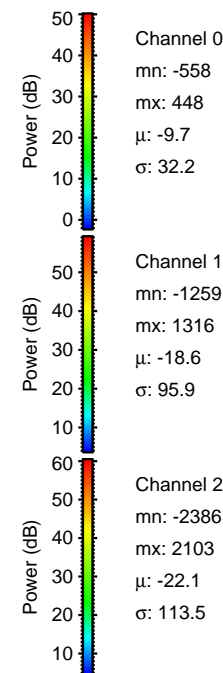
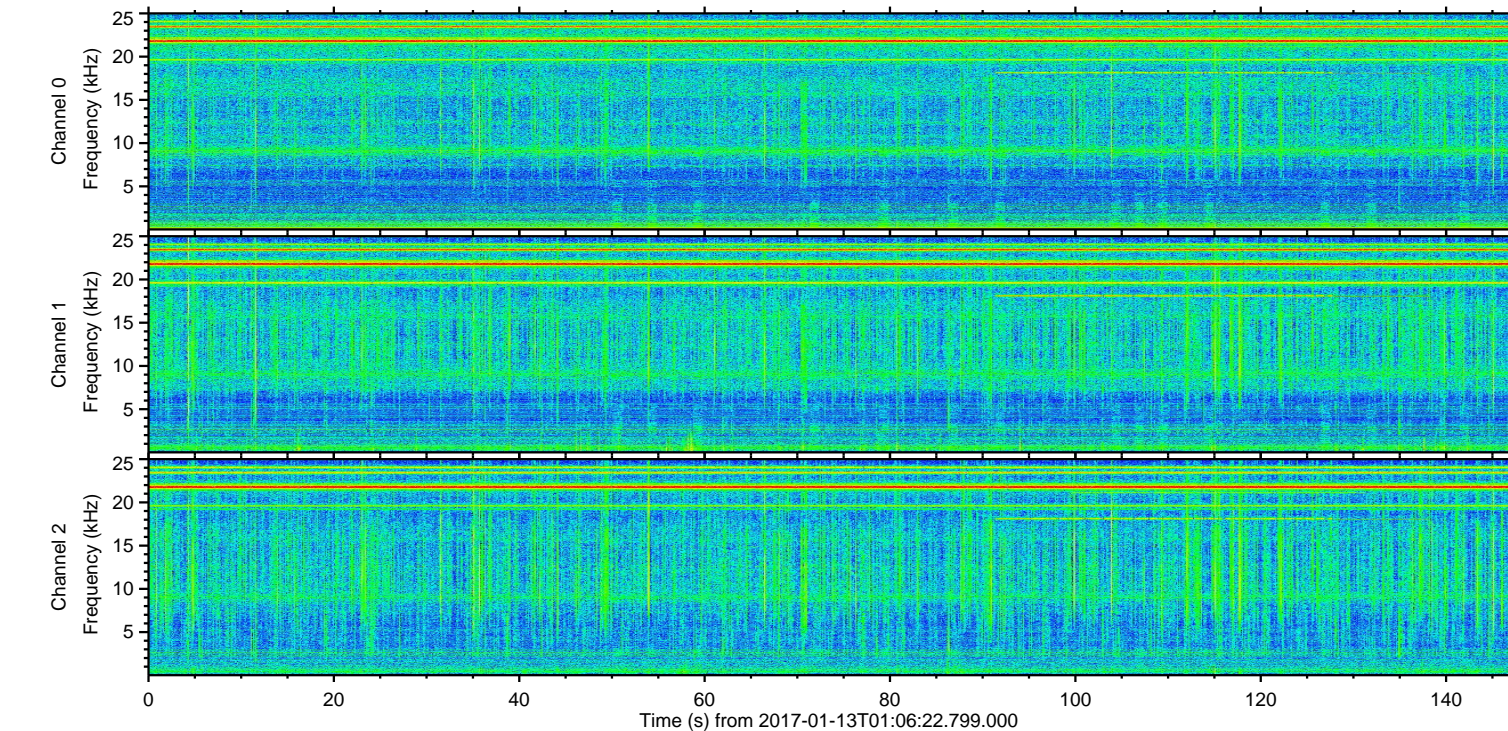
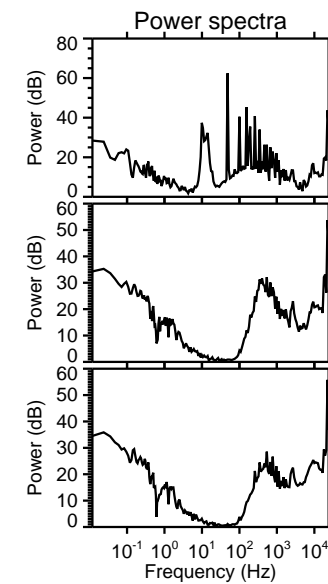
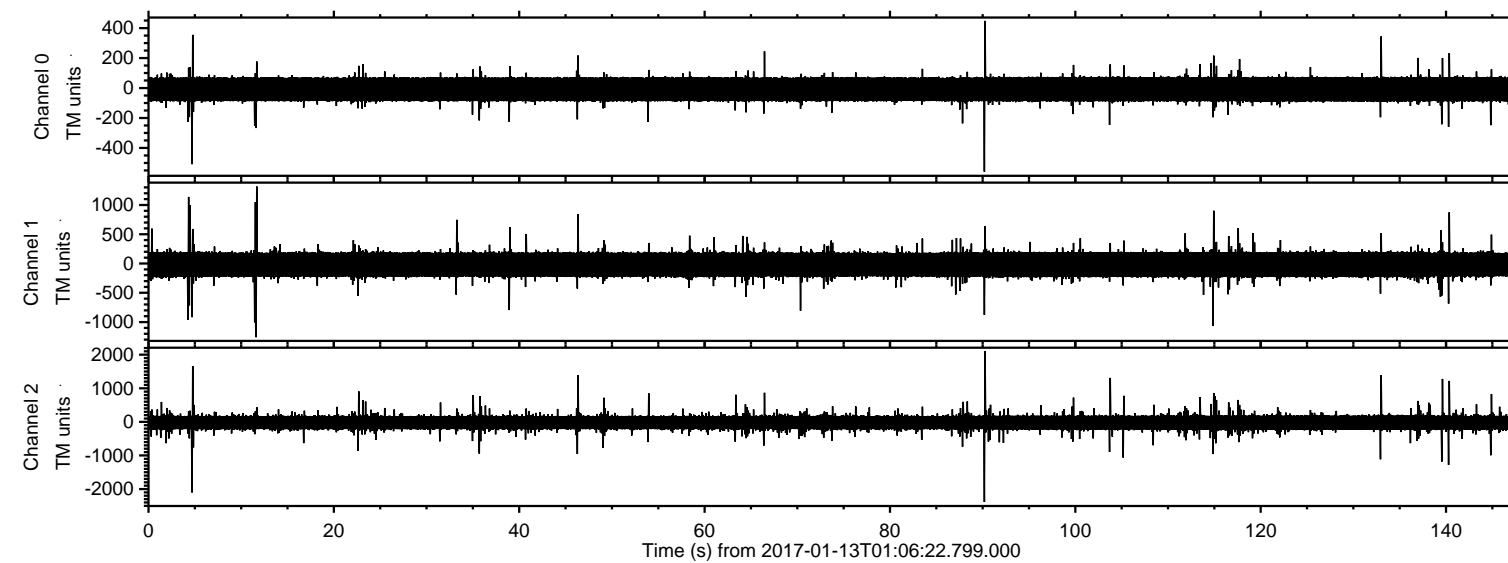


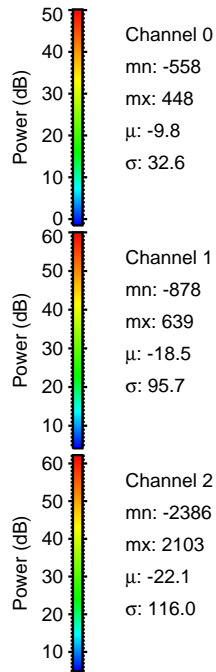
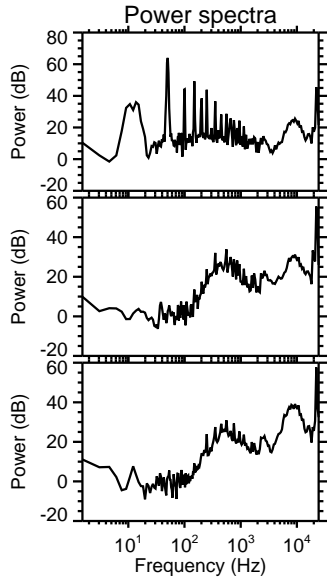
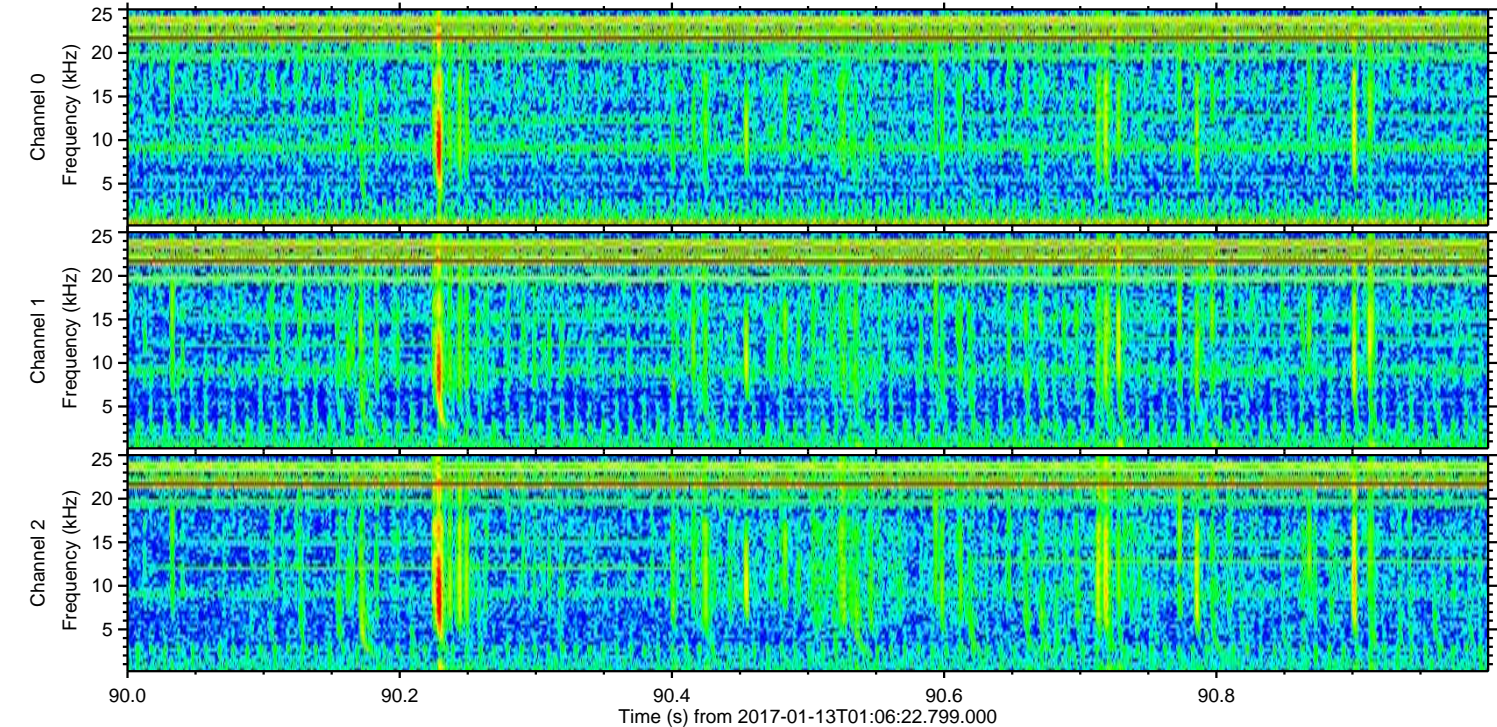
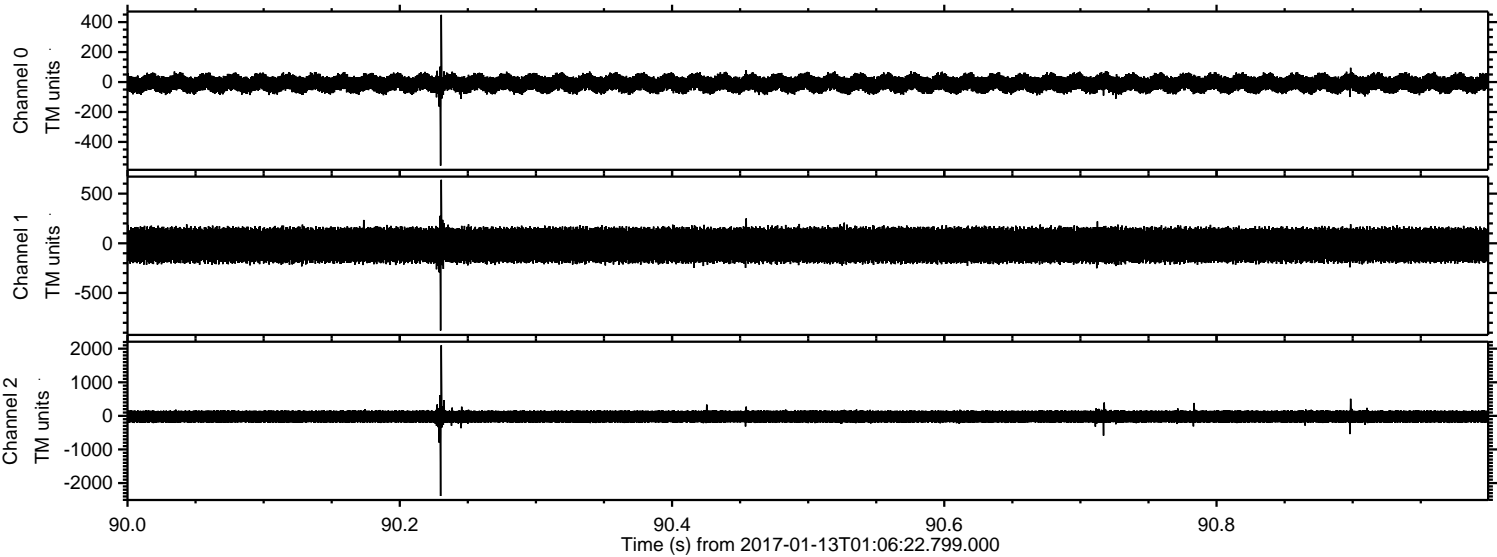
ELMAVAN 3D WAVEFORMS (Measured data sampled at 50 kHz) 51000 packets of 144 samples from 2017-01-13T01:06:22.799.000.

Processed Fri Jan 13 02:14:41 2017 by ELM ver.2012-10-06 from 001__elm20170113_010621__dat00.bin

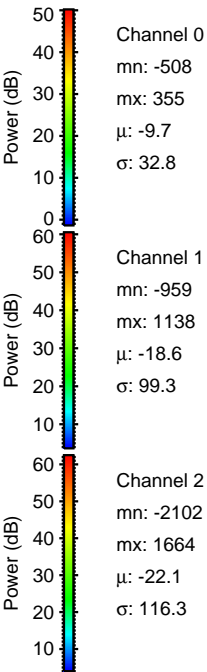
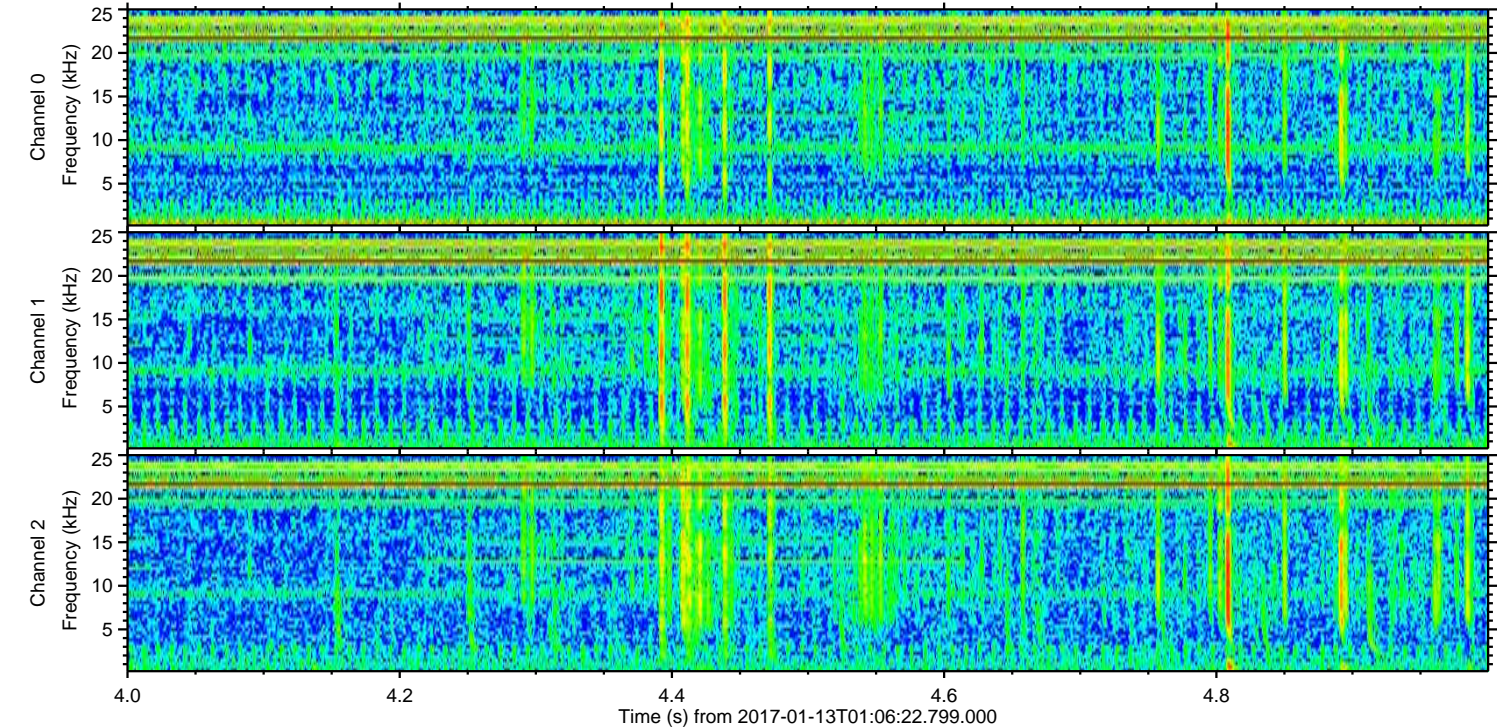
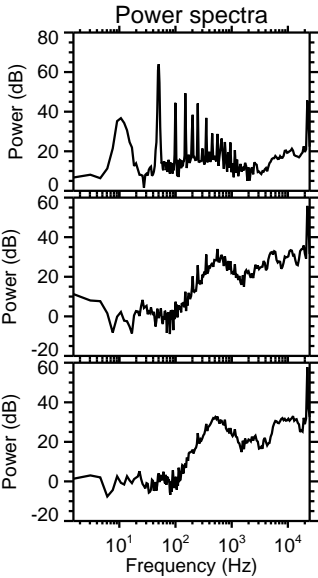
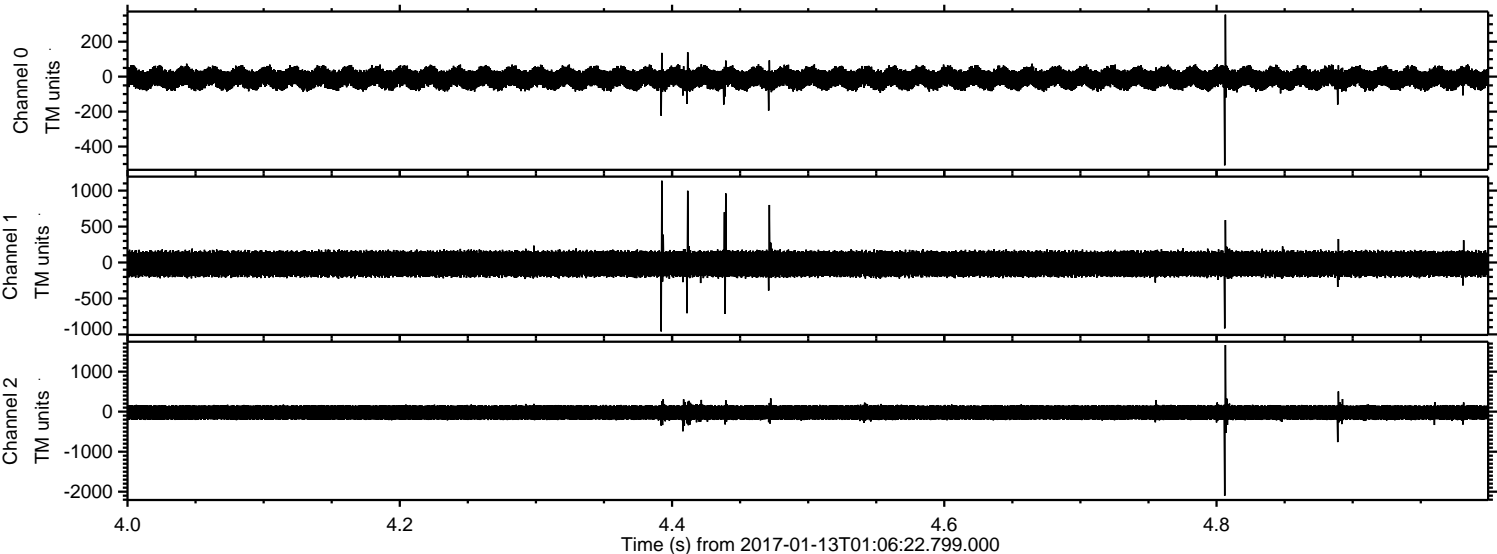


ELMAVAN 3D WAVEFORMS (Measured data sampled at 50 kHz) 51000 packets of 144 samples from 2017-01-13T01:06:22.799.000. Part 91/147

Processed Fri Jan 13 02:14:52 2017 by ELM ver.2012-10-06 from 001__elm20170113_010621__dat00.bin

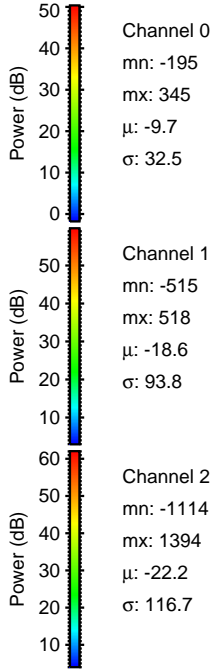
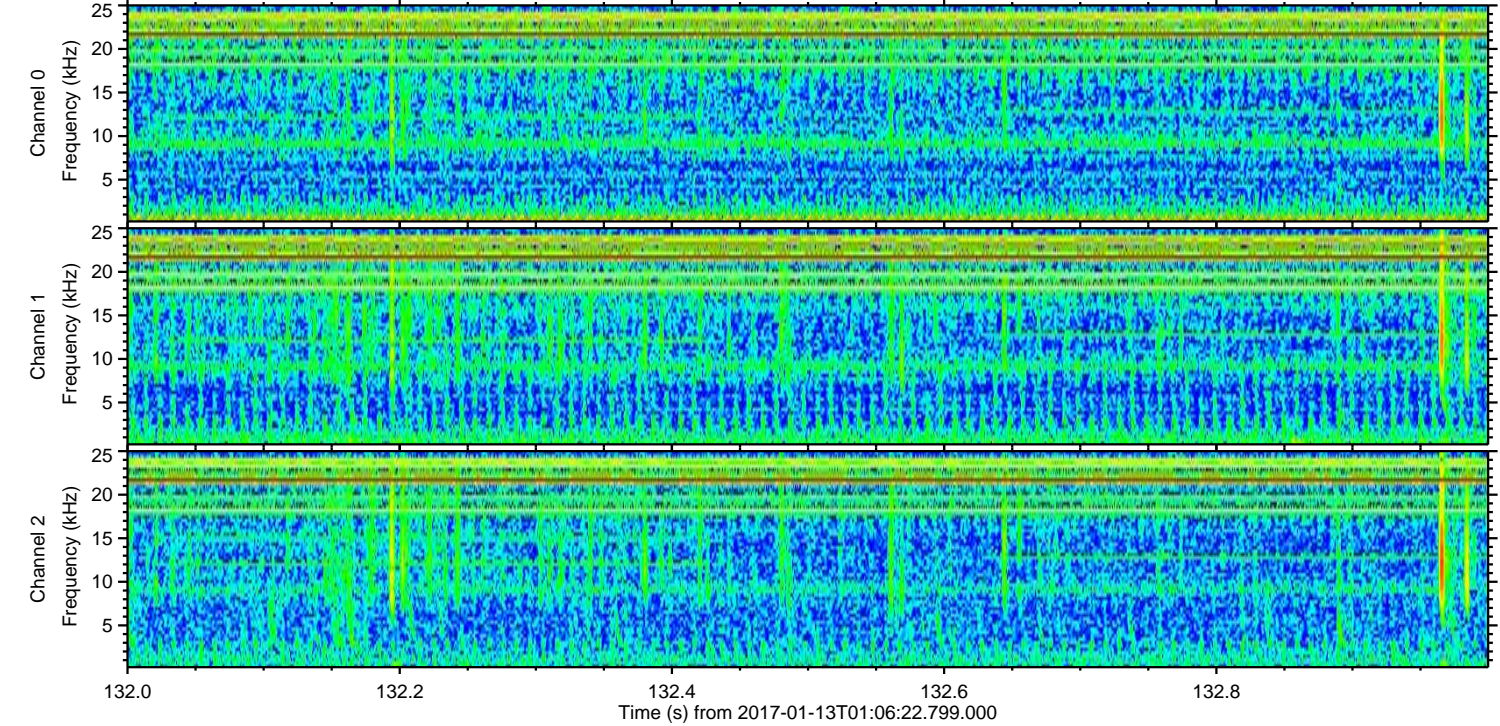
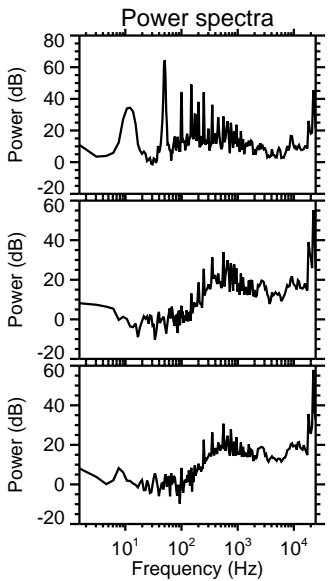
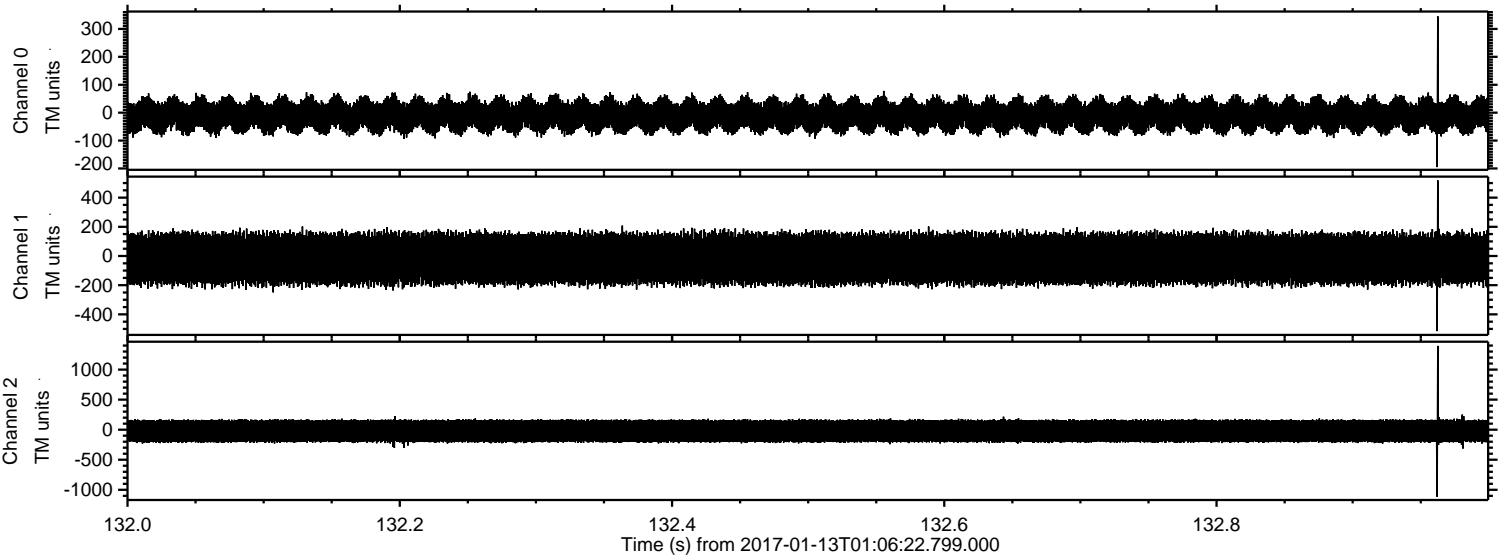


Processed Fri Jan 13 02:14:53 2017 by ELM ver.2012-10-06 from 001__elm20170113_010621__dat00.bin



ELMAVAN 3D WAVEFORMS (Measured data sampled at 50 kHz) 51000 packets of 144 samples from 2017-01-13T01:06:22.799.000. Part 133/147

Processed Fri Jan 13 02:14:54 2017 by ELM ver.2012-10-06 from 001__elm20170113_010621__dat00.bin

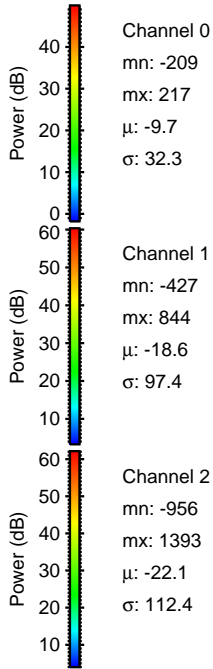
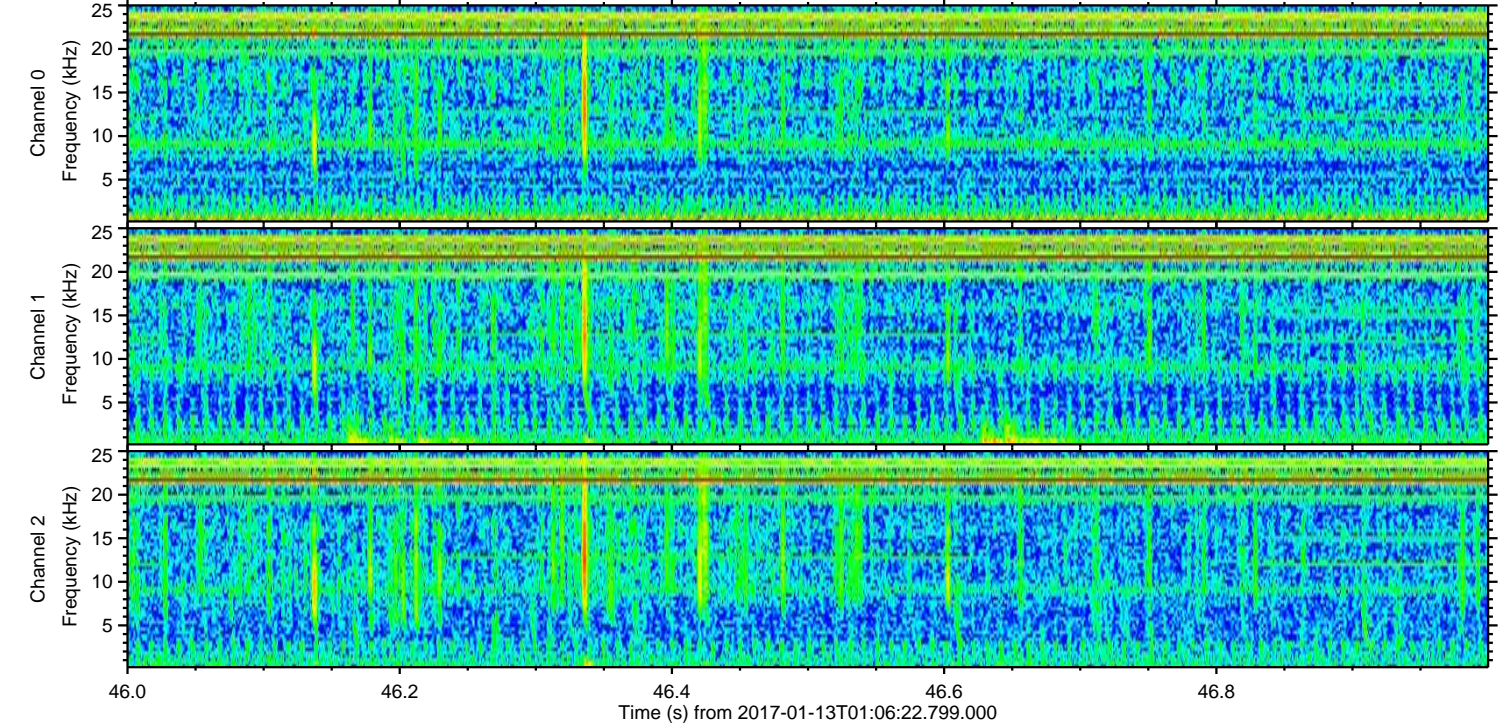
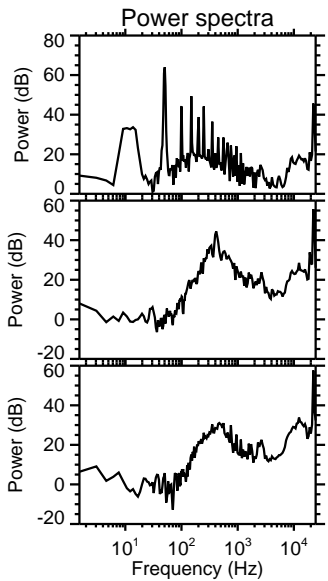
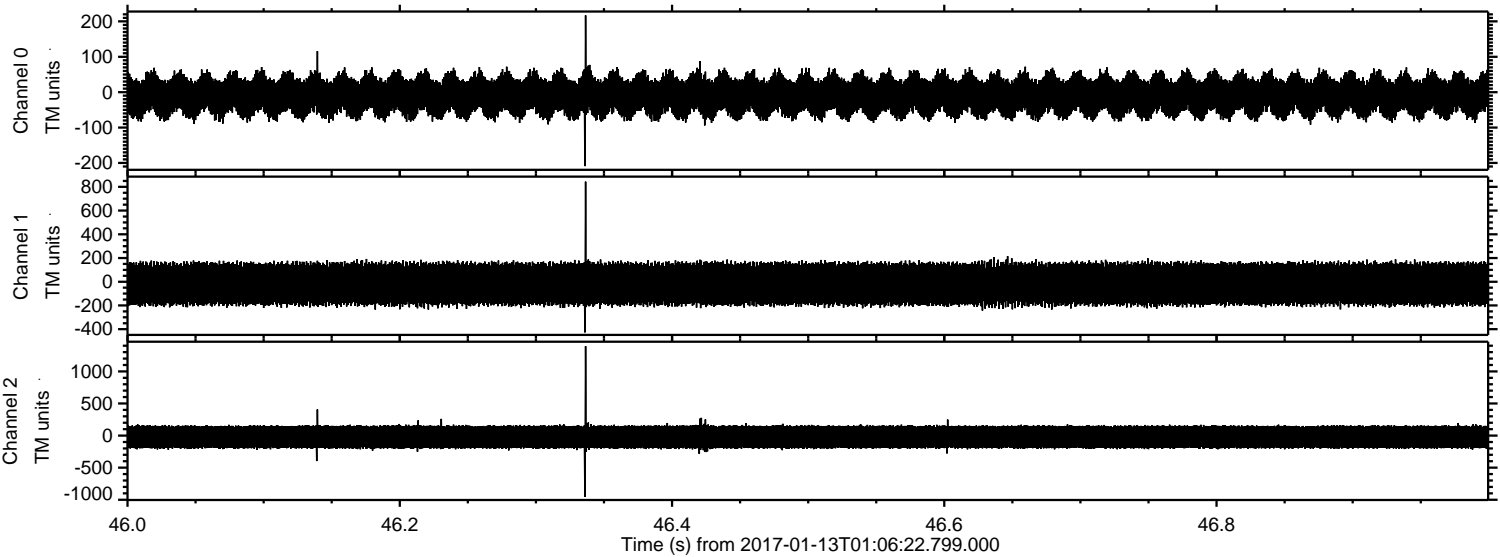


Channel 0
mn: -195
mx: 345
 μ : -9.7
 σ : 32.5

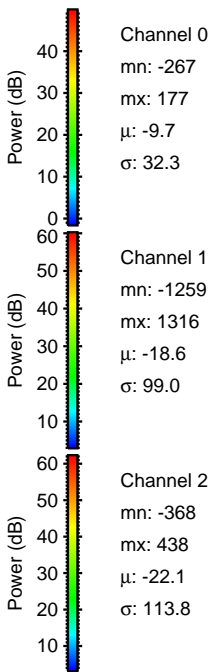
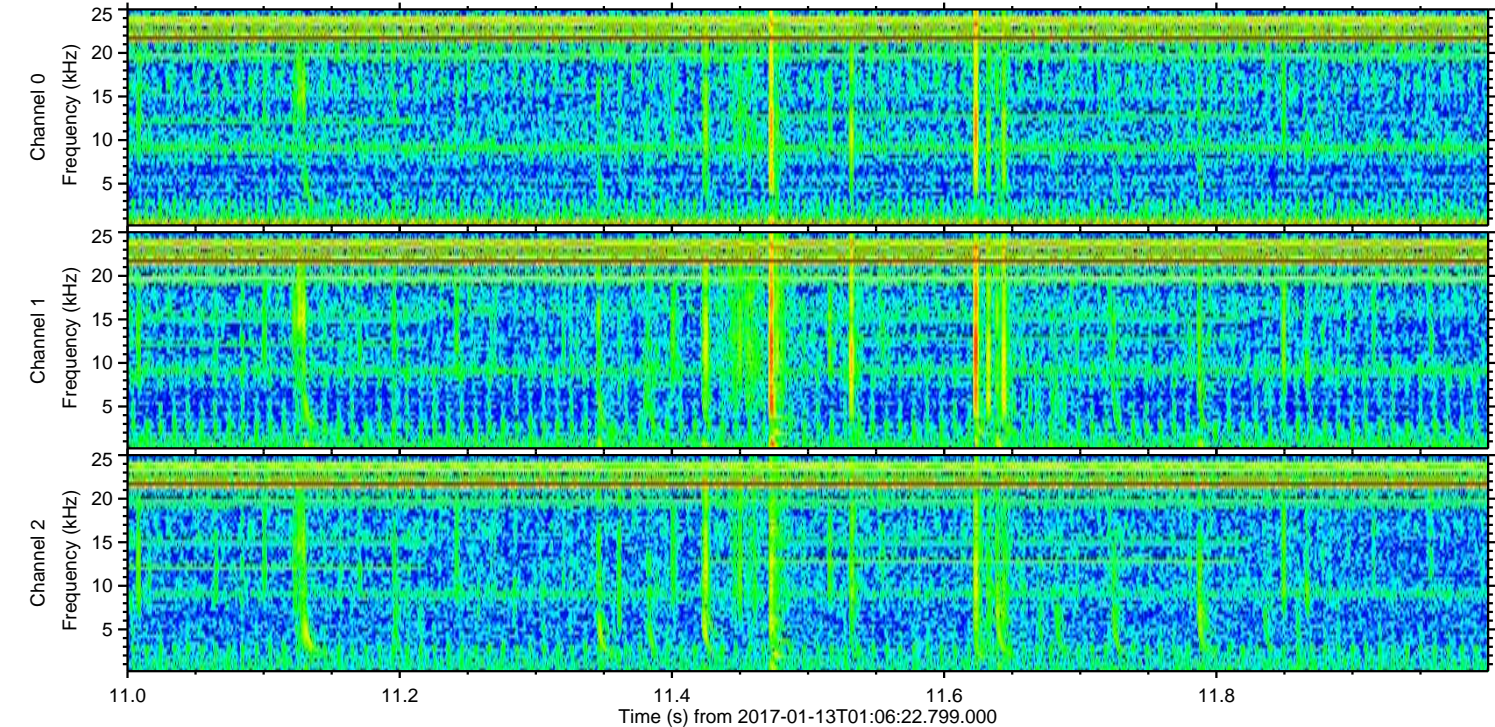
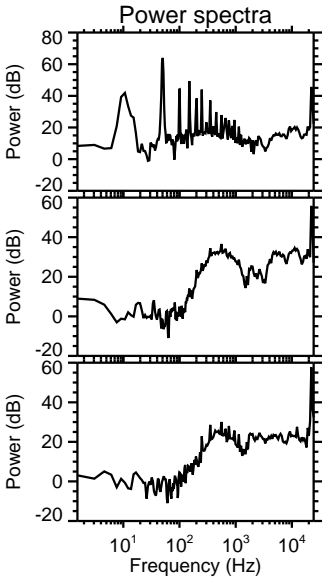
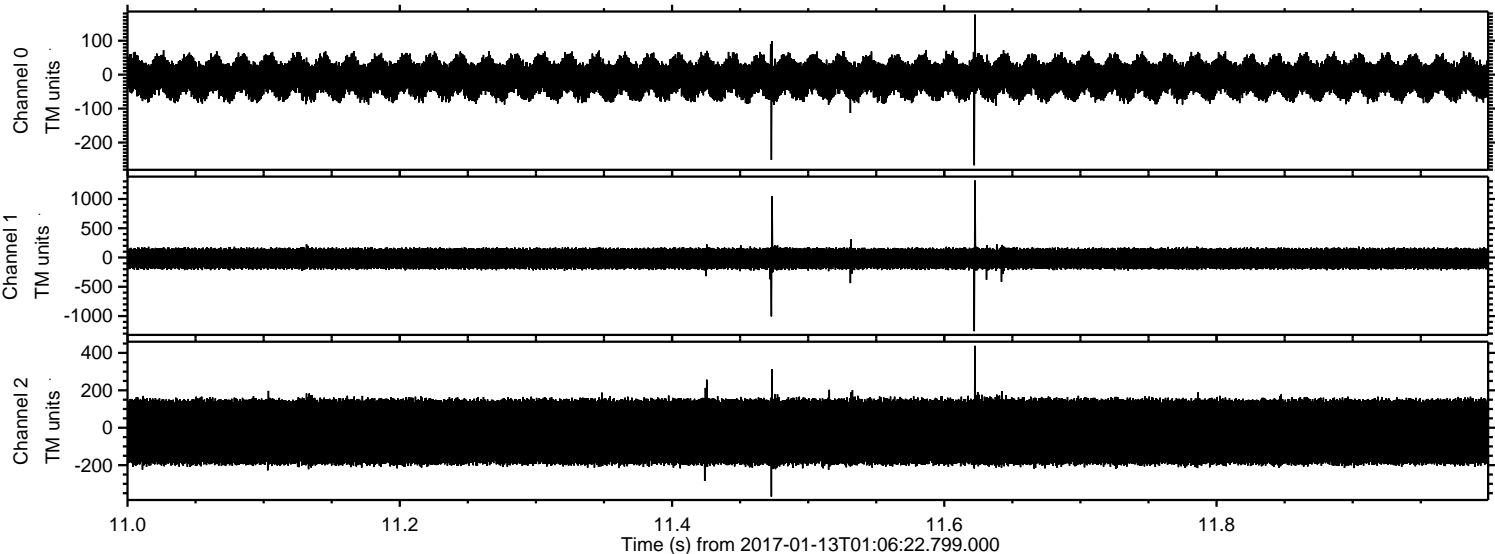
Channel 1
mn: -515
mx: 518
 μ : -18.6
 σ : 93.8

Channel 2
mn: -1114
mx: 1394
 μ : -22.2
 σ : 116.7

Processed Fri Jan 13 02:14:55 2017 by ELM ver.2012-10-06 from 001__elm20170113_010621__dat00.bin

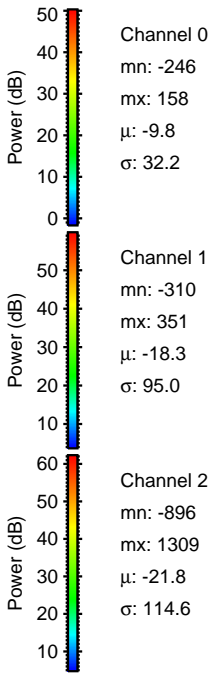
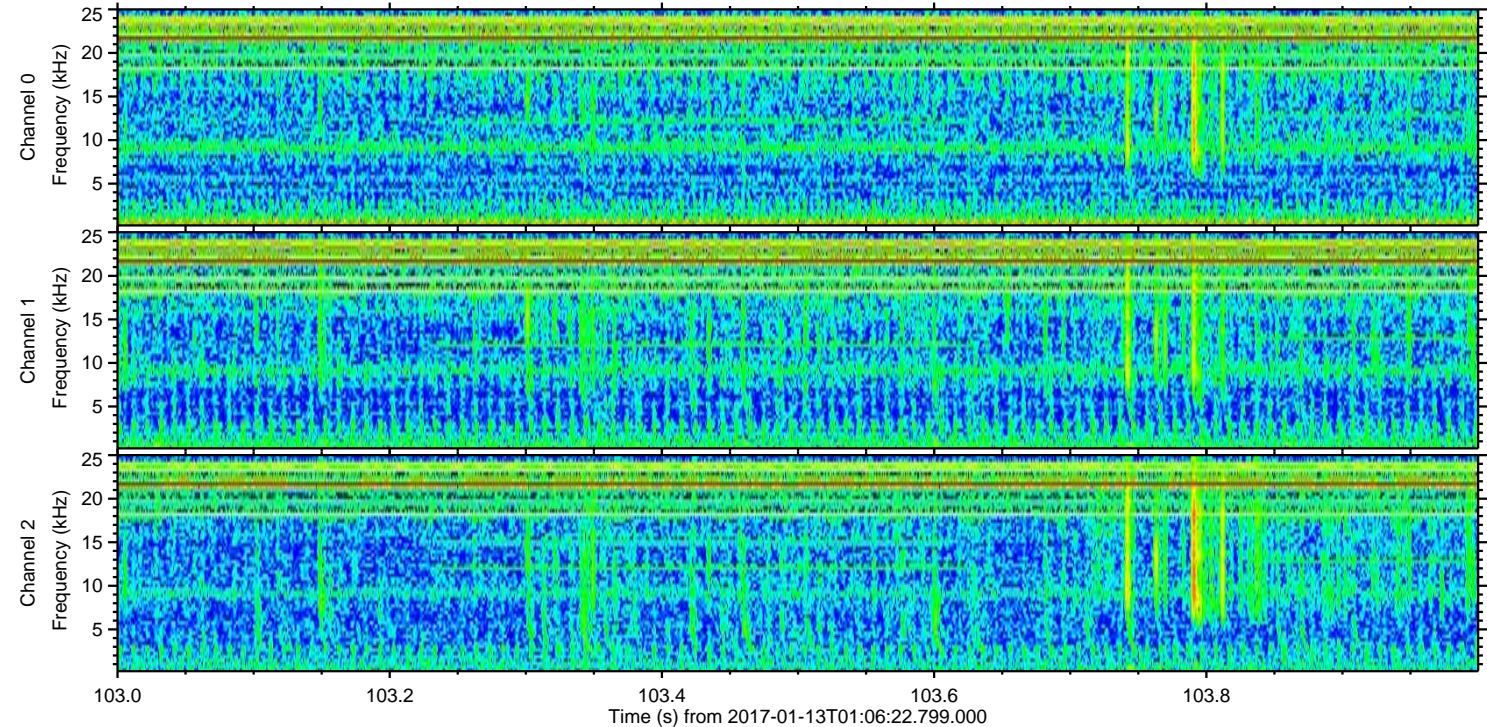
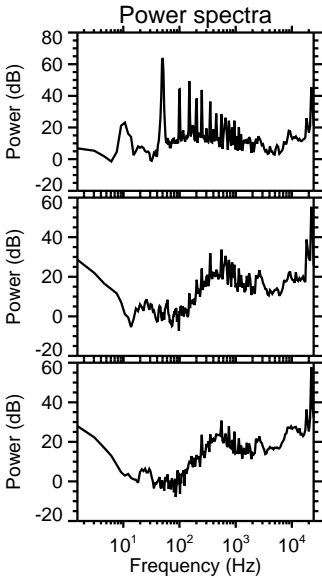
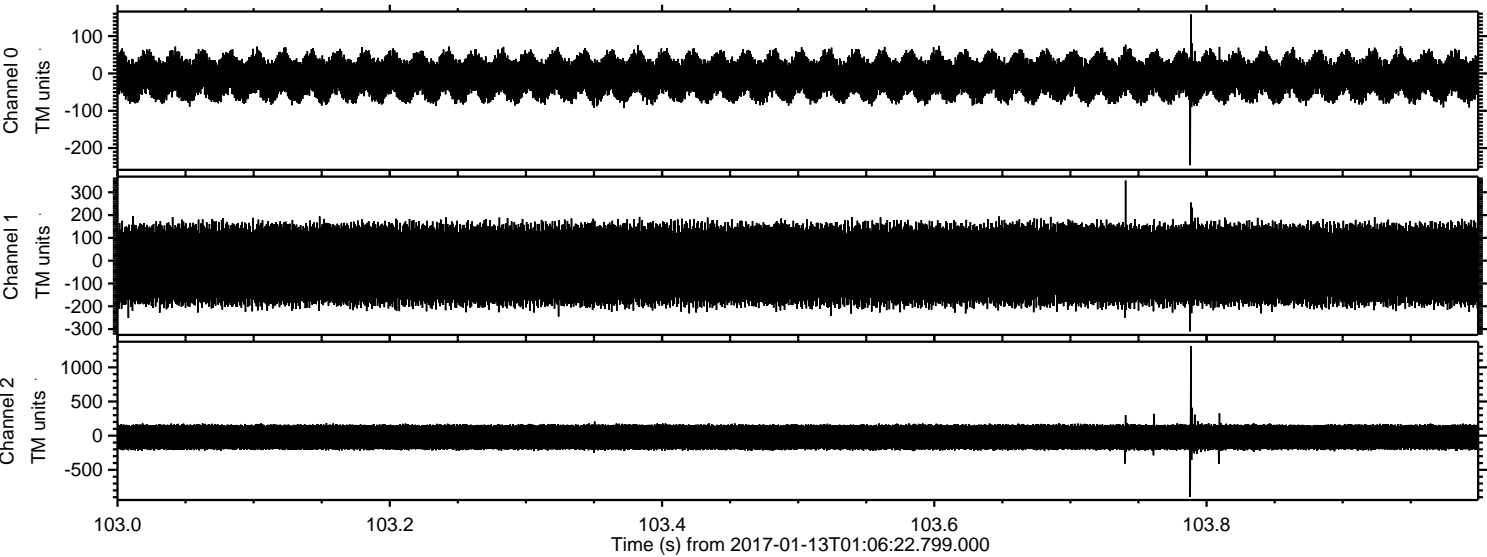


Processed Fri Jan 13 02:14:56 2017 by ELM ver.2012-10-06 from 001__elm20170113_010621__dat00.bin



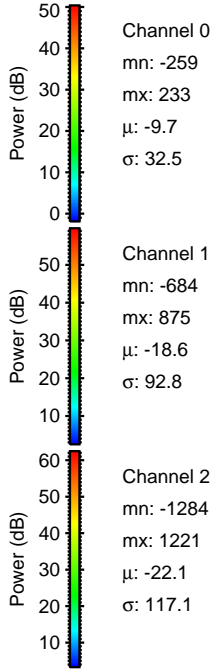
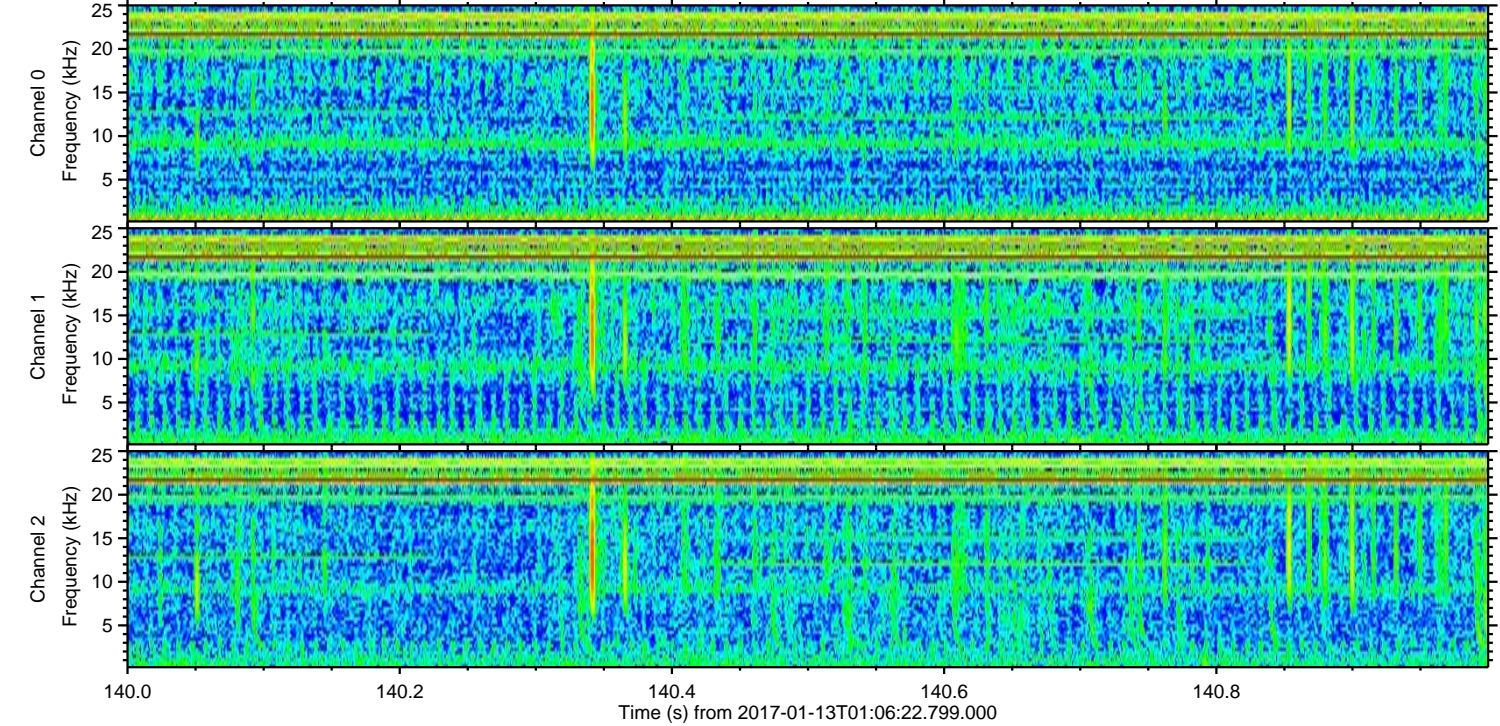
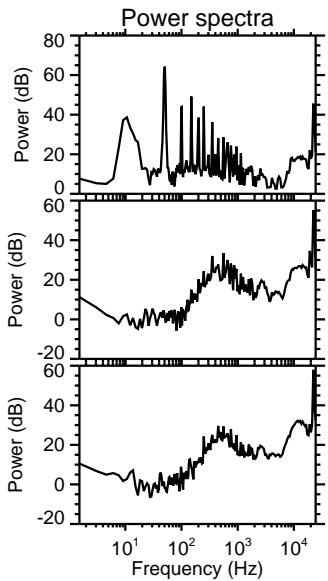
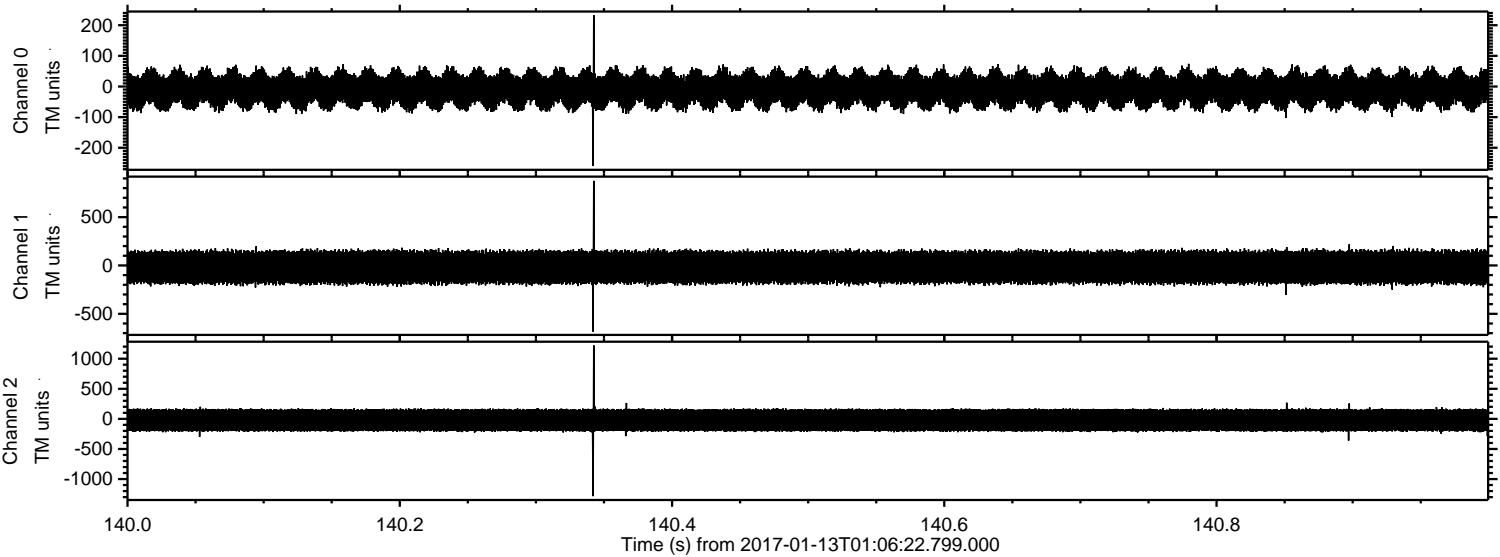
ELMAVAN 3D WAVEFORMS (Measured data sampled at 50 kHz) 51000 packets of 144 samples from 2017-01-13T01:06:22.799.000. Part 104/147

Processed Fri Jan 13 02:14:57 2017 by ELM ver.2012-10-06 from 001__elm20170113_010621__dat00.bin



ELMAVAN 3D WAVEFORMS (Measured data sampled at 50 kHz) 51000 packets of 144 samples from 2017-01-13T01:06:22.799.000. Part 141/147

Processed Fri Jan 13 02:14:58 2017 by ELM ver.2012-10-06 from 001__elm20170113_010621__dat00.bin



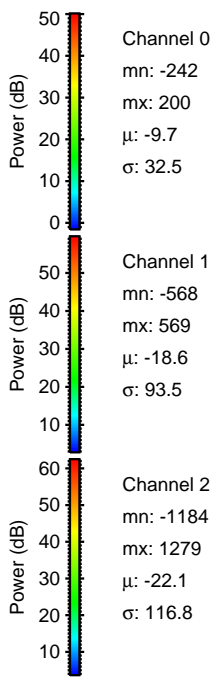
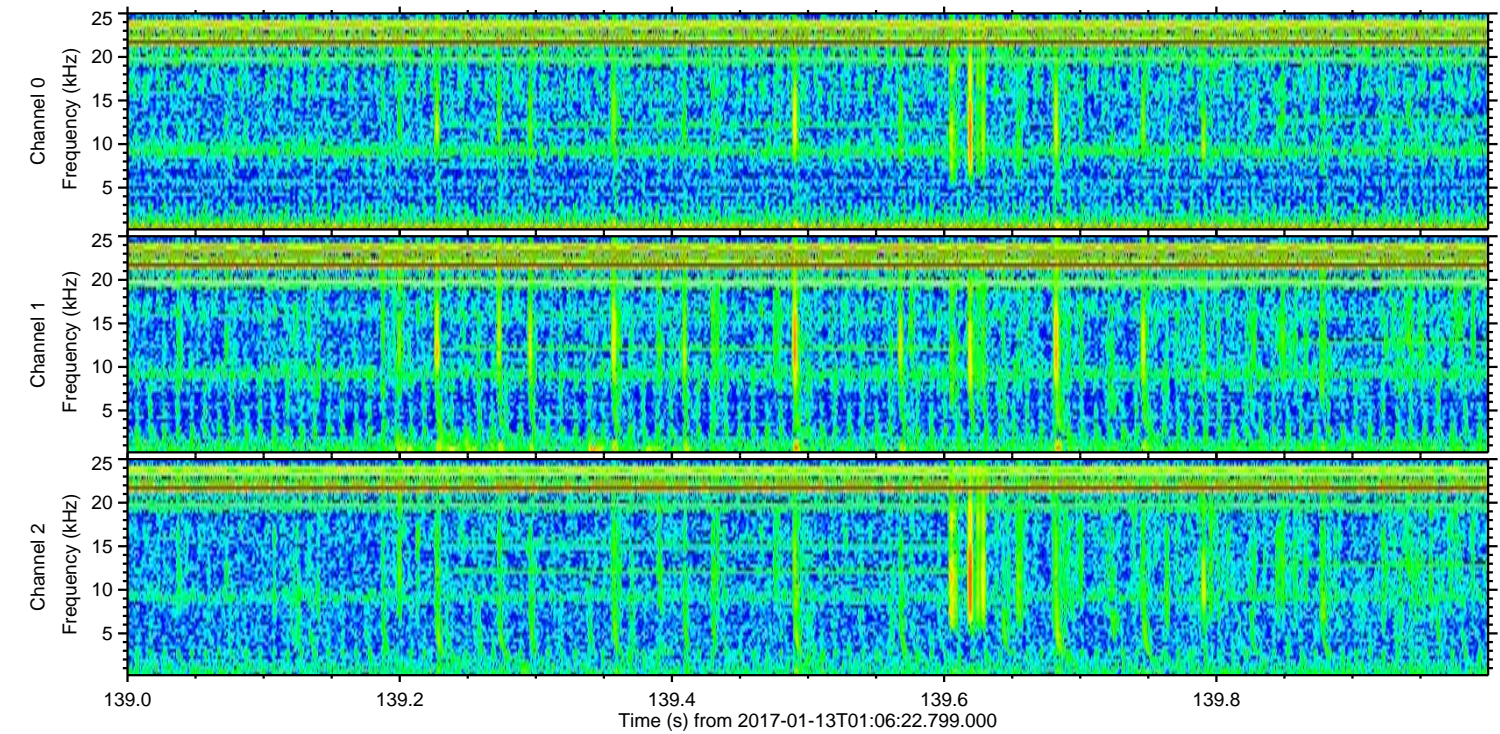
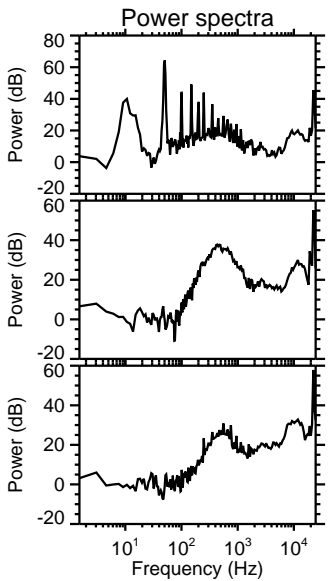
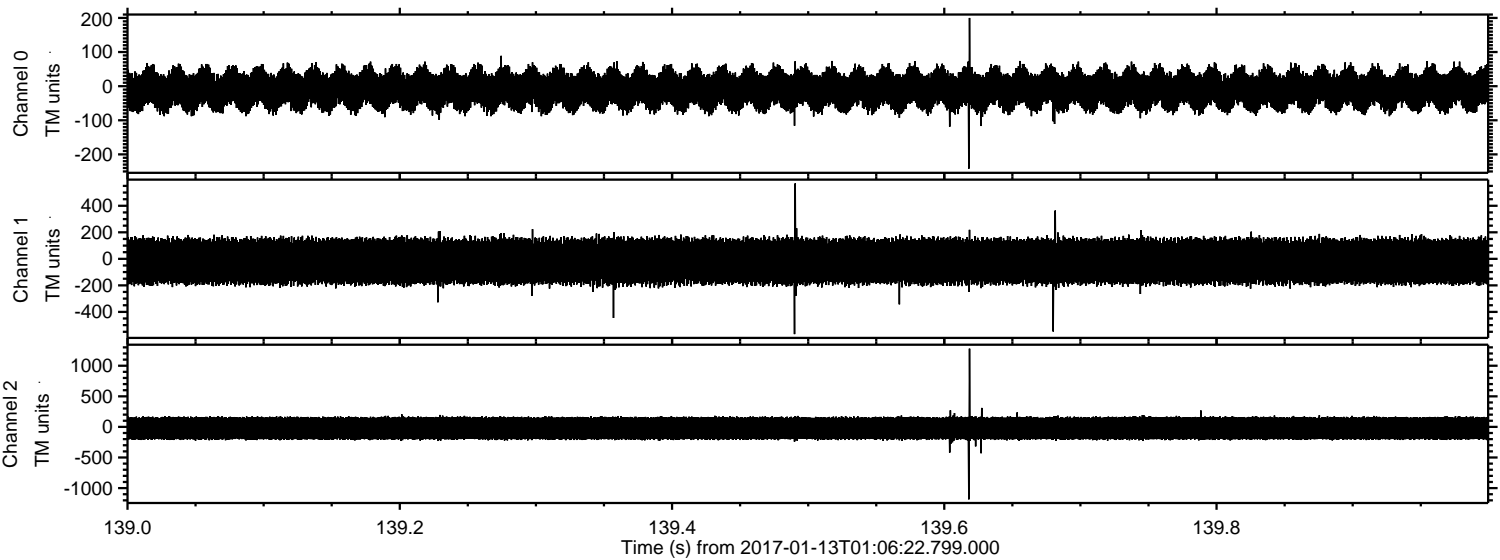
Channel 0
mn: -259
mx: 233
 μ : -9.7
 σ : 32.5

Channel 1
mn: -684
mx: 875
 μ : -18.6
 σ : 92.8

Channel 2
mn: -1284
mx: 1221
 μ : -22.1
 σ : 117.1

ELMAVAN 3D WAVEFORMS (Measured data sampled at 50 kHz) 51000 packets of 144 samples from 2017-01-13T01:06:22.799.000. Part 140/147

Processed Fri Jan 13 02:14:59 2017 by ELM ver.2012-10-06 from 001__elm20170113_010621__dat00.bin



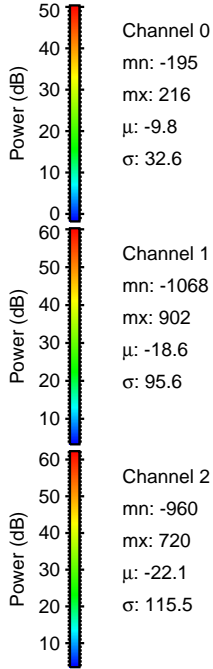
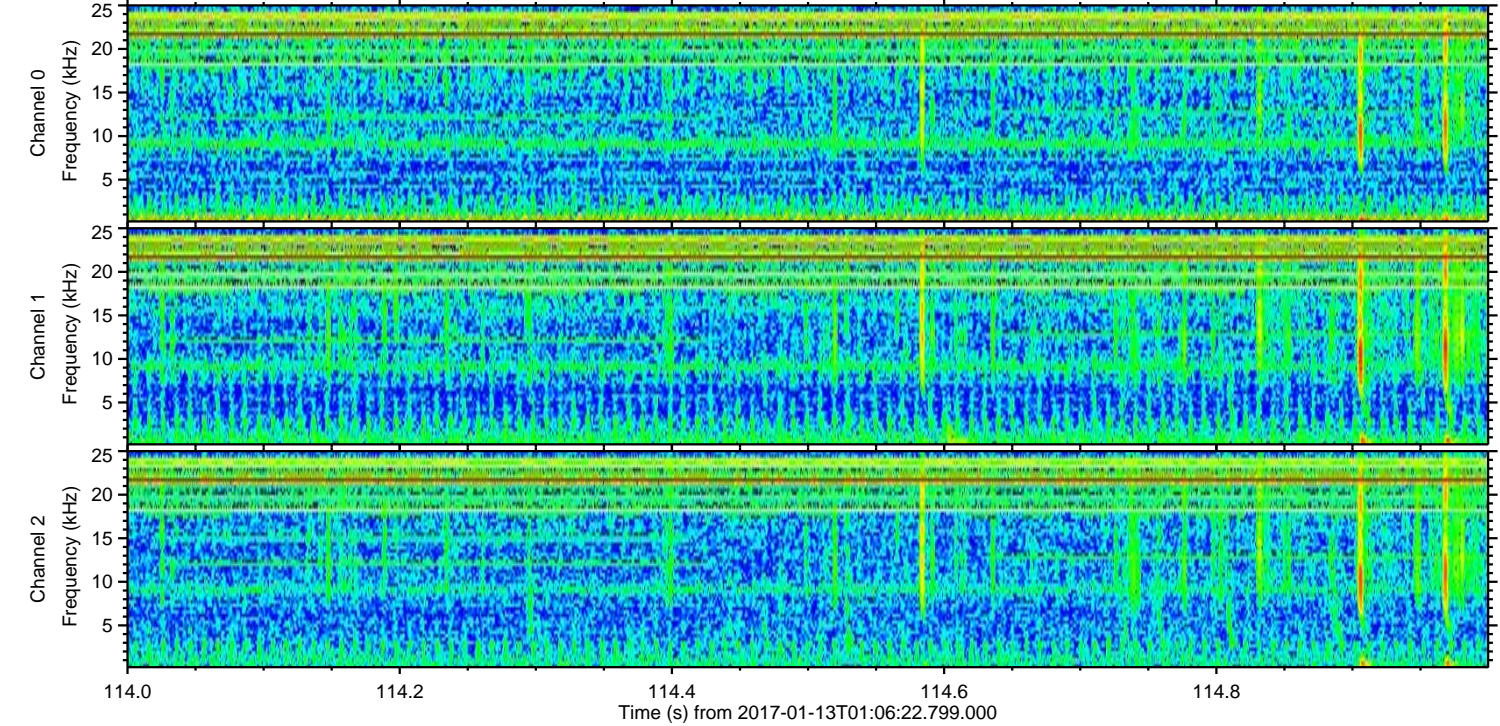
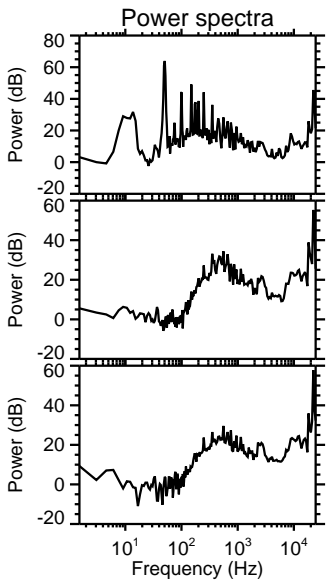
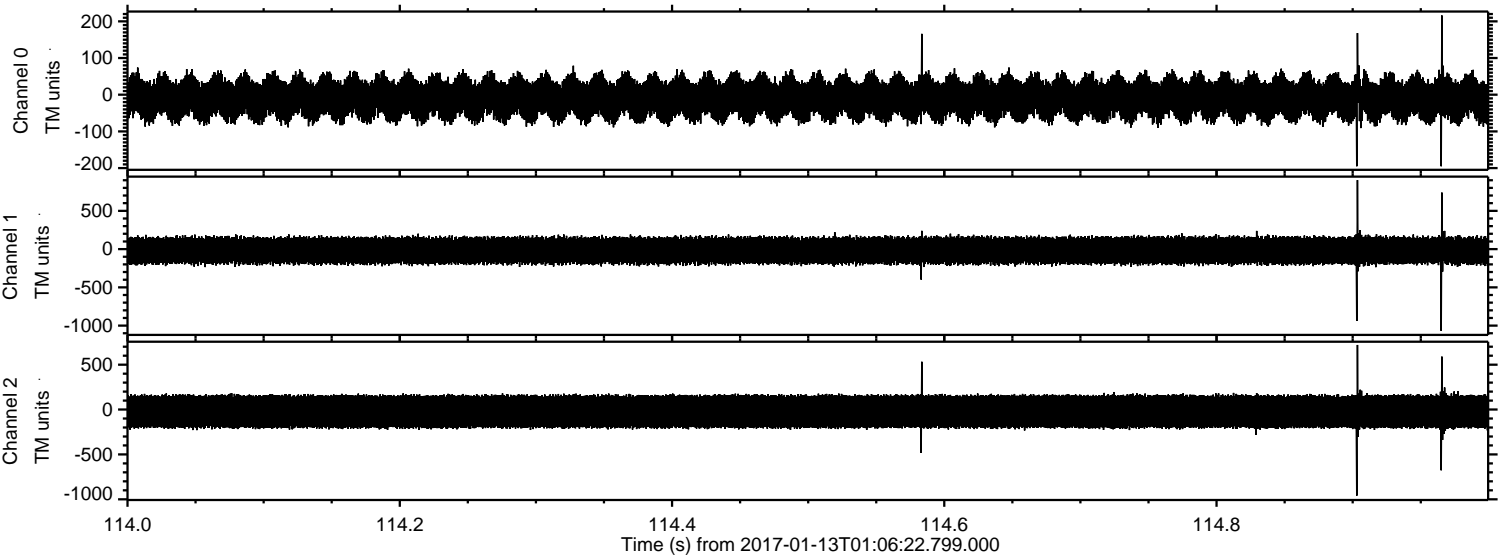
Channel 0
mn: -242
mx: 200
 μ : -9.7
 σ : 32.5

Channel 1
mn: -568
mx: 569
 μ : -18.6
 σ : 93.5

Channel 2
mn: -1184
mx: 1279
 μ : -22.1
 σ : 116.8

ELMAVAN 3D WAVEFORMS (Measured data sampled at 50 kHz) 51000 packets of 144 samples from 2017-01-13T01:06:22.799.000. Part 115/147

Processed Fri Jan 13 02:15:00 2017 by ELM ver.2012-10-06 from 001__elm20170113_010621__dat00.bin



Channel 0
mn: -195
mx: 216
 μ : -9.8
 σ : 32.6

Channel 1
mn: -1068
mx: 902
 μ : -18.6
 σ : 95.6

Channel 2
mn: -960
mx: 720
 μ : -22.1
 σ : 115.5

ELMAVAN 3D WAVEFORMS (Measured data sampled at 50 kHz) 51000 packets of 144 samples from 2017-01-13T01:06:22.799.000. Part 103/147

