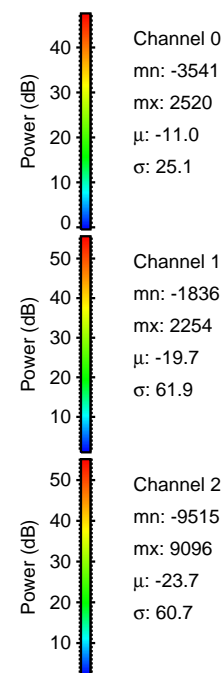
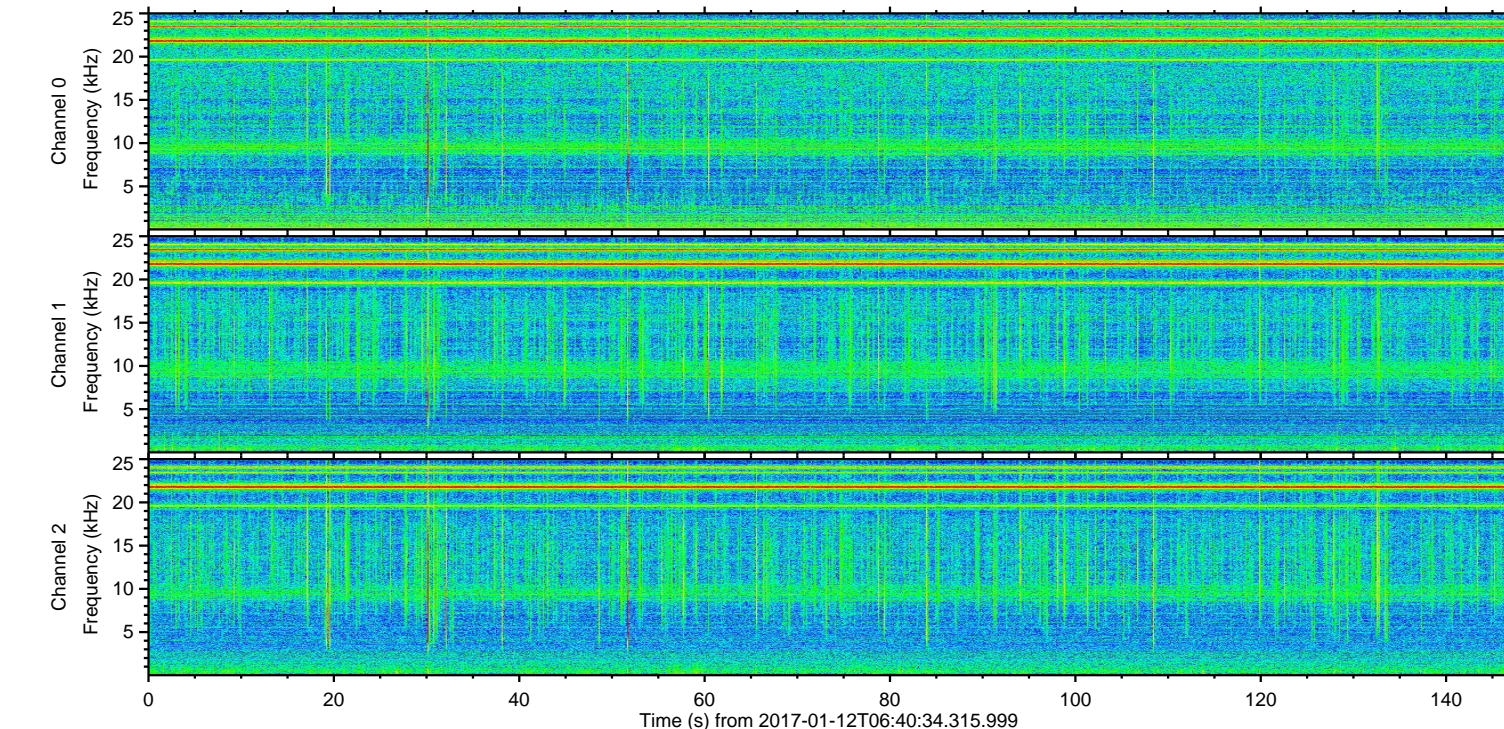
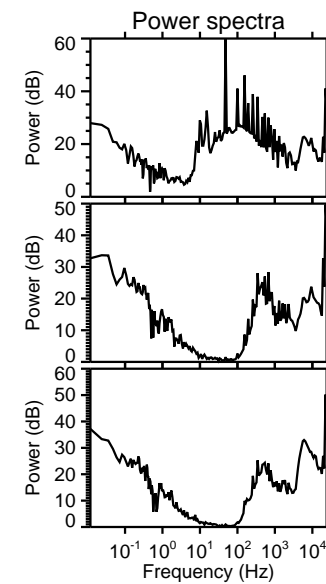
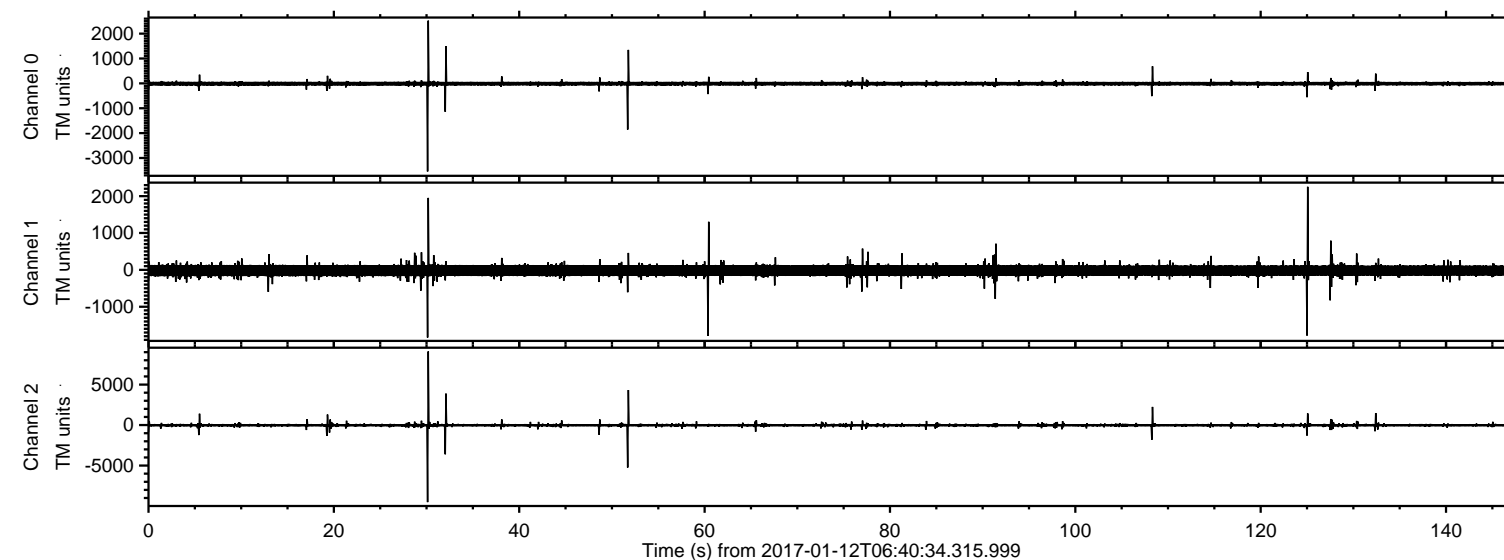
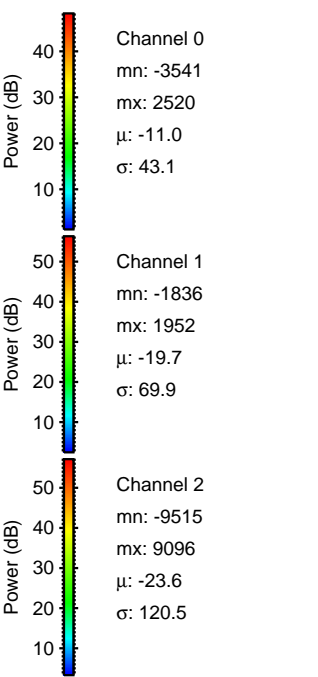
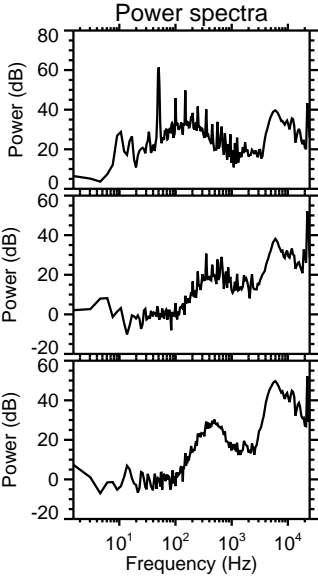
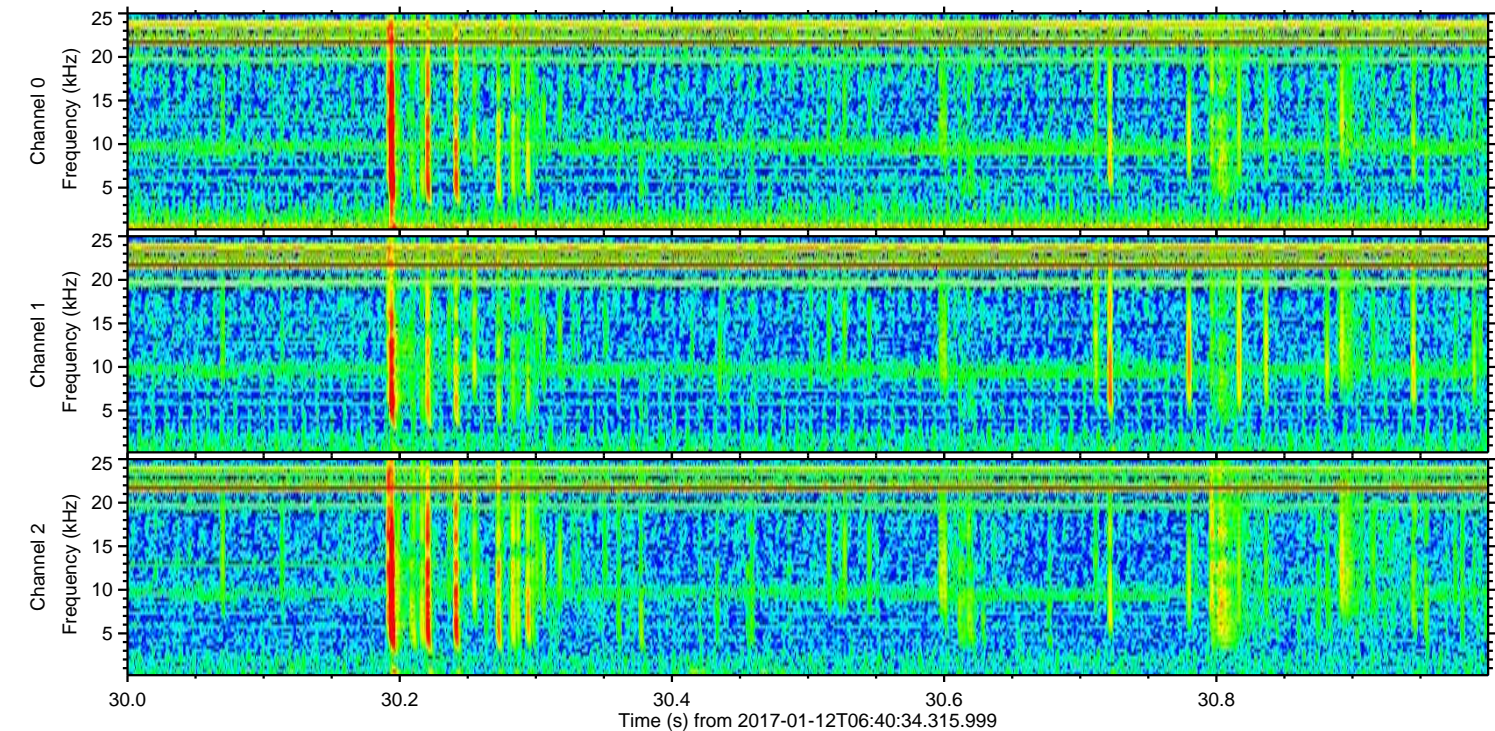
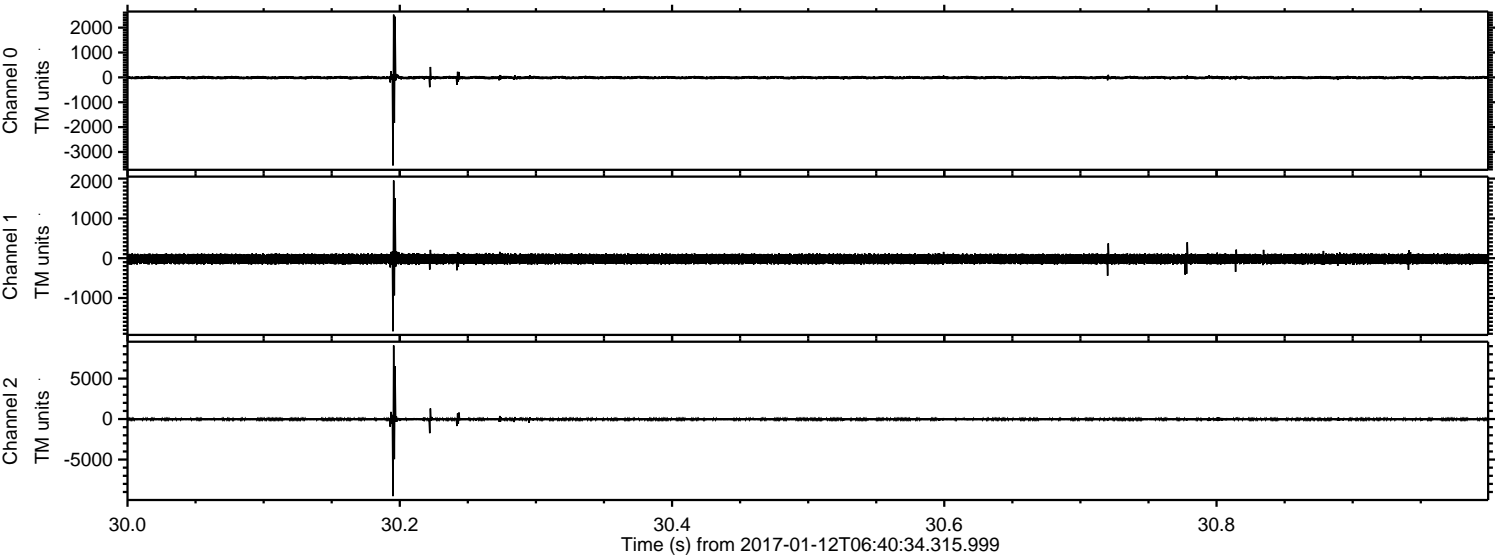


ELMAVAN 3D WAVEFORMS (Measured data sampled at 50 kHz) 51000 packets of 144 samples from 2017-01-12T06:40:34.315.999.

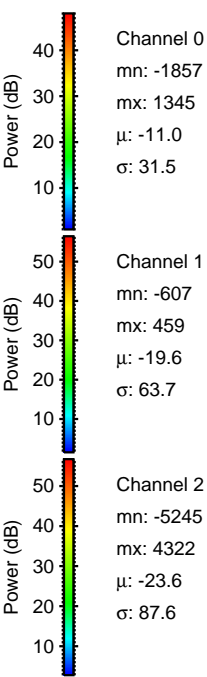
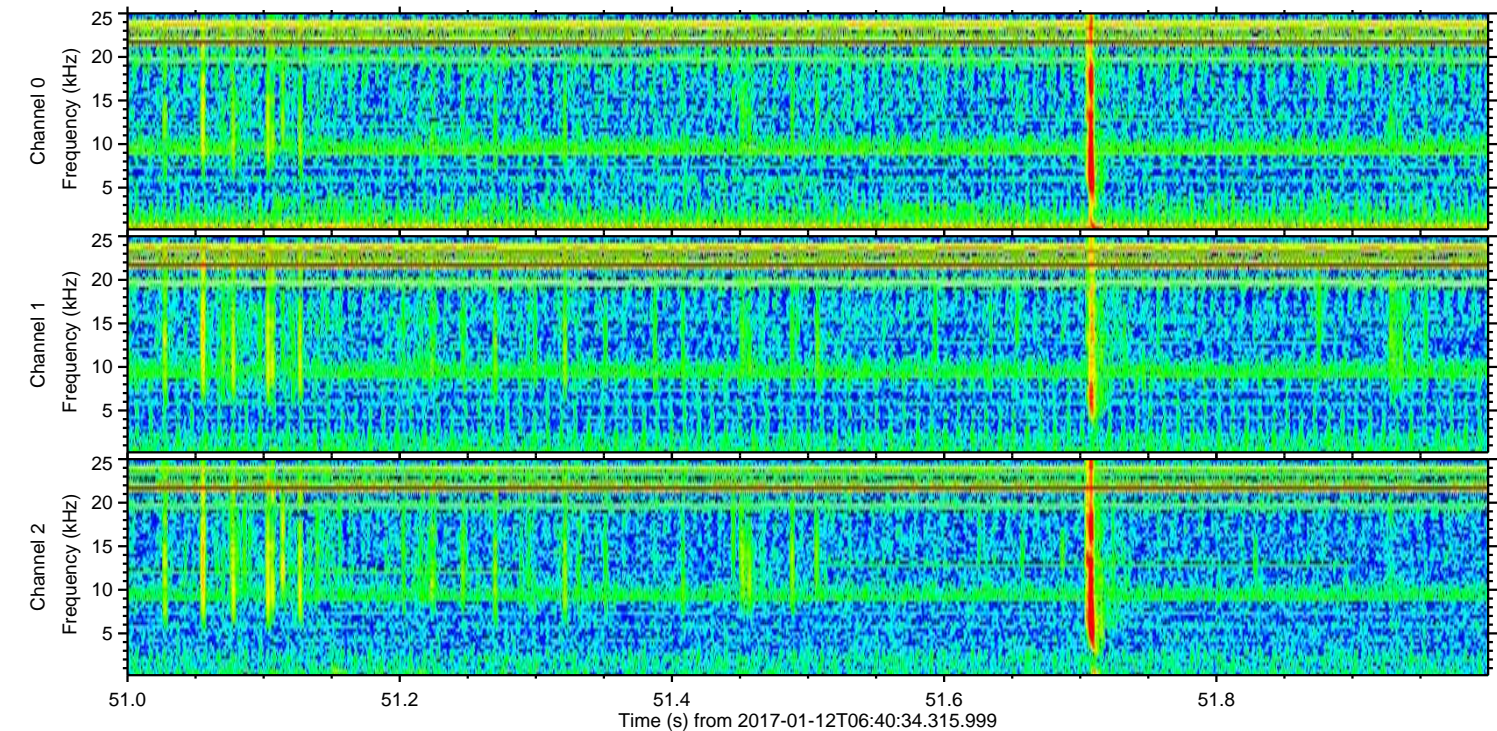
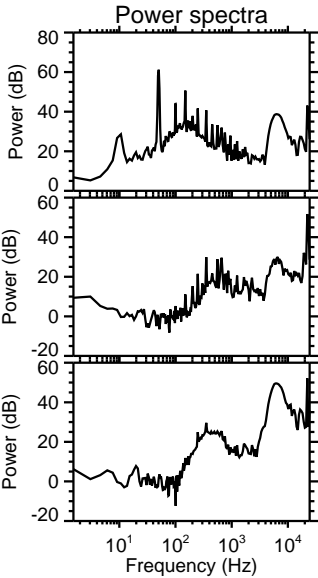
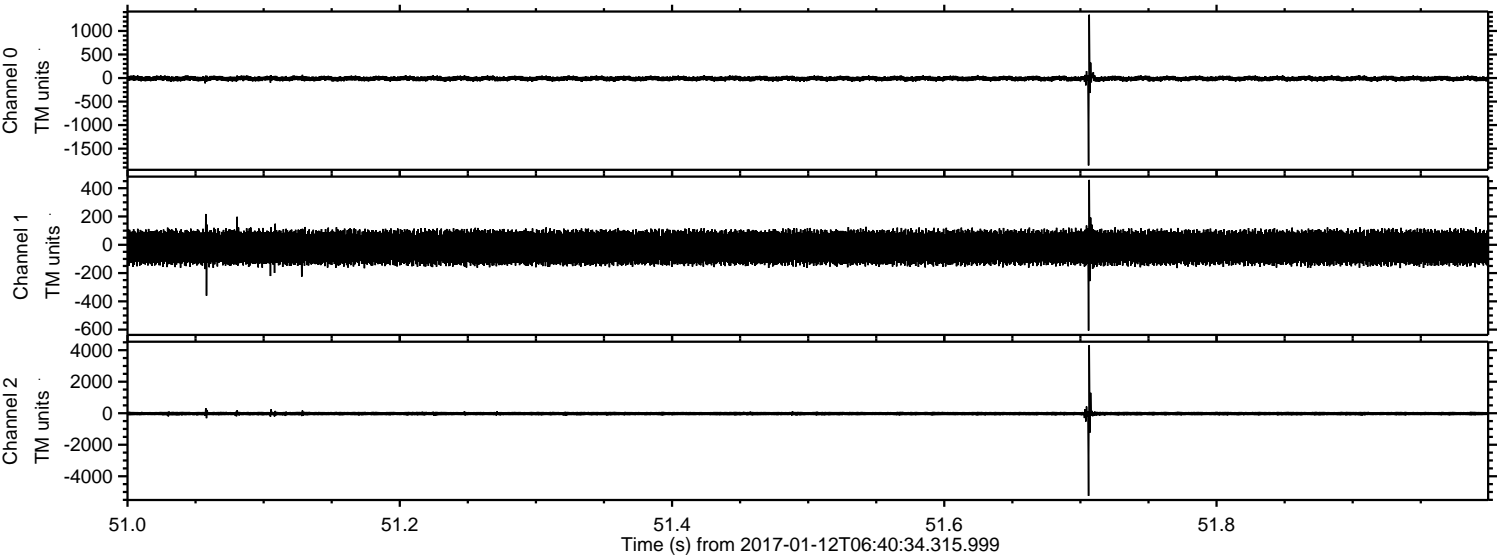
Processed Thu Jan 12 07:48:45 2017 by ELM ver.2012-10-06 from 001__elm20170112_064033__dat00.bin



Processed Thu Jan 12 07:48:57 2017 by ELM ver.2012-10-06 from 001__elm20170112_064033__dat00.bin

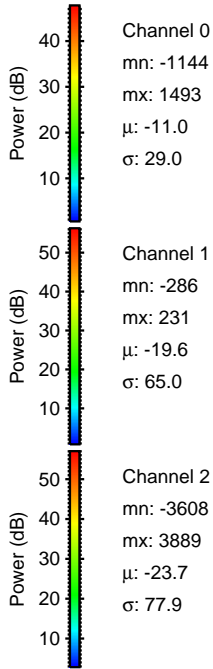
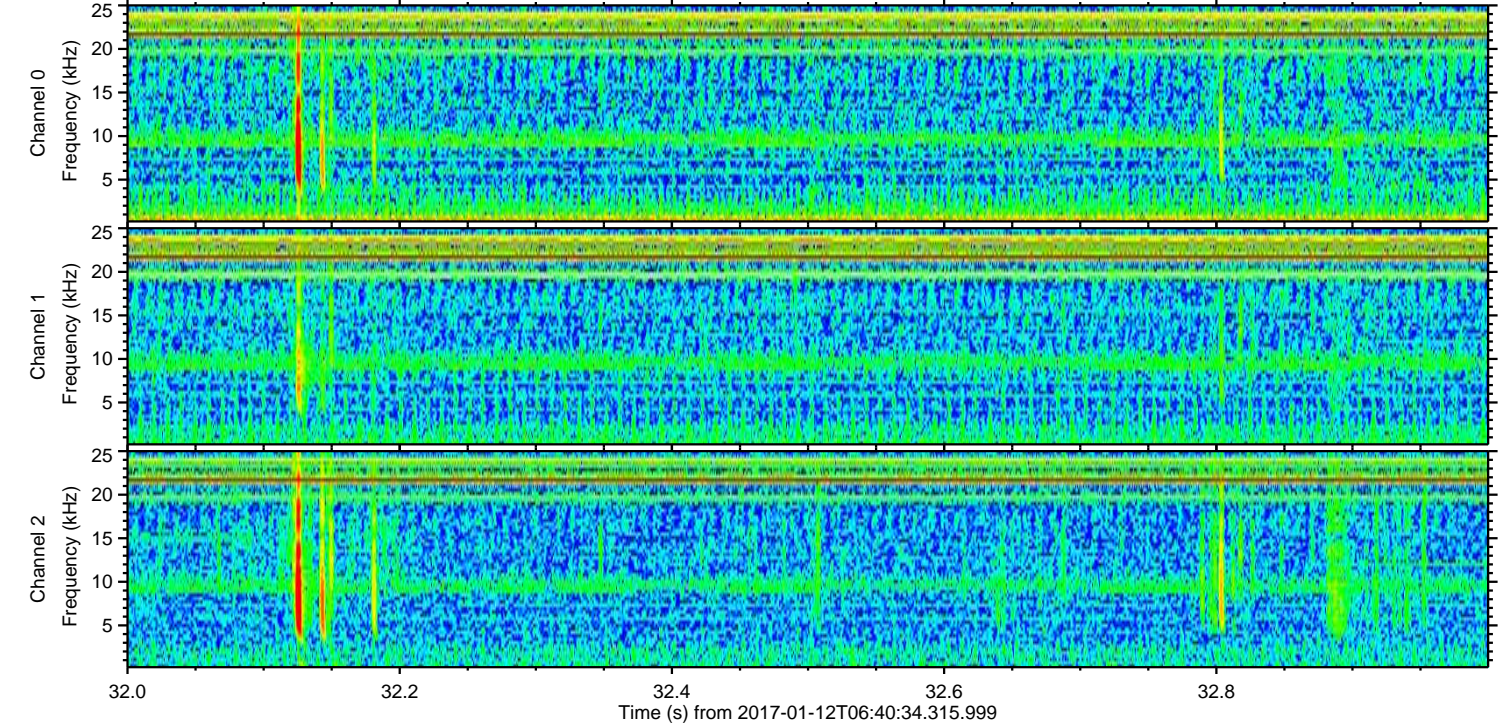
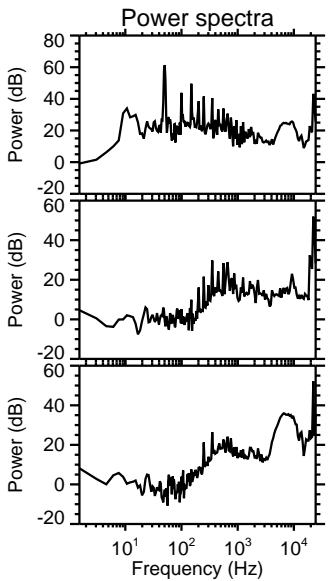
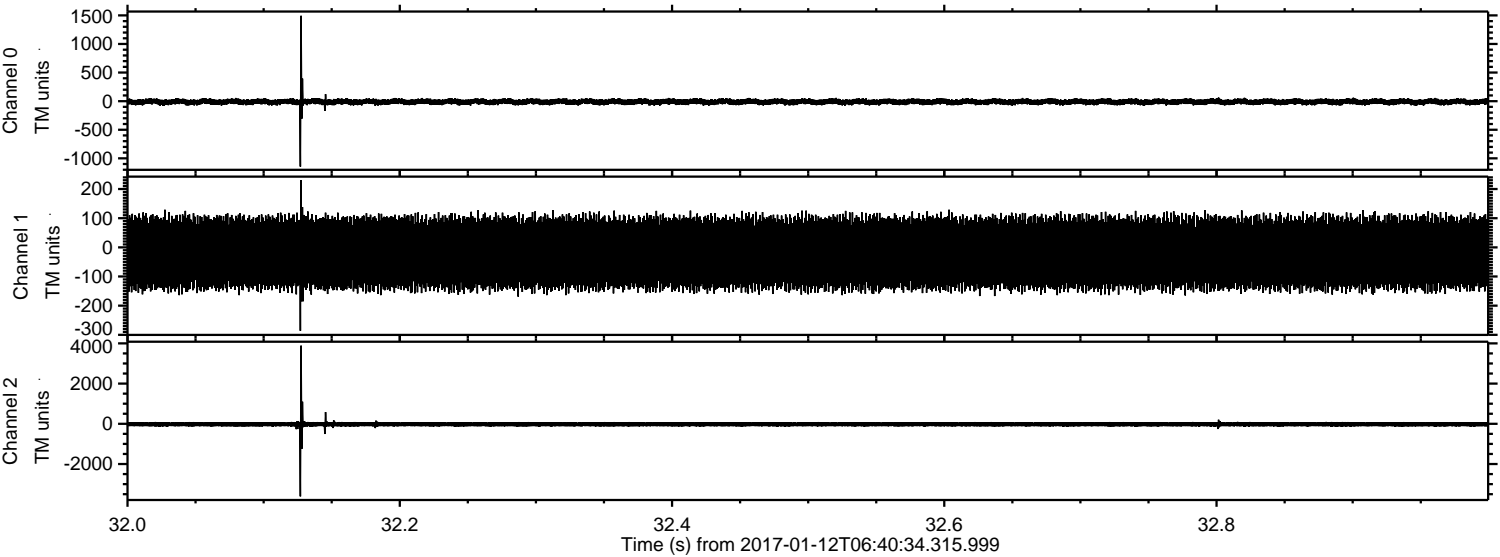


Processed Thu Jan 12 07:48:58 2017 by ELM ver.2012-10-06 from 001__elm20170112_064033__dat00.bin



ELMAVAN 3D WAVEFORMS (Measured data sampled at 50 kHz) 51000 packets of 144 samples from 2017-01-12T06:40:34.315.999. Part 33/147

Processed Thu Jan 12 07:48:59 2017 by ELM ver.2012-10-06 from 001__elm20170112_064033__dat00.bin



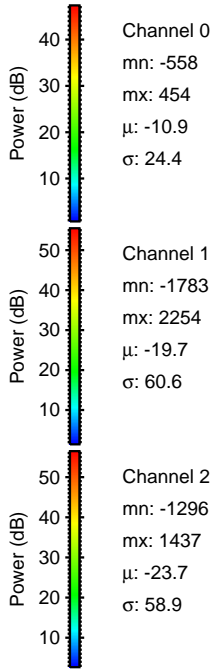
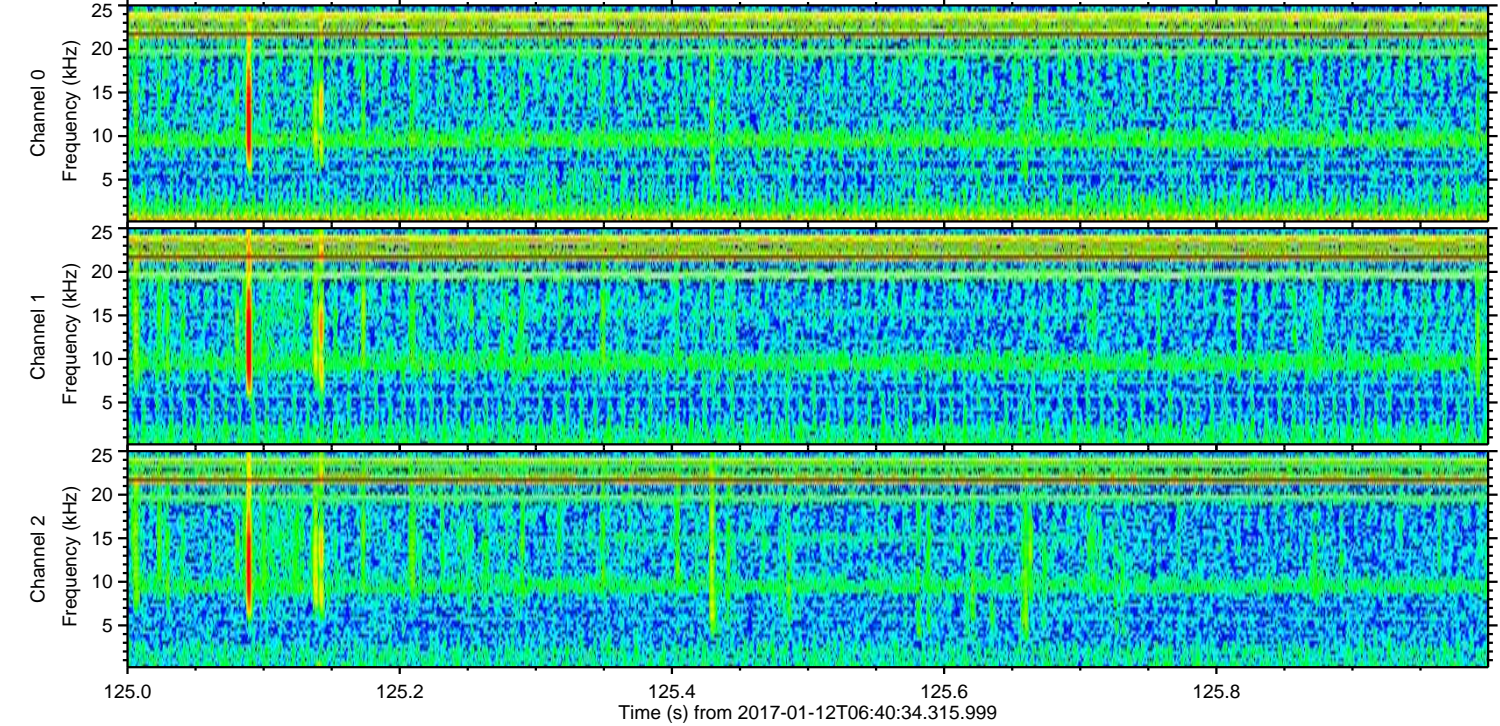
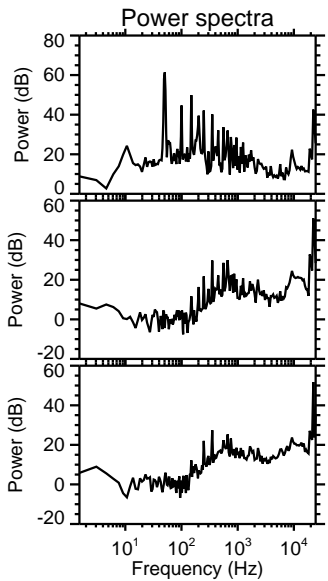
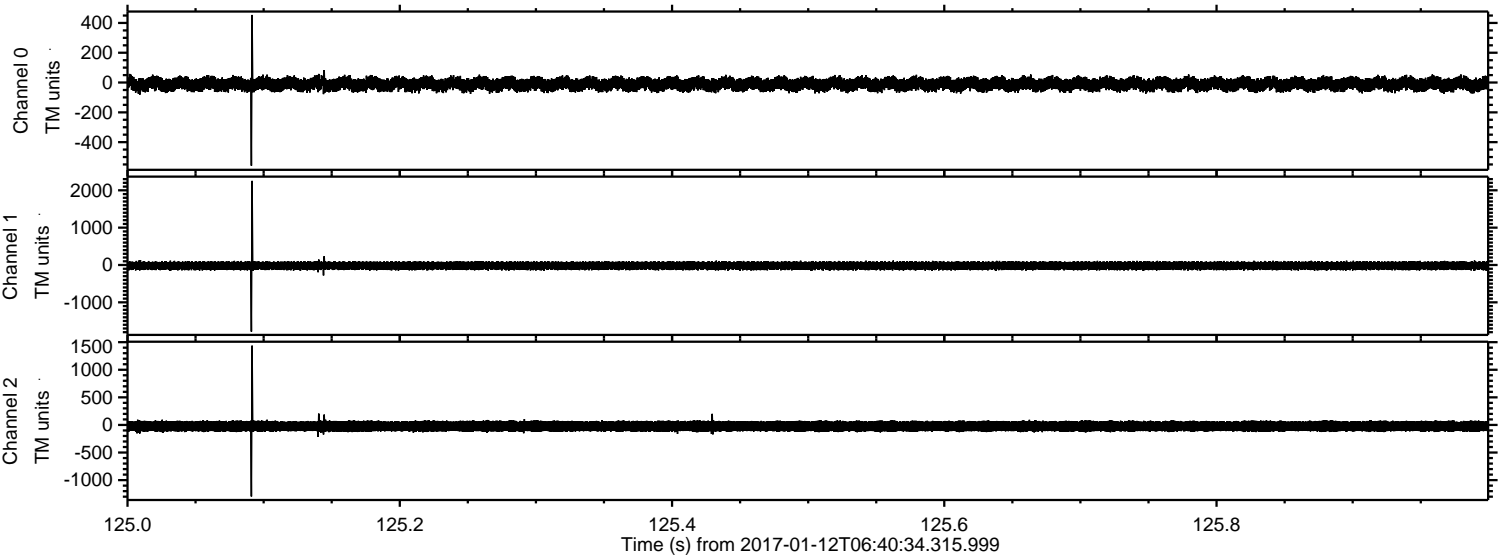
Channel 0
mn: -1144
mx: 1493
μ: -11.0
σ: 29.0

Channel 1
mn: -286
mx: 231
μ: -19.6
σ: 65.0

Channel 2
mn: -3608
mx: 3889
μ: -23.7
σ: 77.9

ELMAVAN 3D WAVEFORMS (Measured data sampled at 50 kHz) 51000 packets of 144 samples from 2017-01-12T06:40:34.315.999. Part 126/147

Processed Thu Jan 12 07:49:00 2017 by ELM ver.2012-10-06 from 001__elm20170112_064033__dat00.bin



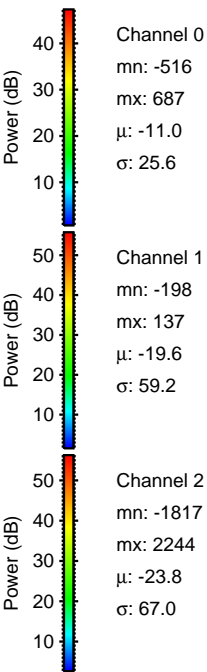
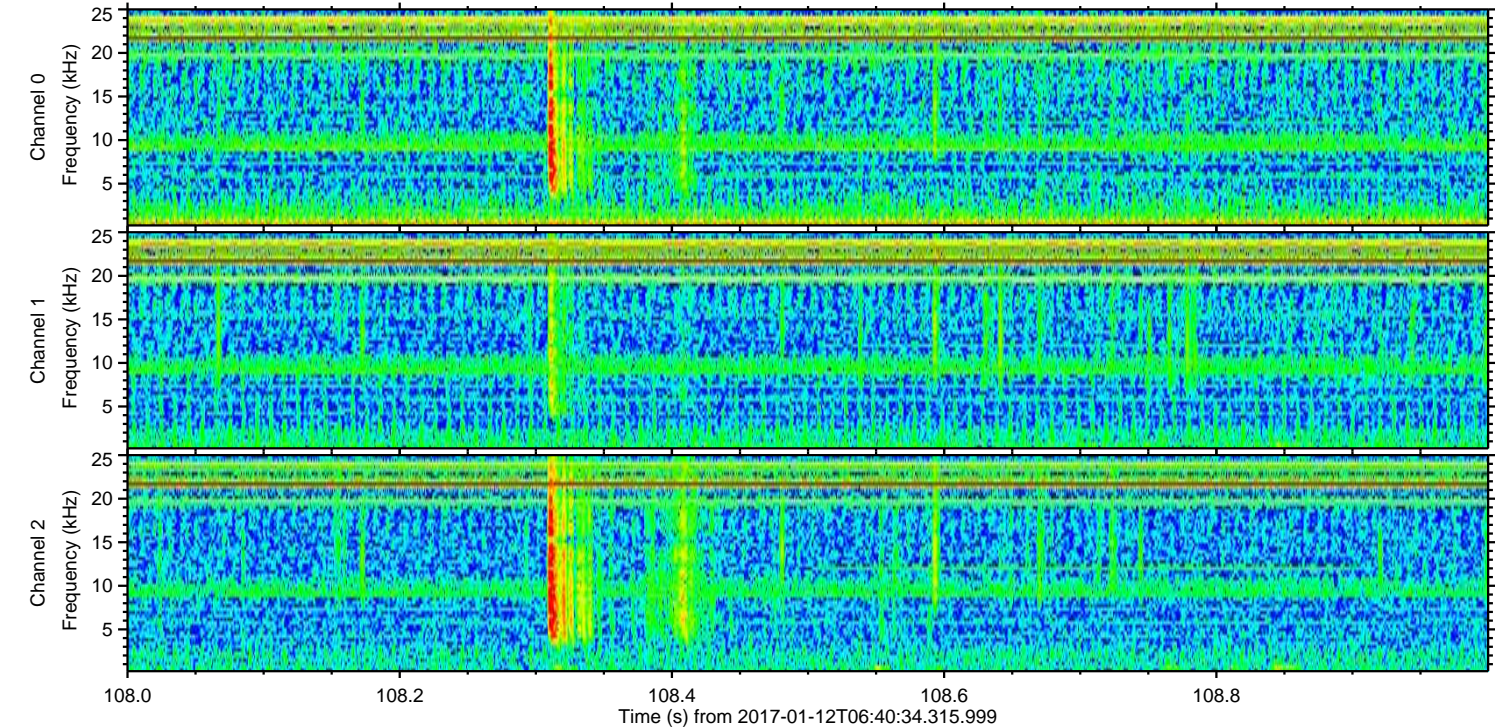
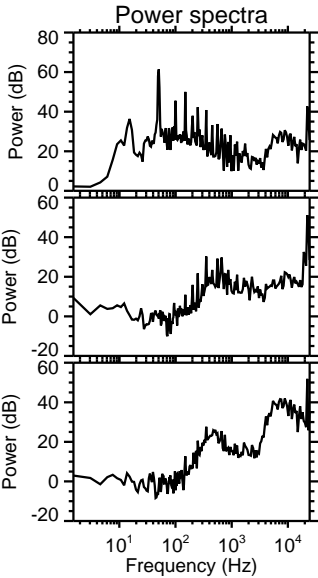
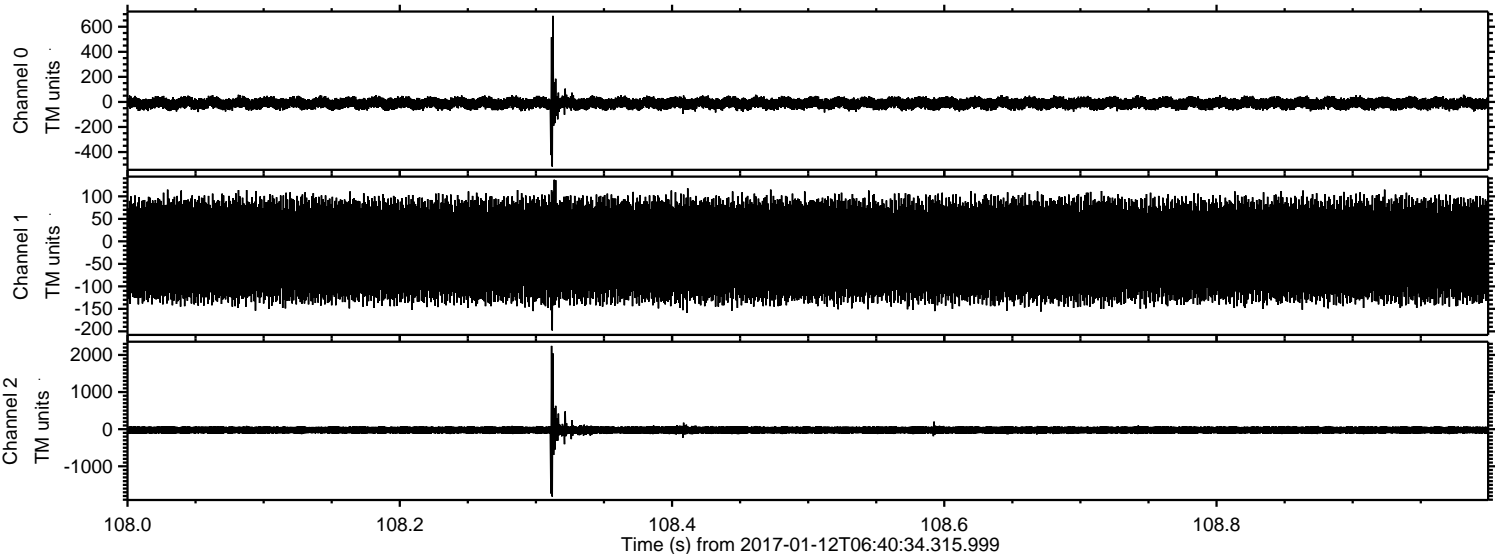
Channel 0
mn: -558
mx: 454
 μ : -10.9
 σ : 24.4

Channel 1
mn: -1783
mx: 2254
 μ : -19.7
 σ : 60.6

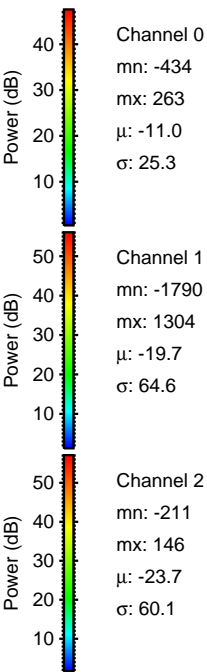
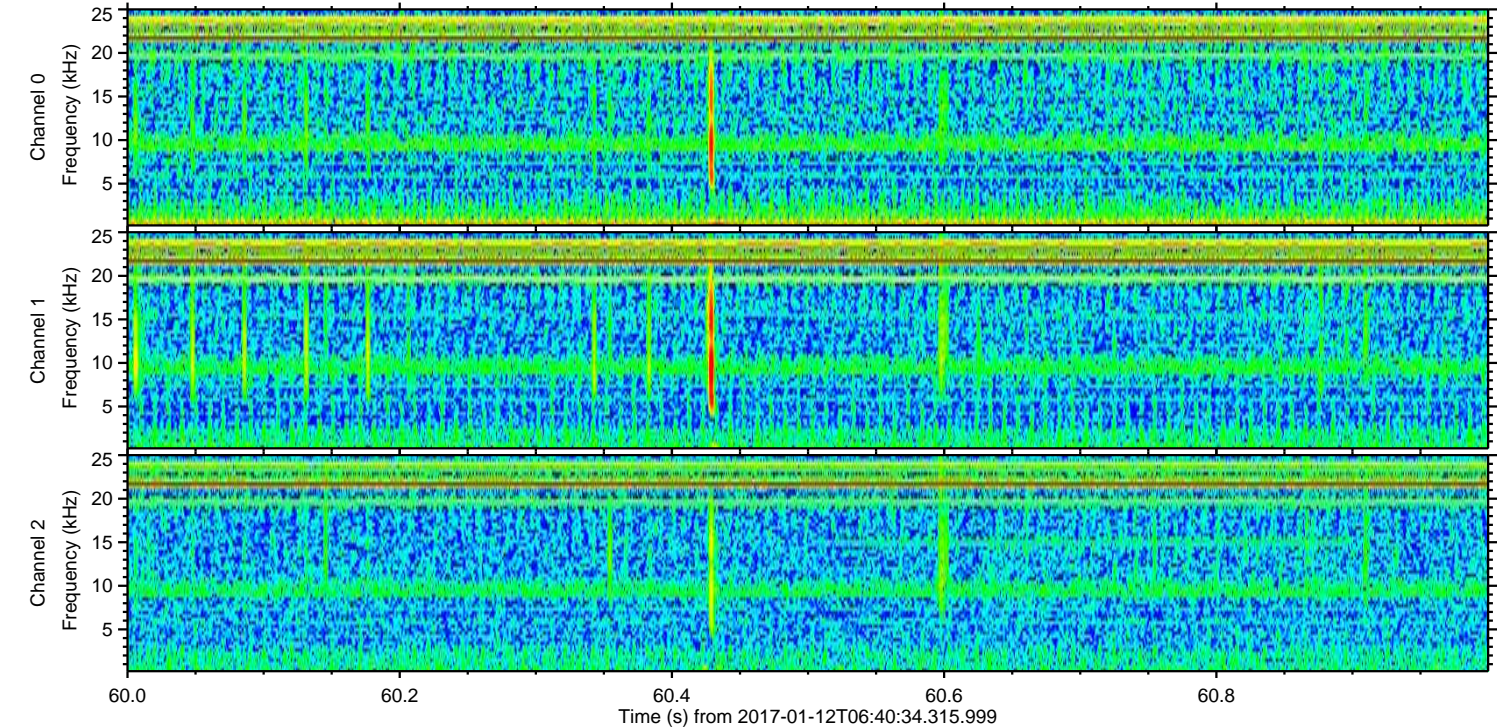
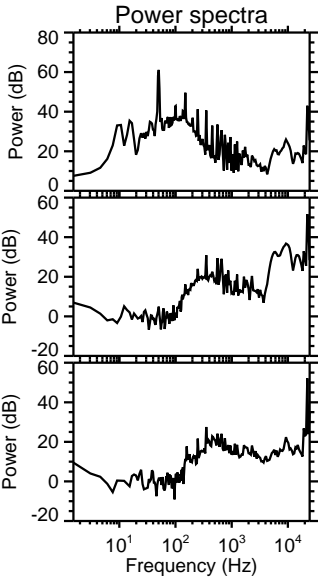
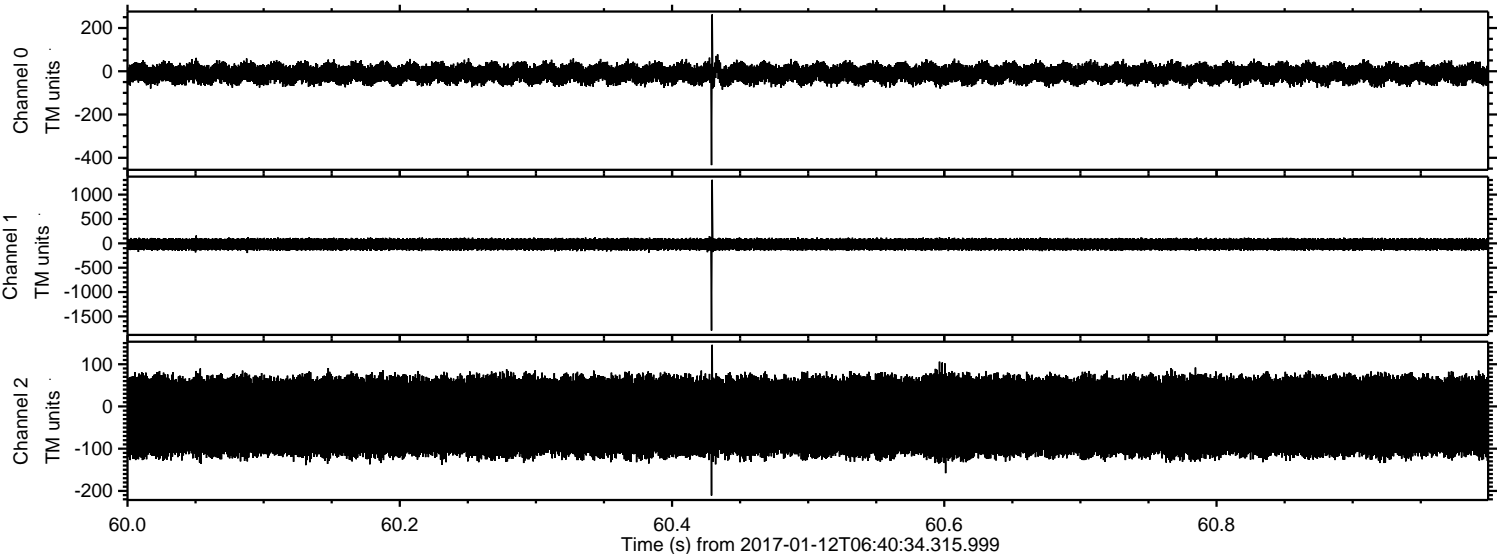
Channel 2
mn: -1296
mx: 1437
 μ : -23.7
 σ : 58.9

ELMAVAN 3D WAVEFORMS (Measured data sampled at 50 kHz) 51000 packets of 144 samples from 2017-01-12T06:40:34.315.999. Part 109/147

Processed Thu Jan 12 07:49:00 2017 by ELM ver.2012-10-06 from 001__elm20170112_064033__dat00.bin



Processed Thu Jan 12 07:49:01 2017 by ELM ver.2012-10-06 from 001__elm20170112_064033__dat00.bin



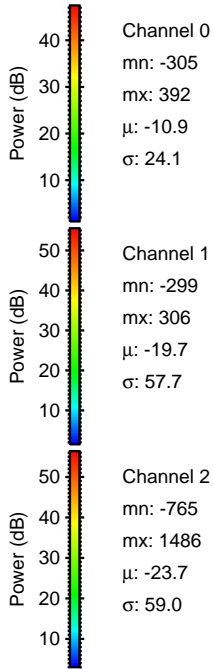
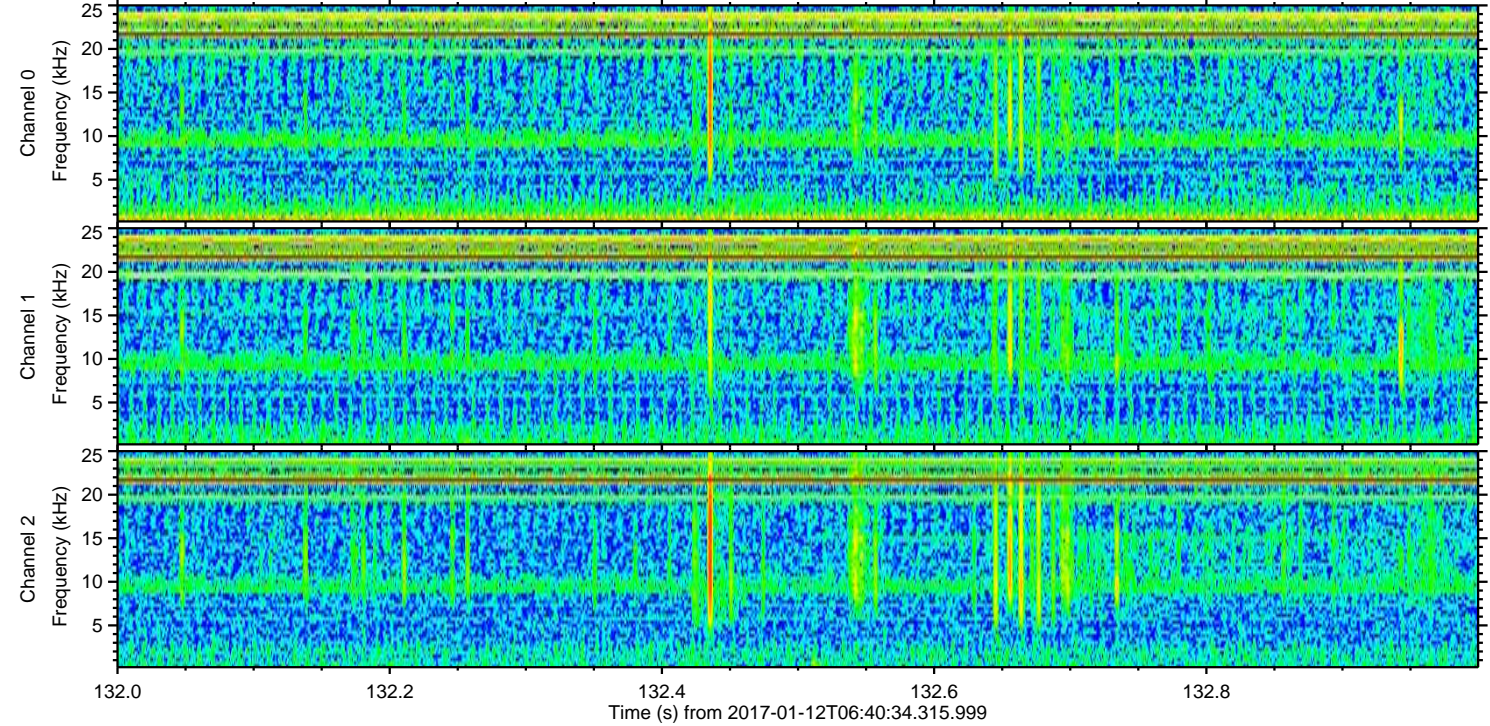
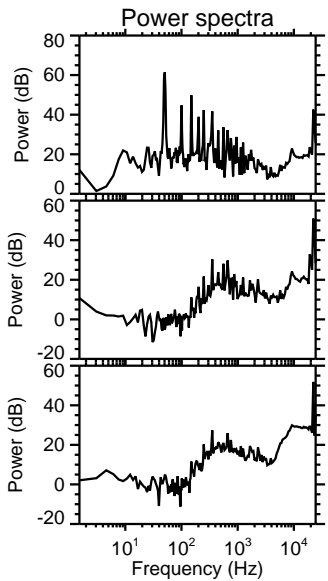
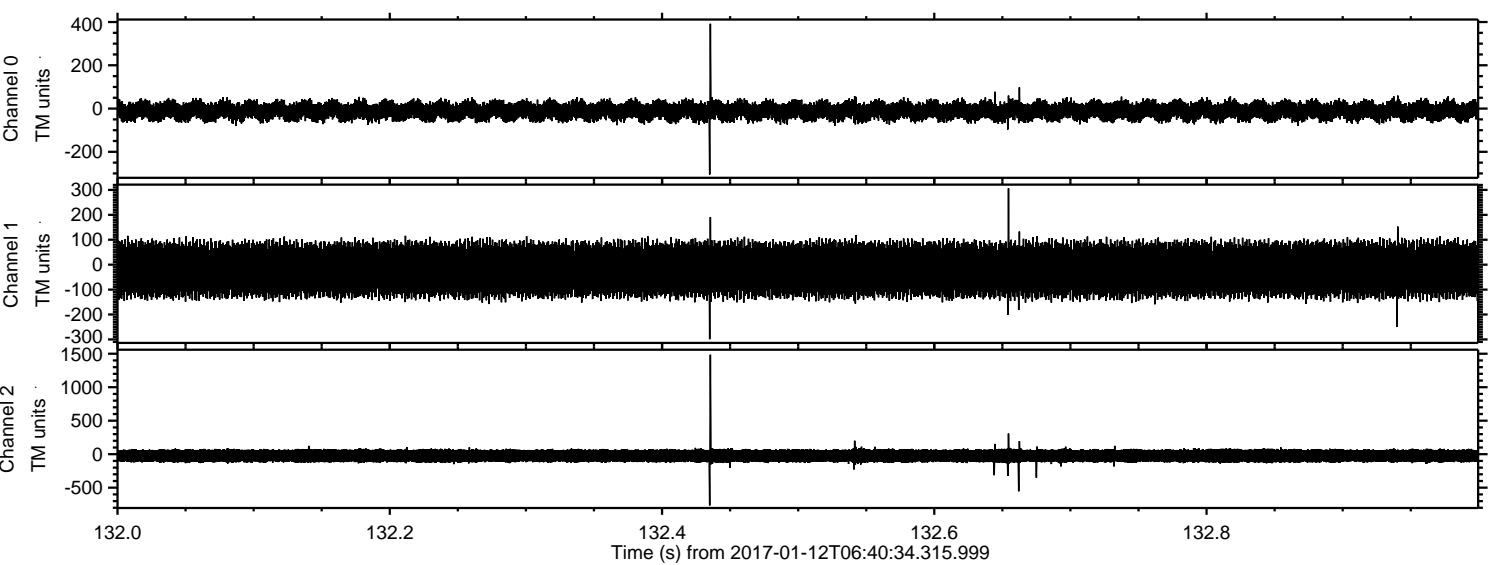
Channel 0
mn: -434
mx: 263
 μ : -11.0
 σ : 25.3

Channel 1
mn: -1790
mx: 1304
 μ : -19.7
 σ : 64.6

Channel 2
mn: -211
mx: 146
 μ : -23.7
 σ : 60.1

ELMAVAN 3D WAVEFORMS (Measured data sampled at 50 kHz) 51000 packets of 144 samples from 2017-01-12T06:40:34.315.999. Part 133/147

Processed Thu Jan 12 07:49:02 2017 by ELM ver.2012-10-06 from 001__elm20170112_064033__dat00.bin



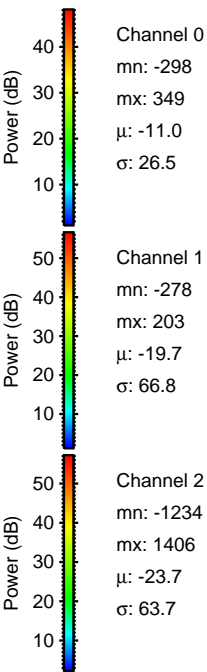
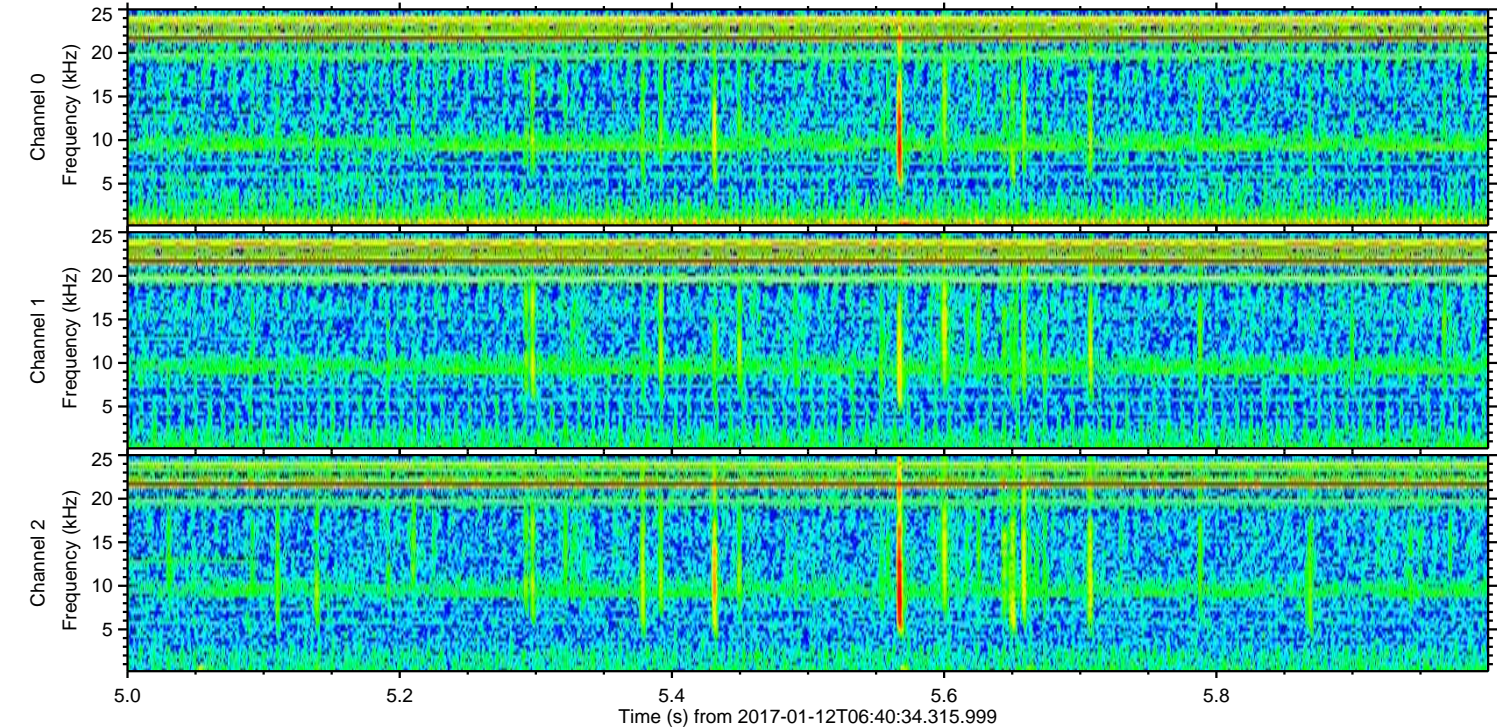
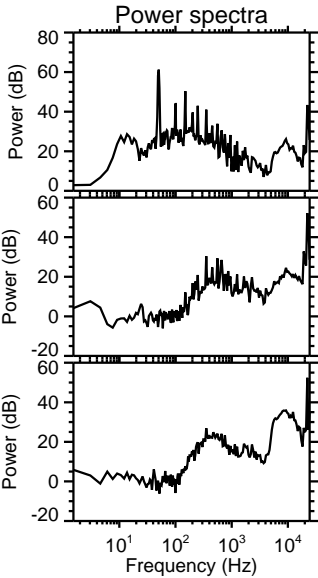
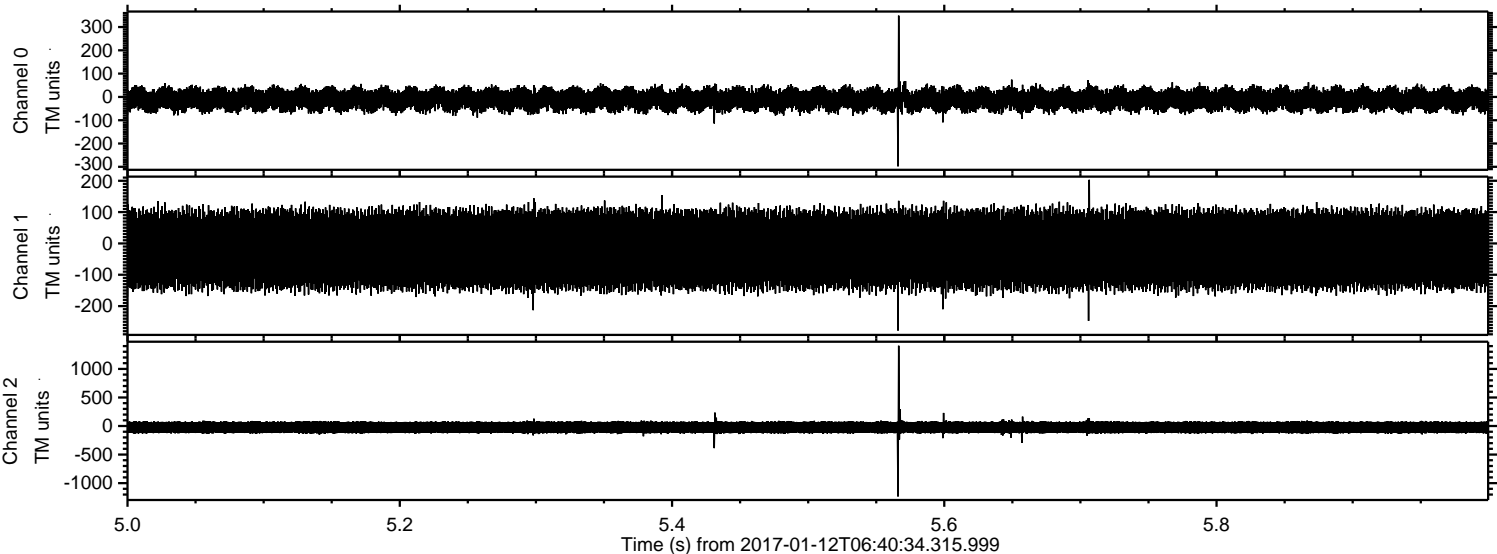
Channel 0
mn: -305
mx: 392
 μ : -10.9
 σ : 24.1

Channel 1
mn: -299
mx: 306
 μ : -19.7
 σ : 57.7

Channel 2
mn: -765
mx: 1486
 μ : -23.7
 σ : 59.0

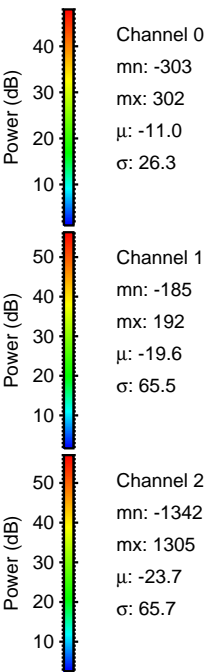
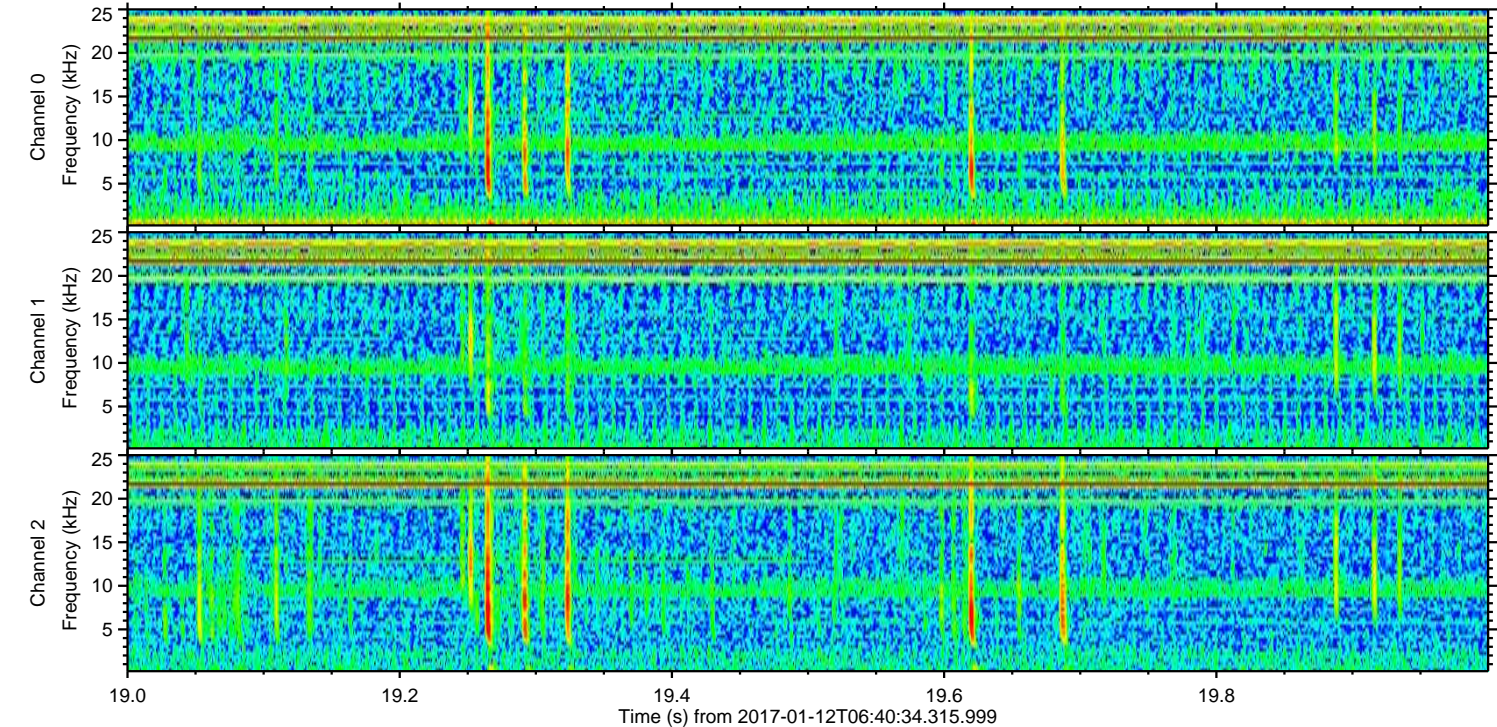
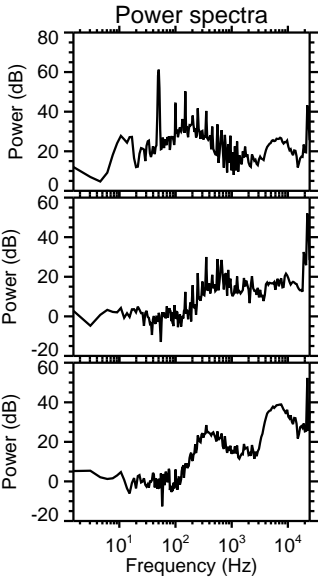
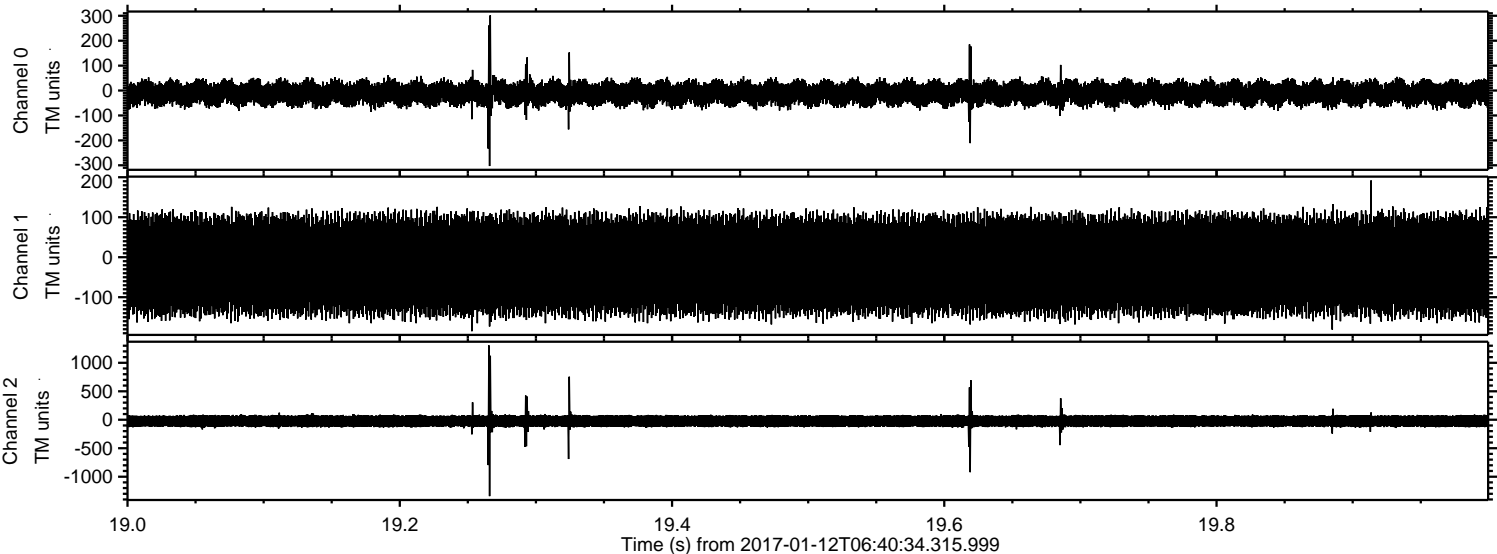
ELMAVAN 3D WAVEFORMS (Measured data sampled at 50 kHz) 51000 packets of 144 samples from 2017-01-12T06:40:34.315.999. Part 6/147

Processed Thu Jan 12 07:49:03 2017 by ELM ver.2012-10-06 from 001__elm20170112_064033__dat00.bin



ELMAVAN 3D WAVEFORMS (Measured data sampled at 50 kHz) 51000 packets of 144 samples from 2017-01-12T06:40:34.315.999. Part 20/147

Processed Thu Jan 12 07:49:04 2017 by ELM ver.2012-10-06 from 001__elm20170112_064033__dat00.bin



ELMAVAN 3D WAVEFORMS (Measured data sampled at 50 kHz) 51000 packets of 144 samples from 2017-01-12T06:40:34.315.999. Part 100/147

