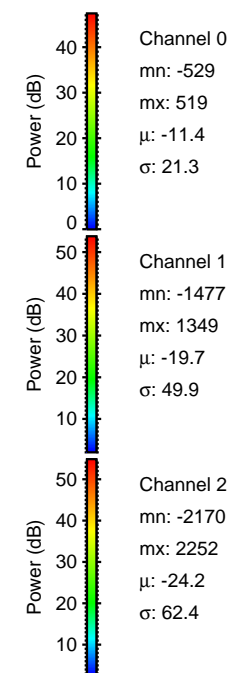
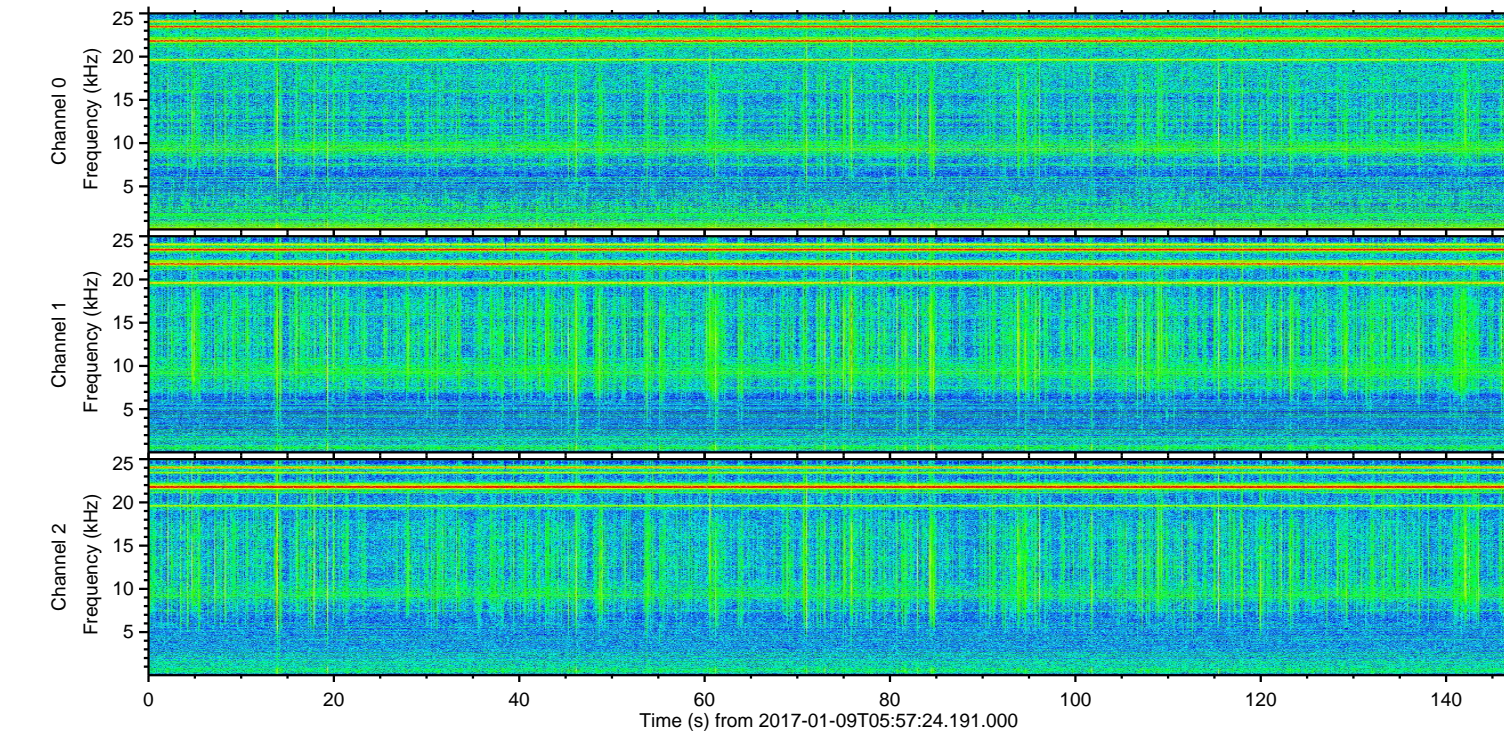
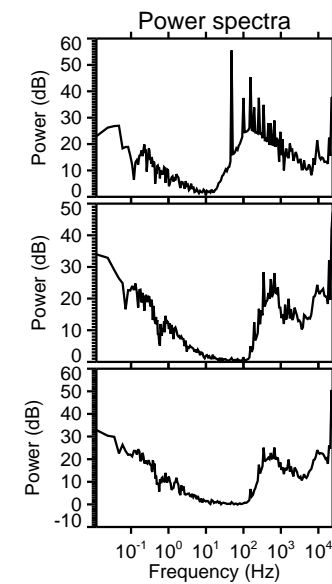
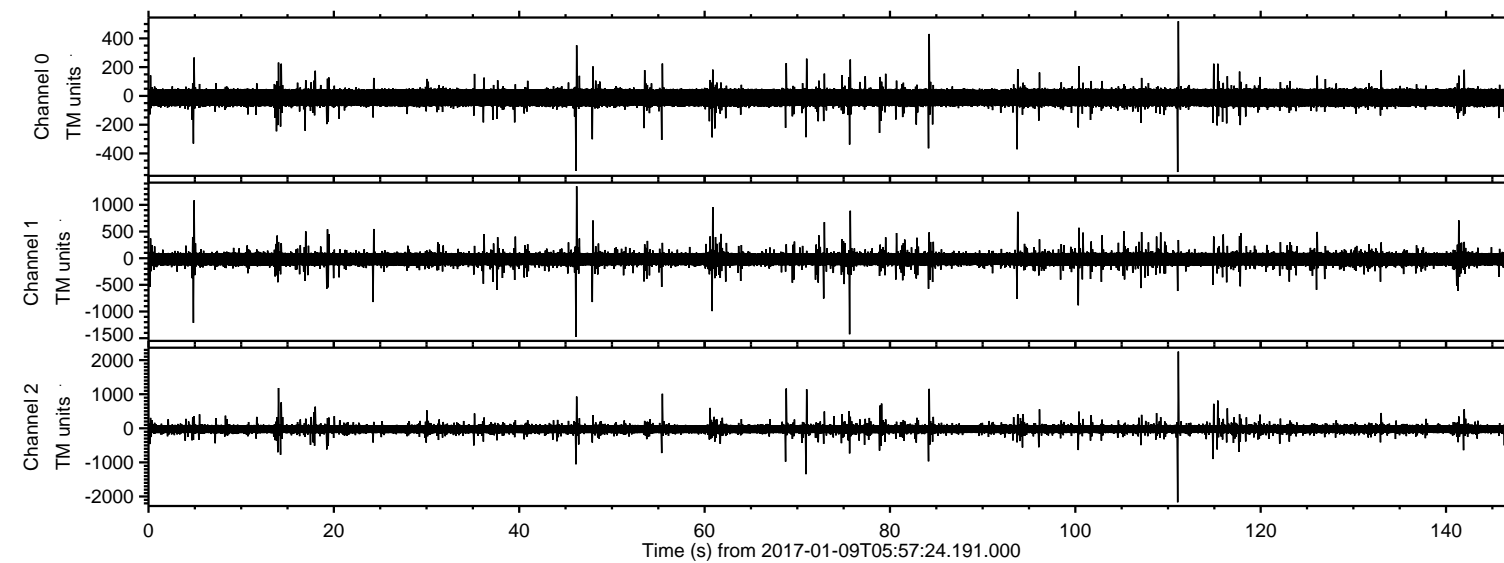


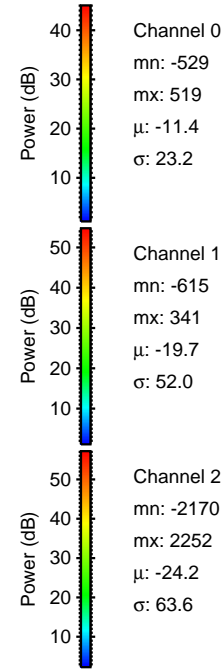
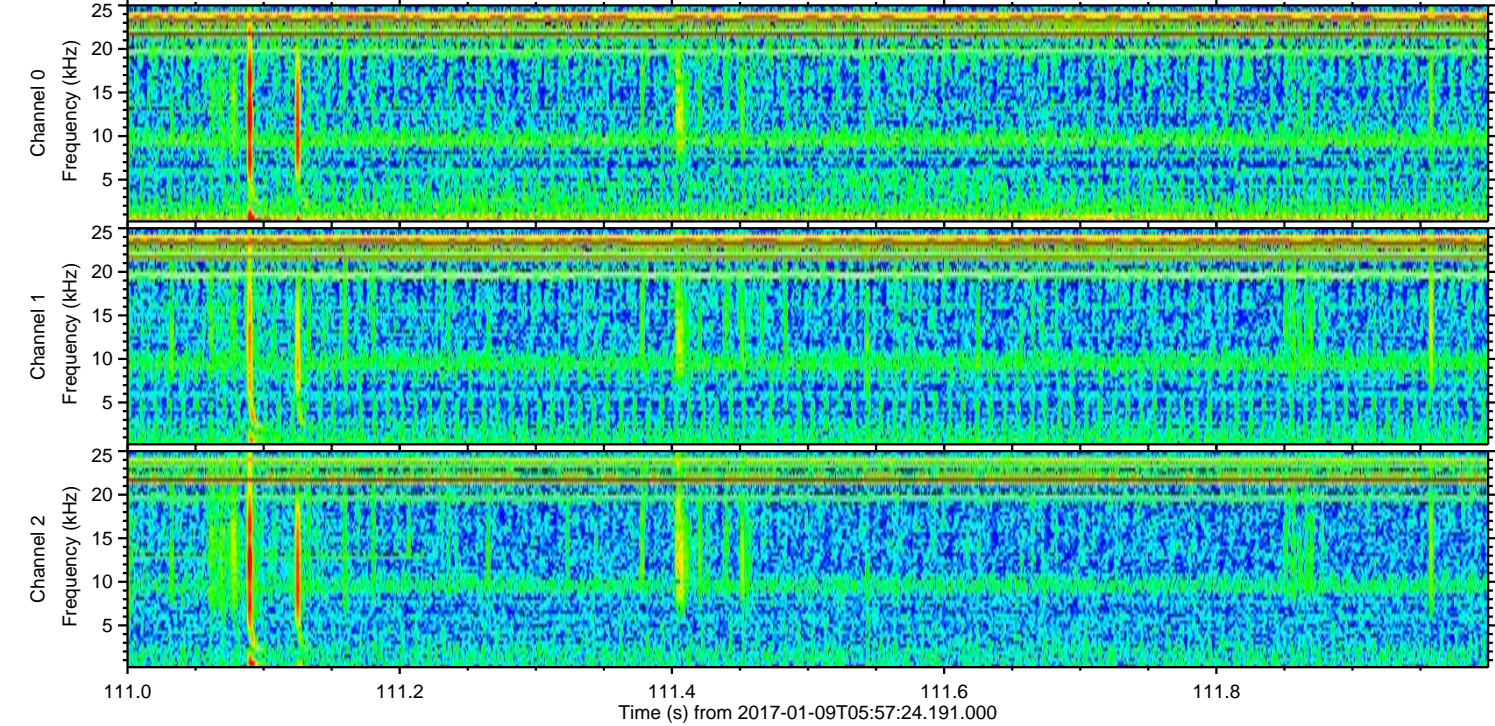
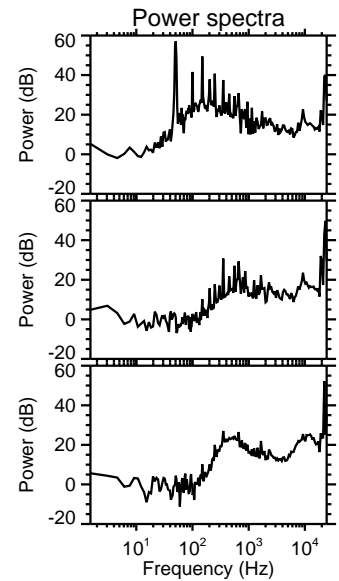
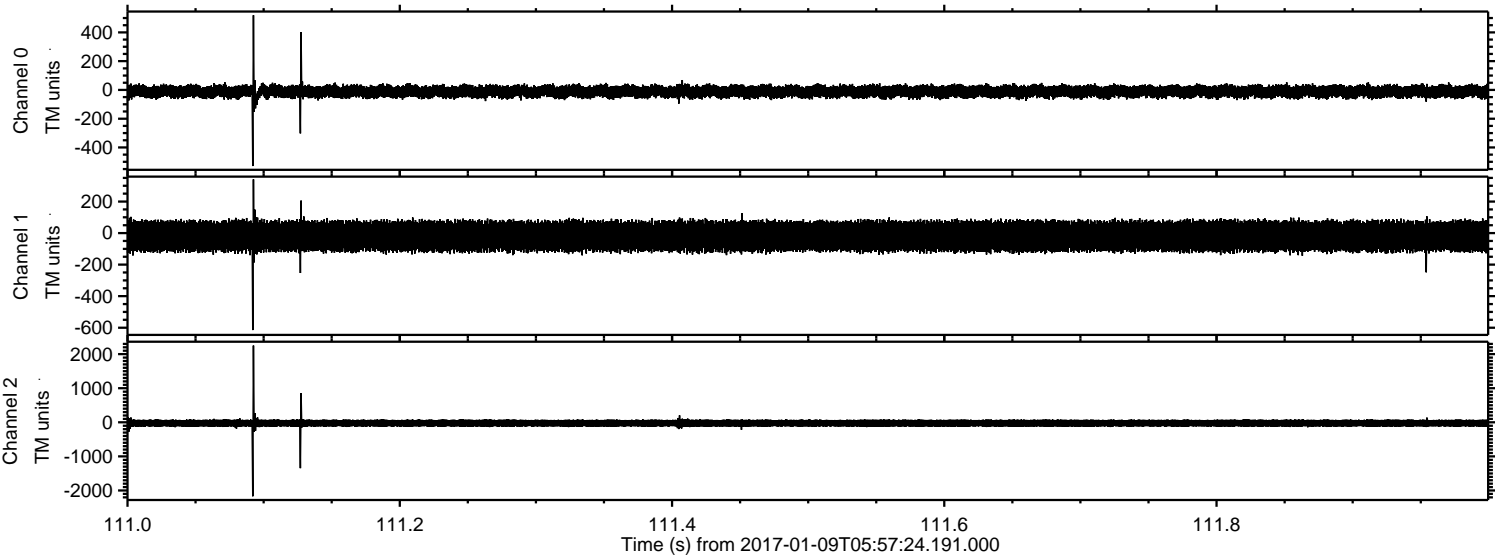
ELMAVAN 3D WAVEFORMS (Measured data sampled at 50 kHz) 51000 packets of 144 samples from 2017-01-09T05:57:24.191.000.

Processed Mon Jan 9 07:05:23 2017 by ELM ver.2012-10-06 from 001__elm20170109_055723__dat00.bin



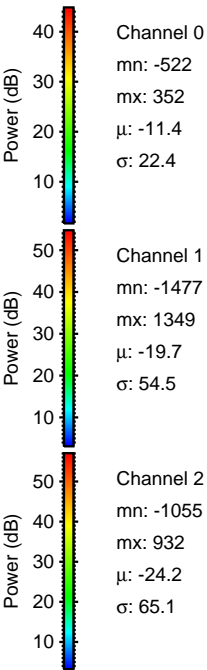
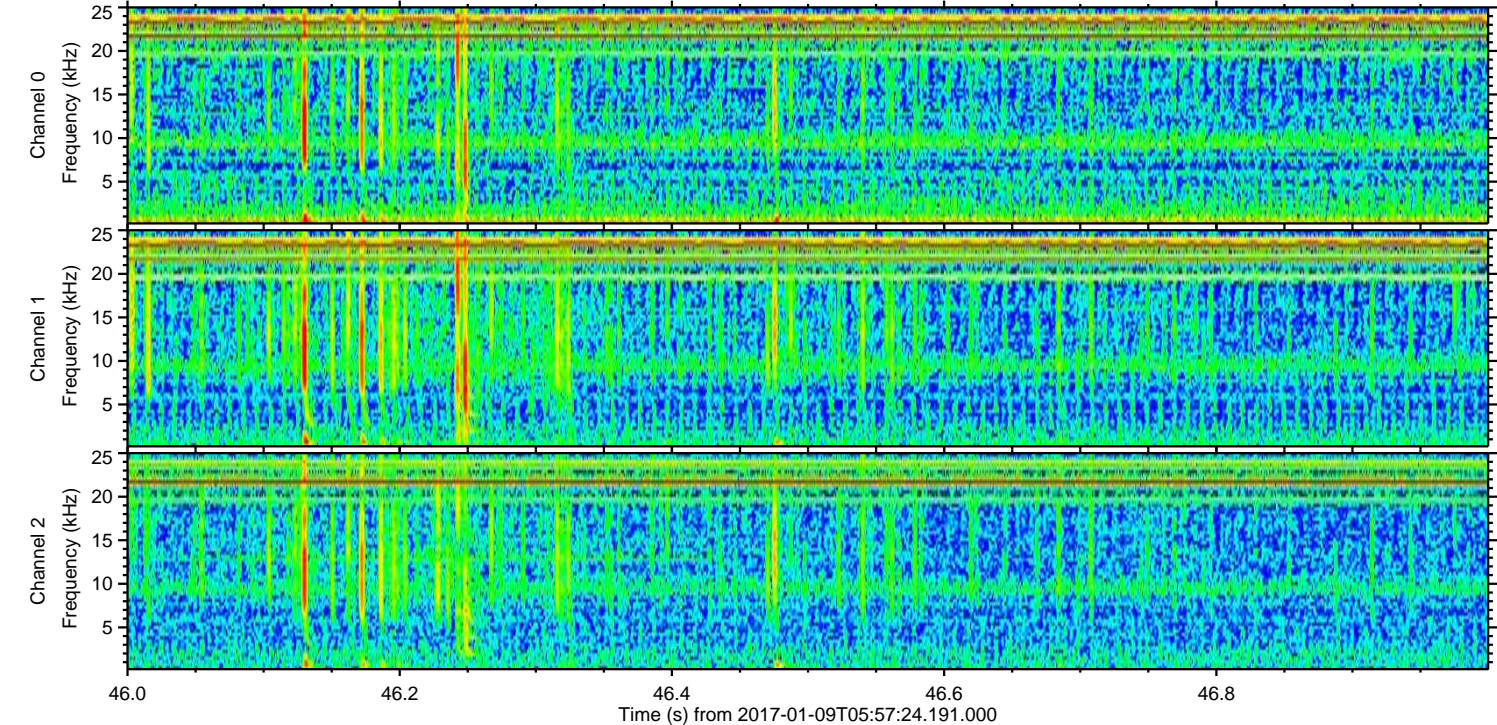
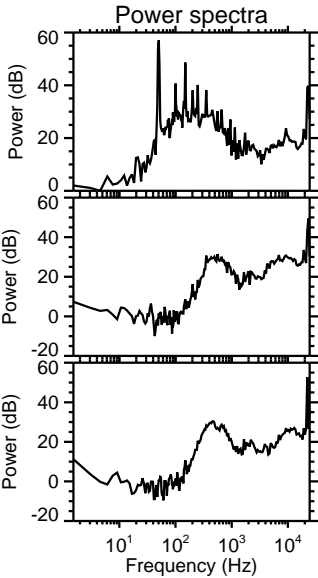
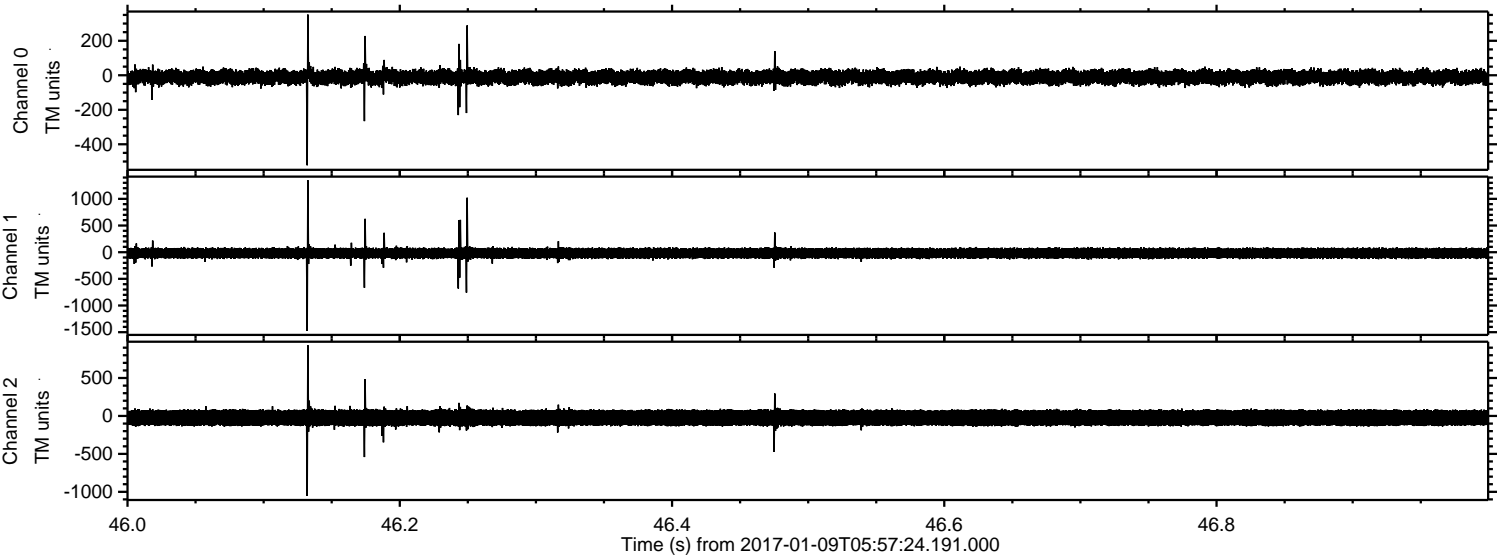
ELMAVAN 3D WAVEFORMS (Measured data sampled at 50 kHz) 51000 packets of 144 samples from 2017-01-09T05:57:24.191.000. Part 112/147

Processed Mon Jan 9 07:05:34 2017 by ELM ver.2012-10-06 from 001__elm20170109_055723__dat00.bin



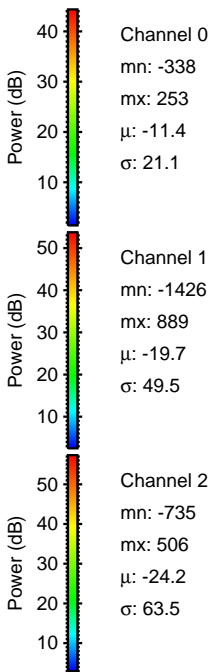
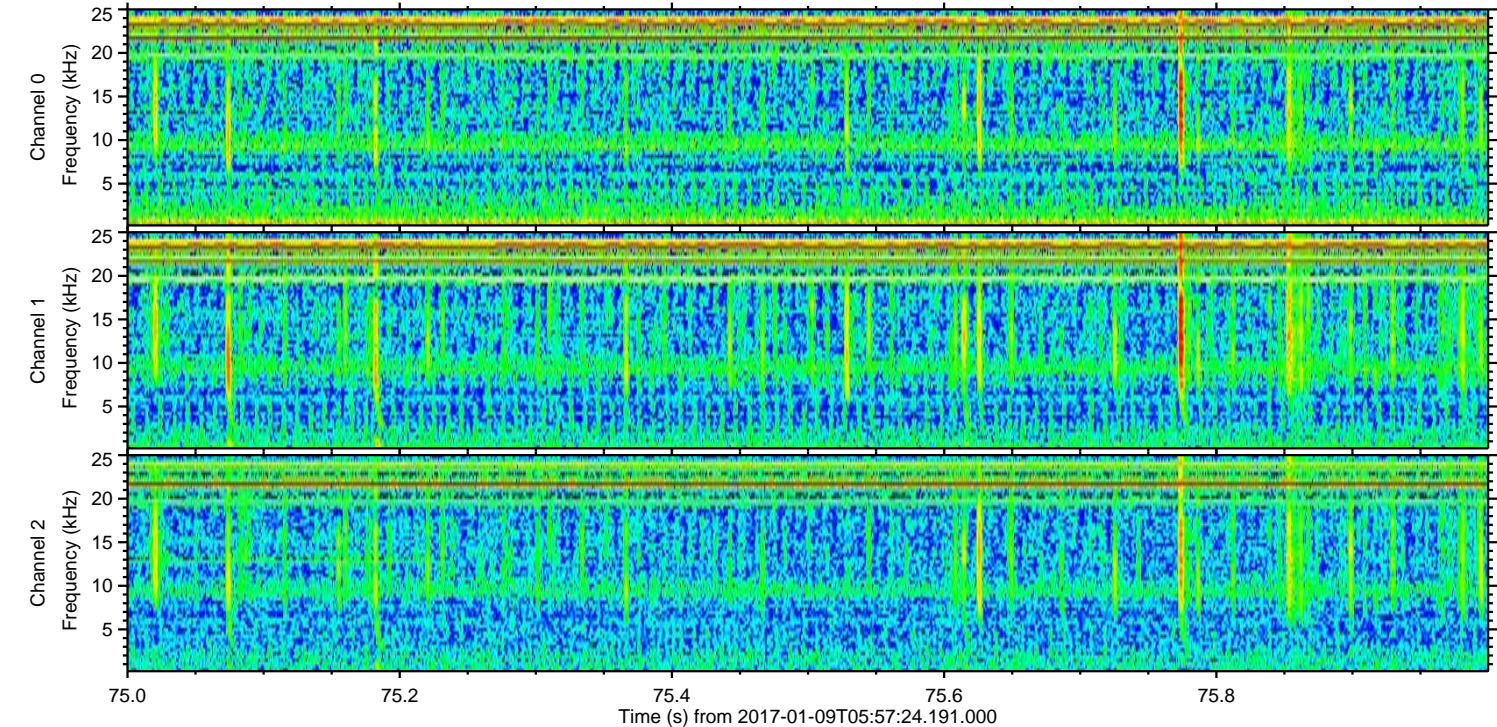
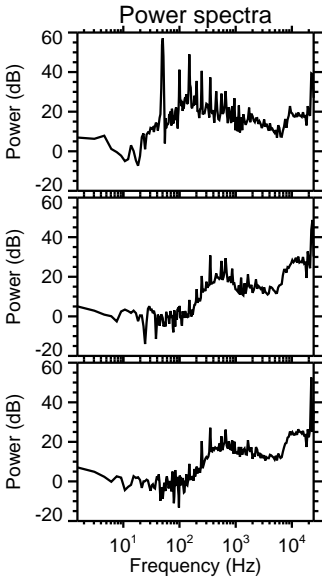
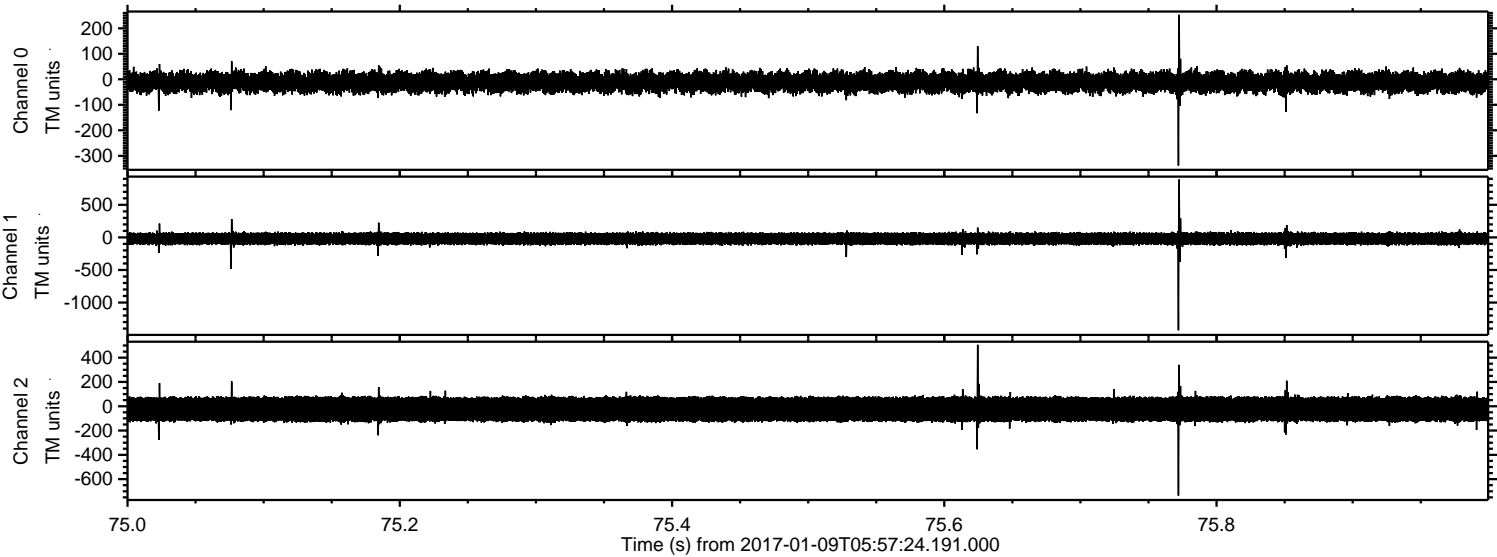
ELMAVAN 3D WAVEFORMS (Measured data sampled at 50 kHz) 51000 packets of 144 samples from 2017-01-09T05:57:24.191.000. Part 47/147

Processed Mon Jan 9 07:05:35 2017 by ELM ver.2012-10-06 from 001__elm20170109_055723__dat00.bin

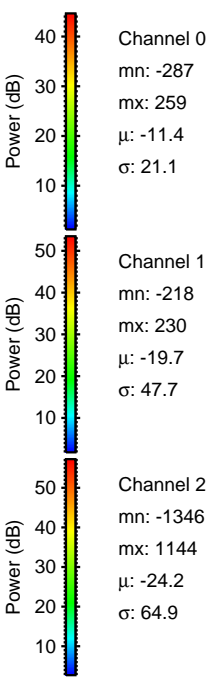
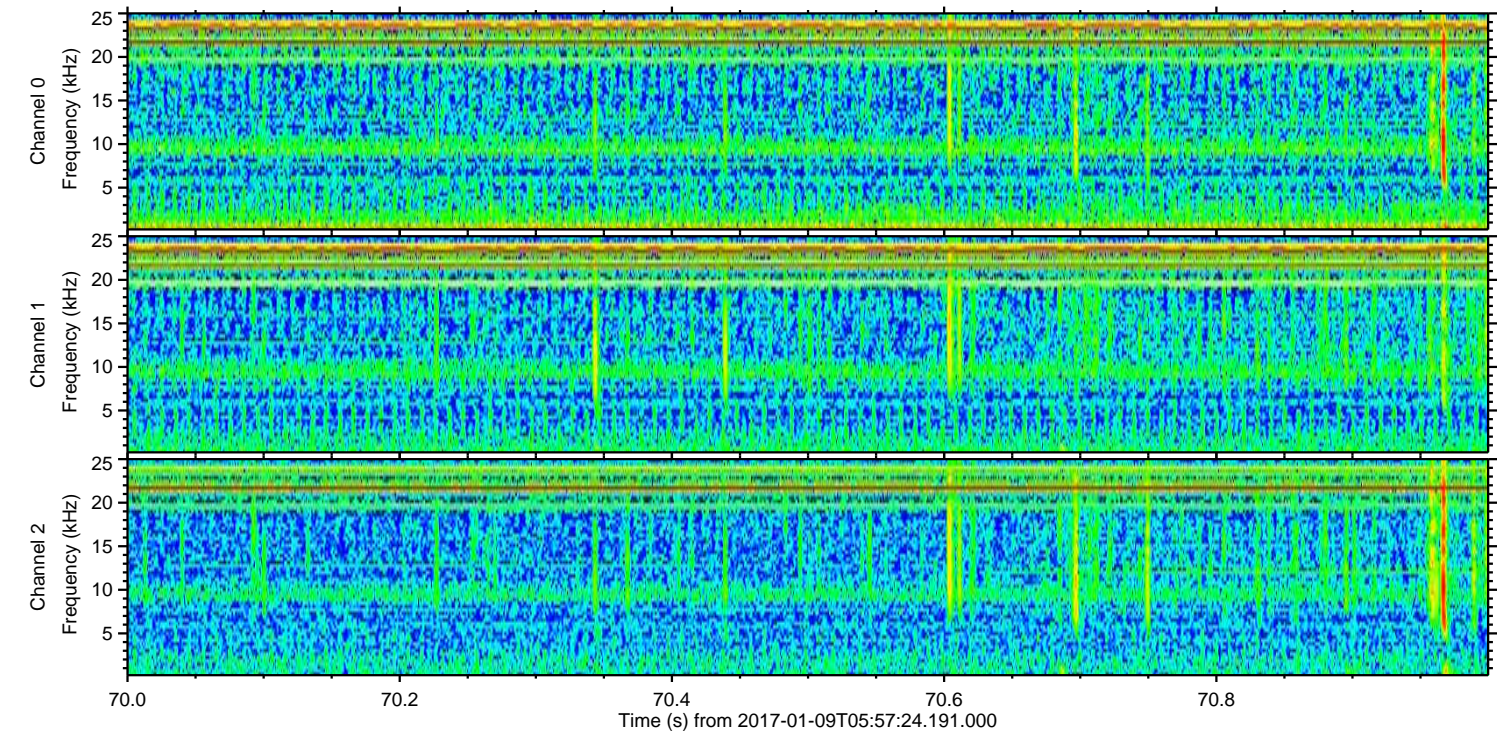
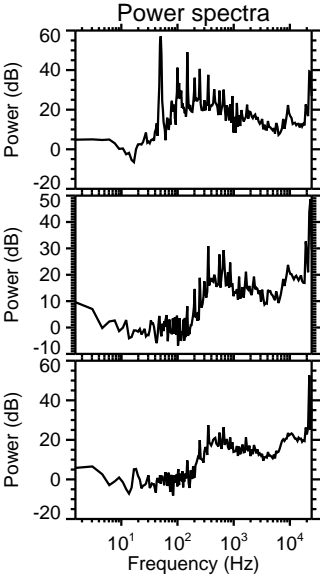
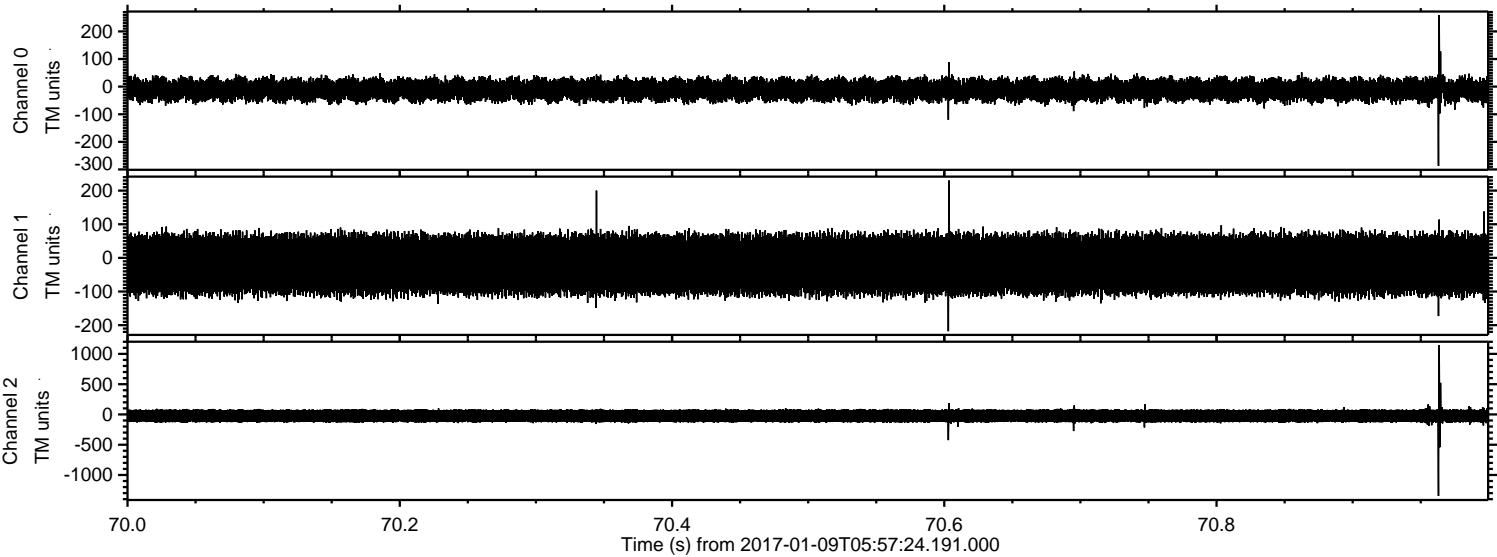


ELMAVAN 3D WAVEFORMS (Measured data sampled at 50 kHz) 51000 packets of 144 samples from 2017-01-09T05:57:24.191.000. Part 76/147

Processed Mon Jan 9 07:05:36 2017 by ELM ver.2012-10-06 from 001__elm20170109_055723__dat00.bin



Processed Mon Jan 9 07:05:37 2017 by ELM ver.2012-10-06 from 001__elm20170109_055723__dat00.bin



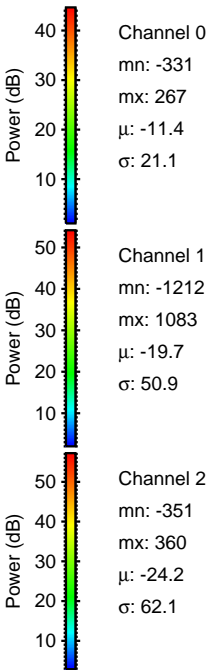
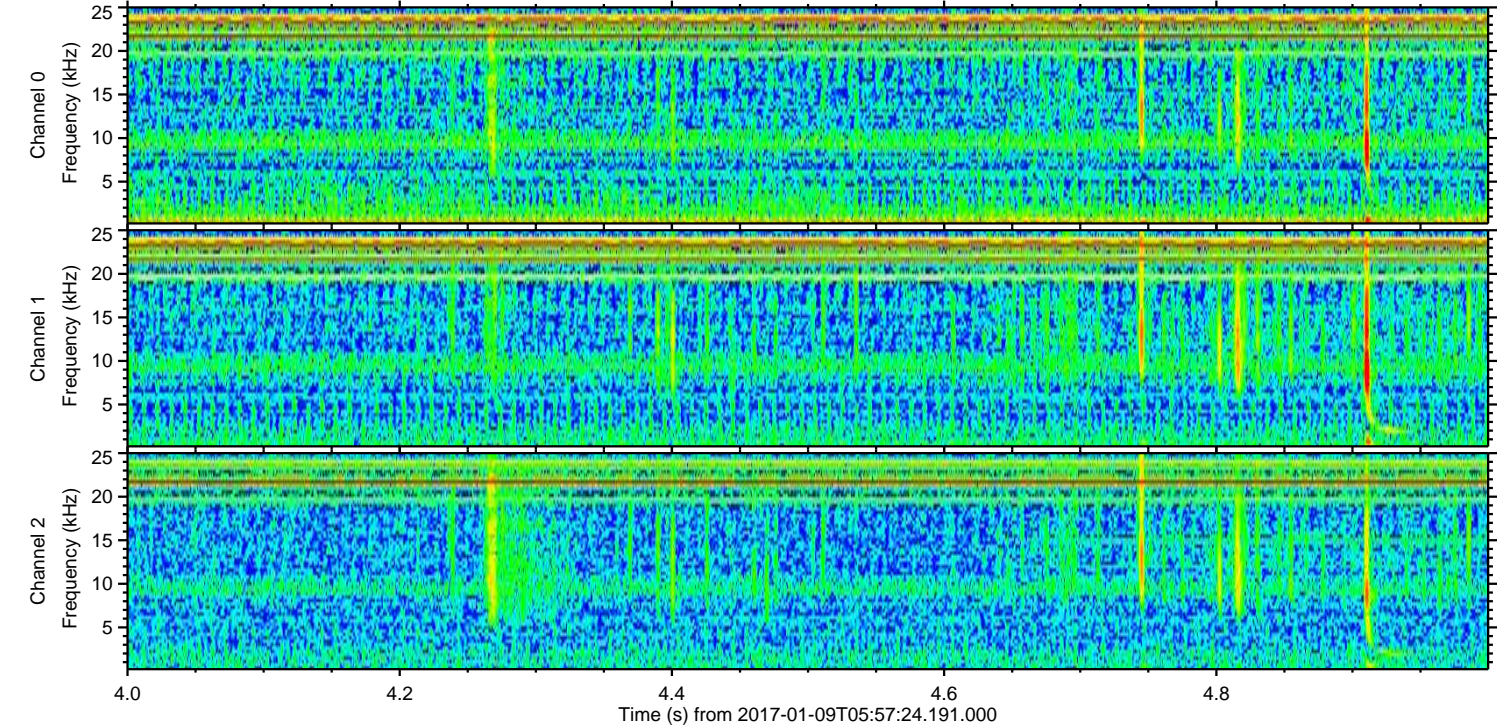
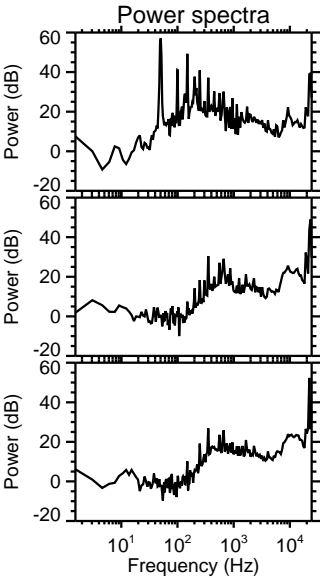
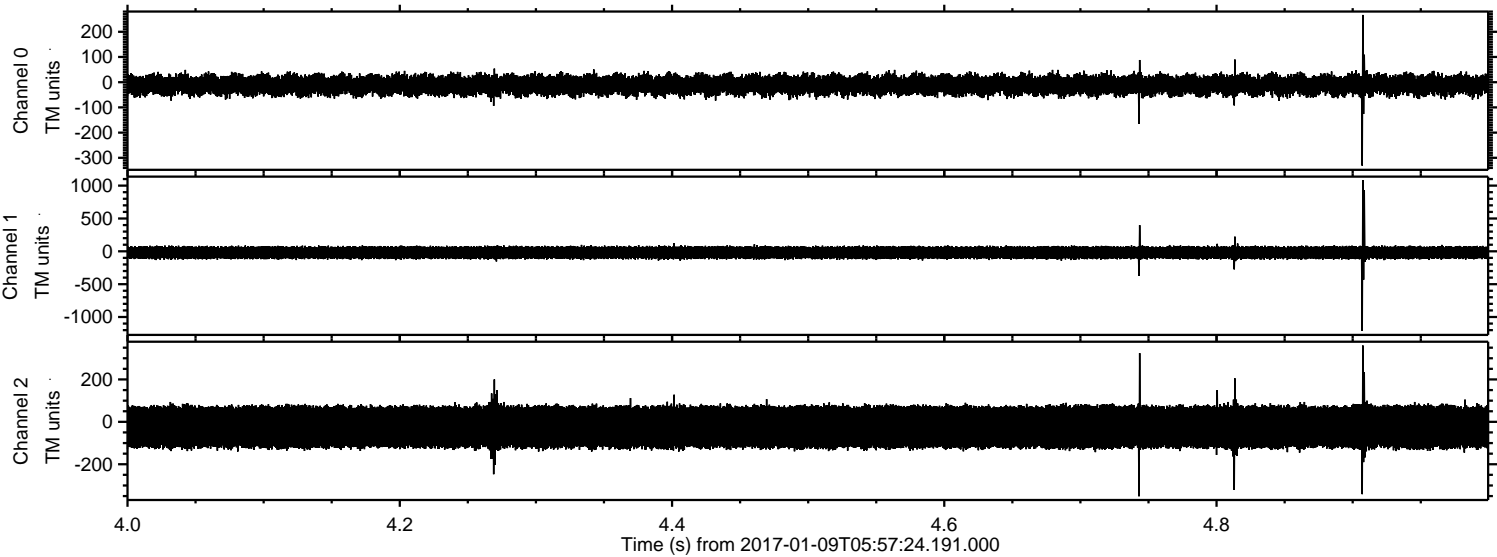
Channel 0
mn: -287
mx: 259
 μ : -11.4
 σ : 21.1

Channel 1
mn: -218
mx: 230
 μ : -19.7
 σ : 47.7

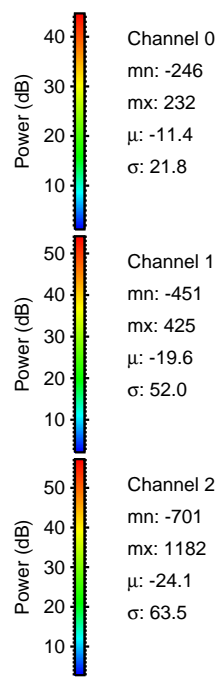
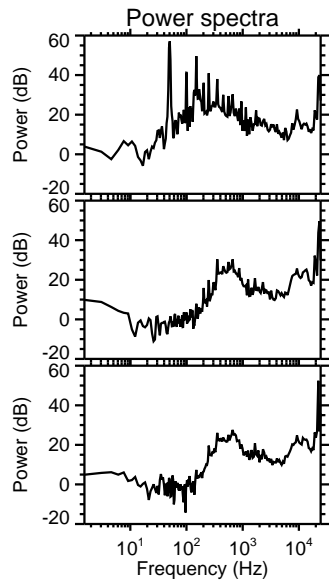
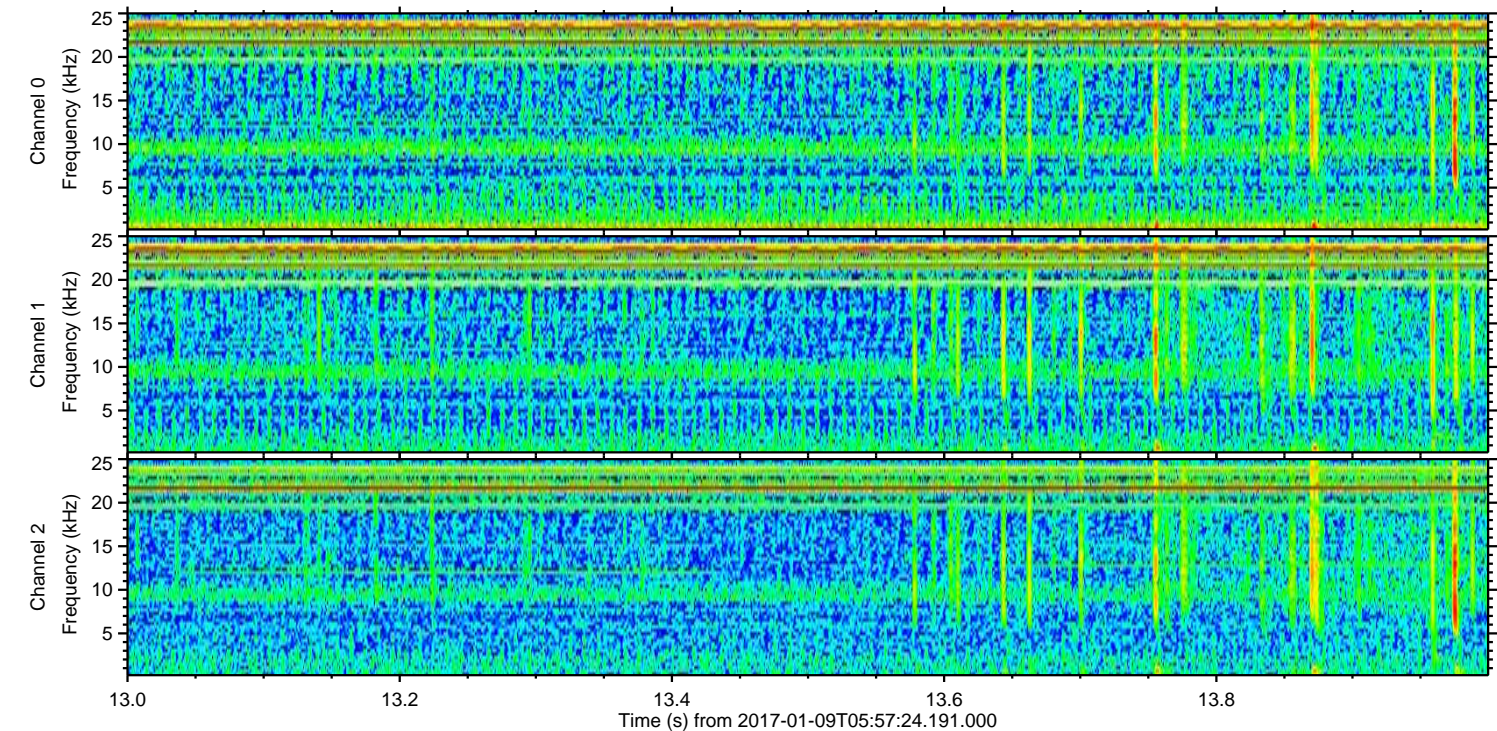
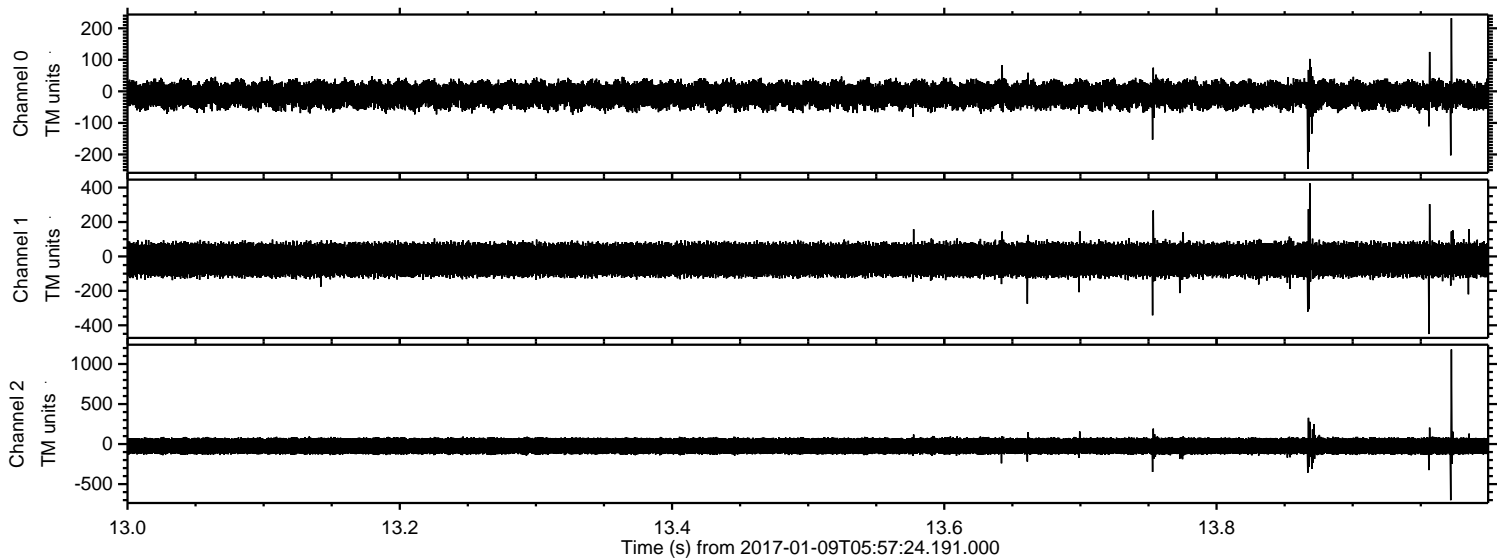
Channel 2
mn: -1346
mx: 1144
 μ : -24.2
 σ : 64.9

ELMAVAN 3D WAVEFORMS (Measured data sampled at 50 kHz) 51000 packets of 144 samples from 2017-01-09T05:57:24.191.000. Part 5/147

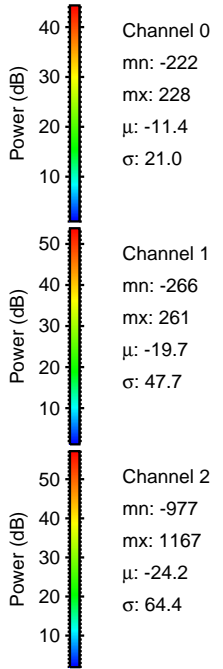
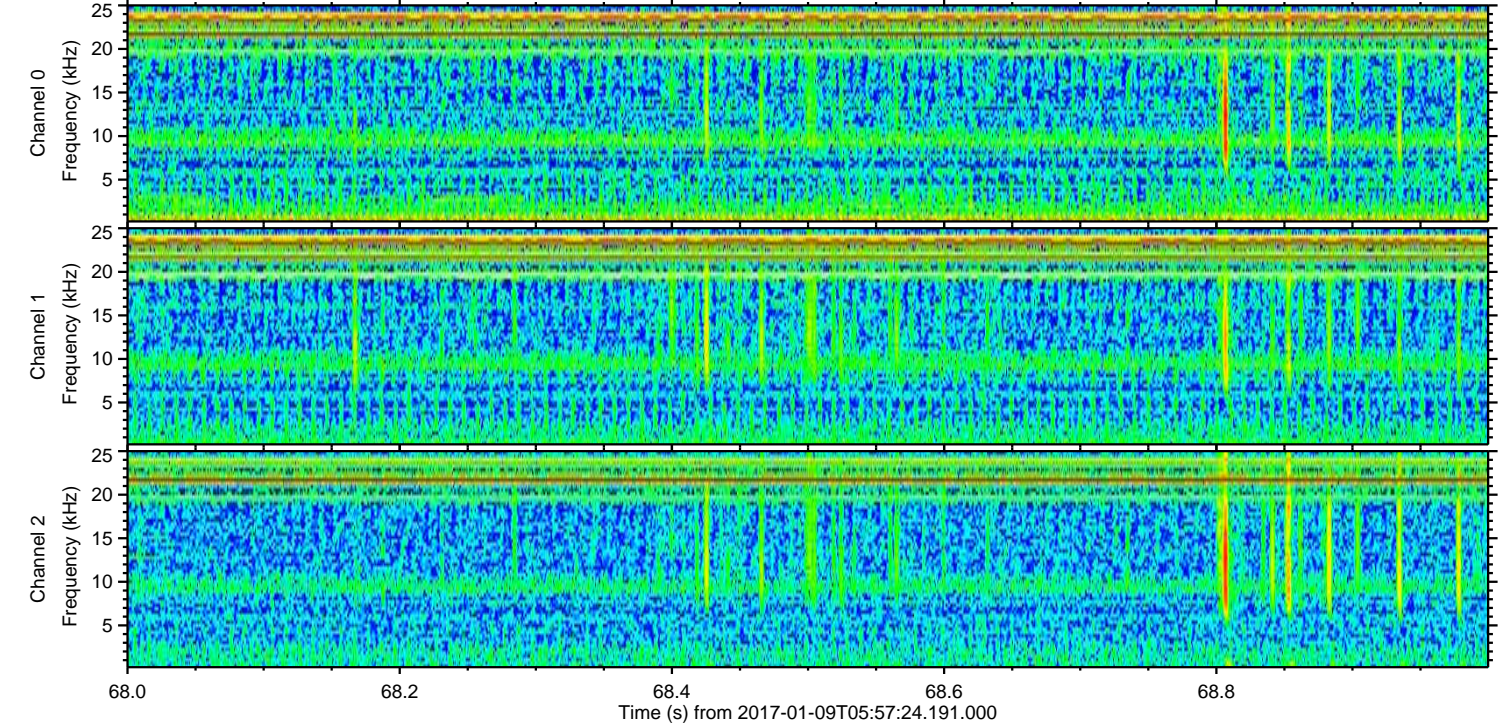
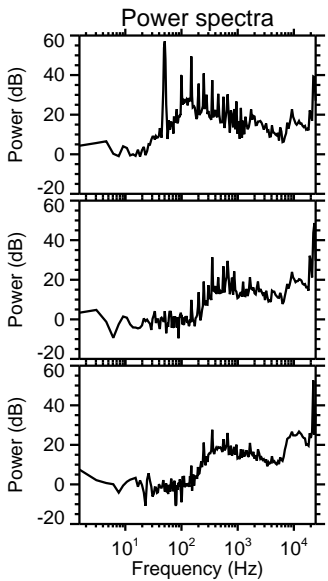
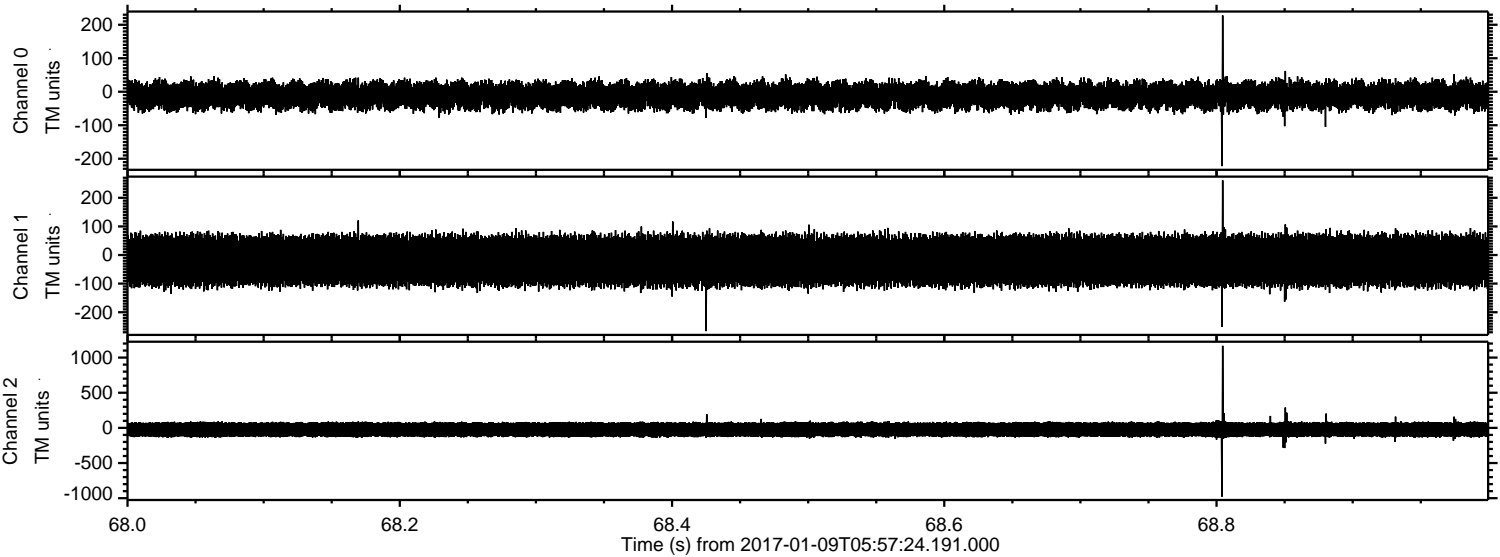
Processed Mon Jan 9 07:05:38 2017 by ELM ver.2012-10-06 from 001__elm20170109_055723__dat00.bin



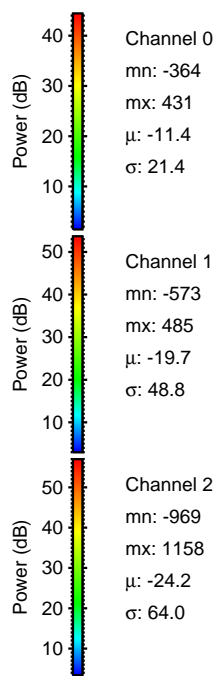
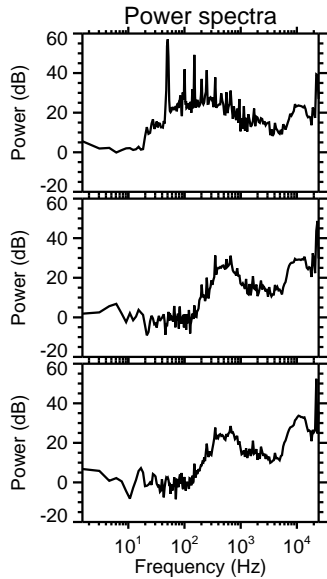
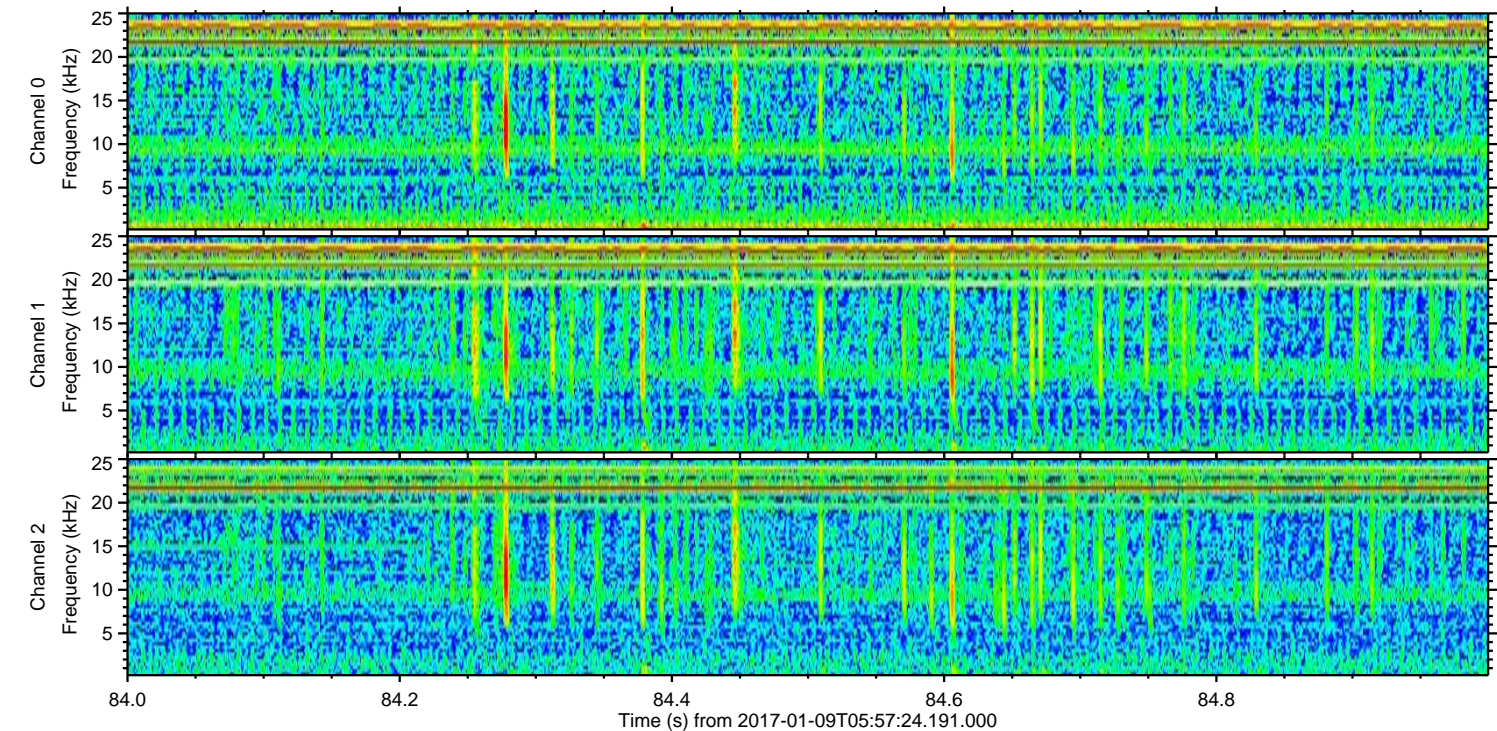
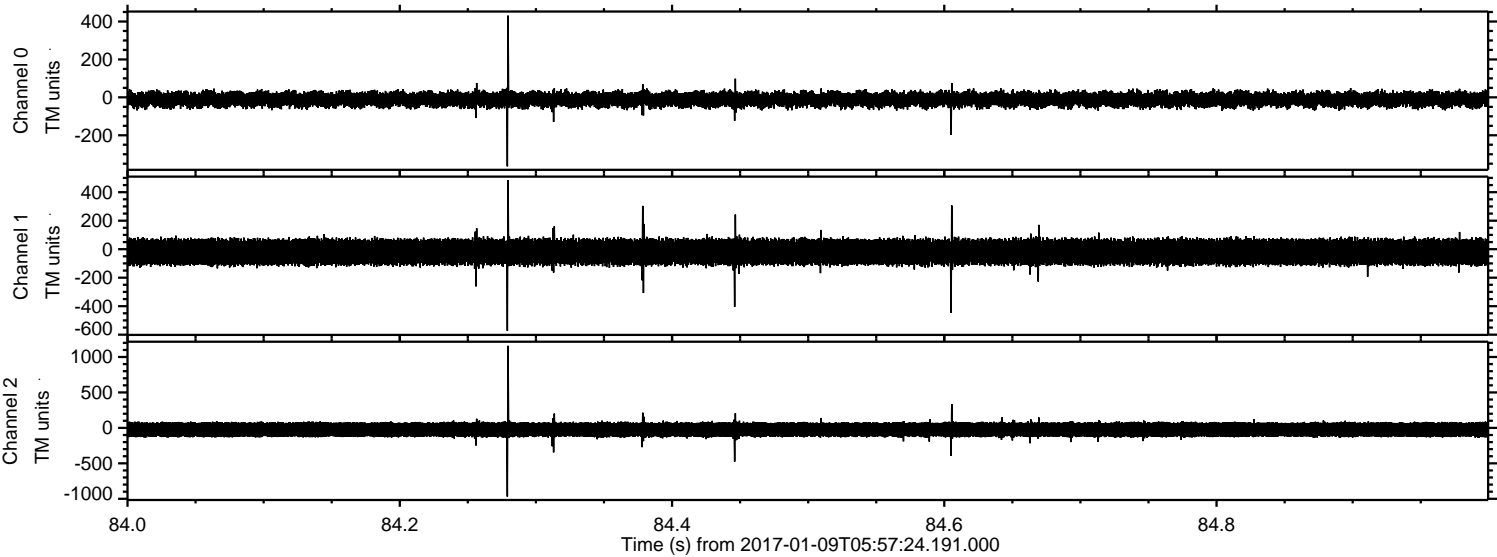
Processed Mon Jan 9 07:05:39 2017 by ELM ver.2012-10-06 from 001__elm20170109_055723__dat00.bin



Processed Mon Jan 9 07:05:40 2017 by ELM ver.2012-10-06 from 001__elm20170109_055723__dat00.bin



Processed Mon Jan 9 07:05:41 2017 by ELM ver.2012-10-06 from 001__elm20170109_055723__dat00.bin

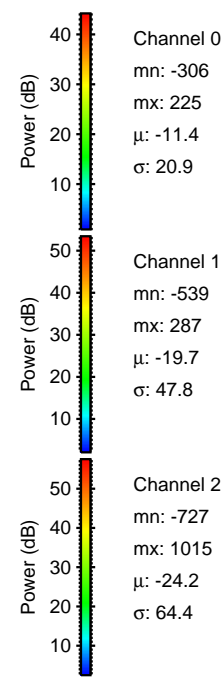
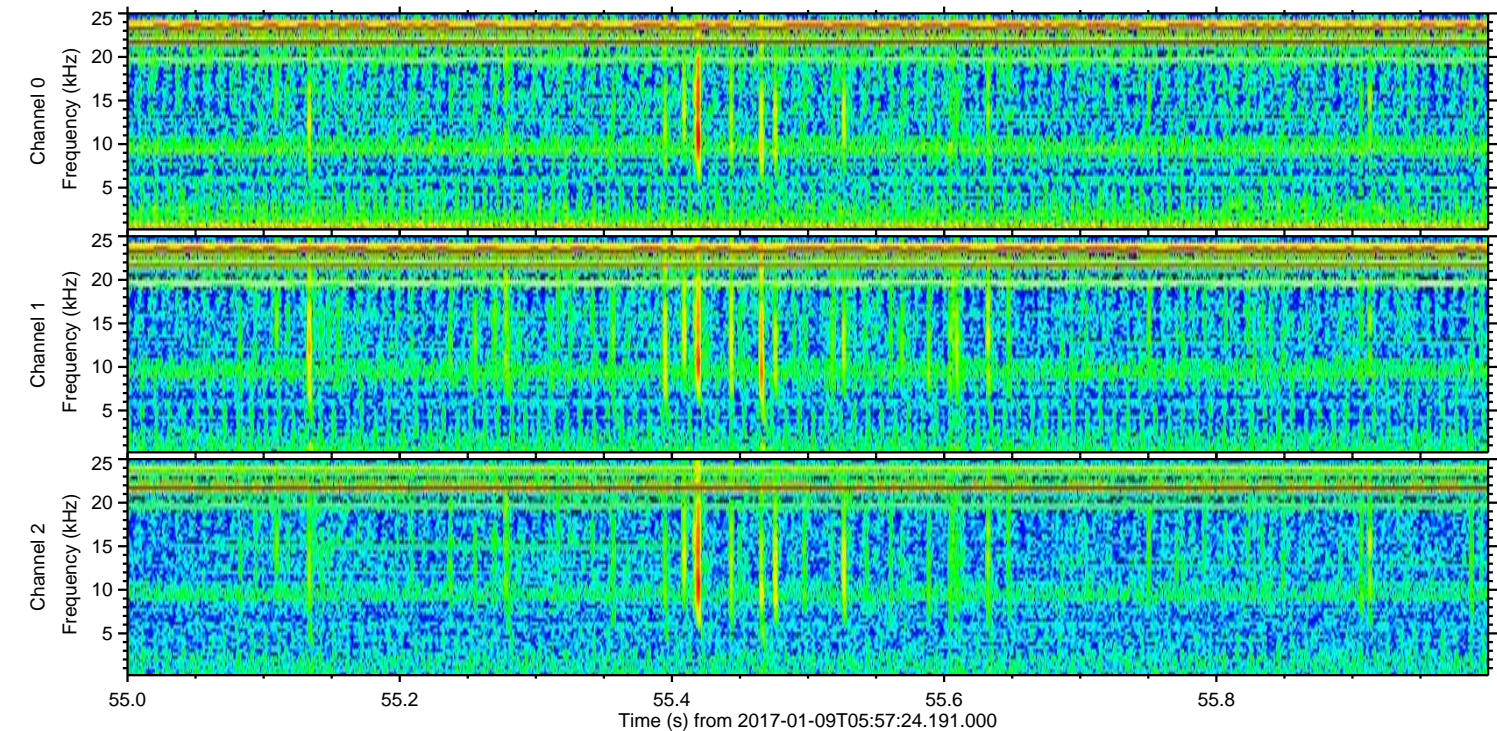
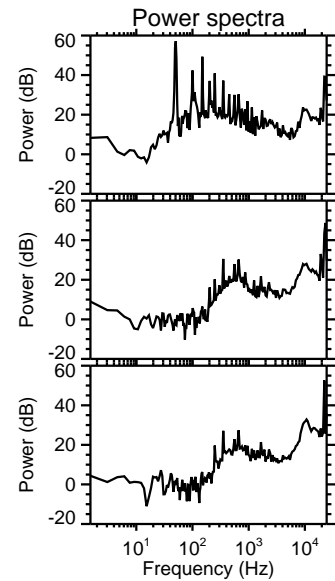
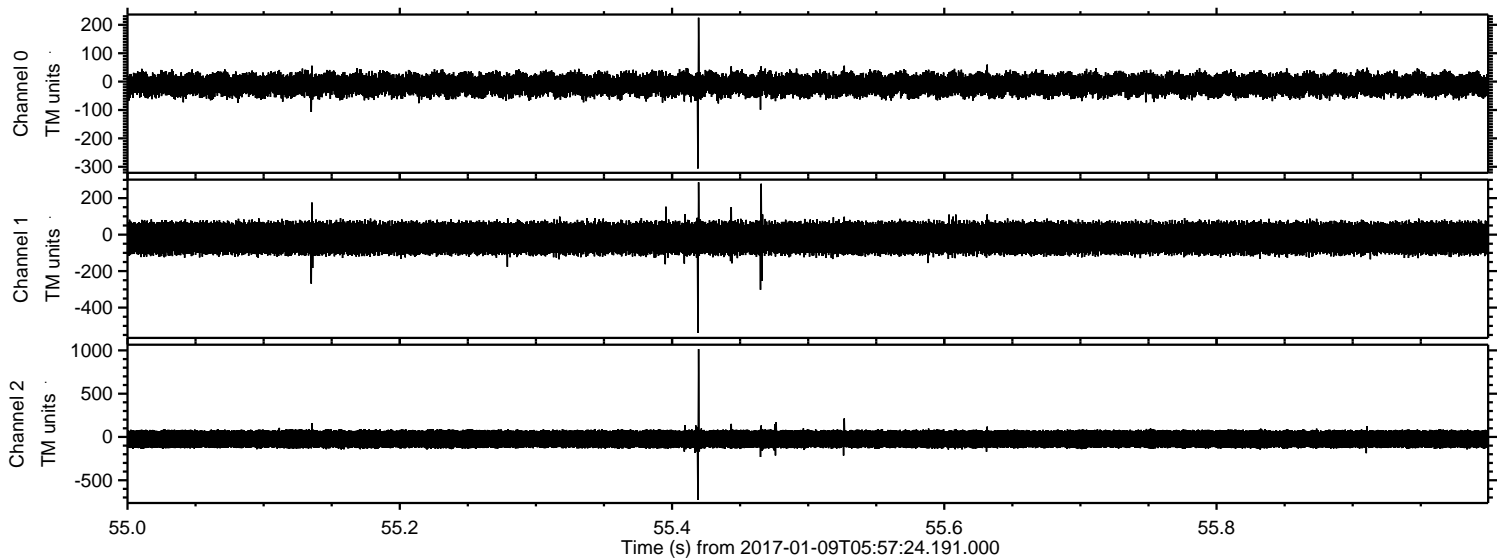


Channel 0
mn: -364
mx: 431
 μ : -11.4
 σ : 21.4

Channel 1
mn: -573
mx: 485
 μ : -19.7
 σ : 48.8

Channel 2
mn: -969
mx: 1158
 μ : -24.2
 σ : 64.0

Processed Mon Jan 9 07:05:42 2017 by ELM ver.2012-10-06 from 001__elm20170109_055723__dat00.bin



Processed Mon Jan 9 07:05:43 2017 by ELM ver.2012-10-06 from 001__elm20170109_055723__dat00.bin

