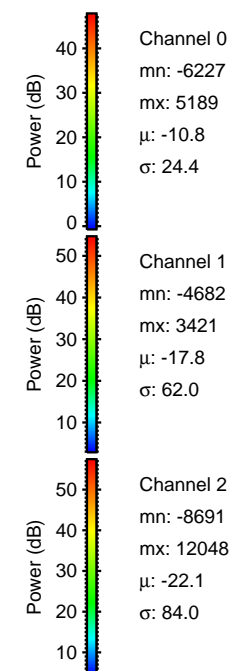
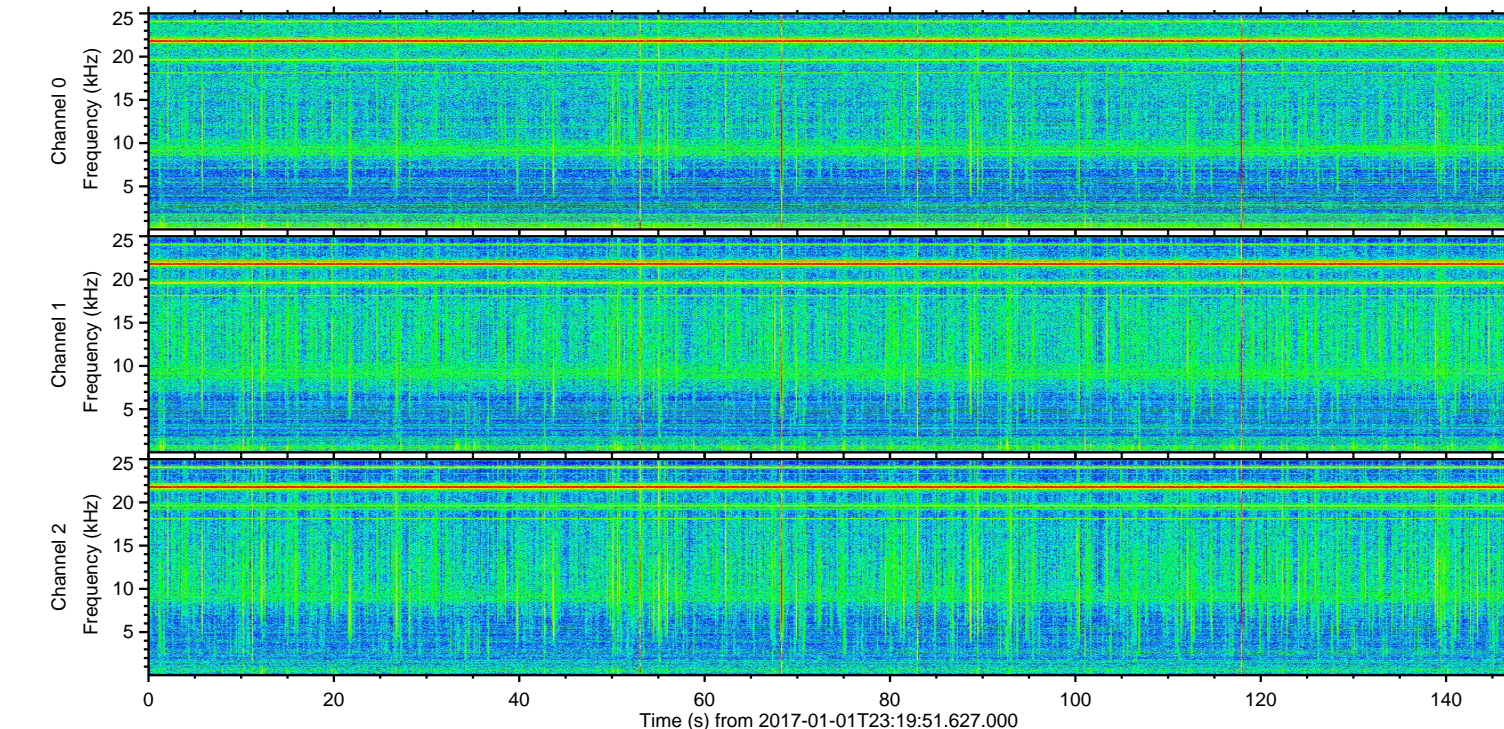
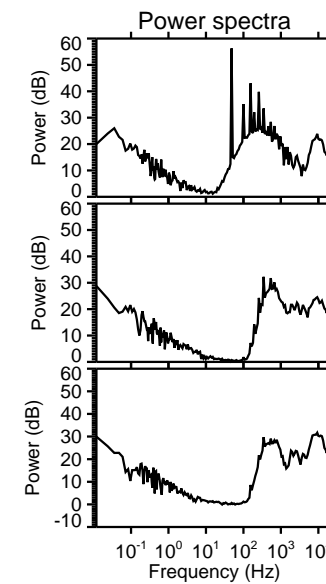
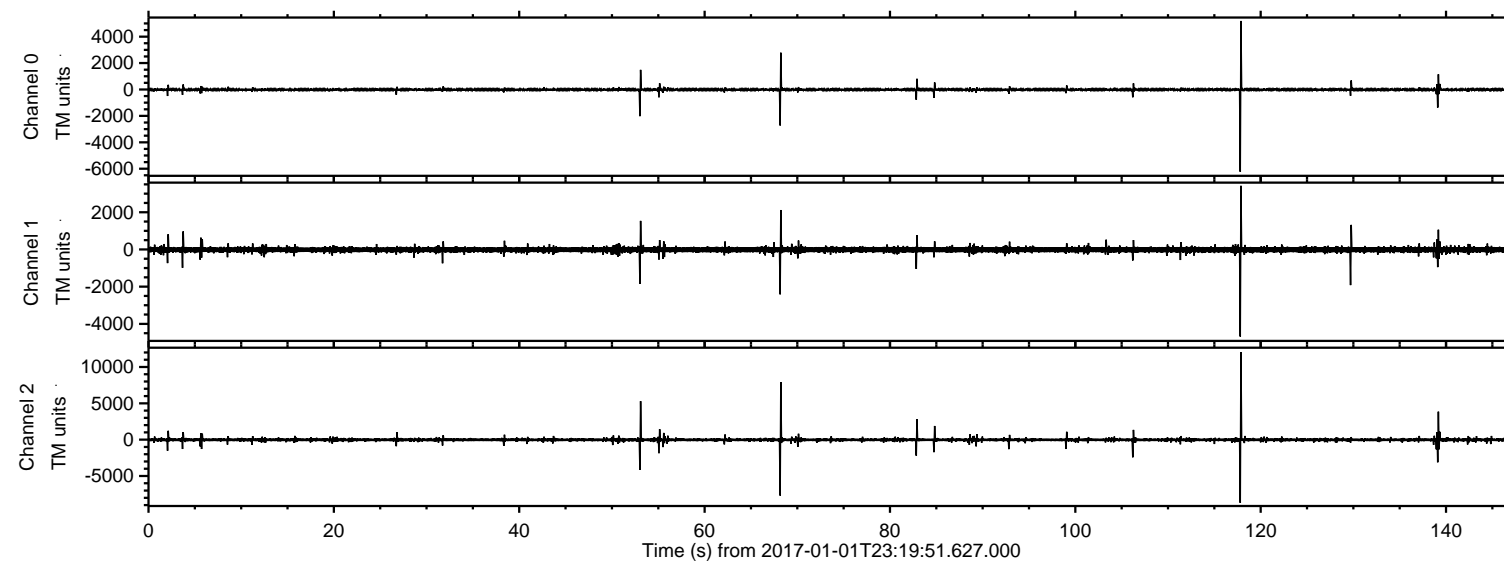


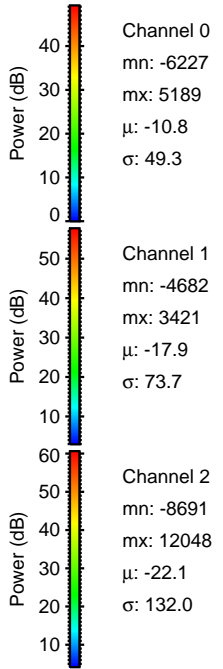
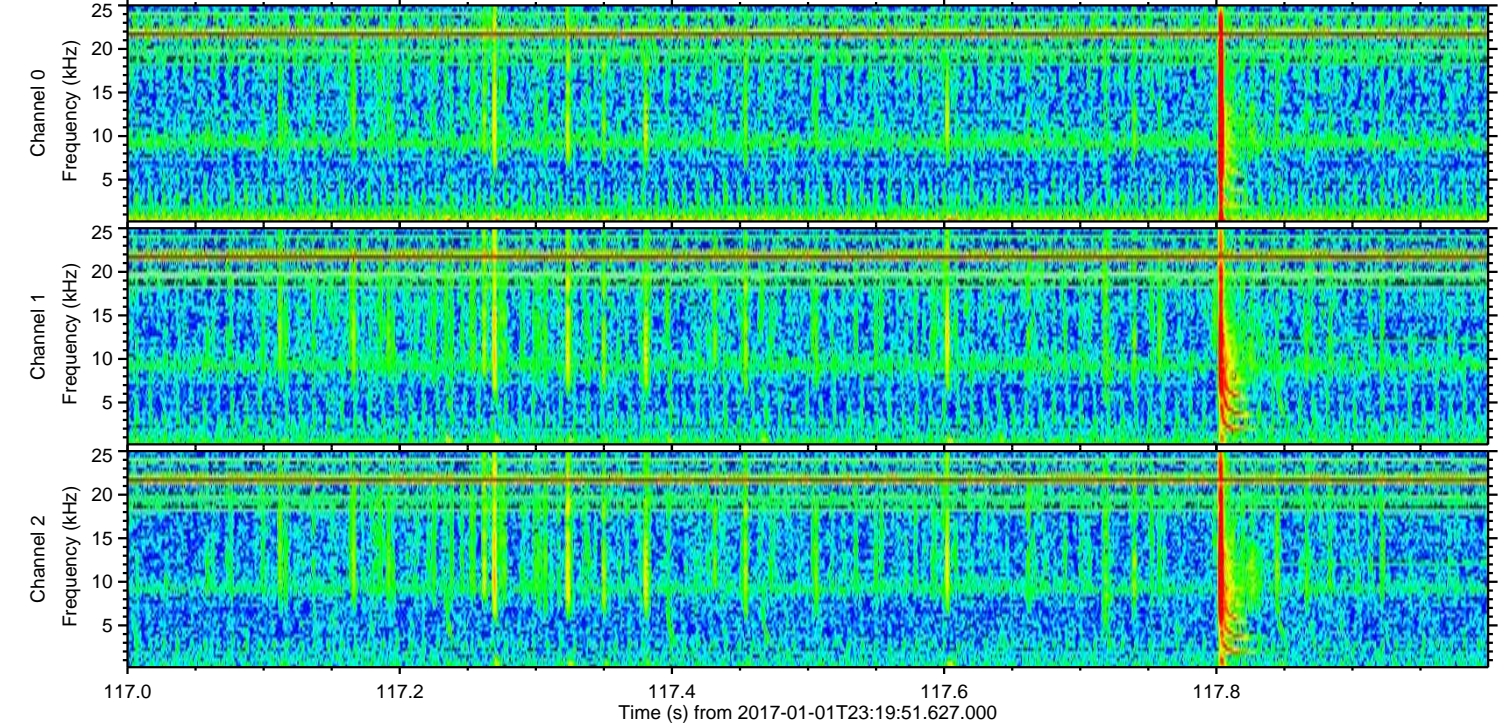
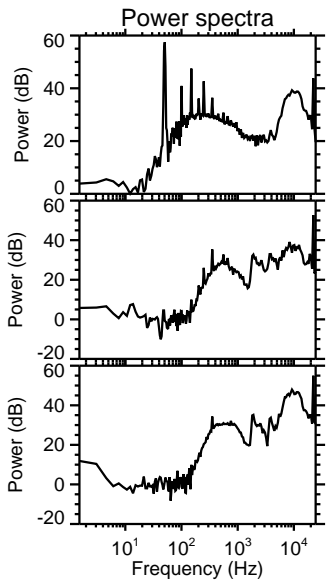
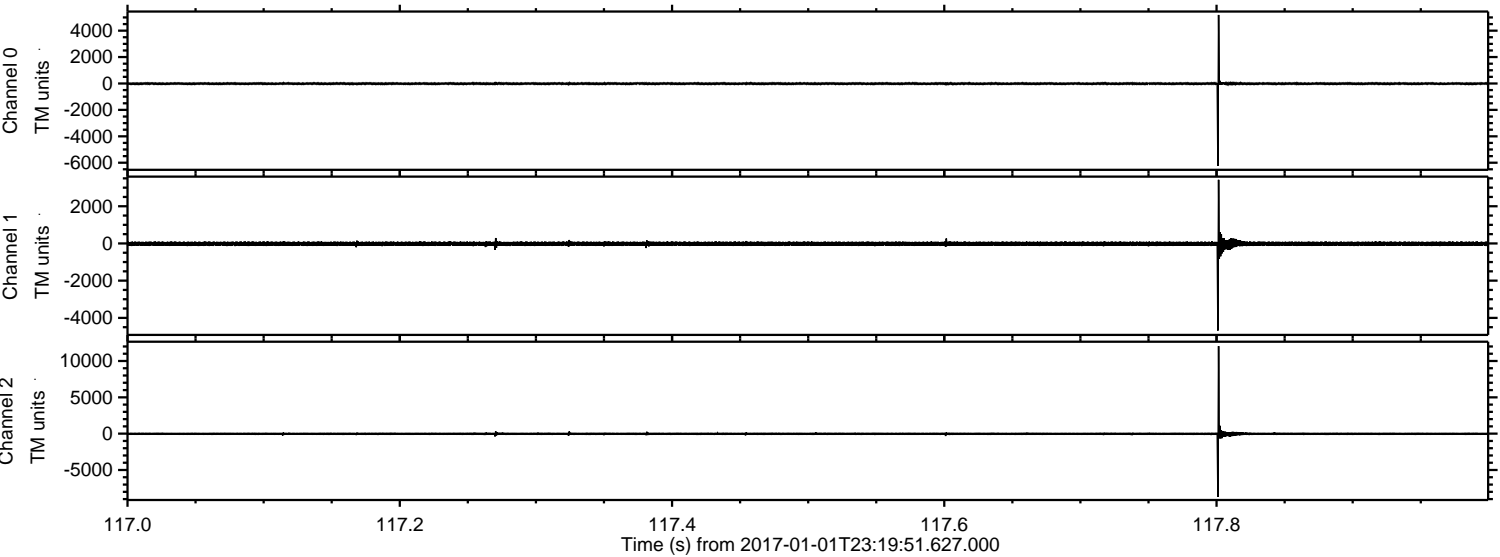
ELMAVAN 3D WAVEFORMS (Measured data sampled at 50 kHz) 51000 packets of 144 samples from 2017-01-01T23:19:51.627.000.

Processed Mon Jan 2 00:27:37 2017 by ELM ver.2012-10-06 from 001__elm20170101_231950__dat00.bin

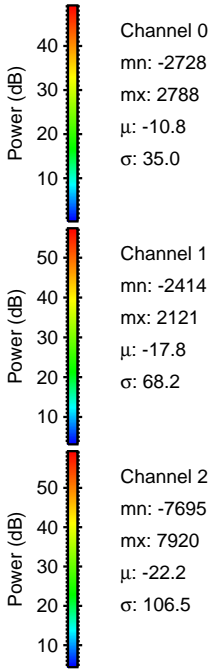
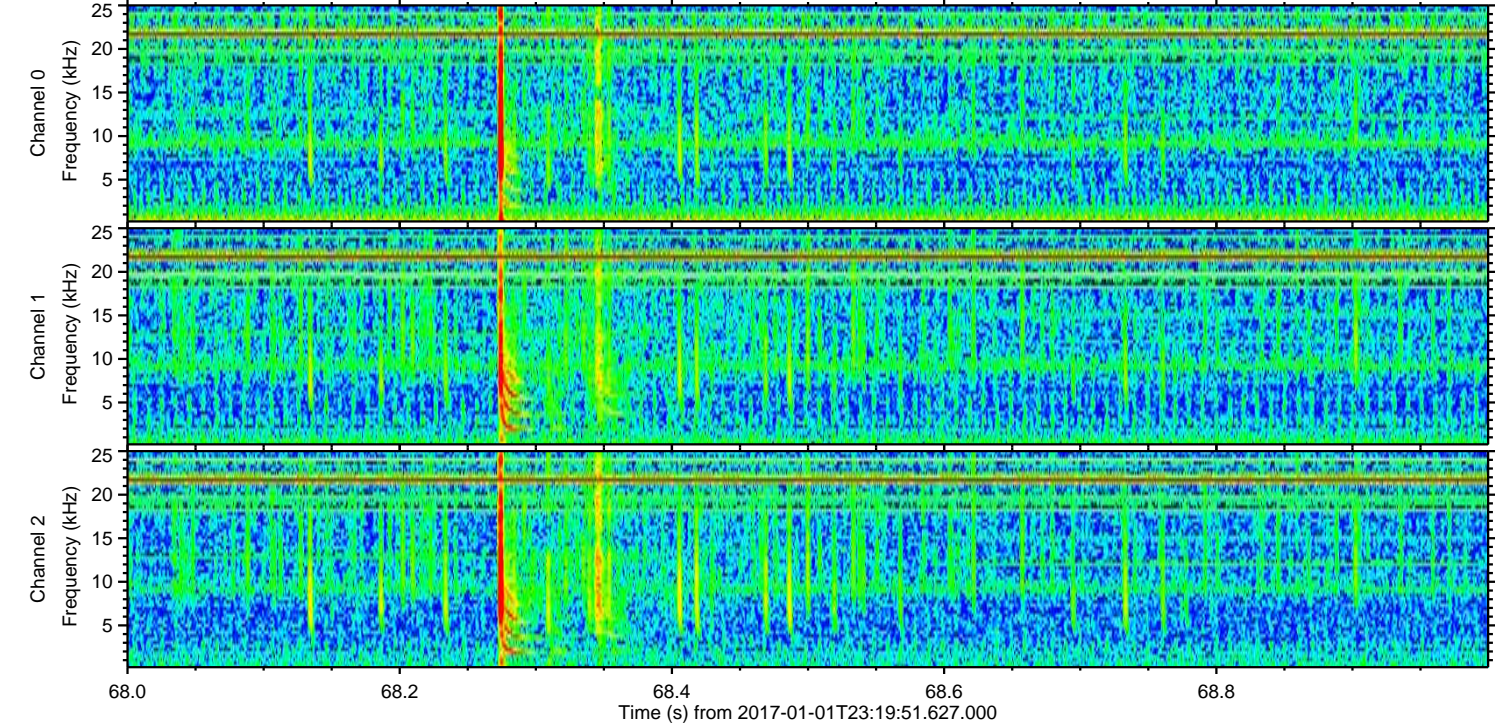
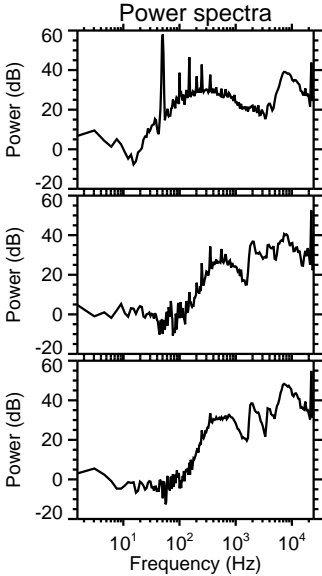
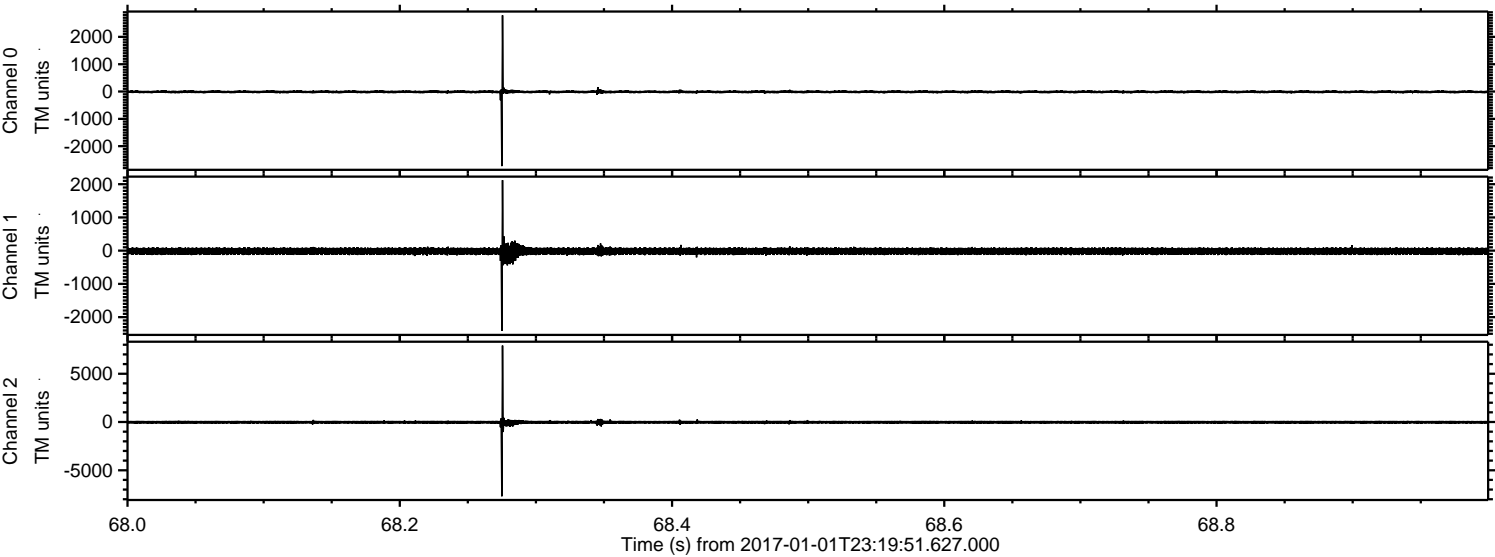


ELMAVAN 3D WAVEFORMS (Measured data sampled at 50 kHz) 51000 packets of 144 samples from 2017-01-01T23:19:51.627.000. Part 118/147

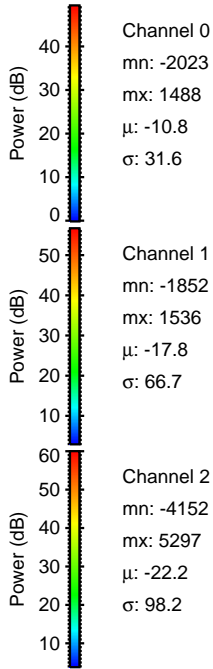
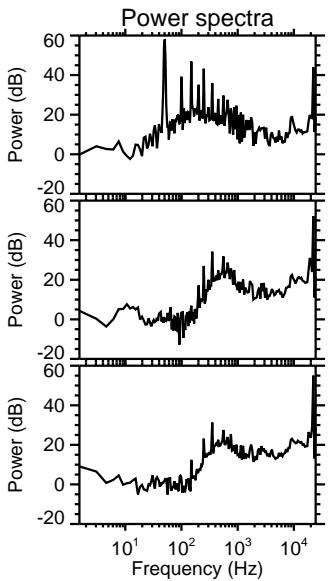
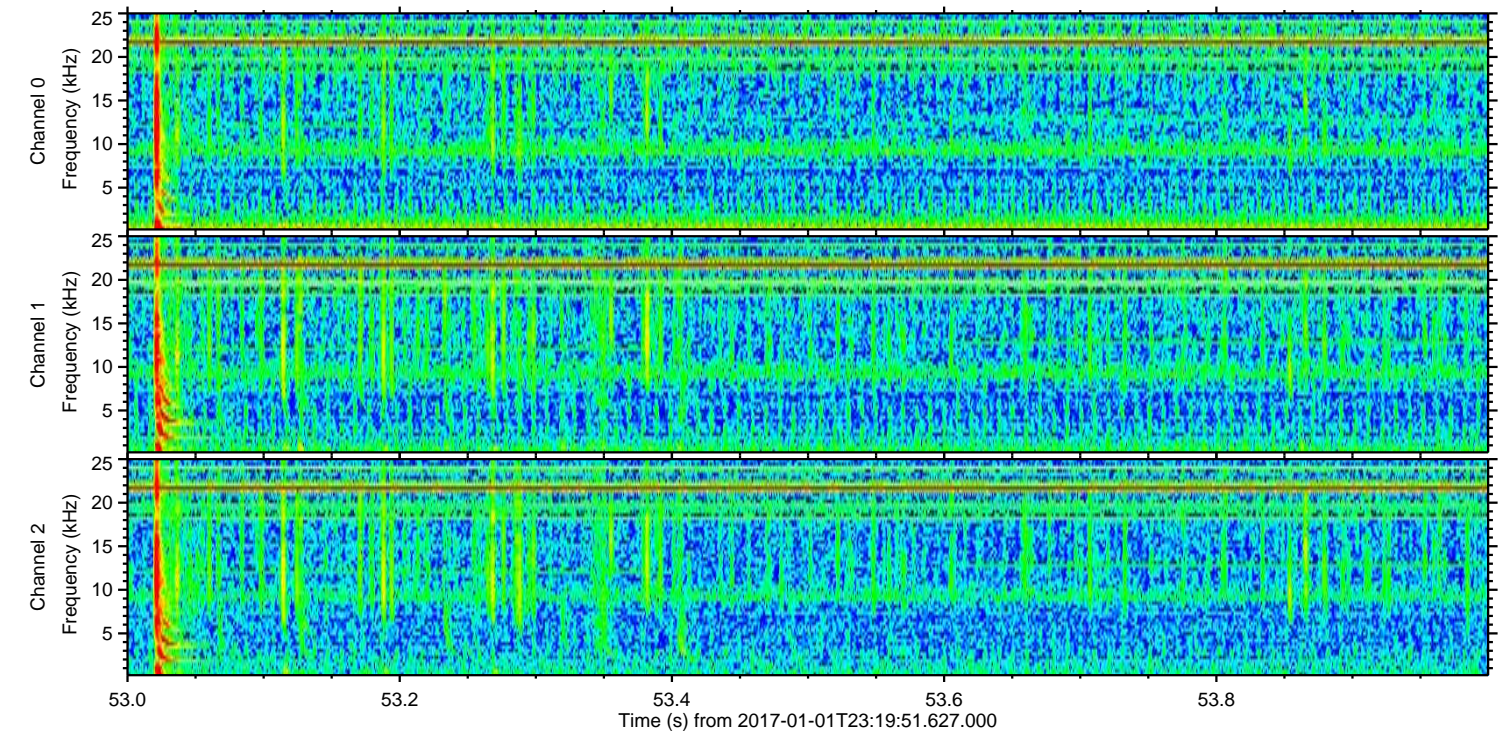
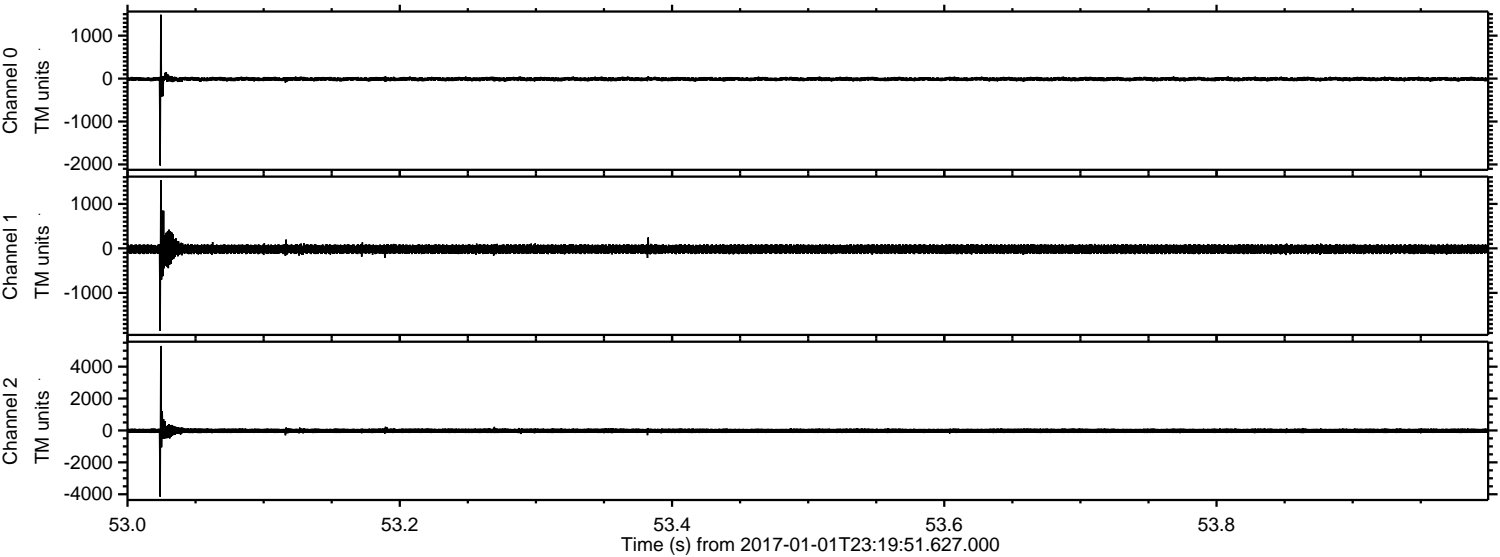
Processed Mon Jan 2 00:27:49 2017 by ELM ver.2012-10-06 from 001__elm20170101_231950__dat00.bin



Processed Mon Jan 2 00:27:50 2017 by ELM ver.2012-10-06 from 001__elm20170101_231950__dat00.bin

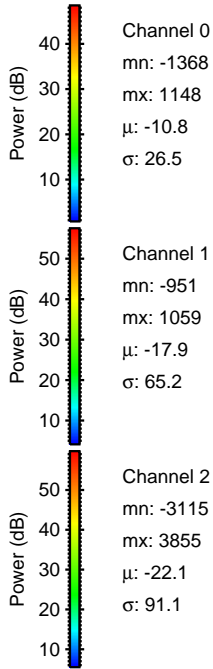
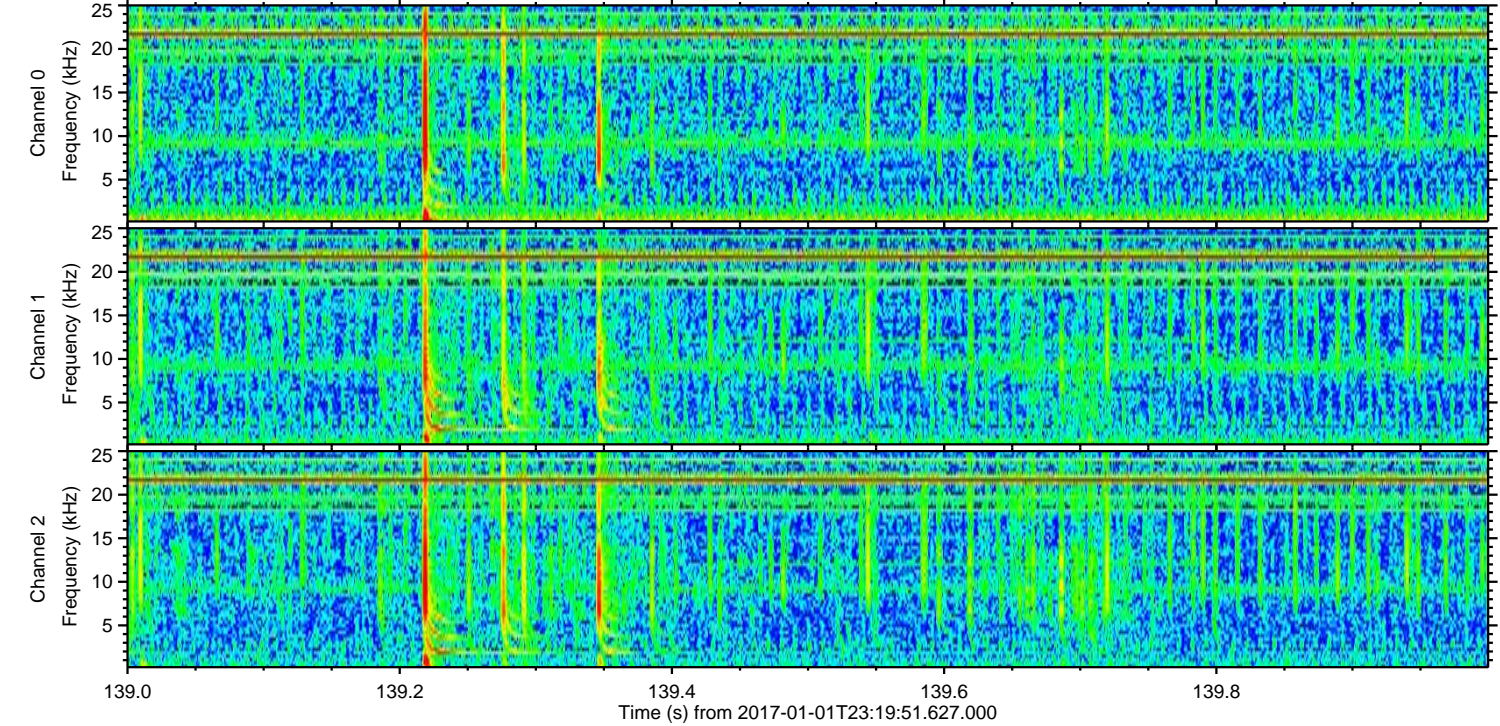
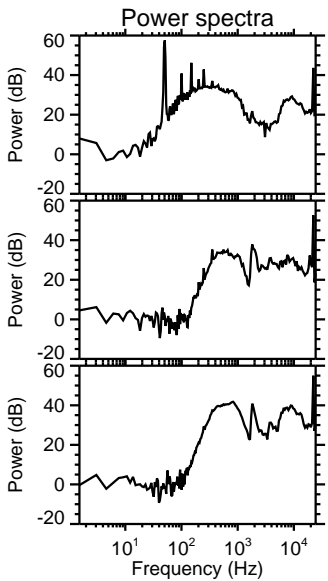
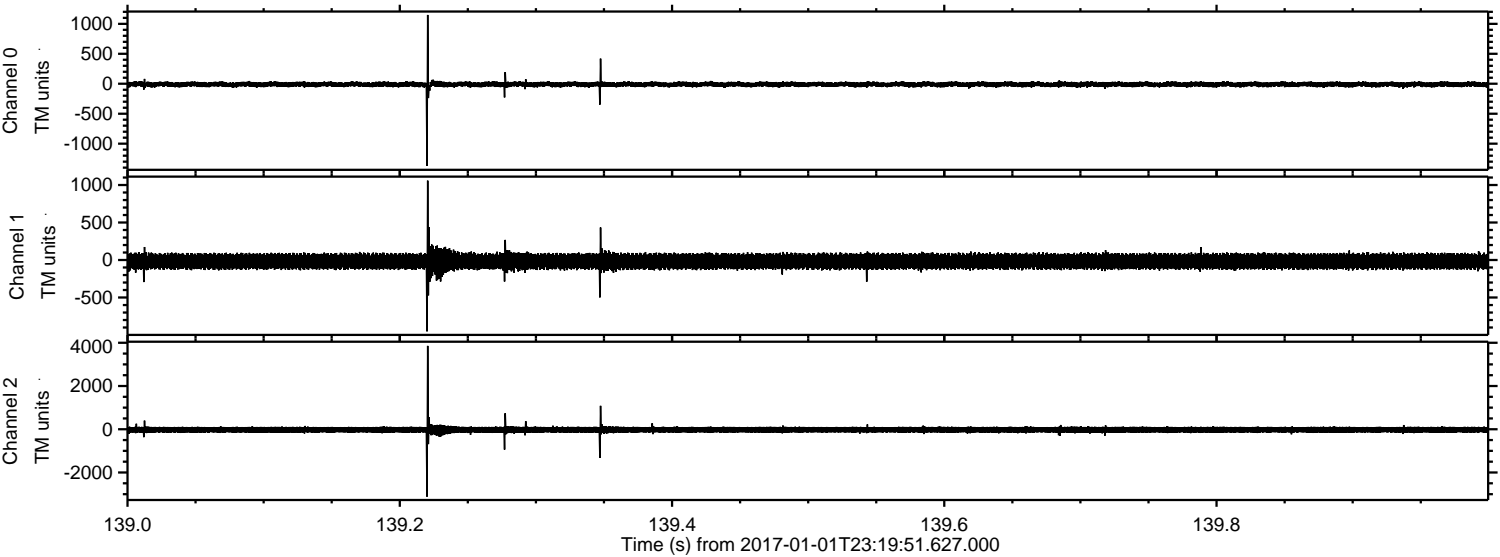


Processed Mon Jan 2 00:27:51 2017 by ELM ver.2012-10-06 from 001__elm20170101_231950__dat00.bin



ELMAVAN 3D WAVEFORMS (Measured data sampled at 50 kHz) 51000 packets of 144 samples from 2017-01-01T23:19:51.627.000. Part 140/147

Processed Mon Jan 2 00:27:52 2017 by ELM ver.2012-10-06 from 001__elm20170101_231950__dat00.bin

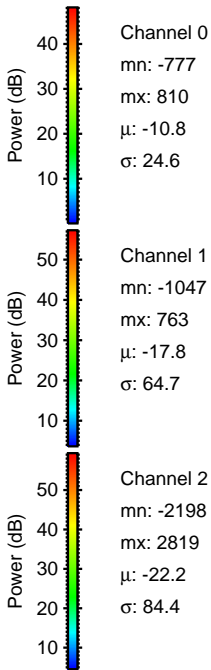
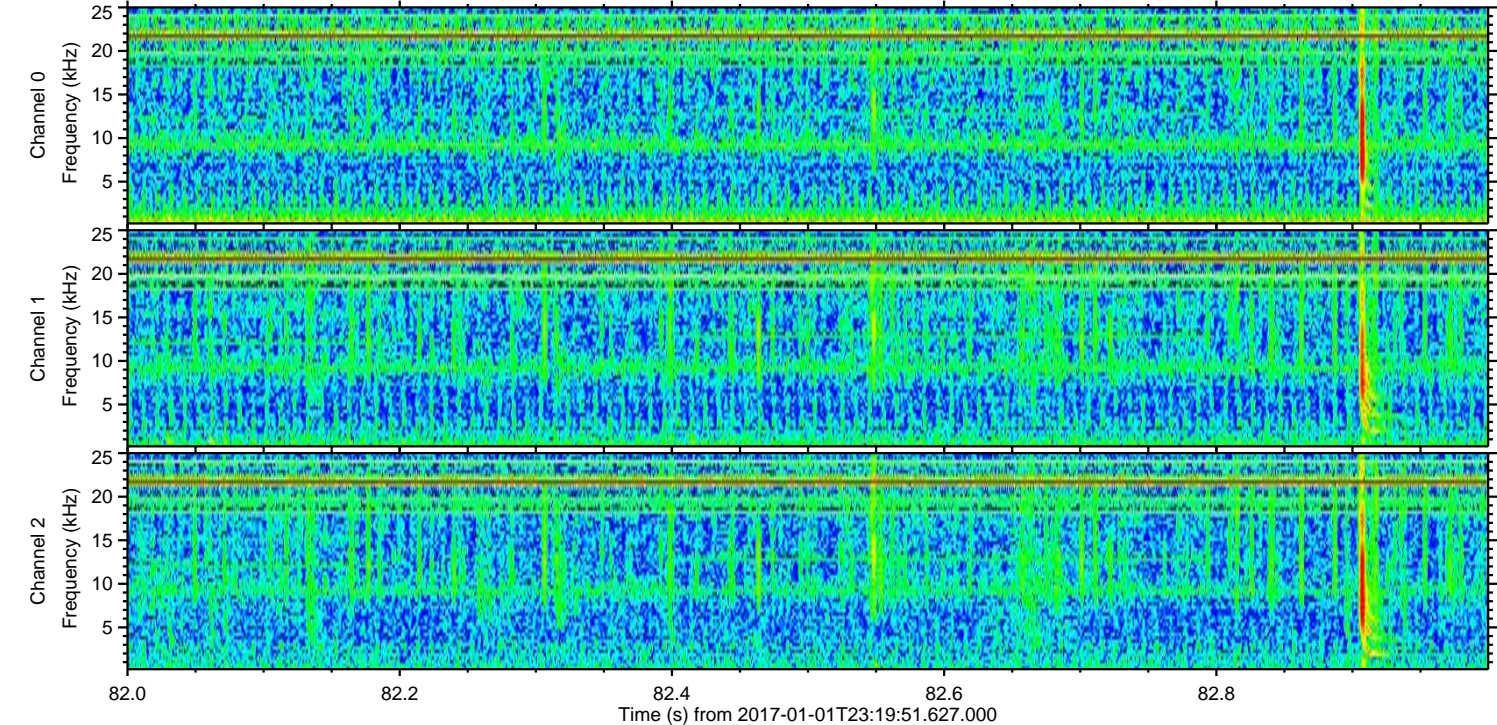
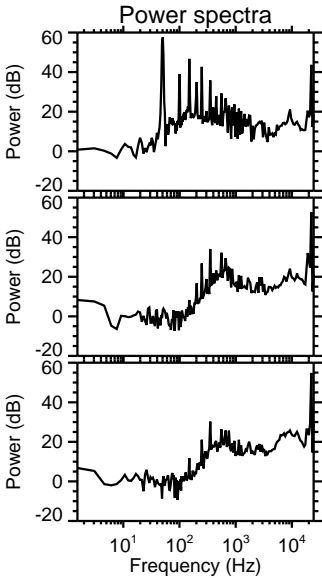
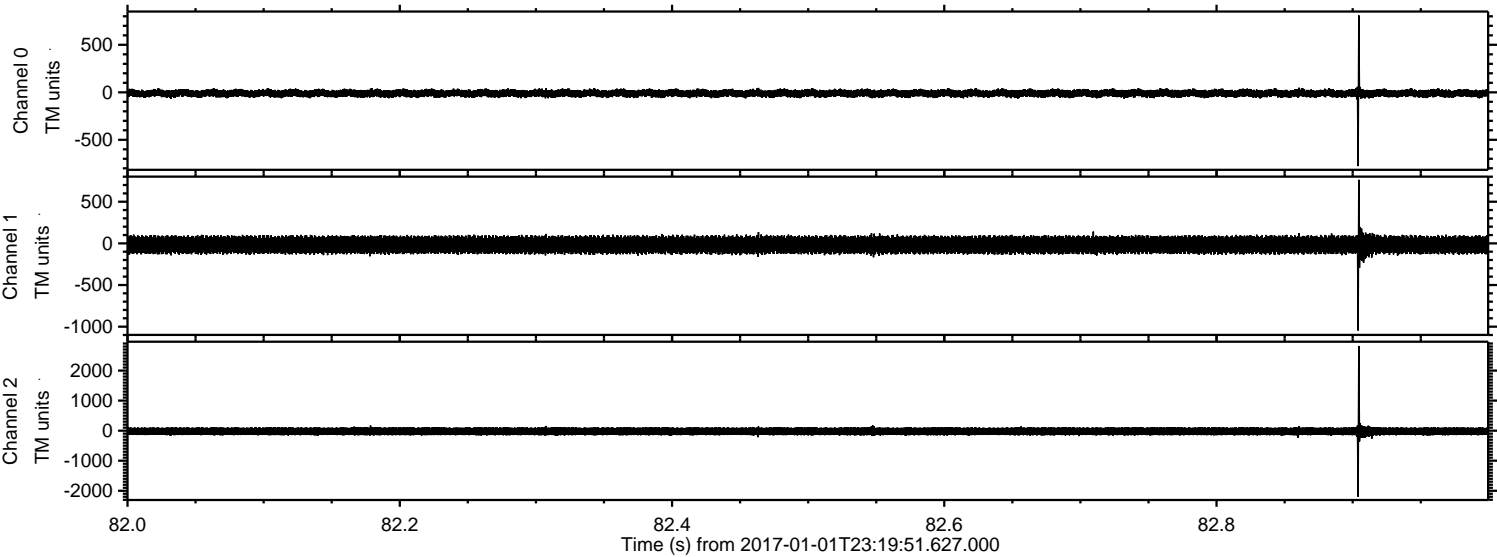


Channel 0
mn: -1368
mx: 1148
 μ : -10.8
 σ : 26.5

Channel 1
mn: -951
mx: 1059
 μ : -17.9
 σ : 65.2

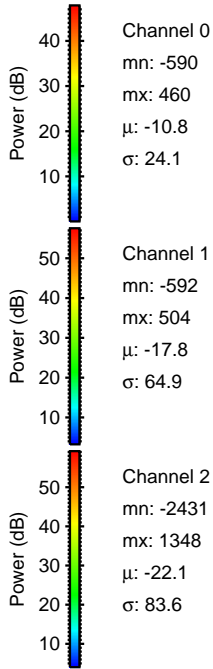
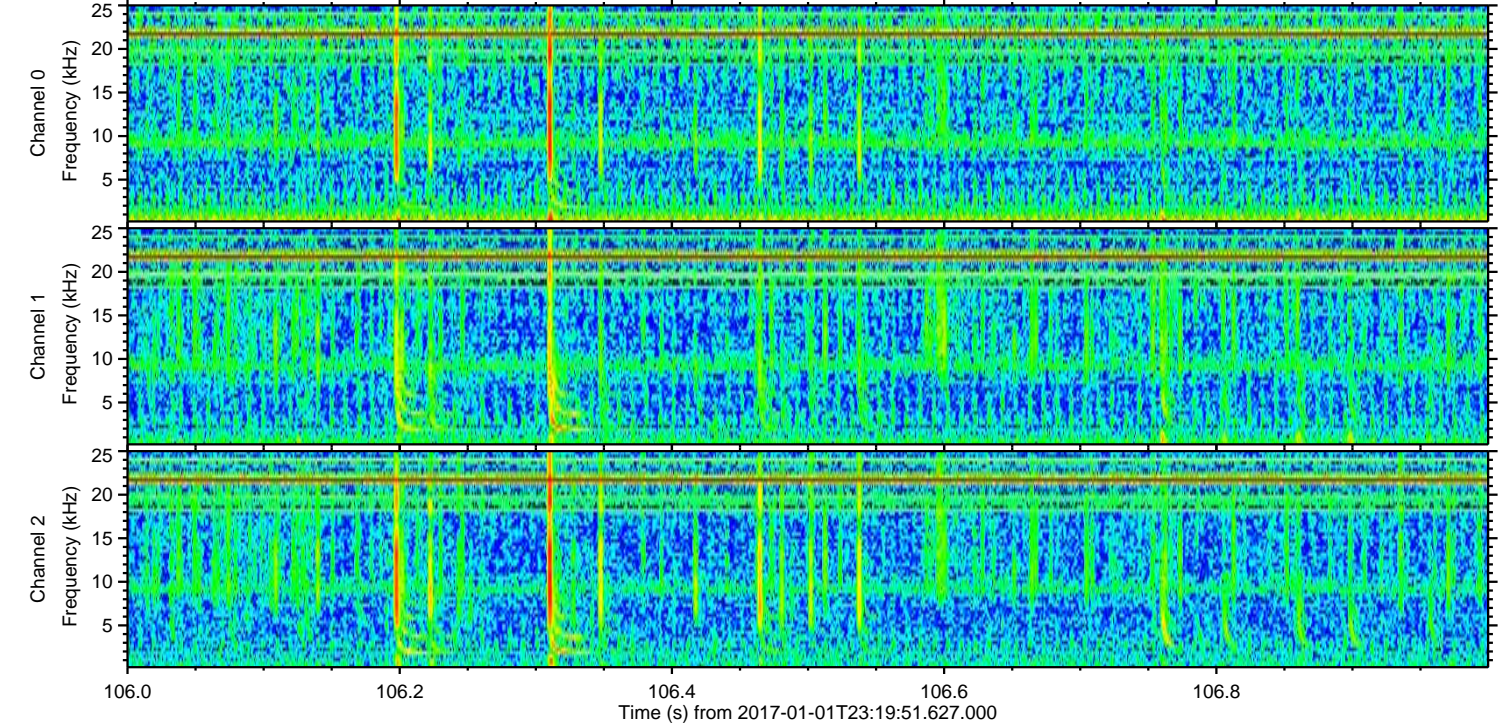
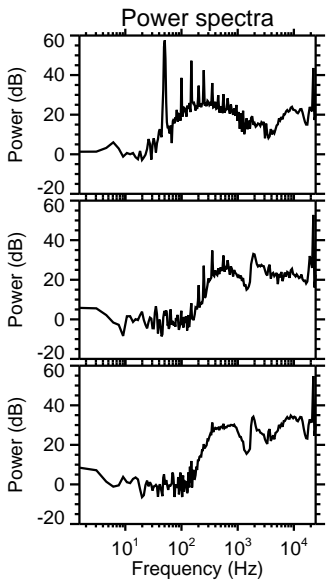
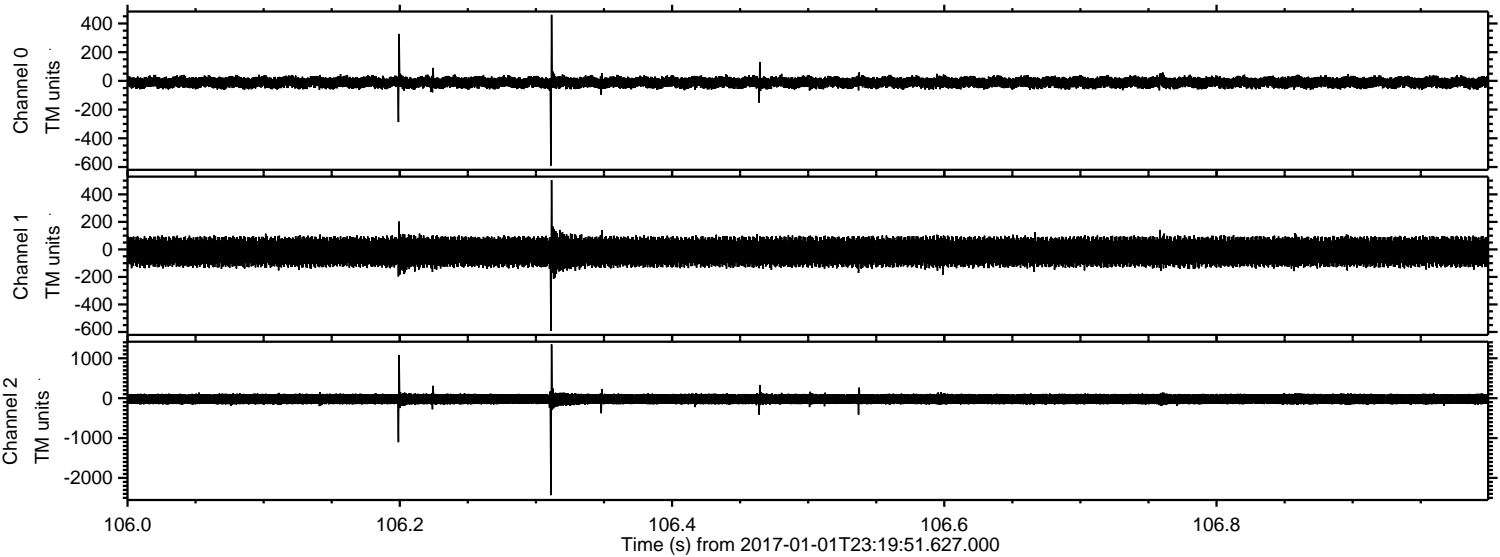
Channel 2
mn: -3115
mx: 3855
 μ : -22.1
 σ : 91.1

Processed Mon Jan 2 00:27:53 2017 by ELM ver.2012-10-06 from 001__elm20170101_231950__dat00.bin

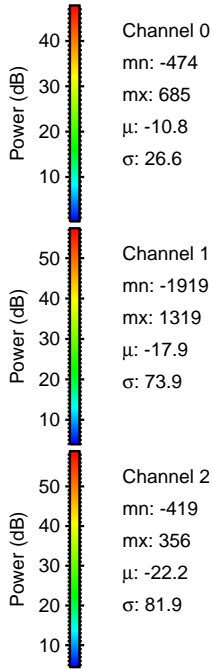
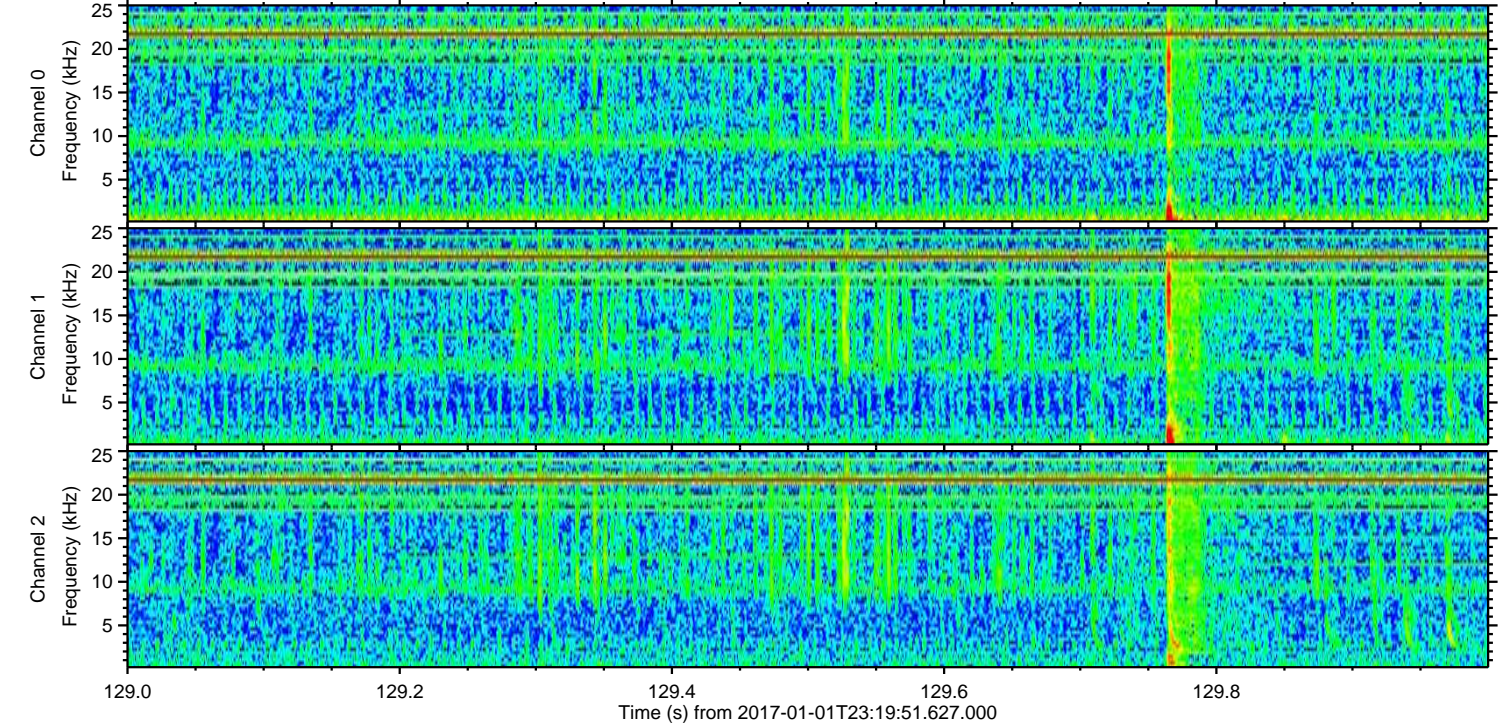
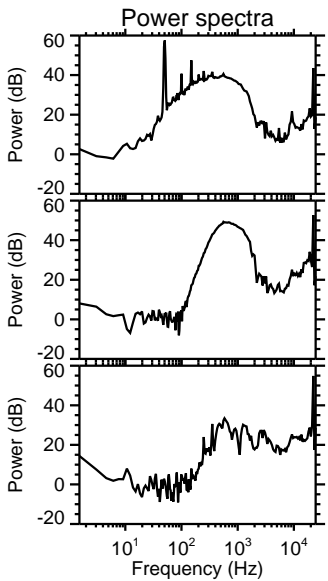
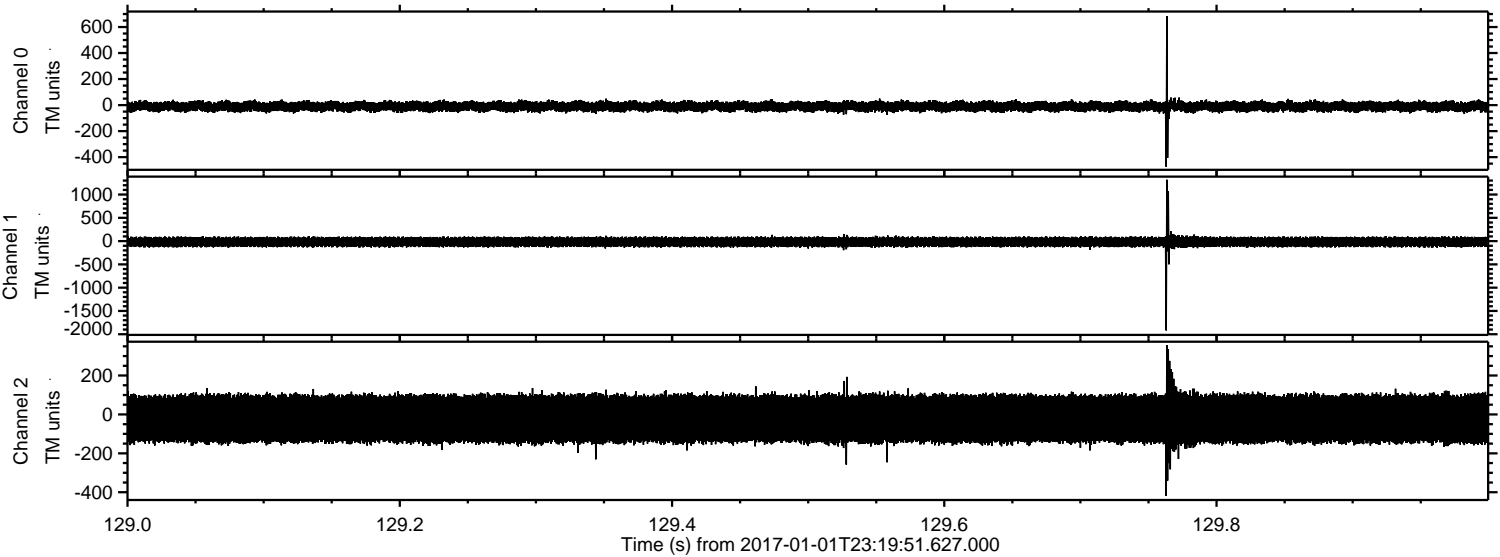


ELMAVAN 3D WAVEFORMS (Measured data sampled at 50 kHz) 51000 packets of 144 samples from 2017-01-01T23:19:51.627.000. Part 107/147

Processed Mon Jan 2 00:27:54 2017 by ELM ver.2012-10-06 from 001__elm20170101_231950__dat00.bin



Processed Mon Jan 2 00:27:54 2017 by ELM ver.2012-10-06 from 001__elm20170101_231950__dat00.bin

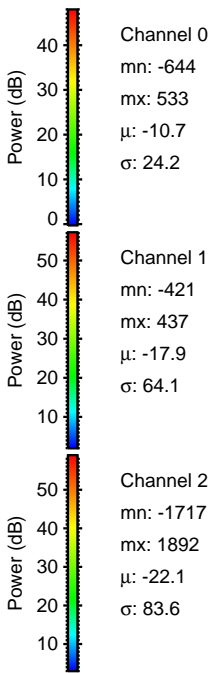
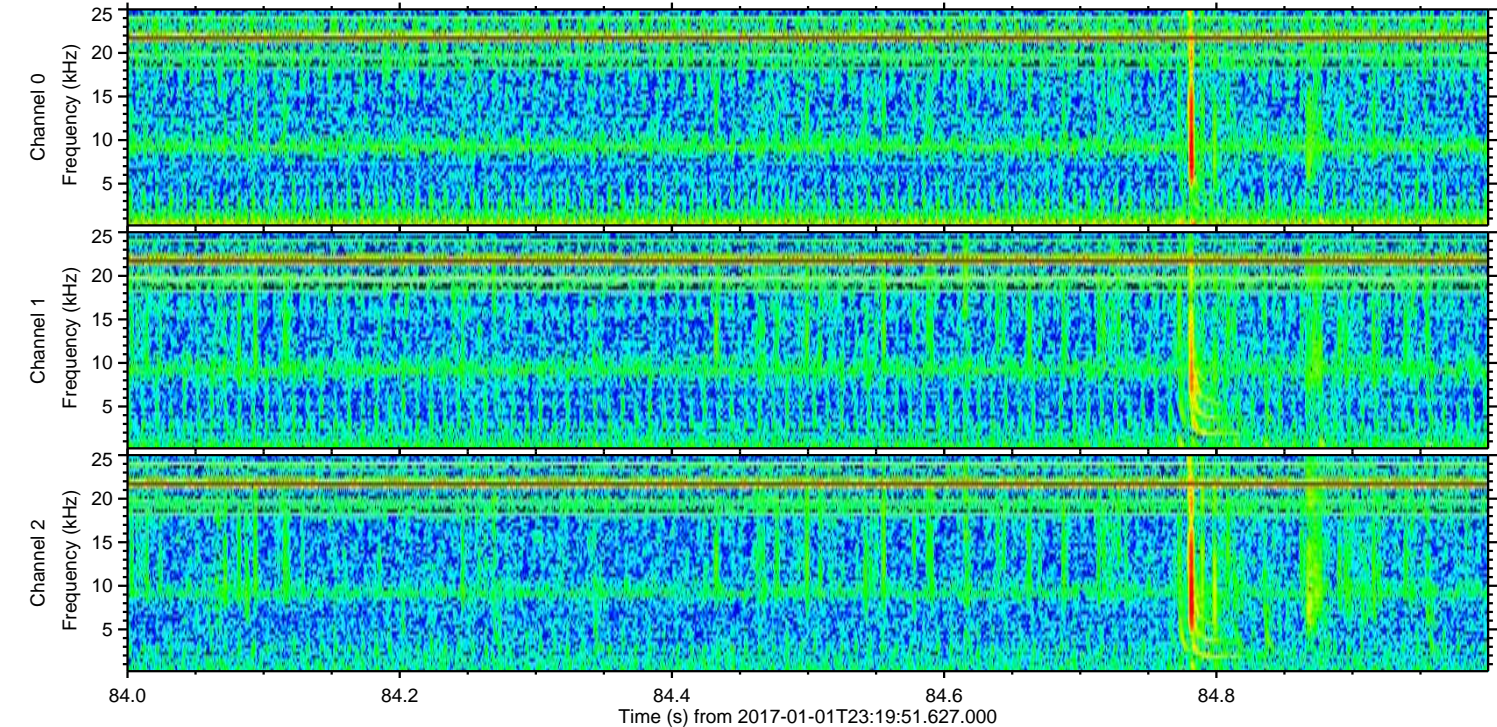
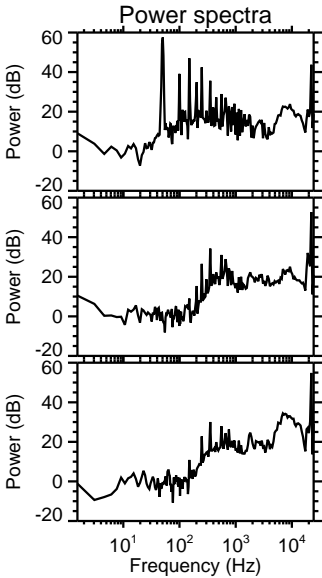
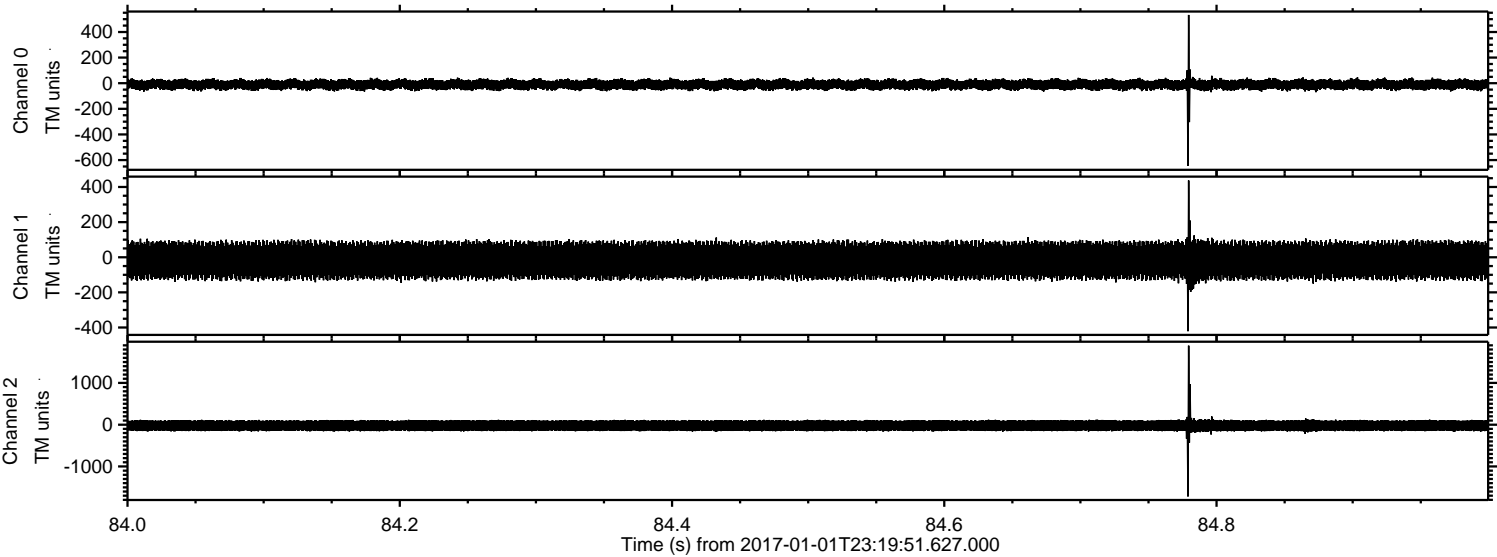


Channel 0
mn: -474
mx: 685
 μ : -10.8
 σ : 26.6

Channel 1
mn: -1919
mx: 1319
 μ : -17.9
 σ : 73.9

Channel 2
mn: -419
mx: 356
 μ : -22.2
 σ : 81.9

Processed Mon Jan 2 00:27:55 2017 by ELM ver.2012-10-06 from 001__elm20170101_231950__dat00.bin



Processed Mon Jan 2 00:27:56 2017 by ELM ver.2012-10-06 from 001__elm20170101_231950__dat00.bin

