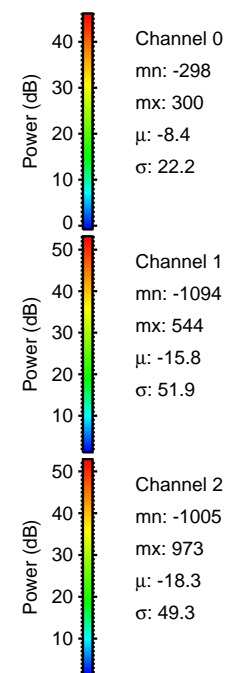
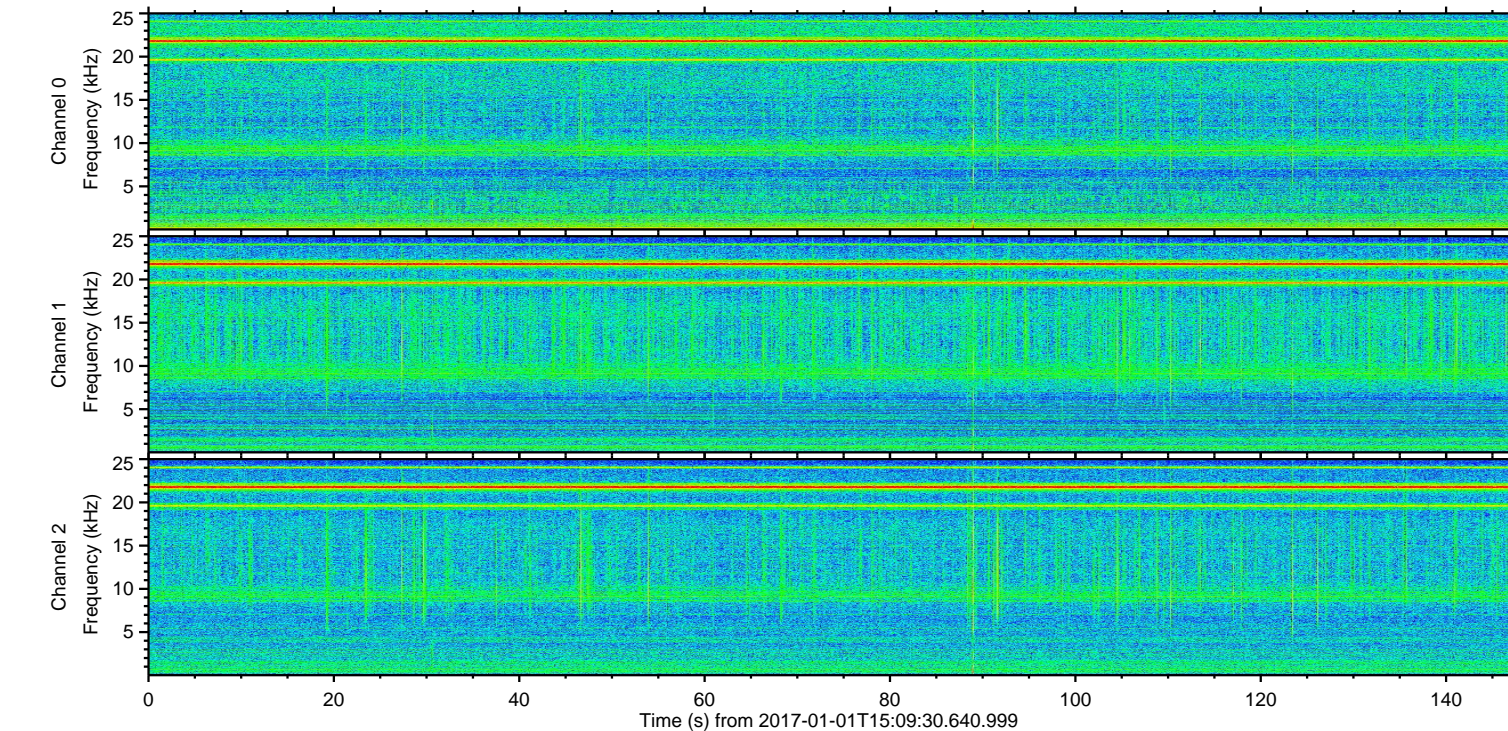
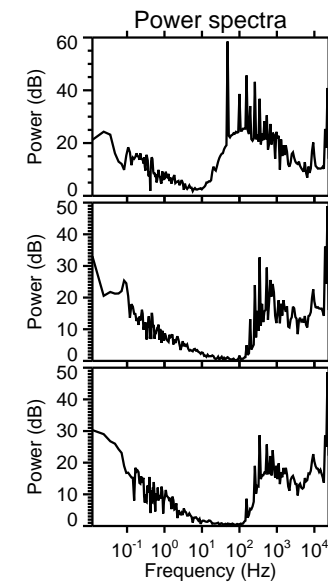
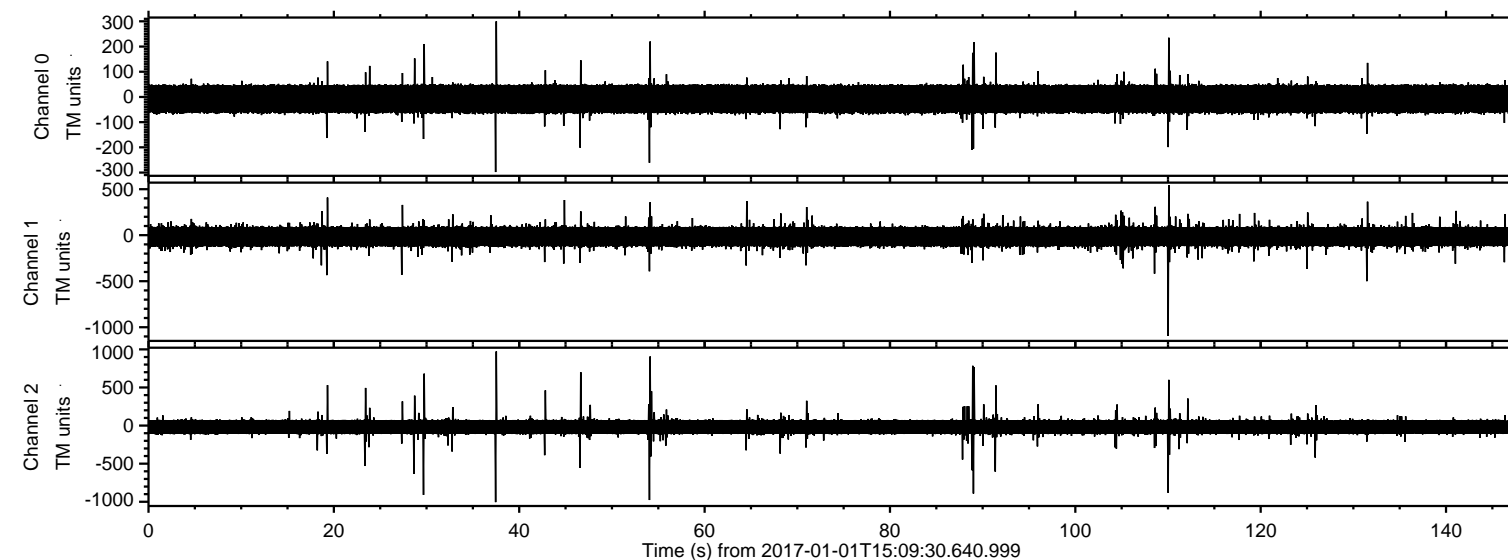


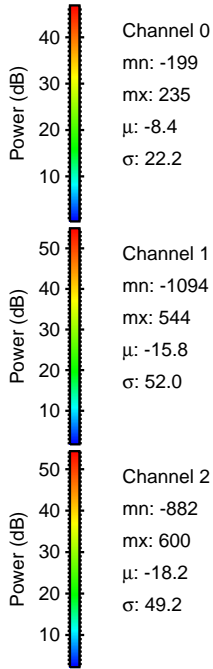
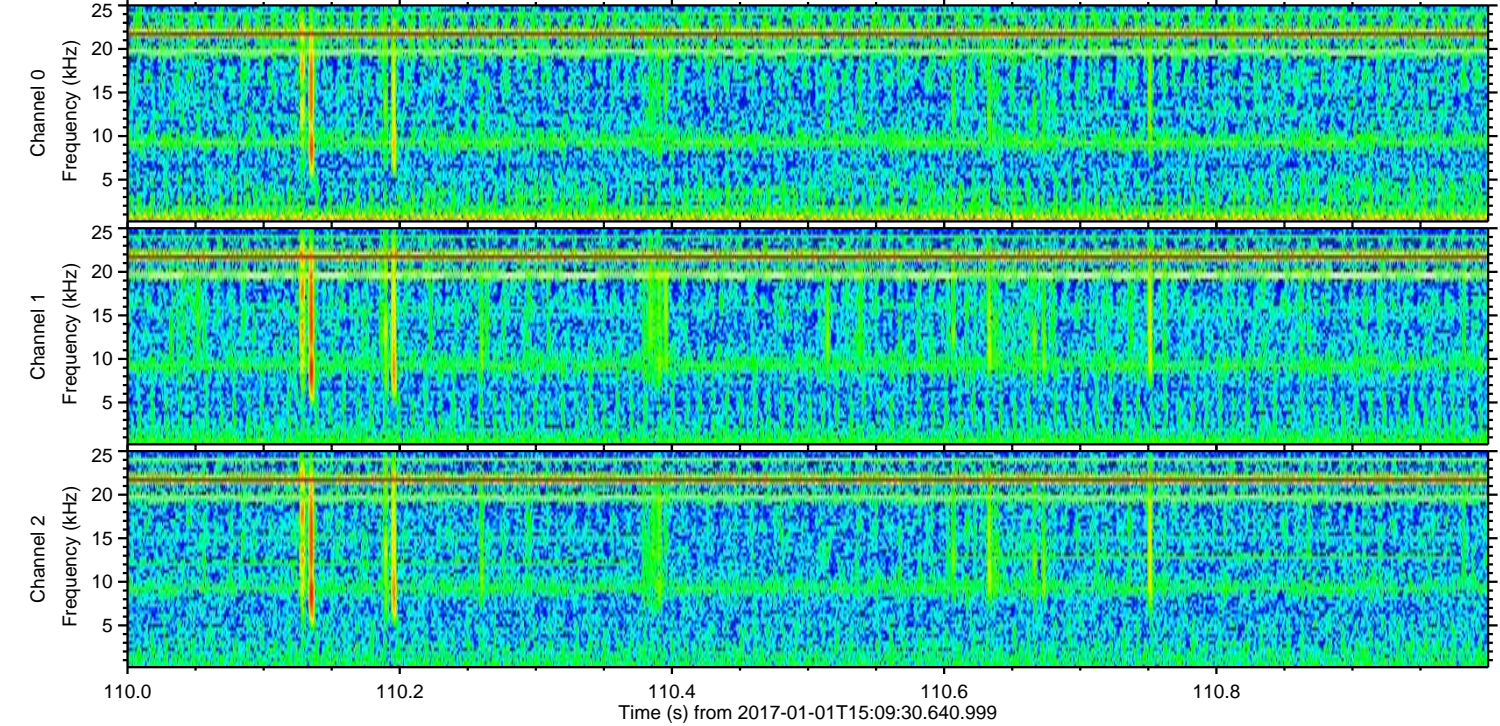
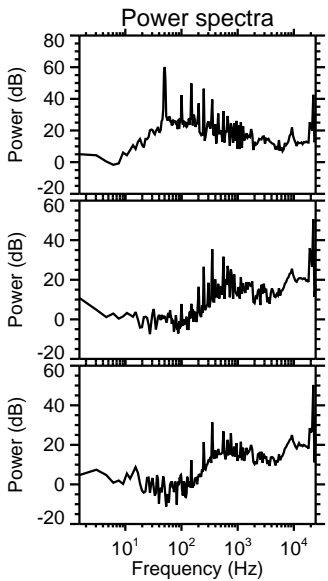
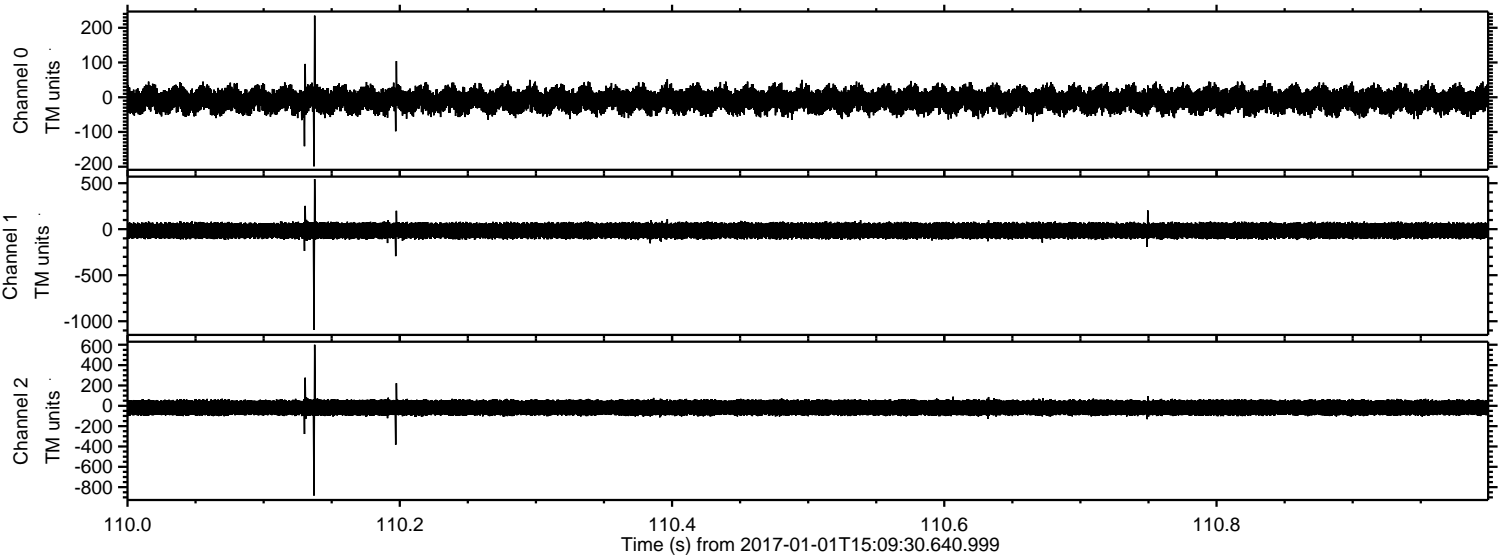
ELMAVAN 3D WAVEFORMS (Measured data sampled at 50 kHz) 51000 packets of 144 samples from 2017-01-01T15:09:30.640.999.

Processed Sun Jan 1 16:17:31 2017 by ELM ver.2012-10-06 from 001__elm20170101_150929__dat00.bin

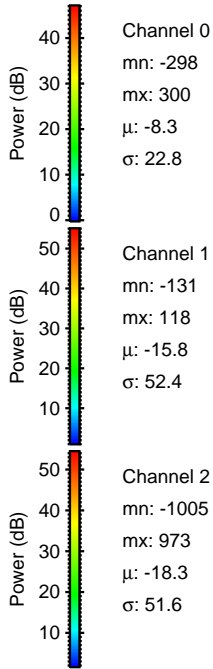
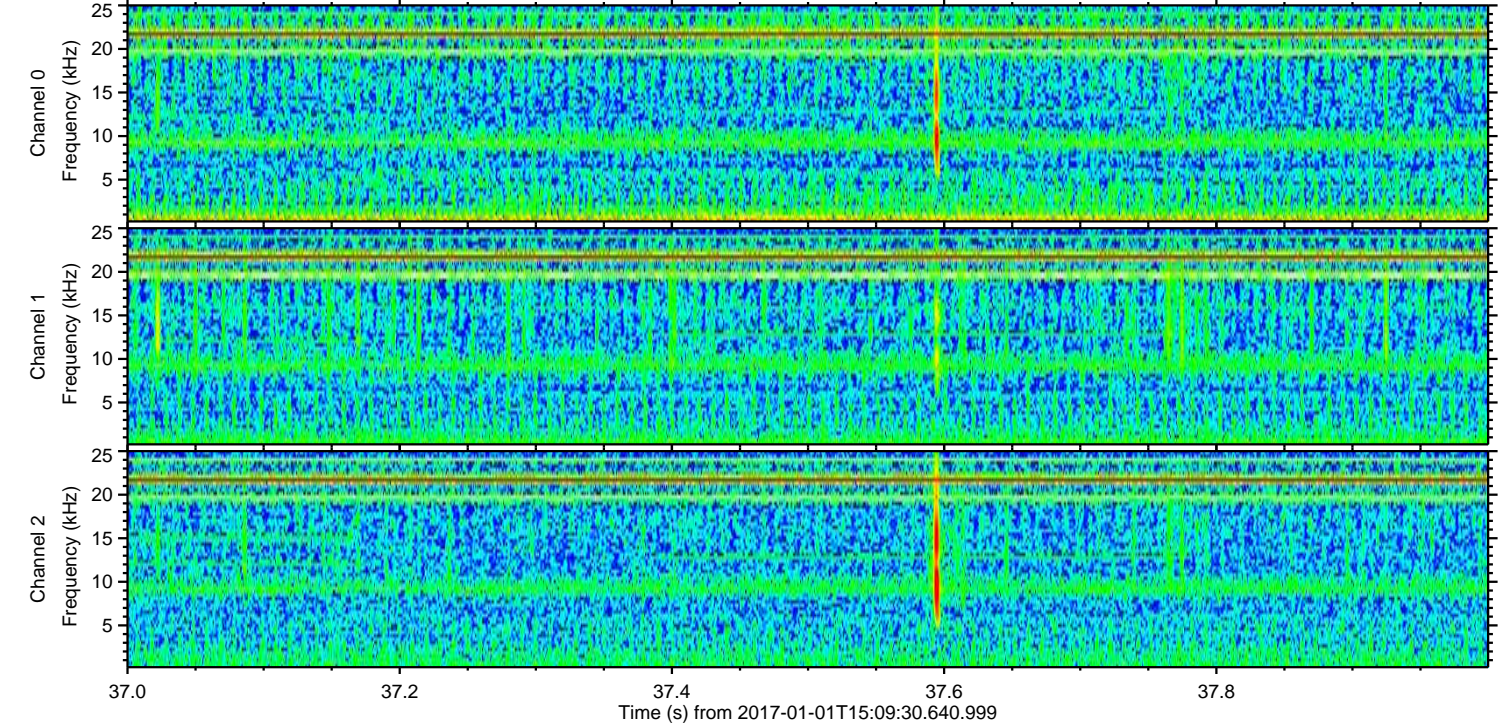
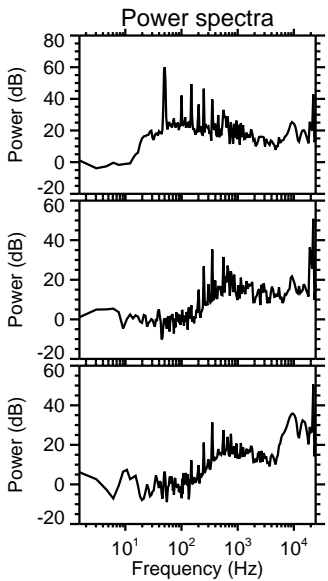
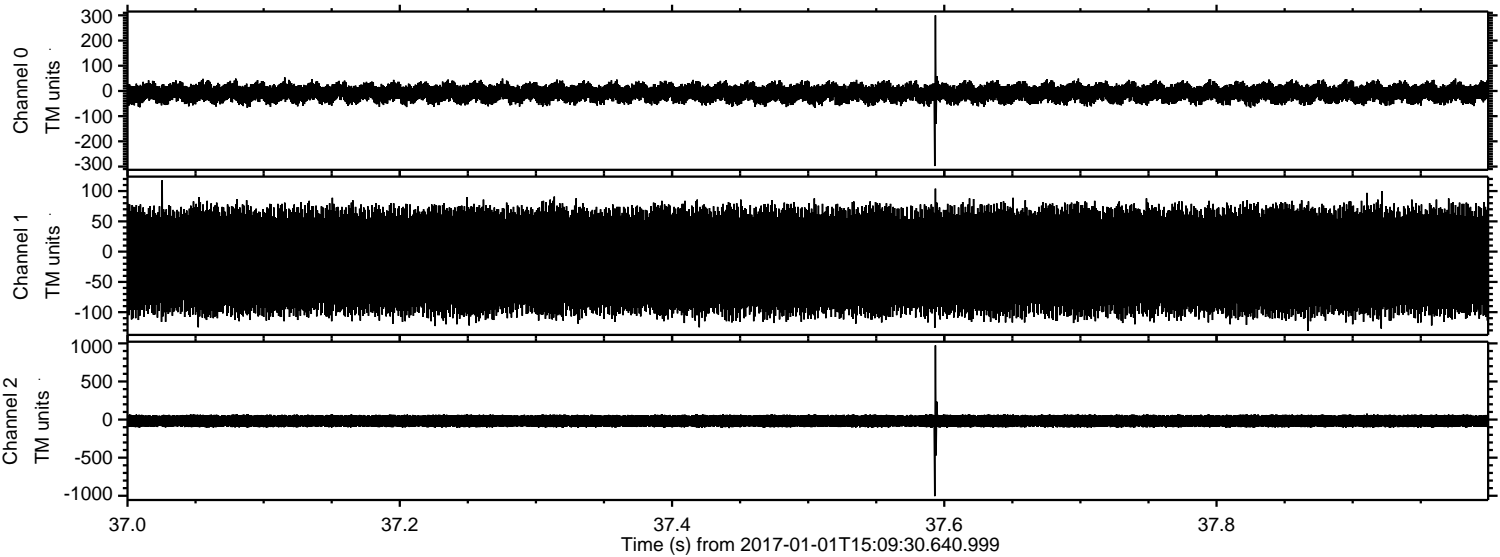


ELMAVAN 3D WAVEFORMS (Measured data sampled at 50 kHz) 51000 packets of 144 samples from 2017-01-01T15:09:30.640.999. Part 111/147

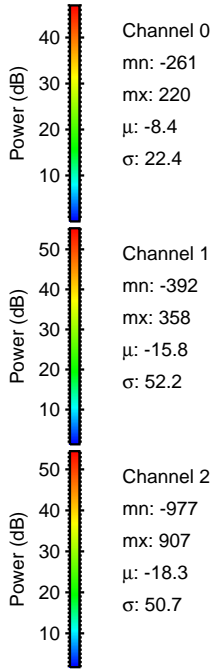
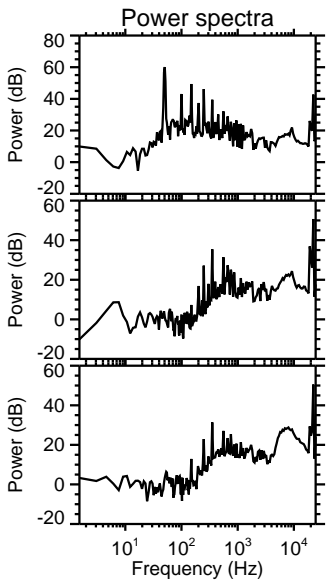
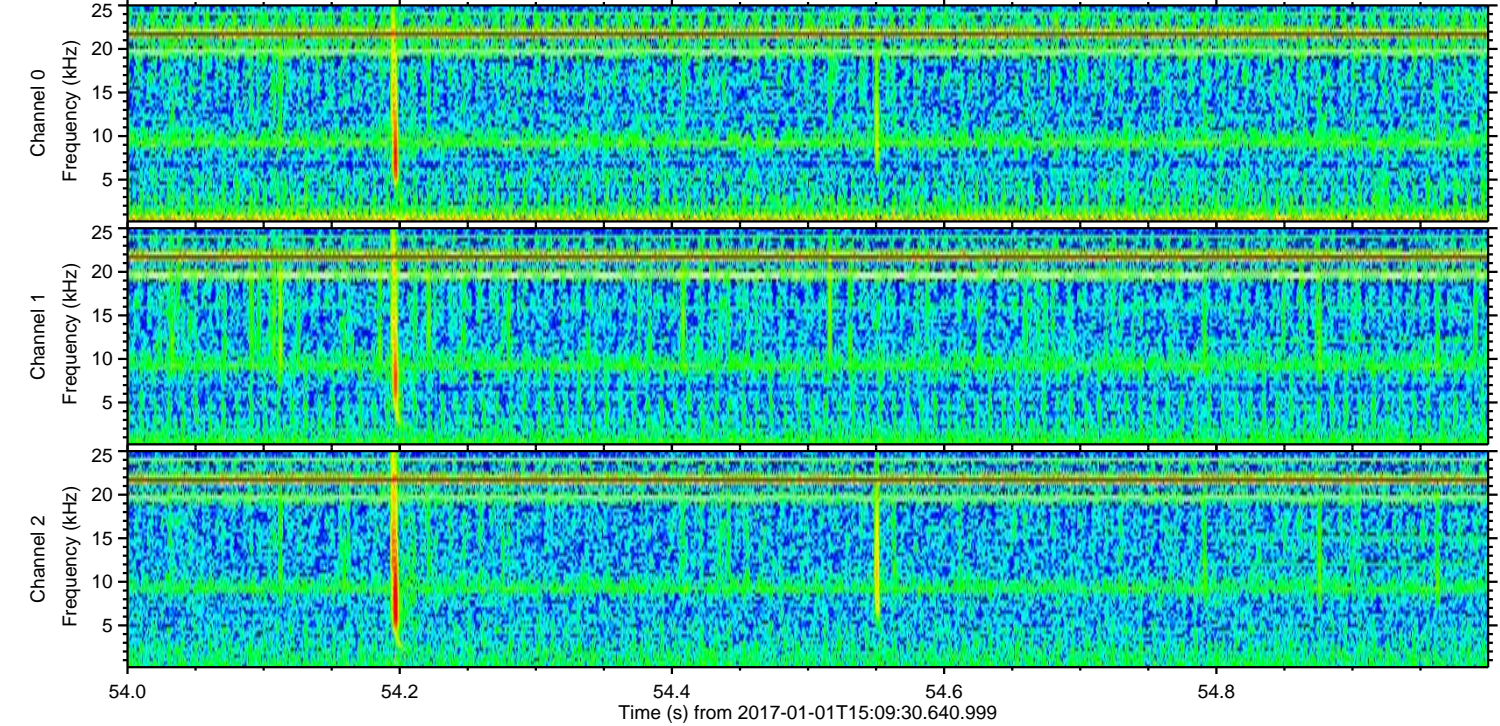
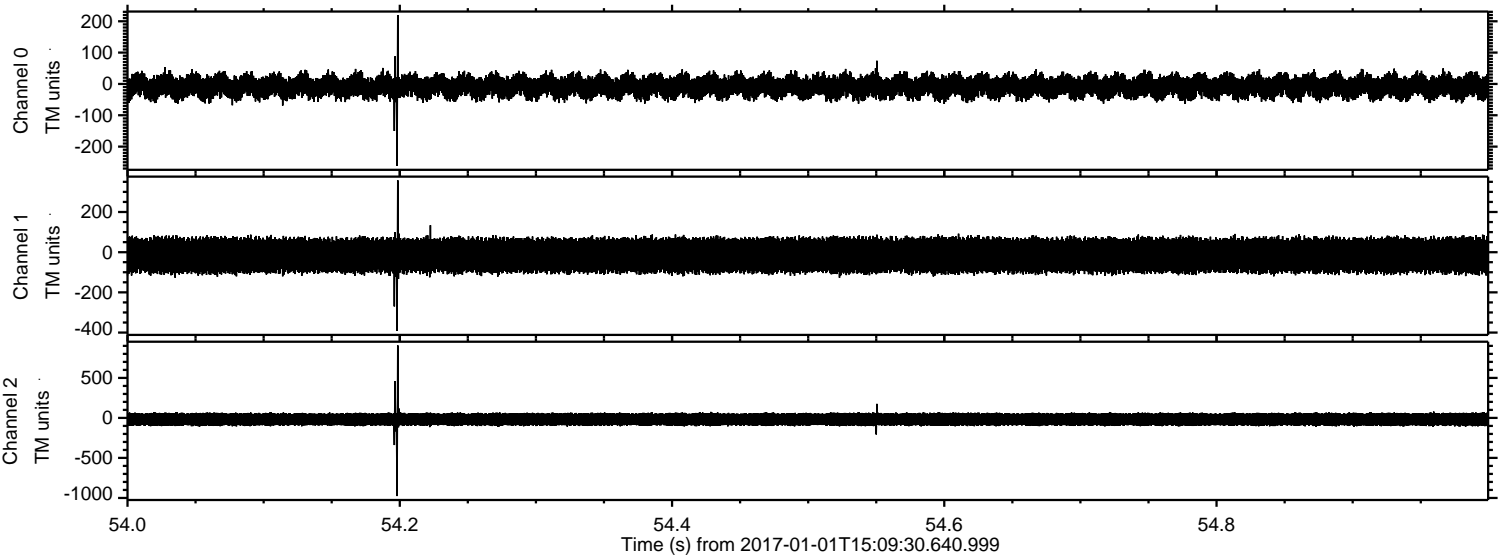
Processed Sun Jan 1 16:17:43 2017 by ELM ver.2012-10-06 from 001__elm20170101_150929__dat00.bin



Processed Sun Jan 1 16:17:44 2017 by ELM ver.2012-10-06 from 001__elm20170101_150929__dat00.bin

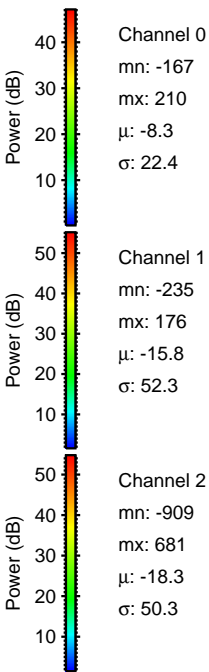
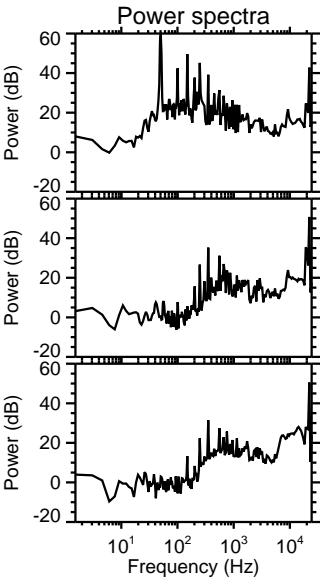
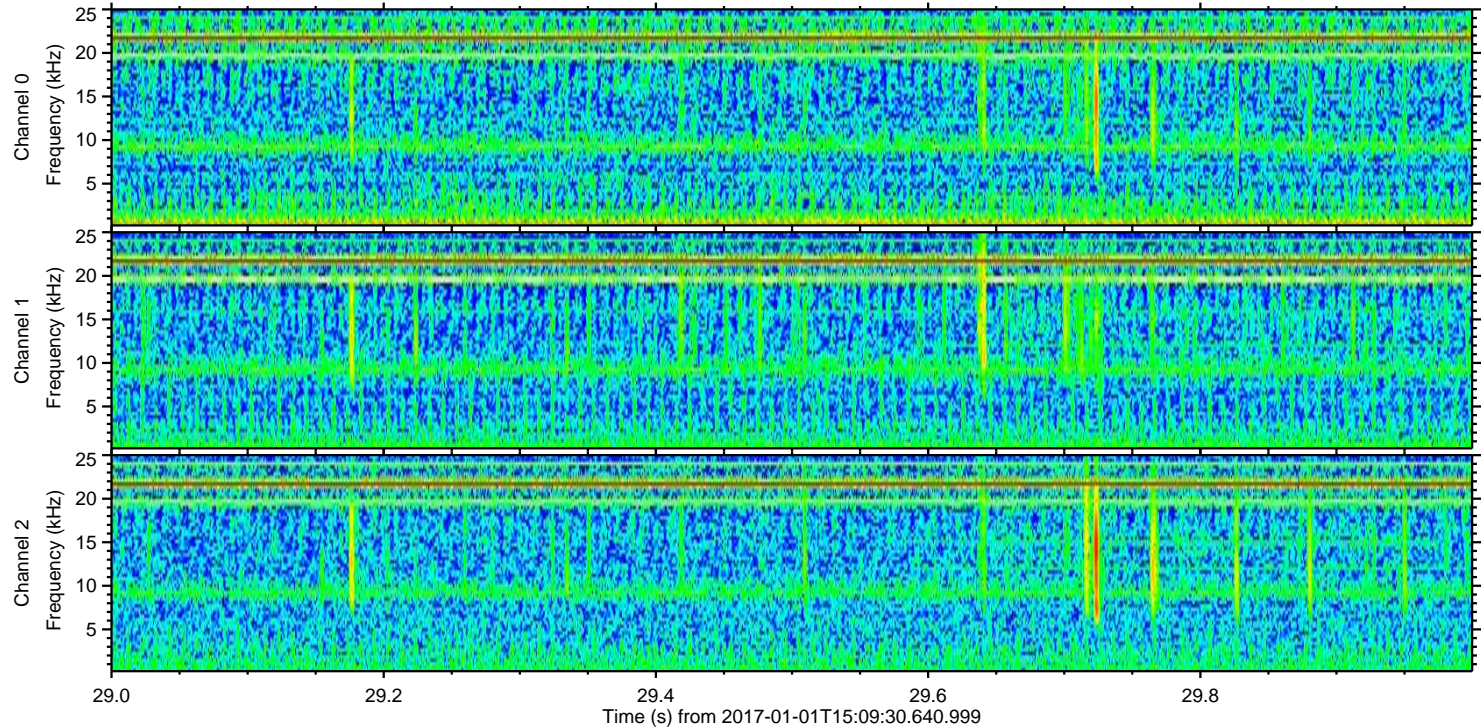
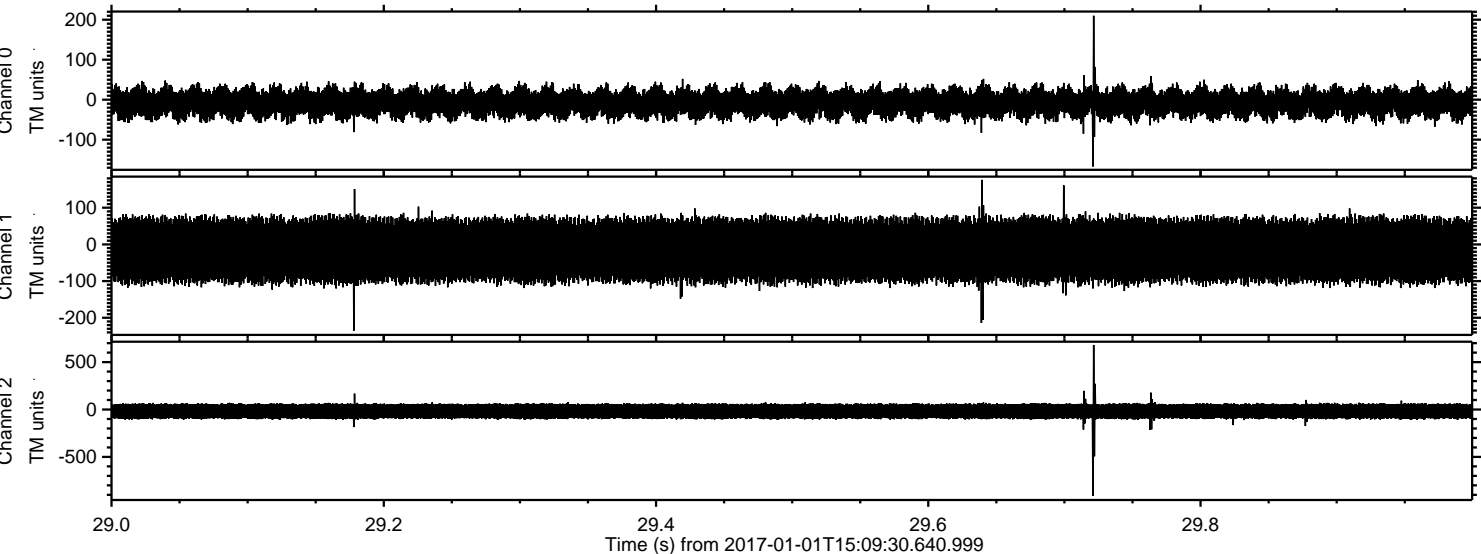


Processed Sun Jan 1 16:17:45 2017 by ELM ver.2012-10-06 from 001__elm20170101_150929__dat00.bin

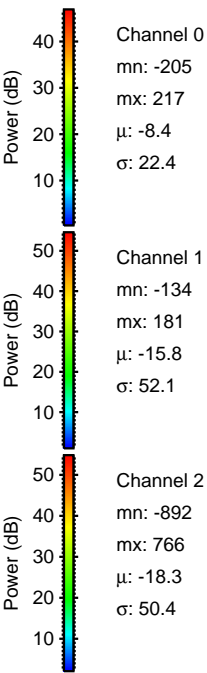
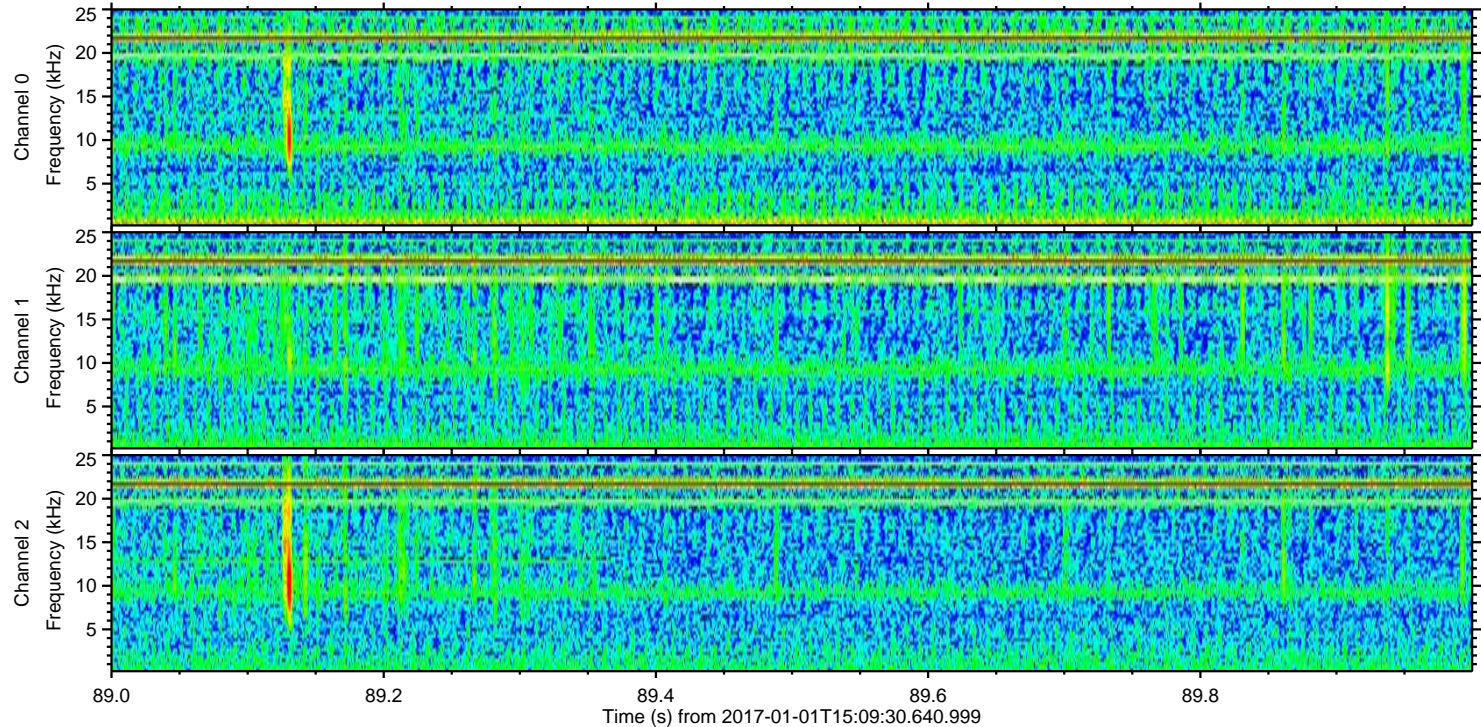
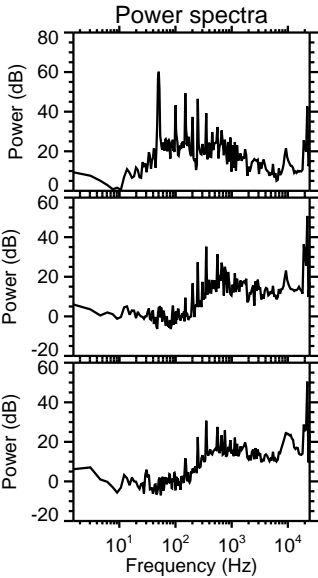
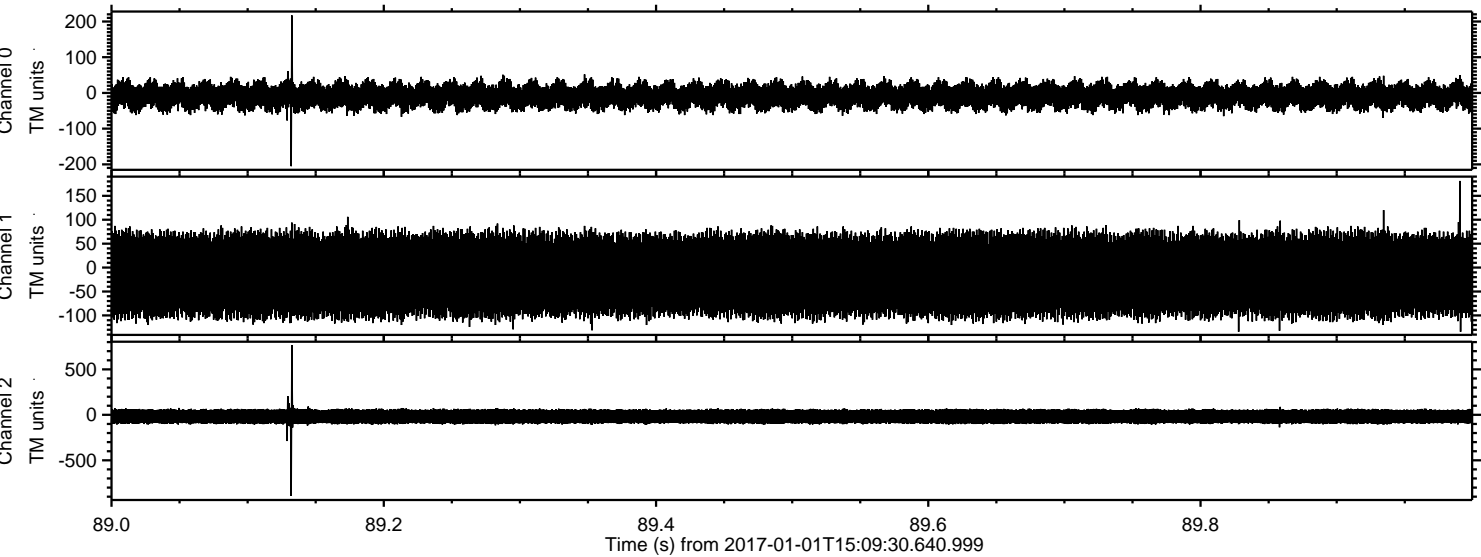


ELMAVAN 3D WAVEFORMS (Measured data sampled at 50 kHz) 51000 packets of 144 samples from 2017-01-01T15:09:30.640.999. Part 30/147

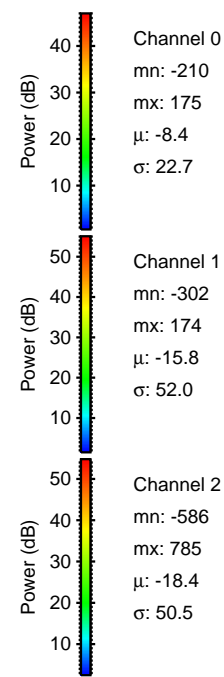
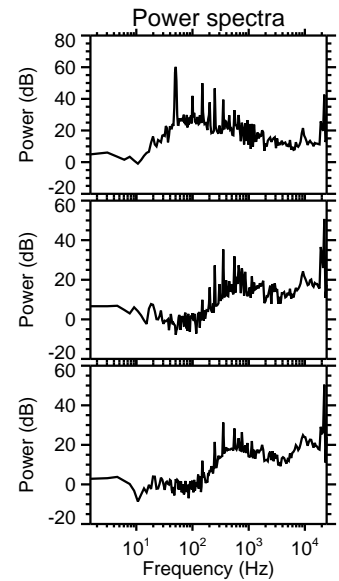
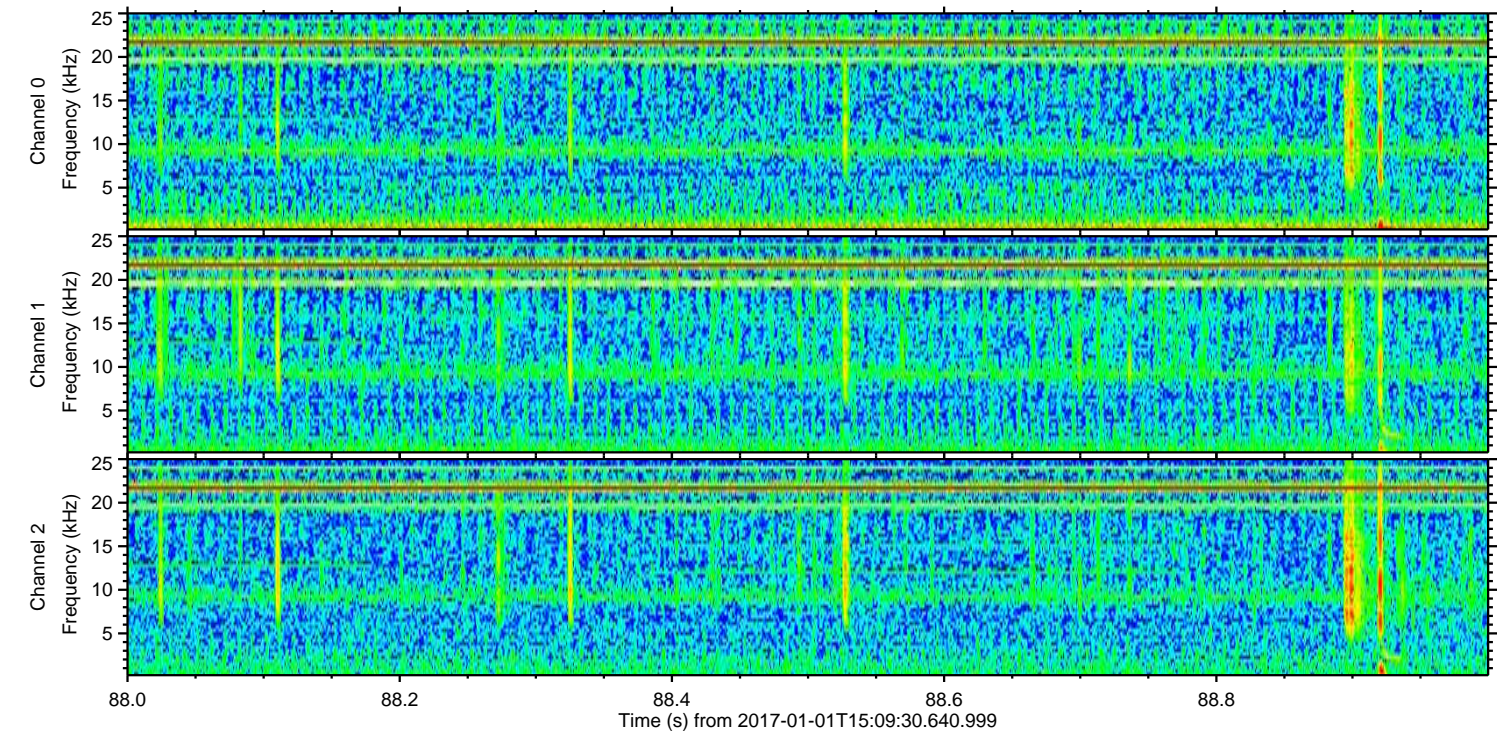
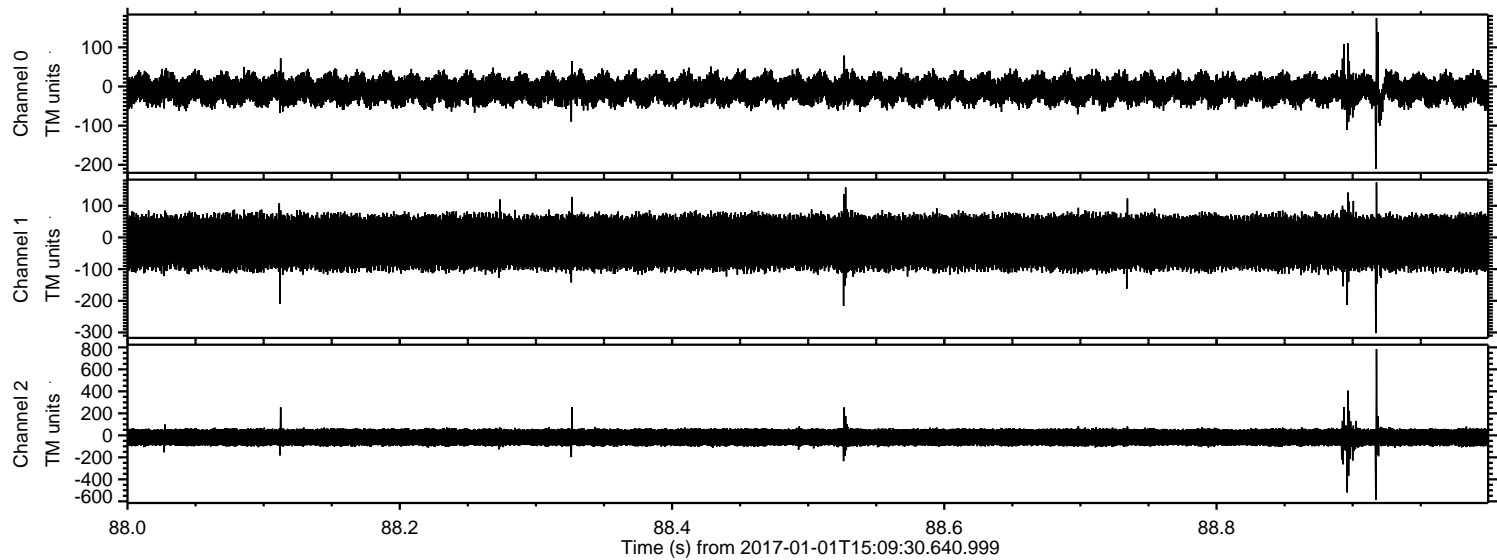
Processed Sun Jan 1 16:17:46 2017 by ELM ver.2012-10-06 from 001__elm20170101_150929__dat00.bin



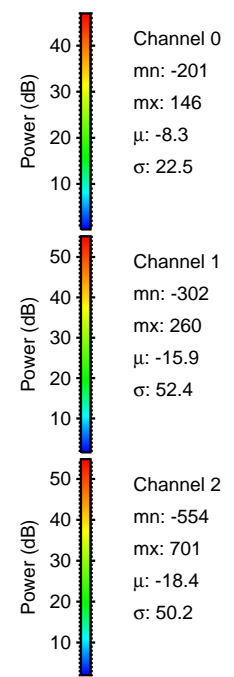
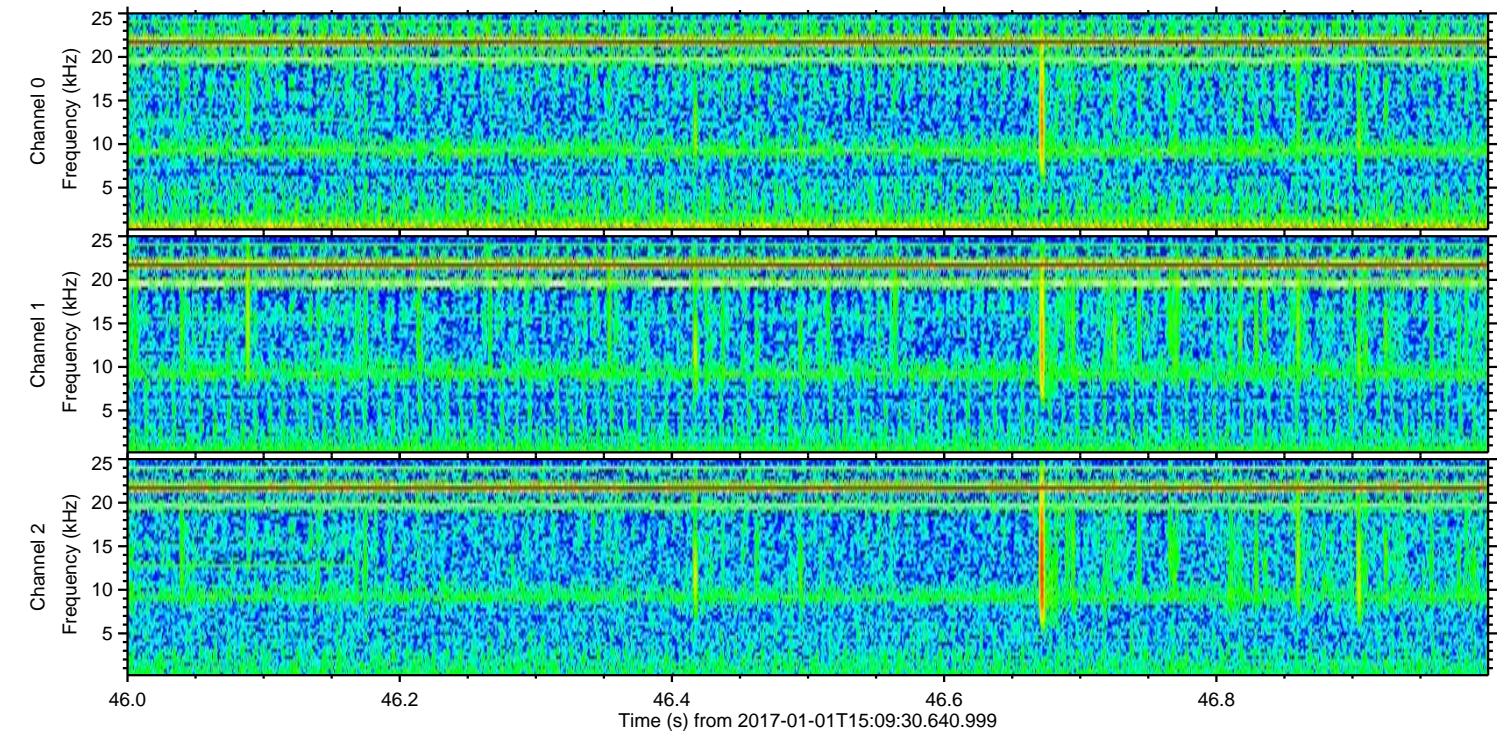
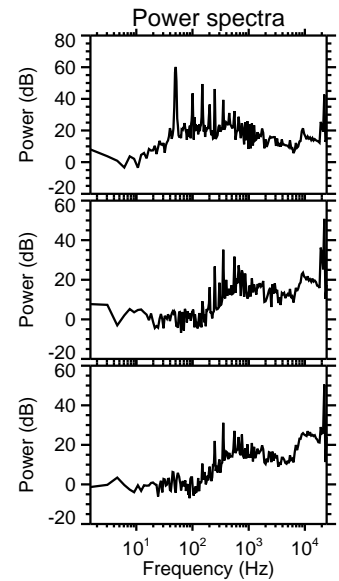
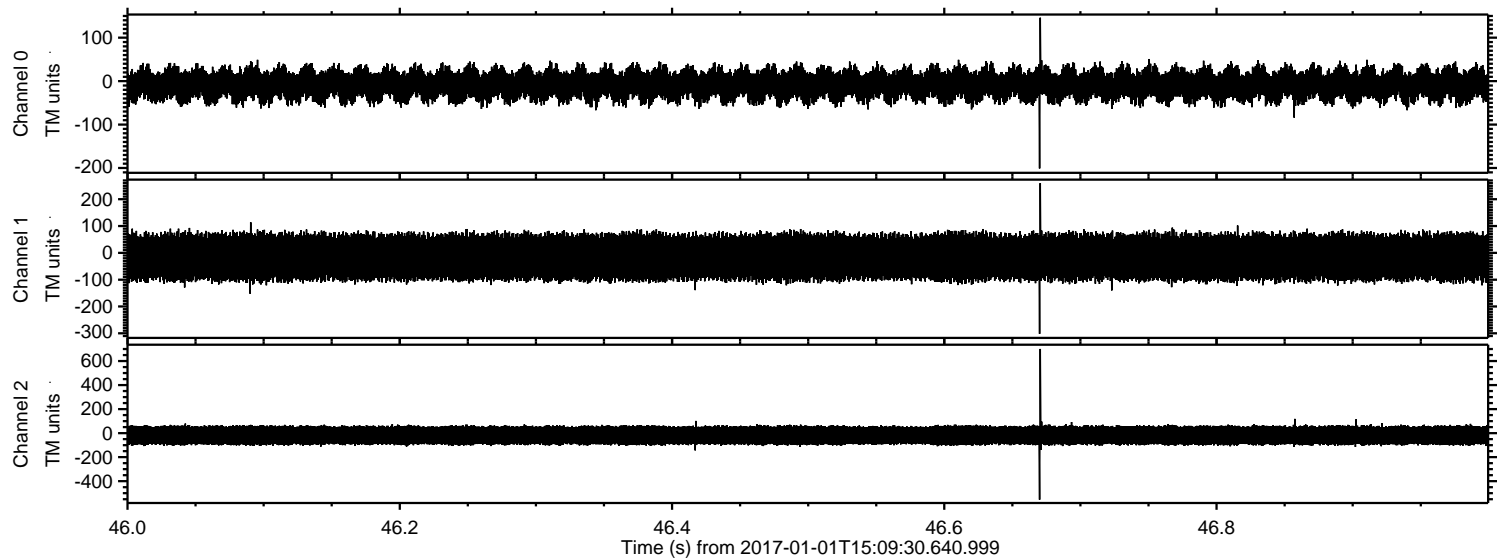
Processed Sun Jan 1 16:17:47 2017 by ELM ver.2012-10-06 from 001__elm20170101_150929__dat00.bin



Processed Sun Jan 1 16:17:47 2017 by ELM ver.2012-10-06 from 001__elm20170101_150929__dat00.bin

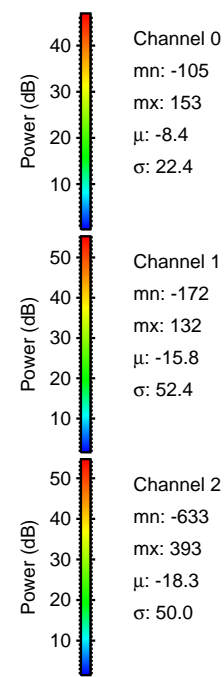
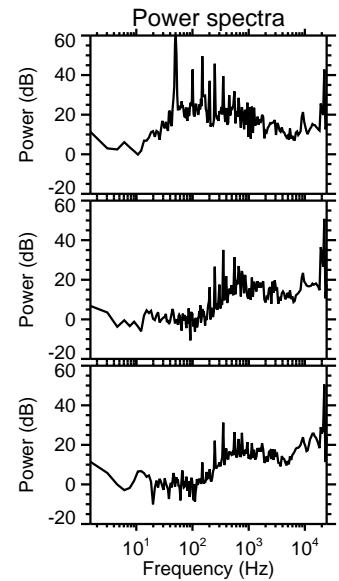
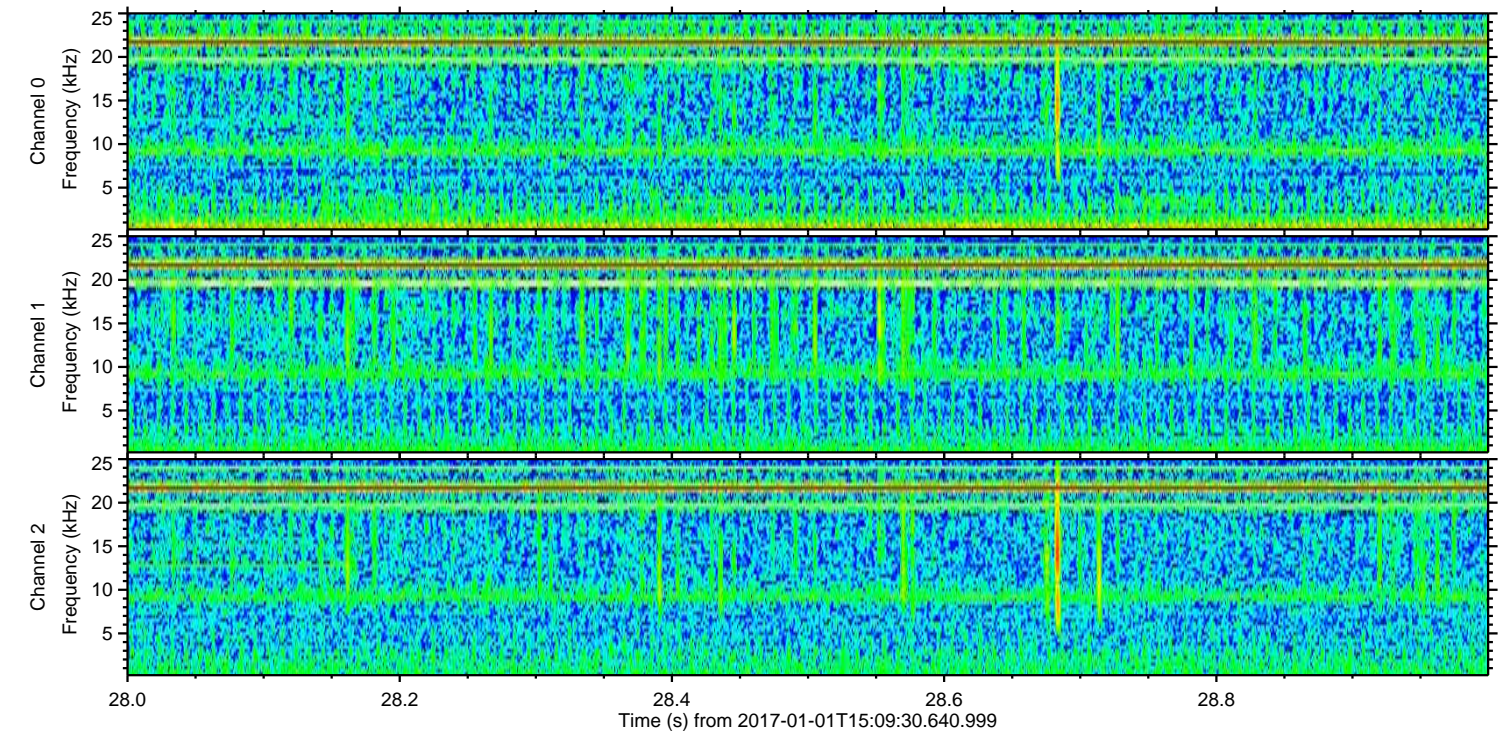
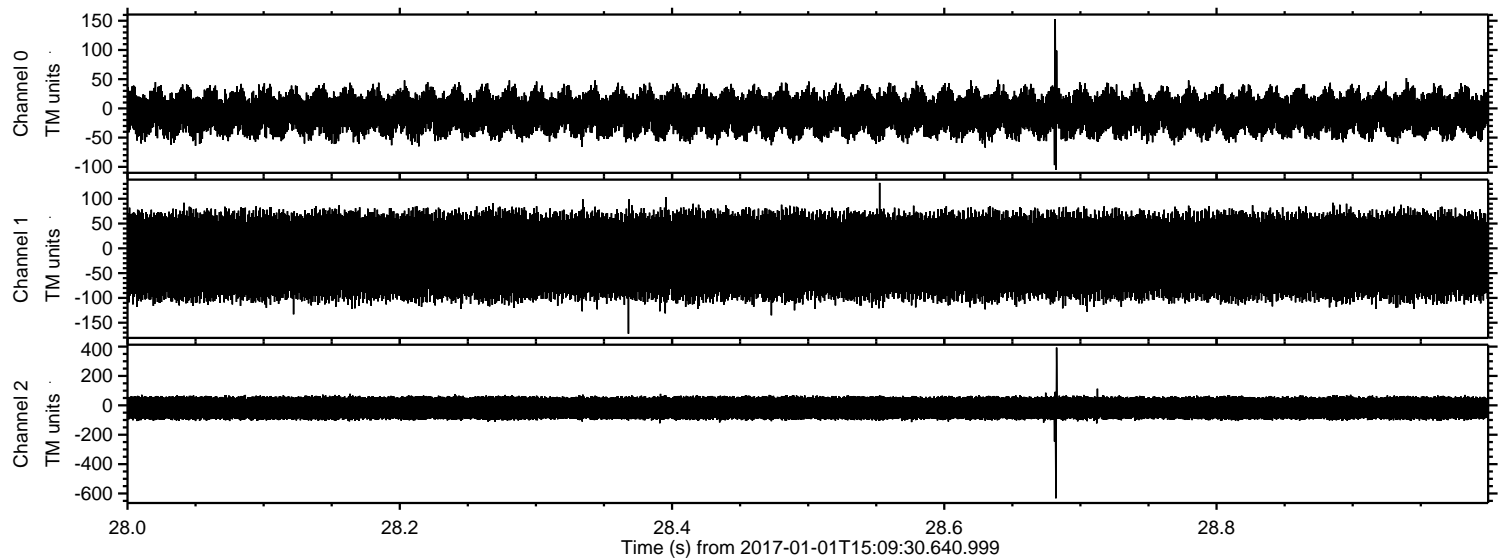


Processed Sun Jan 1 16:17:48 2017 by ELM ver.2012-10-06 from 001__elm20170101_150929__dat00.bin

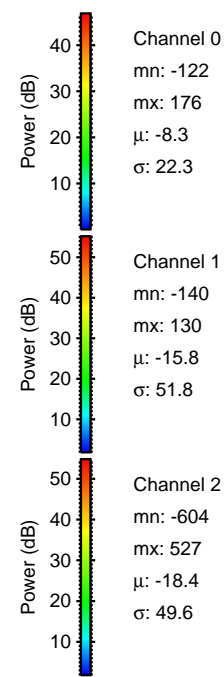
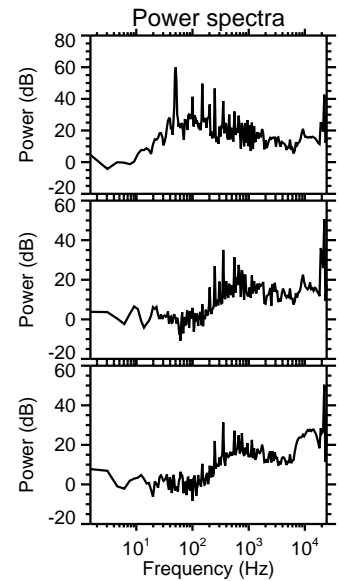
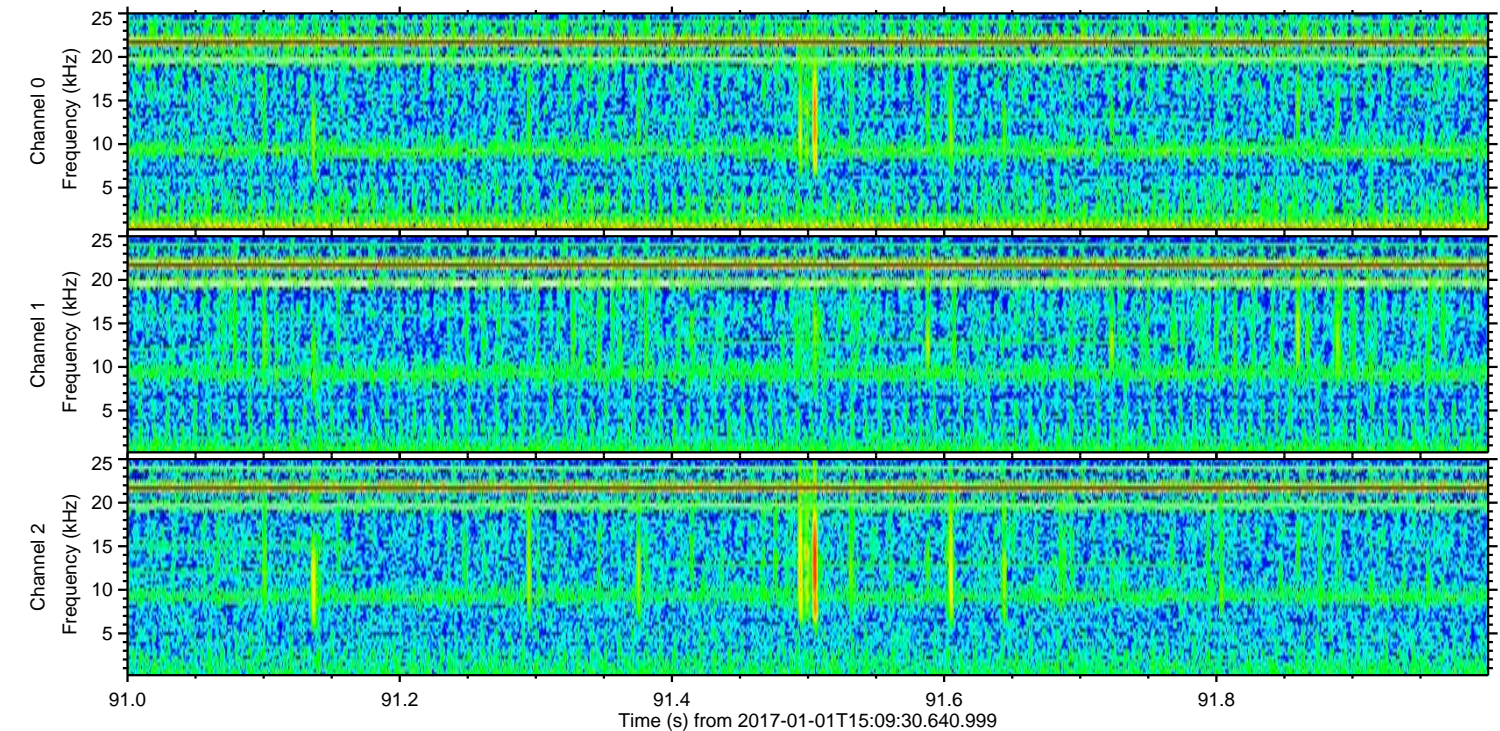
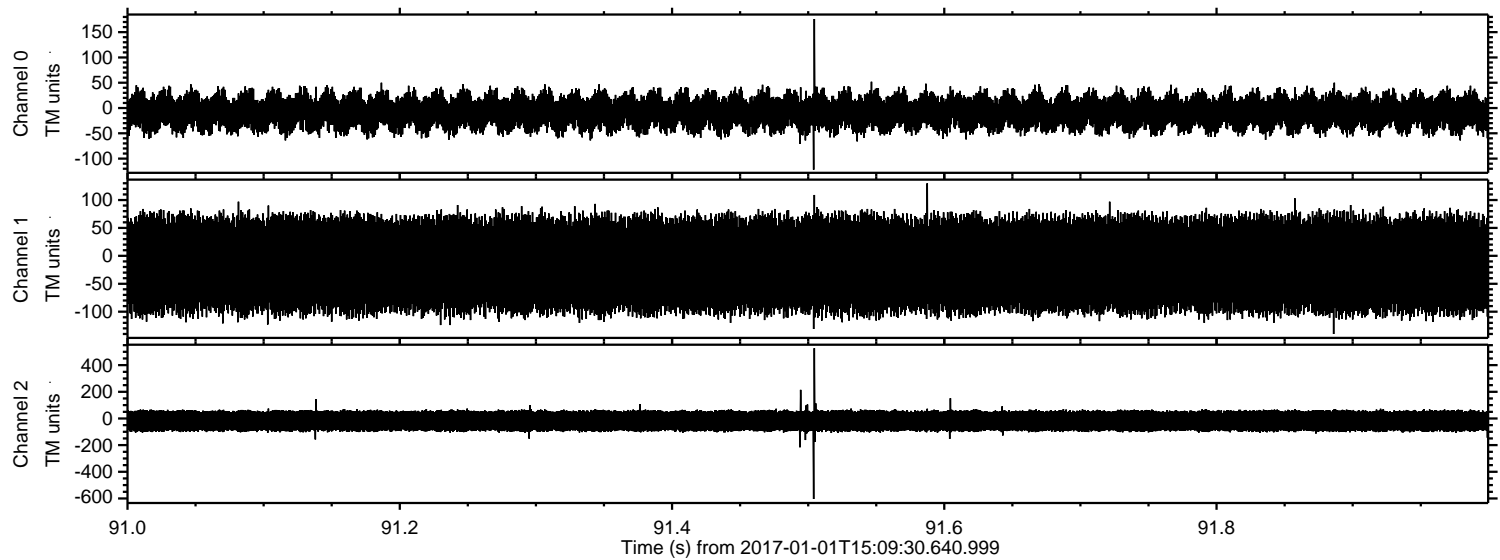


ELMAVAN 3D WAVEFORMS (Measured data sampled at 50 kHz) 51000 packets of 144 samples from 2017-01-01T15:09:30.640.999. Part 29/147

Processed Sun Jan 1 16:17:49 2017 by ELM ver.2012-10-06 from 001__elm20170101_150929__dat00.bin



Processed Sun Jan 1 16:17:50 2017 by ELM ver.2012-10-06 from 001__elm20170101_150929__dat00.bin



Channel 0
mn: -122
mx: 176
 μ : -8.3
 σ : 22.3

Channel 1
mn: -140
mx: 130
 μ : -15.8
 σ : 51.8

Channel 2
mn: -604
mx: 527
 μ : -18.4
 σ : 49.6

Processed Sun Jan 1 16:17:51 2017 by ELM ver.2012-10-06 from 001__elm20170101_150929__dat00.bin

