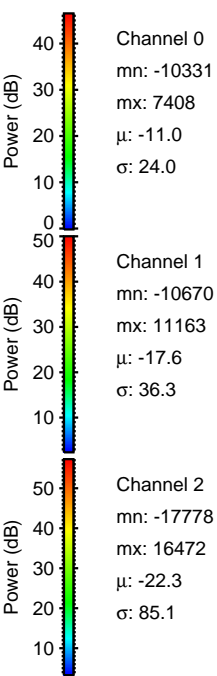
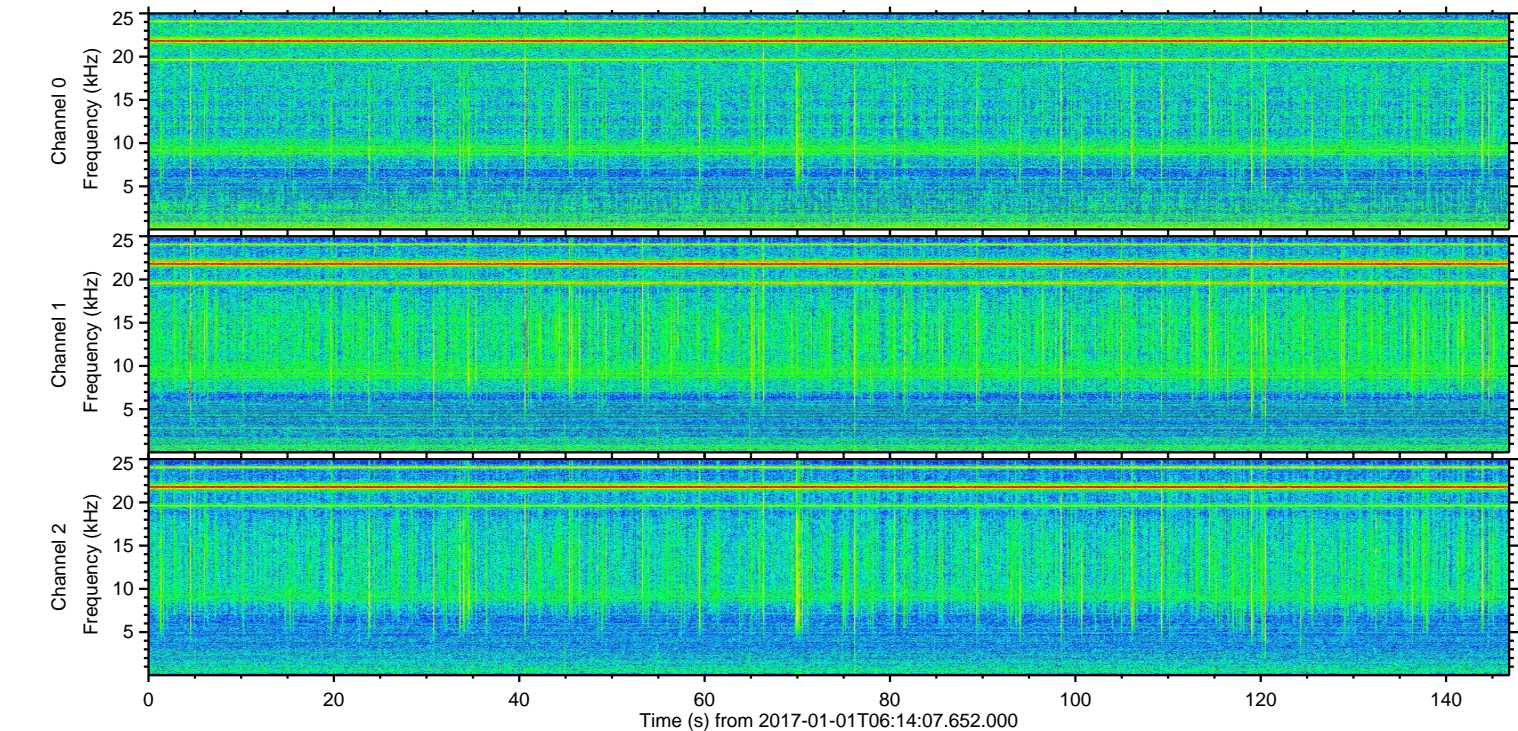
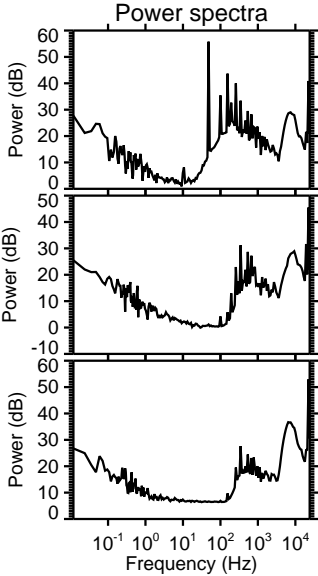
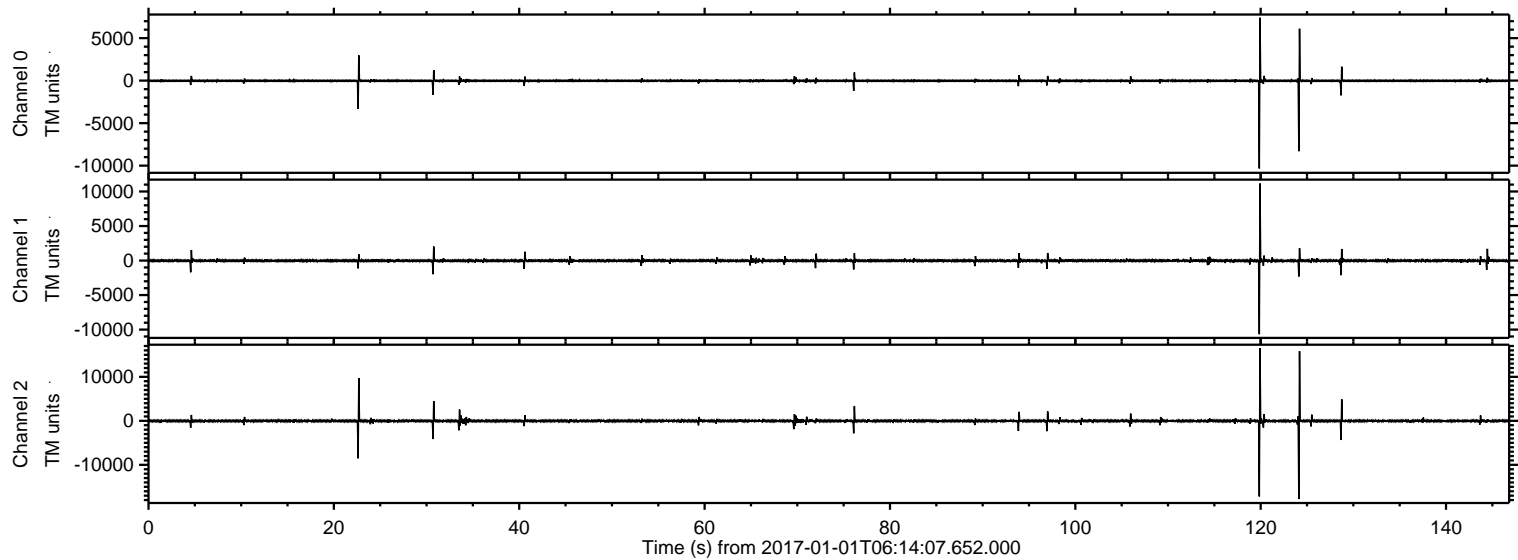


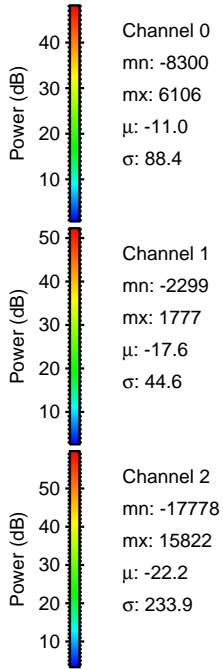
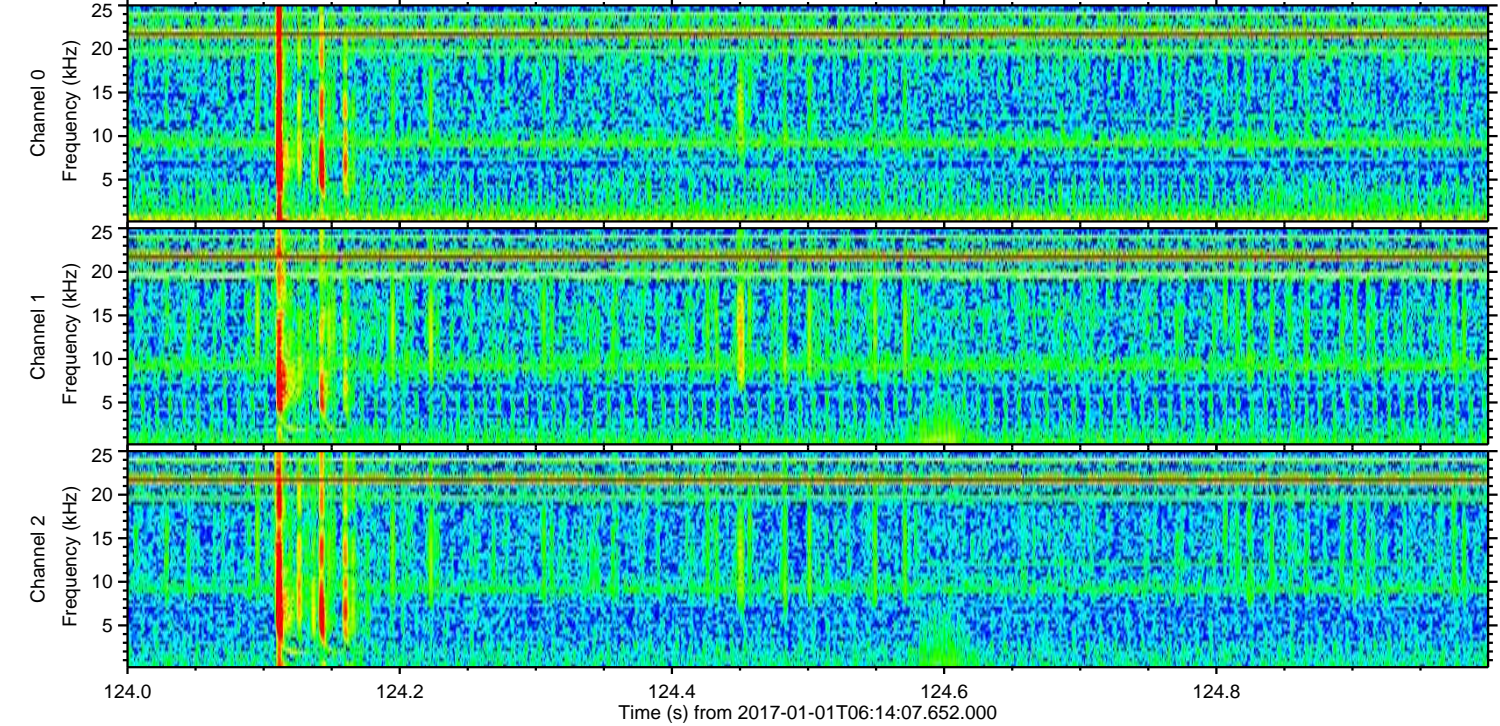
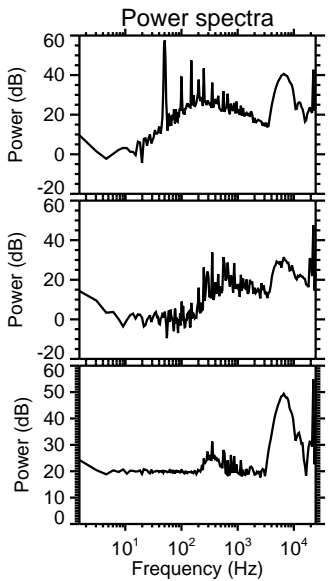
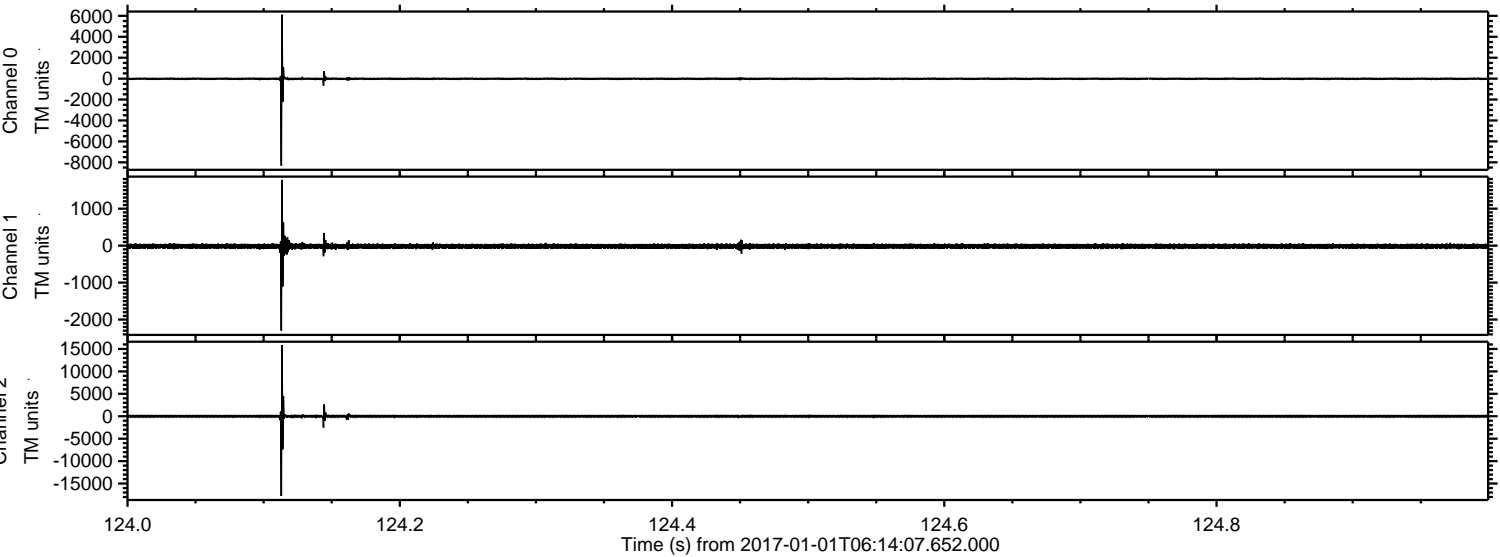
ELMAVAN 3D WAVEFORMS (Measured data sampled at 50 kHz) 51000 packets of 144 samples from 2017-01-01T06:14:07.652.000.

Processed Sun Jan 1 07:22:23 2017 by ELM ver.2012-10-06 from 001__elm20170101_061406__dat00.bin



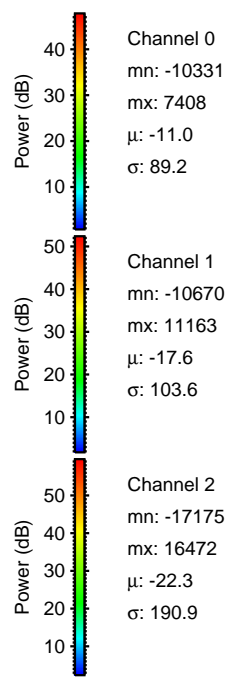
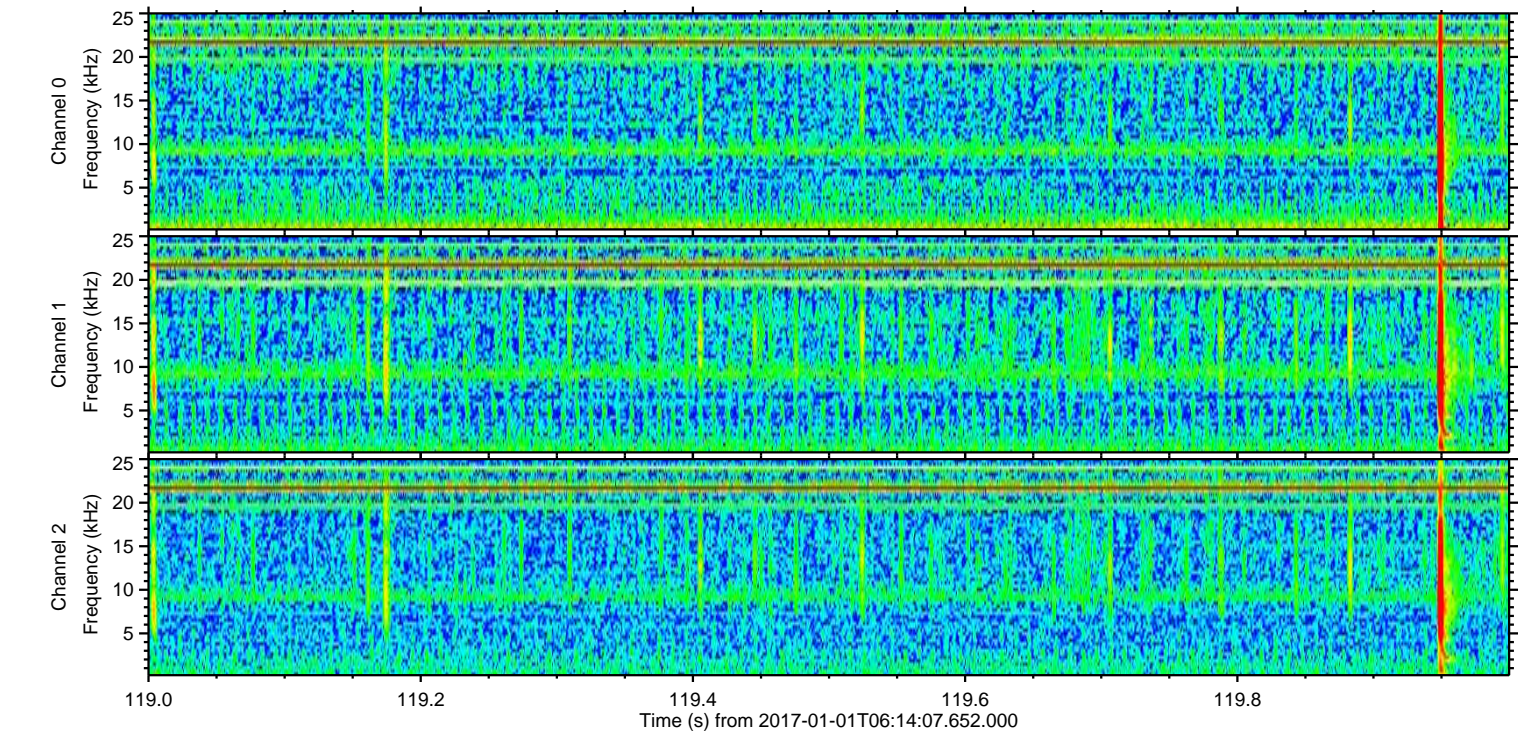
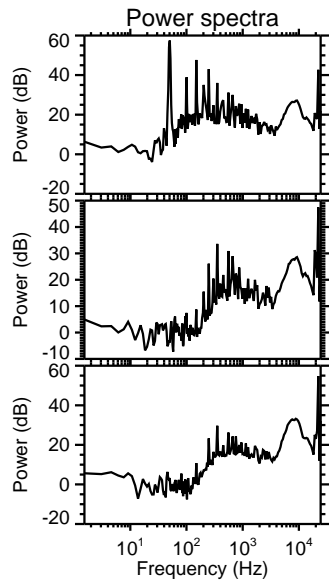
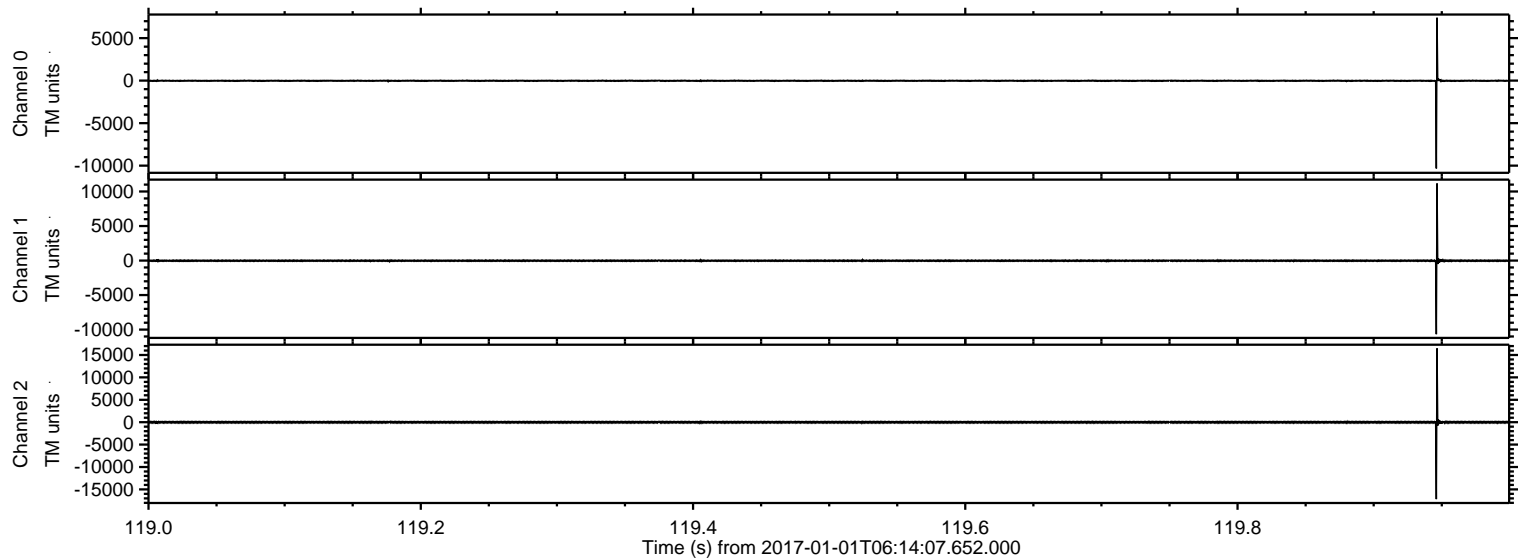
ELMAVAN 3D WAVEFORMS (Measured data sampled at 50 kHz) 51000 packets of 144 samples from 2017-01-01T06:14:07.652.000. Part 125/147

Processed Sun Jan 1 07:22:34 2017 by ELM ver.2012-10-06 from 001__elm20170101_061406__dat00.bin

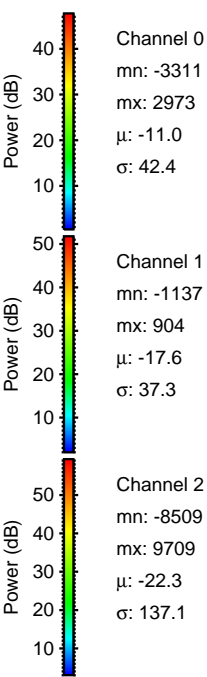
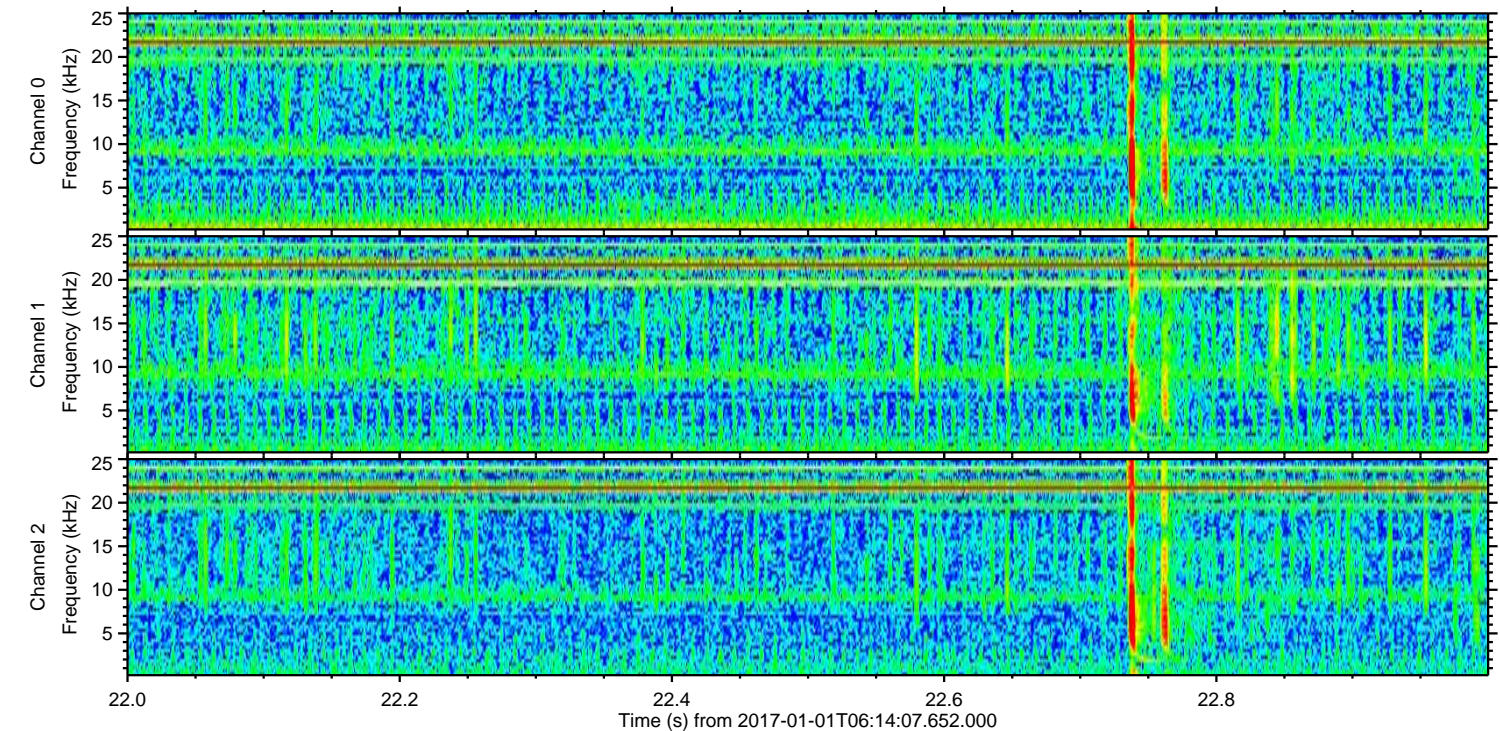
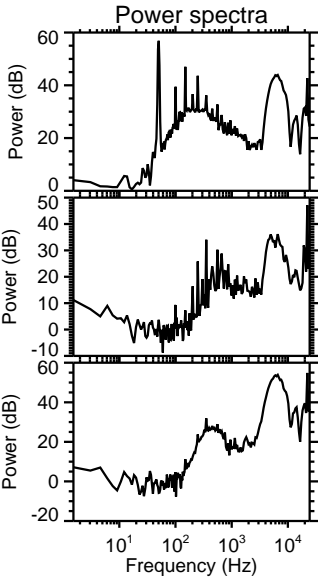
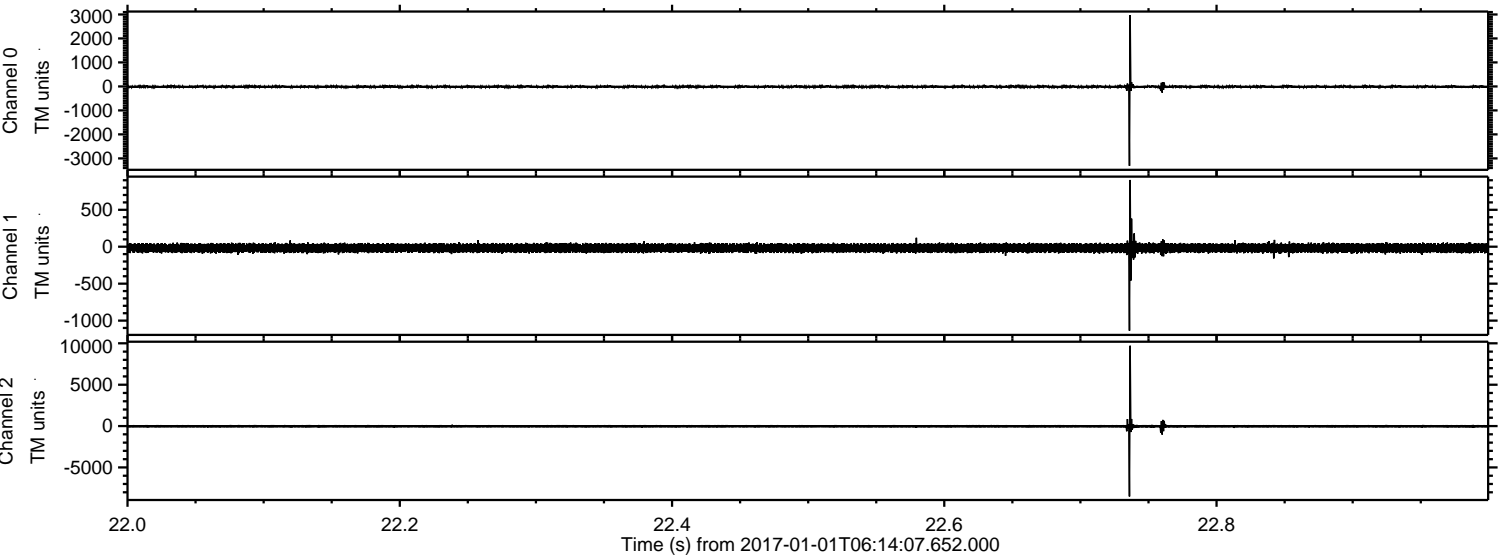


ELMAVAN 3D WAVEFORMS (Measured data sampled at 50 kHz) 51000 packets of 144 samples from 2017-01-01T06:14:07.652.000. Part 120/147

Processed Sun Jan 1 07:22:35 2017 by ELM ver.2012-10-06 from 001__elm20170101_061406__dat00.bin

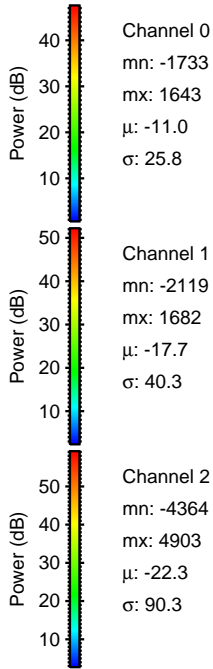
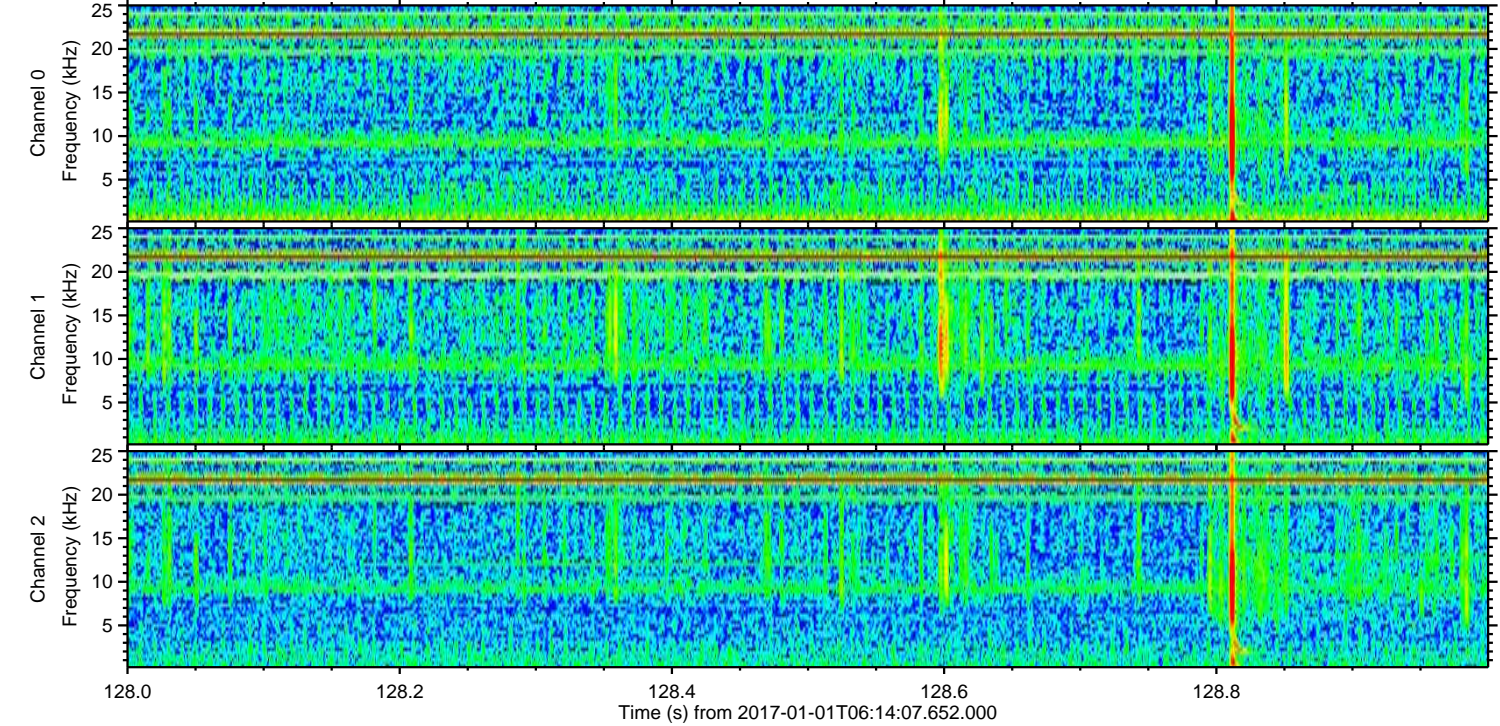
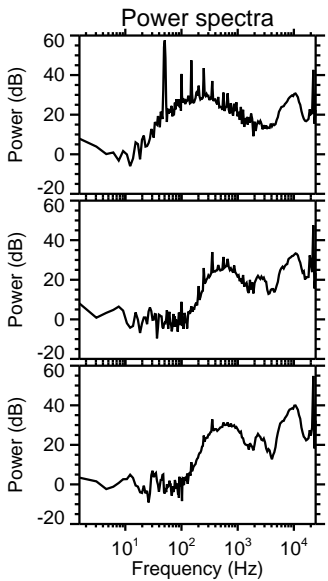
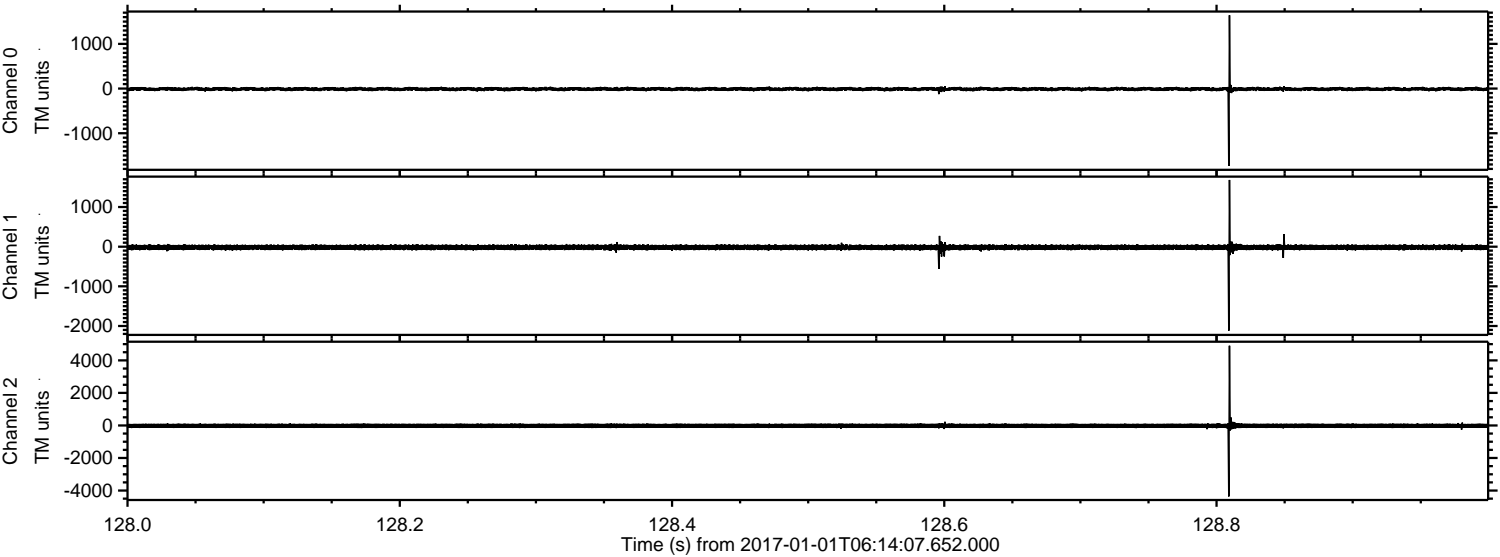


Processed Sun Jan 1 07:22:36 2017 by ELM ver.2012-10-06 from 001__elm20170101_061406__dat00.bin

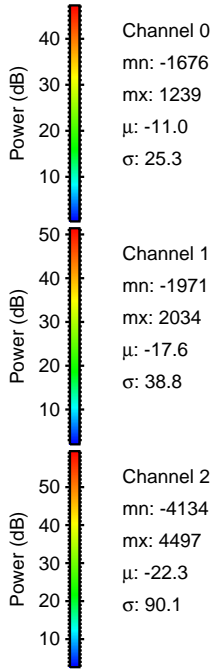
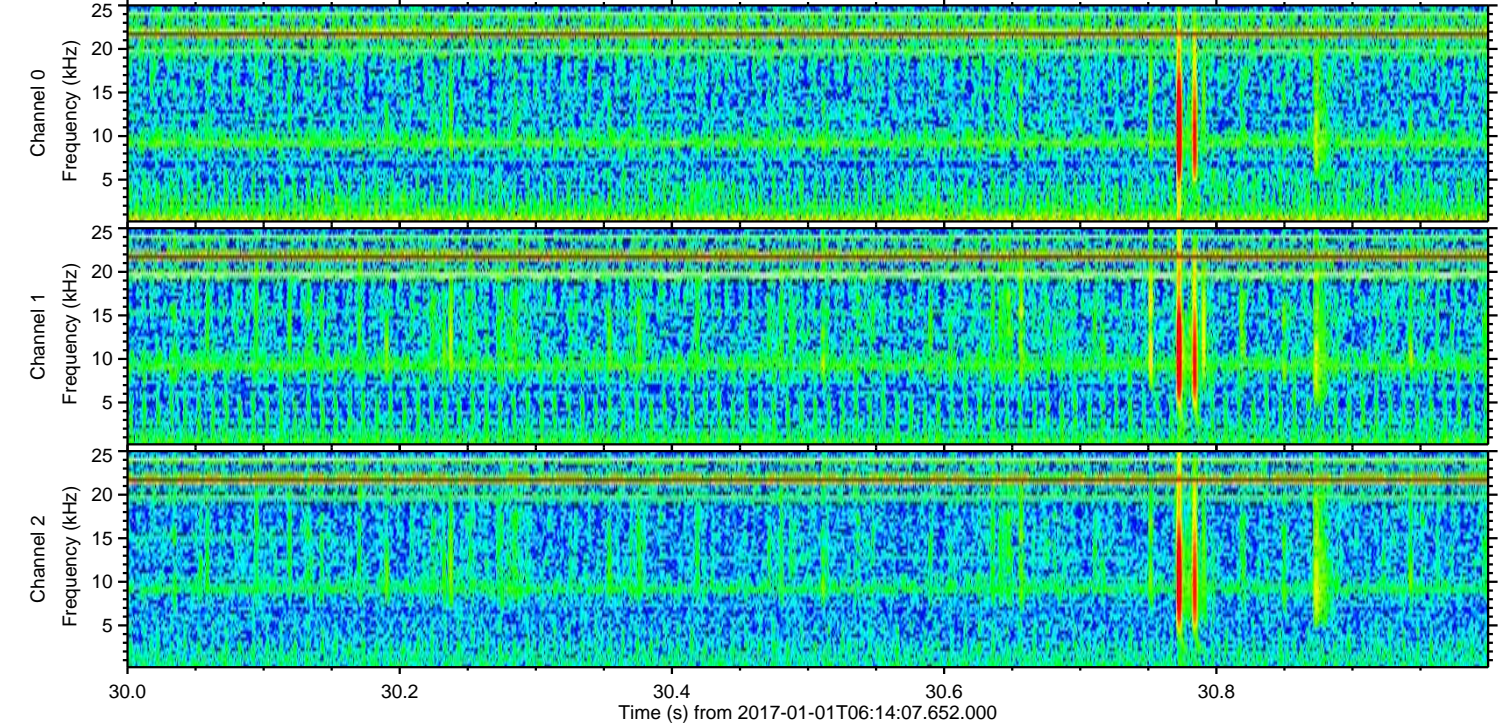
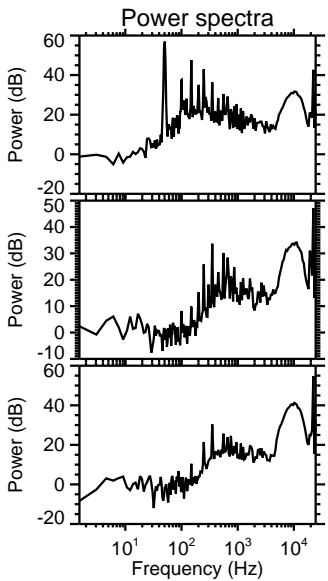
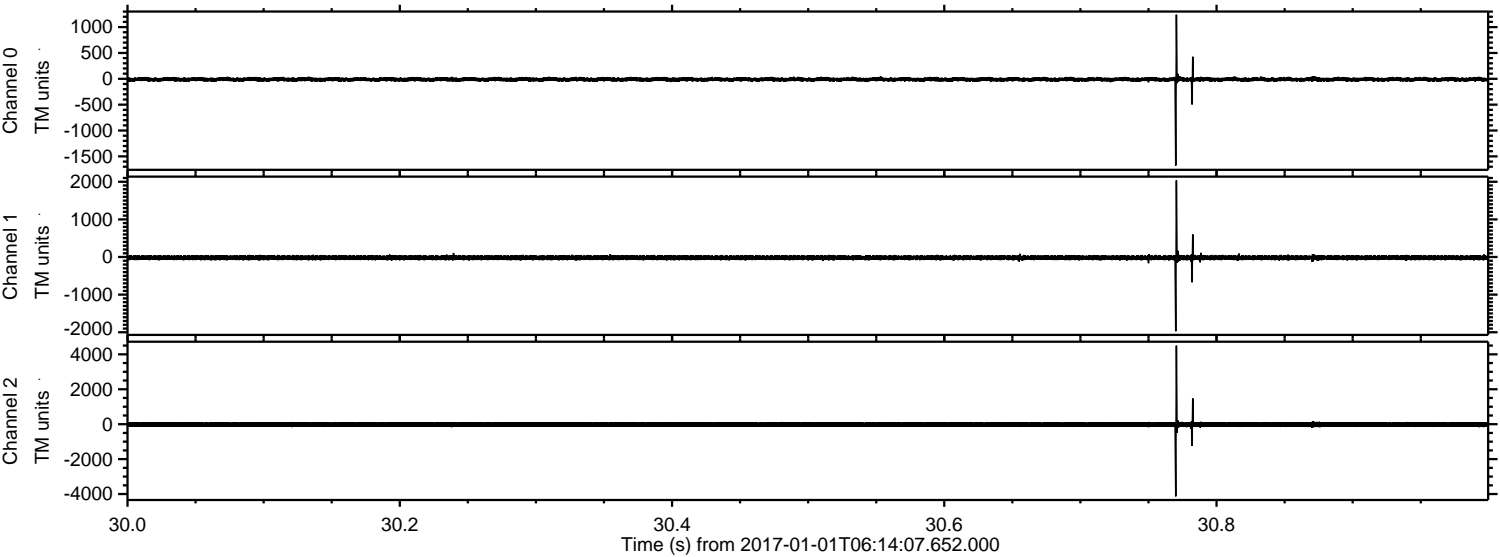


ELMAVAN 3D WAVEFORMS (Measured data sampled at 50 kHz) 51000 packets of 144 samples from 2017-01-01T06:14:07.652.000. Part 129/147

Processed Sun Jan 1 07:22:37 2017 by ELM ver.2012-10-06 from 001__elm20170101_061406__dat00.bin

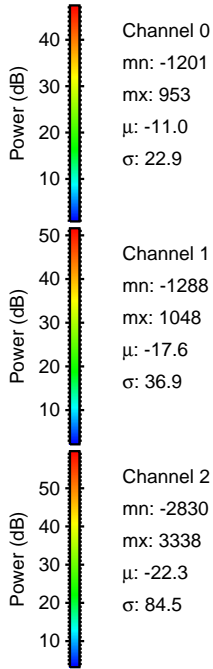
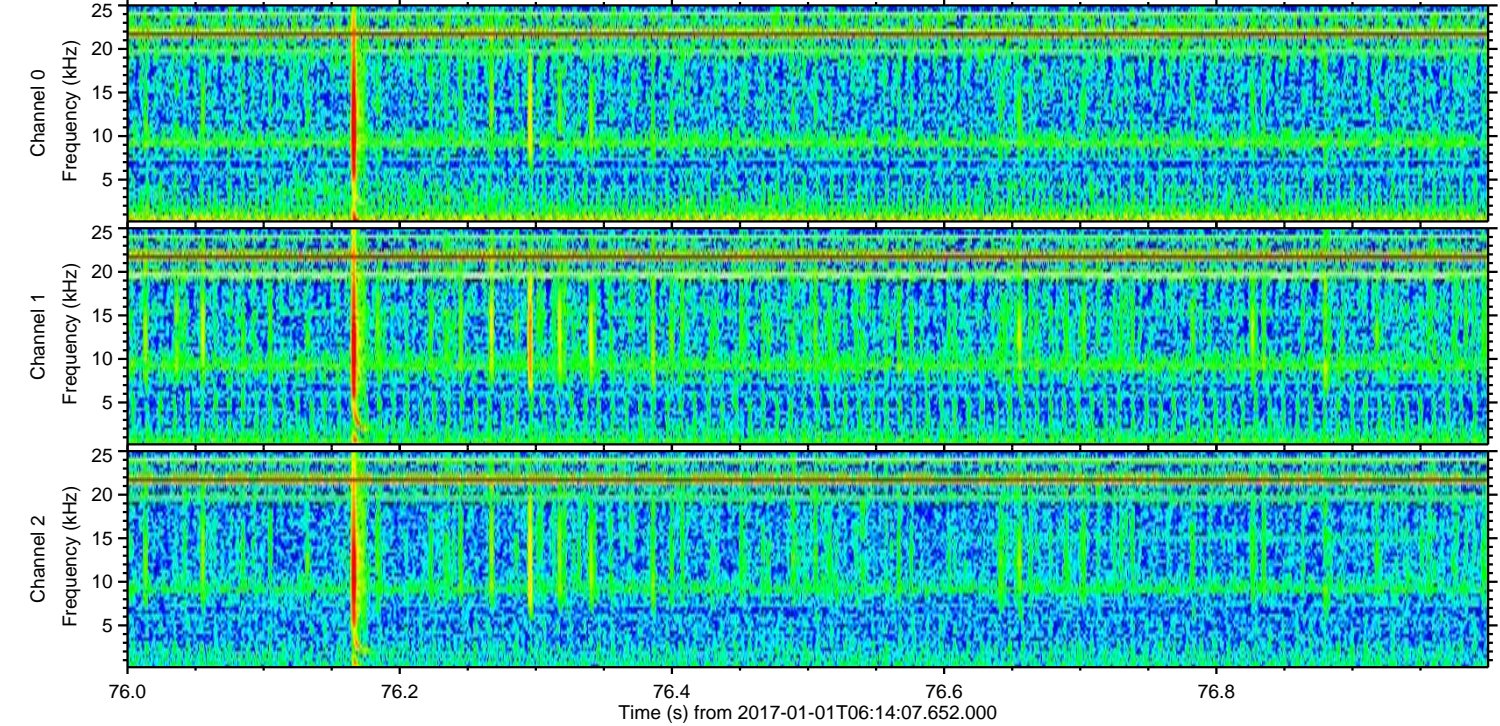
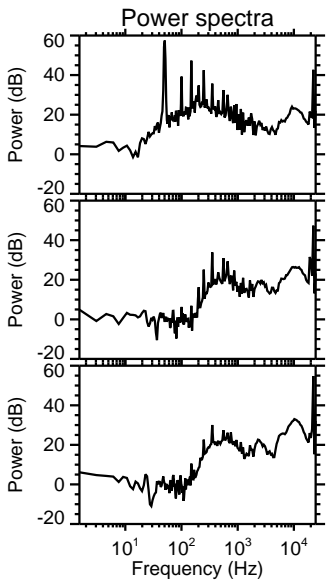
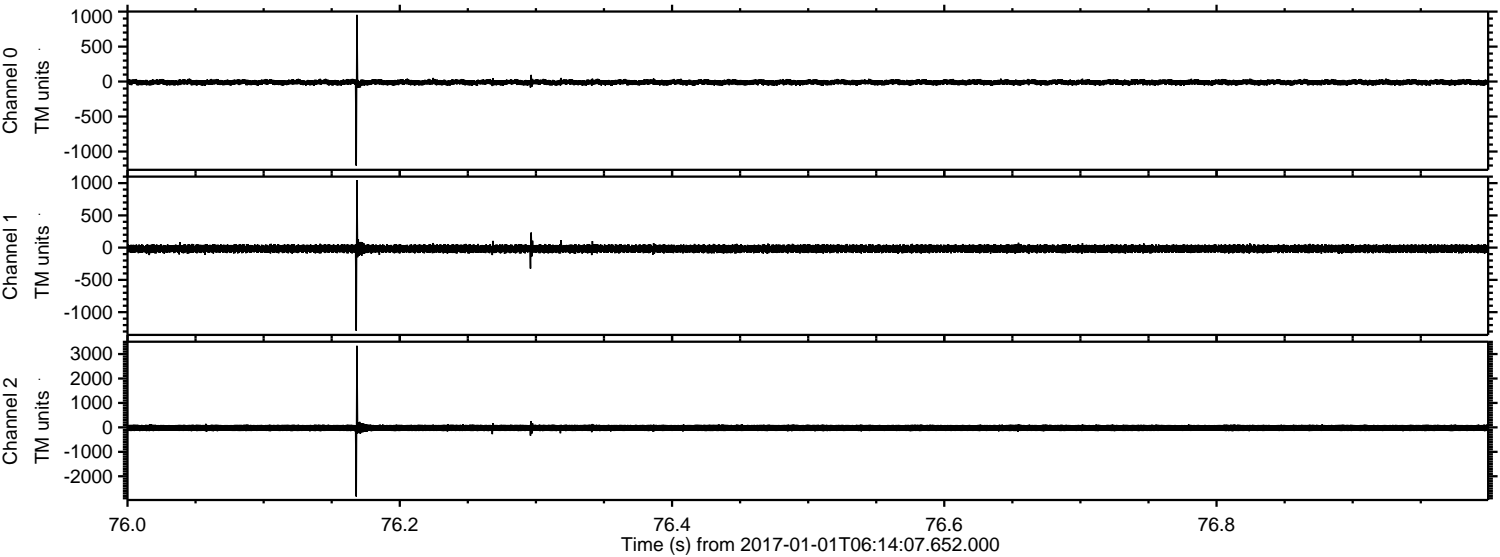


Processed Sun Jan 1 07:22:38 2017 by ELM ver.2012-10-06 from 001__elm20170101_061406__dat00.bin



ELMAVAN 3D WAVEFORMS (Measured data sampled at 50 kHz) 51000 packets of 144 samples from 2017-01-01T06:14:07.652.000. Part 77/147

Processed Sun Jan 1 07:22:39 2017 by ELM ver.2012-10-06 from 001__elm20170101_061406__dat00.bin

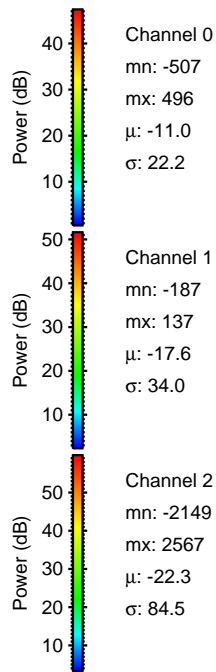
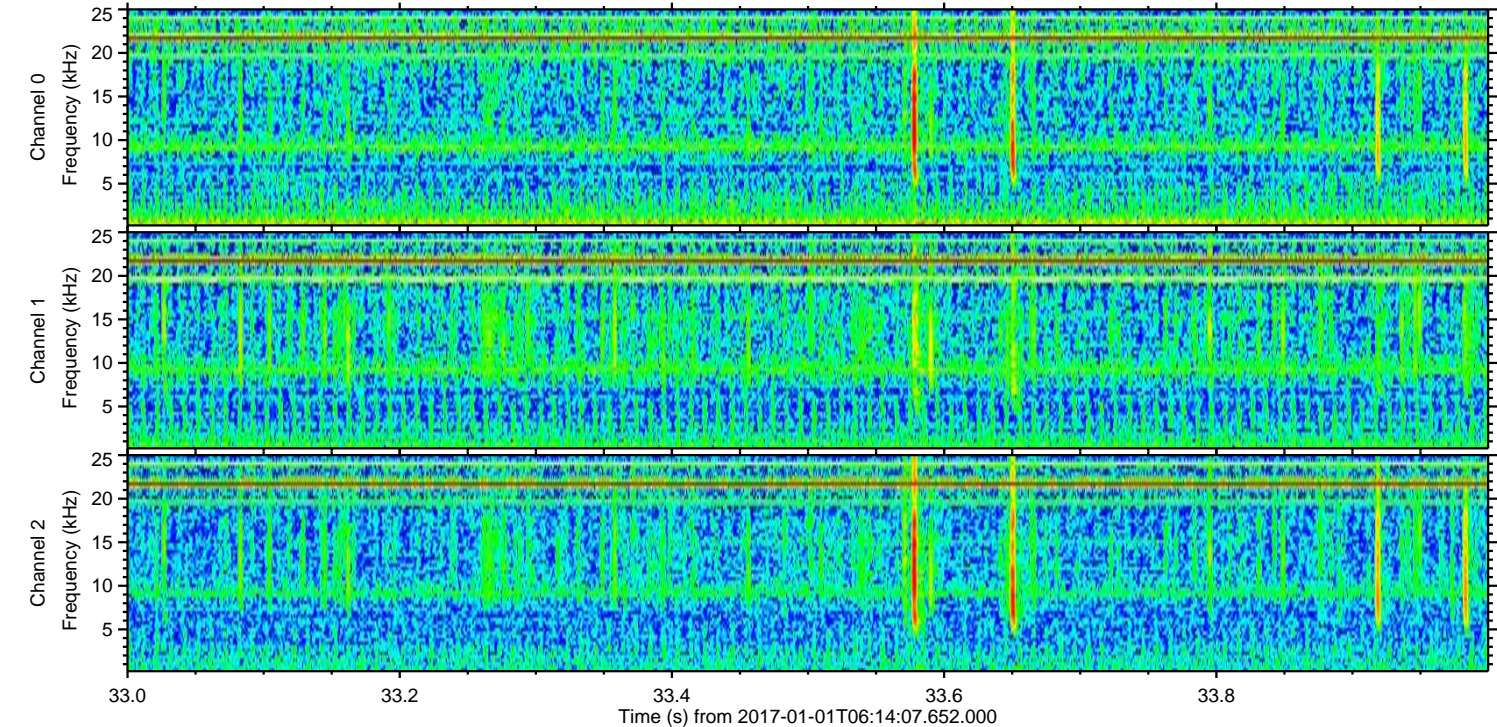
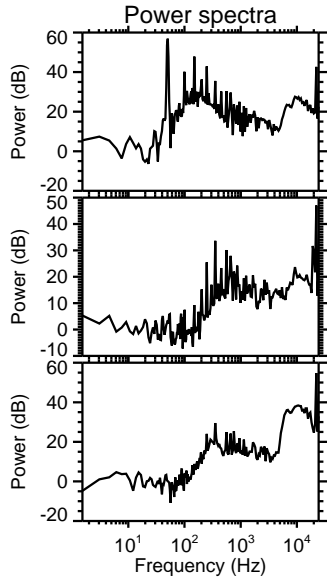
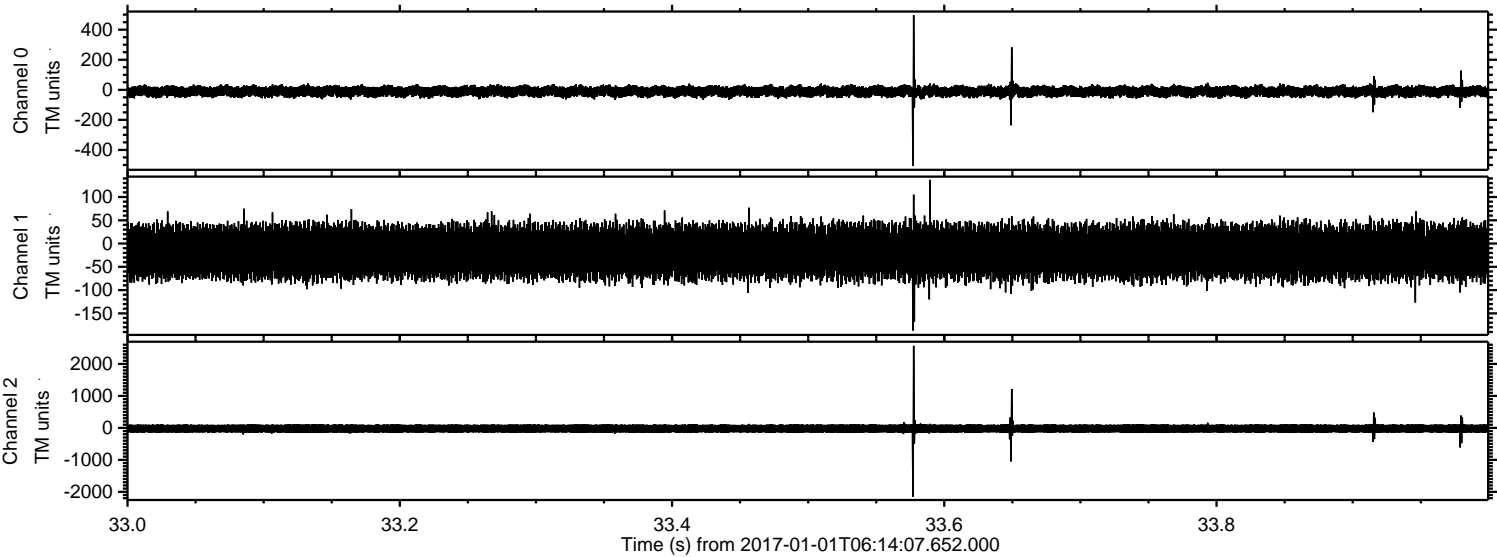


Channel 0
mn: -1201
mx: 953
 μ : -11.0
 σ : 22.9

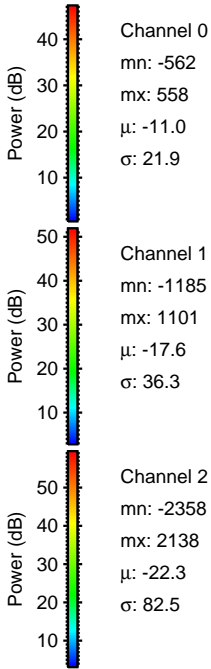
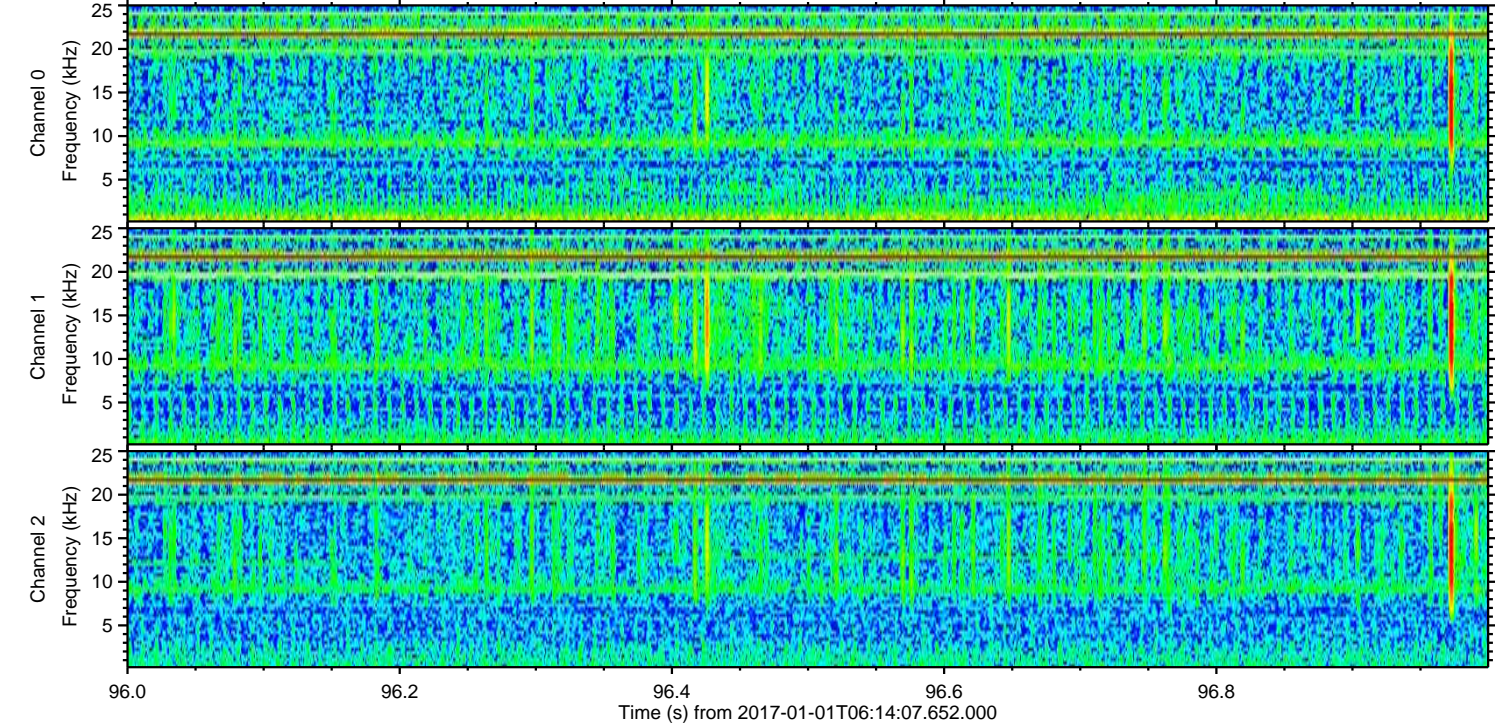
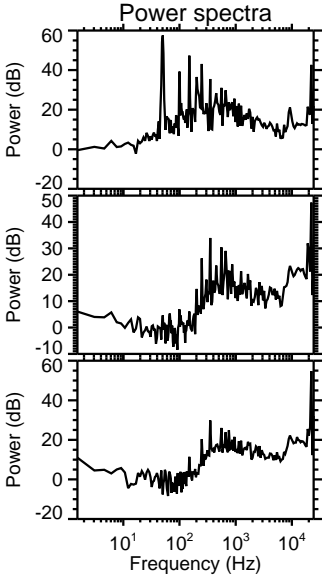
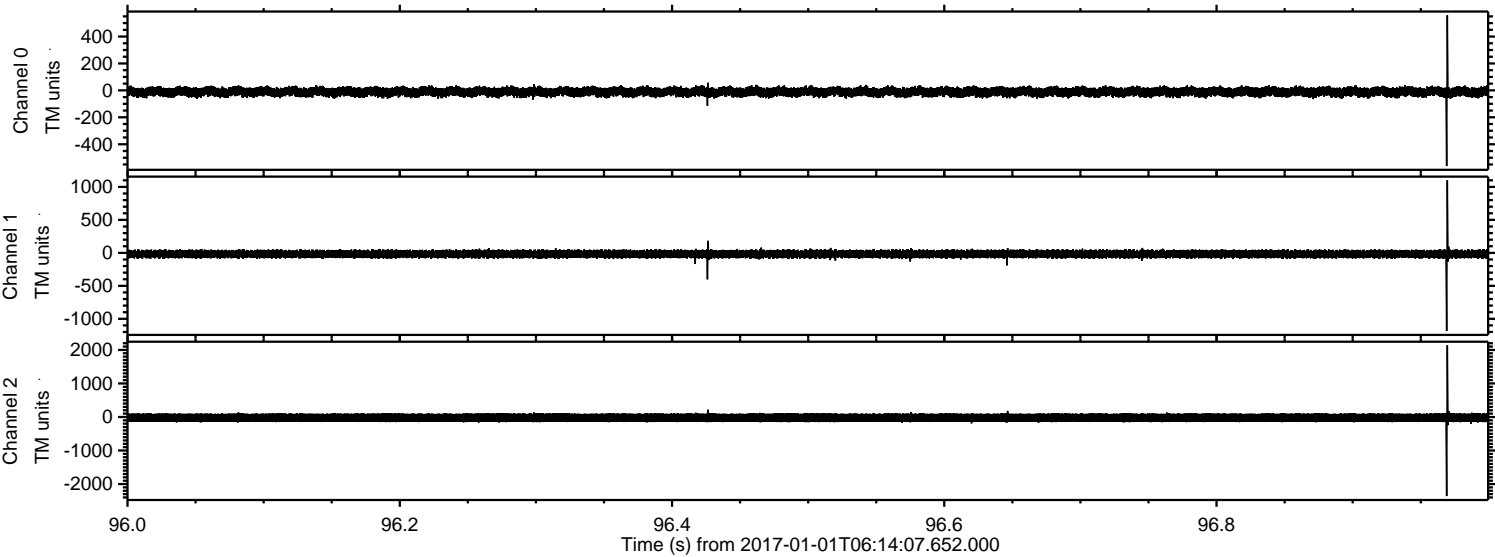
Channel 1
mn: -1288
mx: 1048
 μ : -17.6
 σ : 36.9

Channel 2
mn: -2830
mx: 3338
 μ : -22.3
 σ : 84.5

Processed Sun Jan 1 07:22:40 2017 by ELM ver.2012-10-06 from 001__elm20170101_061406__dat00.bin



Processed Sun Jan 1 07:22:41 2017 by ELM ver.2012-10-06 from 001__elm20170101_061406__dat00.bin



Processed Sun Jan 1 07:22:41 2017 by ELM ver.2012-10-06 from 001__elm20170101_061406__dat00.bin

