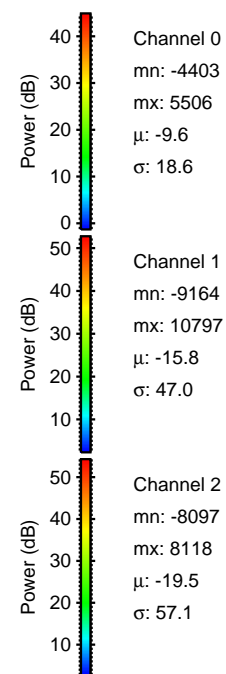
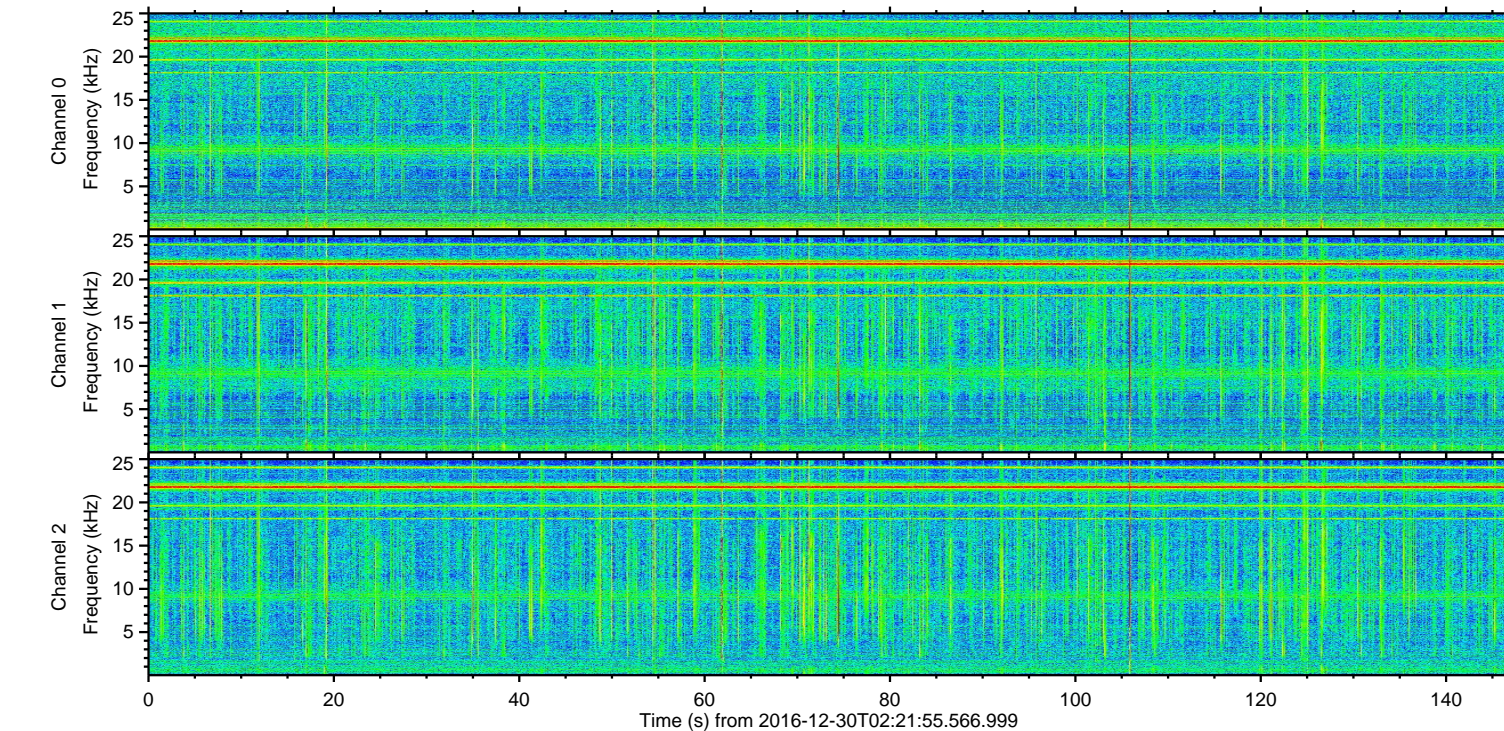
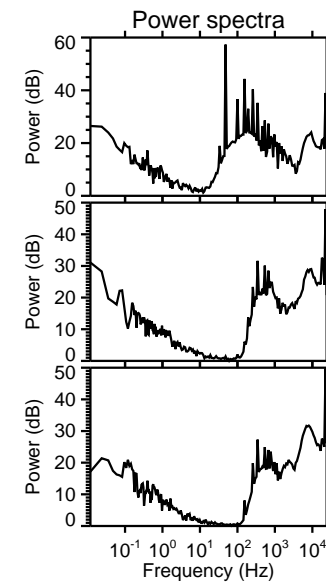
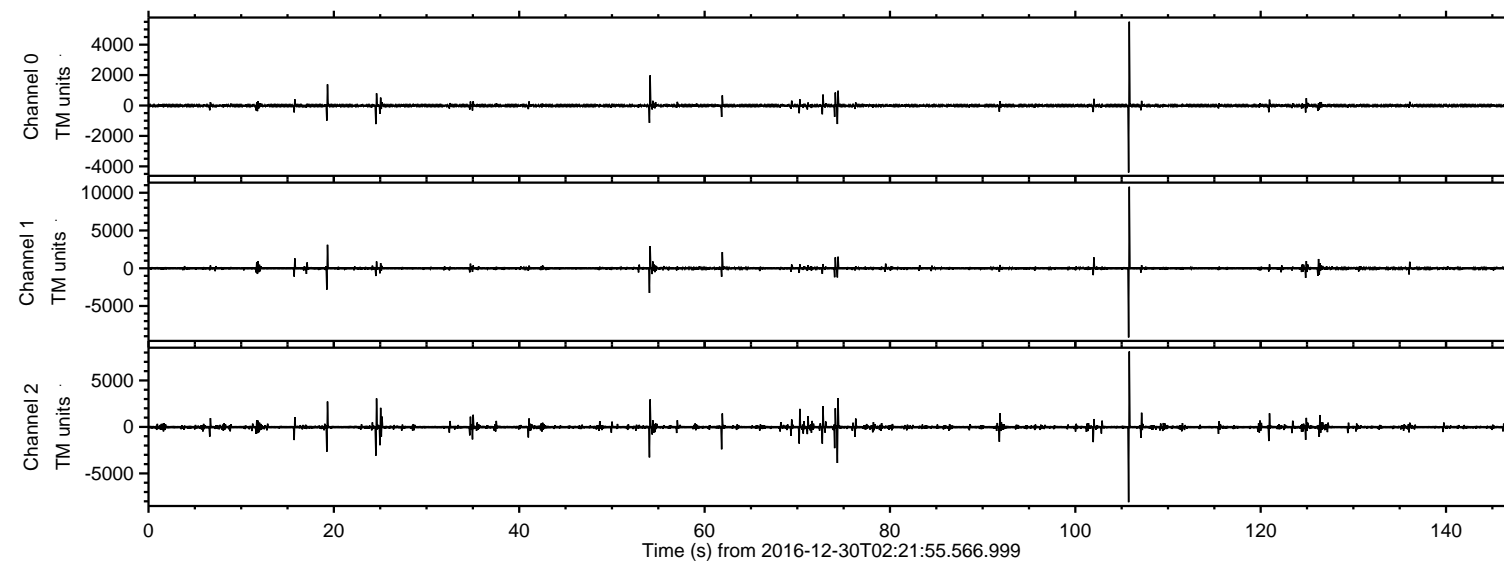


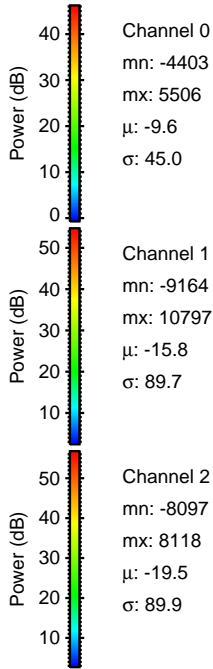
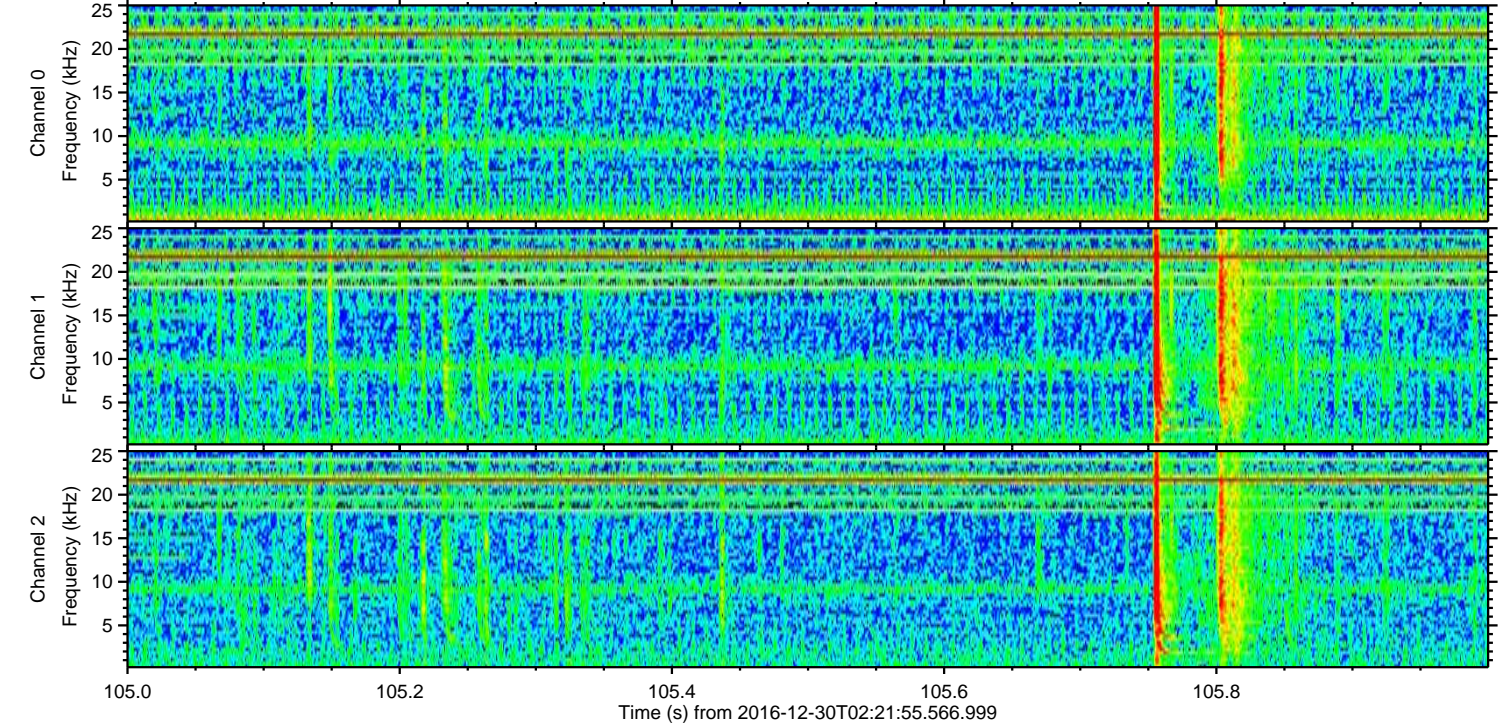
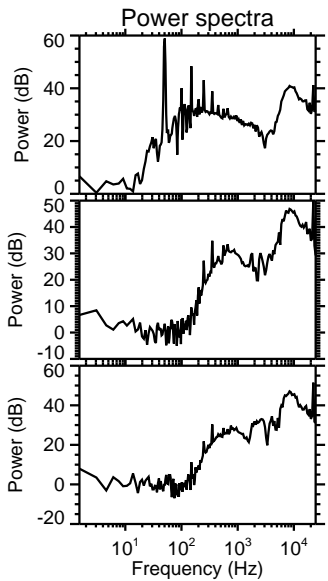
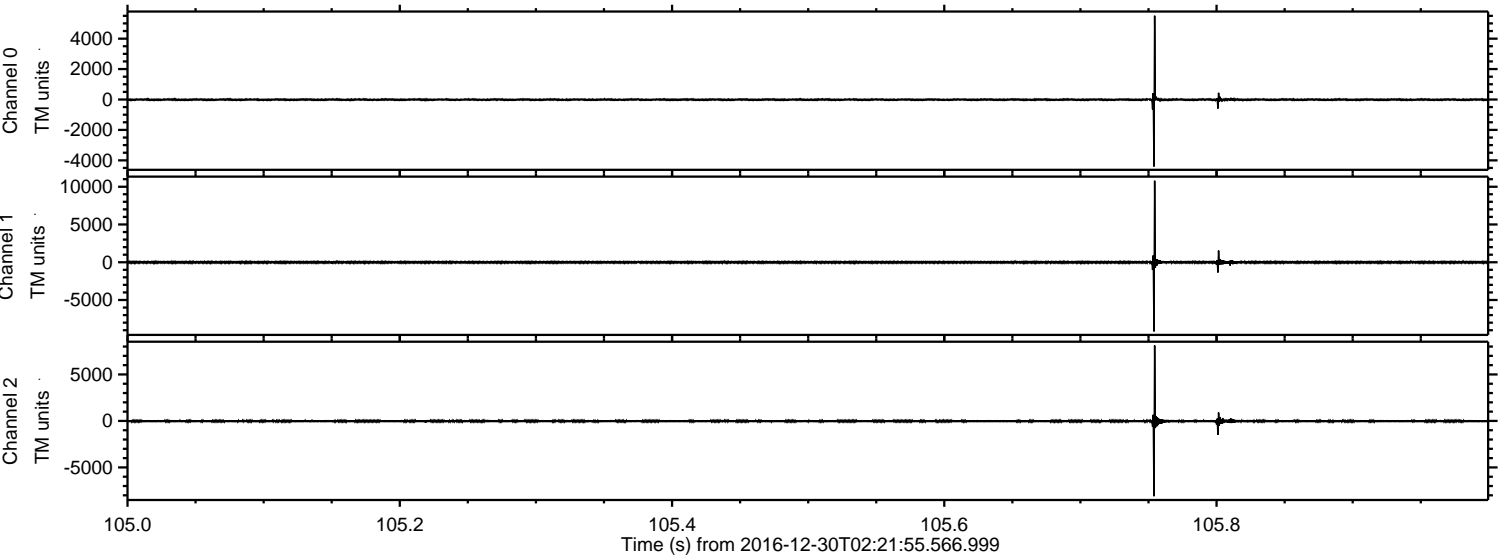
ELMAVAN 3D WAVEFORMS (Measured data sampled at 50 kHz) 51000 packets of 144 samples from 2016-12-30T02:21:55.566.999.

Processed Fri Dec 30 03:29:37 2016 by ELM ver.2012-10-06 from 001__elm20161230_022154__dat00.bin



ELMAVAN 3D WAVEFORMS (Measured data sampled at 50 kHz) 51000 packets of 144 samples from 2016-12-30T02:21:55.566.999. Part 106/147

Processed Fri Dec 30 03:29:48 2016 by ELM ver.2012-10-06 from 001__elm20161230_022154__dat00.bin



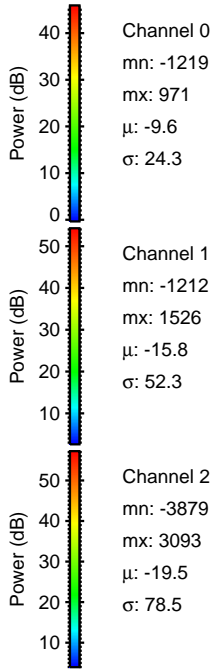
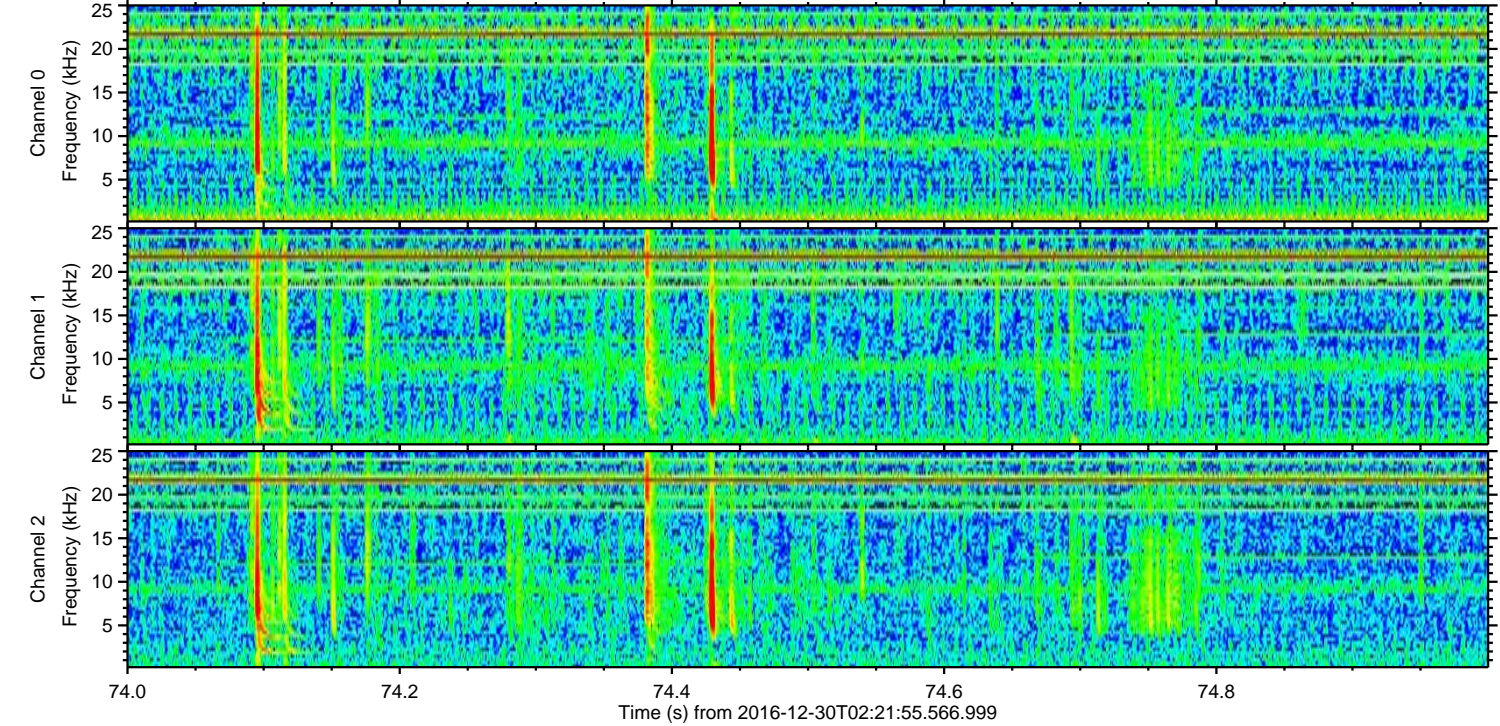
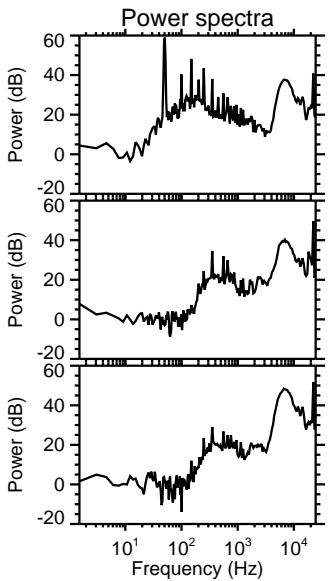
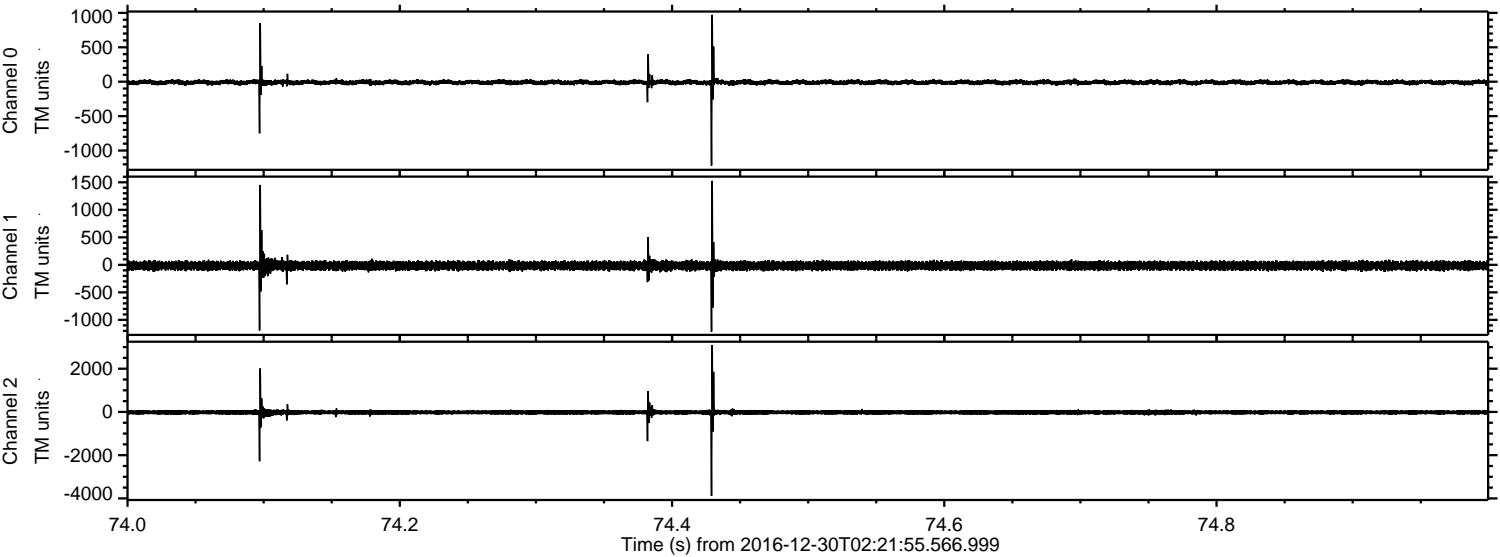
Channel 0
mn: -4403
mx: 5506
 μ : -9.6
 σ : 45.0

Channel 1
mn: -9164
mx: 10797
 μ : -15.8
 σ : 89.7

Channel 2
mn: -8097
mx: 8118
 μ : -19.5
 σ : 89.9

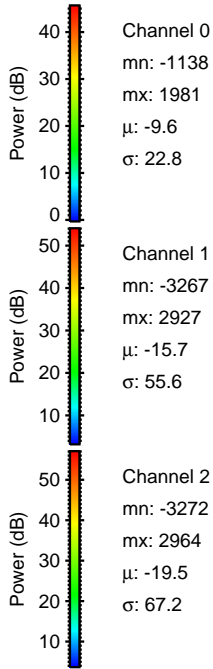
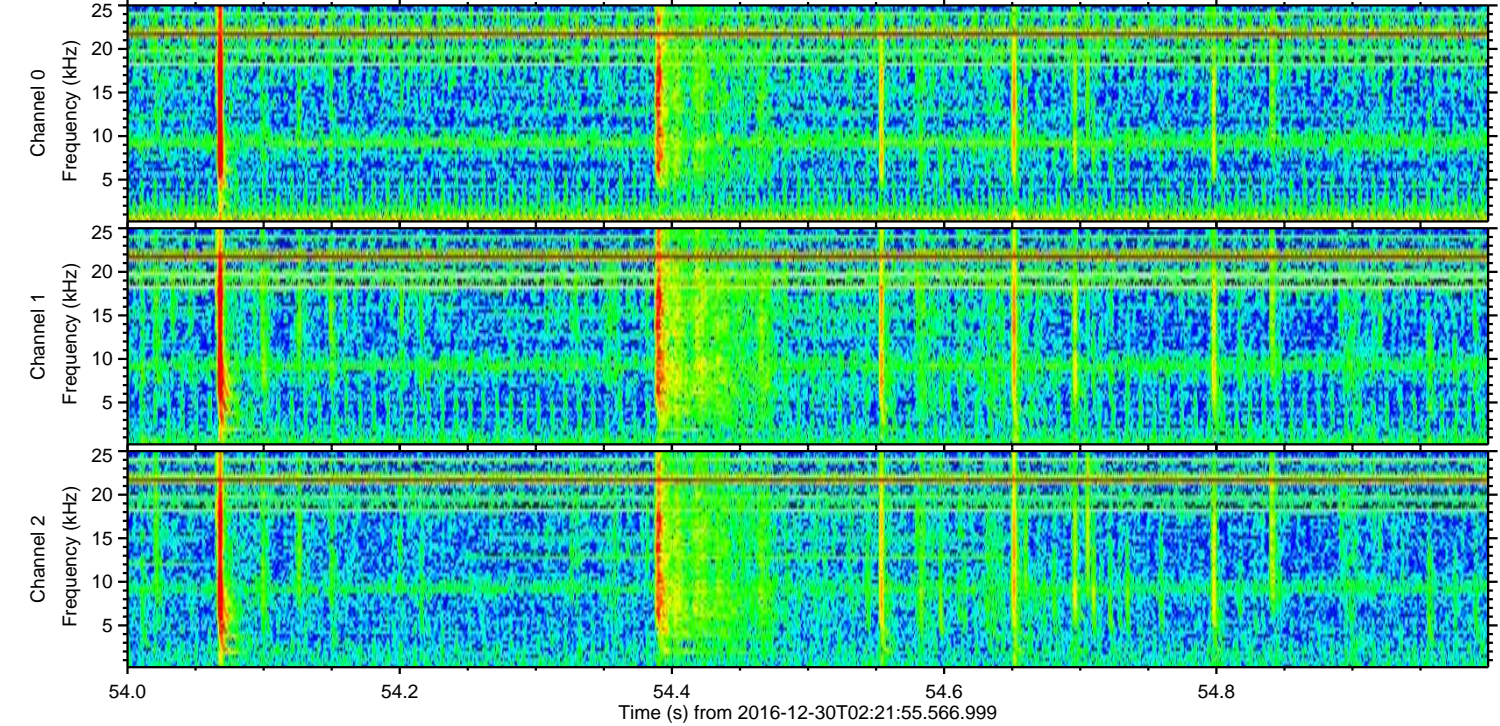
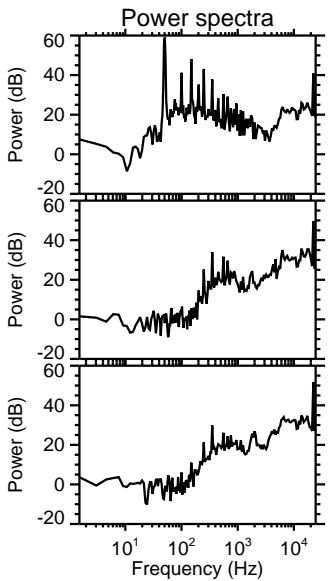
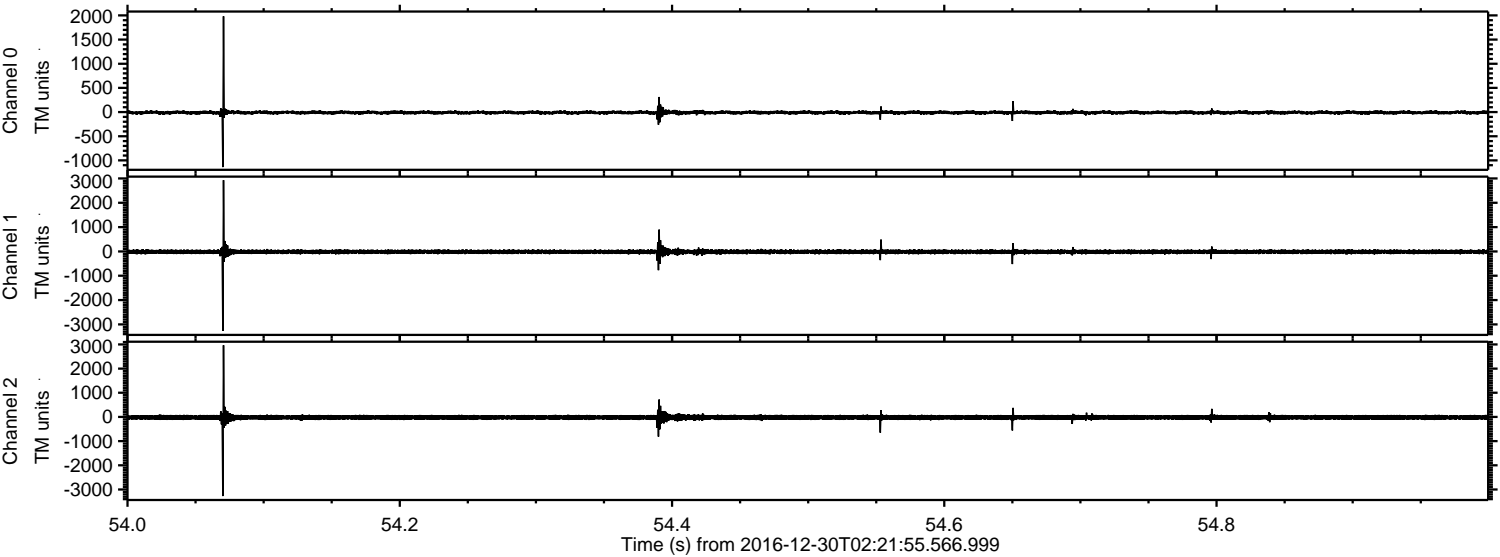
ELMAVAN 3D WAVEFORMS (Measured data sampled at 50 kHz) 51000 packets of 144 samples from 2016-12-30T02:21:55.566.999. Part 75/147

Processed Fri Dec 30 03:29:49 2016 by ELM ver.2012-10-06 from 001__elm20161230_022154__dat00.bin

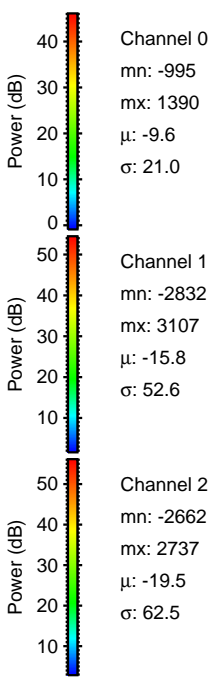
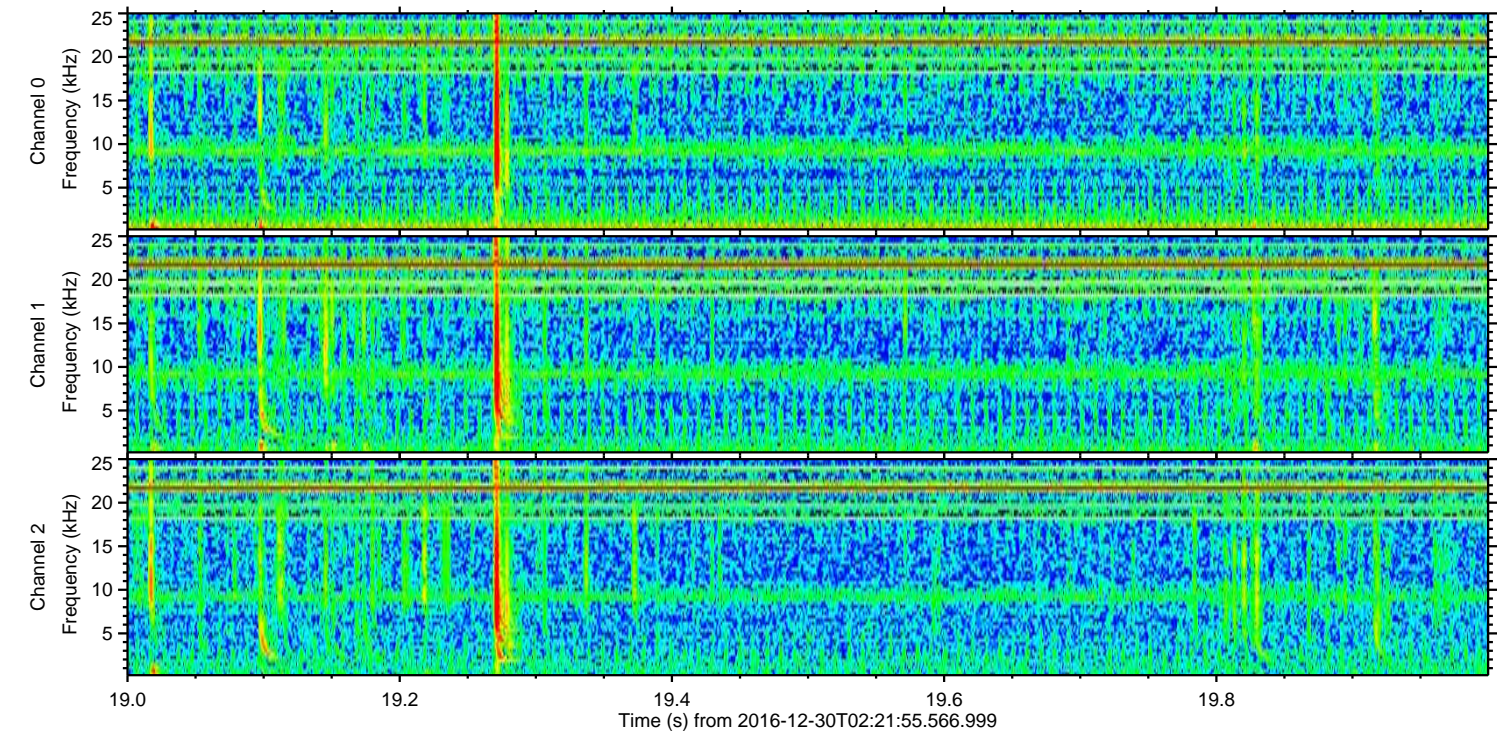
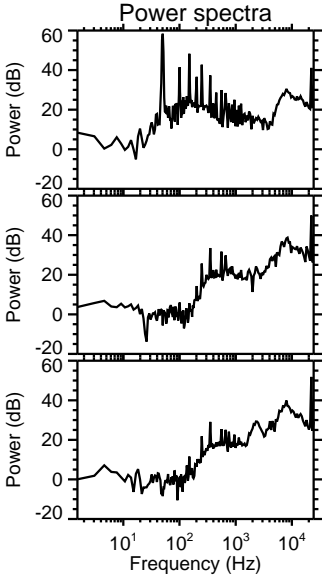
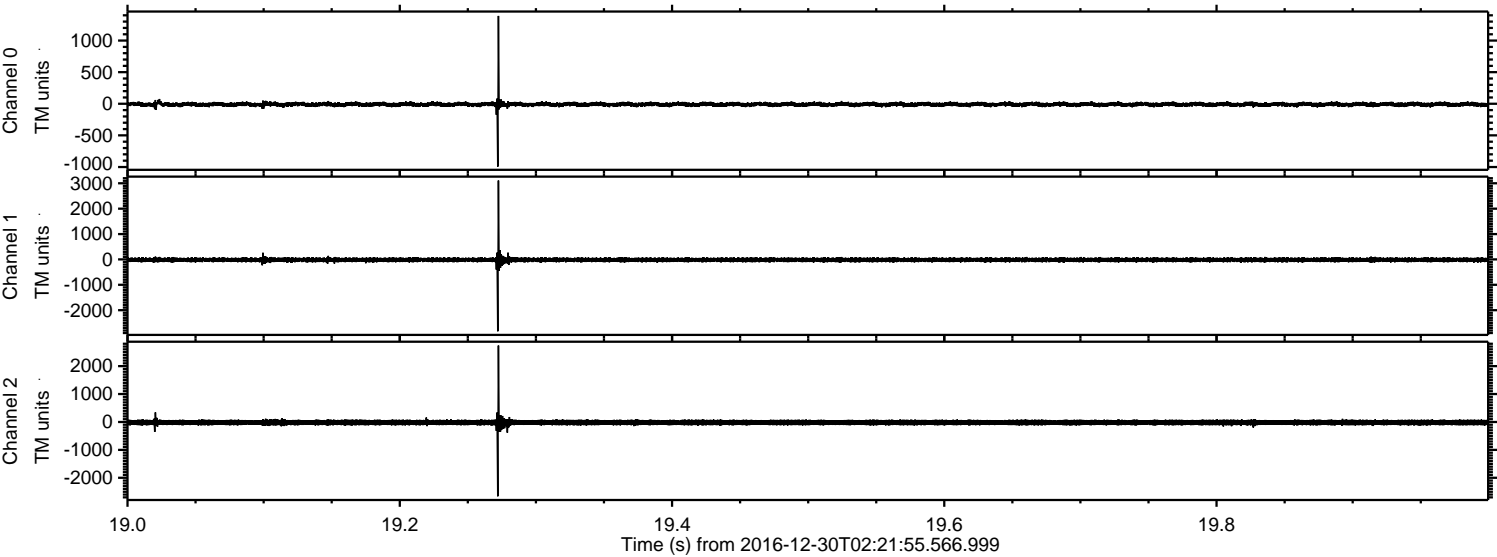


ELMAVAN 3D WAVEFORMS (Measured data sampled at 50 kHz) 51000 packets of 144 samples from 2016-12-30T02:21:55.566.999. Part 55/147

Processed Fri Dec 30 03:29:50 2016 by ELM ver.2012-10-06 from 001__elm20161230_022154__dat00.bin



Processed Fri Dec 30 03:29:51 2016 by ELM ver.2012-10-06 from 001__elm20161230_022154__dat00.bin



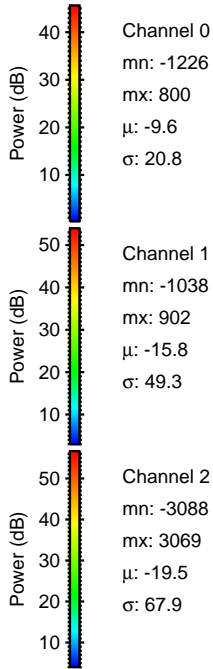
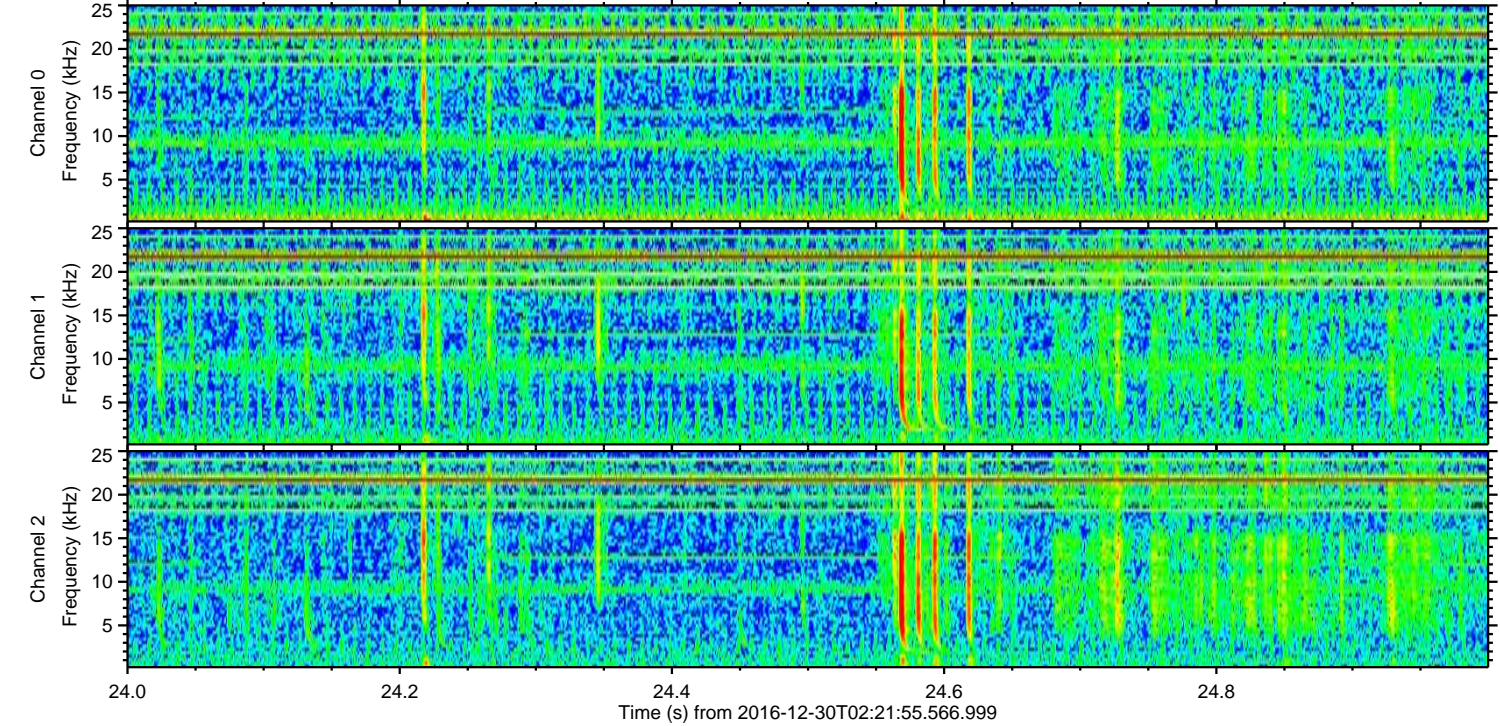
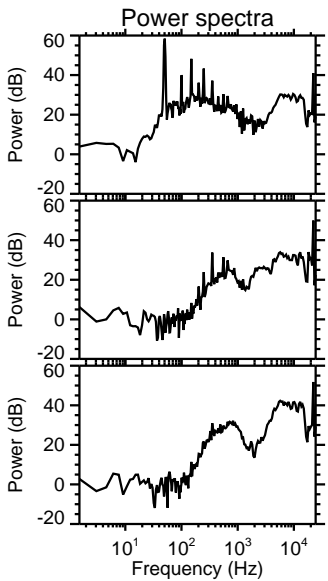
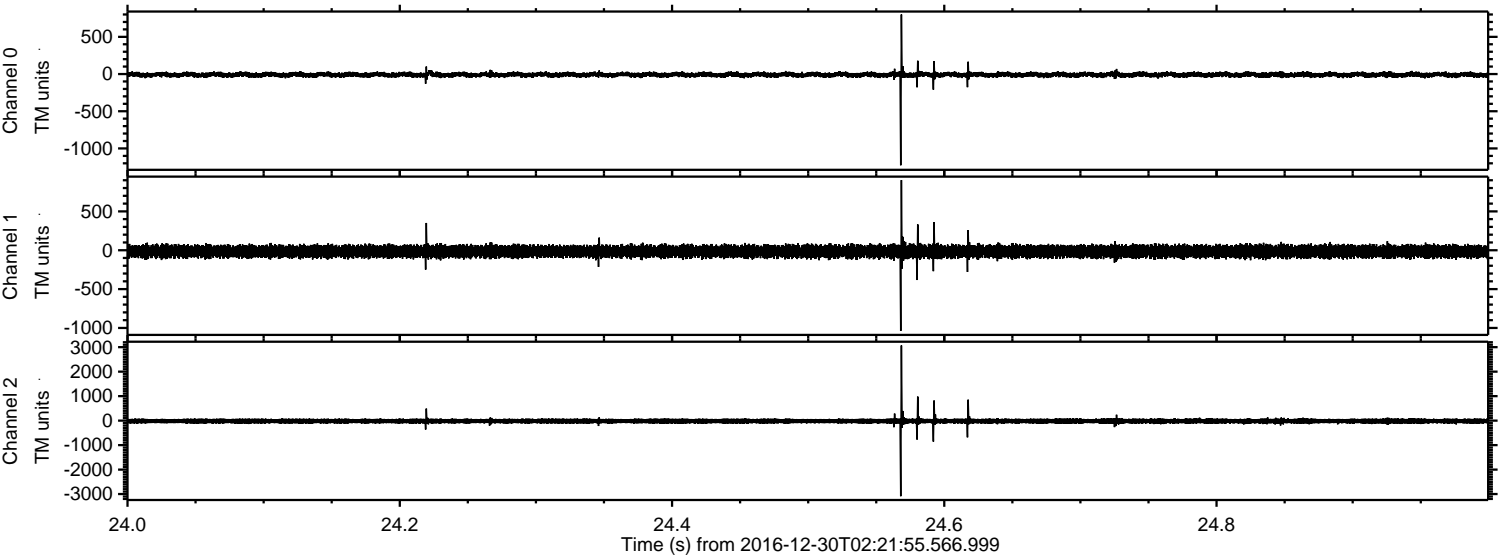
Channel 0
mn: -995
mx: 1390
 μ : -9.6
 σ : 21.0

Channel 1
mn: -2832
mx: 3107
 μ : -15.8
 σ : 52.6

Channel 2
mn: -2662
mx: 2737
 μ : -19.5
 σ : 62.5

ELMAVAN 3D WAVEFORMS (Measured data sampled at 50 kHz) 51000 packets of 144 samples from 2016-12-30T02:21:55.566.999. Part 25/147

Processed Fri Dec 30 03:29:52 2016 by ELM ver.2012-10-06 from 001__elm20161230_022154__dat00.bin



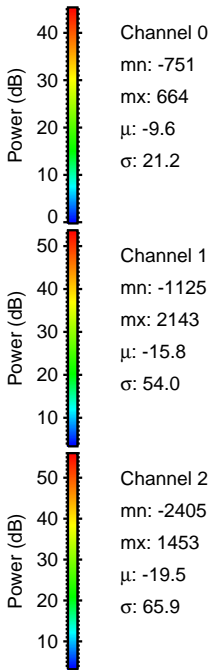
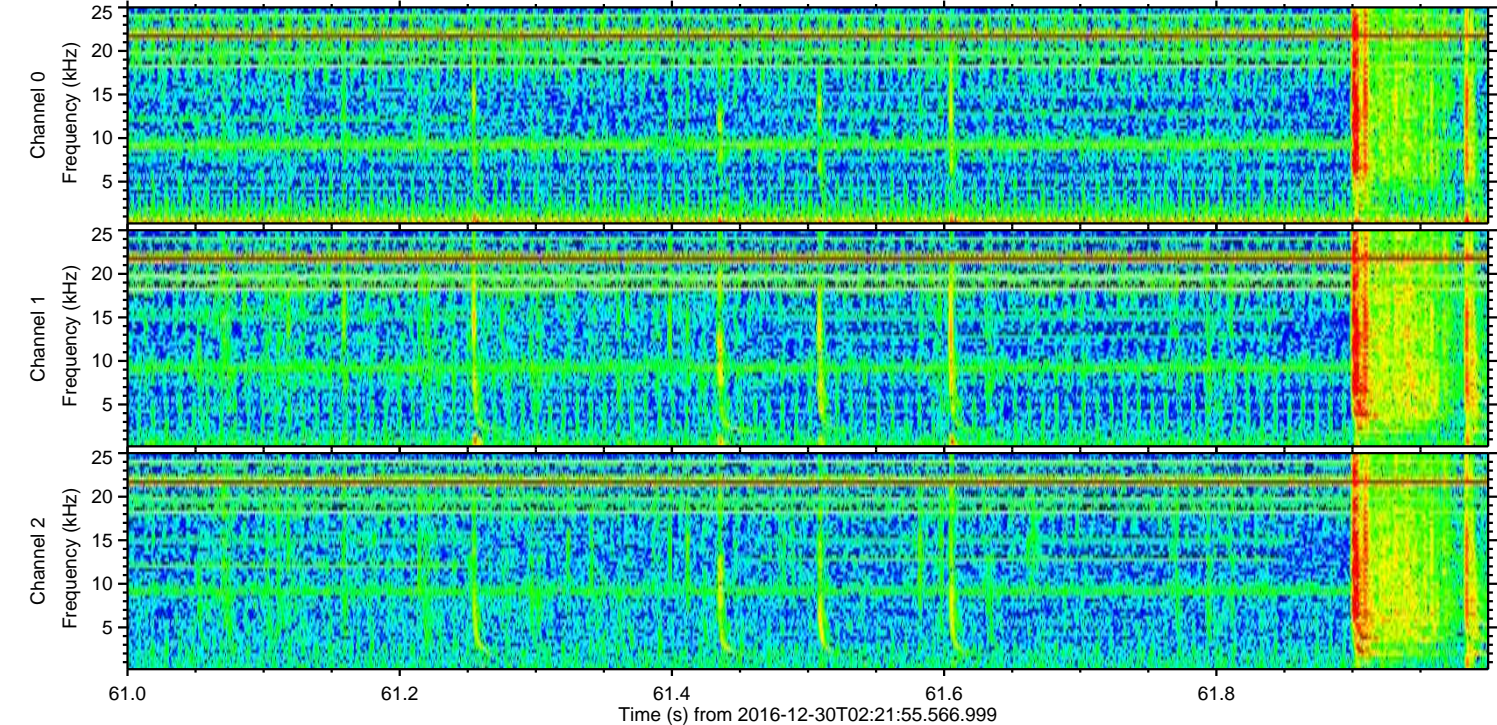
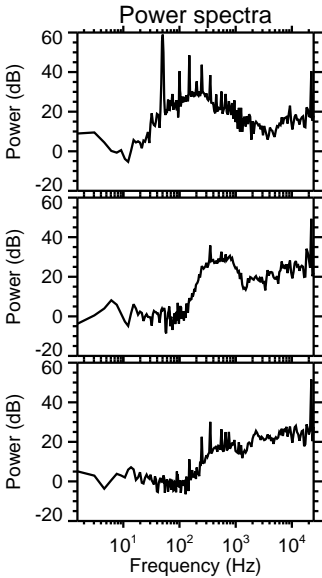
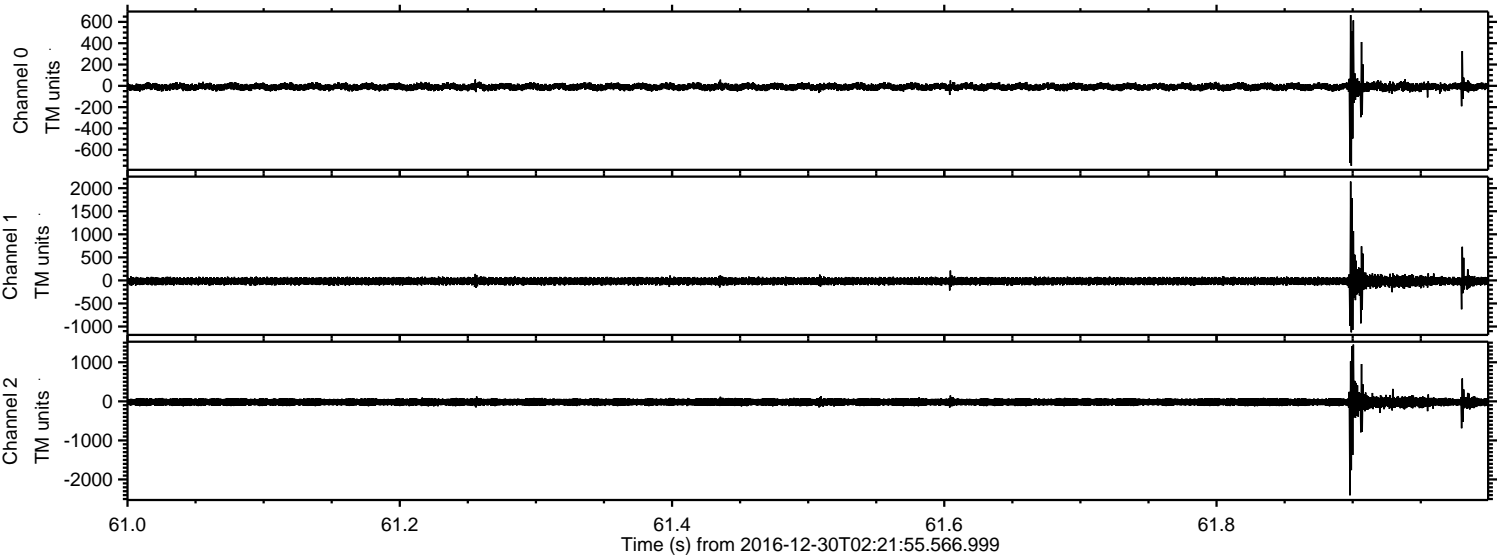
Channel 0
mn: -1226
mx: 800
 μ : -9.6
 σ : 20.8

Channel 1
mn: -1038
mx: 902
 μ : -15.8
 σ : 49.3

Channel 2
mn: -3088
mx: 3069
 μ : -19.5
 σ : 67.9

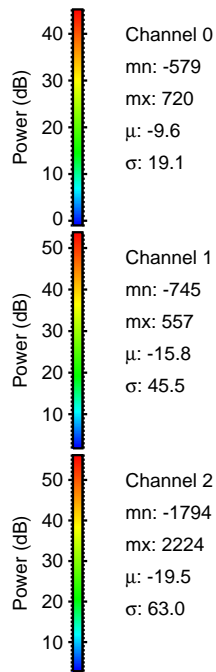
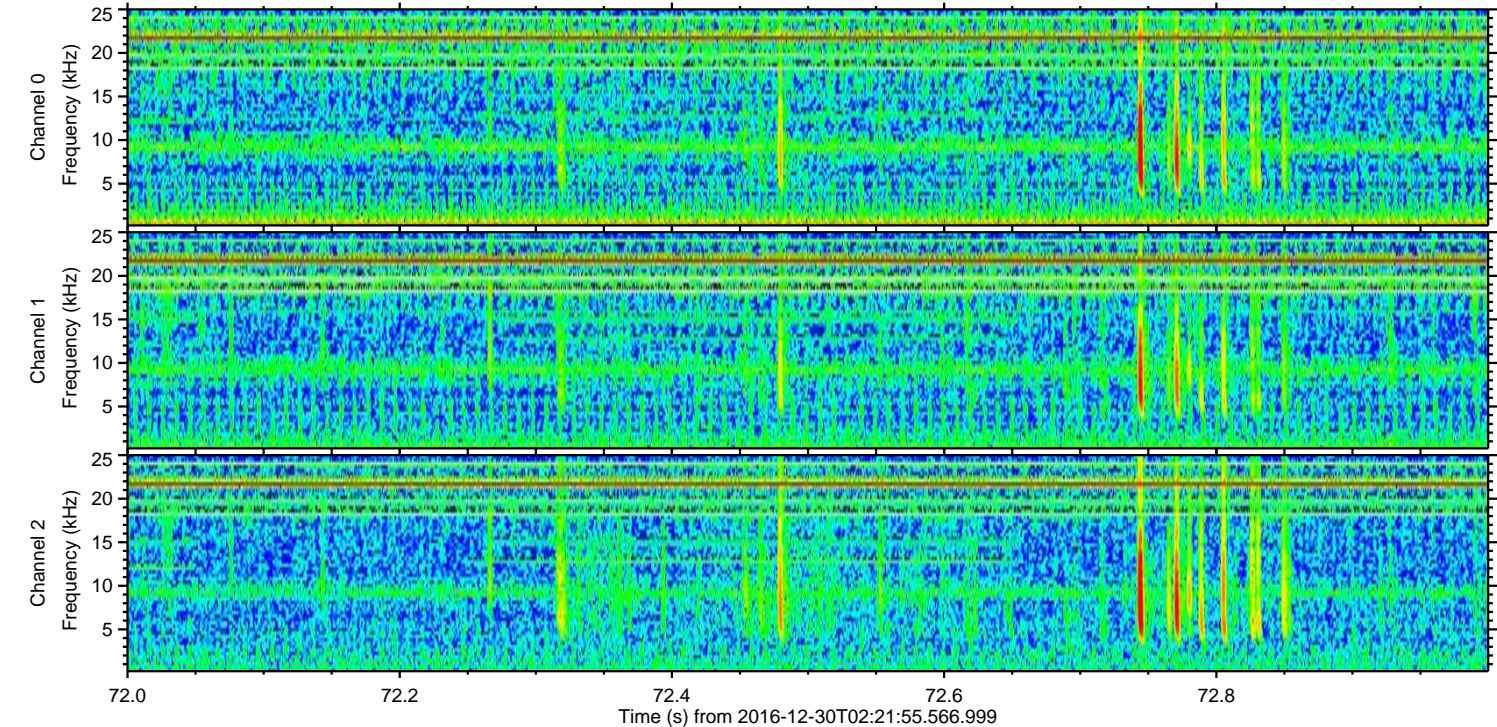
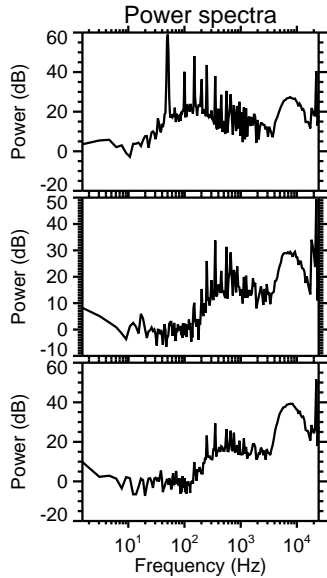
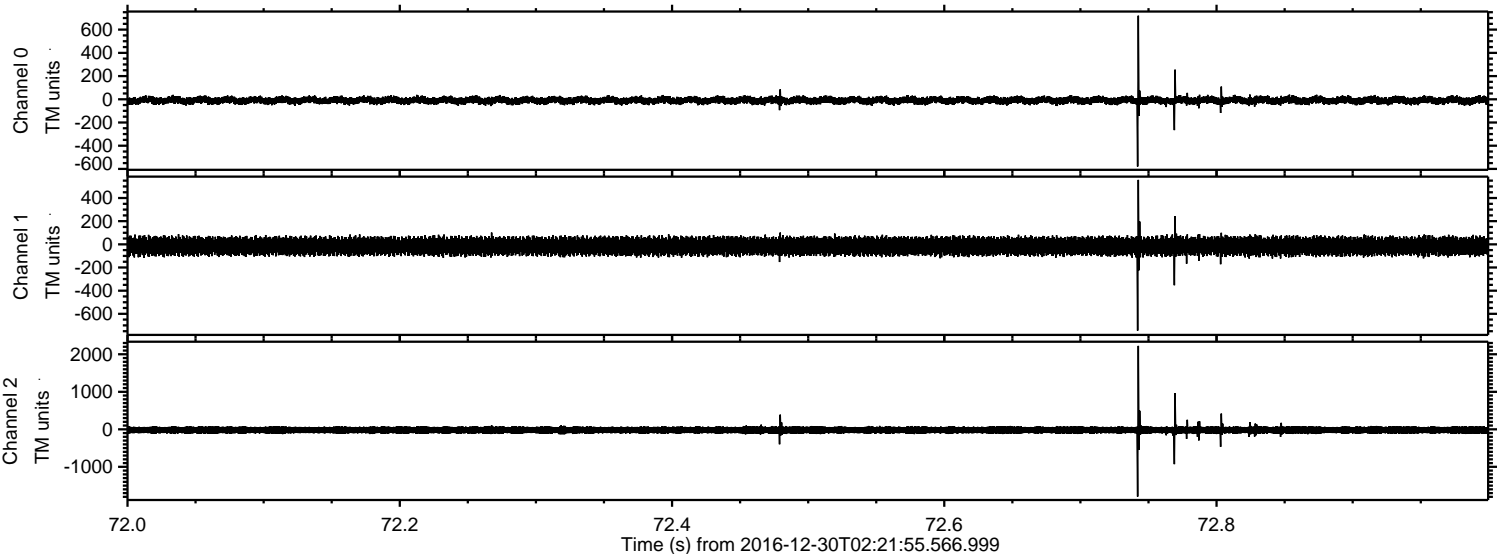
ELMAVAN 3D WAVEFORMS (Measured data sampled at 50 kHz) 51000 packets of 144 samples from 2016-12-30T02:21:55.566.999. Part 62/147

Processed Fri Dec 30 03:29:53 2016 by ELM ver.2012-10-06 from 001__elm20161230_022154__dat00.bin

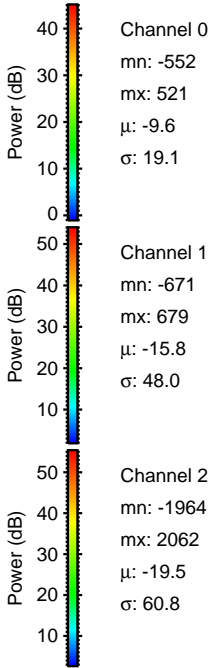
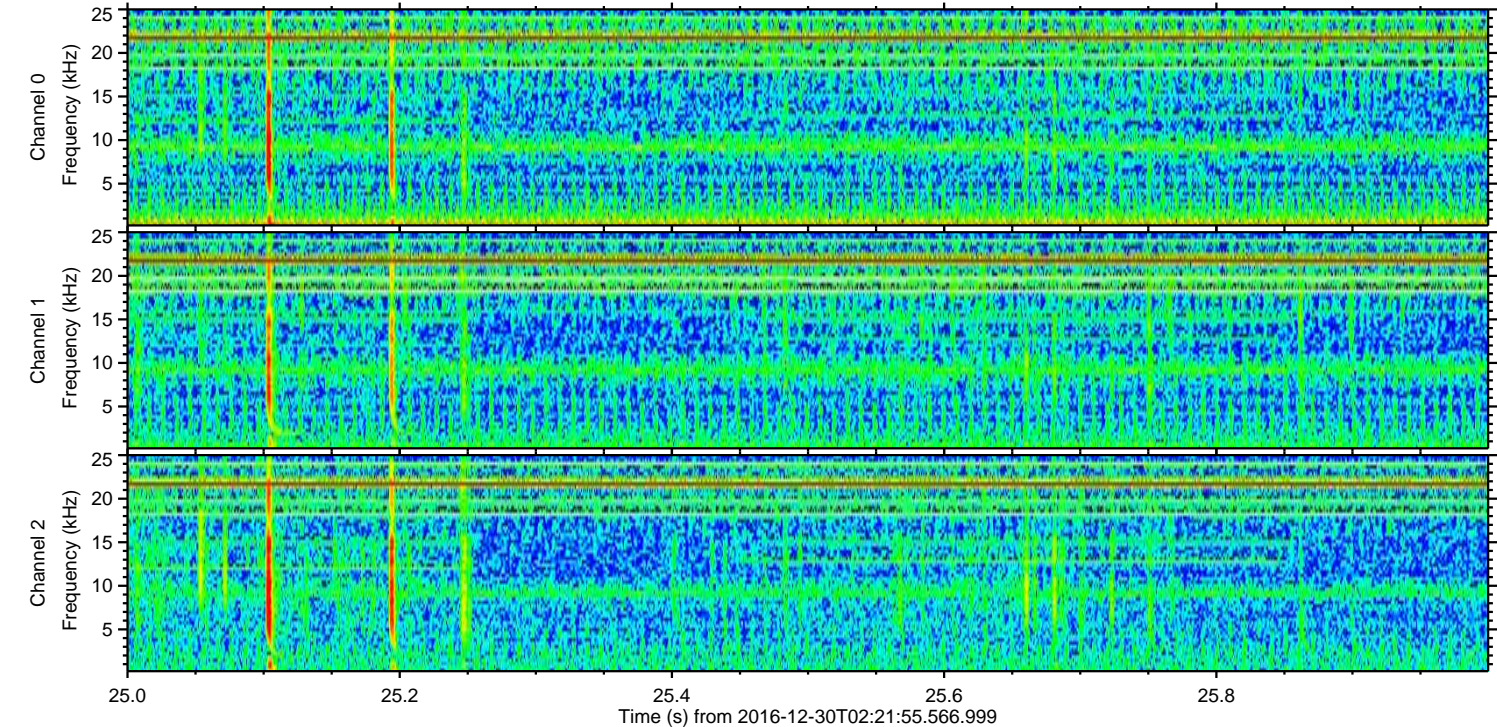
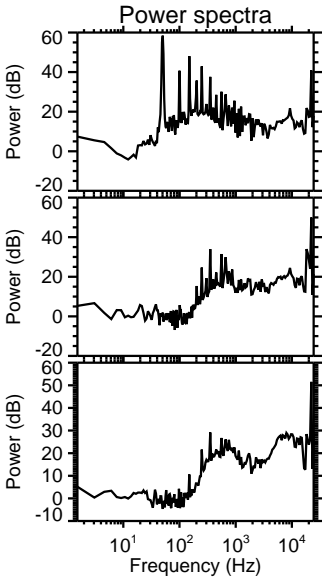
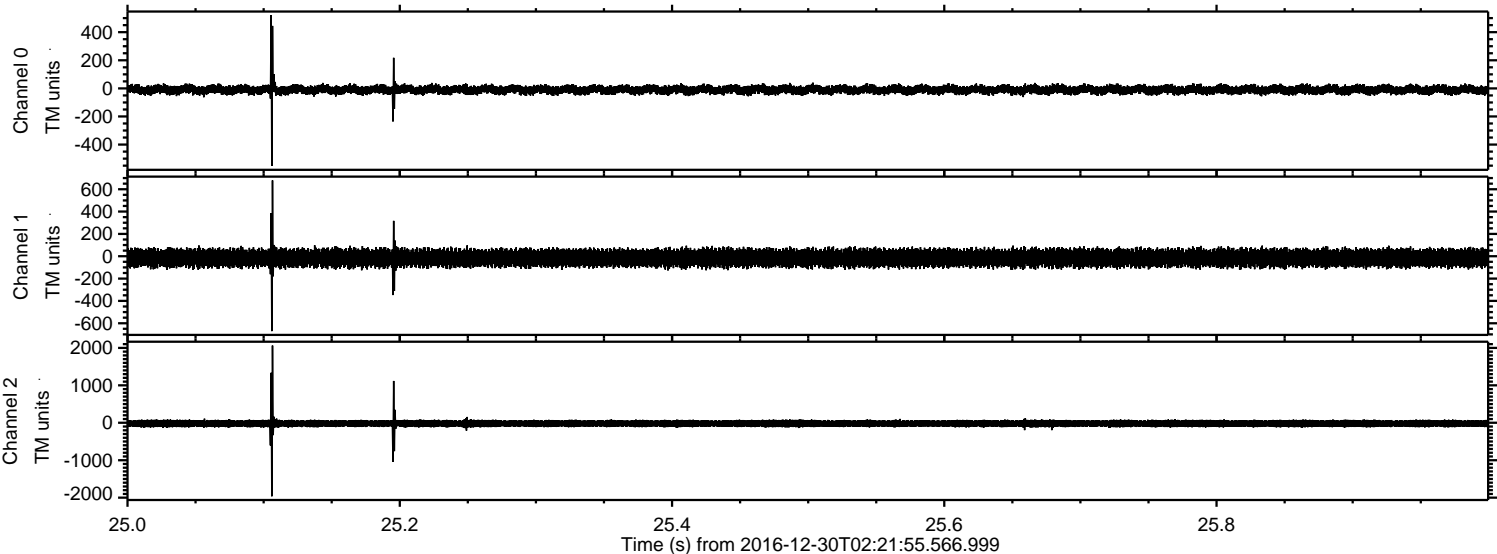


ELMAVAN 3D WAVEFORMS (Measured data sampled at 50 kHz) 51000 packets of 144 samples from 2016-12-30T02:21:55.566.999. Part 73/147

Processed Fri Dec 30 03:29:54 2016 by ELM ver.2012-10-06 from 001__elm20161230_022154__dat00.bin

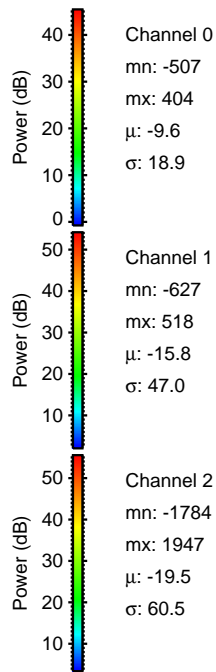
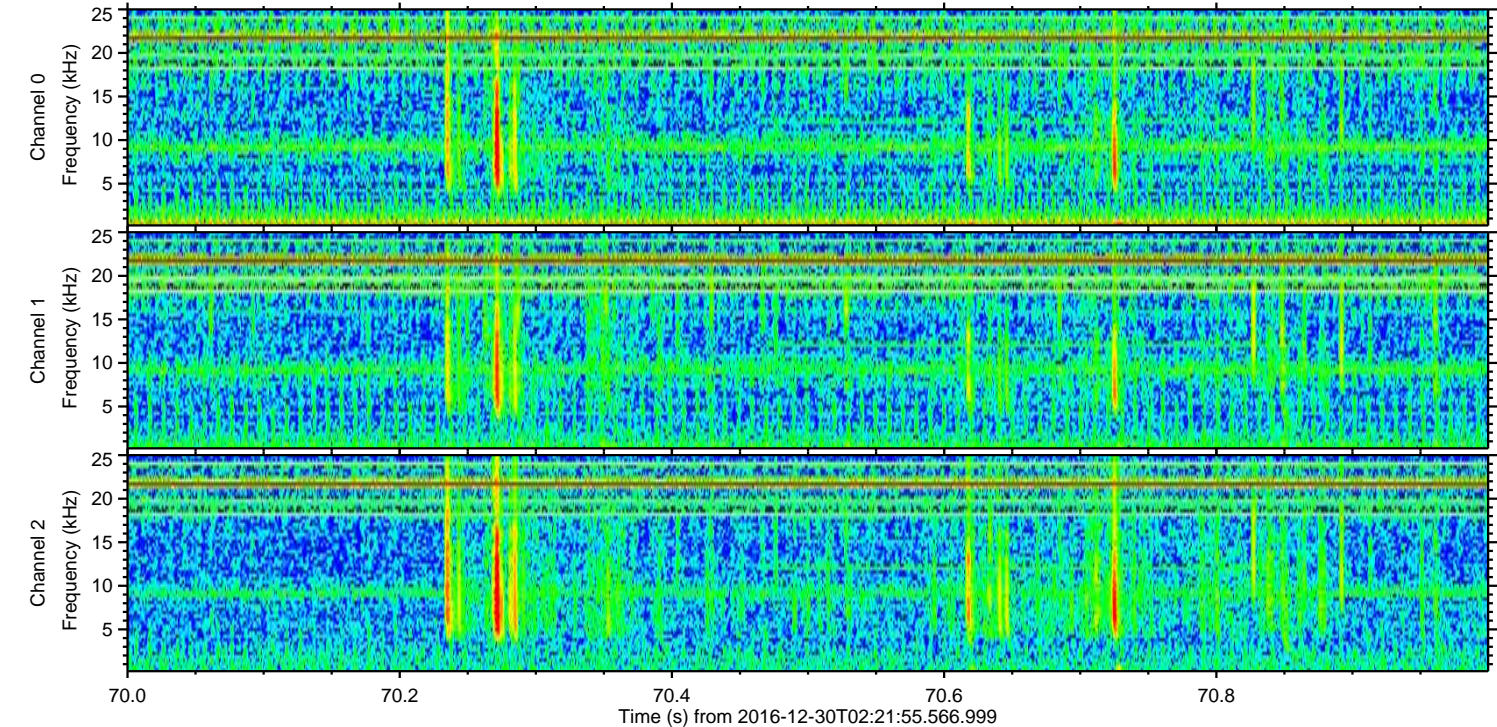
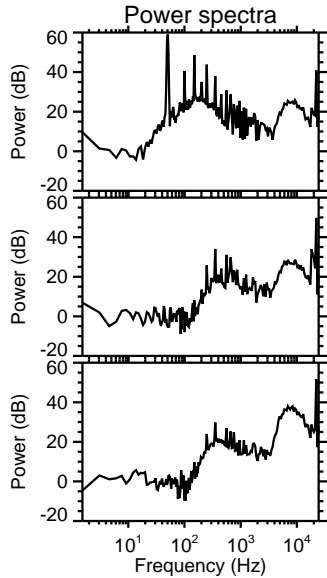
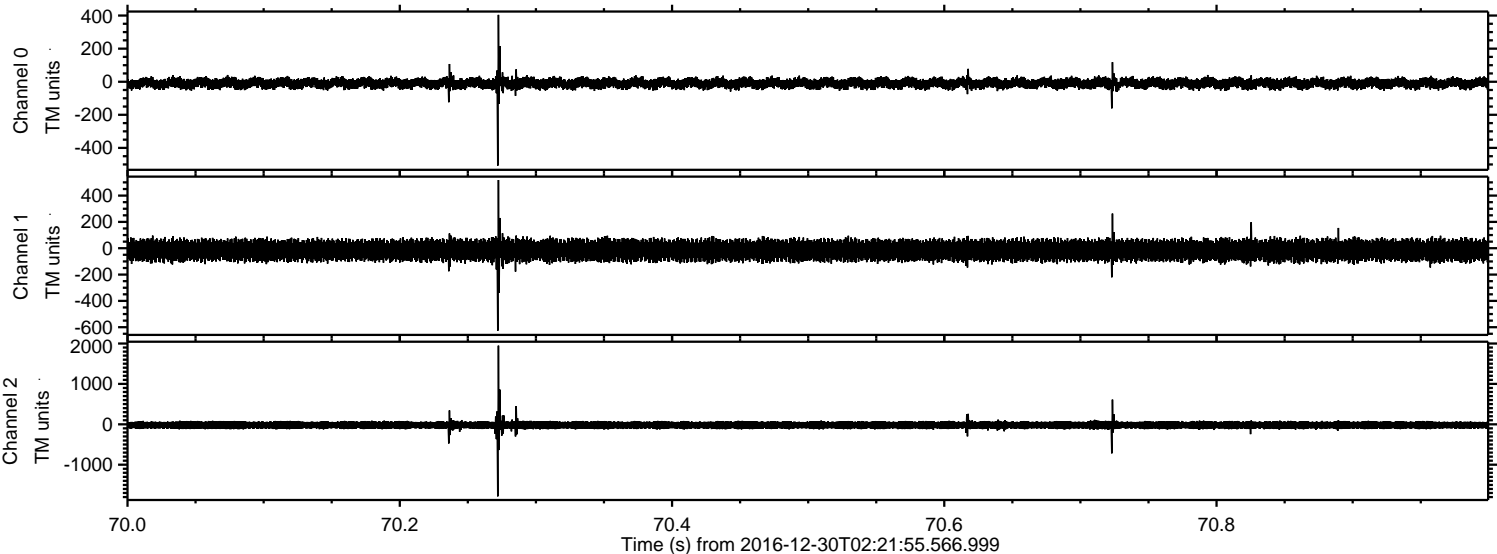


Processed Fri Dec 30 03:29:55 2016 by ELM ver.2012-10-06 from 001__elm20161230_022154__dat00.bin



ELMAVAN 3D WAVEFORMS (Measured data sampled at 50 kHz) 51000 packets of 144 samples from 2016-12-30T02:21:55.566.999. Part 71/147

Processed Fri Dec 30 03:29:56 2016 by ELM ver.2012-10-06 from 001__elm20161230_022154__dat00.bin



ELMAVAN 3D WAVEFORMS (Measured data sampled at 50 kHz) 51000 packets of 144 samples from 2016-12-30T02:21:55.566.999. Part 10/147

Processed Fri Dec 30 03:29:57 2016 by ELM ver.2012-10-06 from 001__elm20161230_022154__dat00.bin

