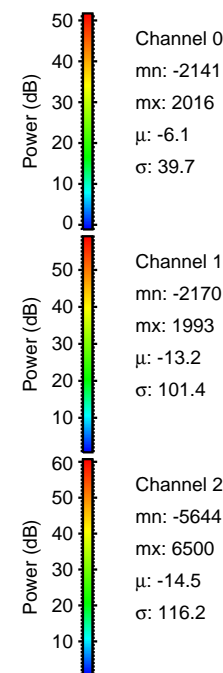
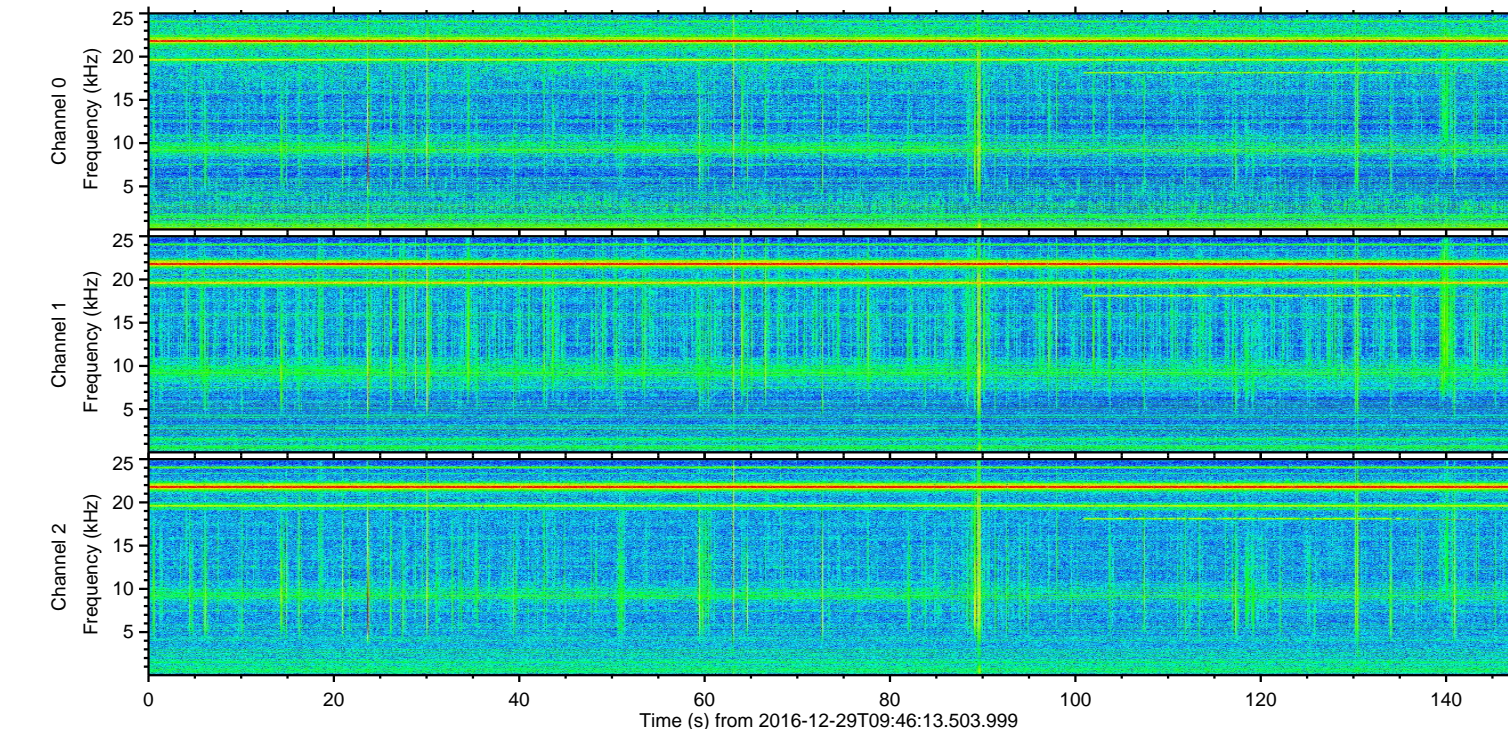
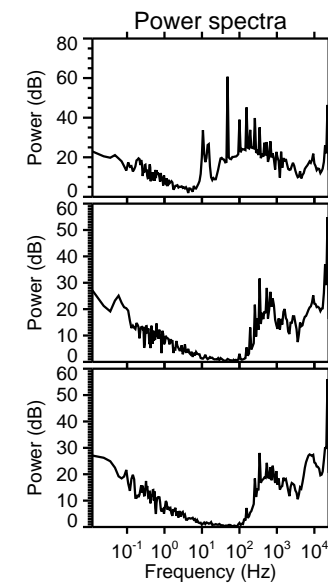
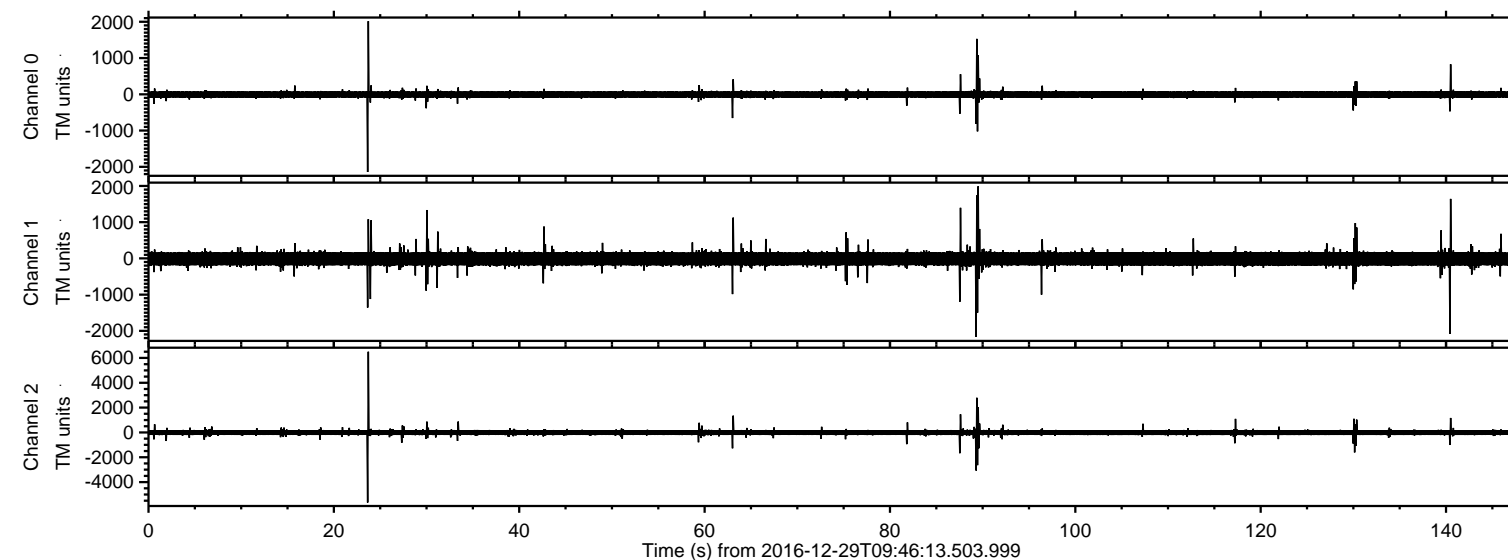


# ELMAVAN 3D WAVEFORMS (Measured data sampled at 50 kHz) 51000 packets of 144 samples from 2016-12-29T09:46:13.503.999.

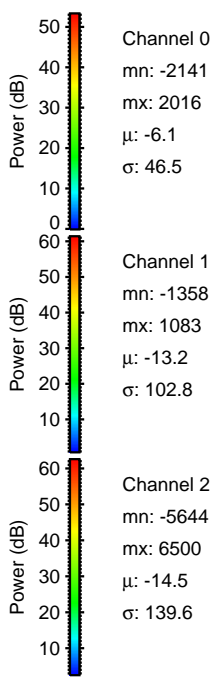
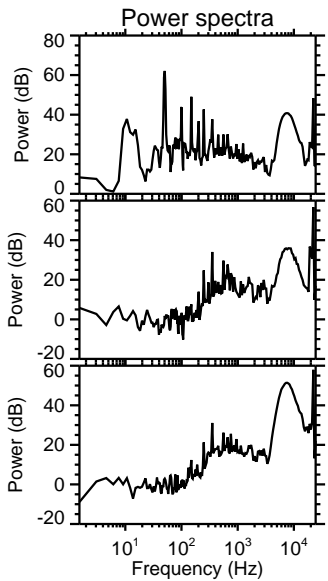
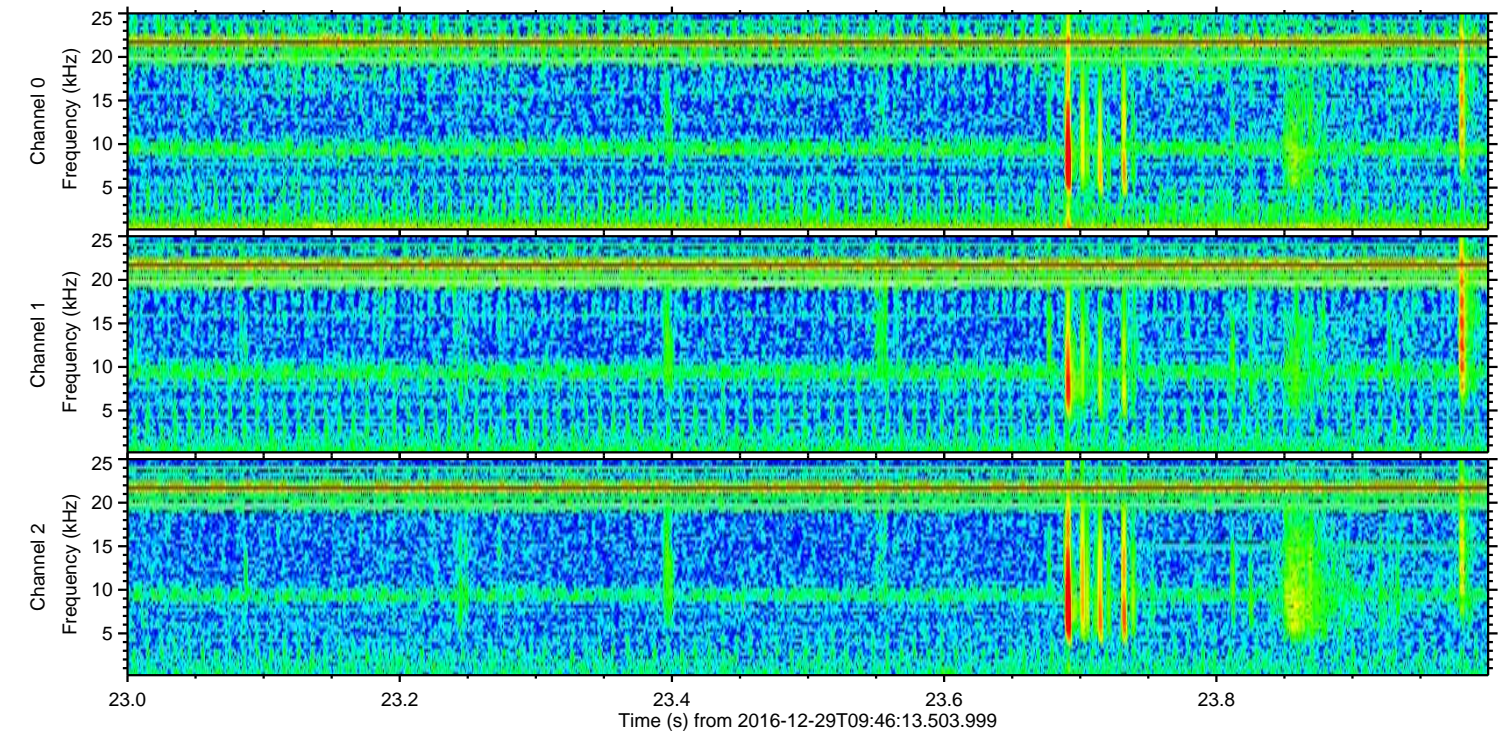
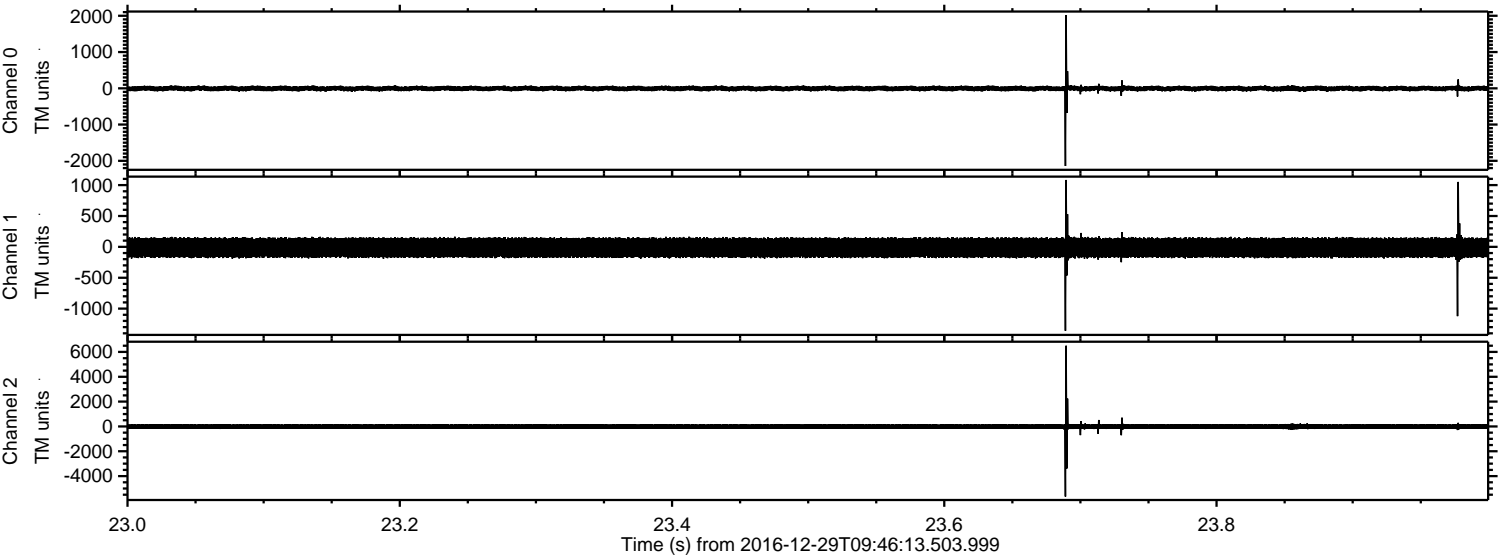
Processed Thu Dec 29 10:54:12 2016 by ELM ver.2012-10-06 from 001\_\_elm20161229\_094612\_\_dat00.bin





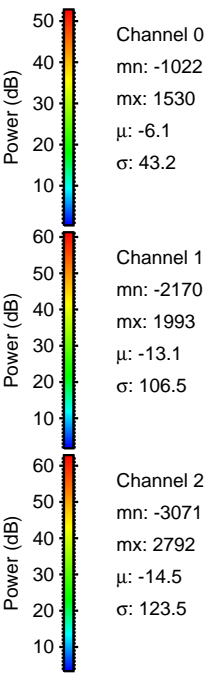
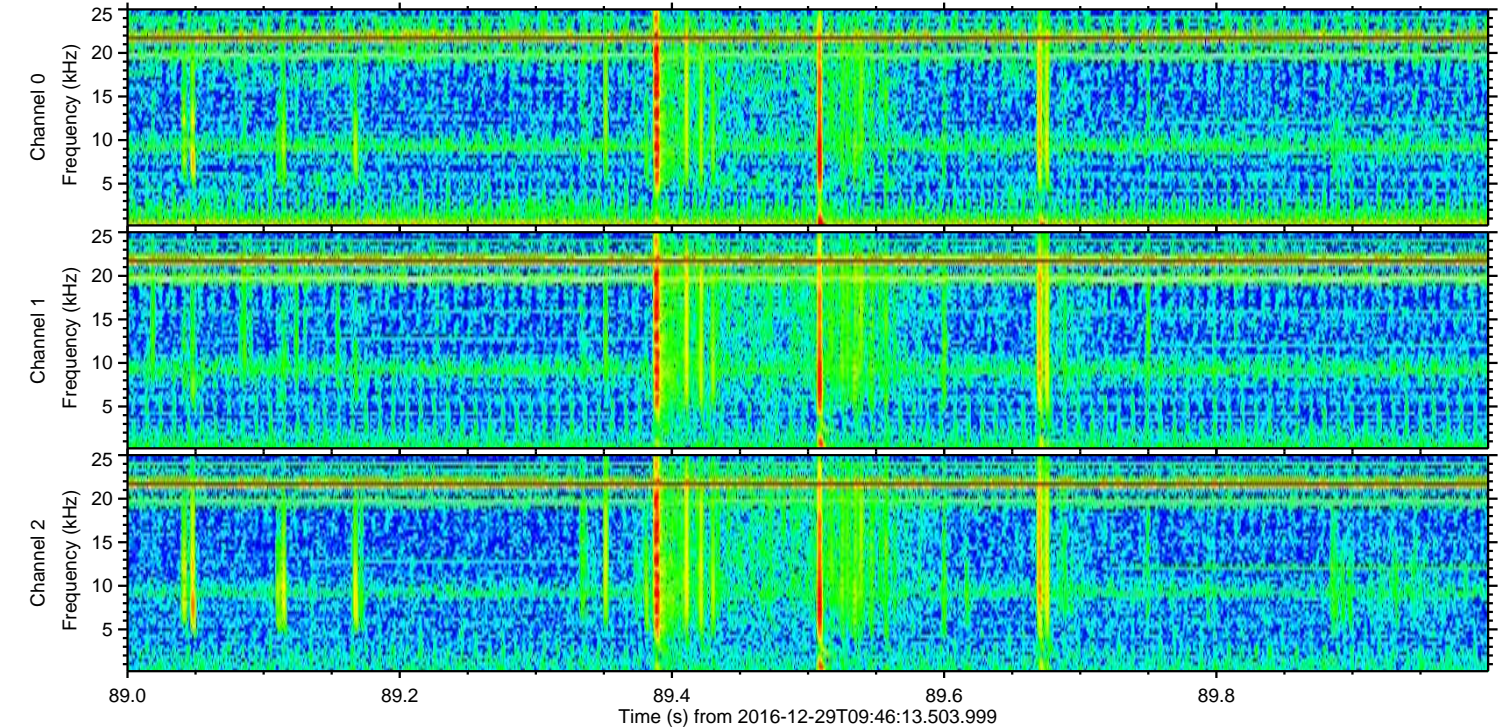
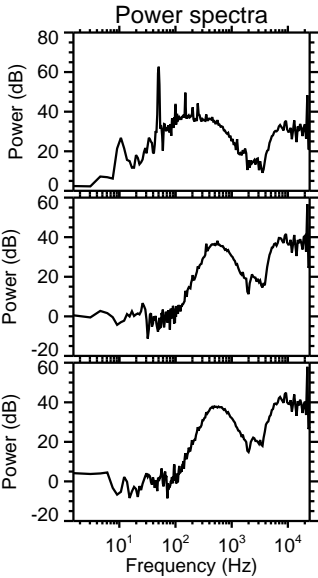
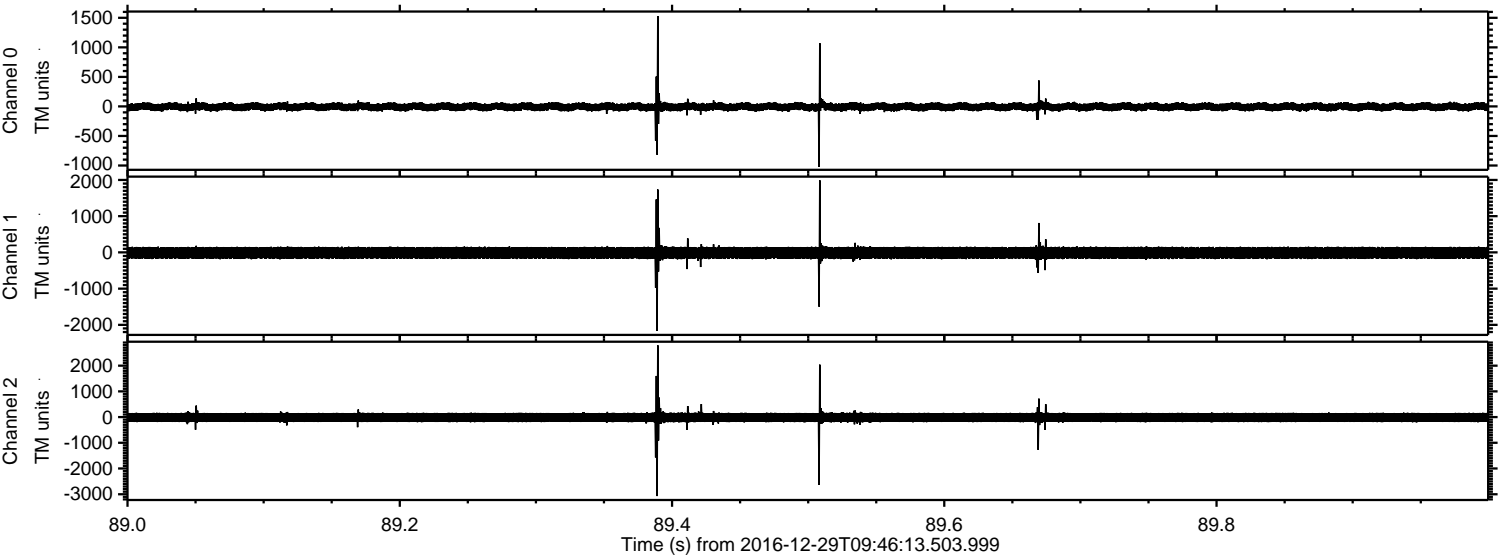
ELMAVAN 3D WAVEFORMS (Measured data sampled at 50 kHz) 51000 packets of 144 samples from 2016-12-29T09:46:13.503.999. Part 24/147

Processed Thu Dec 29 10:54:23 2016 by ELM ver.2012-10-06 from 001\_\_elm20161229\_094612\_\_dat00.bin





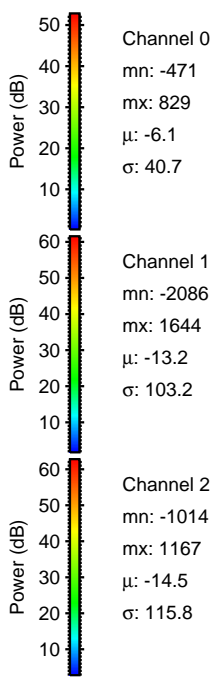
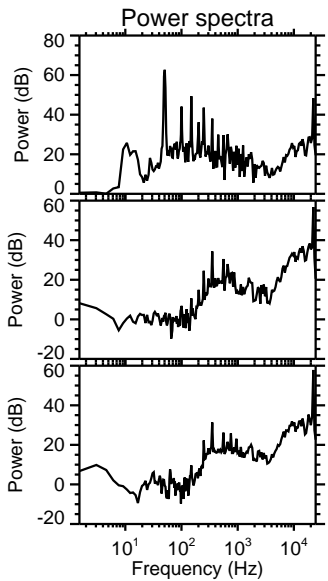
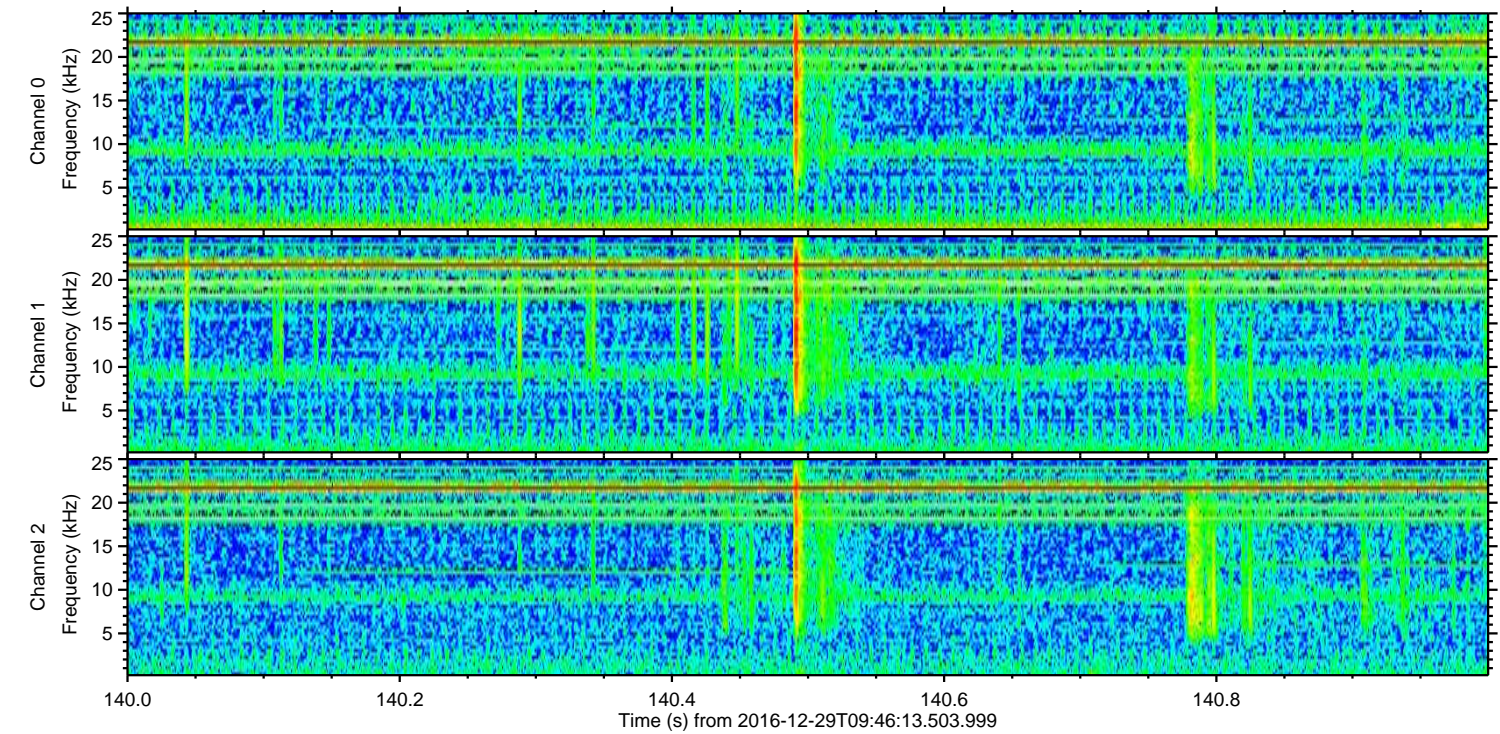
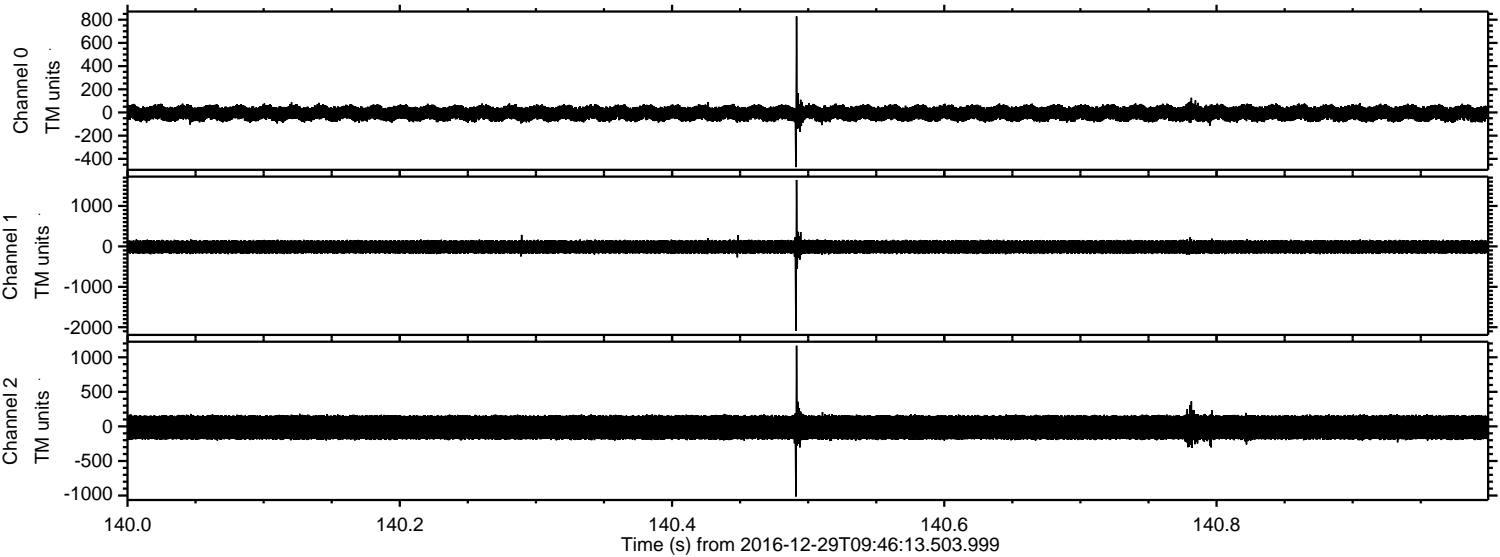
Processed Thu Dec 29 10:54:24 2016 by ELM ver.2012-10-06 from 001\_\_elm20161229\_094612\_\_dat00.bin





ELMAVAN 3D WAVEFORMS (Measured data sampled at 50 kHz) 51000 packets of 144 samples from 2016-12-29T09:46:13.503.999. Part 141/147

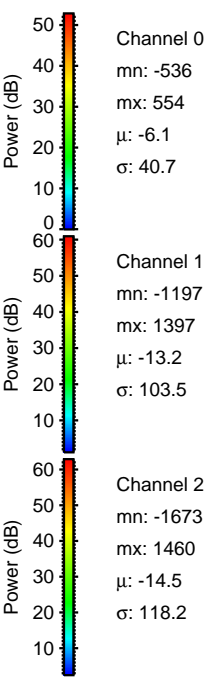
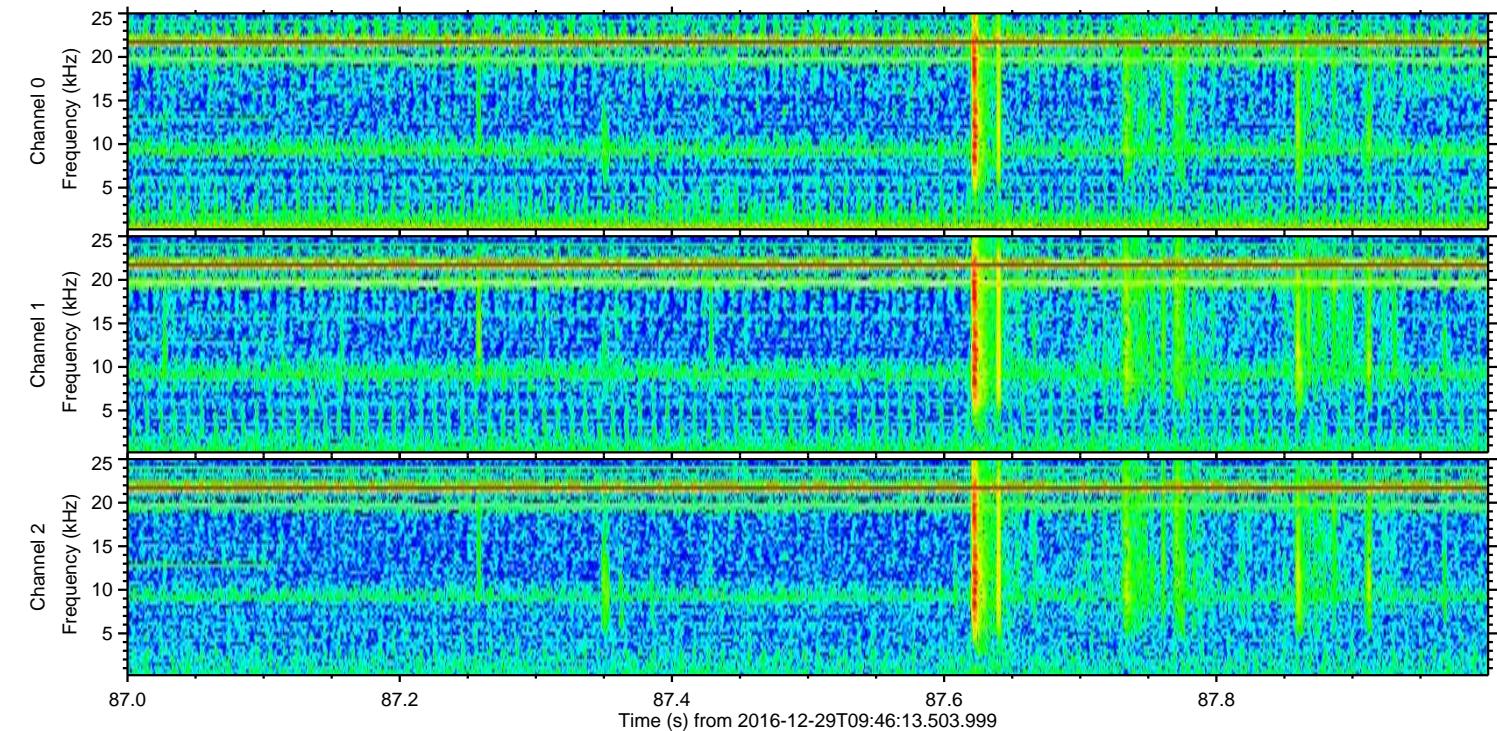
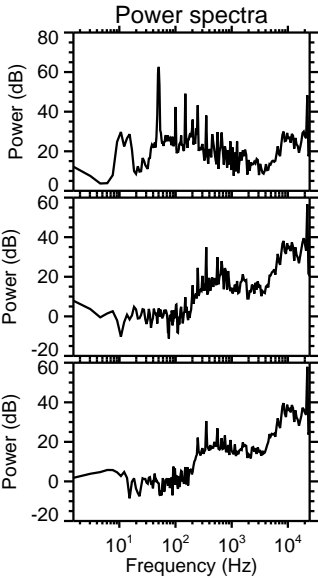
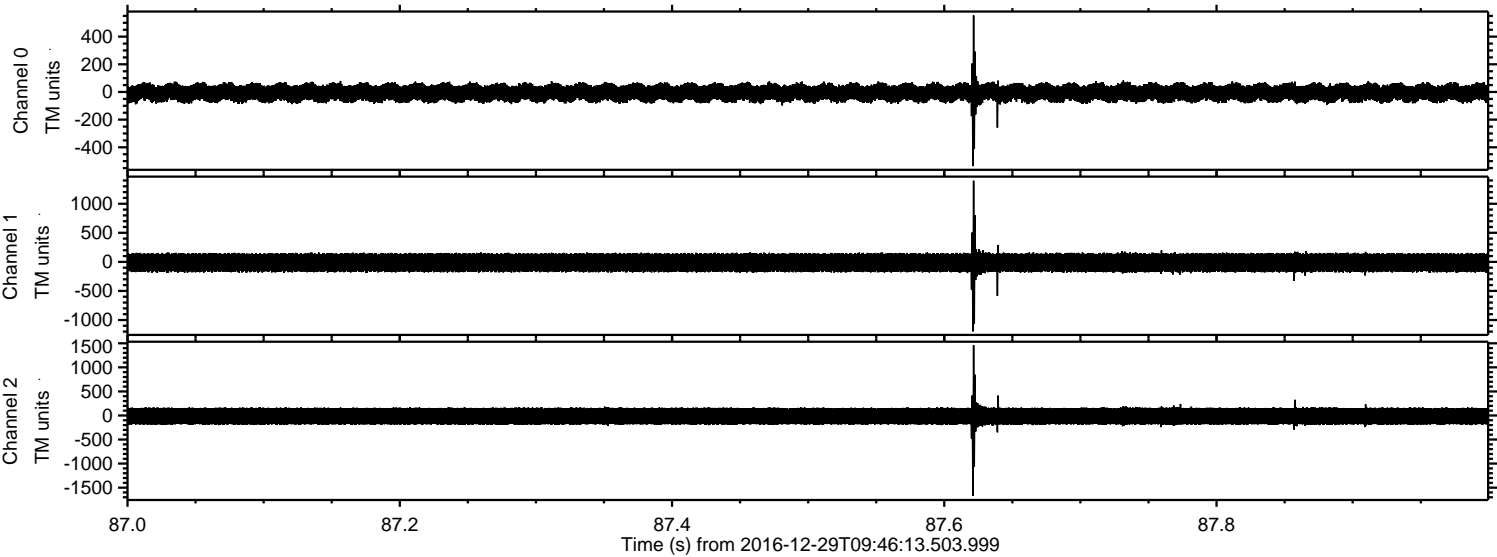
Processed Thu Dec 29 10:54:25 2016 by ELM ver.2012-10-06 from 001\_\_elm20161229\_094612\_\_dat00.bin





ELMAVAN 3D WAVEFORMS (Measured data sampled at 50 kHz) 51000 packets of 144 samples from 2016-12-29T09:46:13.503.999. Part 88/147

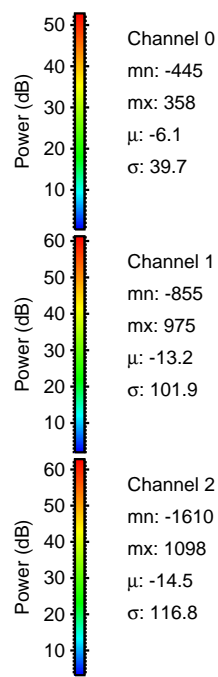
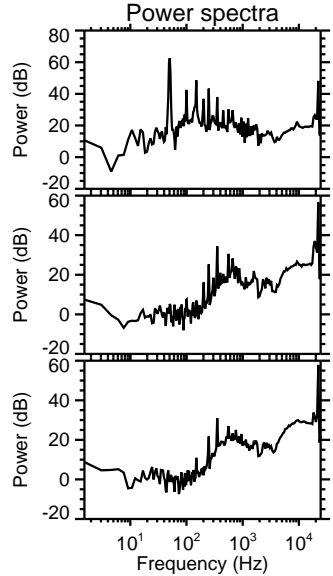
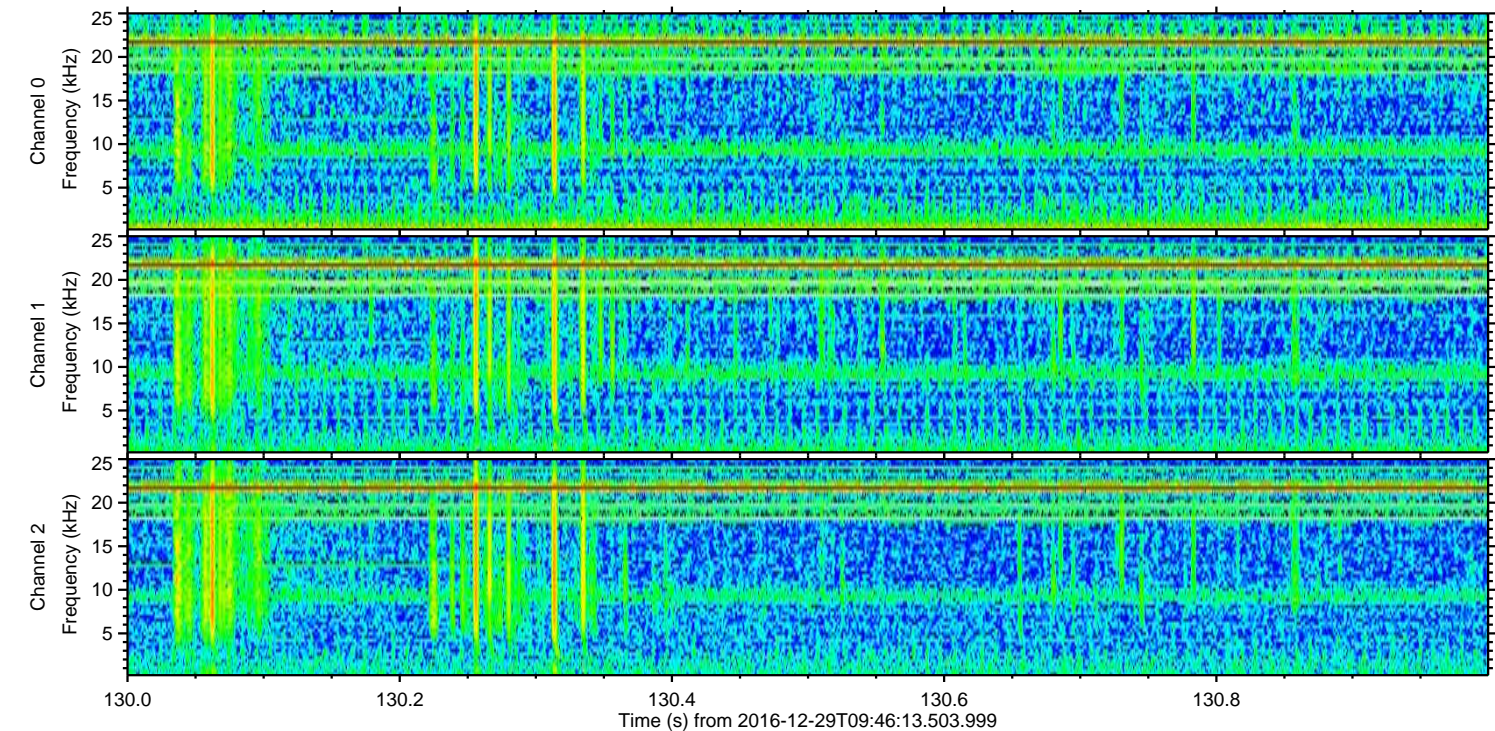
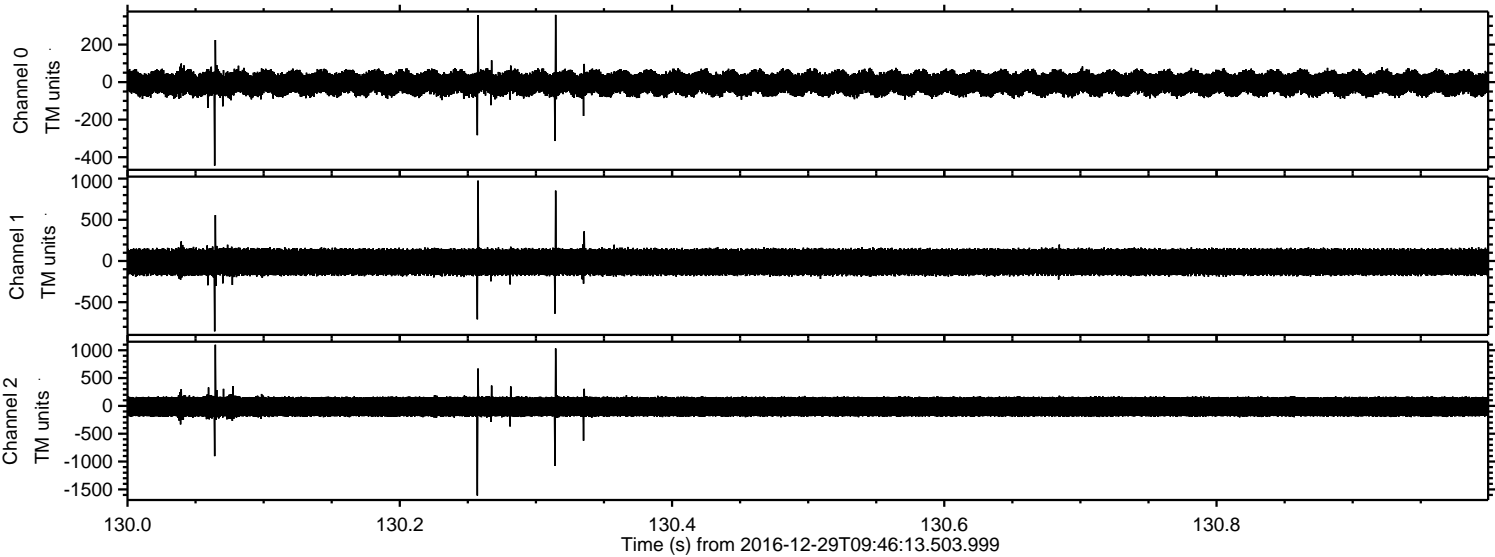
Processed Thu Dec 29 10:54:26 2016 by ELM ver.2012-10-06 from 001\_\_elm20161229\_094612\_\_dat00.bin





ELMAVAN 3D WAVEFORMS (Measured data sampled at 50 kHz) 51000 packets of 144 samples from 2016-12-29T09:46:13.503.999. Part 131/147

Processed Thu Dec 29 10:54:27 2016 by ELM ver.2012-10-06 from 001\_\_elm20161229\_094612\_\_dat00.bin



Channel 0  
mn: -445  
mx: 358  
 $\mu$ : -6.1  
 $\sigma$ : 39.7

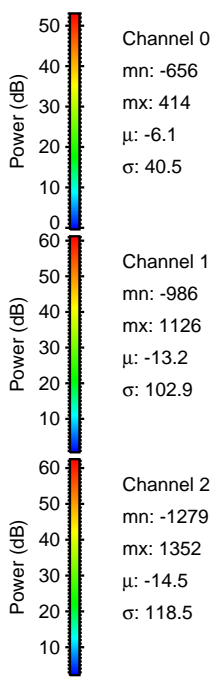
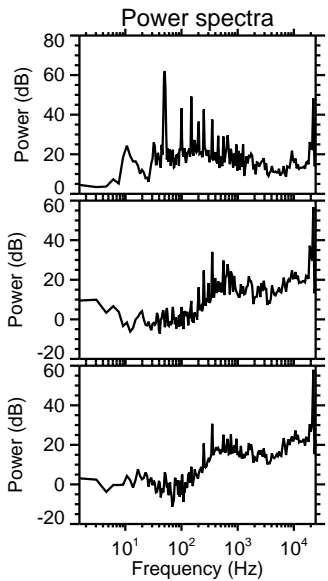
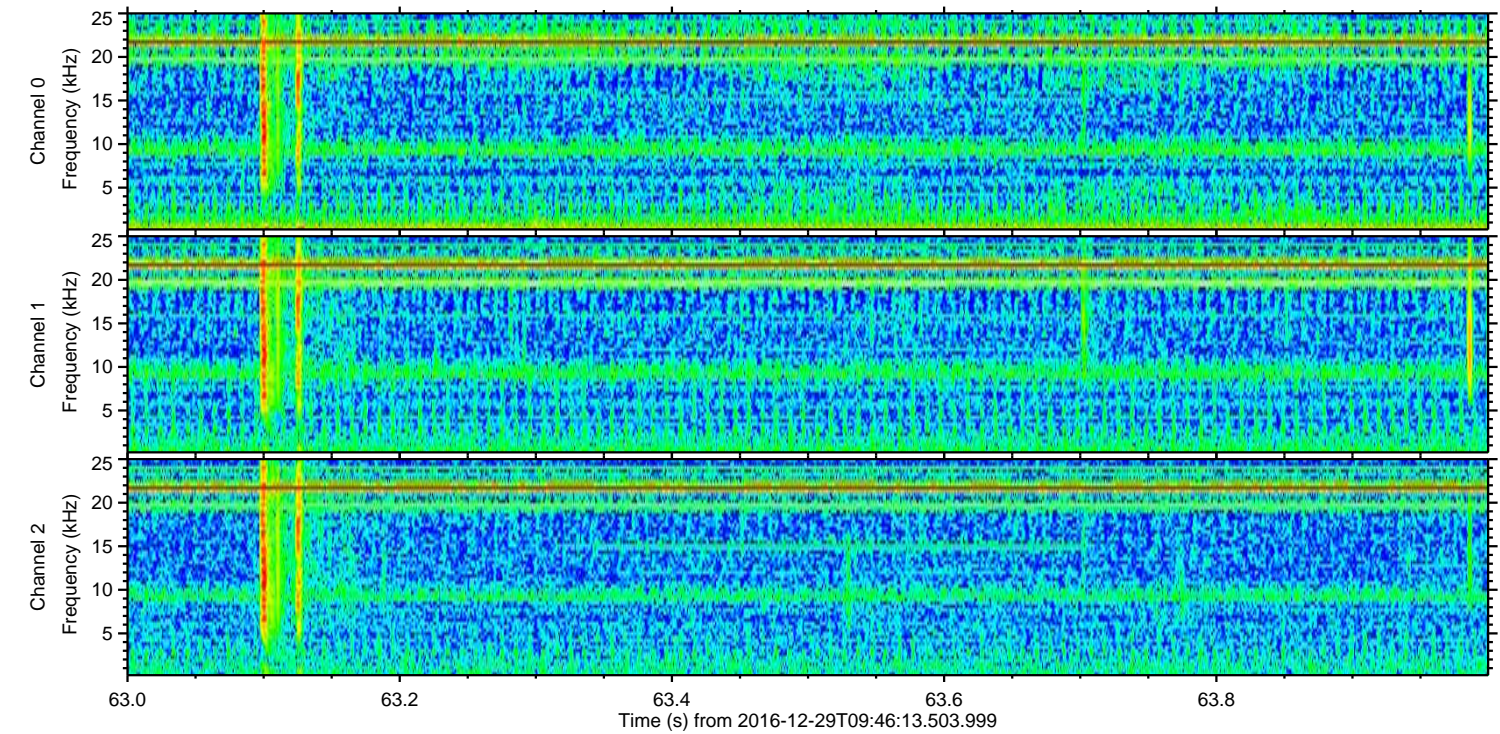
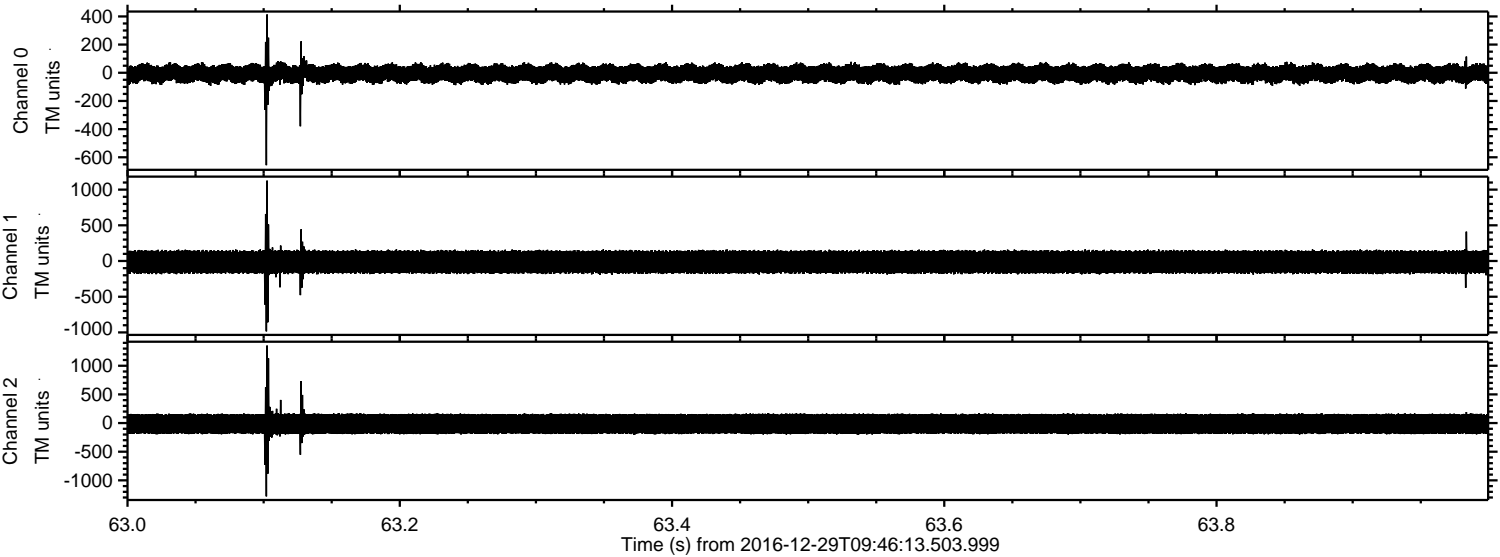
Channel 1  
mn: -855  
mx: 975  
 $\mu$ : -13.2  
 $\sigma$ : 101.9

Channel 2  
mn: -1610  
mx: 1098  
 $\mu$ : -14.5  
 $\sigma$ : 116.8



ELMAVAN 3D WAVEFORMS (Measured data sampled at 50 kHz) 51000 packets of 144 samples from 2016-12-29T09:46:13.503.999. Part 64/147

Processed Thu Dec 29 10:54:28 2016 by ELM ver.2012-10-06 from 001\_\_elm20161229\_094612\_\_dat00.bin



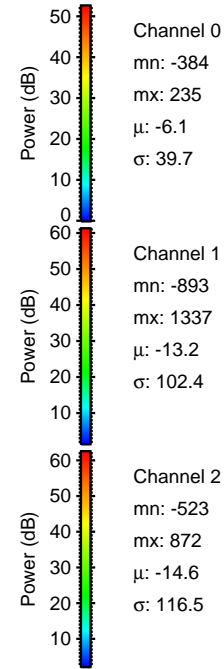
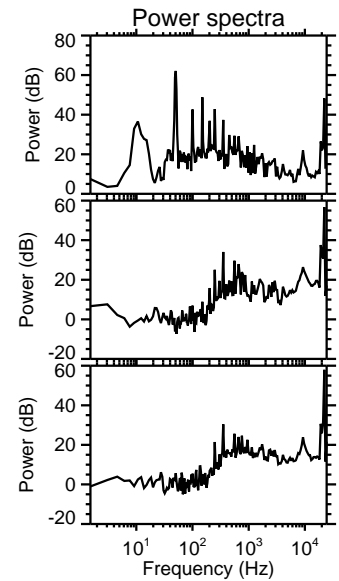
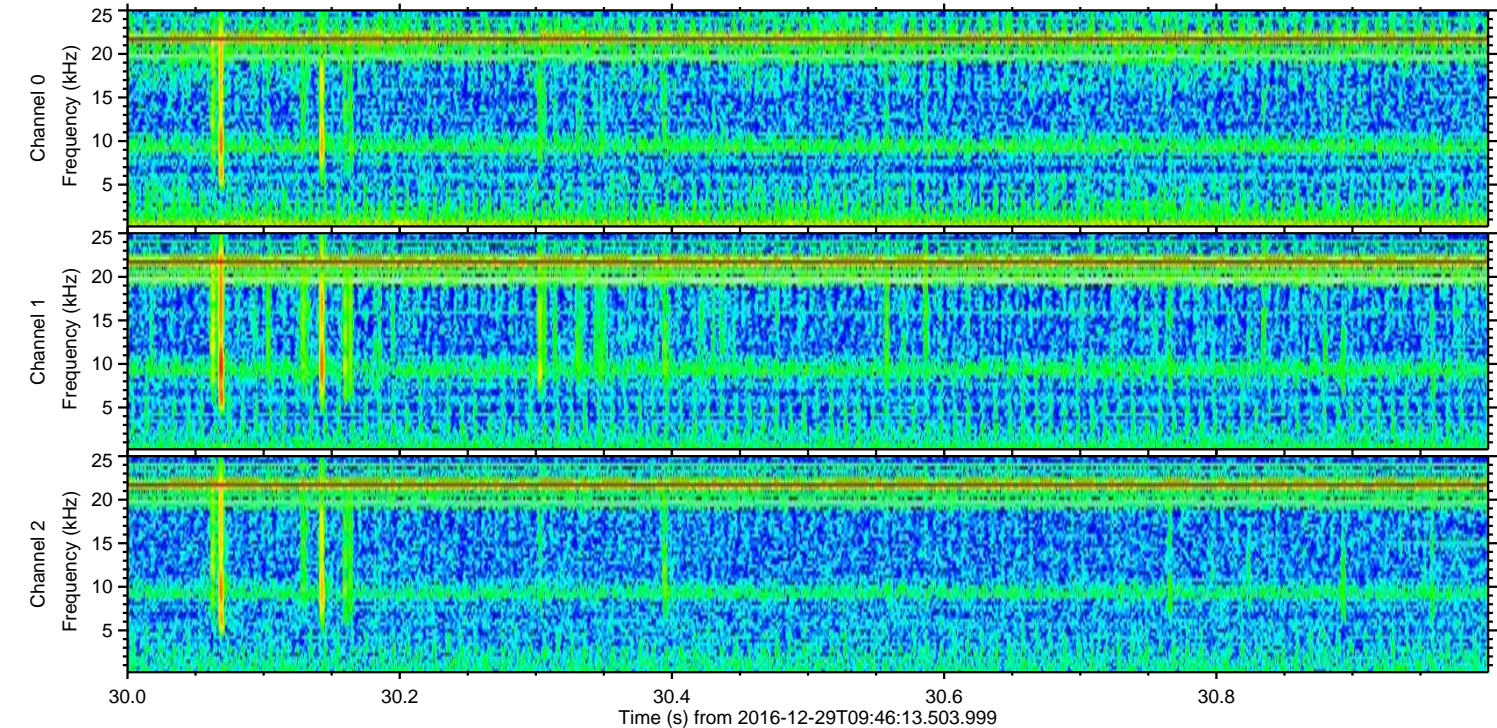
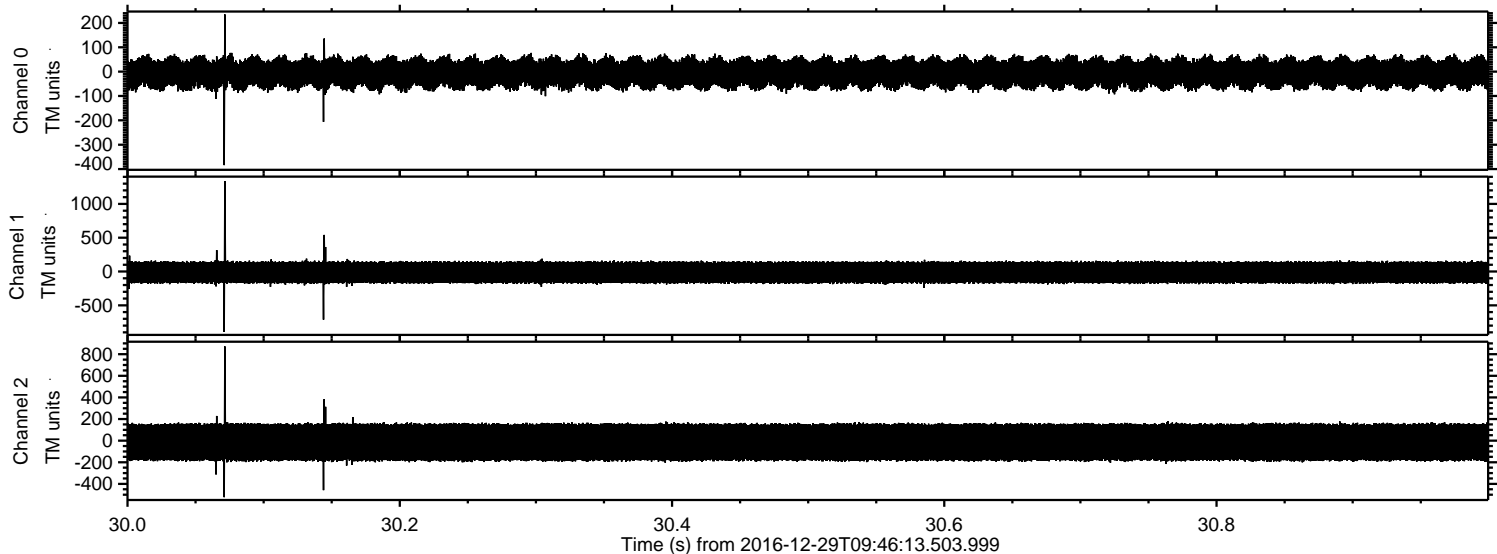
Channel 0  
mn: -656  
mx: 414  
 $\mu$ : -6.1  
 $\sigma$ : 40.5

Channel 1  
mn: -986  
mx: 1126  
 $\mu$ : -13.2  
 $\sigma$ : 102.9

Channel 2  
mn: -1279  
mx: 1352  
 $\mu$ : -14.5  
 $\sigma$ : 118.5



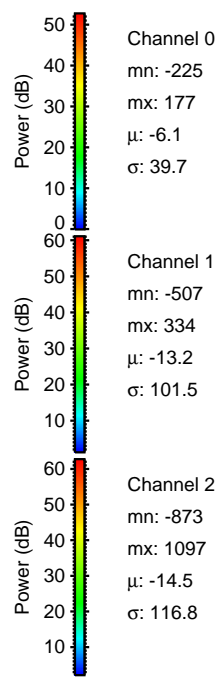
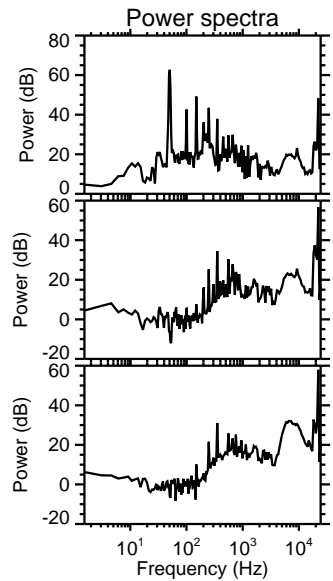
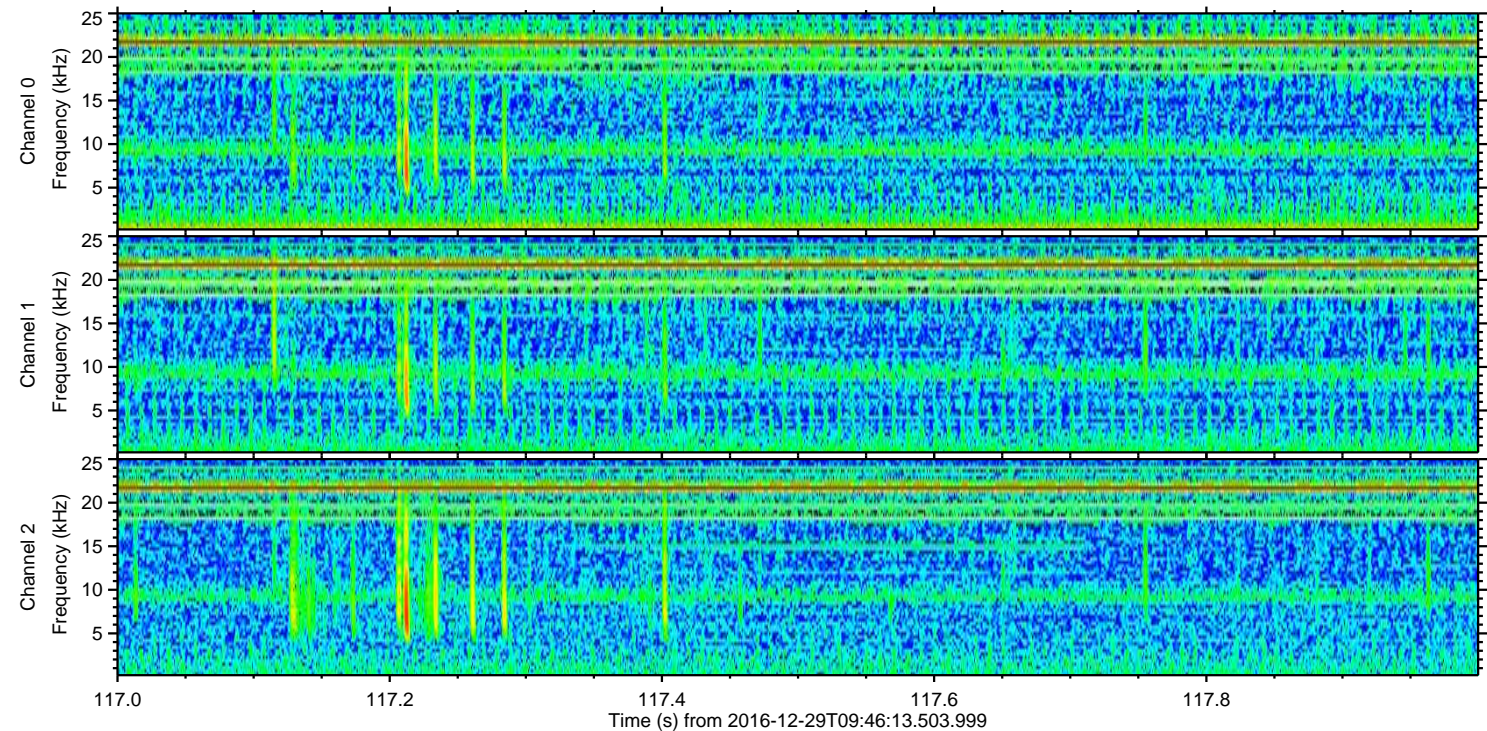
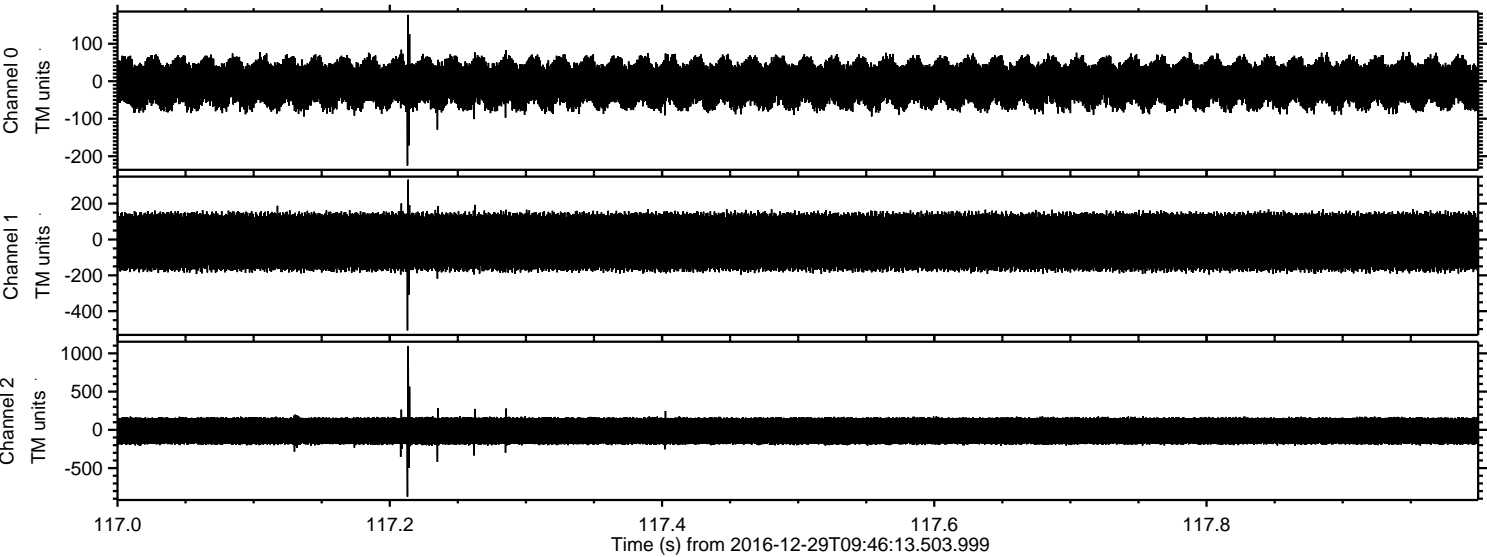
Processed Thu Dec 29 10:54:29 2016 by ELM ver.2012-10-06 from 001\_\_elm20161229\_094612\_\_dat00.bin





ELMAVAN 3D WAVEFORMS (Measured data sampled at 50 kHz) 51000 packets of 144 samples from 2016-12-29T09:46:13.503.999. Part 118/147

Processed Thu Dec 29 10:54:30 2016 by ELM ver.2012-10-06 from 001\_\_elm20161229\_094612\_\_dat00.bin



Channel 0  
mn: -225  
mx: 177  
 $\mu$ : -6.1  
 $\sigma$ : 39.7

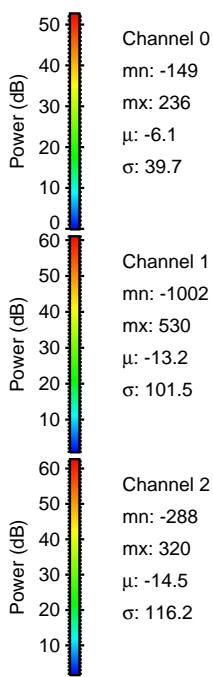
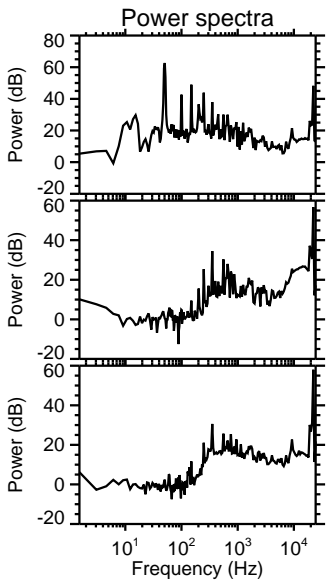
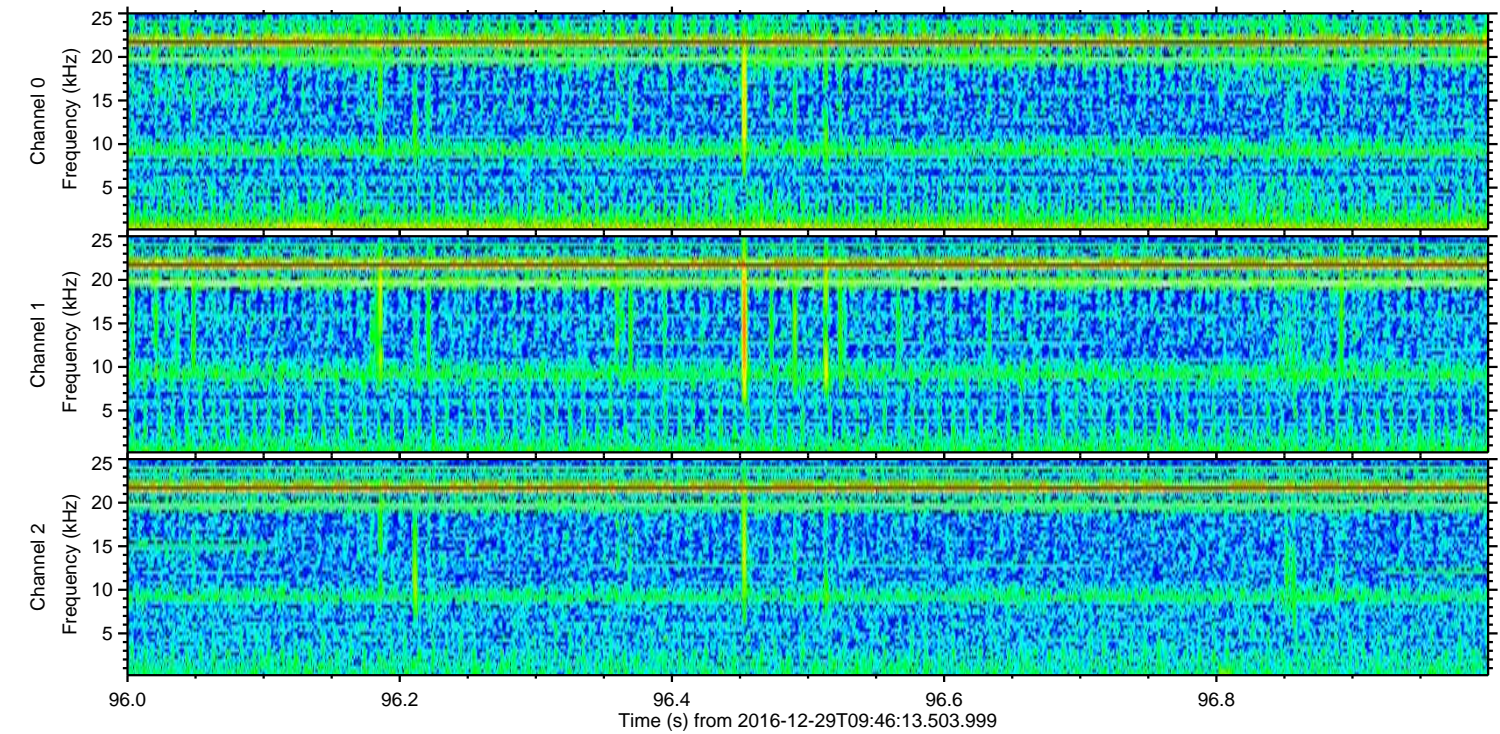
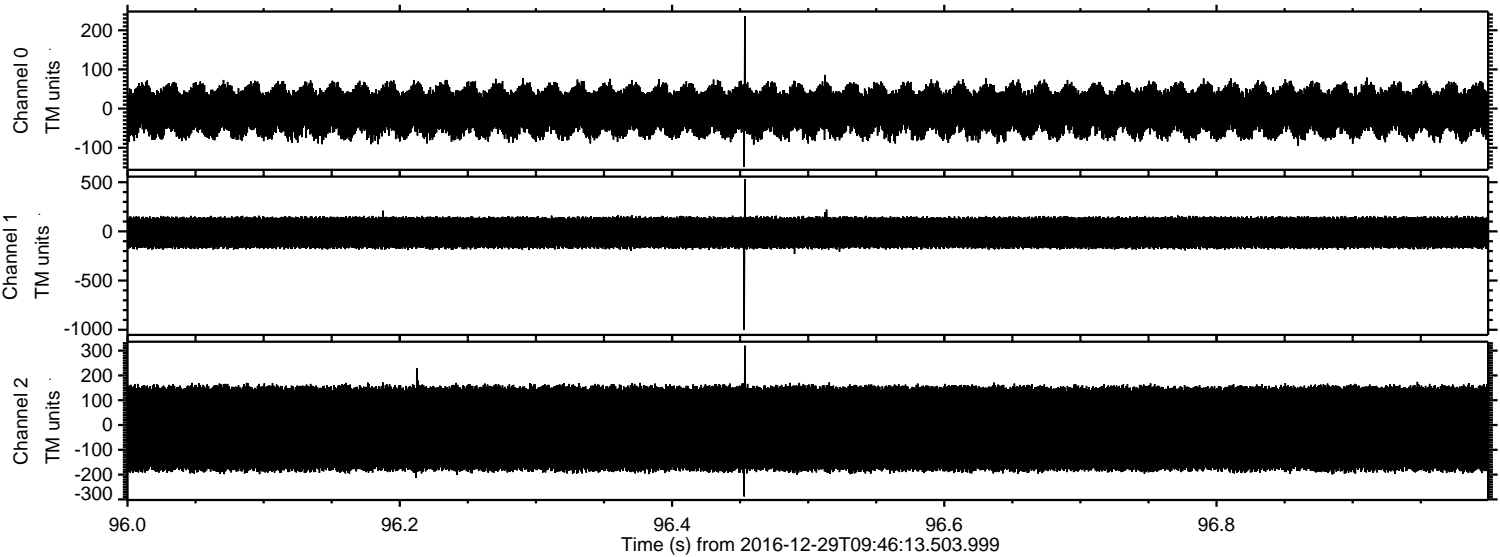
Channel 1  
mn: -507  
mx: 334  
 $\mu$ : -13.2  
 $\sigma$ : 101.5

Channel 2  
mn: -873  
mx: 1097  
 $\mu$ : -14.5  
 $\sigma$ : 116.8



ELMAVAN 3D WAVEFORMS (Measured data sampled at 50 kHz) 51000 packets of 144 samples from 2016-12-29T09:46:13.503.999. Part 97/147

Processed Thu Dec 29 10:54:31 2016 by ELM ver.2012-10-06 from 001\_\_elm20161229\_094612\_\_dat00.bin



Channel 0  
mn: -149  
mx: 236  
 $\mu$ : -6.1  
 $\sigma$ : 39.7

Channel 1  
mn: -1002  
mx: 530  
 $\mu$ : -13.2  
 $\sigma$ : 101.5

Channel 2  
mn: -288  
mx: 320  
 $\mu$ : -14.5  
 $\sigma$ : 116.2



ELMAVAN 3D WAVEFORMS (Measured data sampled at 50 kHz) 51000 packets of 144 samples from 2016-12-29T09:46:13.503.999. Part 70/147

Processed Thu Dec 29 10:54:32 2016 by ELM ver.2012-10-06 from 001\_\_elm20161229\_094612\_\_dat00.bin

