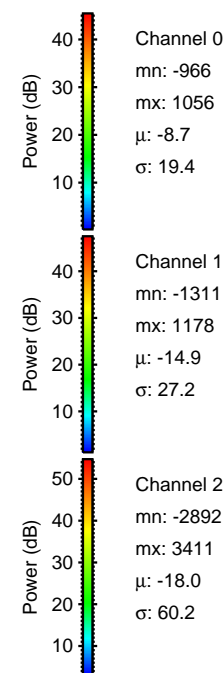
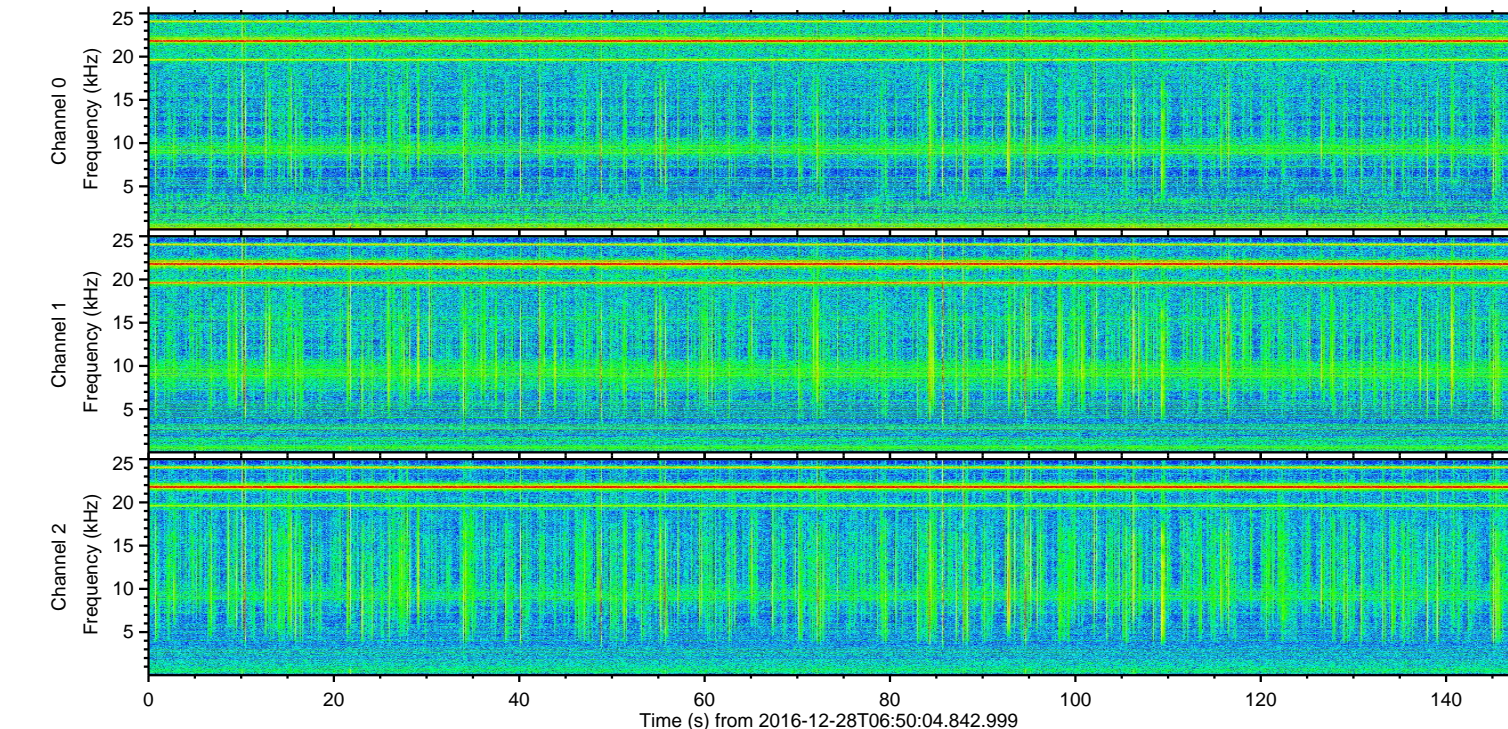
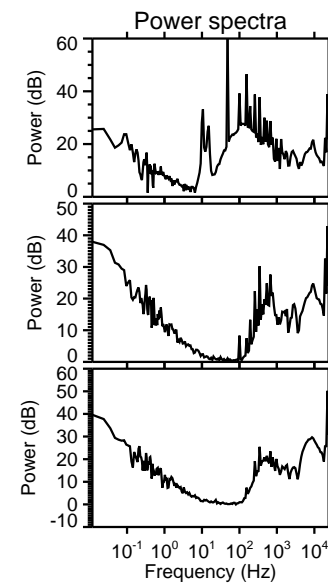
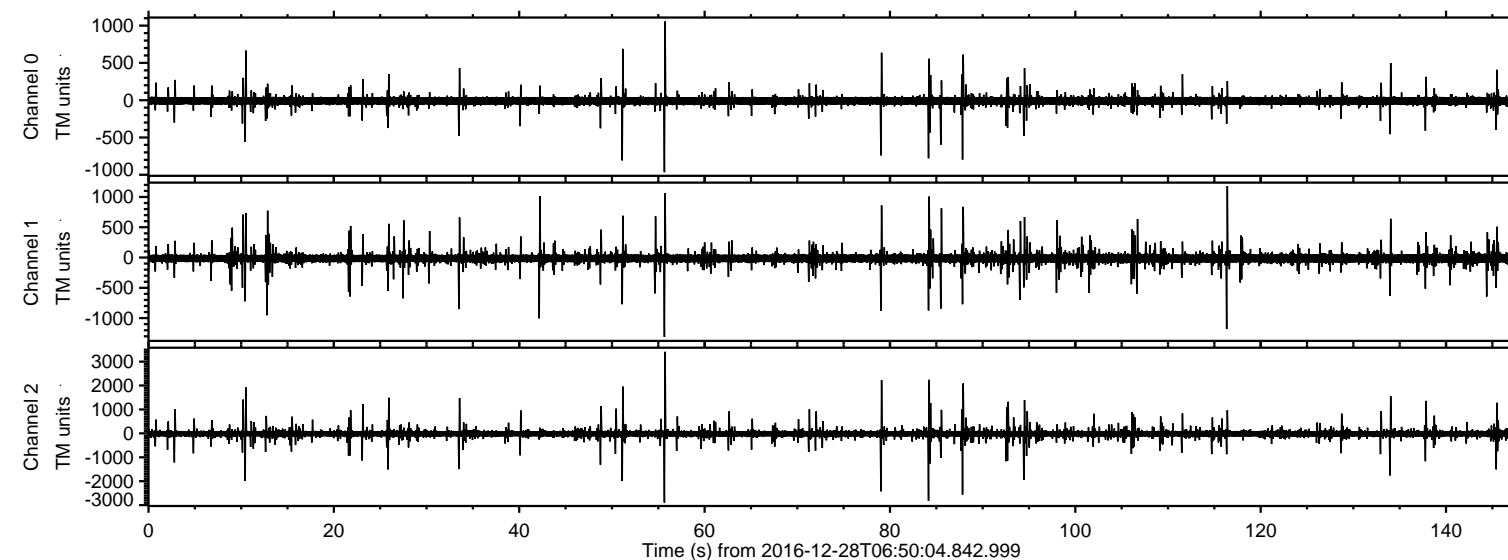
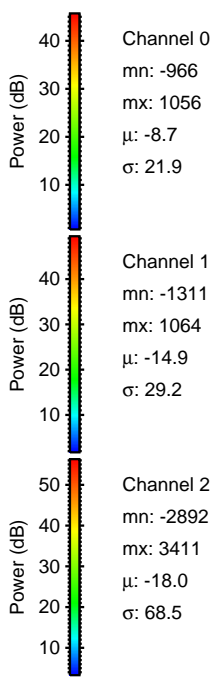
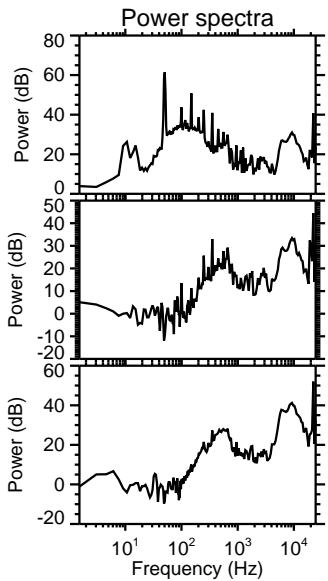
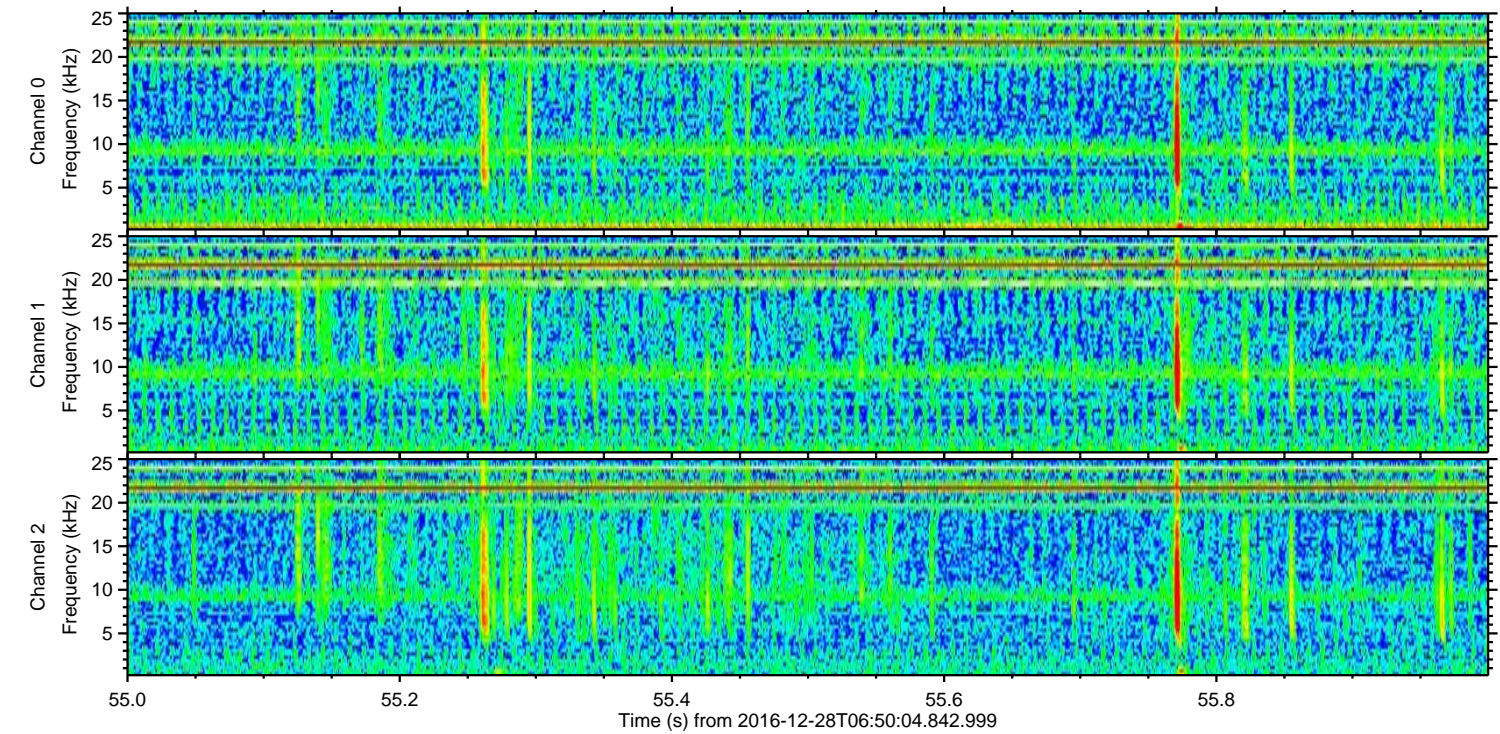
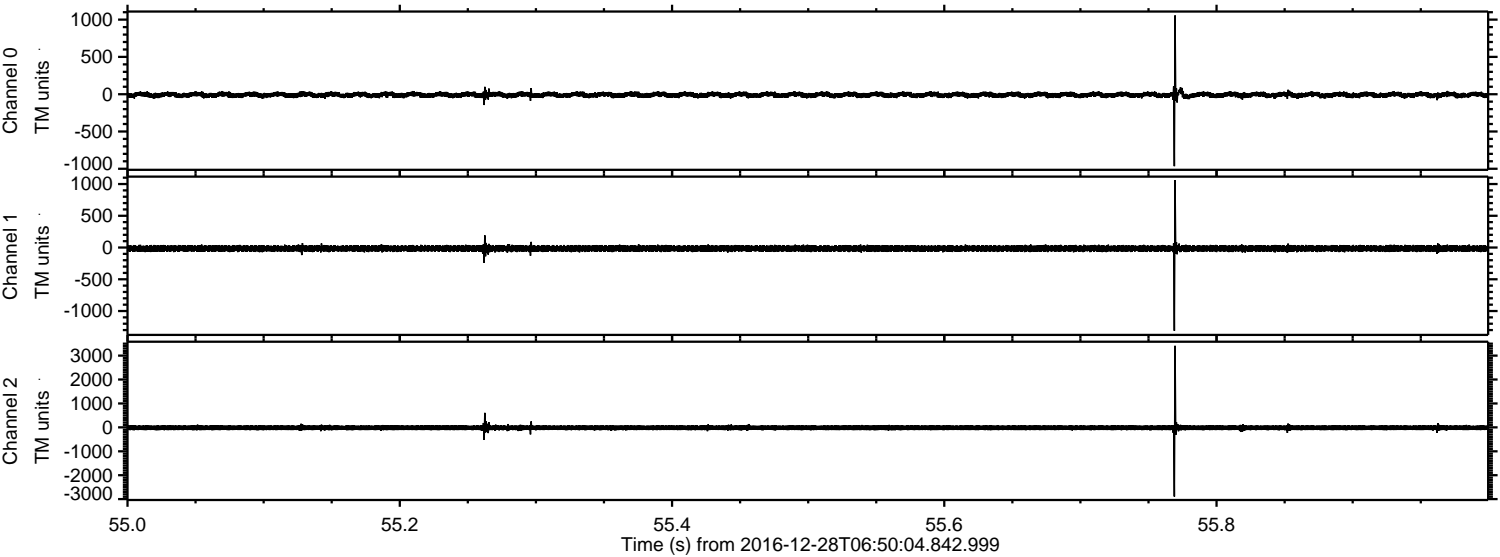


ELMAVAN 3D WAVEFORMS (Measured data sampled at 50 kHz) 51000 packets of 144 samples from 2016-12-28T06:50:04.842.999.

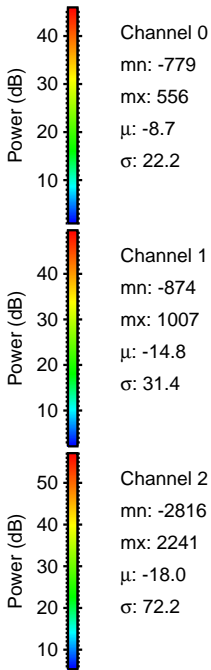
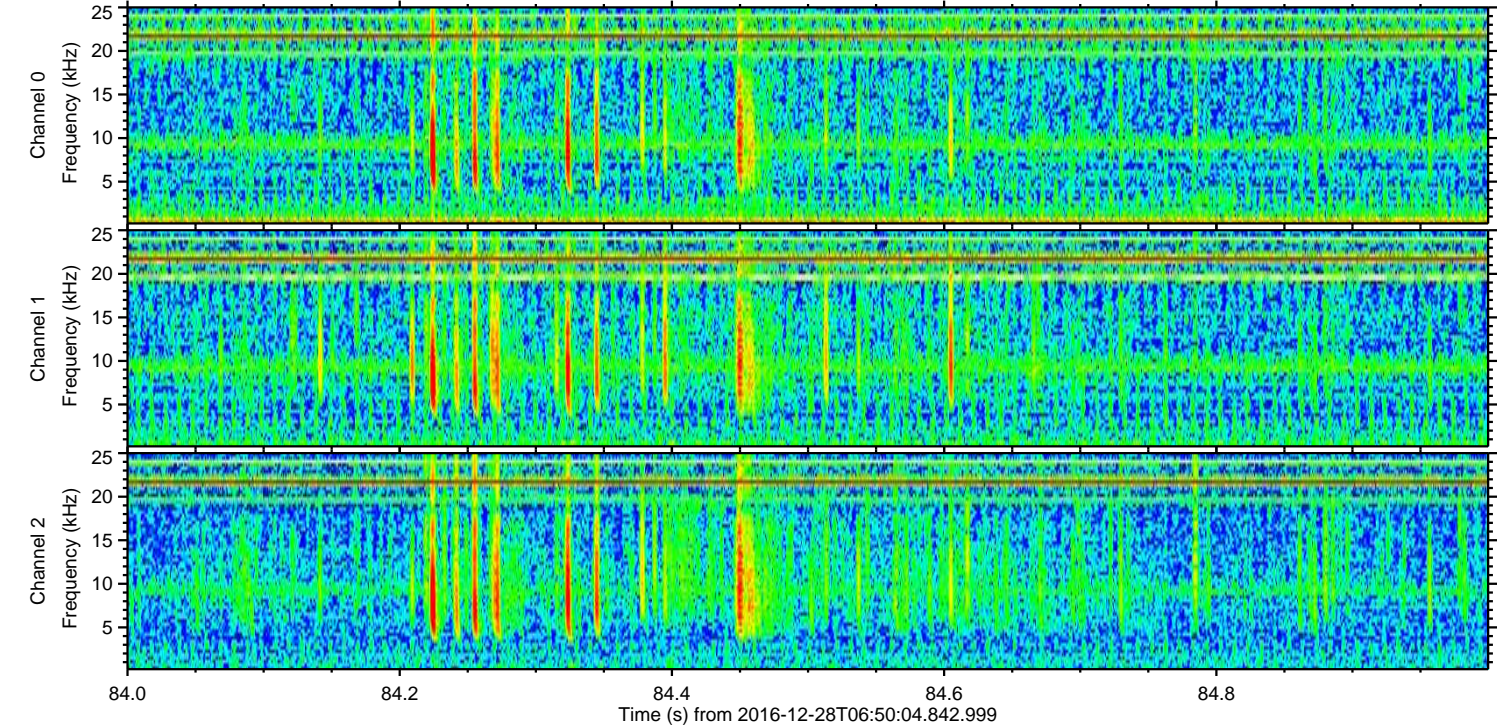
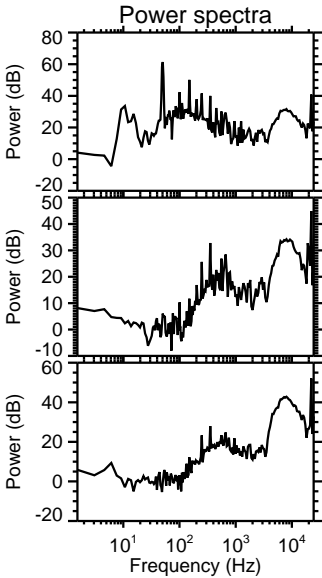
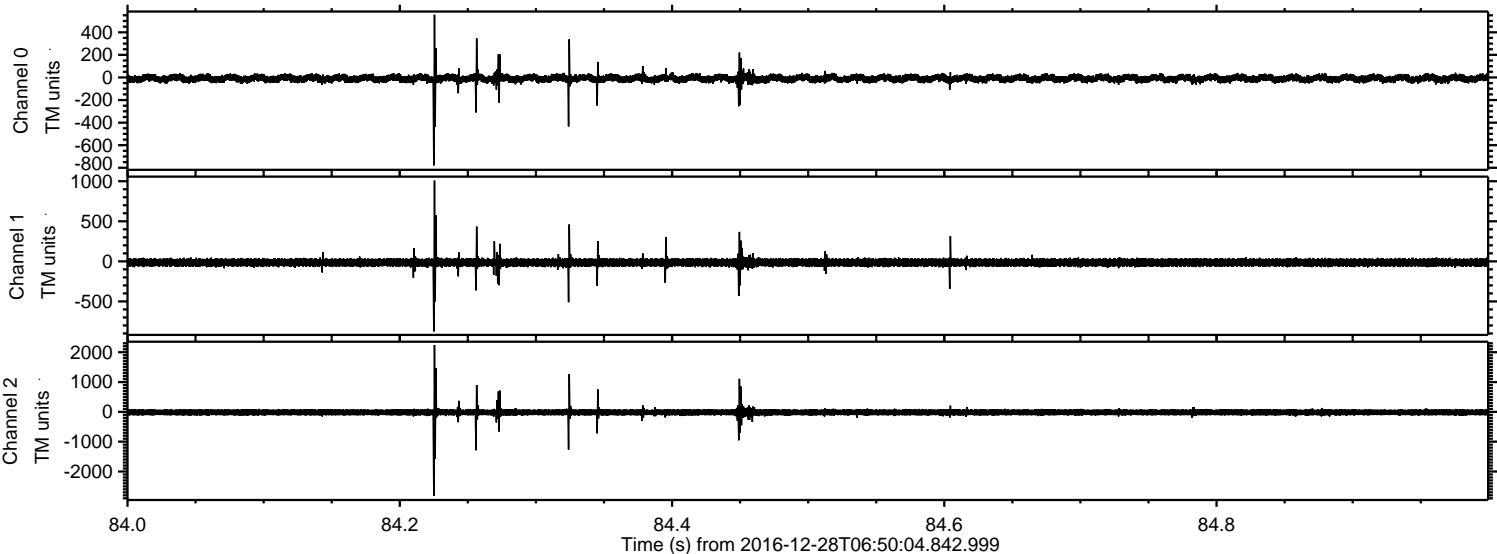
Processed Wed Dec 28 07:58:19 2016 by ELM ver.2012-10-06 from 001__elm20161228_065003__dat00.bin



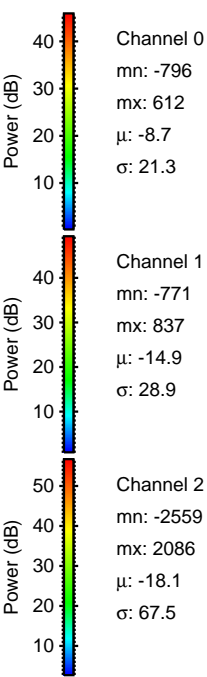
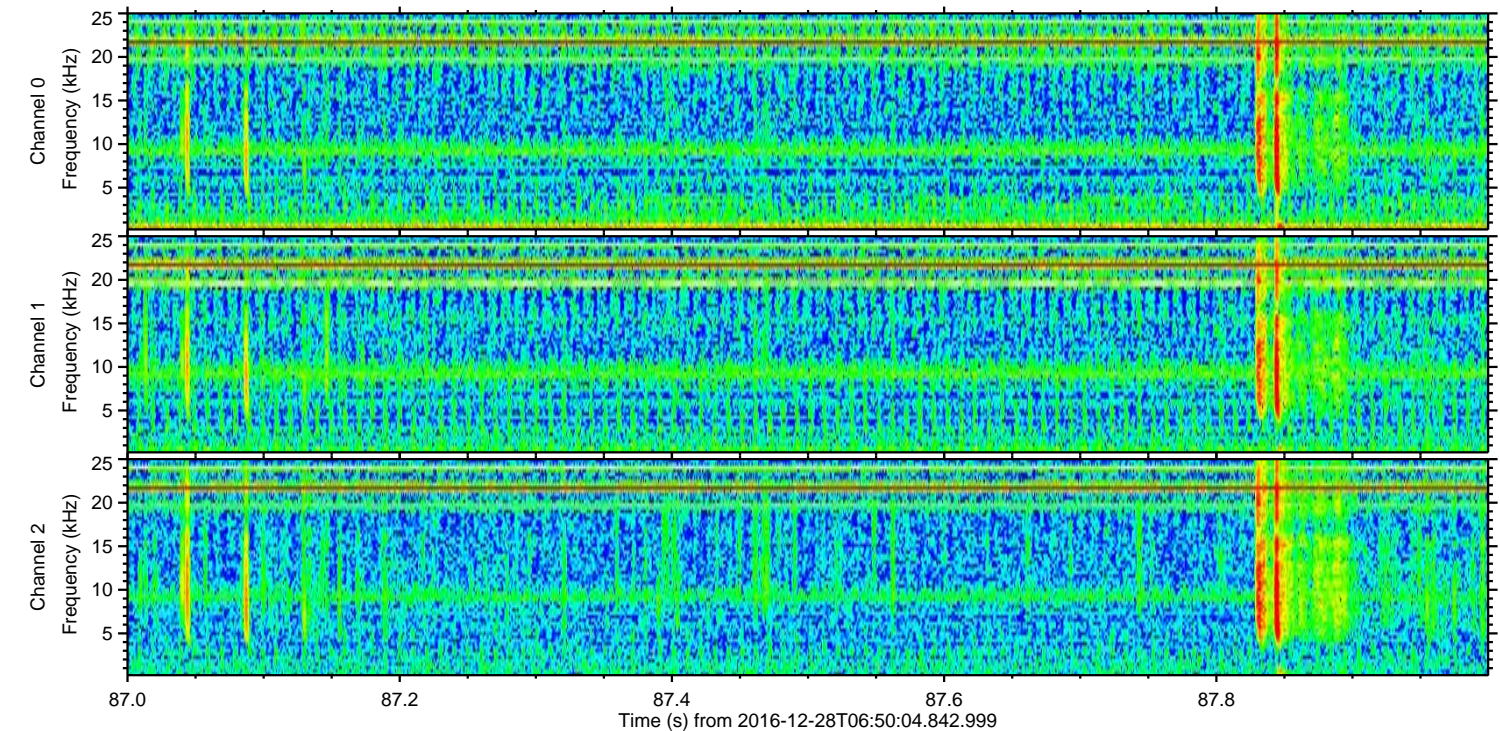
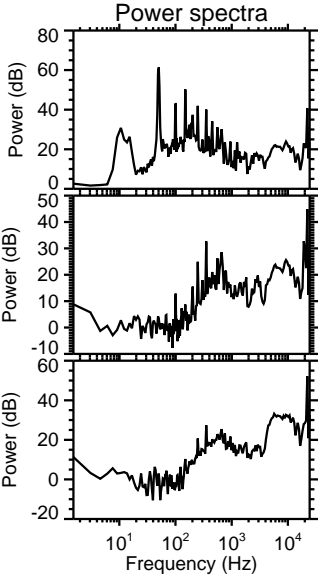
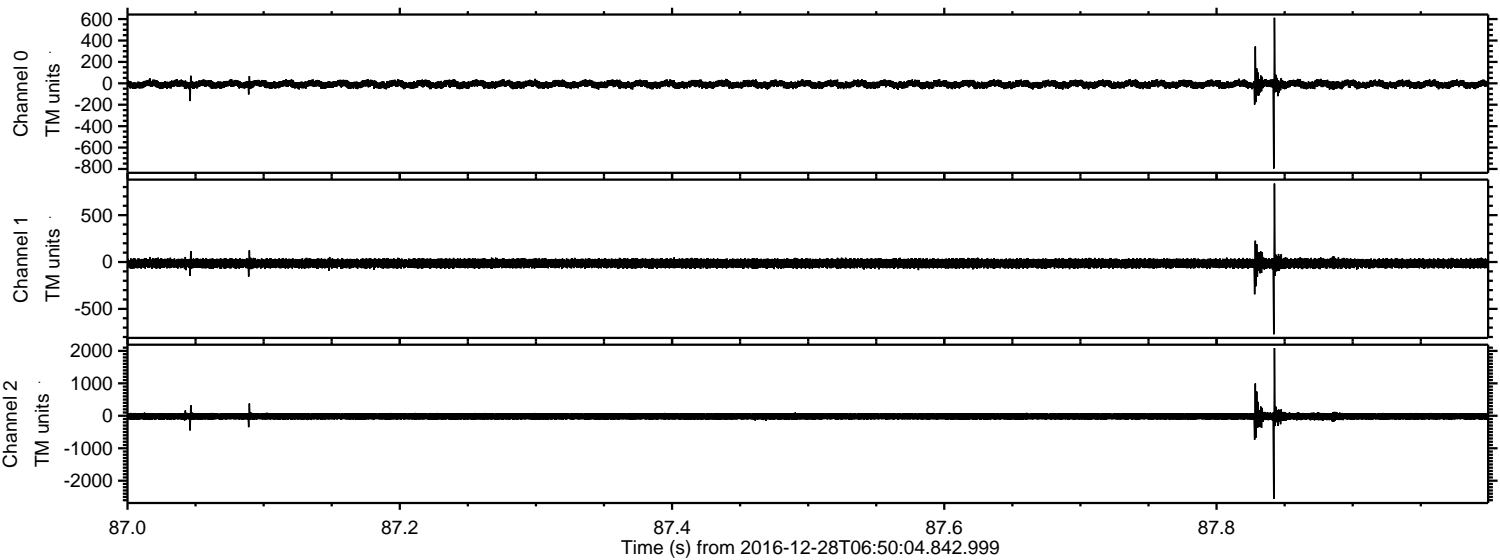
Processed Wed Dec 28 07:58:31 2016 by ELM ver.2012-10-06 from 001__elm20161228_065003__dat00.bin



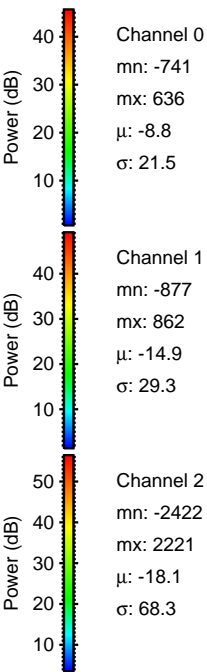
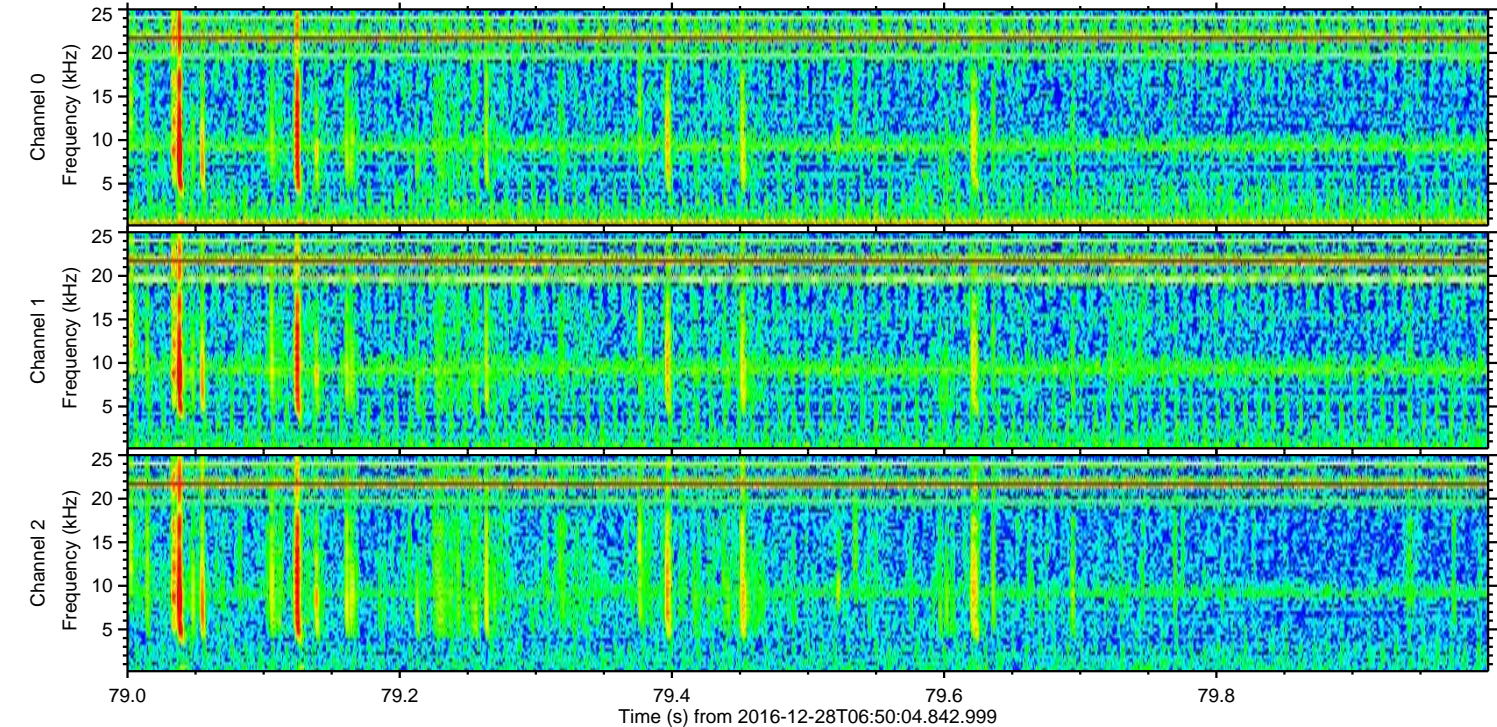
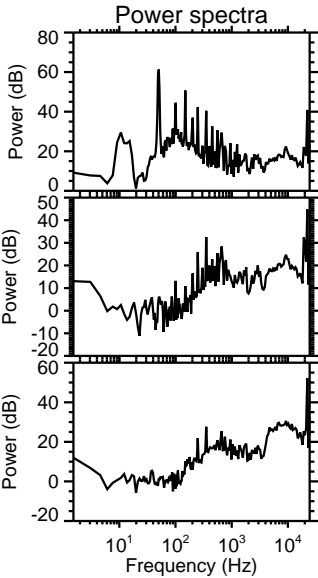
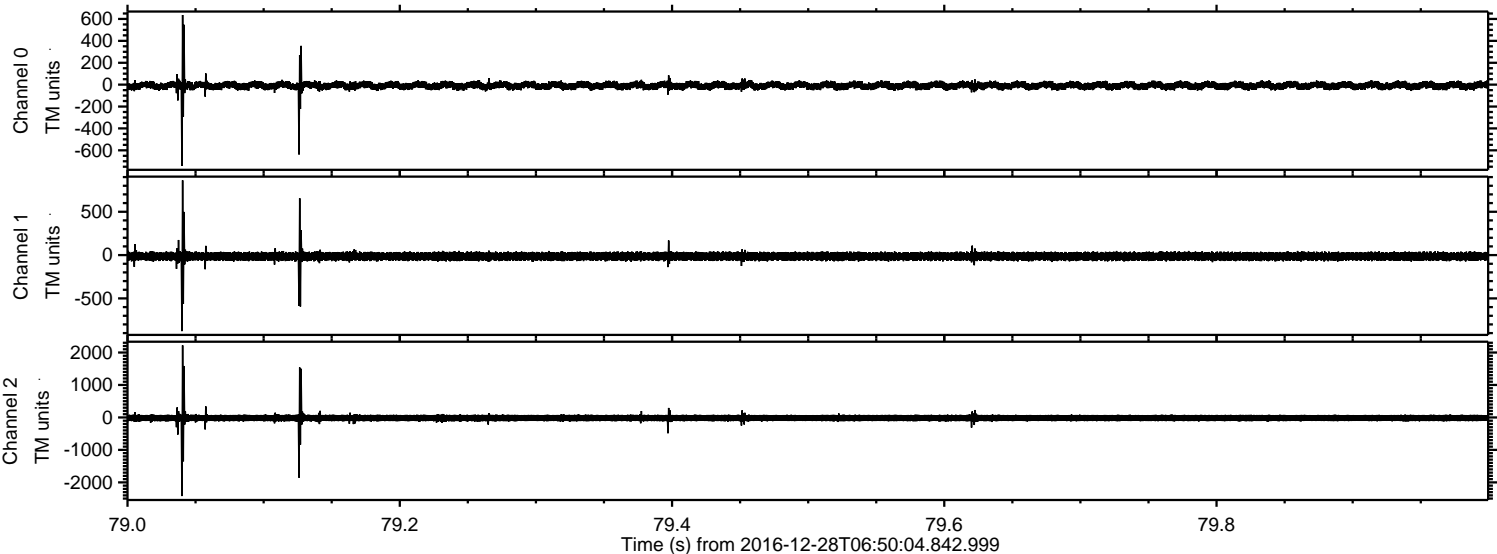
Processed Wed Dec 28 07:58:32 2016 by ELM ver.2012-10-06 from 001__elm20161228_065003__dat00.bin



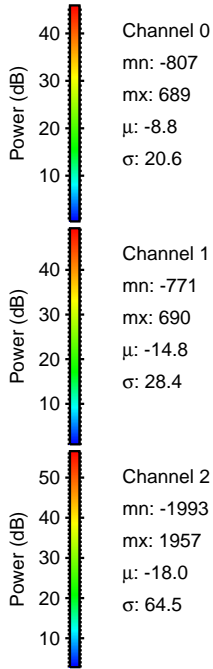
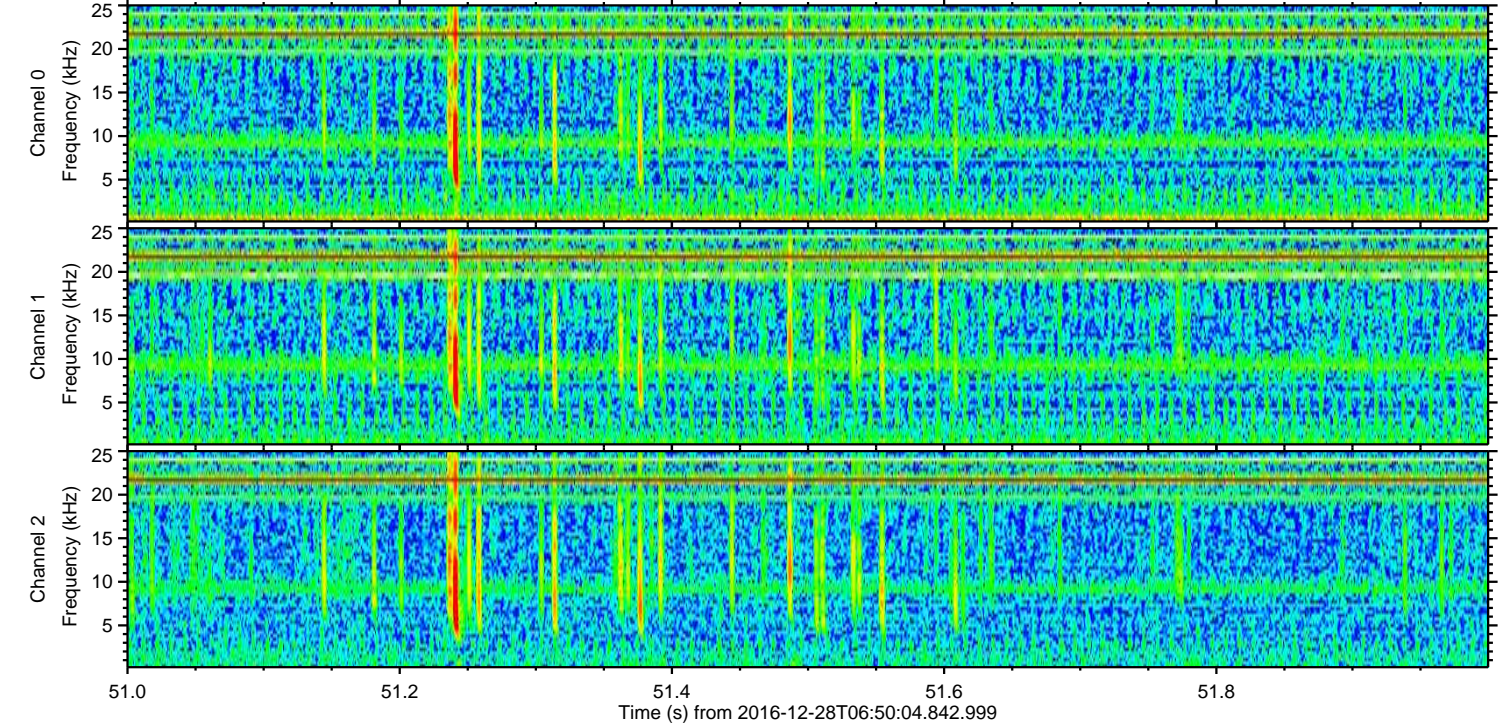
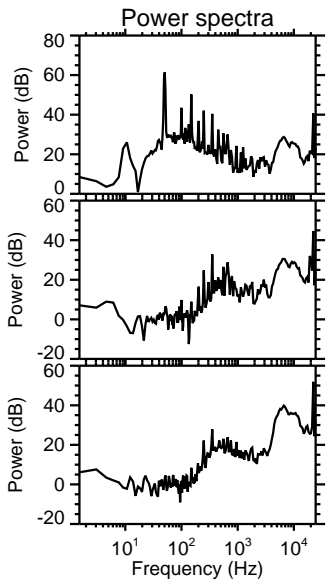
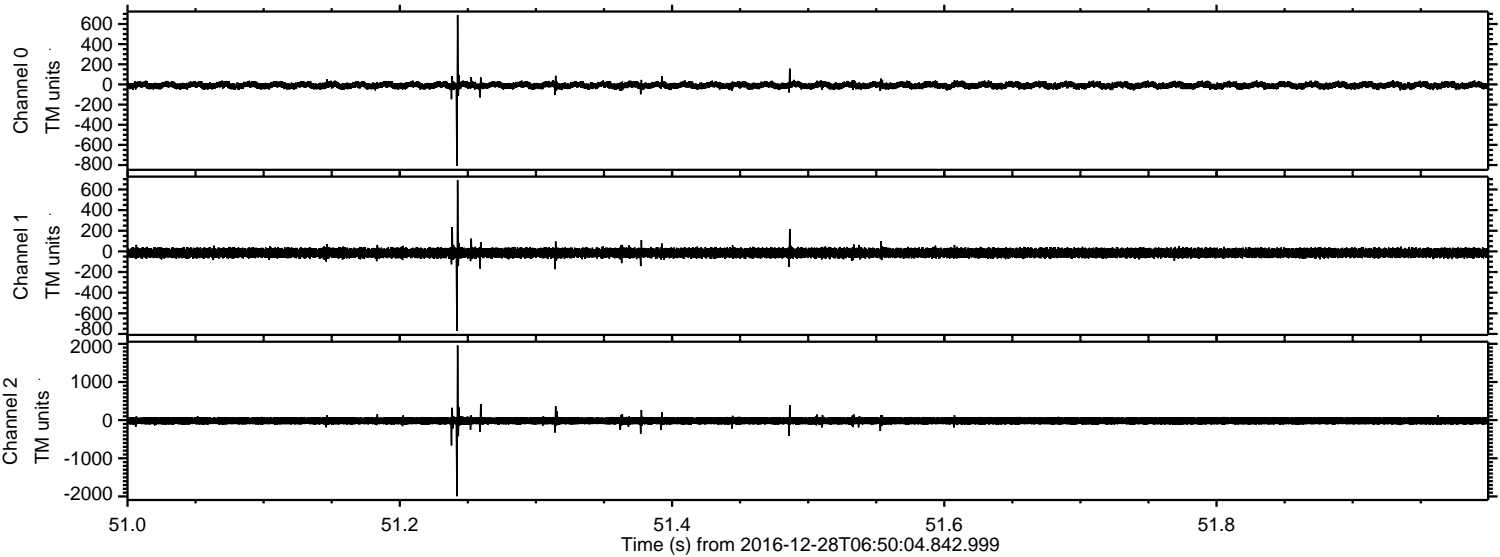
Processed Wed Dec 28 07:58:33 2016 by ELM ver.2012-10-06 from 001__elm20161228_065003__dat00.bin



Processed Wed Dec 28 07:58:34 2016 by ELM ver.2012-10-06 from 001__elm20161228_065003__dat00.bin

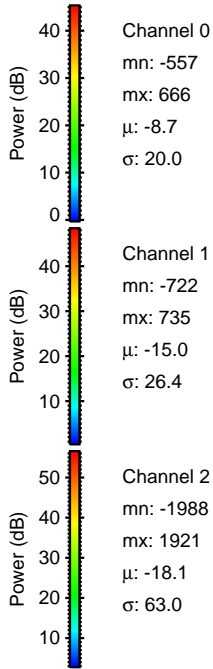
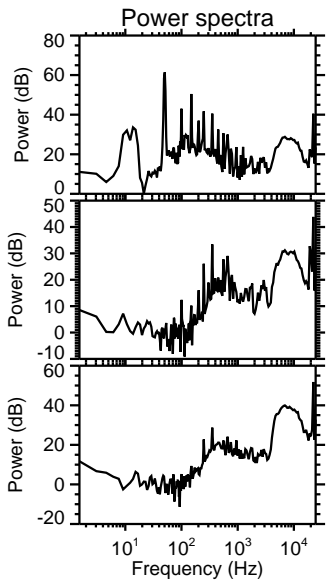
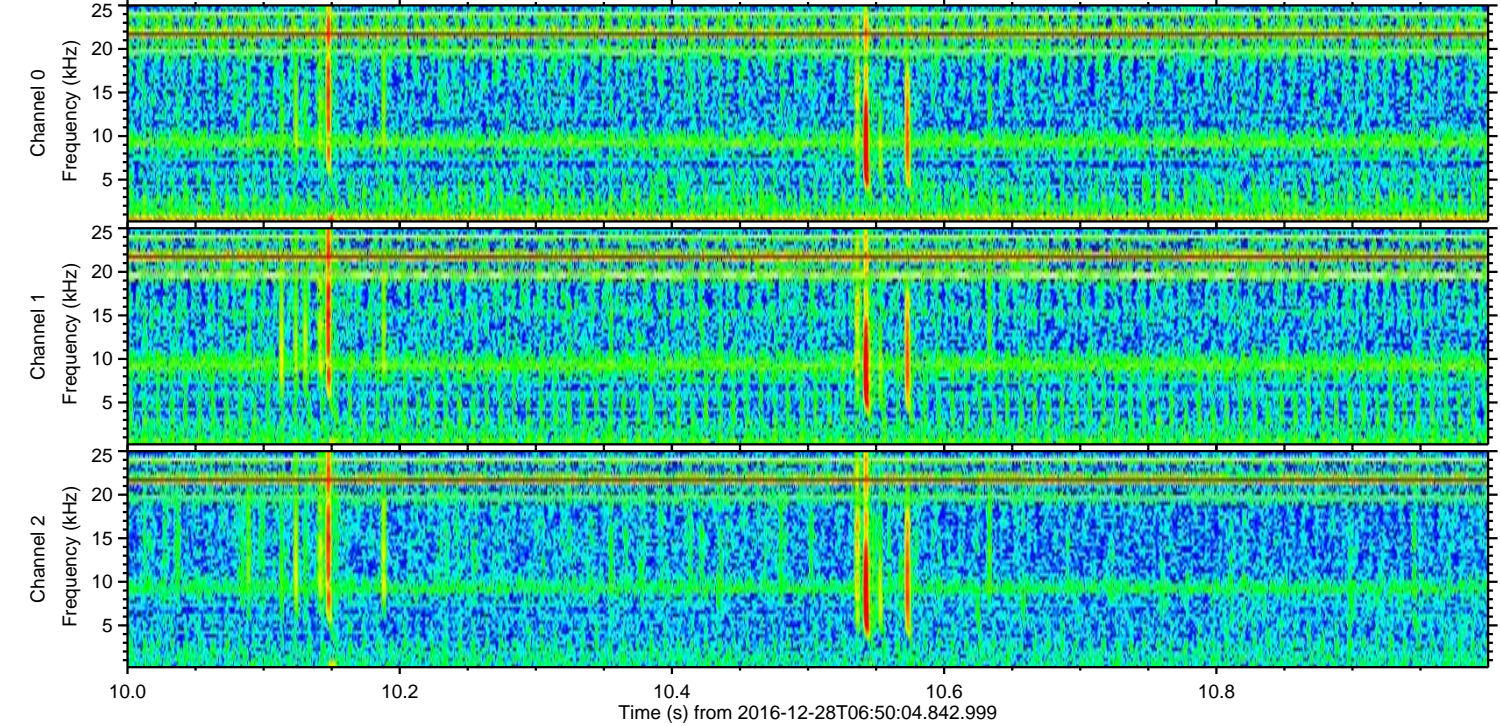
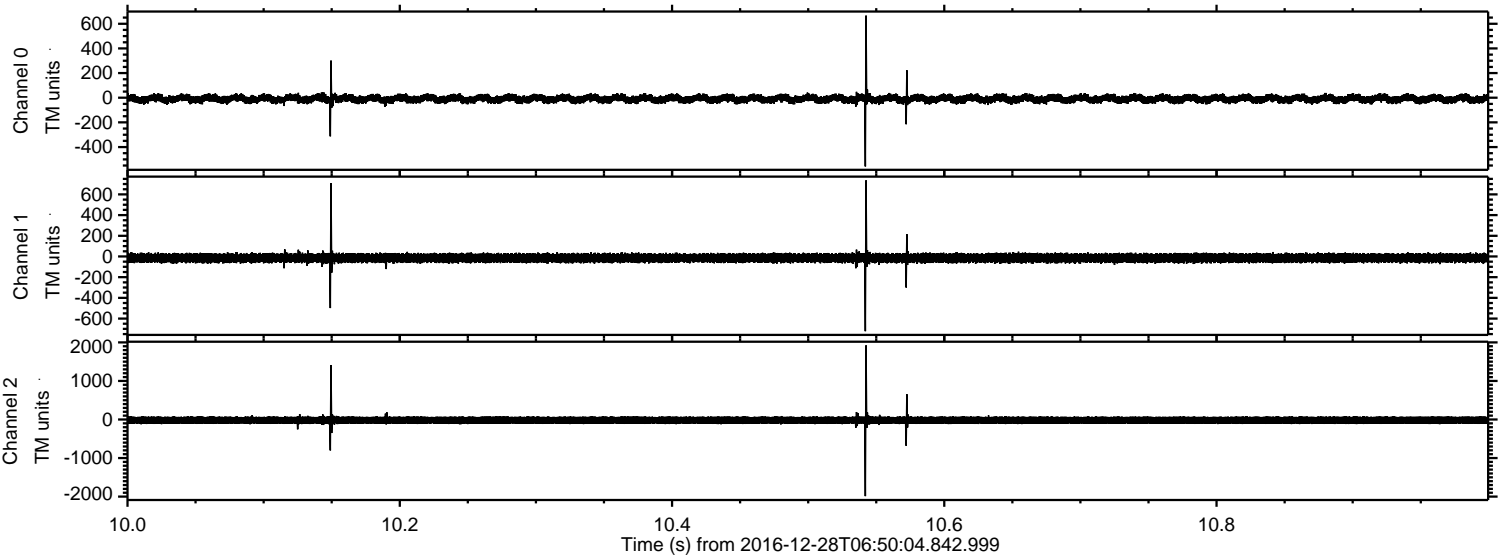


Processed Wed Dec 28 07:58:35 2016 by ELM ver.2012-10-06 from 001__elm20161228_065003__dat00.bin

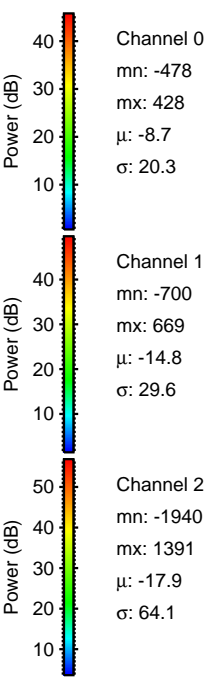
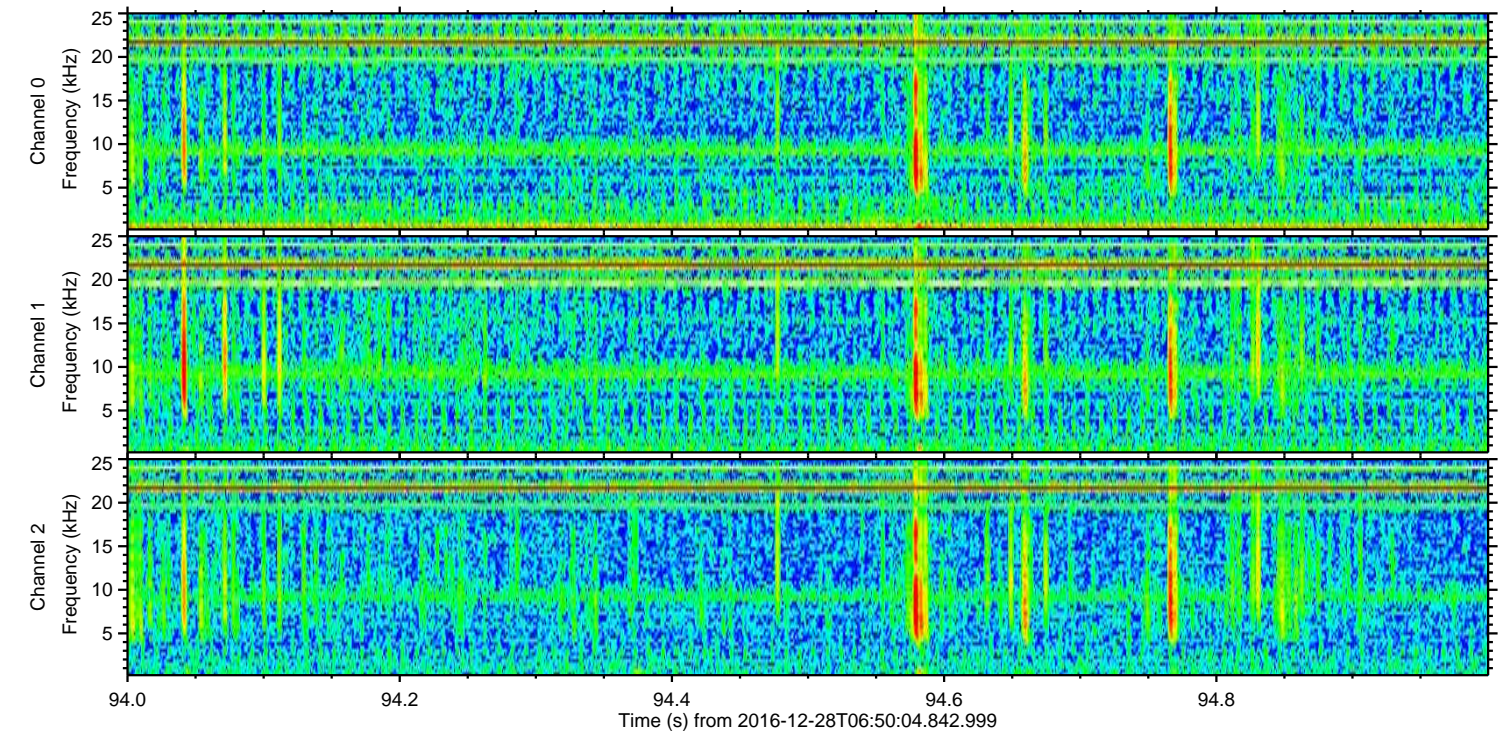
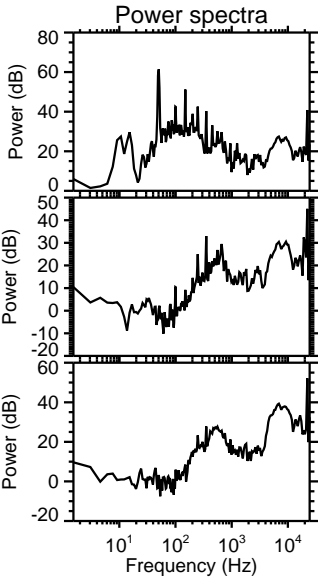
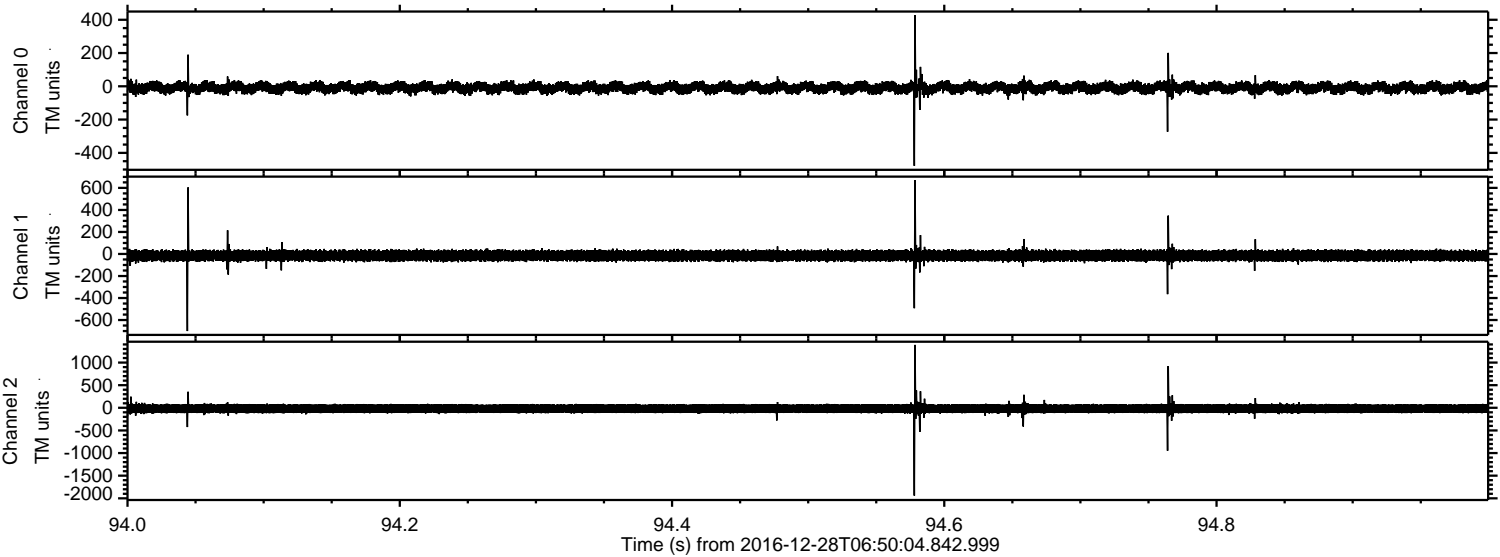


ELMAVAN 3D WAVEFORMS (Measured data sampled at 50 kHz) 51000 packets of 144 samples from 2016-12-28T06:50:04.842.999. Part 11/147

Processed Wed Dec 28 07:58:35 2016 by ELM ver.2012-10-06 from 001__elm20161228_065003__dat00.bin



Processed Wed Dec 28 07:58:36 2016 by ELM ver.2012-10-06 from 001__elm20161228_065003__dat00.bin



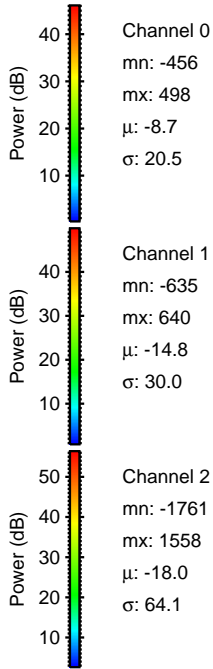
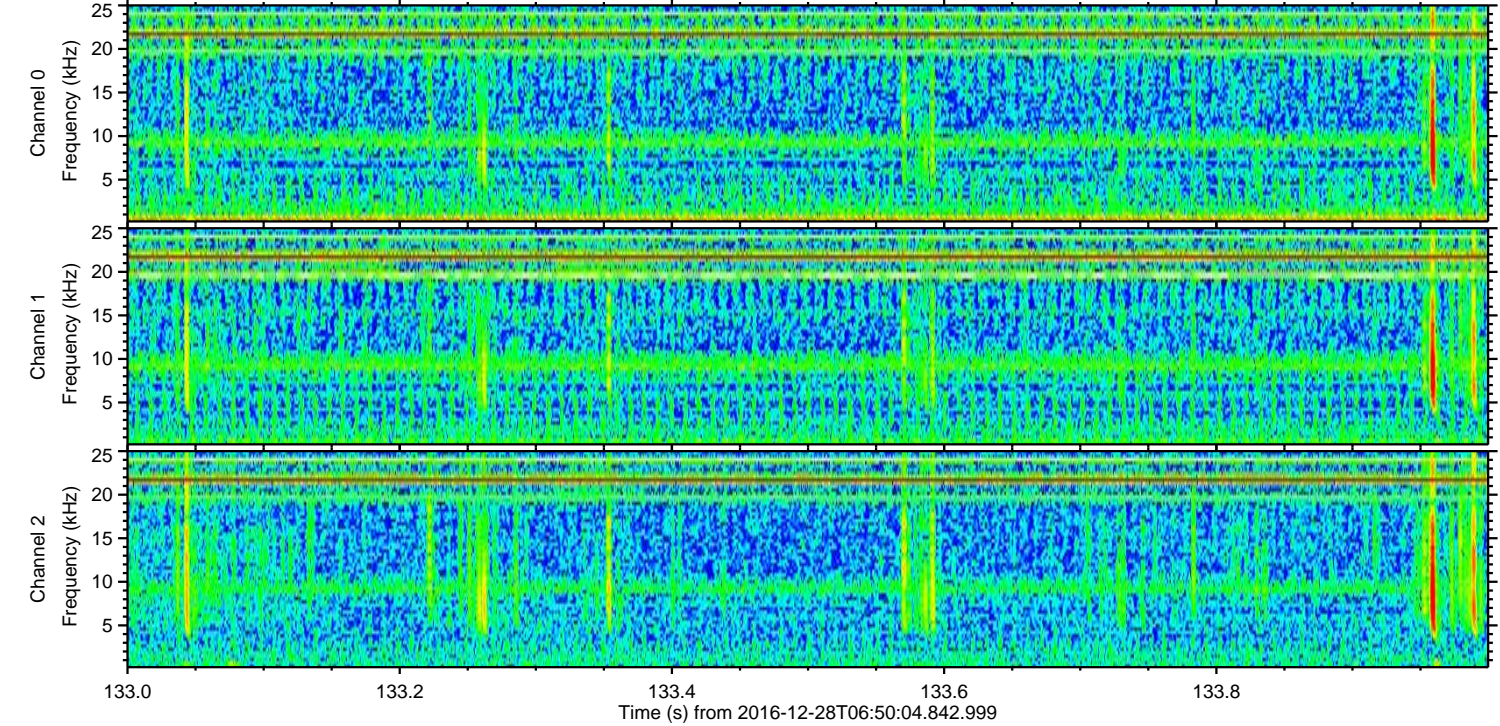
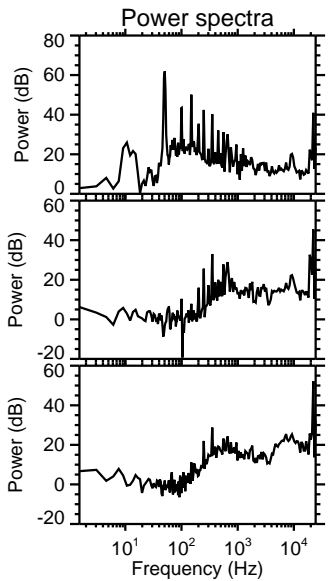
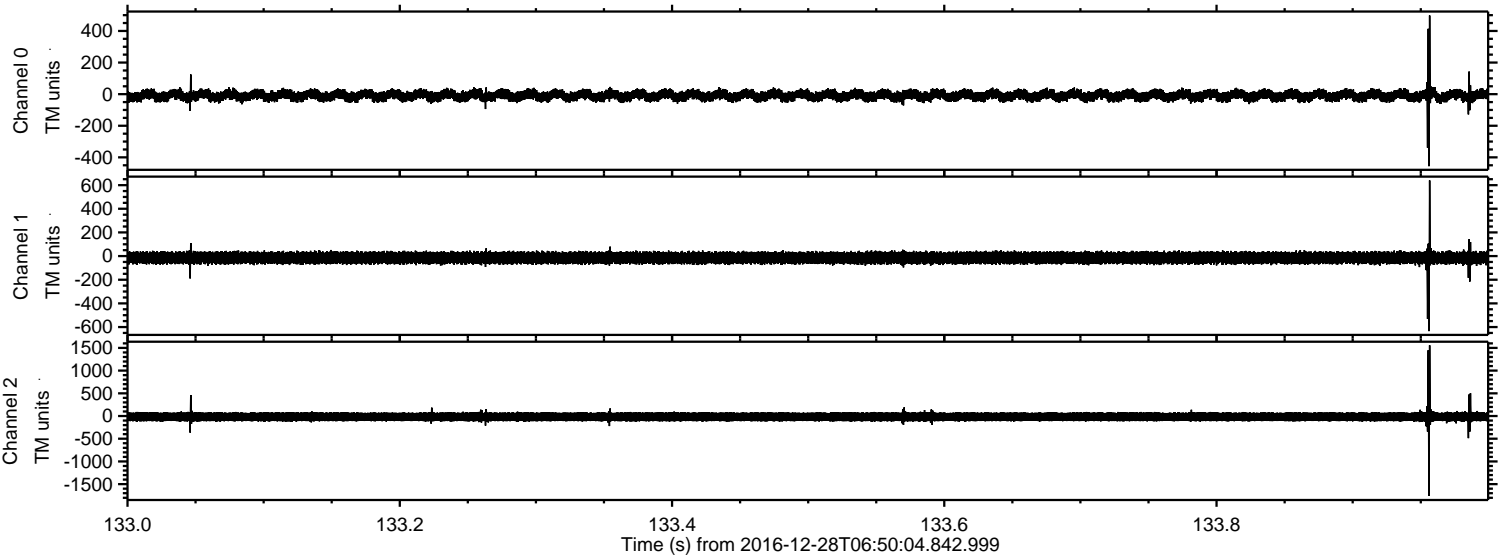
Channel 0
mn: -478
mx: 428
 μ : -8.7
 σ : 20.3

Channel 1
mn: -700
mx: 669
 μ : -14.8
 σ : 29.6

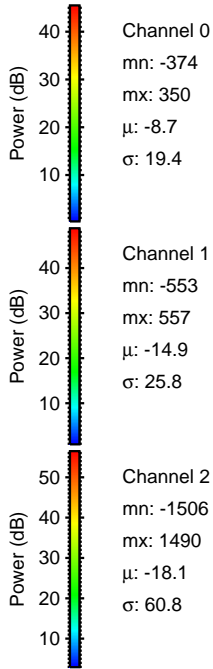
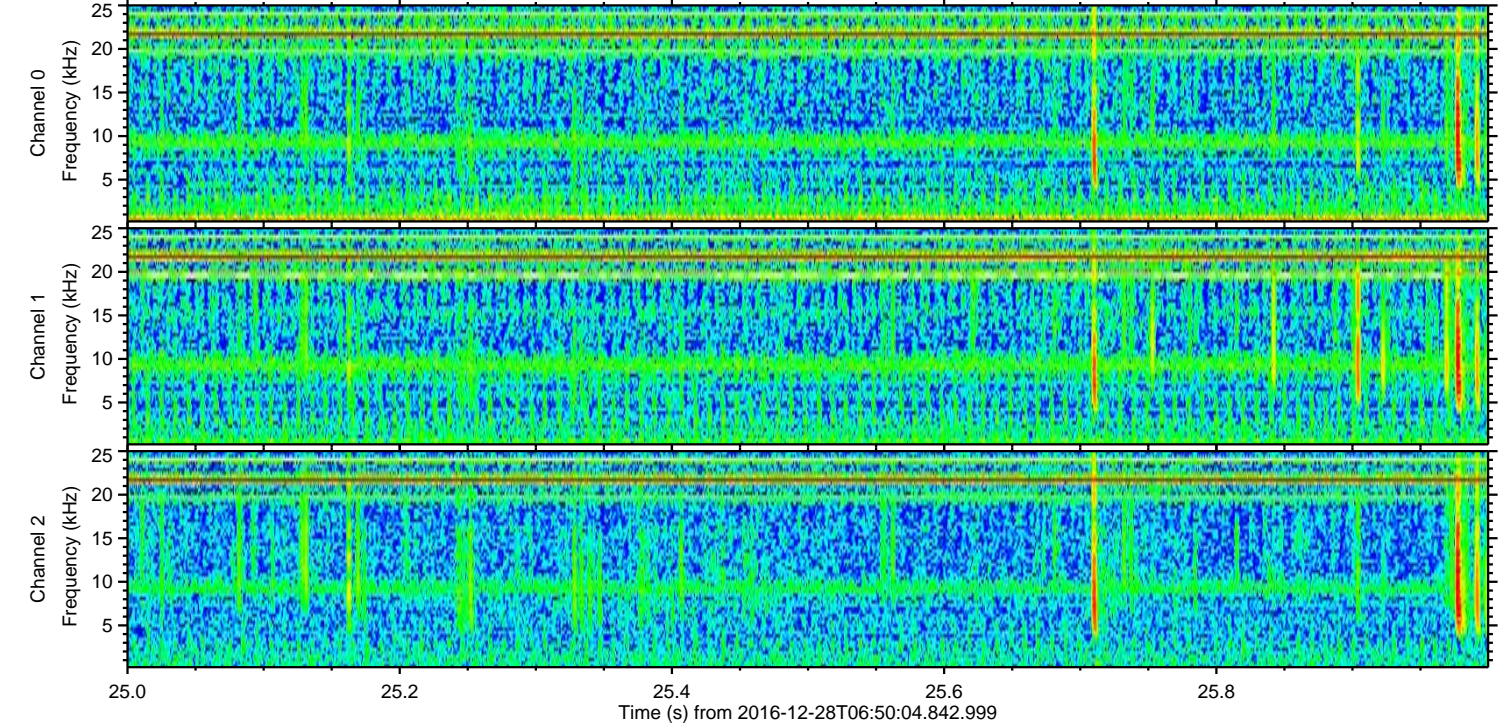
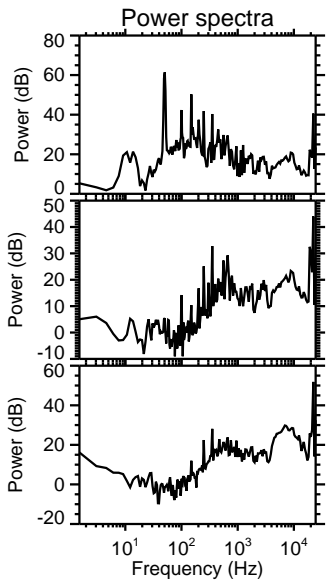
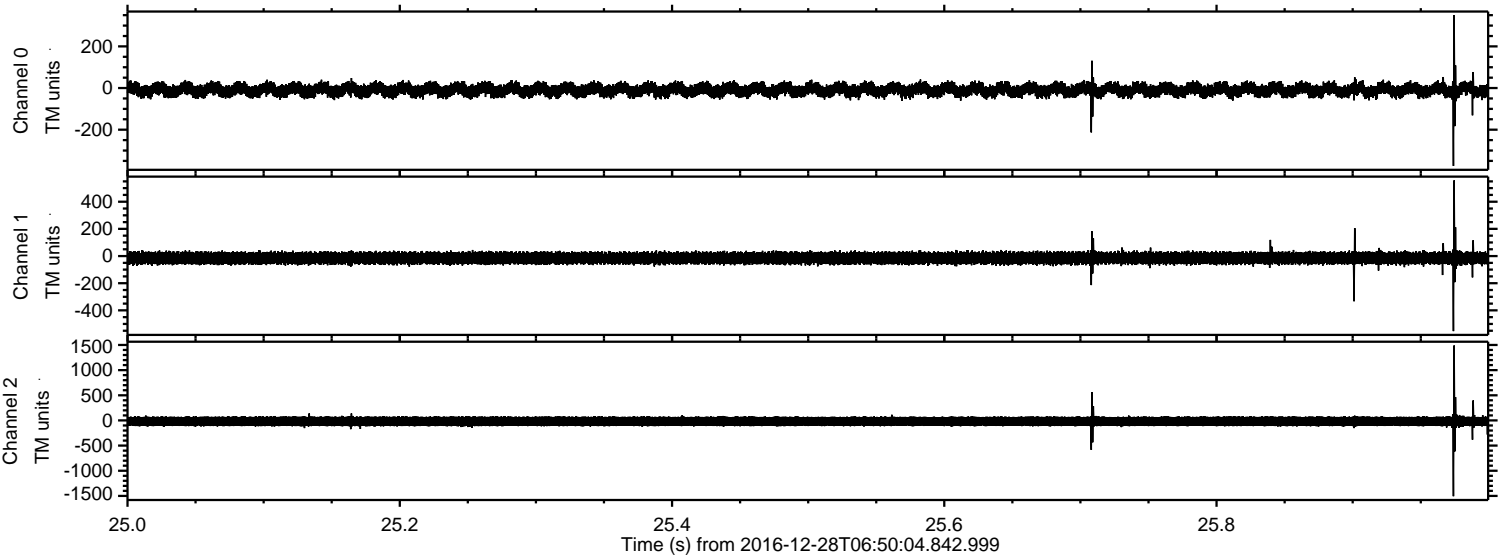
Channel 2
mn: -1940
mx: 1391
 μ : -17.9
 σ : 64.1

ELMAVAN 3D WAVEFORMS (Measured data sampled at 50 kHz) 51000 packets of 144 samples from 2016-12-28T06:50:04.842.999. Part 134/147

Processed Wed Dec 28 07:58:37 2016 by ELM ver.2012-10-06 from 001__elm20161228_065003__dat00.bin



Processed Wed Dec 28 07:58:38 2016 by ELM ver.2012-10-06 from 001__elm20161228_065003__dat00.bin



Channel 0
mn: -374
mx: 350
 μ : -8.7
 σ : 19.4

Channel 1
mn: -553
mx: 557
 μ : -14.9
 σ : 25.8

Channel 2
mn: -1506
mx: 1490
 μ : -18.1
 σ : 60.8

Processed Wed Dec 28 07:58:39 2016 by ELM ver.2012-10-06 from 001__elm20161228_065003__dat00.bin

