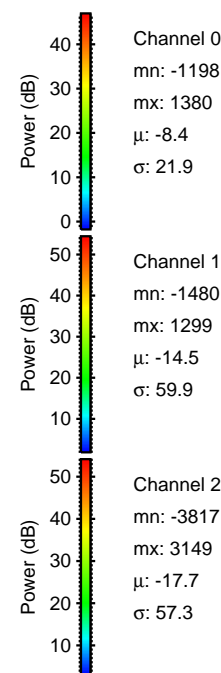
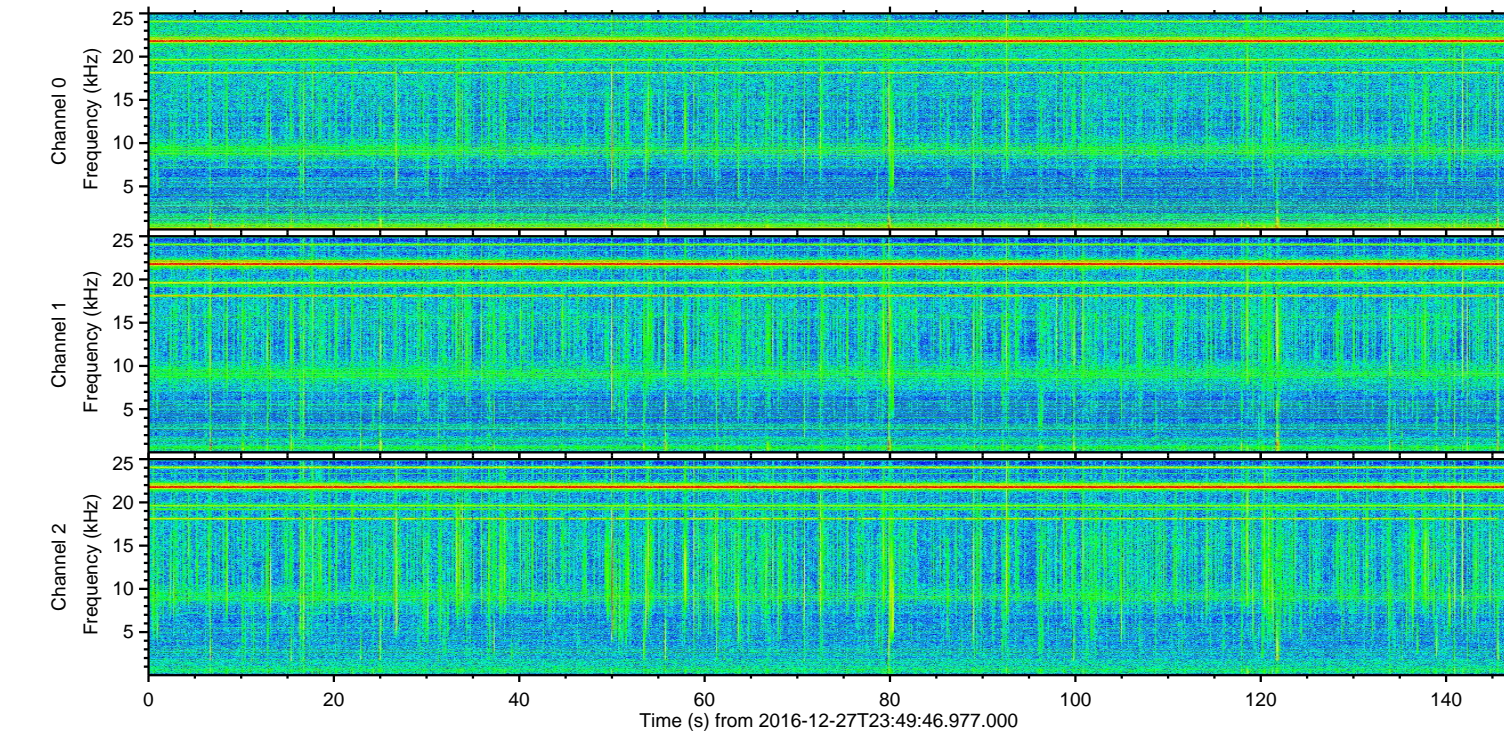
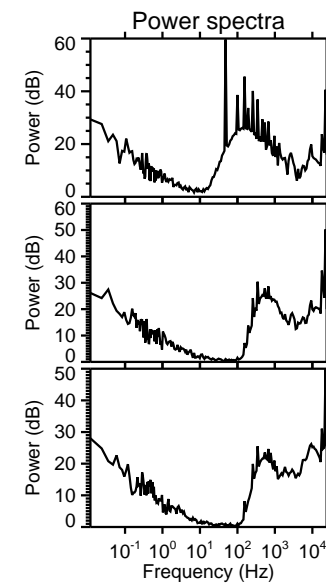
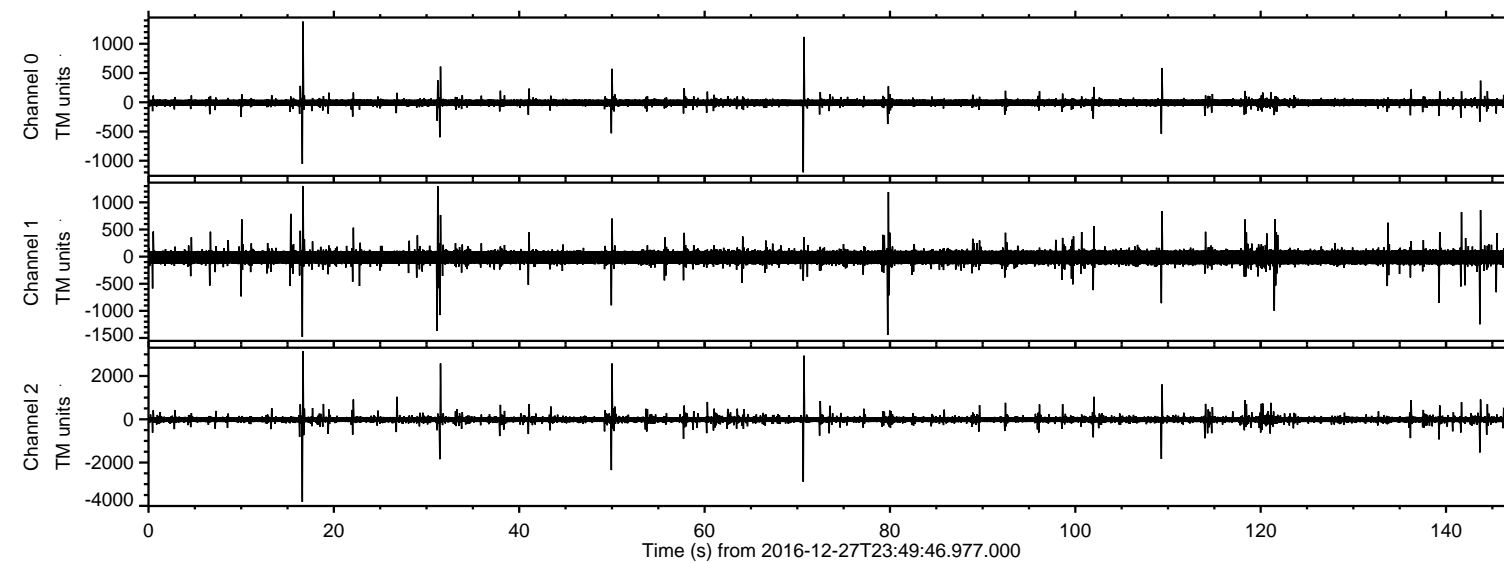


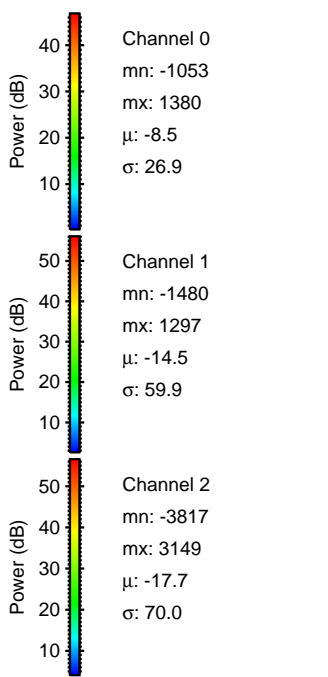
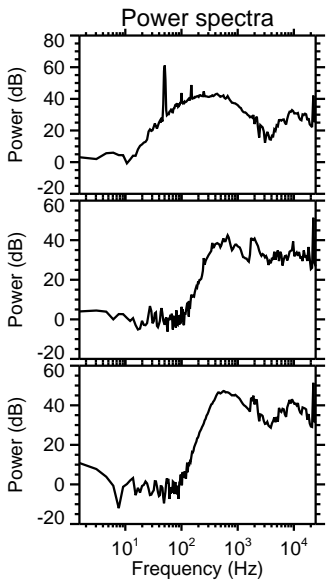
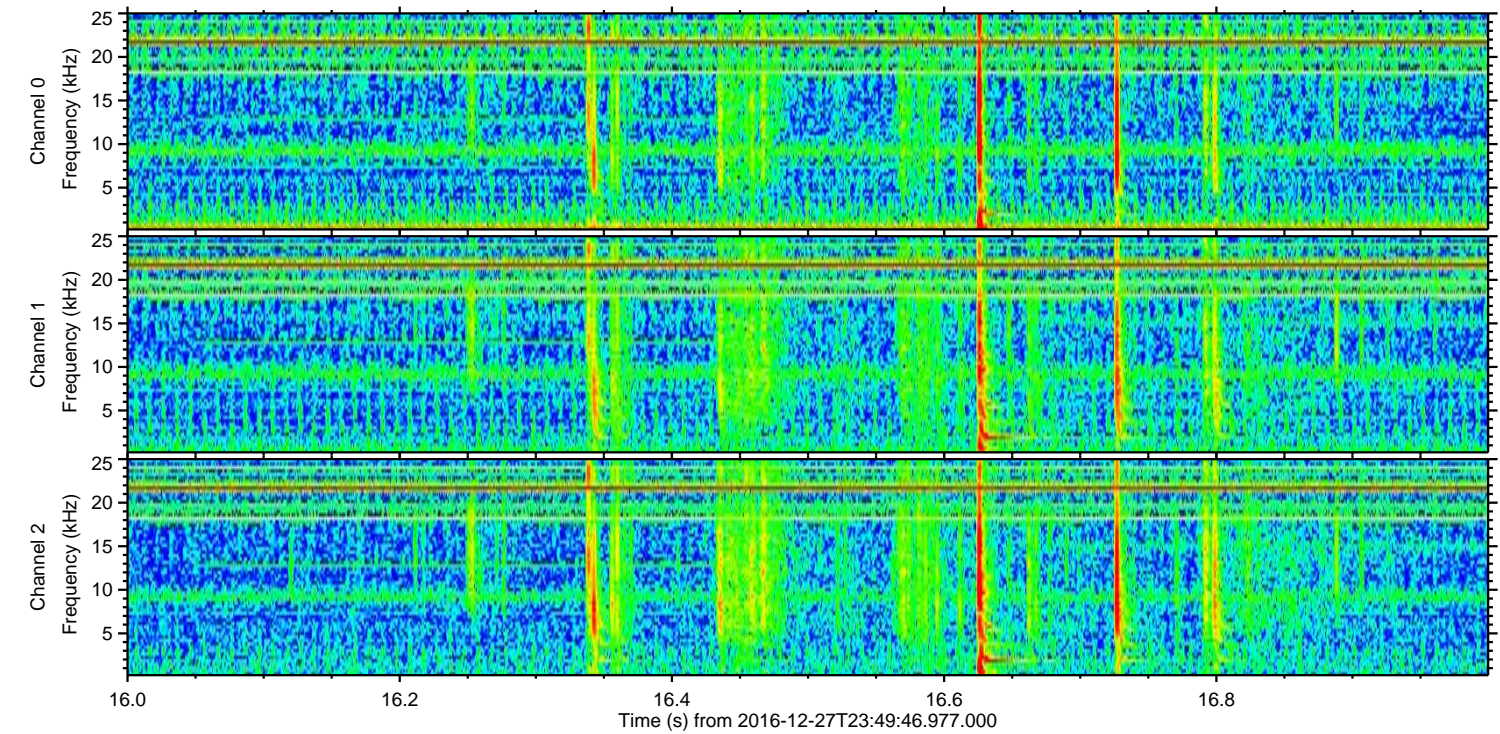
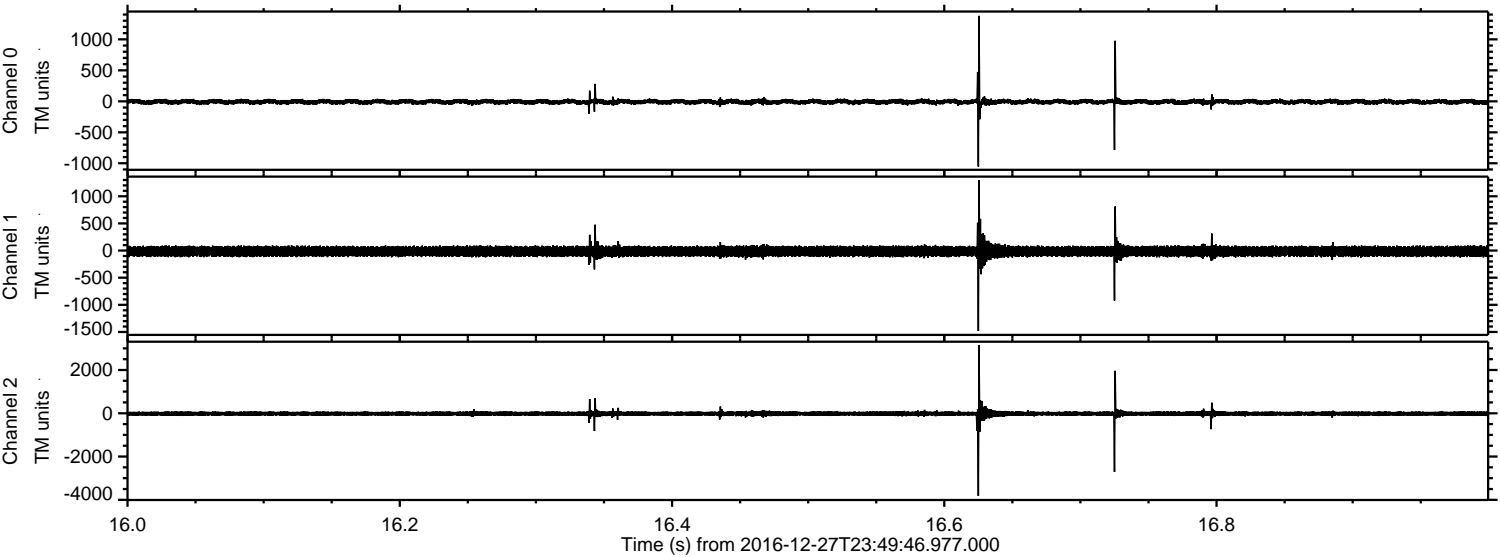
ELMAVAN 3D WAVEFORMS (Measured data sampled at 50 kHz) 51000 packets of 144 samples from 2016-12-27T23:49:46.977.000.

Processed Wed Dec 28 00:57:34 2016 by ELM ver.2012-10-06 from 001__elm20161227_234945__dat00.bin

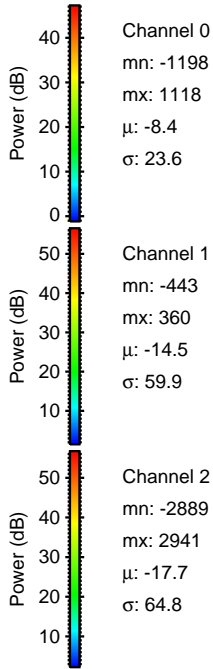
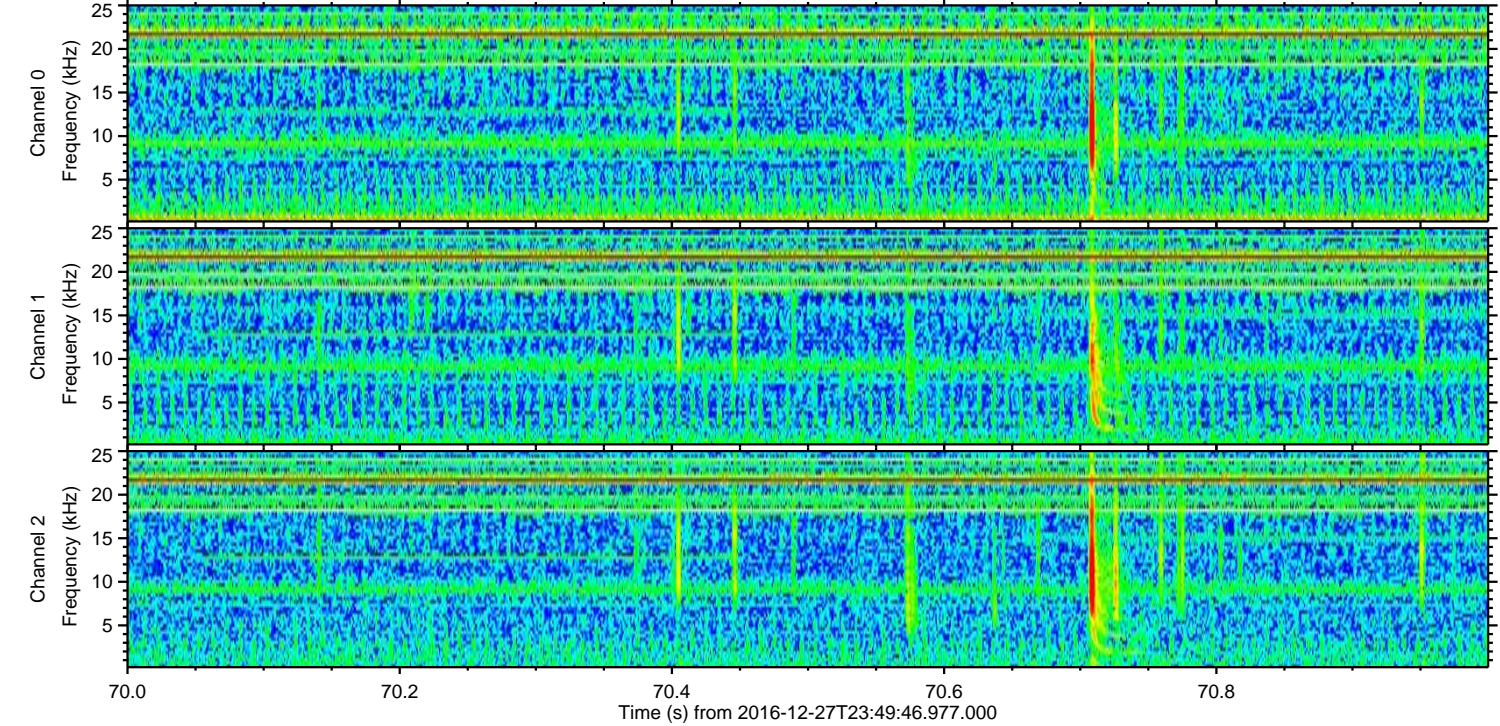
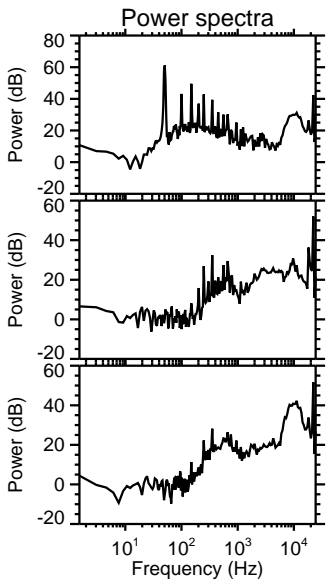
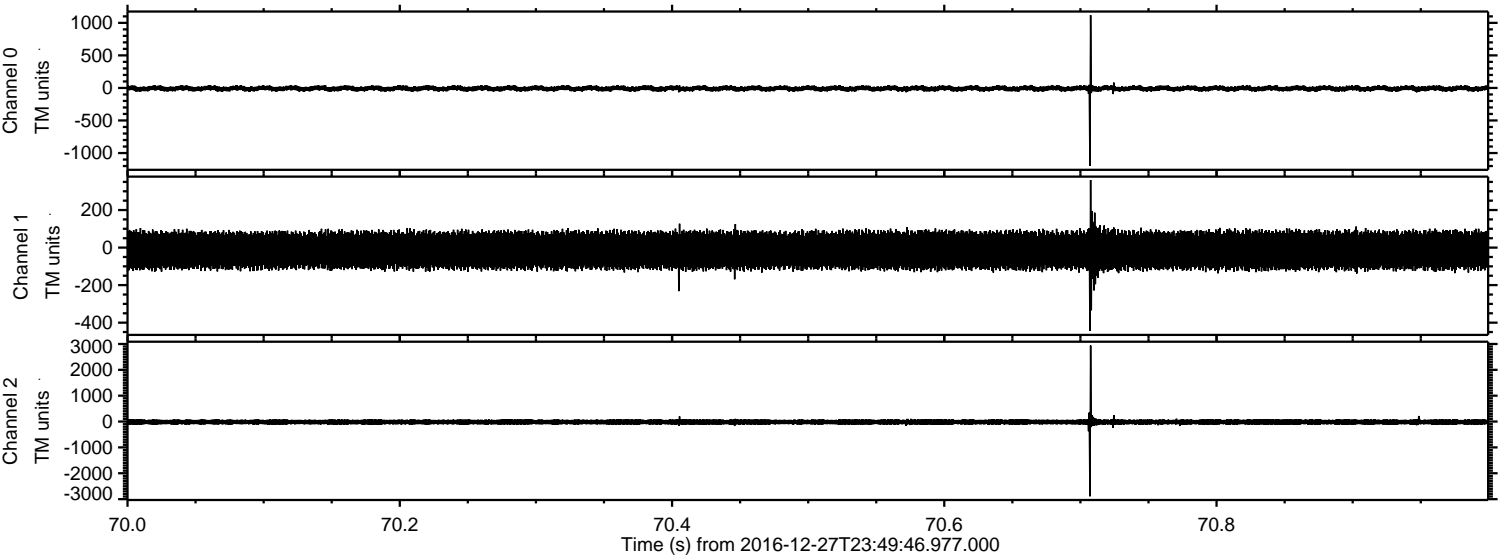


ELMAVAN 3D WAVEFORMS (Measured data sampled at 50 kHz) 51000 packets of 144 samples from 2016-12-27T23:49:46.977.000. Part 17/147

Processed Wed Dec 28 00:57:45 2016 by ELM ver.2012-10-06 from 001__elm20161227_234945__dat00.bin



Processed Wed Dec 28 00:57:46 2016 by ELM ver.2012-10-06 from 001__elm20161227_234945__dat00.bin



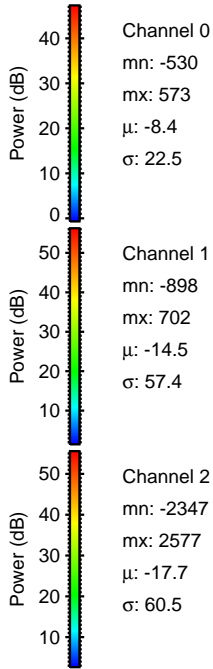
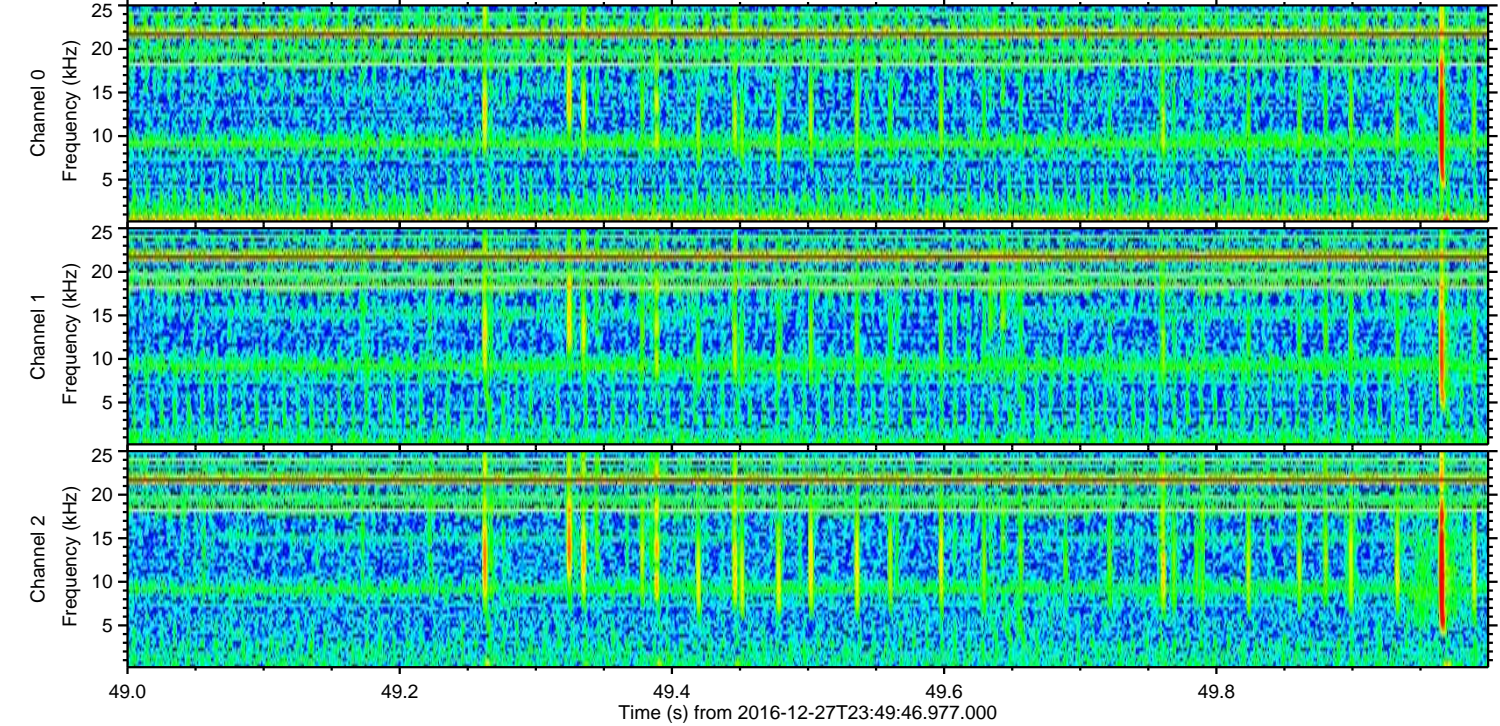
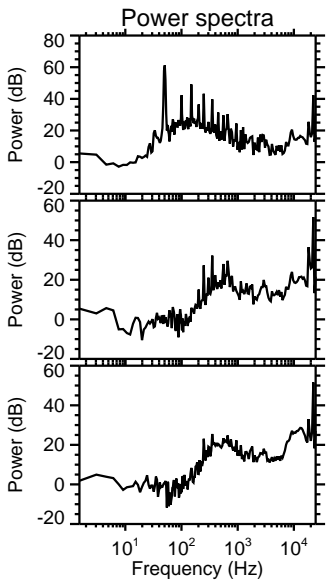
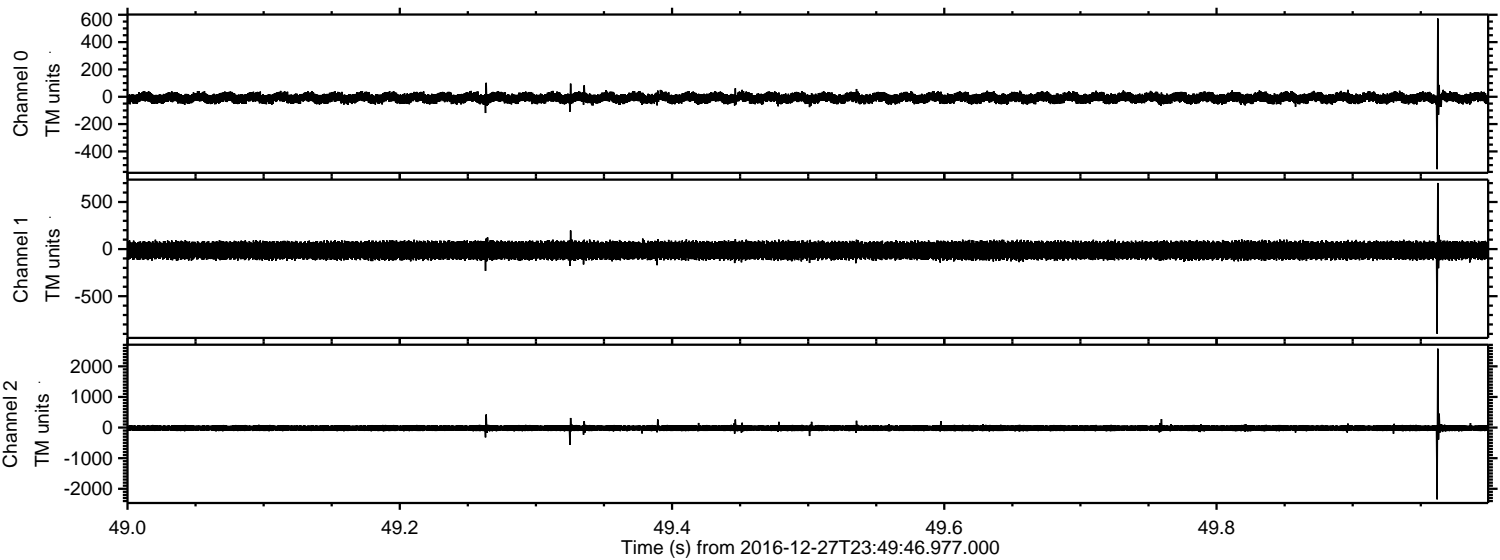
Channel 0
mn: -1198
mx: 1118
 μ : -8.4
 σ : 23.6

Channel 1
mn: -443
mx: 360
 μ : -14.5
 σ : 59.9

Channel 2
mn: -2889
mx: 2941
 μ : -17.7
 σ : 64.8

ELMAVAN 3D WAVEFORMS (Measured data sampled at 50 kHz) 51000 packets of 144 samples from 2016-12-27T23:49:46.977.000. Part 50/147

Processed Wed Dec 28 00:57:47 2016 by ELM ver.2012-10-06 from 001__elm20161227_234945__dat00.bin



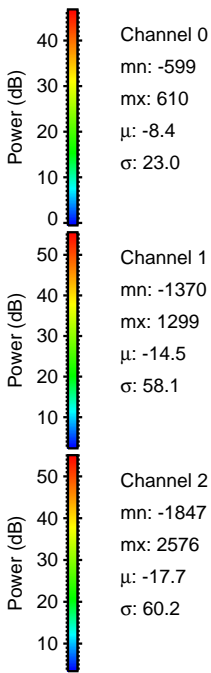
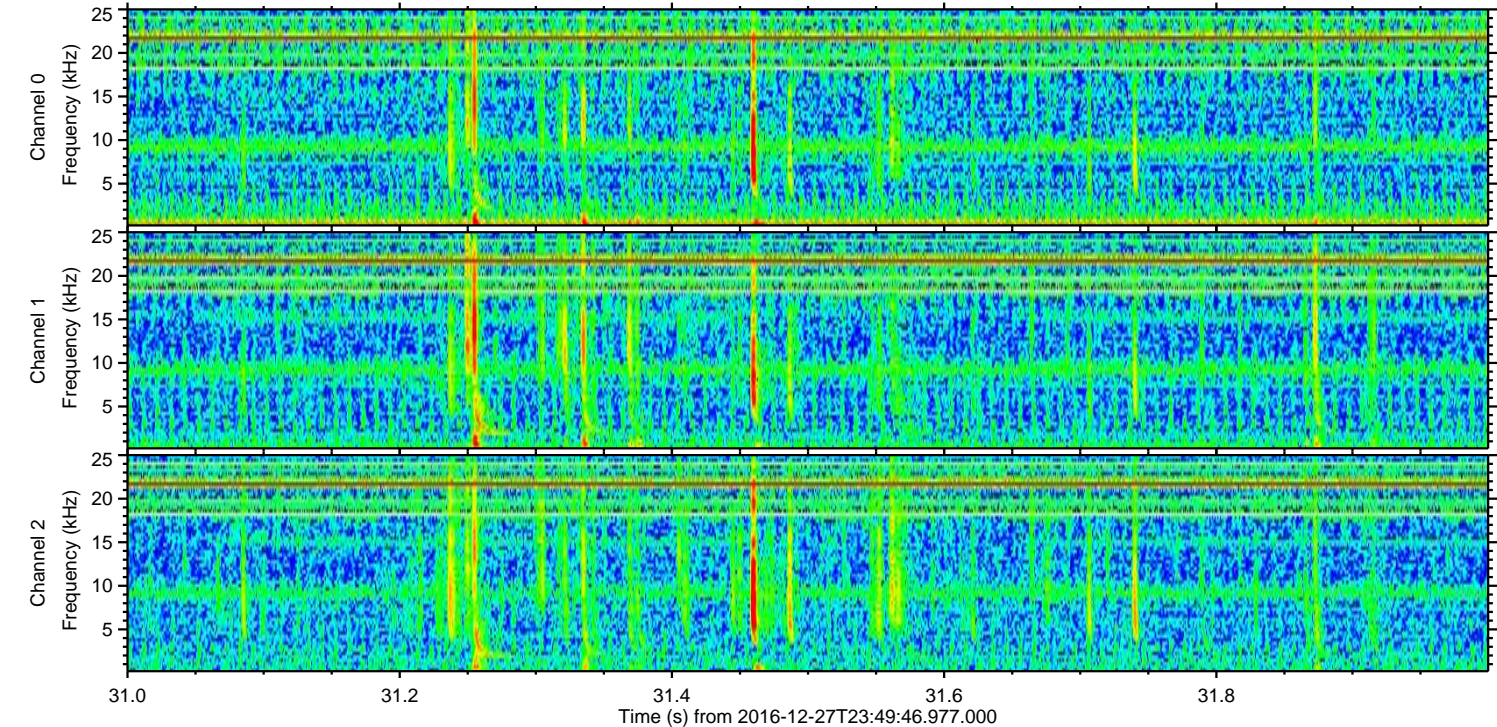
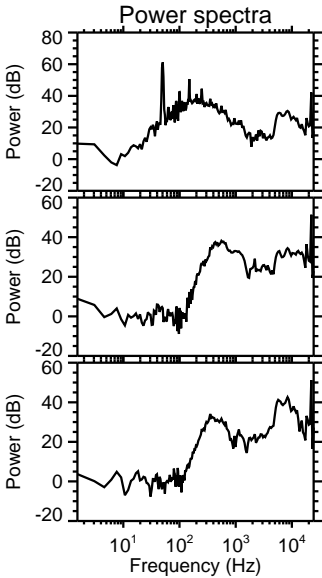
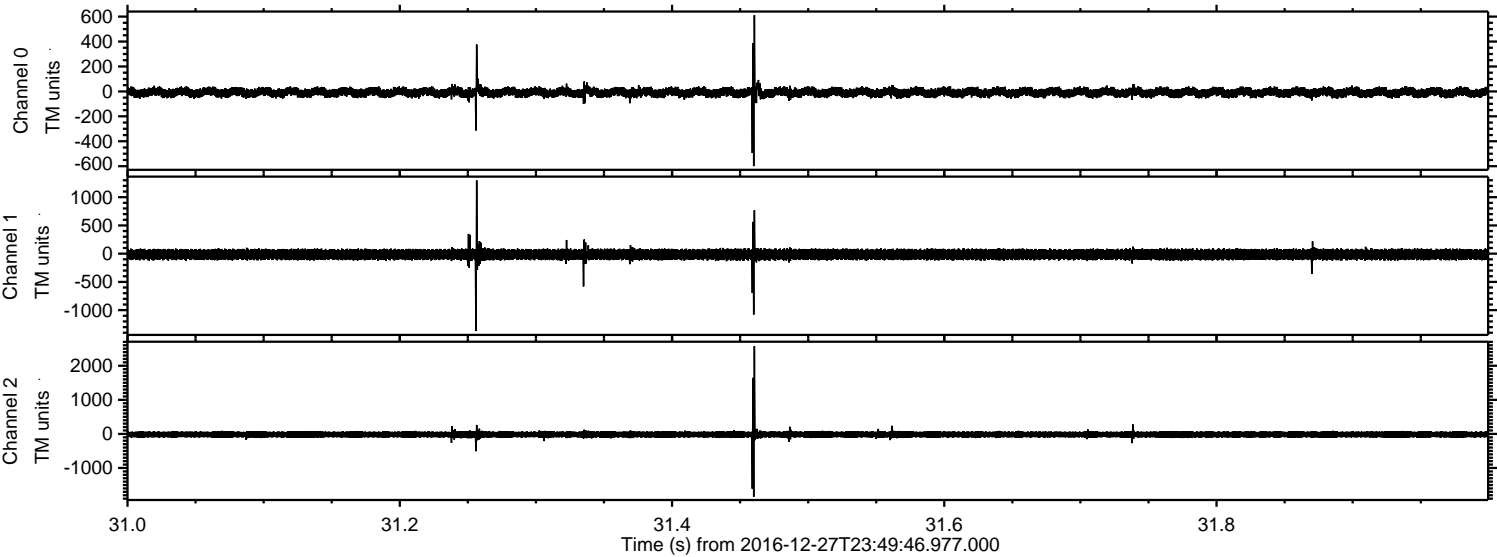
Channel 0
mn: -530
mx: 573
 μ : -8.4
 σ : 22.5

Channel 1
mn: -898
mx: 702
 μ : -14.5
 σ : 57.4

Channel 2
mn: -2347
mx: 2577
 μ : -17.7
 σ : 60.5

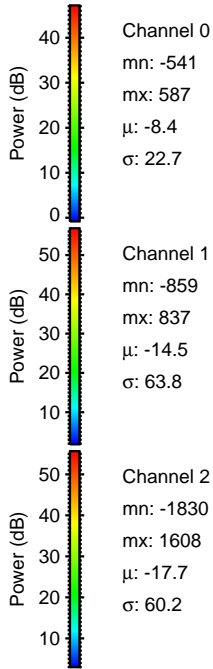
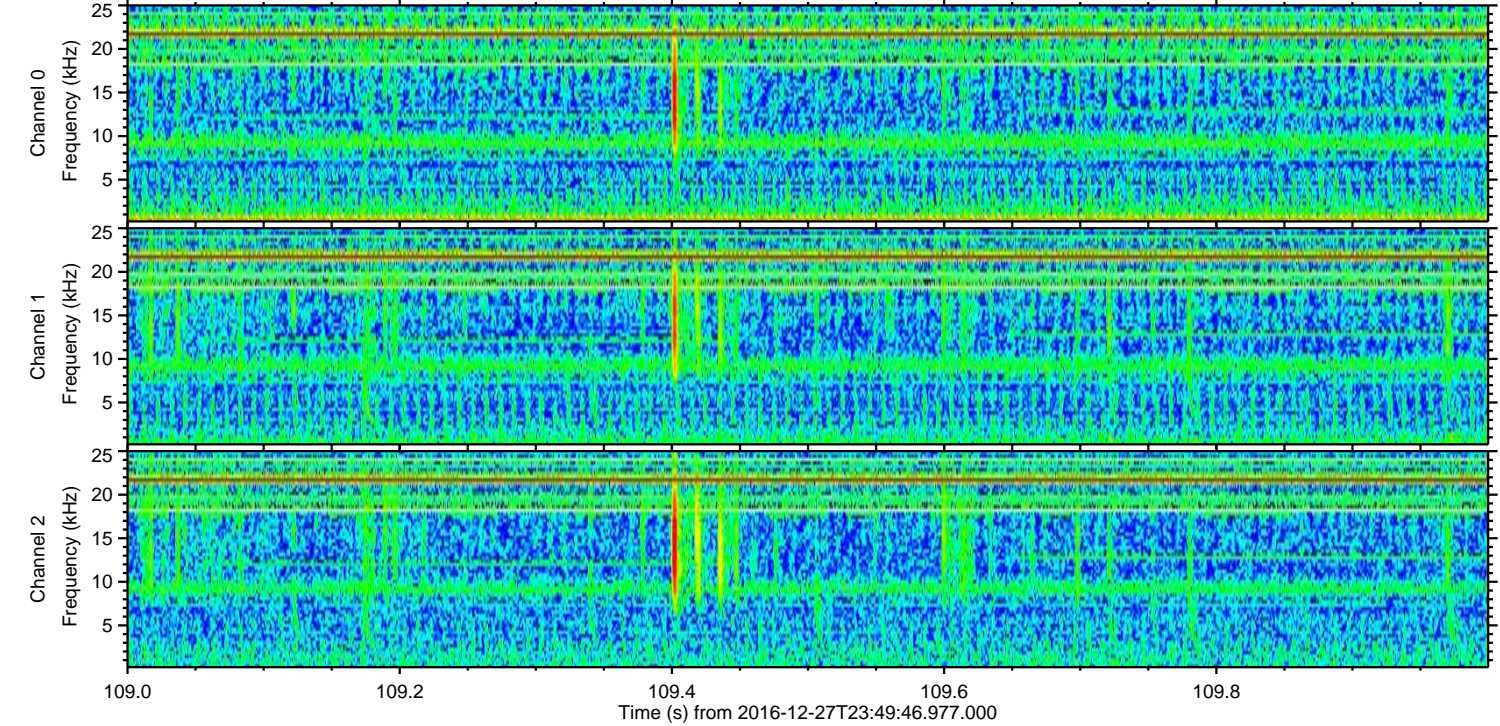
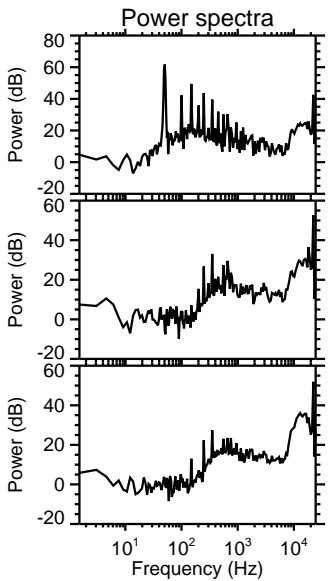
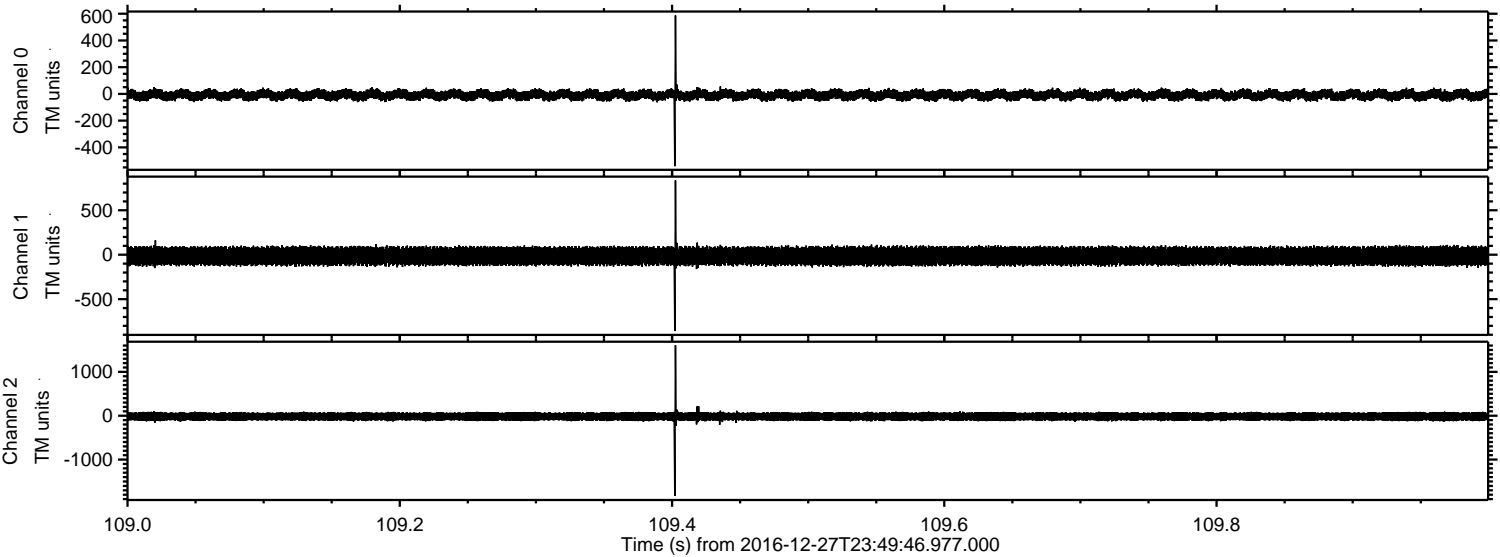
ELMAVAN 3D WAVEFORMS (Measured data sampled at 50 kHz) 51000 packets of 144 samples from 2016-12-27T23:49:46.977.000. Part 32/147

Processed Wed Dec 28 00:57:48 2016 by ELM ver.2012-10-06 from 001__elm20161227_234945__dat00.bin



ELMAVAN 3D WAVEFORMS (Measured data sampled at 50 kHz) 51000 packets of 144 samples from 2016-12-27T23:49:46.977.000. Part 110/147

Processed Wed Dec 28 00:57:49 2016 by ELM ver.2012-10-06 from 001__elm20161227_234945__dat00.bin



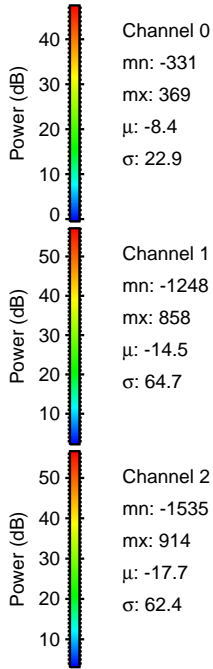
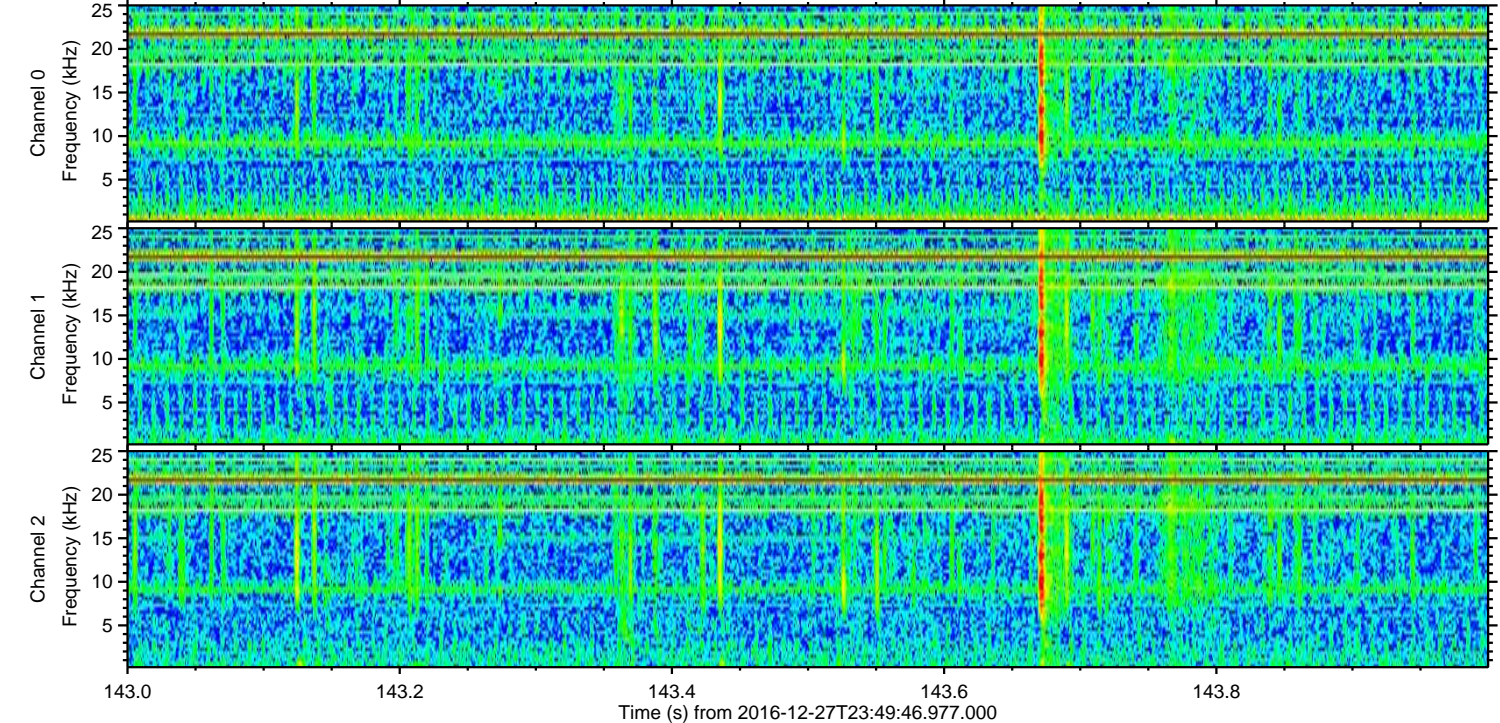
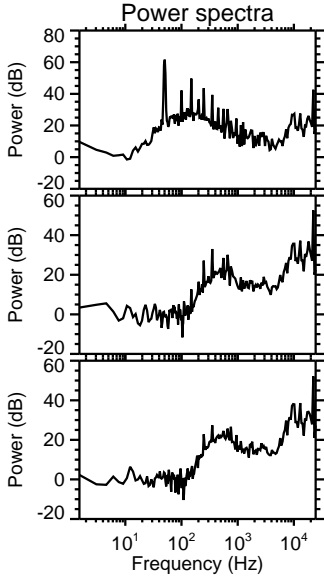
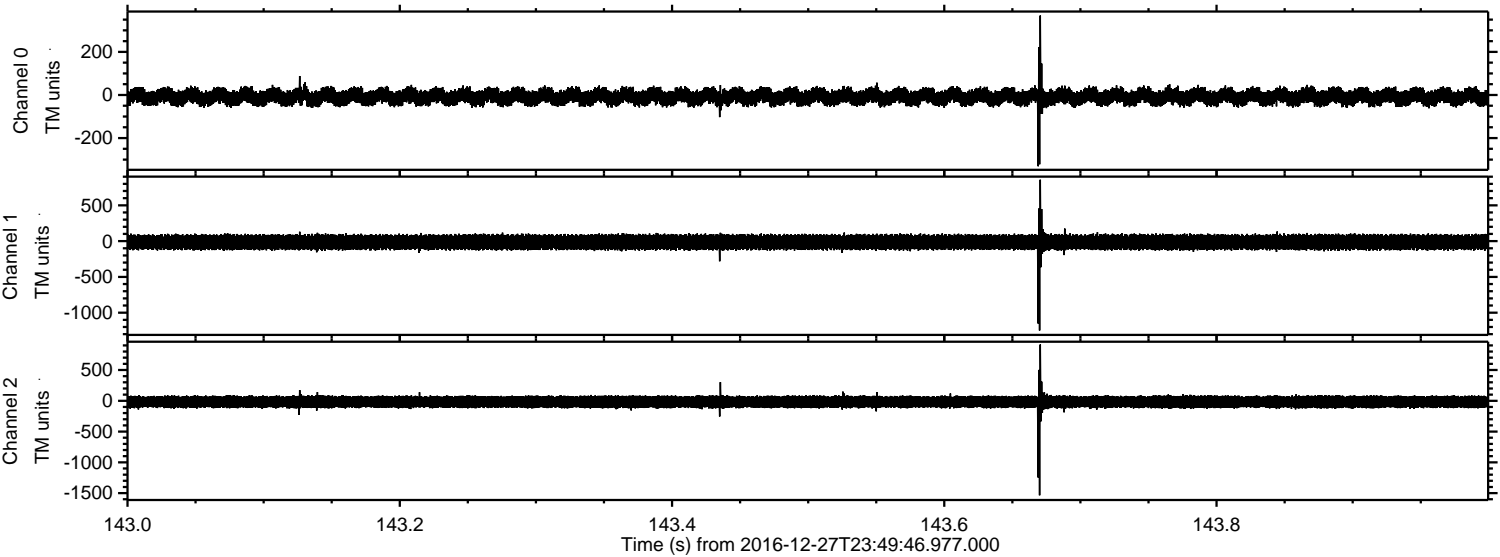
Channel 0
mn: -541
mx: 587
 μ : -8.4
 σ : 22.7

Channel 1
mn: -859
mx: 837
 μ : -14.5
 σ : 63.8

Channel 2
mn: -1830
mx: 1608
 μ : -17.7
 σ : 60.2

ELMAVAN 3D WAVEFORMS (Measured data sampled at 50 kHz) 51000 packets of 144 samples from 2016-12-27T23:49:46.977.000. Part 144/147

Processed Wed Dec 28 00:57:50 2016 by ELM ver.2012-10-06 from 001__elm20161227_234945__dat00.bin

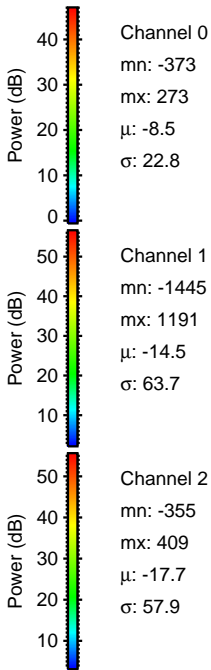
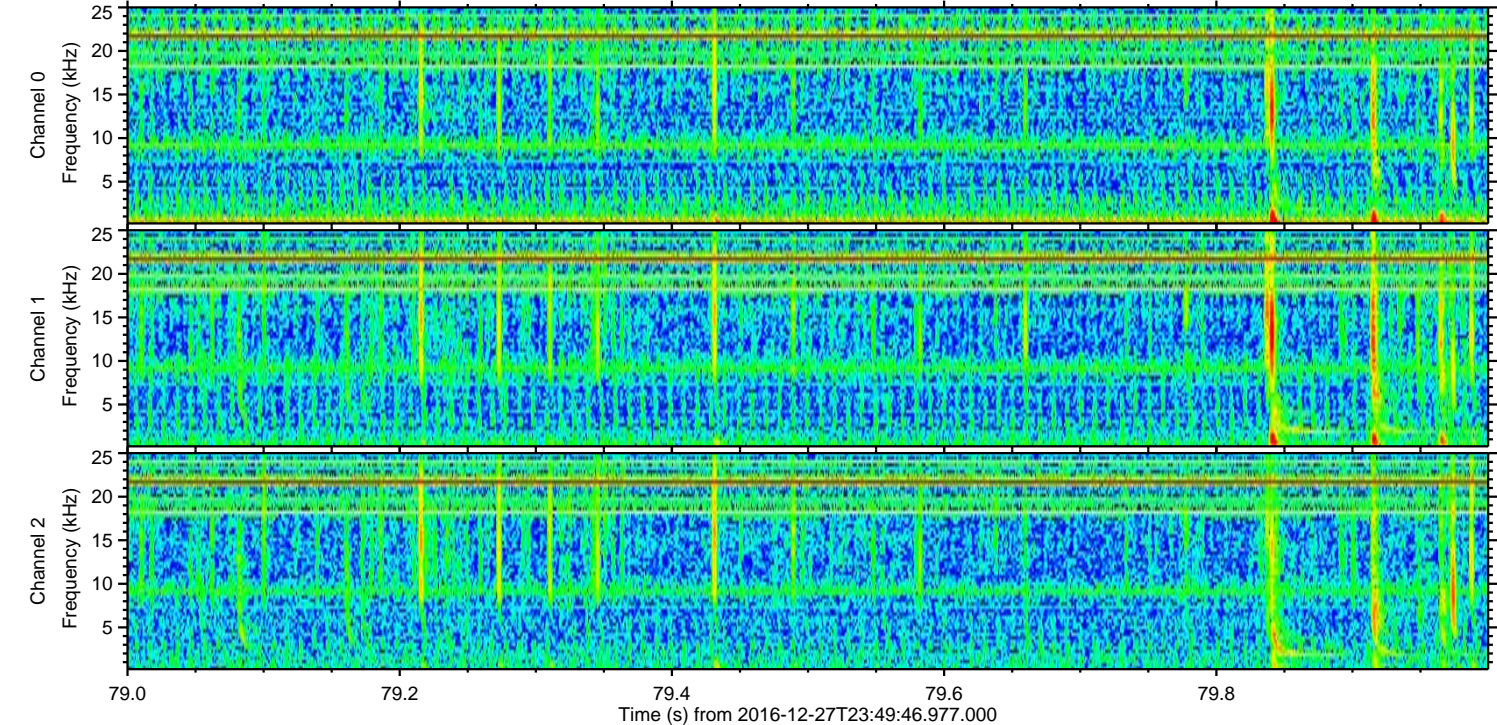
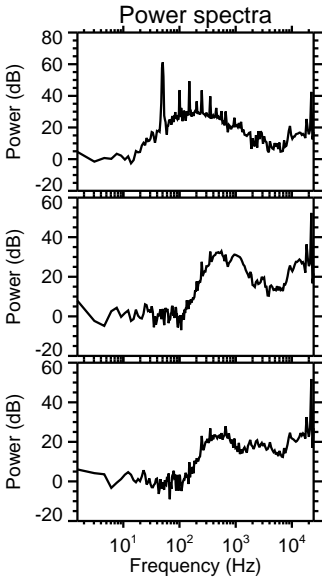
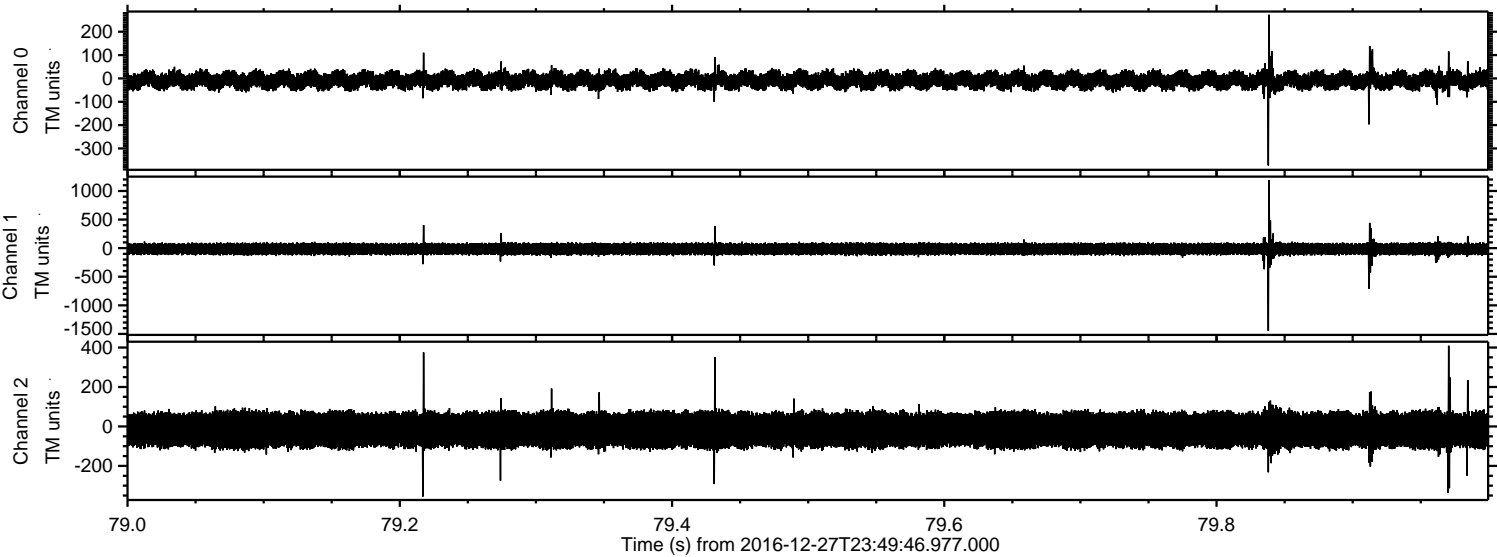


Channel 0
mn: -331
mx: 369
 μ : -8.4
 σ : 22.9

Channel 1
mn: -1248
mx: 858
 μ : -14.5
 σ : 64.7

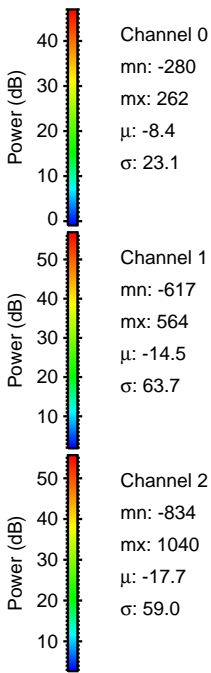
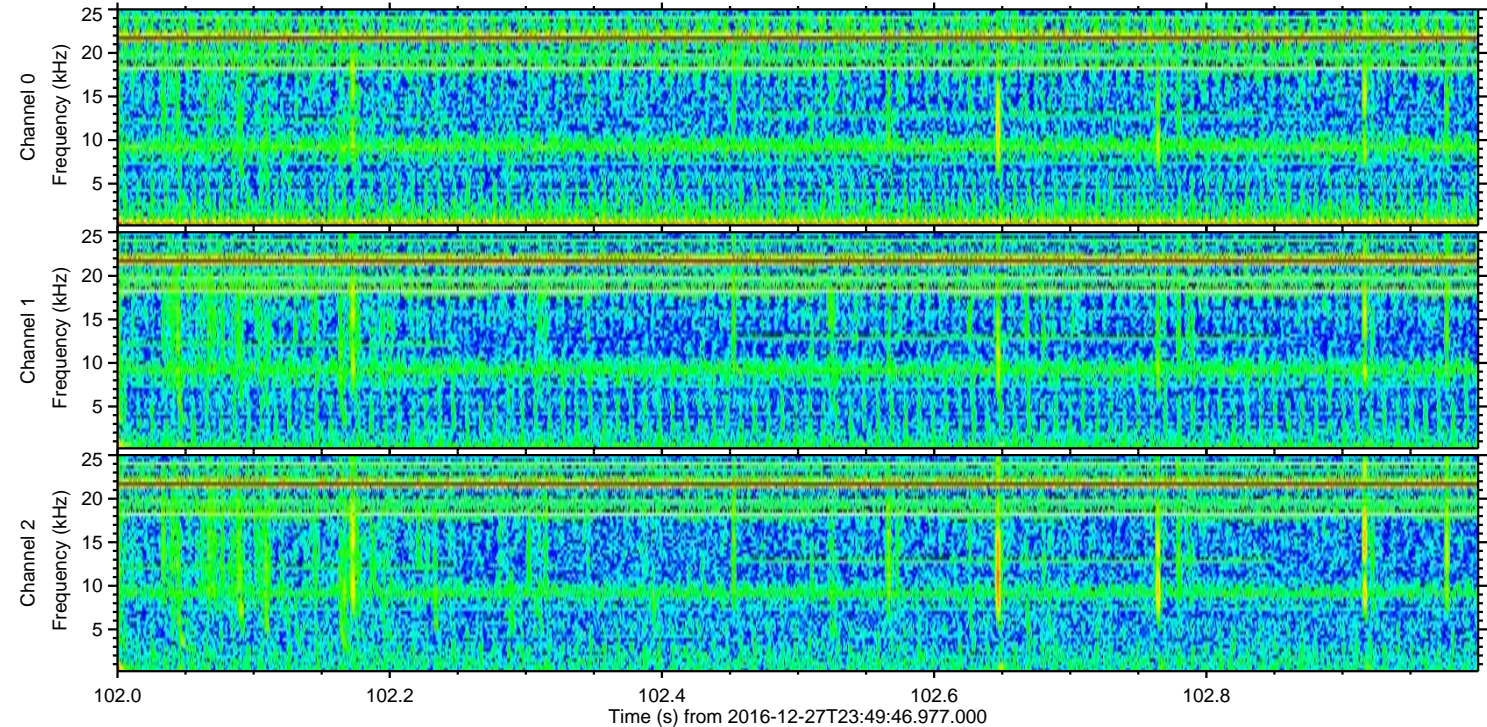
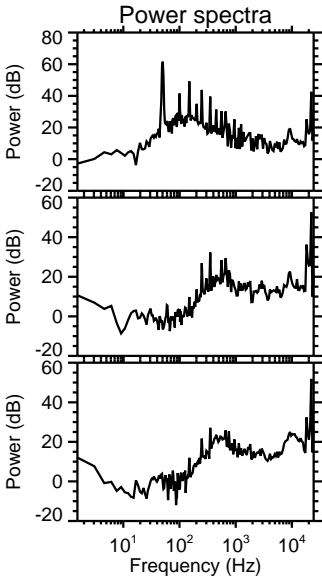
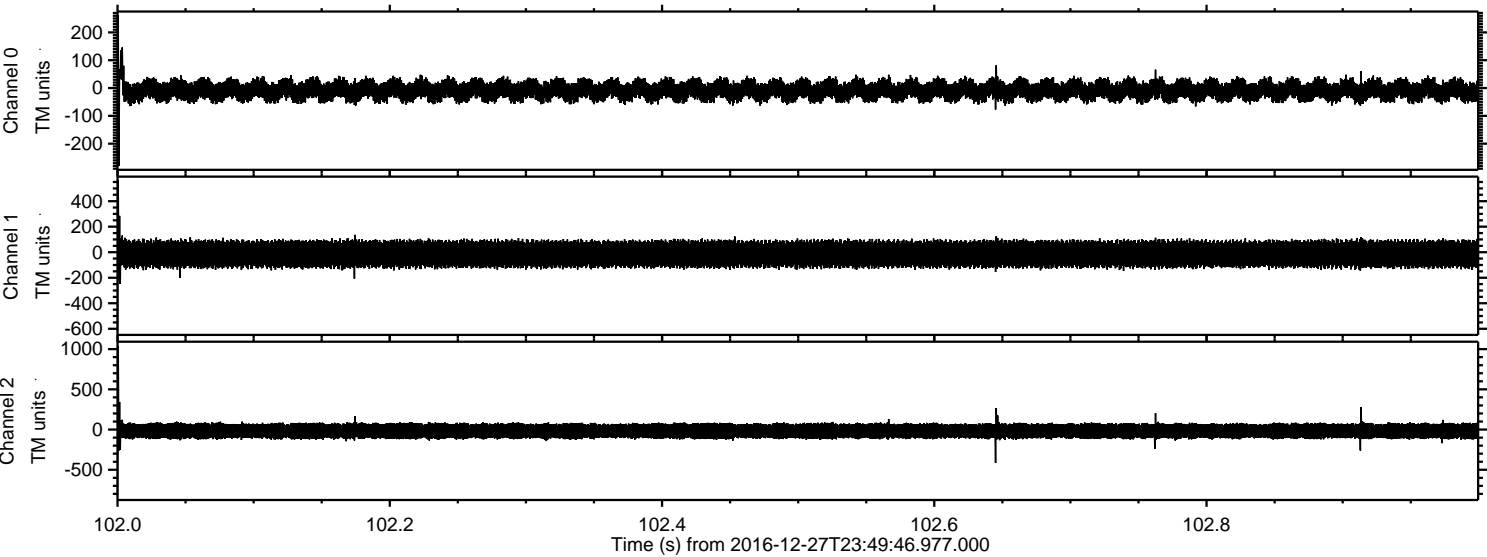
Channel 2
mn: -1535
mx: 914
 μ : -17.7
 σ : 62.4

Processed Wed Dec 28 00:57:51 2016 by ELM ver.2012-10-06 from 001__elm20161227_234945__dat00.bin



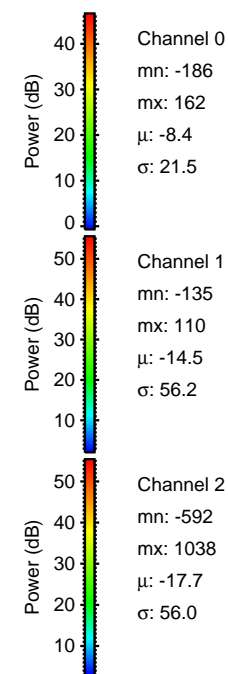
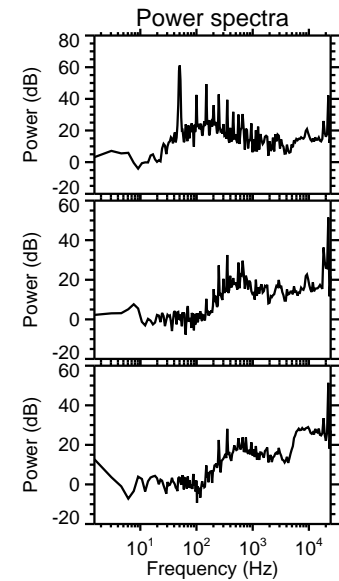
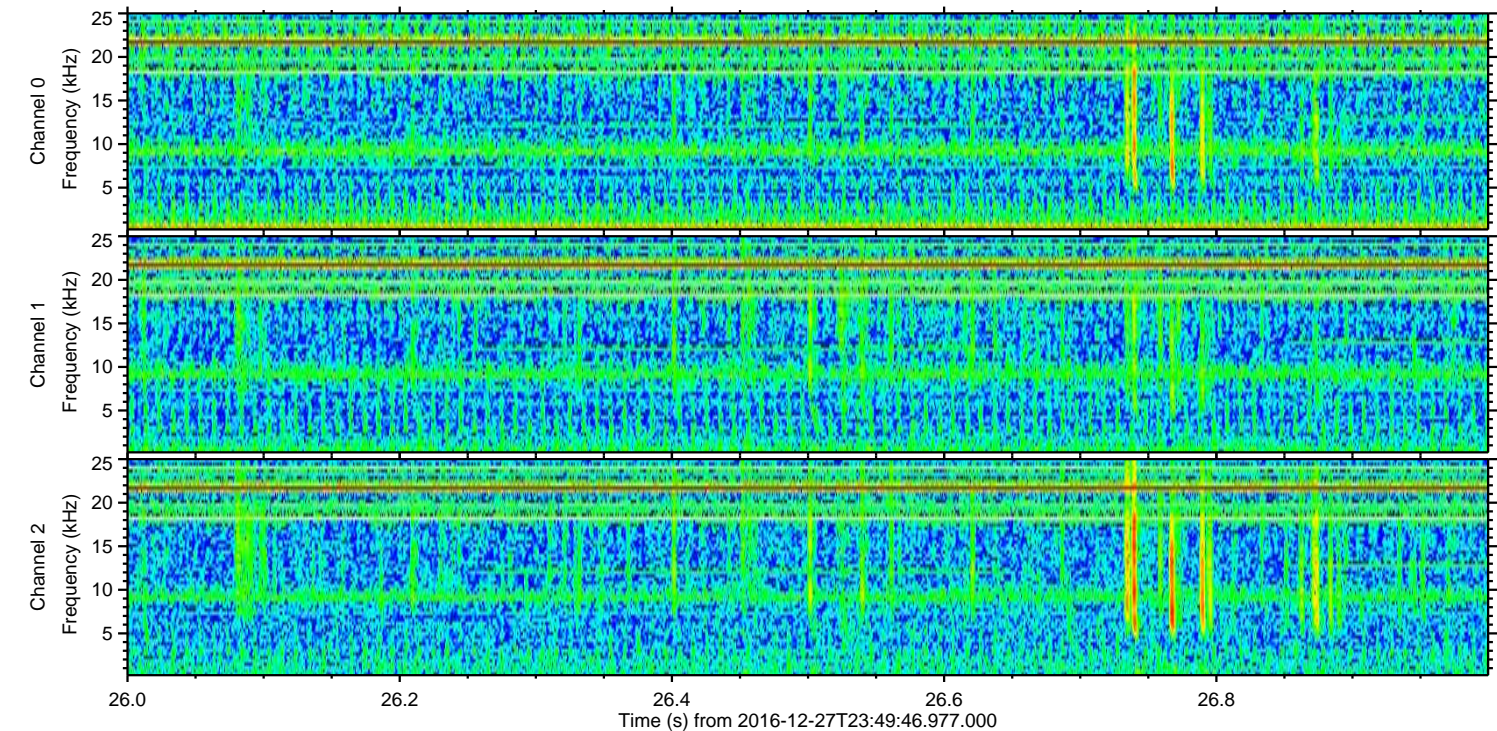
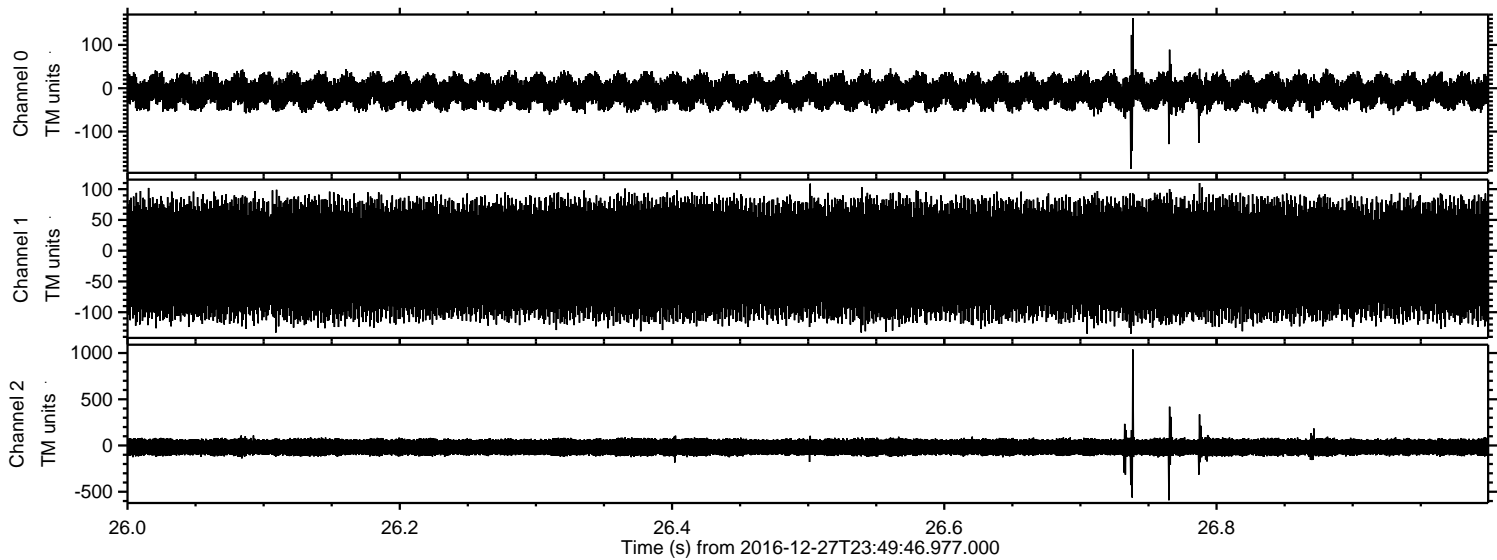
ELMAVAN 3D WAVEFORMS (Measured data sampled at 50 kHz) 51000 packets of 144 samples from 2016-12-27T23:49:46.977.000. Part 103/147

Processed Wed Dec 28 00:57:52 2016 by ELM ver.2012-10-06 from 001__elm20161227_234945__dat00.bin



ELMAVAN 3D WAVEFORMS (Measured data sampled at 50 kHz) 51000 packets of 144 samples from 2016-12-27T23:49:46.977.000. Part 27/147

Processed Wed Dec 28 00:57:53 2016 by ELM ver.2012-10-06 from 001__elm20161227_234945__dat00.bin



Channel 0
mn: -186
mx: 162
 μ : -8.4
 σ : 21.5

Channel 1
mn: -135
mx: 110
 μ : -14.5
 σ : 56.2

Channel 2
mn: -592
mx: 1038
 μ : -17.7
 σ : 56.0

Processed Wed Dec 28 00:57:54 2016 by ELM ver.2012-10-06 from 001__elm20161227_234945__dat00.bin

