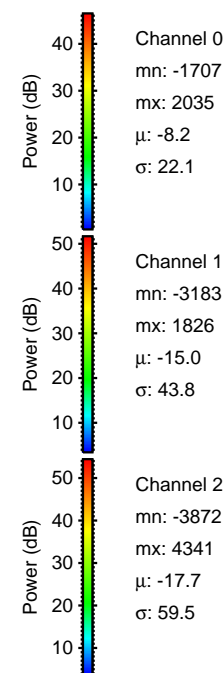
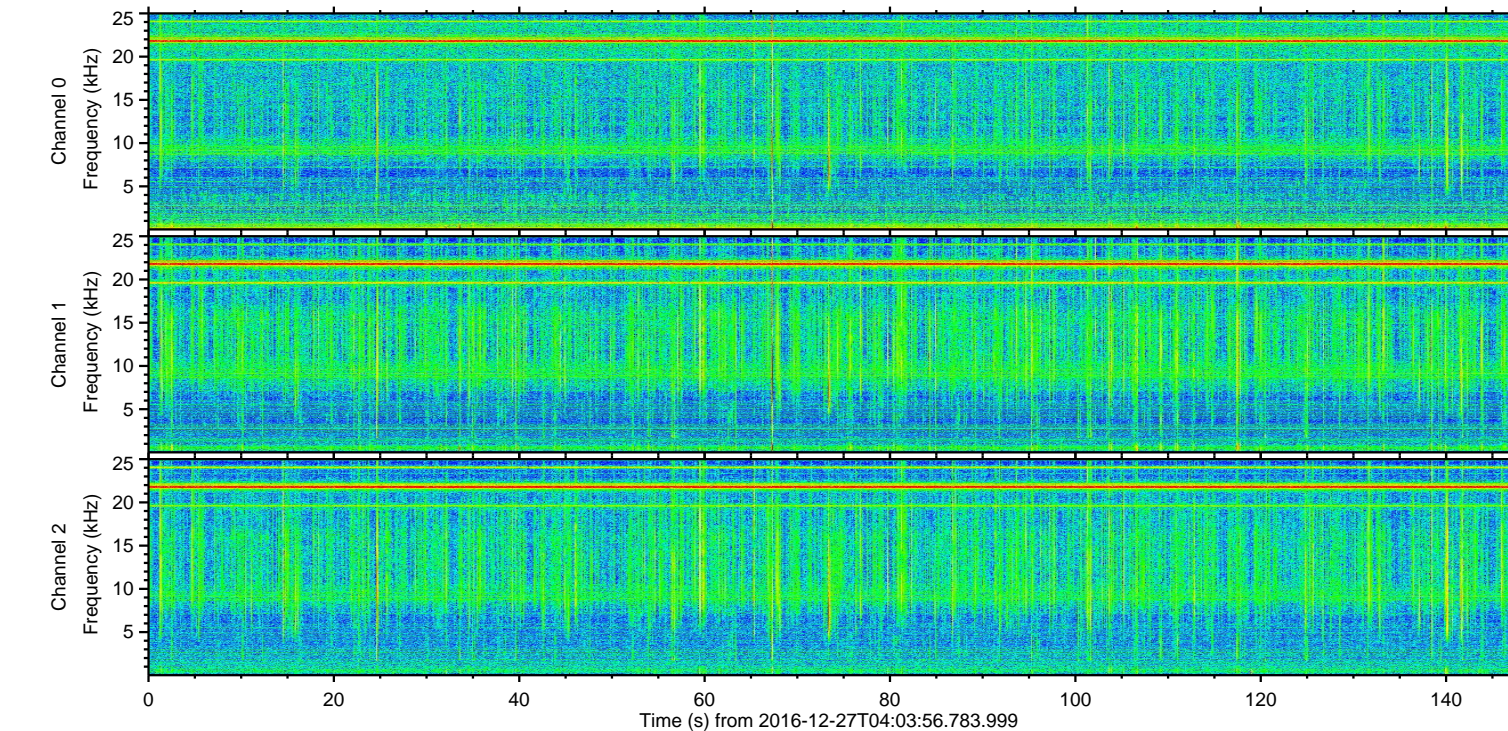
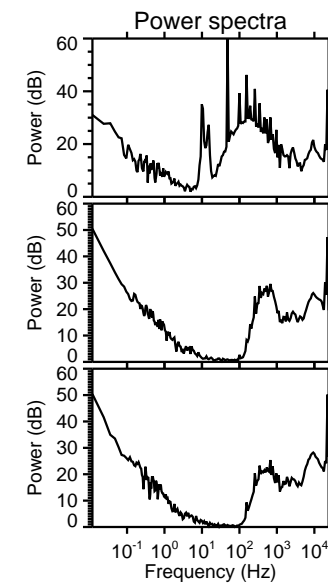
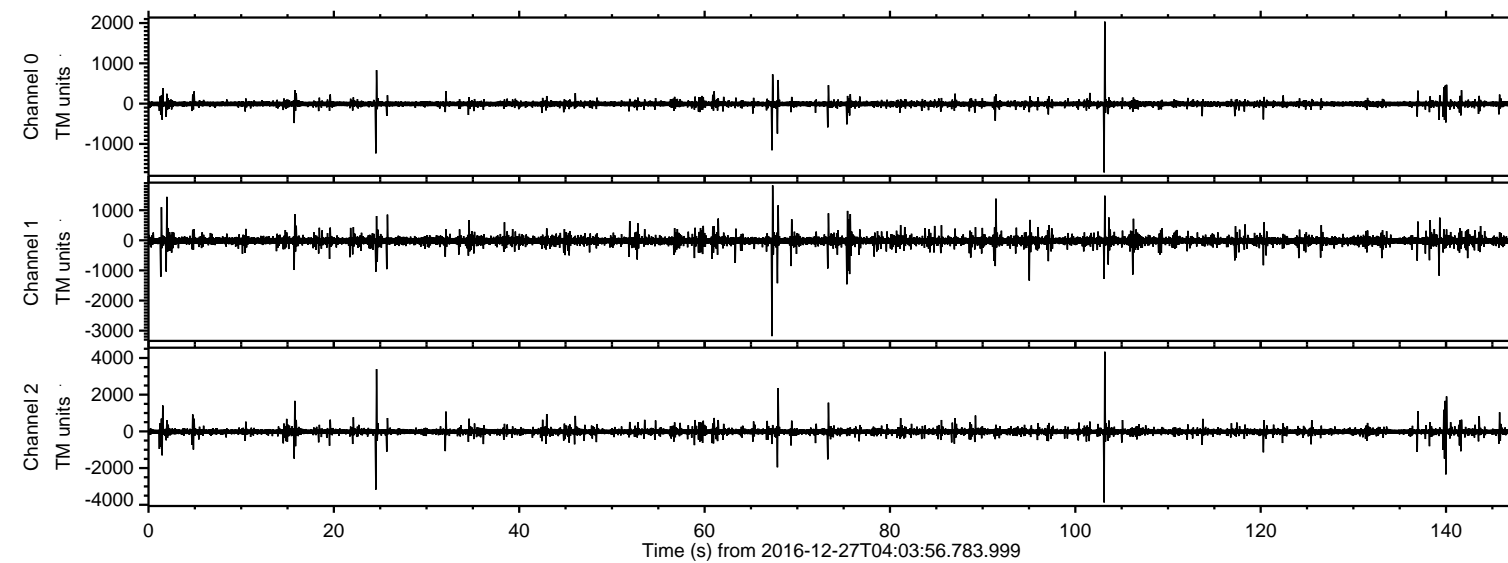


ELMAVAN 3D WAVEFORMS (Measured data sampled at 50 kHz) 51000 packets of 144 samples from 2016-12-27T04:03:56.783.999.

Processed Tue Dec 27 05:11:45 2016 by ELM ver.2012-10-06 from 001__elm20161227_040355__dat00.bin



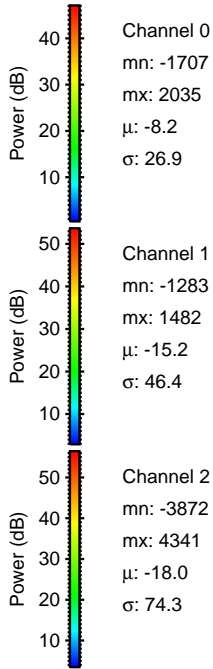
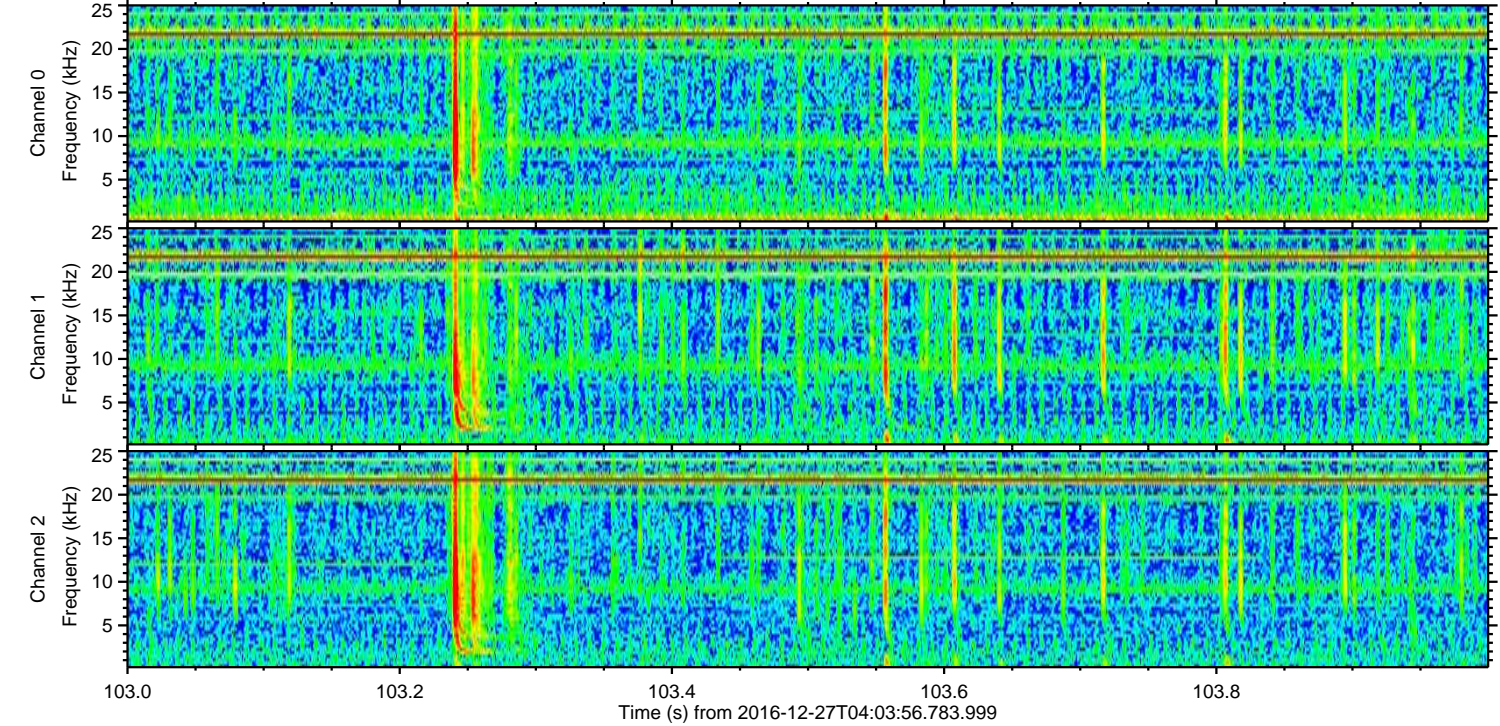
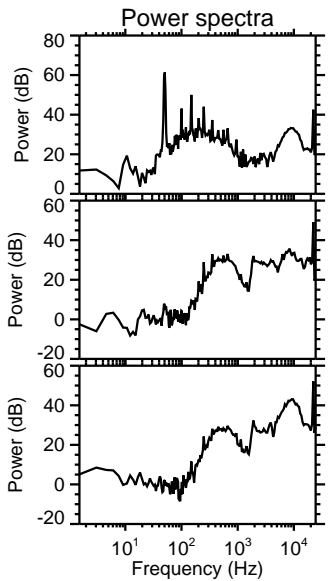
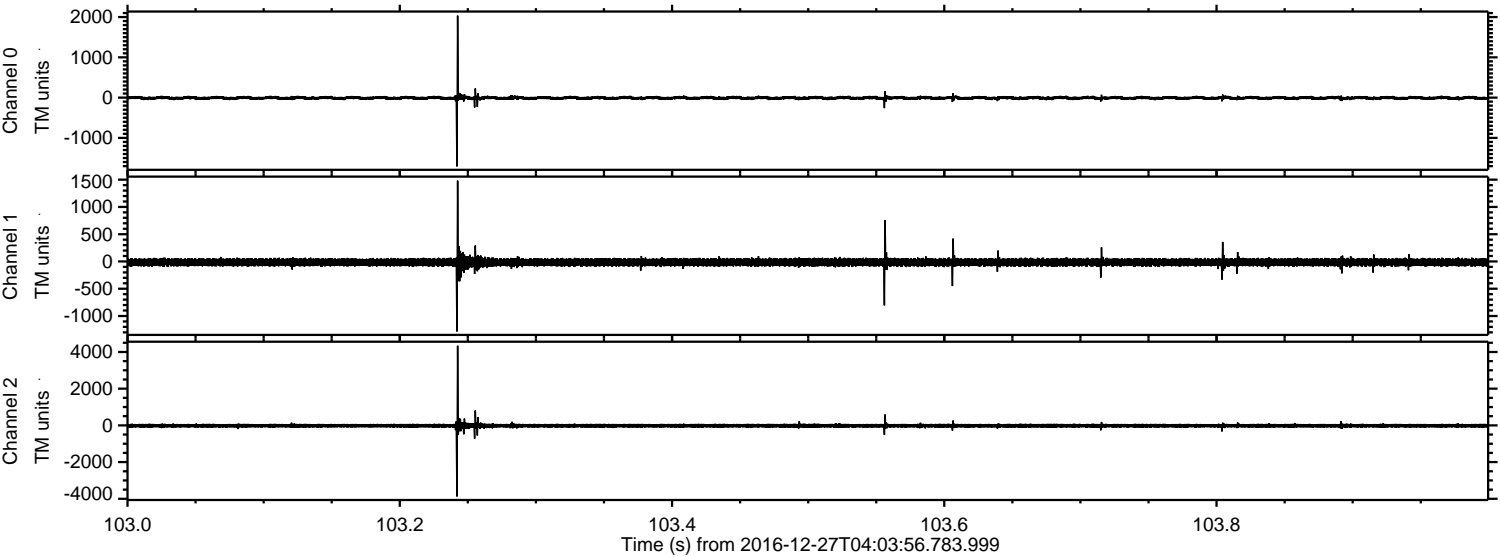
Channel 0
mn: -1707
mx: 2035
 μ : -8.2
 σ : 22.1

Channel 1
mn: -3183
mx: 1826
 μ : -15.0
 σ : 43.8

Channel 2
mn: -3872
mx: 4341
 μ : -17.7
 σ : 59.5

ELMAVAN 3D WAVEFORMS (Measured data sampled at 50 kHz) 51000 packets of 144 samples from 2016-12-27T04:03:56.783.999. Part 104/147

Processed Tue Dec 27 05:11:56 2016 by ELM ver.2012-10-06 from 001__elm20161227_040355__dat00.bin



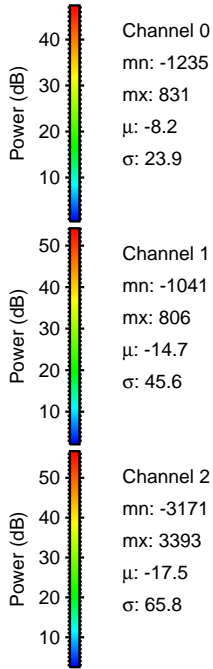
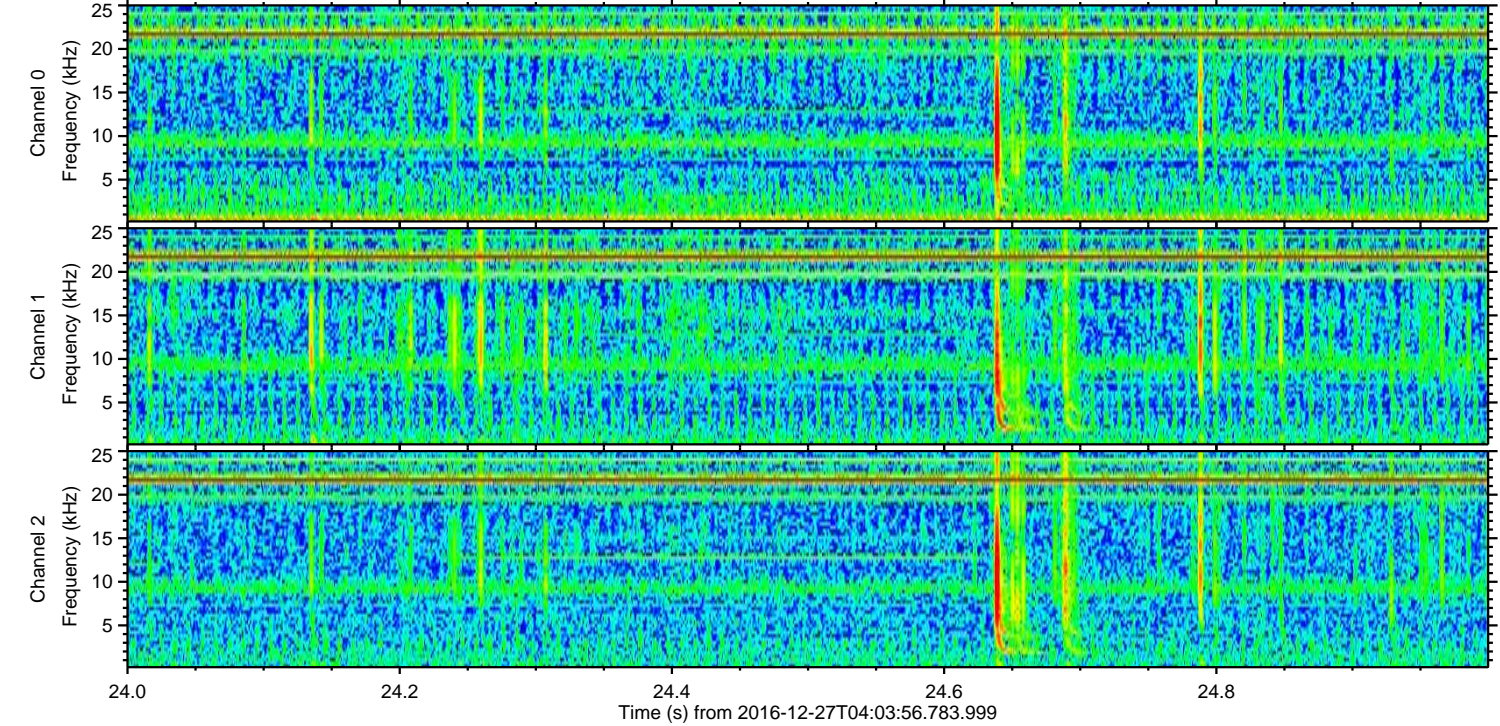
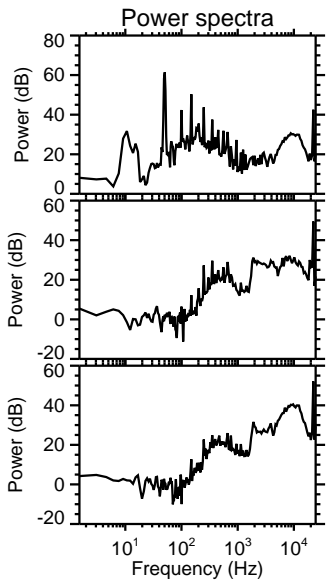
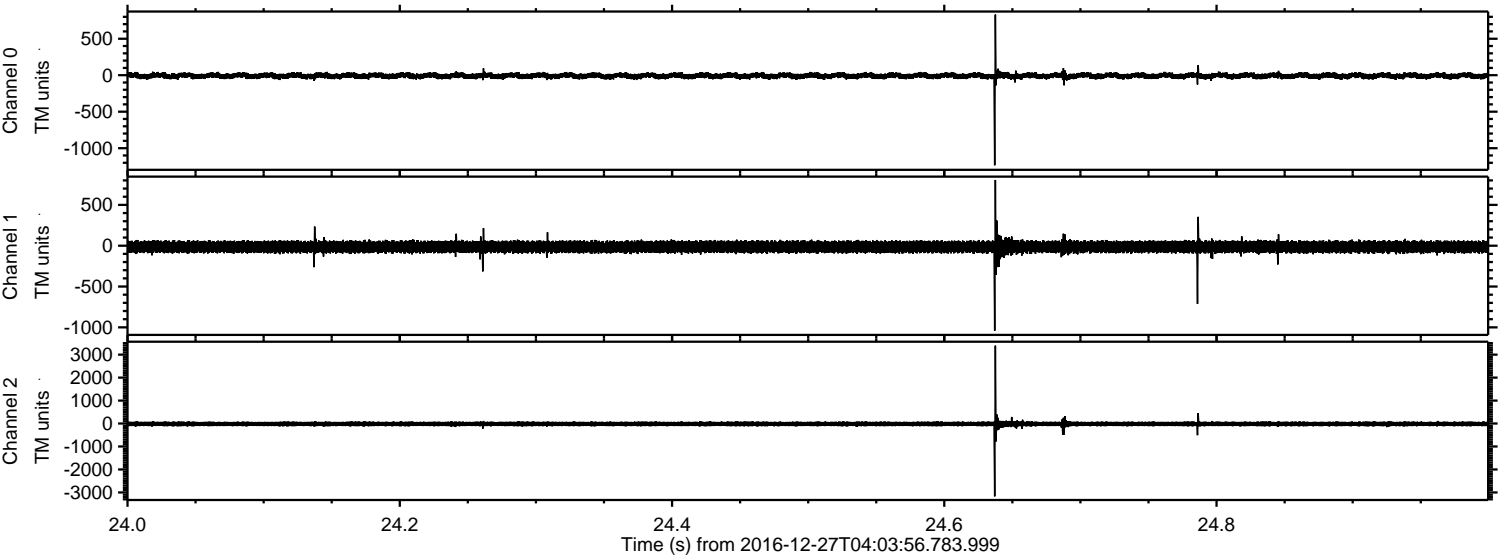
Channel 0
mn: -1707
mx: 2035
 μ : -8.2
 σ : 26.9

Channel 1
mn: -1283
mx: 1482
 μ : -15.2
 σ : 46.4

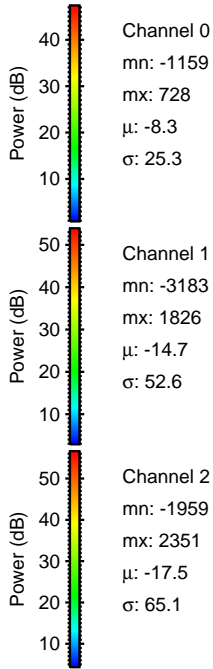
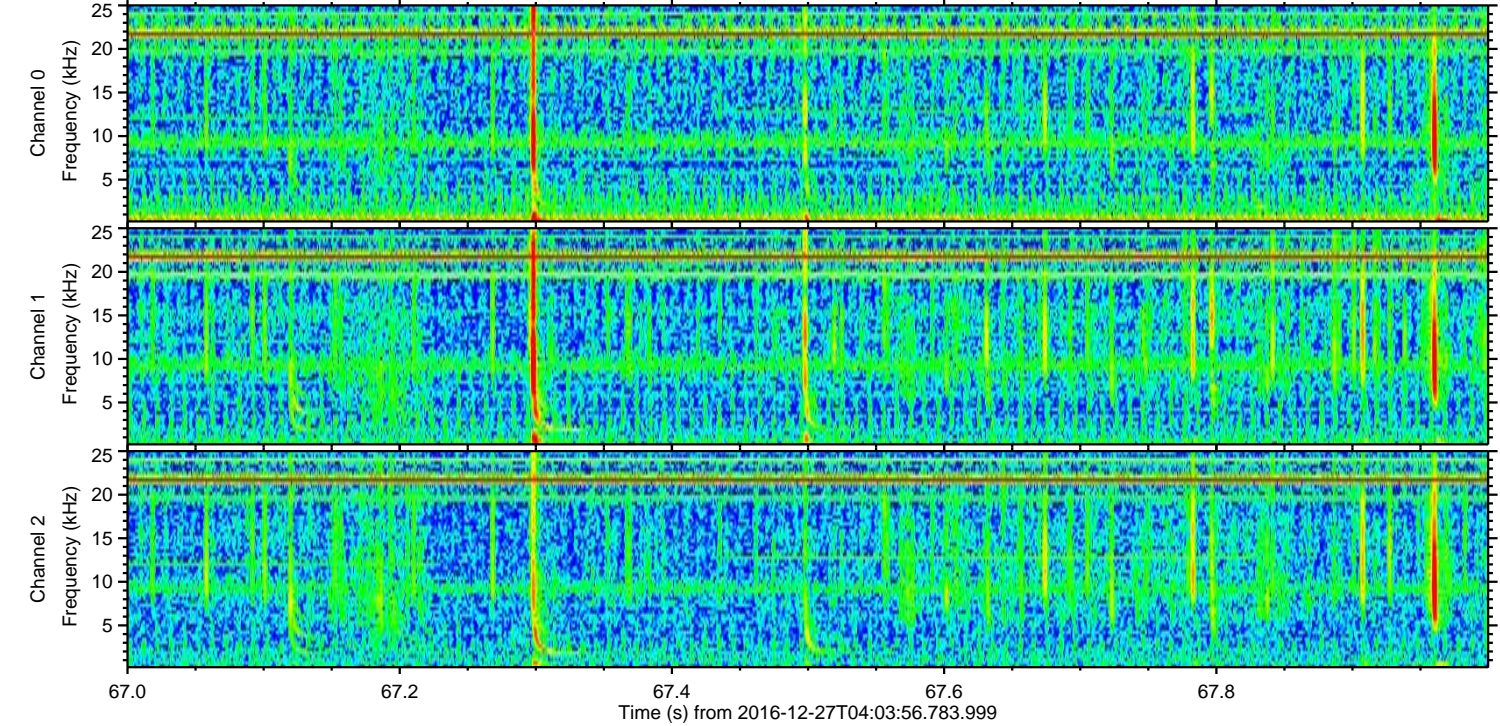
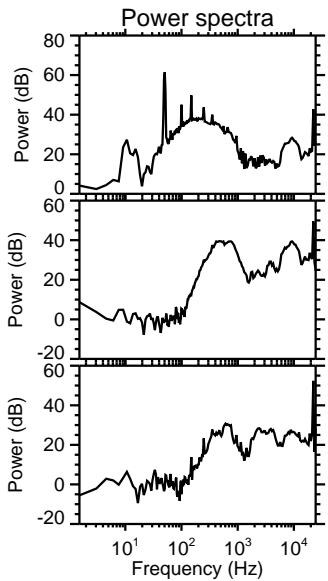
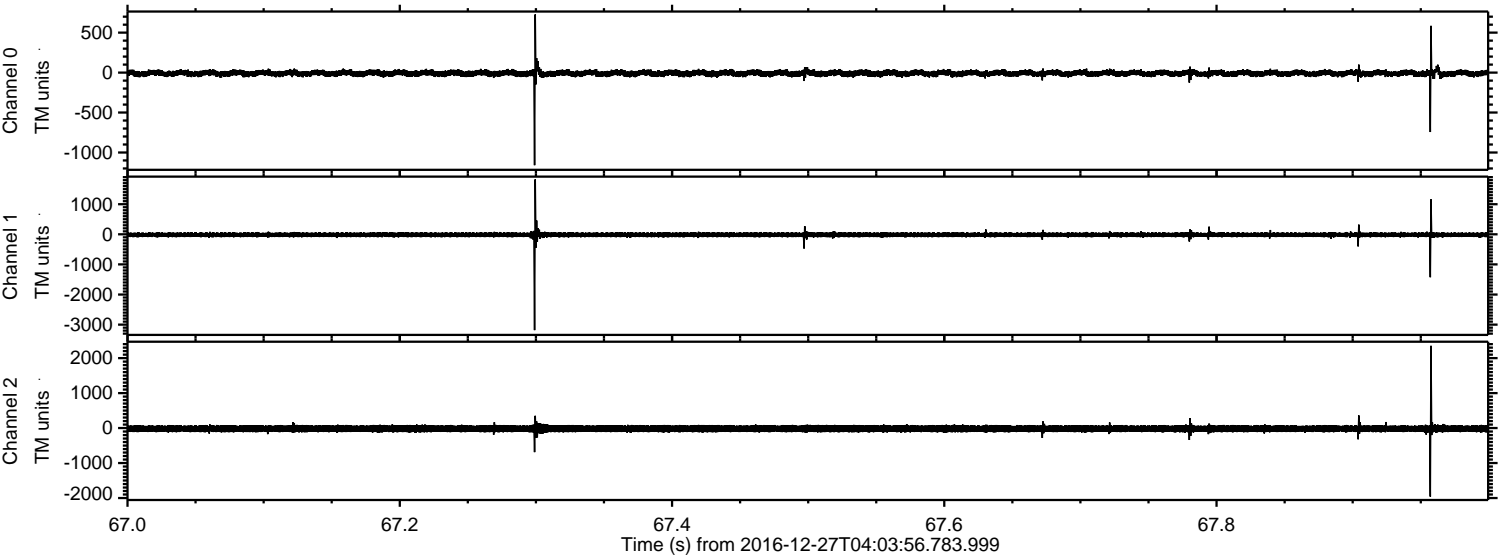
Channel 2
mn: -3872
mx: 4341
 μ : -18.0
 σ : 74.3

ELMAVAN 3D WAVEFORMS (Measured data sampled at 50 kHz) 51000 packets of 144 samples from 2016-12-27T04:03:56.783.999. Part 25/147

Processed Tue Dec 27 05:11:57 2016 by ELM ver.2012-10-06 from 001__elm20161227_040355__dat00.bin

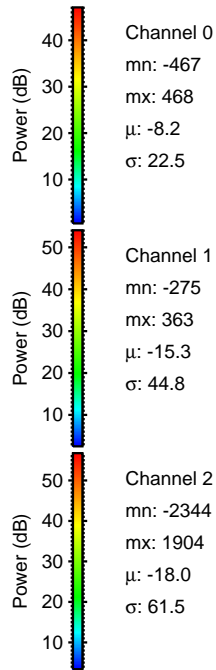
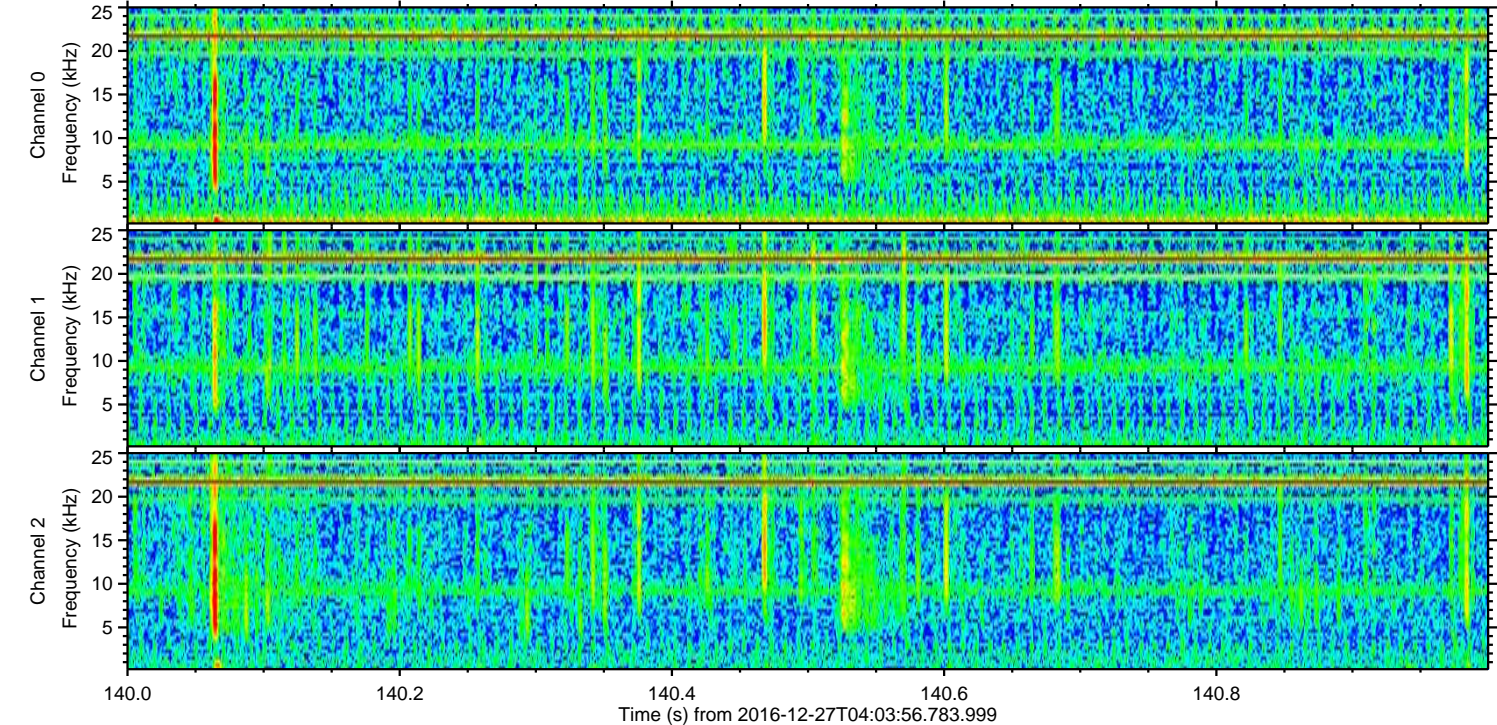
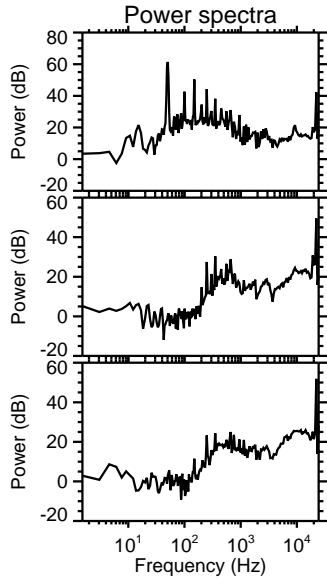
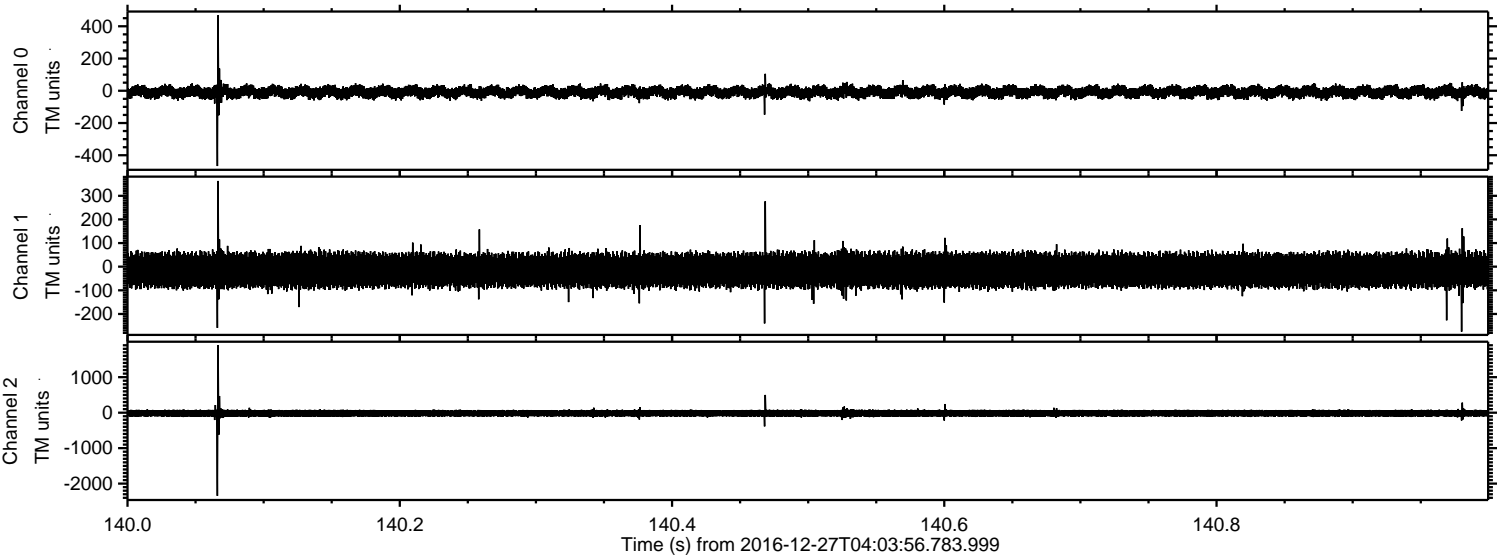


Processed Tue Dec 27 05:11:58 2016 by ELM ver.2012-10-06 from 001__elm20161227_040355__dat00.bin



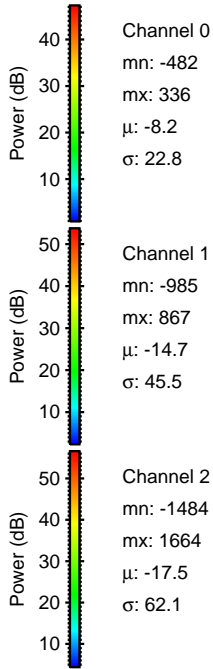
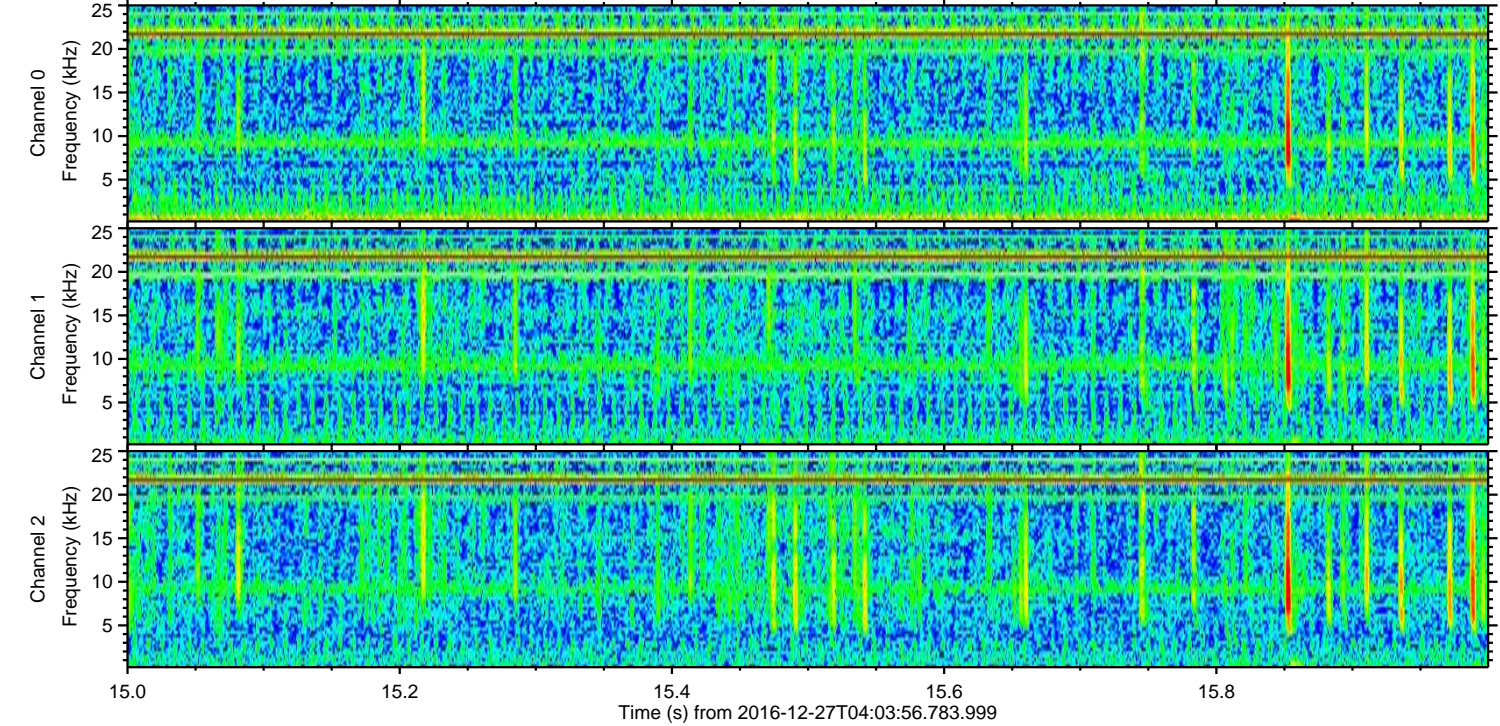
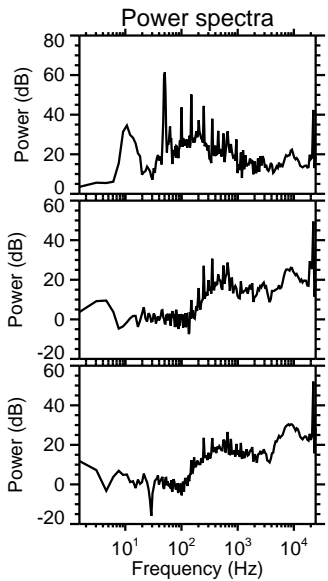
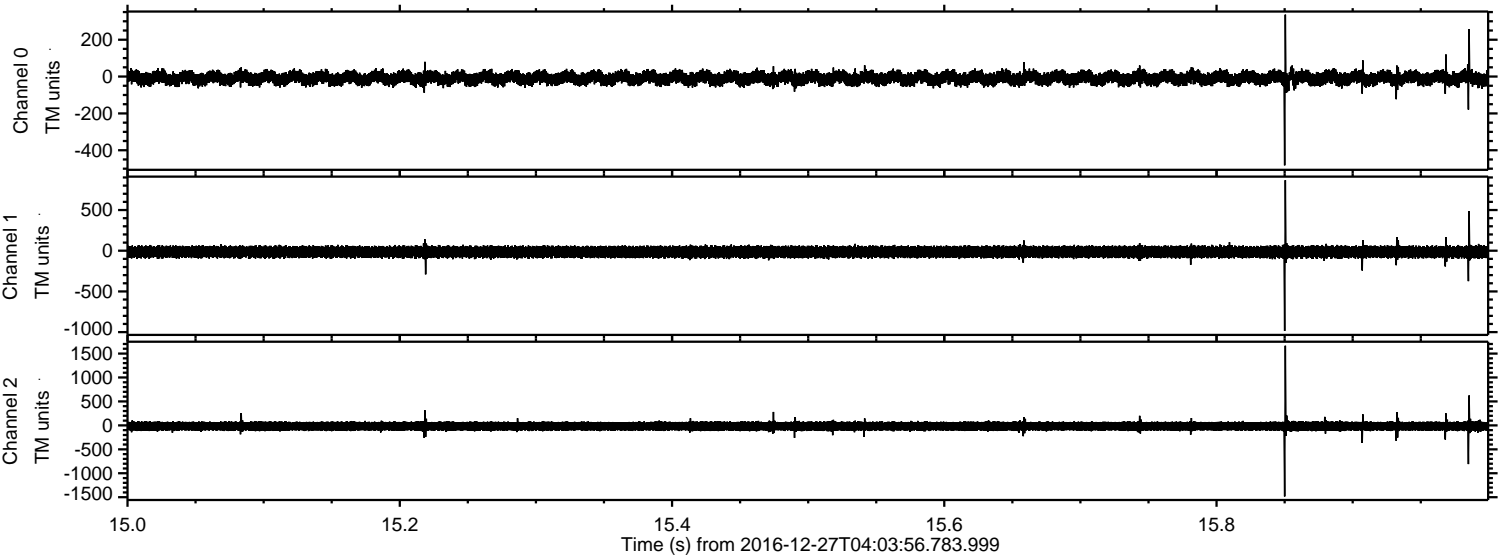
ELMAVAN 3D WAVEFORMS (Measured data sampled at 50 kHz) 51000 packets of 144 samples from 2016-12-27T04:03:56.783.999. Part 141/147

Processed Tue Dec 27 05:11:59 2016 by ELM ver.2012-10-06 from 001__elm20161227_040355__dat00.bin



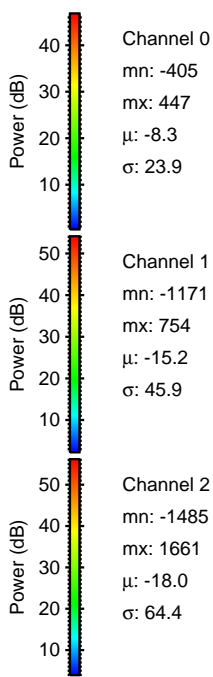
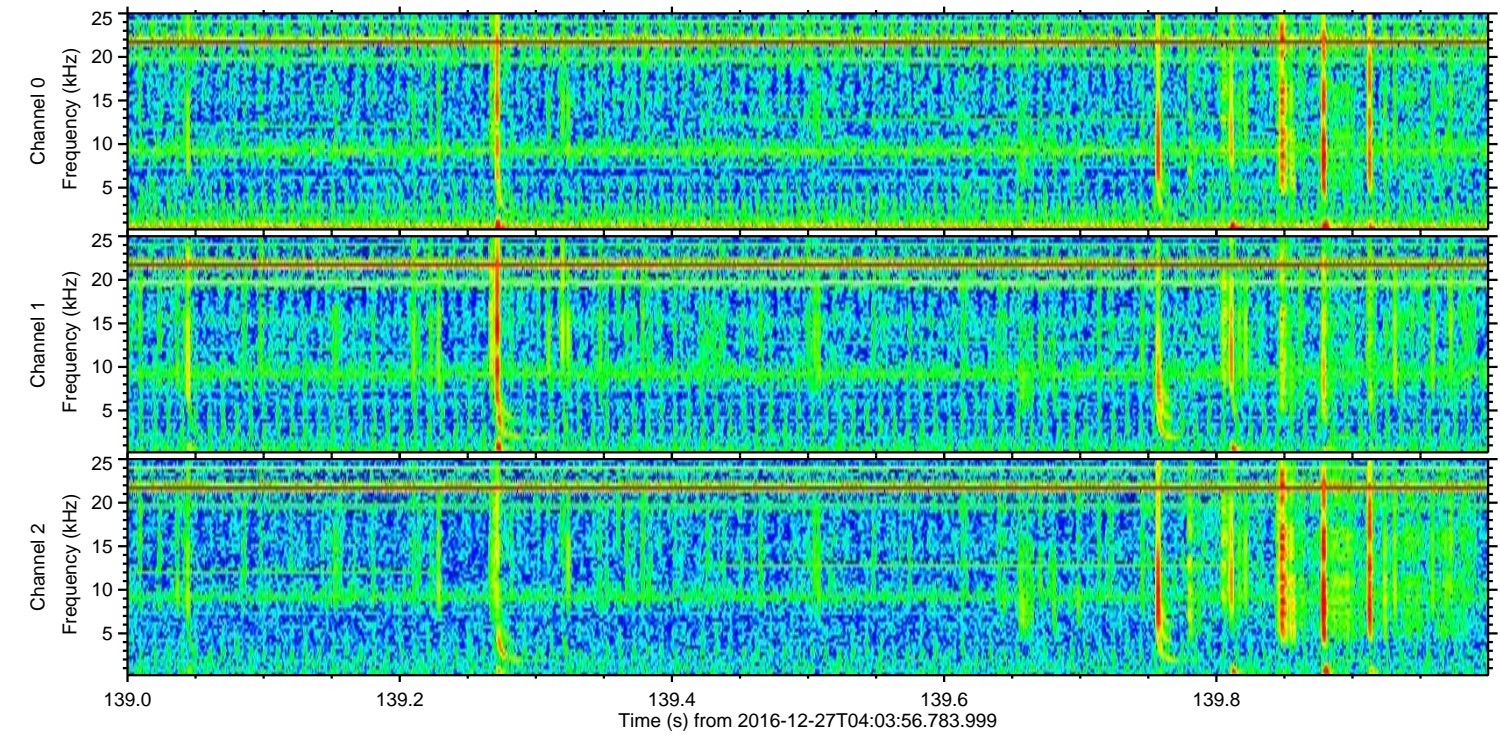
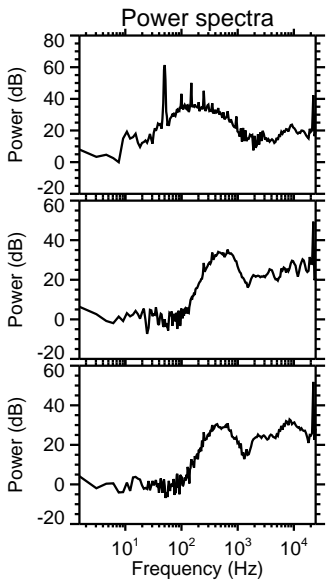
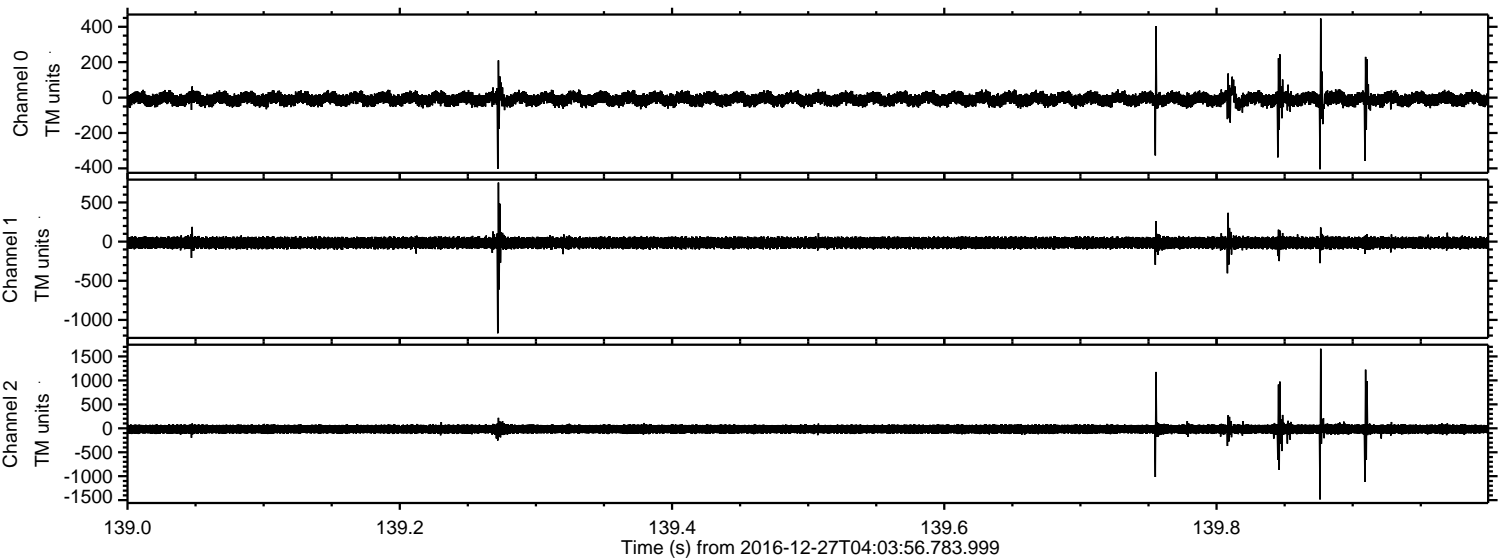
ELMAVAN 3D WAVEFORMS (Measured data sampled at 50 kHz) 51000 packets of 144 samples from 2016-12-27T04:03:56.783.999. Part 16/147

Processed Tue Dec 27 05:12:00 2016 by ELM ver.2012-10-06 from 001__elm20161227_040355__dat00.bin



ELMAVAN 3D WAVEFORMS (Measured data sampled at 50 kHz) 51000 packets of 144 samples from 2016-12-27T04:03:56.783.999. Part 140/147

Processed Tue Dec 27 05:12:01 2016 by ELM ver.2012-10-06 from 001__elm20161227_040355__dat00.bin



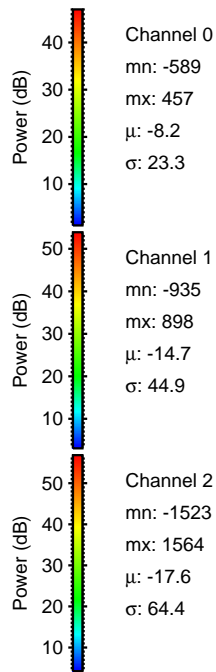
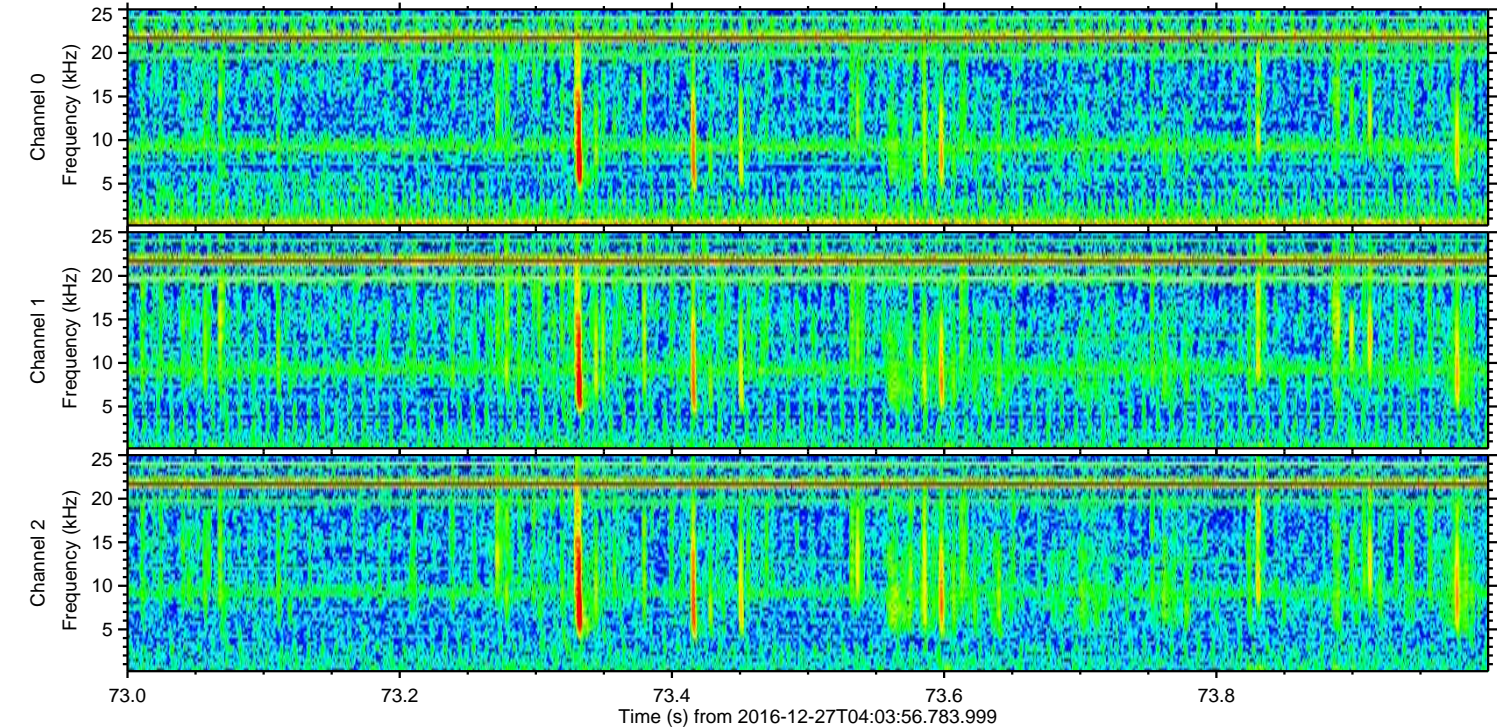
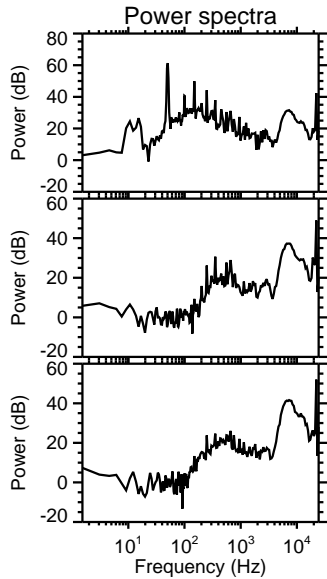
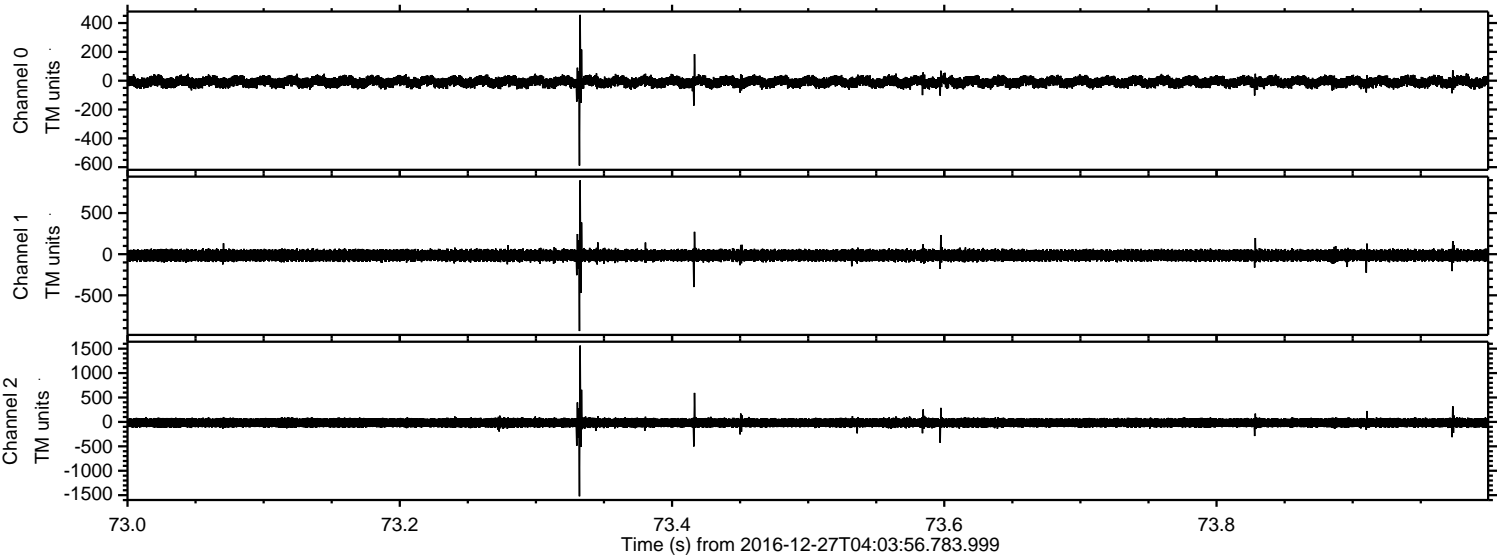
Channel 0
mn: -405
mx: 447
 μ : -8.3
 σ : 23.9

Channel 1
mn: -1171
mx: 754
 μ : -15.2
 σ : 45.9

Channel 2
mn: -1485
mx: 1661
 μ : -18.0
 σ : 64.4

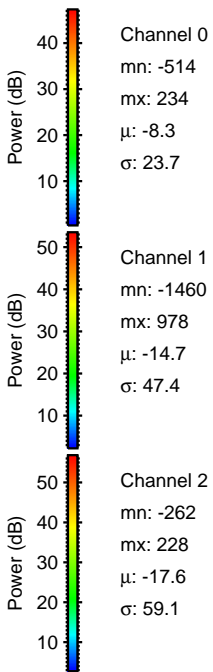
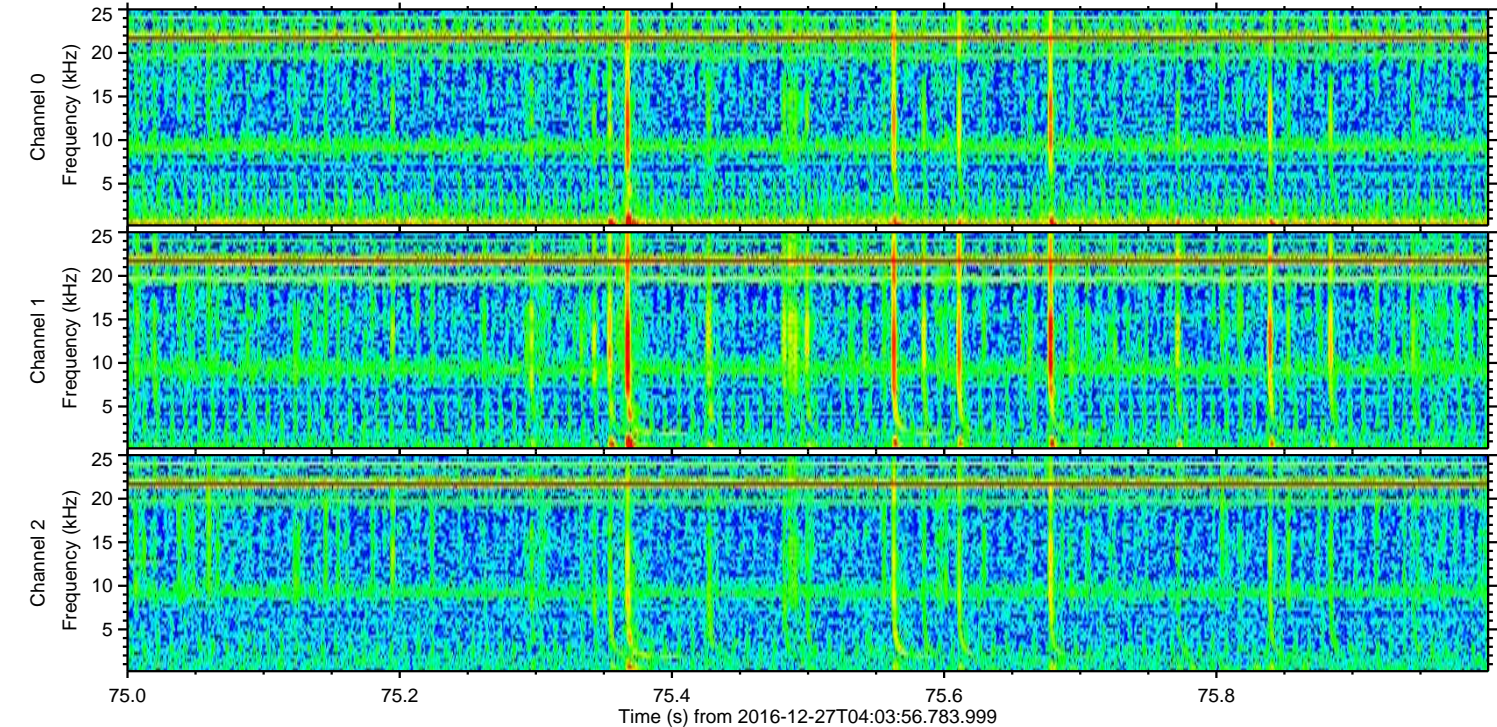
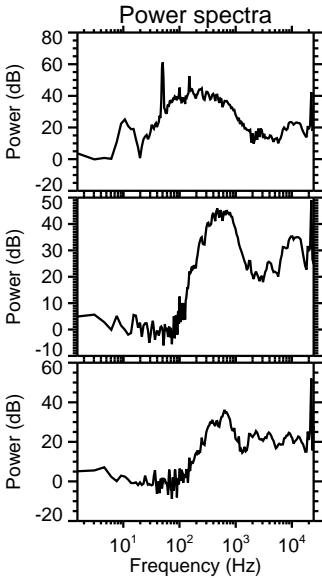
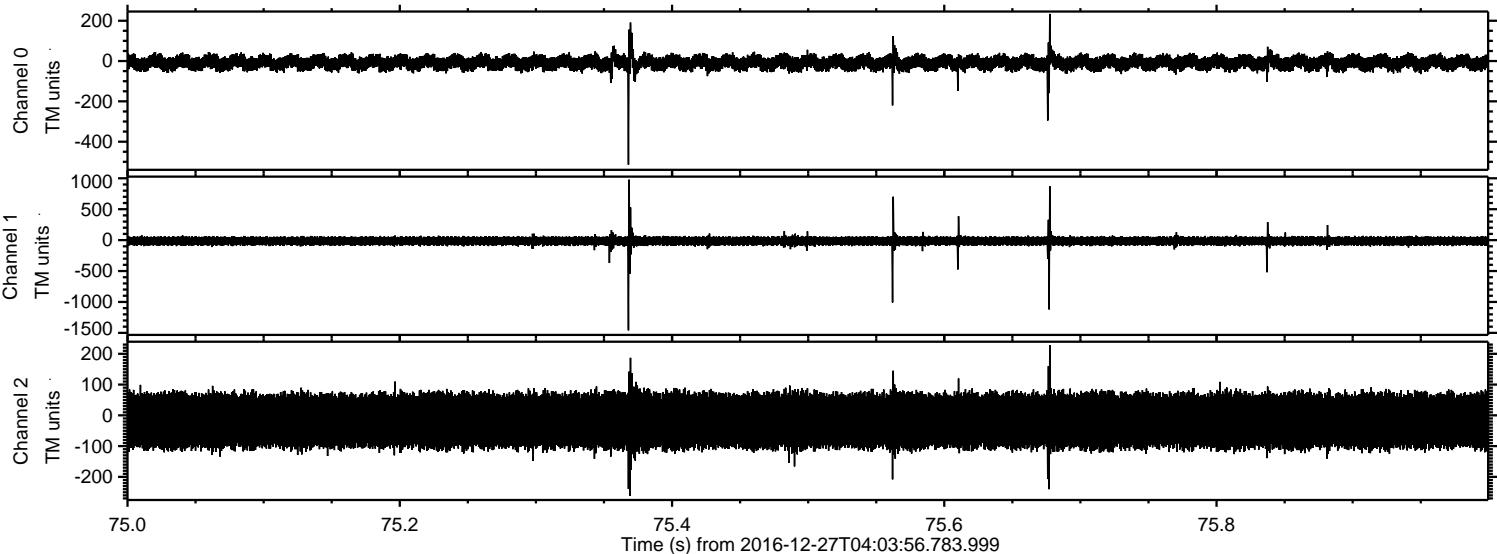
ELMAVAN 3D WAVEFORMS (Measured data sampled at 50 kHz) 51000 packets of 144 samples from 2016-12-27T04:03:56.783.999. Part 74/147

Processed Tue Dec 27 05:12:02 2016 by ELM ver.2012-10-06 from 001__elm20161227_040355__dat00.bin



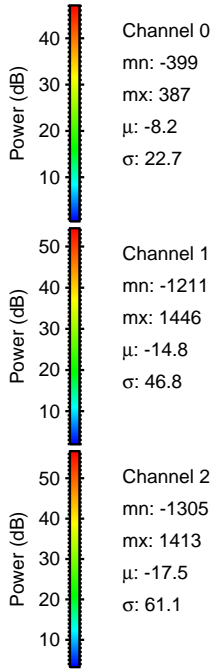
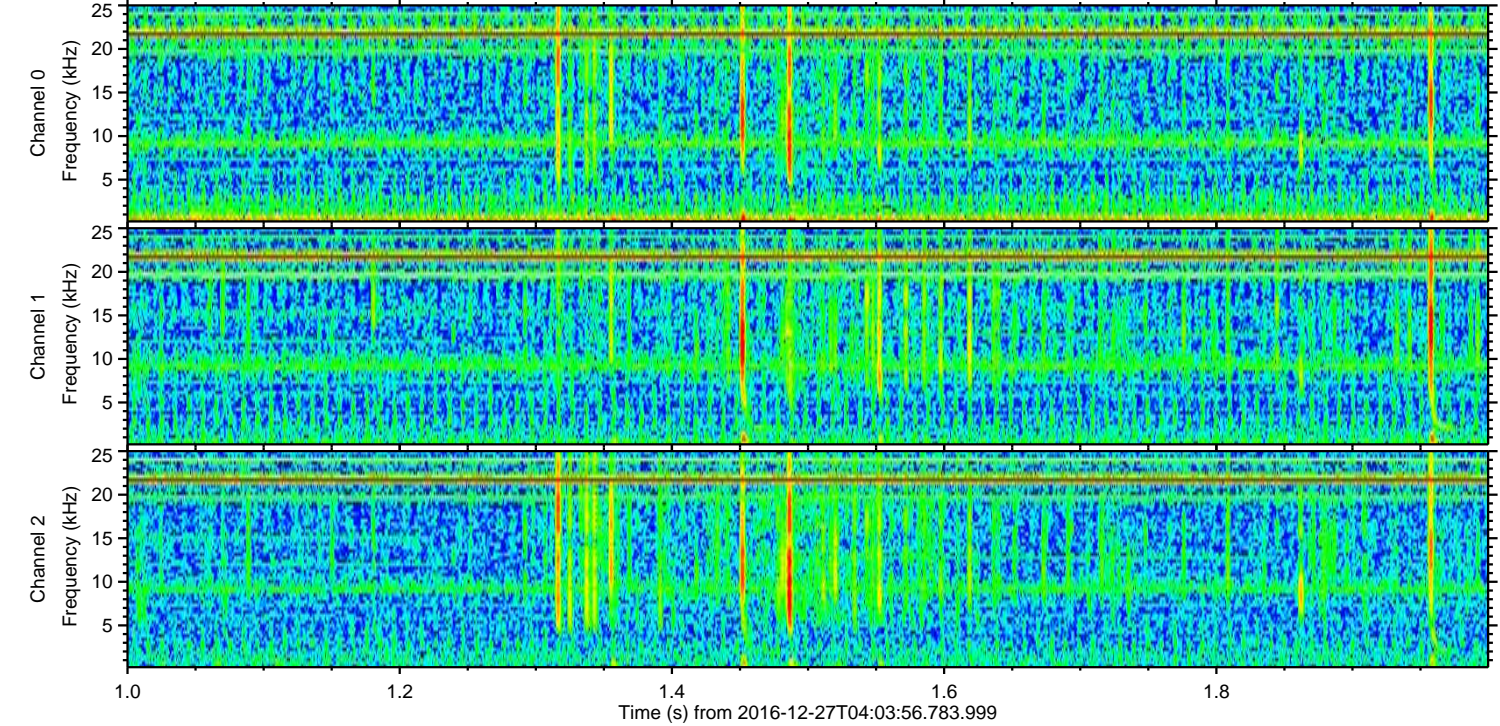
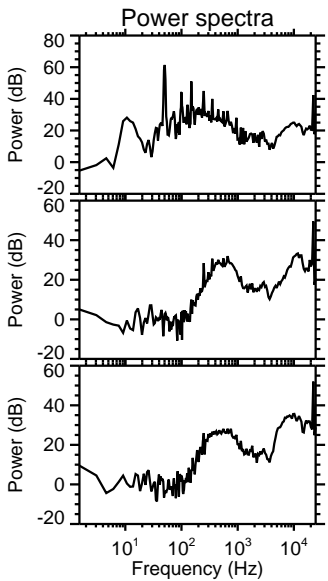
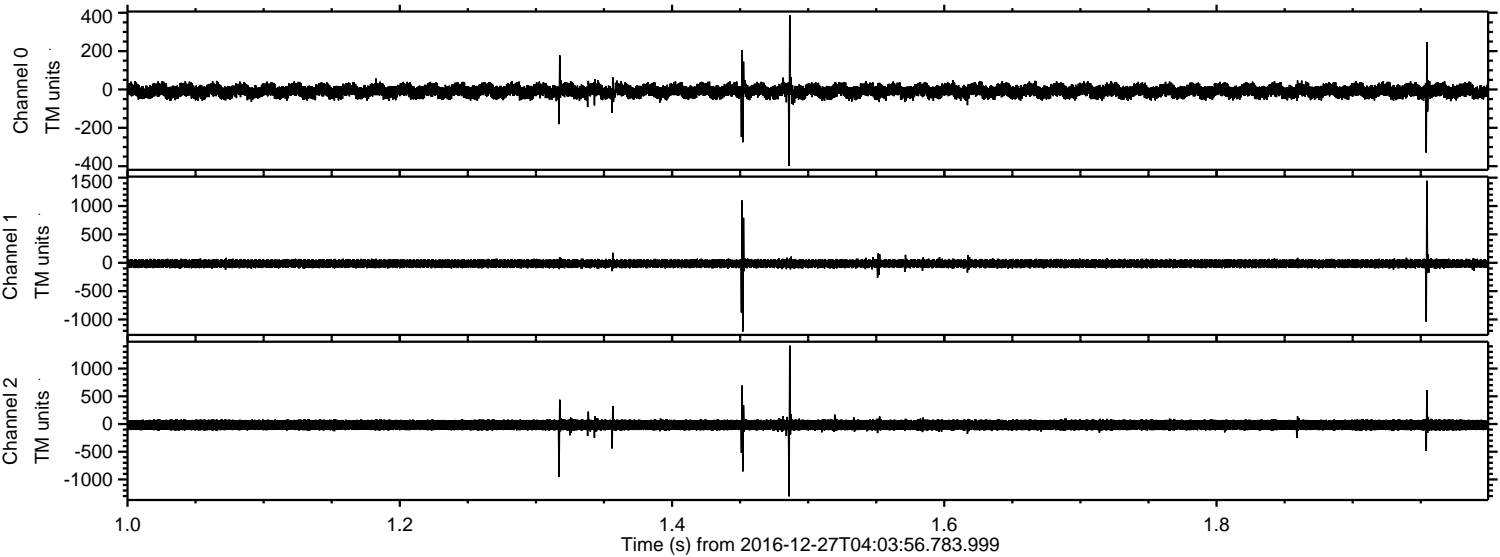
ELMAVAN 3D WAVEFORMS (Measured data sampled at 50 kHz) 51000 packets of 144 samples from 2016-12-27T04:03:56.783.999. Part 76/147

Processed Tue Dec 27 05:12:03 2016 by ELM ver.2012-10-06 from 001__elm20161227_040355__dat00.bin



ELMAVAN 3D WAVEFORMS (Measured data sampled at 50 kHz) 51000 packets of 144 samples from 2016-12-27T04:03:56.783.999. Part 2/147

Processed Tue Dec 27 05:12:04 2016 by ELM ver.2012-10-06 from 001__elm20161227_040355__dat00.bin



ELMAVAN 3D WAVEFORMS (Measured data sampled at 50 kHz) 51000 packets of 144 samples from 2016-12-27T04:03:56.783.999. Part 124/147

