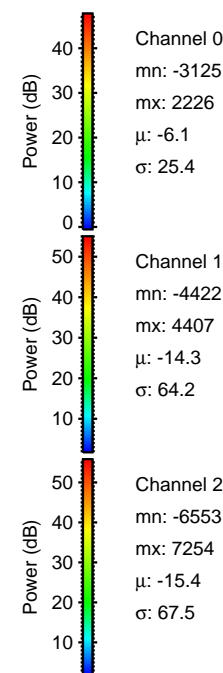
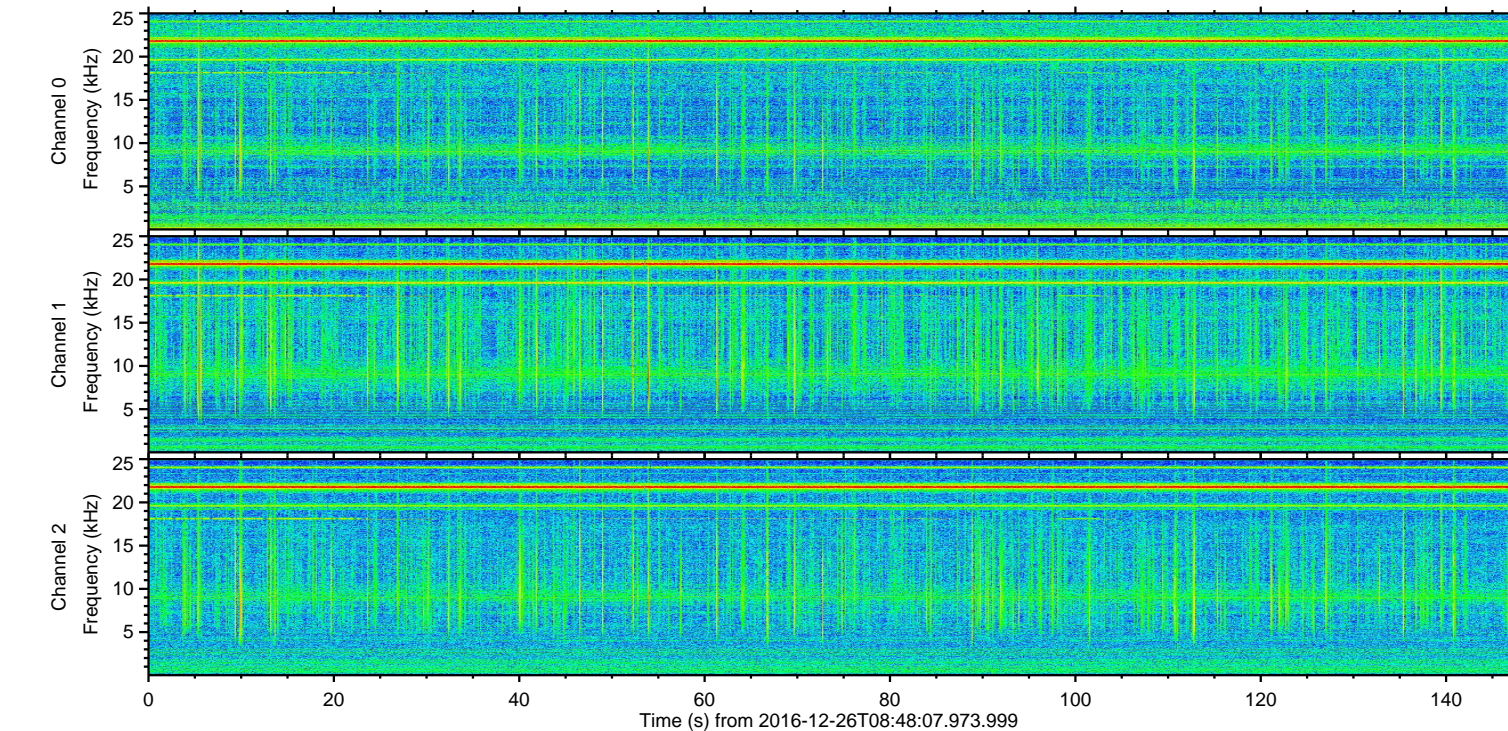
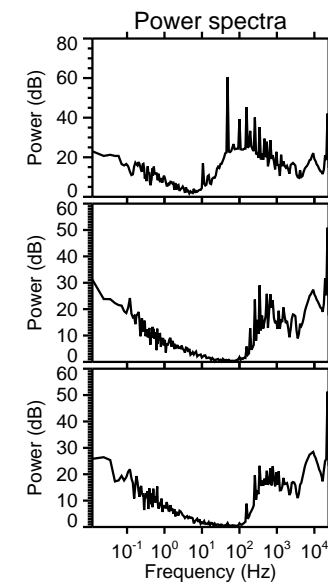
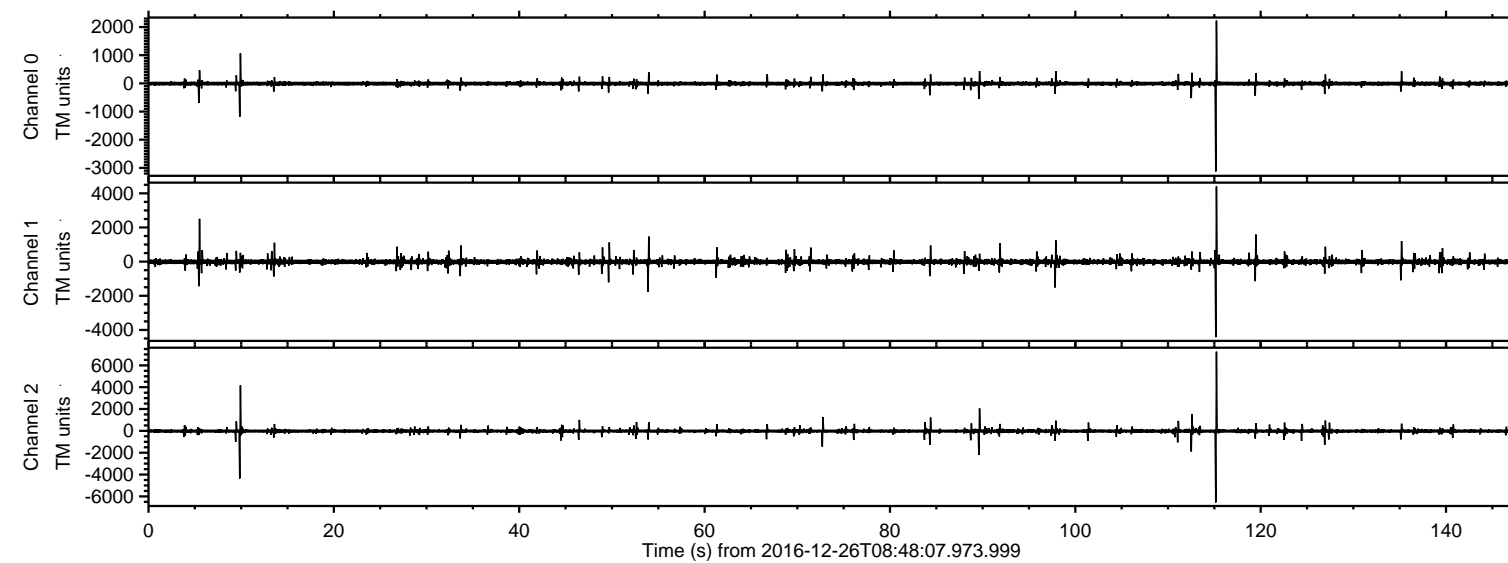


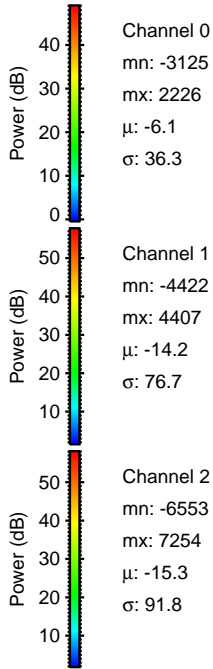
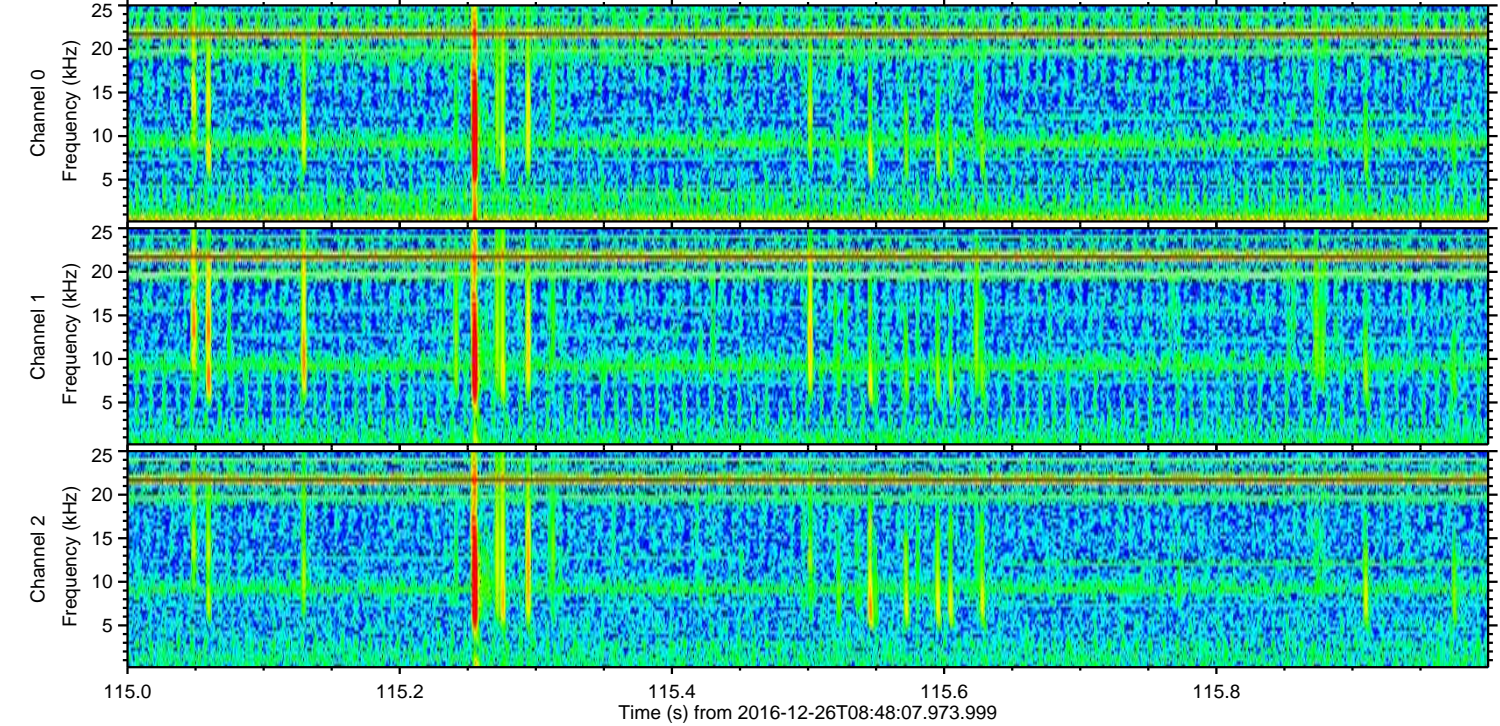
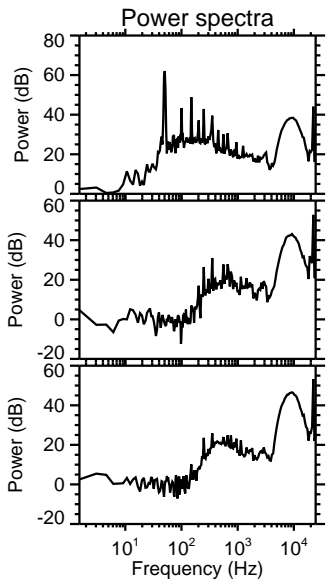
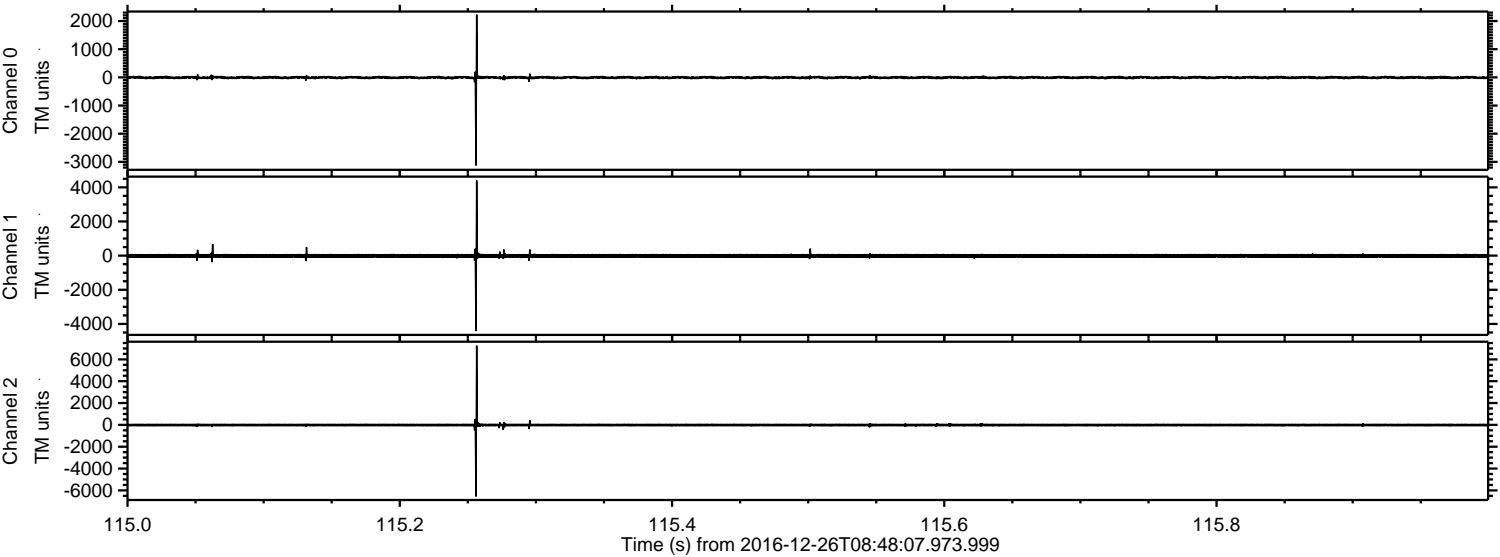
ELMAVAN 3D WAVEFORMS (Measured data sampled at 50 kHz) 51000 packets of 144 samples from 2016-12-26T08:48:07.973.999.

Processed Mon Dec 26 09:55:52 2016 by ELM ver.2012-10-06 from 001__elm20161226_084806__dat00.bin



ELMAVAN 3D WAVEFORMS (Measured data sampled at 50 kHz) 51000 packets of 144 samples from 2016-12-26T08:48:07.973.999. Part 116/147

Processed Mon Dec 26 09:56:04 2016 by ELM ver.2012-10-06 from 001__elm20161226_084806__dat00.bin



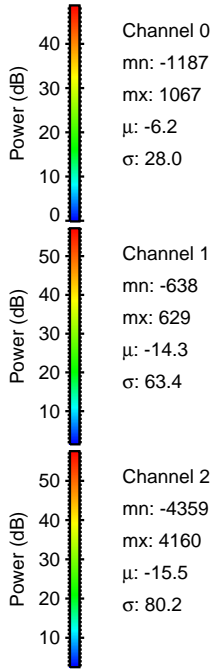
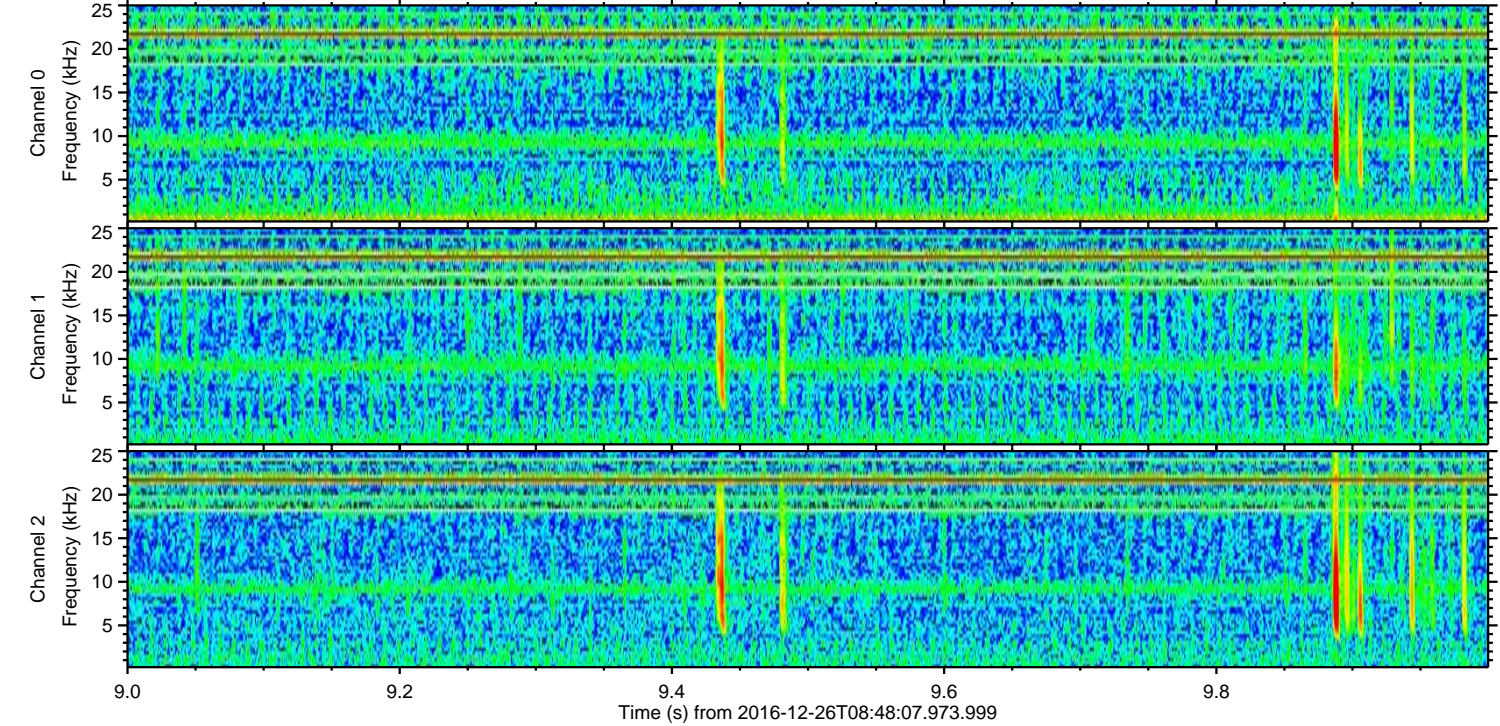
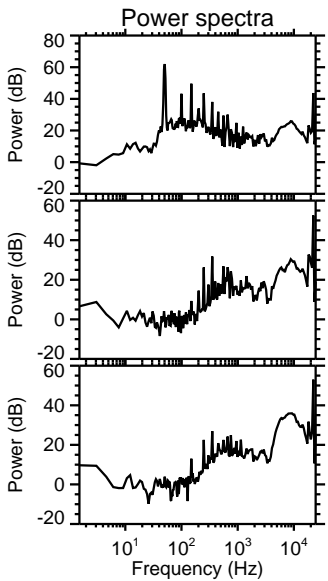
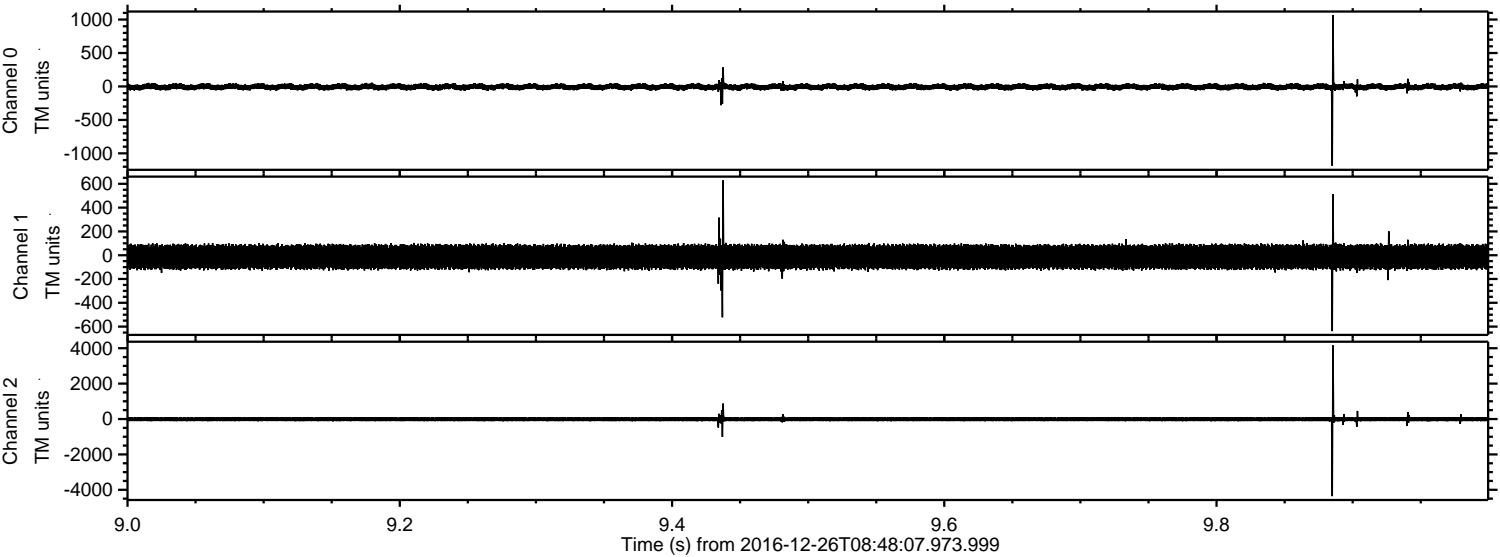
Channel 0
mn: -3125
mx: 2226
 μ : -6.1
 σ : 36.3

Channel 1
mn: -4422
mx: 4407
 μ : -14.2
 σ : 76.7

Channel 2
mn: -6553
mx: 7254
 μ : -15.3
 σ : 91.8

ELMAVAN 3D WAVEFORMS (Measured data sampled at 50 kHz) 51000 packets of 144 samples from 2016-12-26T08:48:07.973.999. Part 10/147

Processed Mon Dec 26 09:56:05 2016 by ELM ver.2012-10-06 from 001__elm20161226_084806__dat00.bin



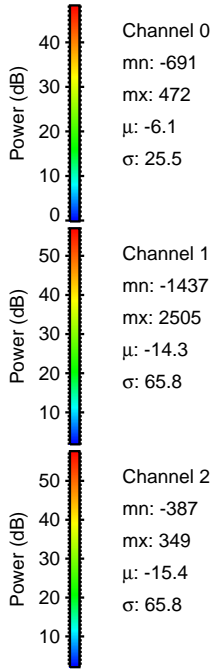
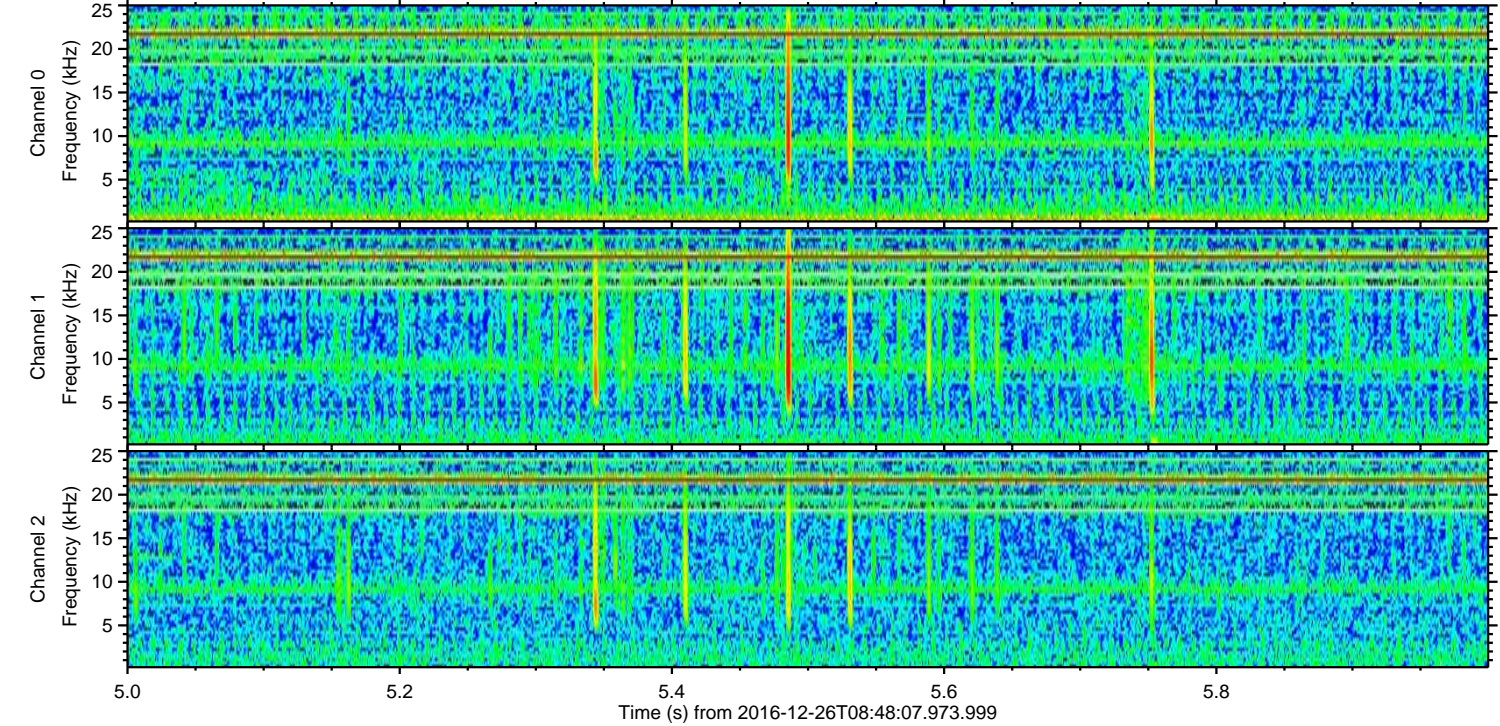
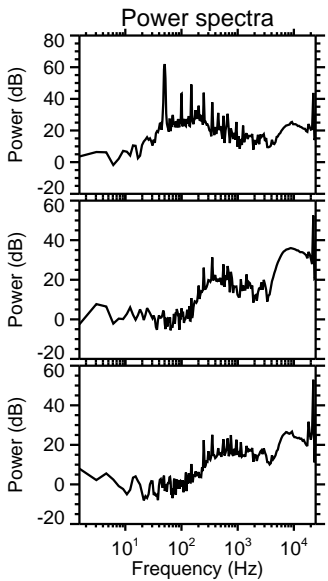
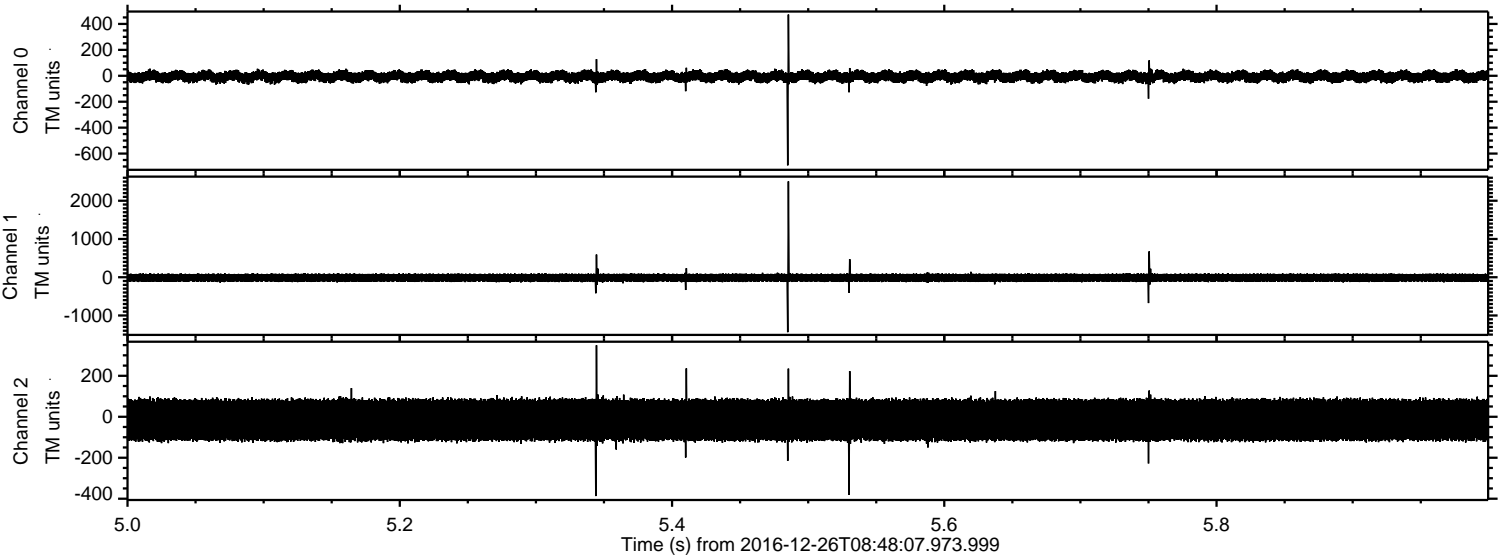
Channel 0
mn: -1187
mx: 1067
 μ : -6.2
 σ : 28.0

Channel 1
mn: -638
mx: 629
 μ : -14.3
 σ : 63.4

Channel 2
mn: -4359
mx: 4160
 μ : -15.5
 σ : 80.2

ELMAVAN 3D WAVEFORMS (Measured data sampled at 50 kHz) 51000 packets of 144 samples from 2016-12-26T08:48:07.973.999. Part 6/147

Processed Mon Dec 26 09:56:06 2016 by ELM ver.2012-10-06 from 001__elm20161226_084806__dat00.bin

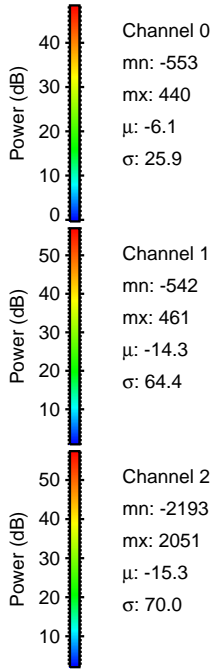
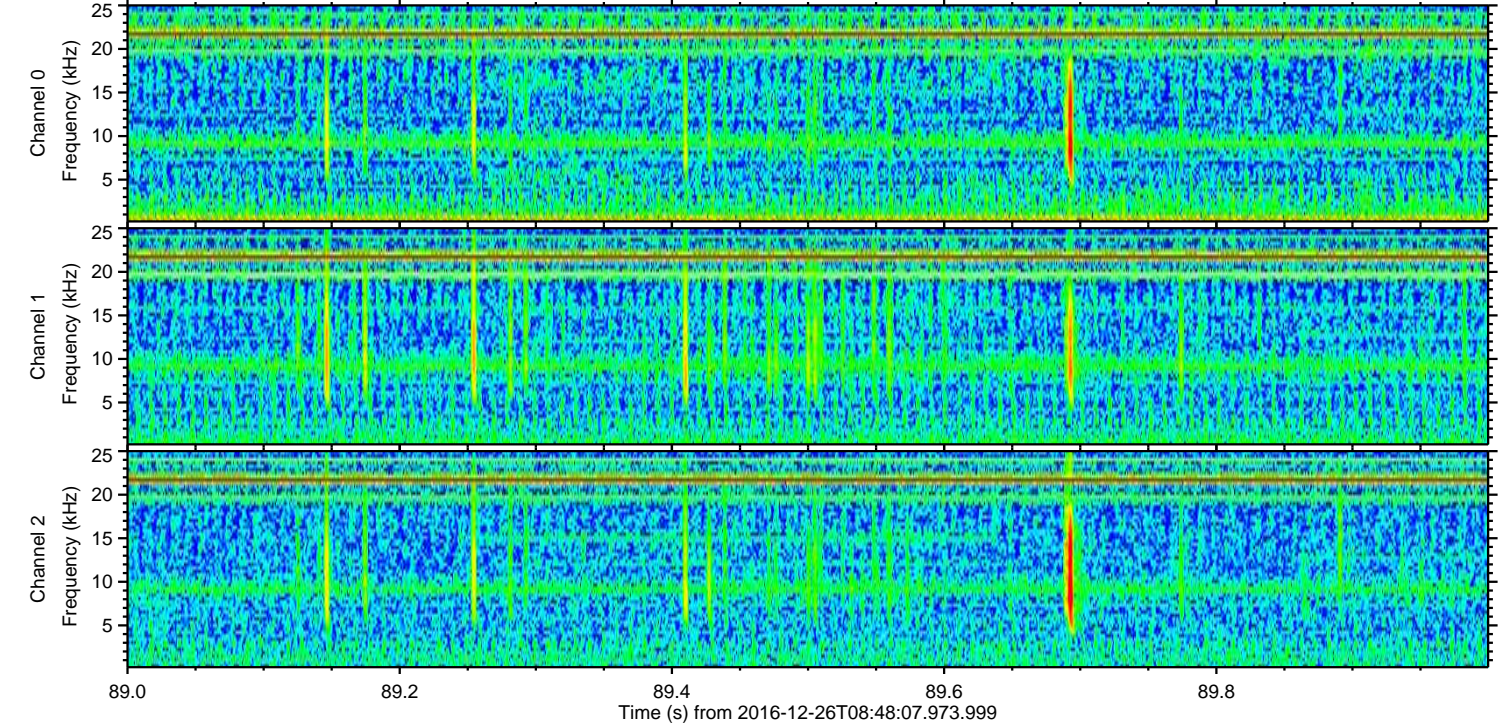
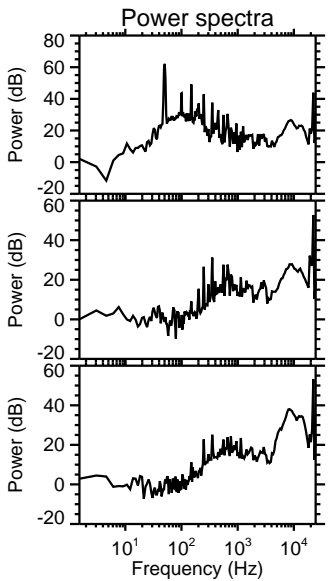
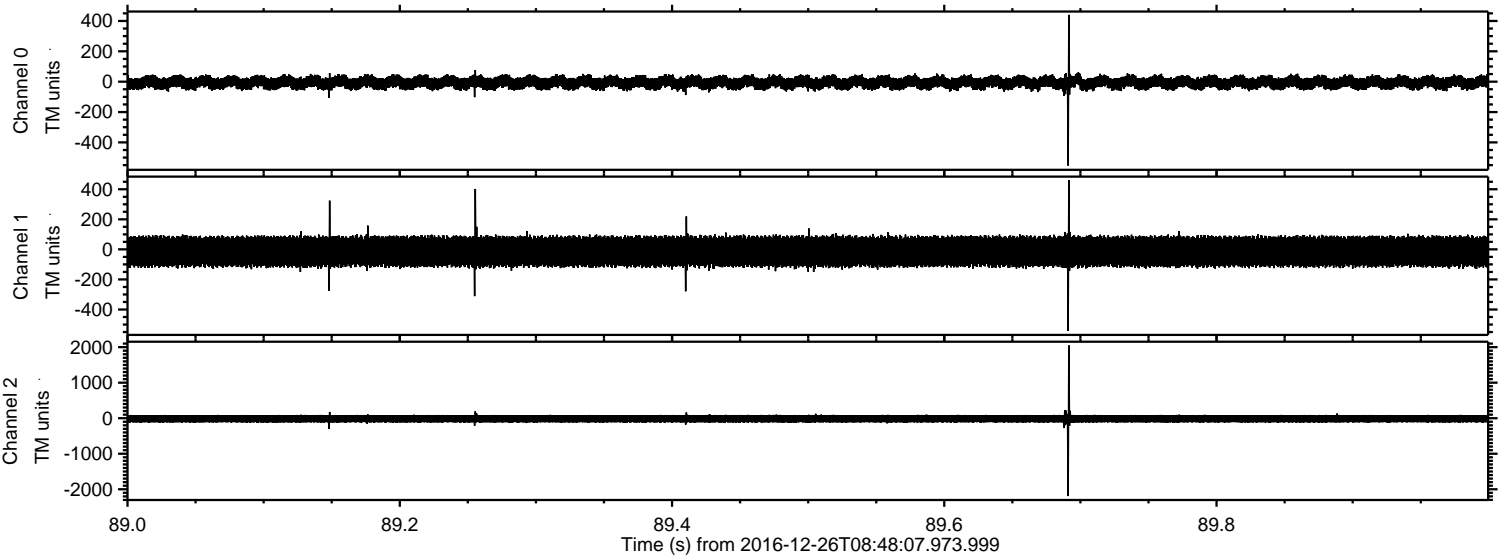


Channel 0
mn: -691
mx: 472
 μ : -6.1
 σ : 25.5

Channel 1
mn: -1437
mx: 2505
 μ : -14.3
 σ : 65.8

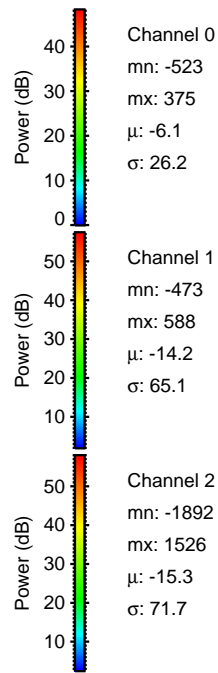
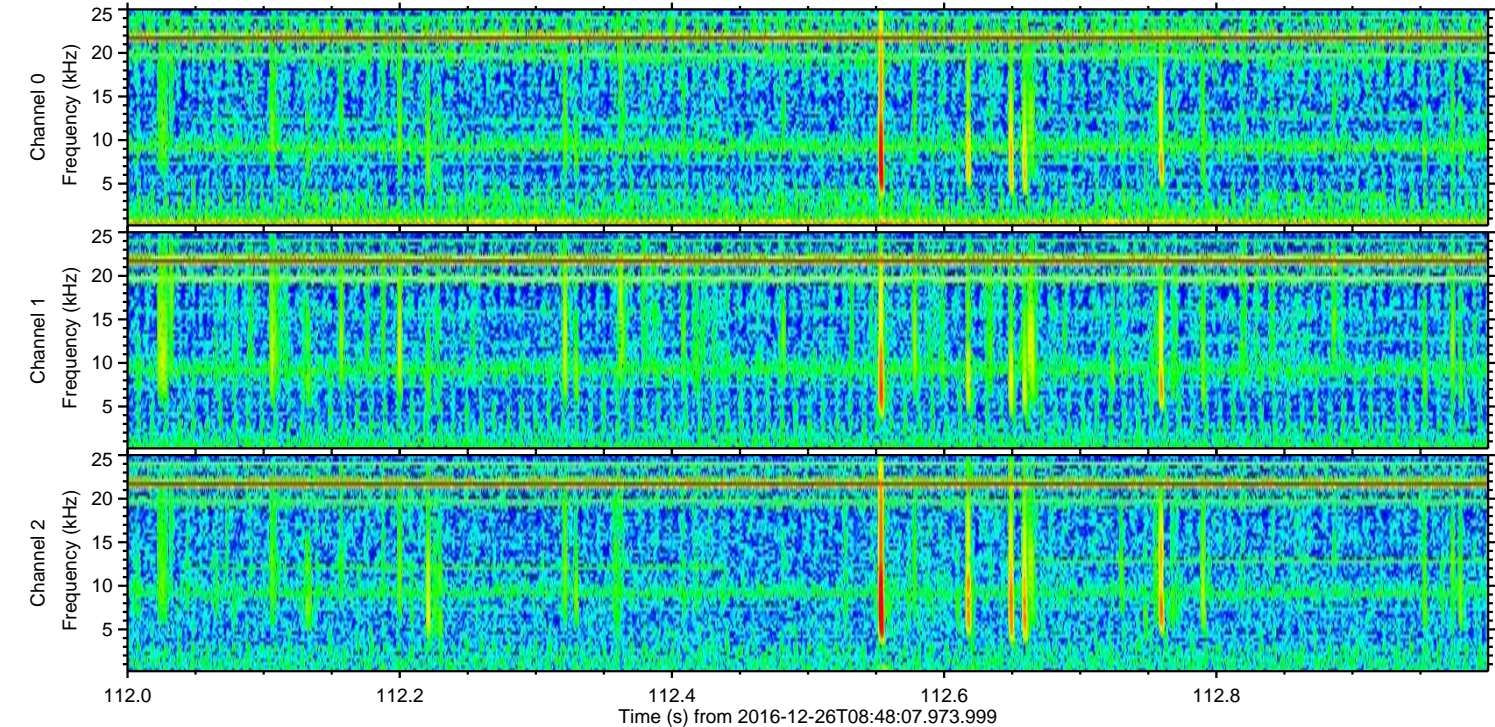
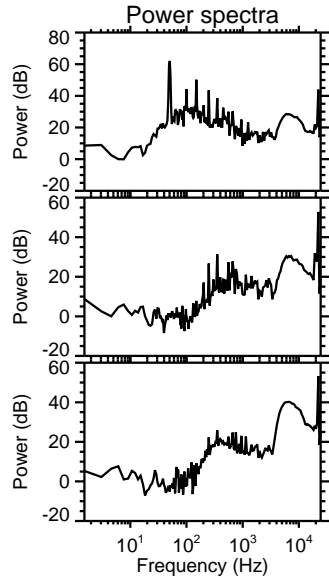
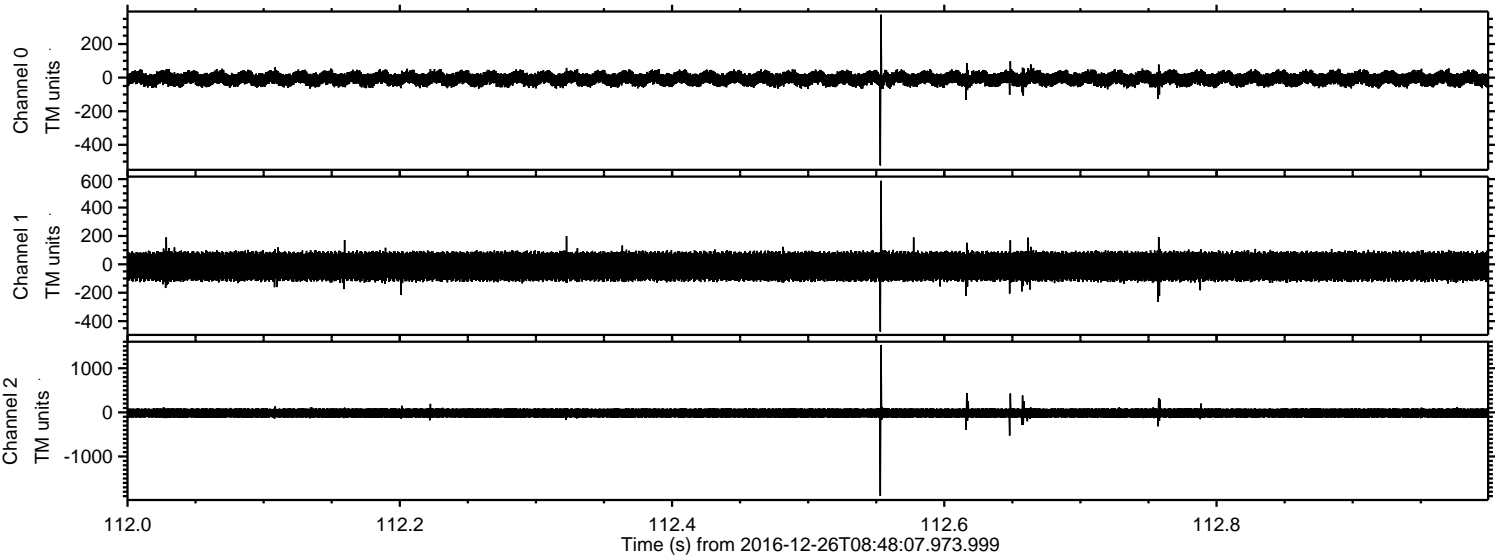
Channel 2
mn: -387
mx: 349
 μ : -15.4
 σ : 65.8

Processed Mon Dec 26 09:56:07 2016 by ELM ver.2012-10-06 from 001__elm20161226_084806__dat00.bin

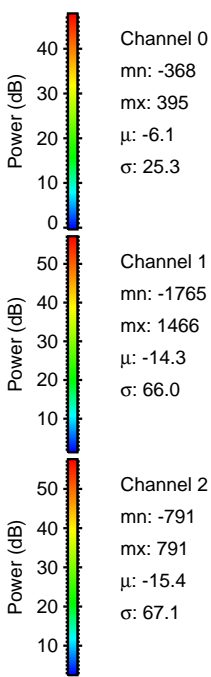
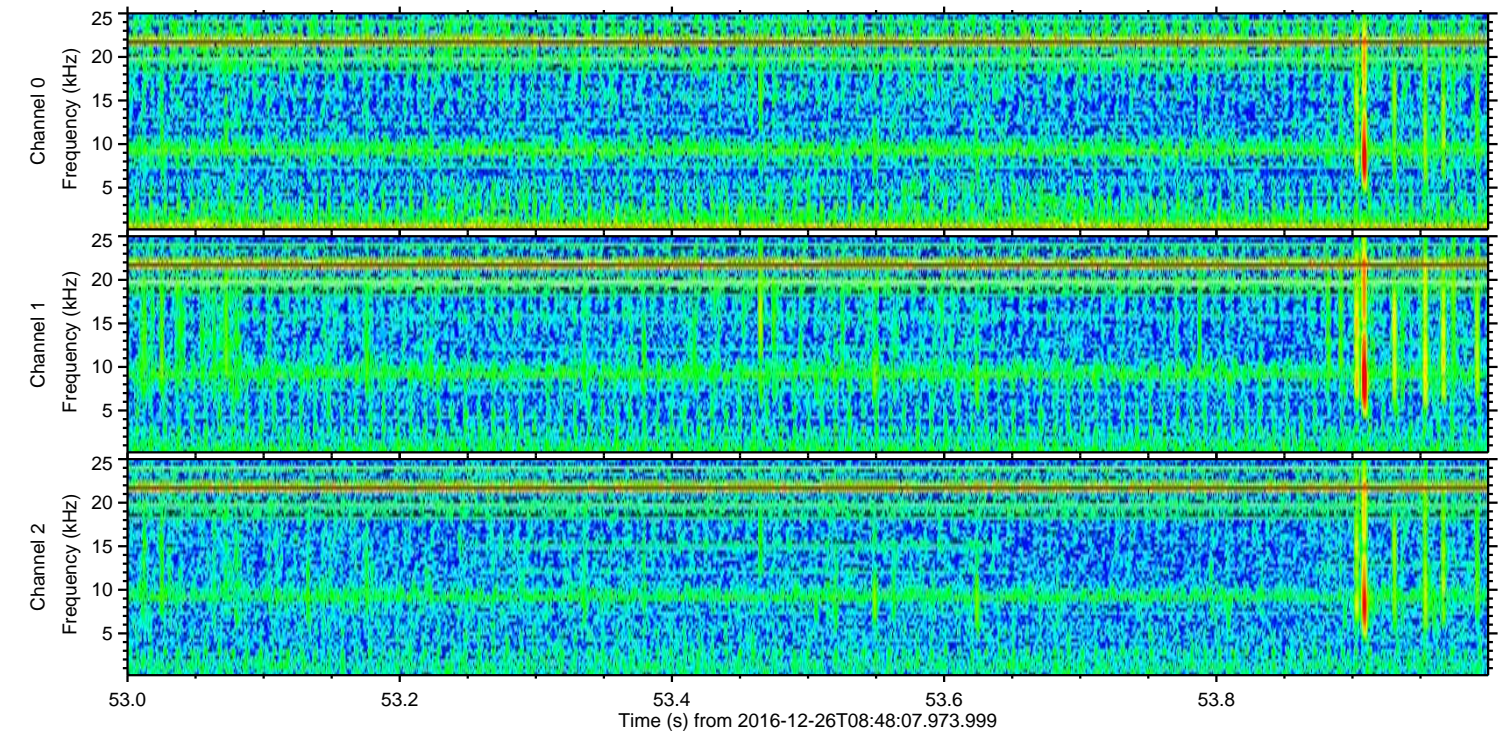
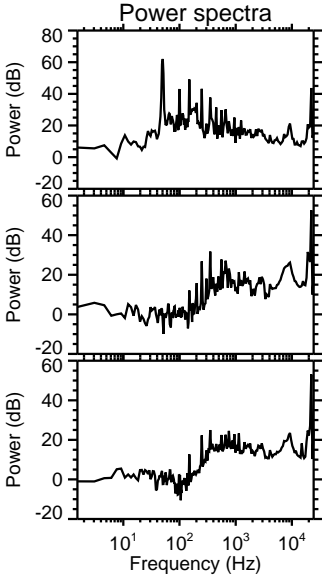
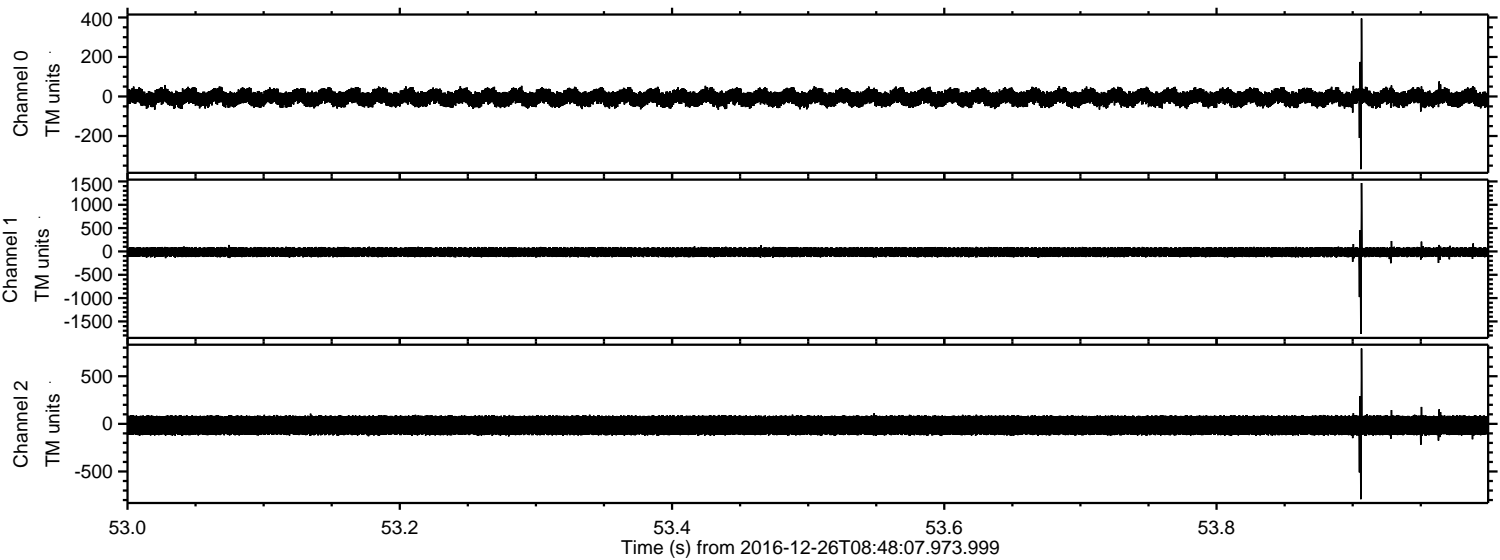


ELMAVAN 3D WAVEFORMS (Measured data sampled at 50 kHz) 51000 packets of 144 samples from 2016-12-26T08:48:07.973.999. Part 113/147

Processed Mon Dec 26 09:56:08 2016 by ELM ver.2012-10-06 from 001__elm20161226_084806__dat00.bin



Processed Mon Dec 26 09:56:09 2016 by ELM ver.2012-10-06 from 001__elm20161226_084806__dat00.bin



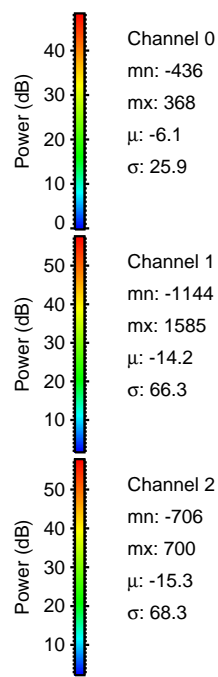
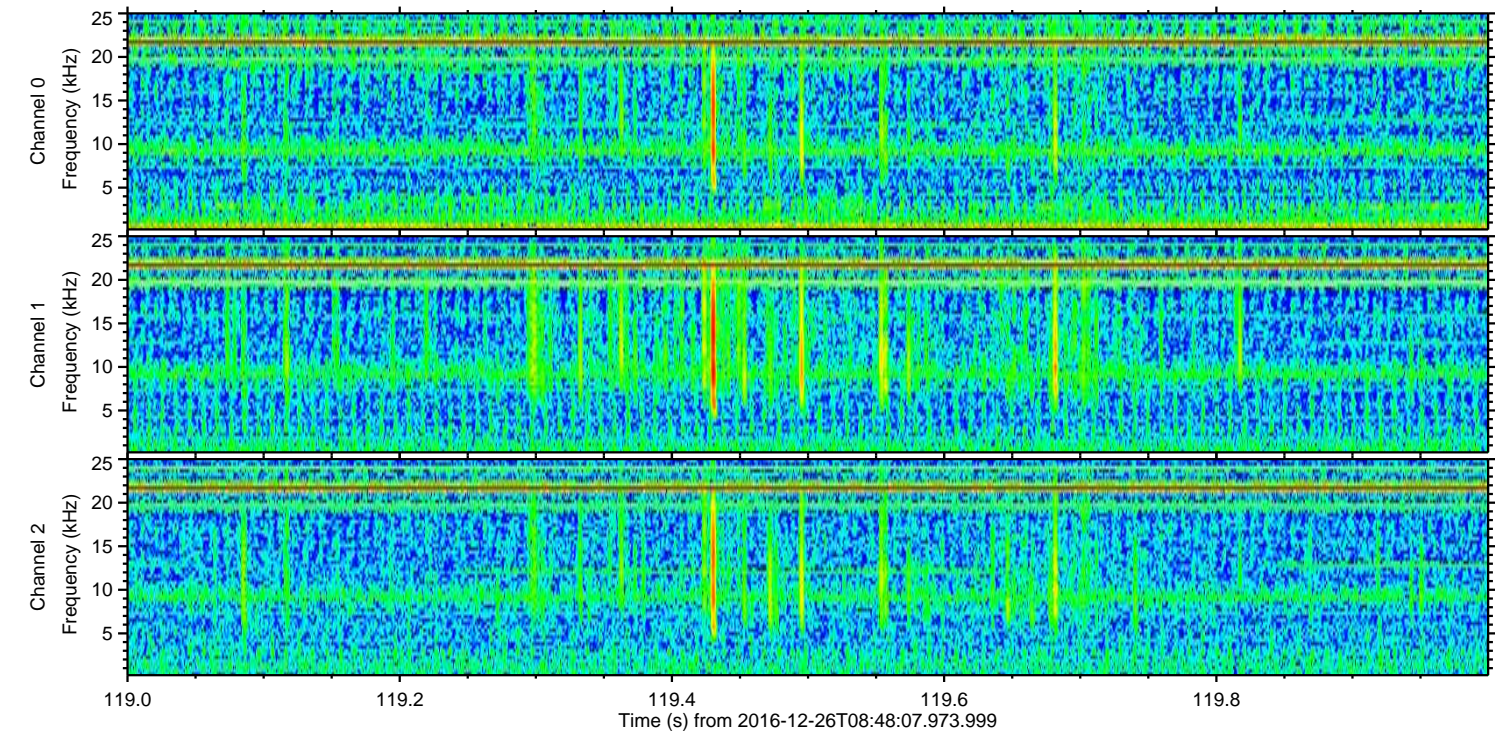
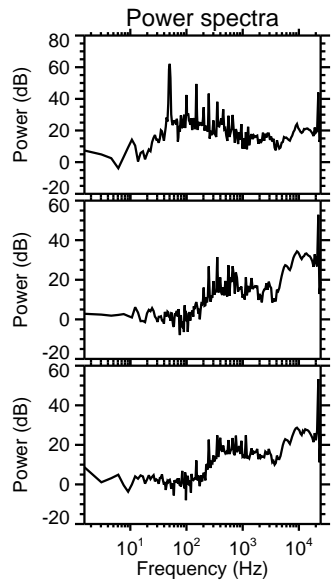
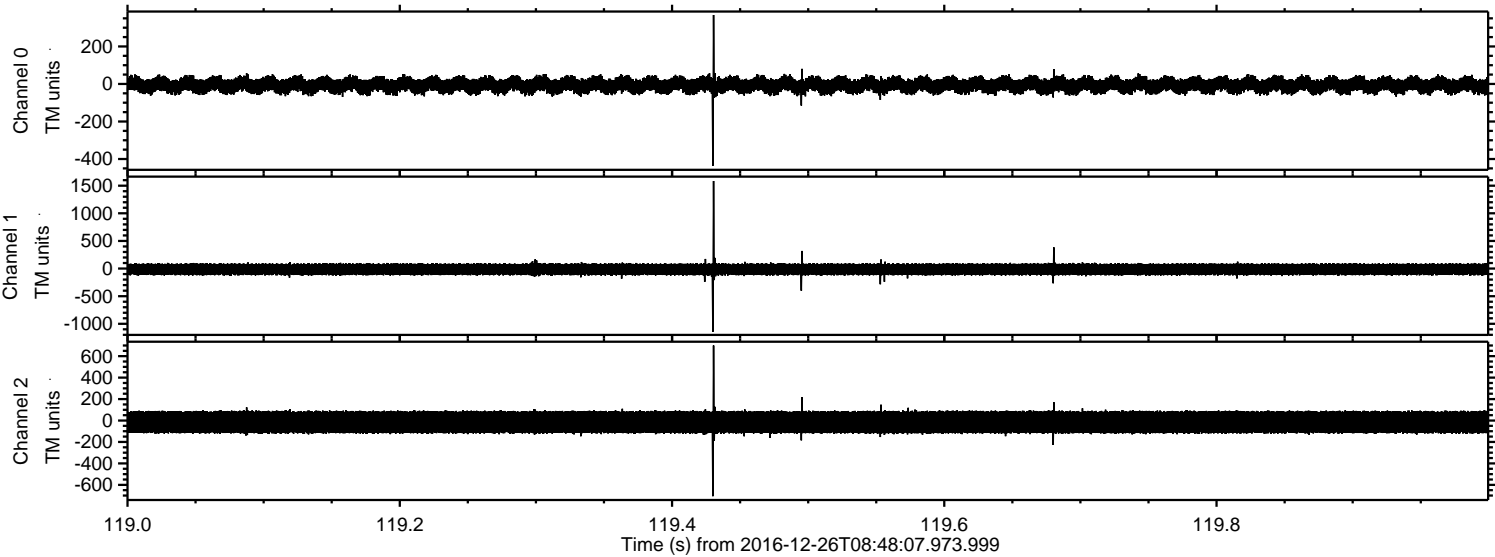
Channel 0
mn: -368
mx: 395
 μ : -6.1
 σ : 25.3

Channel 1
mn: -1765
mx: 1466
 μ : -14.3
 σ : 66.0

Channel 2
mn: -791
mx: 791
 μ : -15.4
 σ : 67.1

ELMAVAN 3D WAVEFORMS (Measured data sampled at 50 kHz) 51000 packets of 144 samples from 2016-12-26T08:48:07.973.999. Part 120/147

Processed Mon Dec 26 09:56:10 2016 by ELM ver.2012-10-06 from 001__elm20161226_084806__dat00.bin



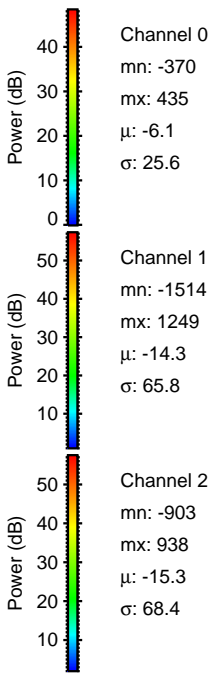
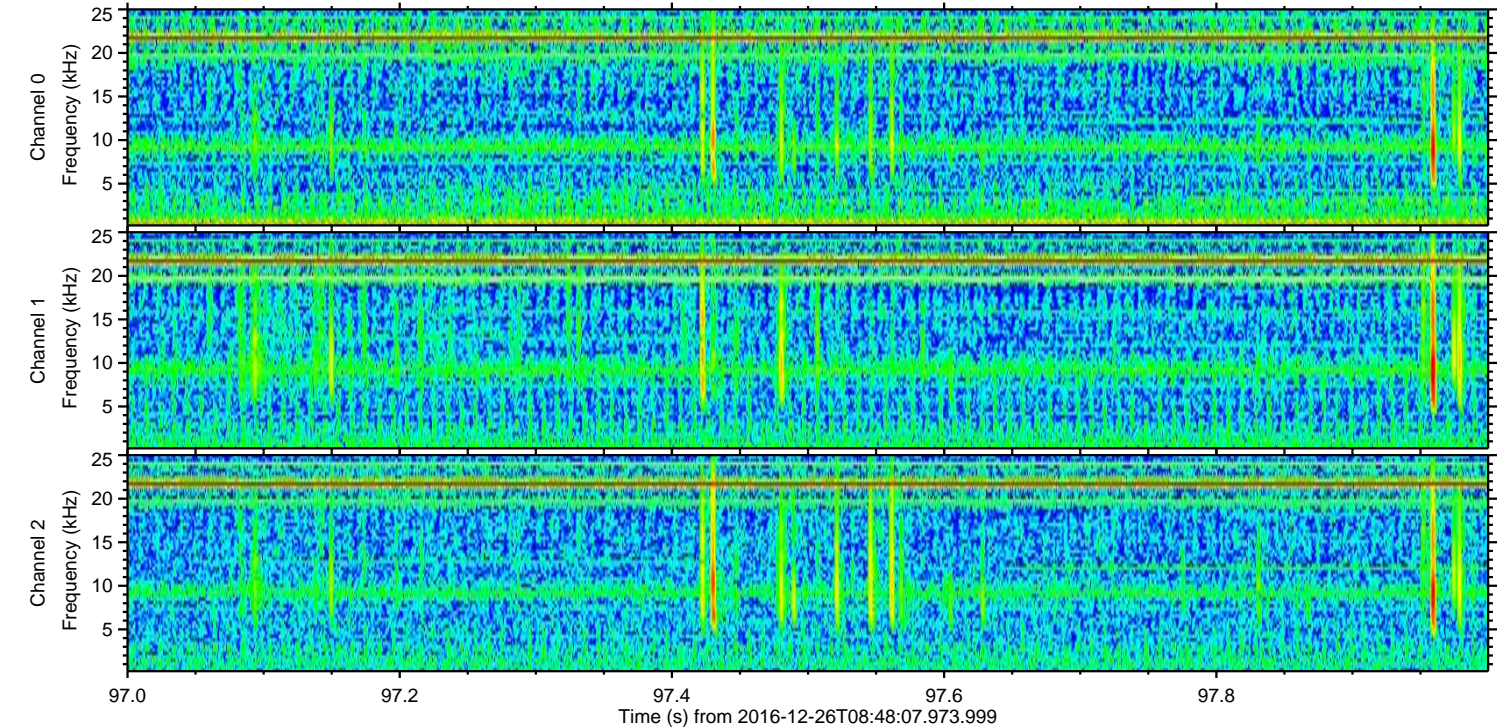
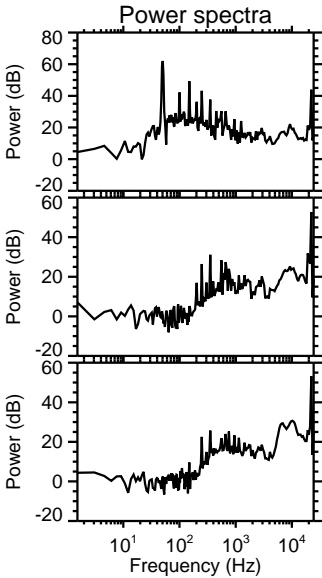
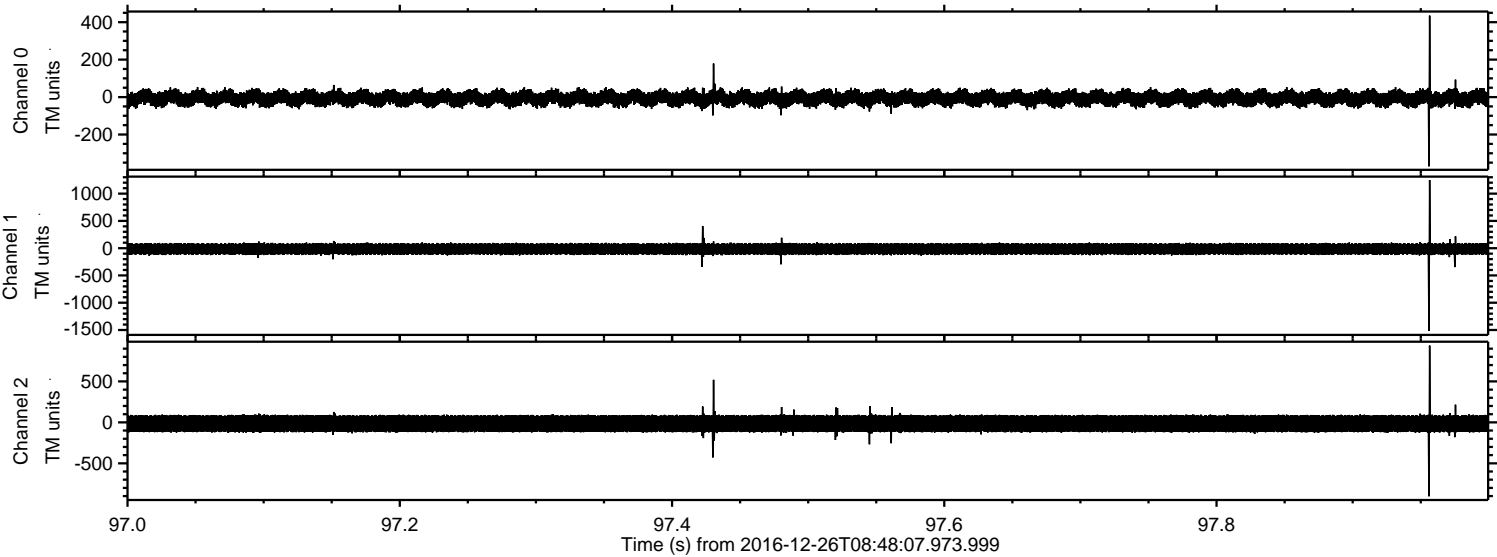
Channel 0
mn: -436
mx: 368
 μ : -6.1
 σ : 25.9

Channel 1
mn: -1144
mx: 1585
 μ : -14.2
 σ : 66.3

Channel 2
mn: -706
mx: 700
 μ : -15.3
 σ : 68.3

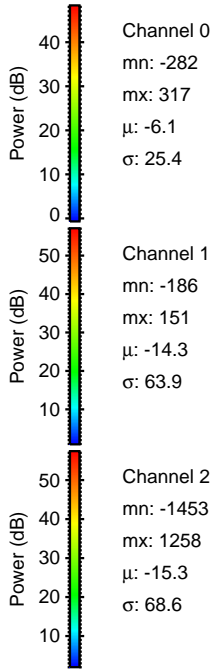
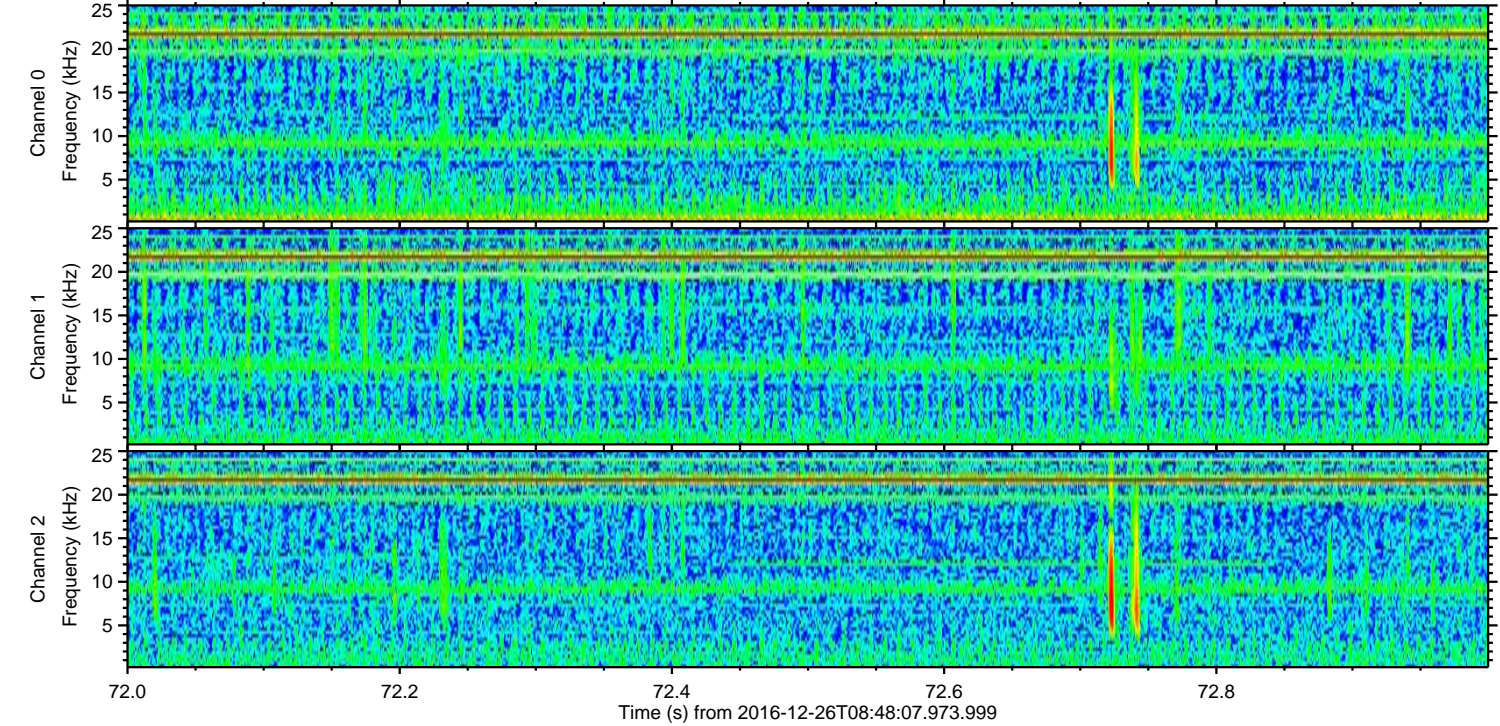
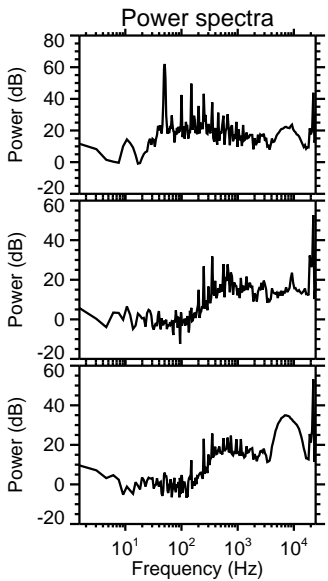
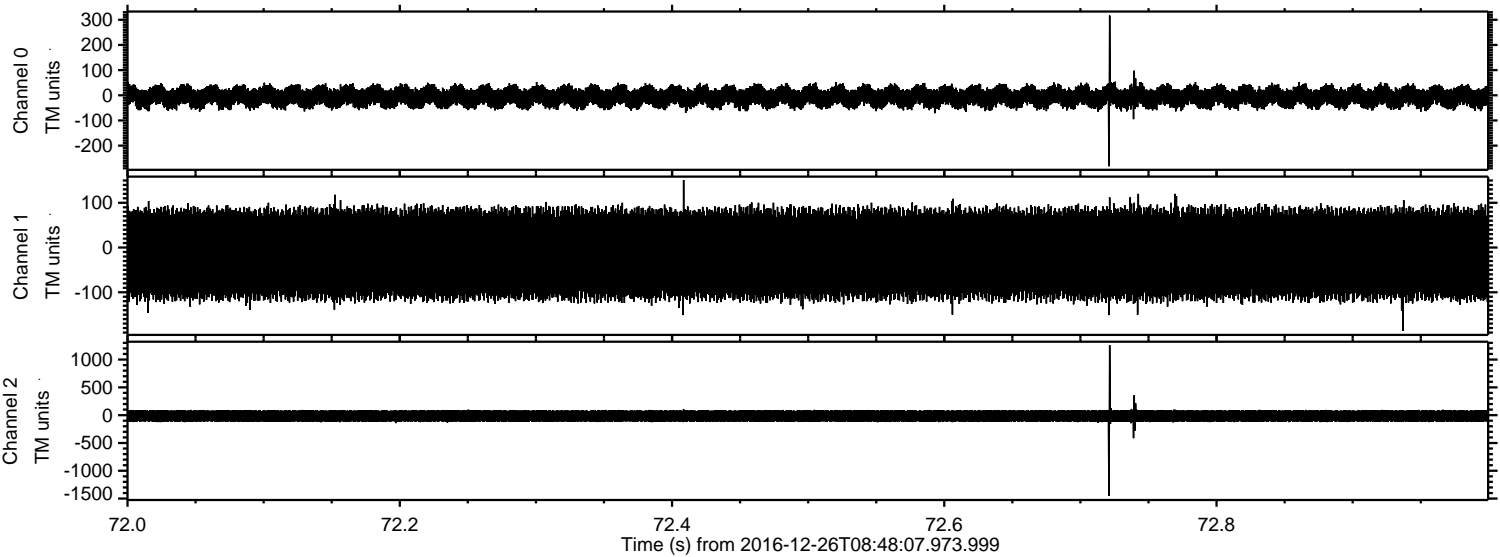
ELMAVAN 3D WAVEFORMS (Measured data sampled at 50 kHz) 51000 packets of 144 samples from 2016-12-26T08:48:07.973.999. Part 98/147

Processed Mon Dec 26 09:56:10 2016 by ELM ver.2012-10-06 from 001__elm20161226_084806__dat00.bin



ELMAVAN 3D WAVEFORMS (Measured data sampled at 50 kHz) 51000 packets of 144 samples from 2016-12-26T08:48:07.973.999. Part 73/147

Processed Mon Dec 26 09:56:11 2016 by ELM ver.2012-10-06 from 001__elm20161226_084806__dat00.bin



Channel 0
mn: -282
mx: 317
 μ : -6.1
 σ : 25.4

Channel 1
mn: -186
mx: 151
 μ : -14.3
 σ : 63.9

Channel 2
mn: -1453
mx: 1258
 μ : -15.3
 σ : 68.6

Processed Mon Dec 26 09:56:12 2016 by ELM ver.2012-10-06 from 001__elm20161226_084806__dat00.bin

