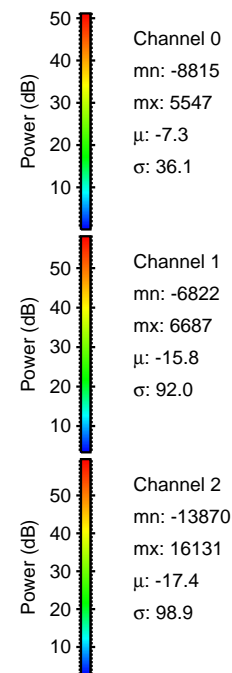
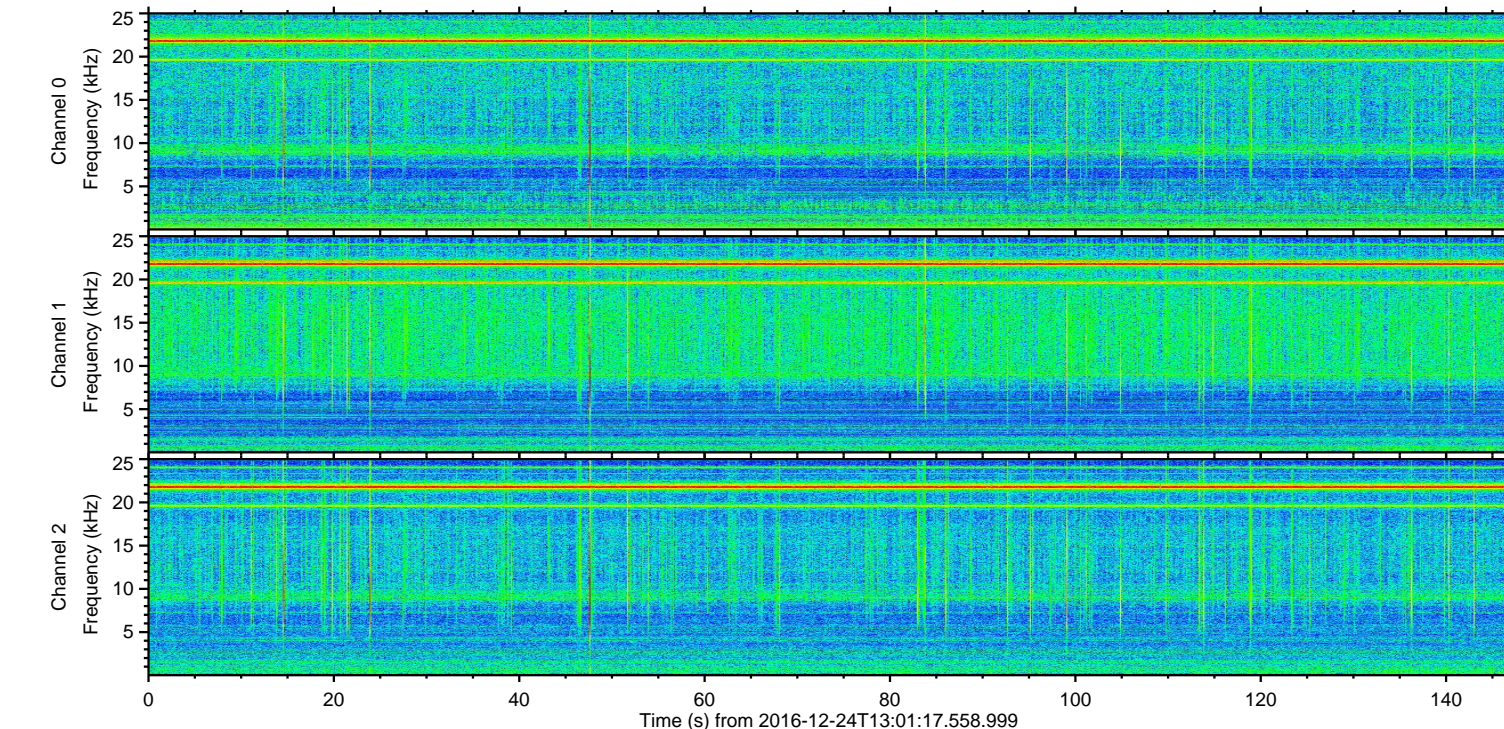
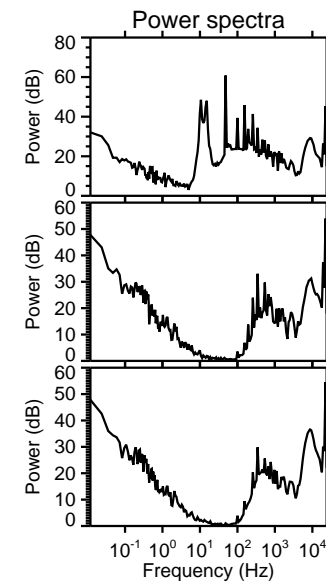
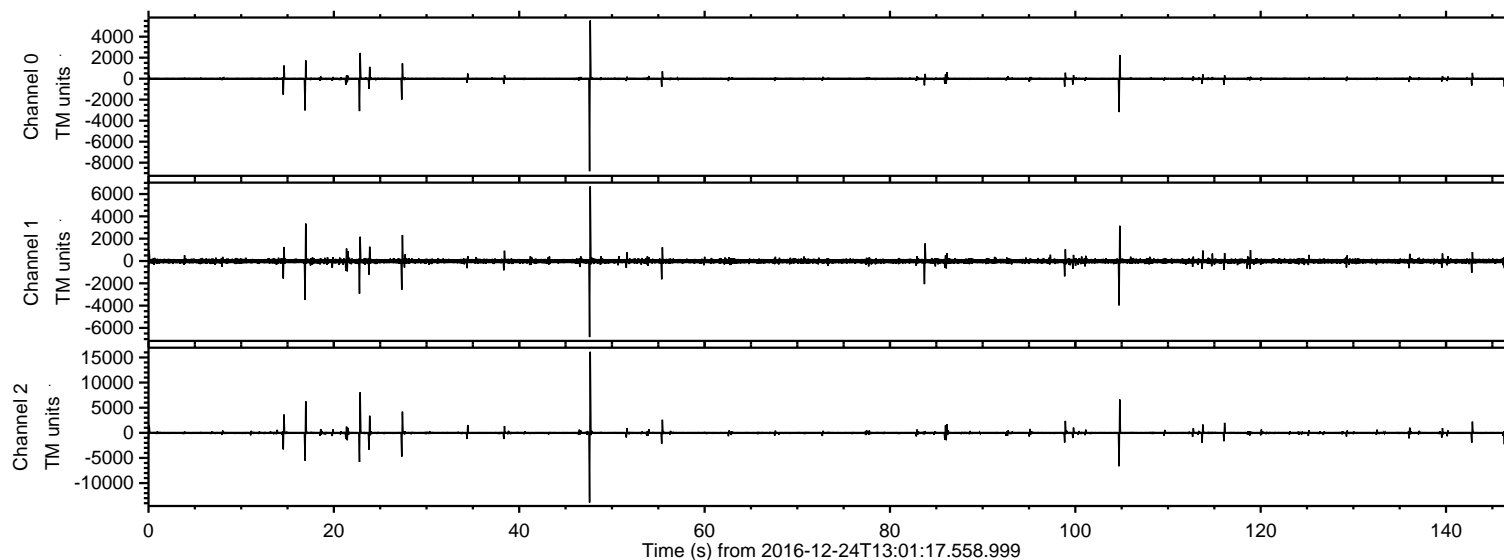


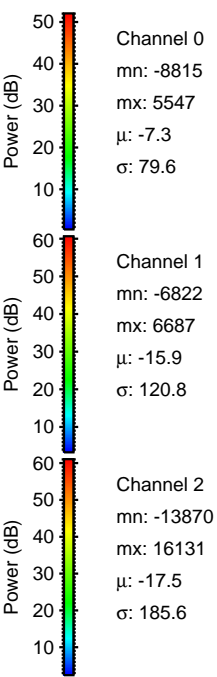
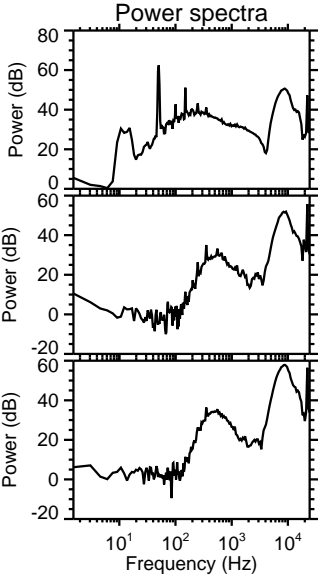
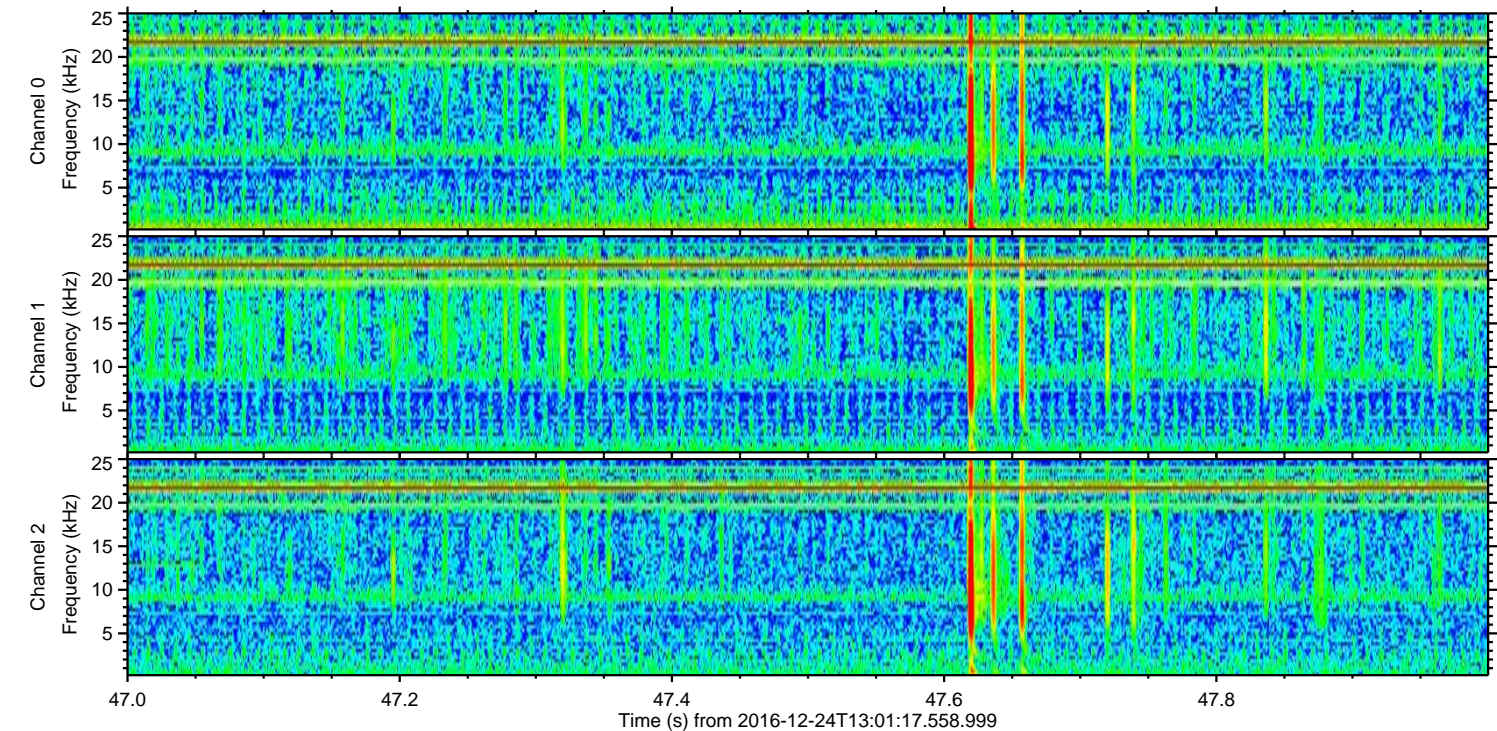
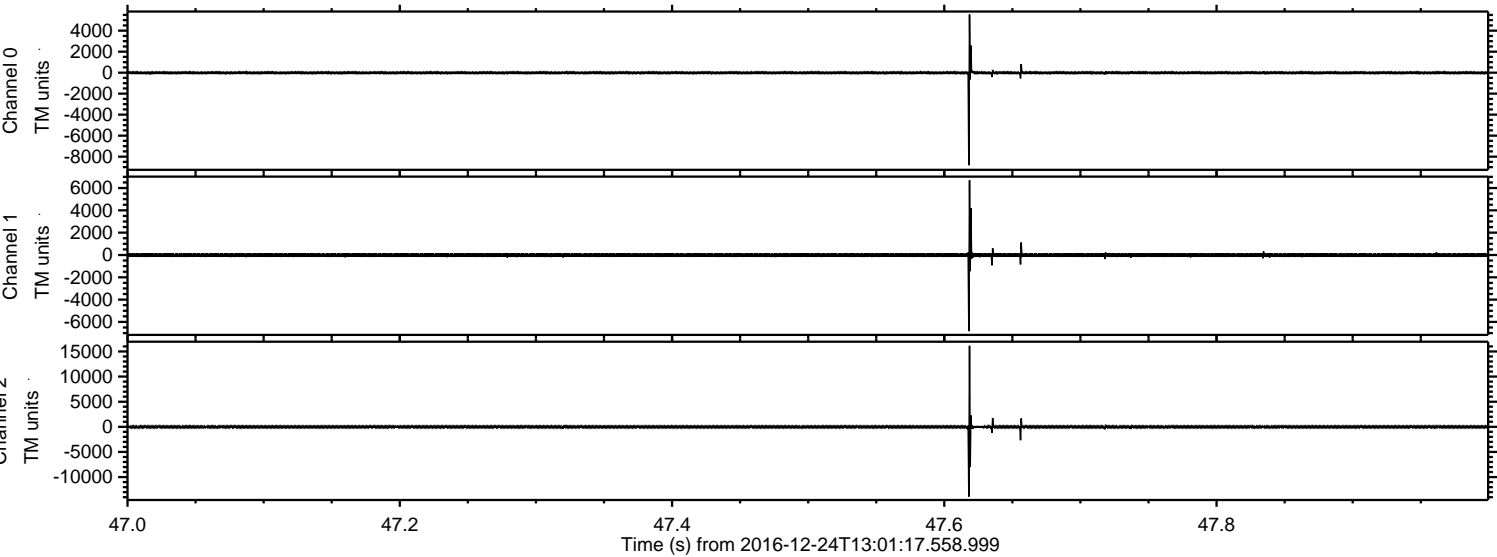
# ELMAVAN 3D WAVEFORMS (Measured data sampled at 50 kHz) 51000 packets of 144 samples from 2016-12-24T13:01:17.558.999.

Processed Sat Dec 24 14:08:49 2016 by ELM ver.2012-10-06 from 001\_\_elm20161224\_130116\_\_dat00.bin





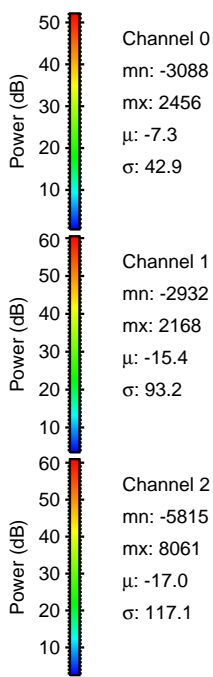
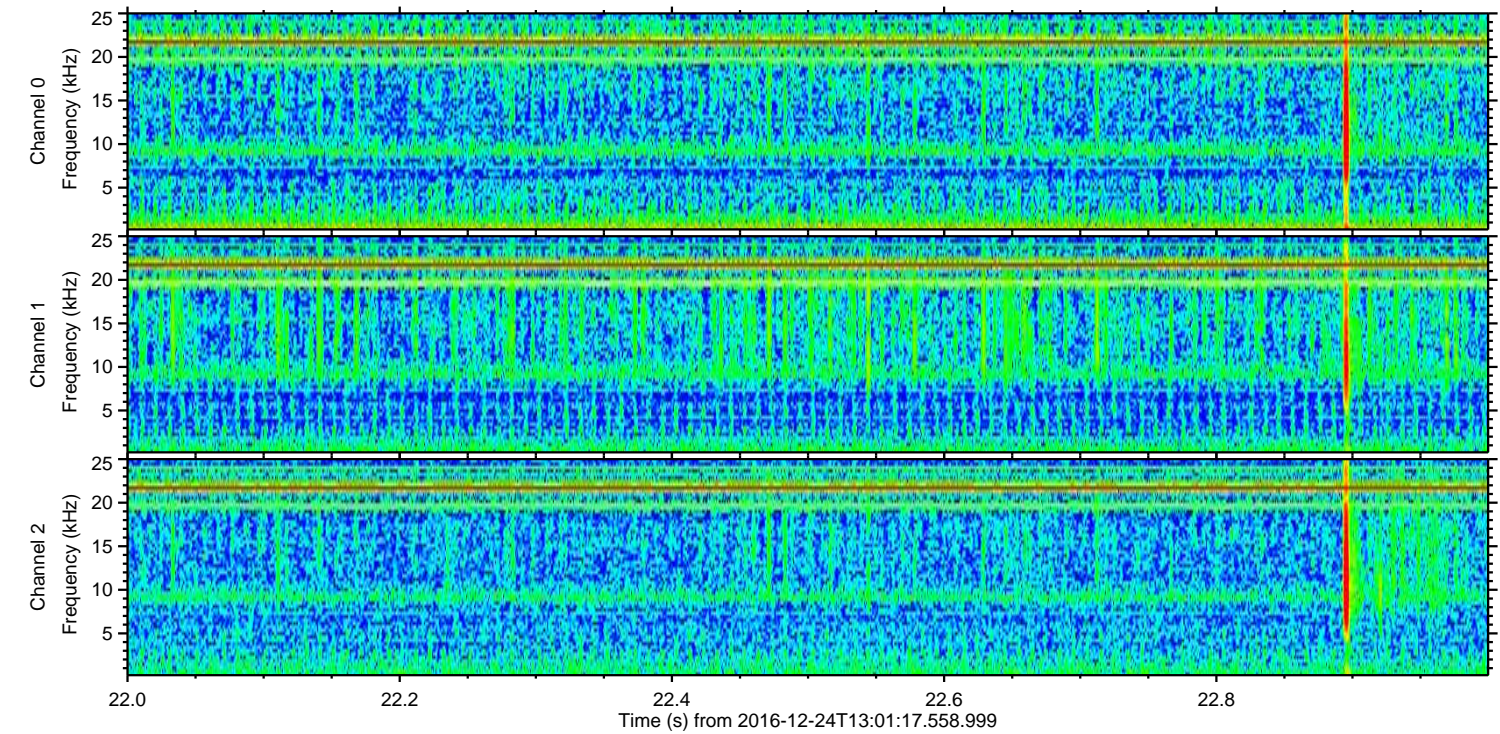
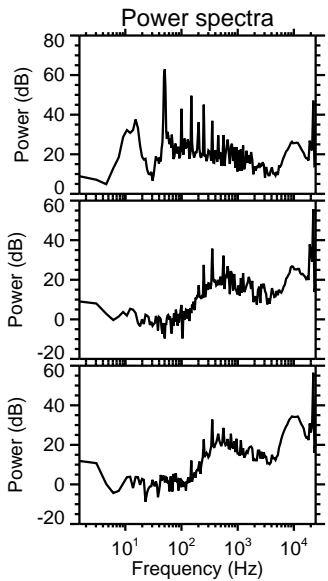
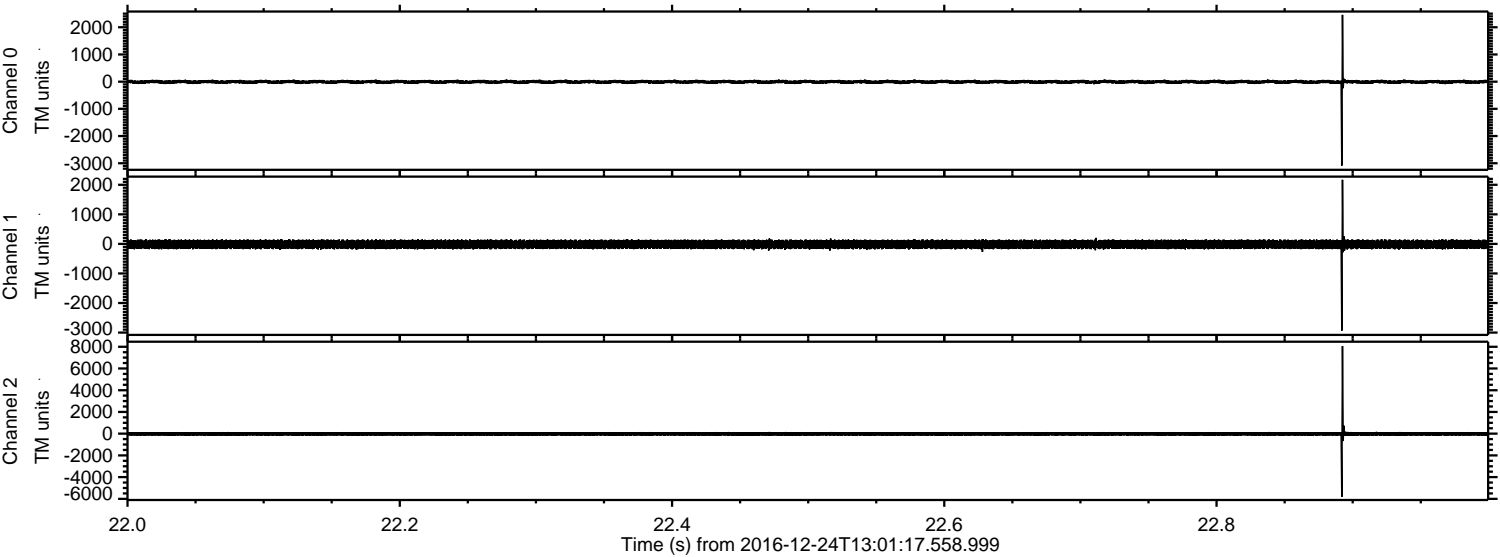
Processed Sat Dec 24 14:09:00 2016 by ELM ver.2012-10-06 from 001\_\_elm20161224\_130116\_\_dat00.bin





ELMAVAN 3D WAVEFORMS (Measured data sampled at 50 kHz) 51000 packets of 144 samples from 2016-12-24T13:01:17.558.999. Part 23/147

Processed Sat Dec 24 14:09:01 2016 by ELM ver.2012-10-06 from 001\_\_elm20161224\_130116\_\_dat00.bin



Channel 0  
mn: -3088  
mx: 2456  
 $\mu$ : -7.3  
 $\sigma$ : 42.9

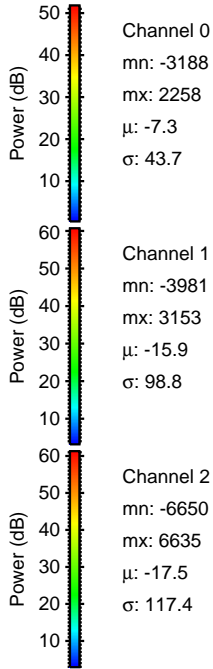
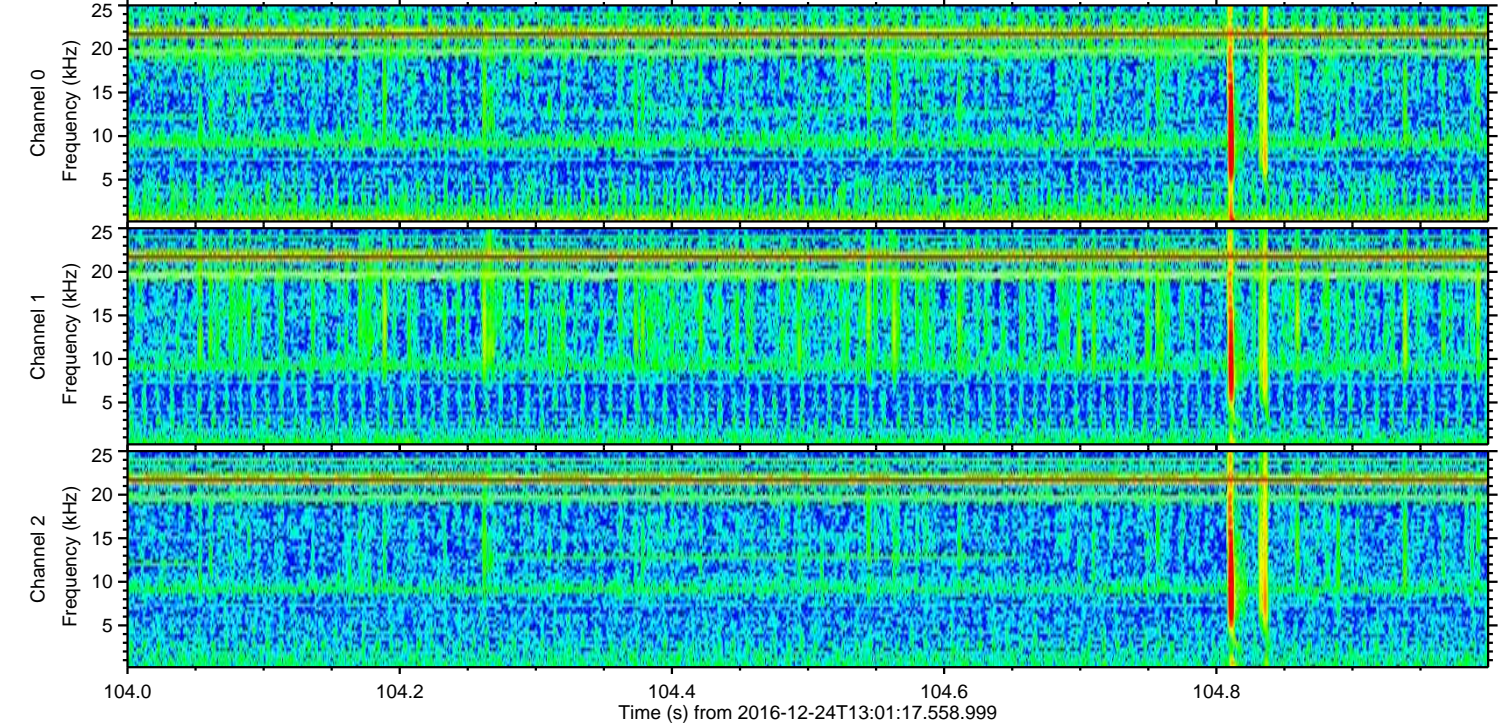
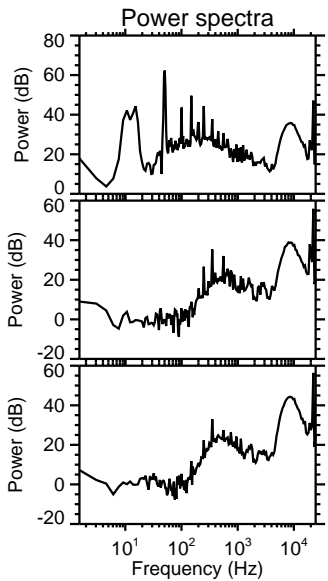
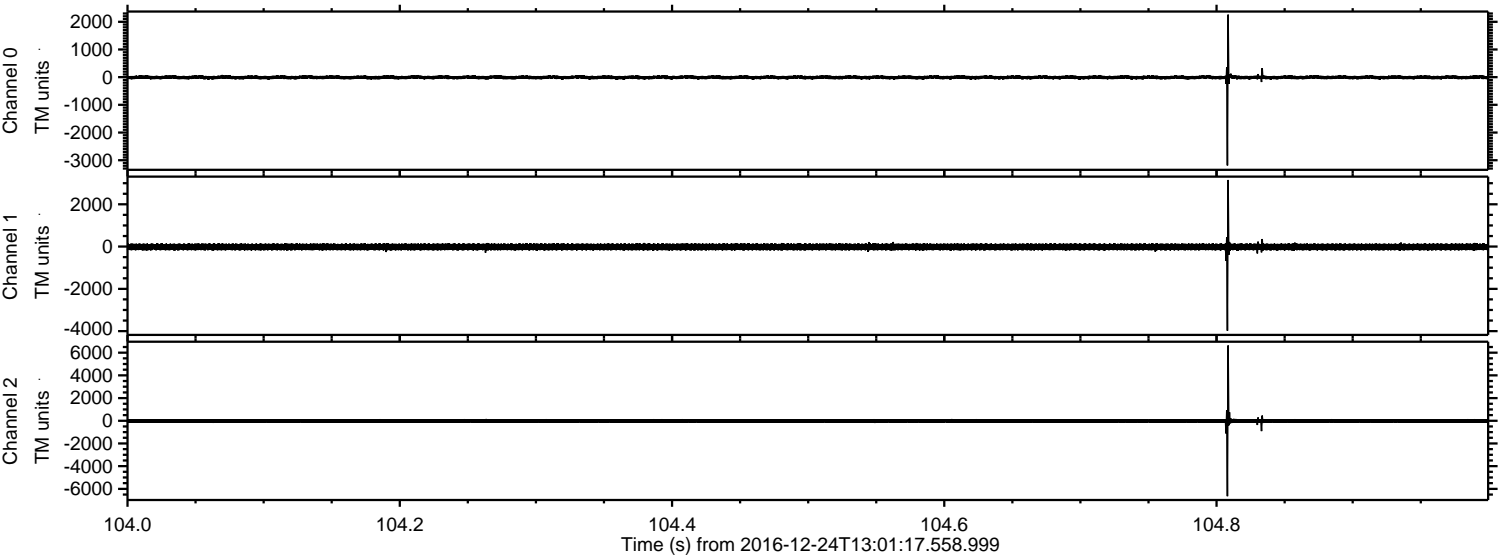
Channel 1  
mn: -2932  
mx: 2168  
 $\mu$ : -15.4  
 $\sigma$ : 93.2

Channel 2  
mn: -5815  
mx: 8061  
 $\mu$ : -17.0  
 $\sigma$ : 117.1



ELMAVAN 3D WAVEFORMS (Measured data sampled at 50 kHz) 51000 packets of 144 samples from 2016-12-24T13:01:17.558.999. Part 105/147

Processed Sat Dec 24 14:09:02 2016 by ELM ver.2012-10-06 from 001\_\_elm20161224\_130116\_\_dat00.bin



Channel 0  
mn: -3188  
mx: 2258  
 $\mu$ : -7.3  
 $\sigma$ : 43.7

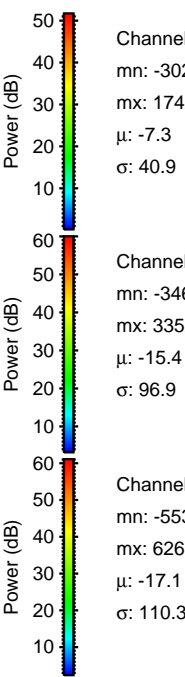
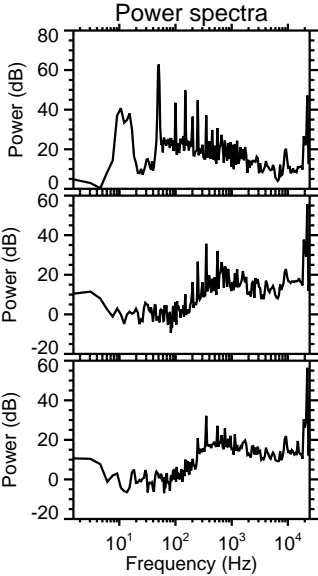
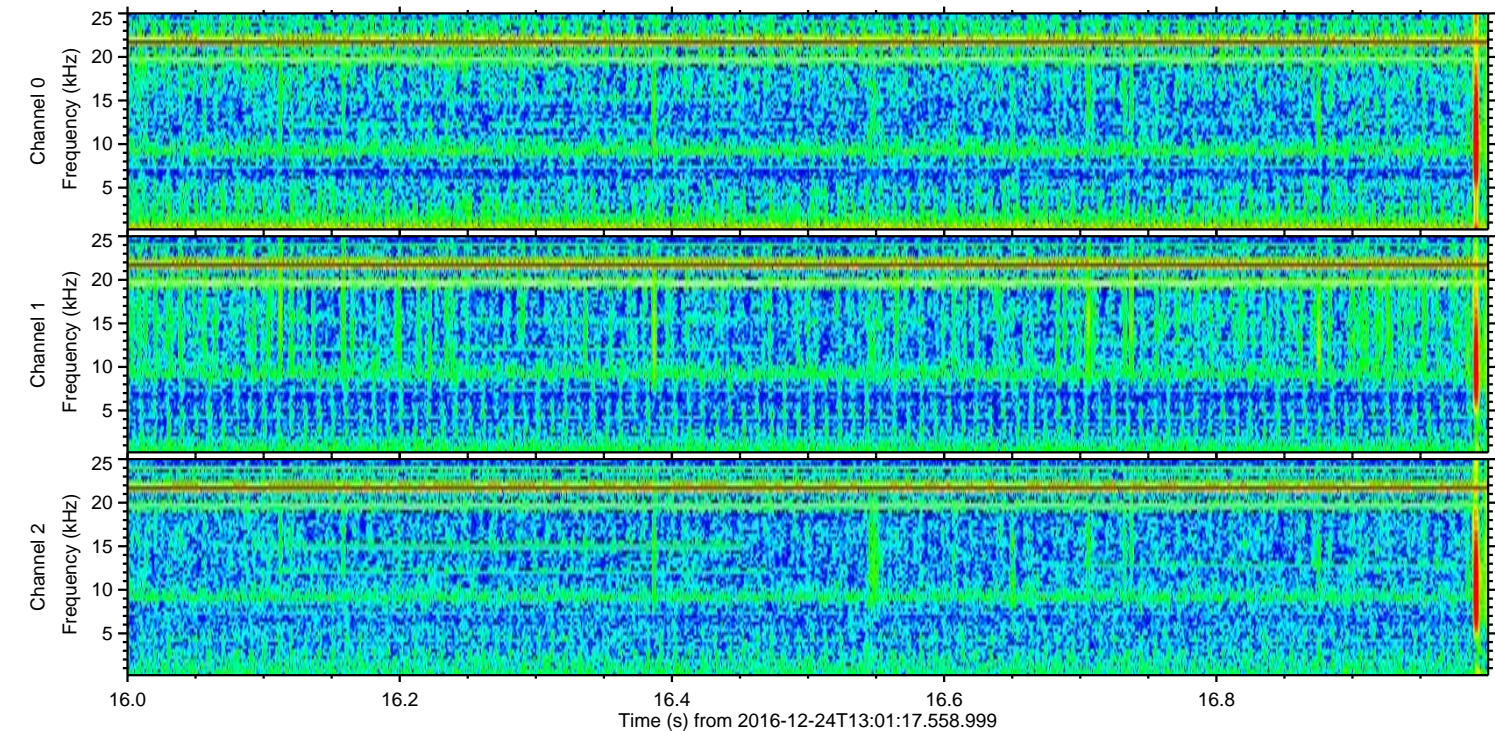
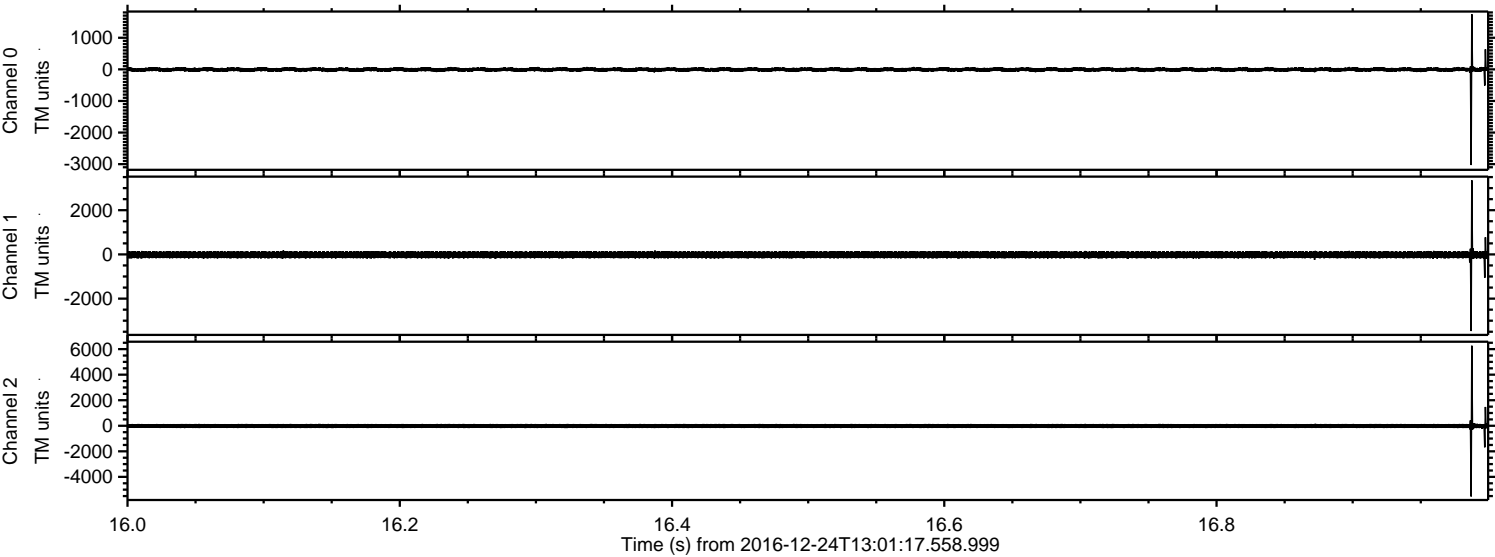
Channel 1  
mn: -3981  
mx: 3153  
 $\mu$ : -15.9  
 $\sigma$ : 98.8

Channel 2  
mn: -6650  
mx: 6635  
 $\mu$ : -17.5  
 $\sigma$ : 117.4



ELMAVAN 3D WAVEFORMS (Measured data sampled at 50 kHz) 51000 packets of 144 samples from 2016-12-24T13:01:17.558.999. Part 17/147

Processed Sat Dec 24 14:09:03 2016 by ELM ver.2012-10-06 from 001\_\_elm20161224\_130116\_\_dat00.bin



Channel 0  
mn: -3029  
mx: 1742  
 $\mu$ : -7.3  
 $\sigma$ : 40.9

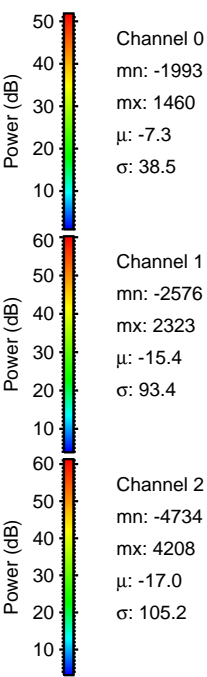
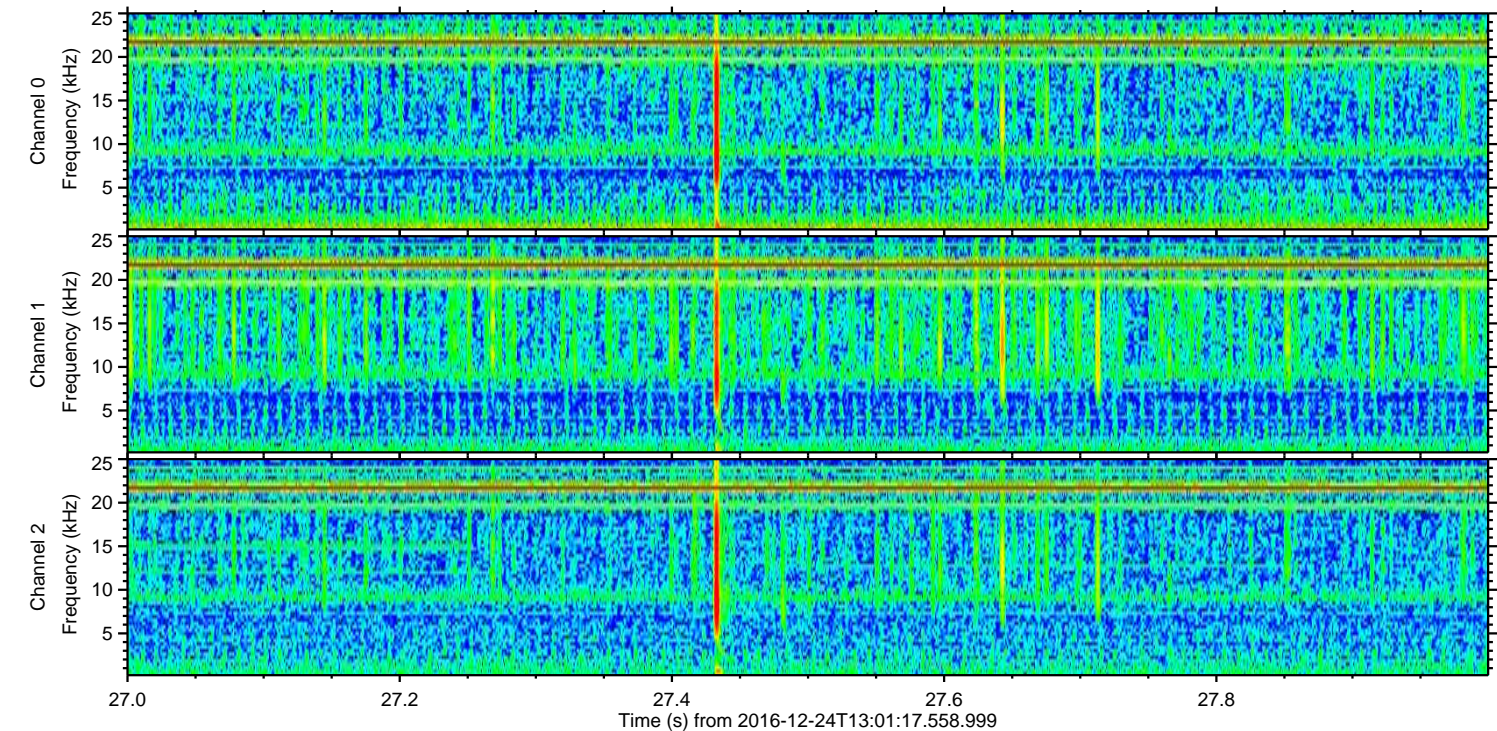
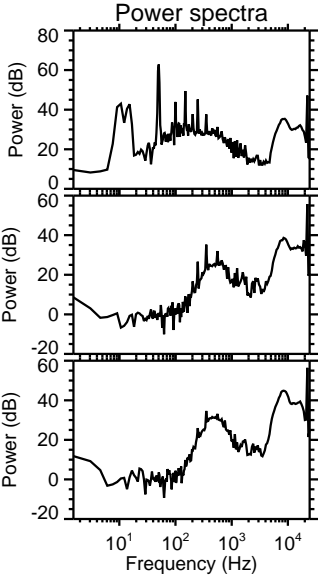
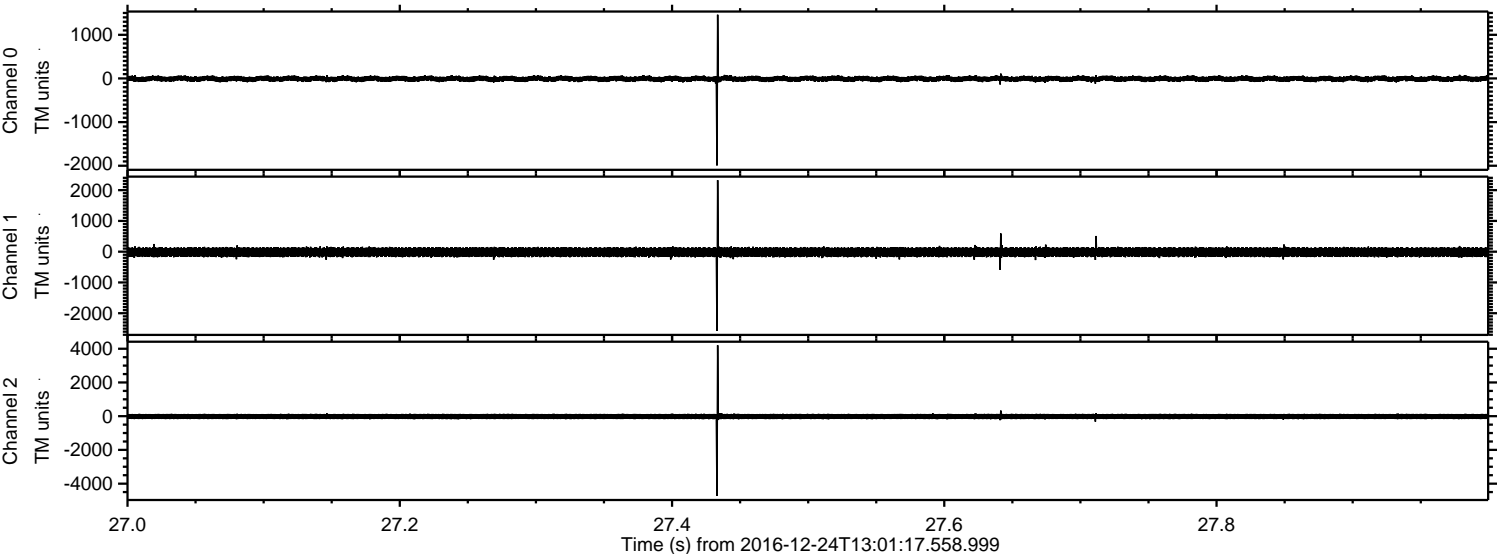
Channel 1  
mn: -3469  
mx: 3352  
 $\mu$ : -15.4  
 $\sigma$ : 96.9

Channel 2  
mn: -5533  
mx: 6267  
 $\mu$ : -17.1  
 $\sigma$ : 110.3



ELMAVAN 3D WAVEFORMS (Measured data sampled at 50 kHz) 51000 packets of 144 samples from 2016-12-24T13:01:17.558.999. Part 28/147

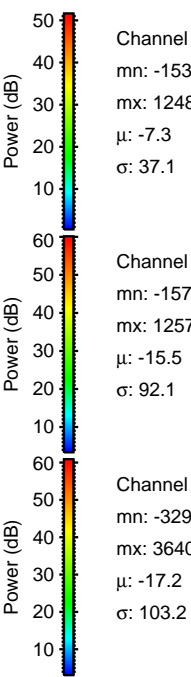
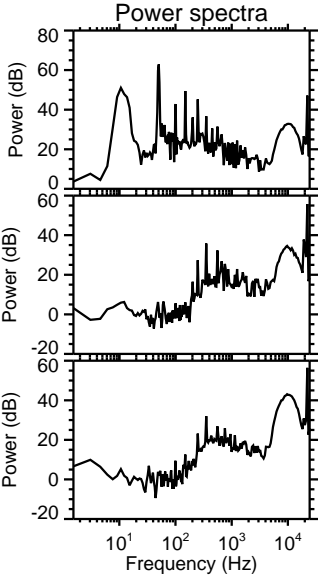
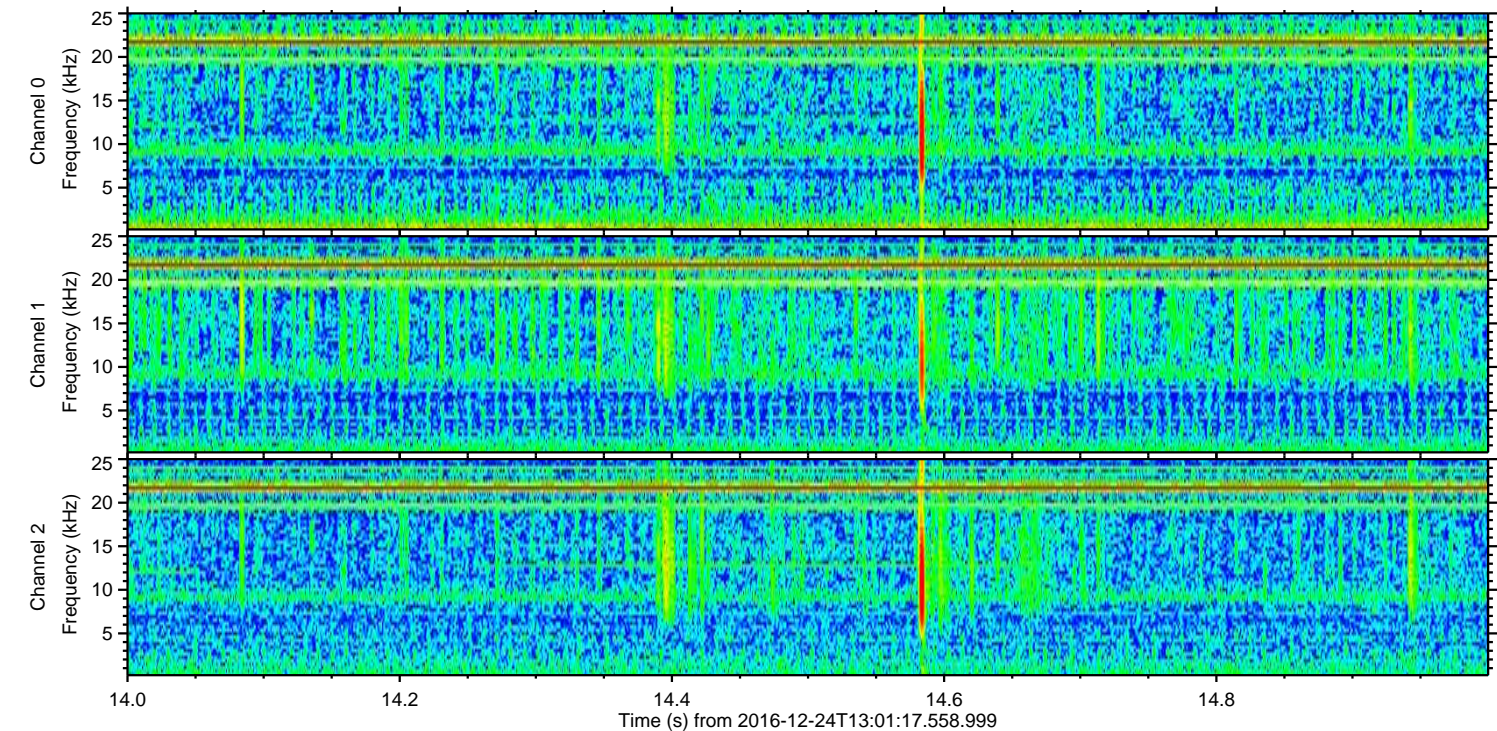
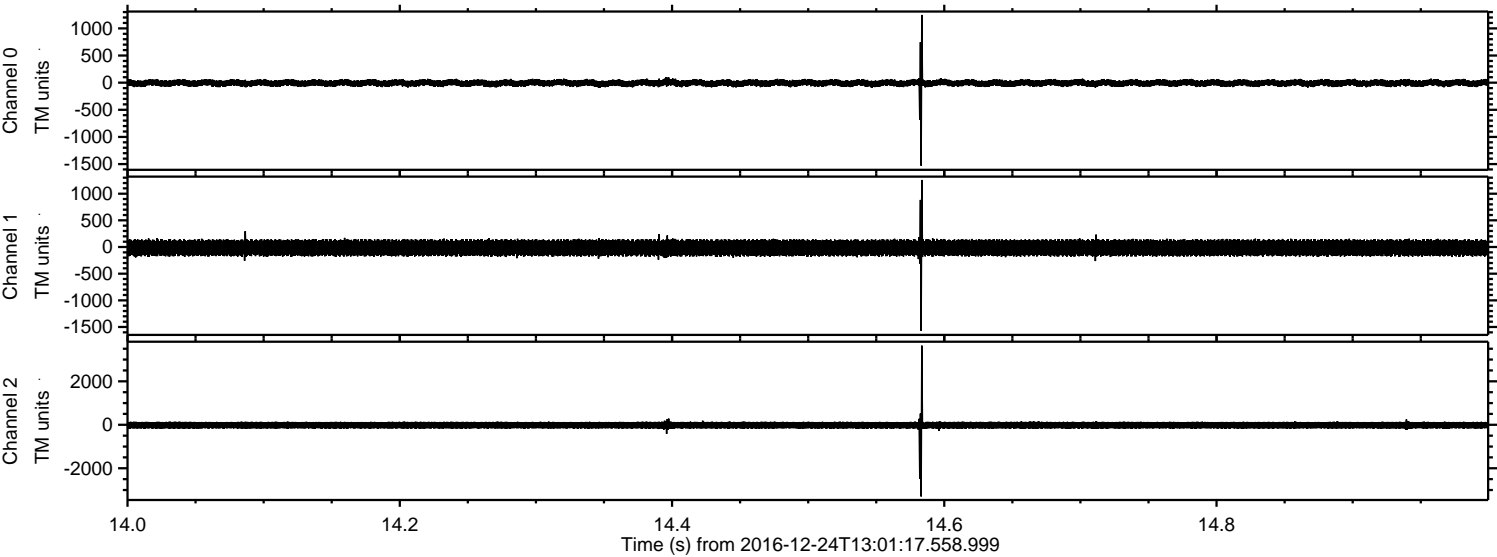
Processed Sat Dec 24 14:09:04 2016 by ELM ver.2012-10-06 from 001\_\_elm20161224\_130116\_\_dat00.bin





ELMAVAN 3D WAVEFORMS (Measured data sampled at 50 kHz) 51000 packets of 144 samples from 2016-12-24T13:01:17.558.999. Part 15/147

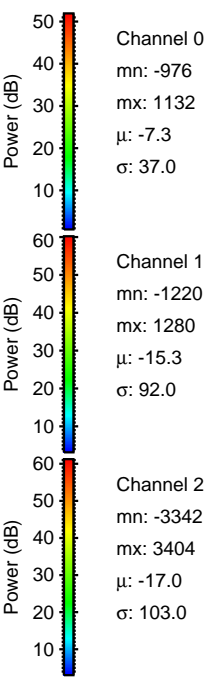
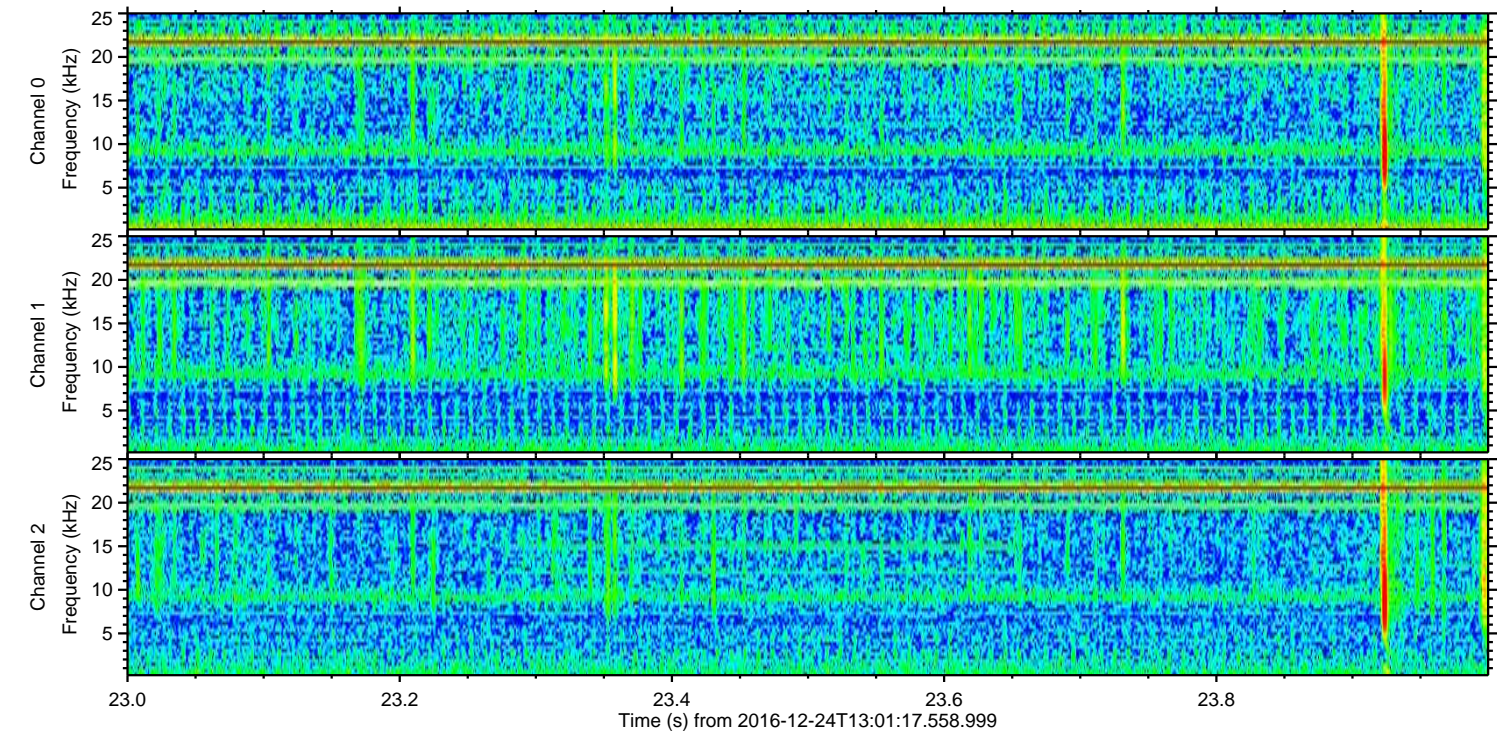
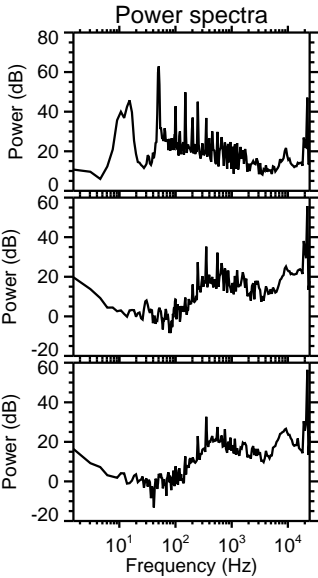
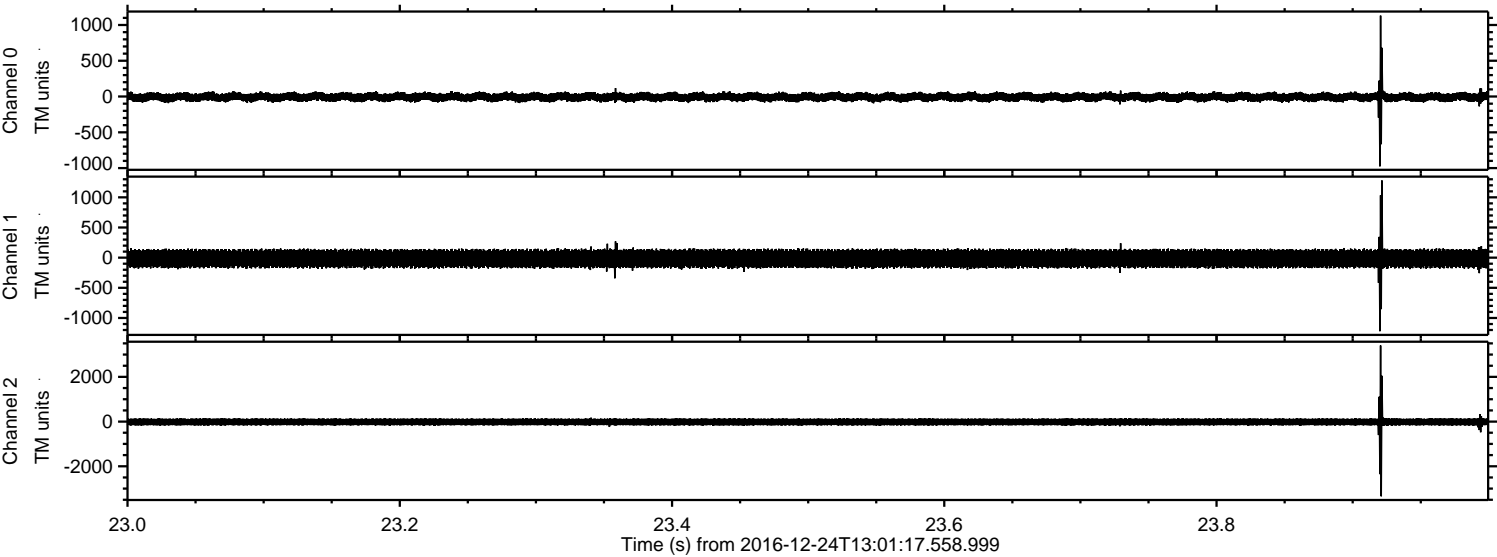
Processed Sat Dec 24 14:09:05 2016 by ELM ver.2012-10-06 from 001\_\_elm20161224\_130116\_\_dat00.bin





ELMAVAN 3D WAVEFORMS (Measured data sampled at 50 kHz) 51000 packets of 144 samples from 2016-12-24T13:01:17.558.999. Part 24/147

Processed Sat Dec 24 14:09:06 2016 by ELM ver.2012-10-06 from 001\_\_elm20161224\_130116\_\_dat00.bin



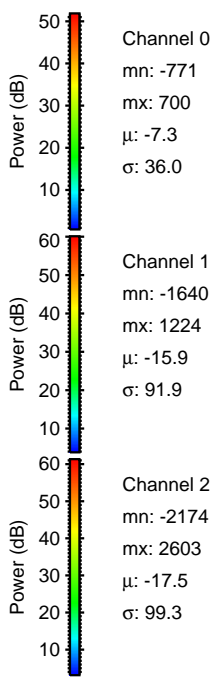
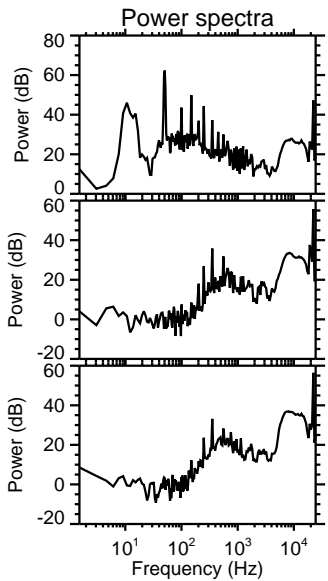
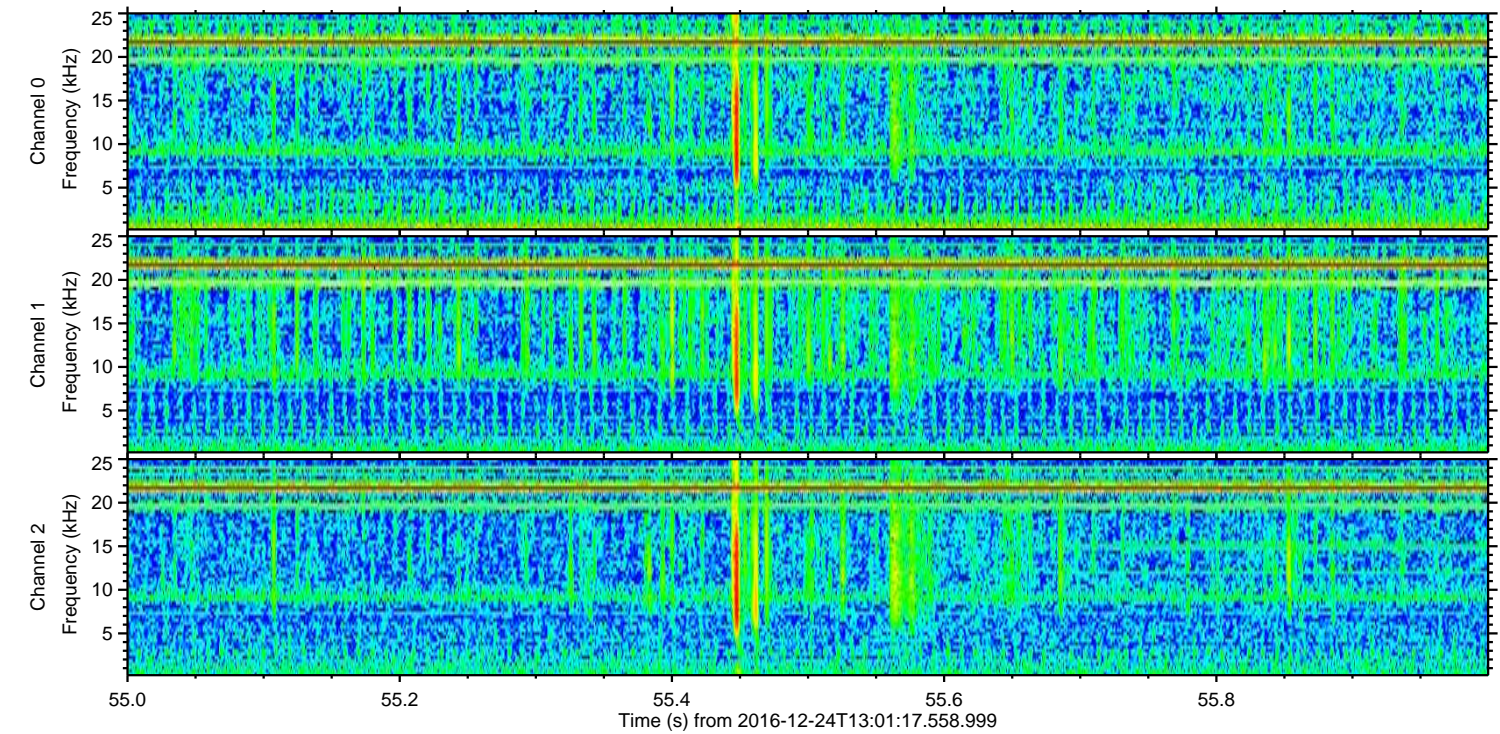
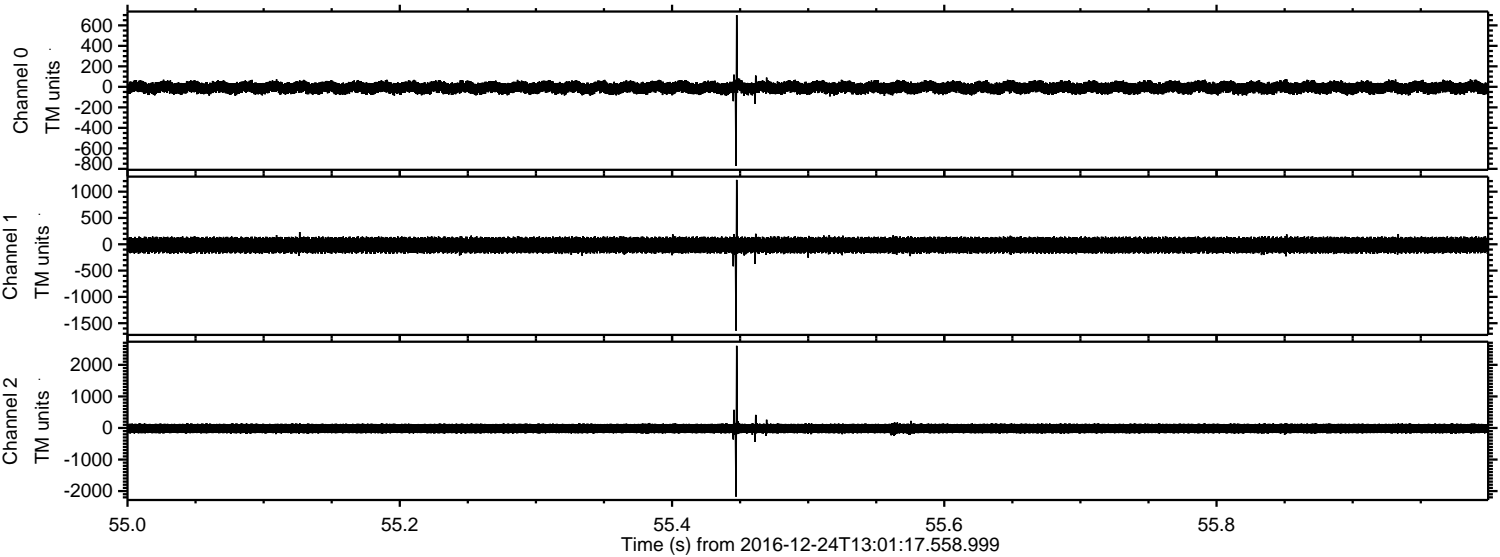
Channel 0  
mn: -976  
mx: 1132  
 $\mu$ : -7.3  
 $\sigma$ : 37.0

Channel 1  
mn: -1220  
mx: 1280  
 $\mu$ : -15.3  
 $\sigma$ : 92.0

Channel 2  
mn: -3342  
mx: 3404  
 $\mu$ : -17.0  
 $\sigma$ : 103.0

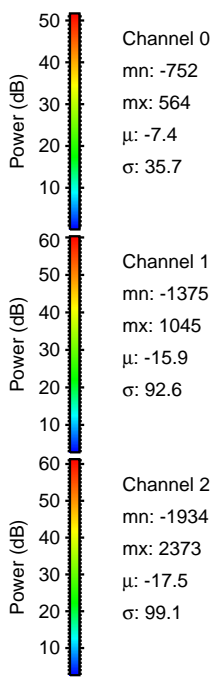
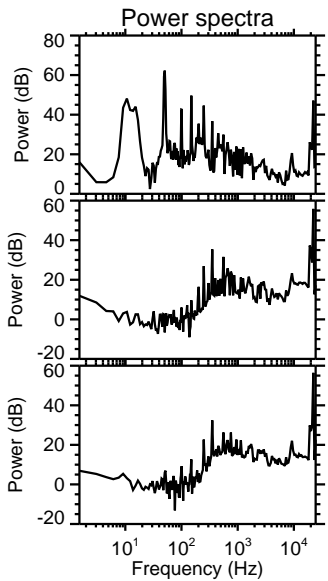
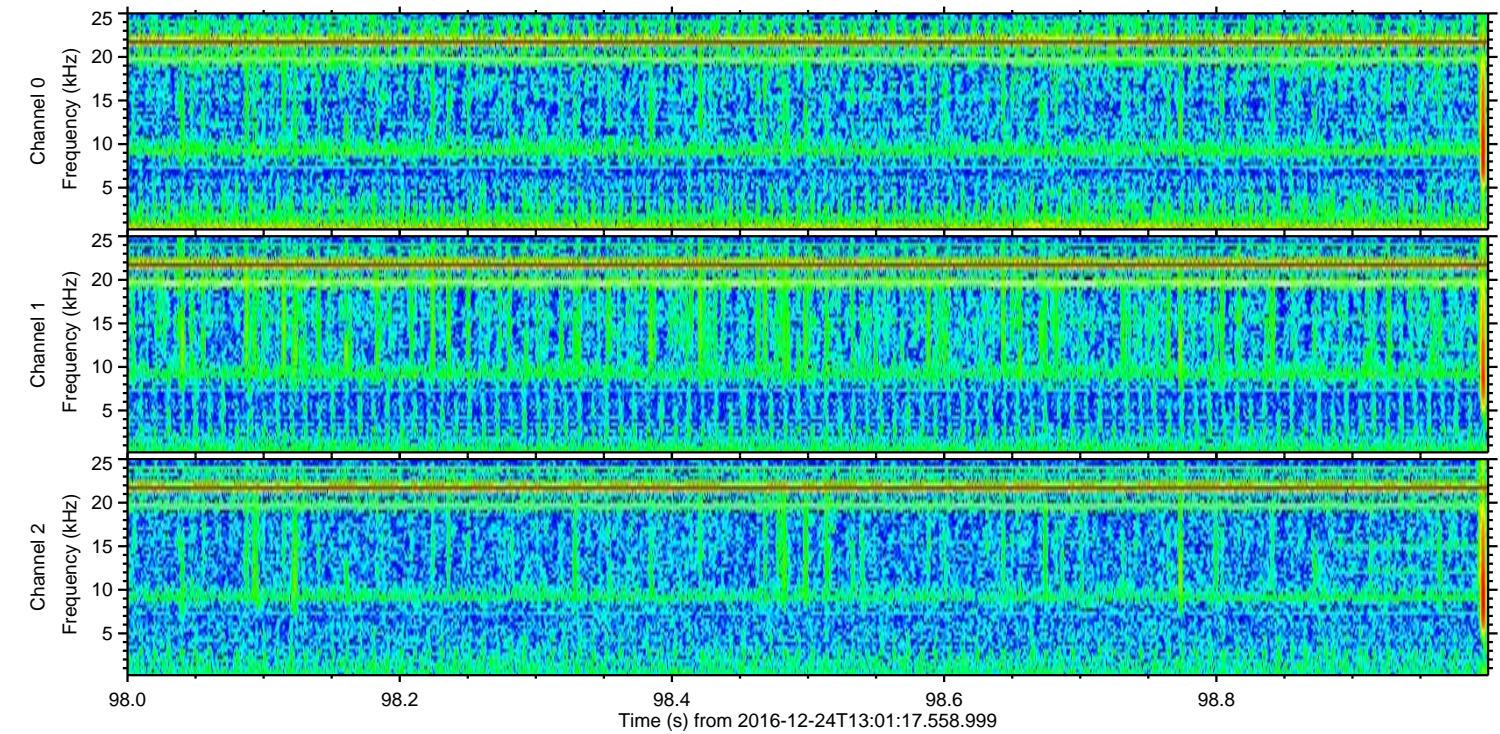
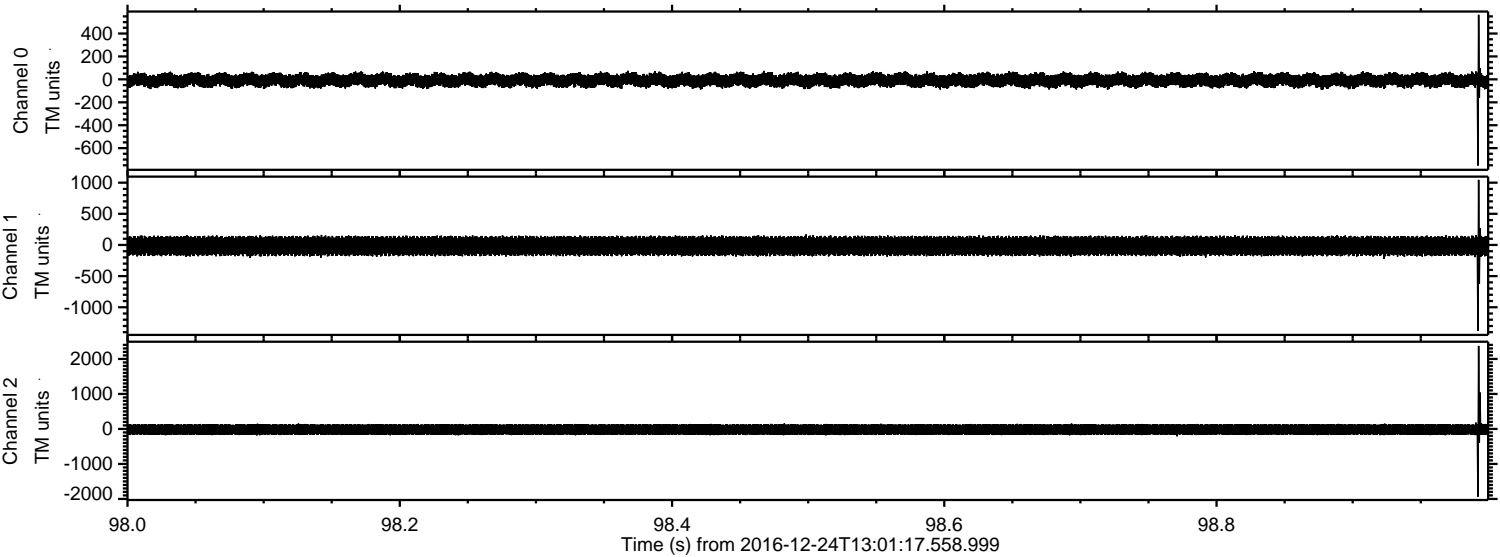


Processed Sat Dec 24 14:09:07 2016 by ELM ver.2012-10-06 from 001\_\_elm20161224\_130116\_\_dat00.bin





Processed Sat Dec 24 14:09:08 2016 by ELM ver.2012-10-06 from 001\_\_elm20161224\_130116\_\_dat00.bin





ELMAVAN 3D WAVEFORMS (Measured data sampled at 50 kHz) 51000 packets of 144 samples from 2016-12-24T13:01:17.558.999. Part 16/147

Processed Sat Dec 24 14:09:09 2016 by ELM ver.2012-10-06 from 001\_\_elm20161224\_130116\_\_dat00.bin

