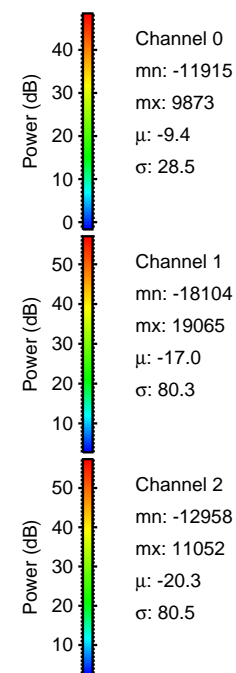
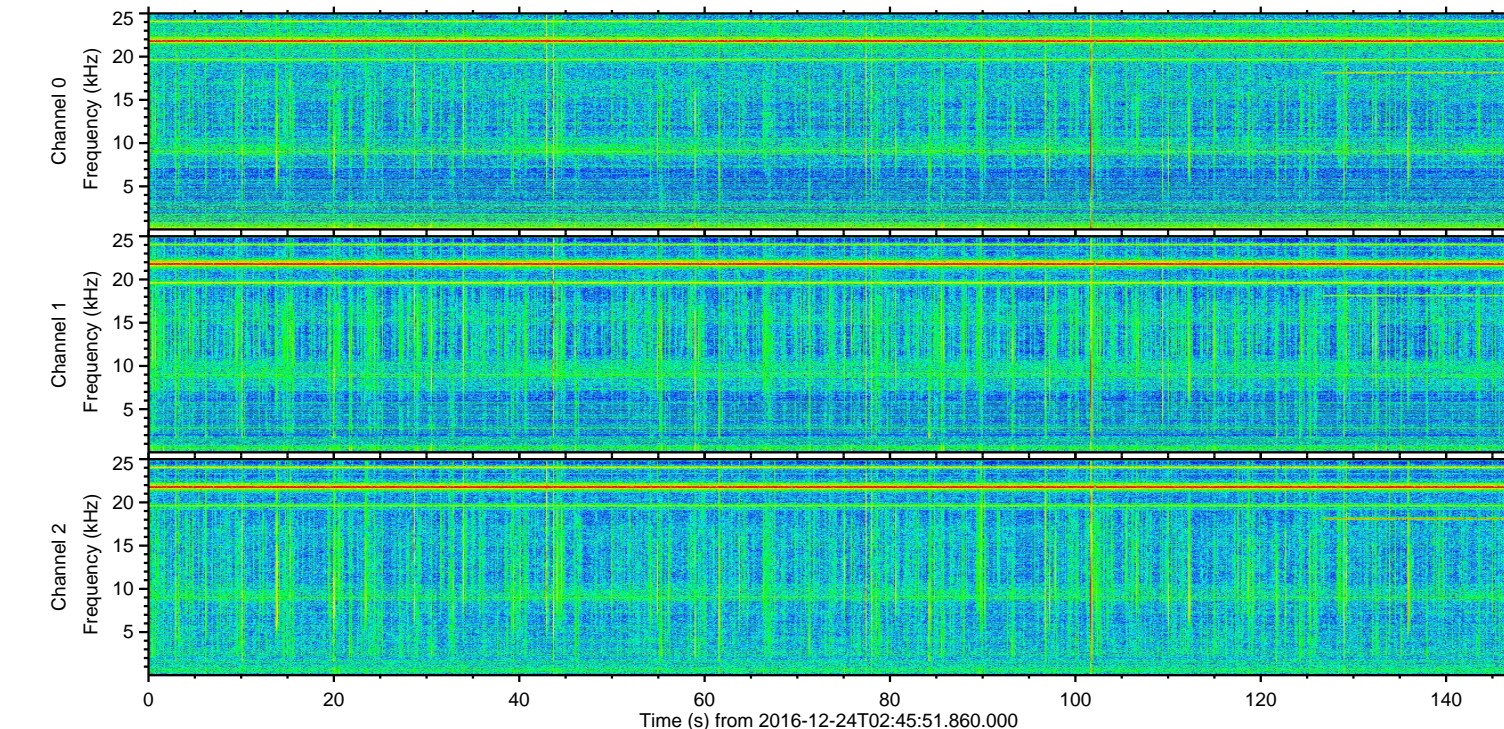
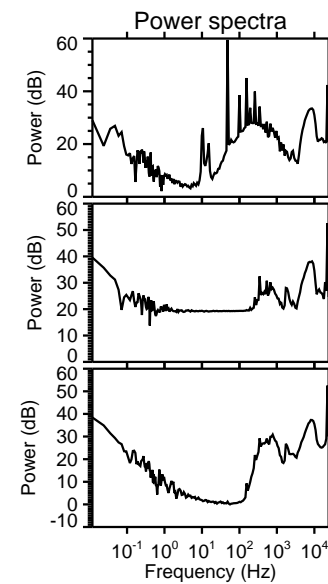
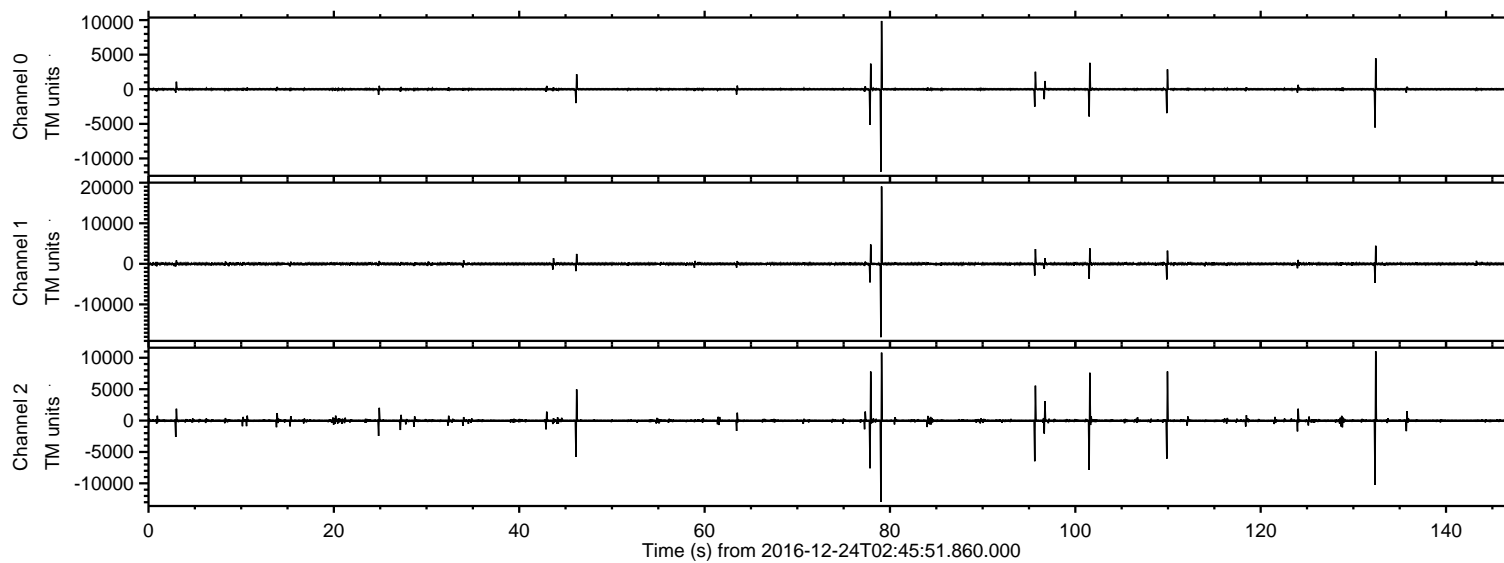
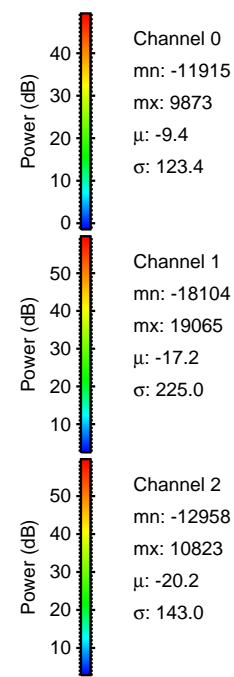
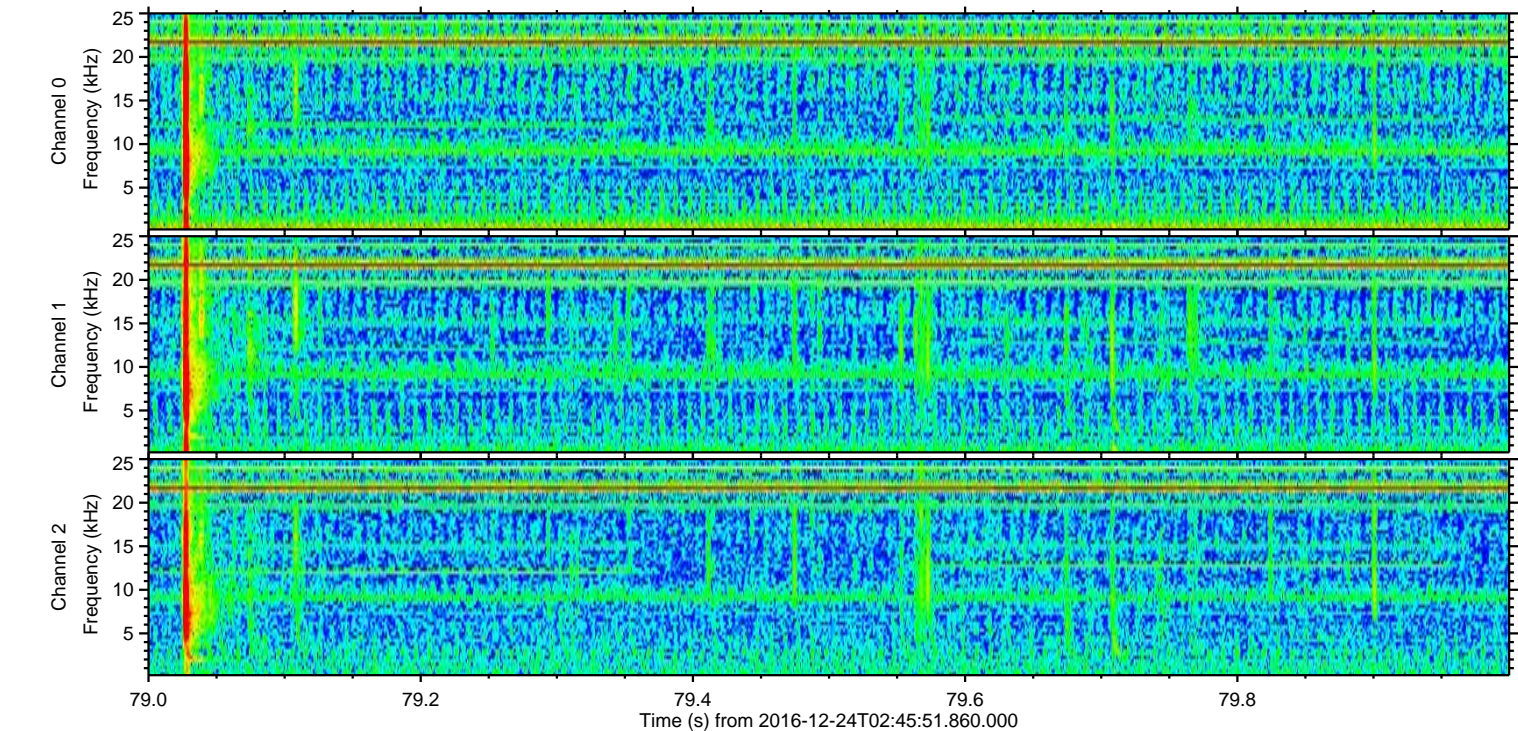
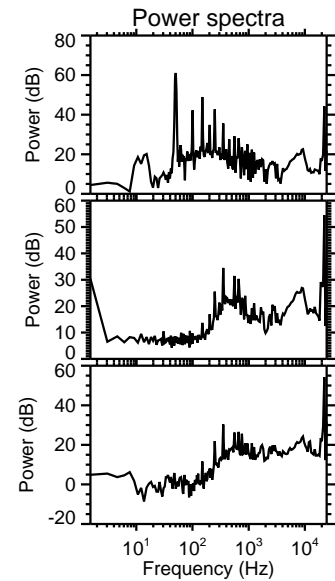
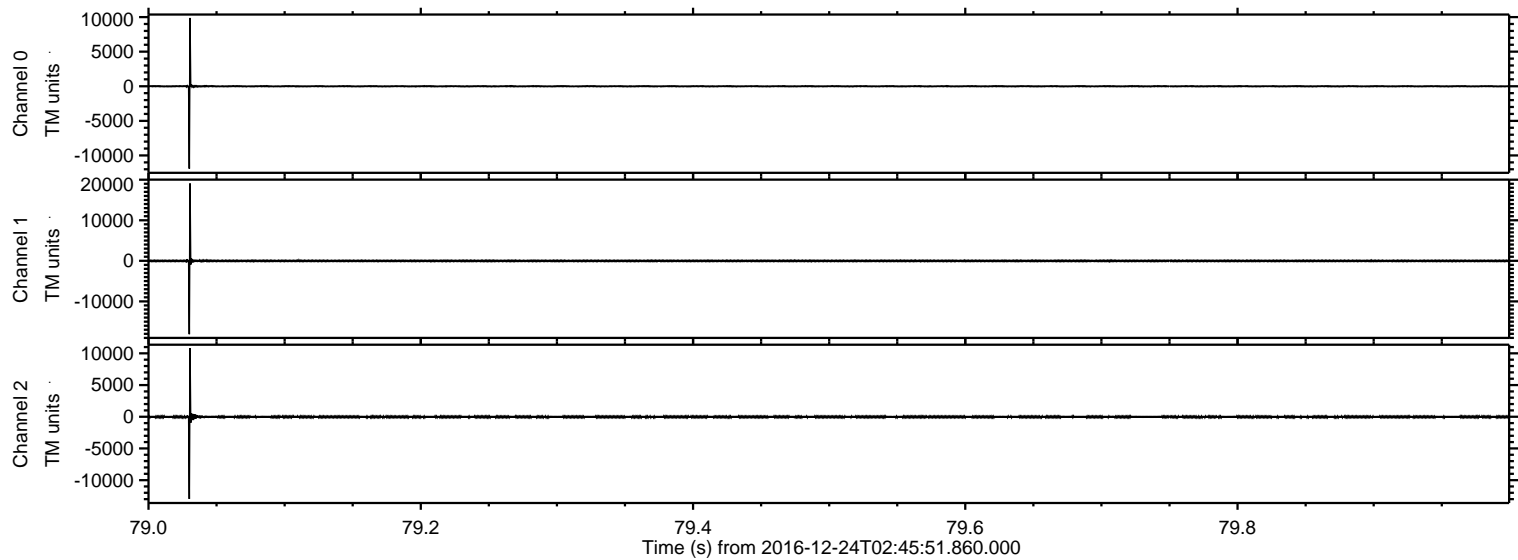


ELMAVAN 3D WAVEFORMS (Measured data sampled at 50 kHz) 51000 packets of 144 samples from 2016-12-24T02:45:51.860.000.

Processed Sat Dec 24 03:53:06 2016 by ELM ver.2012-10-06 from 001__elm20161224_024550__dat00.bin



Processed Sat Dec 24 03:53:17 2016 by ELM ver.2012-10-06 from 001__elm20161224_024550__dat00.bin



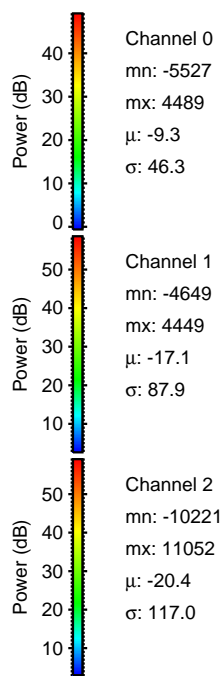
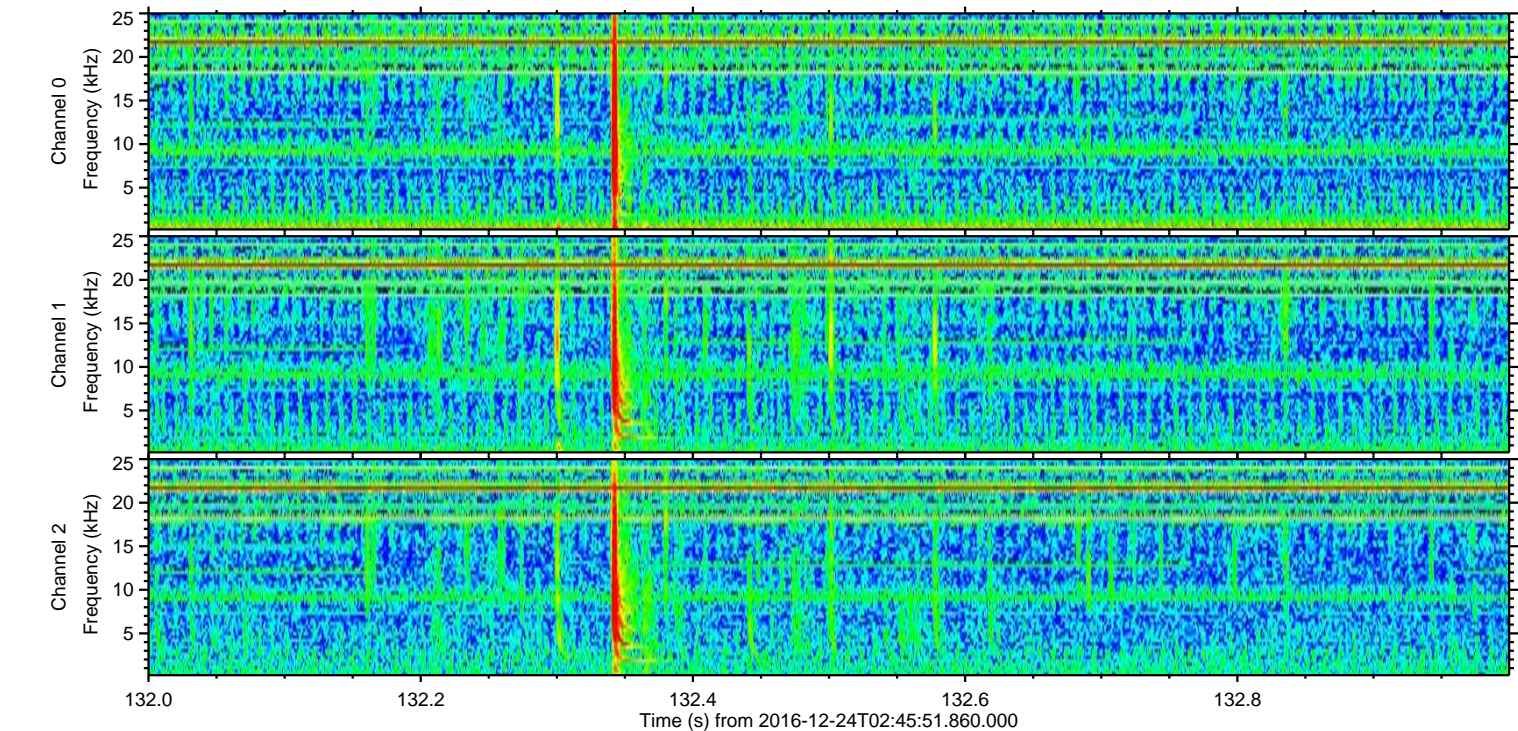
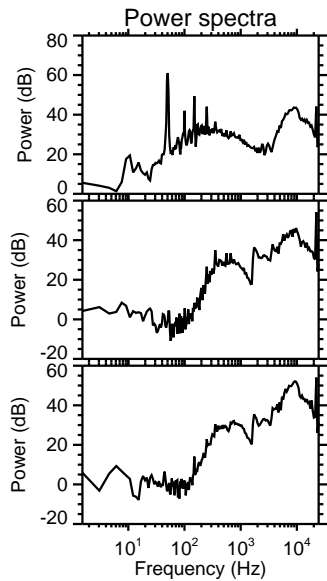
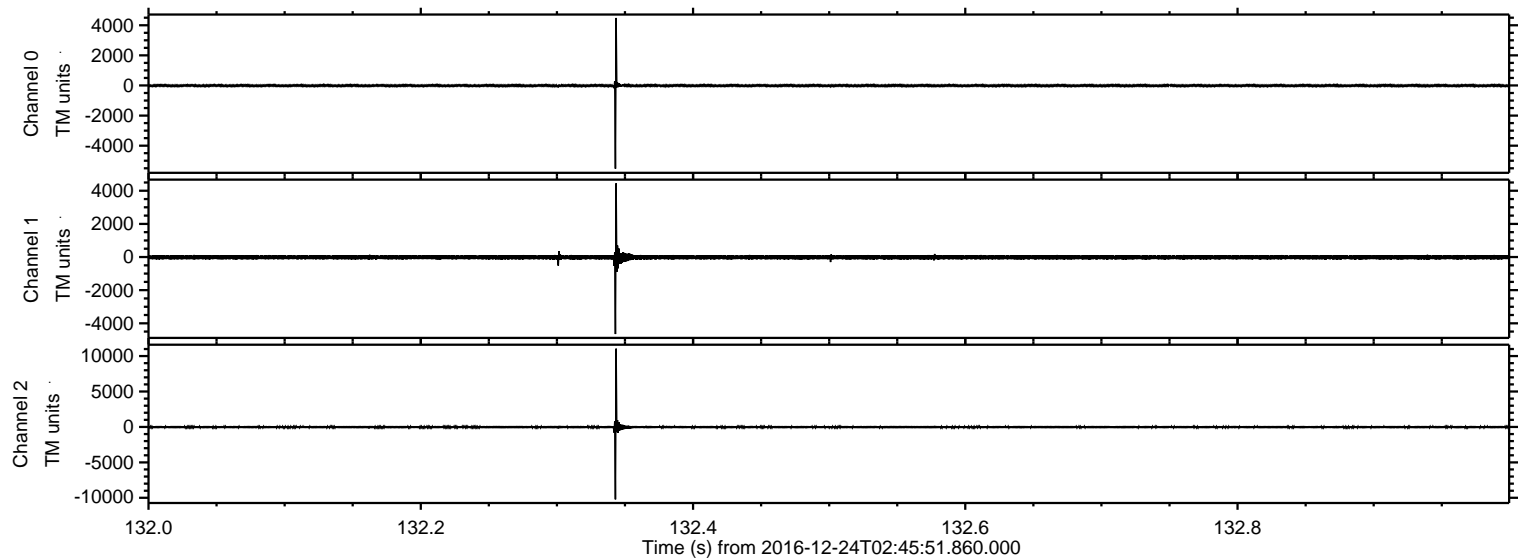
Channel 0
mn: -11915
mx: 9873
 μ : -9.4
 σ : 123.4

Channel 1
mn: -18104
mx: 19065
 μ : -17.2
 σ : 225.0

Channel 2
mn: -12958
mx: 10823
 μ : -20.2
 σ : 143.0

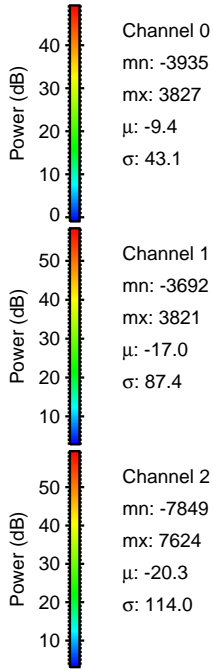
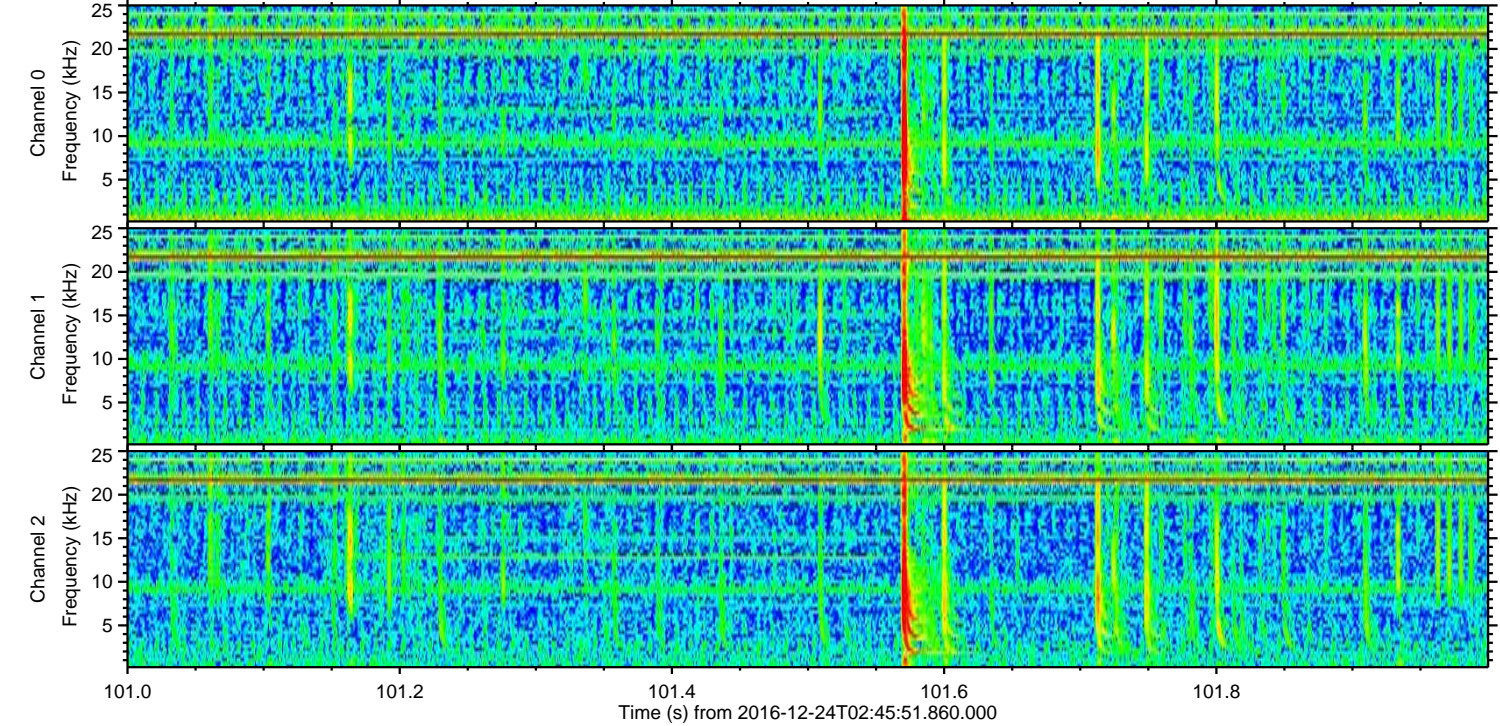
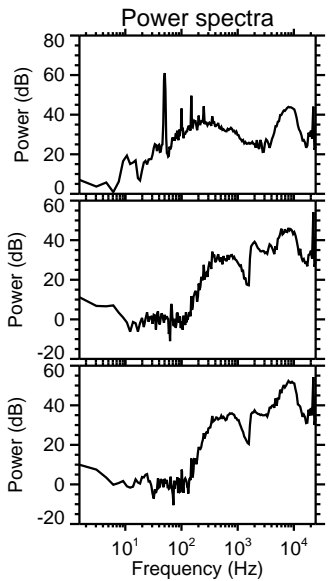
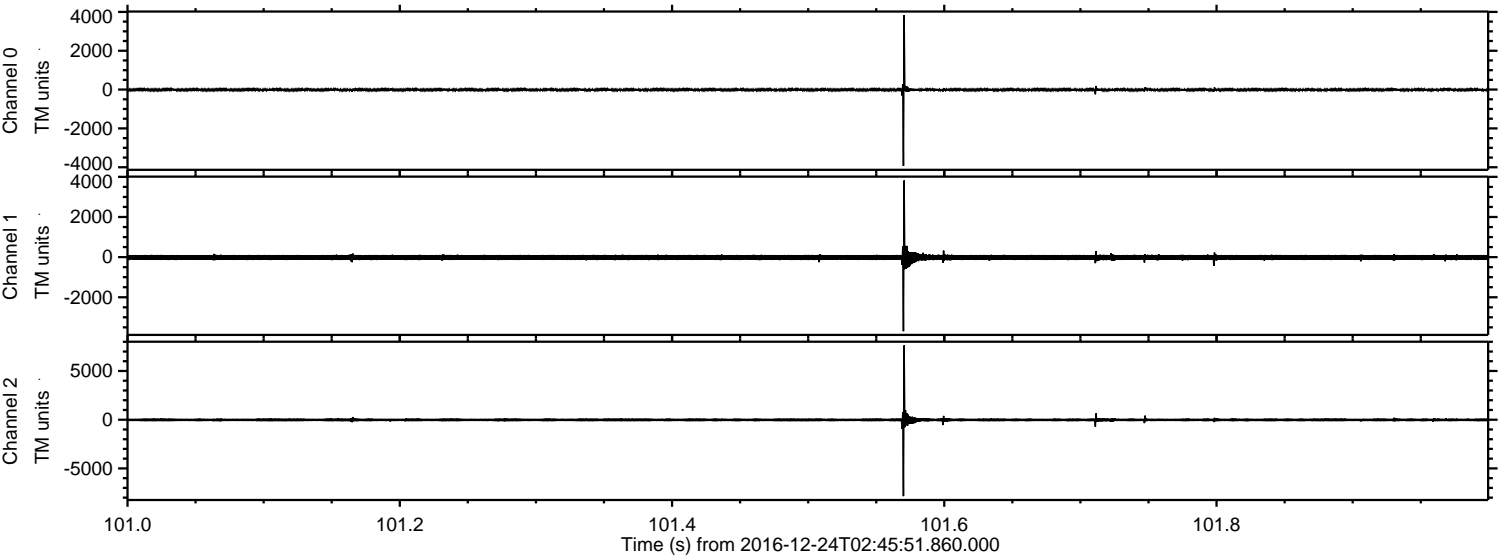
ELMAVAN 3D WAVEFORMS (Measured data sampled at 50 kHz) 51000 packets of 144 samples from 2016-12-24T02:45:51.860.000. Part 133/147

Processed Sat Dec 24 03:53:18 2016 by ELM ver.2012-10-06 from 001__elm20161224_024550__dat00.bin



ELMAVAN 3D WAVEFORMS (Measured data sampled at 50 kHz) 51000 packets of 144 samples from 2016-12-24T02:45:51.860.000. Part 102/147

Processed Sat Dec 24 03:53:19 2016 by ELM ver.2012-10-06 from 001__elm20161224_024550__dat00.bin



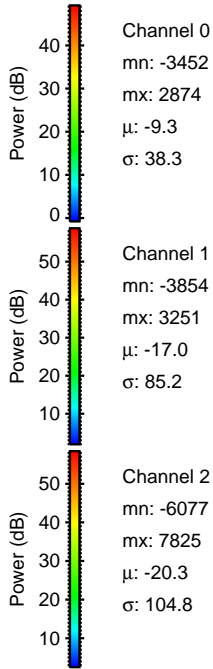
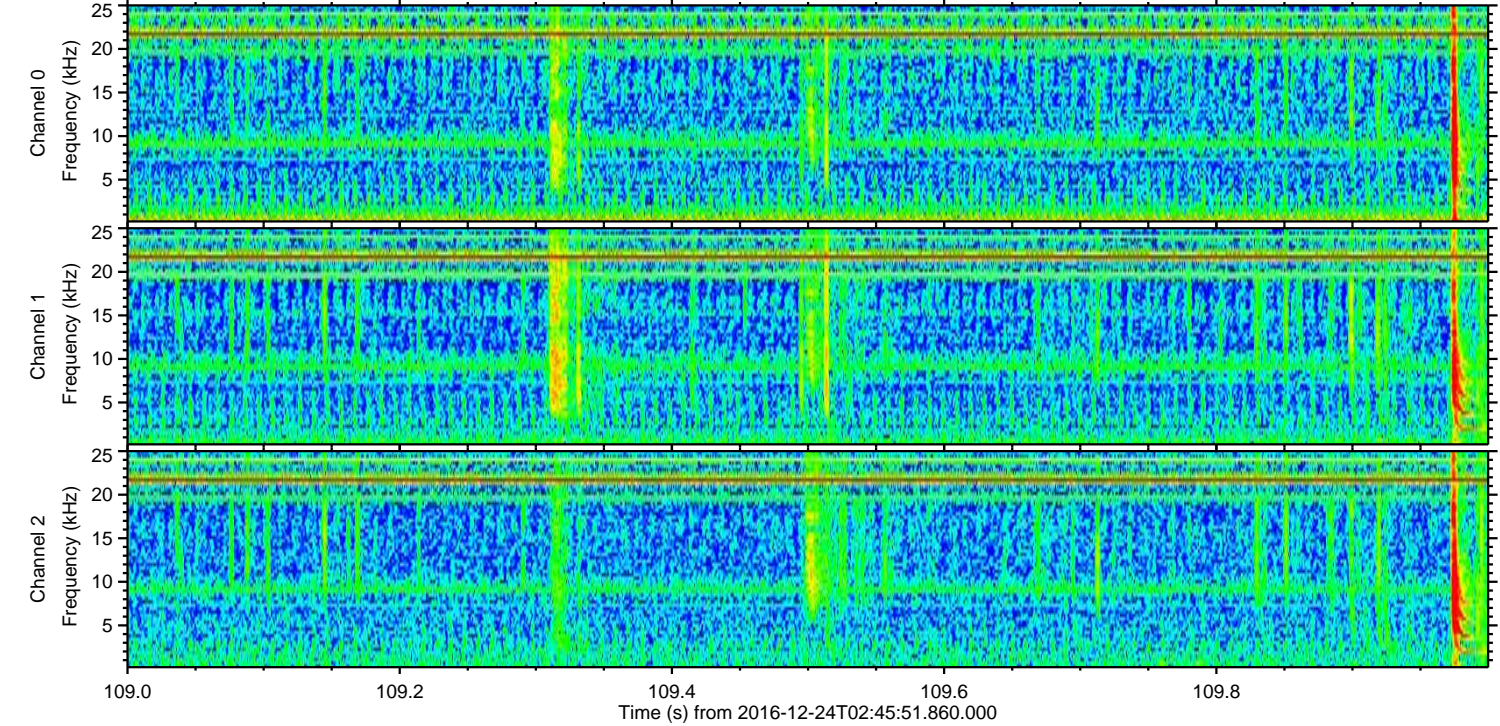
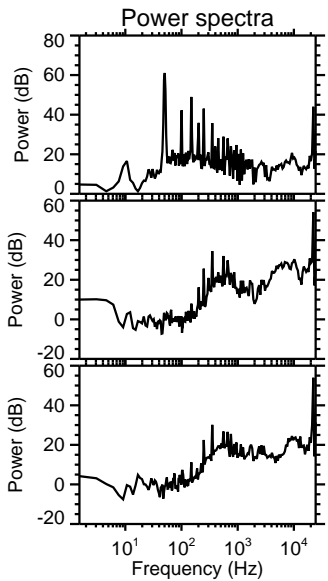
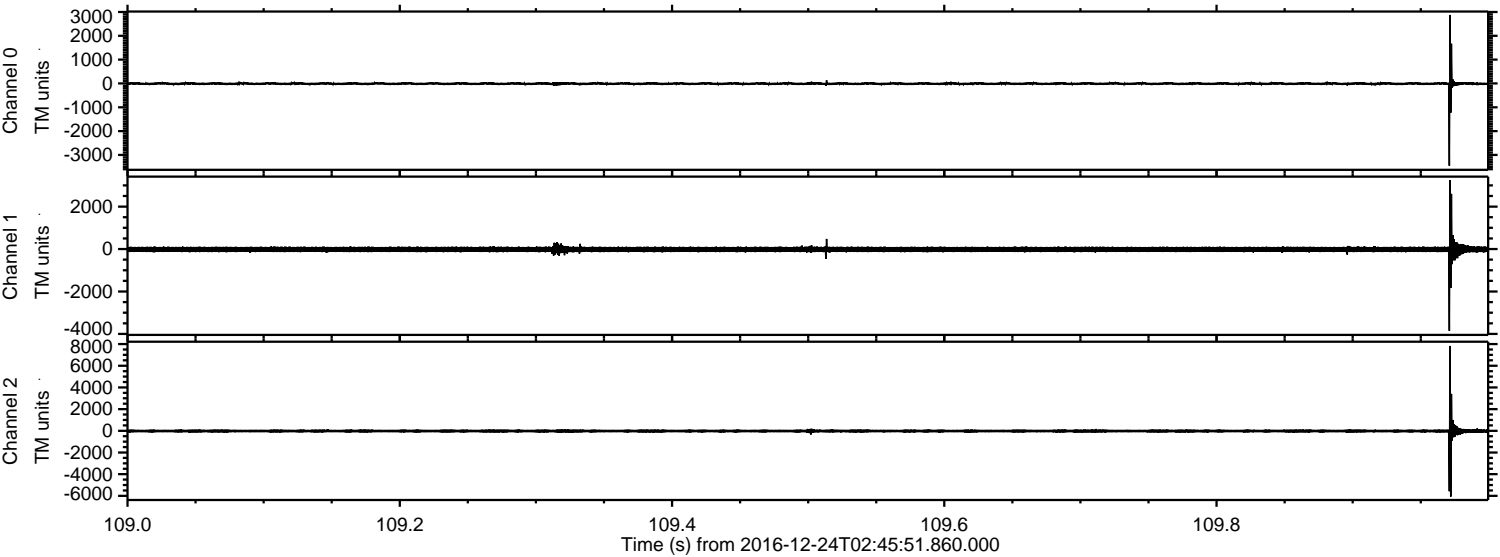
Channel 0
mn: -3935
mx: 3827
 μ : -9.4
 σ : 43.1

Channel 1
mn: -3692
mx: 3821
 μ : -17.0
 σ : 87.4

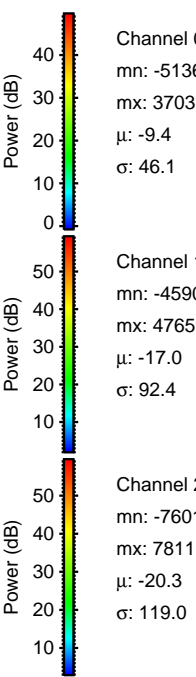
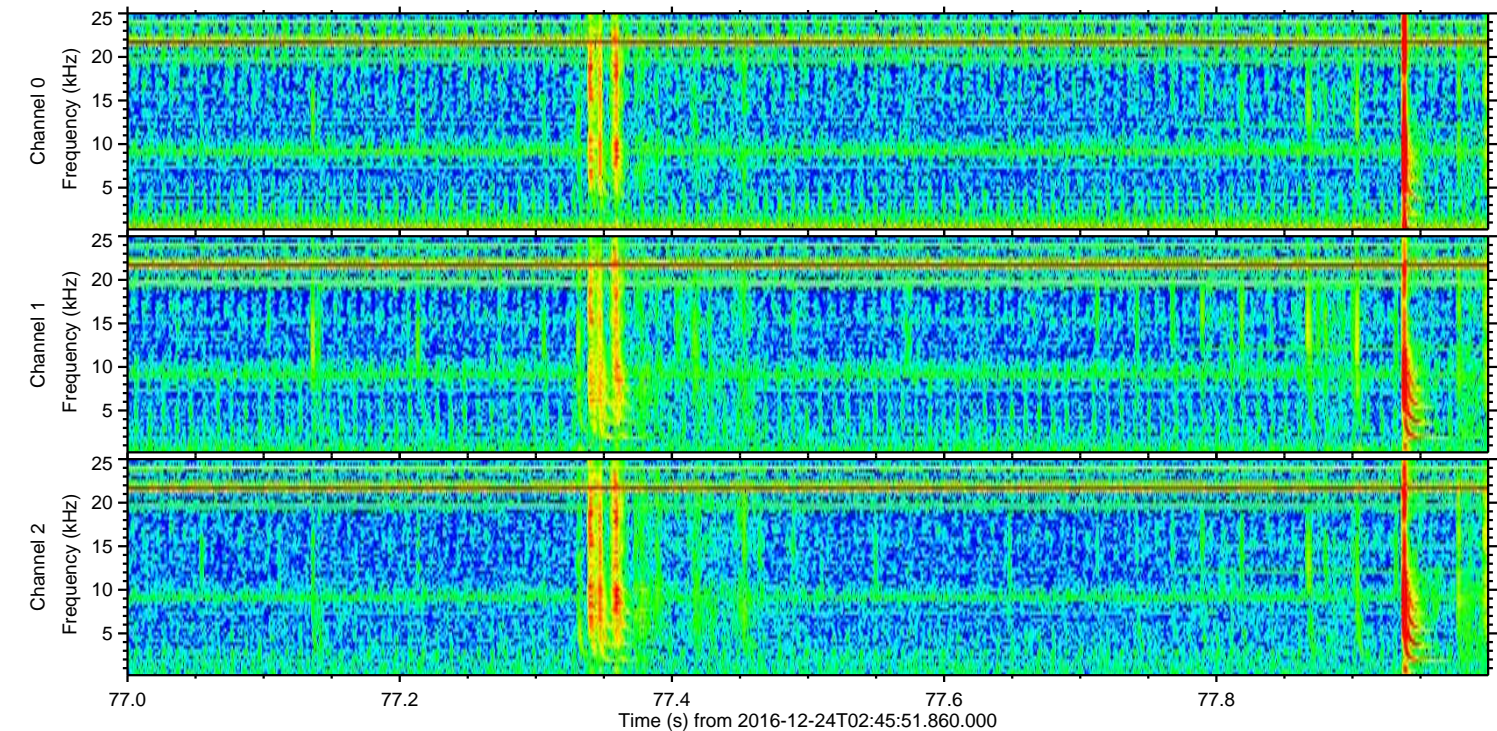
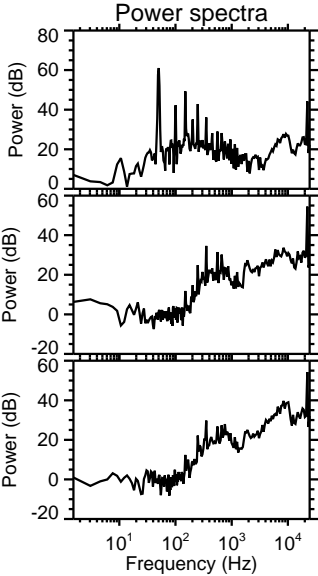
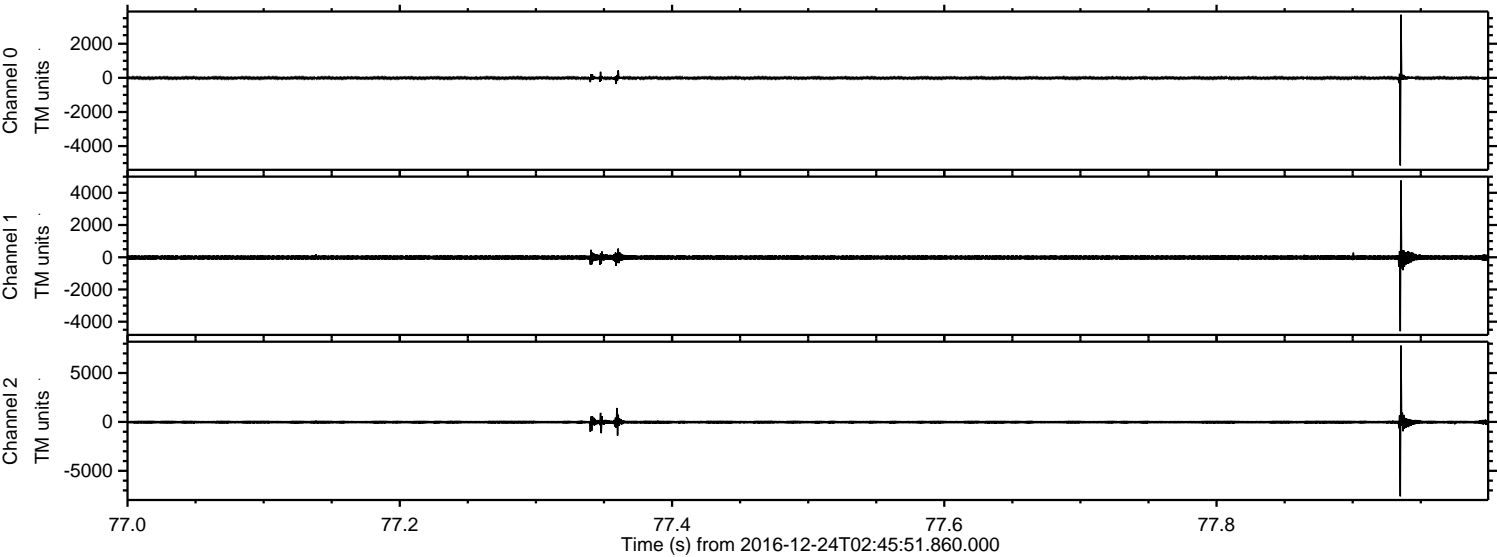
Channel 2
mn: -7849
mx: 7624
 μ : -20.3
 σ : 114.0

ELMAVAN 3D WAVEFORMS (Measured data sampled at 50 kHz) 51000 packets of 144 samples from 2016-12-24T02:45:51.860.000. Part 110/147

Processed Sat Dec 24 03:53:20 2016 by ELM ver.2012-10-06 from 001__elm20161224_024550__dat00.bin



Processed Sat Dec 24 03:53:21 2016 by ELM ver.2012-10-06 from 001__elm20161224_024550__dat00.bin

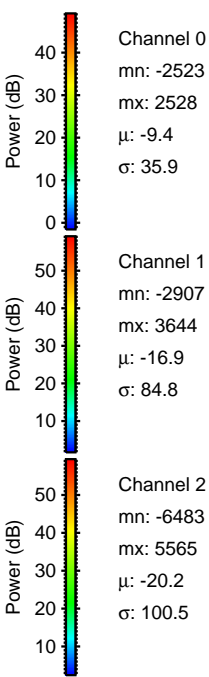
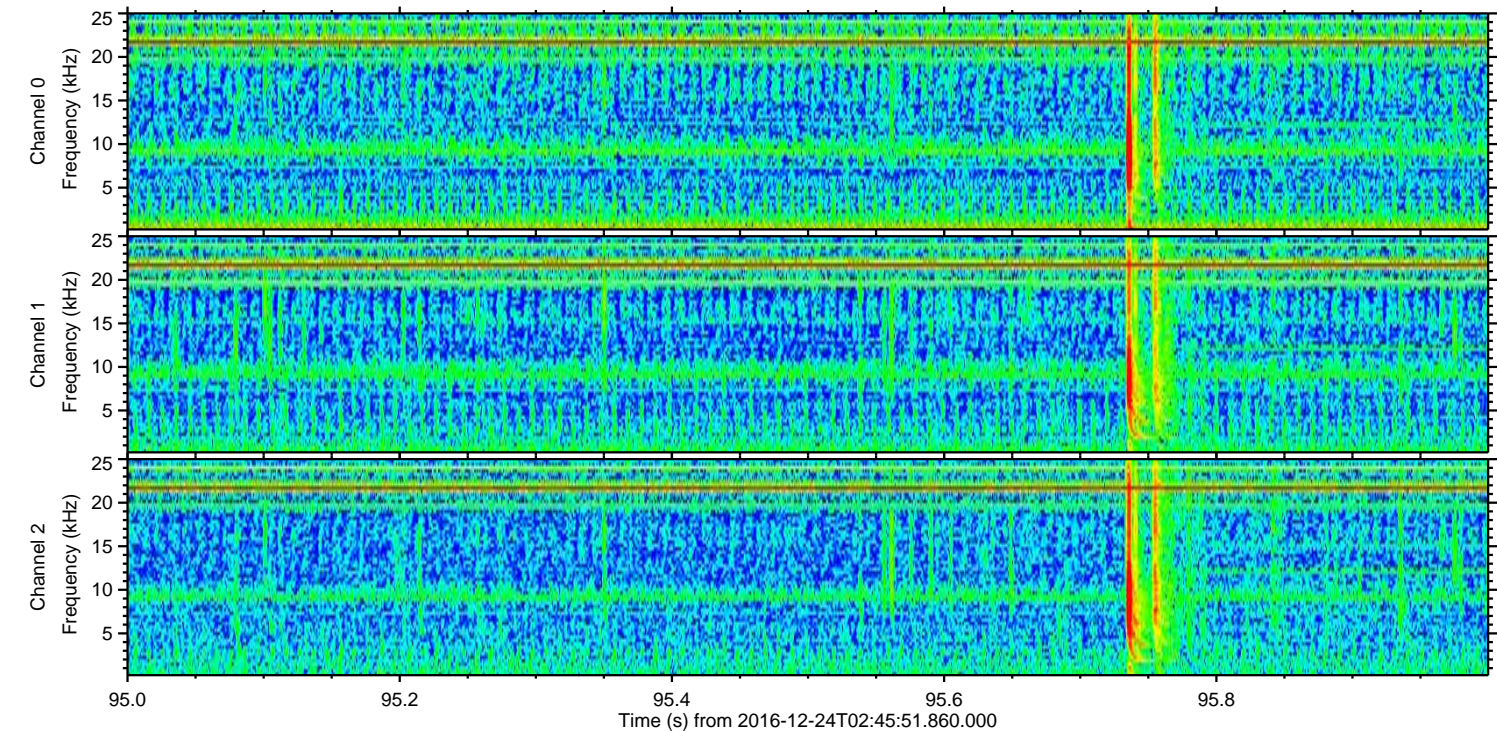
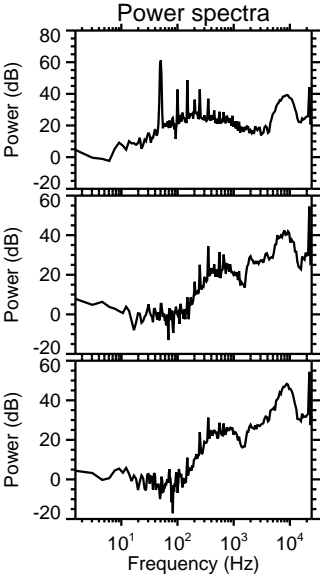
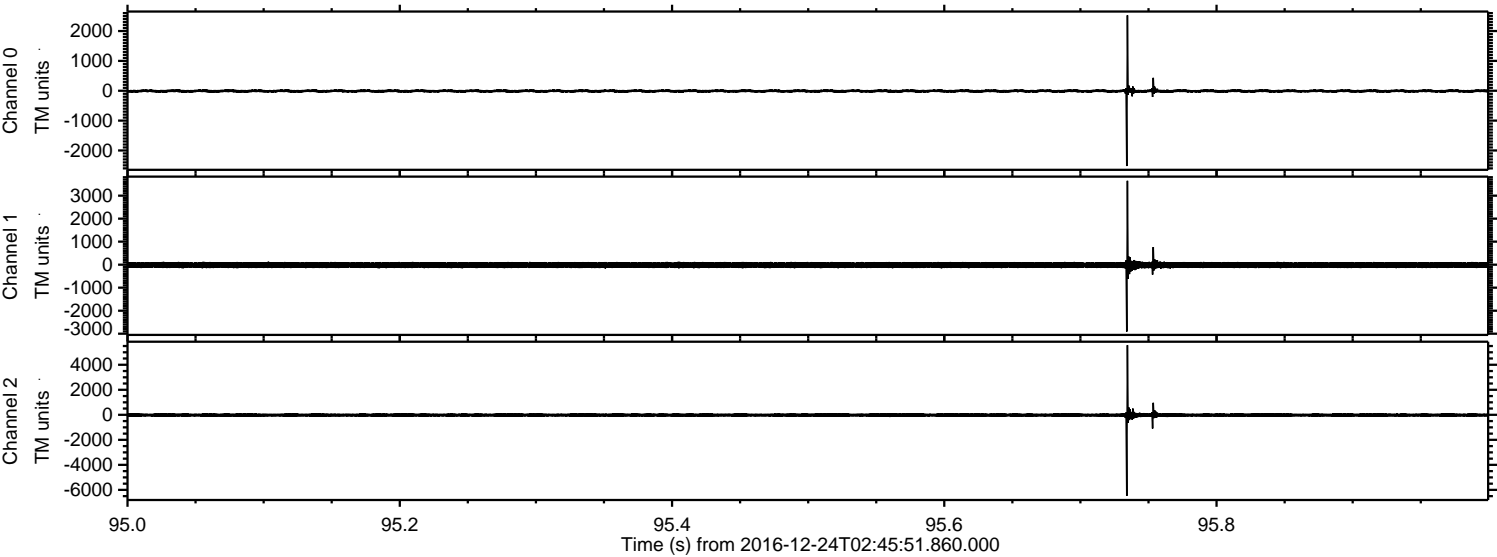


Channel 0
mn: -5136
mx: 3703
 μ : -9.4
 σ : 46.1

Channel 1
mn: -4590
mx: 4765
 μ : -17.0
 σ : 92.4

Channel 2
mn: -7601
mx: 7811
 μ : -20.3
 σ : 119.0

Processed Sat Dec 24 03:53:22 2016 by ELM ver.2012-10-06 from 001__elm20161224_024550__dat00.bin

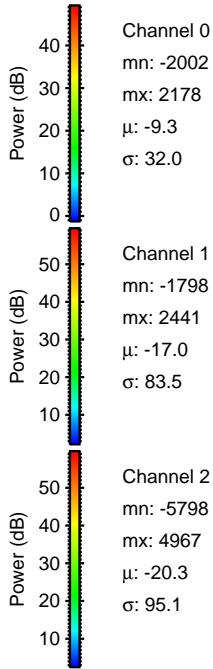
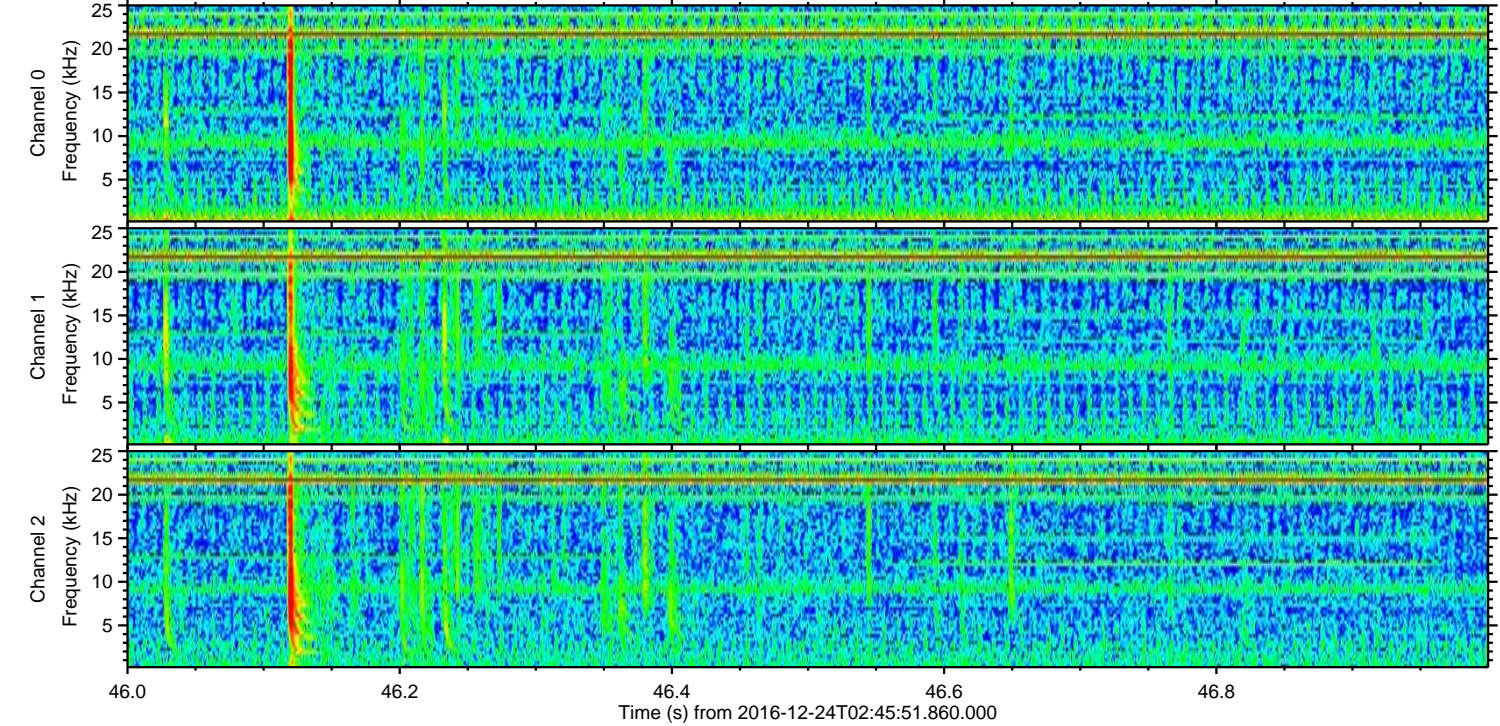
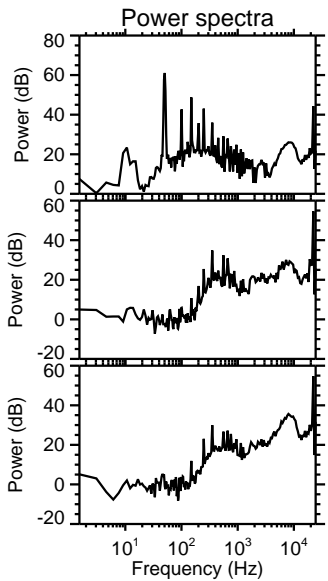
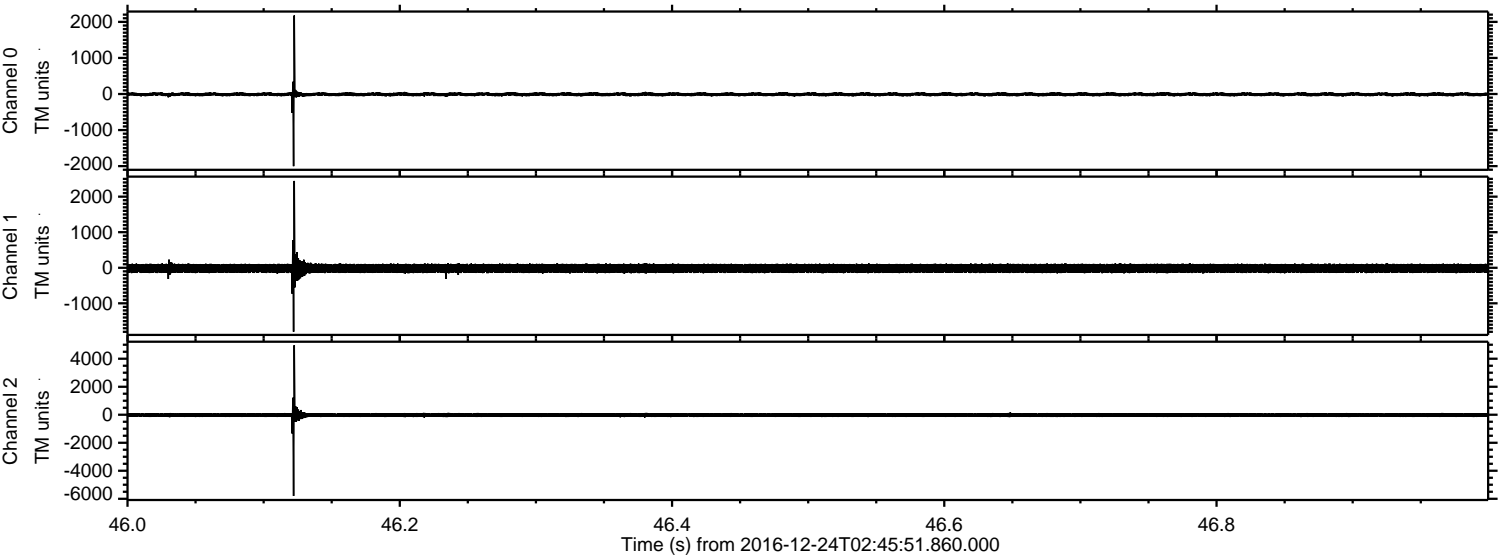


Channel 0
mn: -2523
mx: 2528
 μ : -9.4
 σ : 35.9

Channel 1
mn: -2907
mx: 3644
 μ : -16.9
 σ : 84.8

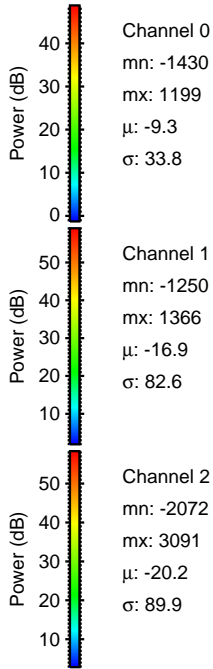
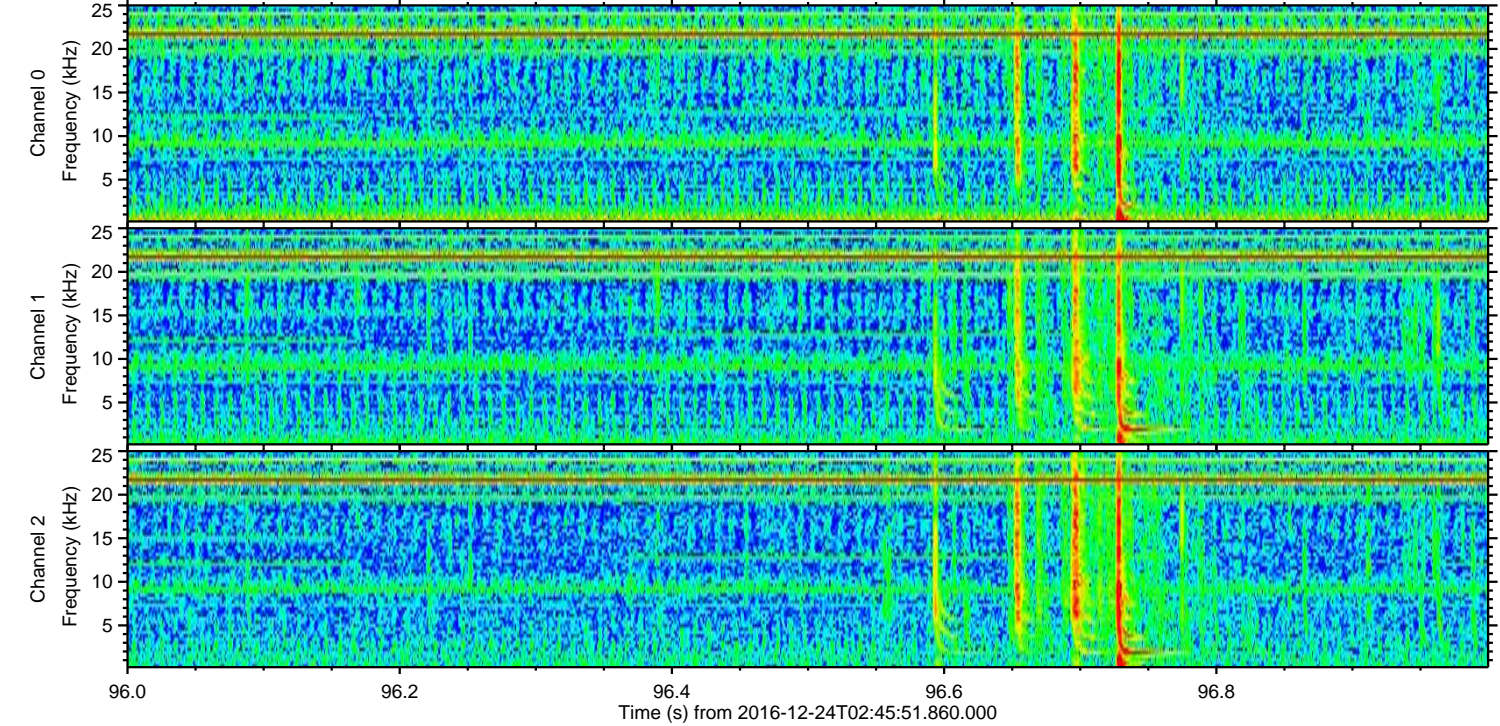
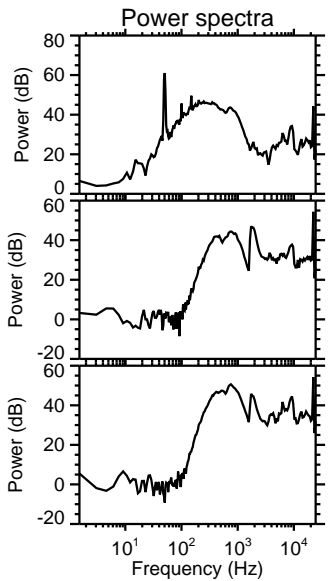
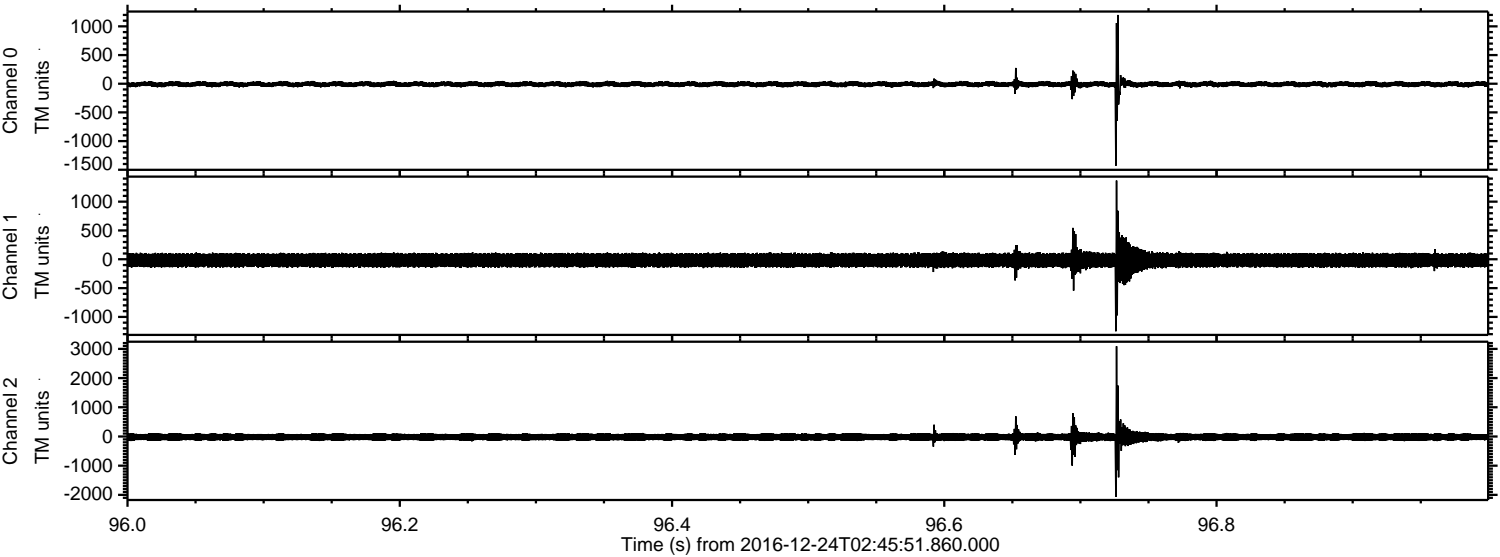
Channel 2
mn: -6483
mx: 5565
 μ : -20.2
 σ : 100.5

Processed Sat Dec 24 03:53:23 2016 by ELM ver.2012-10-06 from 001__elm20161224_024550__dat00.bin

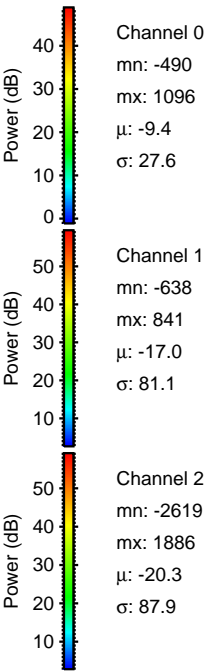
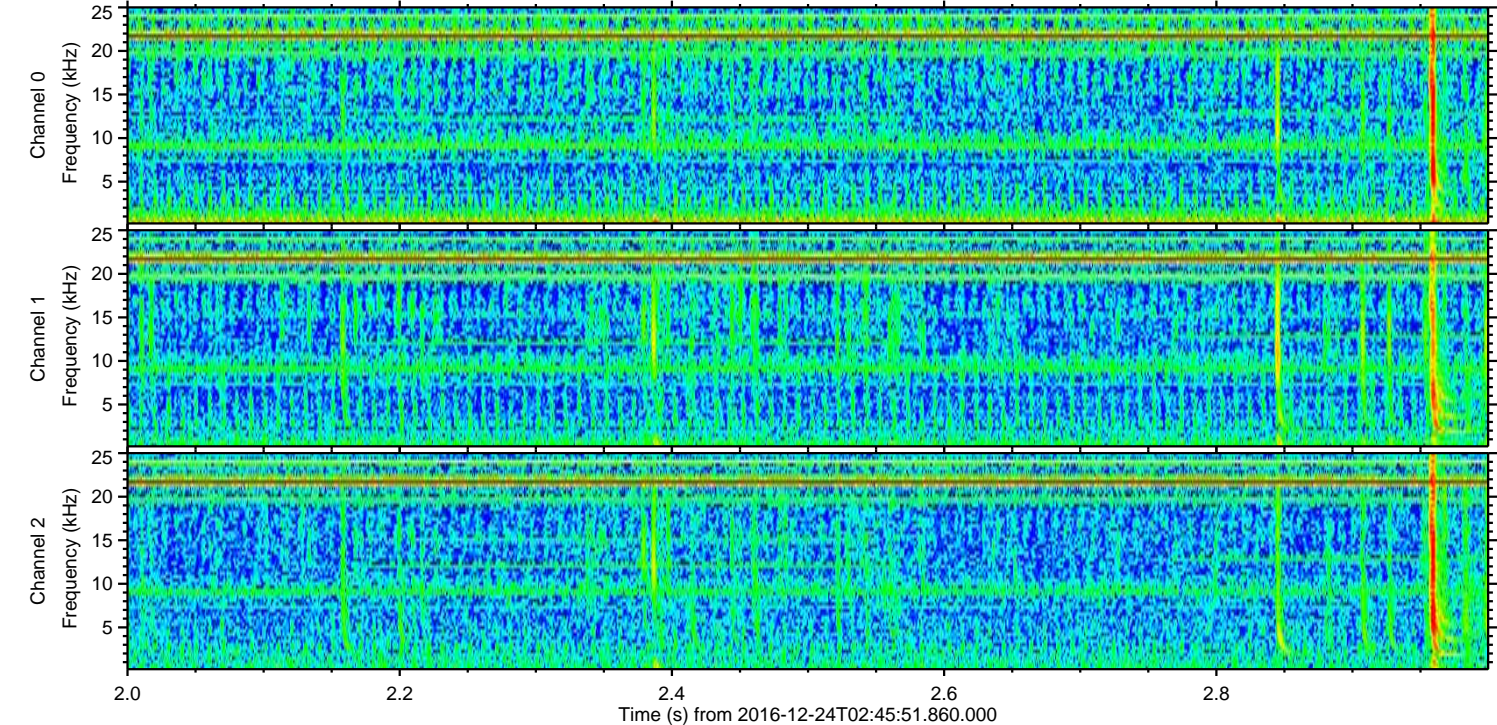
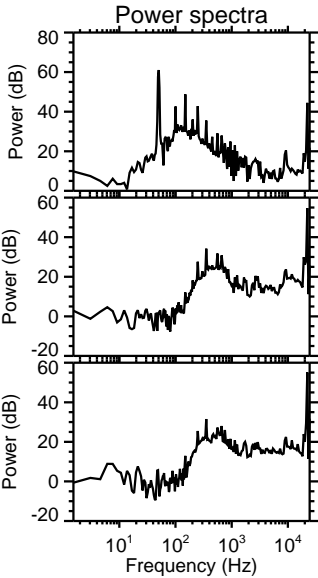
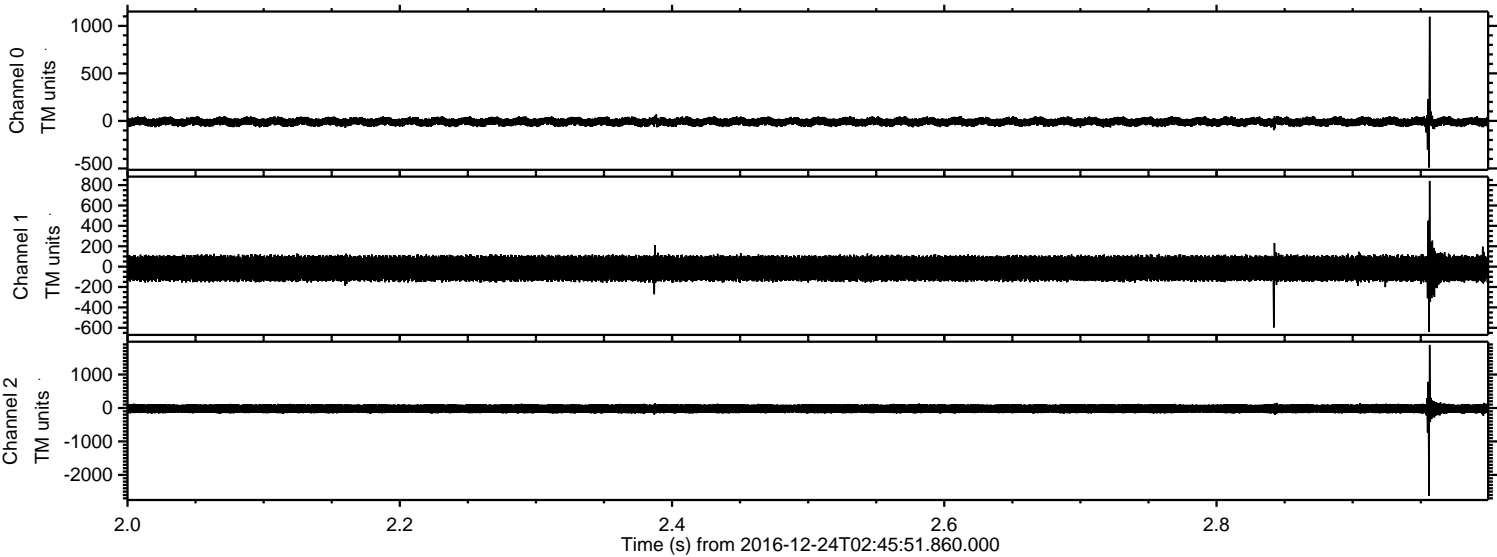


ELMAVAN 3D WAVEFORMS (Measured data sampled at 50 kHz) 51000 packets of 144 samples from 2016-12-24T02:45:51.860.000. Part 97/147

Processed Sat Dec 24 03:53:24 2016 by ELM ver.2012-10-06 from 001__elm20161224_024550__dat00.bin



Processed Sat Dec 24 03:53:25 2016 by ELM ver.2012-10-06 from 001__elm20161224_024550__dat00.bin



Channel 0
mn: -490
mx: 1096
 μ : -9.4
 σ : 27.6

Channel 1
mn: -638
mx: 841
 μ : -17.0
 σ : 81.1

Channel 2
mn: -2619
mx: 1886
 μ : -20.3
 σ : 87.9

Processed Sat Dec 24 03:53:26 2016 by ELM ver.2012-10-06 from 001__elm20161224_024550__dat00.bin

