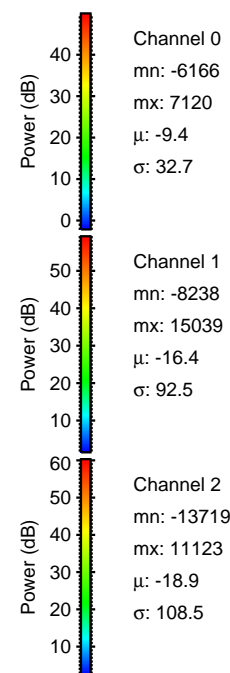
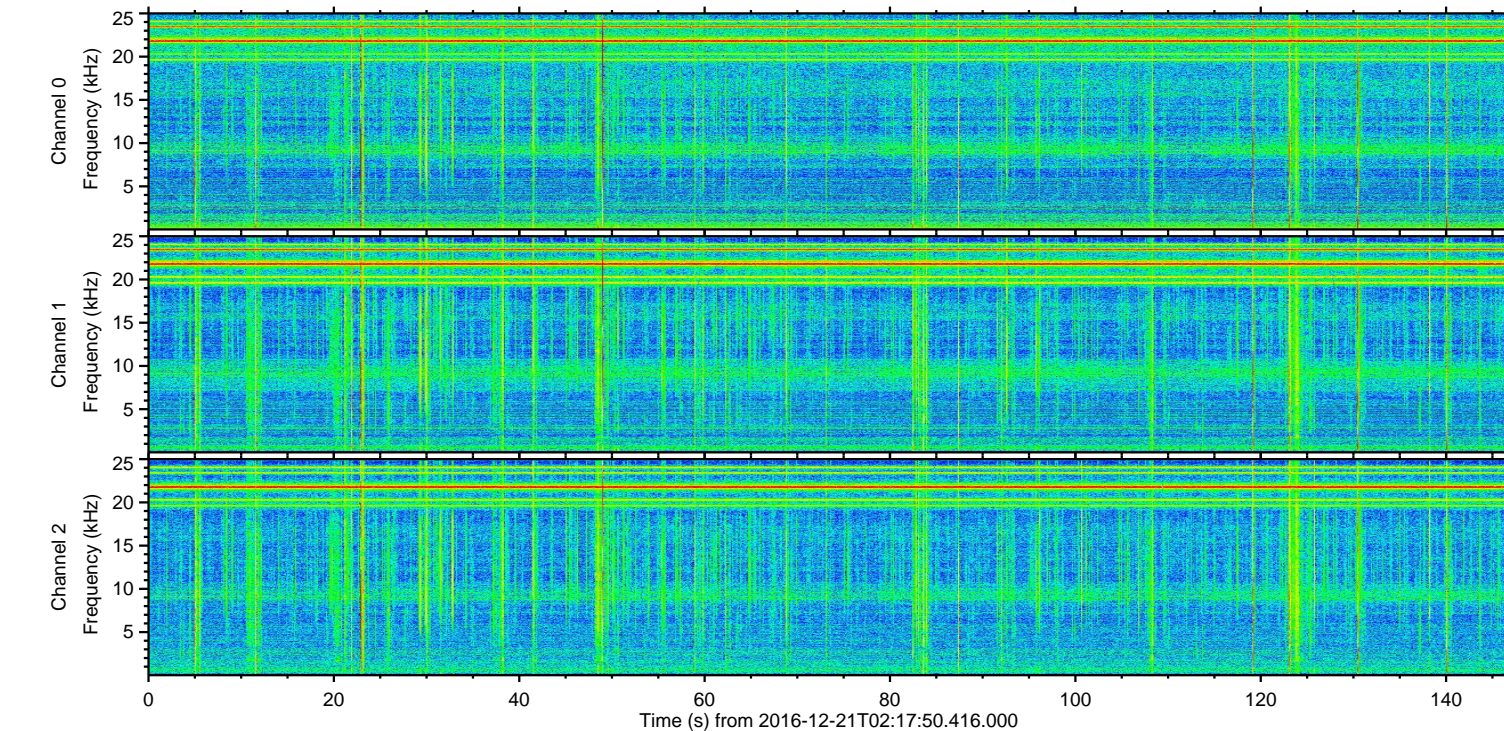
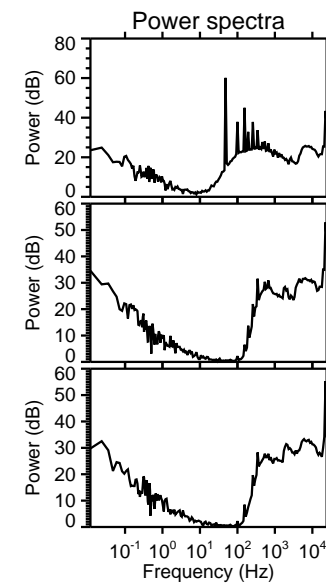
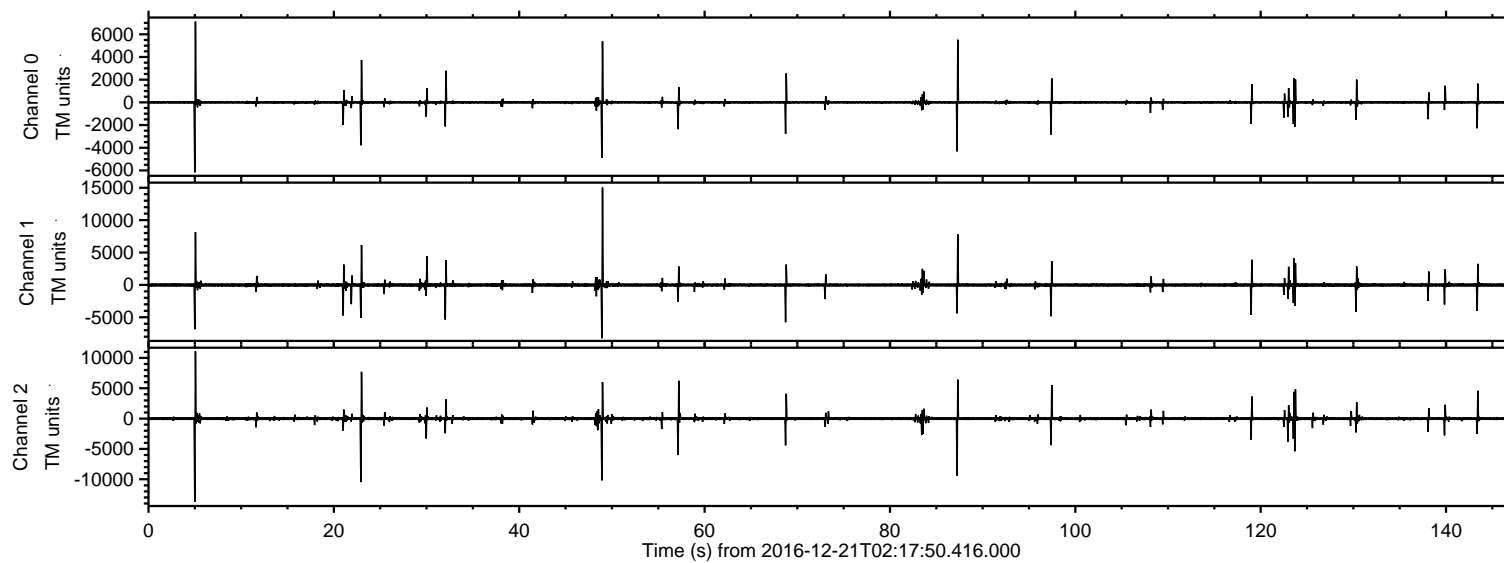
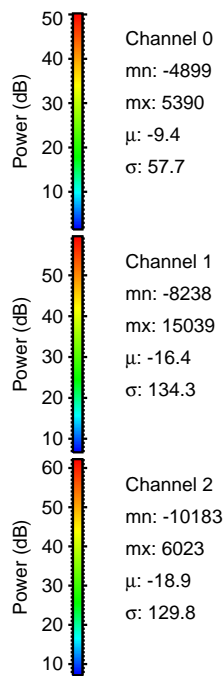
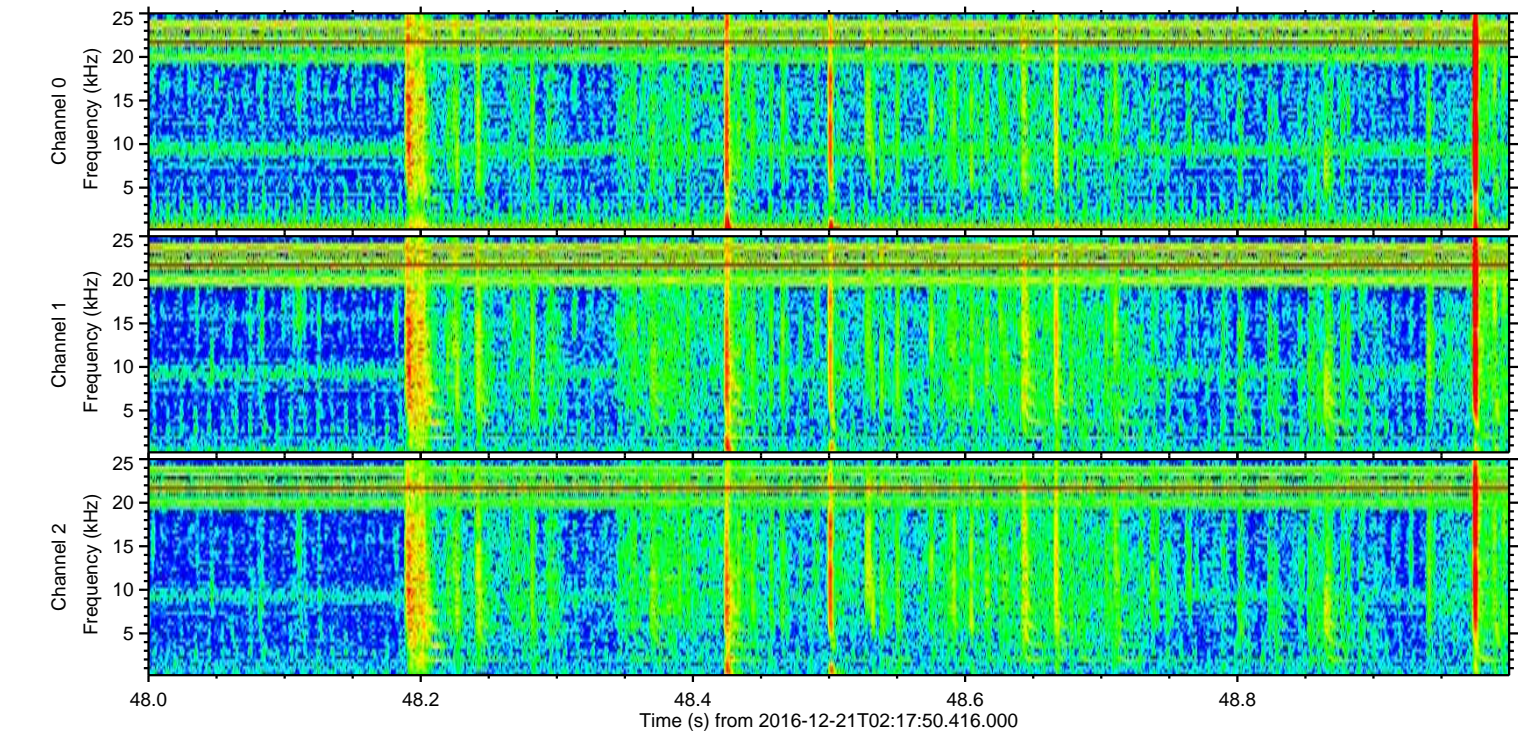
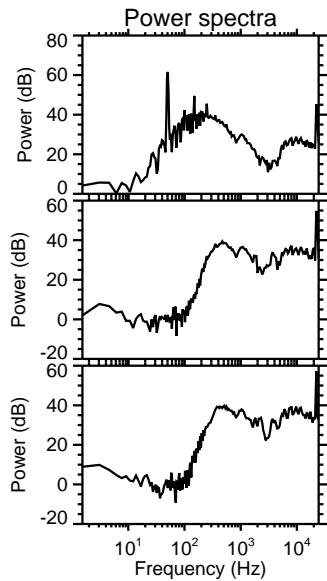
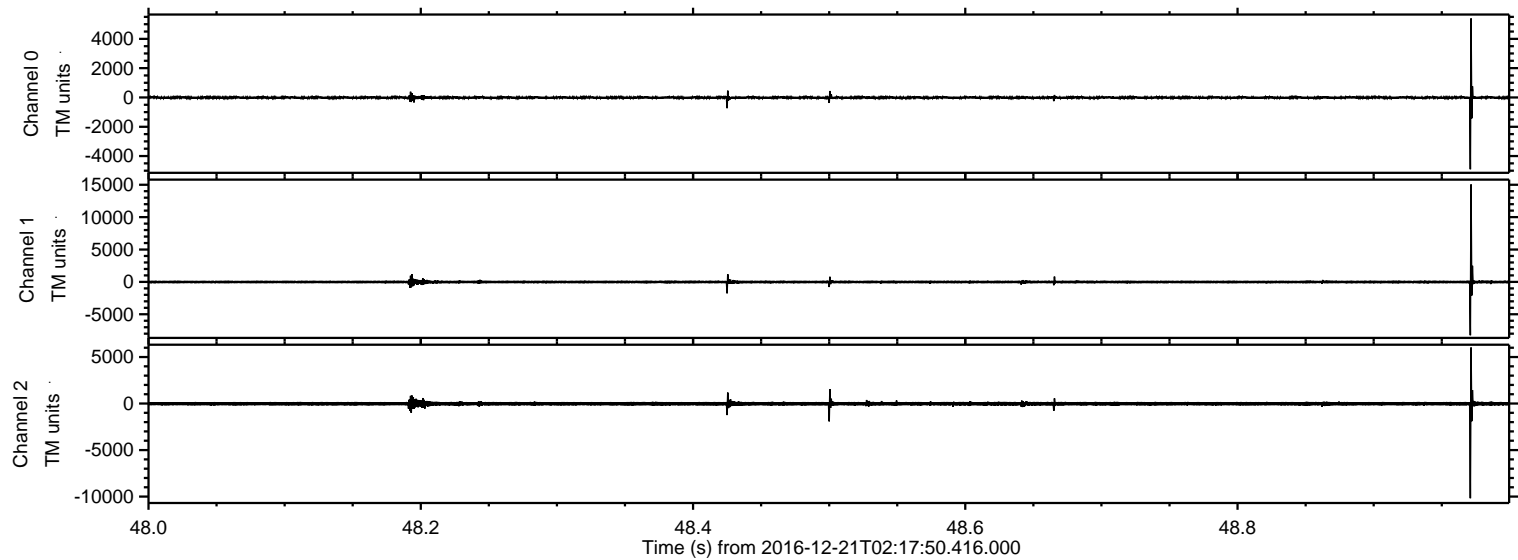


ELMAVAN 3D WAVEFORMS (Measured data sampled at 50 kHz) 51000 packets of 144 samples from 2016-12-21T02:17:50.416.000.

Processed Wed Dec 21 03:25:30 2016 by ELM ver.2012-10-06 from 001__elm20161221_021749__dat00.bin

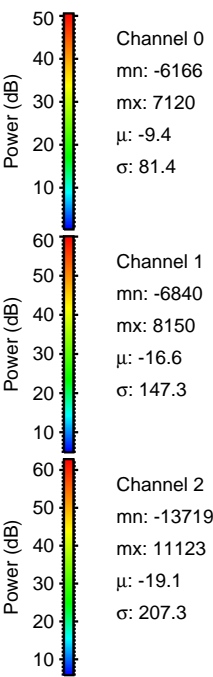
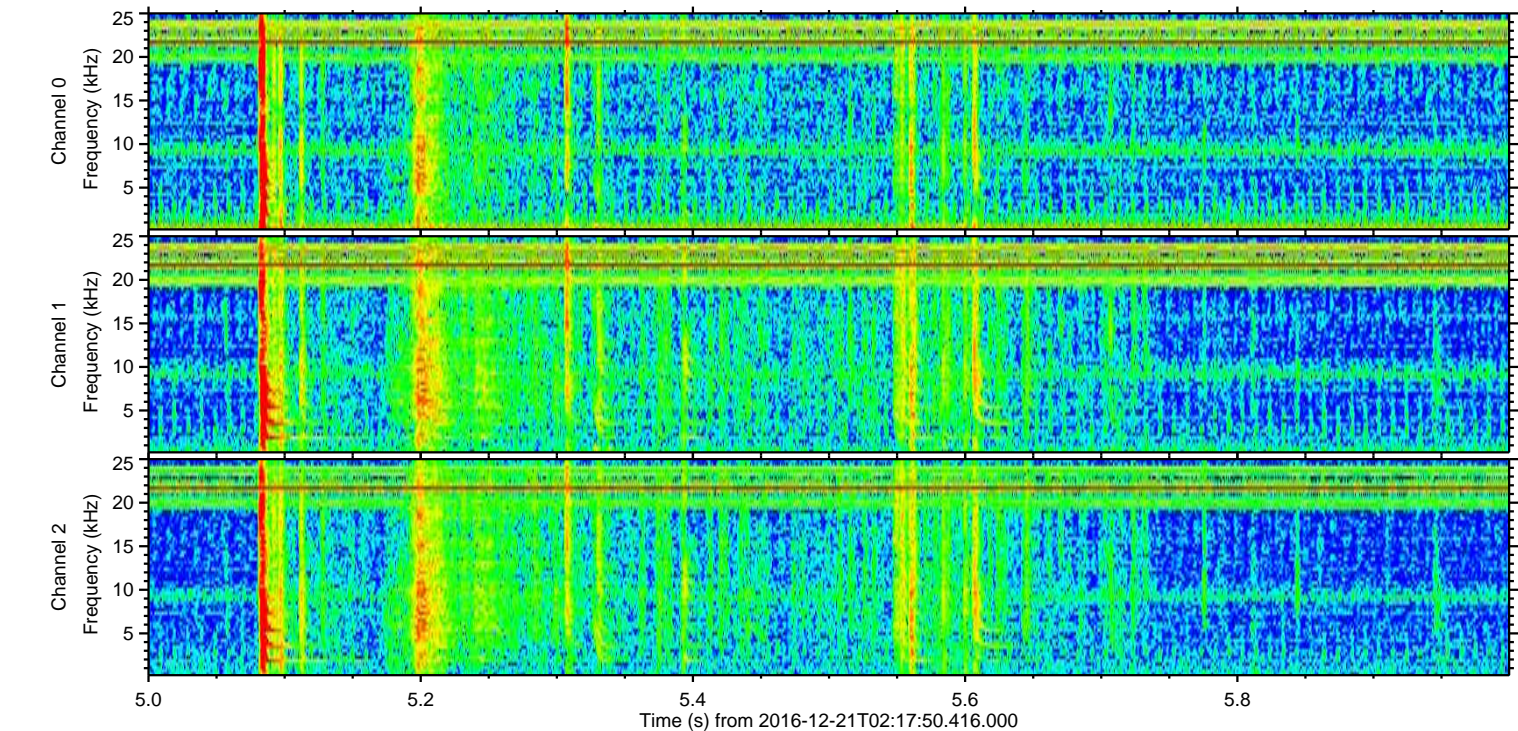
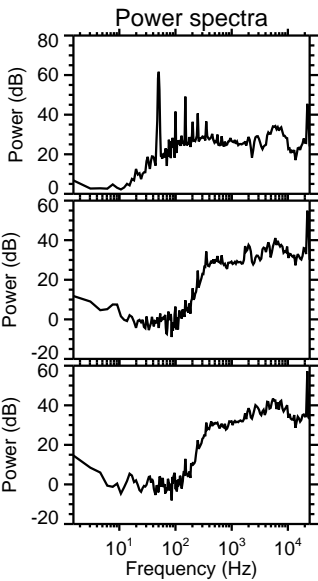
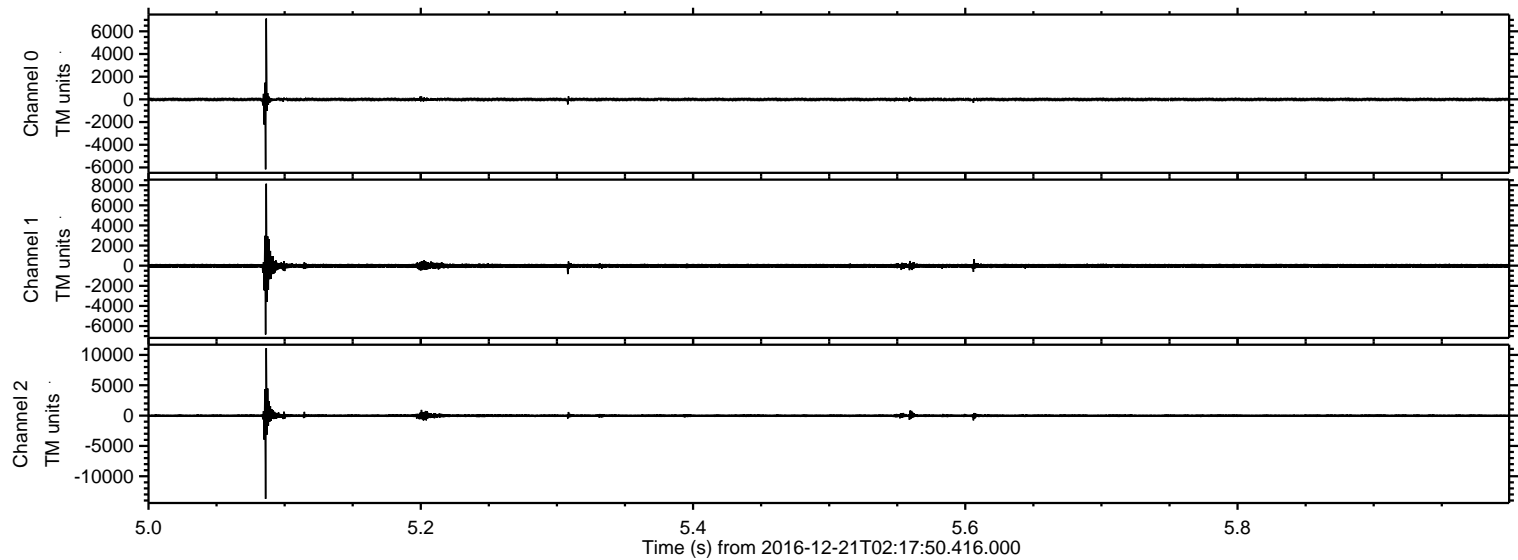


Processed Wed Dec 21 03:25:43 2016 by ELM ver.2012-10-06 from 001__elm20161221_021749__dat00.bin



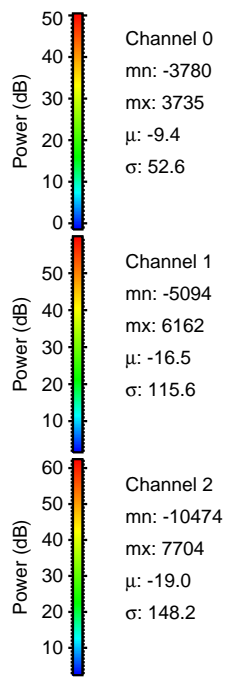
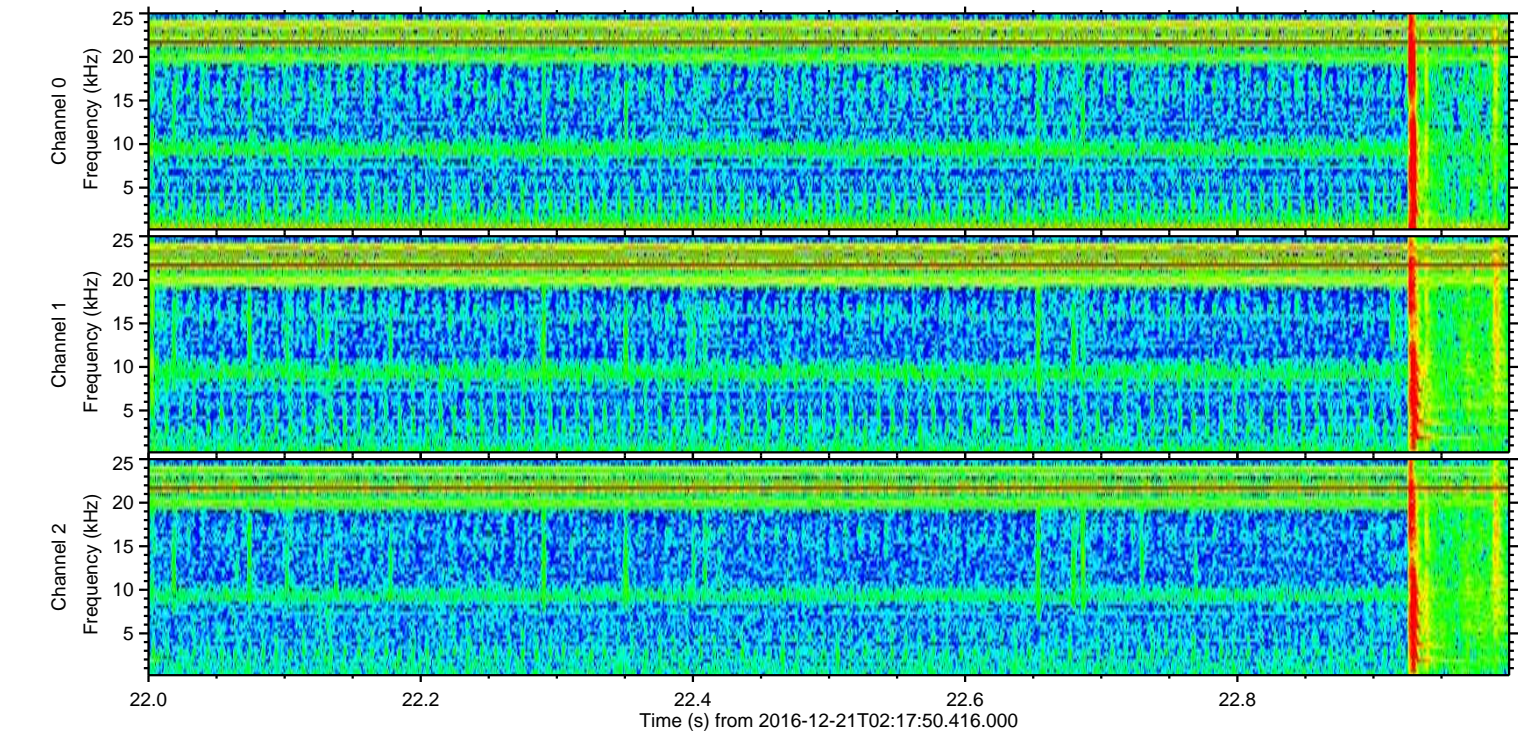
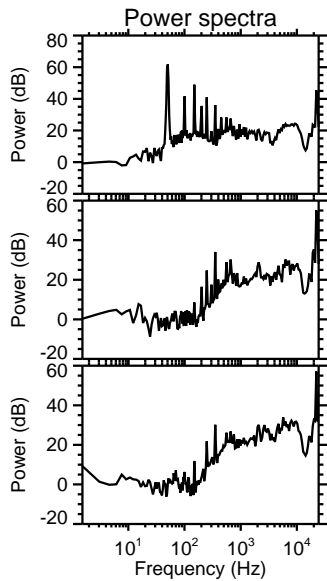
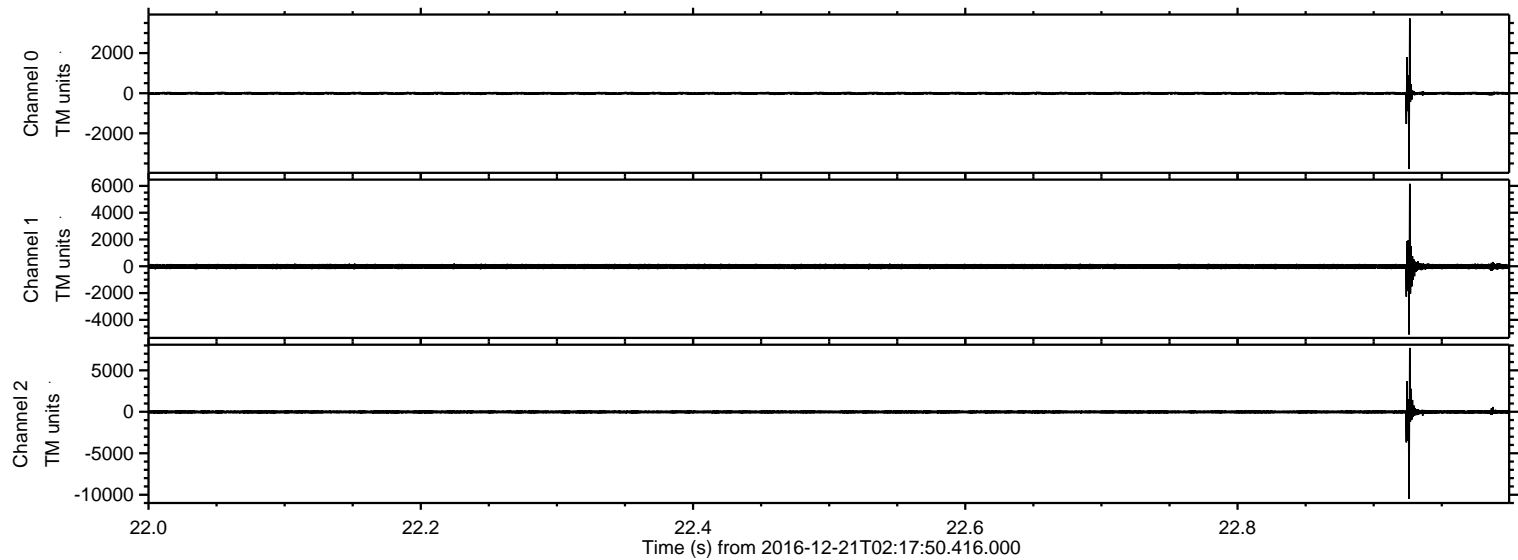
ELMAVAN 3D WAVEFORMS (Measured data sampled at 50 kHz) 51000 packets of 144 samples from 2016-12-21T02:17:50.416.000. Part 6/147

Processed Wed Dec 21 03:25:44 2016 by ELM ver.2012-10-06 from 001__elm20161221_021749__dat00.bin

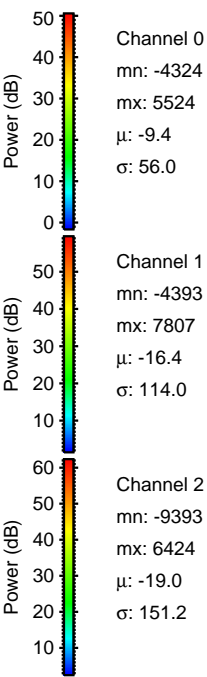
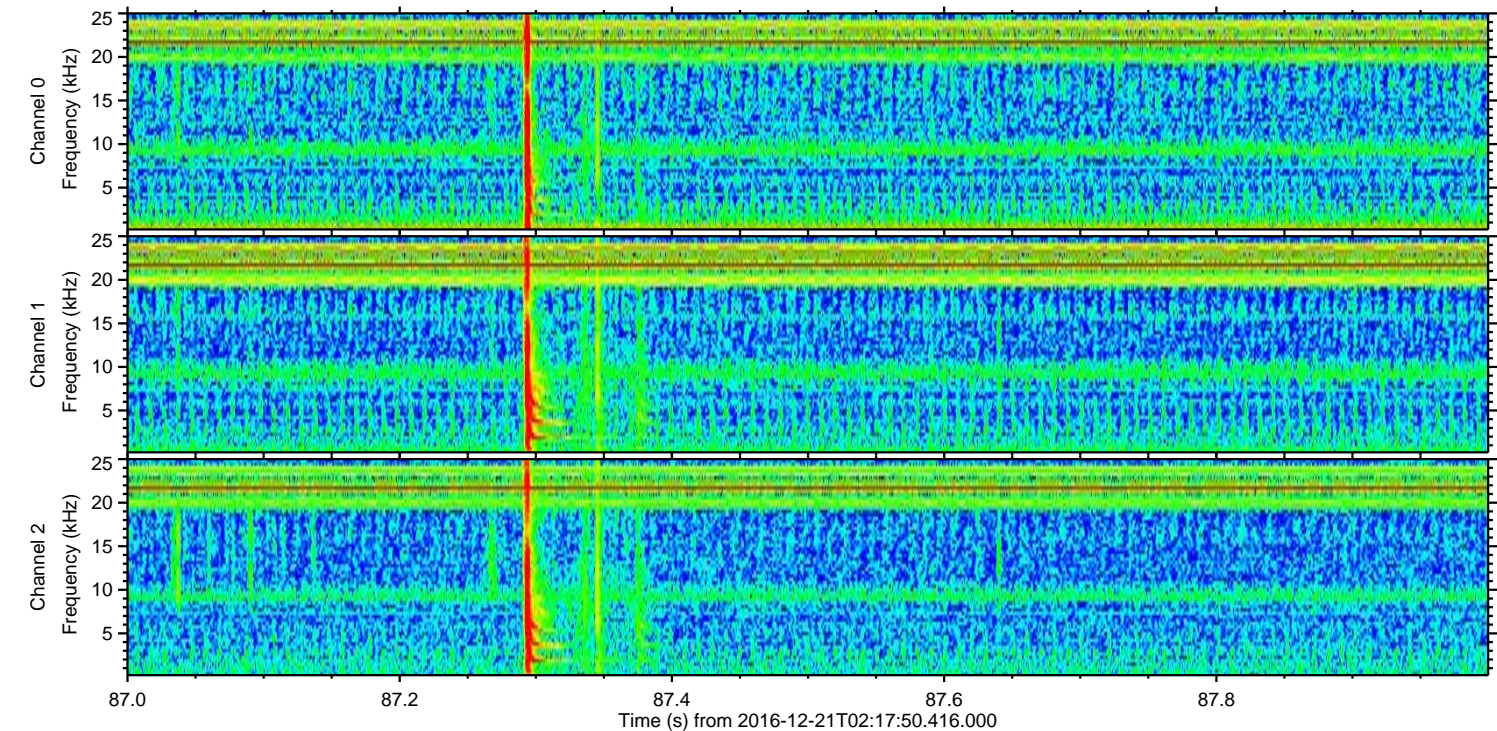
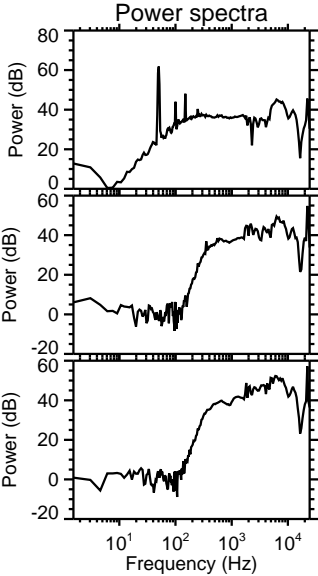
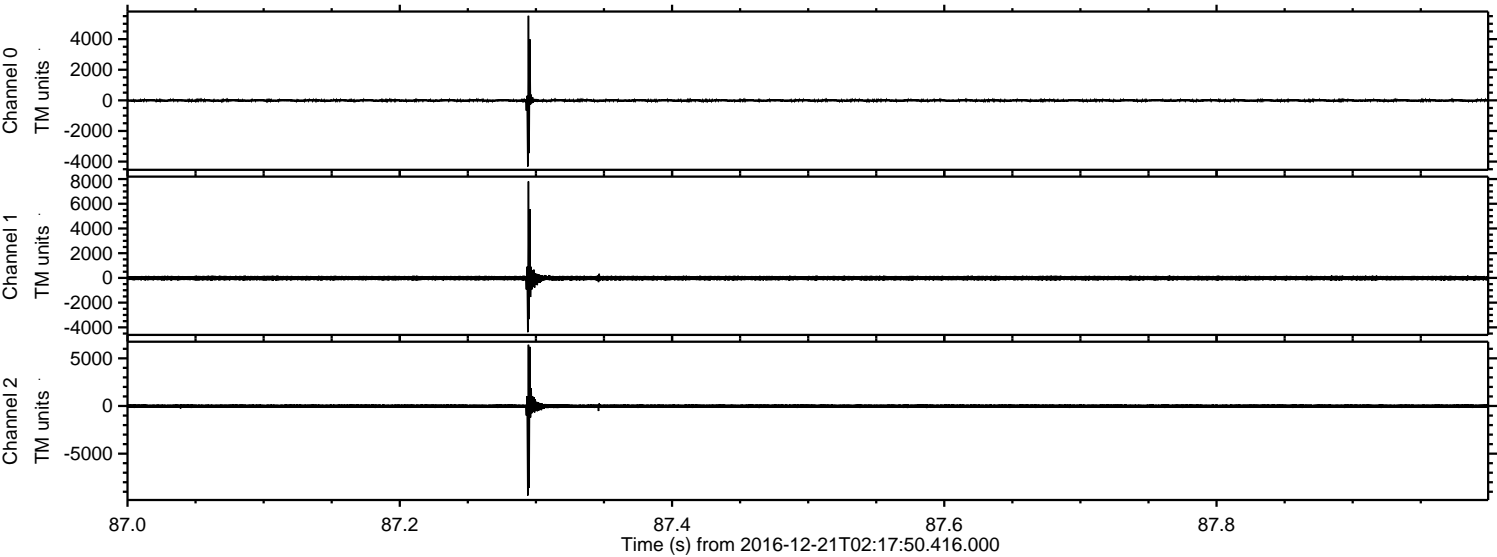


ELMAVAN 3D WAVEFORMS (Measured data sampled at 50 kHz) 51000 packets of 144 samples from 2016-12-21T02:17:50.416.000. Part 23/147

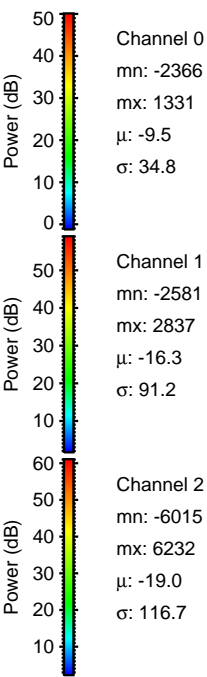
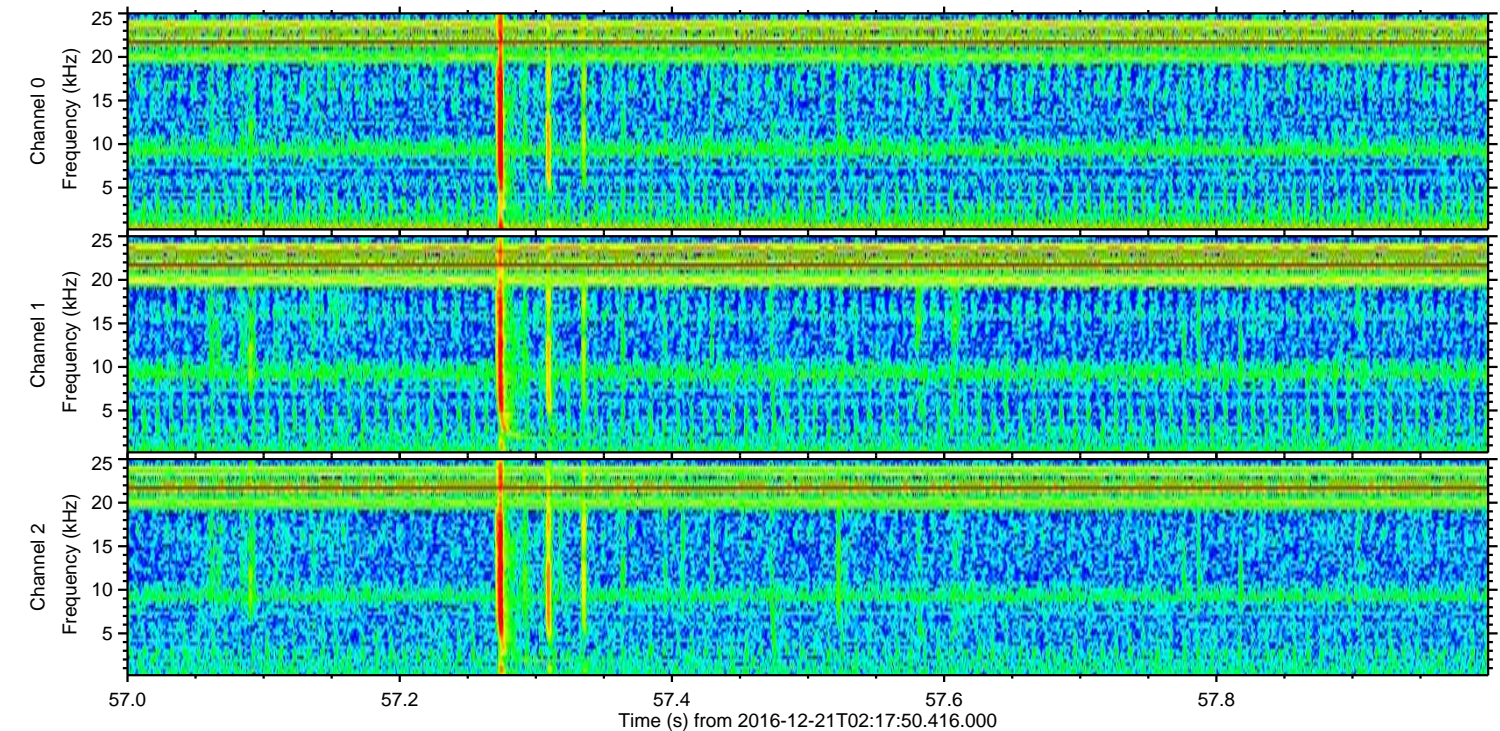
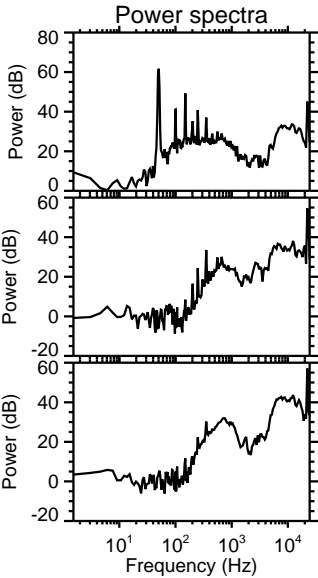
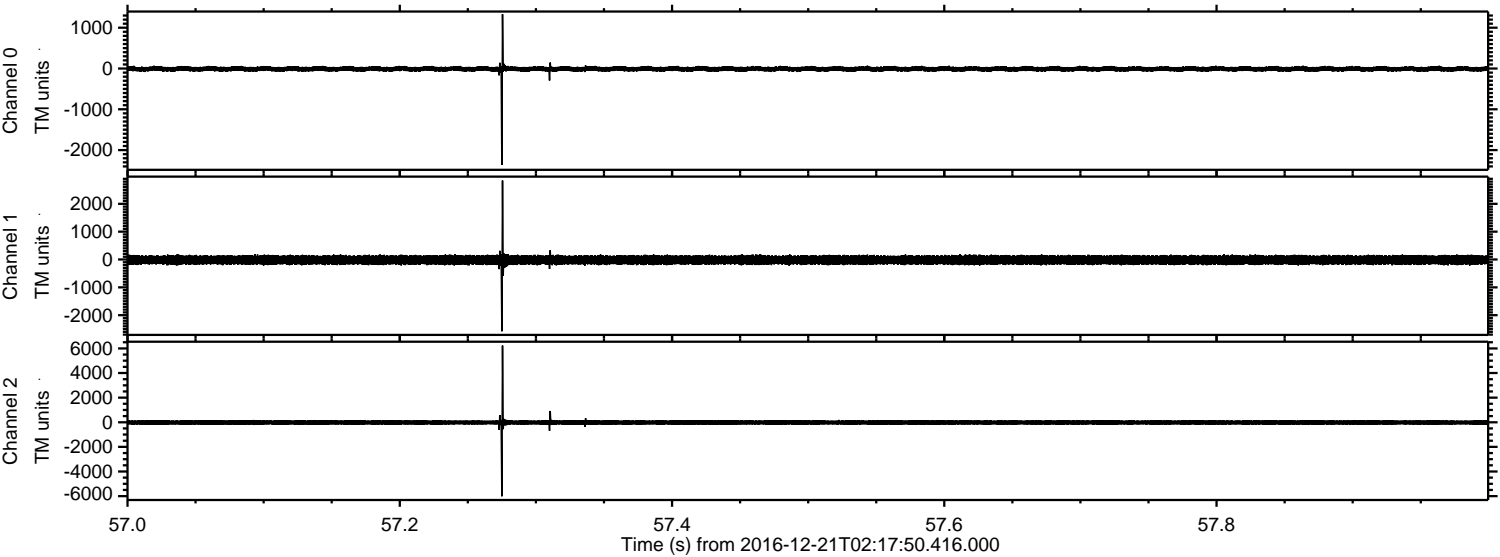
Processed Wed Dec 21 03:25:44 2016 by ELM ver.2012-10-06 from 001__elm20161221_021749__dat00.bin



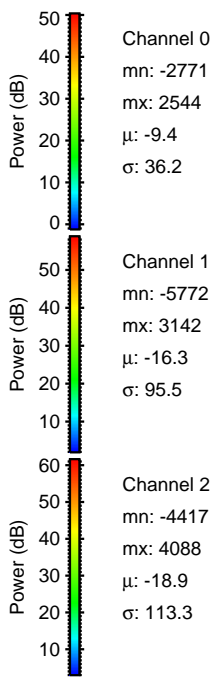
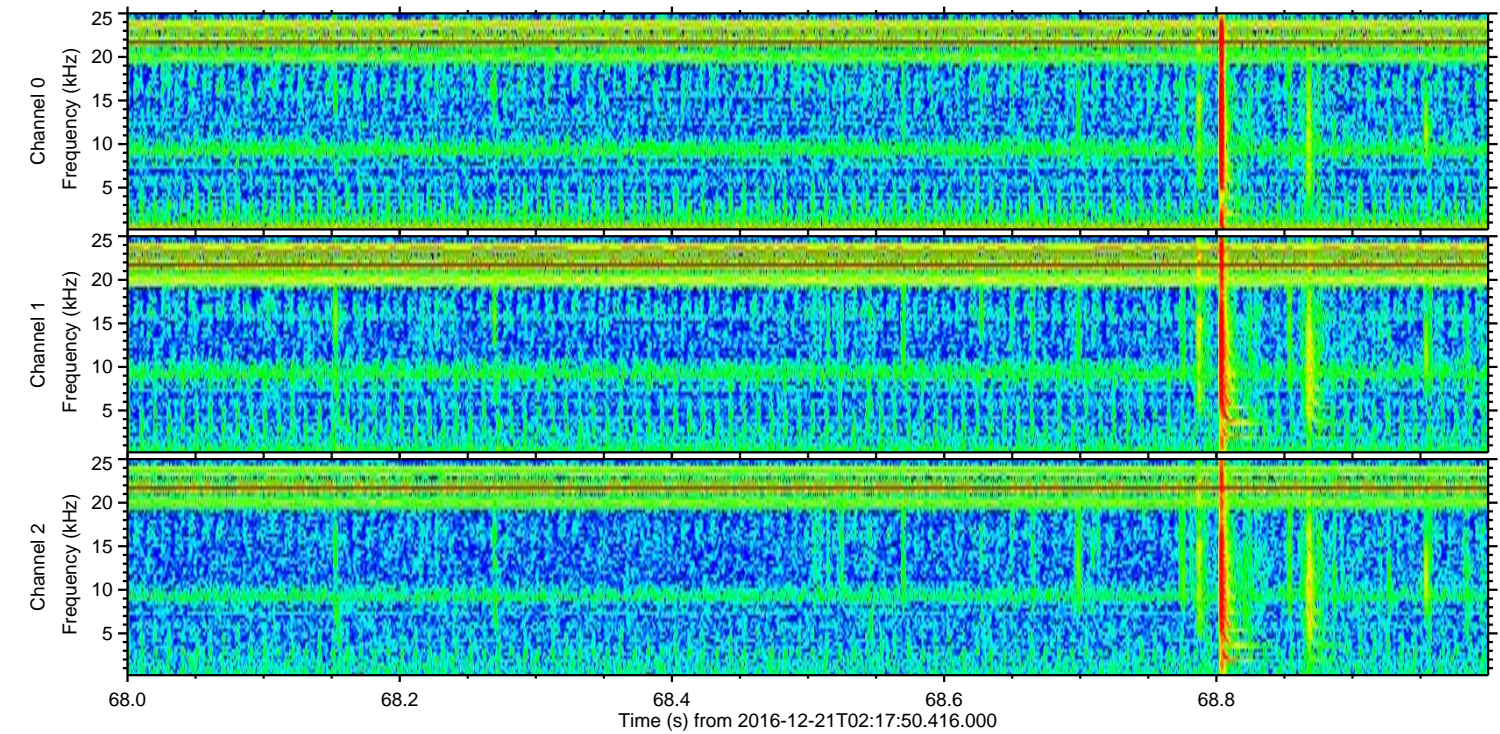
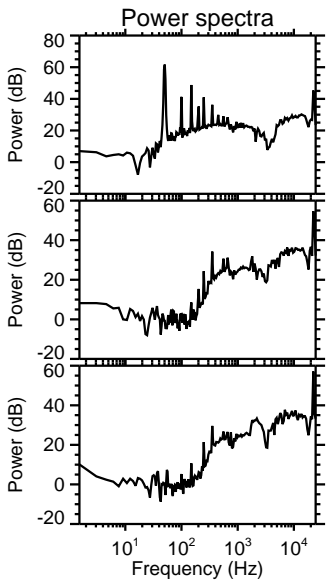
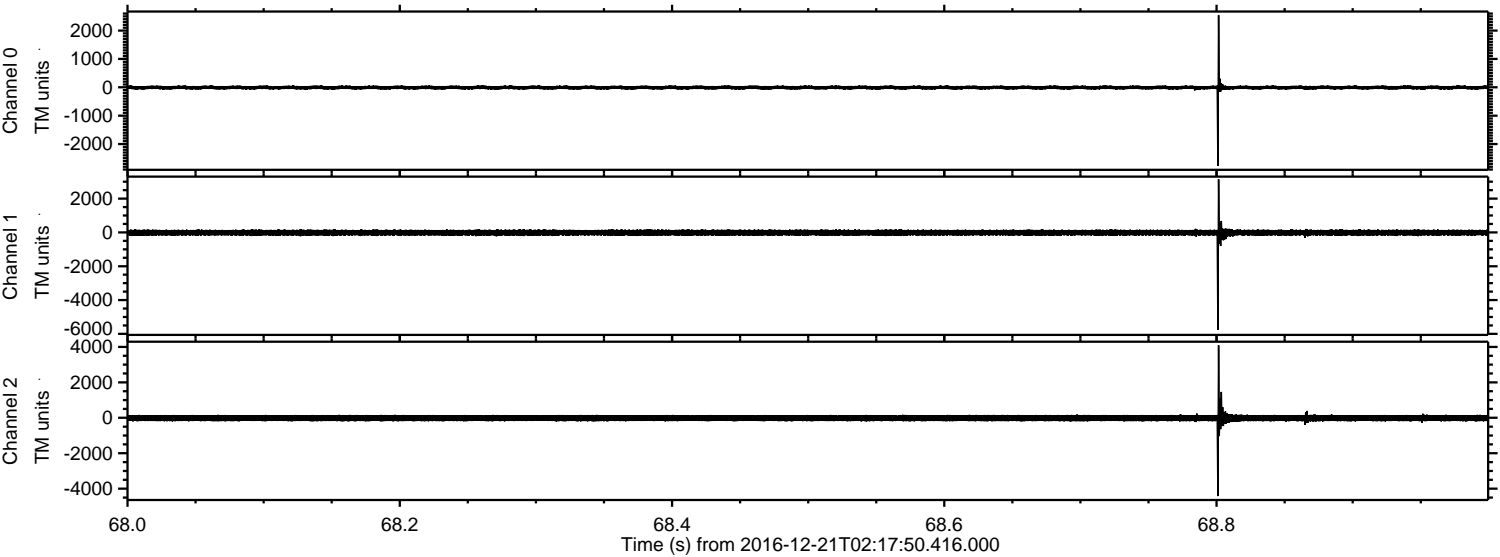
Processed Wed Dec 21 03:25:45 2016 by ELM ver.2012-10-06 from 001__elm20161221_021749__dat00.bin



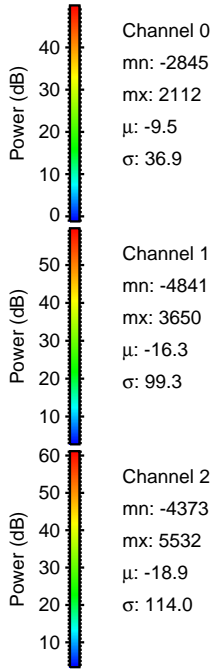
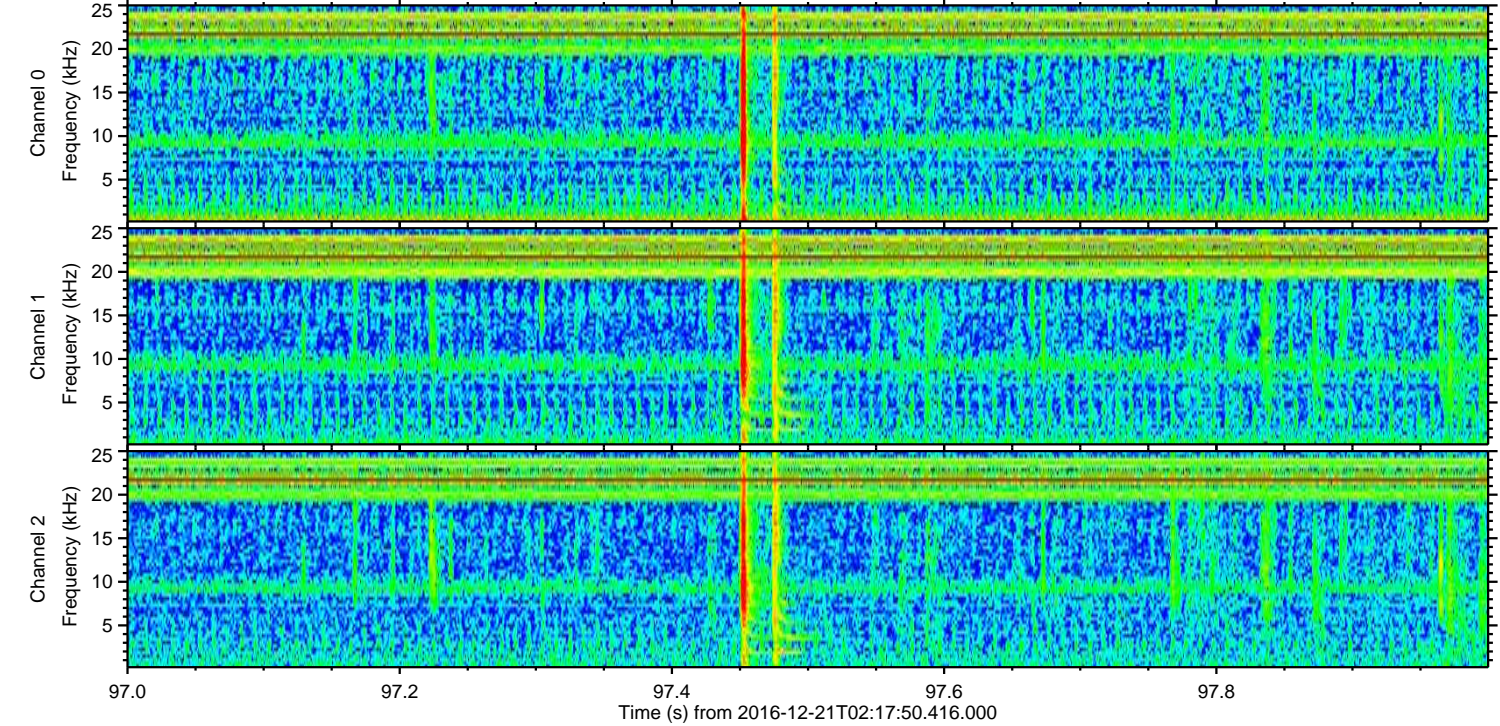
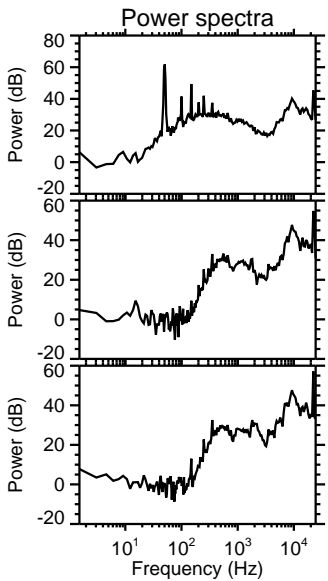
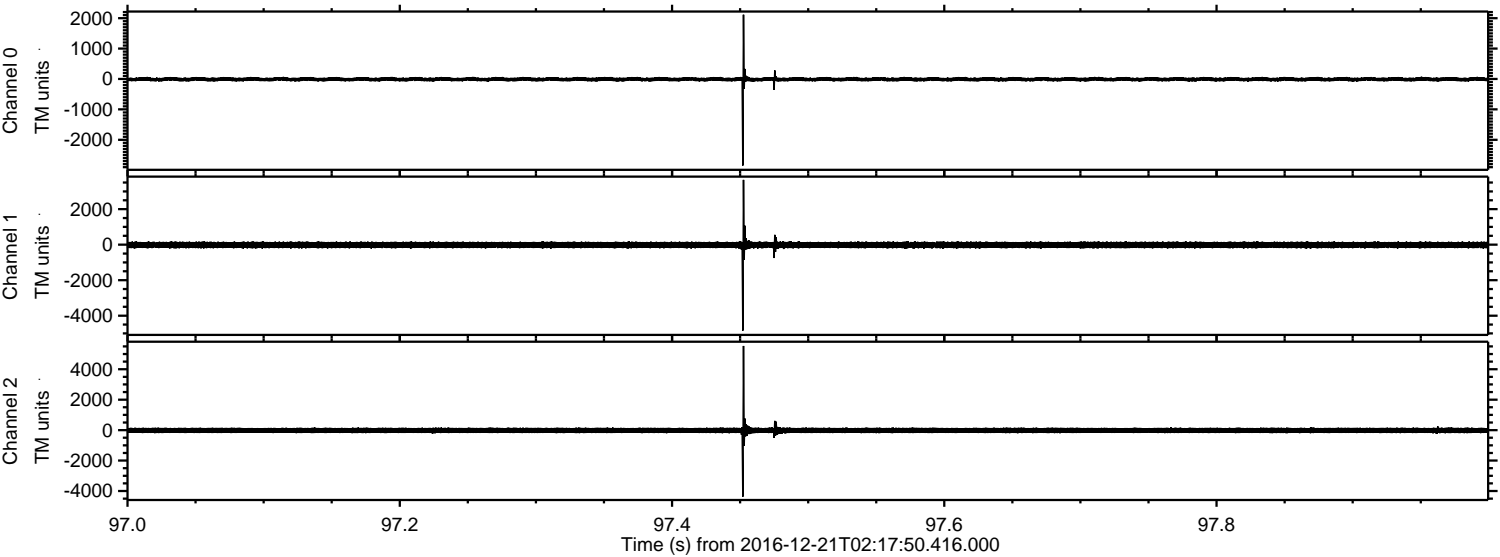
Processed Wed Dec 21 03:25:46 2016 by ELM ver.2012-10-06 from 001__elm20161221_021749__dat00.bin



Processed Wed Dec 21 03:25:47 2016 by ELM ver.2012-10-06 from 001__elm20161221_021749__dat00.bin

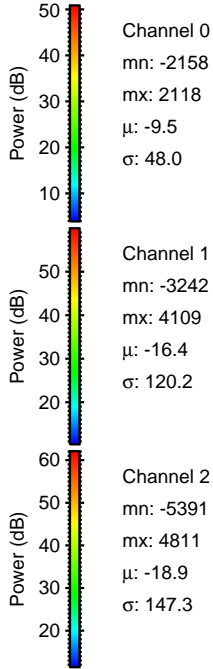
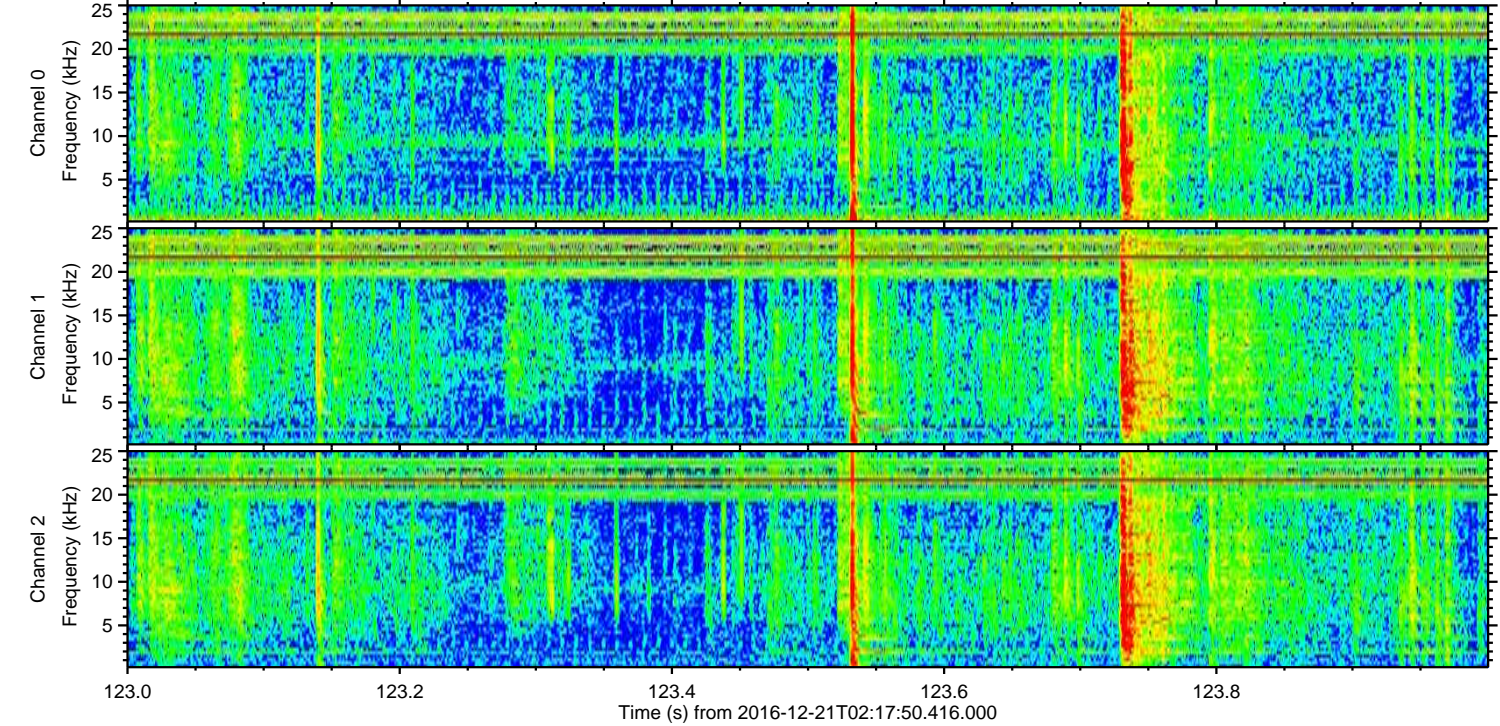
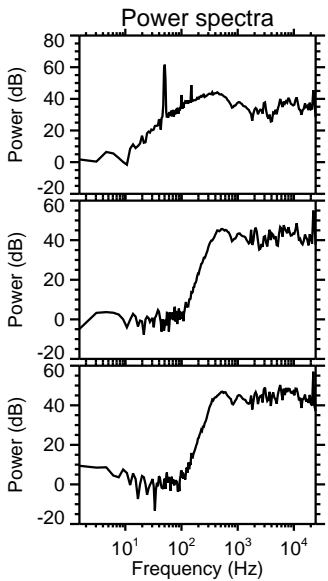
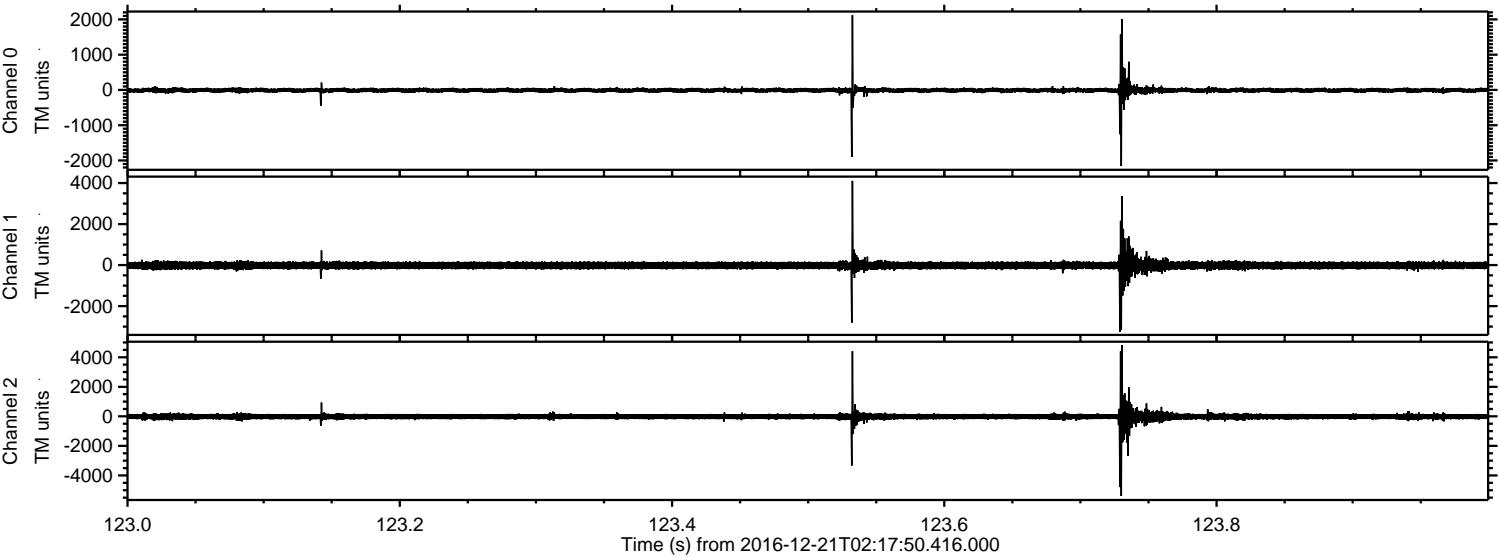


Processed Wed Dec 21 03:25:48 2016 by ELM ver.2012-10-06 from 001__elm20161221_021749__dat00.bin

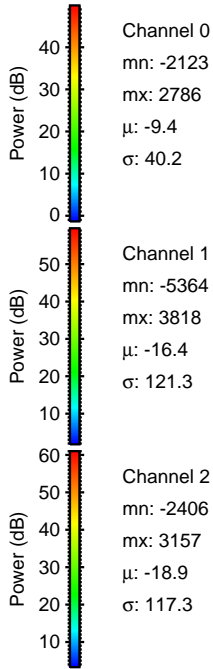
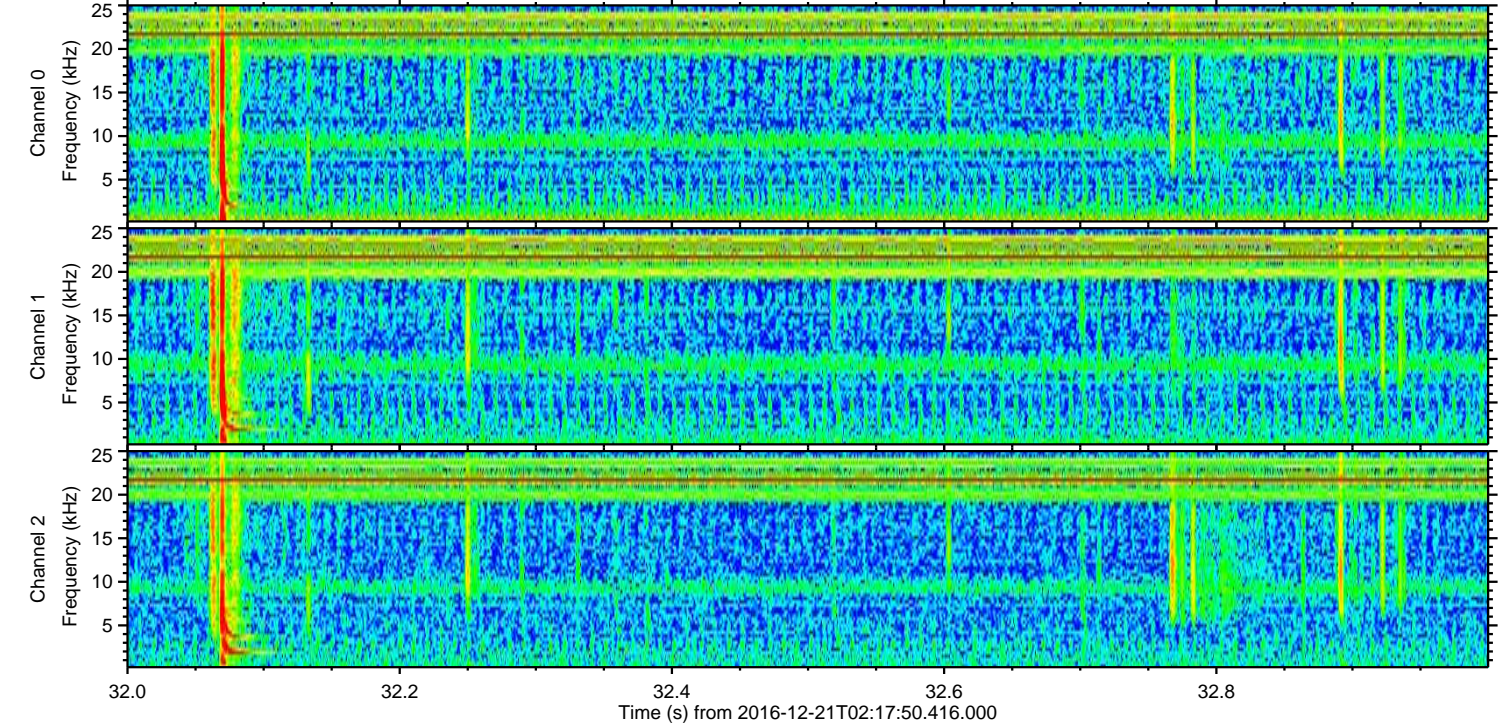
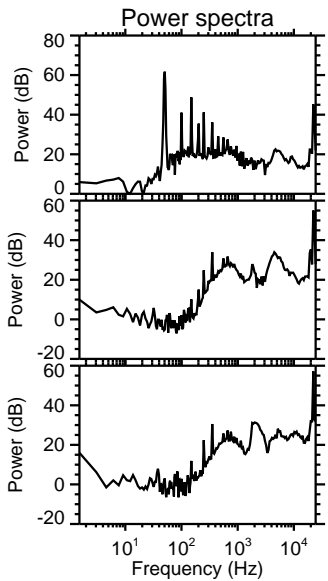
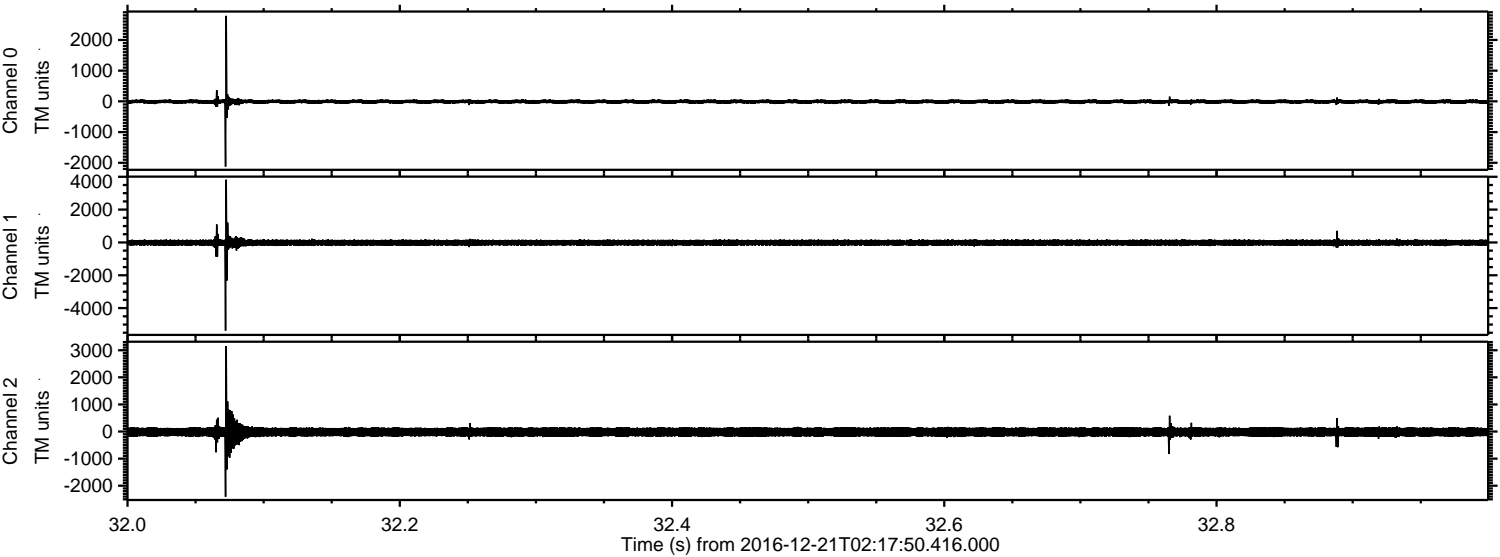


ELMAVAN 3D WAVEFORMS (Measured data sampled at 50 kHz) 51000 packets of 144 samples from 2016-12-21T02:17:50.416.000. Part 124/147

Processed Wed Dec 21 03:25:49 2016 by ELM ver.2012-10-06 from 001__elm20161221_021749__dat00.bin



Processed Wed Dec 21 03:25:50 2016 by ELM ver.2012-10-06 from 001__elm20161221_021749__dat00.bin



Channel 0
mn: -2123
mx: 2786
 μ : -9.4
 σ : 40.2

Channel 1
mn: -5364
mx: 3818
 μ : -16.4
 σ : 121.3

Channel 2
mn: -2406
mx: 3157
 μ : -18.9
 σ : 117.3

Processed Wed Dec 21 03:25:51 2016 by ELM ver.2012-10-06 from 001__elm20161221_021749__dat00.bin

