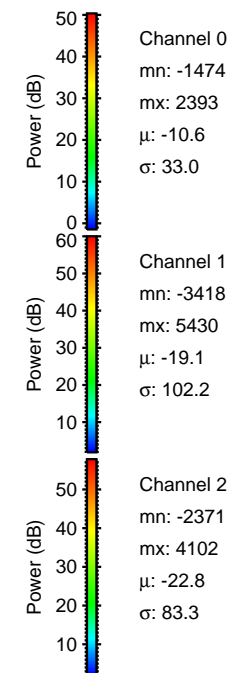
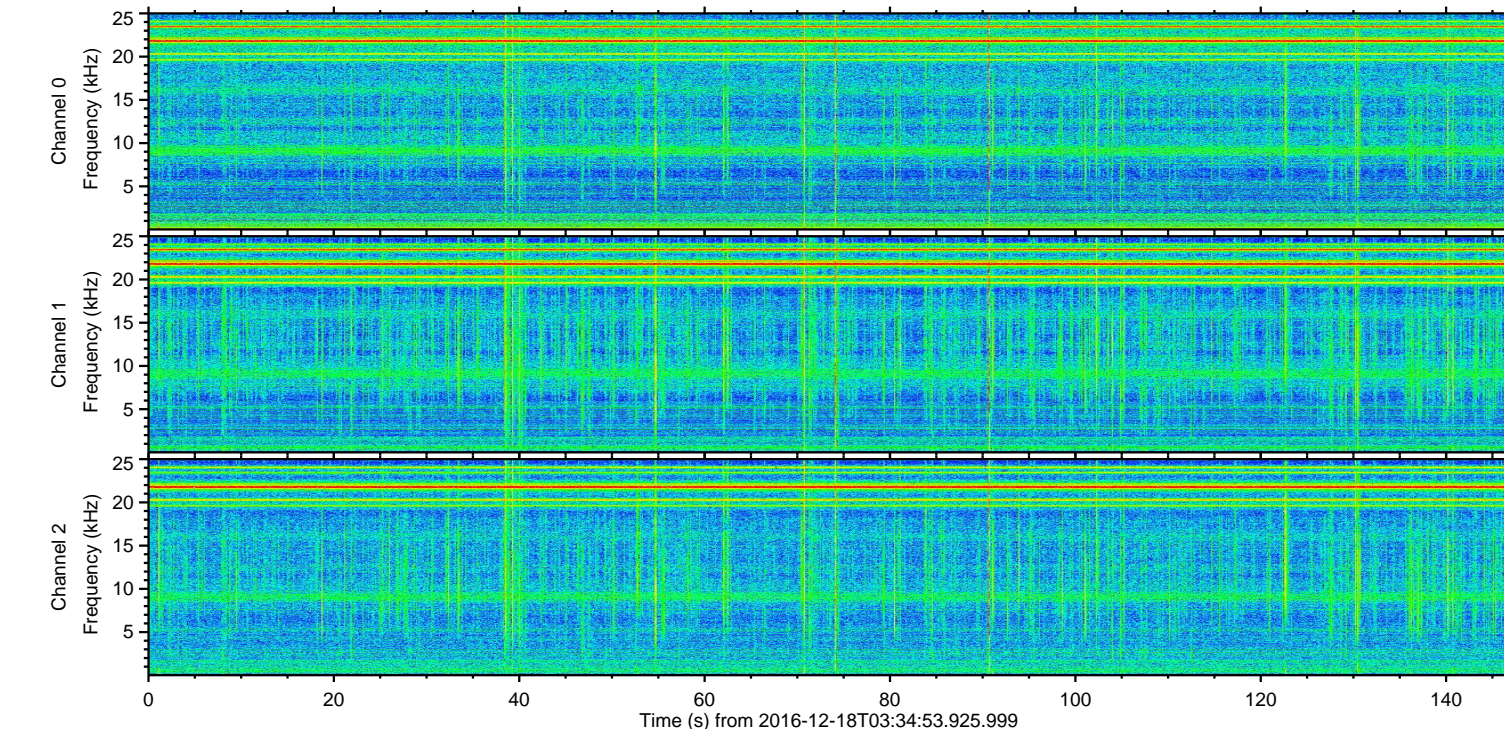
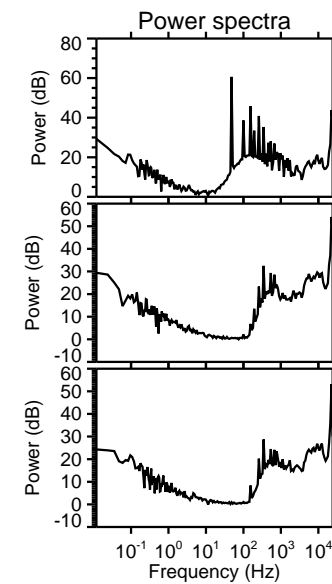
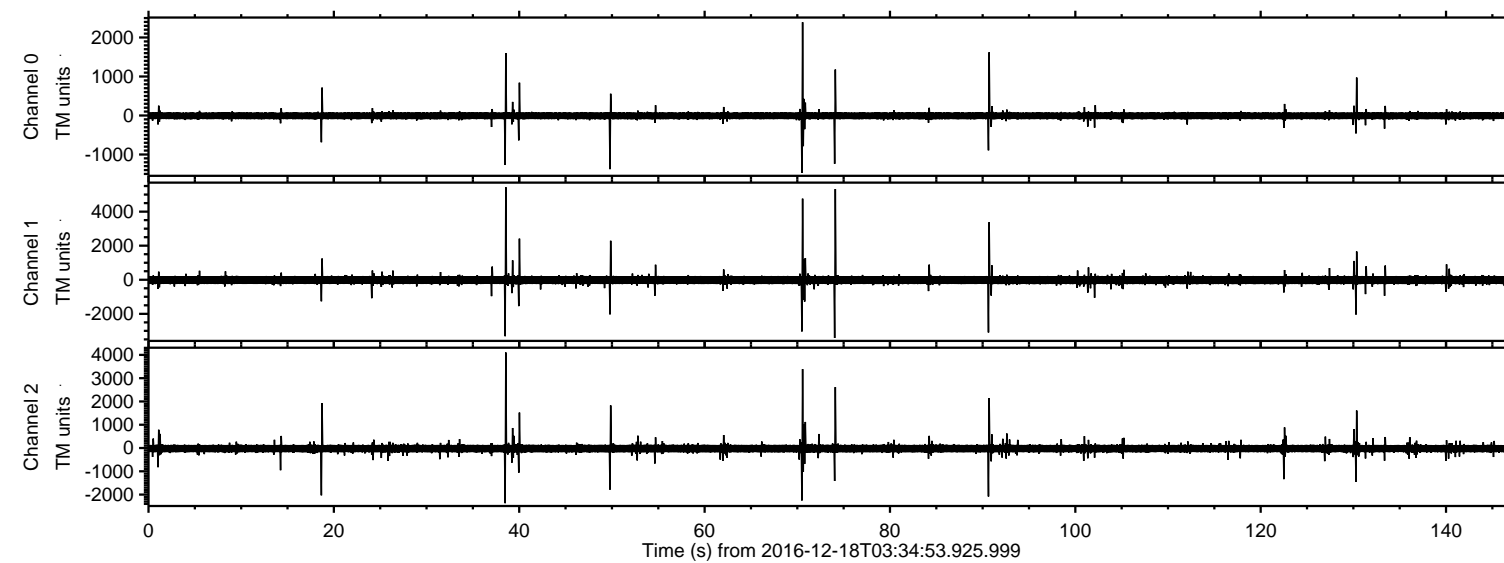


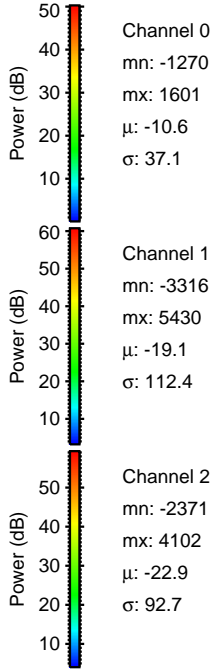
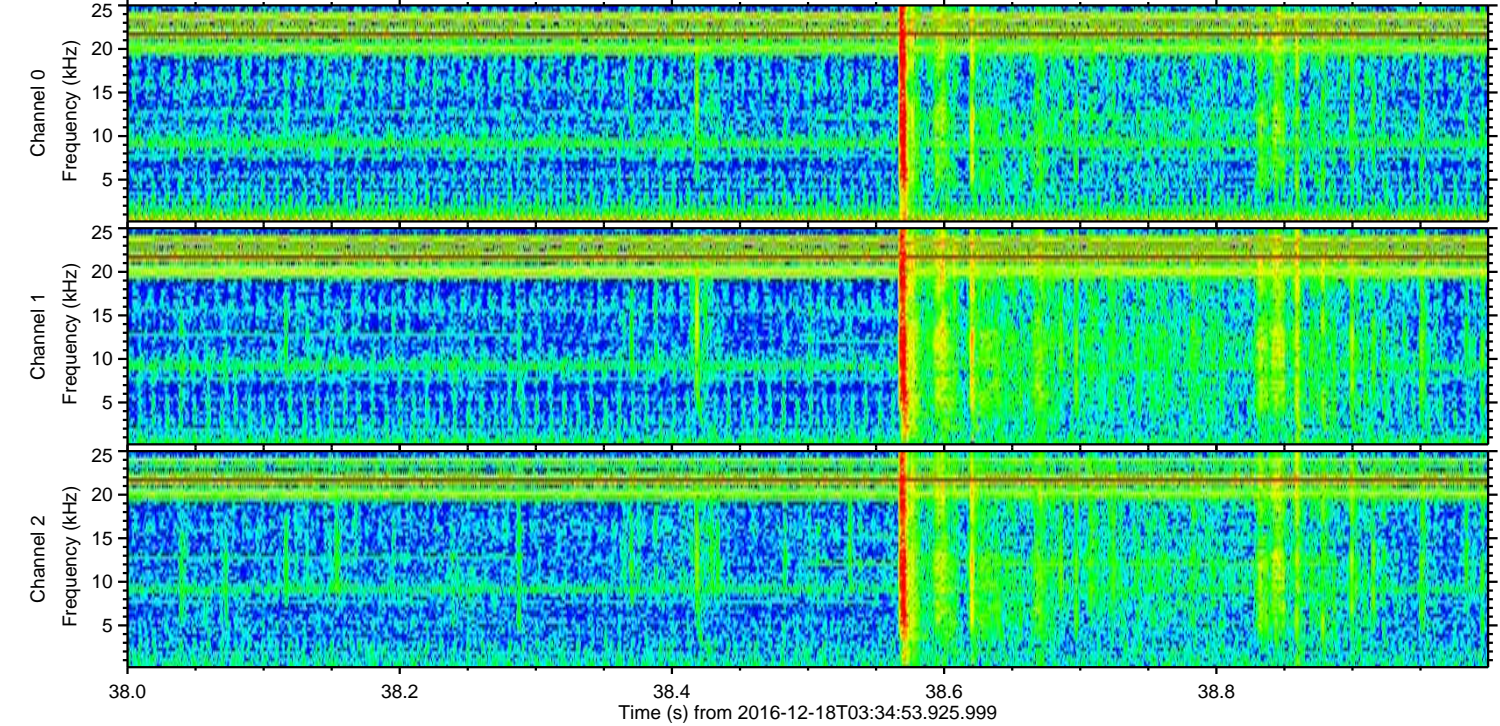
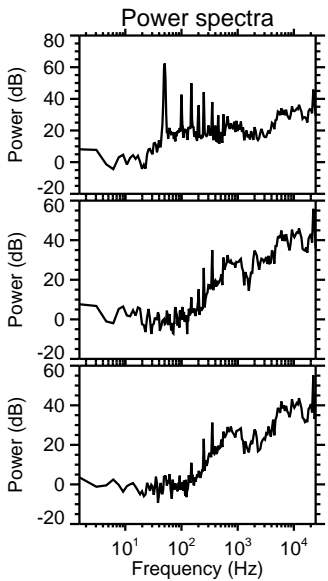
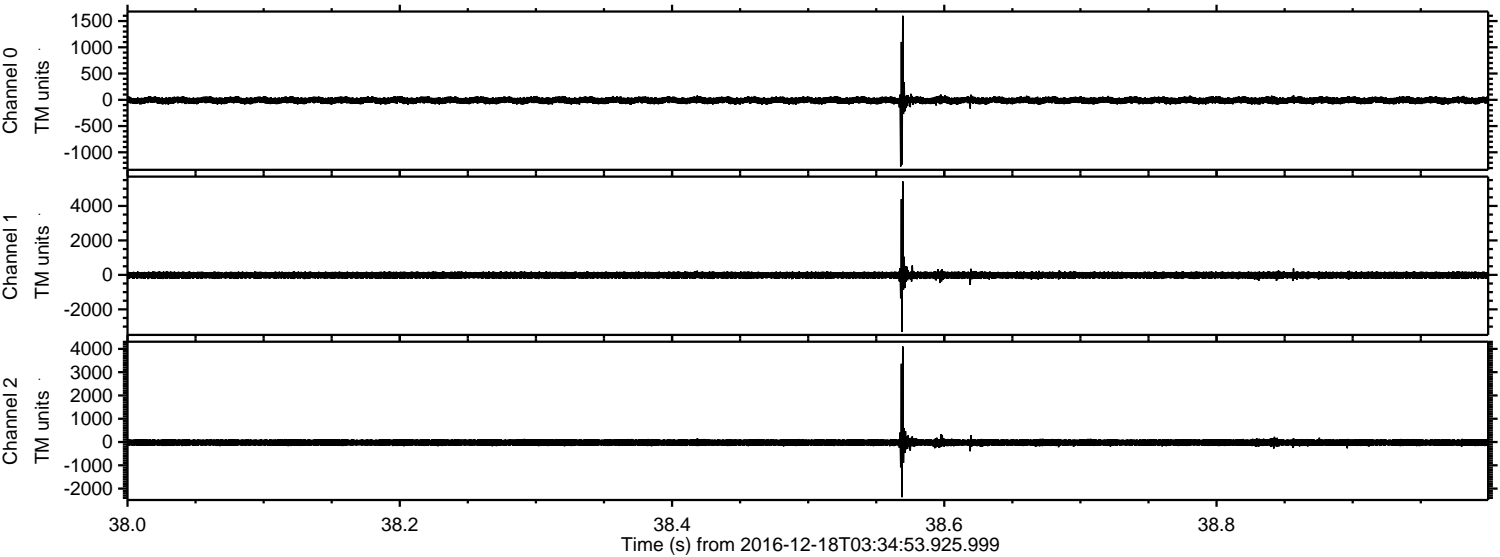
ELMAVAN 3D WAVEFORMS (Measured data sampled at 50 kHz) 51000 packets of 144 samples from 2016-12-18T03:34:53.925.999.

Processed Sun Dec 18 04:42:13 2016 by ELM ver.2012-10-06 from 001__elm20161218_033452__dat00.bin



ELMAVAN 3D WAVEFORMS (Measured data sampled at 50 kHz) 51000 packets of 144 samples from 2016-12-18T03:34:53.925.999. Part 39/147

Processed Sun Dec 18 04:42:24 2016 by ELM ver.2012-10-06 from 001__elm20161218_033452__dat00.bin



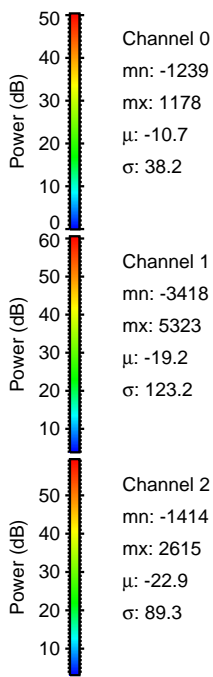
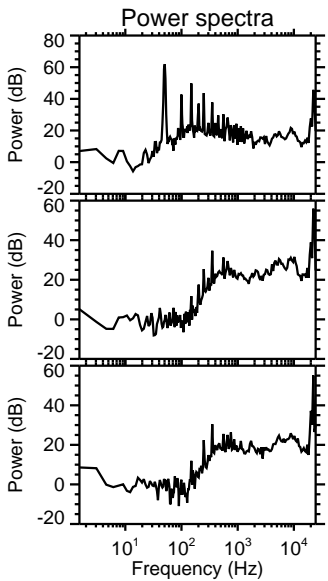
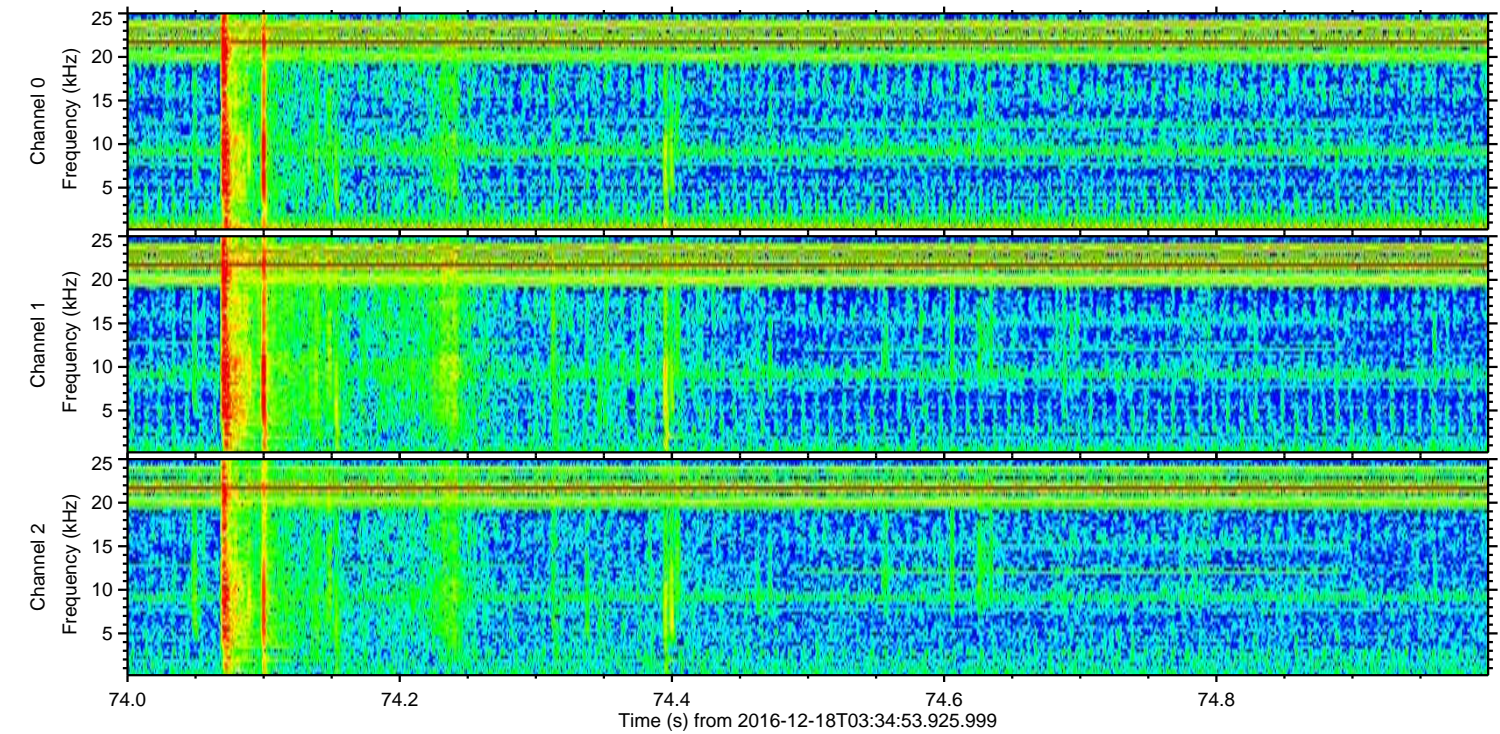
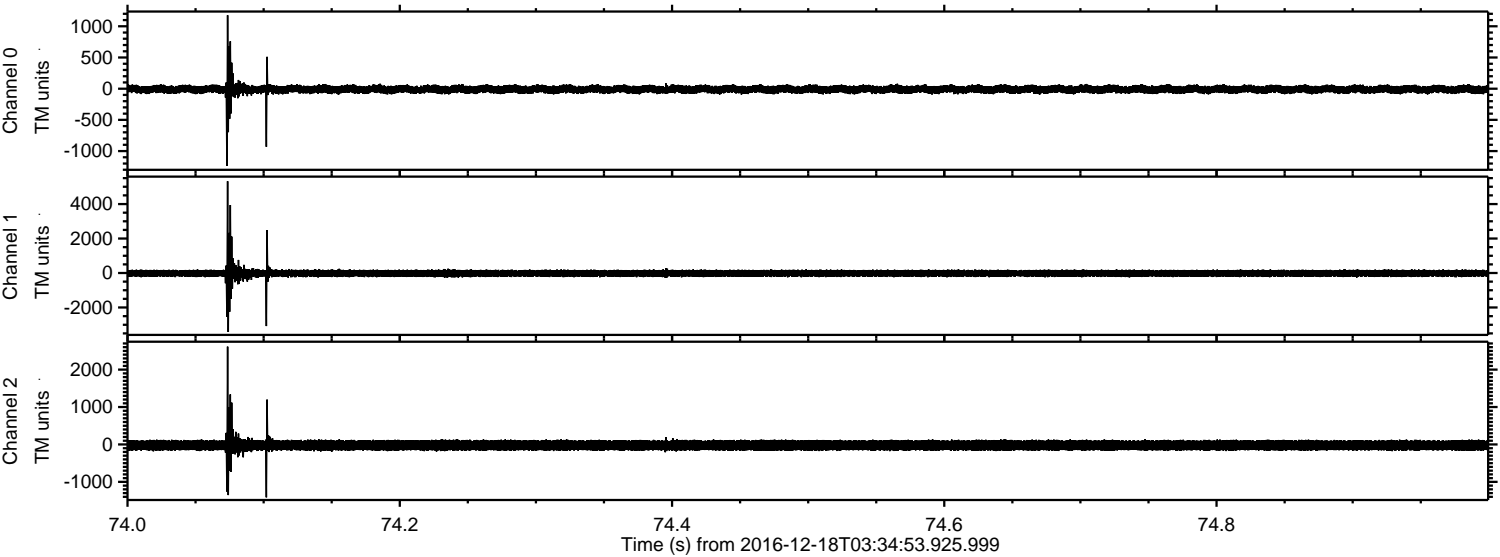
Channel 0
mn: -1270
mx: 1601
 μ : -10.6
 σ : 37.1

Channel 1
mn: -3316
mx: 5430
 μ : -19.1
 σ : 112.4

Channel 2
mn: -2371
mx: 4102
 μ : -22.9
 σ : 92.7

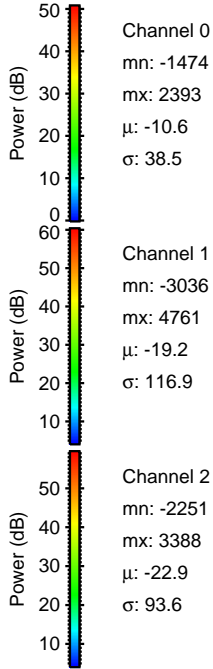
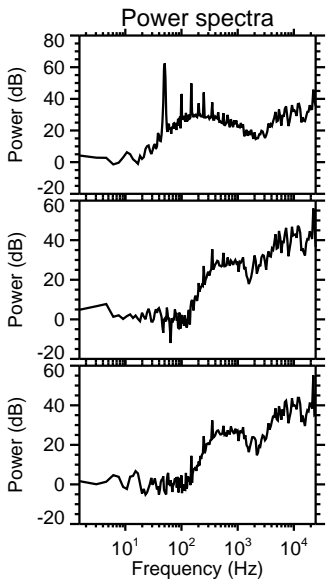
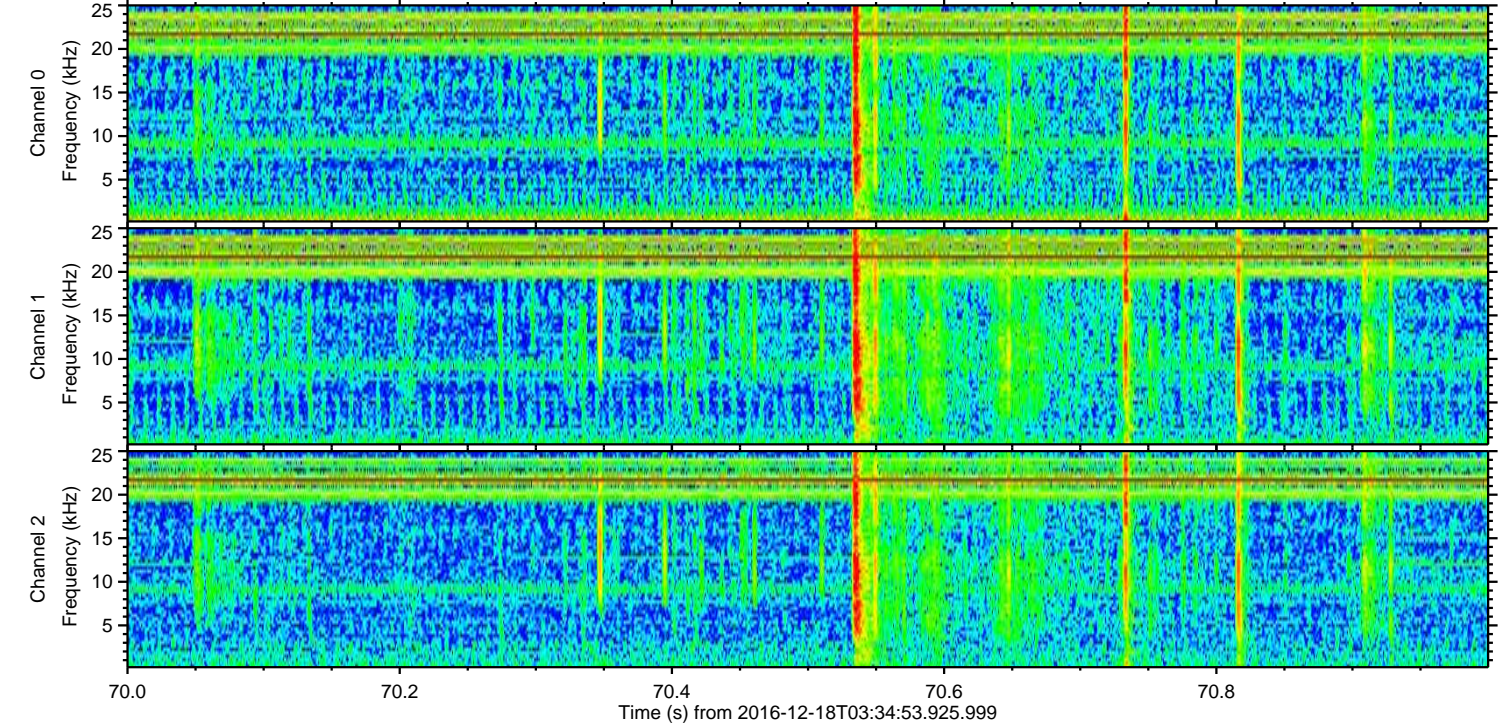
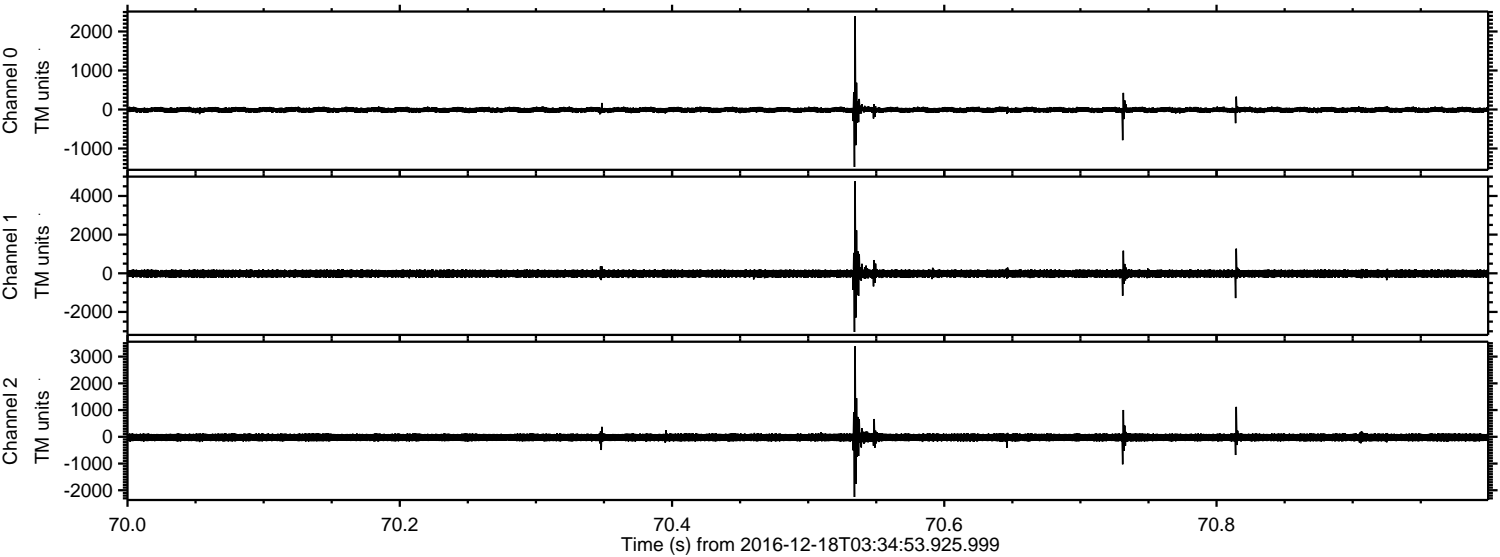
ELMAVAN 3D WAVEFORMS (Measured data sampled at 50 kHz) 51000 packets of 144 samples from 2016-12-18T03:34:53.925.999. Part 75/147

Processed Sun Dec 18 04:42:25 2016 by ELM ver.2012-10-06 from 001__elm20161218_033452__dat00.bin



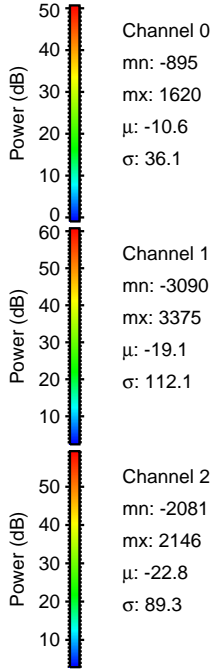
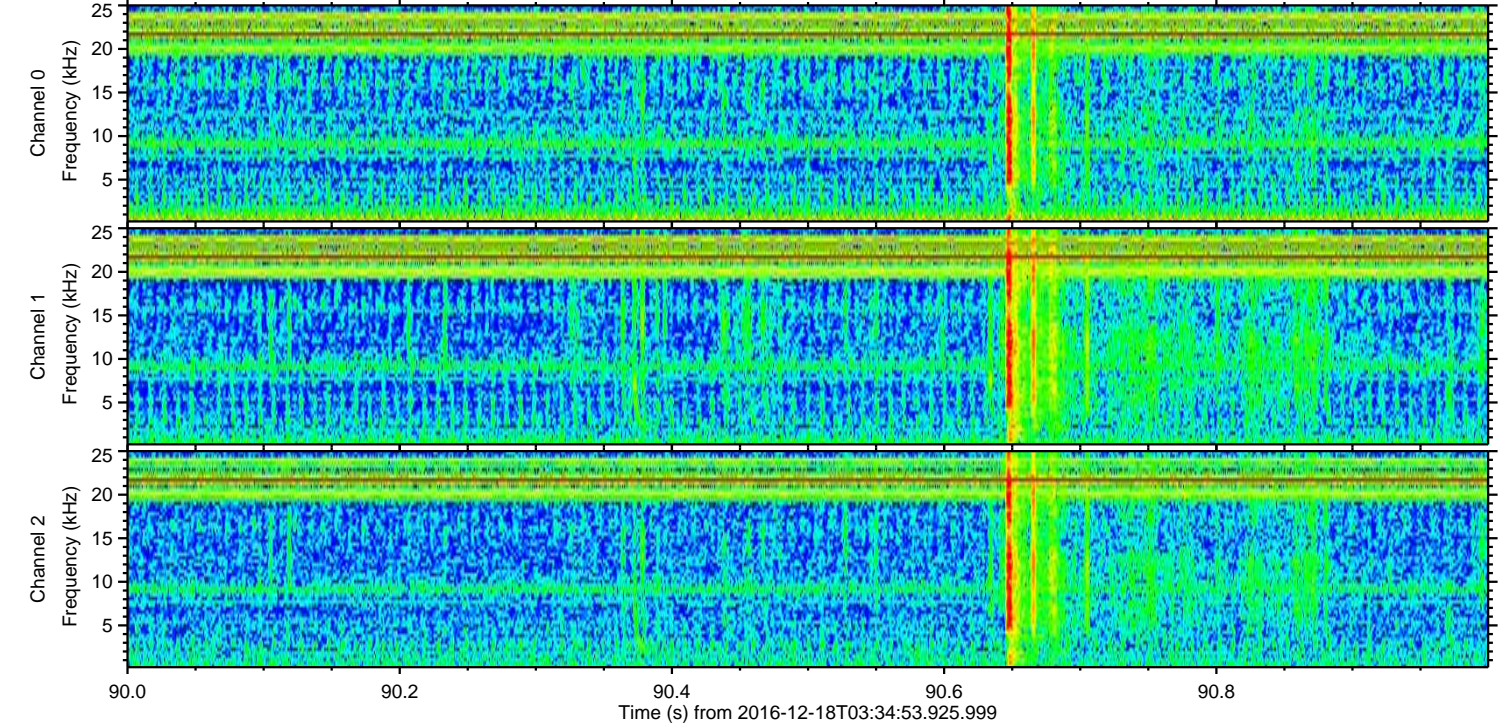
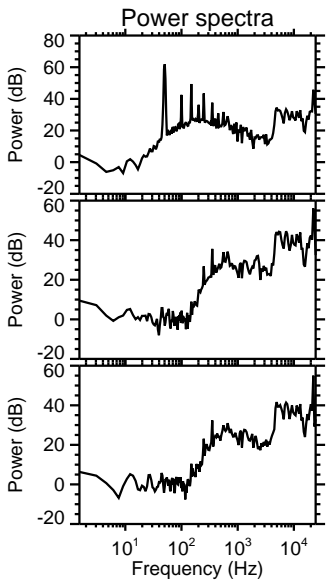
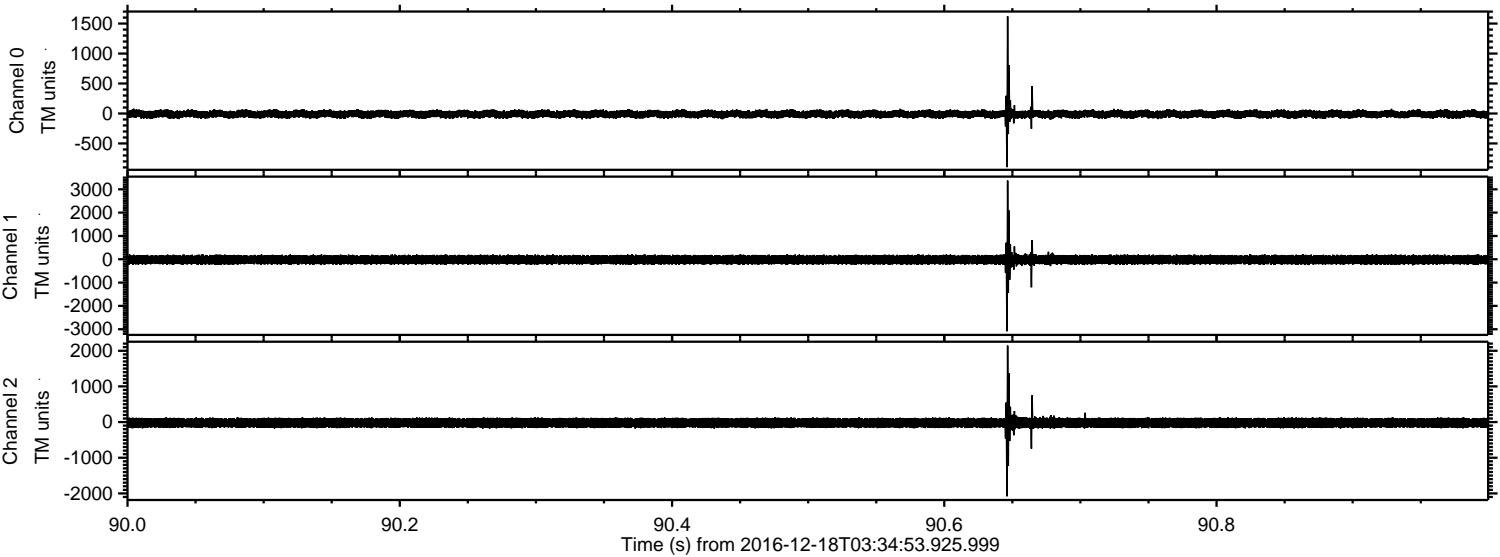
ELMAVAN 3D WAVEFORMS (Measured data sampled at 50 kHz) 51000 packets of 144 samples from 2016-12-18T03:34:53.925.999. Part 71/147

Processed Sun Dec 18 04:42:26 2016 by ELM ver.2012-10-06 from 001__elm20161218_033452__dat00.bin



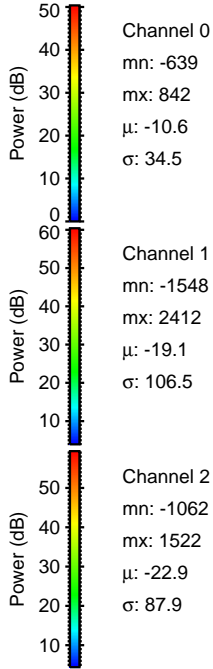
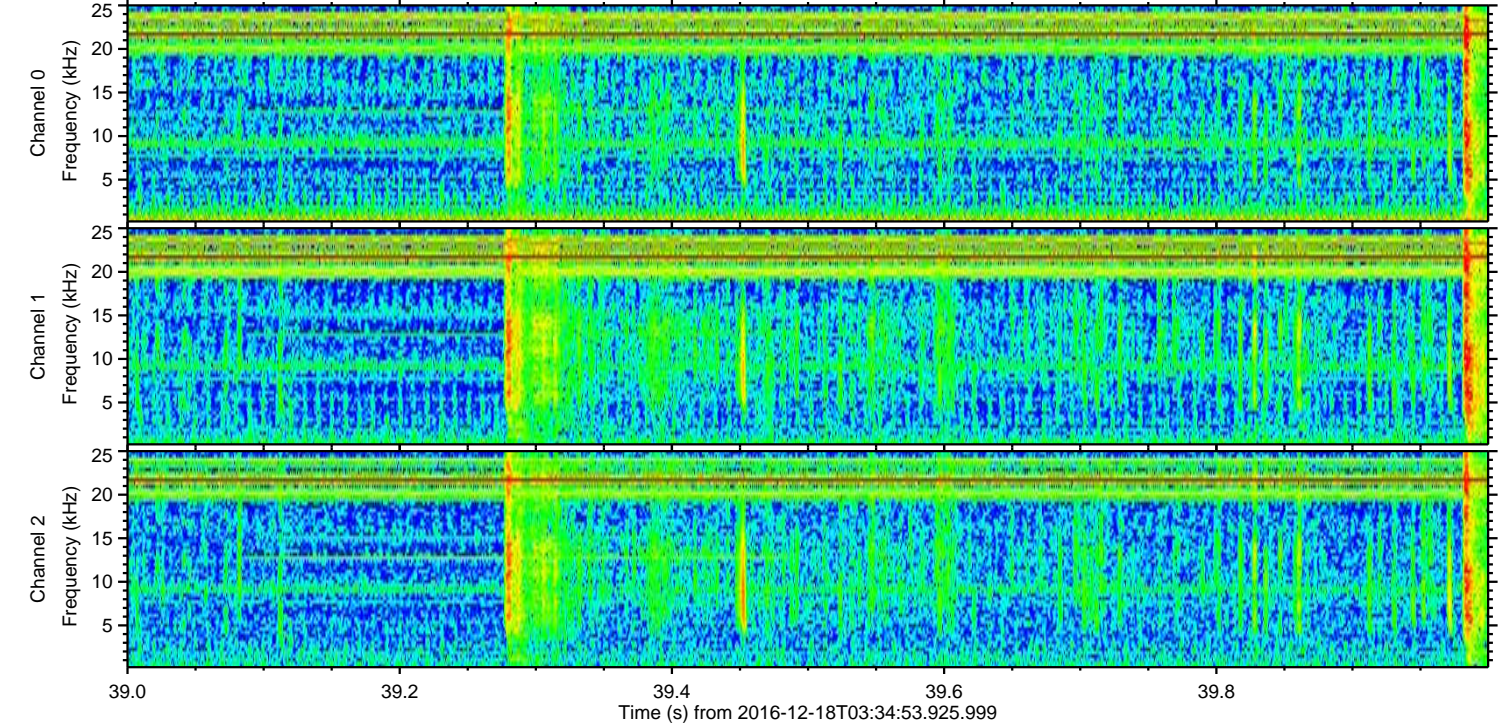
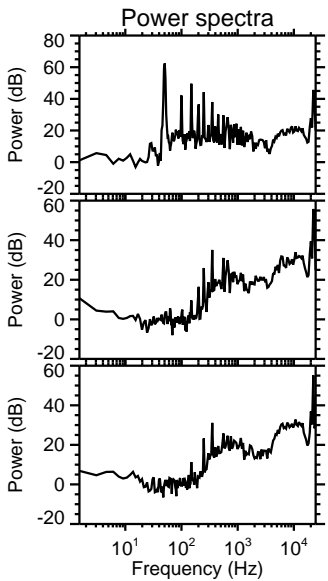
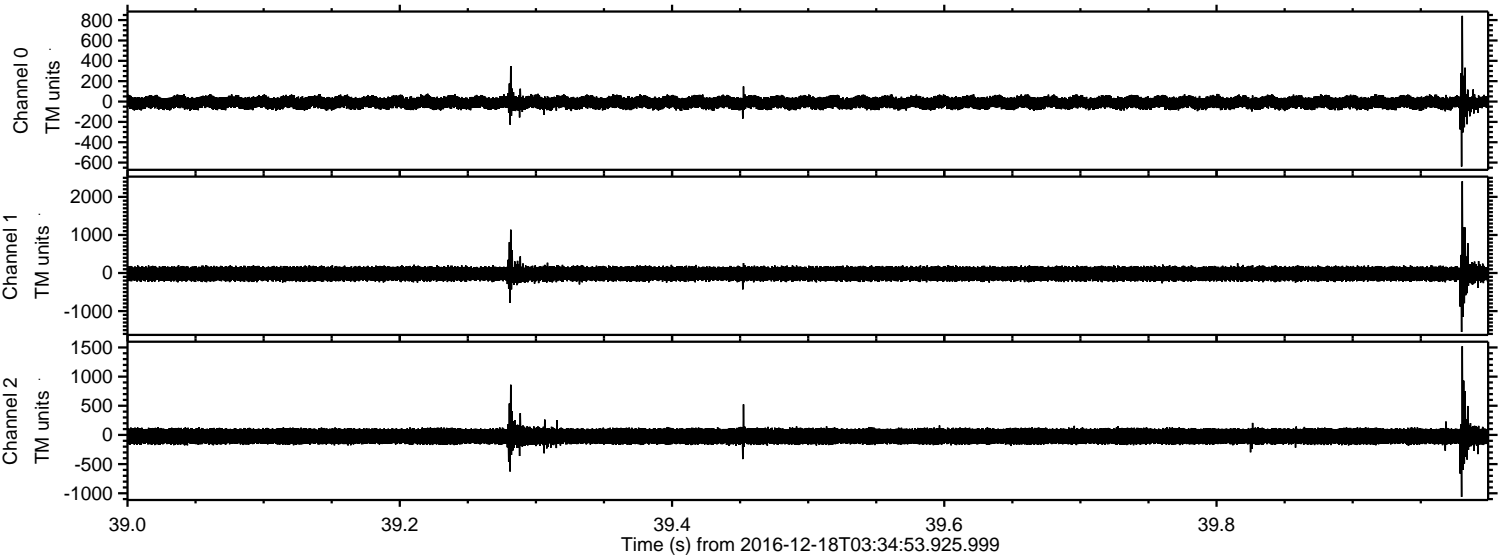
ELMAVAN 3D WAVEFORMS (Measured data sampled at 50 kHz) 51000 packets of 144 samples from 2016-12-18T03:34:53.925.999. Part 91/147

Processed Sun Dec 18 04:42:27 2016 by ELM ver.2012-10-06 from 001__elm20161218_033452__dat00.bin



ELMAVAN 3D WAVEFORMS (Measured data sampled at 50 kHz) 51000 packets of 144 samples from 2016-12-18T03:34:53.925.999. Part 40/147

Processed Sun Dec 18 04:42:28 2016 by ELM ver.2012-10-06 from 001__elm20161218_033452__dat00.bin



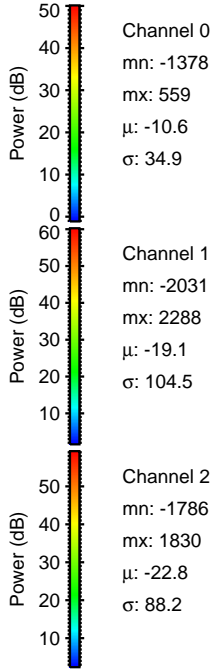
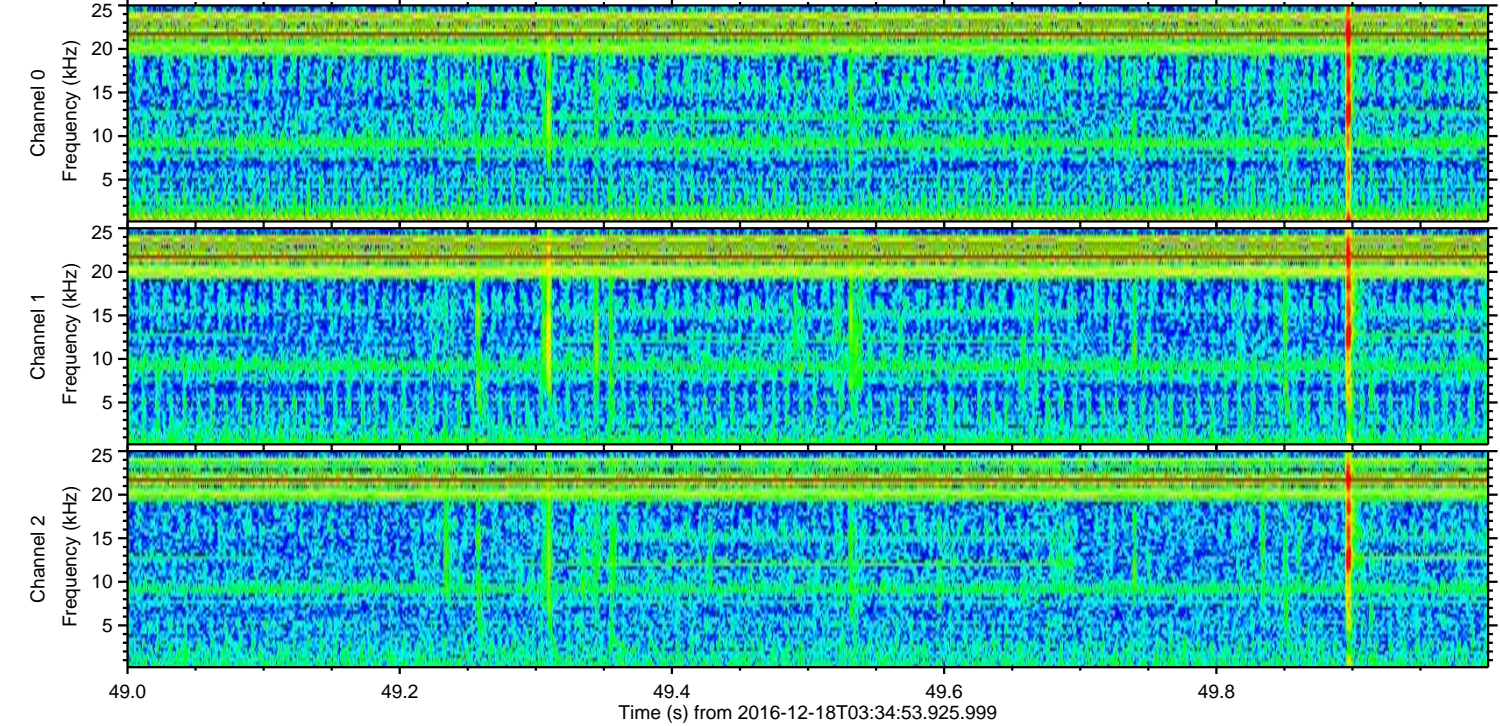
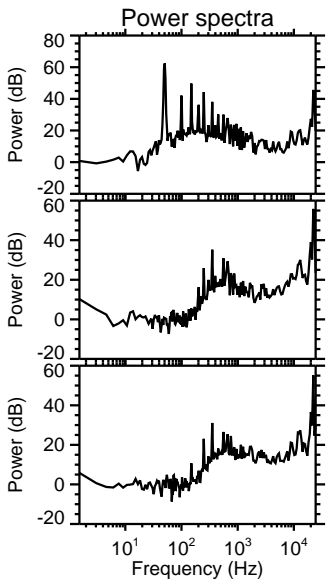
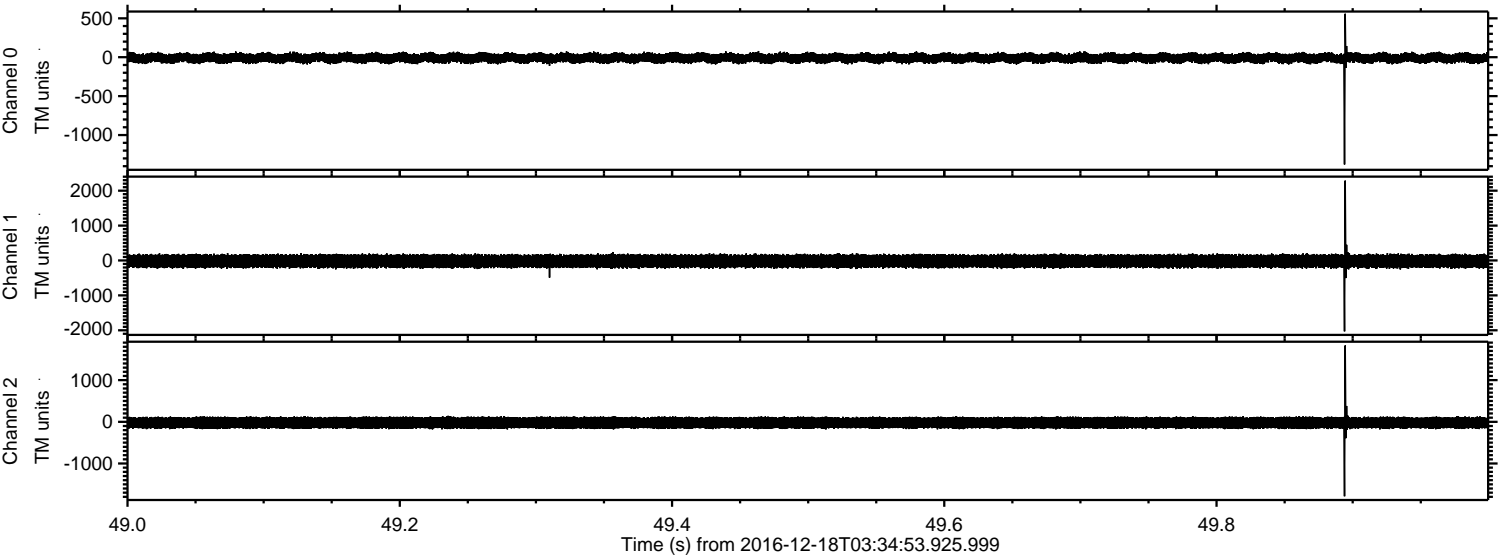
Channel 0
mn: -639
mx: 842
 μ : -10.6
 σ : 34.5

Channel 1
mn: -1548
mx: 2412
 μ : -19.1
 σ : 106.5

Channel 2
mn: -1062
mx: 1522
 μ : -22.9
 σ : 87.9

ELMAVAN 3D WAVEFORMS (Measured data sampled at 50 kHz) 51000 packets of 144 samples from 2016-12-18T03:34:53.925.999. Part 50/147

Processed Sun Dec 18 04:42:29 2016 by ELM ver.2012-10-06 from 001__elm20161218_033452__dat00.bin



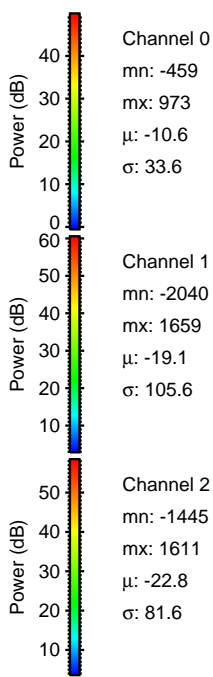
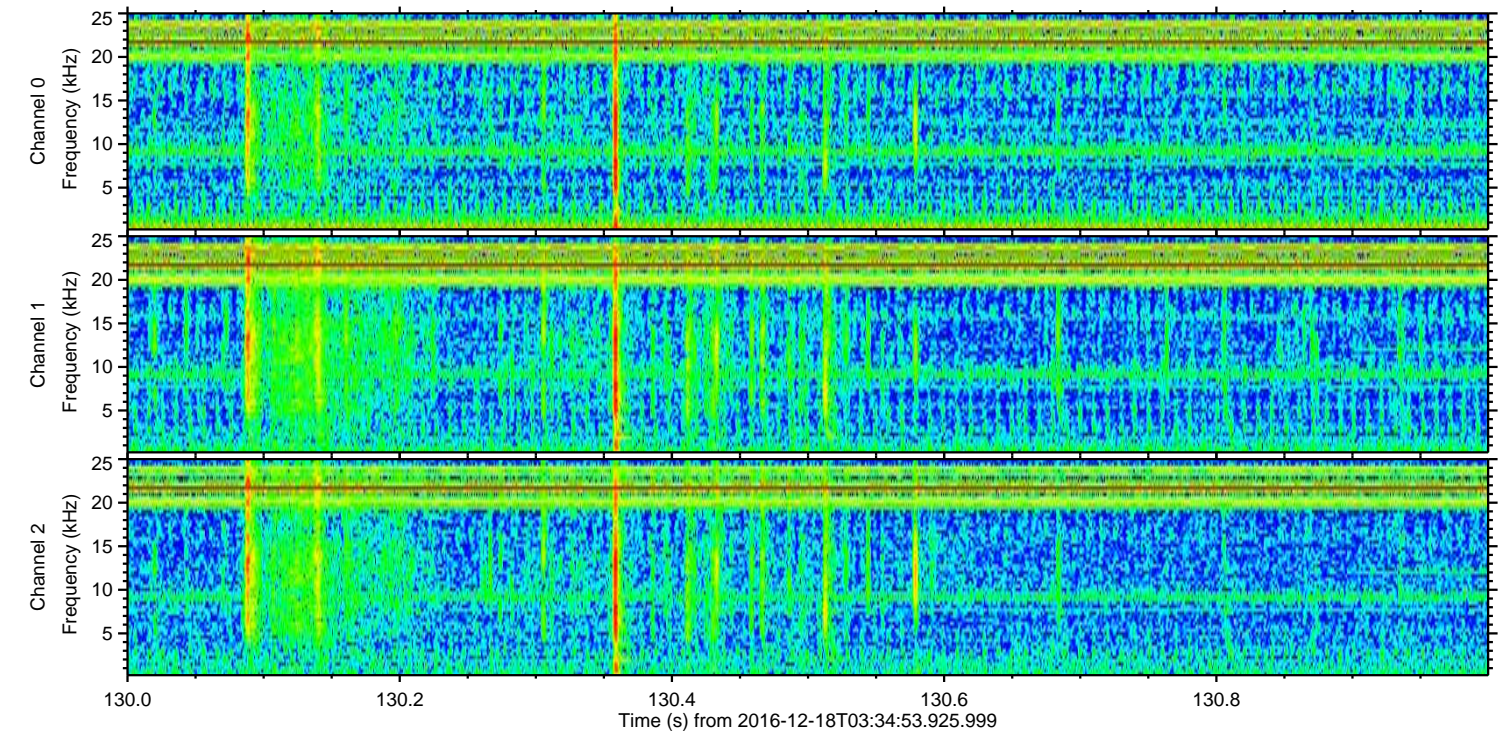
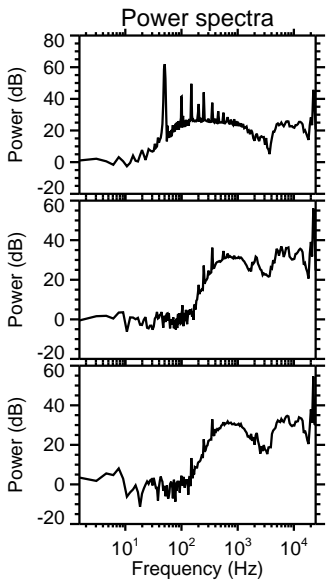
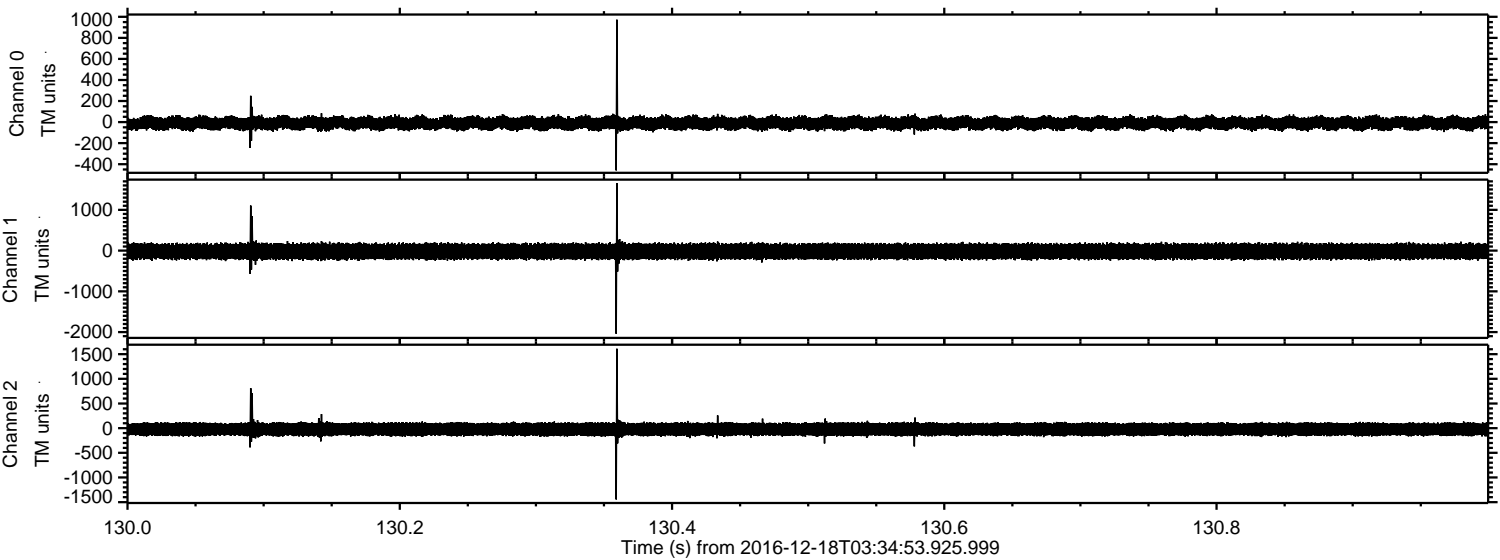
Channel 0
mn: -1378
mx: 559
 μ : -10.6
 σ : 34.9

Channel 1
mn: -2031
mx: 2288
 μ : -19.1
 σ : 104.5

Channel 2
mn: -1786
mx: 1830
 μ : -22.8
 σ : 88.2

ELMAVAN 3D WAVEFORMS (Measured data sampled at 50 kHz) 51000 packets of 144 samples from 2016-12-18T03:34:53.925.999. Part 131/147

Processed Sun Dec 18 04:42:30 2016 by ELM ver.2012-10-06 from 001__elm20161218_033452__dat00.bin



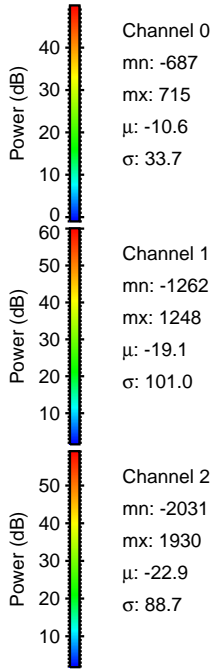
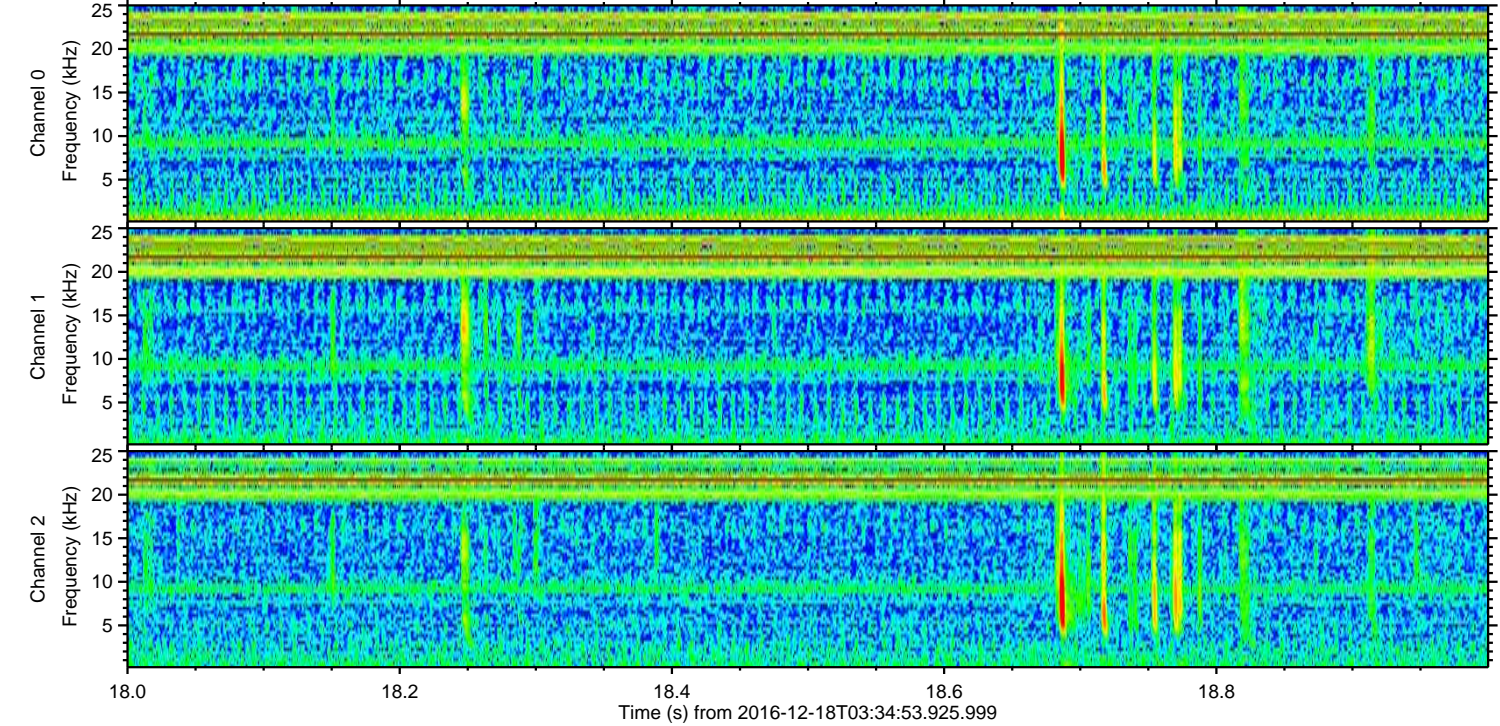
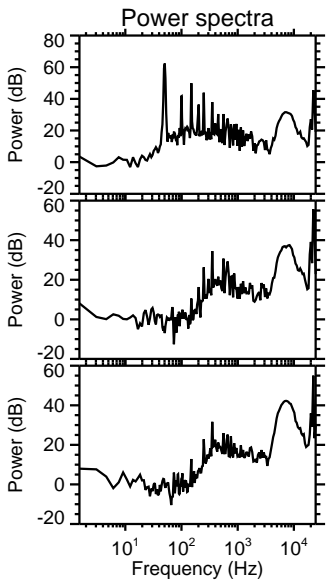
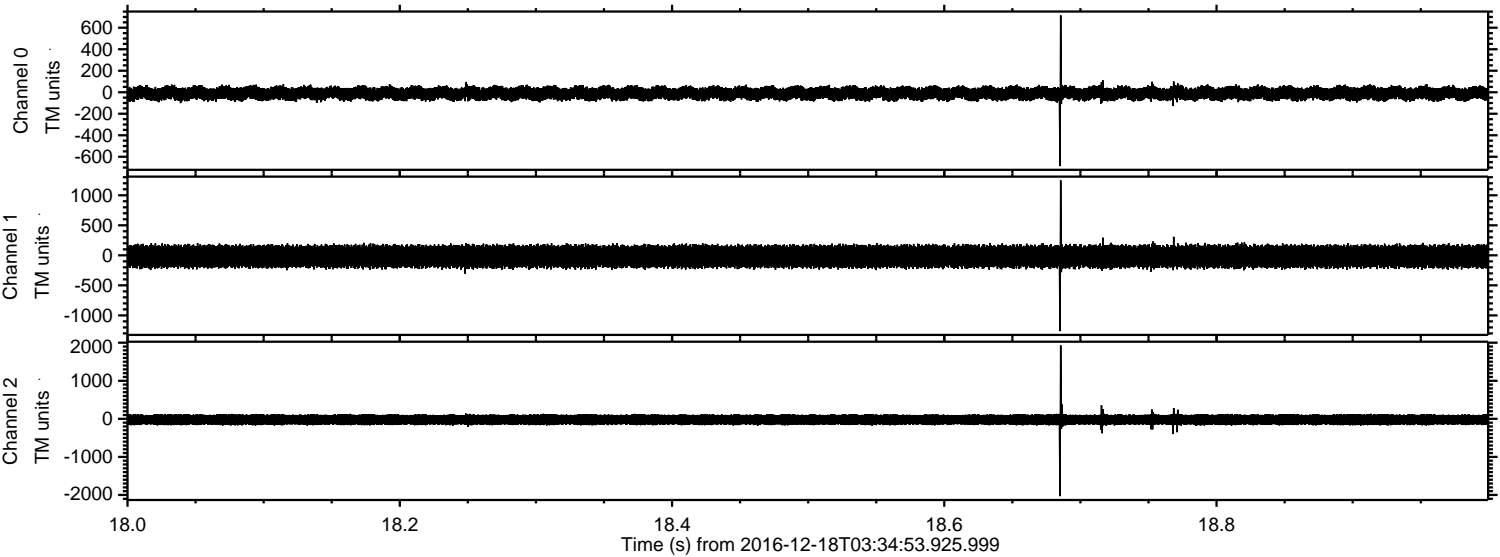
Channel 0
mn: -459
mx: 973
 μ : -10.6
 σ : 33.6

Channel 1
mn: -2040
mx: 1659
 μ : -19.1
 σ : 105.6

Channel 2
mn: -1445
mx: 1611
 μ : -22.8
 σ : 81.6

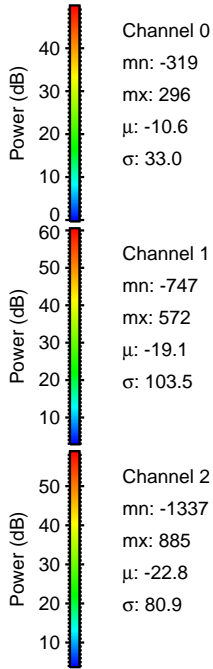
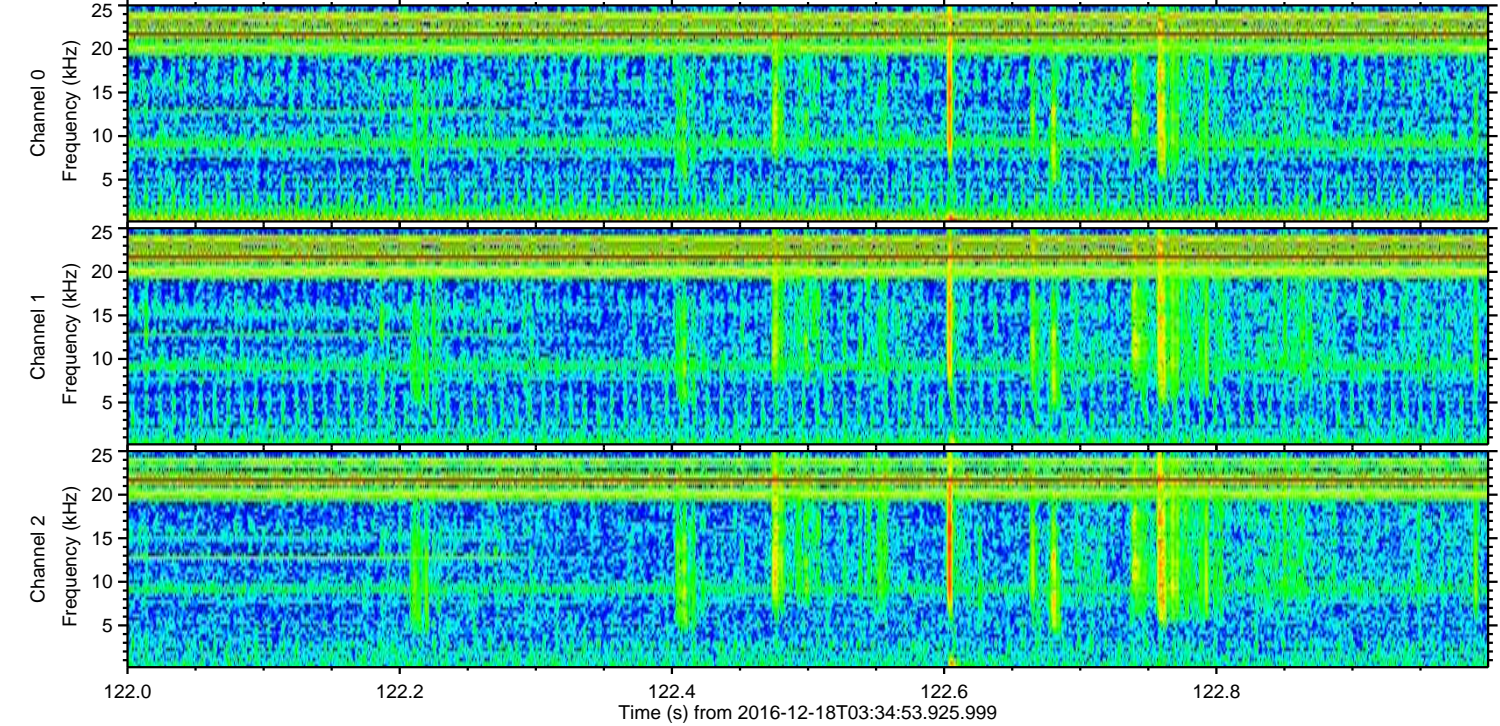
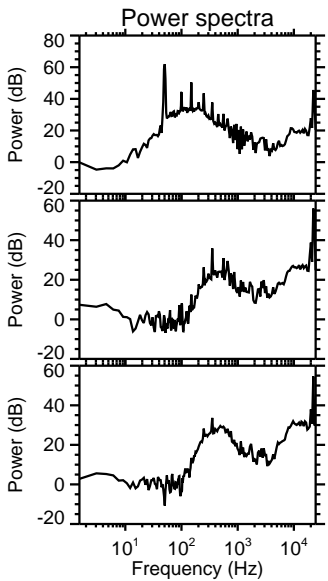
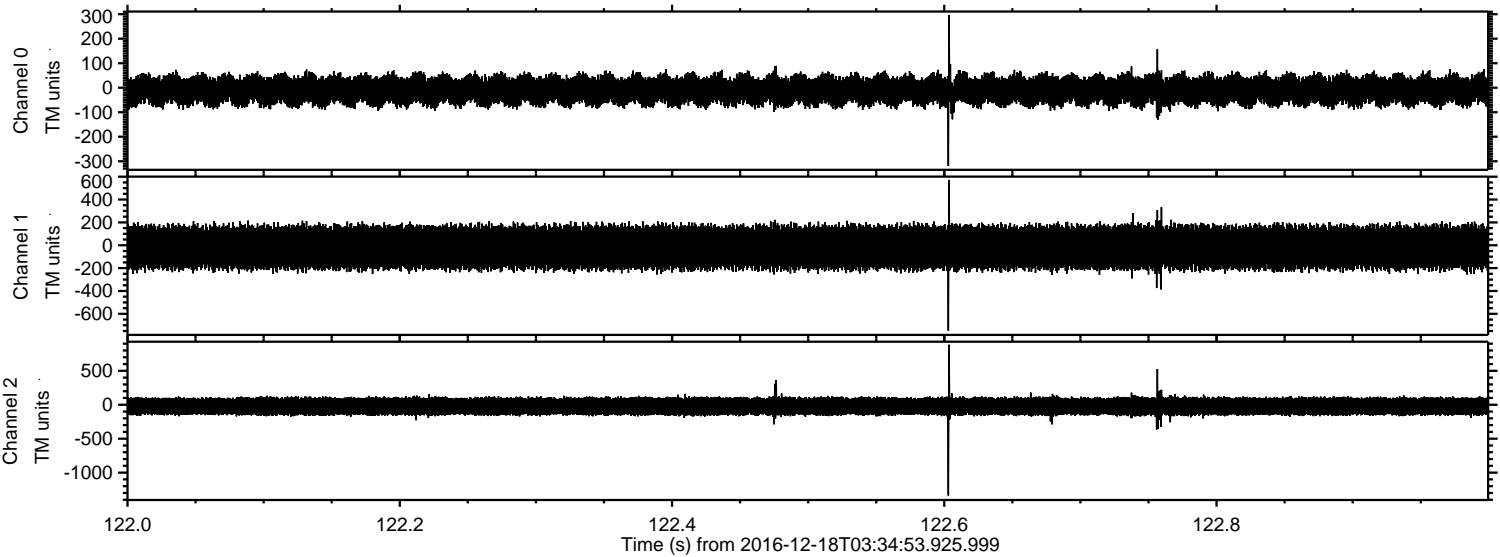
ELMAVAN 3D WAVEFORMS (Measured data sampled at 50 kHz) 51000 packets of 144 samples from 2016-12-18T03:34:53.925.999. Part 19/147

Processed Sun Dec 18 04:42:31 2016 by ELM ver.2012-10-06 from 001__elm20161218_033452__dat00.bin



ELMAVAN 3D WAVEFORMS (Measured data sampled at 50 kHz) 51000 packets of 144 samples from 2016-12-18T03:34:53.925.999. Part 123/147

Processed Sun Dec 18 04:42:32 2016 by ELM ver.2012-10-06 from 001__elm20161218_033452__dat00.bin



ELMAVAN 3D WAVEFORMS (Measured data sampled at 50 kHz) 51000 packets of 144 samples from 2016-12-18T03:34:53.925.999. Part 4/147

Processed Sun Dec 18 04:42:33 2016 by ELM ver.2012-10-06 from 001__elm20161218_033452__dat00.bin

