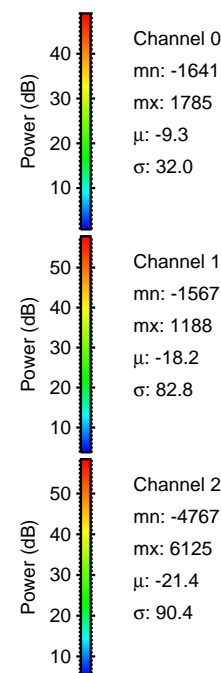
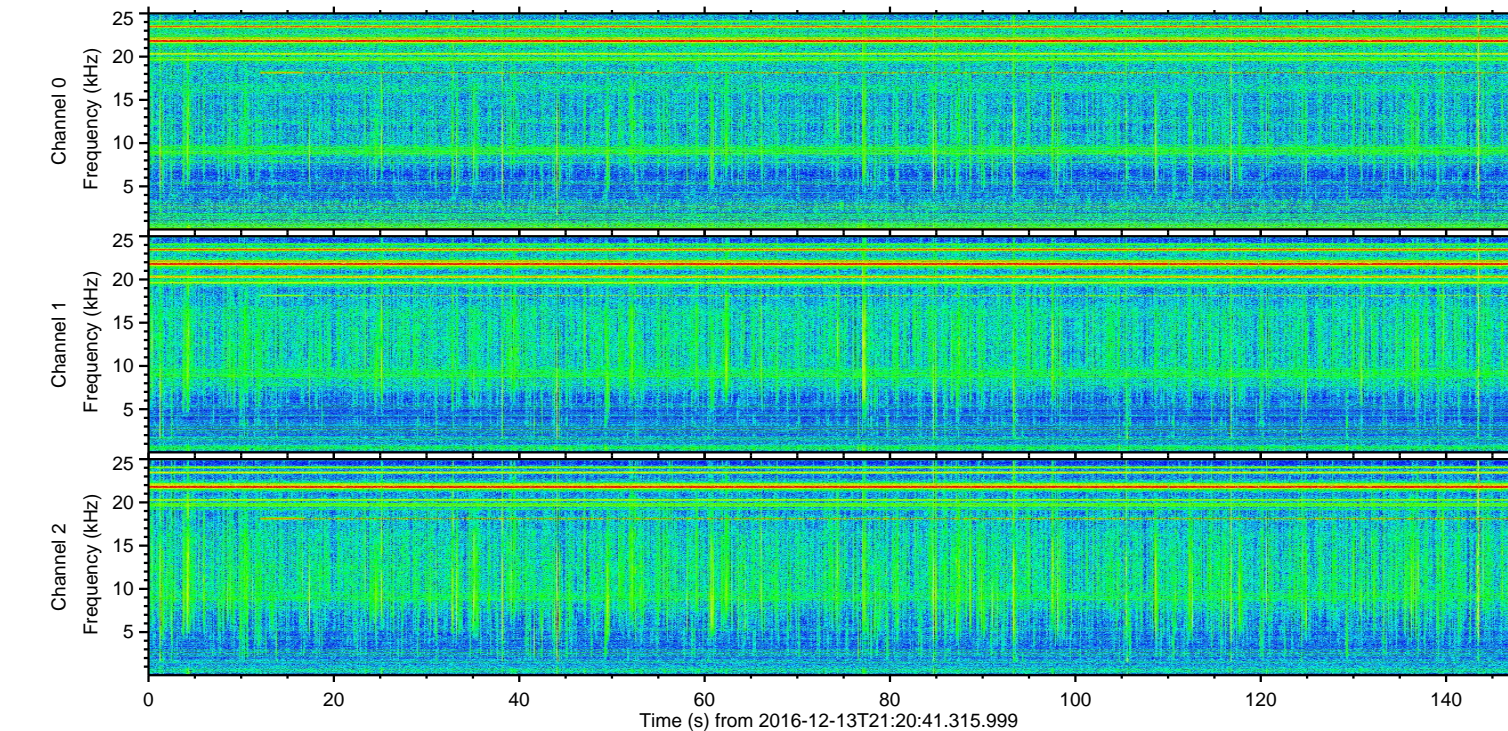
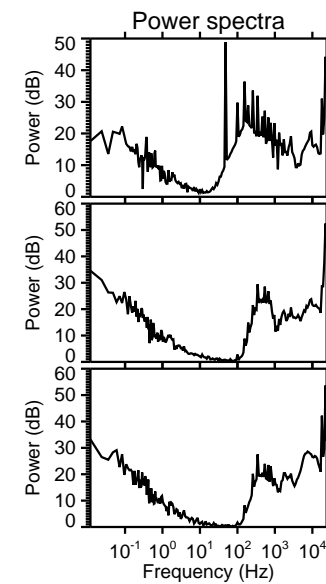
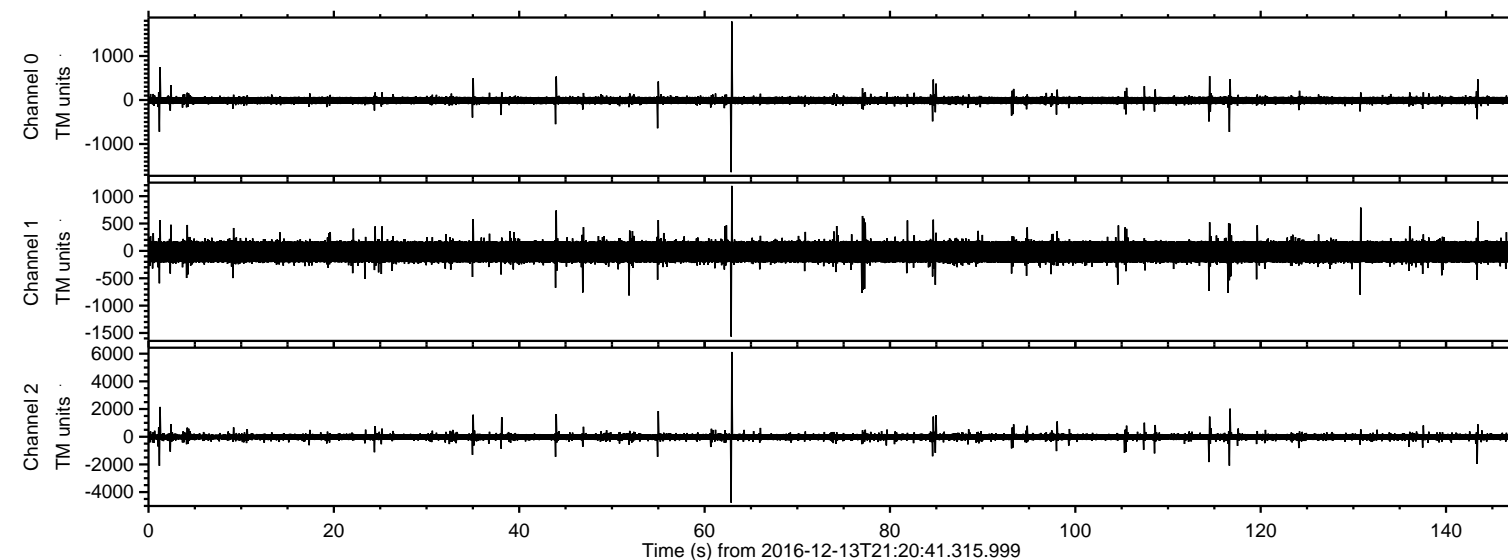
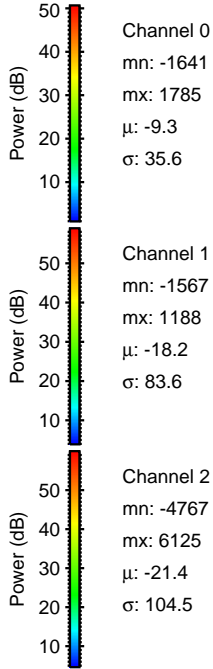
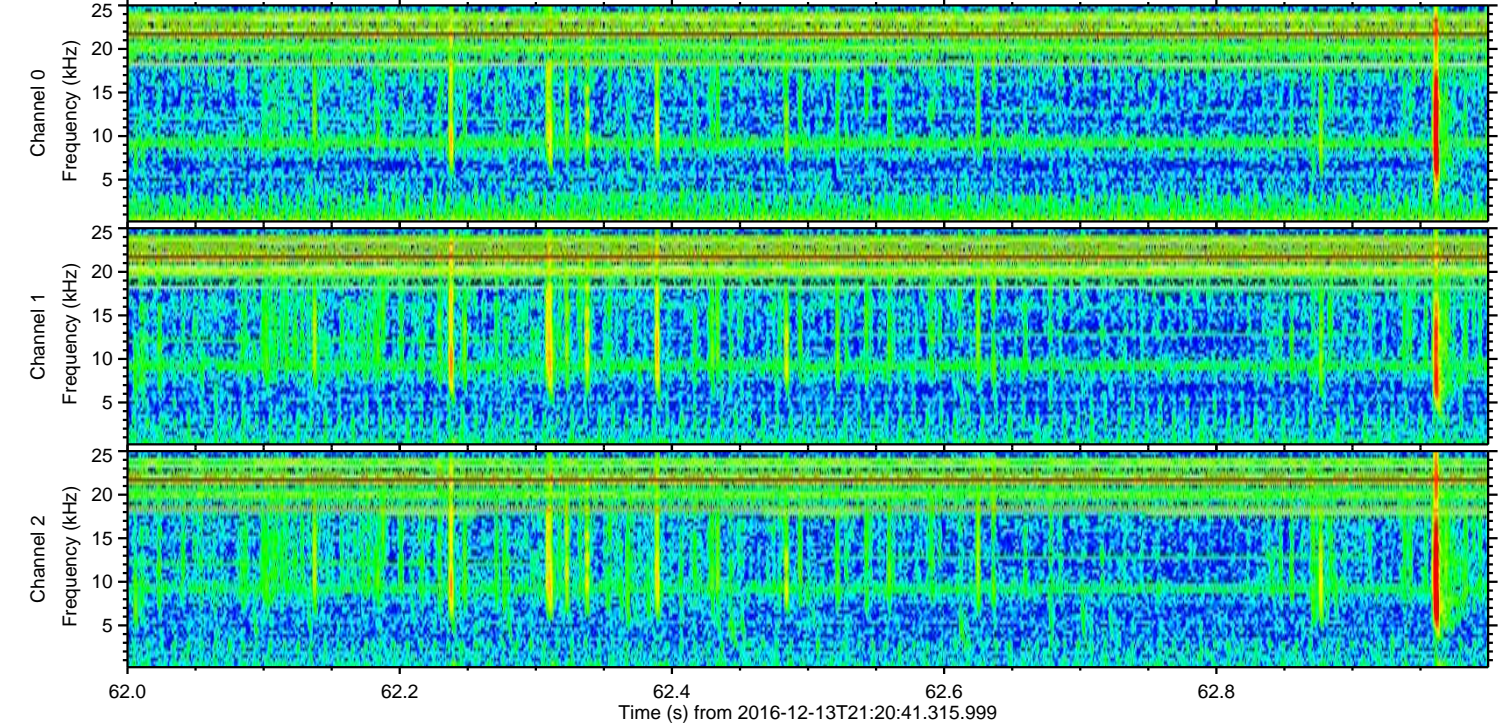
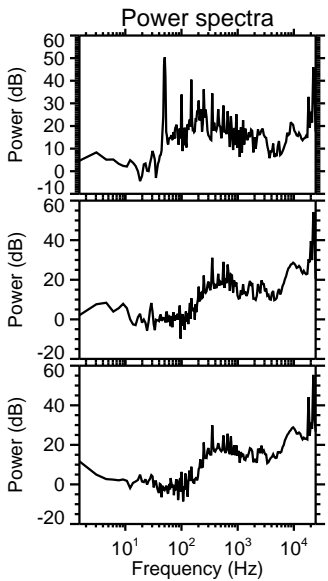
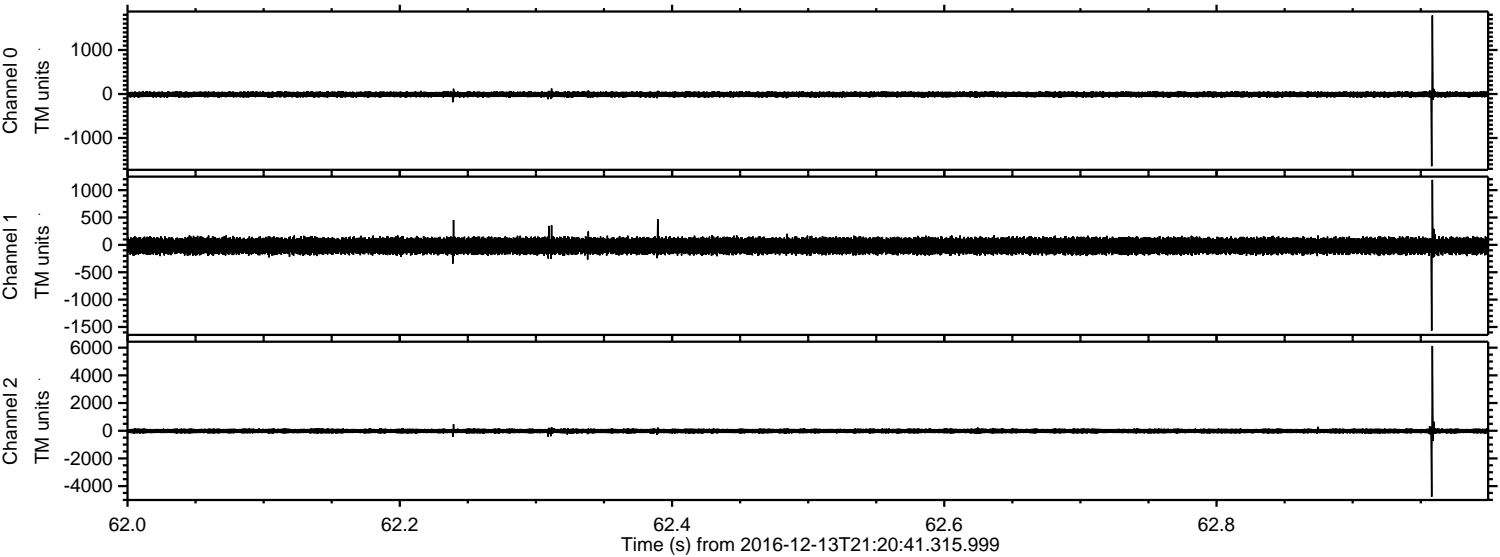


ELMAVAN 3D WAVEFORMS (Measured data sampled at 50 kHz) 51000 packets of 144 samples from 2016-12-13T21:20:41.315.999.

Processed Tue Dec 13 22:28:53 2016 by ELM ver.2012-10-06 from 001__elm20161213_212040__dat00.bin

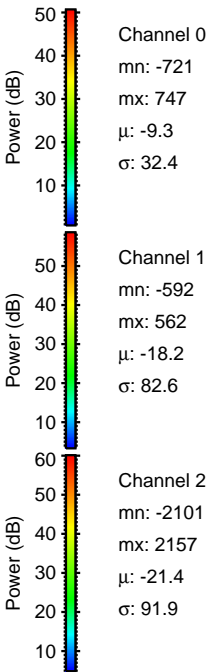
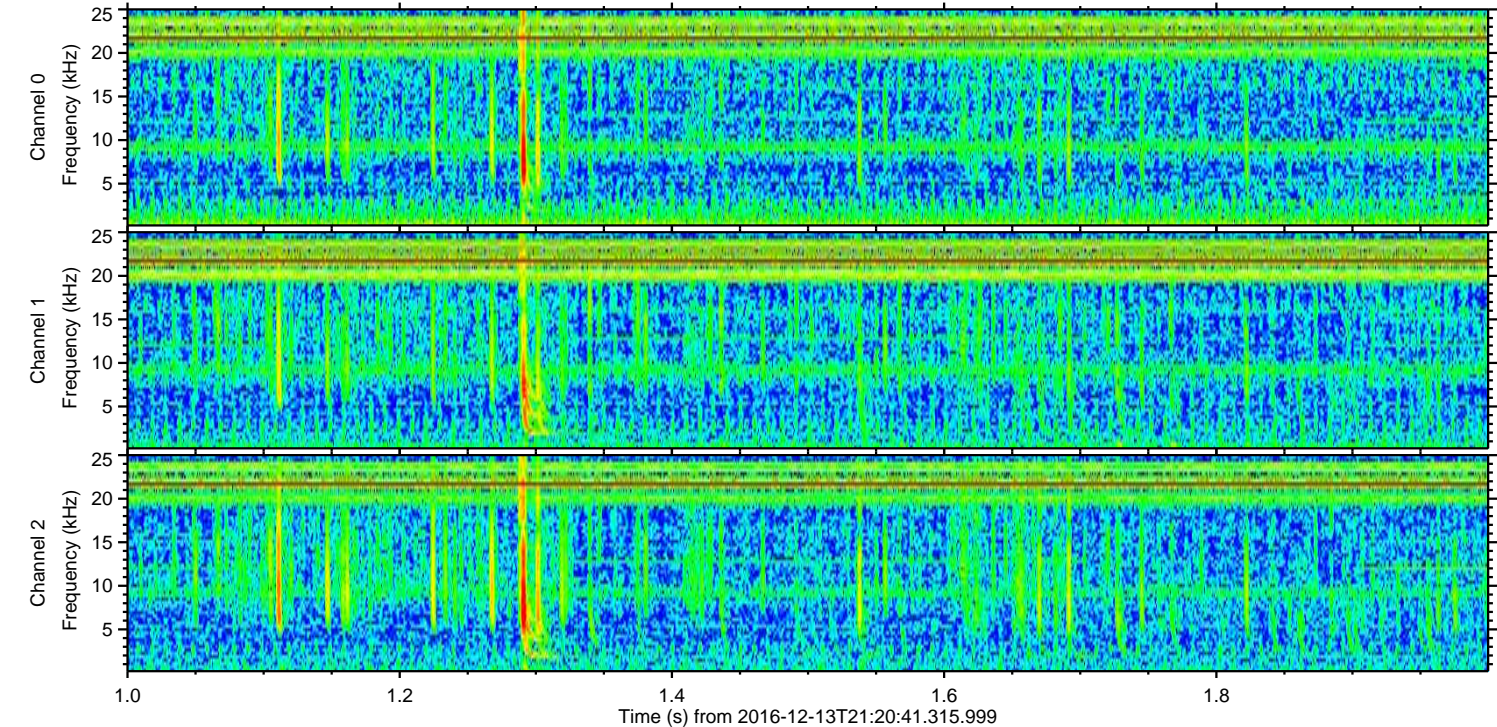
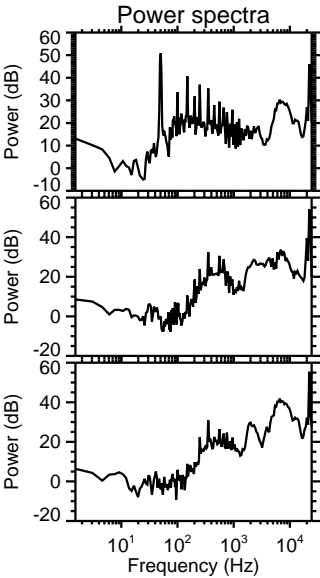
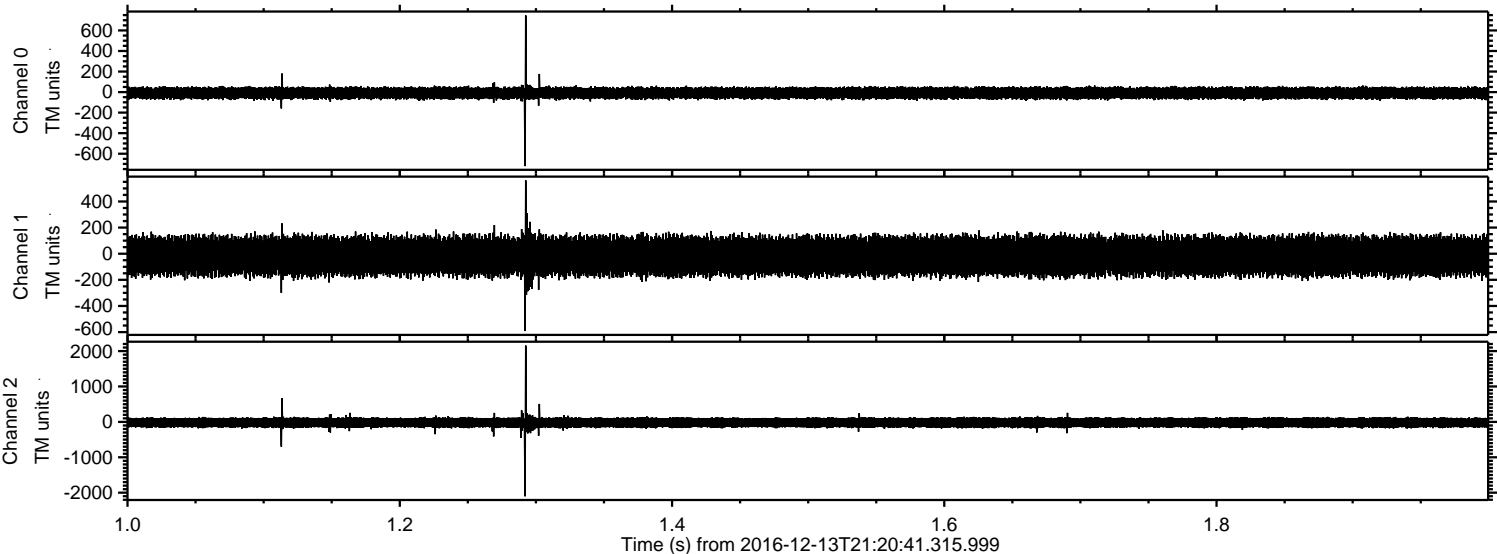


Processed Tue Dec 13 22:29:16 2016 by ELM ver.2012-10-06 from 001__elm20161213_212040__dat00.bin



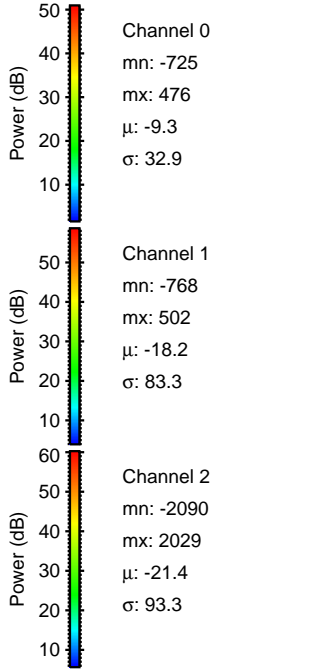
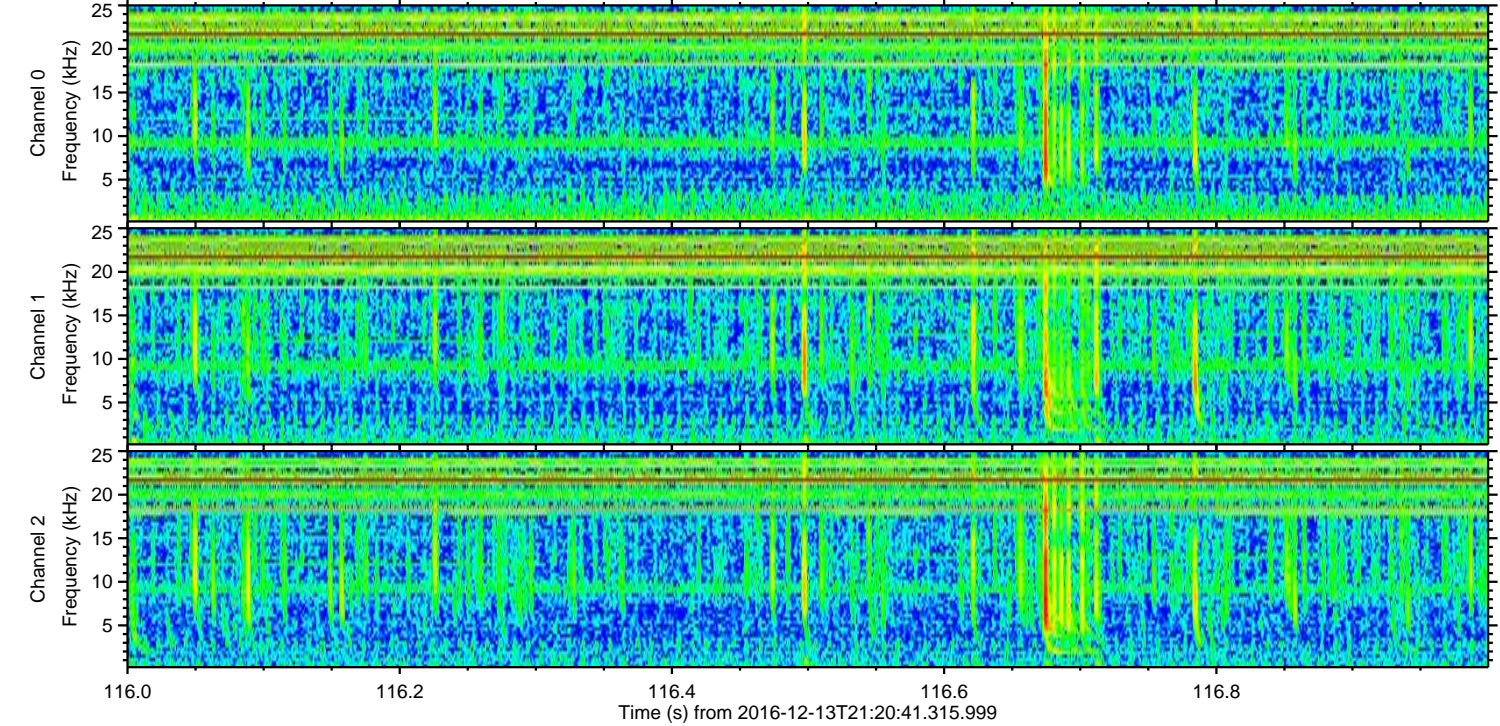
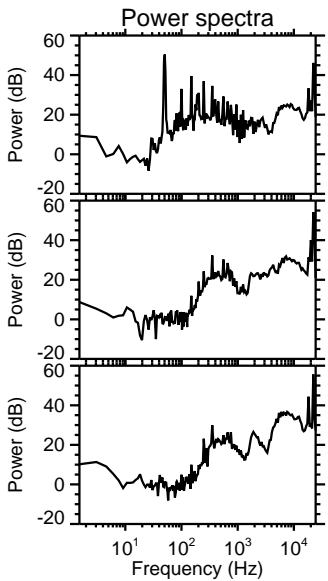
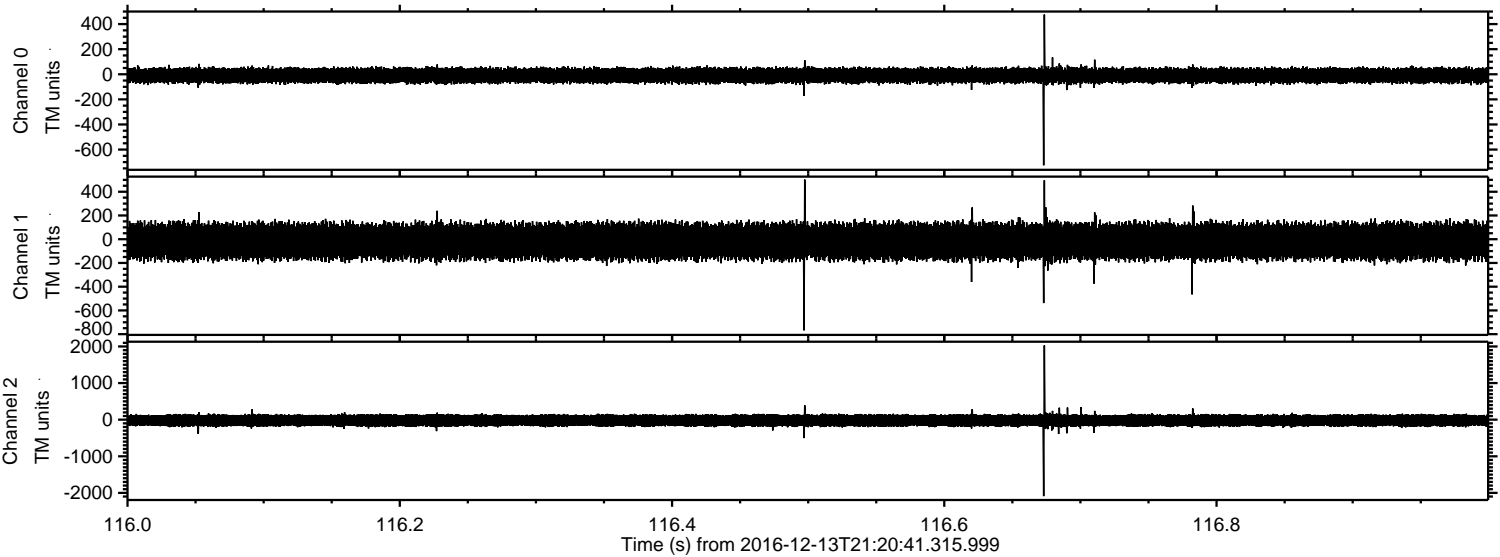
ELMAVAN 3D WAVEFORMS (Measured data sampled at 50 kHz) 51000 packets of 144 samples from 2016-12-13T21:20:41.315.999. Part 2/147

Processed Tue Dec 13 22:29:17 2016 by ELM ver.2012-10-06 from 001__elm20161213_212040__dat00.bin



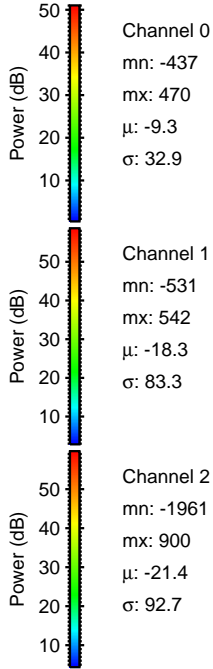
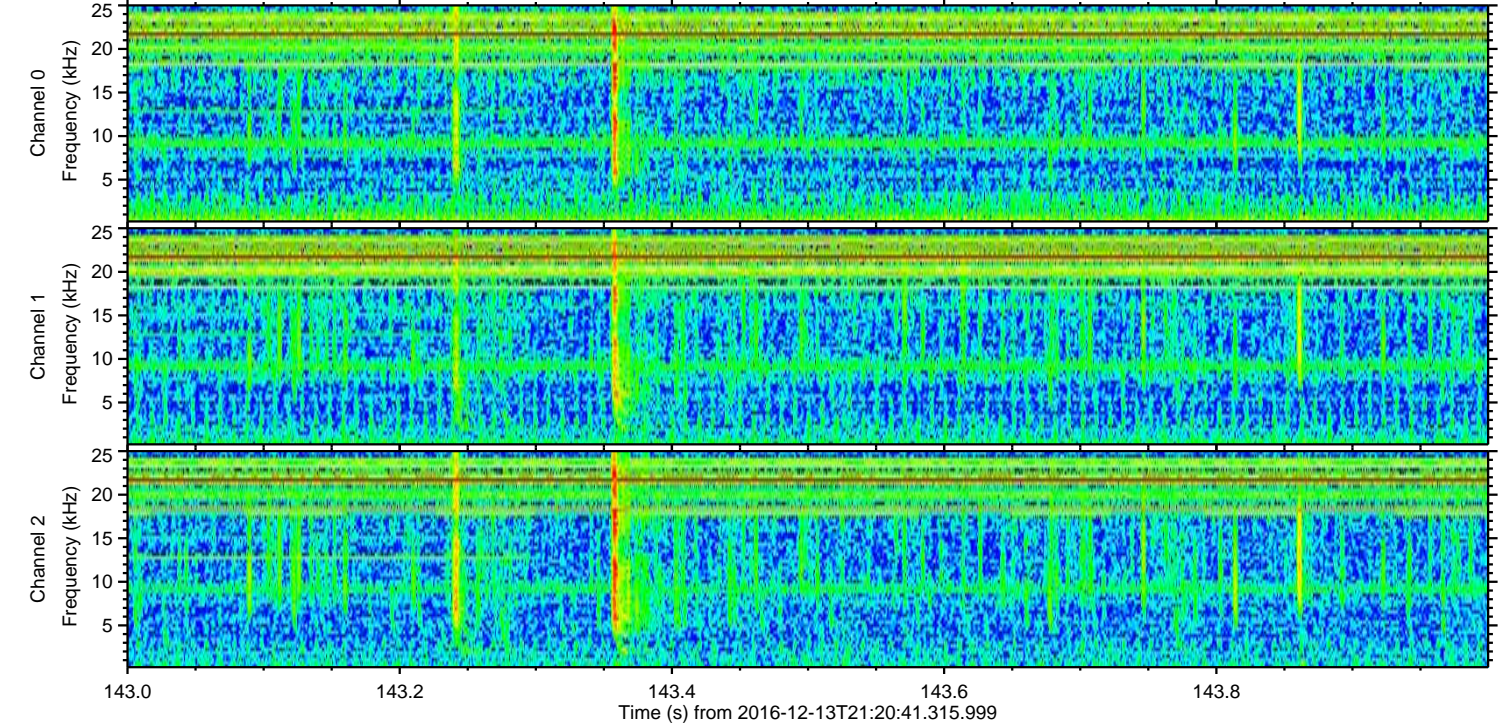
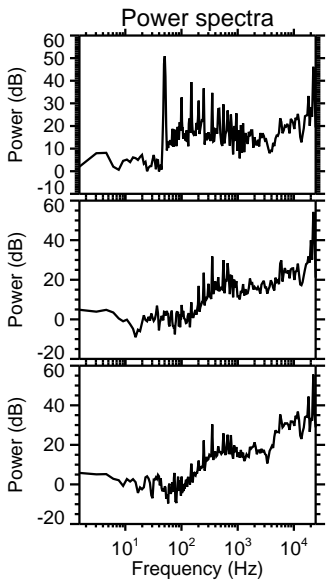
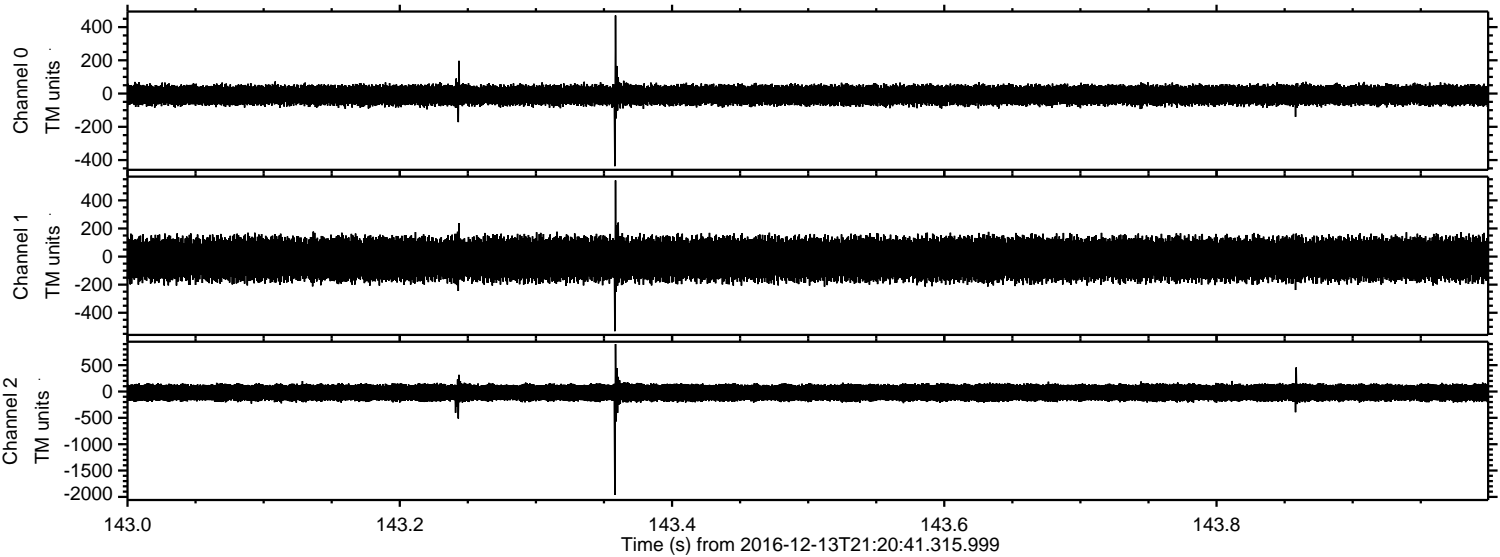
ELMAVAN 3D WAVEFORMS (Measured data sampled at 50 kHz) 51000 packets of 144 samples from 2016-12-13T21:20:41.315.999. Part 117/147

Processed Tue Dec 13 22:29:19 2016 by ELM ver.2012-10-06 from 001__elm20161213_212040__dat00.bin

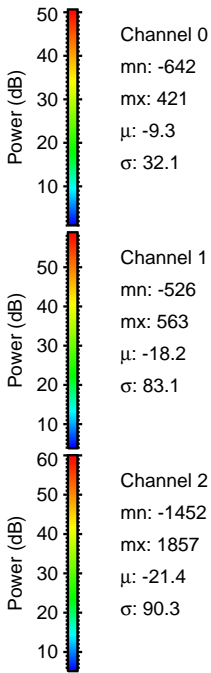
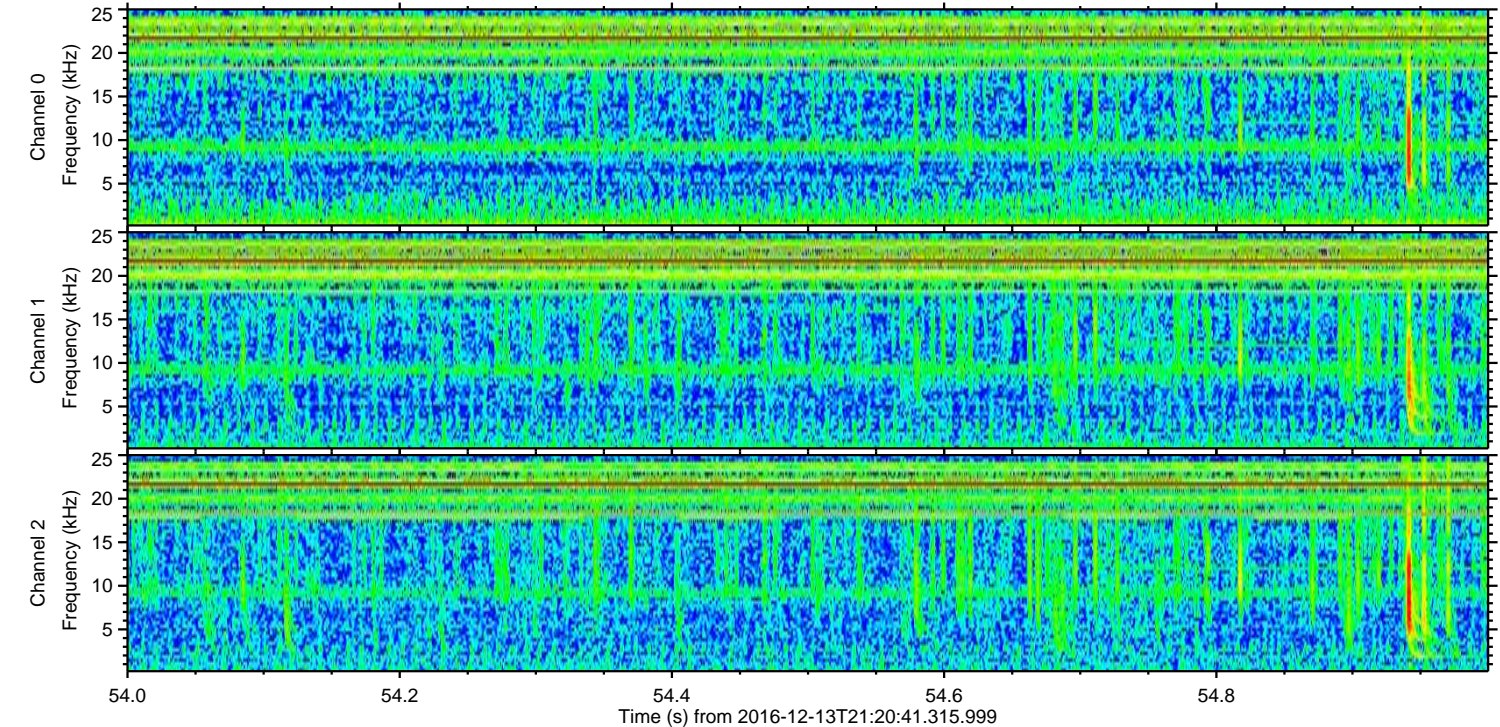
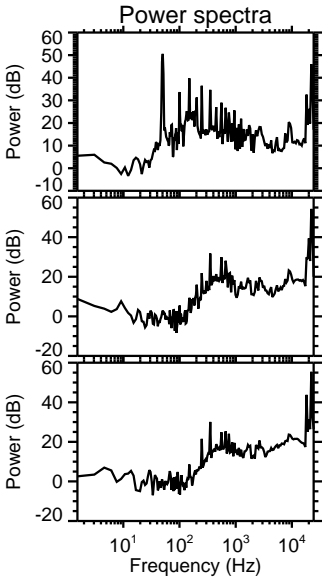
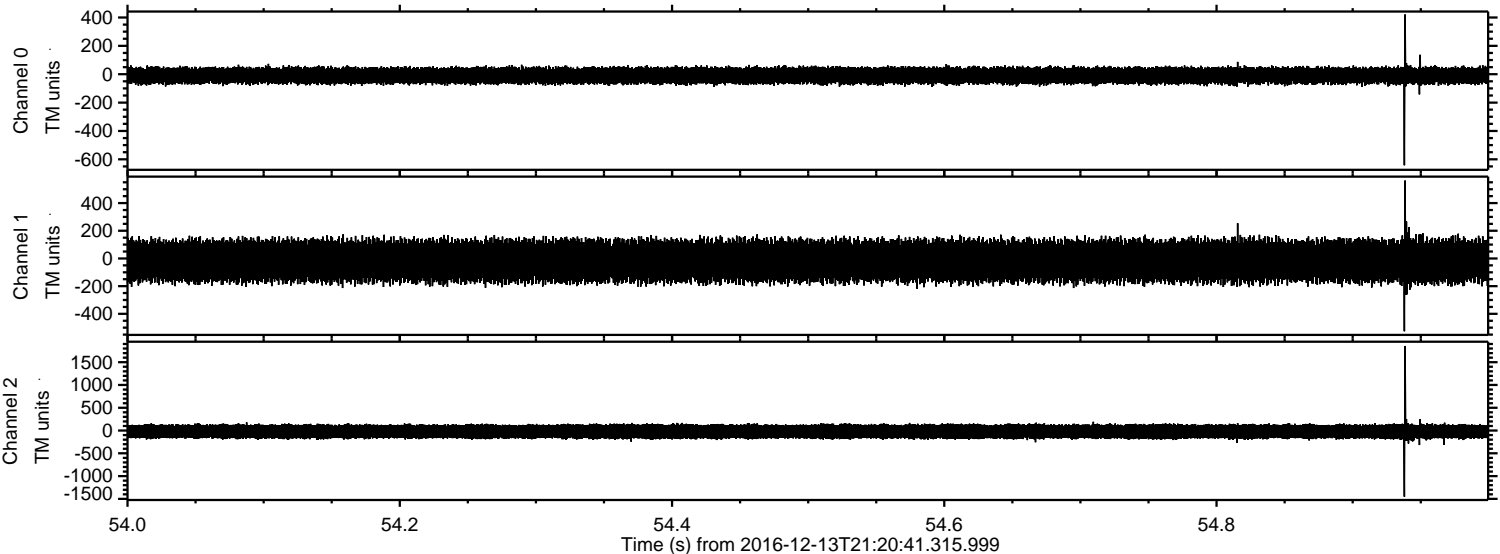


ELMAVAN 3D WAVEFORMS (Measured data sampled at 50 kHz) 51000 packets of 144 samples from 2016-12-13T21:20:41.315.999. Part 144/147

Processed Tue Dec 13 22:29:20 2016 by ELM ver.2012-10-06 from 001__elm20161213_212040__dat00.bin

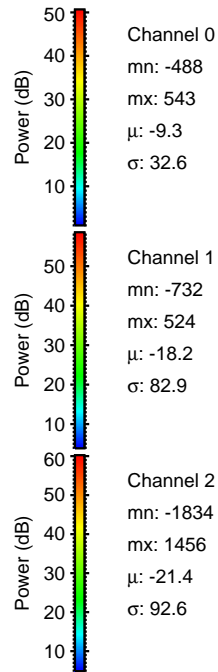
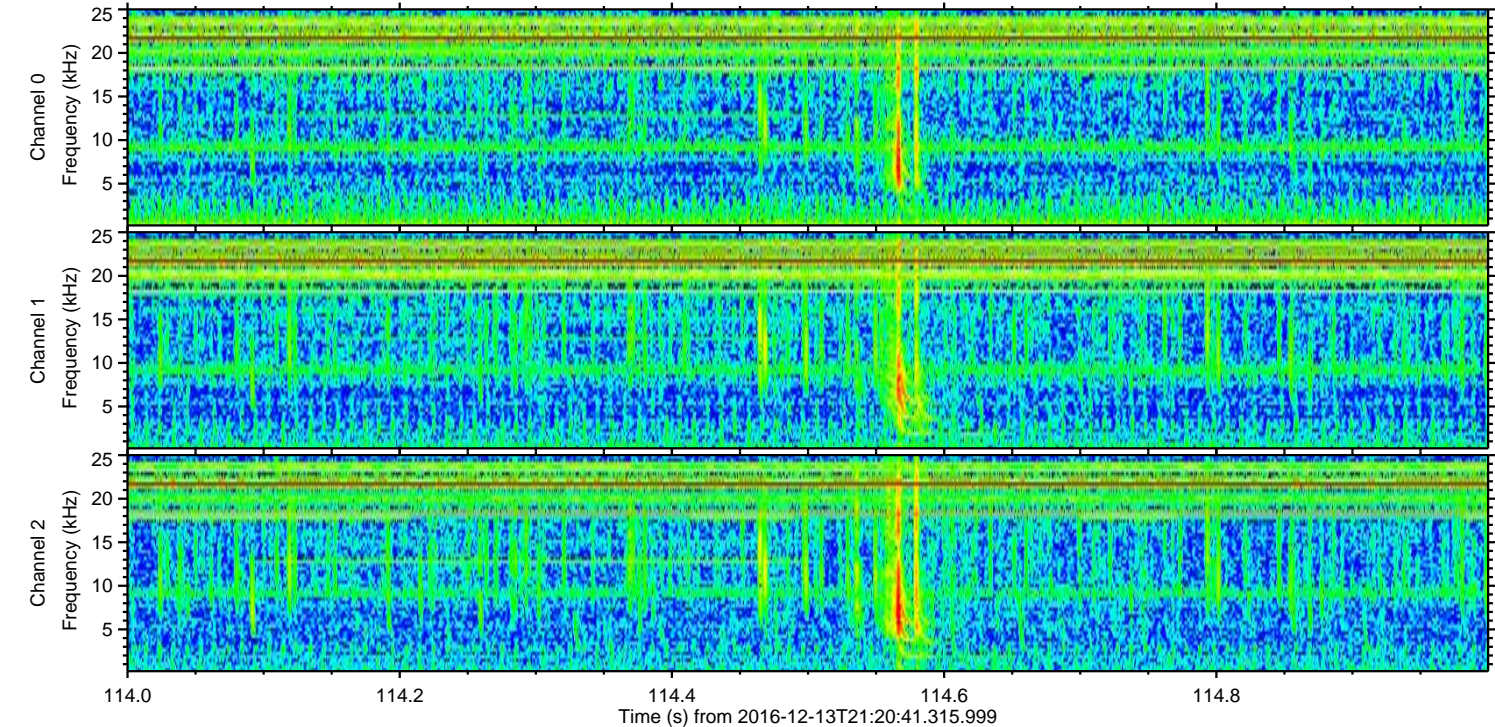
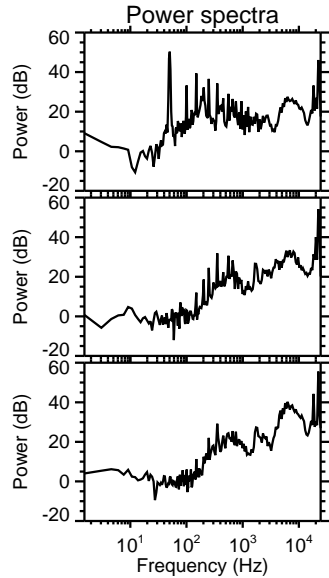
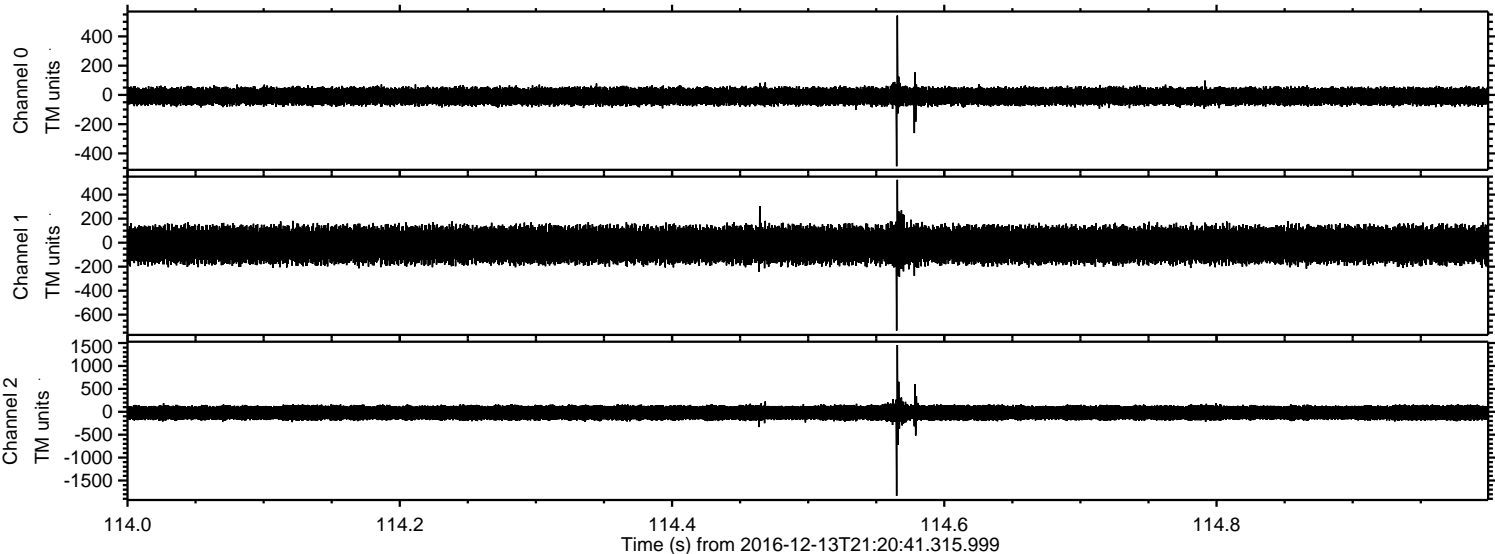


Processed Tue Dec 13 22:29:22 2016 by ELM ver.2012-10-06 from 001__elm20161213_212040__dat00.bin

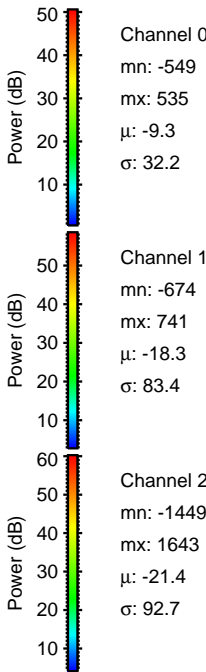
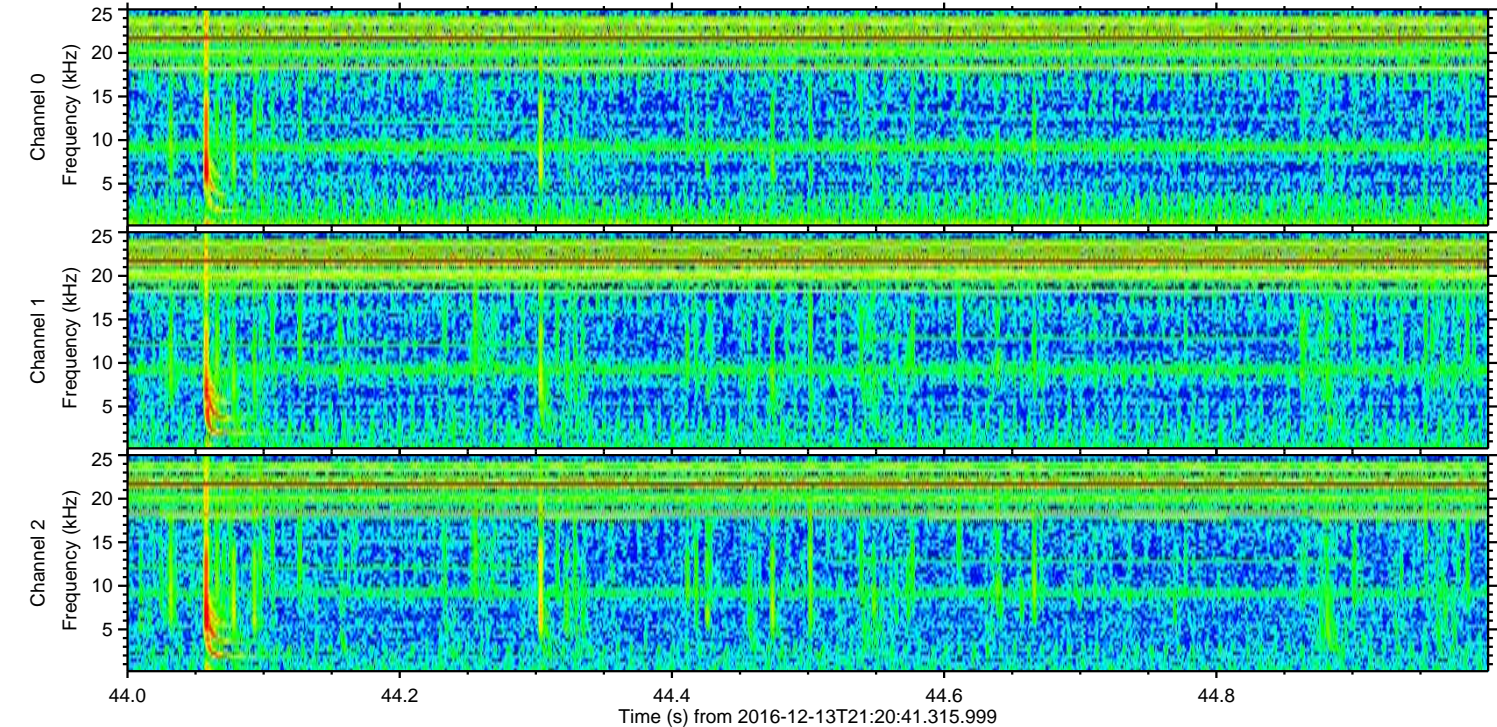
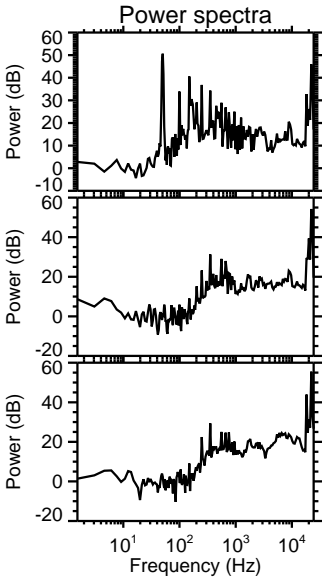
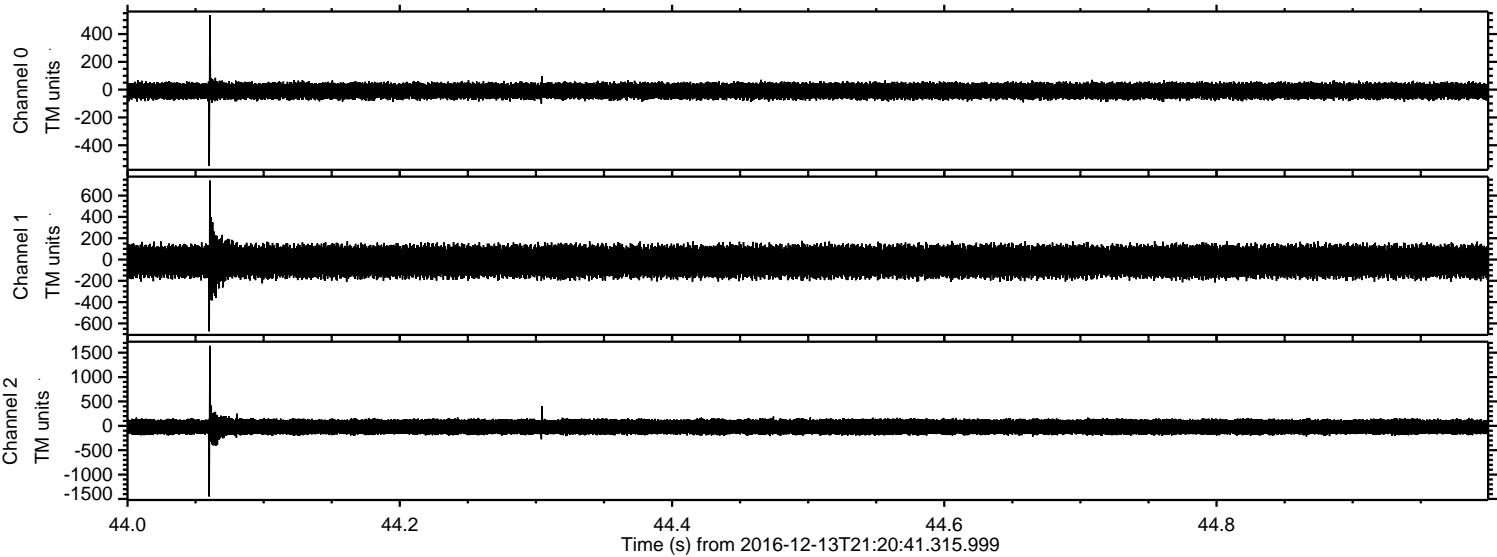


ELMAVAN 3D WAVEFORMS (Measured data sampled at 50 kHz) 51000 packets of 144 samples from 2016-12-13T21:20:41.315.999. Part 115/147

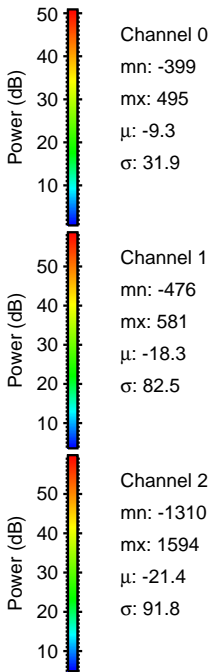
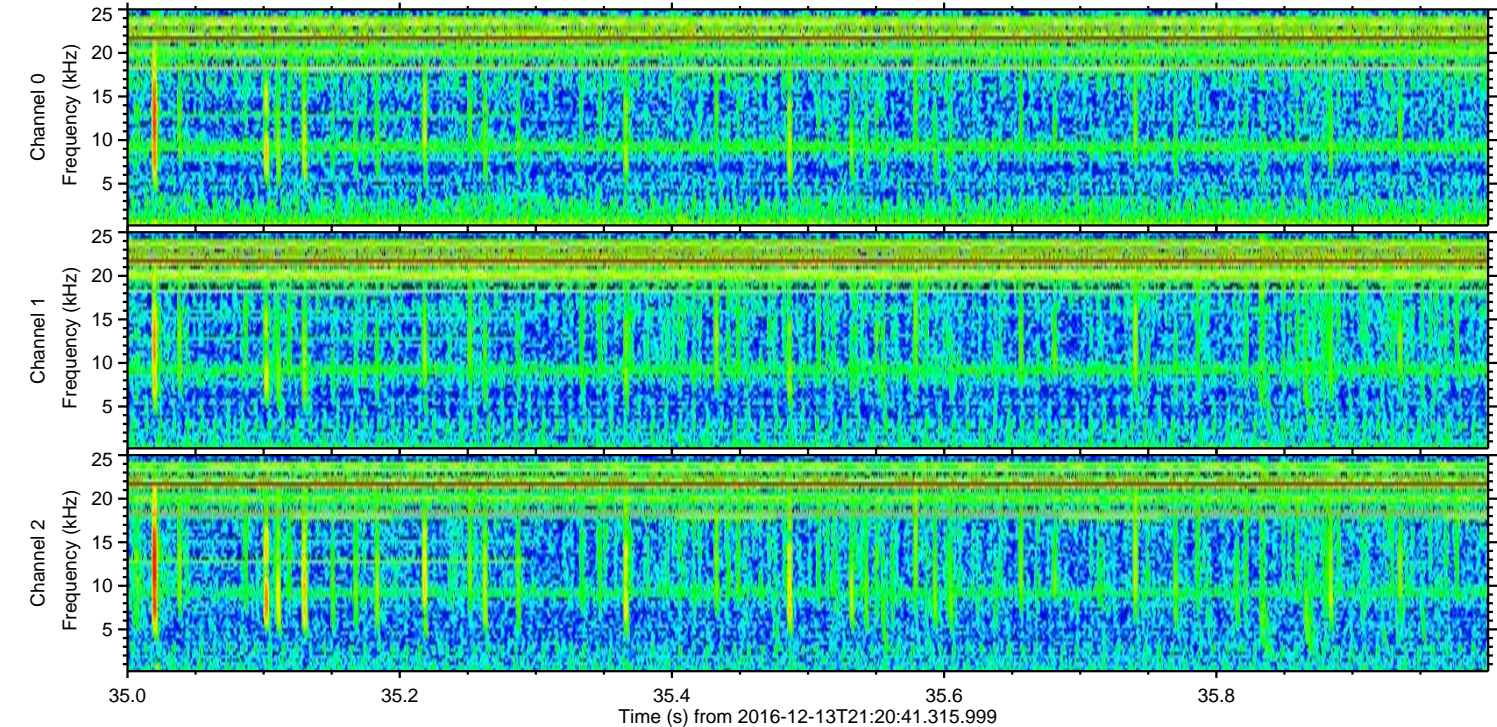
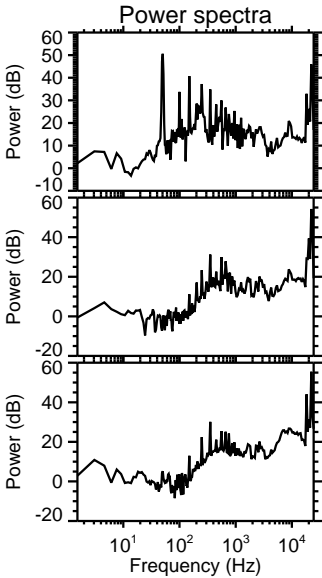
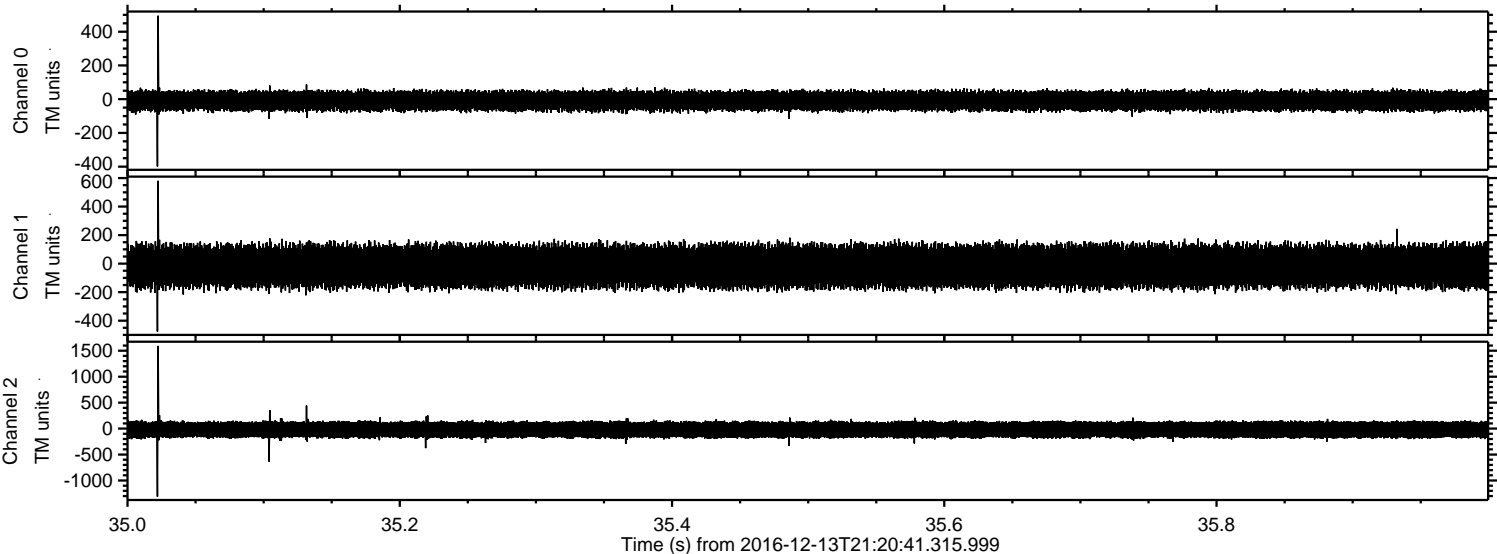
Processed Tue Dec 13 22:29:24 2016 by ELM ver.2012-10-06 from 001__elm20161213_212040__dat00.bin



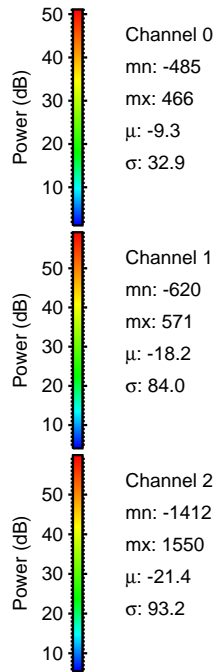
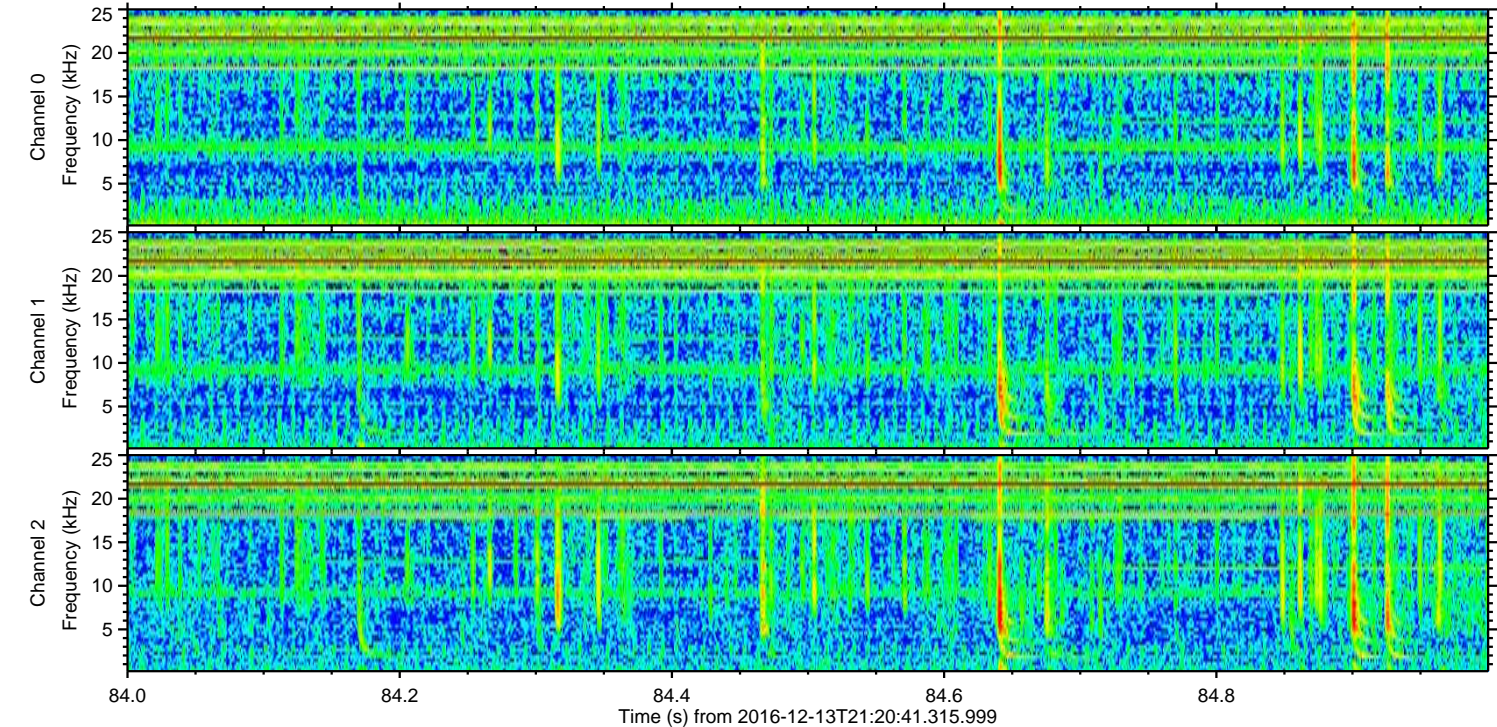
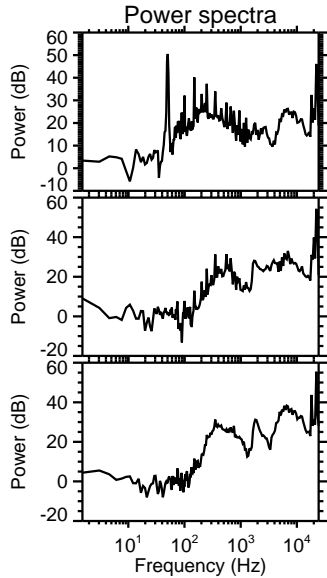
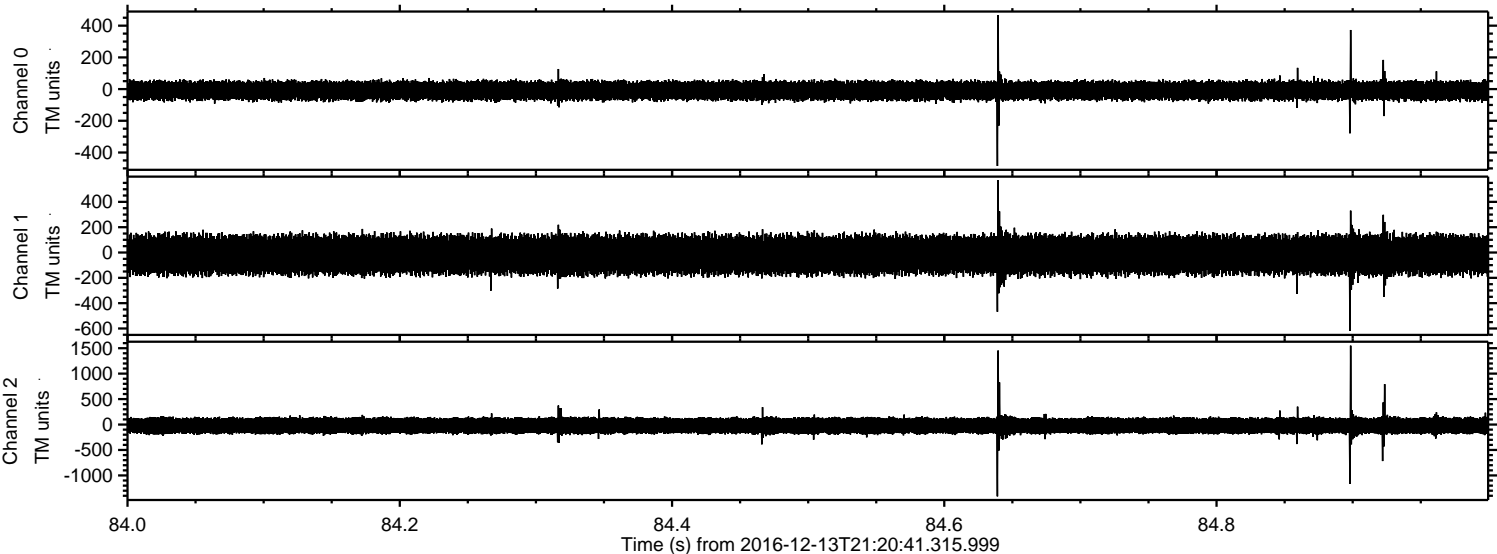
Processed Tue Dec 13 22:29:26 2016 by ELM ver.2012-10-06 from 001__elm20161213_212040__dat00.bin



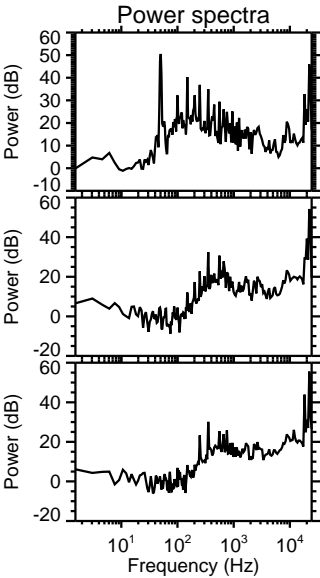
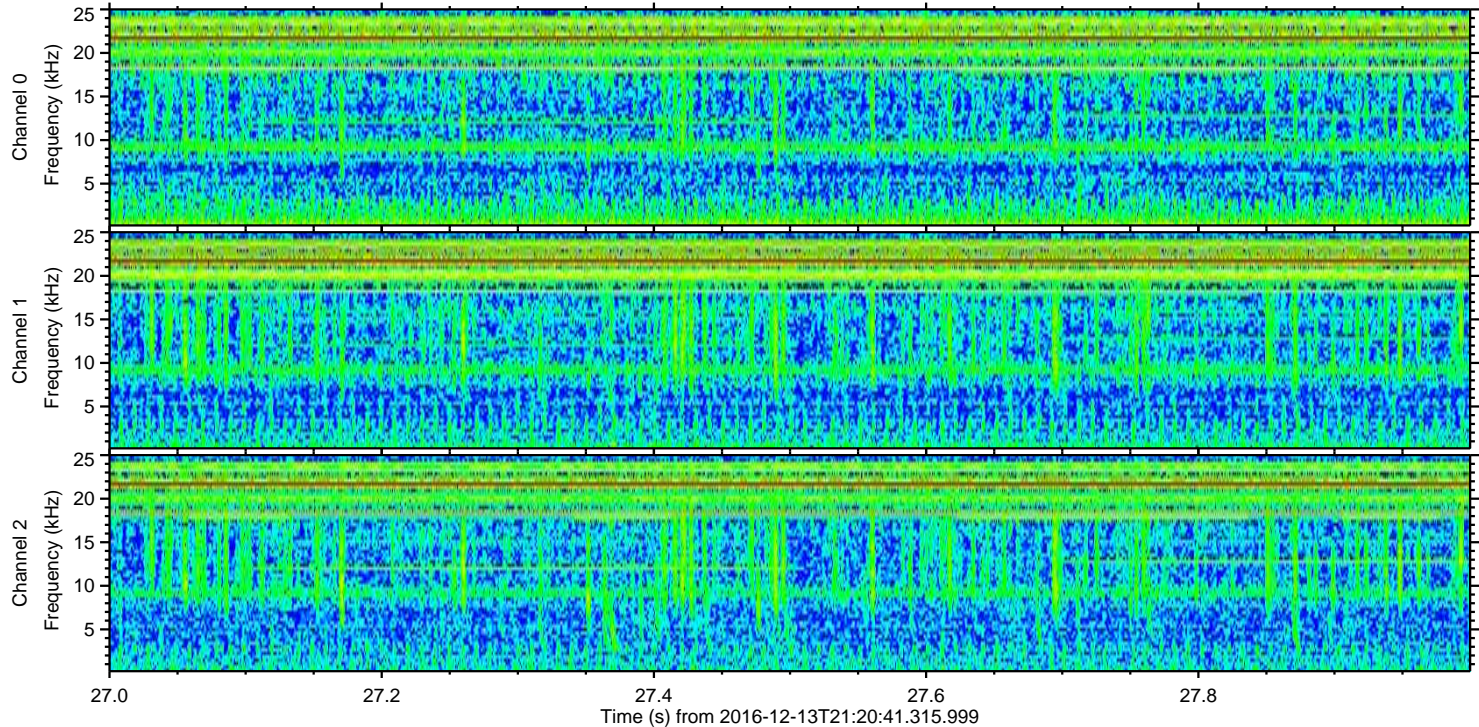
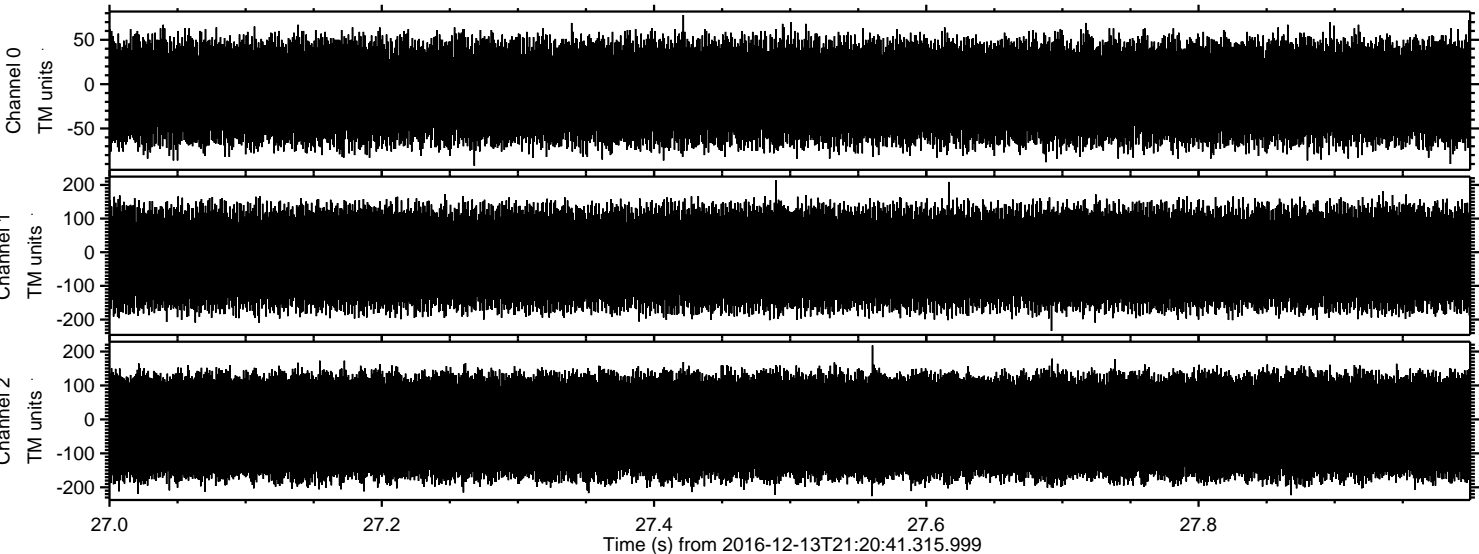
Processed Tue Dec 13 22:29:28 2016 by ELM ver.2012-10-06 from 001__elm20161213_212040__dat00.bin



Processed Tue Dec 13 22:29:29 2016 by ELM ver.2012-10-06 from 001__elm20161213_212040__dat00.bin



Processed Tue Dec 13 22:29:30 2016 by ELM ver.2012-10-06 from 001__elm20161213_212040__dat00.bin



Channel 0
mn: -92
mx: 78
 μ : -9.3
 σ : 31.6

Channel 1
mn: -234
mx: 214
 μ : -18.2
 σ : 82.5

Channel 2
mn: -226
mx: 218
 μ : -21.4
 σ : 91.0