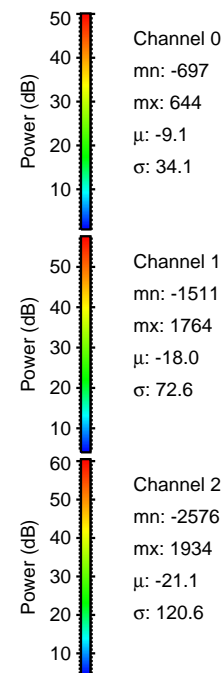
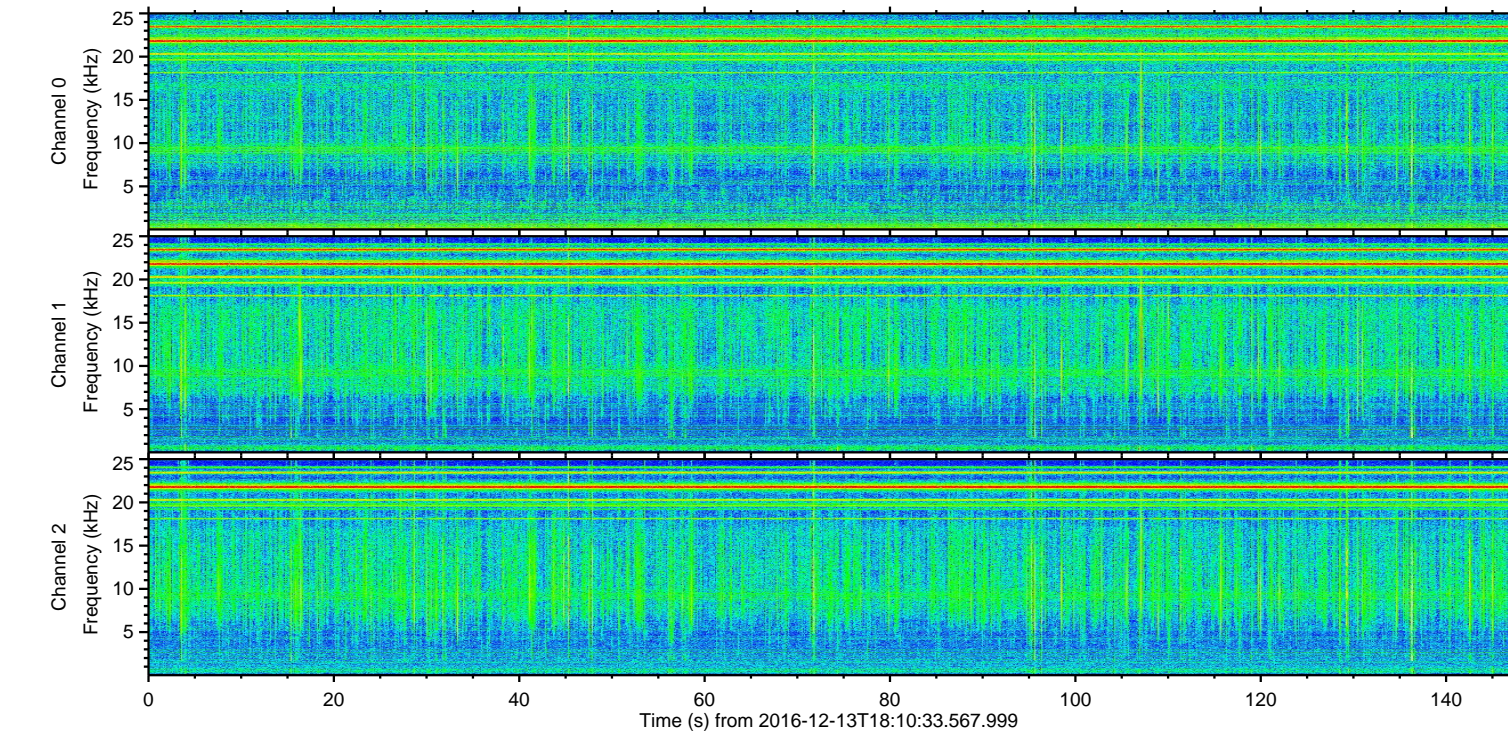
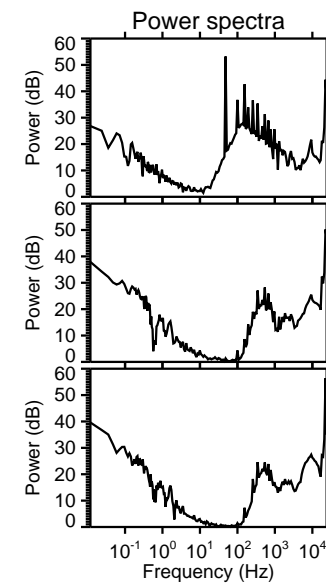
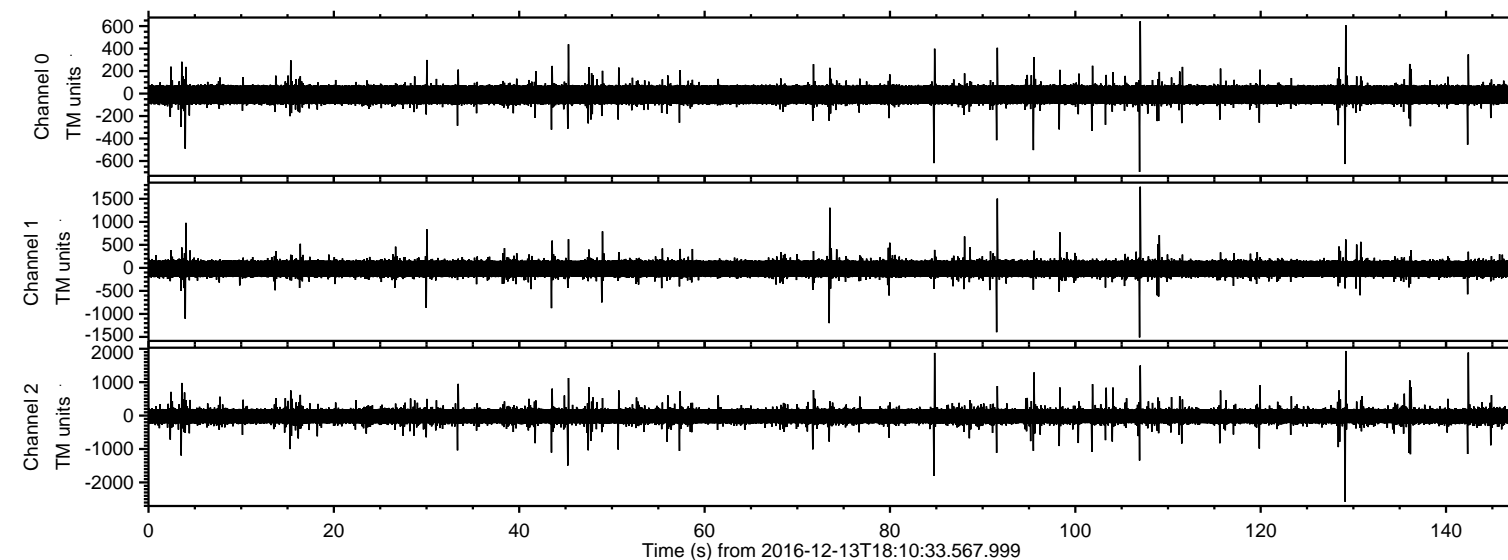


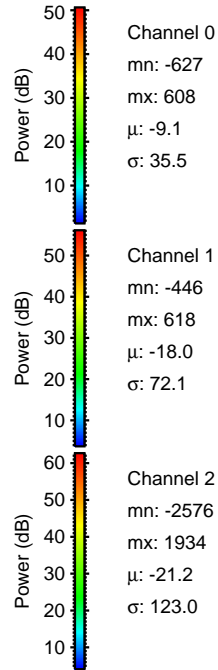
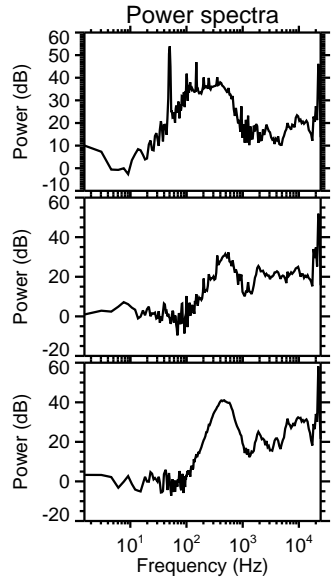
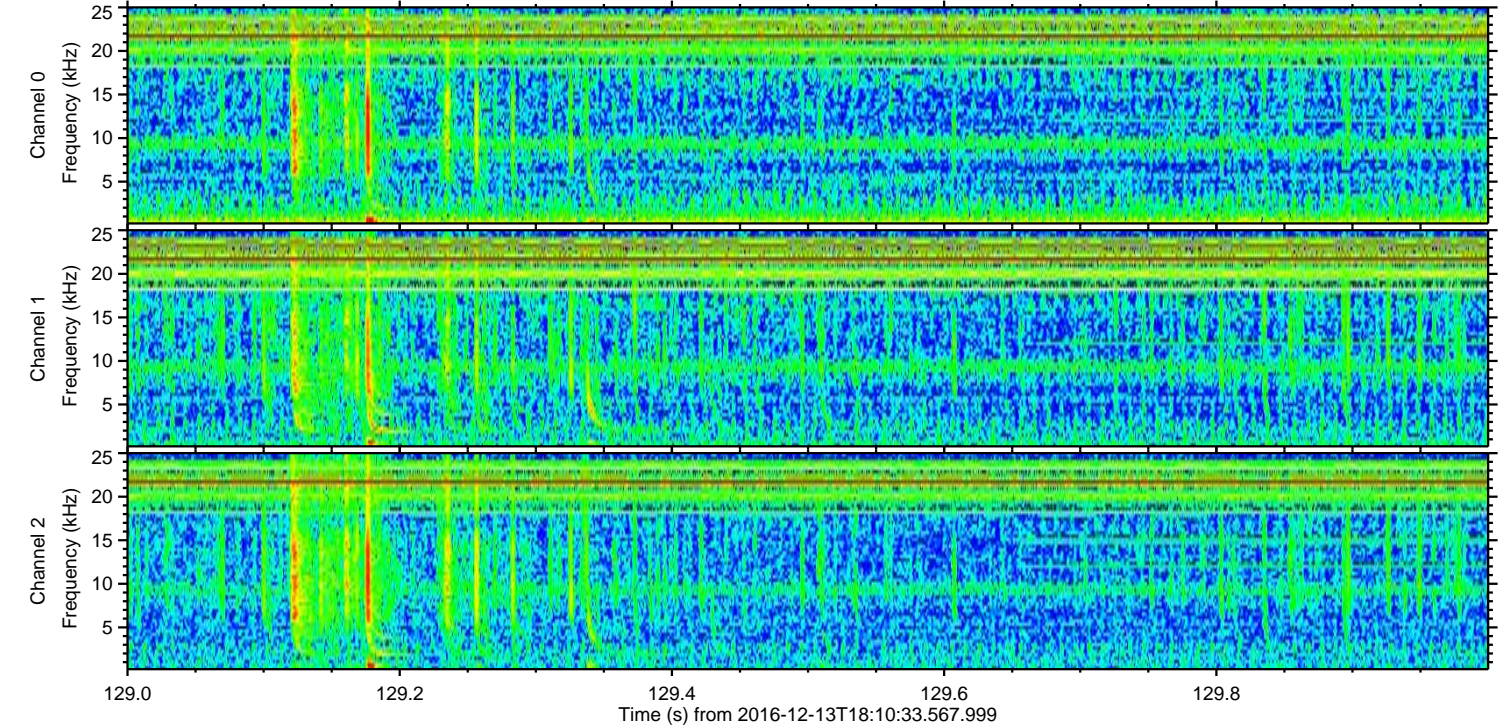
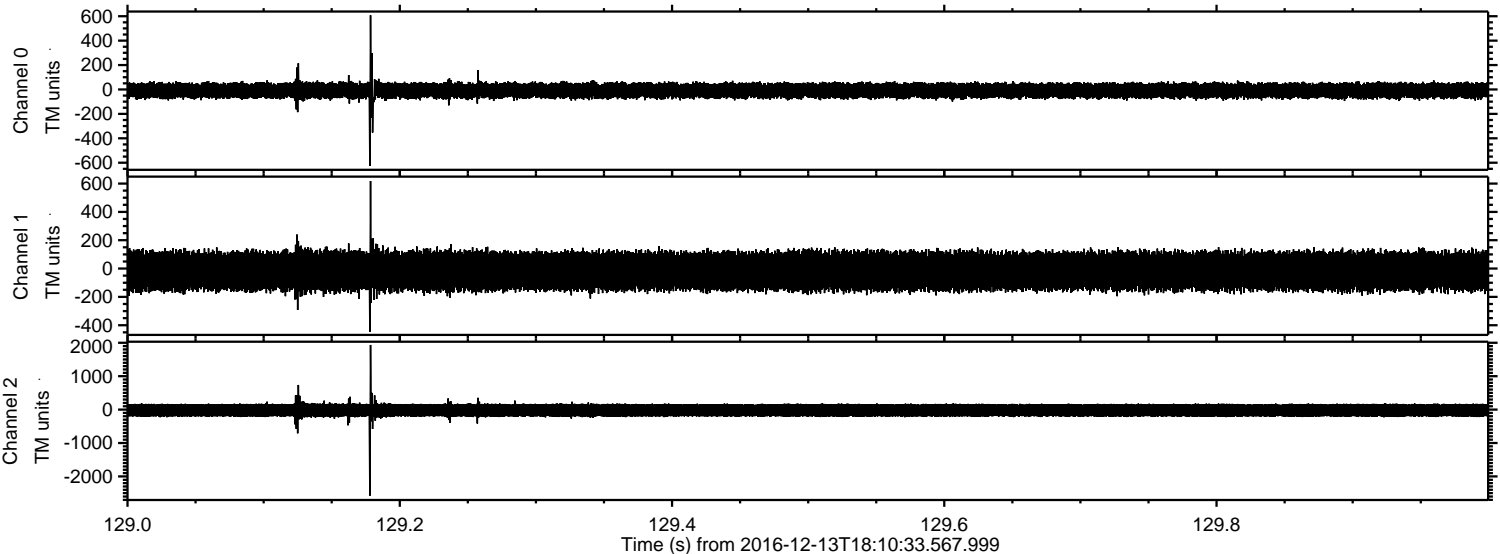
ELMAVAN 3D WAVEFORMS (Measured data sampled at 50 kHz) 51000 packets of 144 samples from 2016-12-13T18:10:33.567.999.

Processed Tue Dec 13 19:18:03 2016 by ELM ver.2012-10-06 from 001__elm20161213_181032__dat00.bin



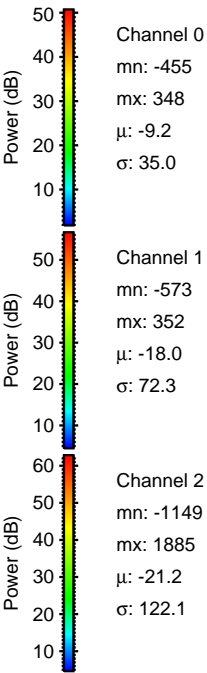
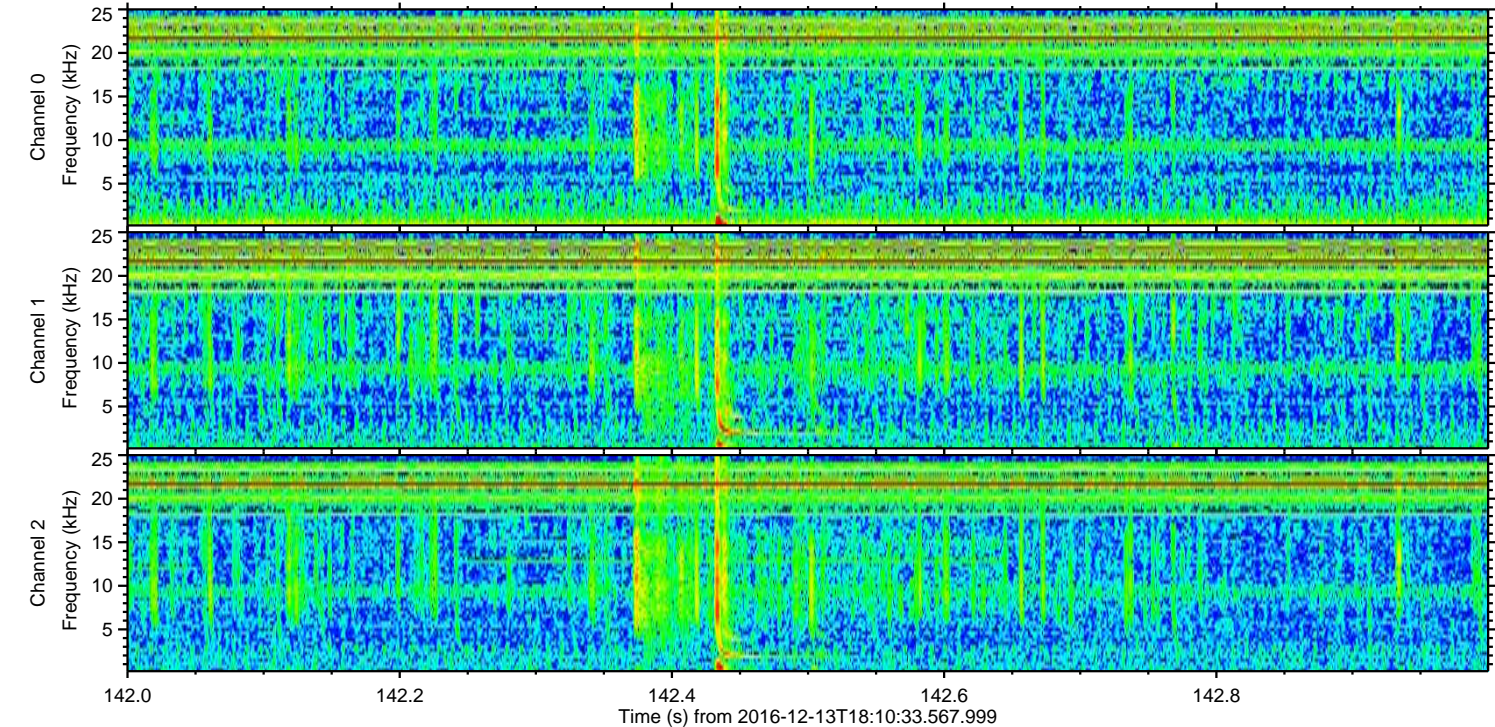
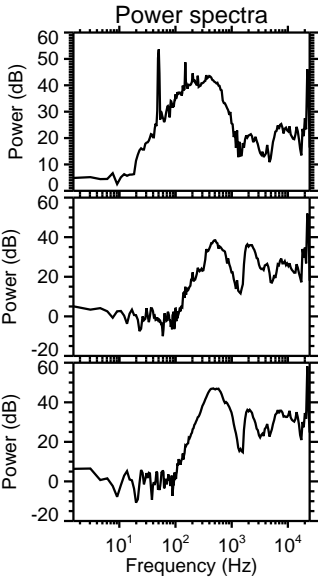
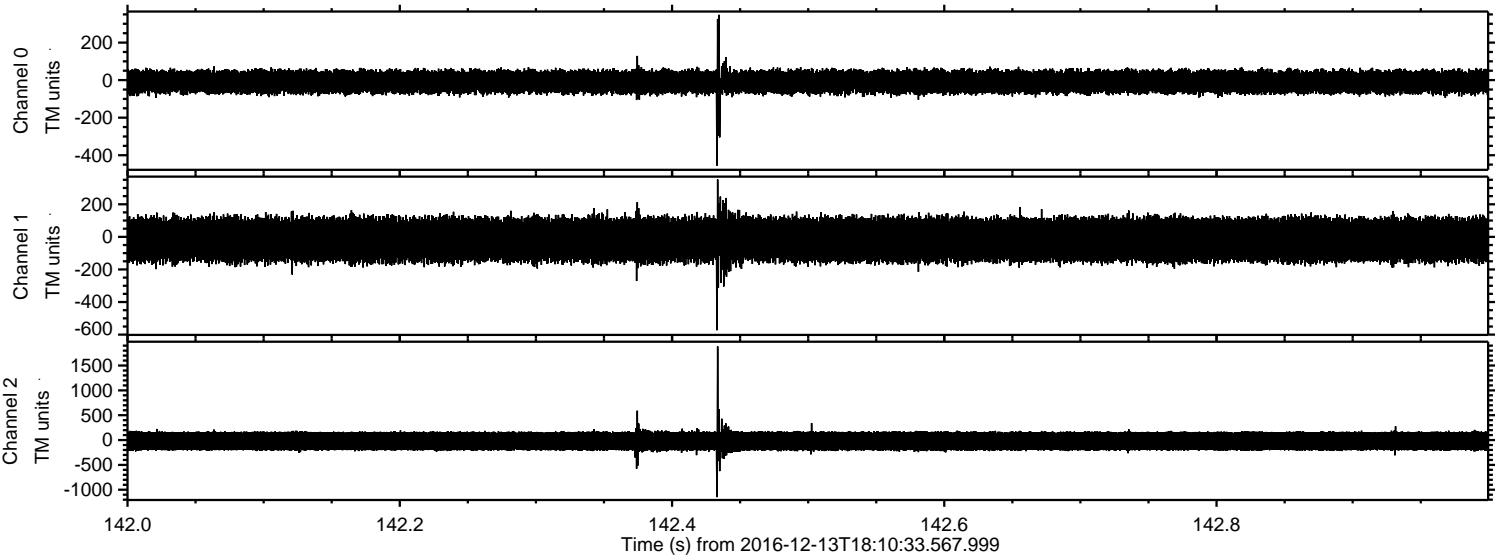
ELMAVAN 3D WAVEFORMS (Measured data sampled at 50 kHz) 51000 packets of 144 samples from 2016-12-13T18:10:33.567.999. Part 130/147

Processed Tue Dec 13 19:18:15 2016 by ELM ver.2012-10-06 from 001__elm20161213_181032__dat00.bin

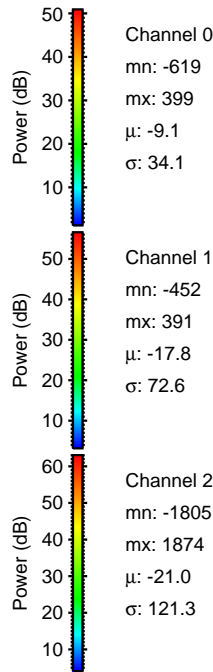
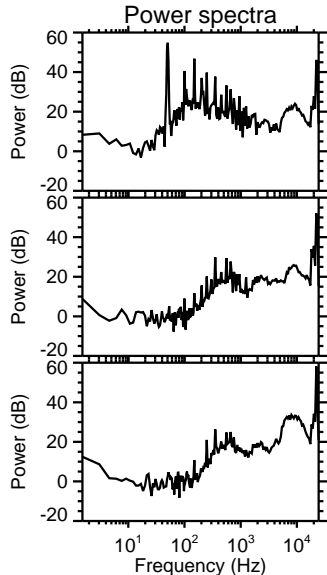
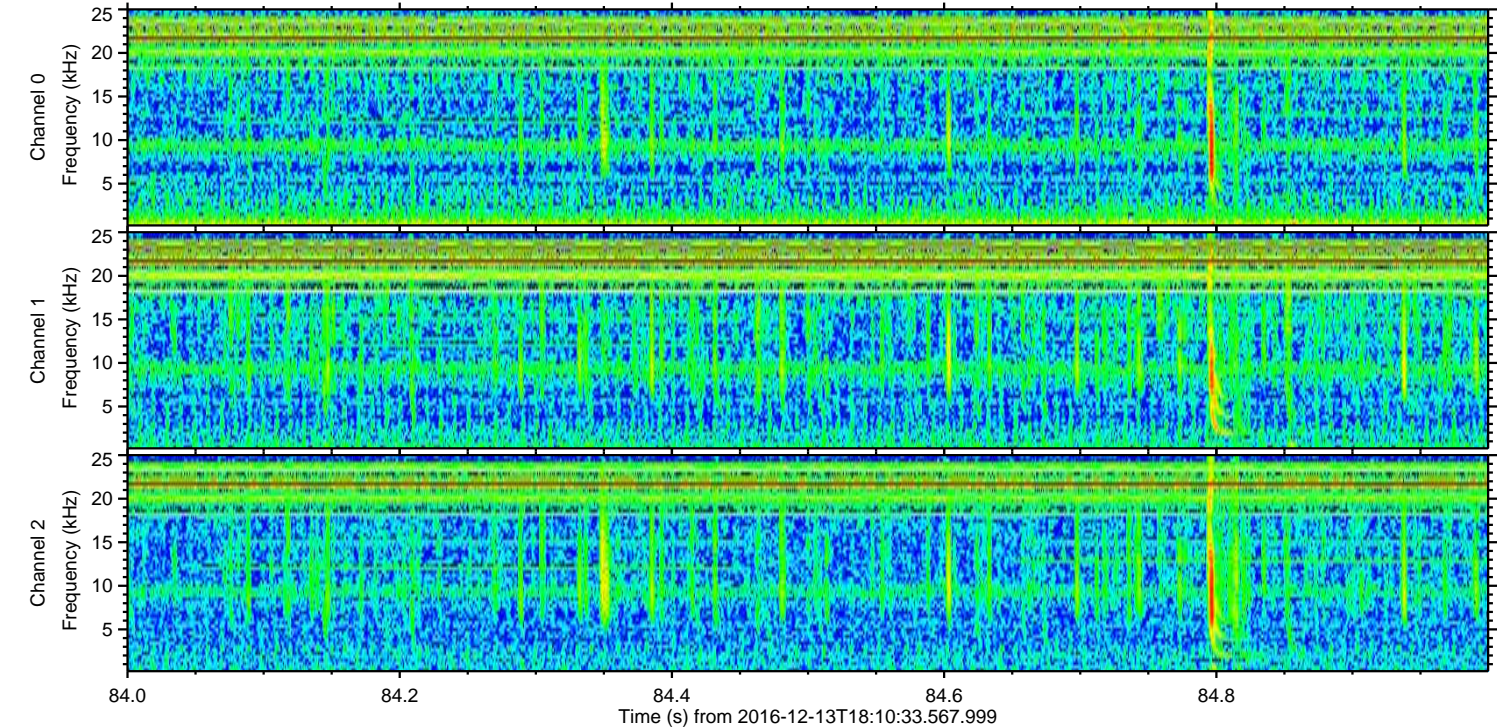
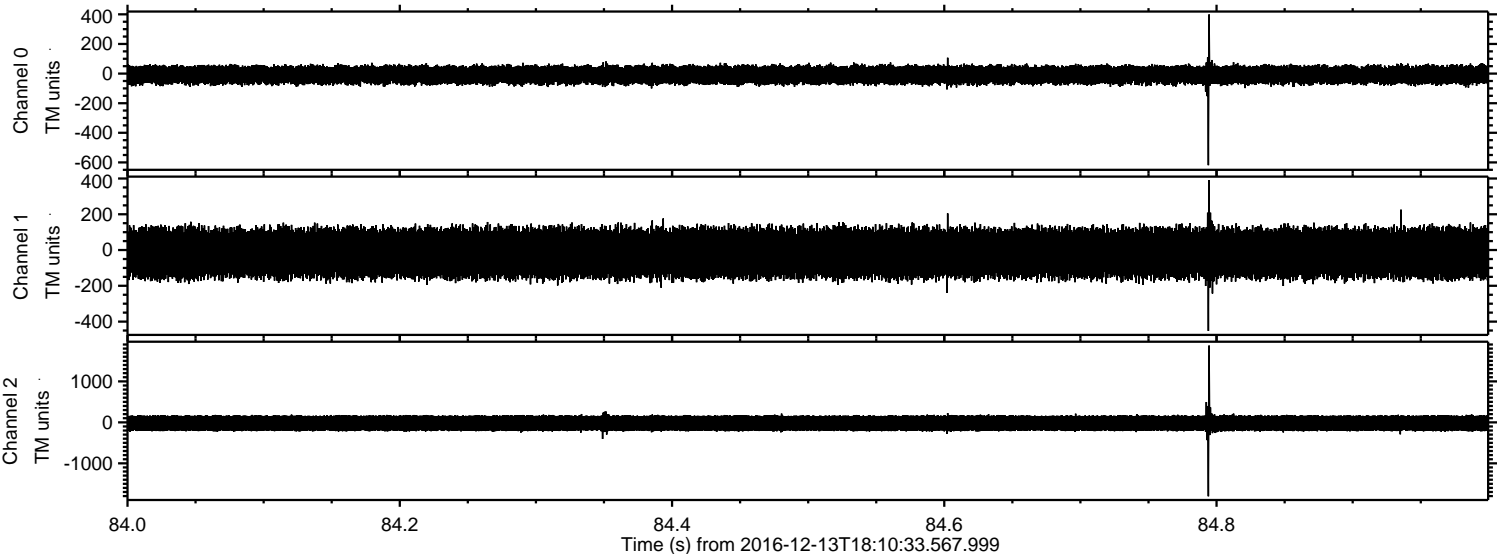


ELMAVAN 3D WAVEFORMS (Measured data sampled at 50 kHz) 51000 packets of 144 samples from 2016-12-13T18:10:33.567.999. Part 143/147

Processed Tue Dec 13 19:18:16 2016 by ELM ver.2012-10-06 from 001__elm20161213_181032__dat00.bin



Processed Tue Dec 13 19:18:17 2016 by ELM ver.2012-10-06 from 001__elm20161213_181032__dat00.bin



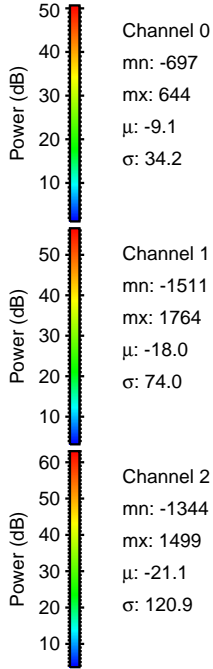
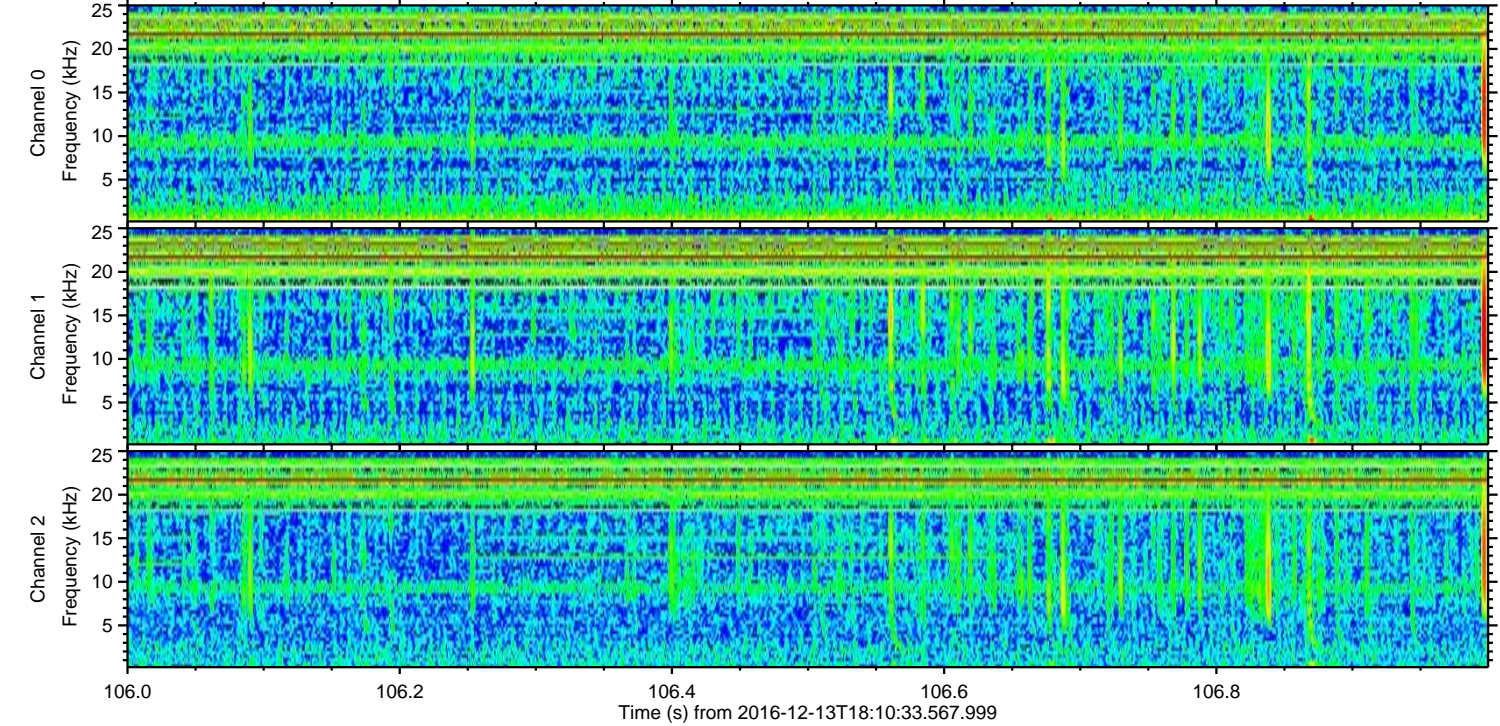
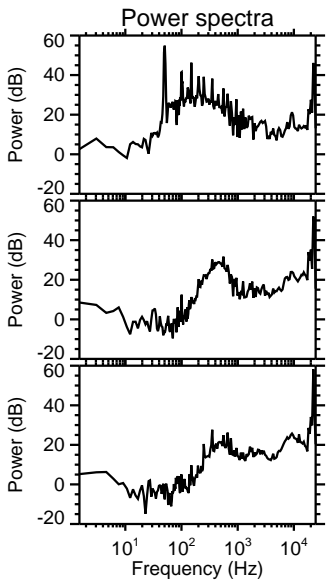
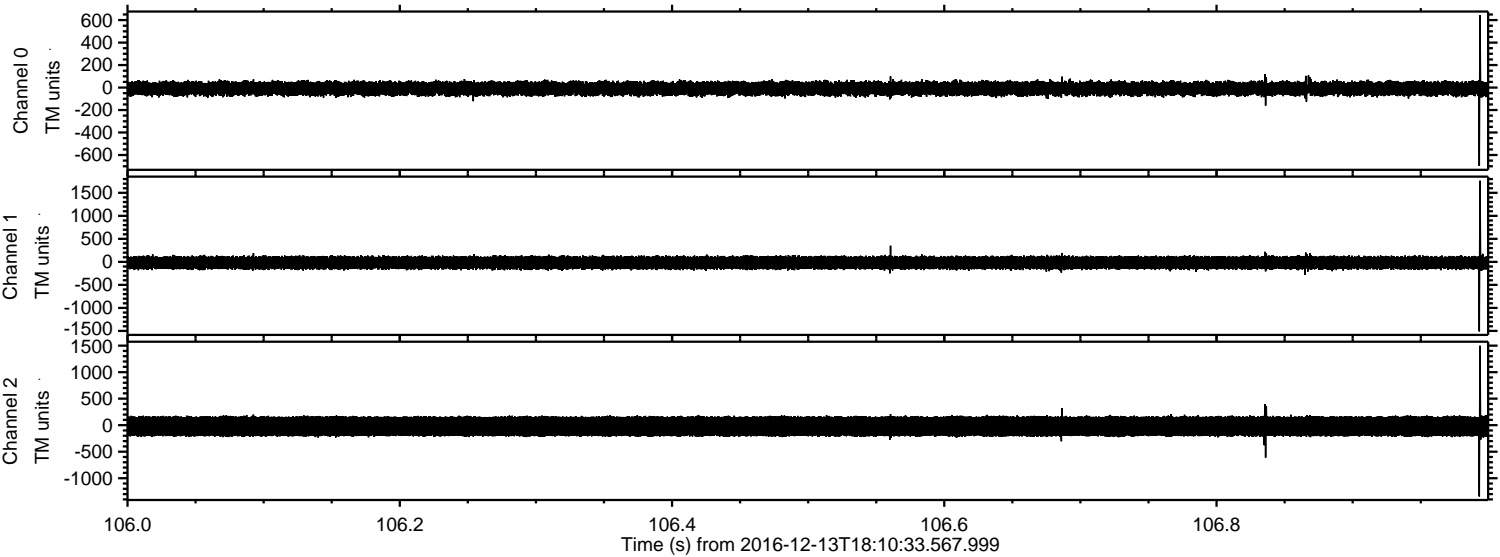
Channel 0
mn: -619
mx: 399
 μ : -9.1
 σ : 34.1

Channel 1
mn: -452
mx: 391
 μ : -17.8
 σ : 72.6

Channel 2
mn: -1805
mx: 1874
 μ : -21.0
 σ : 121.3

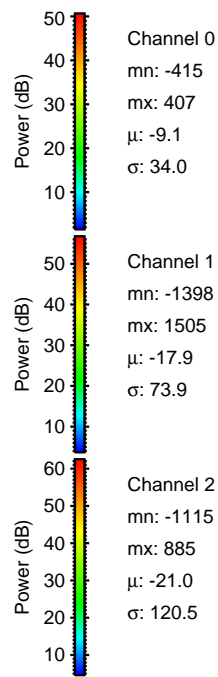
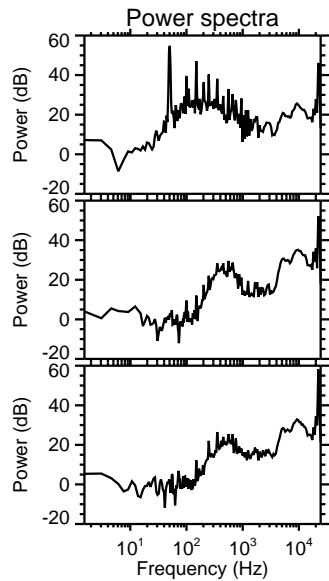
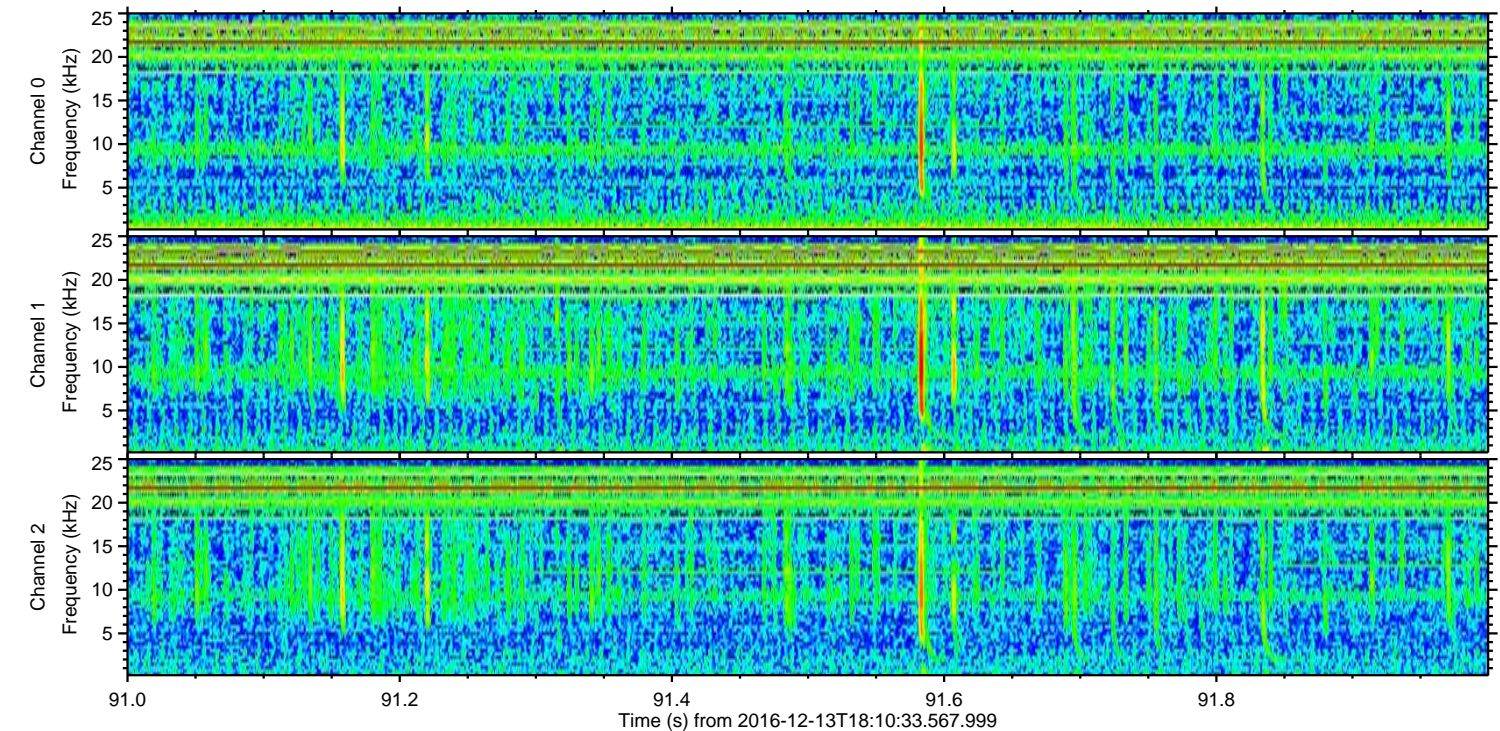
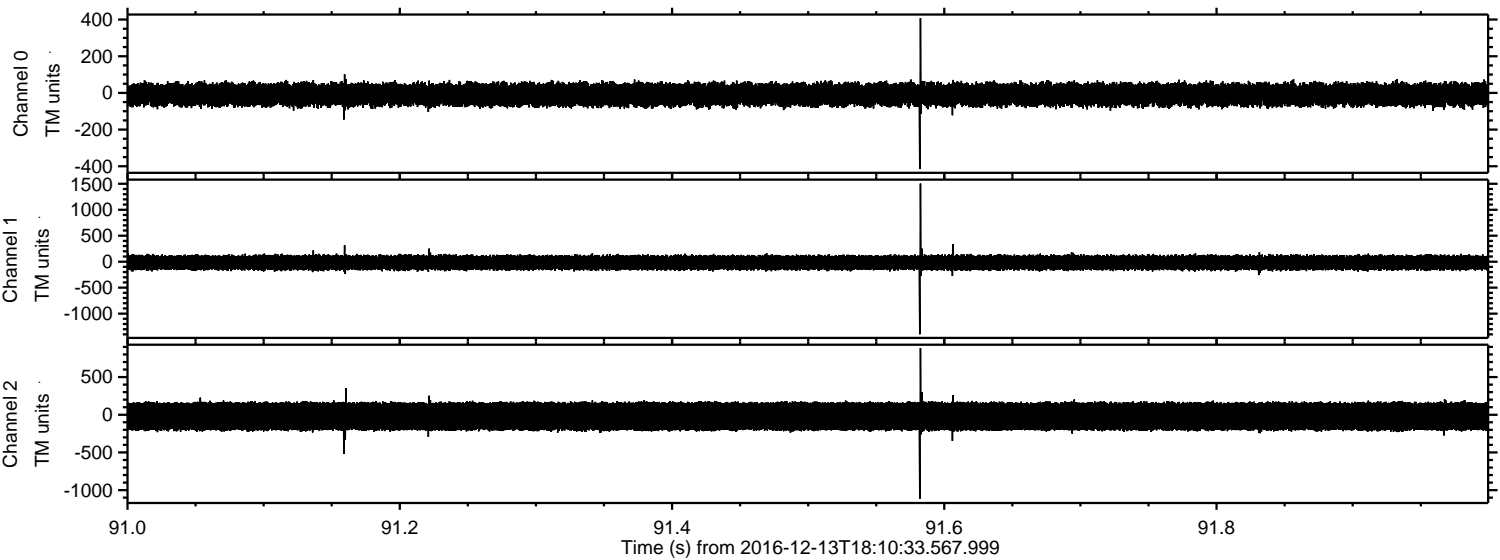
ELMAVAN 3D WAVEFORMS (Measured data sampled at 50 kHz) 51000 packets of 144 samples from 2016-12-13T18:10:33.567.999. Part 107/147

Processed Tue Dec 13 19:18:17 2016 by ELM ver.2012-10-06 from 001__elm20161213_181032__dat00.bin



ELMAVAN 3D WAVEFORMS (Measured data sampled at 50 kHz) 51000 packets of 144 samples from 2016-12-13T18:10:33.567.999. Part 92/147

Processed Tue Dec 13 19:18:18 2016 by ELM ver.2012-10-06 from 001__elm20161213_181032__dat00.bin

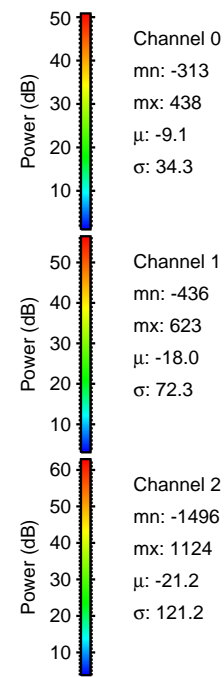
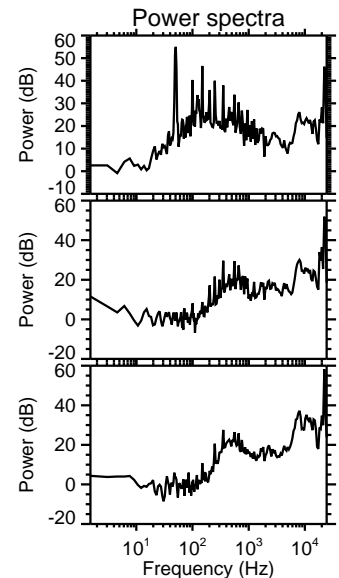
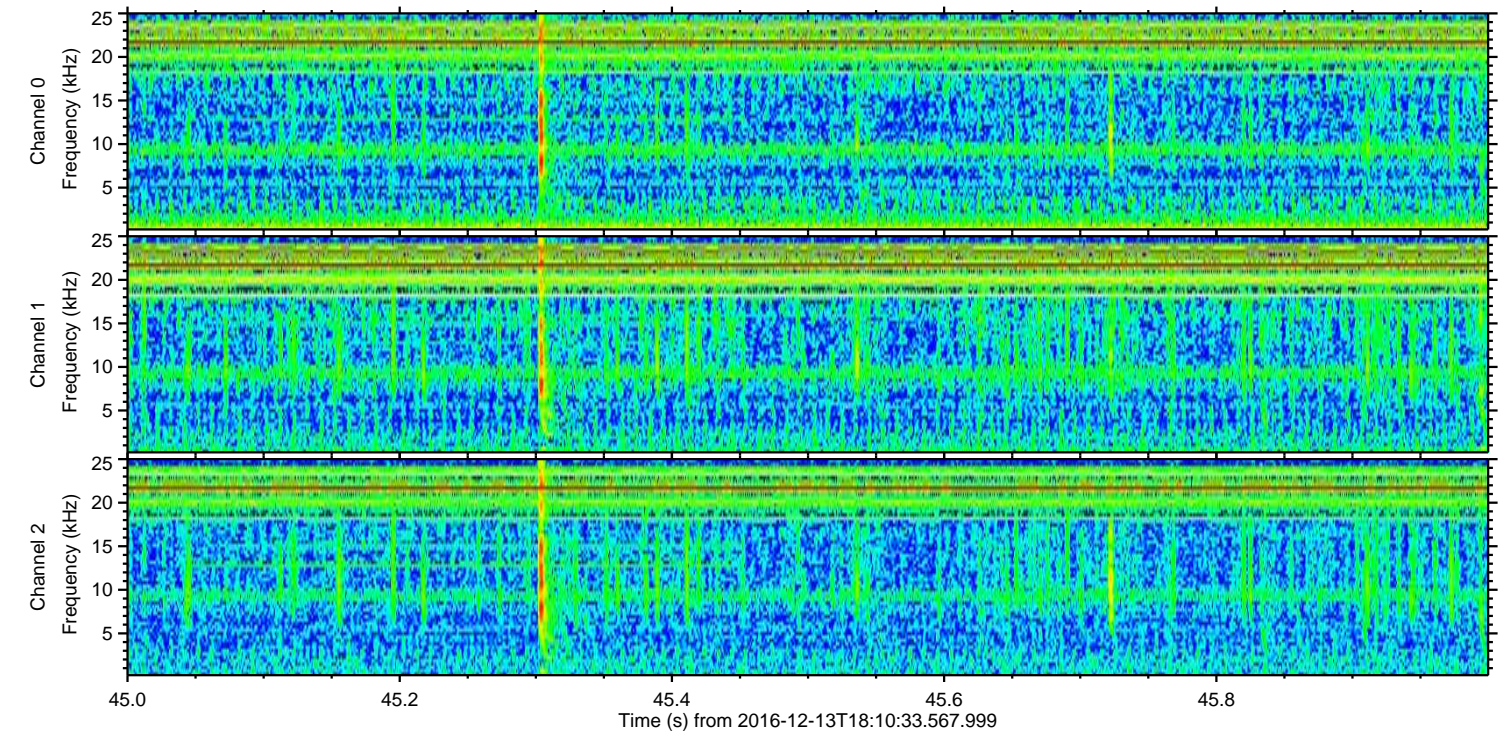
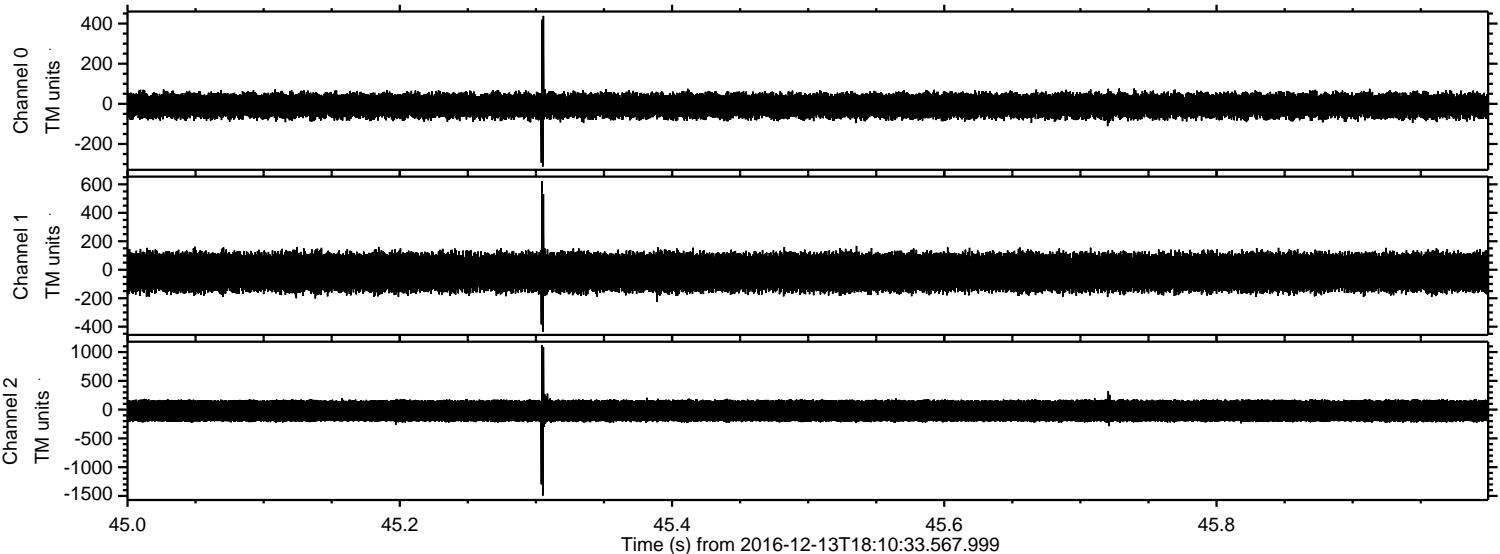


Channel 0
mn: -415
mx: 407
 μ : -9.1
 σ : 34.0

Channel 1
mn: -1398
mx: 1505
 μ : -17.9
 σ : 73.9

Channel 2
mn: -1115
mx: 885
 μ : -21.0
 σ : 120.5

Processed Tue Dec 13 19:18:19 2016 by ELM ver.2012-10-06 from 001__elm20161213_181032__dat00.bin

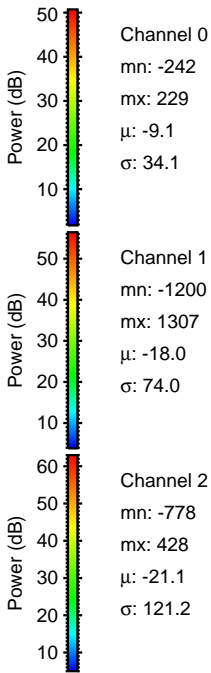
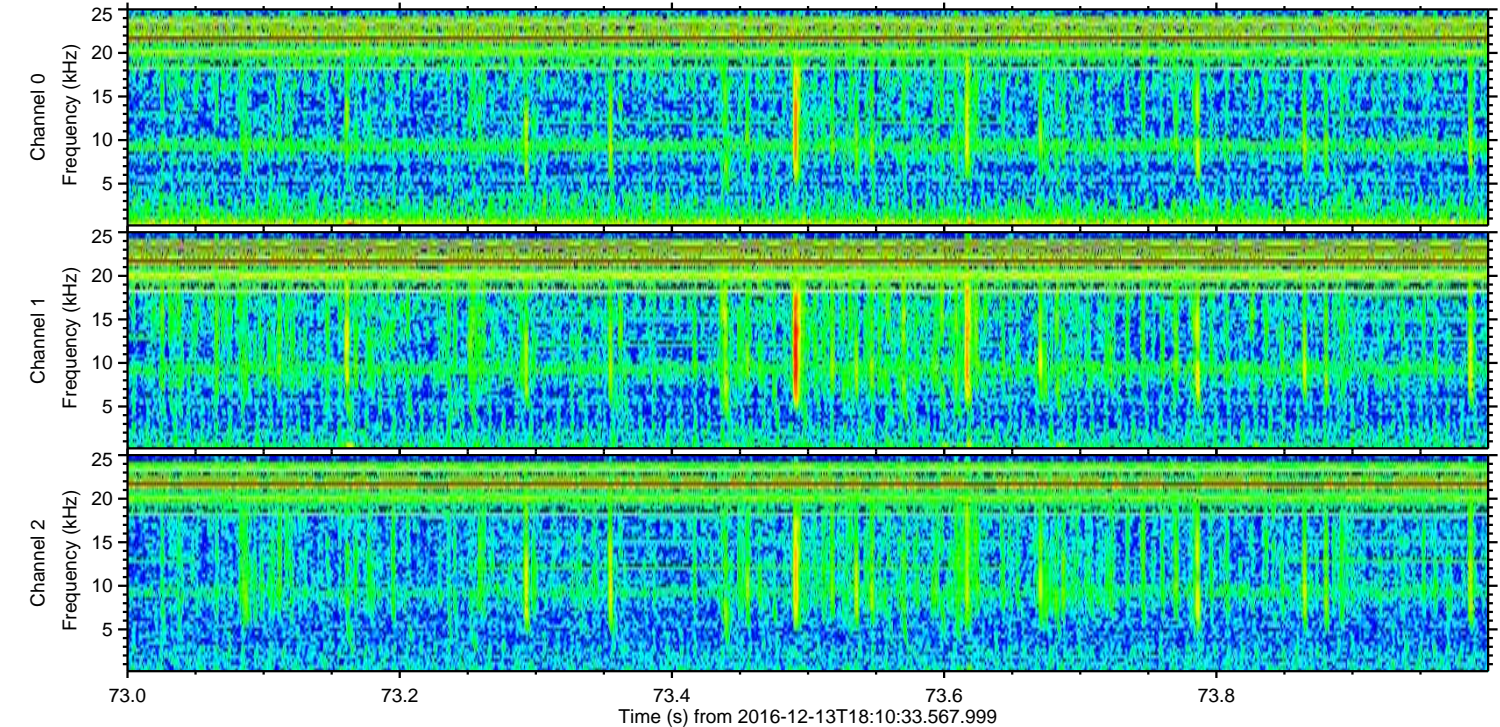
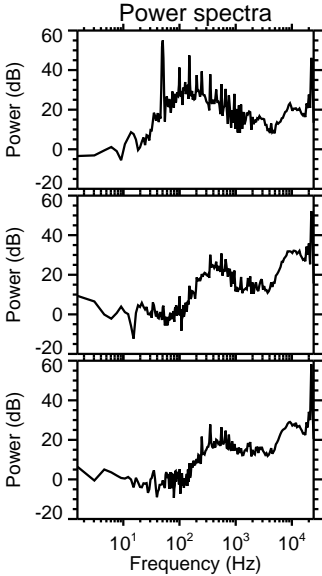
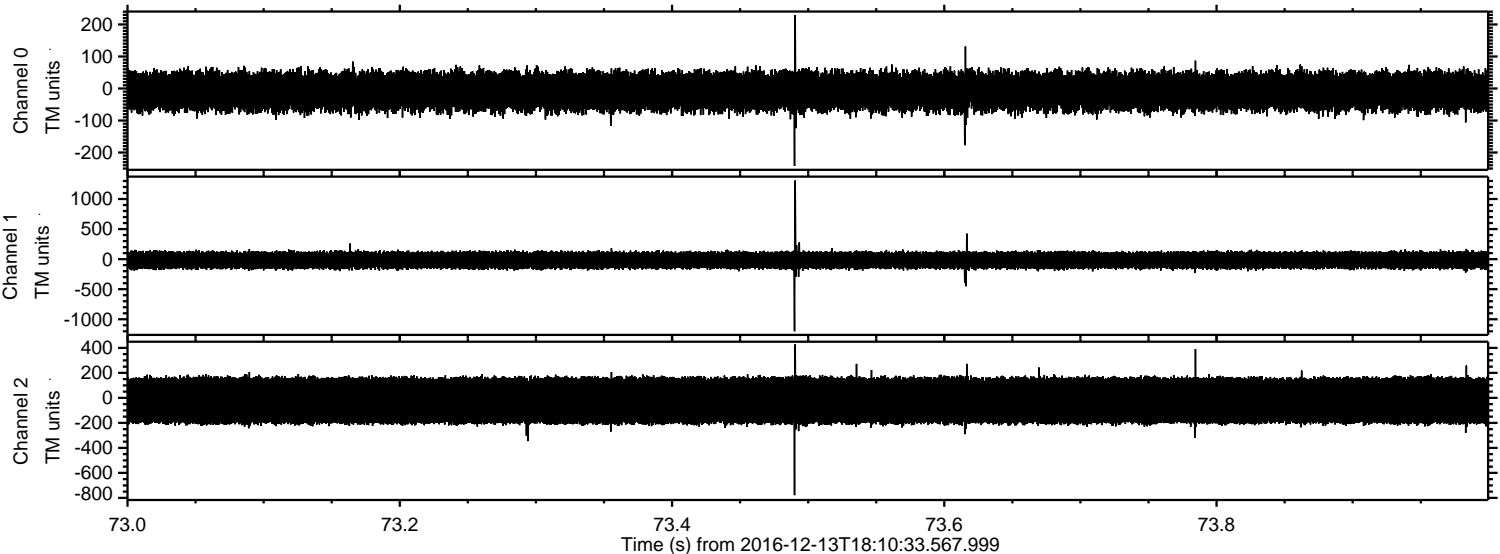


Channel 0
mn: -313
mx: 438
 μ : -9.1
 σ : 34.3

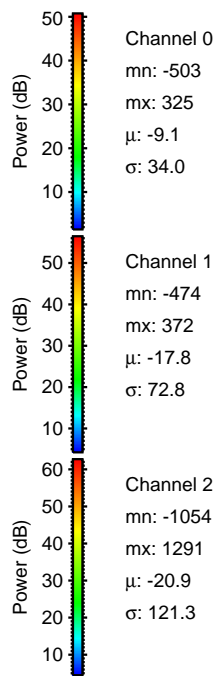
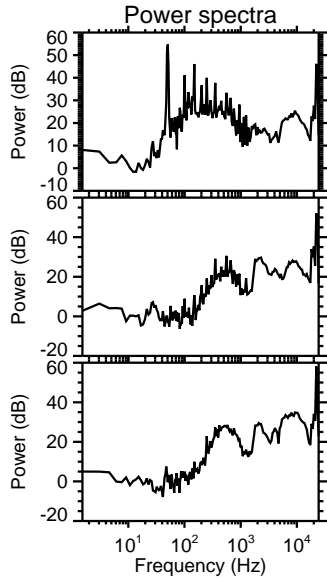
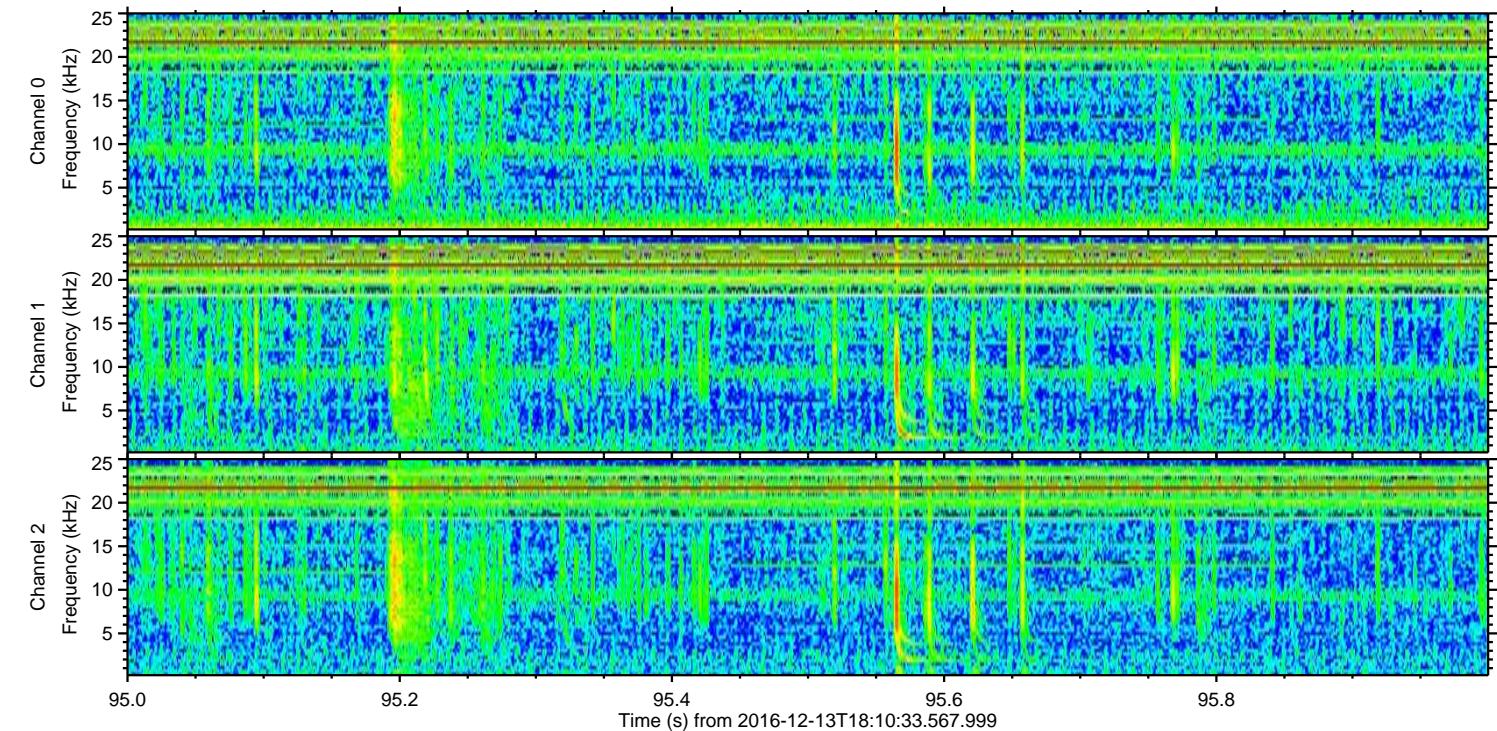
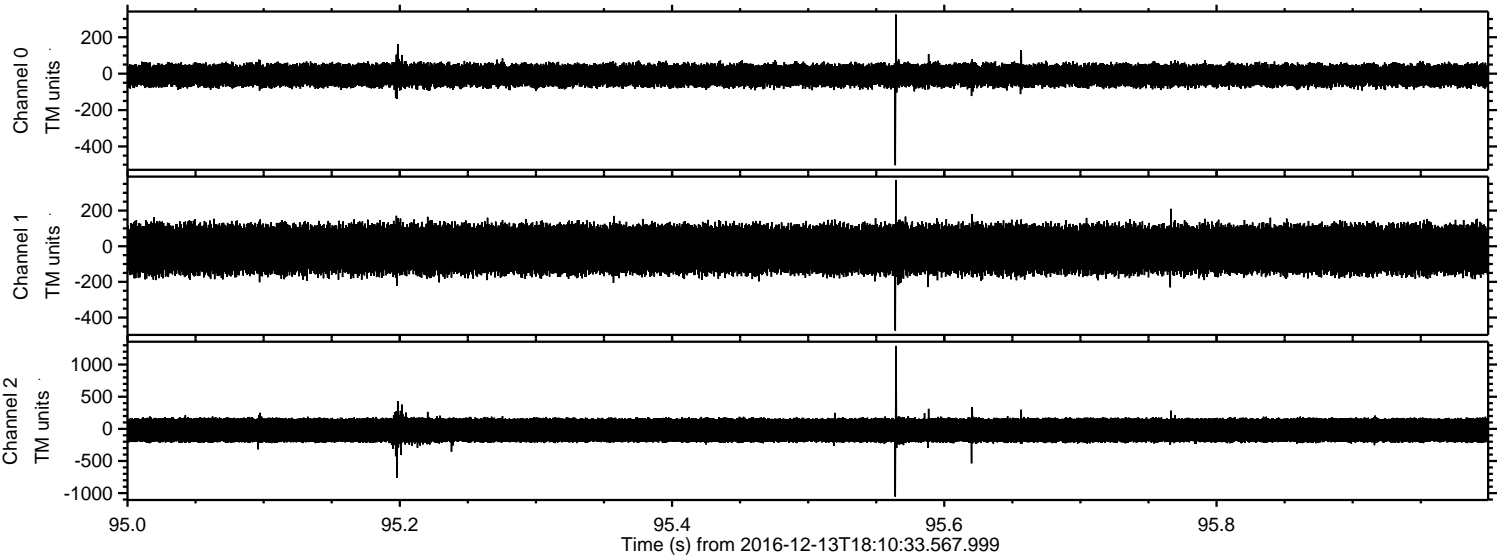
Channel 1
mn: -436
mx: 623
 μ : -18.0
 σ : 72.3

Channel 2
mn: -1496
mx: 1124
 μ : -21.2
 σ : 121.2

Processed Tue Dec 13 19:18:20 2016 by ELM ver.2012-10-06 from 001__elm20161213_181032__dat00.bin

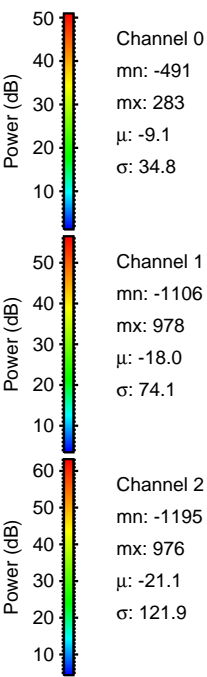
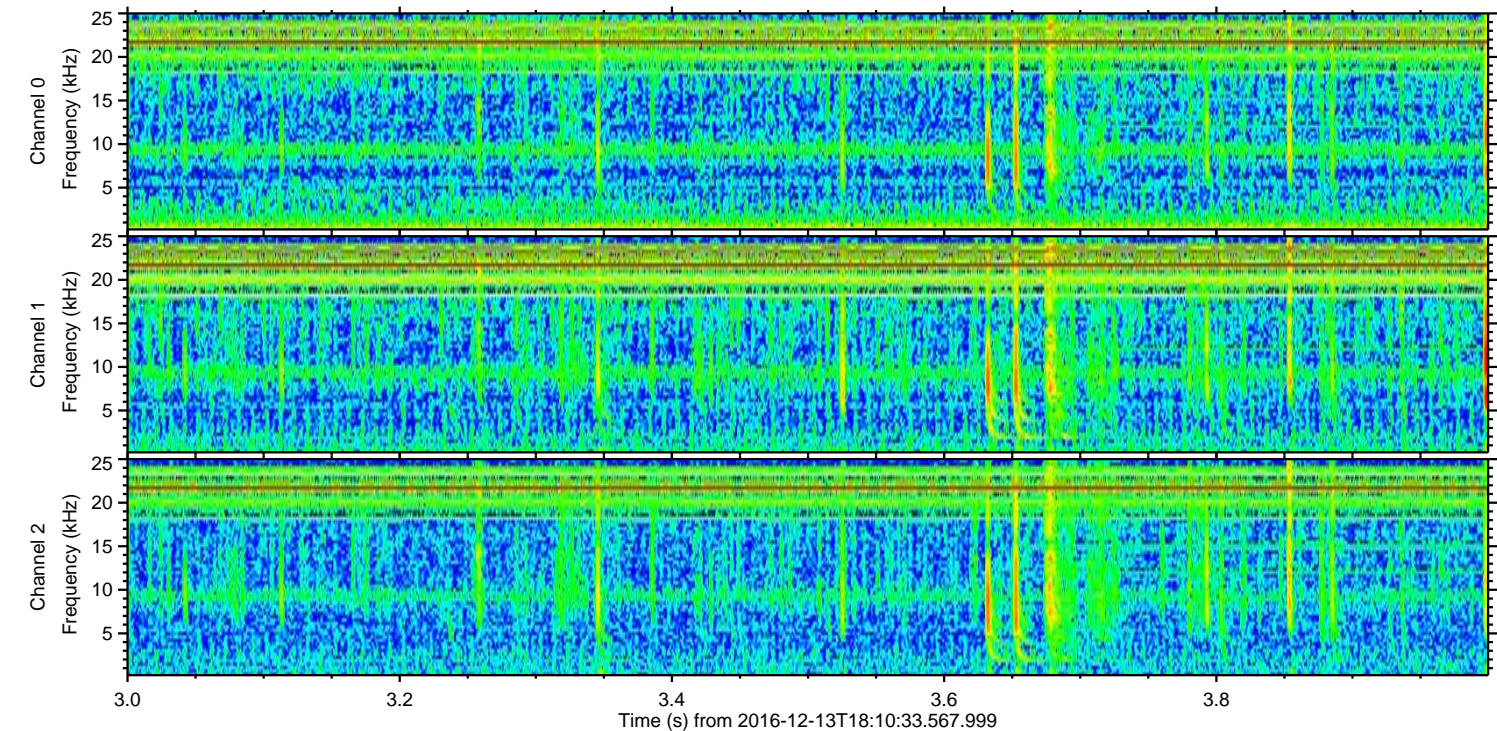
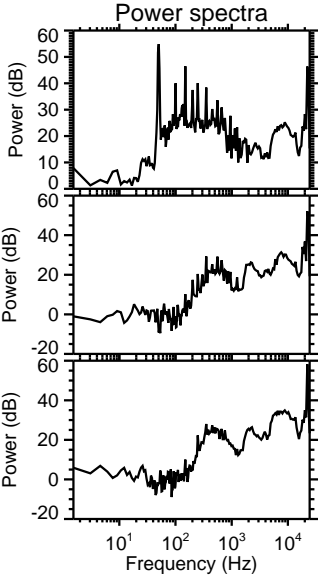
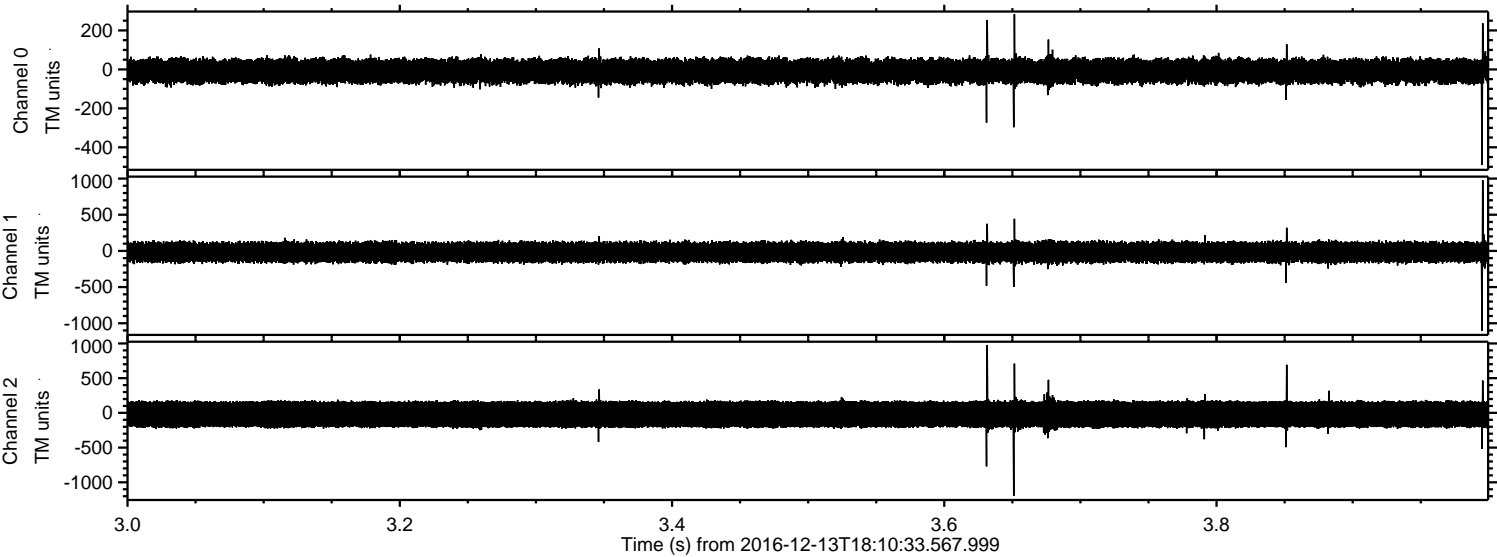


Processed Tue Dec 13 19:18:21 2016 by ELM ver.2012-10-06 from 001__elm20161213_181032__dat00.bin



ELMAVAN 3D WAVEFORMS (Measured data sampled at 50 kHz) 51000 packets of 144 samples from 2016-12-13T18:10:33.567.999. Part 4/147

Processed Tue Dec 13 19:18:22 2016 by ELM ver.2012-10-06 from 001__elm20161213_181032__dat00.bin



ELMAVAN 3D WAVEFORMS (Measured data sampled at 50 kHz) 51000 packets of 144 samples from 2016-12-13T18:10:33.567.999. Part 83/147

Processed Tue Dec 13 19:18:23 2016 by ELM ver.2012-10-06 from 001__elm20161213_181032__dat00.bin

