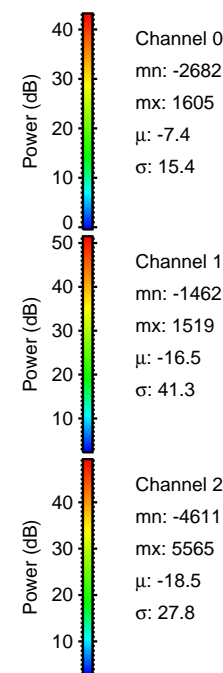
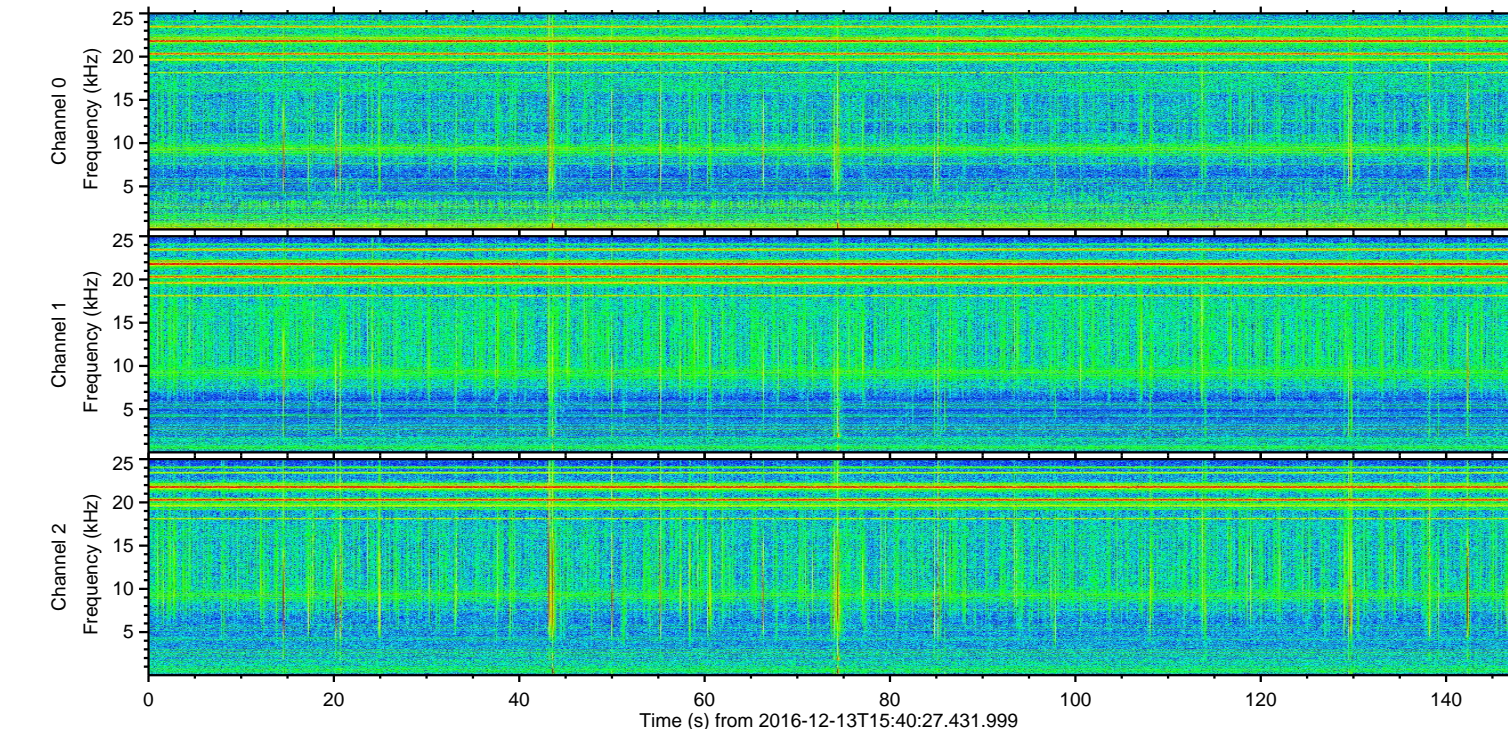
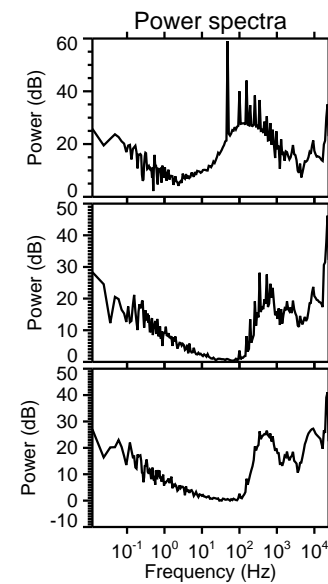
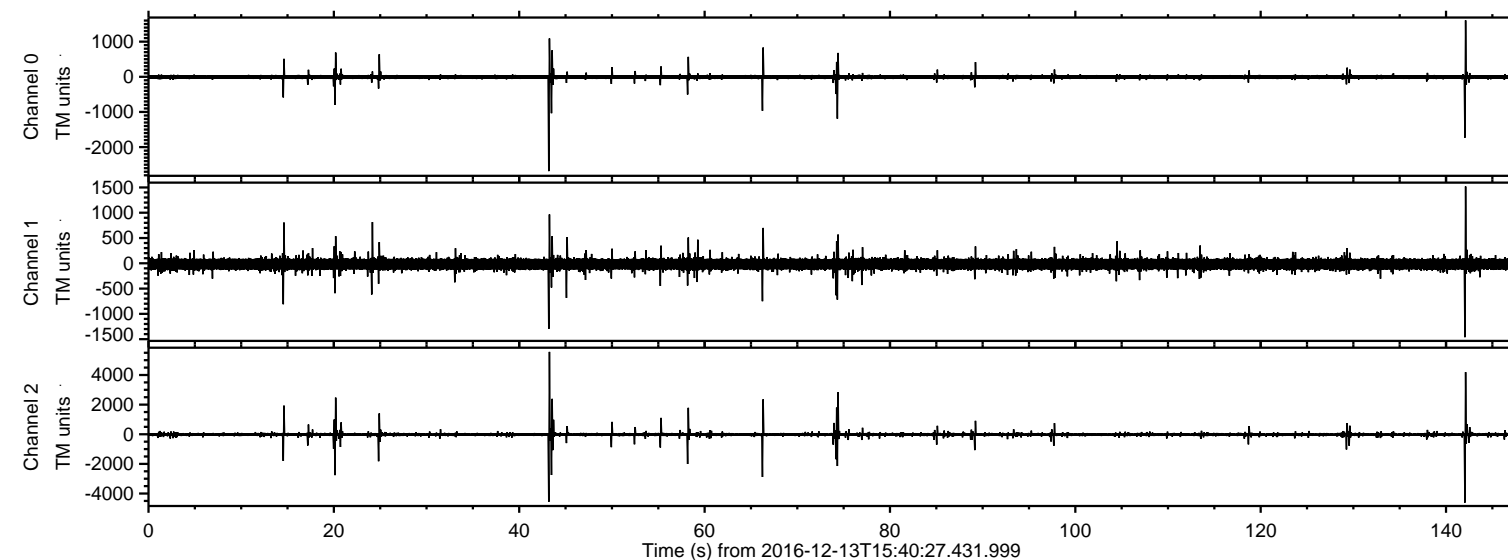
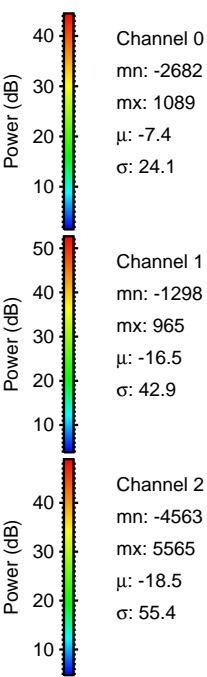
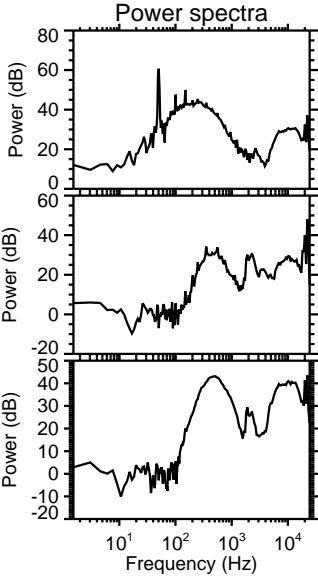
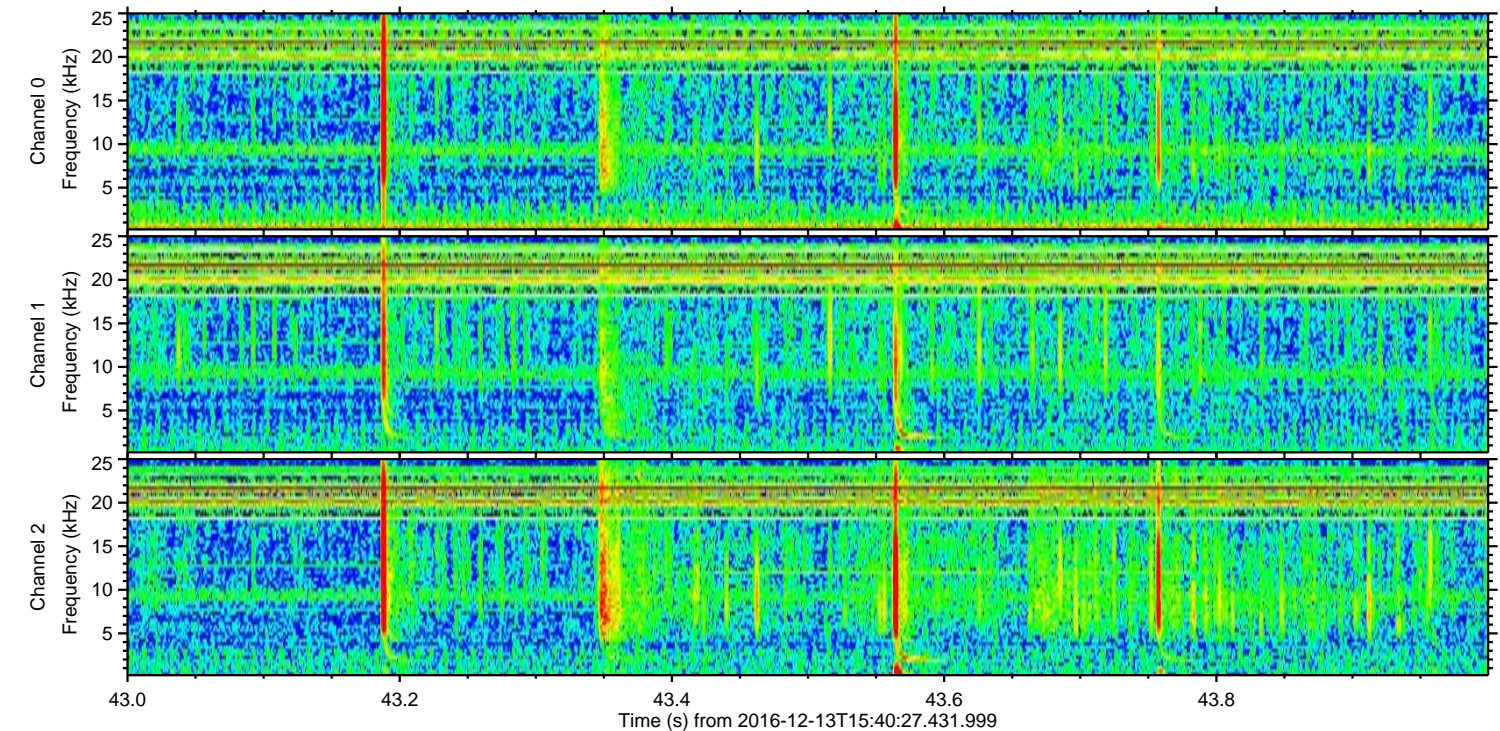
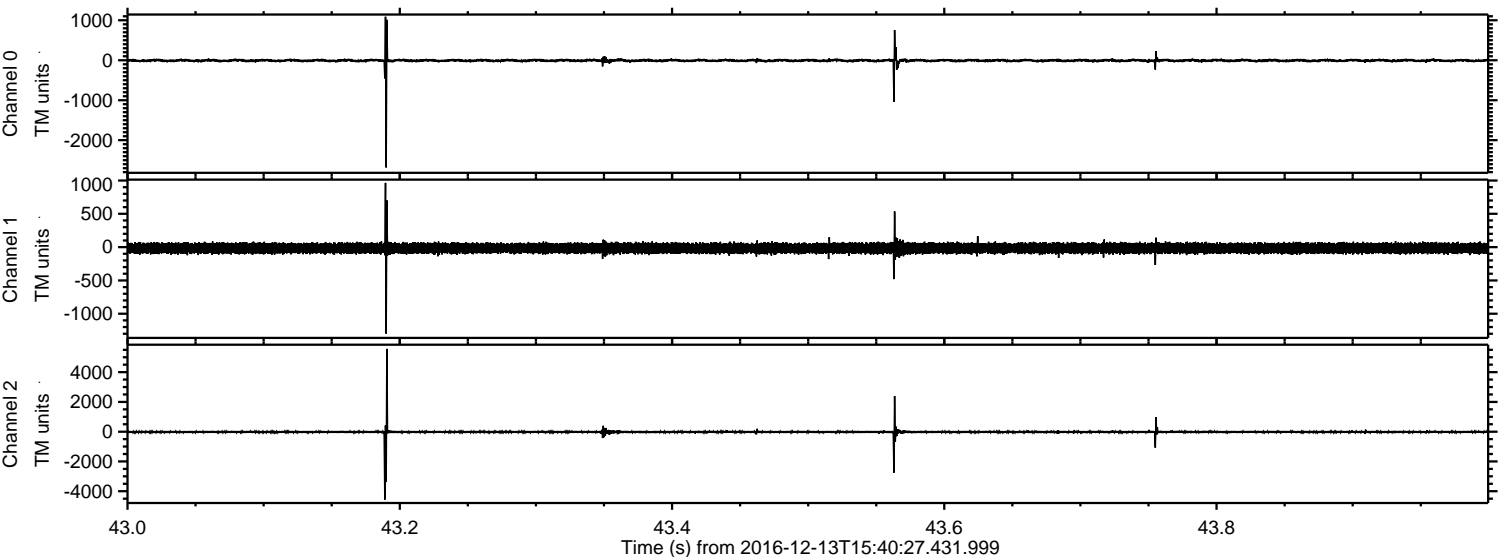


ELMAVAN 3D WAVEFORMS (Measured data sampled at 50 kHz) 51000 packets of 144 samples from 2016-12-13T15:40:27.431.999.

Processed Tue Dec 13 16:47:58 2016 by ELM ver.2012-10-06 from 001__elm20161213_154026__dat00.bin

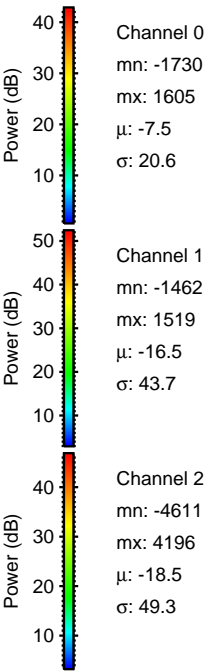
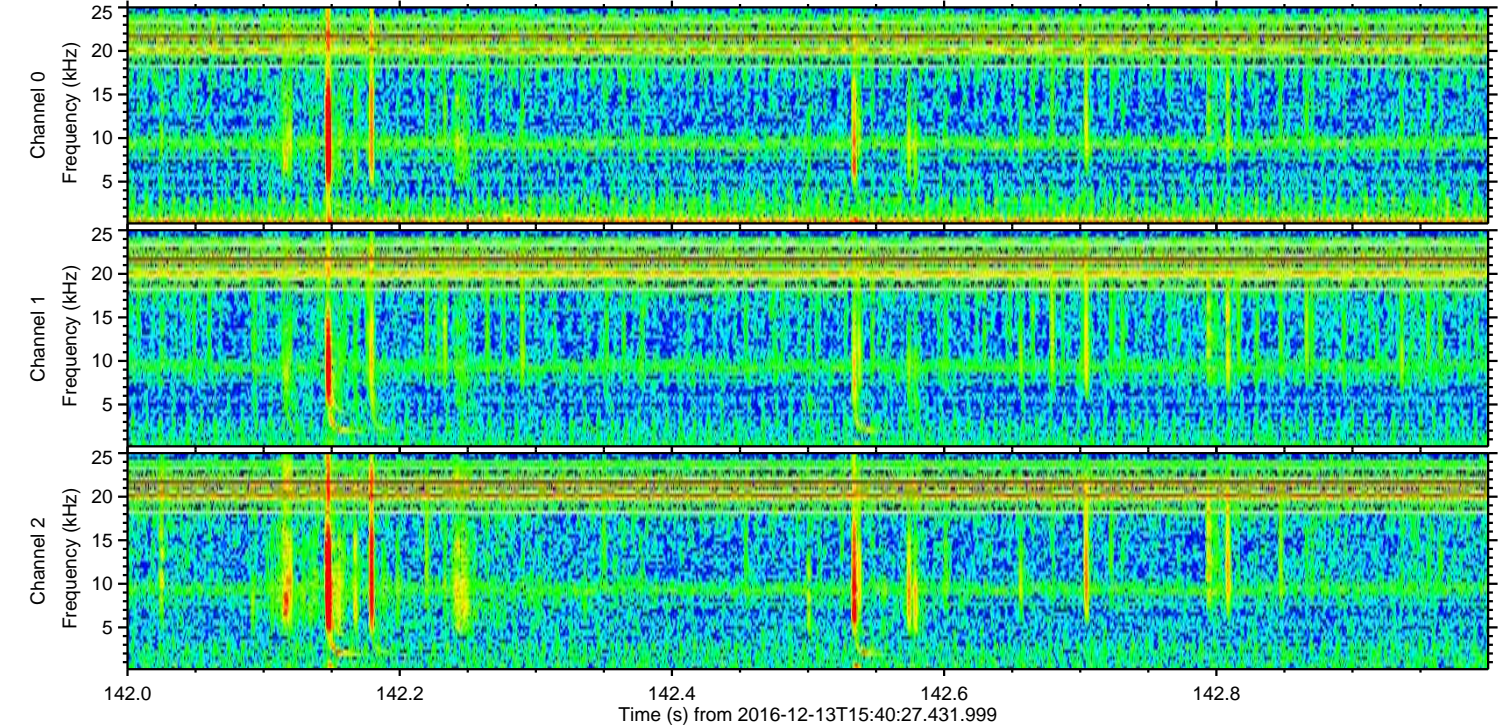
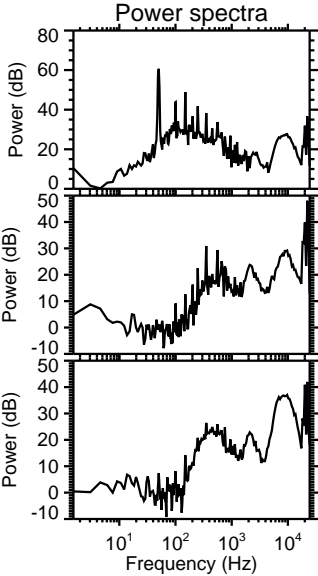
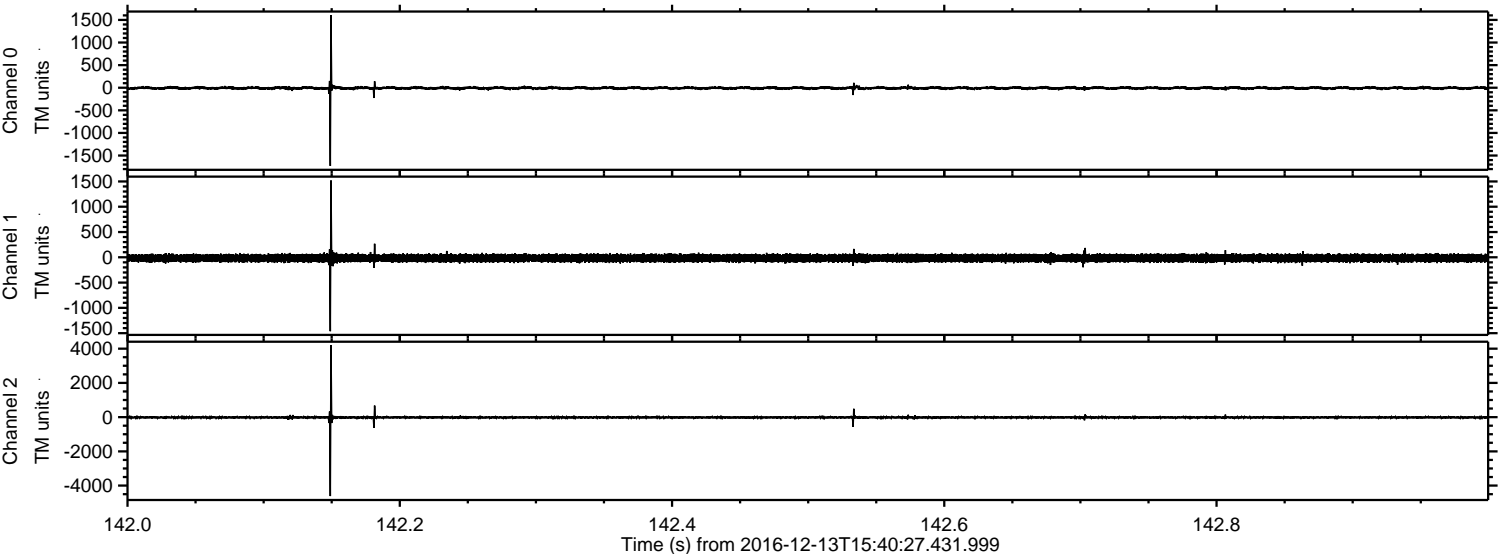


Processed Tue Dec 13 16:48:10 2016 by ELM ver.2012-10-06 from 001__elm20161213_154026__dat00.bin



ELMAVAN 3D WAVEFORMS (Measured data sampled at 50 kHz) 51000 packets of 144 samples from 2016-12-13T15:40:27.431.999. Part 143/147

Processed Tue Dec 13 16:48:11 2016 by ELM ver.2012-10-06 from 001__elm20161213_154026__dat00.bin

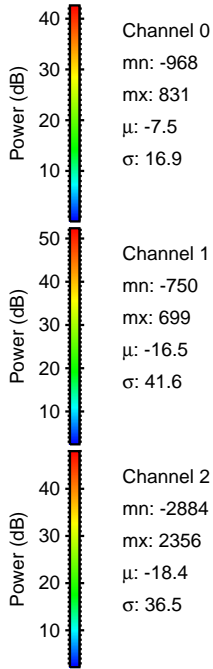
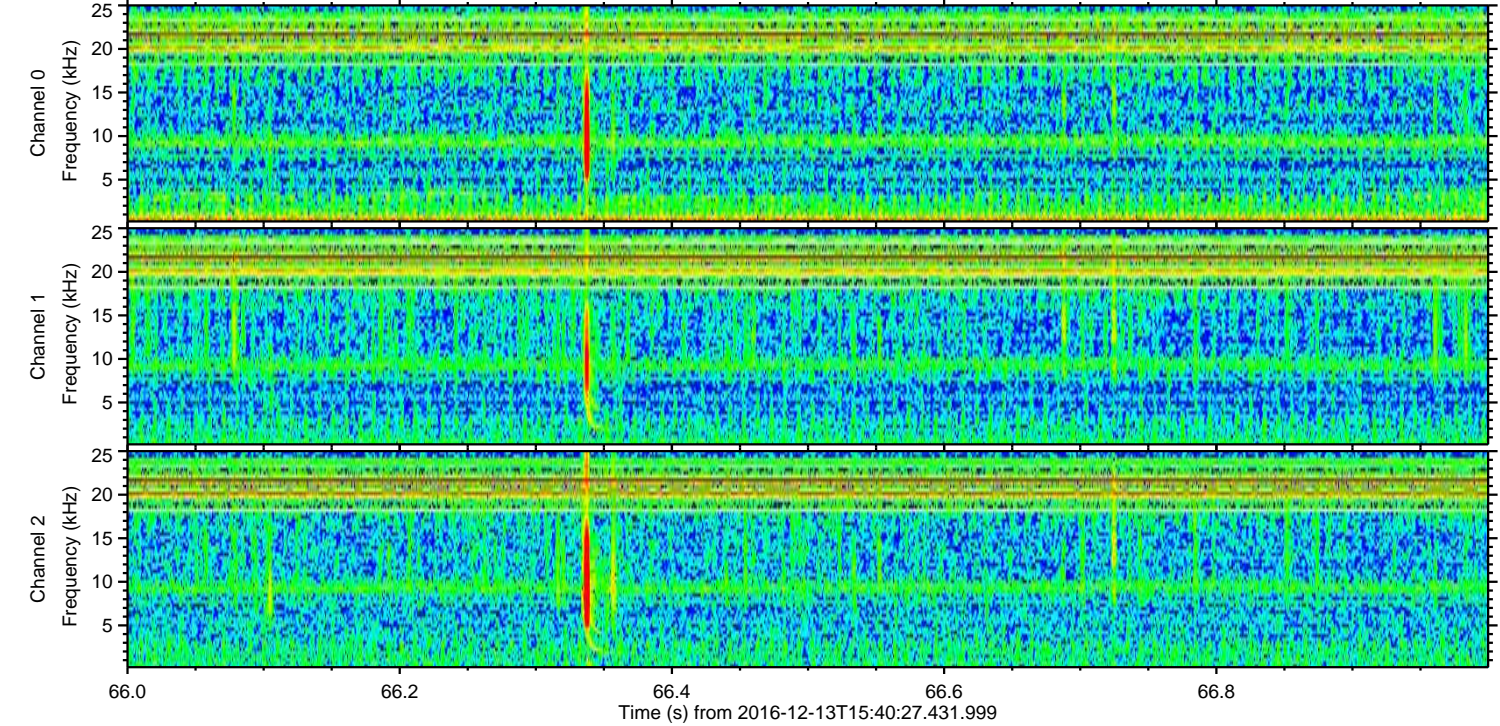
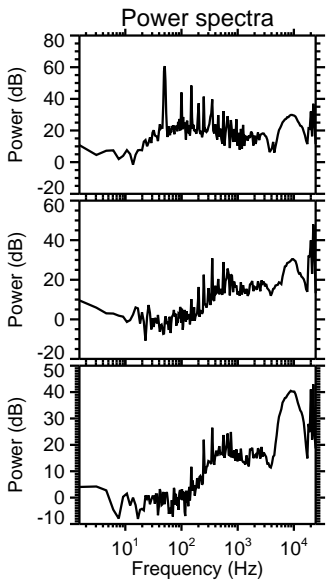
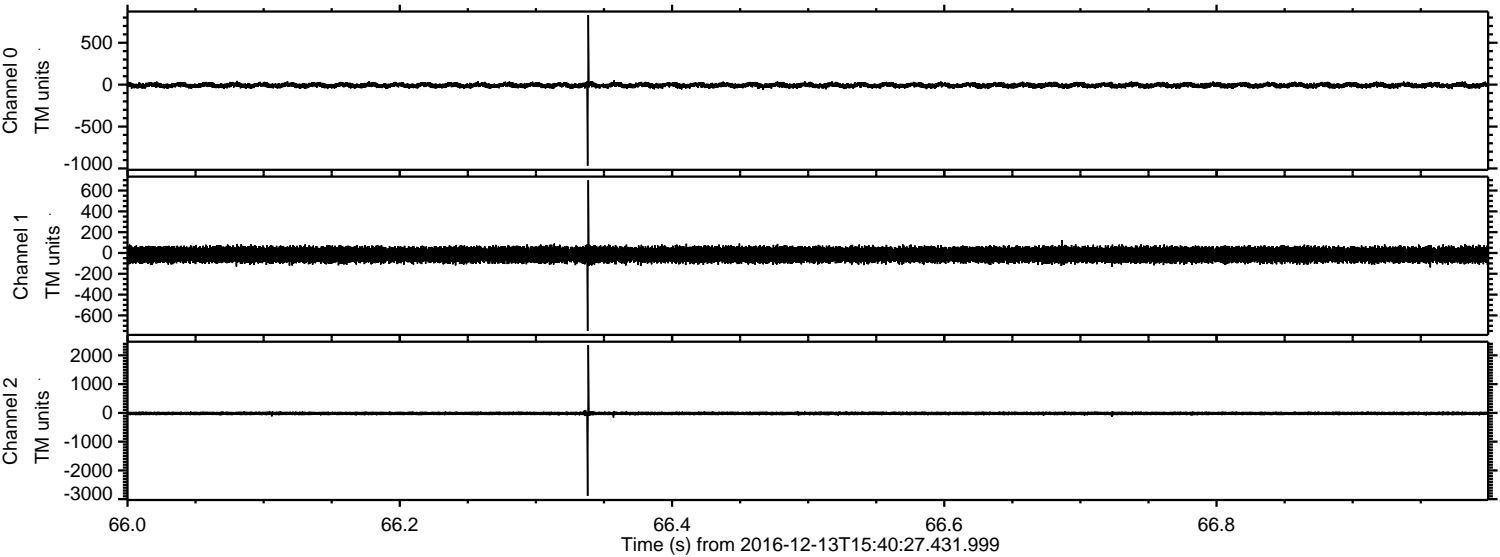


Channel 0
mn: -1730
mx: 1605
 μ : -7.5
 σ : 20.6

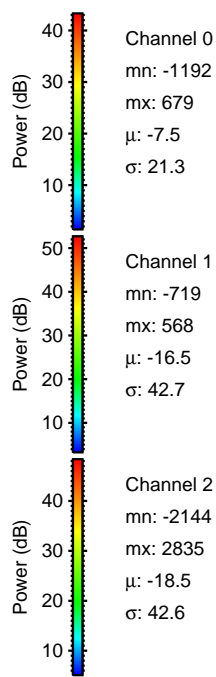
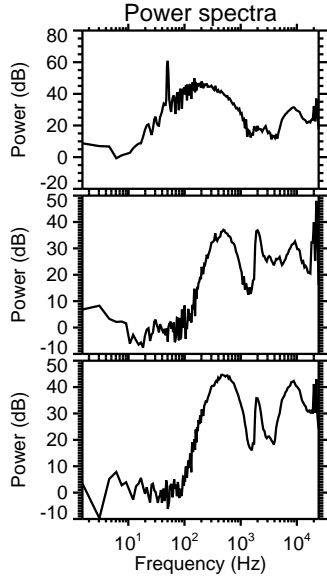
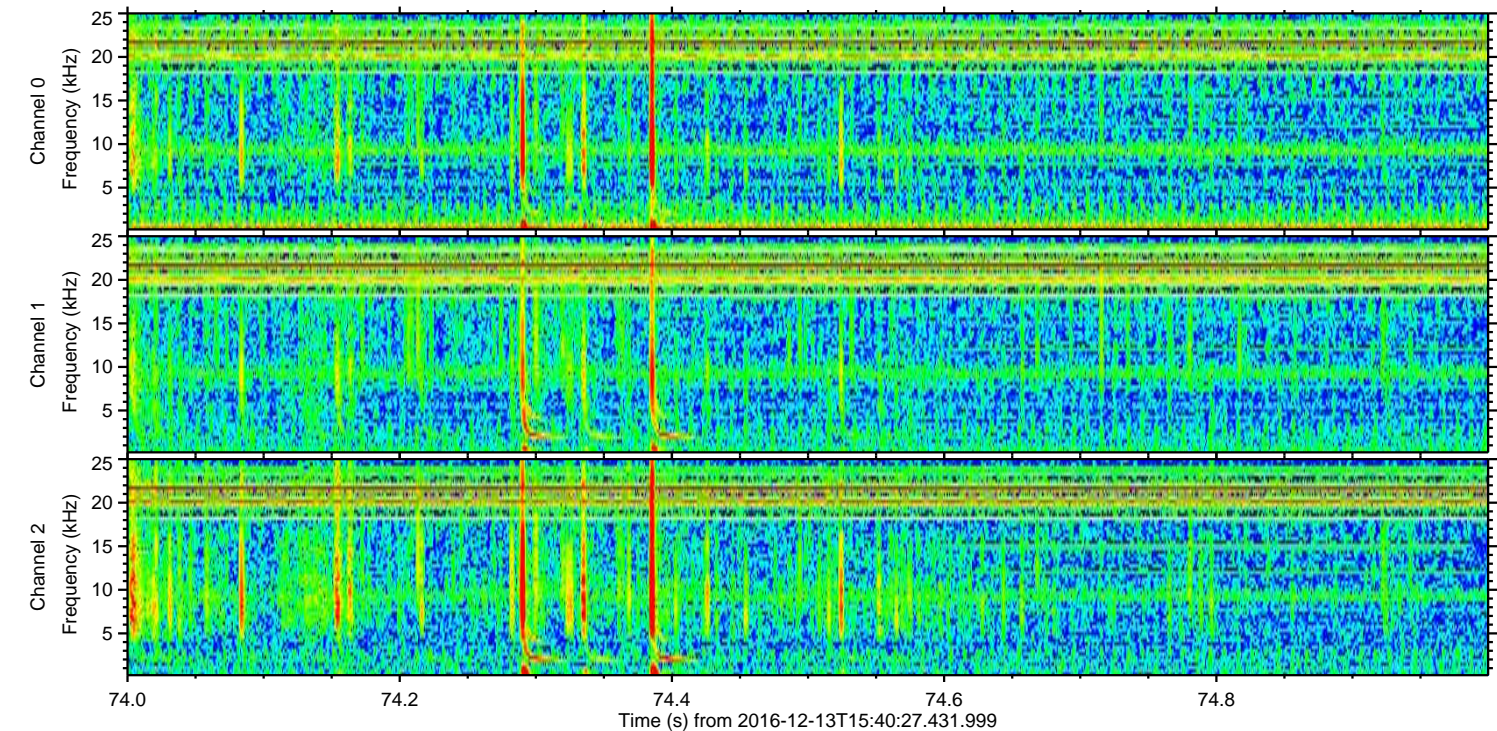
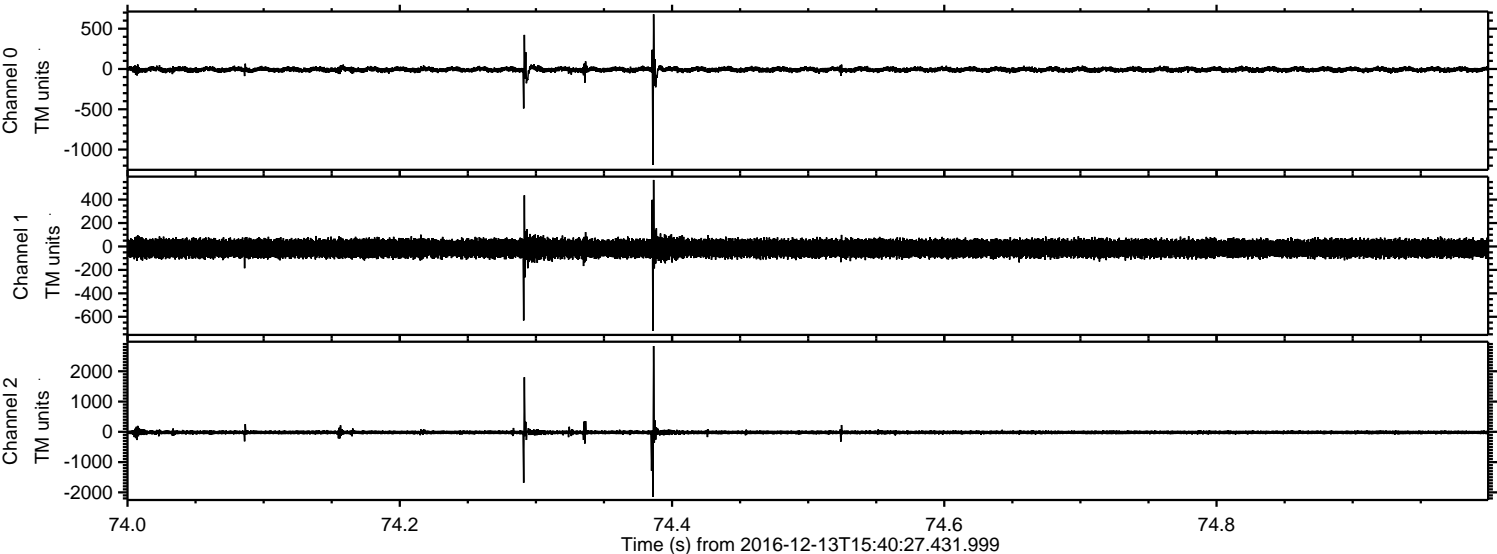
Channel 1
mn: -1462
mx: 1519
 μ : -16.5
 σ : 43.7

Channel 2
mn: -4611
mx: 4196
 μ : -18.5
 σ : 49.3

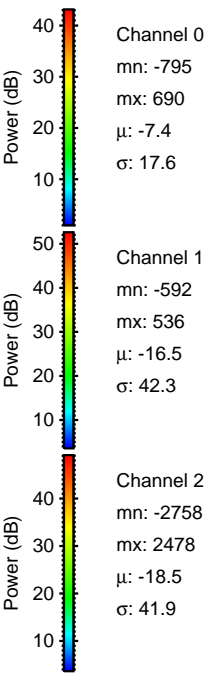
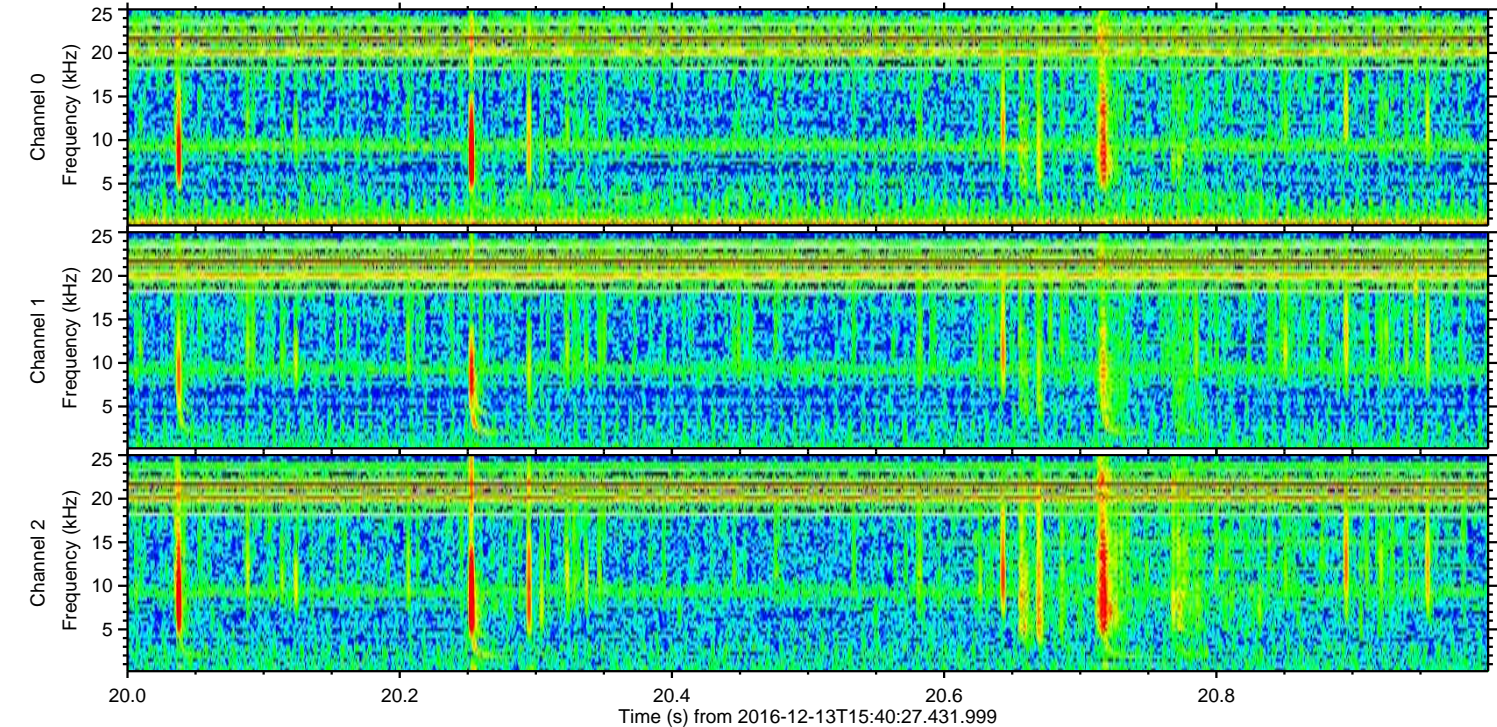
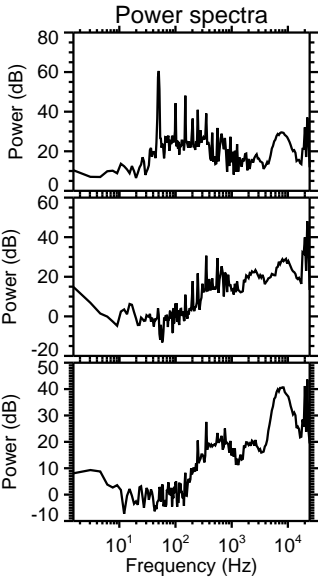
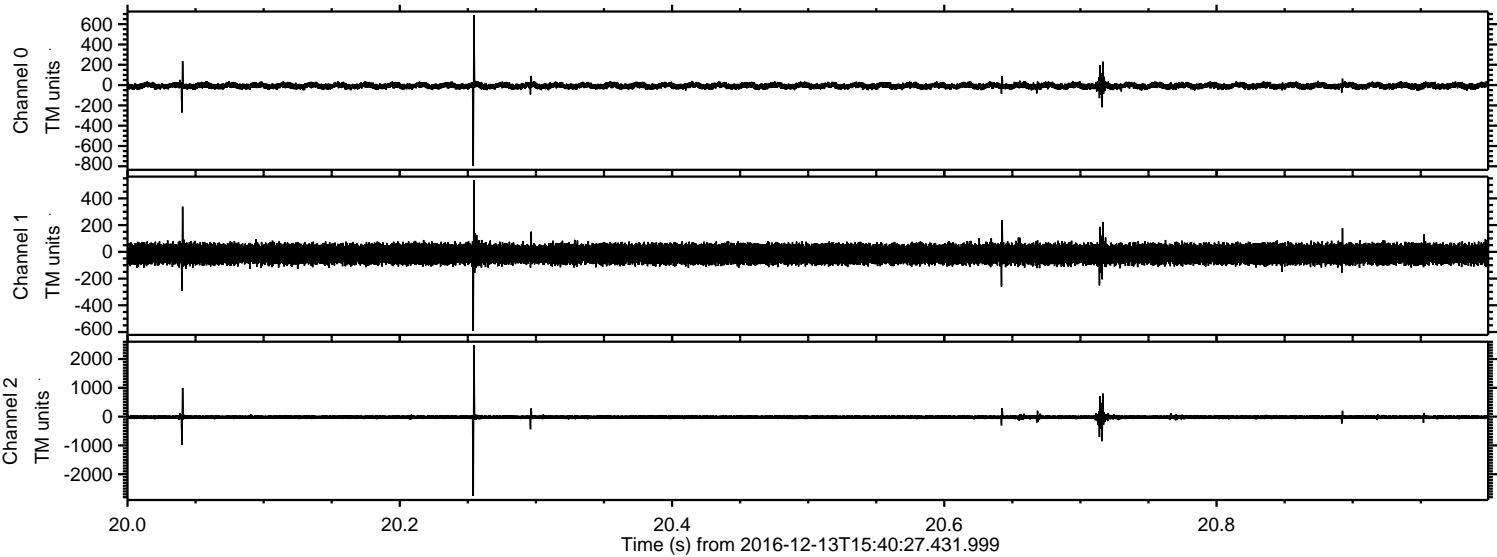
Processed Tue Dec 13 16:48:12 2016 by ELM ver.2012-10-06 from 001__elm20161213_154026__dat00.bin



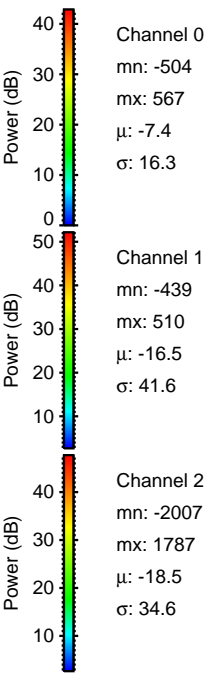
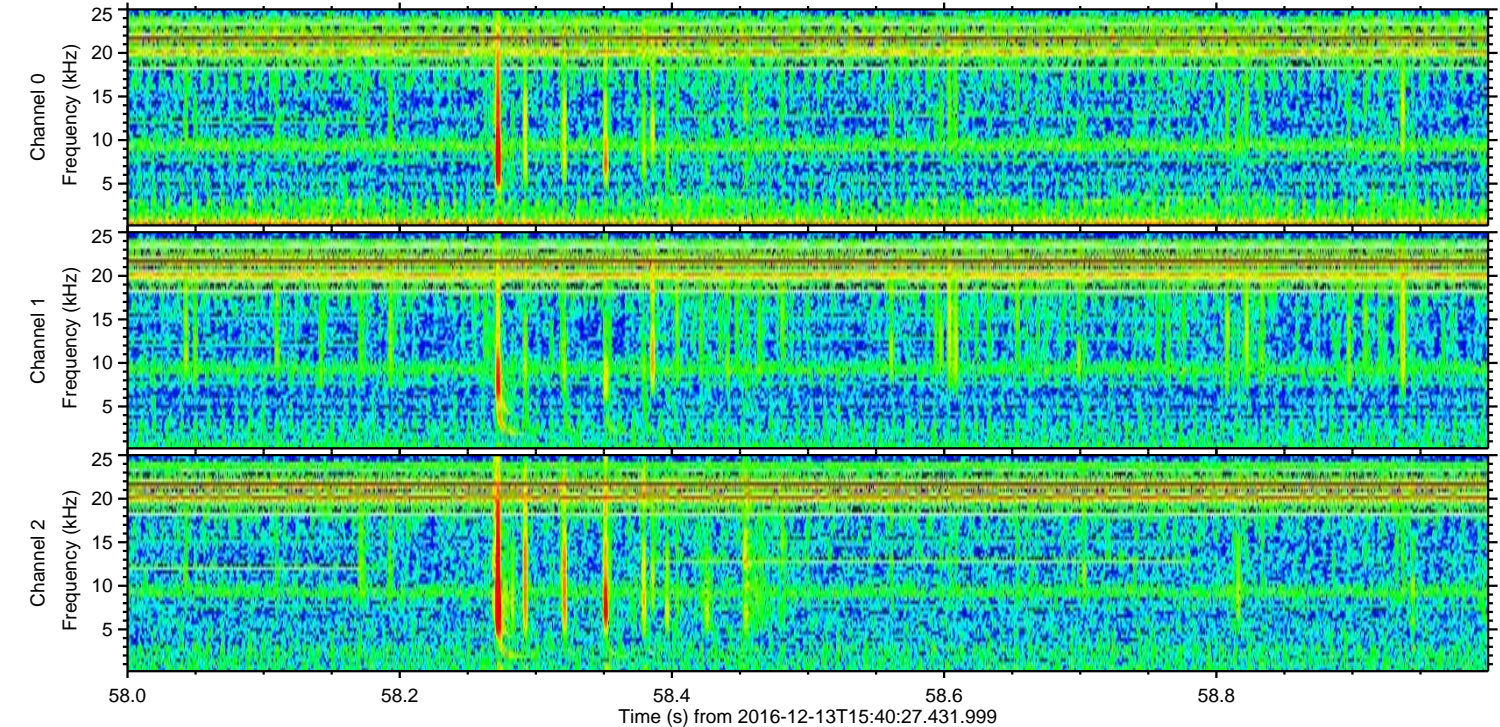
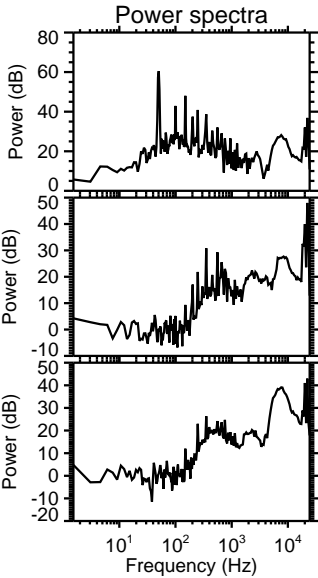
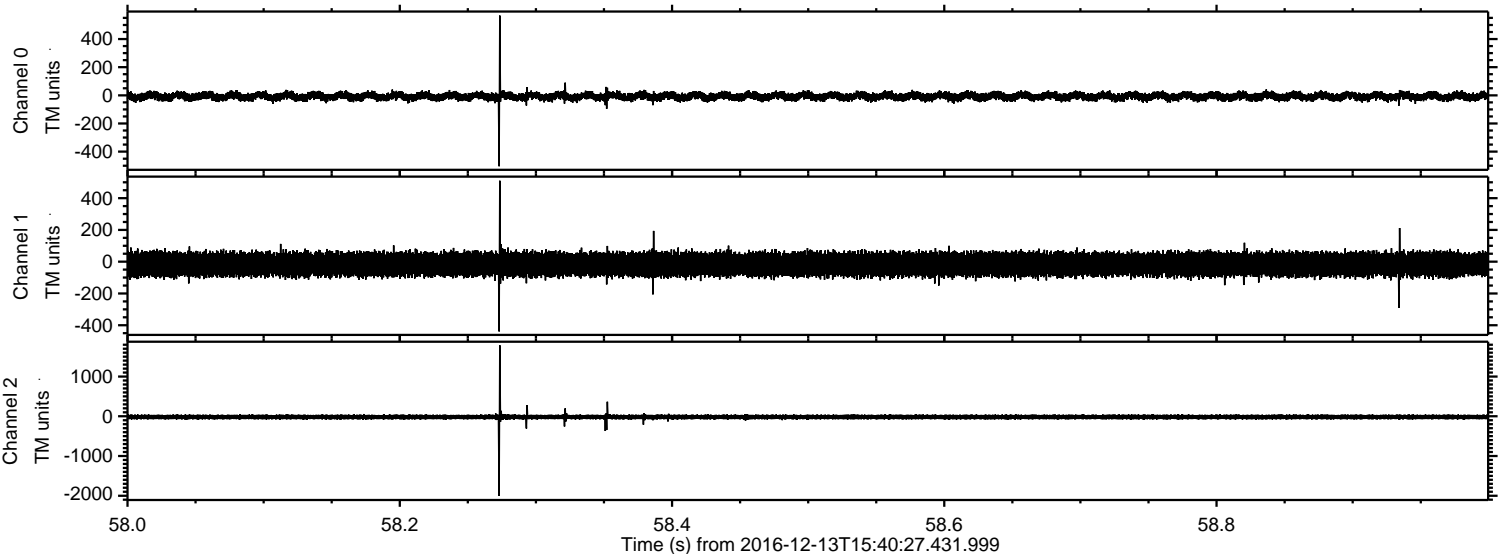
Processed Tue Dec 13 16:48:13 2016 by ELM ver.2012-10-06 from 001__elm20161213_154026__dat00.bin



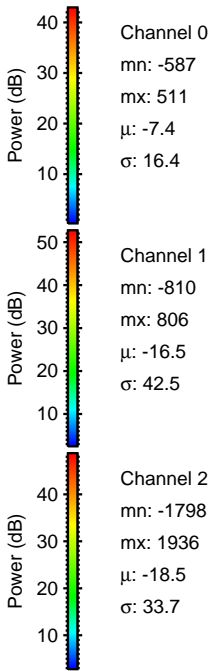
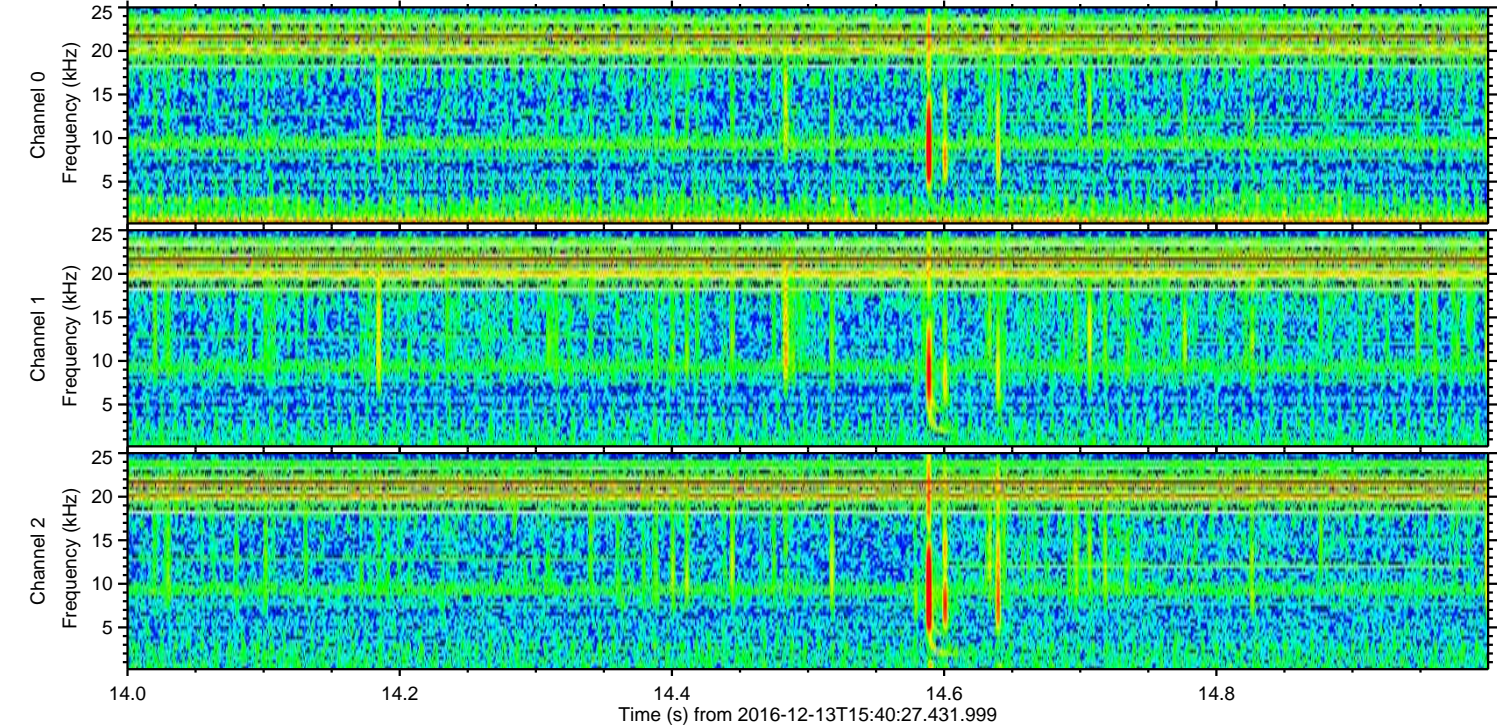
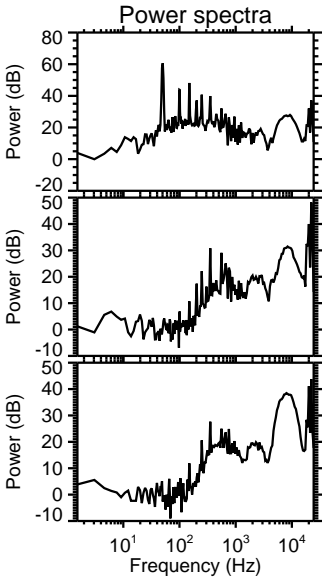
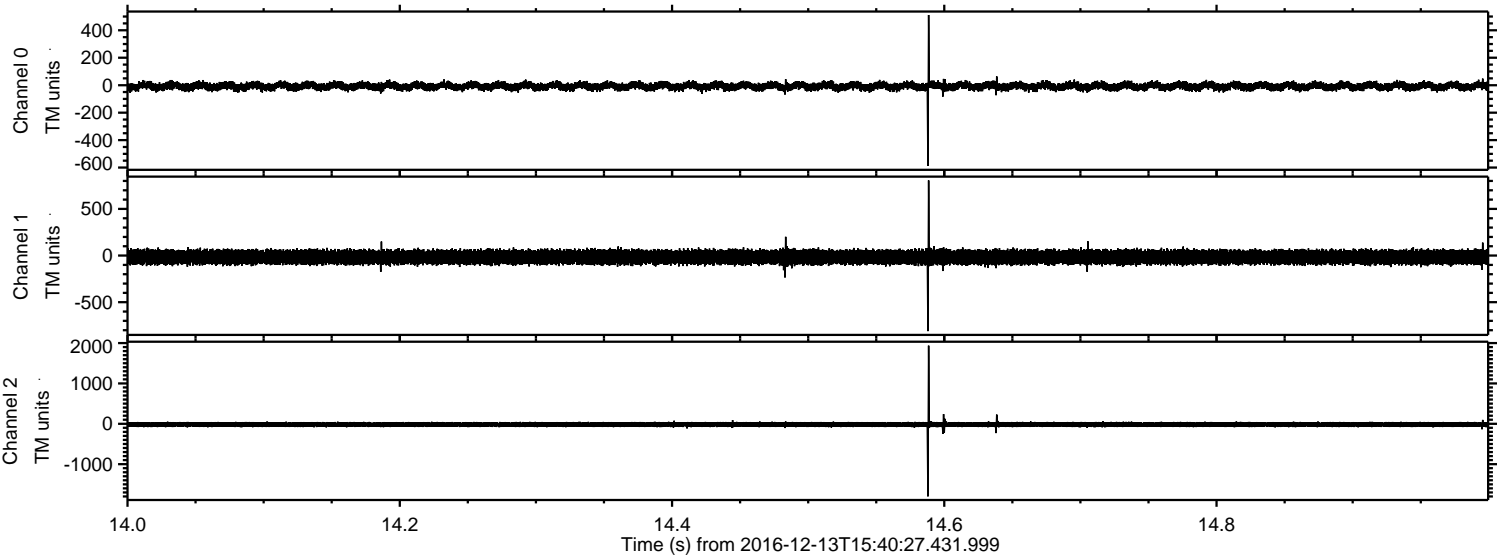
Processed Tue Dec 13 16:48:14 2016 by ELM ver.2012-10-06 from 001__elm20161213_154026__dat00.bin



Processed Tue Dec 13 16:48:15 2016 by ELM ver.2012-10-06 from 001__elm20161213_154026__dat00.bin

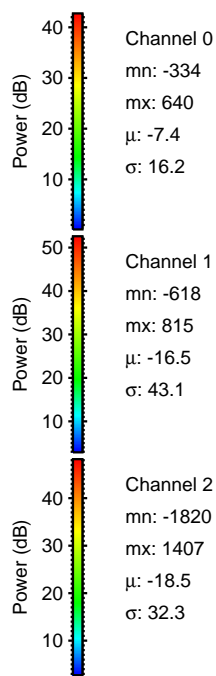
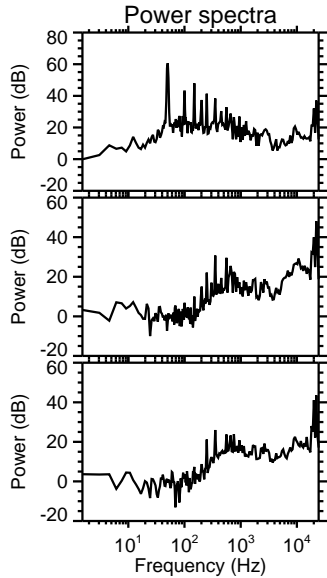
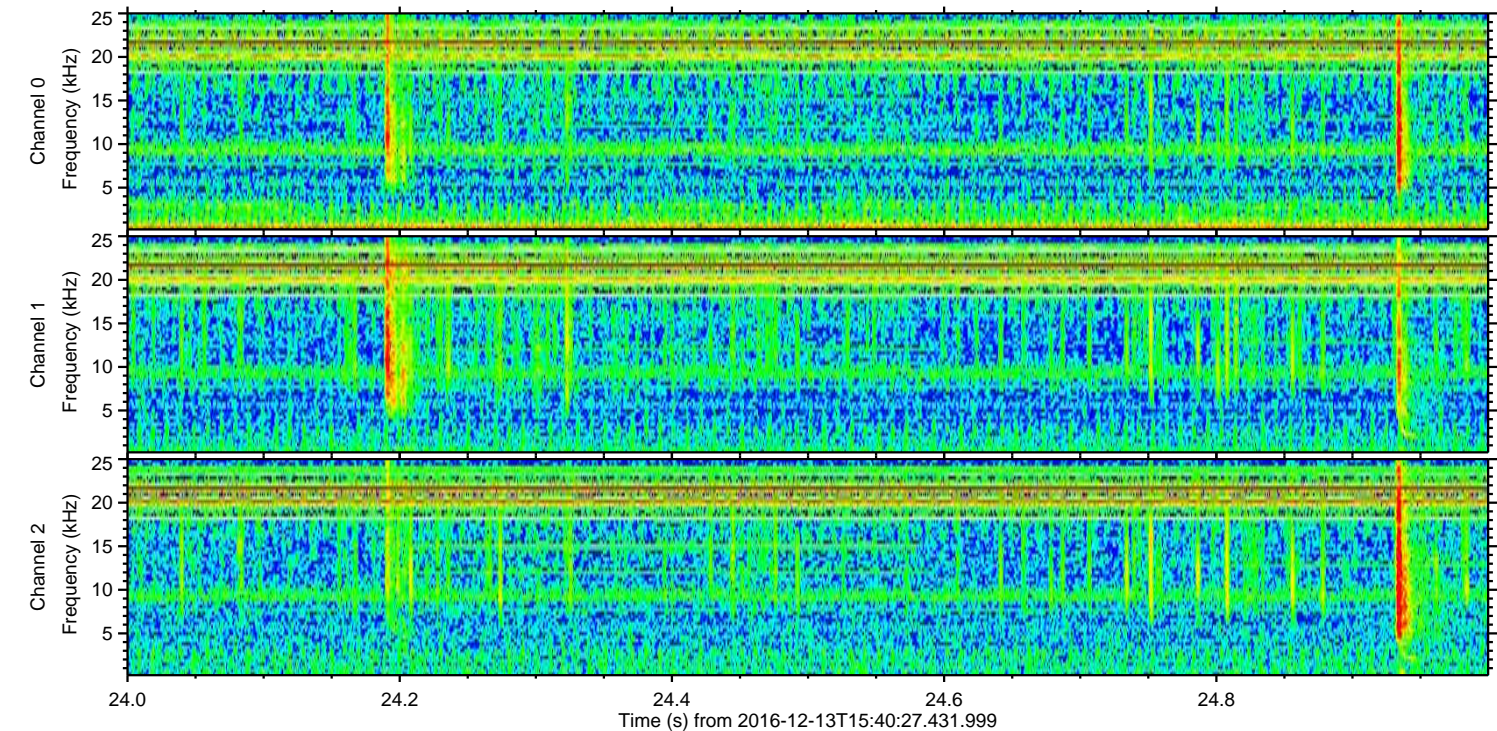
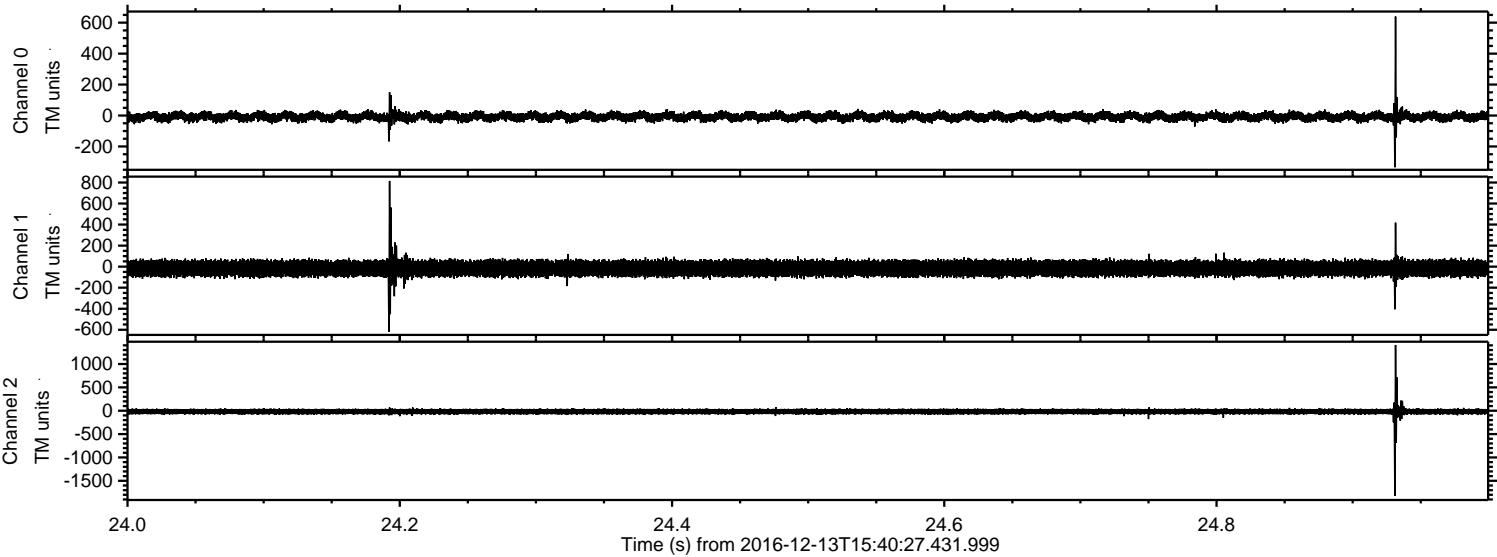


Processed Tue Dec 13 16:48:15 2016 by ELM ver.2012-10-06 from 001__elm20161213_154026__dat00.bin

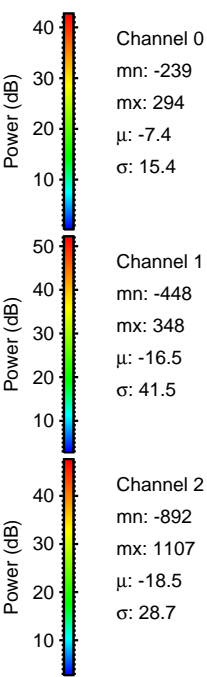
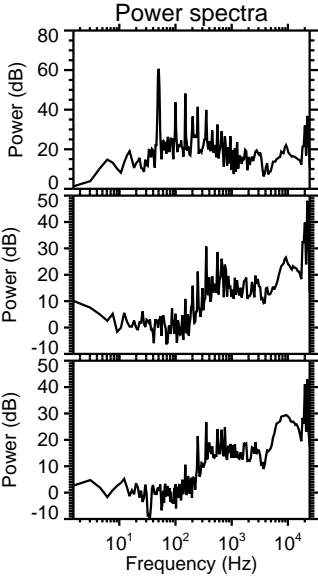
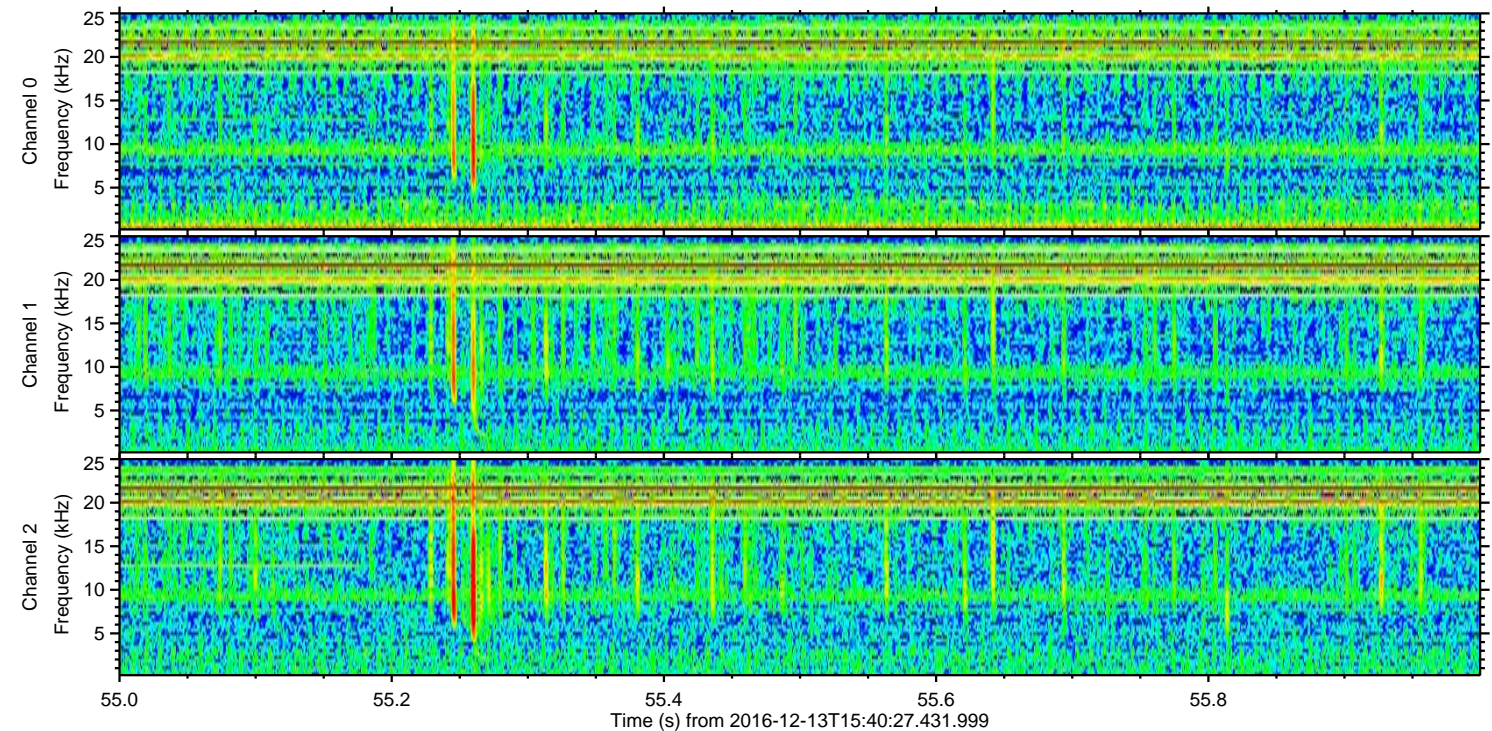
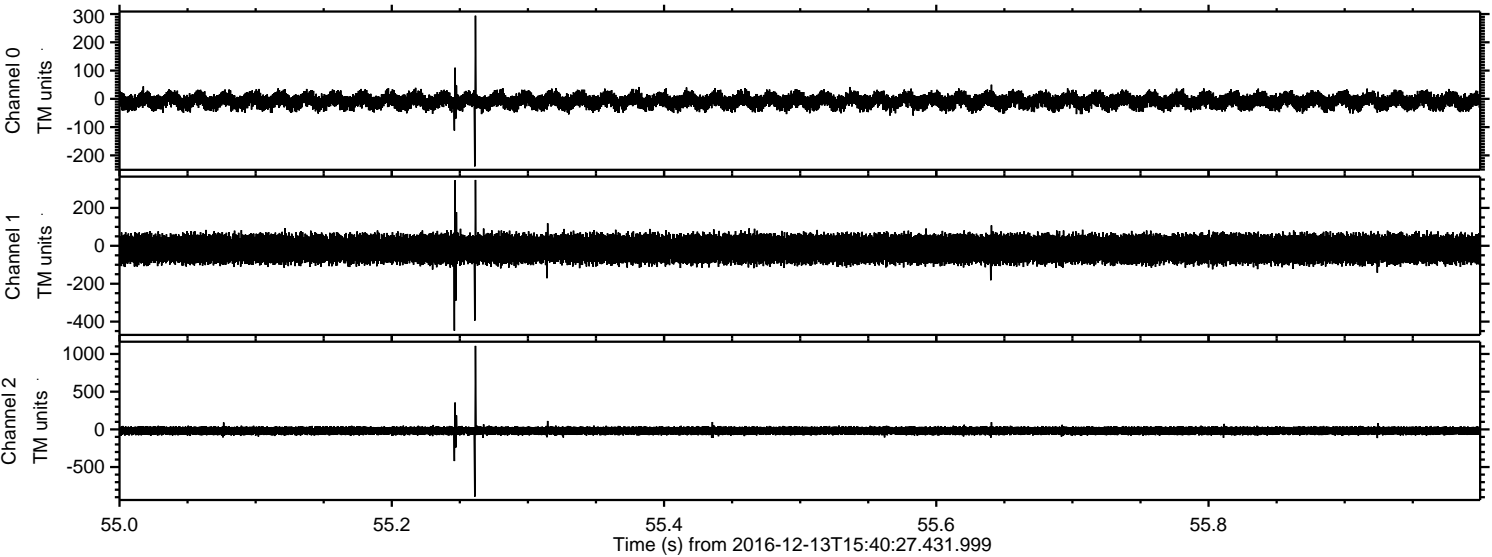


ELMAVAN 3D WAVEFORMS (Measured data sampled at 50 kHz) 51000 packets of 144 samples from 2016-12-13T15:40:27.431.999. Part 25/147

Processed Tue Dec 13 16:48:16 2016 by ELM ver.2012-10-06 from 001__elm20161213_154026__dat00.bin



Processed Tue Dec 13 16:48:17 2016 by ELM ver.2012-10-06 from 001__elm20161213_154026__dat00.bin



Channel 0
mn: -239
mx: 294
 μ : -7.4
 σ : 15.4

Channel 1
mn: -448
mx: 348
 μ : -16.5
 σ : 41.5

Channel 2
mn: -892
mx: 1107
 μ : -18.5
 σ : 28.7

Processed Tue Dec 13 16:48:18 2016 by ELM ver.2012-10-06 from 001__elm20161213_154026__dat00.bin

