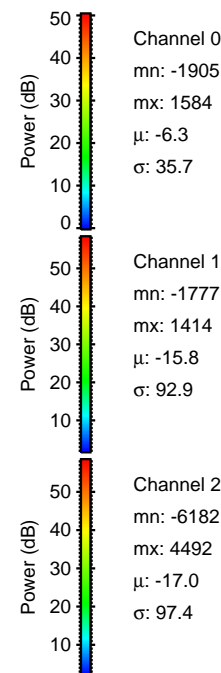
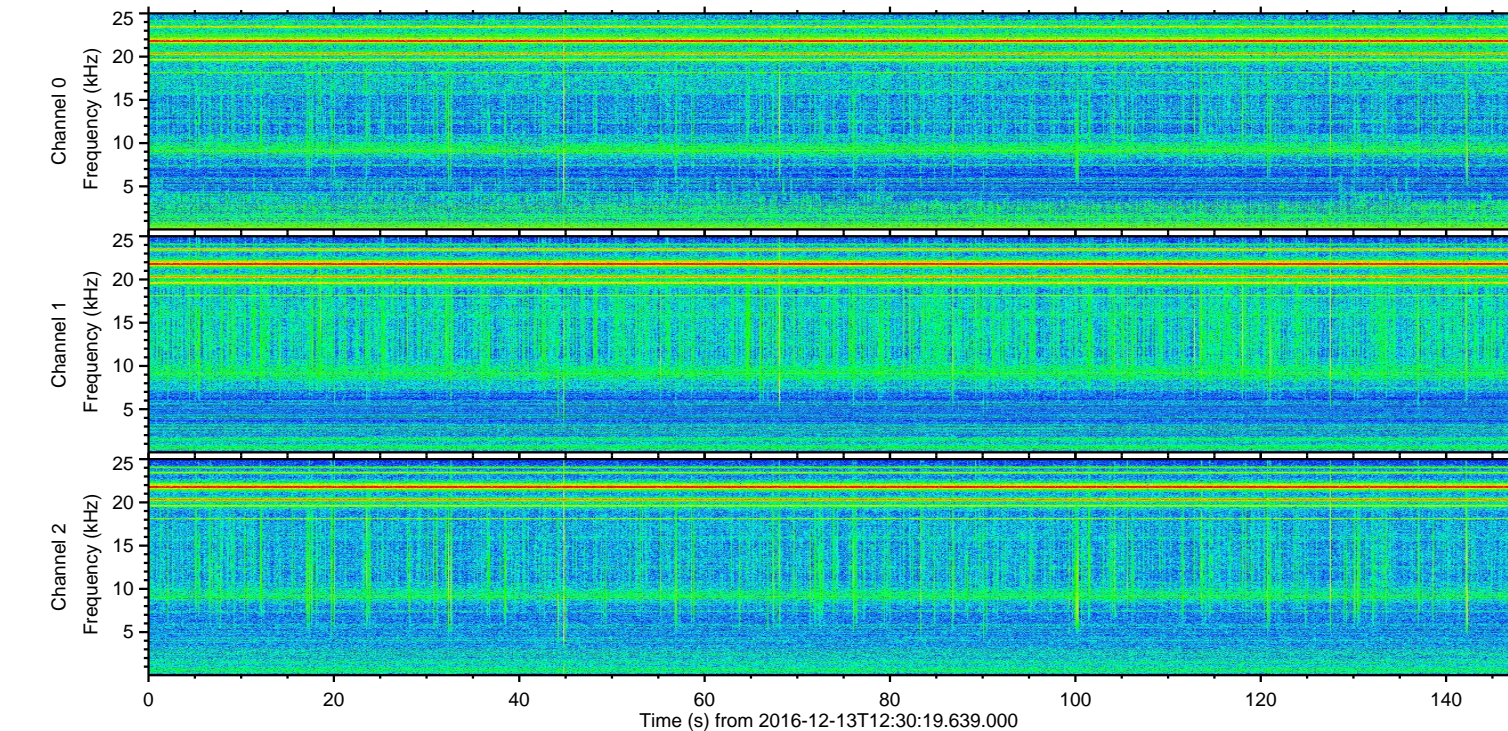
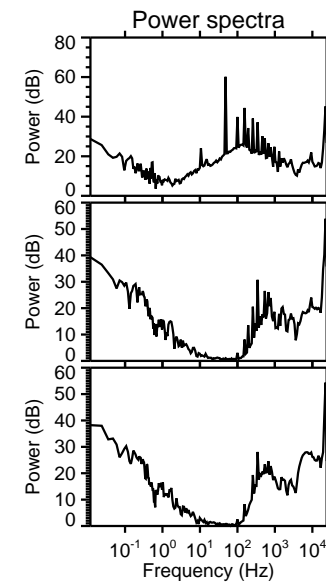
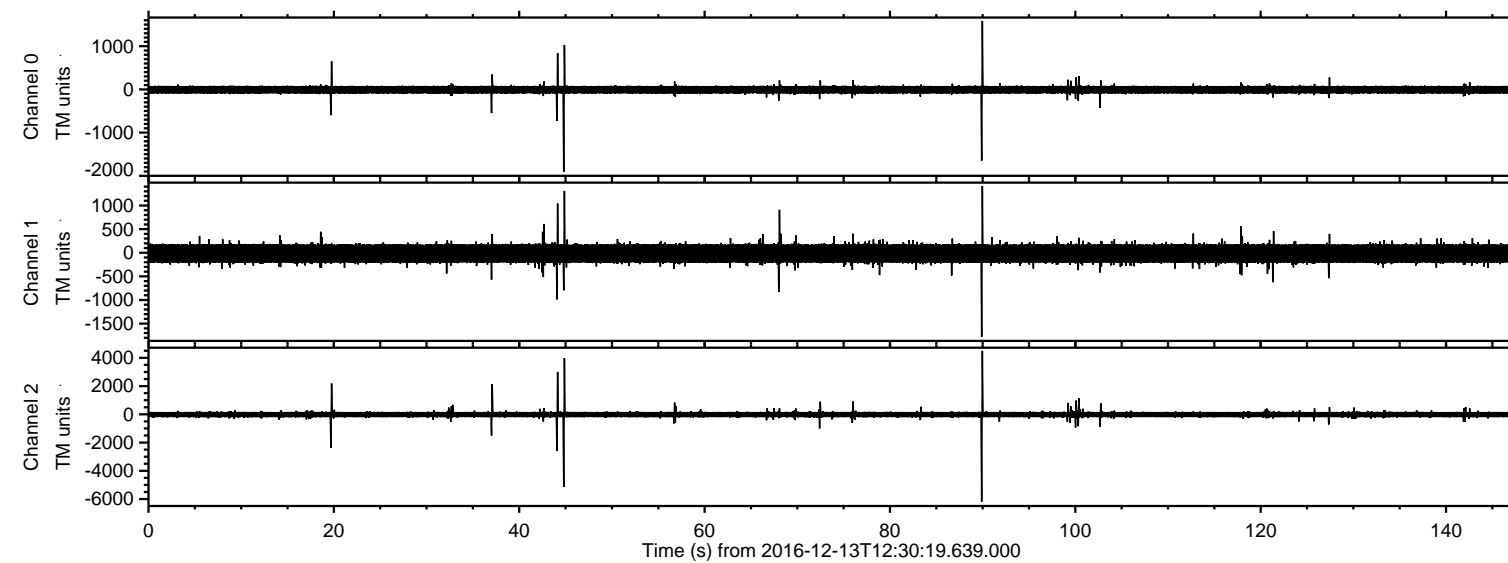


ELMAVAN 3D WAVEFORMS (Measured data sampled at 50 kHz) 51000 packets of 144 samples from 2016-12-13T12:30:19.639.000.

Processed Tue Dec 13 13:38:04 2016 by ELM ver.2012-10-06 from 001__elm20161213_123018__dat00.bin

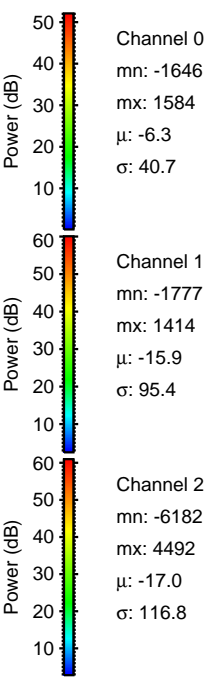
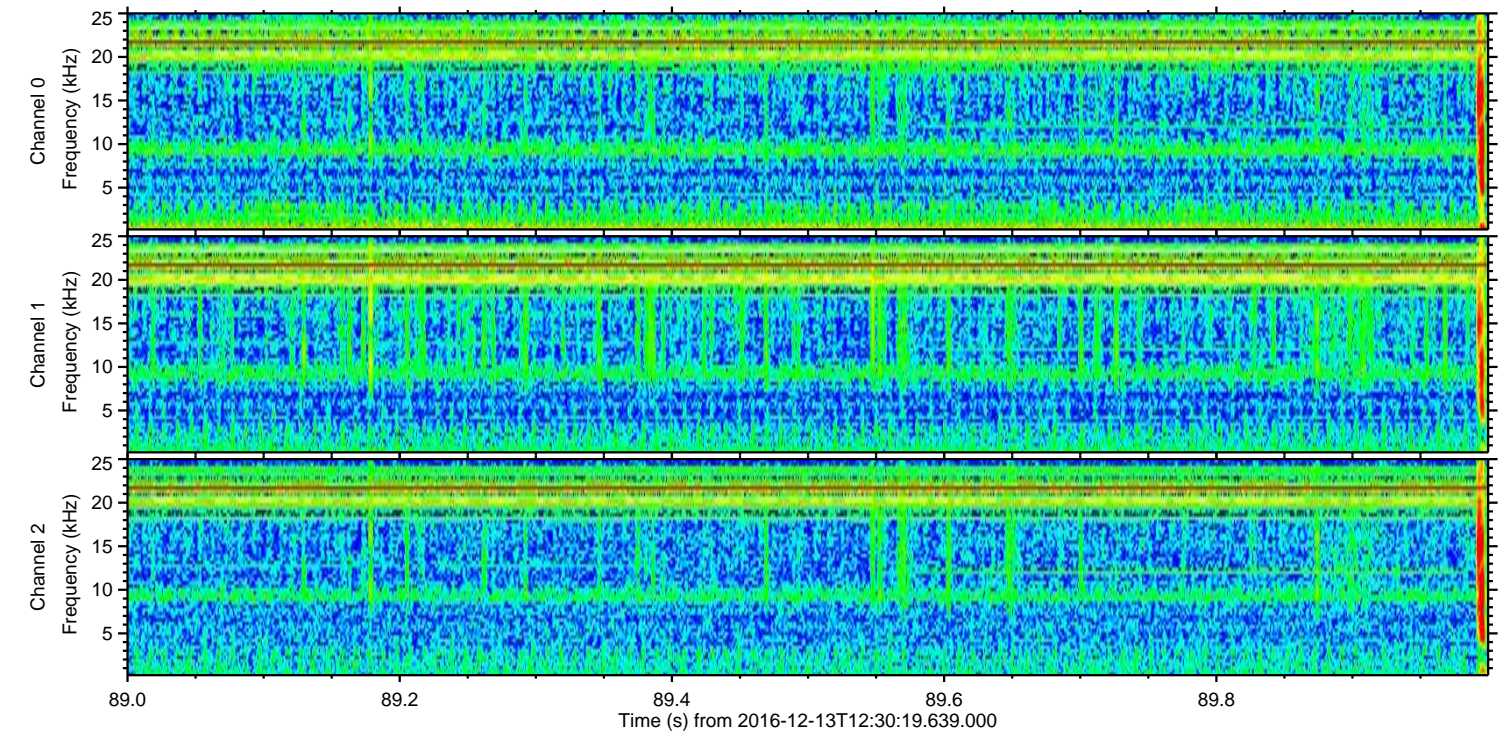
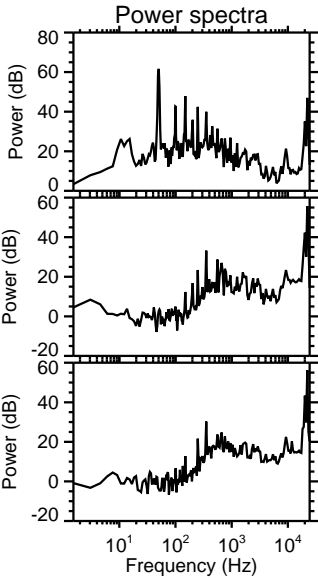
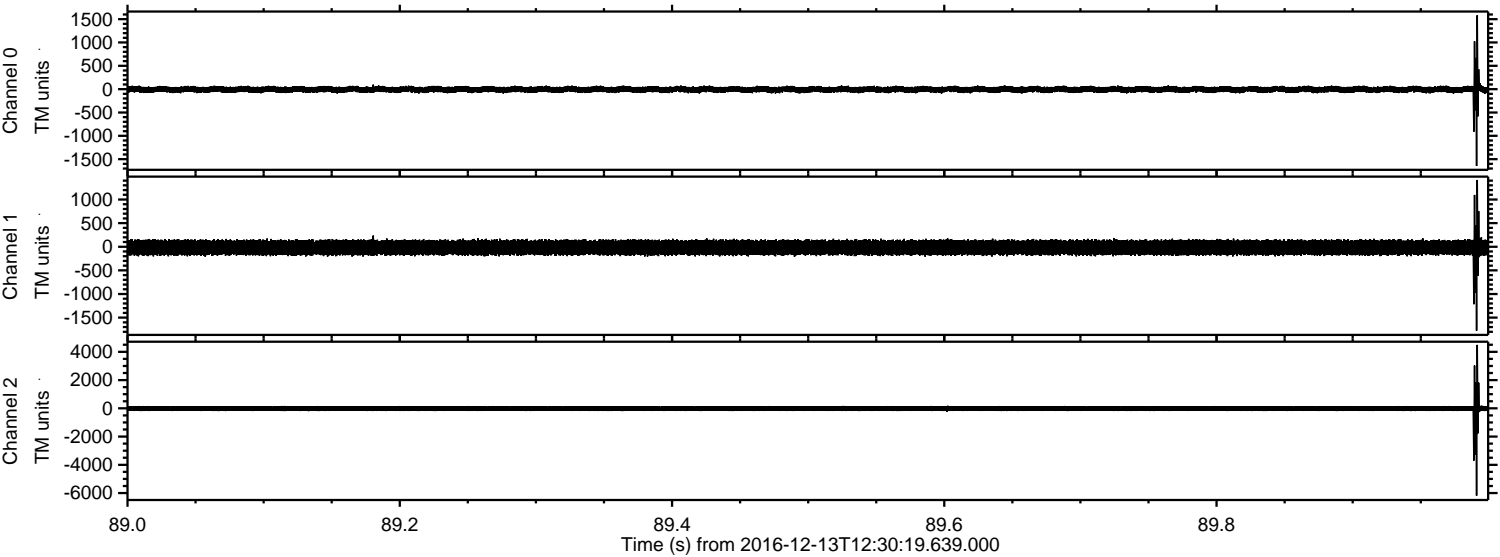


Channel 0
mn: -1905
mx: 1584
 μ : -6.3
 σ : 35.7

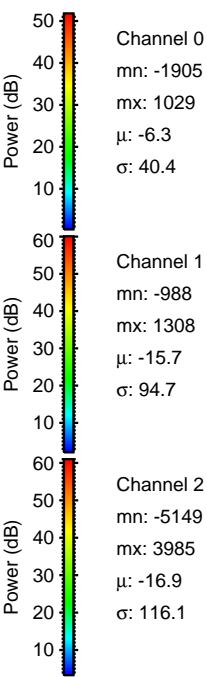
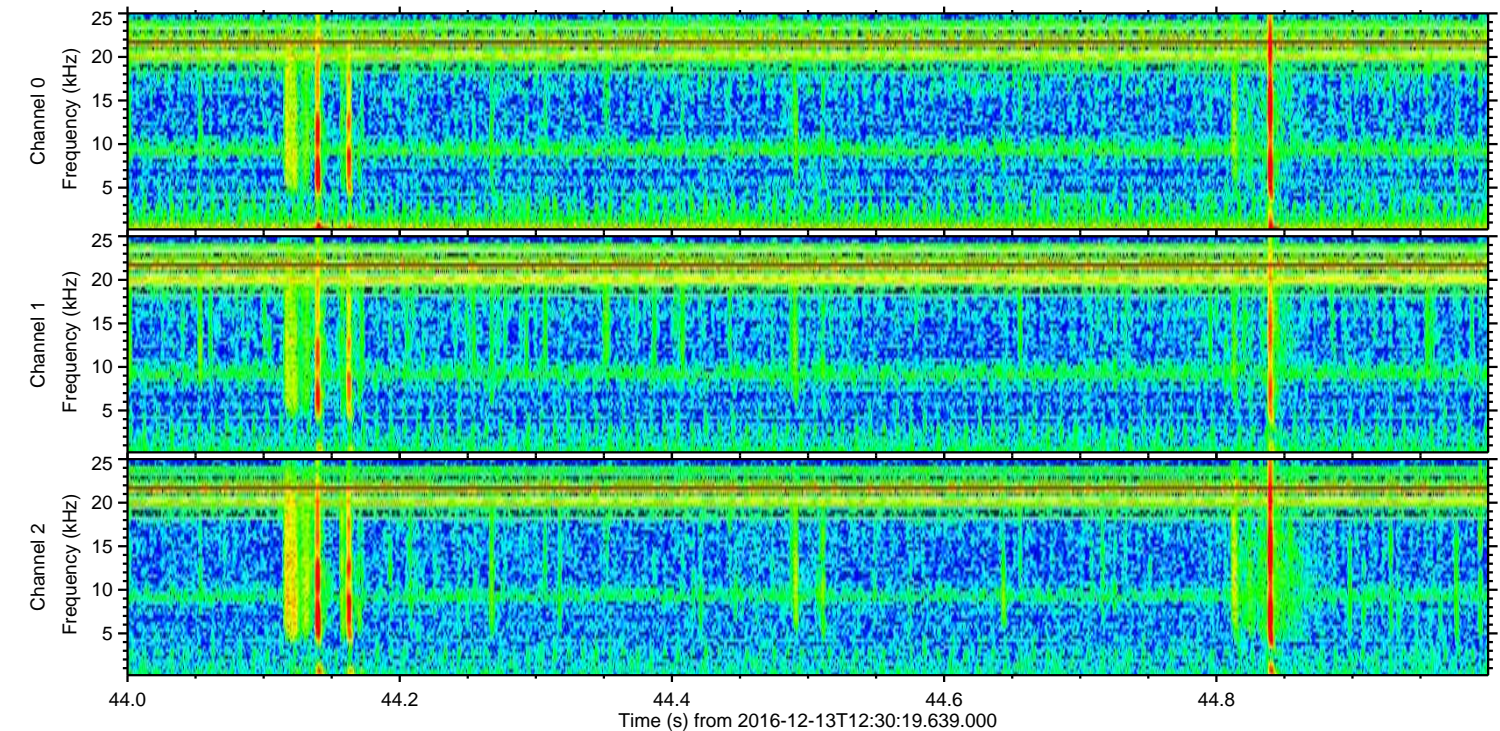
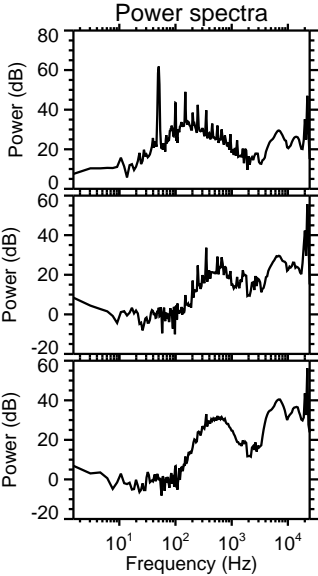
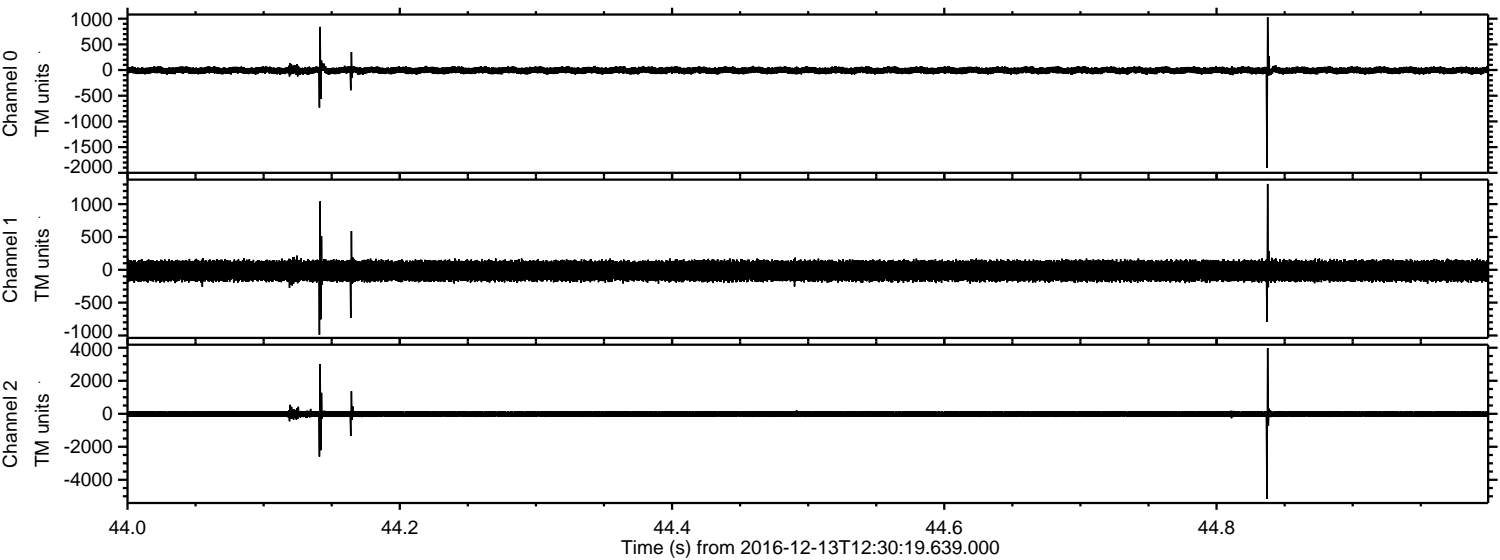
Channel 1
mn: -1777
mx: 1414
 μ : -15.8
 σ : 92.9

Channel 2
mn: -6182
mx: 4492
 μ : -17.0
 σ : 97.4

Processed Tue Dec 13 13:38:15 2016 by ELM ver.2012-10-06 from 001__elm20161213_123018__dat00.bin

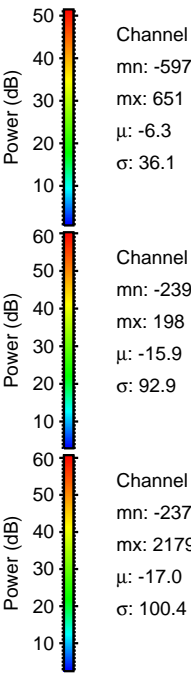
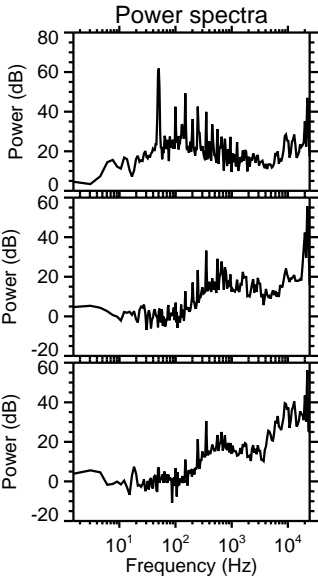
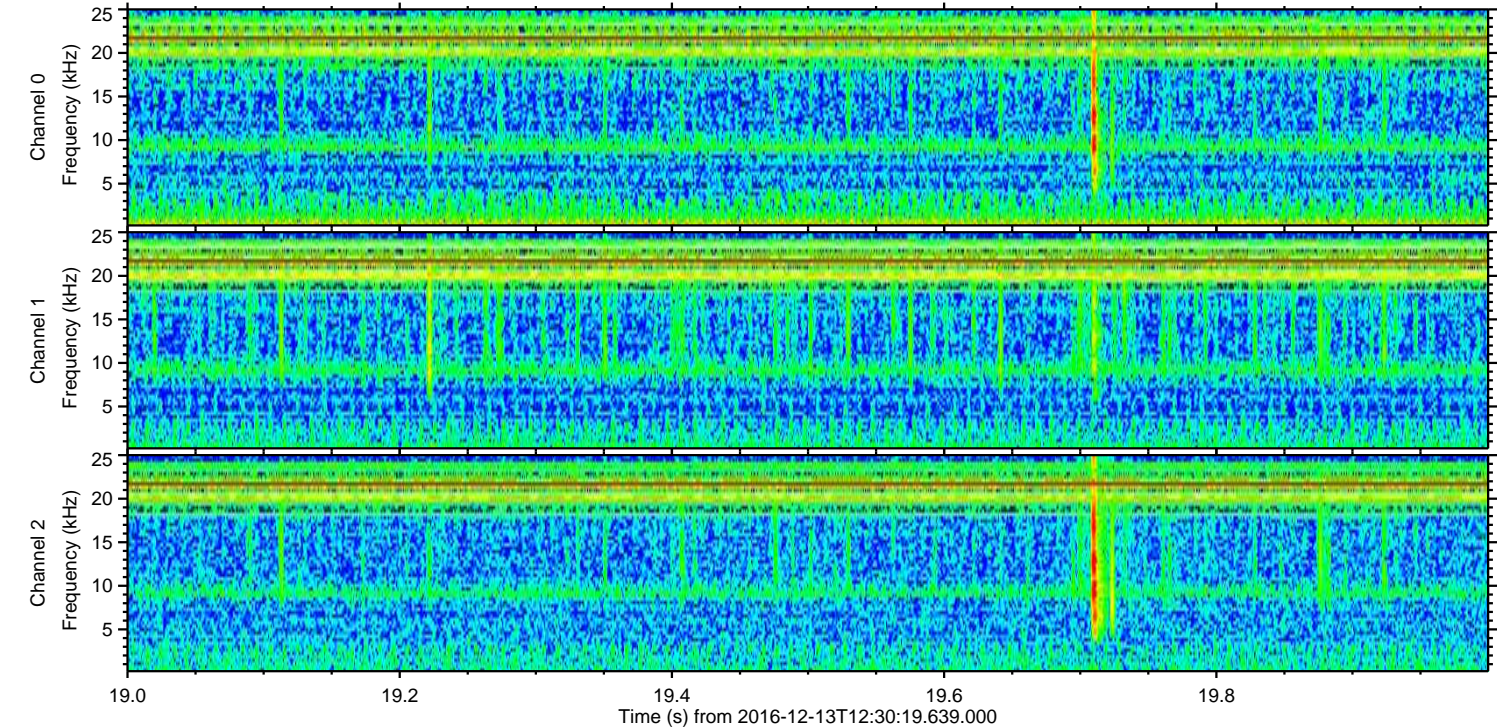
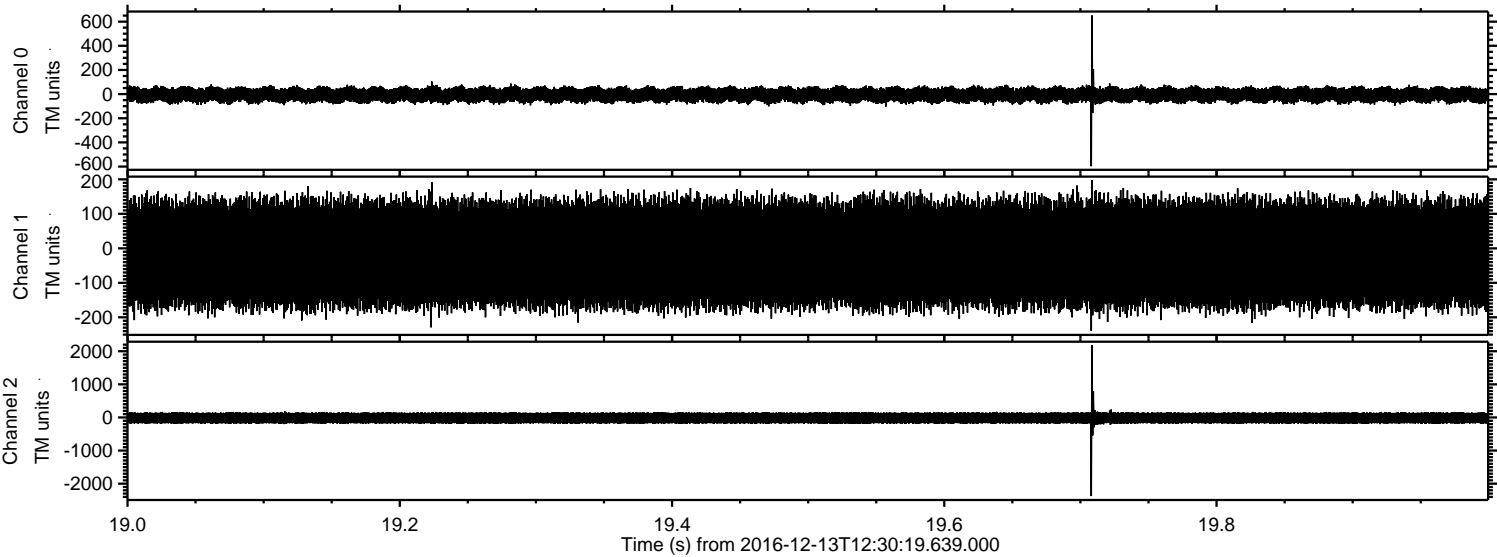


Processed Tue Dec 13 13:38:16 2016 by ELM ver.2012-10-06 from 001__elm20161213_123018__dat00.bin



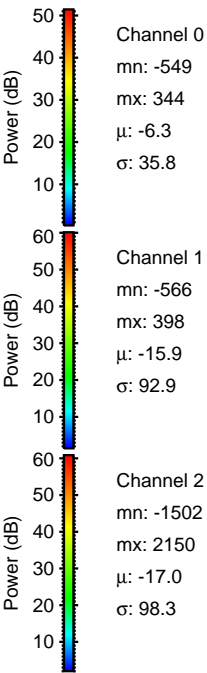
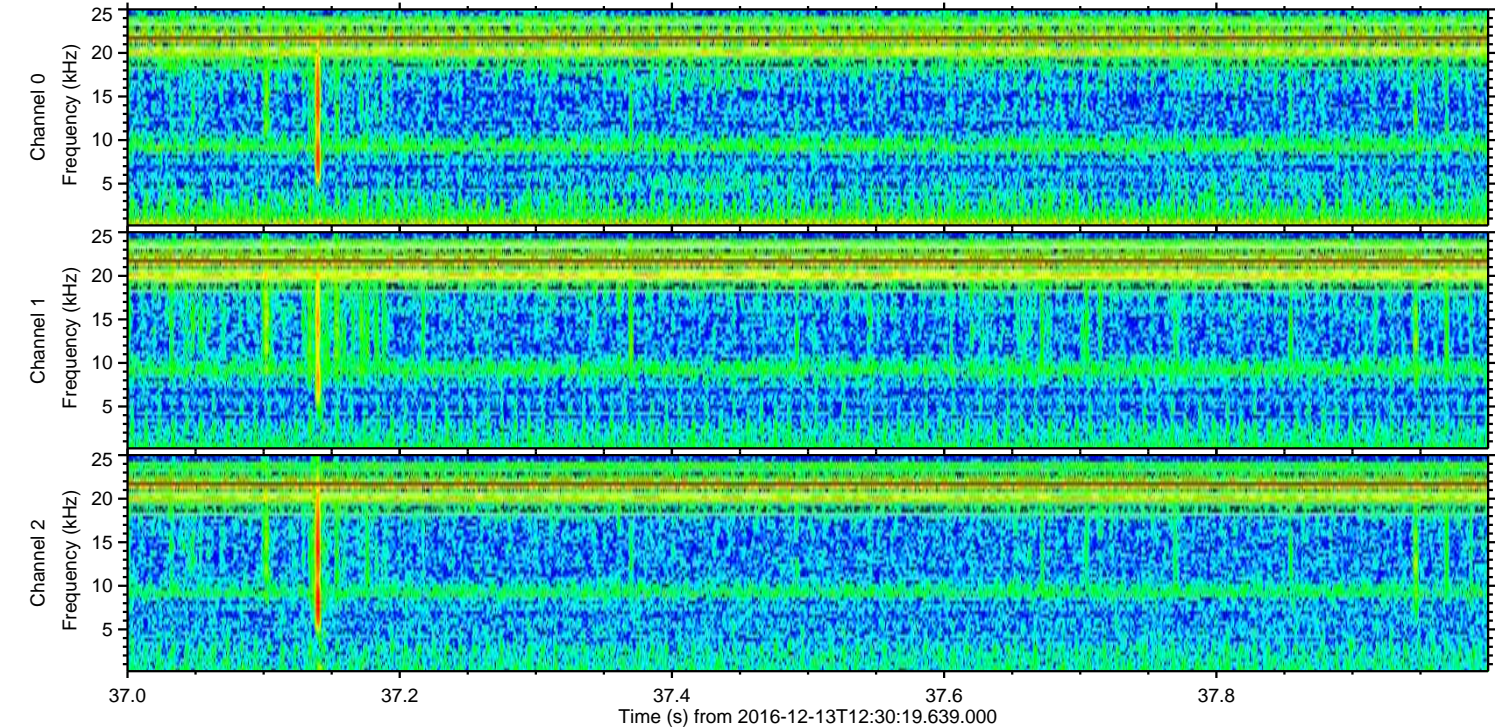
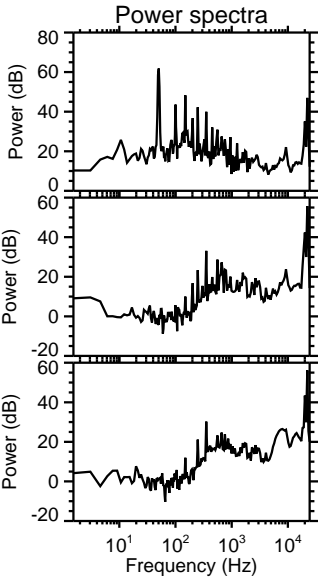
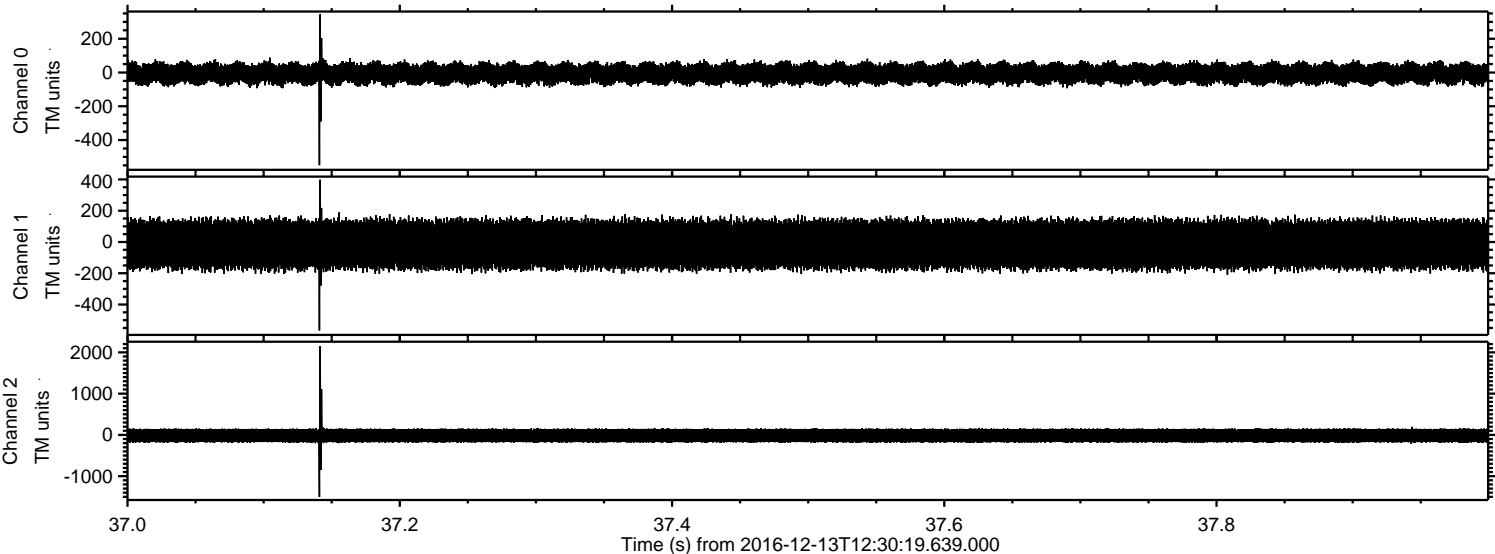
ELMAVAN 3D WAVEFORMS (Measured data sampled at 50 kHz) 51000 packets of 144 samples from 2016-12-13T12:30:19.639.000. Part 20/147

Processed Tue Dec 13 13:38:17 2016 by ELM ver.2012-10-06 from 001__elm20161213_123018__dat00.bin



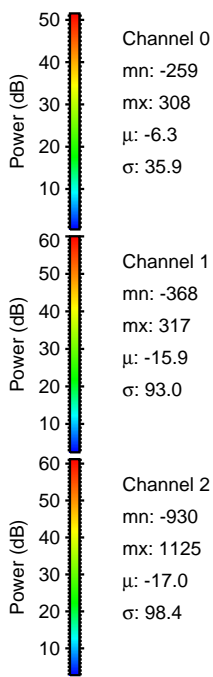
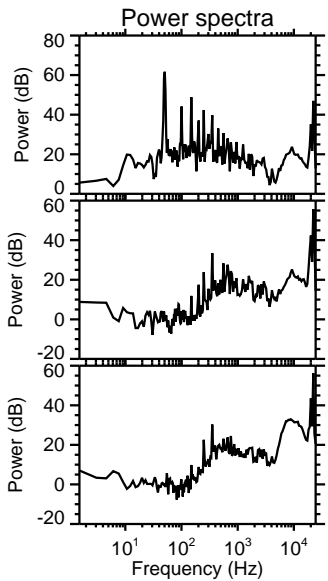
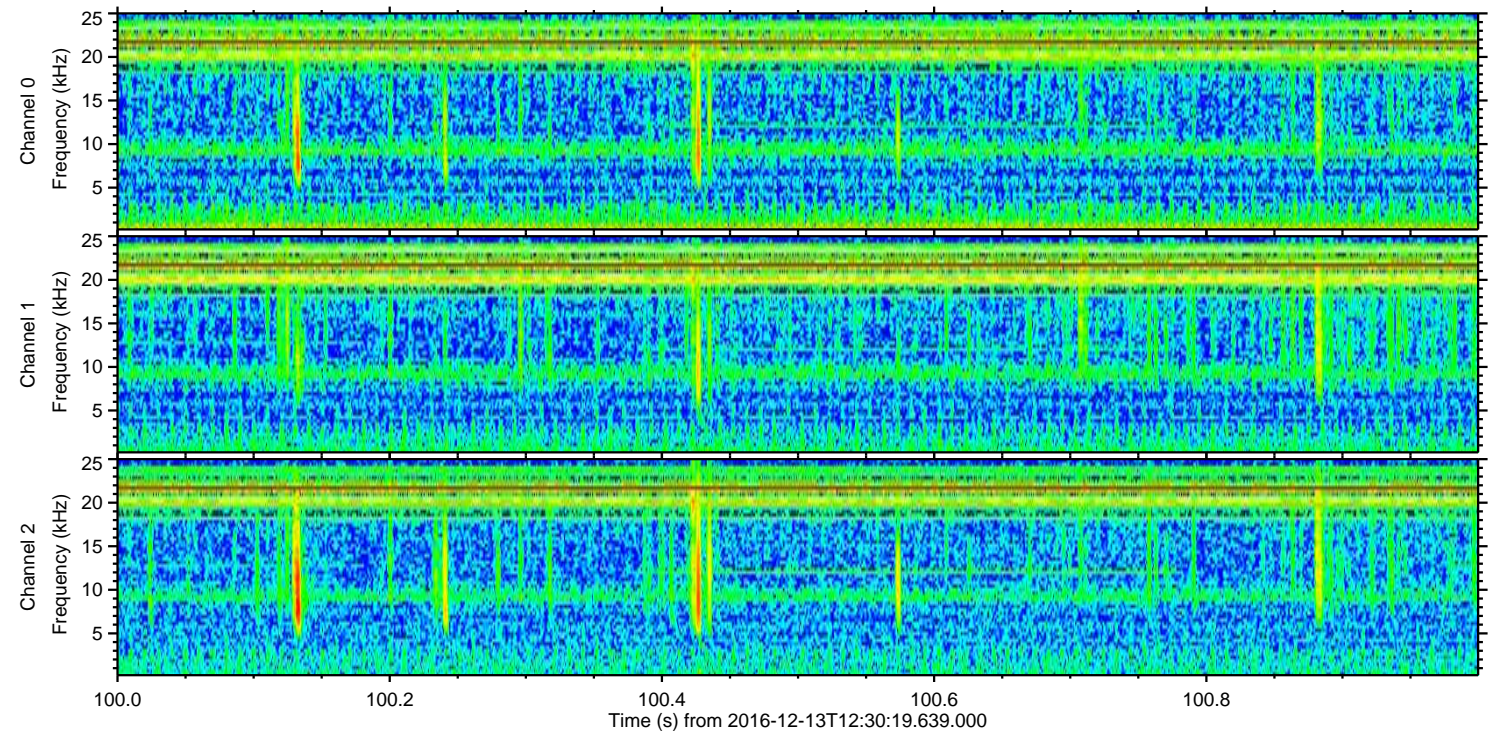
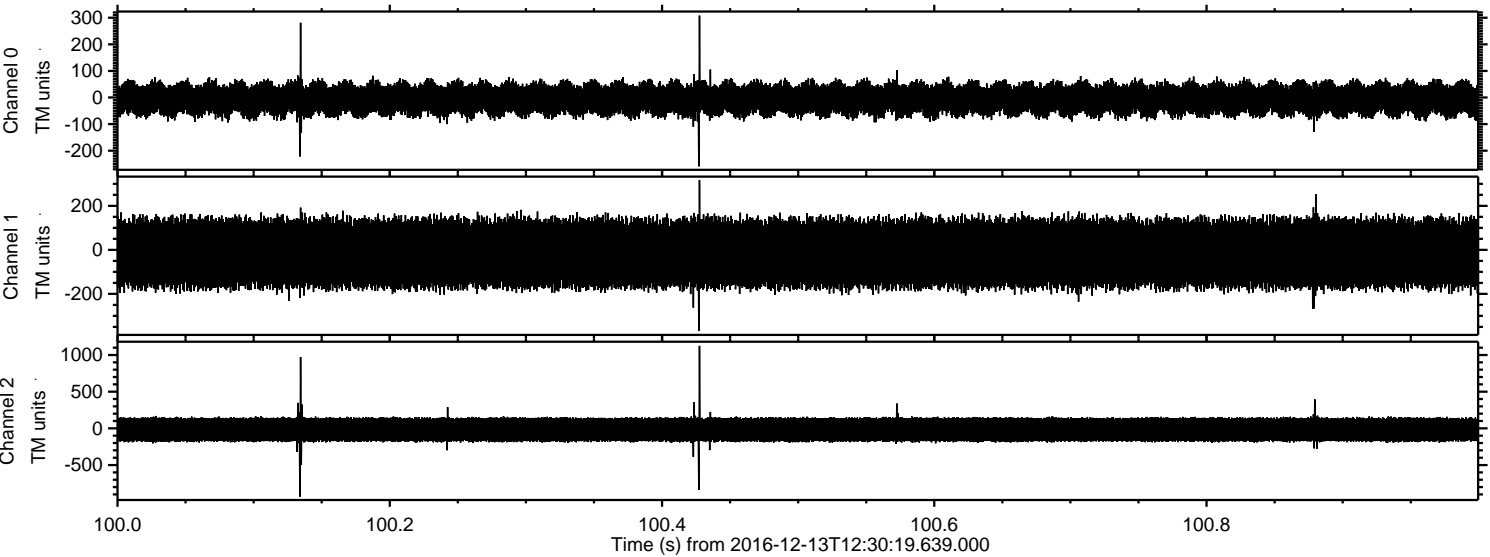
ELMAVAN 3D WAVEFORMS (Measured data sampled at 50 kHz) 51000 packets of 144 samples from 2016-12-13T12:30:19.639.000. Part 38/147

Processed Tue Dec 13 13:38:18 2016 by ELM ver.2012-10-06 from 001__elm20161213_123018__dat00.bin



ELMAVAN 3D WAVEFORMS (Measured data sampled at 50 kHz) 51000 packets of 144 samples from 2016-12-13T12:30:19.639.000. Part 101/147

Processed Tue Dec 13 13:38:19 2016 by ELM ver.2012-10-06 from 001__elm20161213_123018__dat00.bin



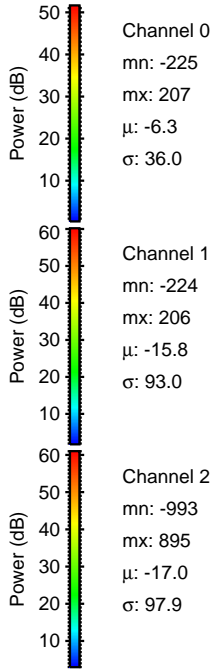
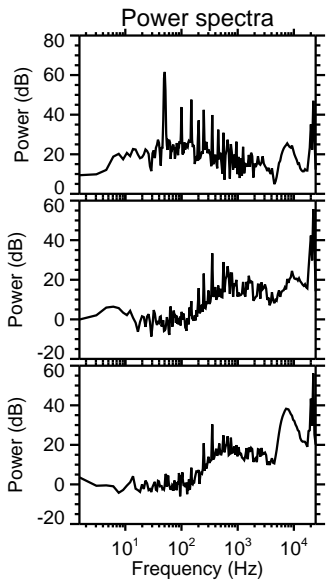
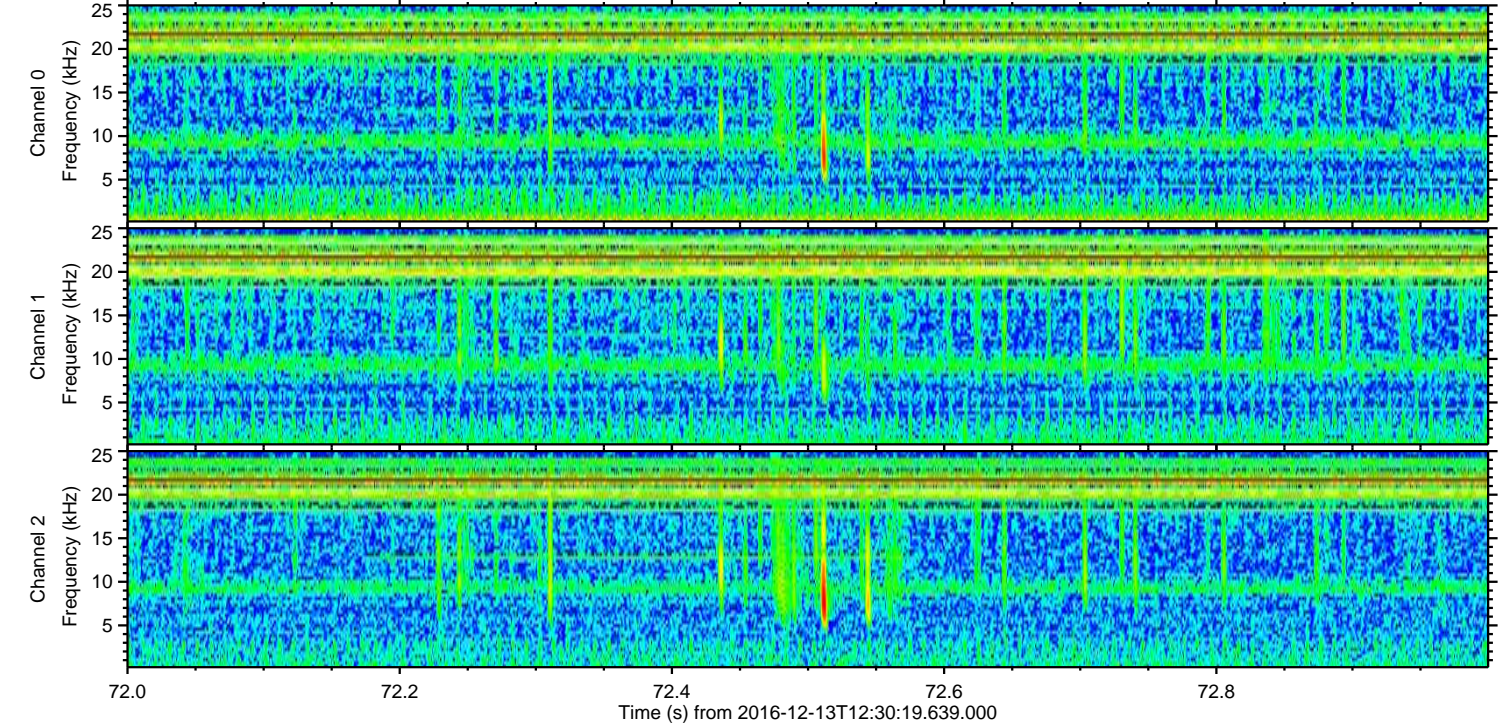
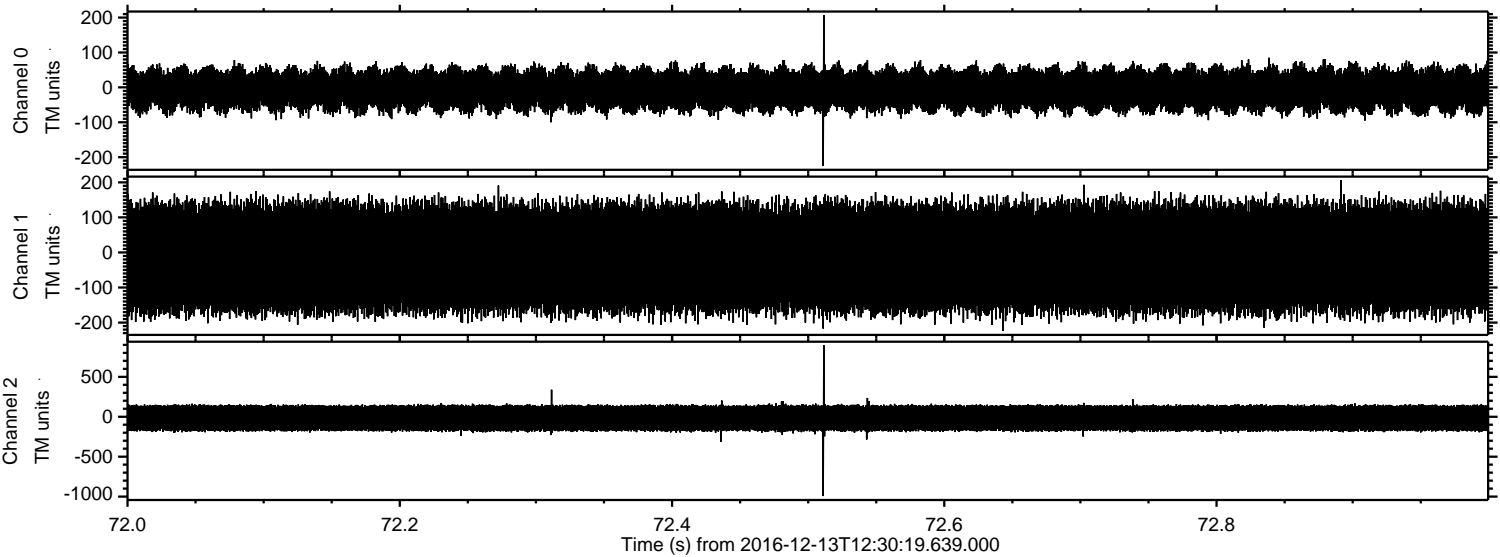
Channel 0
mn: -259
mx: 308
 μ : -6.3
 σ : 35.9

Channel 1
mn: -368
mx: 317
 μ : -15.9
 σ : 93.0

Channel 2
mn: -930
mx: 1125
 μ : -17.0
 σ : 98.4

ELMAVAN 3D WAVEFORMS (Measured data sampled at 50 kHz) 51000 packets of 144 samples from 2016-12-13T12:30:19.639.000. Part 73/147

Processed Tue Dec 13 13:38:20 2016 by ELM ver.2012-10-06 from 001__elm20161213_123018__dat00.bin



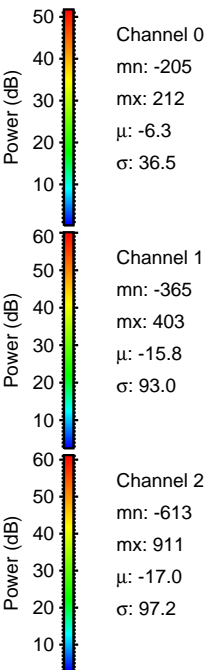
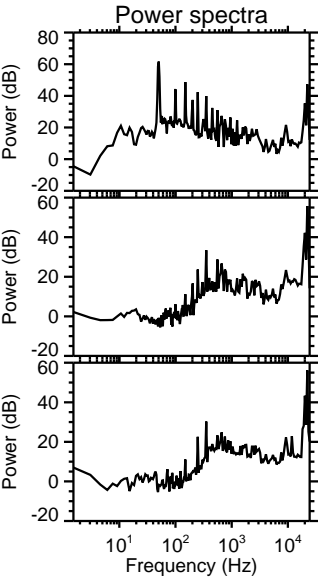
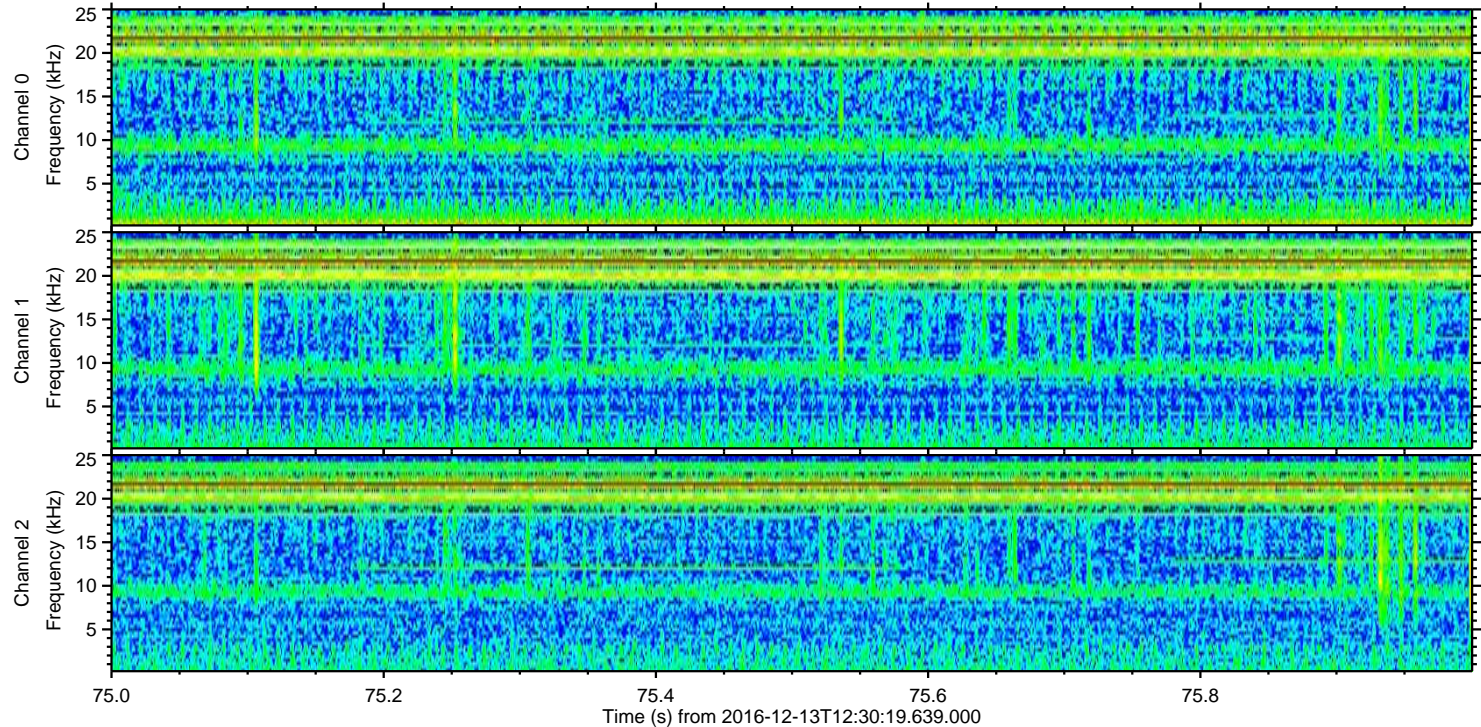
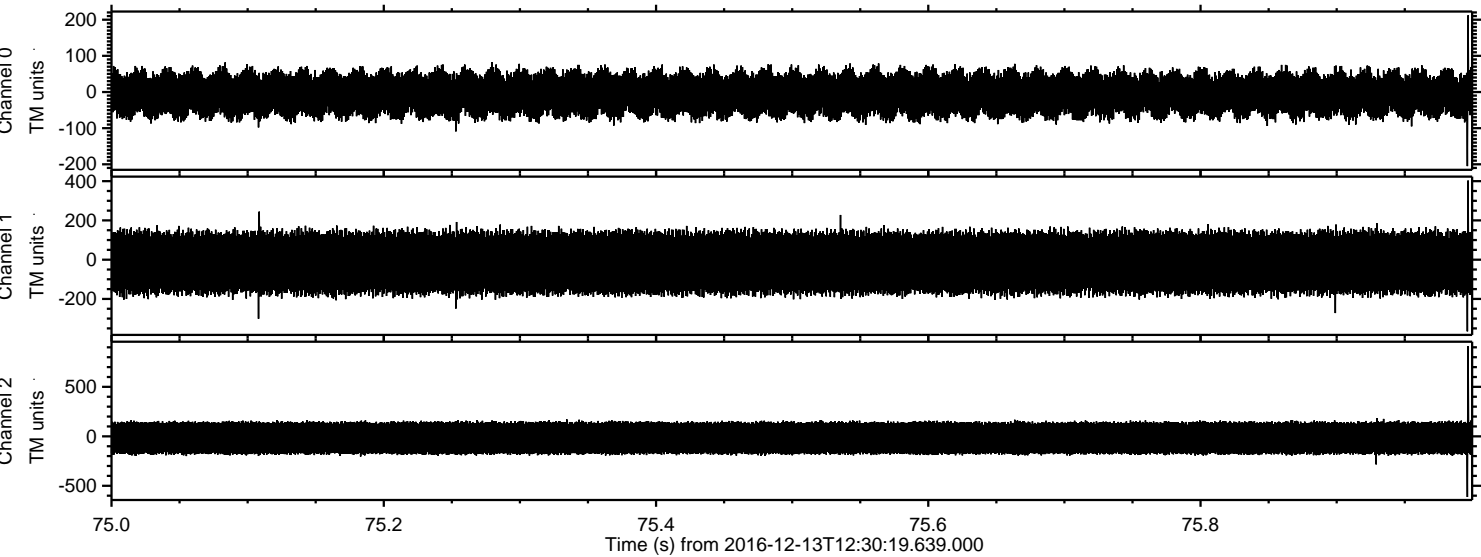
Channel 0
mn: -225
mx: 207
 μ : -6.3
 σ : 36.0

Channel 1
mn: -224
mx: 206
 μ : -15.8
 σ : 93.0

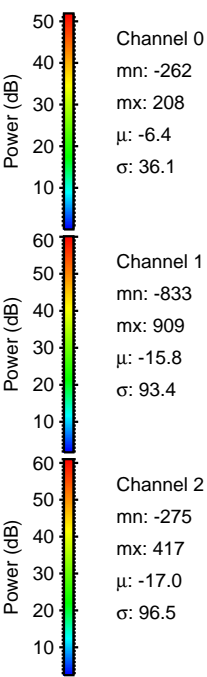
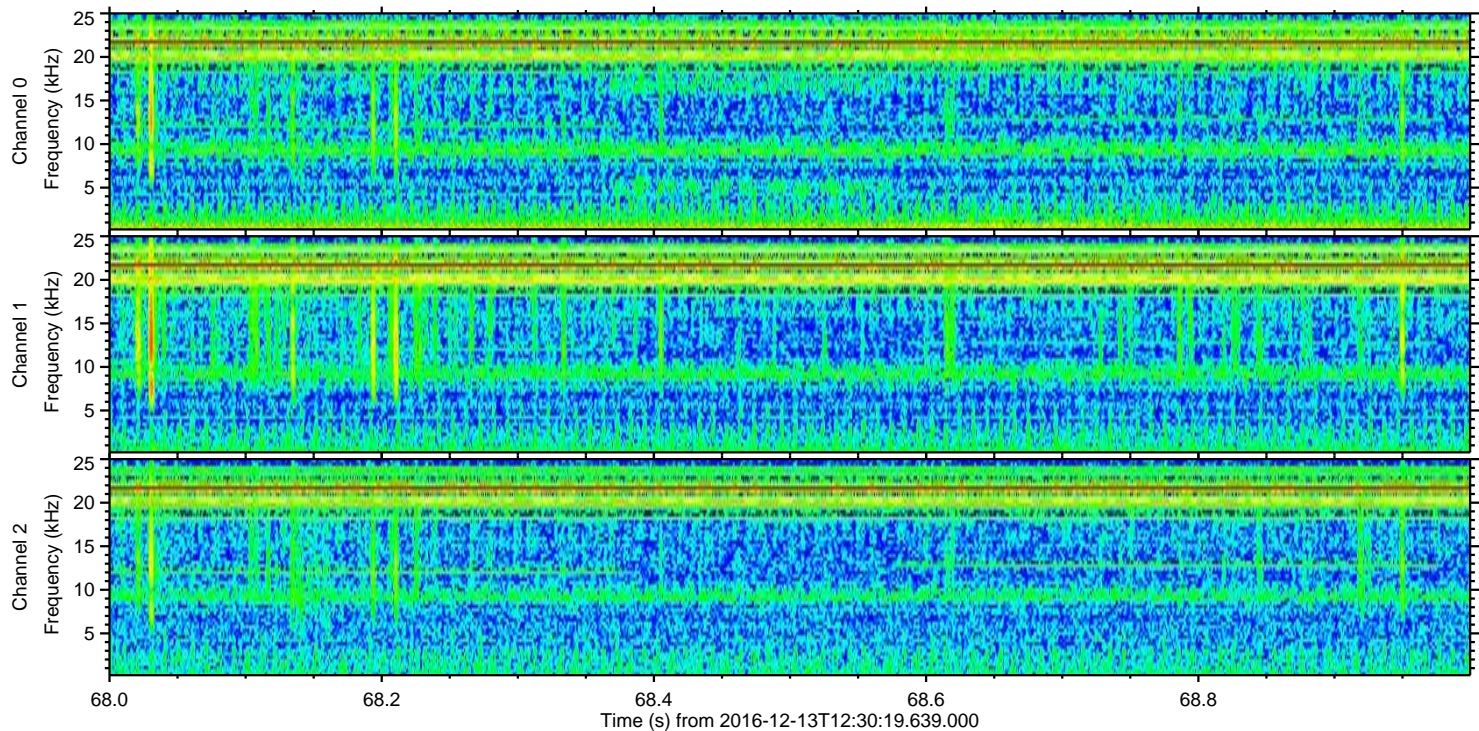
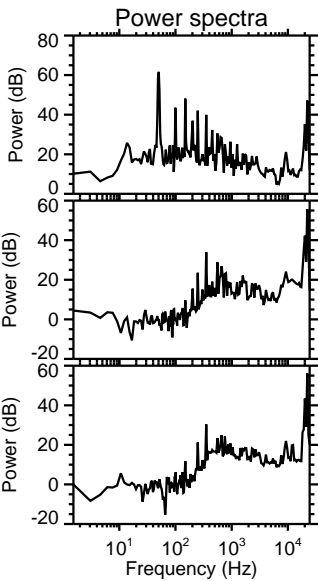
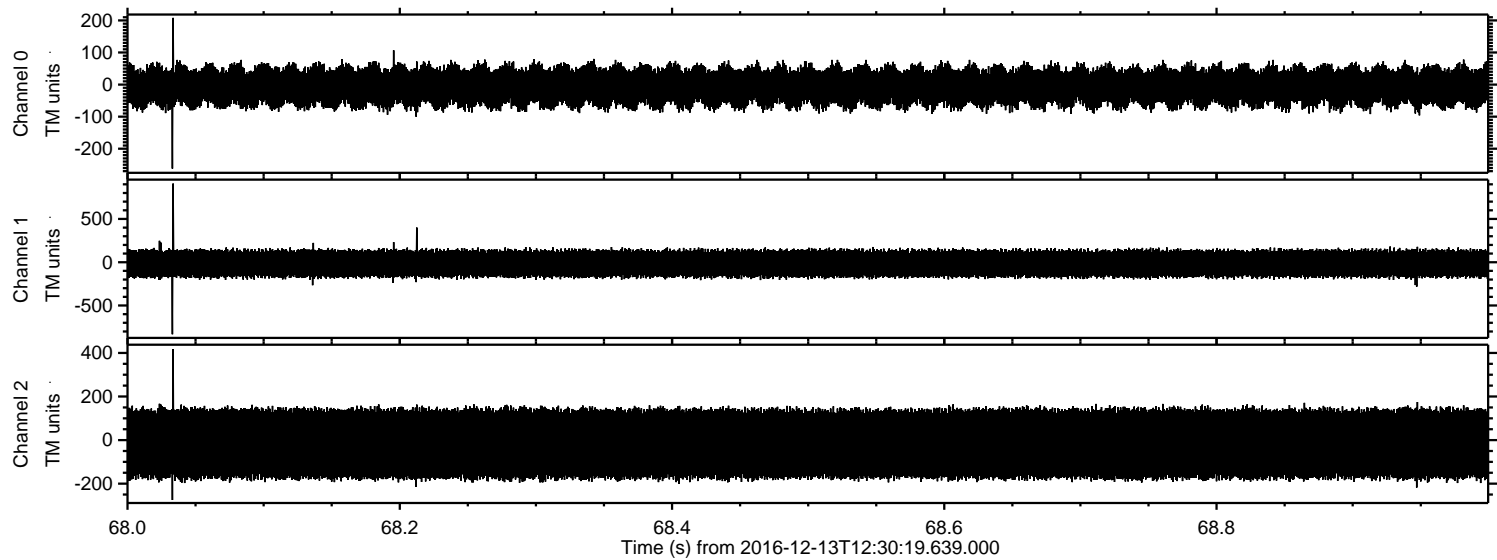
Channel 2
mn: -993
mx: 895
 μ : -17.0
 σ : 97.9

ELMAVAN 3D WAVEFORMS (Measured data sampled at 50 kHz) 51000 packets of 144 samples from 2016-12-13T12:30:19.639.000. Part 76/147

Processed Tue Dec 13 13:38:21 2016 by ELM ver.2012-10-06 from 001__elm20161213_123018__dat00.bin

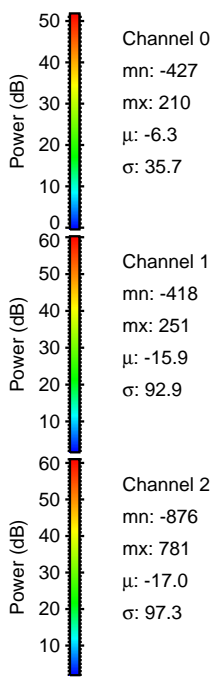
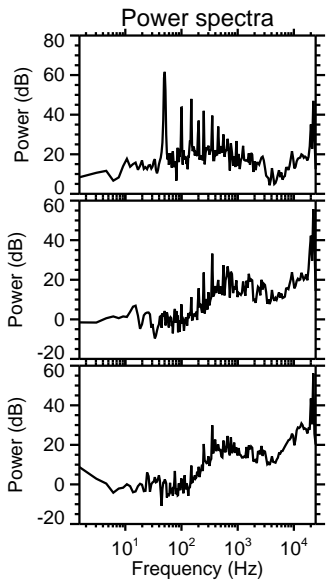
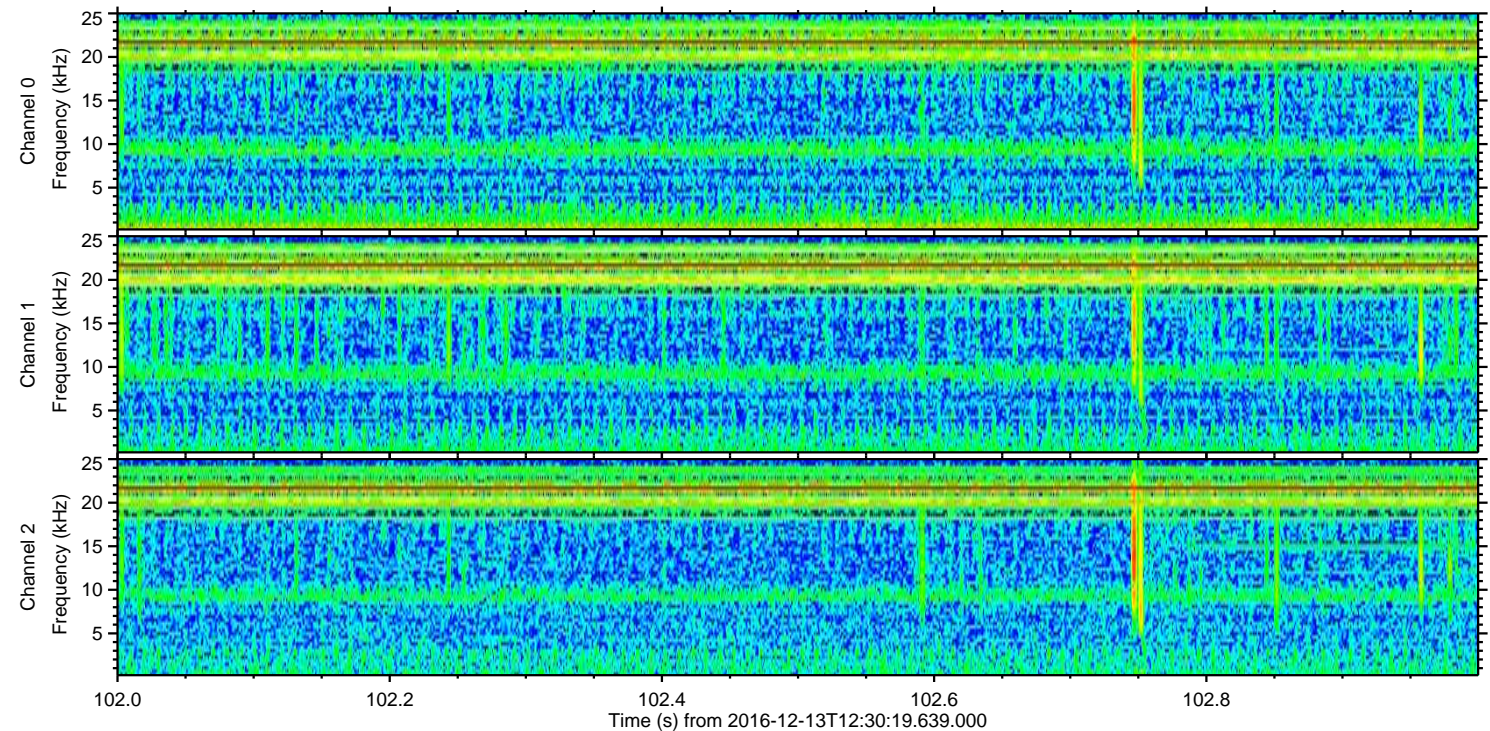
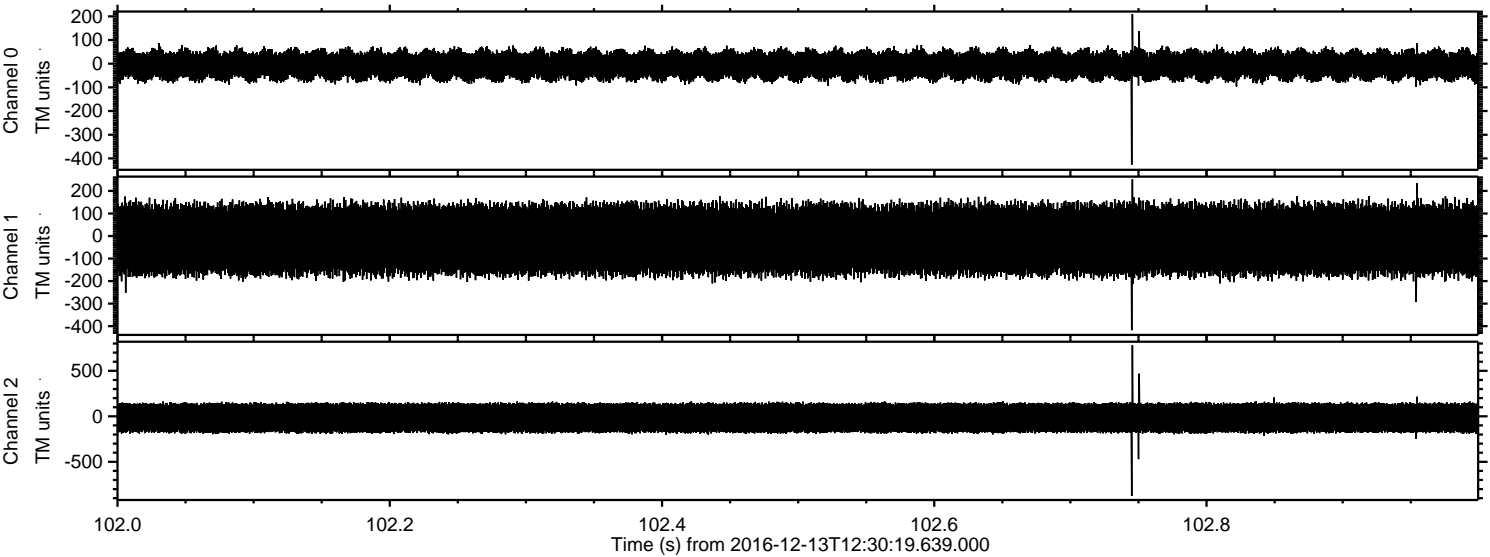


Processed Tue Dec 13 13:38:22 2016 by ELM ver.2012-10-06 from 001__elm20161213_123018__dat00.bin



ELMAVAN 3D WAVEFORMS (Measured data sampled at 50 kHz) 51000 packets of 144 samples from 2016-12-13T12:30:19.639.000. Part 103/147

Processed Tue Dec 13 13:38:23 2016 by ELM ver.2012-10-06 from 001__elm20161213_123018__dat00.bin



Channel 0
mn: -427
mx: 210
 μ : -6.3
 σ : 35.7

Channel 1
mn: -418
mx: 251
 μ : -15.9
 σ : 92.9

Channel 2
mn: -876
mx: 781
 μ : -17.0
 σ : 97.3

ELMAVAN 3D WAVEFORMS (Measured data sampled at 50 kHz) 51000 packets of 144 samples from 2016-12-13T12:30:19.639.000. Part 47/147

Processed Tue Dec 13 13:38:24 2016 by ELM ver.2012-10-06 from 001__elm20161213_123018__dat00.bin

