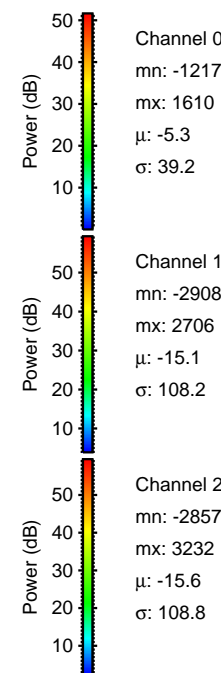
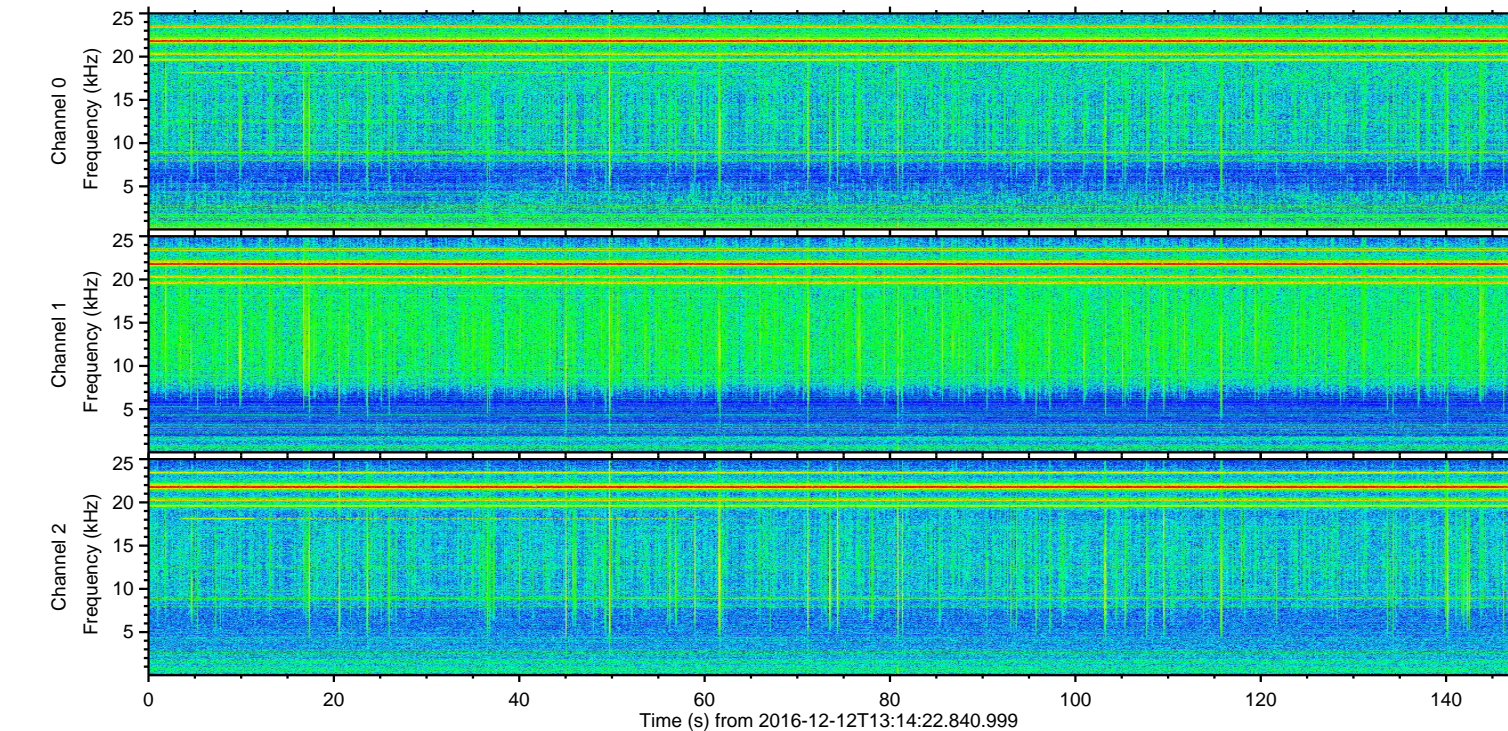
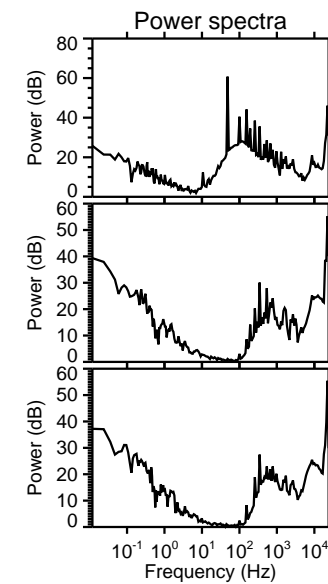
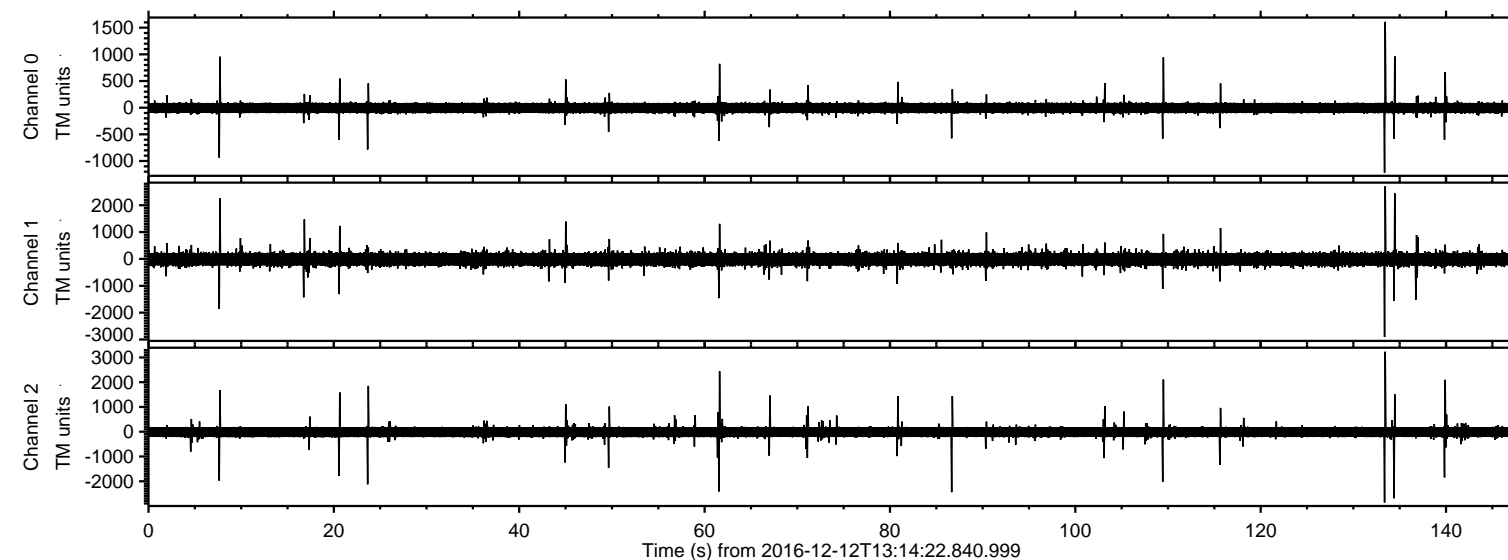


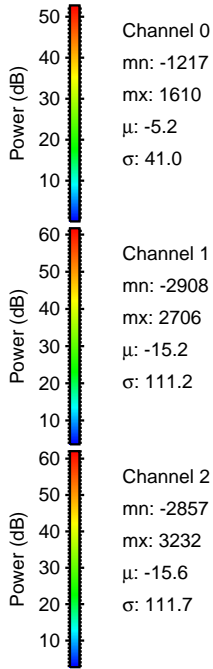
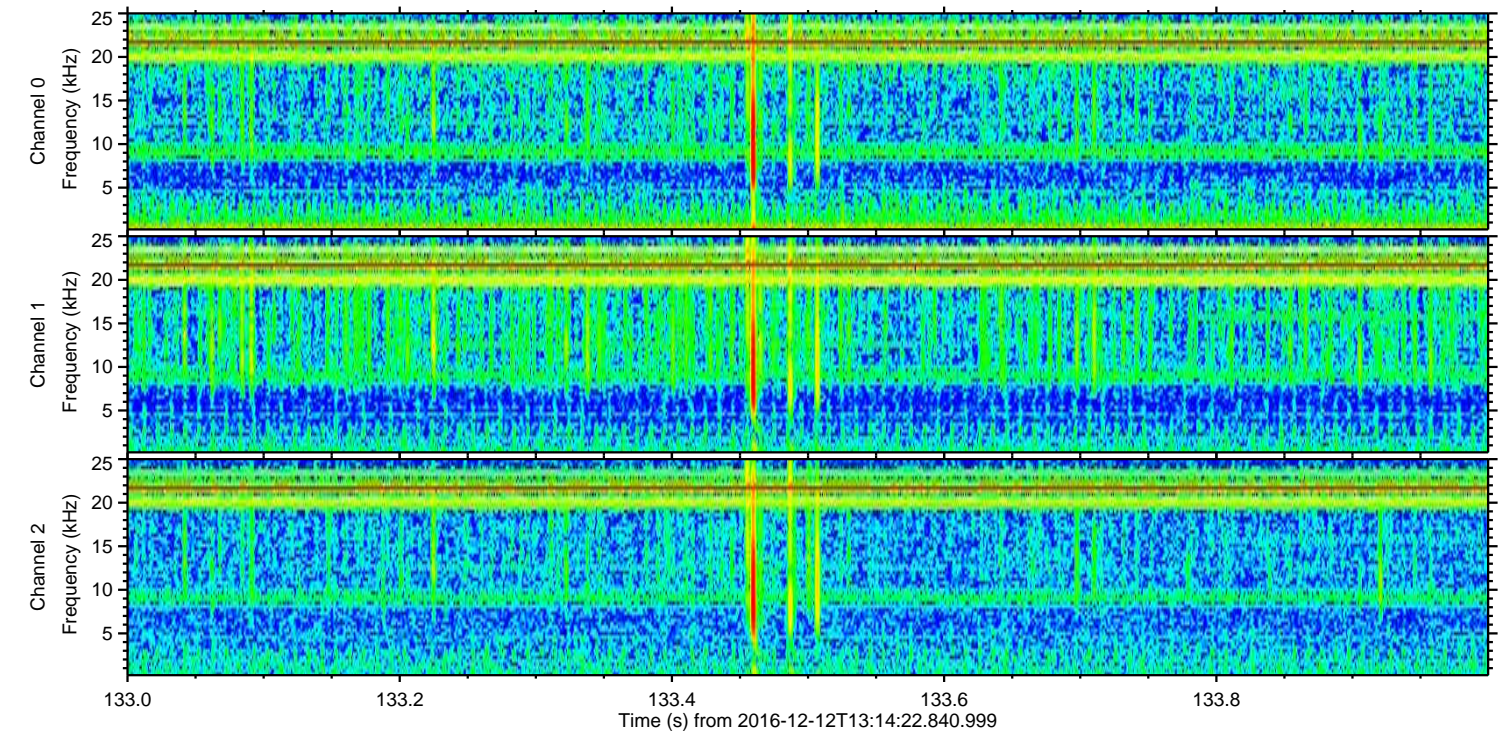
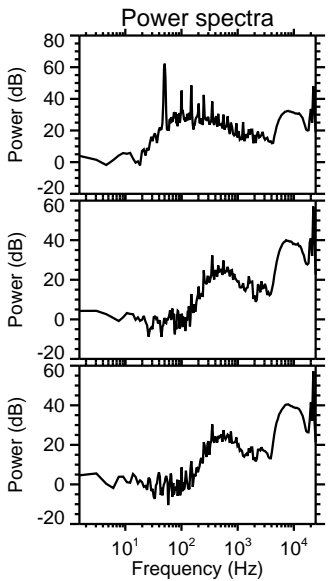
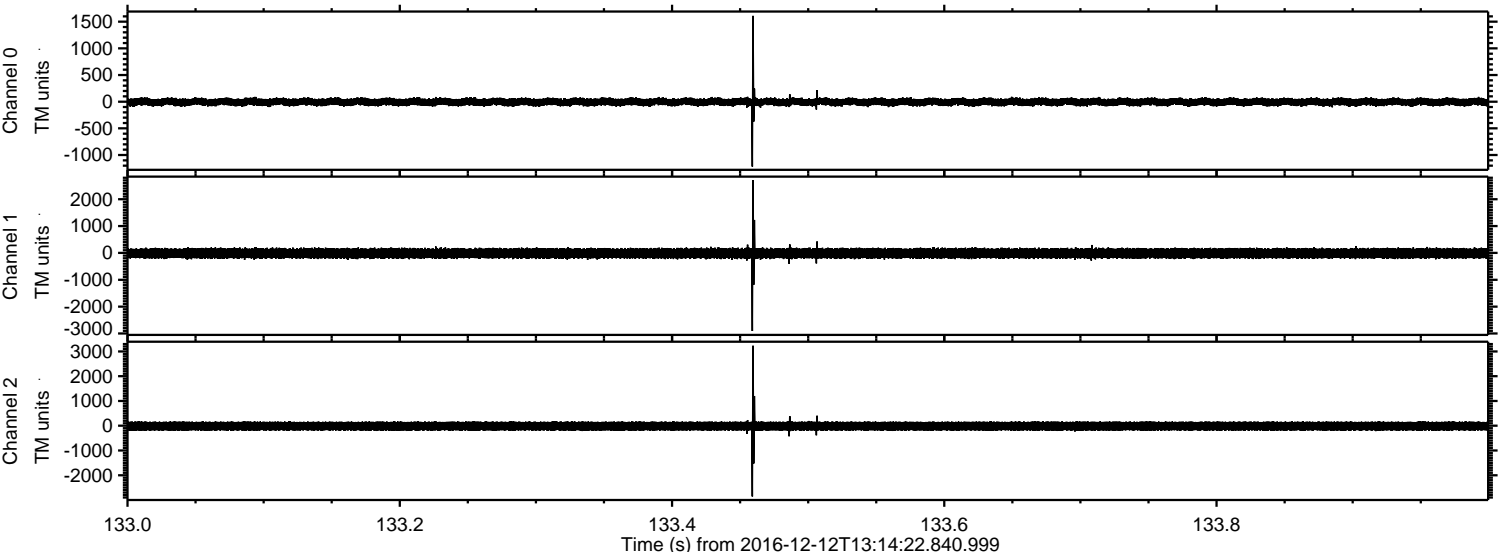
ELMAVAN 3D WAVEFORMS (Measured data sampled at 50 kHz) 51000 packets of 144 samples from 2016-12-12T13:14:22.840.999.

Processed Mon Dec 12 14:22:26 2016 by ELM ver.2012-10-06 from 001__elm20161212_131421__dat00.bin



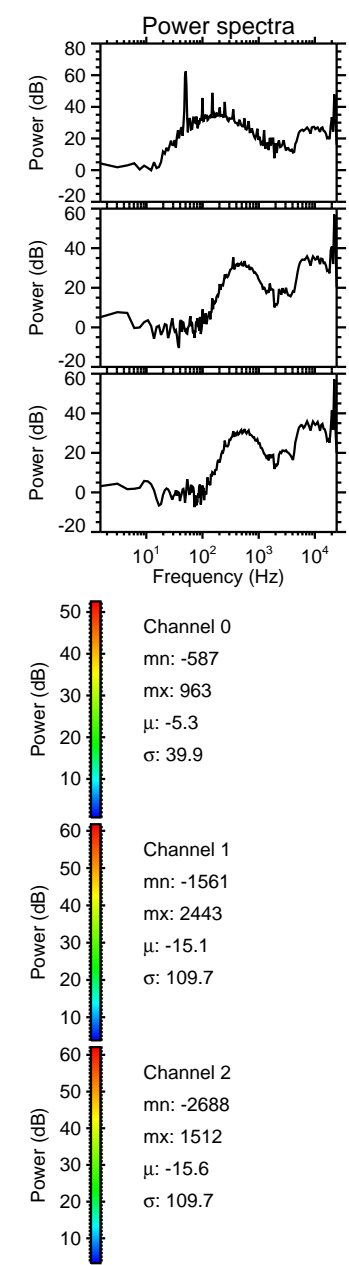
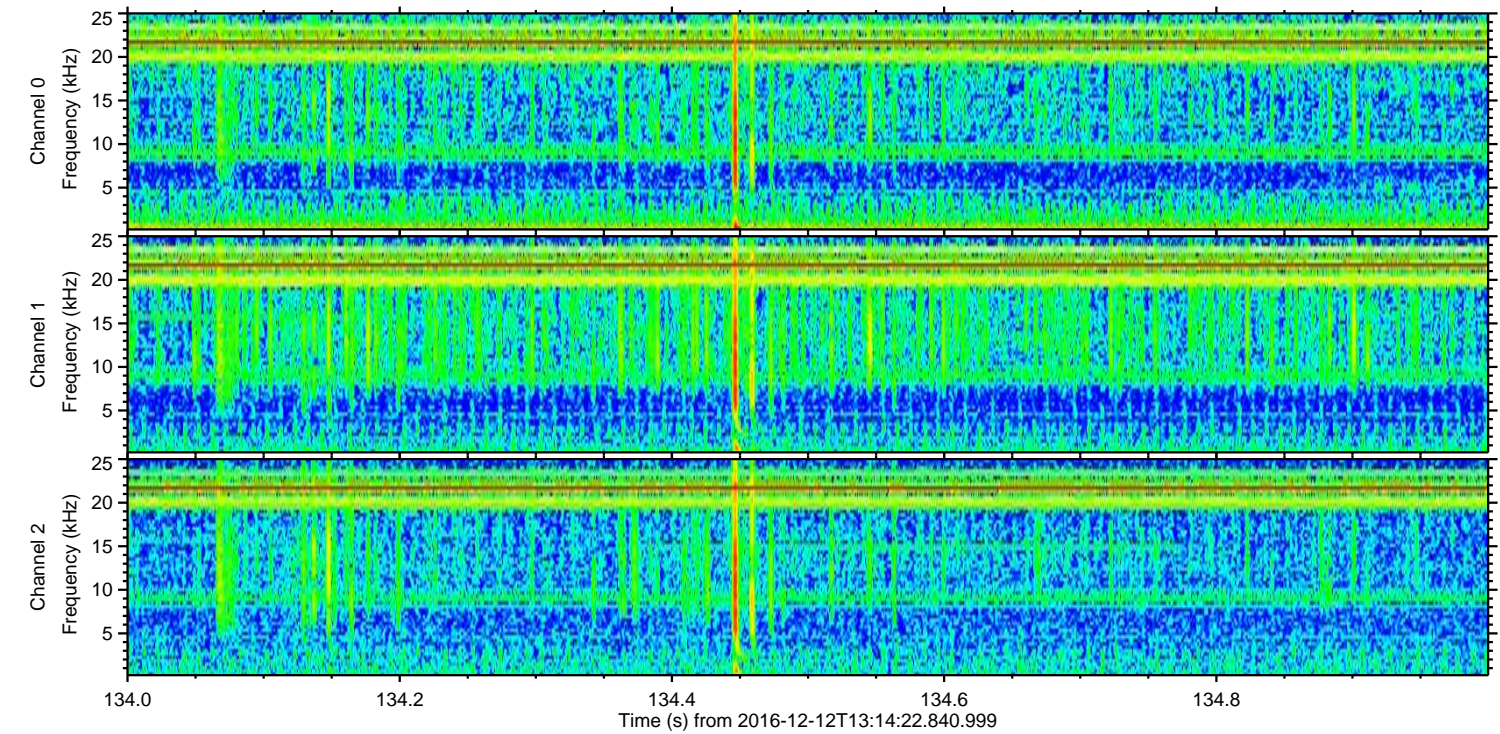
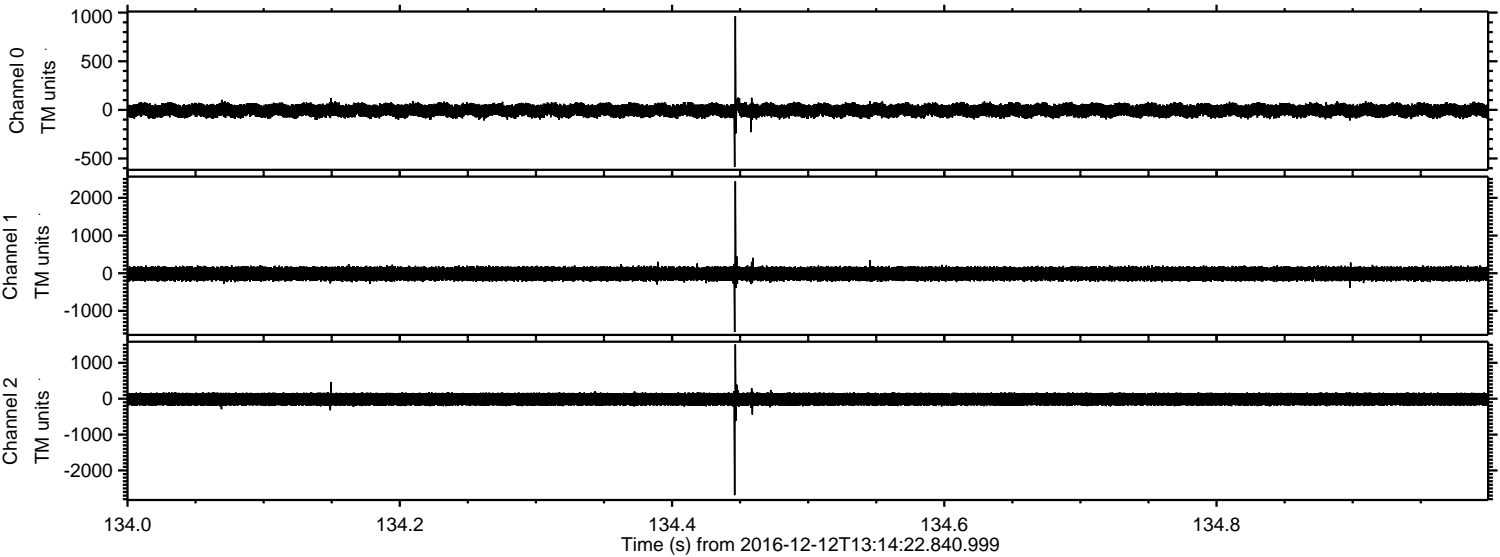
ELMAVAN 3D WAVEFORMS (Measured data sampled at 50 kHz) 51000 packets of 144 samples from 2016-12-12T13:14:22.840.999. Part 134/147

Processed Mon Dec 12 14:22:38 2016 by ELM ver.2012-10-06 from 001__elm20161212_131421__dat00.bin



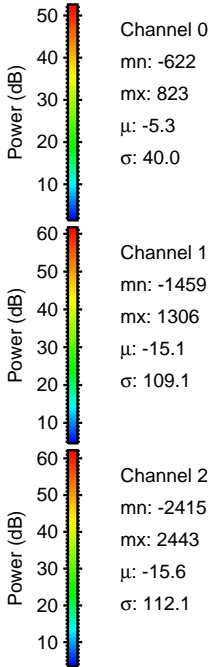
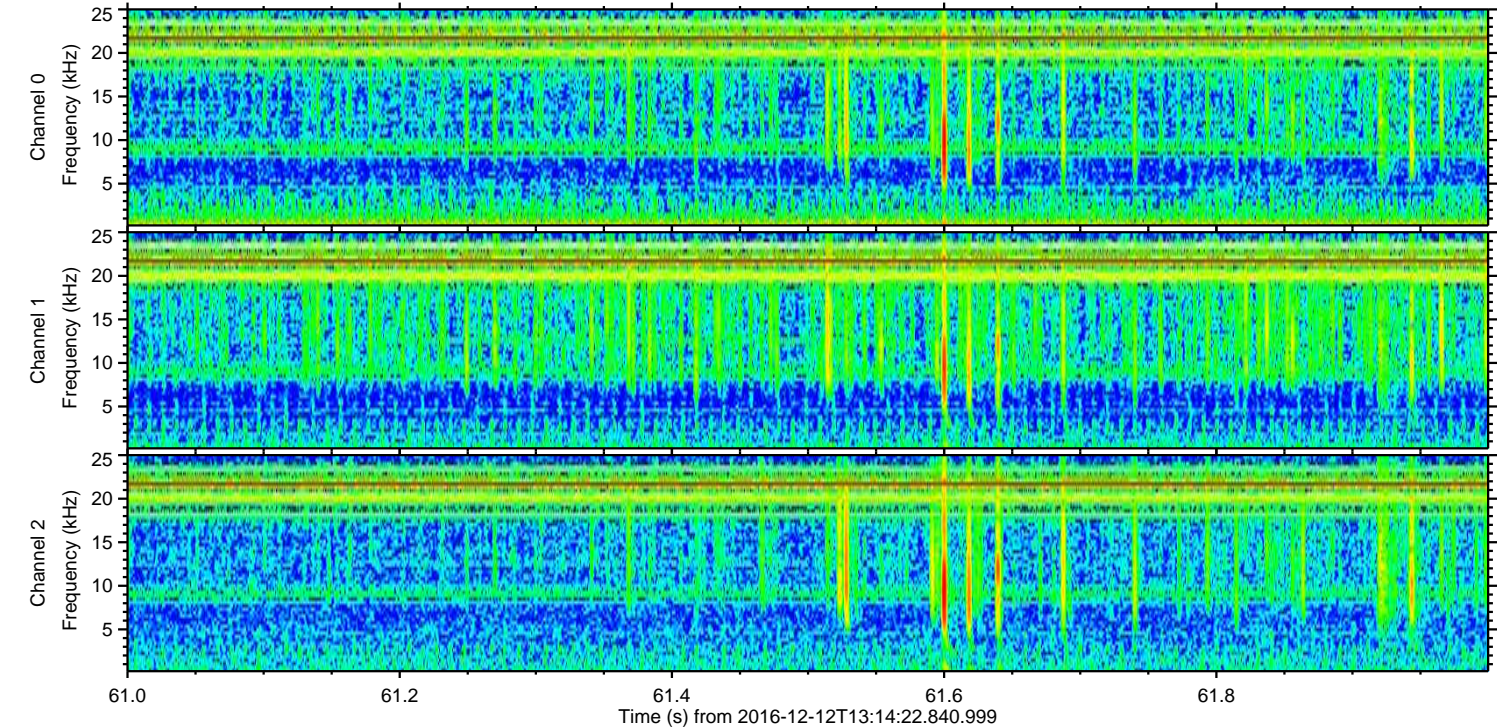
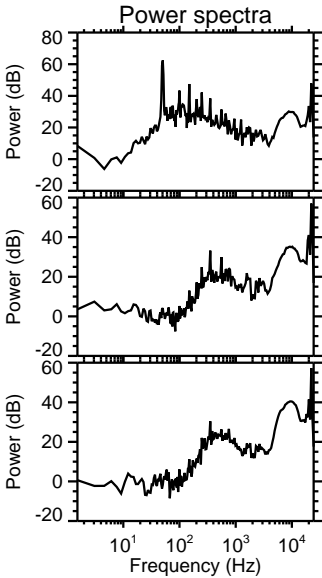
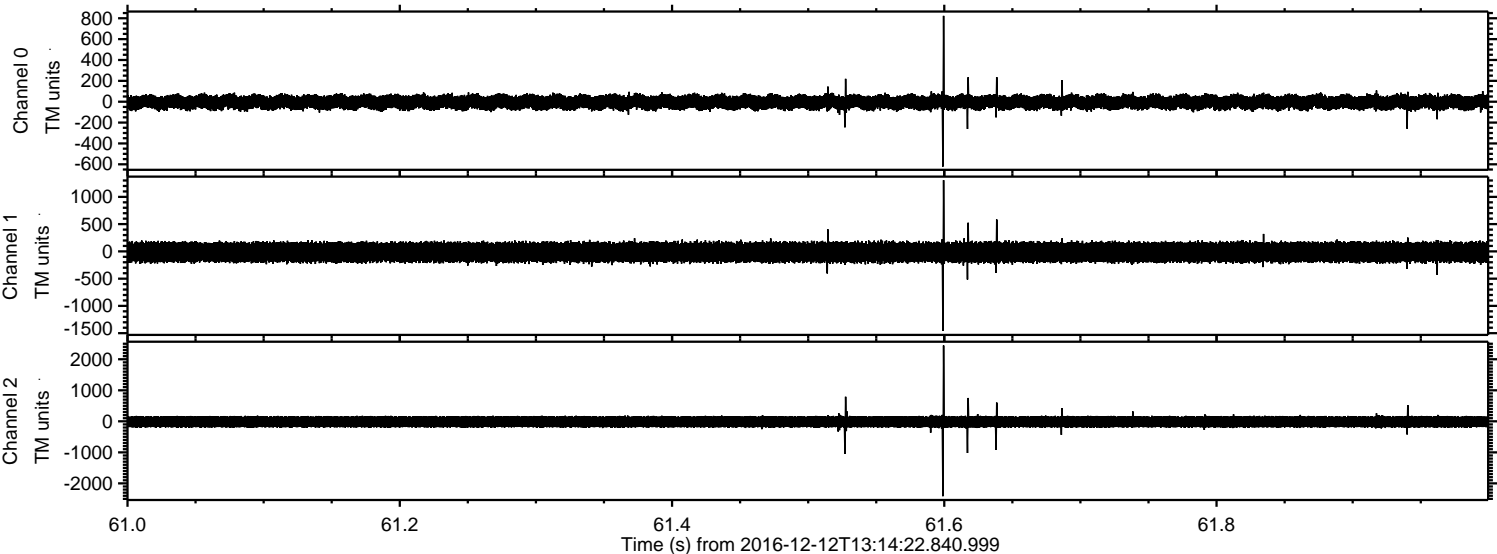
ELMAVAN 3D WAVEFORMS (Measured data sampled at 50 kHz) 51000 packets of 144 samples from 2016-12-12T13:14:22.840.999. Part 135/147

Processed Mon Dec 12 14:22:39 2016 by ELM ver.2012-10-06 from 001__elm20161212_131421__dat00.bin

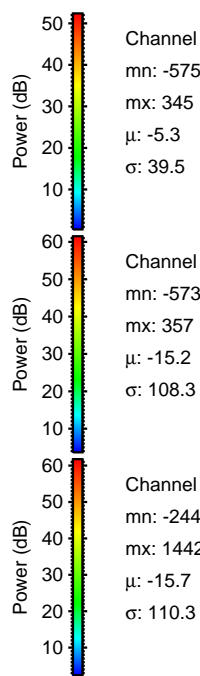
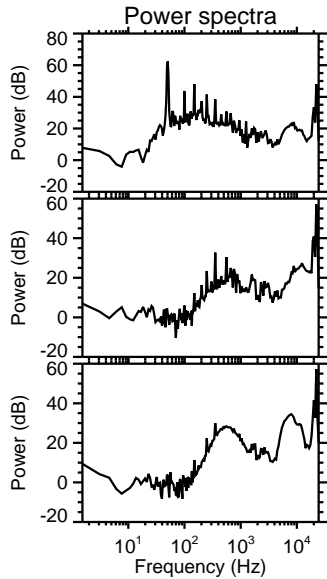
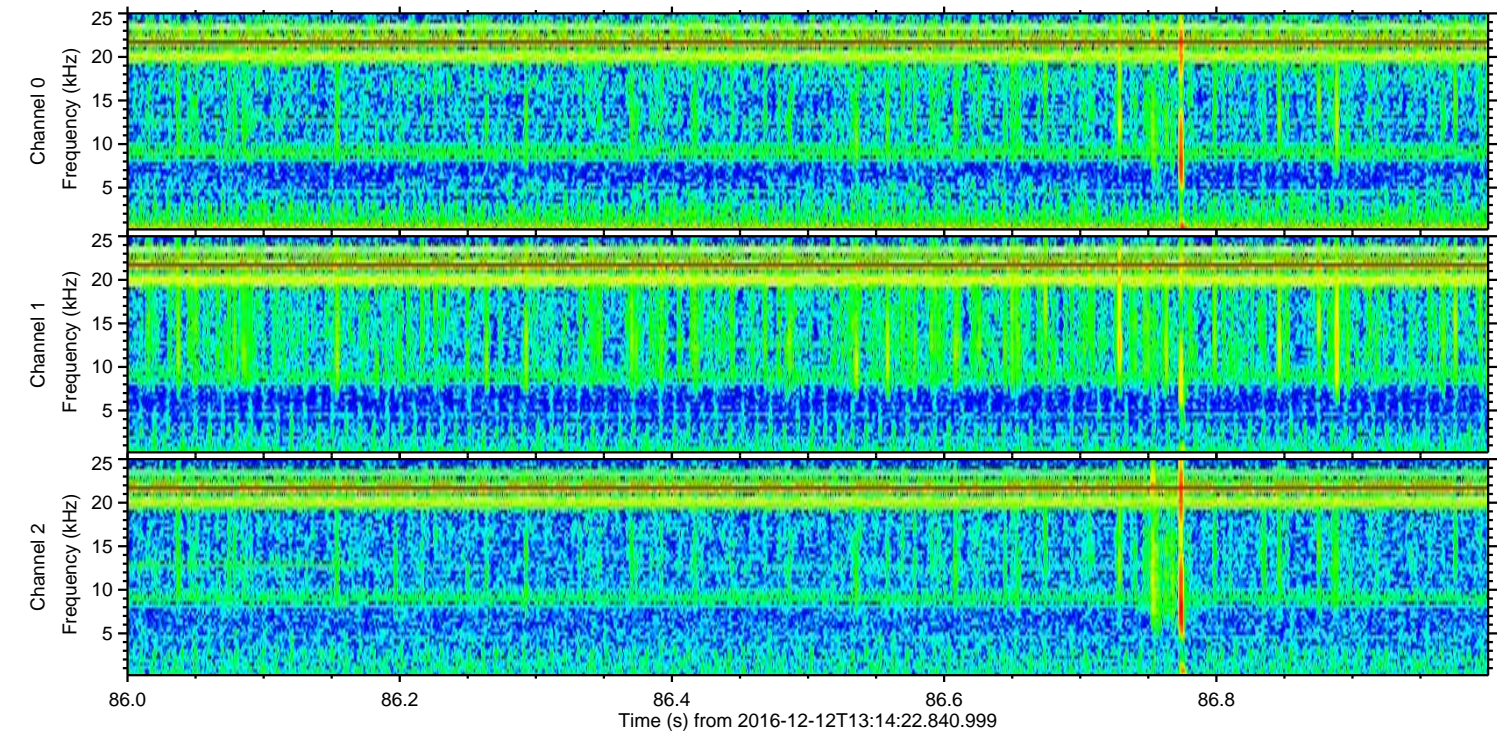
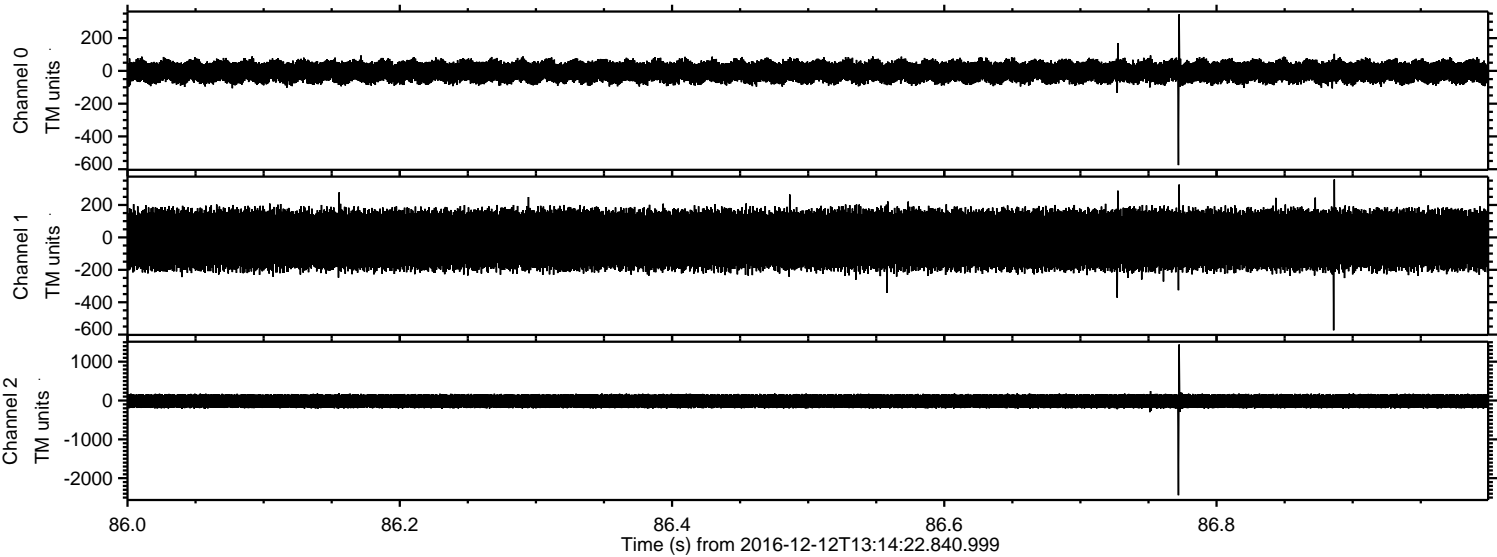


ELMAVAN 3D WAVEFORMS (Measured data sampled at 50 kHz) 51000 packets of 144 samples from 2016-12-12T13:14:22.840.999. Part 62/147

Processed Mon Dec 12 14:22:40 2016 by ELM ver.2012-10-06 from 001__elm20161212_131421__dat00.bin



Processed Mon Dec 12 14:22:41 2016 by ELM ver.2012-10-06 from 001__elm20161212_131421__dat00.bin



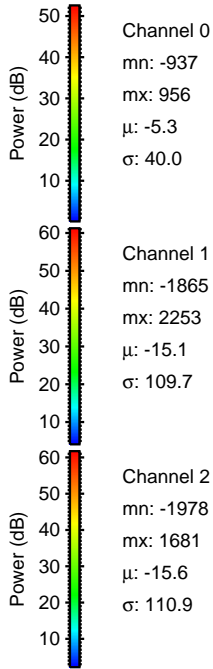
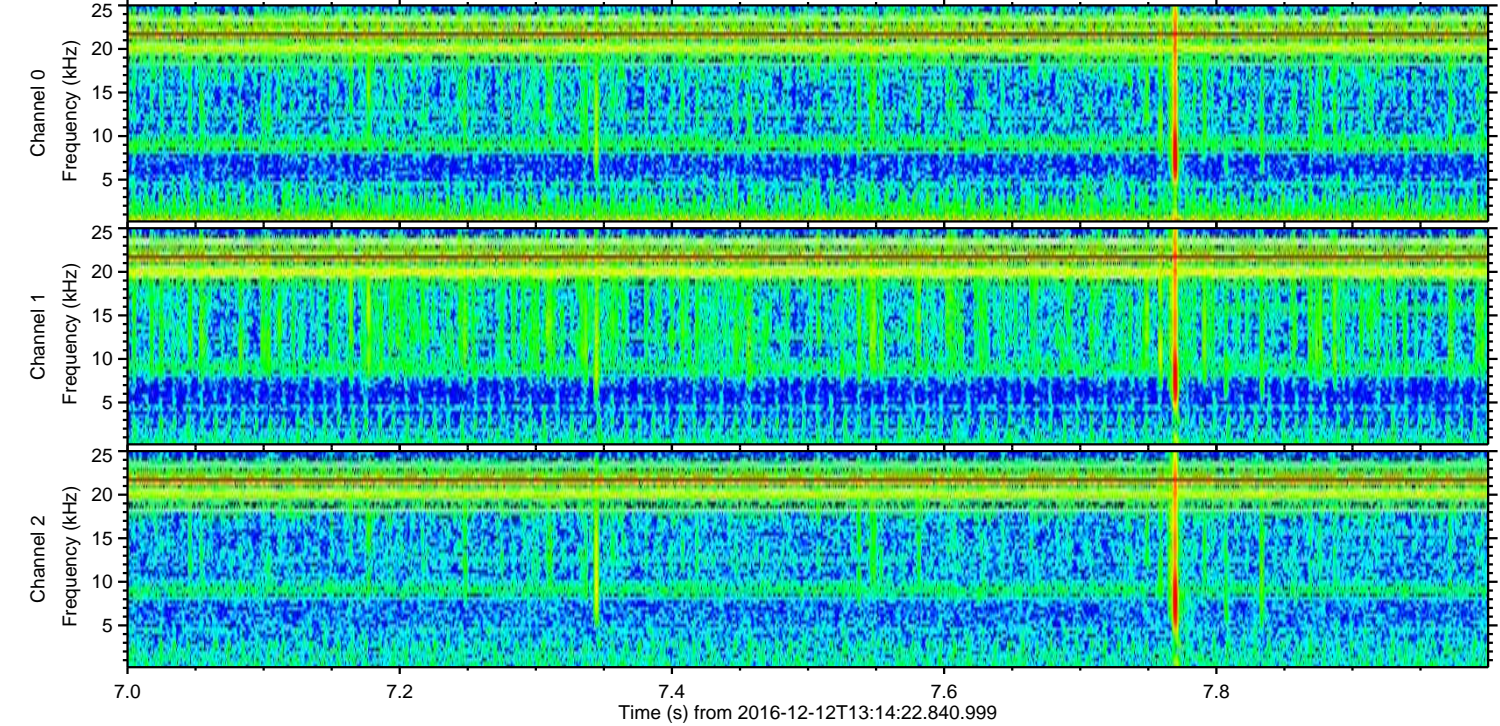
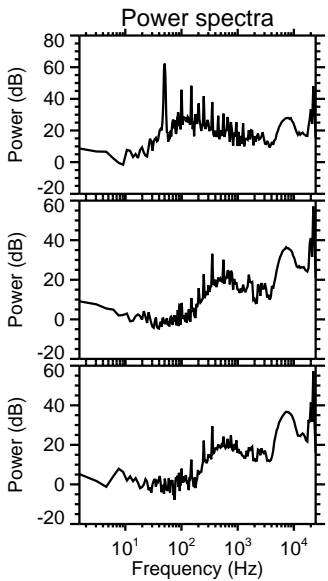
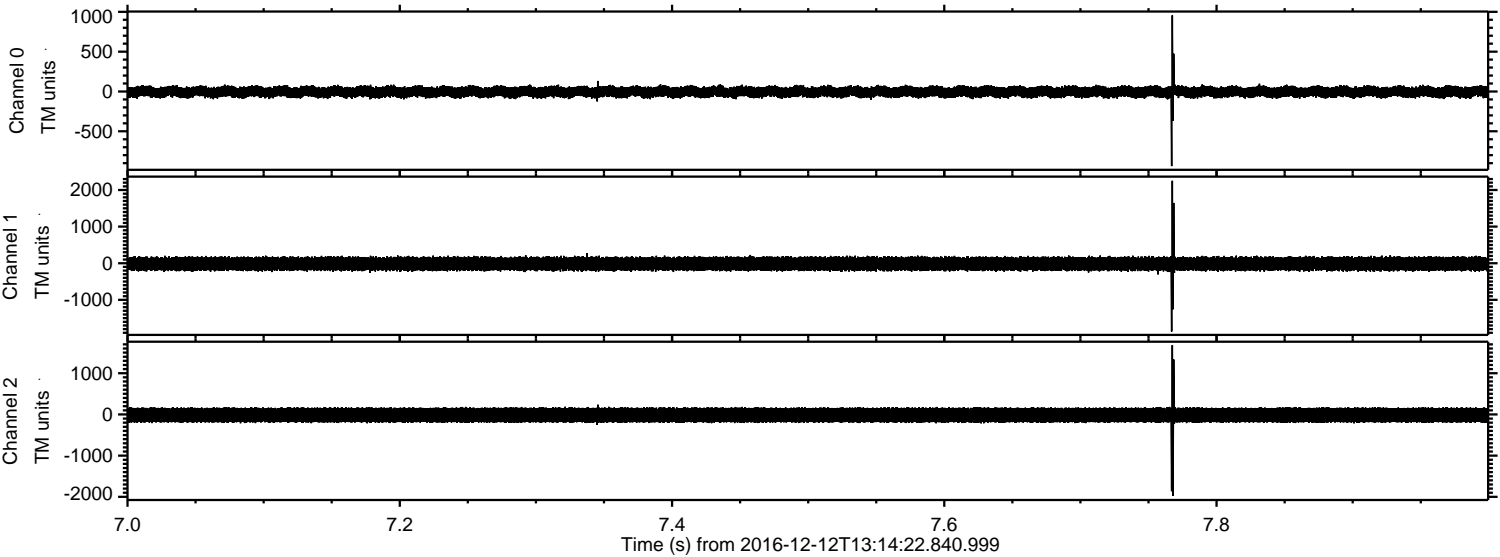
Channel 0
mn: -575
mx: 345
 μ : -5.3
 σ : 39.5

Channel 1
mn: -573
mx: 357
 μ : -15.2
 σ : 108.3

Channel 2
mn: -2440
mx: 1442
 μ : -15.7
 σ : 110.3

ELMAVAN 3D WAVEFORMS (Measured data sampled at 50 kHz) 51000 packets of 144 samples from 2016-12-12T13:14:22.840.999. Part 8/147

Processed Mon Dec 12 14:22:41 2016 by ELM ver.2012-10-06 from 001__elm20161212_131421__dat00.bin



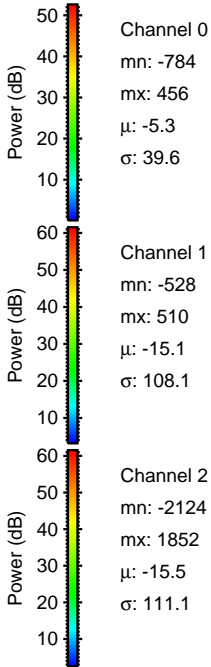
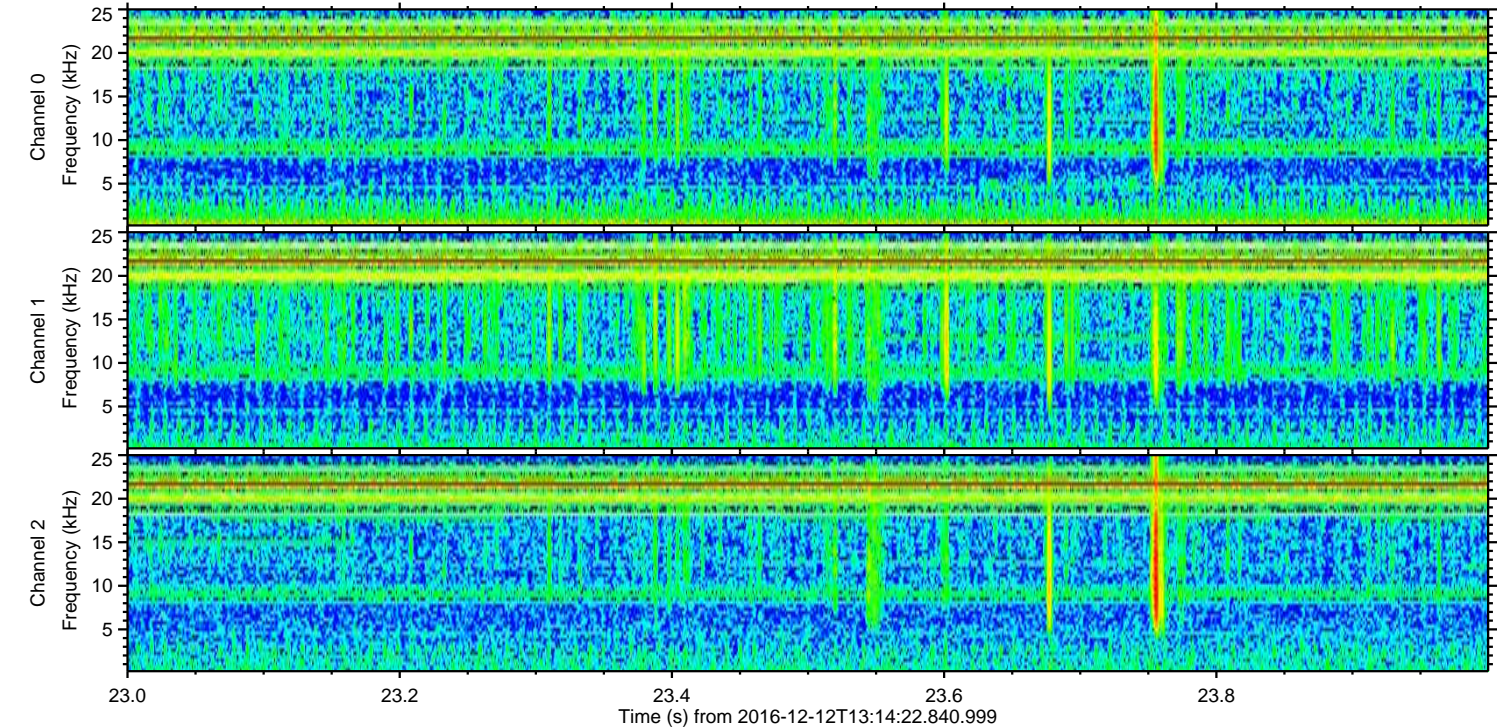
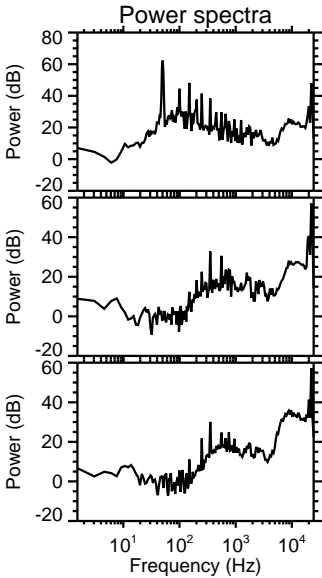
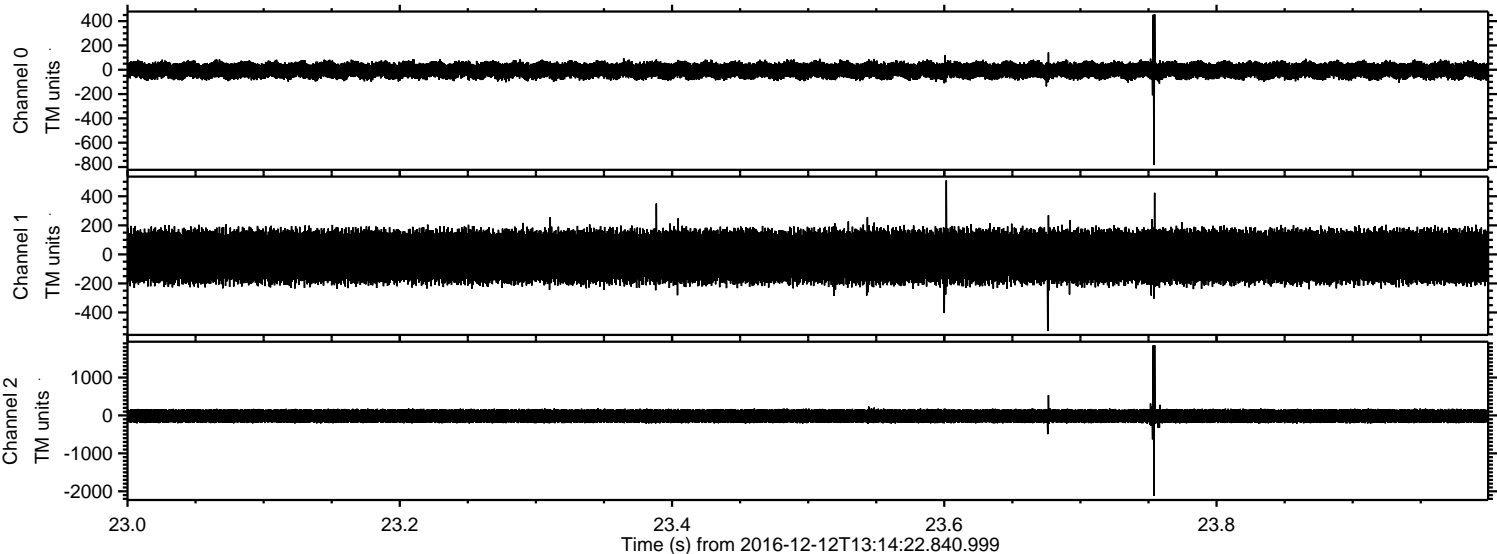
Channel 0
mn: -937
mx: 956
 μ : -5.3
 σ : 40.0

Channel 1
mn: -1865
mx: 2253
 μ : -15.1
 σ : 109.7

Channel 2
mn: -1978
mx: 1681
 μ : -15.6
 σ : 110.9

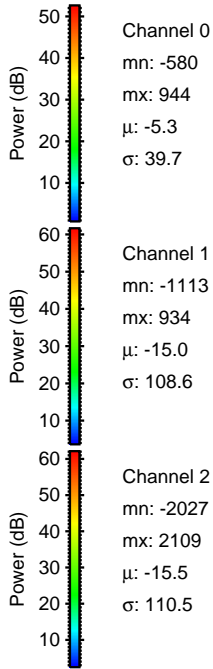
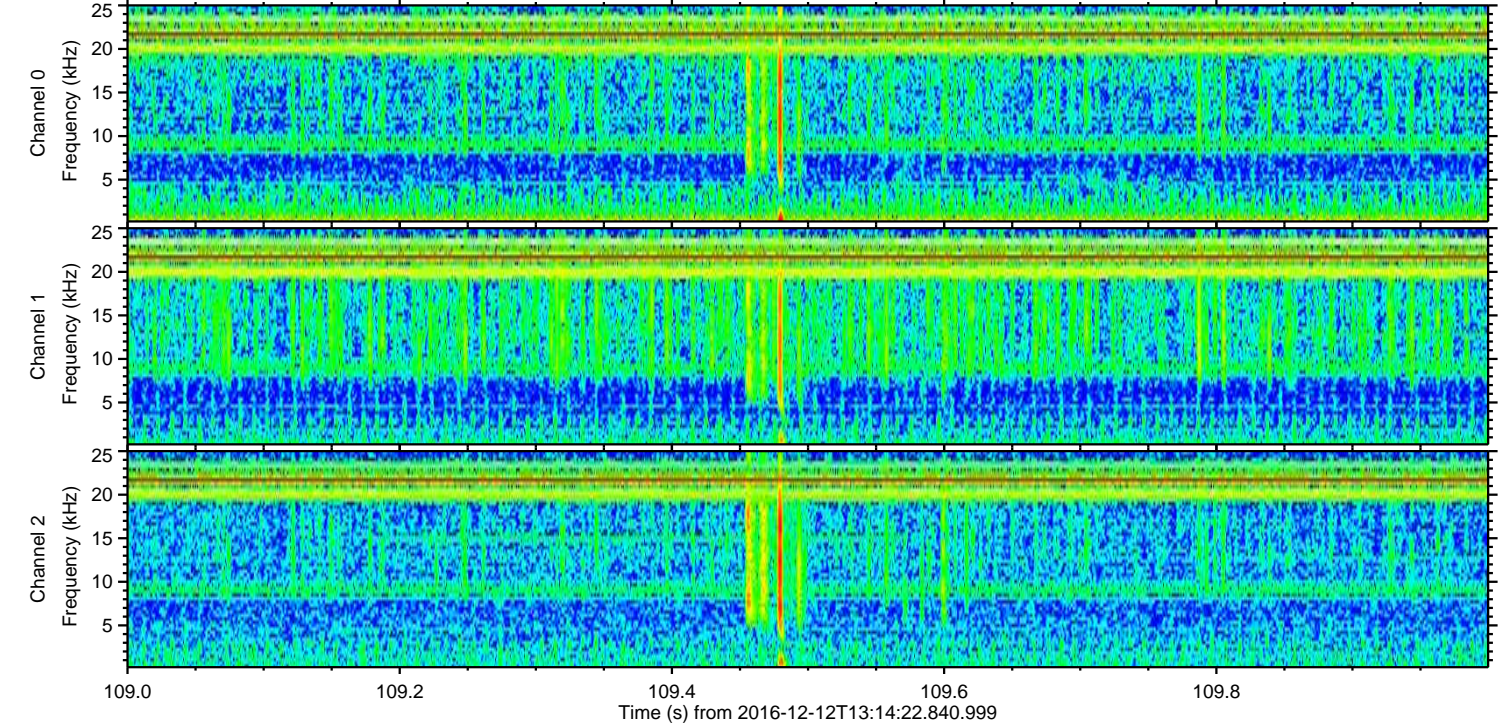
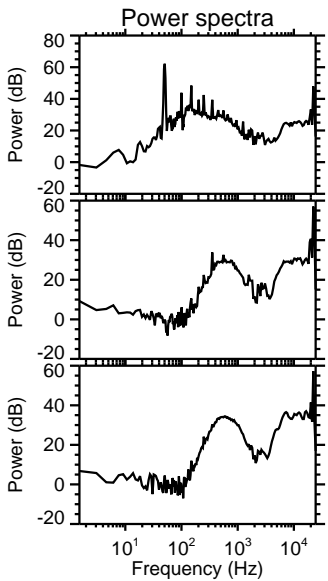
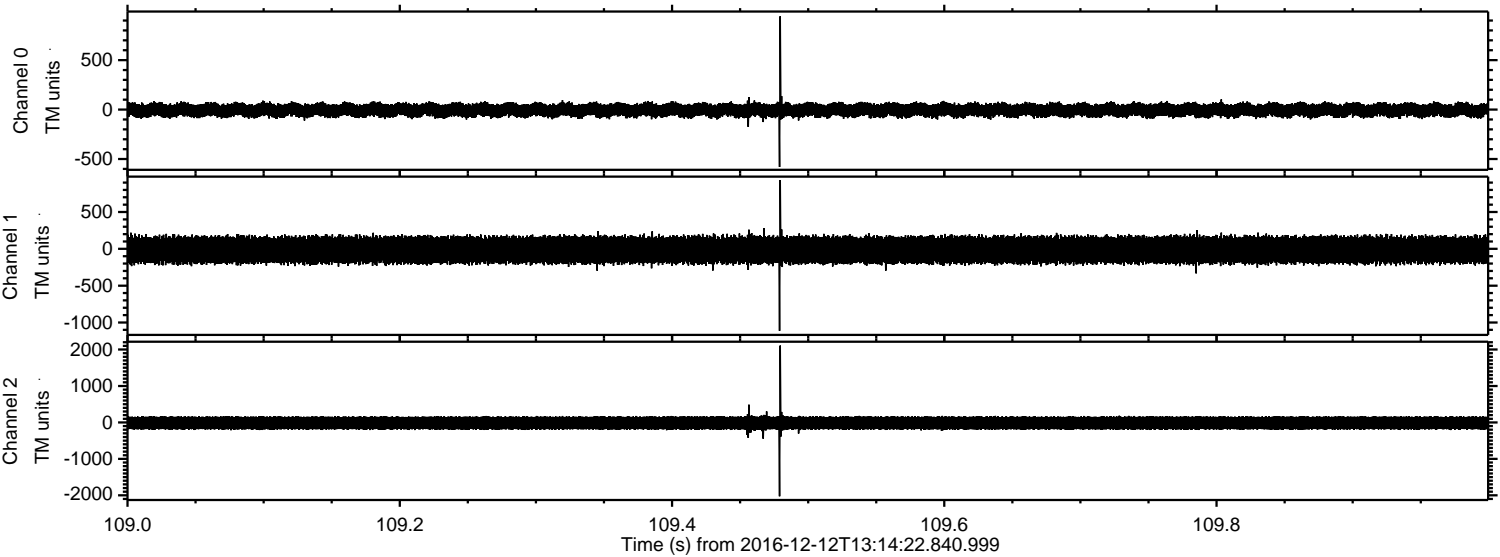
ELMAVAN 3D WAVEFORMS (Measured data sampled at 50 kHz) 51000 packets of 144 samples from 2016-12-12T13:14:22.840.999. Part 24/147

Processed Mon Dec 12 14:22:42 2016 by ELM ver.2012-10-06 from 001__elm20161212_131421__dat00.bin



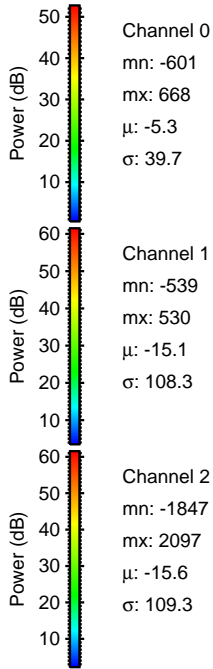
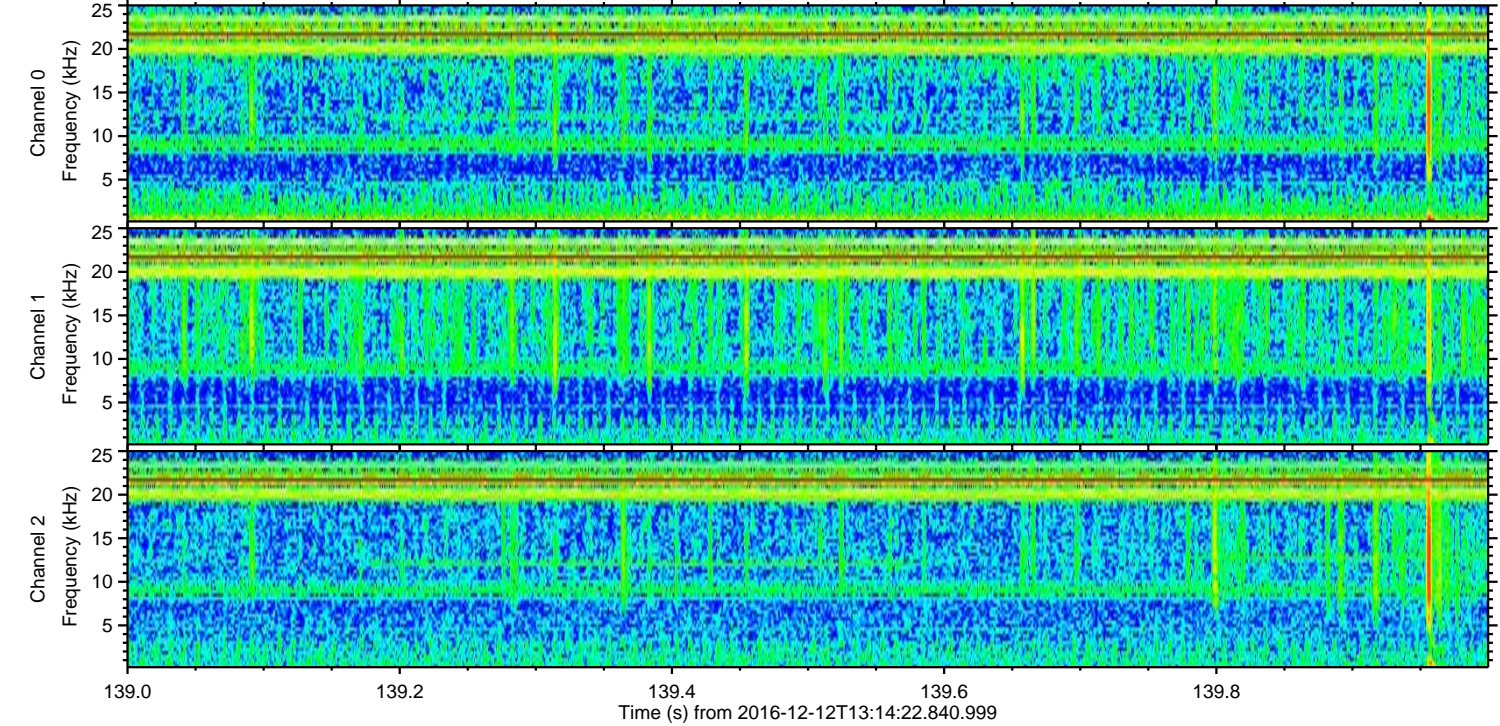
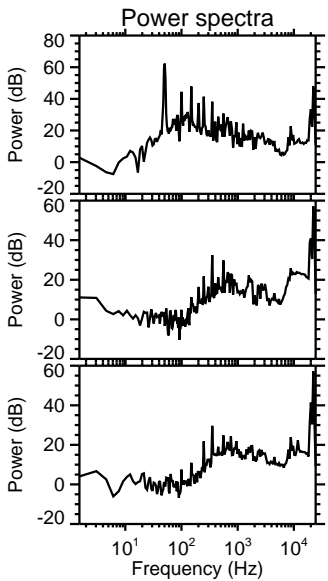
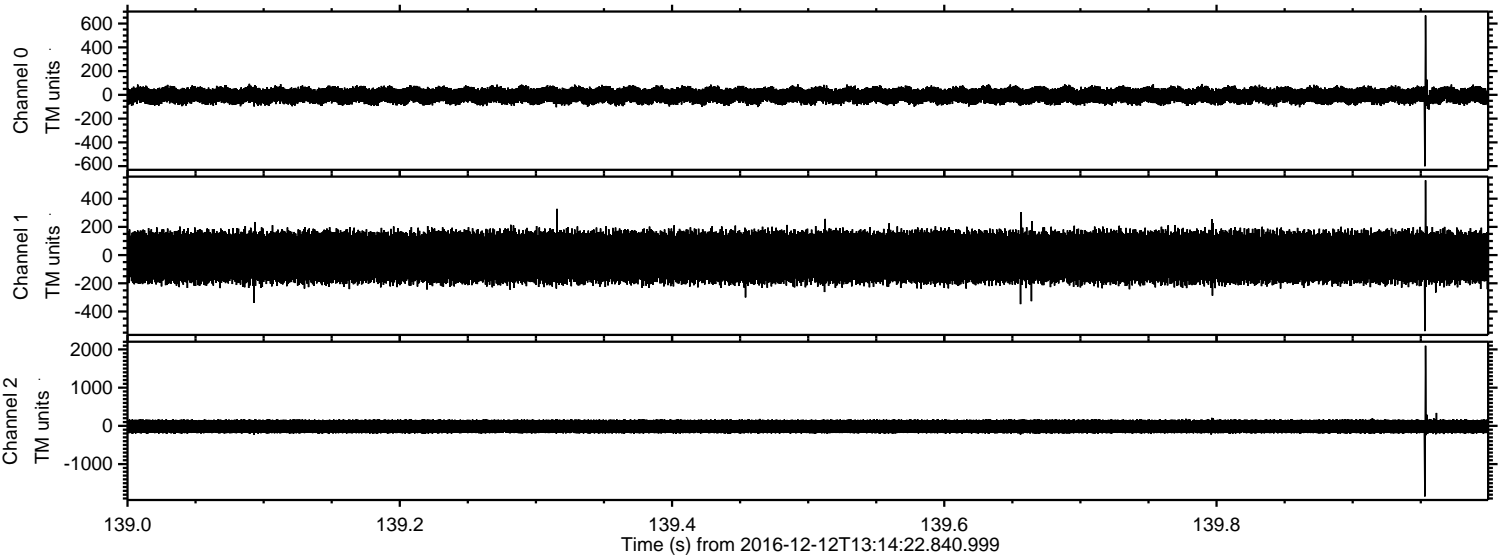
ELMAVAN 3D WAVEFORMS (Measured data sampled at 50 kHz) 51000 packets of 144 samples from 2016-12-12T13:14:22.840.999. Part 110/147

Processed Mon Dec 12 14:22:43 2016 by ELM ver.2012-10-06 from 001__elm20161212_131421__dat00.bin



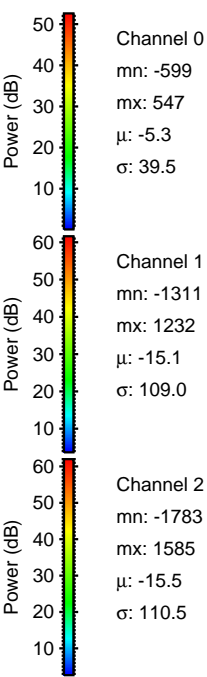
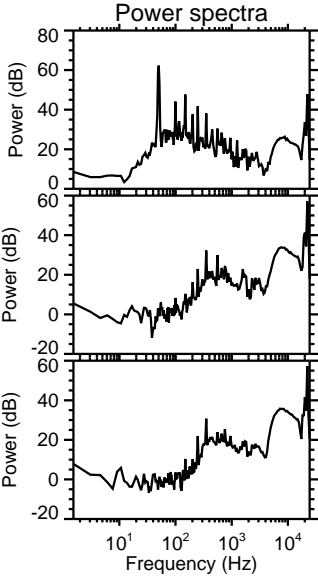
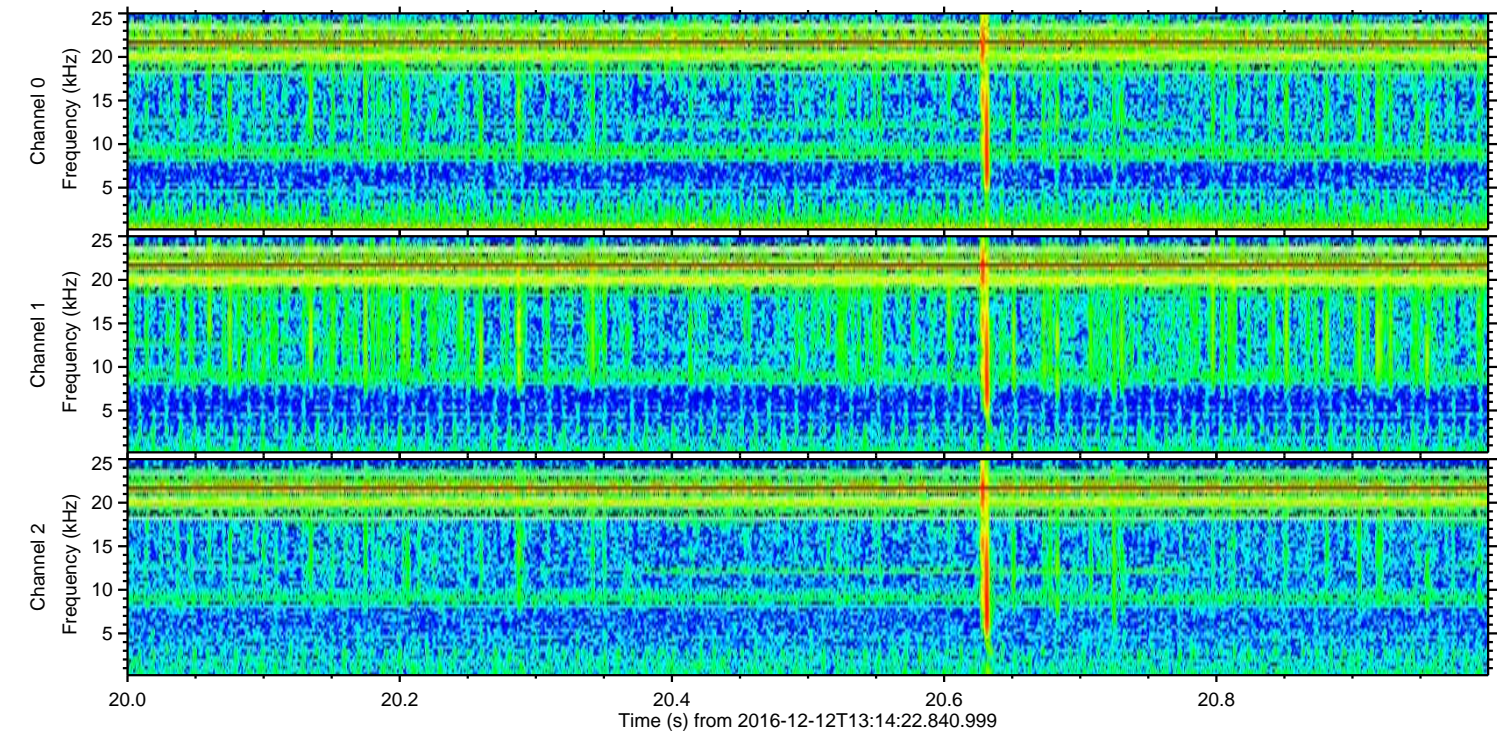
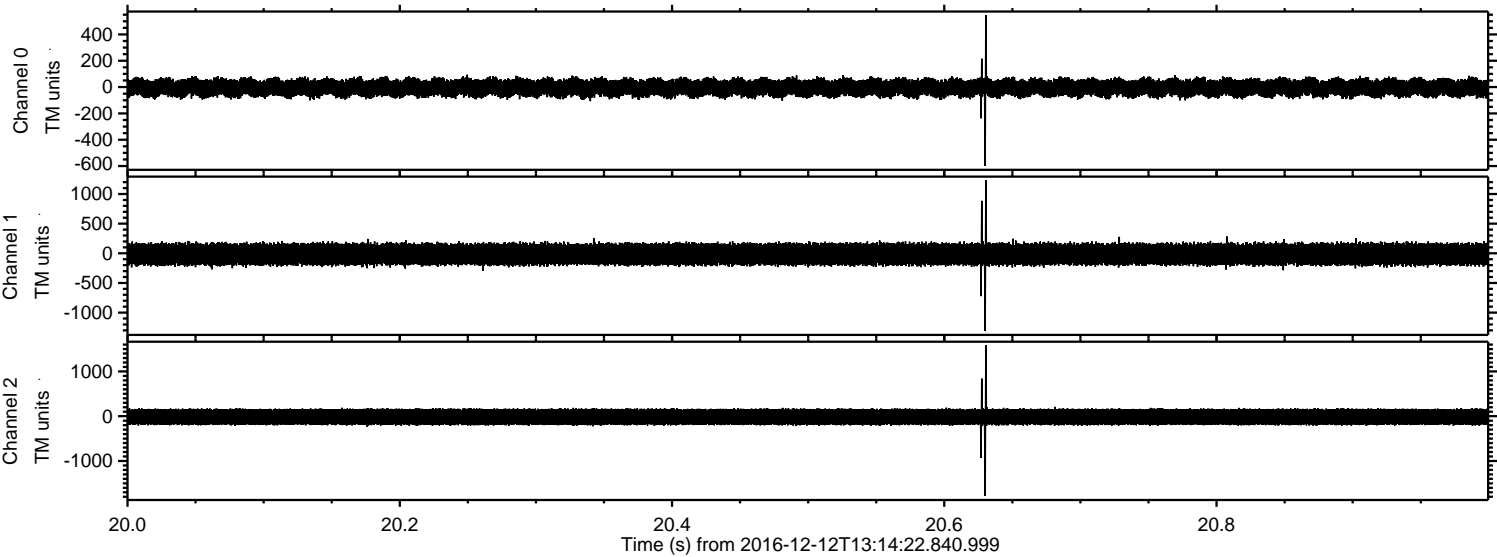
ELMAVAN 3D WAVEFORMS (Measured data sampled at 50 kHz) 51000 packets of 144 samples from 2016-12-12T13:14:22.840.999. Part 140/147

Processed Mon Dec 12 14:22:44 2016 by ELM ver.2012-10-06 from 001__elm20161212_131421__dat00.bin



ELMAVAN 3D WAVEFORMS (Measured data sampled at 50 kHz) 51000 packets of 144 samples from 2016-12-12T13:14:22.840.999. Part 21/147

Processed Mon Dec 12 14:22:45 2016 by ELM ver.2012-10-06 from 001__elm20161212_131421__dat00.bin



Channel 0
mn: -599
mx: 547
 μ : -5.3
 σ : 39.5

Channel 1
mn: -1311
mx: 1232
 μ : -15.1
 σ : 109.0

Channel 2
mn: -1783
mx: 1585
 μ : -15.5
 σ : 110.5

ELMAVAN 3D WAVEFORMS (Measured data sampled at 50 kHz) 51000 packets of 144 samples from 2016-12-12T13:14:22.840.999. Part 102/147

