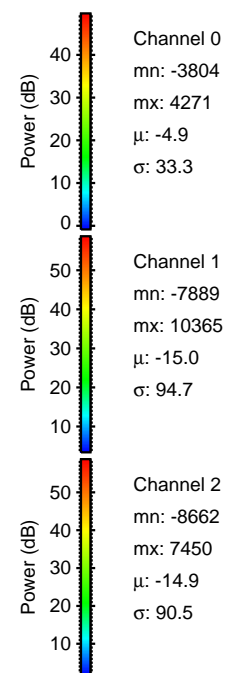
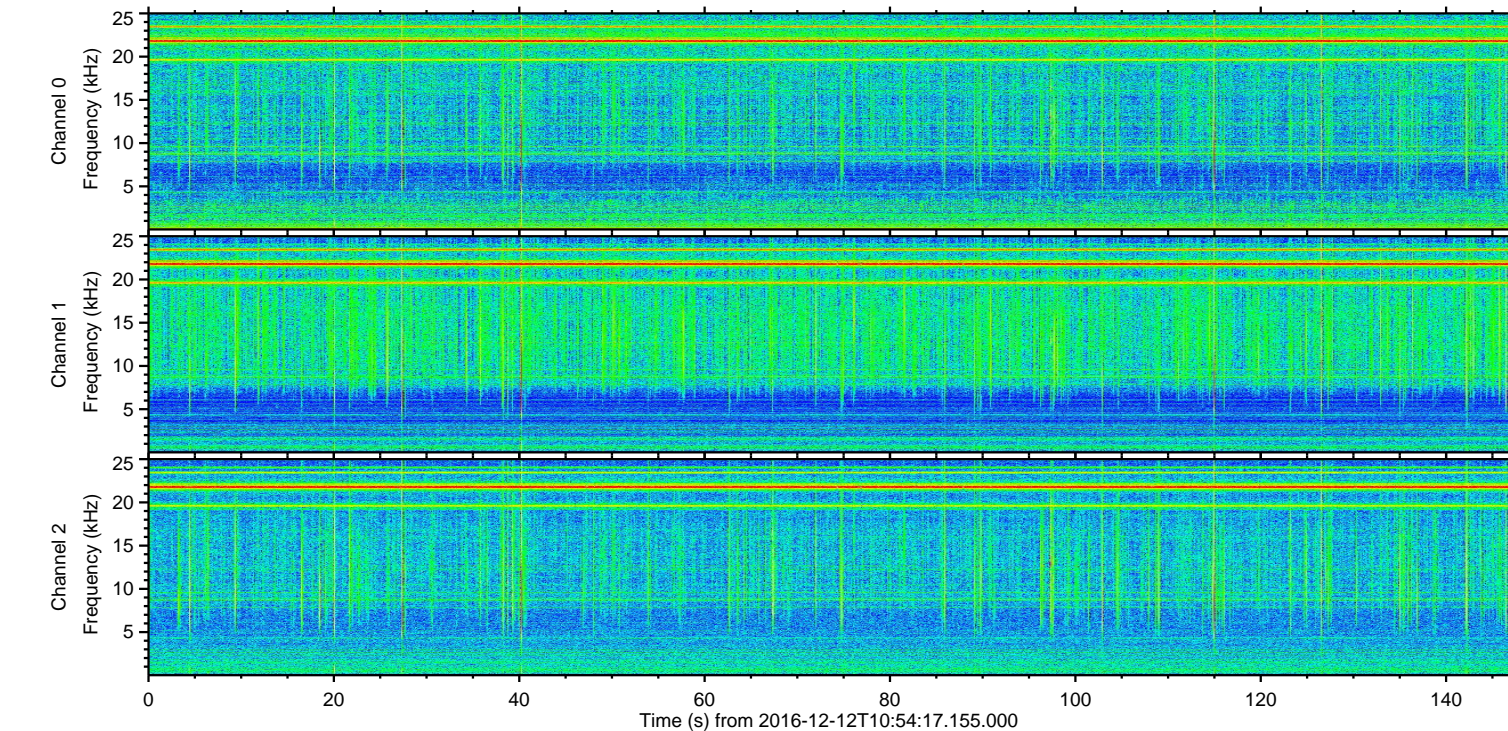
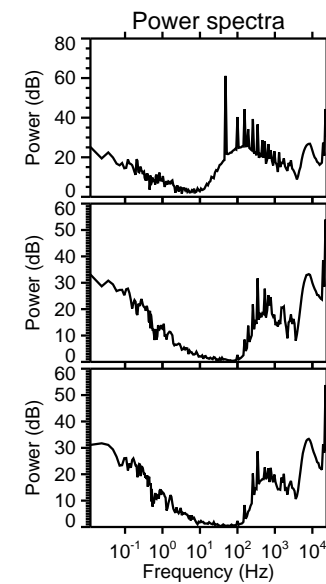
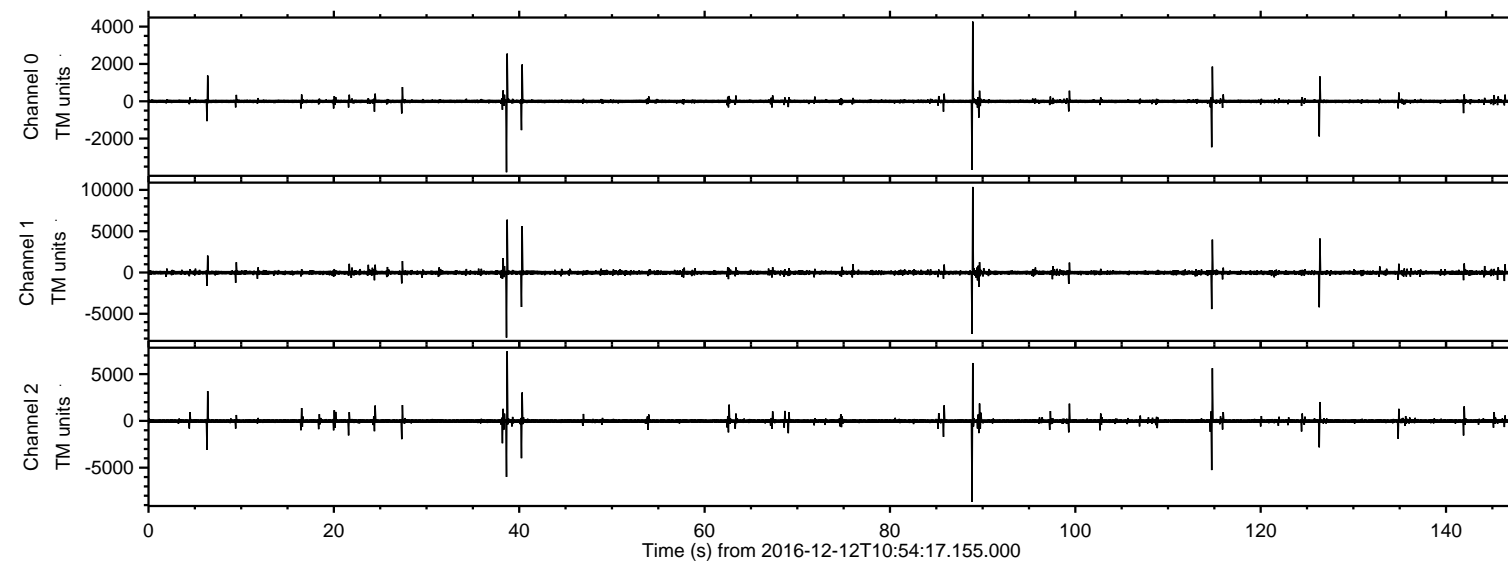


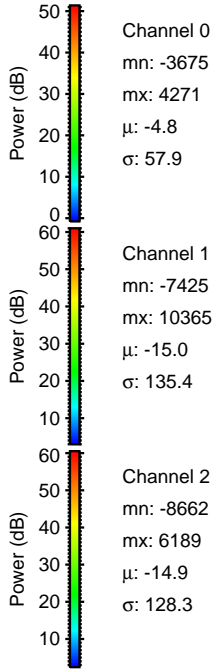
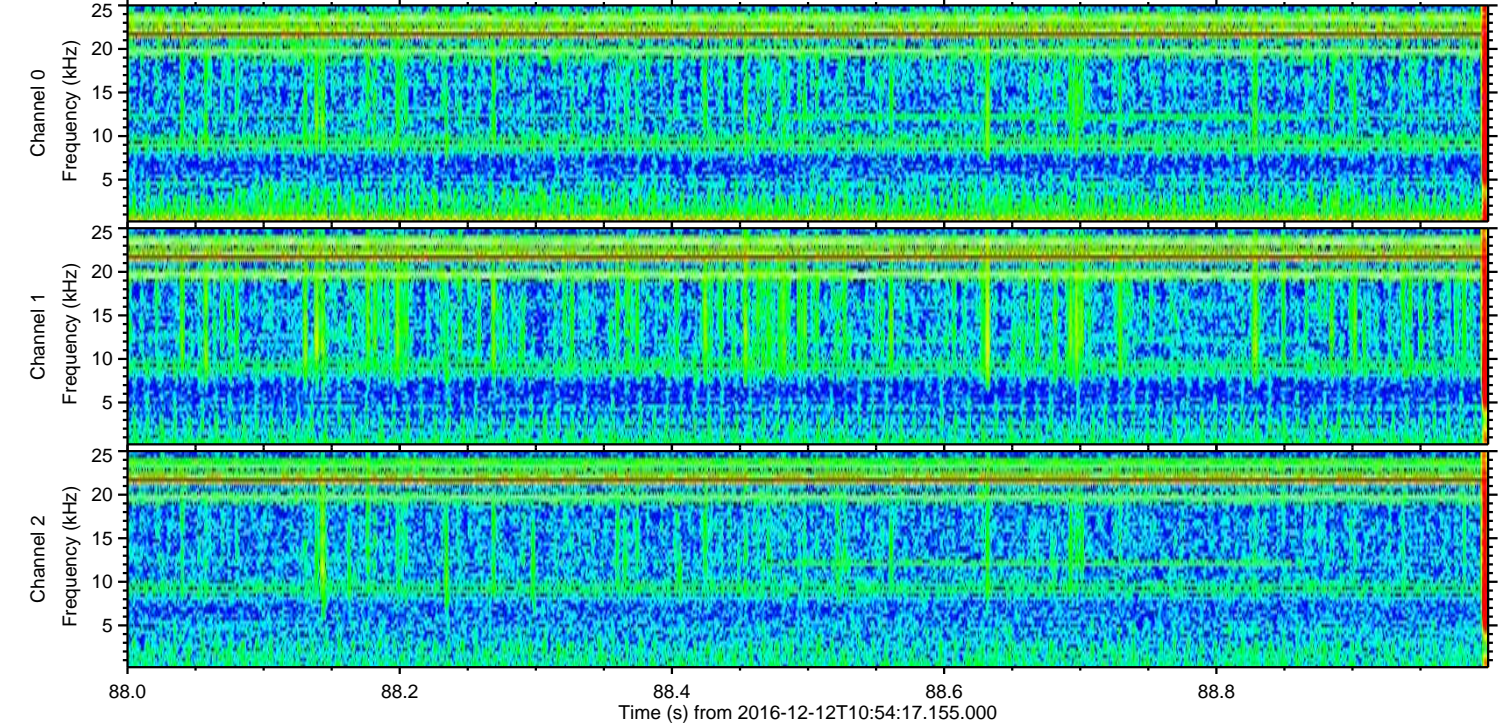
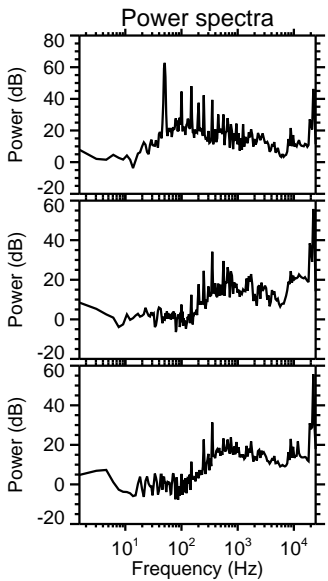
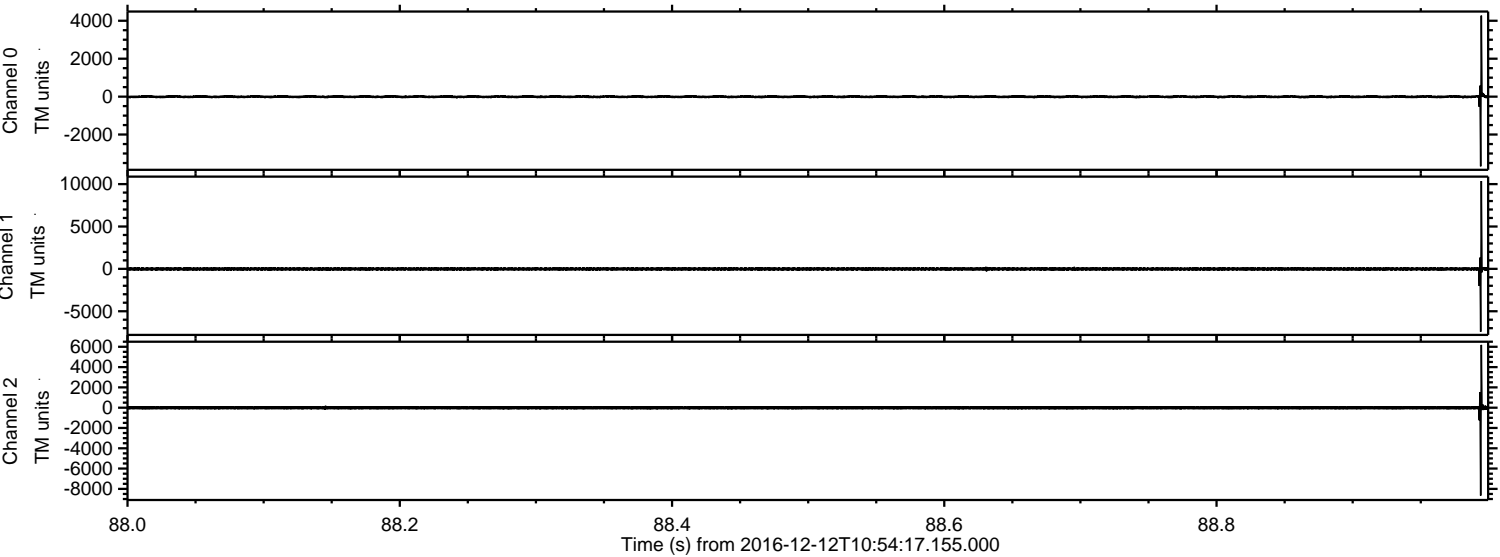
ELMAVAN 3D WAVEFORMS (Measured data sampled at 50 kHz) 51000 packets of 144 samples from 2016-12-12T10:54:17.155.000.

Processed Mon Dec 12 12:02:31 2016 by ELM ver.2012-10-06 from 001__elm20161212_105416__dat00.bin

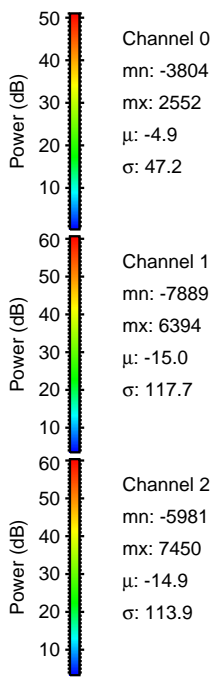
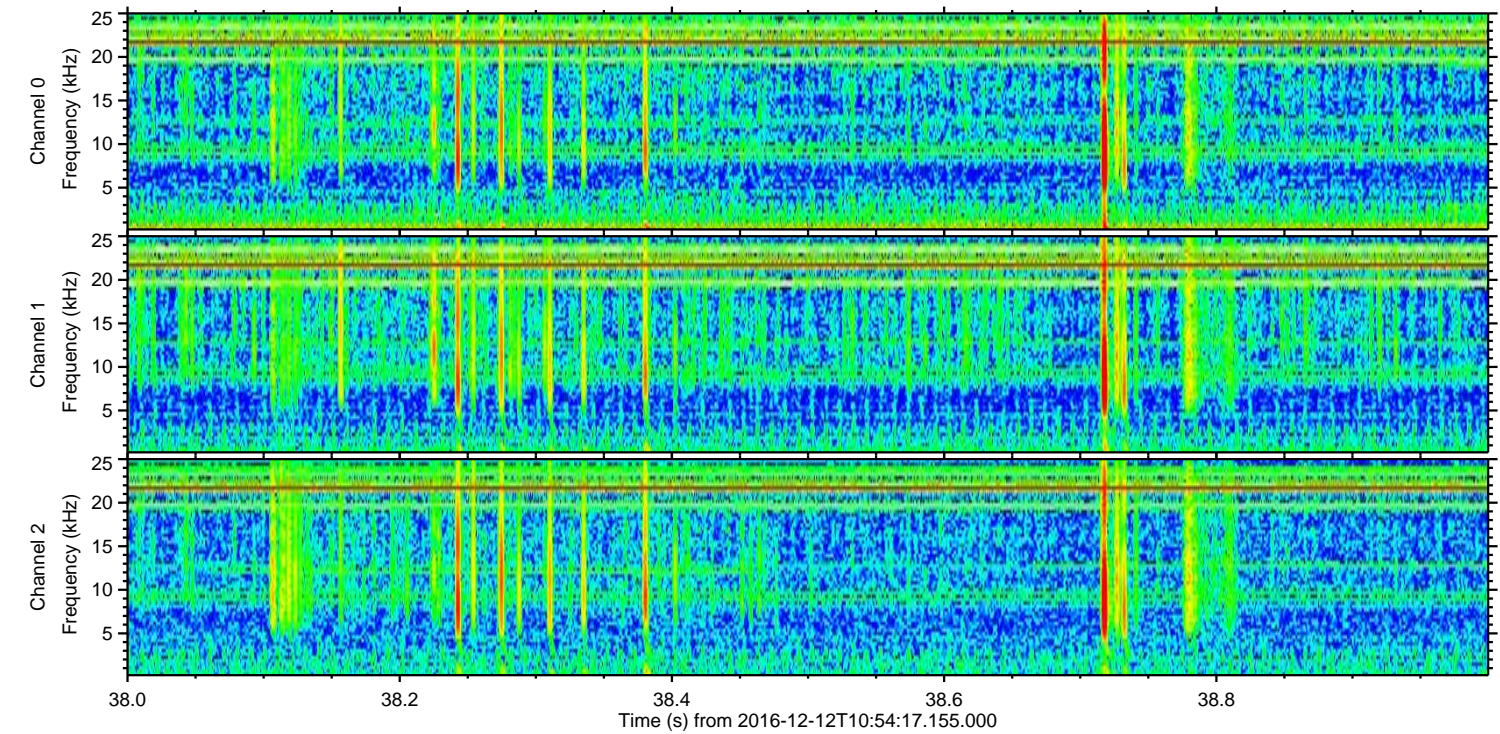
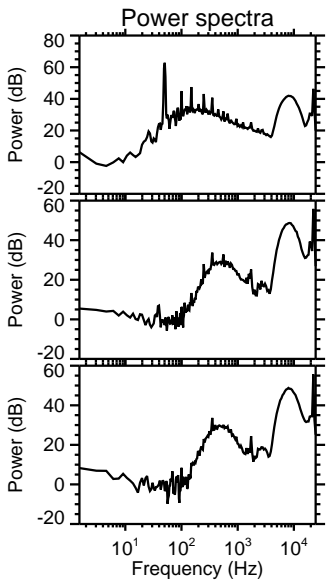
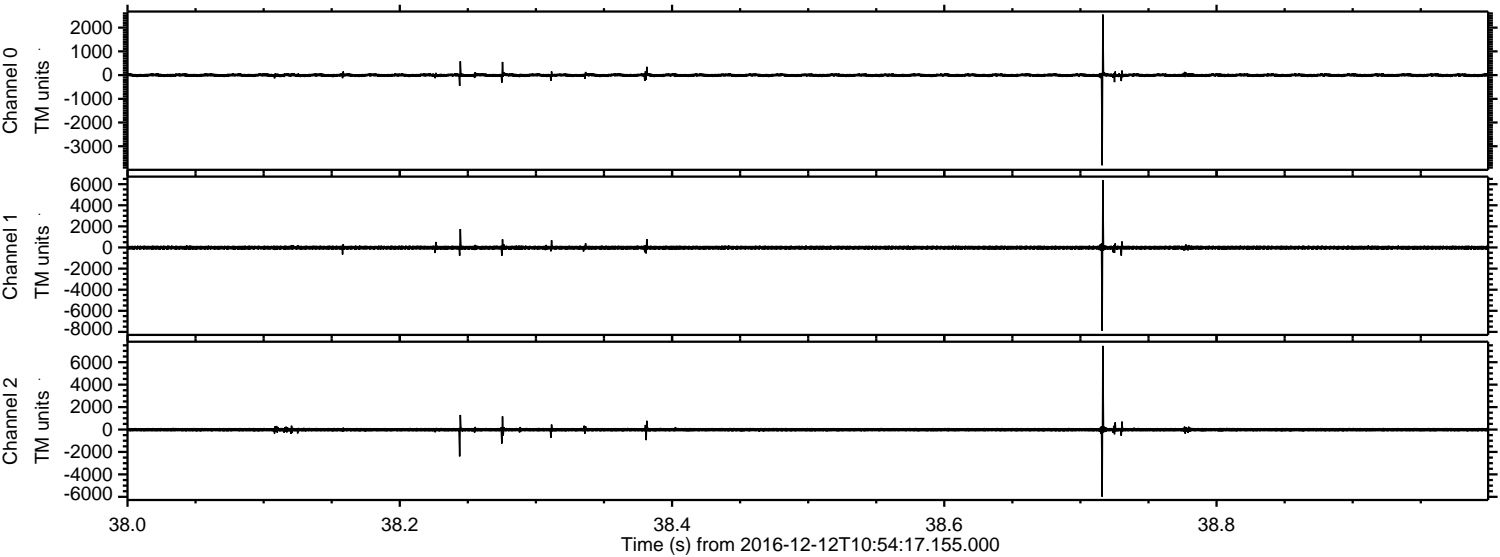


ELMAVAN 3D WAVEFORMS (Measured data sampled at 50 kHz) 51000 packets of 144 samples from 2016-12-12T10:54:17.155.000. Part 89/147

Processed Mon Dec 12 12:02:42 2016 by ELM ver.2012-10-06 from 001__elm20161212_105416__dat00.bin



Processed Mon Dec 12 12:02:43 2016 by ELM ver.2012-10-06 from 001__elm20161212_105416__dat00.bin



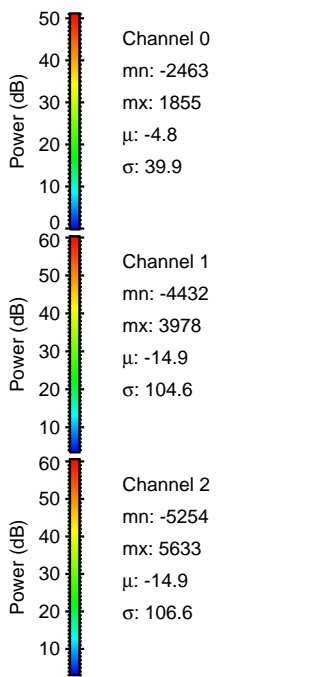
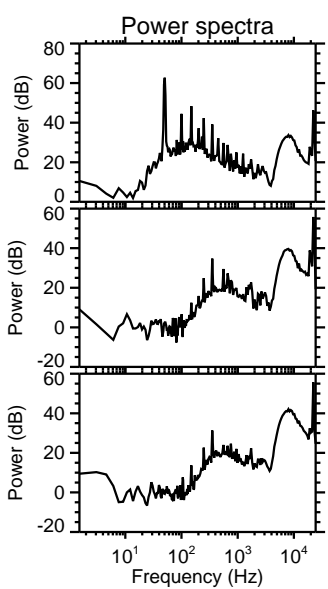
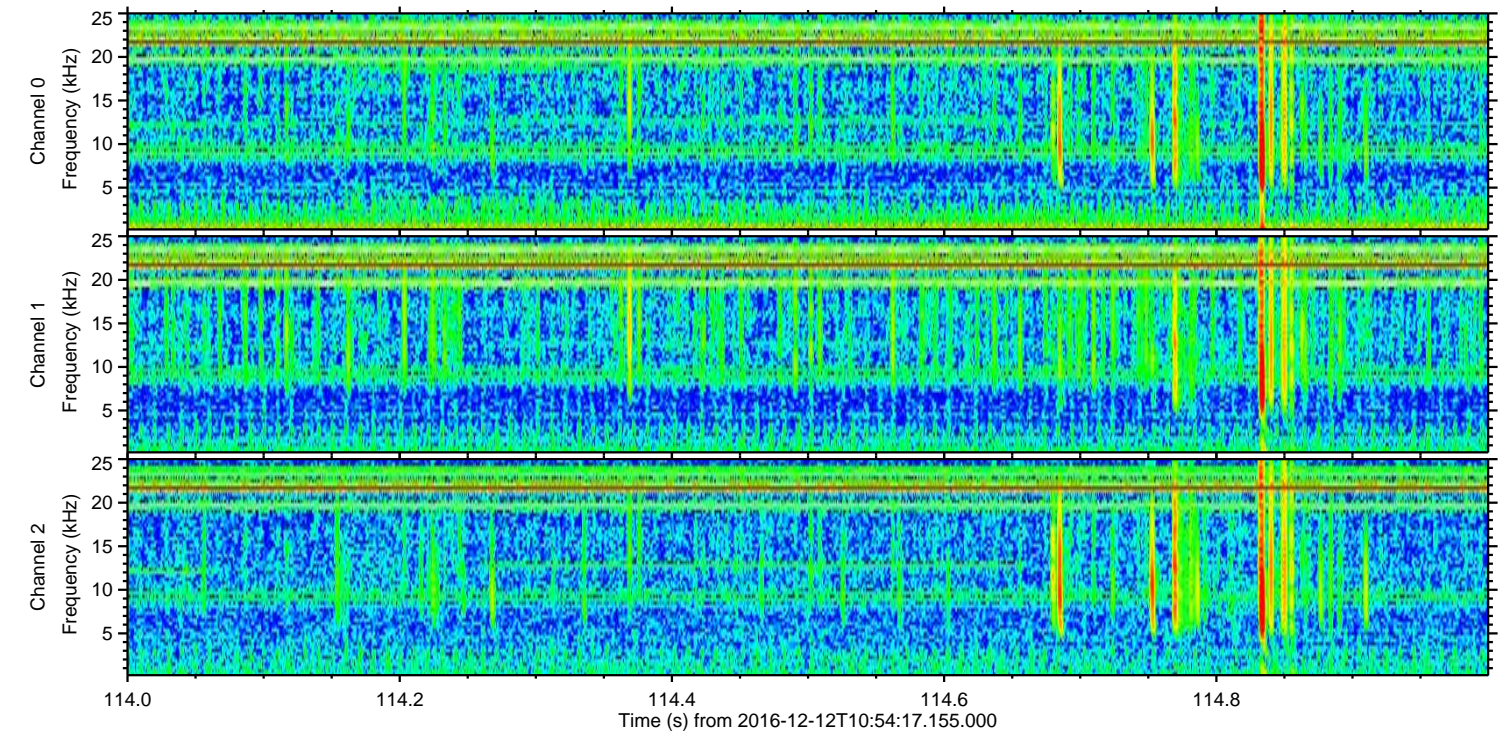
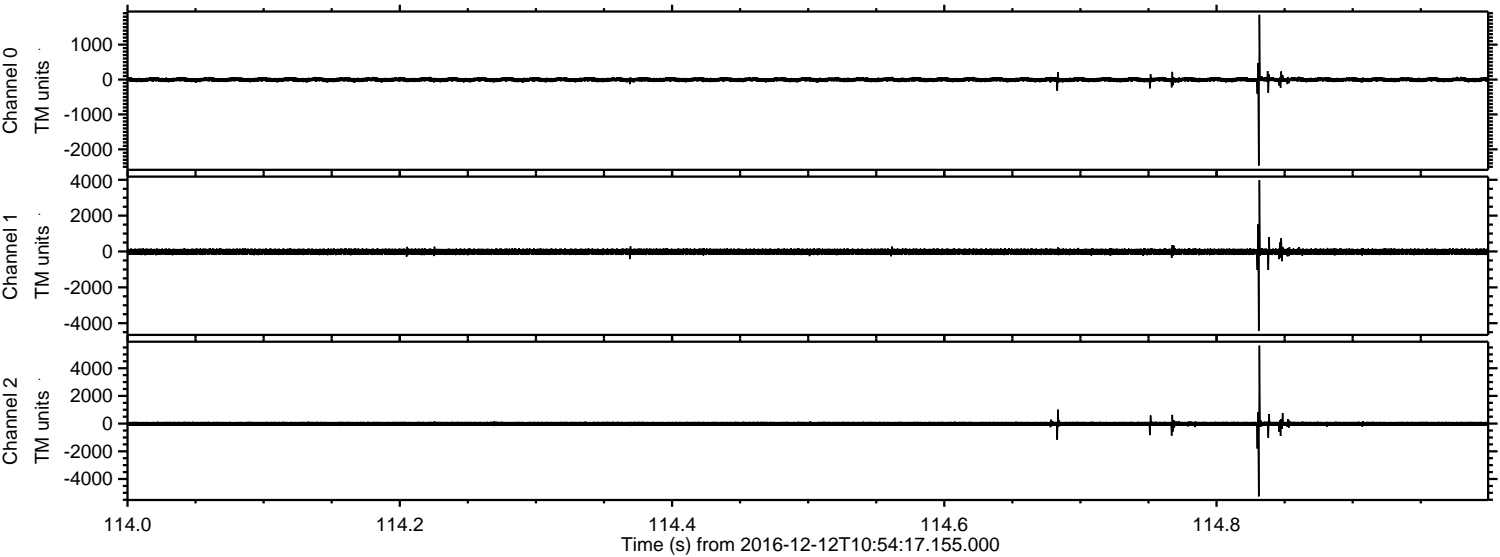
Channel 0
mn: -3804
mx: 2552
 μ : -4.9
 σ : 47.2

Channel 1
mn: -7889
mx: 6394
 μ : -15.0
 σ : 117.7

Channel 2
mn: -5981
mx: 7450
 μ : -14.9
 σ : 113.9

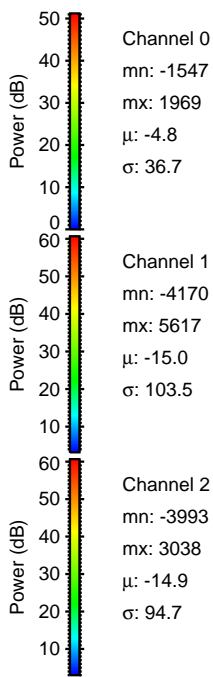
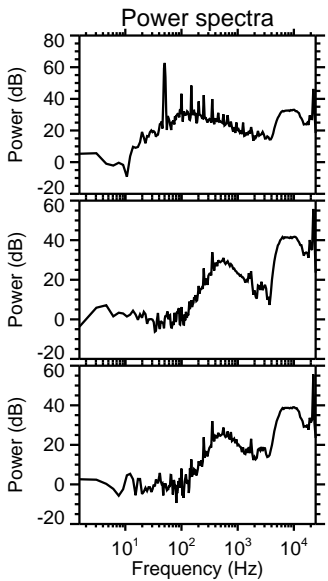
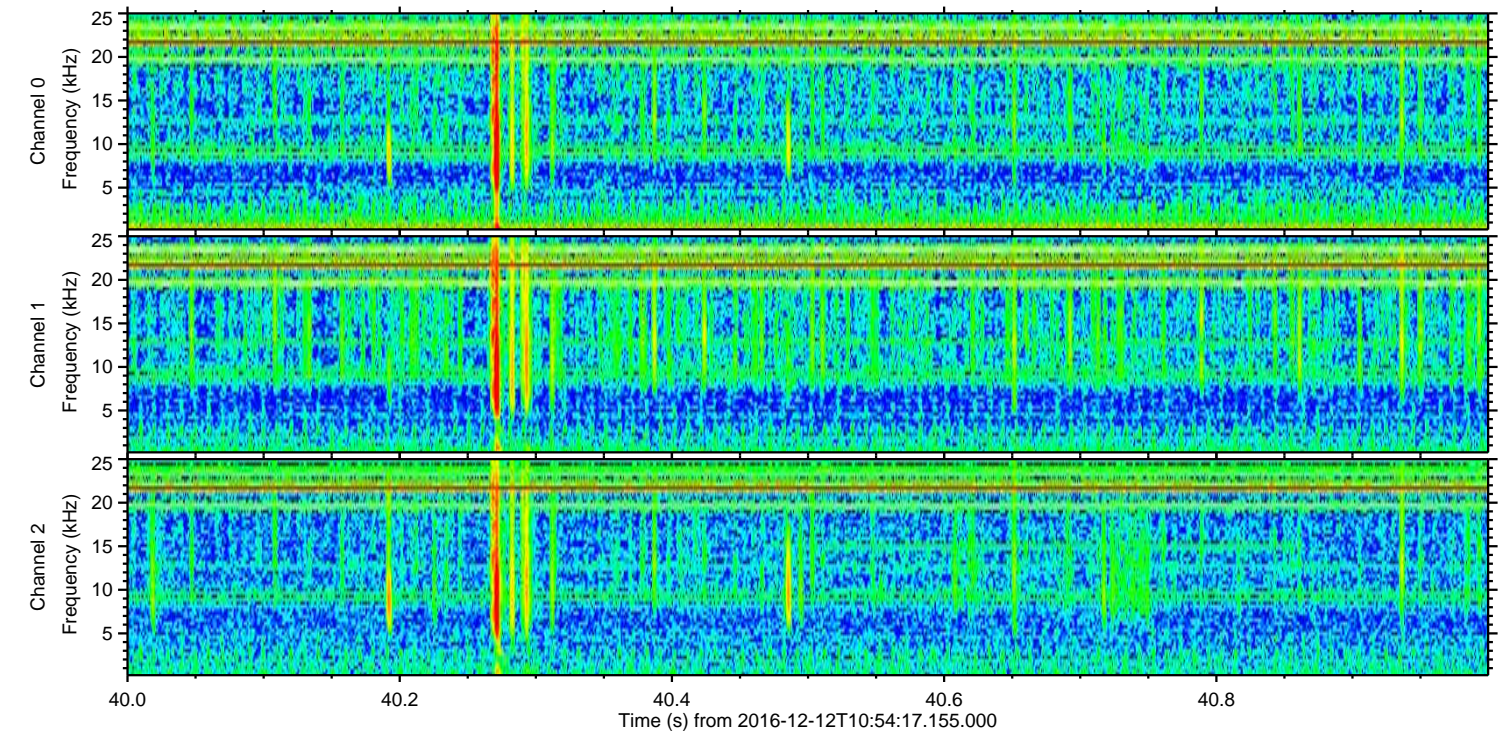
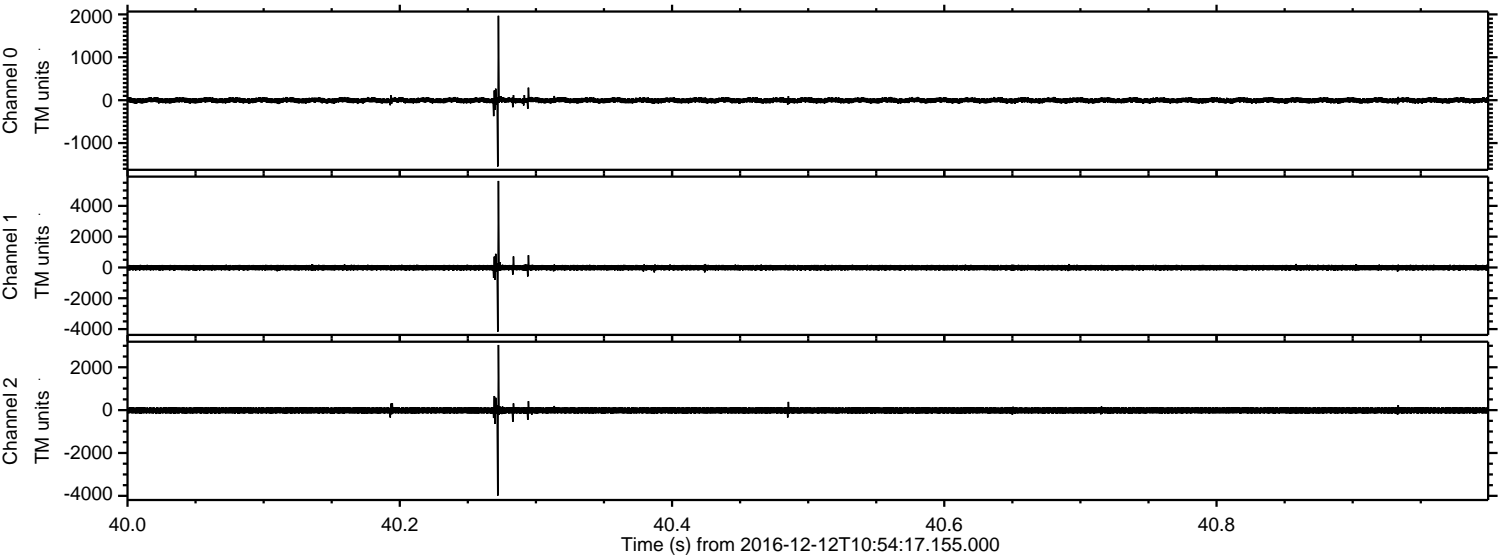
ELMAVAN 3D WAVEFORMS (Measured data sampled at 50 kHz) 51000 packets of 144 samples from 2016-12-12T10:54:17.155.000. Part 115/147

Processed Mon Dec 12 12:02:44 2016 by ELM ver.2012-10-06 from 001__elm20161212_105416__dat00.bin



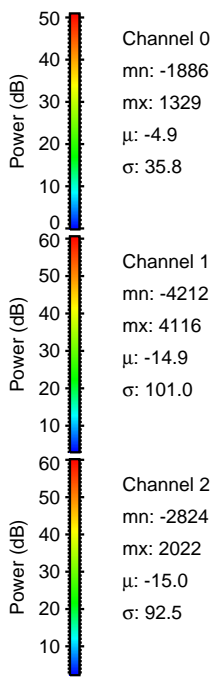
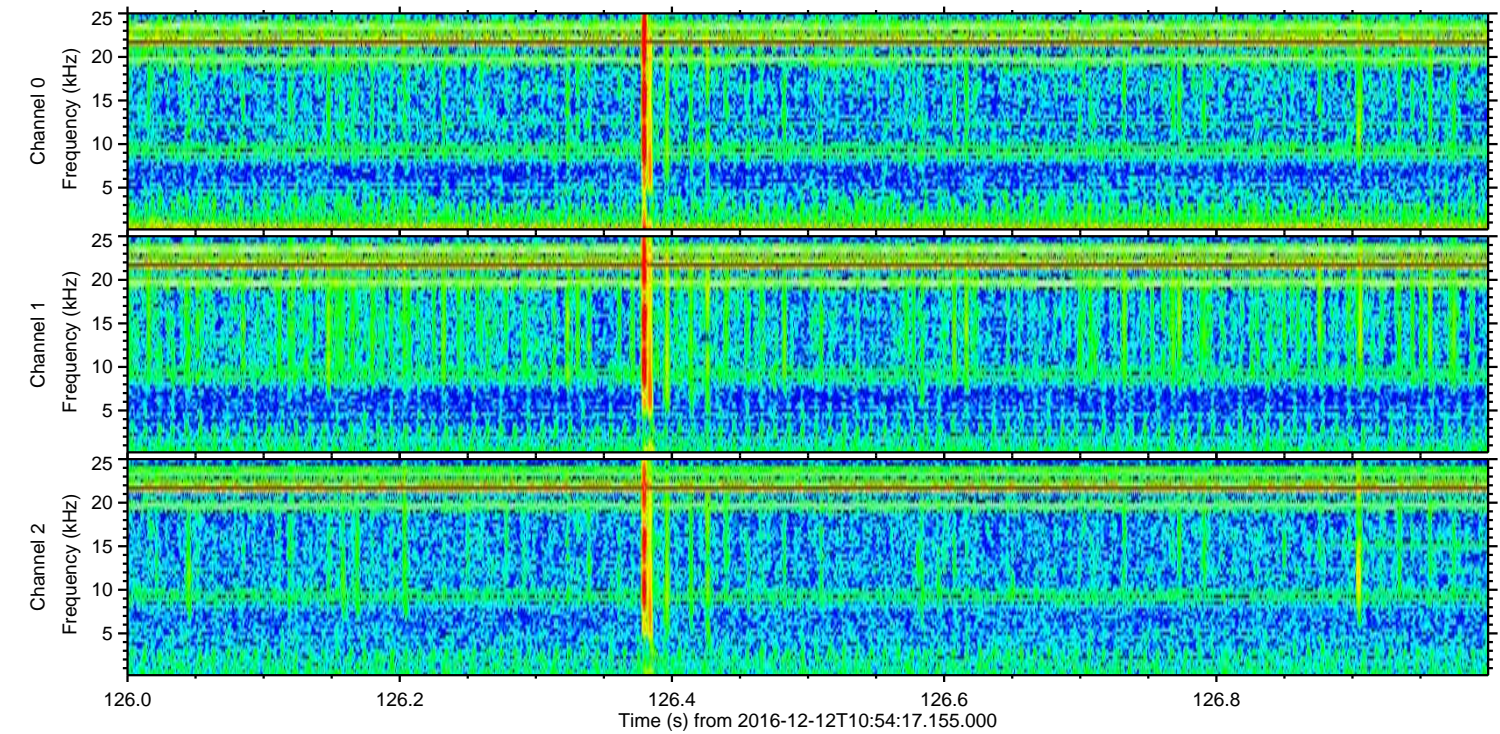
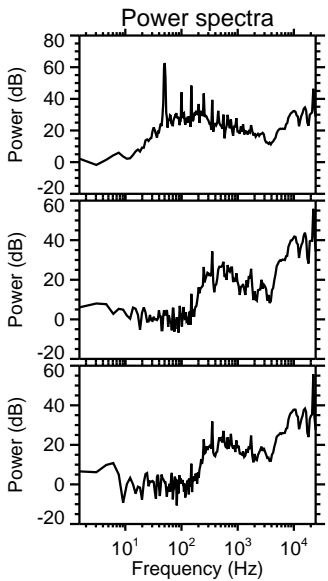
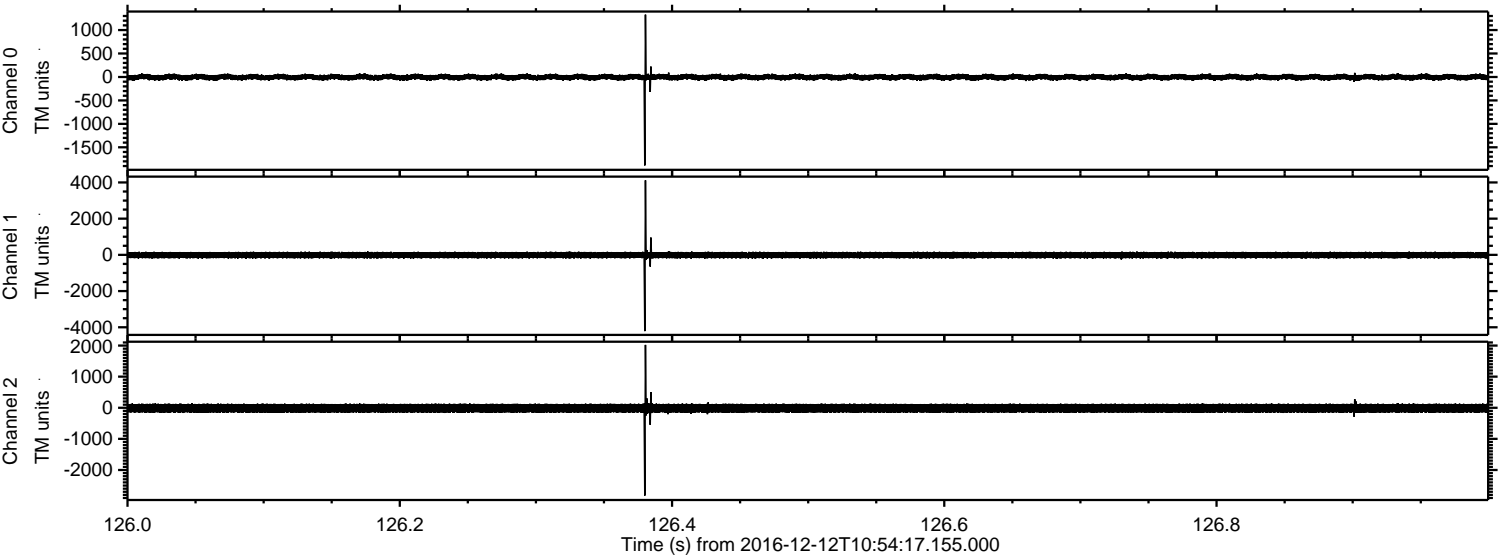
ELMAVAN 3D WAVEFORMS (Measured data sampled at 50 kHz) 51000 packets of 144 samples from 2016-12-12T10:54:17.155.000. Part 41/147

Processed Mon Dec 12 12:02:45 2016 by ELM ver.2012-10-06 from 001__elm20161212_105416__dat00.bin

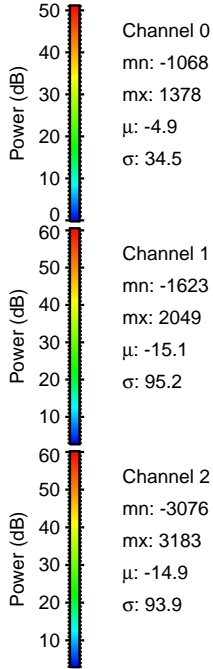
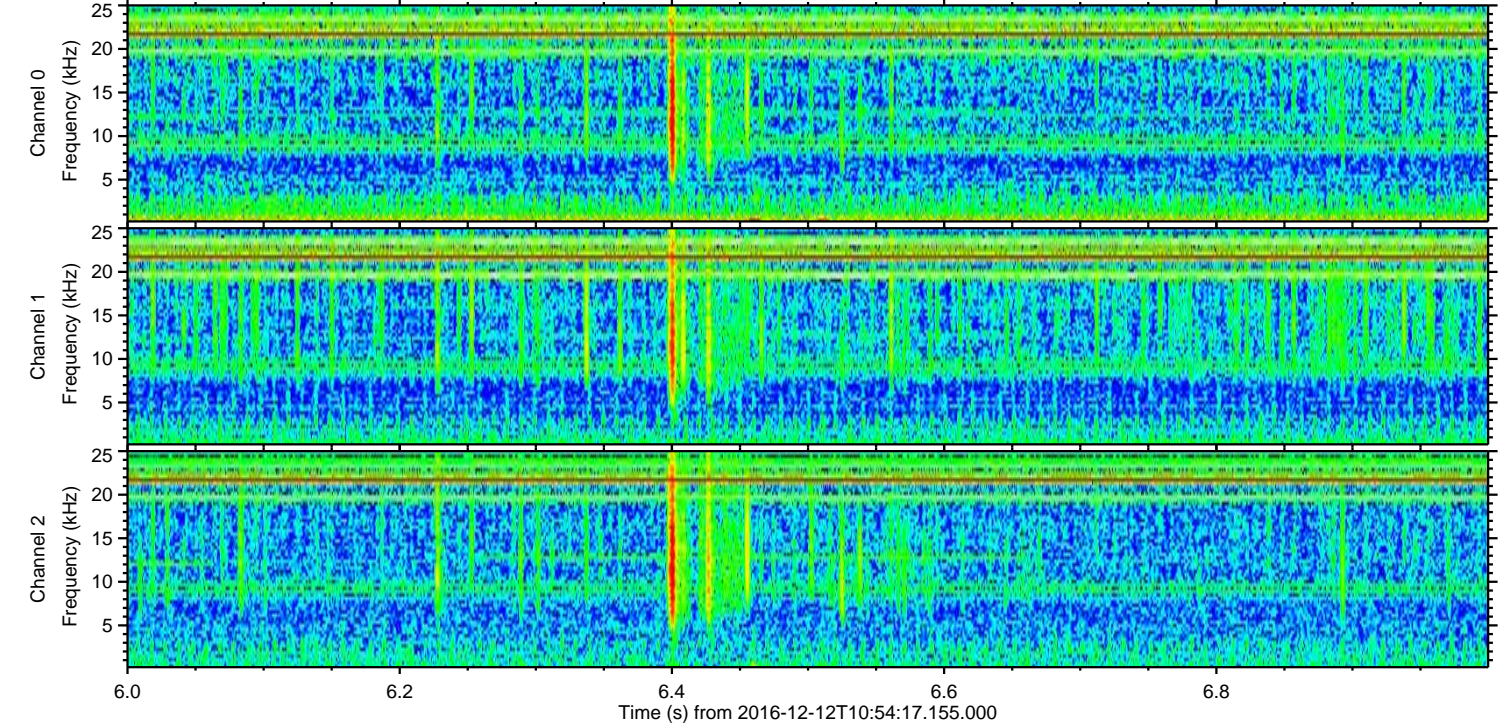
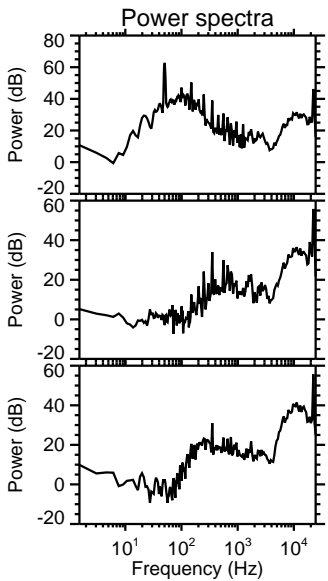
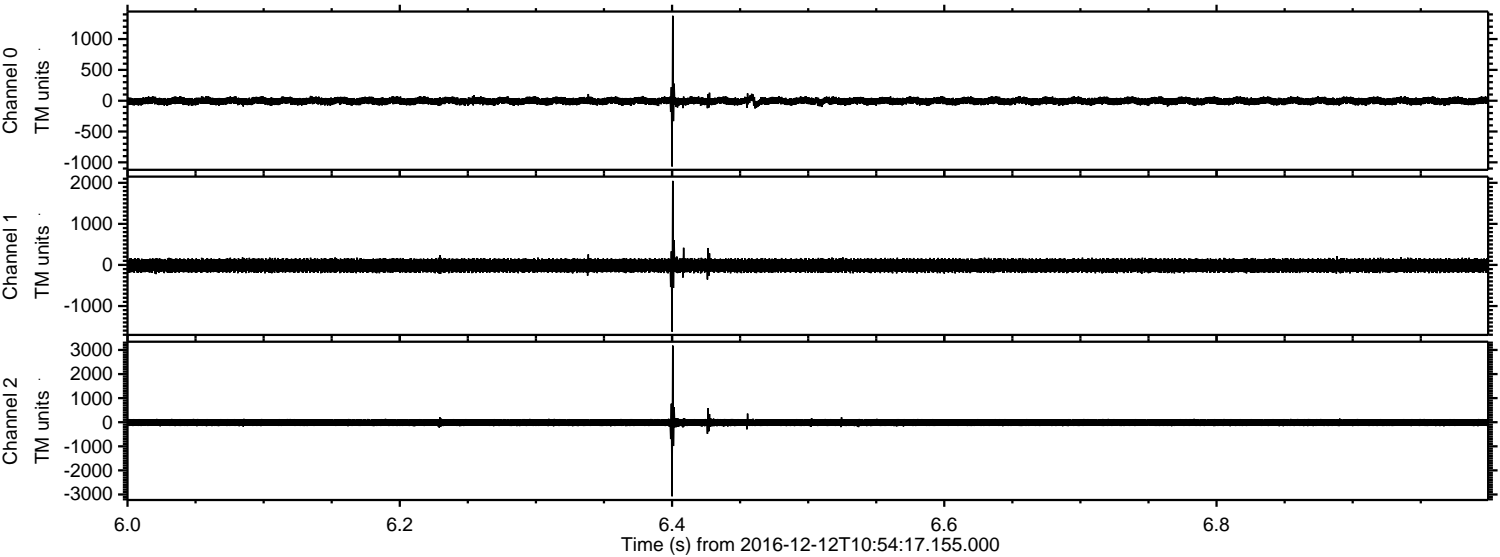


ELMAVAN 3D WAVEFORMS (Measured data sampled at 50 kHz) 51000 packets of 144 samples from 2016-12-12T10:54:17.155.000. Part 127/147

Processed Mon Dec 12 12:02:46 2016 by ELM ver.2012-10-06 from 001__elm20161212_105416__dat00.bin



Processed Mon Dec 12 12:02:47 2016 by ELM ver.2012-10-06 from 001__elm20161212_105416__dat00.bin

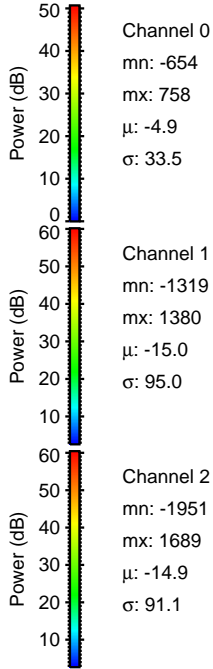
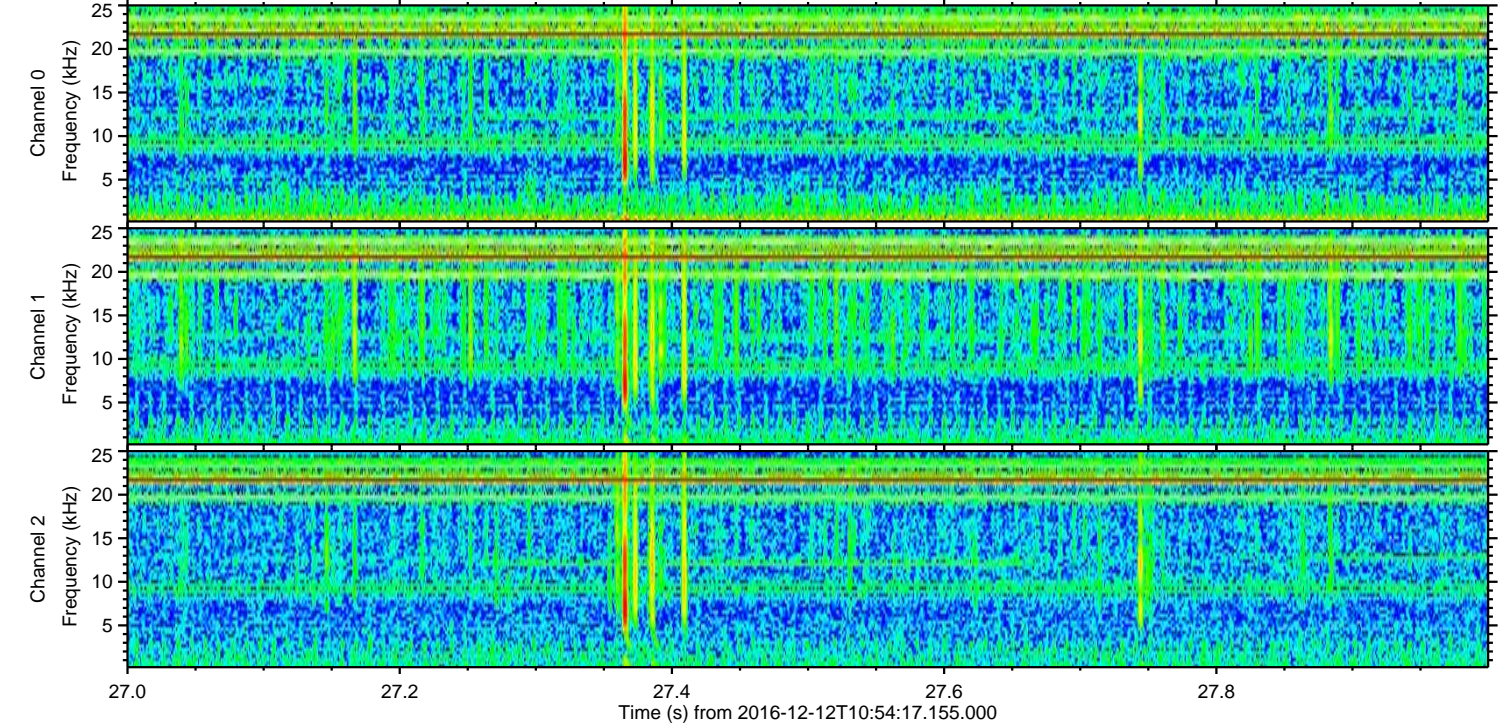
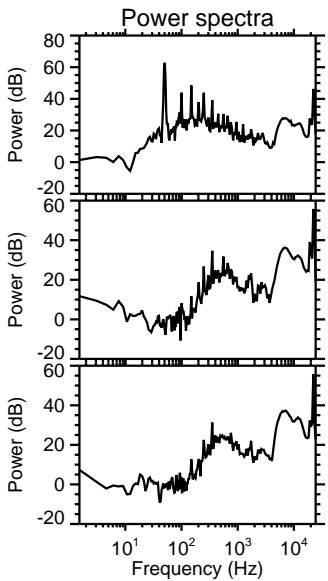
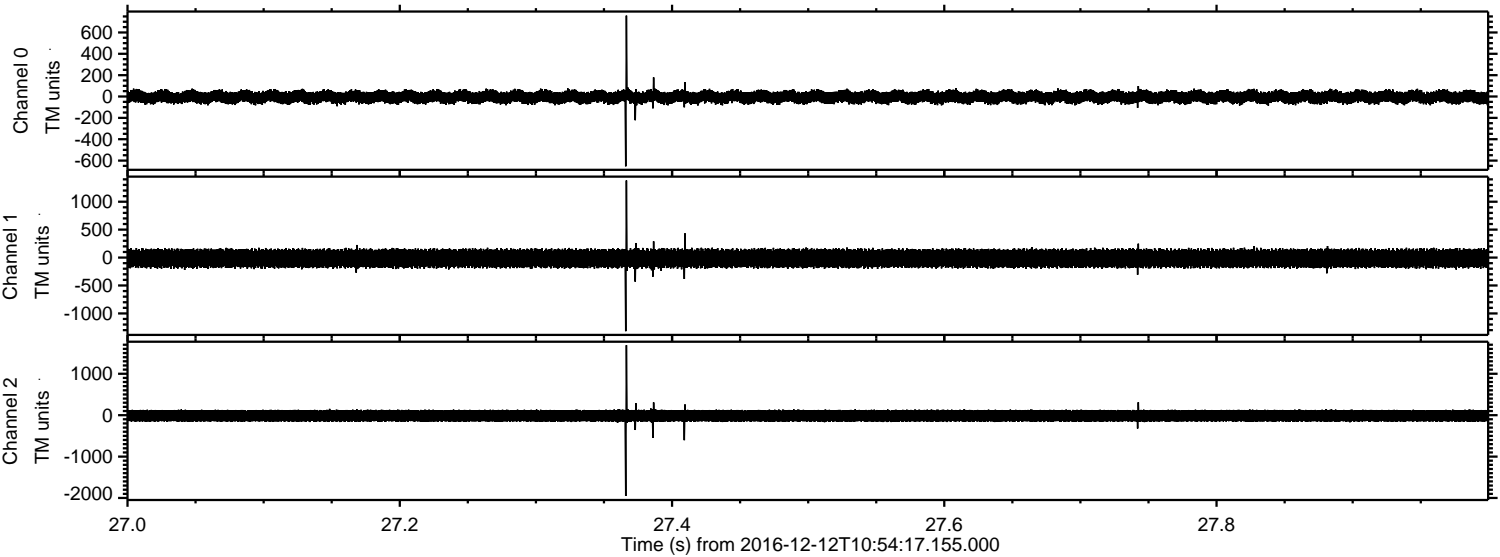


Channel 0
mn: -1068
mx: 1378
 μ : -4.9
 σ : 34.5

Channel 1
mn: -1623
mx: 2049
 μ : -15.1
 σ : 95.2

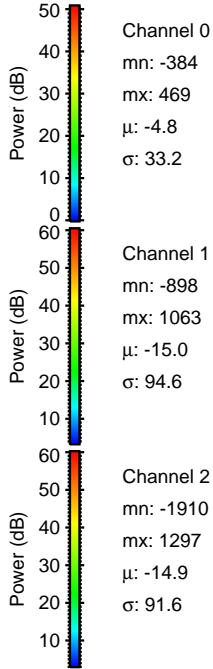
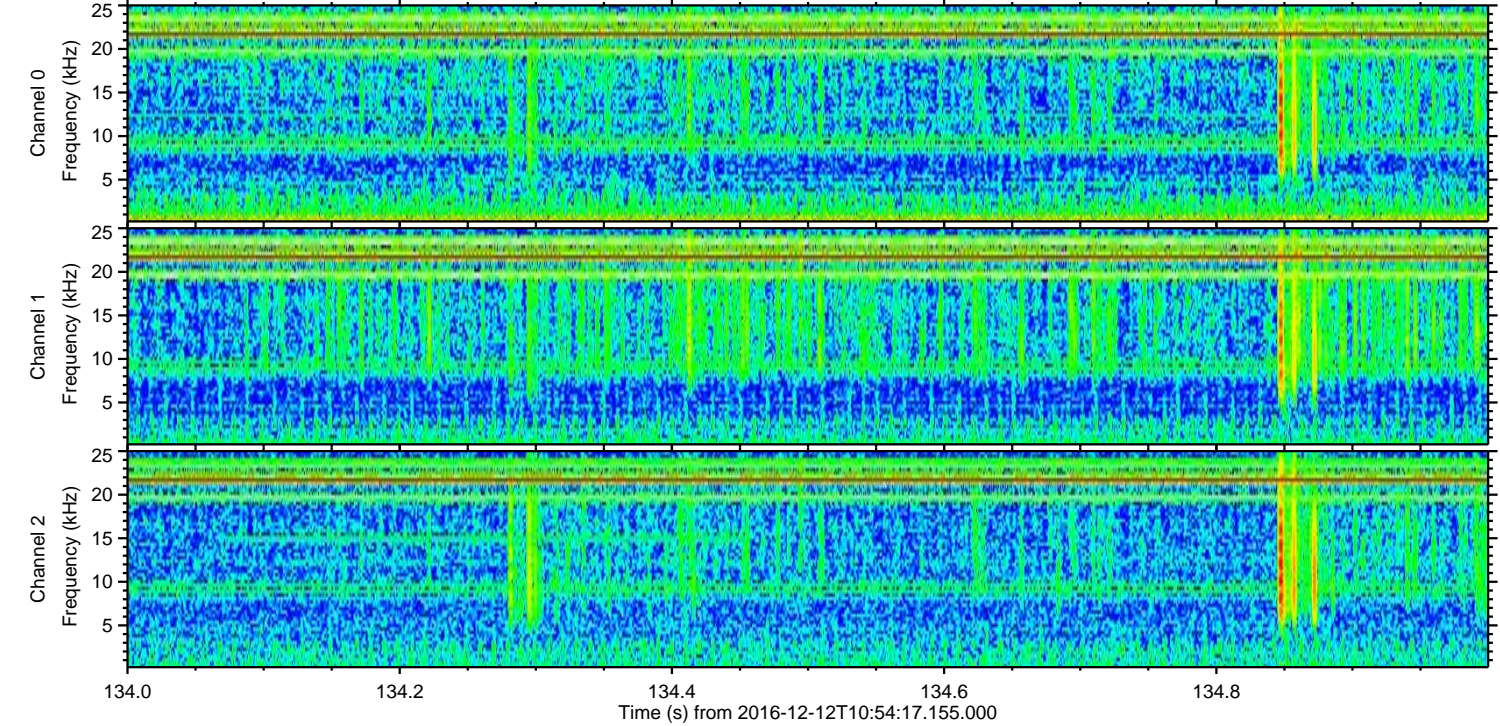
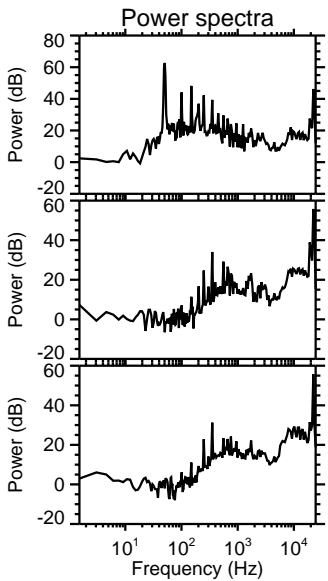
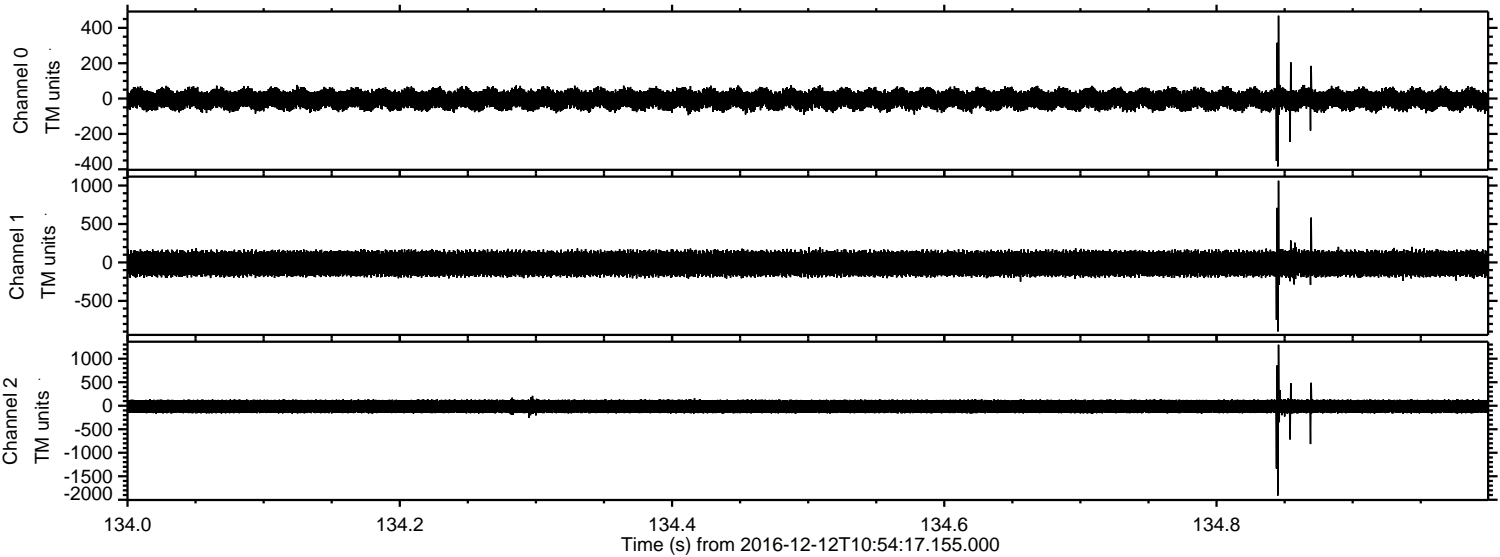
Channel 2
mn: -3076
mx: 3183
 μ : -14.9
 σ : 93.9

Processed Mon Dec 12 12:02:48 2016 by ELM ver.2012-10-06 from 001__elm20161212_105416__dat00.bin



ELMAVAN 3D WAVEFORMS (Measured data sampled at 50 kHz) 51000 packets of 144 samples from 2016-12-12T10:54:17.155.000. Part 135/147

Processed Mon Dec 12 12:02:49 2016 by ELM ver.2012-10-06 from 001__elm20161212_105416__dat00.bin

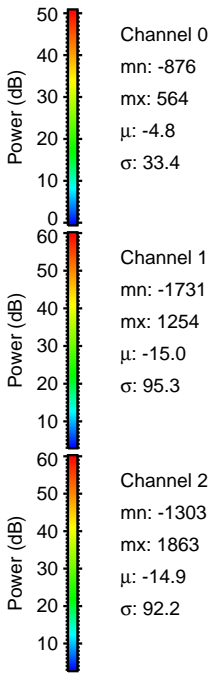
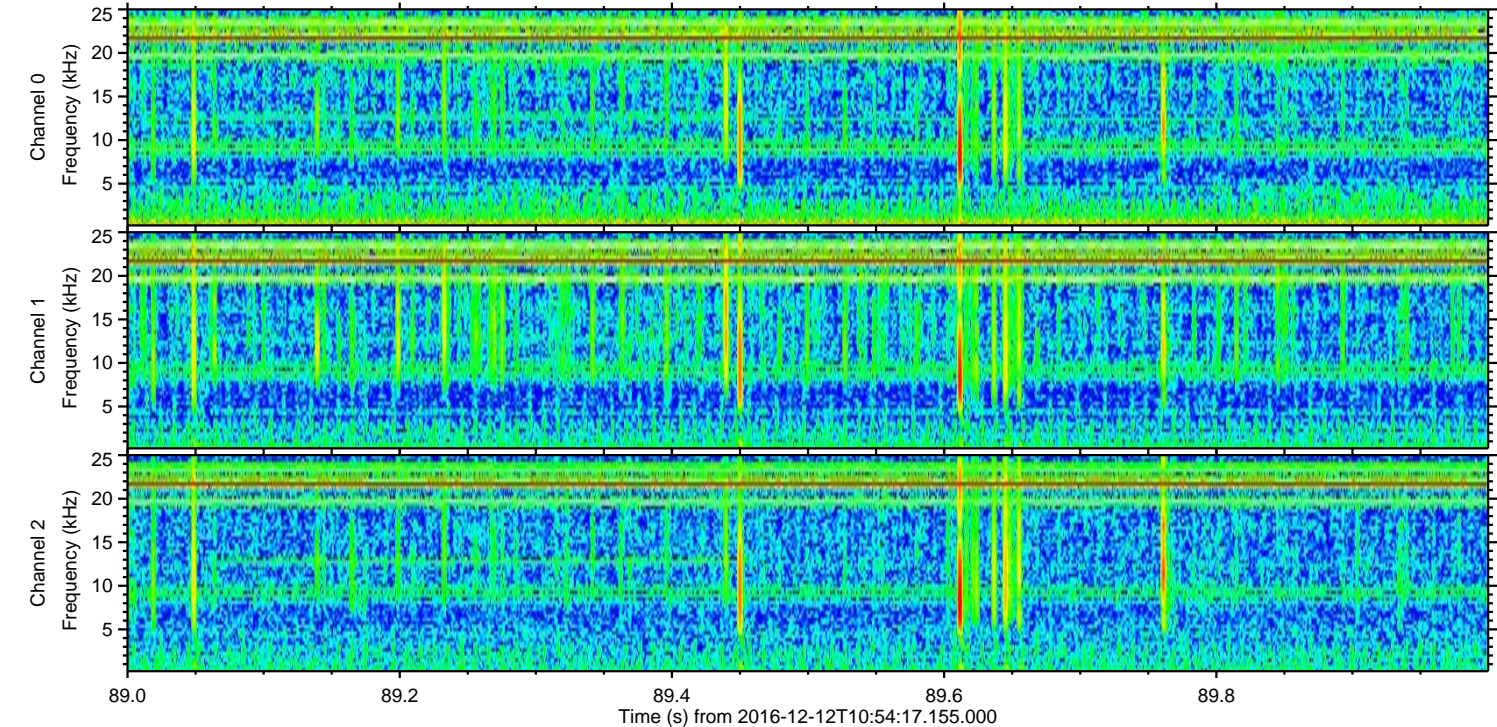
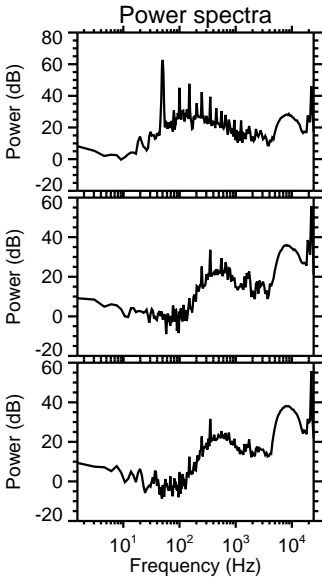
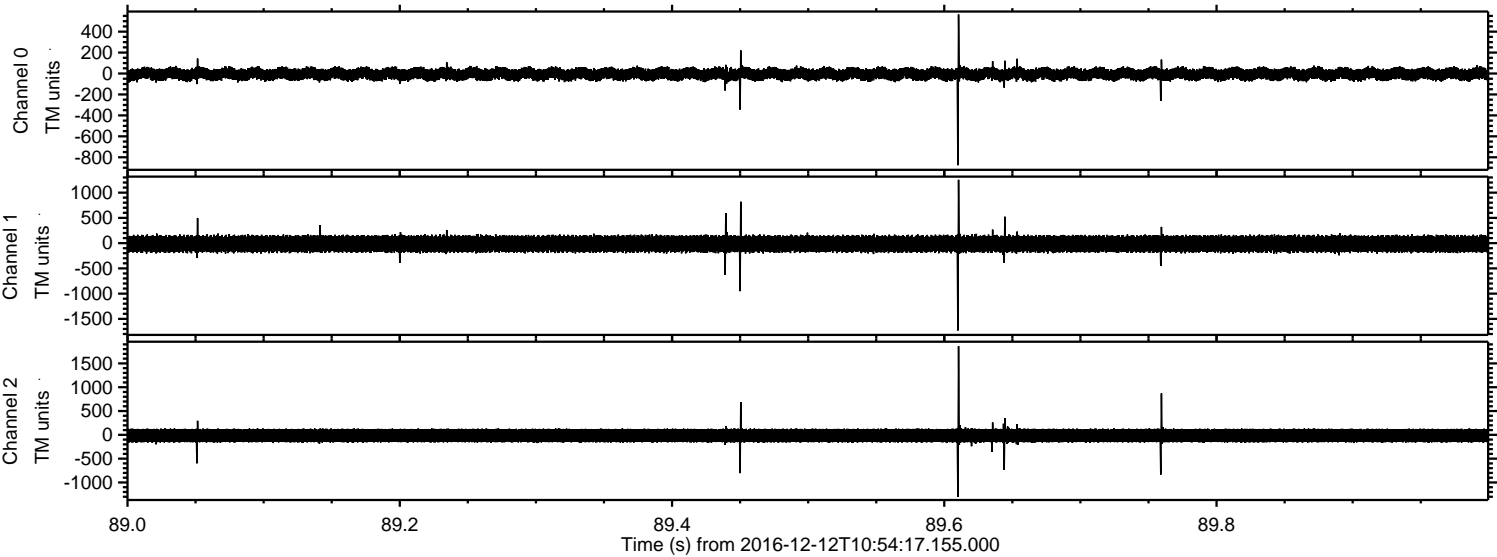


Channel 0
mn: -384
mx: 469
 μ : -4.8
 σ : 33.2

Channel 1
mn: -898
mx: 1063
 μ : -15.0
 σ : 94.6

Channel 2
mn: -1910
mx: 1297
 μ : -14.9
 σ : 91.6

Processed Mon Dec 12 12:02:50 2016 by ELM ver.2012-10-06 from 001__elm20161212_105416__dat00.bin



ELMAVAN 3D WAVEFORMS (Measured data sampled at 50 kHz) 51000 packets of 144 samples from 2016-12-12T10:54:17.155.000. Part 2/147

Processed Mon Dec 12 12:02:51 2016 by ELM ver.2012-10-06 from 001__elm20161212_105416__dat00.bin

