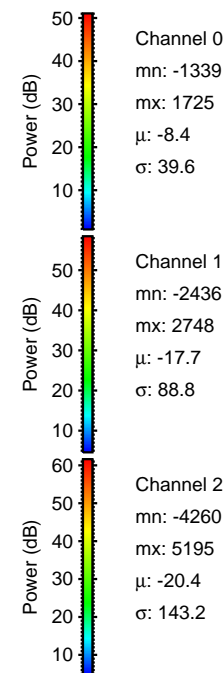
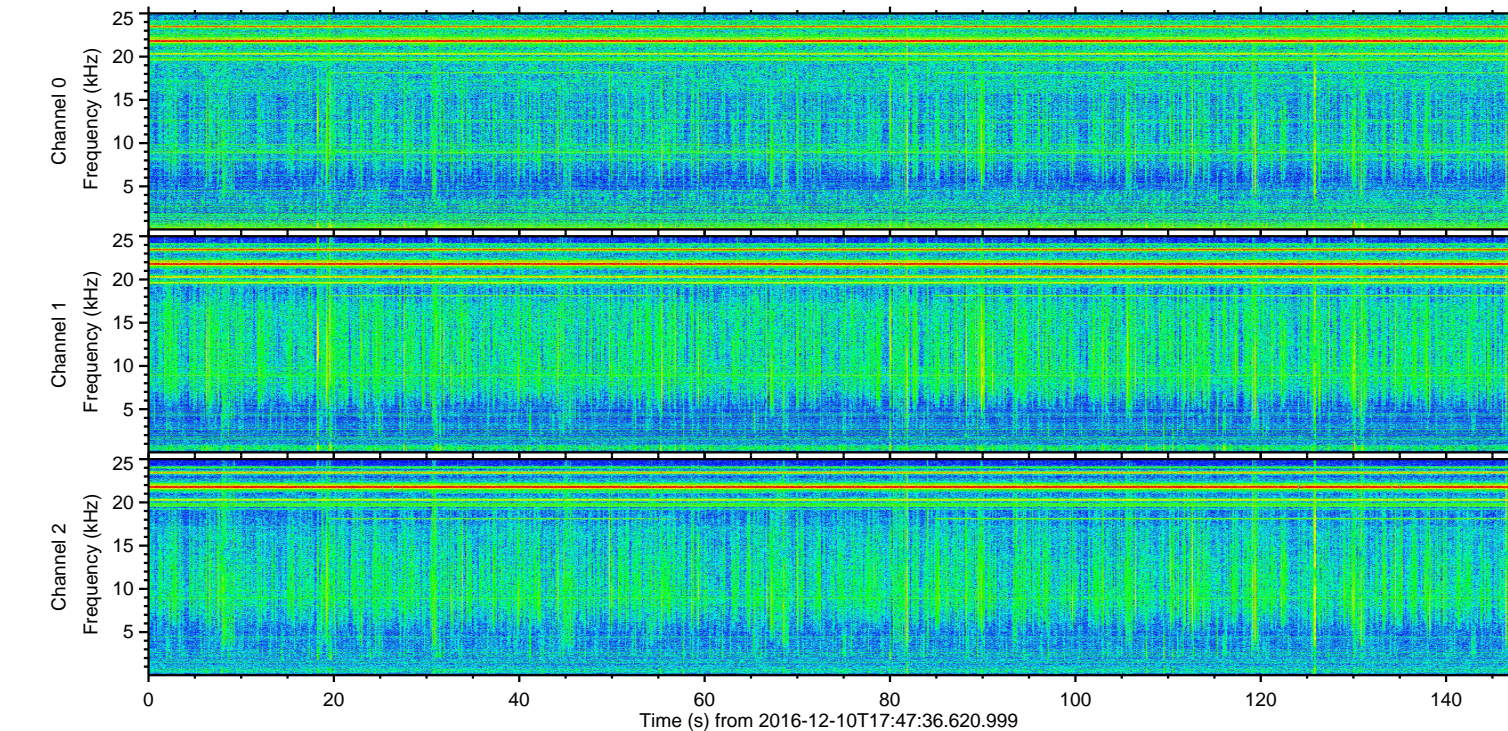
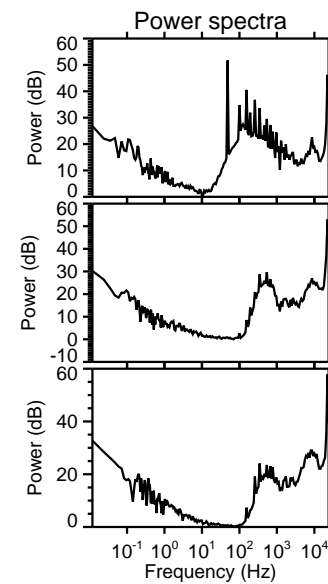
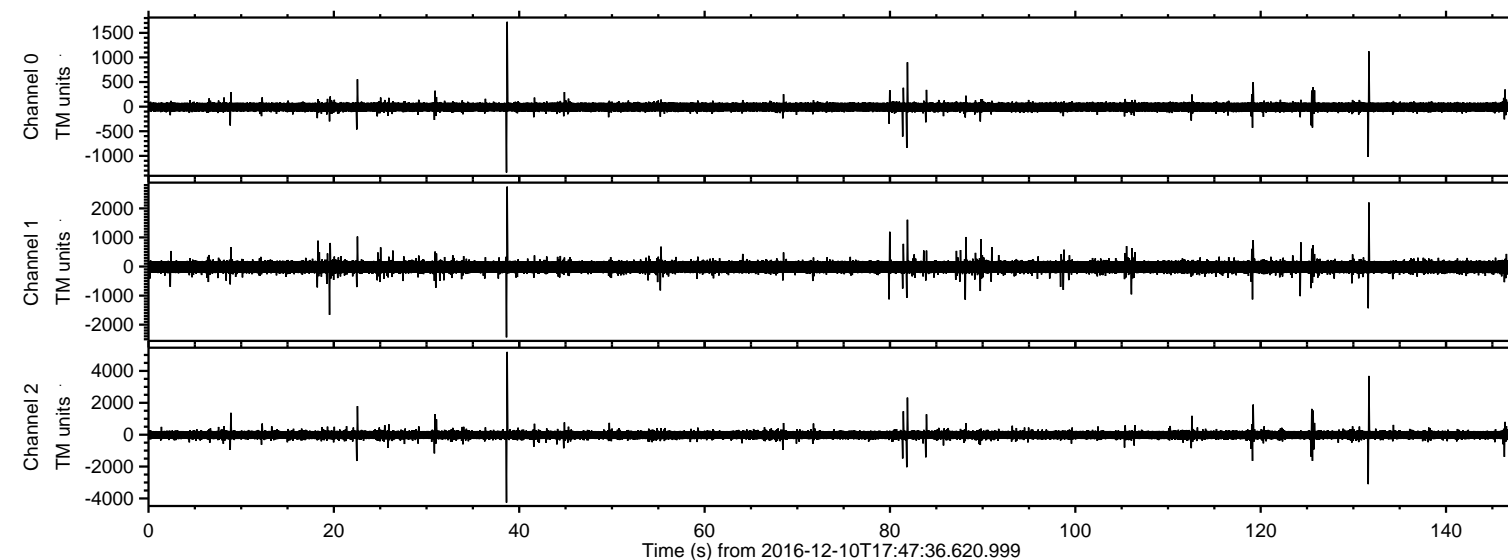


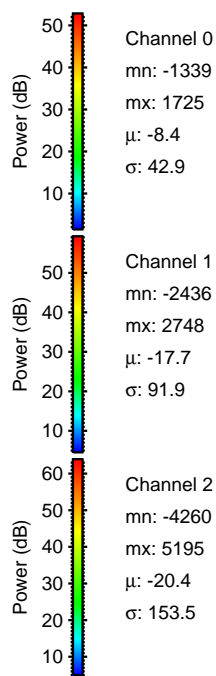
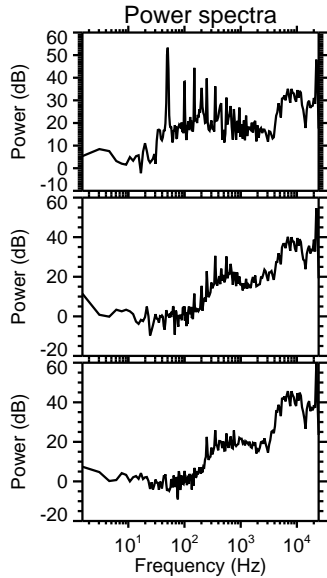
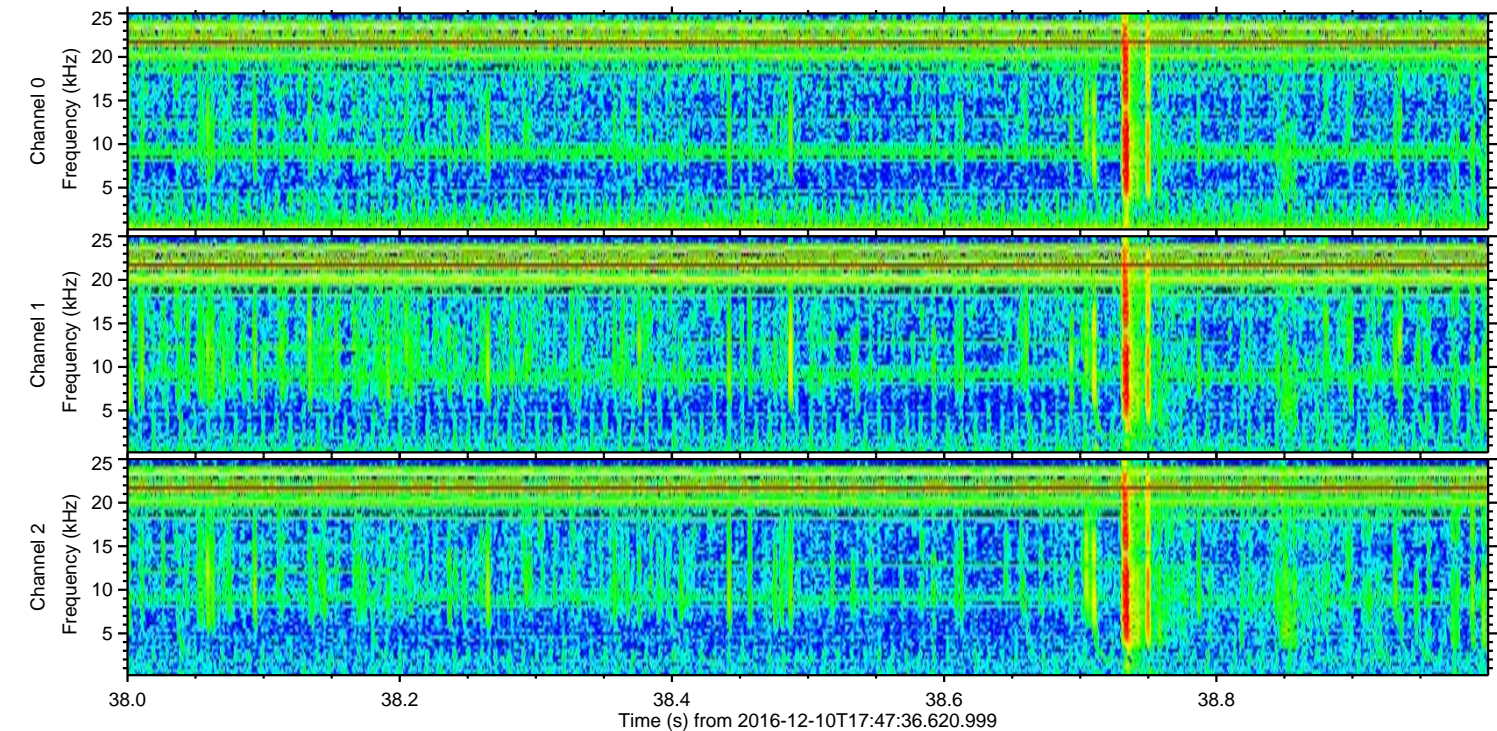
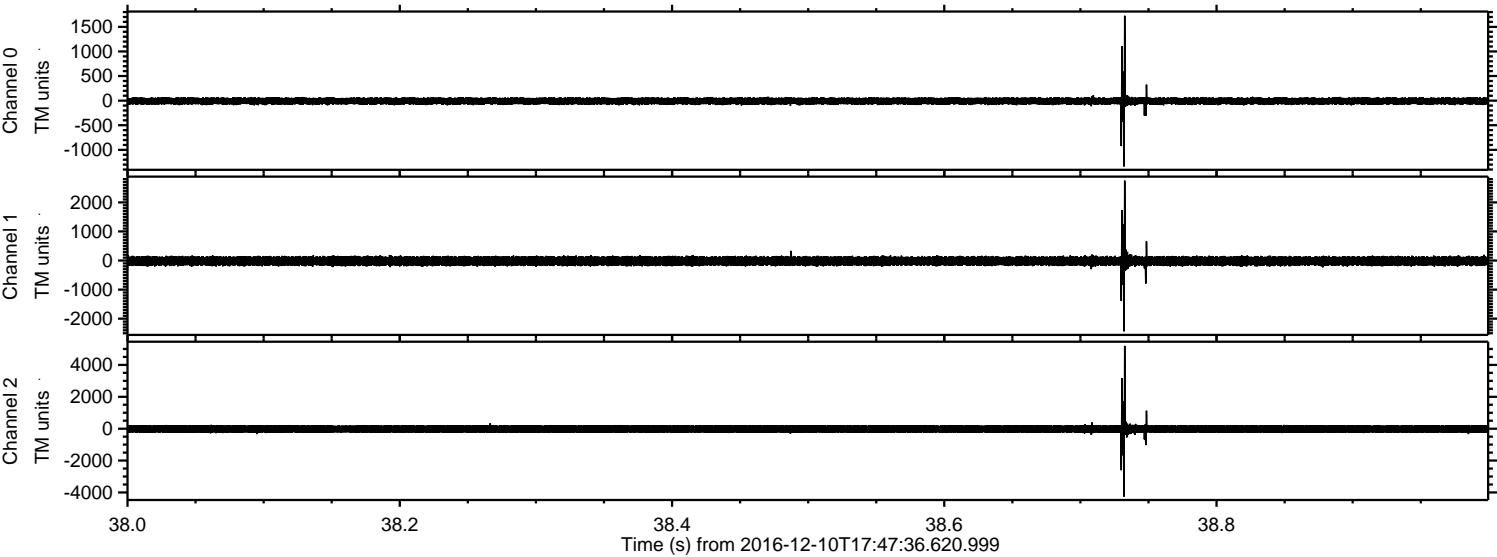
ELMAVAN 3D WAVEFORMS (Measured data sampled at 50 kHz) 51000 packets of 144 samples from 2016-12-10T17:47:36.620.999.

Processed Sat Dec 10 18:55:04 2016 by ELM ver.2012-10-06 from 001__elm20161210_174735__dat00.bin



ELMAVAN 3D WAVEFORMS (Measured data sampled at 50 kHz) 51000 packets of 144 samples from 2016-12-10T17:47:36.620.999. Part 39/147

Processed Sat Dec 10 18:55:15 2016 by ELM ver.2012-10-06 from 001__elm20161210_174735__dat00.bin



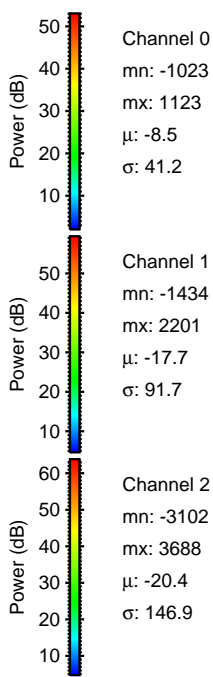
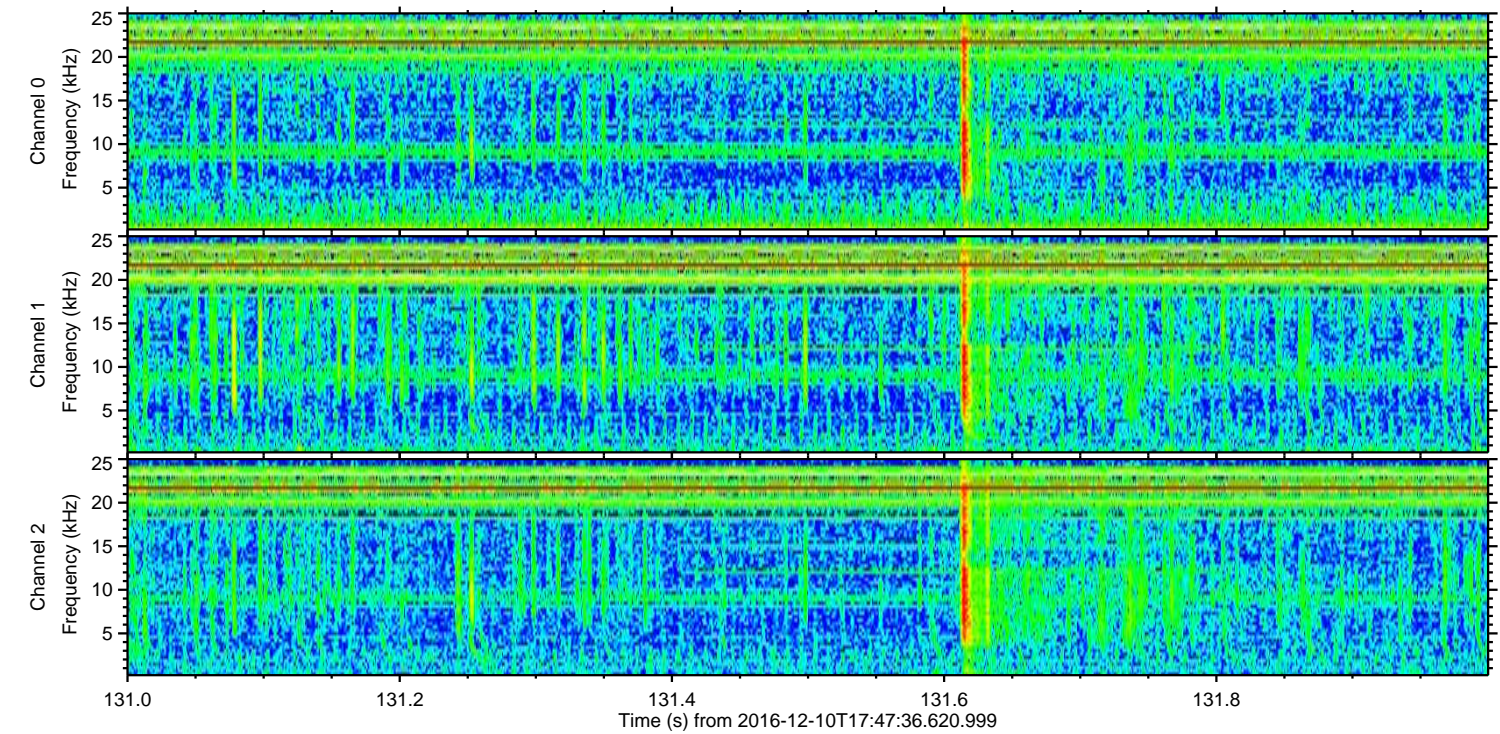
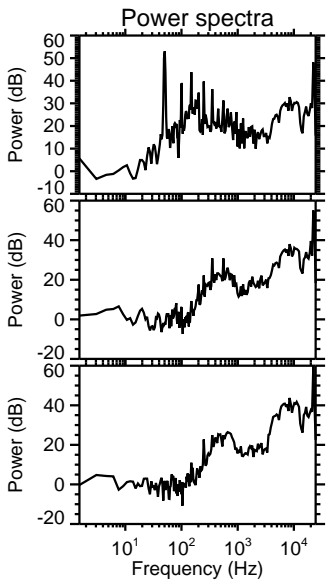
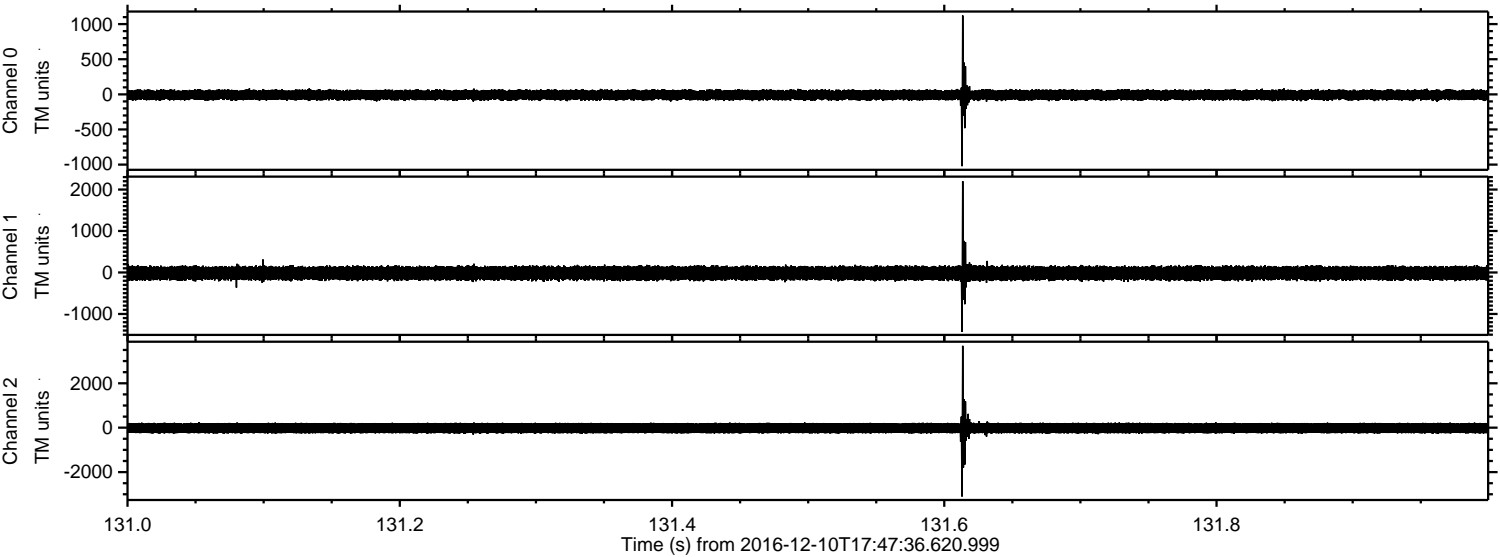
Channel 0
mn: -1339
mx: 1725
 μ : -8.4
 σ : 42.9

Channel 1
mn: -2436
mx: 2748
 μ : -17.7
 σ : 91.9

Channel 2
mn: -4260
mx: 5195
 μ : -20.4
 σ : 153.5

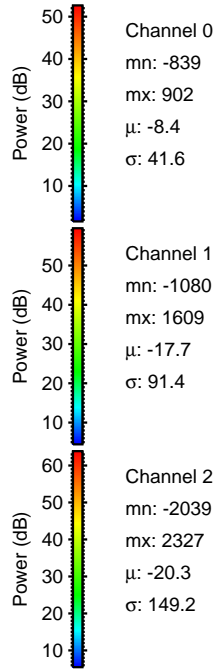
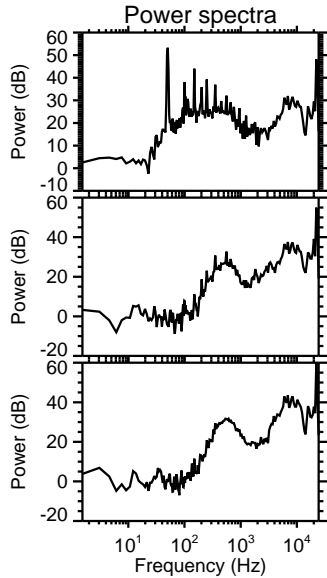
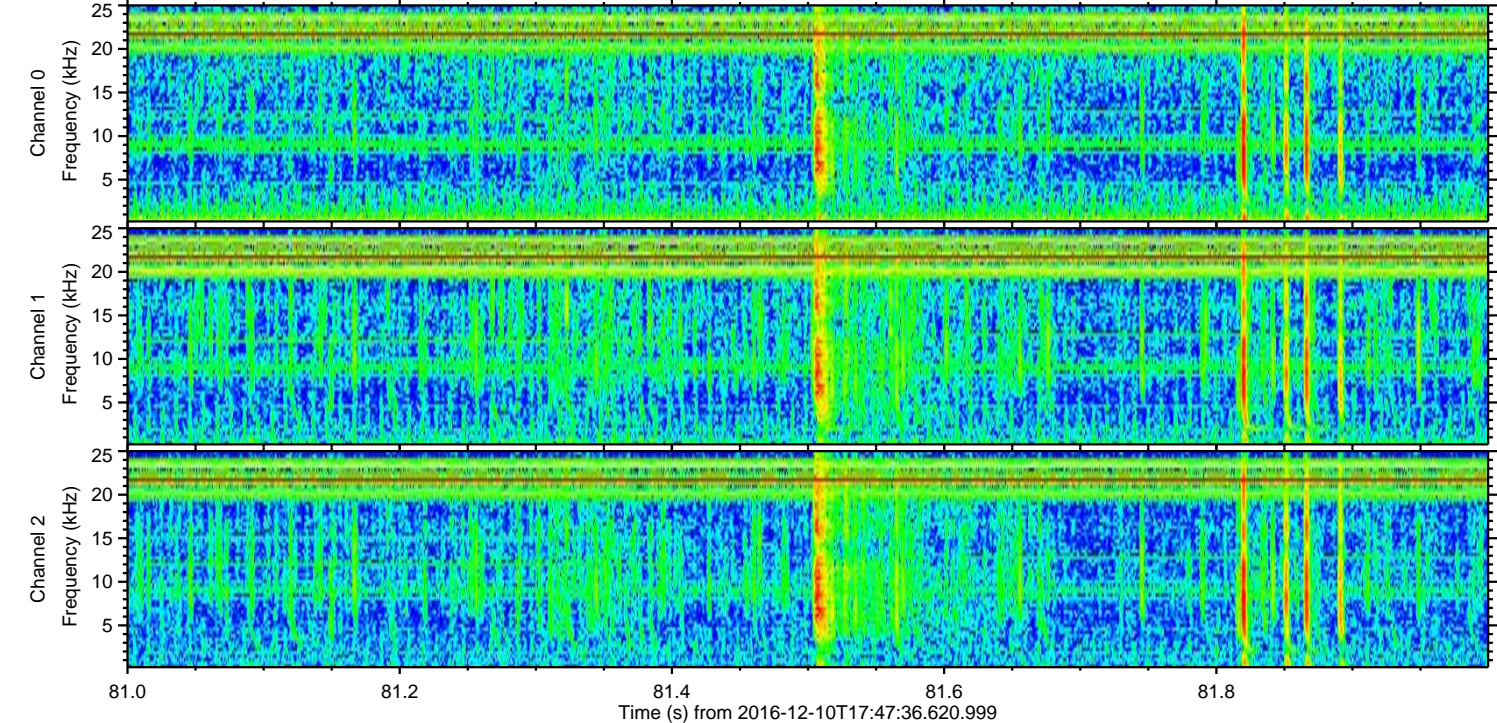
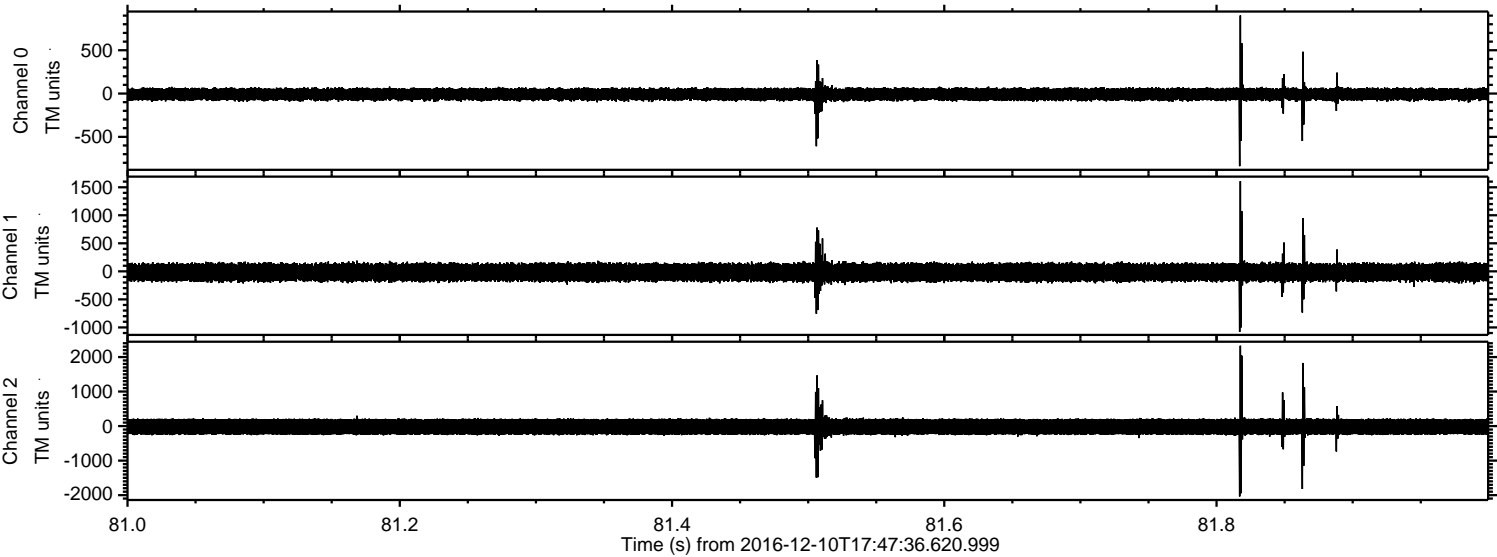
ELMAVAN 3D WAVEFORMS (Measured data sampled at 50 kHz) 51000 packets of 144 samples from 2016-12-10T17:47:36.620.999. Part 132/147

Processed Sat Dec 10 18:55:16 2016 by ELM ver.2012-10-06 from 001__elm20161210_174735__dat00.bin



ELMAVAN 3D WAVEFORMS (Measured data sampled at 50 kHz) 51000 packets of 144 samples from 2016-12-10T17:47:36.620.999. Part 82/147

Processed Sat Dec 10 18:55:17 2016 by ELM ver.2012-10-06 from 001__elm20161210_174735__dat00.bin



Power spectra

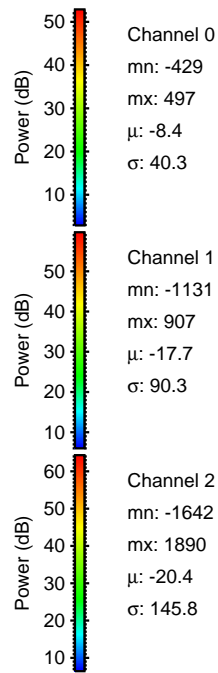
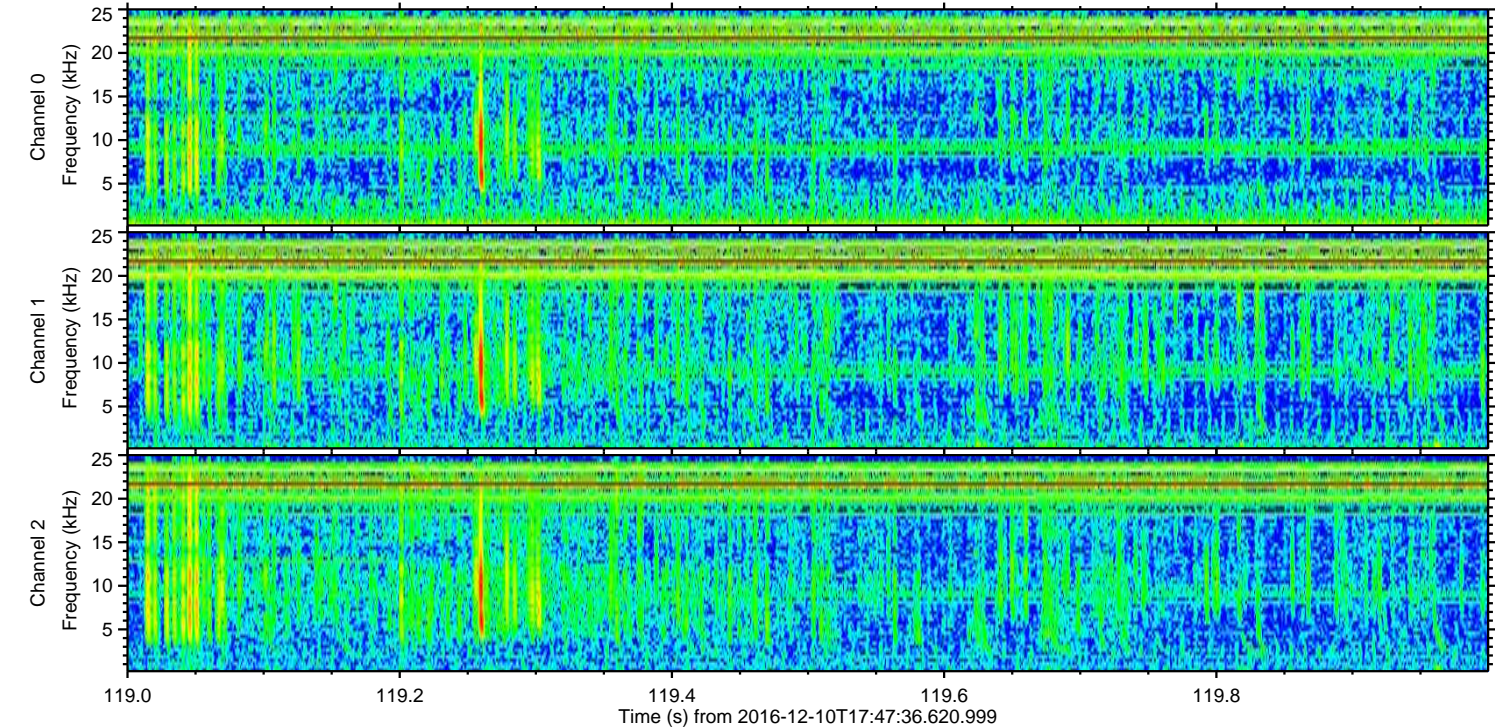
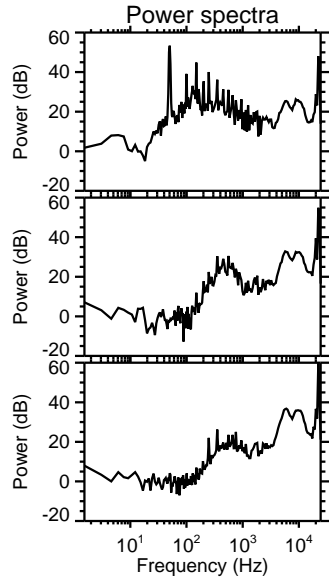
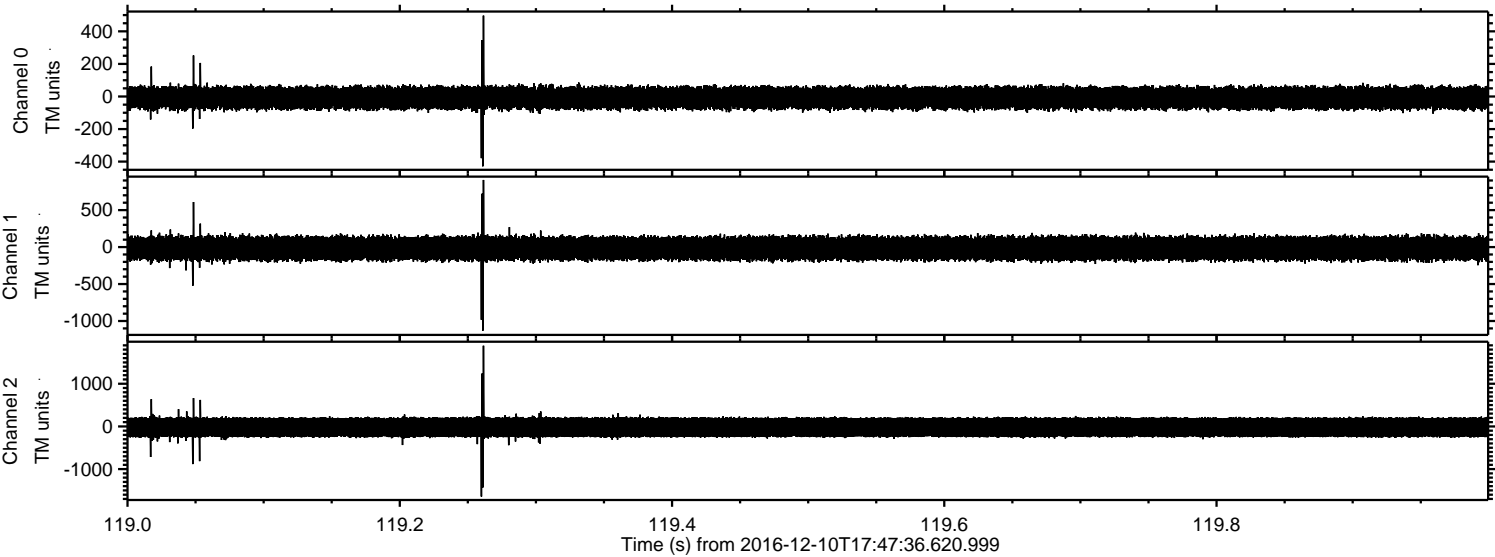
Channel 0
mn: -839
mx: 902
 μ : -8.4
 σ : 41.6

Channel 1
mn: -1080
mx: 1609
 μ : -17.7
 σ : 91.4

Channel 2
mn: -2039
mx: 2327
 μ : -20.3
 σ : 149.2

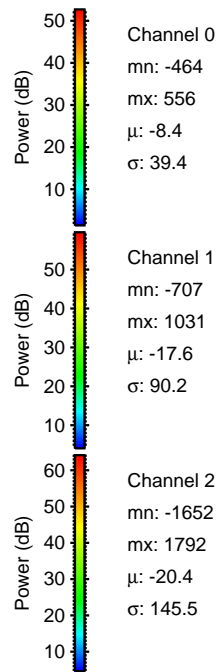
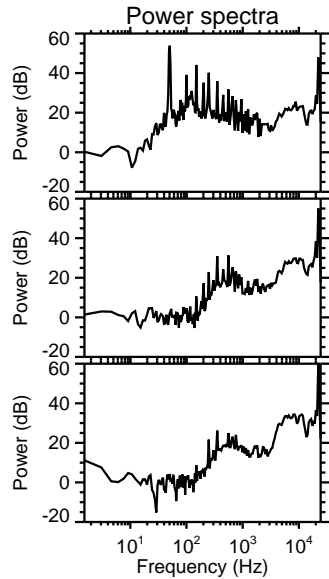
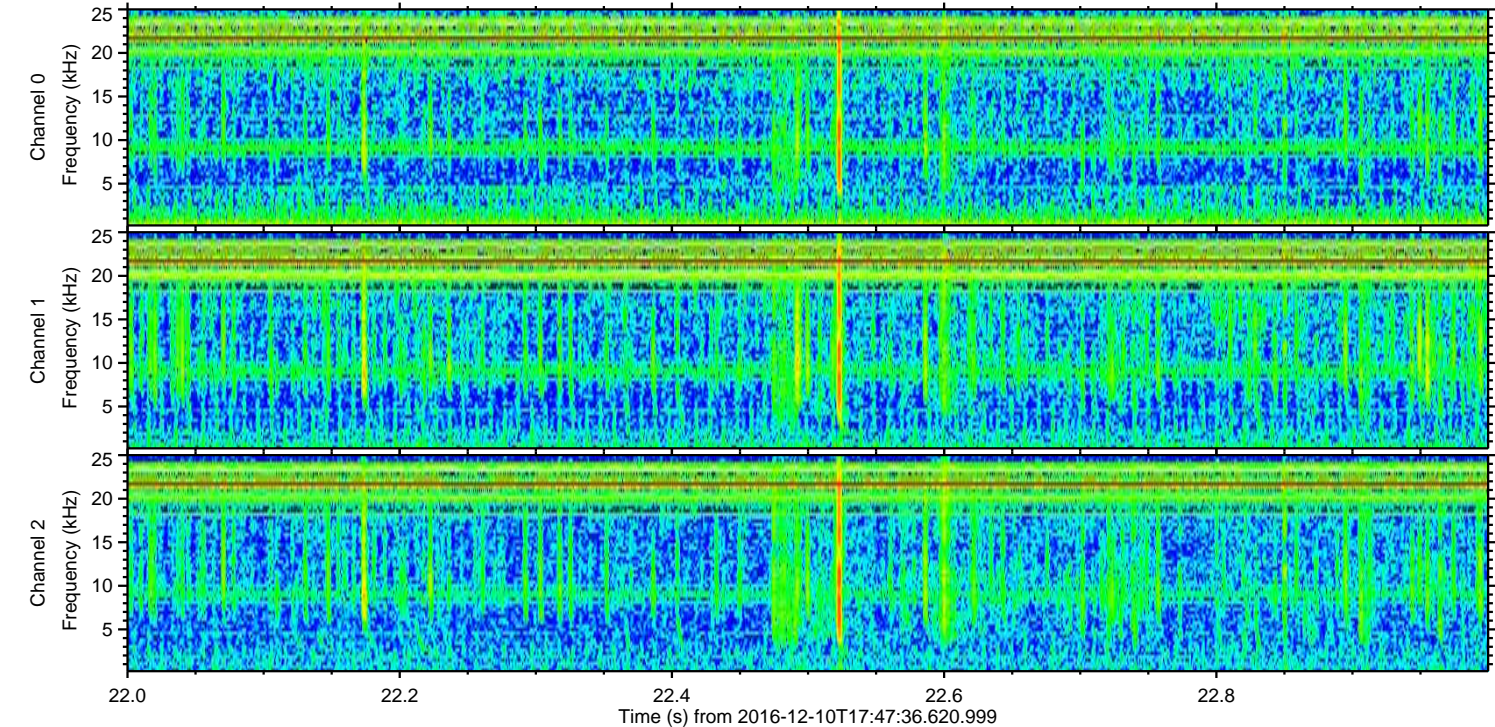
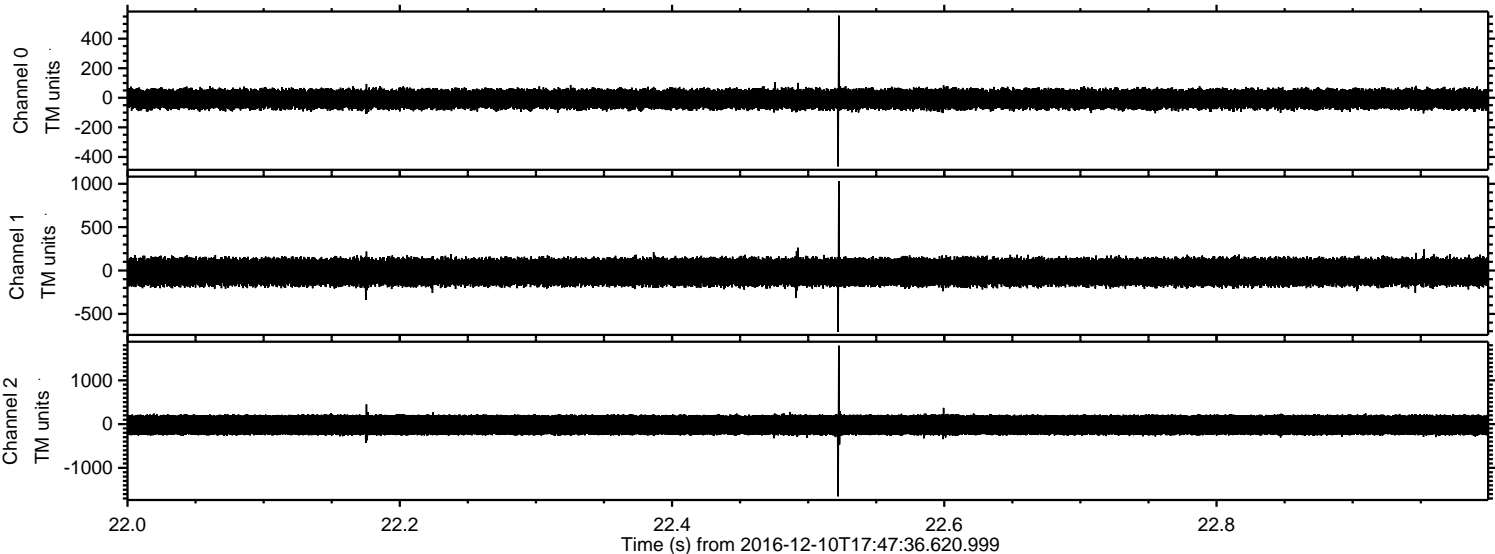
ELMAVAN 3D WAVEFORMS (Measured data sampled at 50 kHz) 51000 packets of 144 samples from 2016-12-10T17:47:36.620.999. Part 120/147

Processed Sat Dec 10 18:55:18 2016 by ELM ver.2012-10-06 from 001__elm20161210_174735__dat00.bin



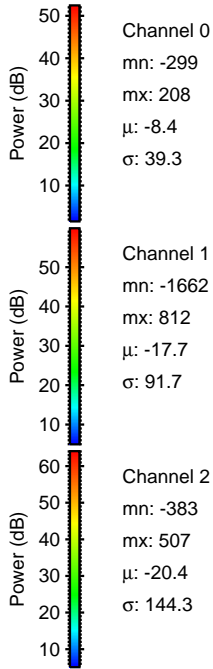
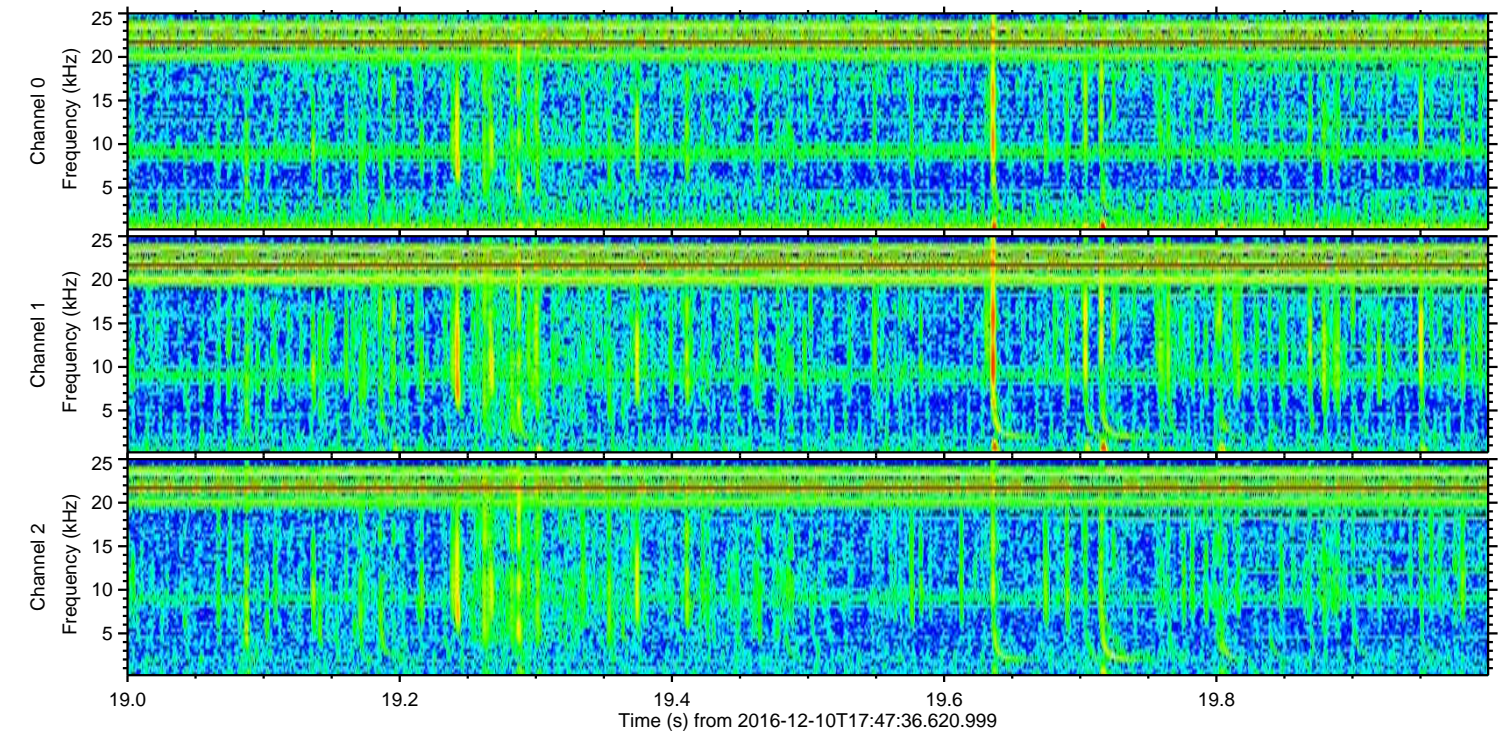
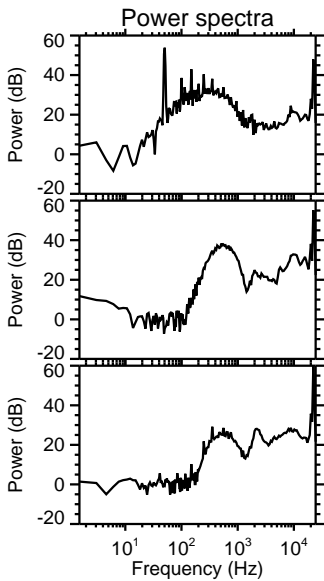
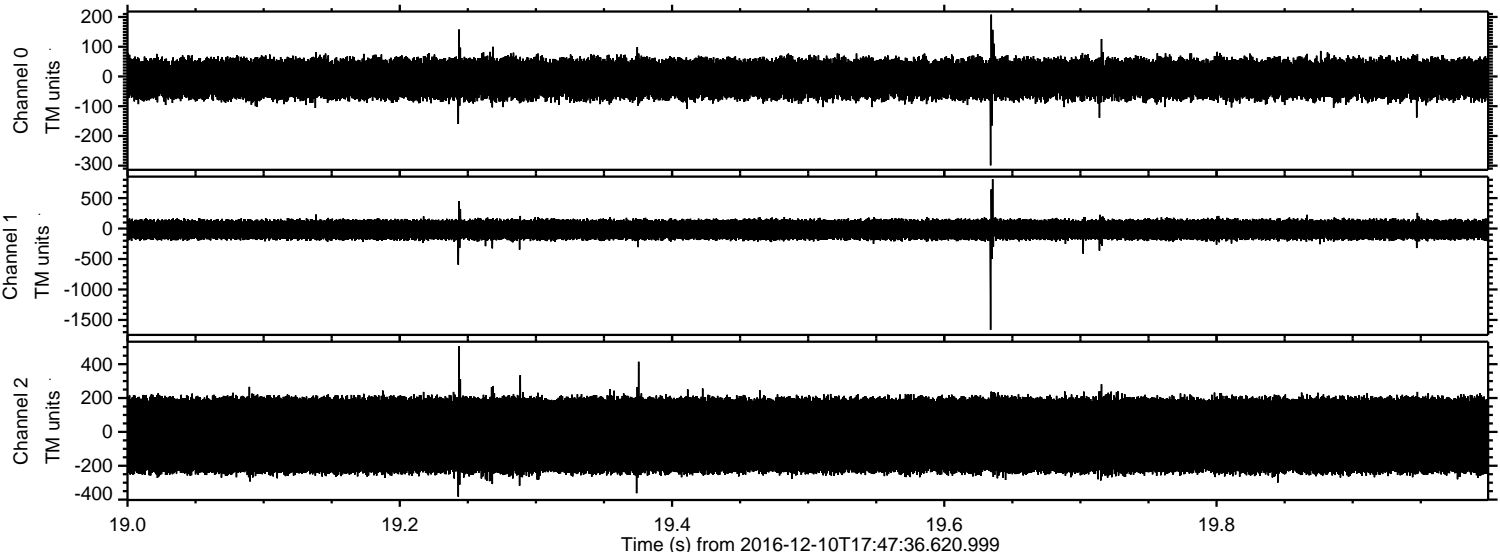
ELMAVAN 3D WAVEFORMS (Measured data sampled at 50 kHz) 51000 packets of 144 samples from 2016-12-10T17:47:36.620.999. Part 23/147

Processed Sat Dec 10 18:55:19 2016 by ELM ver.2012-10-06 from 001__elm20161210_174735__dat00.bin



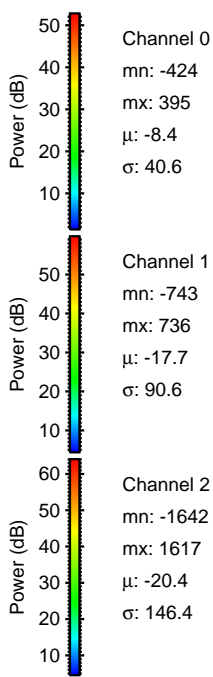
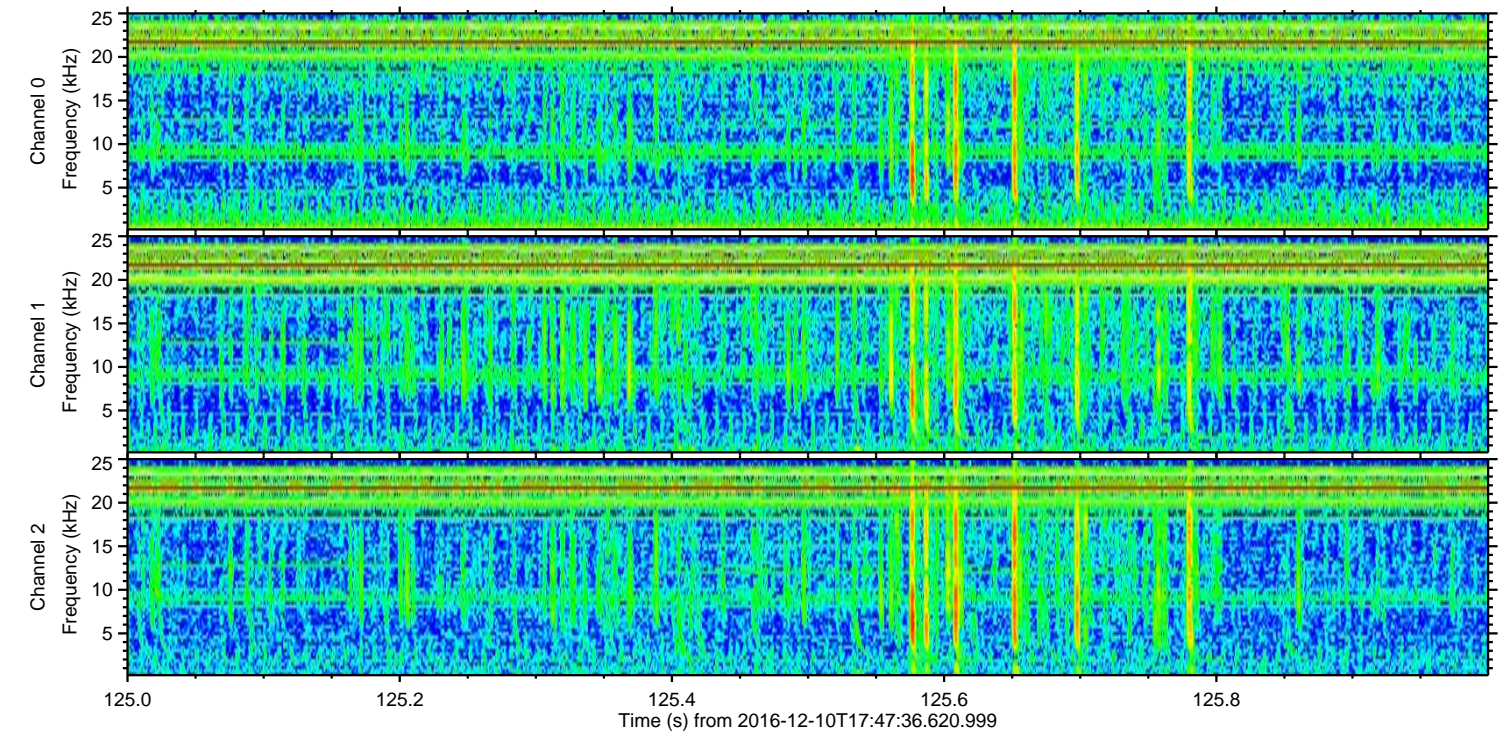
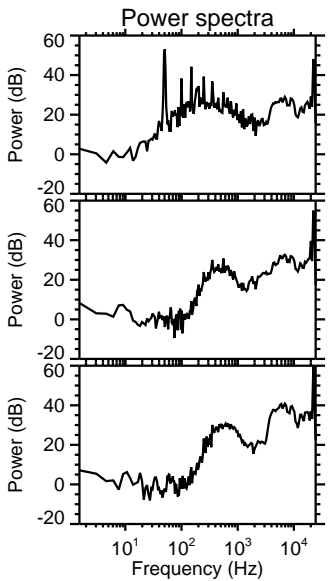
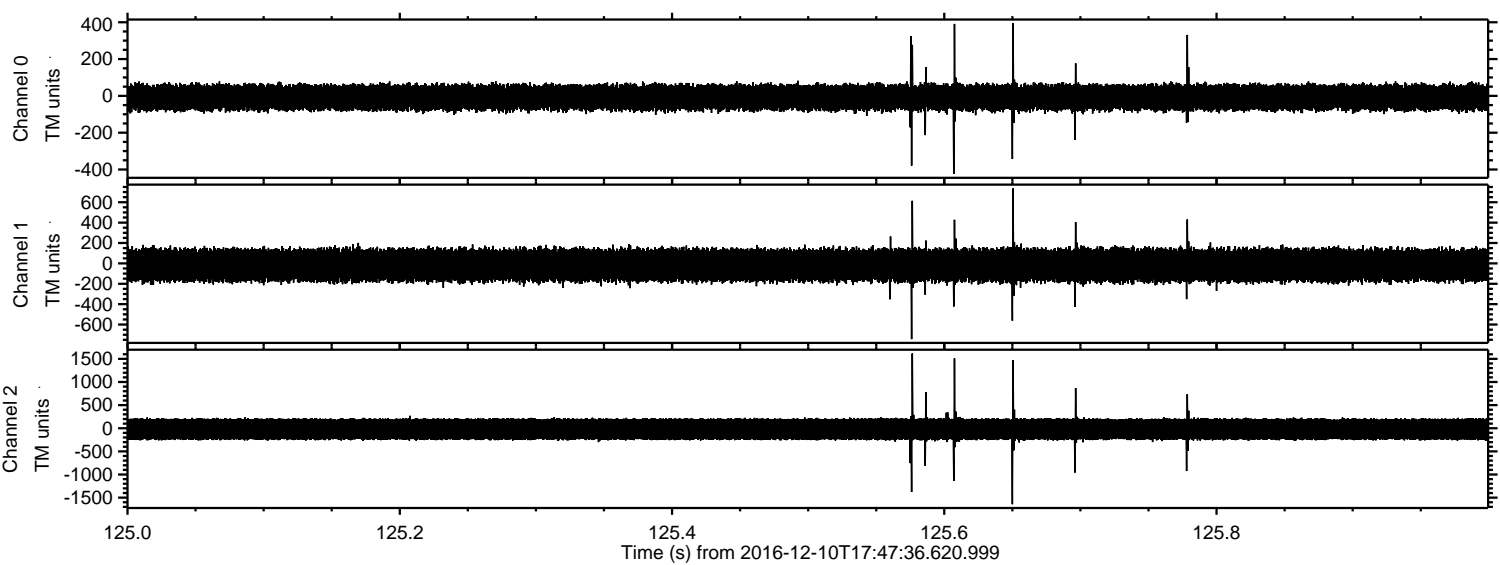
ELMAVAN 3D WAVEFORMS (Measured data sampled at 50 kHz) 51000 packets of 144 samples from 2016-12-10T17:47:36.620.999. Part 20/147

Processed Sat Dec 10 18:55:20 2016 by ELM ver.2012-10-06 from 001__elm20161210_174735__dat00.bin



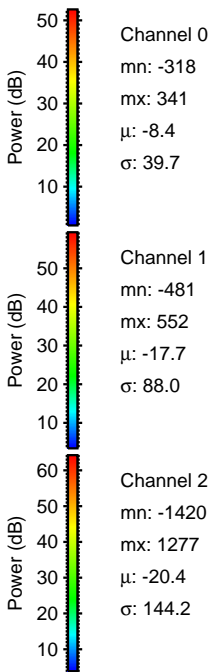
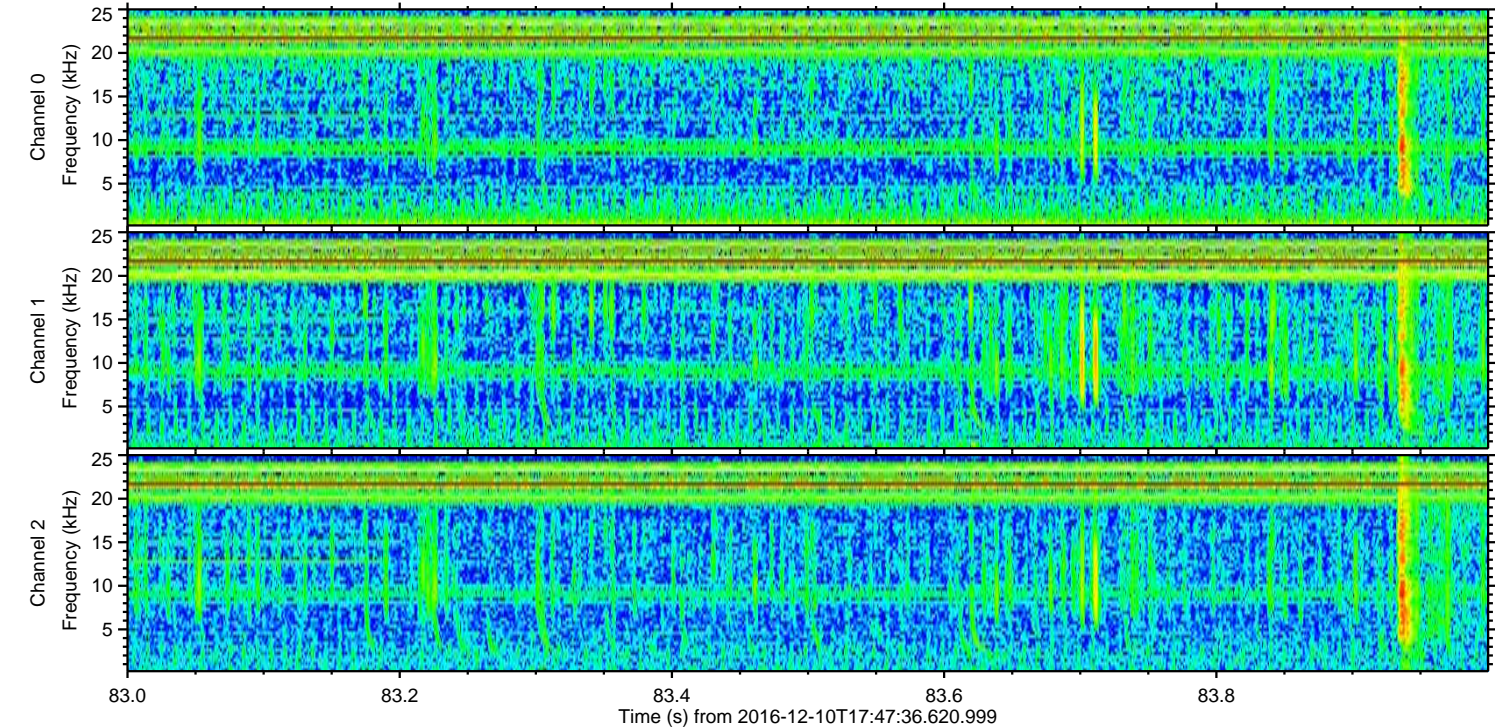
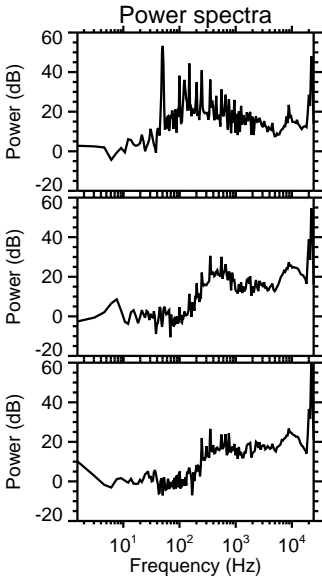
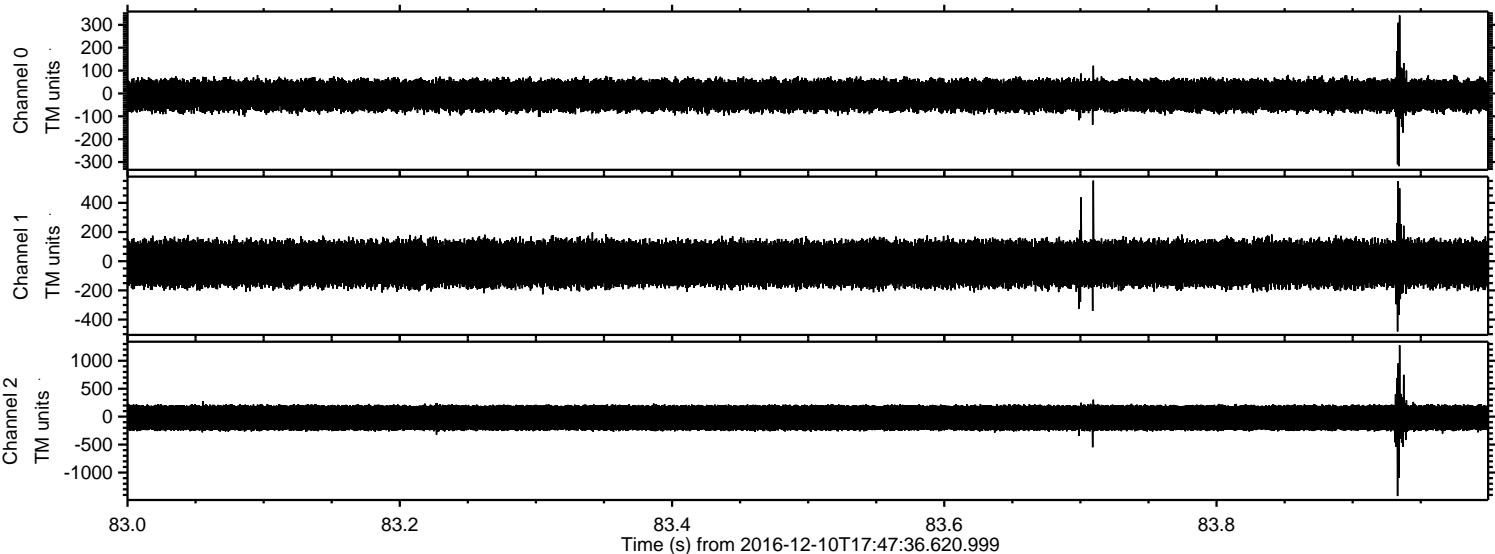
ELMAVAN 3D WAVEFORMS (Measured data sampled at 50 kHz) 51000 packets of 144 samples from 2016-12-10T17:47:36.620.999. Part 126/147

Processed Sat Dec 10 18:55:21 2016 by ELM ver.2012-10-06 from 001__elm20161210_174735__dat00.bin



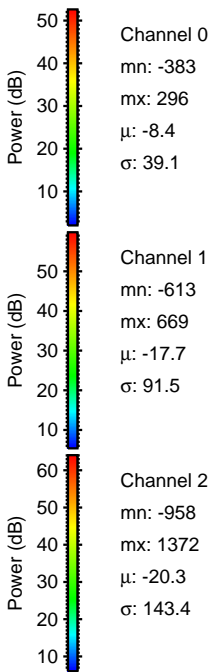
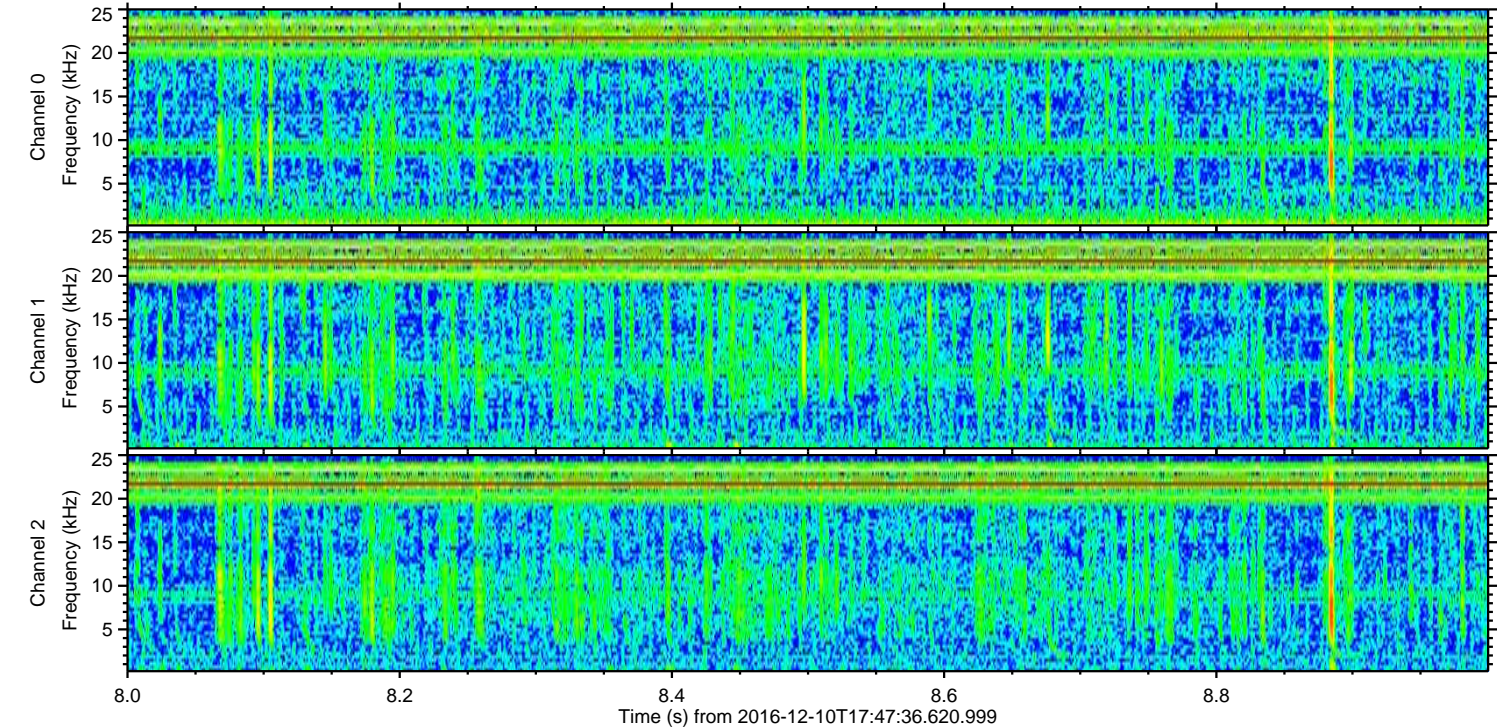
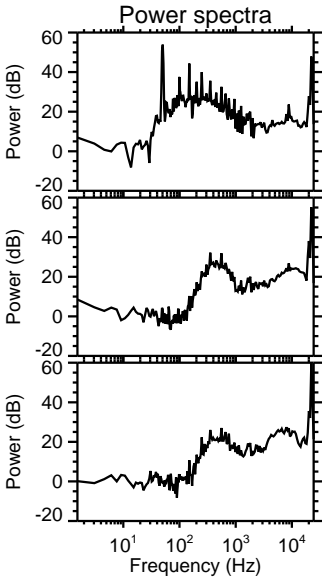
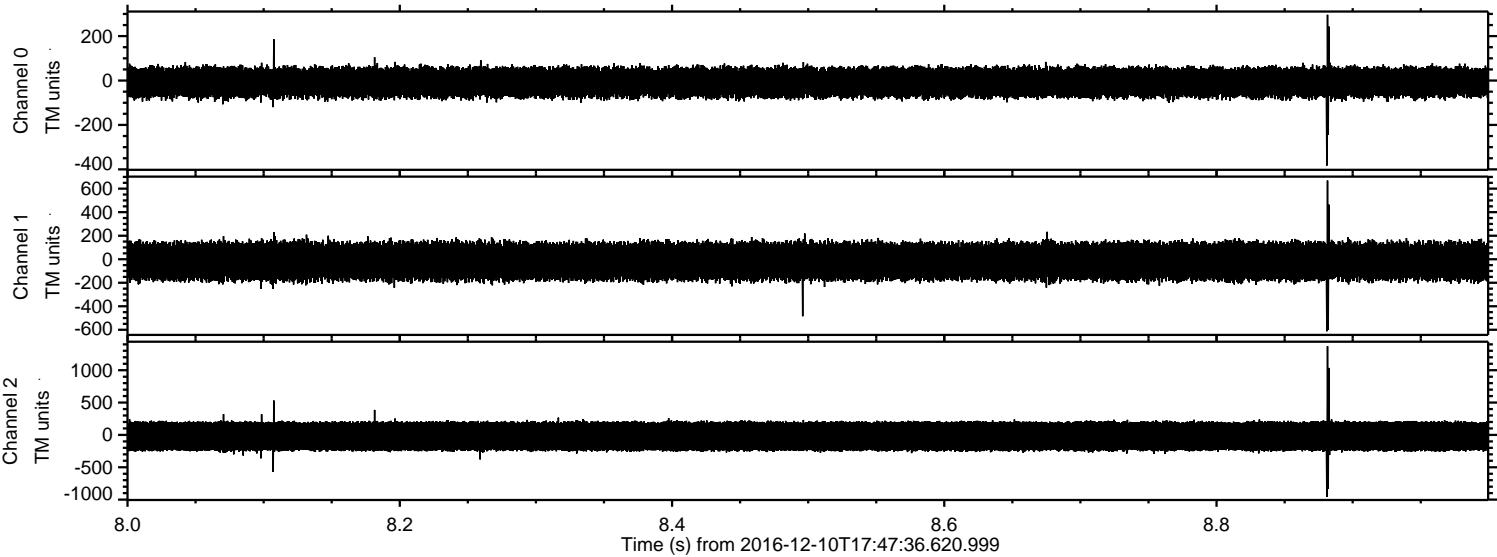
ELMAVAN 3D WAVEFORMS (Measured data sampled at 50 kHz) 51000 packets of 144 samples from 2016-12-10T17:47:36.620.999. Part 84/147

Processed Sat Dec 10 18:55:22 2016 by ELM ver.2012-10-06 from 001__elm20161210_174735__dat00.bin



ELMAVAN 3D WAVEFORMS (Measured data sampled at 50 kHz) 51000 packets of 144 samples from 2016-12-10T17:47:36.620.999. Part 9/147

Processed Sat Dec 10 18:55:23 2016 by ELM ver.2012-10-06 from 001__elm20161210_174735__dat00.bin



ELMAVAN 3D WAVEFORMS (Measured data sampled at 50 kHz) 51000 packets of 144 samples from 2016-12-10T17:47:36.620.999. Part 18/147

Processed Sat Dec 10 18:55:24 2016 by ELM ver.2012-10-06 from 001__elm20161210_174735__dat00.bin

