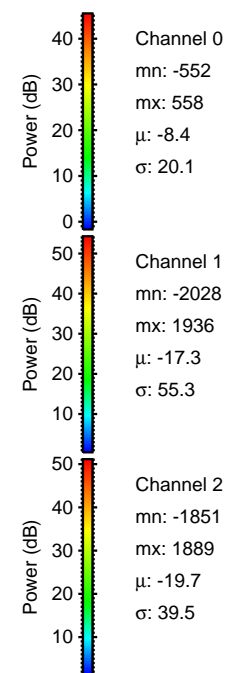
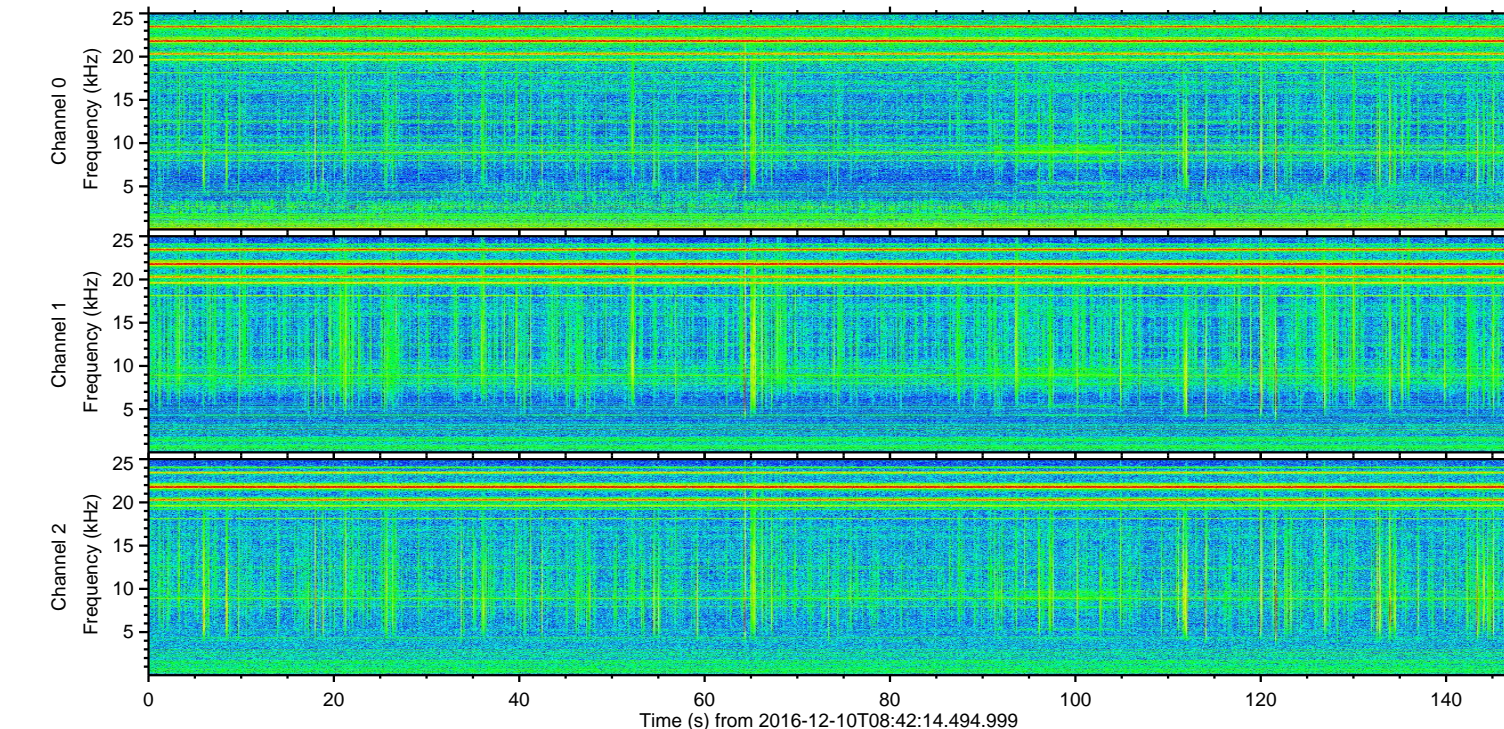
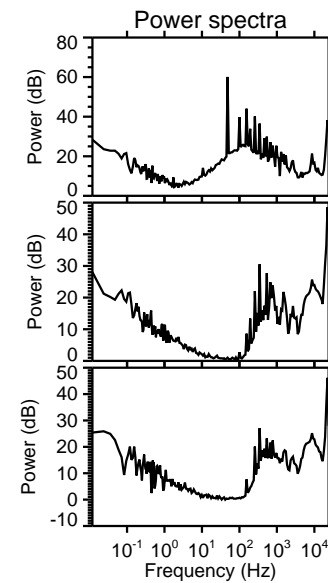
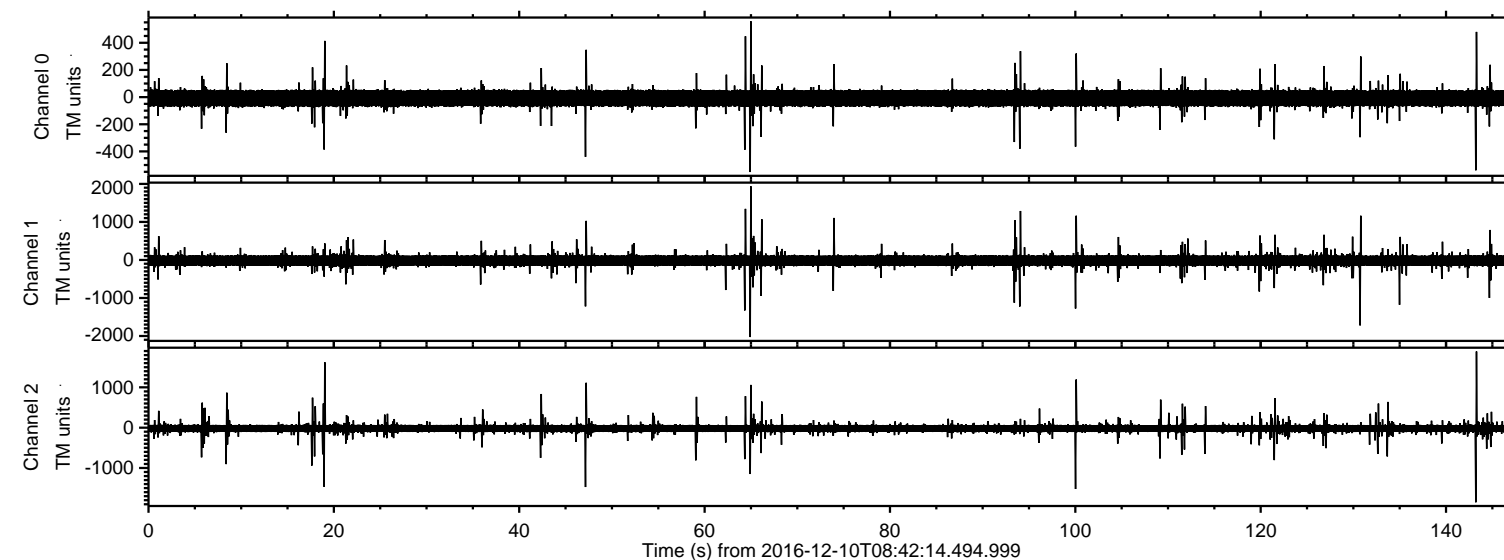


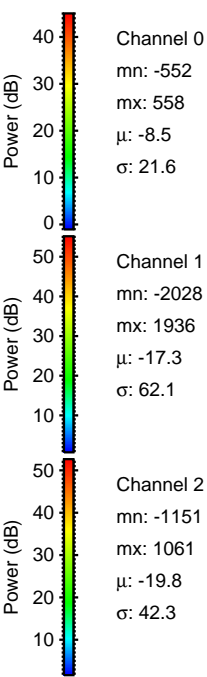
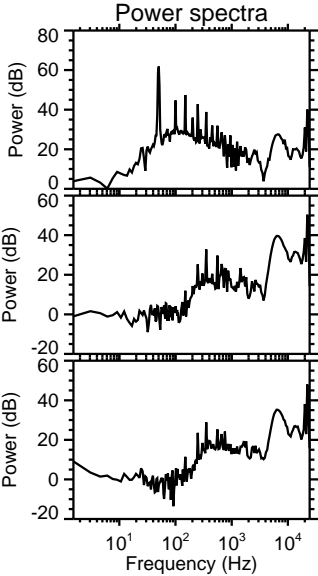
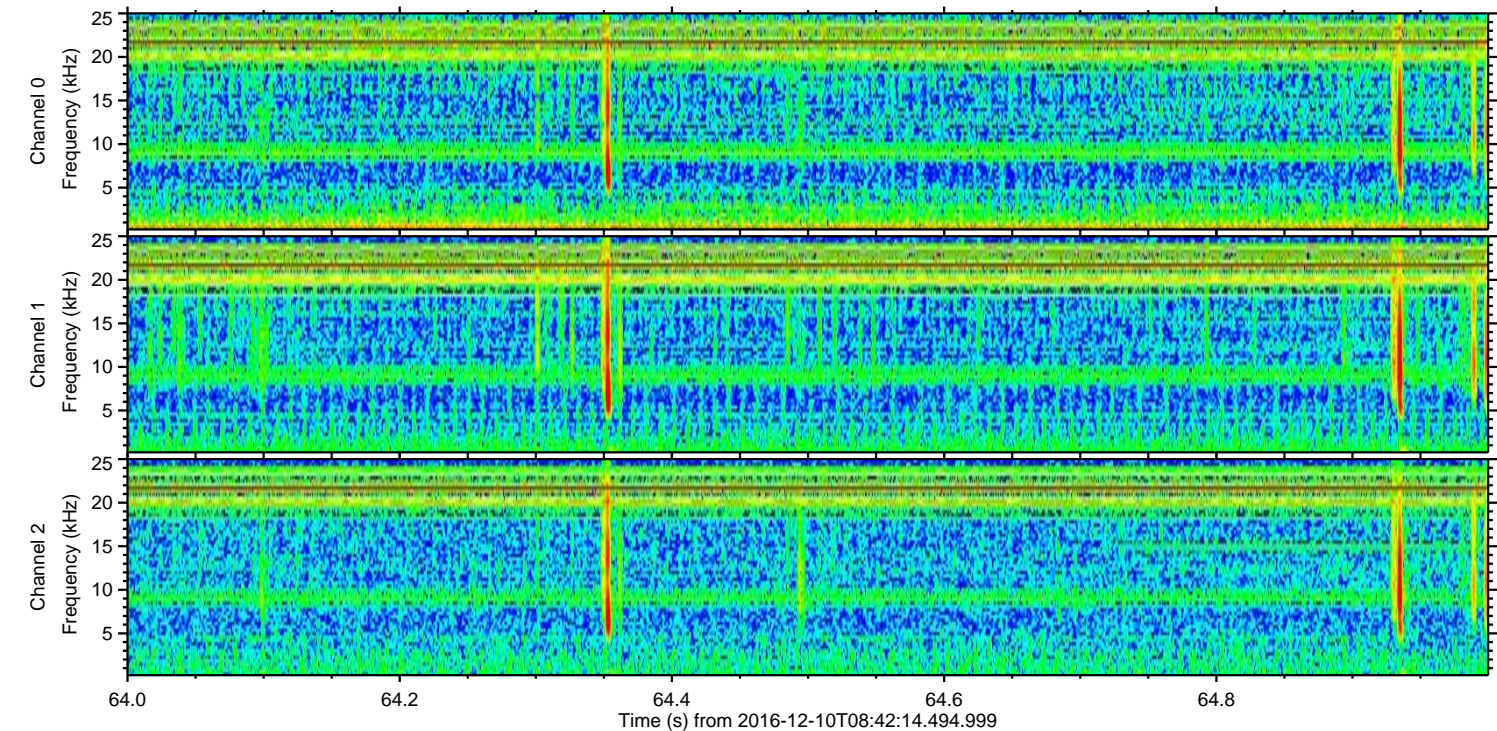
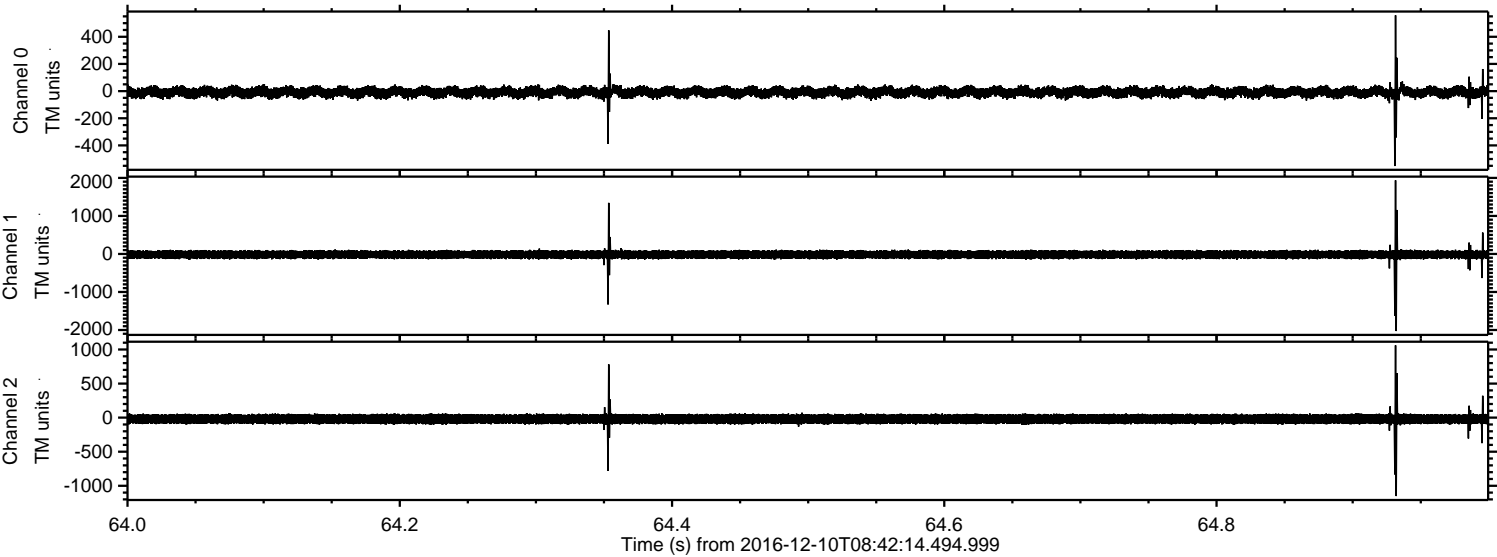
ELMAVAN 3D WAVEFORMS (Measured data sampled at 50 kHz) 51000 packets of 144 samples from 2016-12-10T08:42:14.494.999.

Processed Sat Dec 10 09:49:51 2016 by ELM ver.2012-10-06 from 001__elm20161210_084213__dat00.bin



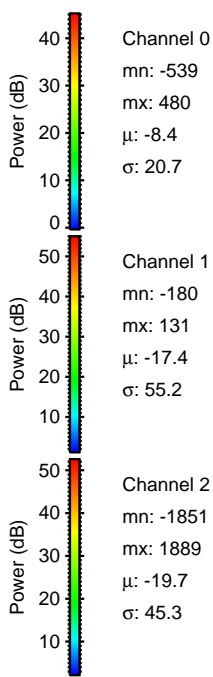
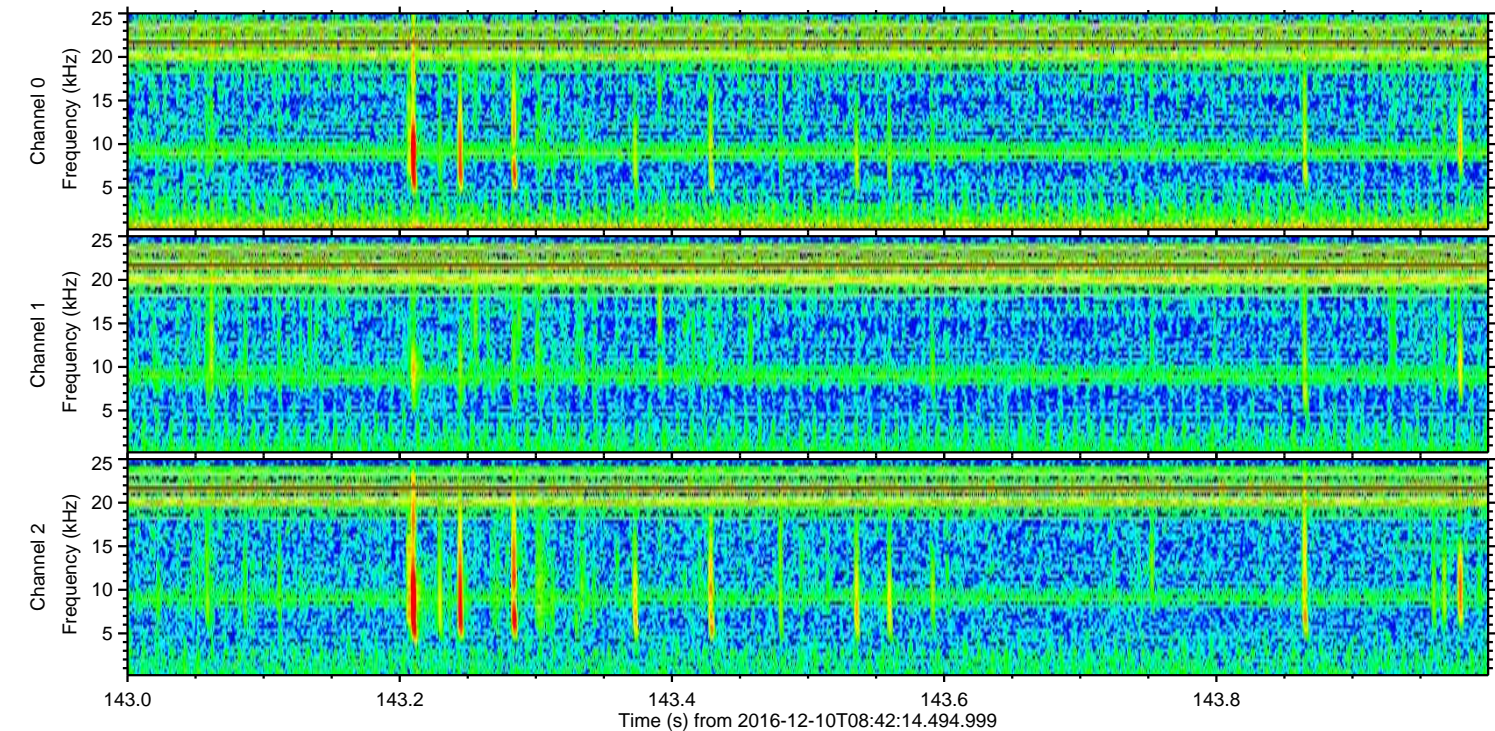
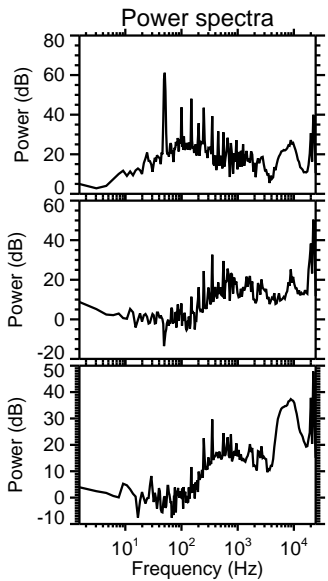
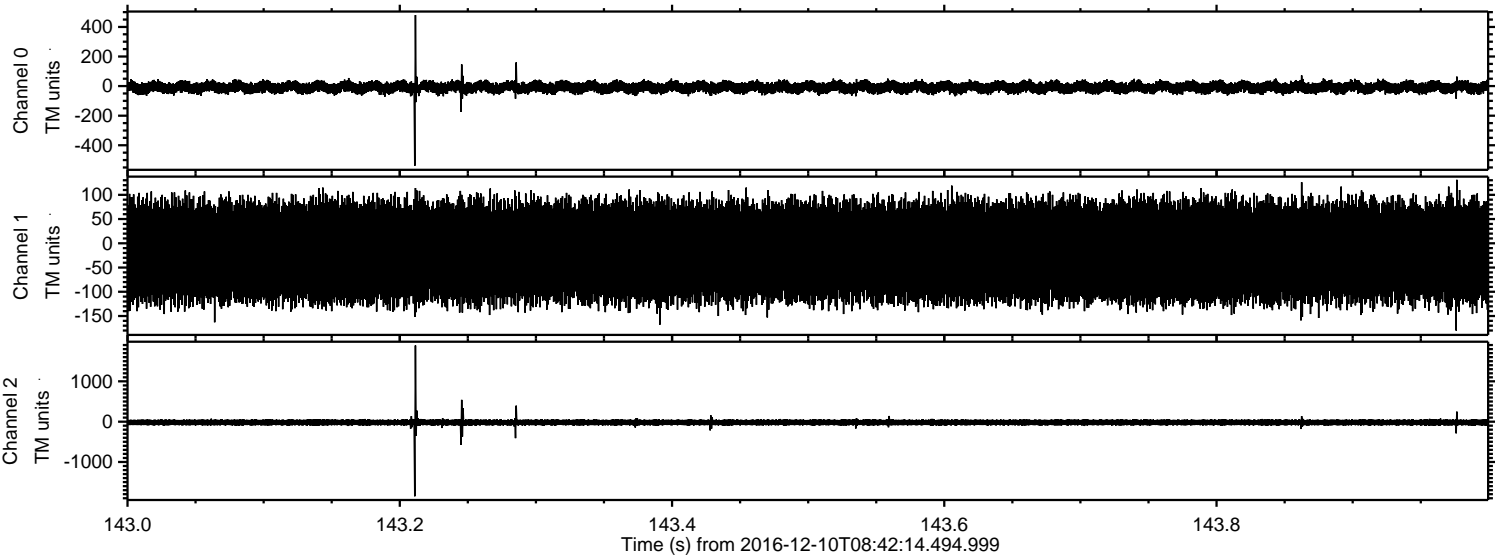
ELMAVAN 3D WAVEFORMS (Measured data sampled at 50 kHz) 51000 packets of 144 samples from 2016-12-10T08:42:14.494.999. Part 65/147

Processed Sat Dec 10 09:50:03 2016 by ELM ver.2012-10-06 from 001__elm20161210_084213__dat00.bin



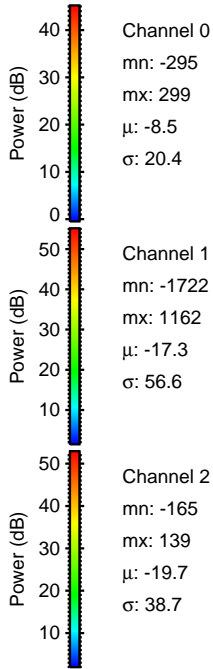
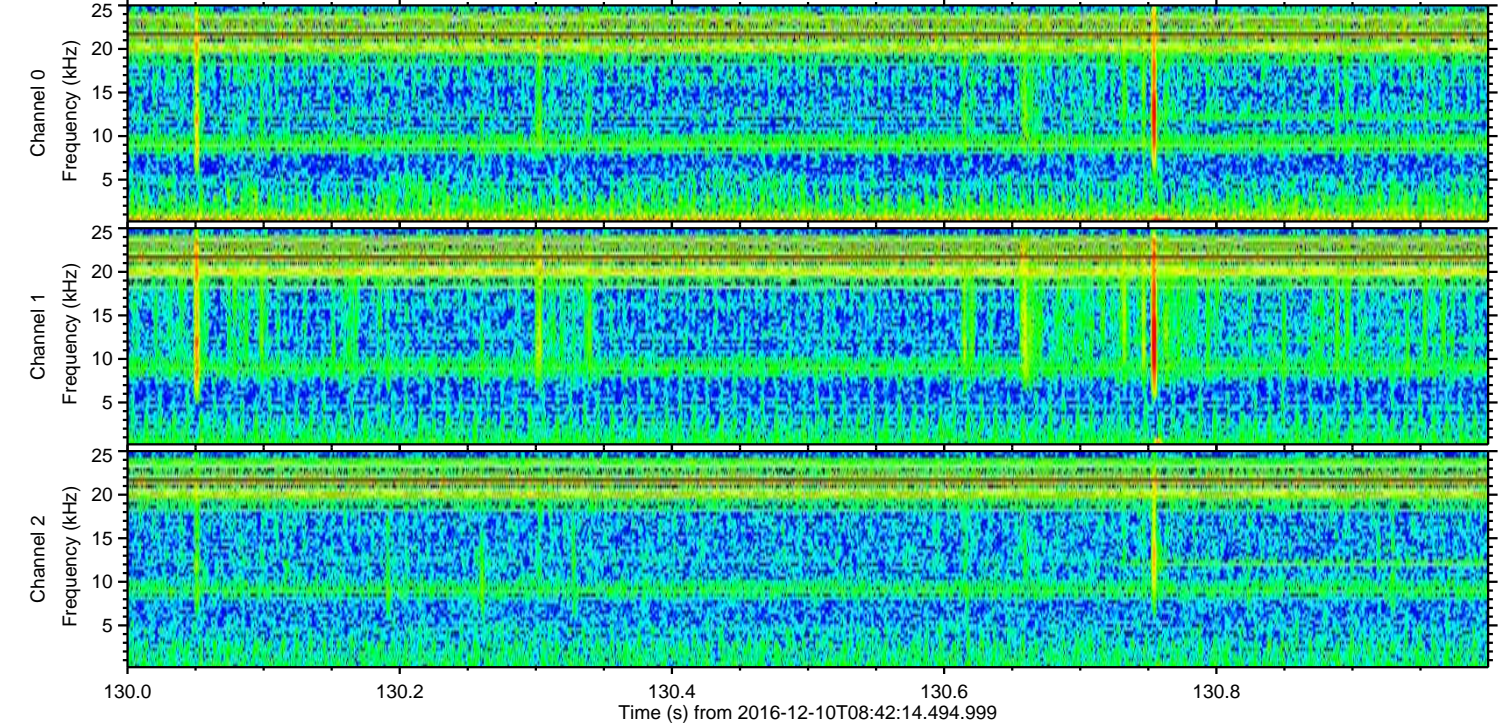
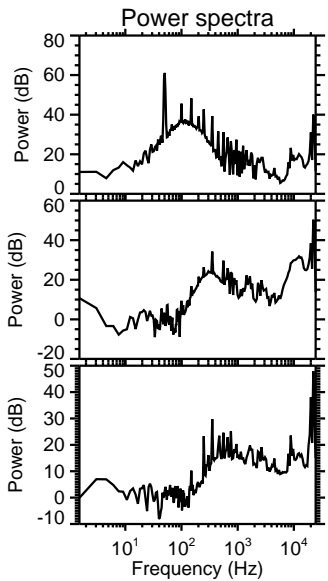
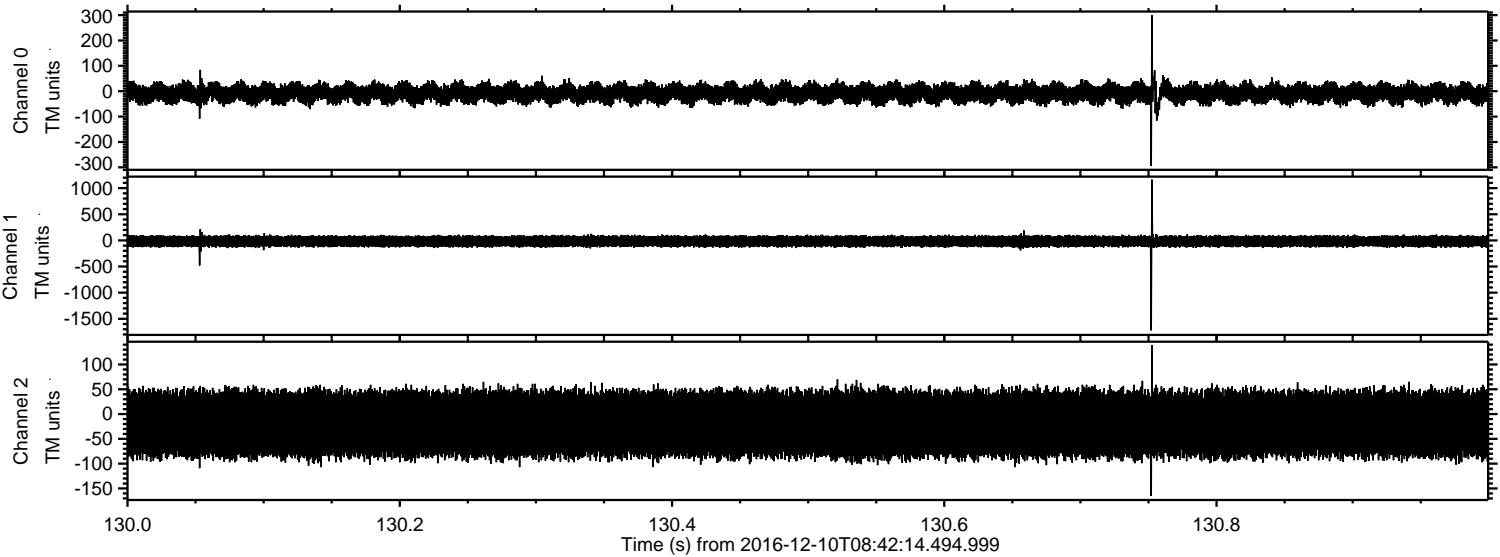
ELMAVAN 3D WAVEFORMS (Measured data sampled at 50 kHz) 51000 packets of 144 samples from 2016-12-10T08:42:14.494.999. Part 144/147

Processed Sat Dec 10 09:50:04 2016 by ELM ver.2012-10-06 from 001__elm20161210_084213__dat00.bin



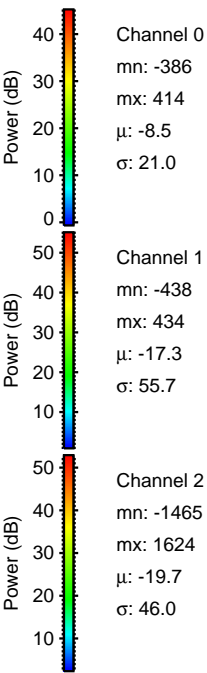
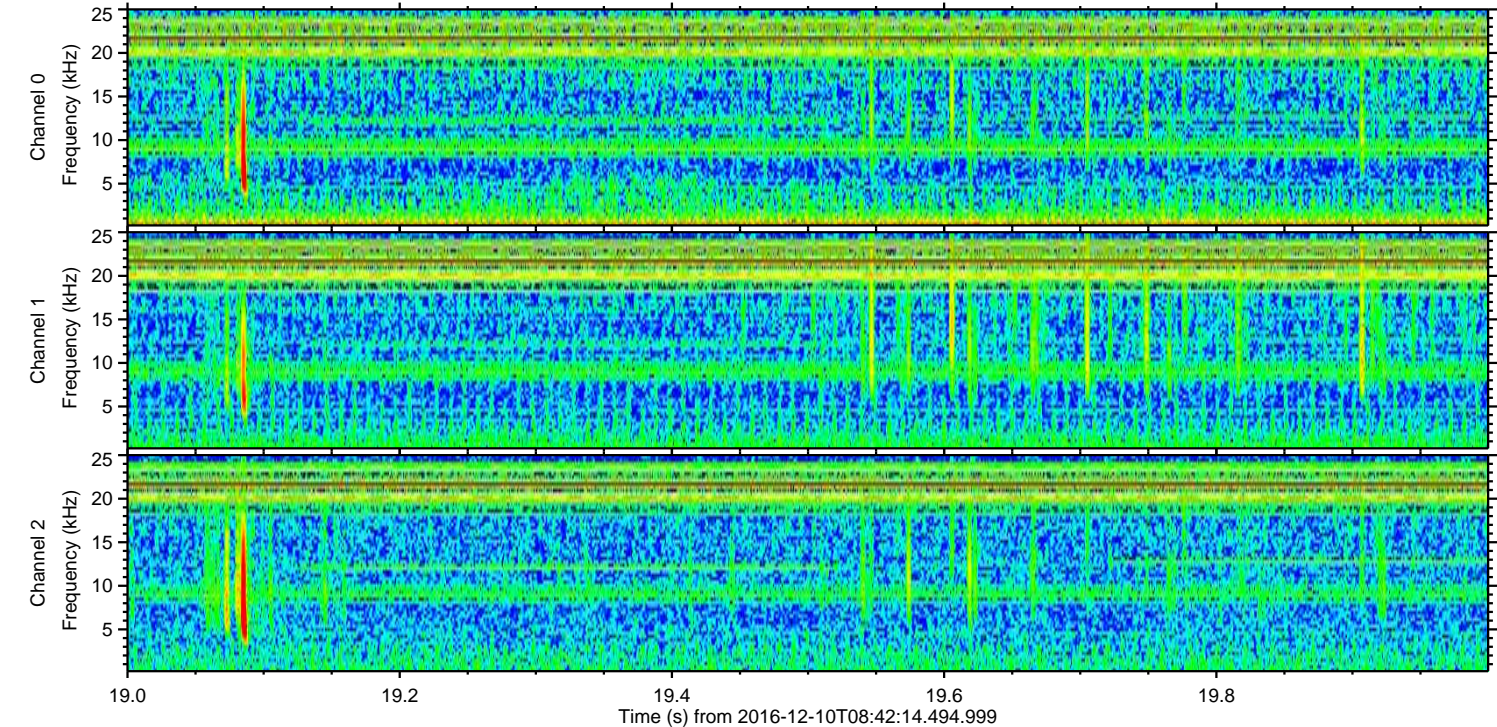
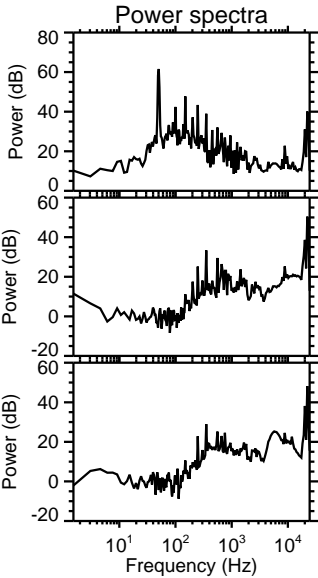
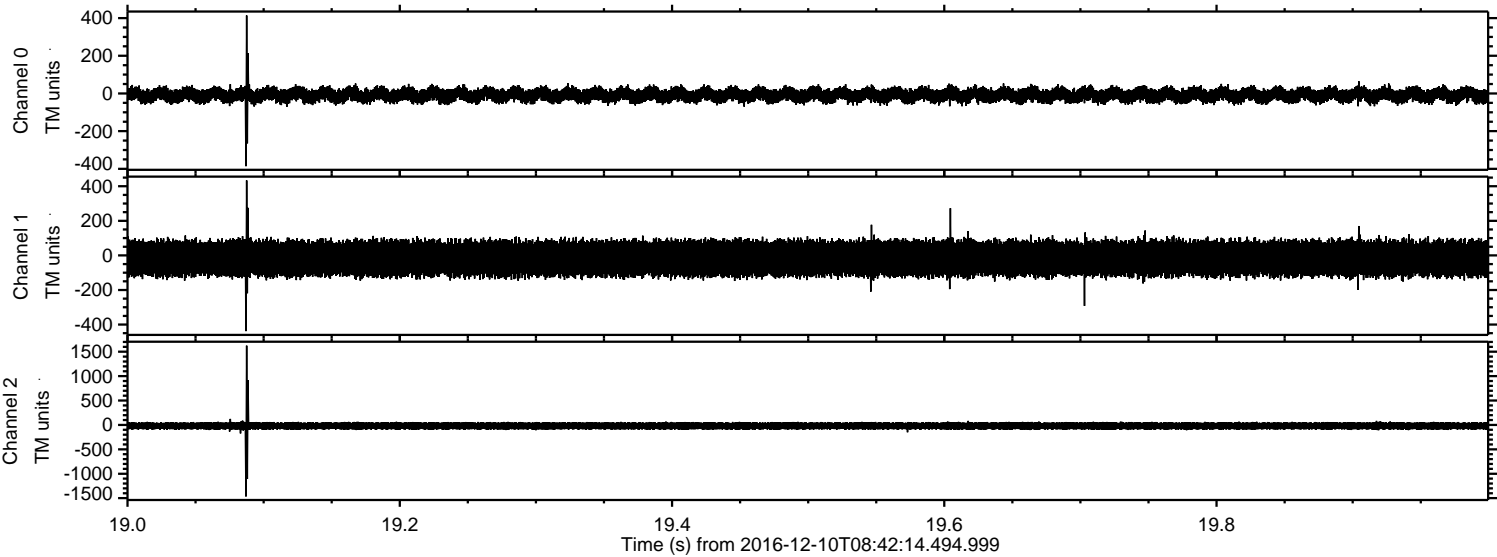
ELMAVAN 3D WAVEFORMS (Measured data sampled at 50 kHz) 51000 packets of 144 samples from 2016-12-10T08:42:14.494.999. Part 131/147

Processed Sat Dec 10 09:50:05 2016 by ELM ver.2012-10-06 from 001__elm20161210_084213__dat00.bin



ELMAVAN 3D WAVEFORMS (Measured data sampled at 50 kHz) 51000 packets of 144 samples from 2016-12-10T08:42:14.494.999. Part 20/147

Processed Sat Dec 10 09:50:06 2016 by ELM ver.2012-10-06 from 001__elm20161210_084213__dat00.bin



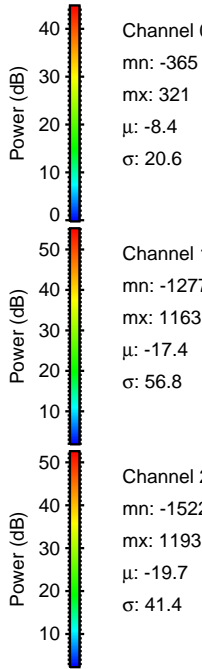
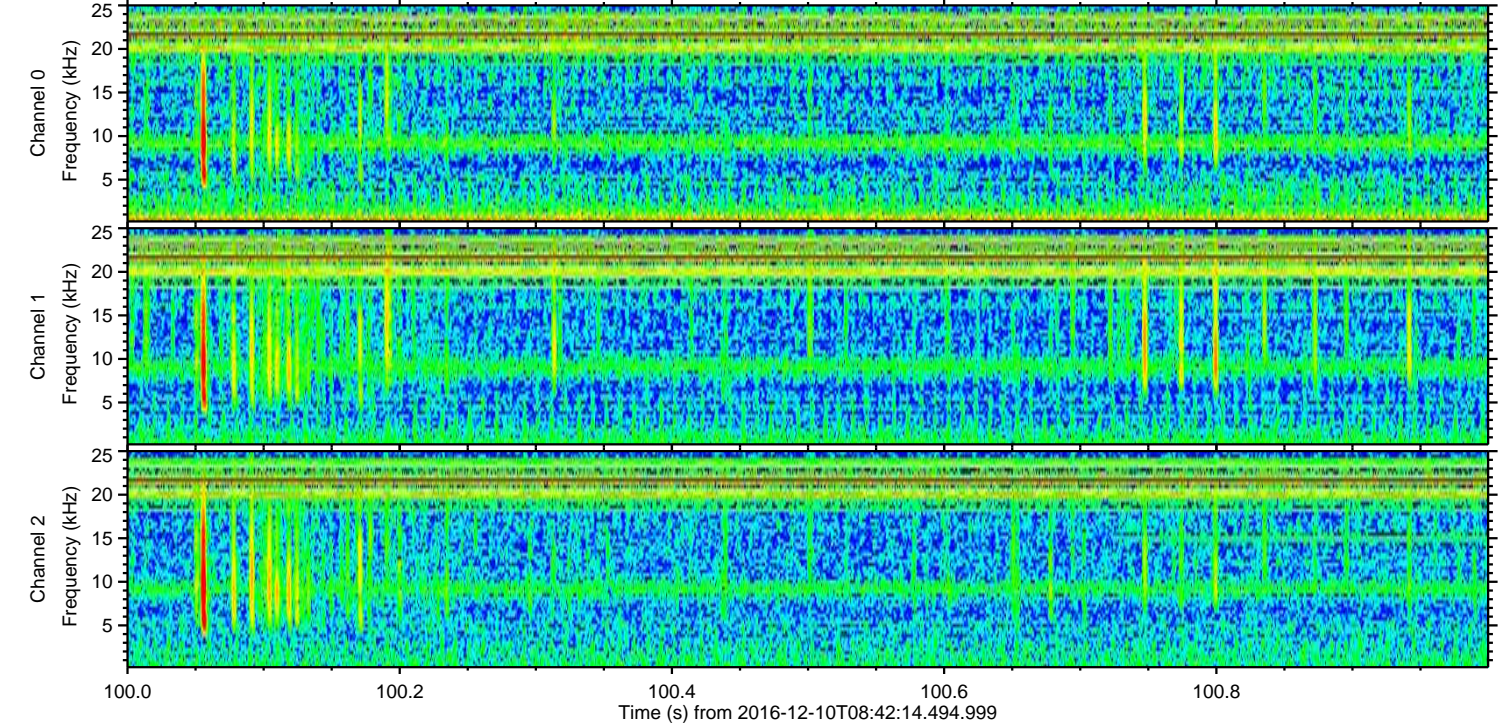
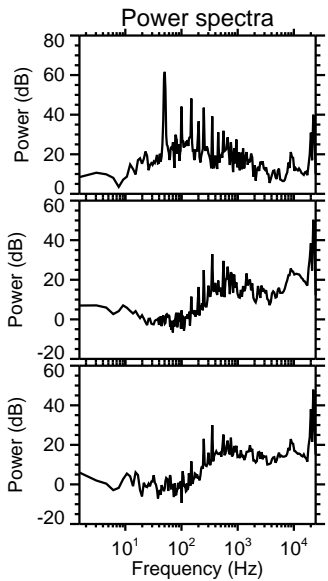
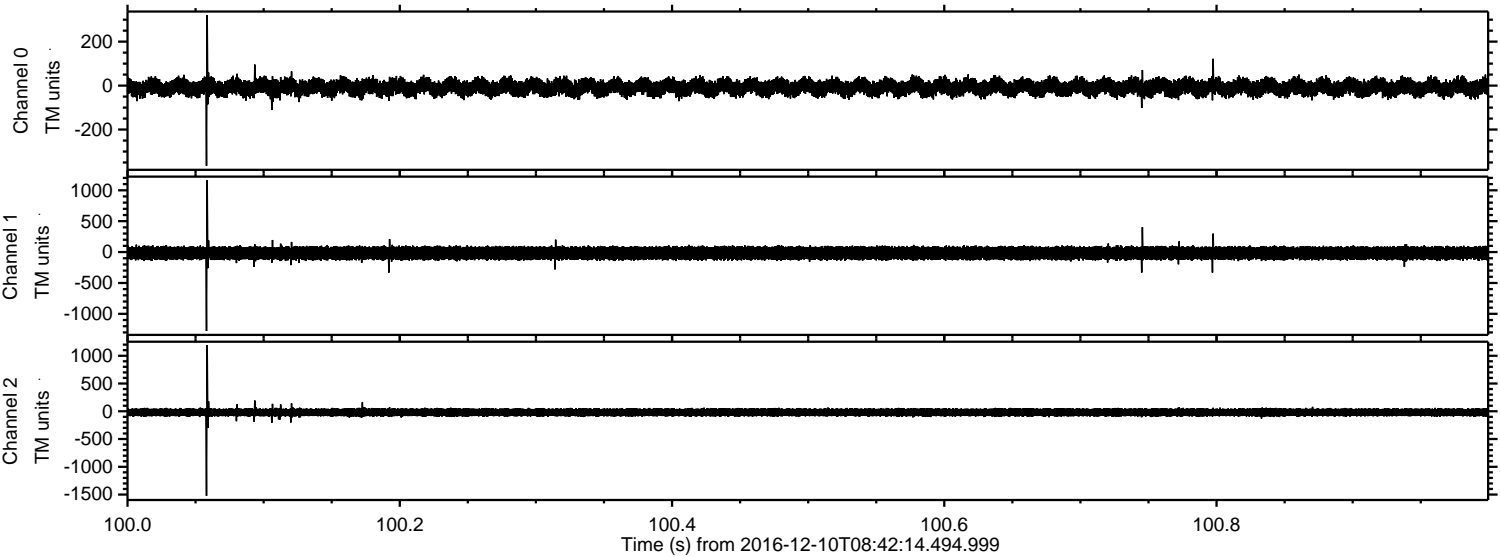
Channel 0
mn: -386
mx: 414
 μ : -8.5
 σ : 21.0

Channel 1
mn: -438
mx: 434
 μ : -17.3
 σ : 55.7

Channel 2
mn: -1465
mx: 1624
 μ : -19.7
 σ : 46.0

ELMAVAN 3D WAVEFORMS (Measured data sampled at 50 kHz) 51000 packets of 144 samples from 2016-12-10T08:42:14.494.999. Part 101/147

Processed Sat Dec 10 09:50:07 2016 by ELM ver.2012-10-06 from 001__elm20161210_084213__dat00.bin



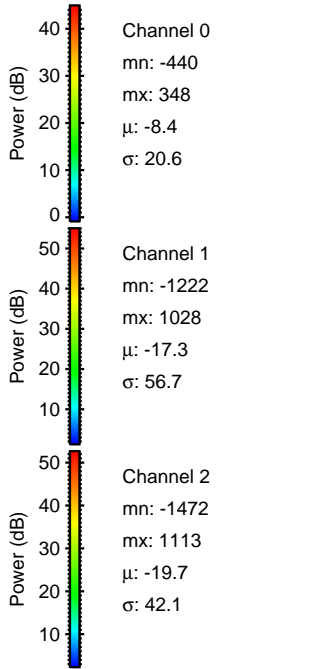
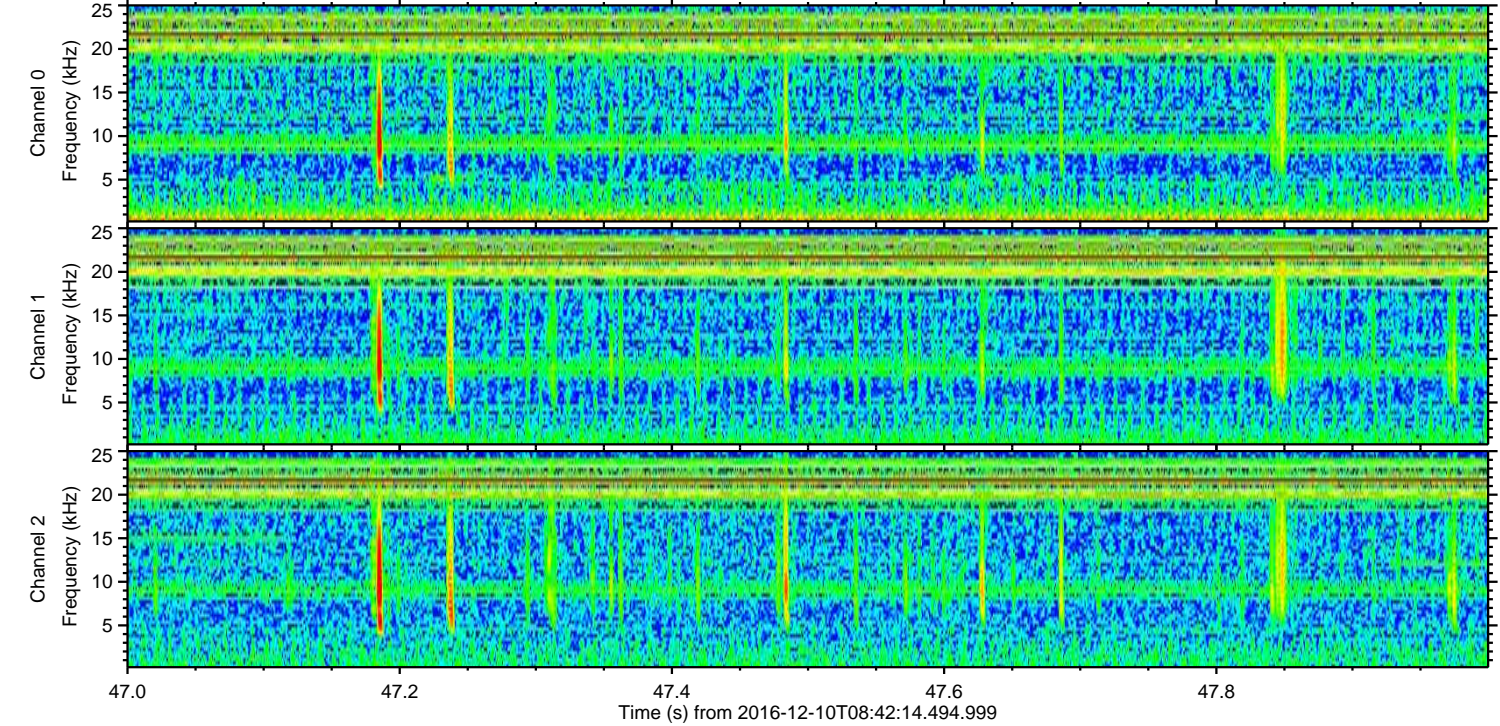
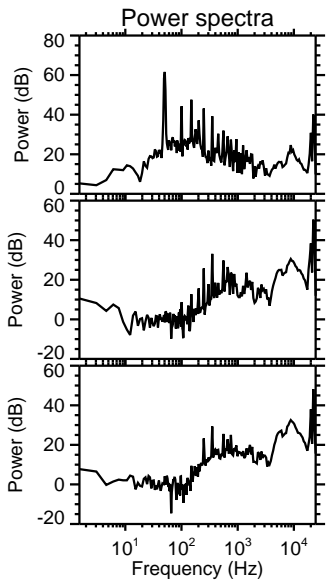
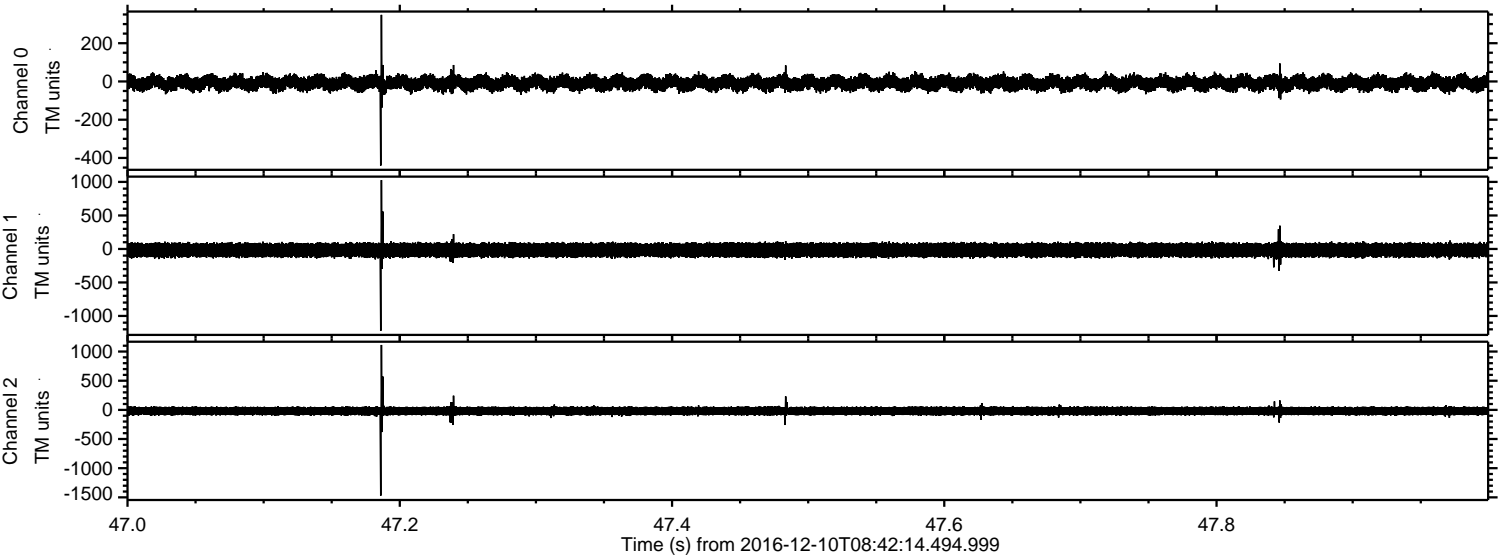
Channel 0
mn: -365
mx: 321
 μ : -8.4
 σ : 20.6

Channel 1
mn: -1277
mx: 1163
 μ : -17.4
 σ : 56.8

Channel 2
mn: -1522
mx: 1193
 μ : -19.7
 σ : 41.4

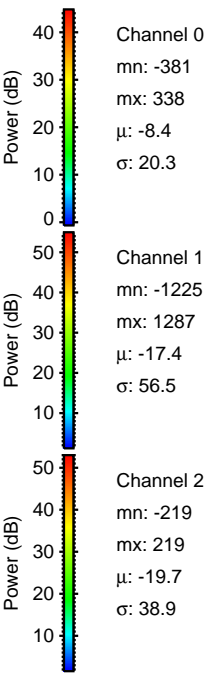
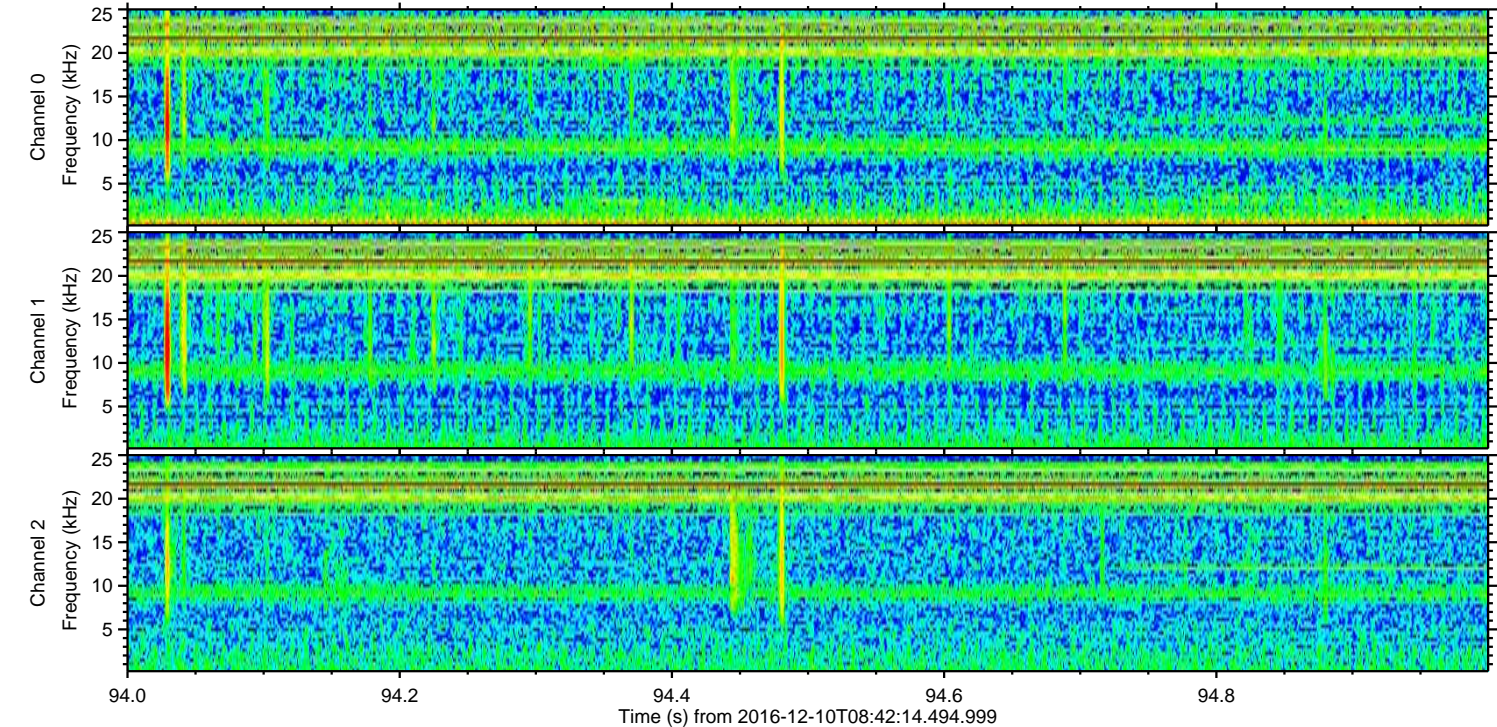
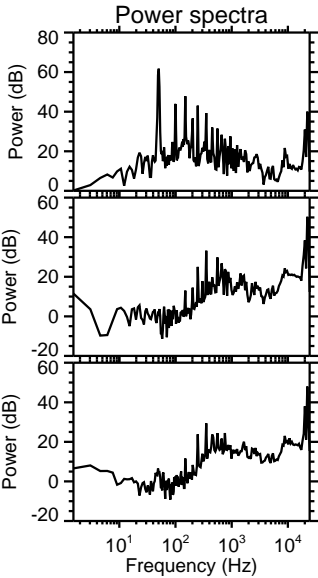
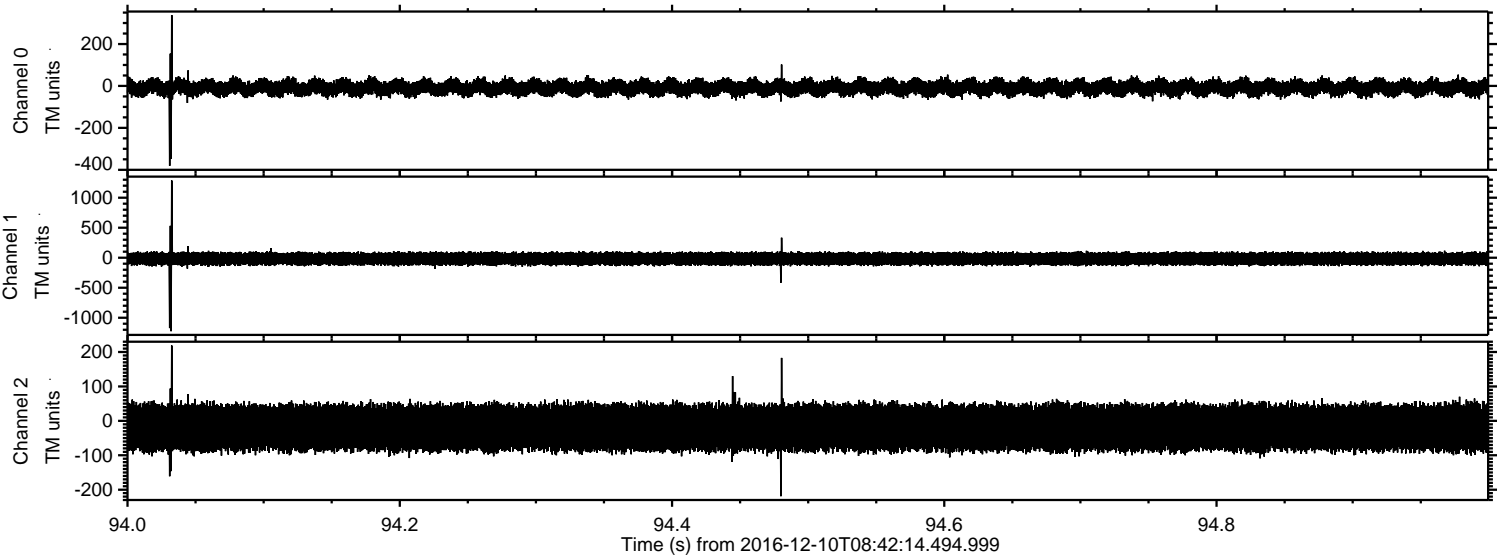
ELMAVAN 3D WAVEFORMS (Measured data sampled at 50 kHz) 51000 packets of 144 samples from 2016-12-10T08:42:14.494.999. Part 48/147

Processed Sat Dec 10 09:50:07 2016 by ELM ver.2012-10-06 from 001__elm20161210_084213__dat00.bin



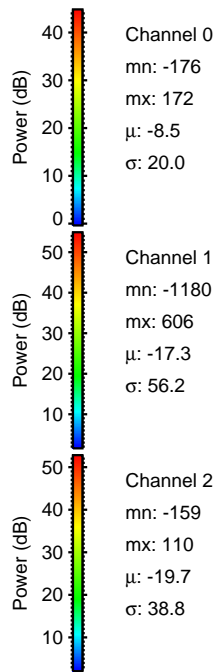
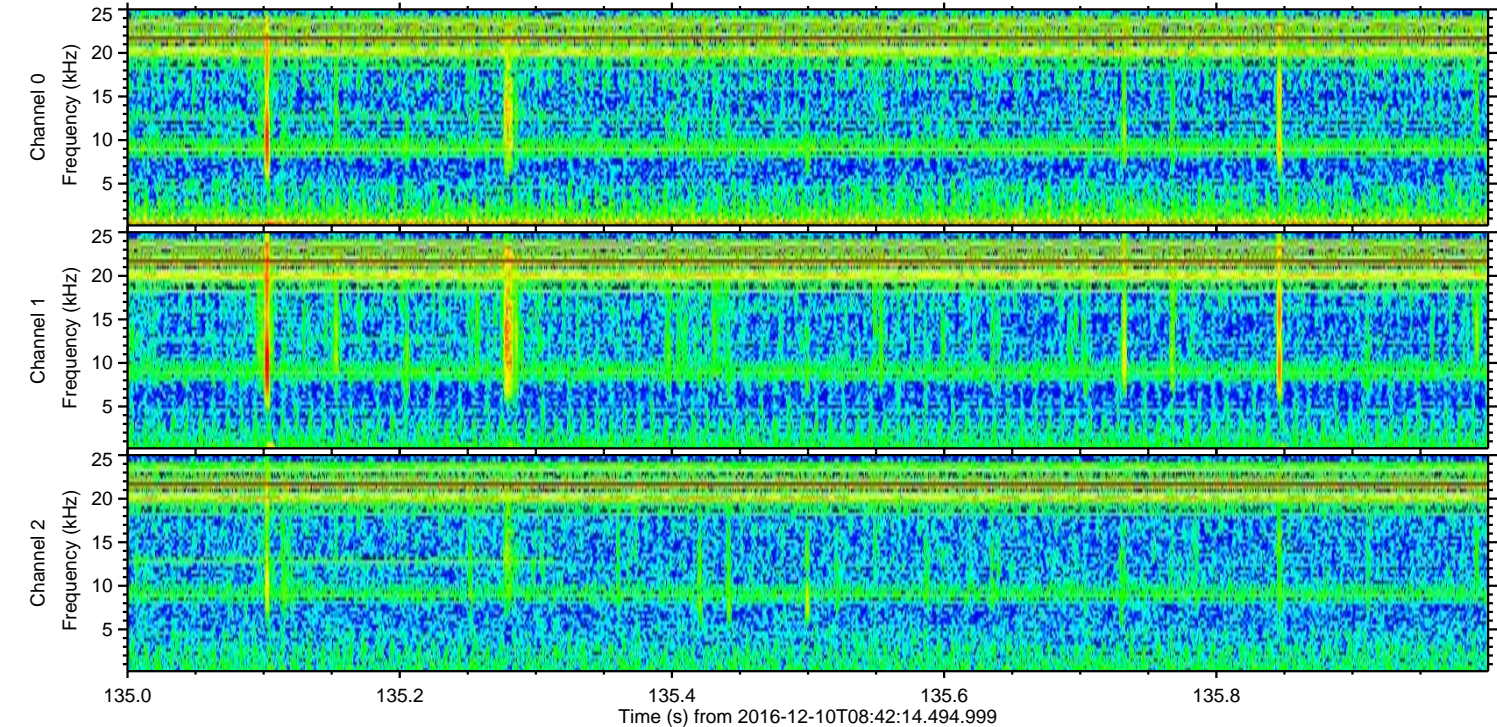
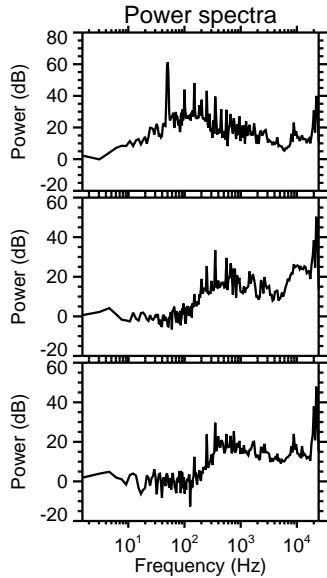
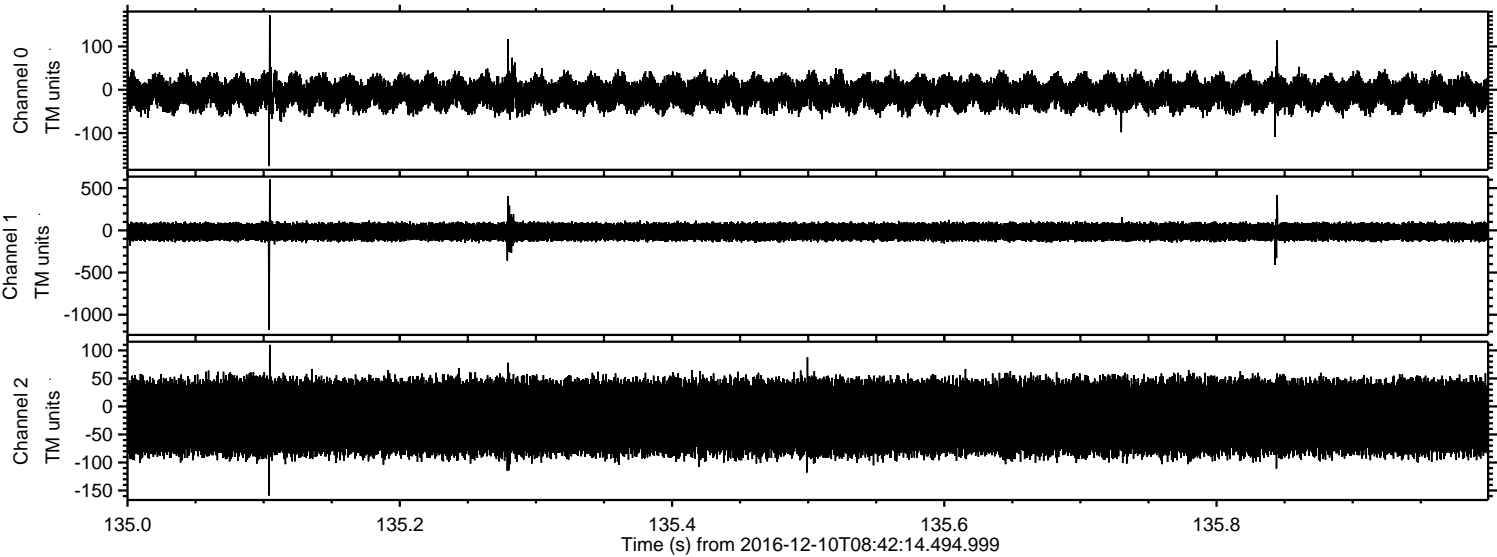
ELMAVAN 3D WAVEFORMS (Measured data sampled at 50 kHz) 51000 packets of 144 samples from 2016-12-10T08:42:14.494.999. Part 95/147

Processed Sat Dec 10 09:50:08 2016 by ELM ver.2012-10-06 from 001__elm20161210_084213__dat00.bin



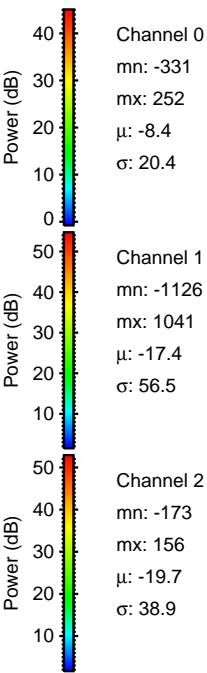
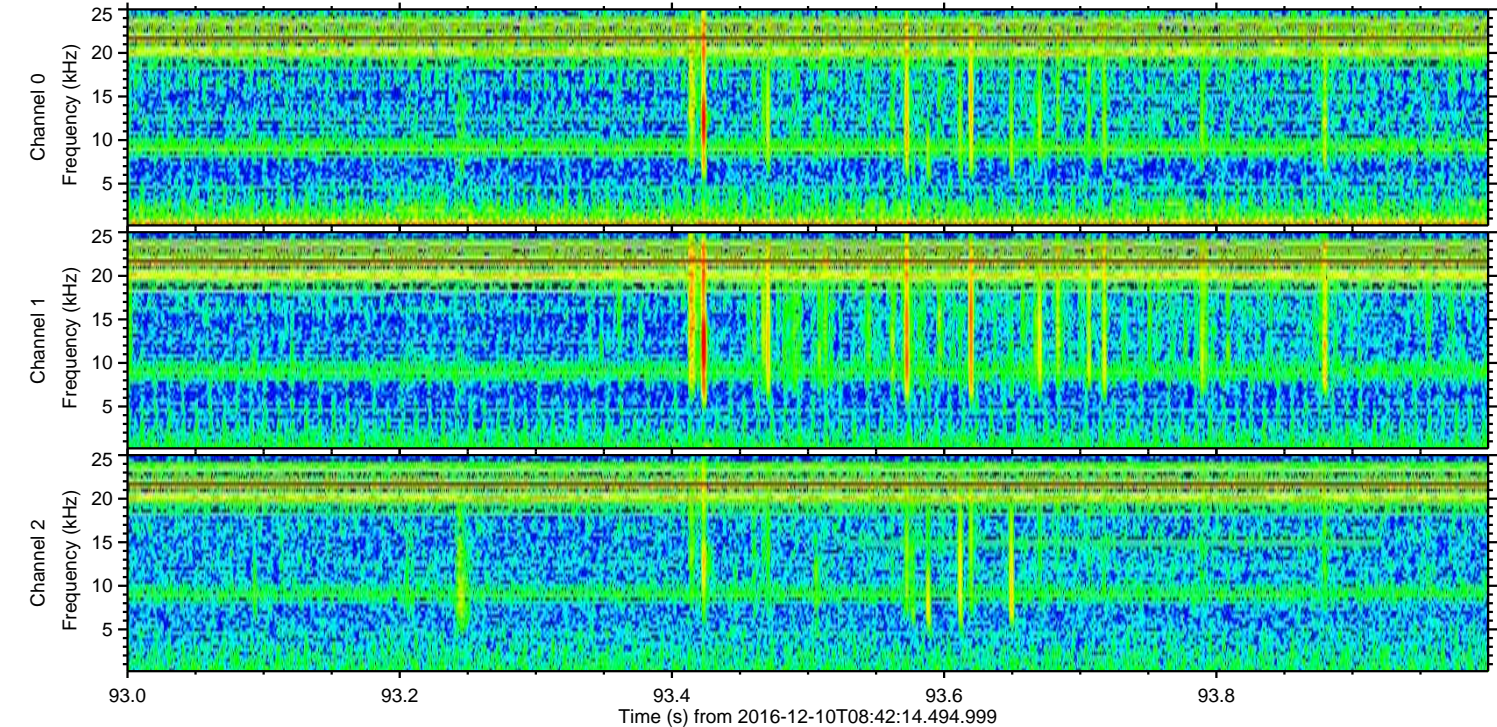
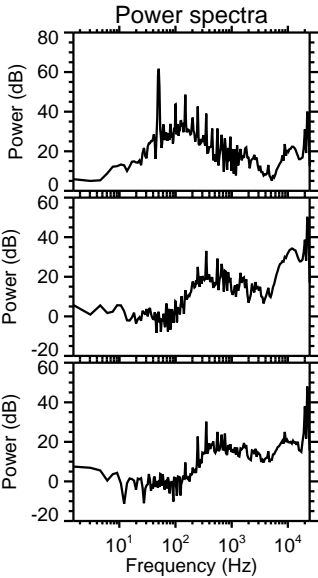
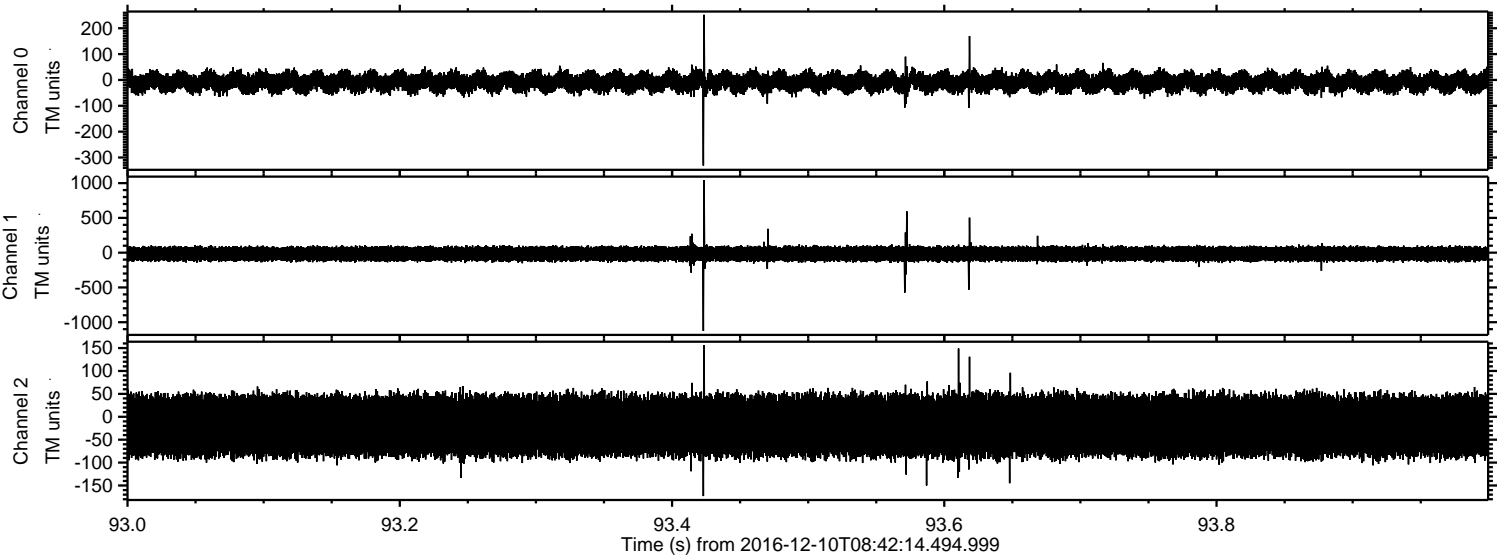
ELMAVAN 3D WAVEFORMS (Measured data sampled at 50 kHz) 51000 packets of 144 samples from 2016-12-10T08:42:14.494.999. Part 136/147

Processed Sat Dec 10 09:50:09 2016 by ELM ver.2012-10-06 from 001__elm20161210_084213__dat00.bin



ELMAVAN 3D WAVEFORMS (Measured data sampled at 50 kHz) 51000 packets of 144 samples from 2016-12-10T08:42:14.494.999. Part 94/147

Processed Sat Dec 10 09:50:10 2016 by ELM ver.2012-10-06 from 001__elm20161210_084213__dat00.bin



ELMAVAN 3D WAVEFORMS (Measured data sampled at 50 kHz) 51000 packets of 144 samples from 2016-12-10T08:42:14.494.999. Part 33/147

Processed Sat Dec 10 09:50:11 2016 by ELM ver.2012-10-06 from 001__elm20161210_084213__dat00.bin

