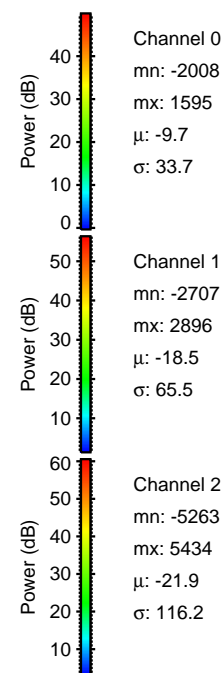
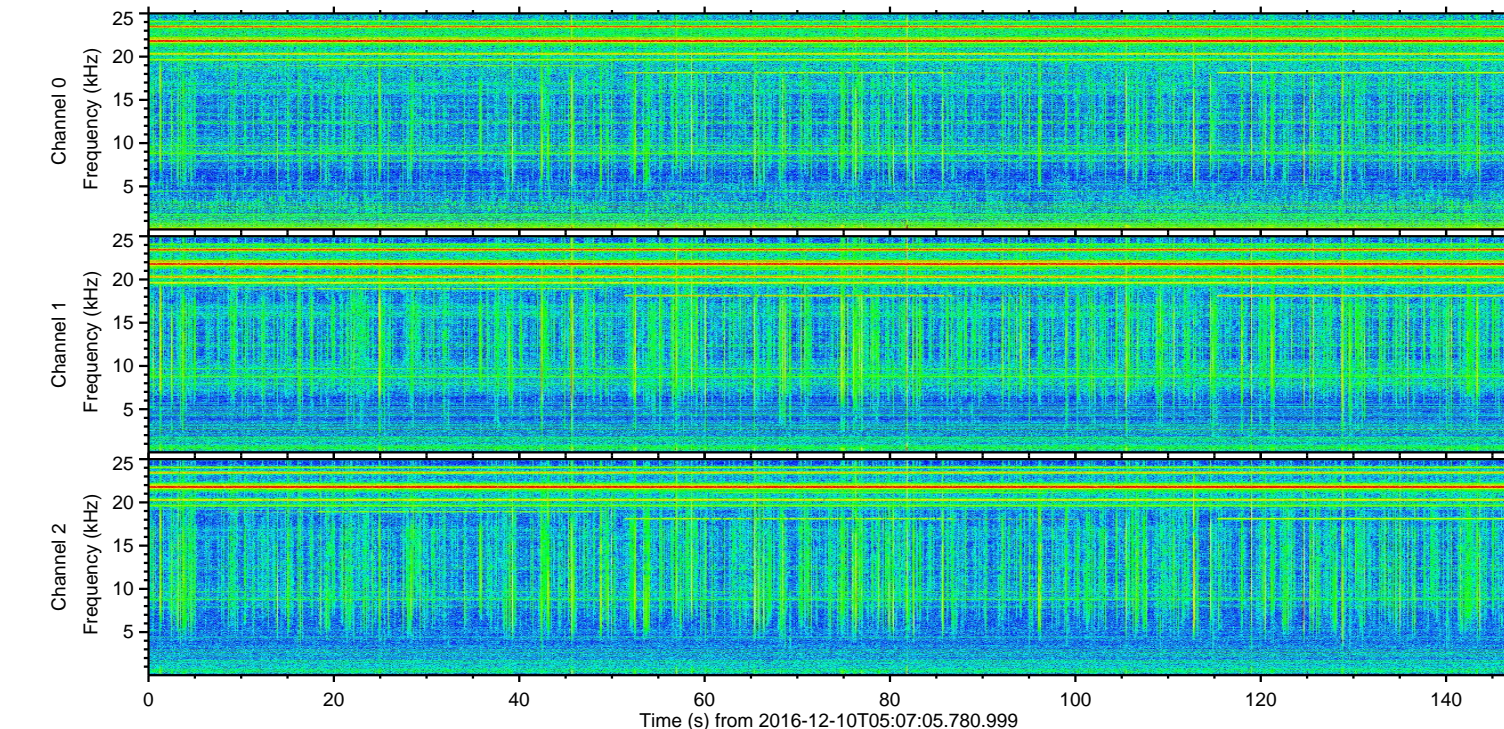
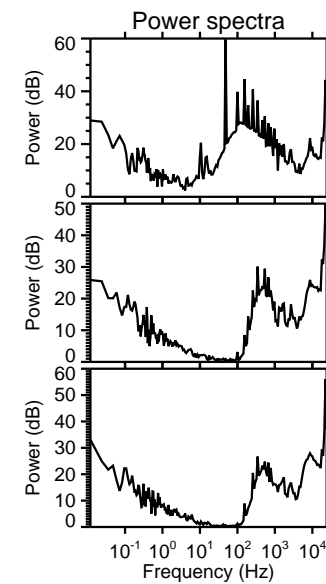
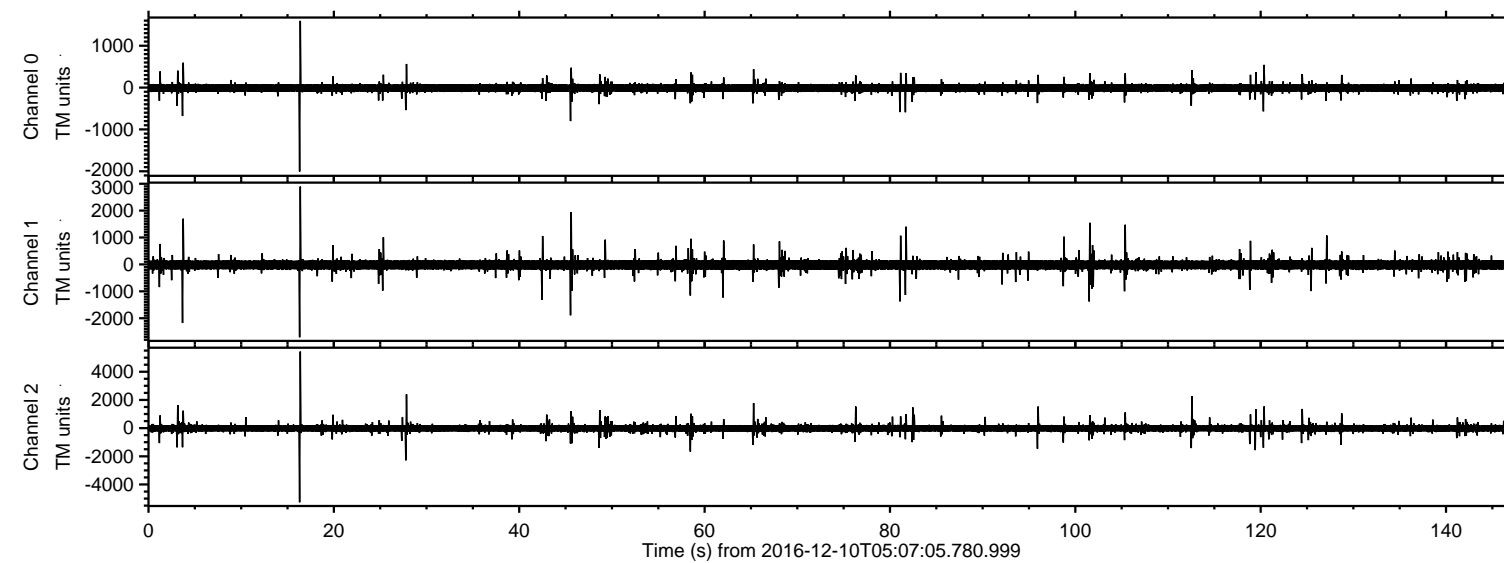


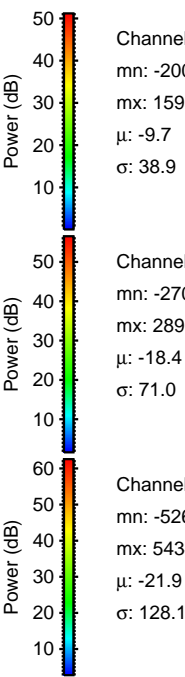
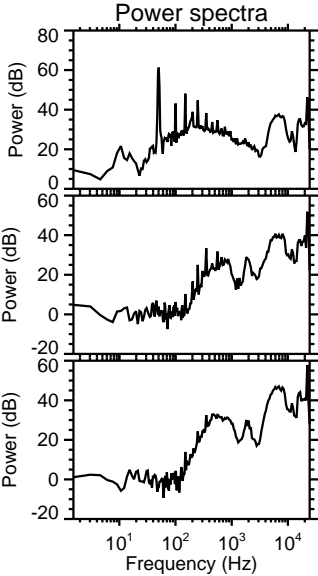
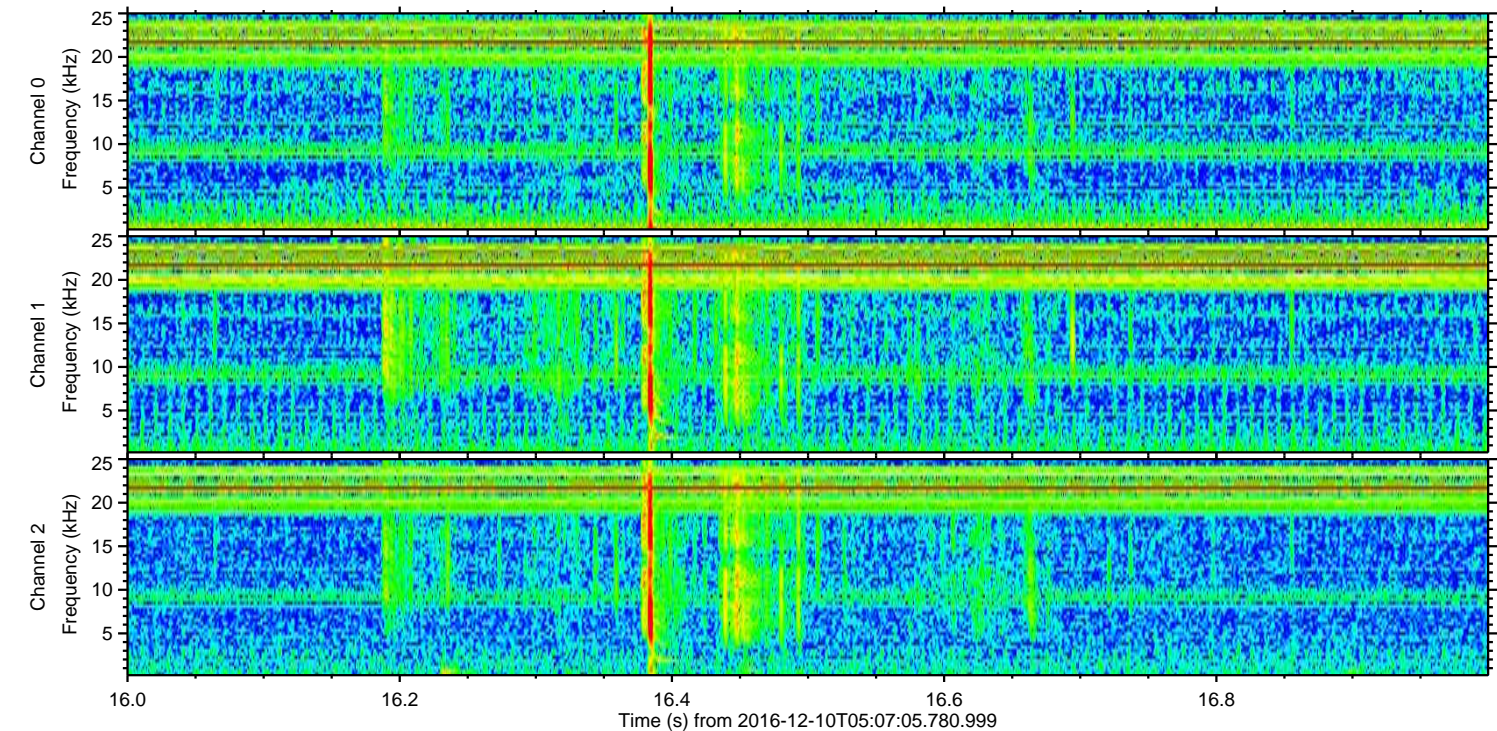
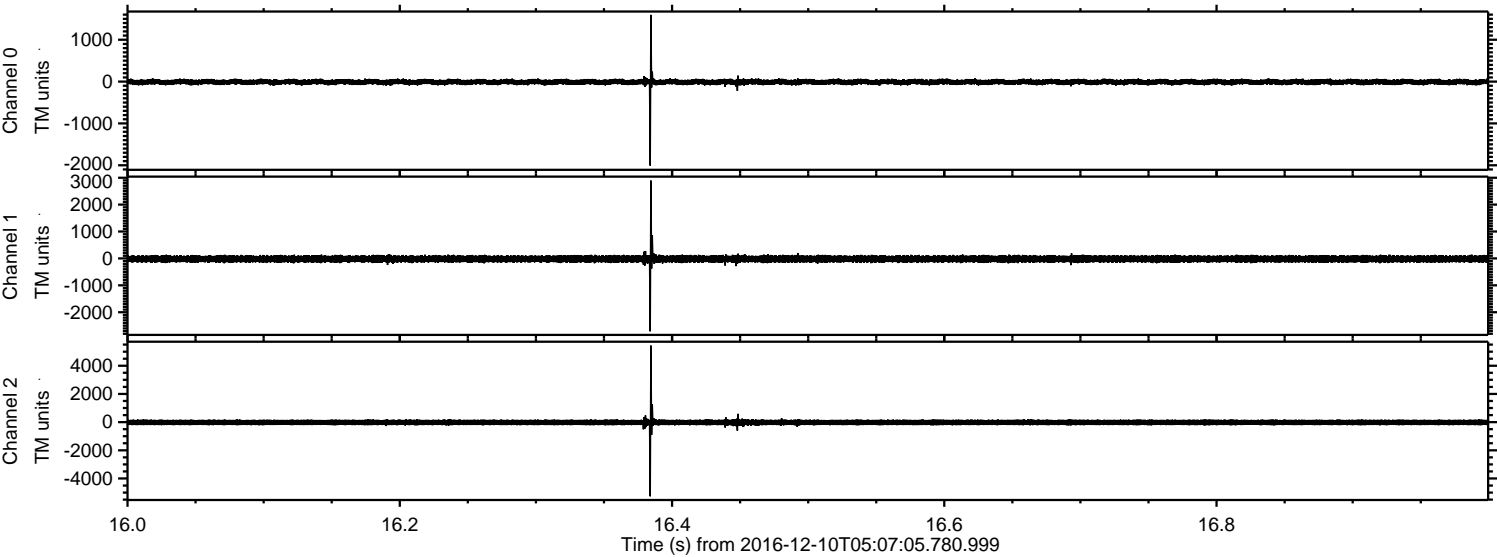
ELMAVAN 3D WAVEFORMS (Measured data sampled at 50 kHz) 51000 packets of 144 samples from 2016-12-10T05:07:05.780.999.

Processed Sat Dec 10 06:14:44 2016 by ELM ver.2012-10-06 from 001__elm20161210_050704__dat00.bin



ELMAVAN 3D WAVEFORMS (Measured data sampled at 50 kHz) 51000 packets of 144 samples from 2016-12-10T05:07:05.780.999. Part 17/147

Processed Sat Dec 10 06:14:56 2016 by ELM ver.2012-10-06 from 001__elm20161210_050704__dat00.bin



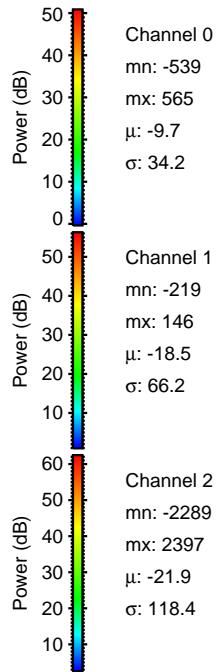
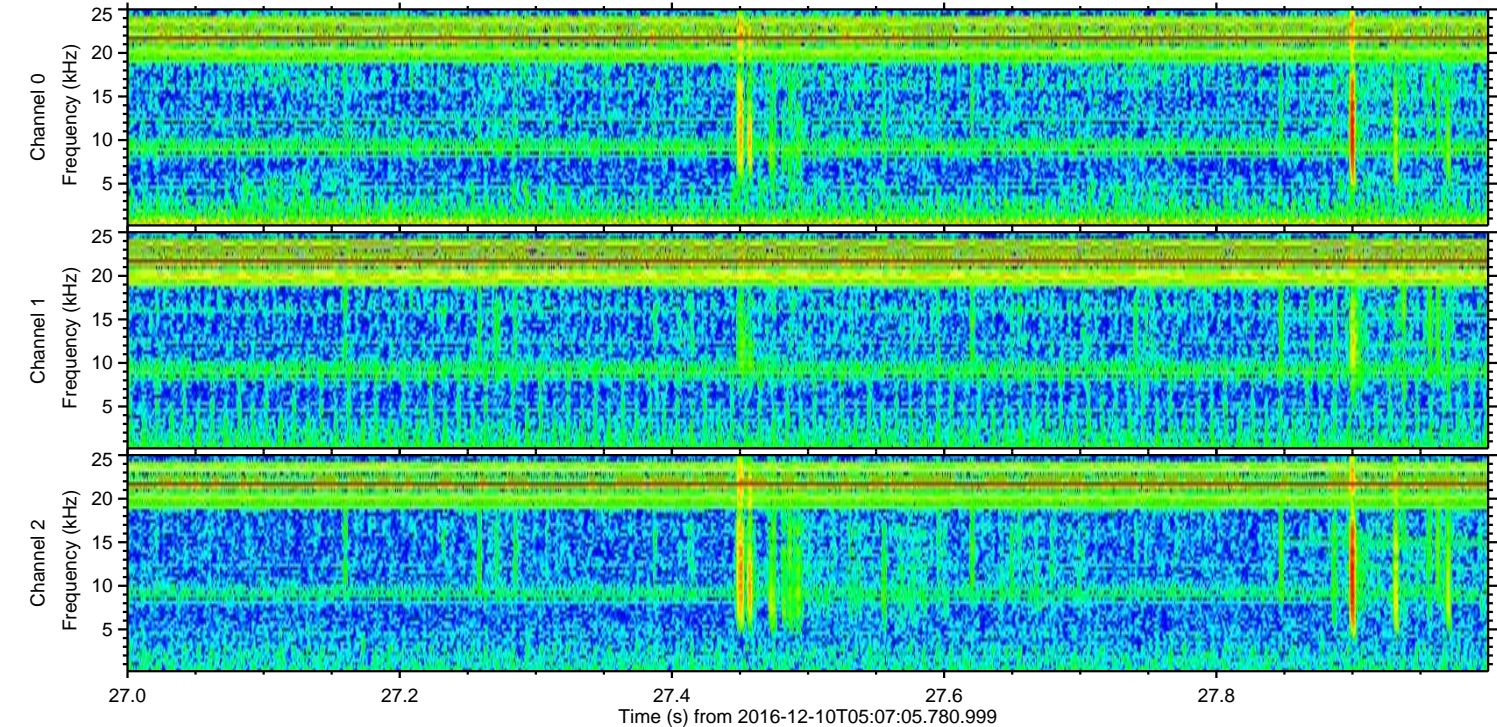
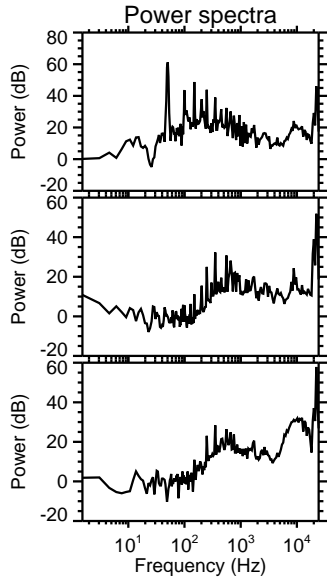
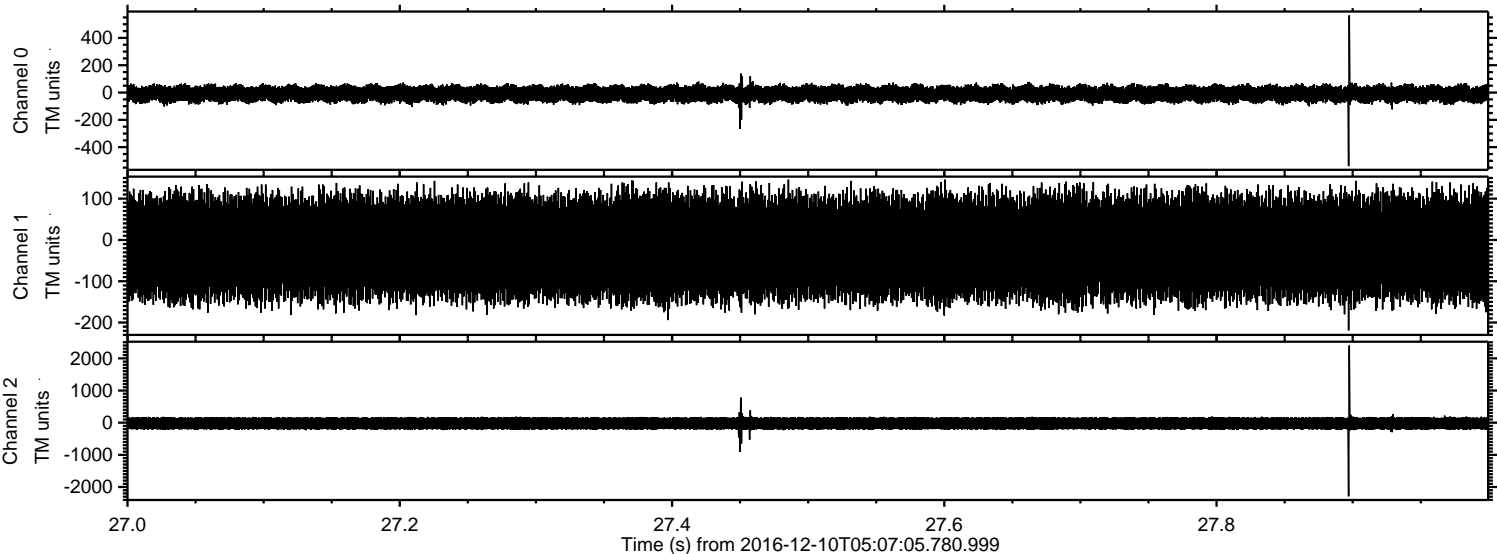
Channel 0
mn: -2008
mx: 1595
 μ : -9.7
 σ : 38.9

Channel 1
mn: -2707
mx: 2896
 μ : -18.4
 σ : 71.0

Channel 2
mn: -5263
mx: 5434
 μ : -21.9
 σ : 128.1

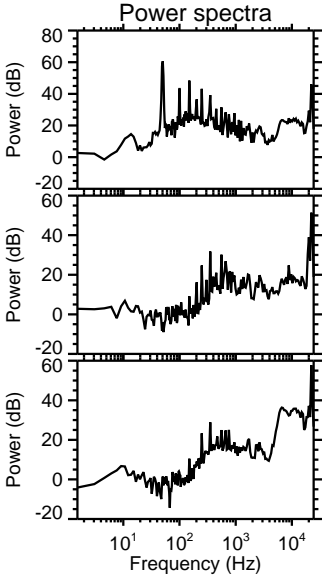
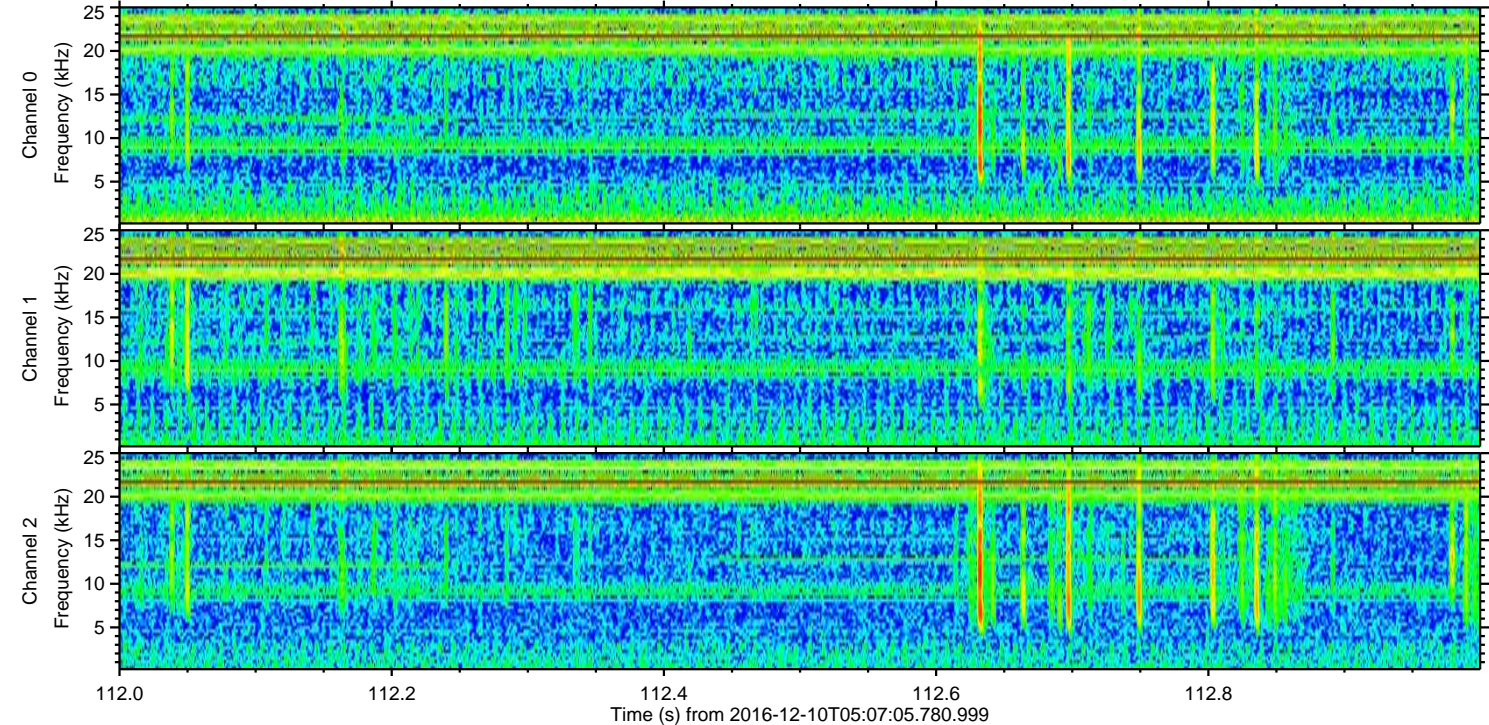
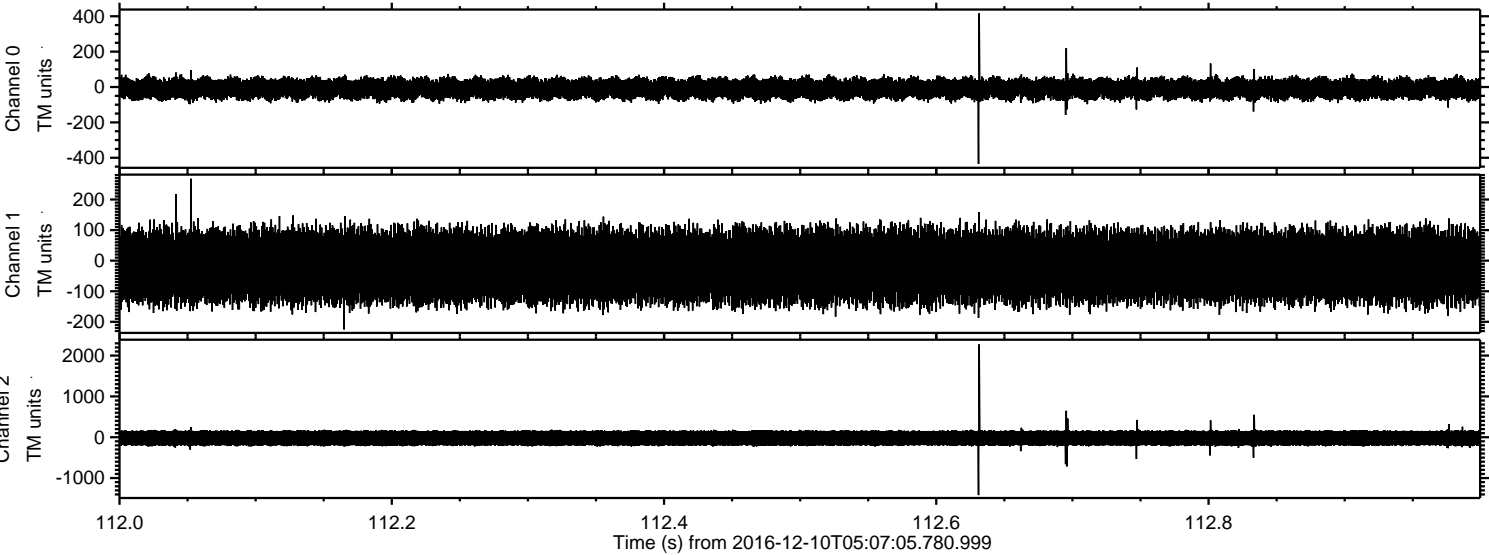
ELMAVAN 3D WAVEFORMS (Measured data sampled at 50 kHz) 51000 packets of 144 samples from 2016-12-10T05:07:05.780.999. Part 28/147

Processed Sat Dec 10 06:14:56 2016 by ELM ver.2012-10-06 from 001__elm20161210_050704__dat00.bin



ELMAVAN 3D WAVEFORMS (Measured data sampled at 50 kHz) 51000 packets of 144 samples from 2016-12-10T05:07:05.780.999. Part 113/147

Processed Sat Dec 10 06:14:57 2016 by ELM ver.2012-10-06 from 001__elm20161210_050704__dat00.bin



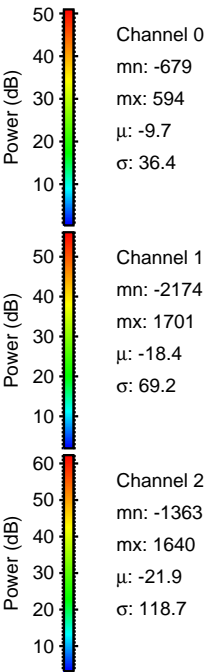
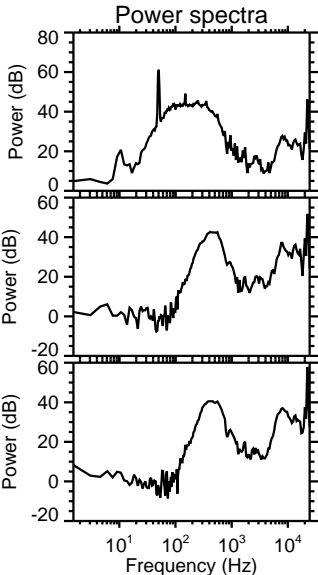
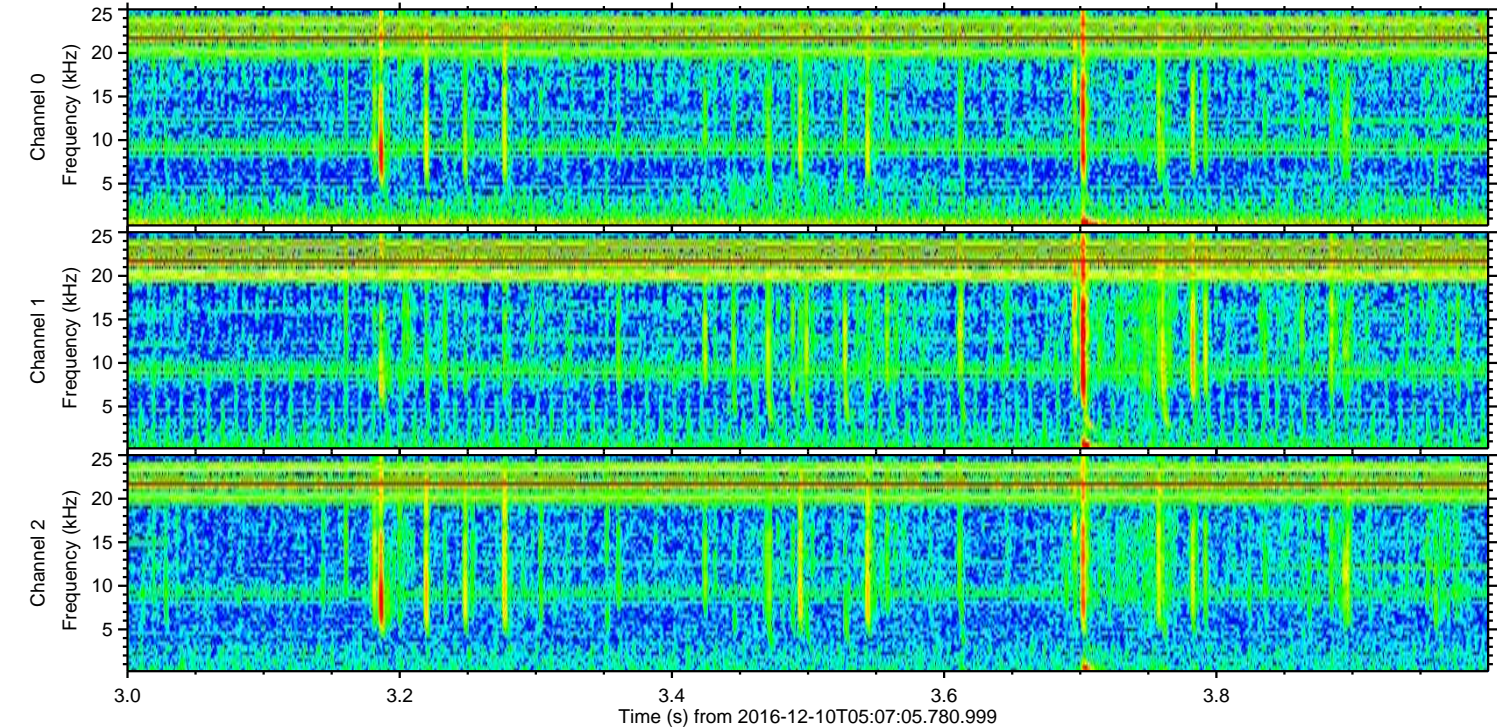
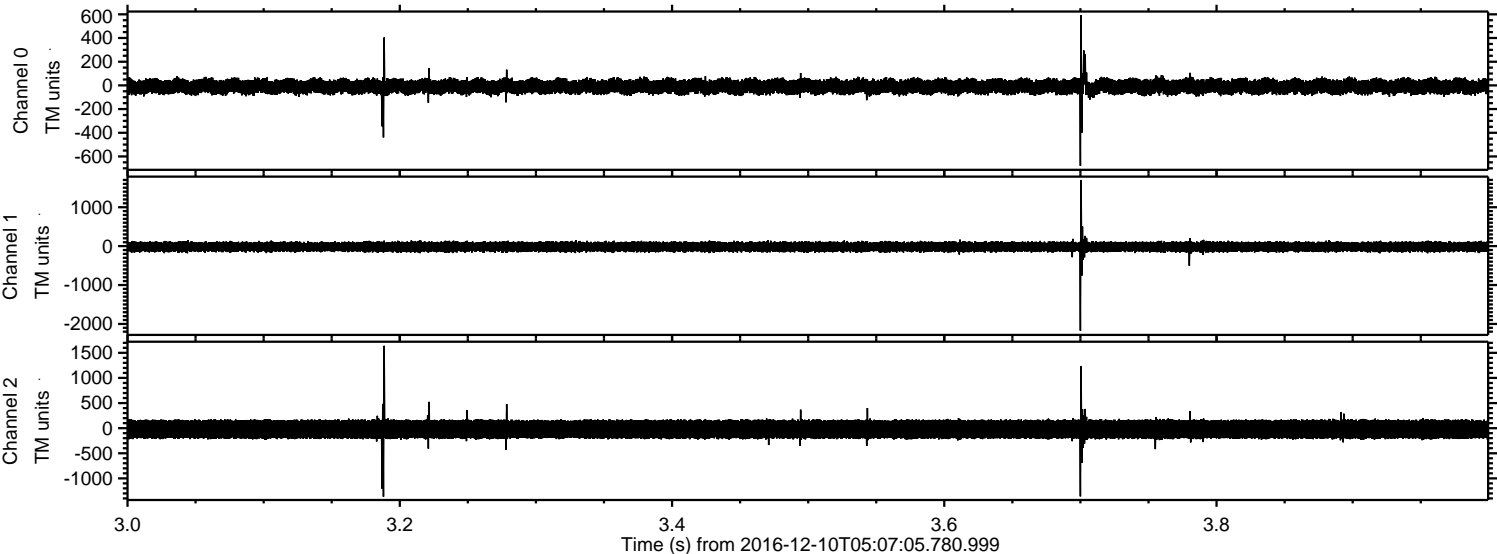
Channel 0
mn: -435
mx: 417
 μ : -9.7
 σ : 33.4

Channel 1
mn: -225
mx: 268
 μ : -18.5
 σ : 63.5

Channel 2
mn: -1417
mx: 2275
 μ : -21.9
 σ : 116.8

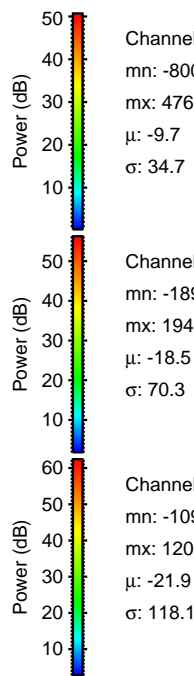
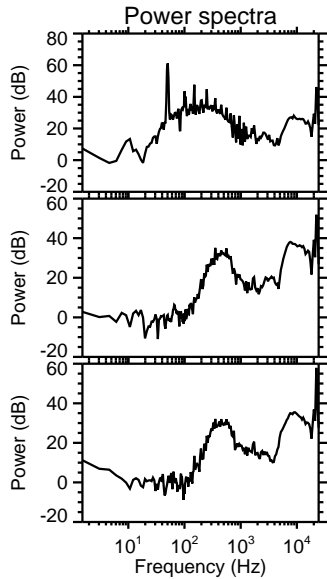
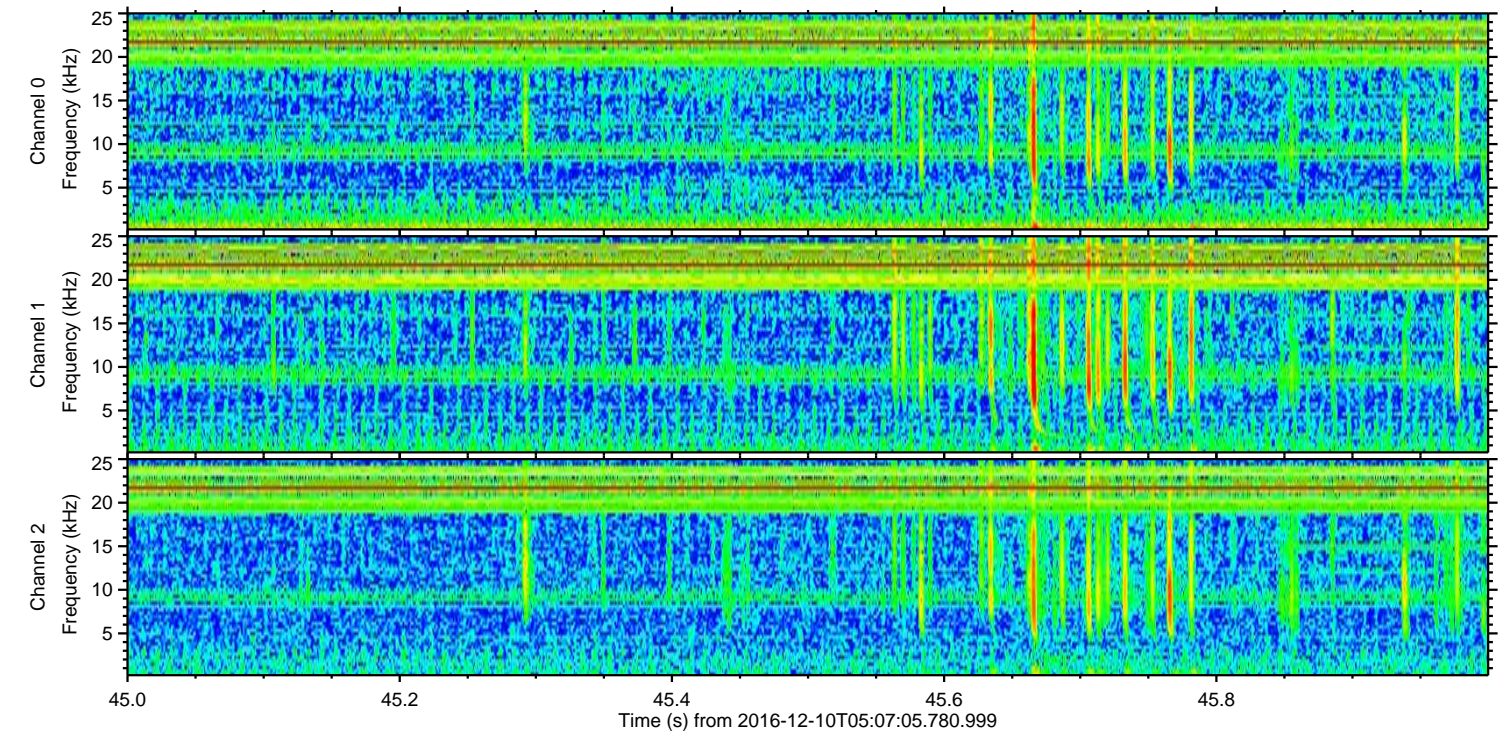
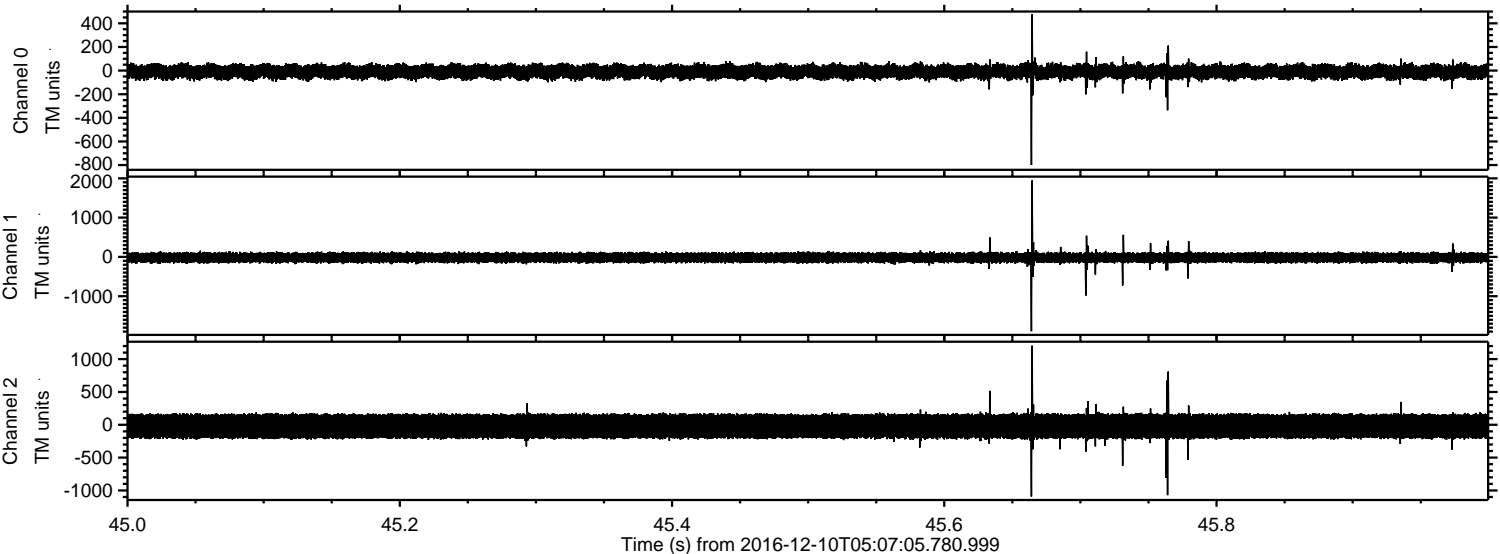
ELMAVAN 3D WAVEFORMS (Measured data sampled at 50 kHz) 51000 packets of 144 samples from 2016-12-10T05:07:05.780.999. Part 4/147

Processed Sat Dec 10 06:14:58 2016 by ELM ver.2012-10-06 from 001__elm20161210_050704__dat00.bin

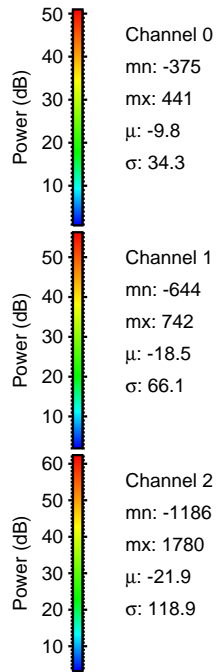
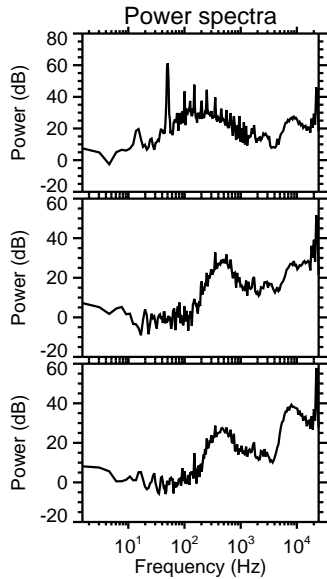
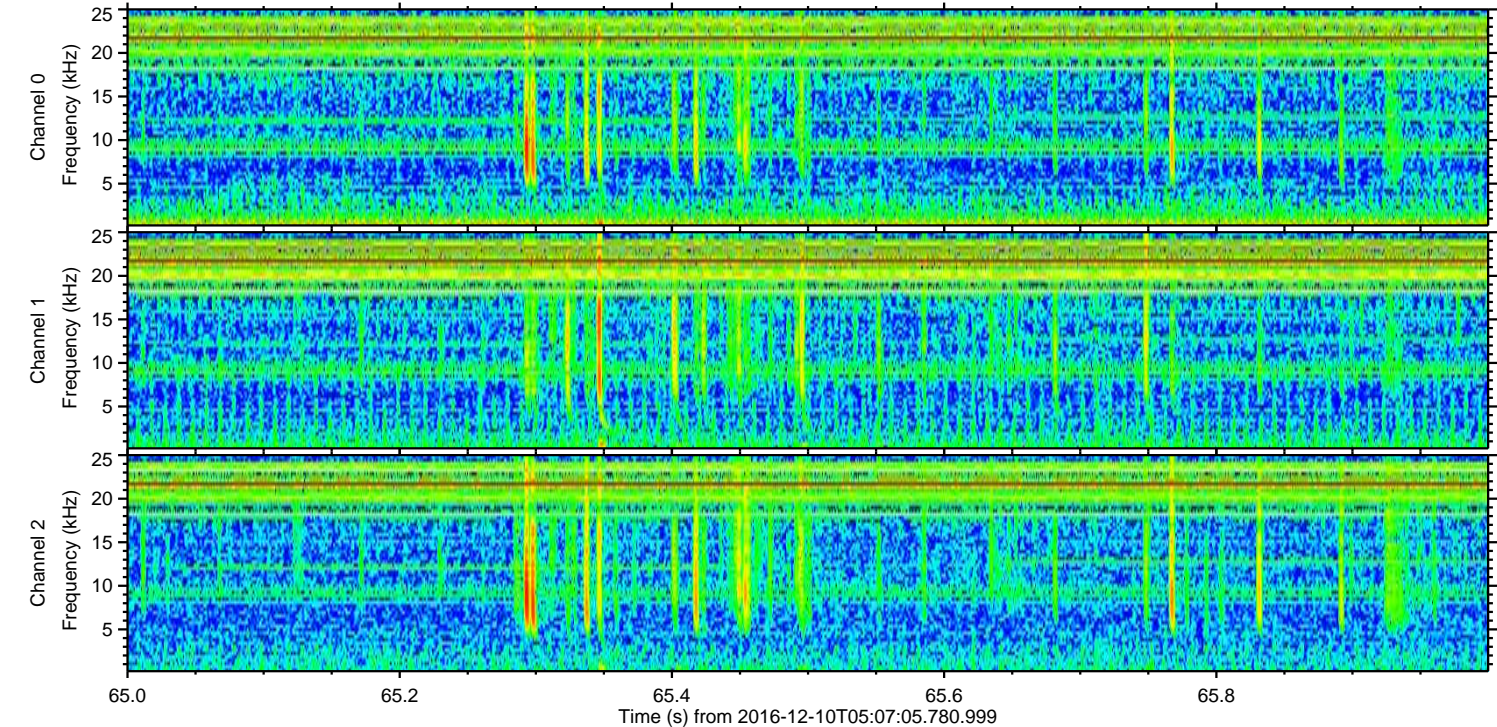
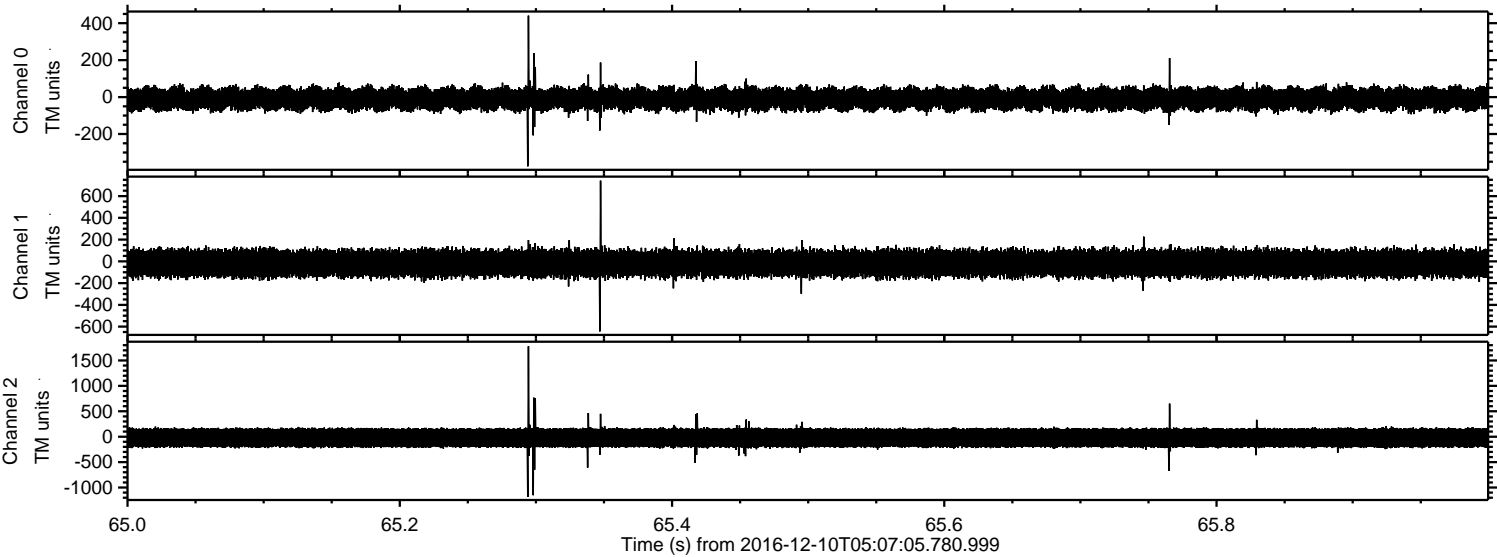


ELMAVAN 3D WAVEFORMS (Measured data sampled at 50 kHz) 51000 packets of 144 samples from 2016-12-10T05:07:05.780.999. Part 46/147

Processed Sat Dec 10 06:14:59 2016 by ELM ver.2012-10-06 from 001__elm20161210_050704__dat00.bin

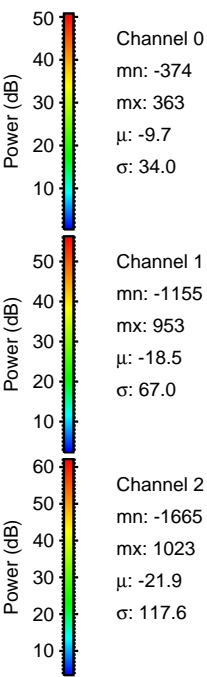
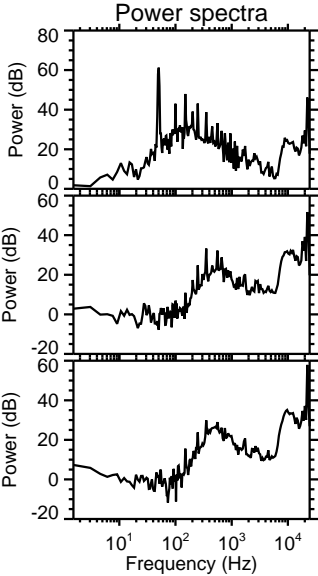
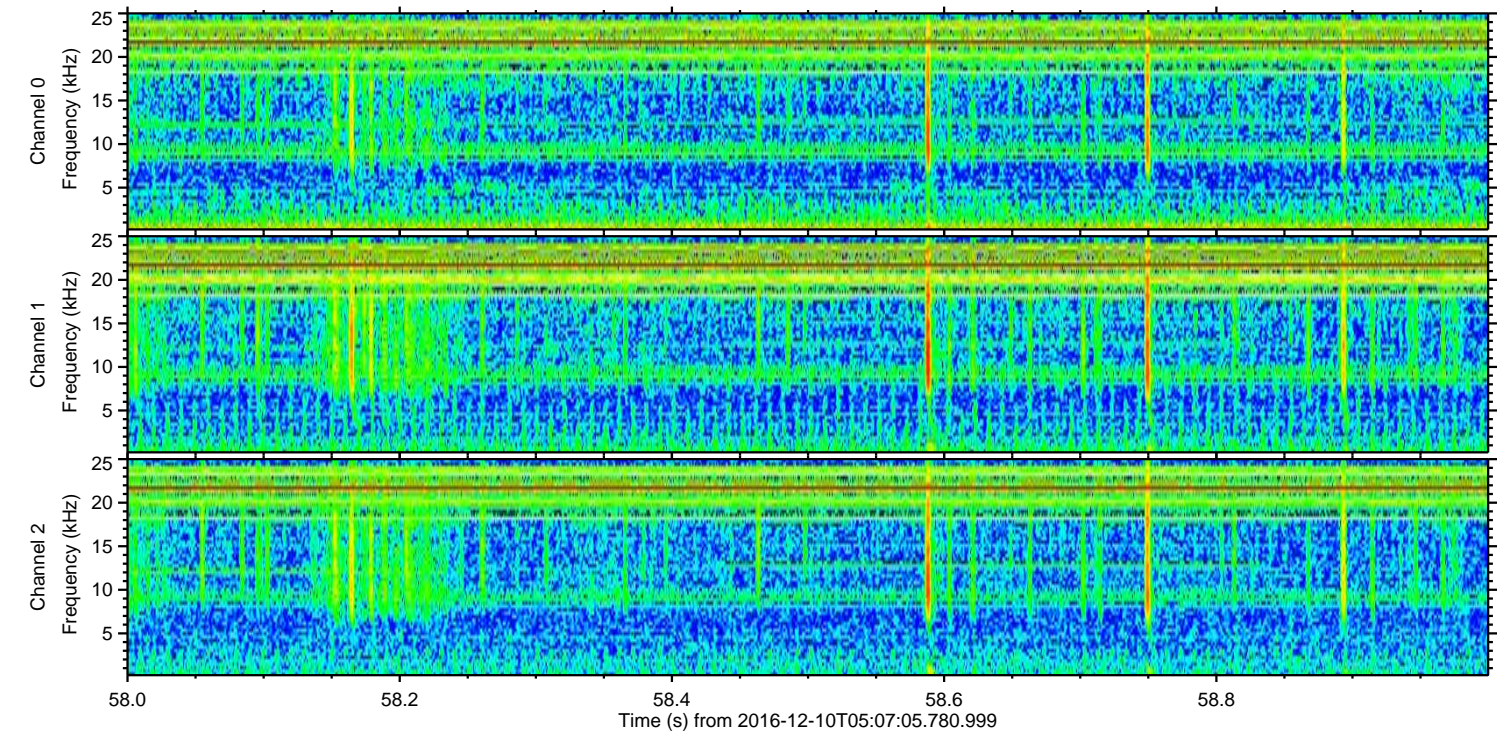
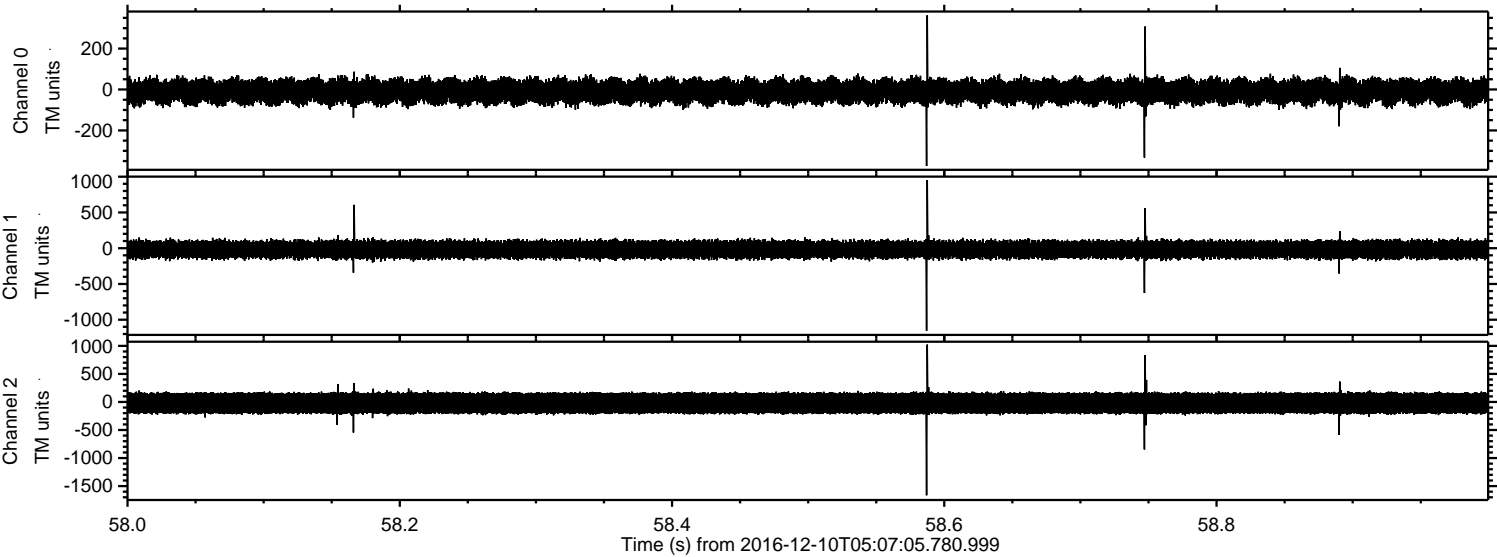


Processed Sat Dec 10 06:15:00 2016 by ELM ver.2012-10-06 from 001__elm20161210_050704__dat00.bin



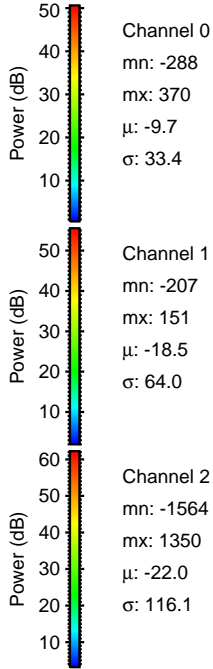
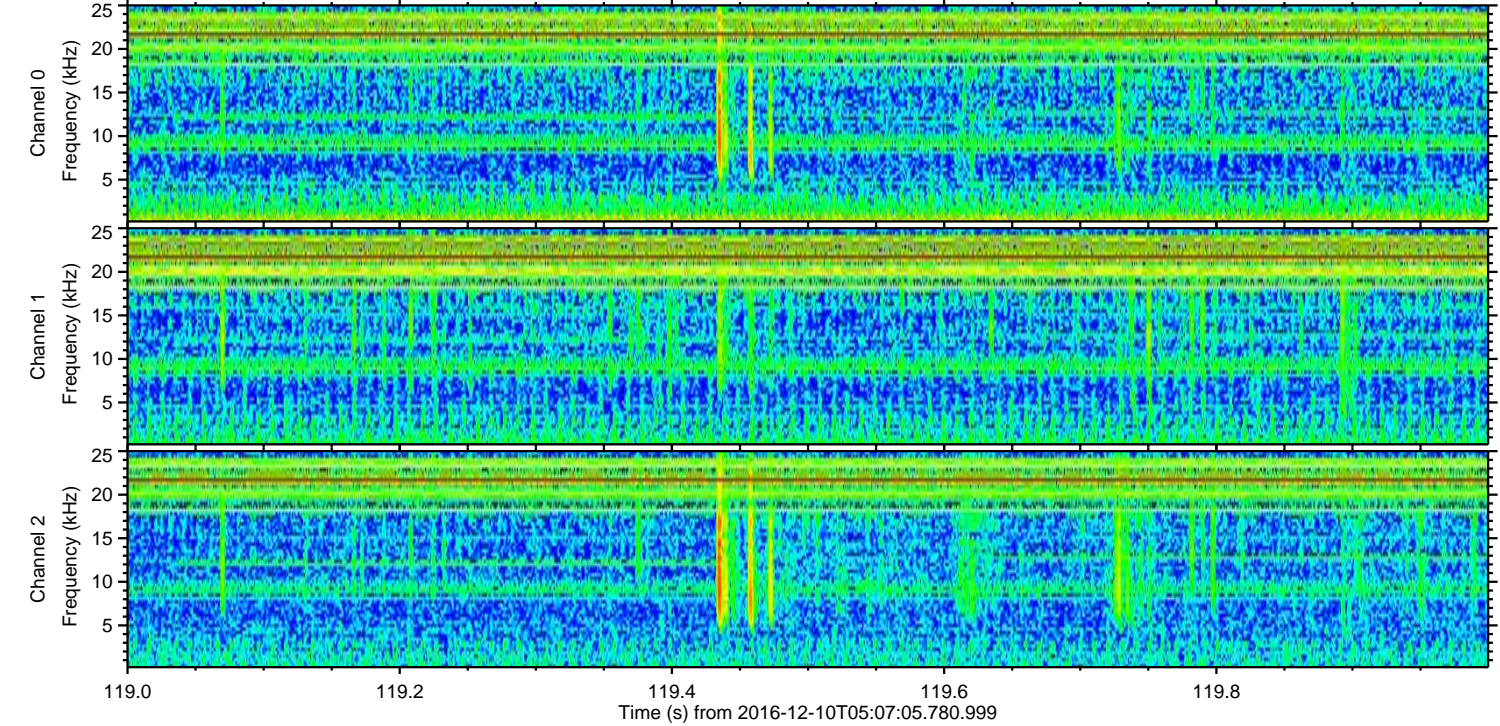
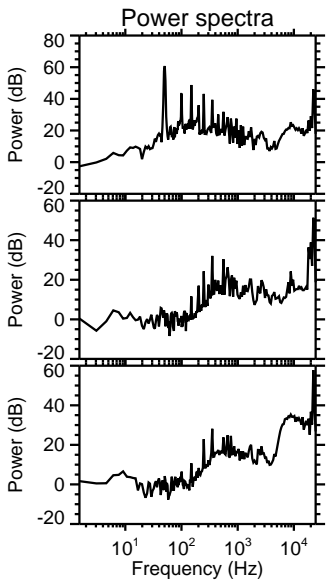
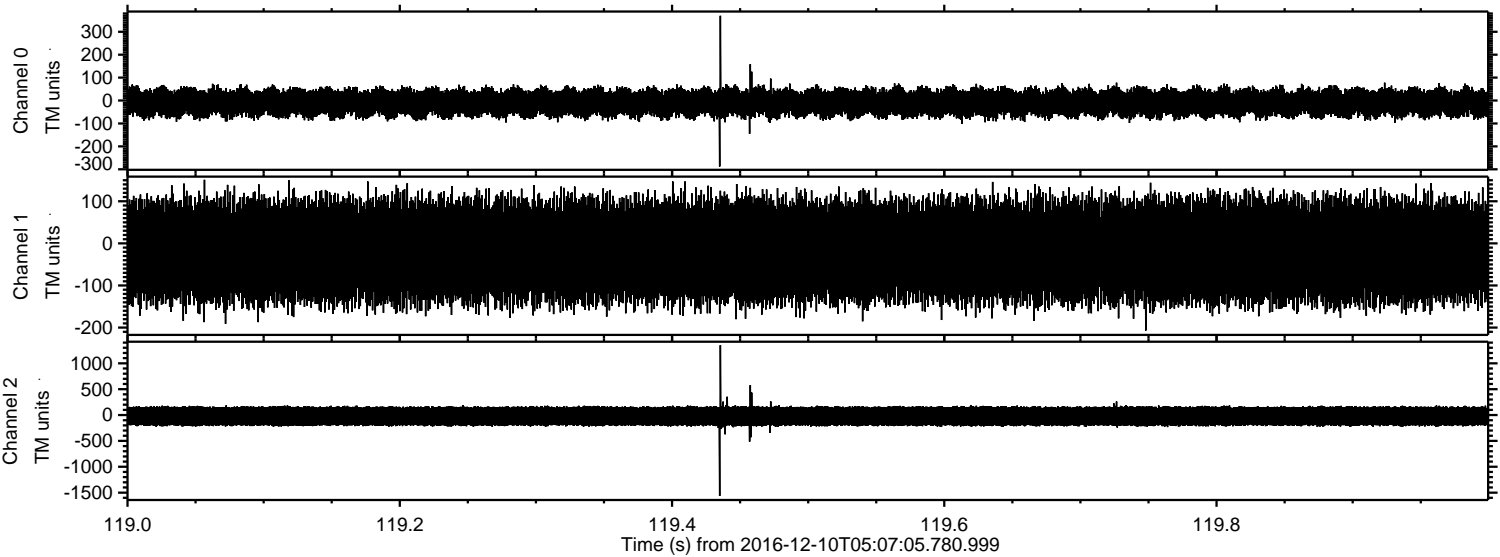
Power spectra

Processed Sat Dec 10 06:15:01 2016 by ELM ver.2012-10-06 from 001__elm20161210_050704__dat00.bin



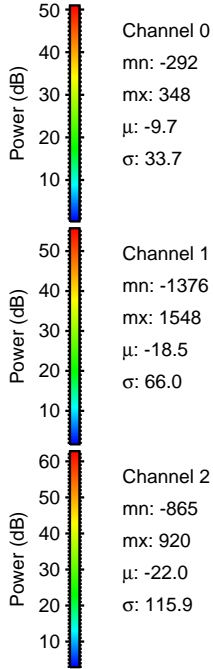
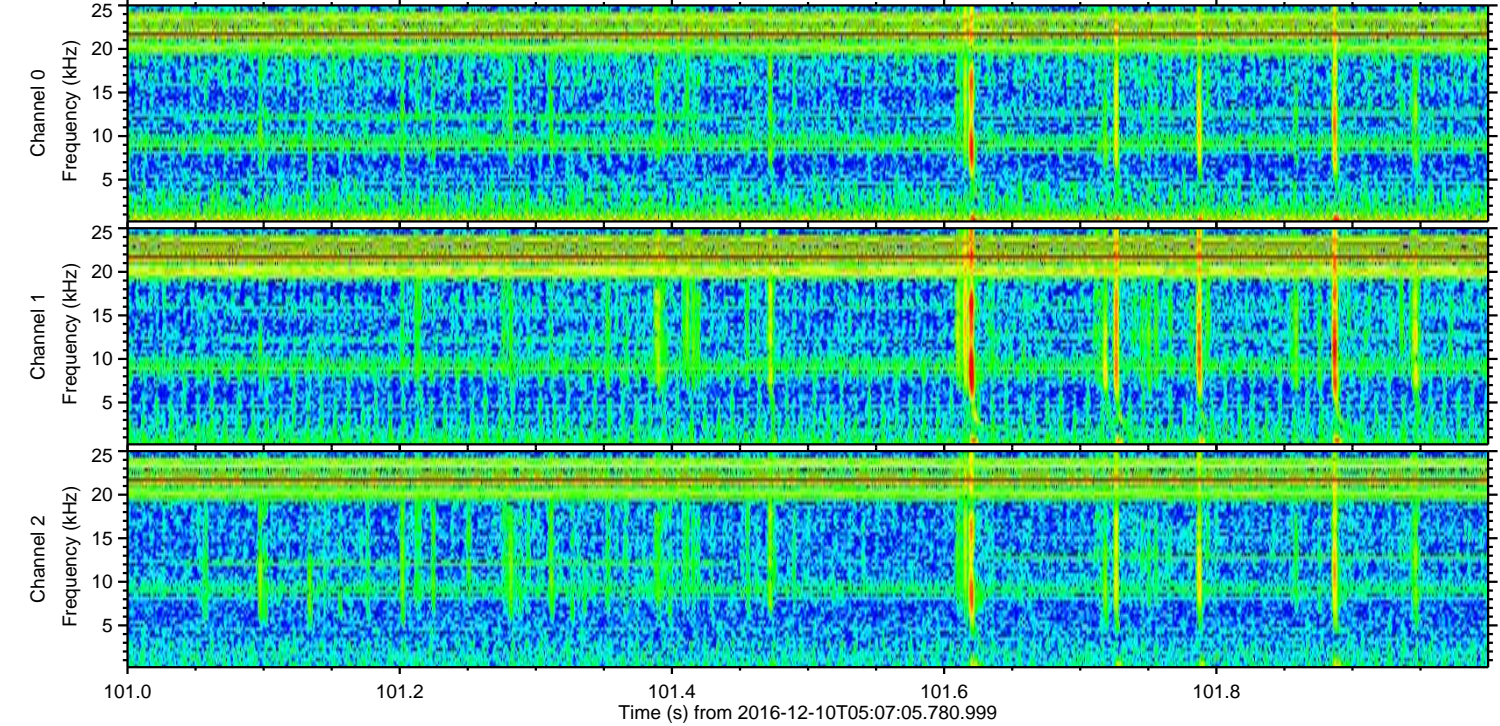
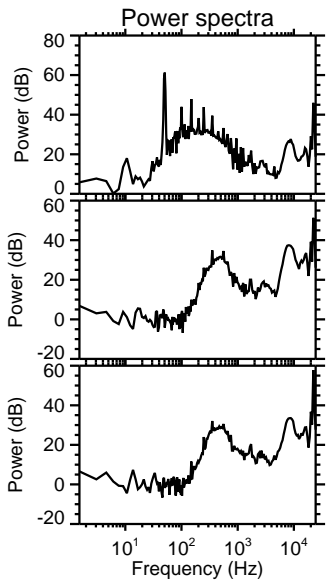
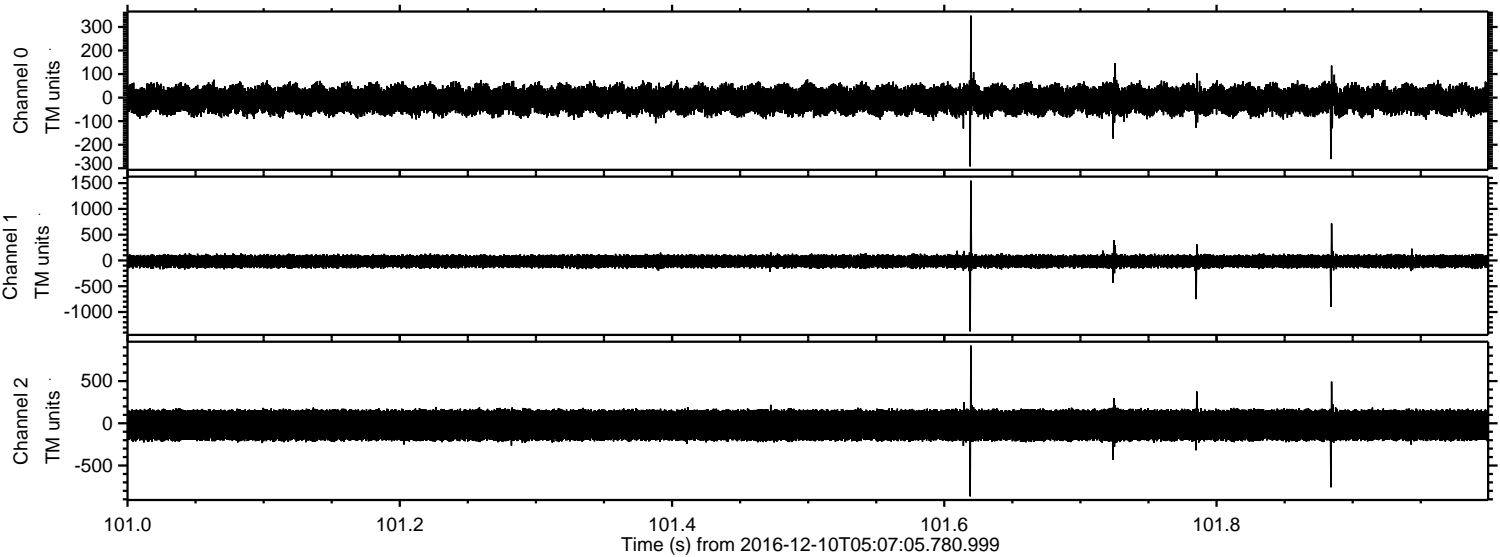
ELMAVAN 3D WAVEFORMS (Measured data sampled at 50 kHz) 51000 packets of 144 samples from 2016-12-10T05:07:05.780.999. Part 120/147

Processed Sat Dec 10 06:15:02 2016 by ELM ver.2012-10-06 from 001__elm20161210_050704__dat00.bin



ELMAVAN 3D WAVEFORMS (Measured data sampled at 50 kHz) 51000 packets of 144 samples from 2016-12-10T05:07:05.780.999. Part 102/147

Processed Sat Dec 10 06:15:03 2016 by ELM ver.2012-10-06 from 001__elm20161210_050704__dat00.bin



ELMAVAN 3D WAVEFORMS (Measured data sampled at 50 kHz) 51000 packets of 144 samples from 2016-12-10T05:07:05.780.999. Part 42/147

Processed Sat Dec 10 06:15:04 2016 by ELM ver.2012-10-06 from 001__elm20161210_050704__dat00.bin

