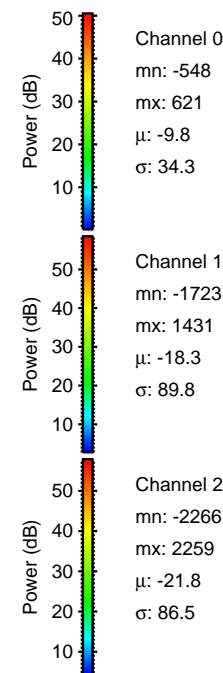
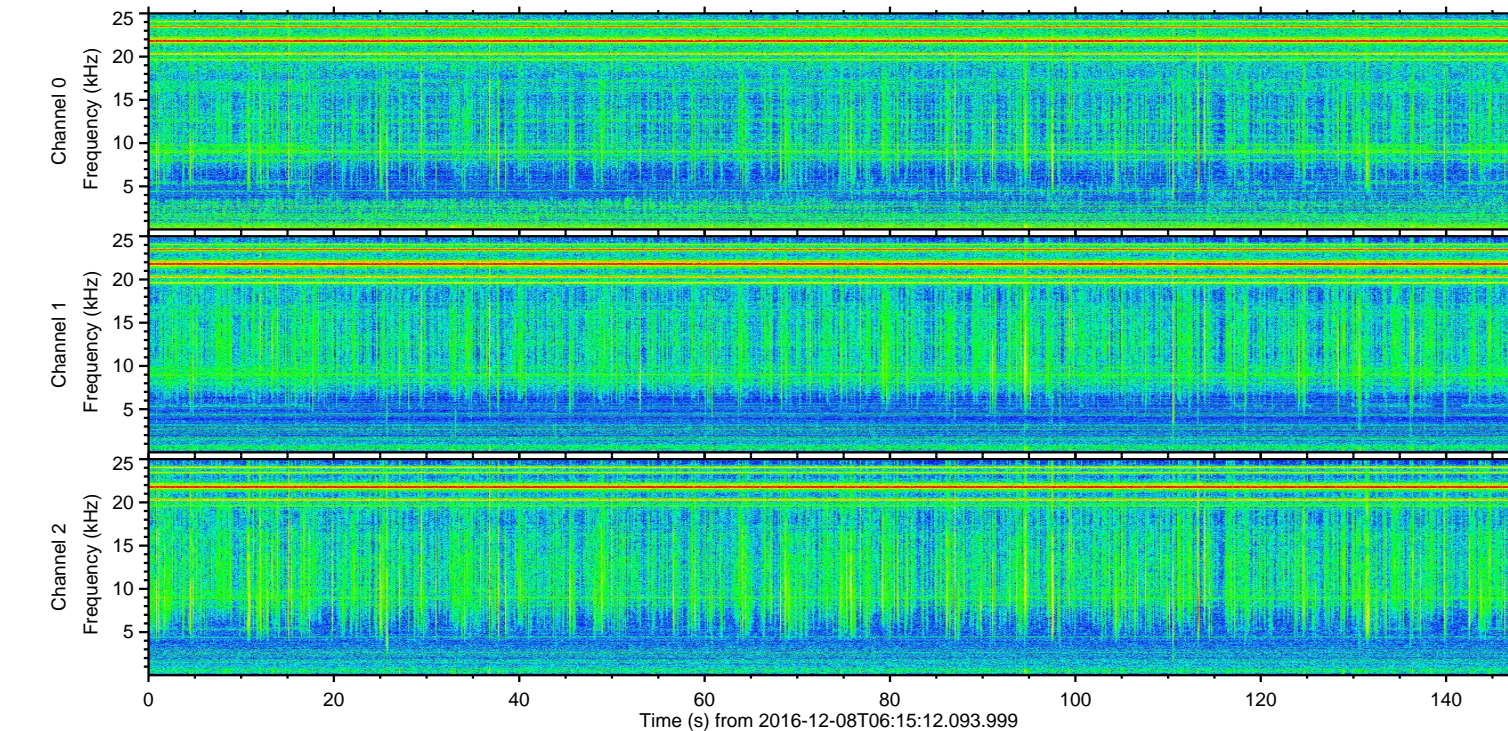
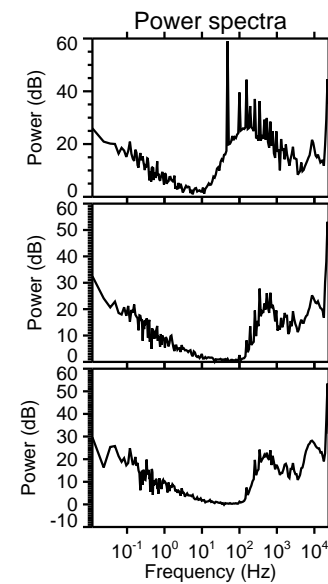
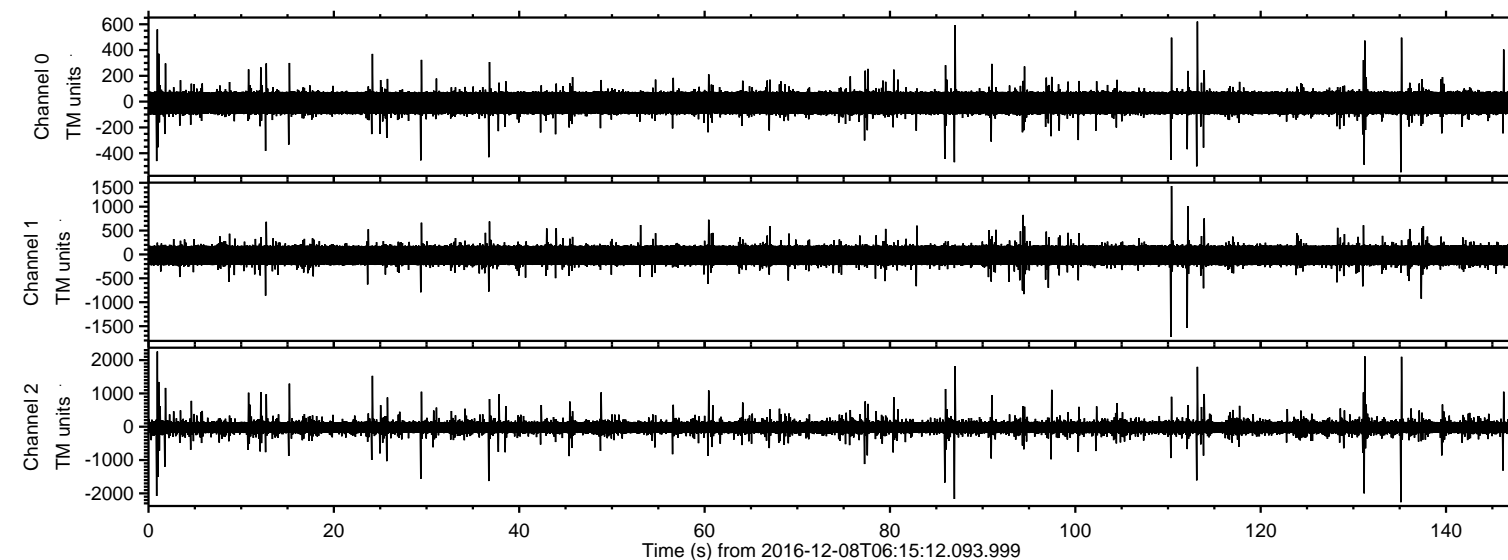


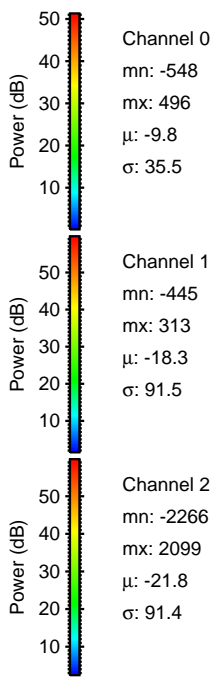
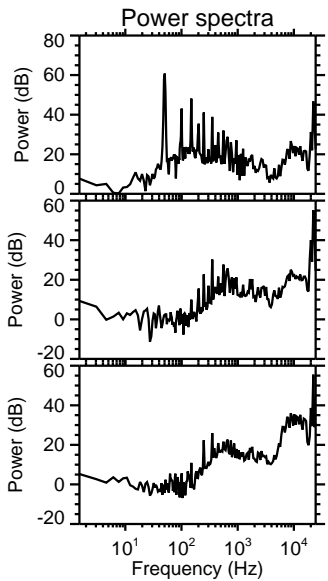
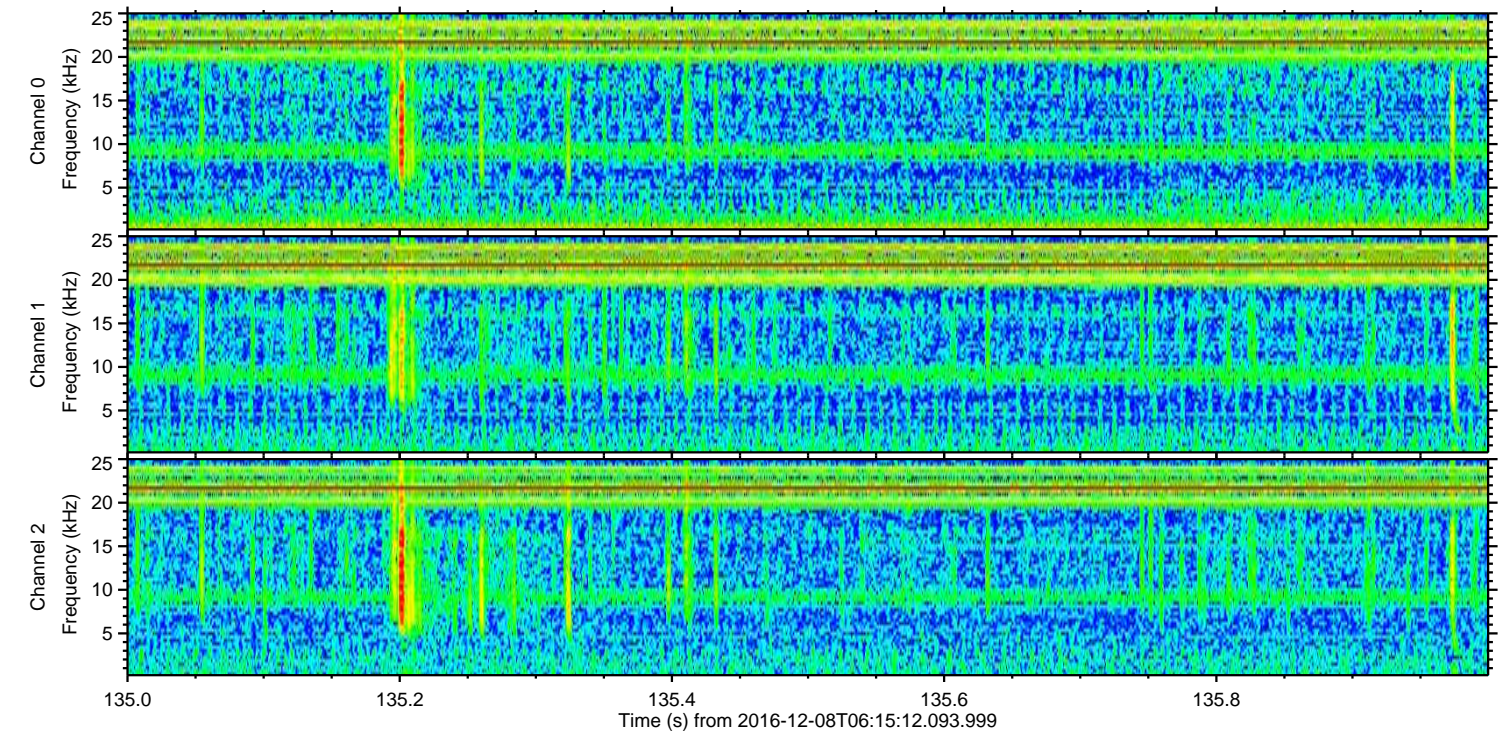
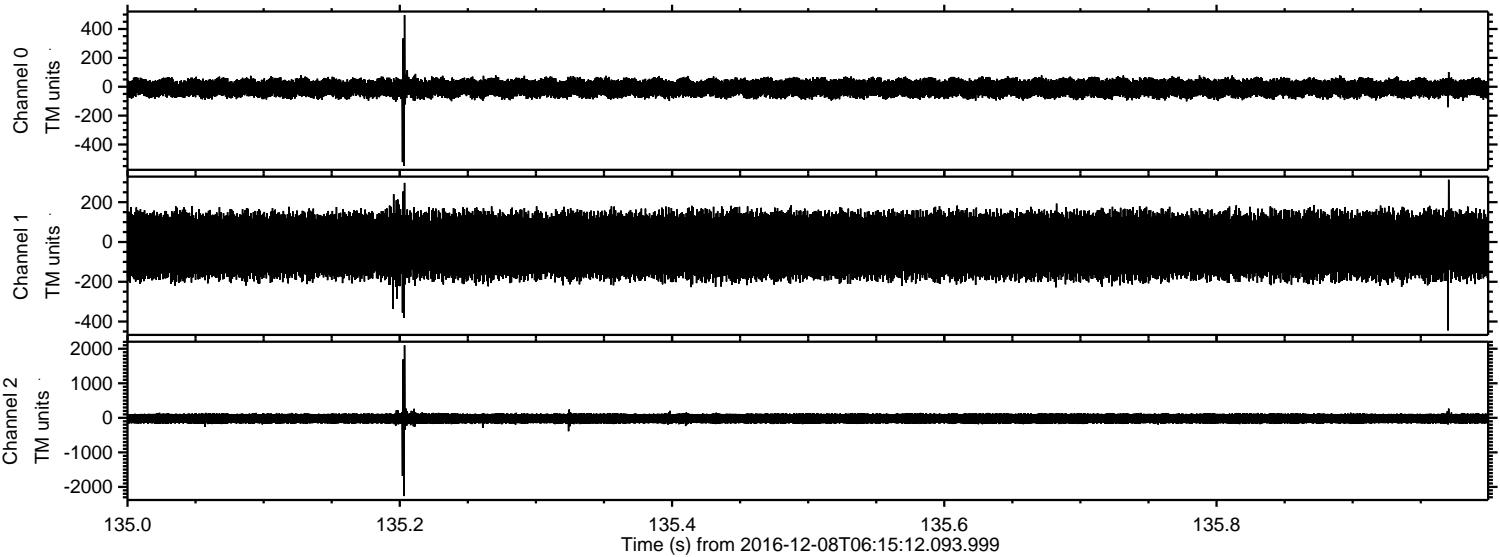
ELMAVAN 3D WAVEFORMS (Measured data sampled at 50 kHz) 51000 packets of 144 samples from 2016-12-08T06:15:12.093.999.

Processed Thu Dec 8 07:22:30 2016 by ELM ver.2012-10-06 from 001\_\_elm20161208\_061511\_\_dat00.bin



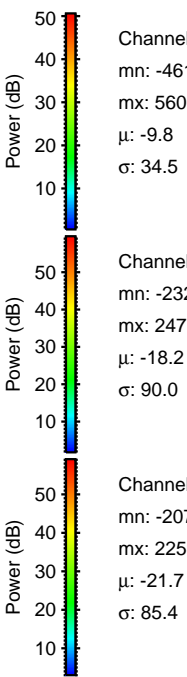
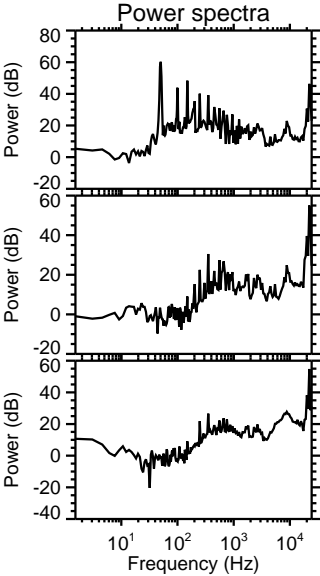
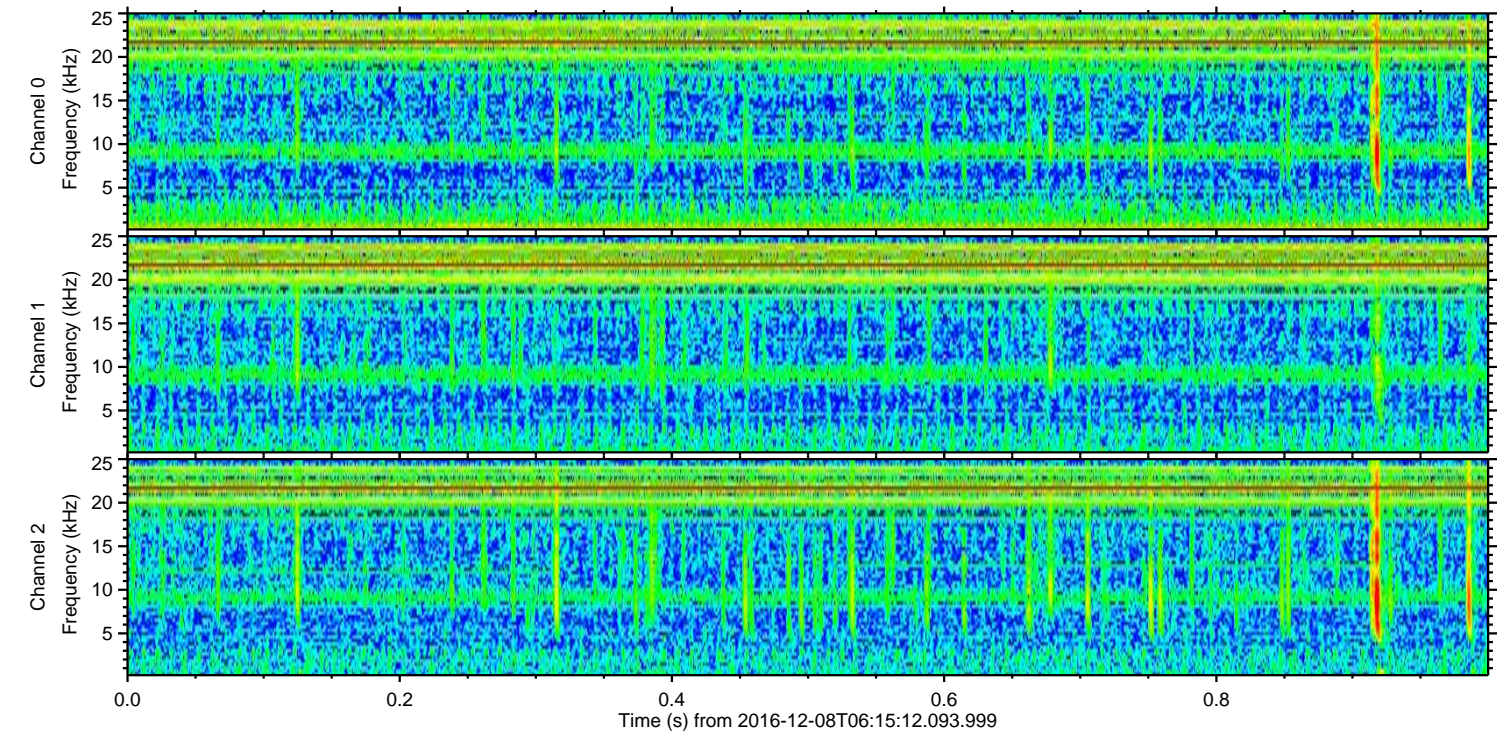
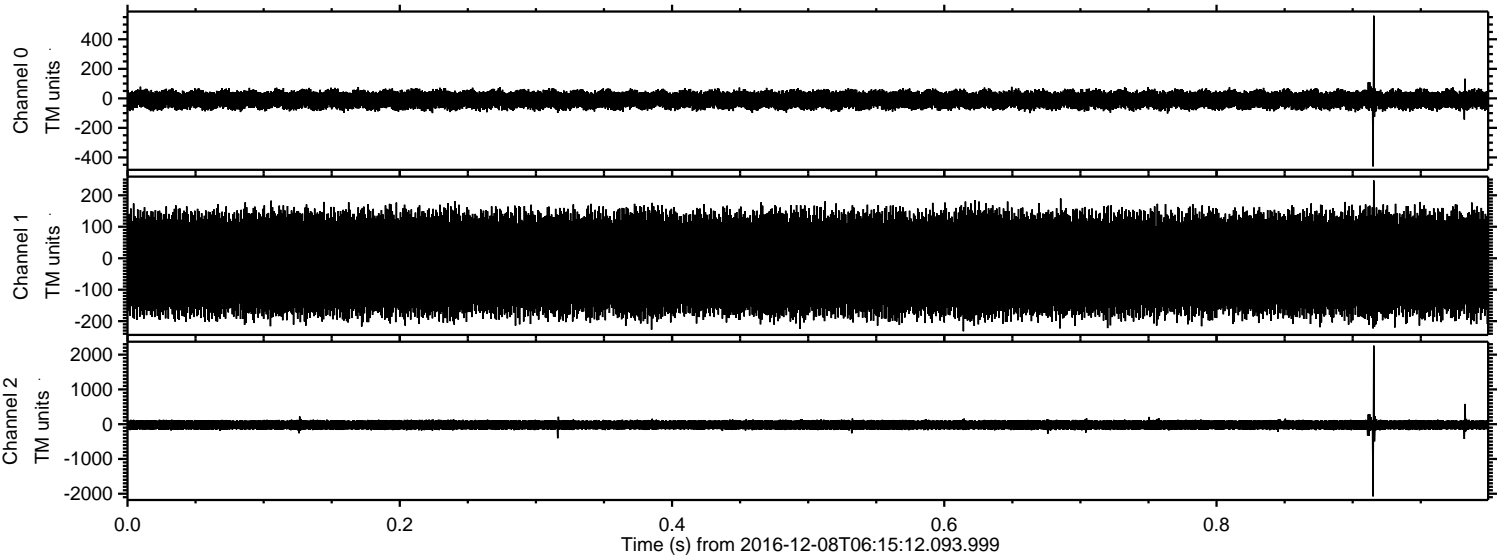
ELMAVAN 3D WAVEFORMS (Measured data sampled at 50 kHz) 51000 packets of 144 samples from 2016-12-08T06:15:12.093.999. Part 136/147

Processed Thu Dec 8 07:22:41 2016 by ELM ver.2012-10-06 from 001\_\_elm20161208\_061511\_\_dat00.bin



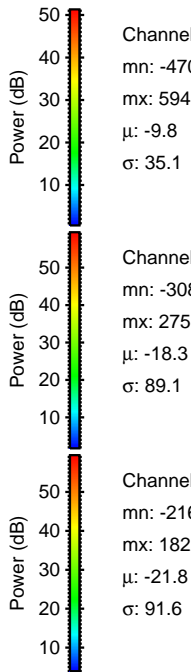
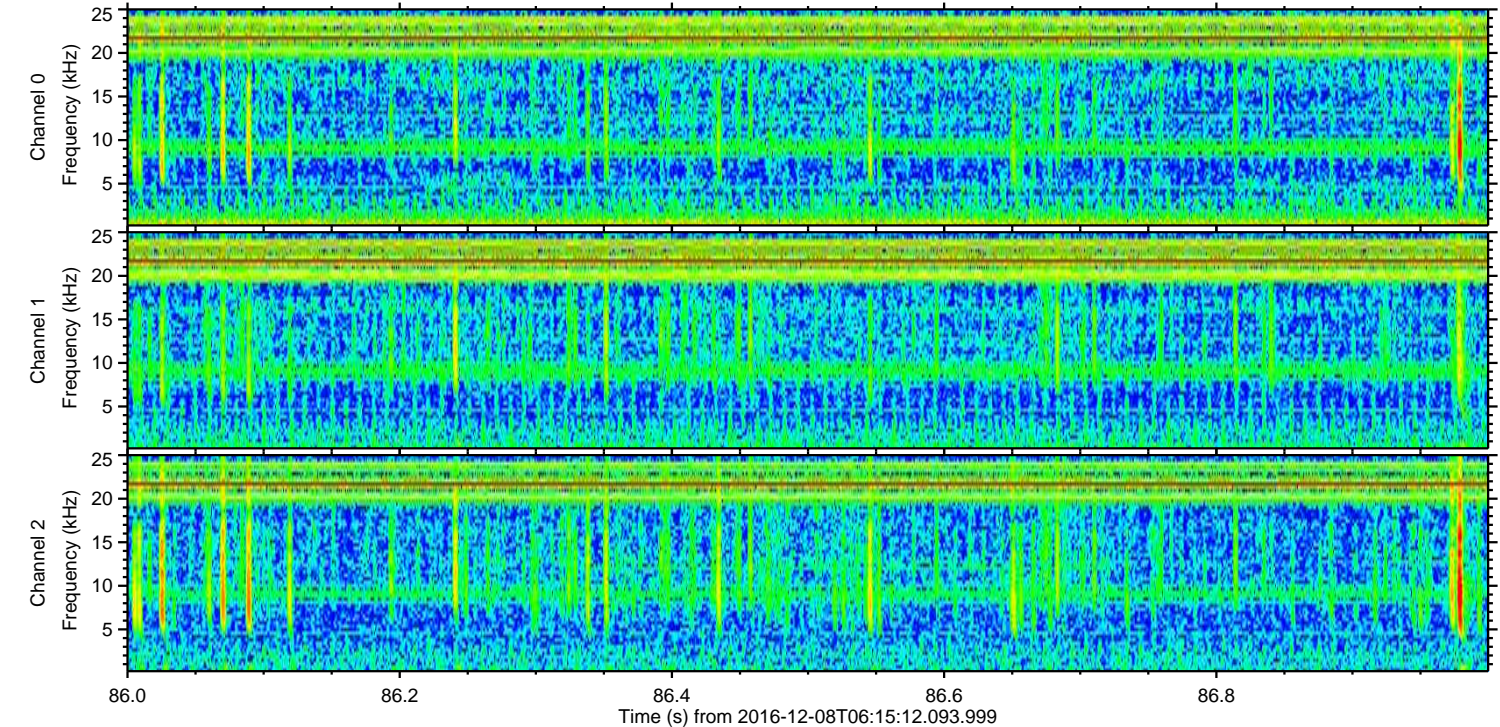
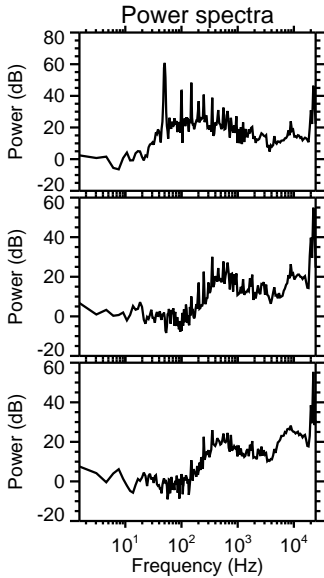
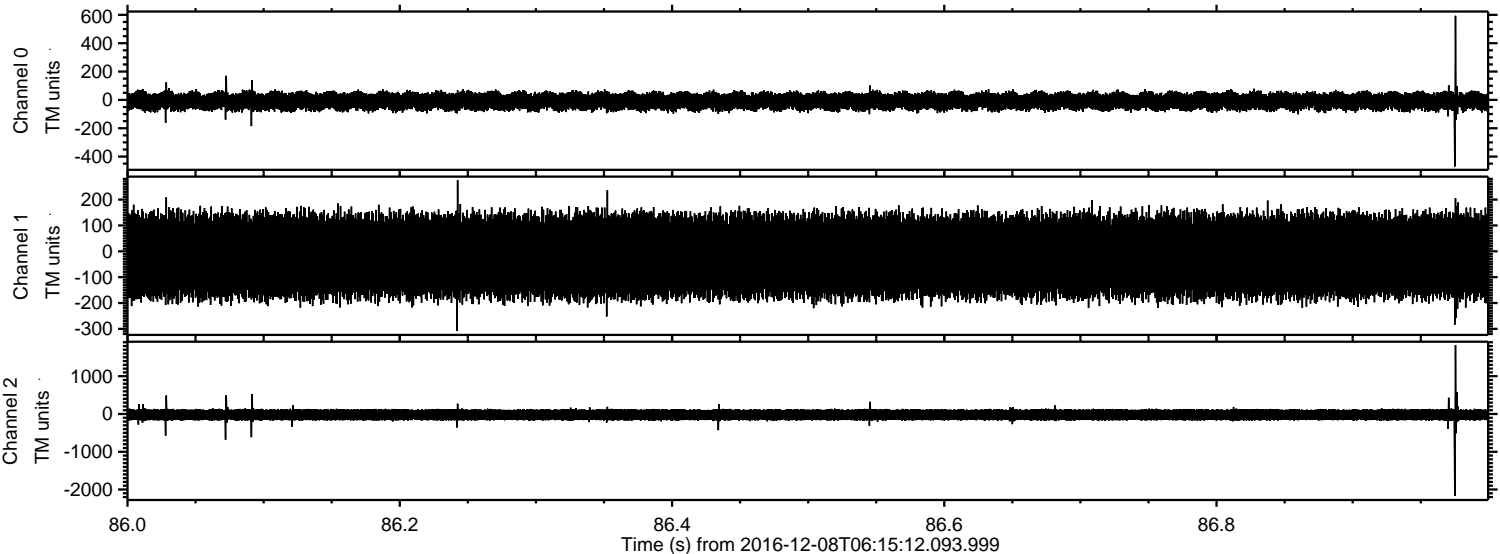
ELMAVAN 3D WAVEFORMS (Measured data sampled at 50 kHz) 51000 packets of 144 samples from 2016-12-08T06:15:12.093.999. Part 1/147

Processed Thu Dec 8 07:22:42 2016 by ELM ver.2012-10-06 from 001\_\_elm20161208\_061511\_\_dat00.bin



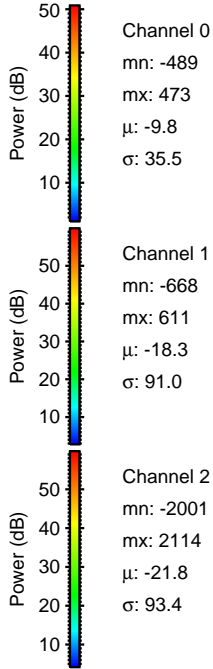
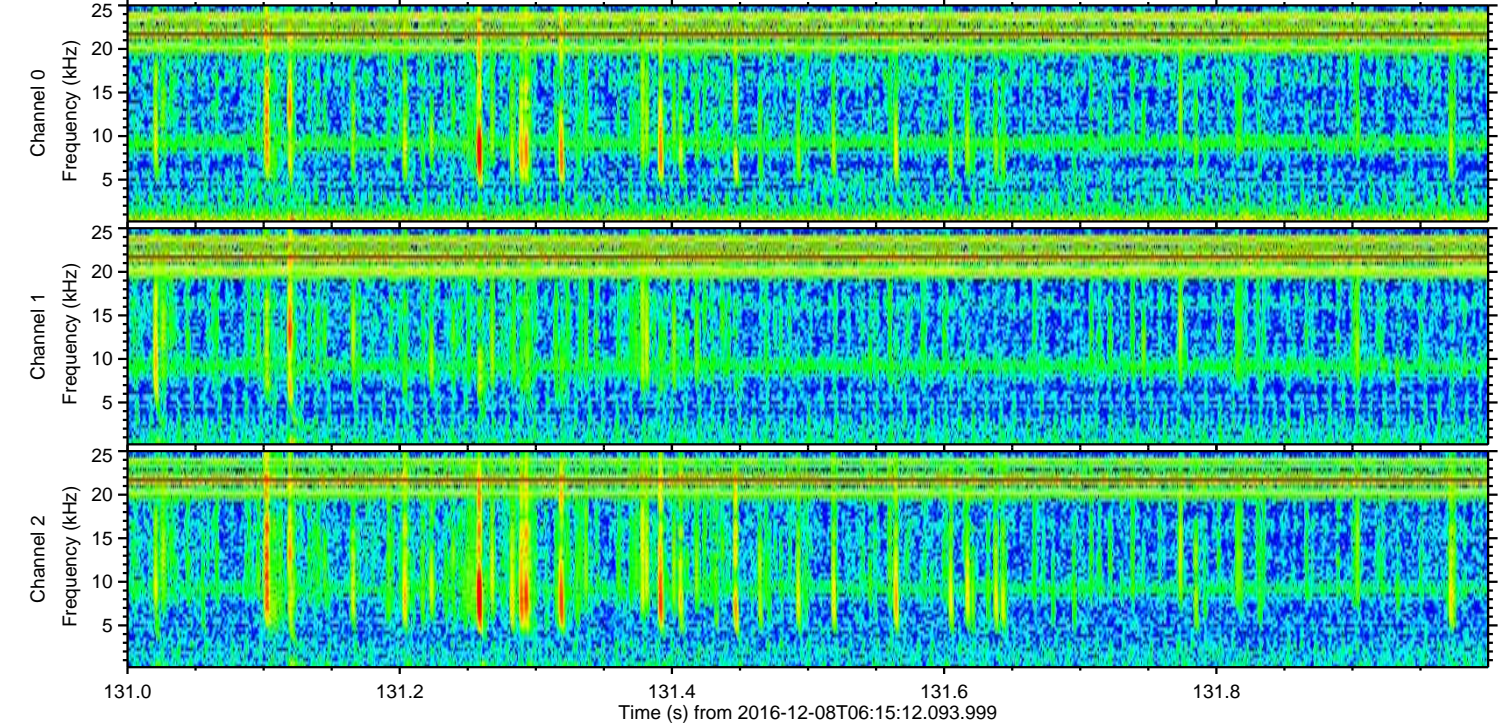
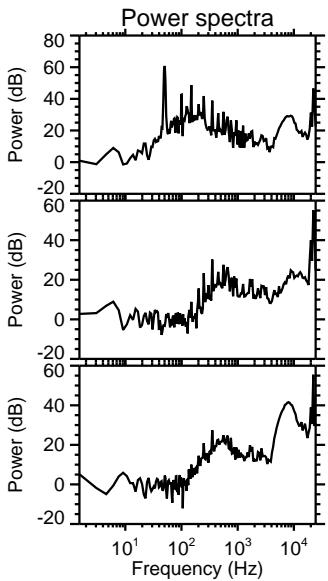
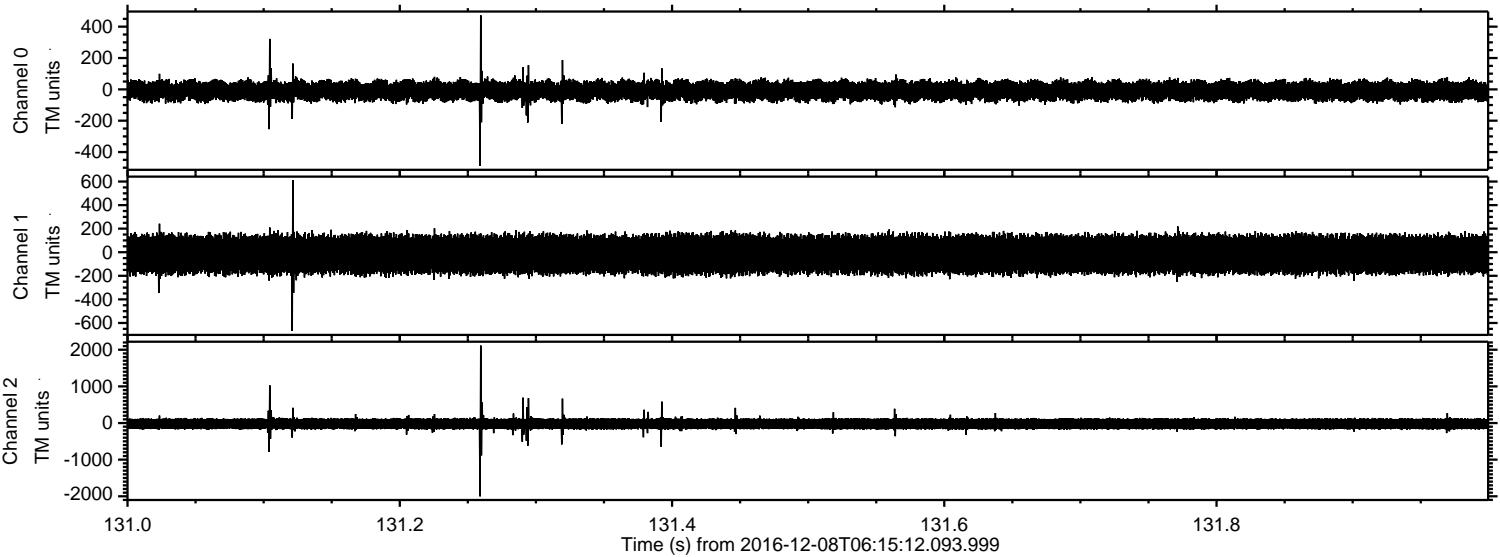
ELMAVAN 3D WAVEFORMS (Measured data sampled at 50 kHz) 51000 packets of 144 samples from 2016-12-08T06:15:12.093.999. Part 87/147

Processed Thu Dec 8 07:22:43 2016 by ELM ver.2012-10-06 from 001\_\_elm20161208\_061511\_\_dat00.bin



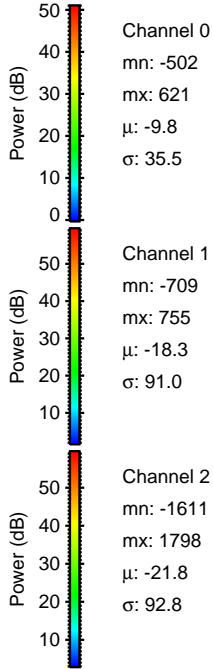
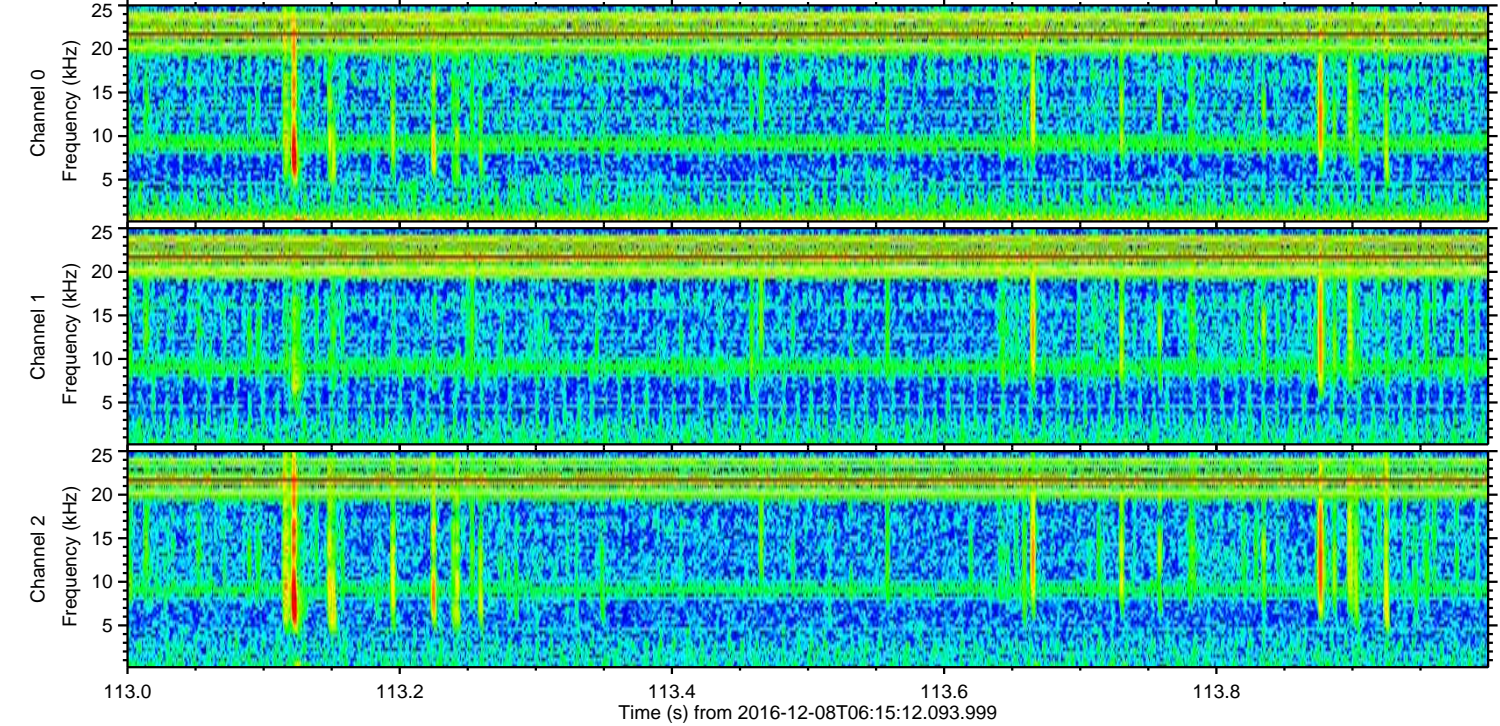
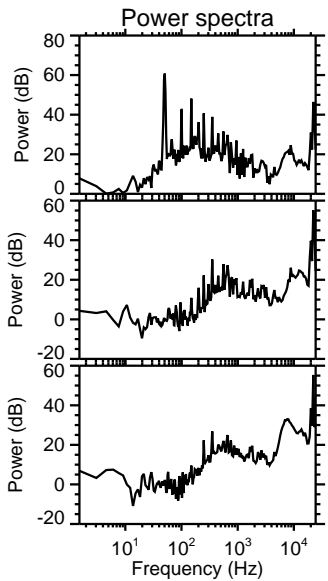
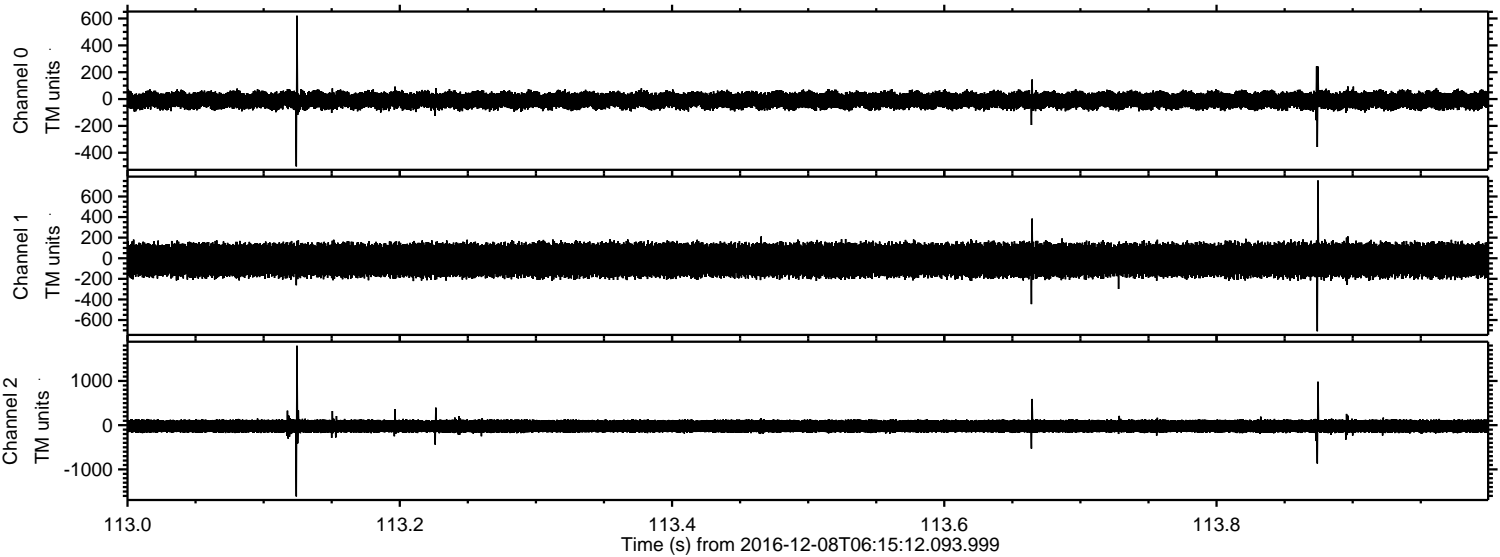
ELMAVAN 3D WAVEFORMS (Measured data sampled at 50 kHz) 51000 packets of 144 samples from 2016-12-08T06:15:12.093.999. Part 132/147

Processed Thu Dec 8 07:22:44 2016 by ELM ver.2012-10-06 from 001\_\_elm20161208\_061511\_\_dat00.bin



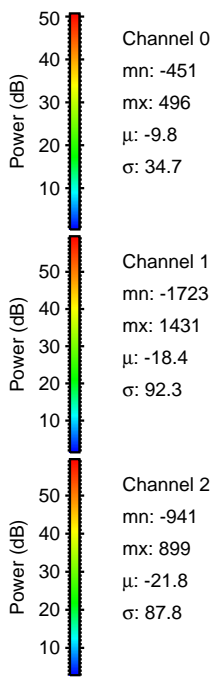
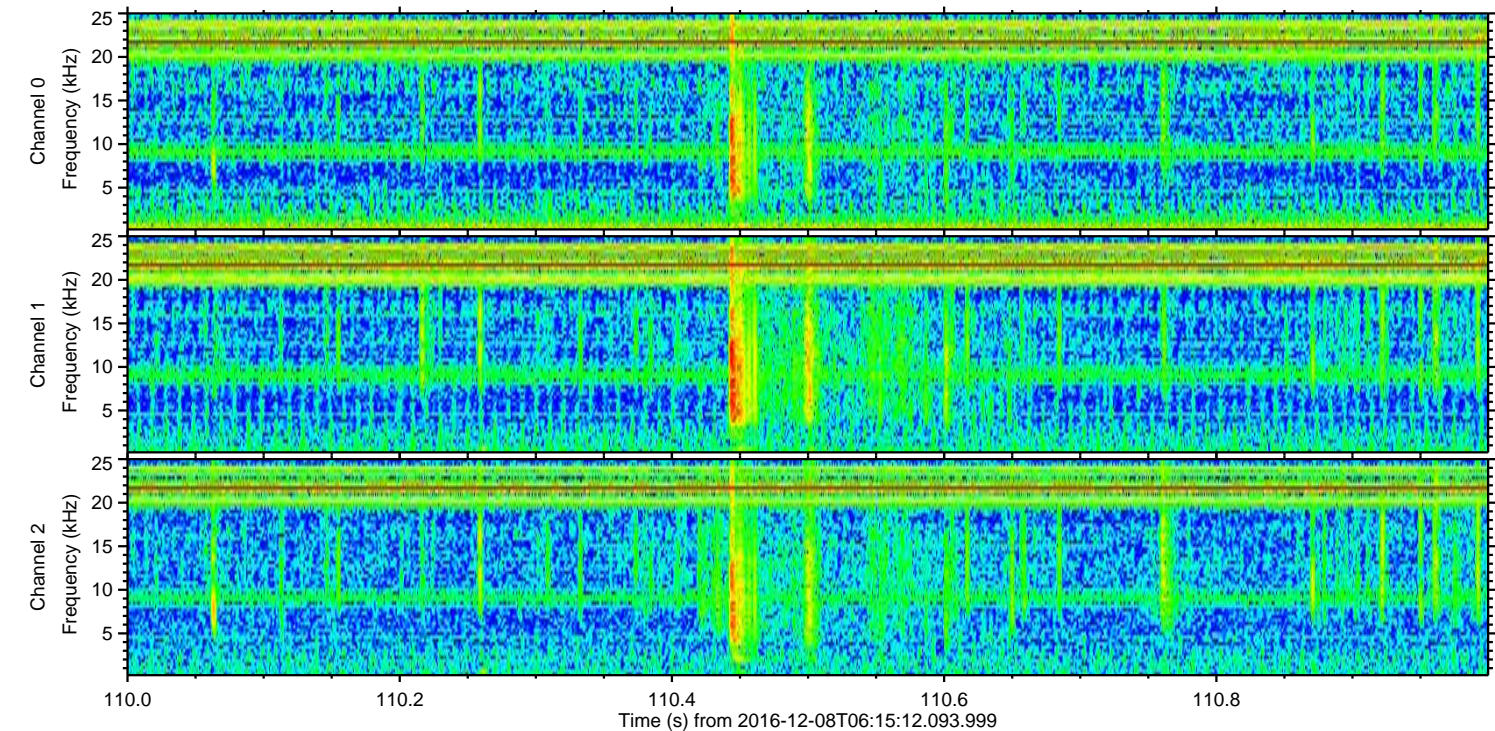
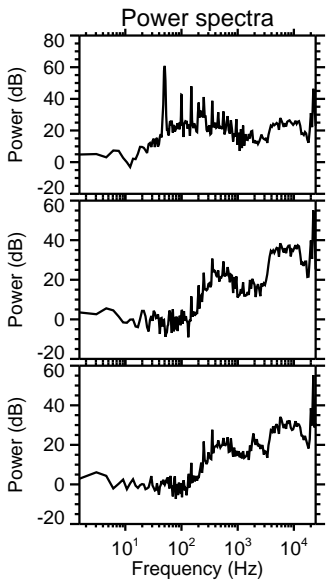
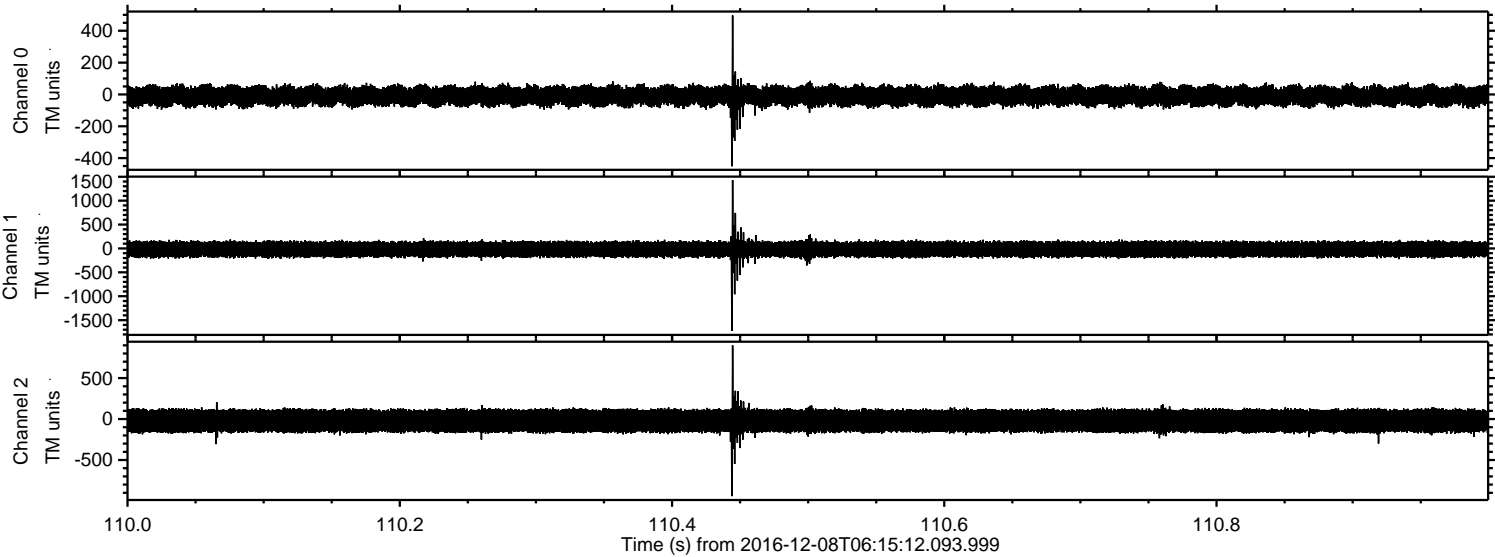
ELMAVAN 3D WAVEFORMS (Measured data sampled at 50 kHz) 51000 packets of 144 samples from 2016-12-08T06:15:12.093.999. Part 114/147

Processed Thu Dec 8 07:22:45 2016 by ELM ver.2012-10-06 from 001\_\_elm20161208\_061511\_\_dat00.bin



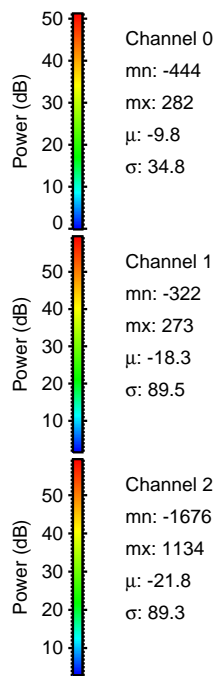
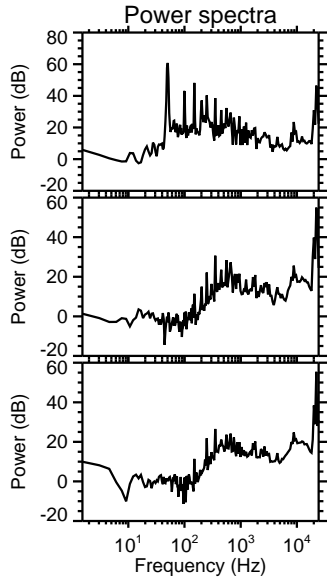
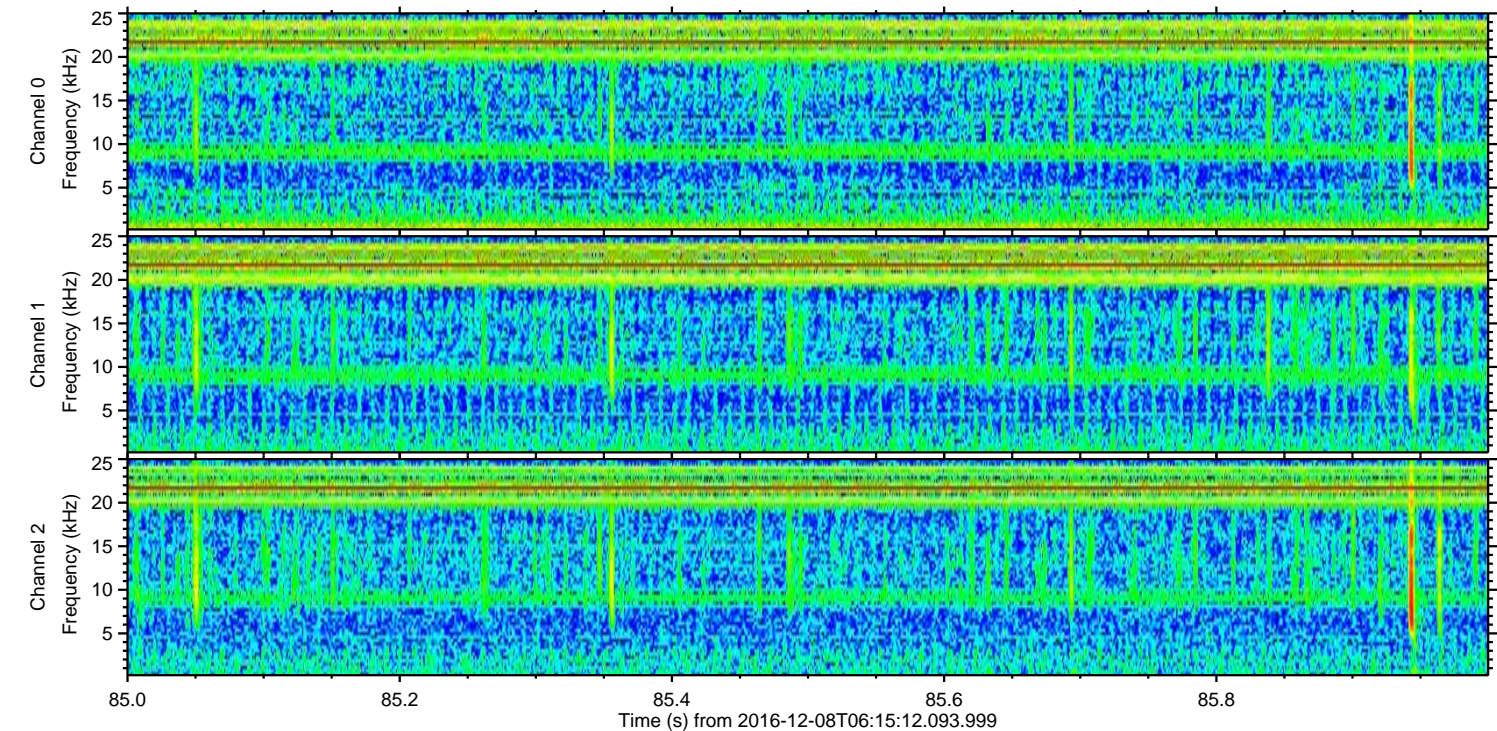
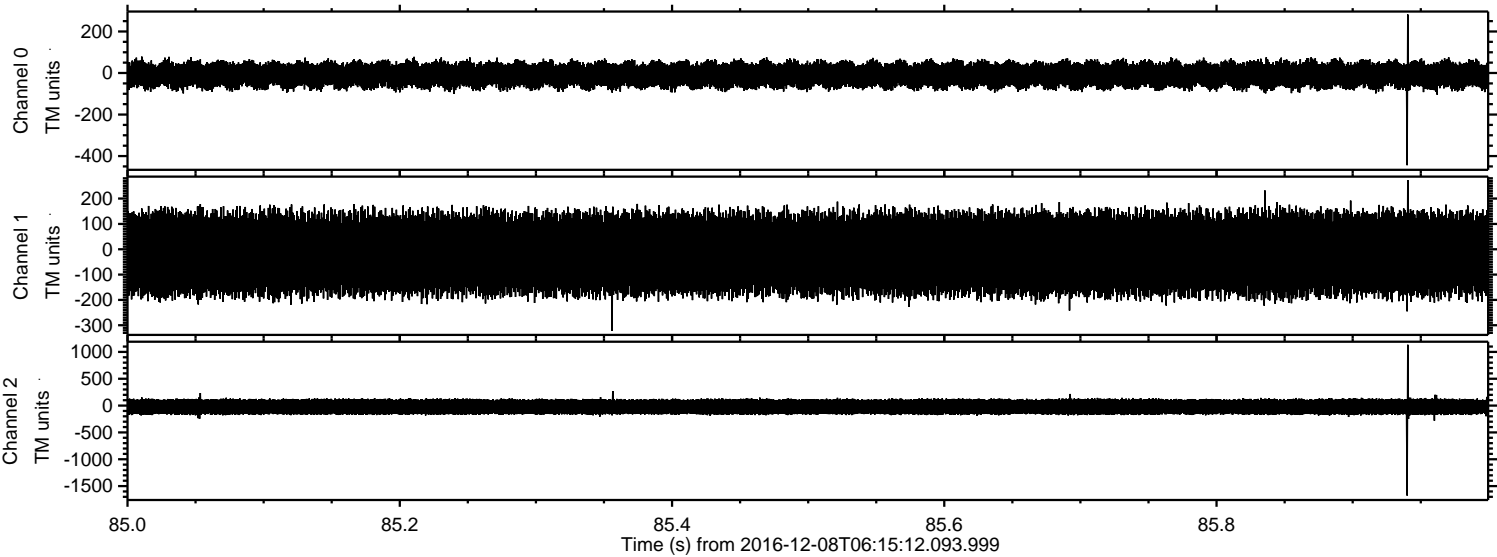
ELMAVAN 3D WAVEFORMS (Measured data sampled at 50 kHz) 51000 packets of 144 samples from 2016-12-08T06:15:12.093.999. Part 111/147

Processed Thu Dec 8 07:22:46 2016 by ELM ver.2012-10-06 from 001\_\_elm20161208\_061511\_\_dat00.bin



ELMAVAN 3D WAVEFORMS (Measured data sampled at 50 kHz) 51000 packets of 144 samples from 2016-12-08T06:15:12.093.999. Part 86/147

Processed Thu Dec 8 07:22:47 2016 by ELM ver.2012-10-06 from 001\_\_elm20161208\_061511\_\_dat00.bin



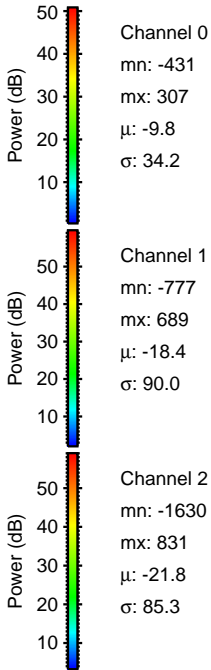
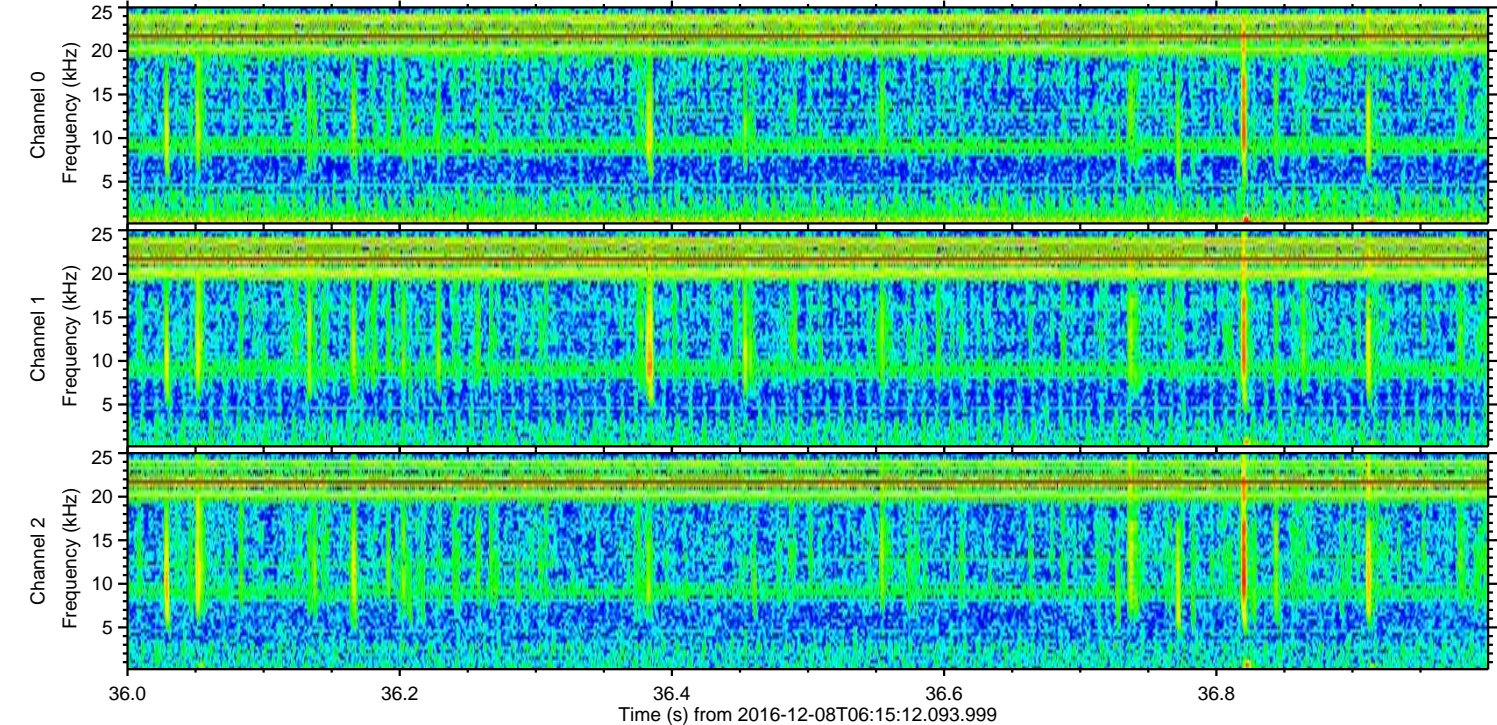
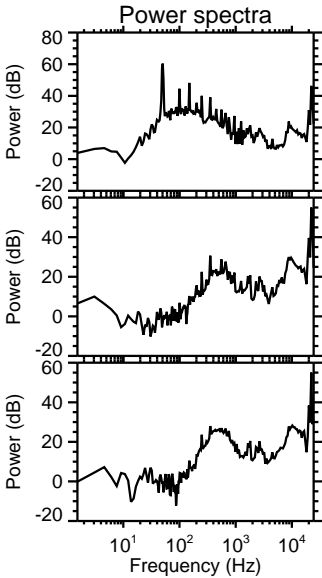
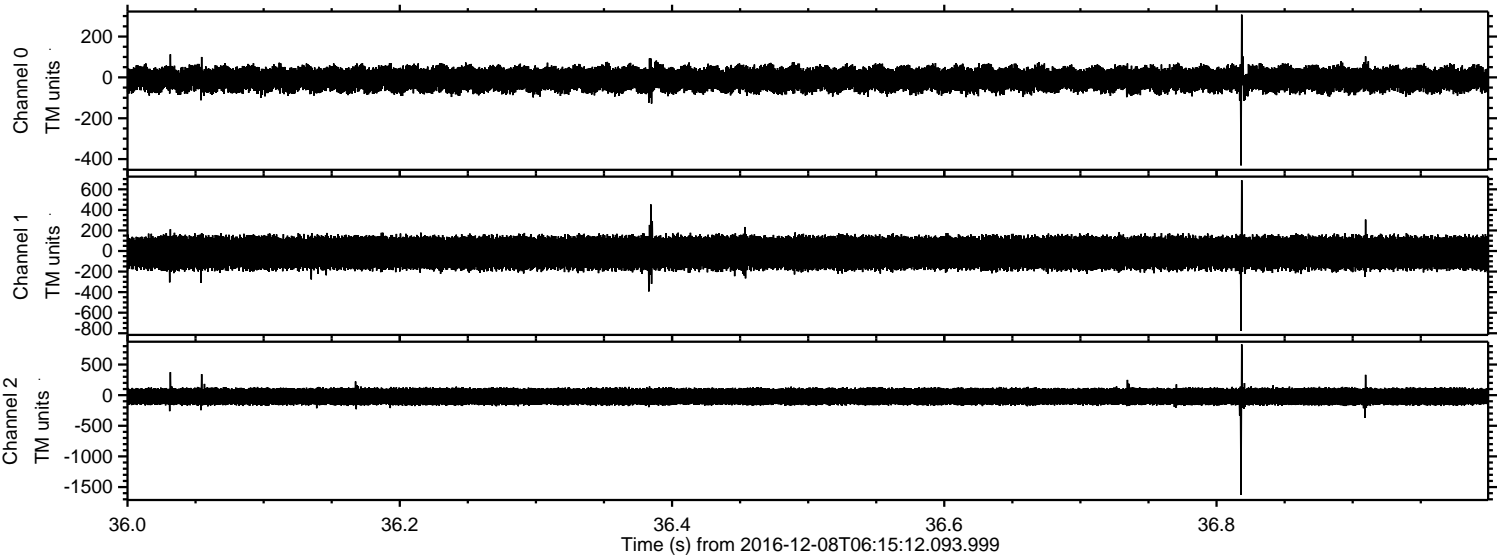
Channel 0  
mn: -444  
mx: 282  
 $\mu$ : -9.8  
 $\sigma$ : 34.8

Channel 1  
mn: -322  
mx: 273  
 $\mu$ : -18.3  
 $\sigma$ : 89.5

Channel 2  
mn: -1676  
mx: 1134  
 $\mu$ : -21.8  
 $\sigma$ : 89.3

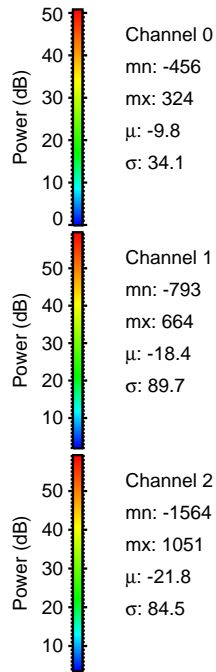
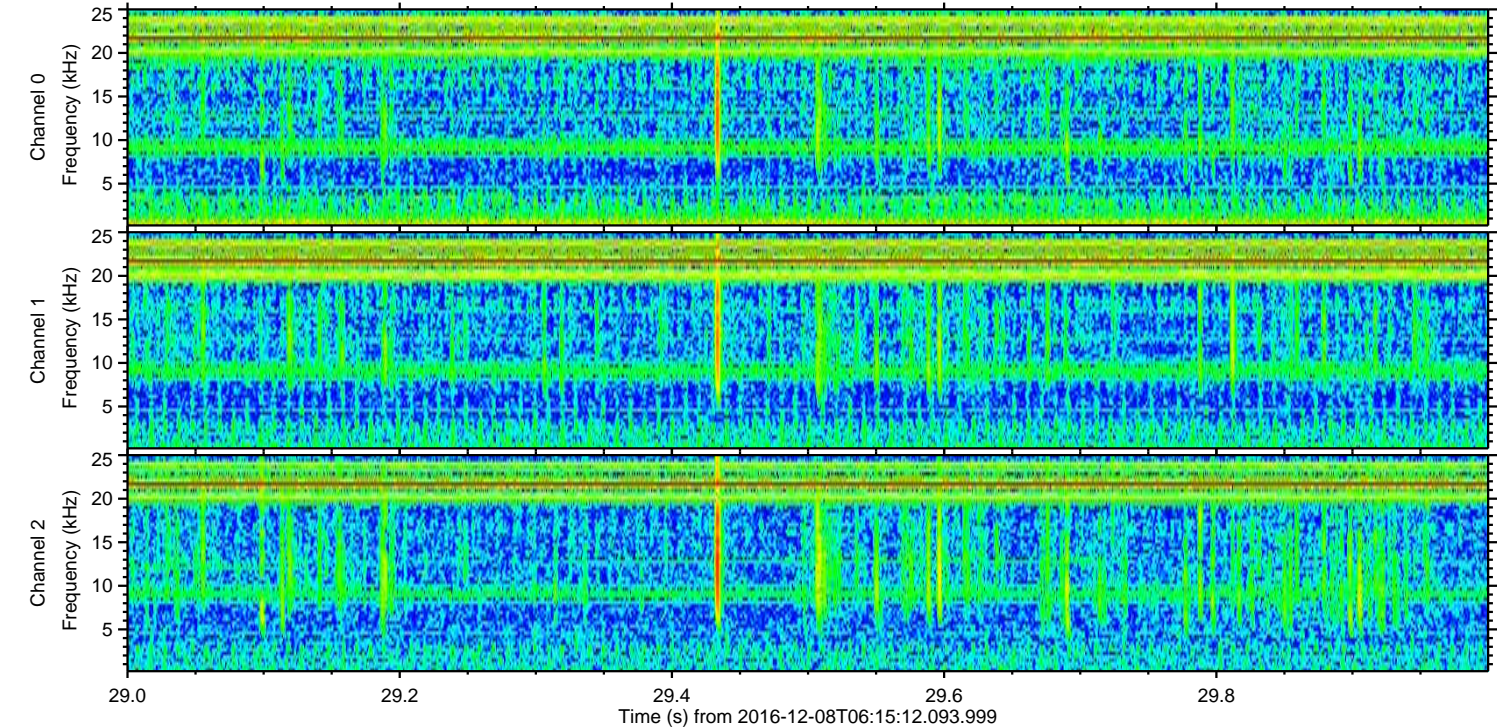
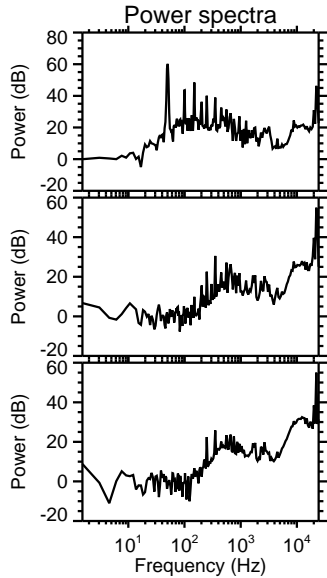
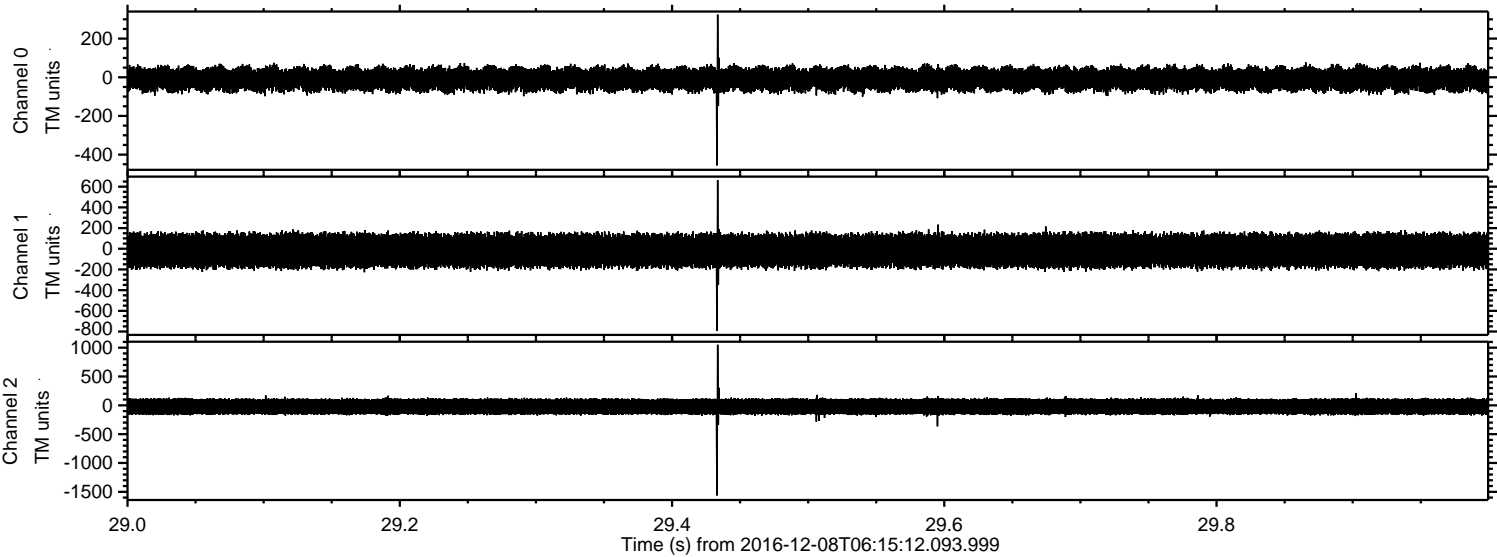
ELMAVAN 3D WAVEFORMS (Measured data sampled at 50 kHz) 51000 packets of 144 samples from 2016-12-08T06:15:12.093.999. Part 37/147

Processed Thu Dec 8 07:22:48 2016 by ELM ver.2012-10-06 from 001\_\_elm20161208\_061511\_\_dat00.bin



ELMAVAN 3D WAVEFORMS (Measured data sampled at 50 kHz) 51000 packets of 144 samples from 2016-12-08T06:15:12.093.999. Part 30/147

Processed Thu Dec 8 07:22:49 2016 by ELM ver.2012-10-06 from 001\_\_elm20161208\_061511\_\_dat00.bin



Channel 0  
mn: -456  
mx: 324  
 $\mu$ : -9.8  
 $\sigma$ : 34.1

Channel 1  
mn: -793  
mx: 664  
 $\mu$ : -18.4  
 $\sigma$ : 89.7

Channel 2  
mn: -1564  
mx: 1051  
 $\mu$ : -21.8  
 $\sigma$ : 84.5

ELMAVAN 3D WAVEFORMS (Measured data sampled at 50 kHz) 51000 packets of 144 samples from 2016-12-08T06:15:12.093.999. Part 63/147

Processed Thu Dec 8 07:22:50 2016 by ELM ver.2012-10-06 from 001\_\_elm20161208\_061511\_\_dat00.bin

