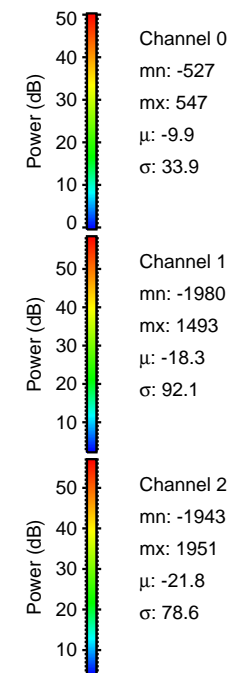
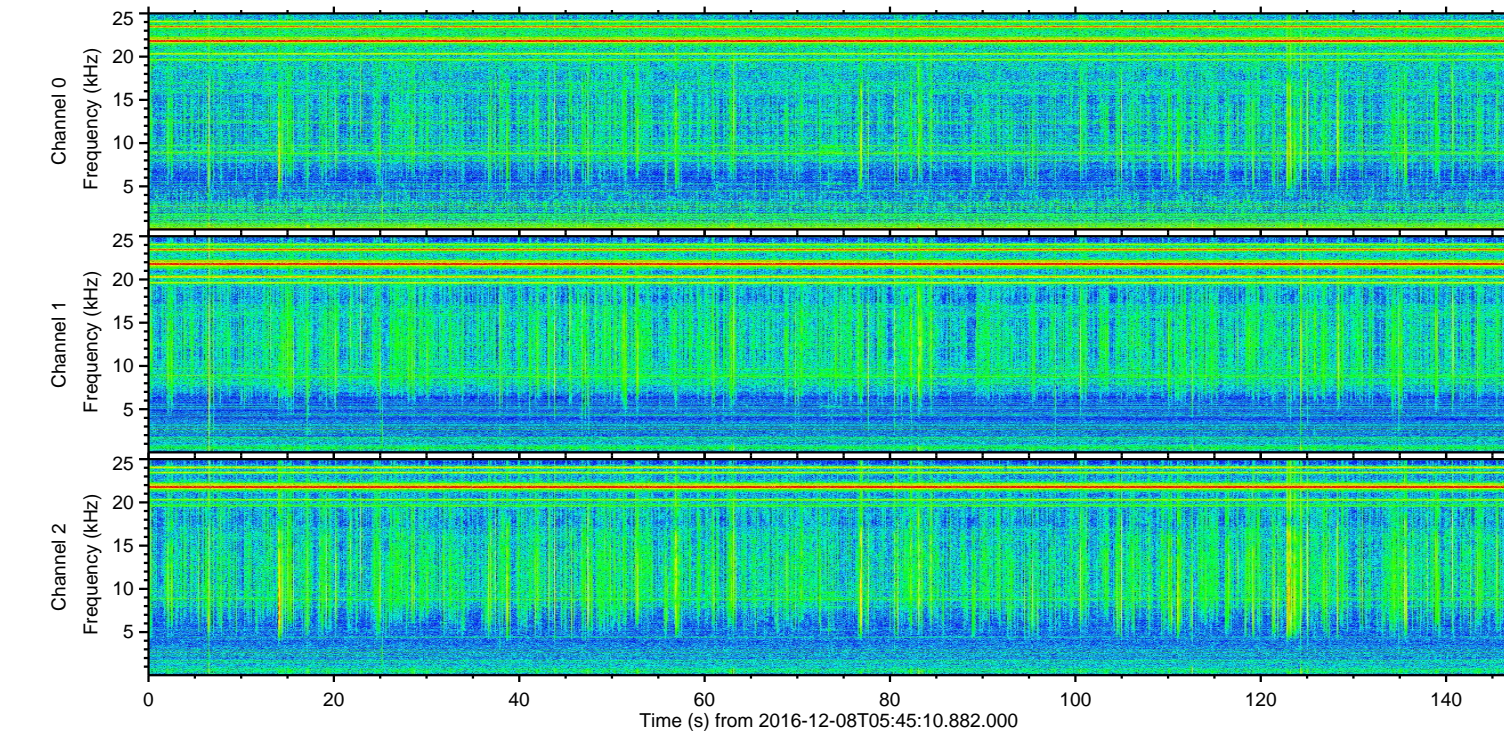
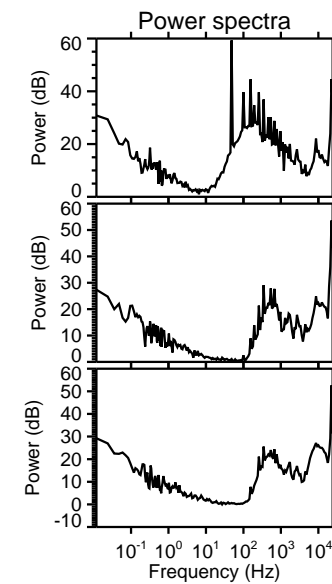
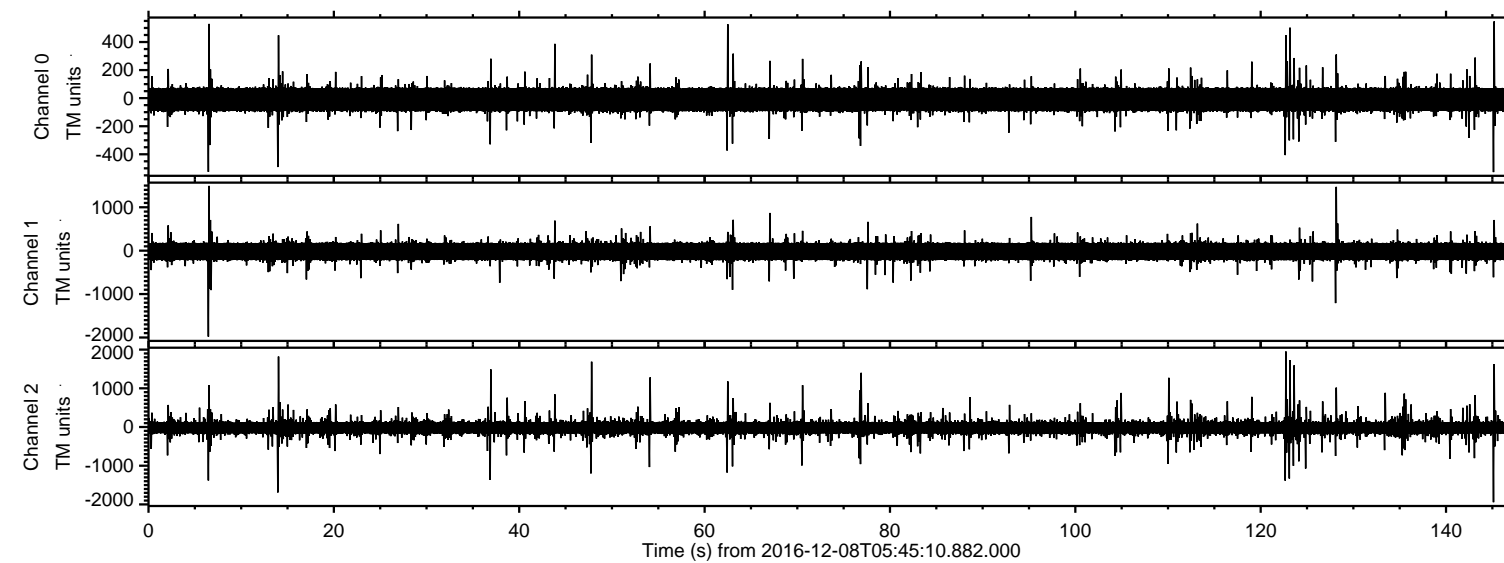


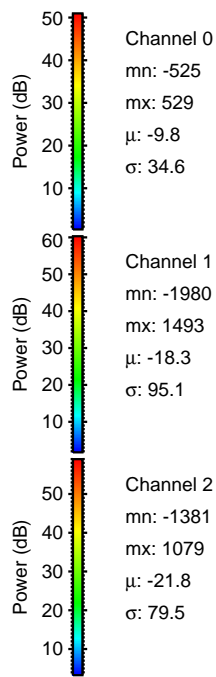
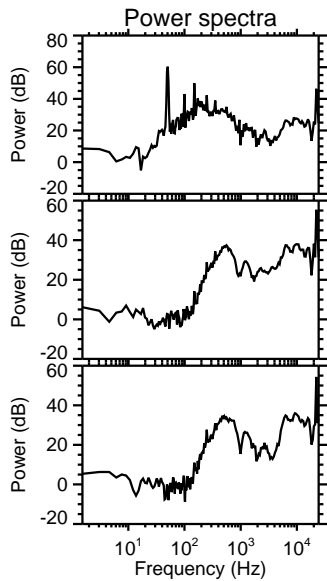
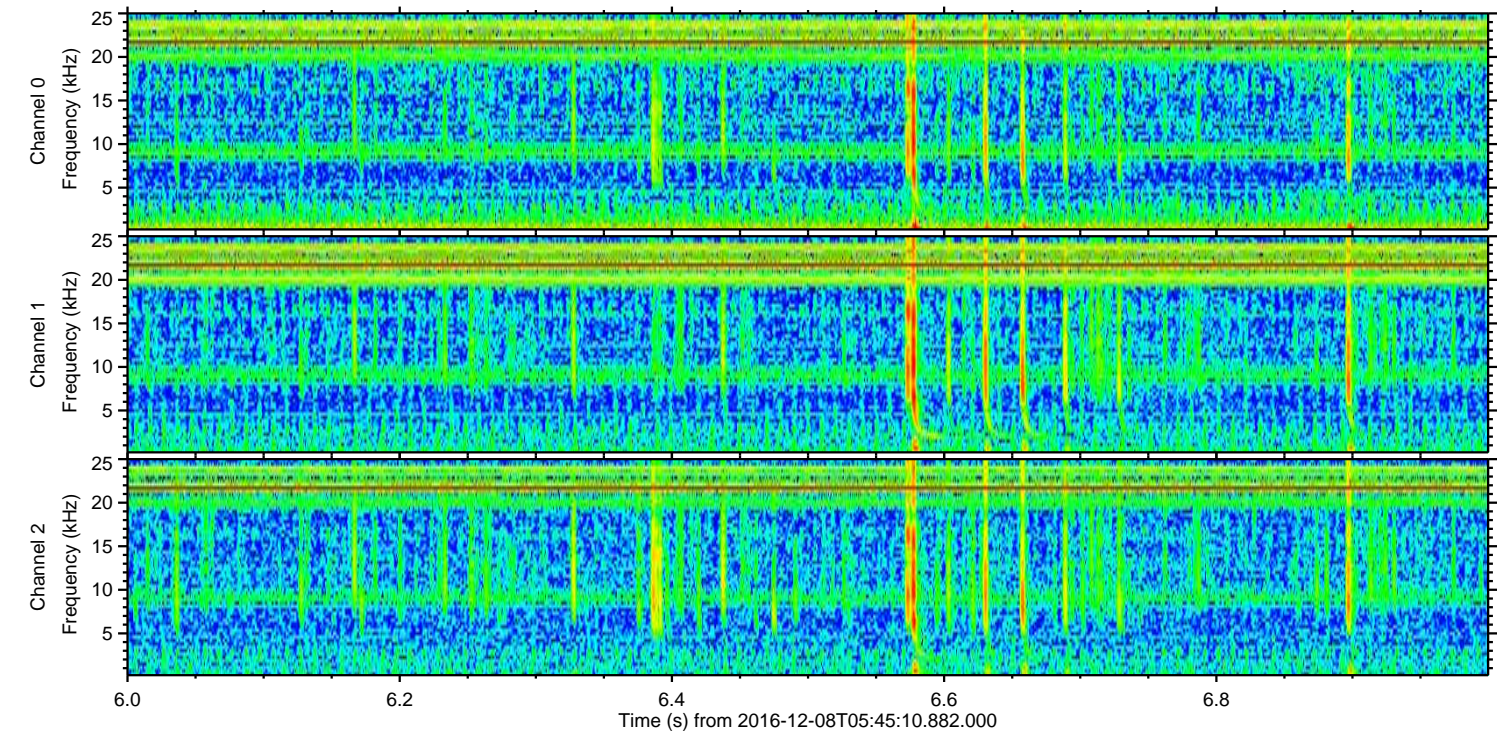
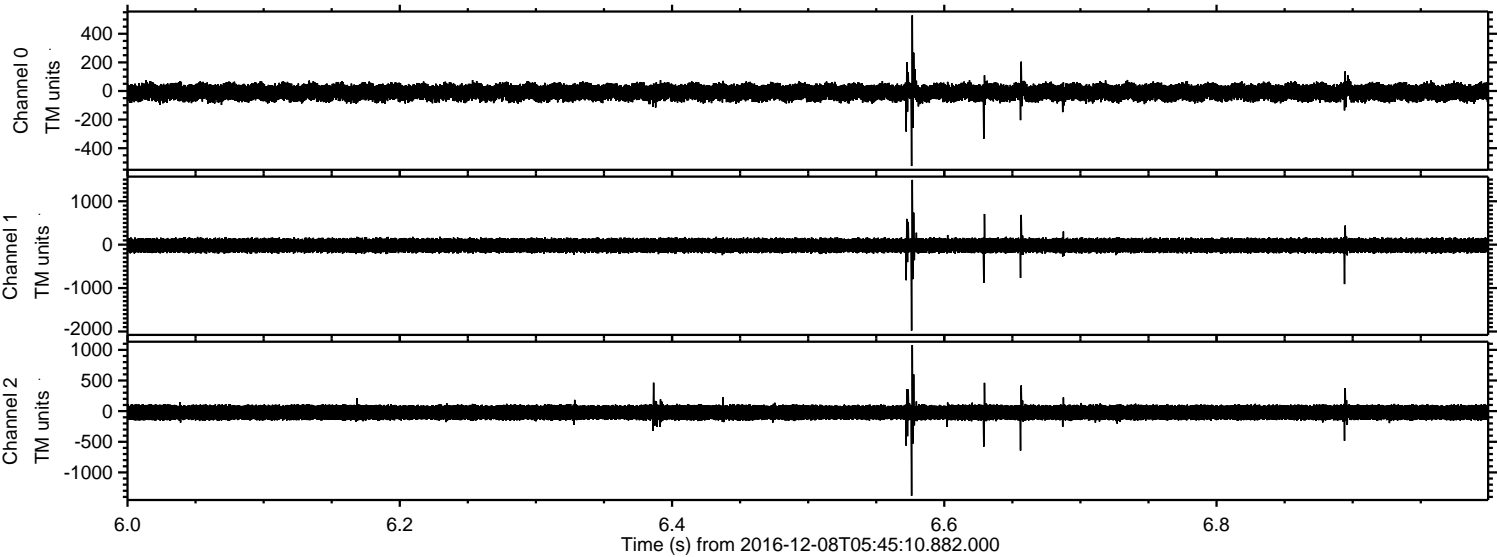
ELMAVAN 3D WAVEFORMS (Measured data sampled at 50 kHz) 51000 packets of 144 samples from 2016-12-08T05:45:10.882.000.

Processed Thu Dec 8 06:53:05 2016 by ELM ver.2012-10-06 from 001__elm20161208_054509__dat00.bin



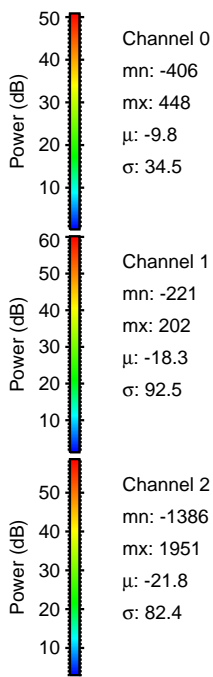
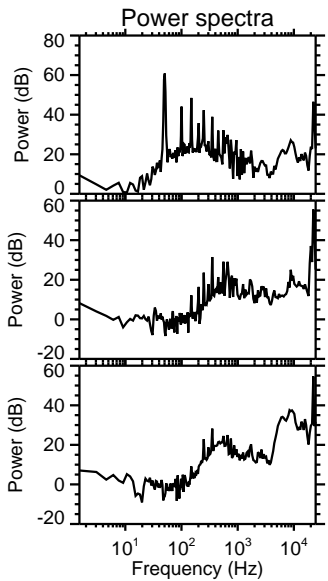
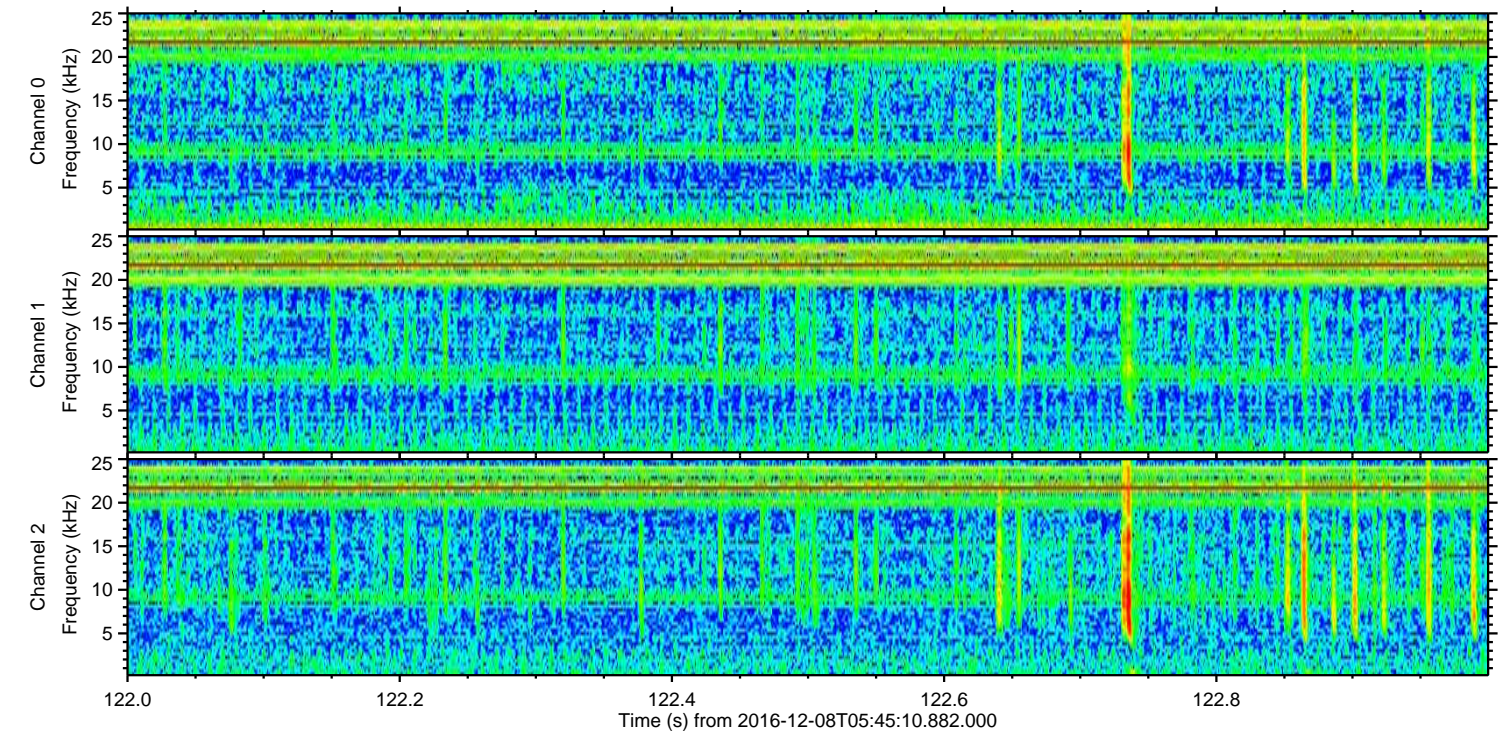
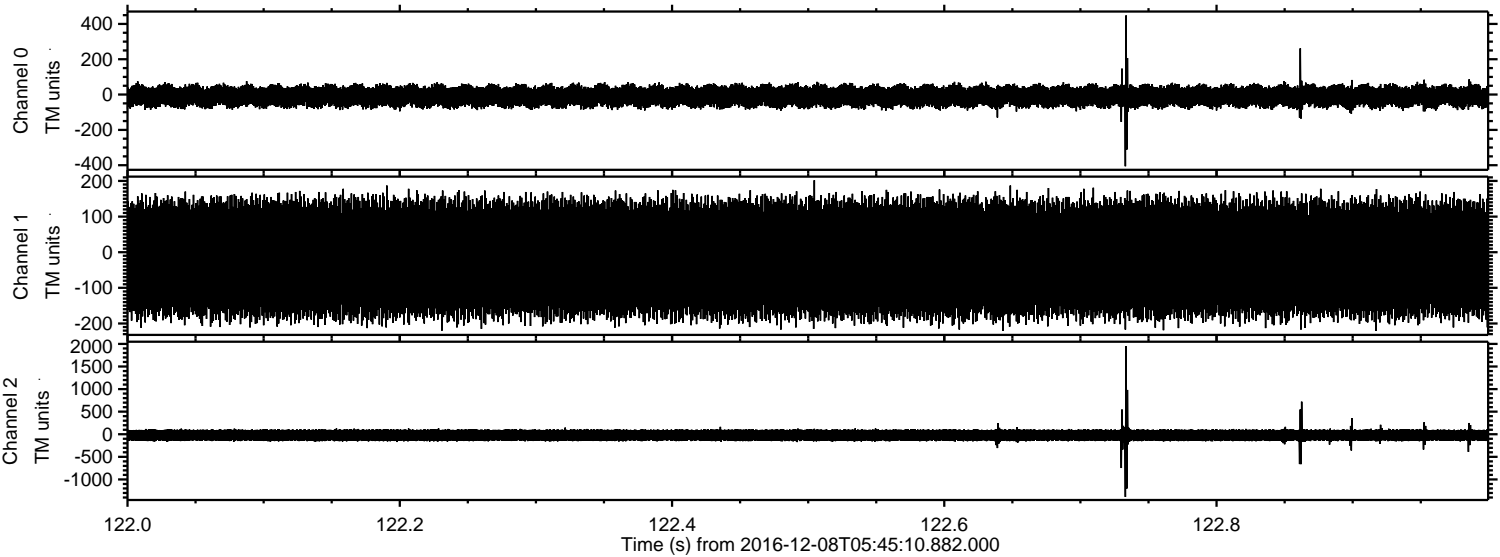
ELMAVAN 3D WAVEFORMS (Measured data sampled at 50 kHz) 51000 packets of 144 samples from 2016-12-08T05:45:10.882.000. Part 7/147

Processed Thu Dec 8 06:53:16 2016 by ELM ver.2012-10-06 from 001__elm20161208_054509__dat00.bin



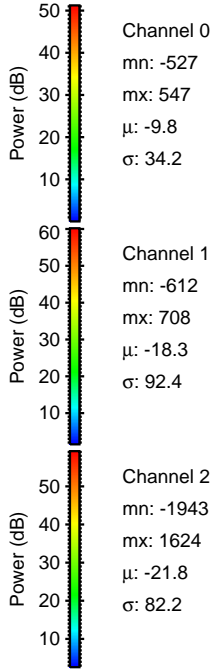
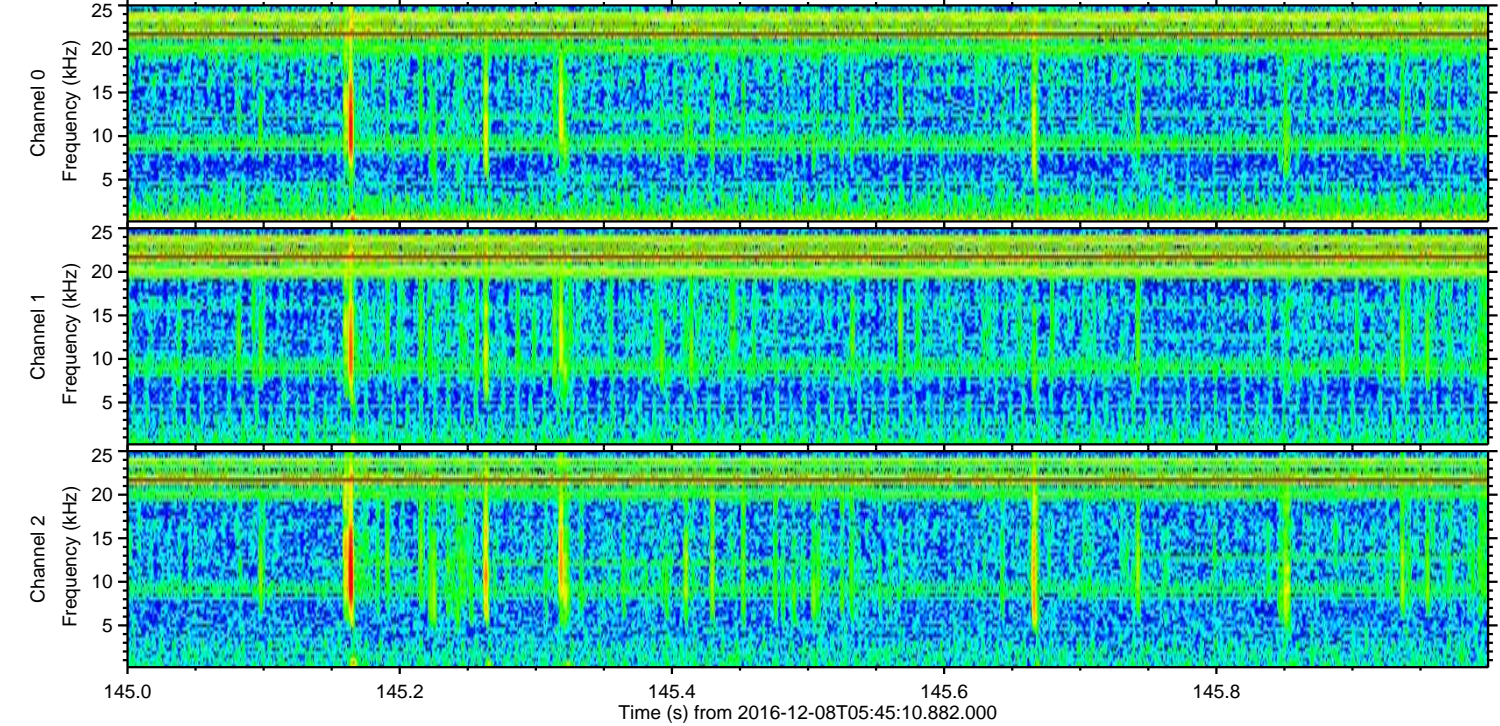
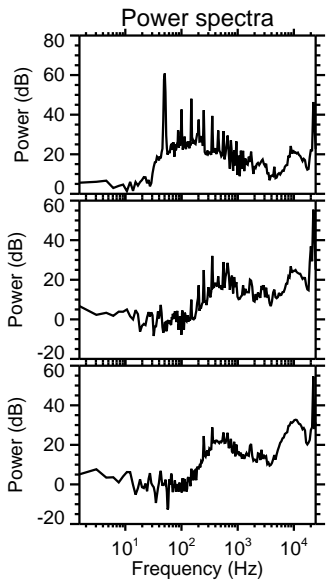
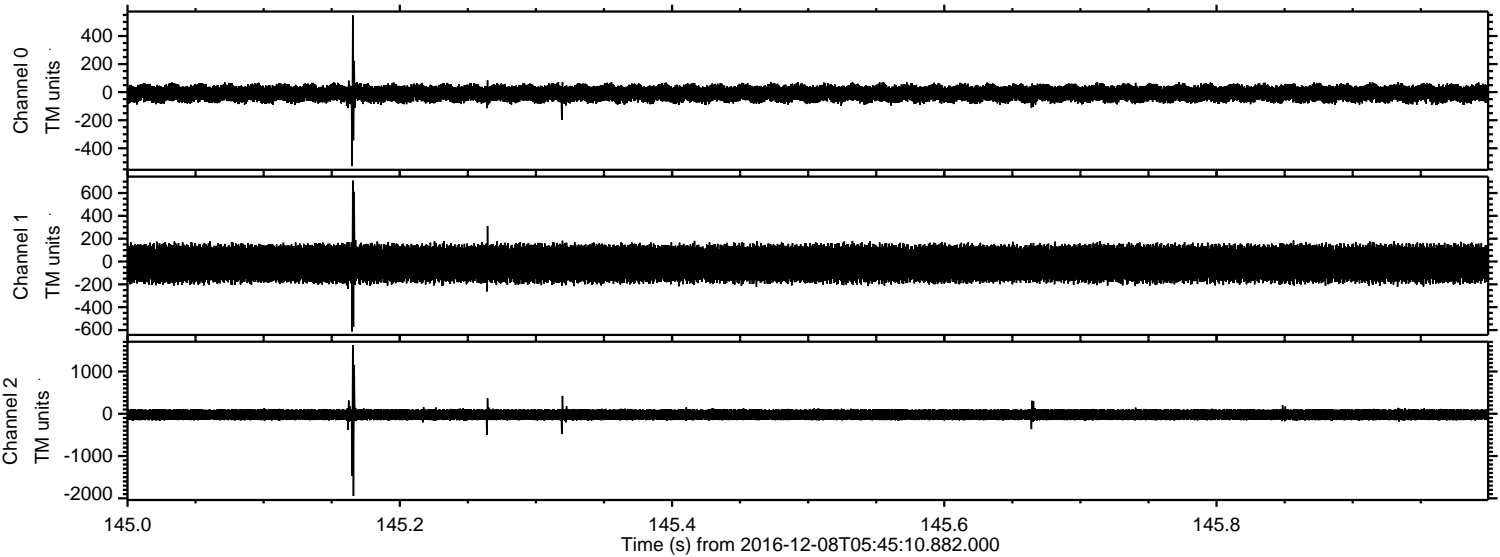
ELMAVAN 3D WAVEFORMS (Measured data sampled at 50 kHz) 51000 packets of 144 samples from 2016-12-08T05:45:10.882.000. Part 123/147

Processed Thu Dec 8 06:53:17 2016 by ELM ver.2012-10-06 from 001__elm20161208_054509__dat00.bin

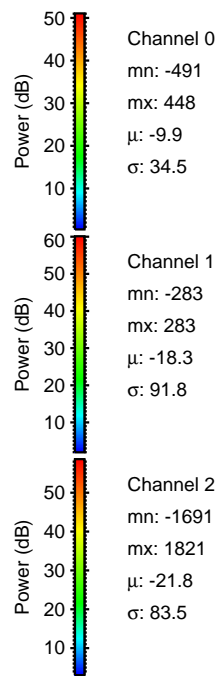
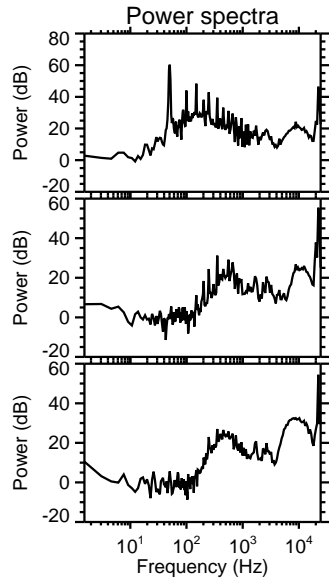
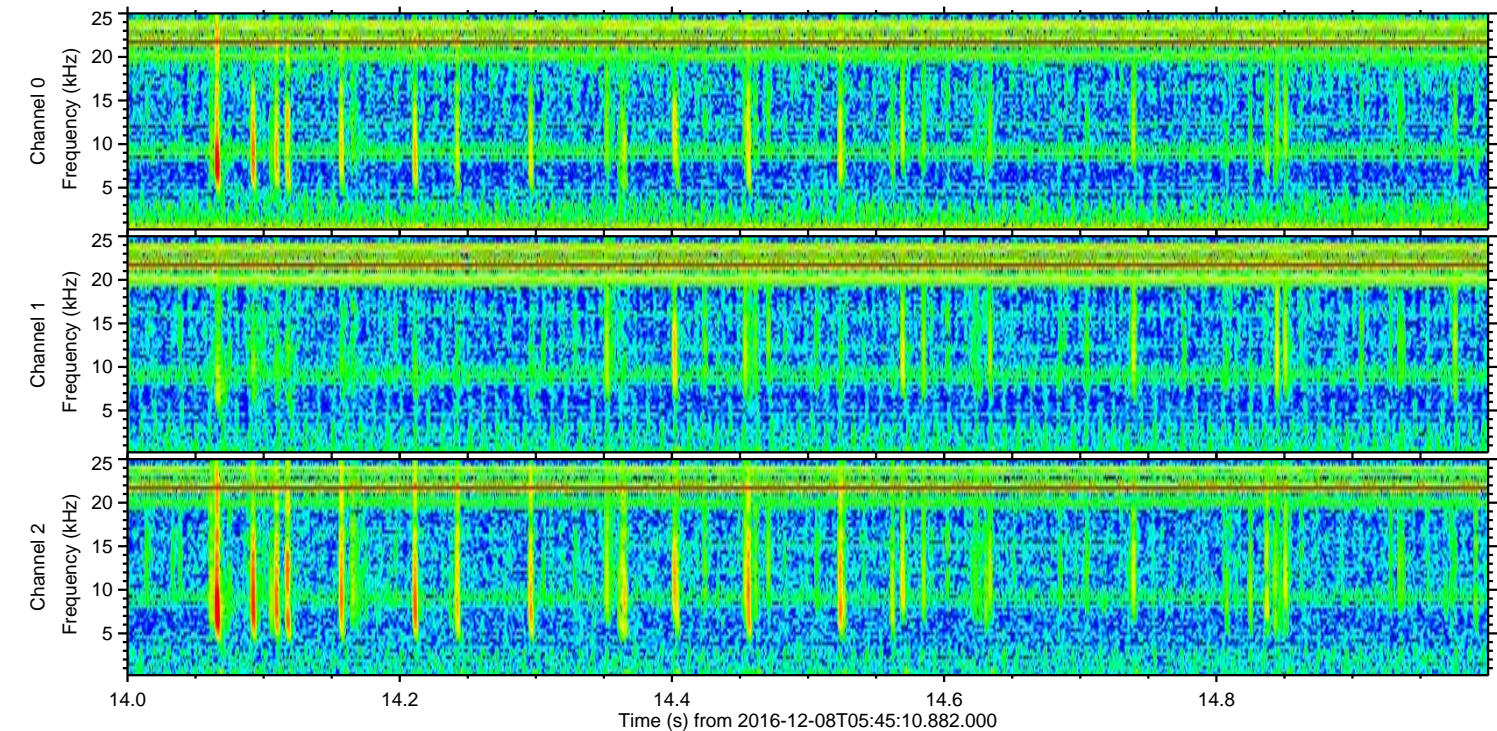
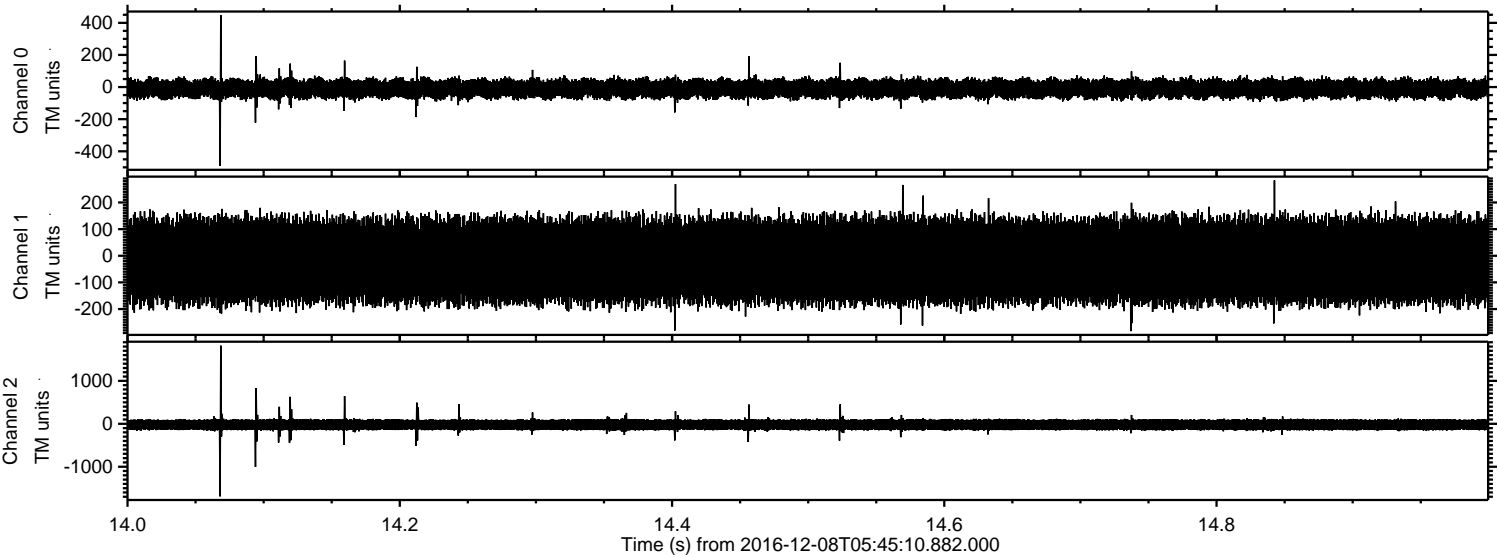


ELMAVAN 3D WAVEFORMS (Measured data sampled at 50 kHz) 51000 packets of 144 samples from 2016-12-08T05:45:10.882.000. Part 146/147

Processed Thu Dec 8 06:53:18 2016 by ELM ver.2012-10-06 from 001__elm20161208_054509__dat00.bin



Processed Thu Dec 8 06:53:19 2016 by ELM ver.2012-10-06 from 001__elm20161208_054509__dat00.bin



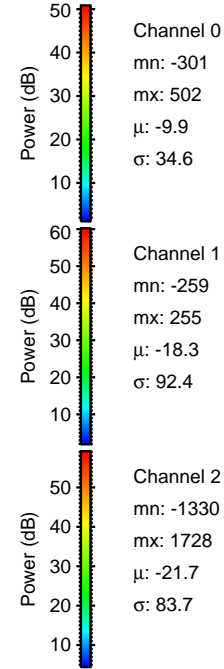
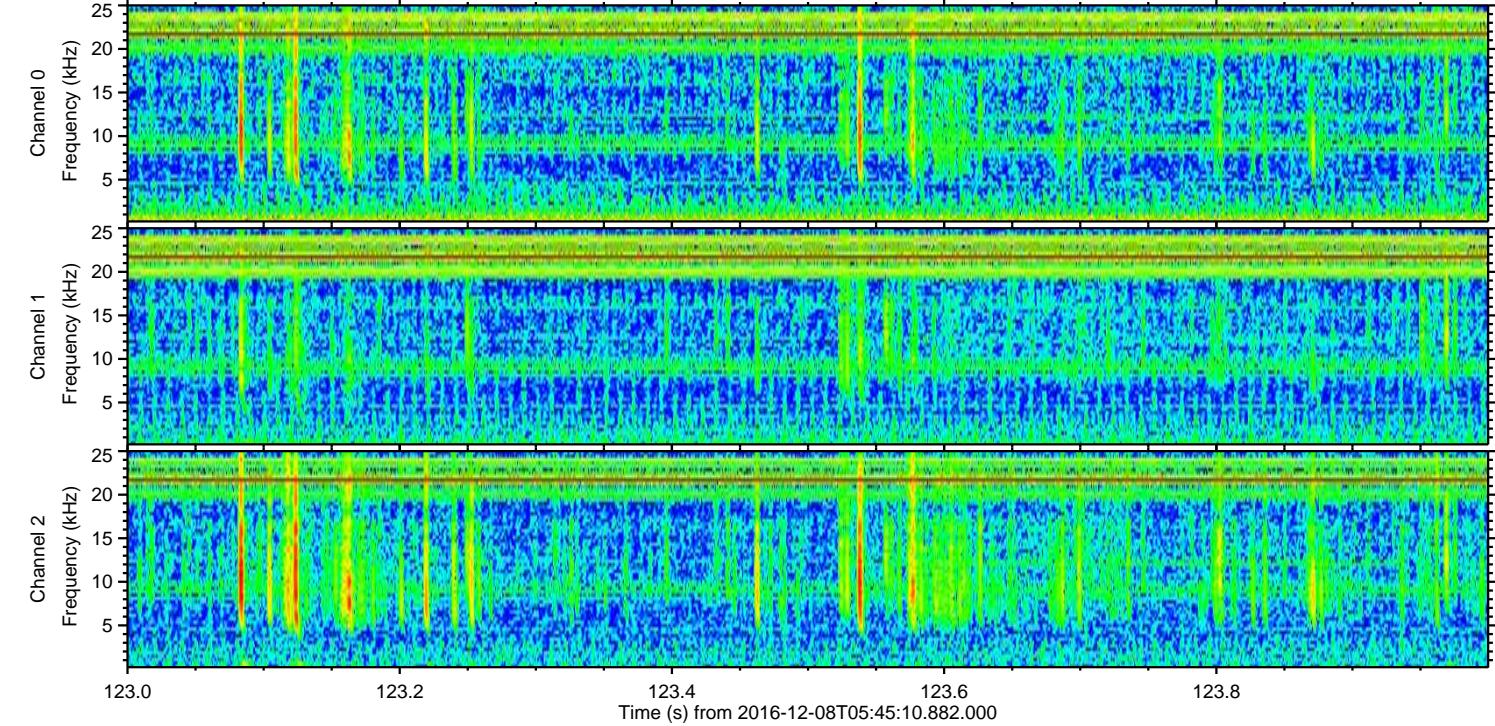
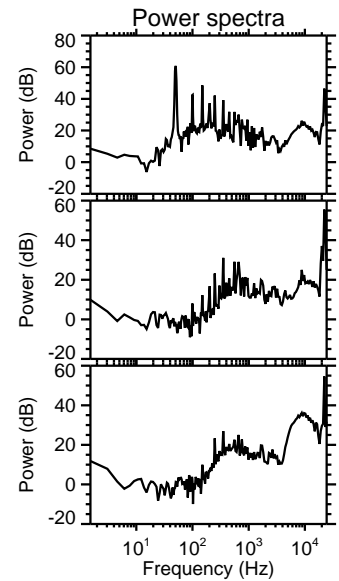
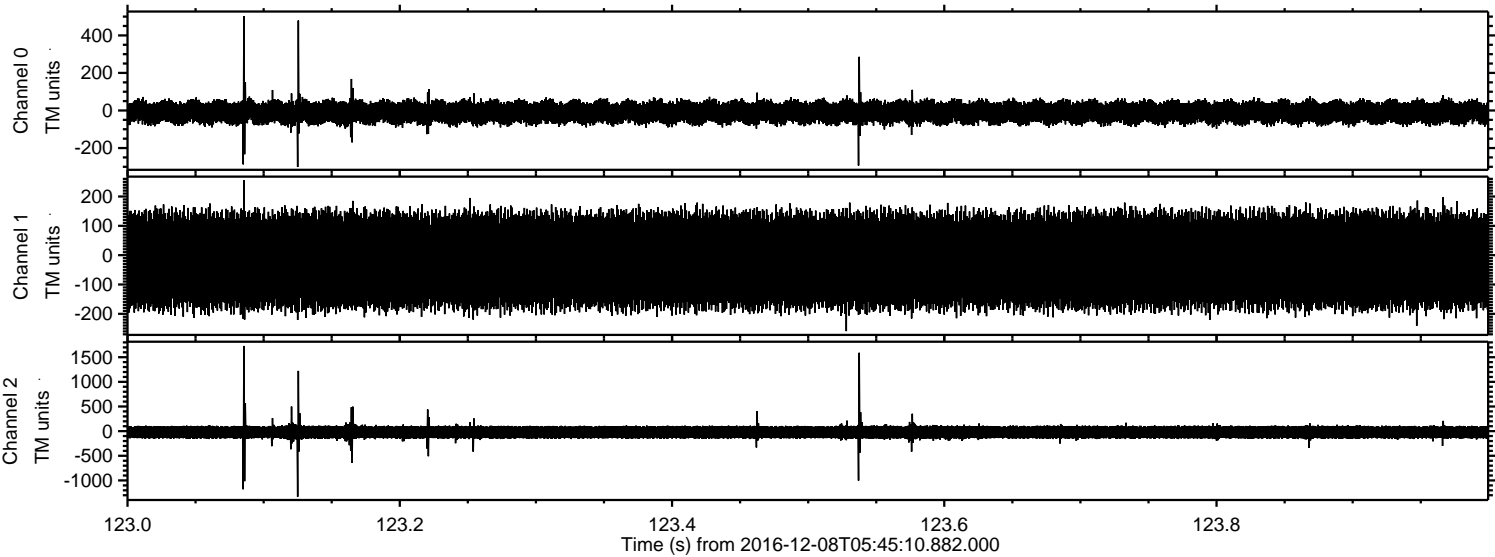
Channel 0
mn: -491
mx: 448
 μ : -9.9
 σ : 34.5

Channel 1
mn: -283
mx: 283
 μ : -18.3
 σ : 91.8

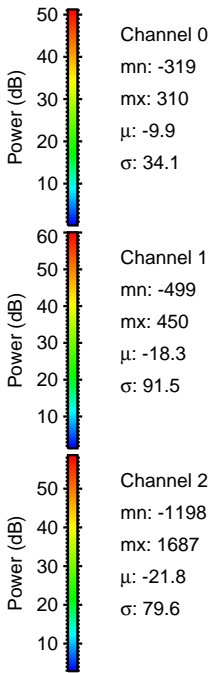
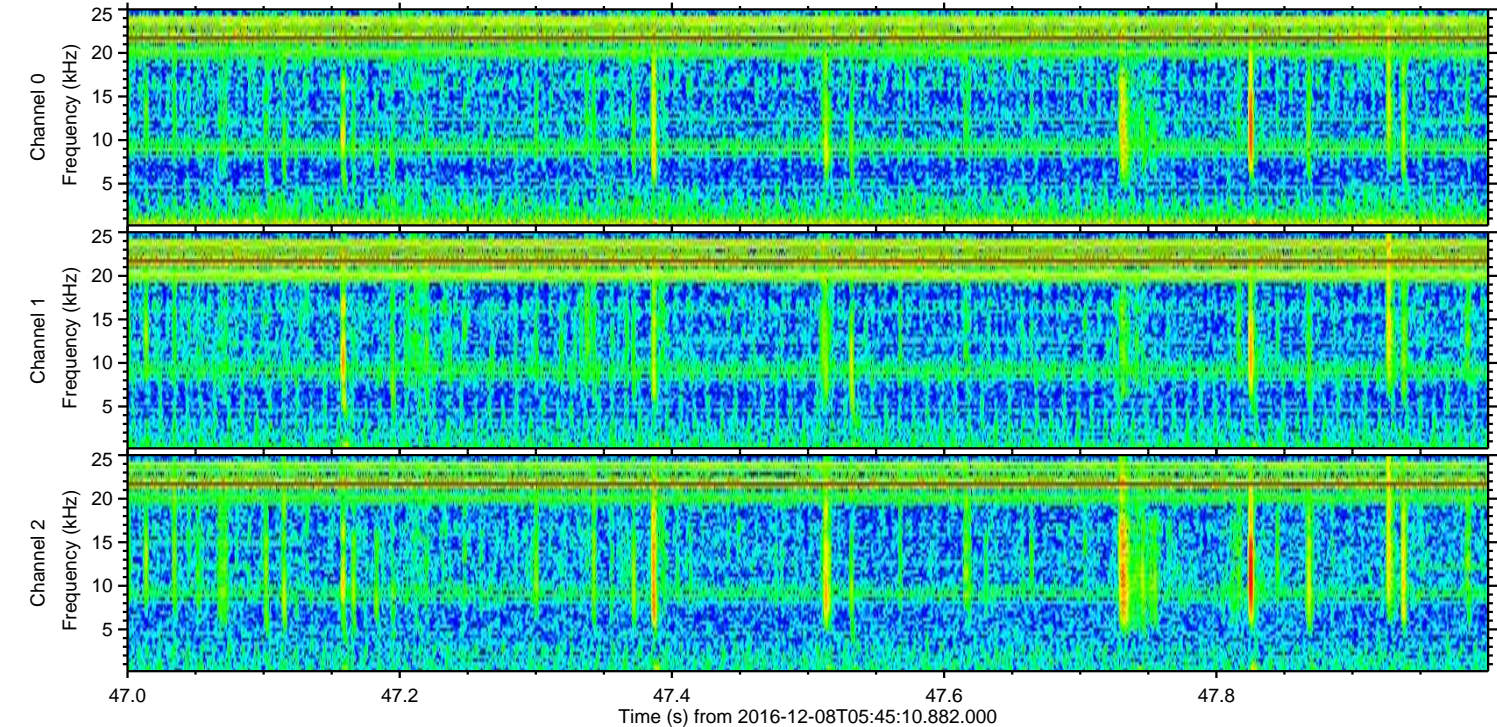
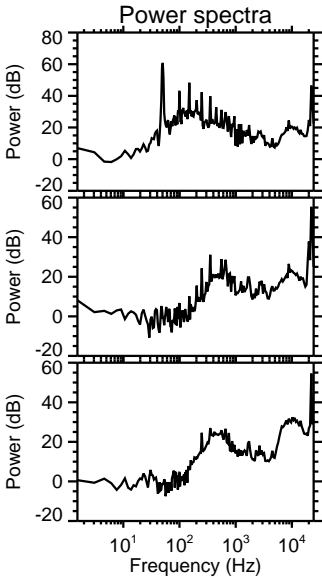
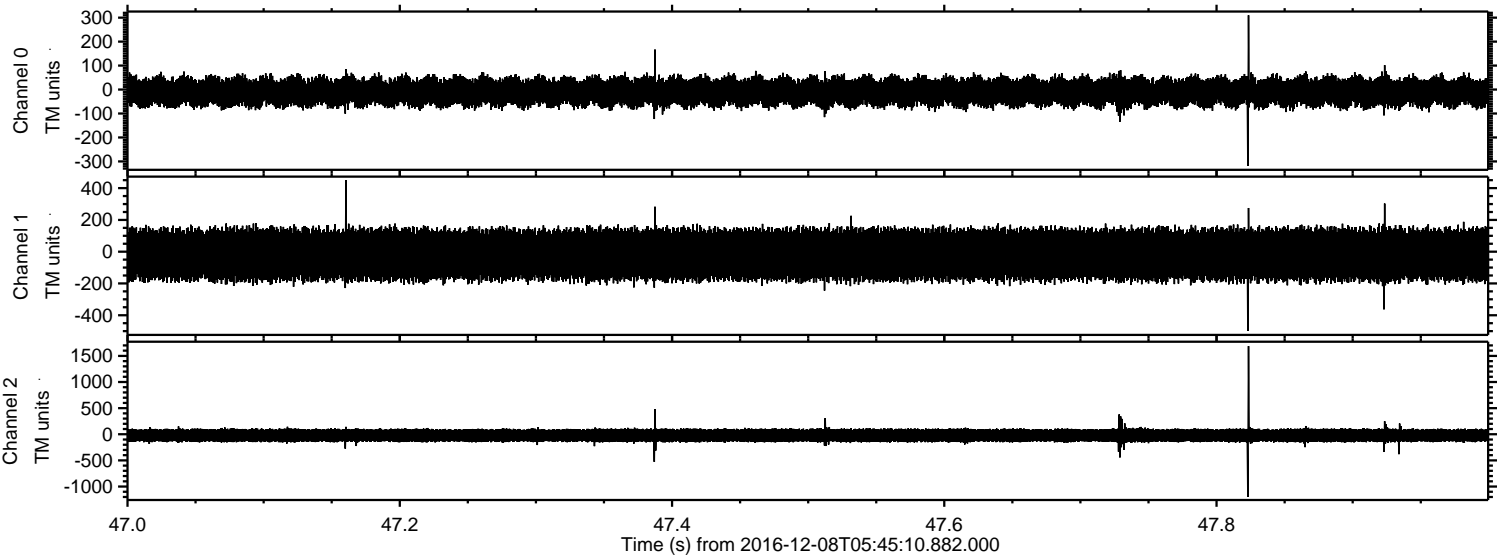
Channel 2
mn: -1691
mx: 1821
 μ : -21.8
 σ : 83.5

ELMAVAN 3D WAVEFORMS (Measured data sampled at 50 kHz) 51000 packets of 144 samples from 2016-12-08T05:45:10.882.000. Part 124/147

Processed Thu Dec 8 06:53:20 2016 by ELM ver.2012-10-06 from 001__elm20161208_054509__dat00.bin



Processed Thu Dec 8 06:53:21 2016 by ELM ver.2012-10-06 from 001__elm20161208_054509__dat00.bin



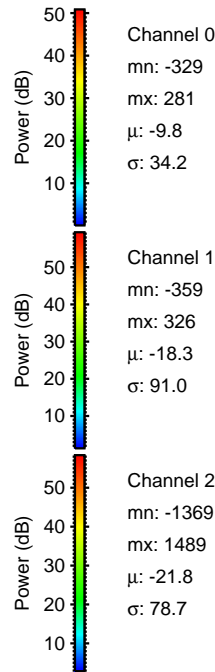
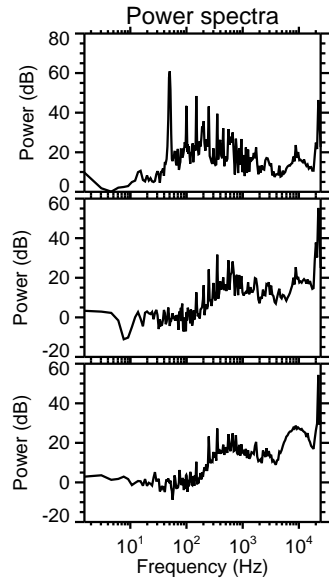
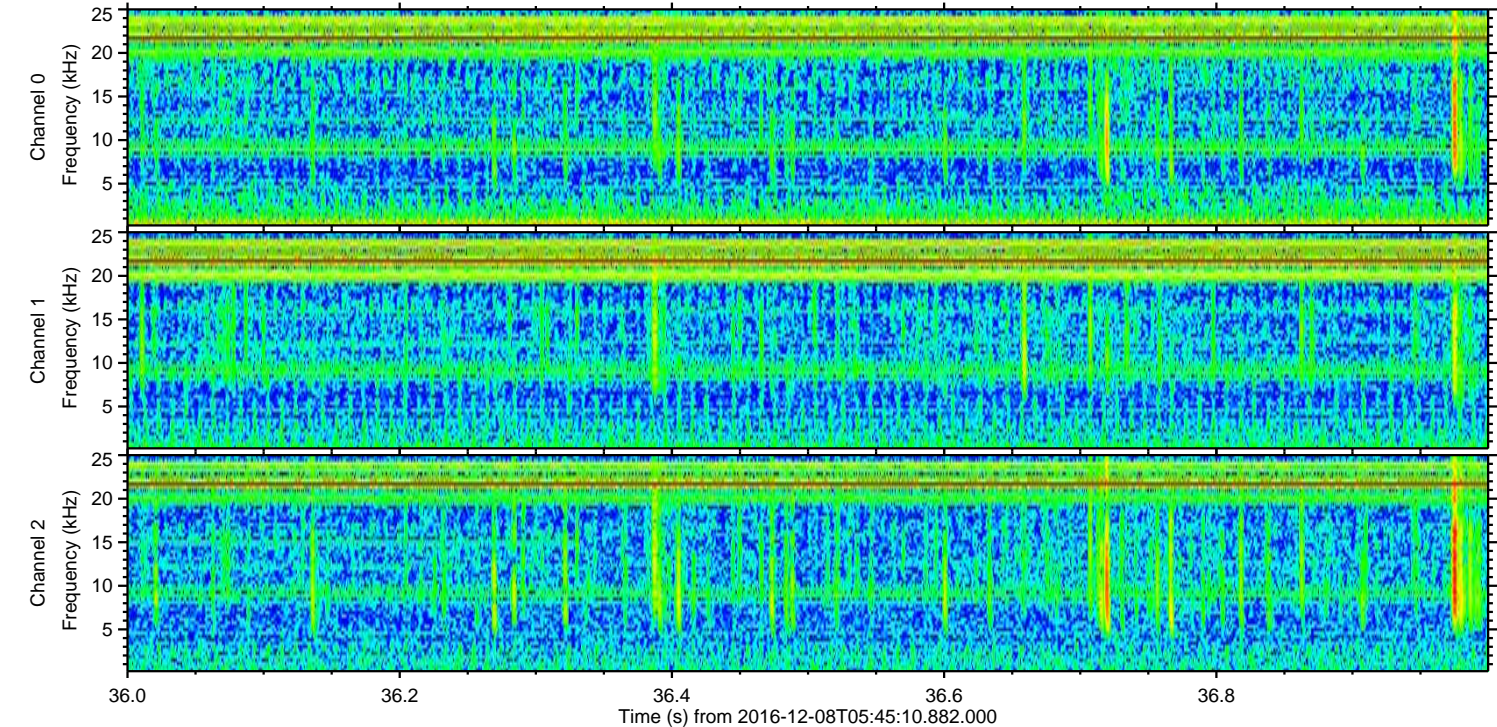
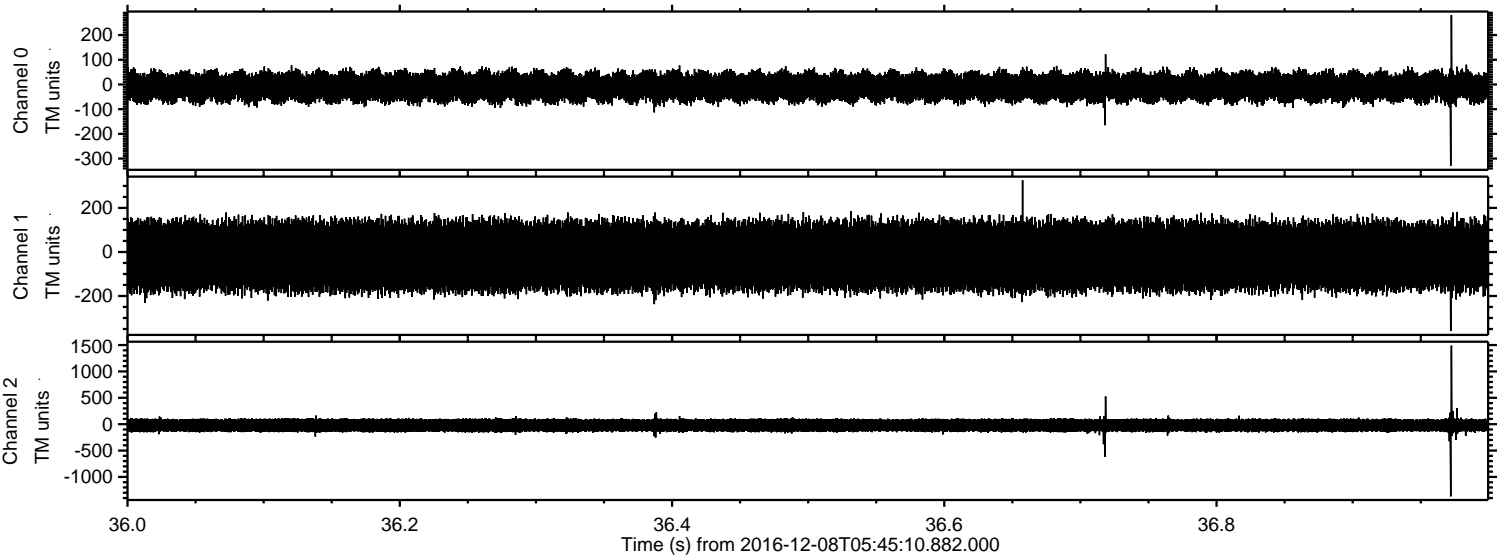
Channel 0
mn: -319
mx: 310
 μ : -9.9
 σ : 34.1

Channel 1
mn: -499
mx: 450
 μ : -18.3
 σ : 91.5

Channel 2
mn: -1198
mx: 1687
 μ : -21.8
 σ : 79.6

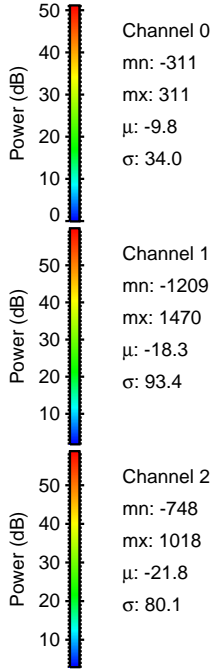
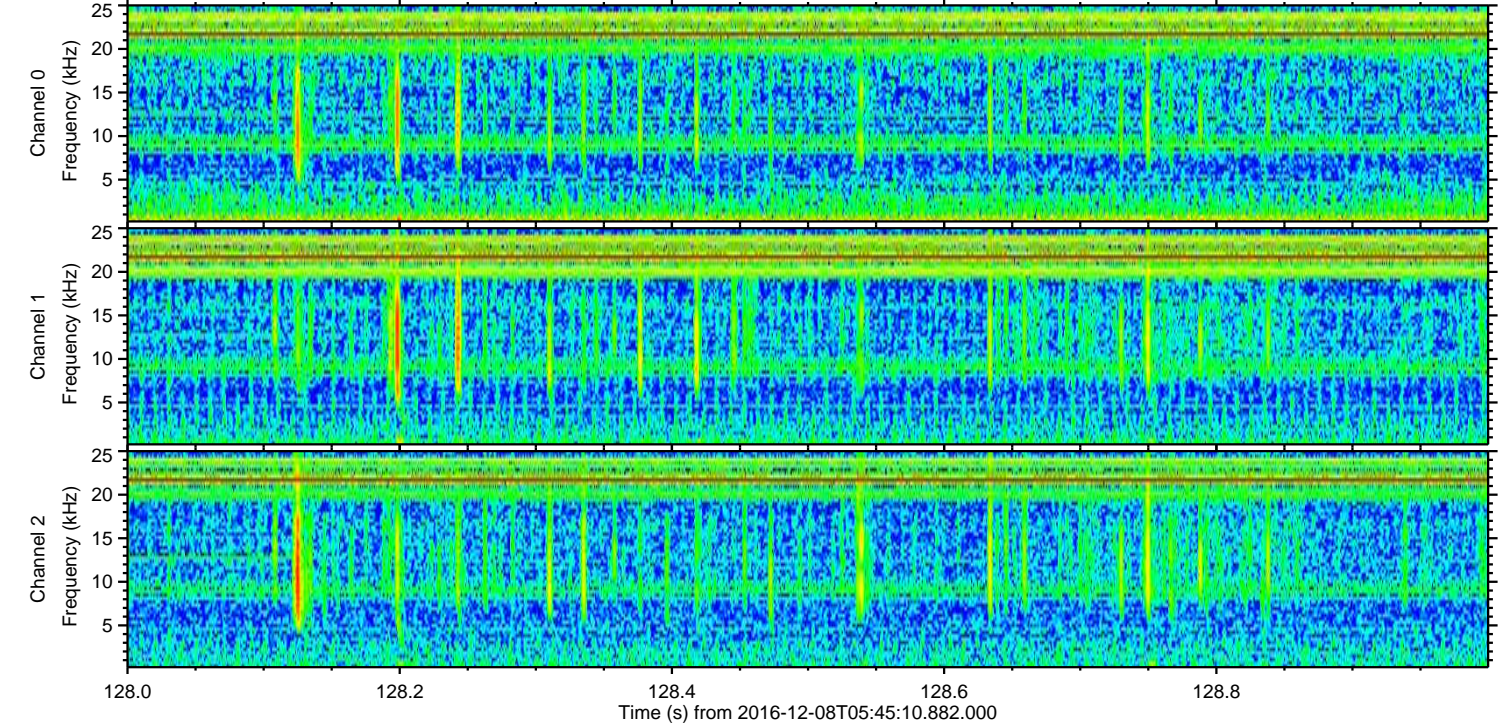
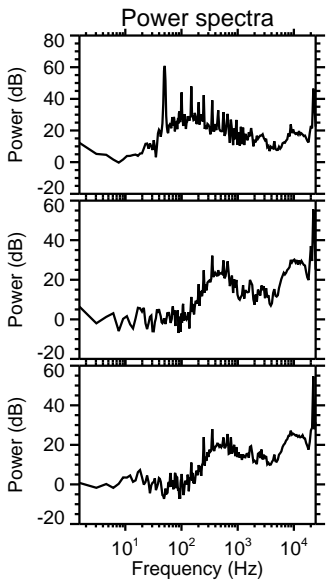
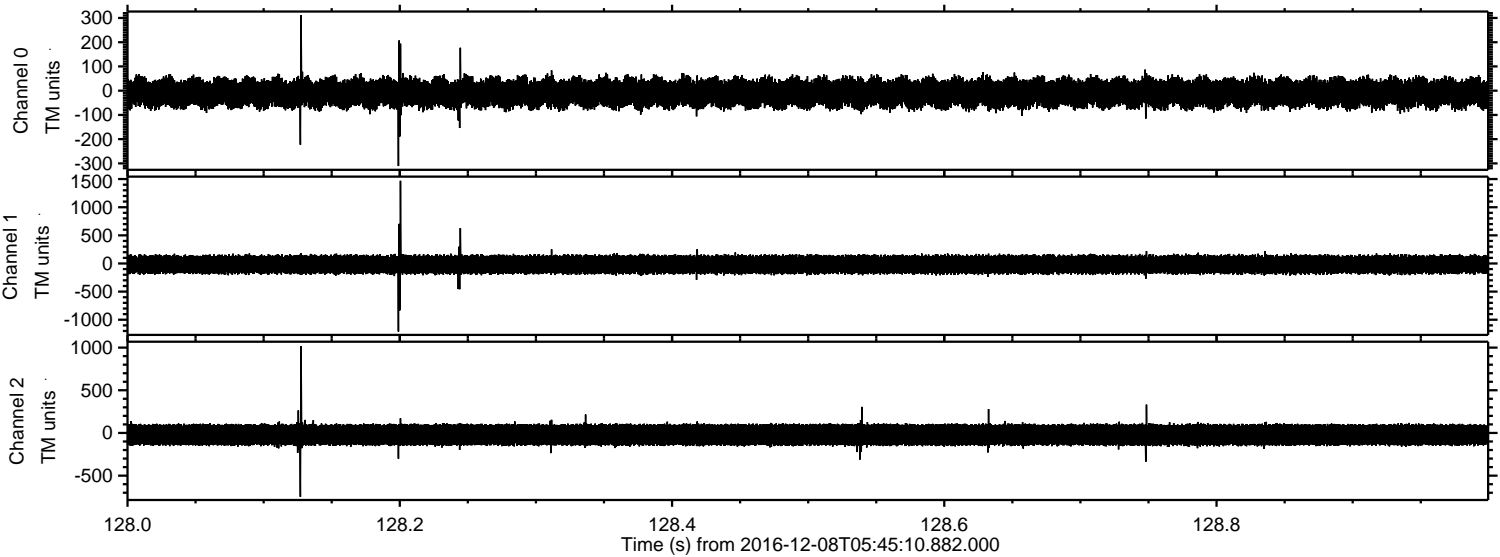
ELMAVAN 3D WAVEFORMS (Measured data sampled at 50 kHz) 51000 packets of 144 samples from 2016-12-08T05:45:10.882.000. Part 37/147

Processed Thu Dec 8 06:53:22 2016 by ELM ver.2012-10-06 from 001__elm20161208_054509__dat00.bin



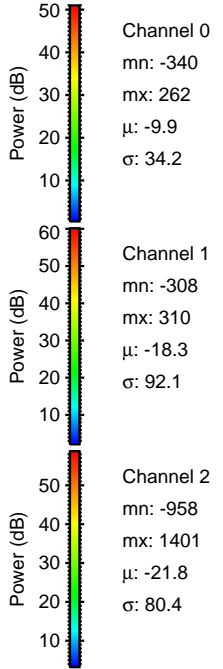
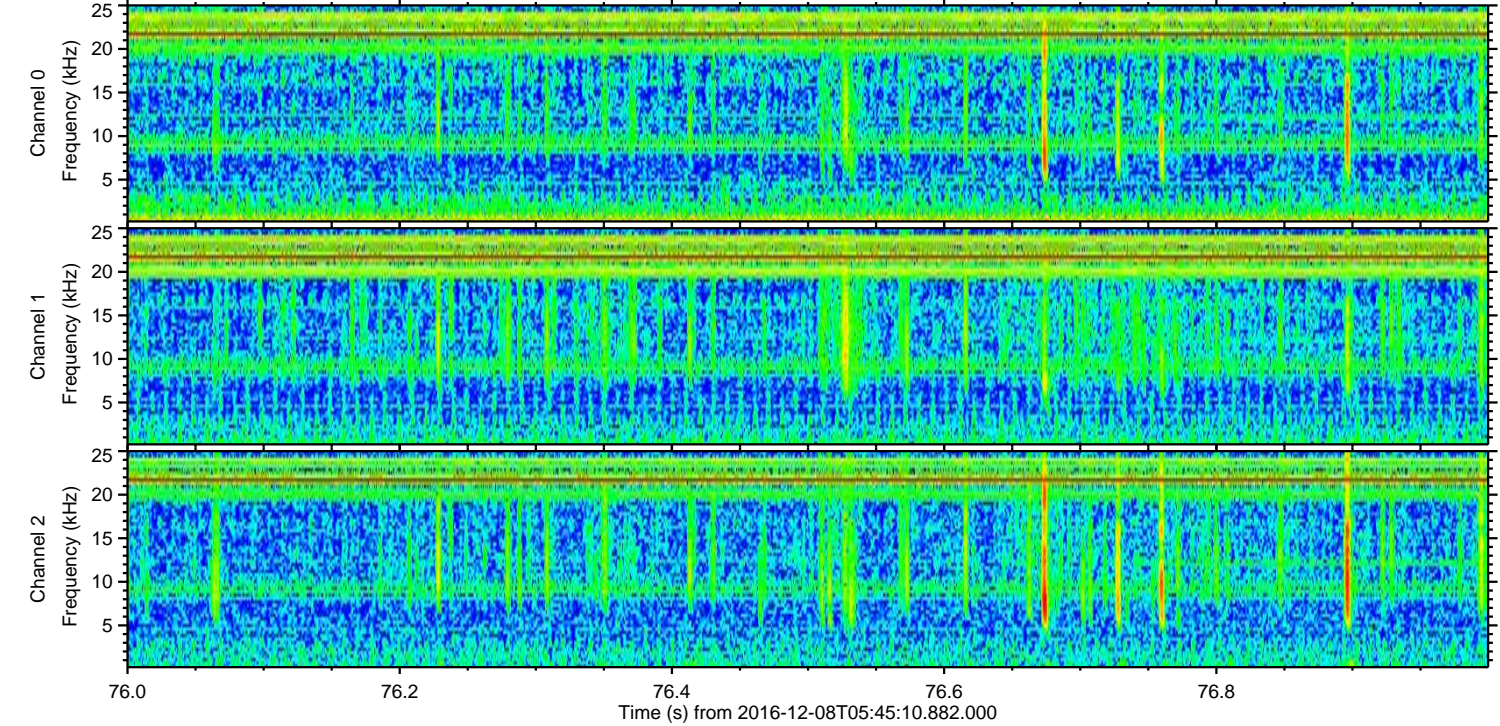
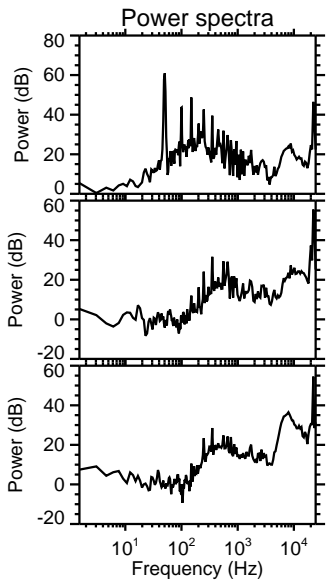
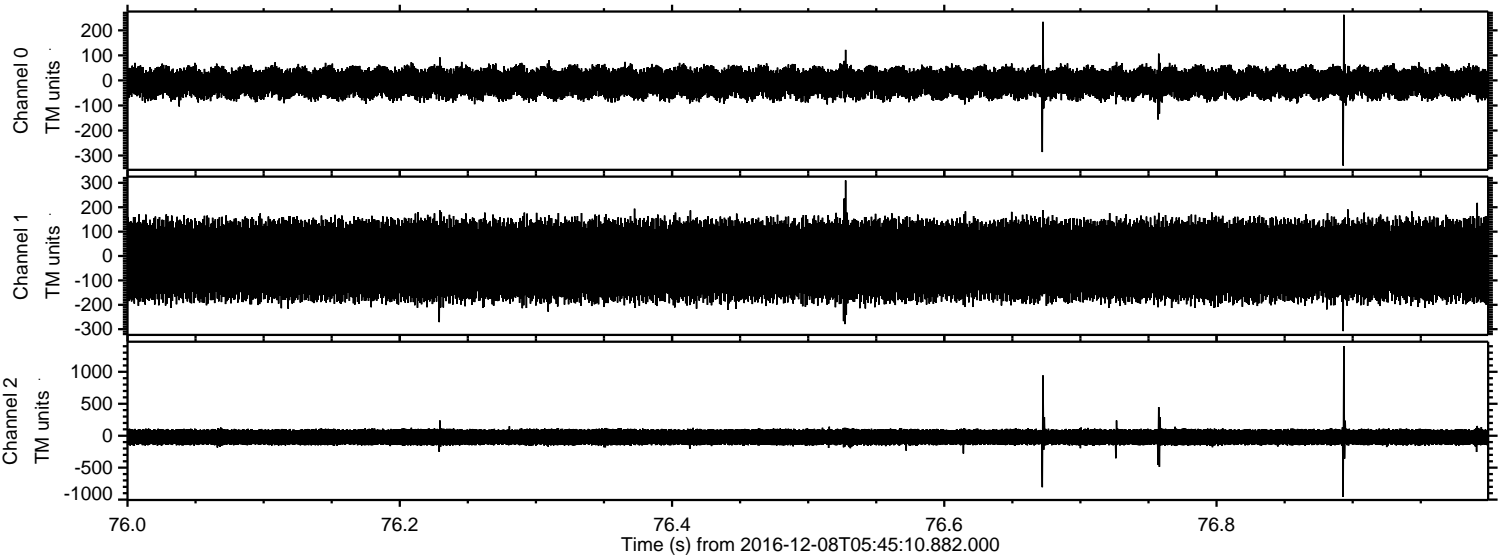
ELMAVAN 3D WAVEFORMS (Measured data sampled at 50 kHz) 51000 packets of 144 samples from 2016-12-08T05:45:10.882.000. Part 129/147

Processed Thu Dec 8 06:53:23 2016 by ELM ver.2012-10-06 from 001__elm20161208_054509__dat00.bin



ELMAVAN 3D WAVEFORMS (Measured data sampled at 50 kHz) 51000 packets of 144 samples from 2016-12-08T05:45:10.882.000. Part 77/147

Processed Thu Dec 8 06:53:24 2016 by ELM ver.2012-10-06 from 001__elm20161208_054509__dat00.bin



ELMAVAN 3D WAVEFORMS (Measured data sampled at 50 kHz) 51000 packets of 144 samples from 2016-12-08T05:45:10.882.000. Part 24/147

Processed Thu Dec 8 06:53:25 2016 by ELM ver.2012-10-06 from 001__elm20161208_054509__dat00.bin

