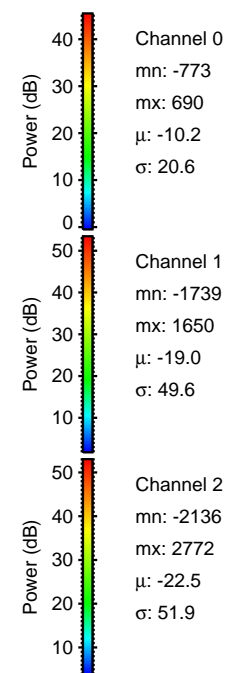
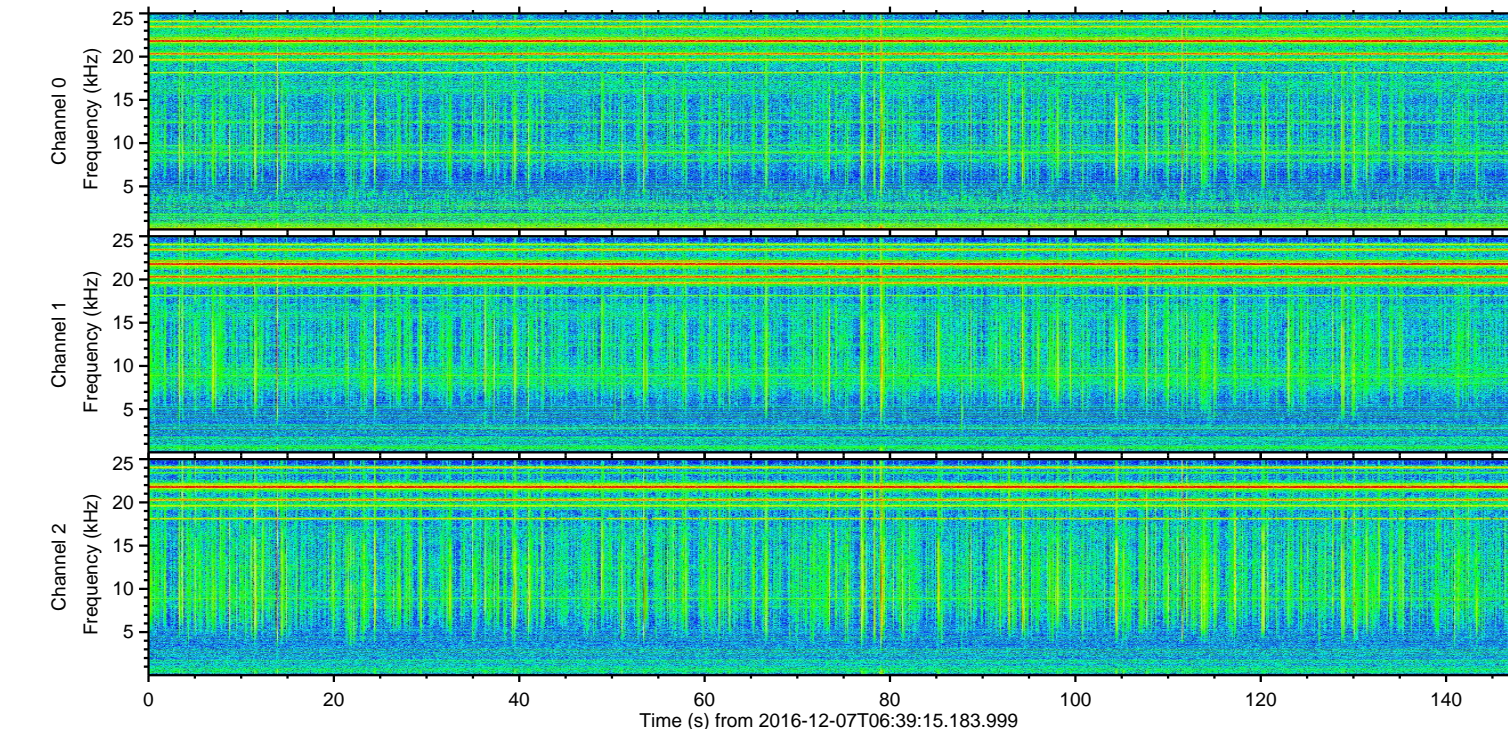
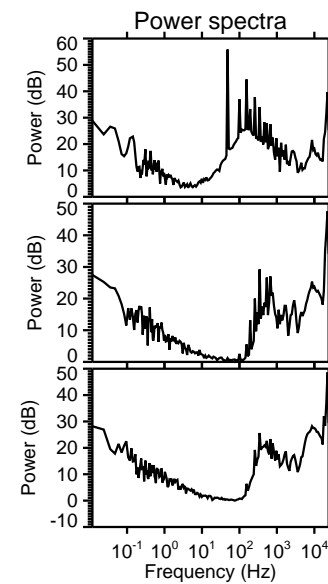
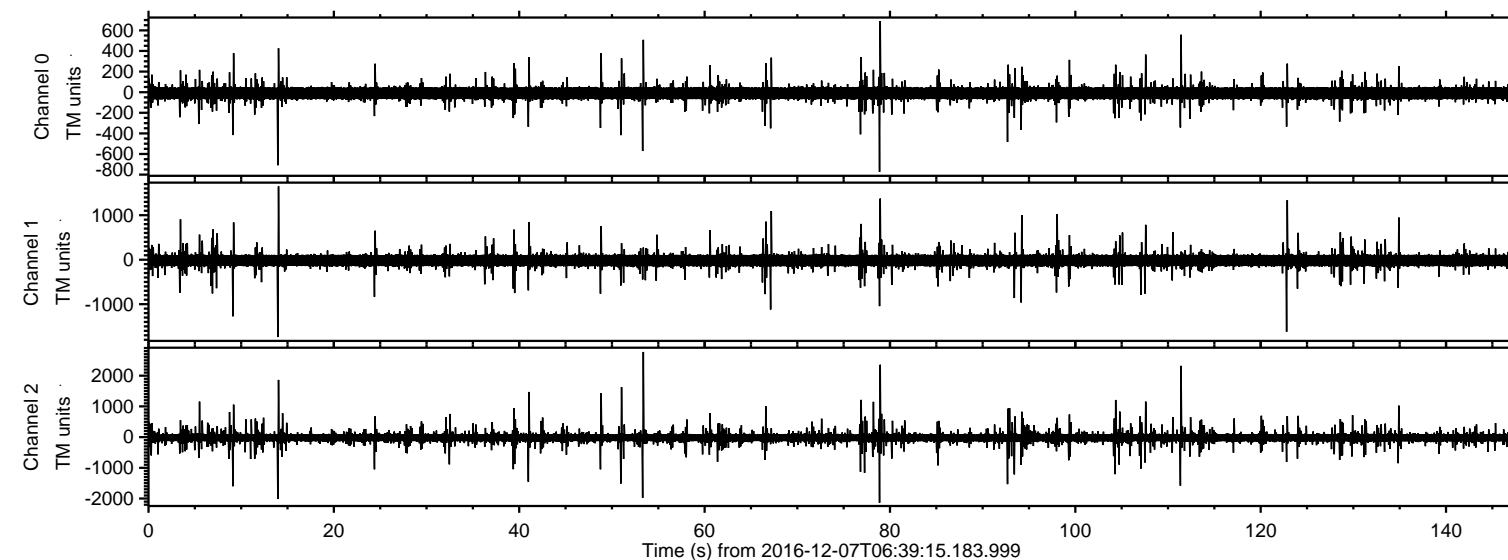


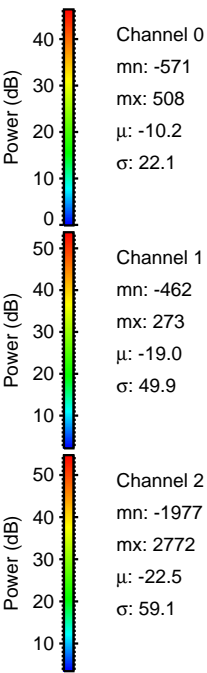
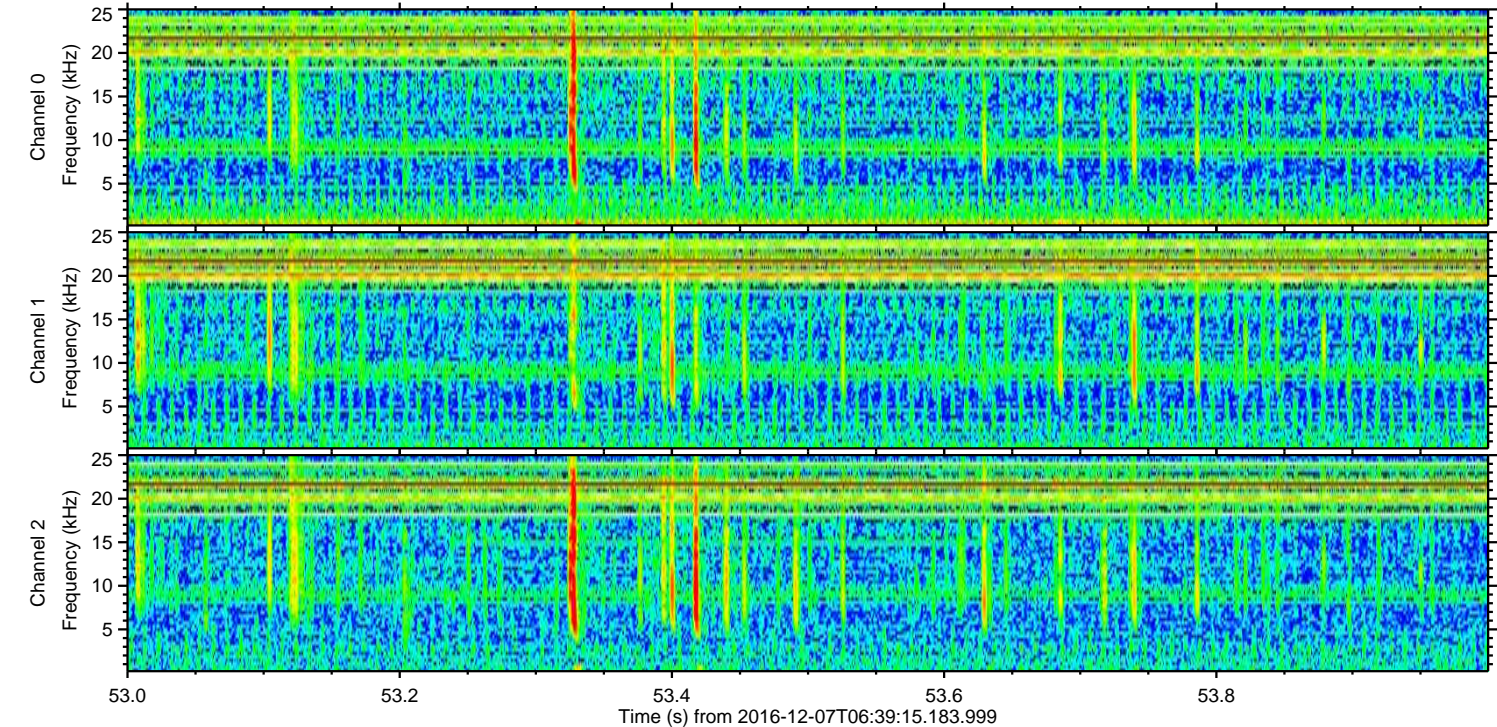
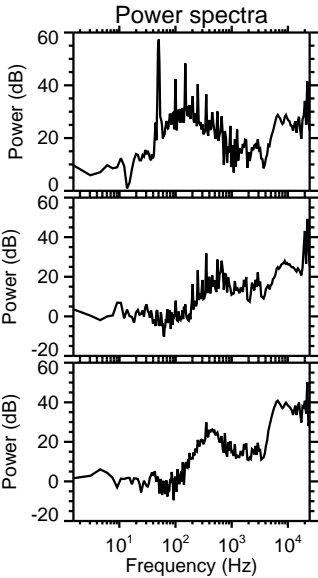
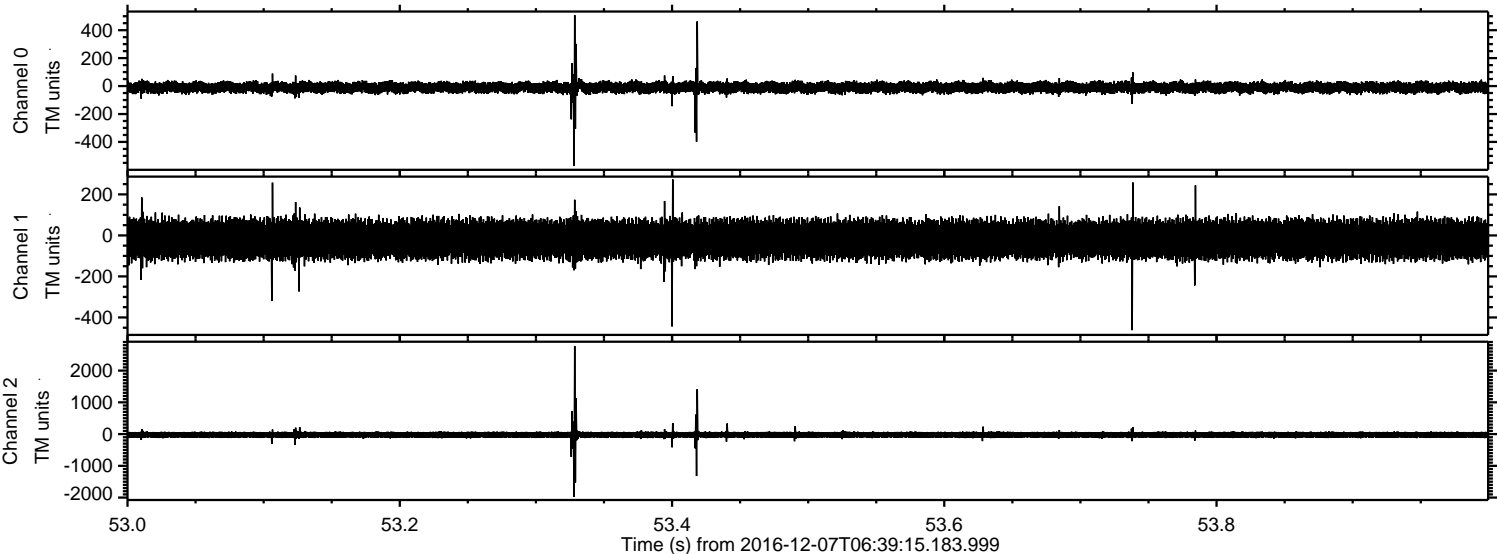
ELMAVAN 3D WAVEFORMS (Measured data sampled at 50 kHz) 51000 packets of 144 samples from 2016-12-07T06:39:15.183.999.

Processed Wed Dec 7 07:46:35 2016 by ELM ver.2012-10-06 from 001__elm20161207_063914__dat00.bin



ELMAVAN 3D WAVEFORMS (Measured data sampled at 50 kHz) 51000 packets of 144 samples from 2016-12-07T06:39:15.183.999. Part 54/147

Processed Wed Dec 7 07:46:50 2016 by ELM ver.2012-10-06 from 001__elm20161207_063914__dat00.bin



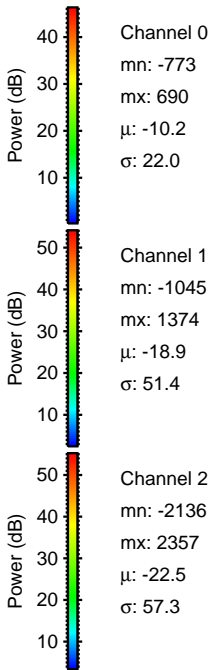
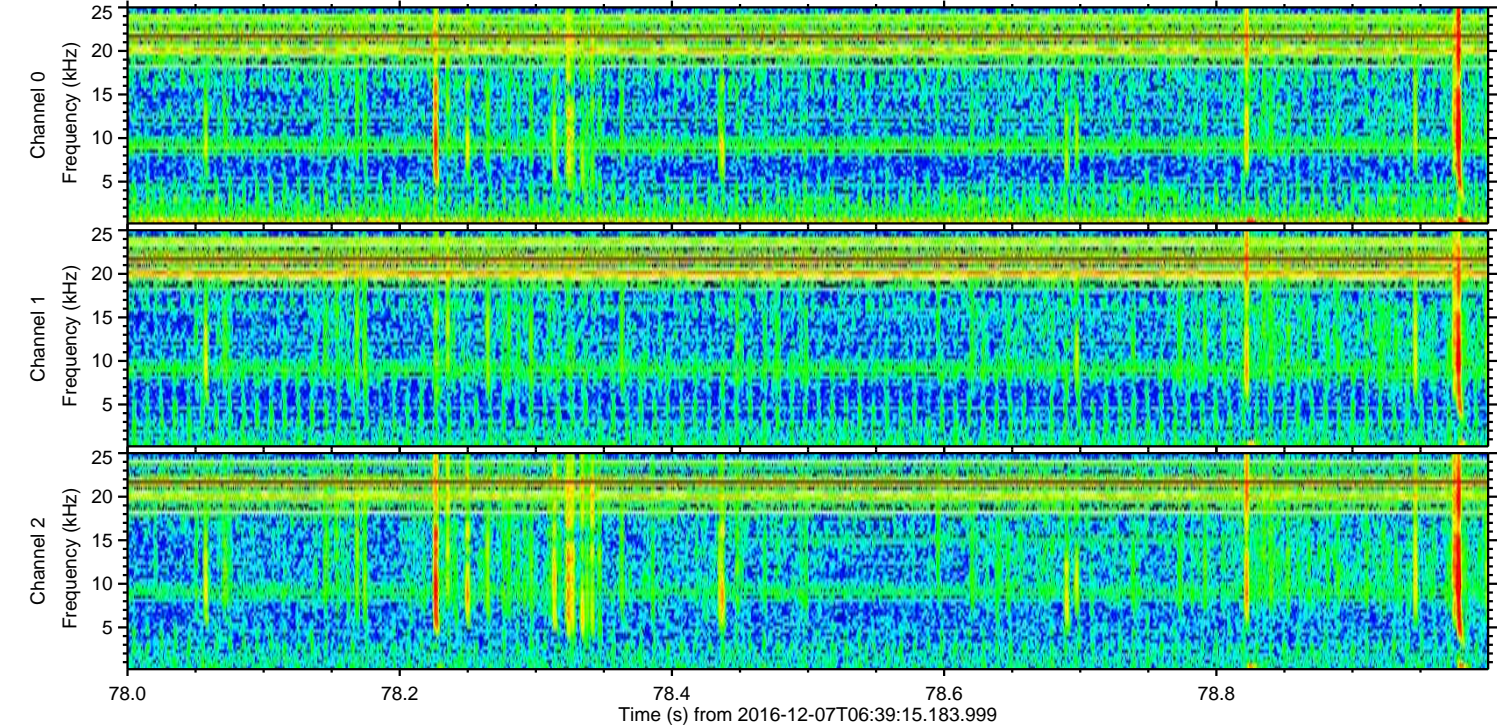
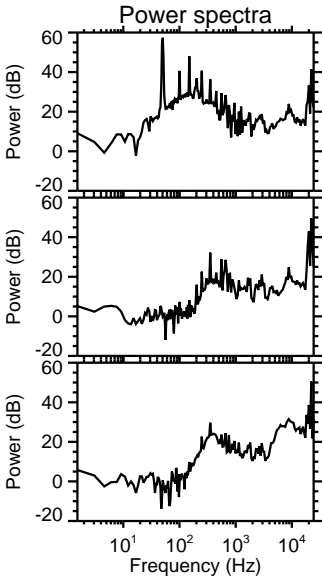
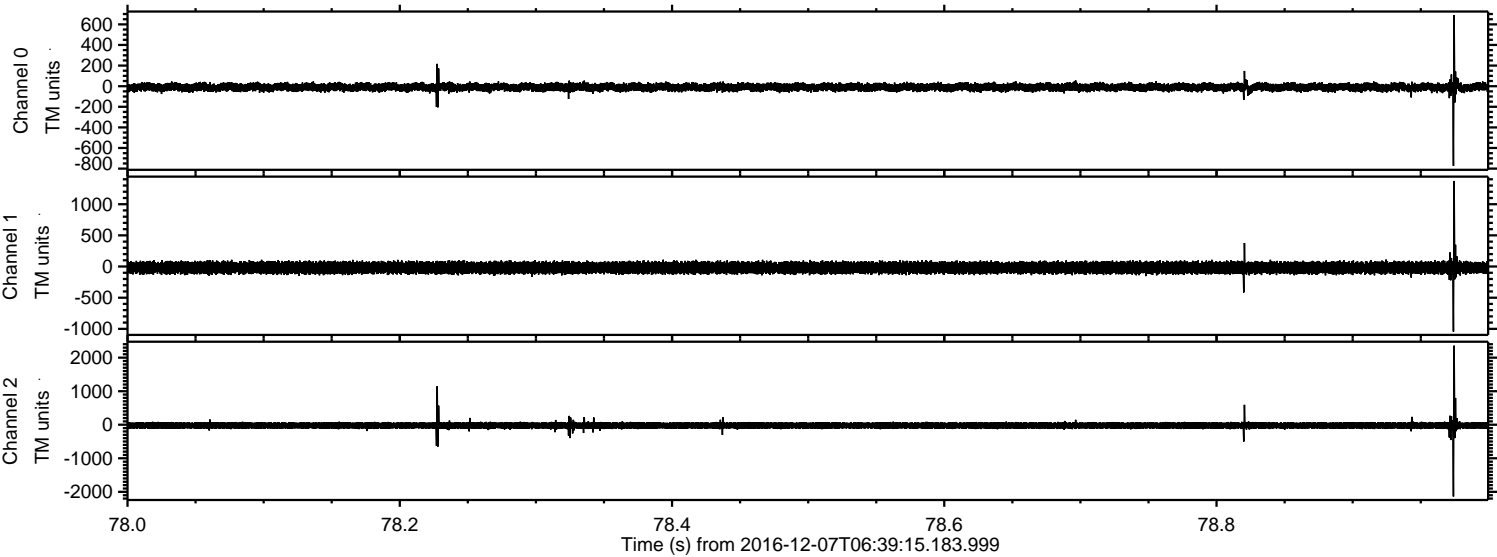
Channel 0
mn: -571
mx: 508
 μ : -10.2
 σ : 22.1

Channel 1
mn: -462
mx: 273
 μ : -19.0
 σ : 49.9

Channel 2
mn: -1977
mx: 2772
 μ : -22.5
 σ : 59.1

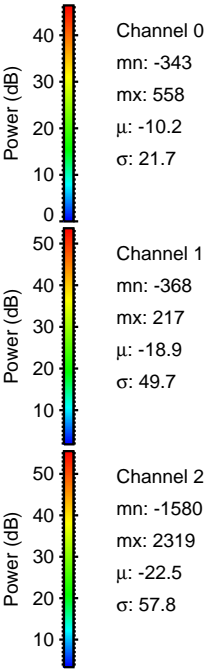
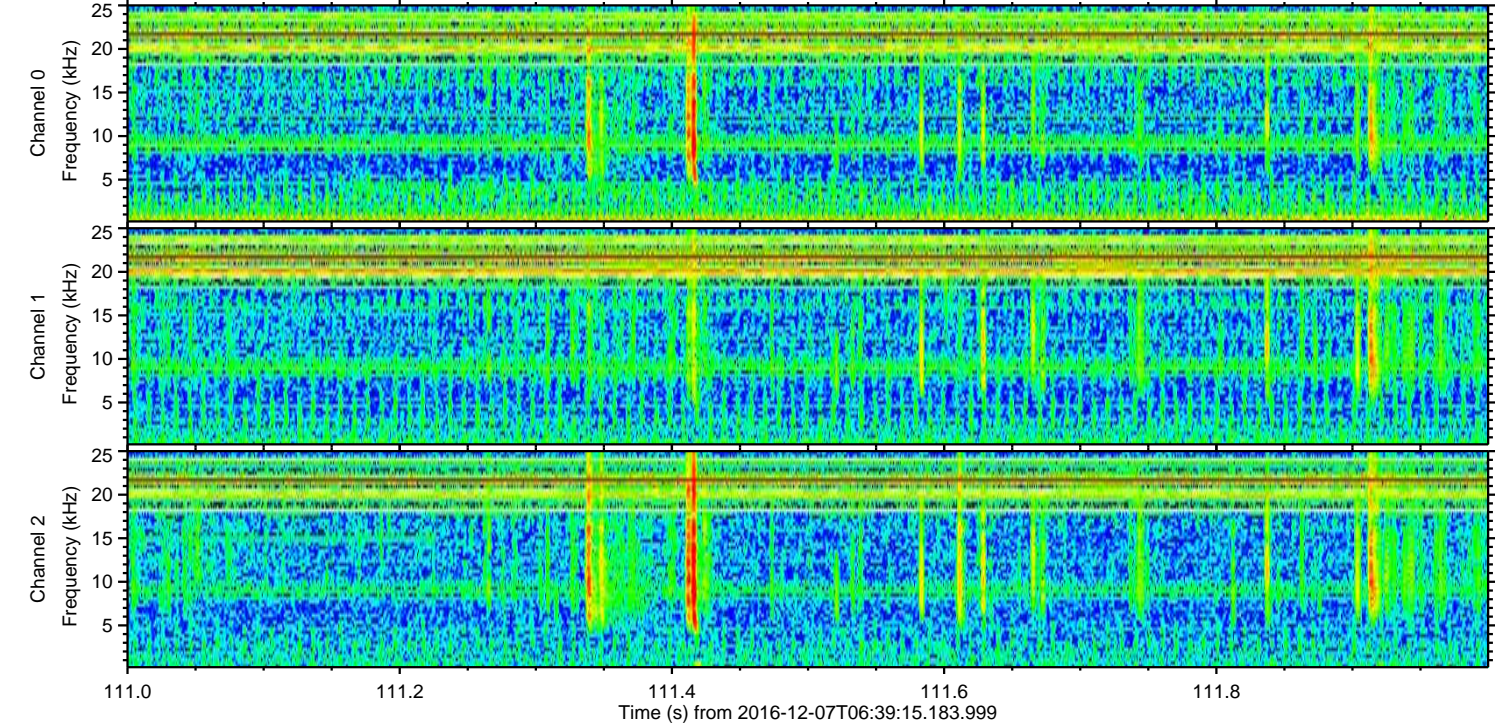
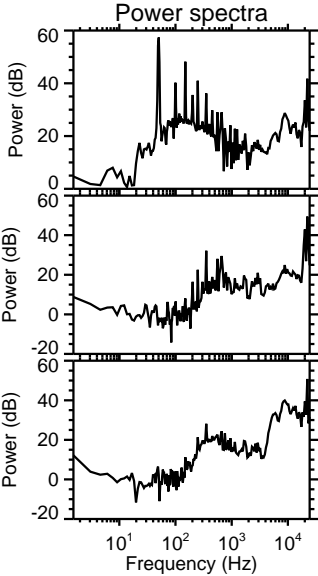
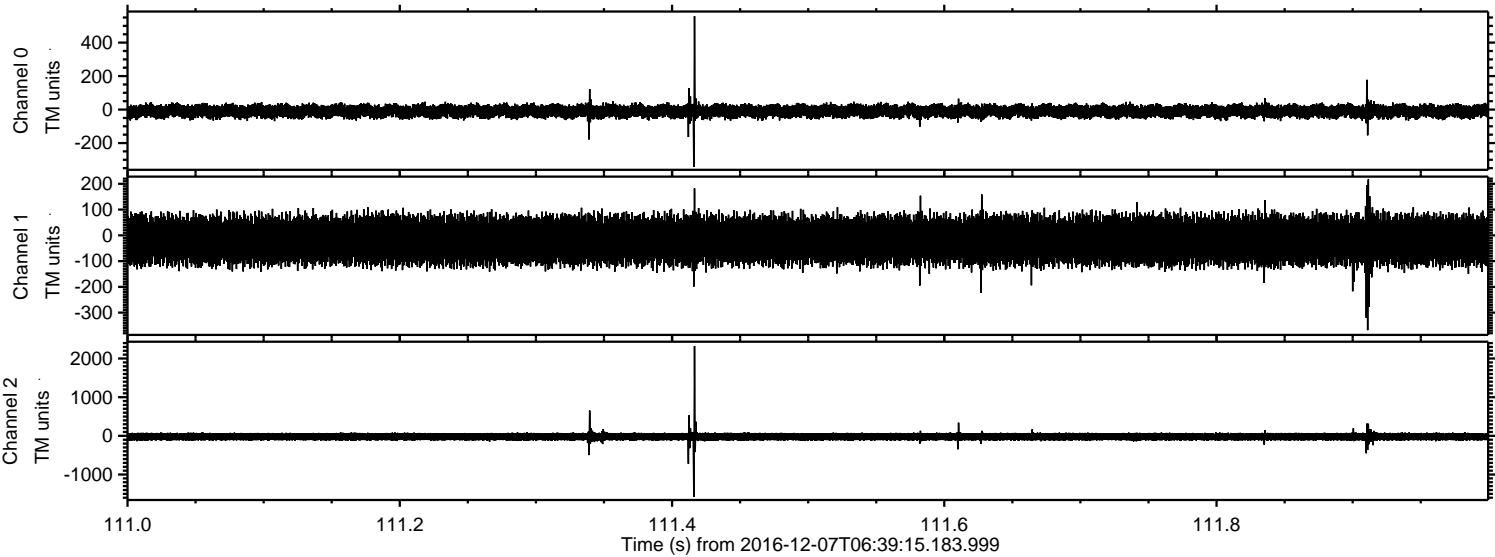
ELMAVAN 3D WAVEFORMS (Measured data sampled at 50 kHz) 51000 packets of 144 samples from 2016-12-07T06:39:15.183.999. Part 79/147

Processed Wed Dec 7 07:46:51 2016 by ELM ver.2012-10-06 from 001__elm20161207_063914__dat00.bin



ELMAVAN 3D WAVEFORMS (Measured data sampled at 50 kHz) 51000 packets of 144 samples from 2016-12-07T06:39:15.183.999. Part 112/147

Processed Wed Dec 7 07:46:52 2016 by ELM ver.2012-10-06 from 001__elm20161207_063914__dat00.bin



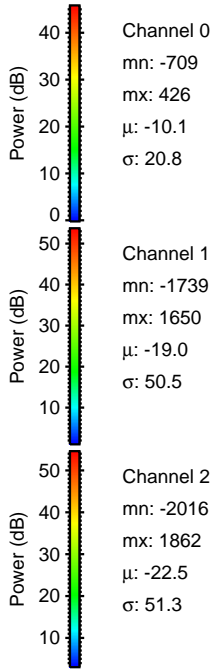
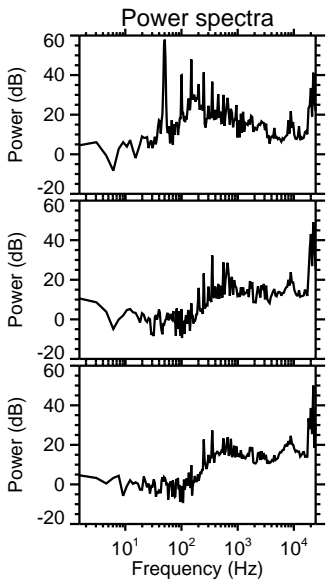
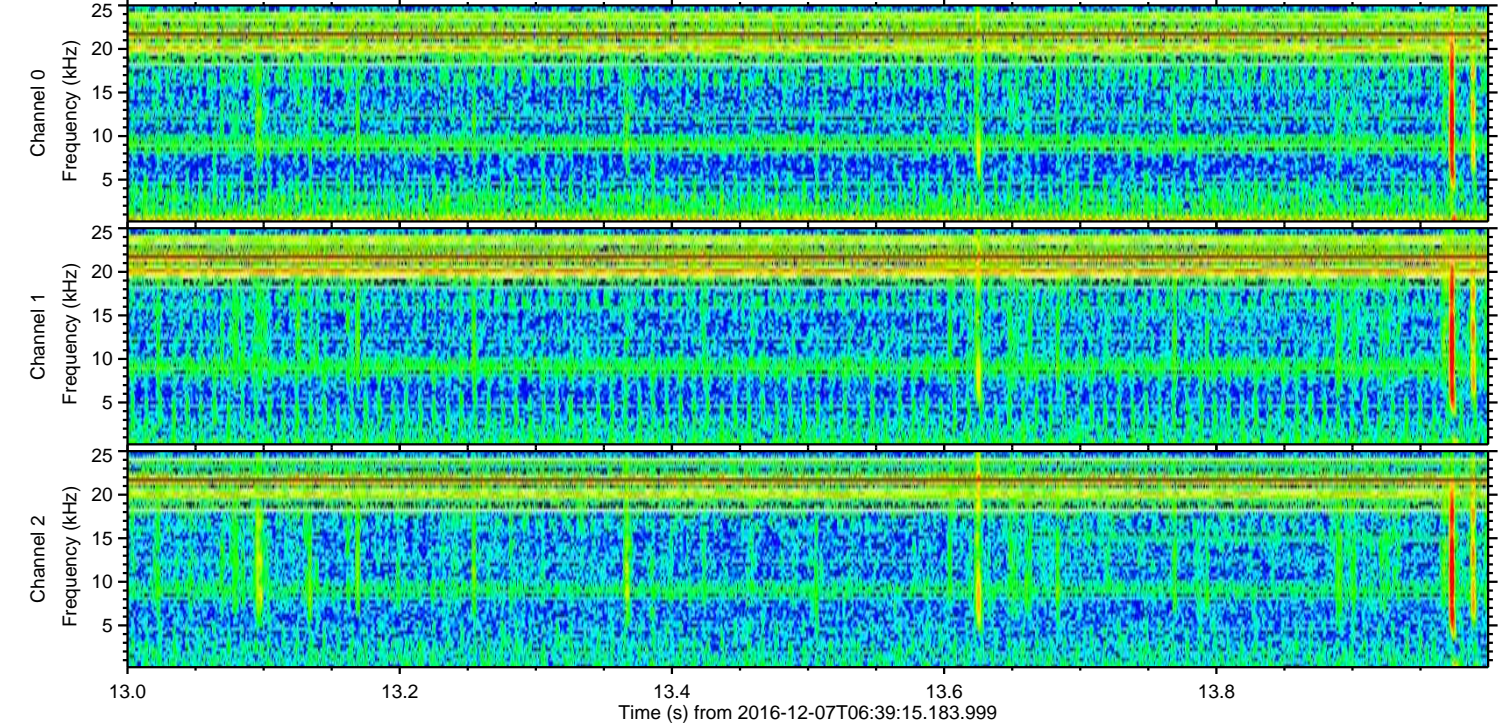
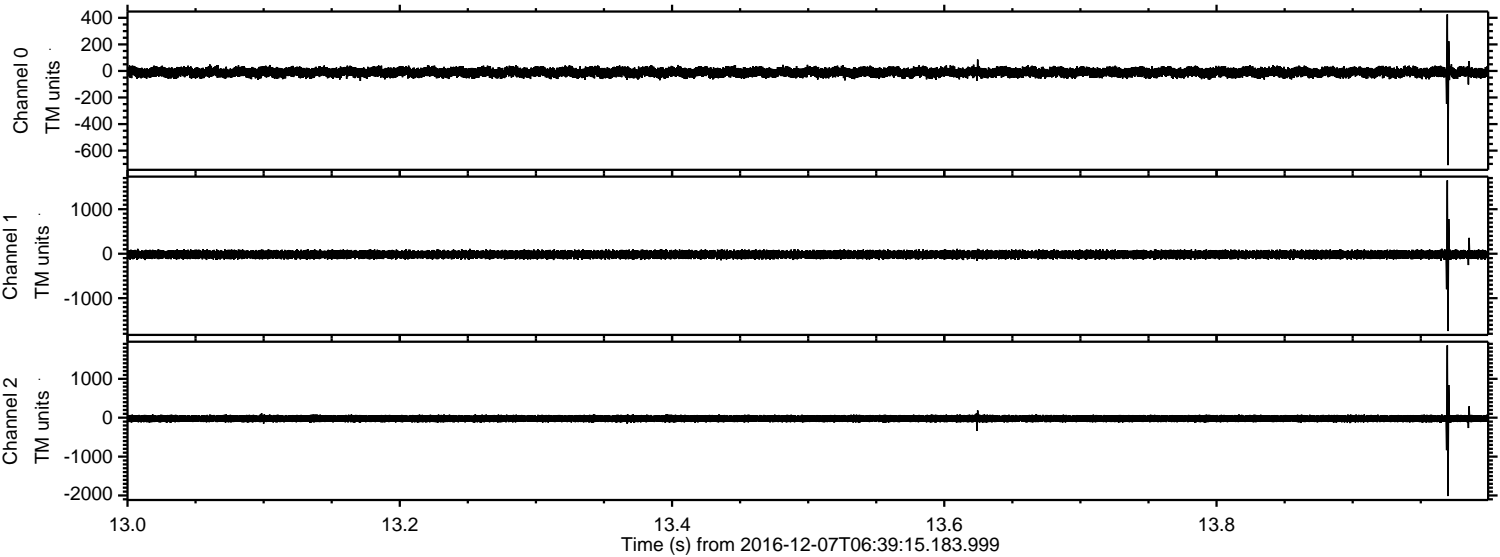
Channel 0
mn: -343
mx: 558
 μ : -10.2
 σ : 21.7

Channel 1
mn: -368
mx: 217
 μ : -18.9
 σ : 49.7

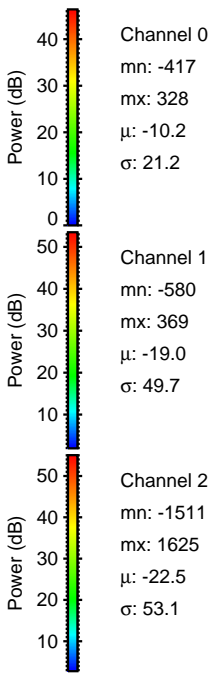
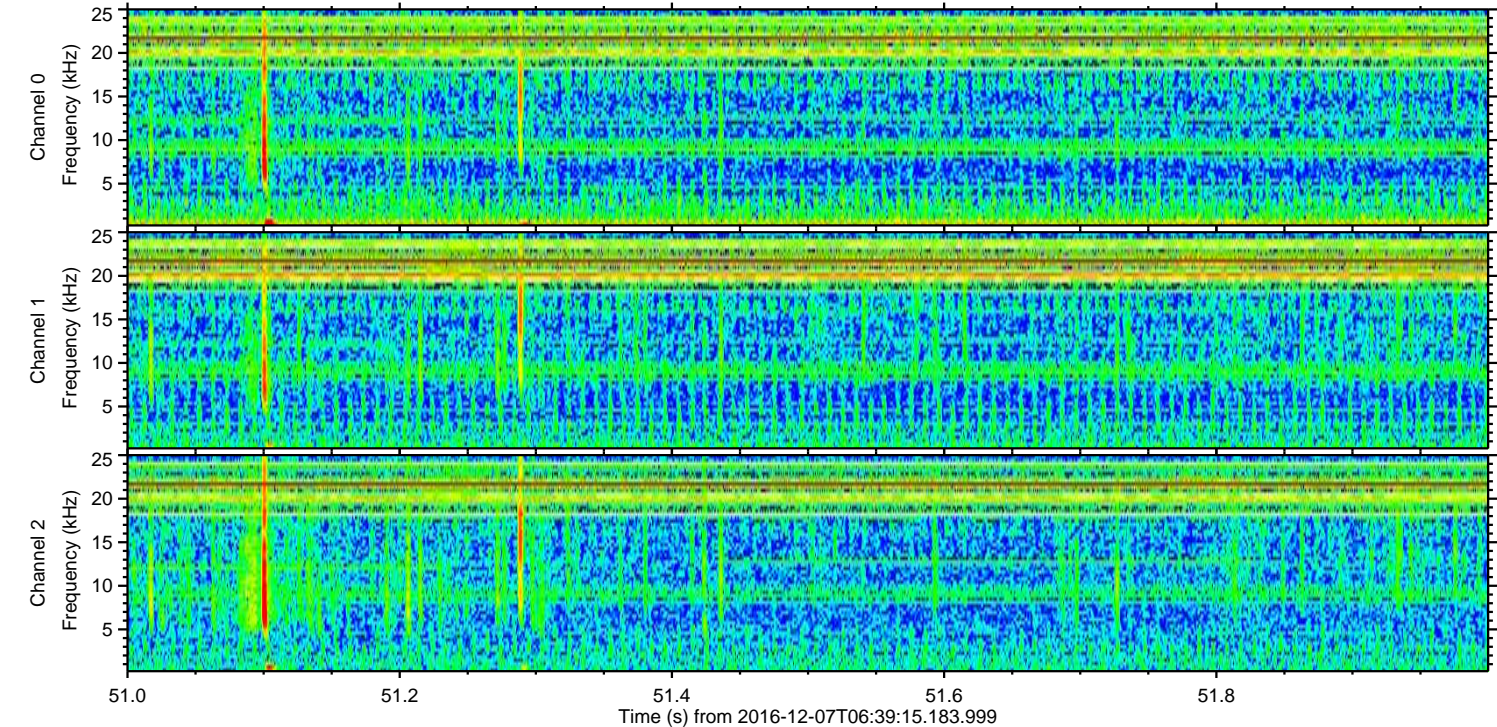
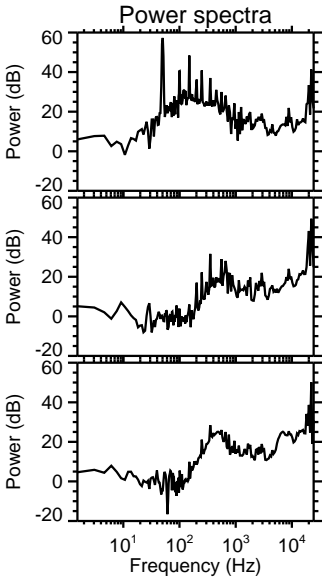
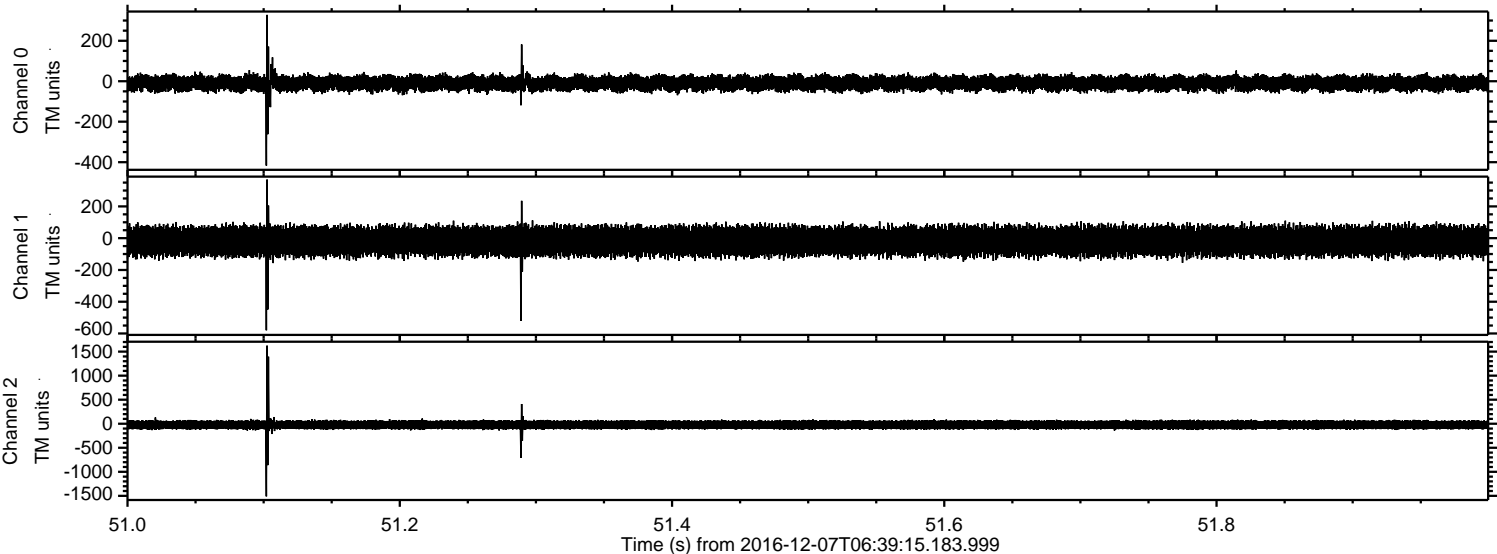
Channel 2
mn: -1580
mx: 2319
 μ : -22.5
 σ : 57.8

ELMAVAN 3D WAVEFORMS (Measured data sampled at 50 kHz) 51000 packets of 144 samples from 2016-12-07T06:39:15.183.999. Part 14/147

Processed Wed Dec 7 07:46:53 2016 by ELM ver.2012-10-06 from 001__elm20161207_063914__dat00.bin

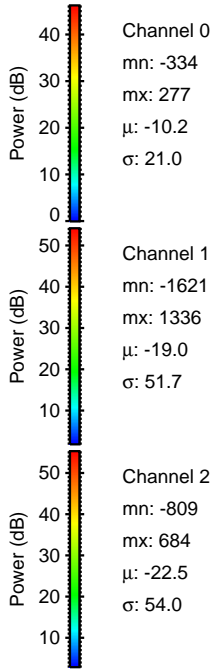
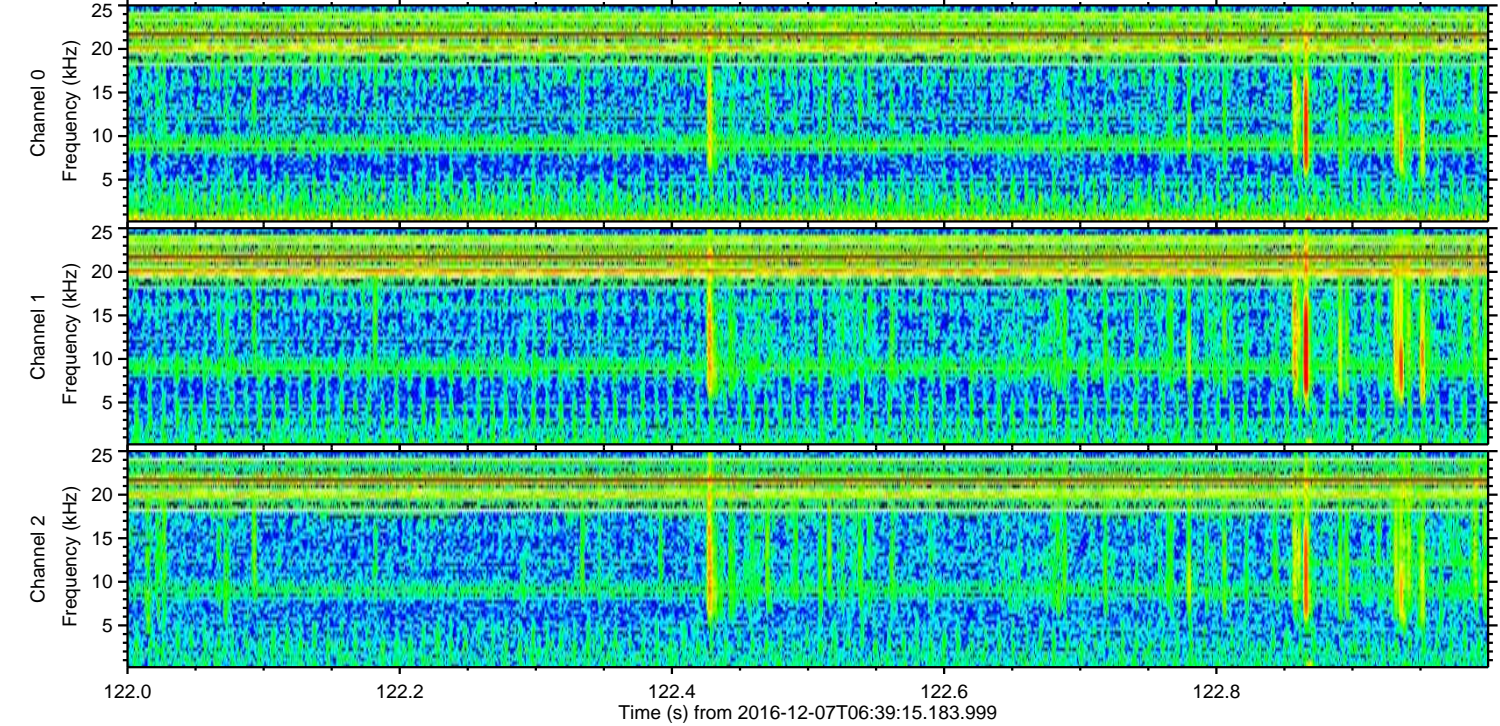
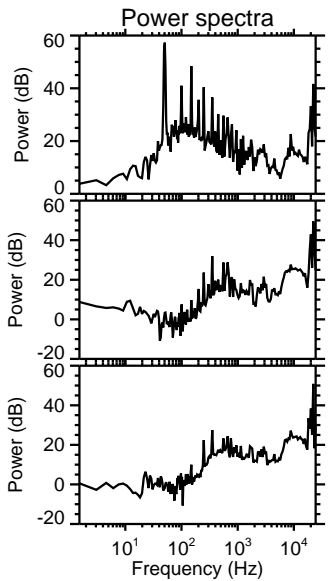
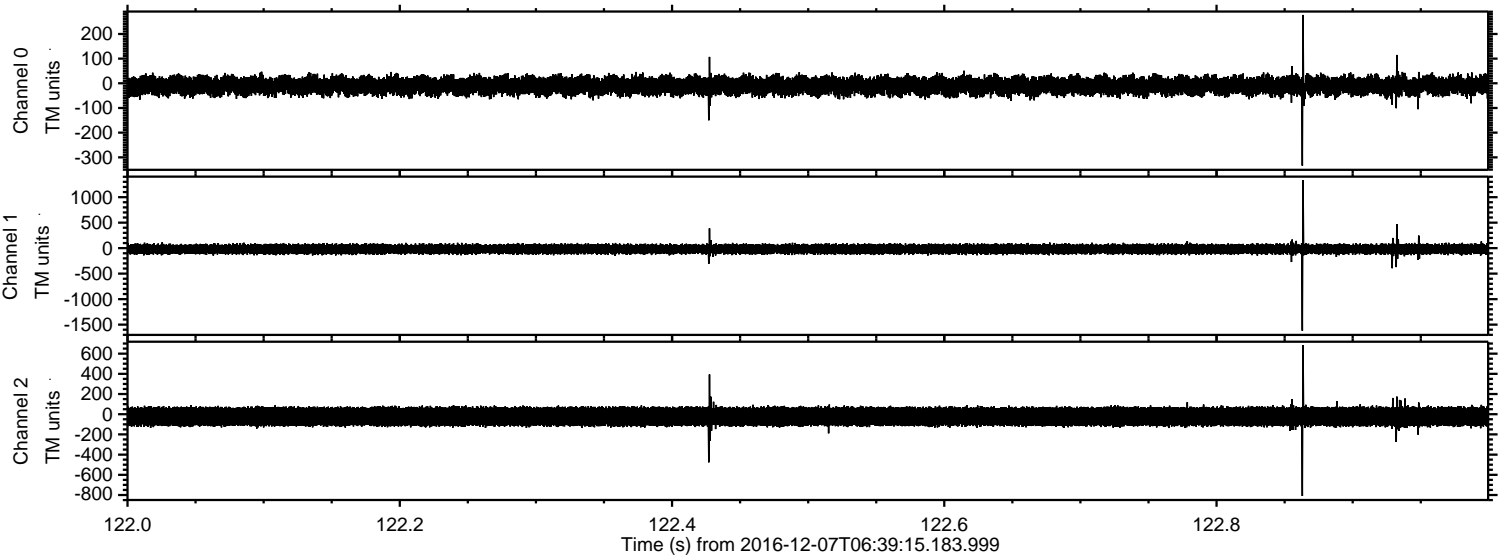


Processed Wed Dec 7 07:46:54 2016 by ELM ver.2012-10-06 from 001__elm20161207_063914__dat00.bin



ELMAVAN 3D WAVEFORMS (Measured data sampled at 50 kHz) 51000 packets of 144 samples from 2016-12-07T06:39:15.183.999. Part 123/147

Processed Wed Dec 7 07:46:55 2016 by ELM ver.2012-10-06 from 001__elm20161207_063914__dat00.bin

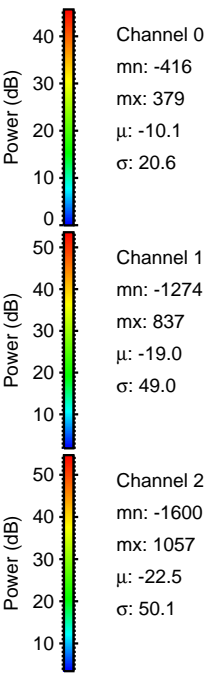
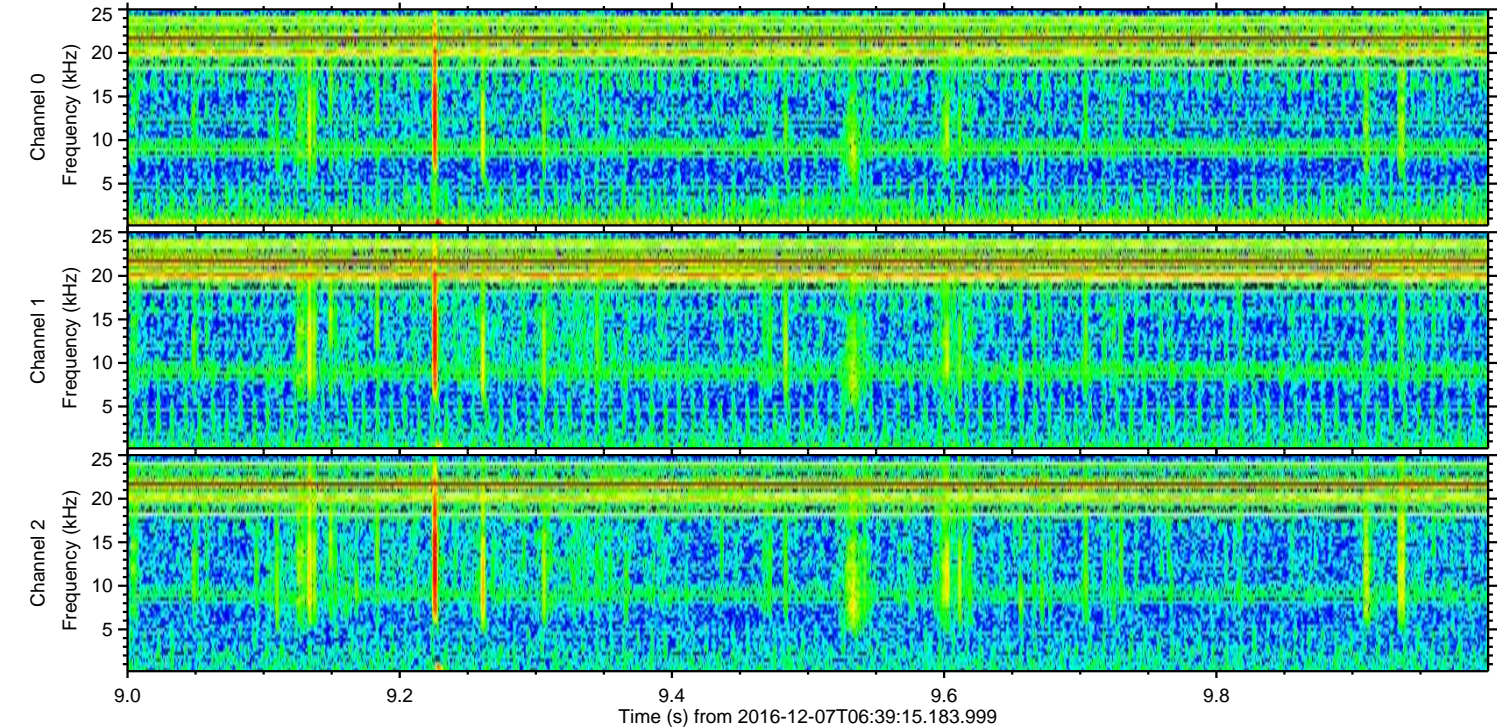
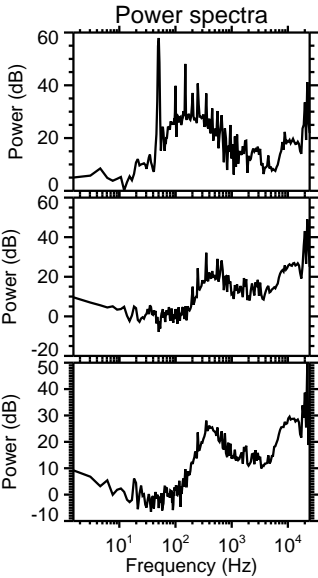
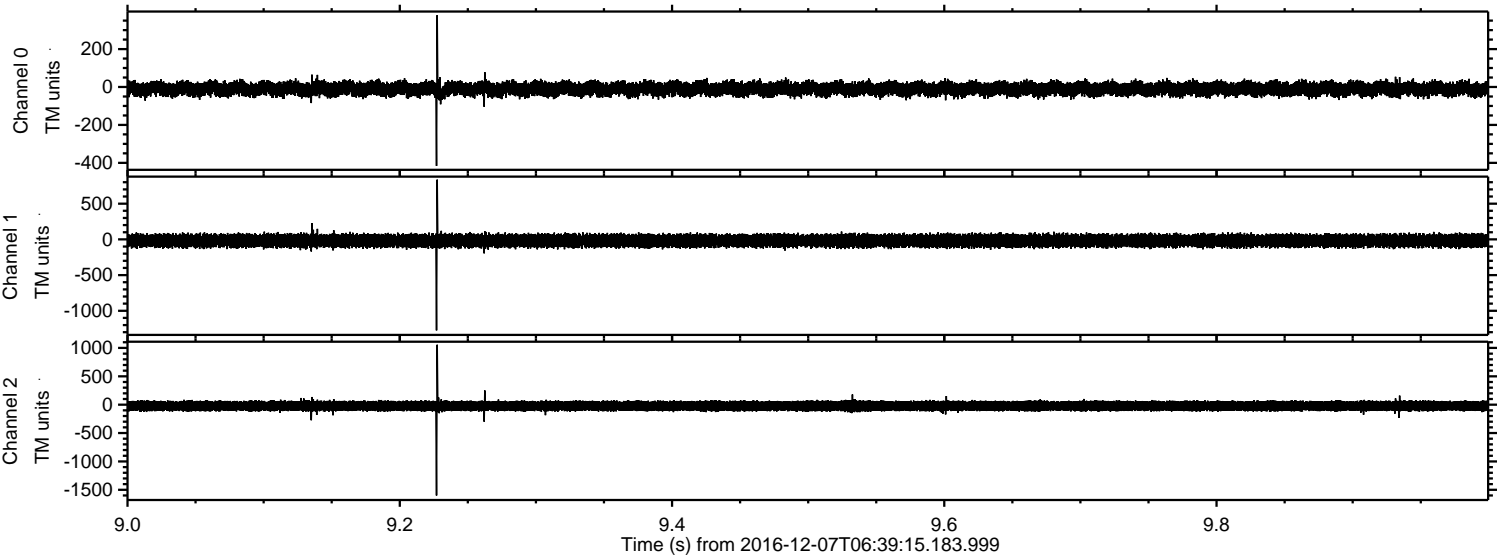


Channel 0
mn: -334
mx: 277
 μ : -10.2
 σ : 21.0

Channel 1
mn: -1621
mx: 1336
 μ : -19.0
 σ : 51.7

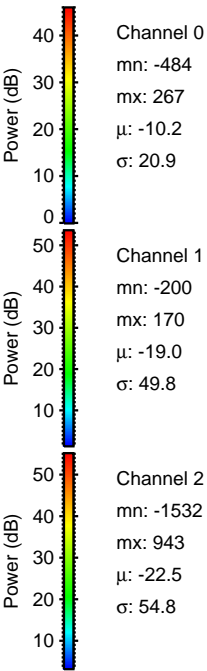
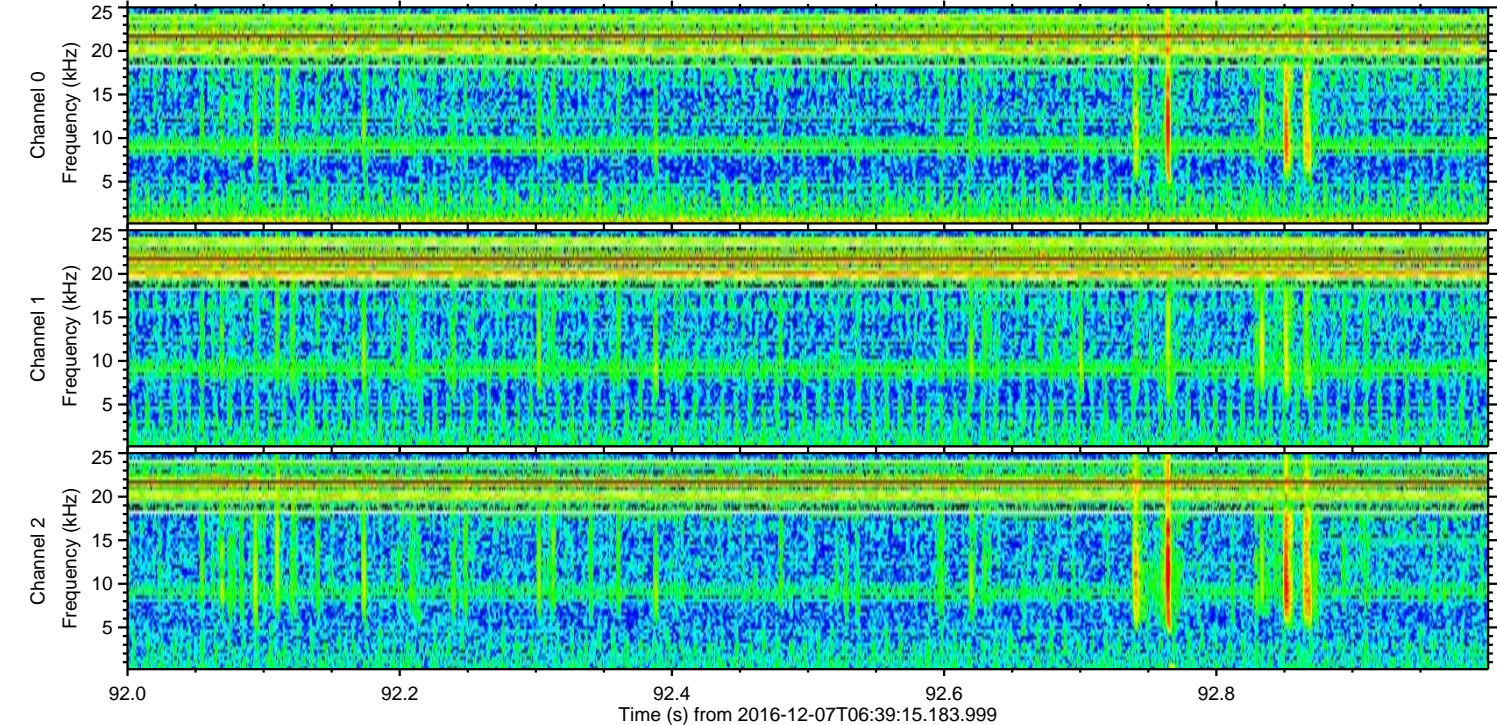
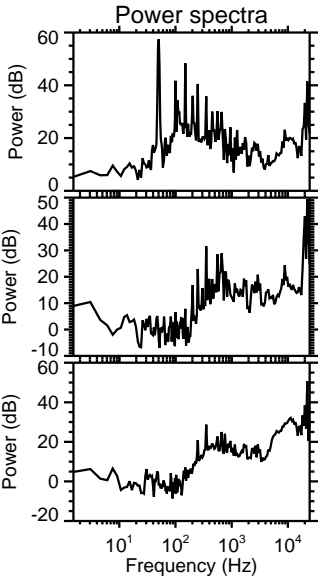
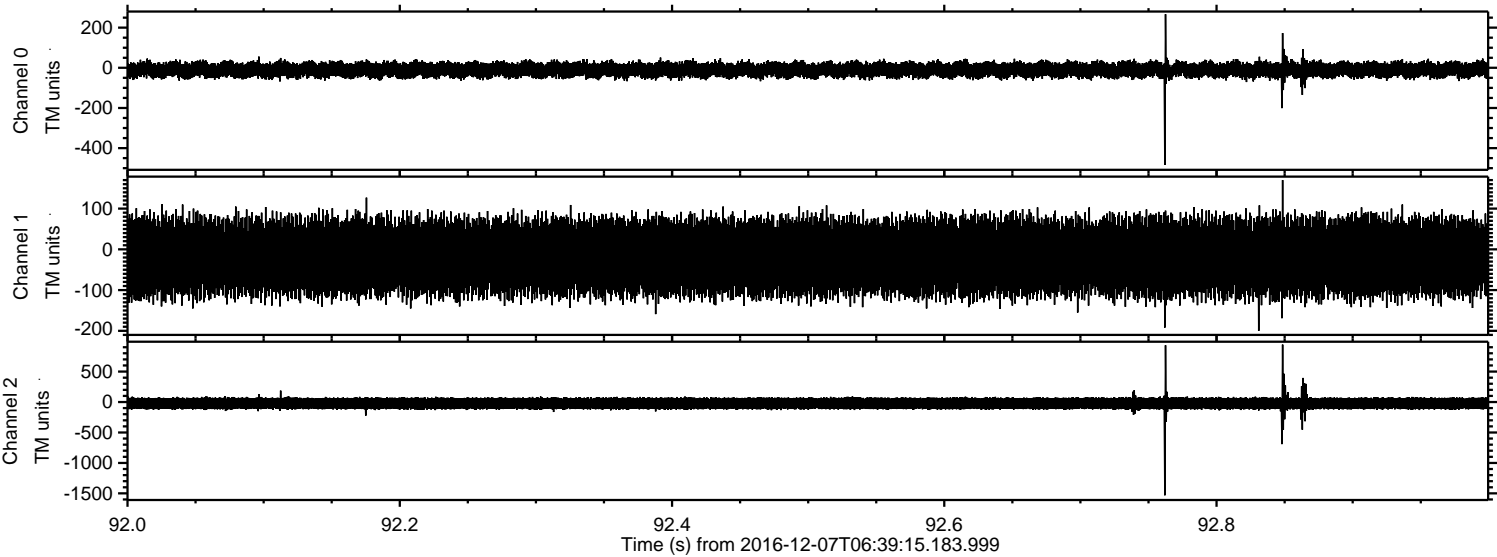
Channel 2
mn: -809
mx: 684
 μ : -22.5
 σ : 54.0

Processed Wed Dec 7 07:46:56 2016 by ELM ver.2012-10-06 from 001__elm20161207_063914__dat00.bin



ELMAVAN 3D WAVEFORMS (Measured data sampled at 50 kHz) 51000 packets of 144 samples from 2016-12-07T06:39:15.183.999. Part 93/147

Processed Wed Dec 7 07:46:57 2016 by ELM ver.2012-10-06 from 001__elm20161207_063914__dat00.bin

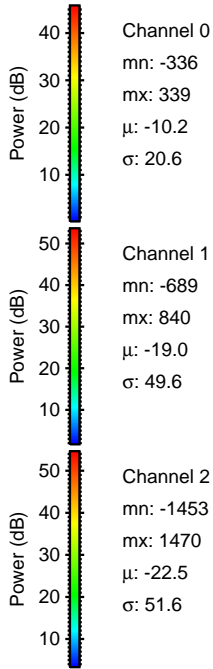
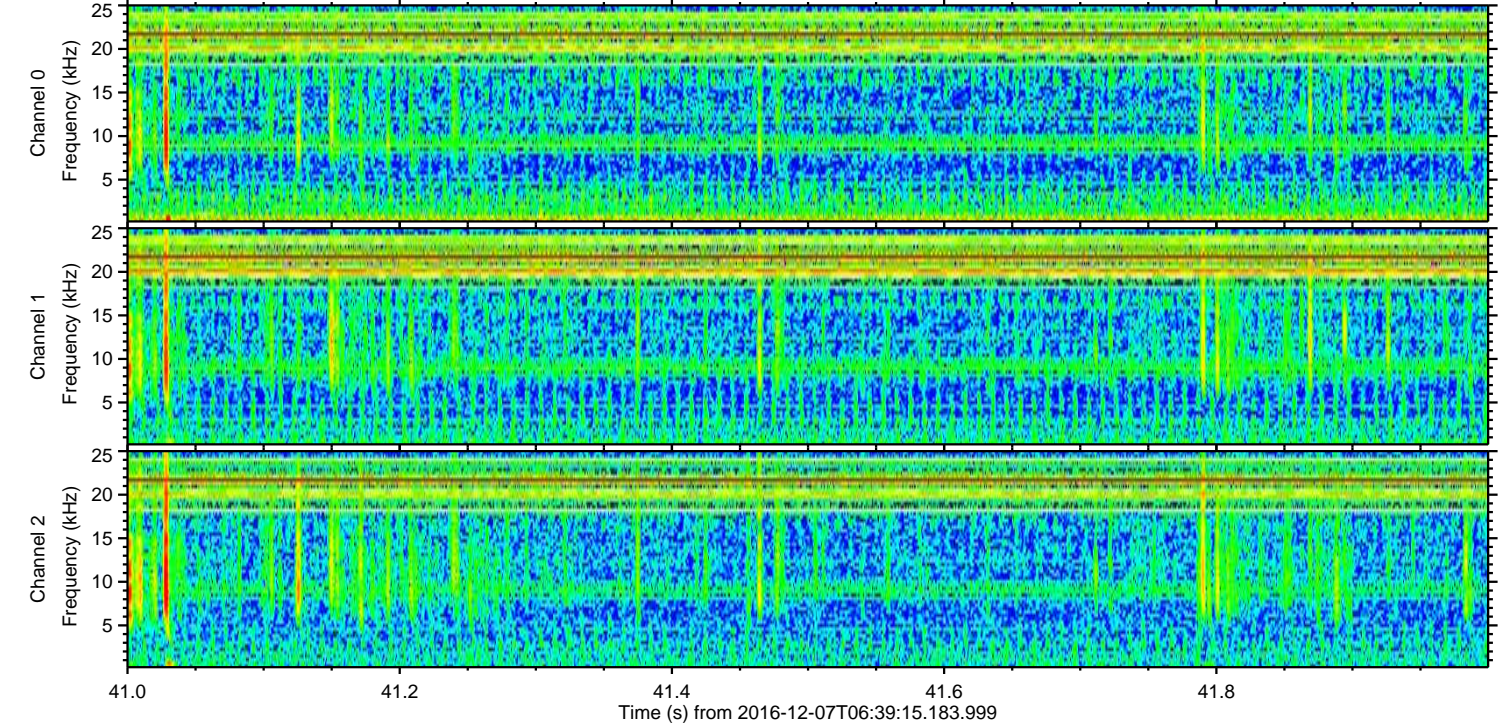
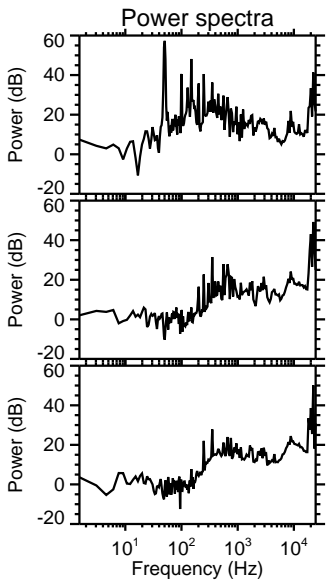
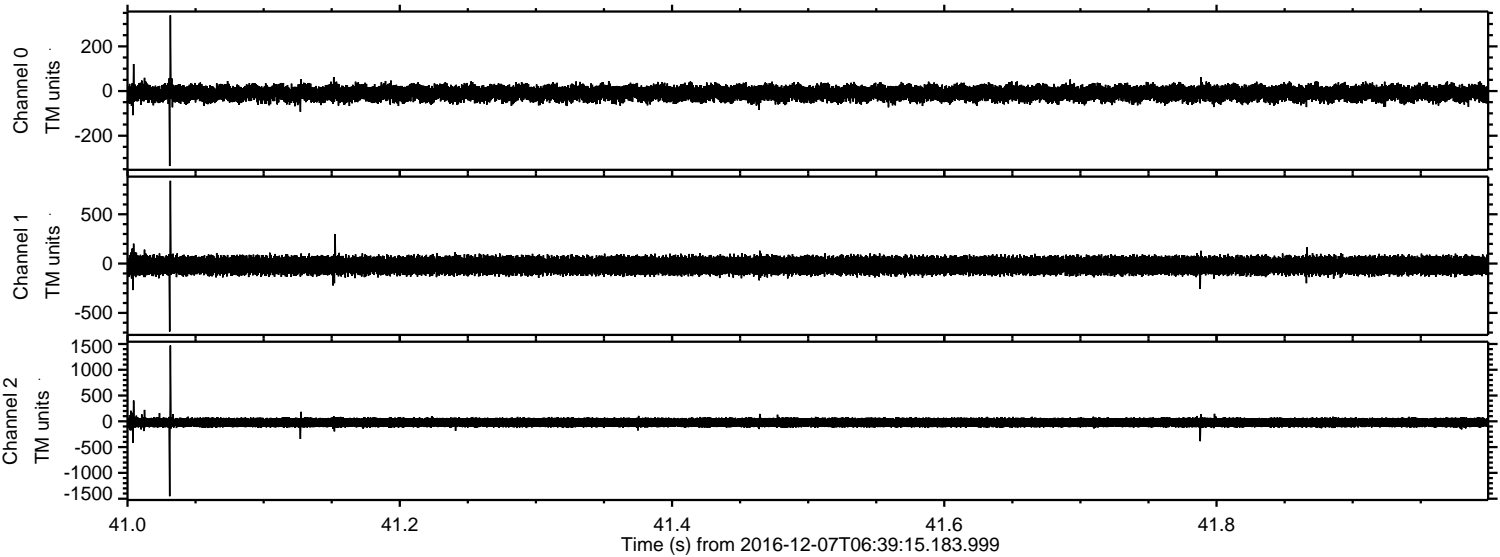


Channel 0
mn: -484
mx: 267
 μ : -10.2
 σ : 20.9

Channel 1
mn: -200
mx: 170
 μ : -19.0
 σ : 49.8

Channel 2
mn: -1532
mx: 943
 μ : -22.5
 σ : 54.8

Processed Wed Dec 7 07:46:58 2016 by ELM ver.2012-10-06 from 001__elm20161207_063914__dat00.bin



Processed Wed Dec 7 07:46:59 2016 by ELM ver.2012-10-06 from 001__elm20161207_063914__dat00.bin

