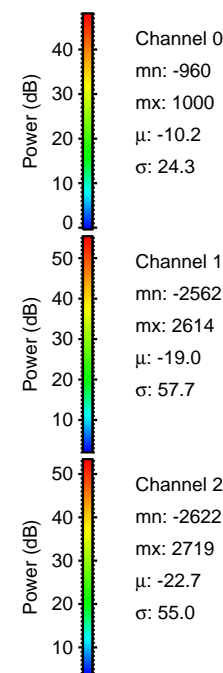
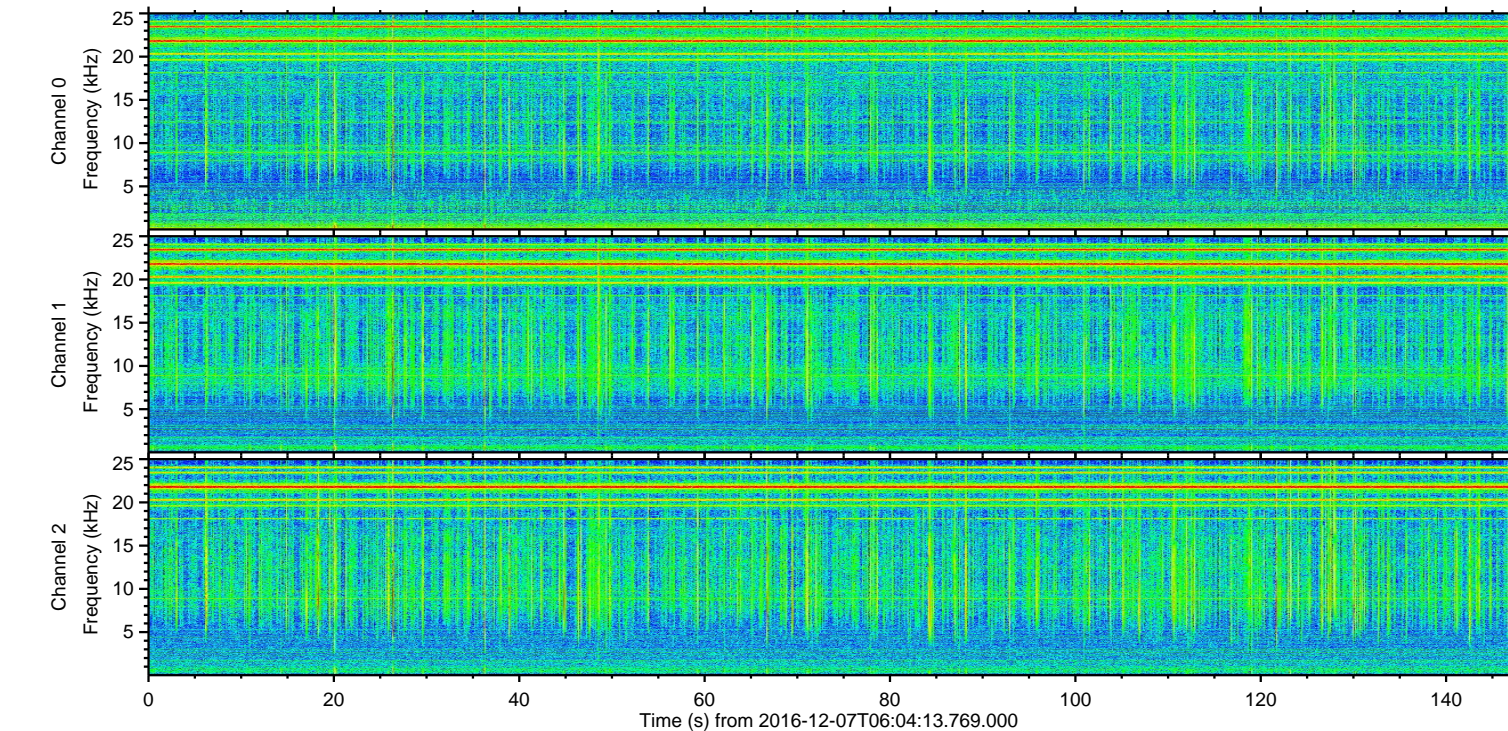
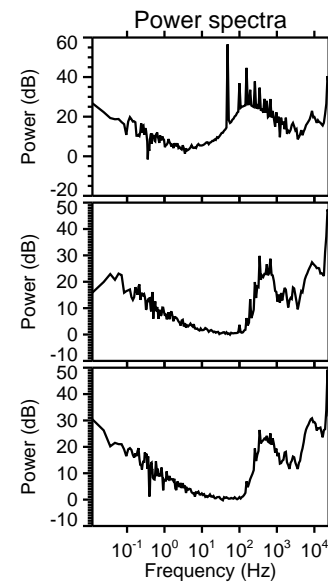
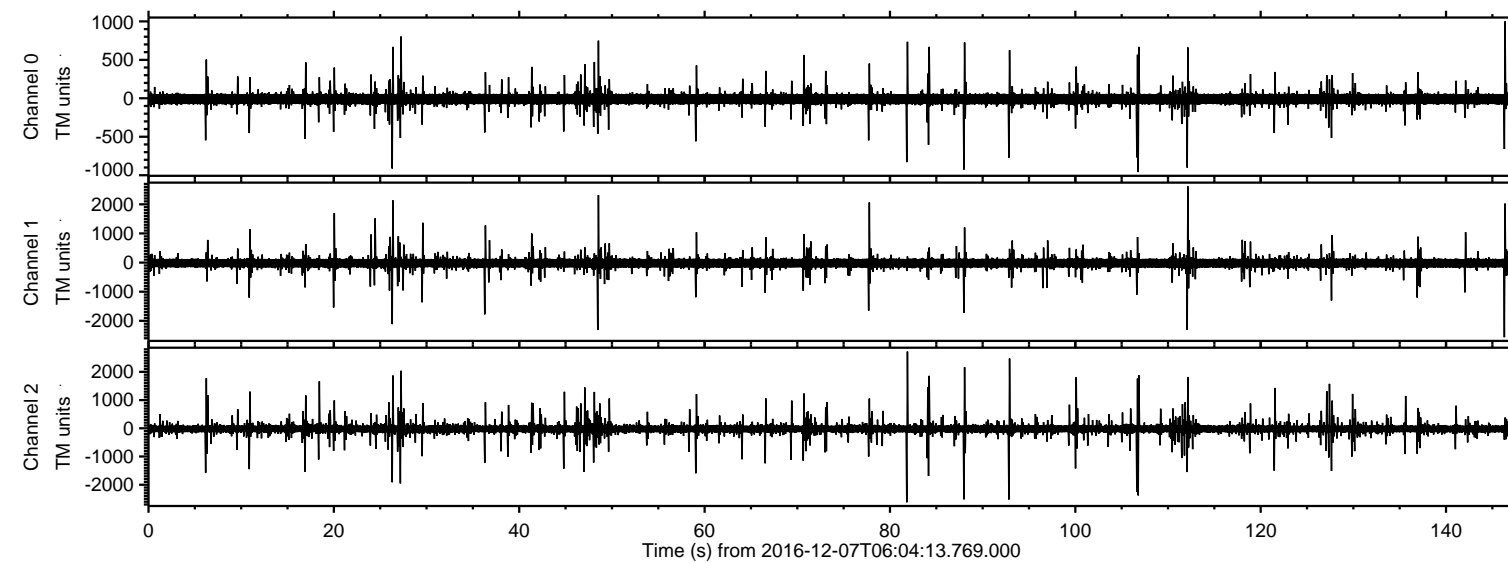
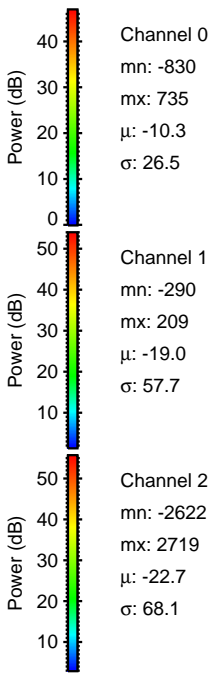
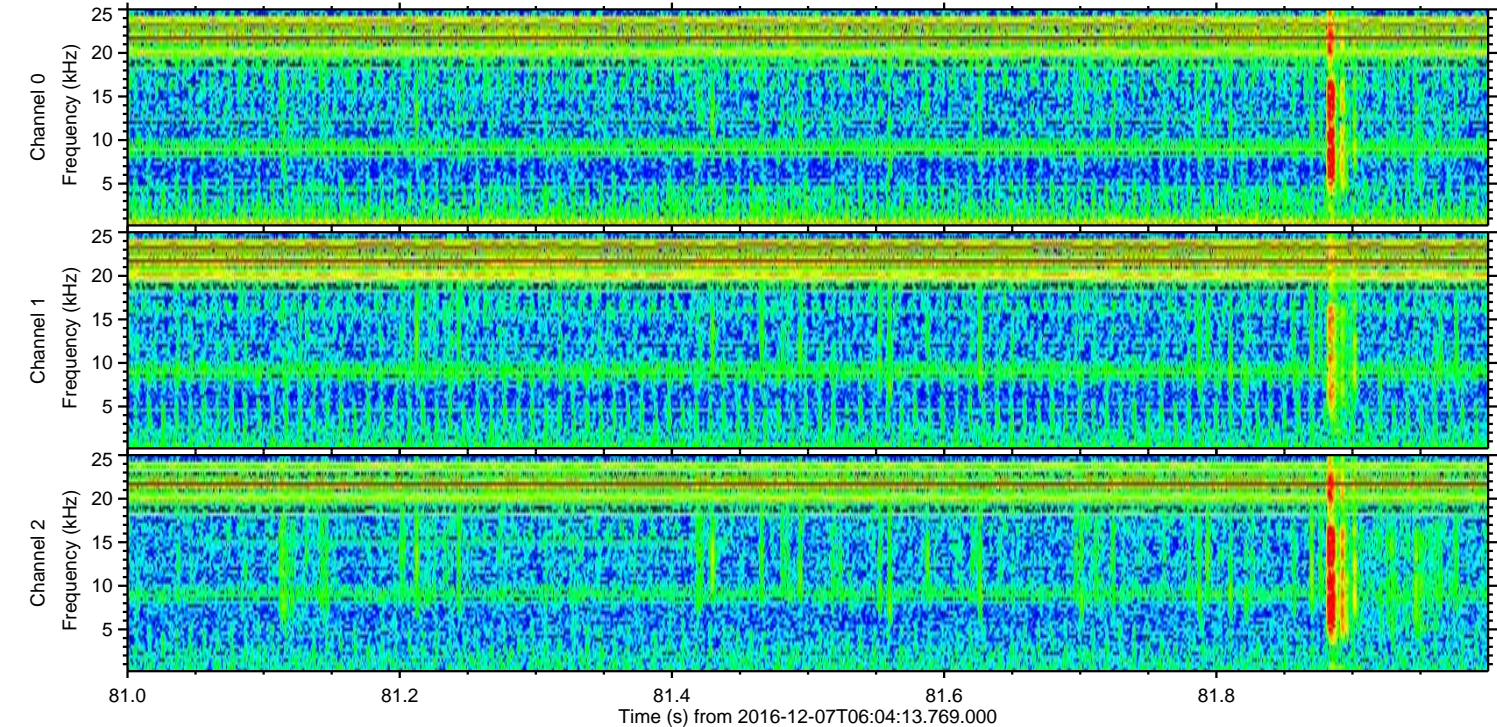
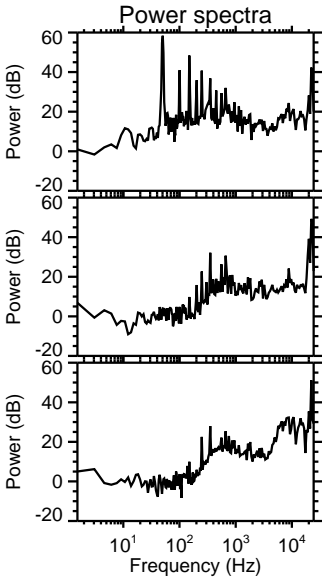
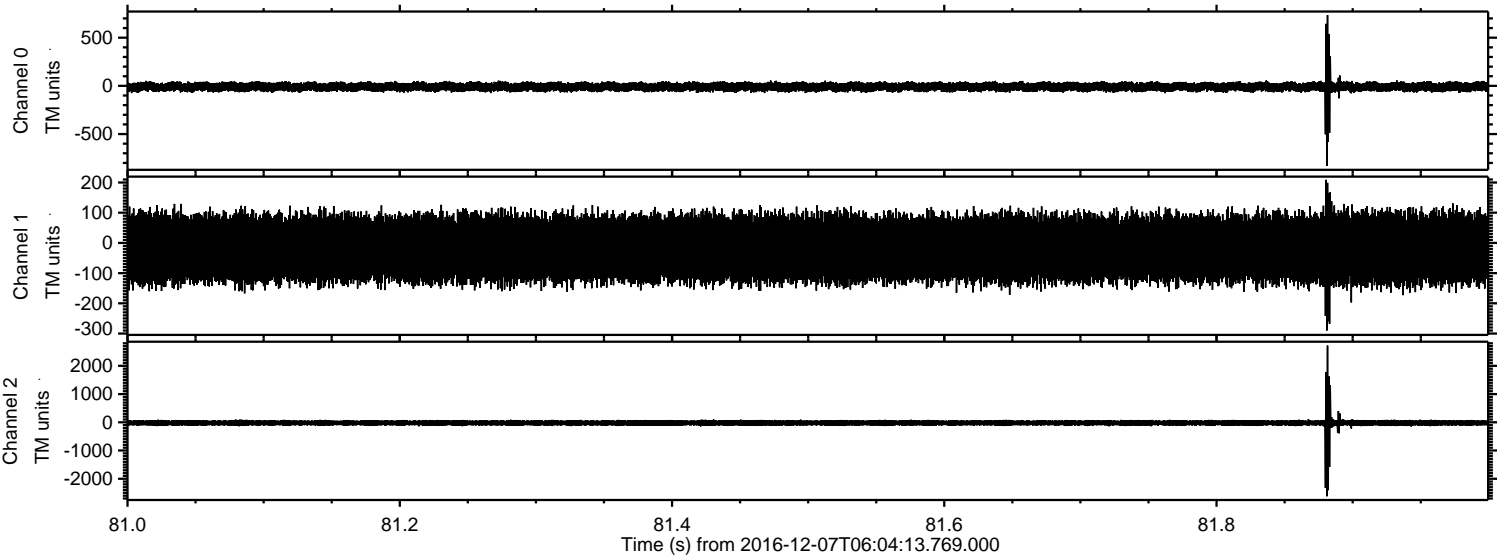


ELMAVAN 3D WAVEFORMS (Measured data sampled at 50 kHz) 51000 packets of 144 samples from 2016-12-07T06:04:13.769.000.

Processed Wed Dec 7 07:12:11 2016 by ELM ver.2012-10-06 from 001__elm20161207_060412__dat00.bin

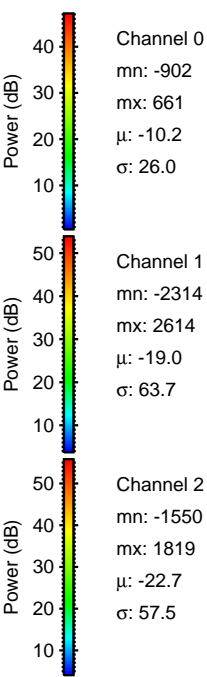
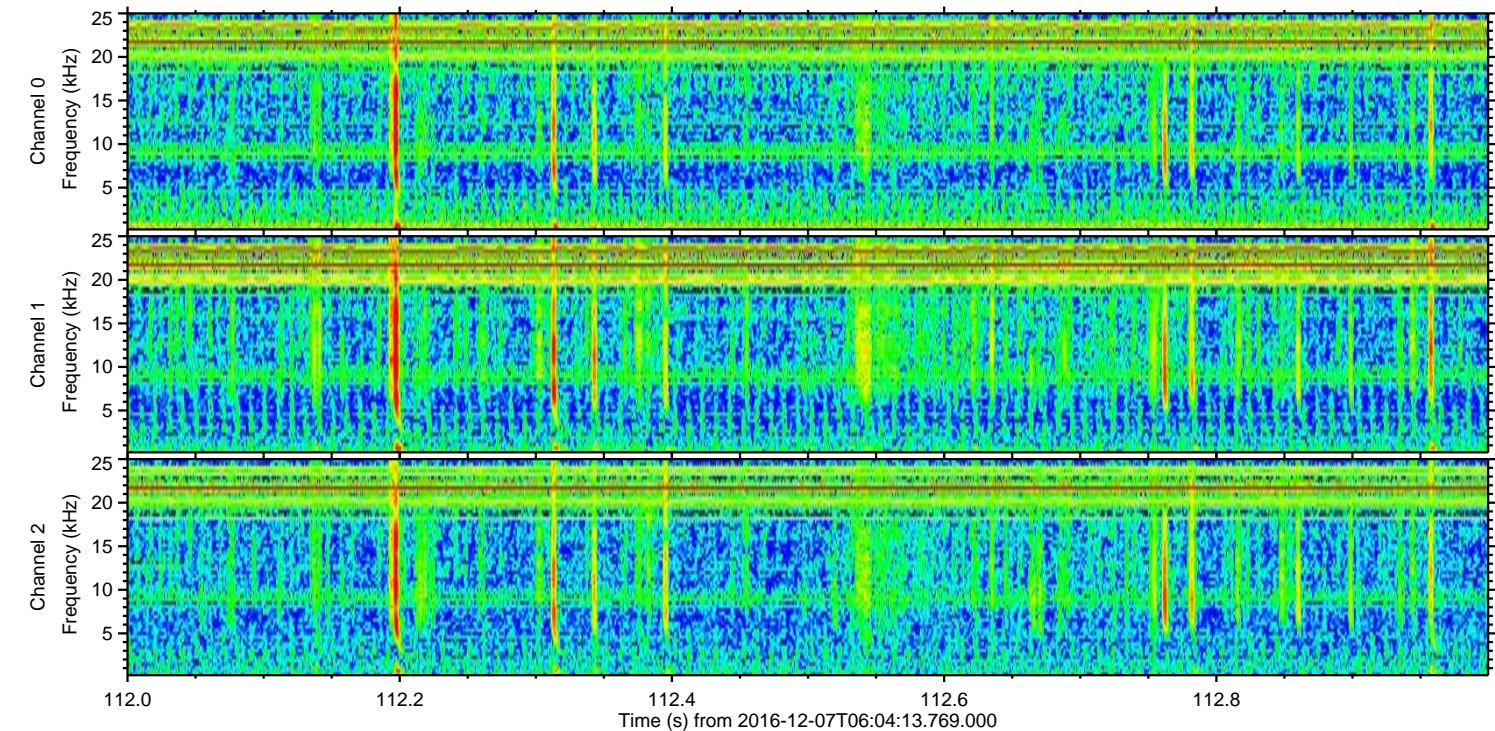
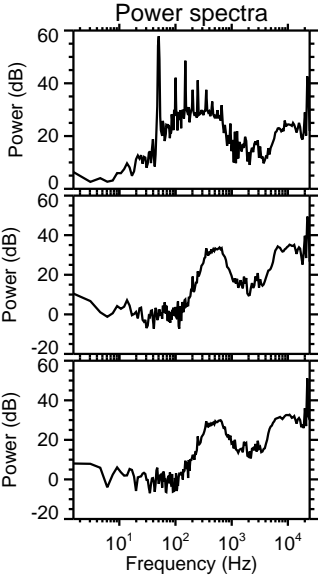
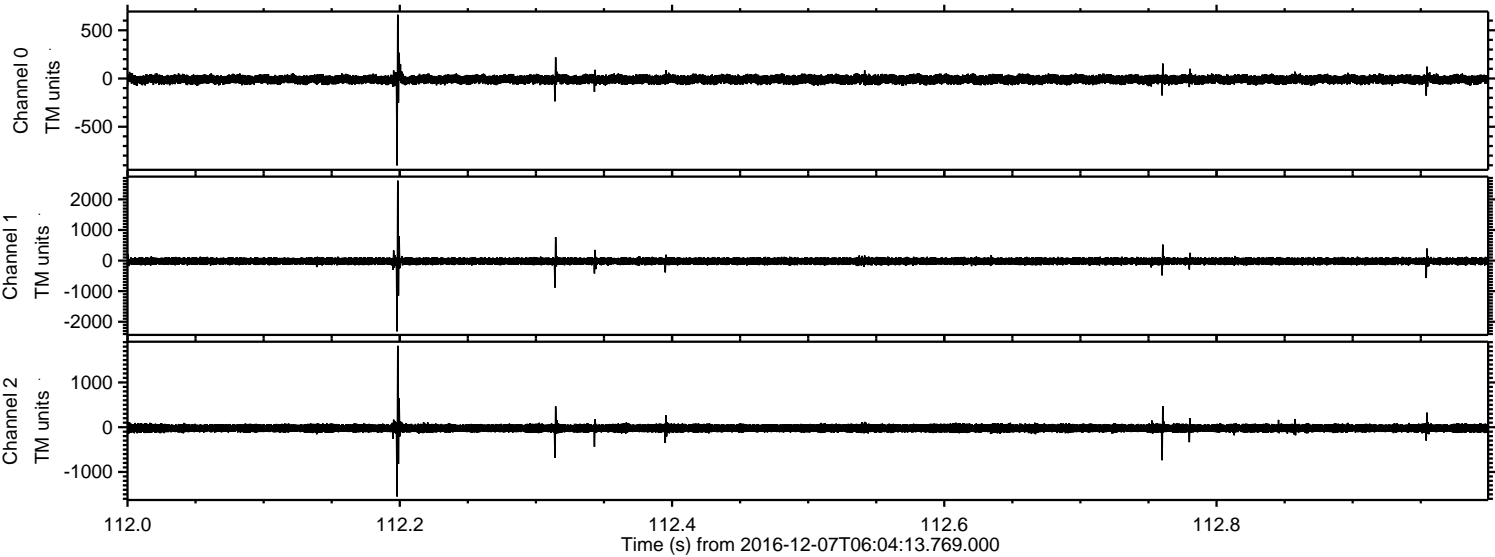


Processed Wed Dec 7 07:12:23 2016 by ELM ver.2012-10-06 from 001__elm20161207_060412__dat00.bin



ELMAVAN 3D WAVEFORMS (Measured data sampled at 50 kHz) 51000 packets of 144 samples from 2016-12-07T06:04:13.769.000. Part 113/147

Processed Wed Dec 7 07:12:24 2016 by ELM ver.2012-10-06 from 001__elm20161207_060412__dat00.bin

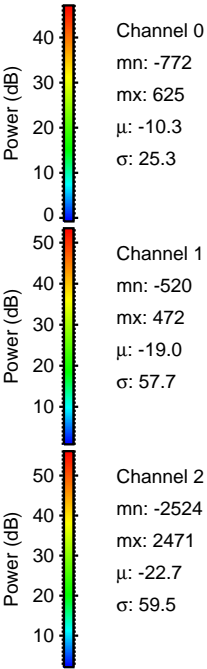
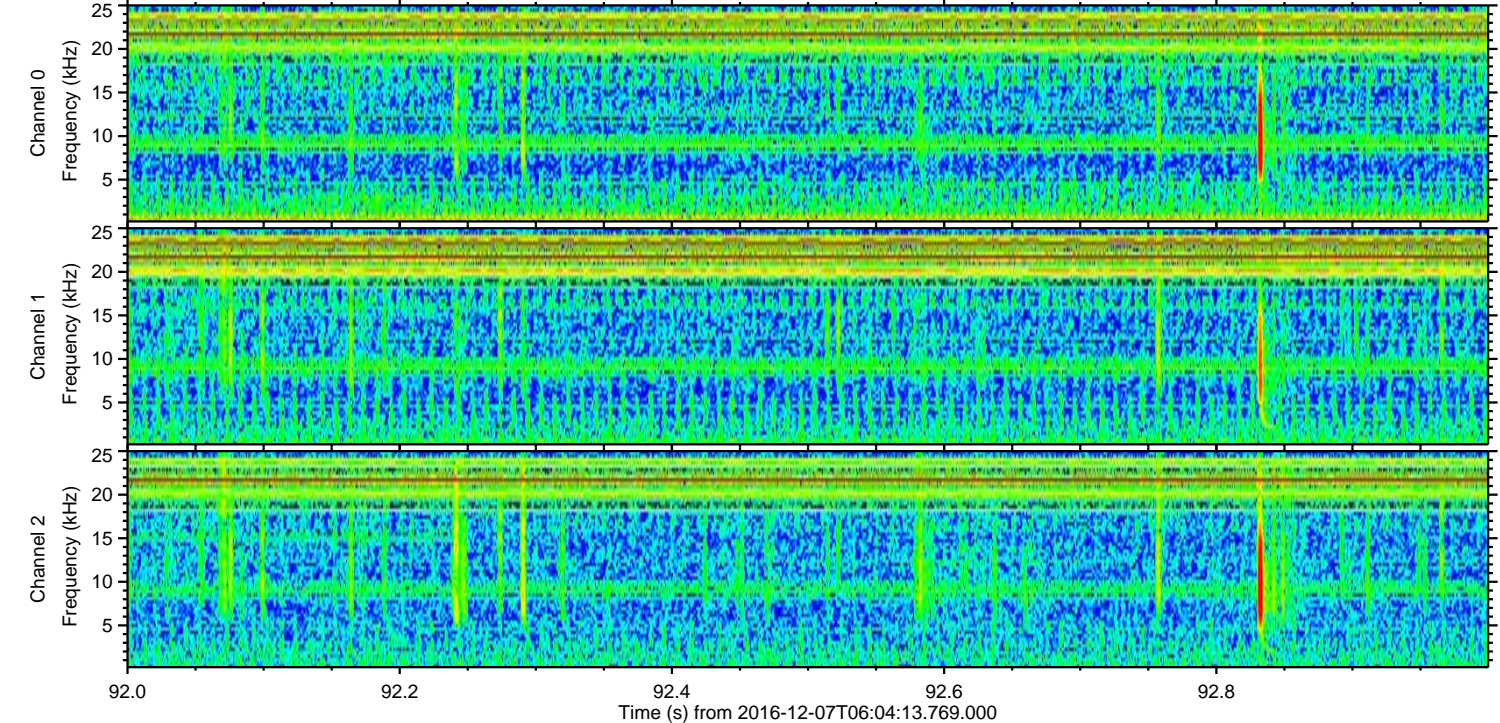
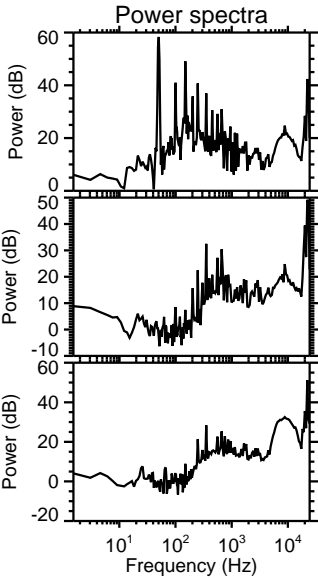
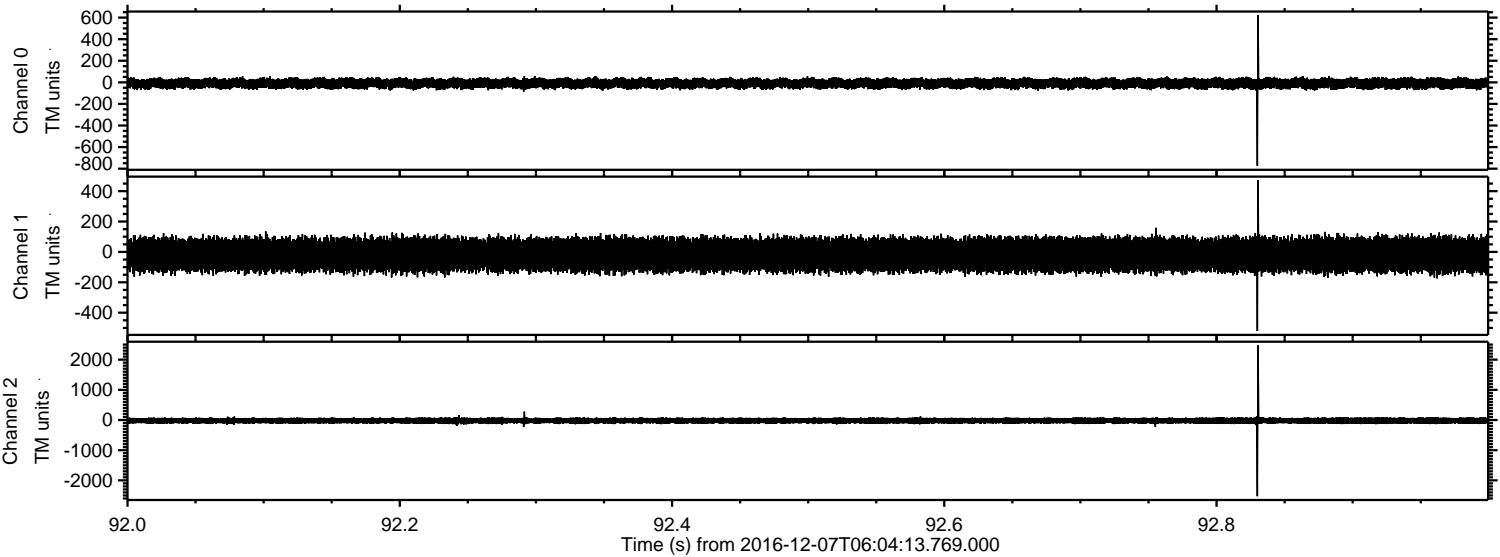


Channel 0
mn: -902
mx: 661
 μ : -10.2
 σ : 26.0

Channel 1
mn: -2314
mx: 2614
 μ : -19.0
 σ : 63.7

Channel 2
mn: -1550
mx: 1819
 μ : -22.7
 σ : 57.5

Processed Wed Dec 7 07:12:25 2016 by ELM ver.2012-10-06 from 001__elm20161207_060412__dat00.bin

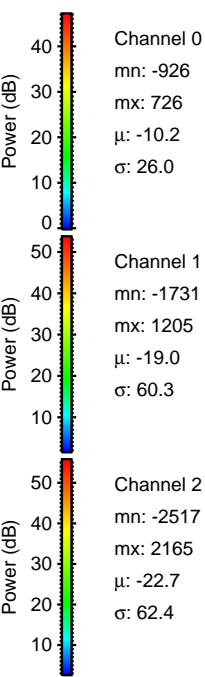
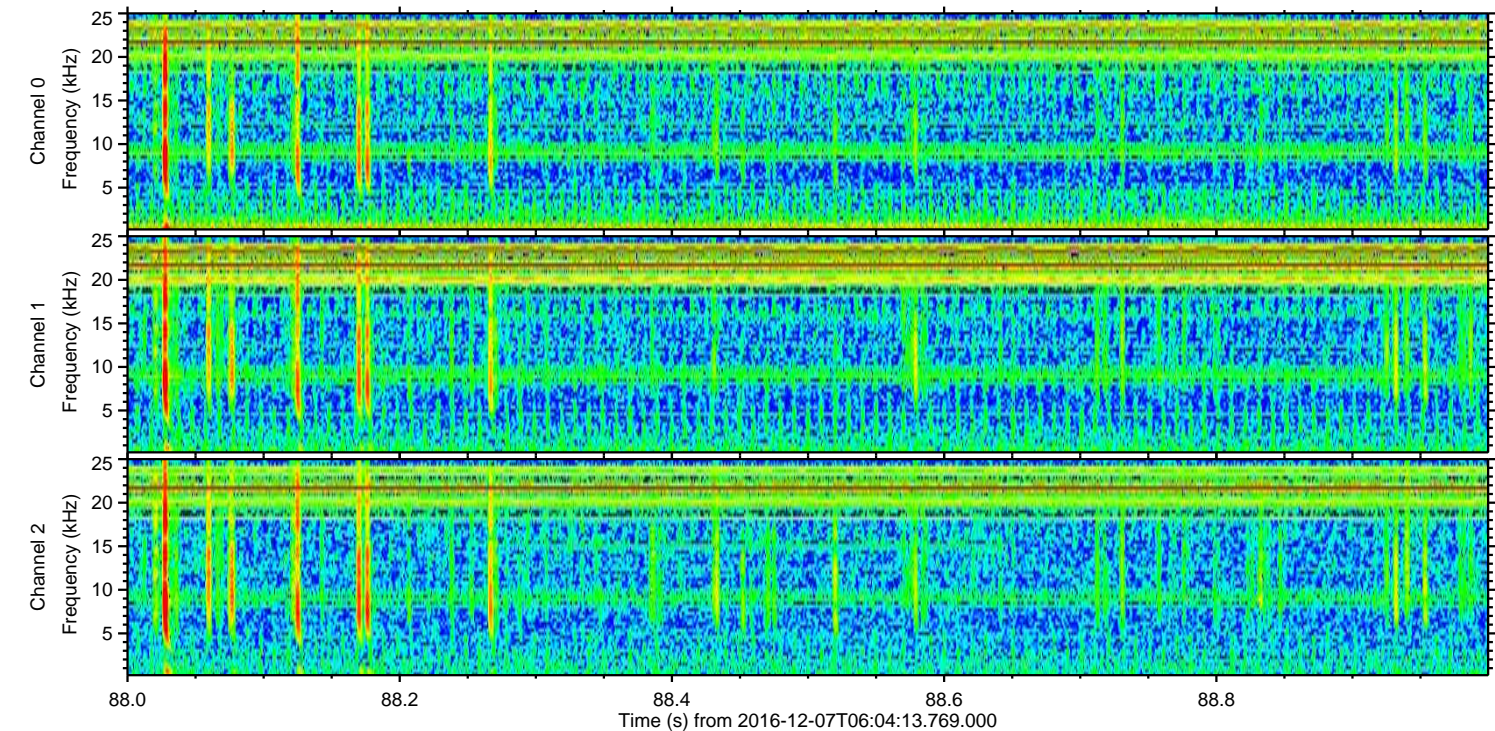
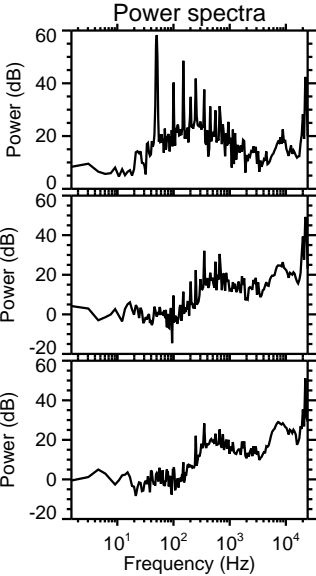
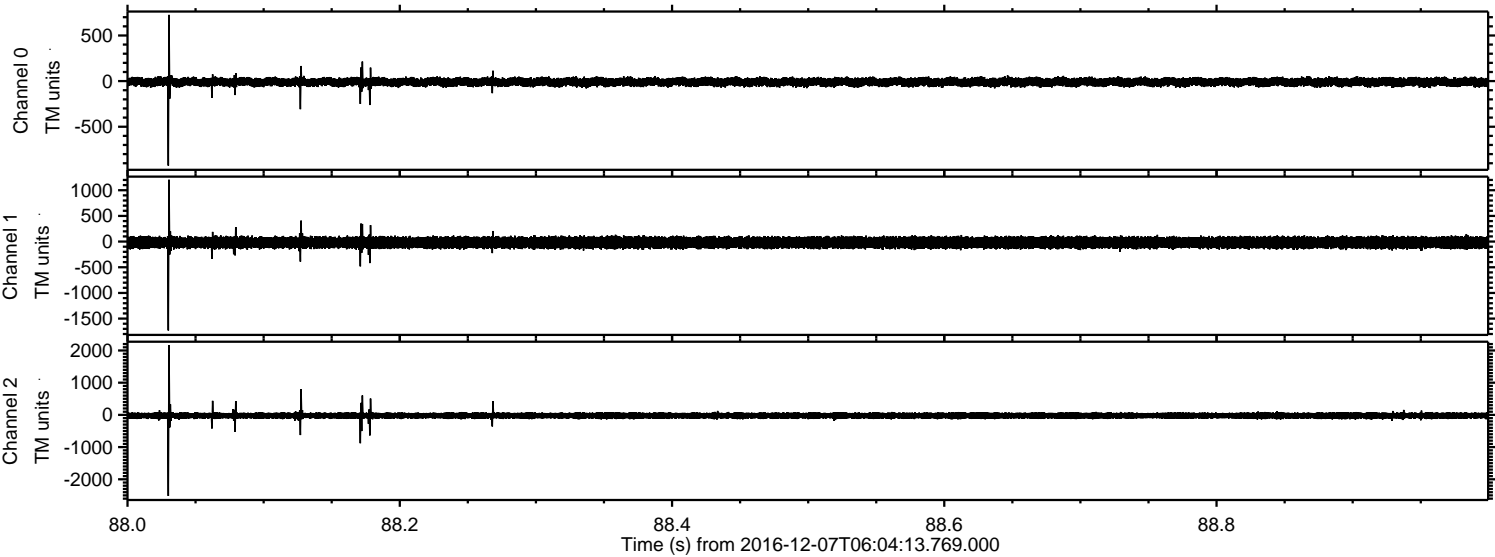


Channel 0
mn: -772
mx: 625
 μ : -10.3
 σ : 25.3

Channel 1
mn: -520
mx: 472
 μ : -19.0
 σ : 57.7

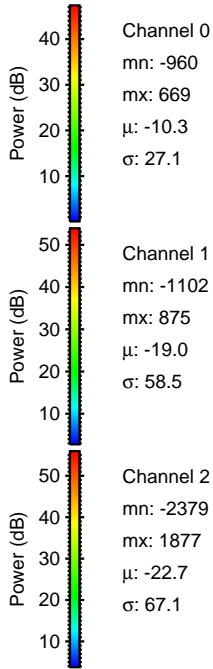
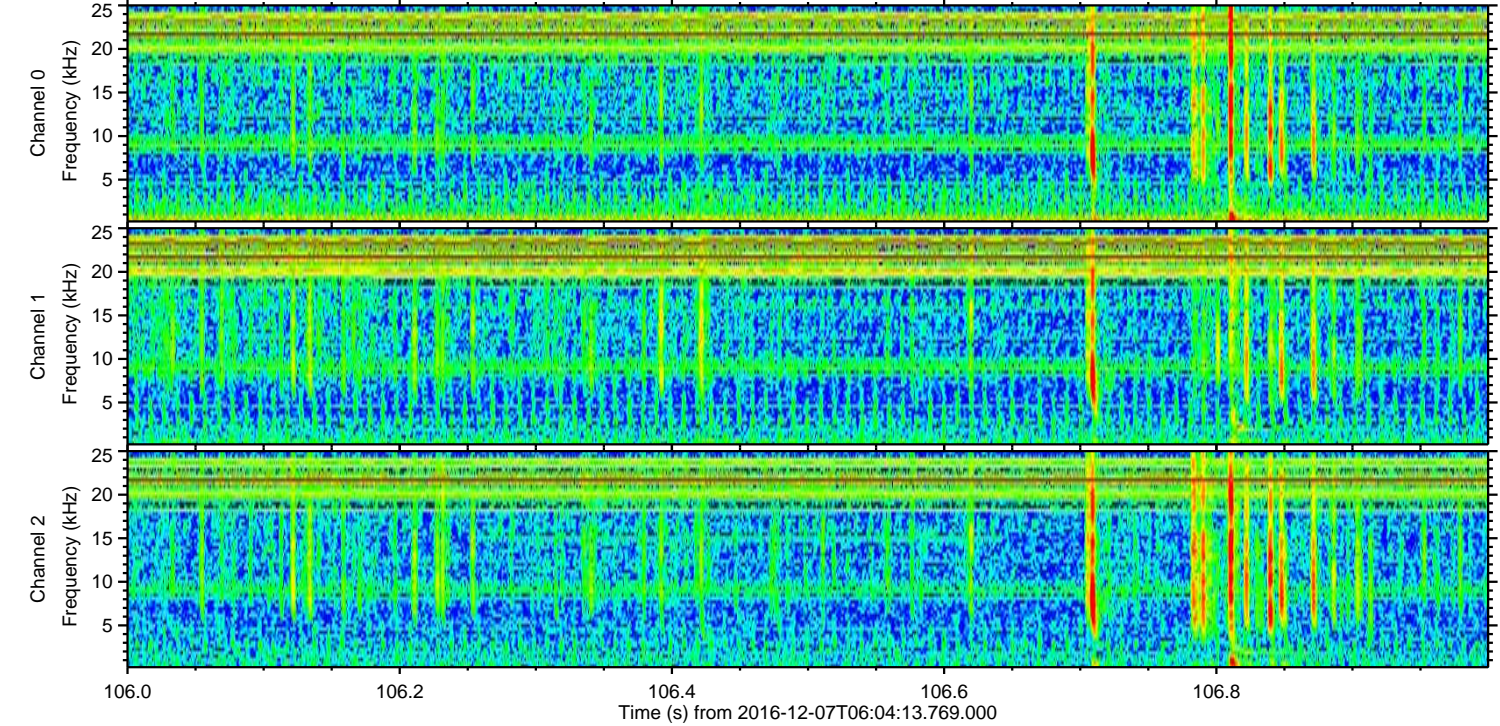
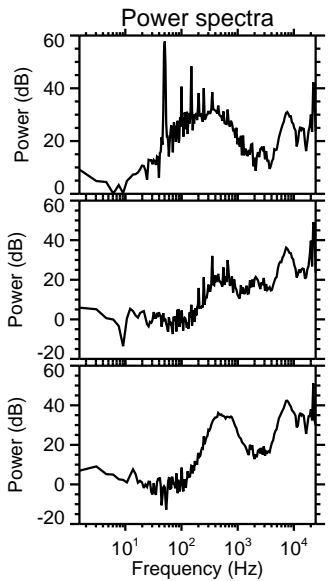
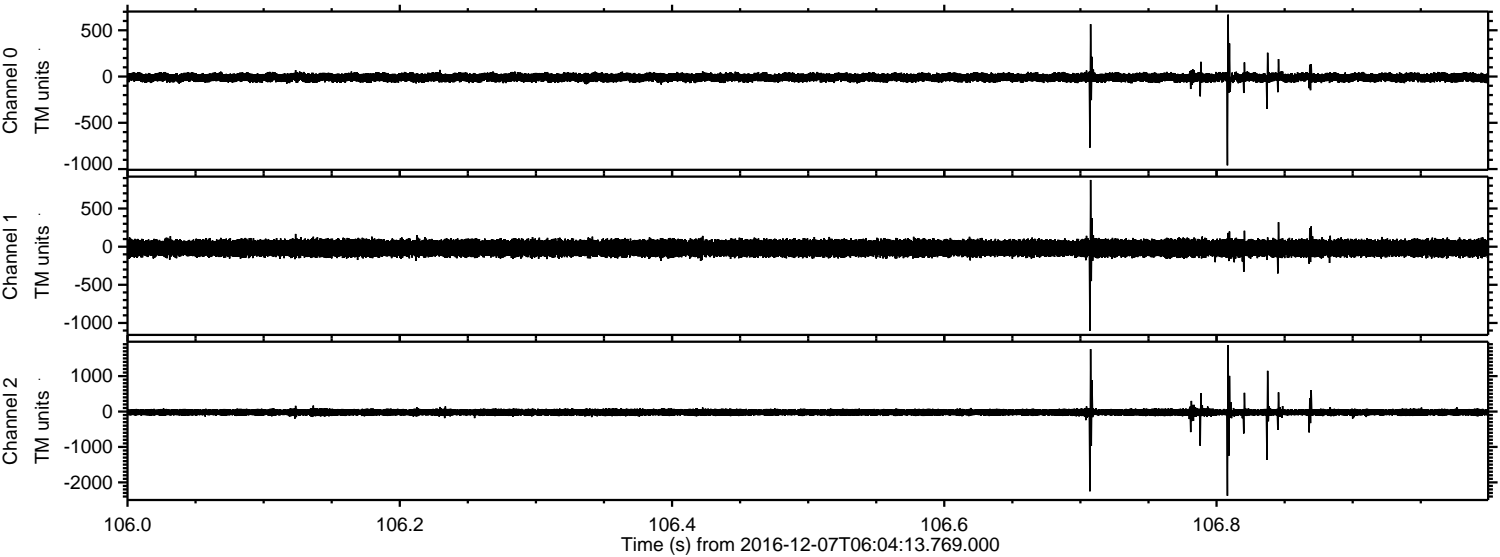
Channel 2
mn: -2524
mx: 2471
 μ : -22.7
 σ : 59.5

Processed Wed Dec 7 07:12:26 2016 by ELM ver.2012-10-06 from 001__elm20161207_060412__dat00.bin



ELMAVAN 3D WAVEFORMS (Measured data sampled at 50 kHz) 51000 packets of 144 samples from 2016-12-07T06:04:13.769.000. Part 107/147

Processed Wed Dec 7 07:12:26 2016 by ELM ver.2012-10-06 from 001__elm20161207_060412__dat00.bin



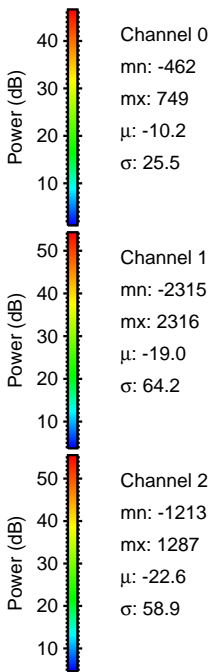
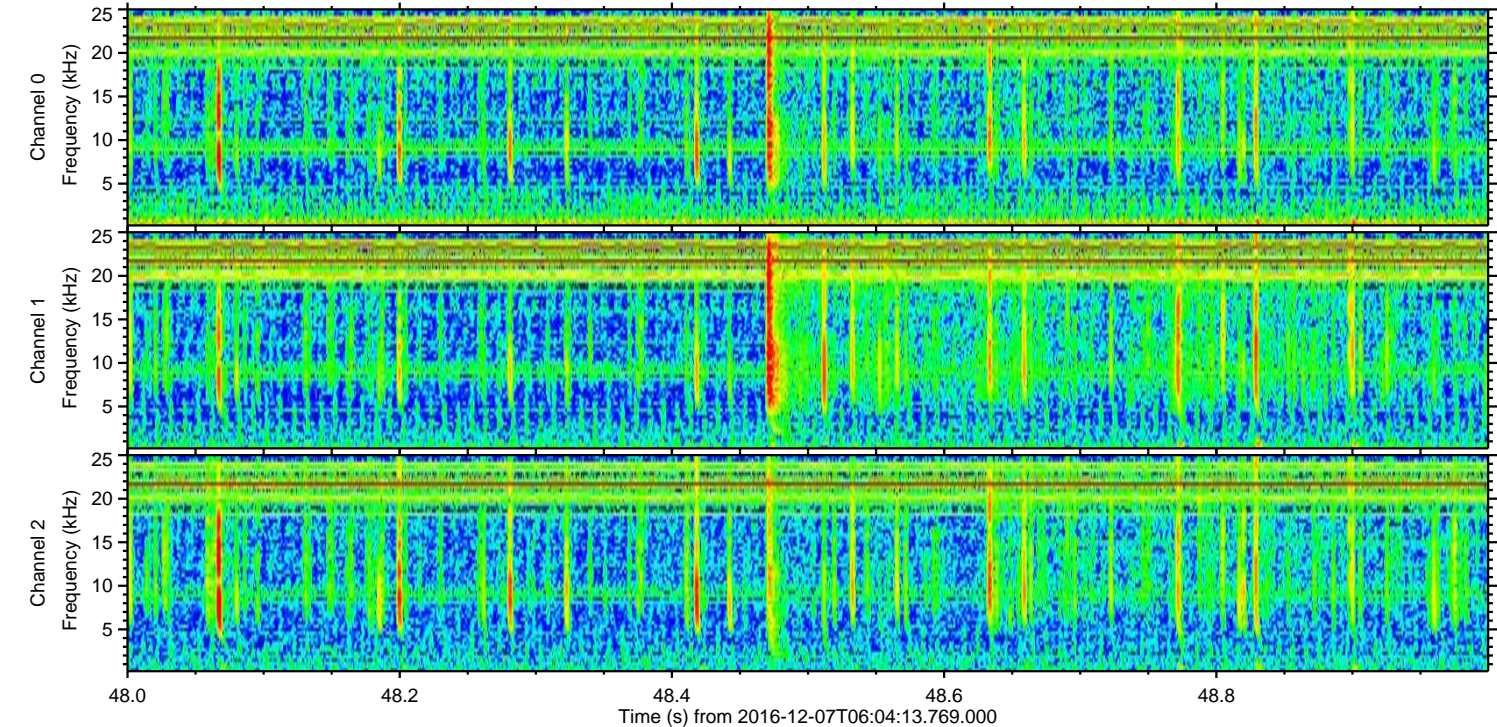
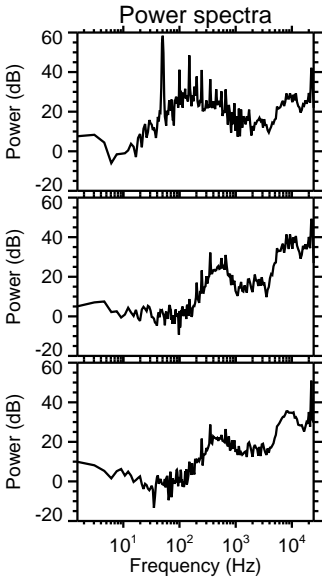
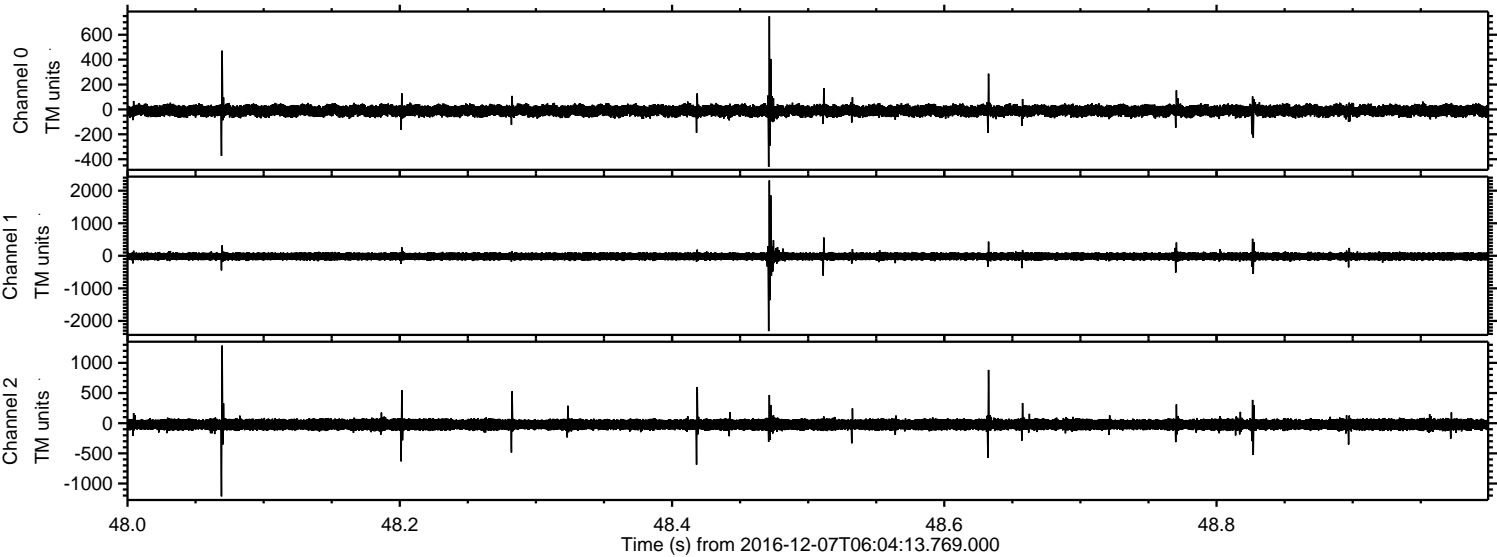
Channel 0
mn: -960
mx: 669
 μ : -10.3
 σ : 27.1

Channel 1
mn: -1102
mx: 875
 μ : -19.0
 σ : 58.5

Channel 2
mn: -2379
mx: 1877
 μ : -22.7
 σ : 67.1

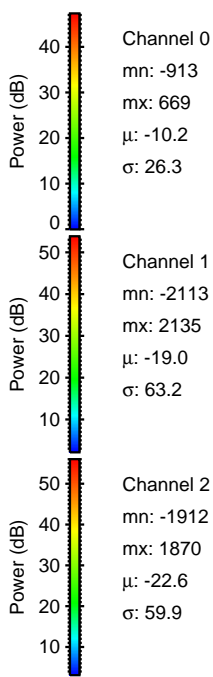
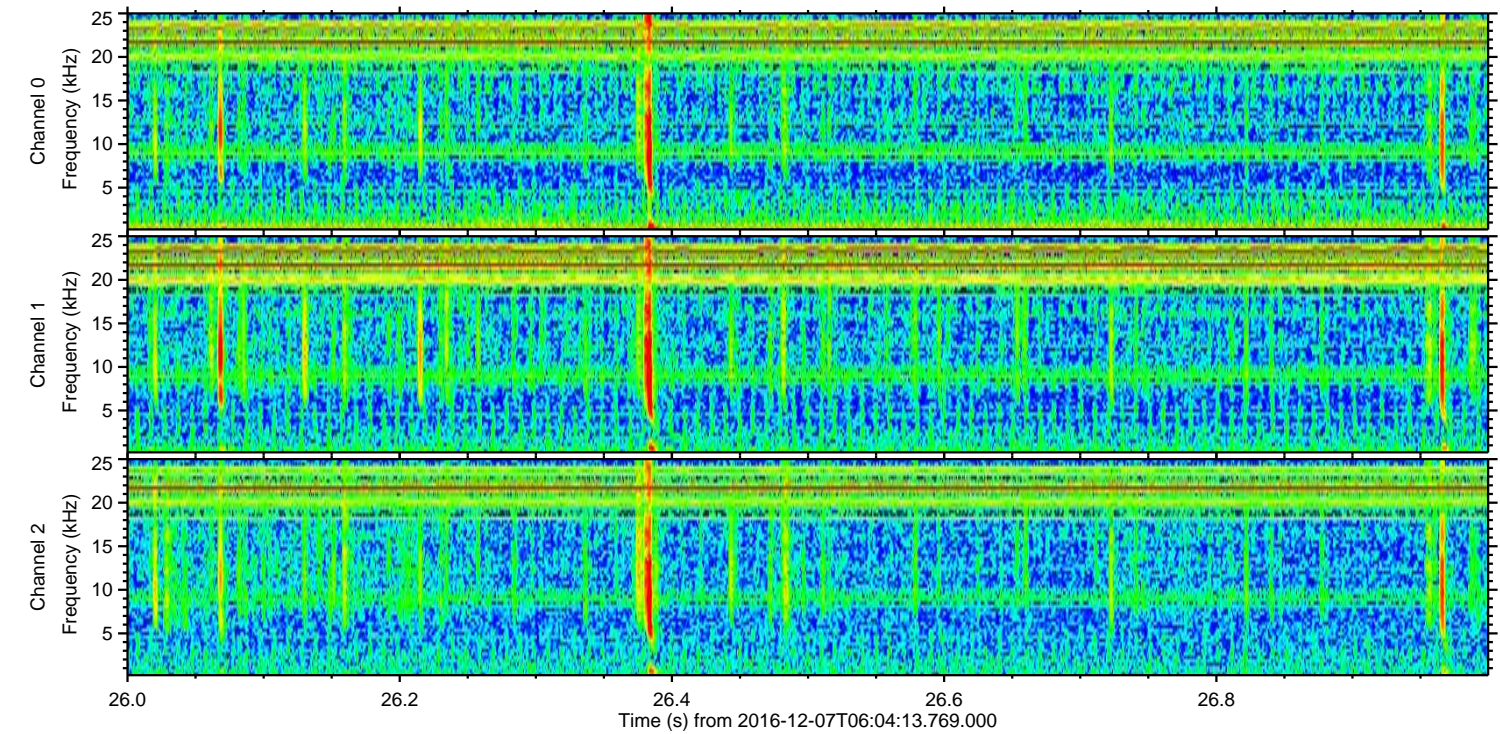
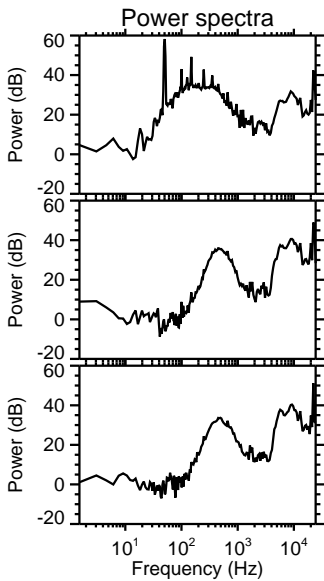
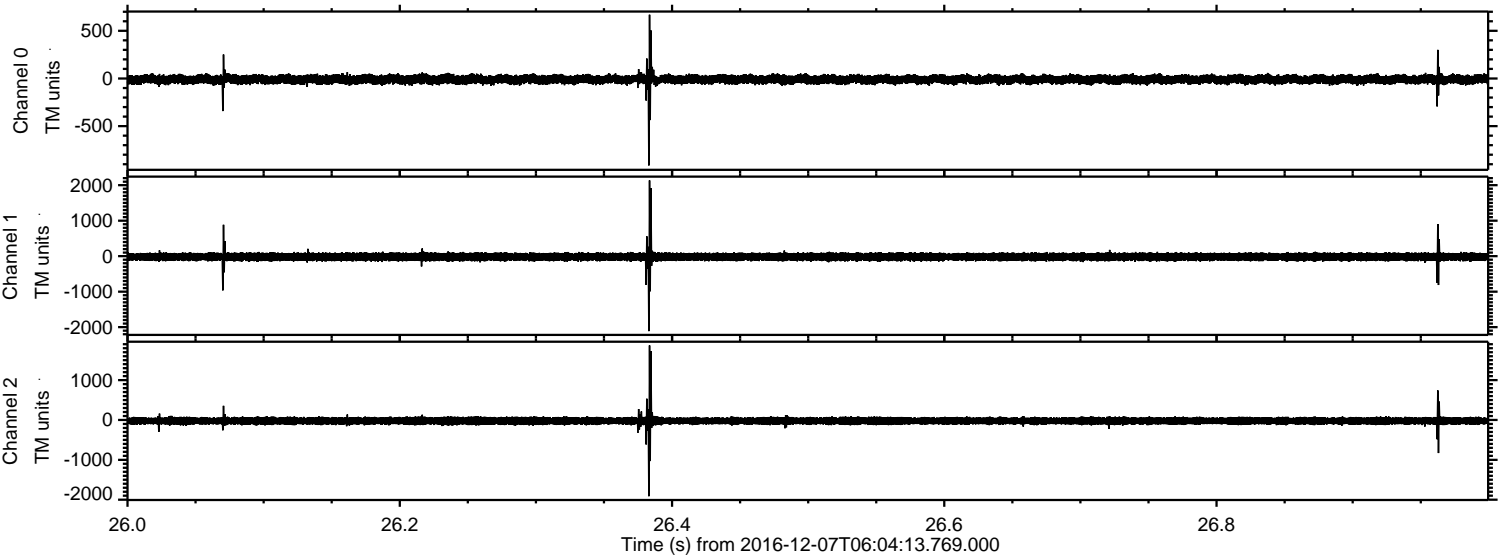
ELMAVAN 3D WAVEFORMS (Measured data sampled at 50 kHz) 51000 packets of 144 samples from 2016-12-07T06:04:13.769.000. Part 49/147

Processed Wed Dec 7 07:12:27 2016 by ELM ver.2012-10-06 from 001__elm20161207_060412__dat00.bin



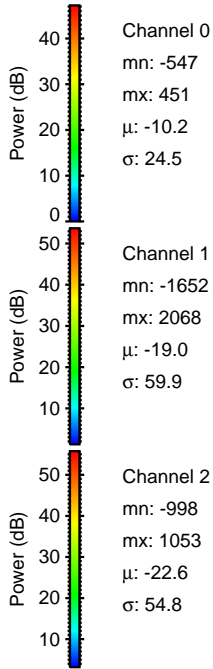
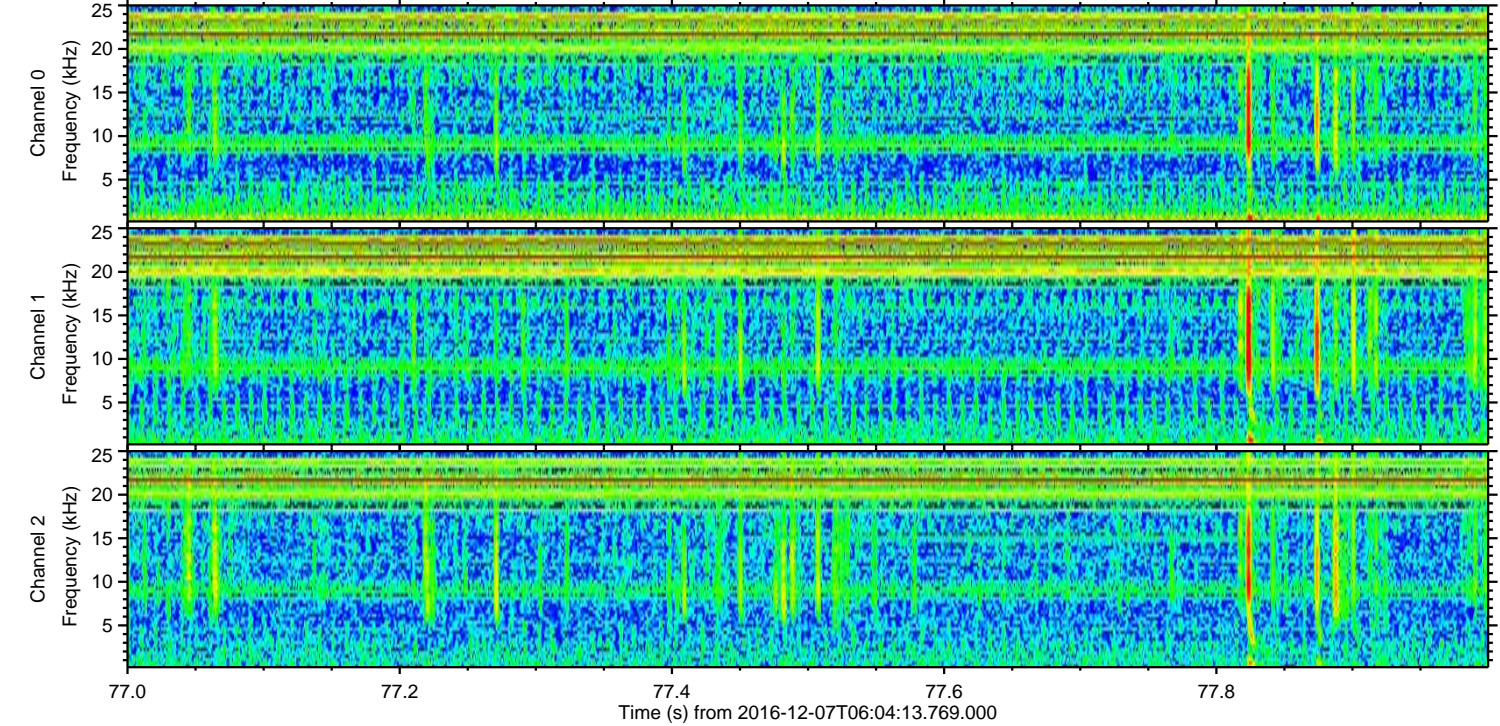
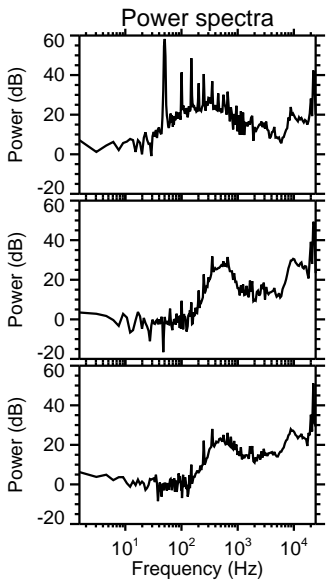
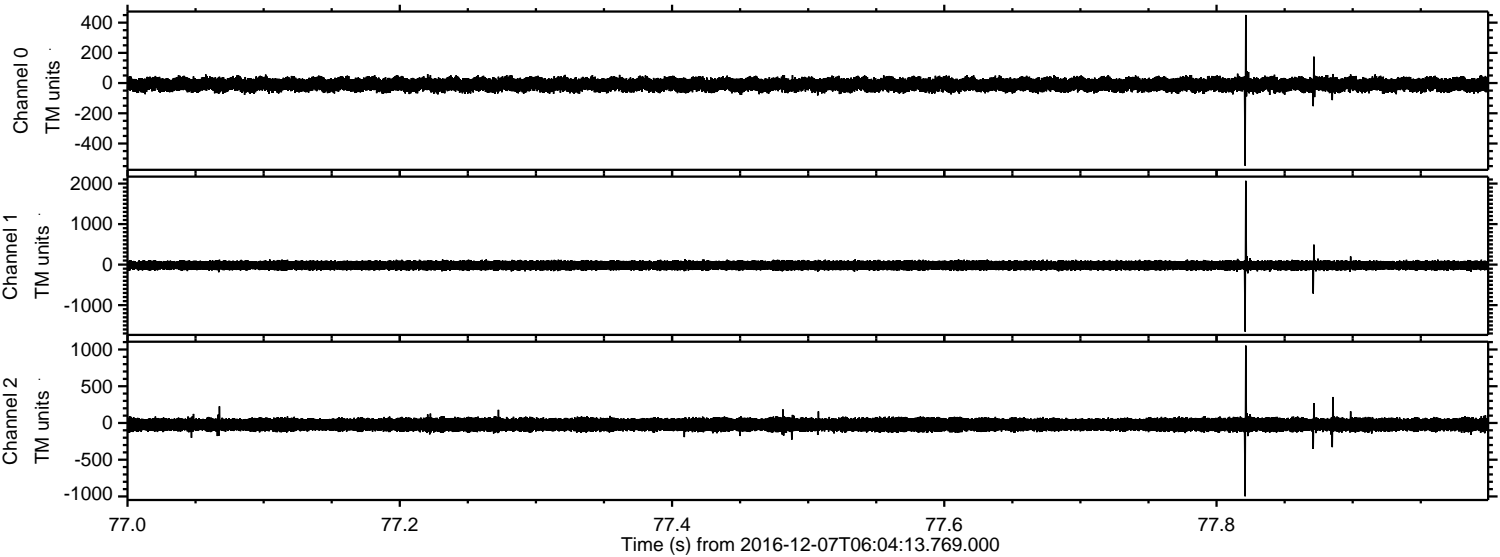
ELMAVAN 3D WAVEFORMS (Measured data sampled at 50 kHz) 51000 packets of 144 samples from 2016-12-07T06:04:13.769.000. Part 27/147

Processed Wed Dec 7 07:12:28 2016 by ELM ver.2012-10-06 from 001__elm20161207_060412__dat00.bin



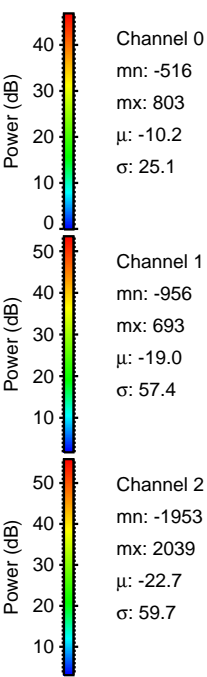
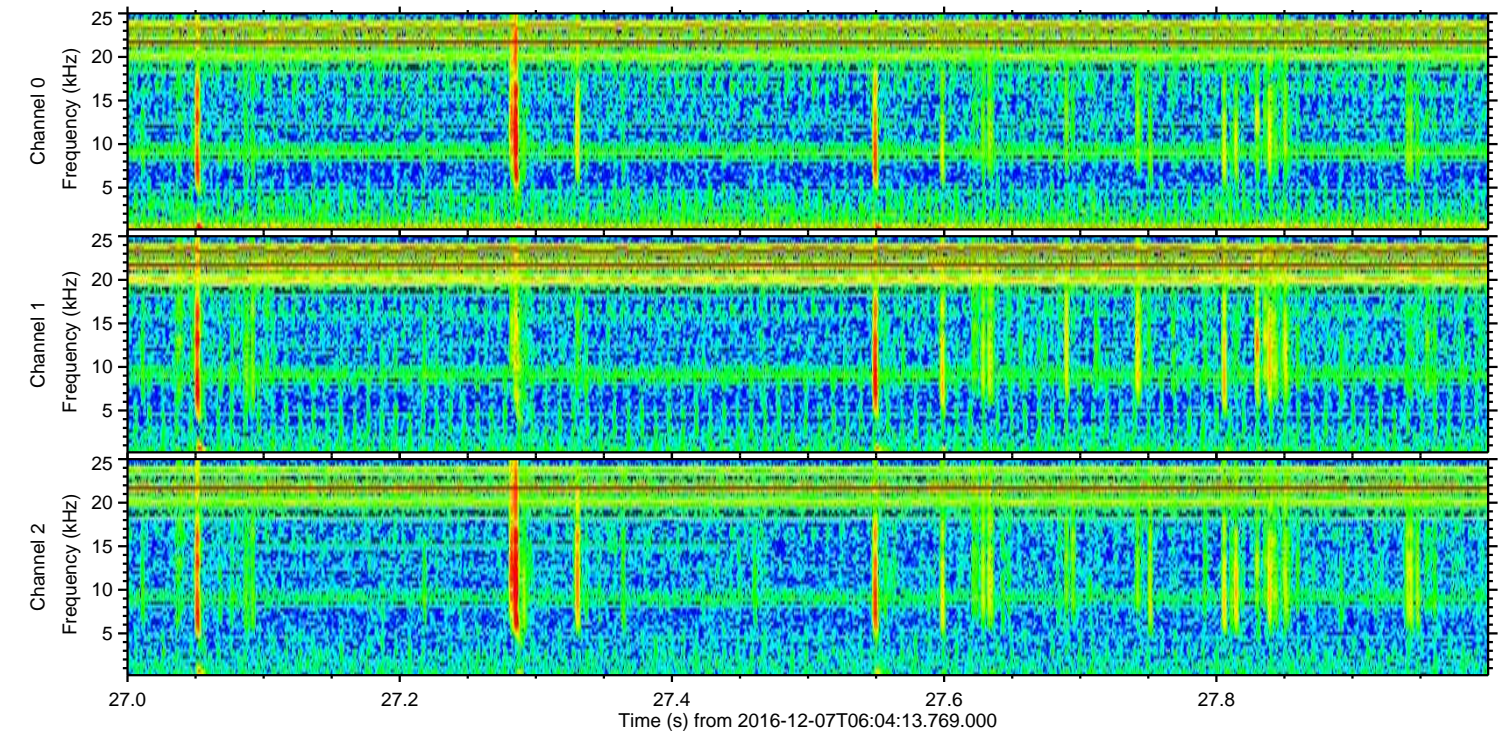
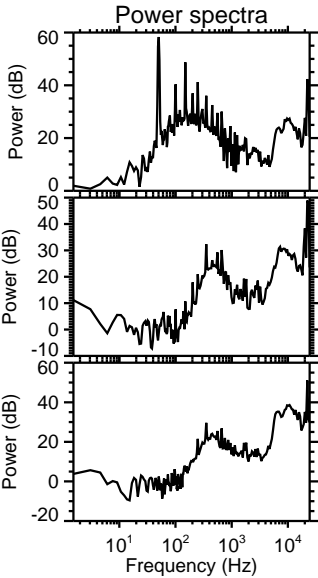
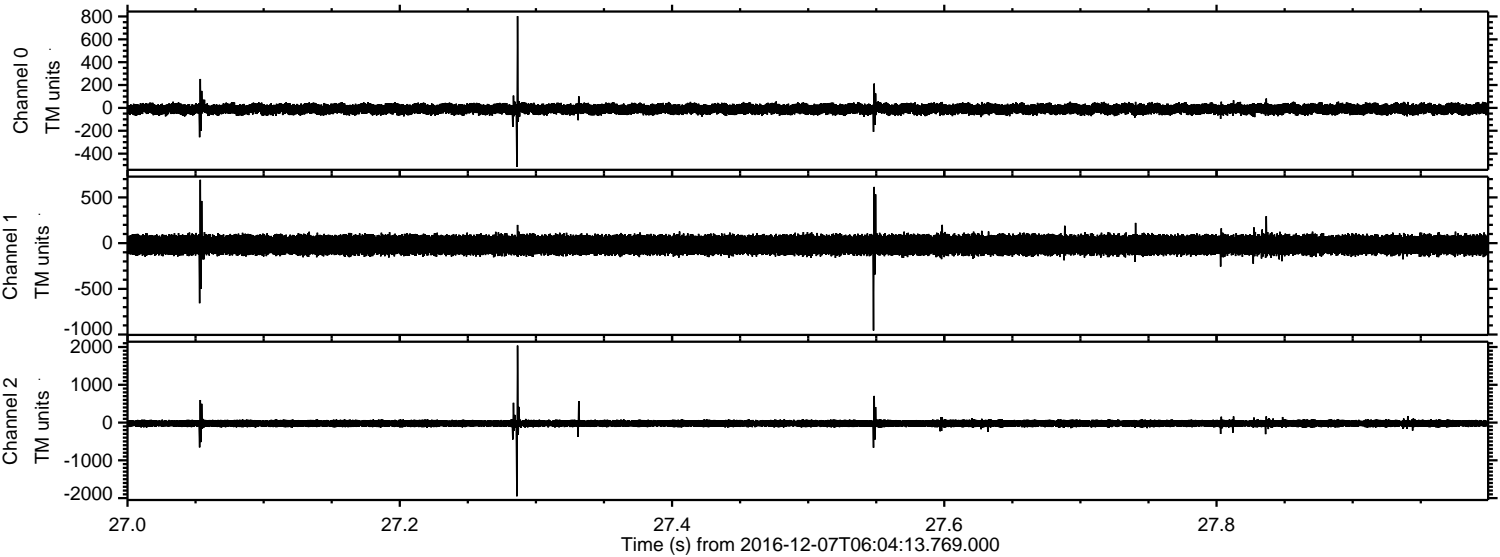
ELMAVAN 3D WAVEFORMS (Measured data sampled at 50 kHz) 51000 packets of 144 samples from 2016-12-07T06:04:13.769.000. Part 78/147

Processed Wed Dec 7 07:12:29 2016 by ELM ver.2012-10-06 from 001__elm20161207_060412__dat00.bin



ELMAVAN 3D WAVEFORMS (Measured data sampled at 50 kHz) 51000 packets of 144 samples from 2016-12-07T06:04:13.769.000. Part 28/147

Processed Wed Dec 7 07:12:30 2016 by ELM ver.2012-10-06 from 001__elm20161207_060412__dat00.bin



Channel 0
mn: -516
mx: 803
 μ : -10.2
 σ : 25.1

Channel 1
mn: -956
mx: 693
 μ : -19.0
 σ : 57.4

Channel 2
mn: -1953
mx: 2039
 μ : -22.7
 σ : 59.7

ELMAVAN 3D WAVEFORMS (Measured data sampled at 50 kHz) 51000 packets of 144 samples from 2016-12-07T06:04:13.769.000. Part 146/147

