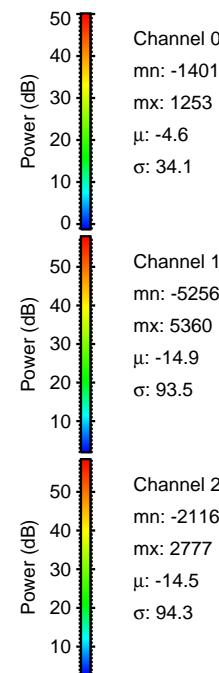
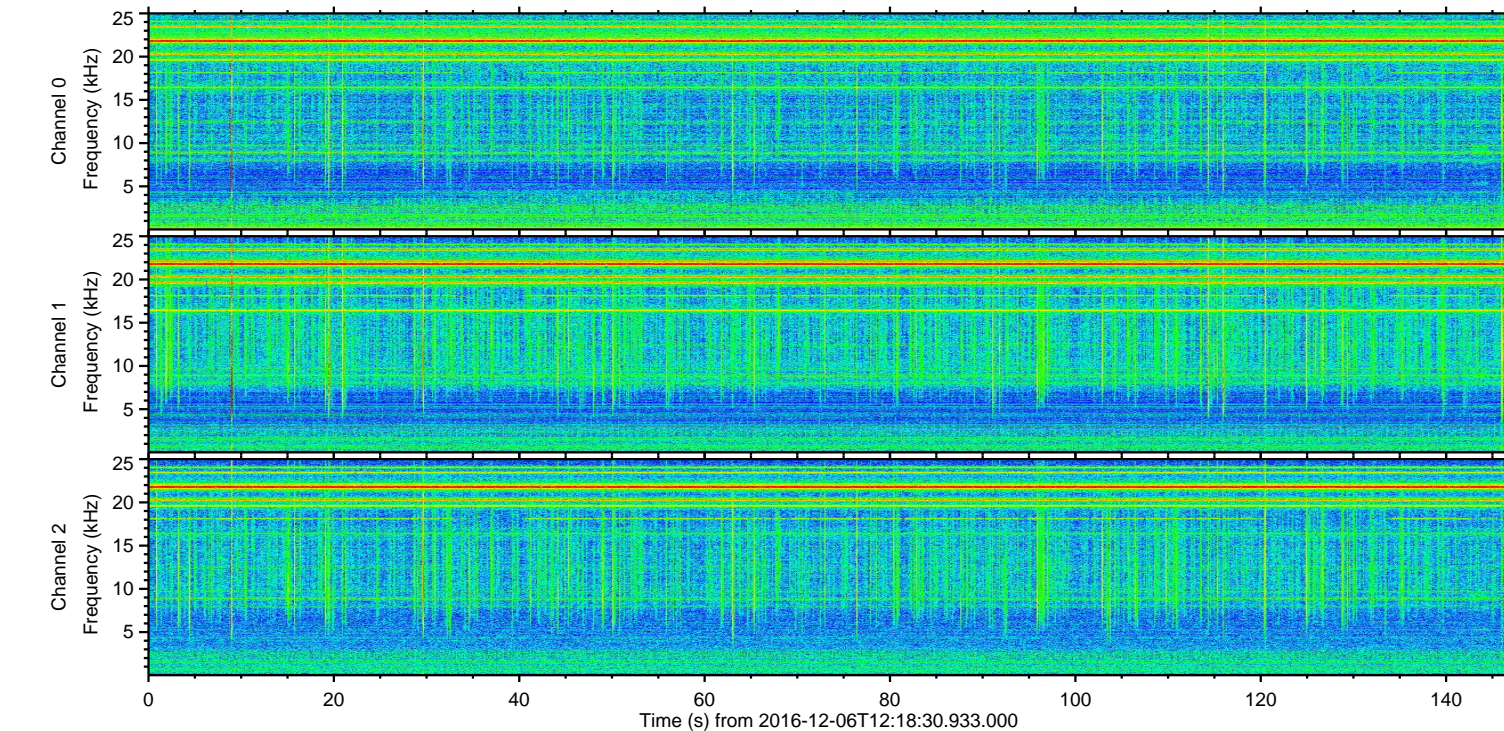
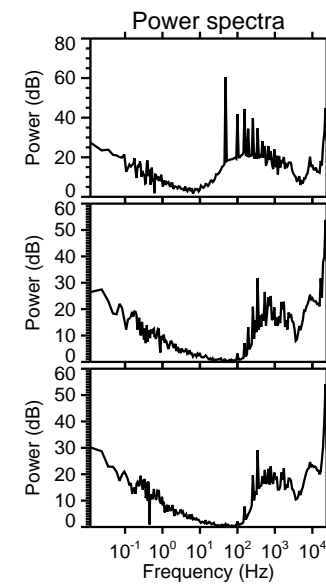
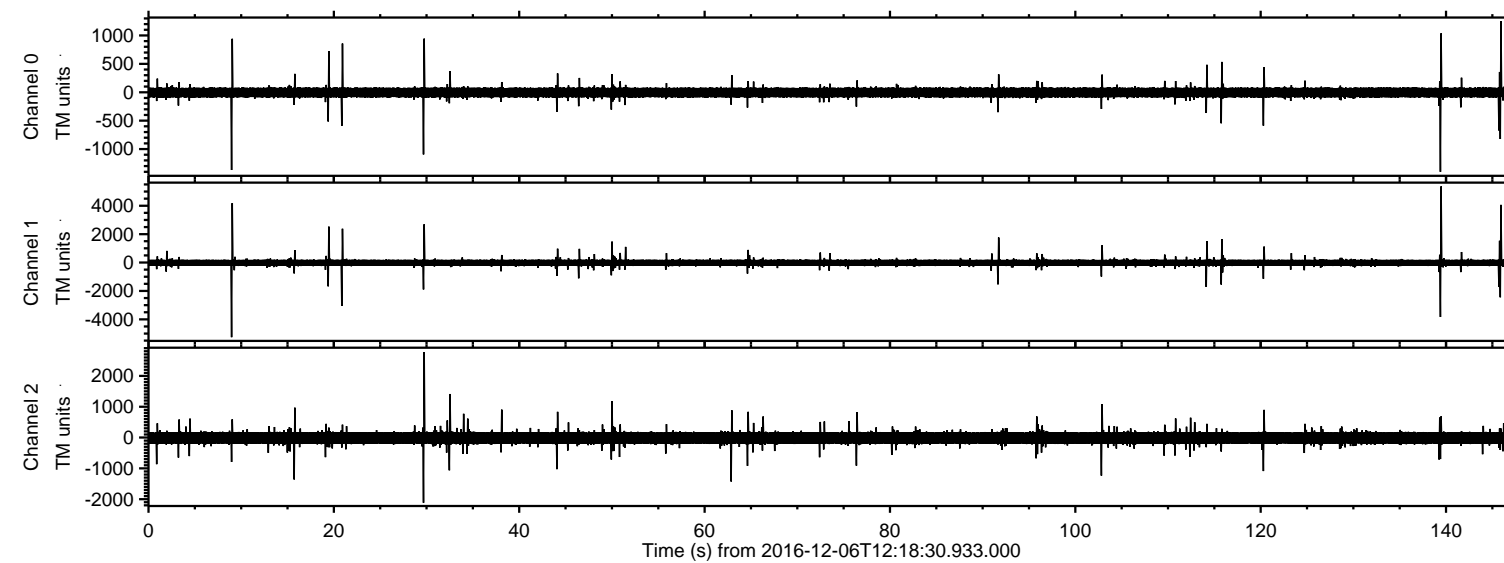


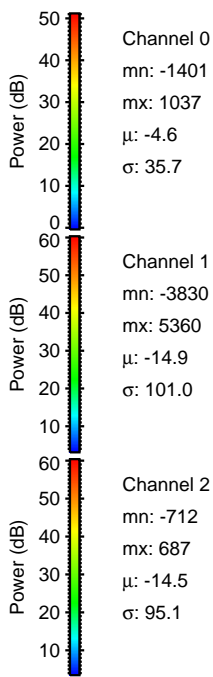
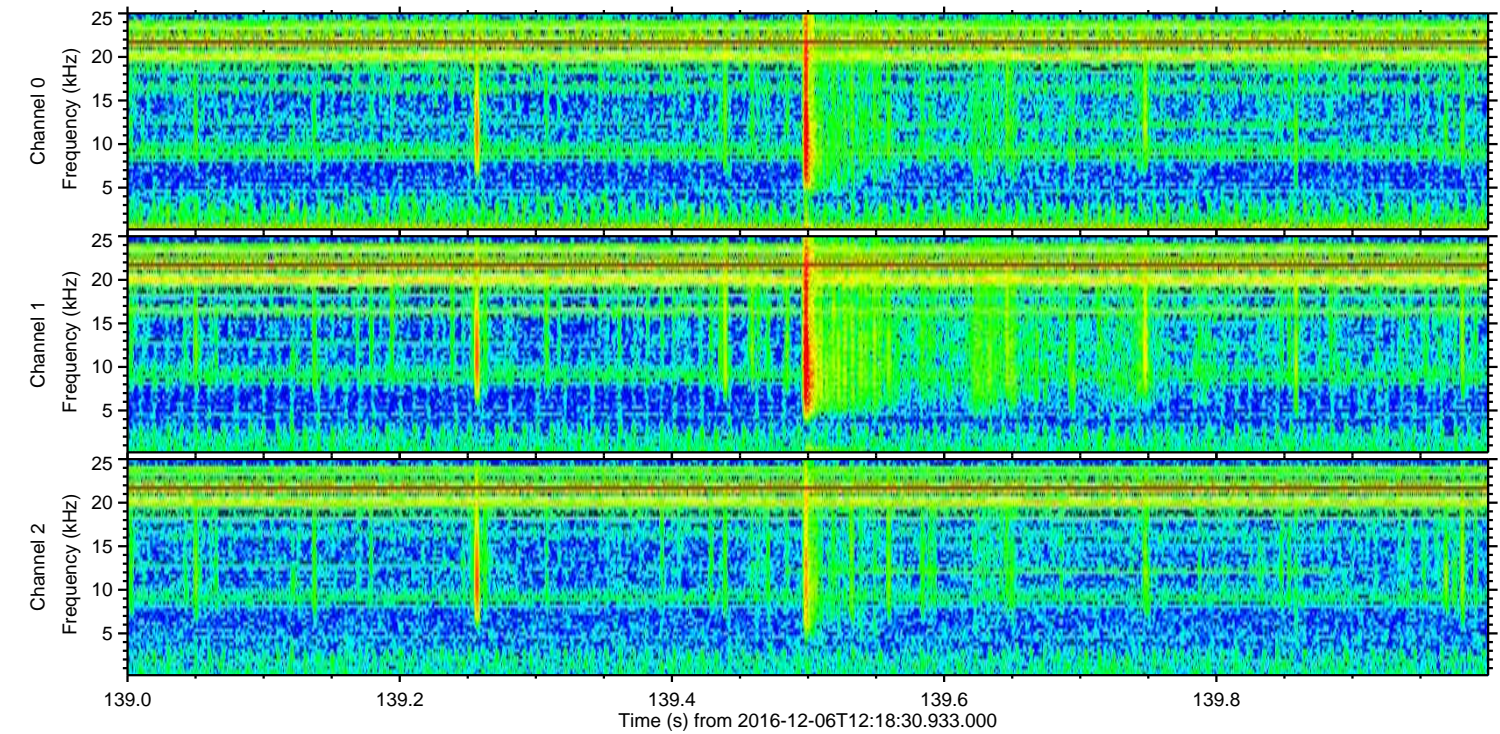
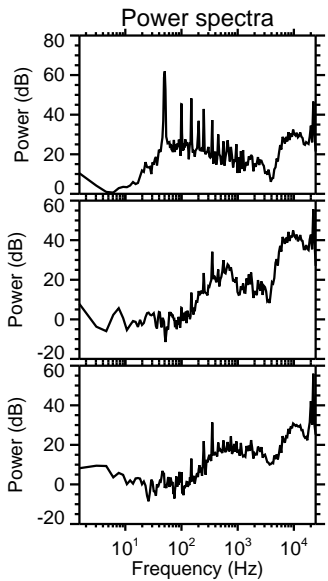
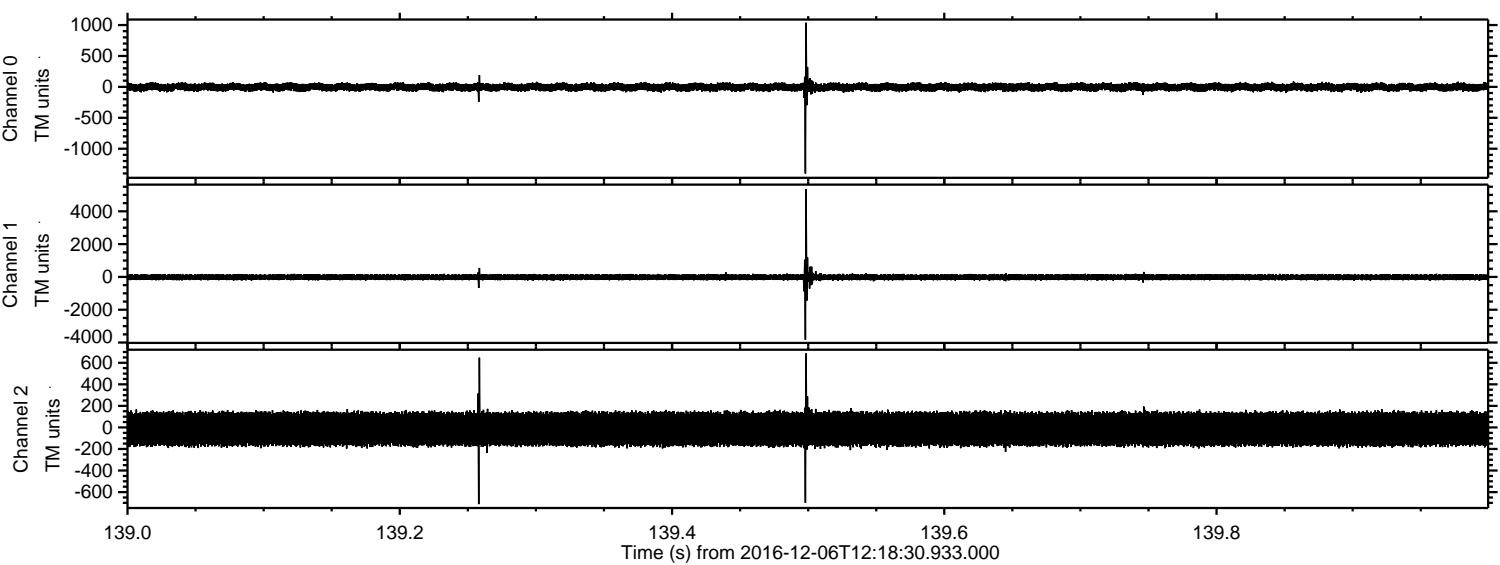
ELMAVAN 3D WAVEFORMS (Measured data sampled at 50 kHz) 51000 packets of 144 samples from 2016-12-06T12:18:30.933.000.

Processed Tue Dec 6 13:26:26 2016 by ELM ver.2012-10-06 from 001__elm20161206_121829__dat00.bin



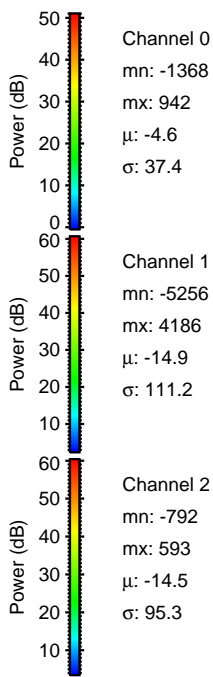
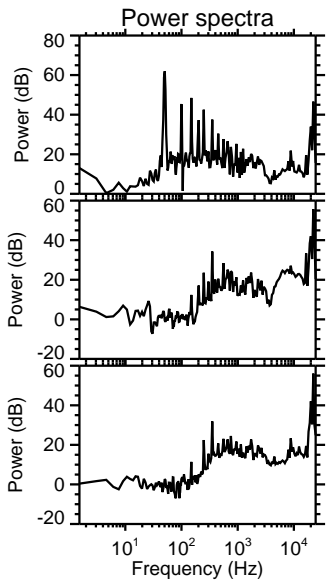
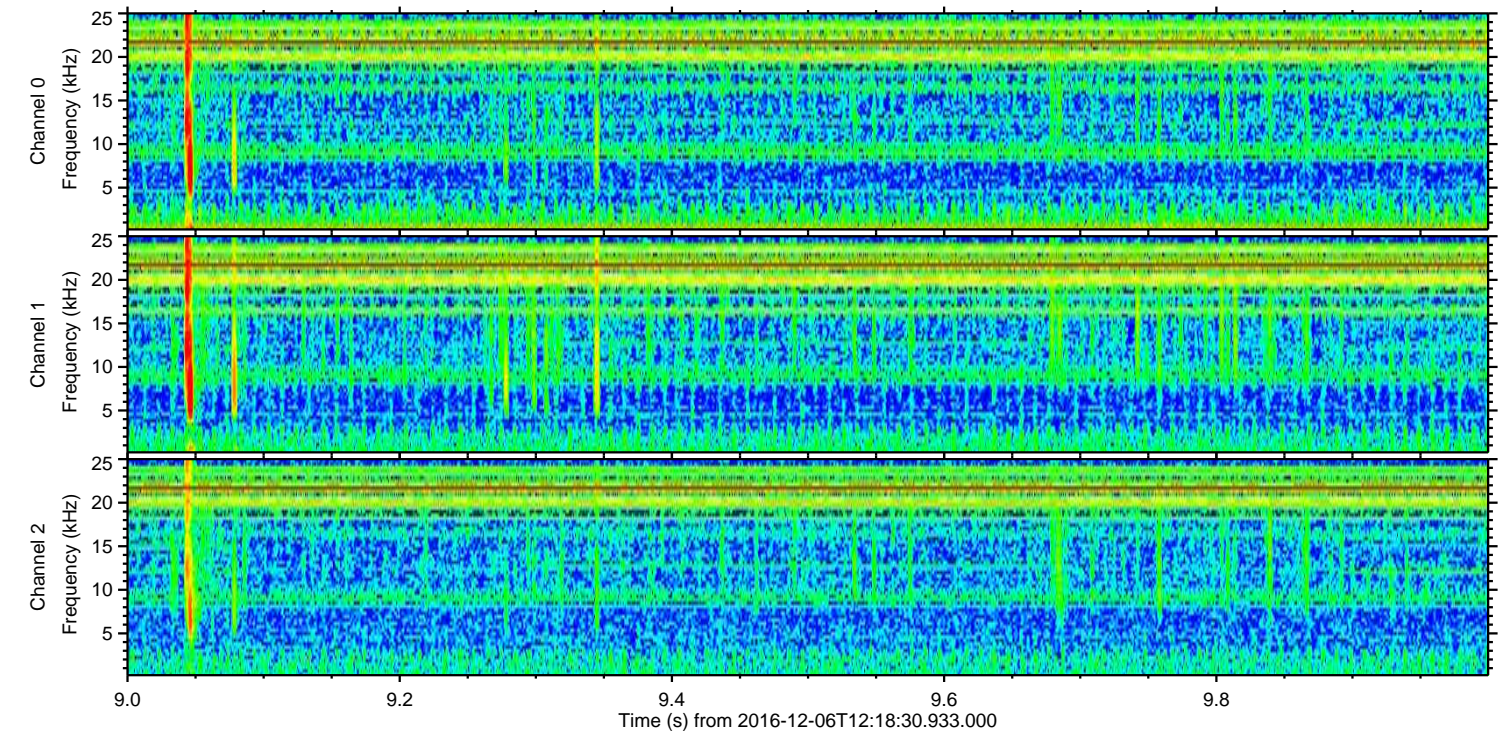
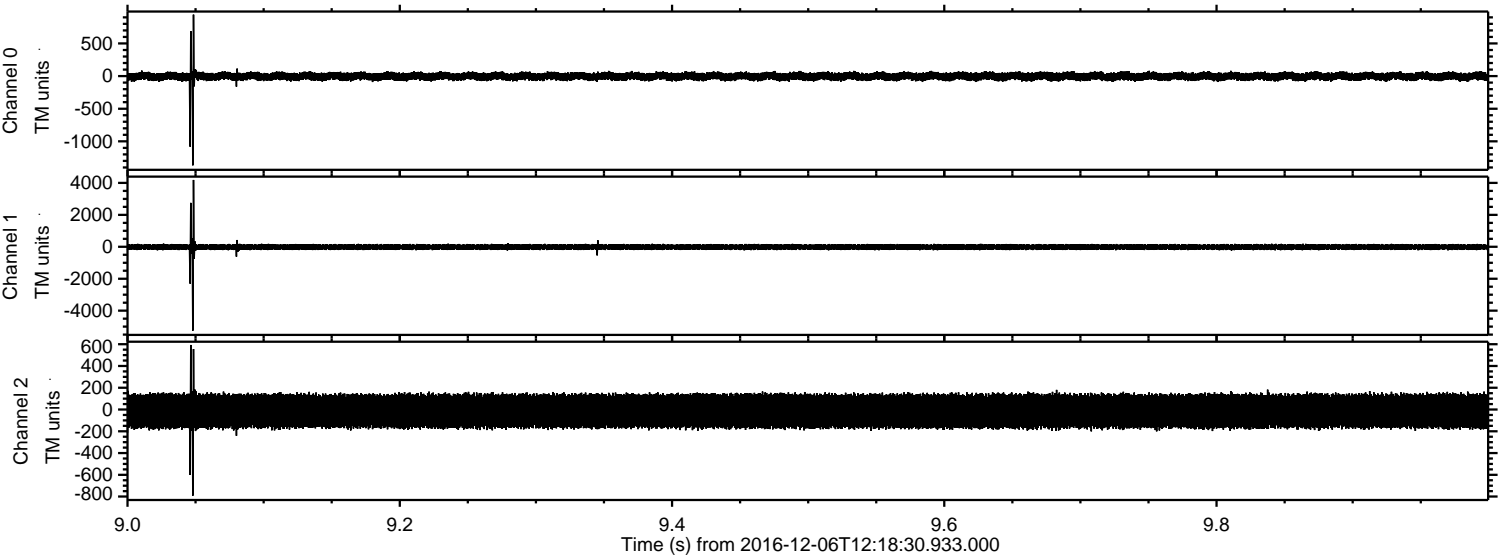
ELMAVAN 3D WAVEFORMS (Measured data sampled at 50 kHz) 51000 packets of 144 samples from 2016-12-06T12:18:30.933.000. Part 140/147

Processed Tue Dec 6 13:26:38 2016 by ELM ver.2012-10-06 from 001__elm20161206_121829__dat00.bin



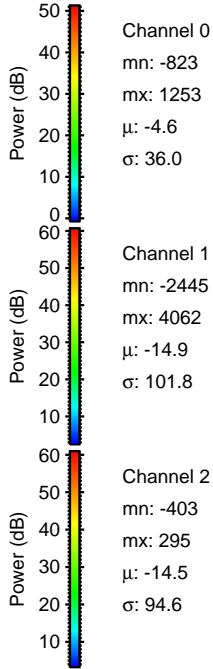
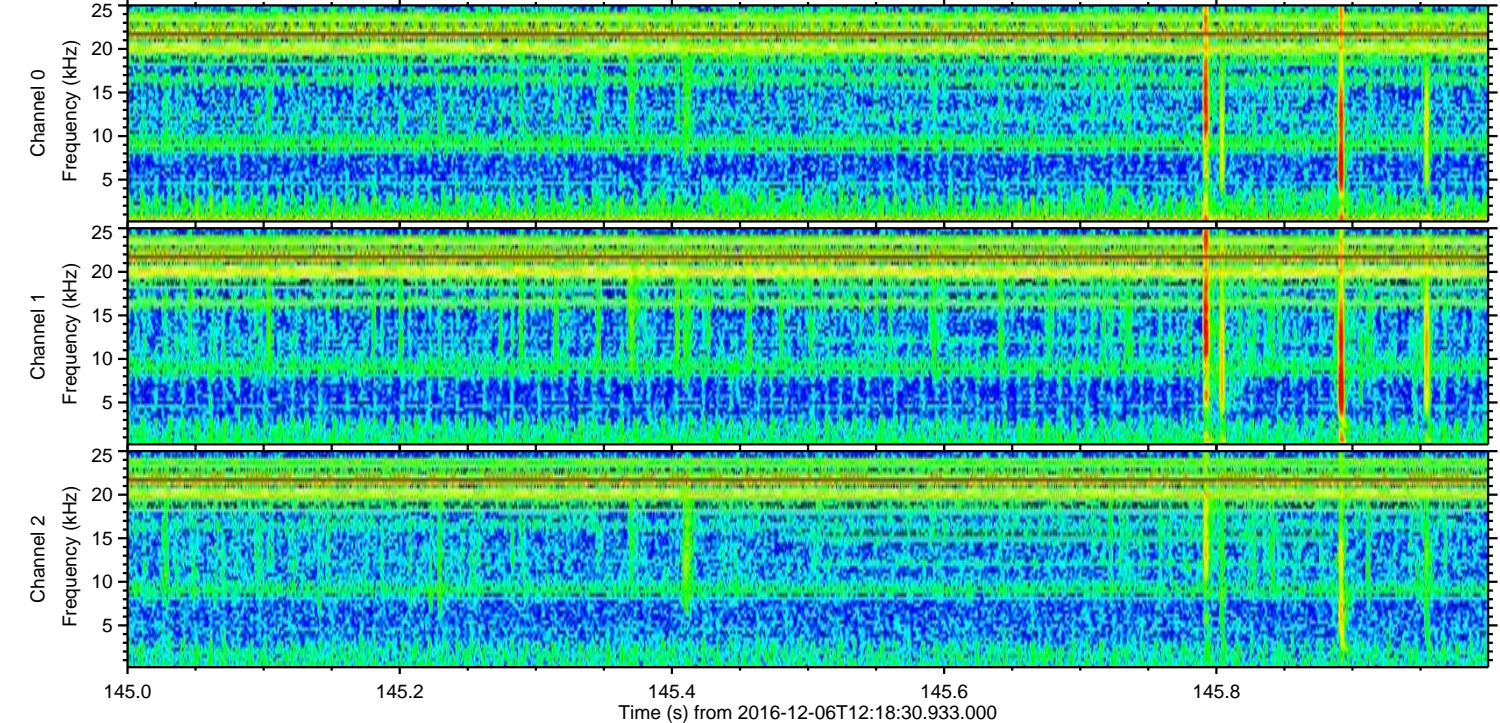
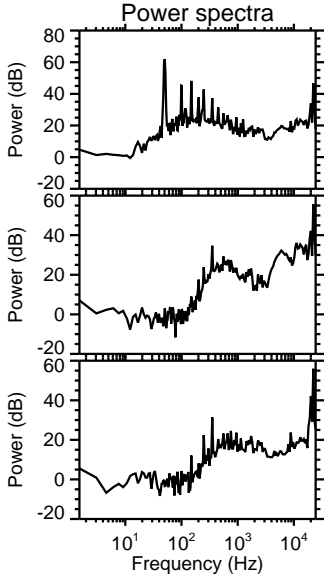
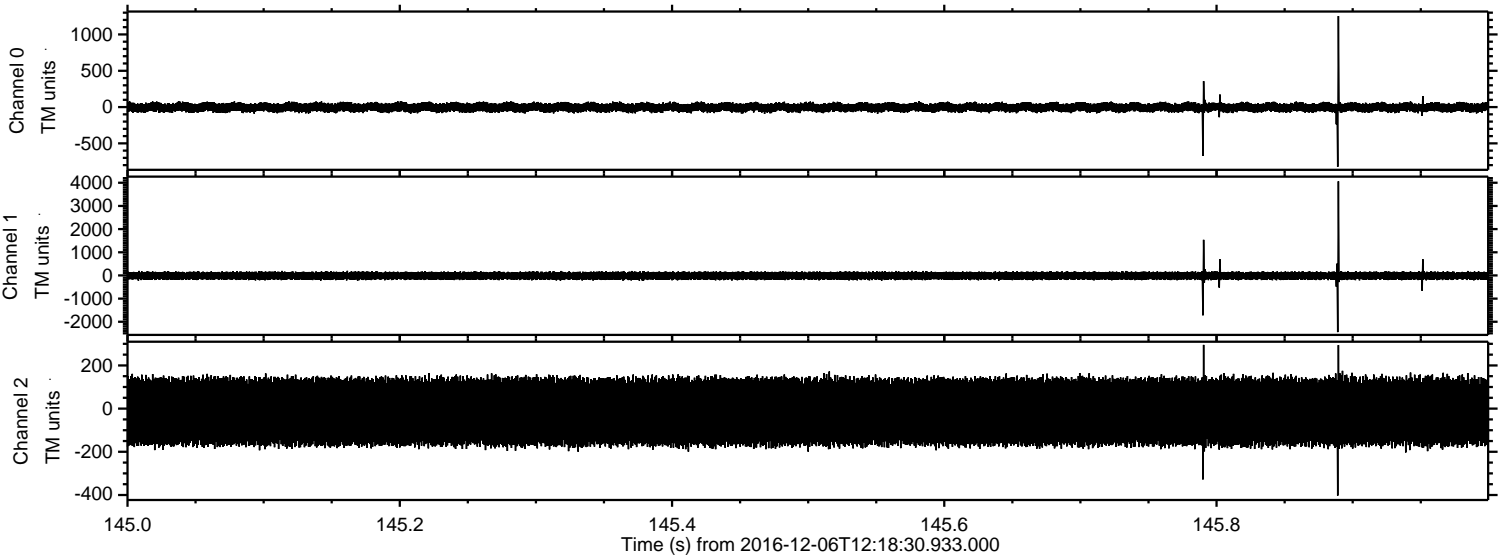
ELMAVAN 3D WAVEFORMS (Measured data sampled at 50 kHz) 51000 packets of 144 samples from 2016-12-06T12:18:30.933.000. Part 10/147

Processed Tue Dec 6 13:26:39 2016 by ELM ver.2012-10-06 from 001__elm20161206_121829__dat00.bin



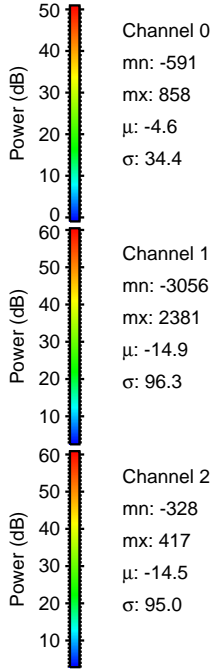
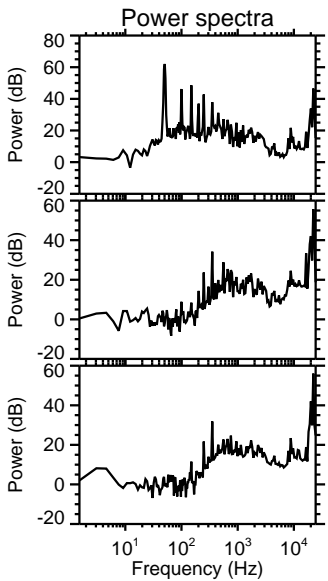
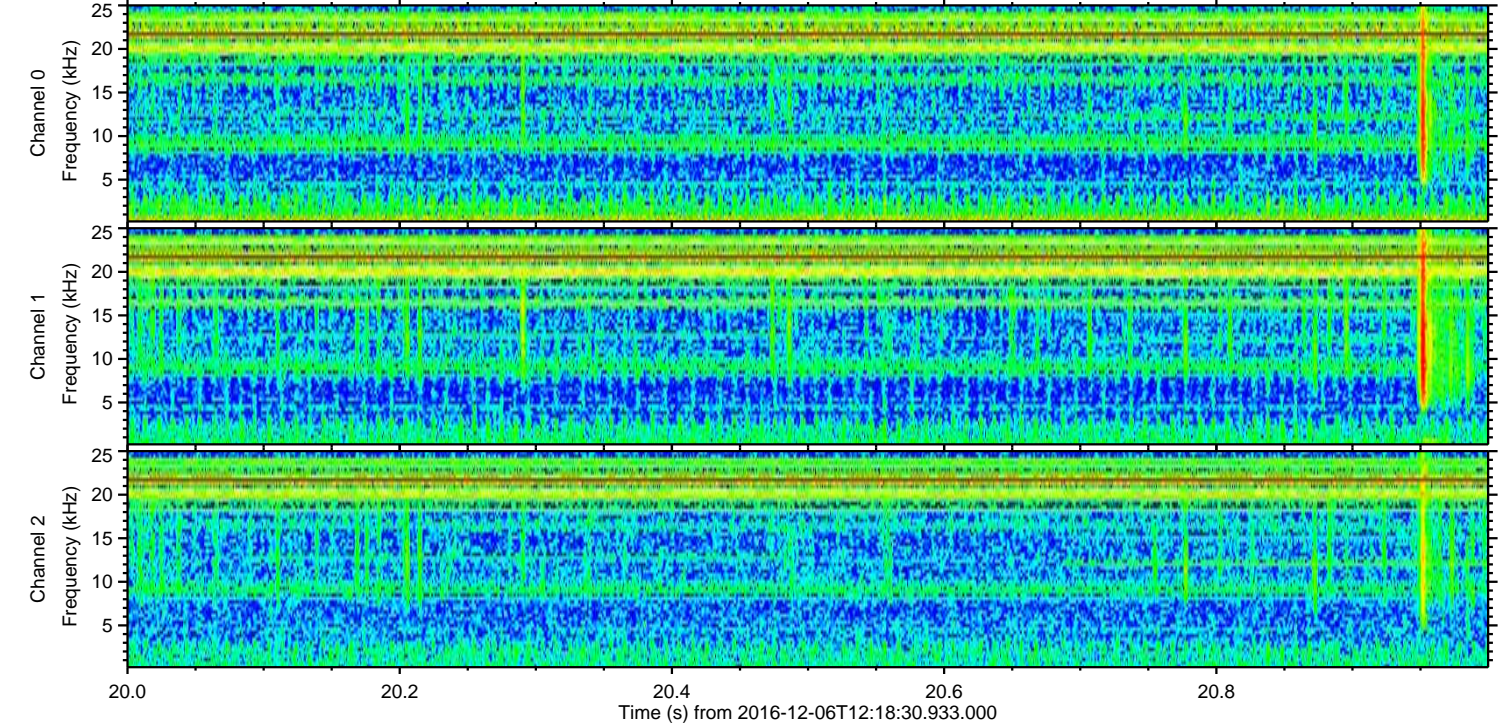
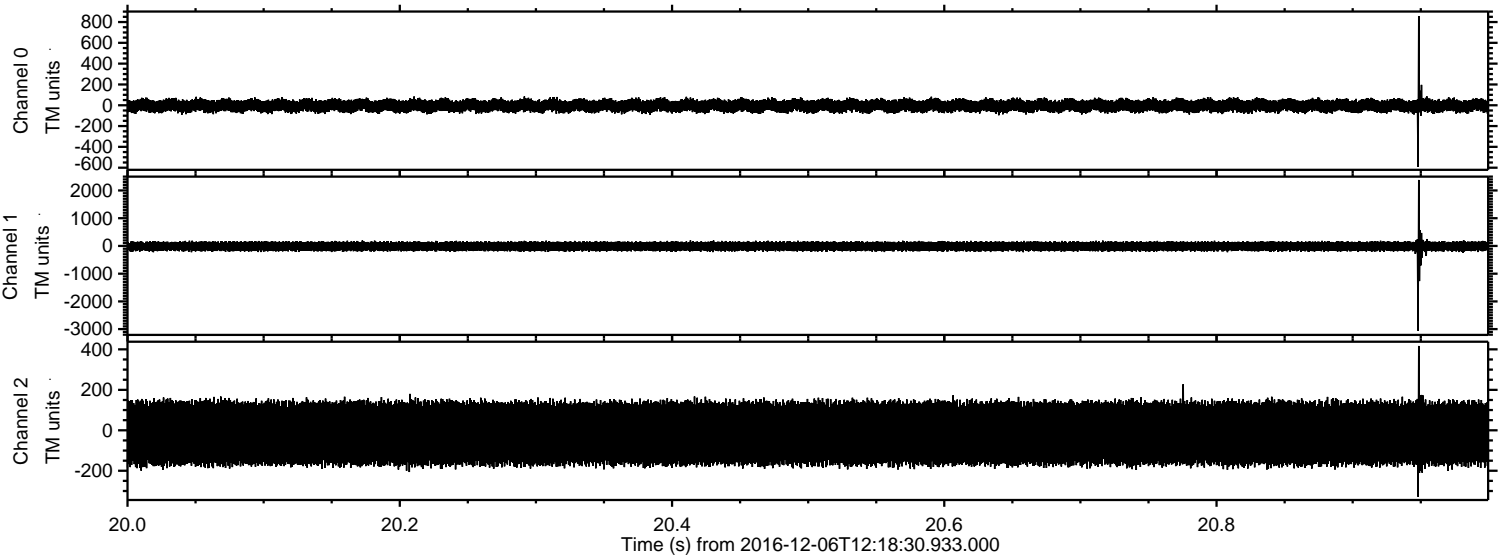
ELMAVAN 3D WAVEFORMS (Measured data sampled at 50 kHz) 51000 packets of 144 samples from 2016-12-06T12:18:30.933.000. Part 146/147

Processed Tue Dec 6 13:26:40 2016 by ELM ver.2012-10-06 from 001__elm20161206_121829__dat00.bin



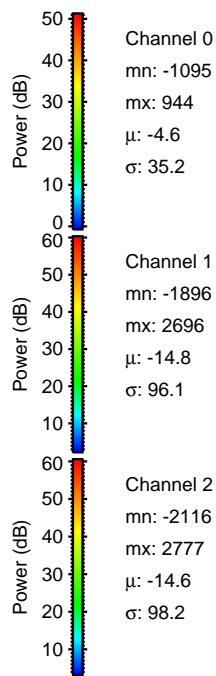
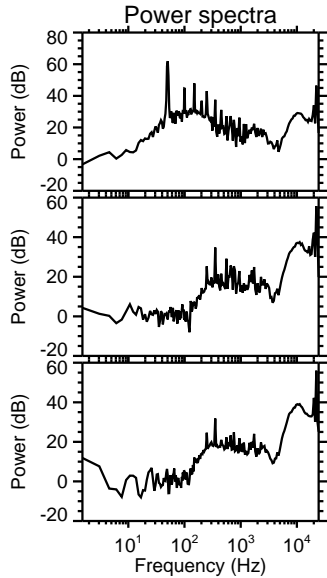
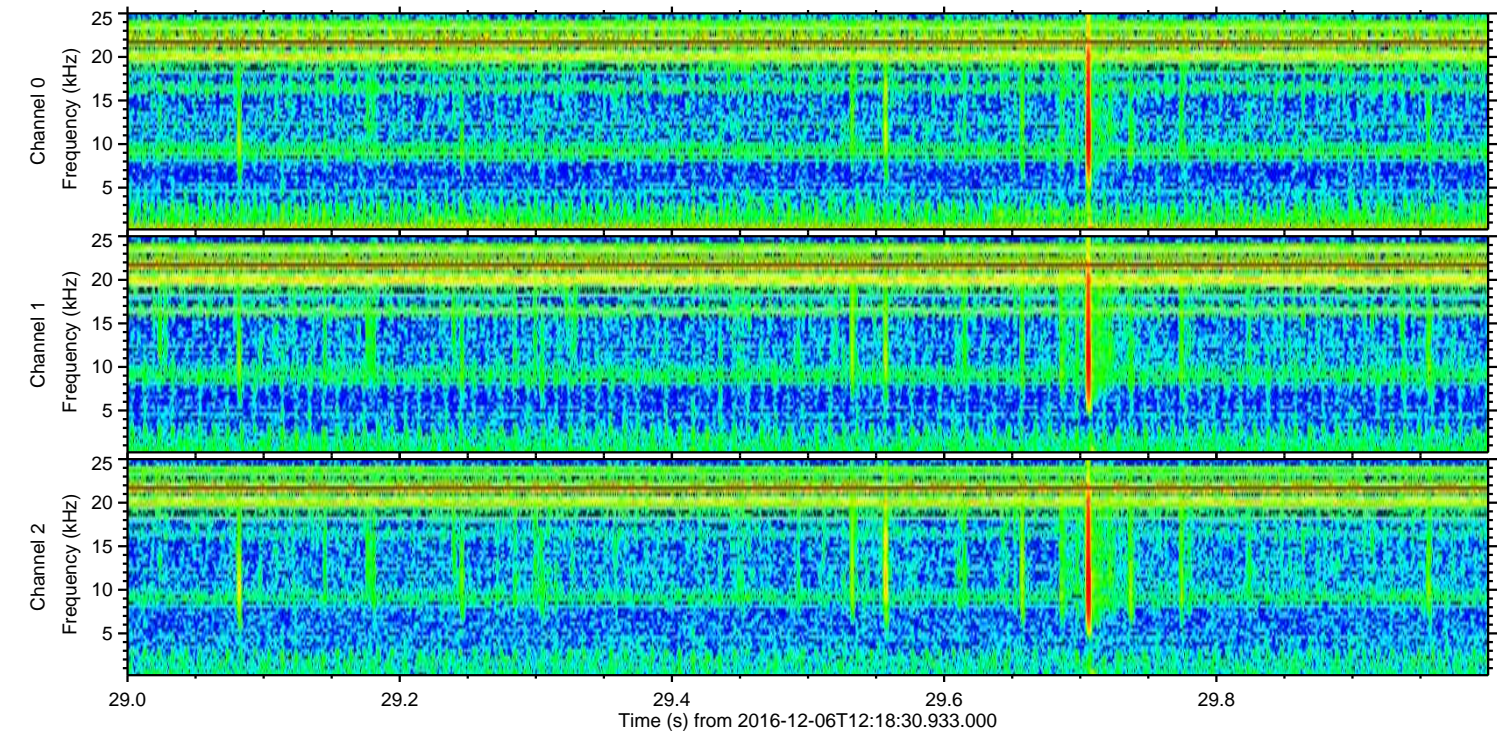
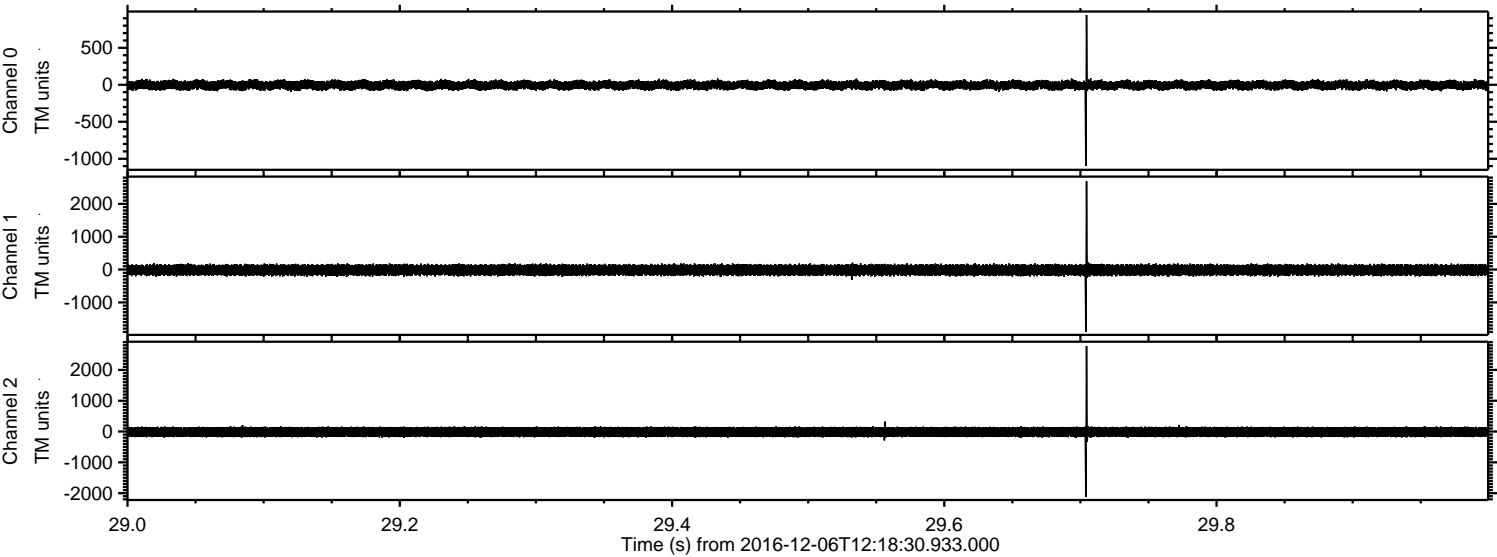
ELMAVAN 3D WAVEFORMS (Measured data sampled at 50 kHz) 51000 packets of 144 samples from 2016-12-06T12:18:30.933.000. Part 21/147

Processed Tue Dec 6 13:26:40 2016 by ELM ver.2012-10-06 from 001__elm20161206_121829__dat00.bin



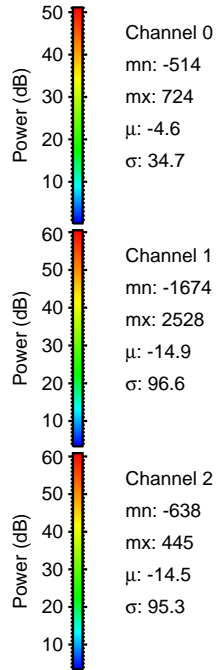
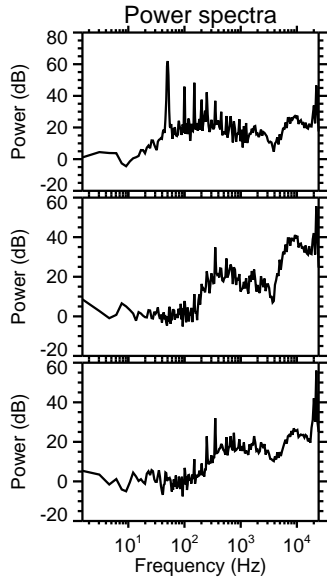
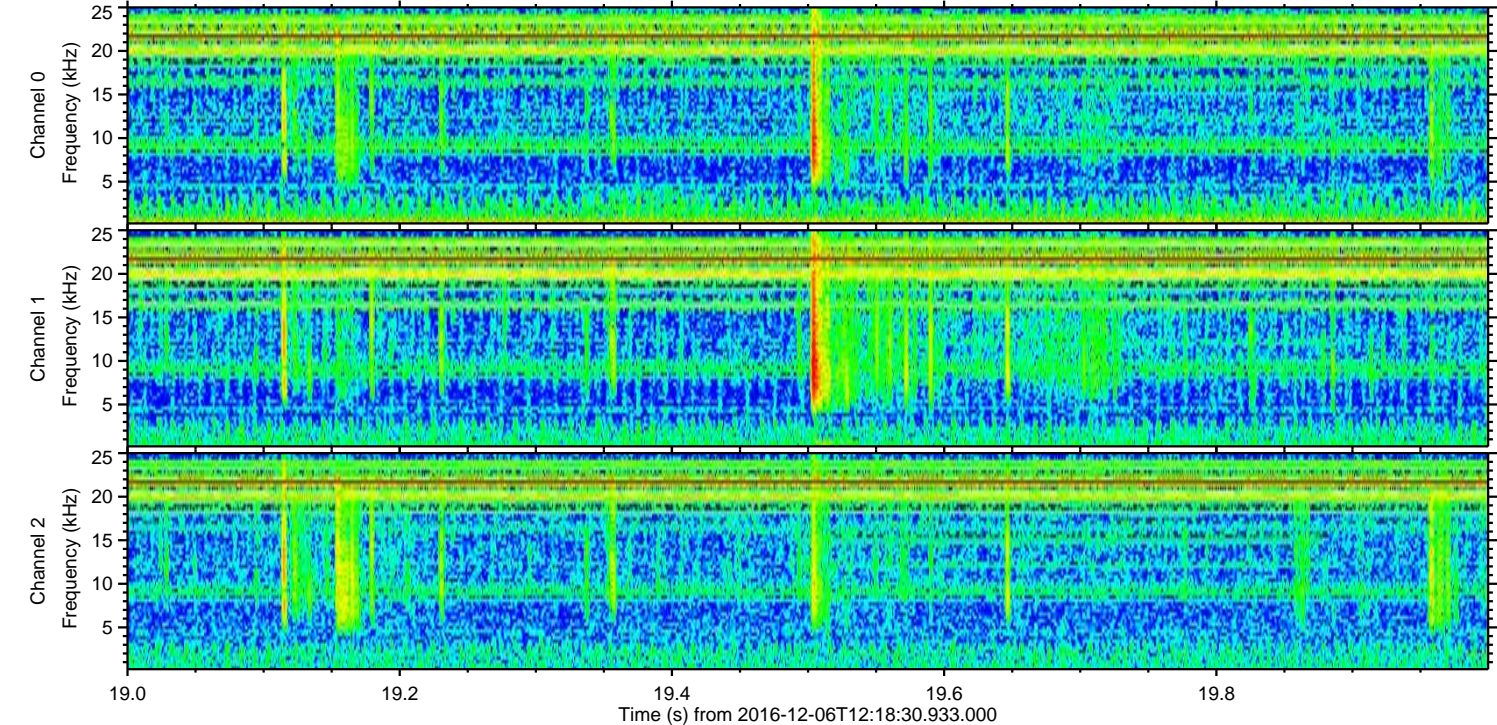
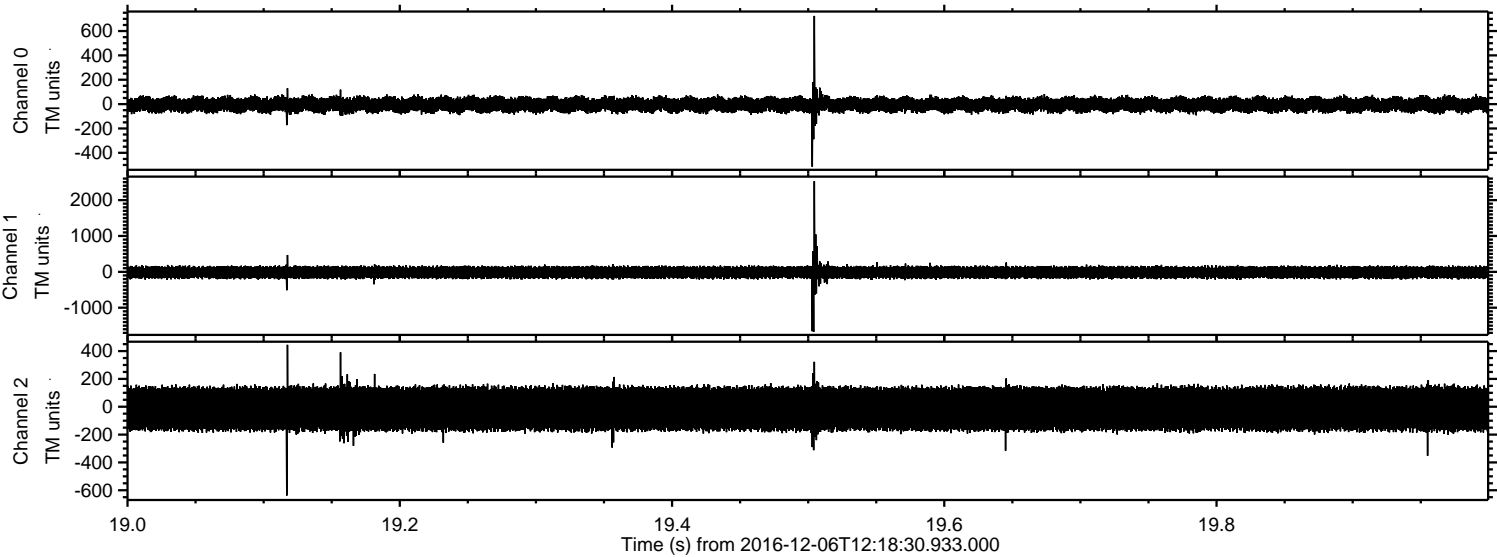
ELMAVAN 3D WAVEFORMS (Measured data sampled at 50 kHz) 51000 packets of 144 samples from 2016-12-06T12:18:30.933.000. Part 30/147

Processed Tue Dec 6 13:26:41 2016 by ELM ver.2012-10-06 from 001__elm20161206_121829__dat00.bin

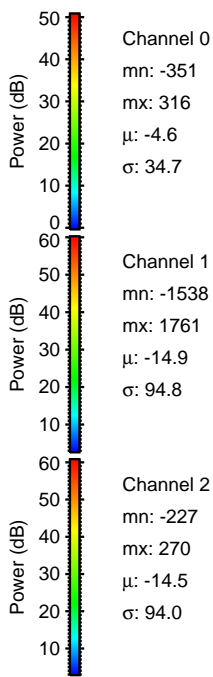
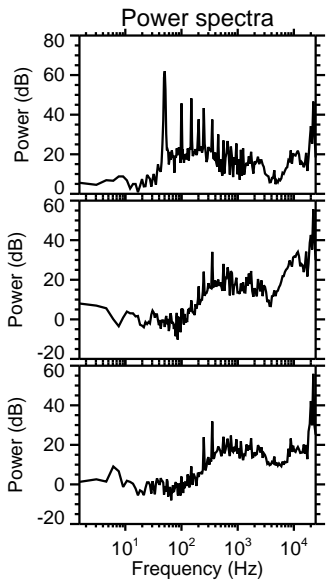
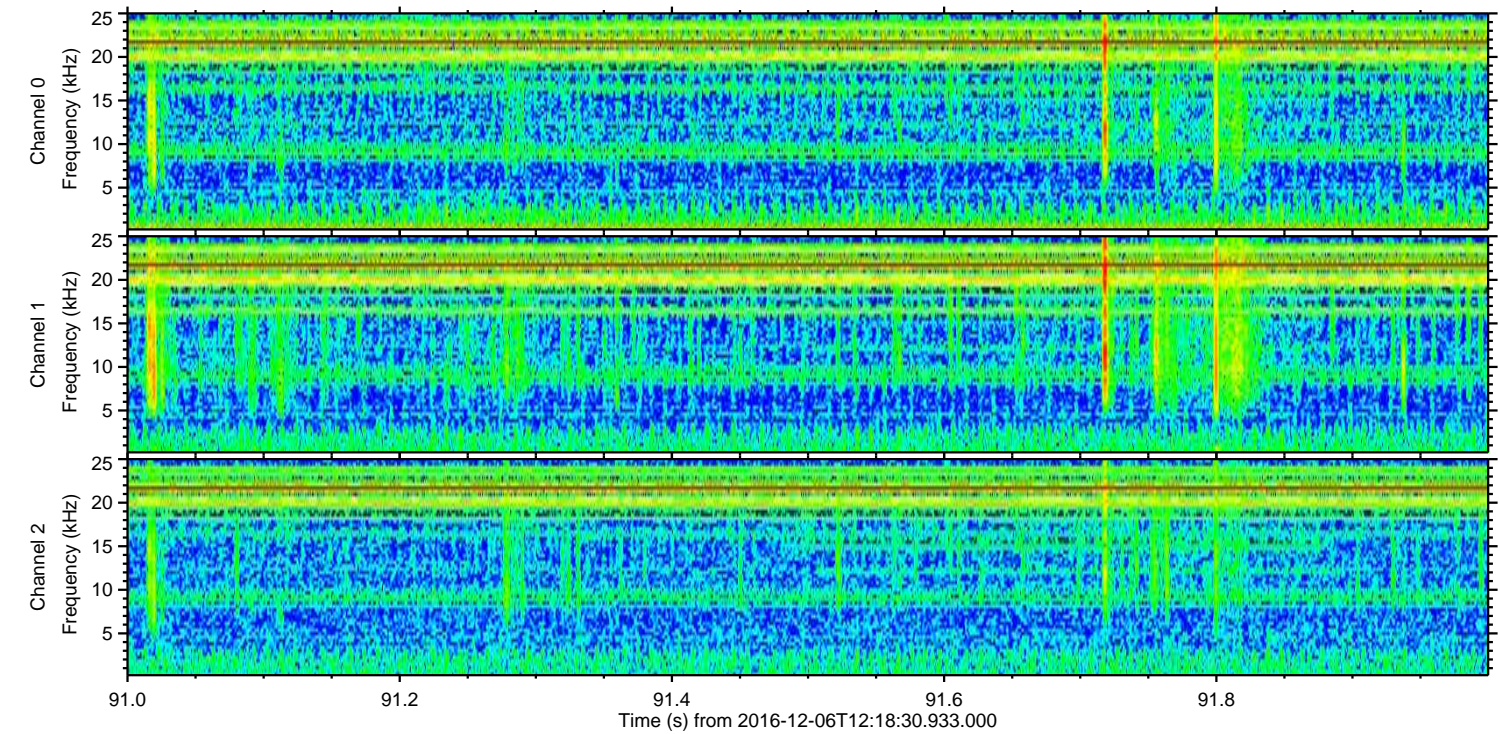
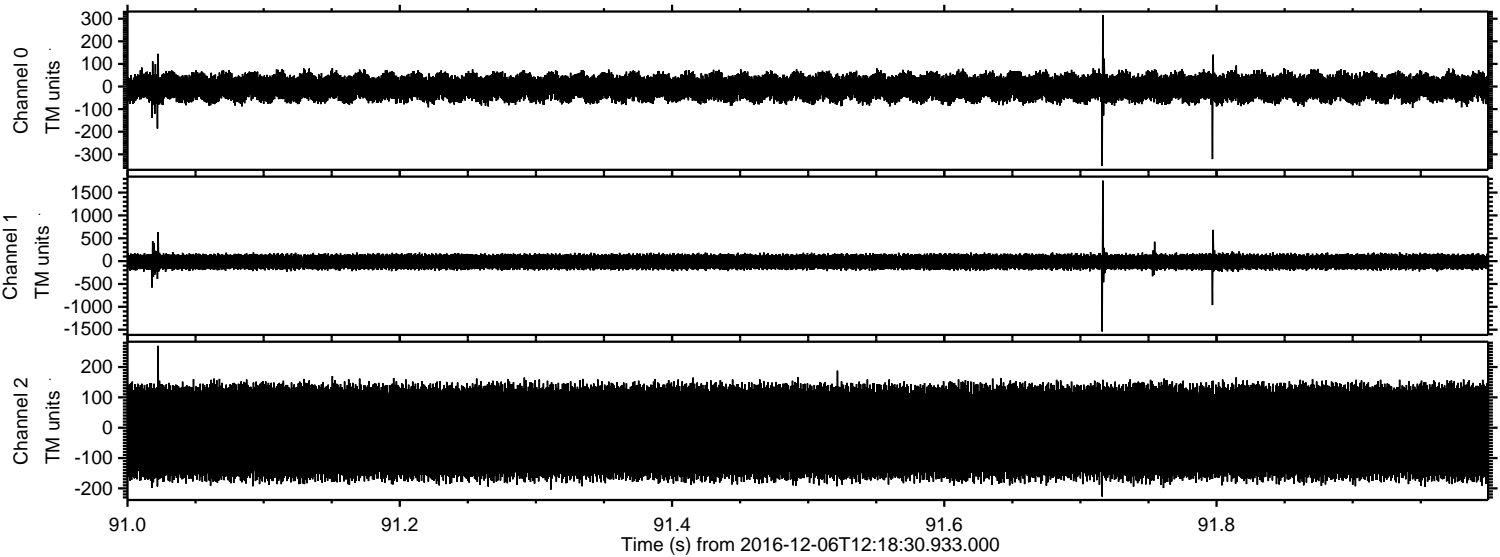


ELMAVAN 3D WAVEFORMS (Measured data sampled at 50 kHz) 51000 packets of 144 samples from 2016-12-06T12:18:30.933.000. Part 20/147

Processed Tue Dec 6 13:26:42 2016 by ELM ver.2012-10-06 from 001__elm20161206_121829__dat00.bin



Processed Tue Dec 6 13:26:43 2016 by ELM ver.2012-10-06 from 001__elm20161206_121829__dat00.bin



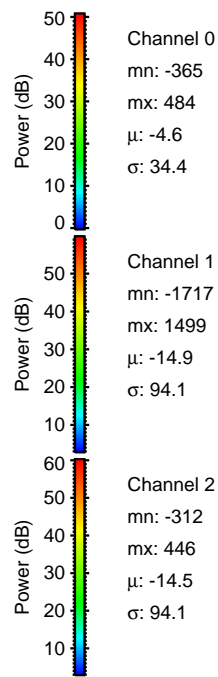
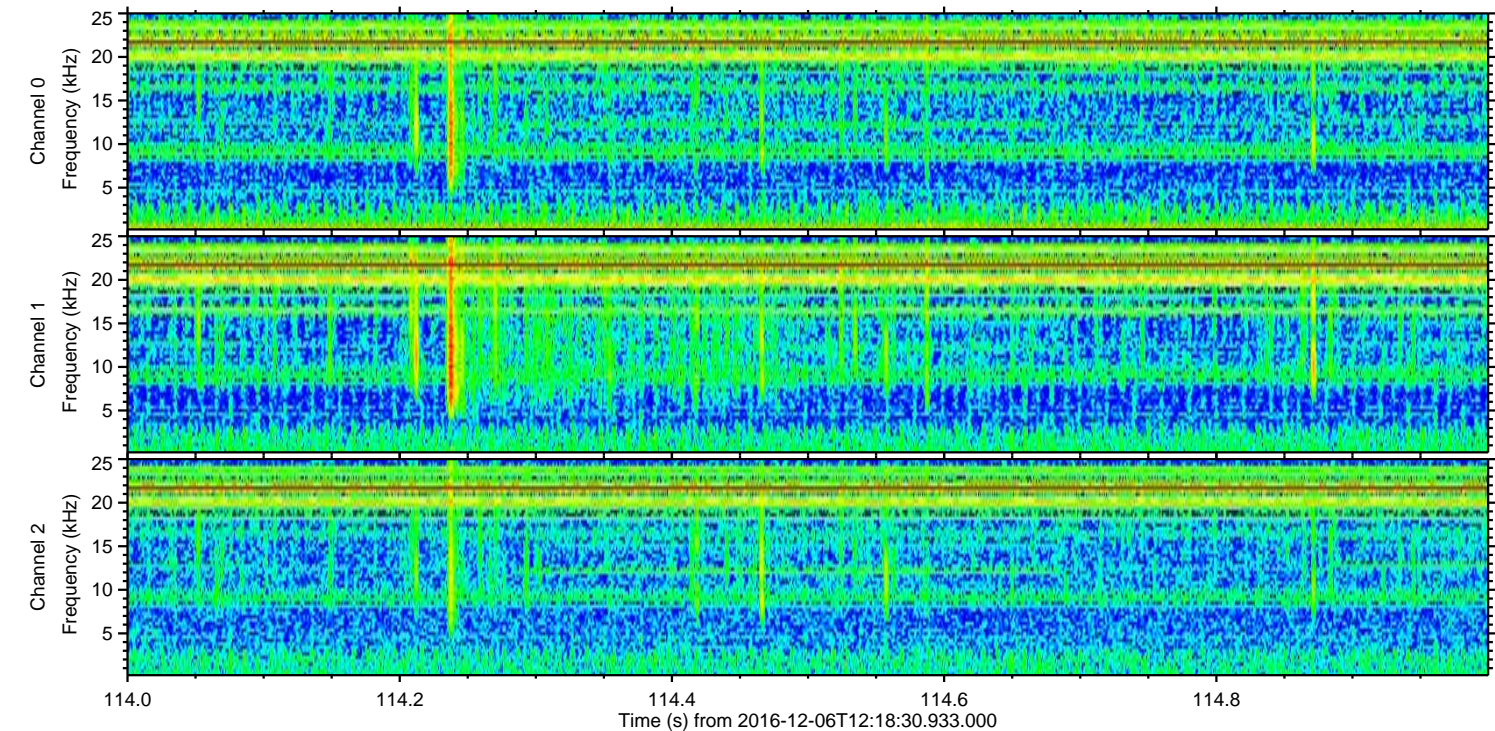
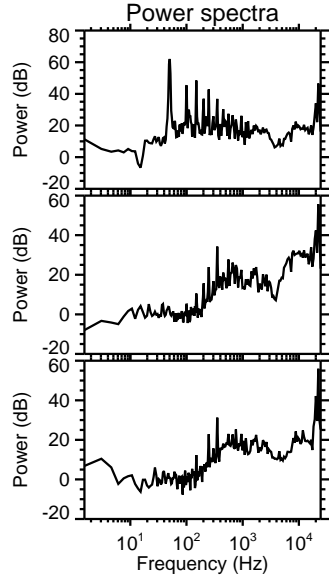
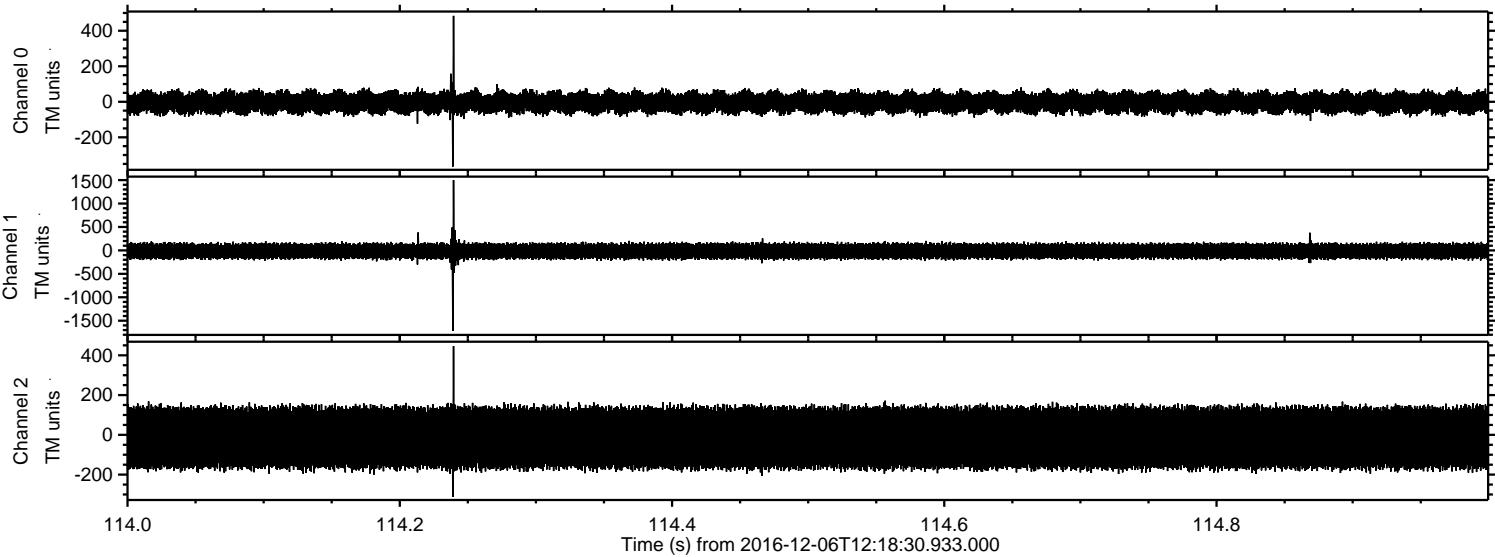
Channel 0
mn: -351
mx: 316
 μ : -4.6
 σ : 34.7

Channel 1
mn: -1538
mx: 1761
 μ : -14.9
 σ : 94.8

Channel 2
mn: -227
mx: 270
 μ : -14.5
 σ : 94.0

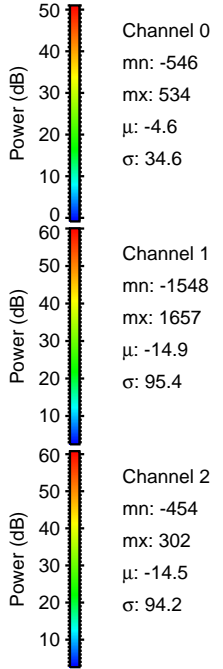
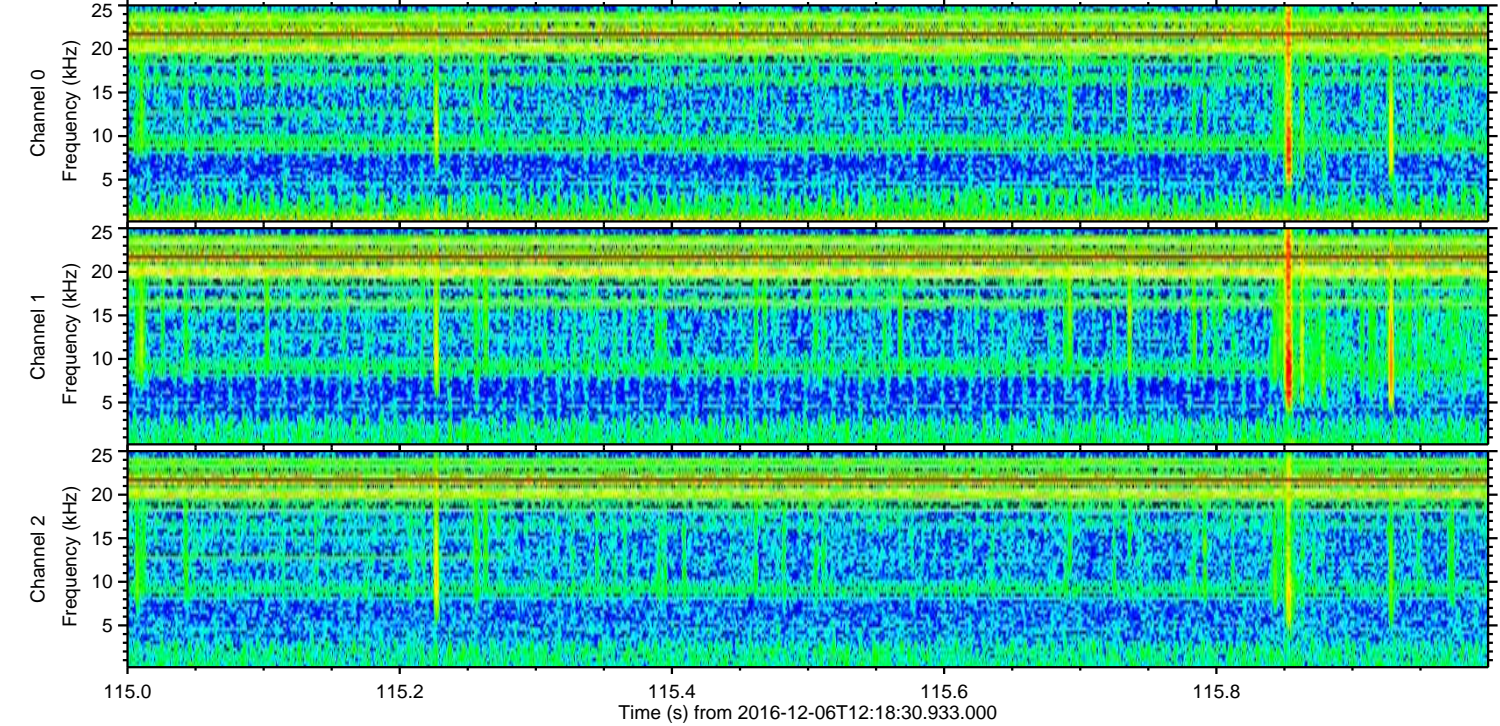
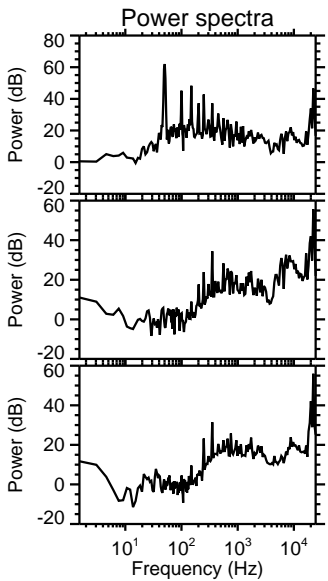
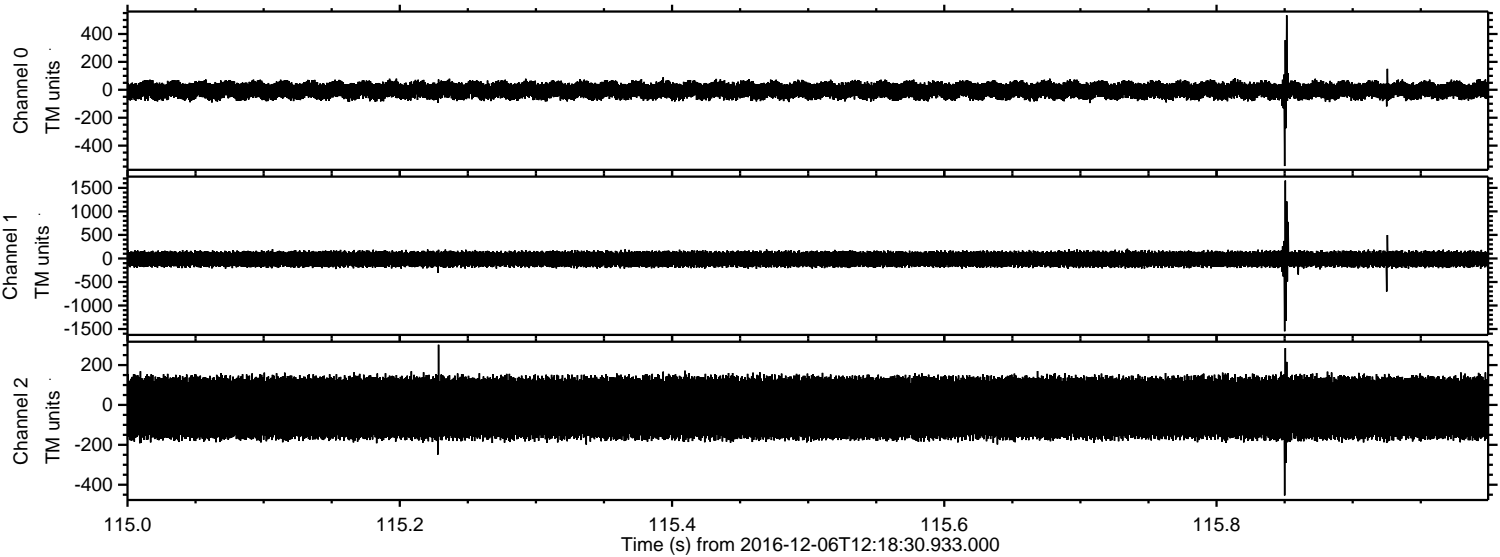
ELMAVAN 3D WAVEFORMS (Measured data sampled at 50 kHz) 51000 packets of 144 samples from 2016-12-06T12:18:30.933.000. Part 115/147

Processed Tue Dec 6 13:26:44 2016 by ELM ver.2012-10-06 from 001__elm20161206_121829__dat00.bin



ELMAVAN 3D WAVEFORMS (Measured data sampled at 50 kHz) 51000 packets of 144 samples from 2016-12-06T12:18:30.933.000. Part 116/147

Processed Tue Dec 6 13:26:45 2016 by ELM ver.2012-10-06 from 001__elm20161206_121829__dat00.bin



Processed Tue Dec 6 13:26:46 2016 by ELM ver.2012-10-06 from 001__elm20161206_121829__dat00.bin

