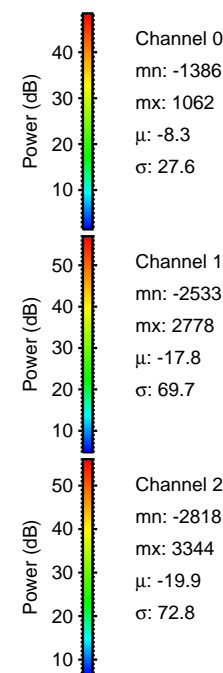
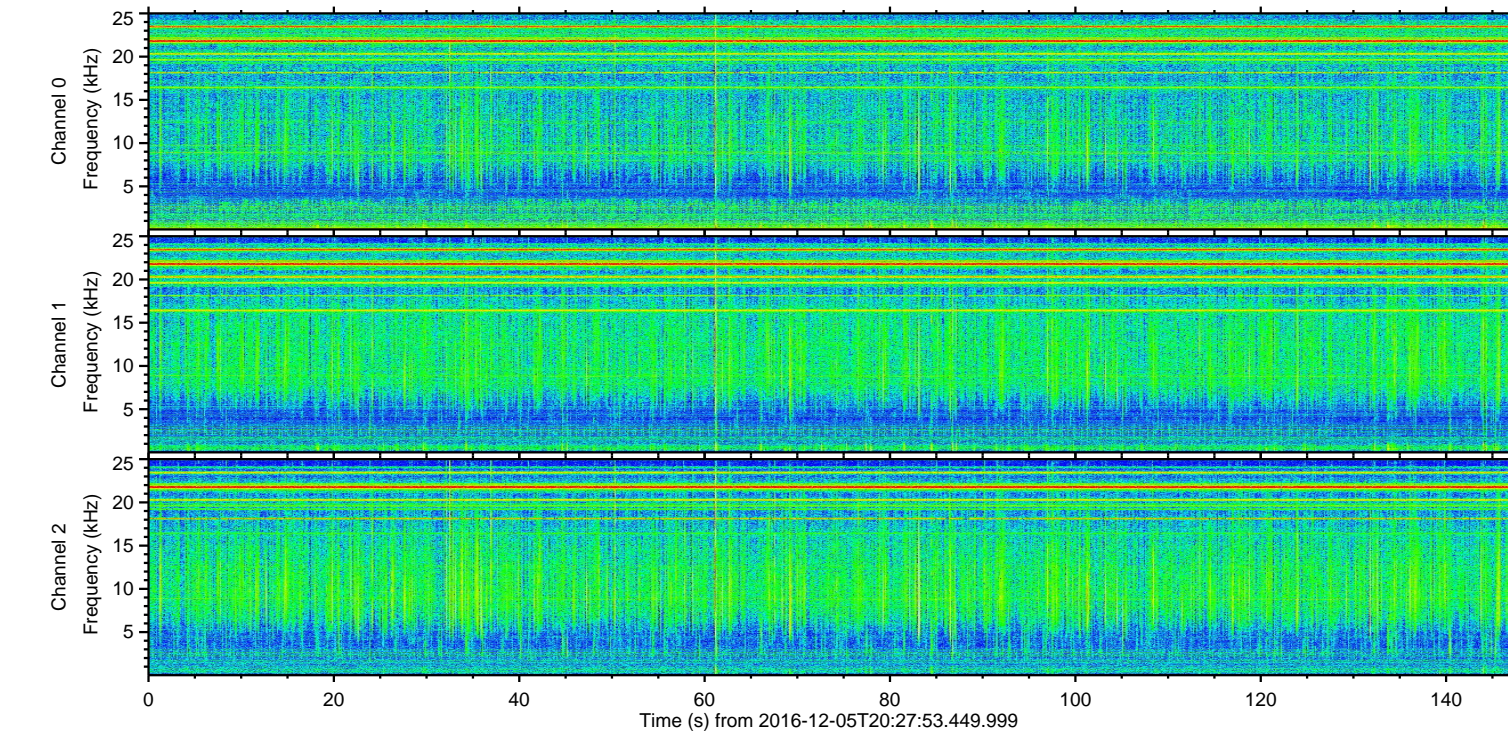
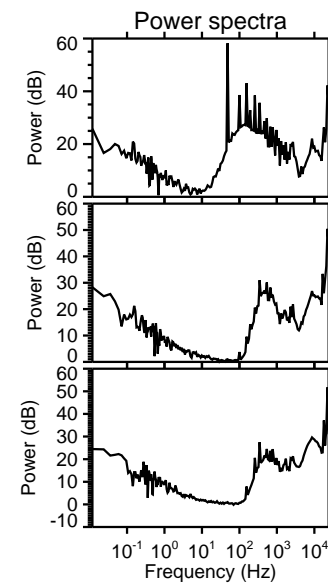
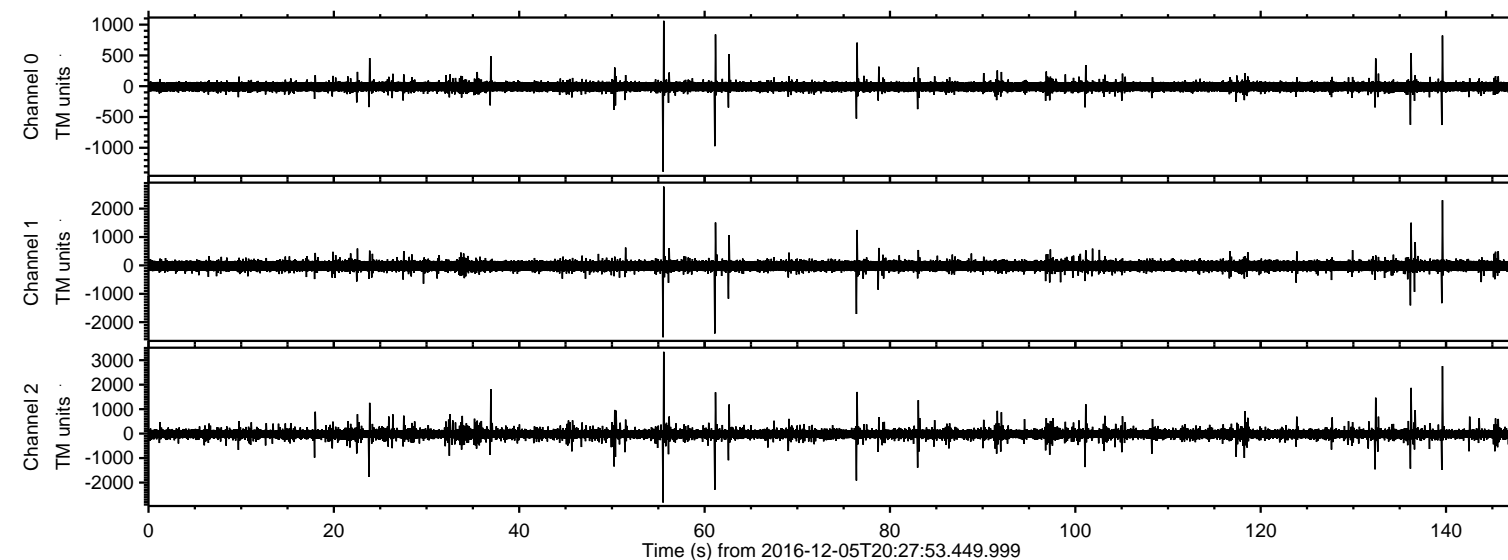
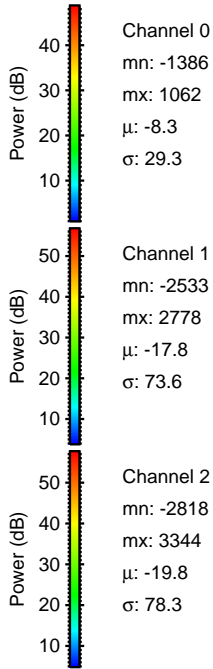
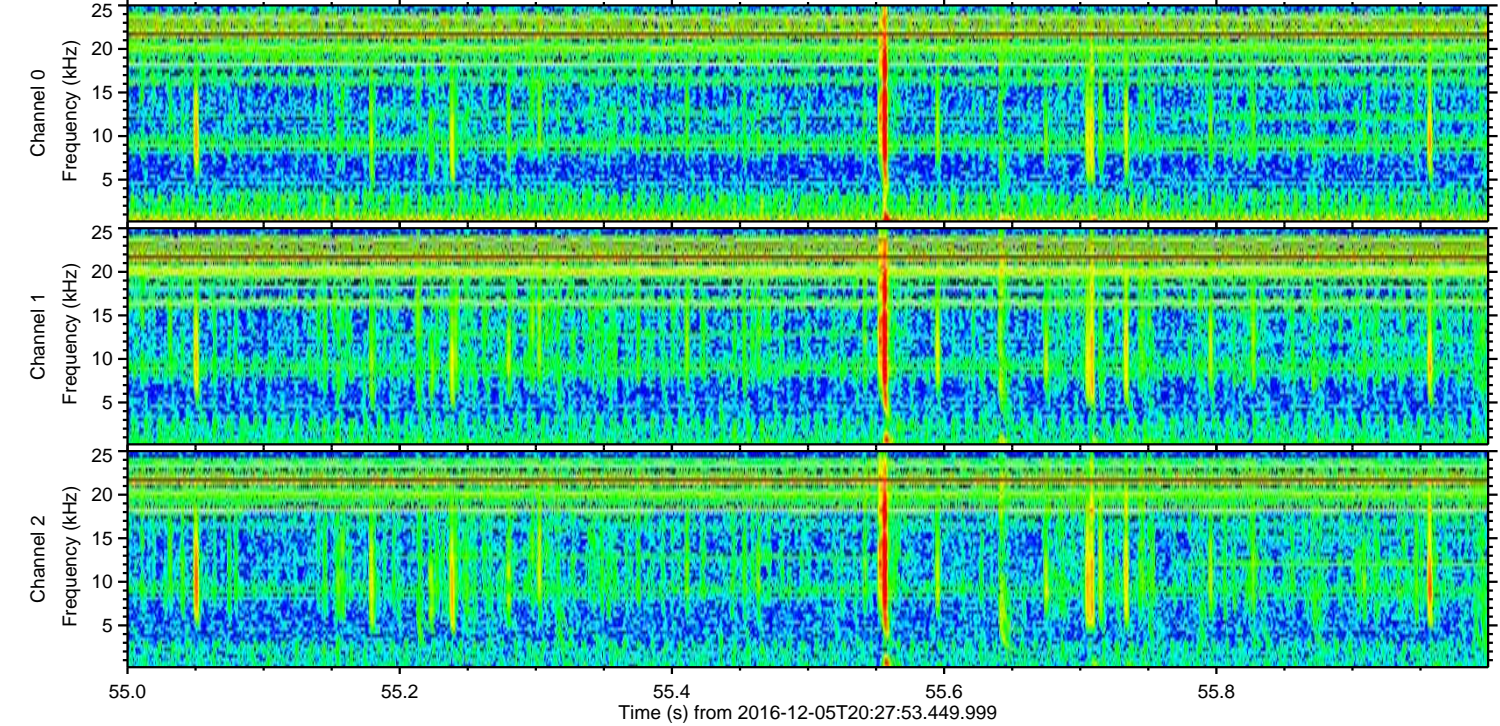
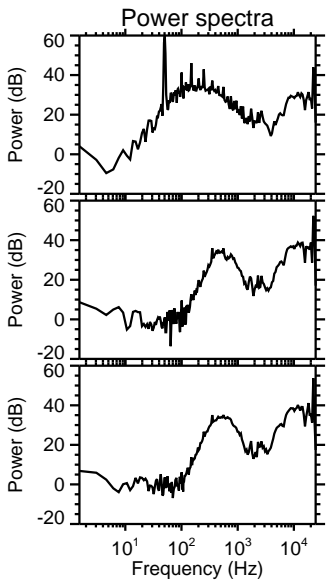
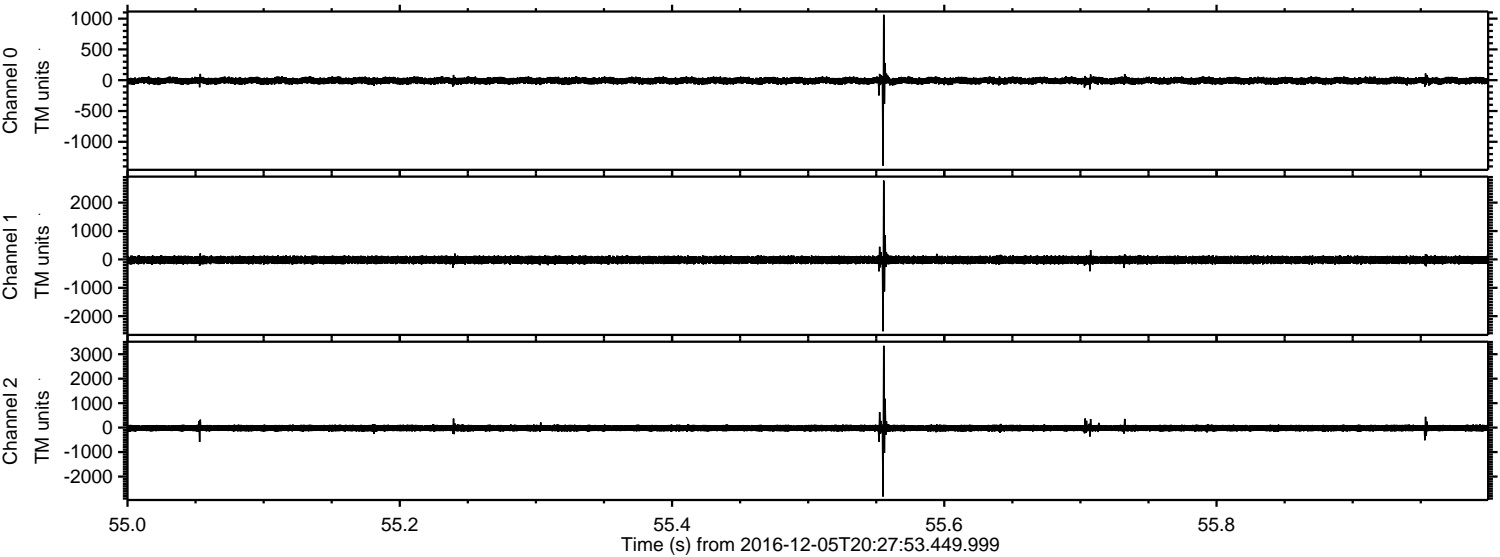


ELMAVAN 3D WAVEFORMS (Measured data sampled at 50 kHz) 51000 packets of 144 samples from 2016-12-05T20:27:53.449.999.

Processed Mon Dec 5 21:35:24 2016 by ELM ver.2012-10-06 from 001__elm20161205_202752__dat00.bin



Processed Mon Dec 5 21:35:35 2016 by ELM ver.2012-10-06 from 001__elm20161205_202752__dat00.bin



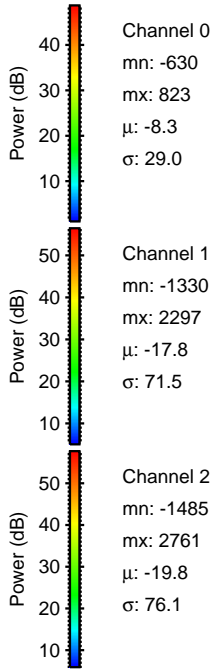
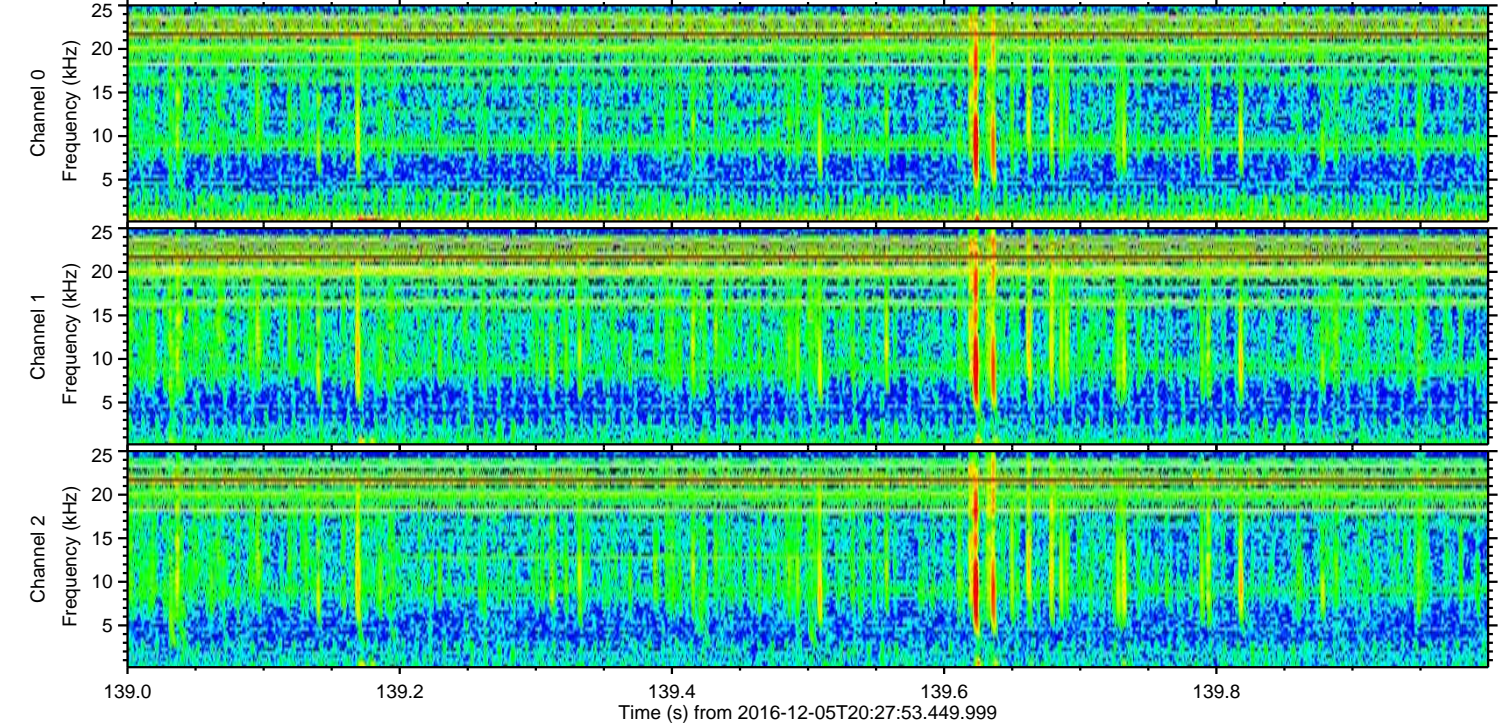
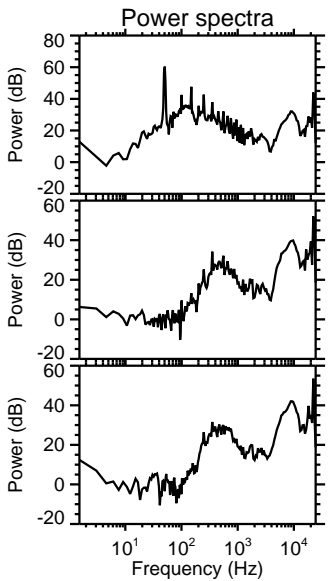
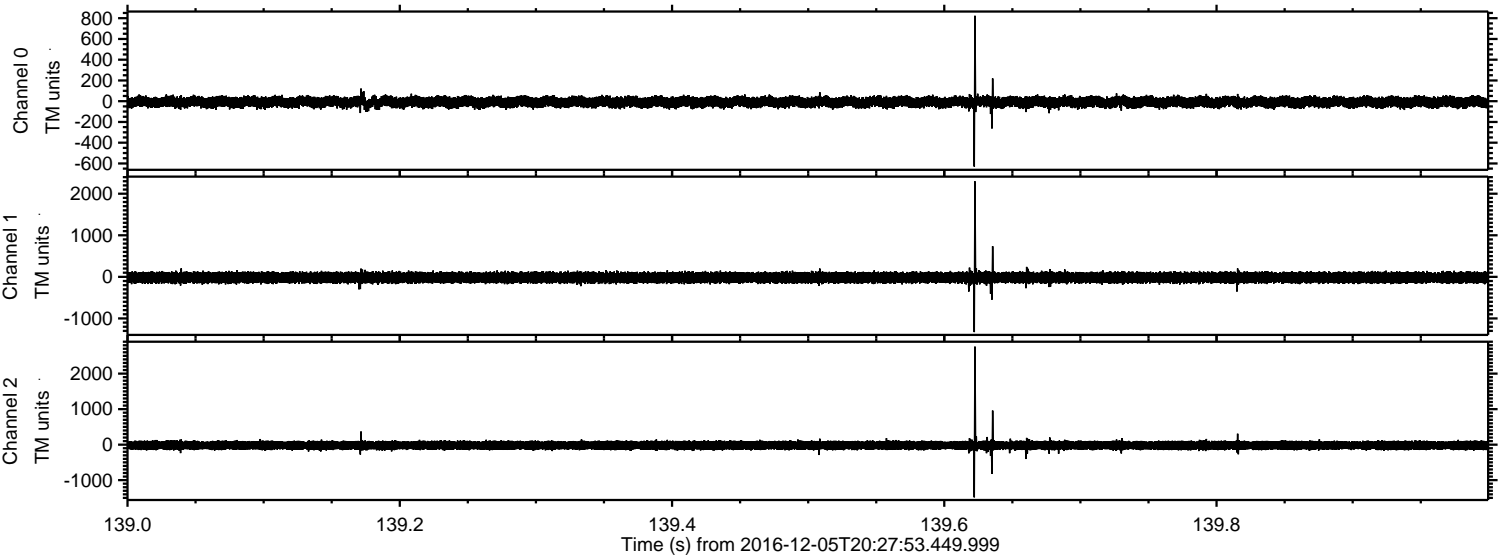
Channel 0
mn: -1386
mx: 1062
 μ : -8.3
 σ : 29.3

Channel 1
mn: -2533
mx: 2778
 μ : -17.8
 σ : 73.6

Channel 2
mn: -2818
mx: 3344
 μ : -19.8
 σ : 78.3

ELMAVAN 3D WAVEFORMS (Measured data sampled at 50 kHz) 51000 packets of 144 samples from 2016-12-05T20:27:53.449.999. Part 140/147

Processed Mon Dec 5 21:35:36 2016 by ELM ver.2012-10-06 from 001__elm20161205_202752__dat00.bin



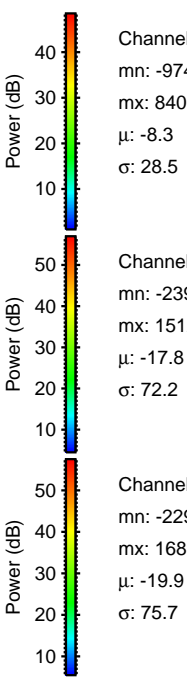
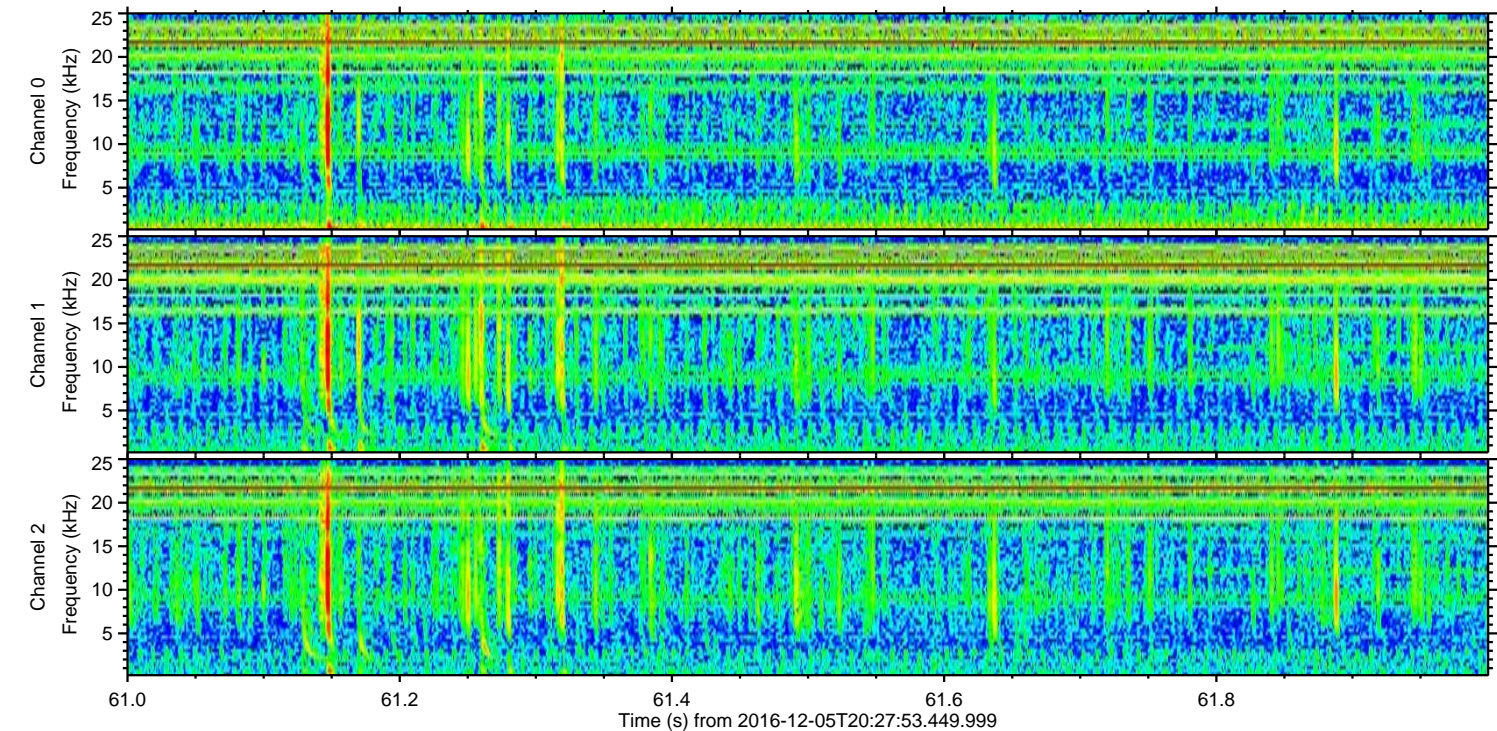
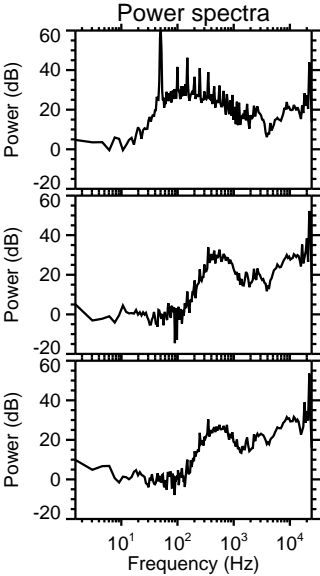
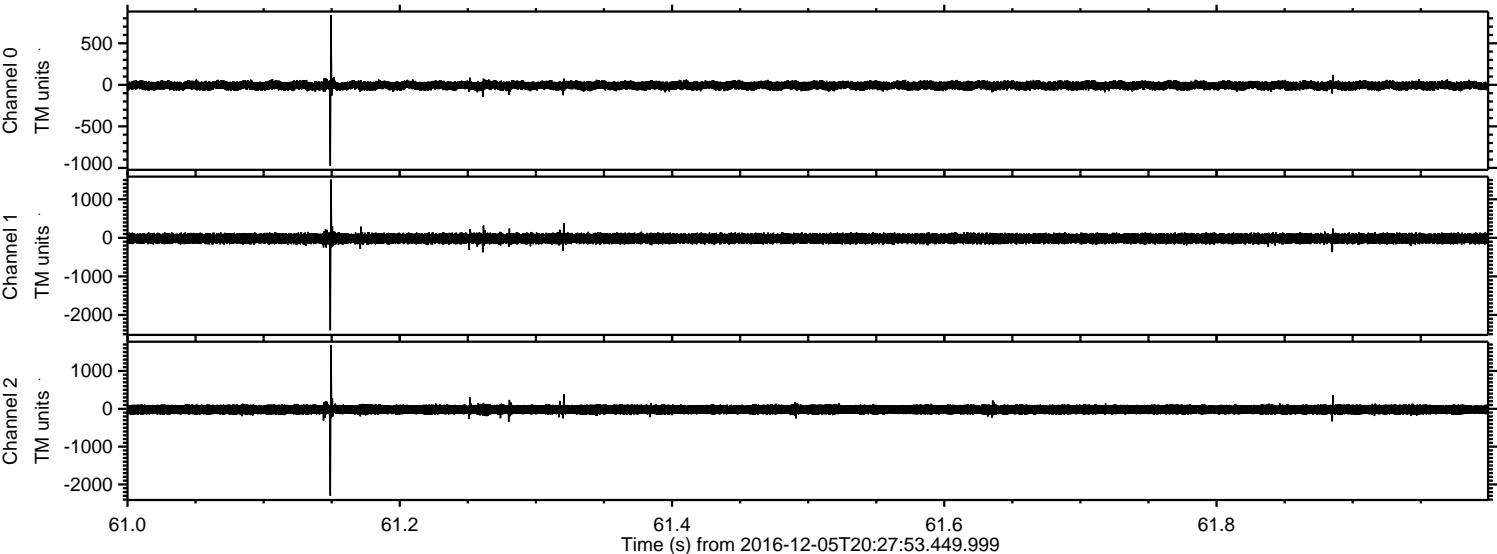
Channel 0
mn: -630
mx: 823
 μ : -8.3
 σ : 29.0

Channel 1
mn: -1330
mx: 2297
 μ : -17.8
 σ : 71.5

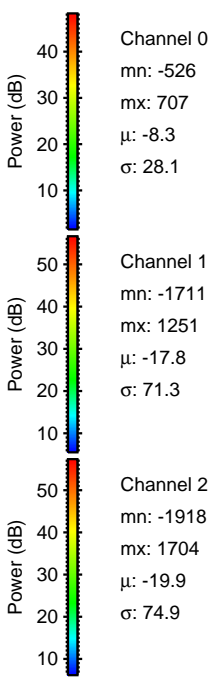
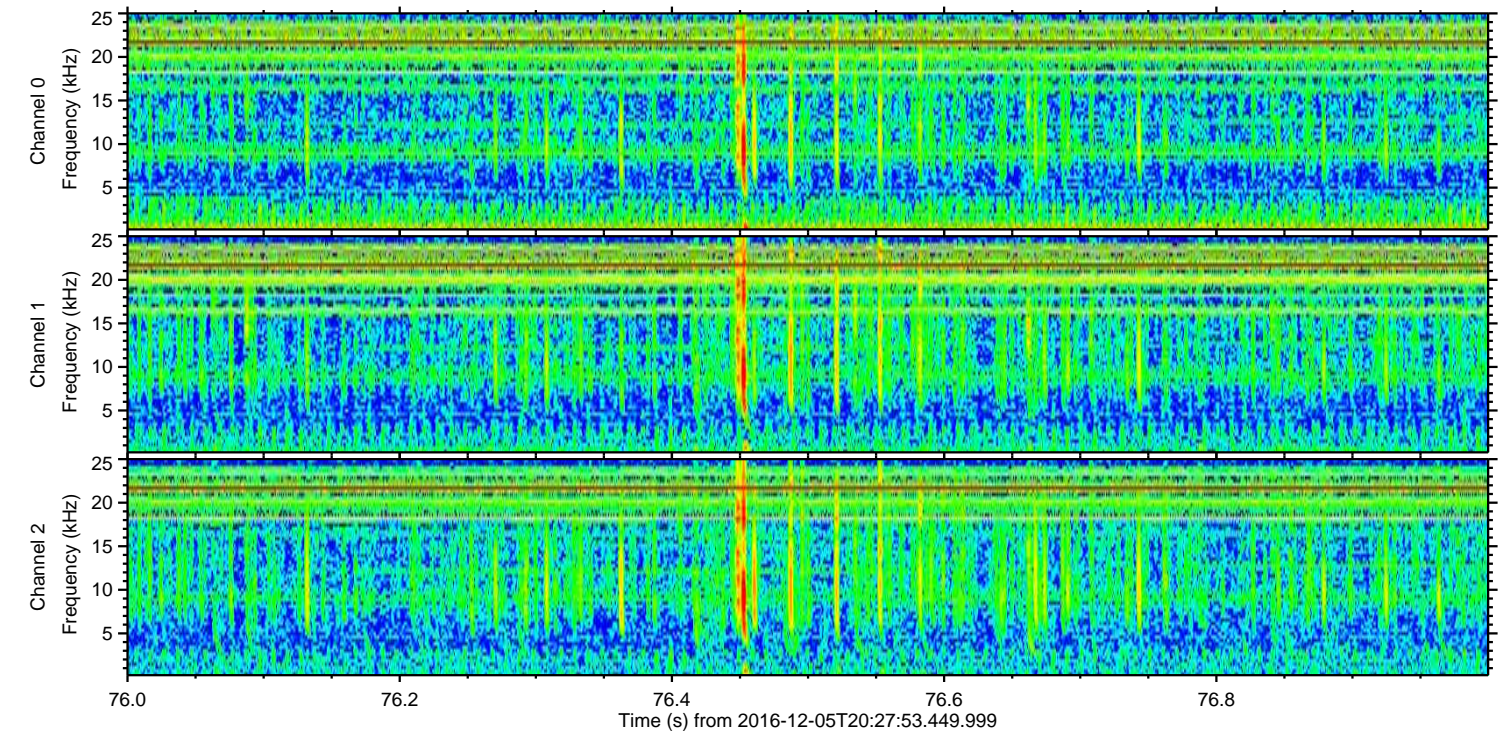
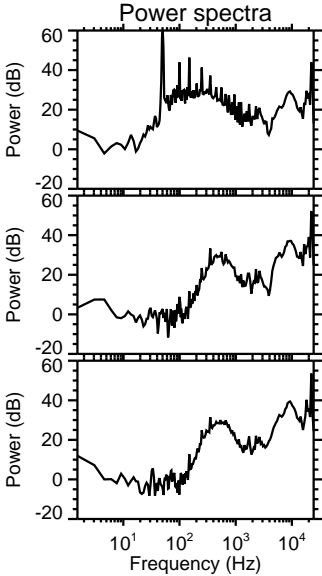
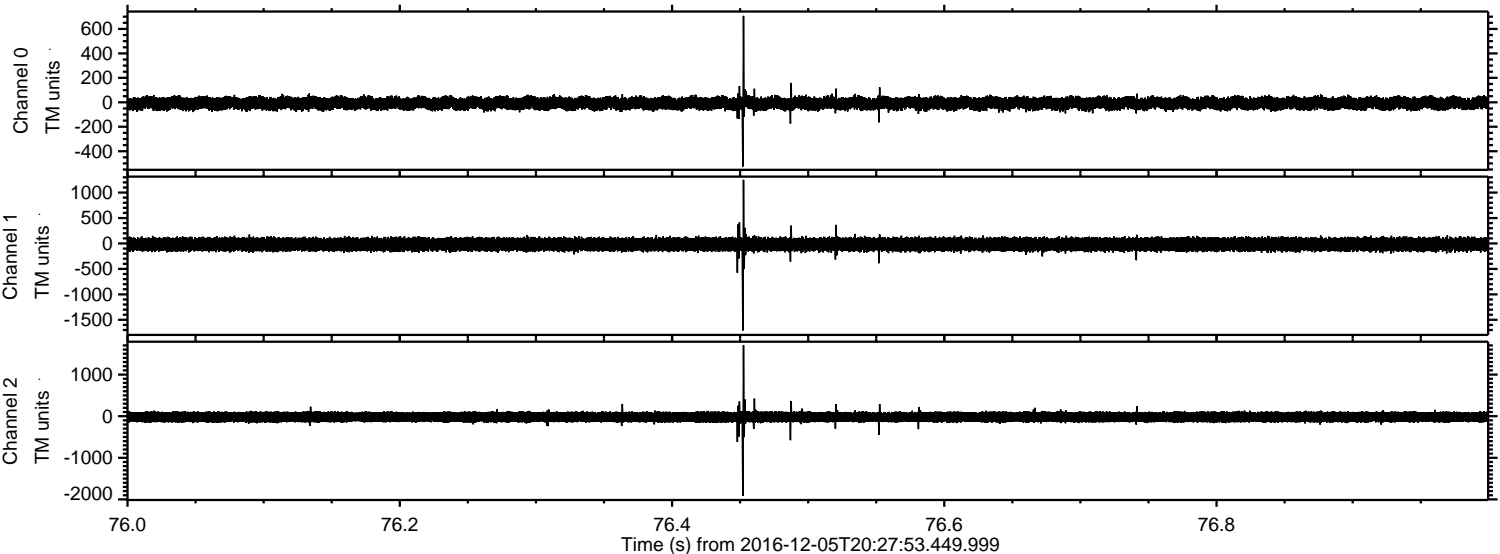
Channel 2
mn: -1485
mx: 2761
 μ : -19.8
 σ : 76.1

ELMAVAN 3D WAVEFORMS (Measured data sampled at 50 kHz) 51000 packets of 144 samples from 2016-12-05T20:27:53.449.999. Part 62/147

Processed Mon Dec 5 21:35:37 2016 by ELM ver.2012-10-06 from 001__elm20161205_202752__dat00.bin



Processed Mon Dec 5 21:35:38 2016 by ELM ver.2012-10-06 from 001__elm20161205_202752__dat00.bin



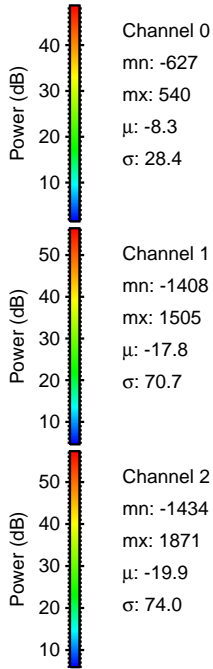
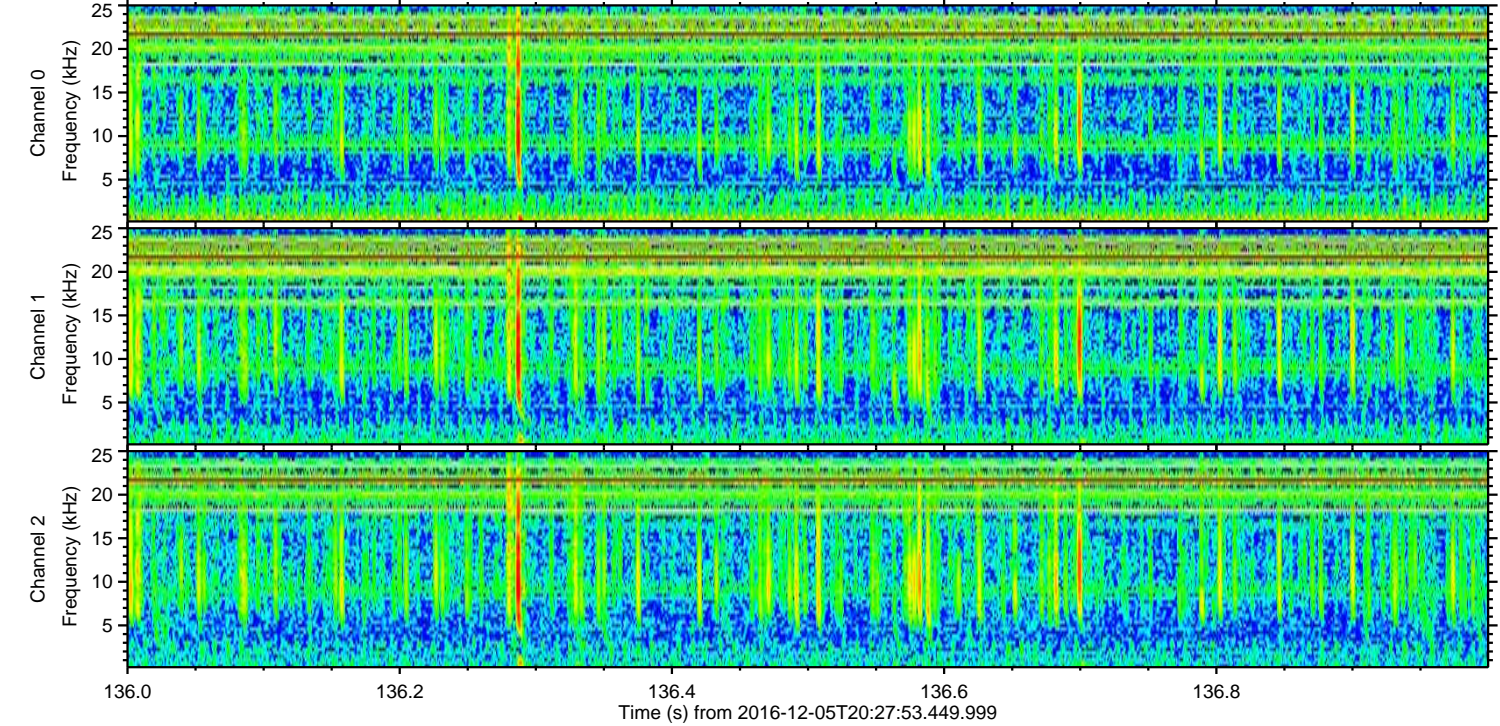
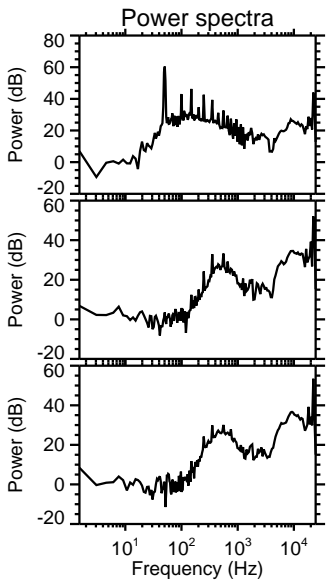
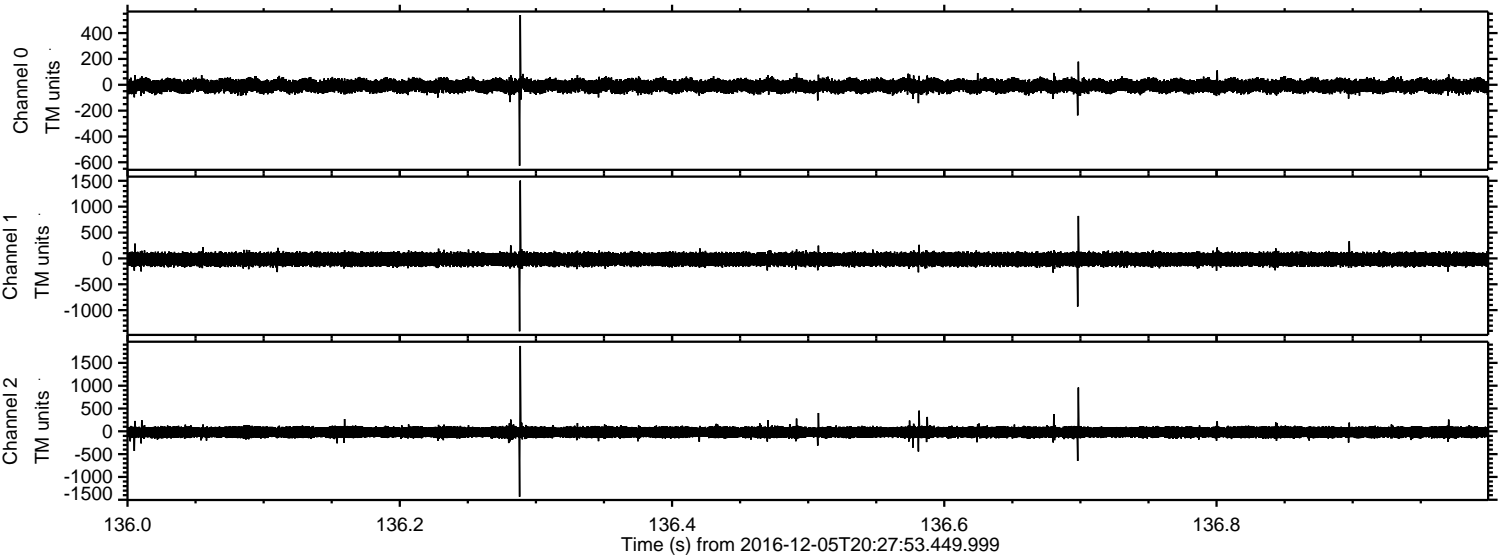
Channel 0
mn: -526
mx: 707
 μ : -8.3
 σ : 28.1

Channel 1
mn: -1711
mx: 1251
 μ : -17.8
 σ : 71.3

Channel 2
mn: -1918
mx: 1704
 μ : -19.9
 σ : 74.9

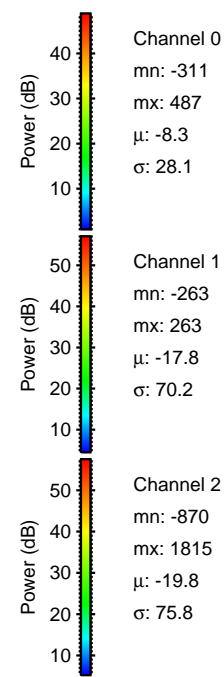
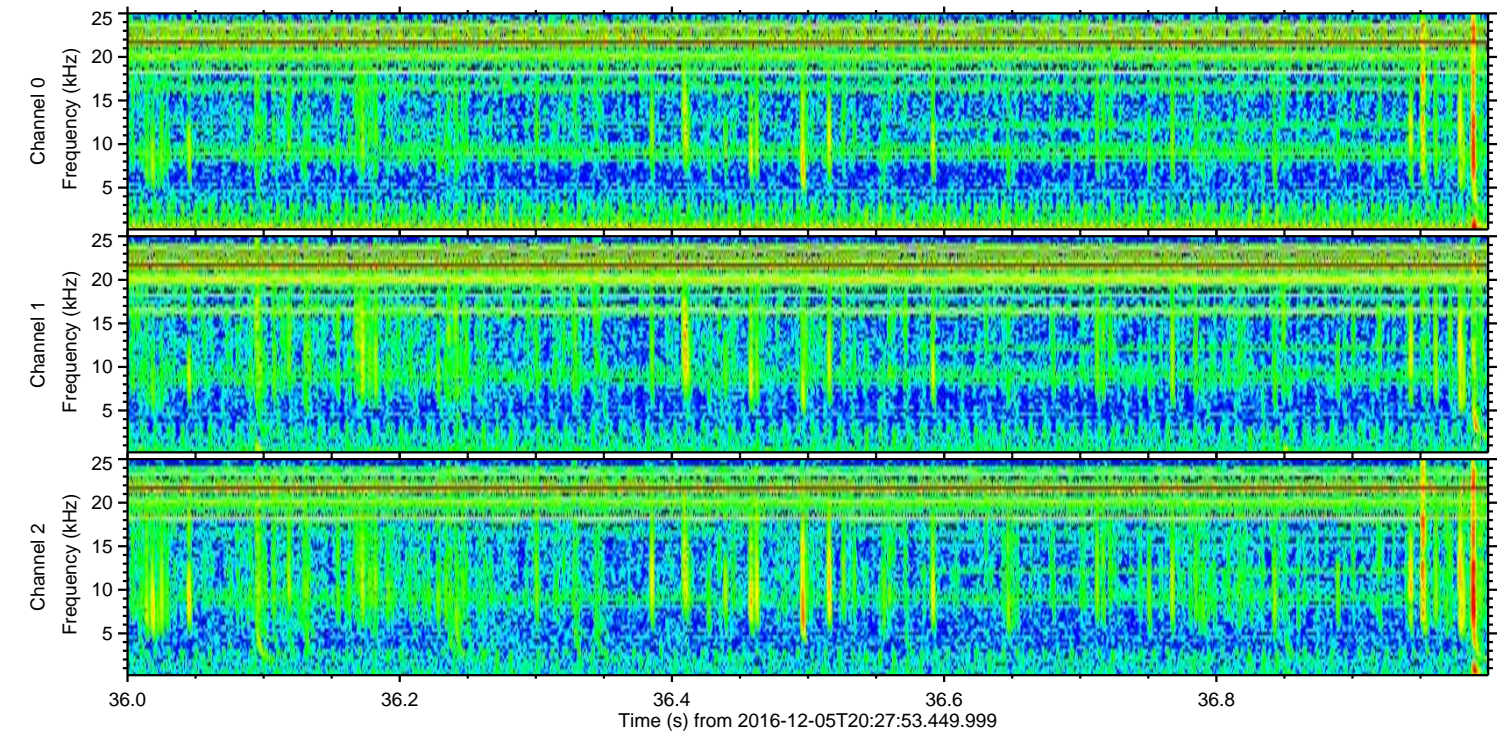
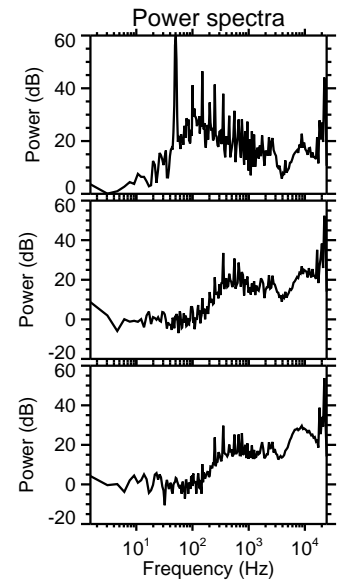
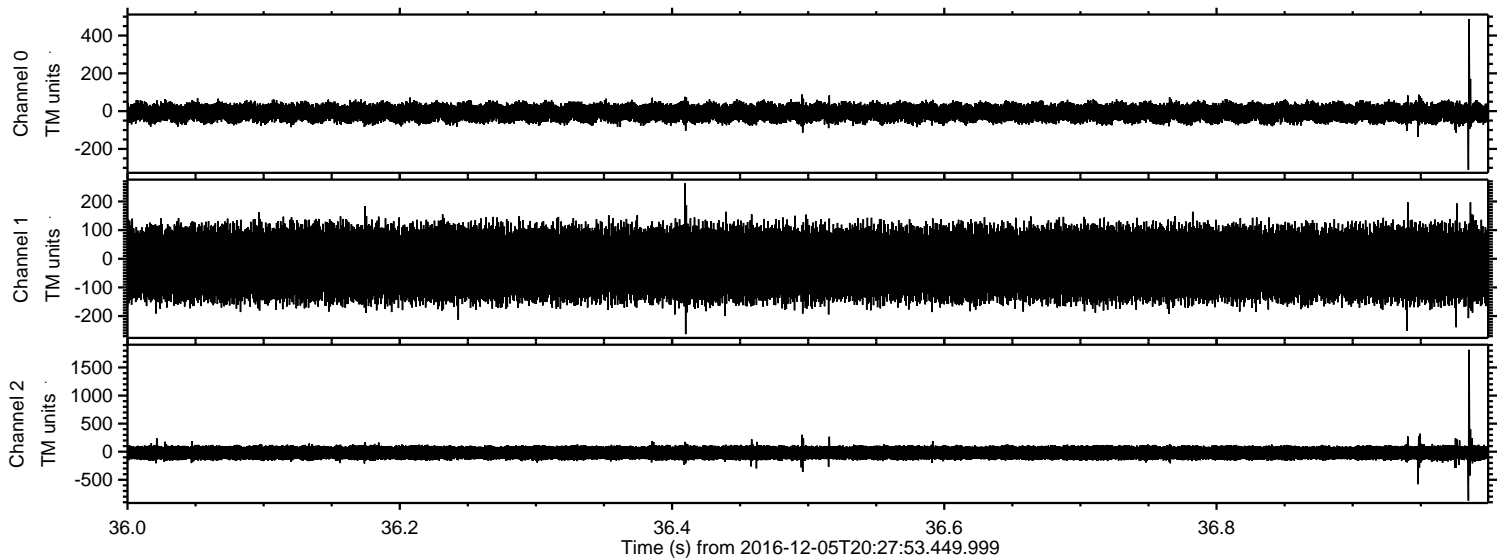
ELMAVAN 3D WAVEFORMS (Measured data sampled at 50 kHz) 51000 packets of 144 samples from 2016-12-05T20:27:53.449.999. Part 137/147

Processed Mon Dec 5 21:35:39 2016 by ELM ver.2012-10-06 from 001__elm20161205_202752__dat00.bin



ELMAVAN 3D WAVEFORMS (Measured data sampled at 50 kHz) 51000 packets of 144 samples from 2016-12-05T20:27:53.449.999. Part 37/147

Processed Mon Dec 5 21:35:40 2016 by ELM ver.2012-10-06 from 001__elm20161205_202752__dat00.bin



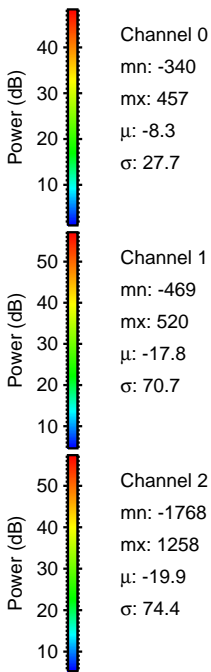
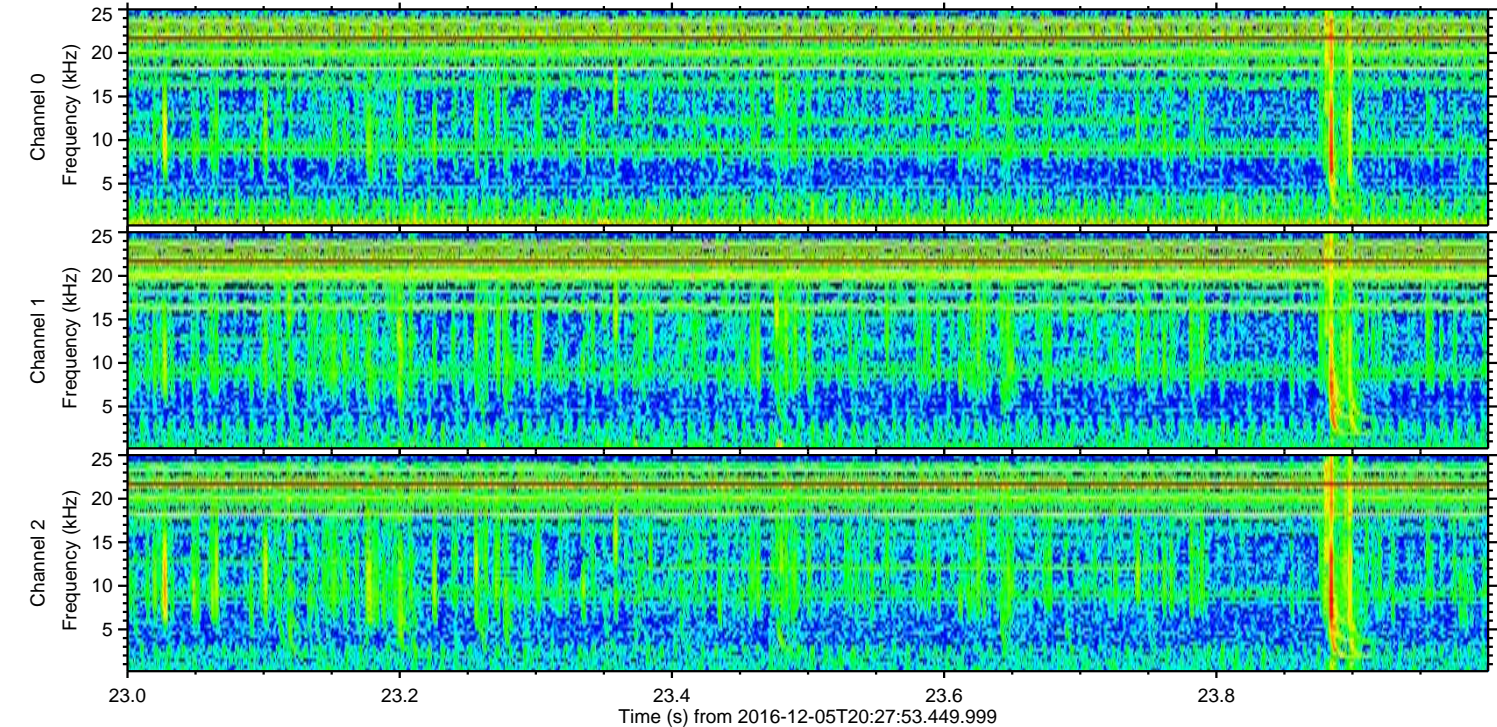
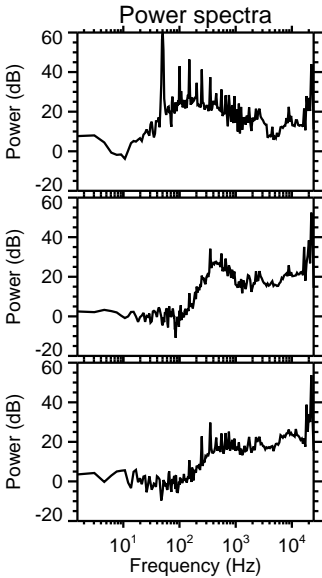
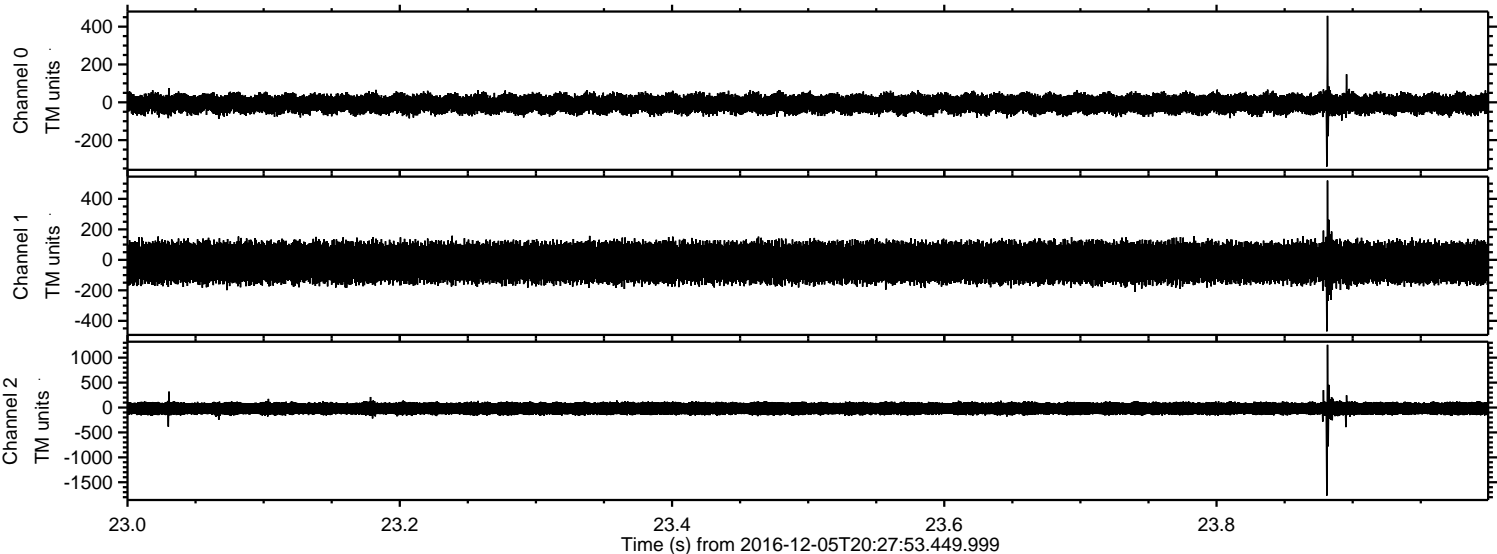
Channel 0
mn: -311
mx: 487
 μ : -8.3
 σ : 28.1

Channel 1
mn: -263
mx: 263
 μ : -17.8
 σ : 70.2

Channel 2
mn: -870
mx: 1815
 μ : -19.8
 σ : 75.8

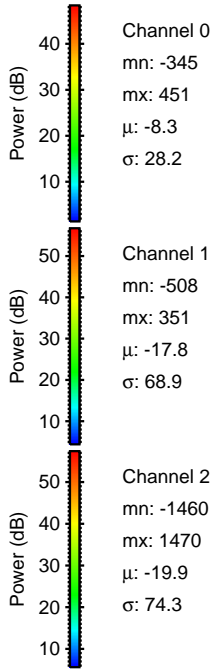
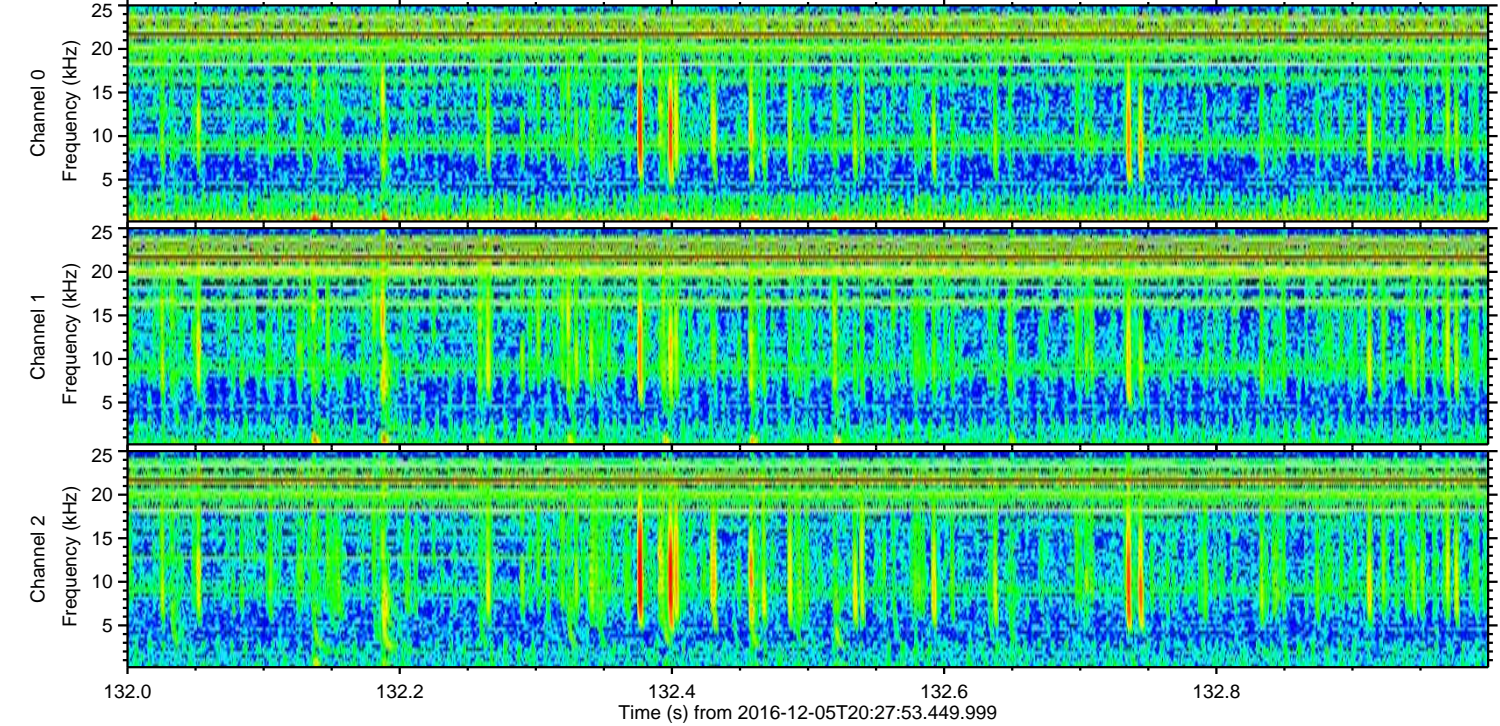
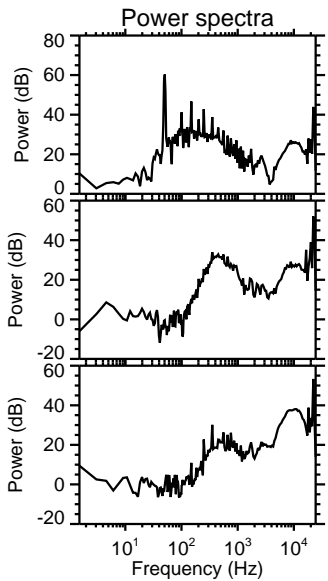
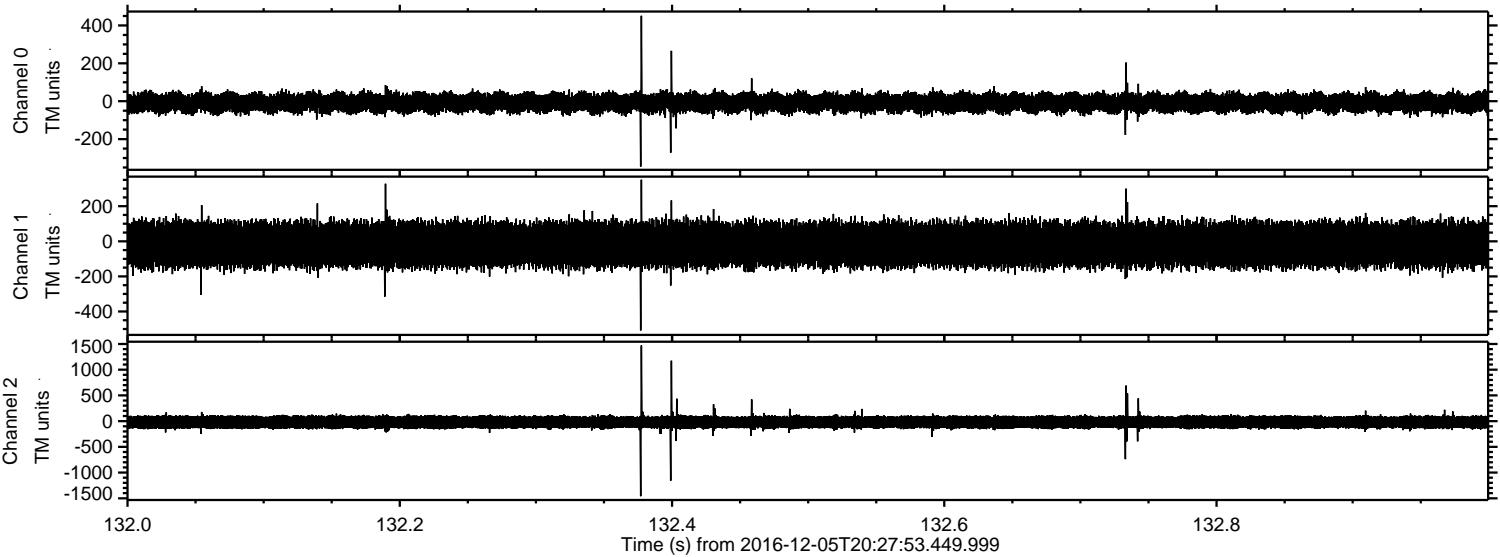
ELMAVAN 3D WAVEFORMS (Measured data sampled at 50 kHz) 51000 packets of 144 samples from 2016-12-05T20:27:53.449.999. Part 24/147

Processed Mon Dec 5 21:35:41 2016 by ELM ver.2012-10-06 from 001__elm20161205_202752__dat00.bin



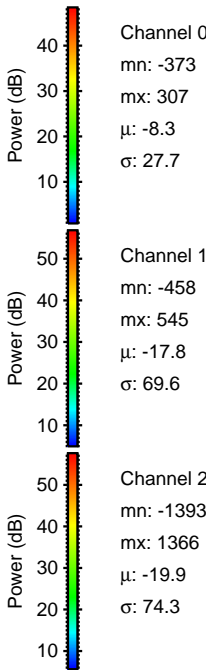
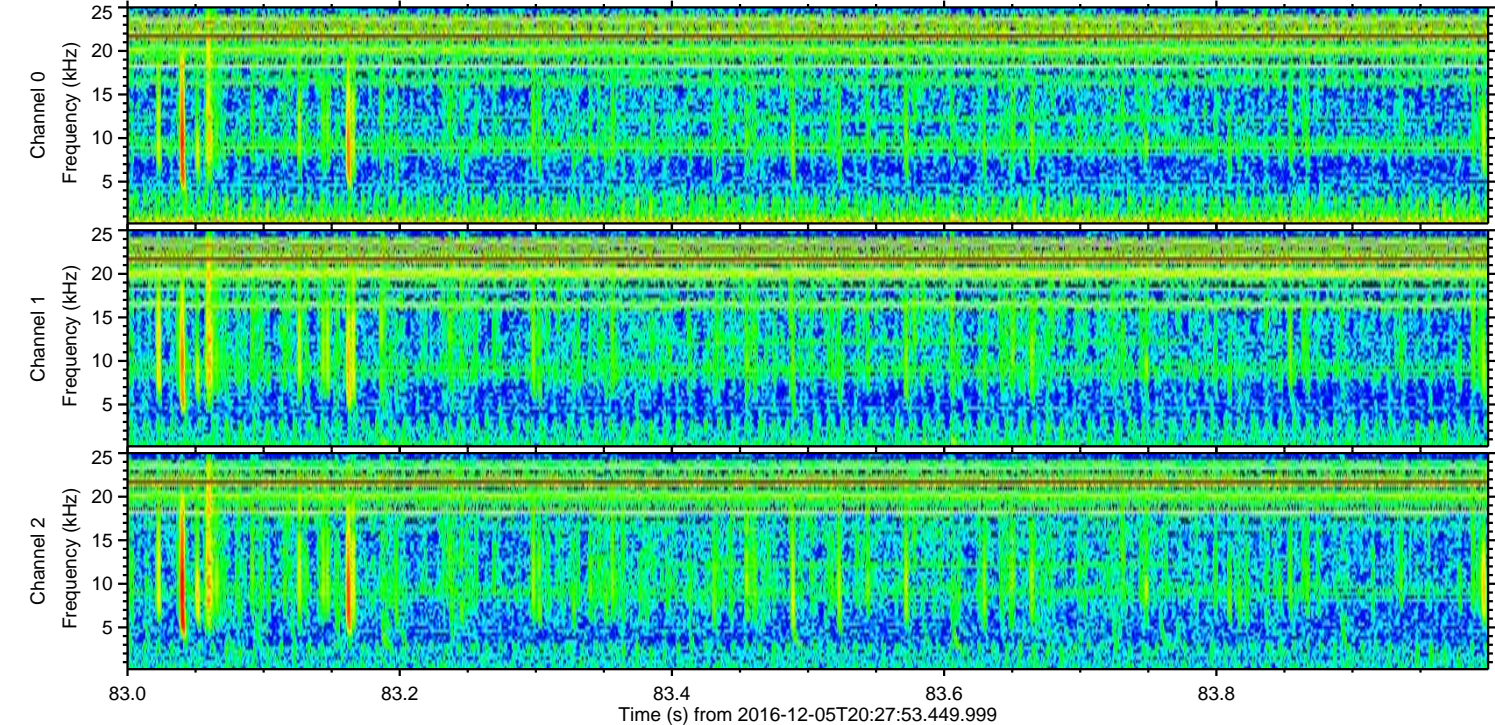
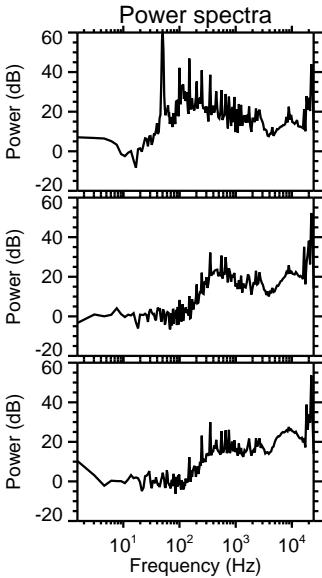
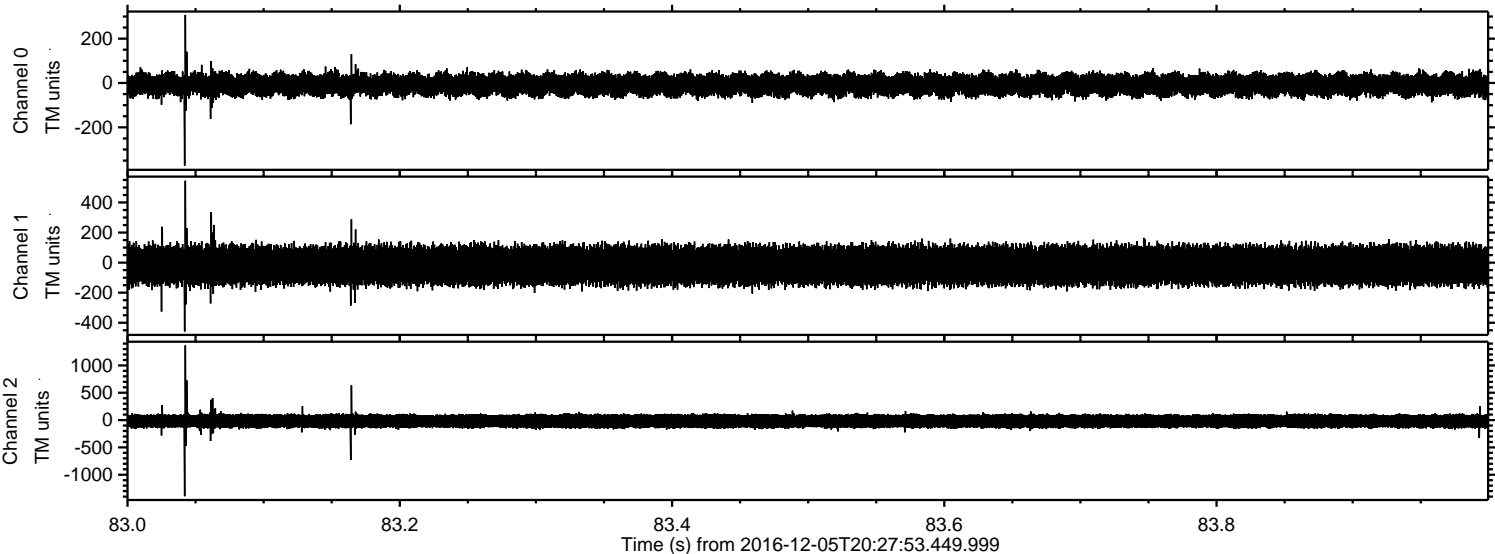
ELMAVAN 3D WAVEFORMS (Measured data sampled at 50 kHz) 51000 packets of 144 samples from 2016-12-05T20:27:53.449.999. Part 133/147

Processed Mon Dec 5 21:35:42 2016 by ELM ver.2012-10-06 from 001__elm20161205_202752__dat00.bin



ELMAVAN 3D WAVEFORMS (Measured data sampled at 50 kHz) 51000 packets of 144 samples from 2016-12-05T20:27:53.449.999. Part 84/147

Processed Mon Dec 5 21:35:43 2016 by ELM ver.2012-10-06 from 001__elm20161205_202752__dat00.bin



ELMAVAN 3D WAVEFORMS (Measured data sampled at 50 kHz) 51000 packets of 144 samples from 2016-12-05T20:27:53.449.999. Part 125/147

Processed Mon Dec 5 21:35:44 2016 by ELM ver.2012-10-06 from 001__elm20161205_202752__dat00.bin

