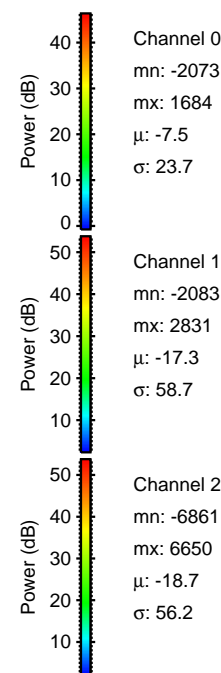
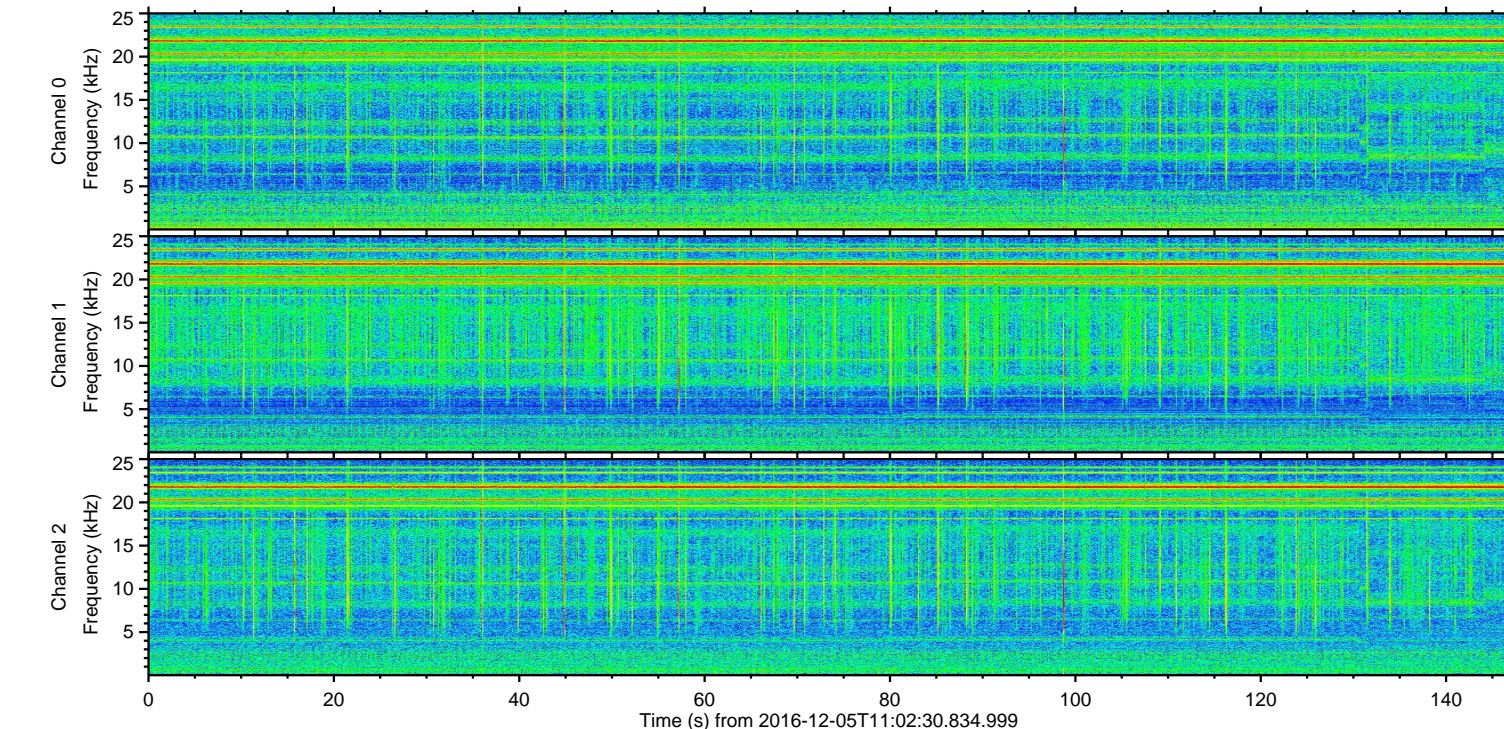
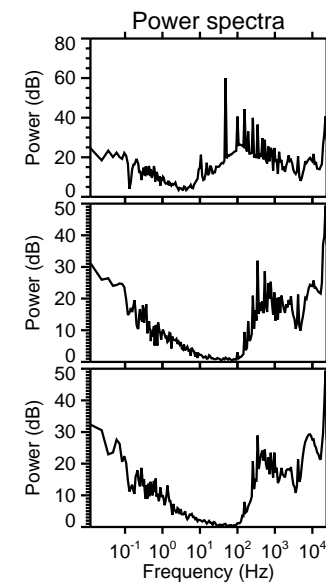
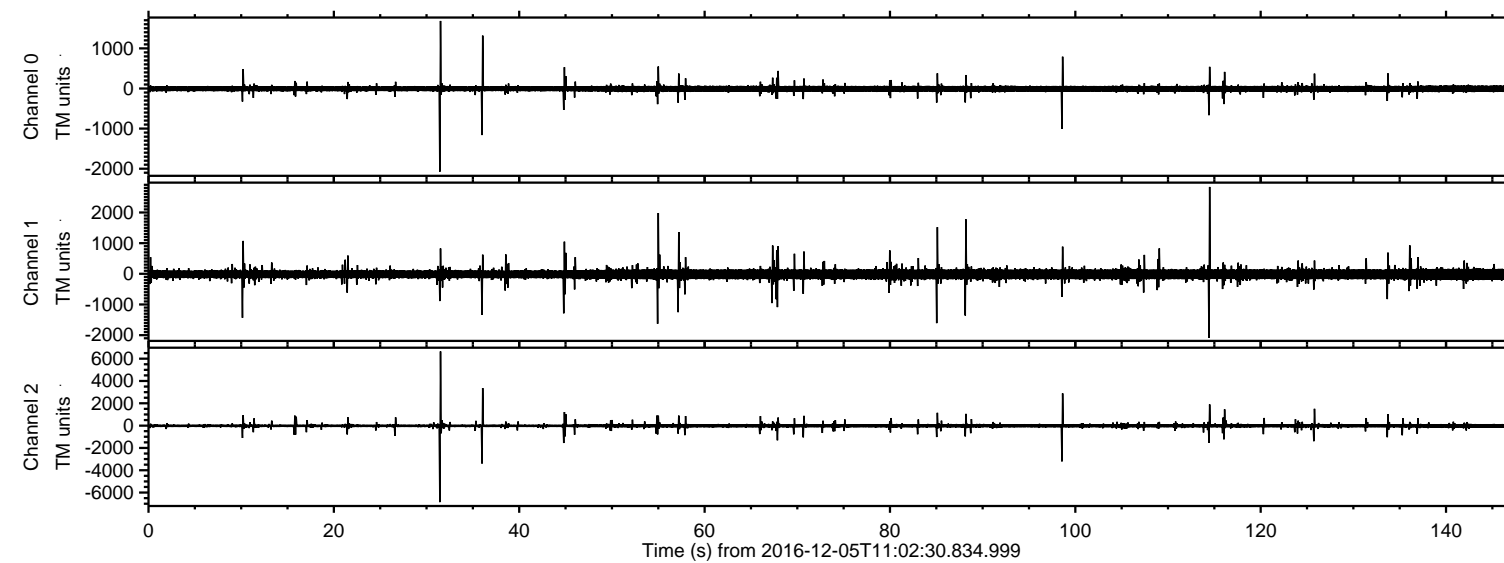


# ELMAVAN 3D WAVEFORMS (Measured data sampled at 50 kHz) 51000 packets of 144 samples from 2016-12-05T11:02:30.834.999.

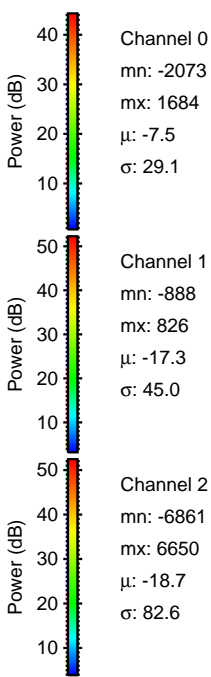
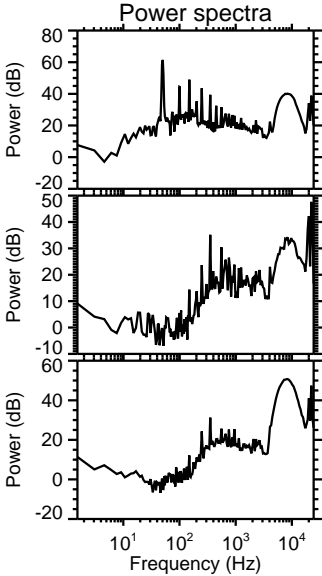
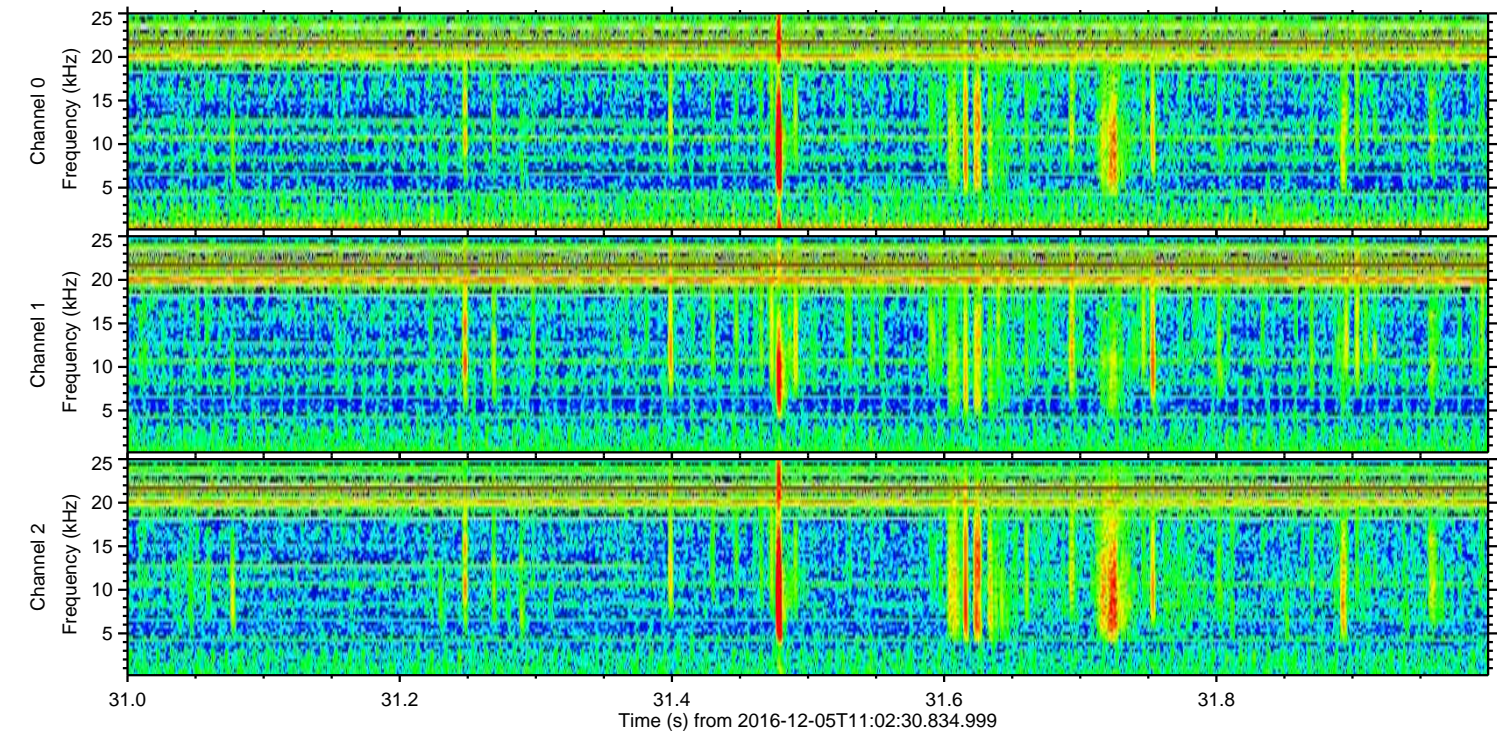
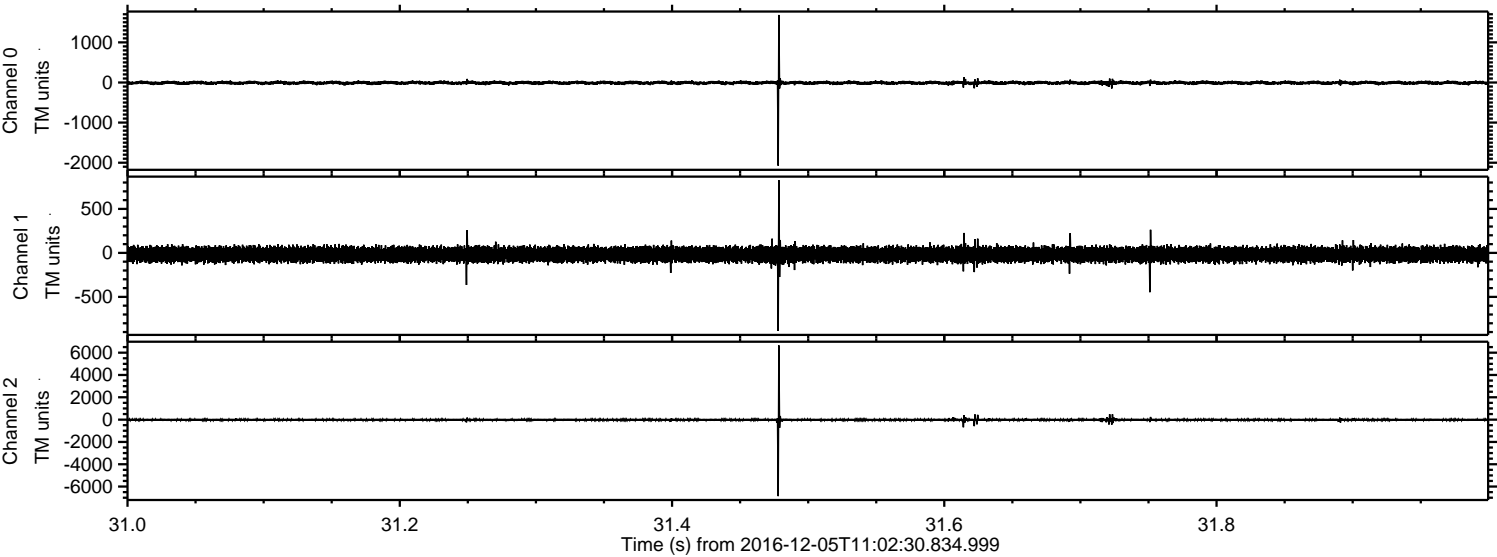
Processed Mon Dec 5 12:10:45 2016 by ELM ver.2012-10-06 from 001\_\_elm20161205\_110229\_\_dat00.bin





ELMAVAN 3D WAVEFORMS (Measured data sampled at 50 kHz) 51000 packets of 144 samples from 2016-12-05T11:02:30.834.999. Part 32/147

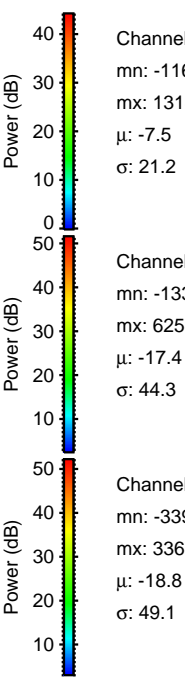
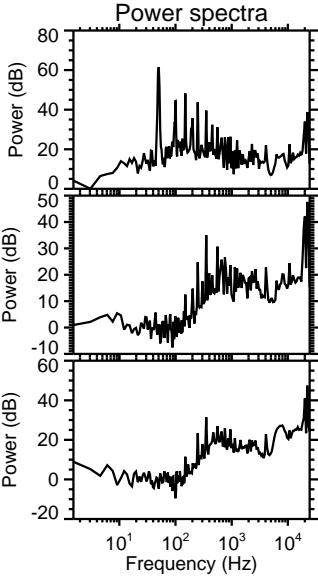
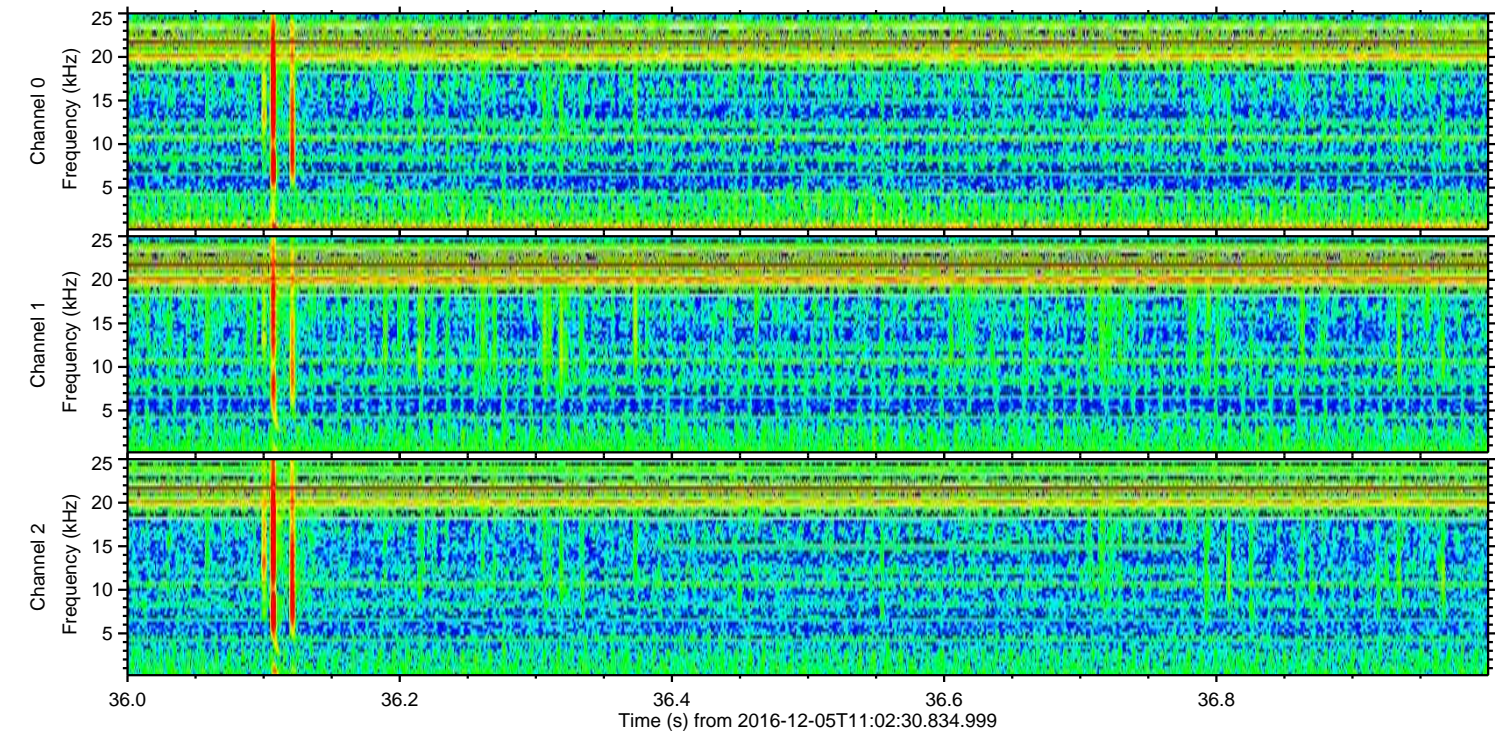
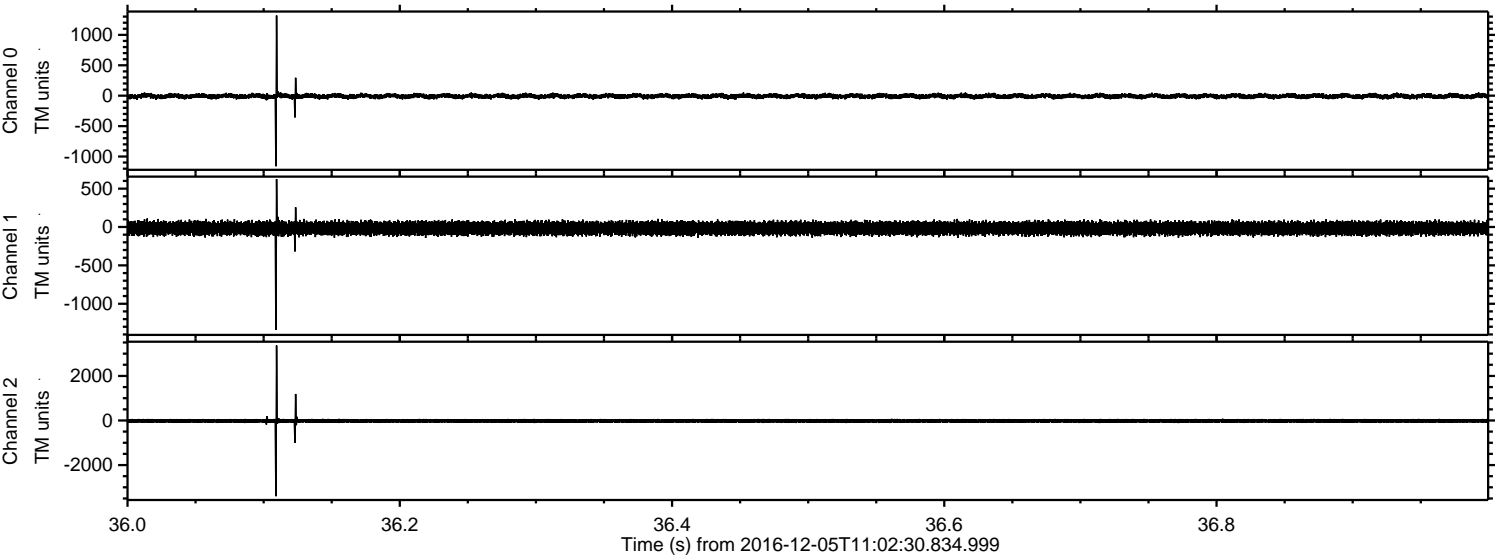
Processed Mon Dec 5 12:10:57 2016 by ELM ver.2012-10-06 from 001\_\_elm20161205\_110229\_\_dat00.bin





ELMAVAN 3D WAVEFORMS (Measured data sampled at 50 kHz) 51000 packets of 144 samples from 2016-12-05T11:02:30.834.999. Part 37/147

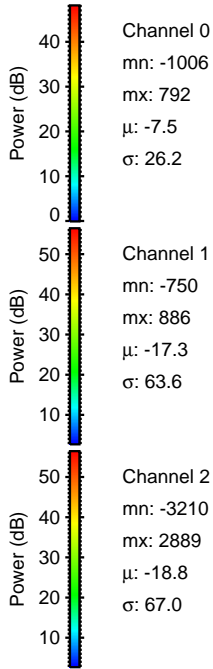
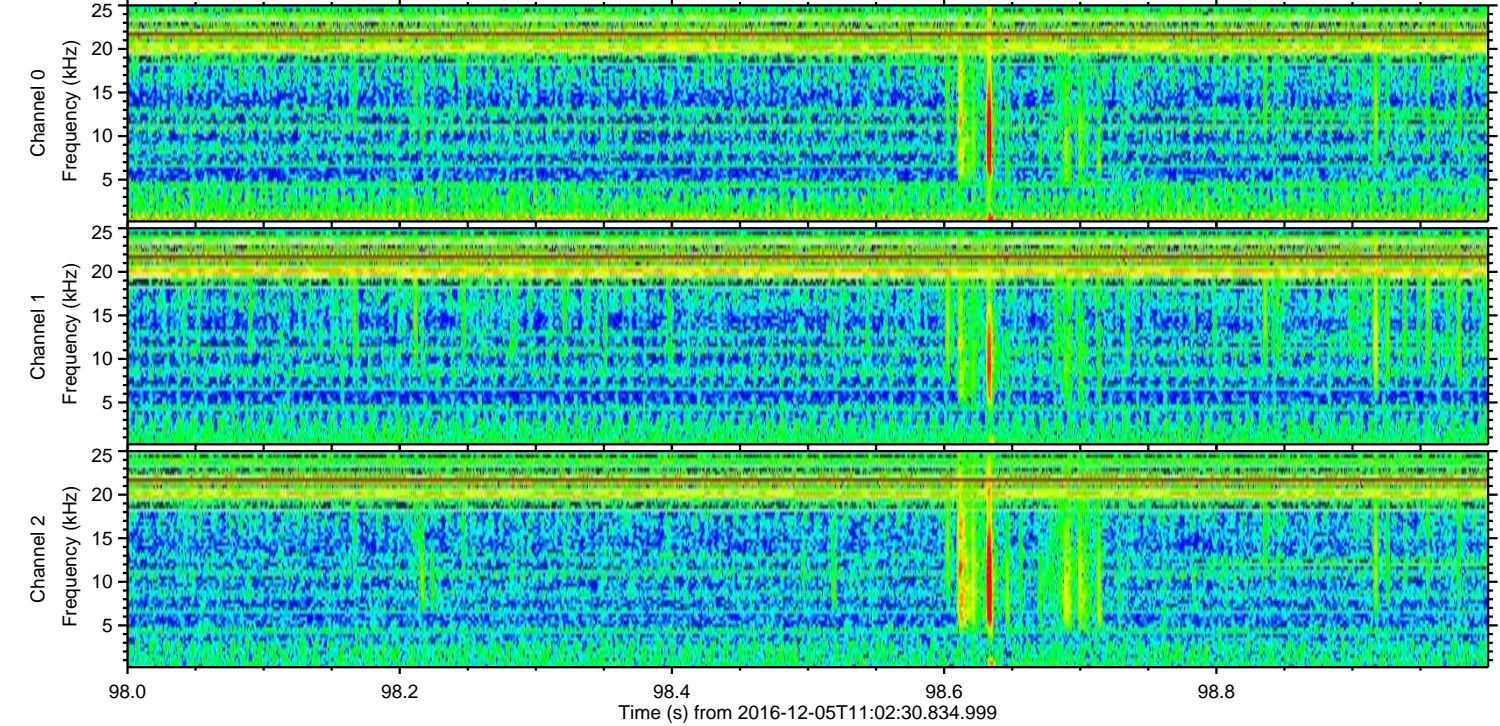
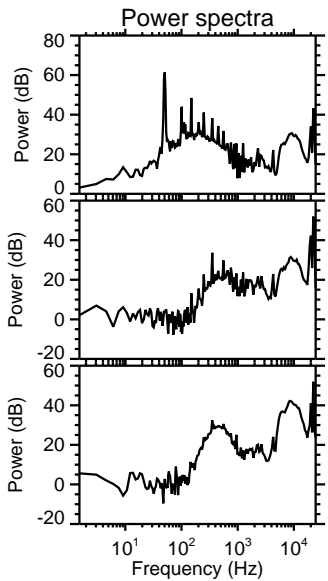
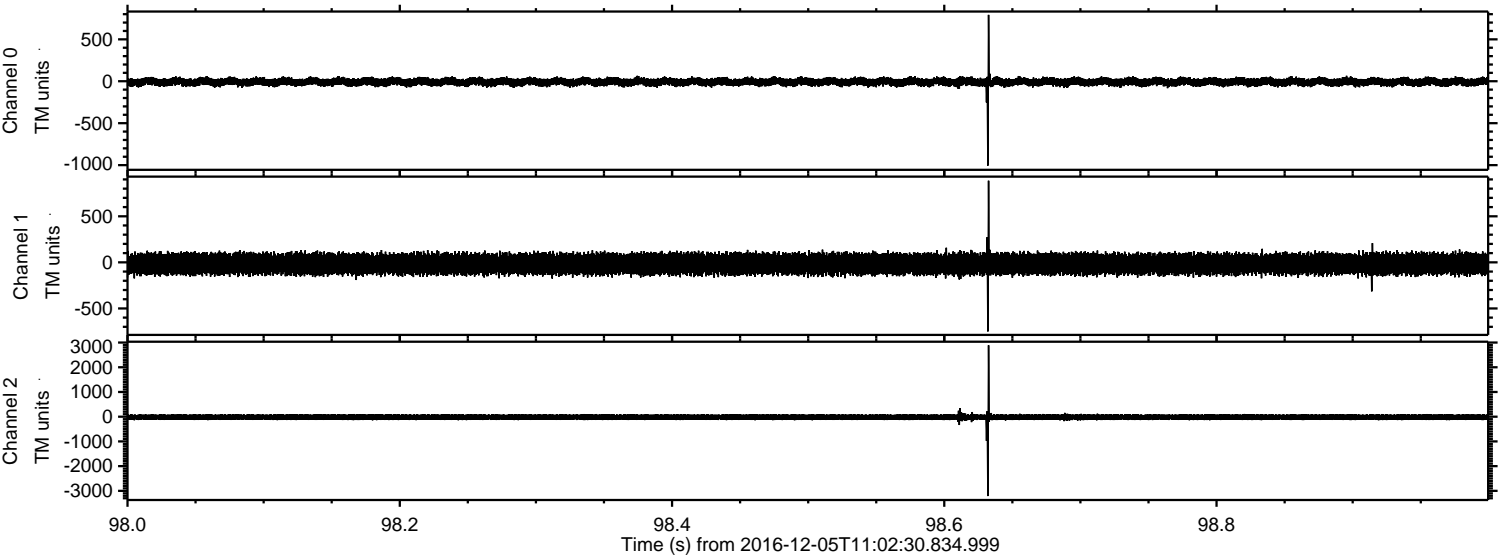
Processed Mon Dec 5 12:10:58 2016 by ELM ver.2012-10-06 from 001\_\_elm20161205\_110229\_\_dat00.bin





ELMAVAN 3D WAVEFORMS (Measured data sampled at 50 kHz) 51000 packets of 144 samples from 2016-12-05T11:02:30.834.999. Part 99/147

Processed Mon Dec 5 12:10:59 2016 by ELM ver.2012-10-06 from 001\_\_elm20161205\_110229\_\_dat00.bin



Channel 0  
mn: -1006  
mx: 792  
 $\mu$ : -7.5  
 $\sigma$ : 26.2

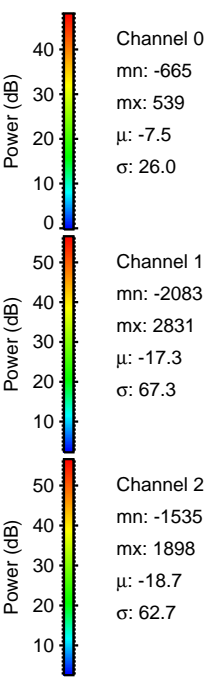
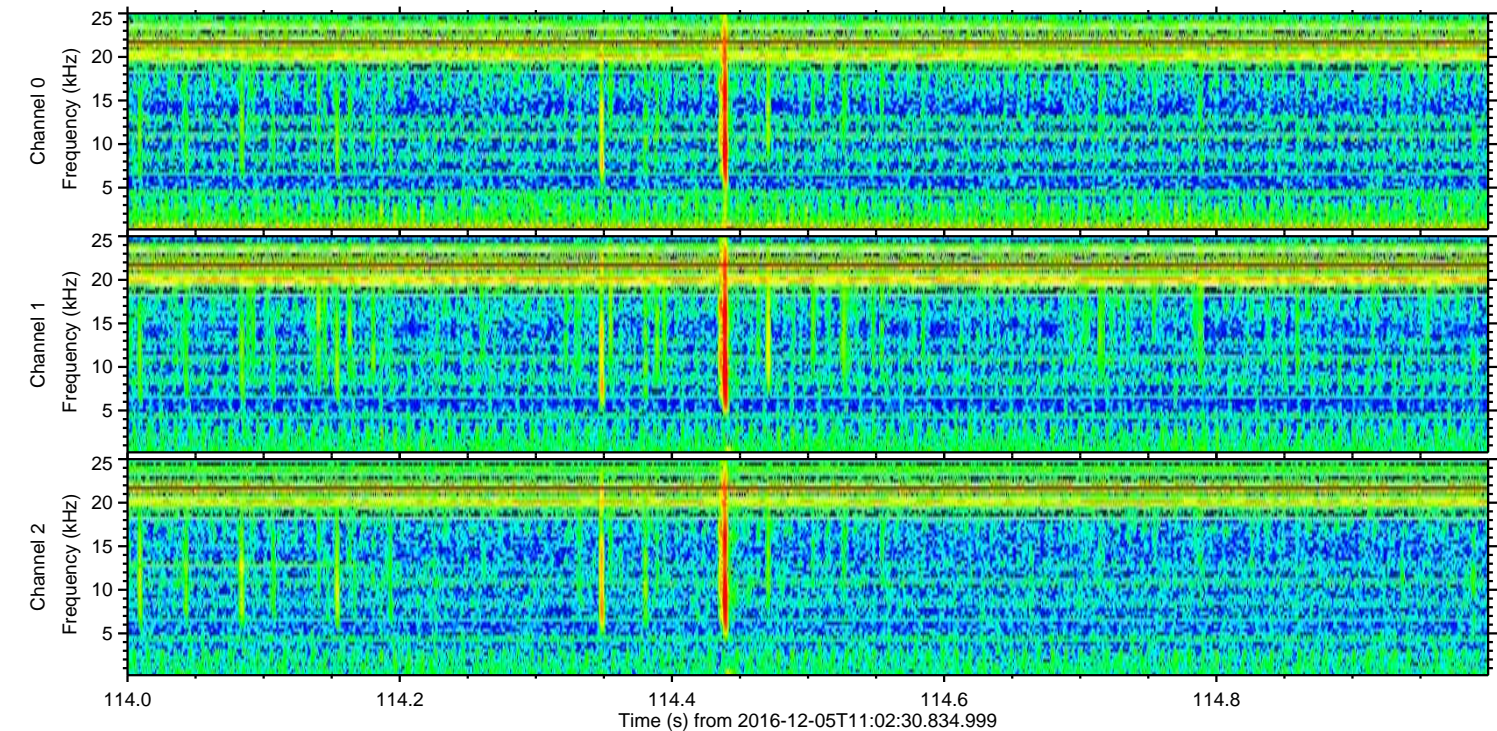
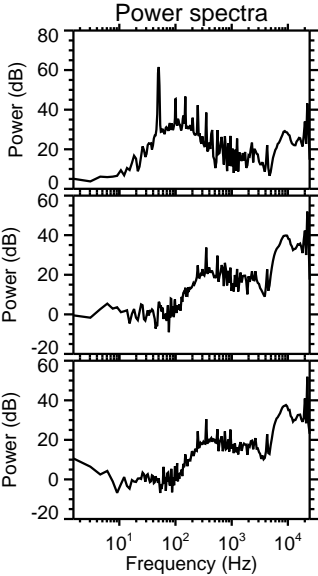
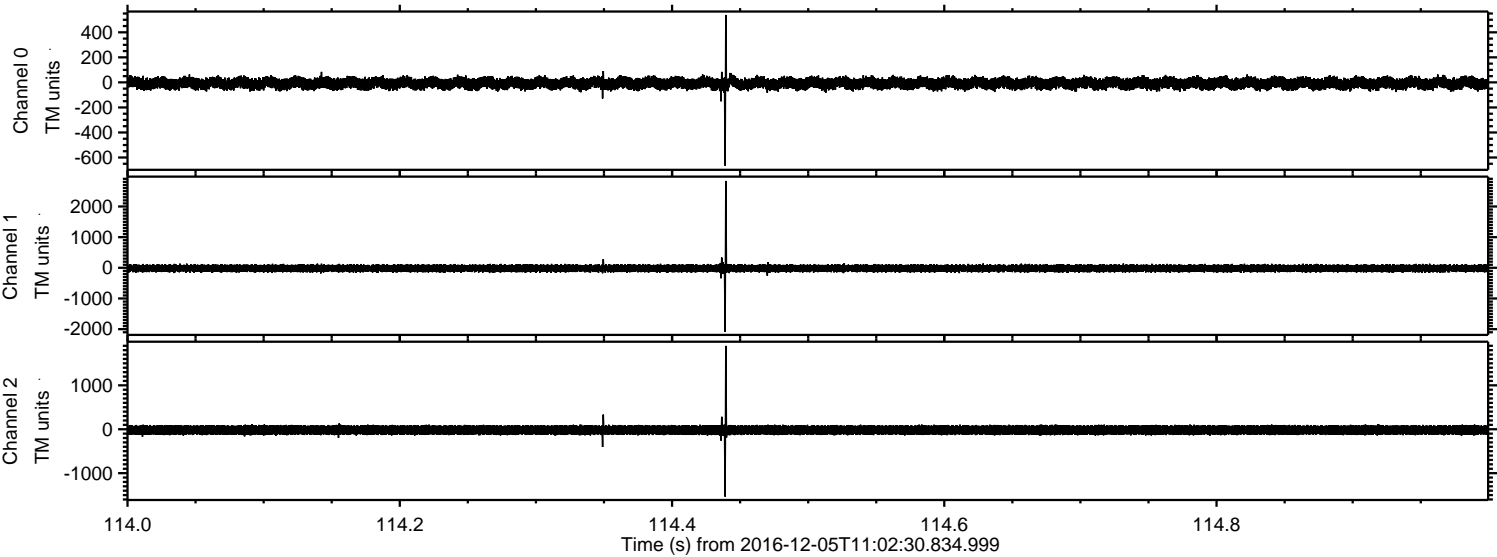
Channel 1  
mn: -750  
mx: 886  
 $\mu$ : -17.3  
 $\sigma$ : 63.6

Channel 2  
mn: -3210  
mx: 2889  
 $\mu$ : -18.8  
 $\sigma$ : 67.0



ELMAVAN 3D WAVEFORMS (Measured data sampled at 50 kHz) 51000 packets of 144 samples from 2016-12-05T11:02:30.834.999. Part 115/147

Processed Mon Dec 5 12:11:00 2016 by ELM ver.2012-10-06 from 001\_\_elm20161205\_110229\_\_dat00.bin



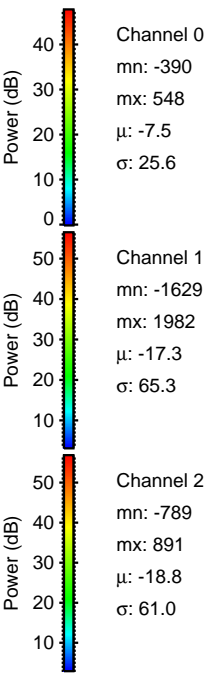
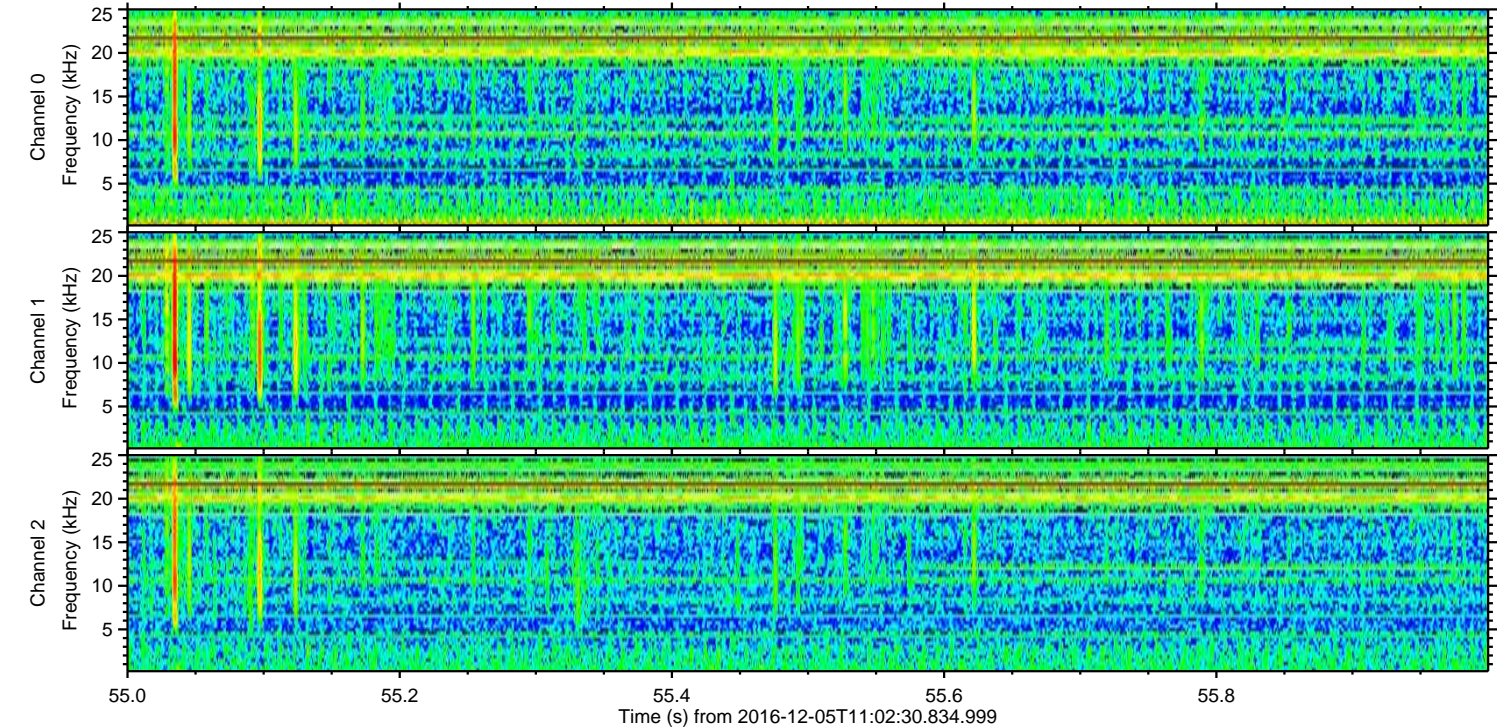
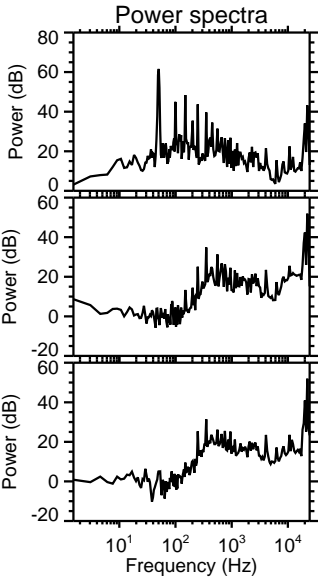
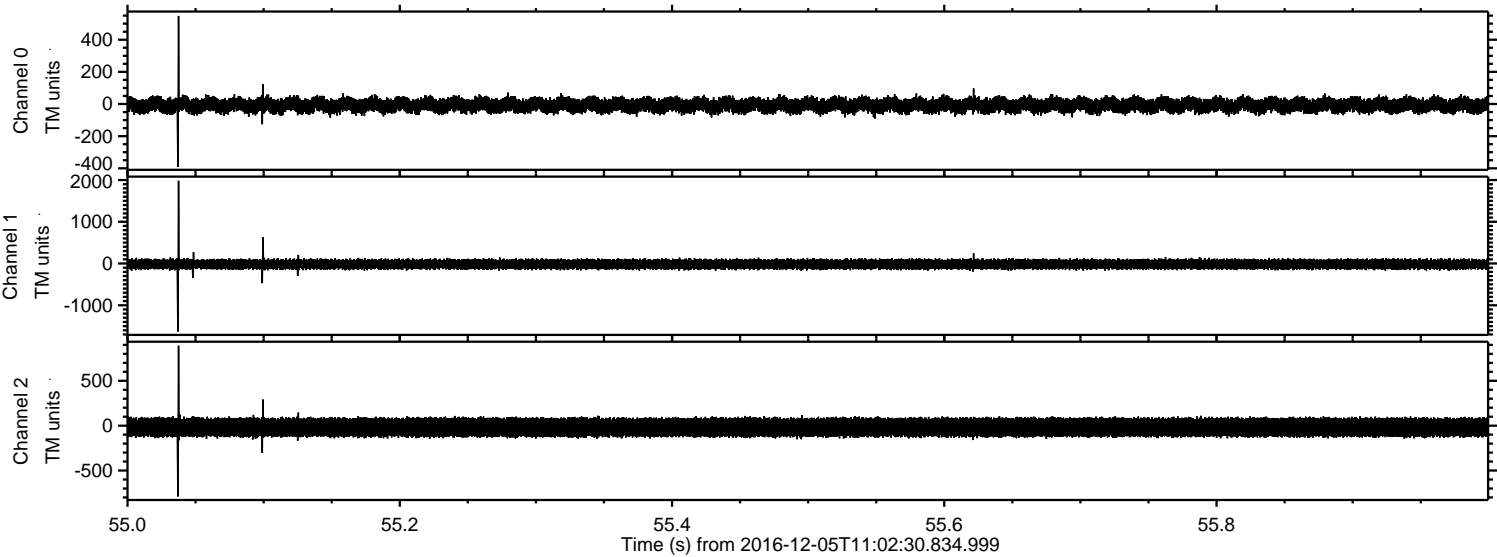
Channel 0  
mn: -665  
mx: 539  
 $\mu$ : -7.5  
 $\sigma$ : 26.0

Channel 1  
mn: -2083  
mx: 2831  
 $\mu$ : -17.3  
 $\sigma$ : 67.3

Channel 2  
mn: -1535  
mx: 1898  
 $\mu$ : -18.7  
 $\sigma$ : 62.7

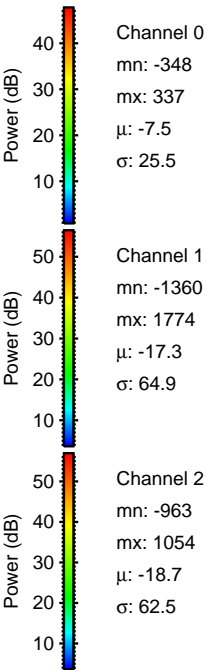
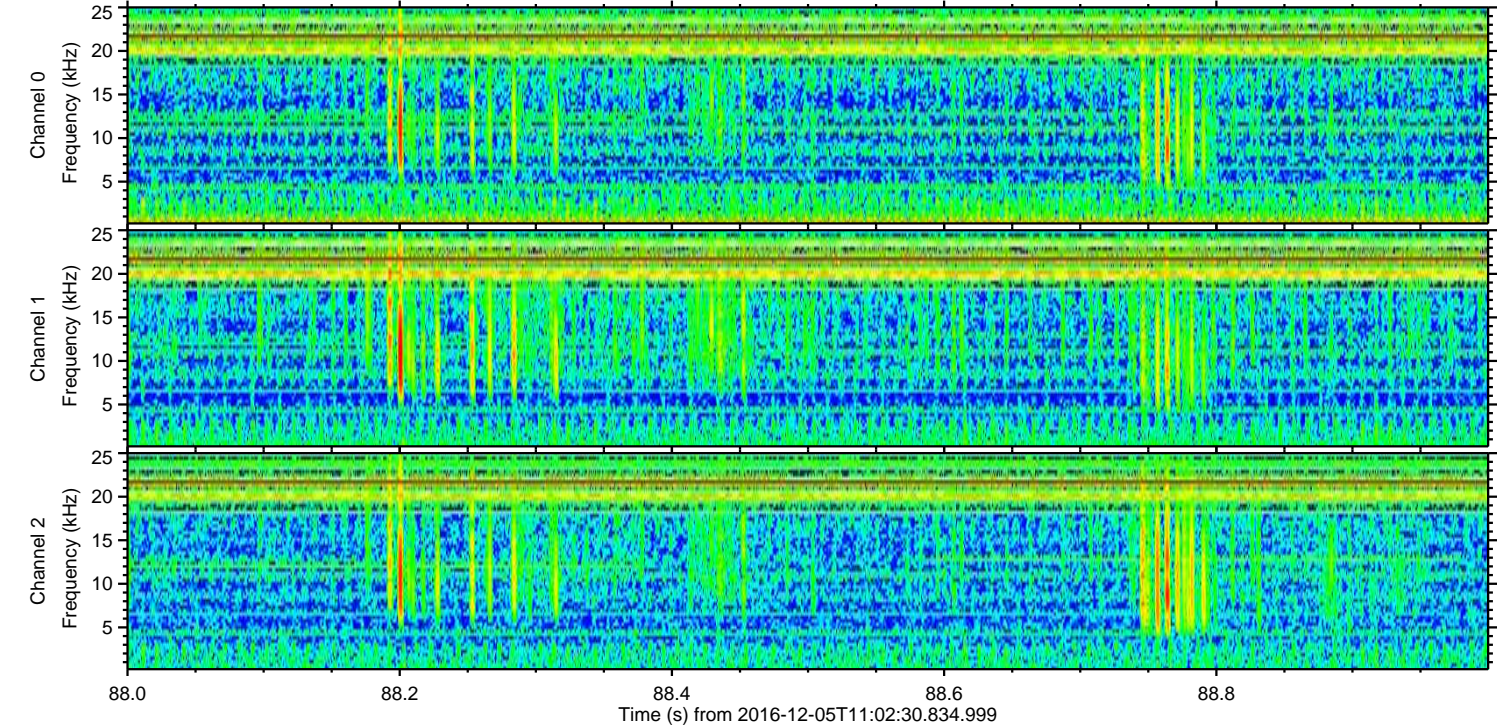
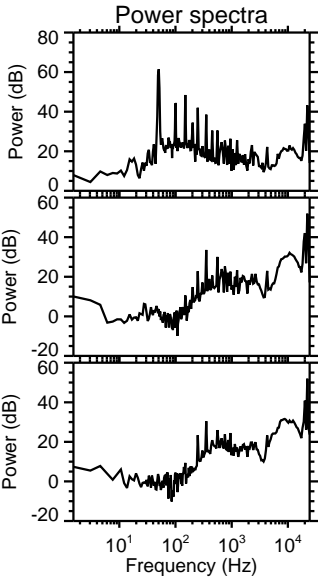
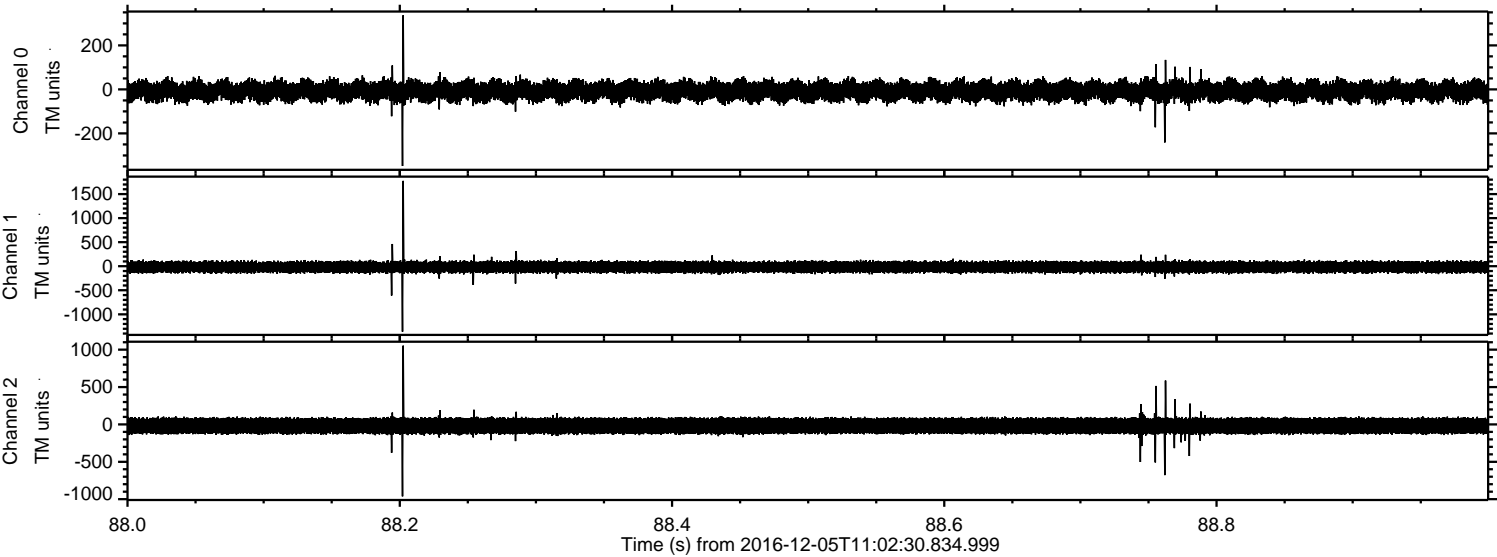


Processed Mon Dec 5 12:11:01 2016 by ELM ver.2012-10-06 from 001\_\_elm20161205\_110229\_\_dat00.bin



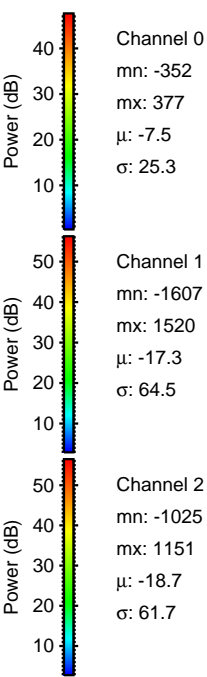
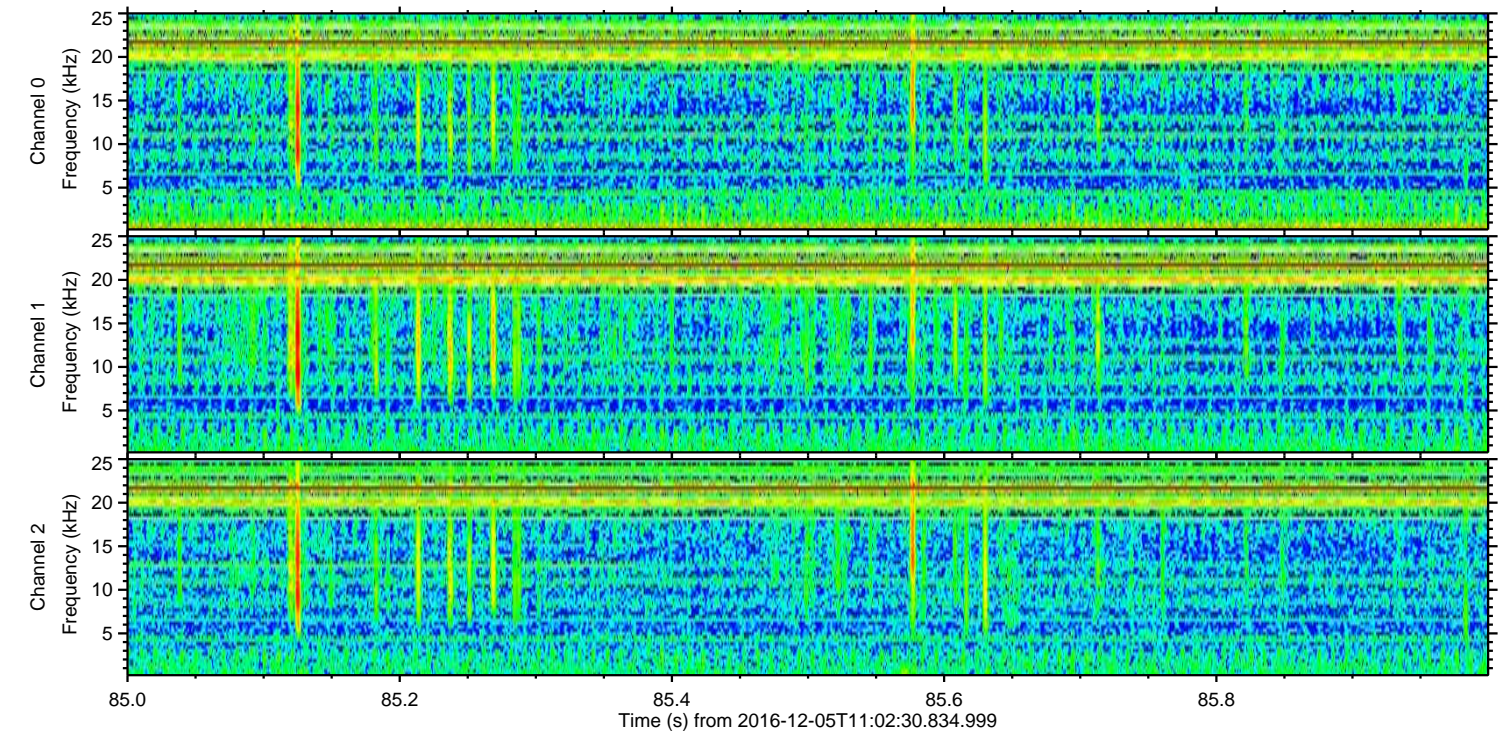
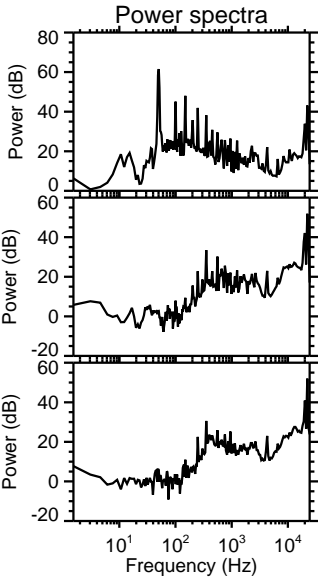
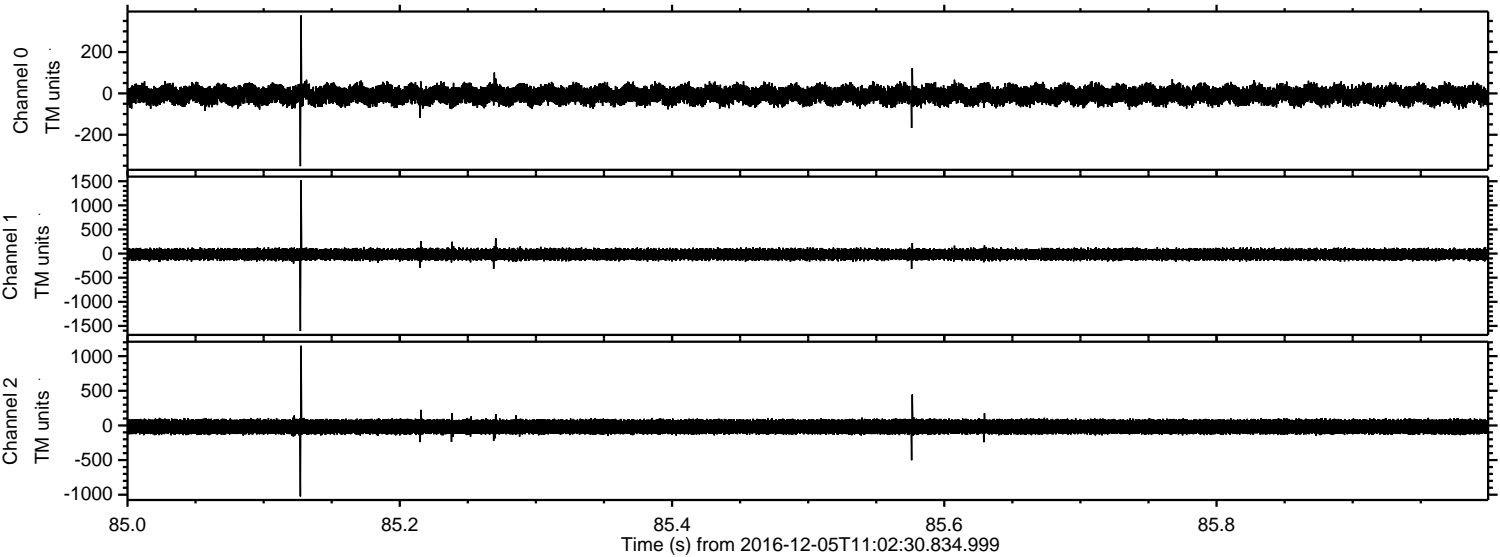


Processed Mon Dec 5 12:11:02 2016 by ELM ver.2012-10-06 from 001\_\_elm20161205\_110229\_\_dat00.bin





Processed Mon Dec 5 12:11:02 2016 by ELM ver.2012-10-06 from 001\_\_elm20161205\_110229\_\_dat00.bin



Channel 0  
mn: -352  
mx: 377  
 $\mu$ : -7.5  
 $\sigma$ : 25.3

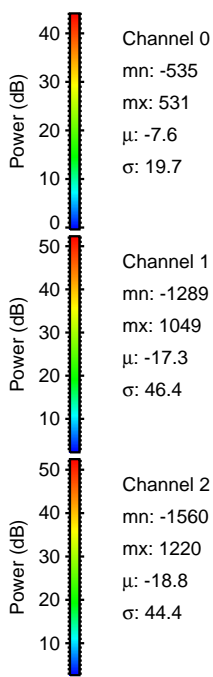
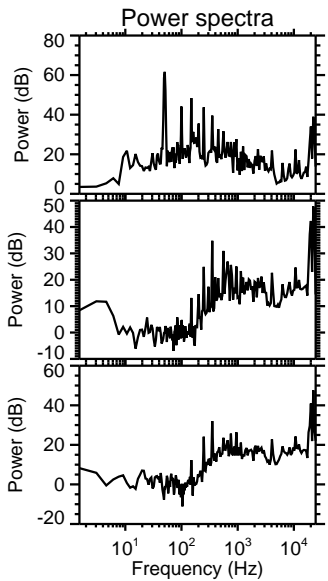
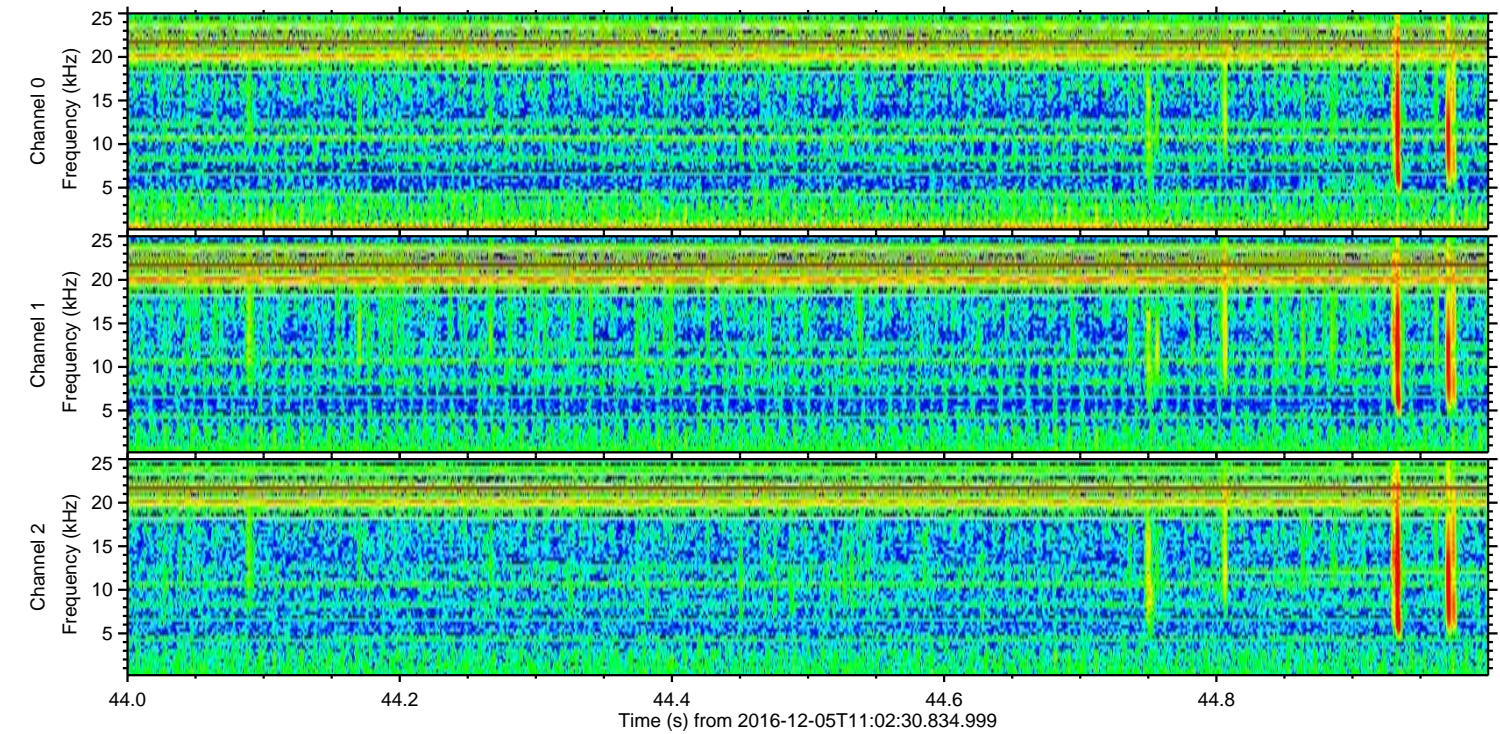
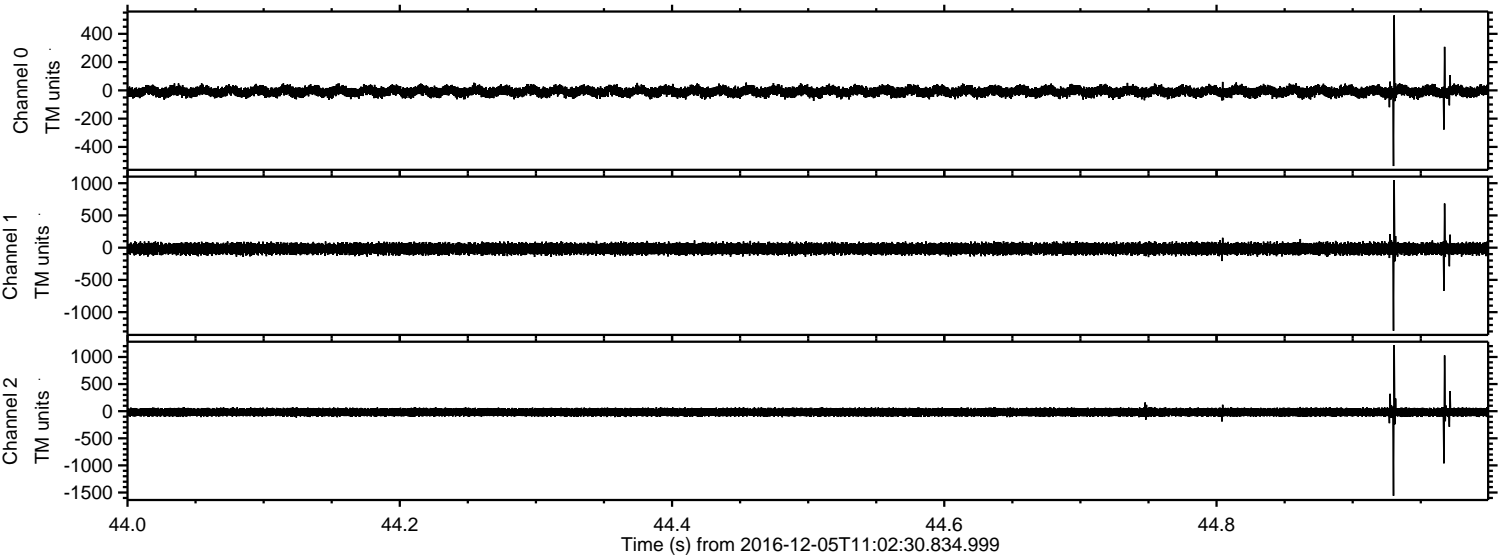
Channel 1  
mn: -1607  
mx: 1520  
 $\mu$ : -17.3  
 $\sigma$ : 64.5

Channel 2  
mn: -1025  
mx: 1151  
 $\mu$ : -18.7  
 $\sigma$ : 61.7



ELMAVAN 3D WAVEFORMS (Measured data sampled at 50 kHz) 51000 packets of 144 samples from 2016-12-05T11:02:30.834.999. Part 45/147

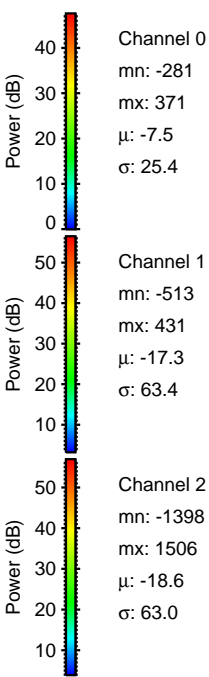
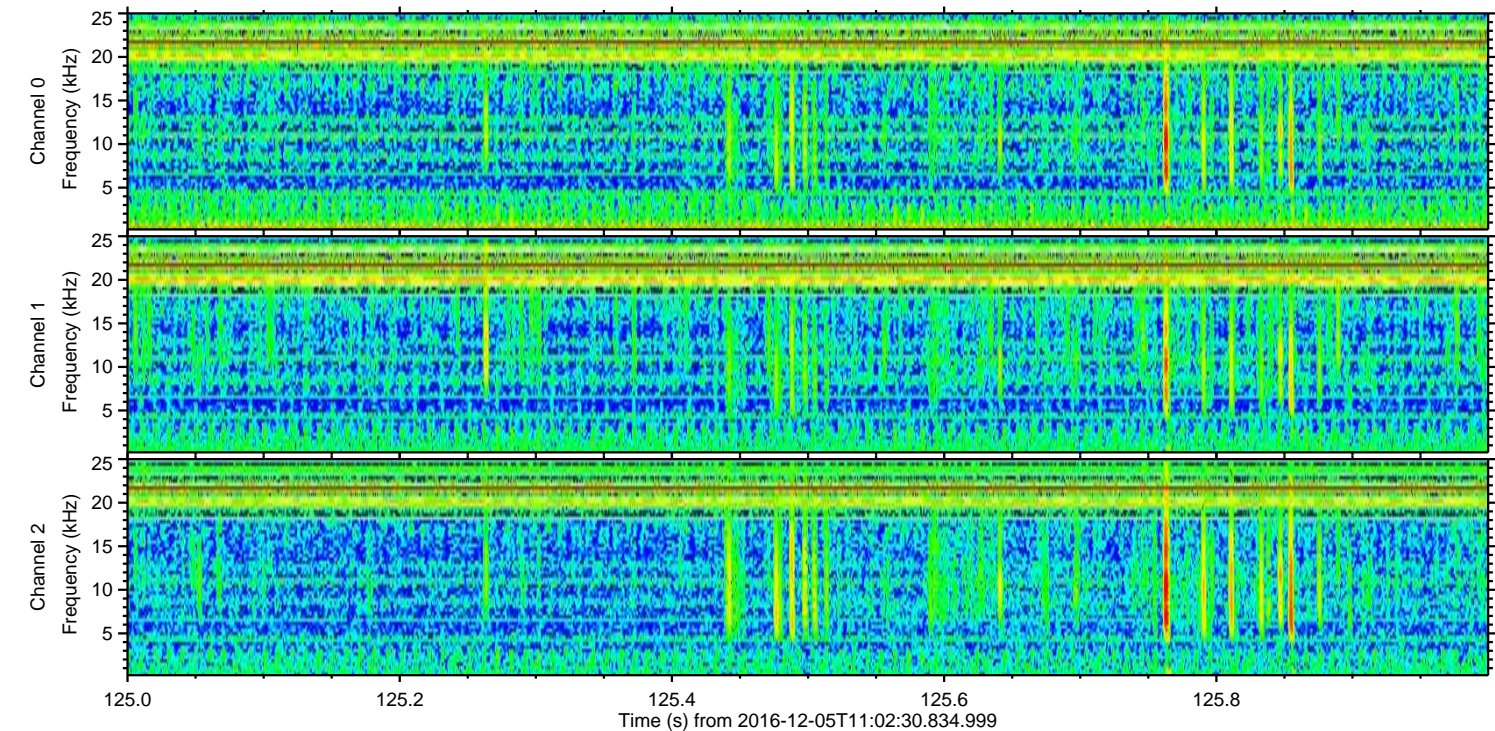
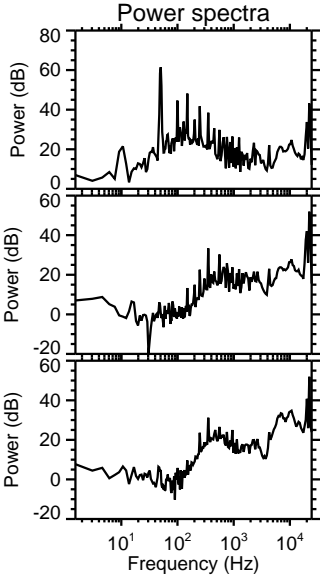
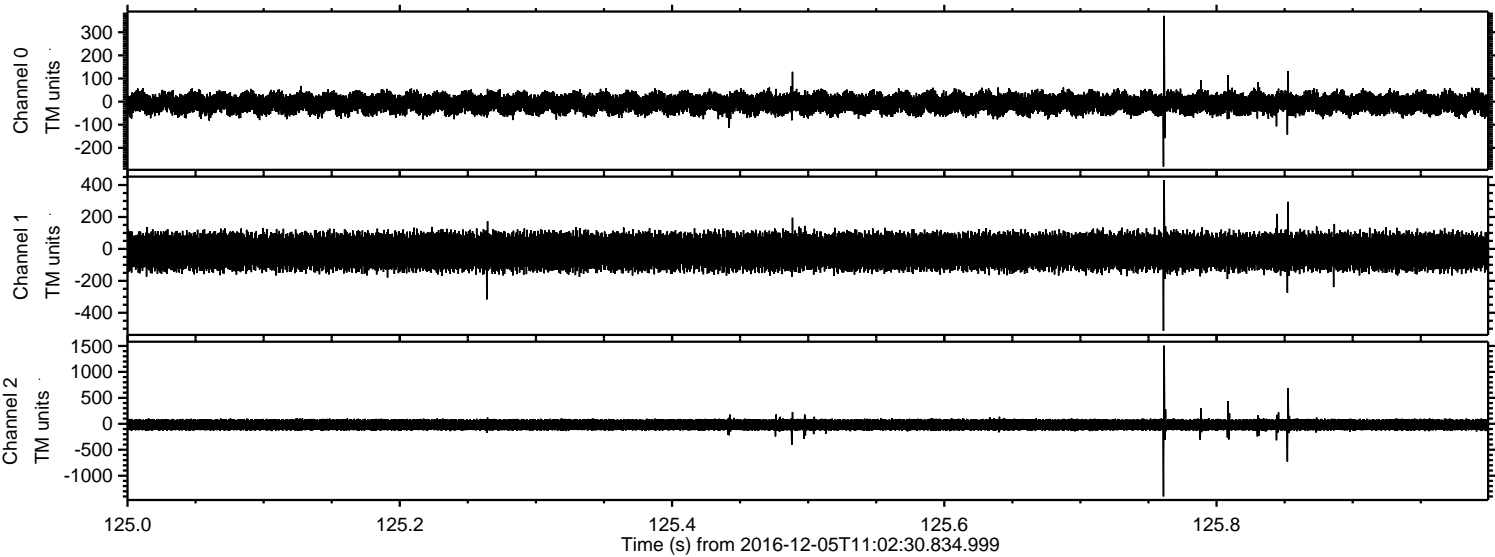
Processed Mon Dec 5 12:11:03 2016 by ELM ver.2012-10-06 from 001\_\_elm20161205\_110229\_\_dat00.bin





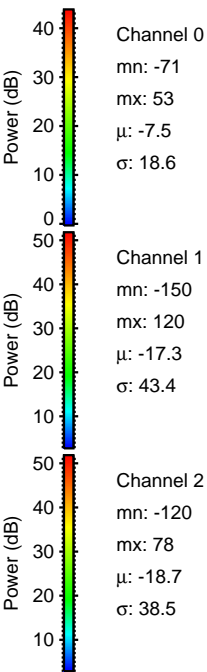
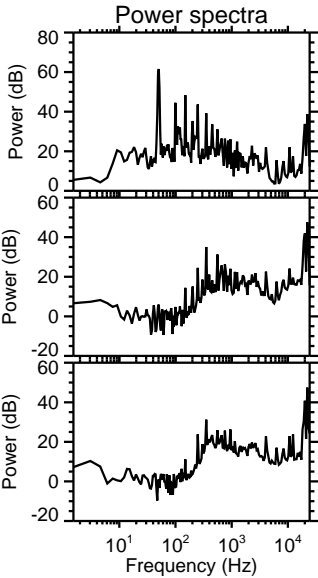
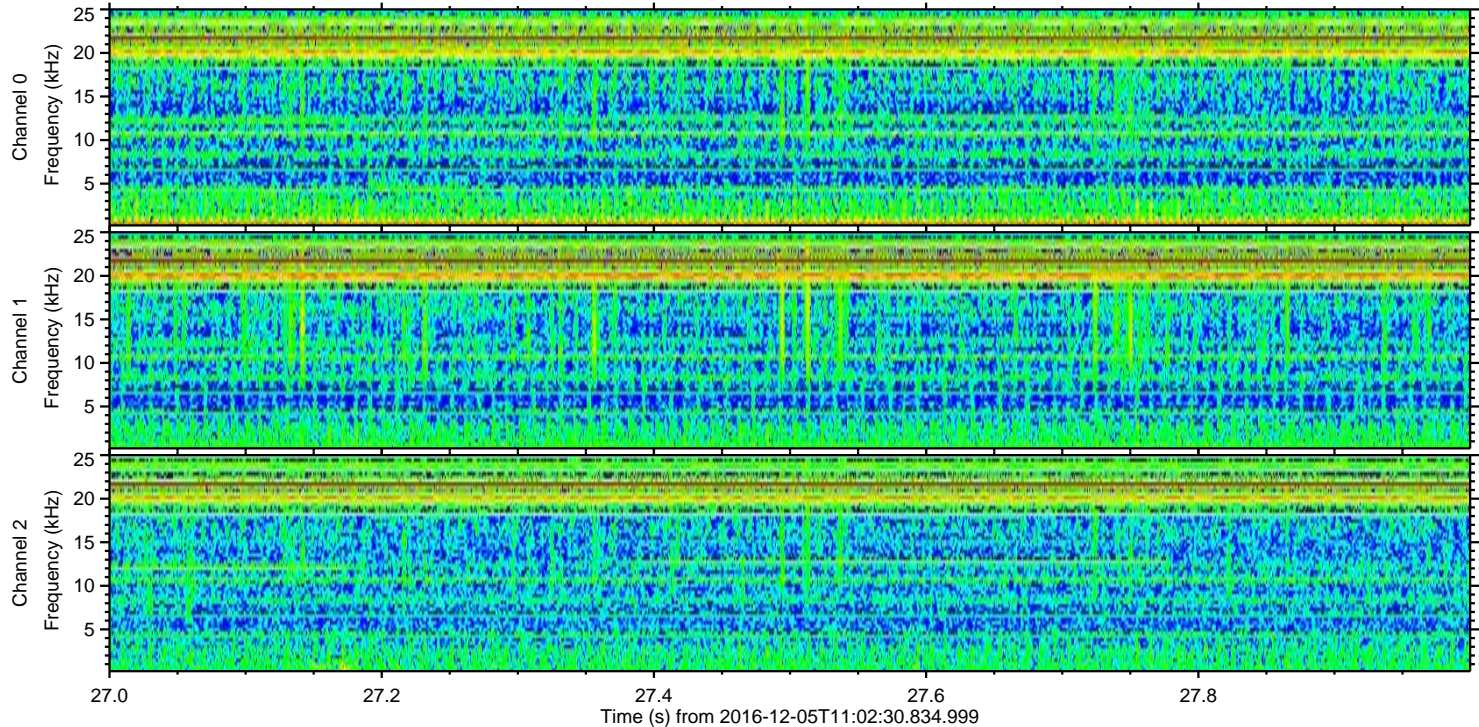
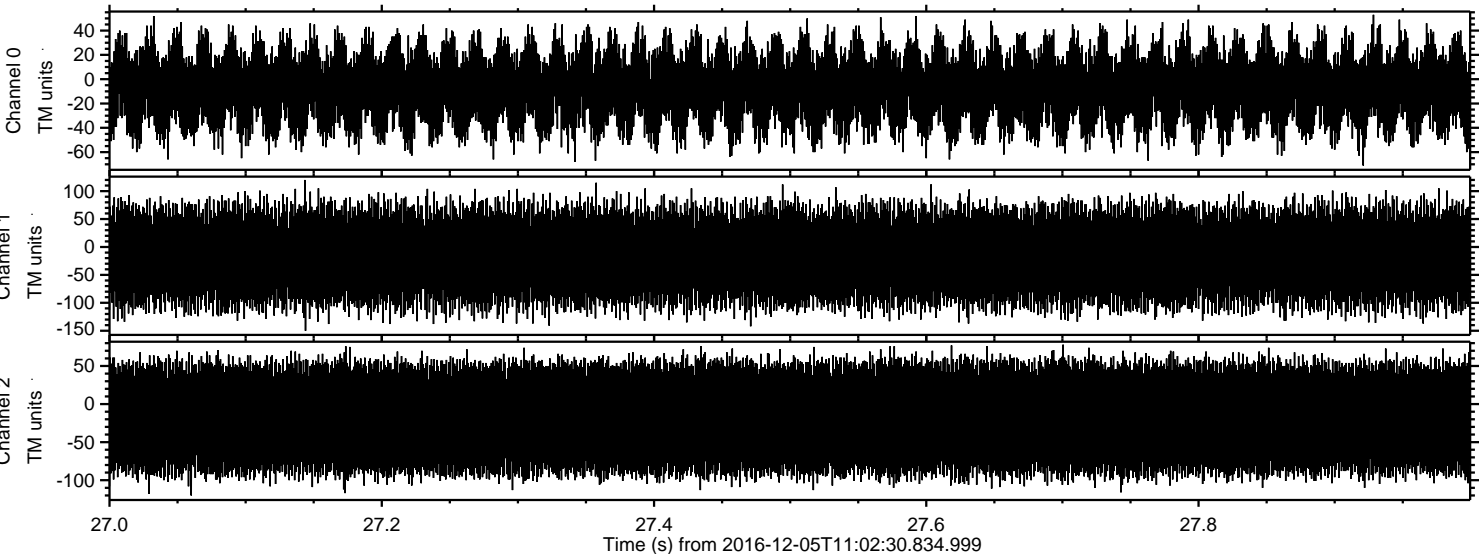
ELMAVAN 3D WAVEFORMS (Measured data sampled at 50 kHz) 51000 packets of 144 samples from 2016-12-05T11:02:30.834.999. Part 126/147

Processed Mon Dec 5 12:11:04 2016 by ELM ver.2012-10-06 from 001\_\_elm20161205\_110229\_\_dat00.bin





Processed Mon Dec 5 12:11:05 2016 by ELM ver.2012-10-06 from 001\_\_elm20161205\_110229\_\_dat00.bin



Power spectra

