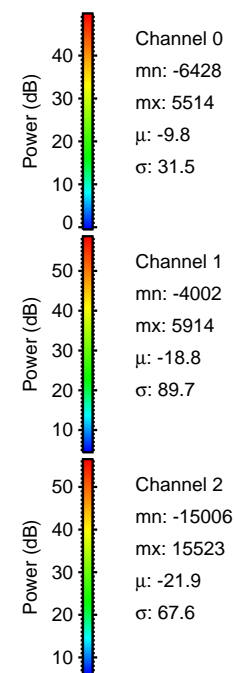
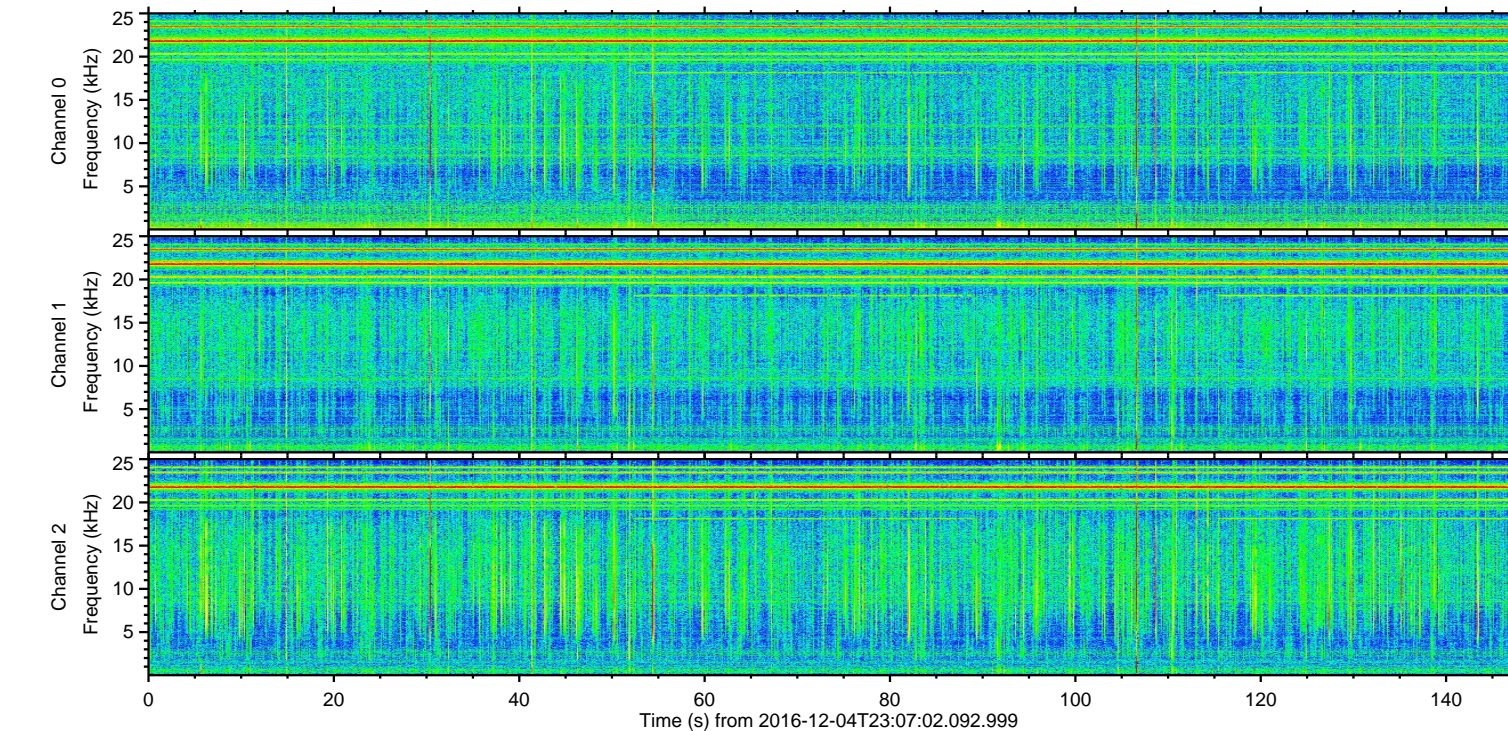
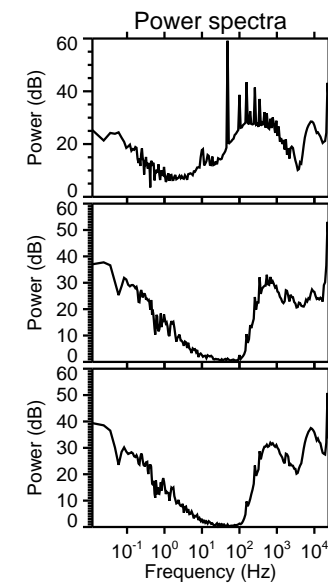
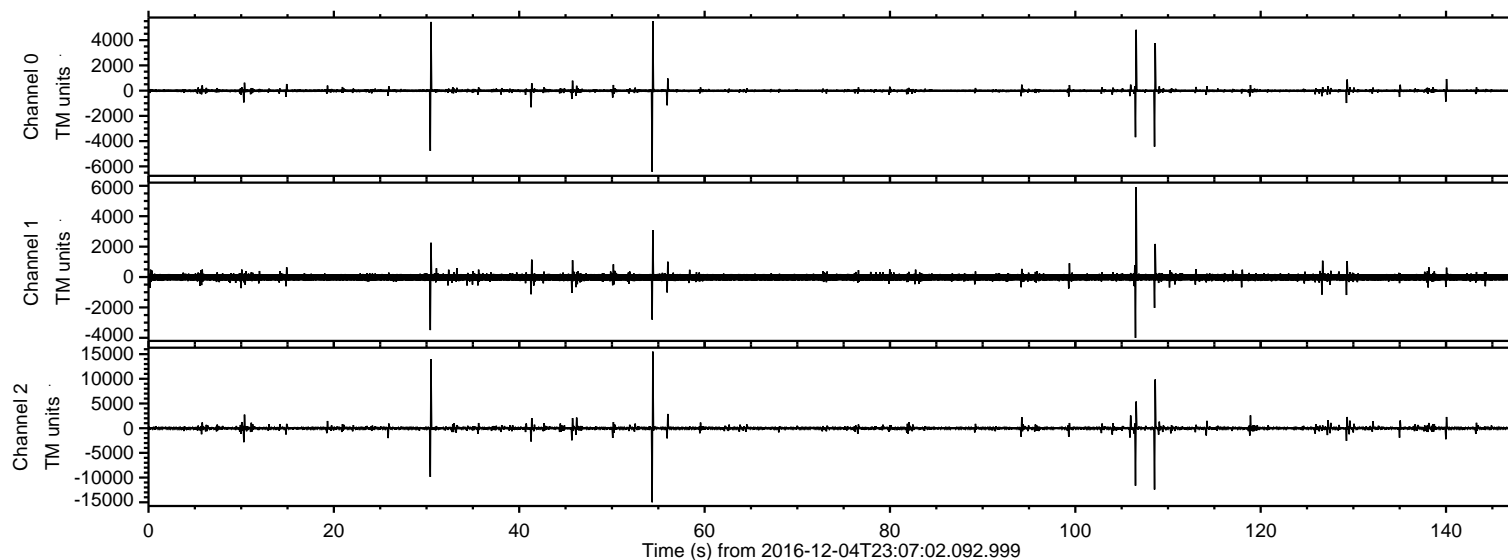
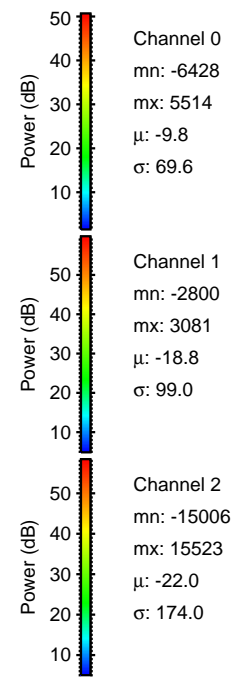
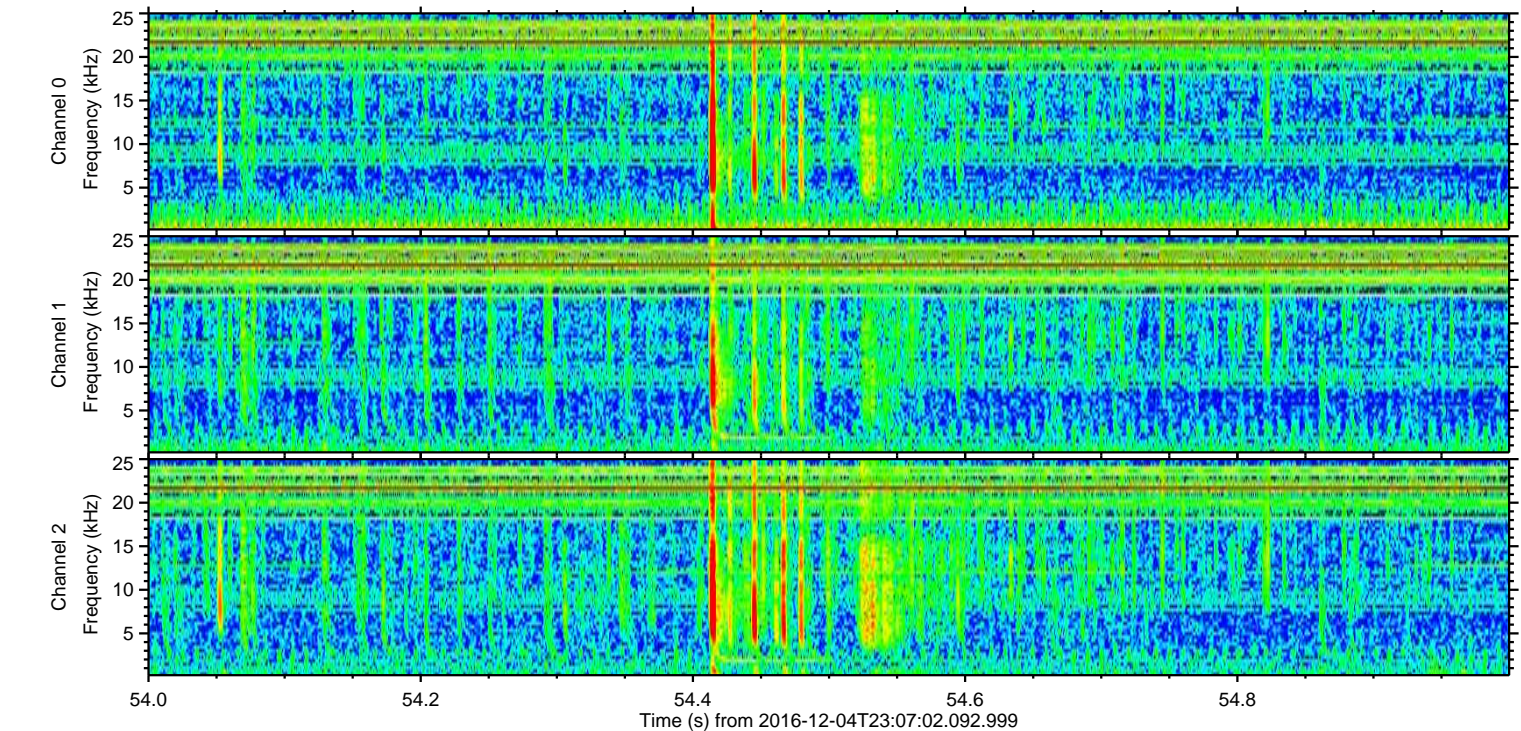
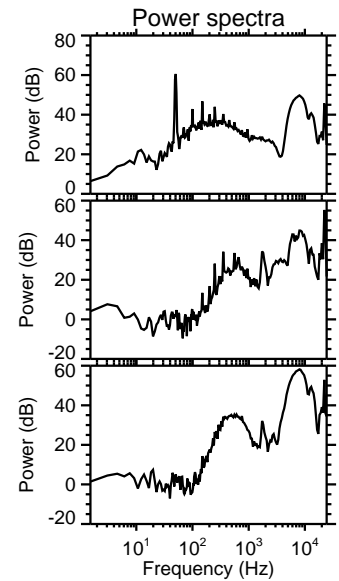
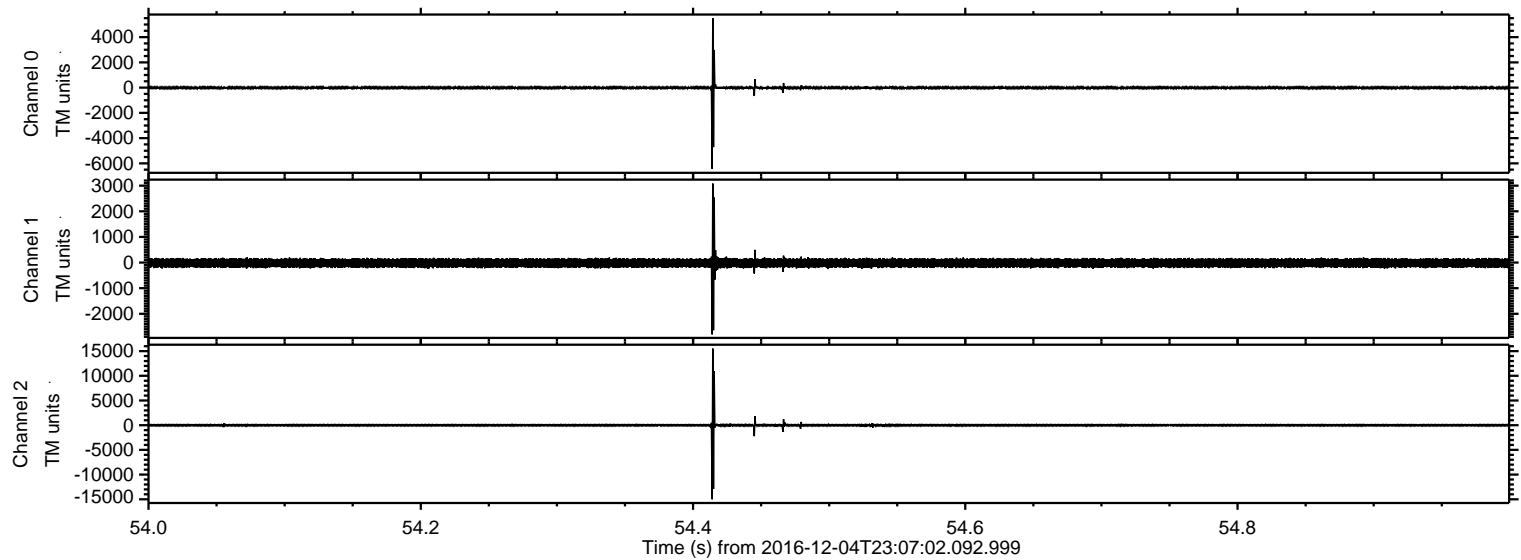


ELMAVAN 3D WAVEFORMS (Measured data sampled at 50 kHz) 51000 packets of 144 samples from 2016-12-04T23:07:02.092.999.

Processed Mon Dec 5 00:15:06 2016 by ELM ver.2012-10-06 from 001__elm20161204_230701__dat00.bin

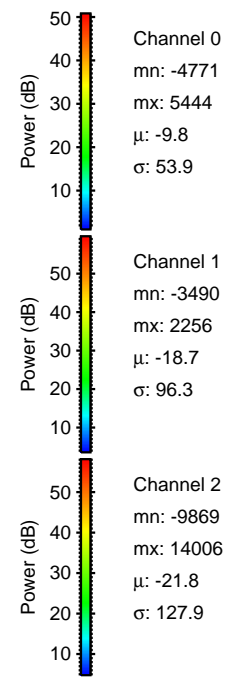
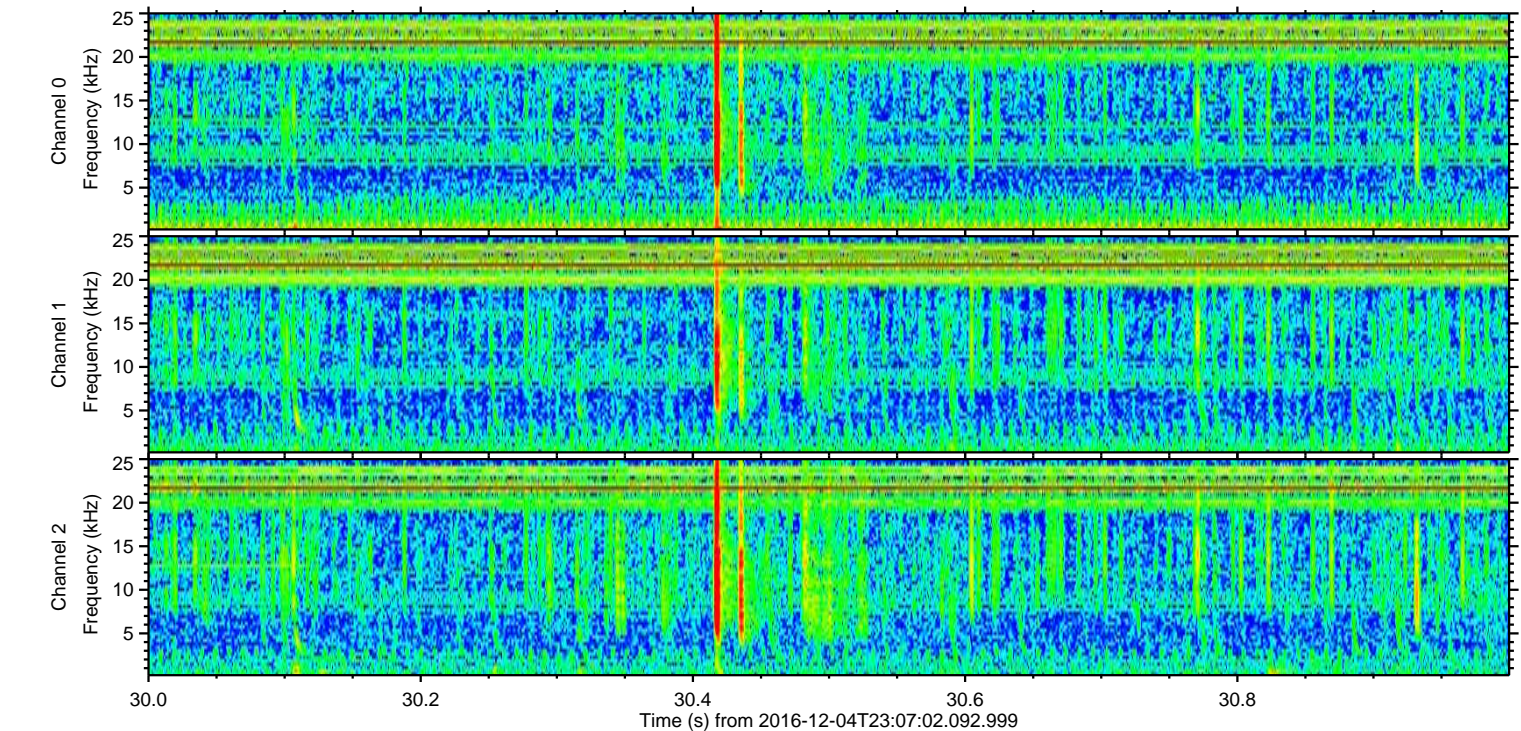
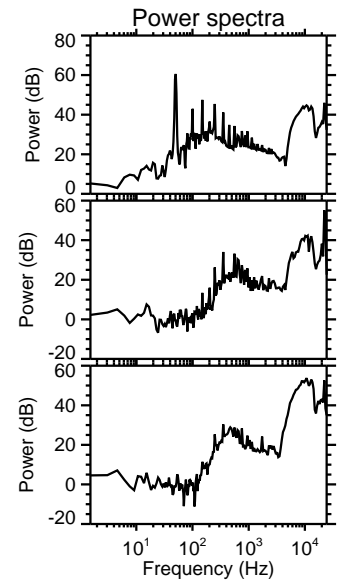
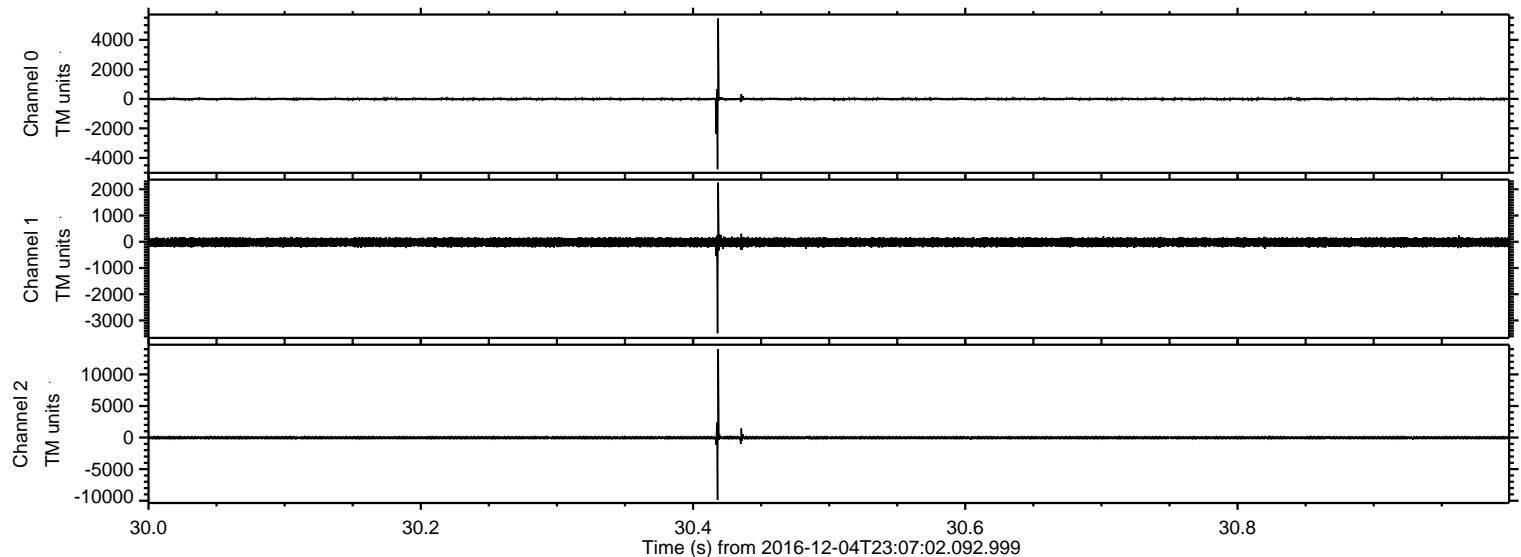


Processed Mon Dec 5 00:15:21 2016 by ELM ver.2012-10-06 from 001__elm20161204_230701__dat00.bin



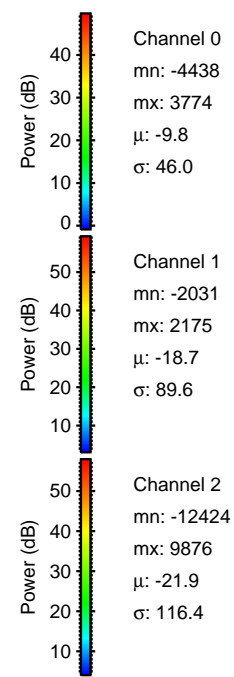
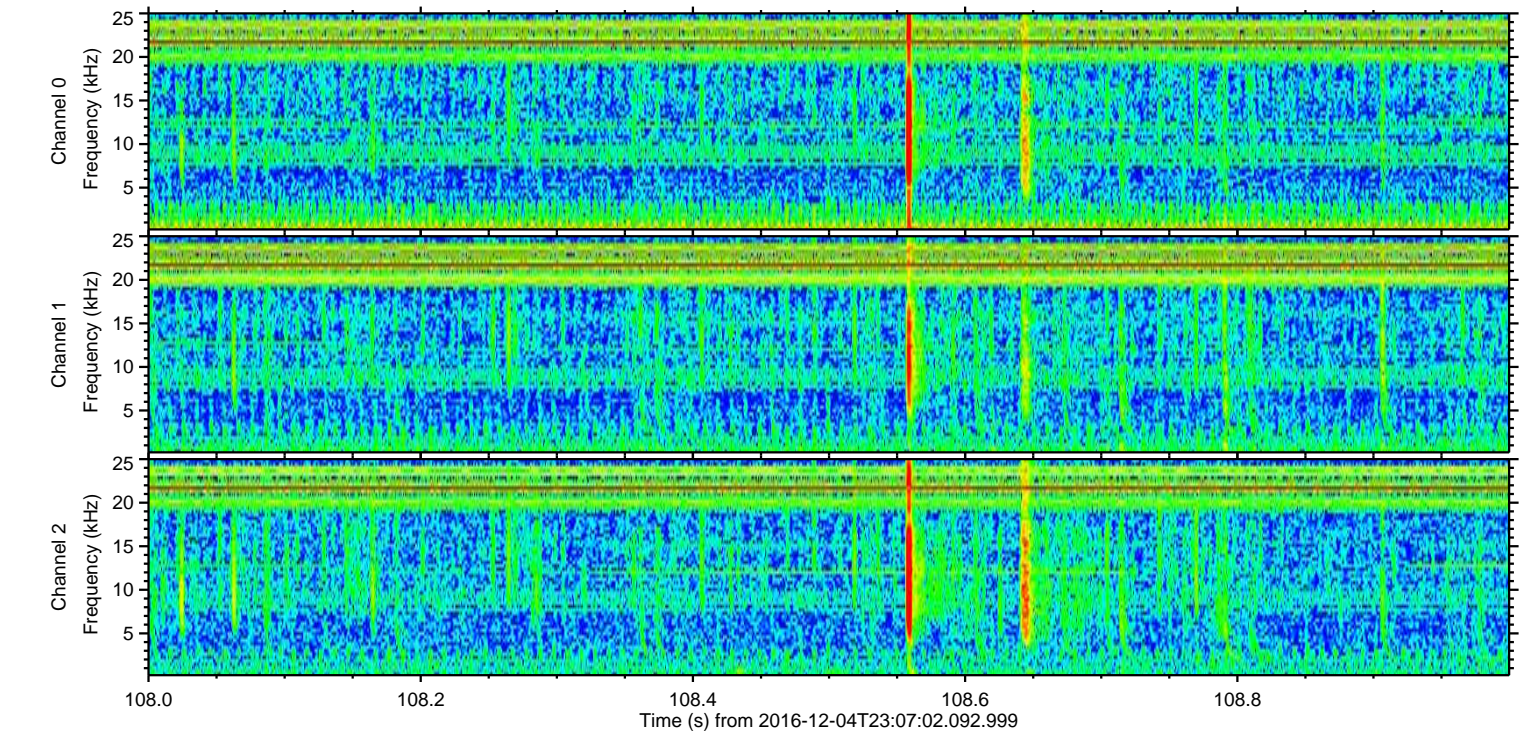
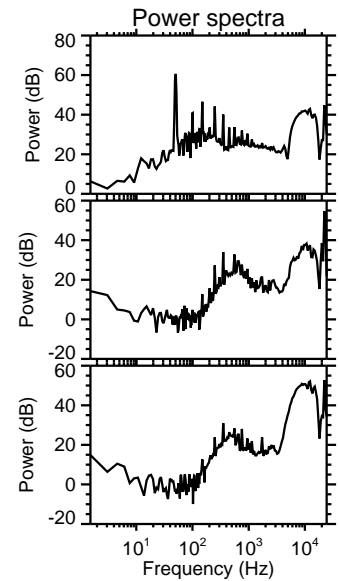
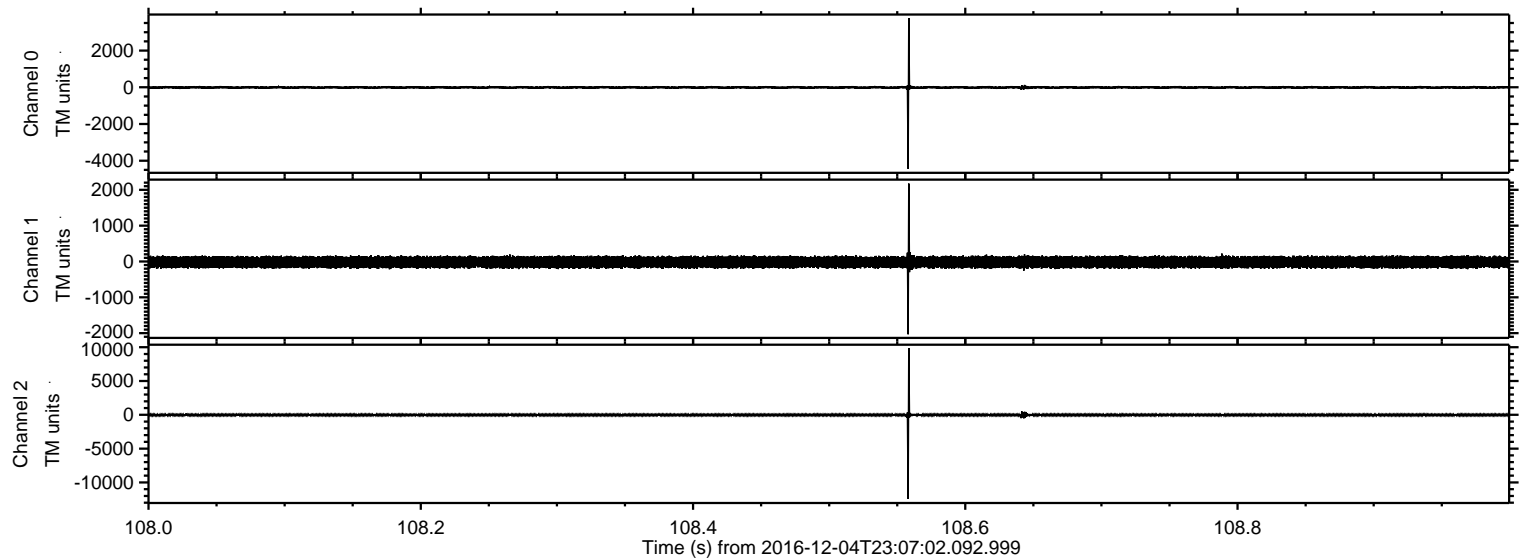
ELMAVAN 3D WAVEFORMS (Measured data sampled at 50 kHz) 51000 packets of 144 samples from 2016-12-04T23:07:02.092.999. Part 31/147

Processed Mon Dec 5 00:15:22 2016 by ELM ver.2012-10-06 from 001__elm20161204_230701__dat00.bin



ELMAVAN 3D WAVEFORMS (Measured data sampled at 50 kHz) 51000 packets of 144 samples from 2016-12-04T23:07:02.092.999. Part 109/147

Processed Mon Dec 5 00:15:23 2016 by ELM ver.2012-10-06 from 001__elm20161204_230701__dat00.bin



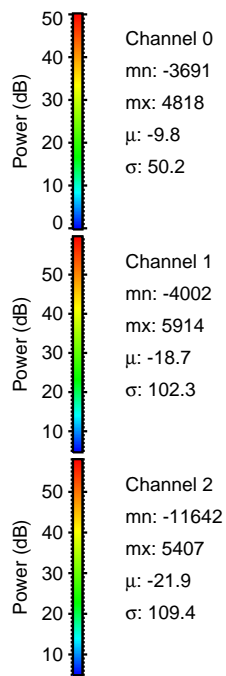
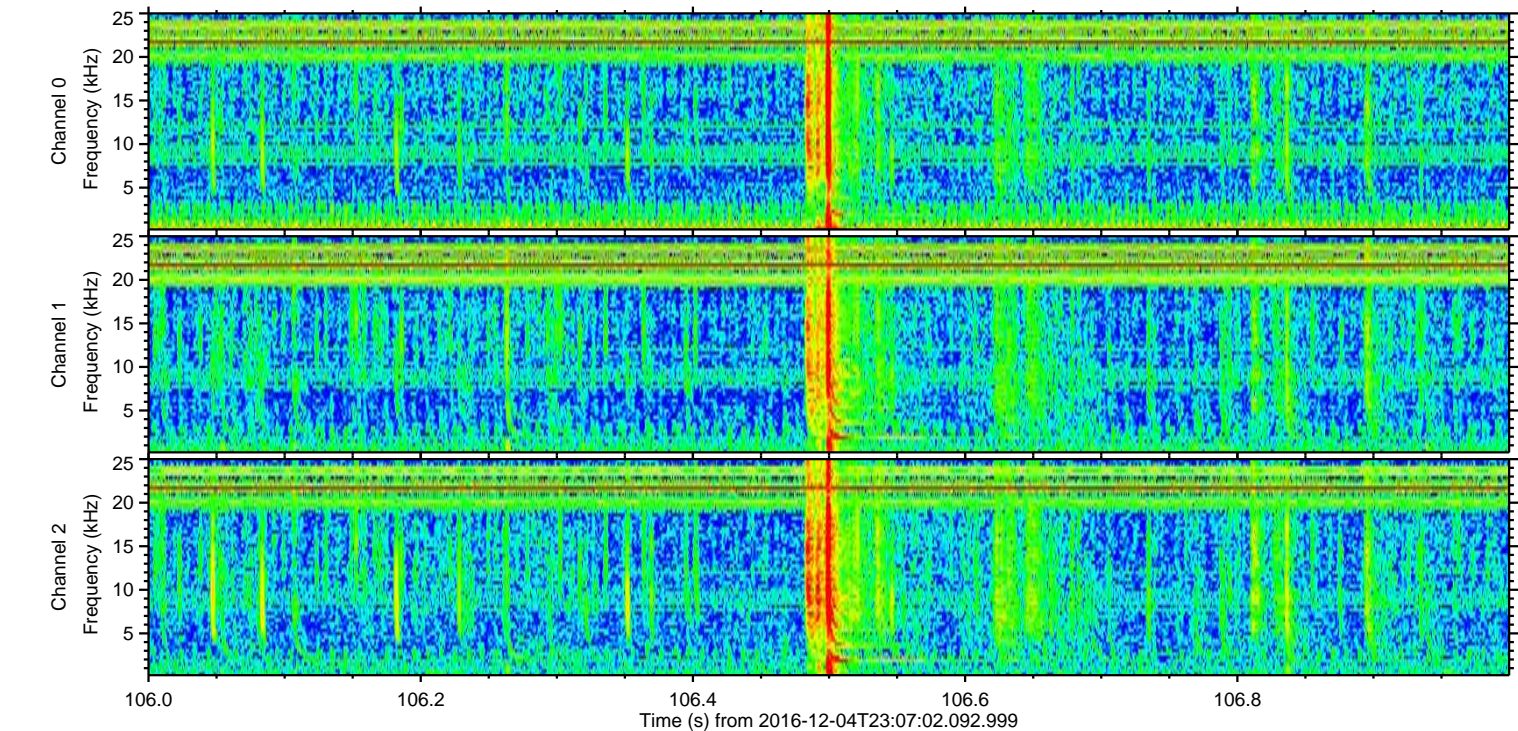
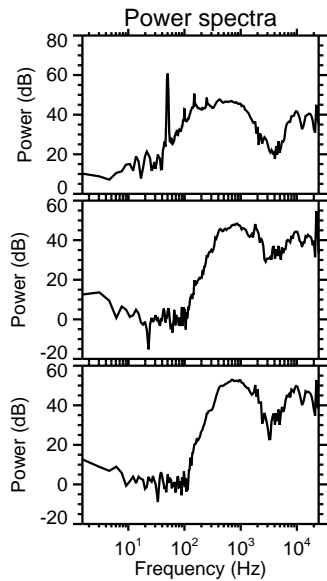
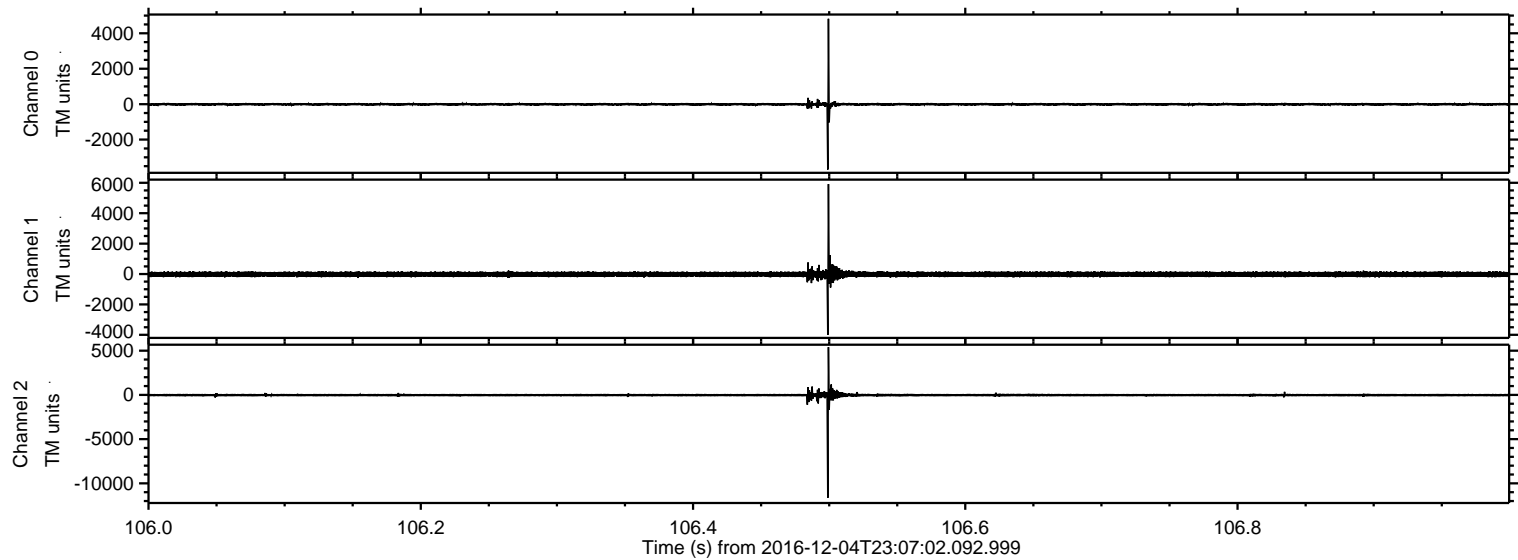
Channel 0
mn: -4438
mx: 3774
 μ : -9.8
 σ : 46.0

Channel 1
mn: -2031
mx: 2175
 μ : -18.7
 σ : 89.6

Channel 2
mn: -12424
mx: 9876
 μ : -21.9
 σ : 116.4

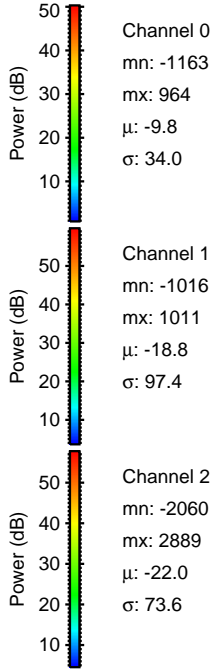
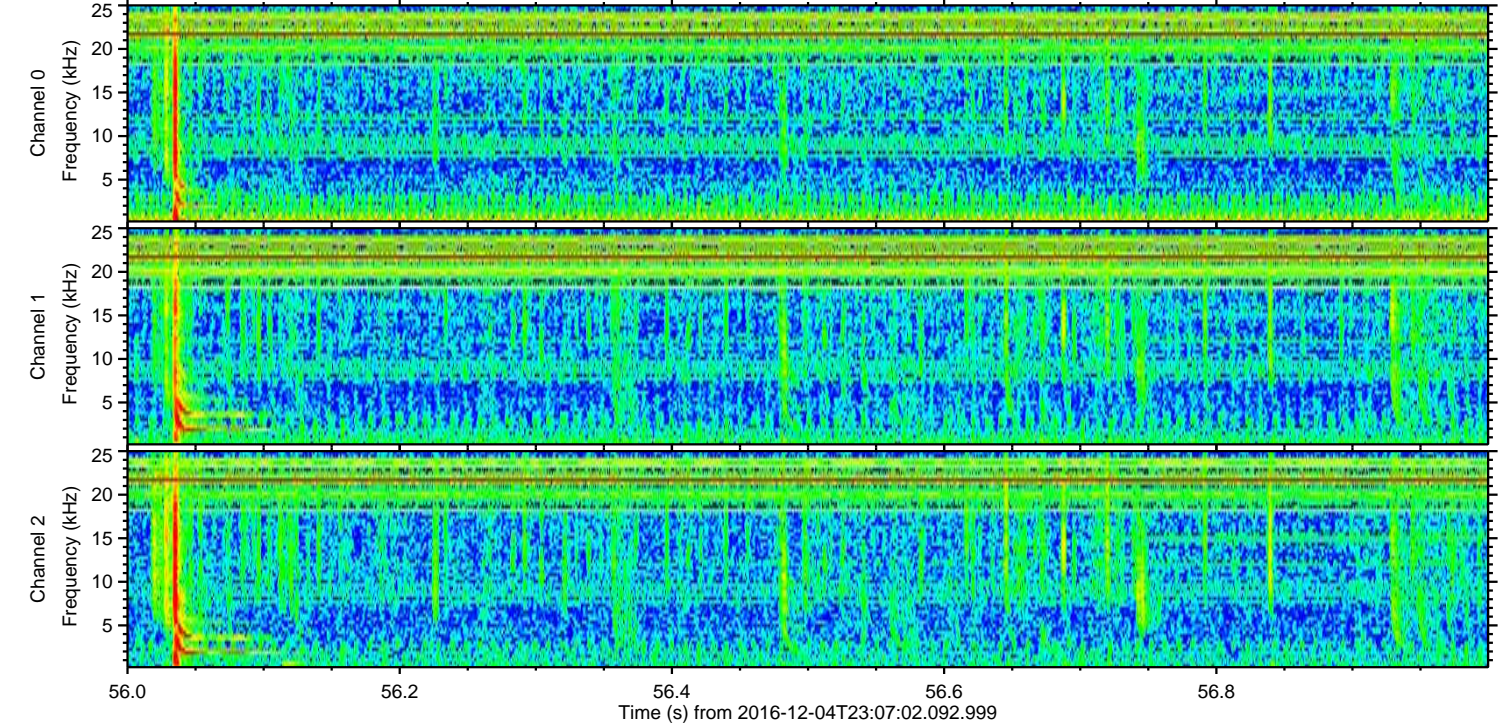
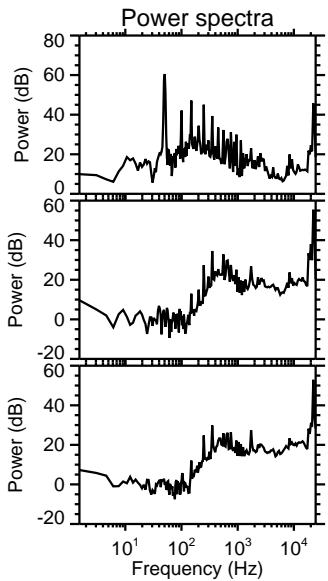
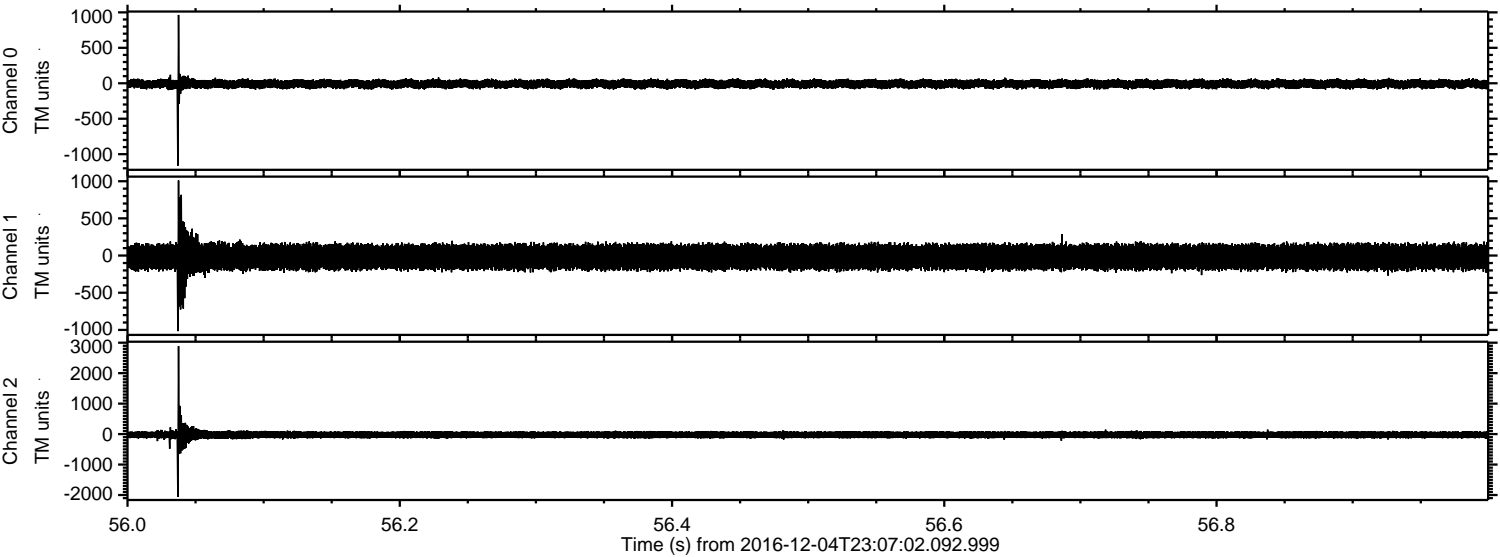
ELMAVAN 3D WAVEFORMS (Measured data sampled at 50 kHz) 51000 packets of 144 samples from 2016-12-04T23:07:02.092.999. Part 107/147

Processed Mon Dec 5 00:15:24 2016 by ELM ver.2012-10-06 from 001__elm20161204_230701__dat00.bin



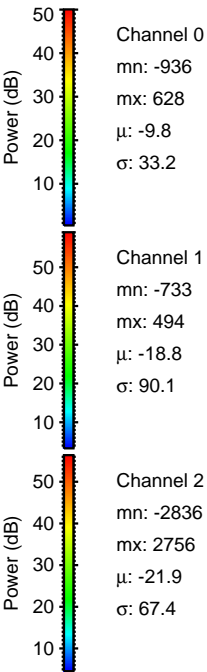
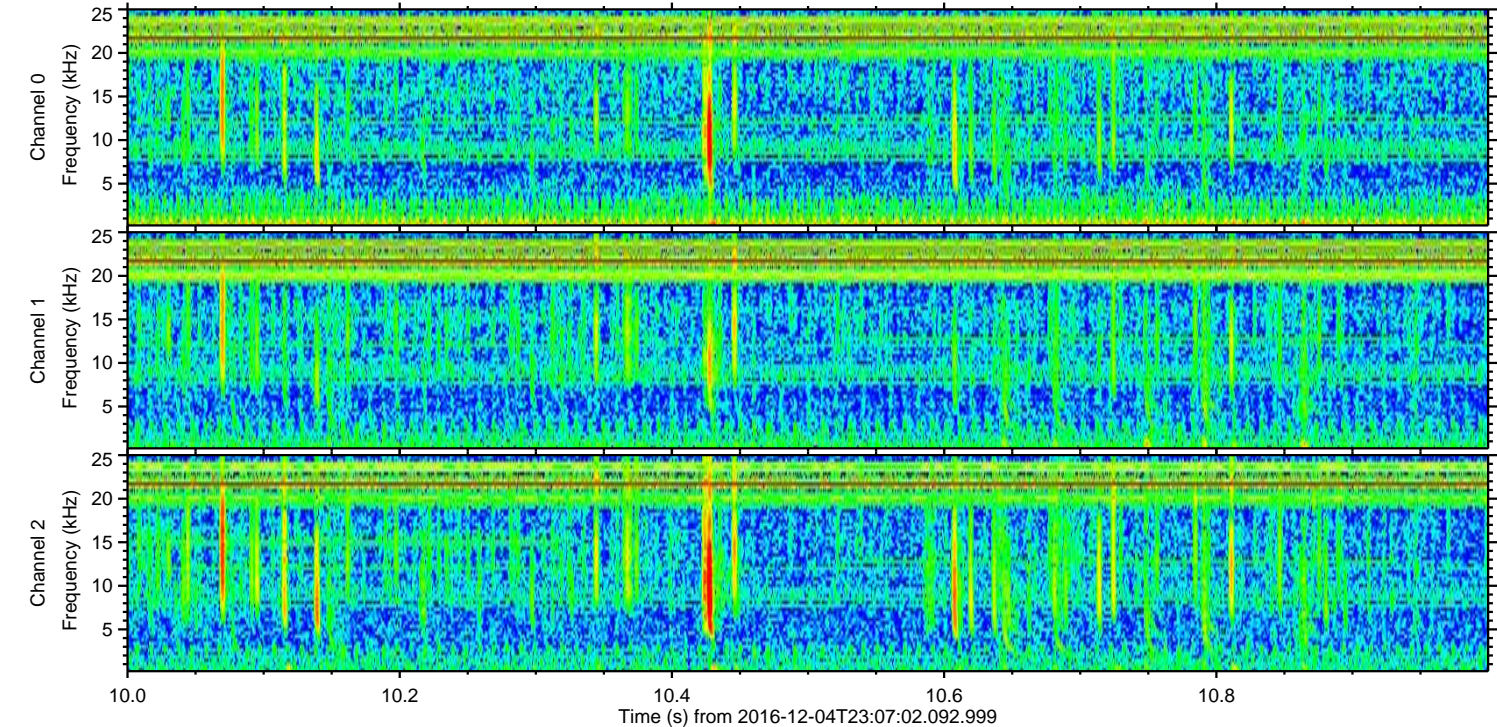
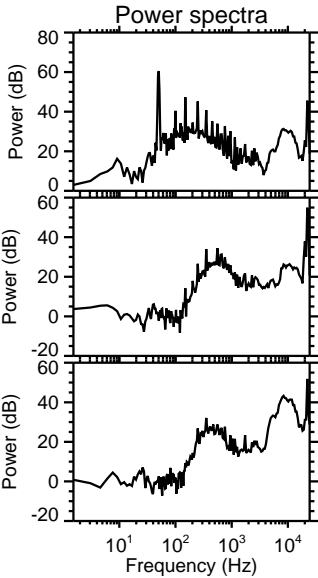
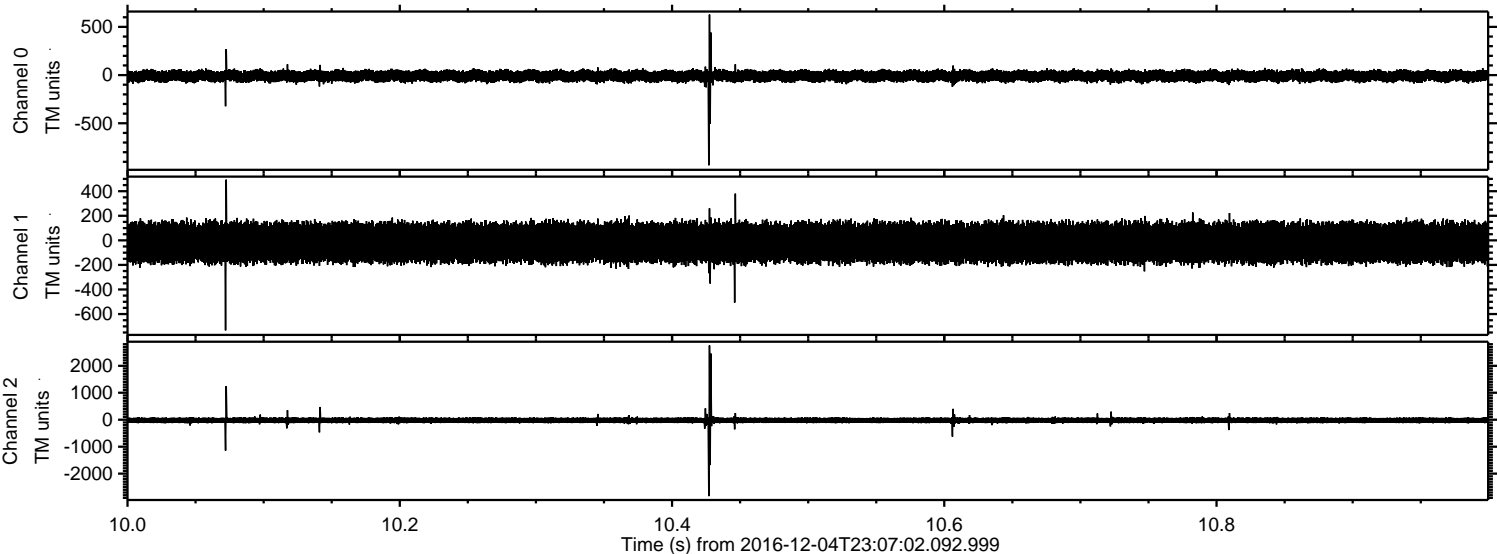
ELMAVAN 3D WAVEFORMS (Measured data sampled at 50 kHz) 51000 packets of 144 samples from 2016-12-04T23:07:02.092.999. Part 57/147

Processed Mon Dec 5 00:15:25 2016 by ELM ver.2012-10-06 from 001__elm20161204_230701__dat00.bin



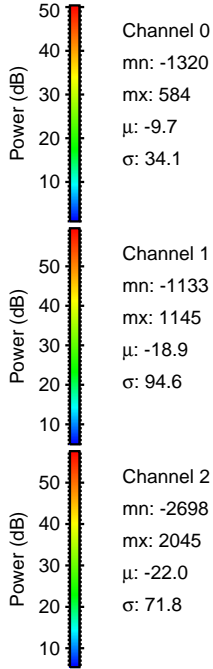
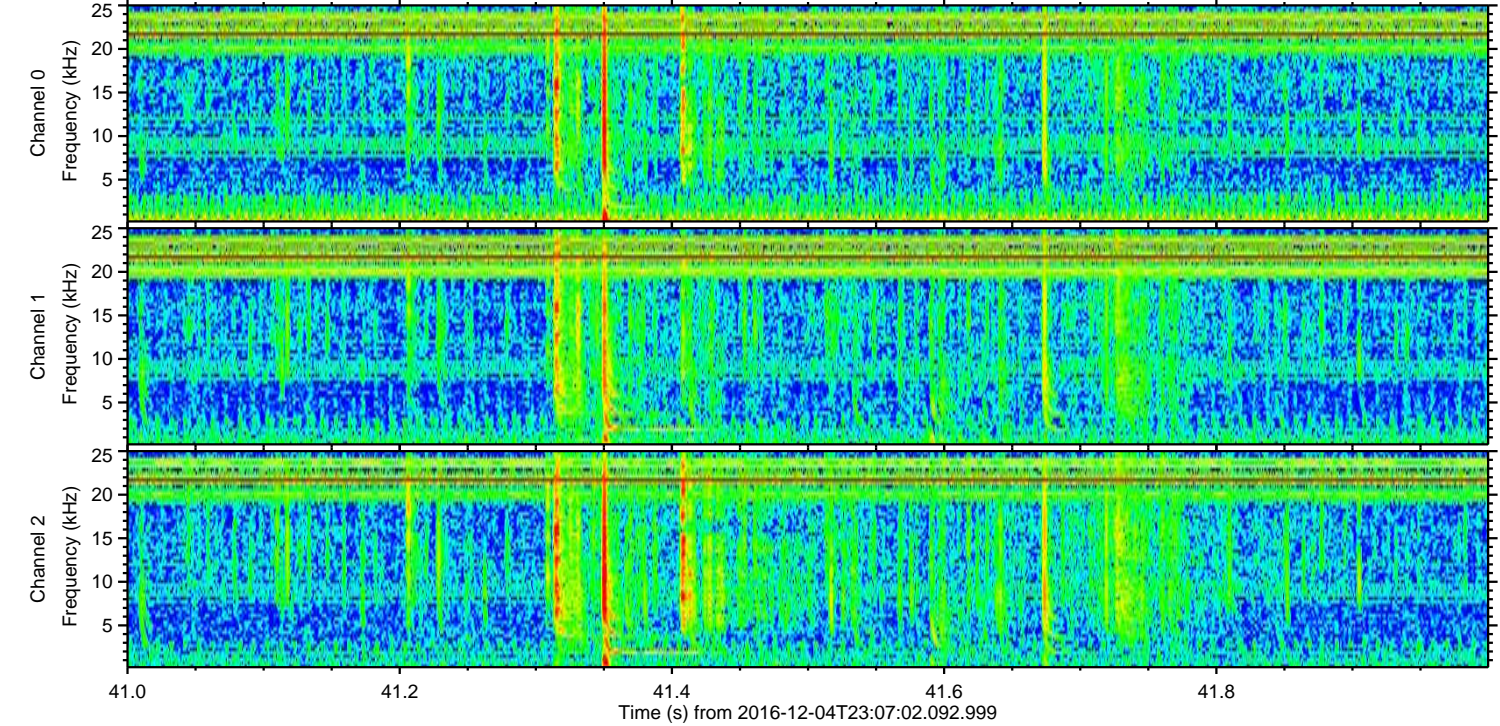
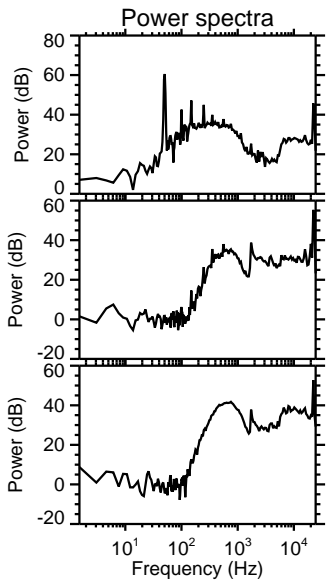
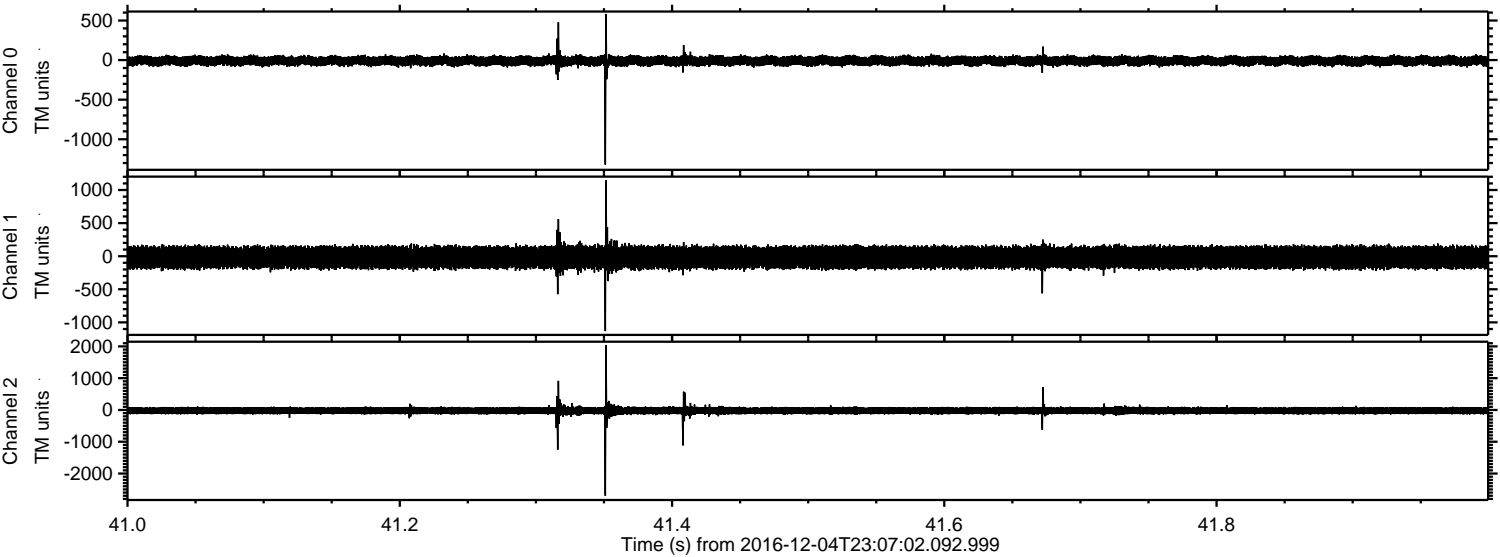
ELMAVAN 3D WAVEFORMS (Measured data sampled at 50 kHz) 51000 packets of 144 samples from 2016-12-04T23:07:02.092.999. Part 11/147

Processed Mon Dec 5 00:15:26 2016 by ELM ver.2012-10-06 from 001__elm20161204_230701__dat00.bin



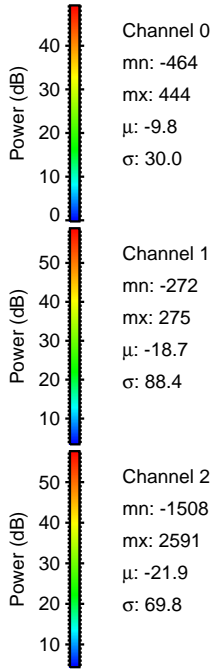
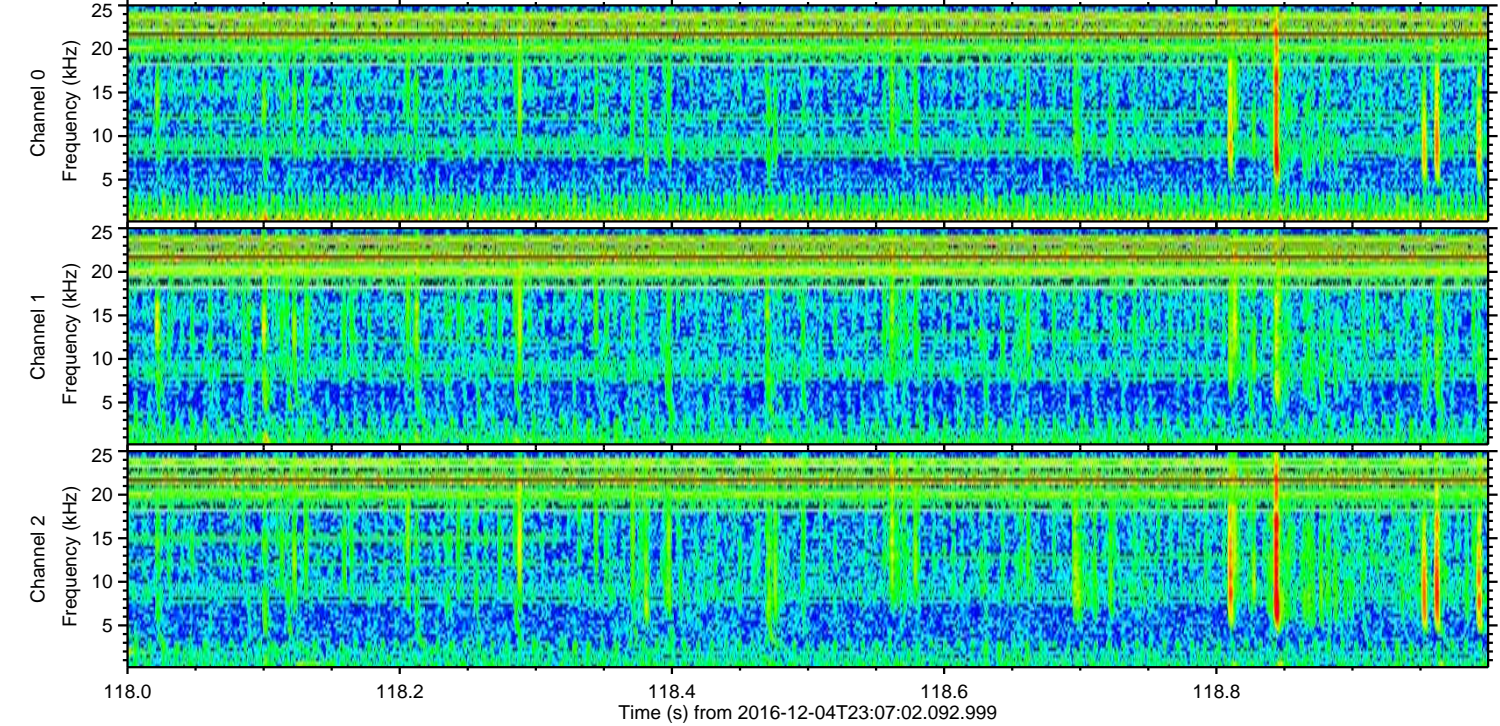
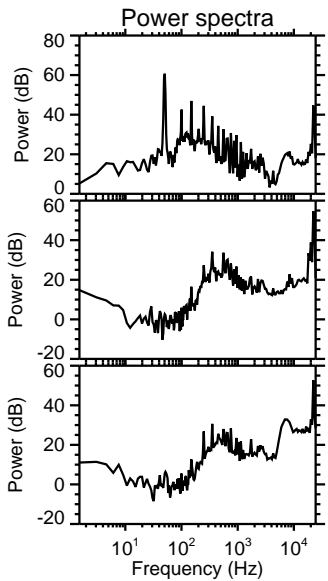
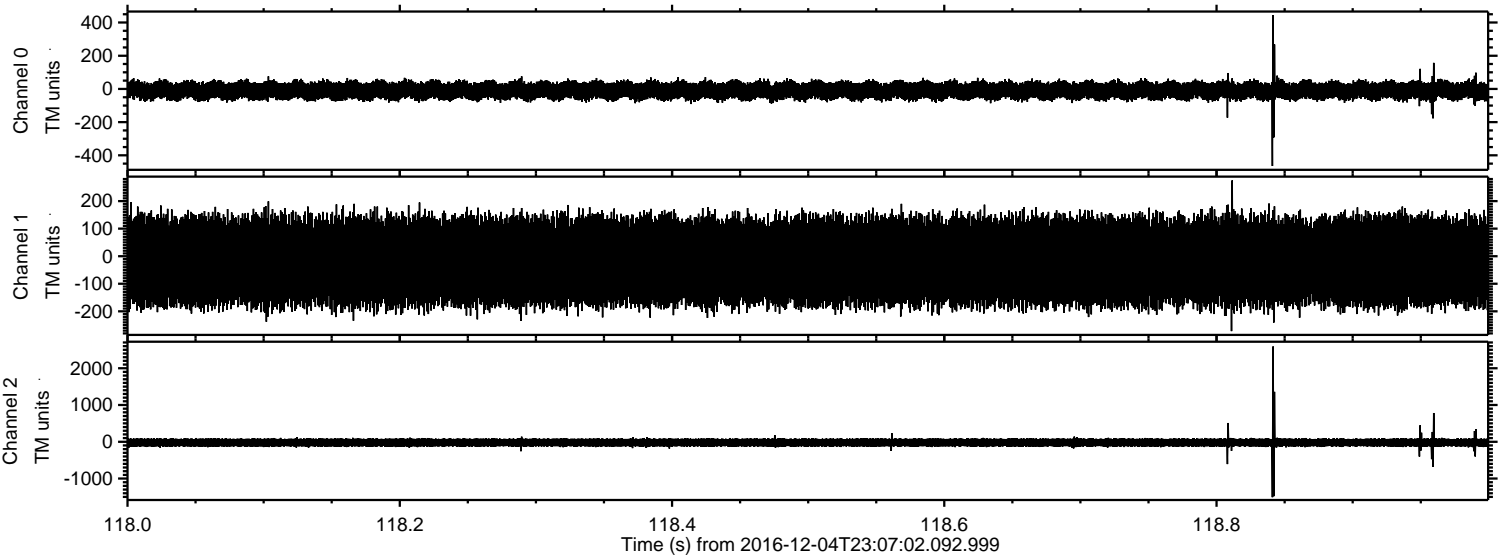
ELMAVAN 3D WAVEFORMS (Measured data sampled at 50 kHz) 51000 packets of 144 samples from 2016-12-04T23:07:02.092.999. Part 42/147

Processed Mon Dec 5 00:15:27 2016 by ELM ver.2012-10-06 from 001__elm20161204_230701__dat00.bin



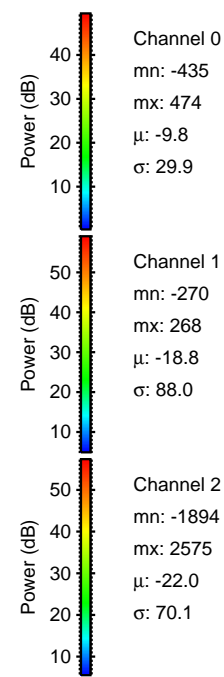
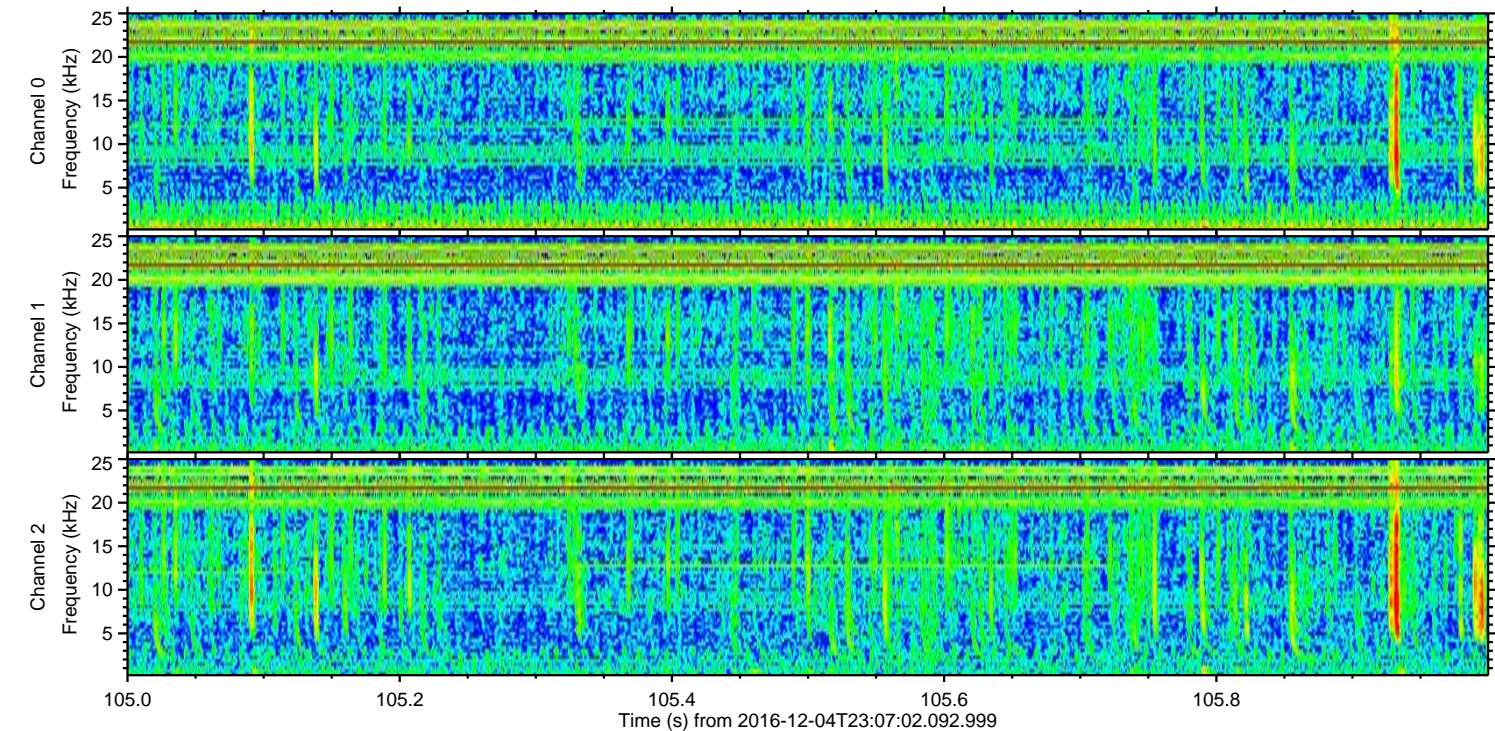
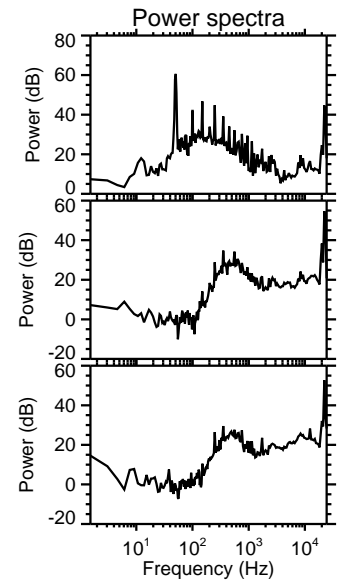
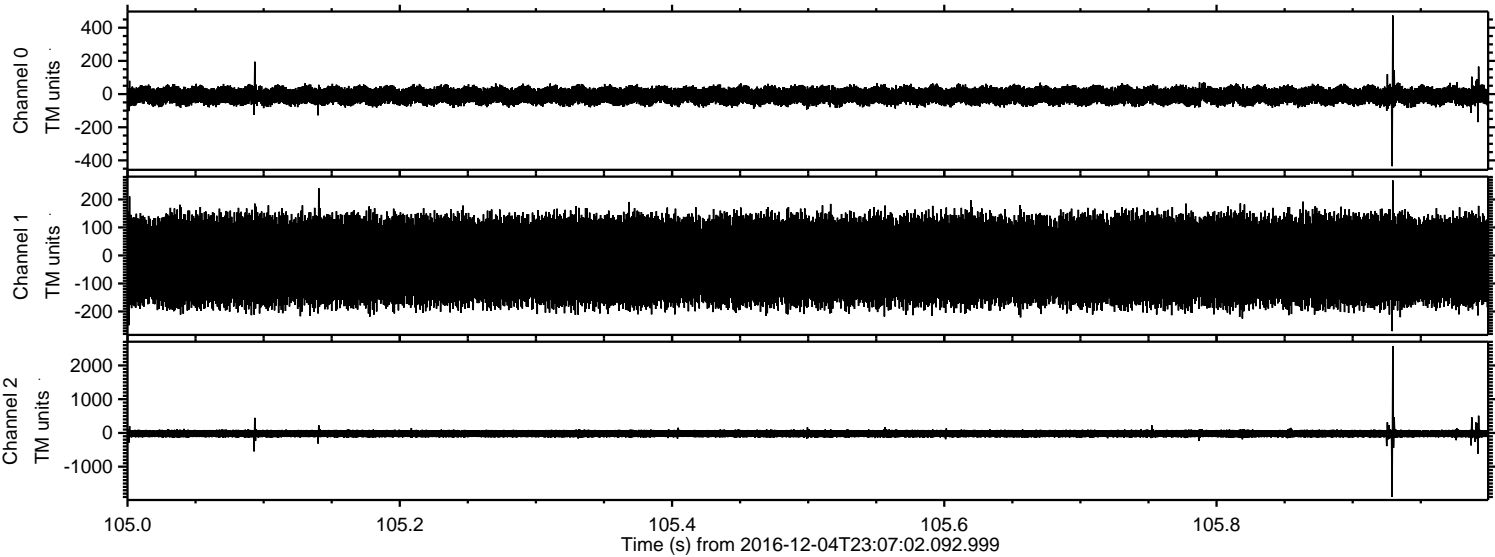
ELMAVAN 3D WAVEFORMS (Measured data sampled at 50 kHz) 51000 packets of 144 samples from 2016-12-04T23:07:02.092.999. Part 119/147

Processed Mon Dec 5 00:15:28 2016 by ELM ver.2012-10-06 from 001__elm20161204_230701__dat00.bin



ELMAVAN 3D WAVEFORMS (Measured data sampled at 50 kHz) 51000 packets of 144 samples from 2016-12-04T23:07:02.092.999. Part 106/147

Processed Mon Dec 5 00:15:29 2016 by ELM ver.2012-10-06 from 001__elm20161204_230701__dat00.bin



Channel 0
mn: -435
mx: 474
 μ : -9.8
 σ : 29.9

Channel 1
mn: -270
mx: 268
 μ : -18.8
 σ : 88.0

Channel 2
mn: -1894
mx: 2575
 μ : -22.0
 σ : 70.1

ELMAVAN 3D WAVEFORMS (Measured data sampled at 50 kHz) 51000 packets of 144 samples from 2016-12-04T23:07:02.092.999. Part 98/147

Processed Mon Dec 5 00:15:30 2016 by ELM ver.2012-10-06 from 001__elm20161204_230701__dat00.bin

