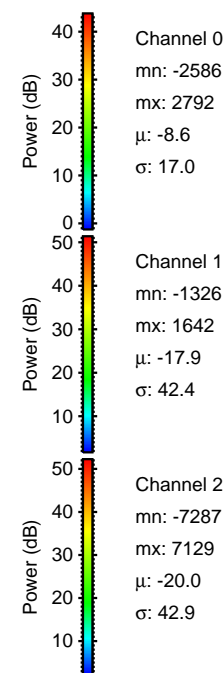
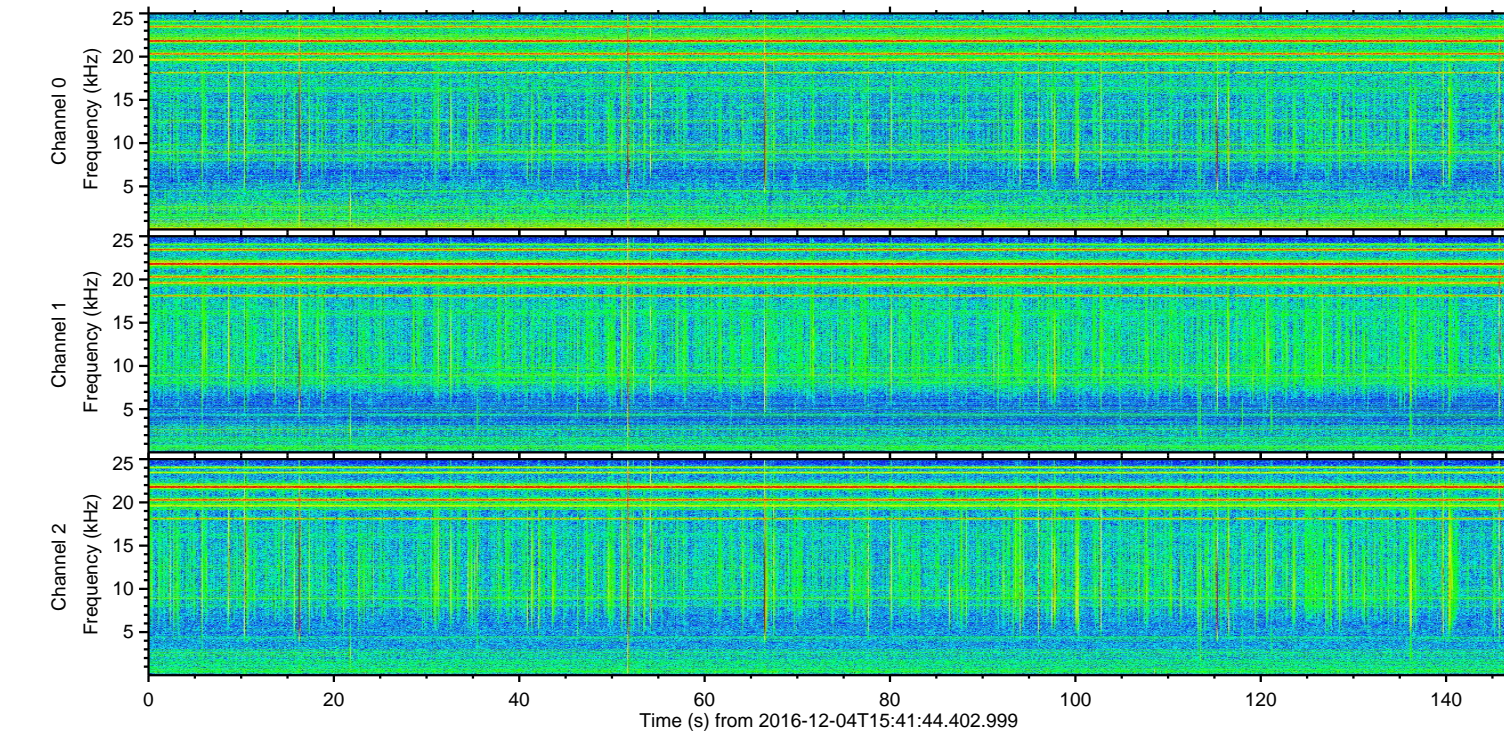
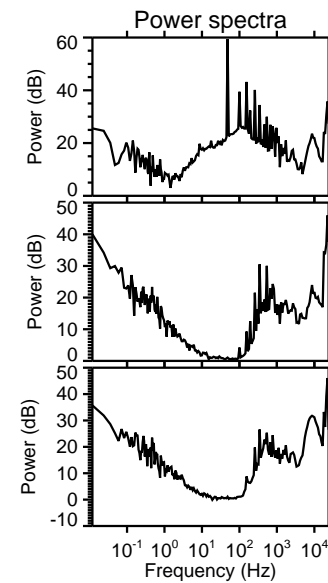
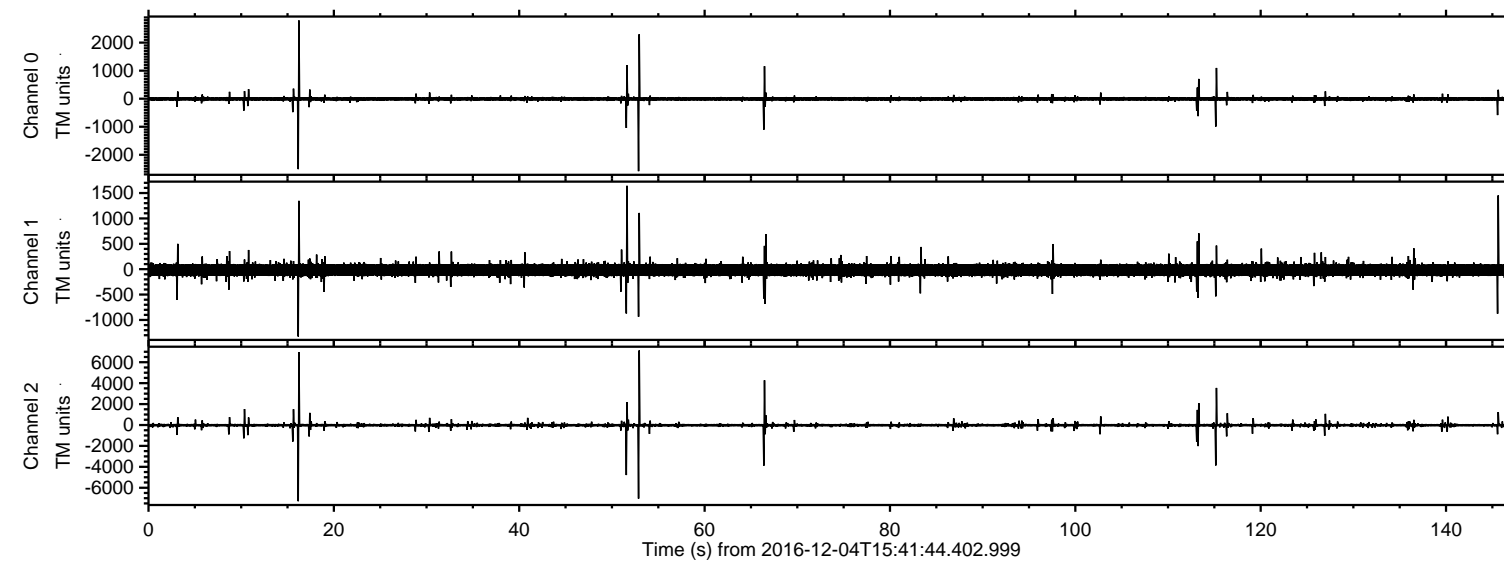


ELMAVAN 3D WAVEFORMS (Measured data sampled at 50 kHz) 51000 packets of 144 samples from 2016-12-04T15:41:44.402.999.

Processed Sun Dec 4 22:43:04 2016 by ELM ver.2012-10-06 from 001__elm20161204_154143__dat00.bin



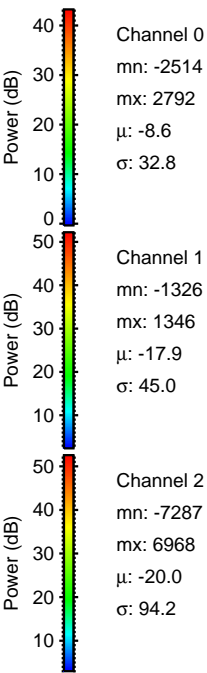
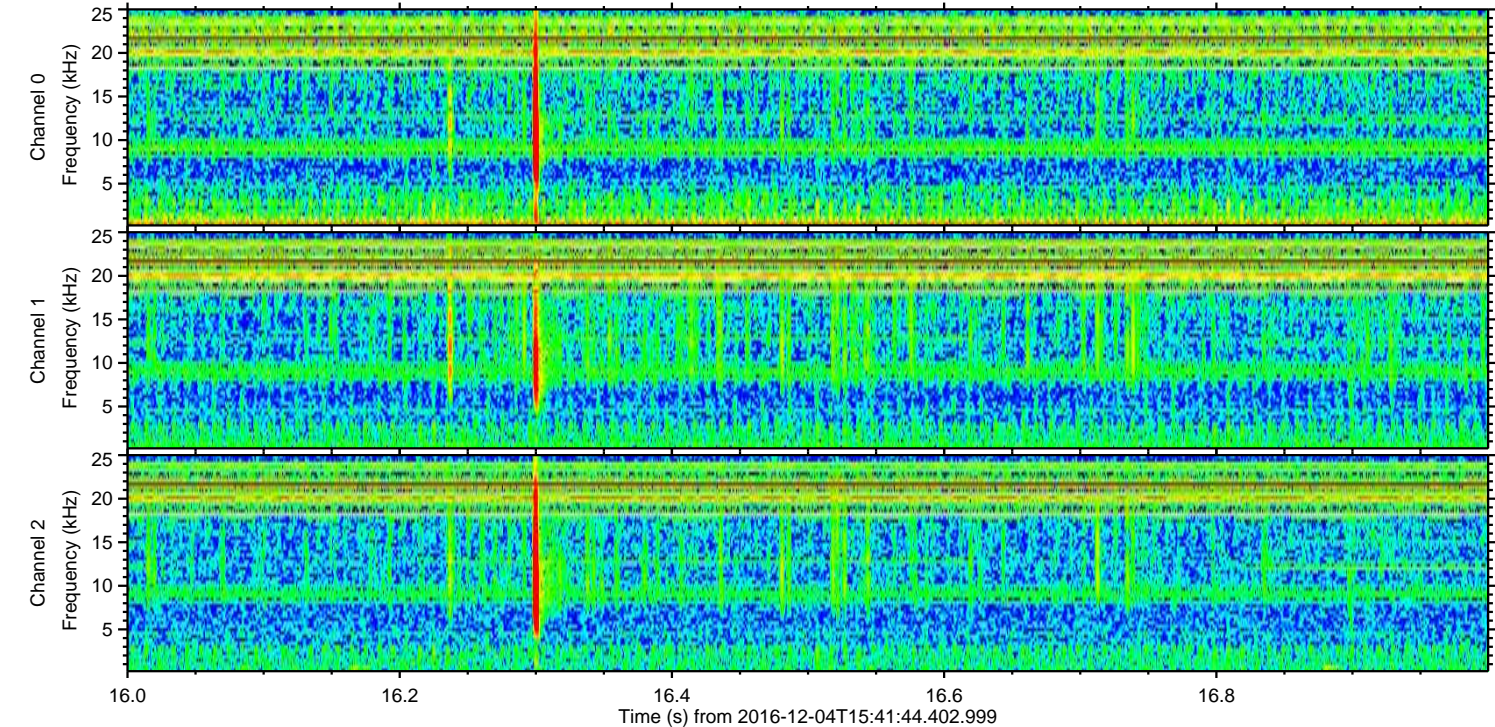
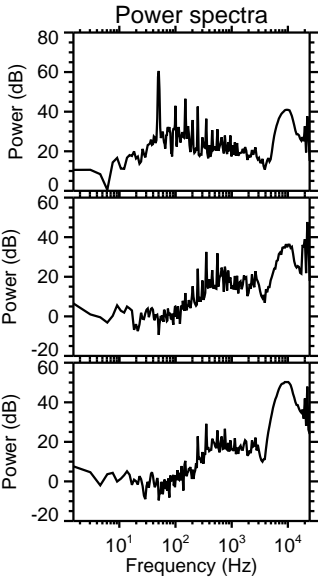
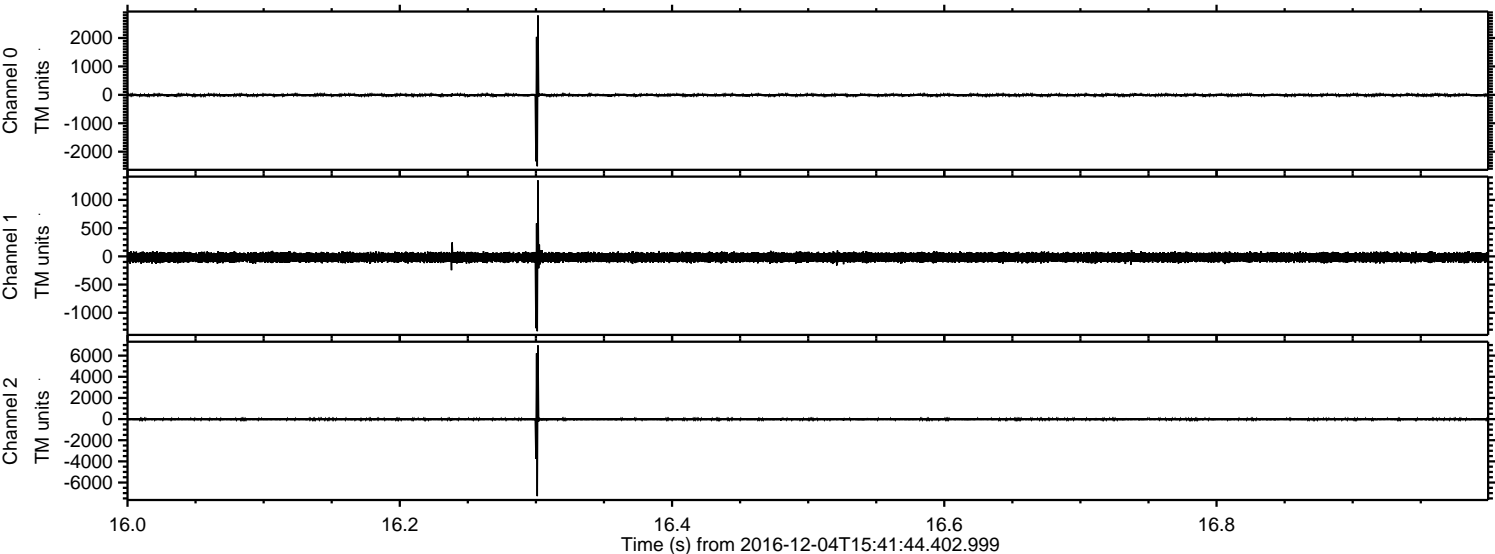
Channel 0
mn: -2586
mx: 2792
 μ : -8.6
 σ : 17.0

Channel 1
mn: -1326
mx: 1642
 μ : -17.9
 σ : 42.4

Channel 2
mn: -7287
mx: 7129
 μ : -20.0
 σ : 42.9

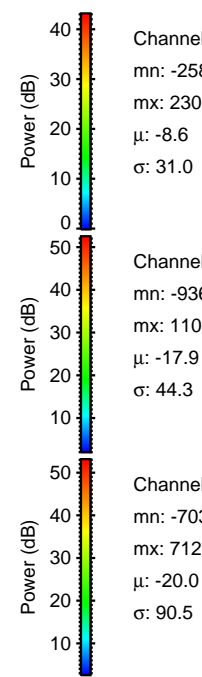
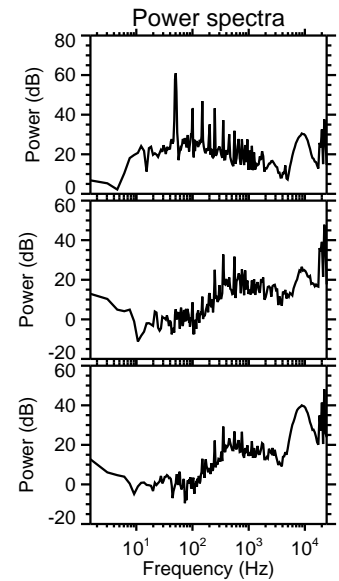
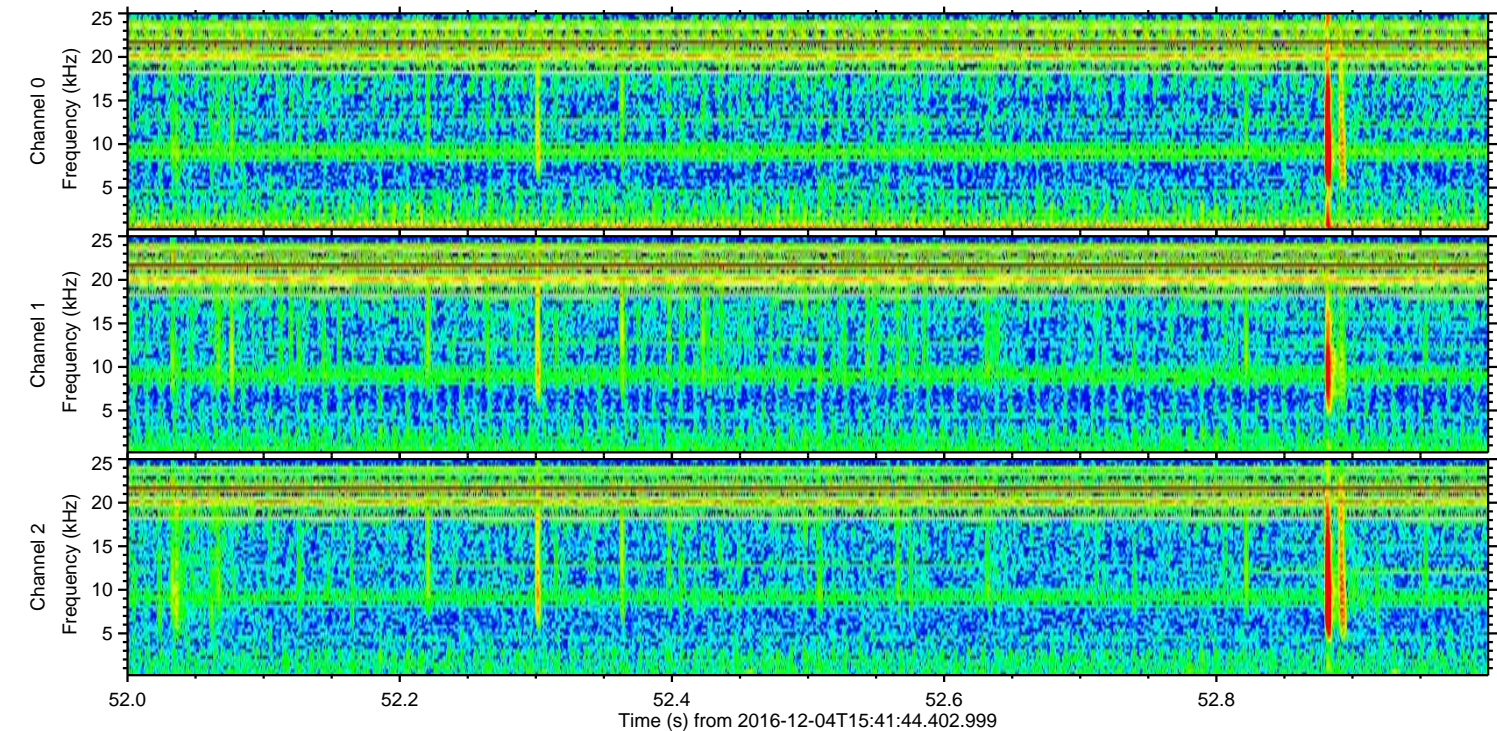
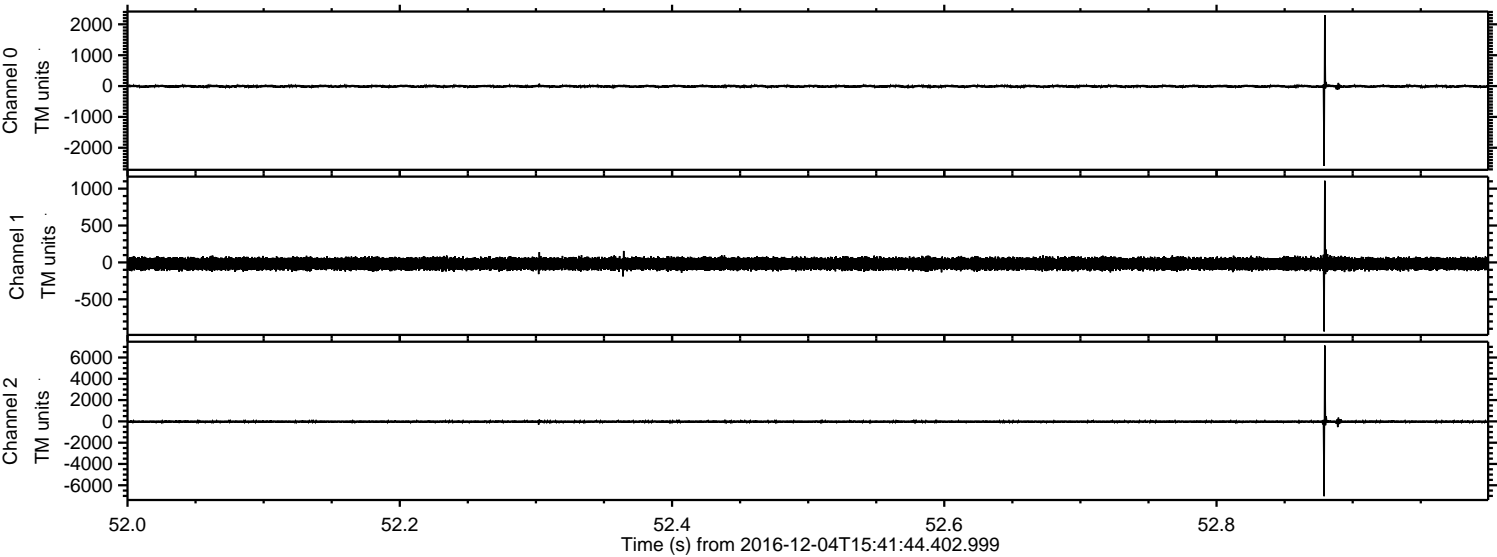
ELMAVAN 3D WAVEFORMS (Measured data sampled at 50 kHz) 51000 packets of 144 samples from 2016-12-04T15:41:44.402.999. Part 17/147

Processed Sun Dec 4 22:43:16 2016 by ELM ver.2012-10-06 from 001__elm20161204_154143__dat00.bin



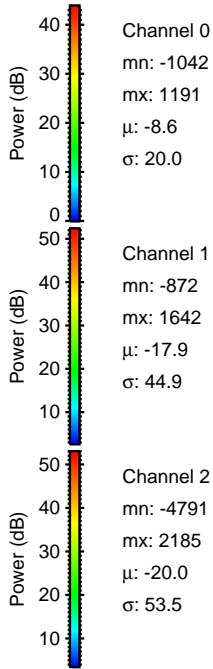
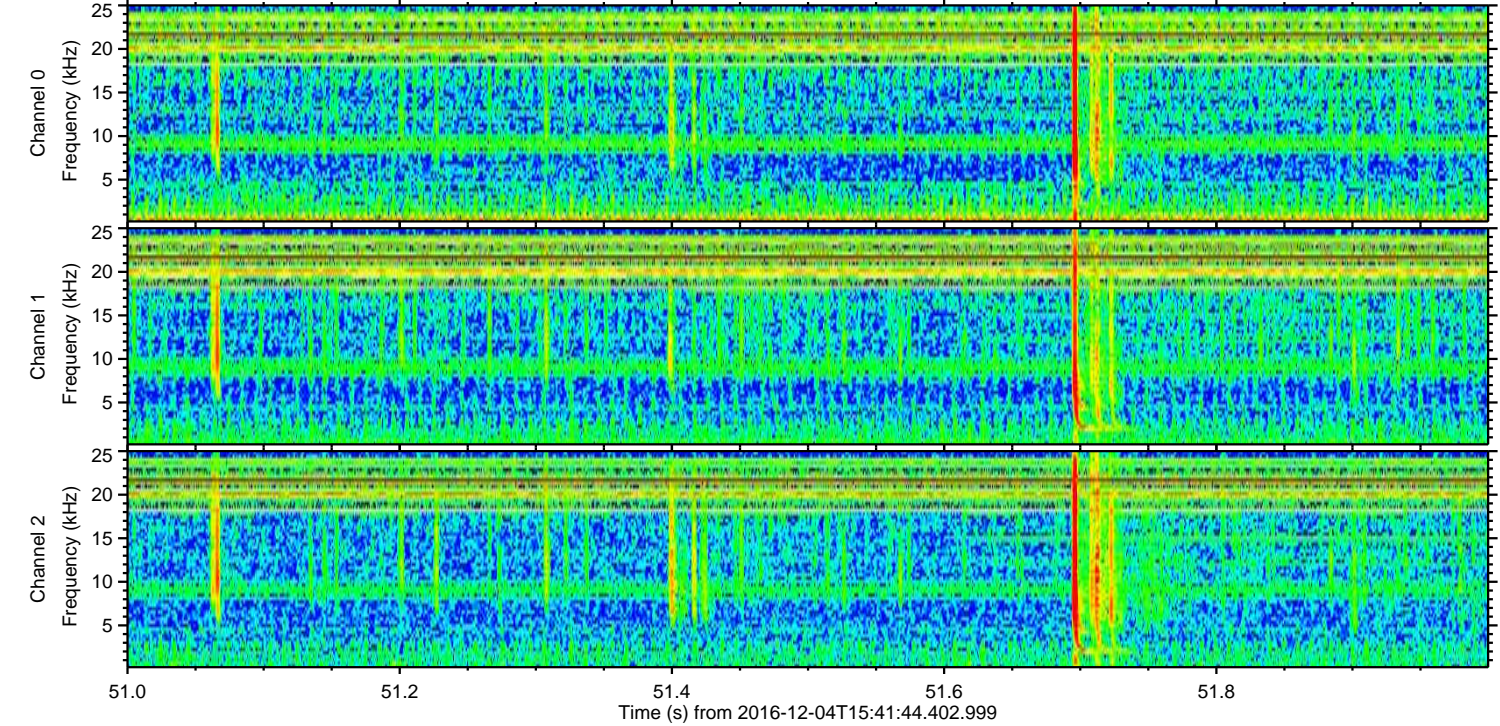
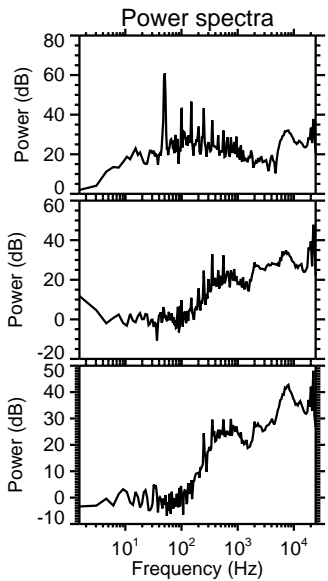
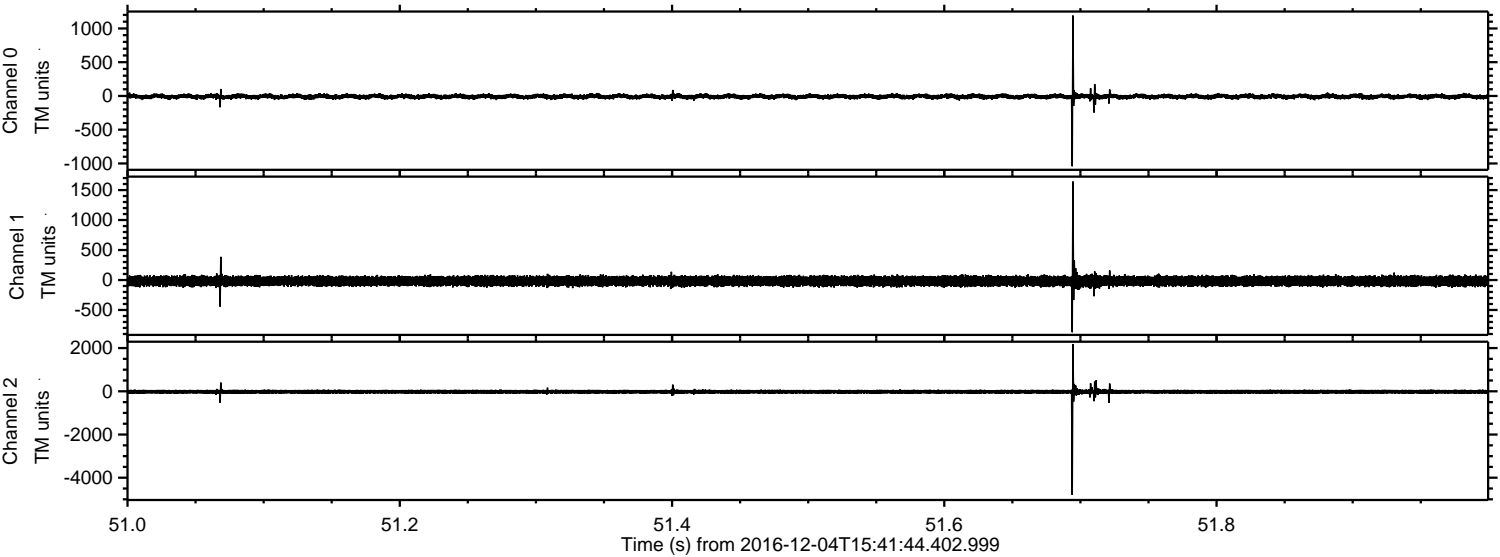
ELMAVAN 3D WAVEFORMS (Measured data sampled at 50 kHz) 51000 packets of 144 samples from 2016-12-04T15:41:44.402.999. Part 53/147

Processed Sun Dec 4 22:43:17 2016 by ELM ver.2012-10-06 from 001__elm20161204_154143__dat00.bin



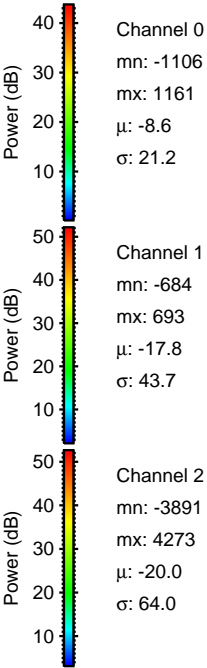
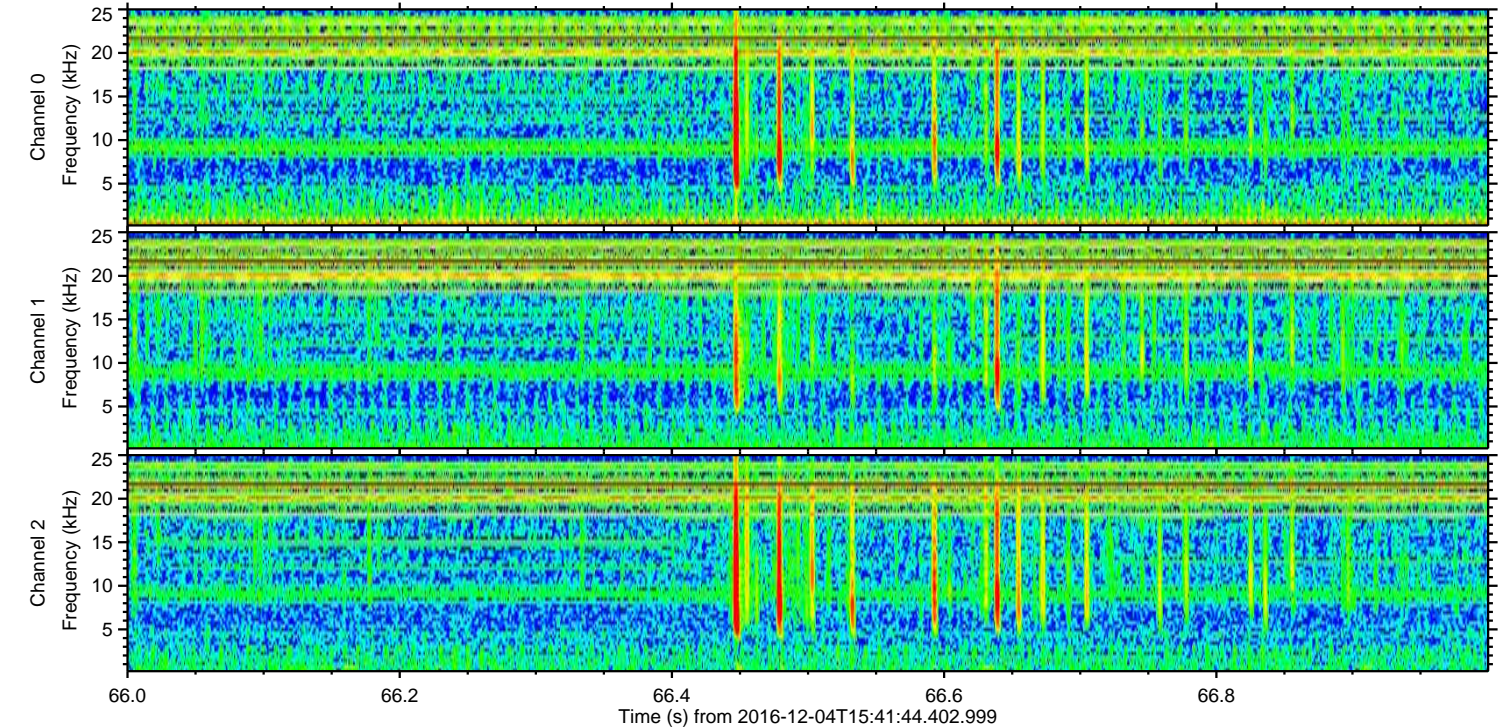
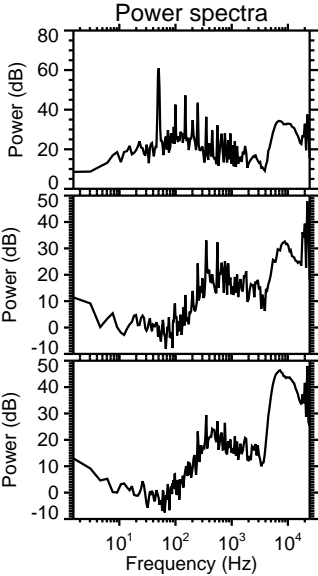
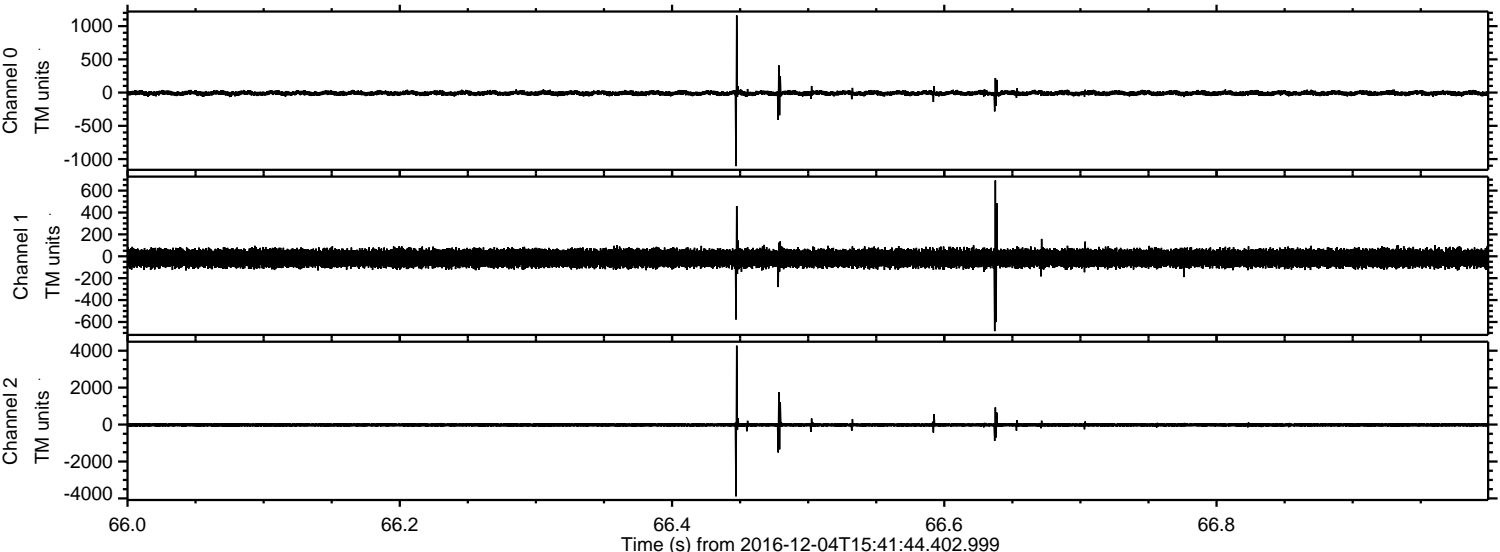
ELMAVAN 3D WAVEFORMS (Measured data sampled at 50 kHz) 51000 packets of 144 samples from 2016-12-04T15:41:44.402.999. Part 52/147

Processed Sun Dec 4 22:43:18 2016 by ELM ver.2012-10-06 from 001__elm20161204_154143__dat00.bin



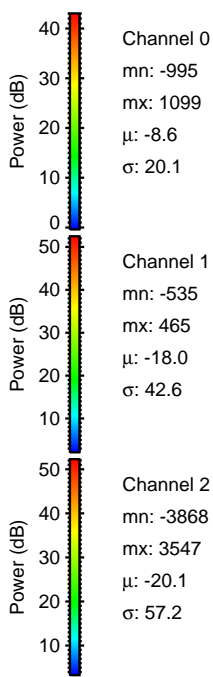
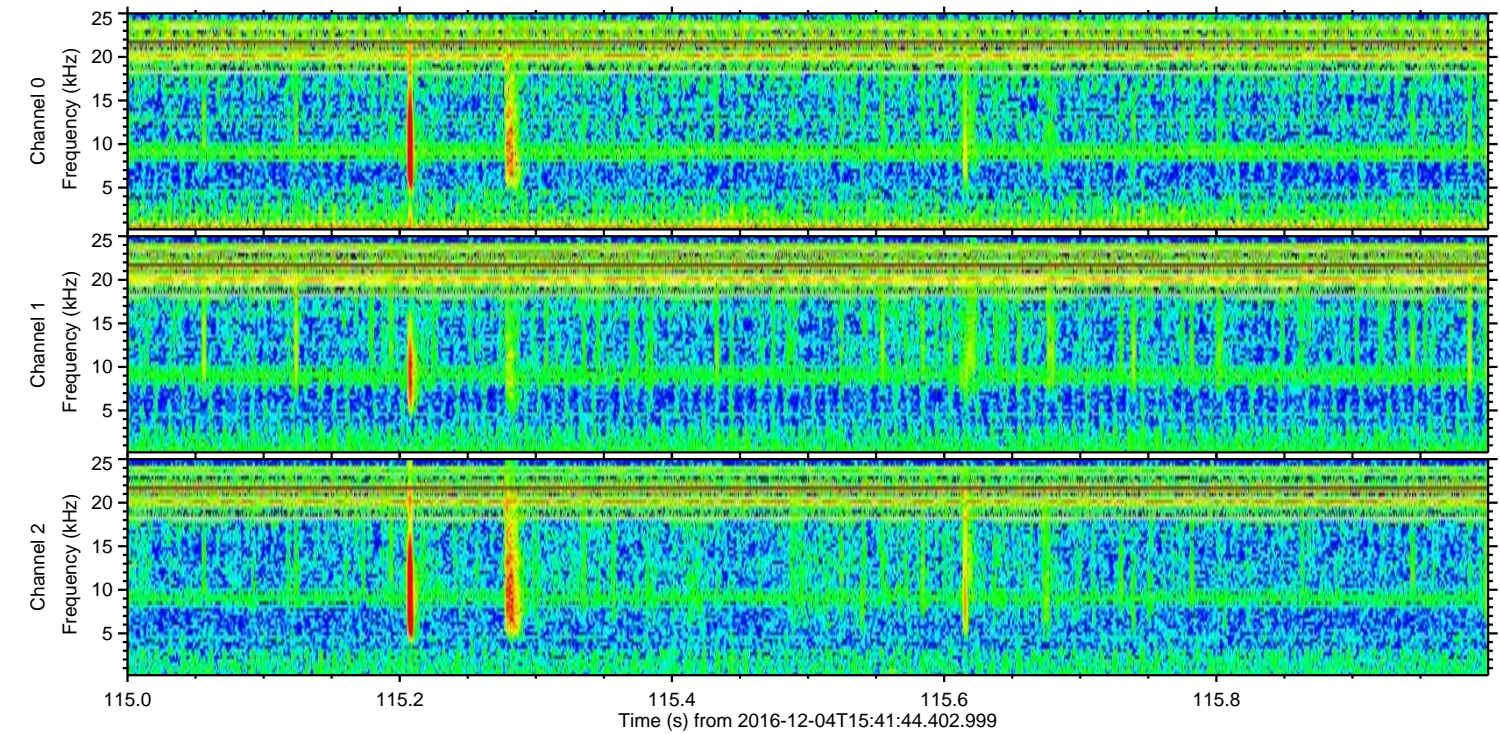
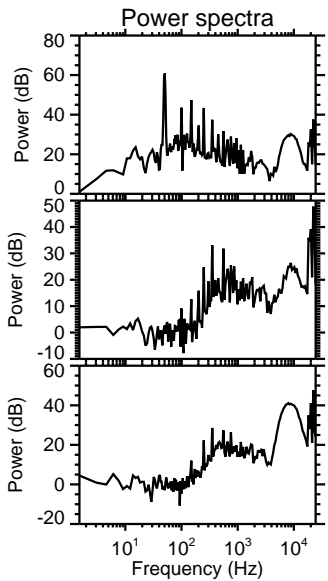
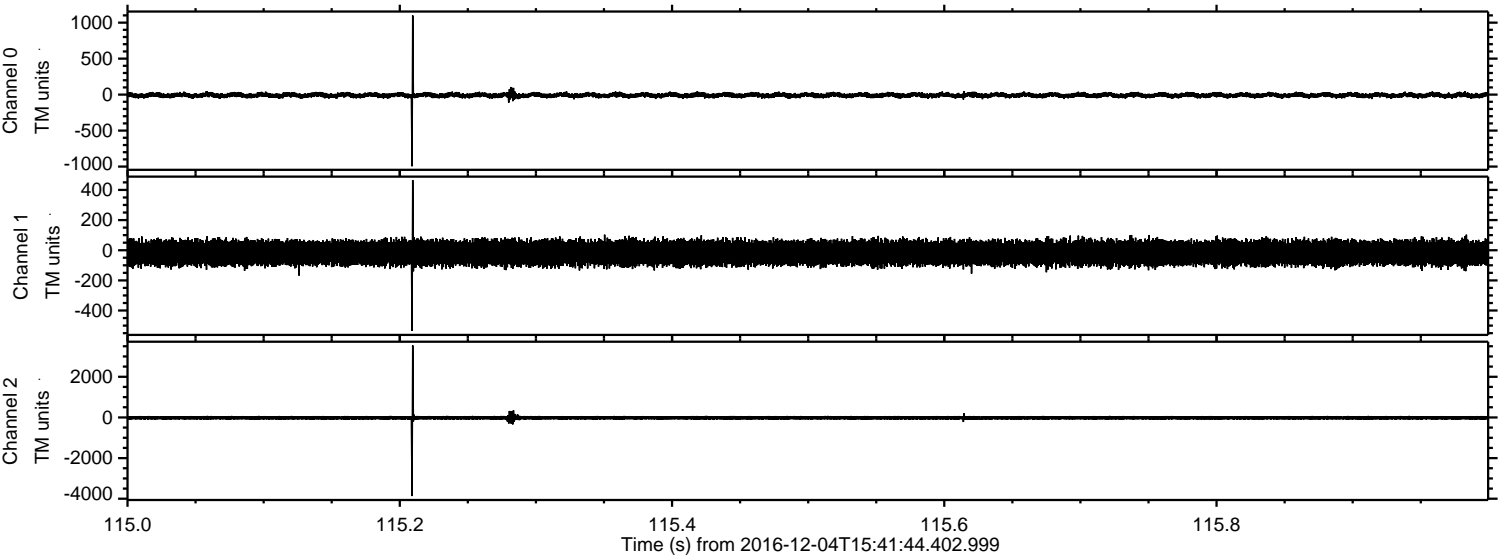
ELMAVAN 3D WAVEFORMS (Measured data sampled at 50 kHz) 51000 packets of 144 samples from 2016-12-04T15:41:44.402.999. Part 67/147

Processed Sun Dec 4 22:43:18 2016 by ELM ver.2012-10-06 from 001__elm20161204_154143__dat00.bin



ELMAVAN 3D WAVEFORMS (Measured data sampled at 50 kHz) 51000 packets of 144 samples from 2016-12-04T15:41:44.402.999. Part 116/147

Processed Sun Dec 4 22:43:19 2016 by ELM ver.2012-10-06 from 001__elm20161204_154143__dat00.bin



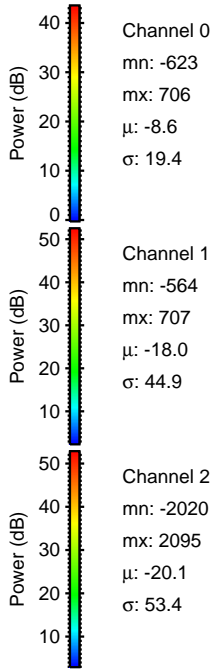
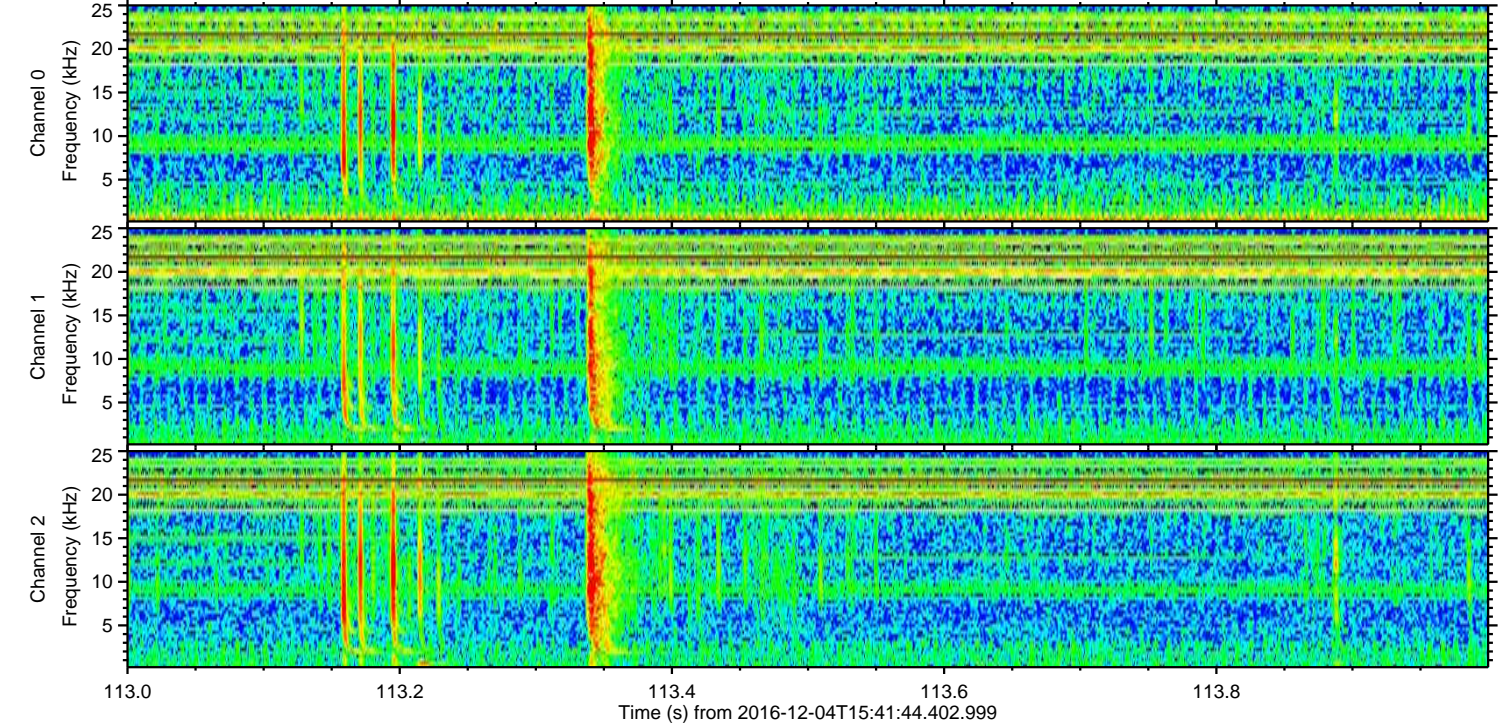
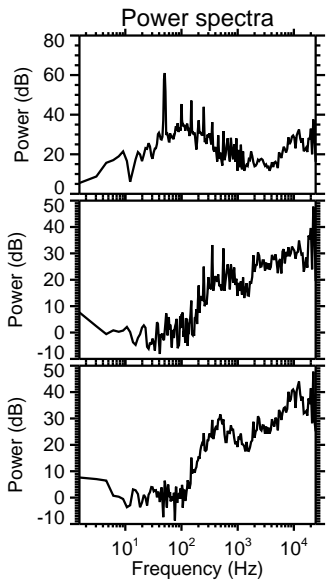
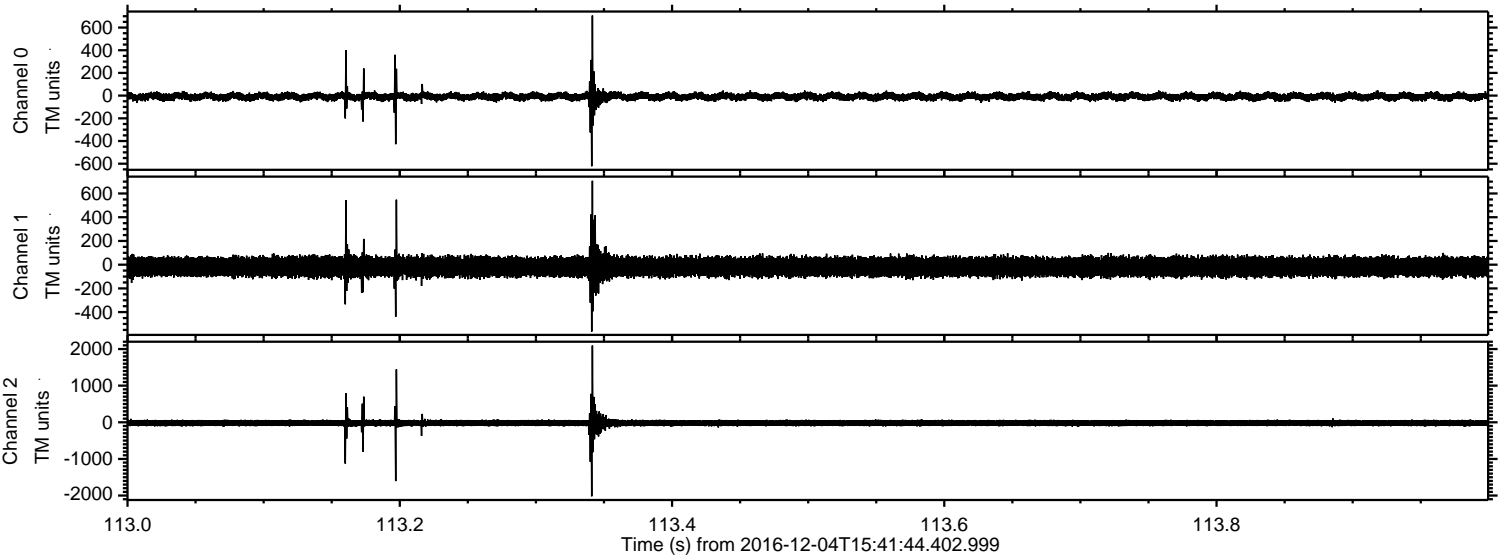
Channel 0
mn: -995
mx: 1099
 μ : -8.6
 σ : 20.1

Channel 1
mn: -535
mx: 465
 μ : -18.0
 σ : 42.6

Channel 2
mn: -3868
mx: 3547
 μ : -20.1
 σ : 57.2

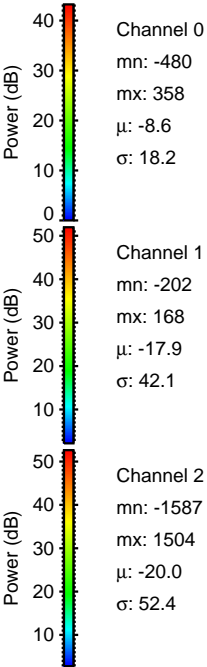
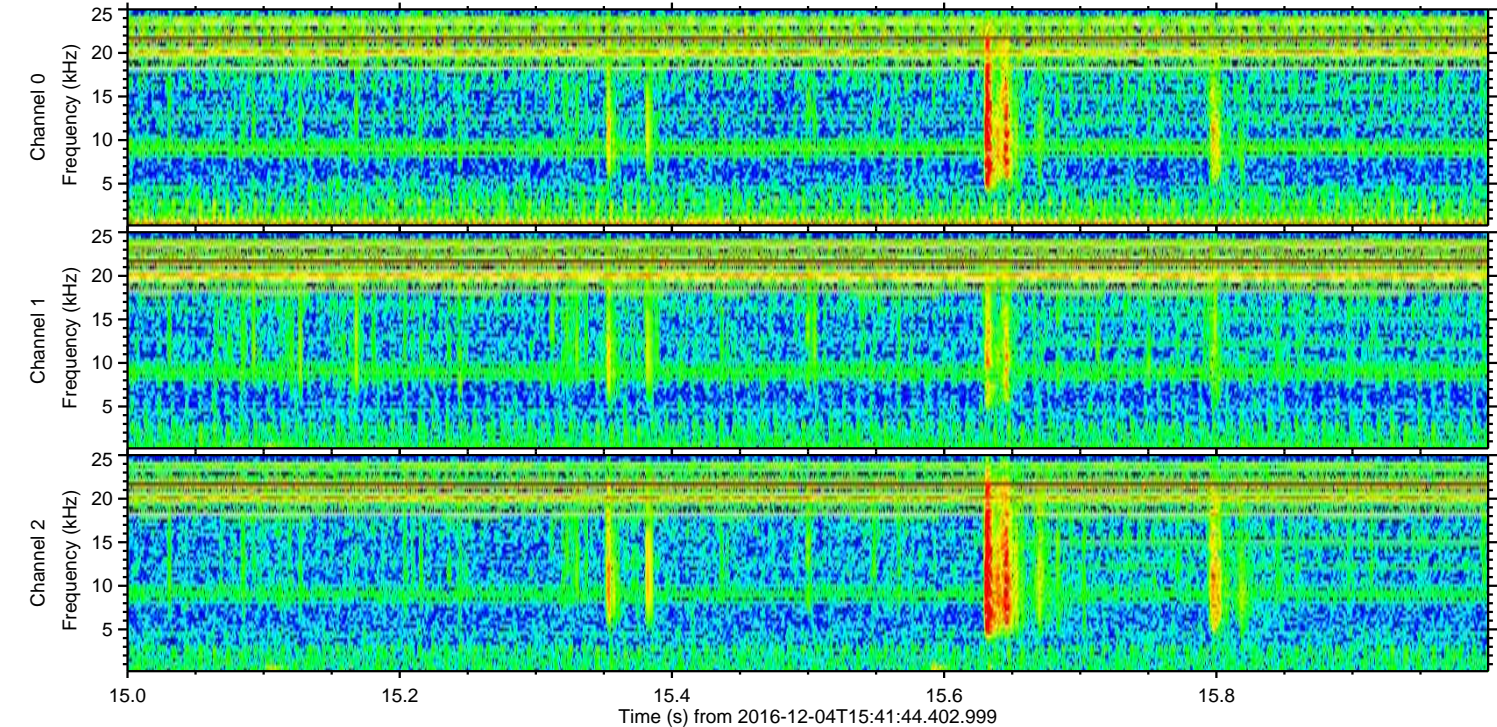
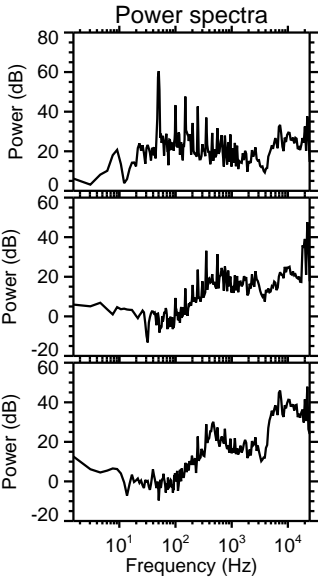
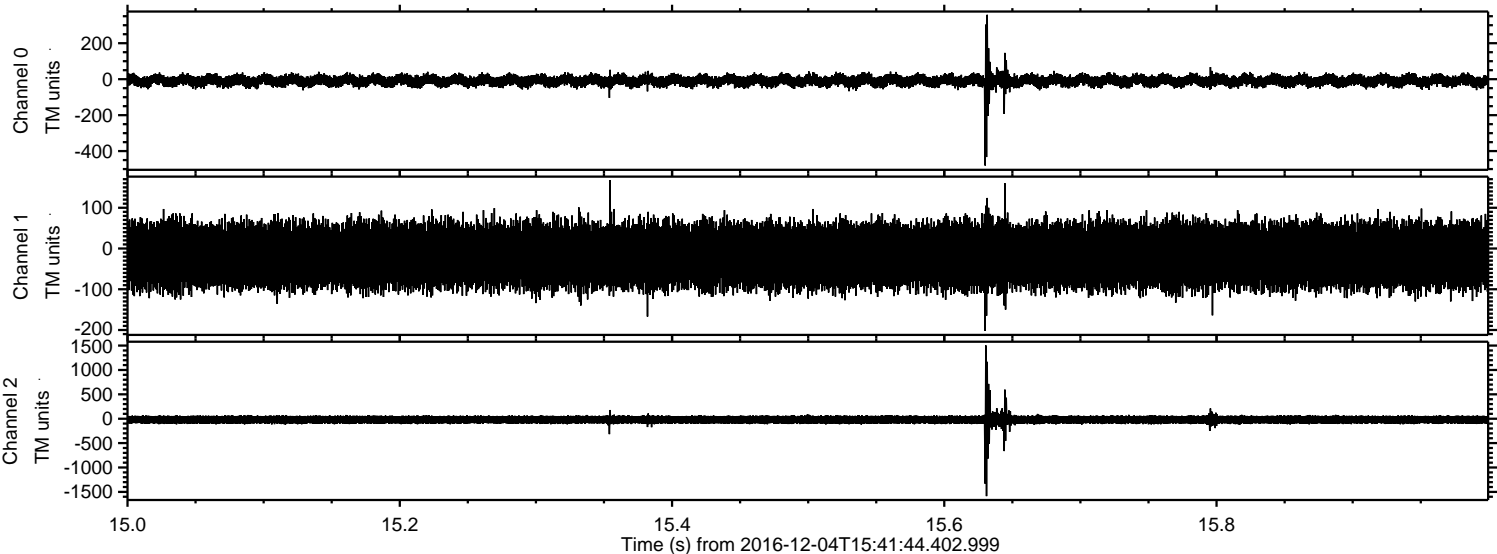
ELMAVAN 3D WAVEFORMS (Measured data sampled at 50 kHz) 51000 packets of 144 samples from 2016-12-04T15:41:44.402.999. Part 114/147

Processed Sun Dec 4 22:43:20 2016 by ELM ver.2012-10-06 from 001__elm20161204_154143__dat00.bin



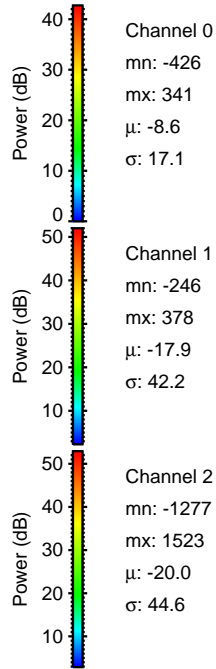
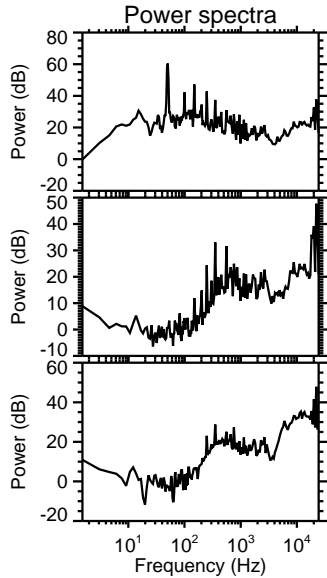
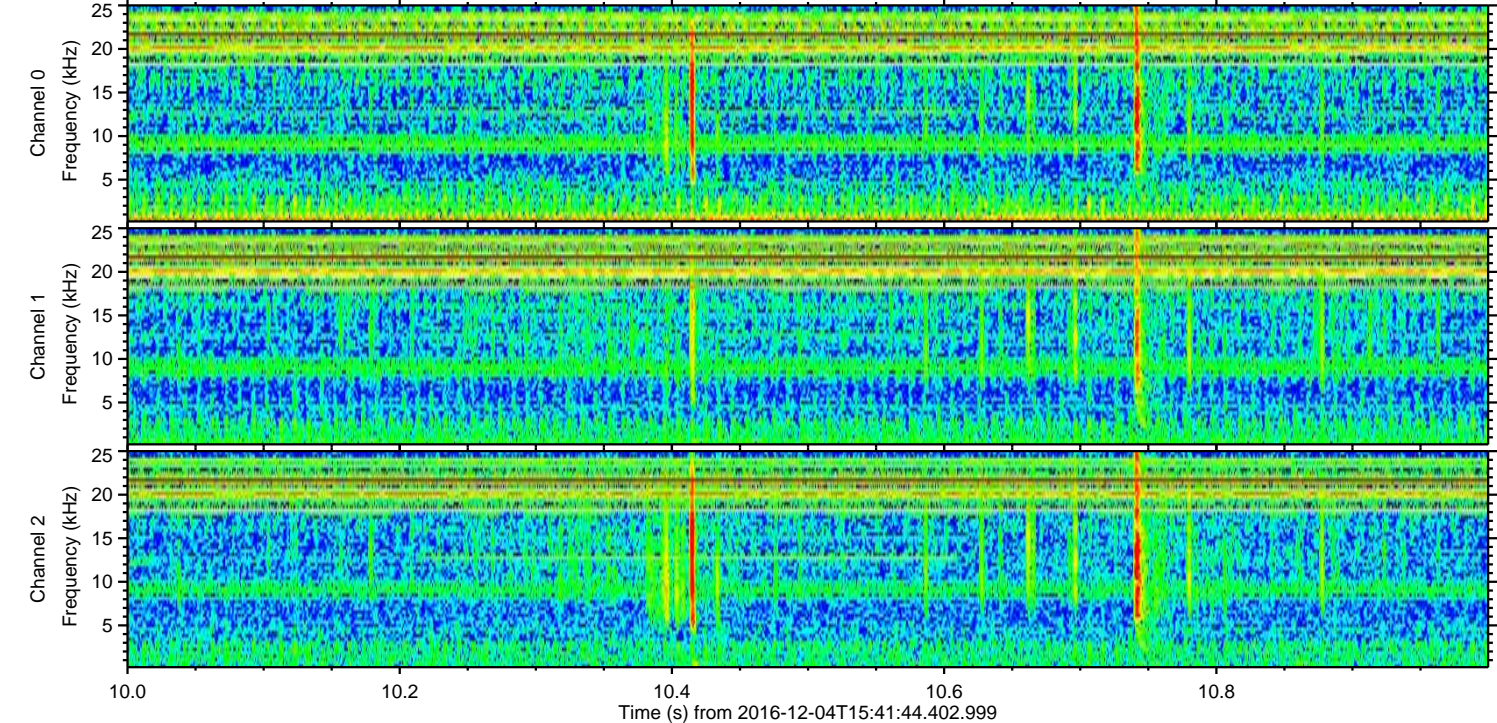
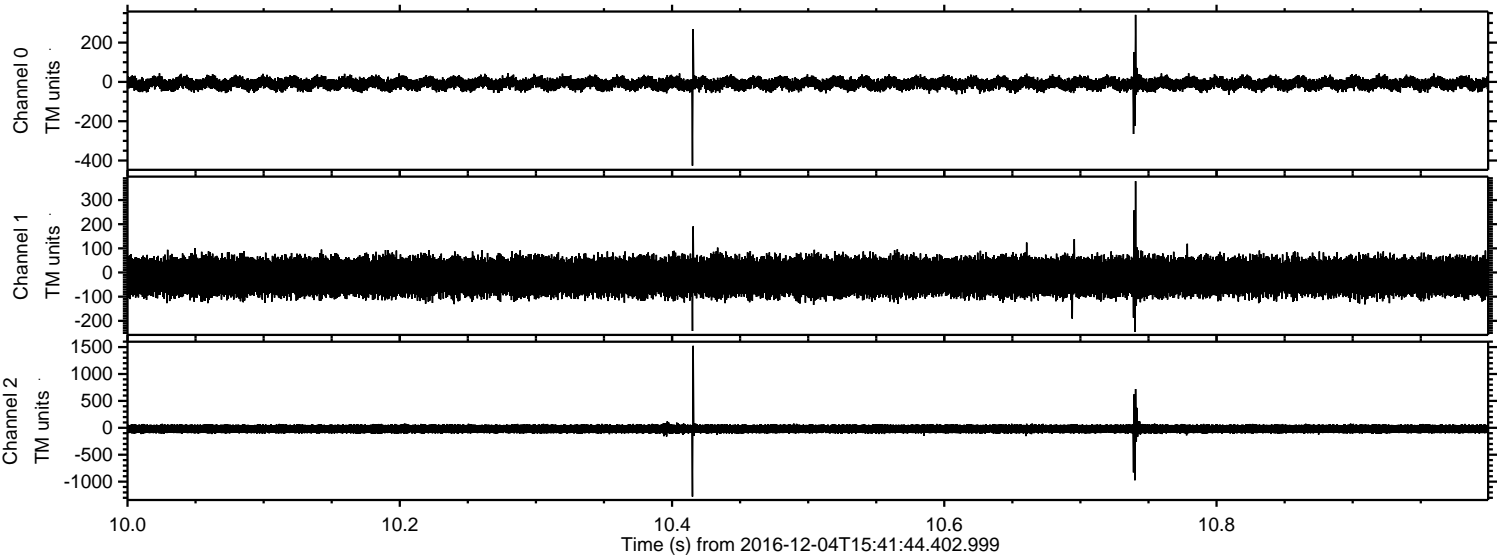
ELMAVAN 3D WAVEFORMS (Measured data sampled at 50 kHz) 51000 packets of 144 samples from 2016-12-04T15:41:44.402.999. Part 16/147

Processed Sun Dec 4 22:43:21 2016 by ELM ver.2012-10-06 from 001__elm20161204_154143__dat00.bin



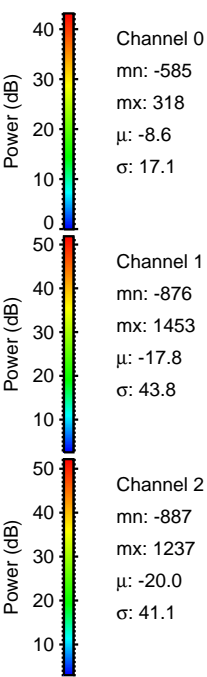
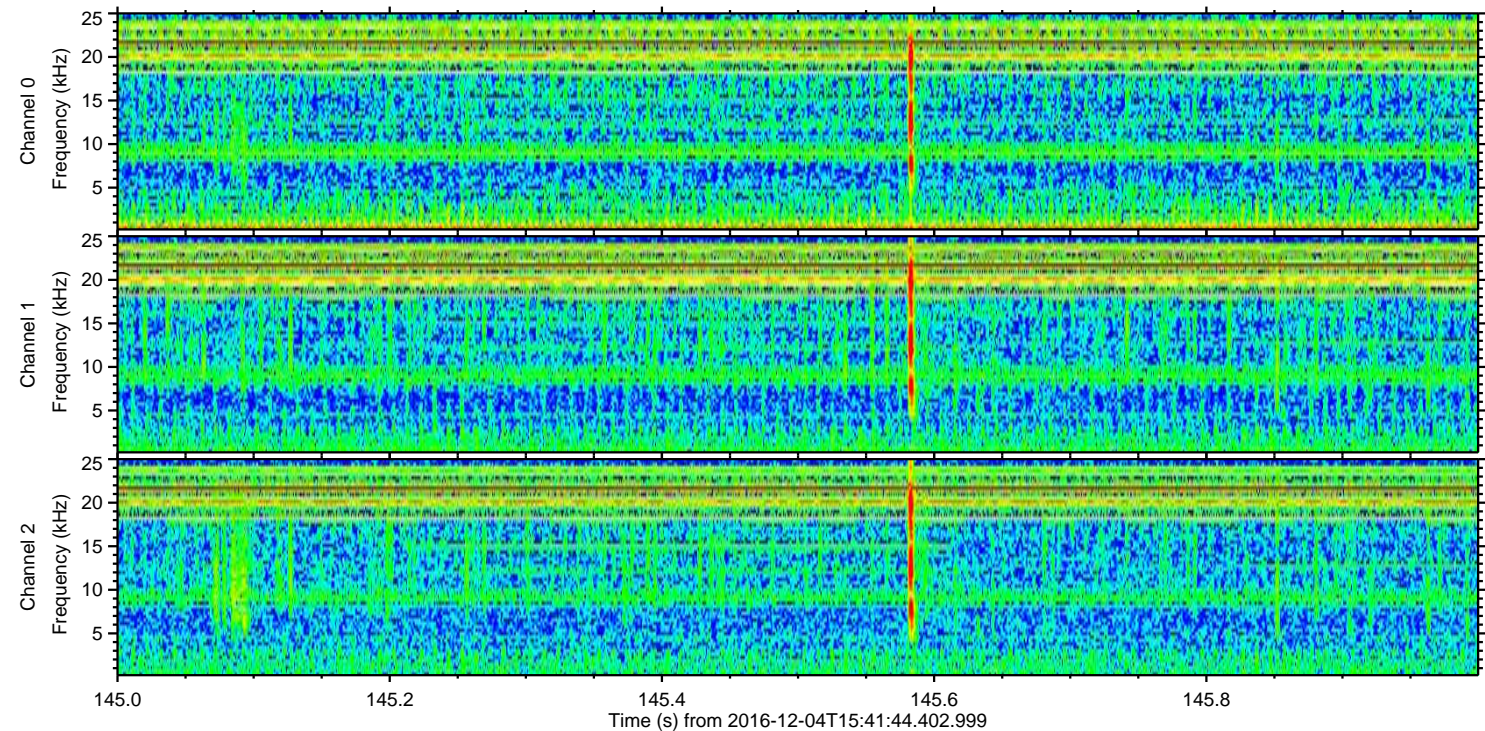
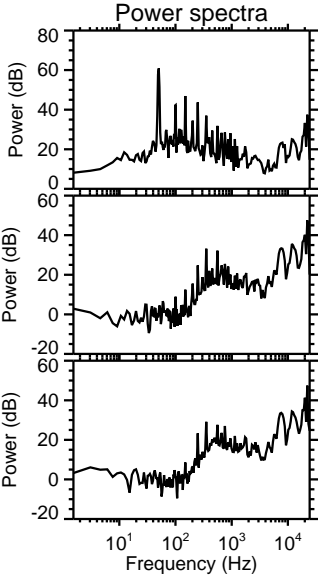
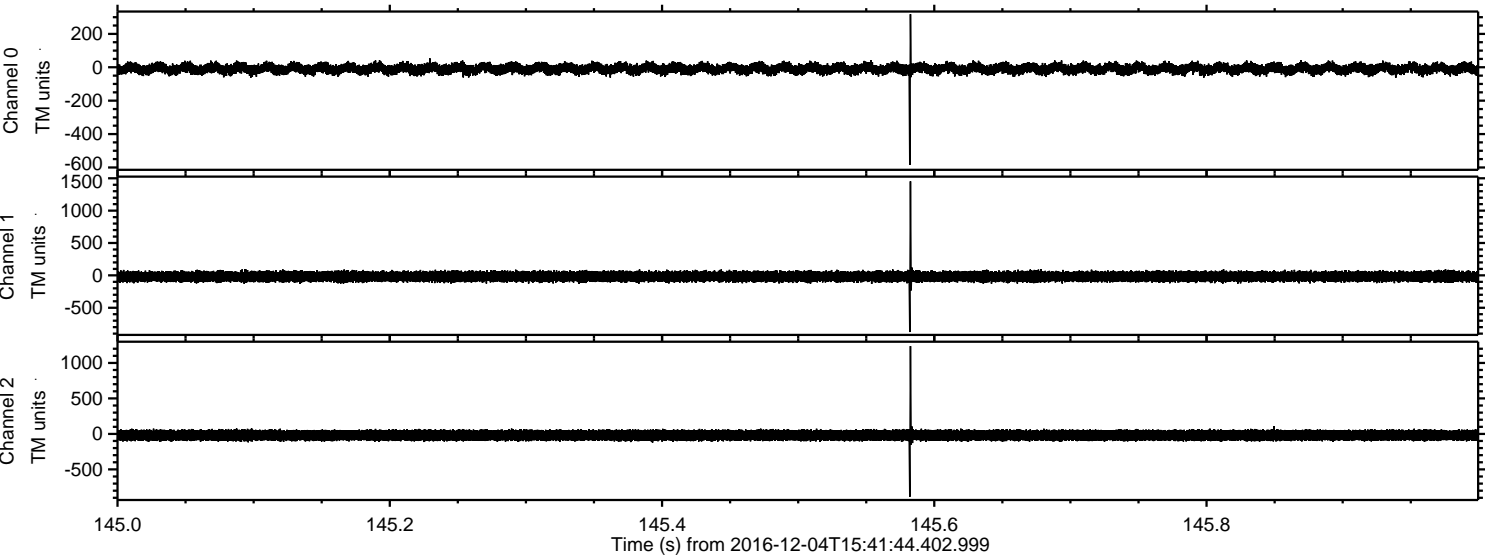
ELMAVAN 3D WAVEFORMS (Measured data sampled at 50 kHz) 51000 packets of 144 samples from 2016-12-04T15:41:44.402.999. Part 11/147

Processed Sun Dec 4 22:43:22 2016 by ELM ver.2012-10-06 from 001__elm20161204_154143__dat00.bin



ELMAVAN 3D WAVEFORMS (Measured data sampled at 50 kHz) 51000 packets of 144 samples from 2016-12-04T15:41:44.402.999. Part 146/147

Processed Sun Dec 4 22:43:23 2016 by ELM ver.2012-10-06 from 001__elm20161204_154143__dat00.bin



ELMAVAN 3D WAVEFORMS (Measured data sampled at 50 kHz) 51000 packets of 144 samples from 2016-12-04T15:41:44.402.999. Part 143/147

