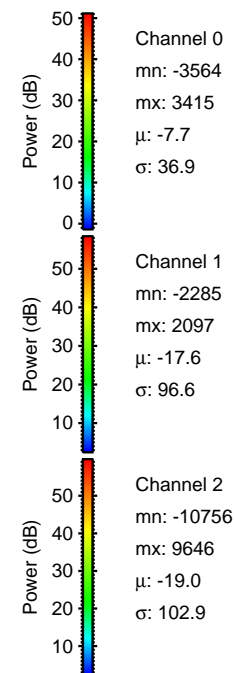
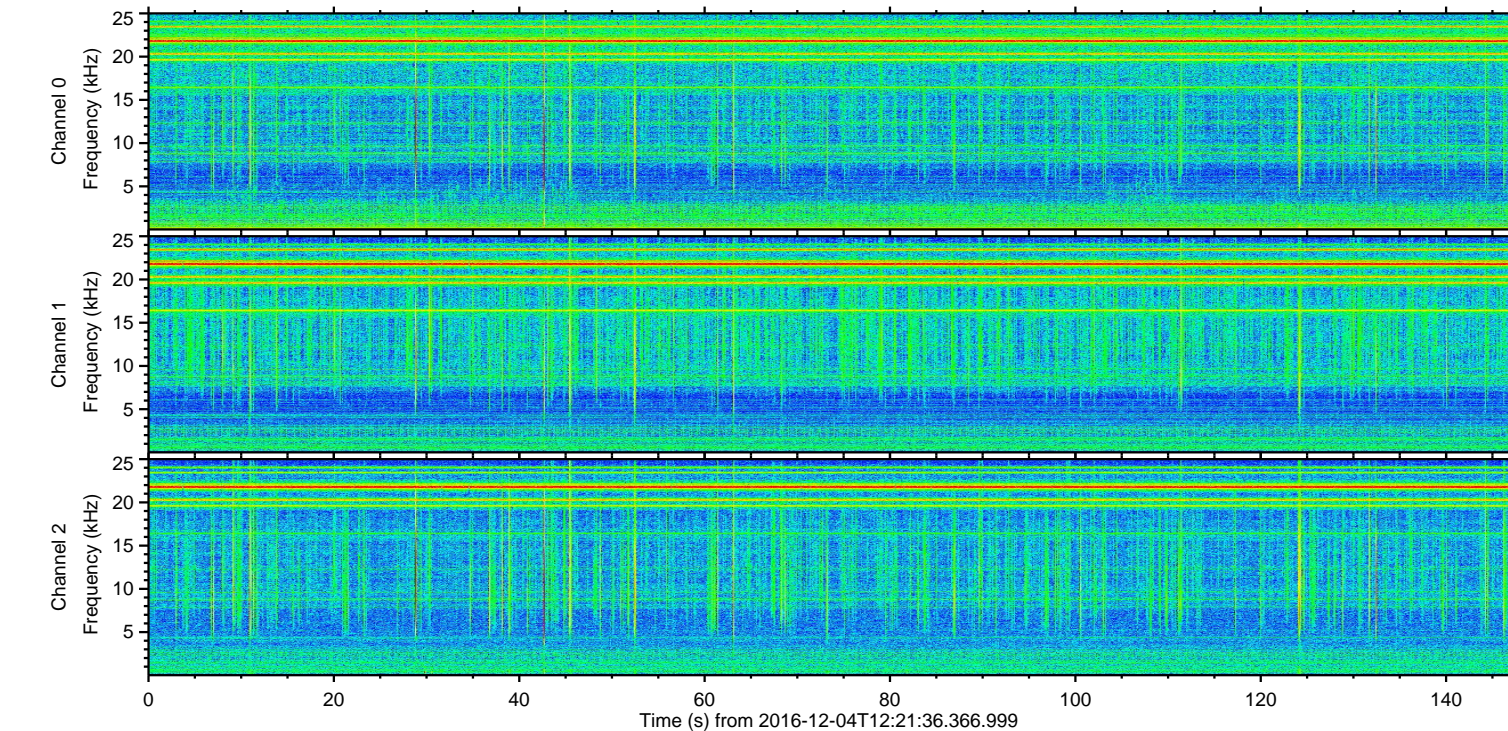
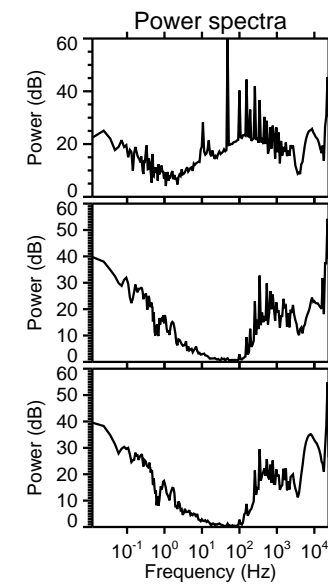
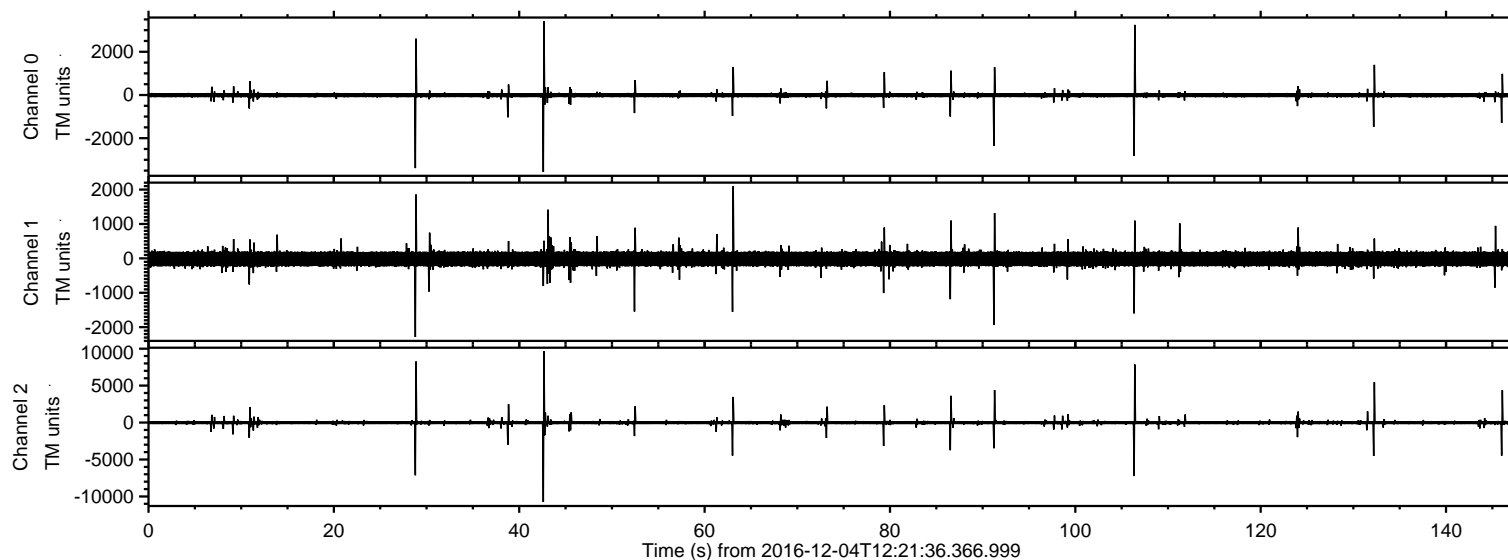


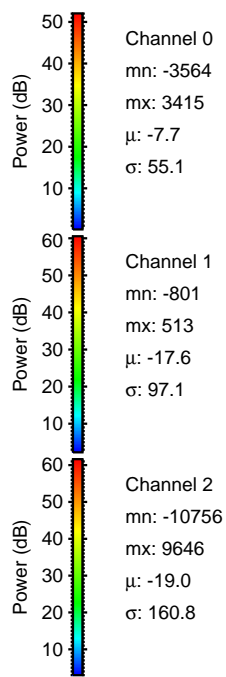
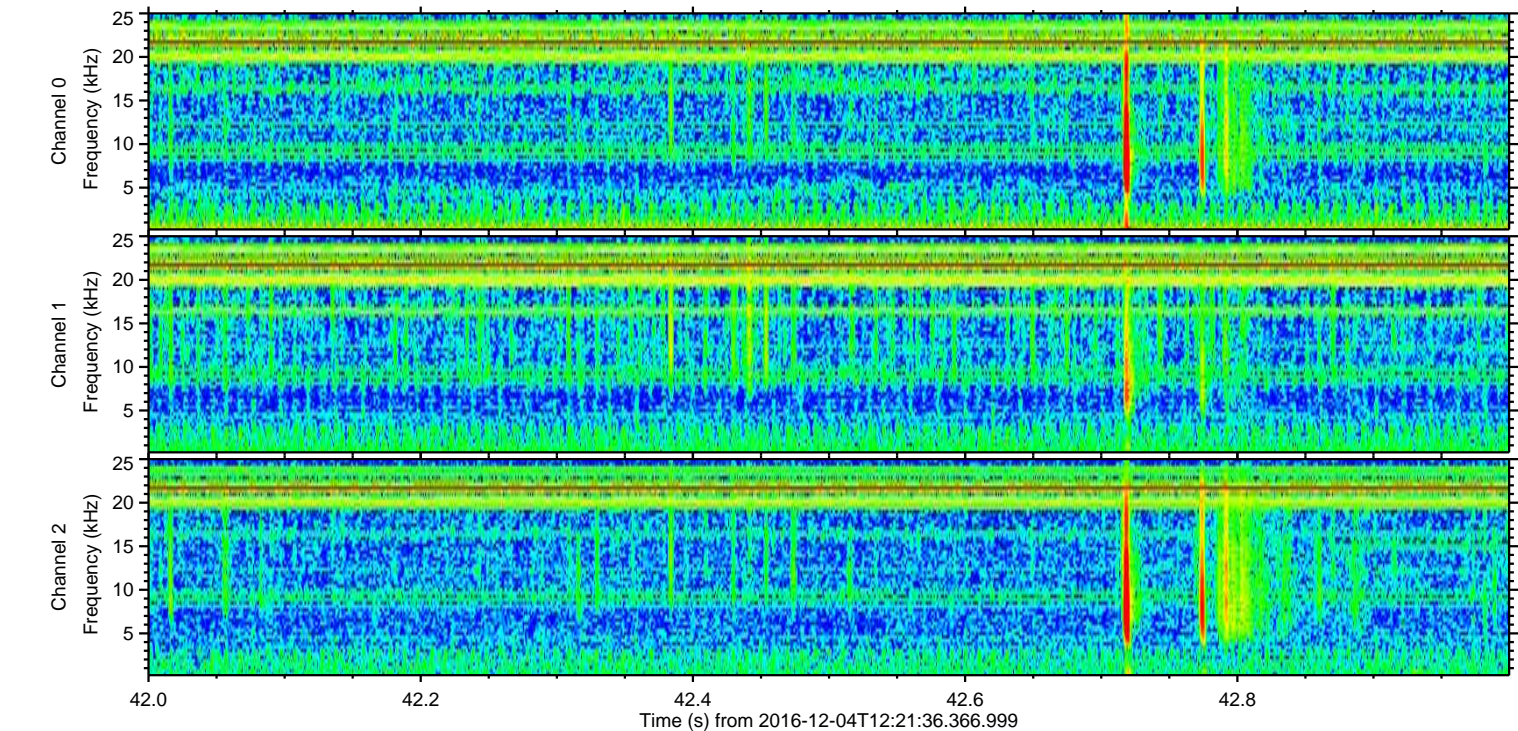
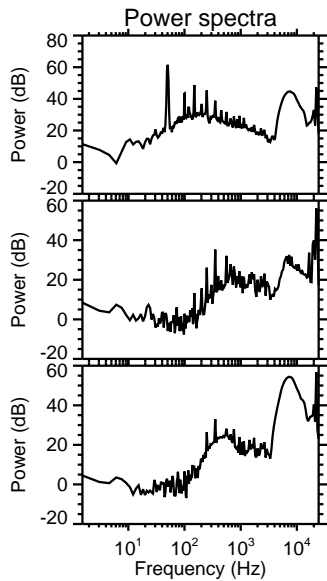
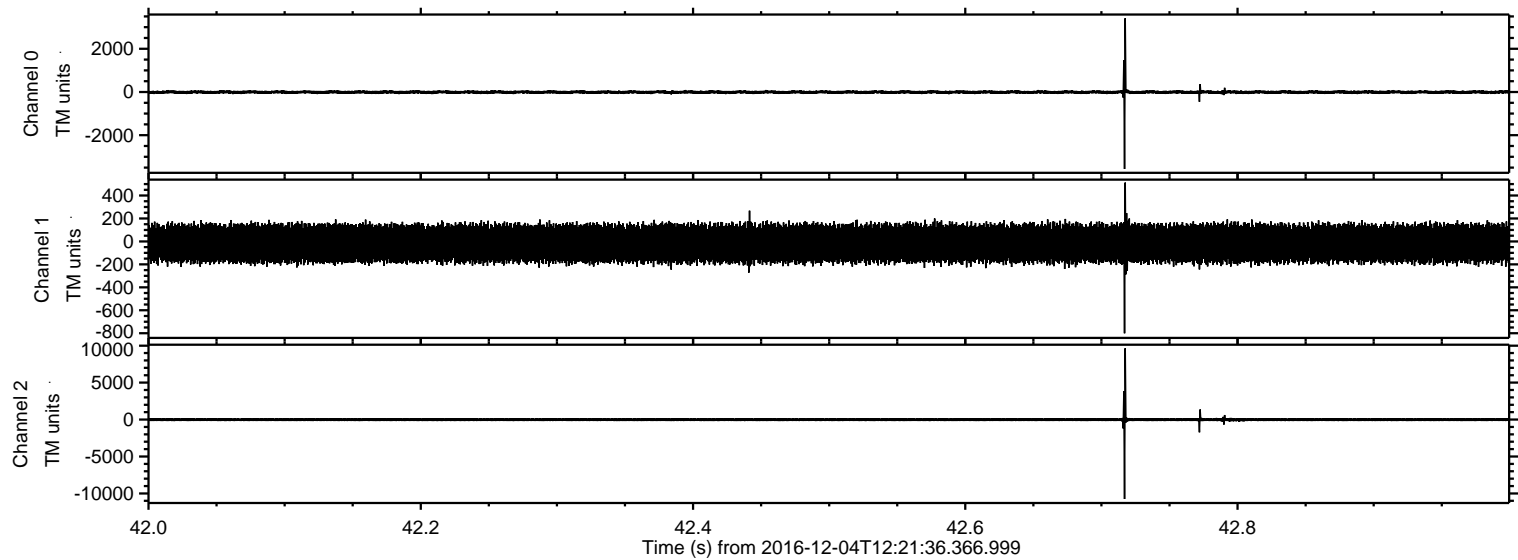
ELMAVAN 3D WAVEFORMS (Measured data sampled at 50 kHz) 51000 packets of 144 samples from 2016-12-04T12:21:36.366.999.

Processed Sun Dec 4 22:02:10 2016 by ELM ver.2012-10-06 from 001__elm20161204_122135__dat00.bin



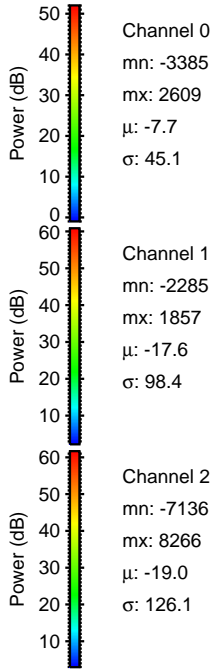
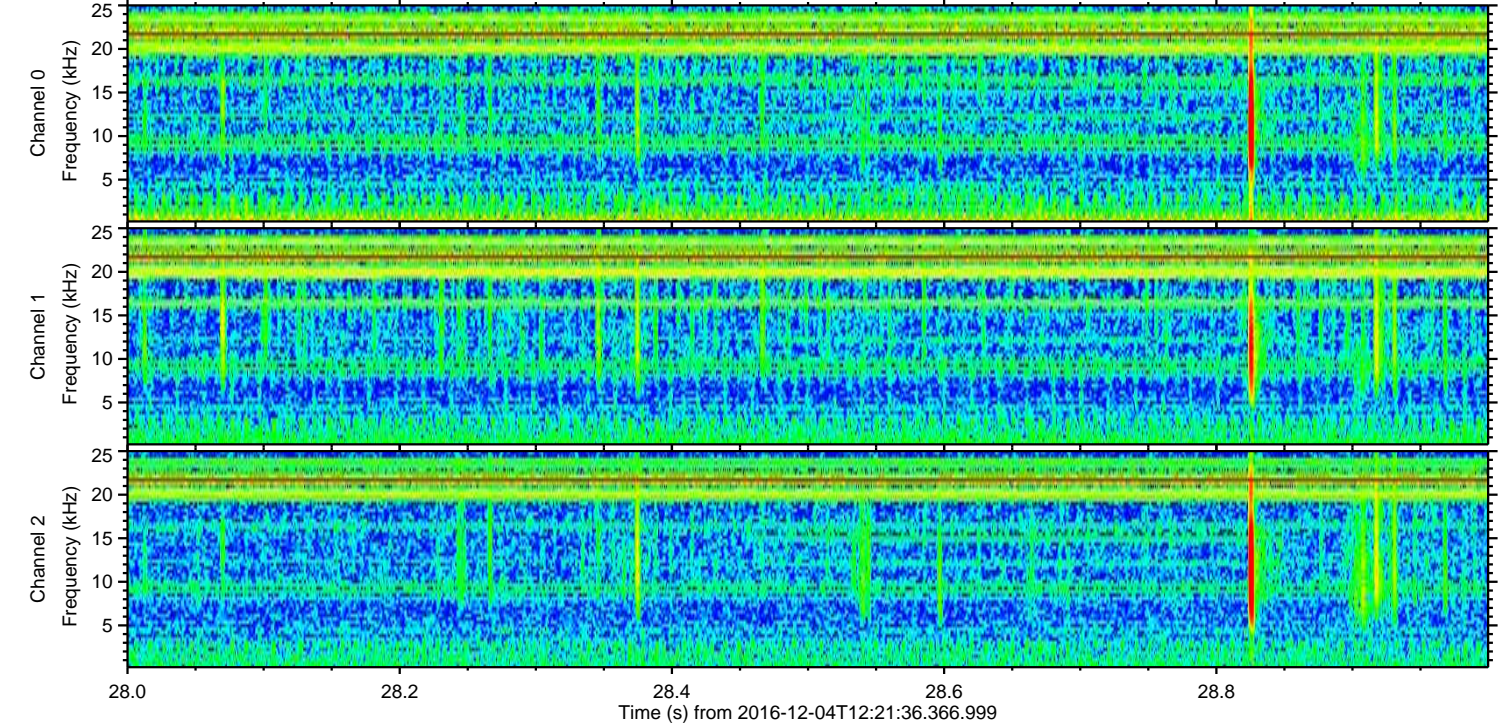
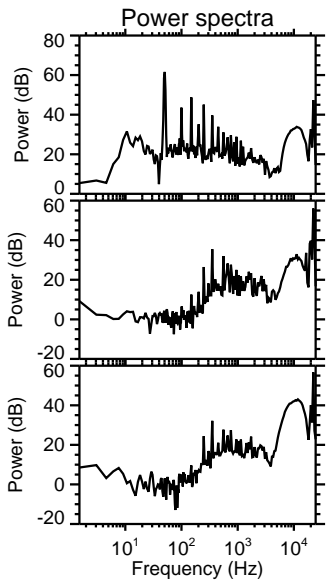
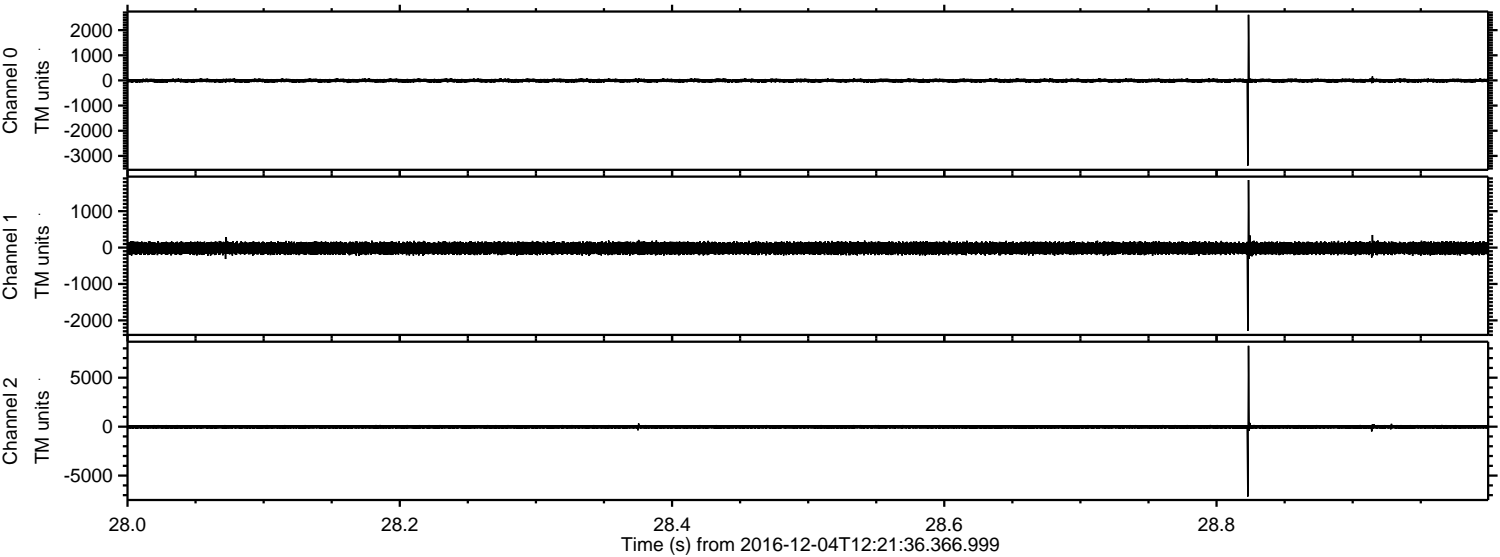
ELMAVAN 3D WAVEFORMS (Measured data sampled at 50 kHz) 51000 packets of 144 samples from 2016-12-04T12:21:36.366.999. Part 43/147

Processed Sun Dec 4 22:02:21 2016 by ELM ver.2012-10-06 from 001__elm20161204_122135__dat00.bin



ELMAVAN 3D WAVEFORMS (Measured data sampled at 50 kHz) 51000 packets of 144 samples from 2016-12-04T12:21:36.366.999. Part 29/147

Processed Sun Dec 4 22:02:22 2016 by ELM ver.2012-10-06 from 001__elm20161204_122135__dat00.bin



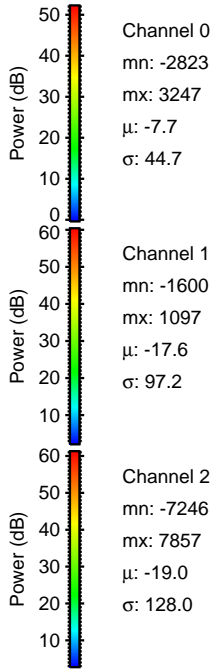
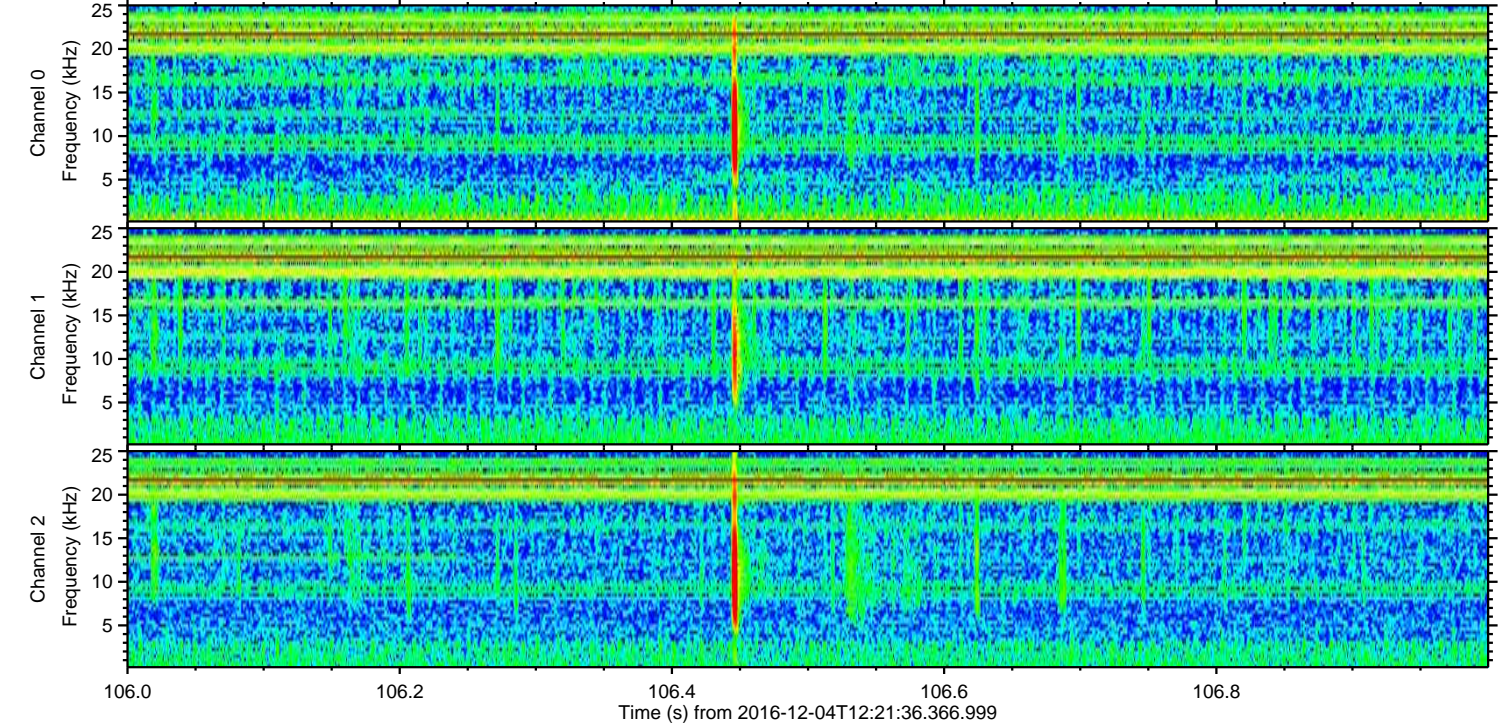
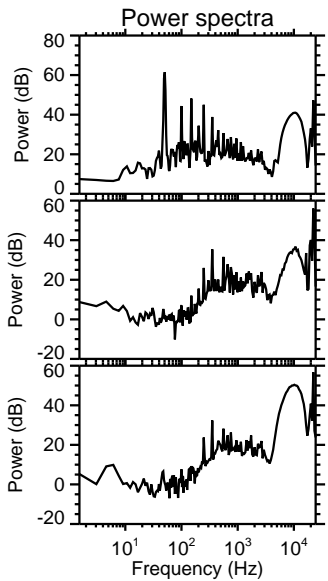
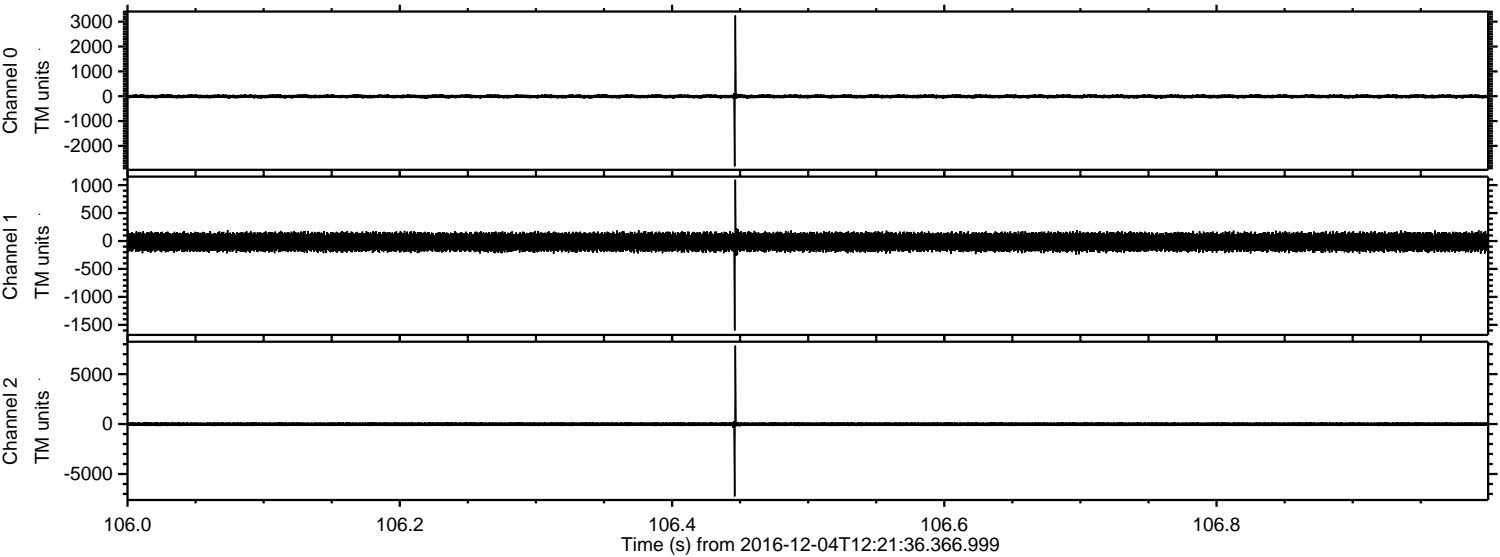
Channel 0
mn: -3385
mx: 2609
 μ : -7.7
 σ : 45.1

Channel 1
mn: -2285
mx: 1857
 μ : -17.6
 σ : 98.4

Channel 2
mn: -7136
mx: 8266
 μ : -19.0
 σ : 126.1

ELMAVAN 3D WAVEFORMS (Measured data sampled at 50 kHz) 51000 packets of 144 samples from 2016-12-04T12:21:36.366.999. Part 107/147

Processed Sun Dec 4 22:02:23 2016 by ELM ver.2012-10-06 from 001__elm20161204_122135__dat00.bin



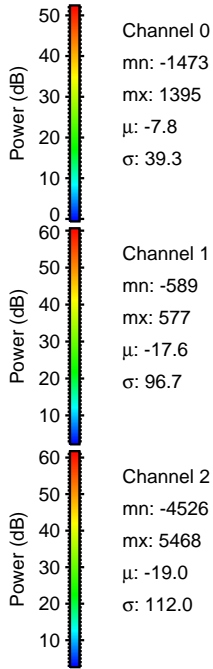
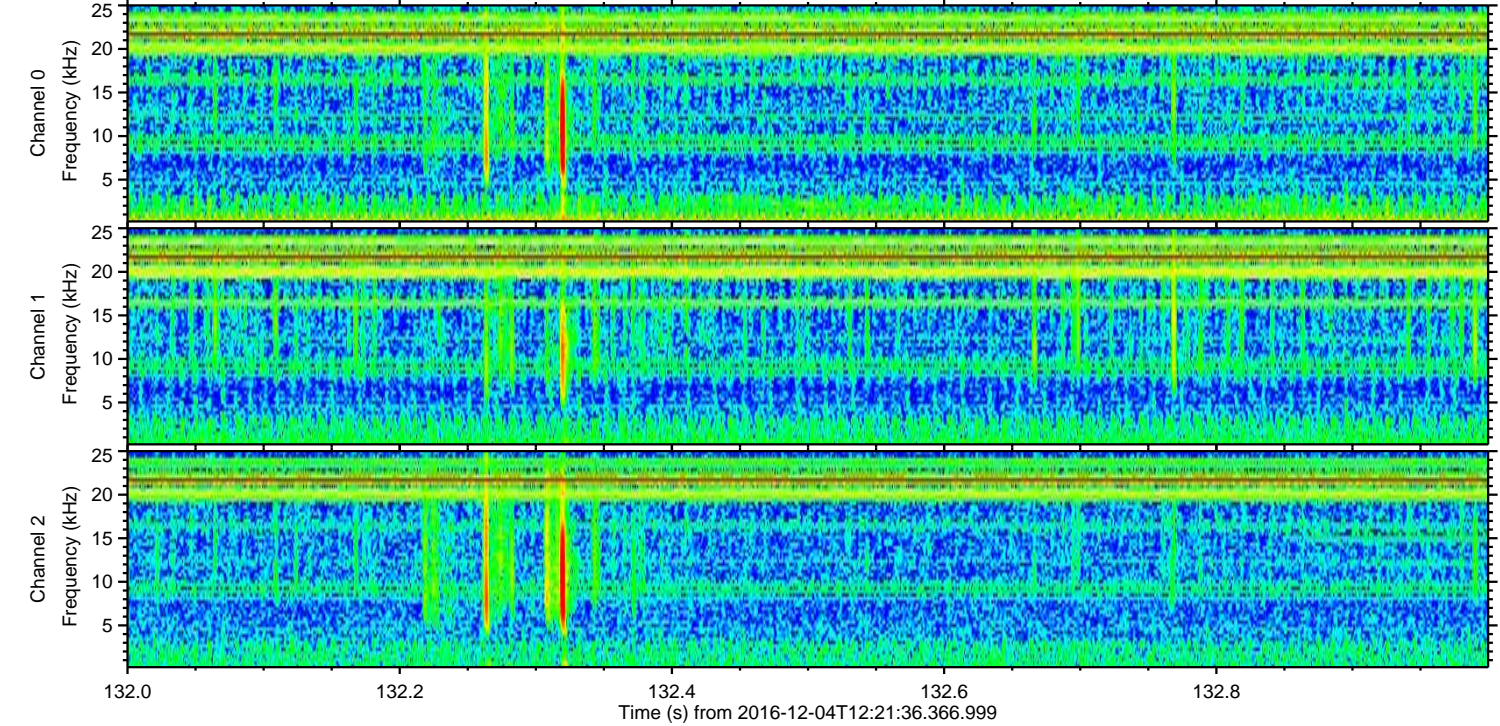
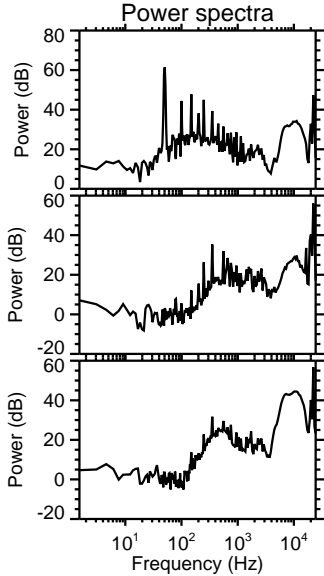
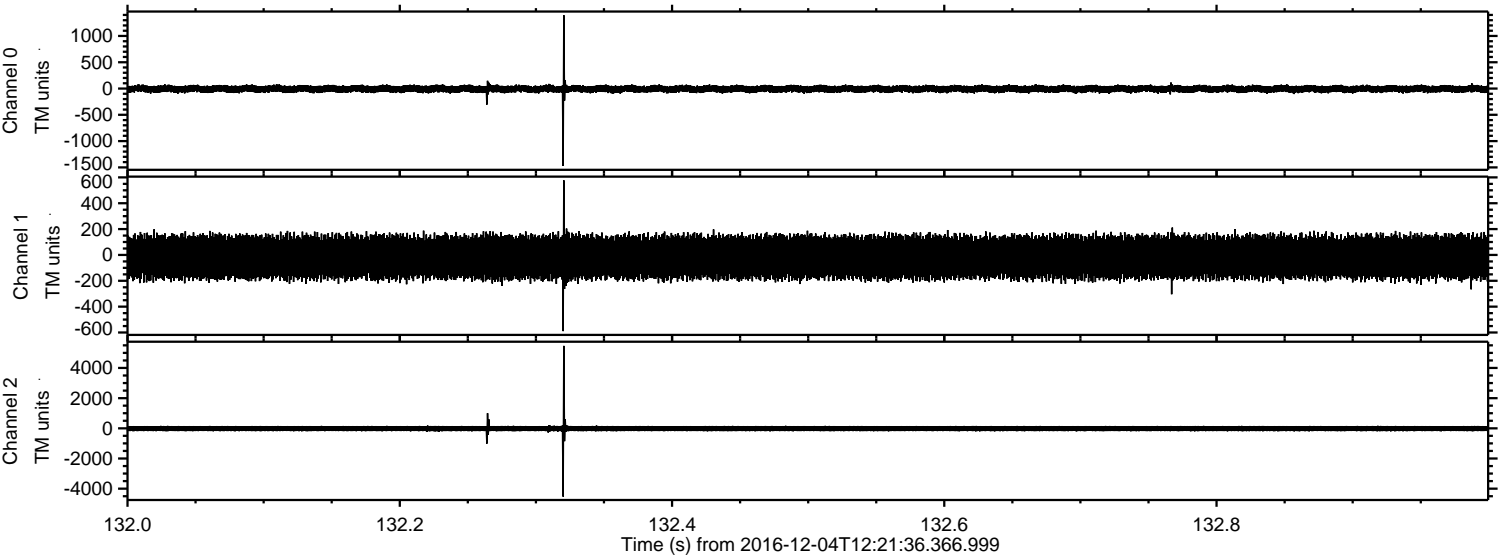
Channel 0
mn: -2823
mx: 3247
 μ : -7.7
 σ : 44.7

Channel 1
mn: -1600
mx: 1097
 μ : -17.6
 σ : 97.2

Channel 2
mn: -7246
mx: 7857
 μ : -19.0
 σ : 128.0

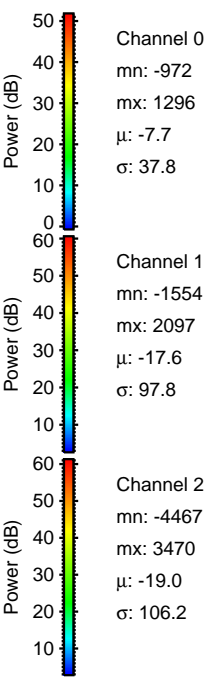
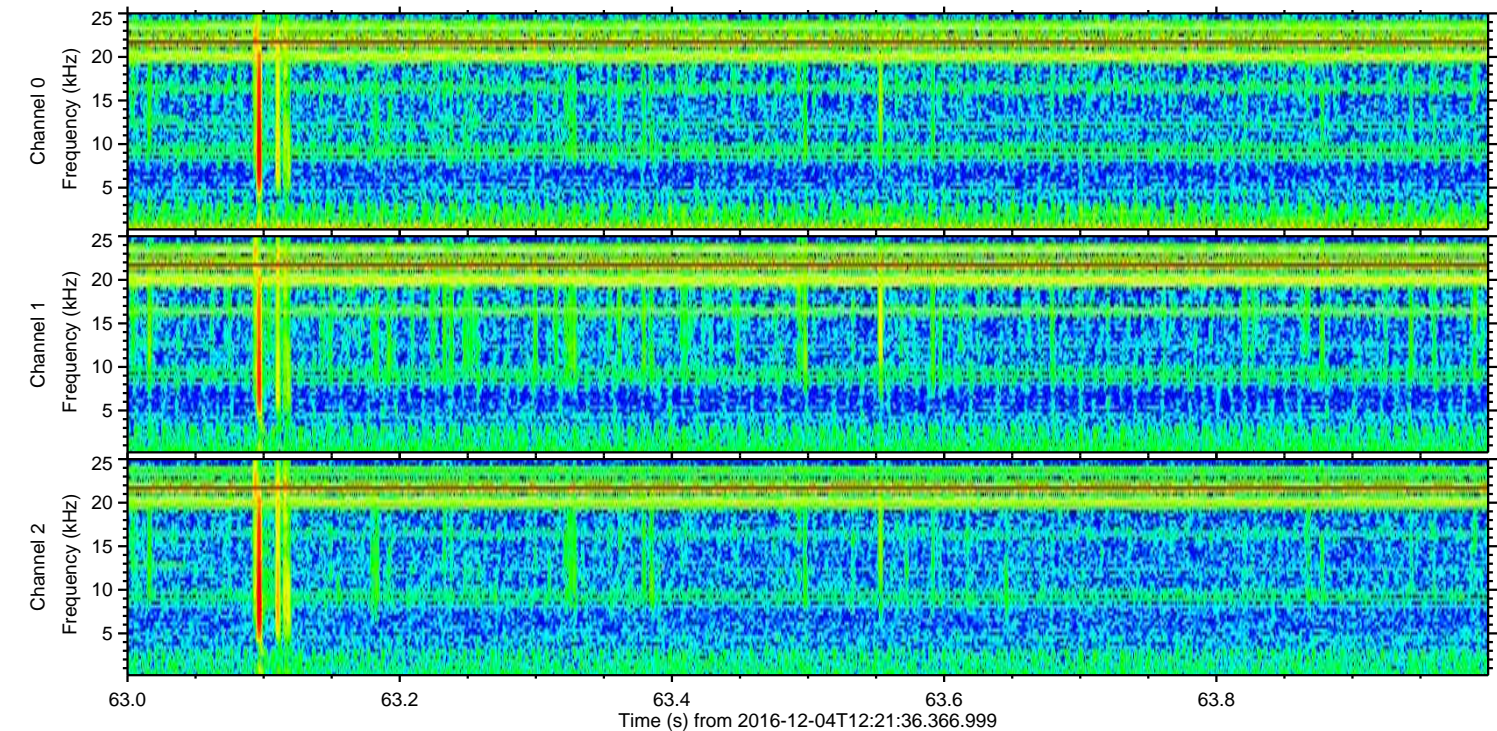
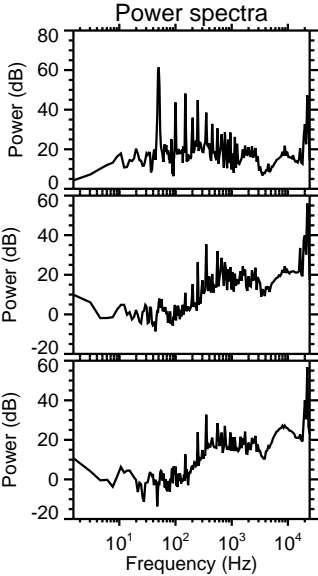
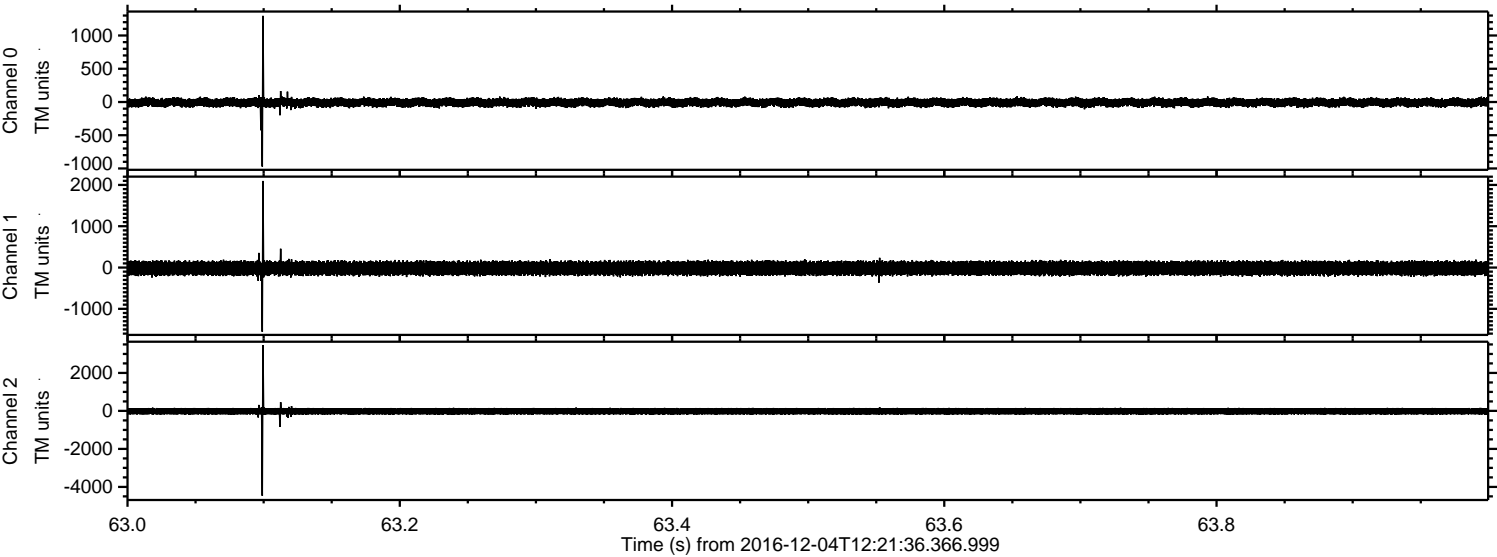
ELMAVAN 3D WAVEFORMS (Measured data sampled at 50 kHz) 51000 packets of 144 samples from 2016-12-04T12:21:36.366.999. Part 133/147

Processed Sun Dec 4 22:02:24 2016 by ELM ver.2012-10-06 from 001__elm20161204_122135__dat00.bin



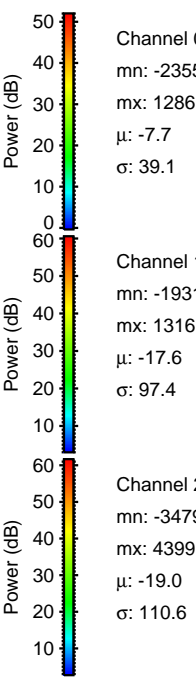
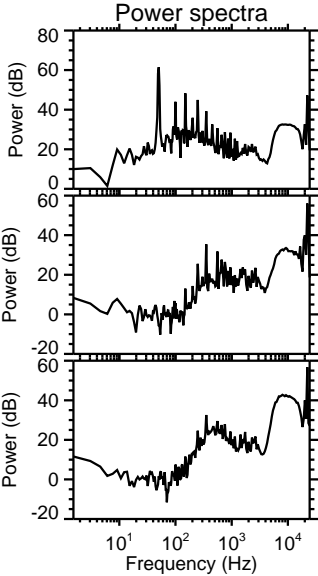
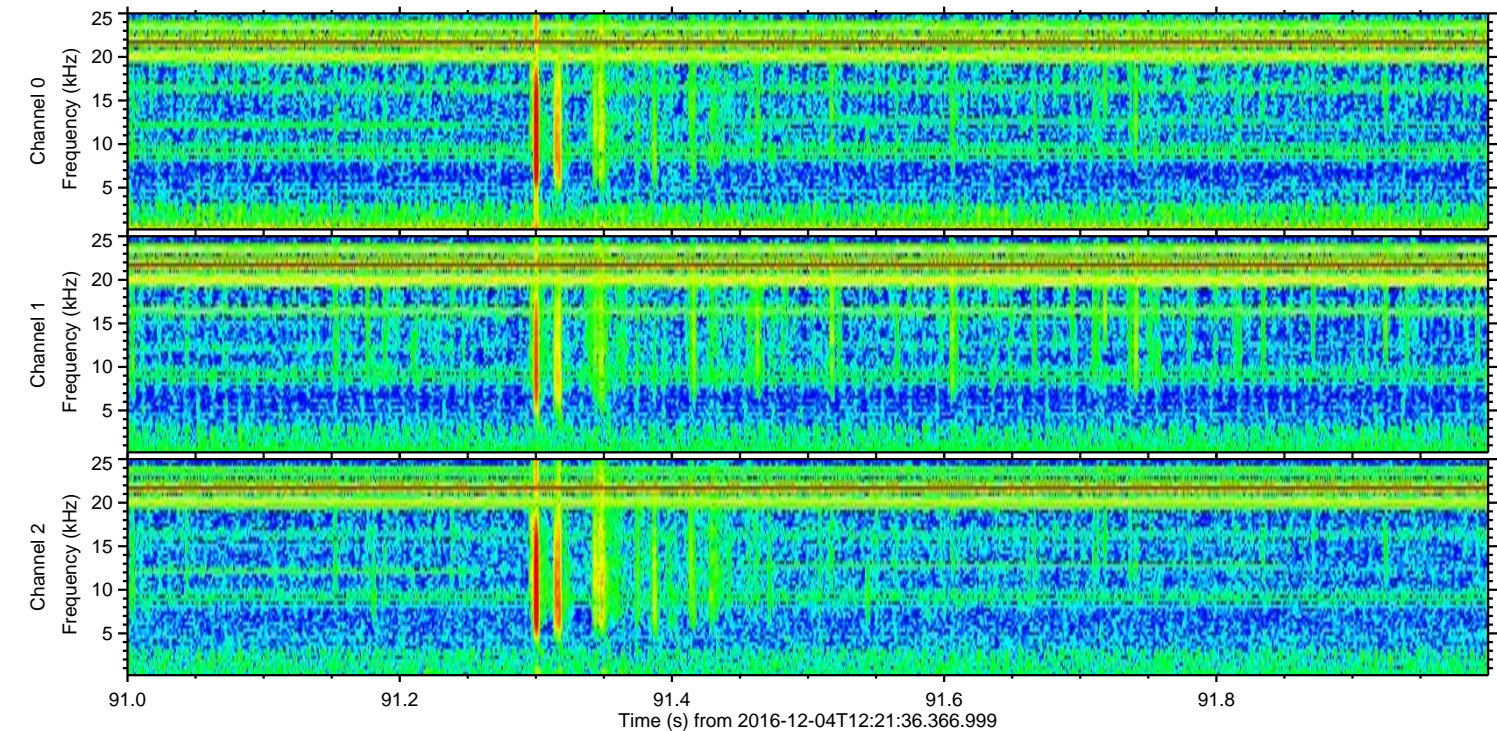
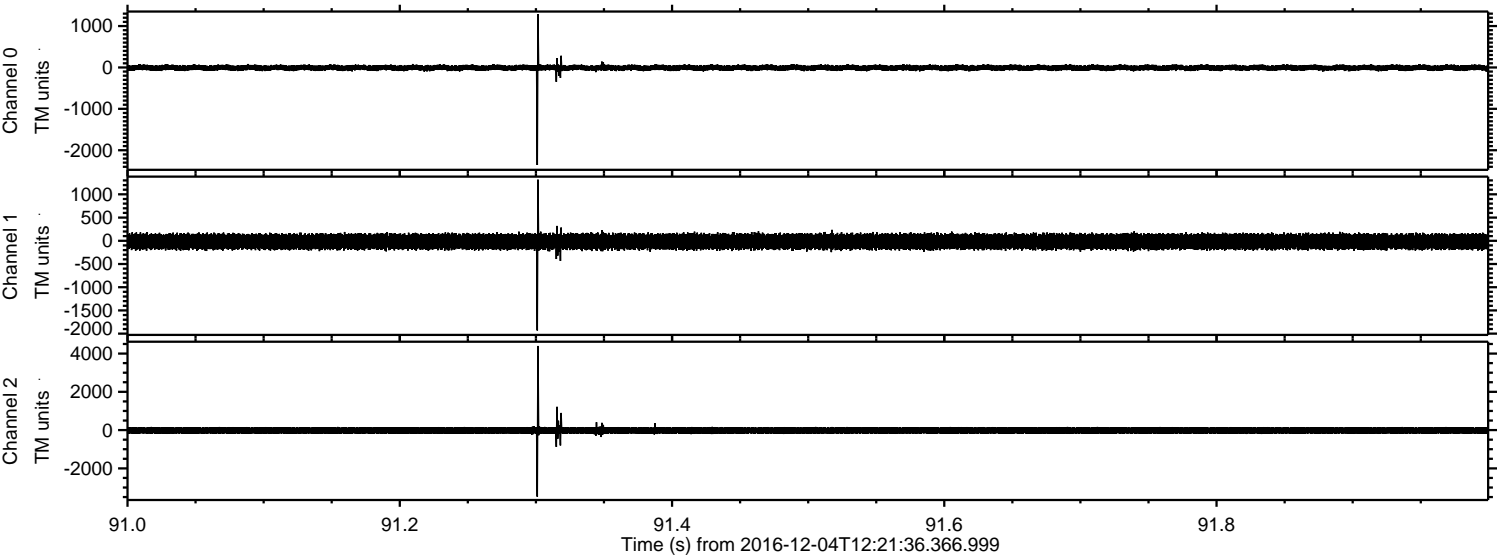
ELMAVAN 3D WAVEFORMS (Measured data sampled at 50 kHz) 51000 packets of 144 samples from 2016-12-04T12:21:36.366.999. Part 64/147

Processed Sun Dec 4 22:02:25 2016 by ELM ver.2012-10-06 from 001__elm20161204_122135__dat00.bin



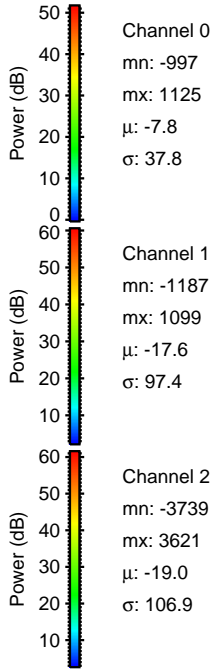
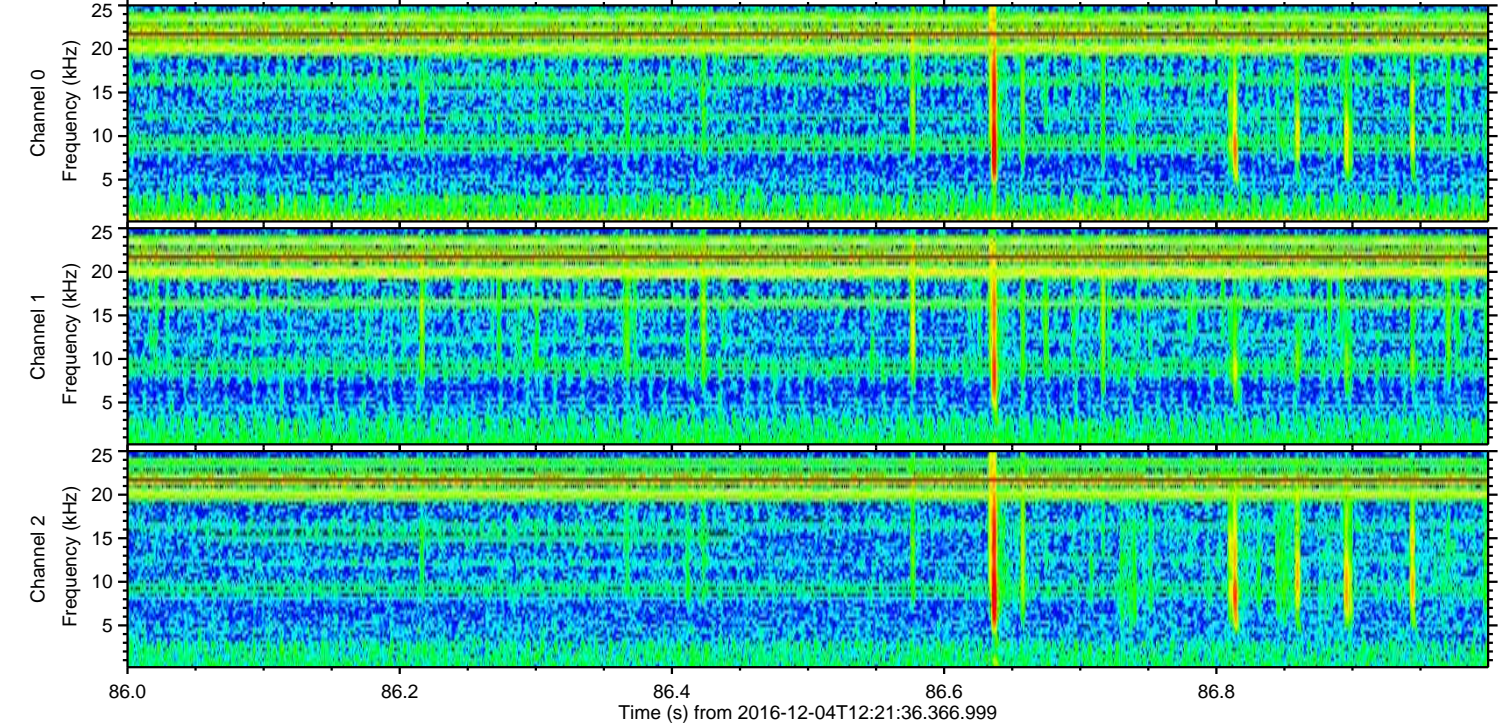
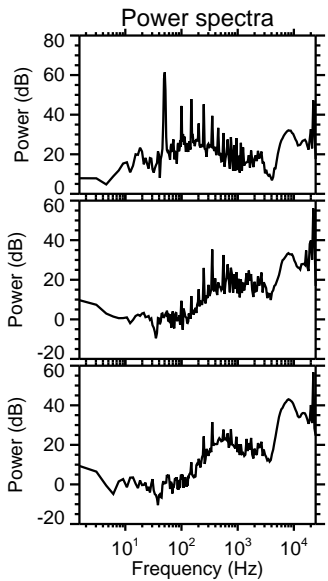
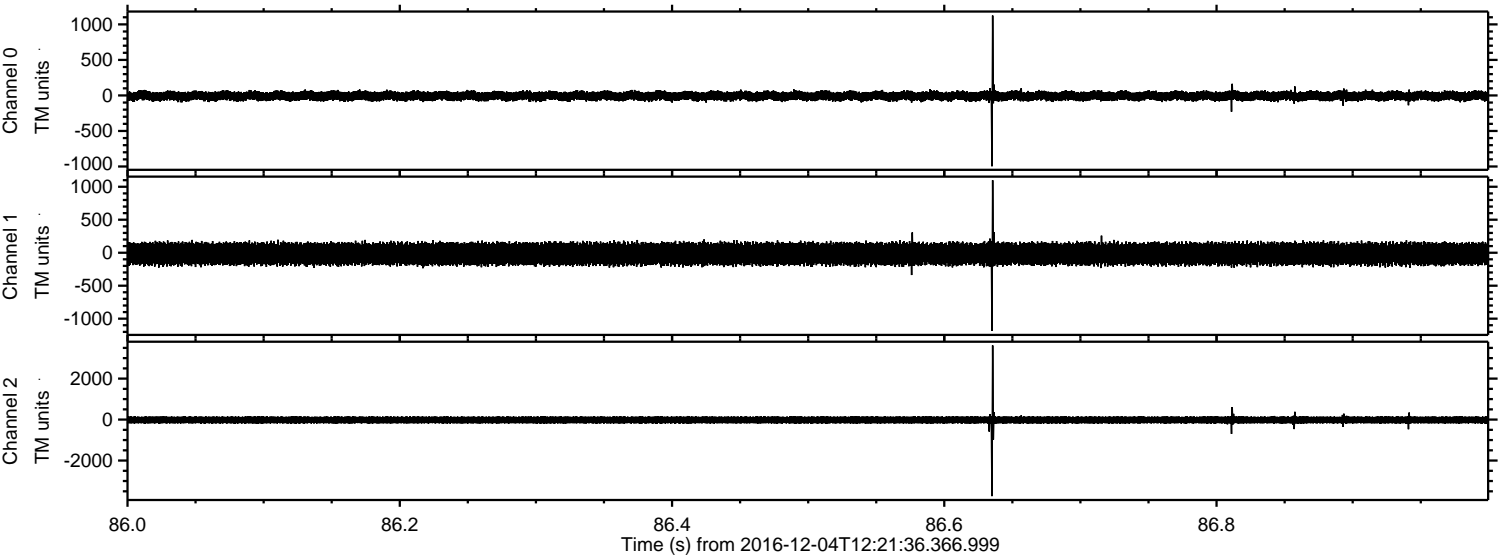
ELMAVAN 3D WAVEFORMS (Measured data sampled at 50 kHz) 51000 packets of 144 samples from 2016-12-04T12:21:36.366.999. Part 92/147

Processed Sun Dec 4 22:02:26 2016 by ELM ver.2012-10-06 from 001__elm20161204_122135__dat00.bin



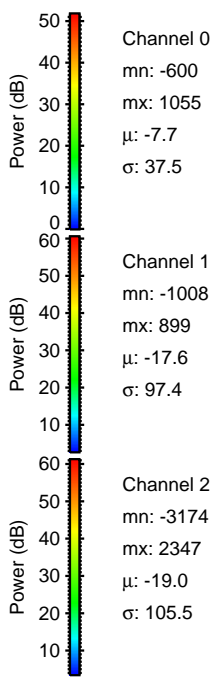
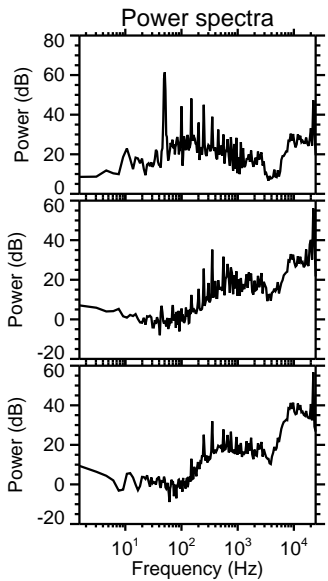
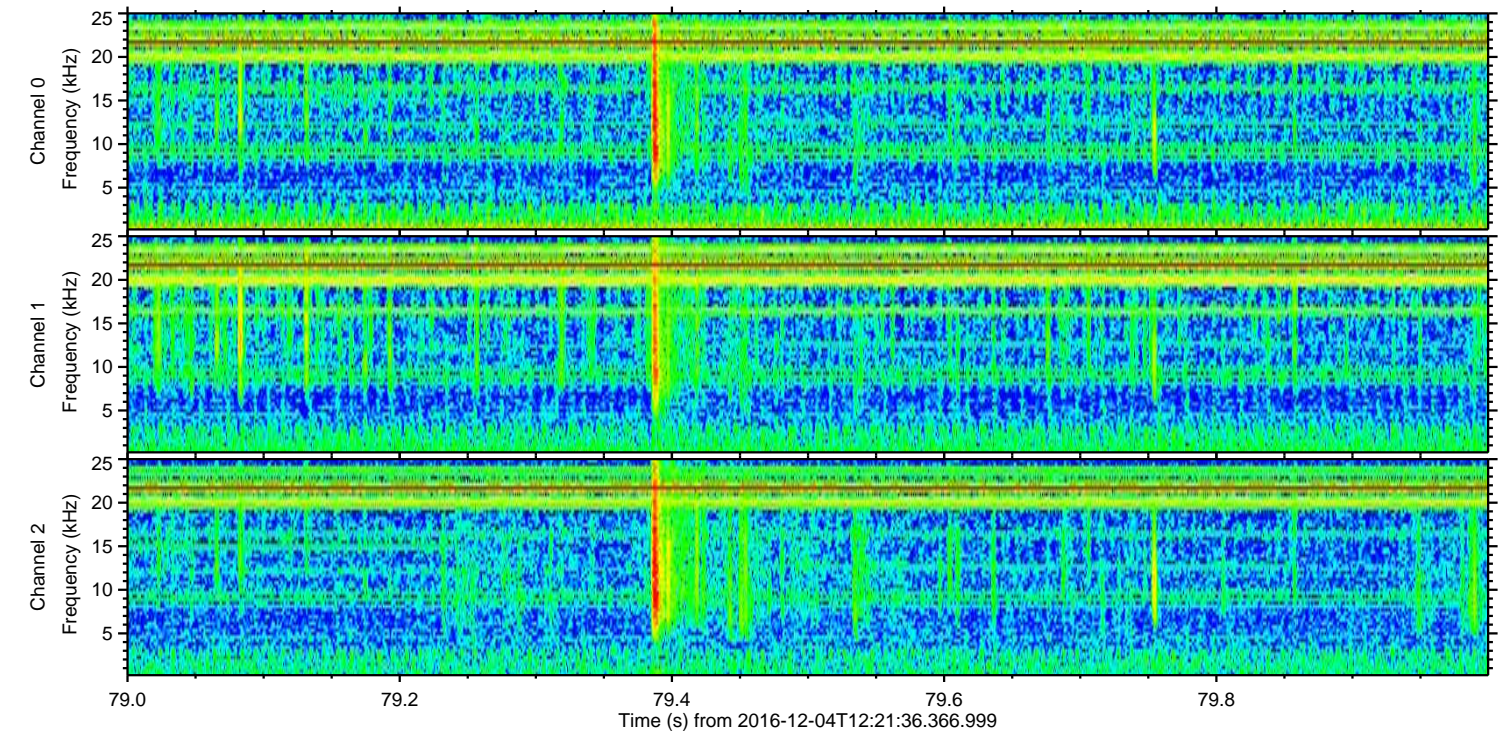
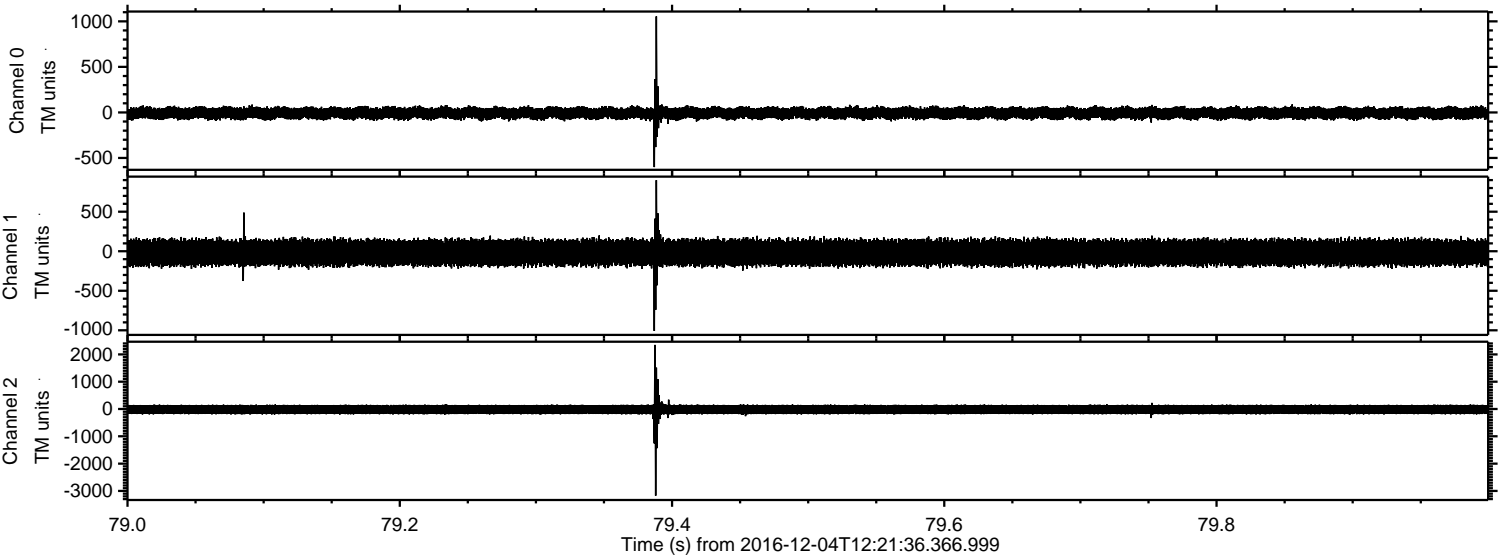
ELMAVAN 3D WAVEFORMS (Measured data sampled at 50 kHz) 51000 packets of 144 samples from 2016-12-04T12:21:36.366.999. Part 87/147

Processed Sun Dec 4 22:02:27 2016 by ELM ver.2012-10-06 from 001__elm20161204_122135__dat00.bin



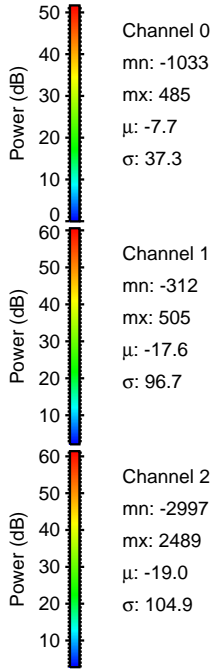
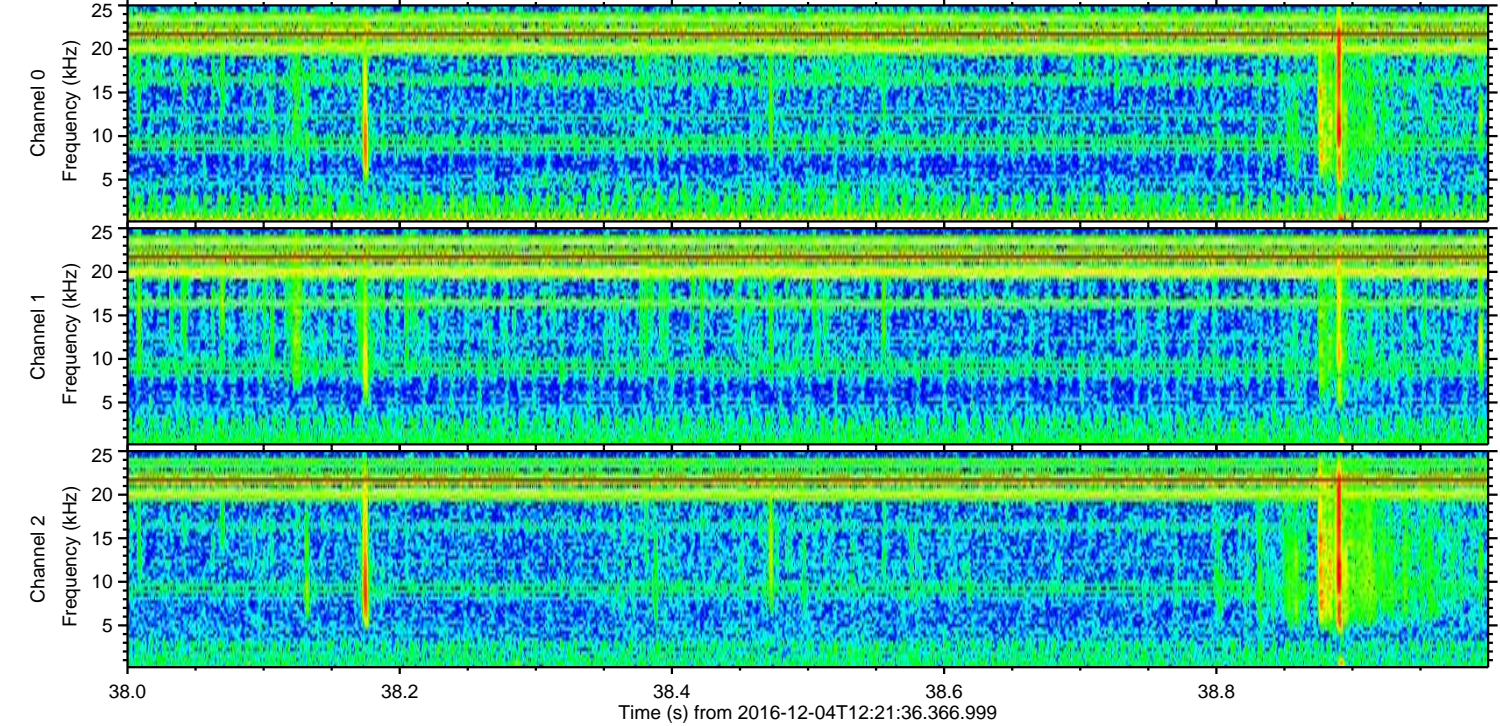
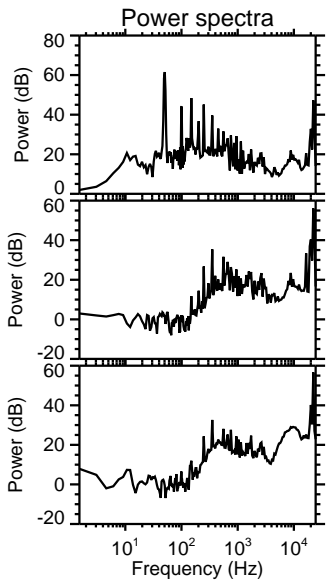
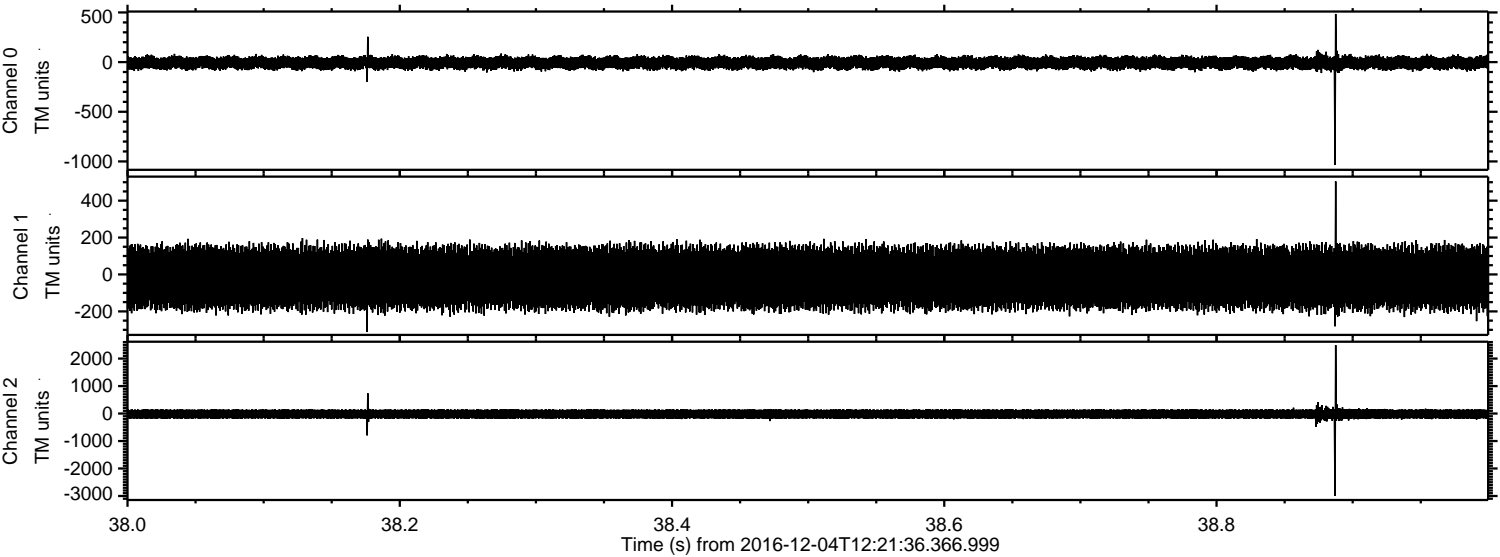
ELMAVAN 3D WAVEFORMS (Measured data sampled at 50 kHz) 51000 packets of 144 samples from 2016-12-04T12:21:36.366.999. Part 80/147

Processed Sun Dec 4 22:02:28 2016 by ELM ver.2012-10-06 from 001__elm20161204_122135__dat00.bin



ELMAVAN 3D WAVEFORMS (Measured data sampled at 50 kHz) 51000 packets of 144 samples from 2016-12-04T12:21:36.366.999. Part 39/147

Processed Sun Dec 4 22:02:29 2016 by ELM ver.2012-10-06 from 001__elm20161204_122135__dat00.bin



ELMAVAN 3D WAVEFORMS (Measured data sampled at 50 kHz) 51000 packets of 144 samples from 2016-12-04T12:21:36.366.999. Part 86/147

Processed Sun Dec 4 22:02:30 2016 by ELM ver.2012-10-06 from 001__elm20161204_122135__dat00.bin

