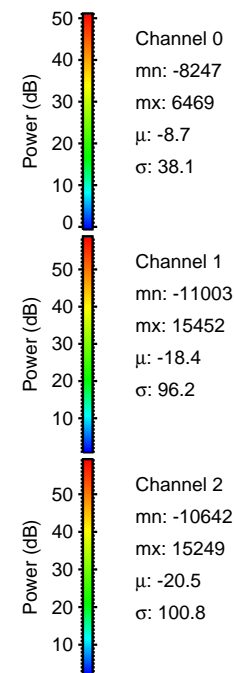
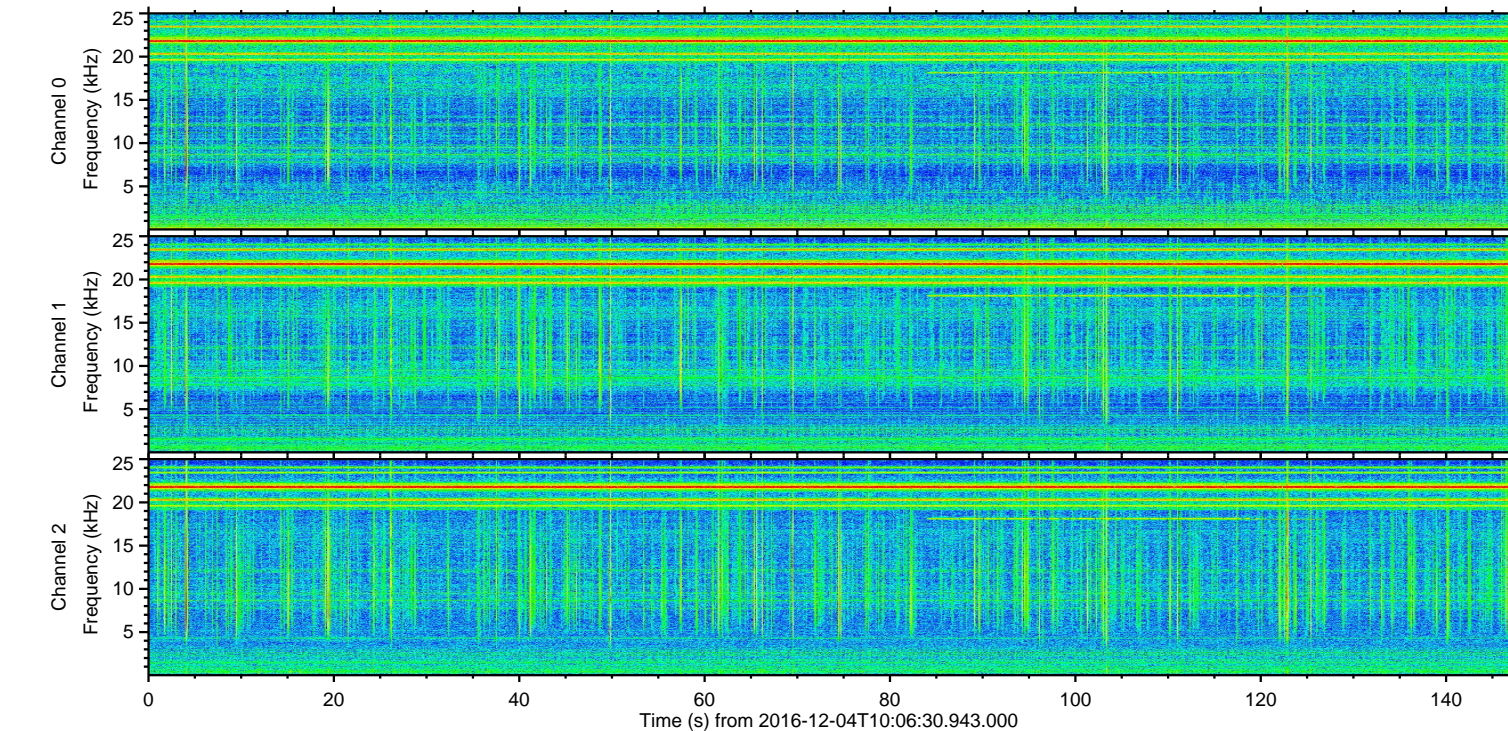
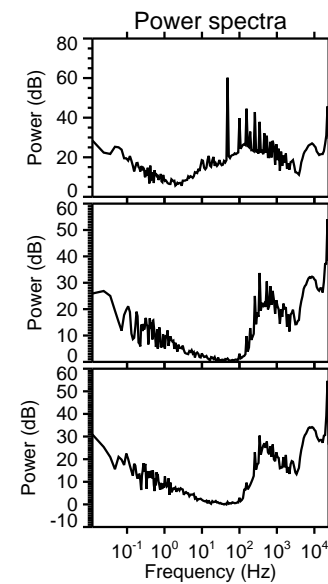
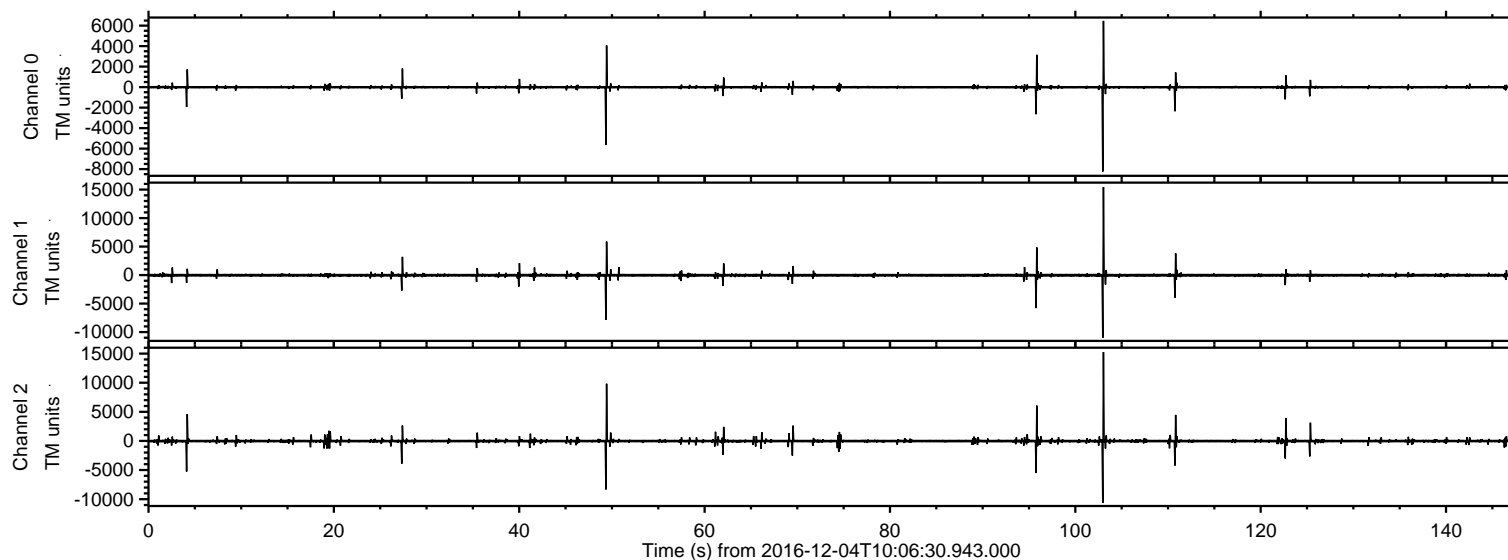


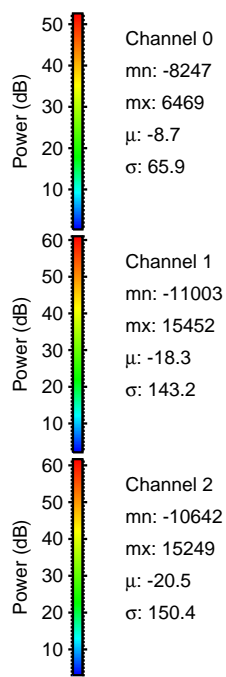
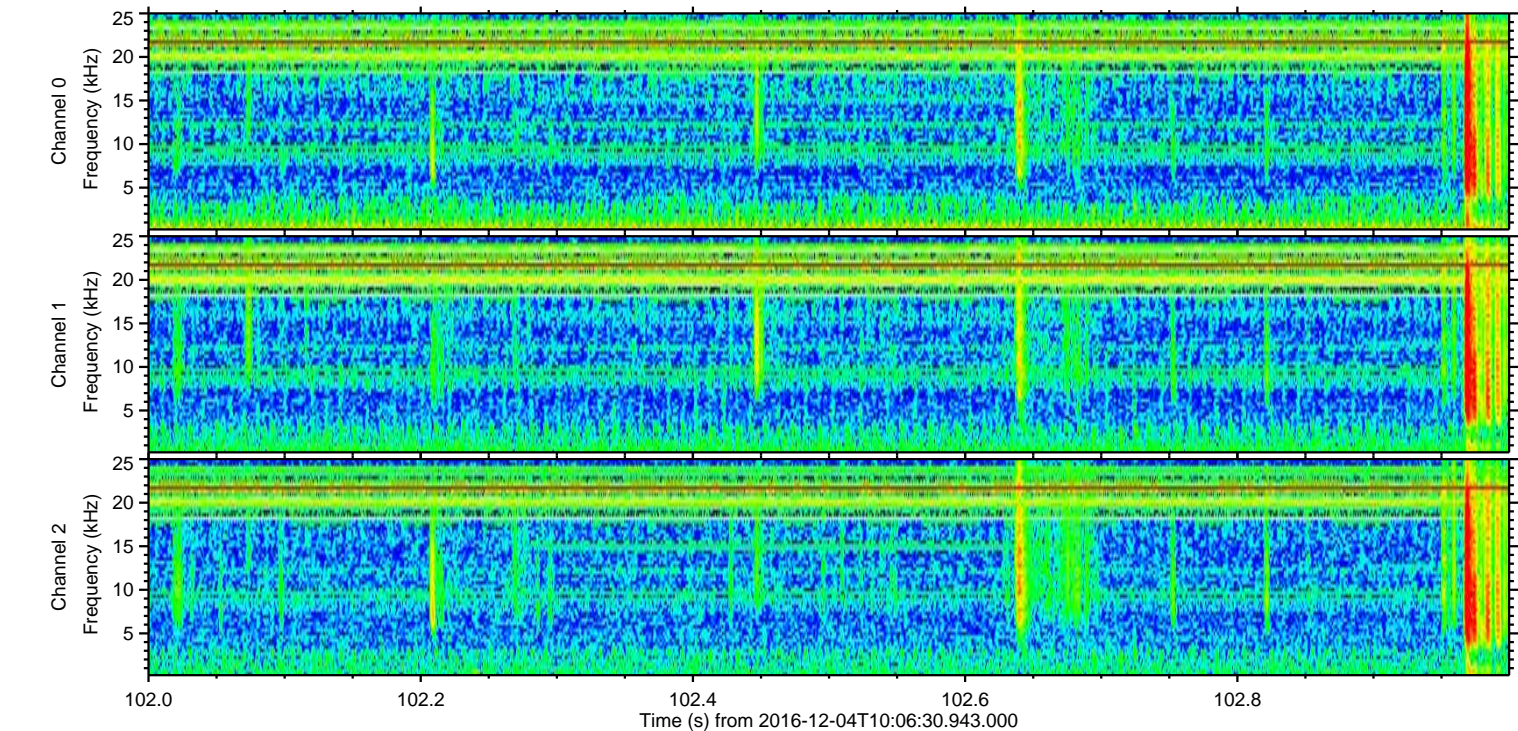
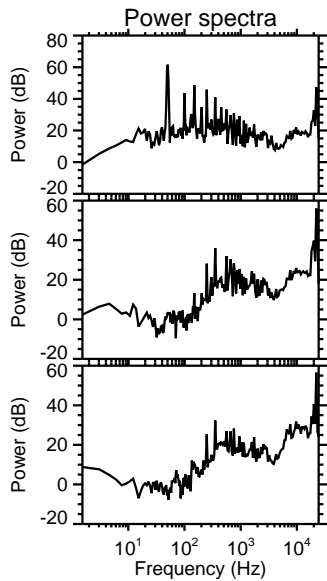
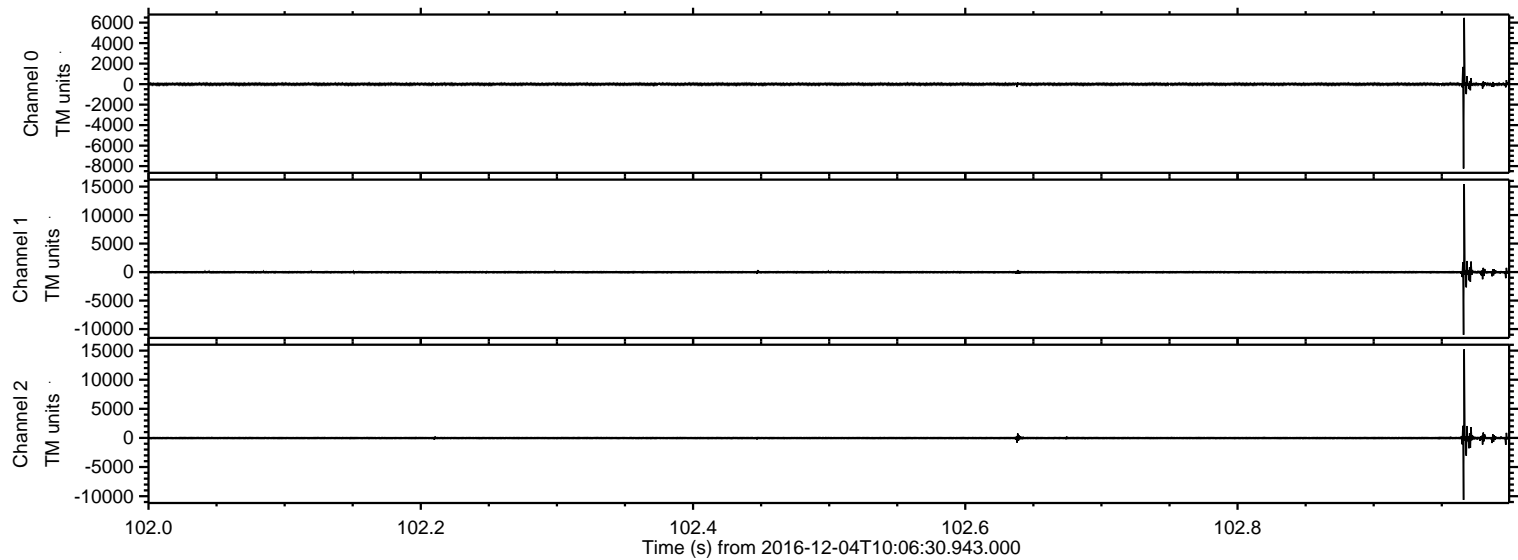
ELMAVAN 3D WAVEFORMS (Measured data sampled at 50 kHz) 51000 packets of 144 samples from 2016-12-04T10:06:30.943.000.

Processed Sun Dec 4 21:34:06 2016 by ELM ver.2012-10-06 from 001__elm20161204_100629__dat00.bin

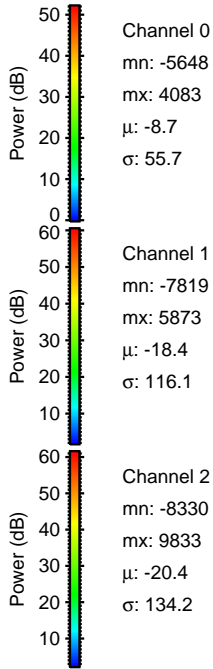
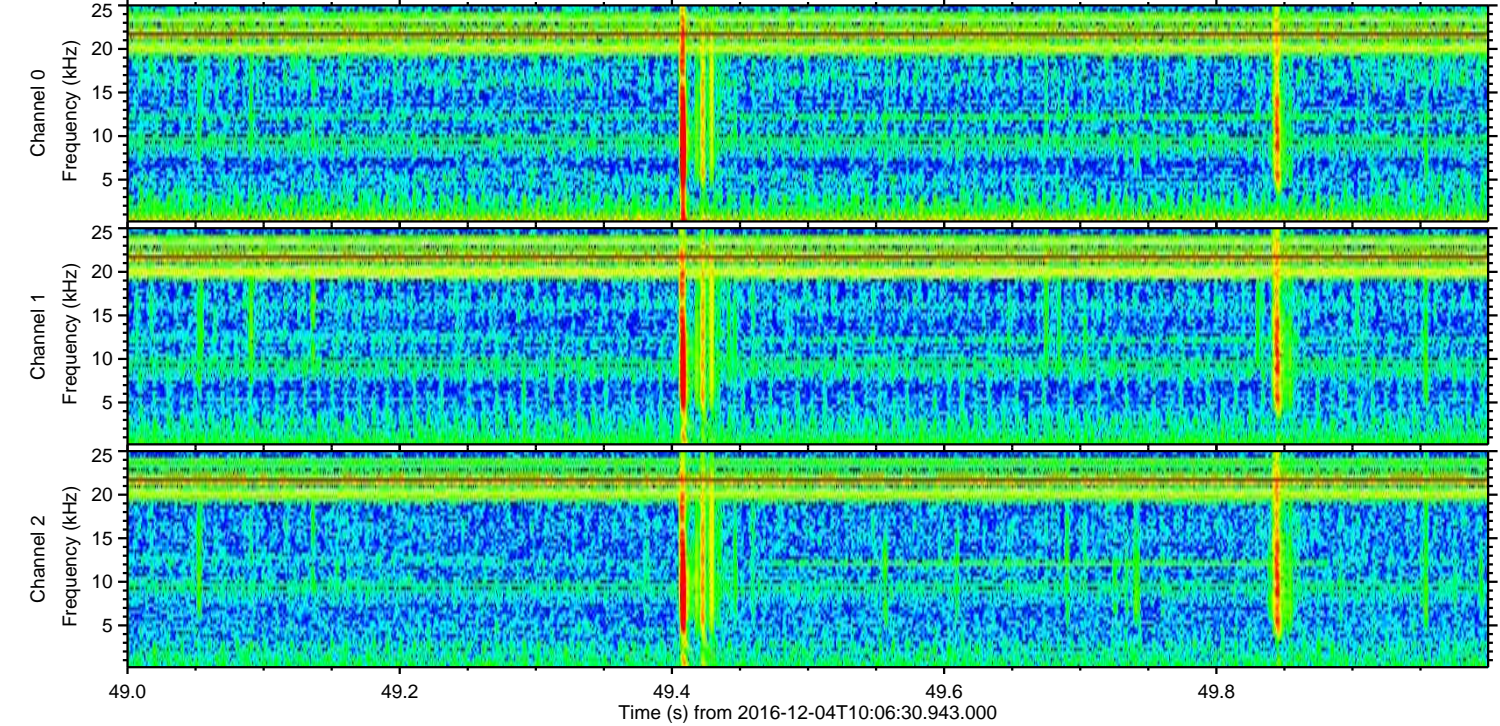
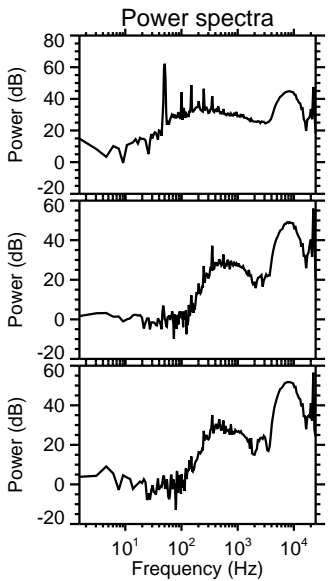
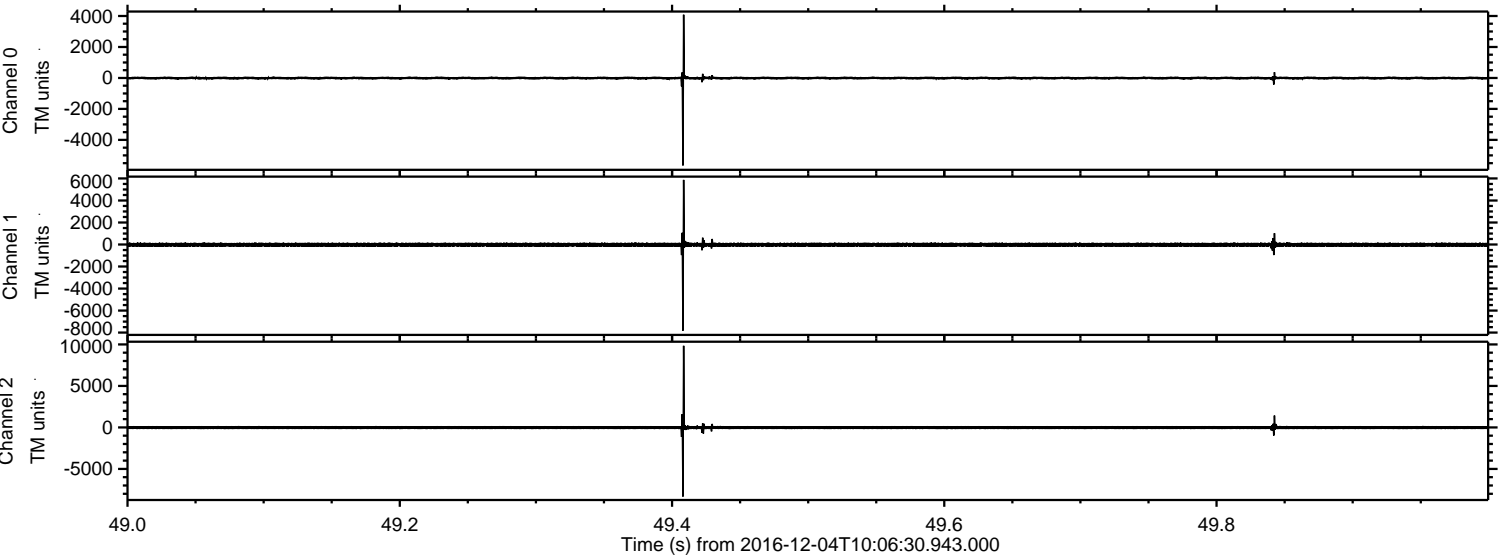


ELMAVAN 3D WAVEFORMS (Measured data sampled at 50 kHz) 51000 packets of 144 samples from 2016-12-04T10:06:30.943.000. Part 103/147

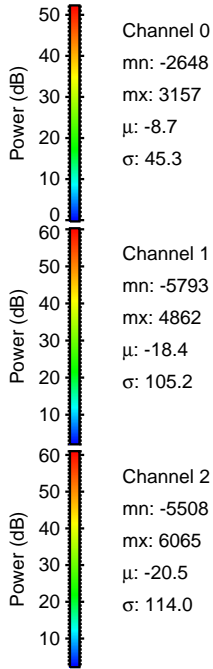
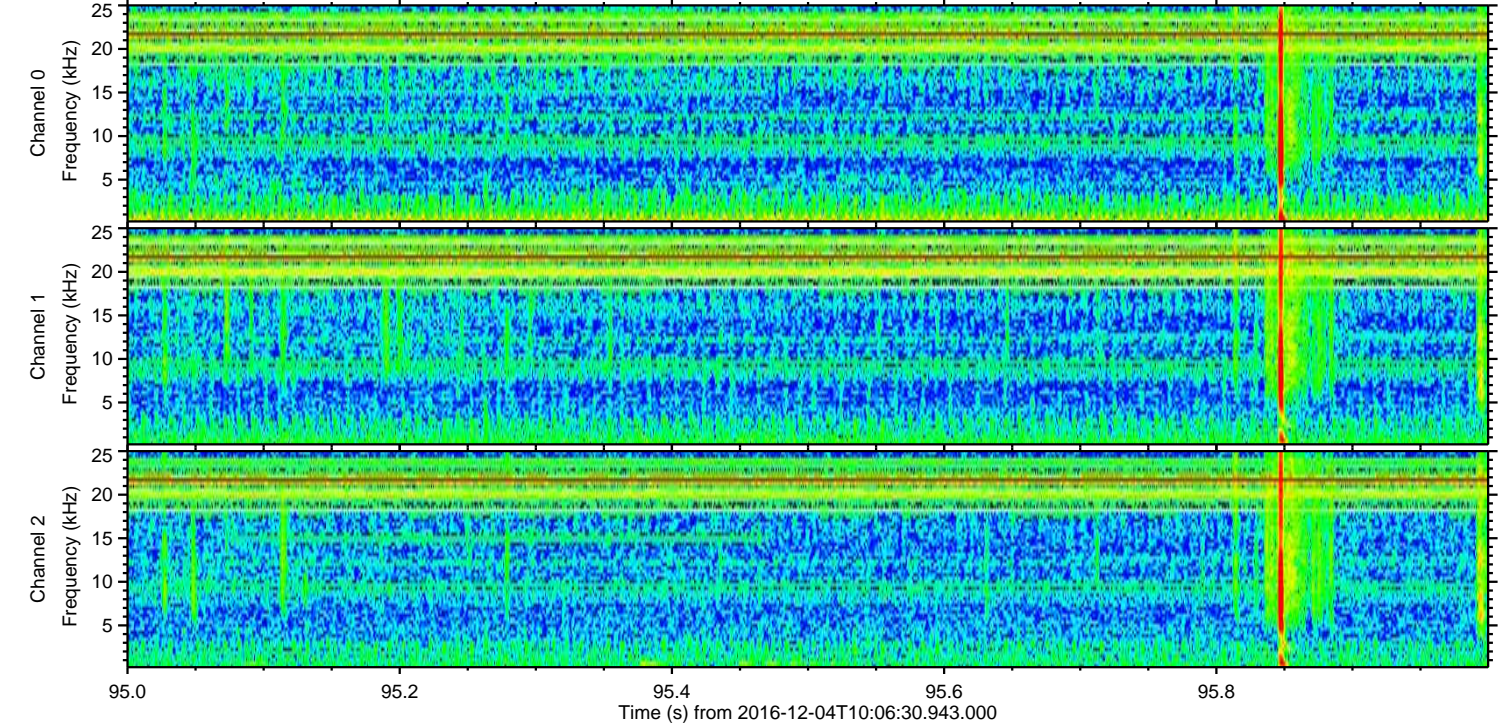
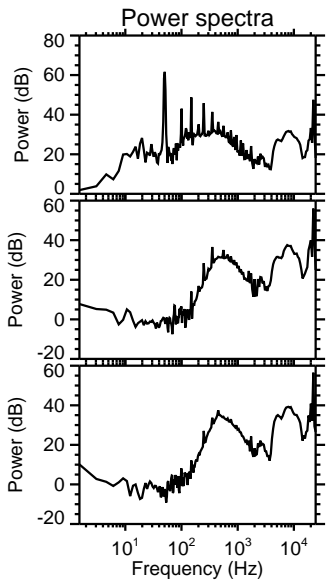
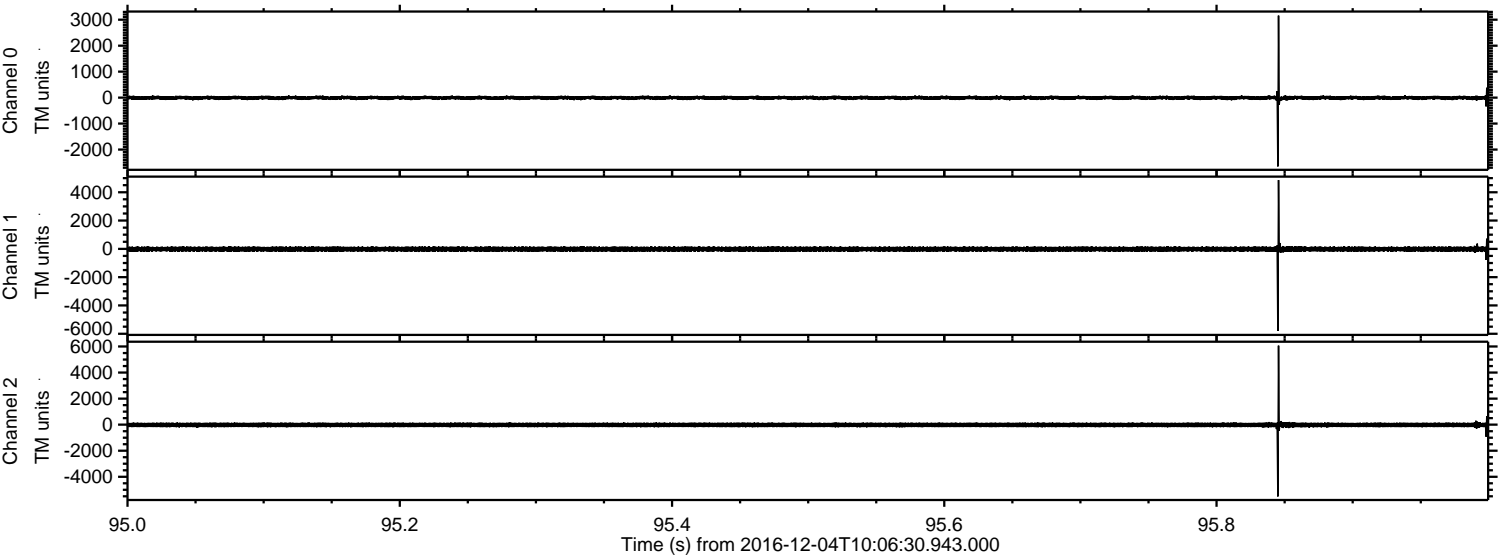
Processed Sun Dec 4 21:34:17 2016 by ELM ver.2012-10-06 from 001__elm20161204_100629__dat00.bin



Processed Sun Dec 4 21:34:18 2016 by ELM ver.2012-10-06 from 001__elm20161204_100629__dat00.bin



Processed Sun Dec 4 21:34:19 2016 by ELM ver.2012-10-06 from 001__elm20161204_100629__dat00.bin

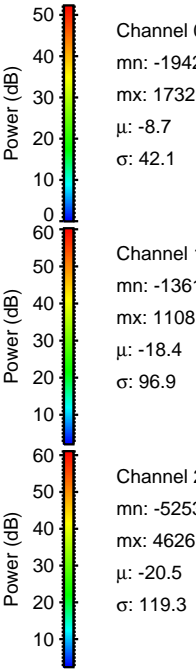
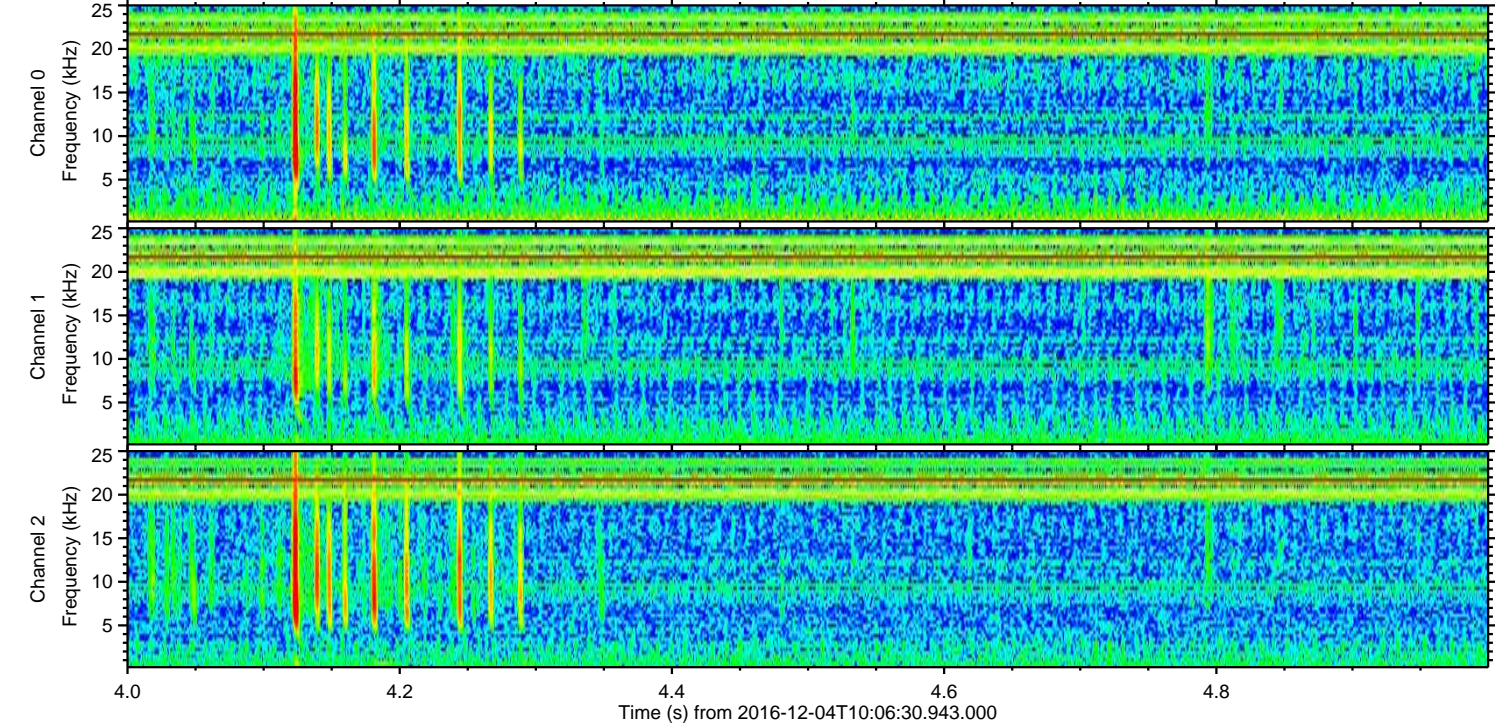
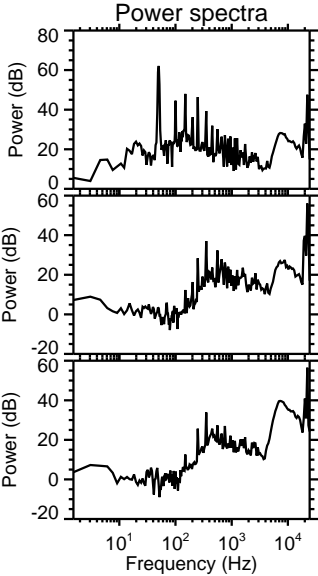
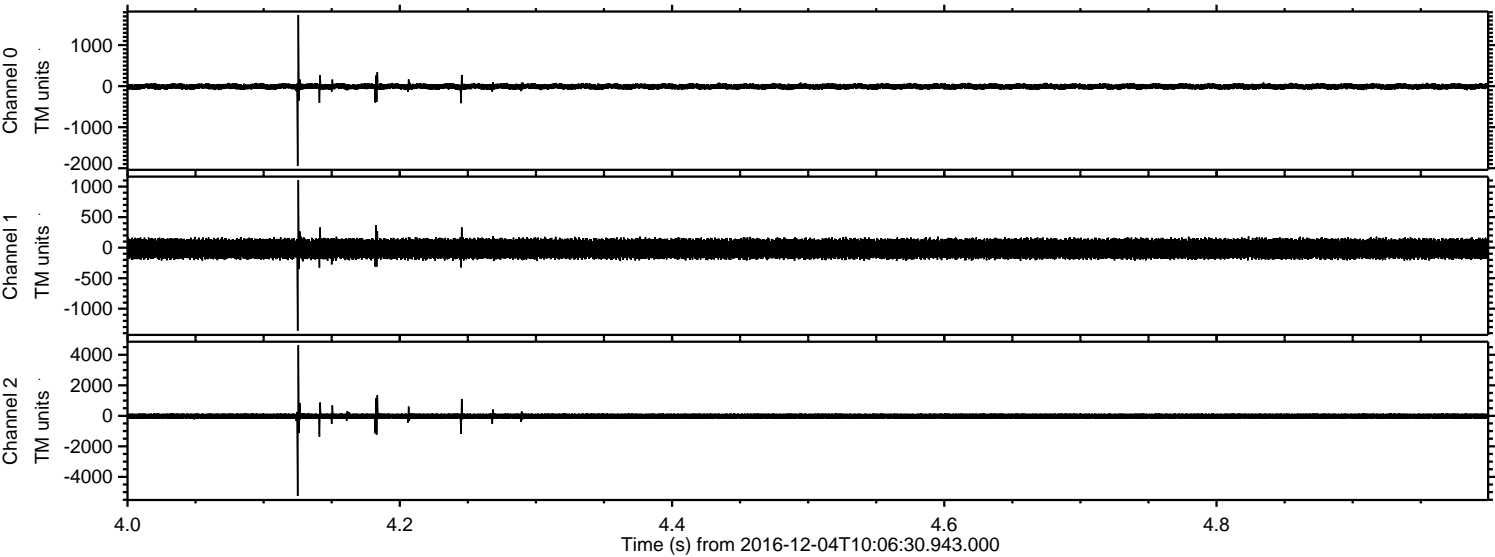


Channel 0
mn: -2648
mx: 3157
 μ : -8.7
 σ : 45.3

Channel 1
mn: -5793
mx: 4862
 μ : -18.4
 σ : 105.2

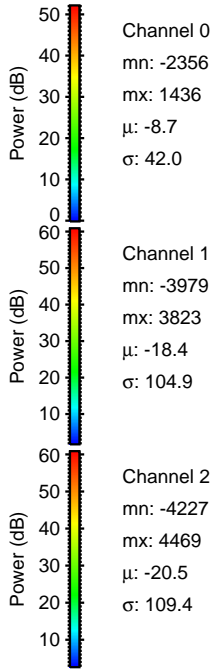
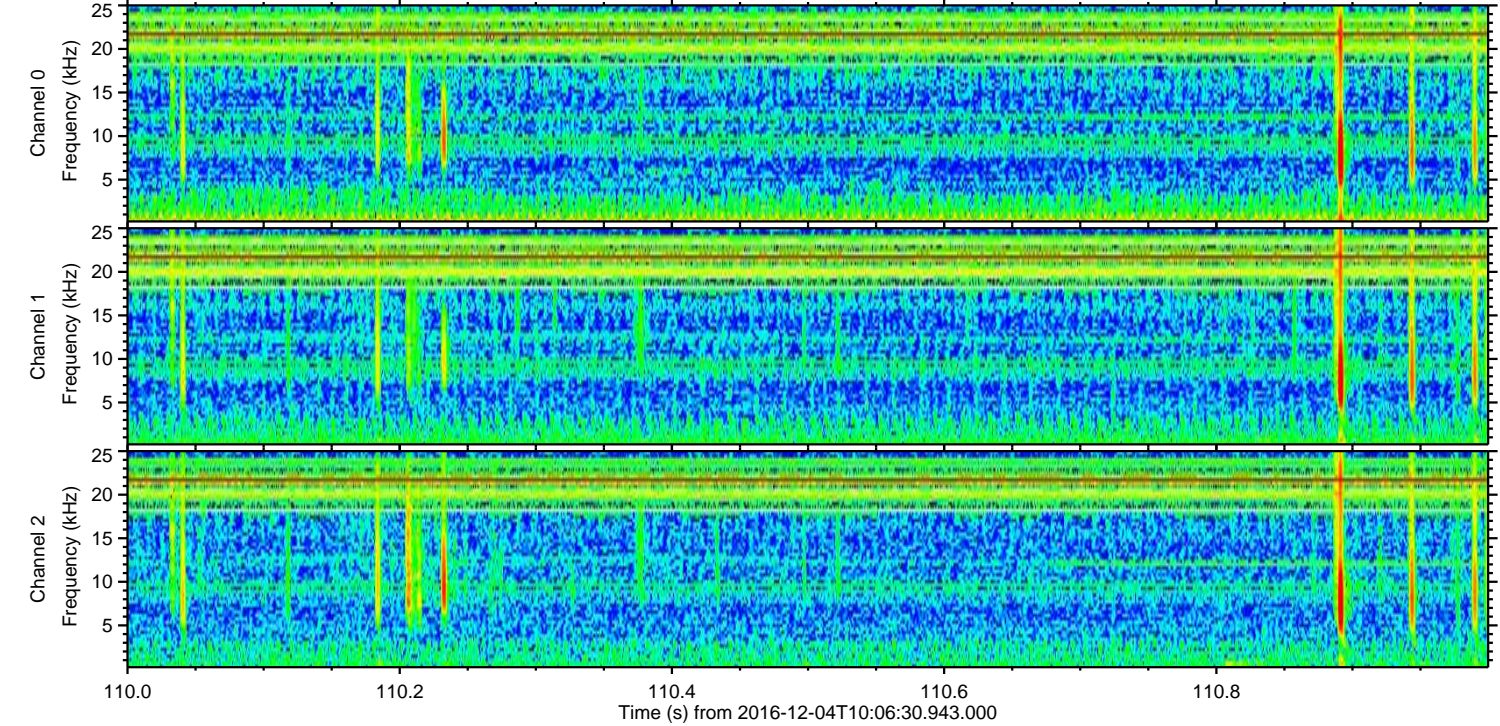
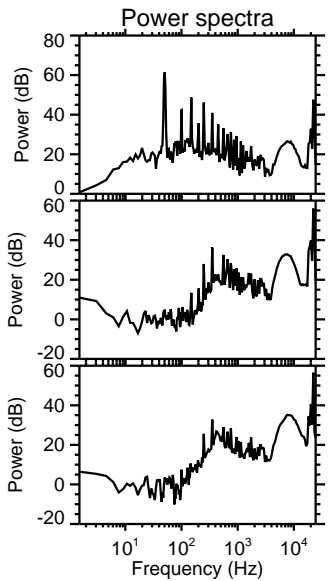
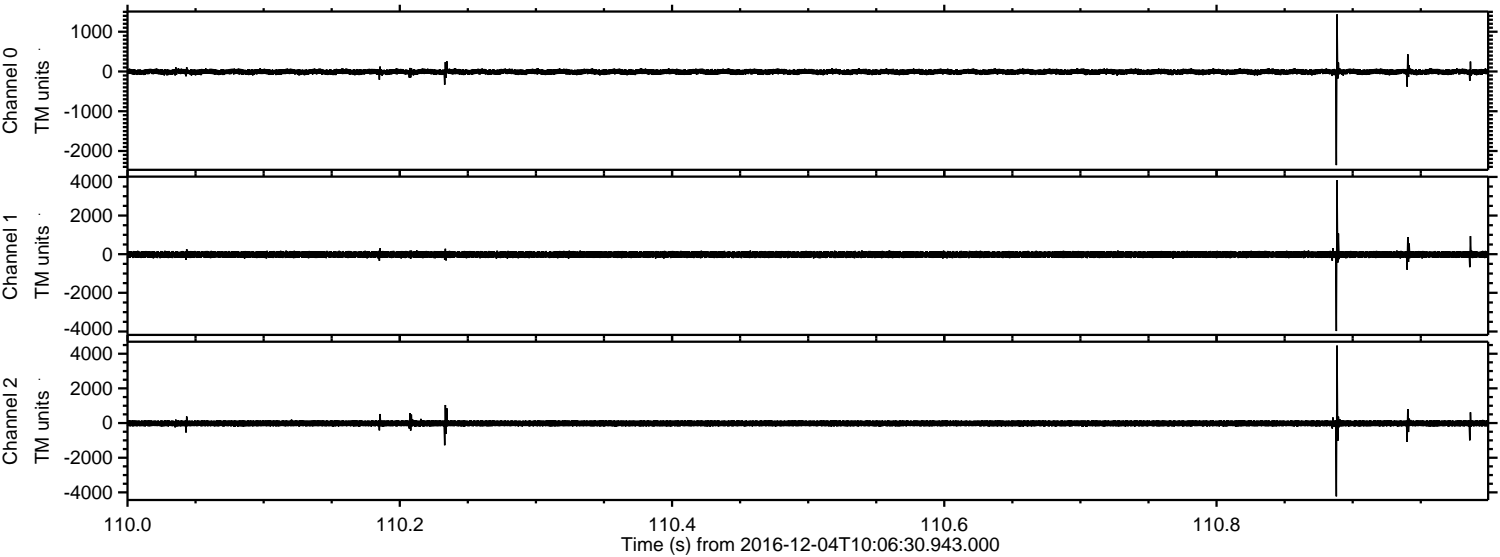
Channel 2
mn: -5508
mx: 6065
 μ : -20.5
 σ : 114.0

Processed Sun Dec 4 21:34:20 2016 by ELM ver.2012-10-06 from 001__elm20161204_100629__dat00.bin



ELMAVAN 3D WAVEFORMS (Measured data sampled at 50 kHz) 51000 packets of 144 samples from 2016-12-04T10:06:30.943.000. Part 111/147

Processed Sun Dec 4 21:34:21 2016 by ELM ver.2012-10-06 from 001__elm20161204_100629__dat00.bin

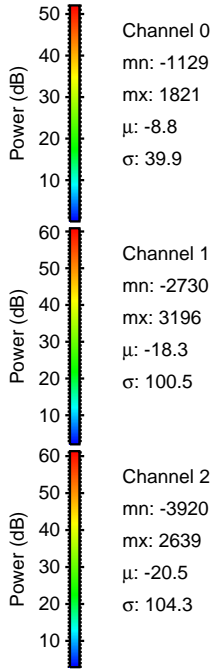
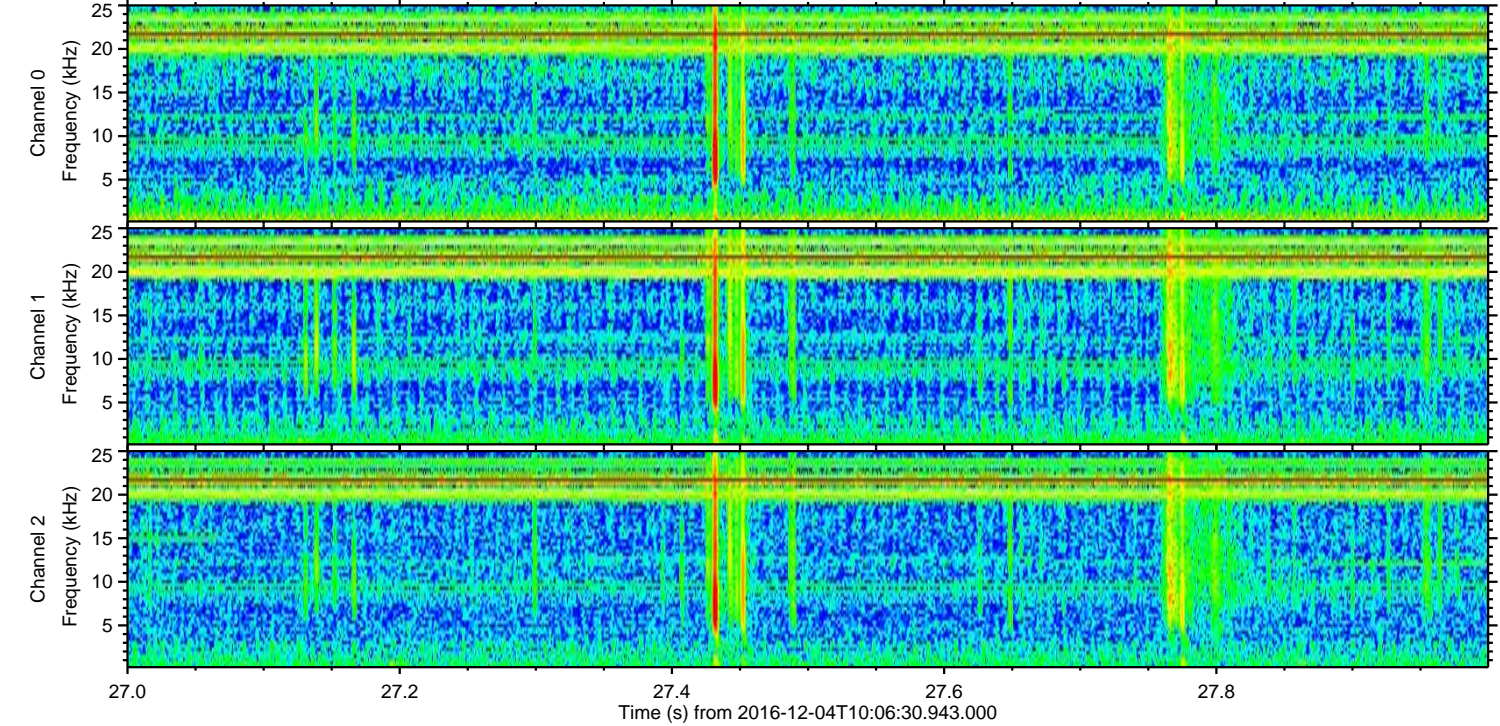
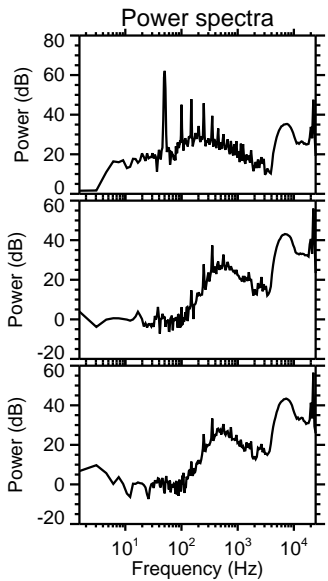
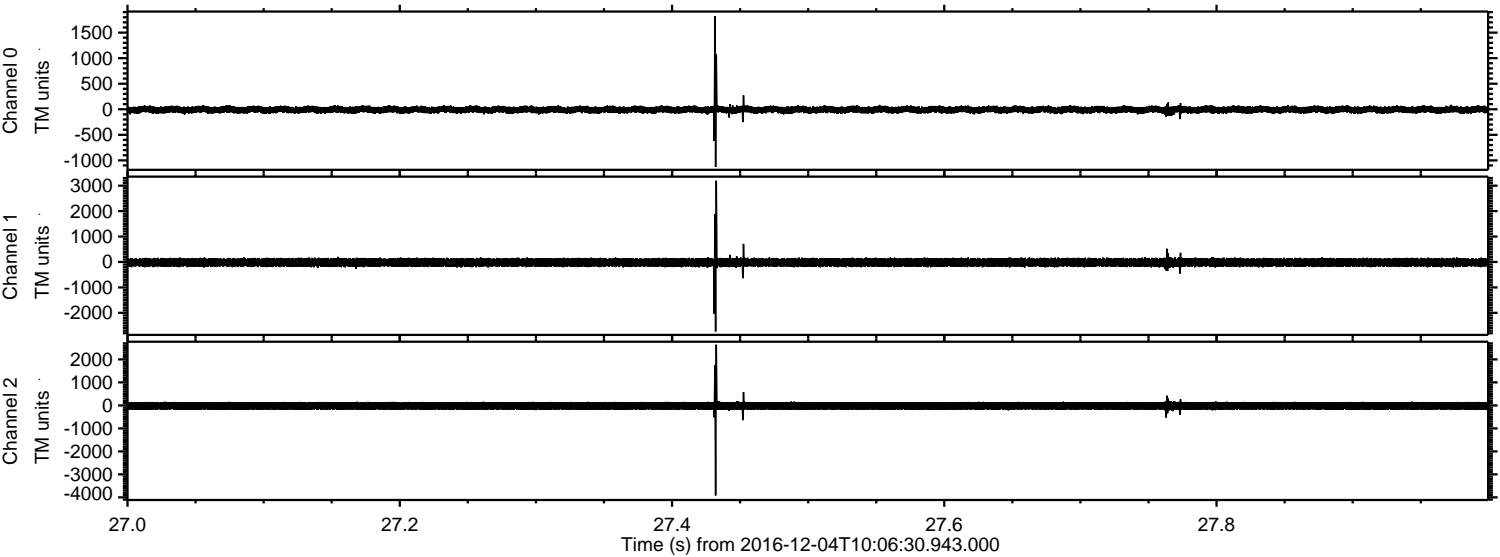


Channel 0
mn: -2356
mx: 1436
 μ : -8.7
 σ : 42.0

Channel 1
mn: -3979
mx: 3823
 μ : -18.4
 σ : 104.9

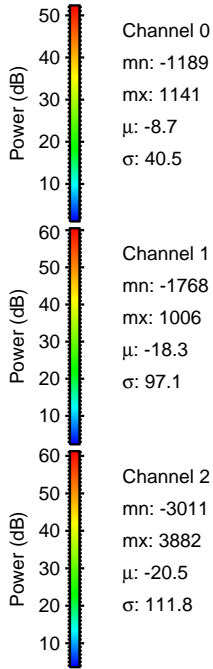
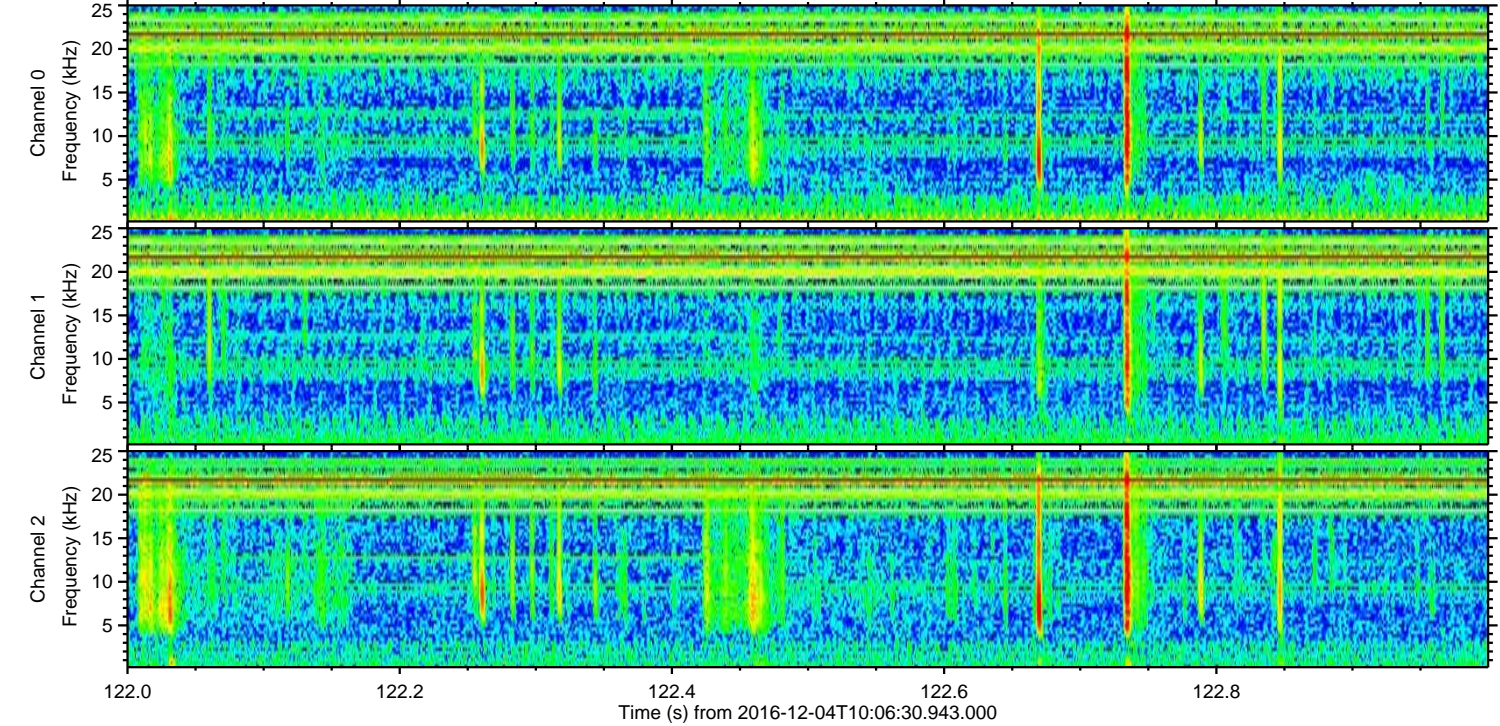
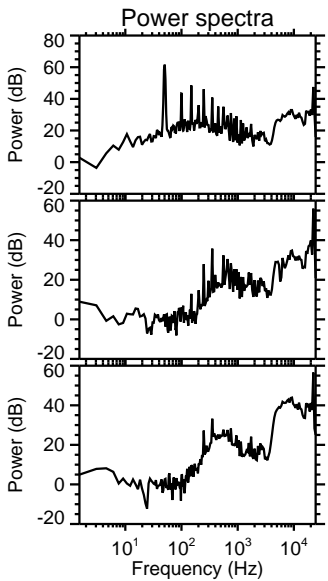
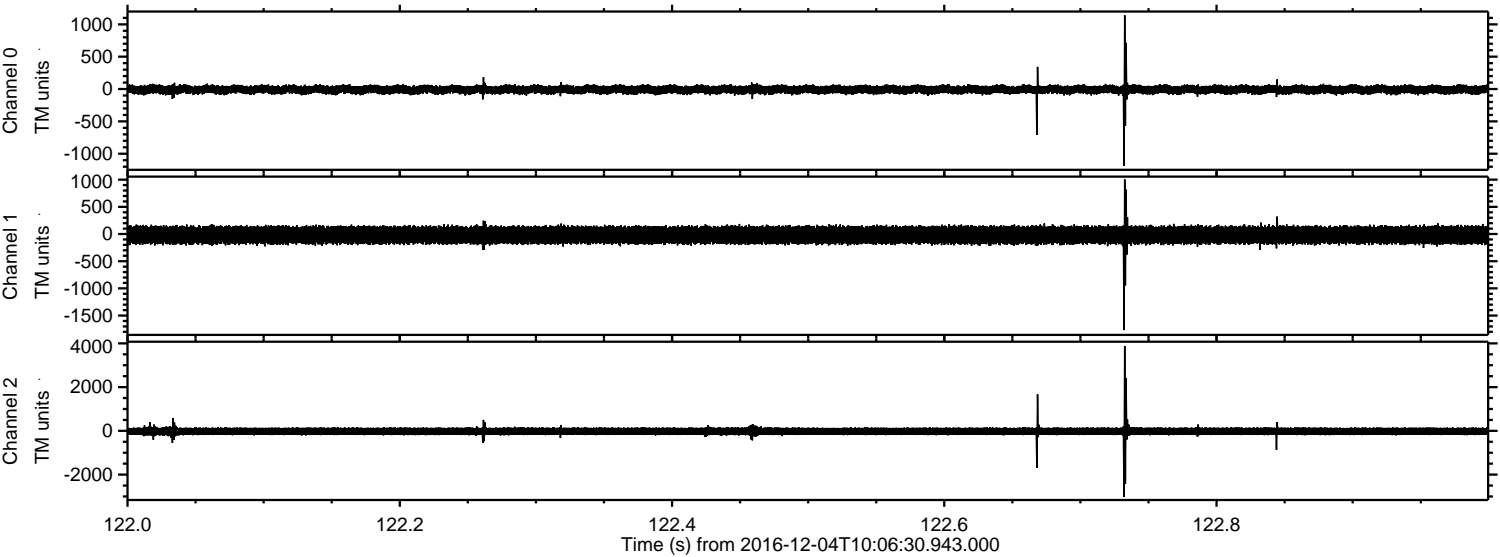
Channel 2
mn: -4227
mx: 4469
 μ : -20.5
 σ : 109.4

Processed Sun Dec 4 21:34:22 2016 by ELM ver.2012-10-06 from 001__elm20161204_100629__dat00.bin



ELMAVAN 3D WAVEFORMS (Measured data sampled at 50 kHz) 51000 packets of 144 samples from 2016-12-04T10:06:30.943.000. Part 123/147

Processed Sun Dec 4 21:34:23 2016 by ELM ver.2012-10-06 from 001__elm20161204_100629__dat00.bin



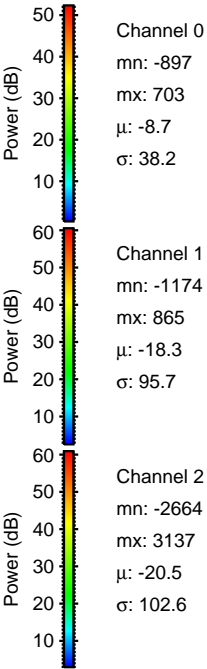
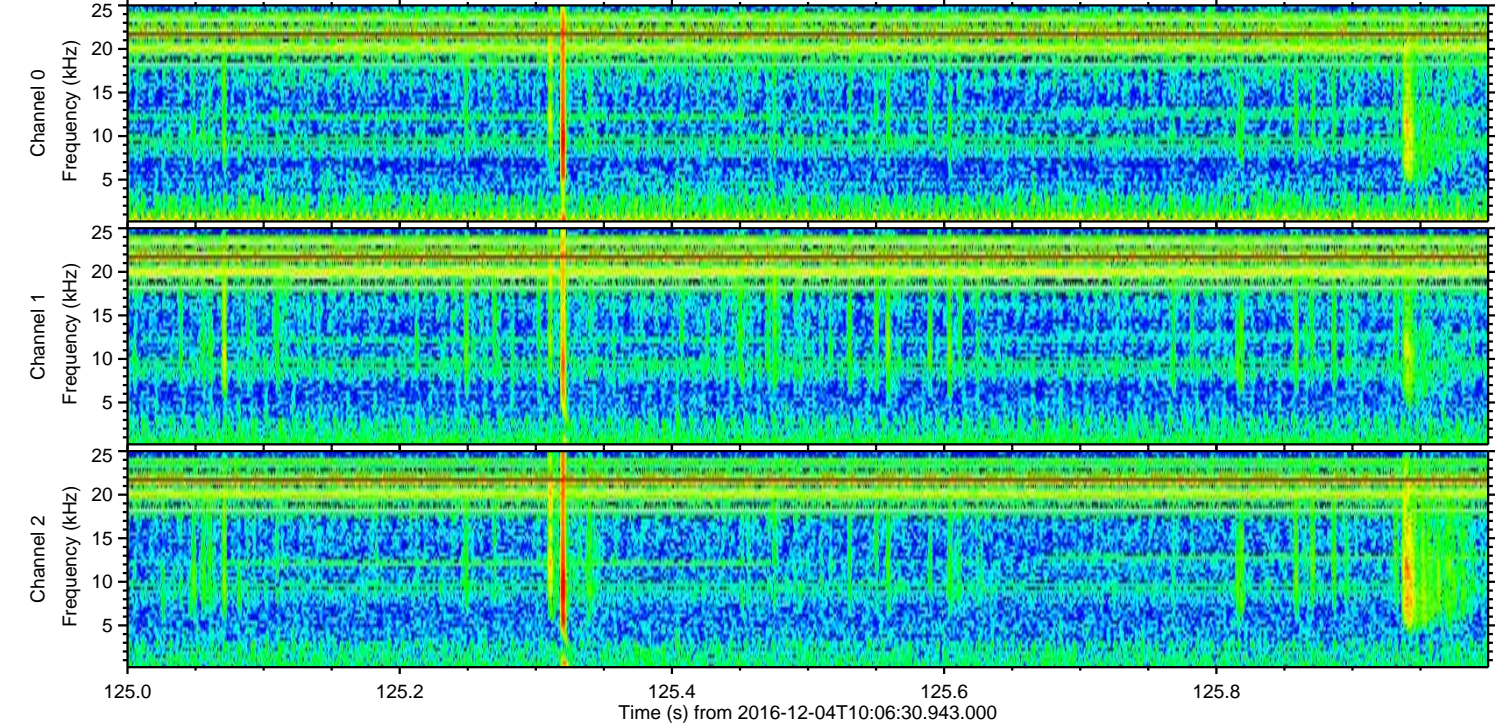
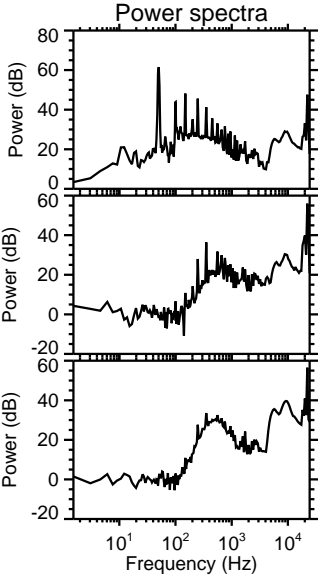
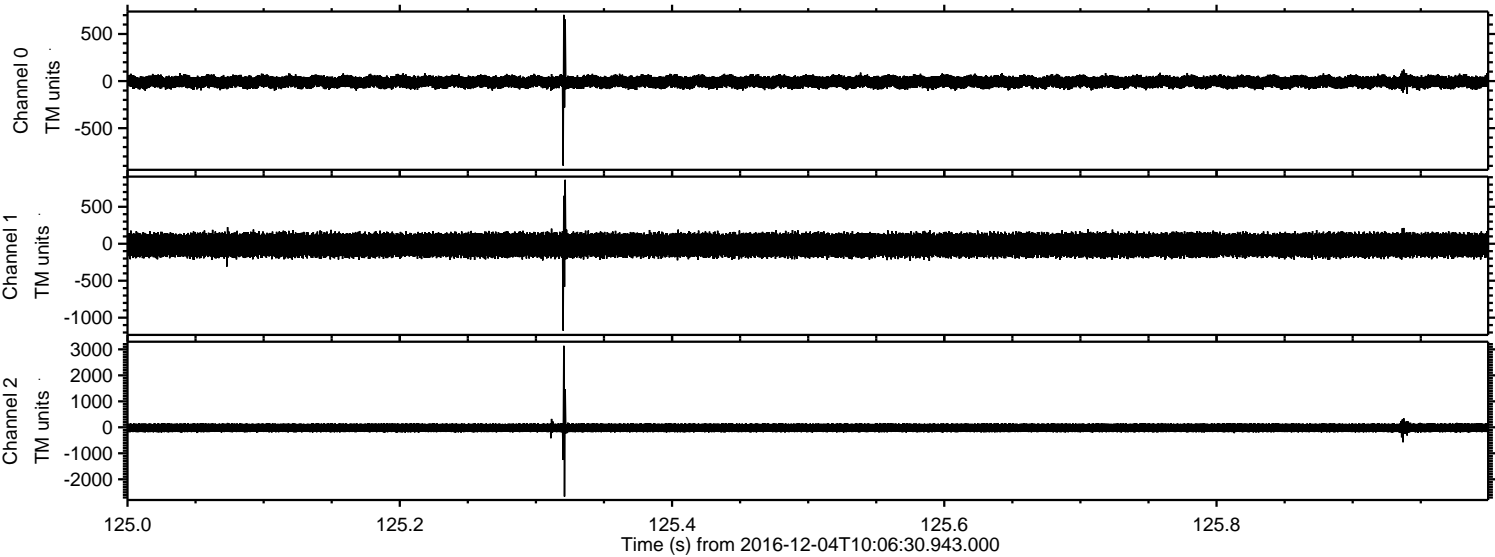
Channel 0
mn: -1189
mx: 1141
 μ : -8.7
 σ : 40.5

Channel 1
mn: -1768
mx: 1006
 μ : -18.3
 σ : 97.1

Channel 2
mn: -3011
mx: 3882
 μ : -20.5
 σ : 111.8

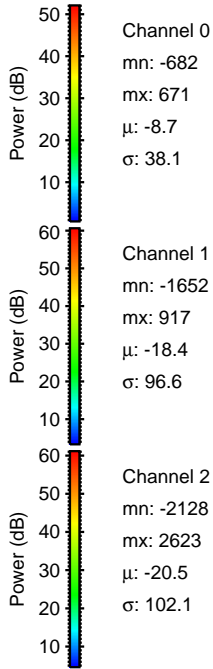
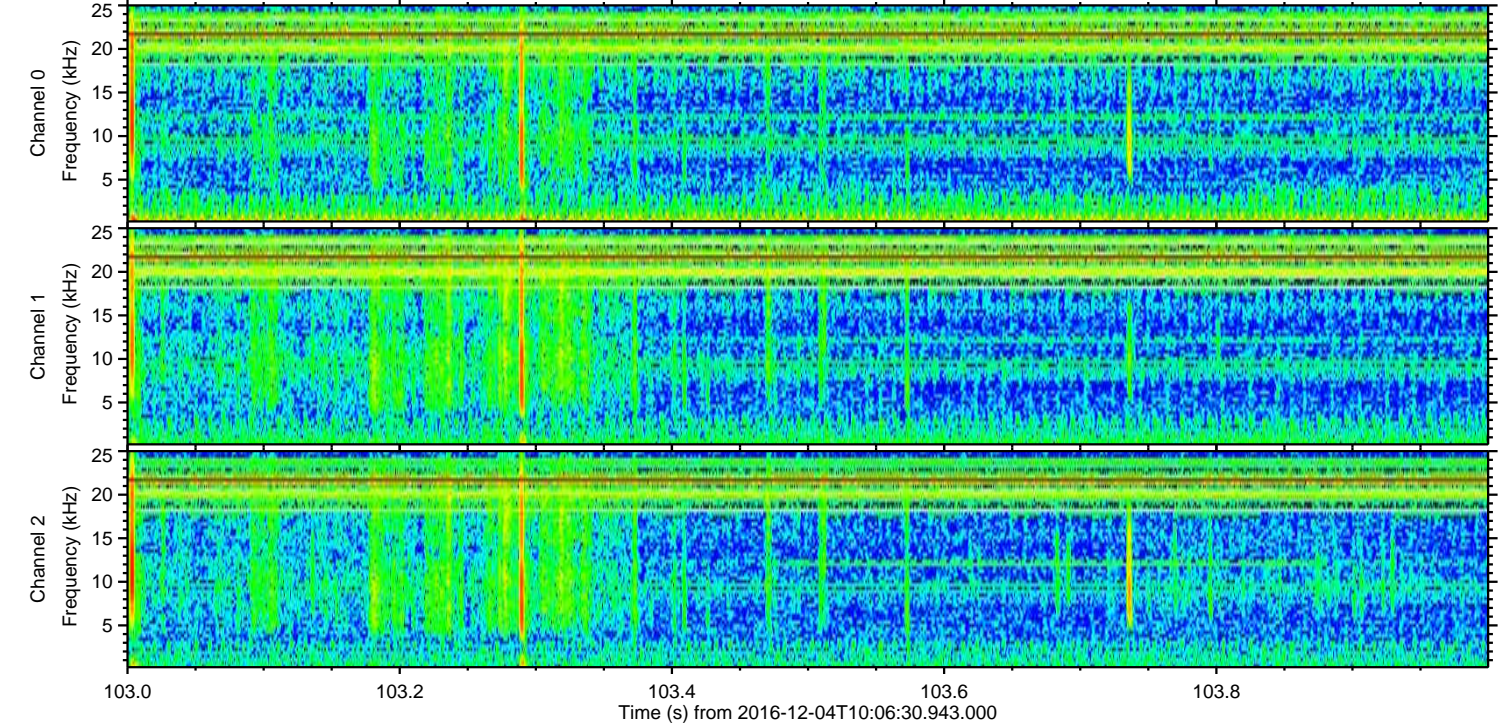
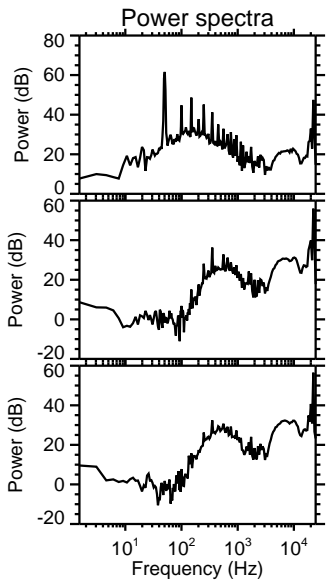
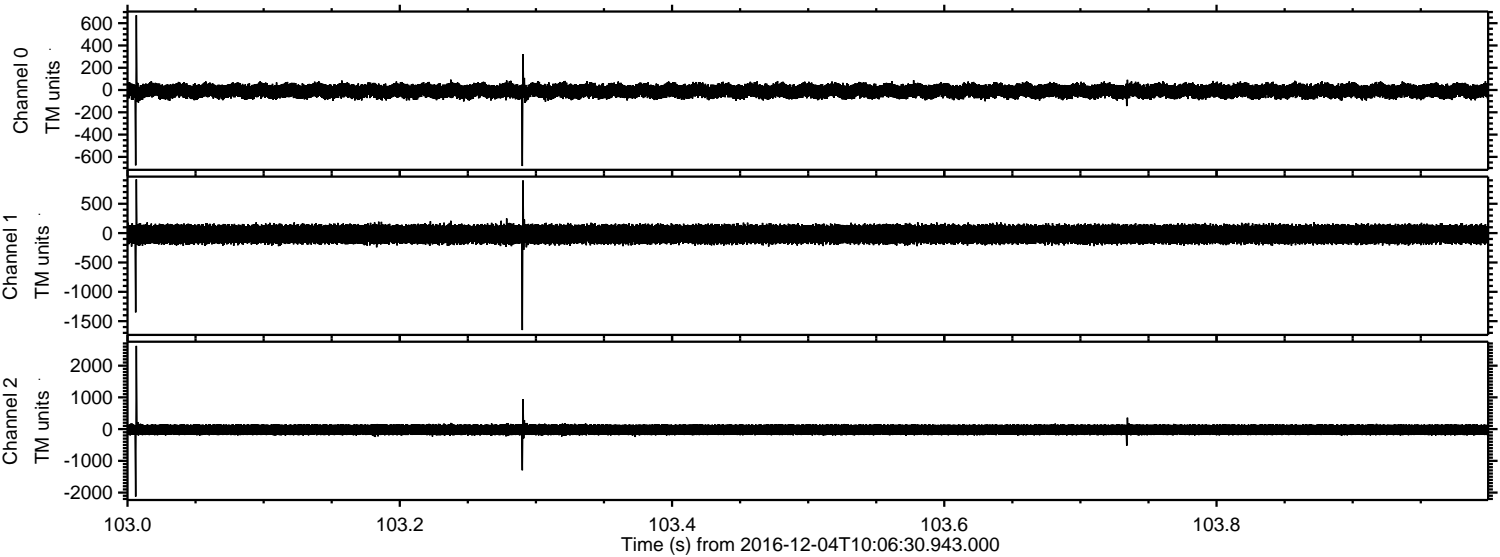
ELMAVAN 3D WAVEFORMS (Measured data sampled at 50 kHz) 51000 packets of 144 samples from 2016-12-04T10:06:30.943.000. Part 126/147

Processed Sun Dec 4 21:34:24 2016 by ELM ver.2012-10-06 from 001__elm20161204_100629__dat00.bin



ELMAVAN 3D WAVEFORMS (Measured data sampled at 50 kHz) 51000 packets of 144 samples from 2016-12-04T10:06:30.943.000. Part 104/147

Processed Sun Dec 4 21:34:25 2016 by ELM ver.2012-10-06 from 001__elm20161204_100629__dat00.bin



ELMAVAN 3D WAVEFORMS (Measured data sampled at 50 kHz) 51000 packets of 144 samples from 2016-12-04T10:06:30.943.000. Part 35/147

Processed Sun Dec 4 21:34:26 2016 by ELM ver.2012-10-06 from 001__elm20161204_100629__dat00.bin

