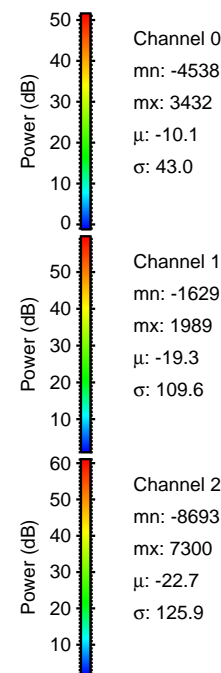
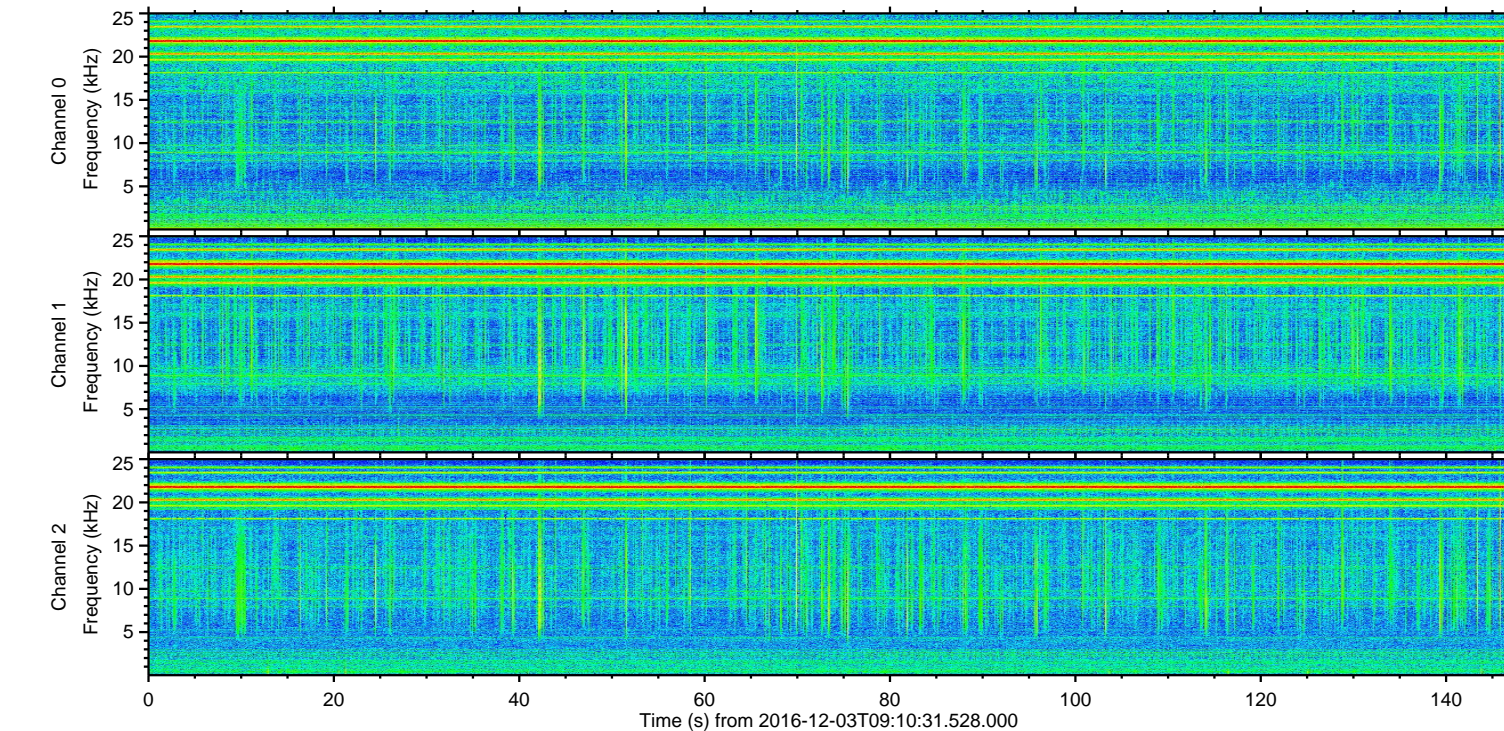
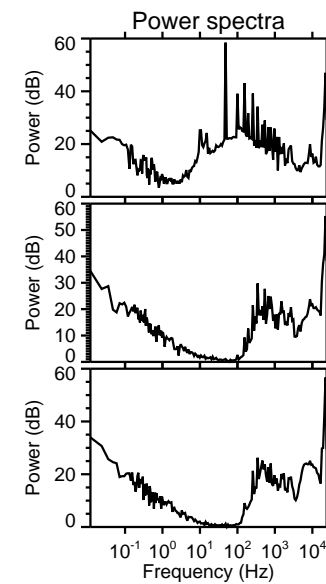
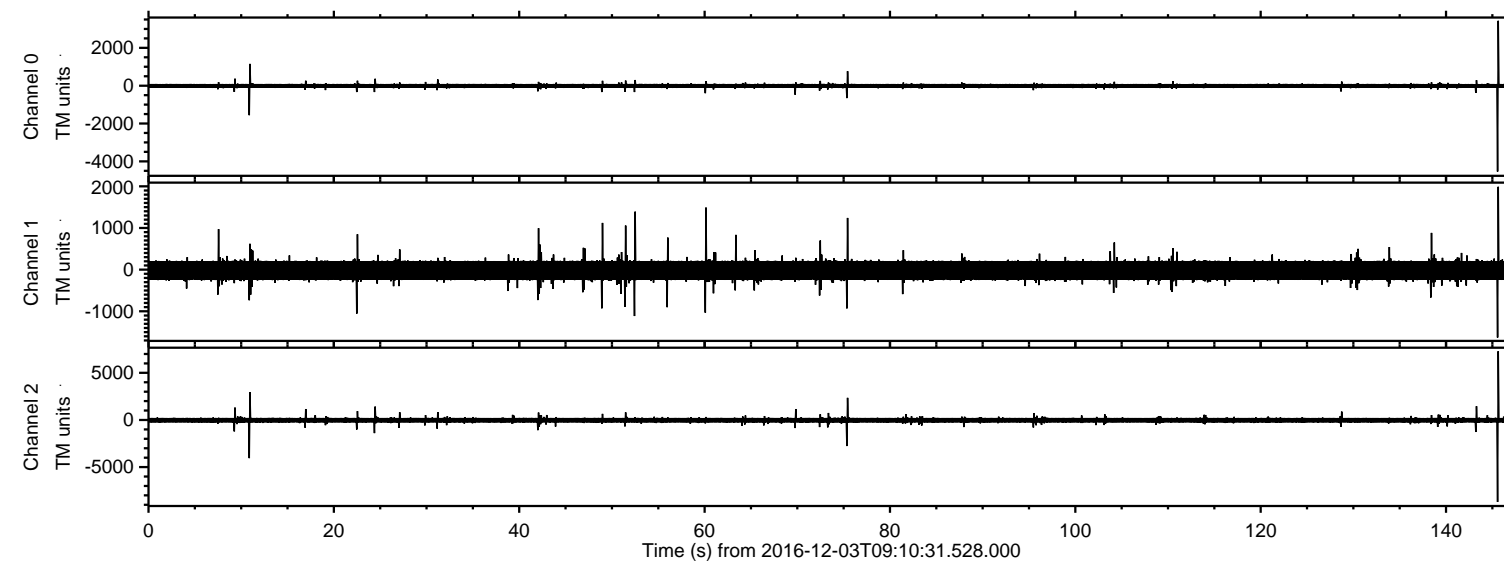


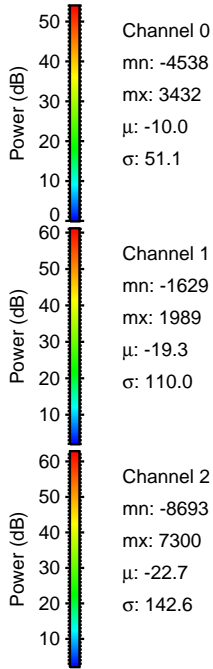
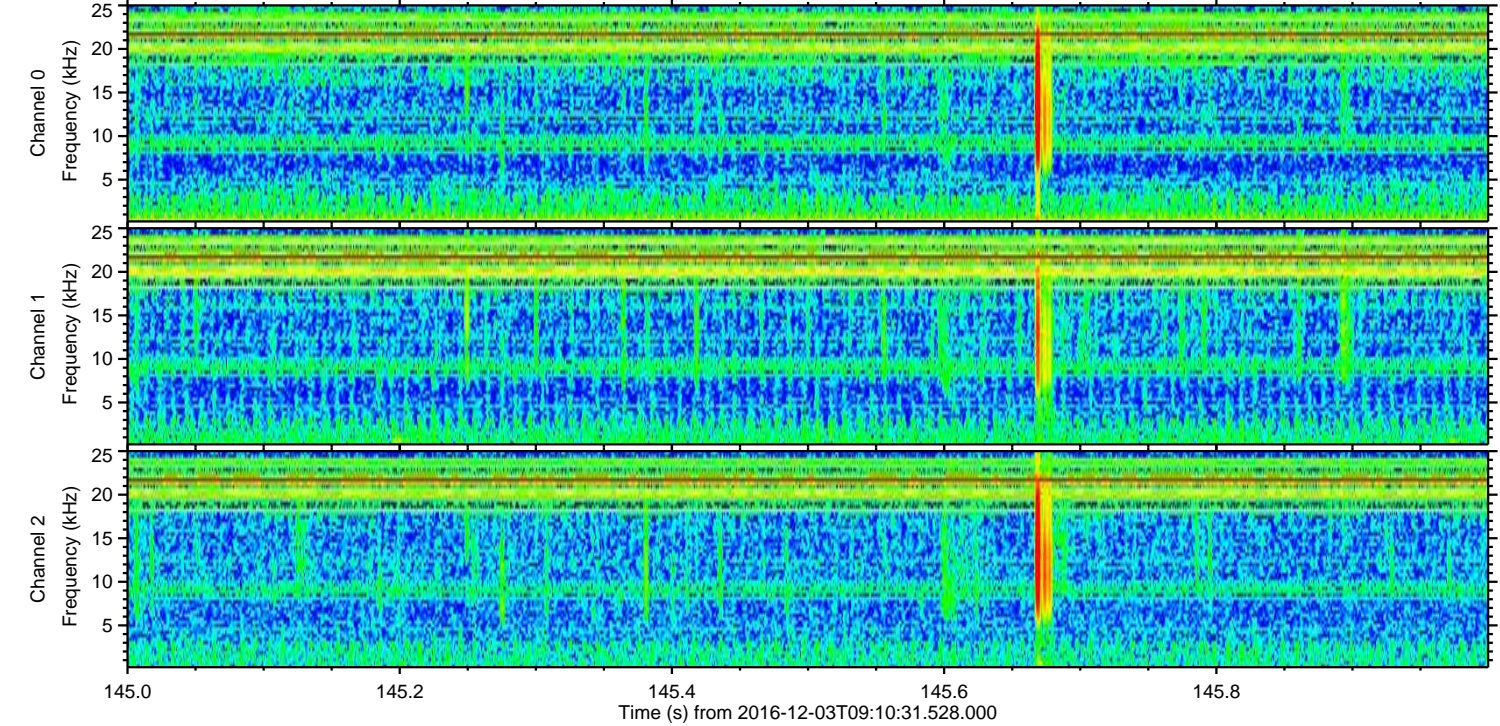
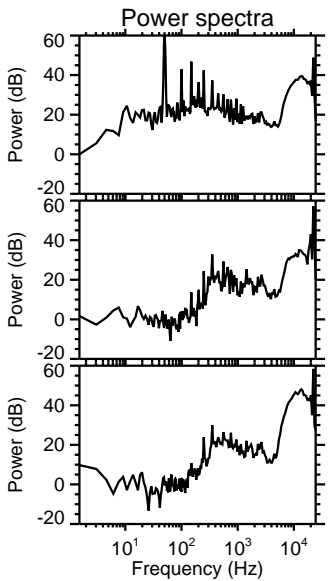
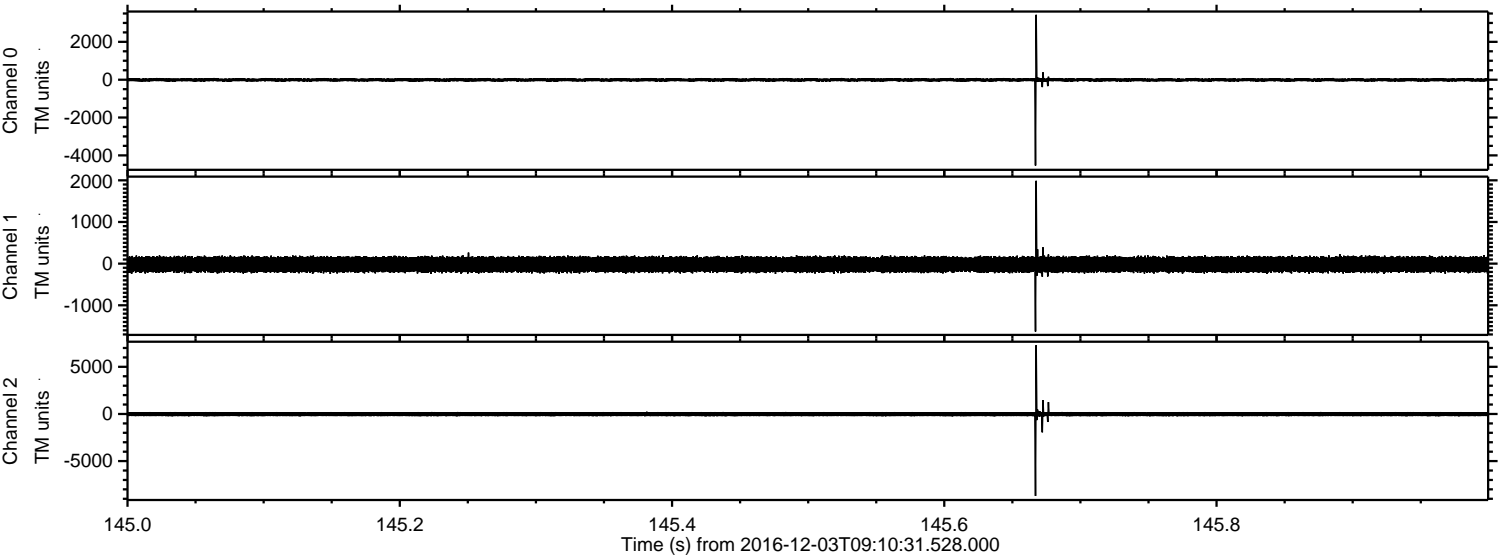
ELMAVAN 3D WAVEFORMS (Measured data sampled at 50 kHz) 51000 packets of 144 samples from 2016-12-03T09:10:31.528.000.

Processed Sat Dec 3 10:18:32 2016 by ELM ver.2012-10-06 from 001__elm20161203_091030__dat00.bin



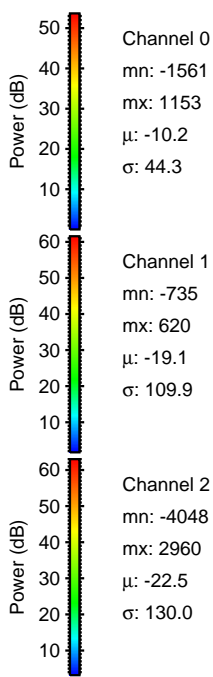
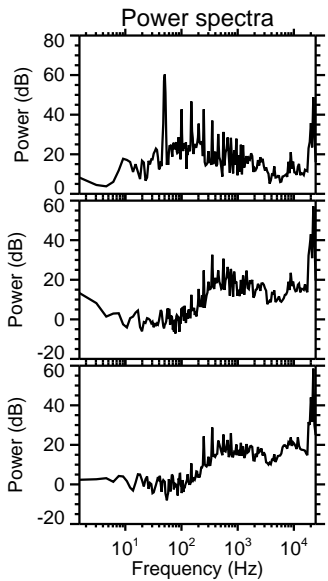
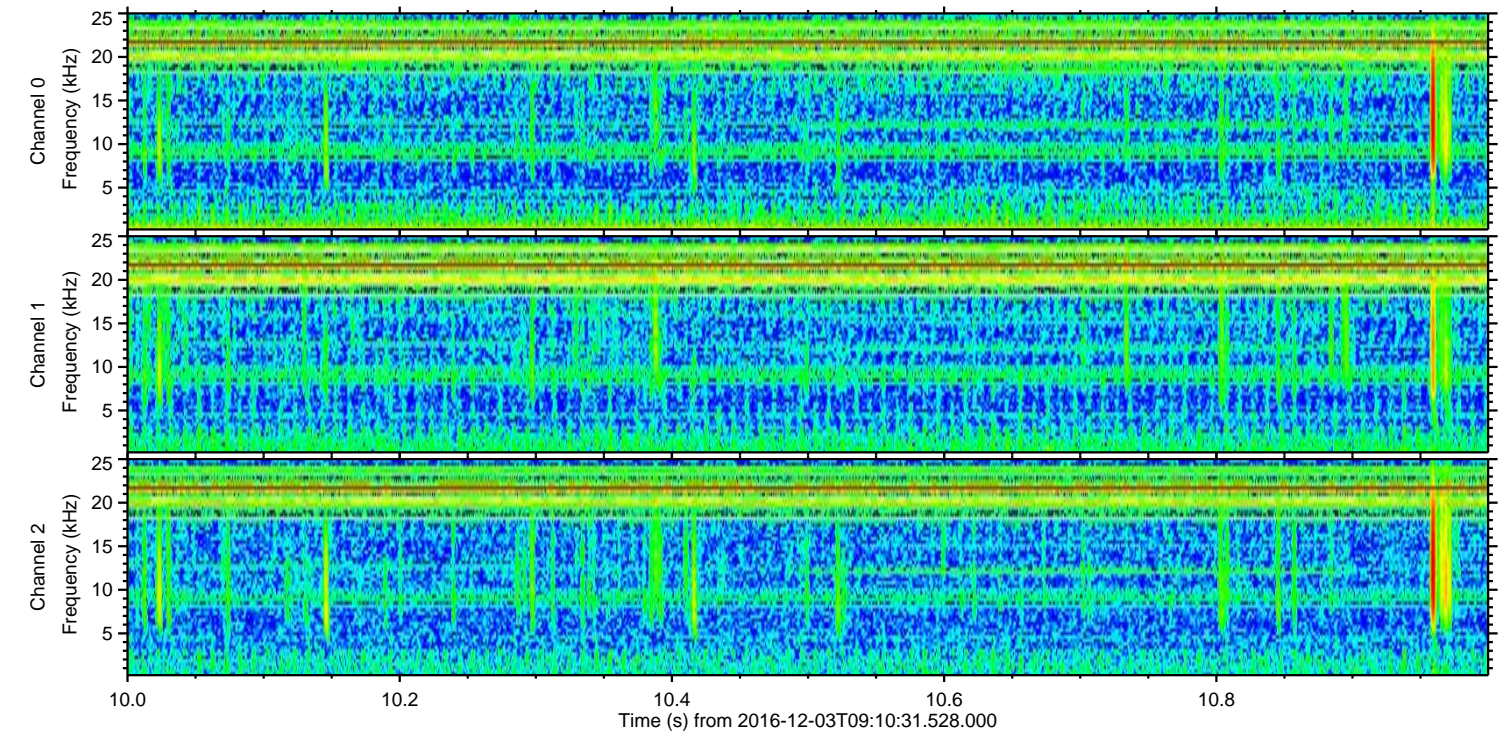
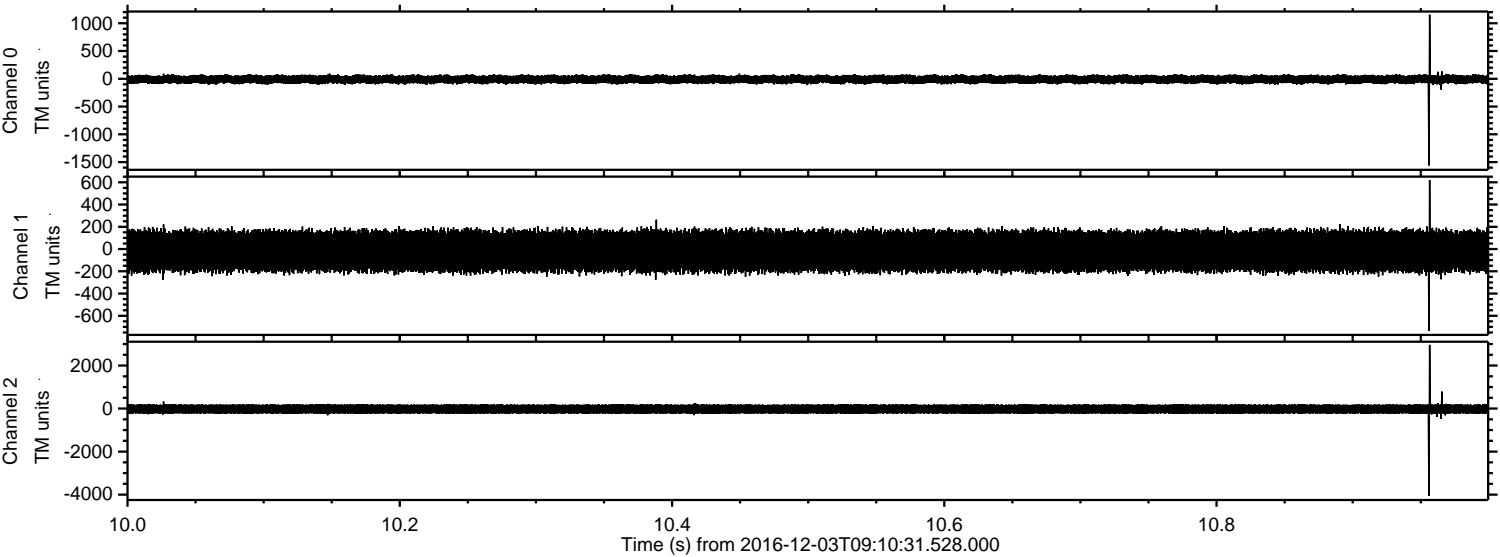
ELMAVAN 3D WAVEFORMS (Measured data sampled at 50 kHz) 51000 packets of 144 samples from 2016-12-03T09:10:31.528.000. Part 146/147

Processed Sat Dec 3 10:18:43 2016 by ELM ver.2012-10-06 from 001__elm20161203_091030__dat00.bin



ELMAVAN 3D WAVEFORMS (Measured data sampled at 50 kHz) 51000 packets of 144 samples from 2016-12-03T09:10:31.528.000. Part 11/147

Processed Sat Dec 3 10:18:44 2016 by ELM ver.2012-10-06 from 001__elm20161203_091030__dat00.bin



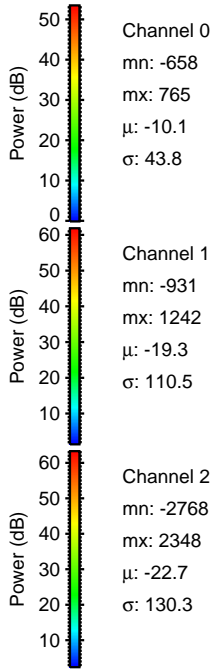
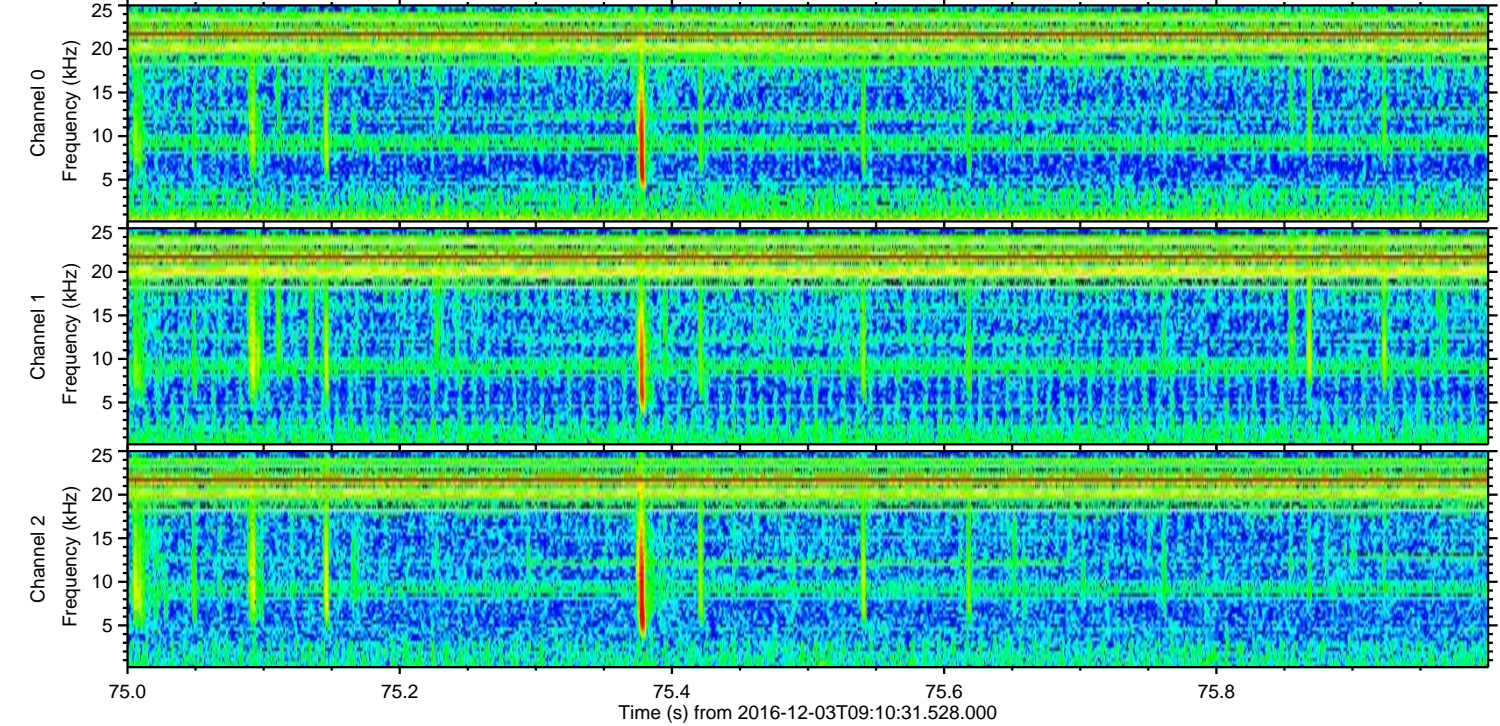
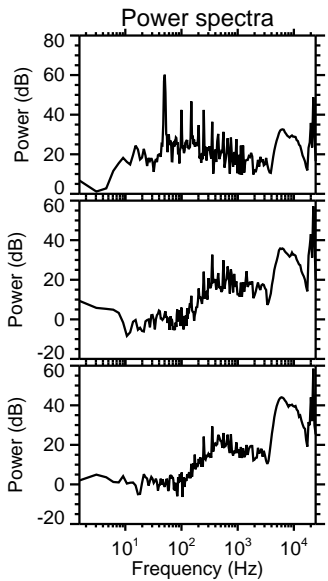
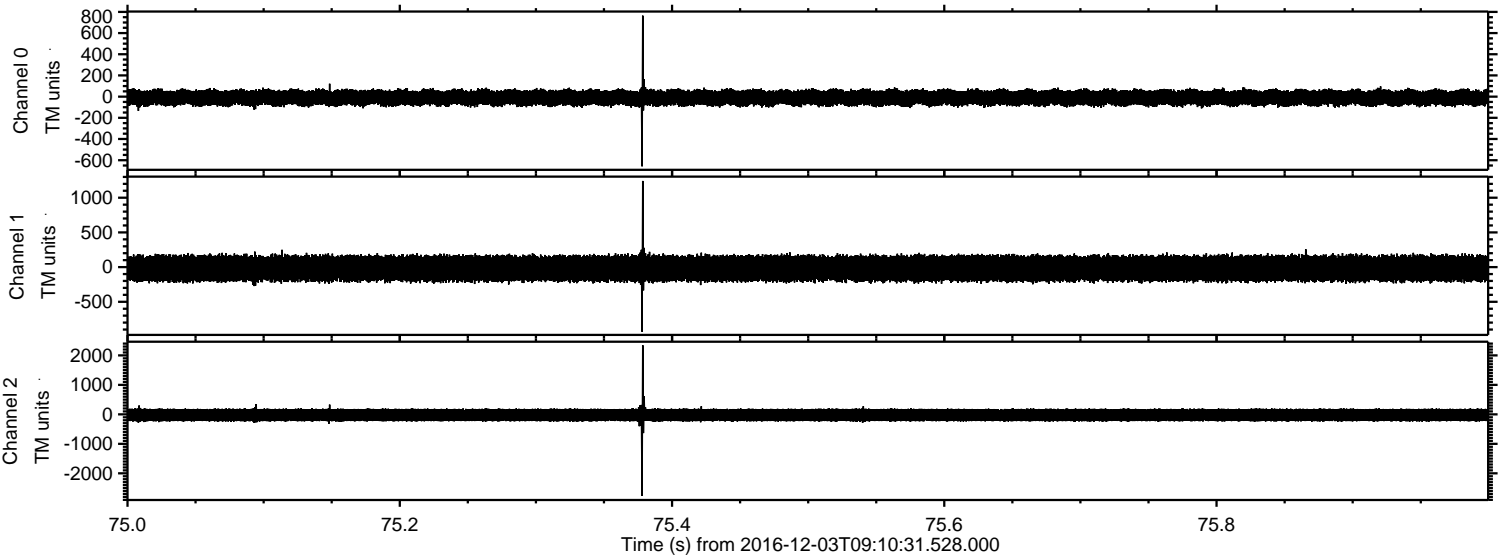
Channel 0
mn: -1561
mx: 1153
 μ : -10.2
 σ : 44.3

Channel 1
mn: -735
mx: 620
 μ : -19.1
 σ : 109.9

Channel 2
mn: -4048
mx: 2960
 μ : -22.5
 σ : 130.0

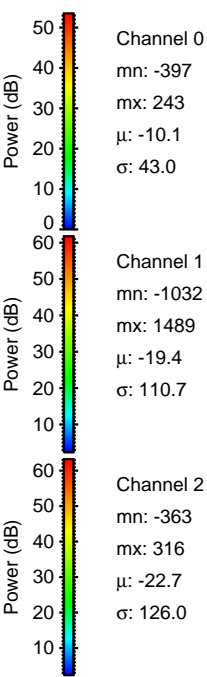
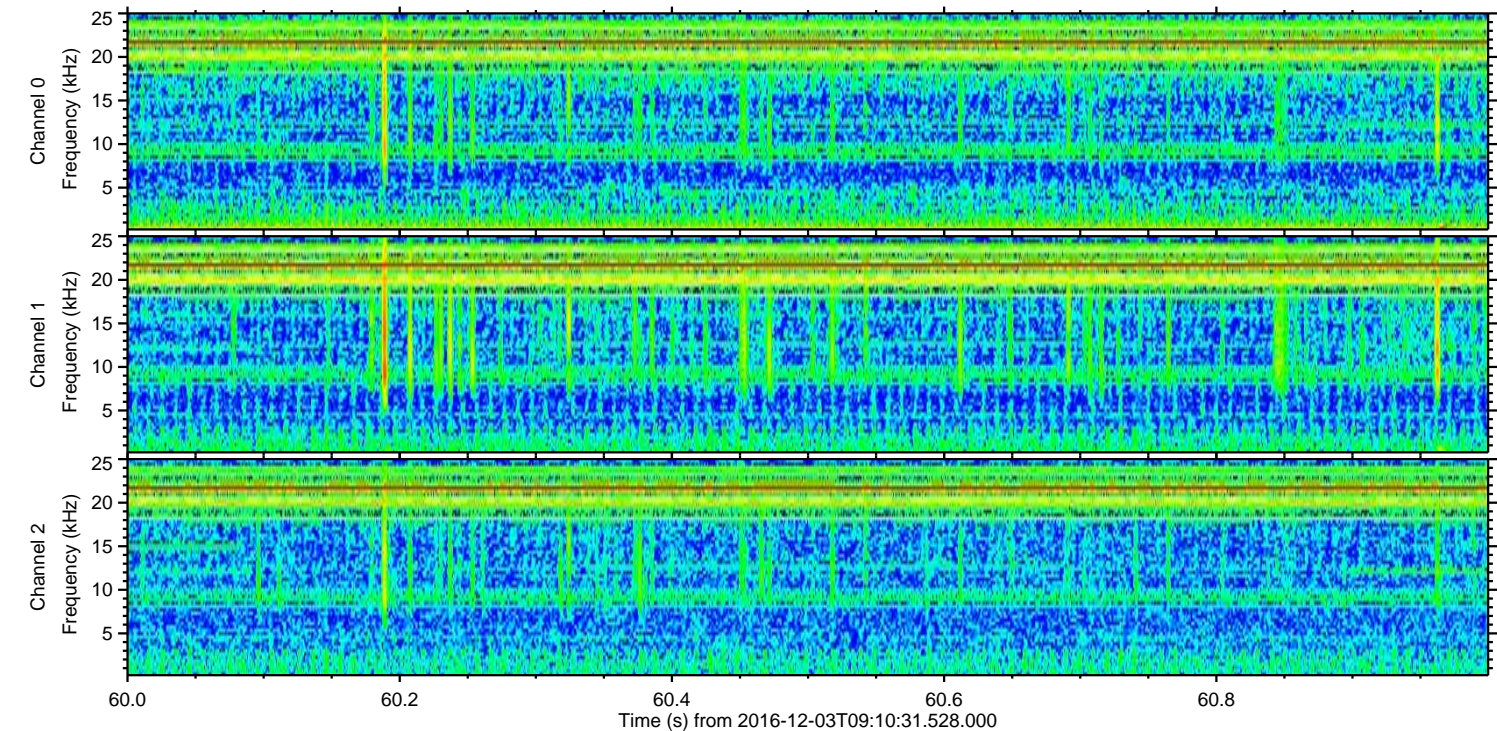
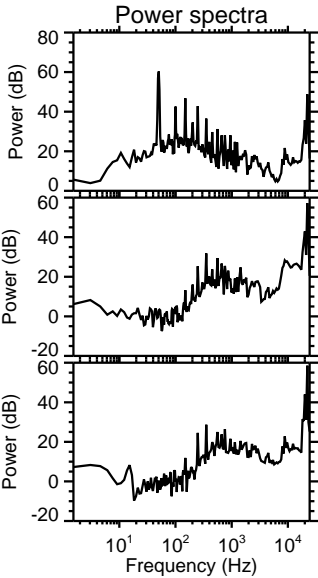
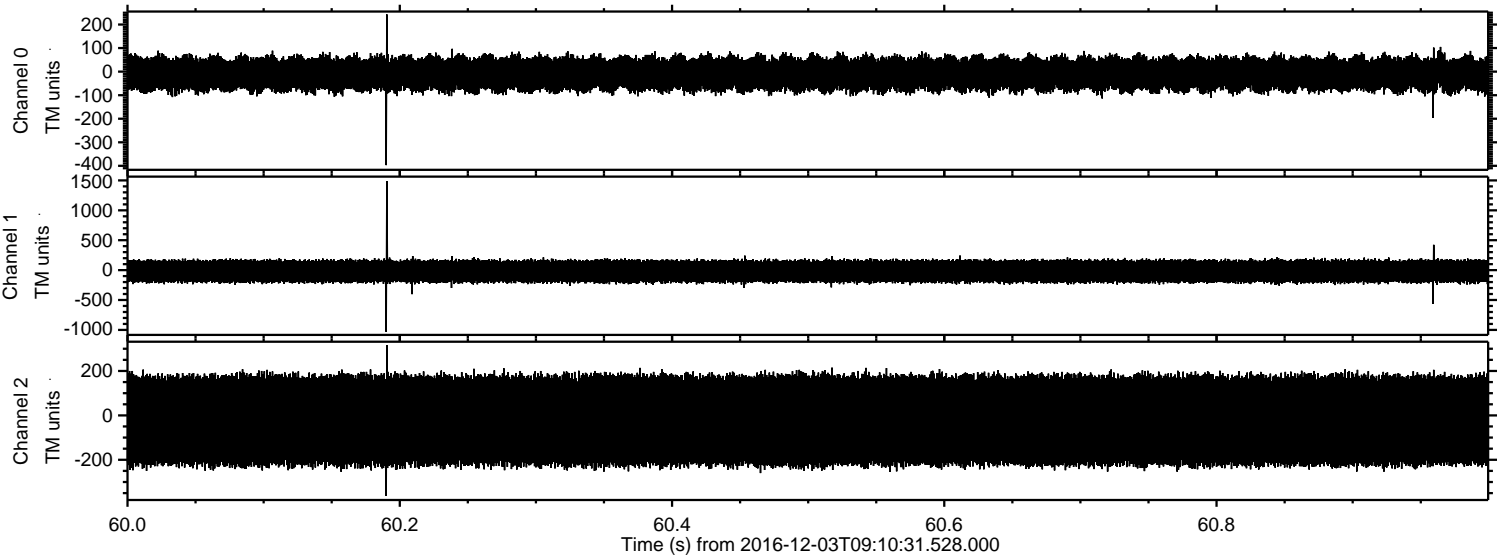
ELMAVAN 3D WAVEFORMS (Measured data sampled at 50 kHz) 51000 packets of 144 samples from 2016-12-03T09:10:31.528.000. Part 76/147

Processed Sat Dec 3 10:18:45 2016 by ELM ver.2012-10-06 from 001__elm20161203_091030__dat00.bin



ELMAVAN 3D WAVEFORMS (Measured data sampled at 50 kHz) 51000 packets of 144 samples from 2016-12-03T09:10:31.528.000. Part 61/147

Processed Sat Dec 3 10:18:46 2016 by ELM ver.2012-10-06 from 001__elm20161203_091030__dat00.bin



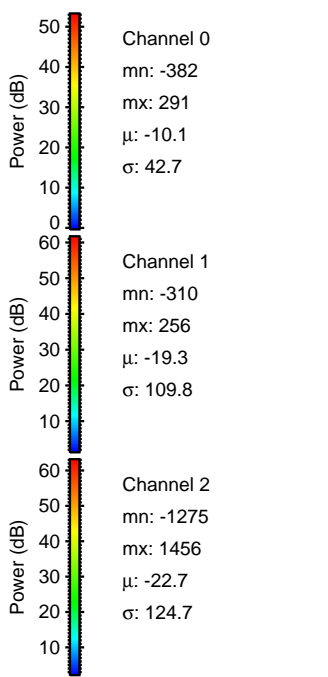
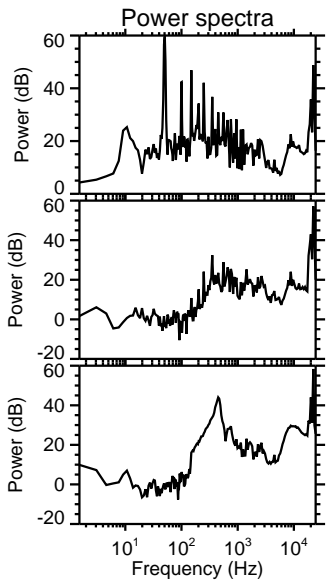
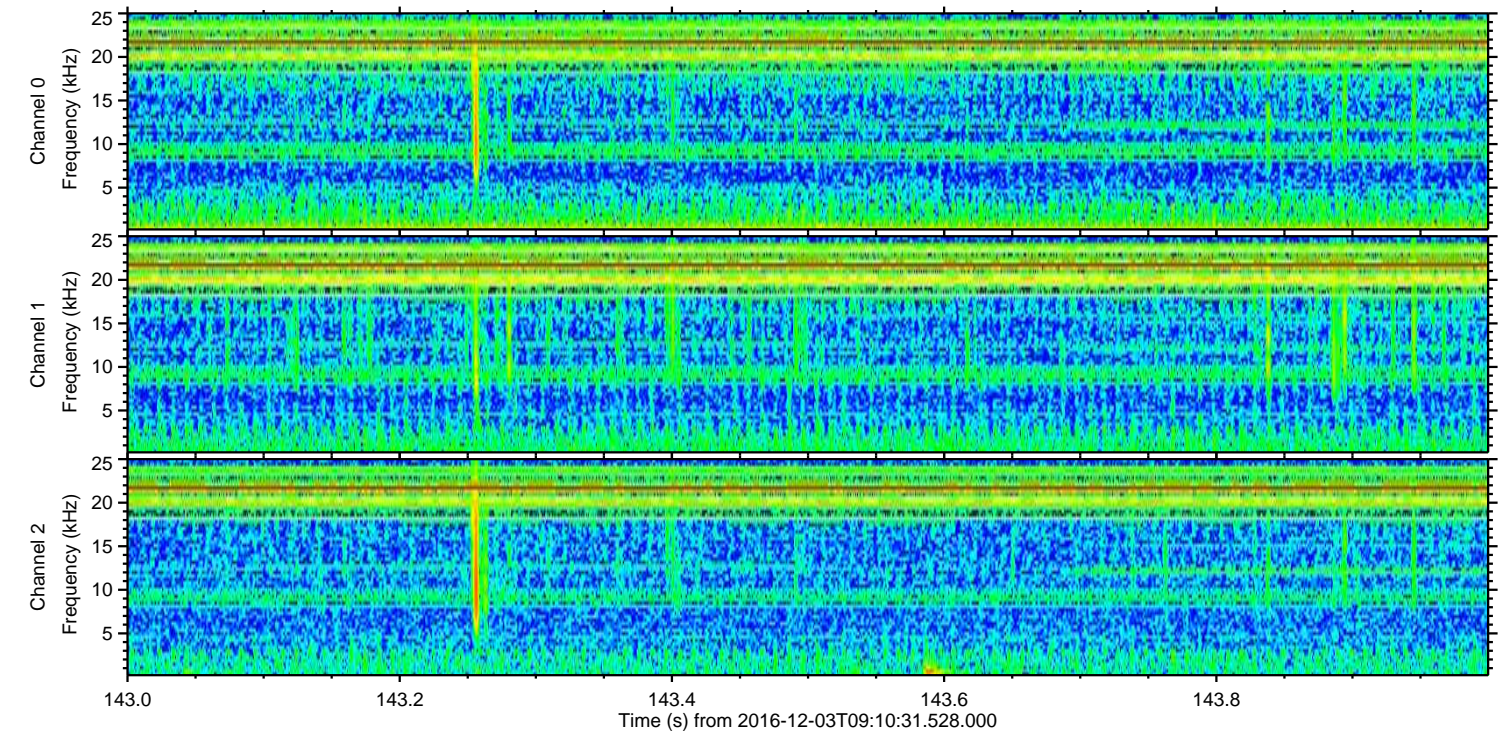
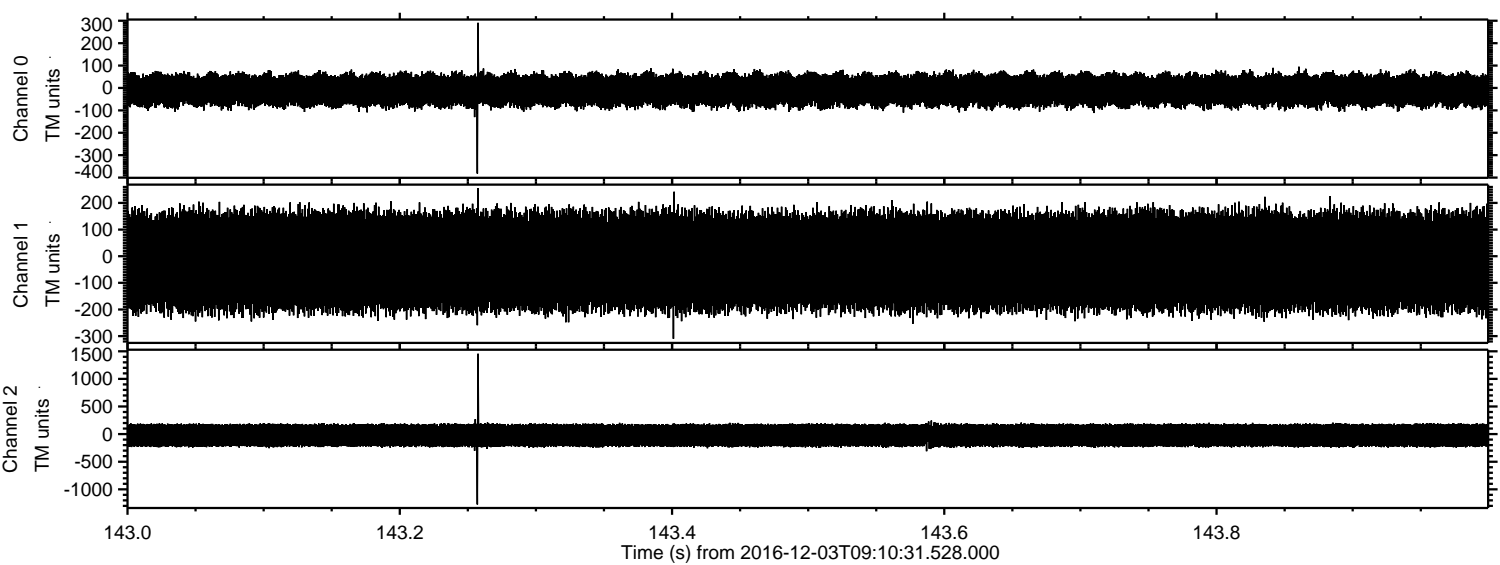
Channel 0
mn: -397
mx: 243
 μ : -10.1
 σ : 43.0

Channel 1
mn: -1032
mx: 1489
 μ : -19.4
 σ : 110.7

Channel 2
mn: -363
mx: 316
 μ : -22.7
 σ : 126.0

ELMAVAN 3D WAVEFORMS (Measured data sampled at 50 kHz) 51000 packets of 144 samples from 2016-12-03T09:10:31.528.000. Part 144/147

Processed Sat Dec 3 10:18:47 2016 by ELM ver.2012-10-06 from 001__elm20161203_091030__dat00.bin



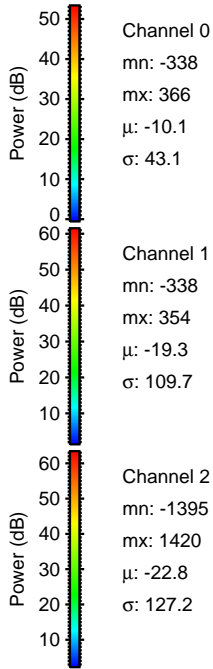
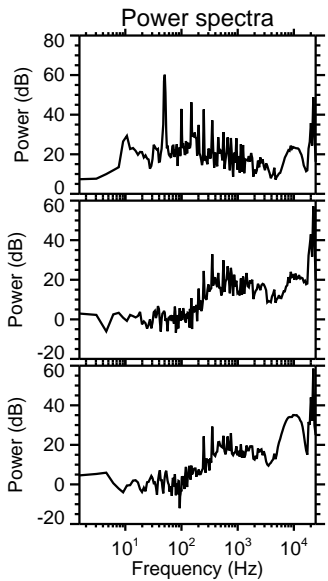
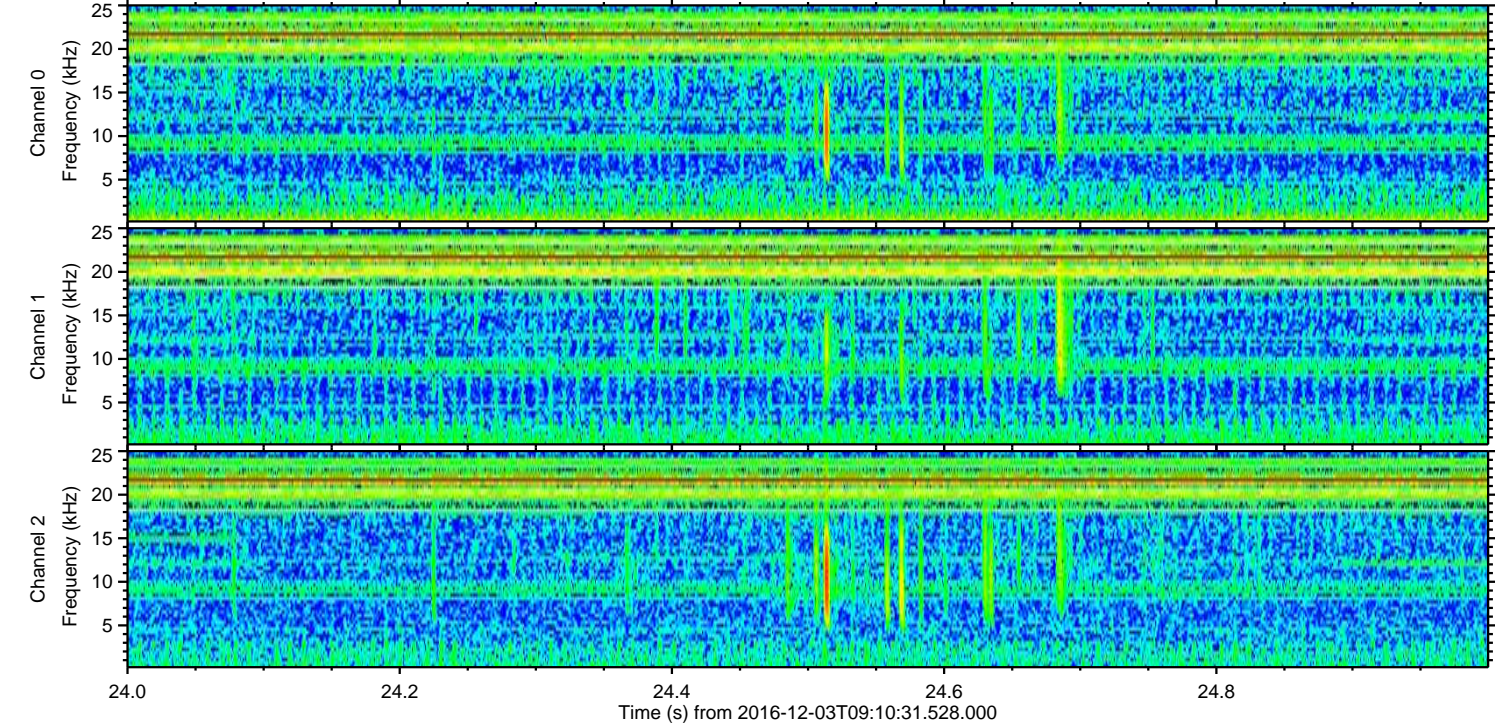
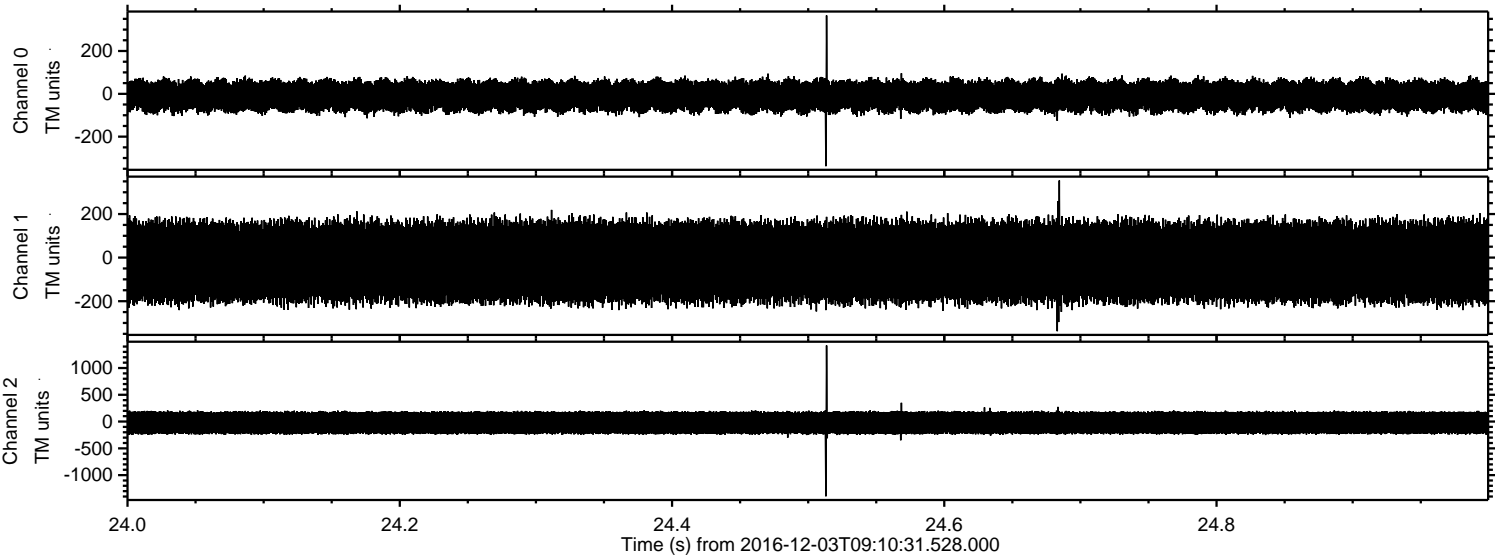
Power spectra

Channel 0
mn: -382
mx: 291
 μ : -10.1
 σ : 42.7

Channel 1
mn: -310
mx: 256
 μ : -19.3
 σ : 109.8

Channel 2
mn: -1275
mx: 1456
 μ : -22.7
 σ : 124.7

Processed Sat Dec 3 10:18:48 2016 by ELM ver.2012-10-06 from 001__elm20161203_091030__dat00.bin



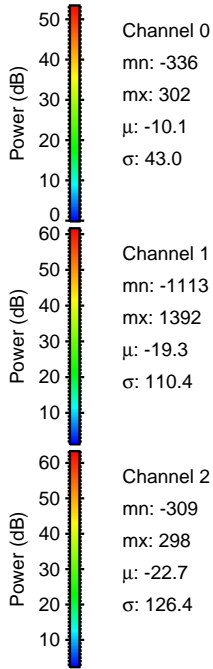
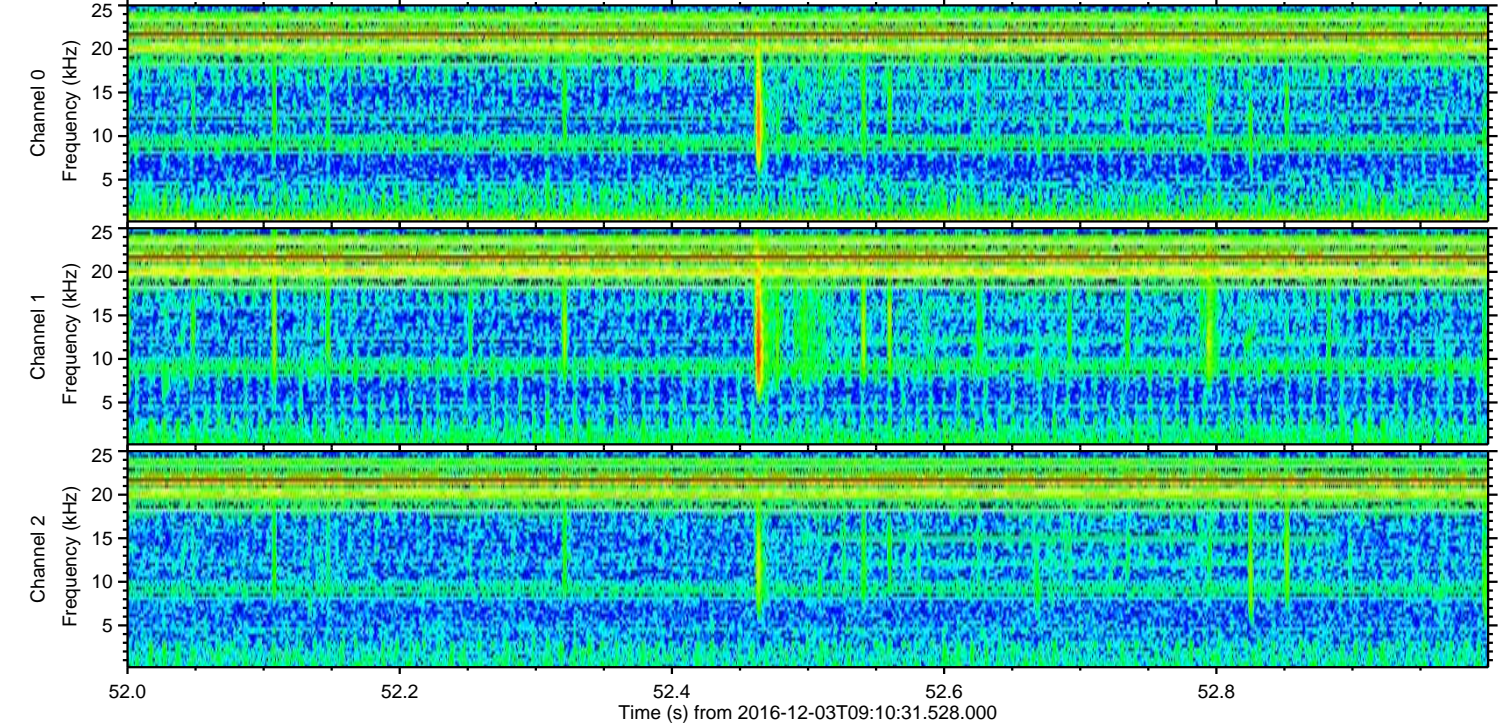
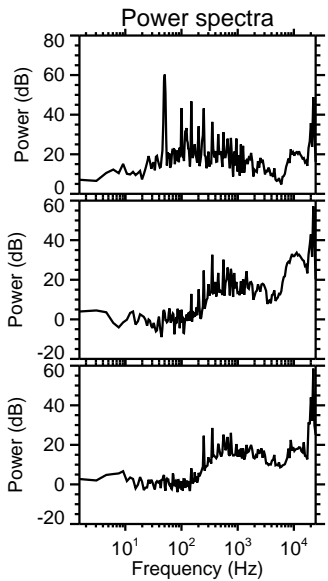
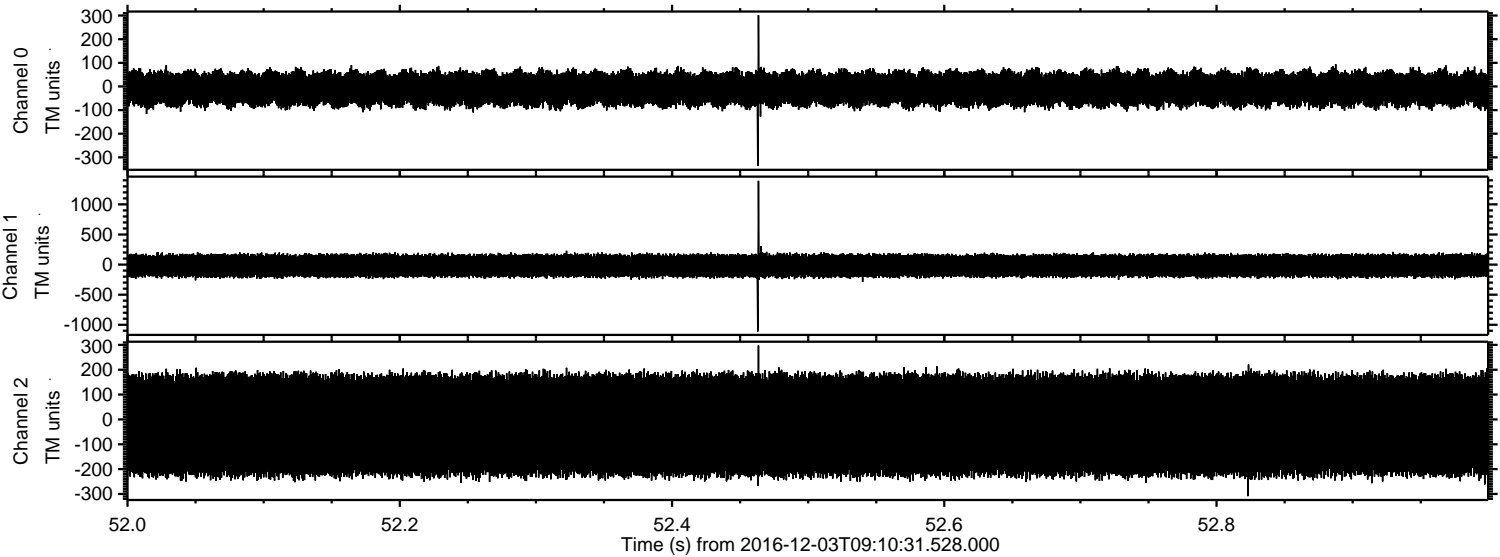
Channel 0
mn: -338
mx: 366
 μ : -10.1
 σ : 43.1

Channel 1
mn: -338
mx: 354
 μ : -19.3
 σ : 109.7

Channel 2
mn: -1395
mx: 1420
 μ : -22.8
 σ : 127.2

ELMAVAN 3D WAVEFORMS (Measured data sampled at 50 kHz) 51000 packets of 144 samples from 2016-12-03T09:10:31.528.000. Part 53/147

Processed Sat Dec 3 10:18:49 2016 by ELM ver.2012-10-06 from 001__elm20161203_091030__dat00.bin



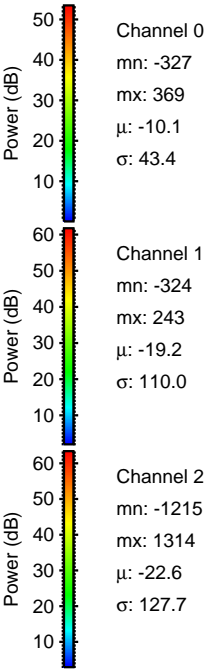
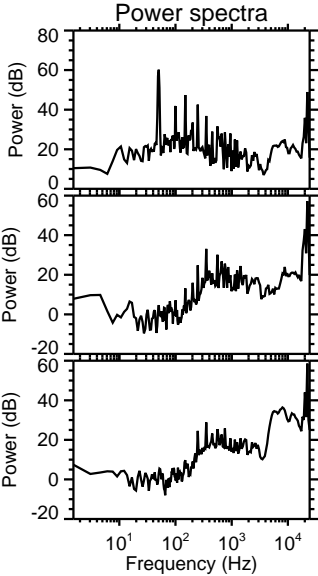
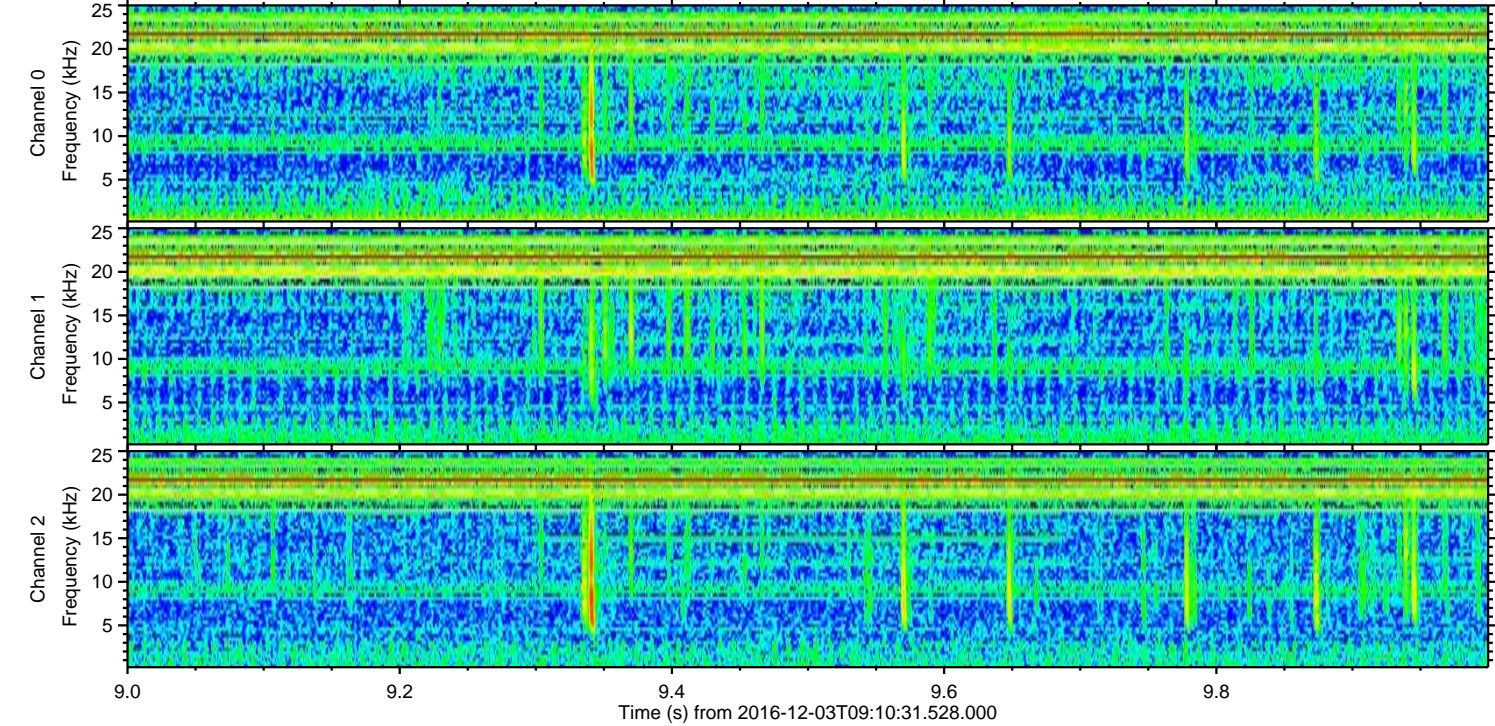
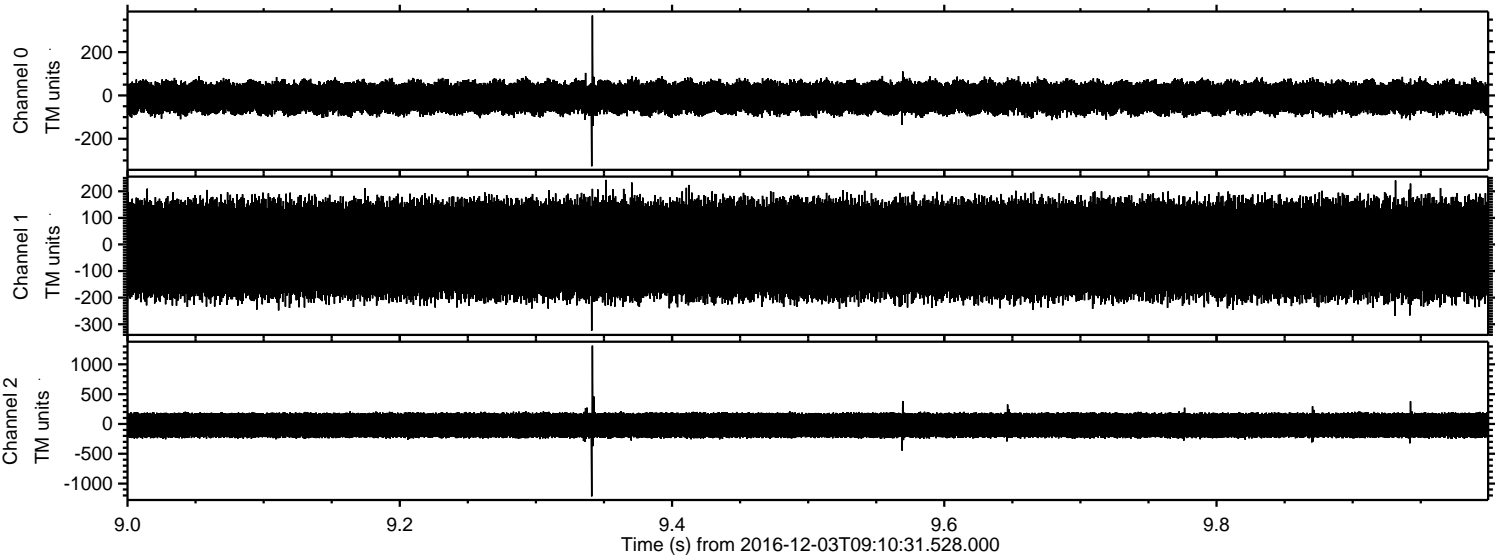
Channel 0
mn: -336
mx: 302
 μ : -10.1
 σ : 43.0

Channel 1
mn: -1113
mx: 1392
 μ : -19.3
 σ : 110.4

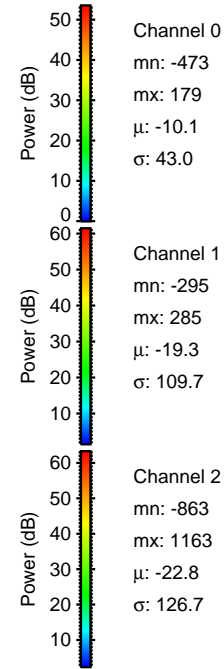
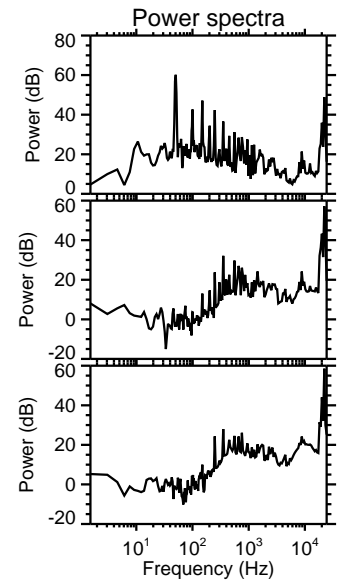
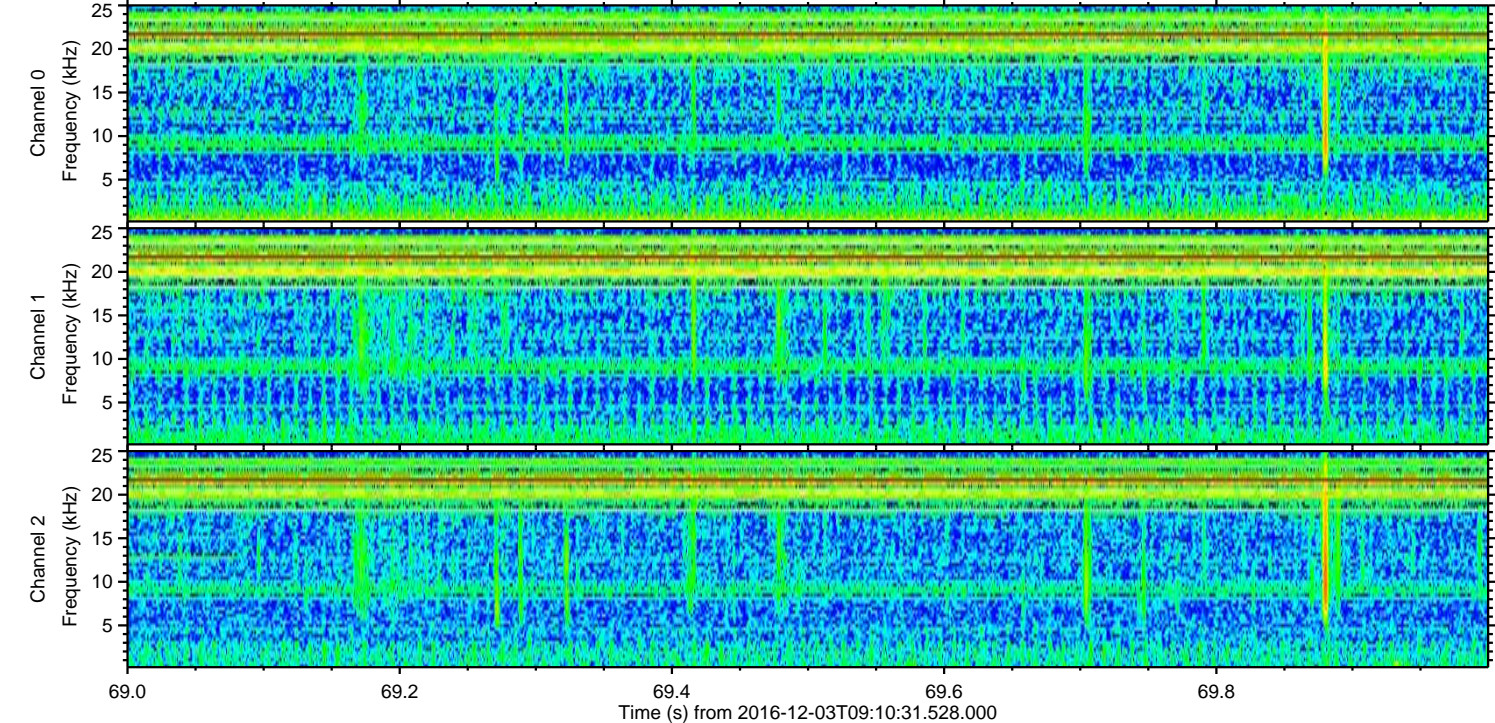
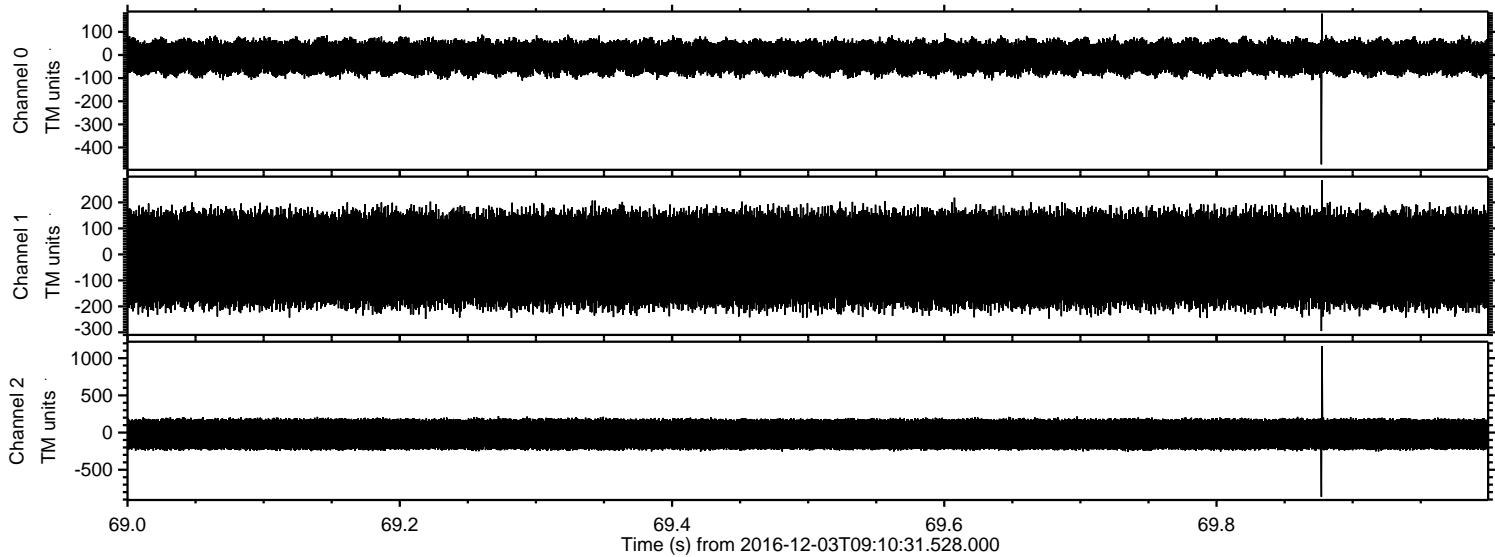
Channel 2
mn: -309
mx: 298
 μ : -22.7
 σ : 126.4

ELMAVAN 3D WAVEFORMS (Measured data sampled at 50 kHz) 51000 packets of 144 samples from 2016-12-03T09:10:31.528.000. Part 10/147

Processed Sat Dec 3 10:18:50 2016 by ELM ver.2012-10-06 from 001__elm20161203_091030__dat00.bin



Processed Sat Dec 3 10:18:51 2016 by ELM ver.2012-10-06 from 001__elm20161203_091030__dat00.bin



Channel 0
mn: -473
mx: 179
 μ : -10.1
 σ : 43.0

Channel 1
mn: -295
mx: 285
 μ : -19.3
 σ : 109.7

Channel 2
mn: -863
mx: 1163
 μ : -22.8
 σ : 126.7

ELMAVAN 3D WAVEFORMS (Measured data sampled at 50 kHz) 51000 packets of 144 samples from 2016-12-03T09:10:31.528.000. Part 102/147

