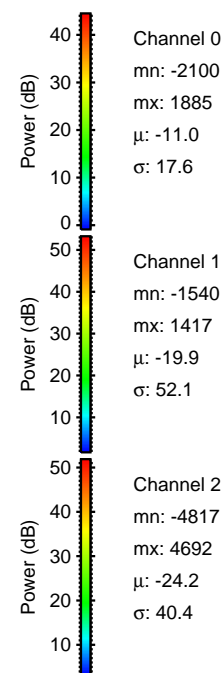
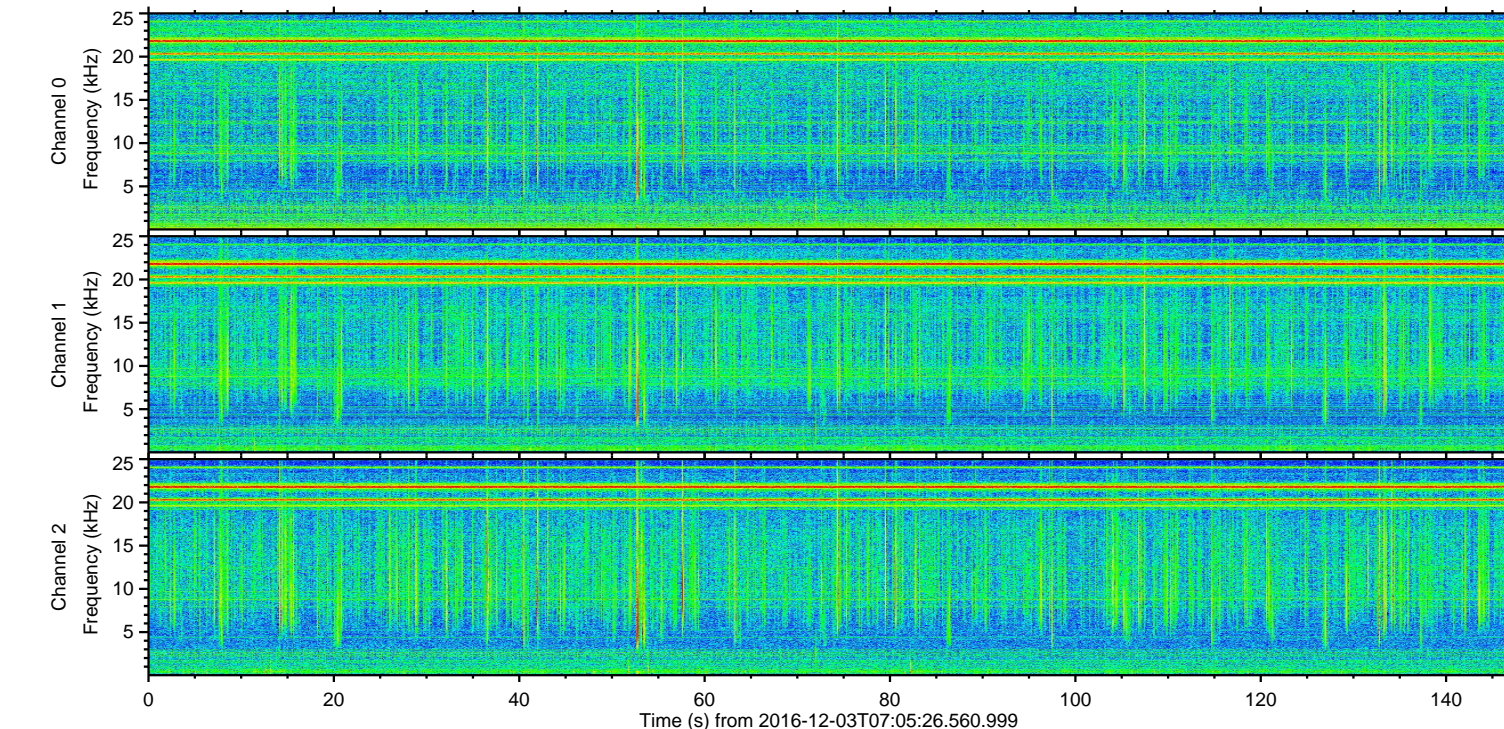
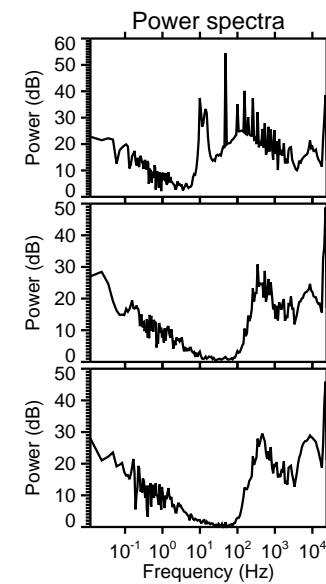
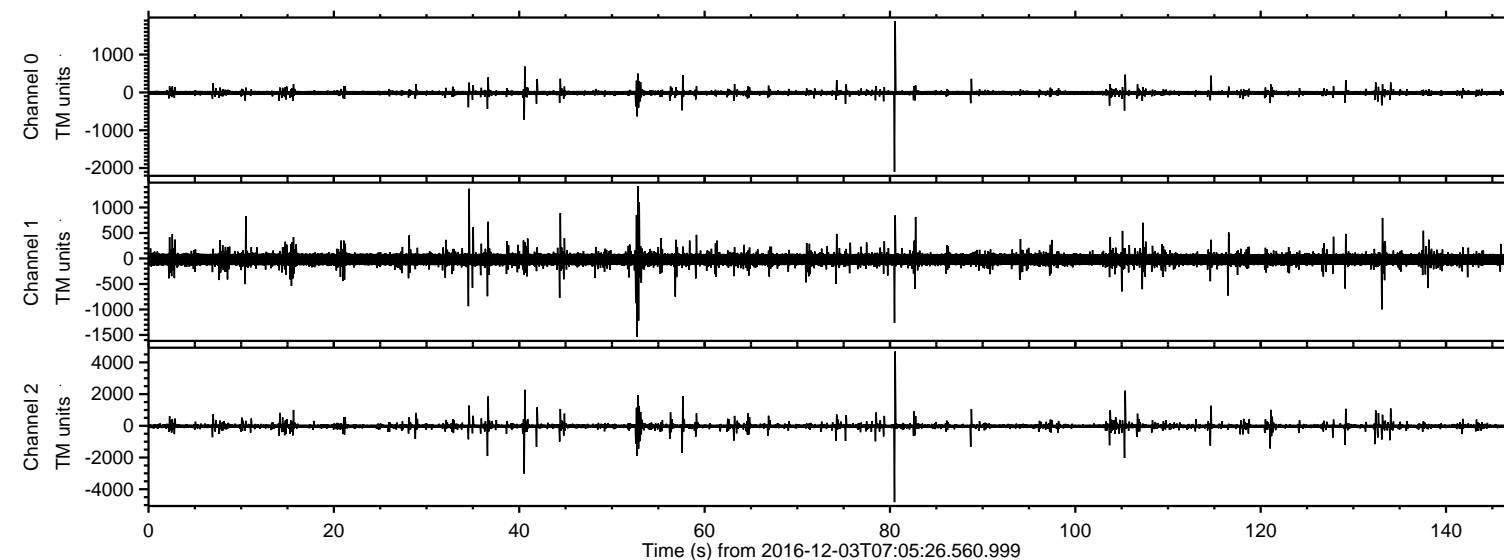


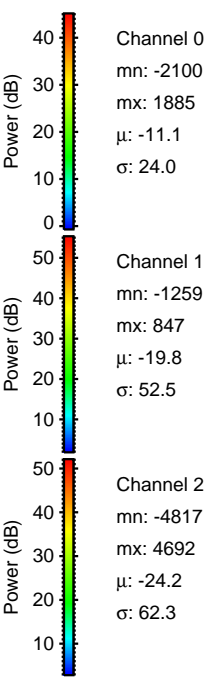
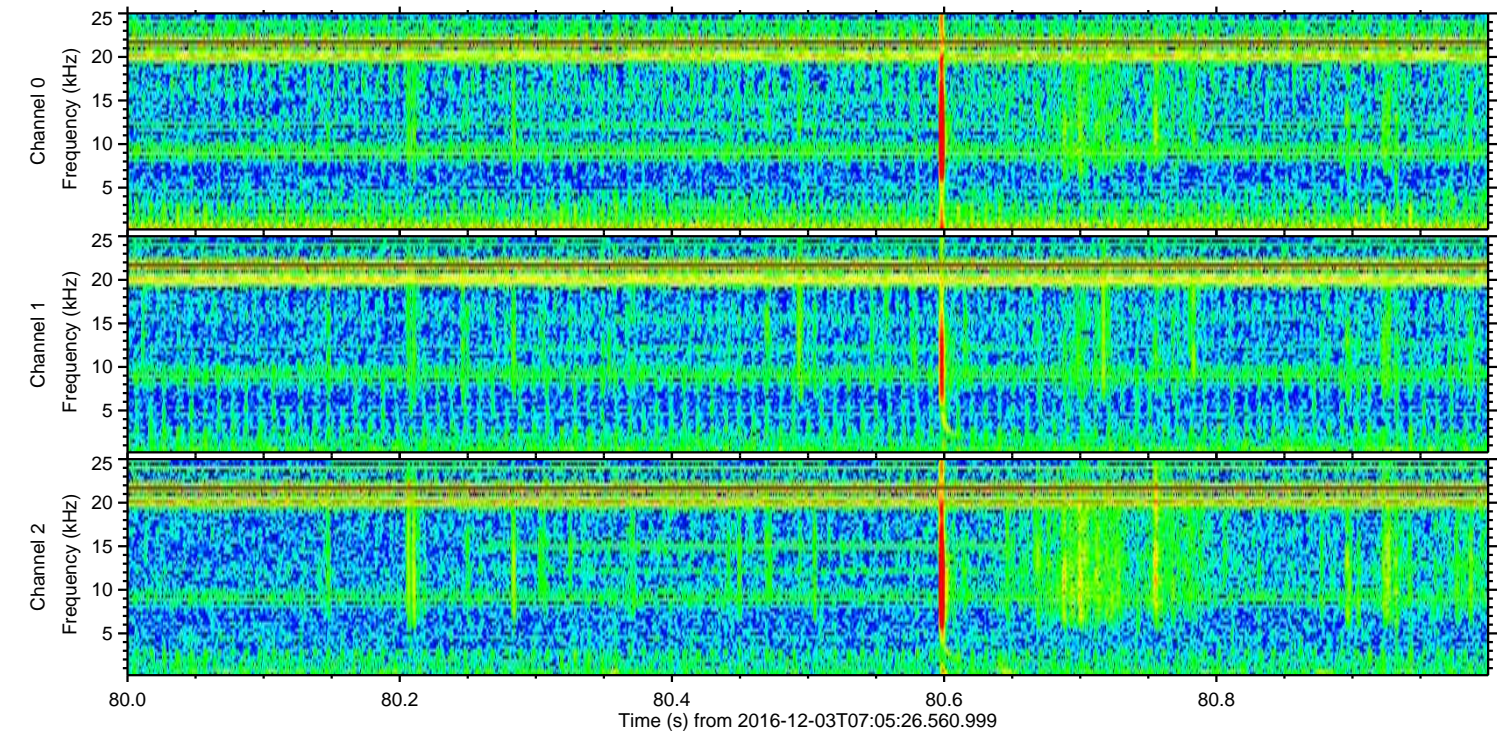
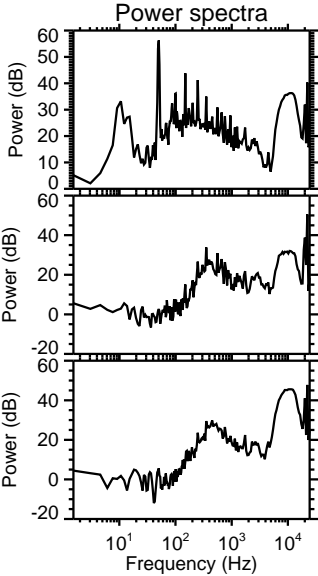
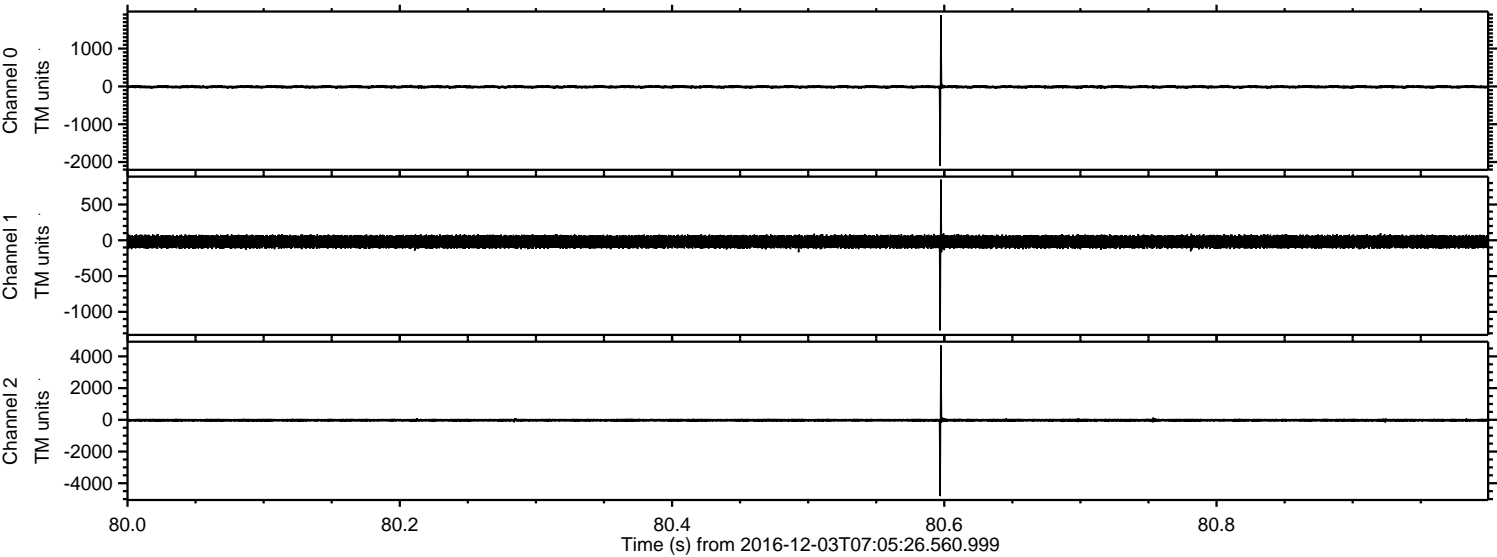
# ELMAVAN 3D WAVEFORMS (Measured data sampled at 50 kHz) 51000 packets of 144 samples from 2016-12-03T07:05:26.560.999.

Processed Sat Dec 3 08:13:25 2016 by ELM ver.2012-10-06 from 001\_\_elm20161203\_070525\_\_dat00.bin





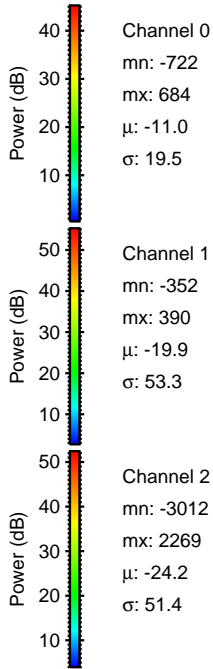
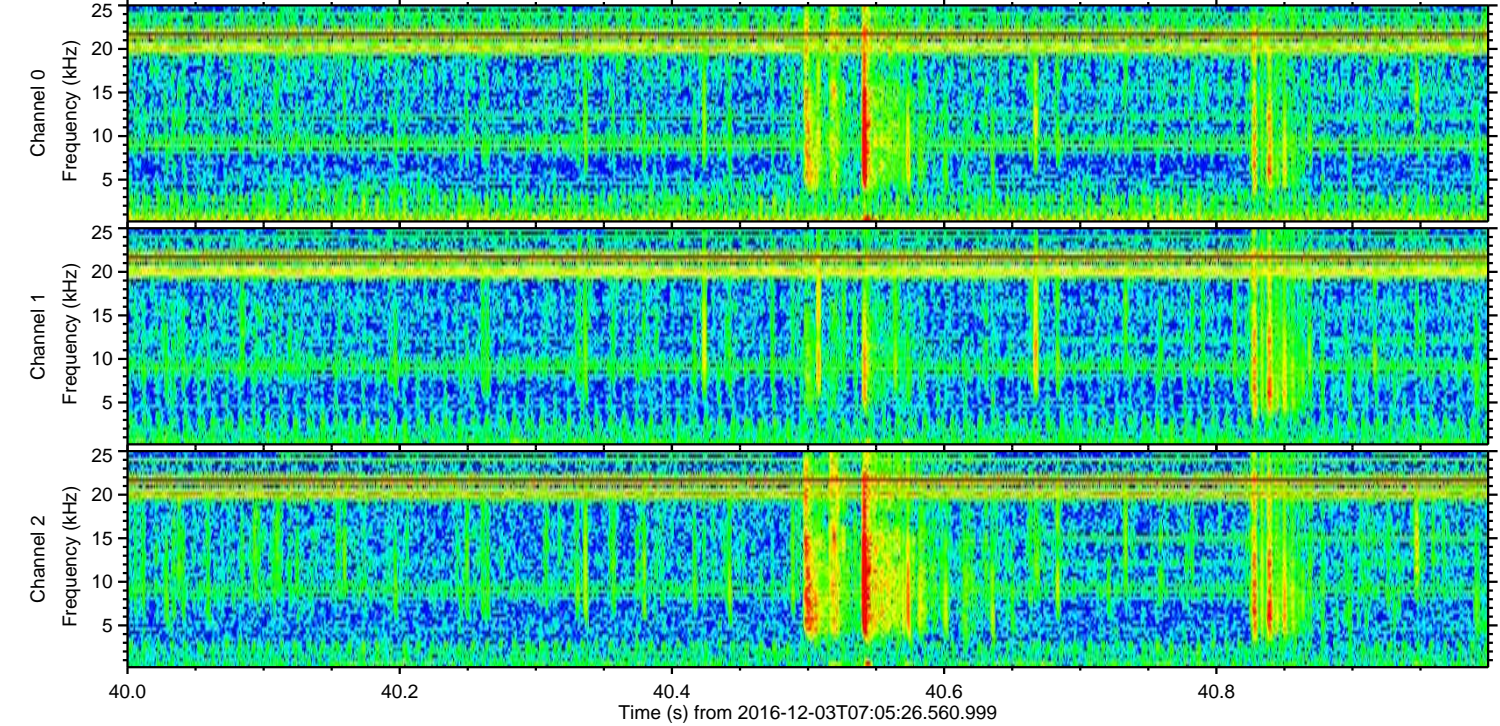
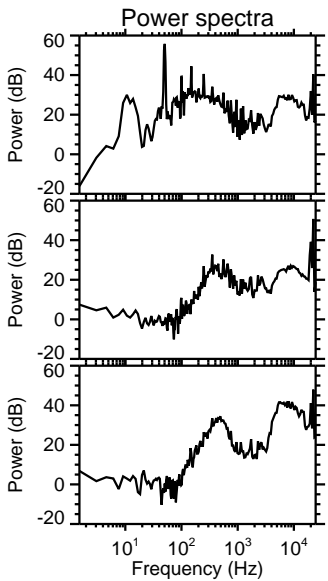
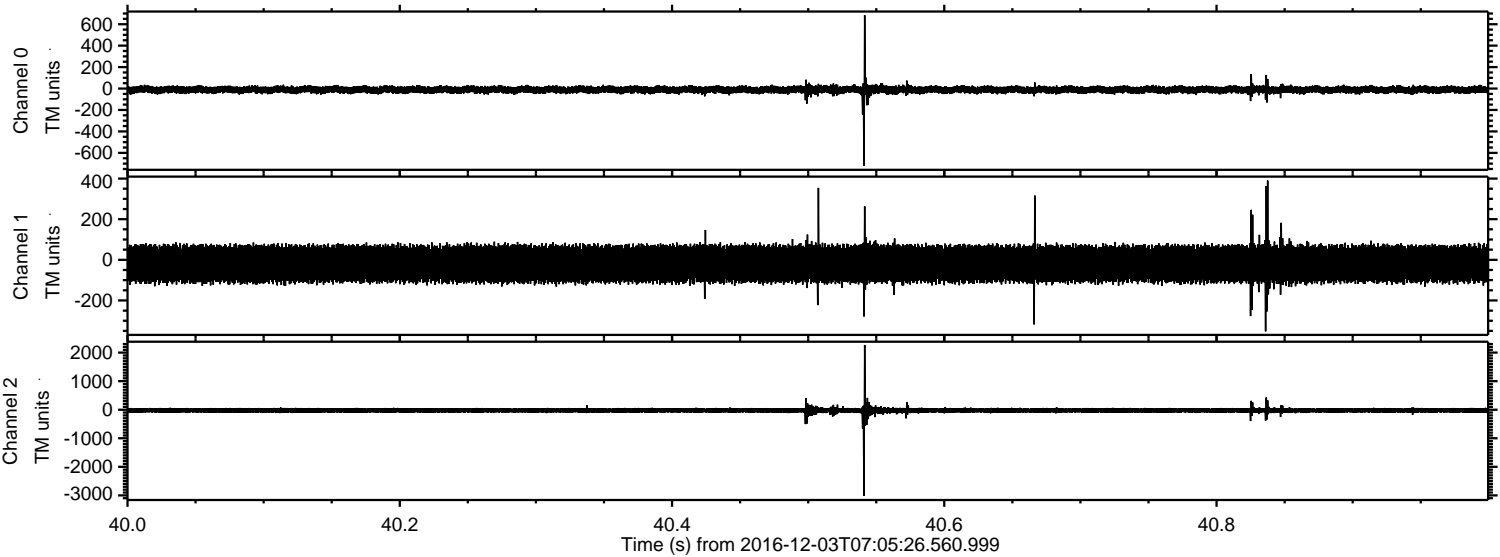
Processed Sat Dec 3 08:13:36 2016 by ELM ver.2012-10-06 from 001\_\_elm20161203\_070525\_\_dat00.bin





ELMAVAN 3D WAVEFORMS (Measured data sampled at 50 kHz) 51000 packets of 144 samples from 2016-12-03T07:05:26.560.999. Part 41/147

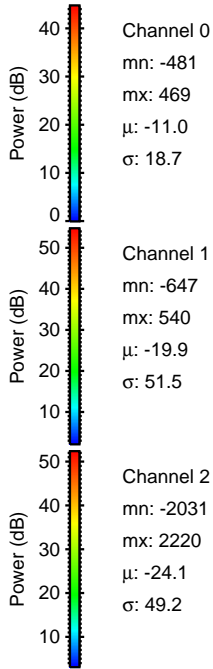
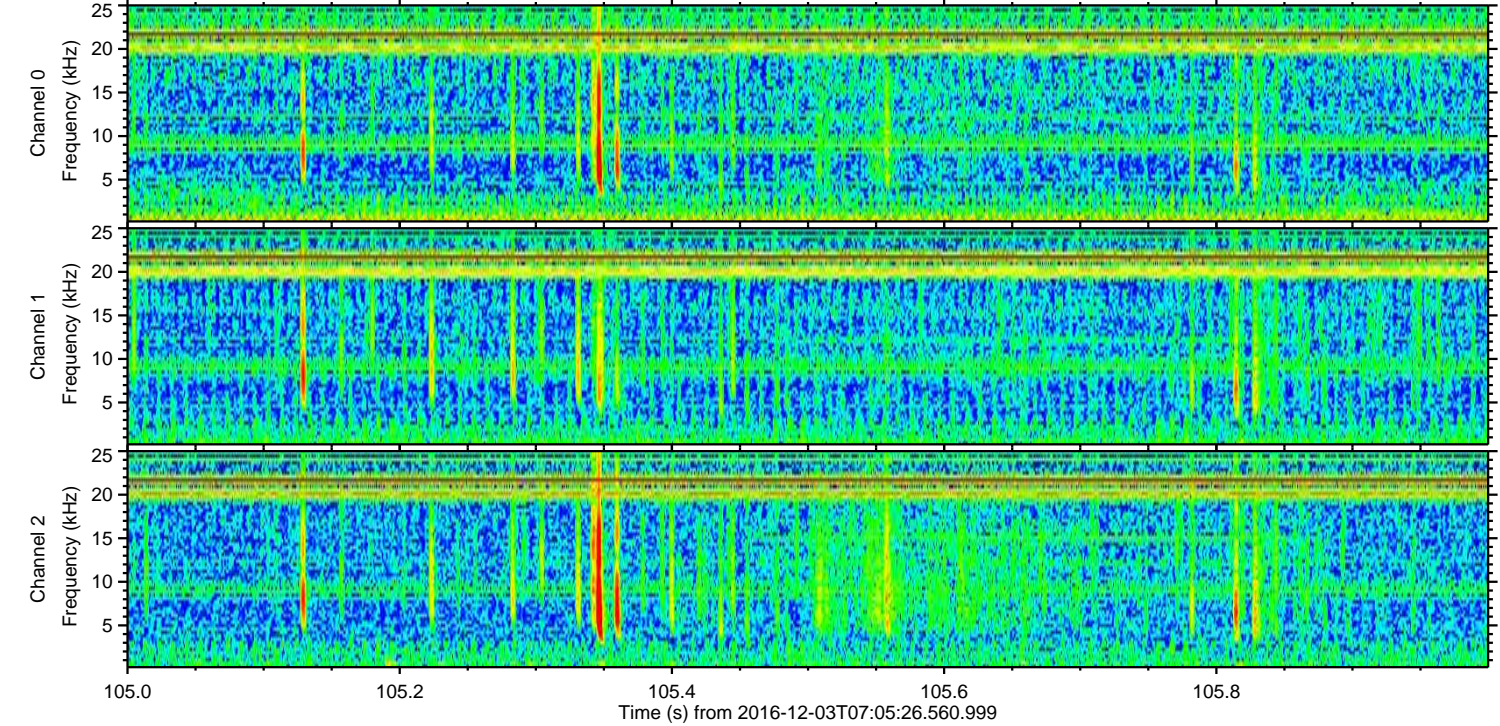
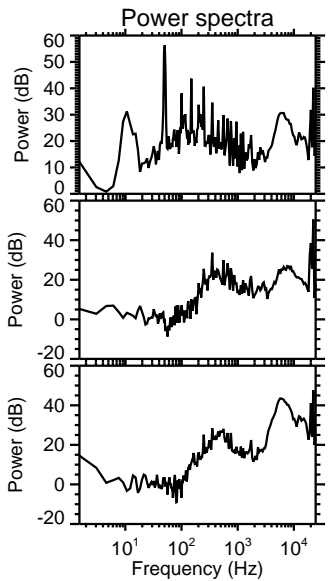
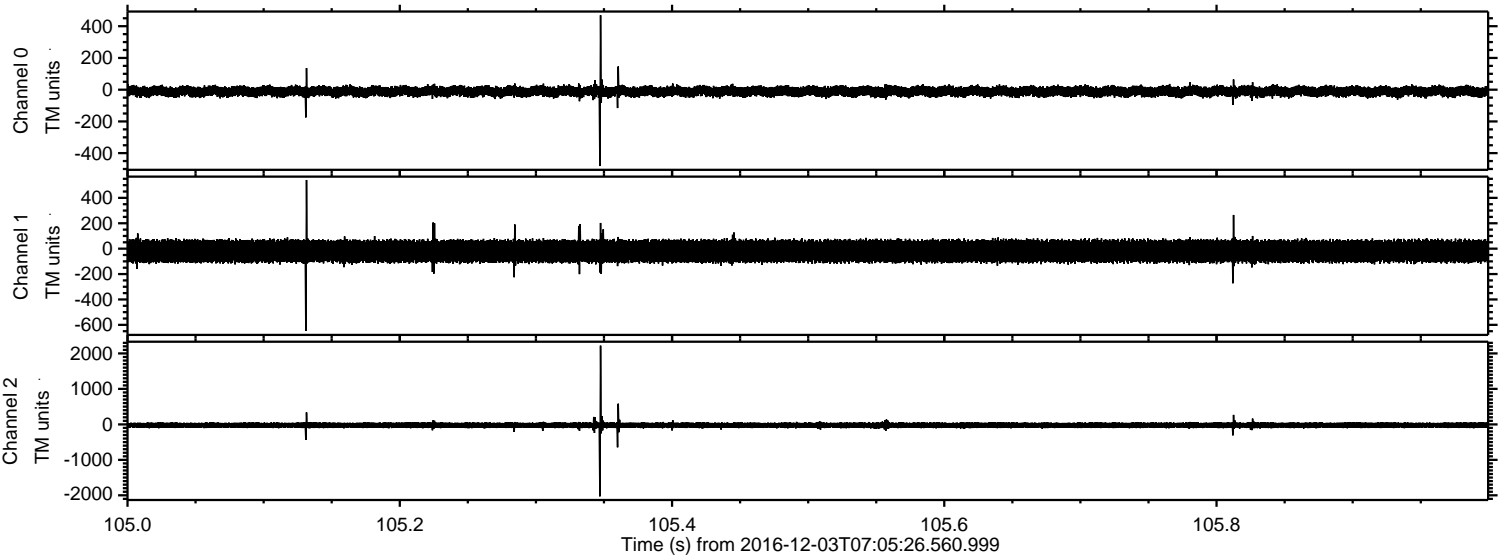
Processed Sat Dec 3 08:13:37 2016 by ELM ver.2012-10-06 from 001\_\_elm20161203\_070525\_\_dat00.bin





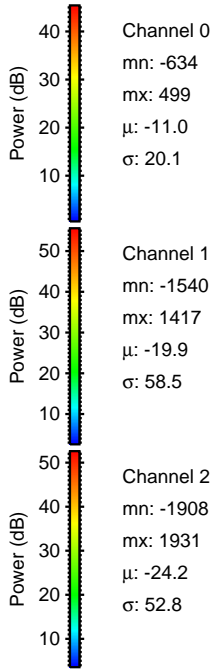
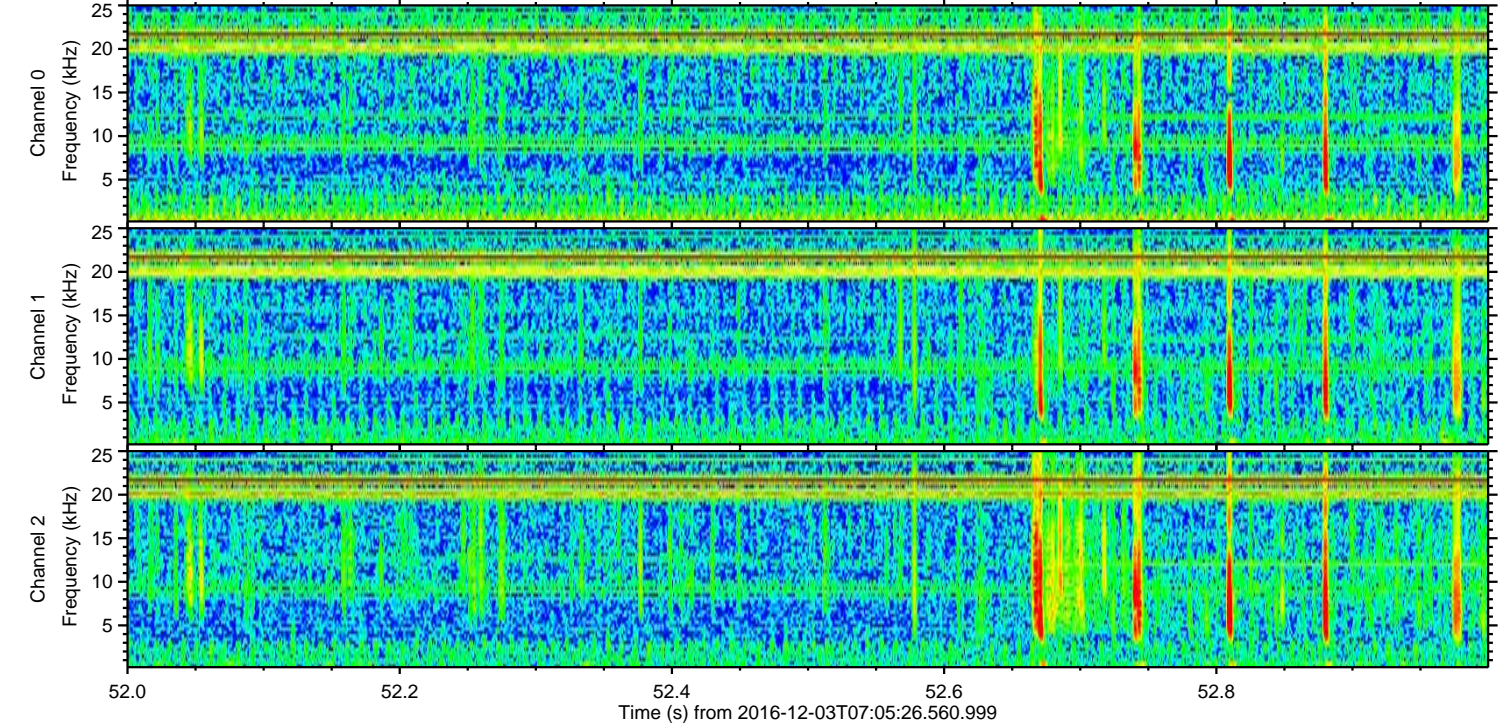
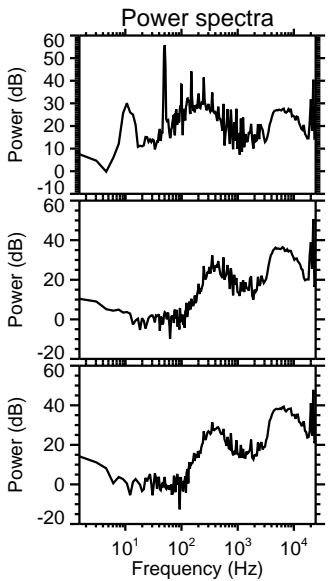
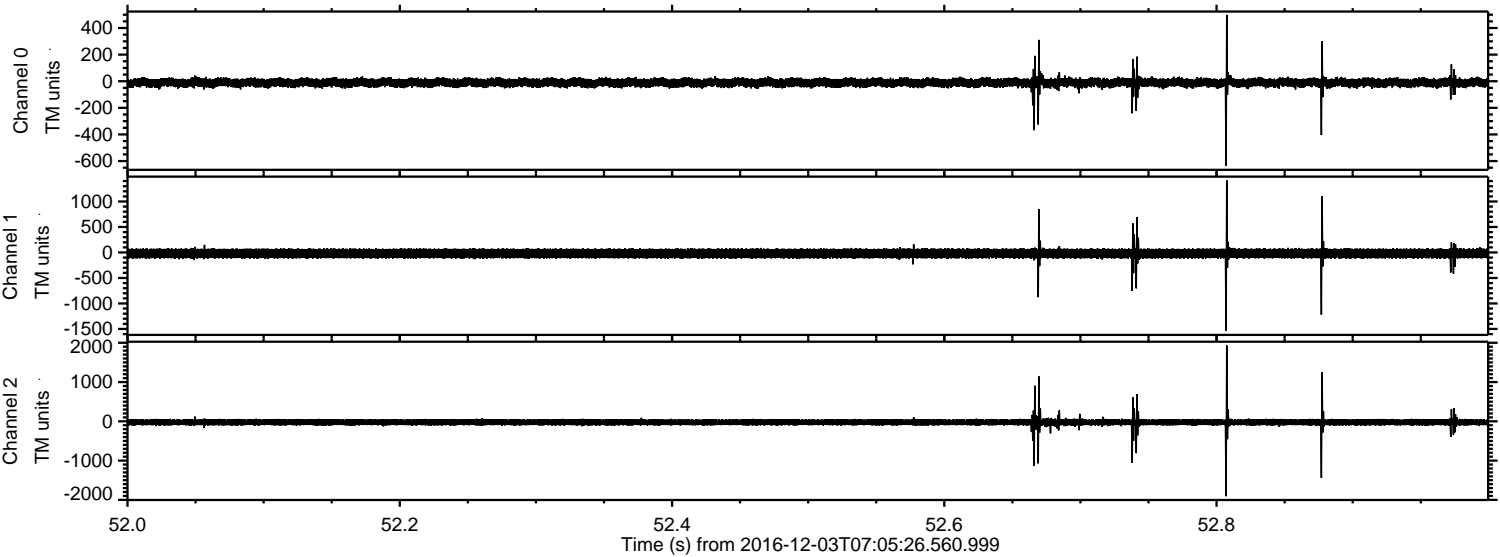
ELMAVAN 3D WAVEFORMS (Measured data sampled at 50 kHz) 51000 packets of 144 samples from 2016-12-03T07:05:26.560.999. Part 106/147

Processed Sat Dec 3 08:13:38 2016 by ELM ver.2012-10-06 from 001\_\_elm20161203\_070525\_\_dat00.bin





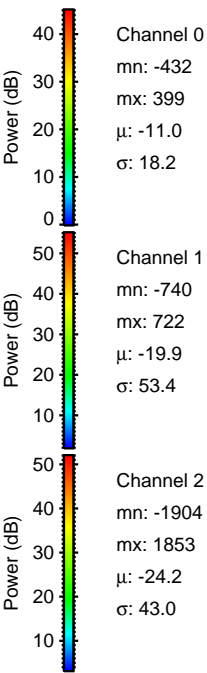
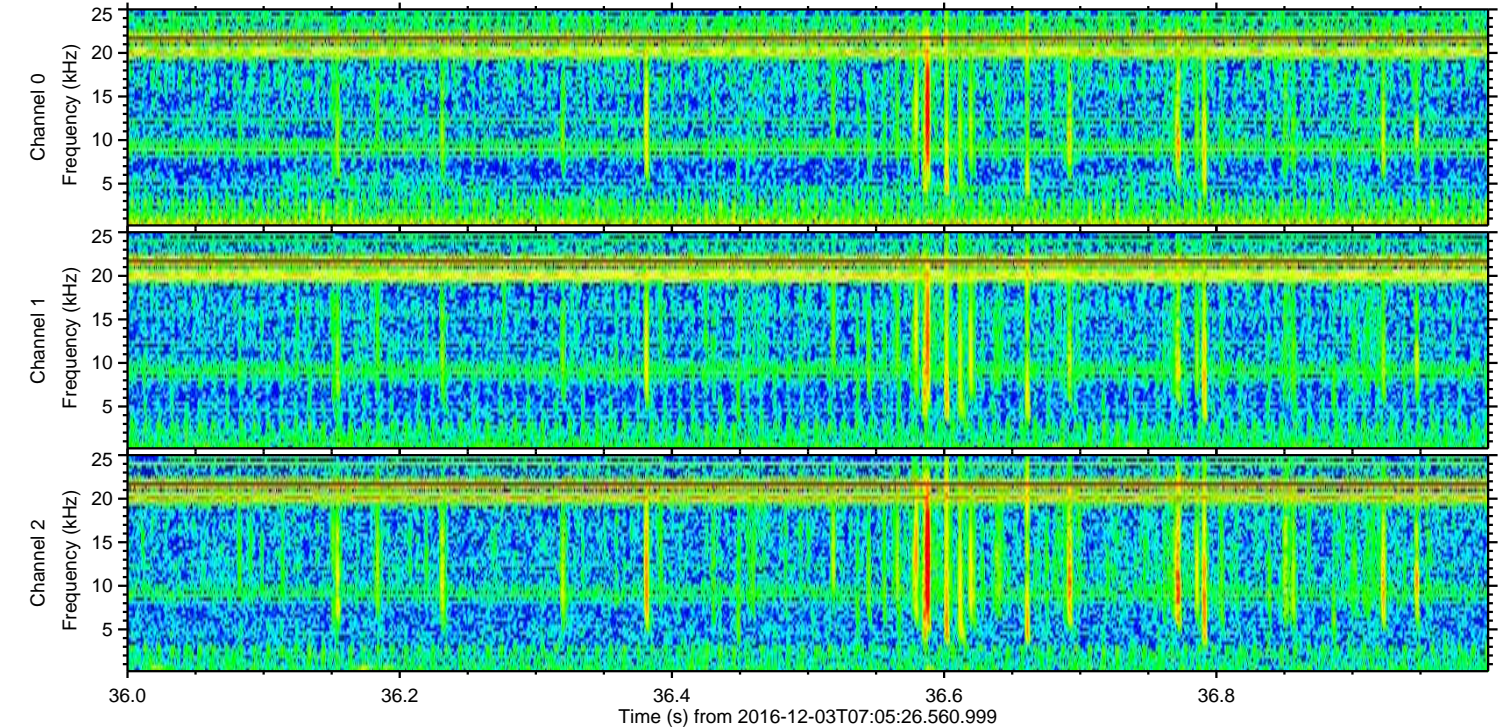
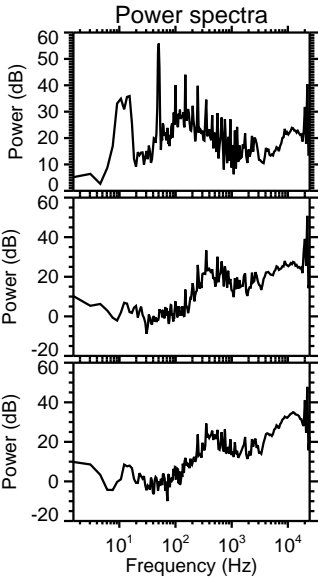
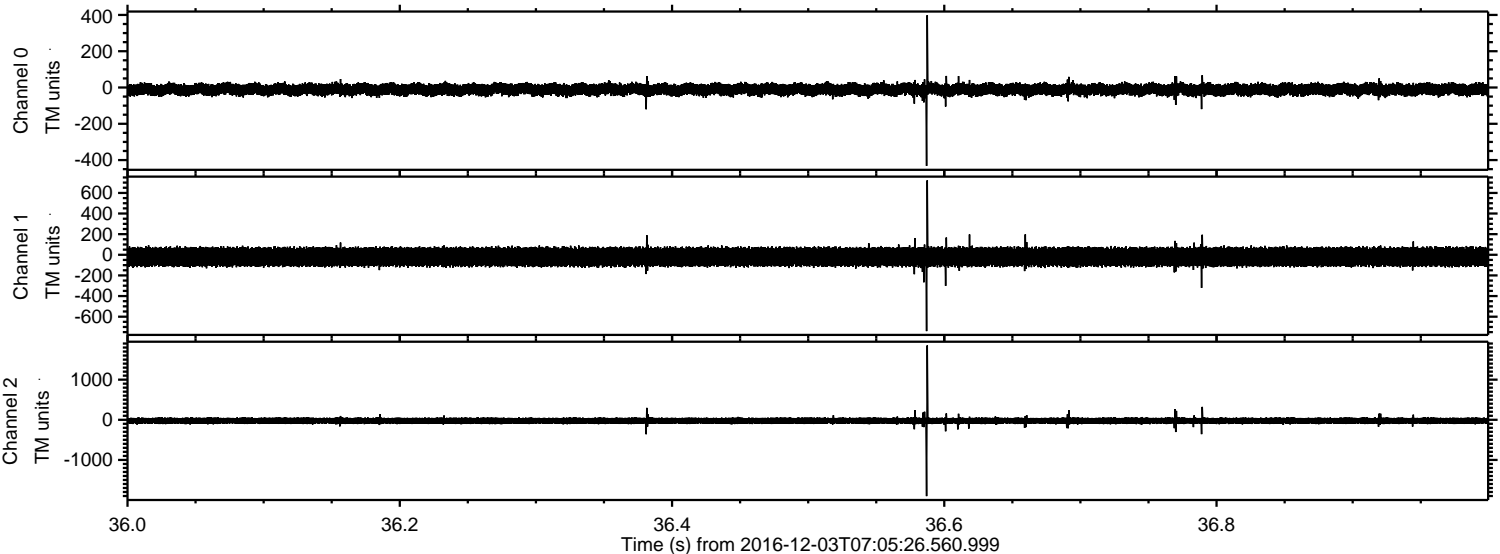
Processed Sat Dec 3 08:13:39 2016 by ELM ver.2012-10-06 from 001\_\_elm20161203\_070525\_\_dat00.bin





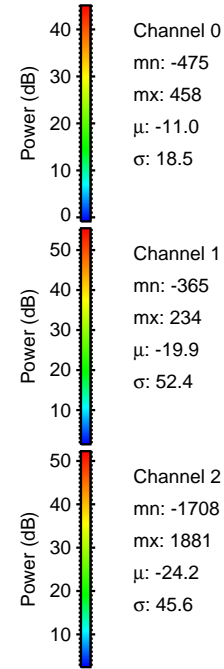
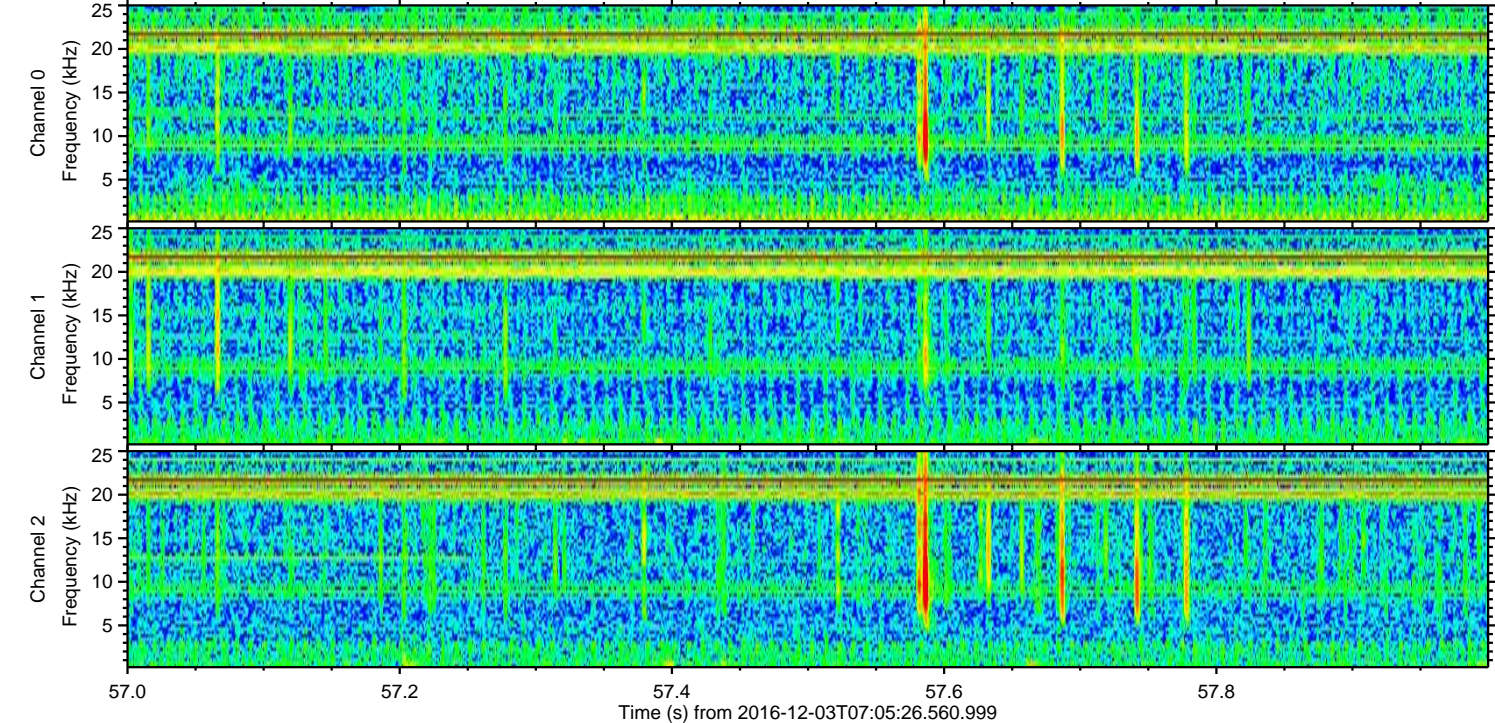
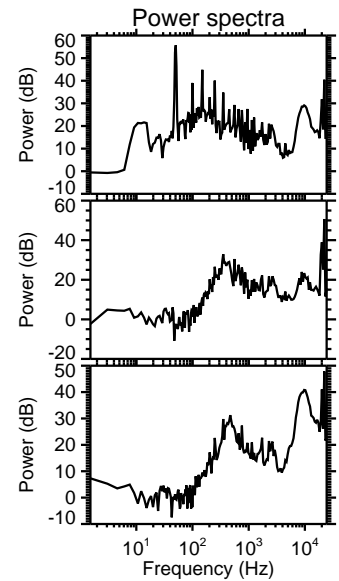
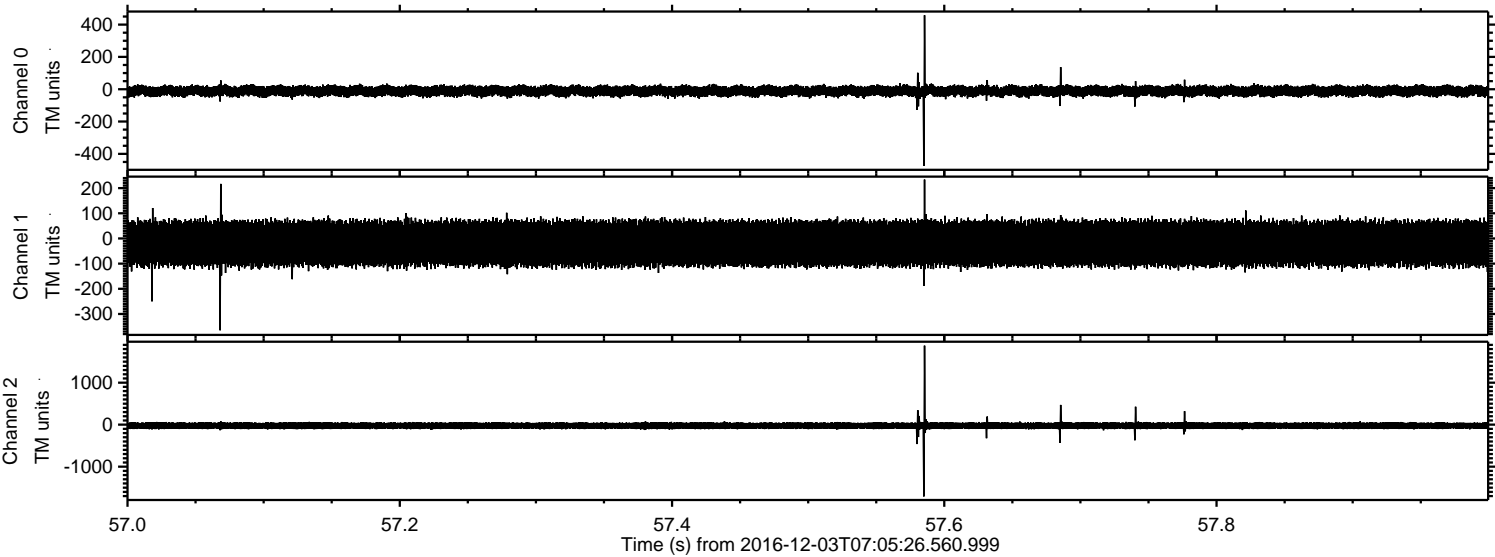
ELMAVAN 3D WAVEFORMS (Measured data sampled at 50 kHz) 51000 packets of 144 samples from 2016-12-03T07:05:26.560.999. Part 37/147

Processed Sat Dec 3 08:13:40 2016 by ELM ver.2012-10-06 from 001\_\_elm20161203\_070525\_\_dat00.bin





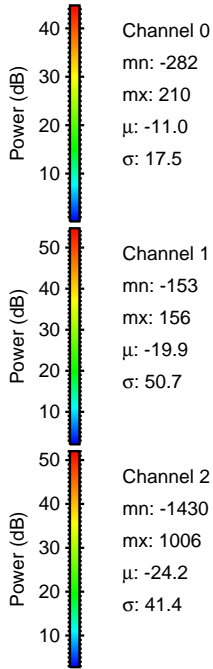
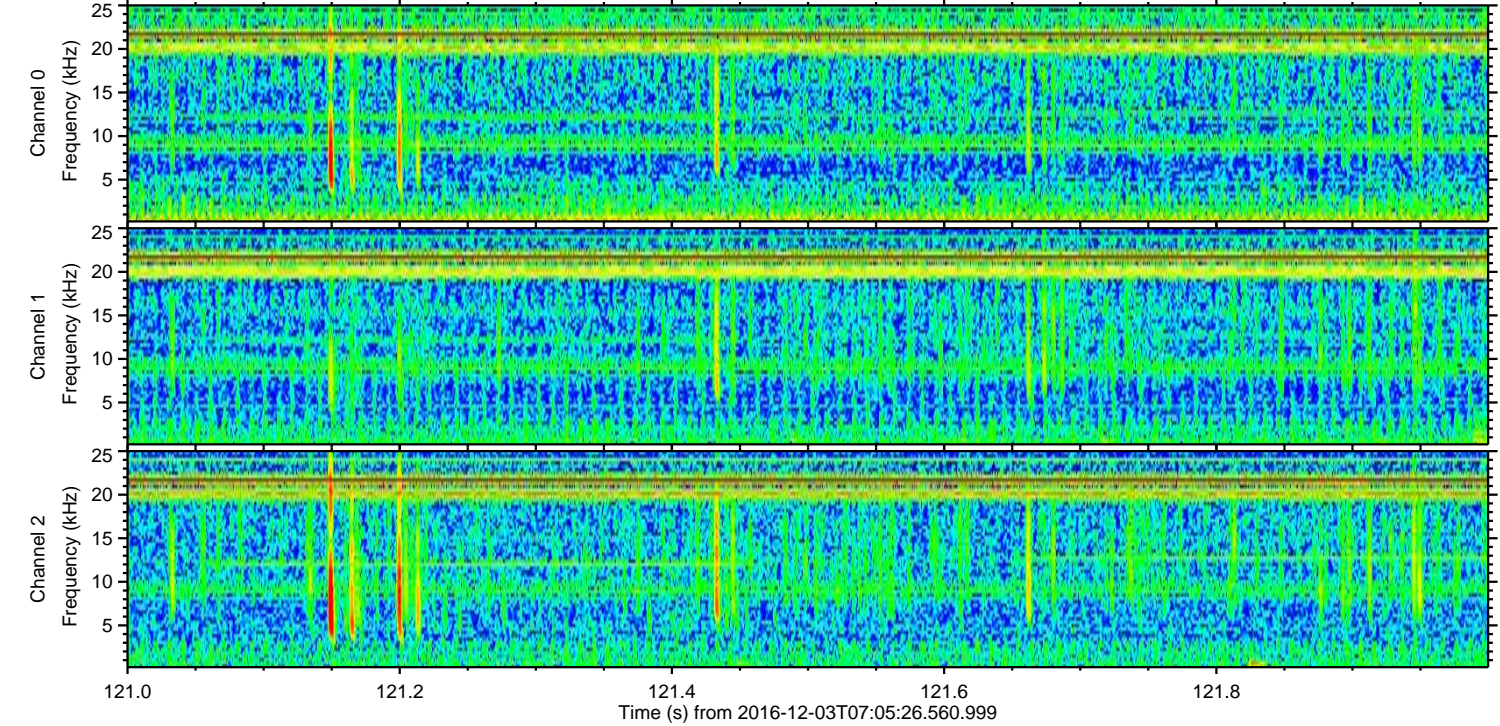
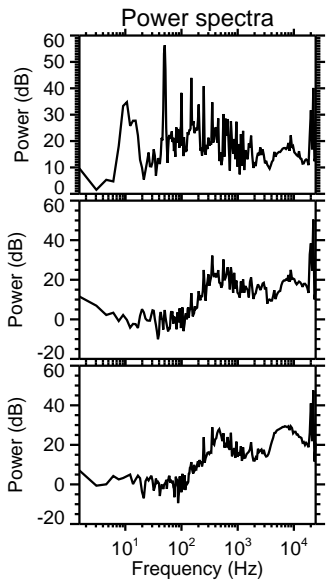
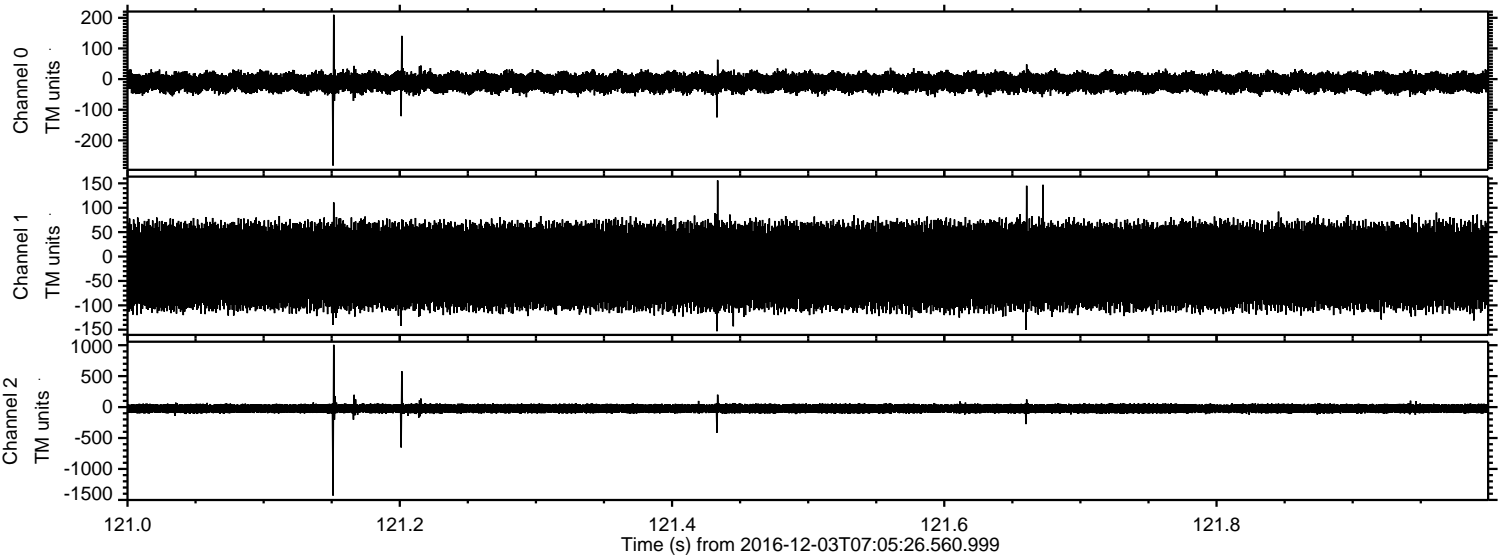
Processed Sat Dec 3 08:13:41 2016 by ELM ver.2012-10-06 from 001\_\_elm20161203\_070525\_\_dat00.bin





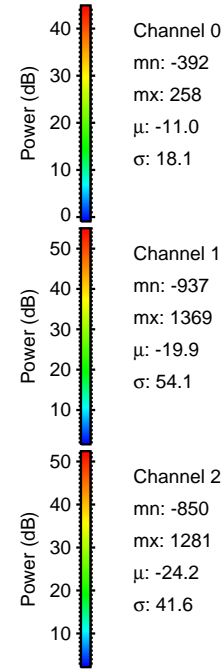
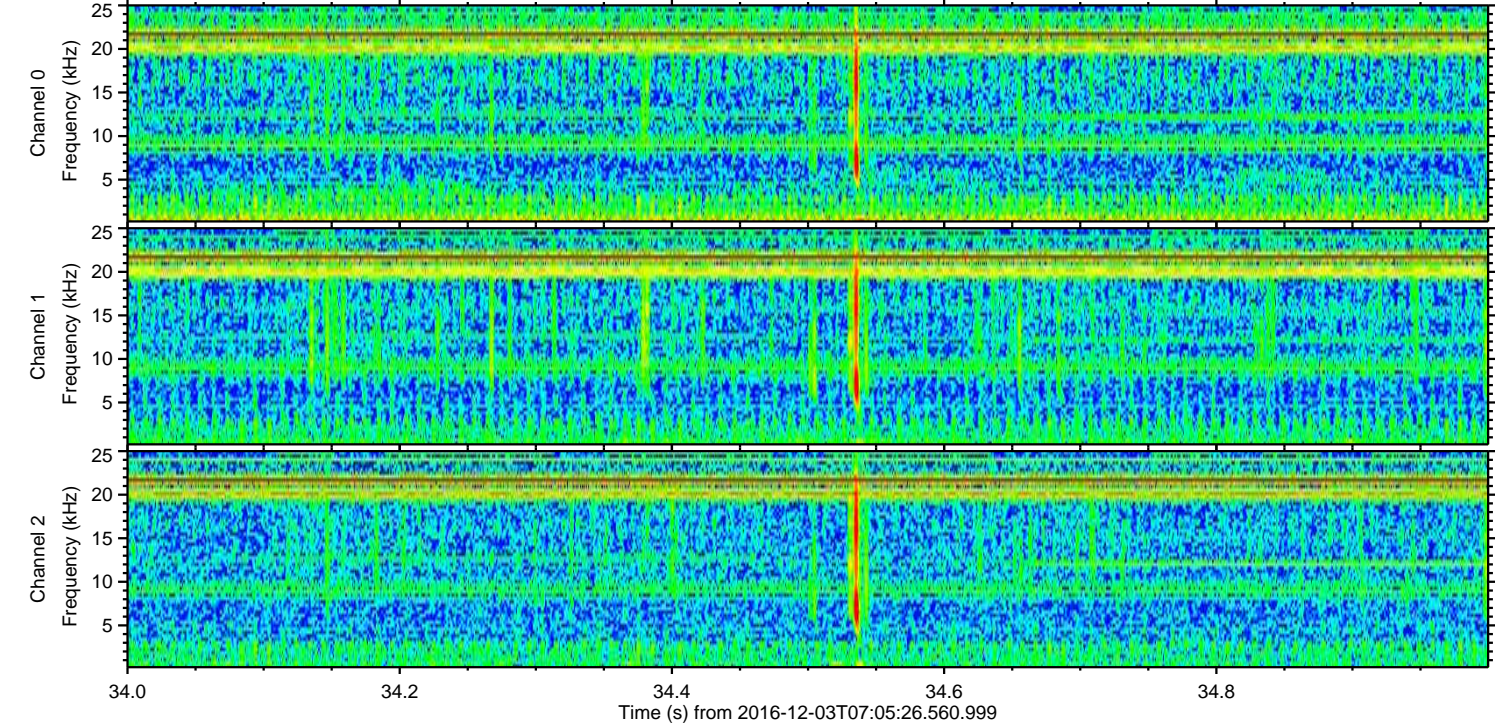
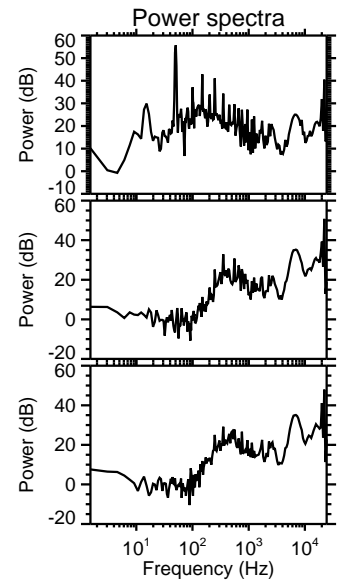
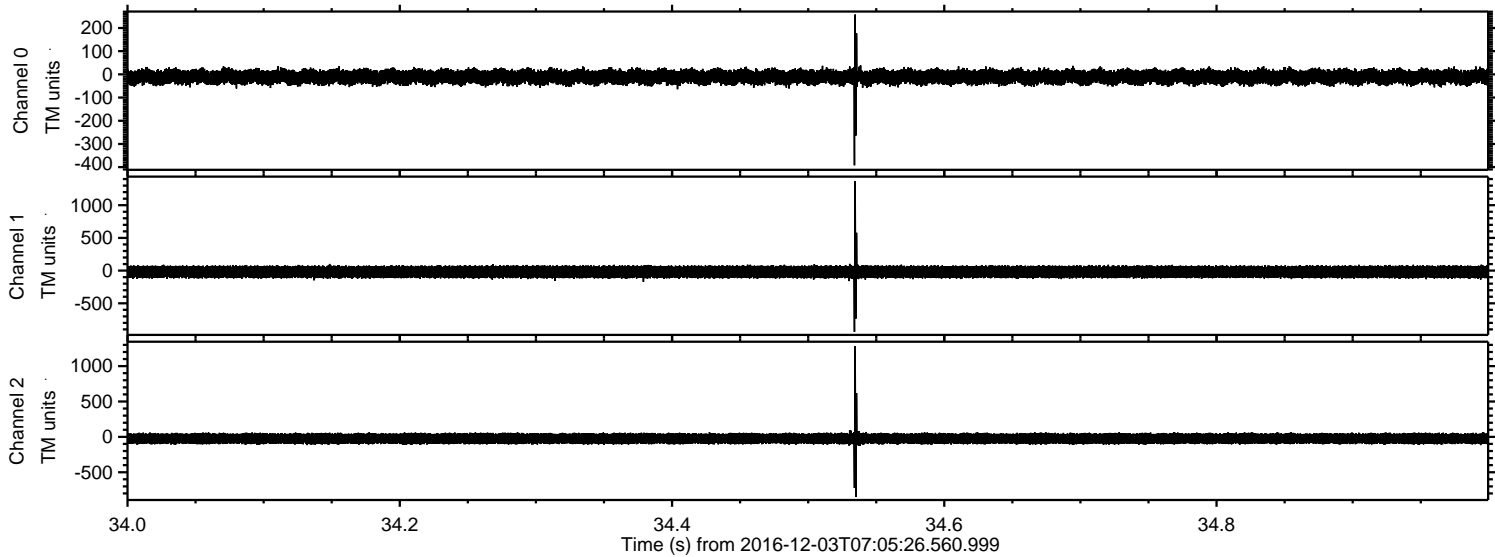
ELMAVAN 3D WAVEFORMS (Measured data sampled at 50 kHz) 51000 packets of 144 samples from 2016-12-03T07:05:26.560.999. Part 122/147

Processed Sat Dec 3 08:13:42 2016 by ELM ver.2012-10-06 from 001\_\_elm20161203\_070525\_\_dat00.bin





Processed Sat Dec 3 08:13:43 2016 by ELM ver.2012-10-06 from 001\_\_elm20161203\_070525\_\_dat00.bin





Processed Sat Dec 3 08:13:44 2016 by ELM ver.2012-10-06 from 001\_\_elm20161203\_070525\_\_dat00.bin

