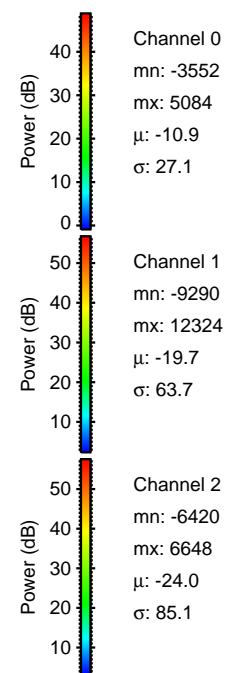
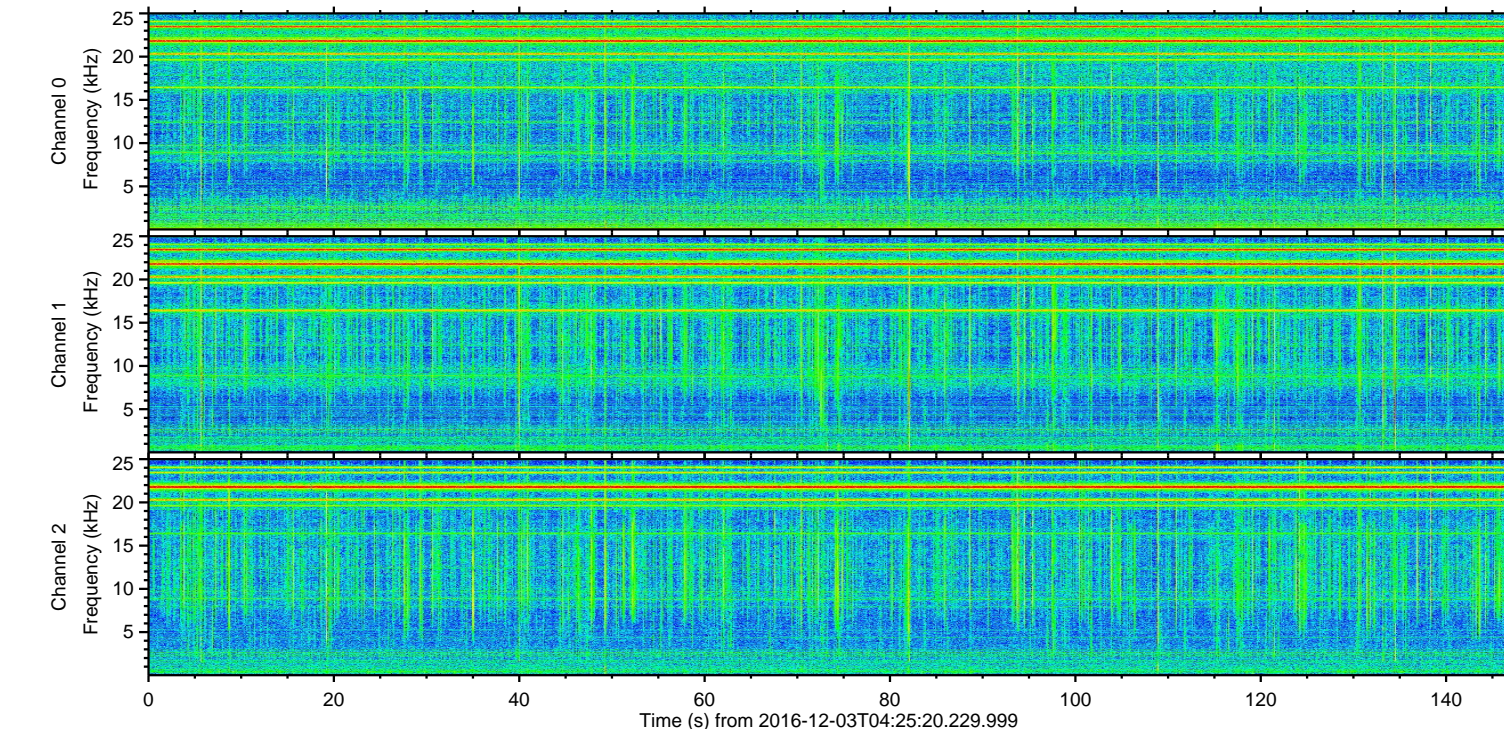
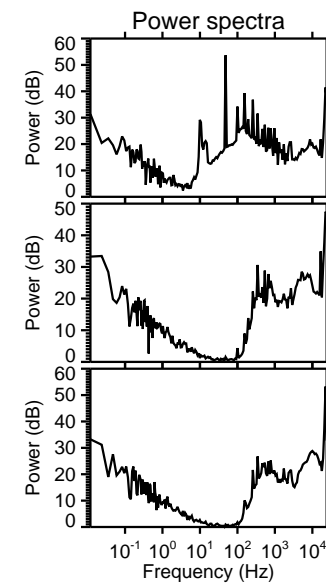
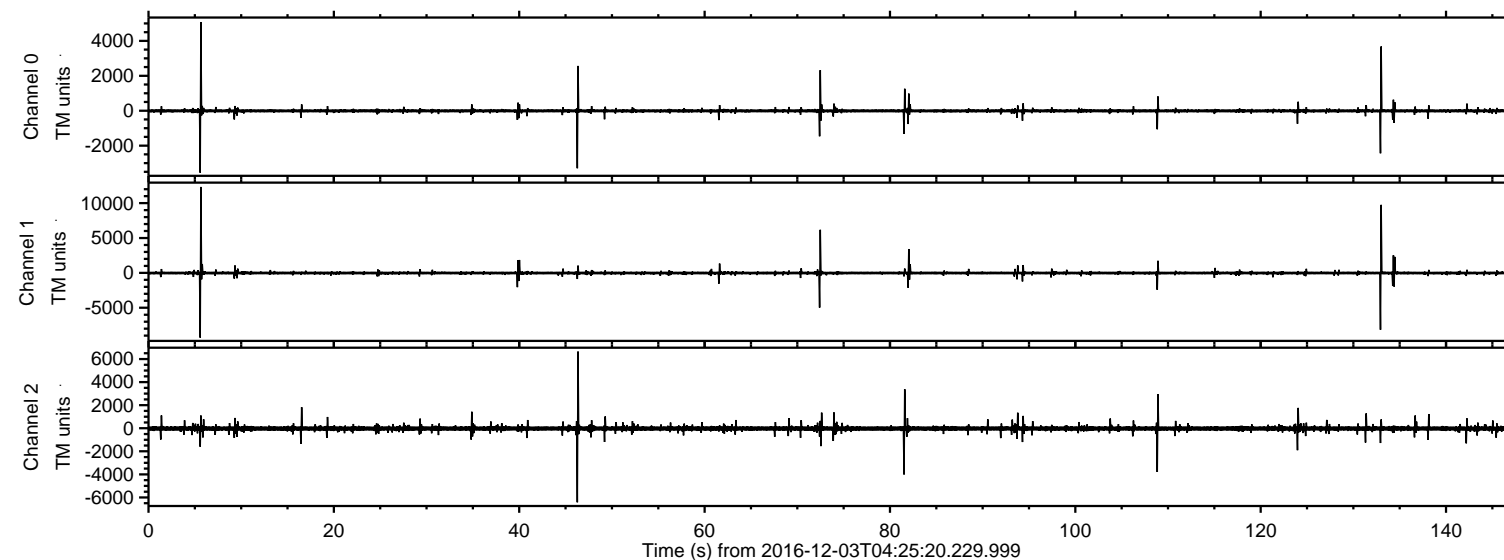


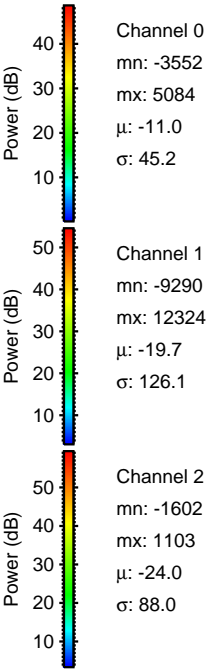
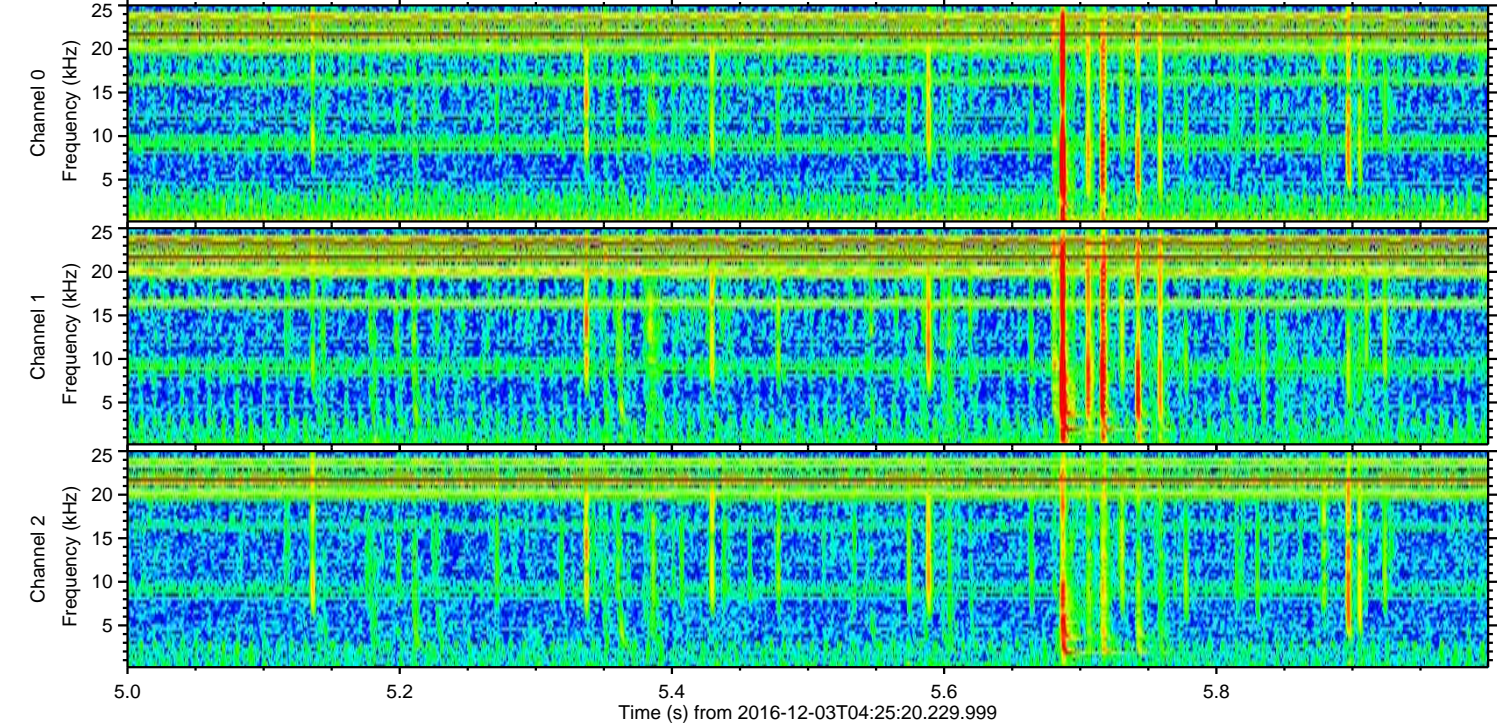
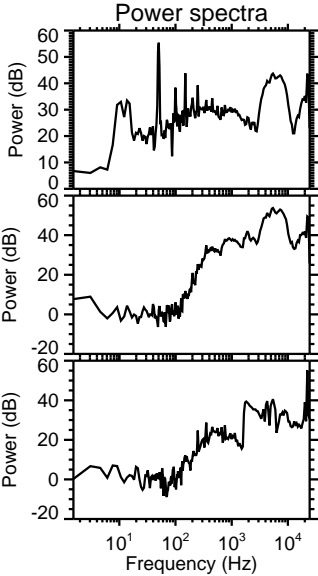
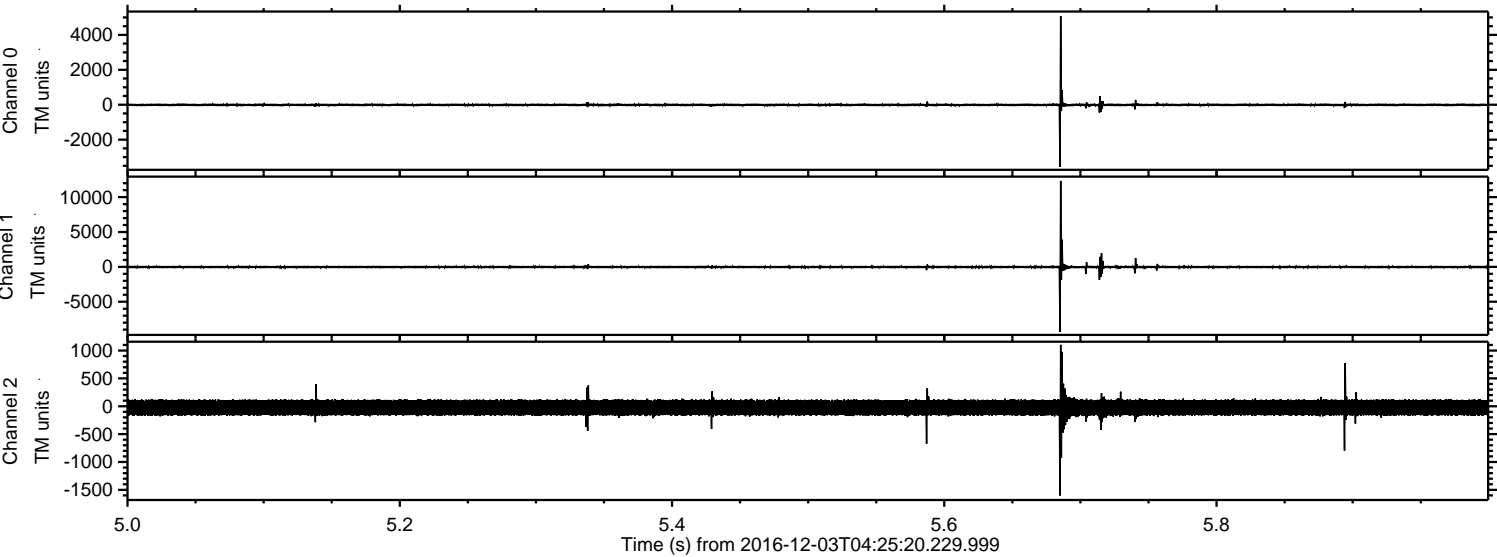
ELMAVAN 3D WAVEFORMS (Measured data sampled at 50 kHz) 51000 packets of 144 samples from 2016-12-03T04:25:20.229.999.

Processed Sat Dec 3 05:33:07 2016 by ELM ver.2012-10-06 from 001__elm20161203_042519__dat00.bin



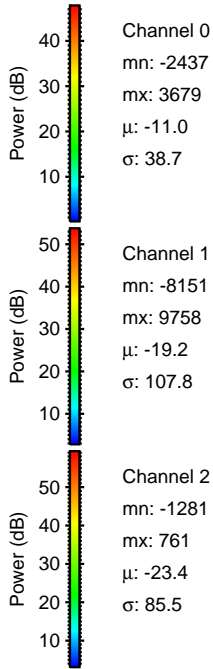
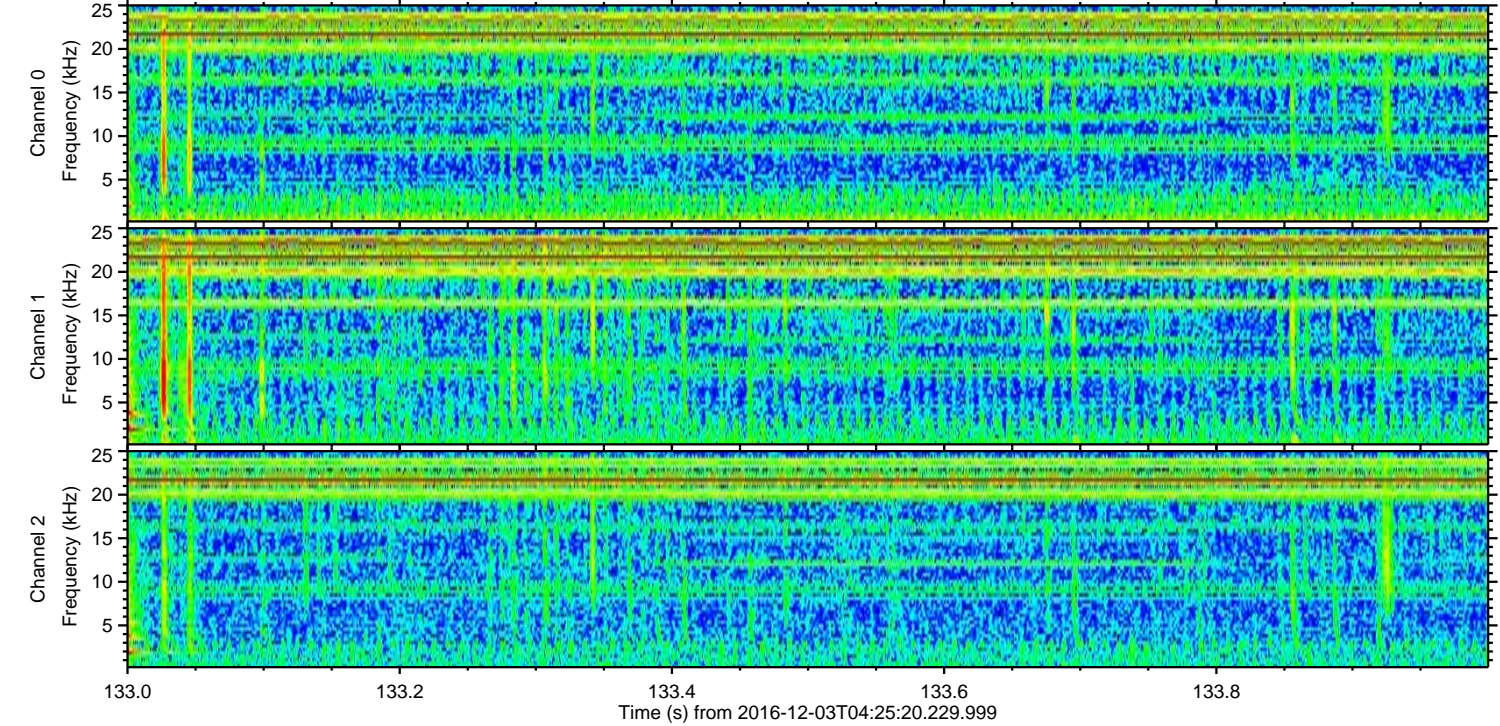
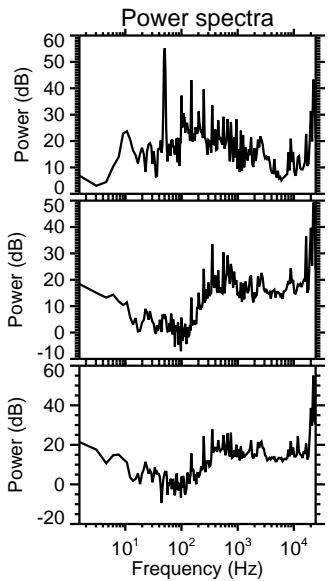
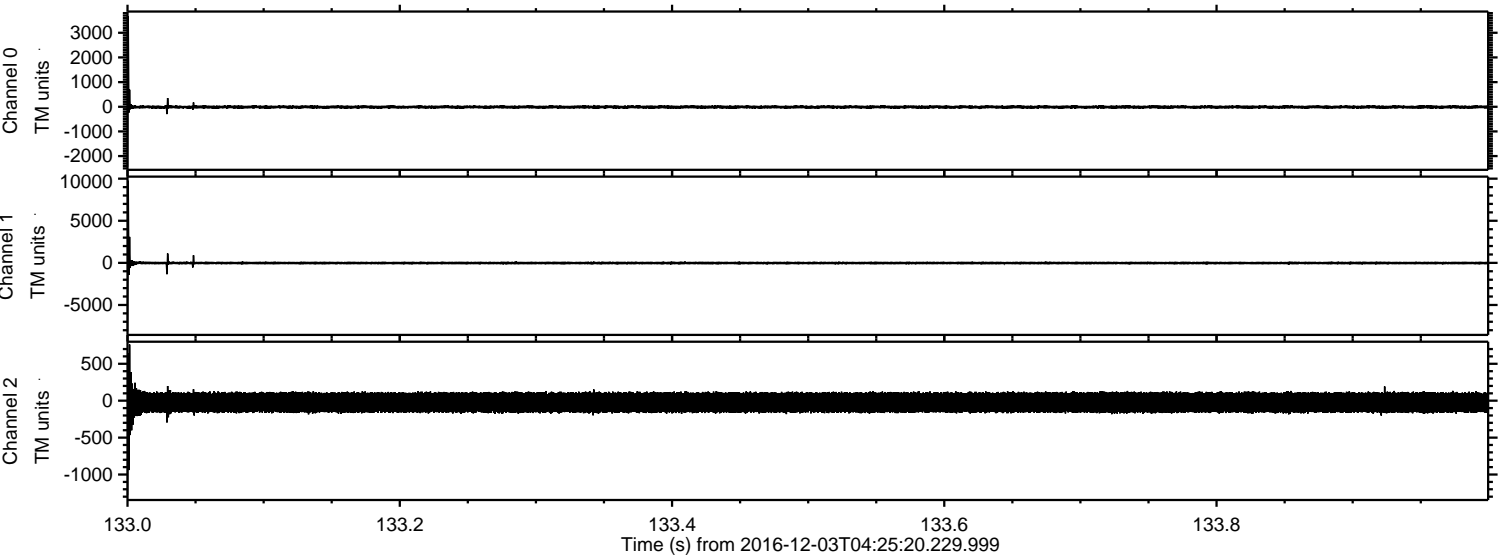
ELMAVAN 3D WAVEFORMS (Measured data sampled at 50 kHz) 51000 packets of 144 samples from 2016-12-03T04:25:20.229.999. Part 6/147

Processed Sat Dec 3 05:33:18 2016 by ELM ver.2012-10-06 from 001__elm20161203_042519__dat00.bin



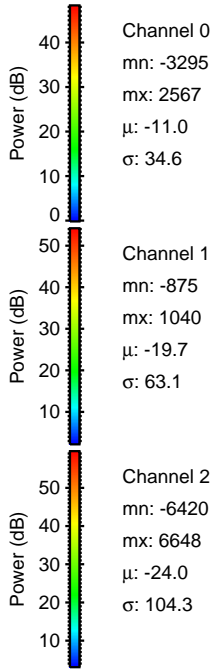
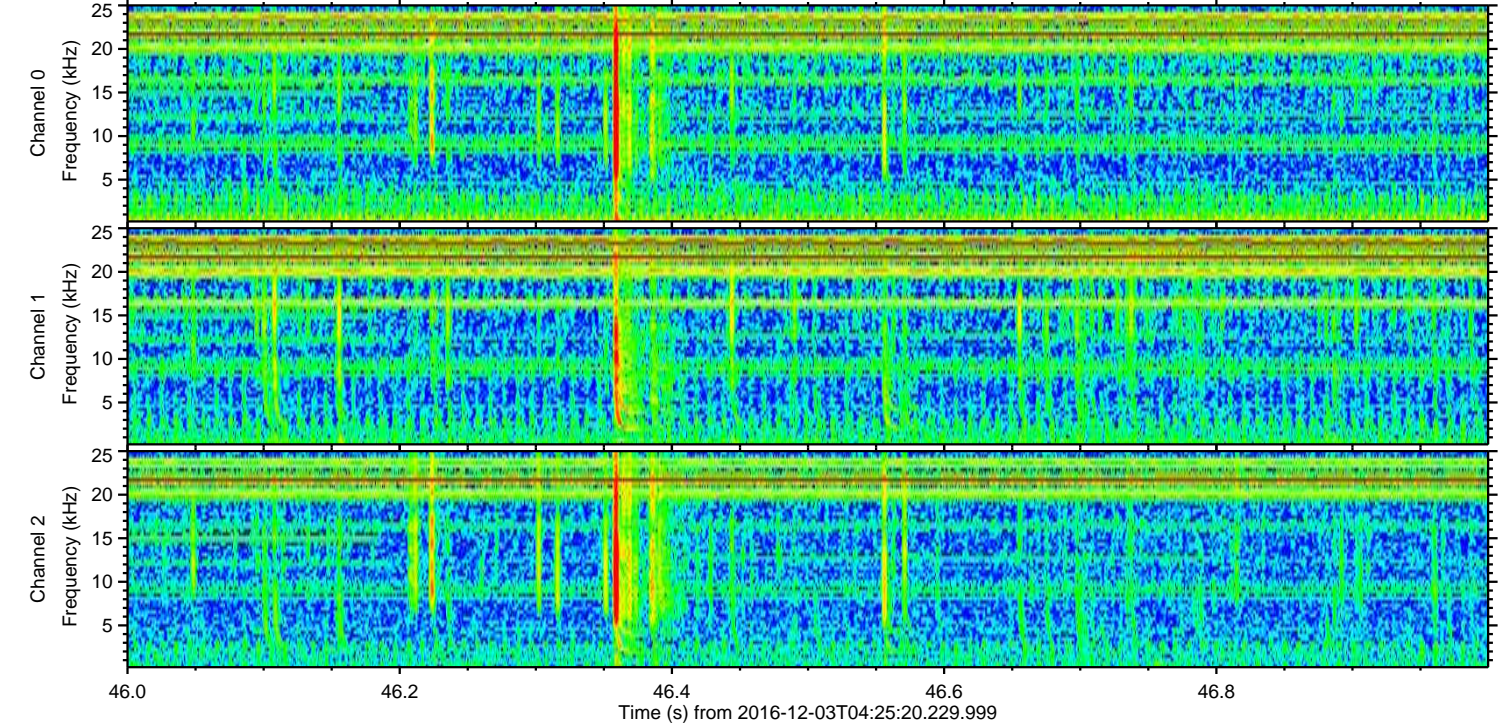
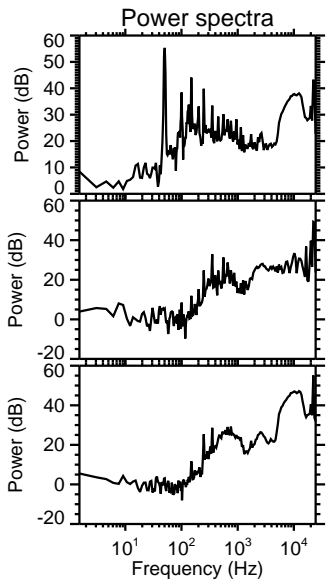
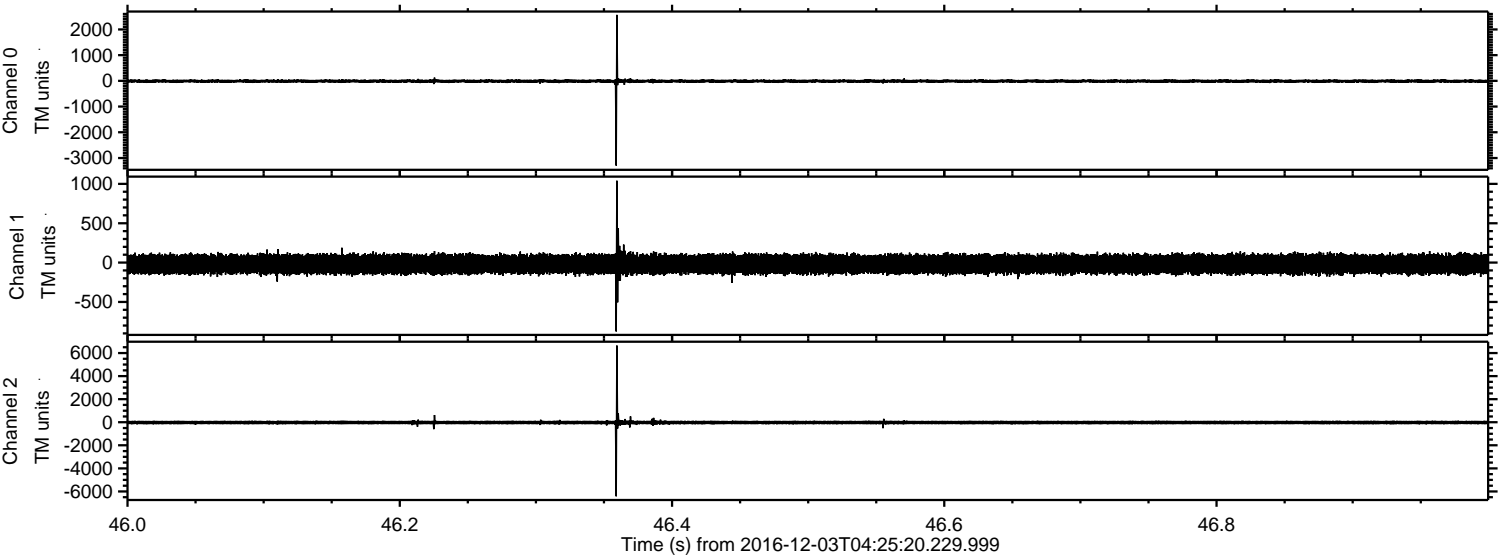
ELMAVAN 3D WAVEFORMS (Measured data sampled at 50 kHz) 51000 packets of 144 samples from 2016-12-03T04:25:20.229.999. Part 134/147

Processed Sat Dec 3 05:33:19 2016 by ELM ver.2012-10-06 from 001__elm20161203_042519__dat00.bin



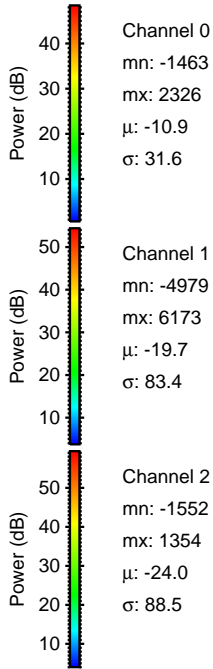
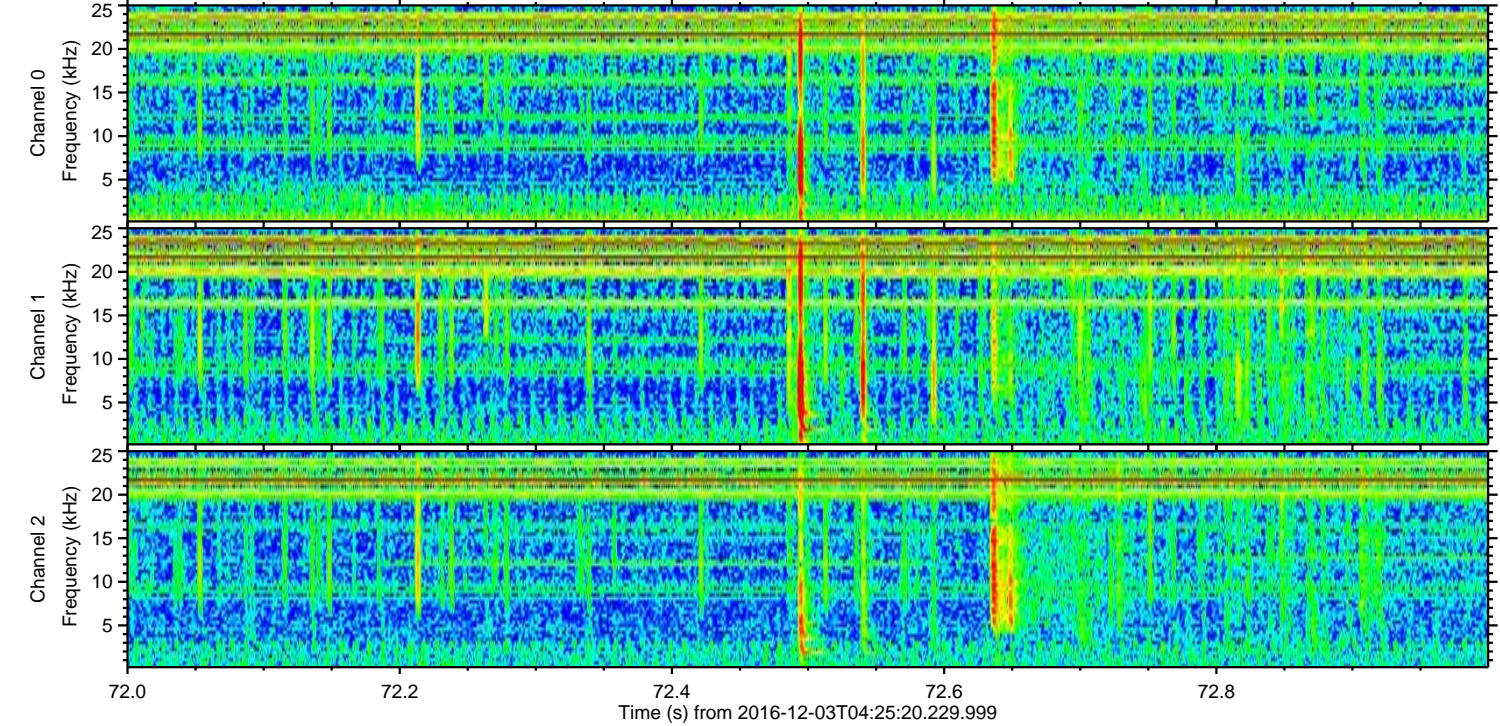
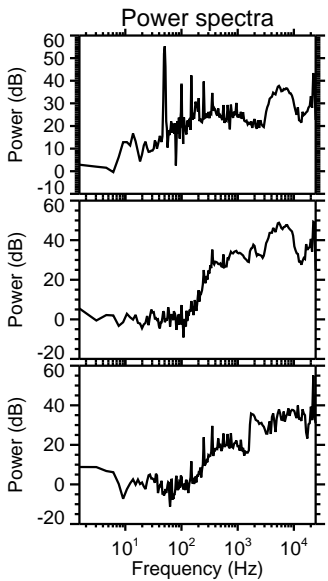
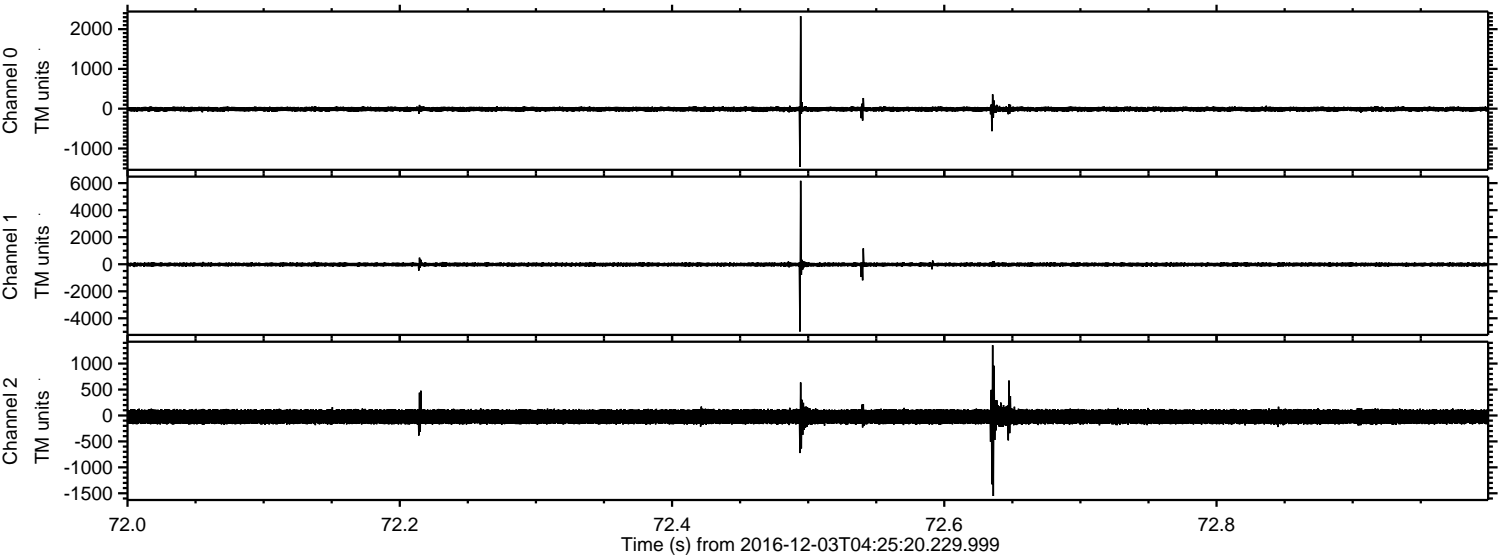
ELMAVAN 3D WAVEFORMS (Measured data sampled at 50 kHz) 51000 packets of 144 samples from 2016-12-03T04:25:20.229.999. Part 47/147

Processed Sat Dec 3 05:33:20 2016 by ELM ver.2012-10-06 from 001__elm20161203_042519__dat00.bin

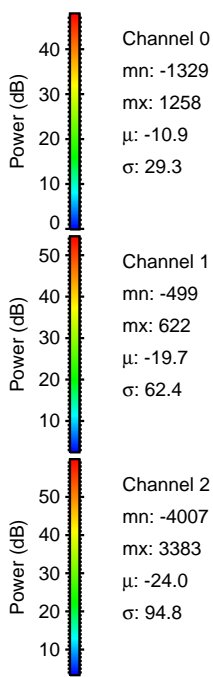
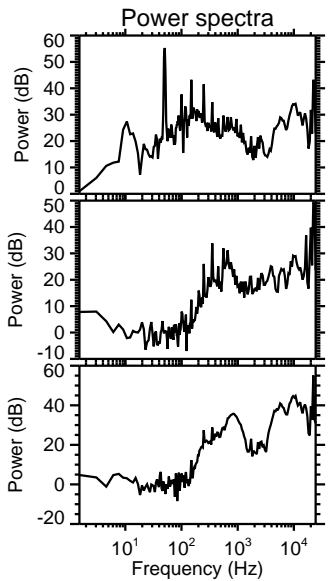
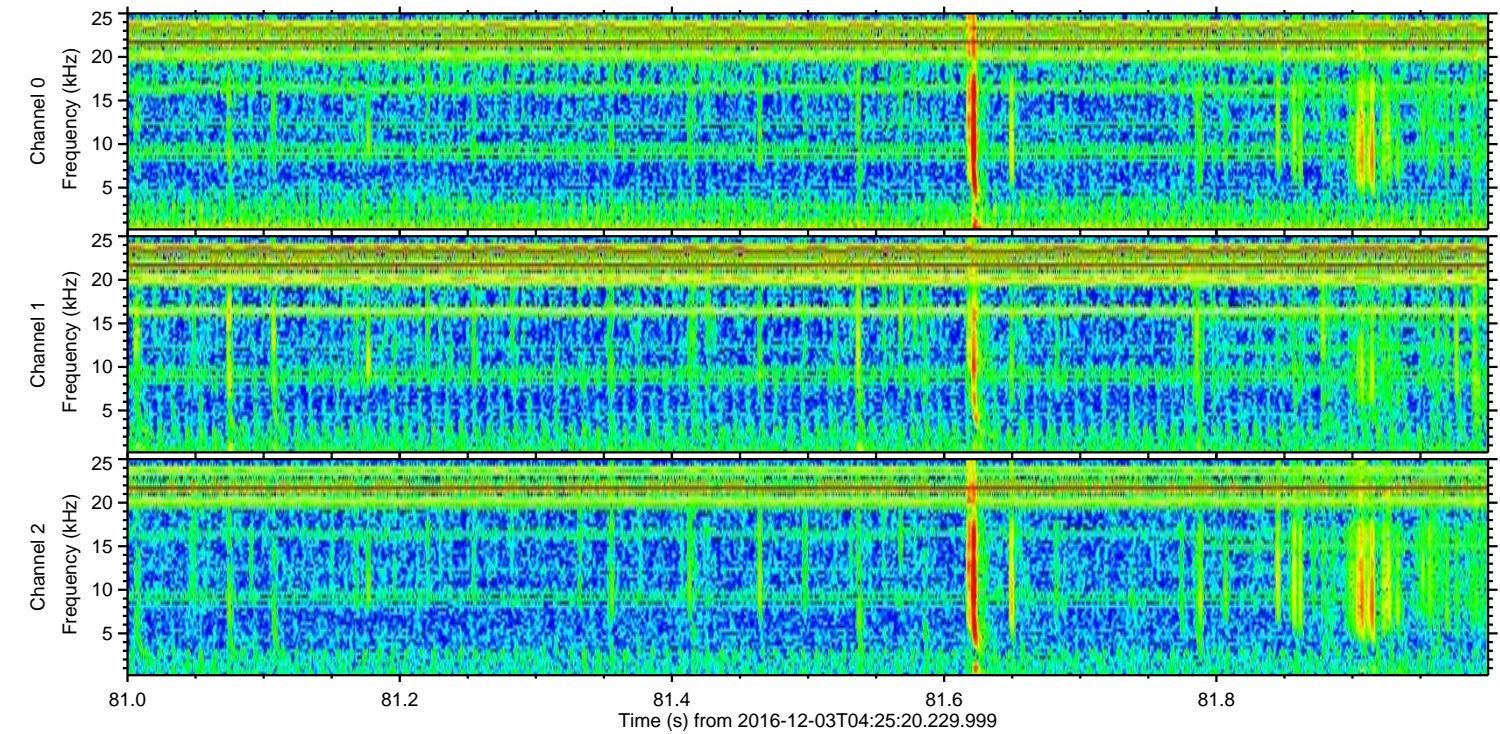
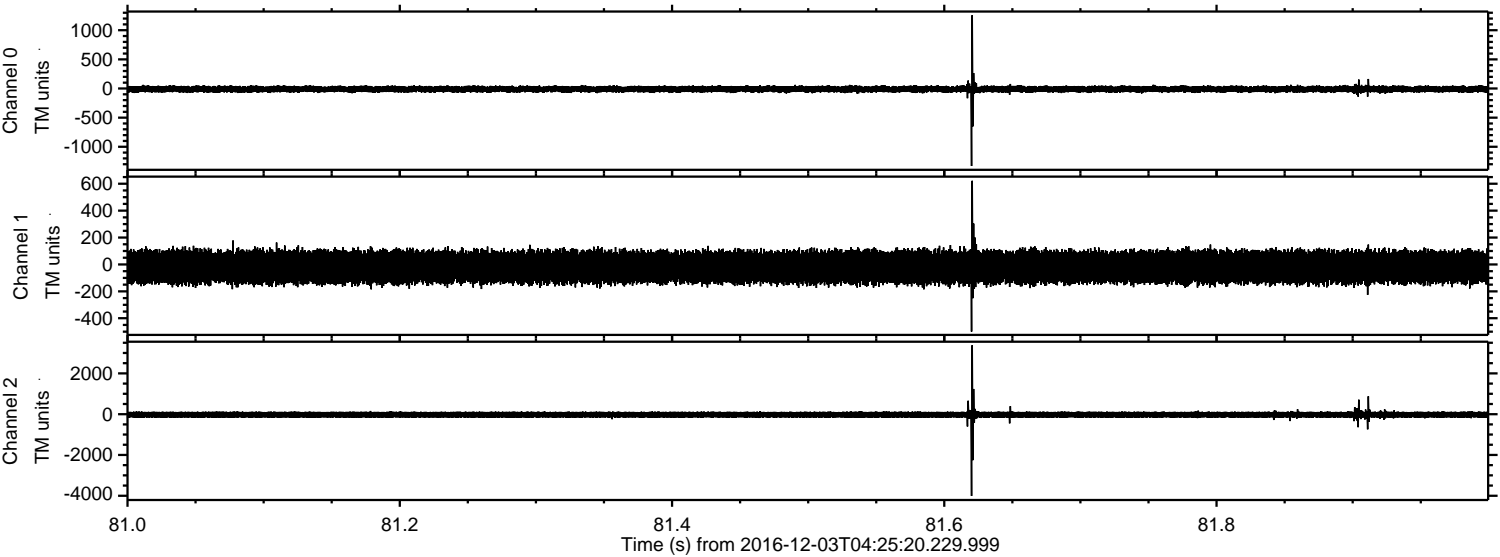


ELMAVAN 3D WAVEFORMS (Measured data sampled at 50 kHz) 51000 packets of 144 samples from 2016-12-03T04:25:20.229.999. Part 73/147

Processed Sat Dec 3 05:33:21 2016 by ELM ver.2012-10-06 from 001__elm20161203_042519__dat00.bin



Processed Sat Dec 3 05:33:22 2016 by ELM ver.2012-10-06 from 001__elm20161203_042519__dat00.bin



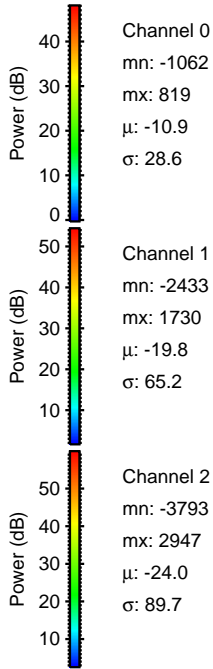
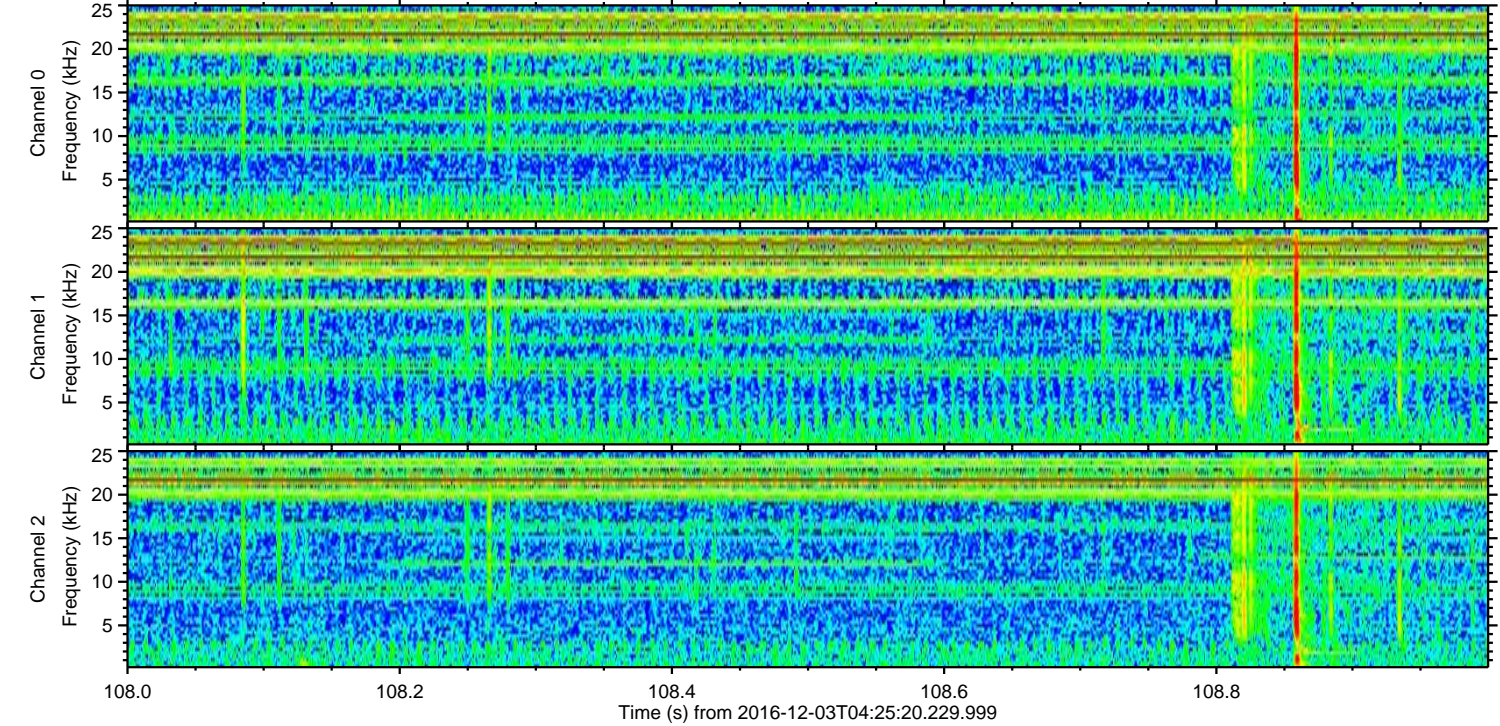
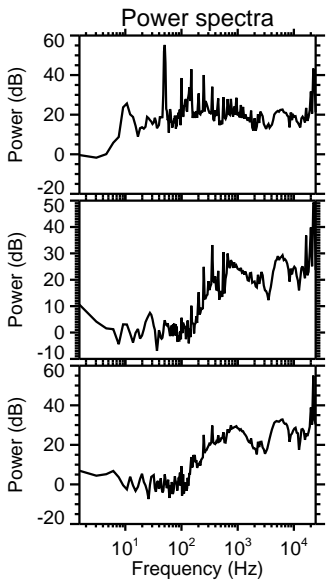
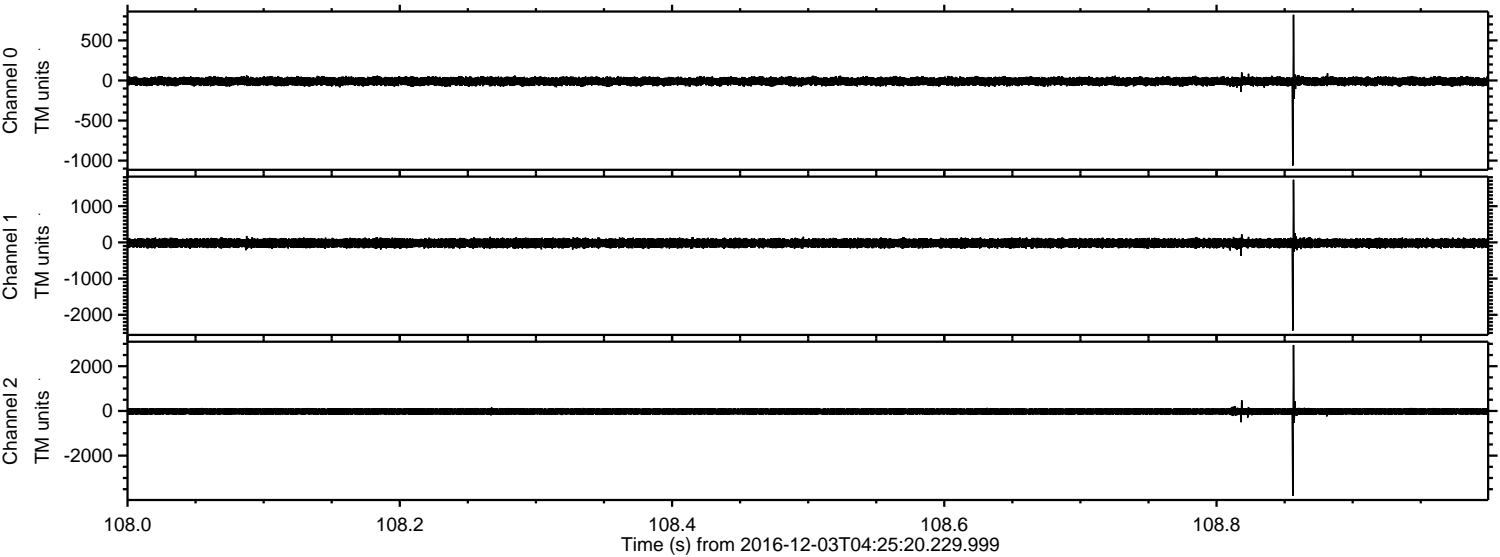
Channel 0
mn: -1329
mx: 1258
 μ : -10.9
 σ : 29.3

Channel 1
mn: -499
mx: 622
 μ : -19.7
 σ : 62.4

Channel 2
mn: -4007
mx: 3383
 μ : -24.0
 σ : 94.8

ELMAVAN 3D WAVEFORMS (Measured data sampled at 50 kHz) 51000 packets of 144 samples from 2016-12-03T04:25:20.229.999. Part 109/147

Processed Sat Dec 3 05:33:23 2016 by ELM ver.2012-10-06 from 001__elm20161203_042519__dat00.bin



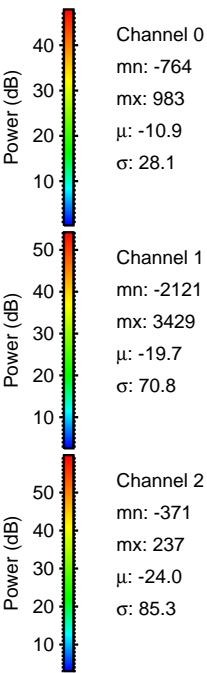
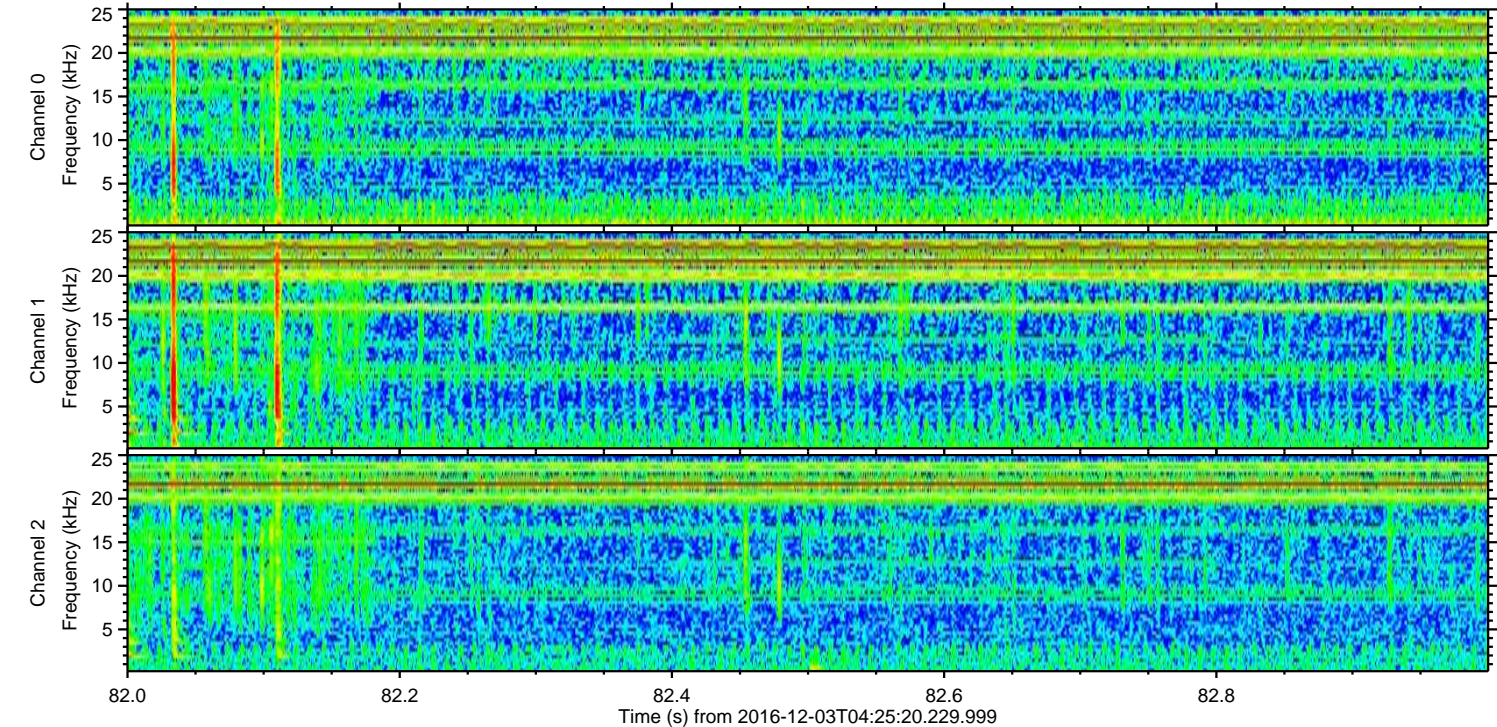
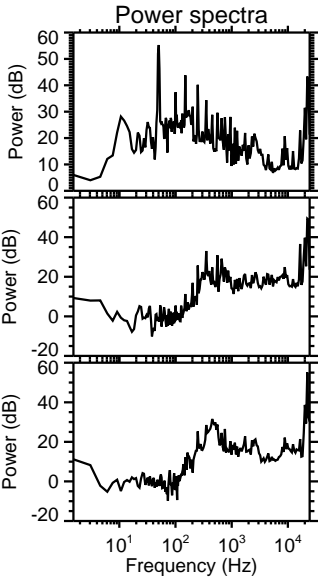
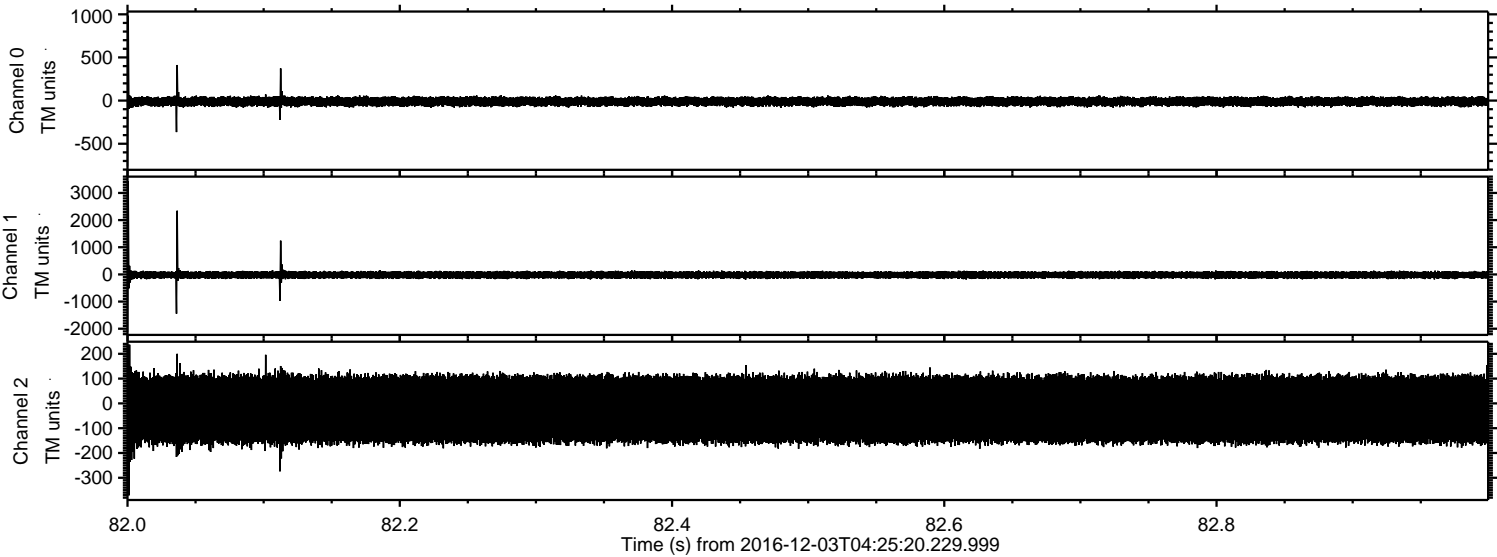
Channel 0
mn: -1062
mx: 819
 μ : -10.9
 σ : 28.6

Channel 1
mn: -2433
mx: 1730
 μ : -19.8
 σ : 65.2

Channel 2
mn: -3793
mx: 2947
 μ : -24.0
 σ : 89.7

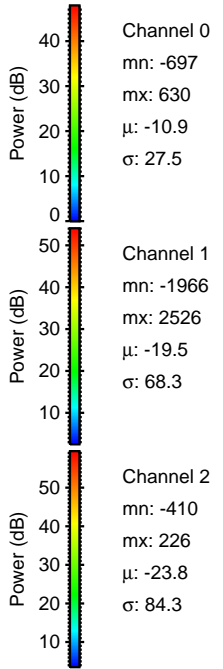
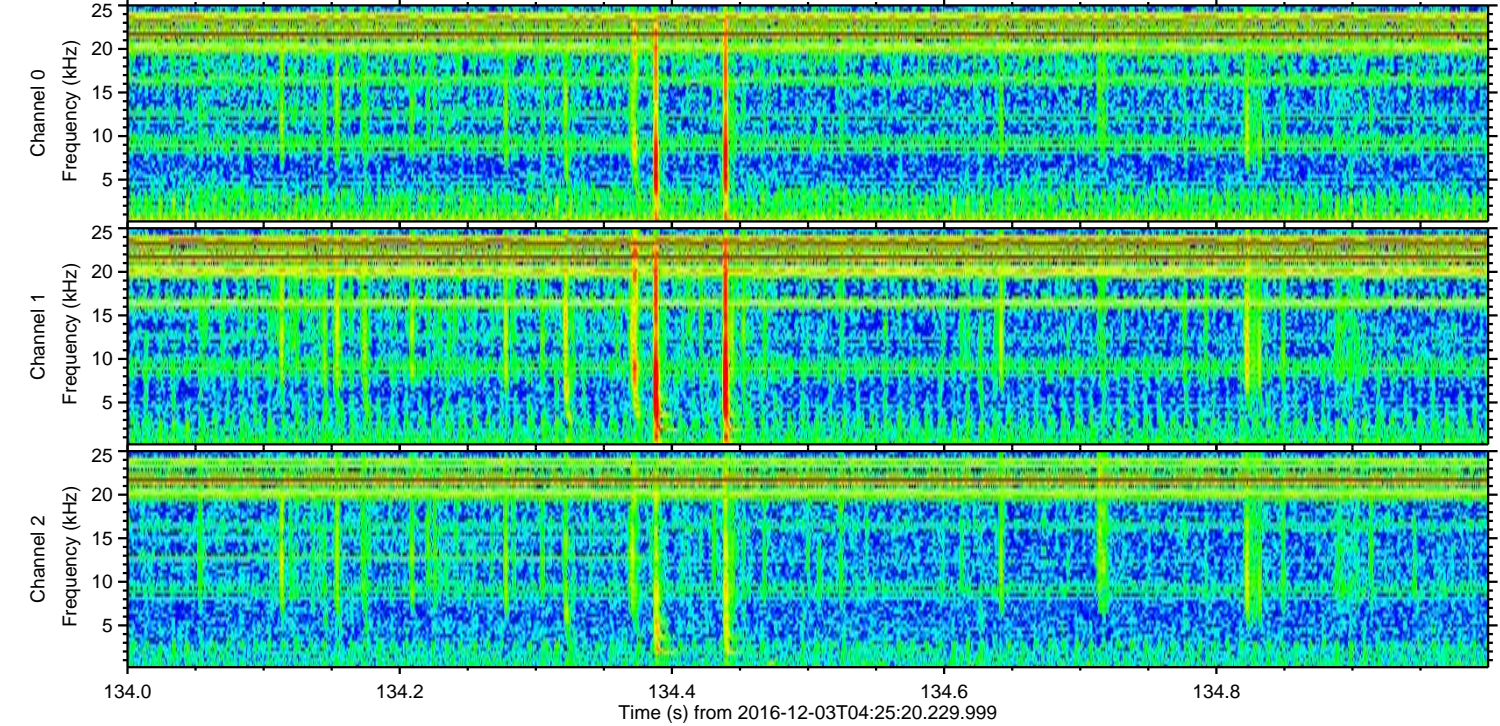
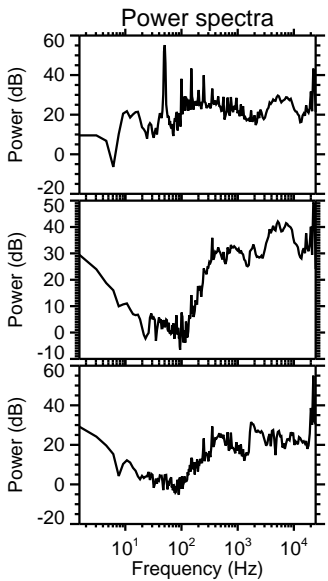
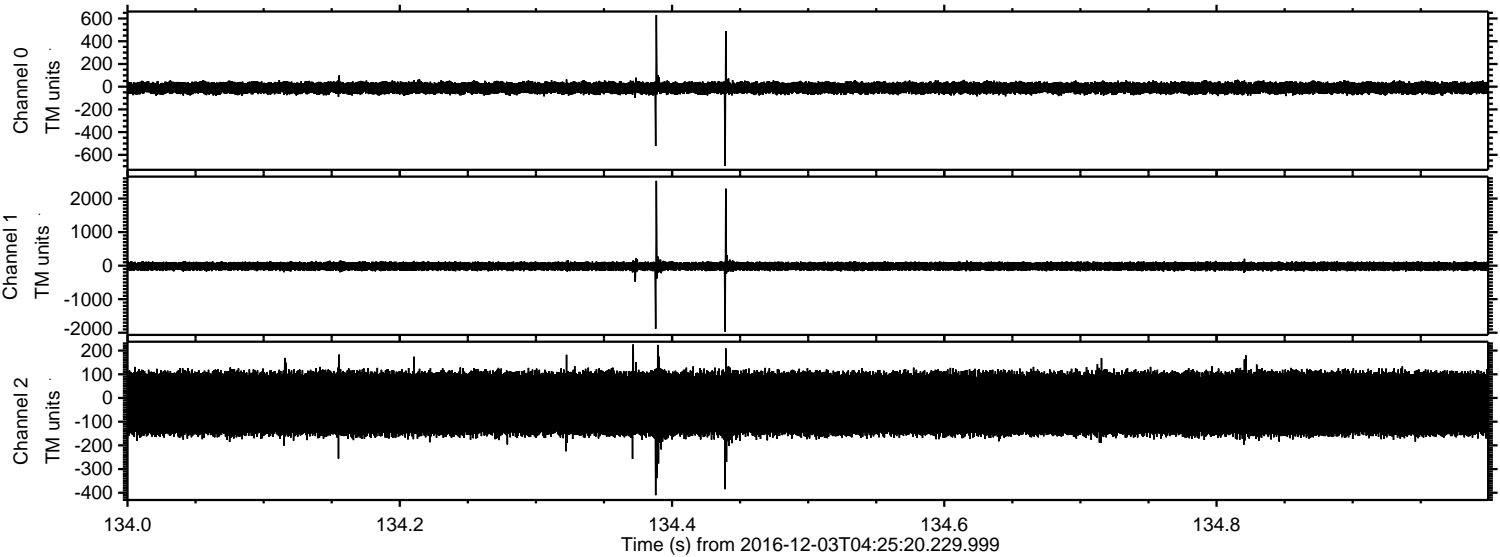
ELMAVAN 3D WAVEFORMS (Measured data sampled at 50 kHz) 51000 packets of 144 samples from 2016-12-03T04:25:20.229.999. Part 83/147

Processed Sat Dec 3 05:33:24 2016 by ELM ver.2012-10-06 from 001__elm20161203_042519__dat00.bin



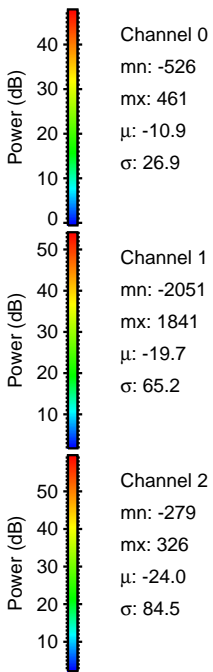
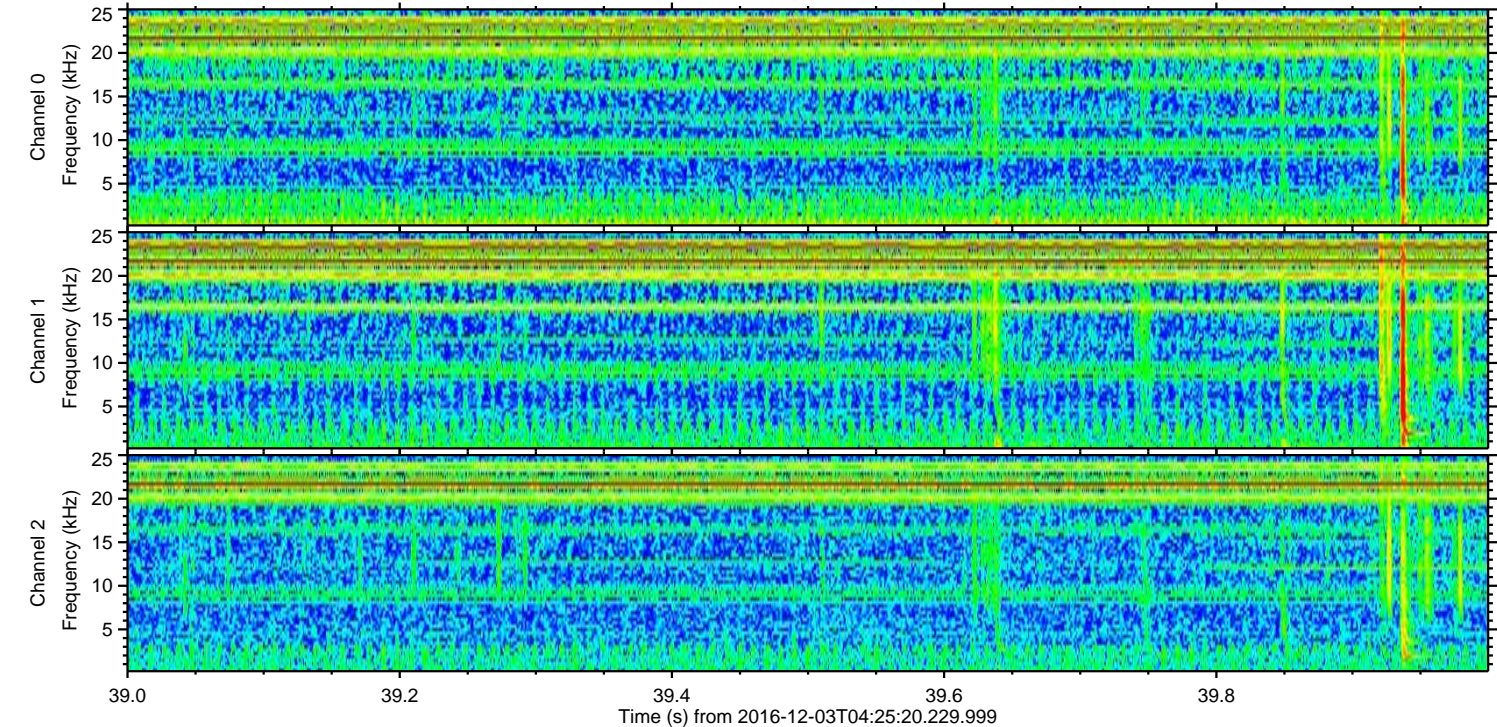
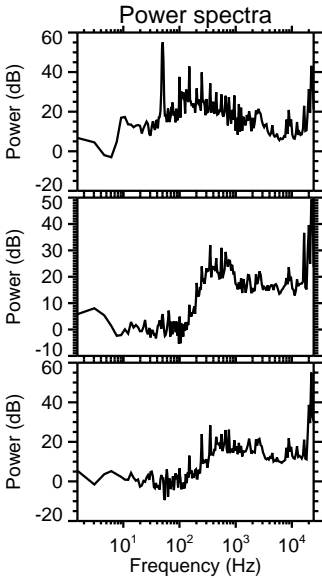
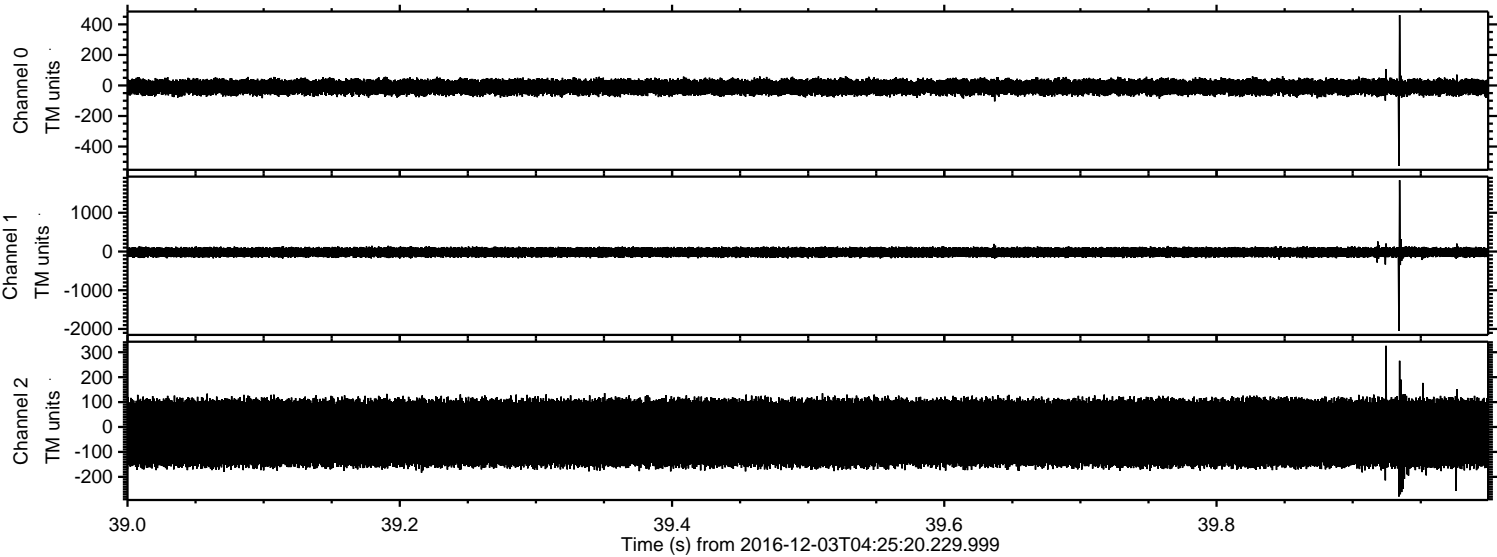
ELMAVAN 3D WAVEFORMS (Measured data sampled at 50 kHz) 51000 packets of 144 samples from 2016-12-03T04:25:20.229.999. Part 135/147

Processed Sat Dec 3 05:33:25 2016 by ELM ver.2012-10-06 from 001__elm20161203_042519__dat00.bin



ELMAVAN 3D WAVEFORMS (Measured data sampled at 50 kHz) 51000 packets of 144 samples from 2016-12-03T04:25:20.229.999. Part 40/147

Processed Sat Dec 3 05:33:26 2016 by ELM ver.2012-10-06 from 001__elm20161203_042519__dat00.bin



ELMAVAN 3D WAVEFORMS (Measured data sampled at 50 kHz) 51000 packets of 144 samples from 2016-12-03T04:25:20.229.999. Part 92/147

Processed Sat Dec 3 05:33:27 2016 by ELM ver.2012-10-06 from 001__elm20161203_042519__dat00.bin

