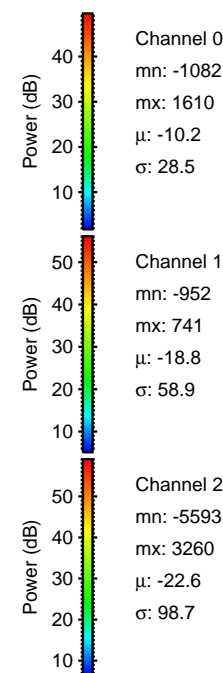
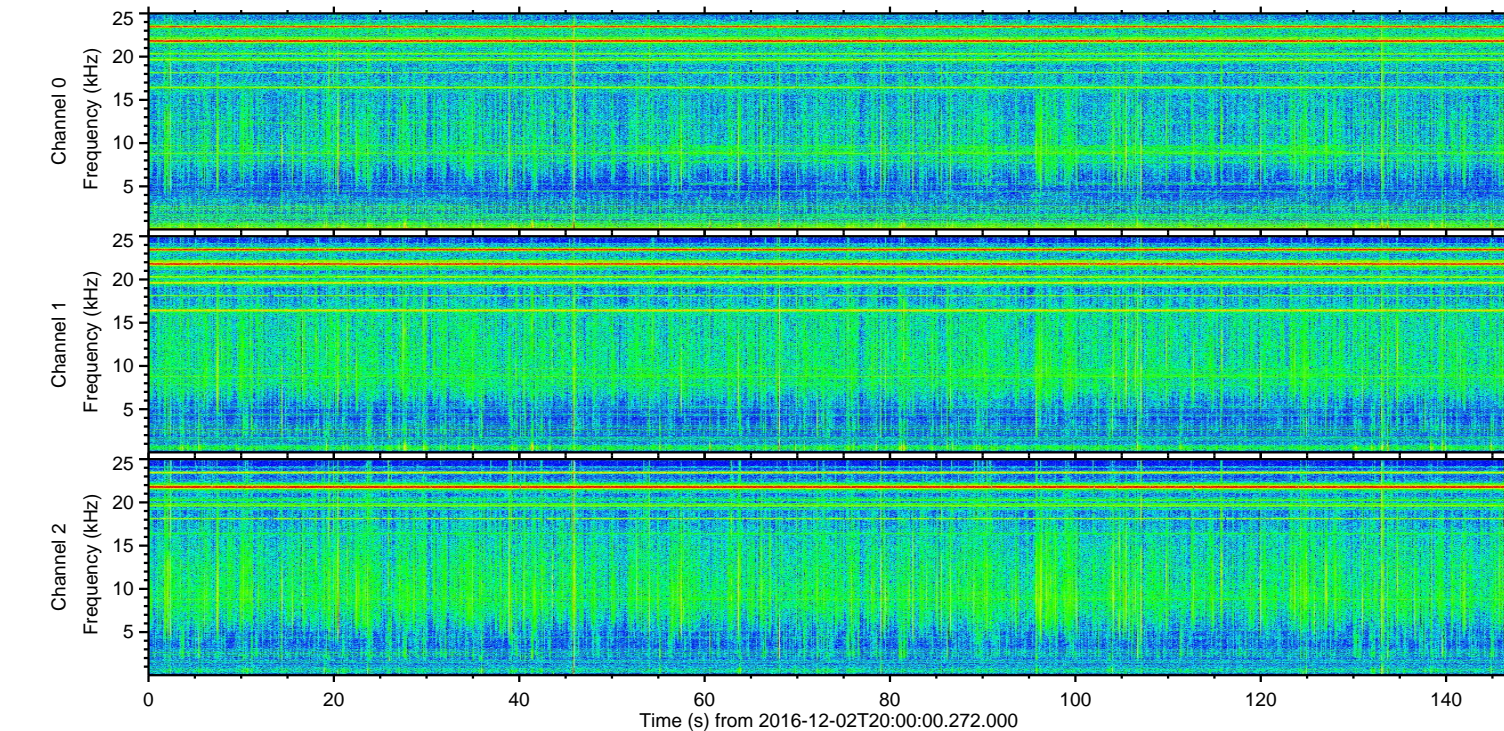
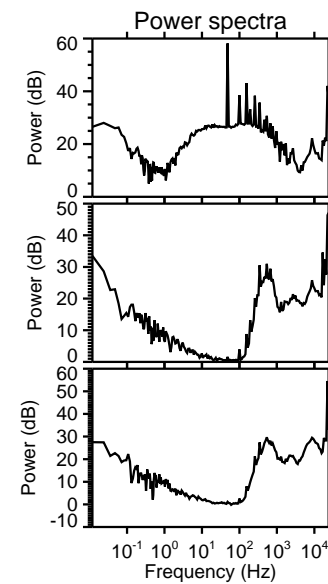
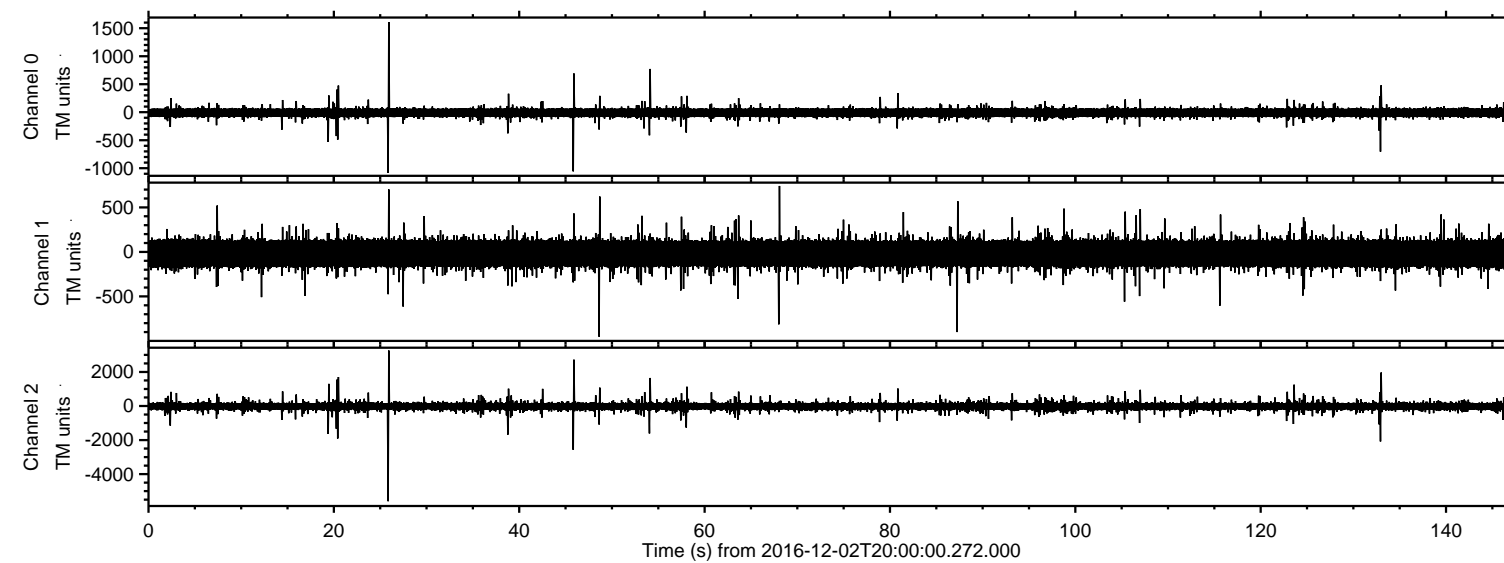


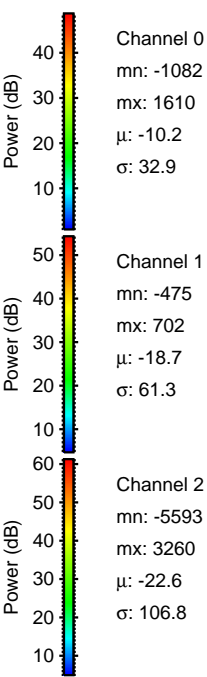
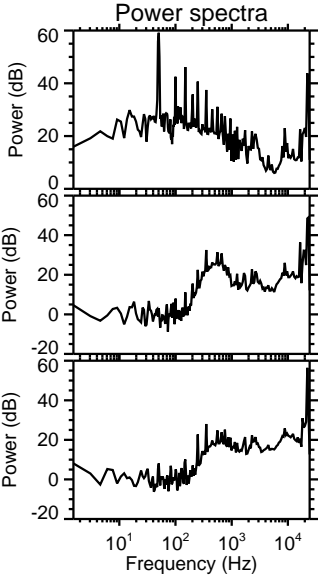
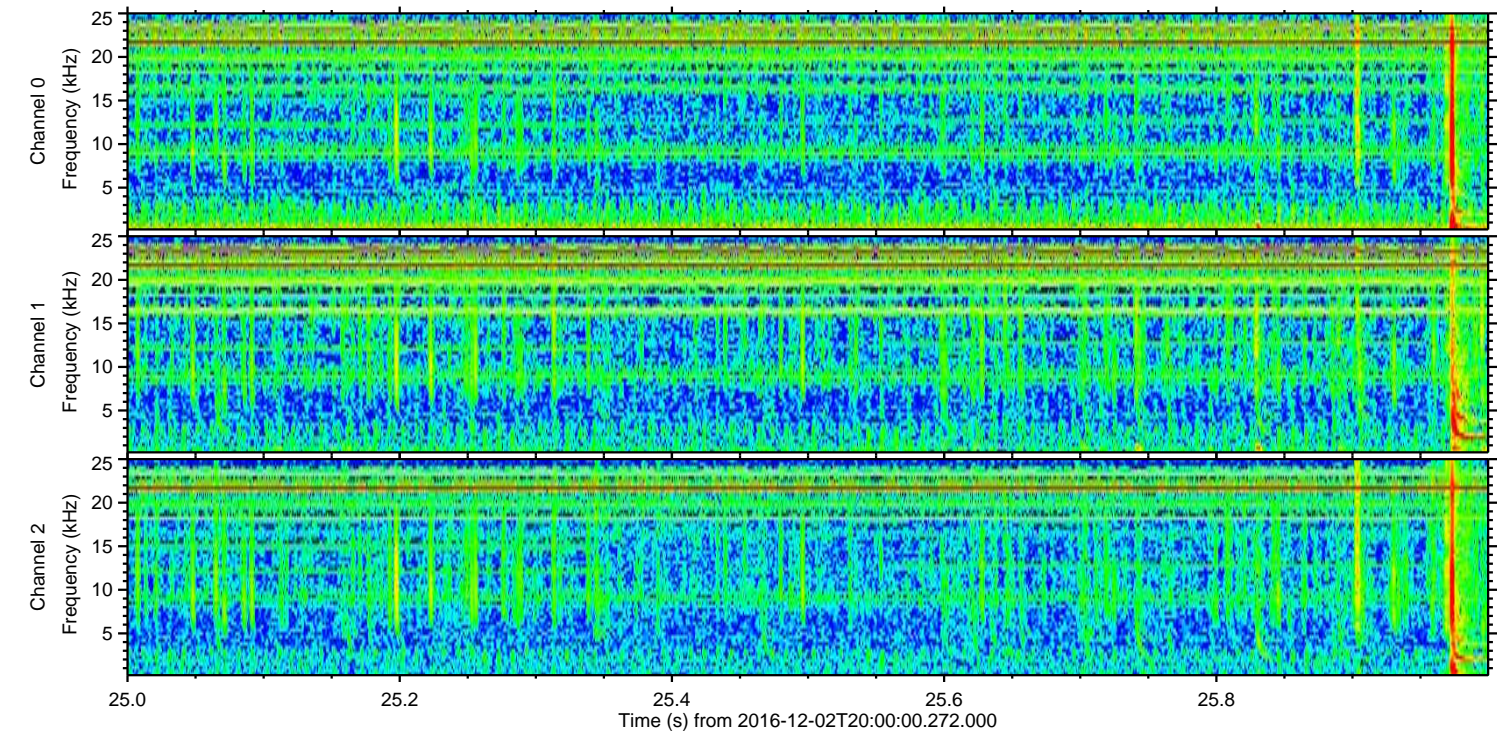
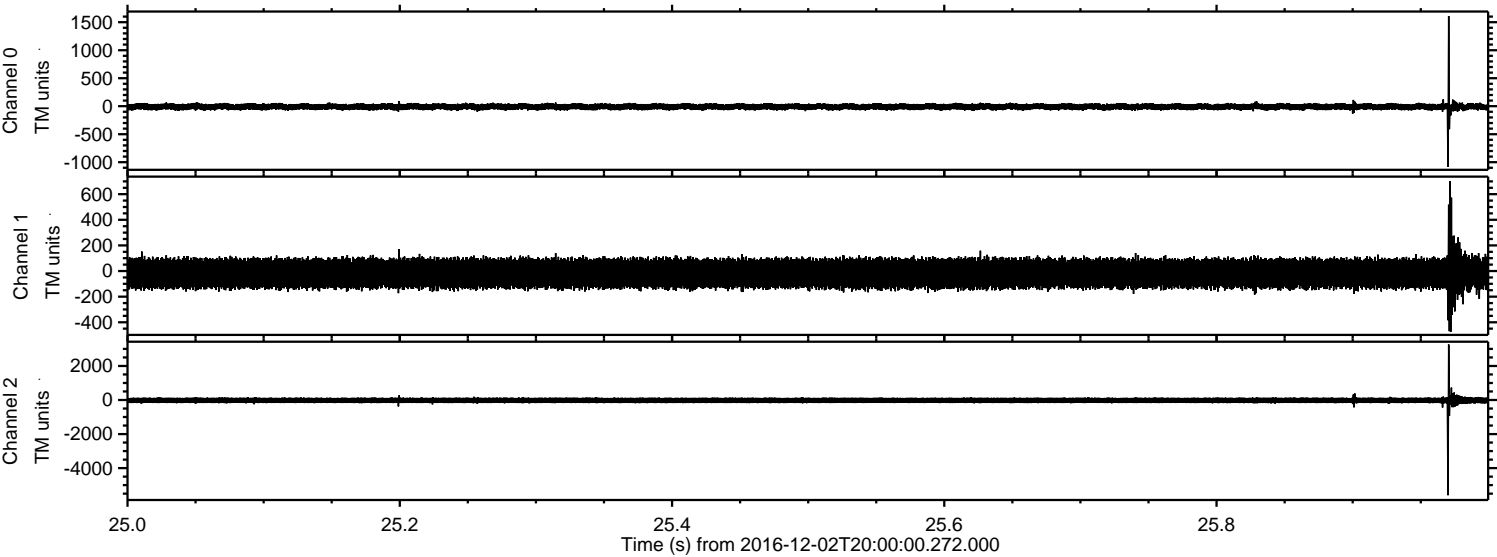
ELMAVAN 3D WAVEFORMS (Measured data sampled at 50 kHz) 51000 packets of 144 samples from 2016-12-02T20:00:00.272.000.

Processed Fri Dec 2 21:07:32 2016 by ELM ver.2012-10-06 from 001__elm20161202_195959__dat00.bin



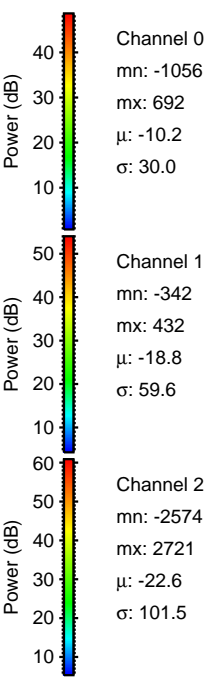
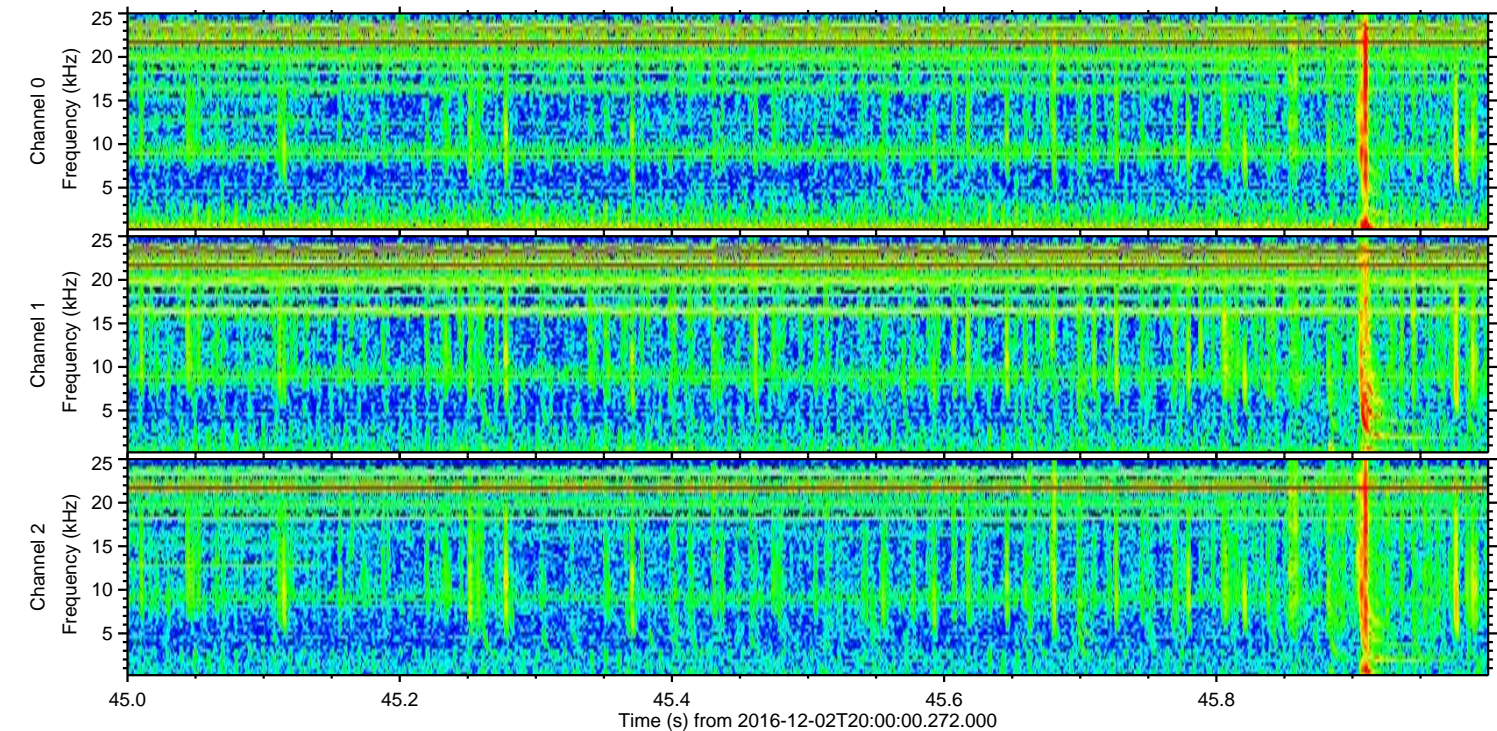
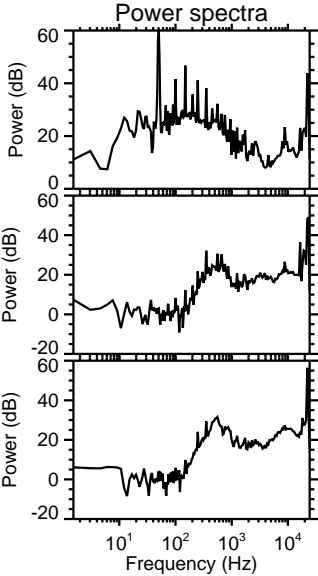
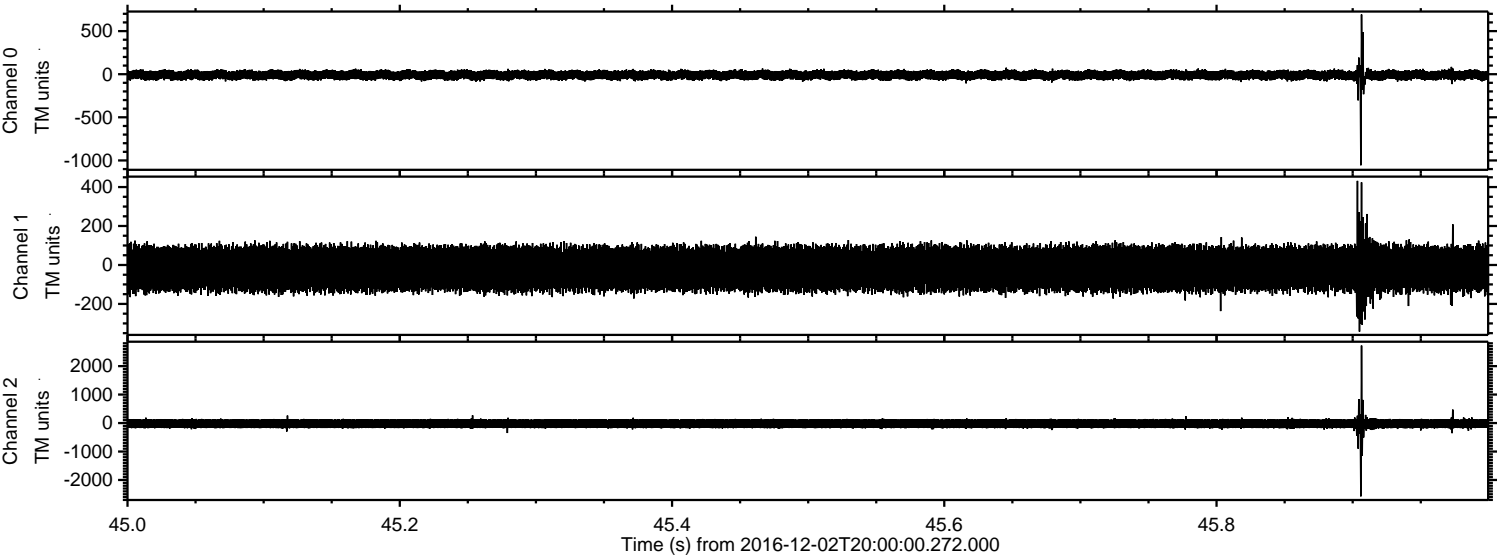
ELMAVAN 3D WAVEFORMS (Measured data sampled at 50 kHz) 51000 packets of 144 samples from 2016-12-02T20:00:00.272.000. Part 26/147

Processed Fri Dec 2 21:07:44 2016 by ELM ver.2012-10-06 from 001__elm20161202_195959__dat00.bin



ELMAVAN 3D WAVEFORMS (Measured data sampled at 50 kHz) 51000 packets of 144 samples from 2016-12-02T20:00:00.272.000. Part 46/147

Processed Fri Dec 2 21:07:45 2016 by ELM ver.2012-10-06 from 001__elm20161202_195959__dat00.bin



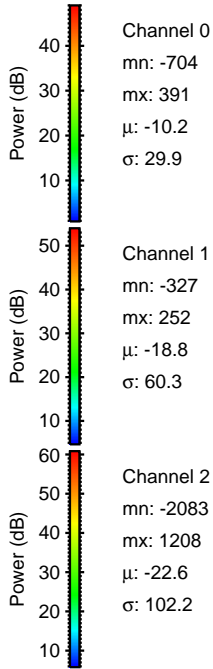
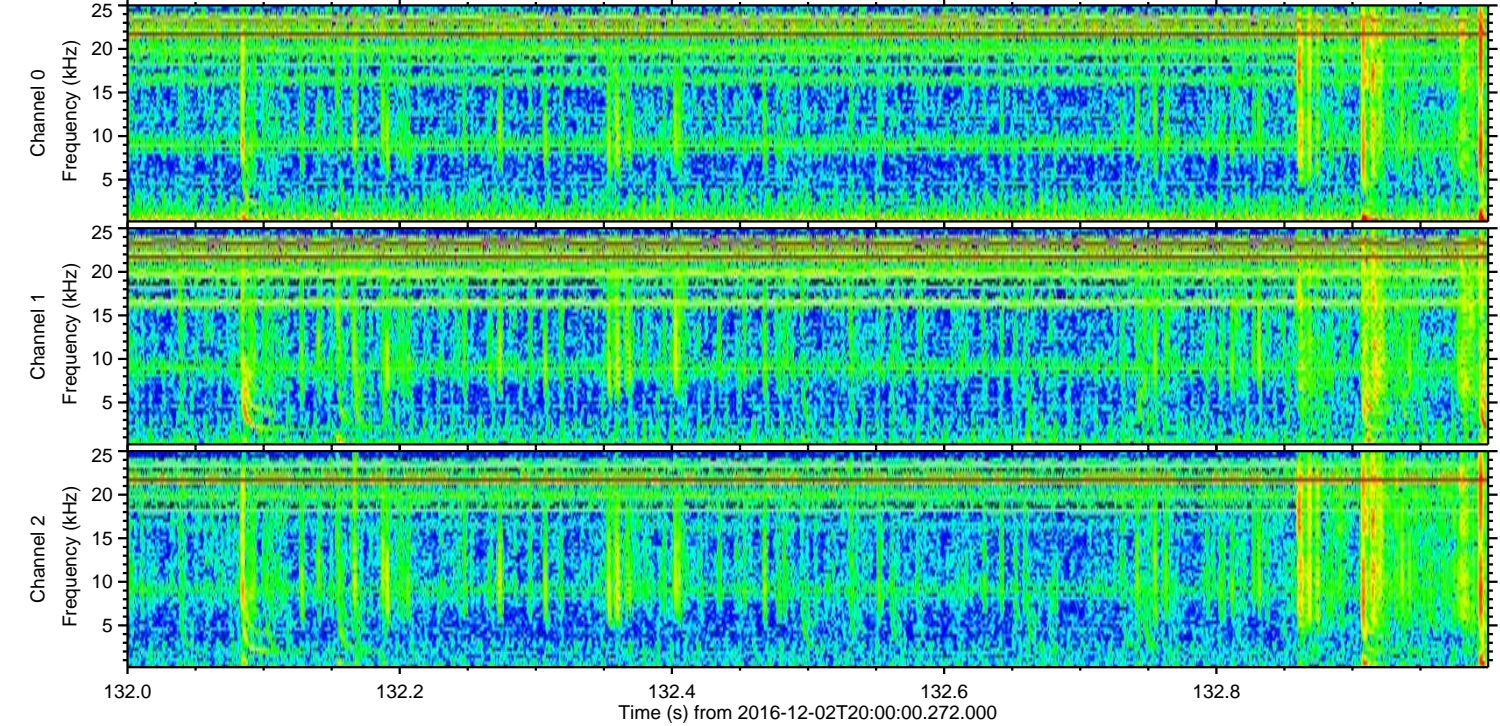
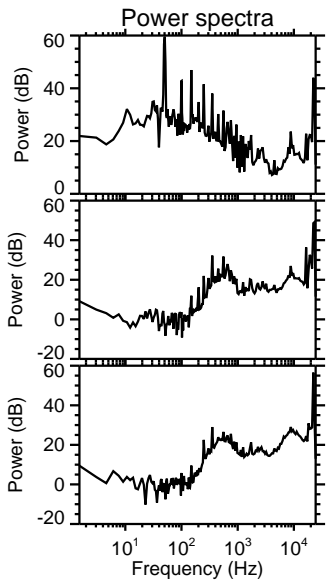
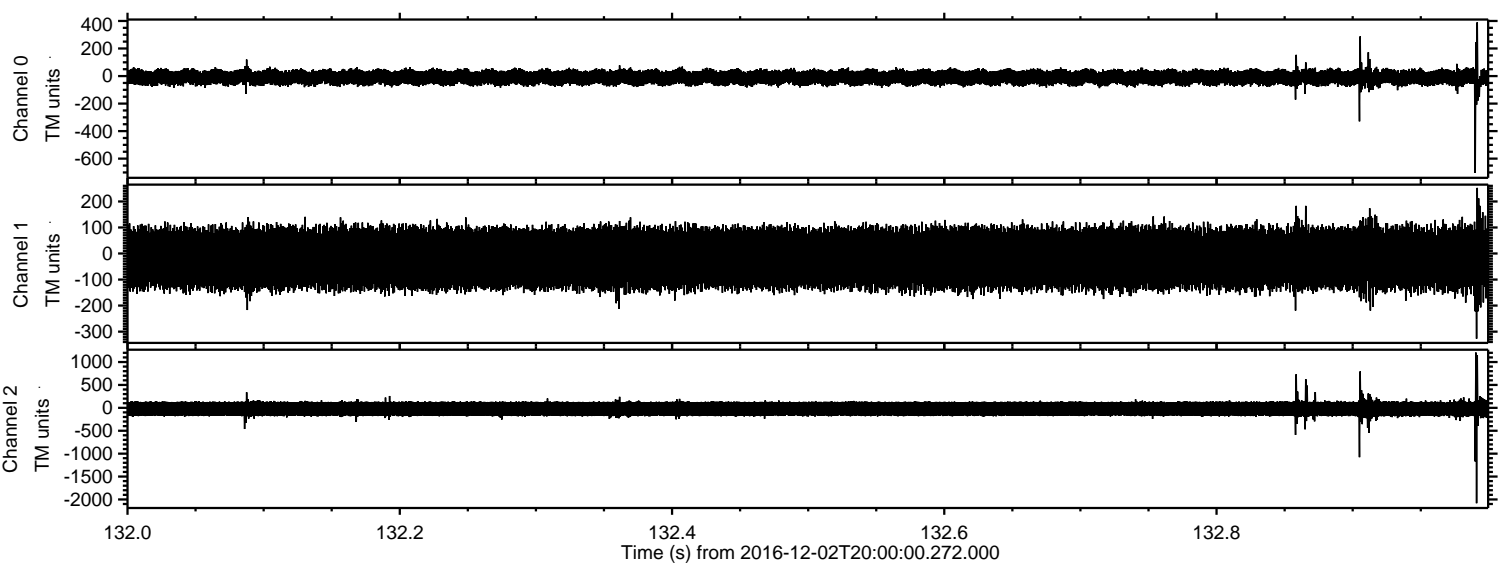
Channel 0
mn: -1056
mx: 692
 μ : -10.2
 σ : 30.0

Channel 1
mn: -342
mx: 432
 μ : -18.8
 σ : 59.6

Channel 2
mn: -2574
mx: 2721
 μ : -22.6
 σ : 101.5

ELMAVAN 3D WAVEFORMS (Measured data sampled at 50 kHz) 51000 packets of 144 samples from 2016-12-02T20:00:00.272.000. Part 133/147

Processed Fri Dec 2 21:07:46 2016 by ELM ver.2012-10-06 from 001__elm20161202_195959__dat00.bin

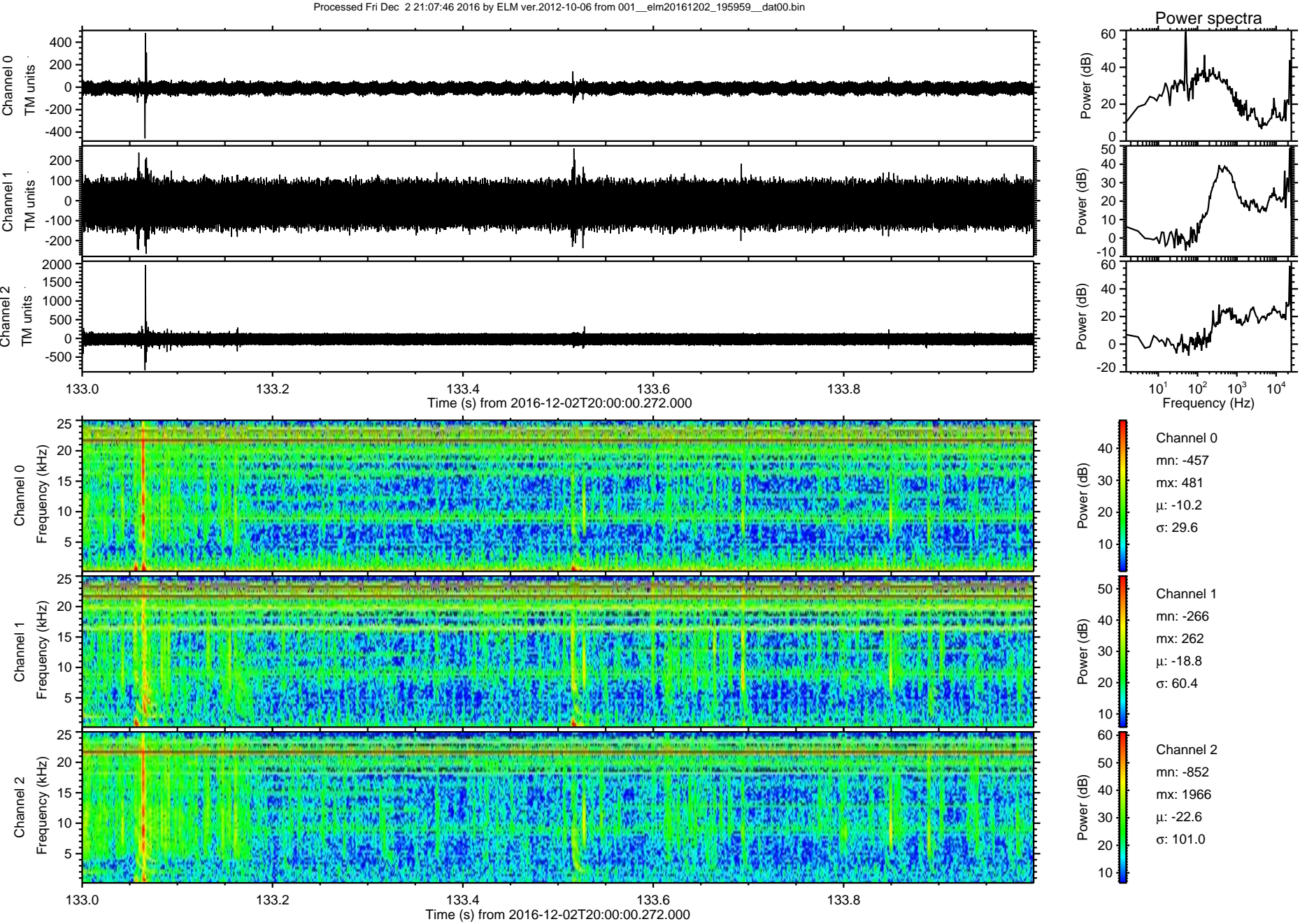


Channel 0
mn: -704
mx: 391
 μ : -10.2
 σ : 29.9

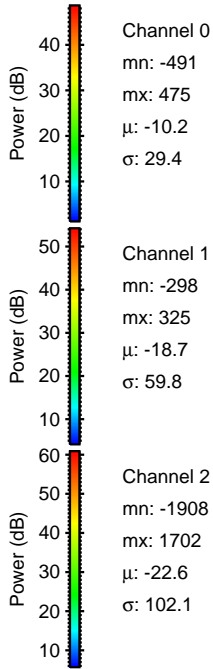
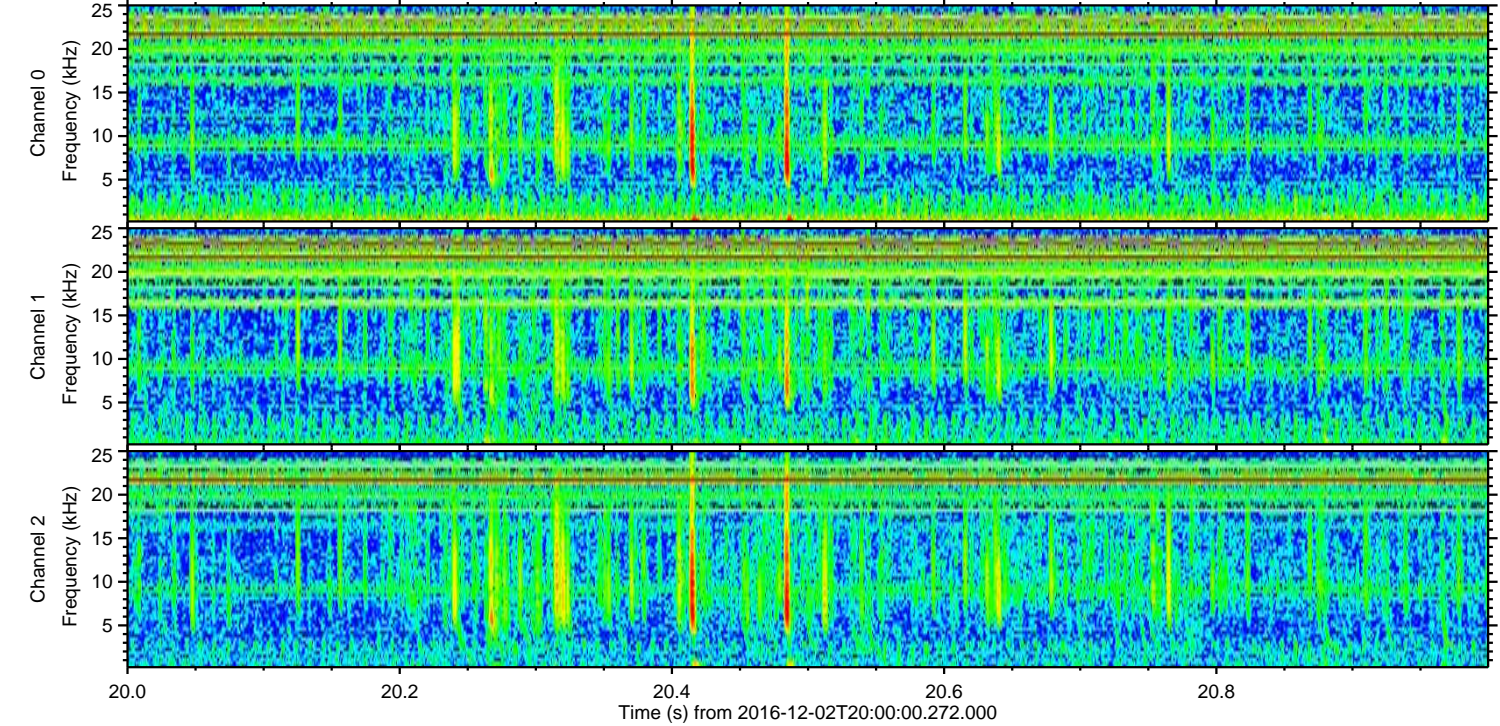
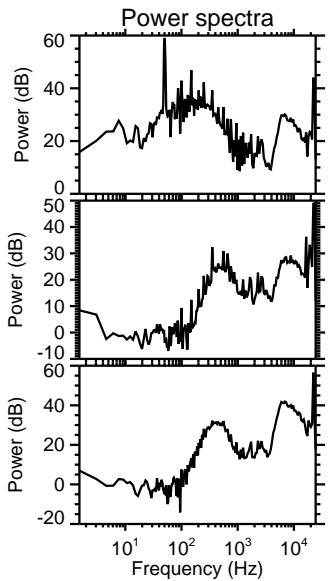
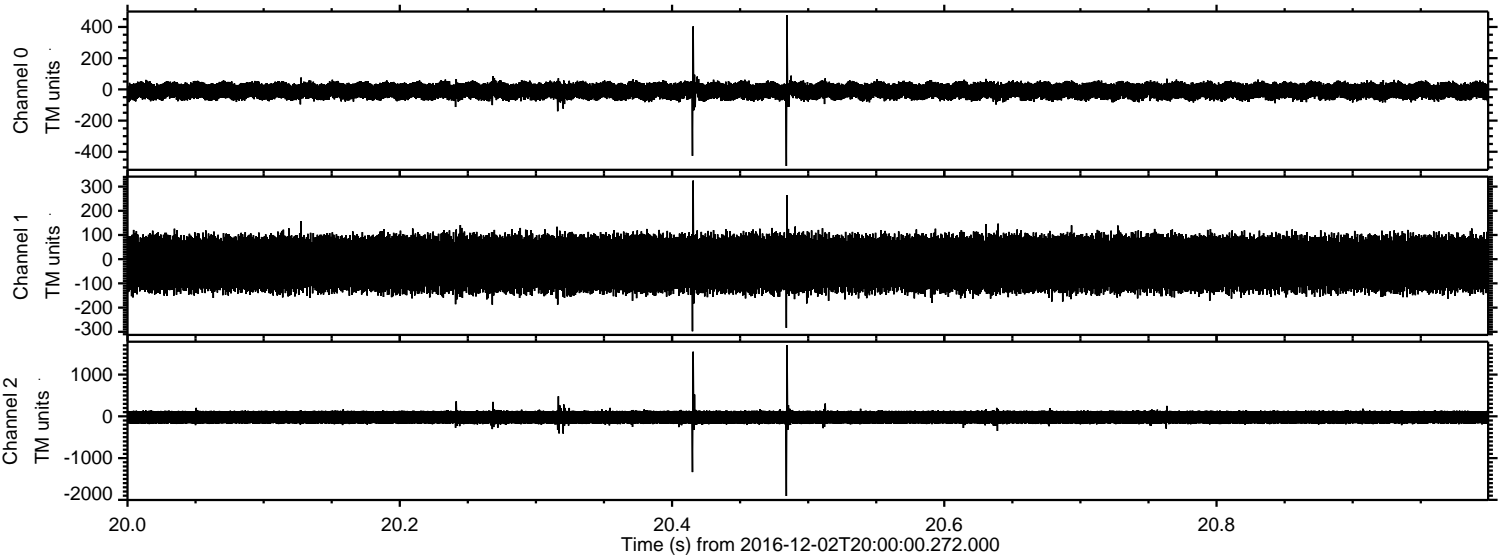
Channel 1
mn: -327
mx: 252
 μ : -18.8
 σ : 60.3

Channel 2
mn: -2083
mx: 1208
 μ : -22.6
 σ : 102.2

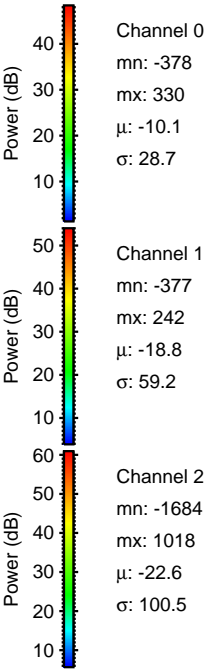
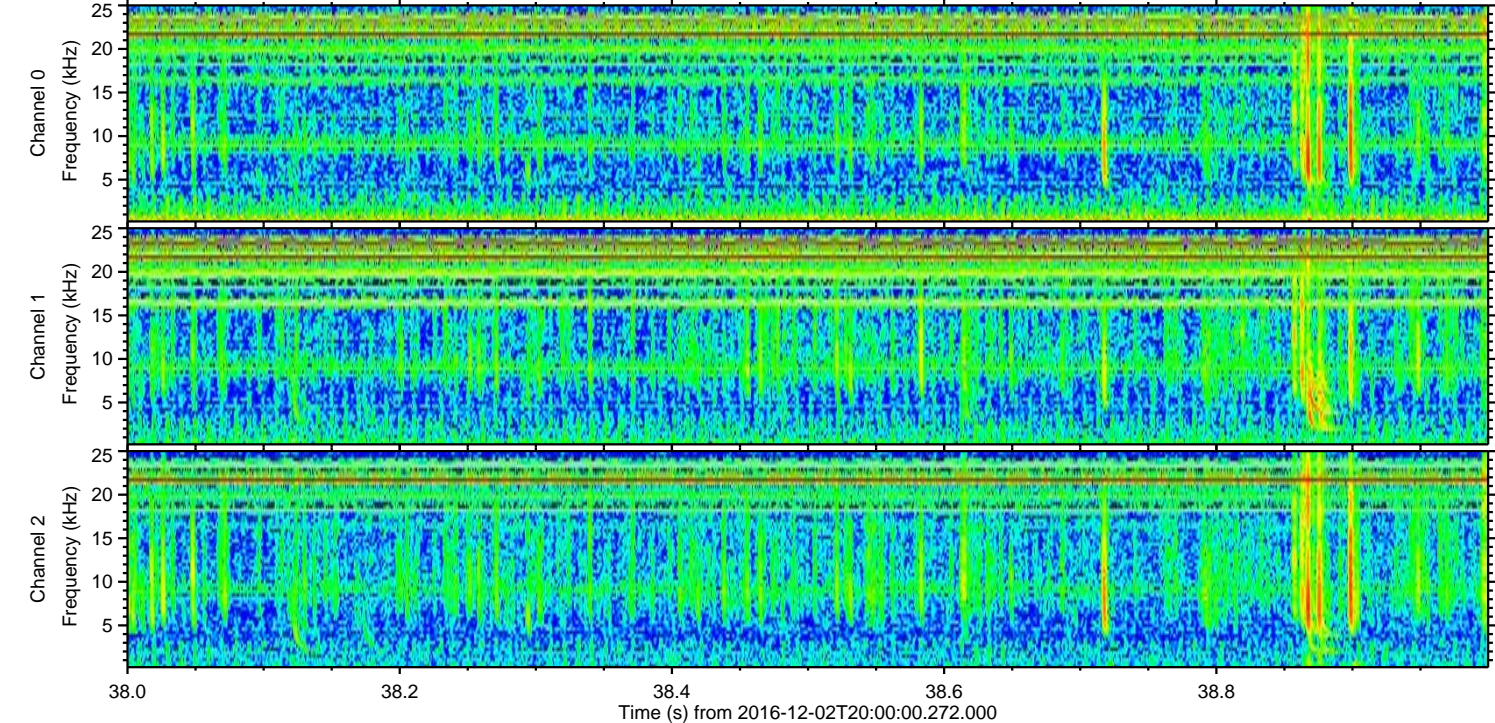
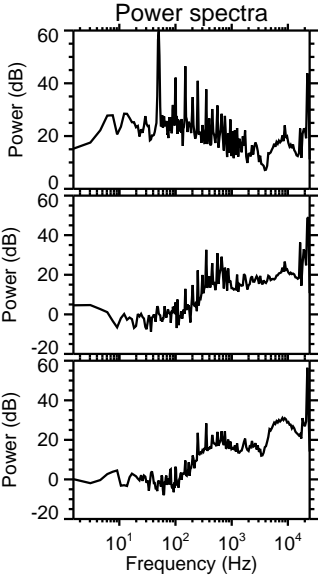
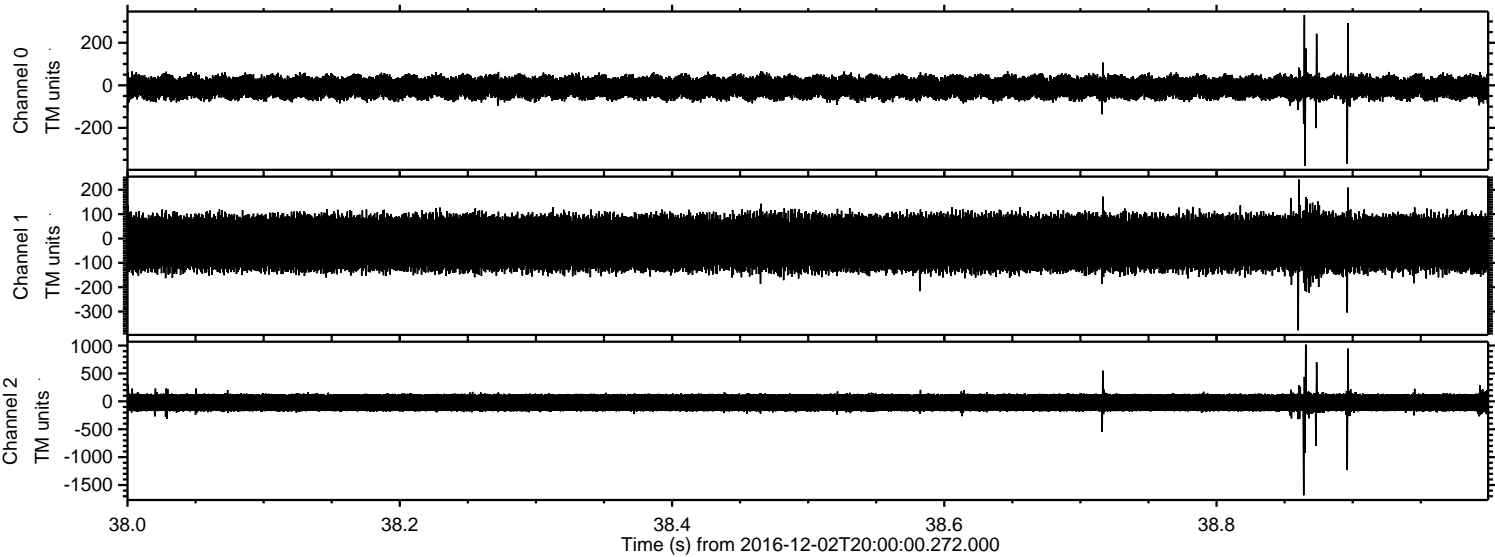
ELMAVAN 3D WAVEFORMS (Measured data sampled at 50 kHz) 51000 packets of 144 samples from 2016-12-02T20:00:00.272.000. Part 134/147



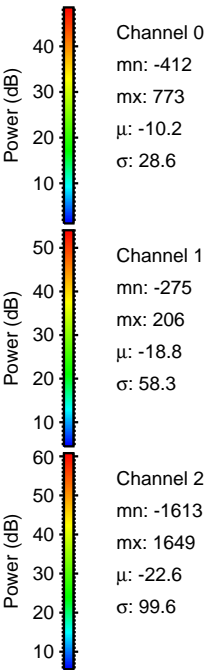
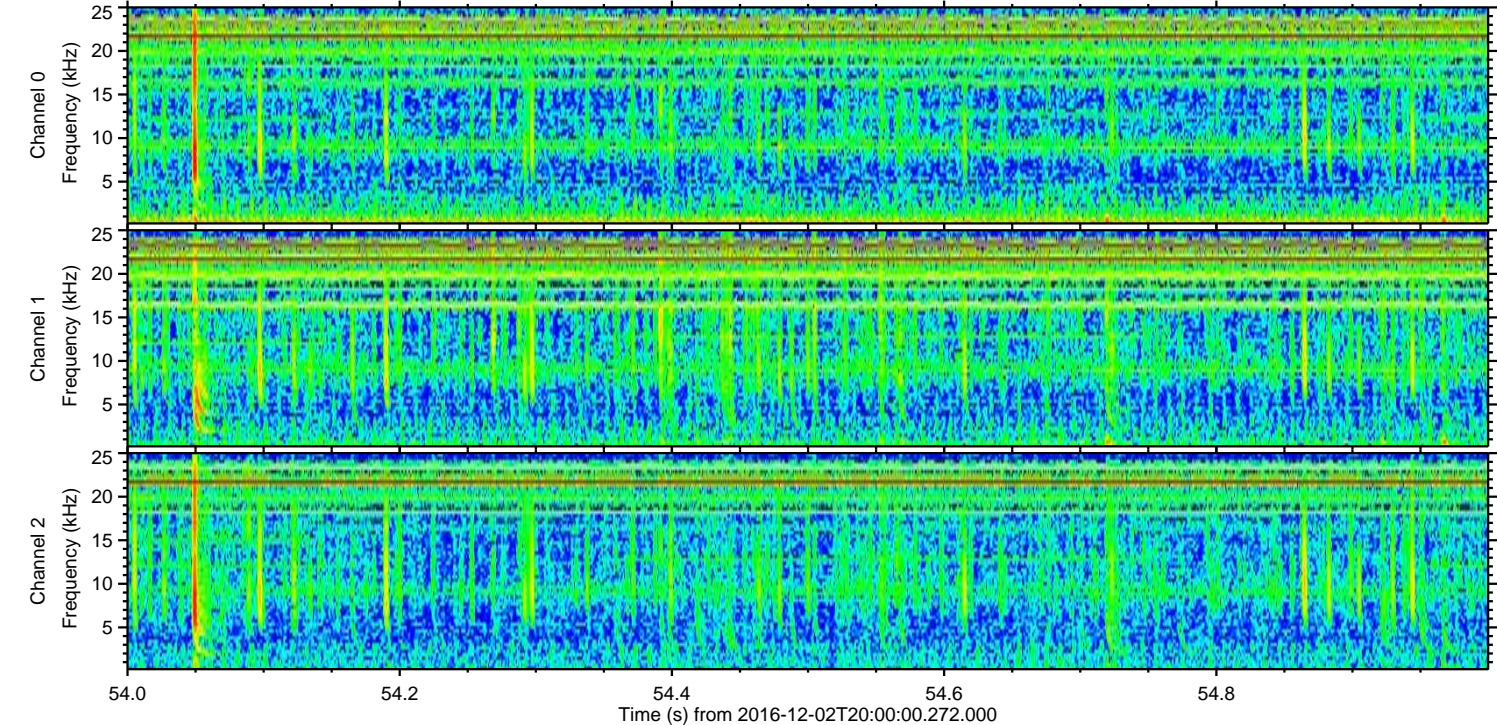
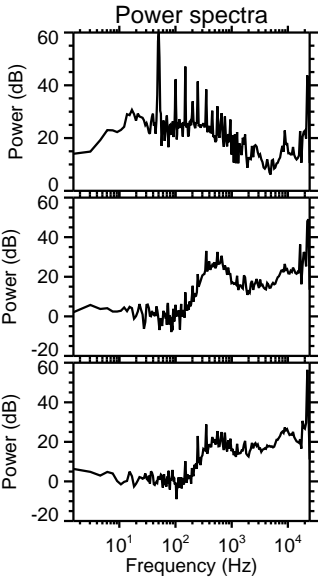
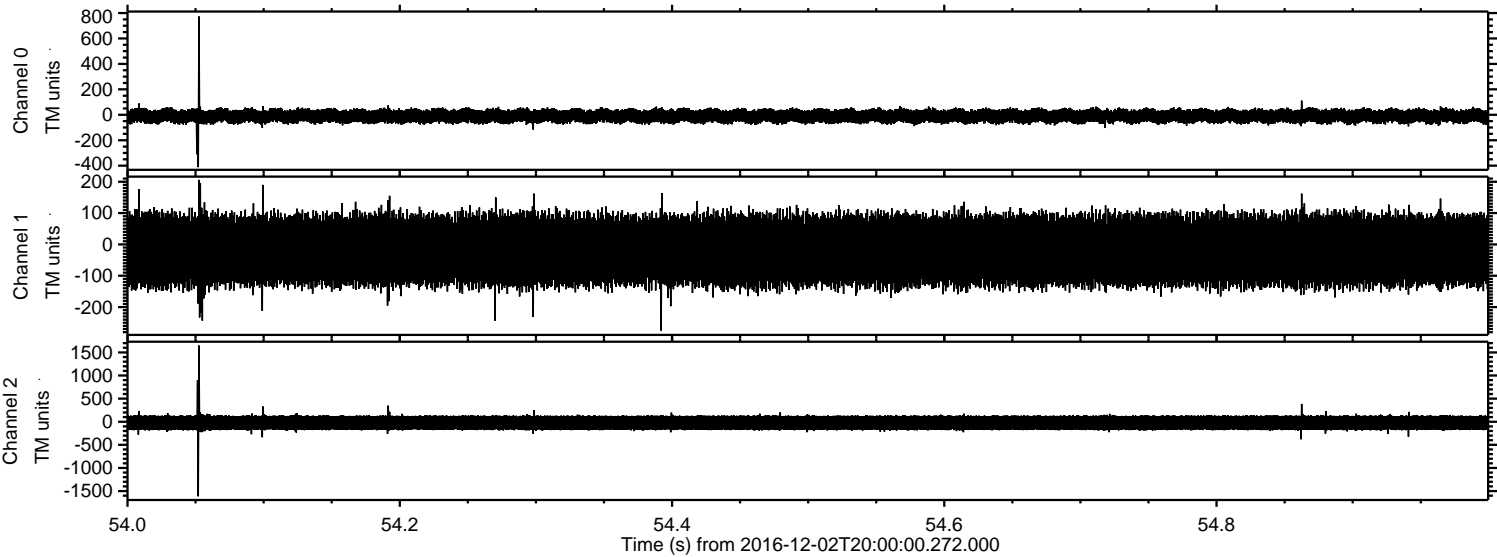
Processed Fri Dec 2 21:07:47 2016 by ELM ver.2012-10-06 from 001__elm20161202_195959__dat00.bin



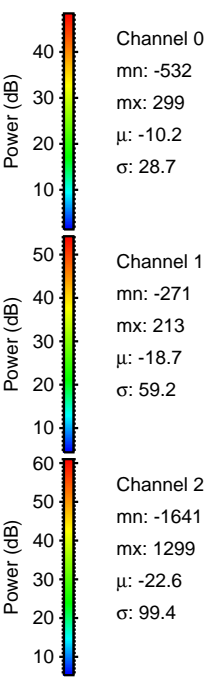
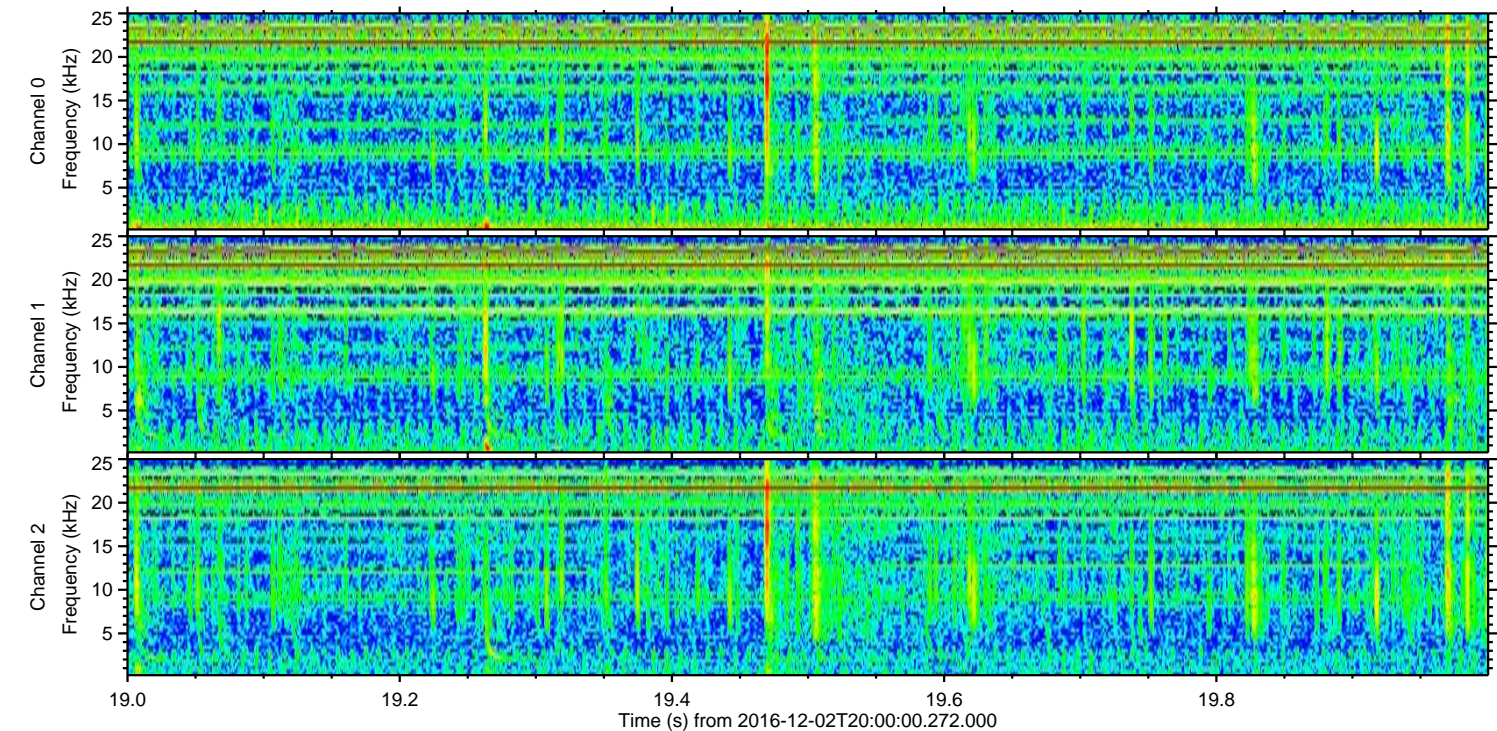
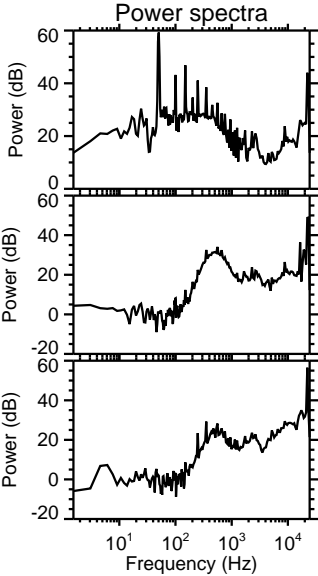
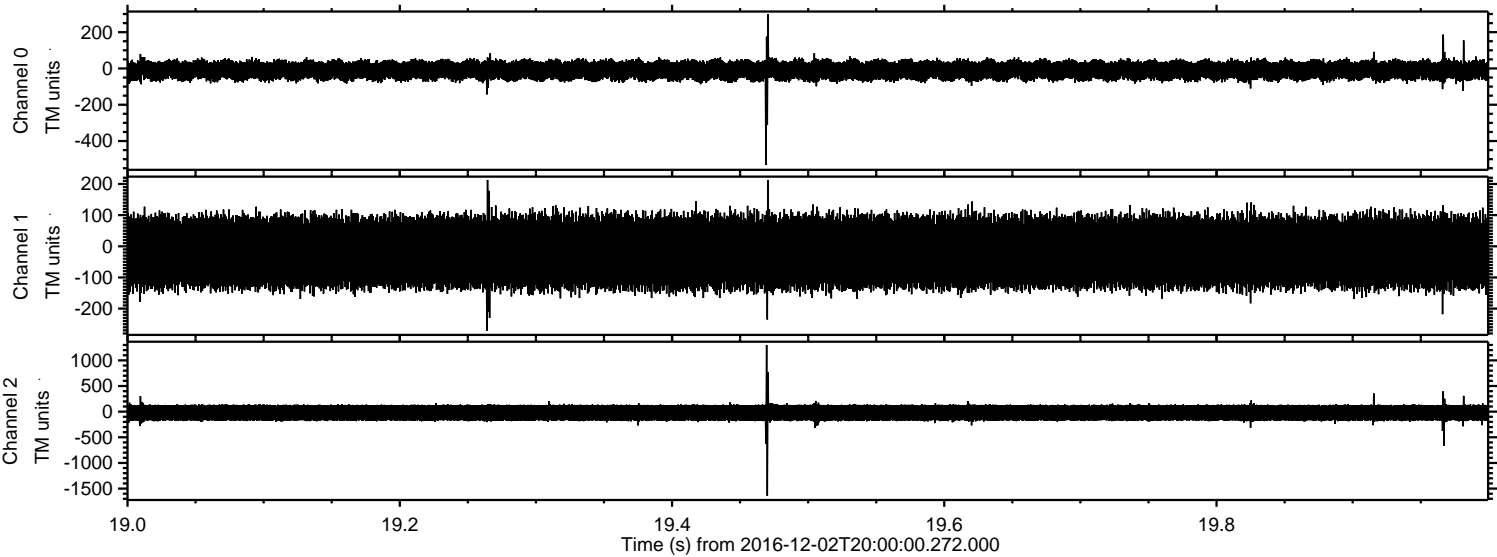
Processed Fri Dec 2 21:07:48 2016 by ELM ver.2012-10-06 from 001__elm20161202_195959__dat00.bin



Processed Fri Dec 2 21:07:49 2016 by ELM ver.2012-10-06 from 001__elm20161202_195959__dat00.bin



Processed Fri Dec 2 21:07:50 2016 by ELM ver.2012-10-06 from 001__elm20161202_195959__dat00.bin



Processed Fri Dec 2 21:07:51 2016 by ELM ver.2012-10-06 from 001__elm20161202_195959__dat00.bin

