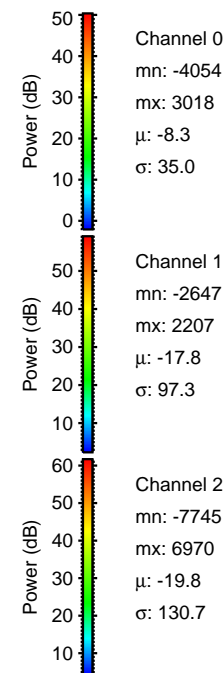
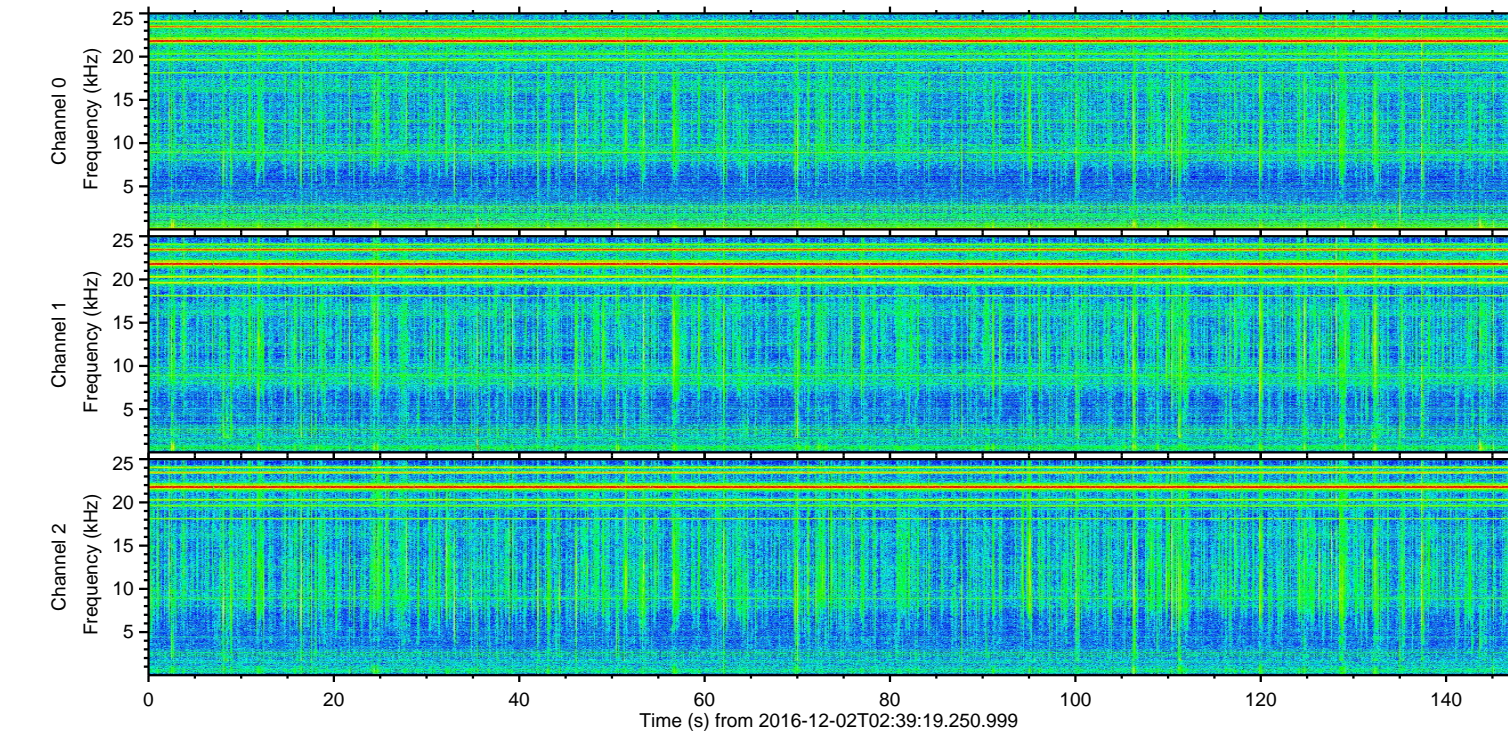
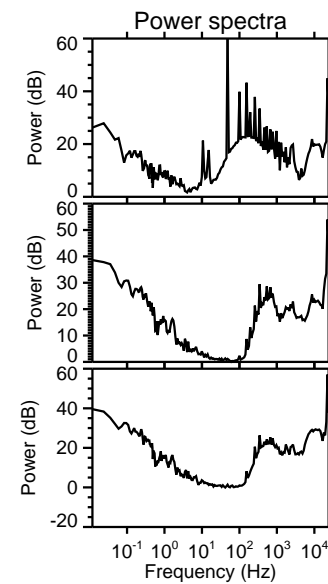
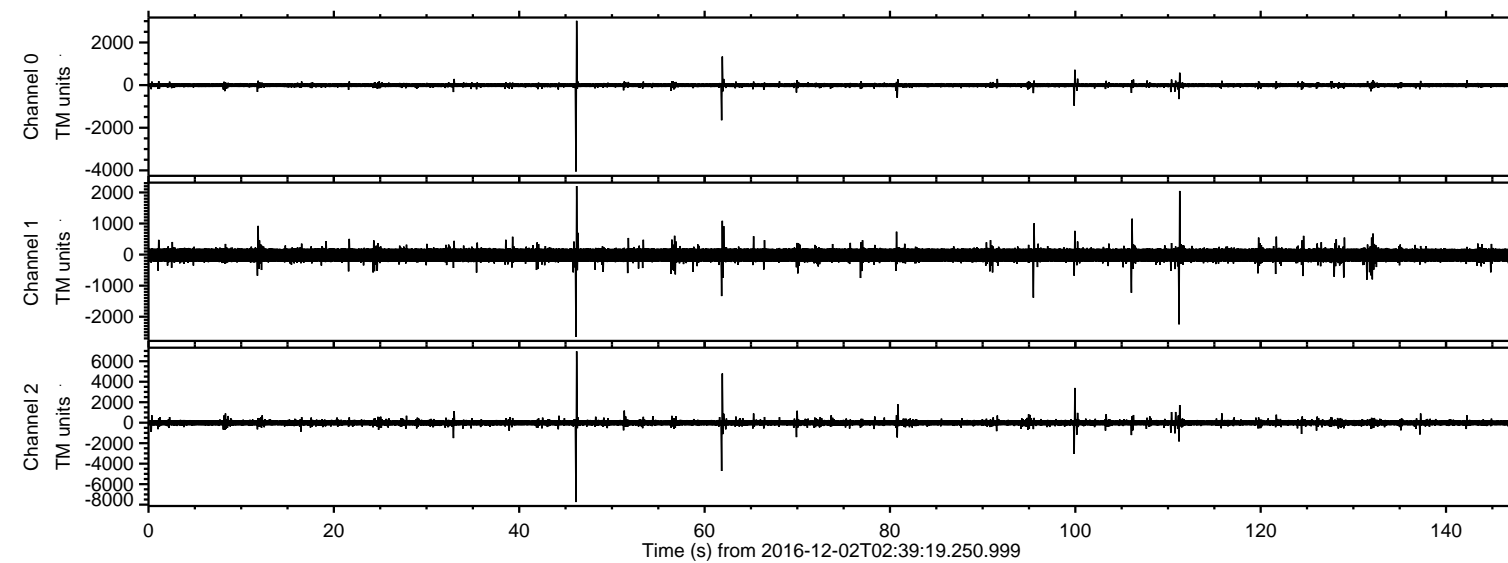


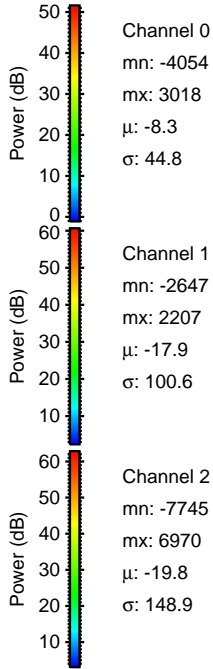
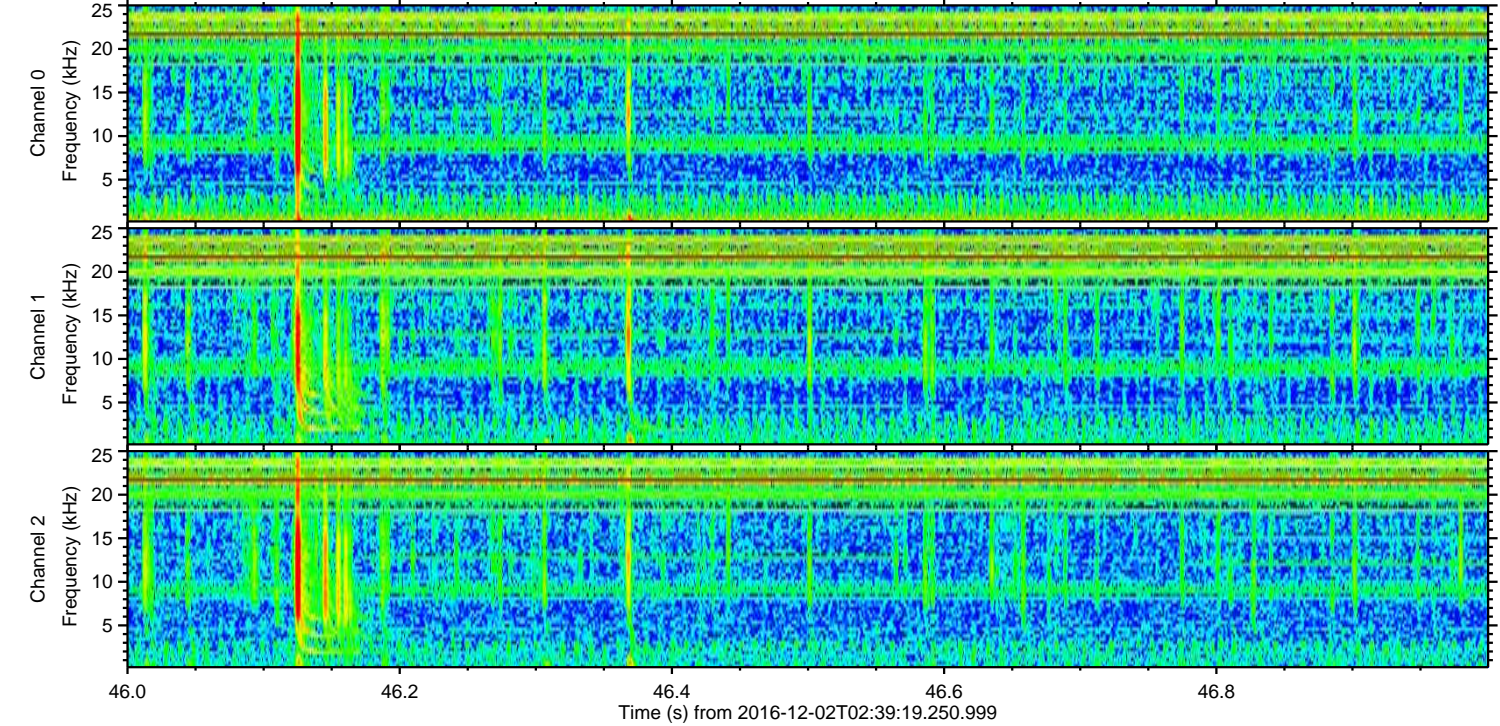
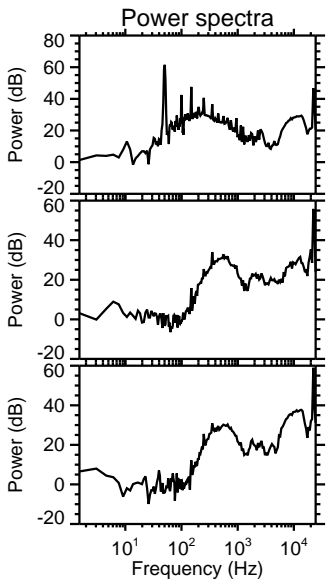
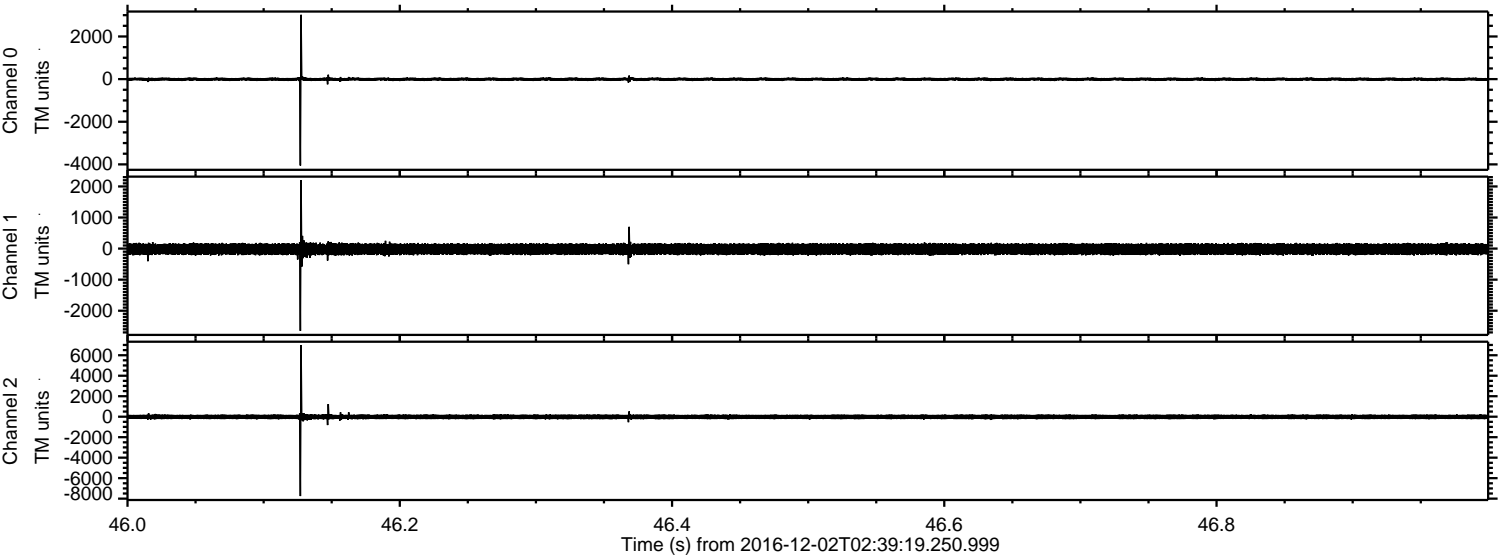
# ELMAVAN 3D WAVEFORMS (Measured data sampled at 50 kHz) 51000 packets of 144 samples from 2016-12-02T02:39:19.250.999.

Processed Fri Dec 2 03:47:23 2016 by ELM ver.2012-10-06 from 001\_\_elm20161202\_023918\_\_dat00.bin





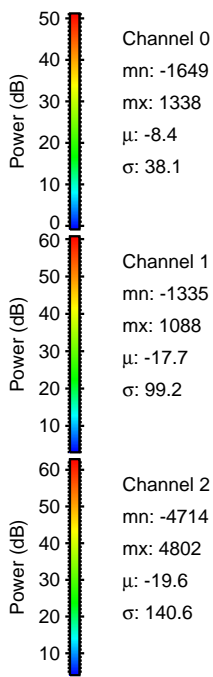
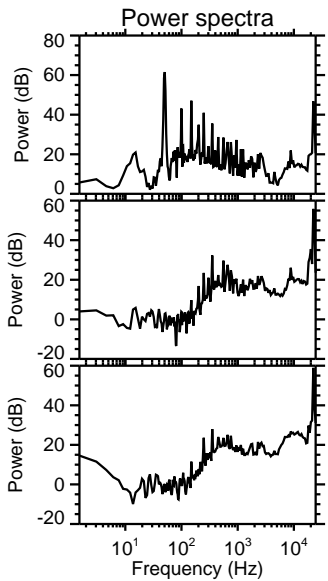
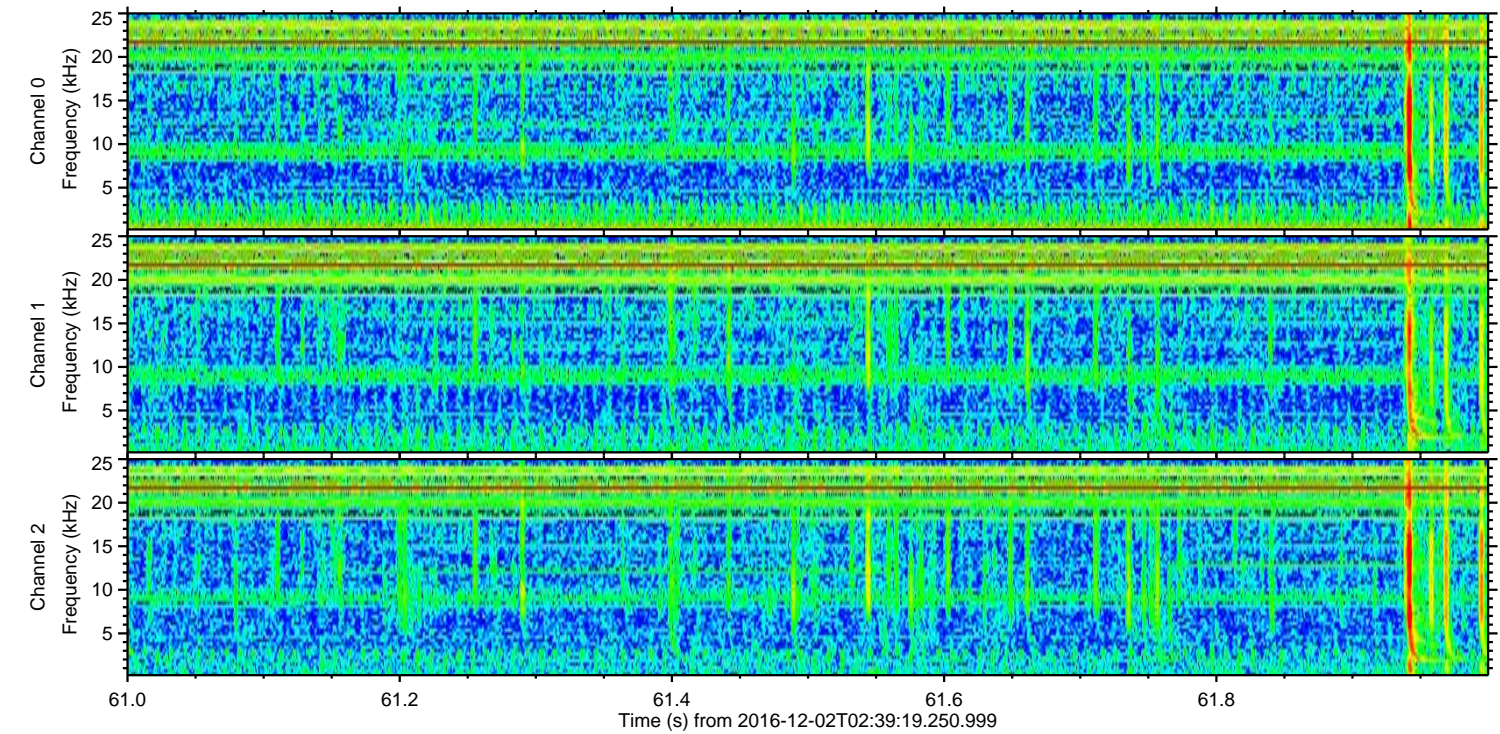
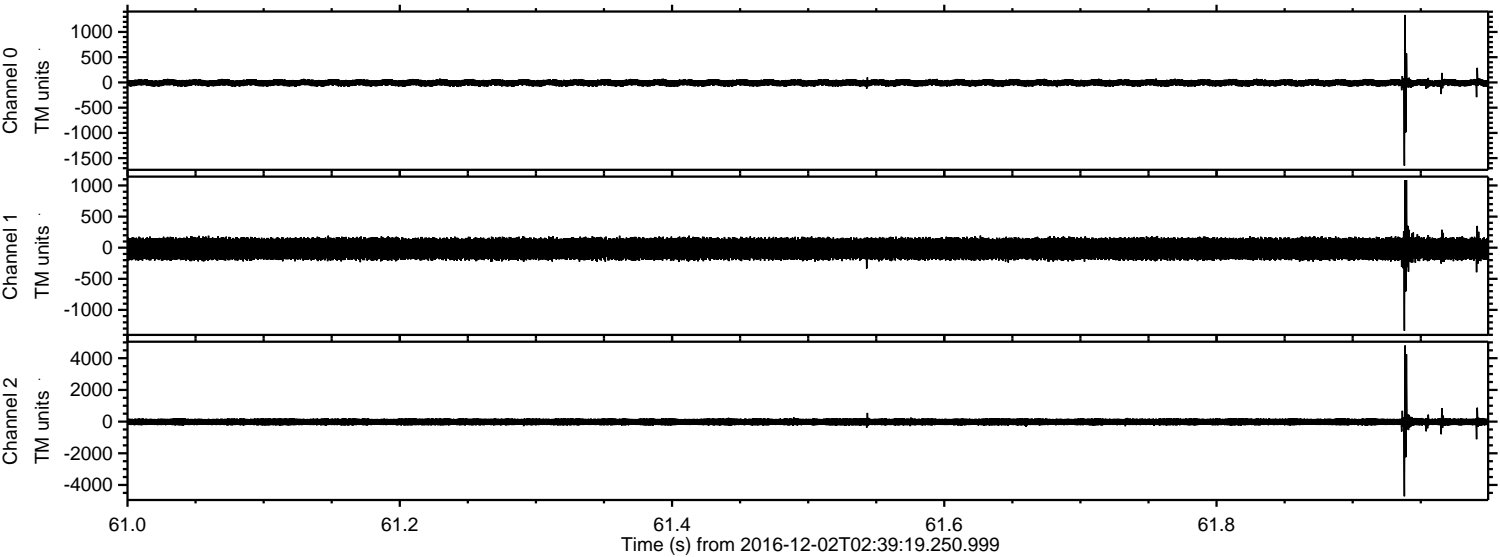
Processed Fri Dec 2 03:47:34 2016 by ELM ver.2012-10-06 from 001\_\_elm20161202\_023918\_\_dat00.bin





ELMAVAN 3D WAVEFORMS (Measured data sampled at 50 kHz) 51000 packets of 144 samples from 2016-12-02T02:39:19.250.999. Part 62/147

Processed Fri Dec 2 03:47:35 2016 by ELM ver.2012-10-06 from 001\_\_elm20161202\_023918\_\_dat00.bin



Channel 0  
mn: -1649  
mx: 1338  
 $\mu$ : -8.4  
 $\sigma$ : 38.1

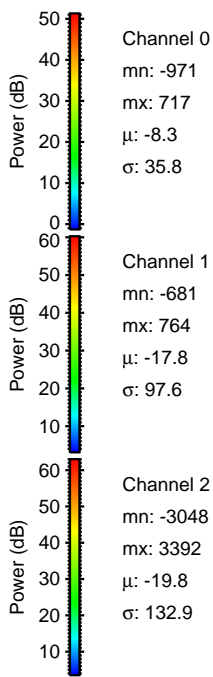
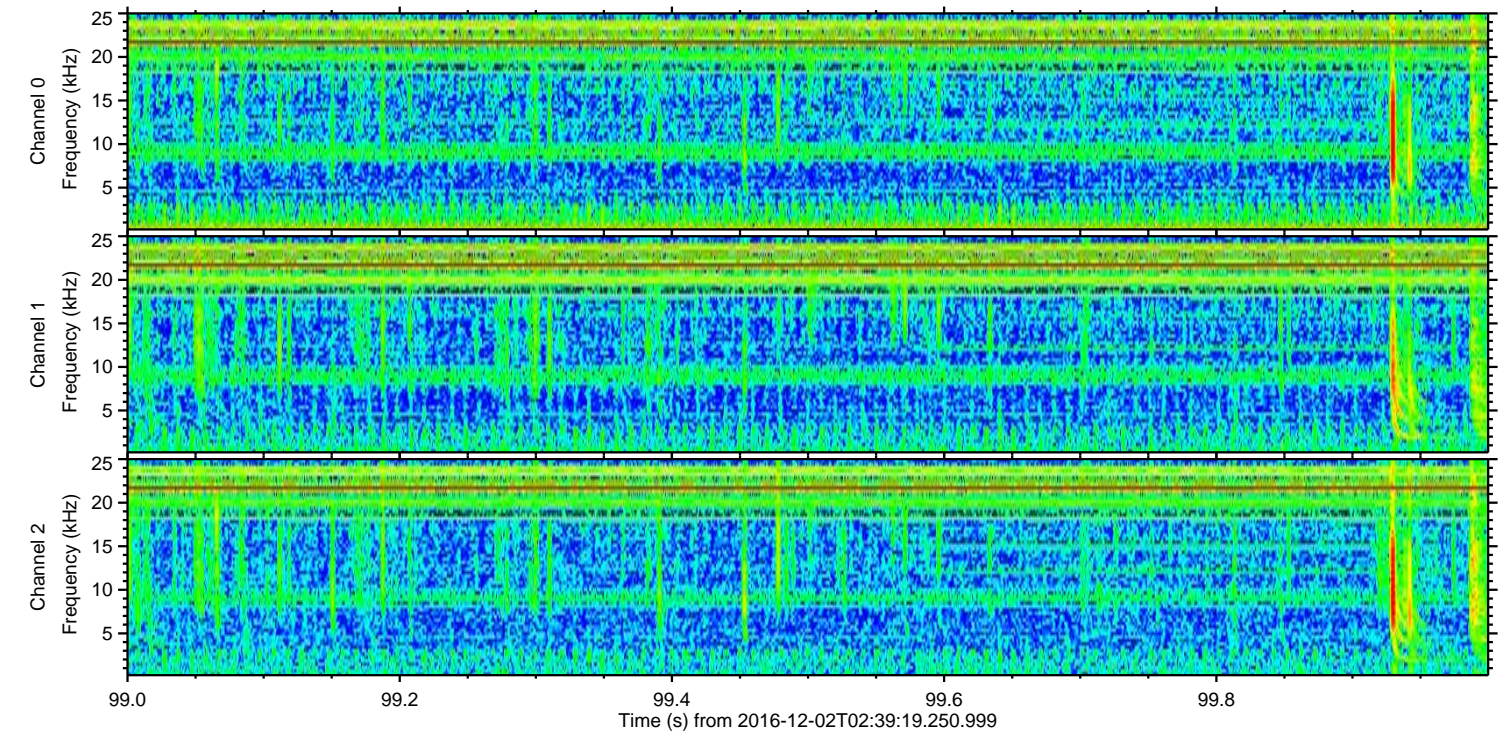
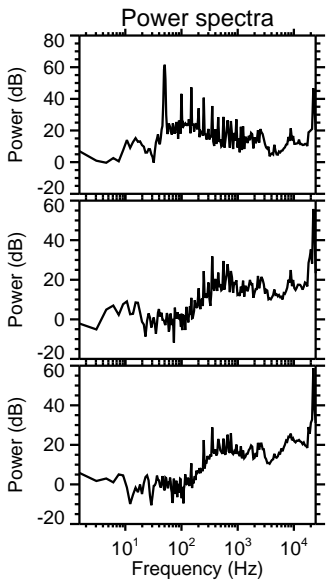
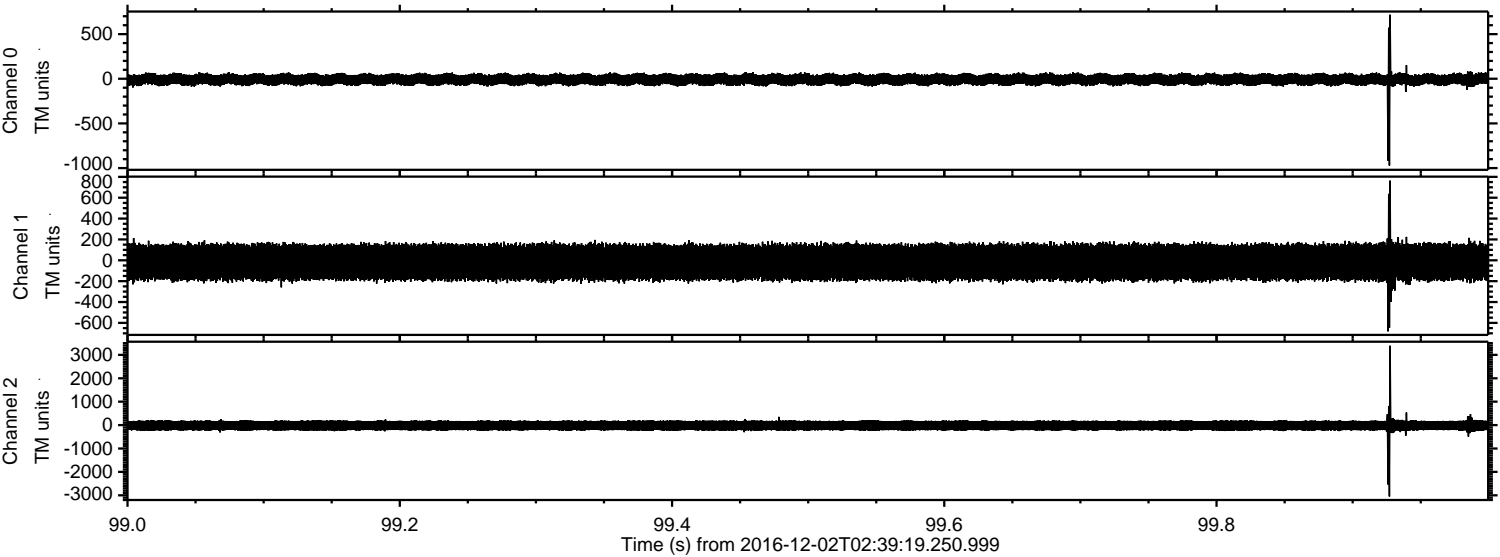
Channel 1  
mn: -1335  
mx: 1088  
 $\mu$ : -17.7  
 $\sigma$ : 99.2

Channel 2  
mn: -4714  
mx: 4802  
 $\mu$ : -19.6  
 $\sigma$ : 140.6



ELMAVAN 3D WAVEFORMS (Measured data sampled at 50 kHz) 51000 packets of 144 samples from 2016-12-02T02:39:19.250.999. Part 100/147

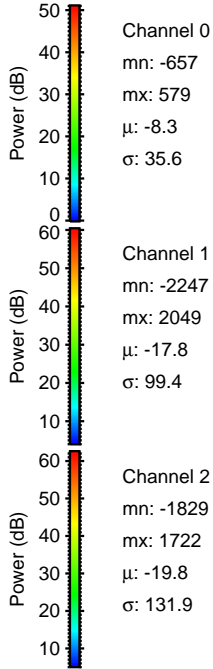
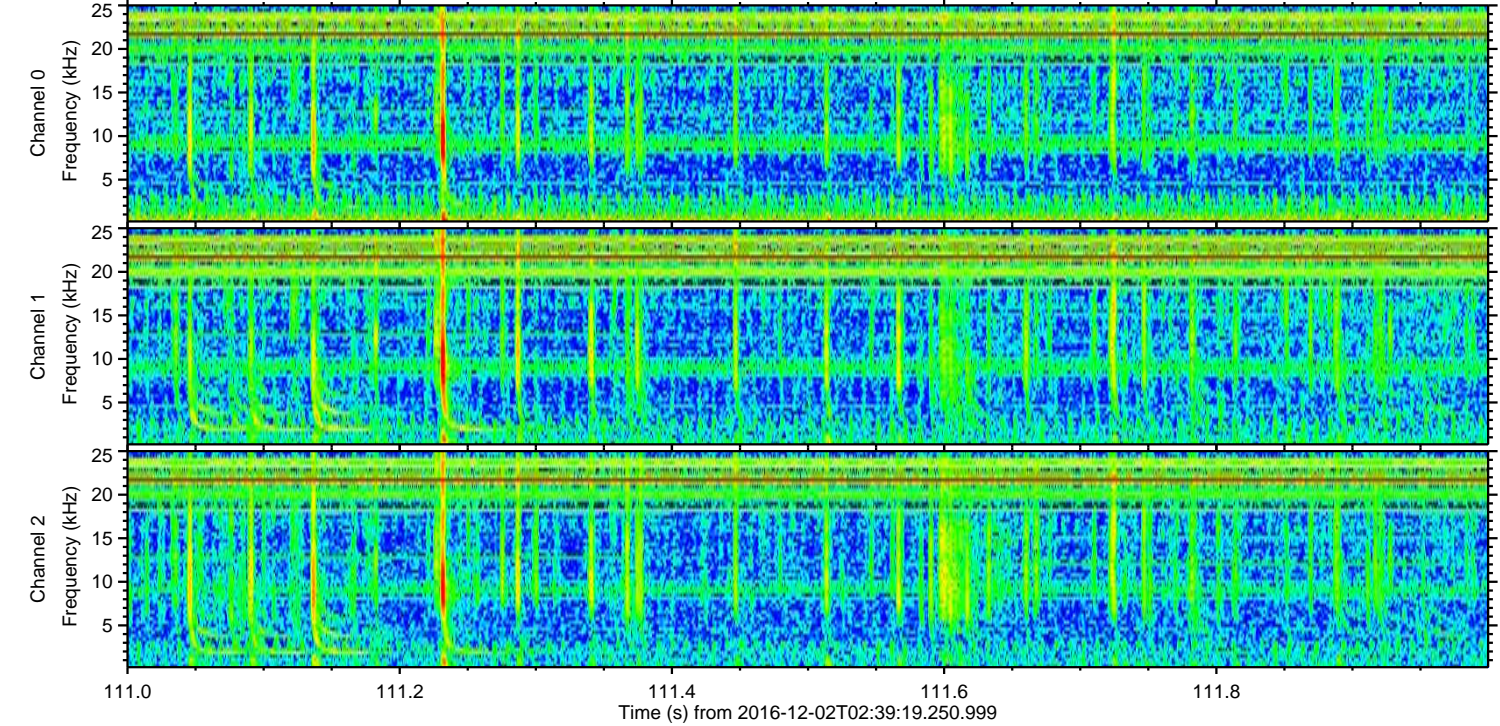
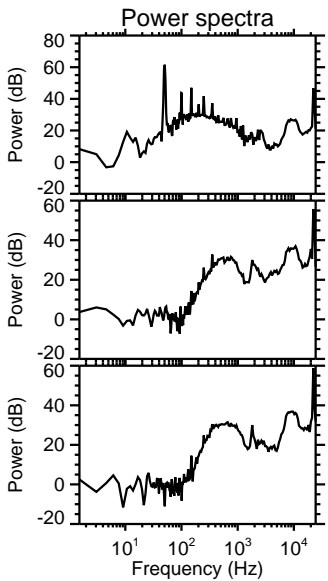
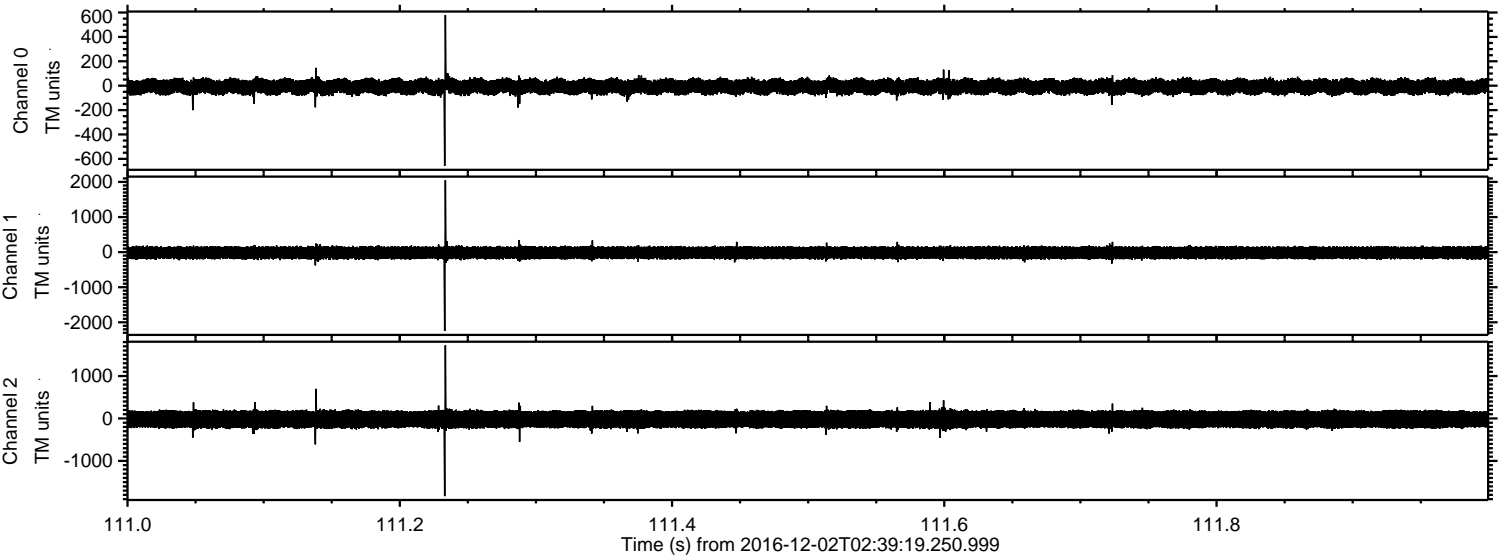
Processed Fri Dec 2 03:47:36 2016 by ELM ver.2012-10-06 from 001\_\_elm20161202\_023918\_\_dat00.bin





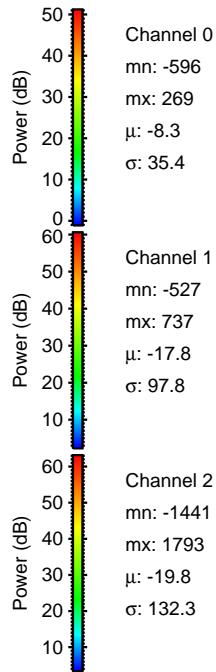
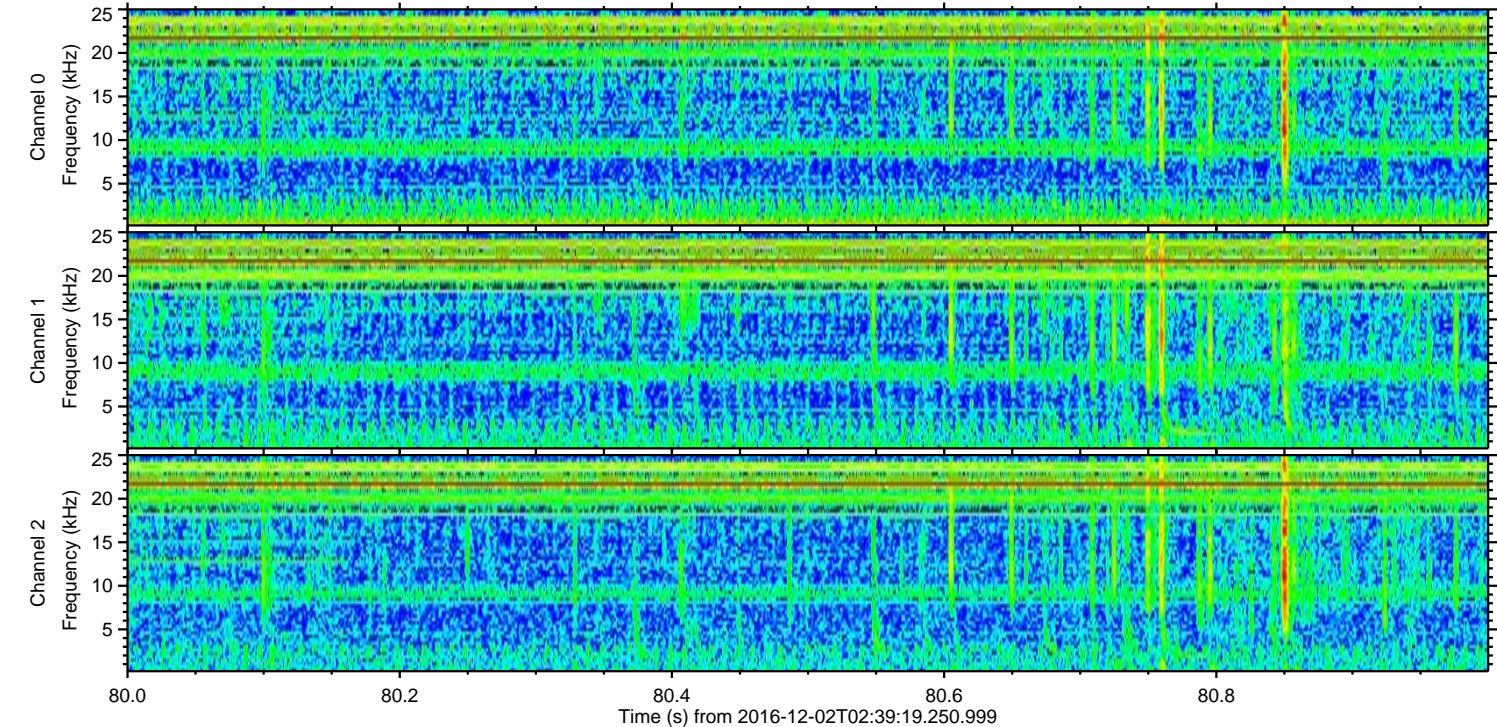
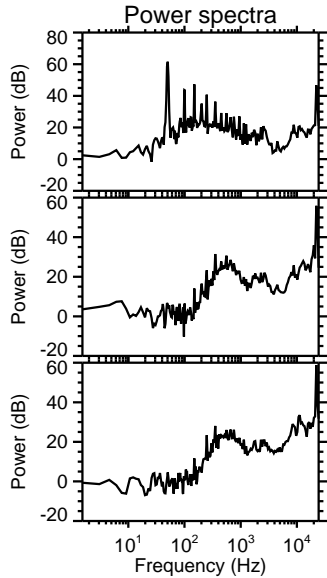
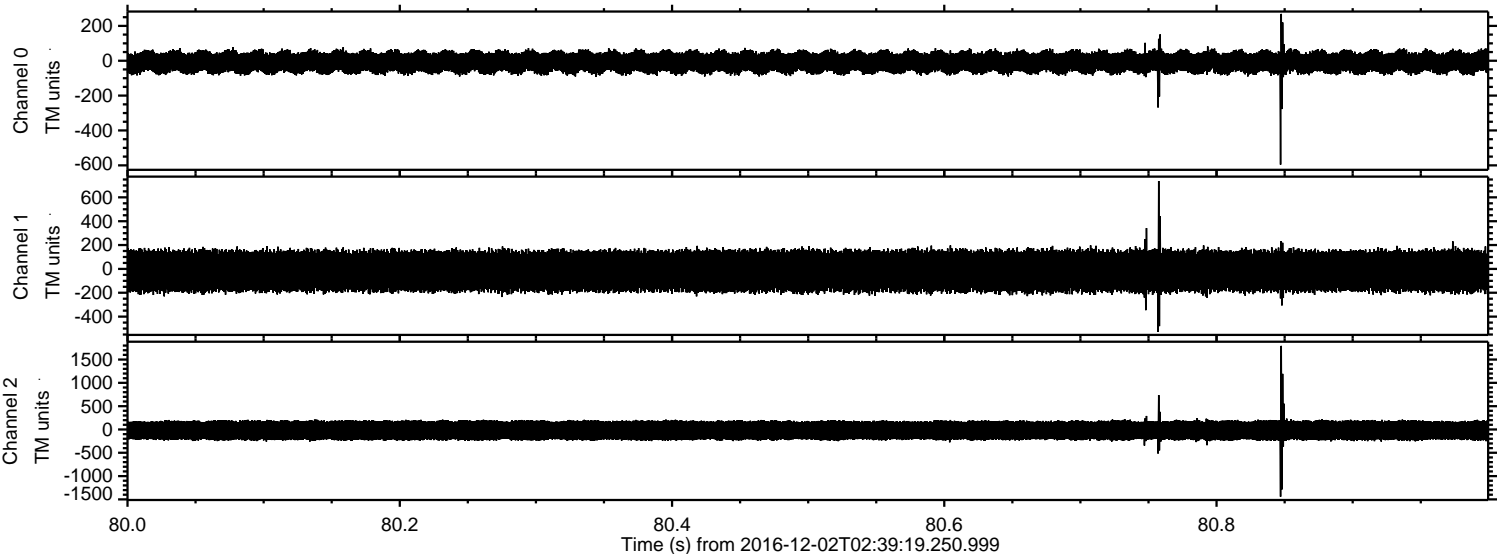
ELMAVAN 3D WAVEFORMS (Measured data sampled at 50 kHz) 51000 packets of 144 samples from 2016-12-02T02:39:19.250.999. Part 112/147

Processed Fri Dec 2 03:47:37 2016 by ELM ver.2012-10-06 from 001\_\_elm20161202\_023918\_\_dat00.bin



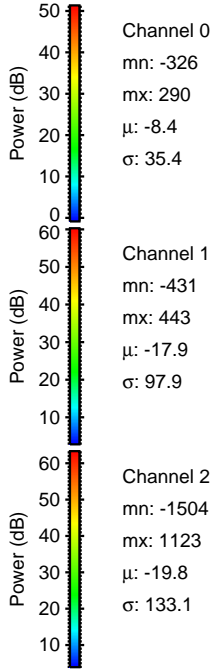
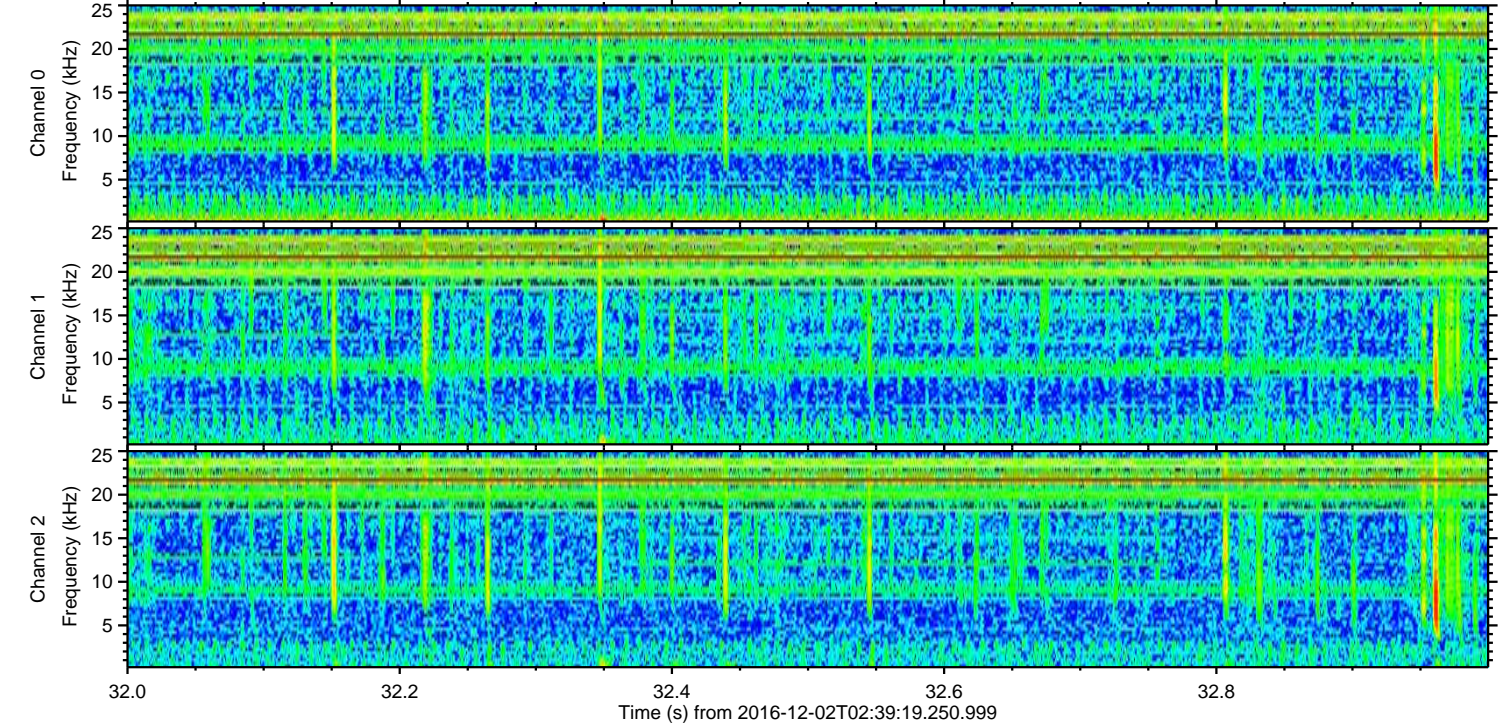
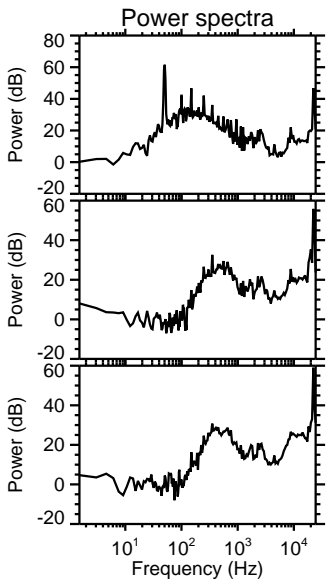
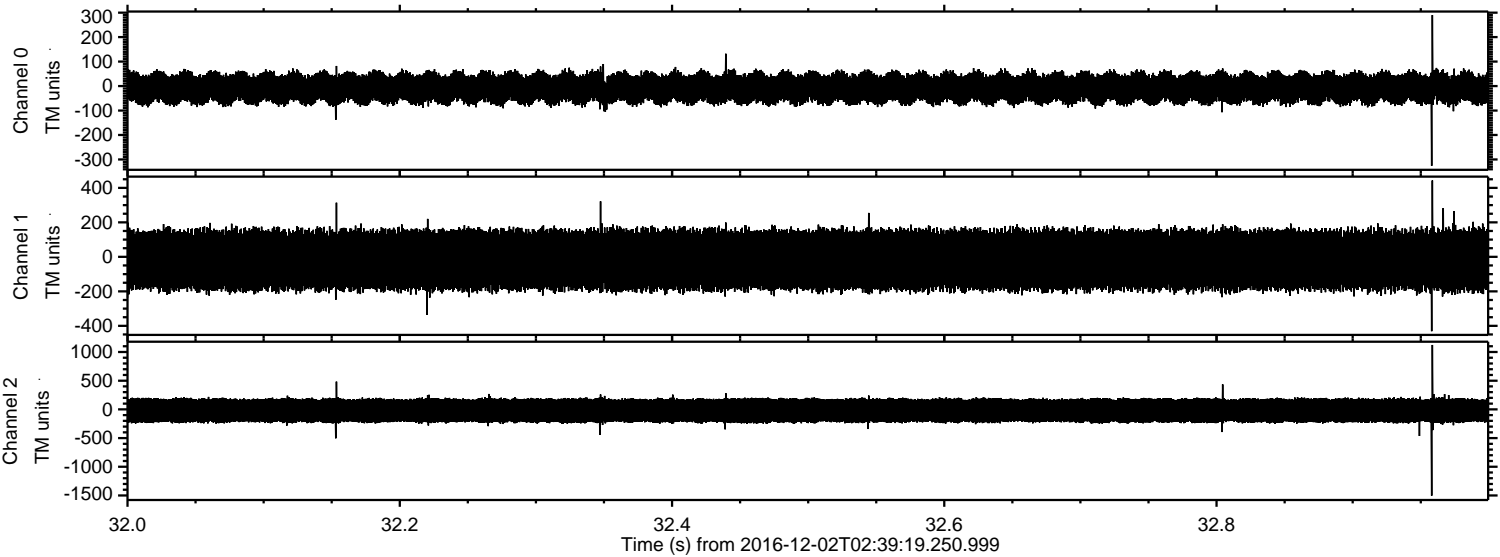


Processed Fri Dec 2 03:47:38 2016 by ELM ver.2012-10-06 from 001\_\_elm20161202\_023918\_\_dat00.bin





Processed Fri Dec 2 03:47:39 2016 by ELM ver.2012-10-06 from 001\_\_elm20161202\_023918\_\_dat00.bin



Channel 0  
mn: -326  
mx: 290  
μ: -8.4  
σ: 35.4

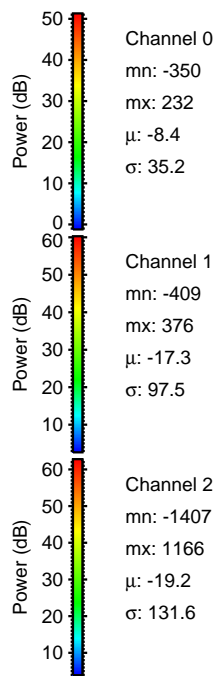
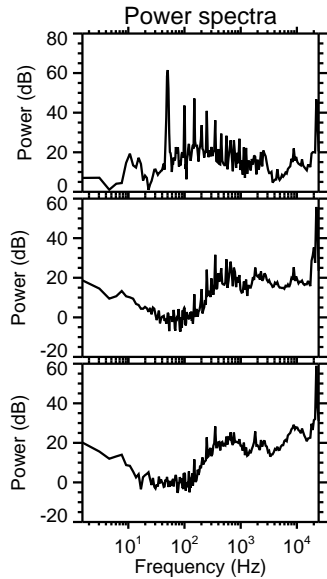
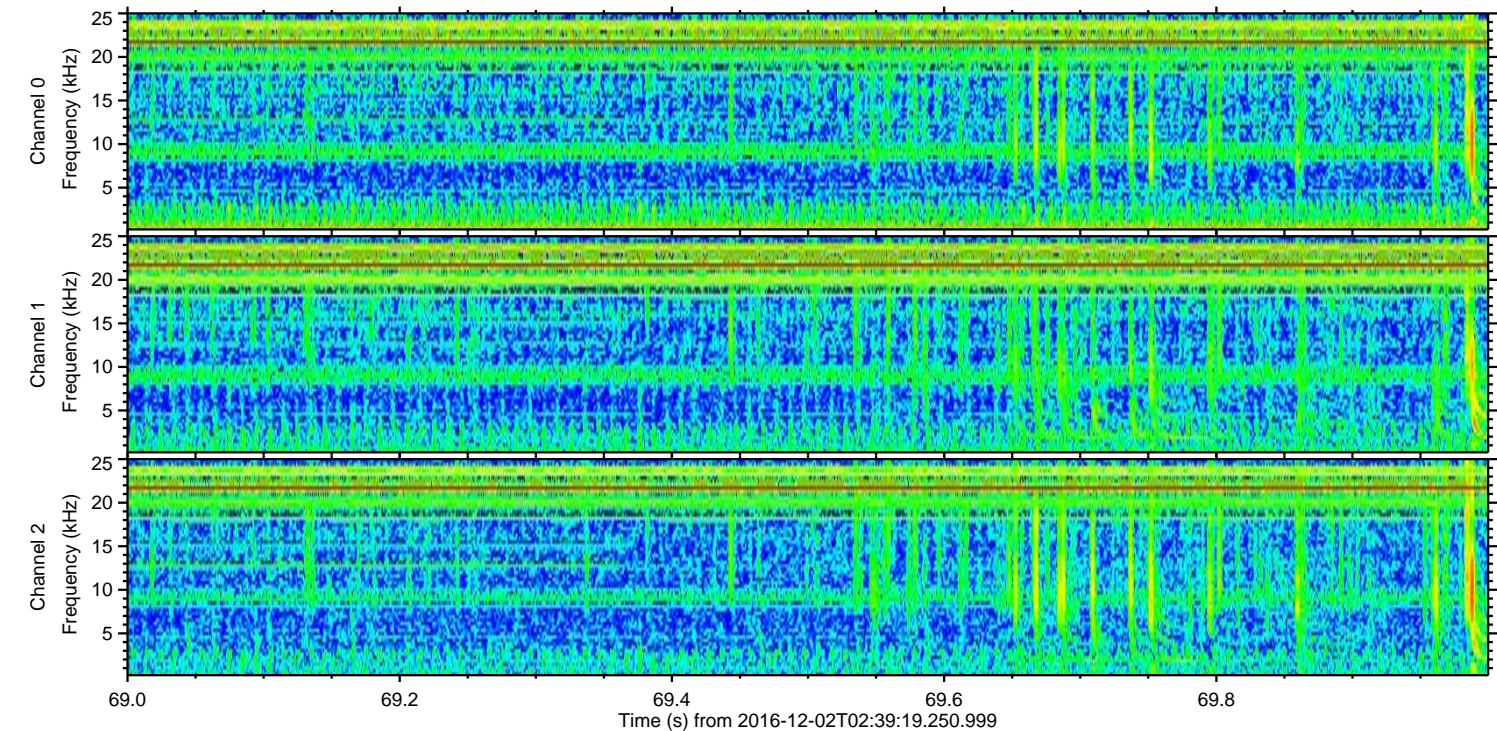
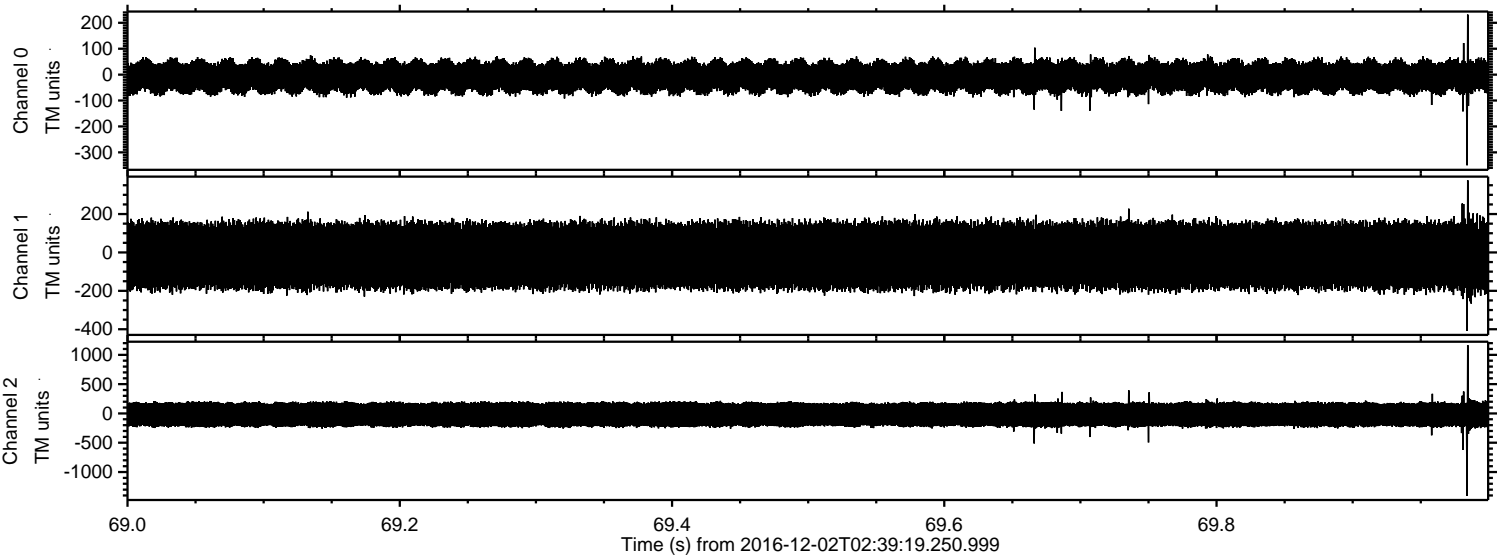
Channel 1  
mn: -431  
mx: 443  
μ: -17.9  
σ: 97.9

Channel 2  
mn: -1504  
mx: 1123  
μ: -19.8  
σ: 133.1



ELMAVAN 3D WAVEFORMS (Measured data sampled at 50 kHz) 51000 packets of 144 samples from 2016-12-02T02:39:19.250.999. Part 70/147

Processed Fri Dec 2 03:47:40 2016 by ELM ver.2012-10-06 from 001\_\_elm20161202\_023918\_\_dat00.bin



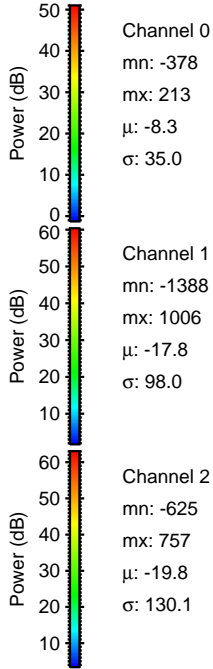
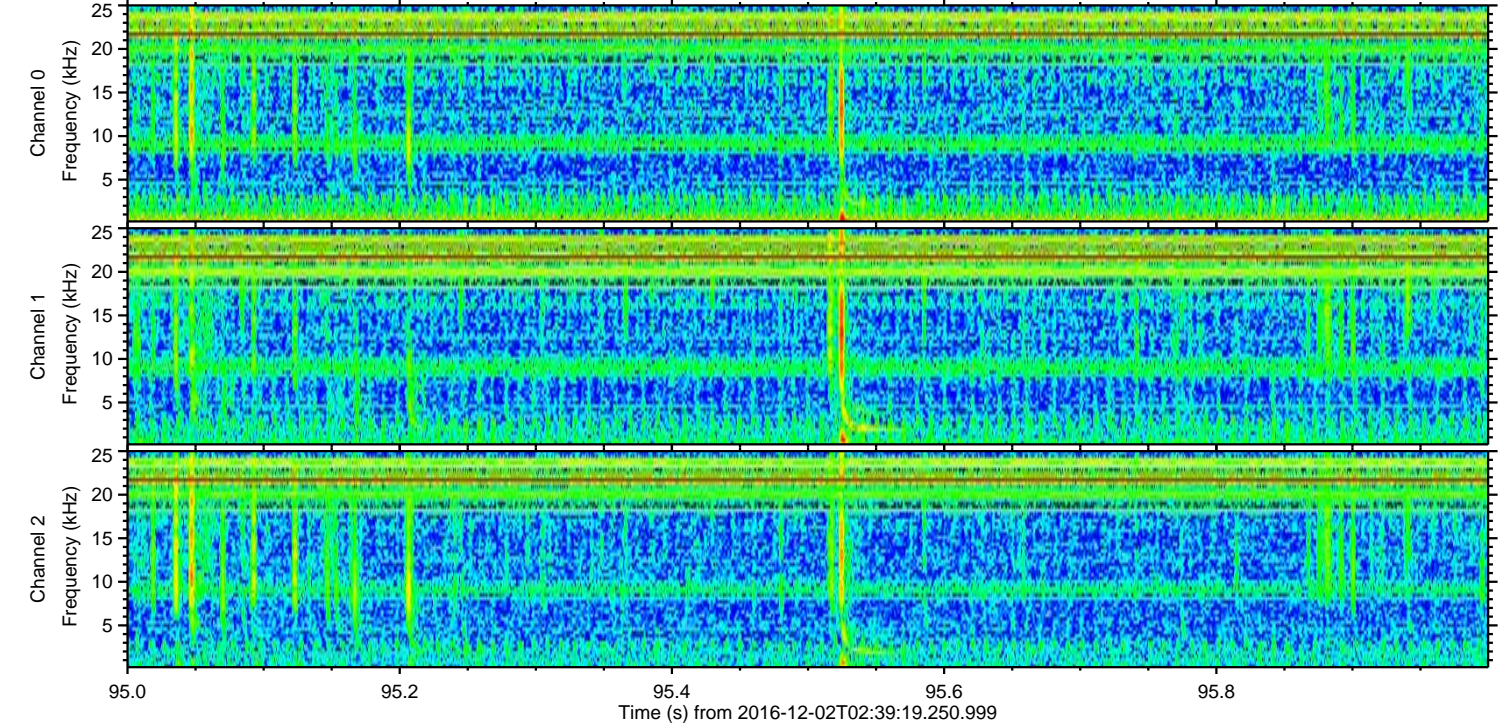
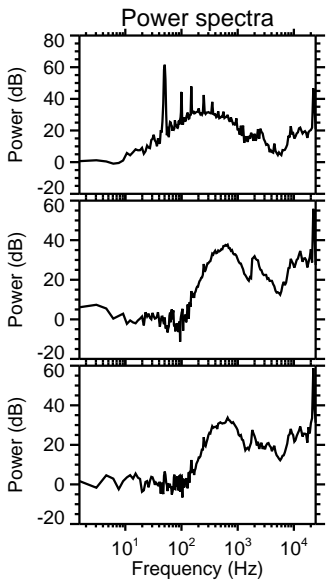
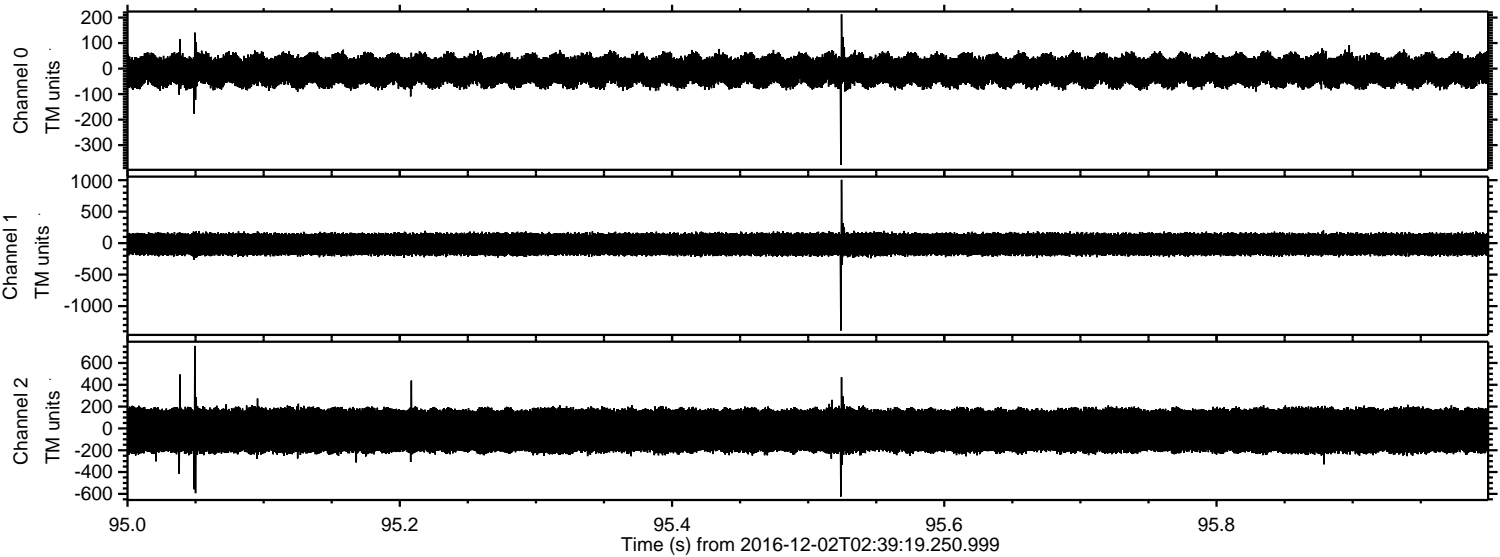
Channel 0  
mn: -350  
mx: 232  
 $\mu$ : -8.4  
 $\sigma$ : 35.2

Channel 1  
mn: -409  
mx: 376  
 $\mu$ : -17.3  
 $\sigma$ : 97.5

Channel 2  
mn: -1407  
mx: 1166  
 $\mu$ : -19.2  
 $\sigma$ : 131.6



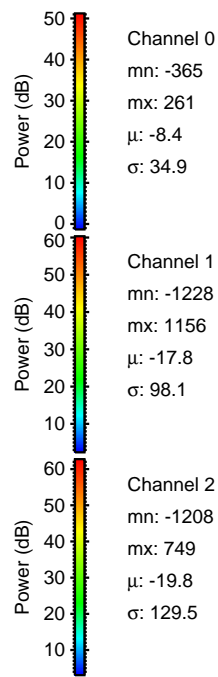
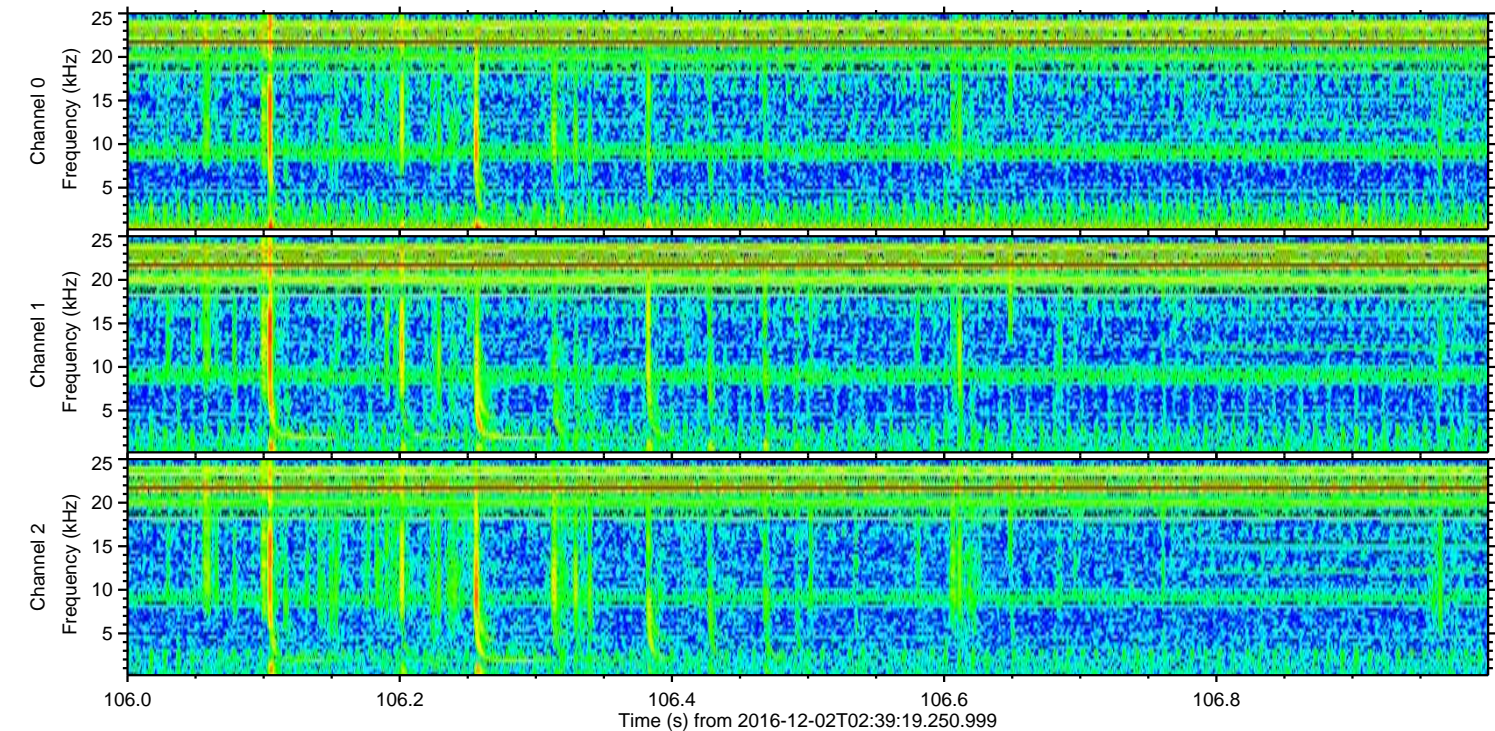
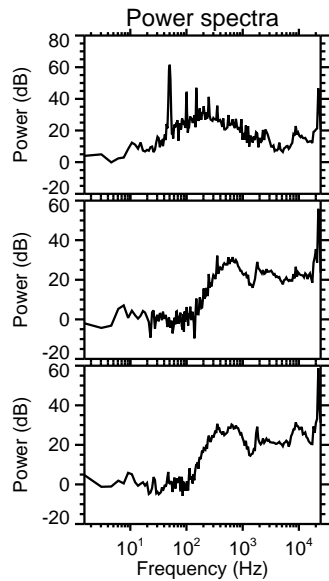
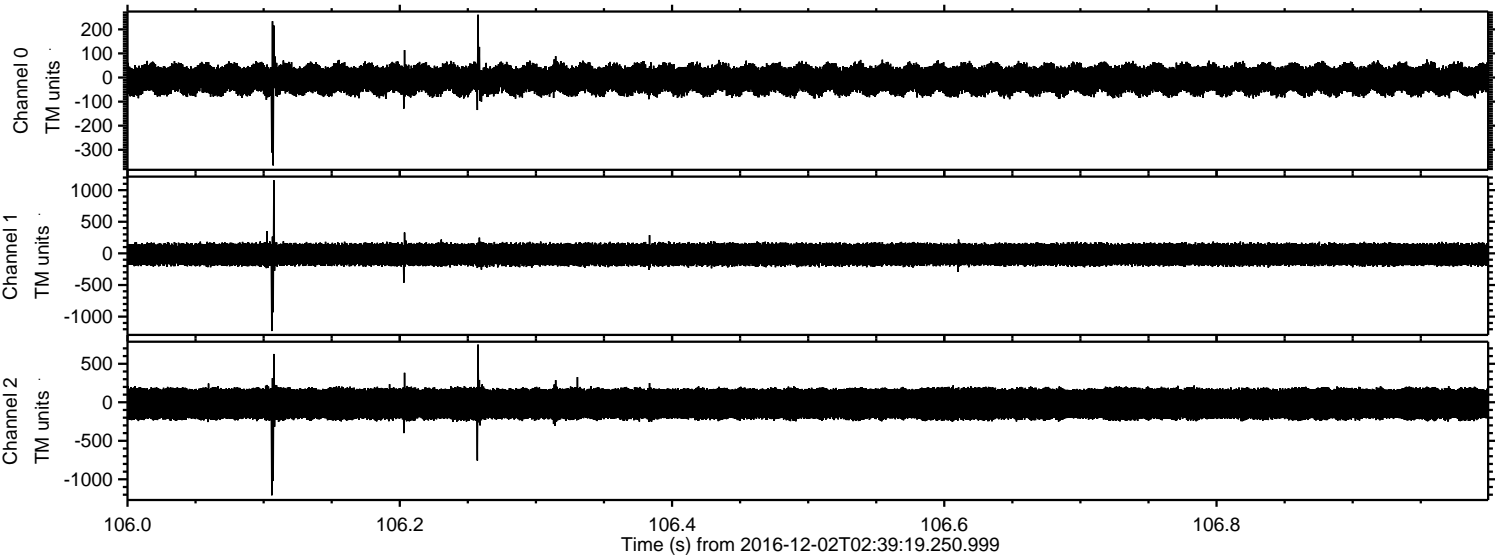
Processed Fri Dec 2 03:47:41 2016 by ELM ver.2012-10-06 from 001\_\_elm20161202\_023918\_\_dat00.bin





ELMAVAN 3D WAVEFORMS (Measured data sampled at 50 kHz) 51000 packets of 144 samples from 2016-12-02T02:39:19.250.999. Part 107/147

Processed Fri Dec 2 03:47:42 2016 by ELM ver.2012-10-06 from 001\_\_elm20161202\_023918\_\_dat00.bin





ELMAVAN 3D WAVEFORMS (Measured data sampled at 50 kHz) 51000 packets of 144 samples from 2016-12-02T02:39:19.250.999. Part 146/147

