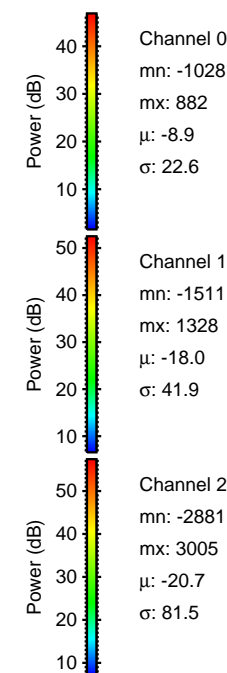
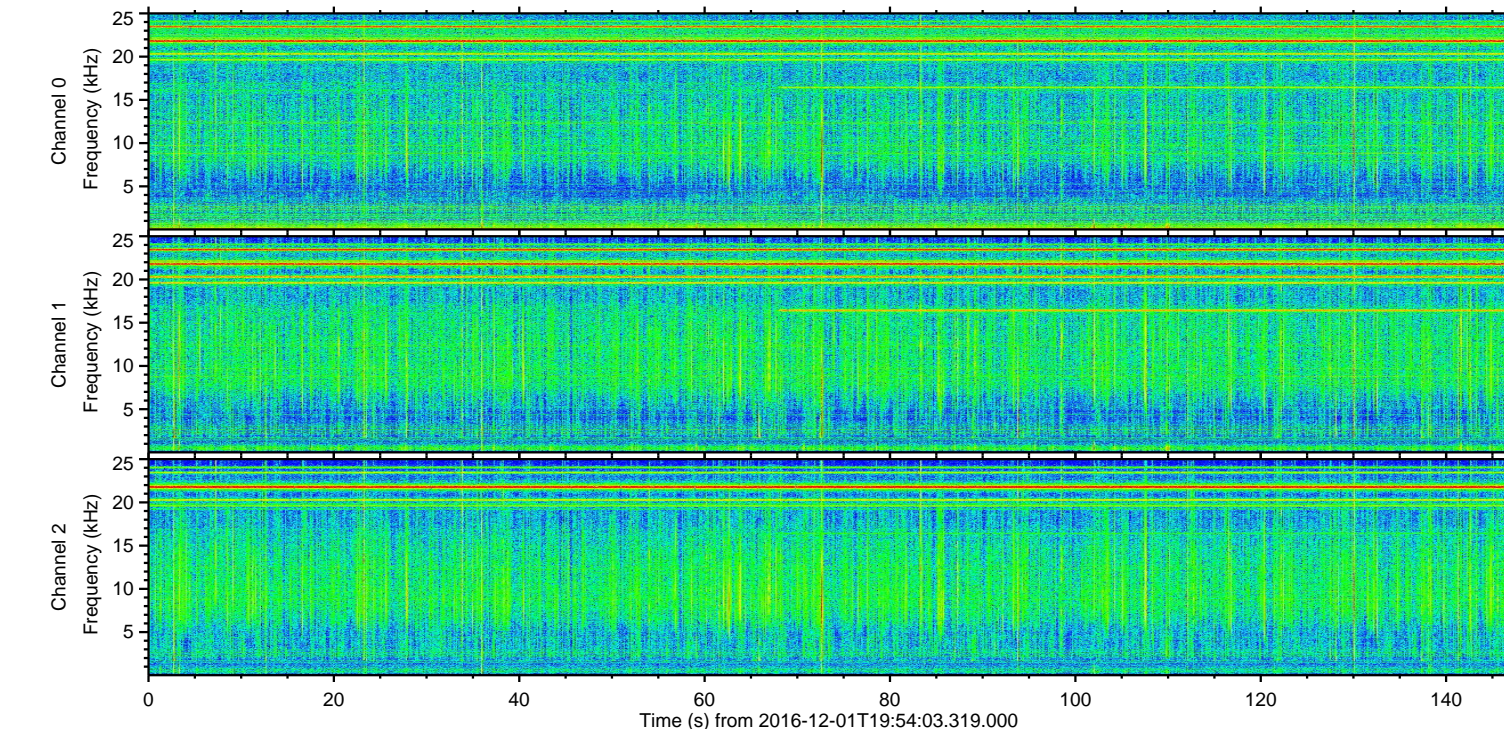
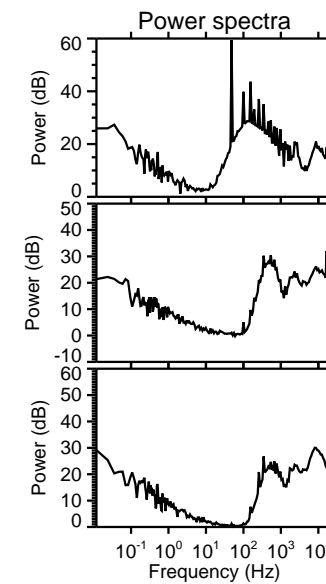
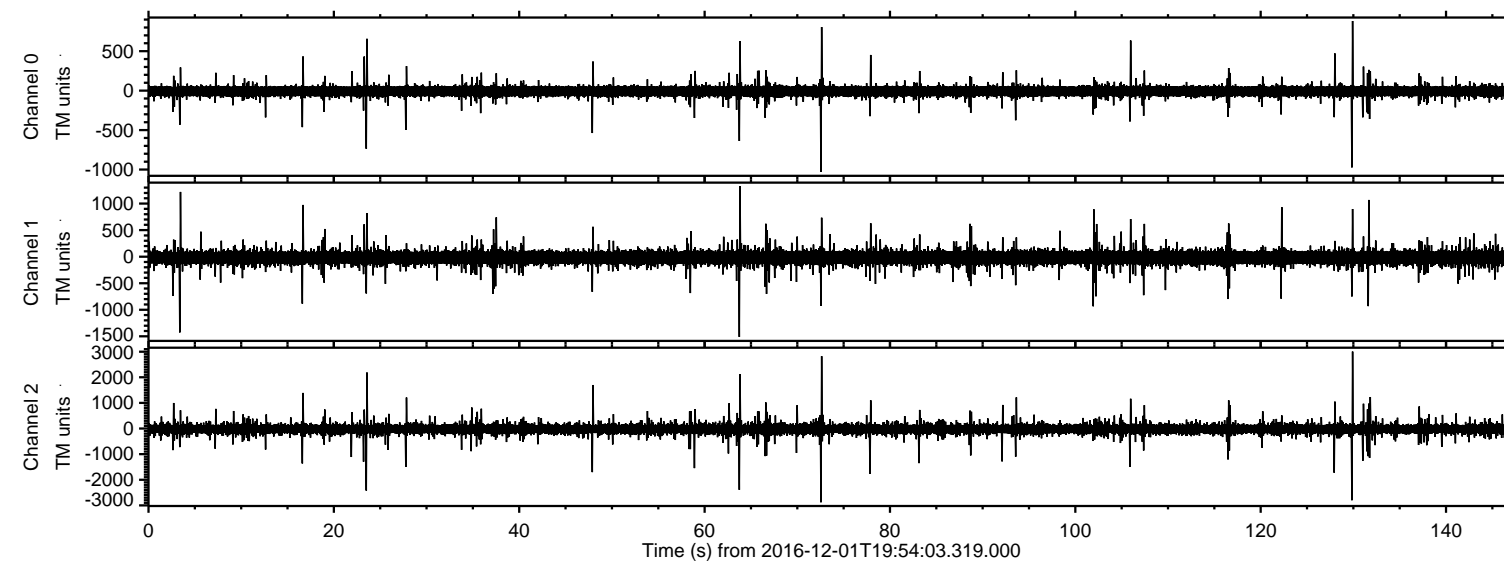


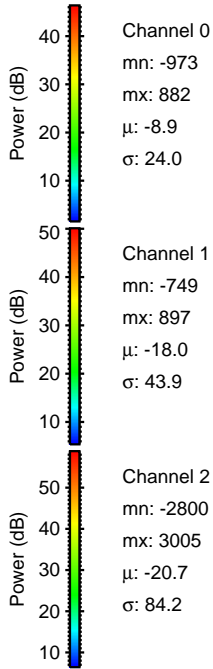
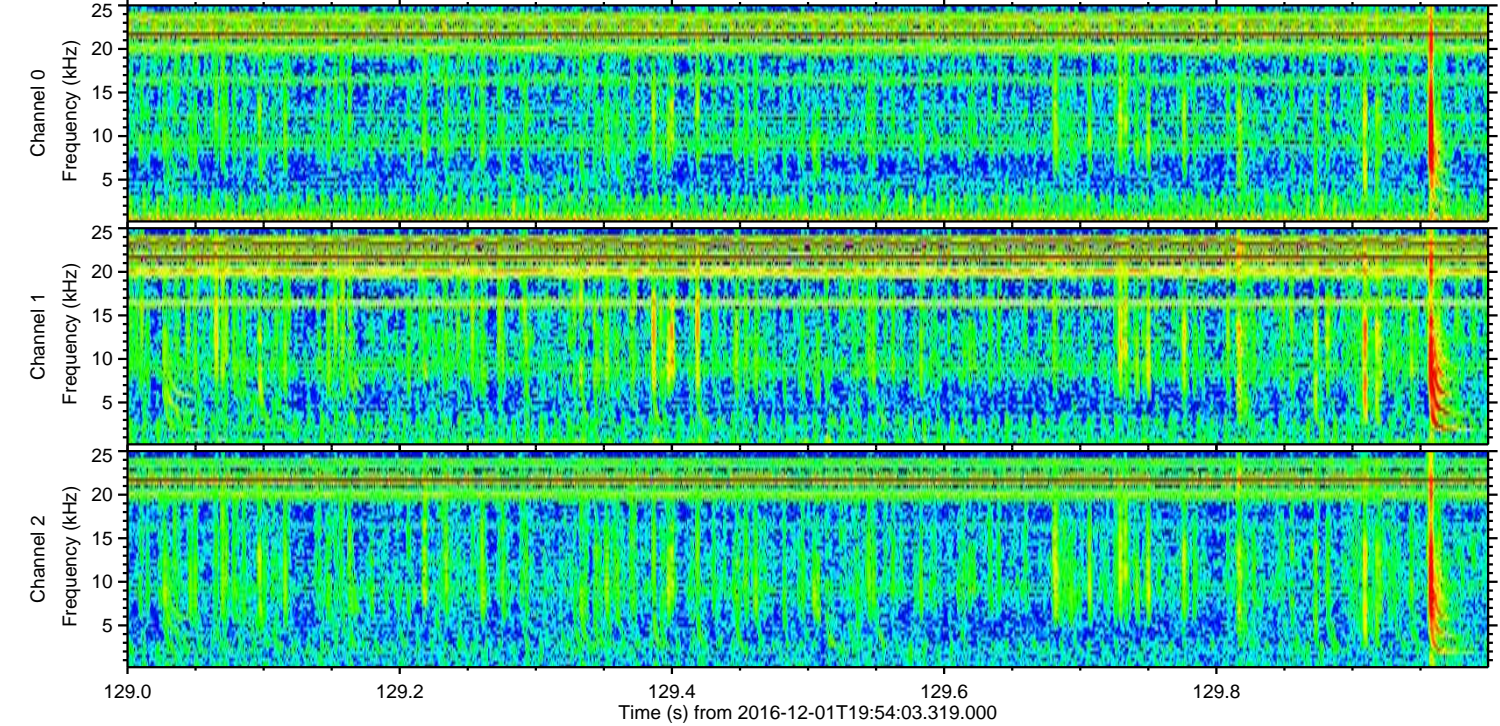
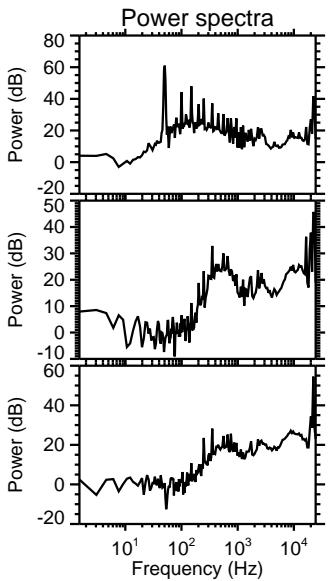
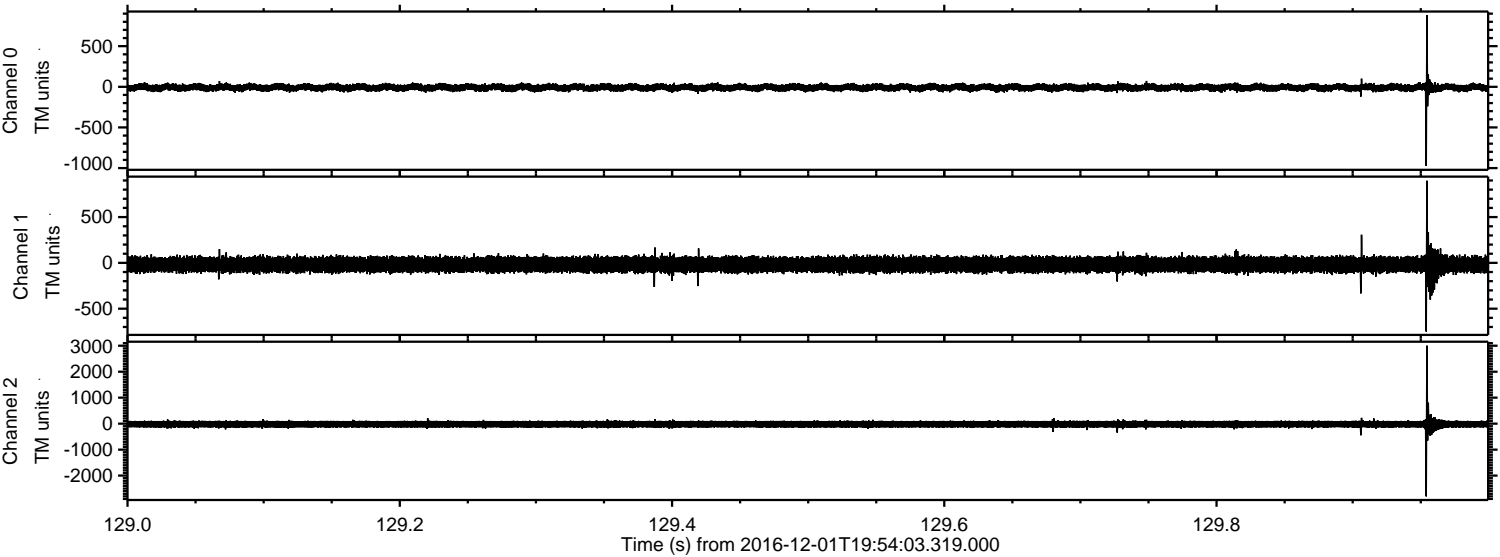
ELMAVAN 3D WAVEFORMS (Measured data sampled at 50 kHz) 51000 packets of 144 samples from 2016-12-01T19:54:03.319.000.

Processed Thu Dec 1 21:02:08 2016 by ELM ver.2012-10-06 from 001__elm20161201_195402__dat00.bin



ELMAVAN 3D WAVEFORMS (Measured data sampled at 50 kHz) 51000 packets of 144 samples from 2016-12-01T19:54:03.319.000. Part 130/147

Processed Thu Dec 1 21:02:20 2016 by ELM ver.2012-10-06 from 001__elm20161201_195402__dat00.bin



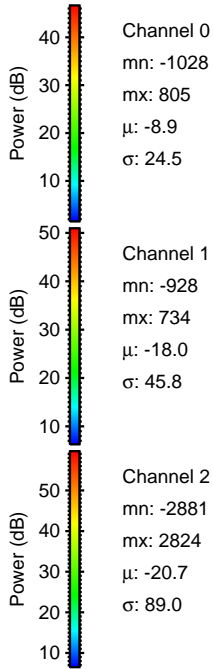
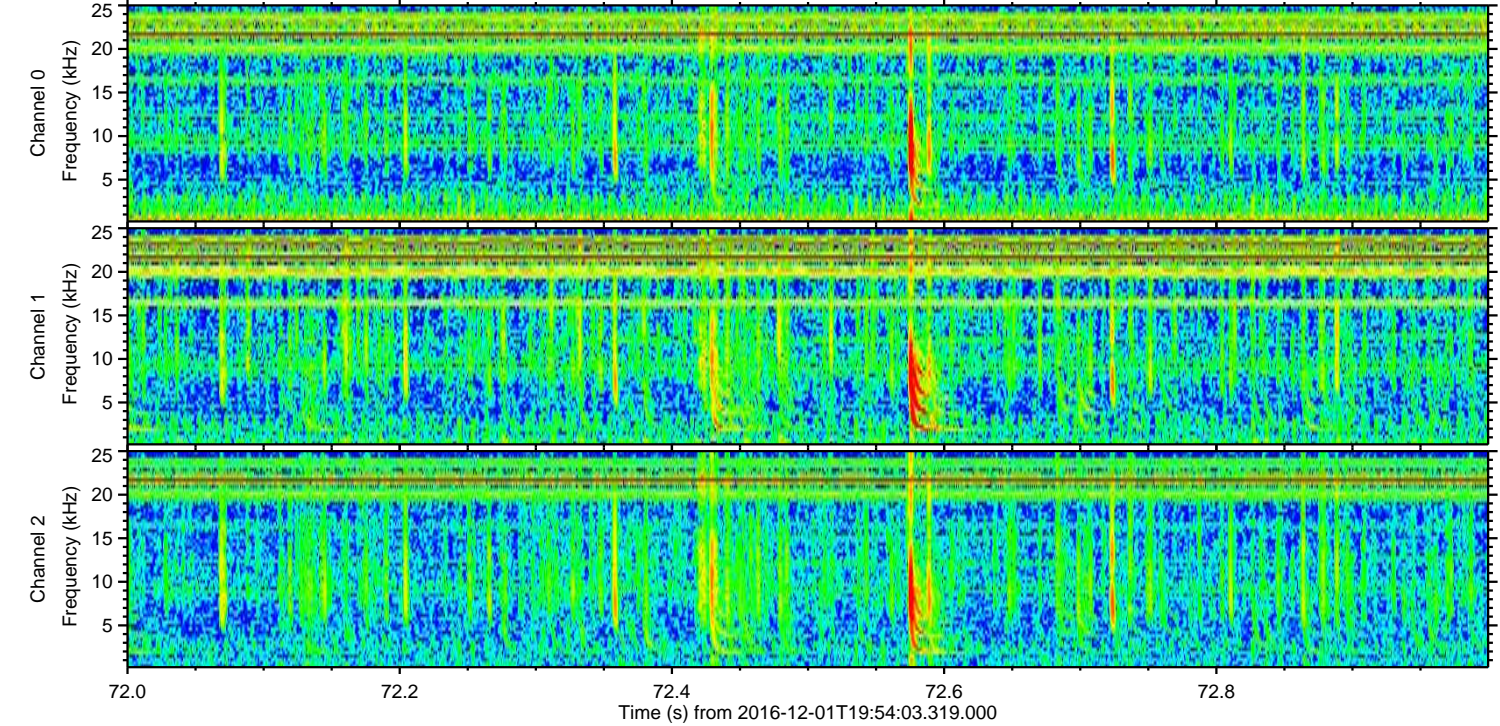
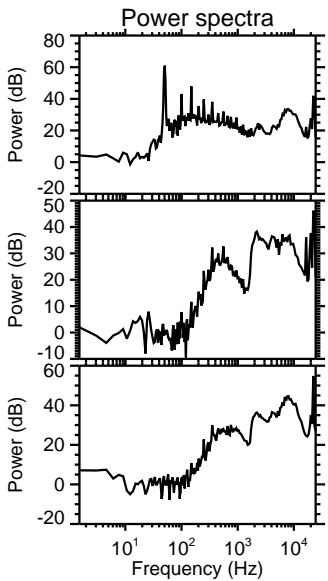
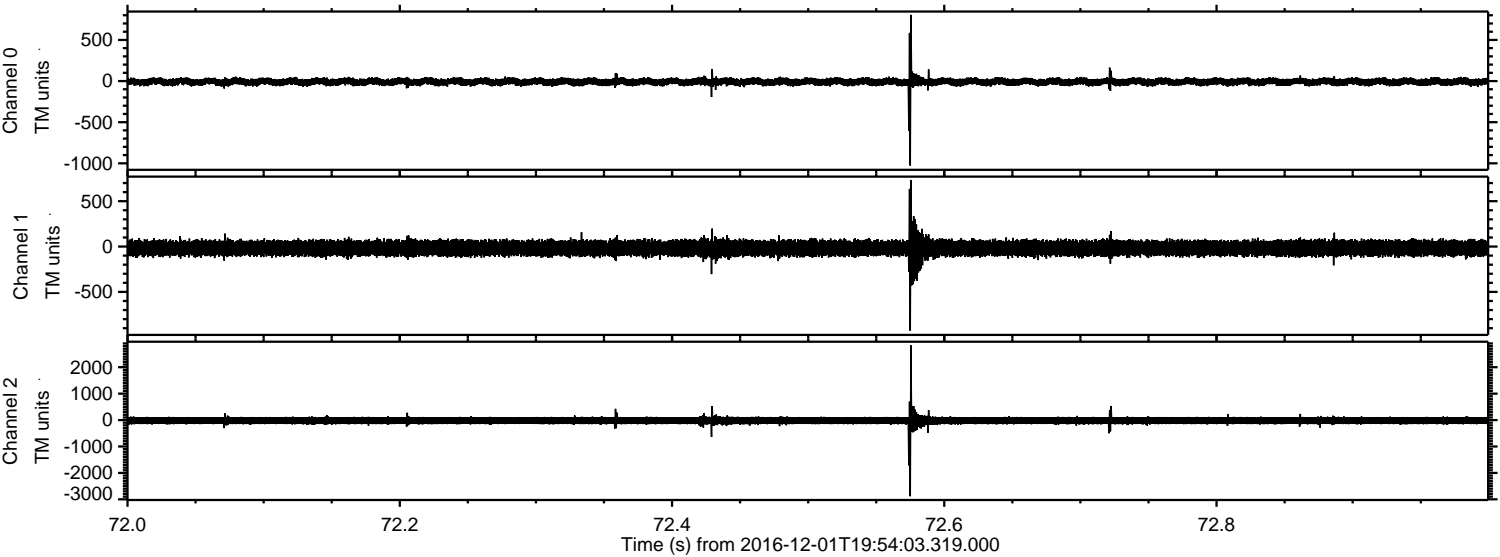
Channel 0
mn: -973
mx: 882
 μ : -8.9
 σ : 24.0

Channel 1
mn: -749
mx: 897
 μ : -18.0
 σ : 43.9

Channel 2
mn: -2800
mx: 3005
 μ : -20.7
 σ : 84.2

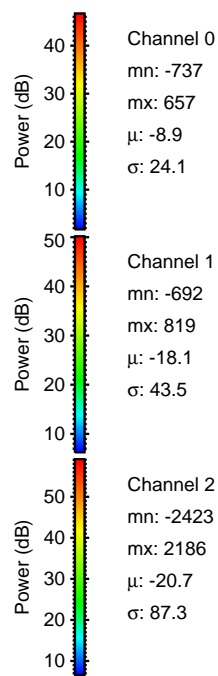
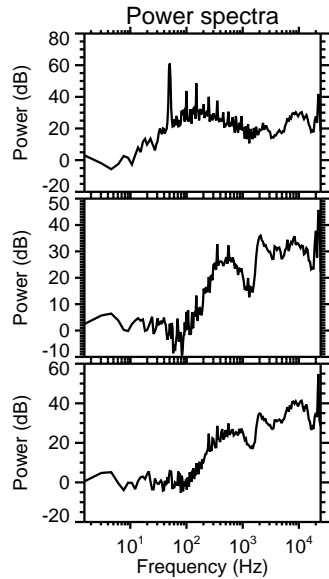
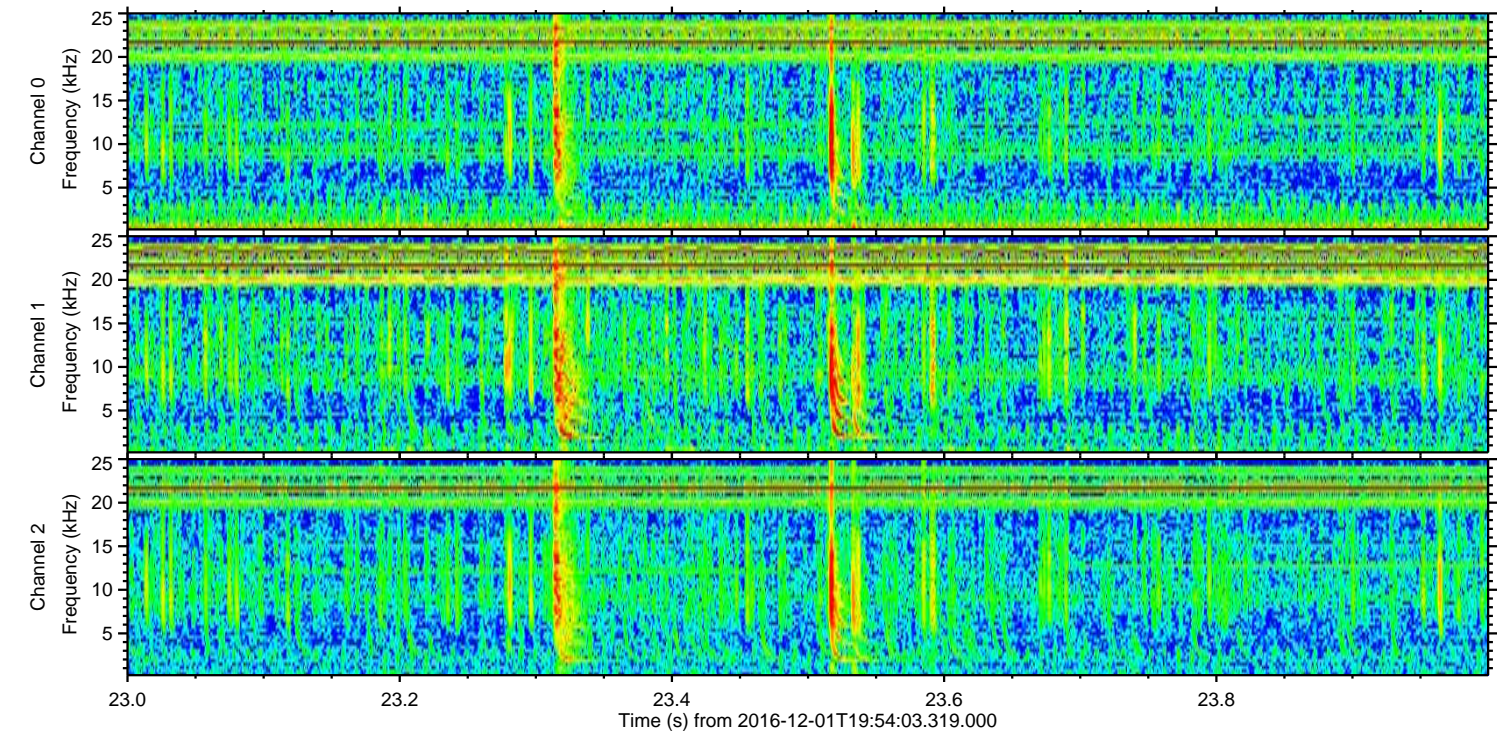
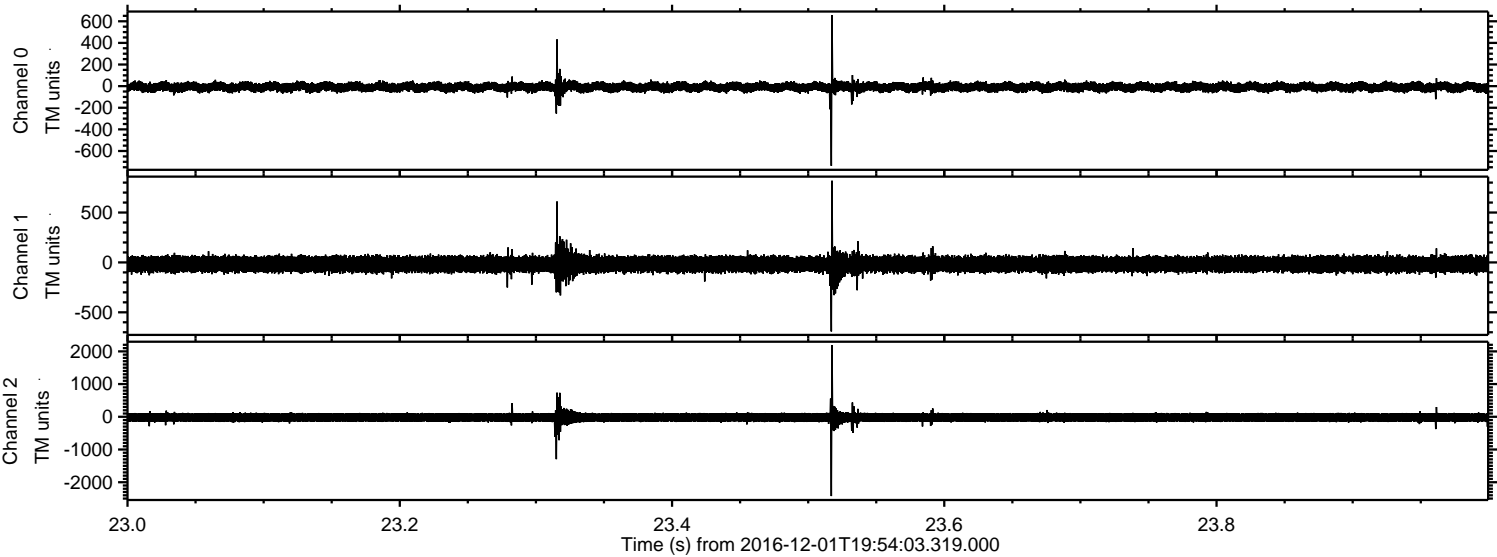
ELMAVAN 3D WAVEFORMS (Measured data sampled at 50 kHz) 51000 packets of 144 samples from 2016-12-01T19:54:03.319.000. Part 73/147

Processed Thu Dec 1 21:02:20 2016 by ELM ver.2012-10-06 from 001__elm20161201_195402__dat00.bin

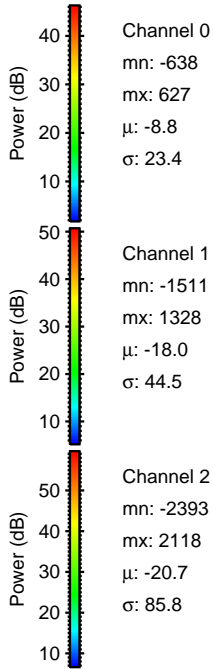
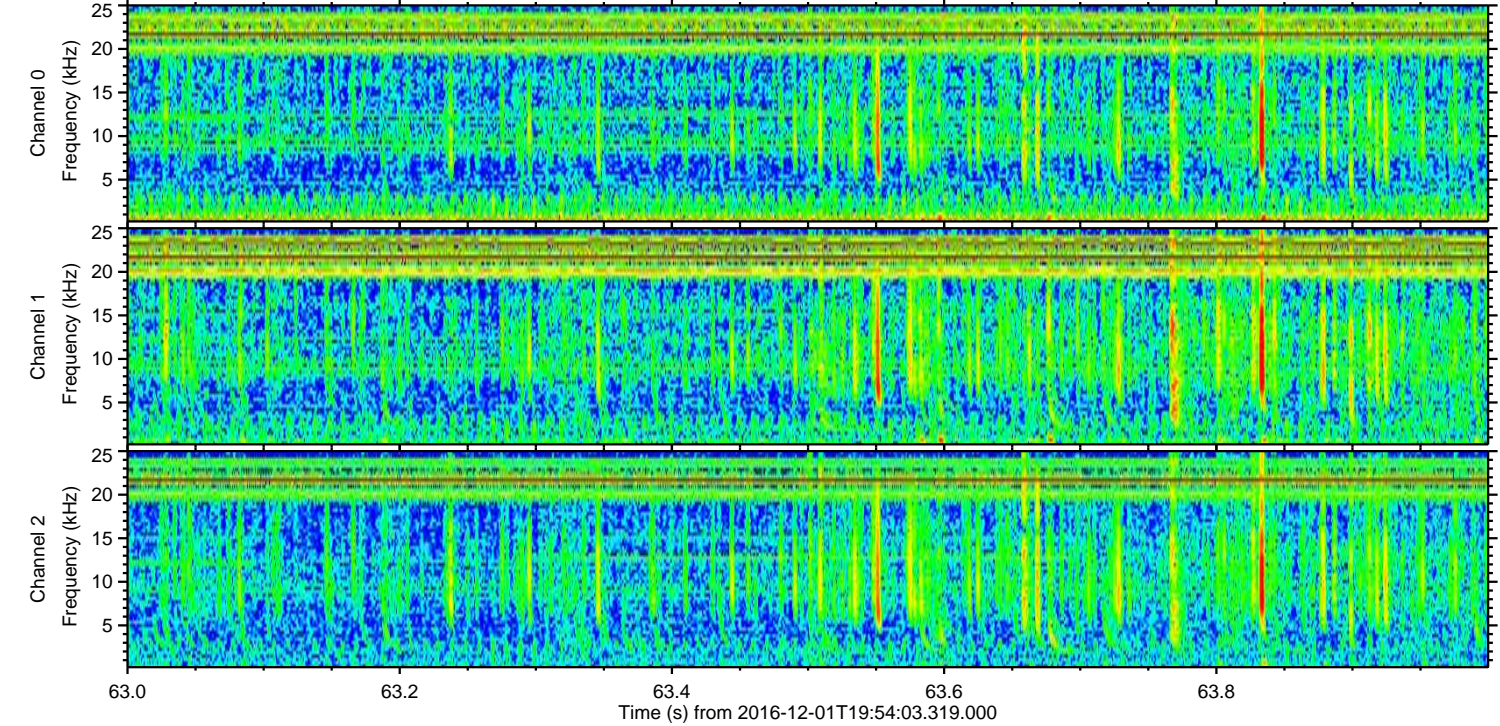
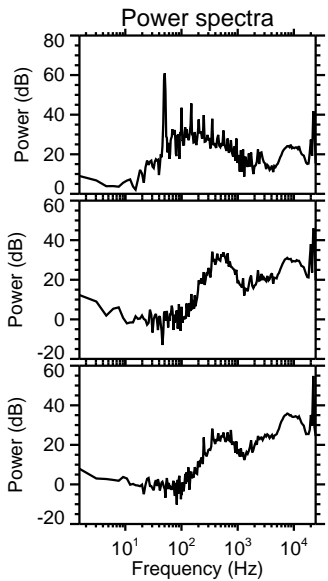
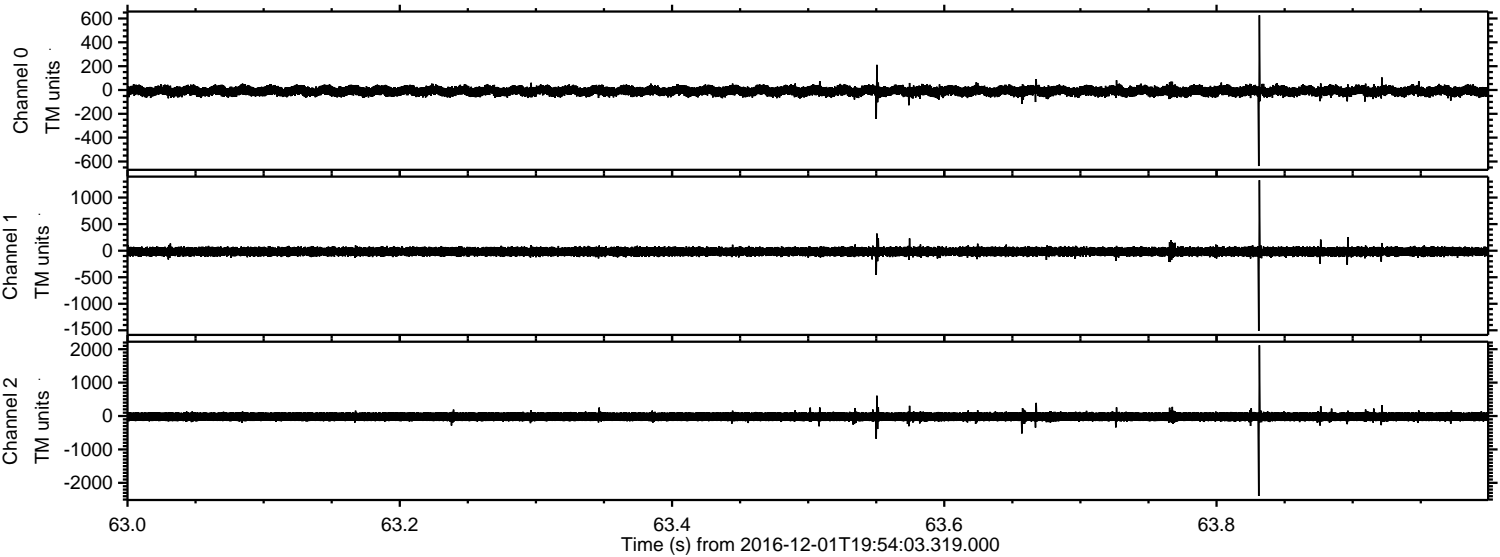


ELMAVAN 3D WAVEFORMS (Measured data sampled at 50 kHz) 51000 packets of 144 samples from 2016-12-01T19:54:03.319.000. Part 24/147

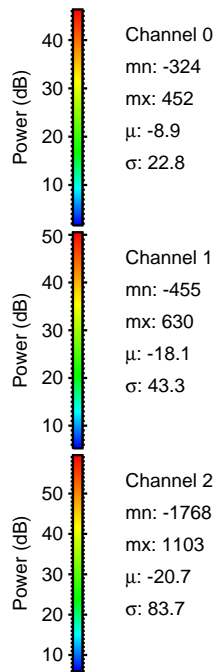
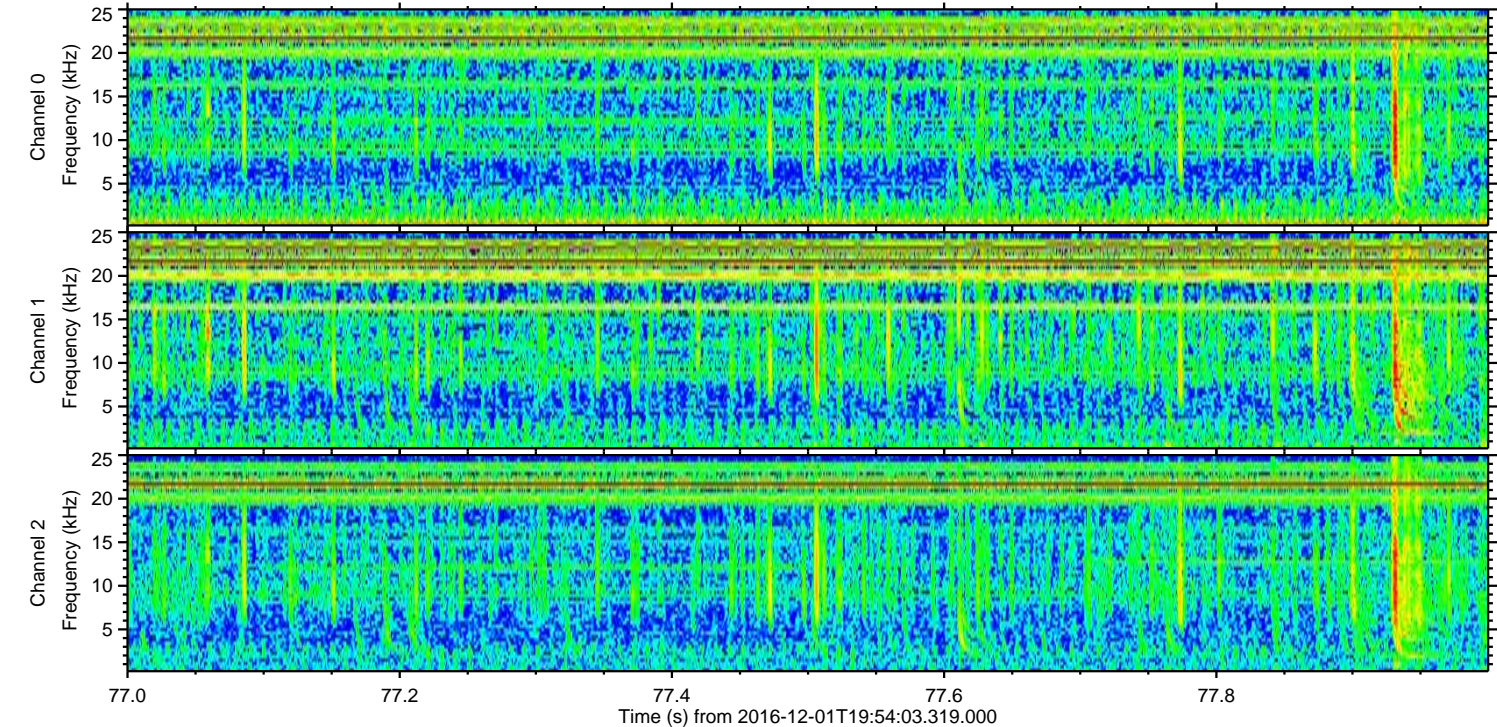
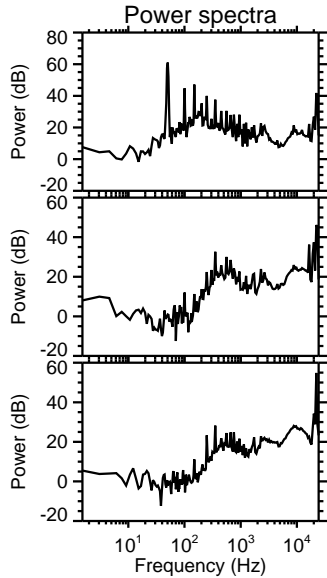
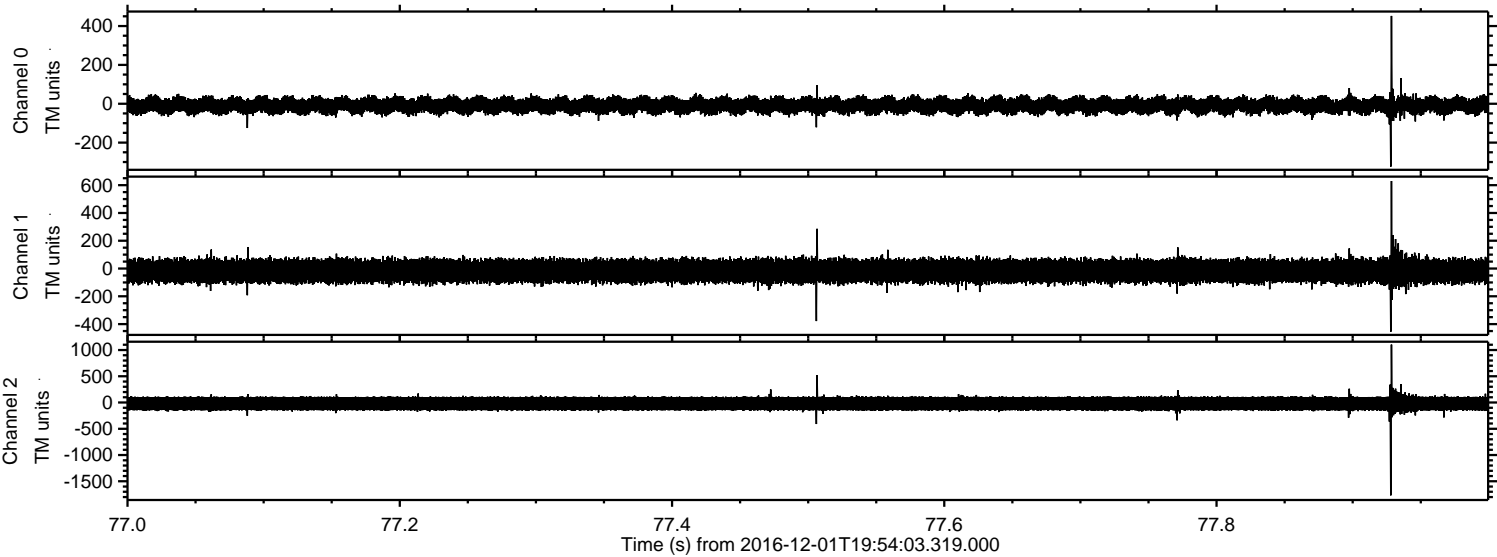
Processed Thu Dec 1 21:02:21 2016 by ELM ver.2012-10-06 from 001__elm20161201_195402__dat00.bin



Processed Thu Dec 1 21:02:22 2016 by ELM ver.2012-10-06 from 001__elm20161201_195402__dat00.bin

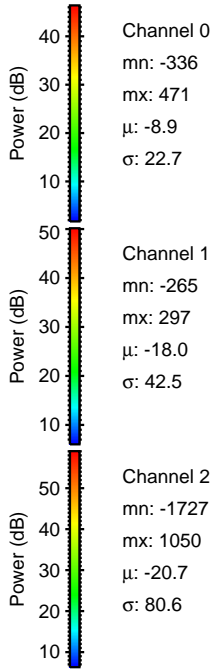
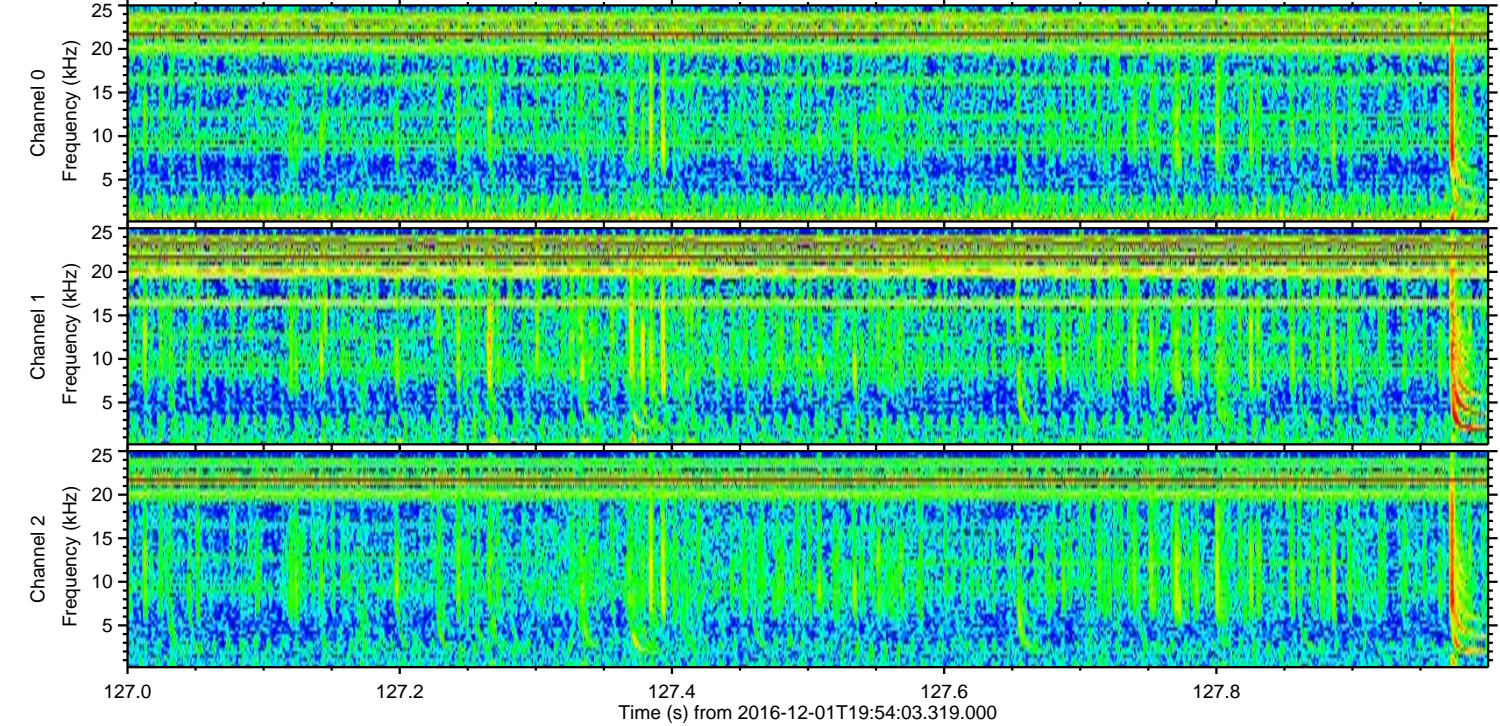
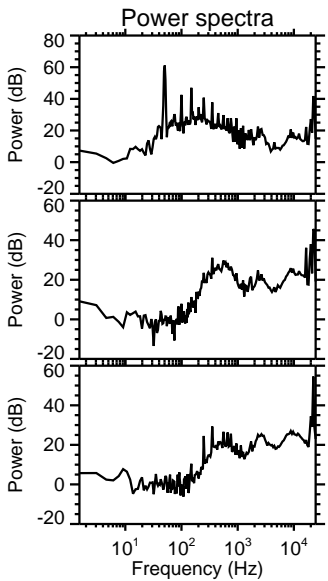
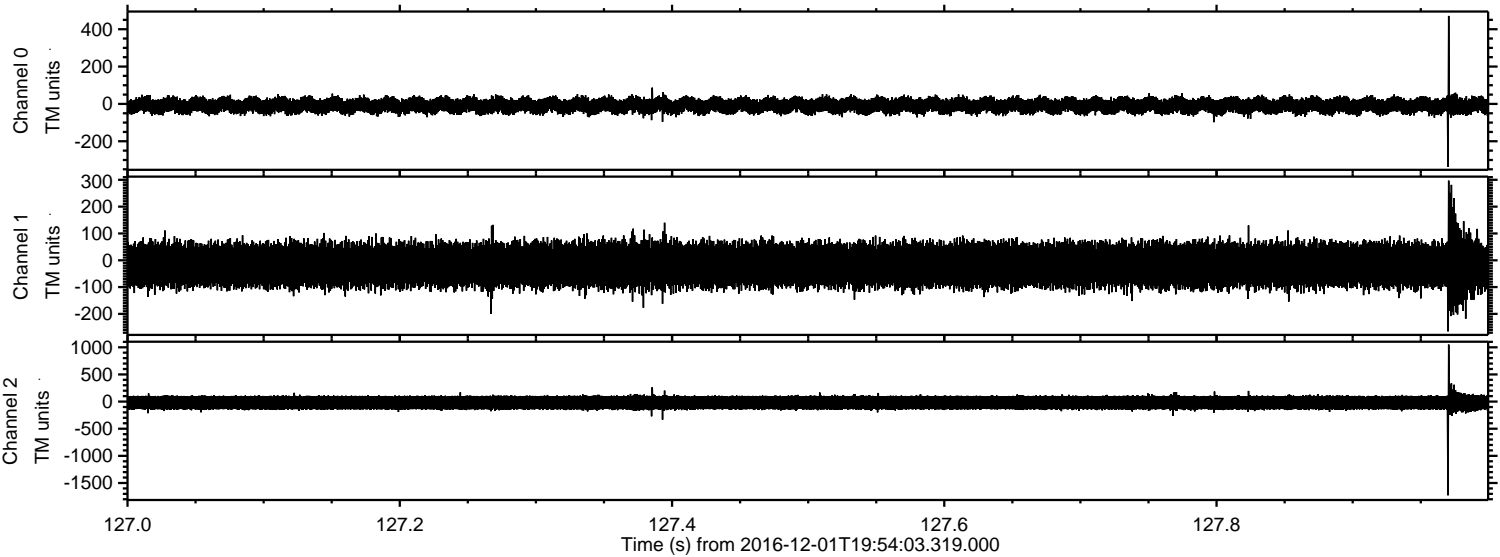


Processed Thu Dec 1 21:02:23 2016 by ELM ver.2012-10-06 from 001__elm20161201_195402__dat00.bin

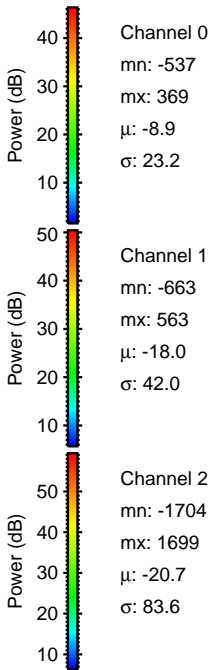
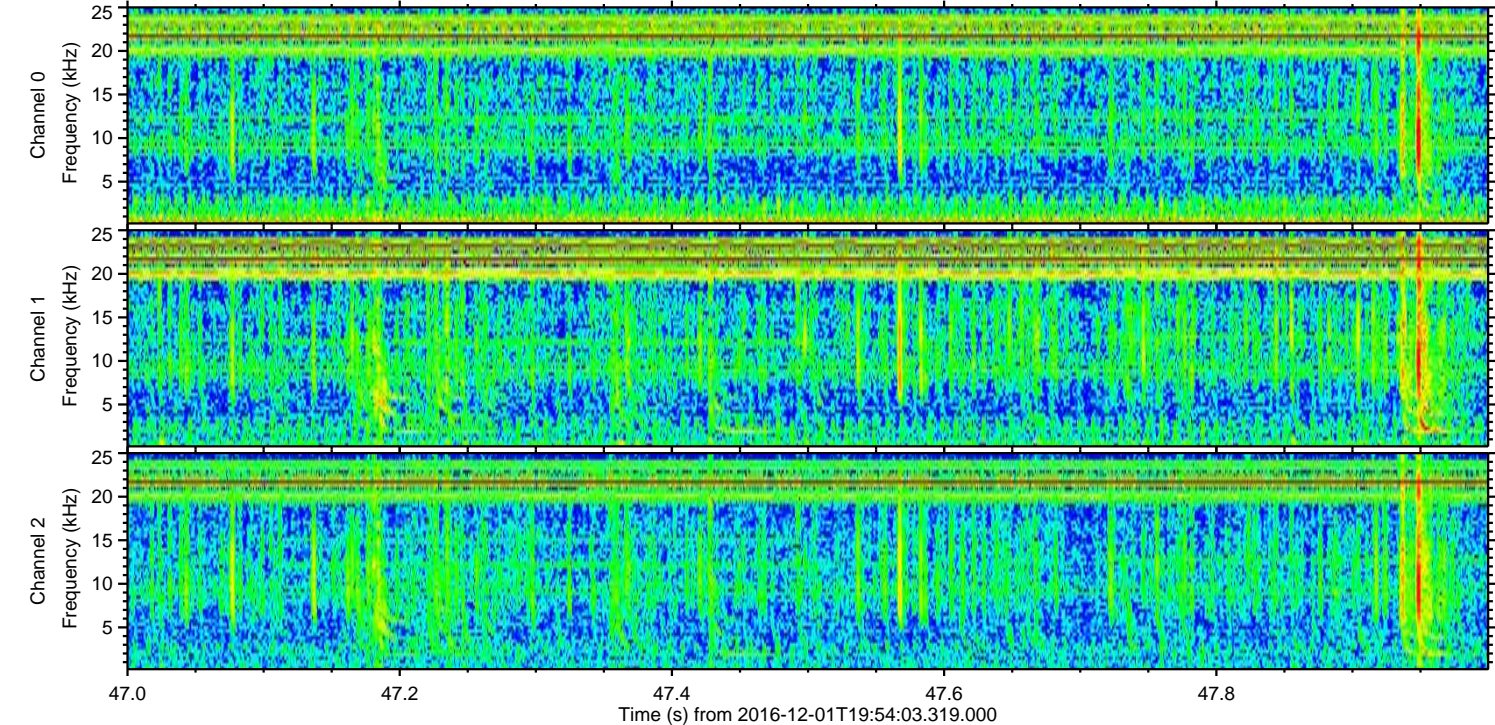
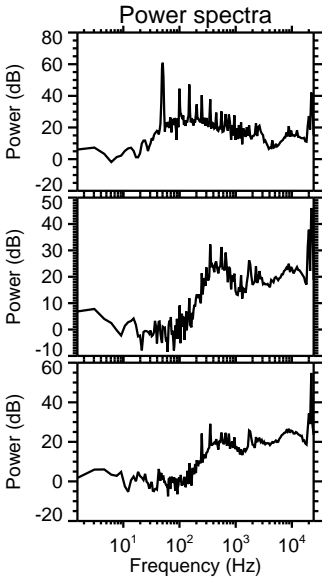
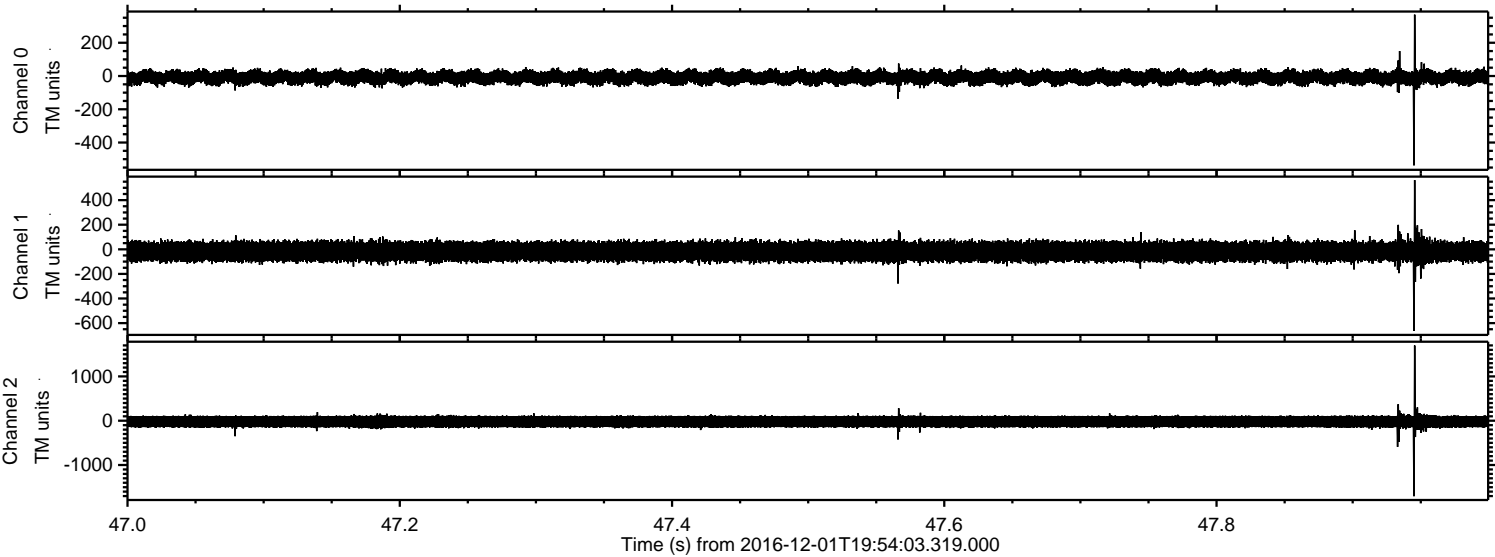


ELMAVAN 3D WAVEFORMS (Measured data sampled at 50 kHz) 51000 packets of 144 samples from 2016-12-01T19:54:03.319.000. Part 128/147

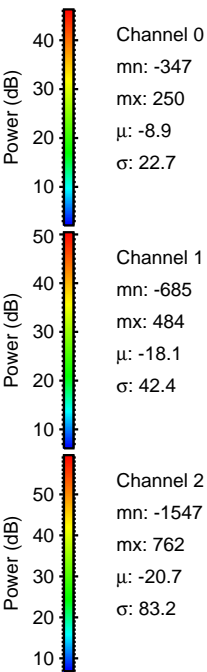
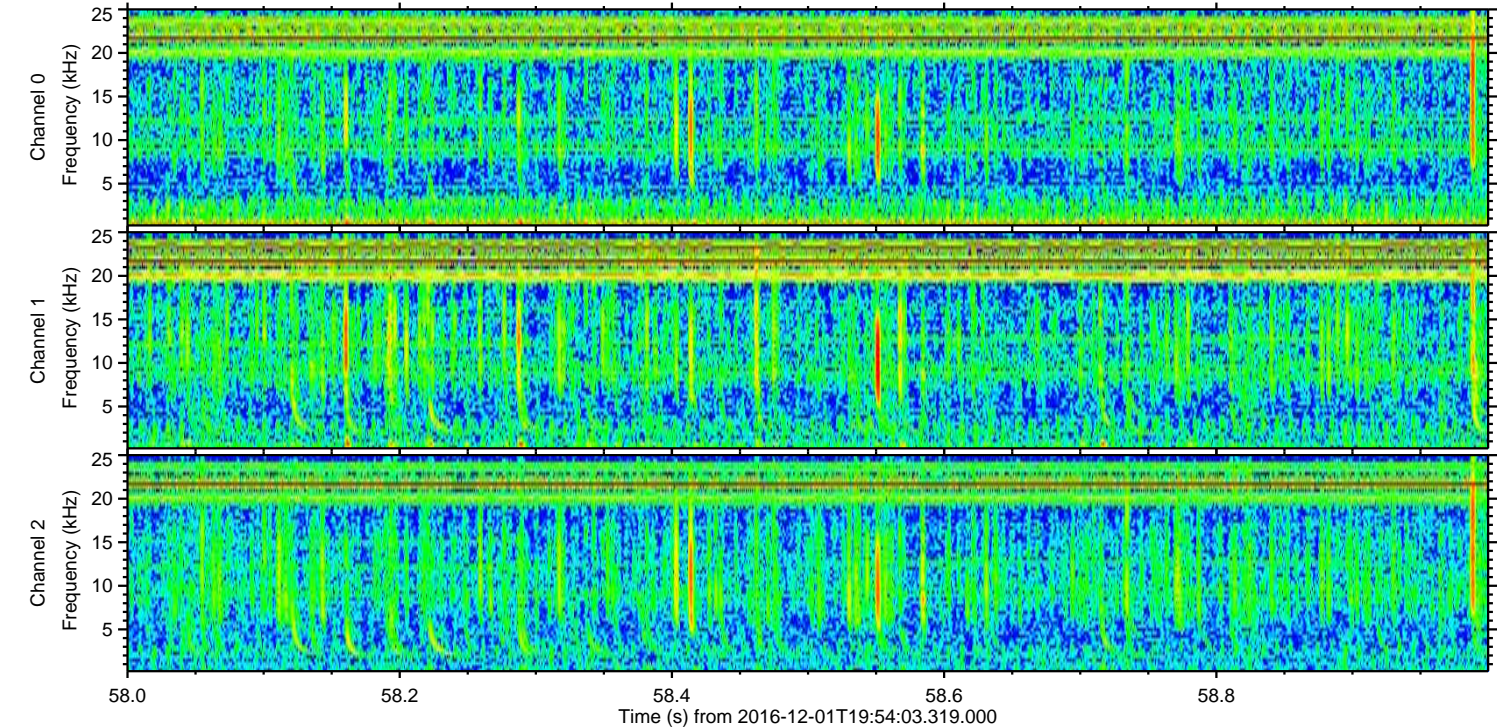
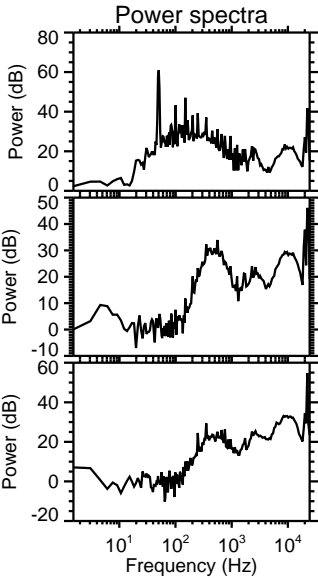
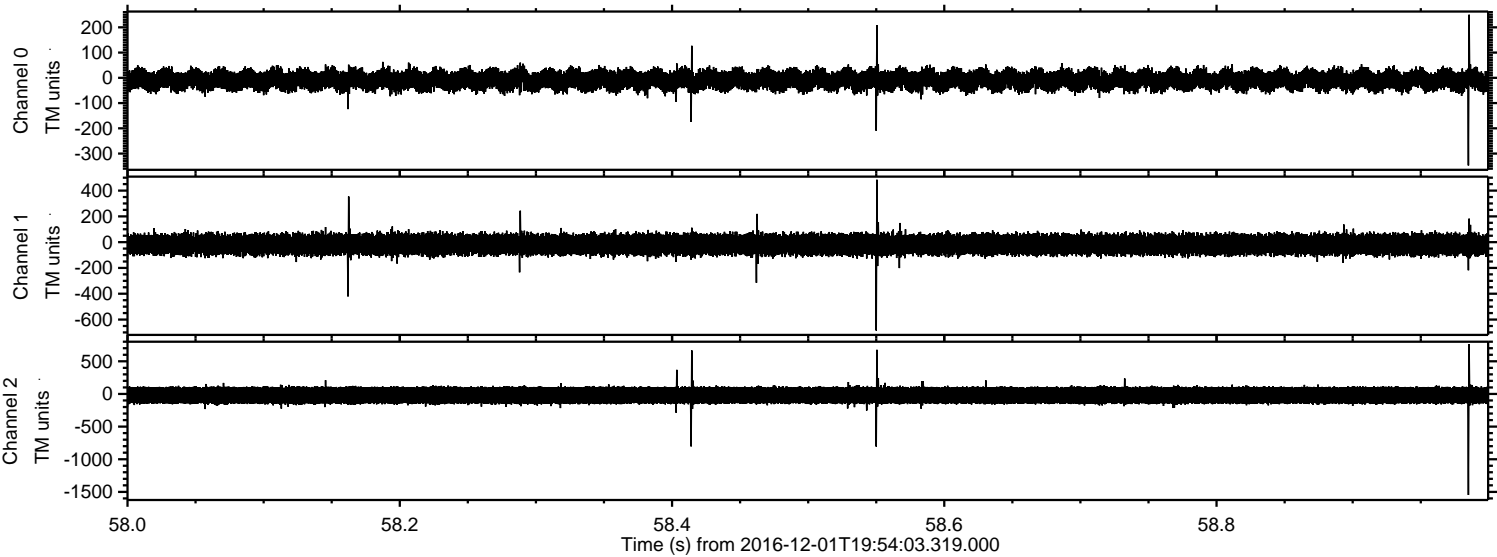
Processed Thu Dec 1 21:02:24 2016 by ELM ver.2012-10-06 from 001__elm20161201_195402__dat00.bin



Processed Thu Dec 1 21:02:25 2016 by ELM ver.2012-10-06 from 001__elm20161201_195402__dat00.bin



Processed Thu Dec 1 21:02:26 2016 by ELM ver.2012-10-06 from 001__elm20161201_195402__dat00.bin



Processed Thu Dec 1 21:02:27 2016 by ELM ver.2012-10-06 from 001__elm20161201_195402__dat00.bin

