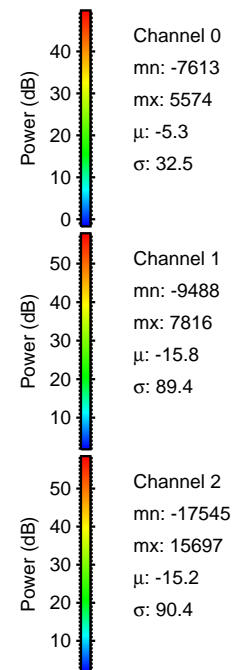
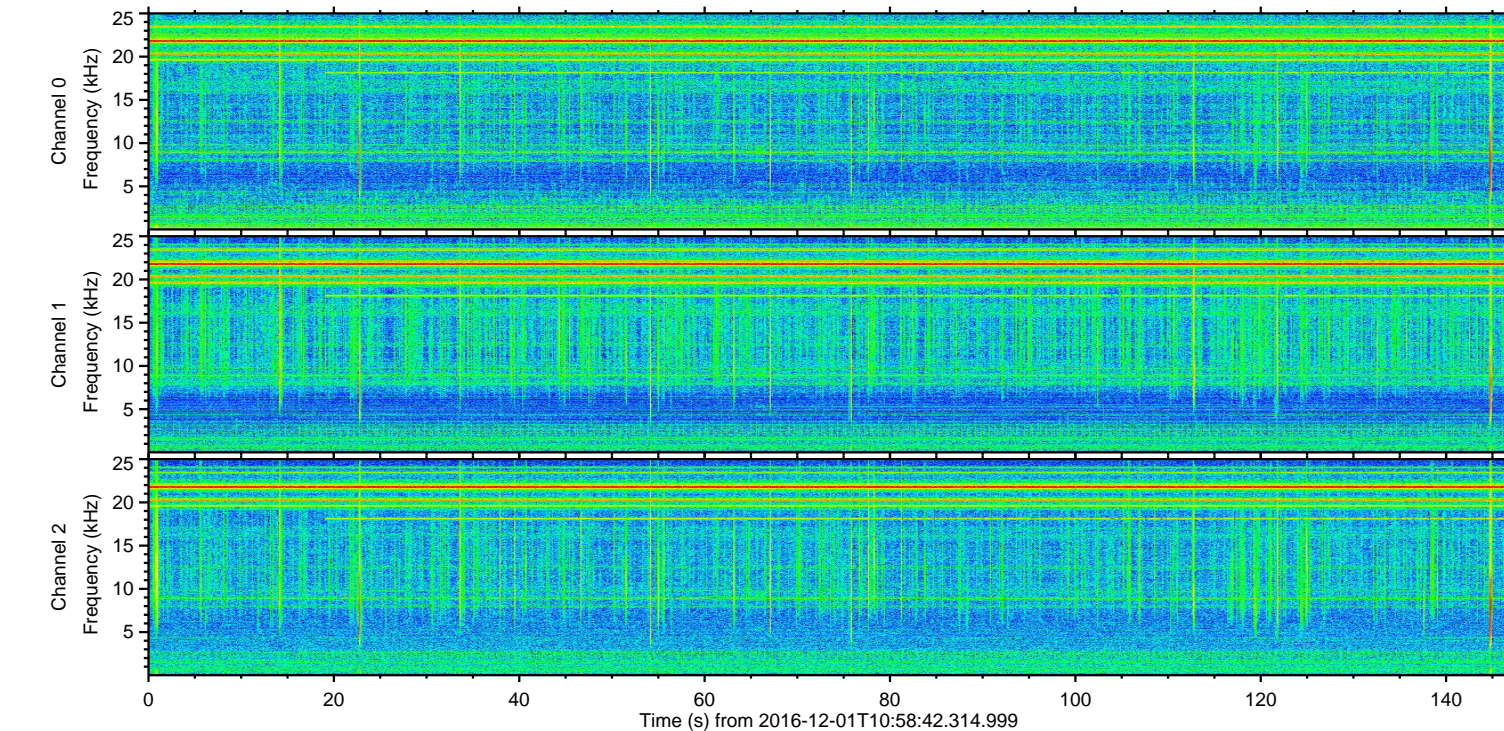
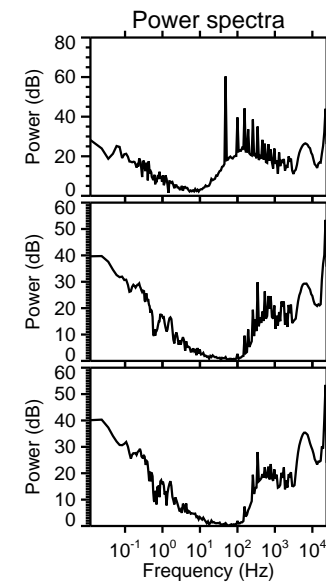
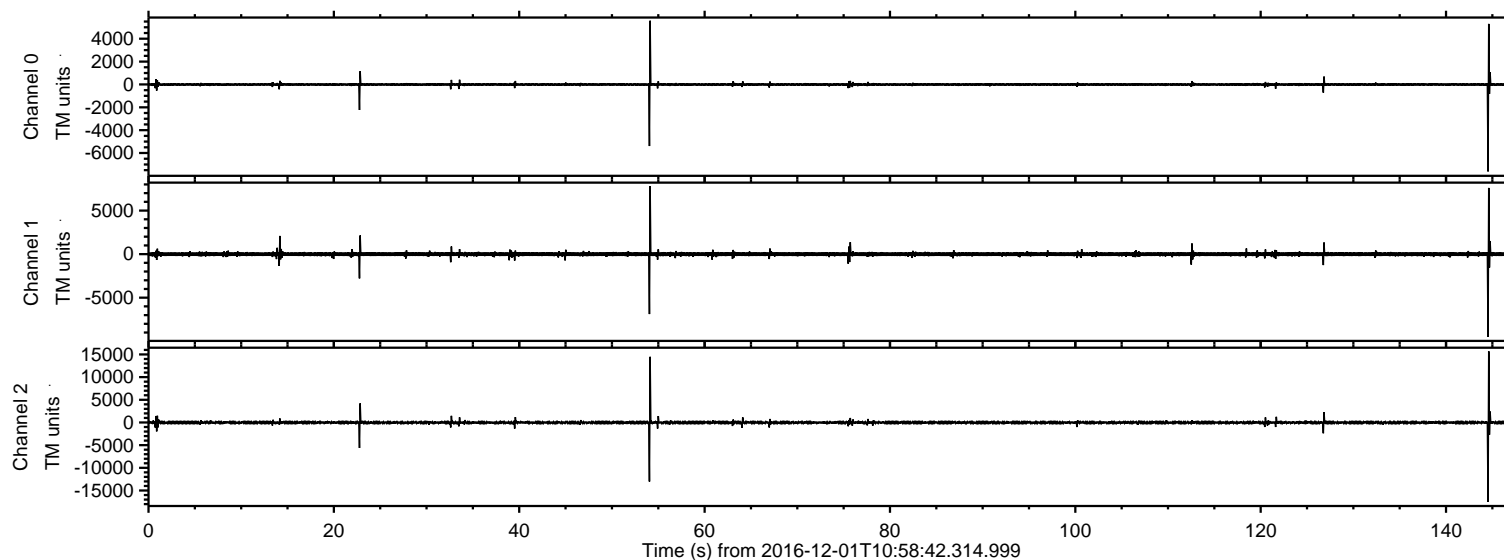


# ELMAVAN 3D WAVEFORMS (Measured data sampled at 50 kHz) 51000 packets of 144 samples from 2016-12-01T10:58:42.314.999.

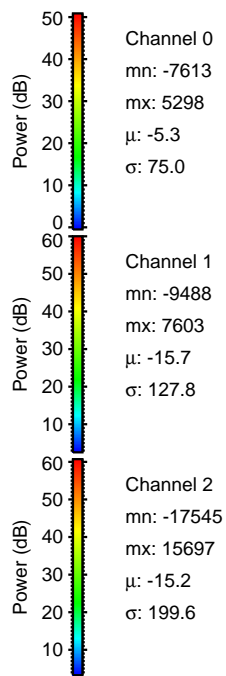
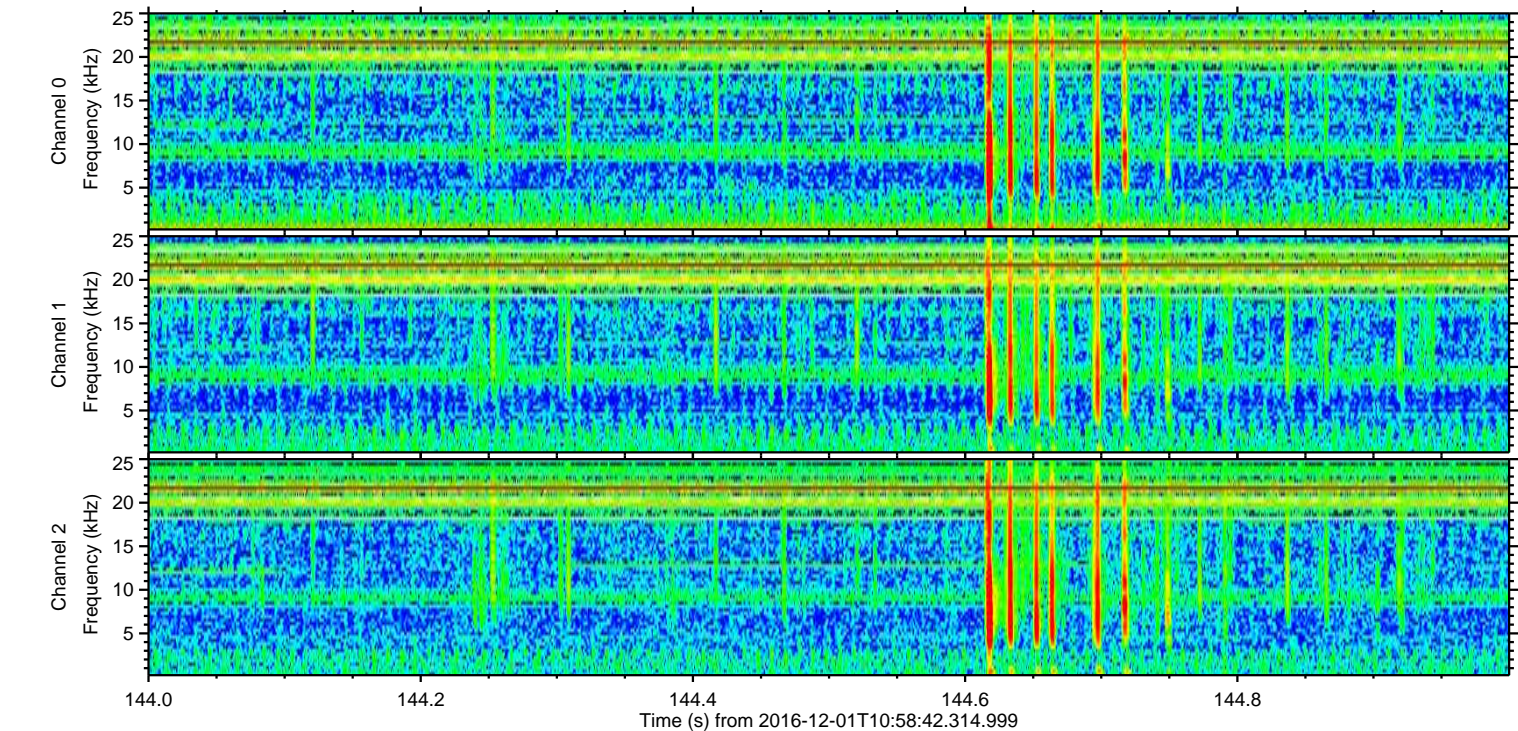
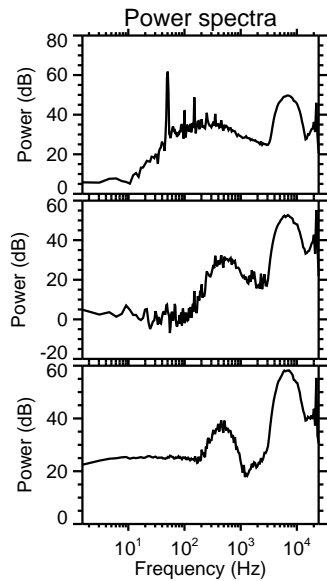
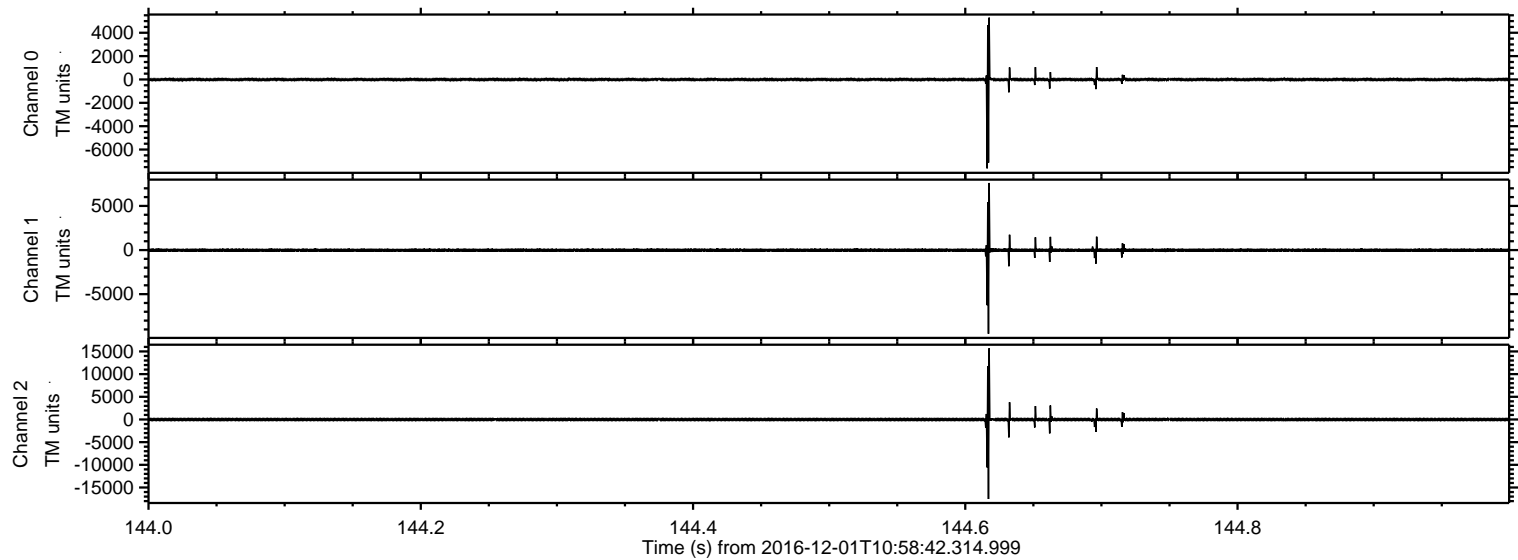
Processed Thu Dec 1 12:06:29 2016 by ELM ver.2012-10-06 from 001\_\_elm20161201\_105841\_\_dat00.bin





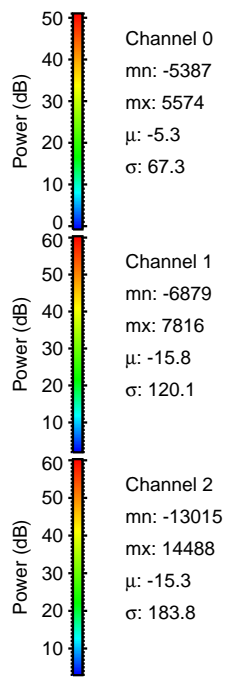
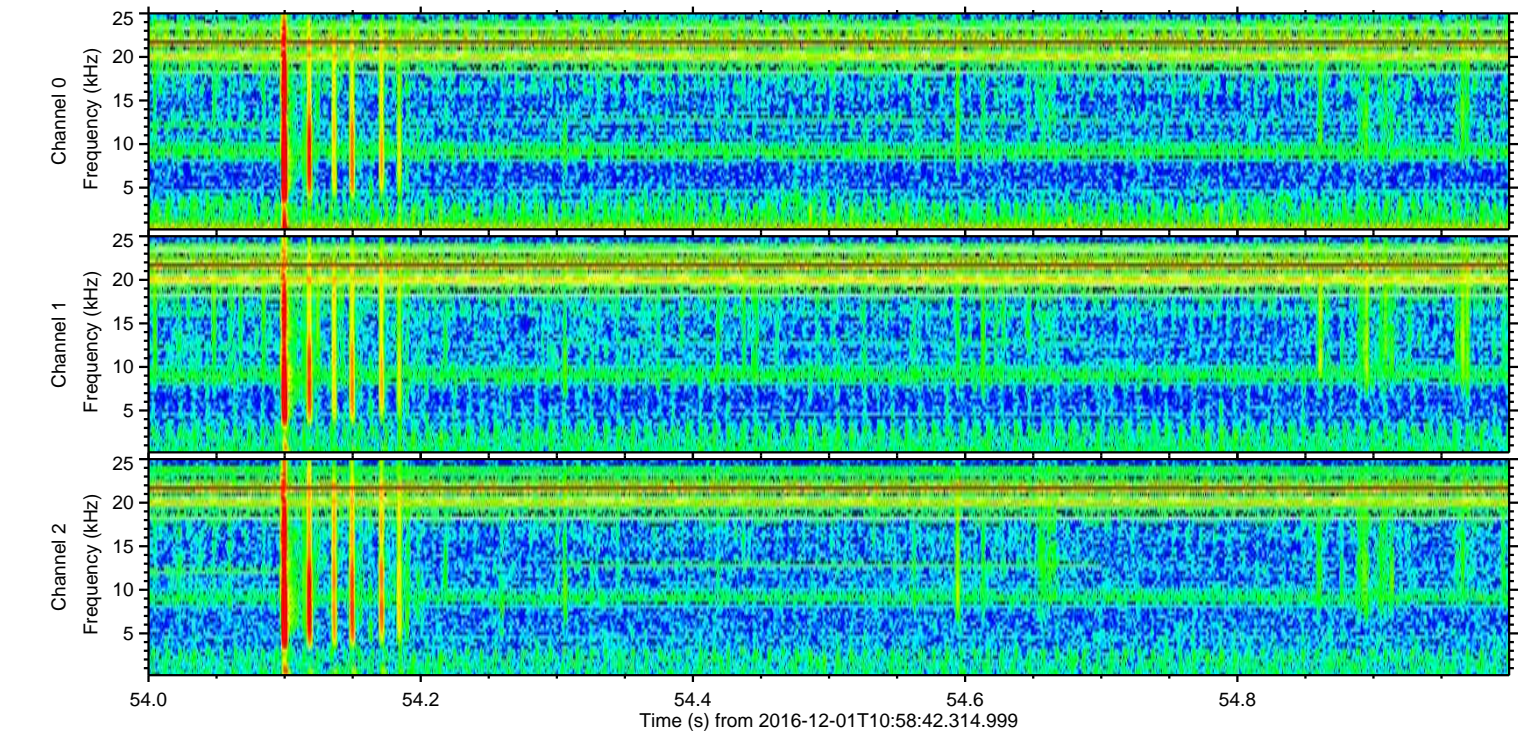
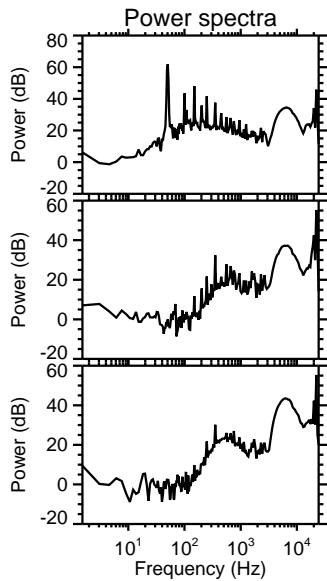
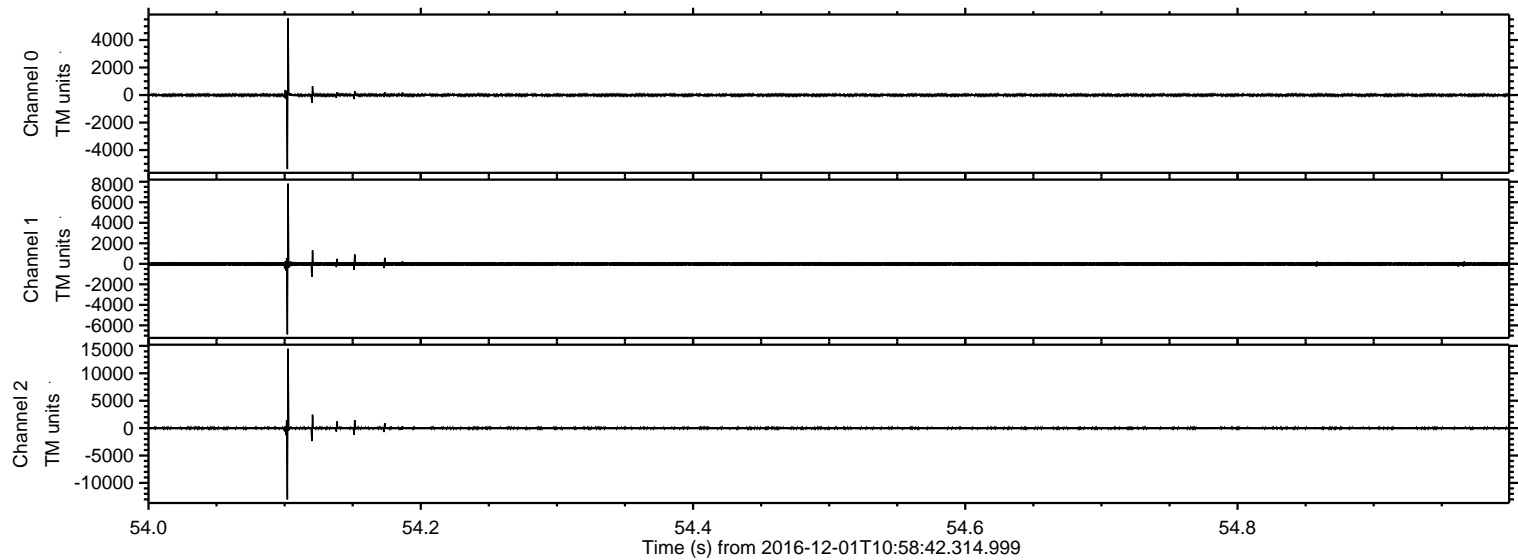
ELMAVAN 3D WAVEFORMS (Measured data sampled at 50 kHz) 51000 packets of 144 samples from 2016-12-01T10:58:42.314.999. Part 145/147

Processed Thu Dec 1 12:06:40 2016 by ELM ver.2012-10-06 from 001\_\_elm20161201\_105841\_\_dat00.bin





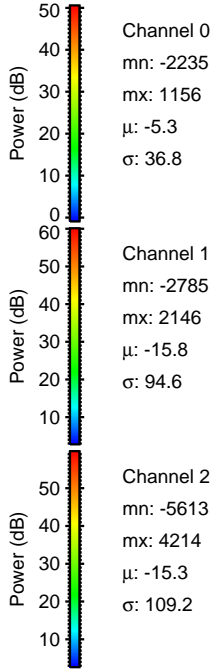
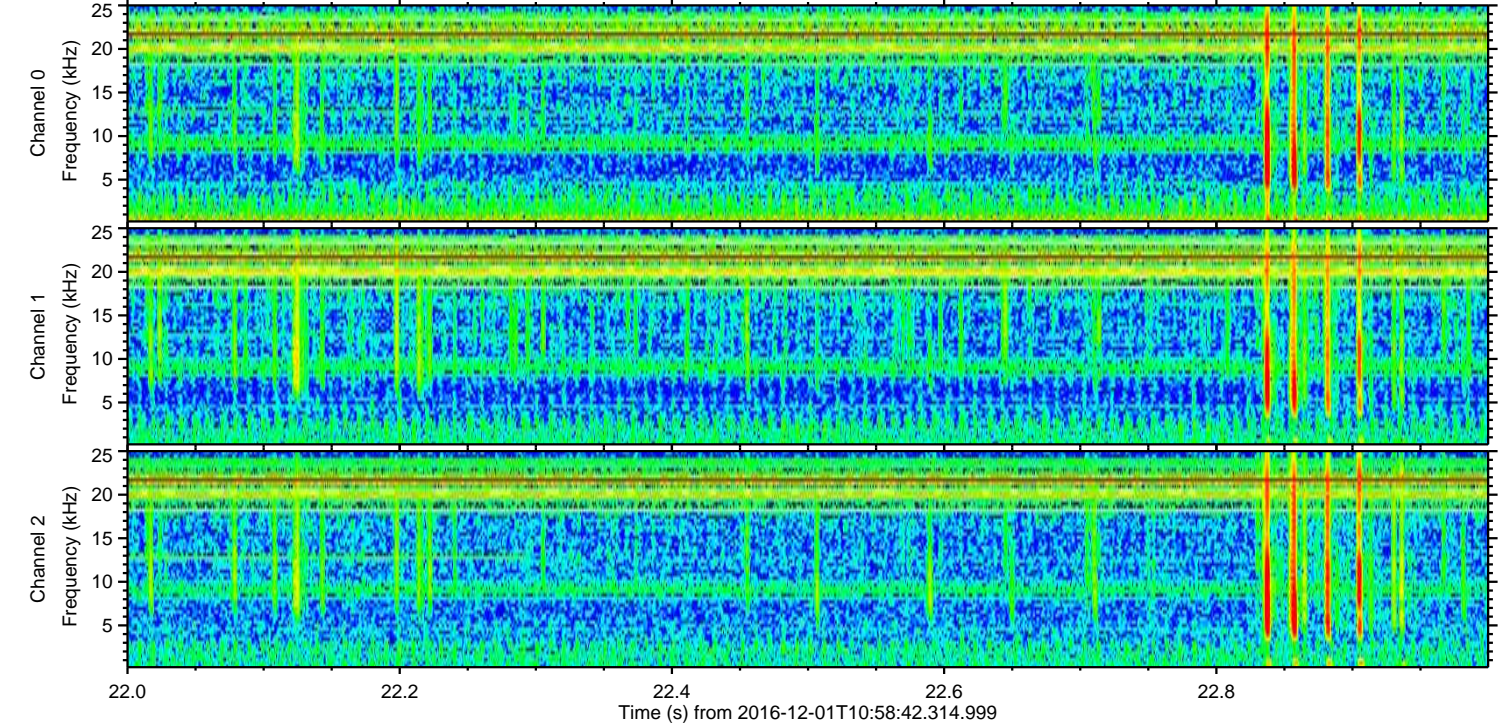
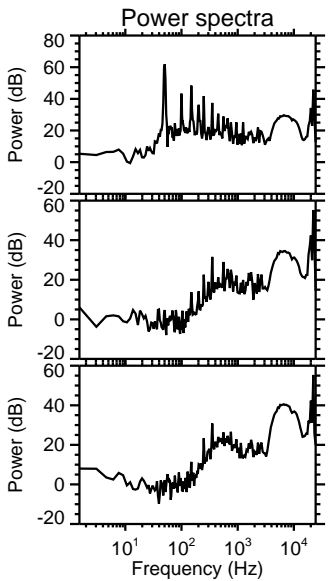
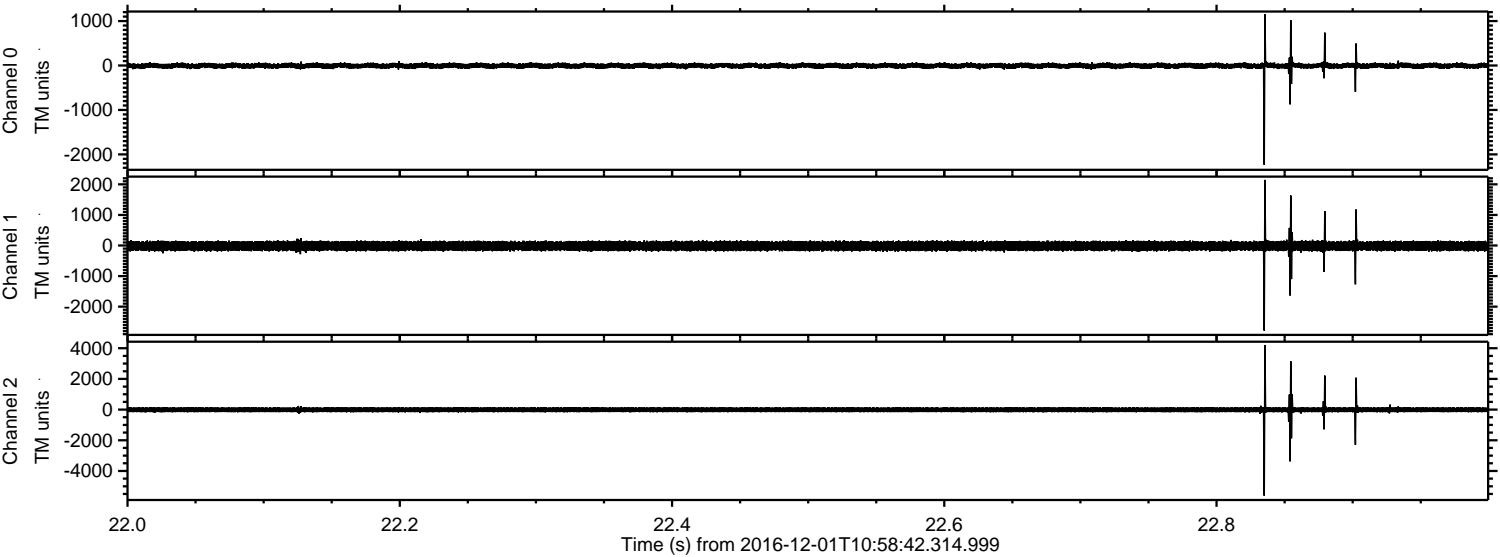
Processed Thu Dec 1 12:06:41 2016 by ELM ver.2012-10-06 from 001\_\_elm20161201\_105841\_\_dat00.bin





ELMAVAN 3D WAVEFORMS (Measured data sampled at 50 kHz) 51000 packets of 144 samples from 2016-12-01T10:58:42.314.999. Part 23/147

Processed Thu Dec 1 12:06:42 2016 by ELM ver.2012-10-06 from 001\_\_elm20161201\_105841\_\_dat00.bin



Channel 0  
mn: -2235  
mx: 1156  
 $\mu$ : -5.3  
 $\sigma$ : 36.8

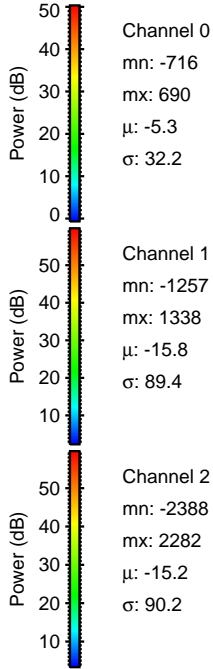
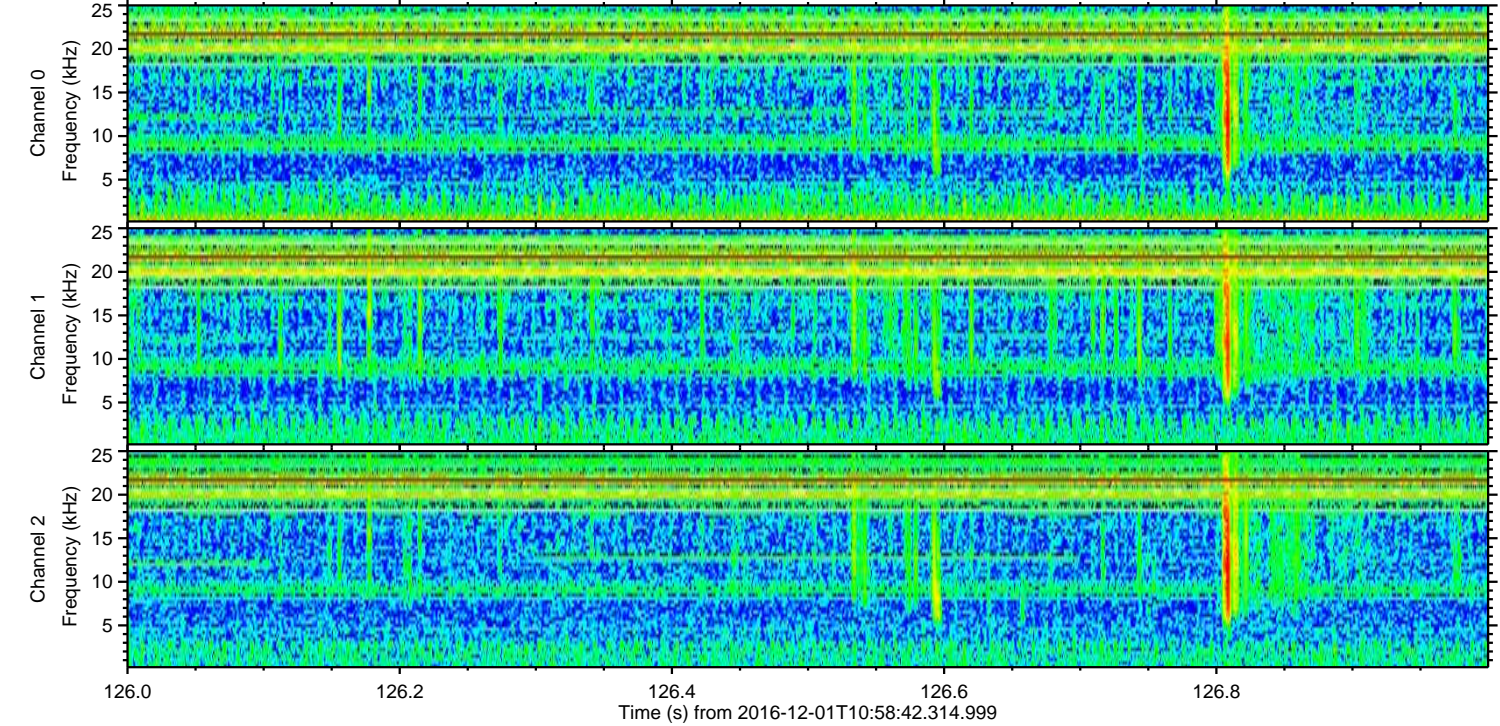
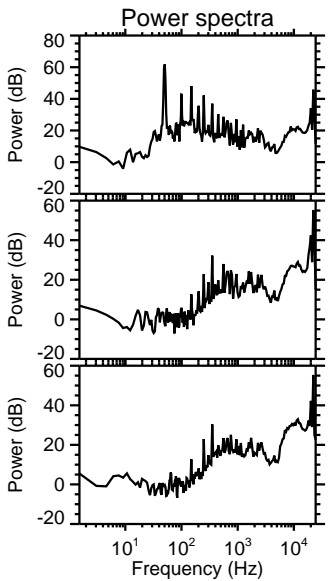
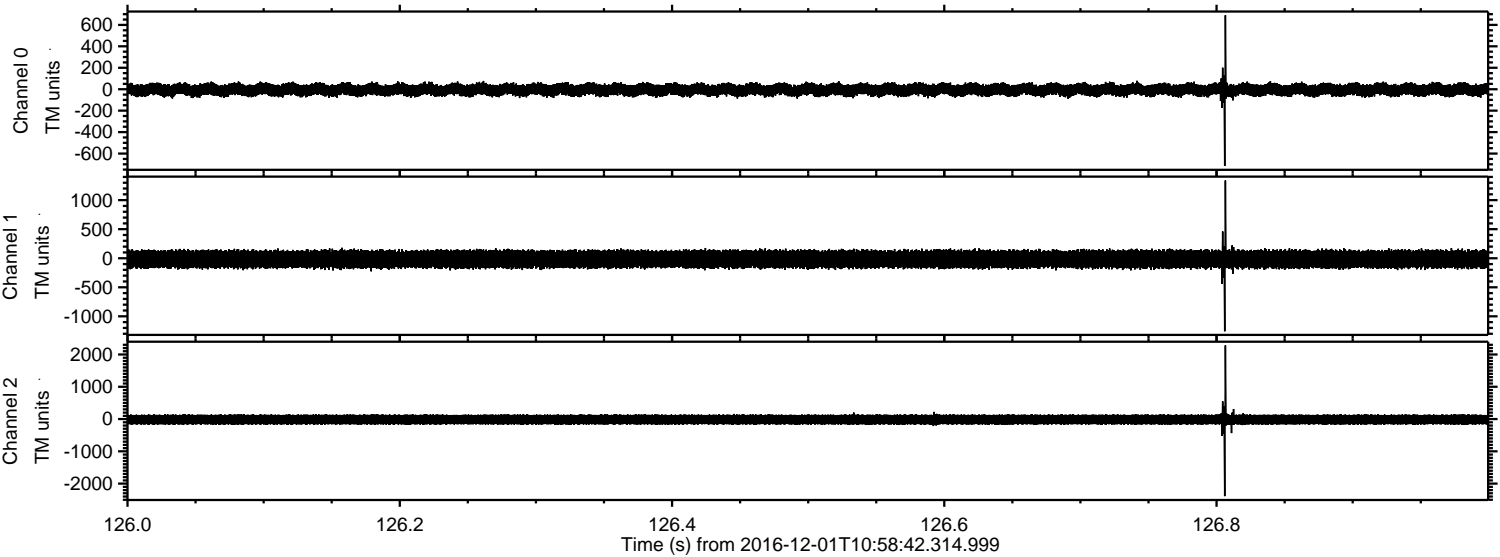
Channel 1  
mn: -2785  
mx: 2146  
 $\mu$ : -15.8  
 $\sigma$ : 94.6

Channel 2  
mn: -5613  
mx: 4214  
 $\mu$ : -15.3  
 $\sigma$ : 109.2



ELMAVAN 3D WAVEFORMS (Measured data sampled at 50 kHz) 51000 packets of 144 samples from 2016-12-01T10:58:42.314.999. Part 127/147

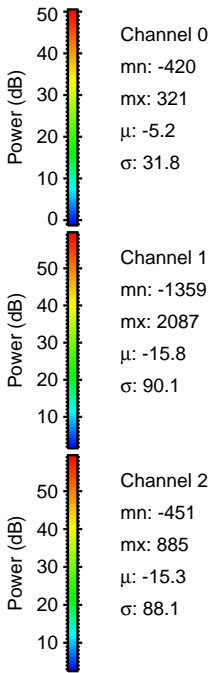
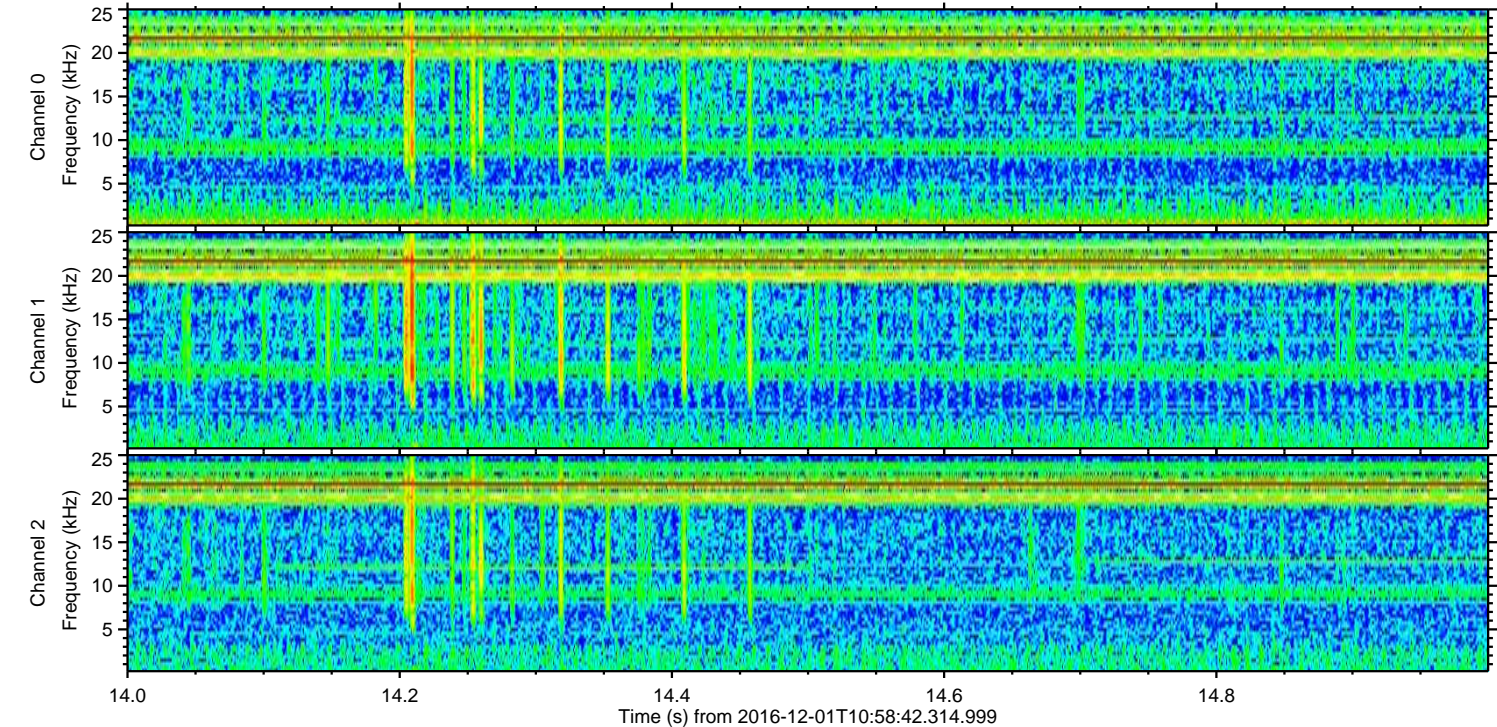
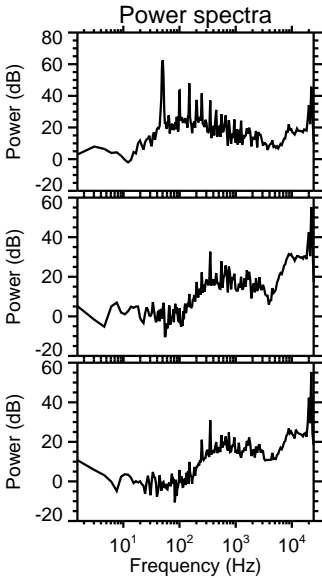
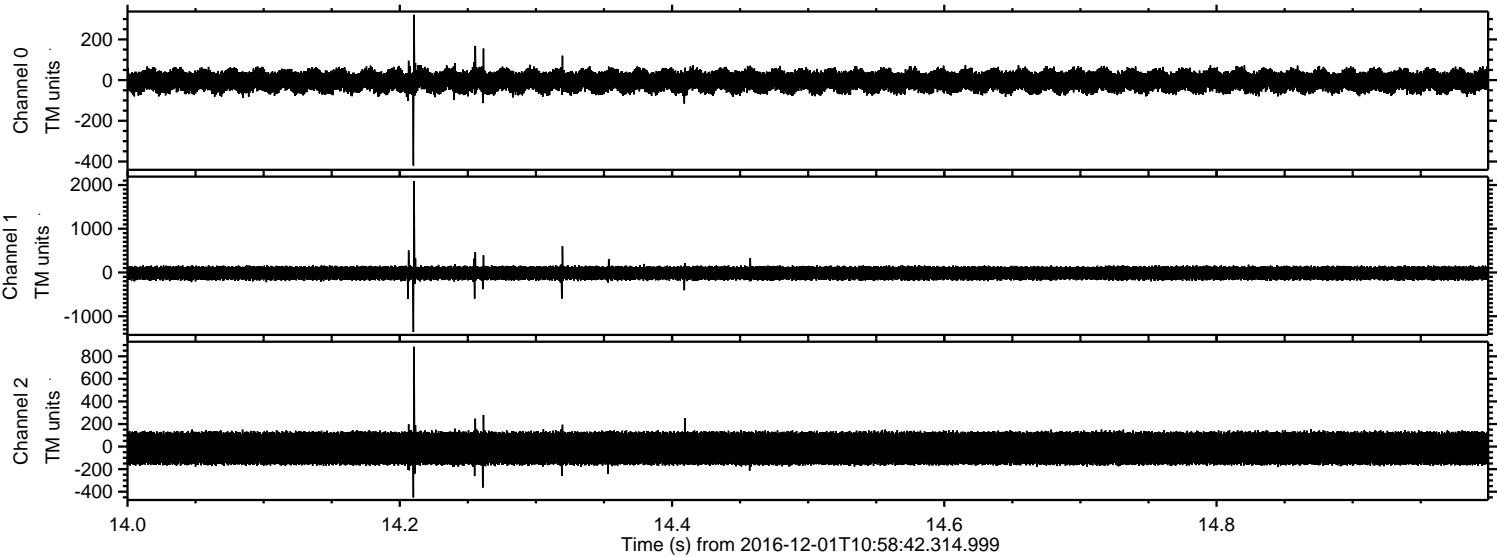
Processed Thu Dec 1 12:06:43 2016 by ELM ver.2012-10-06 from 001\_\_elm20161201\_105841\_\_dat00.bin





ELMAVAN 3D WAVEFORMS (Measured data sampled at 50 kHz) 51000 packets of 144 samples from 2016-12-01T10:58:42.314.999. Part 15/147

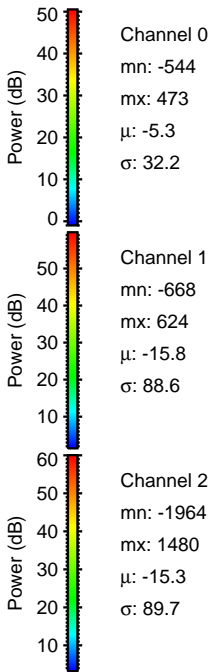
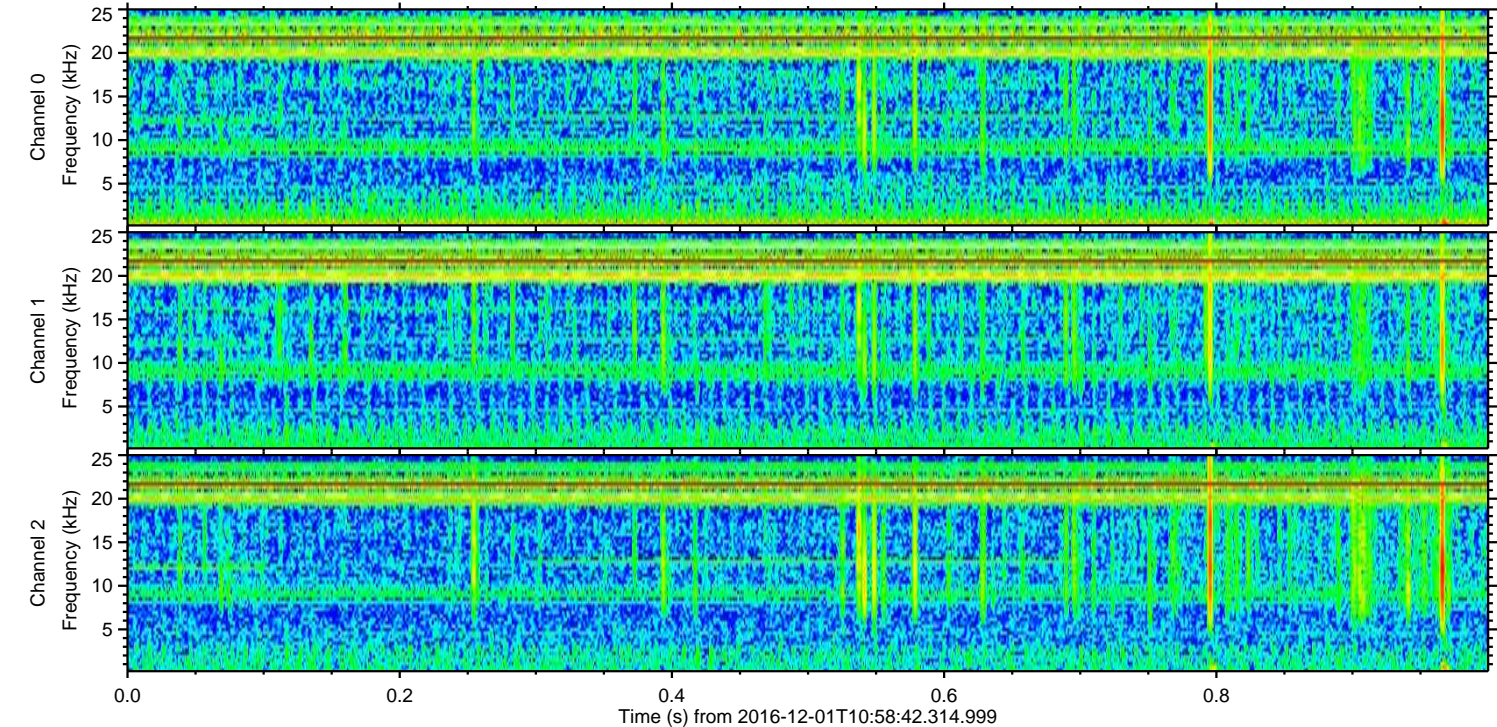
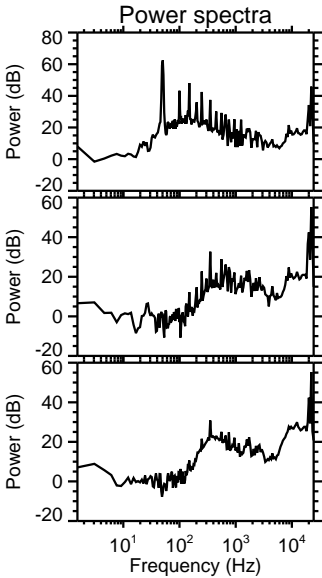
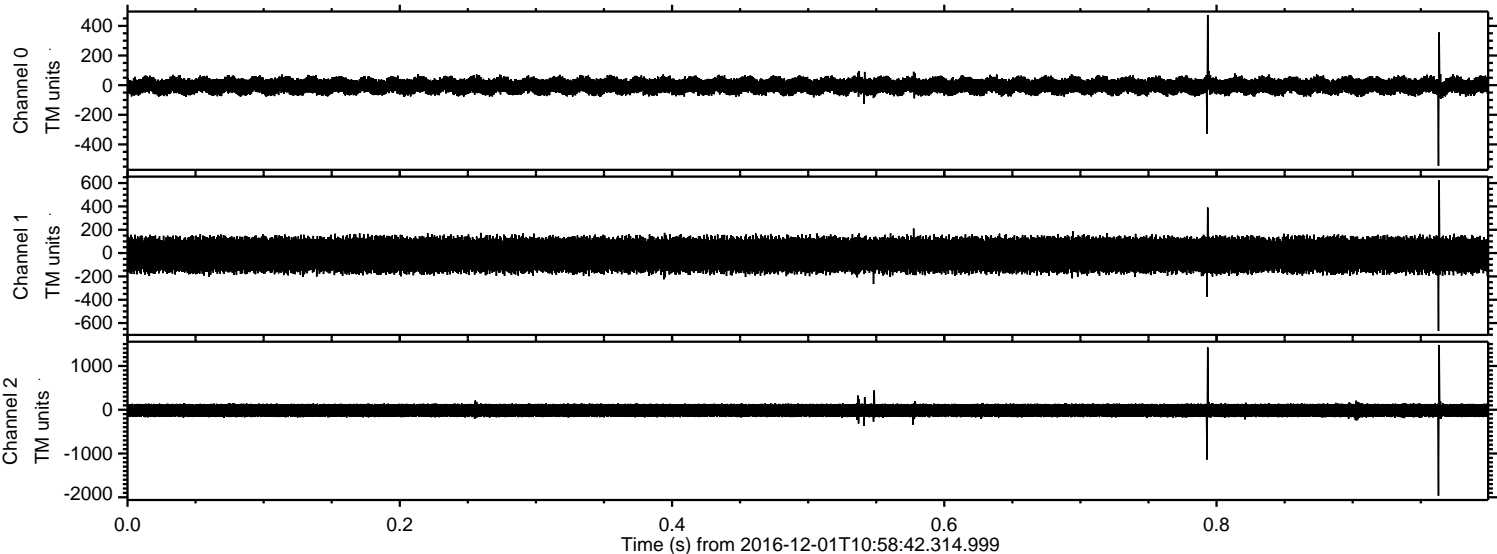
Processed Thu Dec 1 12:06:44 2016 by ELM ver.2012-10-06 from 001\_\_elm20161201\_105841\_\_dat00.bin





ELMAVAN 3D WAVEFORMS (Measured data sampled at 50 kHz) 51000 packets of 144 samples from 2016-12-01T10:58:42.314.999. Part 1/147

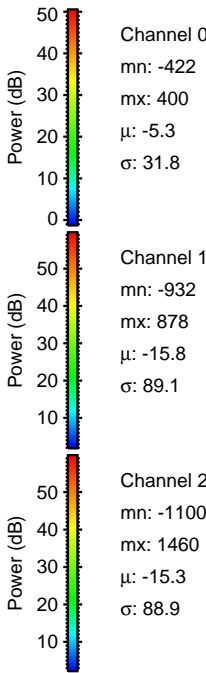
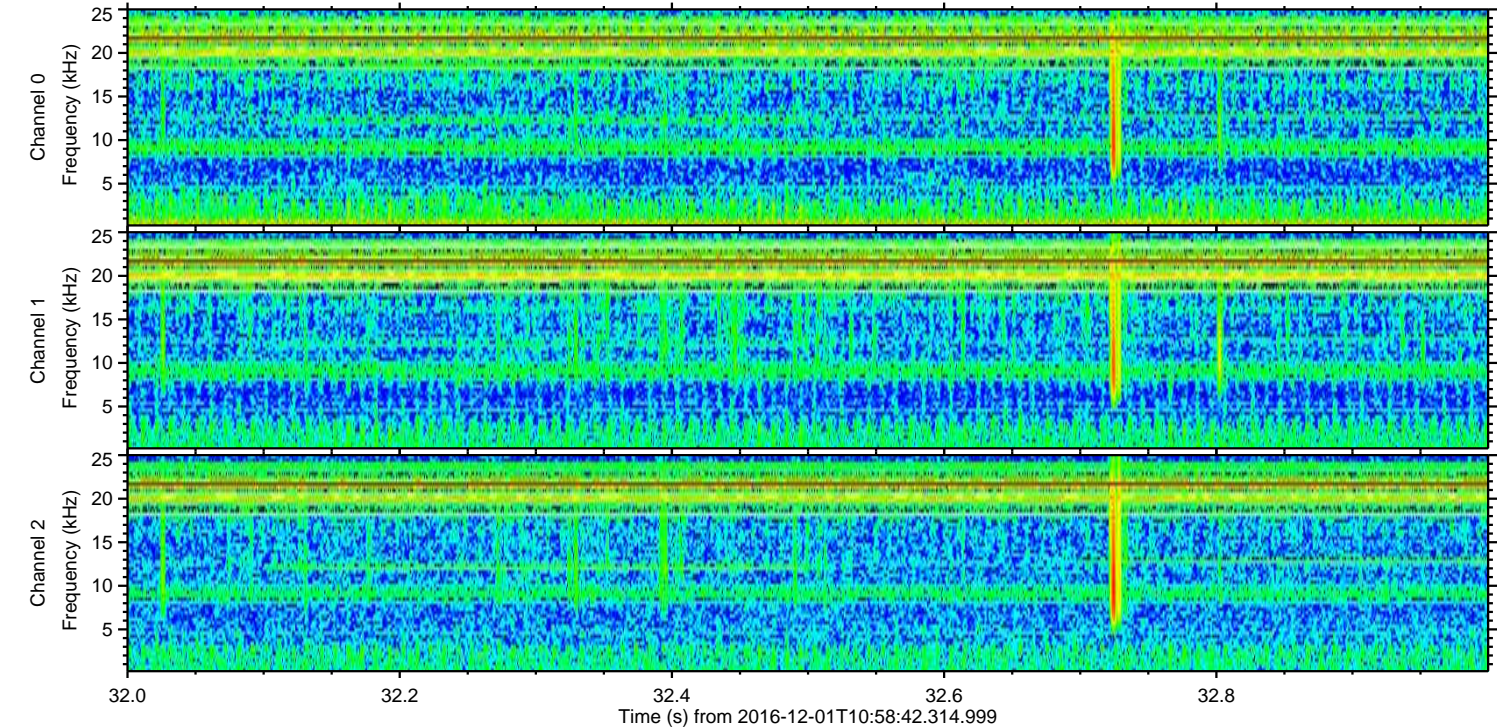
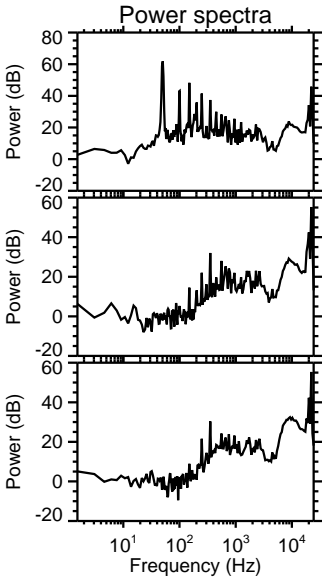
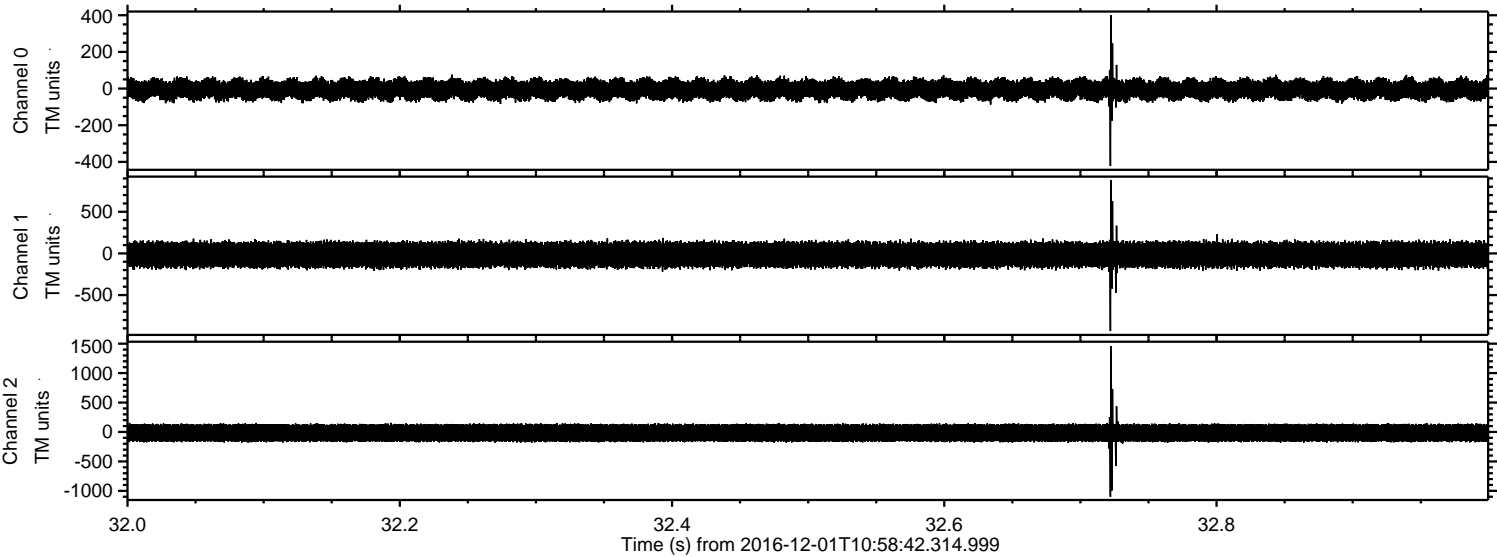
Processed Thu Dec 1 12:06:45 2016 by ELM ver.2012-10-06 from 001\_\_elm20161201\_105841\_\_dat00.bin





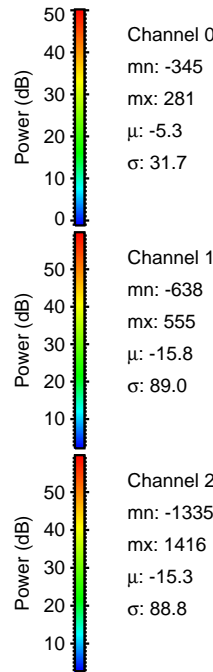
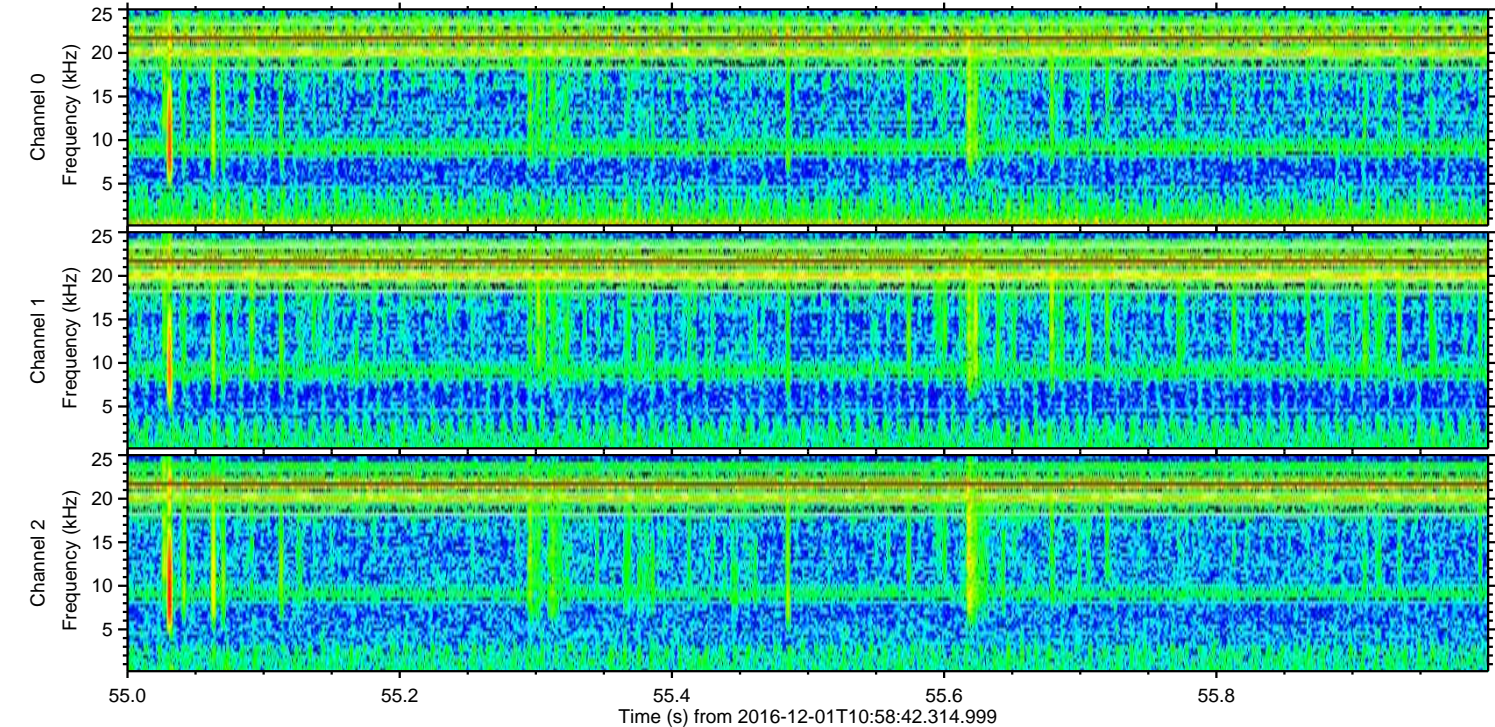
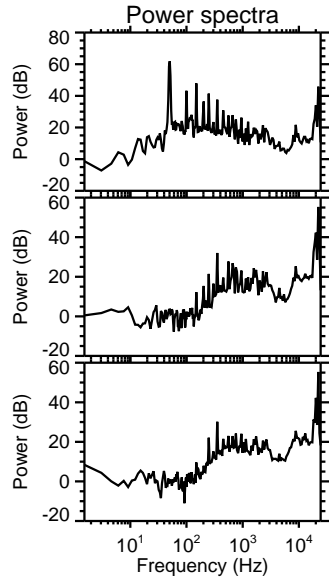
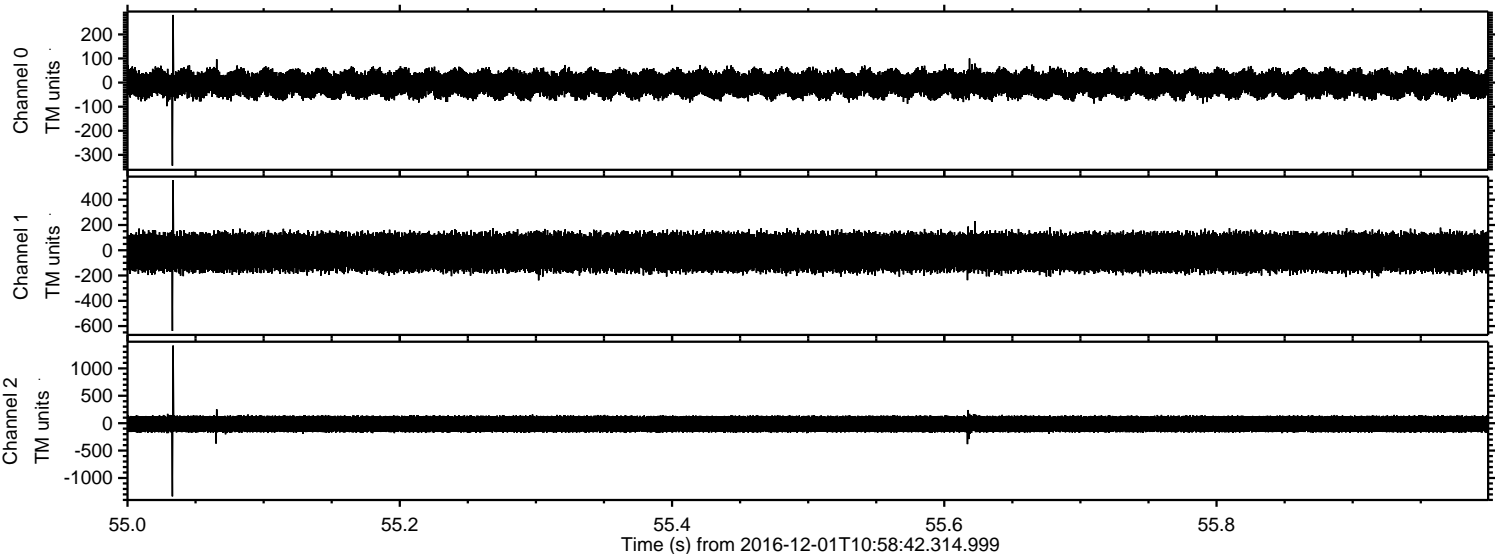
ELMAVAN 3D WAVEFORMS (Measured data sampled at 50 kHz) 51000 packets of 144 samples from 2016-12-01T10:58:42.314.999. Part 33/147

Processed Thu Dec 1 12:06:46 2016 by ELM ver.2012-10-06 from 001\_\_elm20161201\_105841\_\_dat00.bin





Processed Thu Dec 1 12:06:47 2016 by ELM ver.2012-10-06 from 001\_\_elm20161201\_105841\_\_dat00.bin



Channel 0  
mn: -345  
mx: 281  
 $\mu$ : -5.3  
 $\sigma$ : 31.7

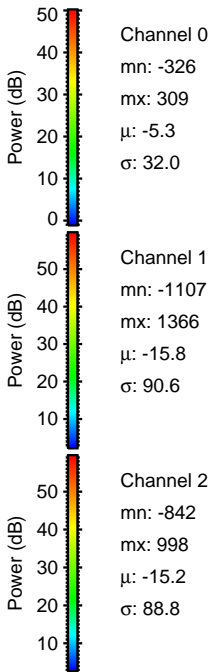
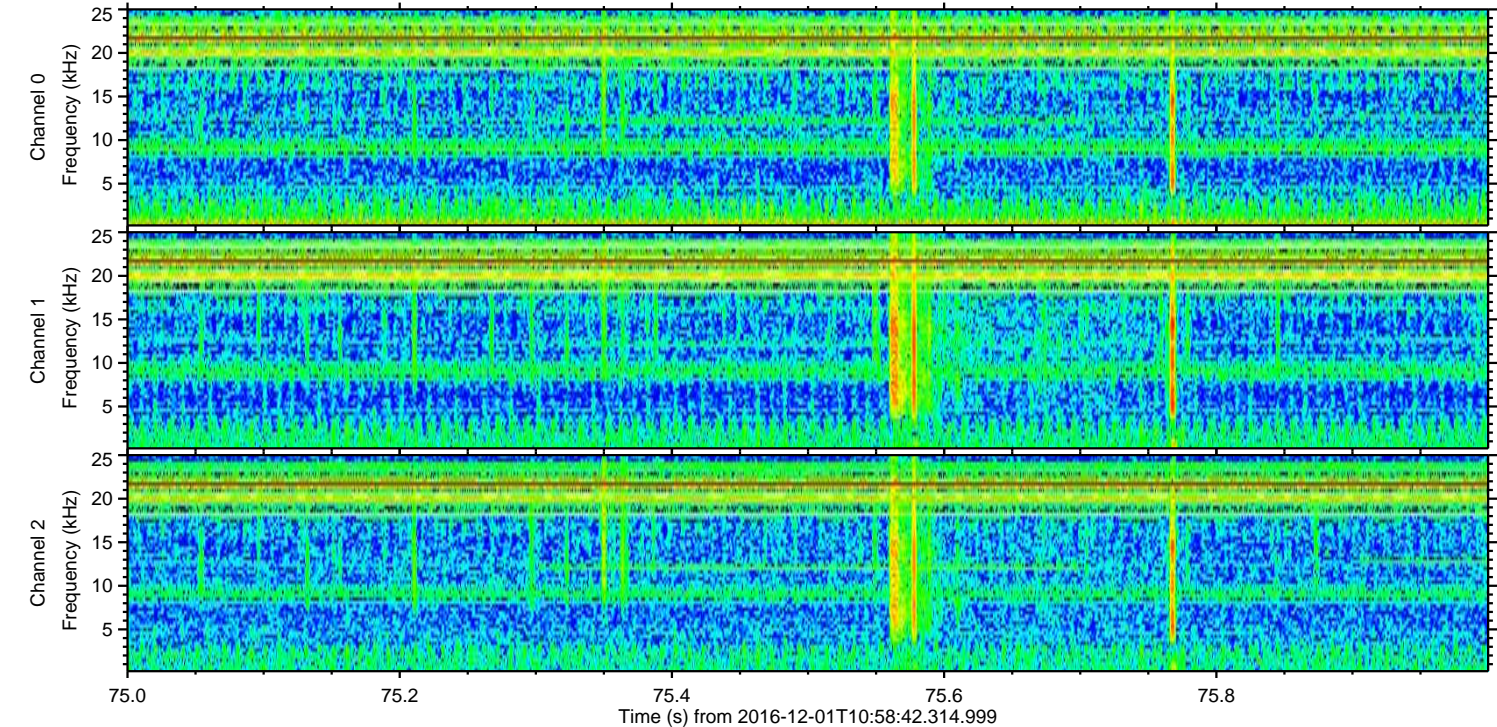
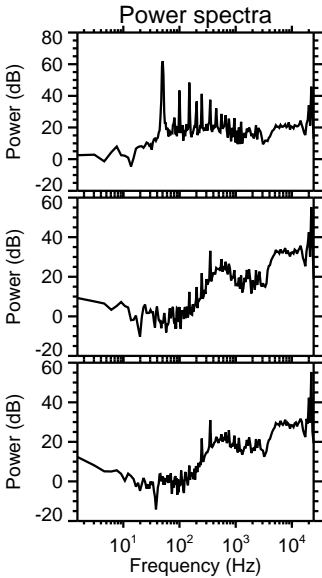
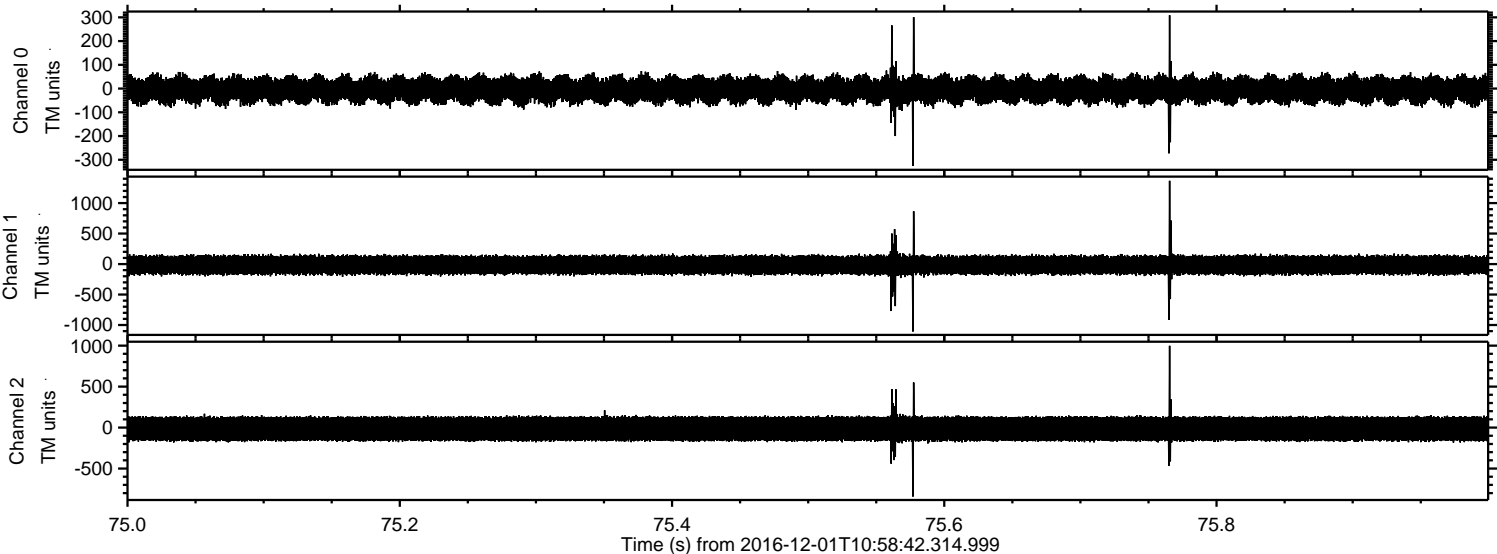
Channel 1  
mn: -638  
mx: 555  
 $\mu$ : -15.8  
 $\sigma$ : 89.0

Channel 2  
mn: -1335  
mx: 1416  
 $\mu$ : -15.3  
 $\sigma$ : 88.8



ELMAVAN 3D WAVEFORMS (Measured data sampled at 50 kHz) 51000 packets of 144 samples from 2016-12-01T10:58:42.314.999. Part 76/147

Processed Thu Dec 1 12:06:48 2016 by ELM ver.2012-10-06 from 001\_\_elm20161201\_105841\_\_dat00.bin





ELMAVAN 3D WAVEFORMS (Measured data sampled at 50 kHz) 51000 packets of 144 samples from 2016-12-01T10:58:42.314.999. Part 16/147

