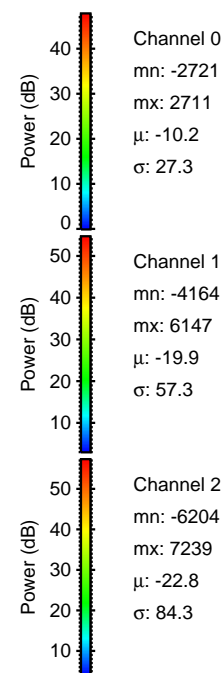
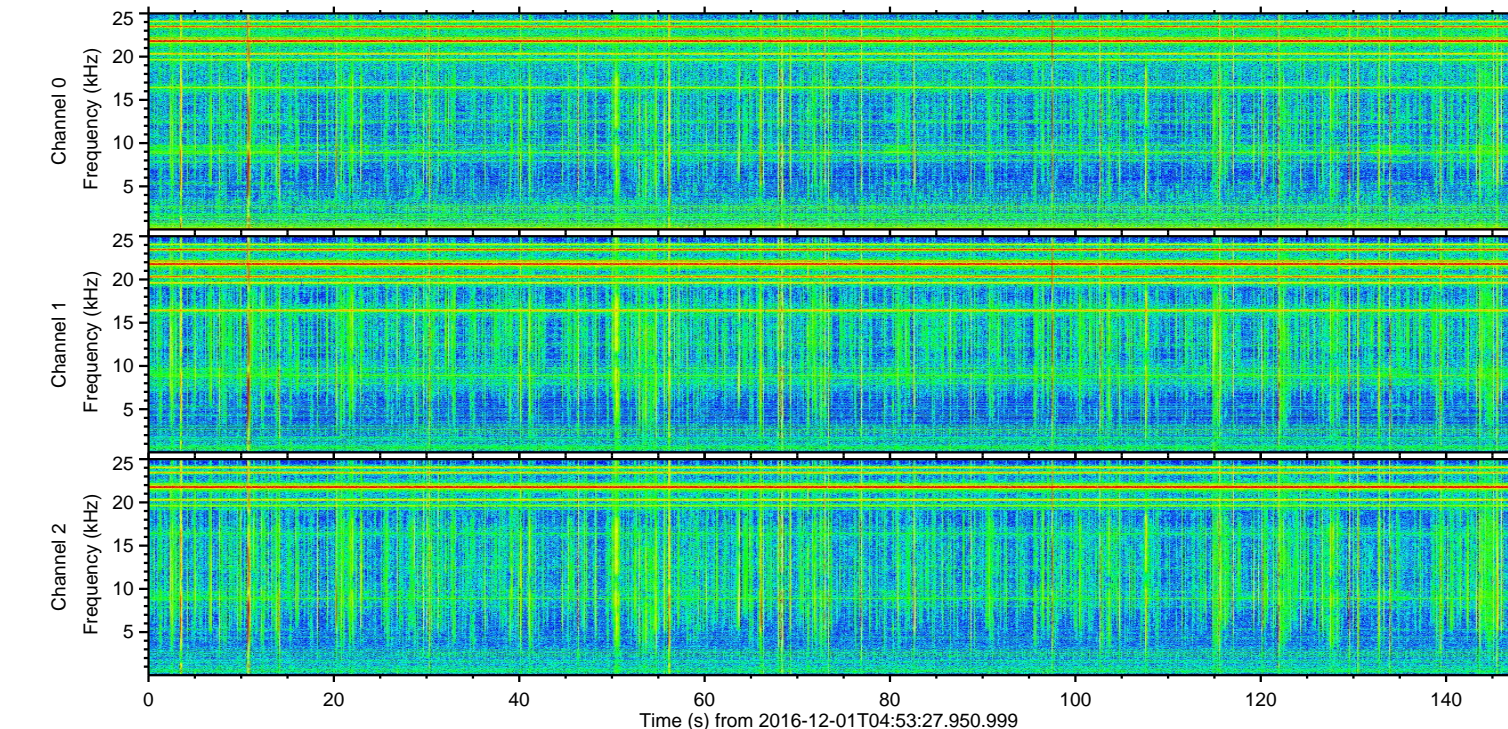
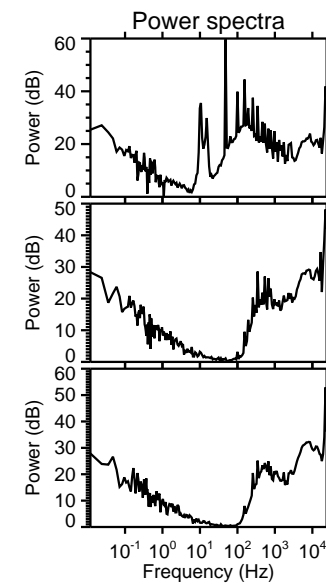
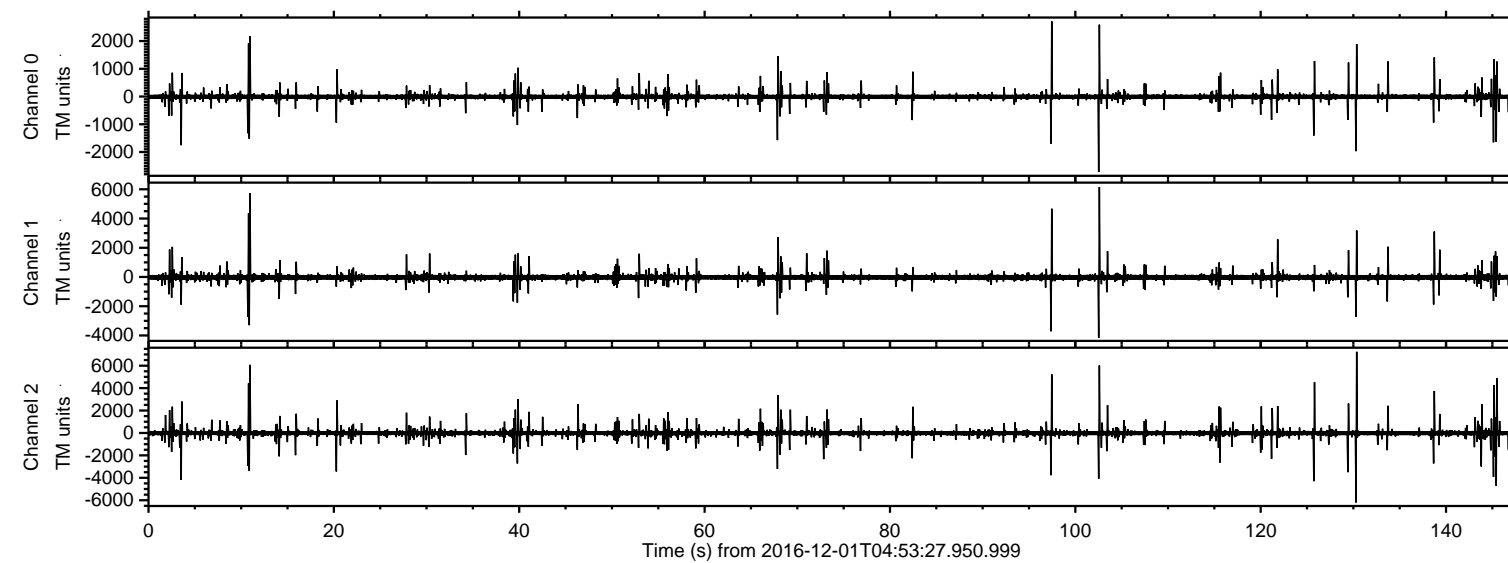


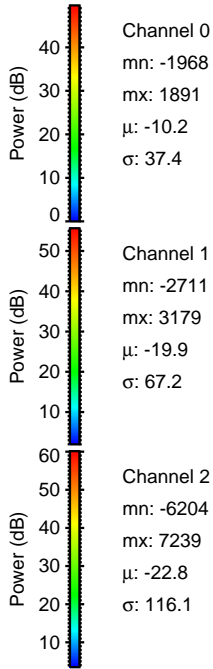
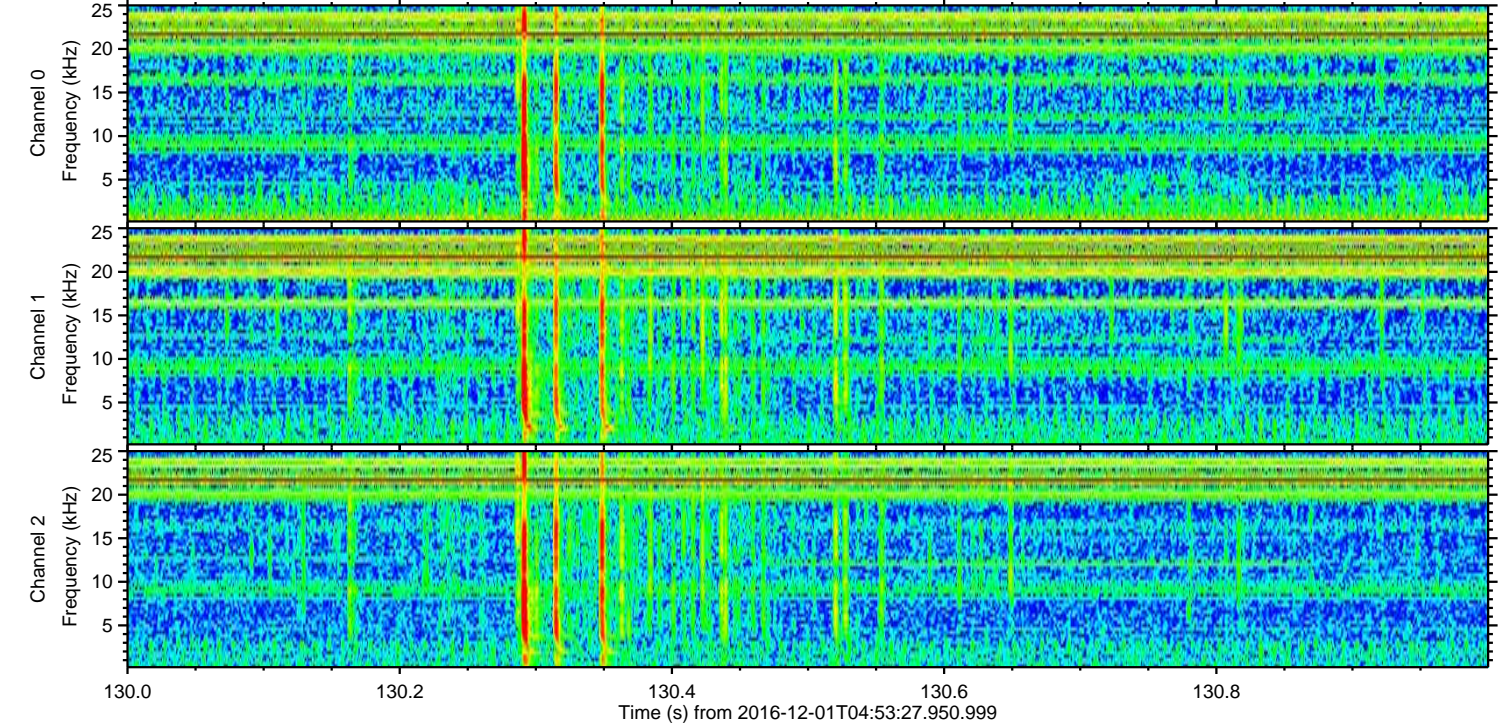
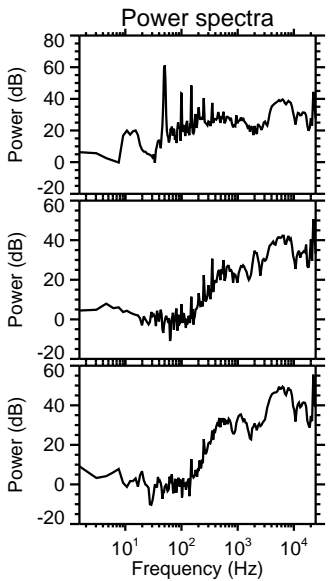
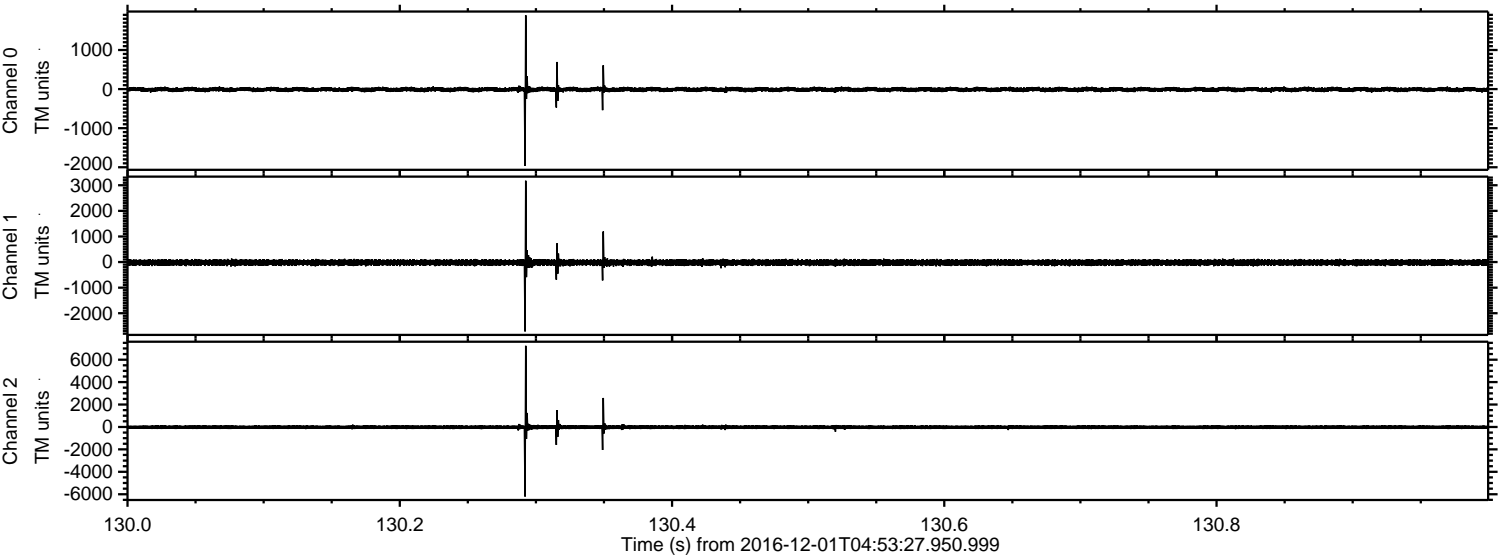
ELMAVAN 3D WAVEFORMS (Measured data sampled at 50 kHz) 51000 packets of 144 samples from 2016-12-01T04:53:27.950.999.

Processed Thu Dec 1 06:00:54 2016 by ELM ver.2012-10-06 from 001__elm20161201_045326__dat00.bin



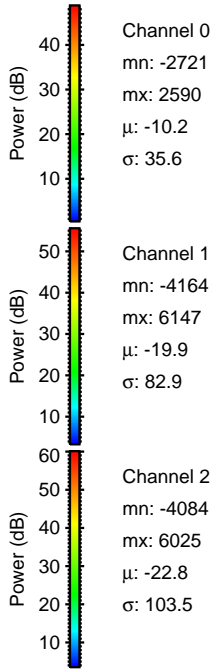
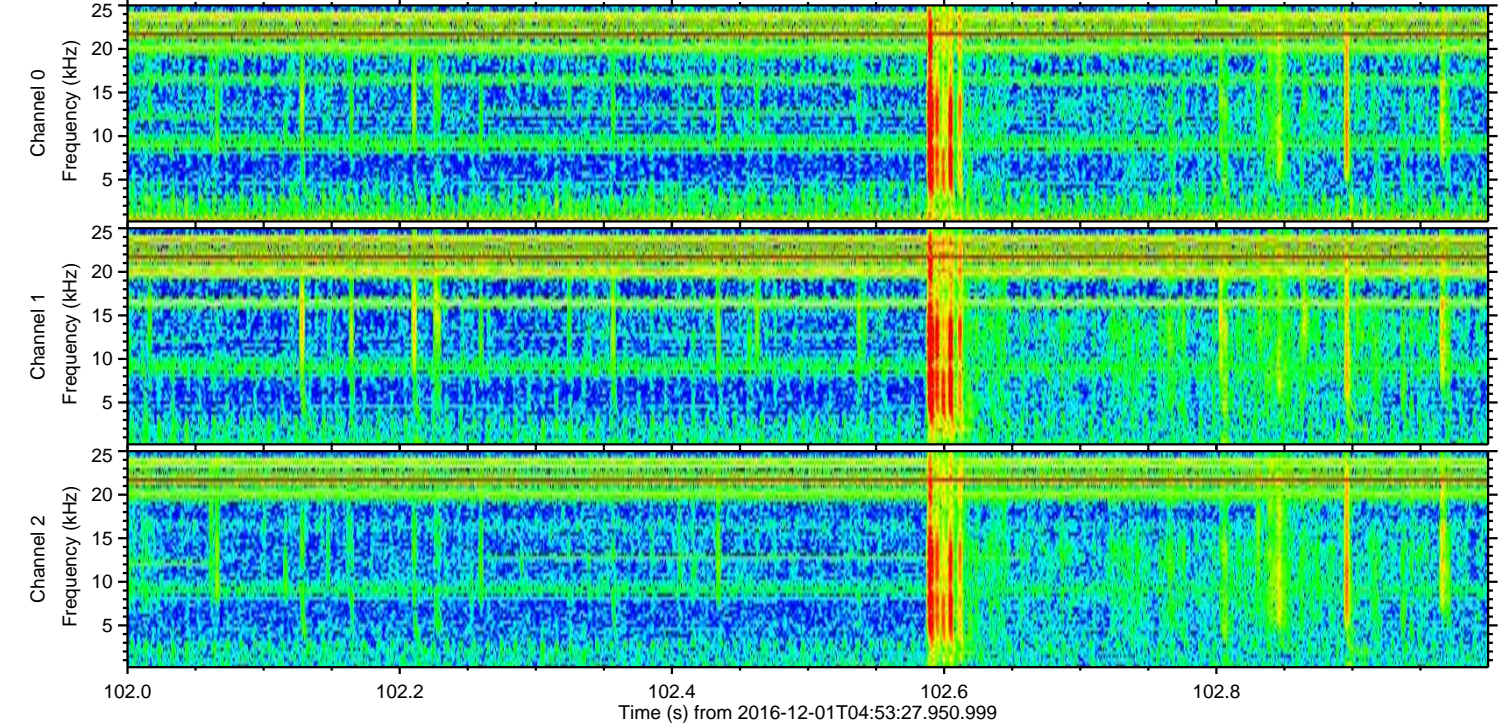
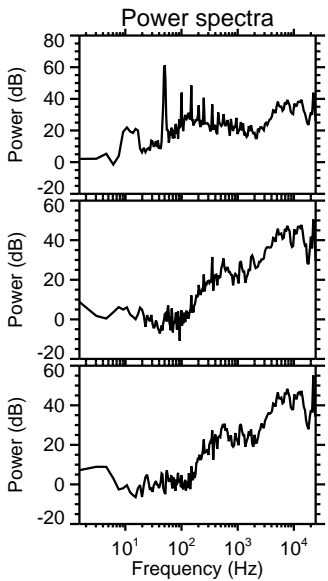
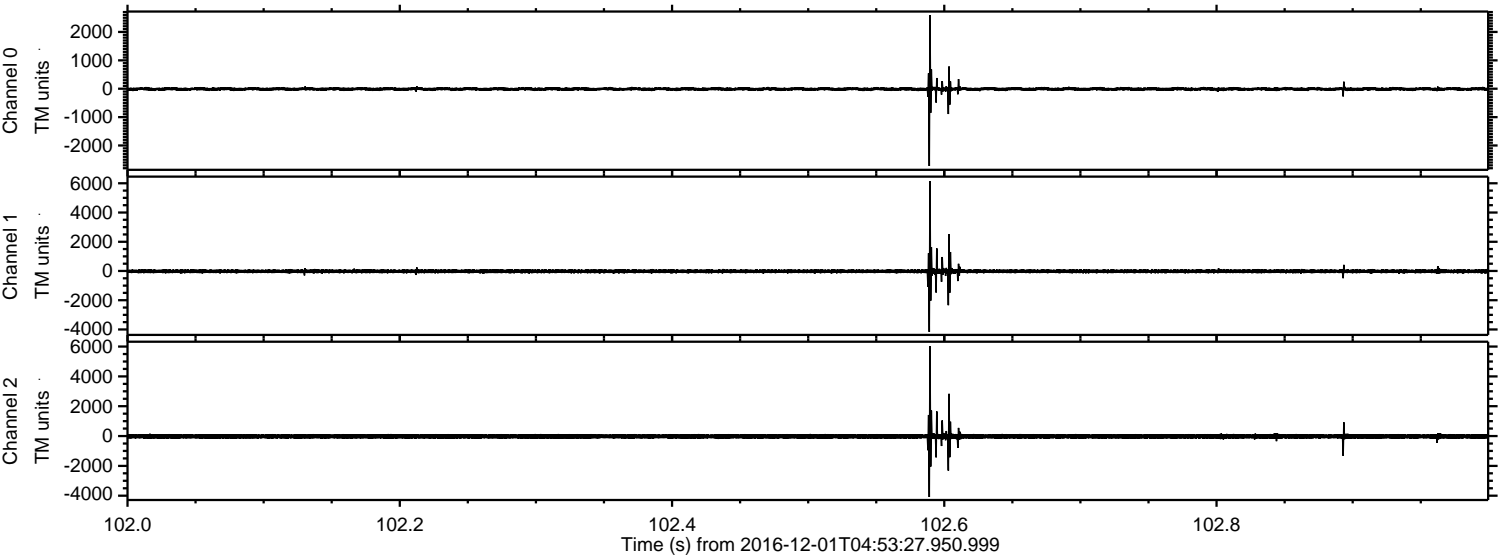
ELMAVAN 3D WAVEFORMS (Measured data sampled at 50 kHz) 51000 packets of 144 samples from 2016-12-01T04:53:27.950.999. Part 131/147

Processed Thu Dec 1 06:01:06 2016 by ELM ver.2012-10-06 from 001__elm20161201_045326__dat00.bin



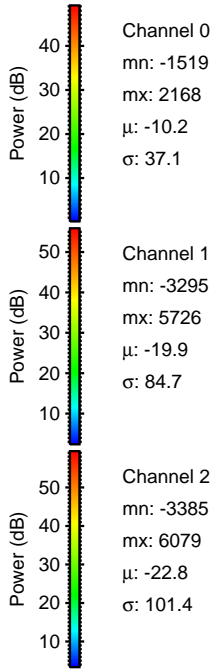
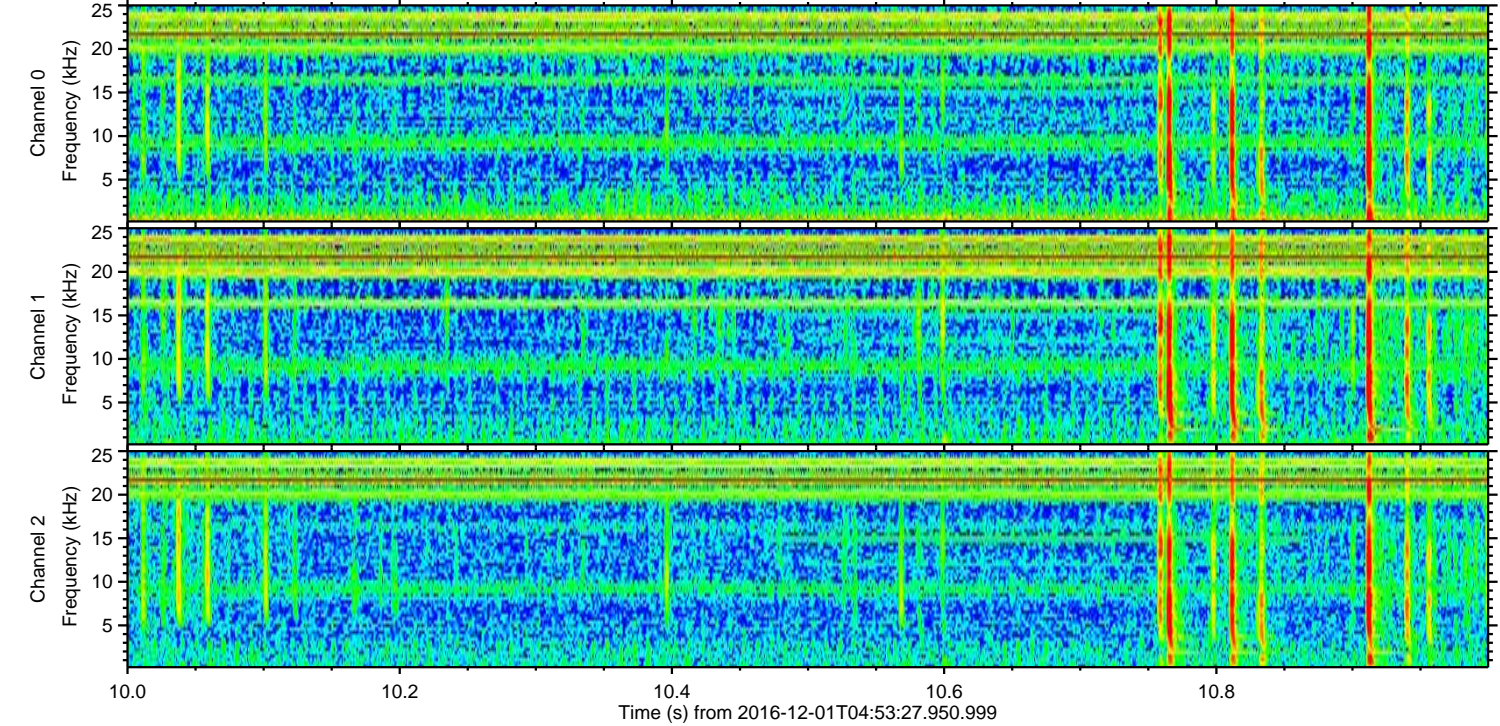
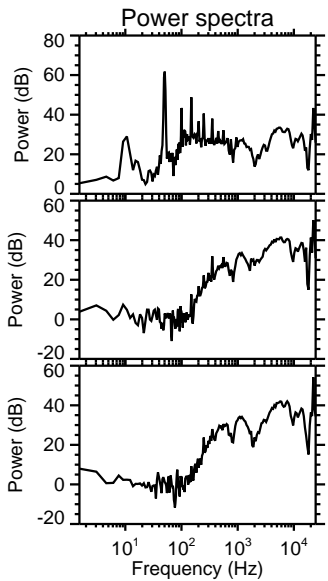
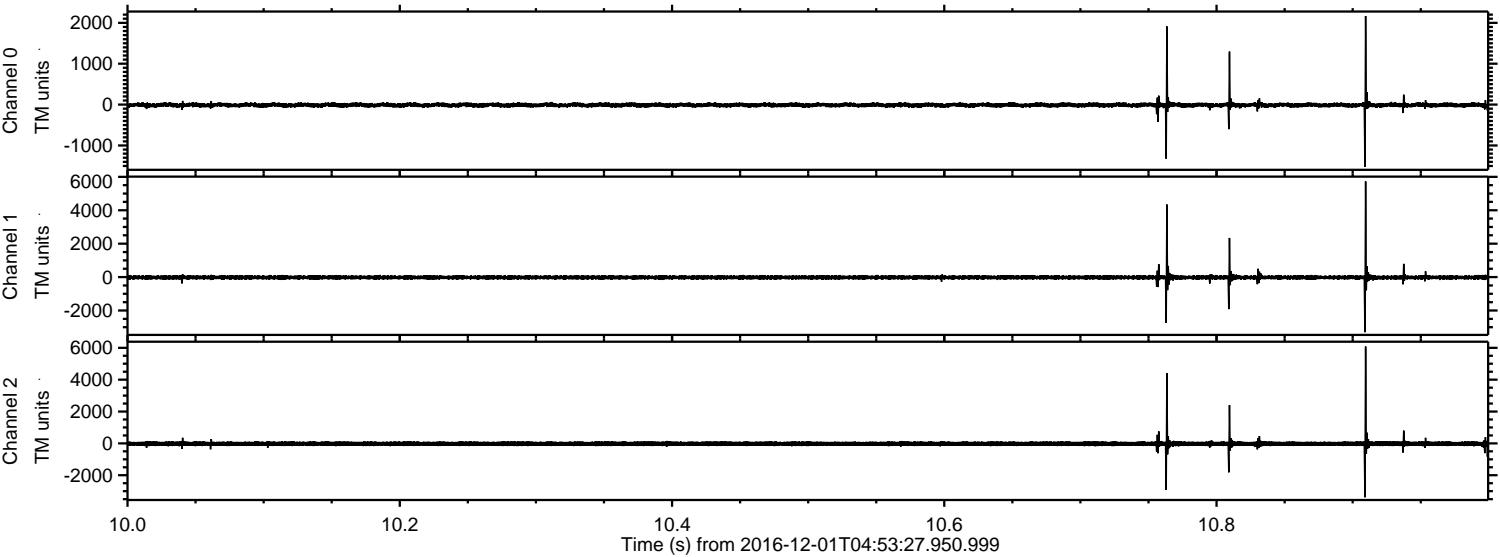
ELMAVAN 3D WAVEFORMS (Measured data sampled at 50 kHz) 51000 packets of 144 samples from 2016-12-01T04:53:27.950.999. Part 103/147

Processed Thu Dec 1 06:01:07 2016 by ELM ver.2012-10-06 from 001__elm20161201_045326__dat00.bin



ELMAVAN 3D WAVEFORMS (Measured data sampled at 50 kHz) 51000 packets of 144 samples from 2016-12-01T04:53:27.950.999. Part 11/147

Processed Thu Dec 1 06:01:07 2016 by ELM ver.2012-10-06 from 001__elm20161201_045326__dat00.bin

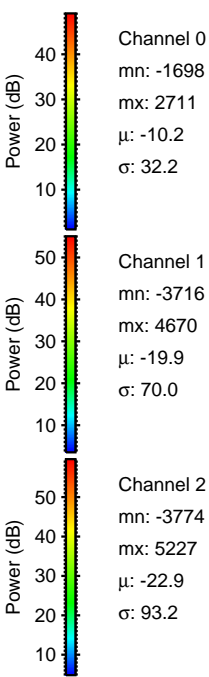
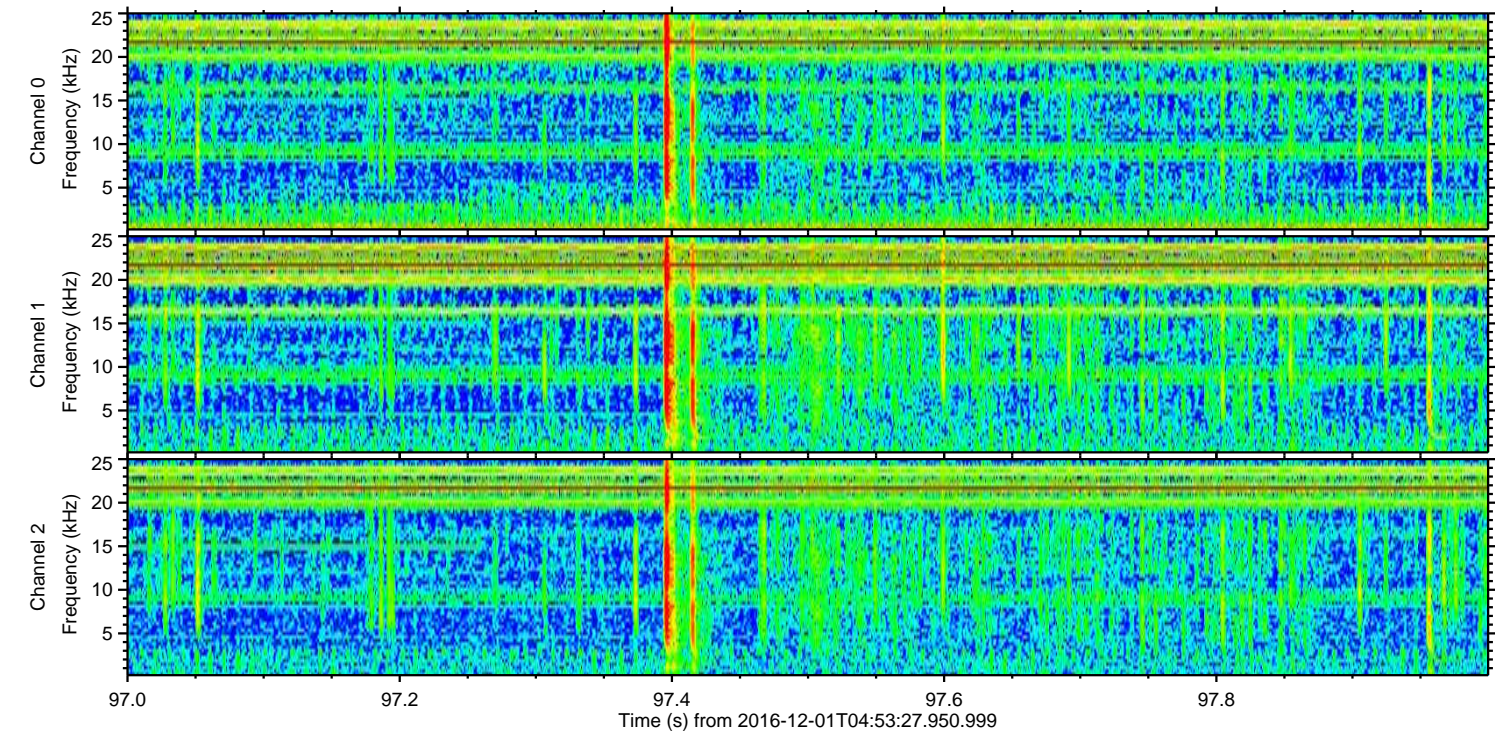
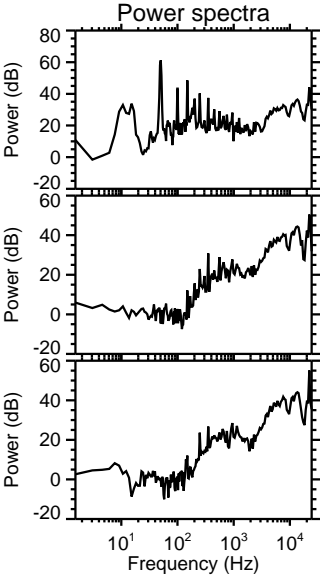
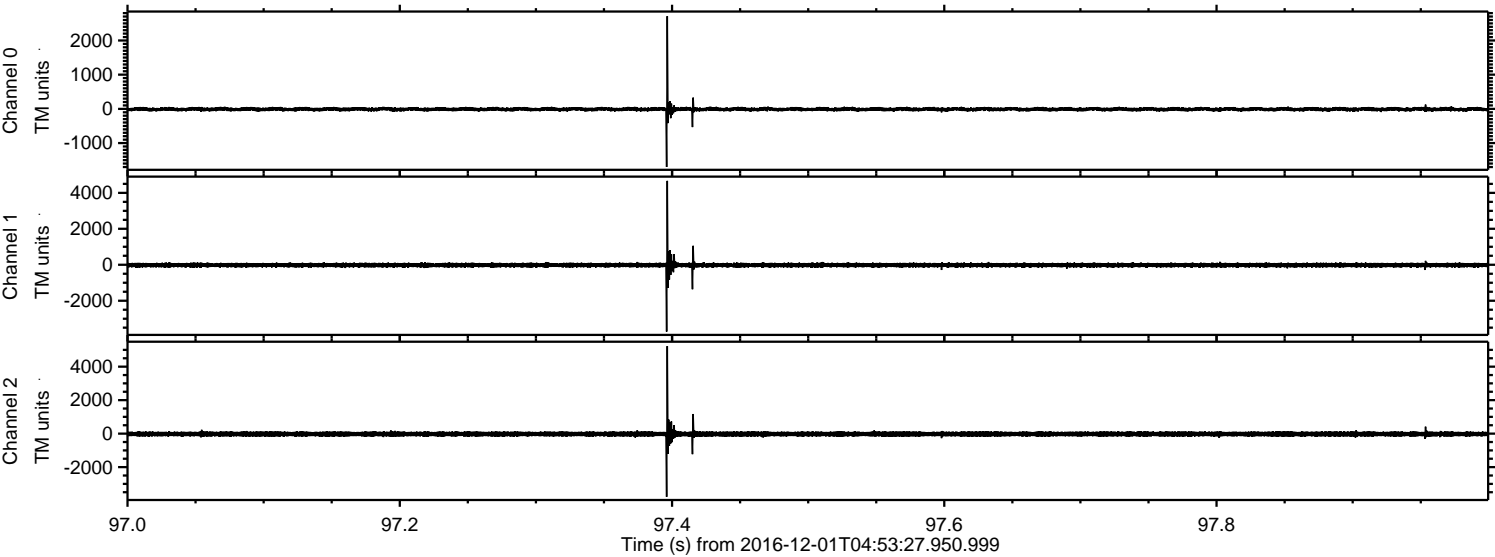


Channel 0
mn: -1519
mx: 2168
 μ : -10.2
 σ : 37.1

Channel 1
mn: -3295
mx: 5726
 μ : -19.9
 σ : 84.7

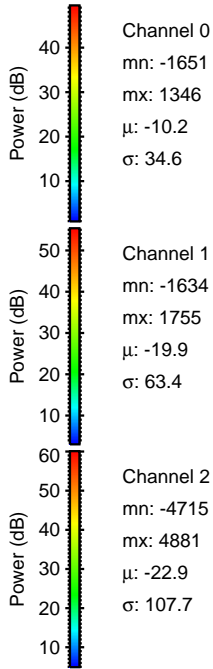
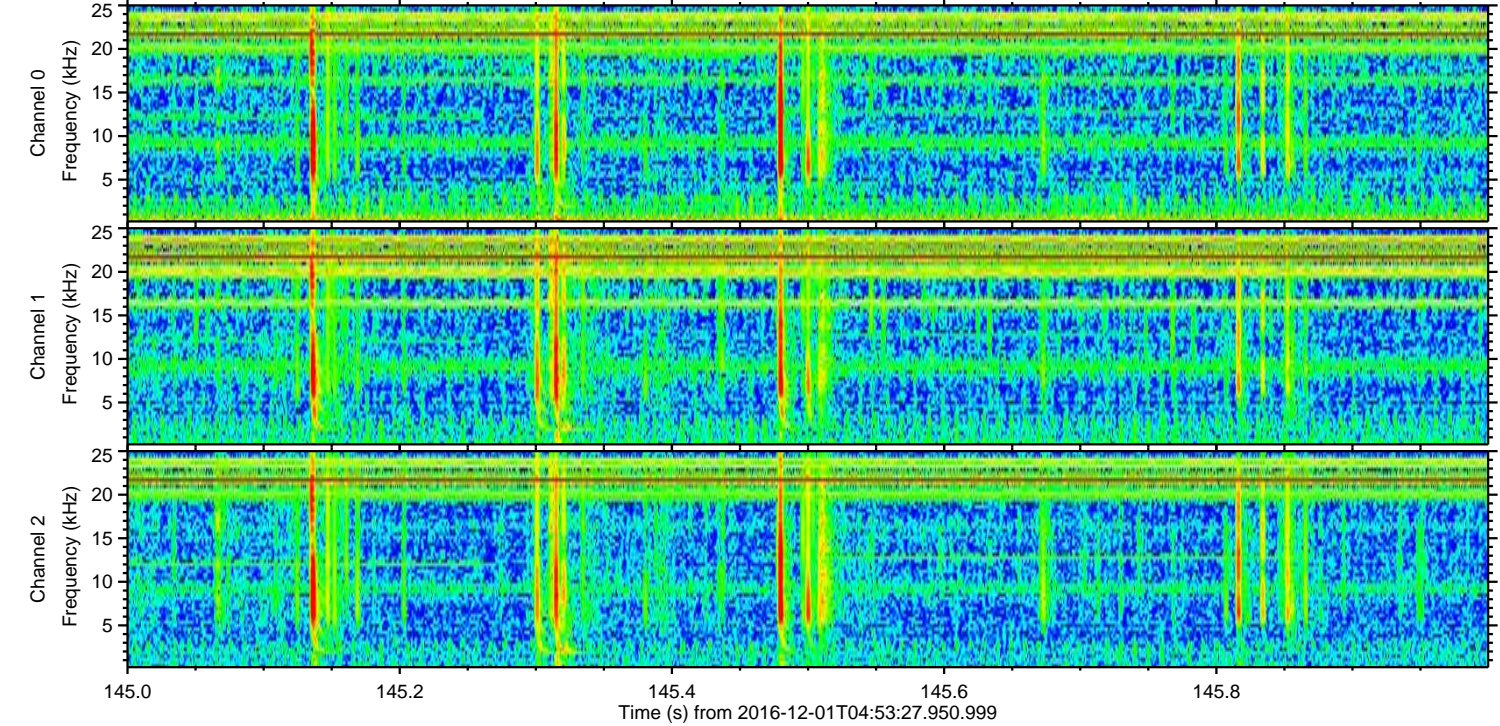
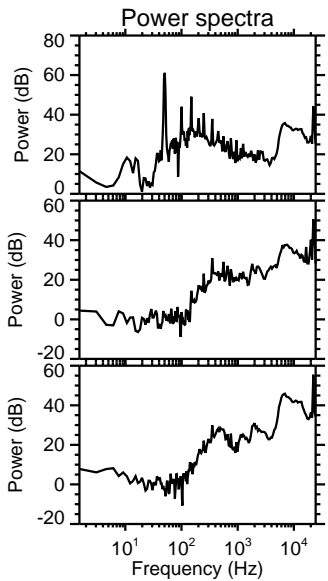
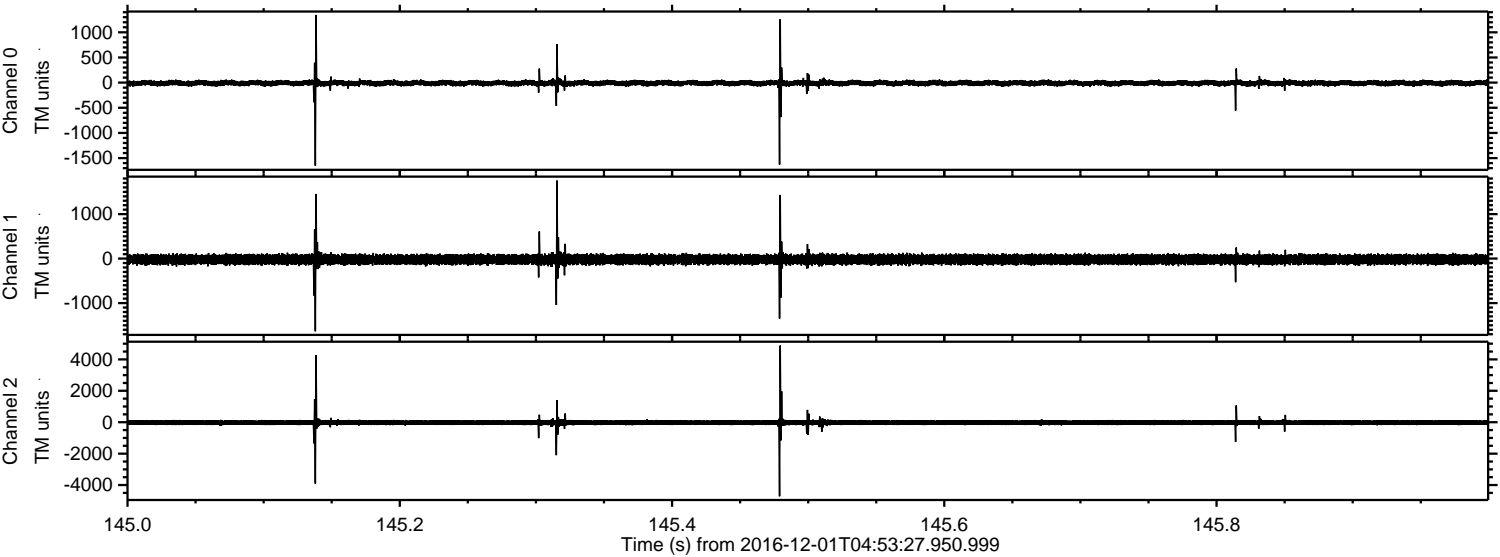
Channel 2
mn: -3385
mx: 6079
 μ : -22.8
 σ : 101.4

Processed Thu Dec 1 06:01:08 2016 by ELM ver.2012-10-06 from 001__elm20161201_045326__dat00.bin



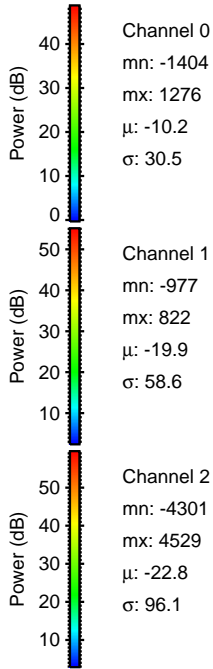
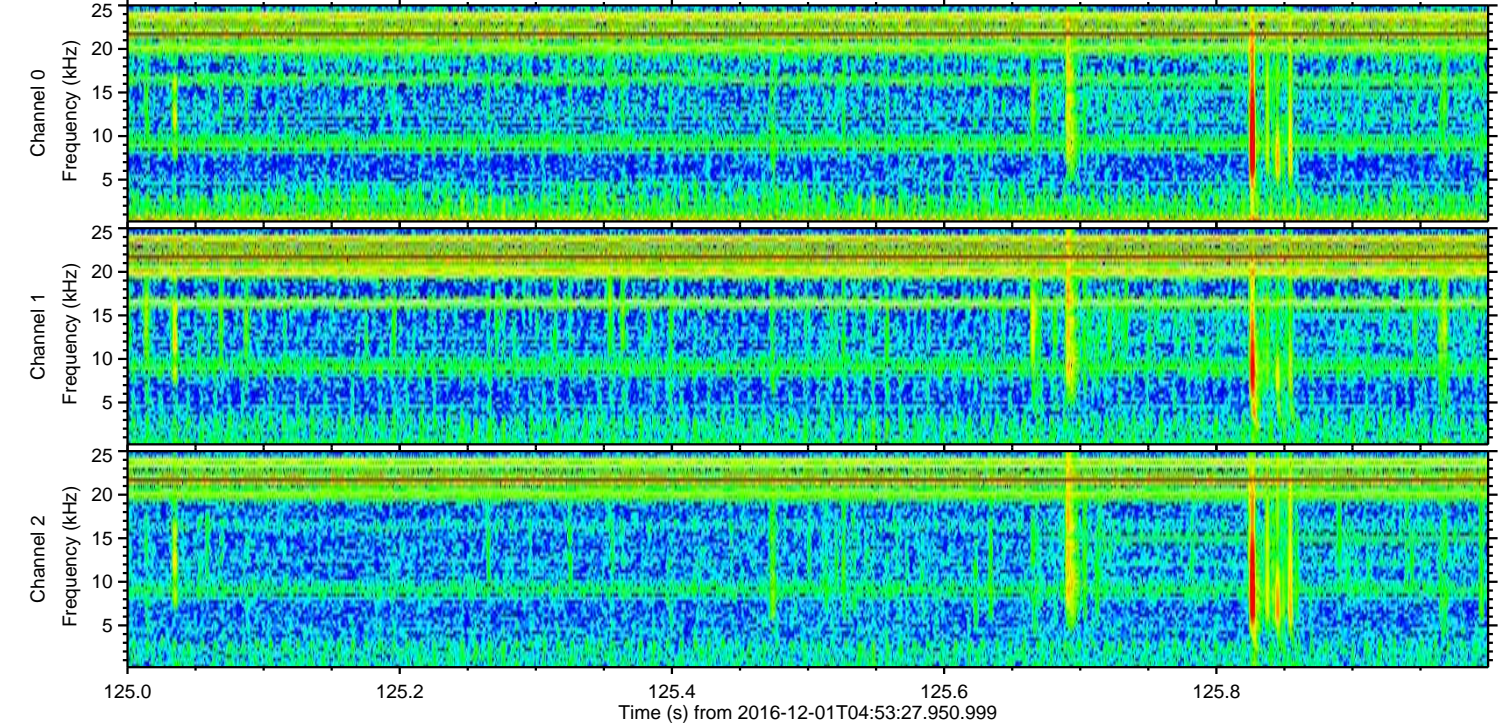
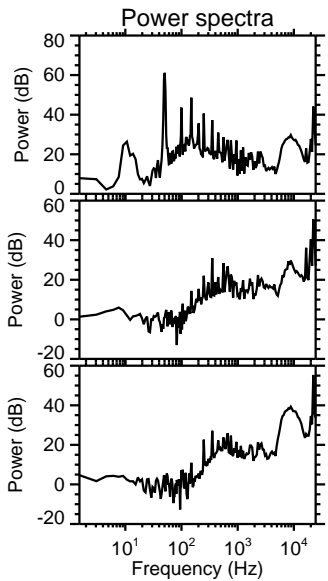
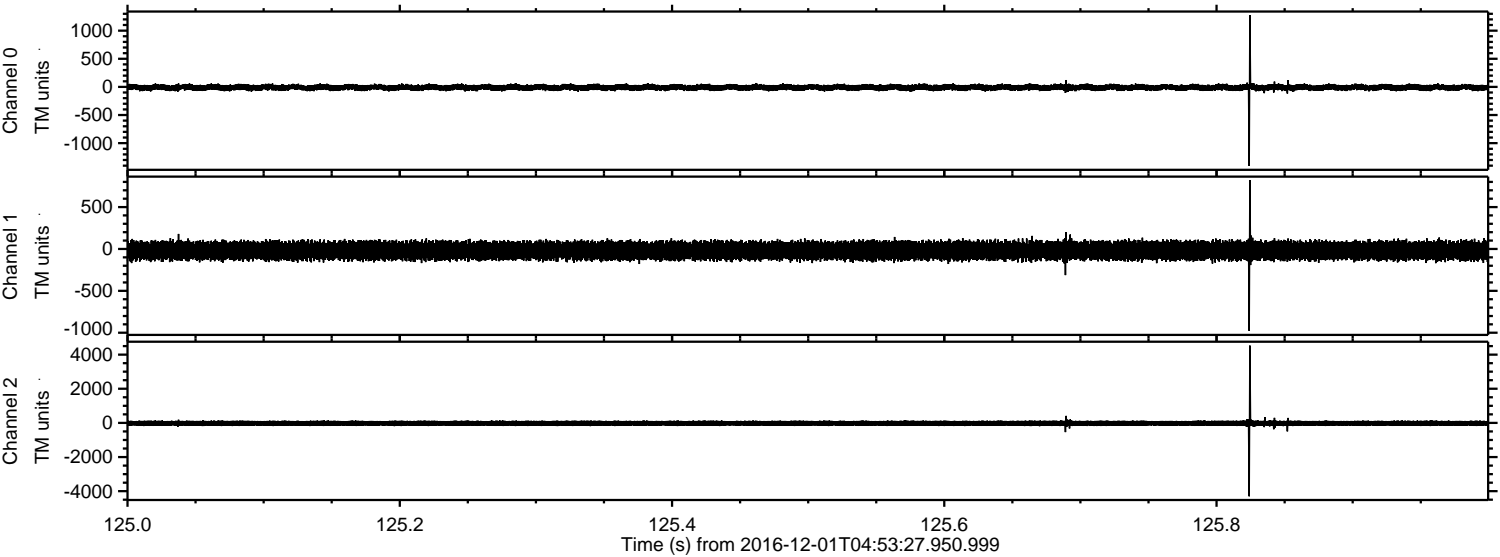
ELMAVAN 3D WAVEFORMS (Measured data sampled at 50 kHz) 51000 packets of 144 samples from 2016-12-01T04:53:27.950.999. Part 146/147

Processed Thu Dec 1 06:01:09 2016 by ELM ver.2012-10-06 from 001__elm20161201_045326__dat00.bin



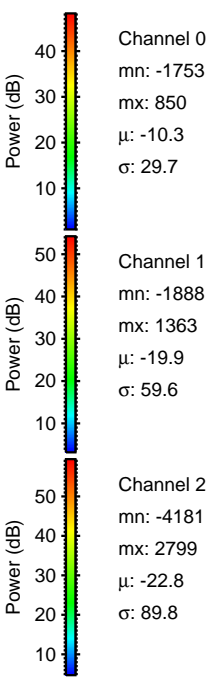
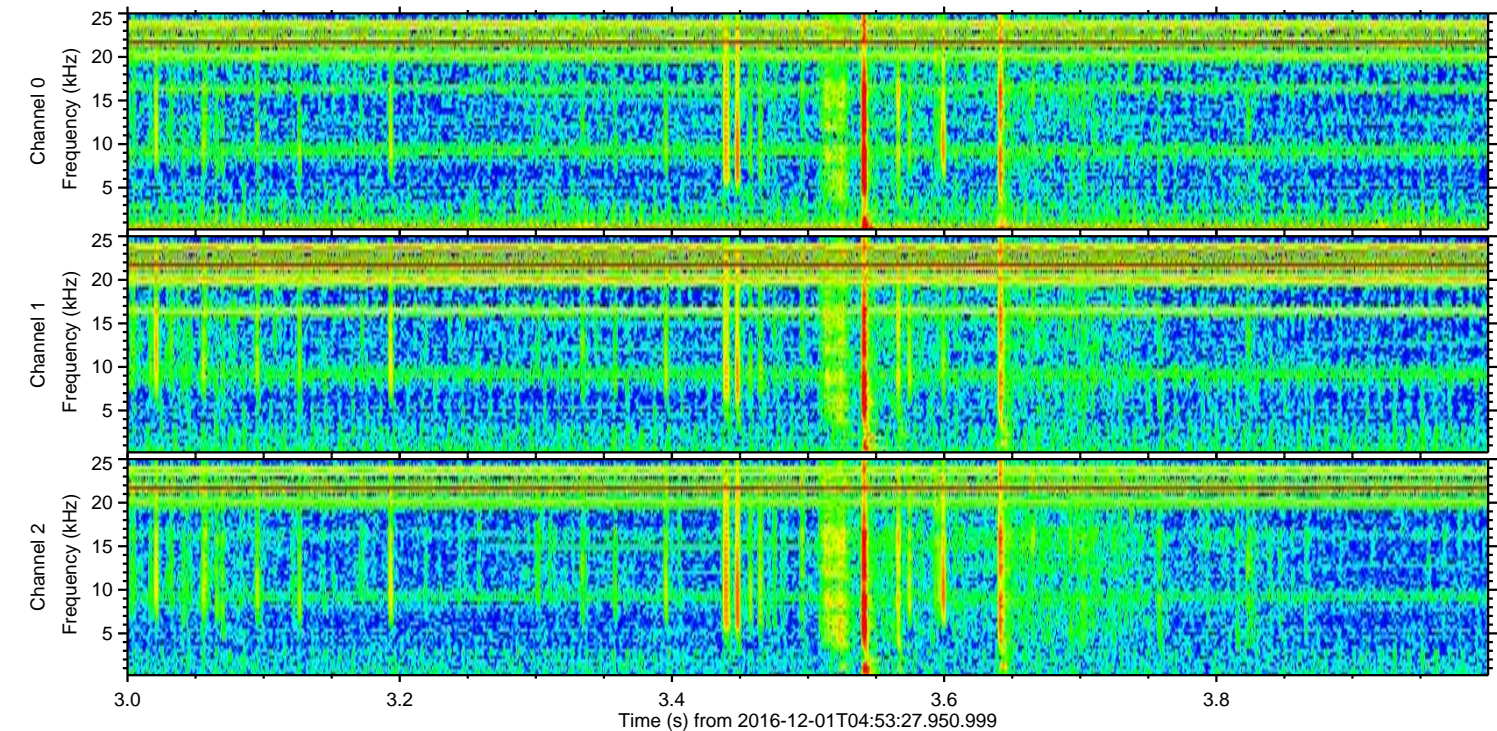
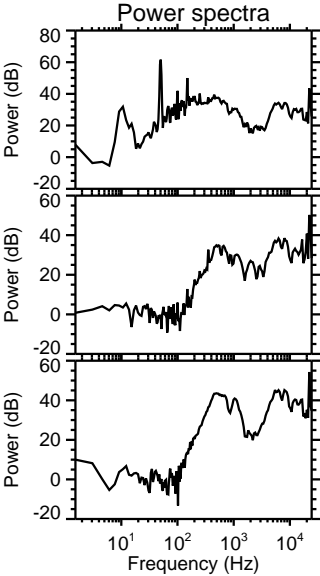
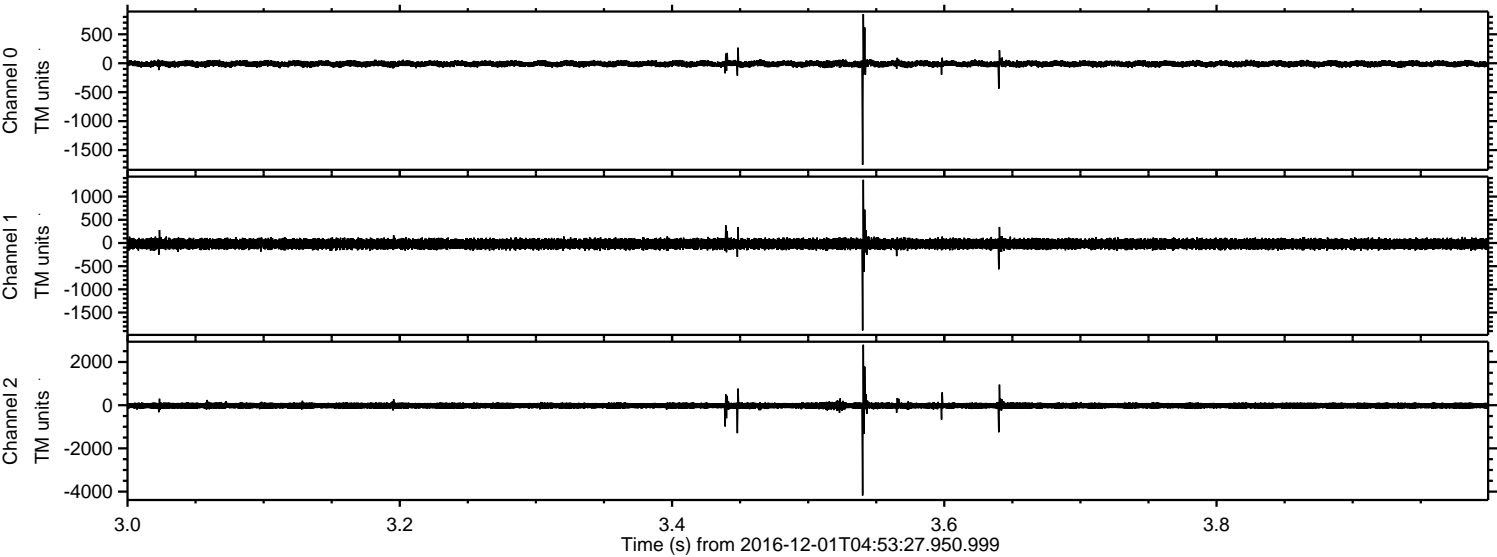
ELMAVAN 3D WAVEFORMS (Measured data sampled at 50 kHz) 51000 packets of 144 samples from 2016-12-01T04:53:27.950.999. Part 126/147

Processed Thu Dec 1 06:01:10 2016 by ELM ver.2012-10-06 from 001__elm20161201_045326__dat00.bin



ELMAVAN 3D WAVEFORMS (Measured data sampled at 50 kHz) 51000 packets of 144 samples from 2016-12-01T04:53:27.950.999. Part 4/147

Processed Thu Dec 1 06:01:11 2016 by ELM ver.2012-10-06 from 001__elm20161201_045326__dat00.bin



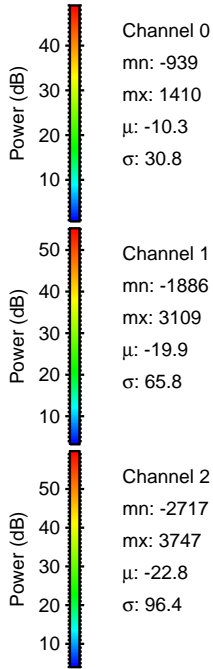
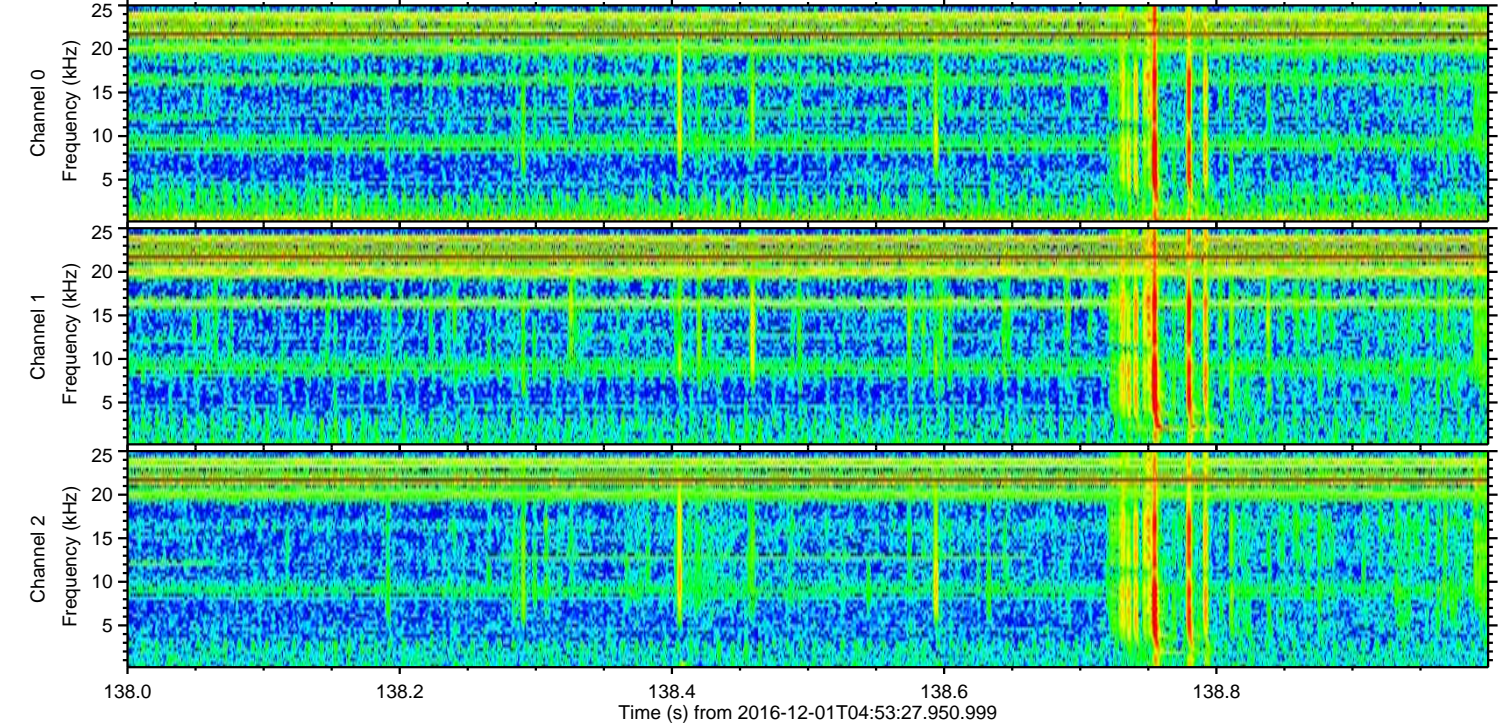
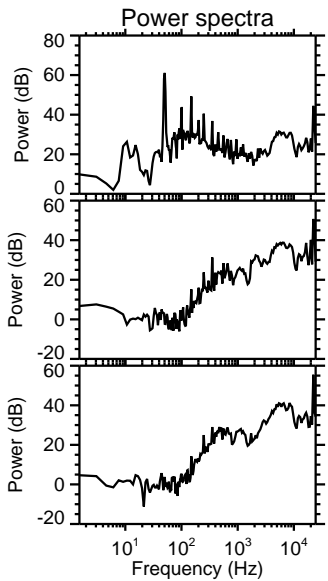
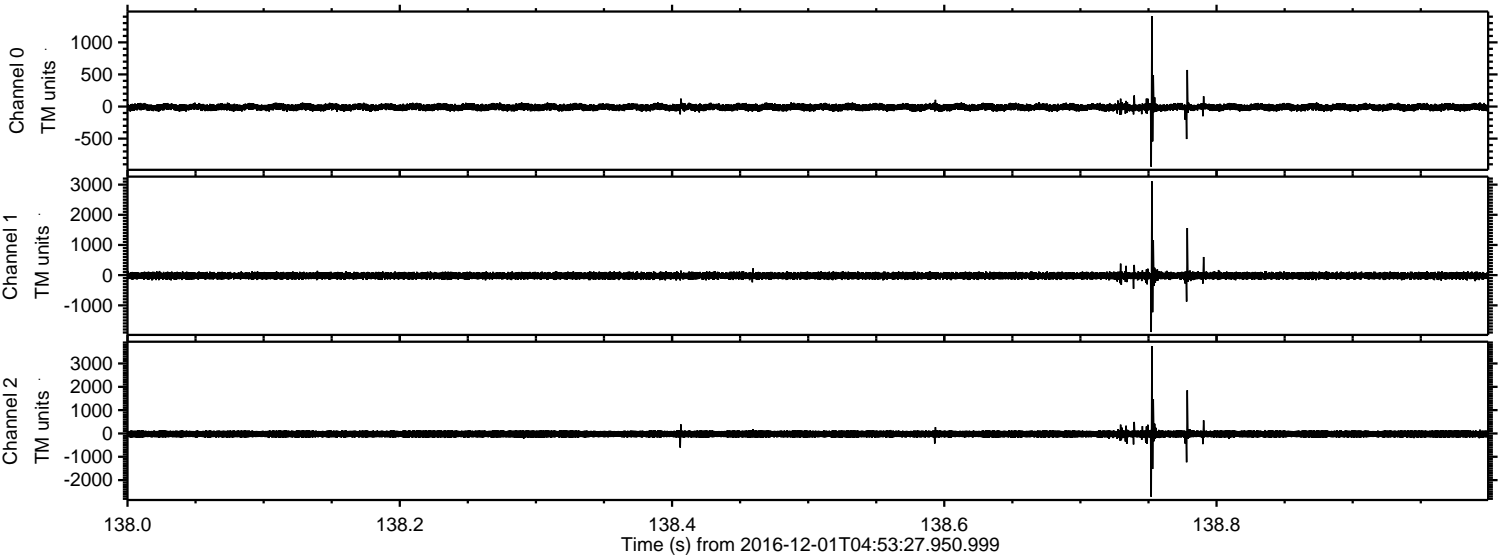
Channel 0
mn: -1753
mx: 850
 μ : -10.3
 σ : 29.7

Channel 1
mn: -1888
mx: 1363
 μ : -19.9
 σ : 59.6

Channel 2
mn: -4181
mx: 2799
 μ : -22.8
 σ : 89.8

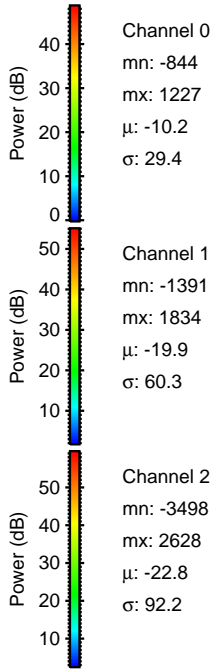
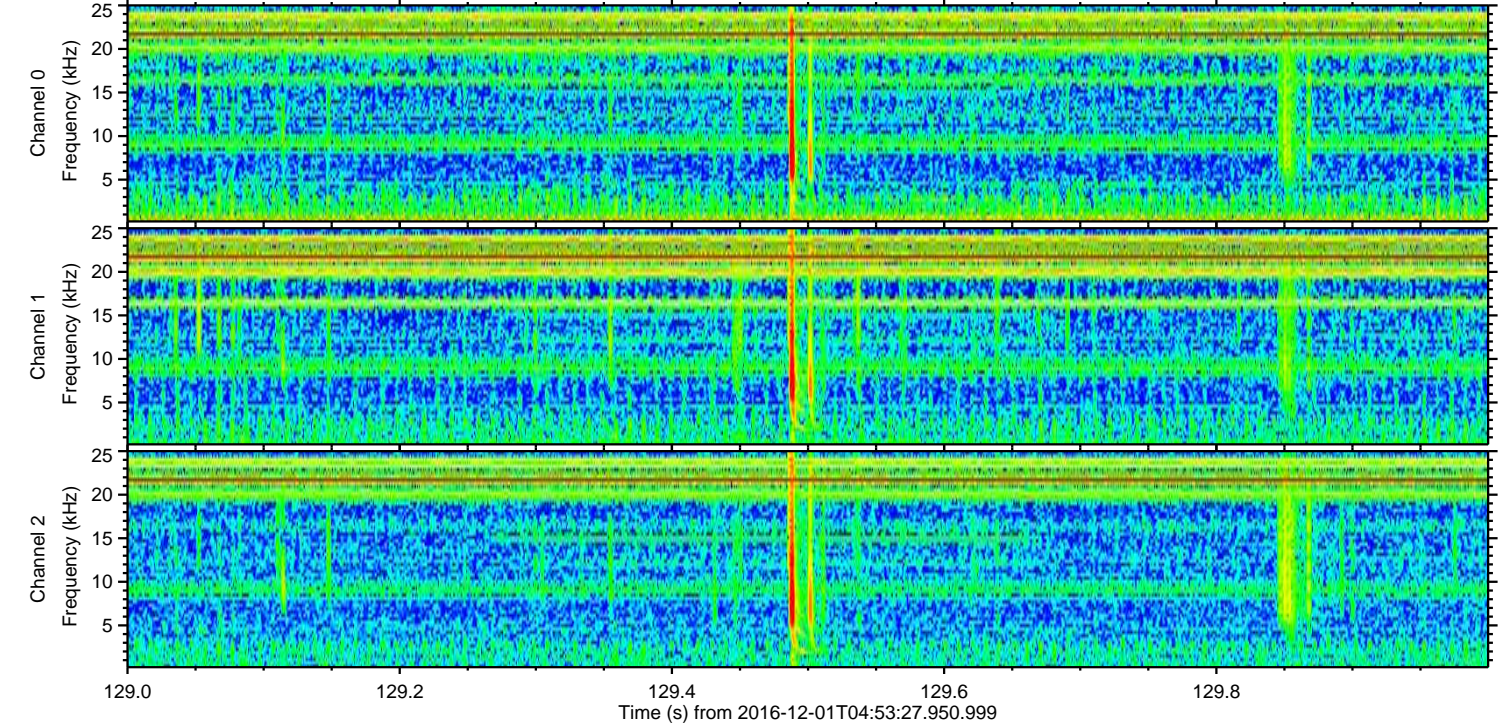
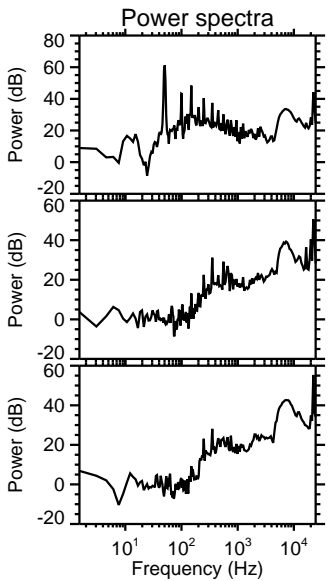
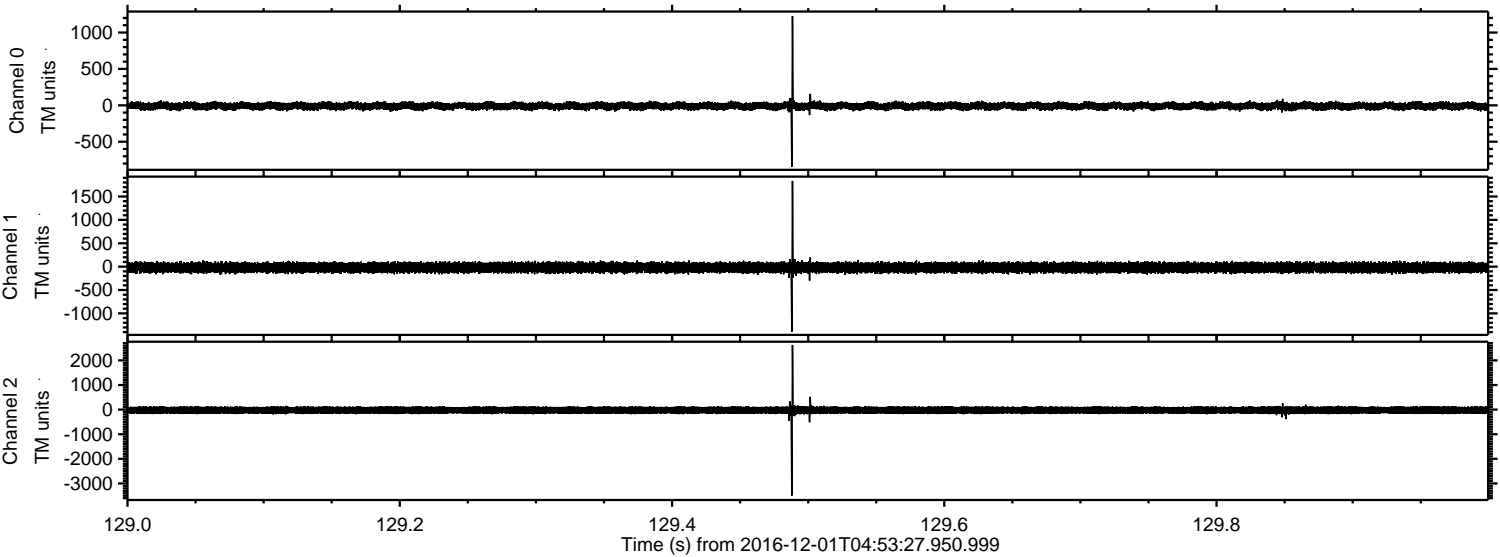
ELMAVAN 3D WAVEFORMS (Measured data sampled at 50 kHz) 51000 packets of 144 samples from 2016-12-01T04:53:27.950.999. Part 139/147

Processed Thu Dec 1 06:01:12 2016 by ELM ver.2012-10-06 from 001__elm20161201_045326__dat00.bin



ELMAVAN 3D WAVEFORMS (Measured data sampled at 50 kHz) 51000 packets of 144 samples from 2016-12-01T04:53:27.950.999. Part 130/147

Processed Thu Dec 1 06:01:13 2016 by ELM ver.2012-10-06 from 001__elm20161201_045326__dat00.bin



Channel 0
mn: -844
mx: 1227
 μ : -10.2
 σ : 29.4

Channel 1
mn: -1391
mx: 1834
 μ : -19.9
 σ : 60.3

Channel 2
mn: -3498
mx: 2628
 μ : -22.8
 σ : 92.2

ELMAVAN 3D WAVEFORMS (Measured data sampled at 50 kHz) 51000 packets of 144 samples from 2016-12-01T04:53:27.950.999. Part 119/147

