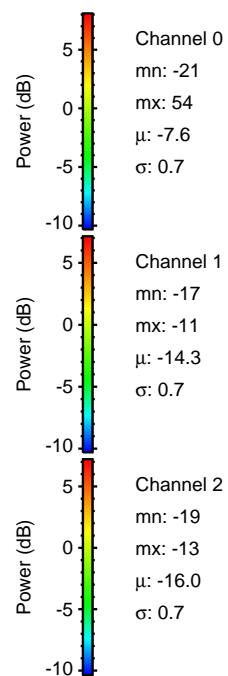
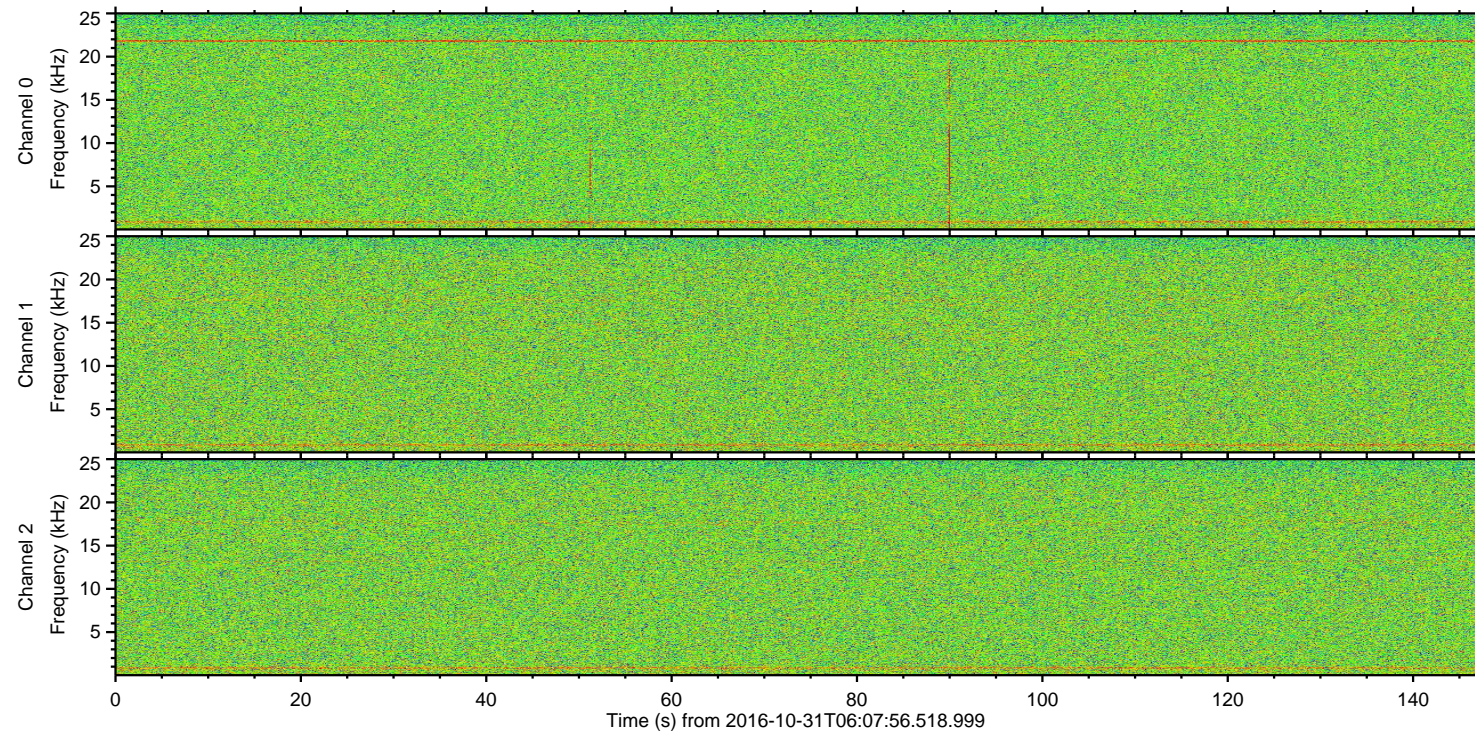
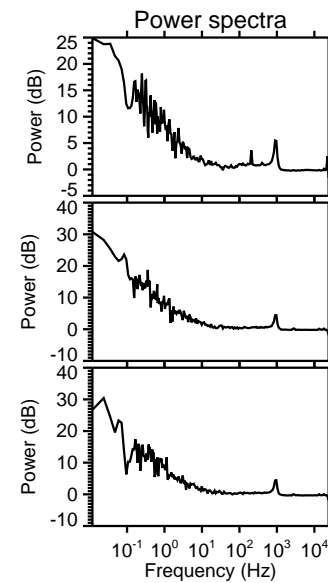
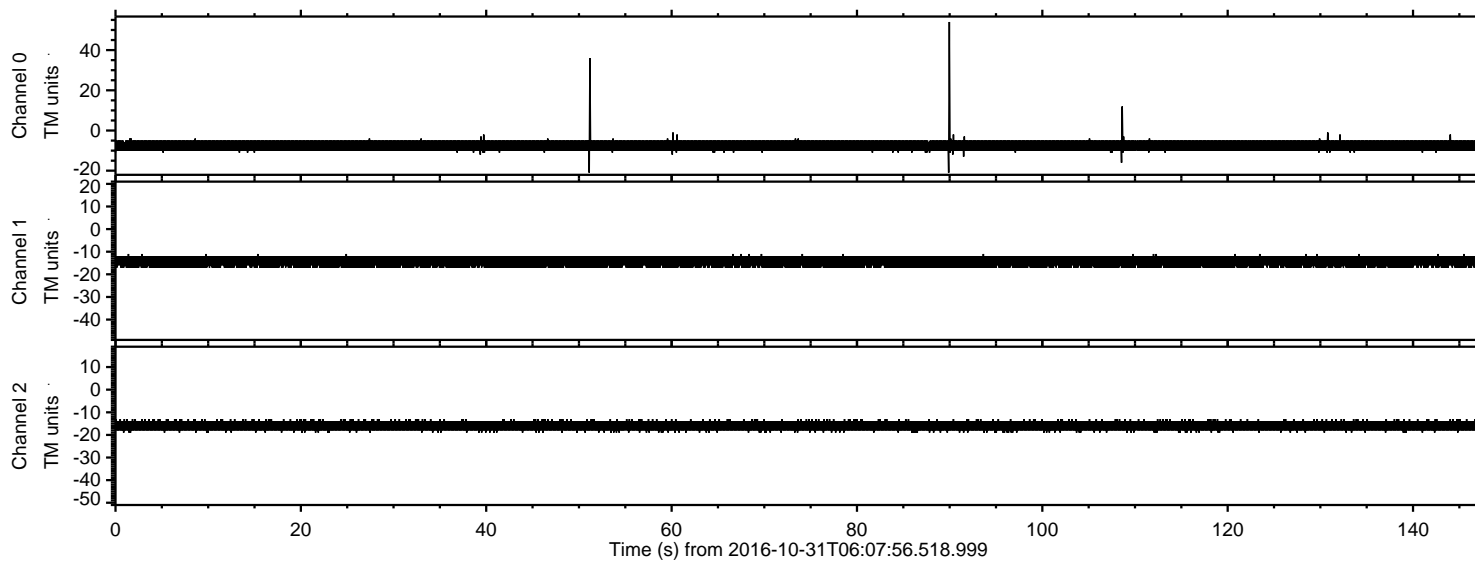


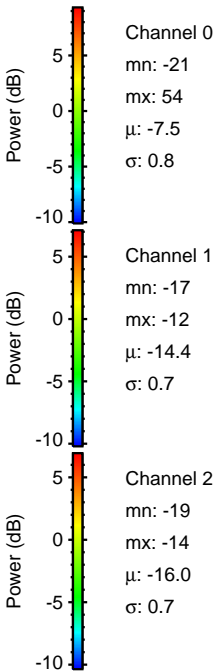
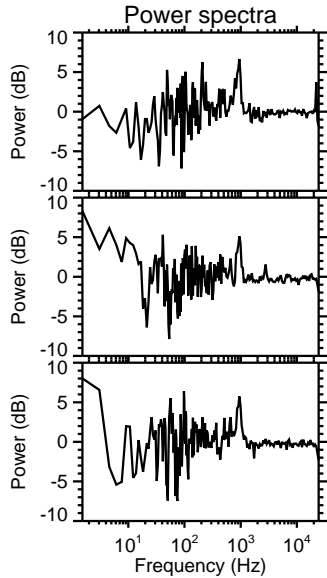
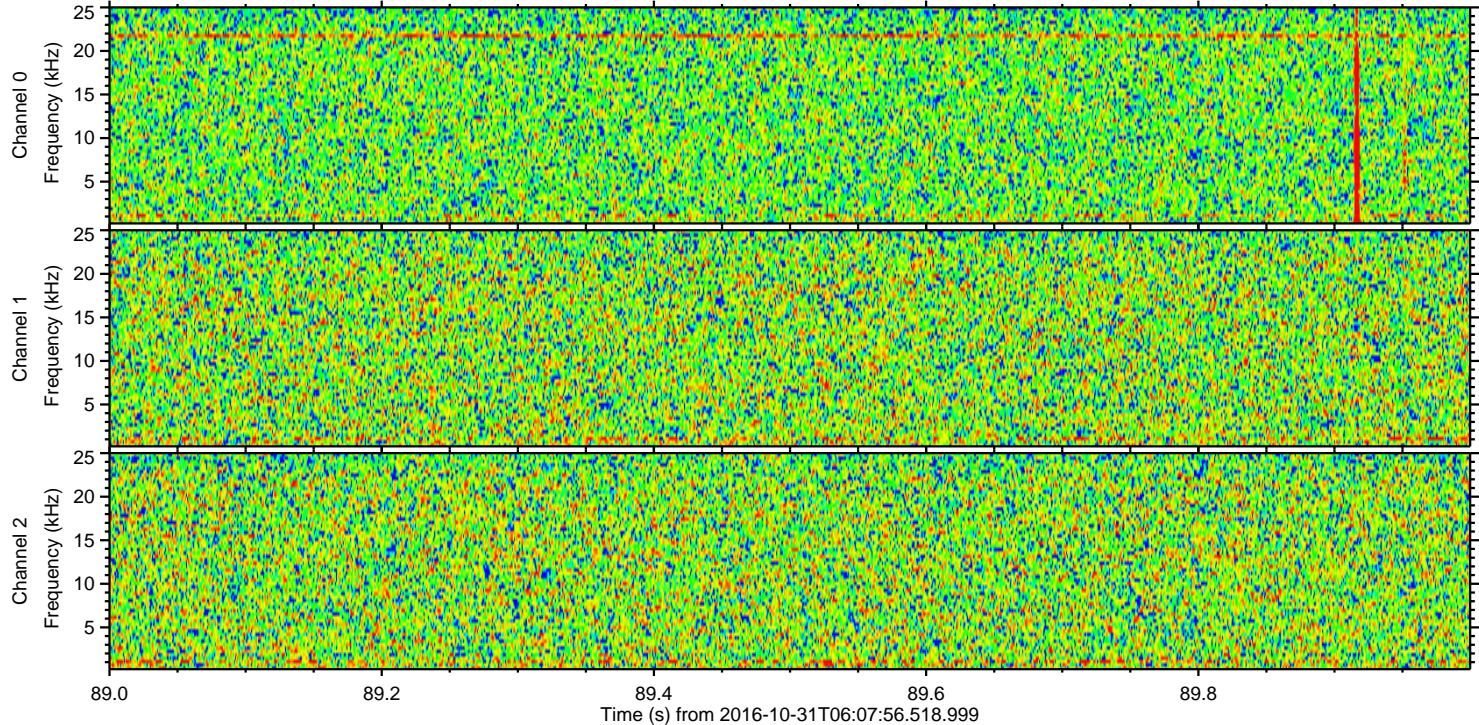
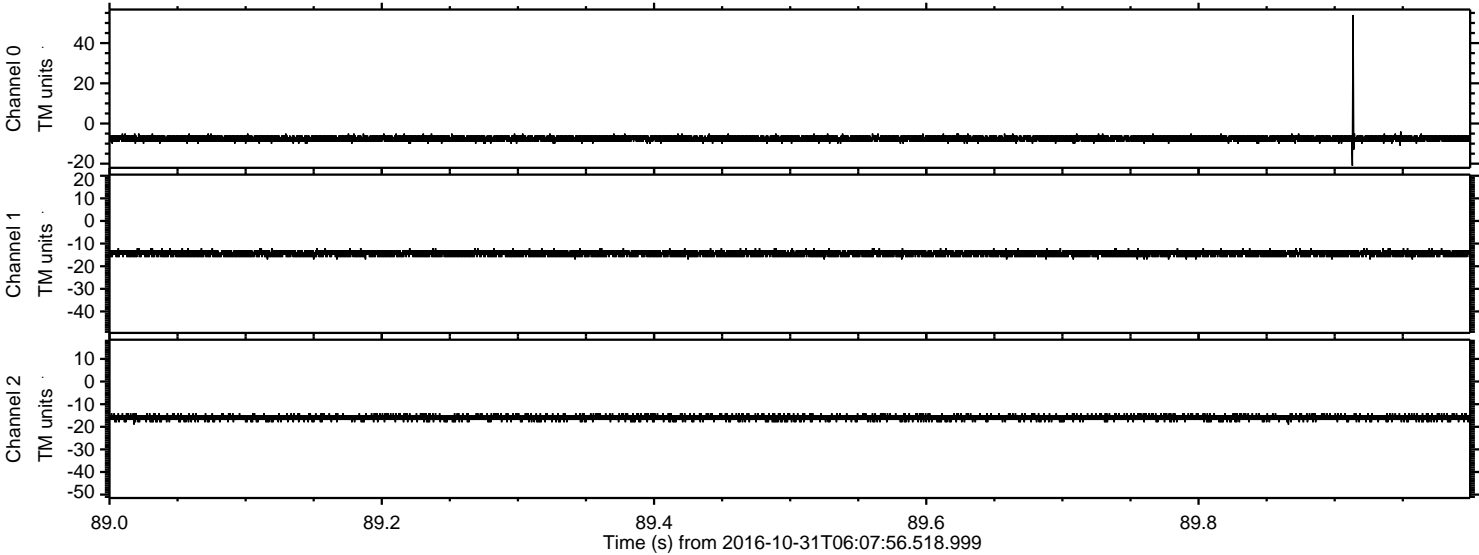
ELMAVAN 3D WAVEFORMS (Measured data sampled at 50 kHz) 51000 packets of 144 samples from 2016-10-31T06:07:56.518.999.

Processed Mon Oct 31 07:14:49 2016 by ELM ver.2012-10-06 from 001\_\_elm20161031\_060755\_\_dat00.bin

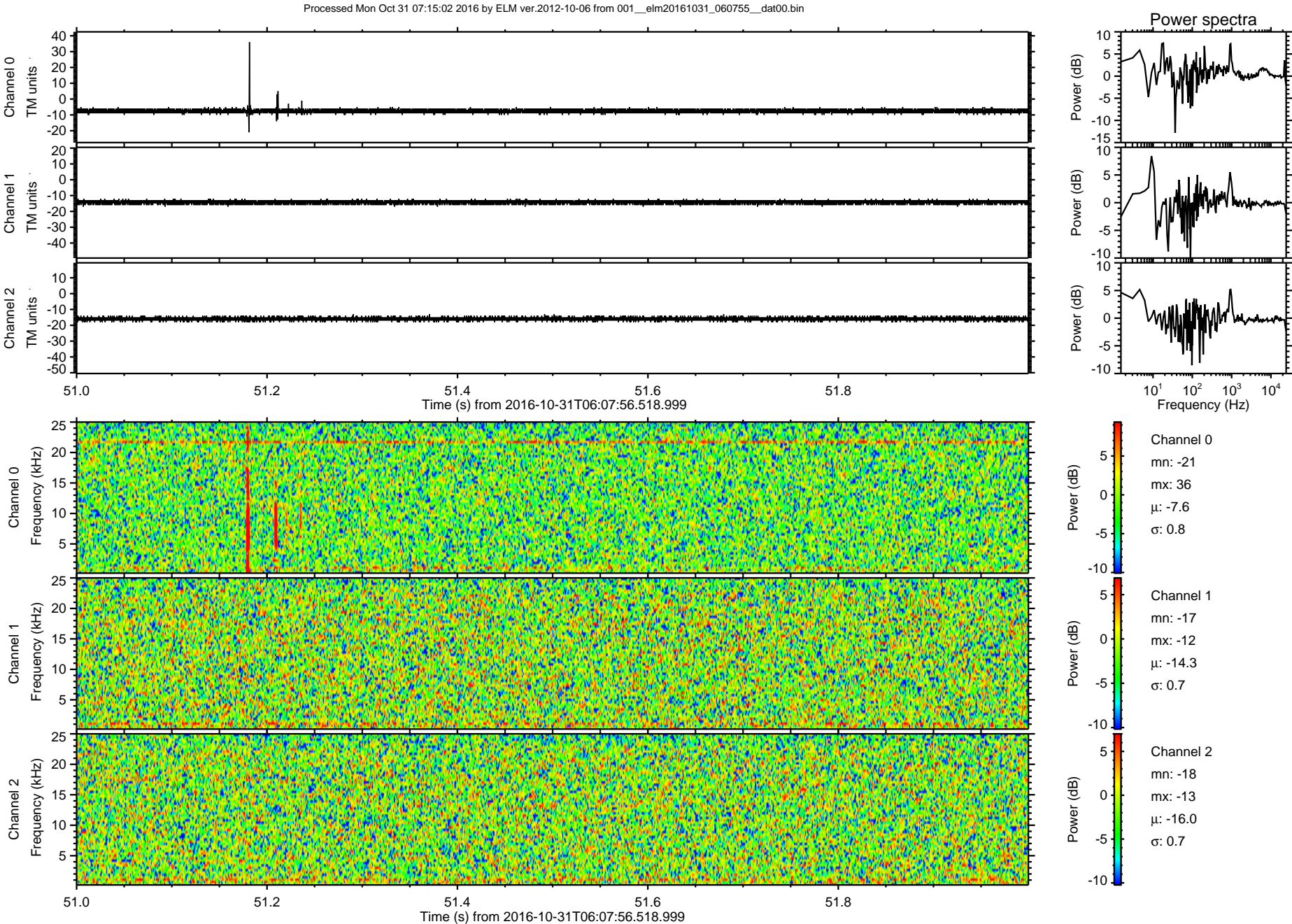




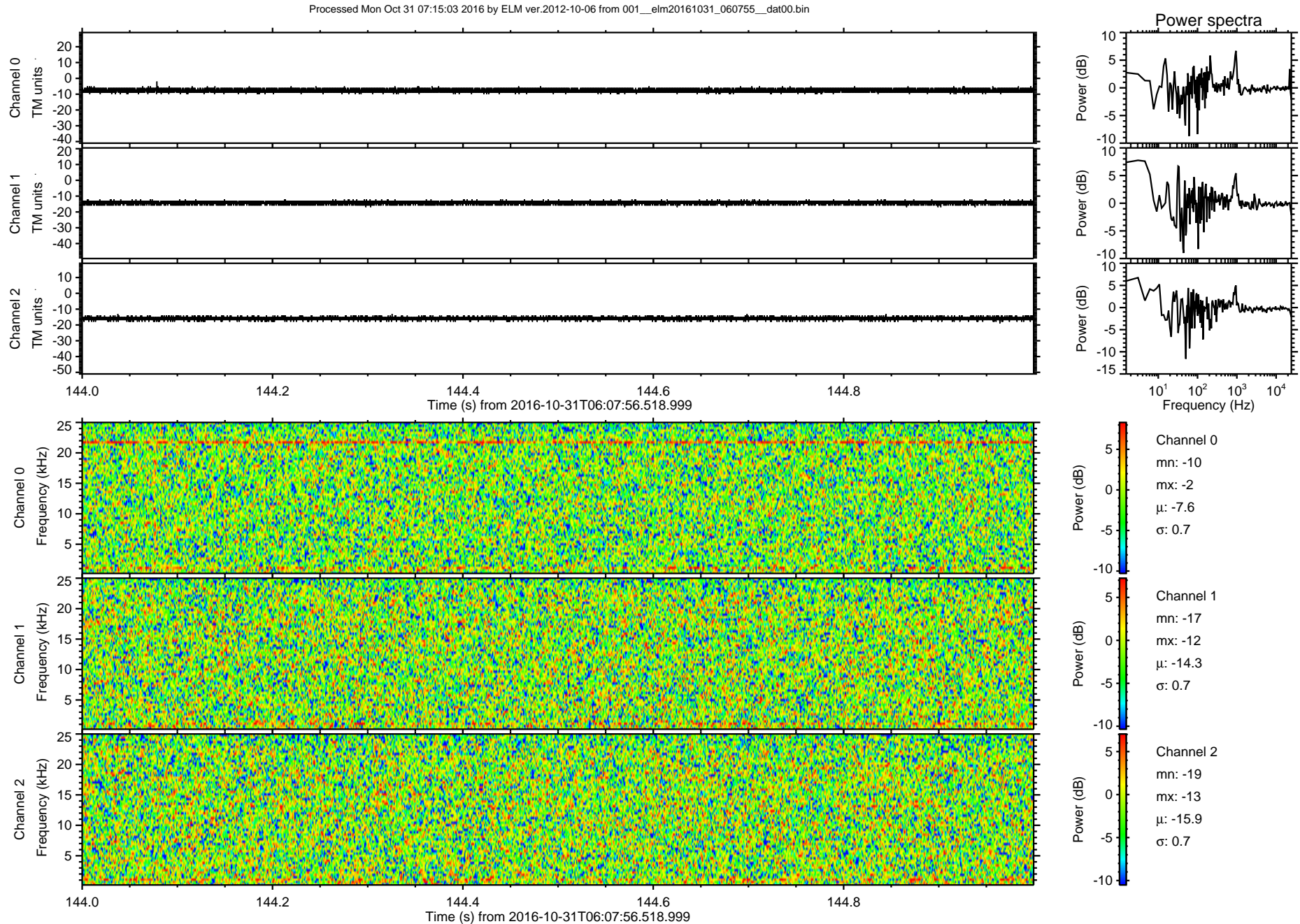
Processed Mon Oct 31 07:15:01 2016 by ELM ver.2012-10-06 from 001\_\_elm20161031\_060755\_\_dat00.bin







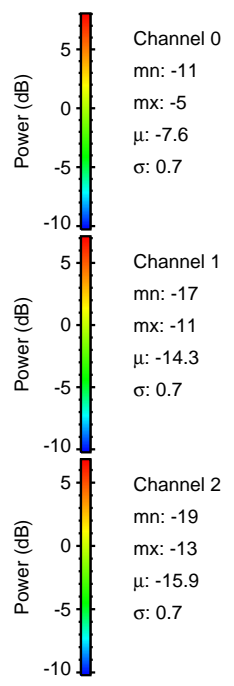
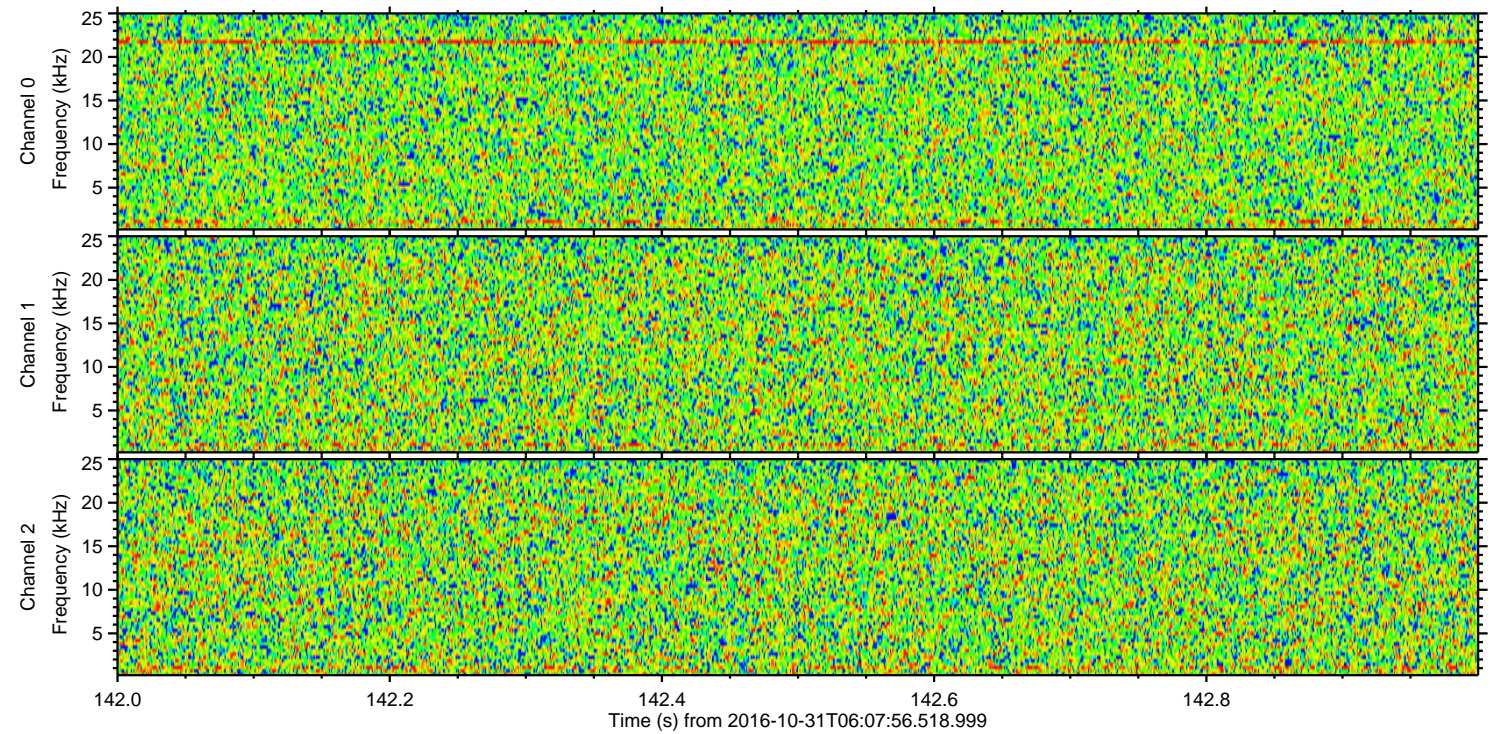
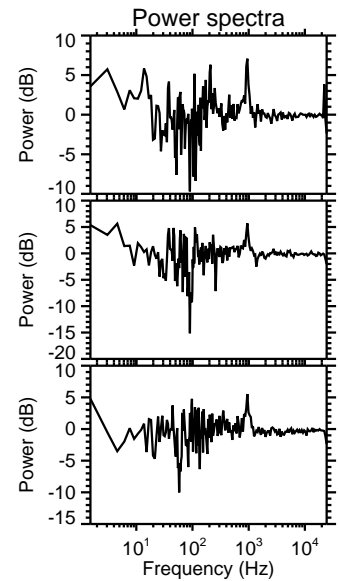
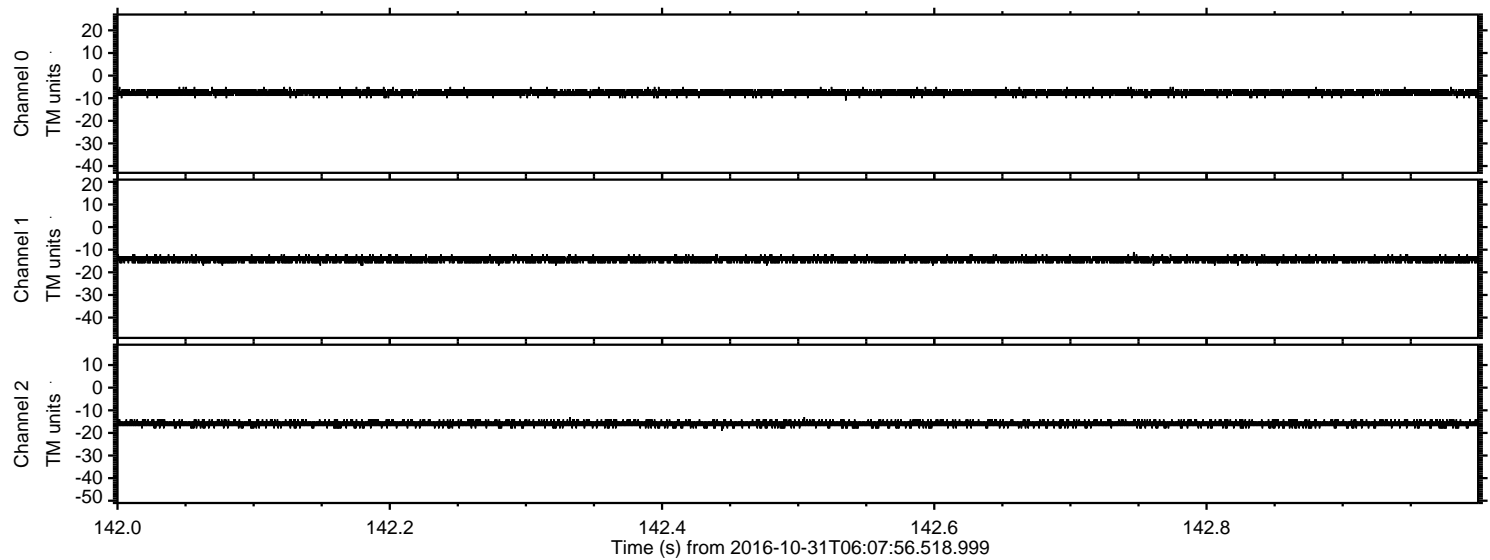






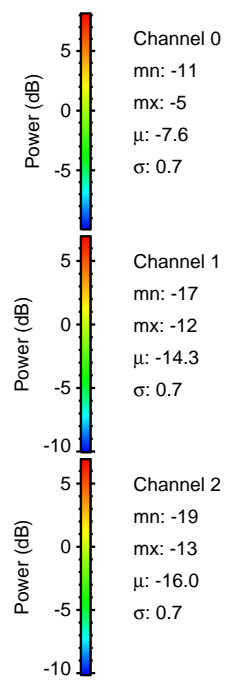
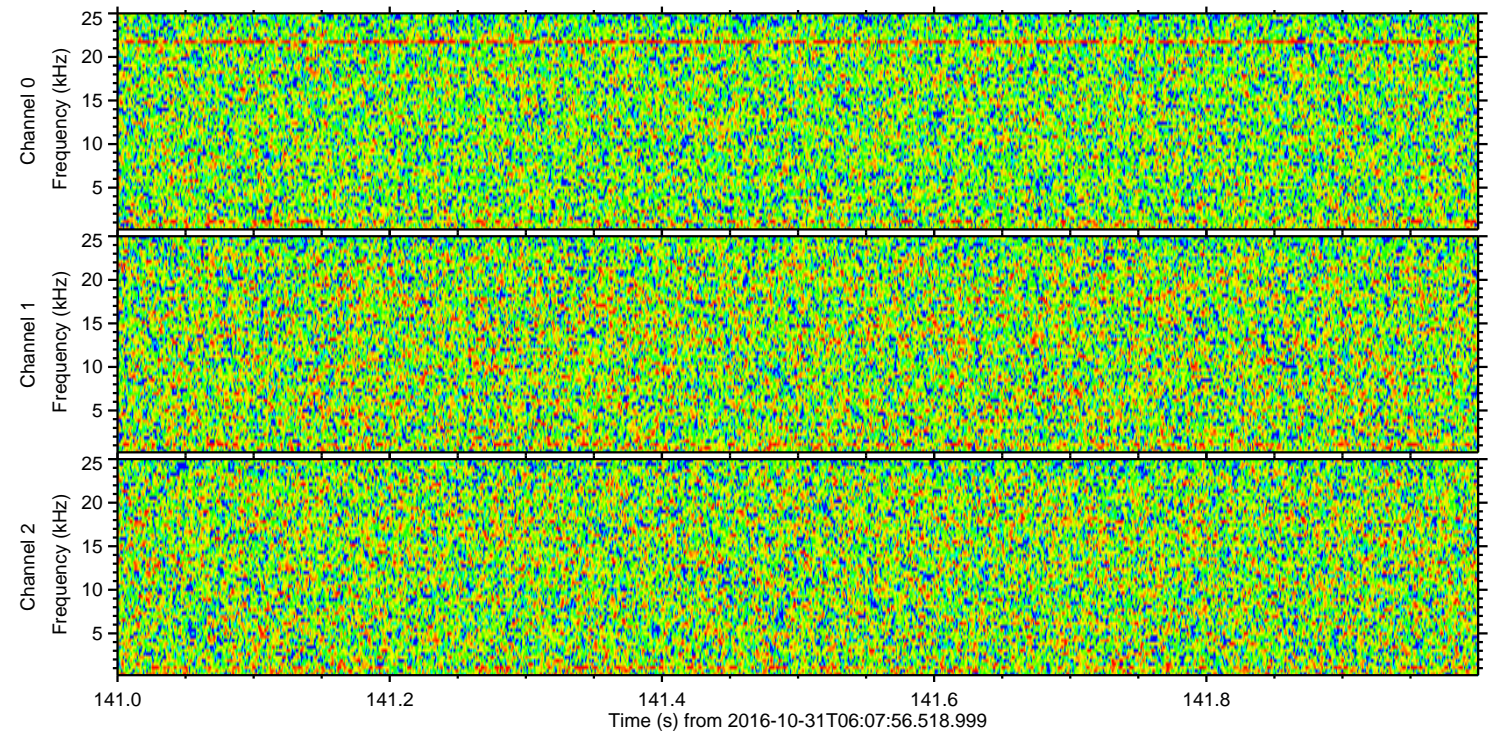
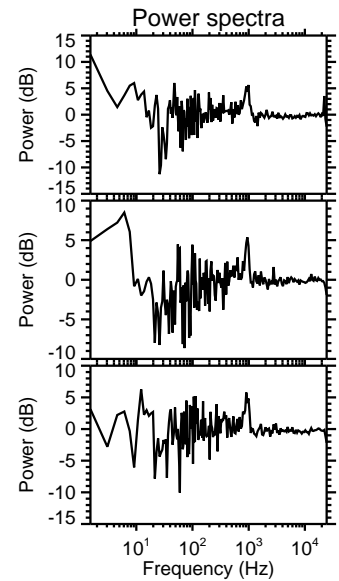
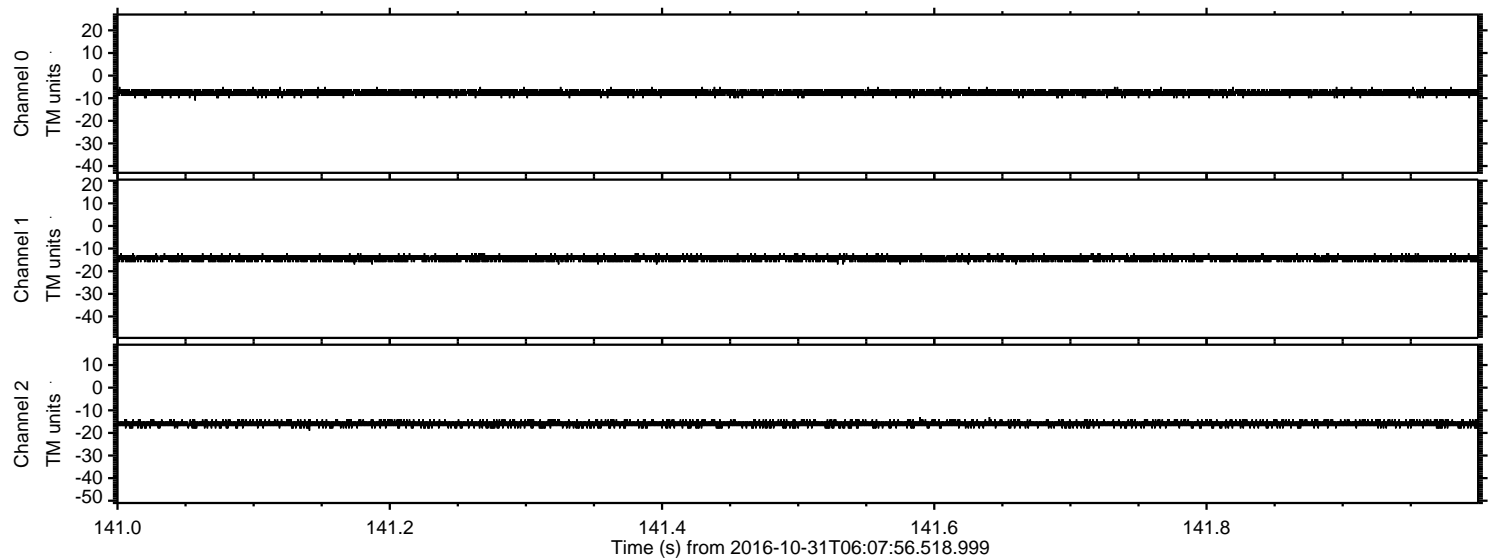
ELMAVAN 3D WAVEFORMS (Measured data sampled at 50 kHz) 51000 packets of 144 samples from 2016-10-31T06:07:56.518.999. Part 143/147

Processed Mon Oct 31 07:15:04 2016 by ELM ver.2012-10-06 from 001\_\_elm20161031\_060755\_\_dat00.bin





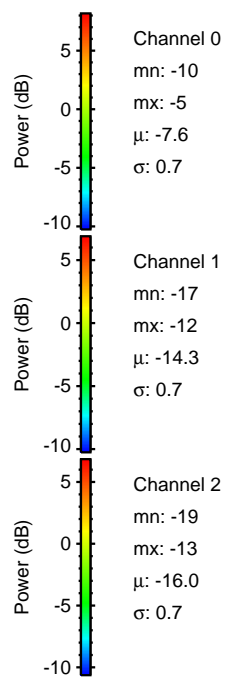
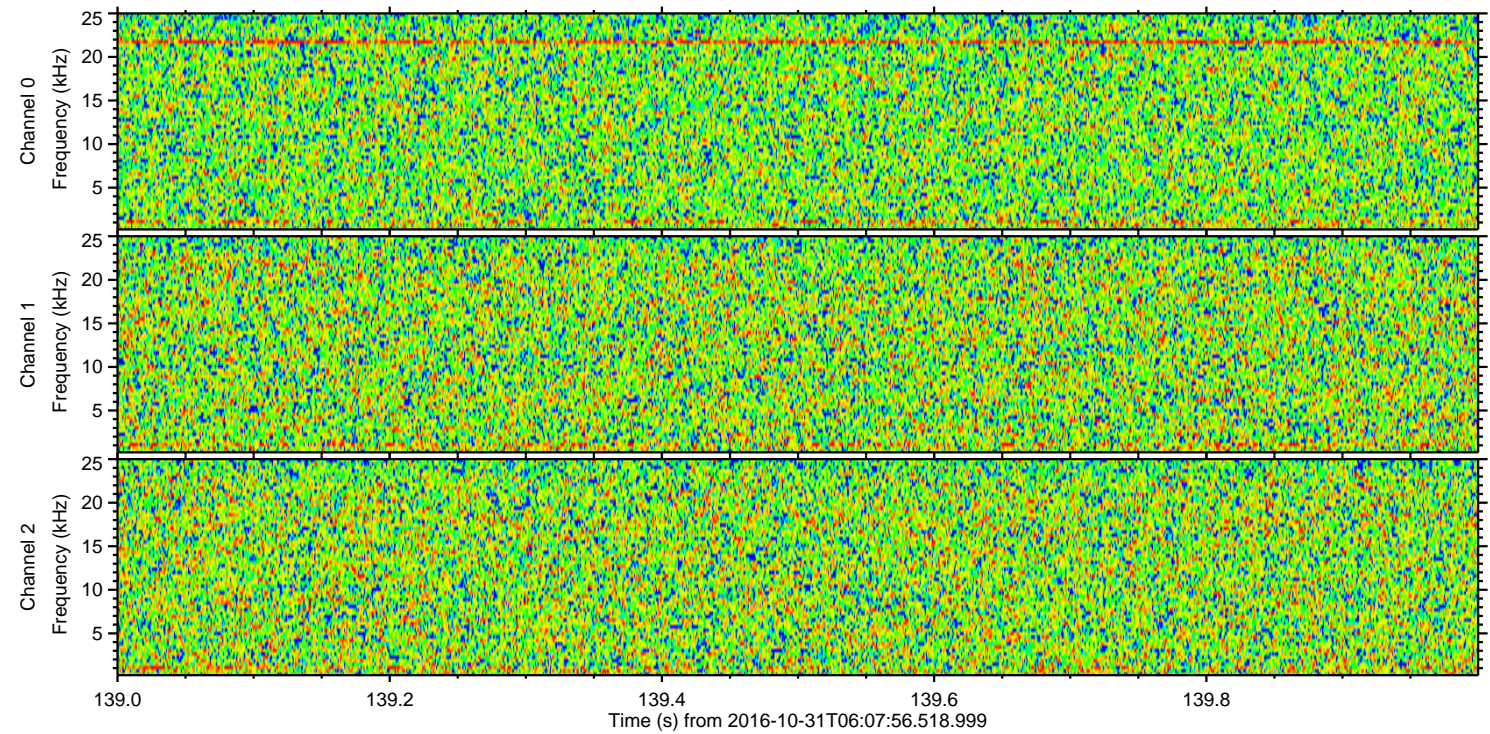
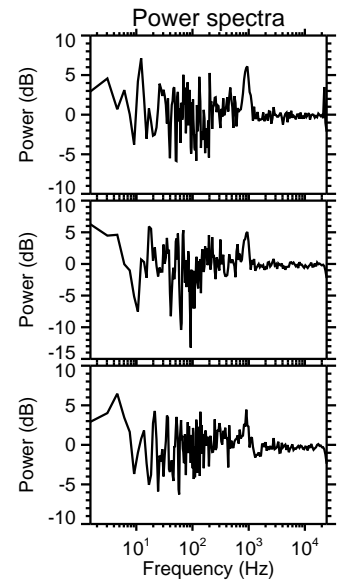
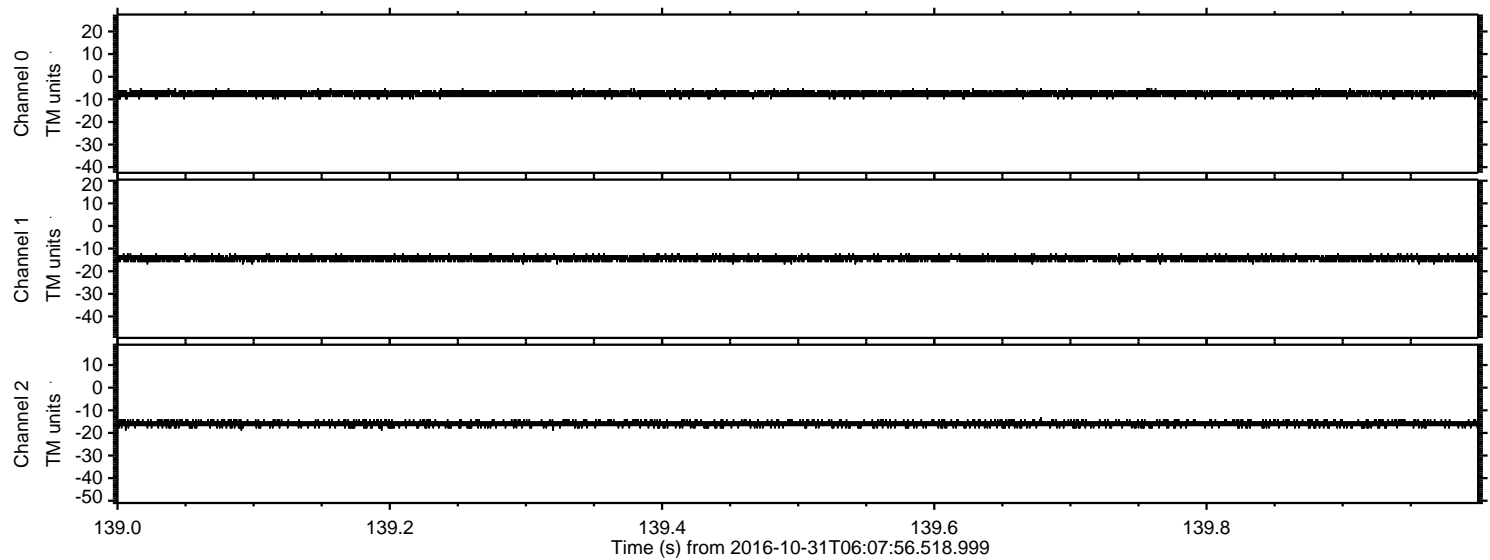
Processed Mon Oct 31 07:15:05 2016 by ELM ver.2012-10-06 from 001\_\_elm20161031\_060755\_\_dat00.bin





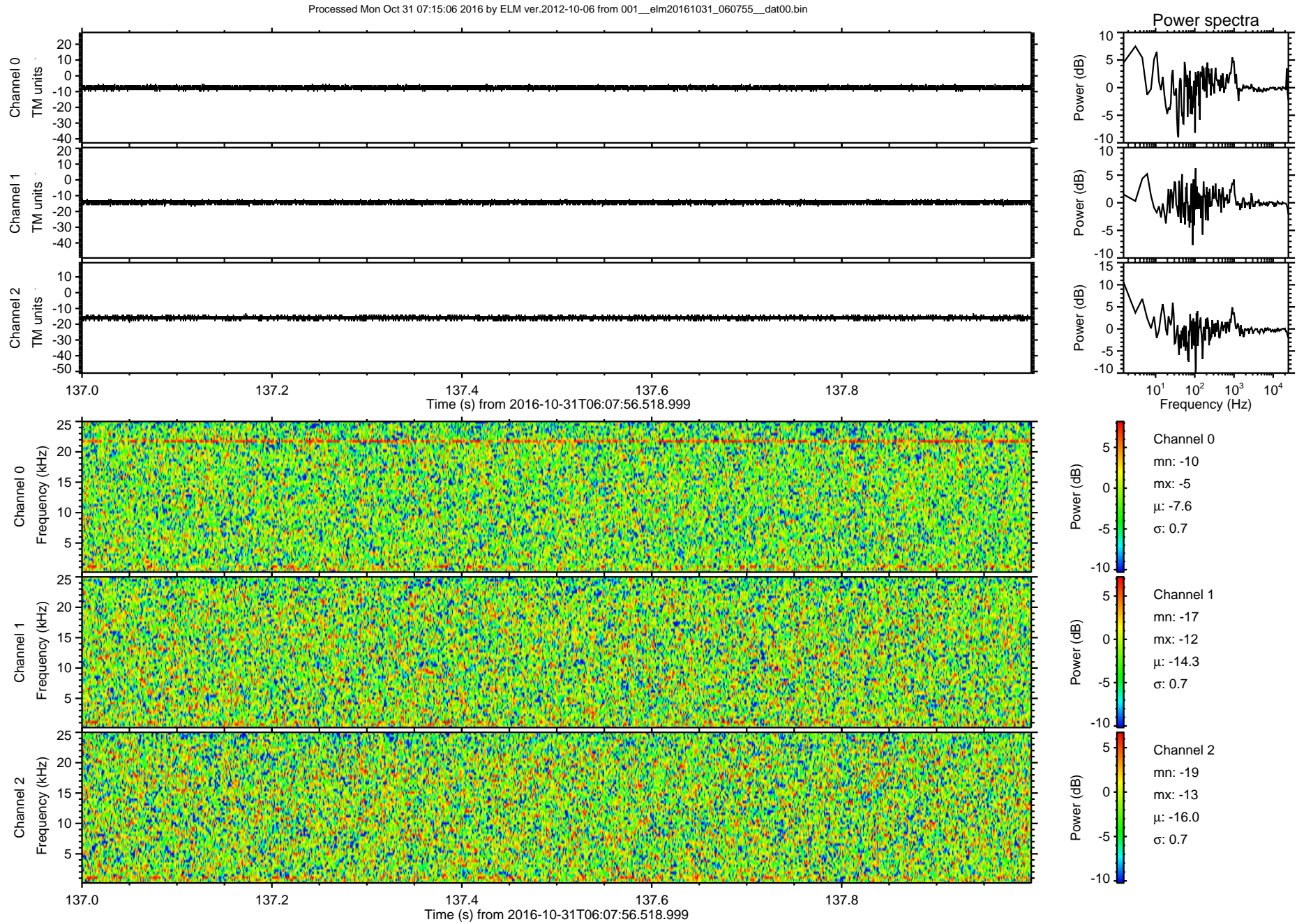
ELMAVAN 3D WAVEFORMS (Measured data sampled at 50 kHz) 51000 packets of 144 samples from 2016-10-31T06:07:56.518.999. Part 140/147

Processed Mon Oct 31 07:15:06 2016 by ELM ver.2012-10-06 from 001\_\_elm20161031\_060755\_\_dat00.bin





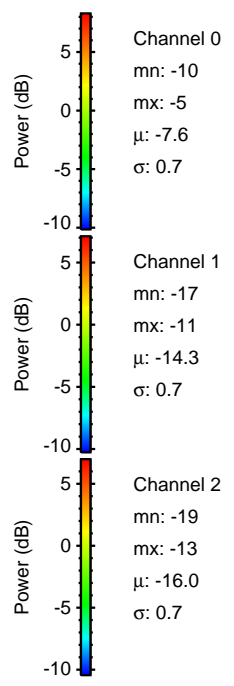
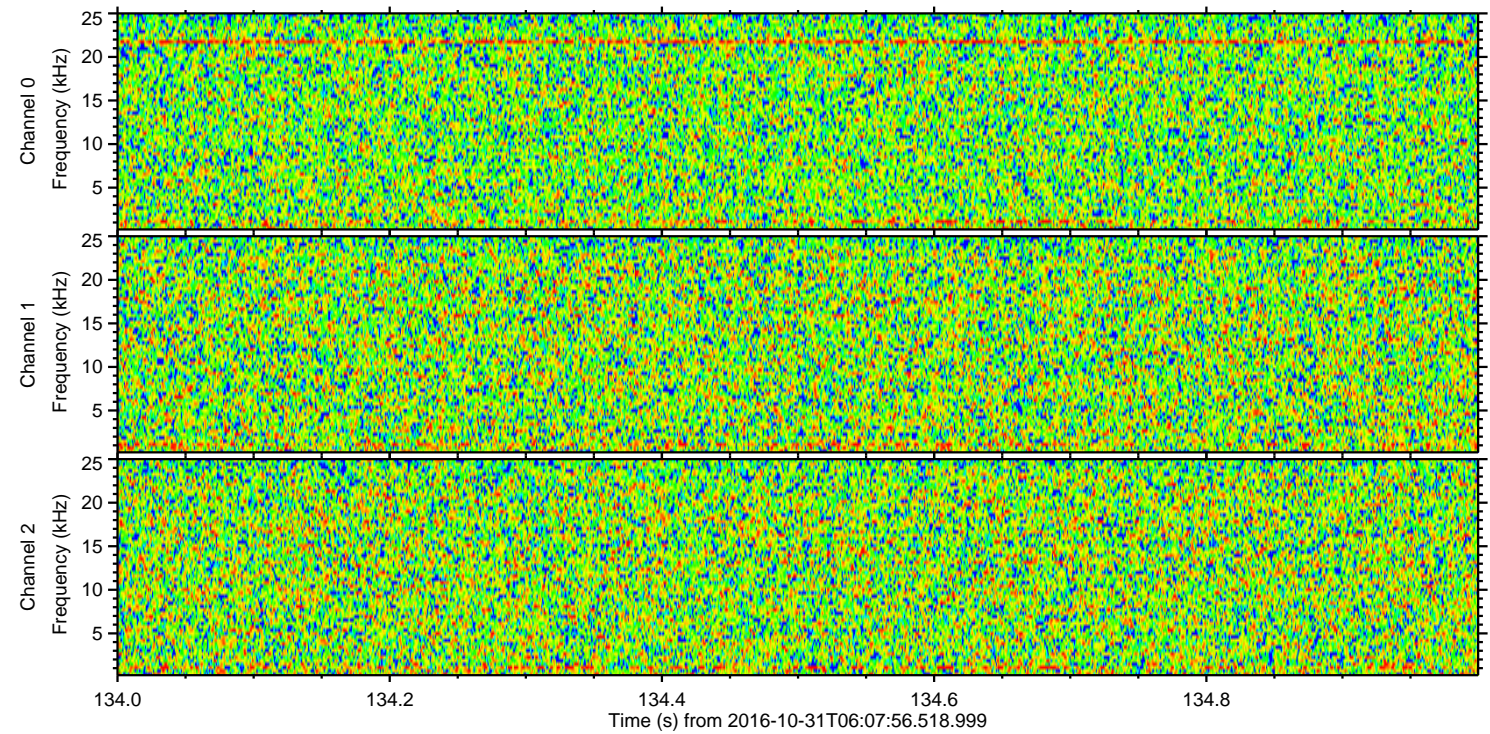
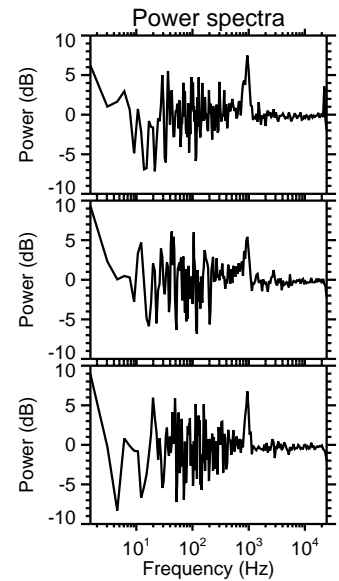
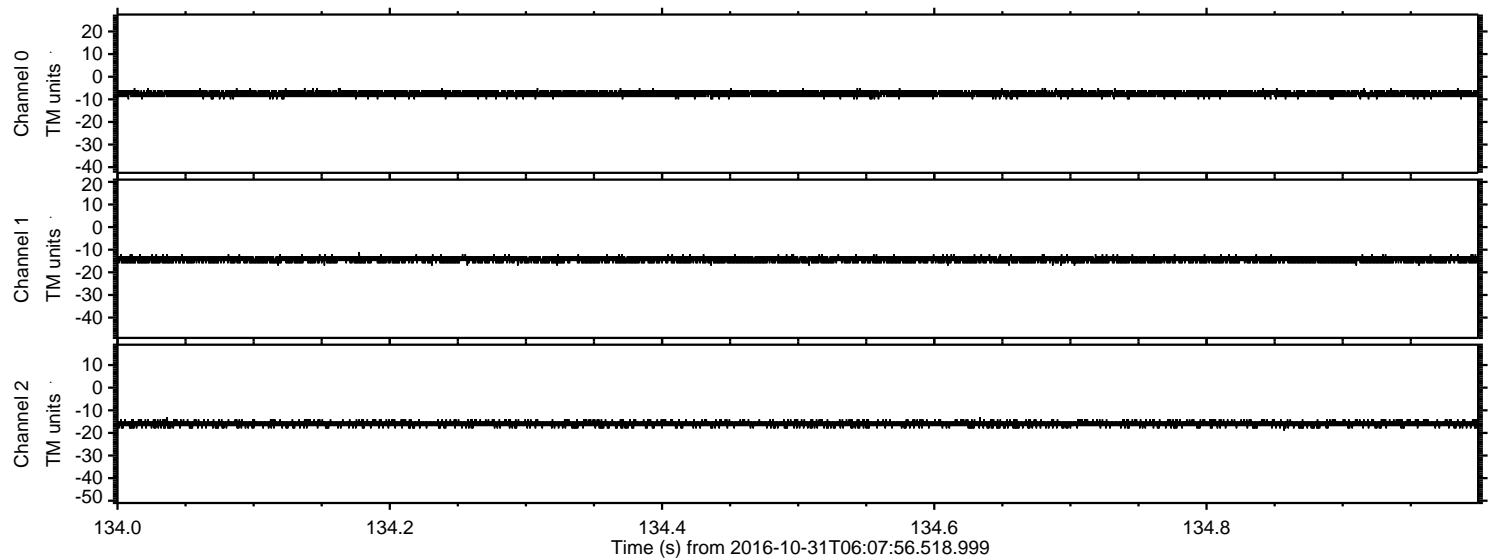
ELMAVAN 3D WAVEFORMS (Measured data sampled at 50 kHz) 51000 packets of 144 samples from 2016-10-31T06:07:56.518.999. Part 138/147





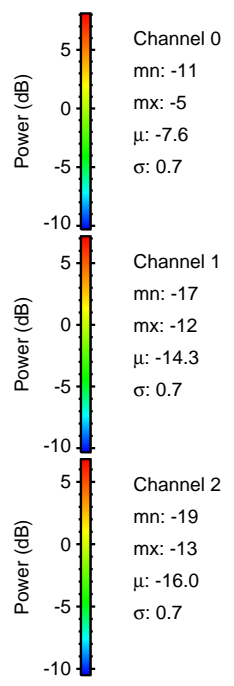
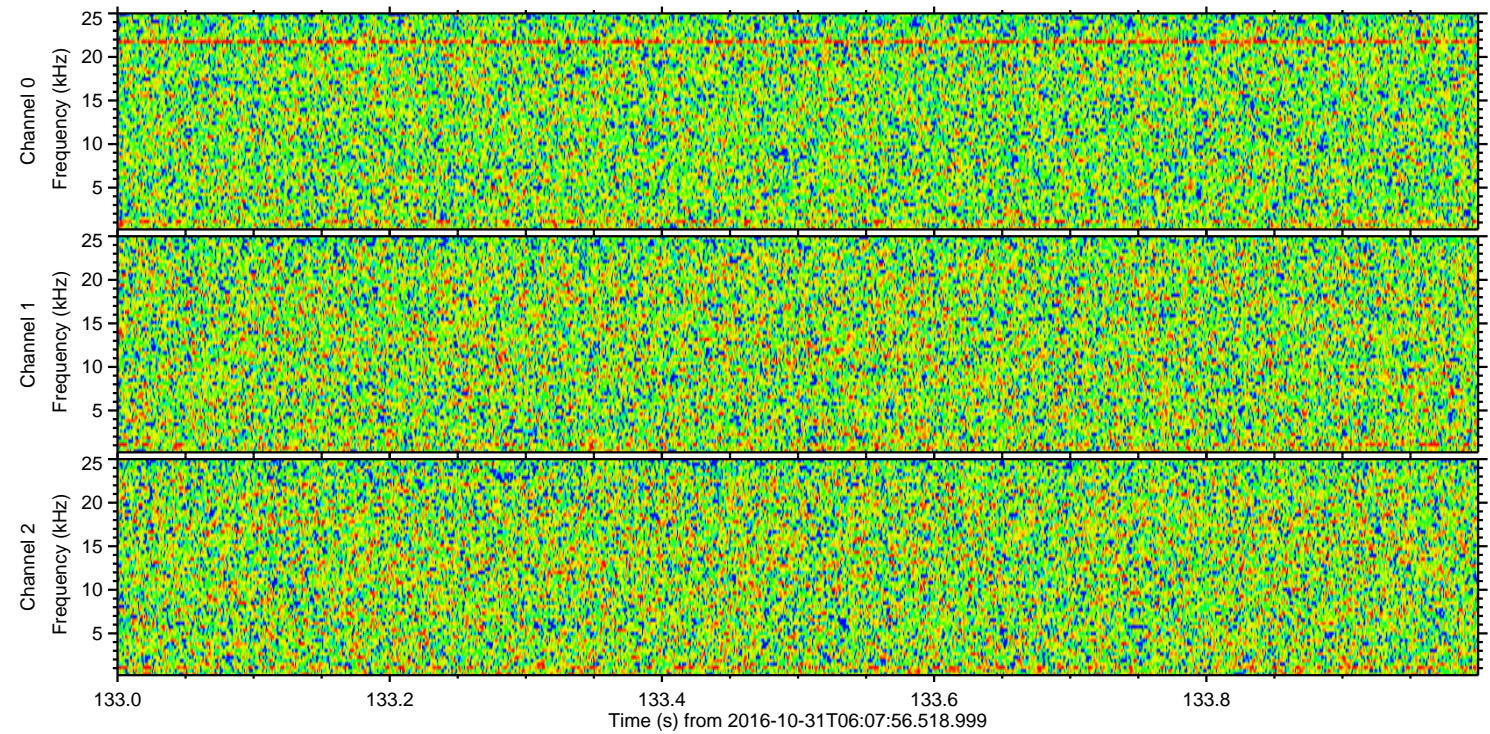
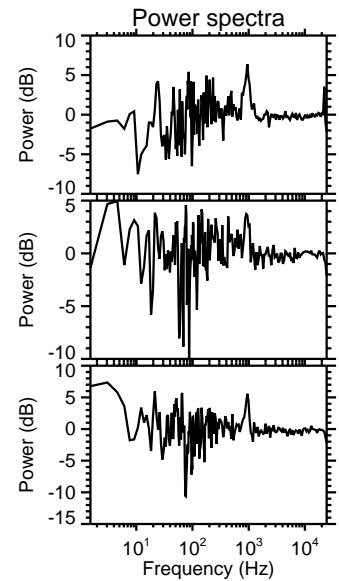
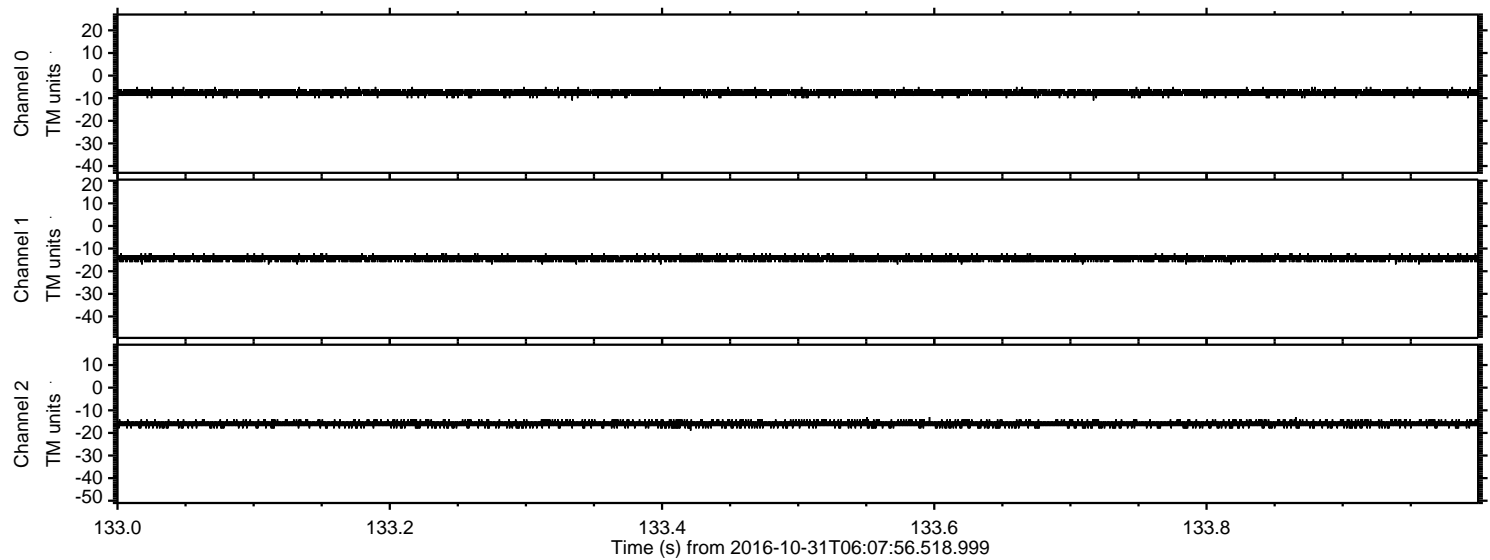
ELMAVAN 3D WAVEFORMS (Measured data sampled at 50 kHz) 51000 packets of 144 samples from 2016-10-31T06:07:56.518.999. Part 135/147

Processed Mon Oct 31 07:15:07 2016 by ELM ver.2012-10-06 from 001\_\_elm20161031\_060755\_\_dat00.bin





Processed Mon Oct 31 07:15:08 2016 by ELM ver.2012-10-06 from 001\_\_elm20161031\_060755\_\_dat00.bin





Processed Mon Oct 31 07:15:09 2016 by ELM ver.2012-10-06 from 001\_\_elm20161031\_060755\_\_dat00.bin

