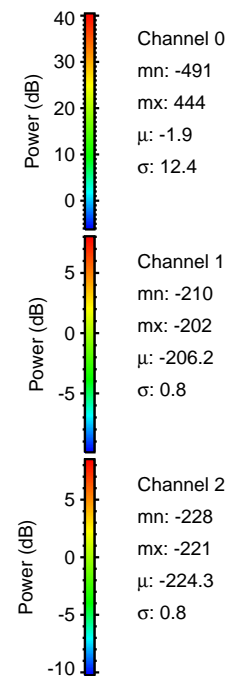
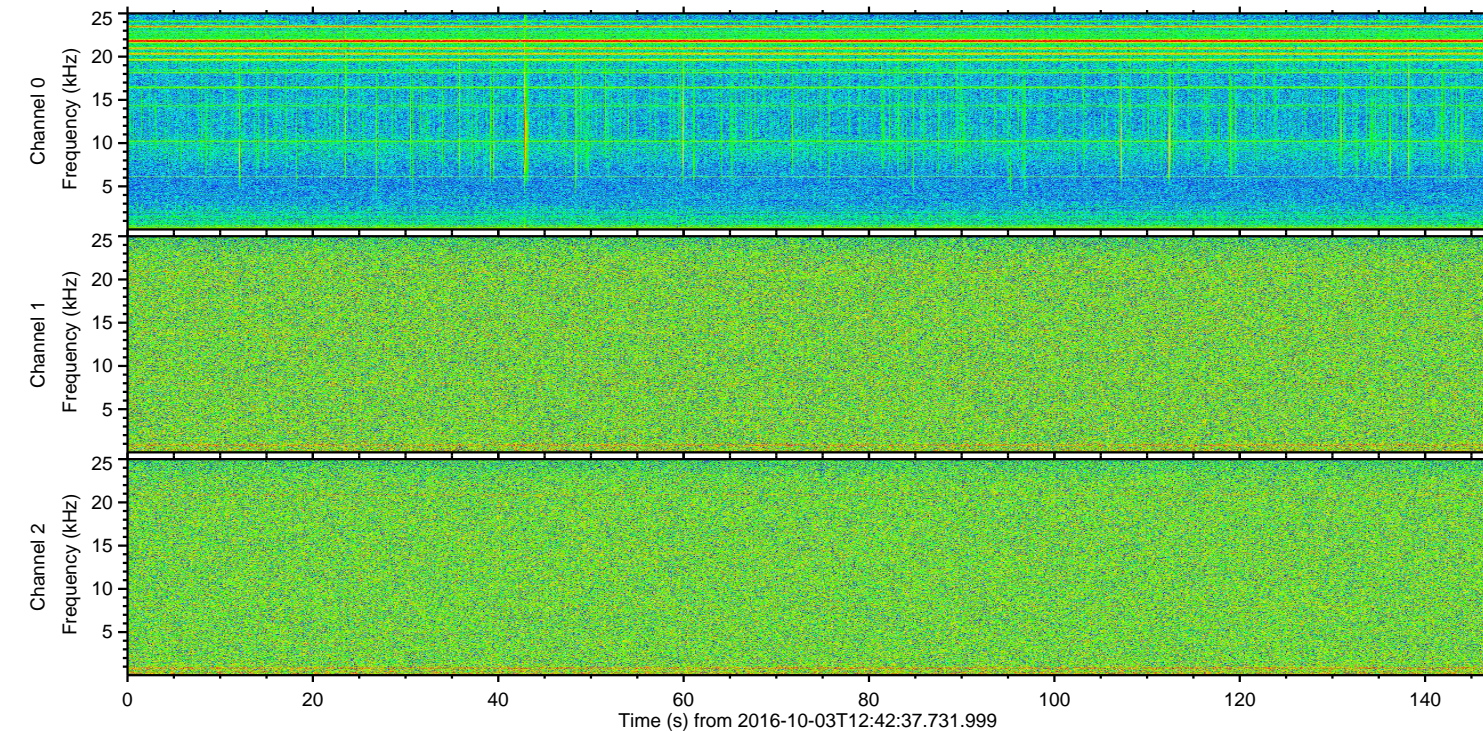
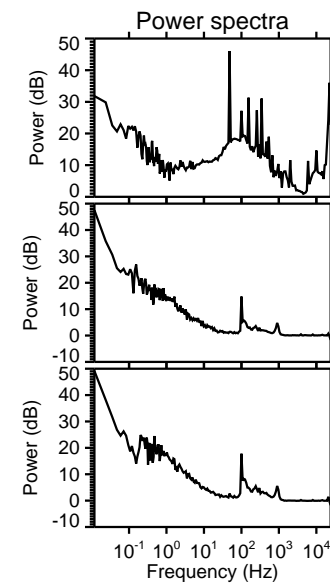
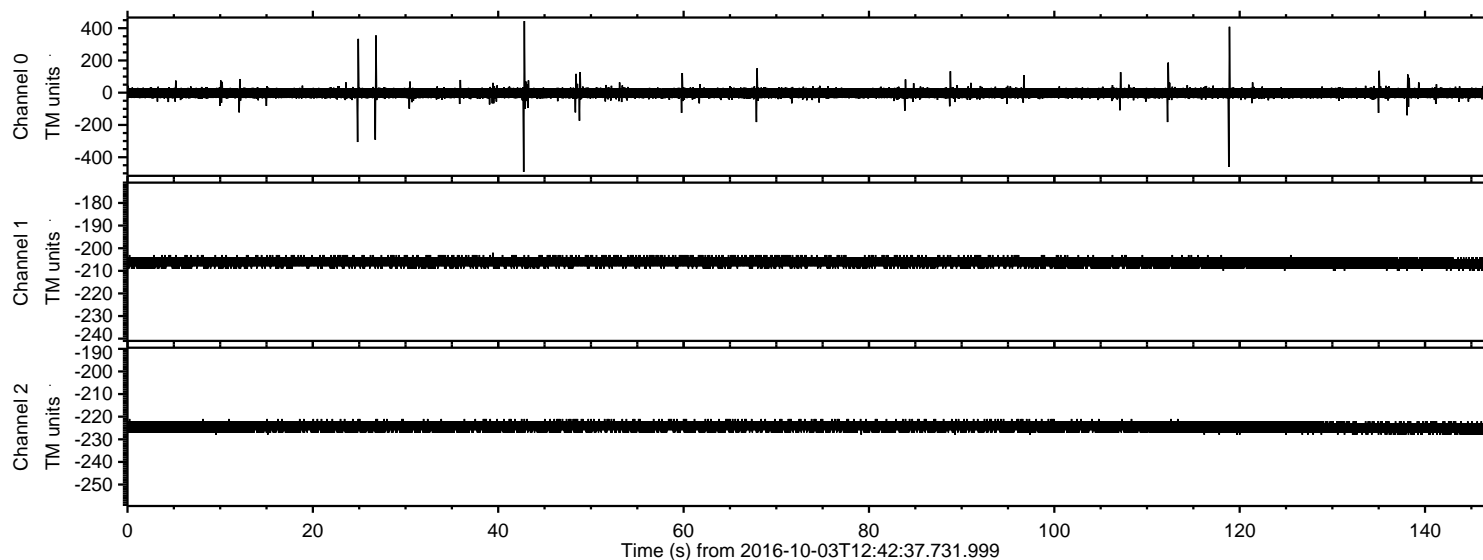
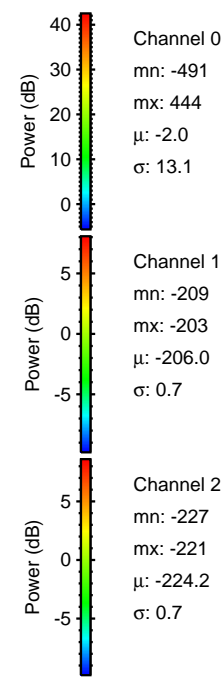
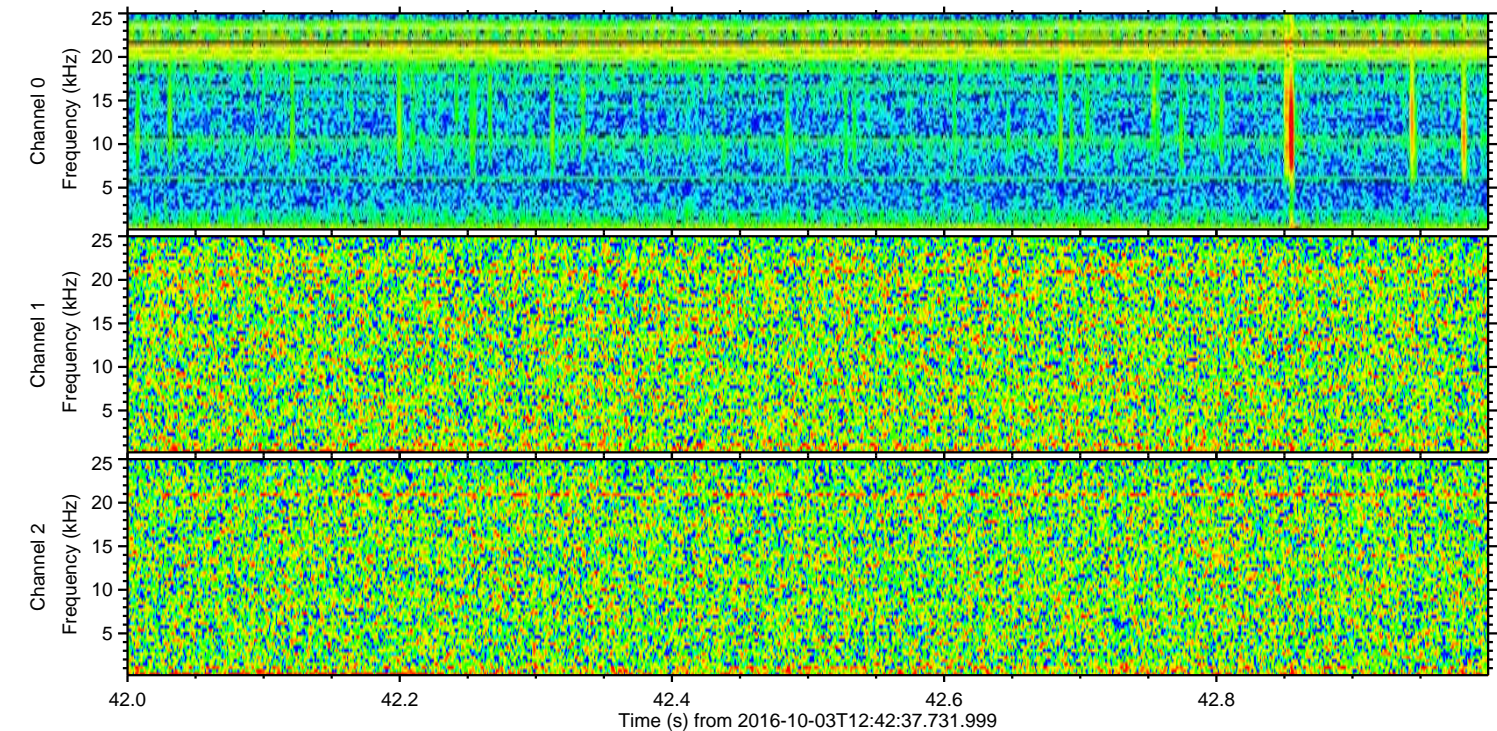
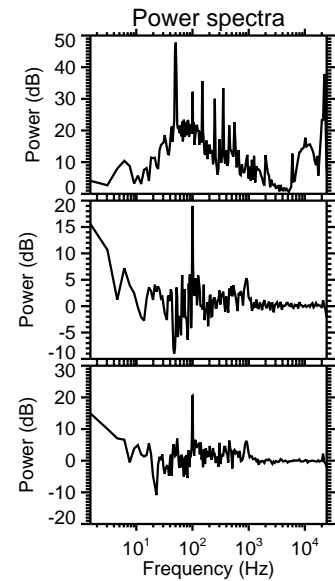
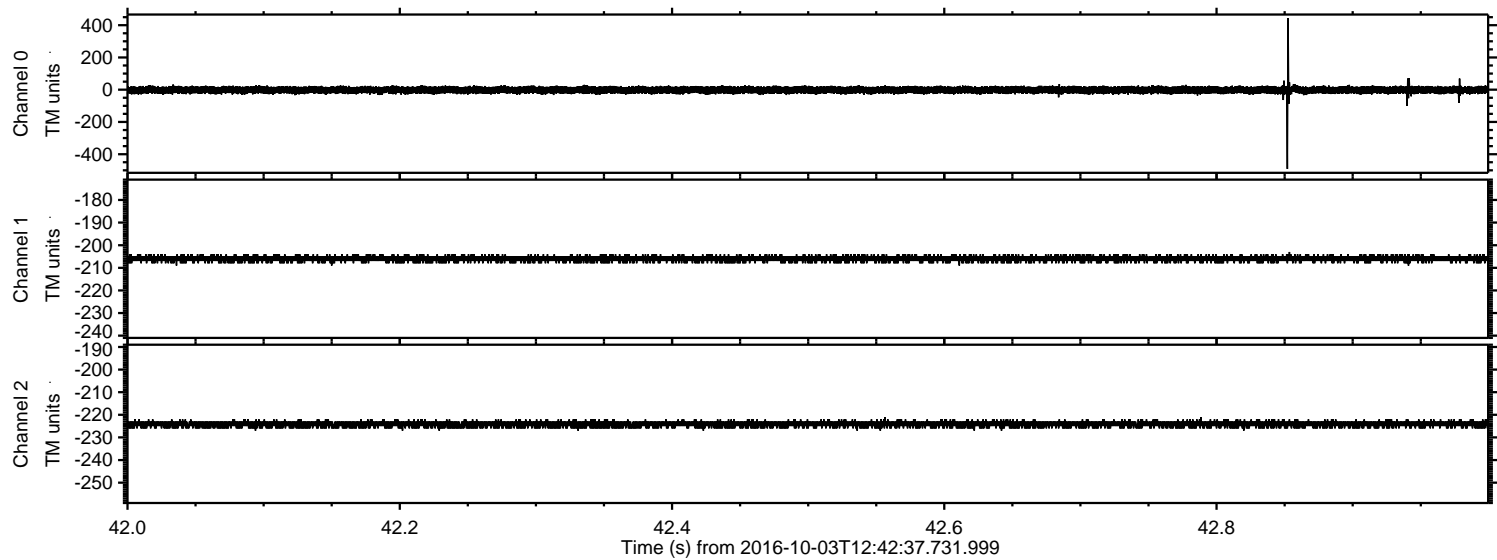


ELMAVAN 3D WAVEFORMS (Measured data sampled at 50 kHz) 51000 packets of 144 samples from 2016-10-03T12:42:37.731.999.

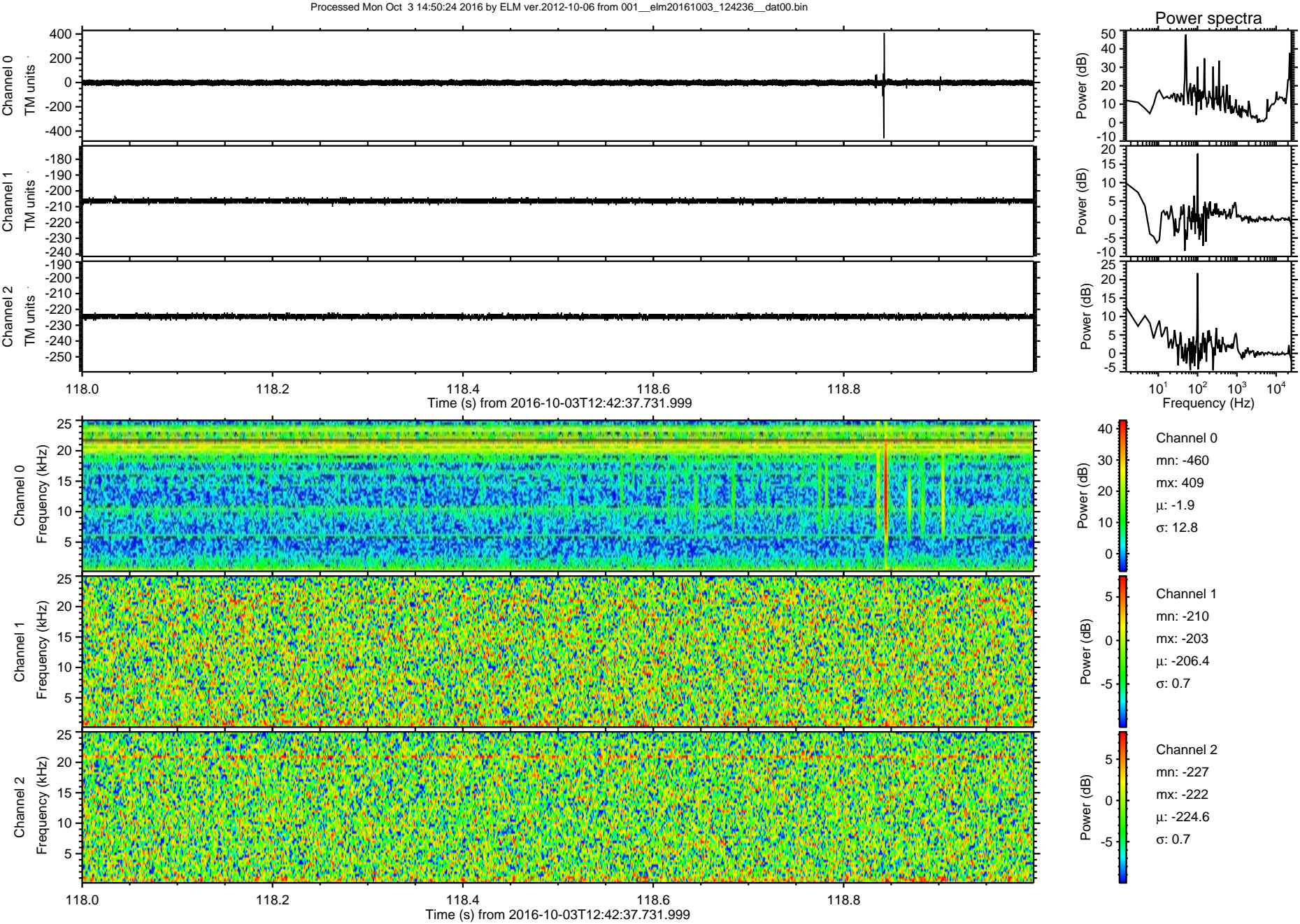
Processed Mon Oct 3 14:50:11 2016 by ELM ver.2012-10-06 from 001__elm20161003_124236__dat00.bin



Processed Mon Oct 3 14:50:23 2016 by ELM ver.2012-10-06 from 001__elm20161003_124236__dat00.bin

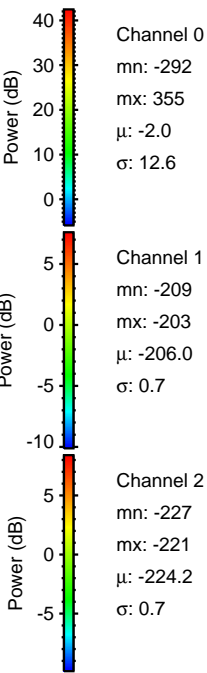
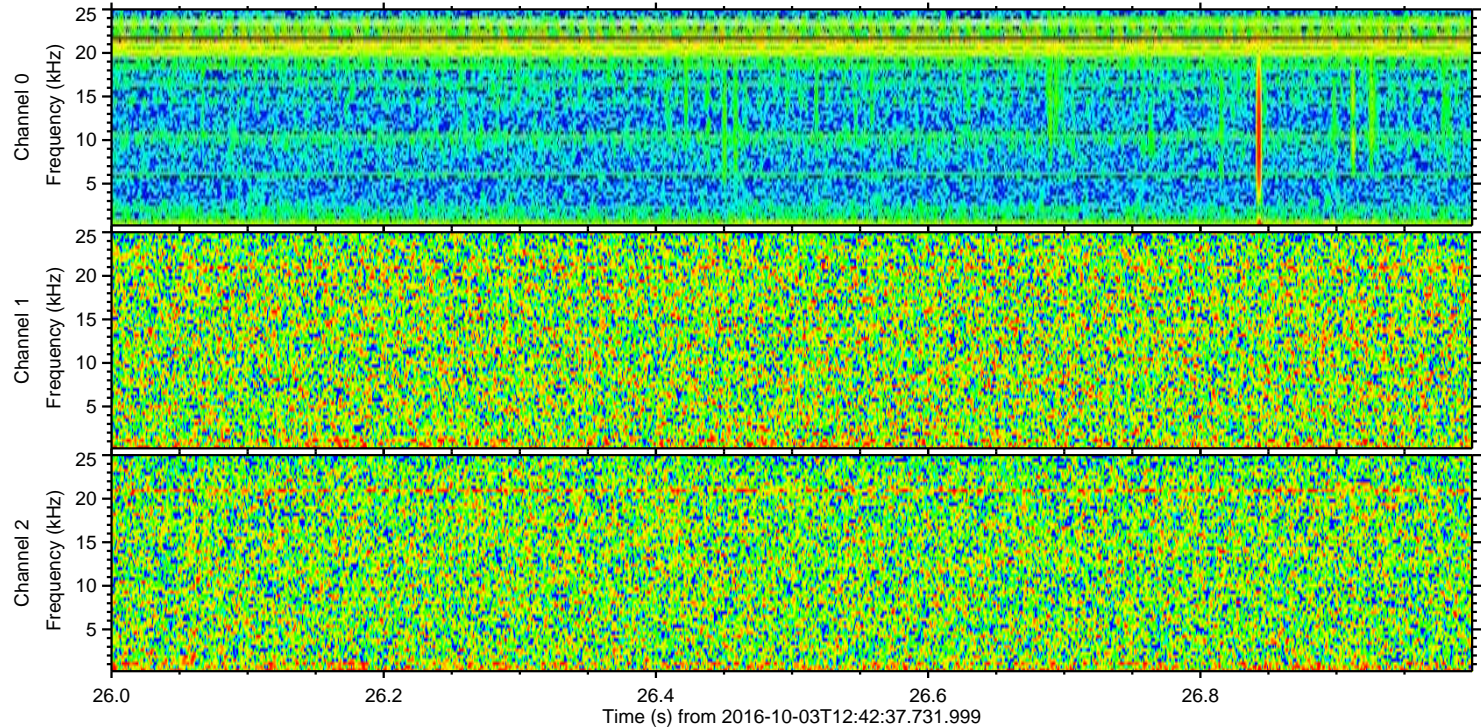
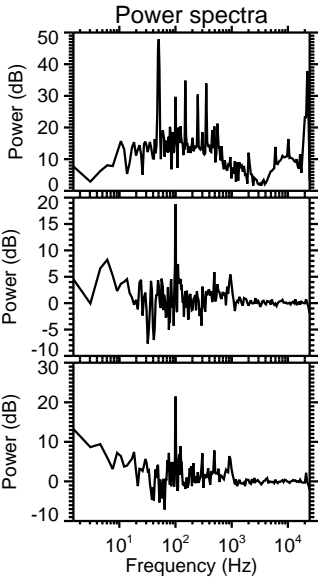
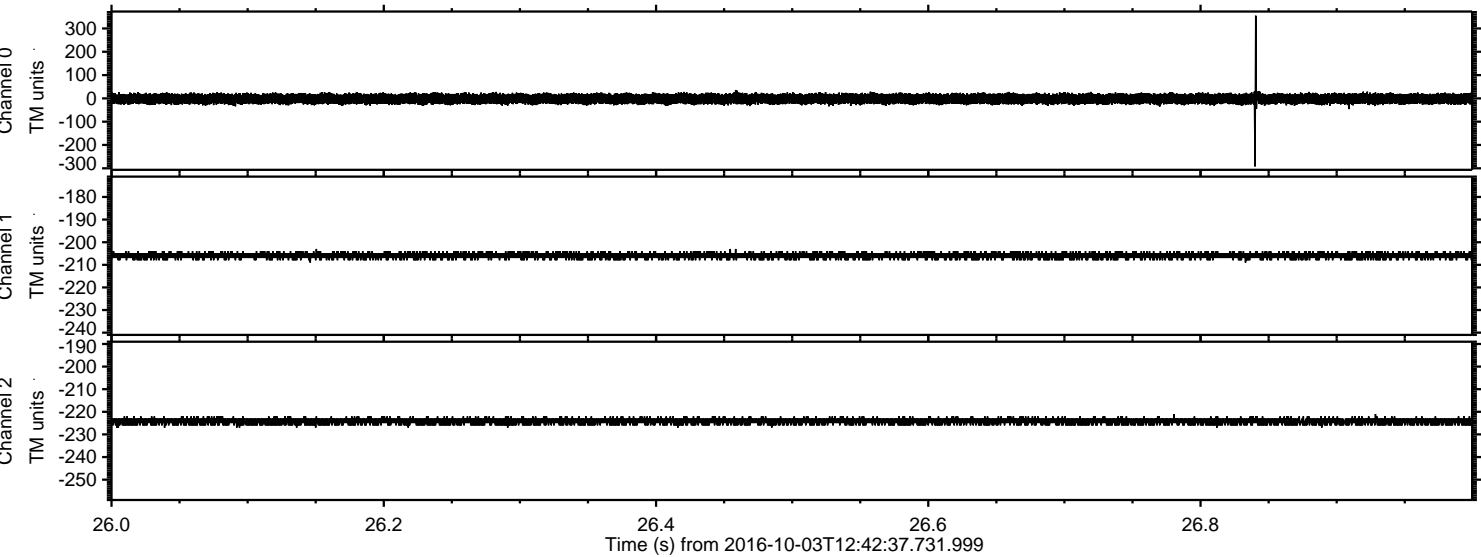


ELMAVAN 3D WAVEFORMS (Measured data sampled at 50 kHz) 51000 packets of 144 samples from 2016-10-03T12:42:37.731.999. Part 119/147

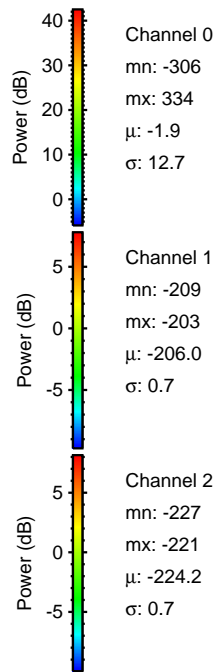
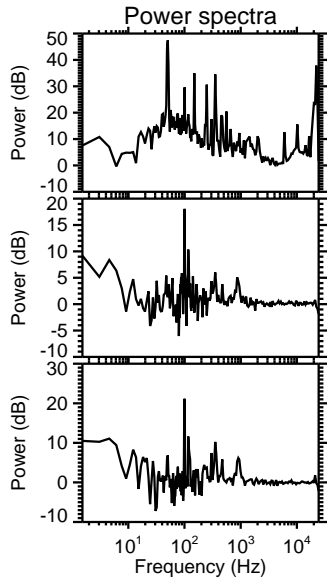
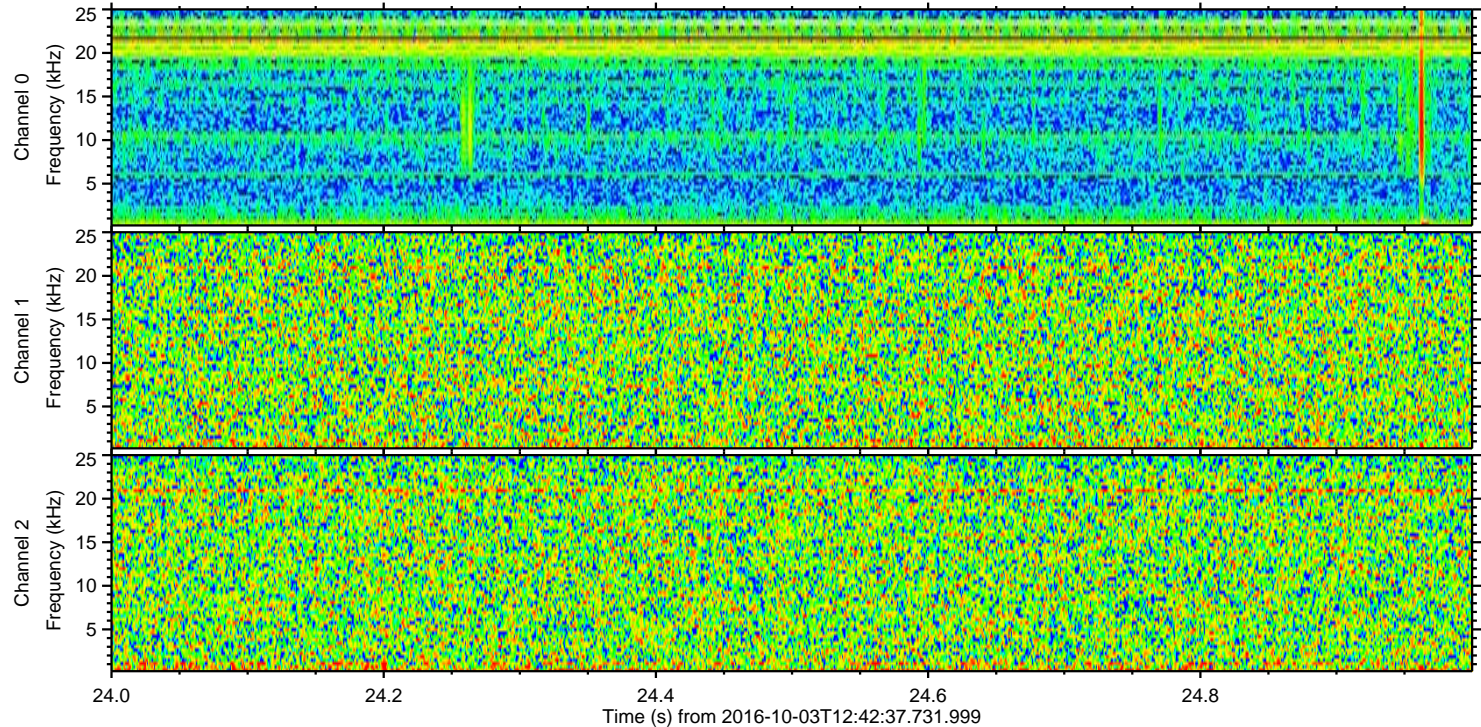
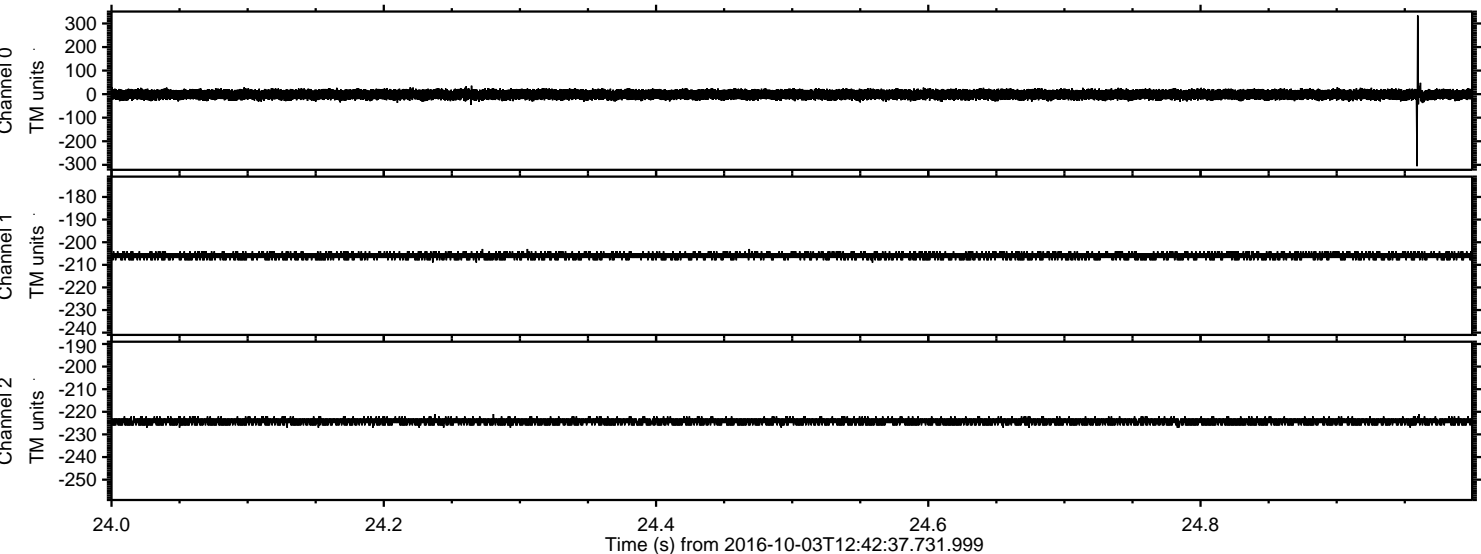


ELMAVAN 3D WAVEFORMS (Measured data sampled at 50 kHz) 51000 packets of 144 samples from 2016-10-03T12:42:37.731.999. Part 27/147

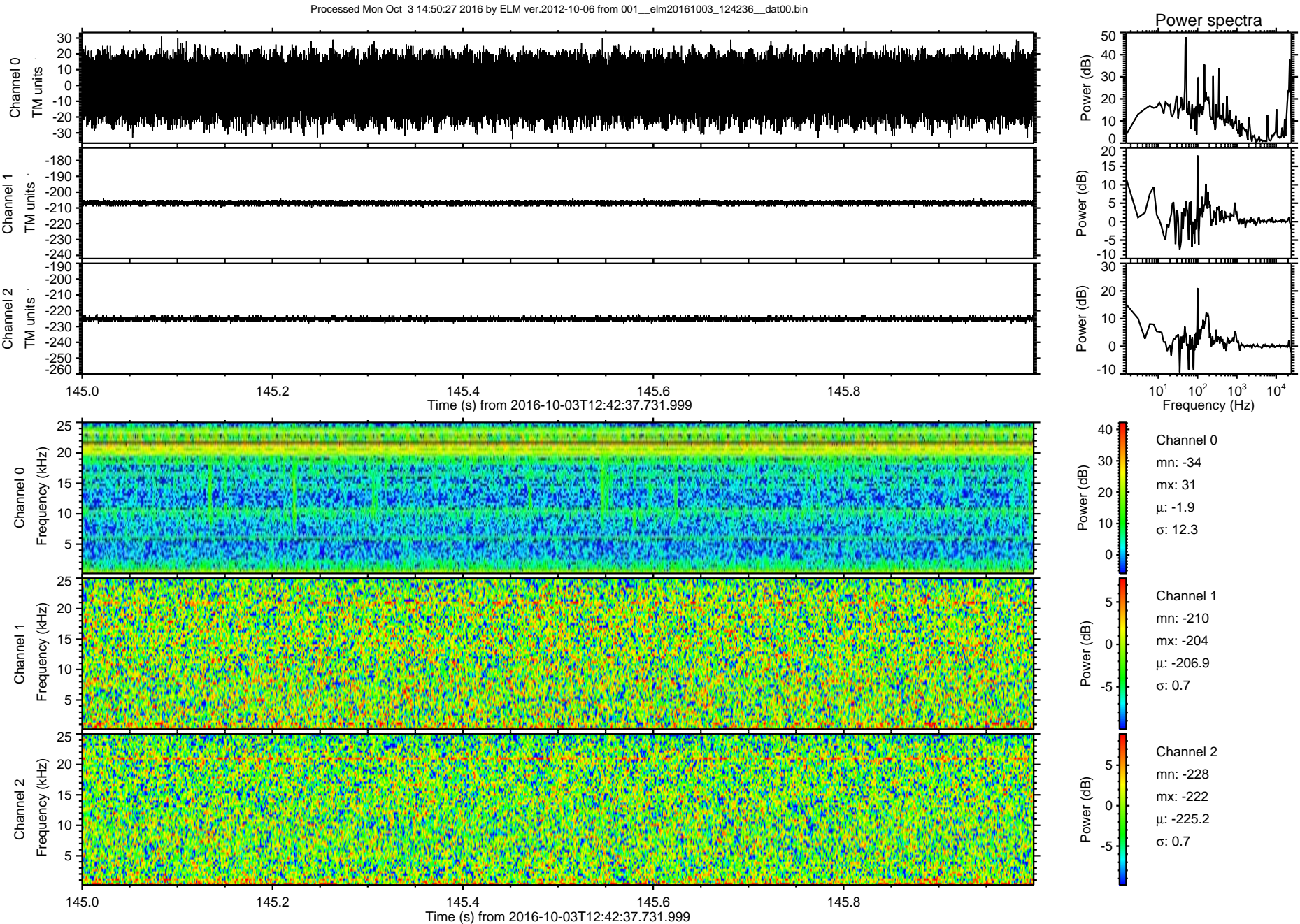
Processed Mon Oct 3 14:50:25 2016 by ELM ver.2012-10-06 from 001__elm20161003_124236__dat00.bin



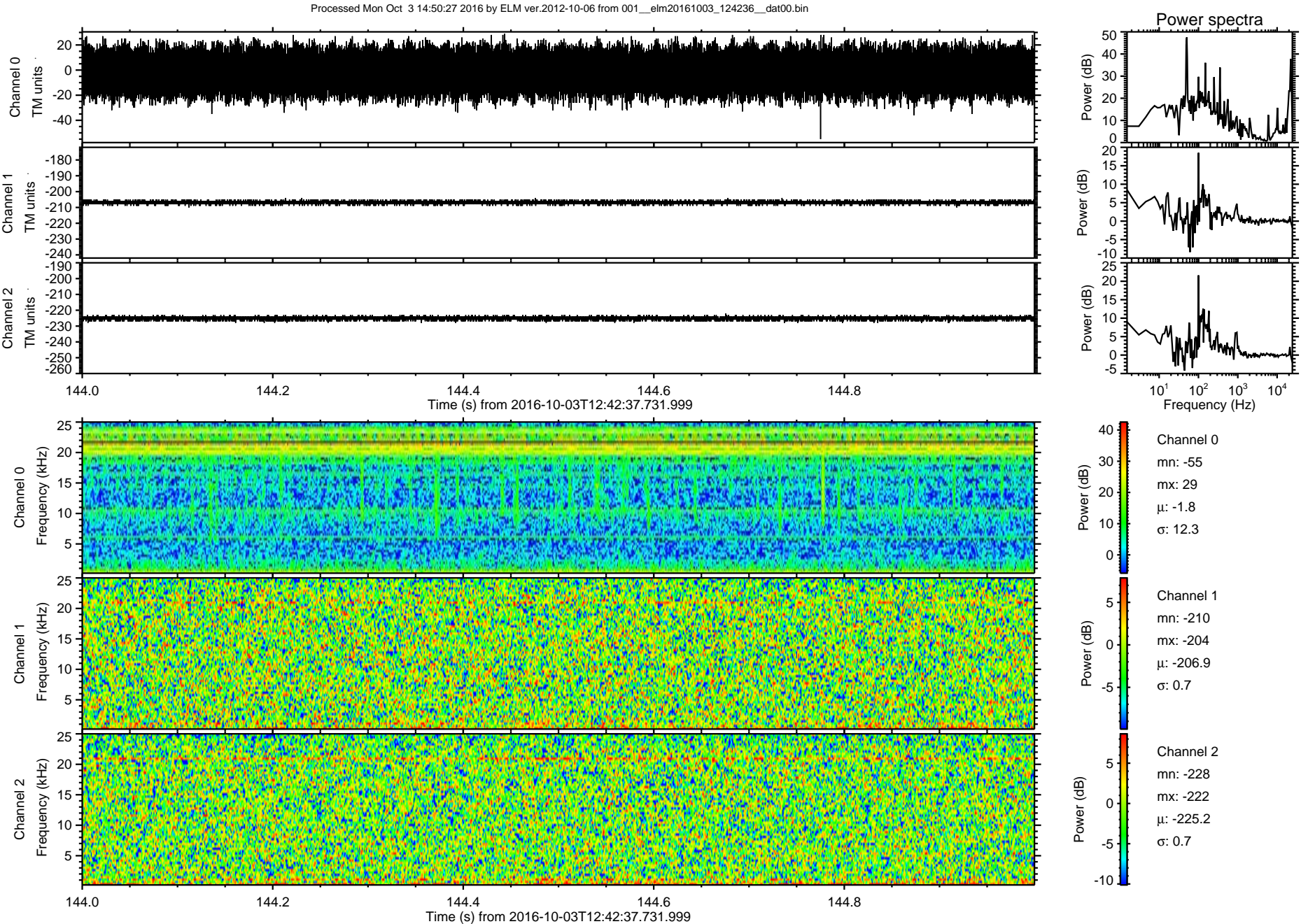
Processed Mon Oct 3 14:50:26 2016 by ELM ver.2012-10-06 from 001__elm20161003_124236__dat00.bin



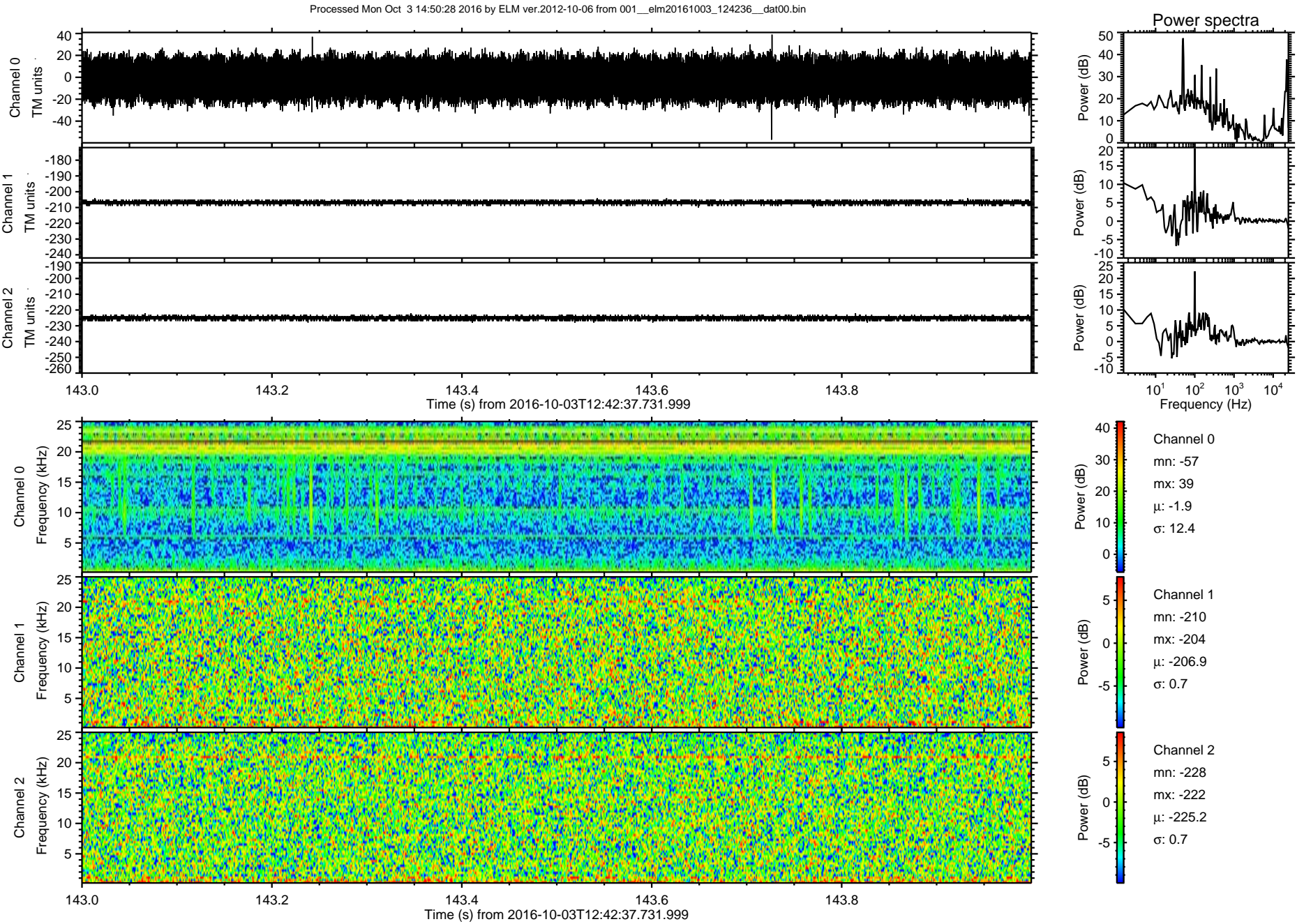
ELMAVAN 3D WAVEFORMS (Measured data sampled at 50 kHz) 51000 packets of 144 samples from 2016-10-03T12:42:37.731.999. Part 146/147



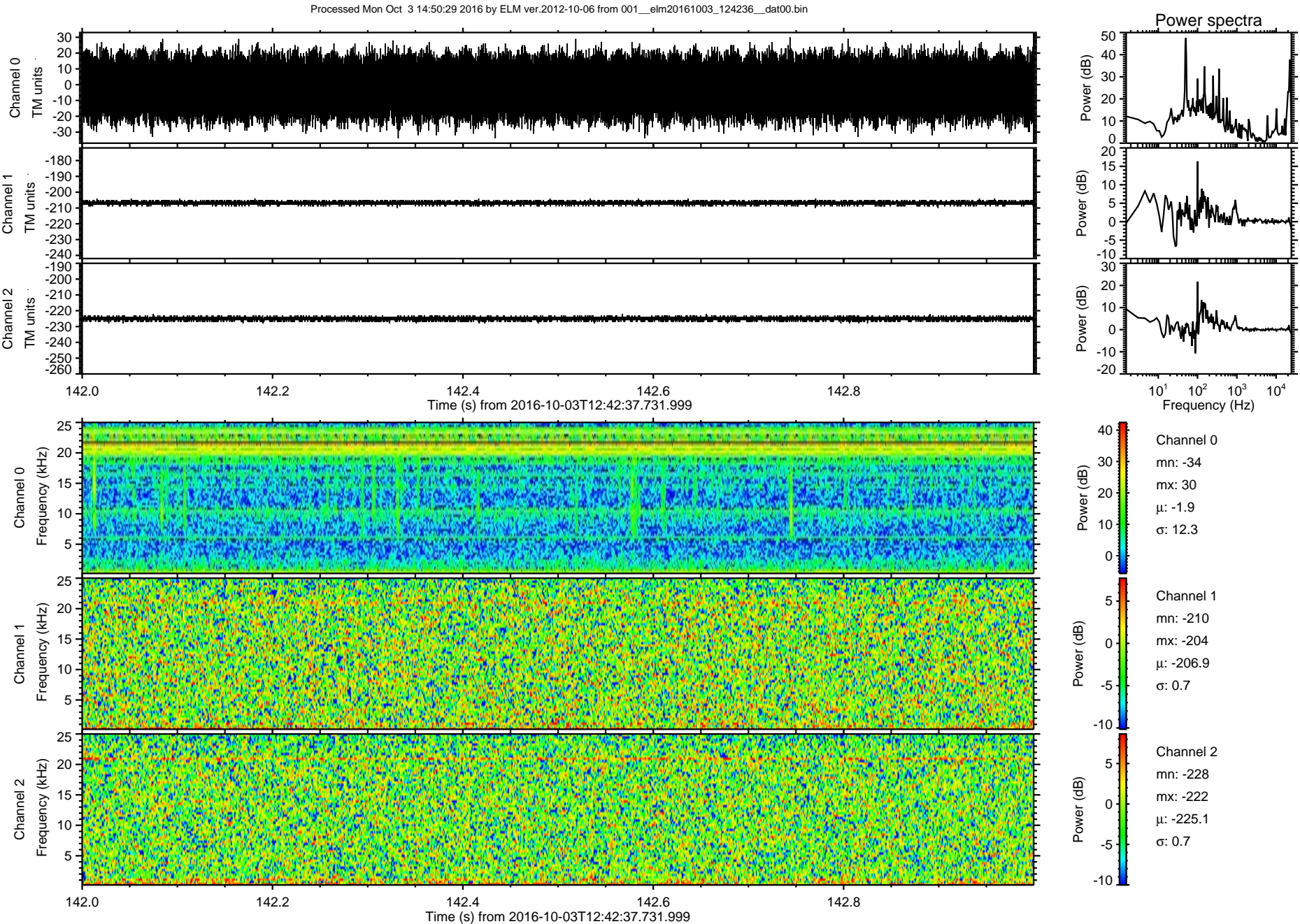
ELMAVAN 3D WAVEFORMS (Measured data sampled at 50 kHz) 51000 packets of 144 samples from 2016-10-03T12:42:37.731.999. Part 145/147



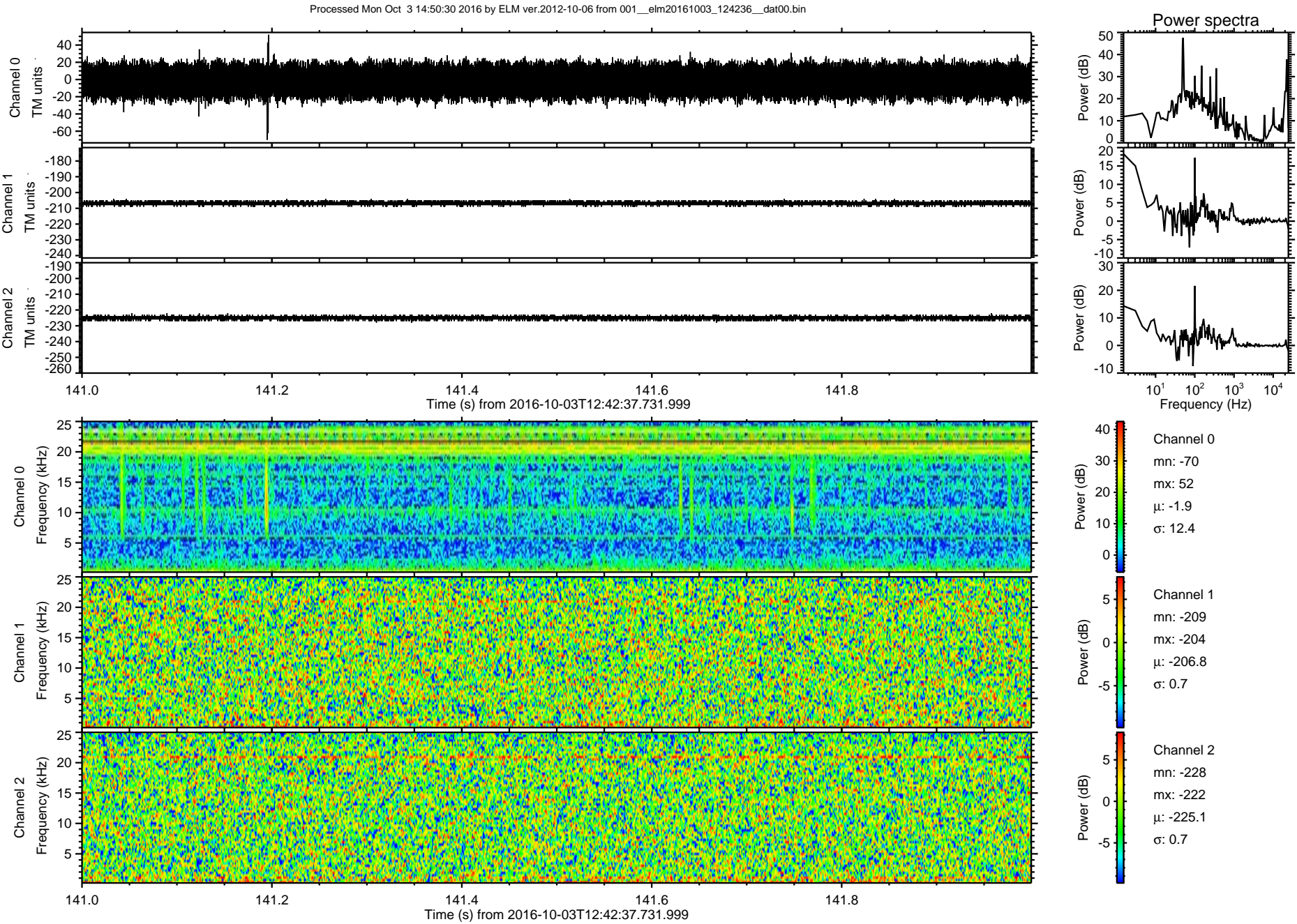
ELMAVAN 3D WAVEFORMS (Measured data sampled at 50 kHz) 51000 packets of 144 samples from 2016-10-03T12:42:37.731.999. Part 144/147



ELMAVAN 3D WAVEFORMS (Measured data sampled at 50 kHz) 51000 packets of 144 samples from 2016-10-03T12:42:37.731.999. Part 143/147



ELMAVAN 3D WAVEFORMS (Measured data sampled at 50 kHz) 51000 packets of 144 samples from 2016-10-03T12:42:37.731.999. Part 142/147



ELMAVAN 3D WAVEFORMS (Measured data sampled at 50 kHz) 51000 packets of 144 samples from 2016-10-03T12:42:37.731.999. Part 1/147

Processed Mon Oct 3 14:50:31 2016 by ELM ver.2012-10-06 from 001__elm20161003_124236__dat00.bin

