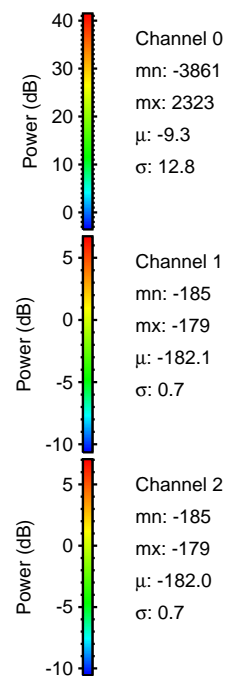
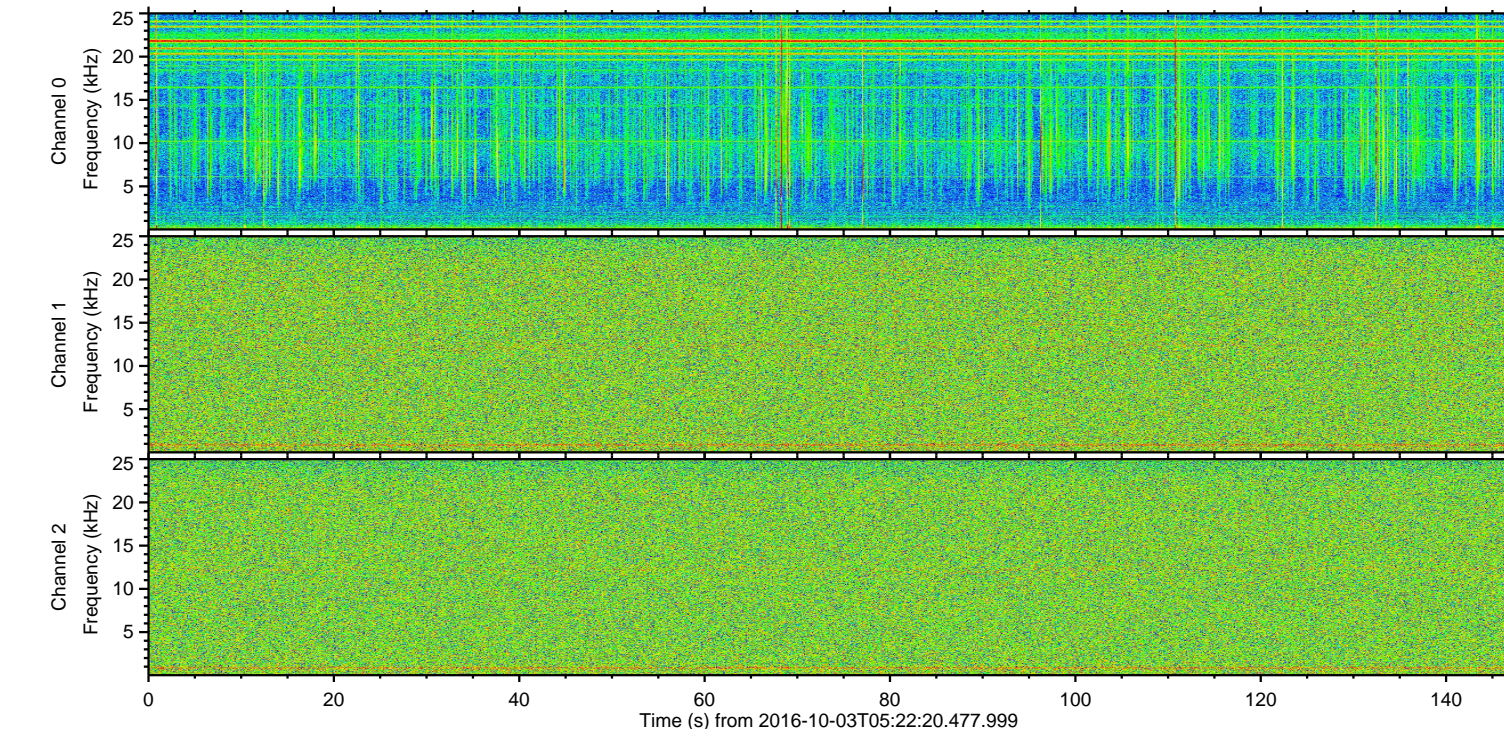
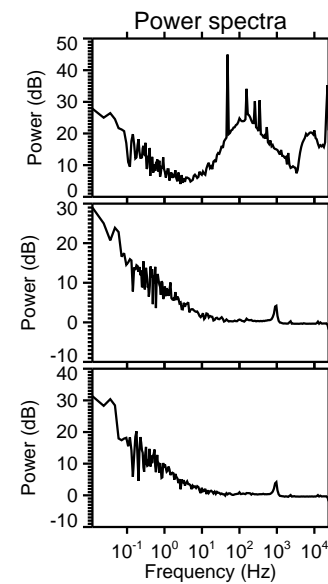
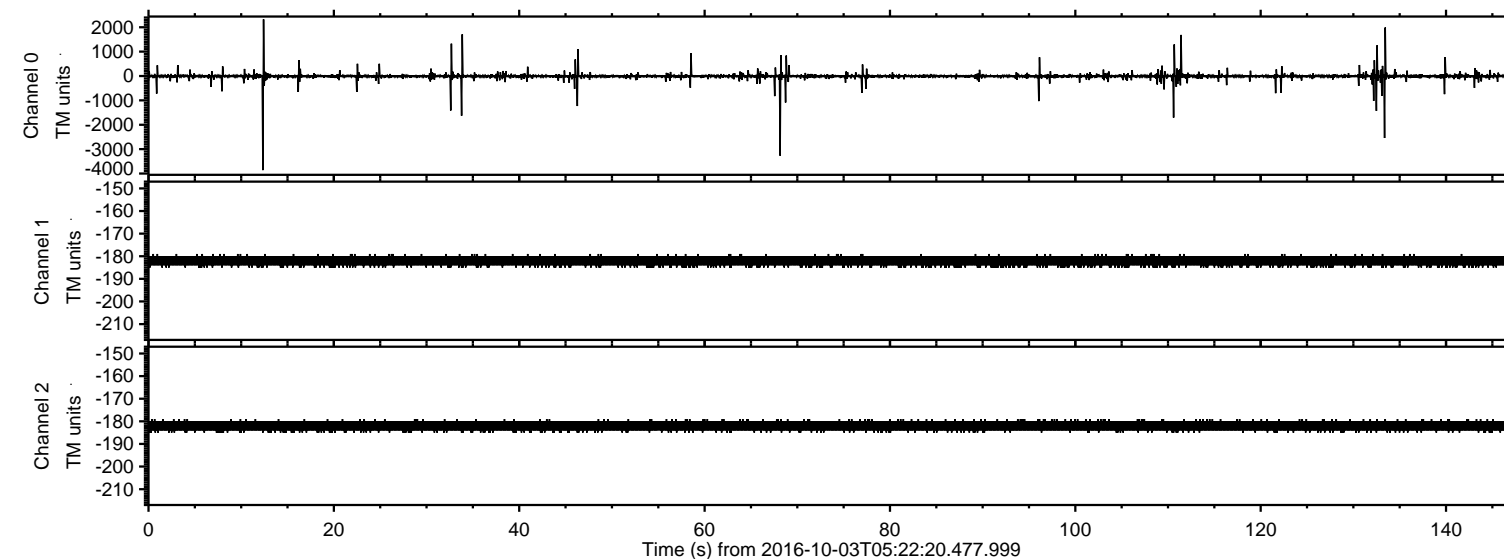


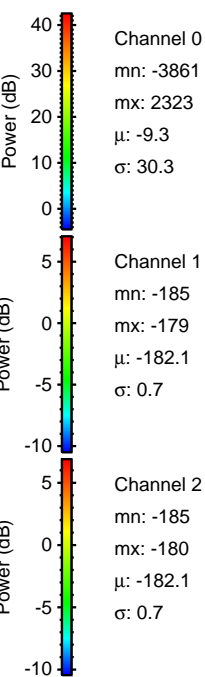
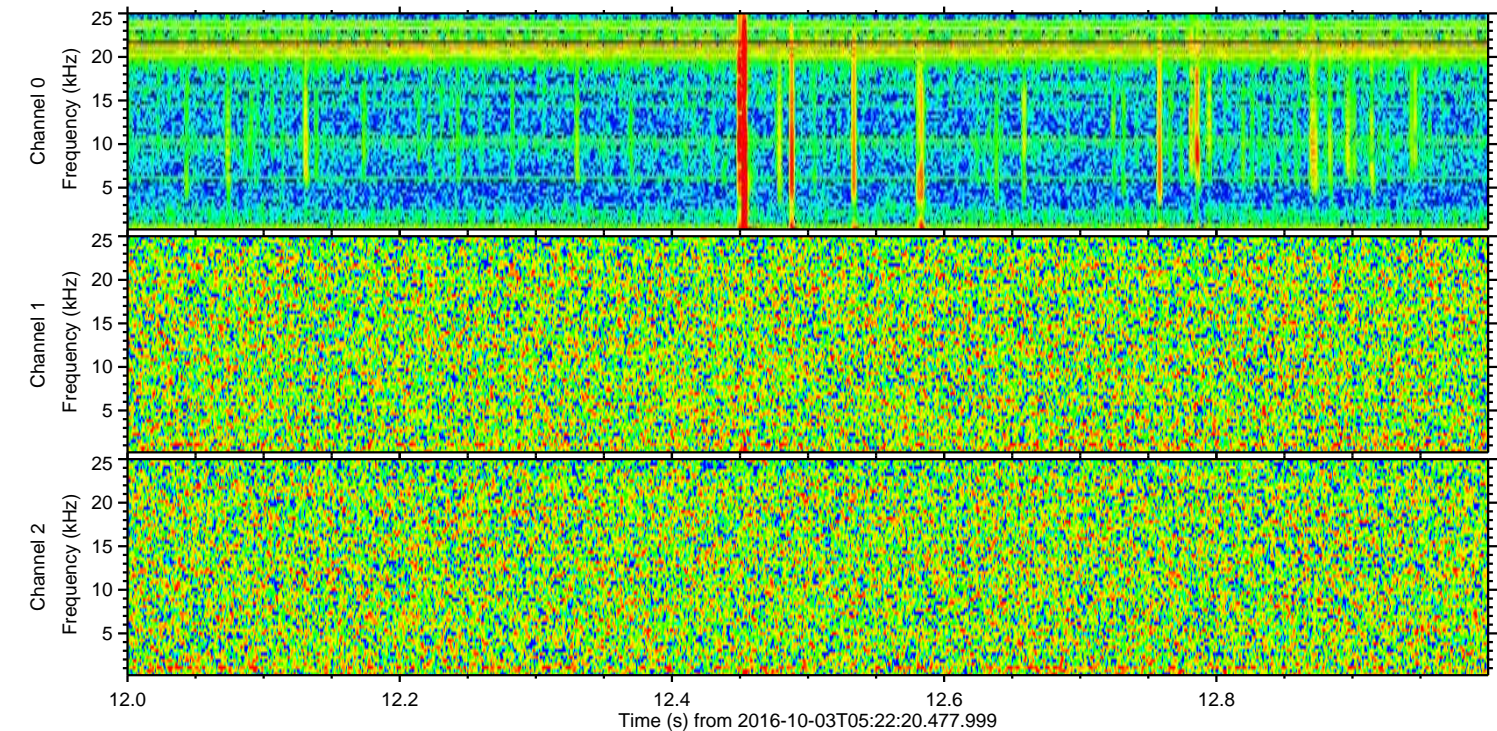
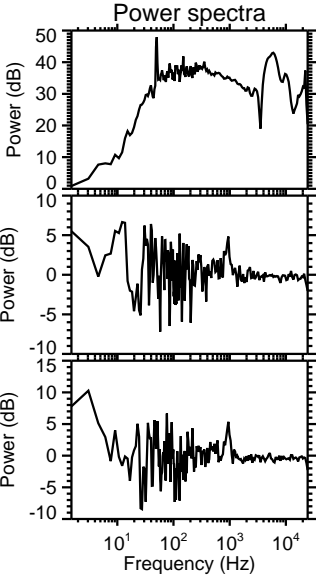
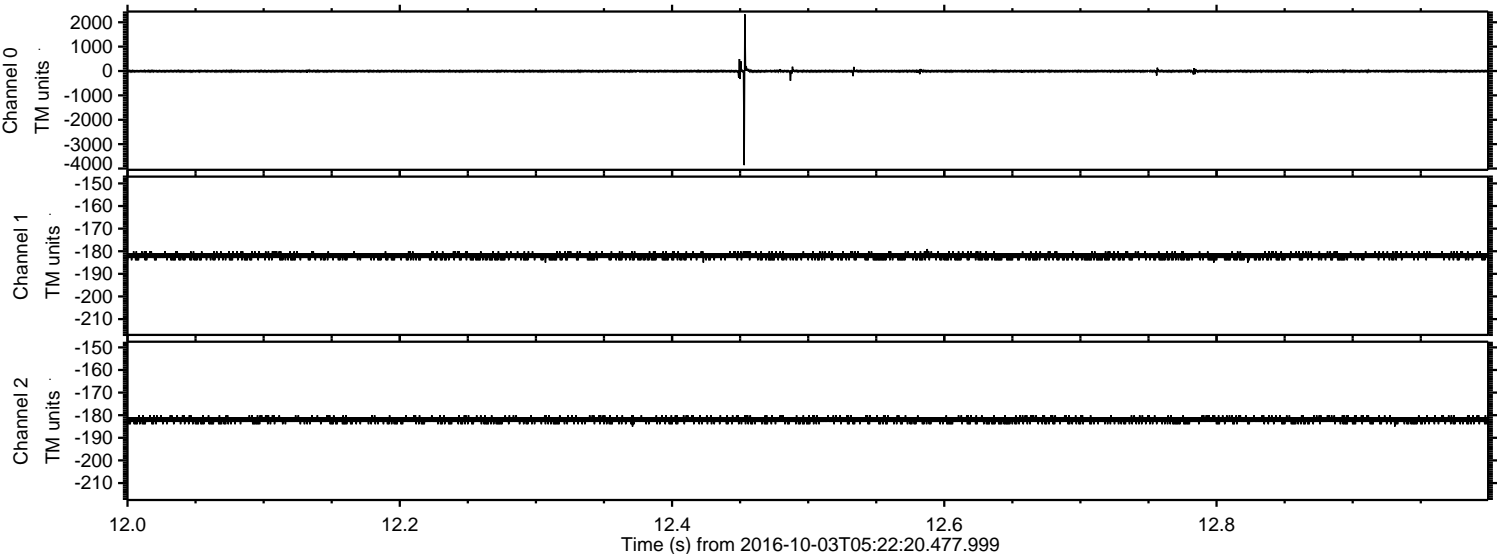
# ELMAVAN 3D WAVEFORMS (Measured data sampled at 50 kHz) 51000 packets of 144 samples from 2016-10-03T05:22:20.477.999.

Processed Mon Oct 3 07:29:36 2016 by ELM ver.2012-10-06 from 001\_\_elm20161003\_052219\_\_dat00.bin



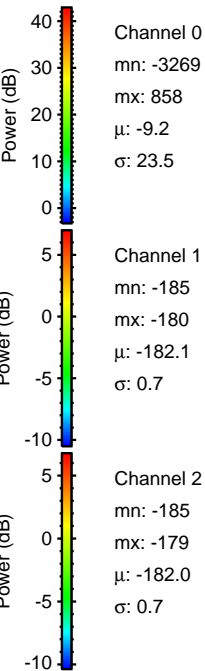
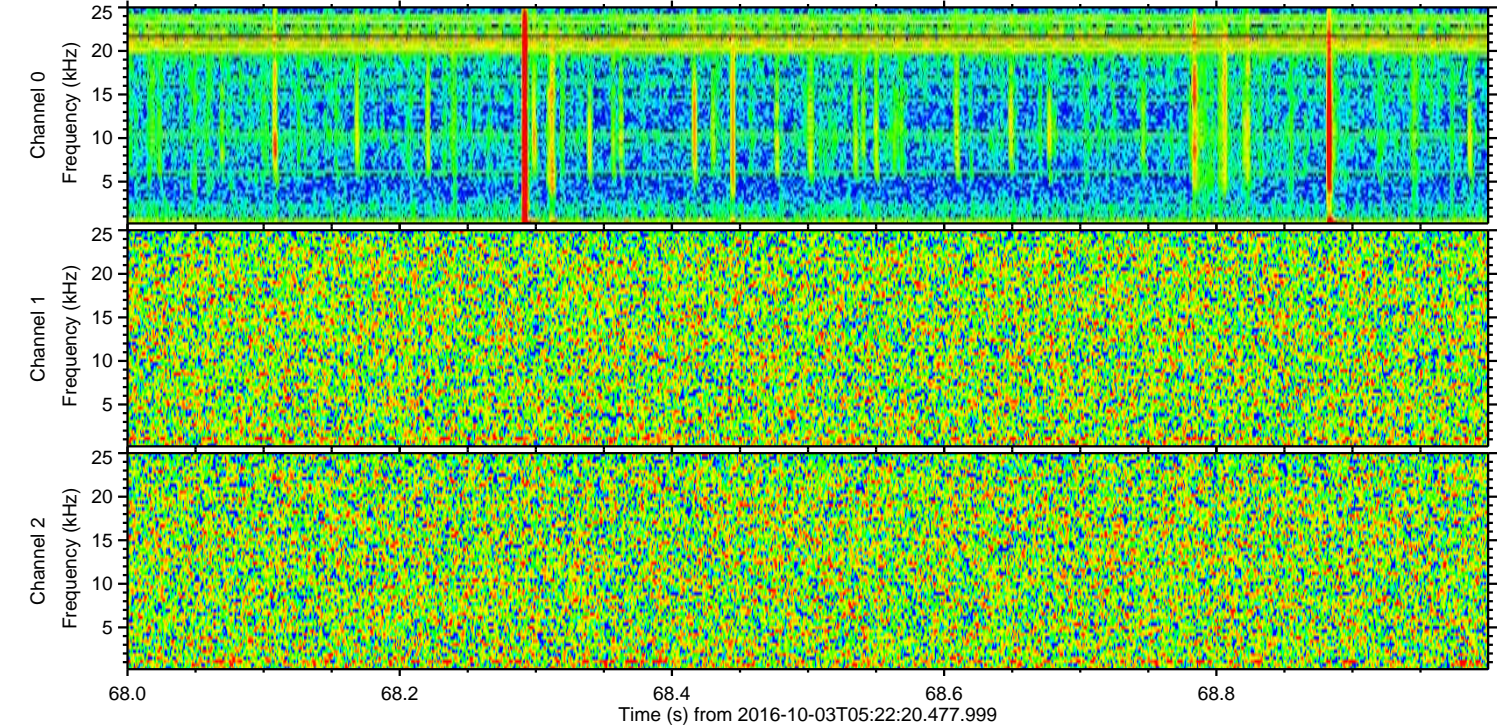
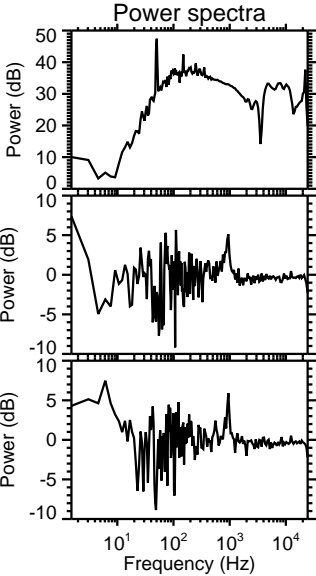
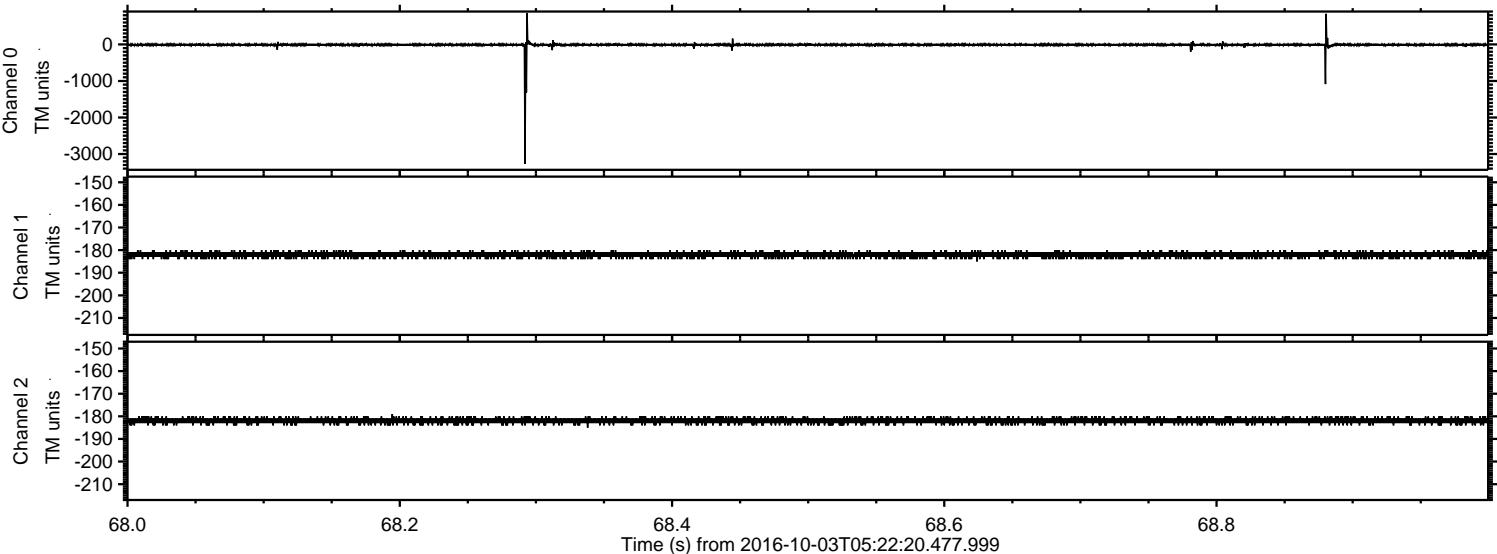


Processed Mon Oct 3 07:29:47 2016 by ELM ver.2012-10-06 from 001\_\_elm20161003\_052219\_\_dat00.bin





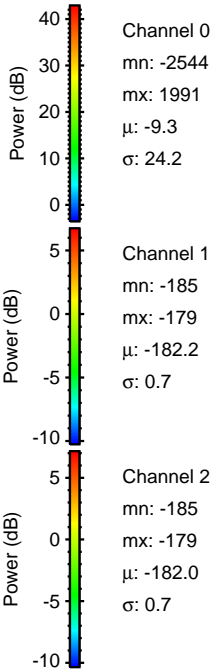
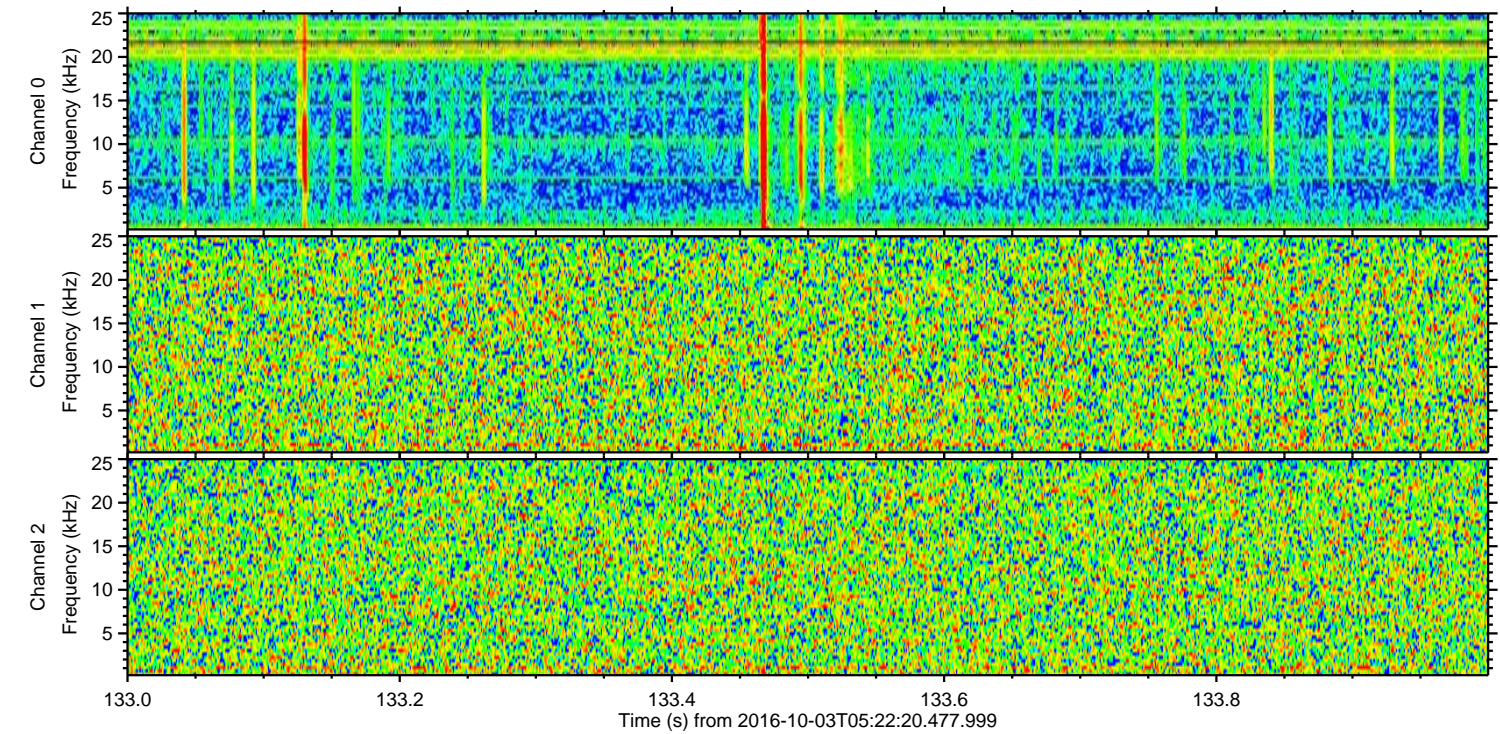
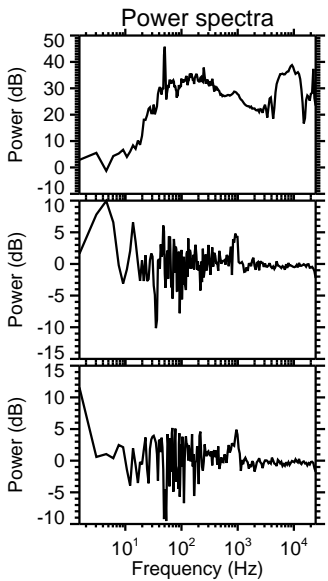
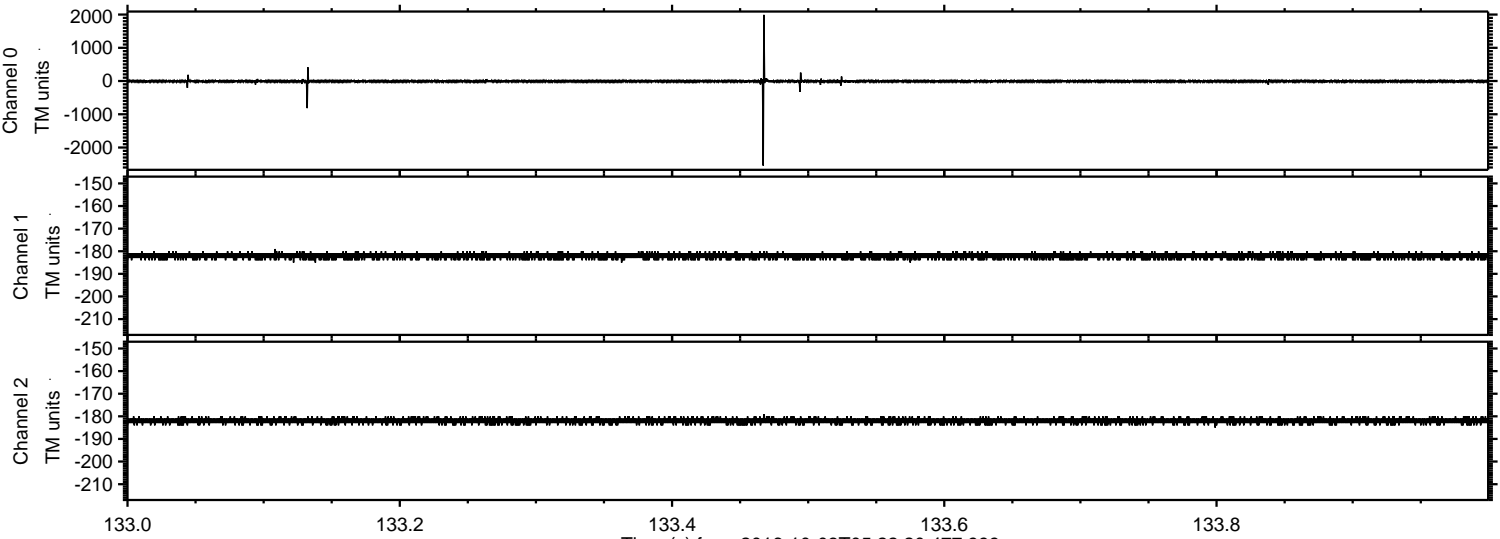
Processed Mon Oct 3 07:29:48 2016 by ELM ver.2012-10-06 from 001\_\_elm20161003\_052219\_\_dat00.bin





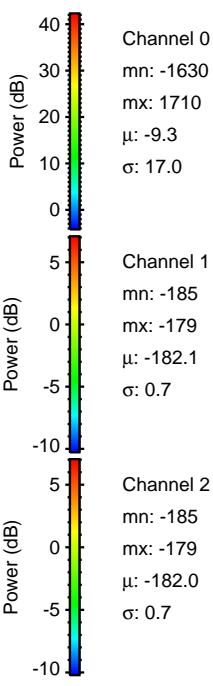
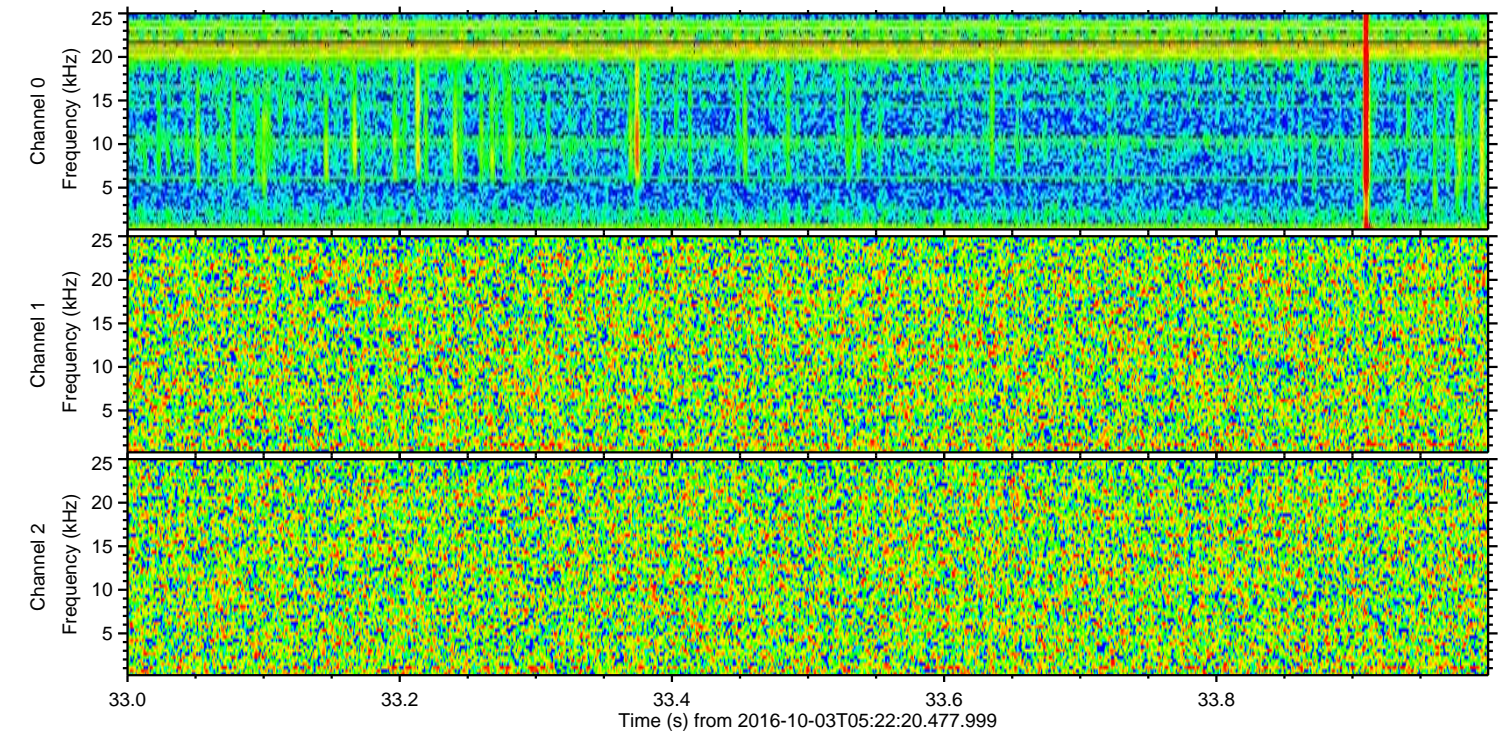
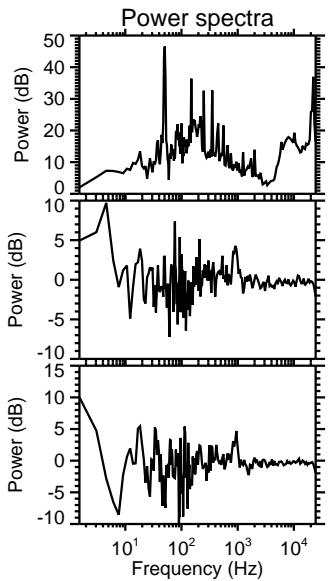
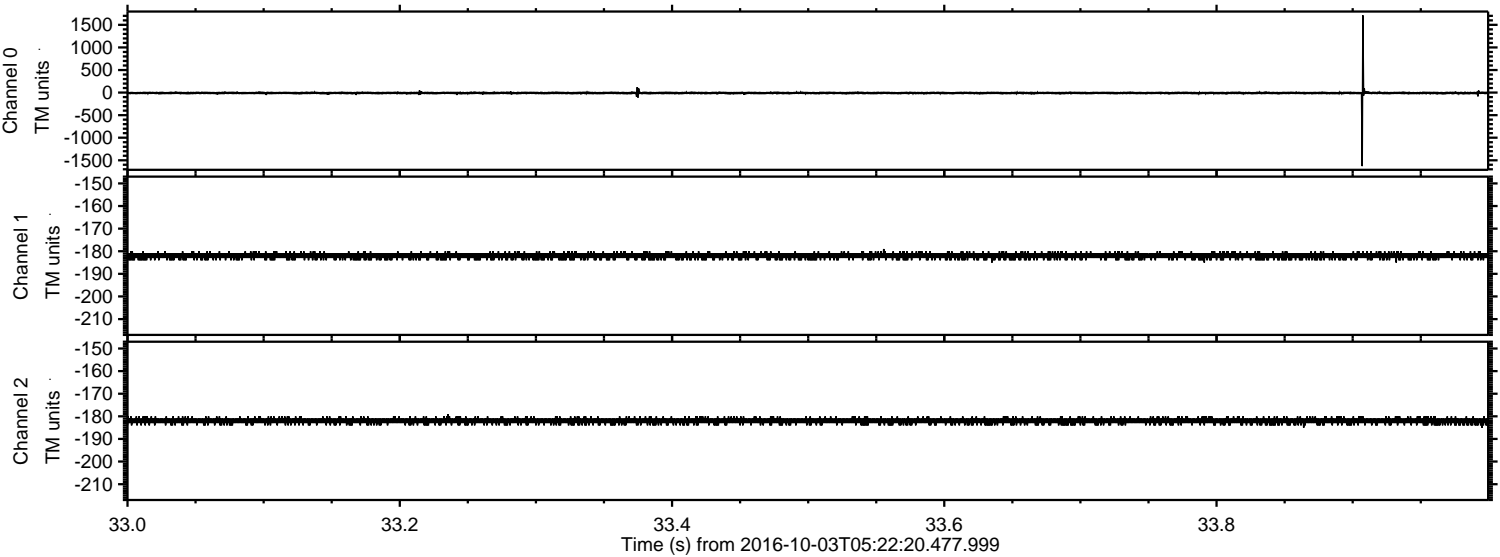
ELMAVAN 3D WAVEFORMS (Measured data sampled at 50 kHz) 51000 packets of 144 samples from 2016-10-03T05:22:20.477.999. Part 134/147

Processed Mon Oct 3 07:29:49 2016 by ELM ver.2012-10-06 from 001\_\_elm20161003\_052219\_\_dat00.bin





Processed Mon Oct 3 07:29:50 2016 by ELM ver.2012-10-06 from 001\_\_elm20161003\_052219\_\_dat00.bin



Channel 0  
mn: -1630  
mx: 1710  
 $\mu$ : -9.3  
 $\sigma$ : 17.0

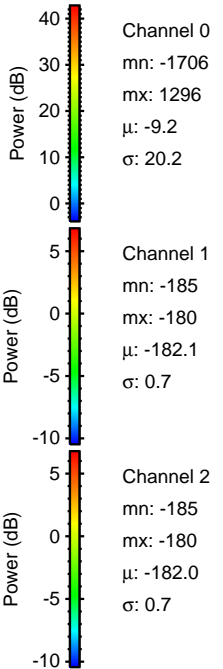
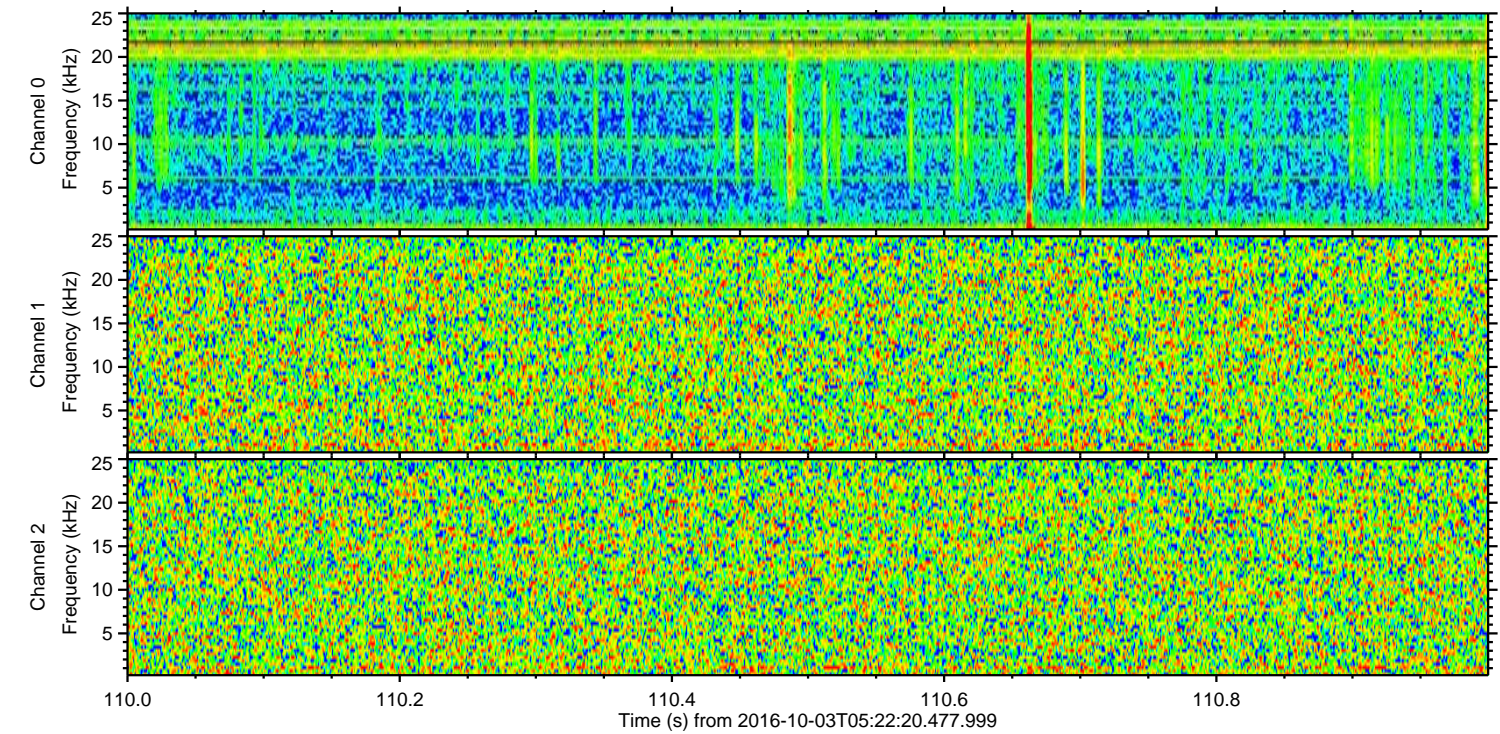
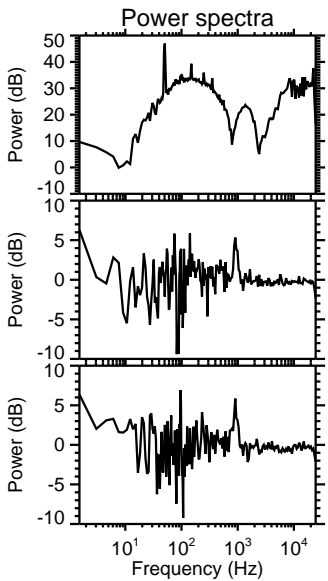
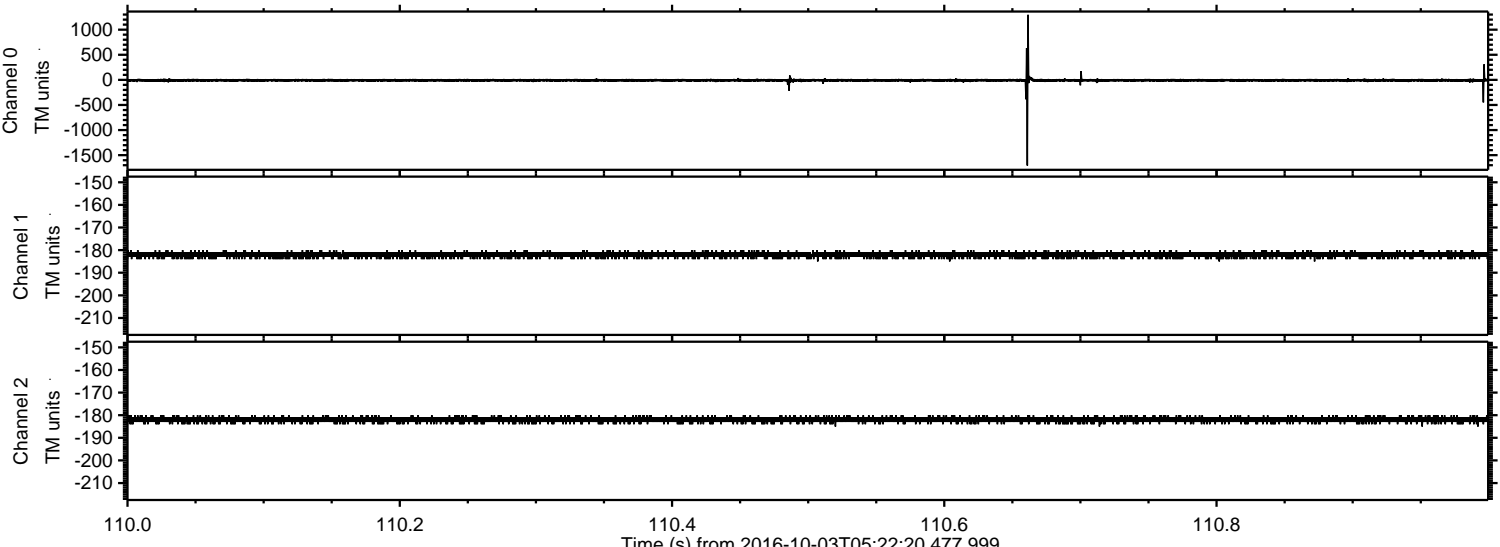
Channel 1  
mn: -185  
mx: -179  
 $\mu$ : -182.1  
 $\sigma$ : 0.7

Channel 2  
mn: -185  
mx: -179  
 $\mu$ : -182.0  
 $\sigma$ : 0.7



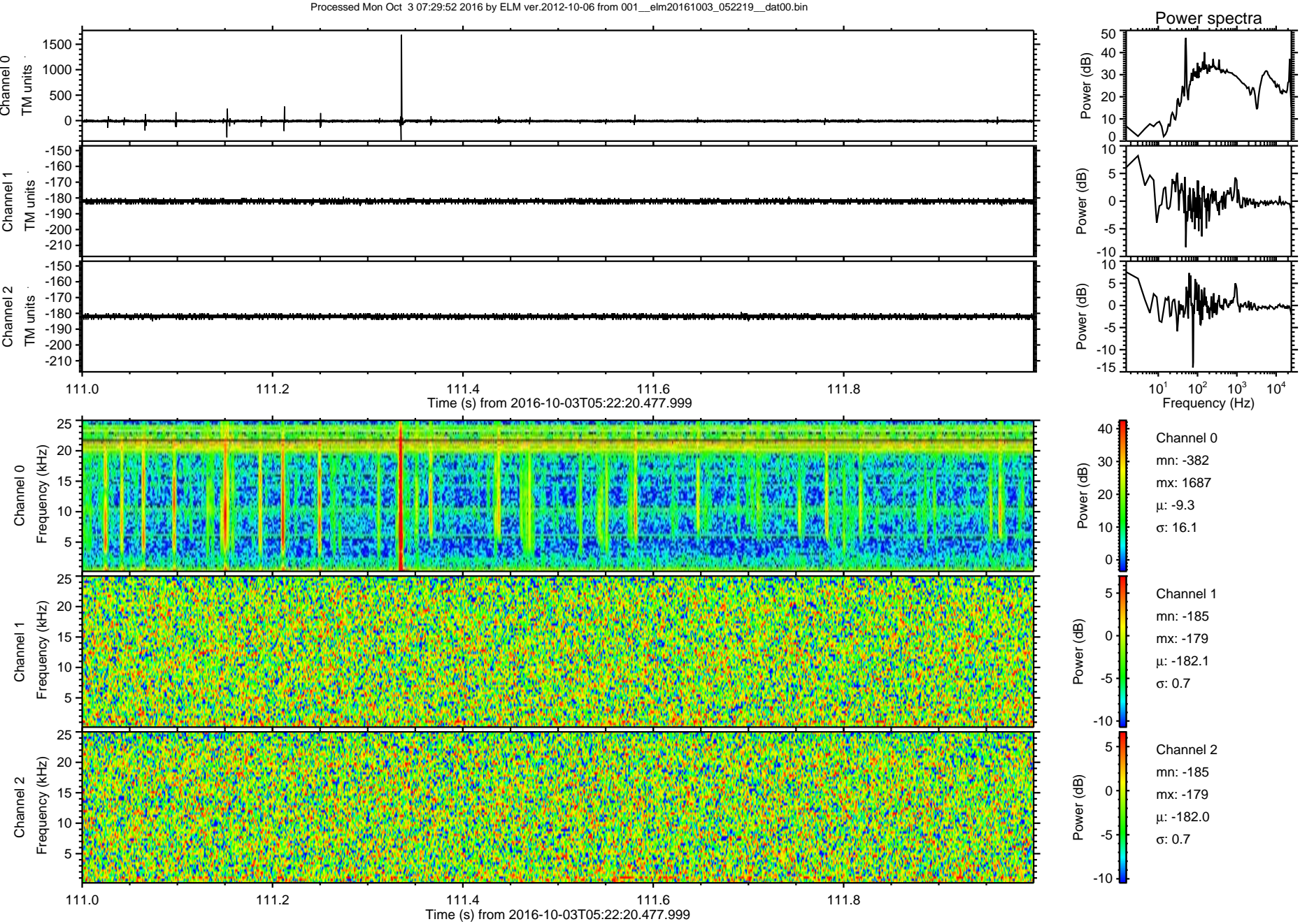
ELMAVAN 3D WAVEFORMS (Measured data sampled at 50 kHz) 51000 packets of 144 samples from 2016-10-03T05:22:20.477.999. Part 111/147

Processed Mon Oct 3 07:29:51 2016 by ELM ver.2012-10-06 from 001\_\_elm20161003\_052219\_\_dat00.bin





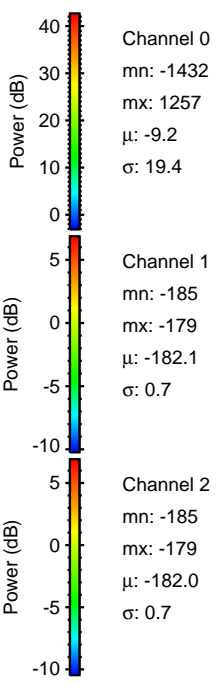
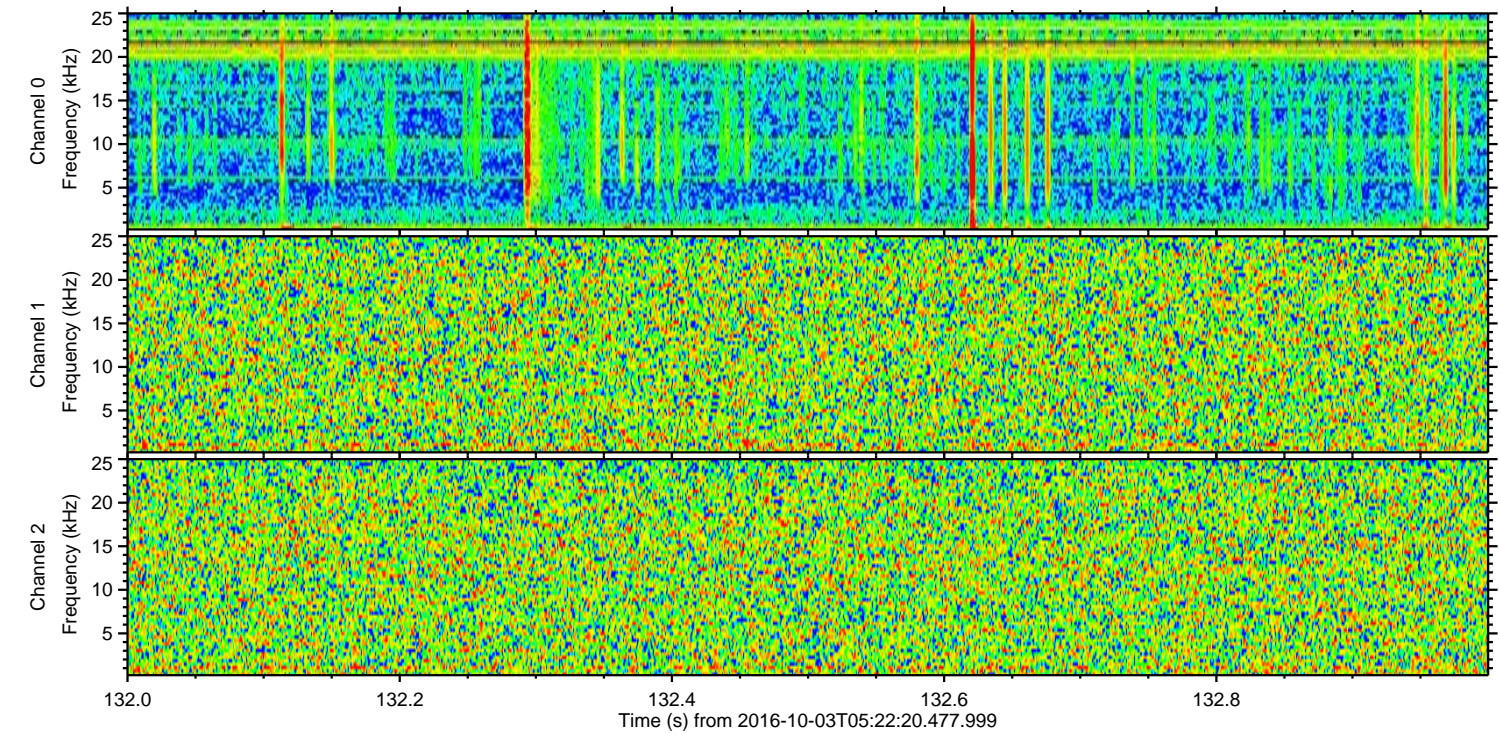
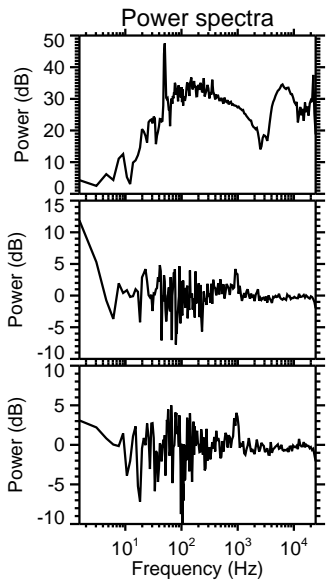
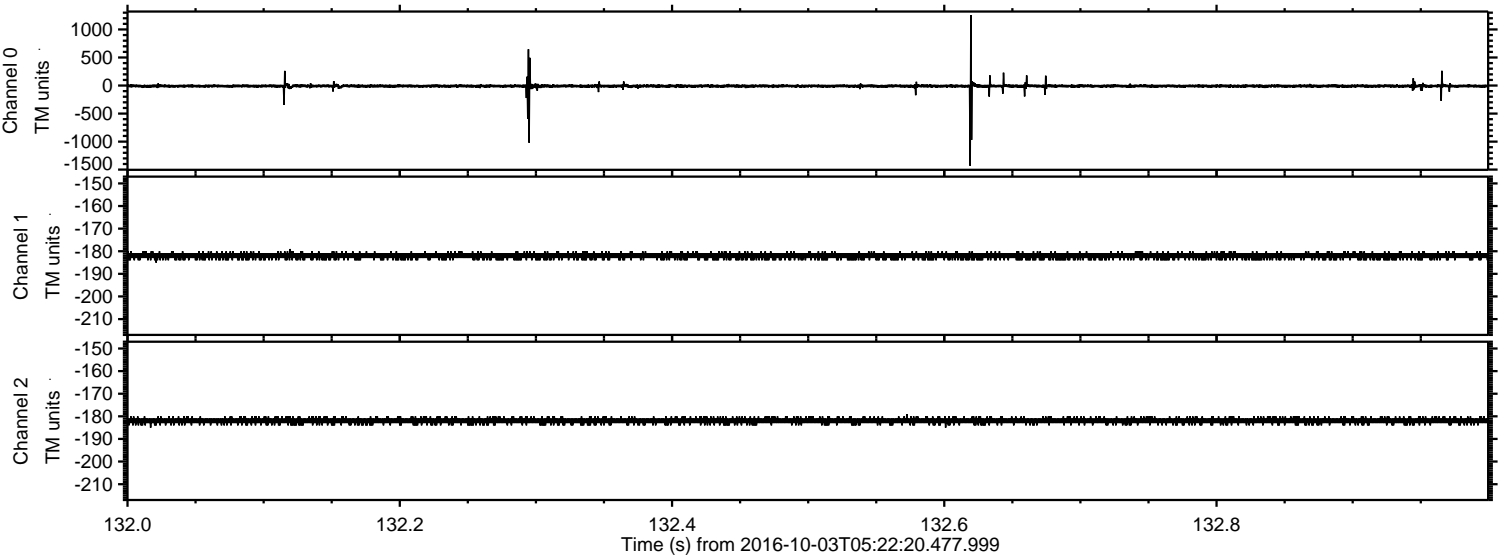
ELMAVAN 3D WAVEFORMS (Measured data sampled at 50 kHz) 51000 packets of 144 samples from 2016-10-03T05:22:20.477.999. Part 112/147





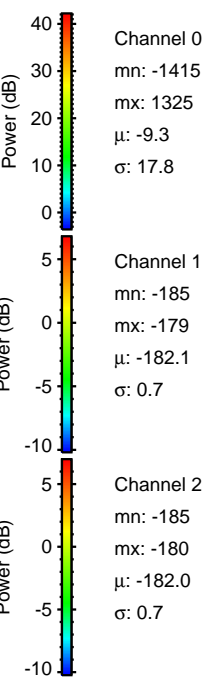
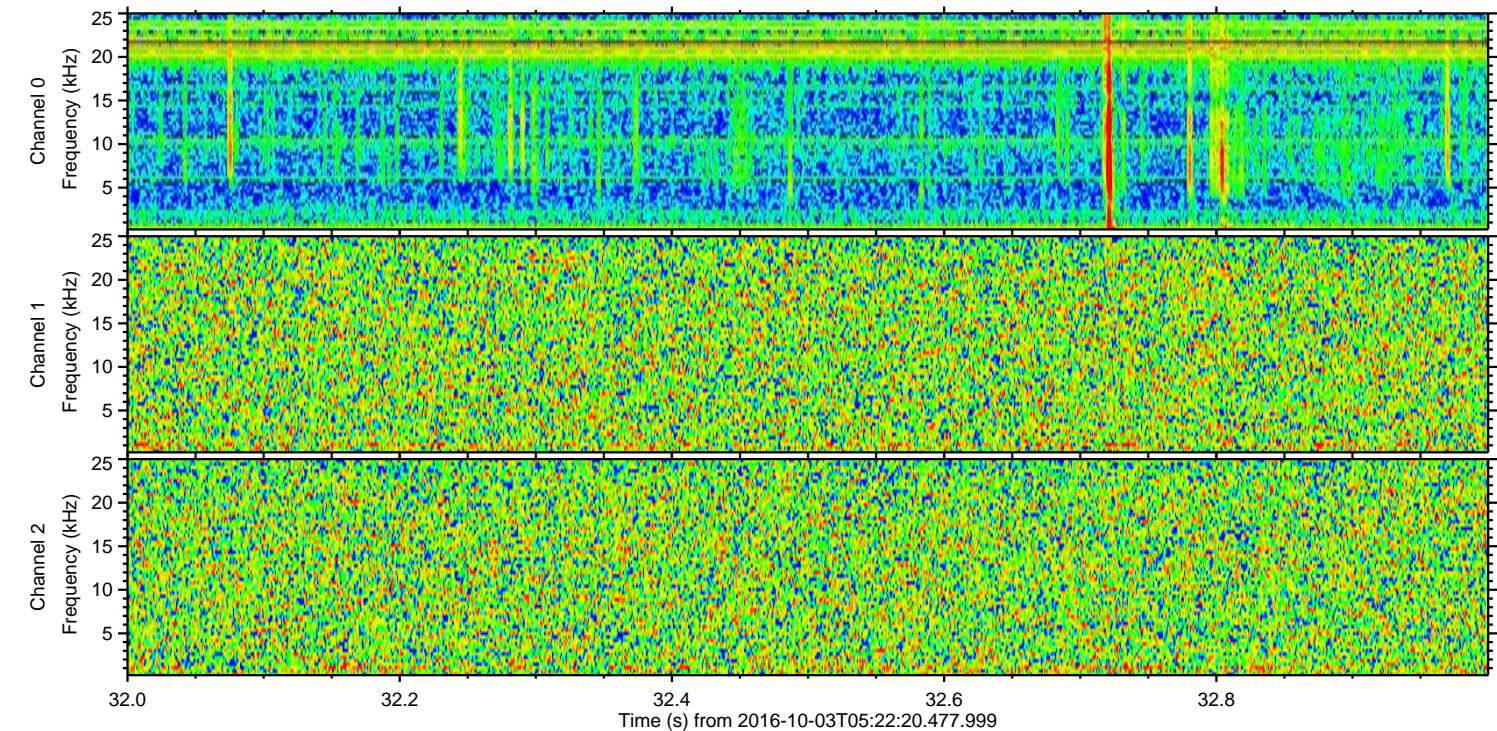
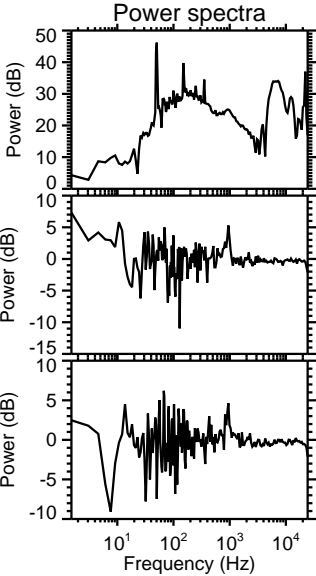
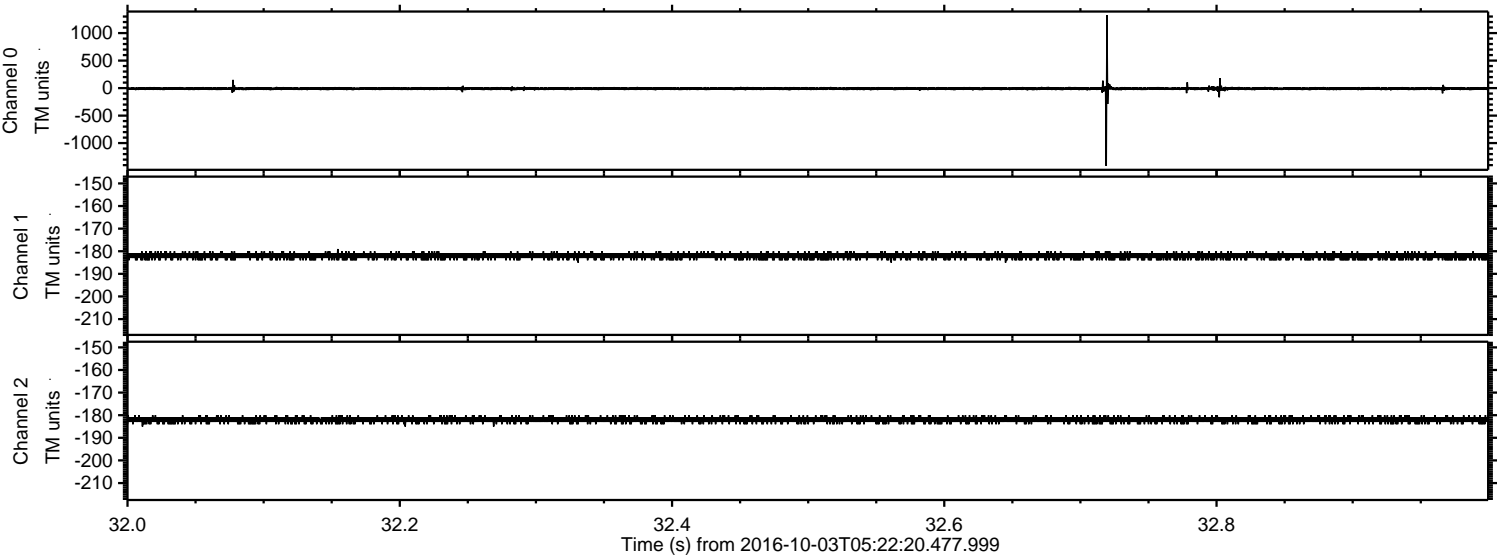
ELMAVAN 3D WAVEFORMS (Measured data sampled at 50 kHz) 51000 packets of 144 samples from 2016-10-03T05:22:20.477.999. Part 133/147

Processed Mon Oct 3 07:29:53 2016 by ELM ver.2012-10-06 from 001\_\_elm20161003\_052219\_\_dat00.bin





Processed Mon Oct 3 07:29:54 2016 by ELM ver.2012-10-06 from 001\_\_elm20161003\_052219\_\_dat00.bin





Processed Mon Oct 3 07:29:55 2016 by ELM ver.2012-10-06 from 001\_\_elm20161003\_052219\_\_dat00.bin

