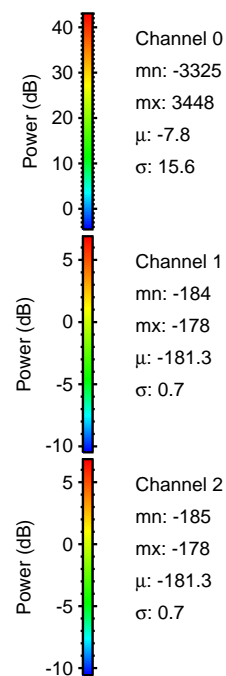
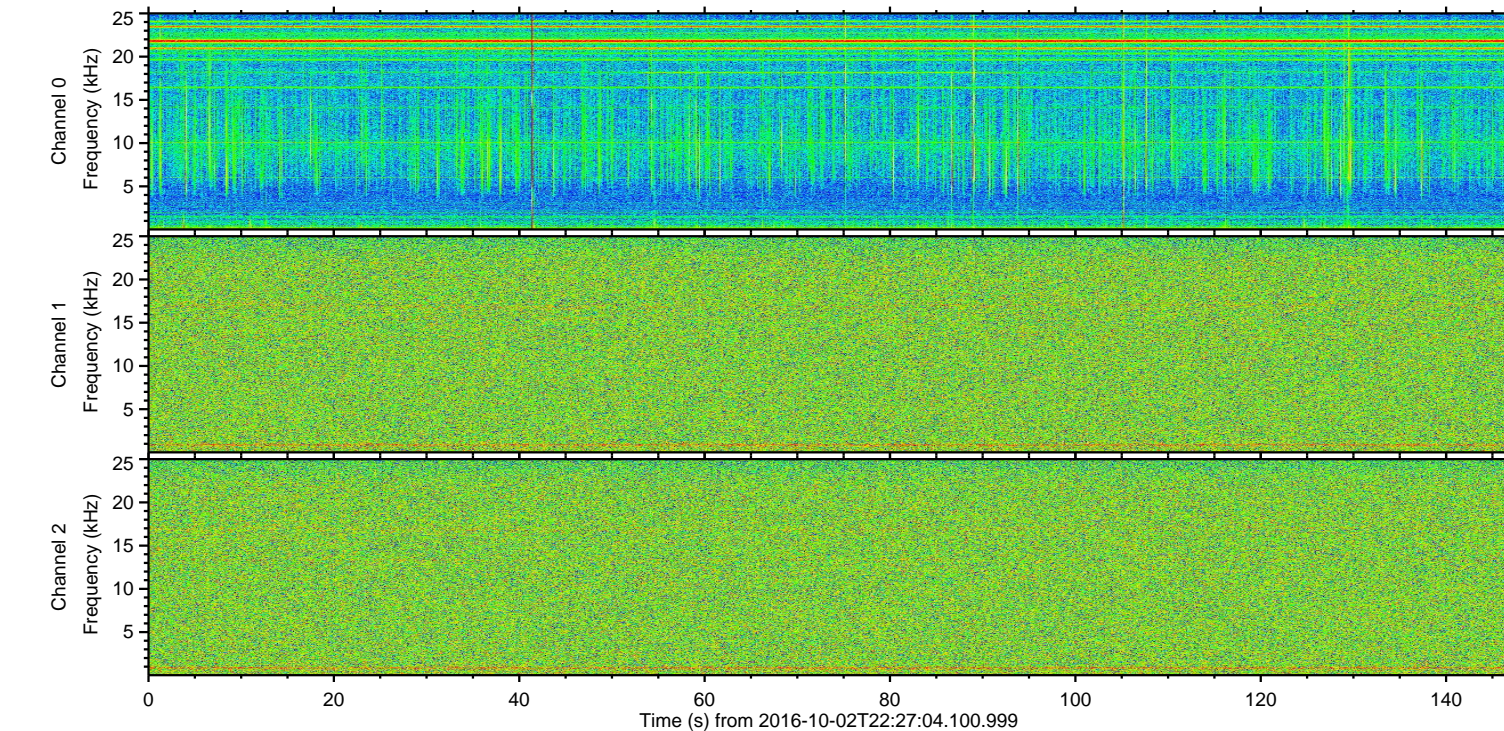
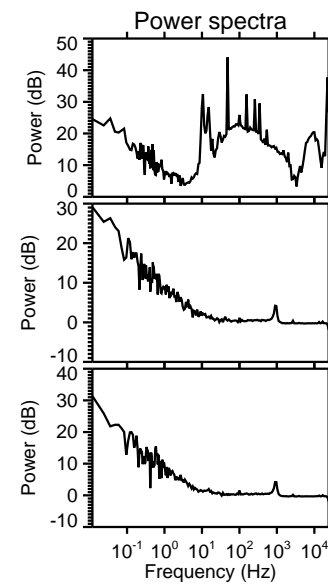
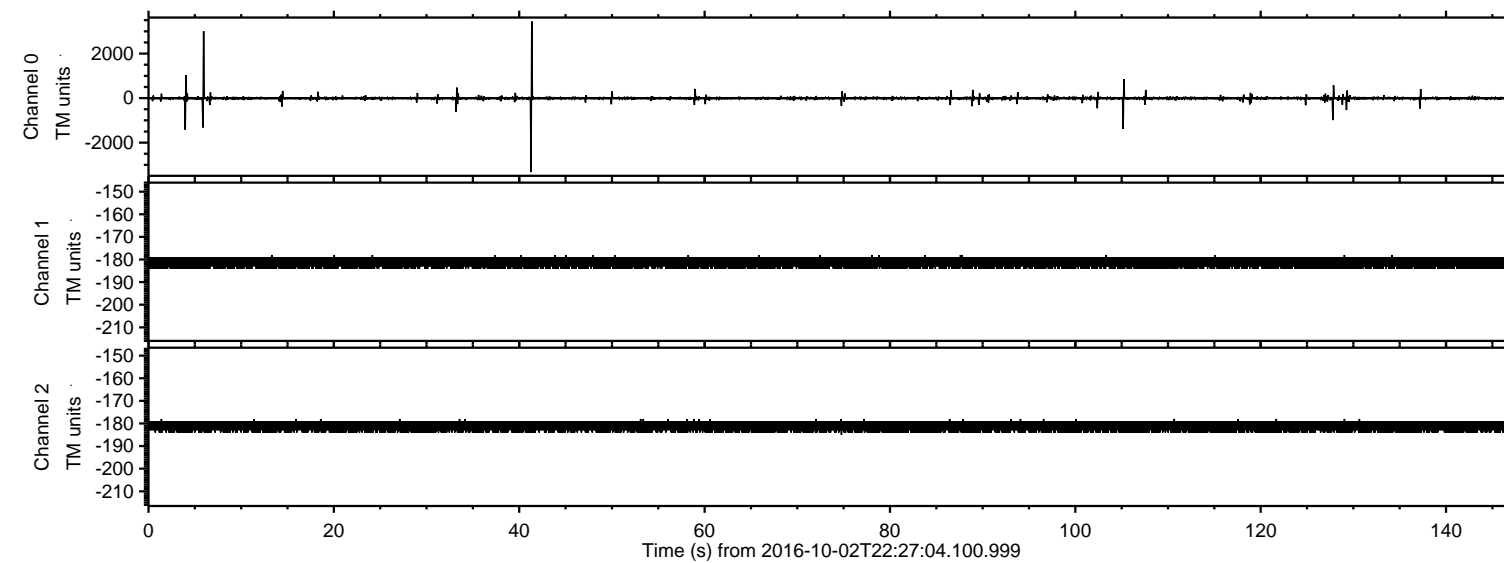
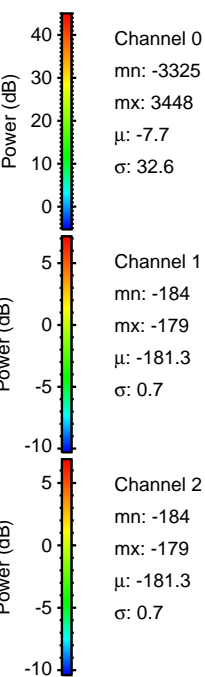
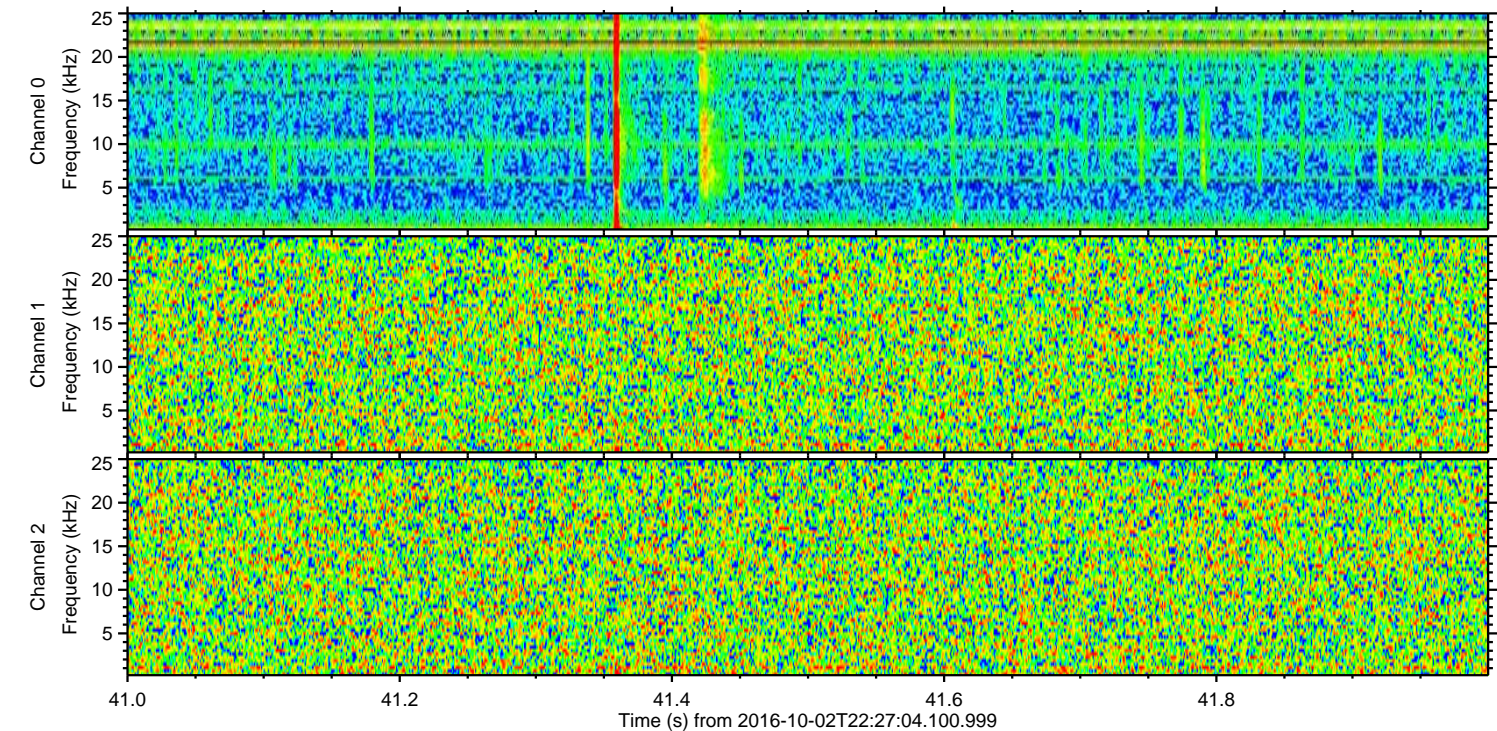
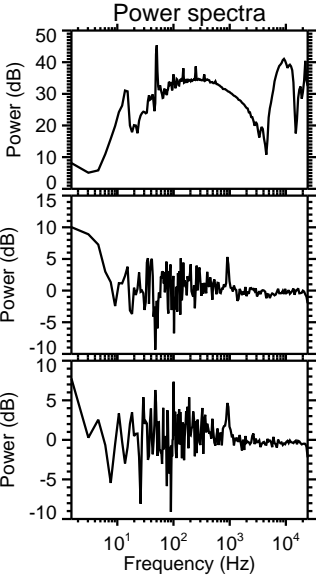
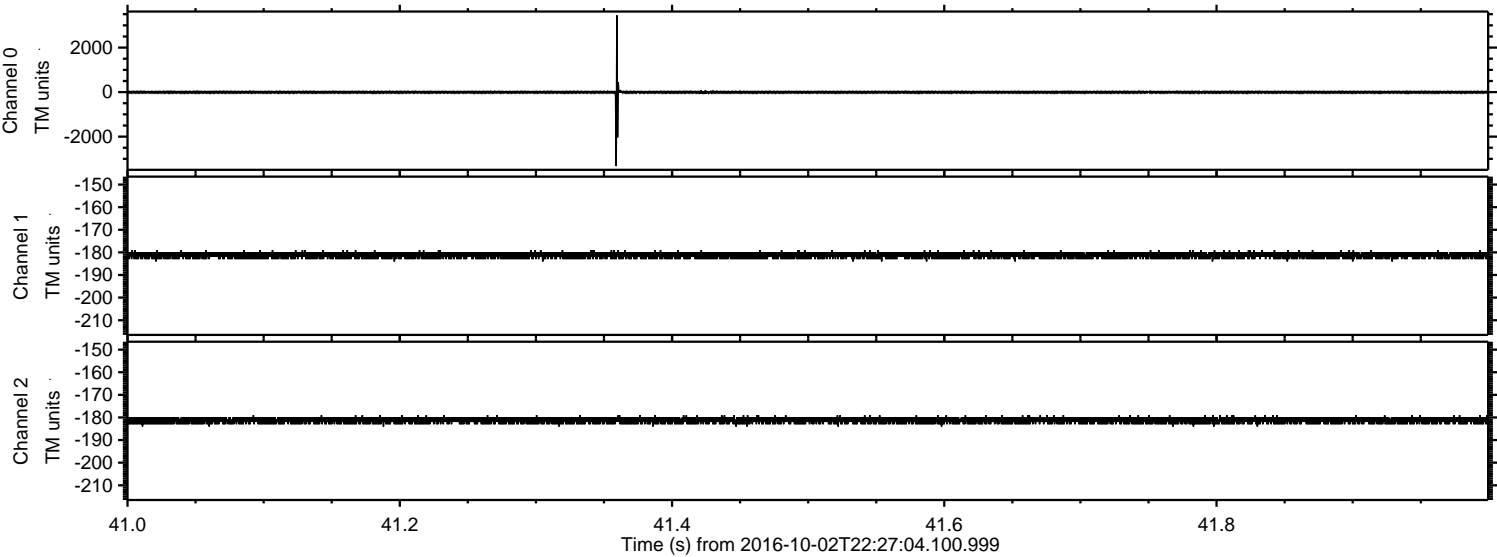


ELMAVAN 3D WAVEFORMS (Measured data sampled at 50 kHz) 51000 packets of 144 samples from 2016-10-02T22:27:04.100.999.

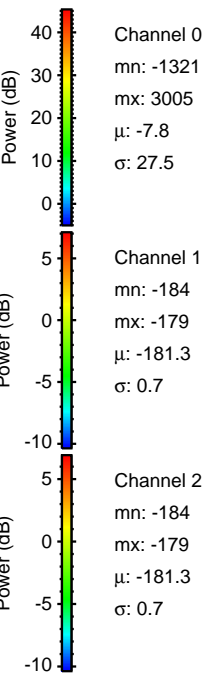
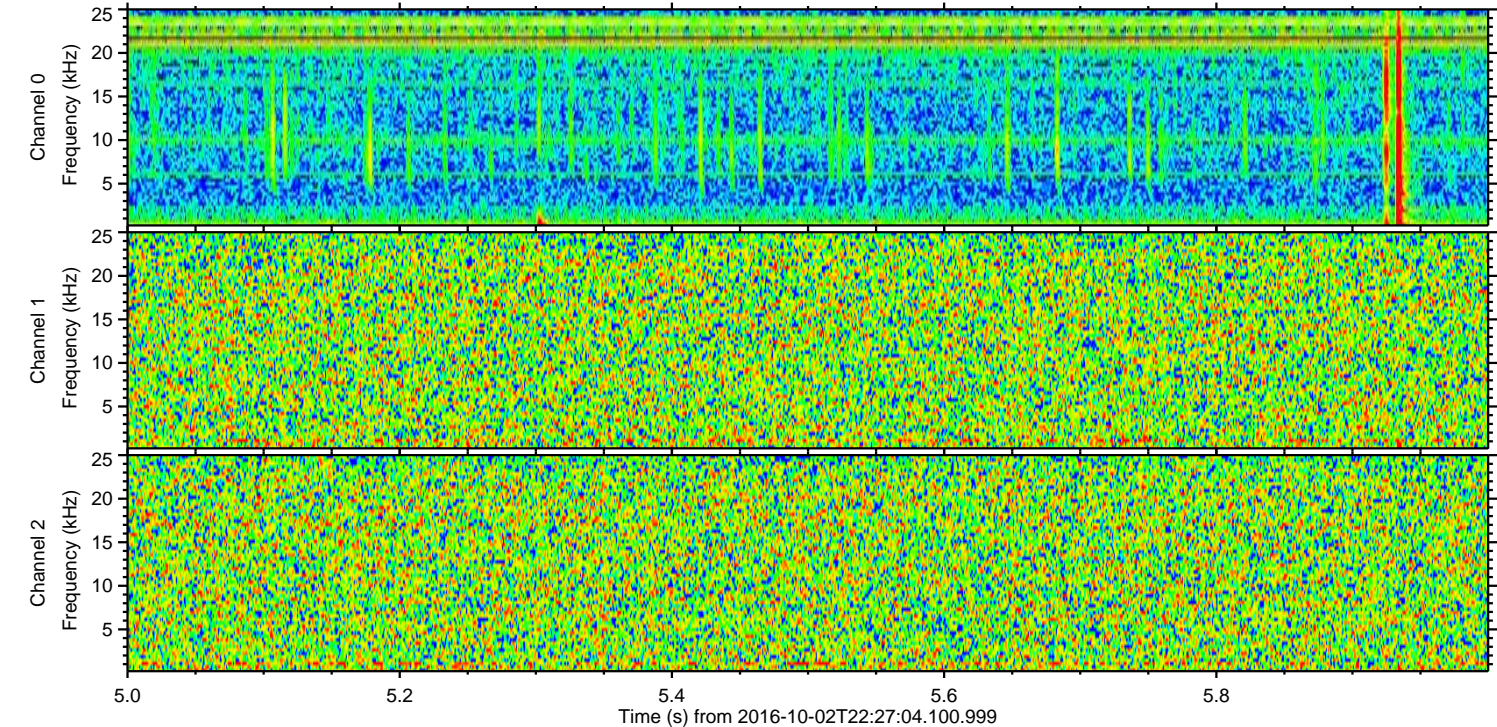
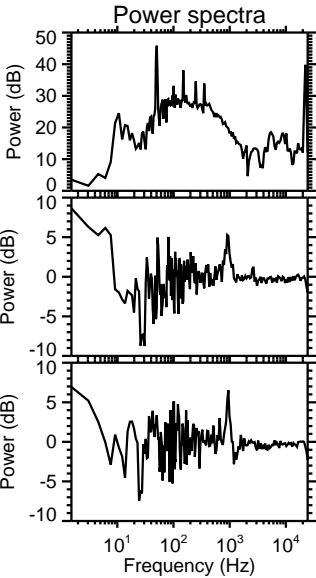
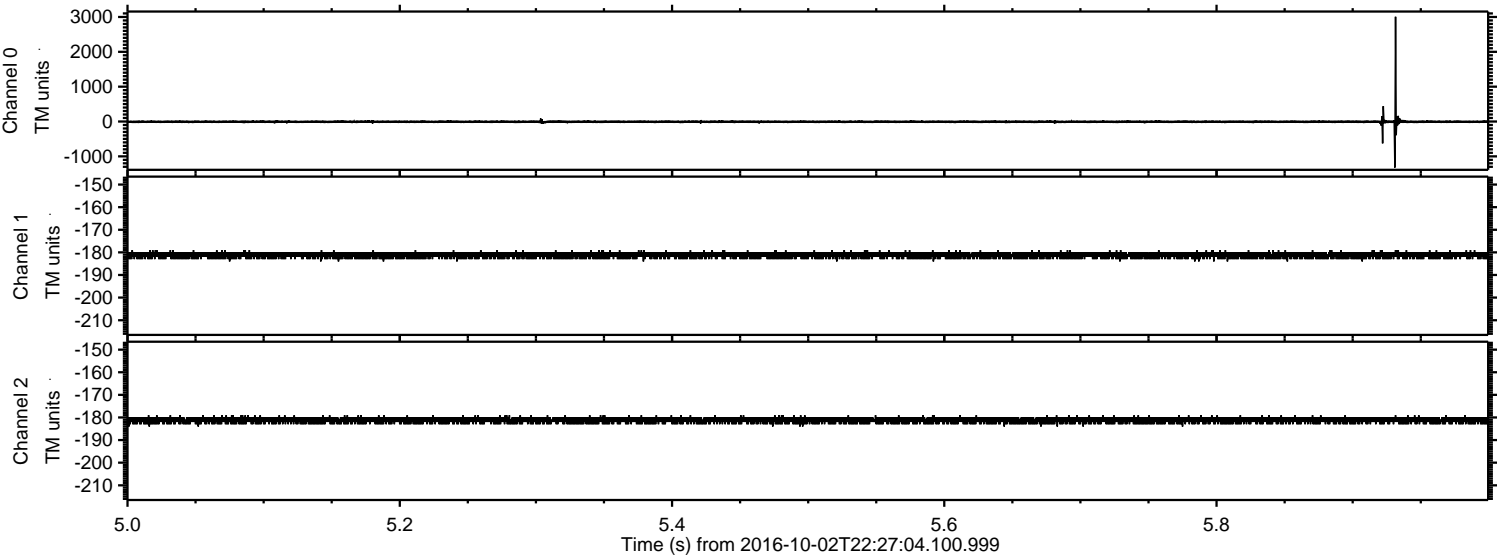
Processed Mon Oct 3 00:34:49 2016 by ELM ver.2012-10-06 from 001__elm20161002_222703__dat00.bin



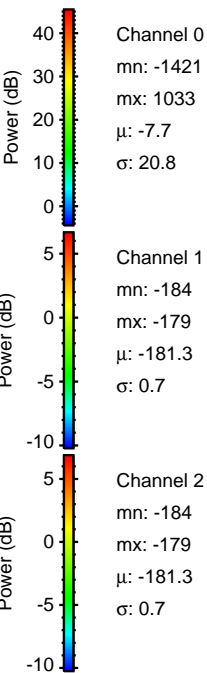
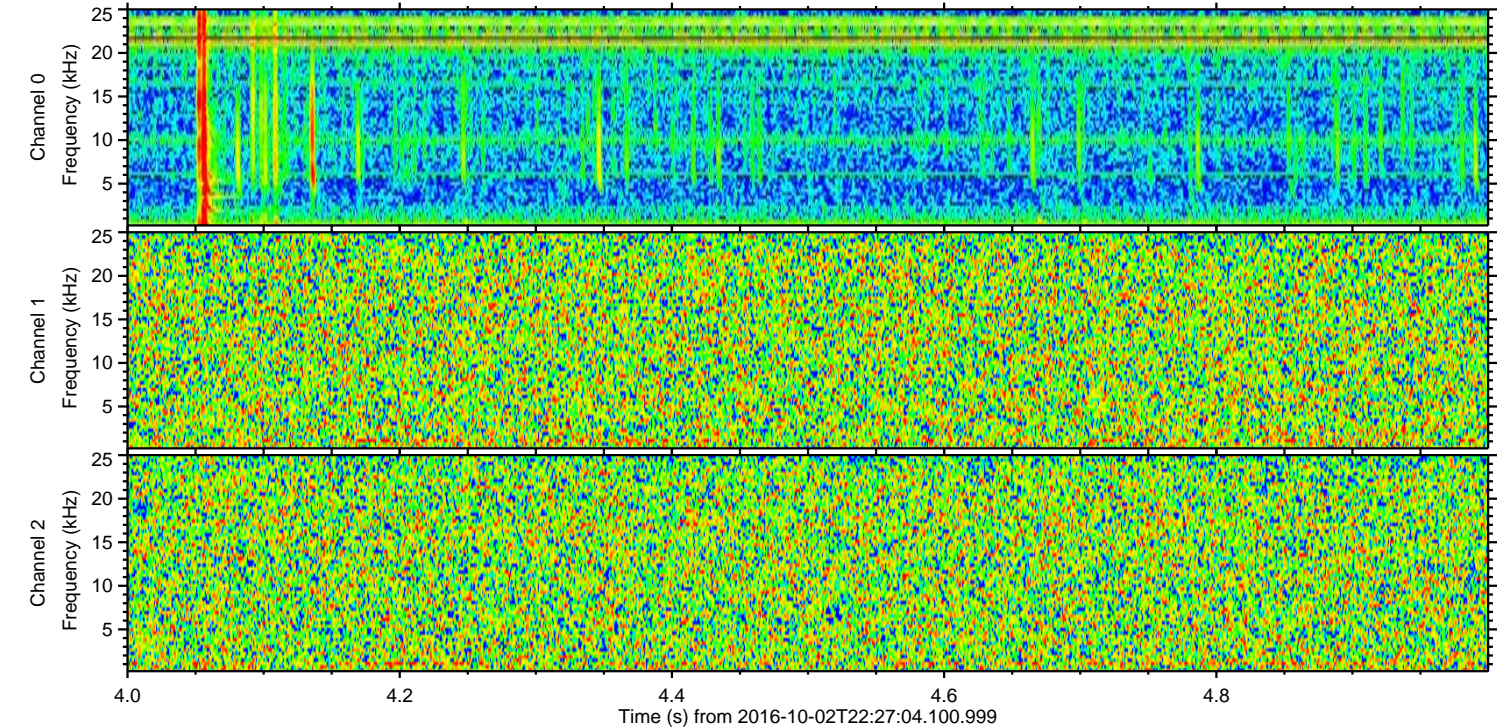
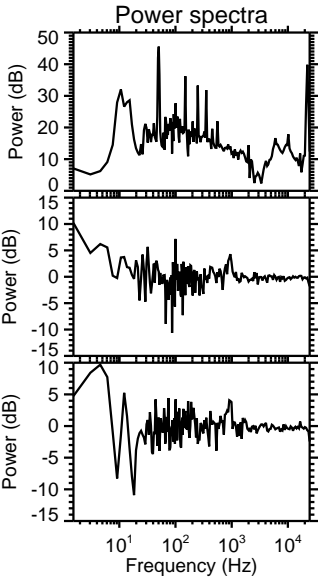
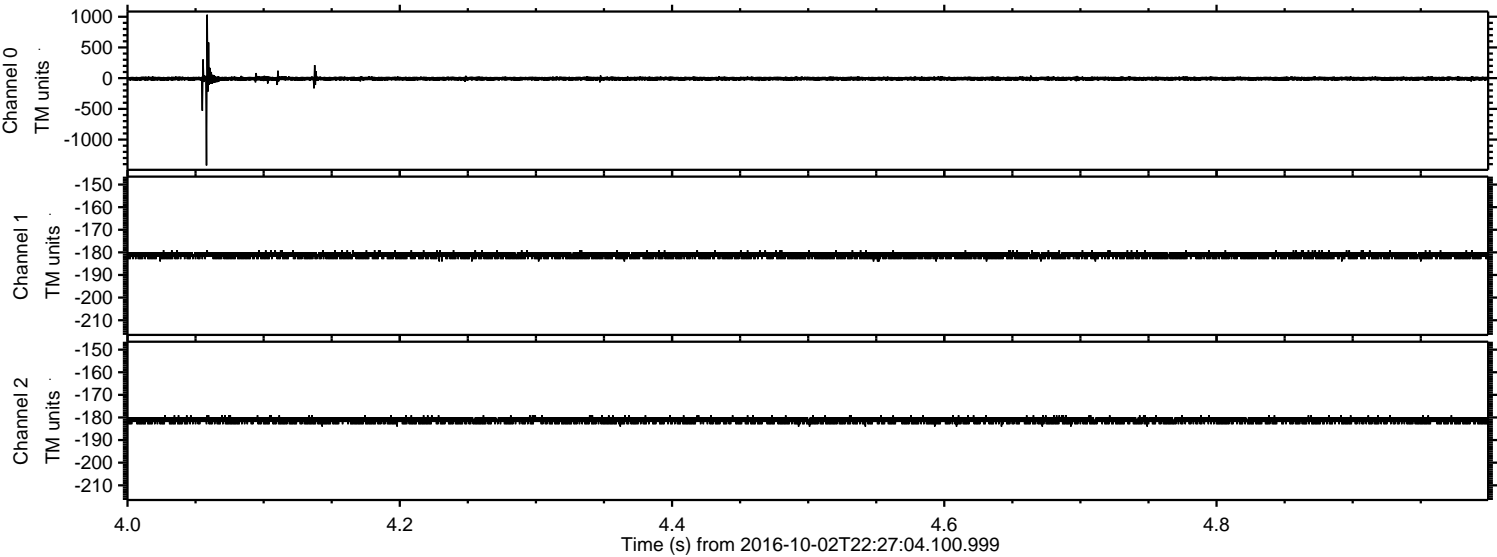
Processed Mon Oct 3 00:35:01 2016 by ELM ver.2012-10-06 from 001__elm20161002_222703__dat00.bin



Processed Mon Oct 3 00:35:02 2016 by ELM ver.2012-10-06 from 001__elm20161002_222703__dat00.bin

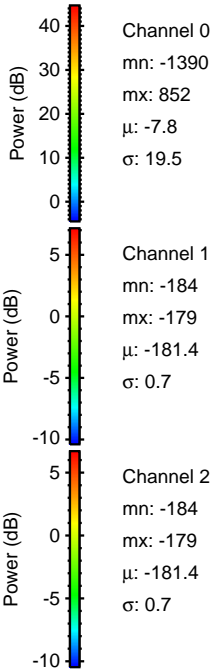
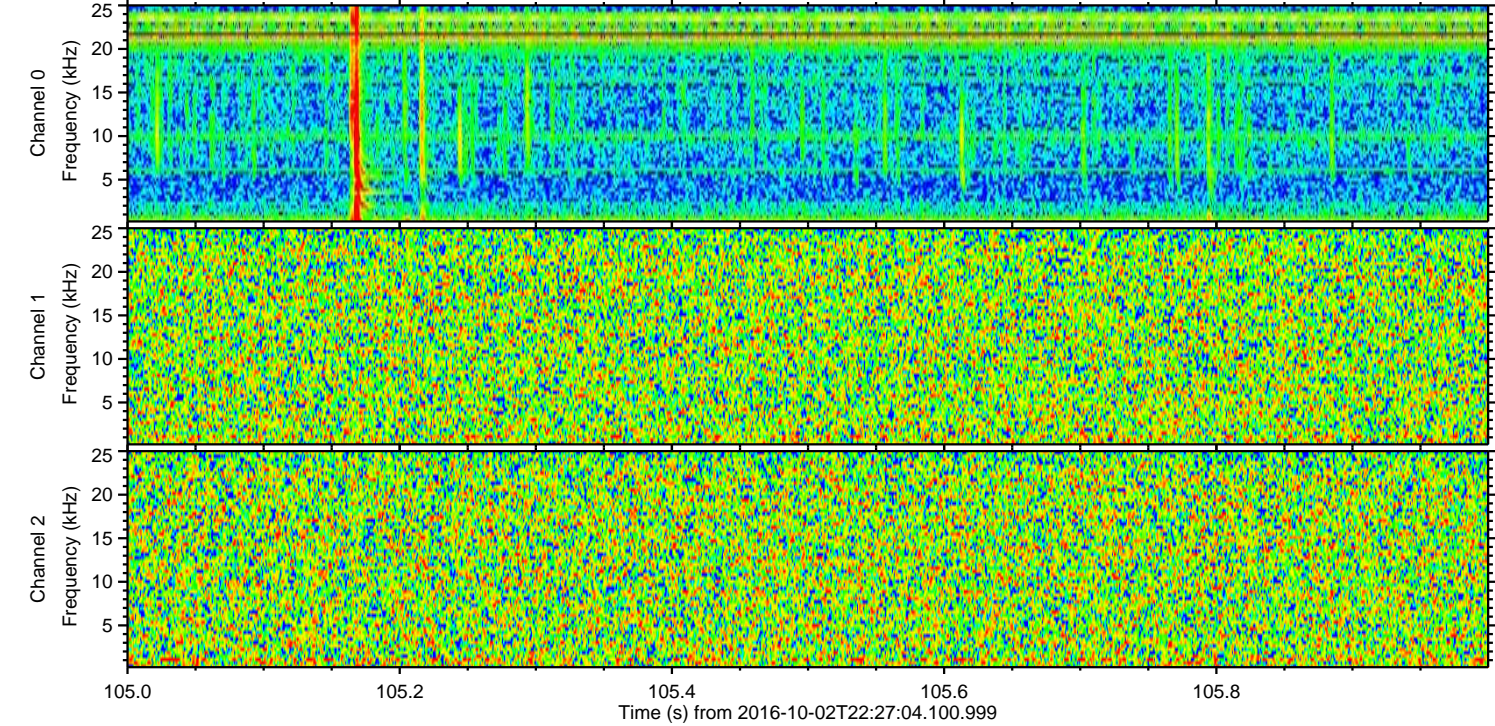
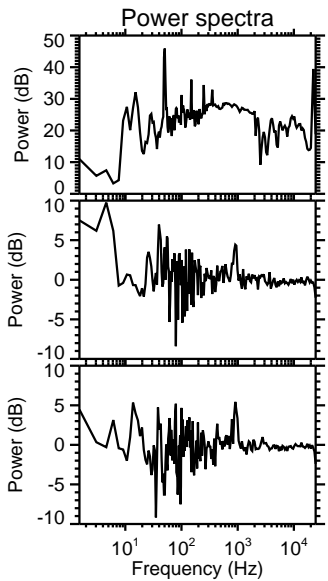
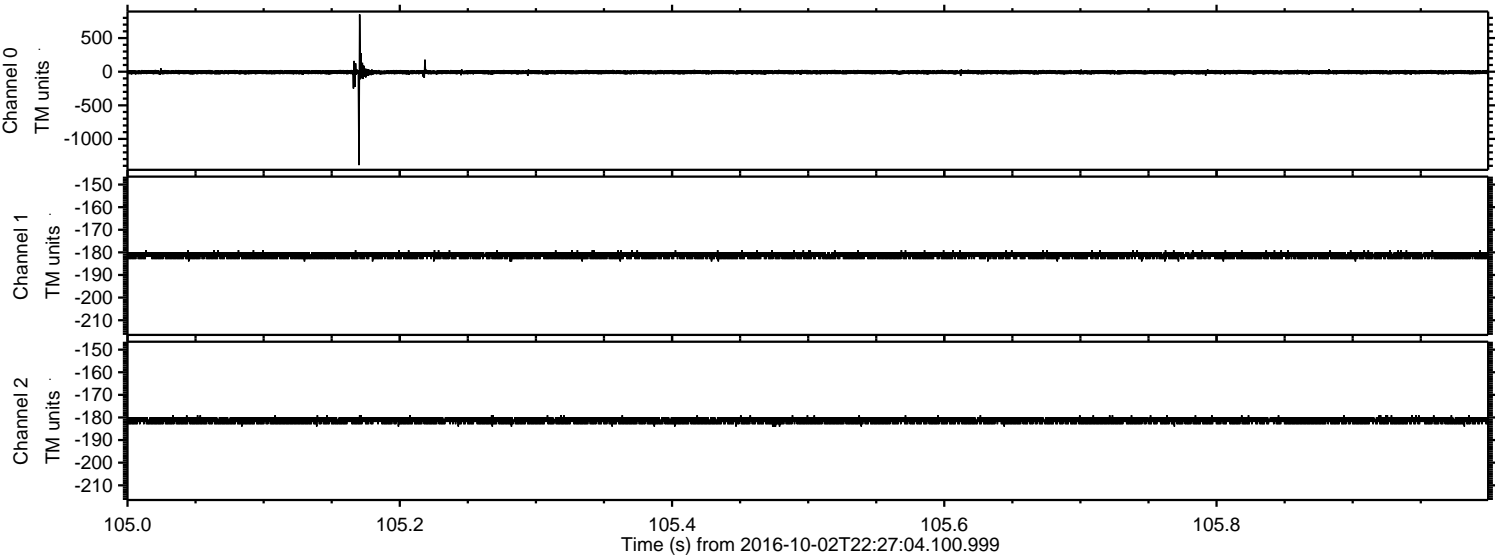


Processed Mon Oct 3 00:35:03 2016 by ELM ver.2012-10-06 from 001__elm20161002_222703__dat00.bin



ELMAVAN 3D WAVEFORMS (Measured data sampled at 50 kHz) 51000 packets of 144 samples from 2016-10-02T22:27:04.100.999. Part 106/147

Processed Mon Oct 3 00:35:04 2016 by ELM ver.2012-10-06 from 001__elm20161002_222703__dat00.bin

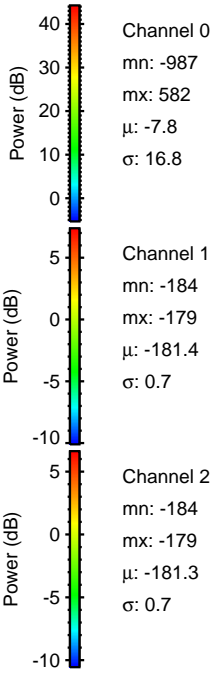
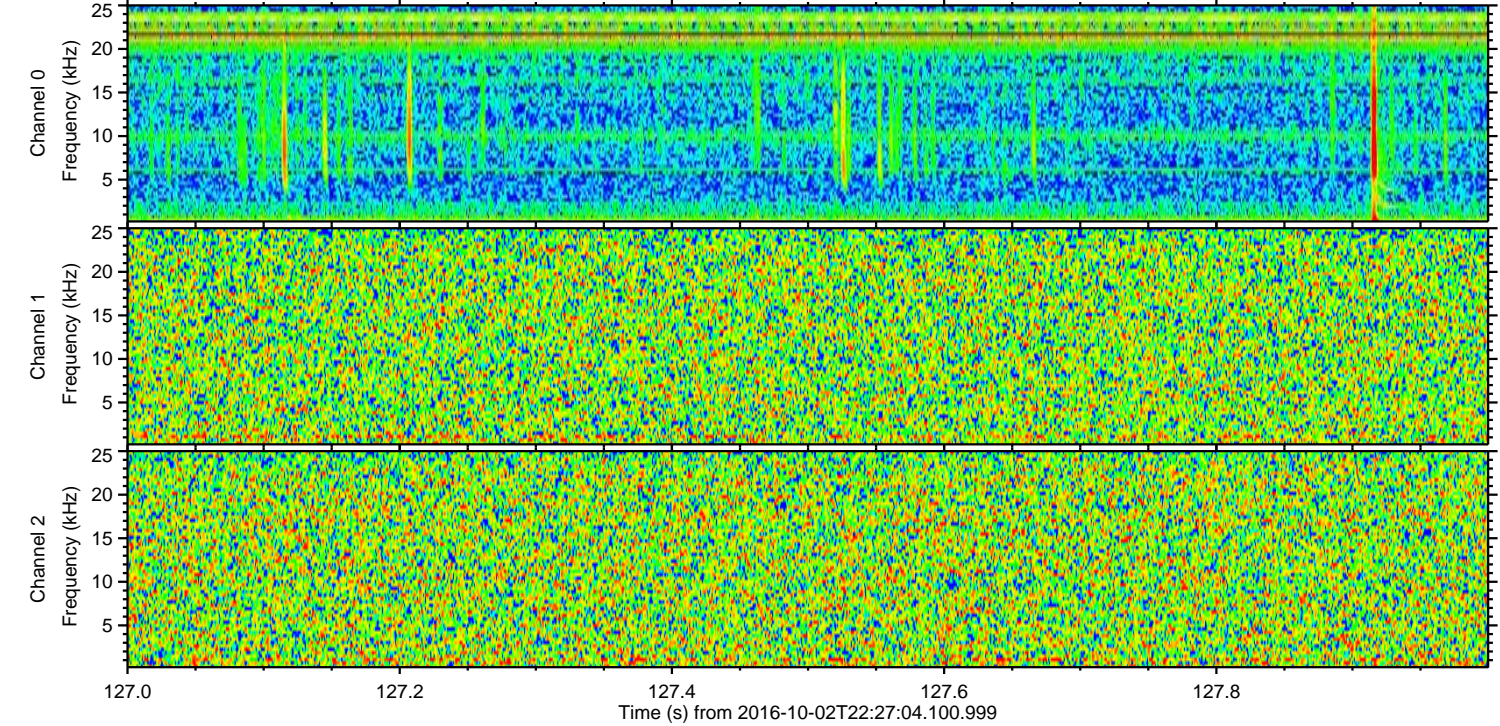
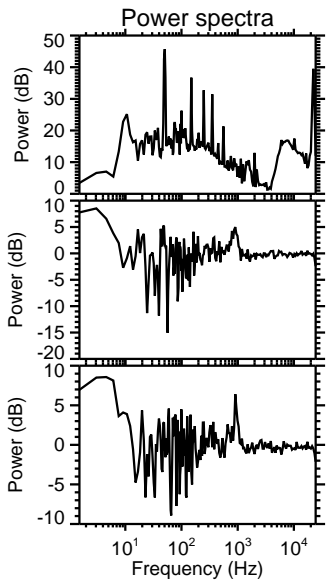
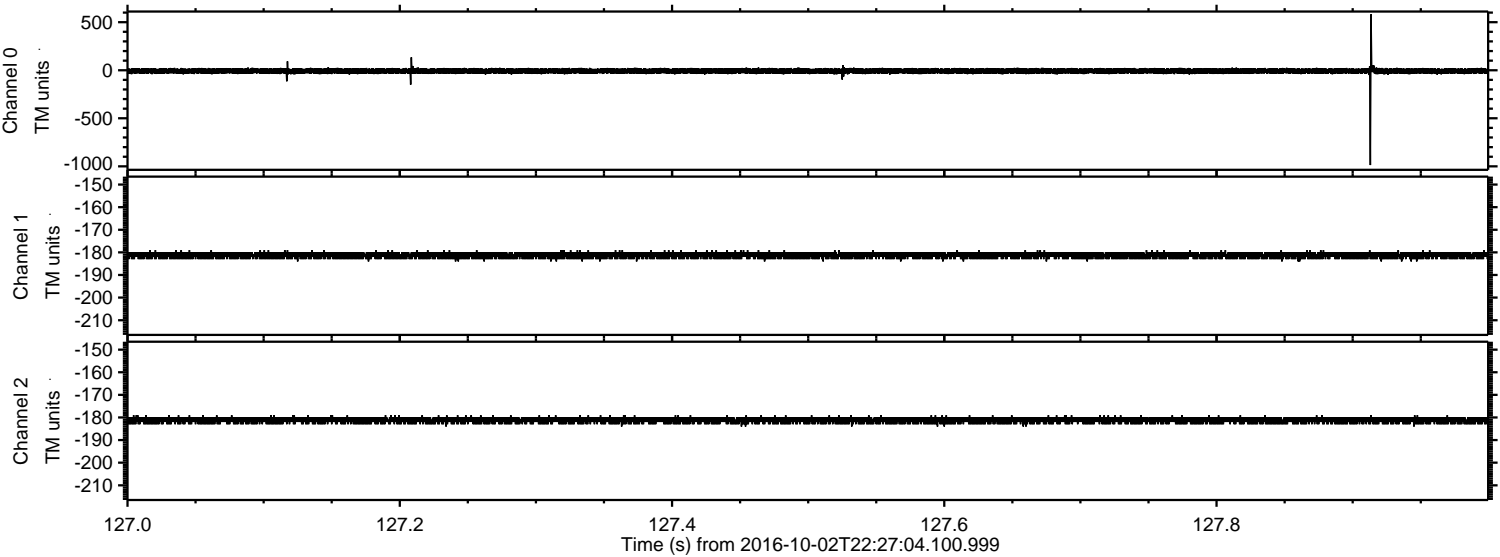


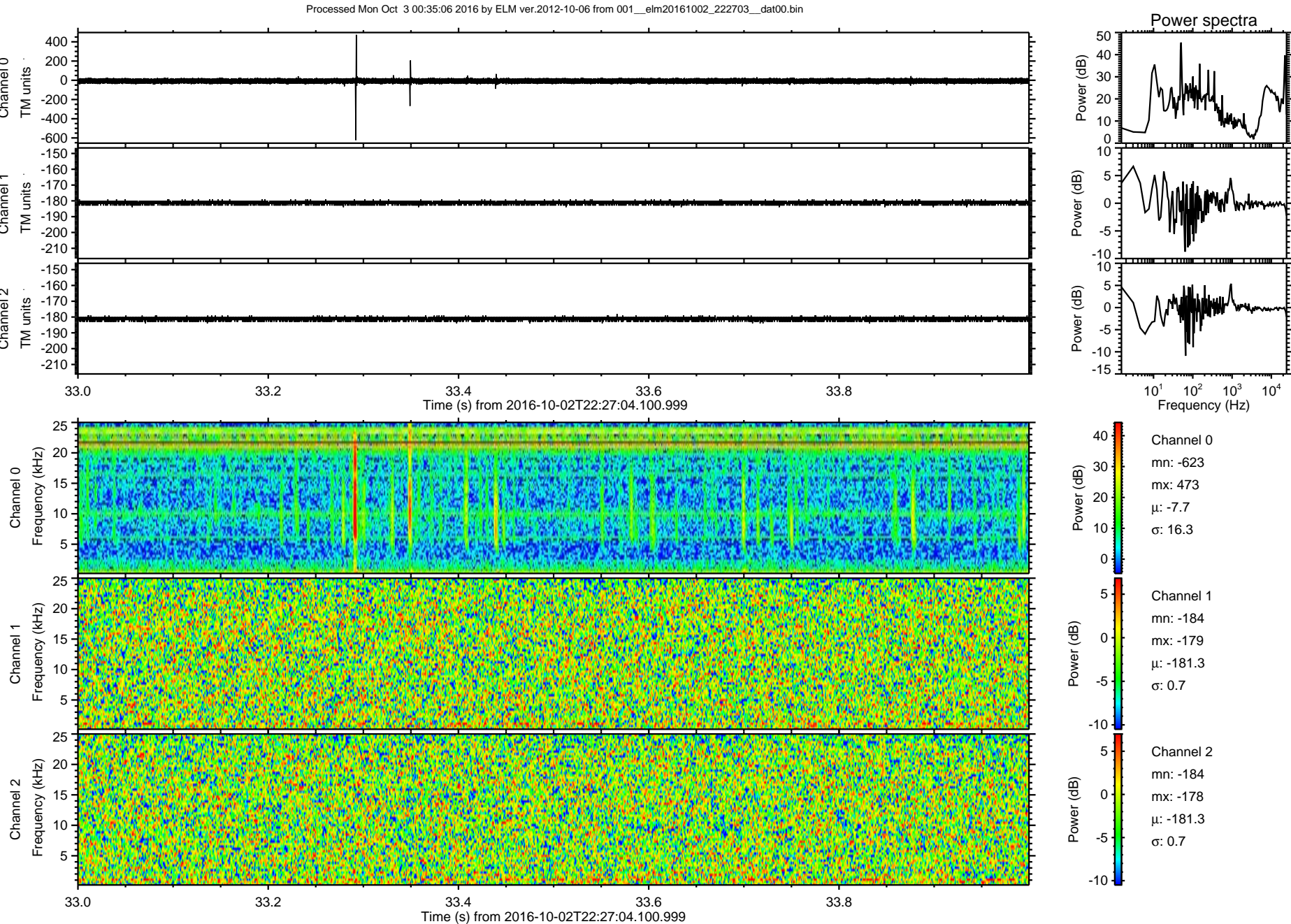
Channel 0
mn: -1390
mx: 852
 μ : -7.8
 σ : 19.5

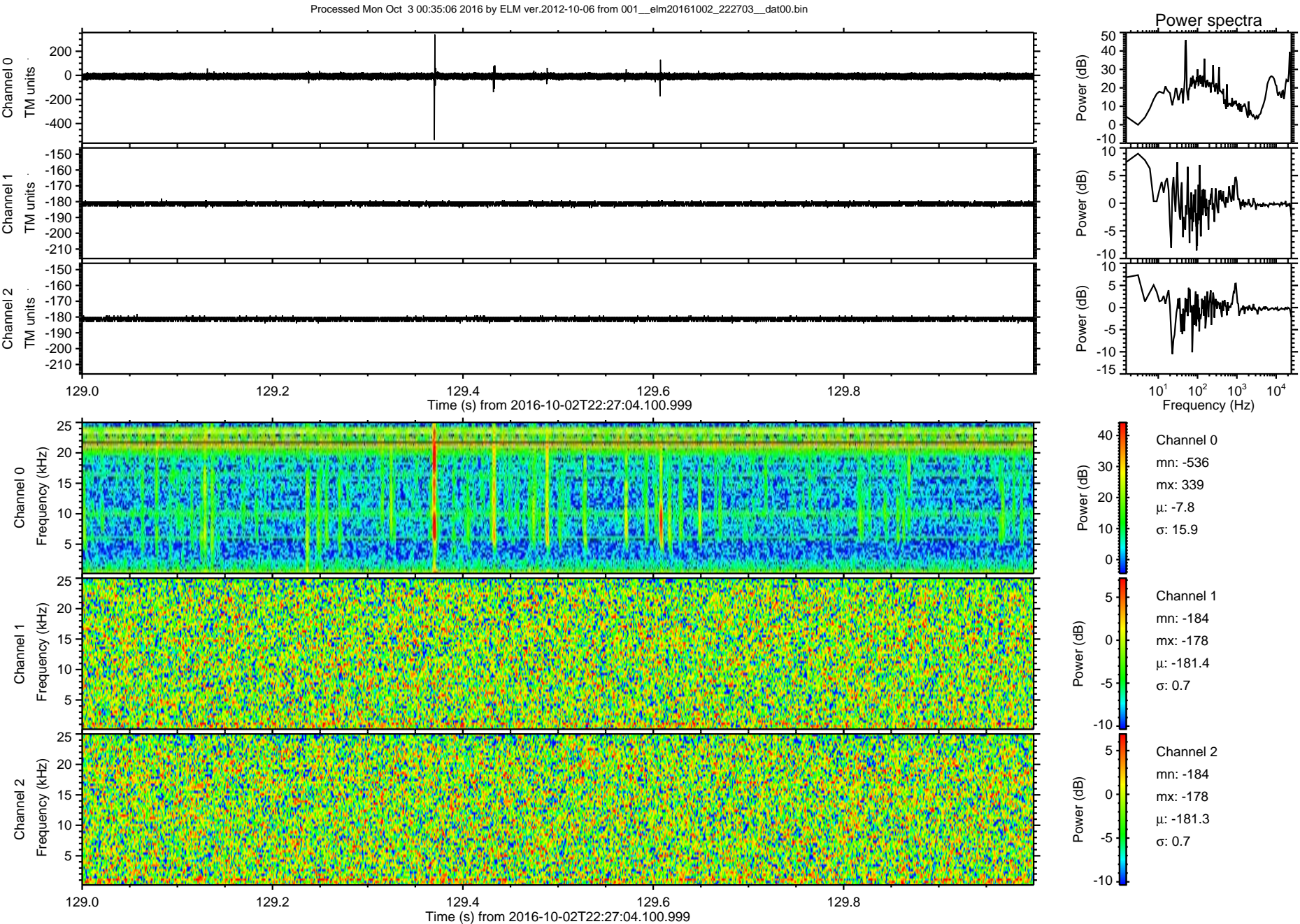
Channel 1
mn: -184
mx: -179
 μ : -181.4
 σ : 0.7

Channel 2
mn: -184
mx: -179
 μ : -181.4
 σ : 0.7

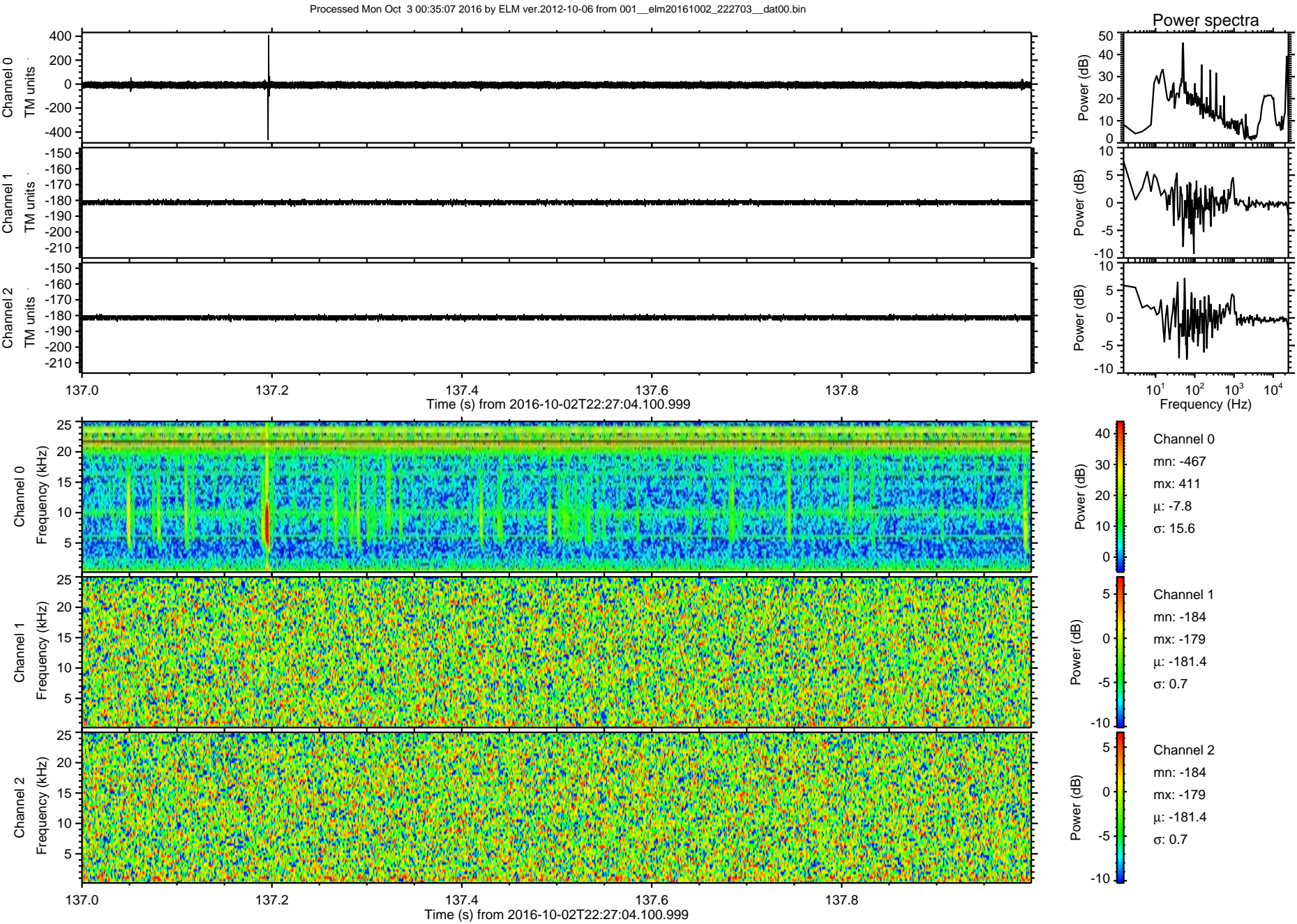
Processed Mon Oct 3 00:35:05 2016 by ELM ver.2012-10-06 from 001__elm20161002_222703__dat00.bin



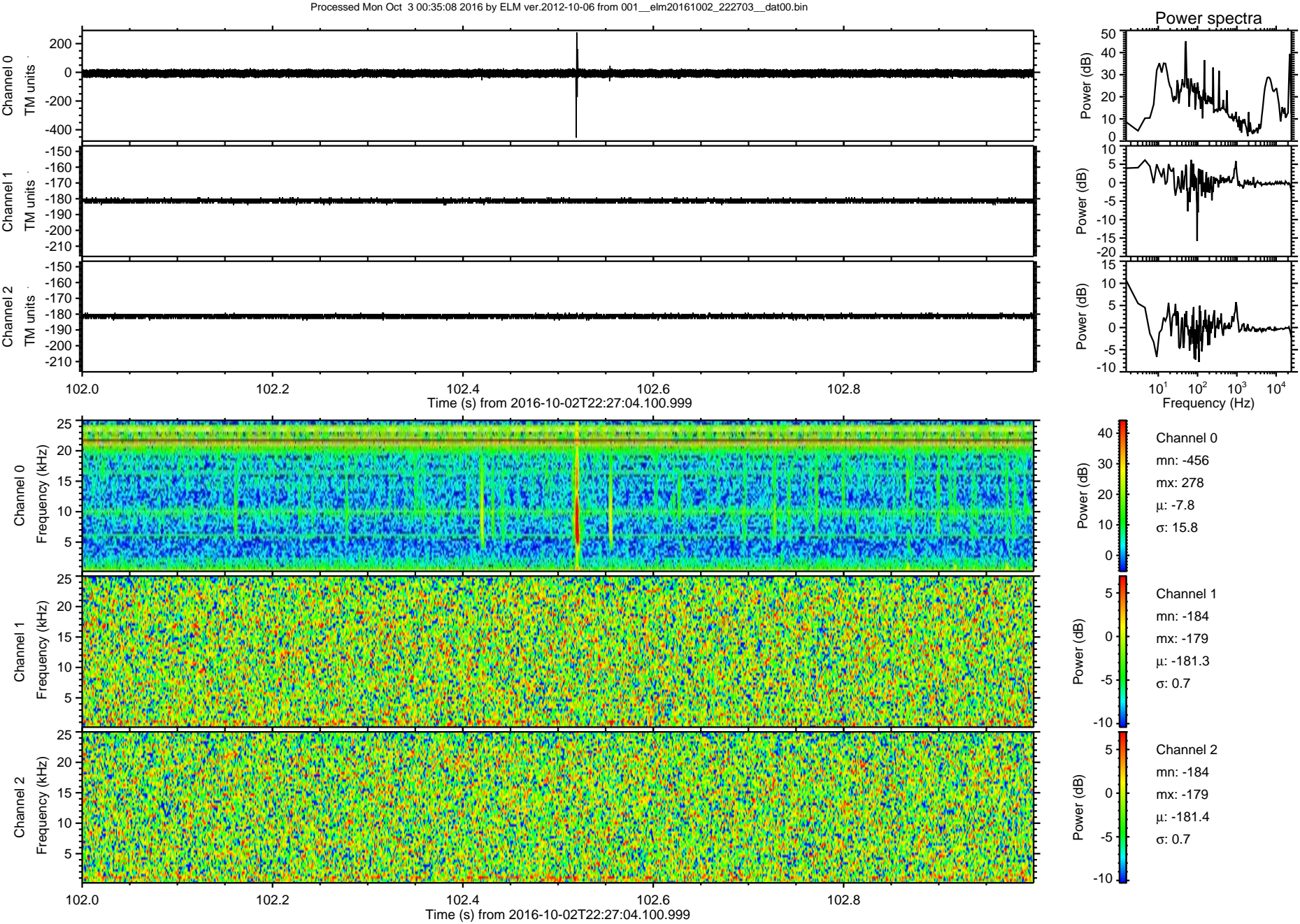




ELMAVAN 3D WAVEFORMS (Measured data sampled at 50 kHz) 51000 packets of 144 samples from 2016-10-02T22:27:04.100.999. Part 138/147

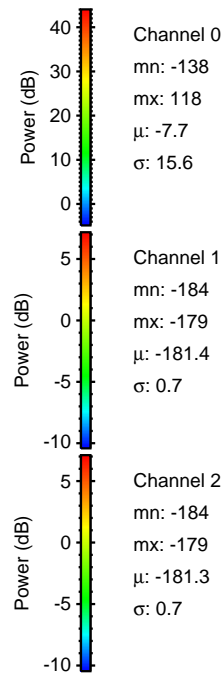
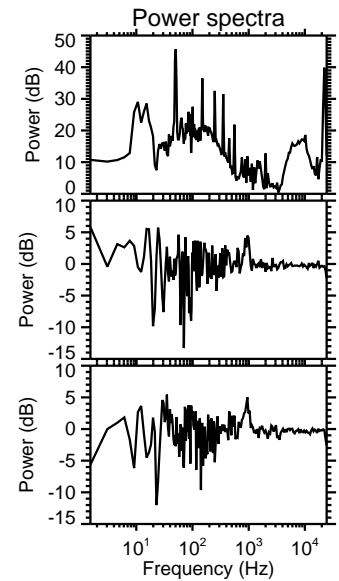
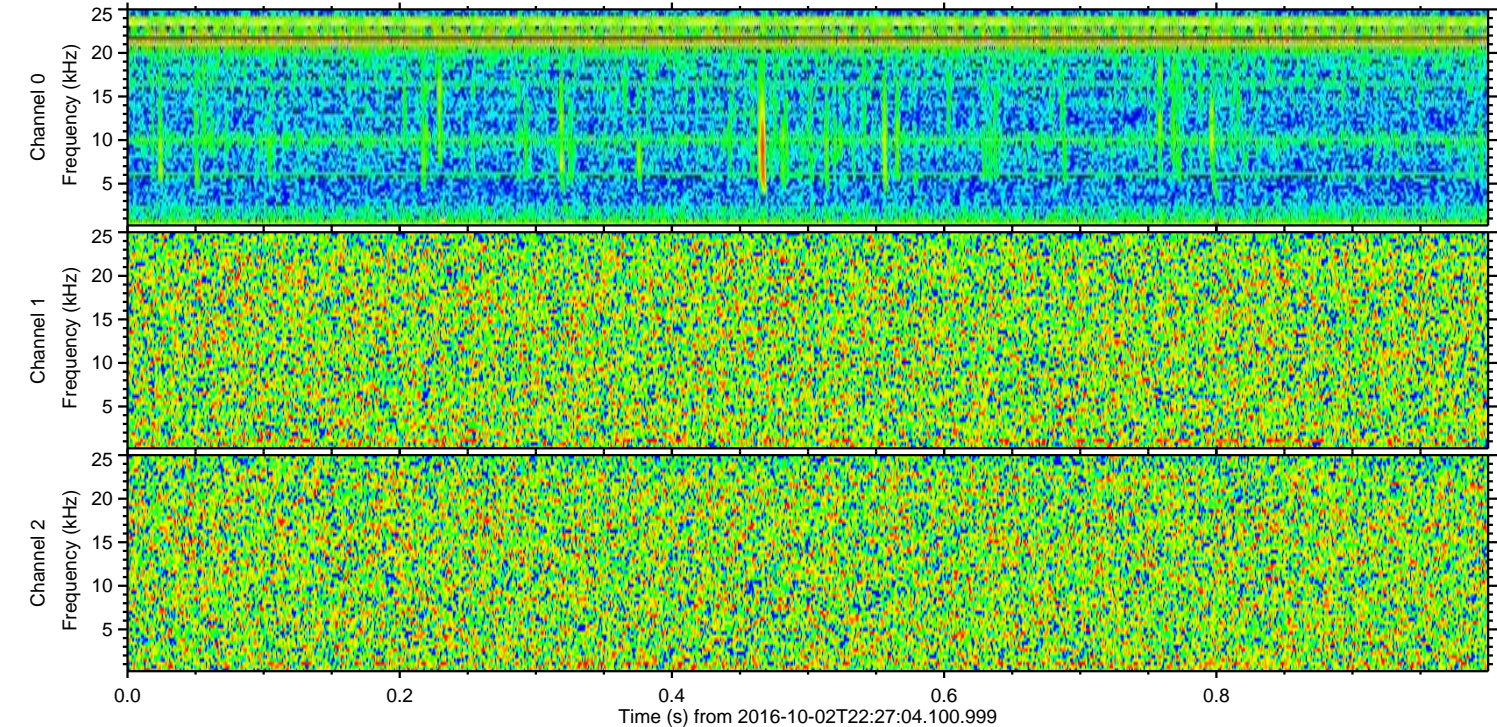
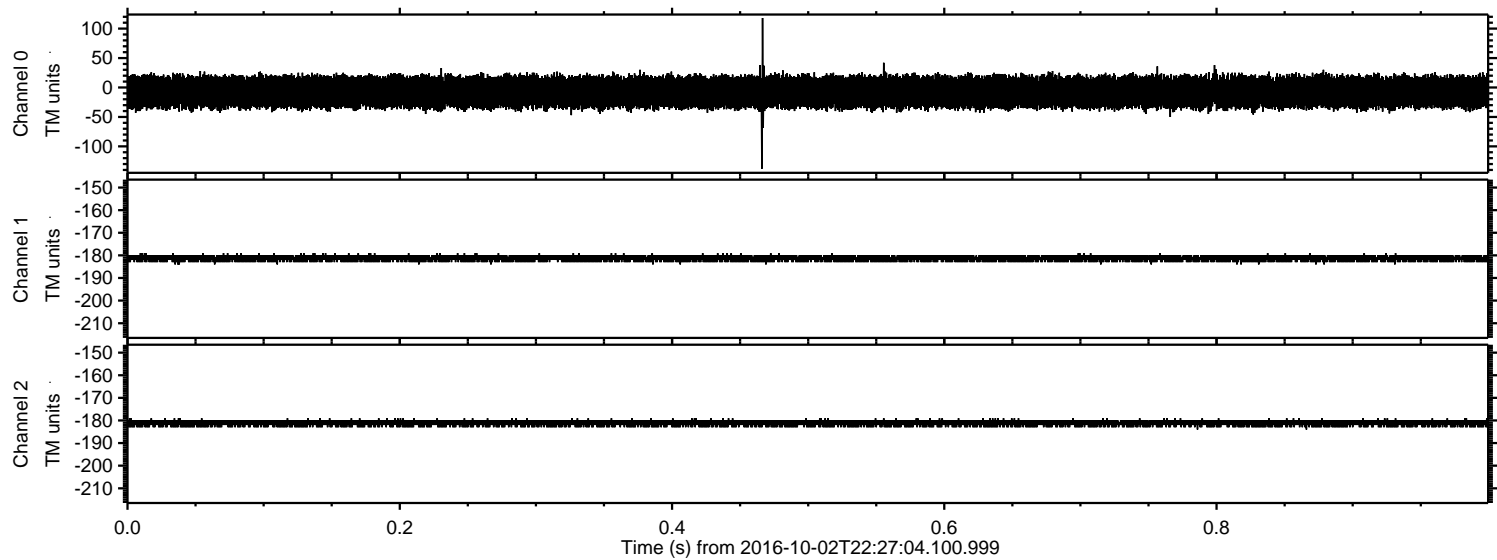


ELMAVAN 3D WAVEFORMS (Measured data sampled at 50 kHz) 51000 packets of 144 samples from 2016-10-02T22:27:04.100.999. Part 103/147



ELMAVAN 3D WAVEFORMS (Measured data sampled at 50 kHz) 51000 packets of 144 samples from 2016-10-02T22:27:04.100.999. Part 1/147

Processed Mon Oct 3 00:35:09 2016 by ELM ver.2012-10-06 from 001__elm20161002_222703__dat00.bin



Channel 0
mn: -138
mx: 118
 μ : -7.7
 σ : 15.6

Channel 1
mn: -184
mx: -179
 μ : -181.4
 σ : 0.7

Channel 2
mn: -184
mx: -179
 μ : -181.3
 σ : 0.7