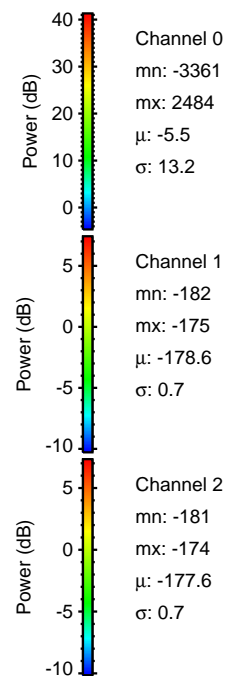
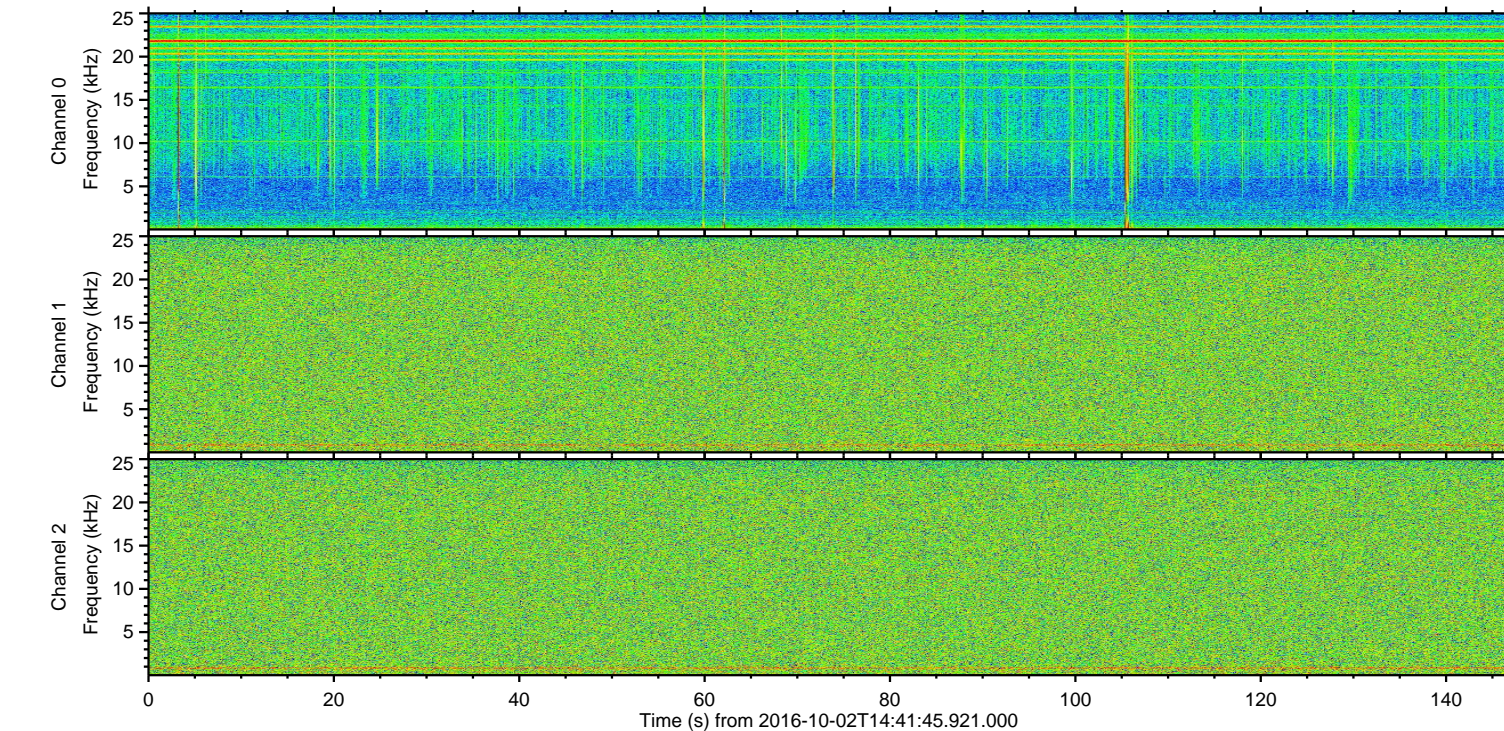
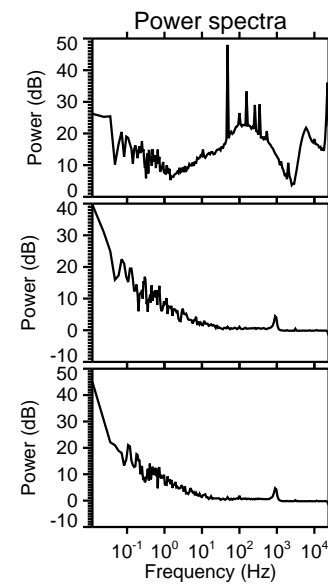
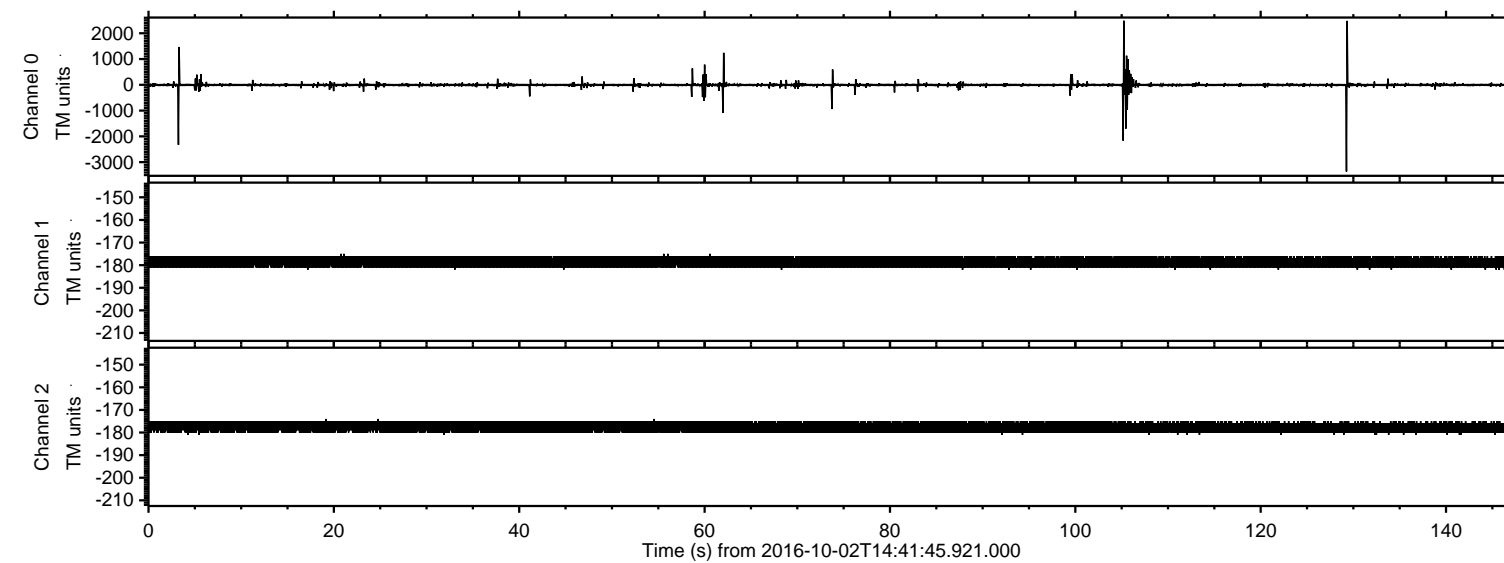


# ELMAVAN 3D WAVEFORMS (Measured data sampled at 50 kHz) 51000 packets of 144 samples from 2016-10-02T14:41:45.921.000.

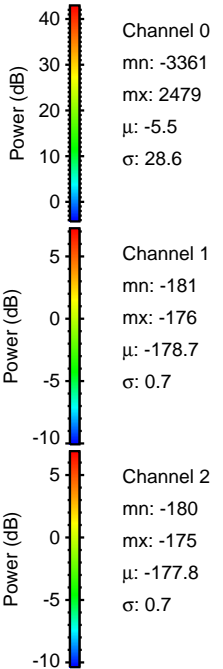
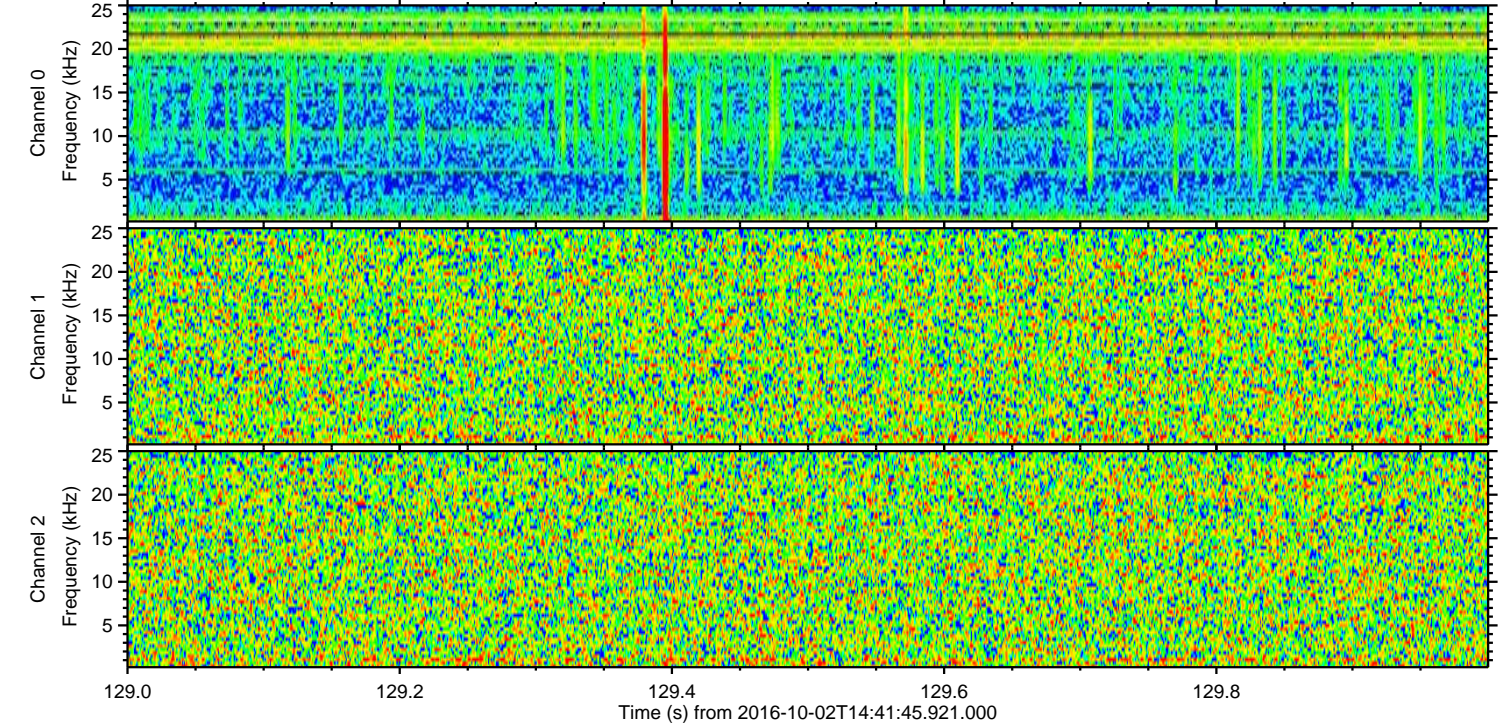
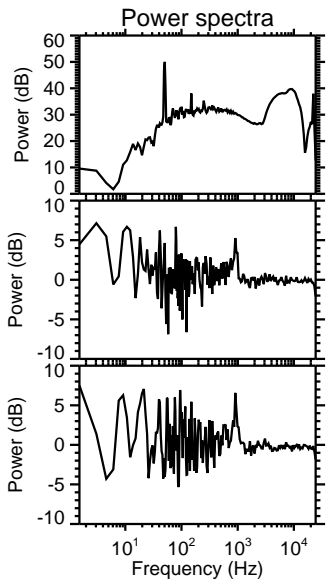
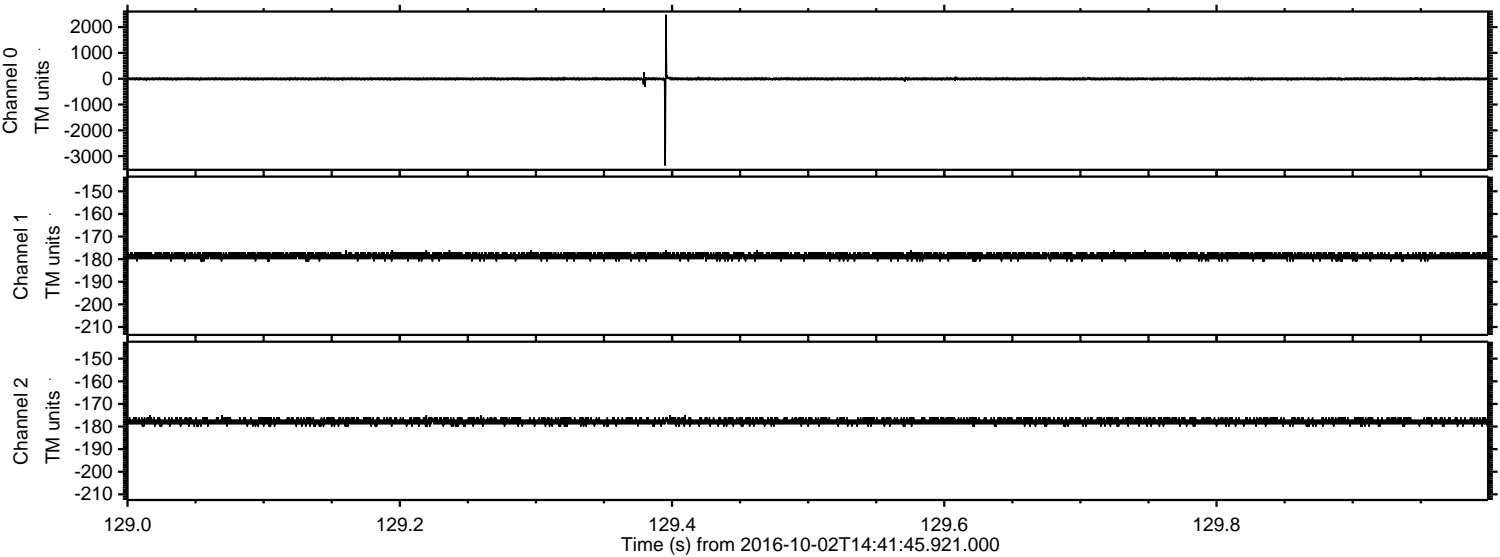
Processed Sun Oct 2 16:49:35 2016 by ELM ver.2012-10-06 from 001\_\_elm20161002\_144144\_\_dat00.bin





ELMAVAN 3D WAVEFORMS (Measured data sampled at 50 kHz) 51000 packets of 144 samples from 2016-10-02T14:41:45.921.000. Part 130/147

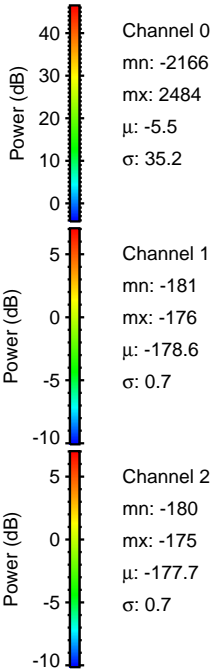
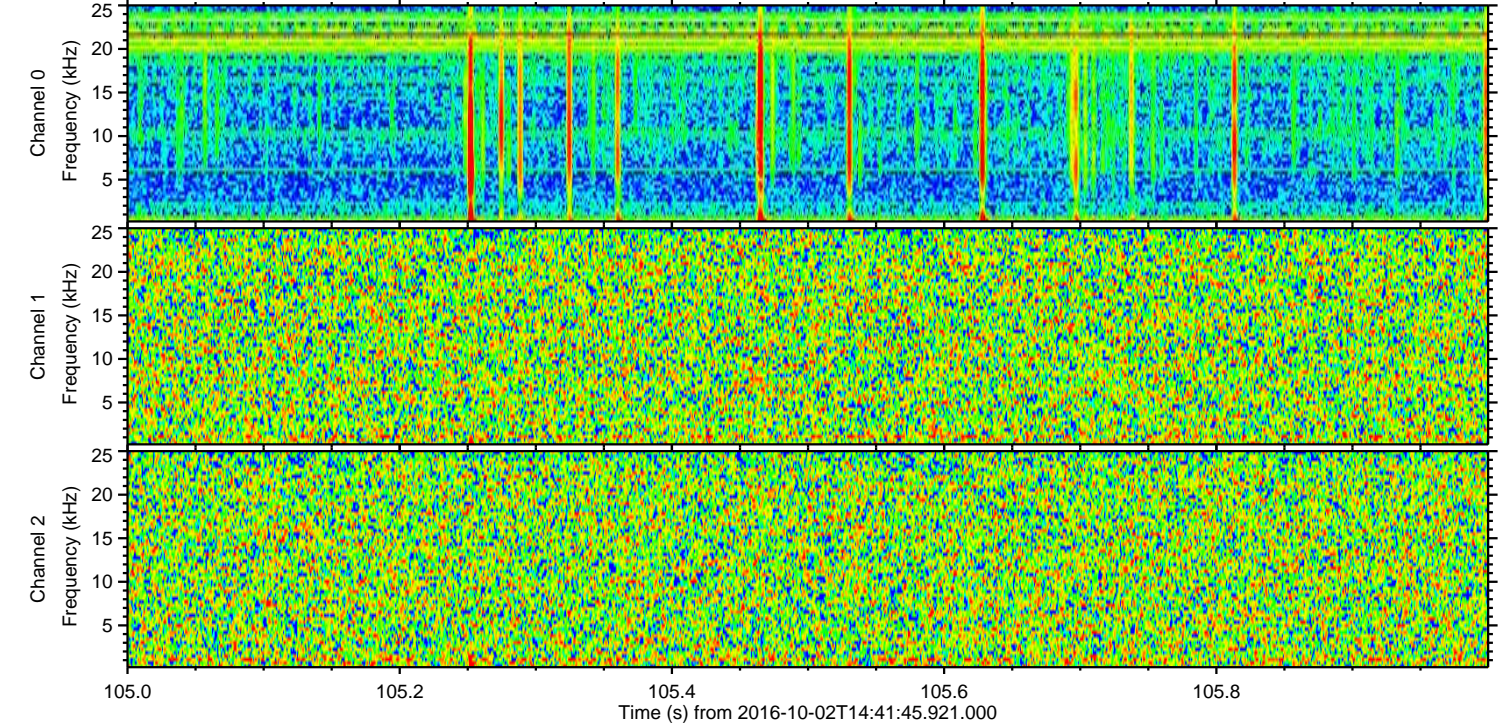
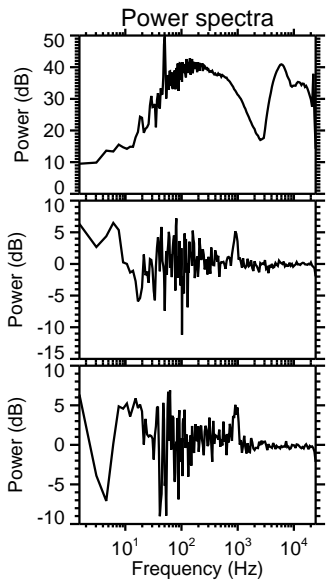
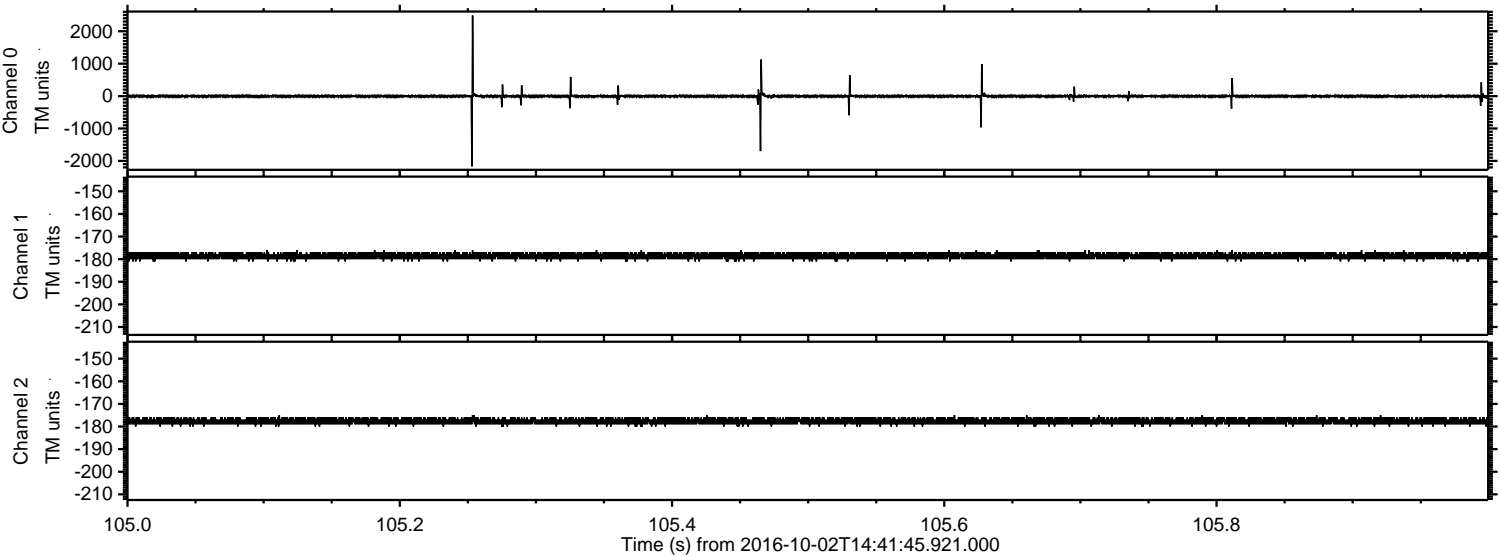
Processed Sun Oct 2 16:49:47 2016 by ELM ver.2012-10-06 from 001\_\_elm20161002\_144144\_\_dat00.bin





ELMAVAN 3D WAVEFORMS (Measured data sampled at 50 kHz) 51000 packets of 144 samples from 2016-10-02T14:41:45.921.000. Part 106/147

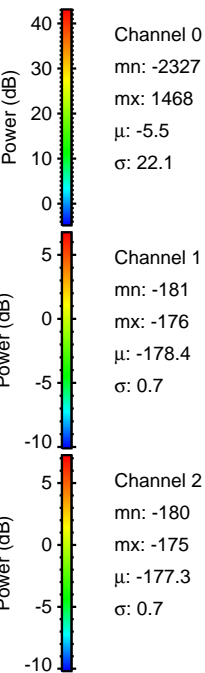
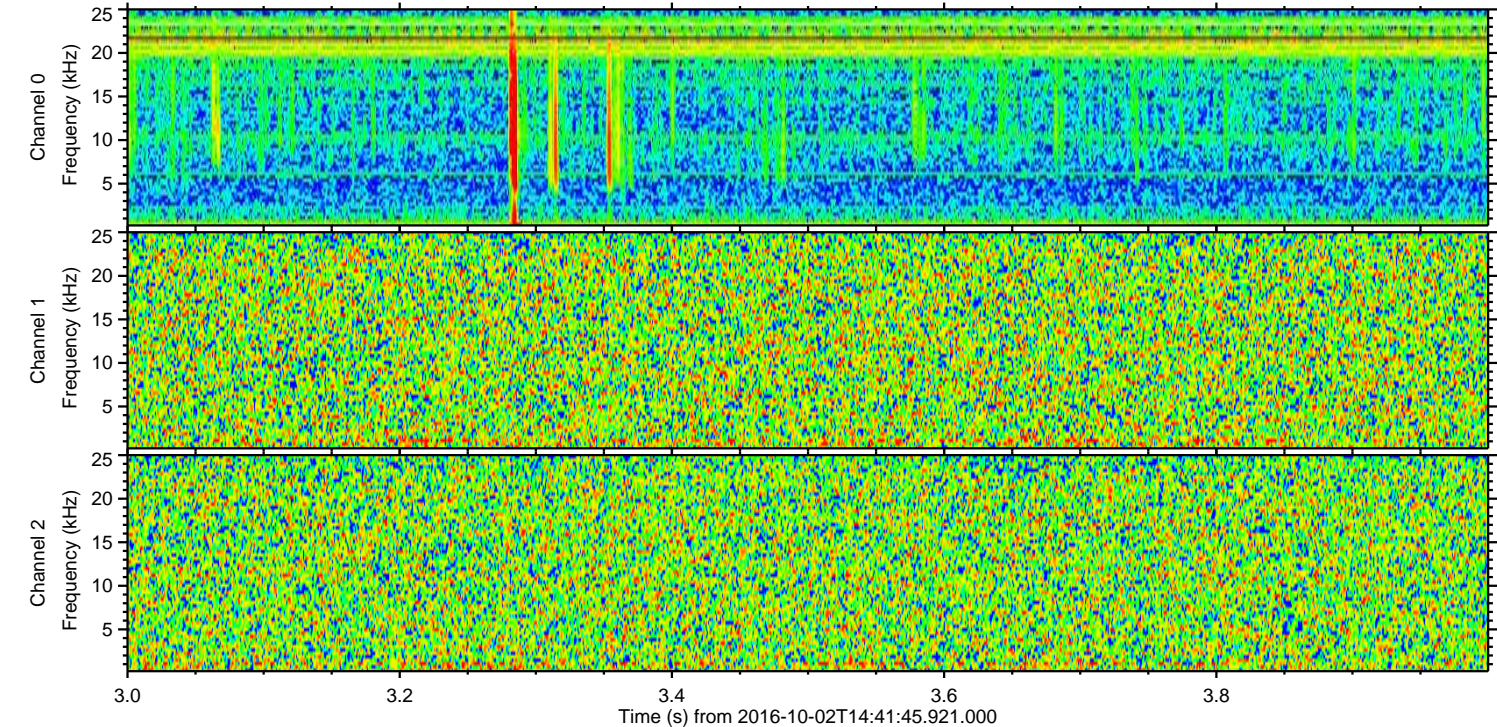
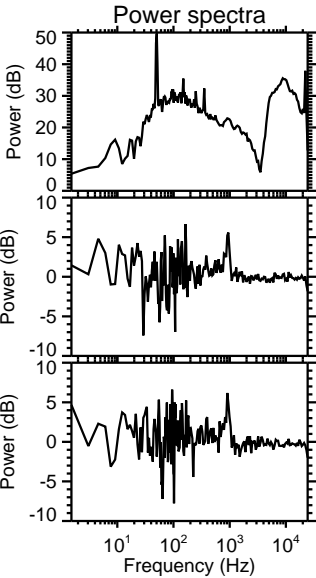
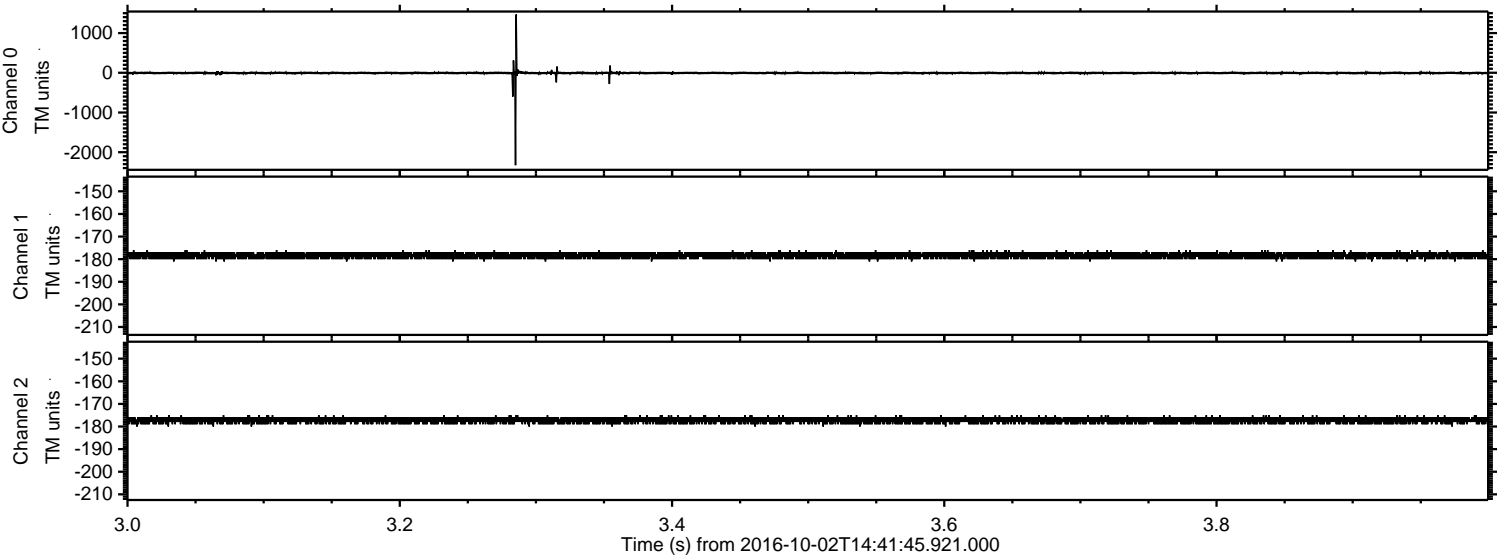
Processed Sun Oct 2 16:49:48 2016 by ELM ver.2012-10-06 from 001\_\_elm20161002\_144144\_\_dat00.bin





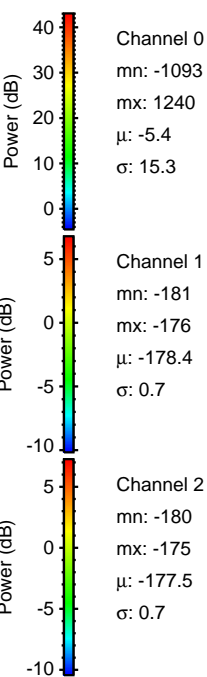
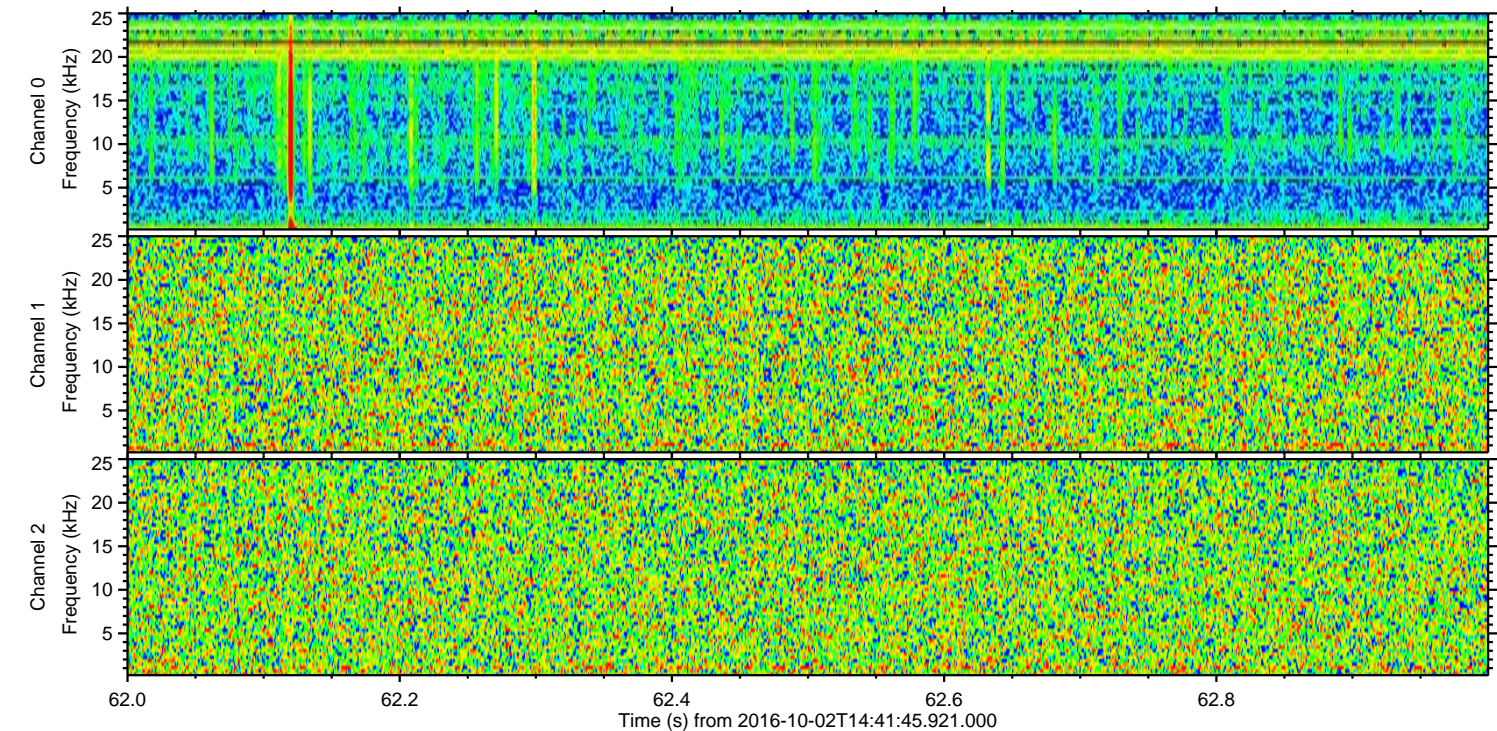
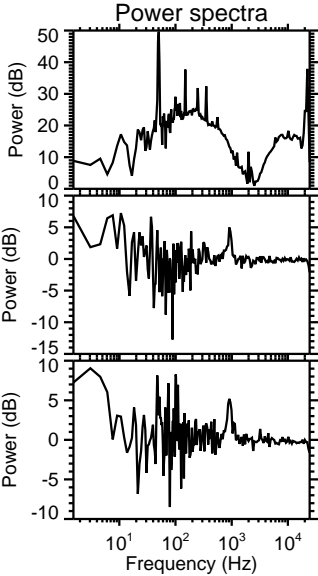
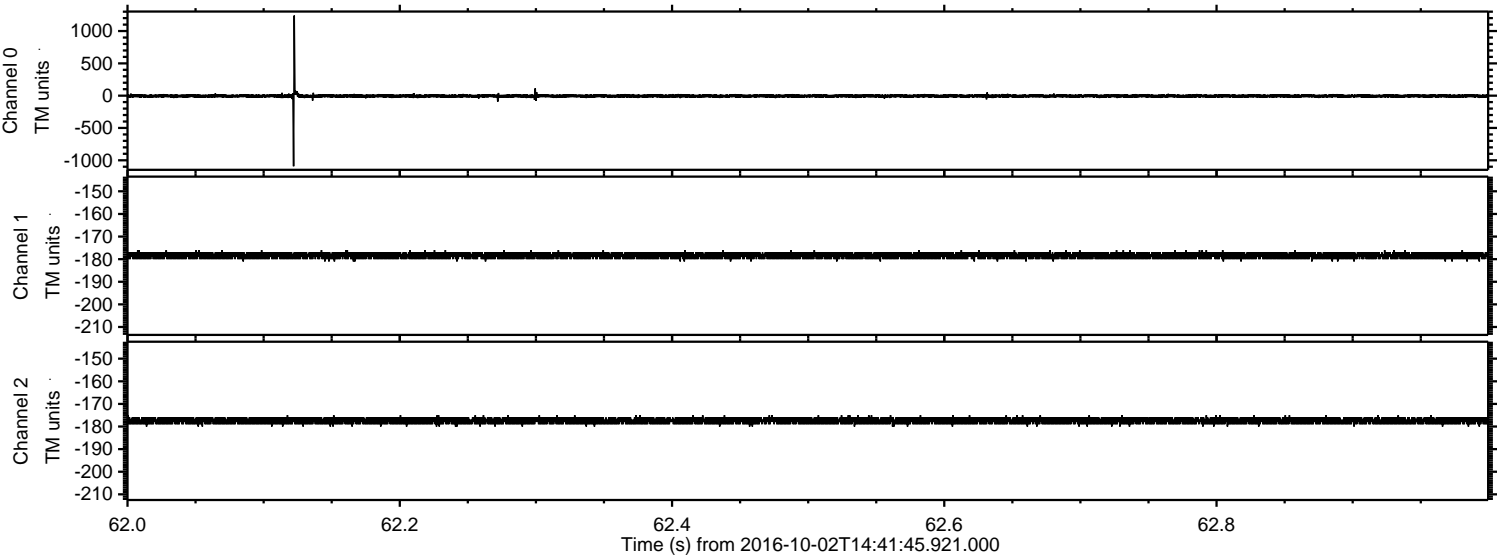
ELMAVAN 3D WAVEFORMS (Measured data sampled at 50 kHz) 51000 packets of 144 samples from 2016-10-02T14:41:45.921.000. Part 4/147

Processed Sun Oct 2 16:49:48 2016 by ELM ver.2012-10-06 from 001\_\_elm20161002\_144144\_\_dat00.bin



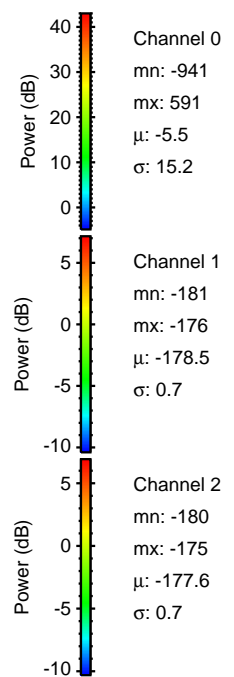
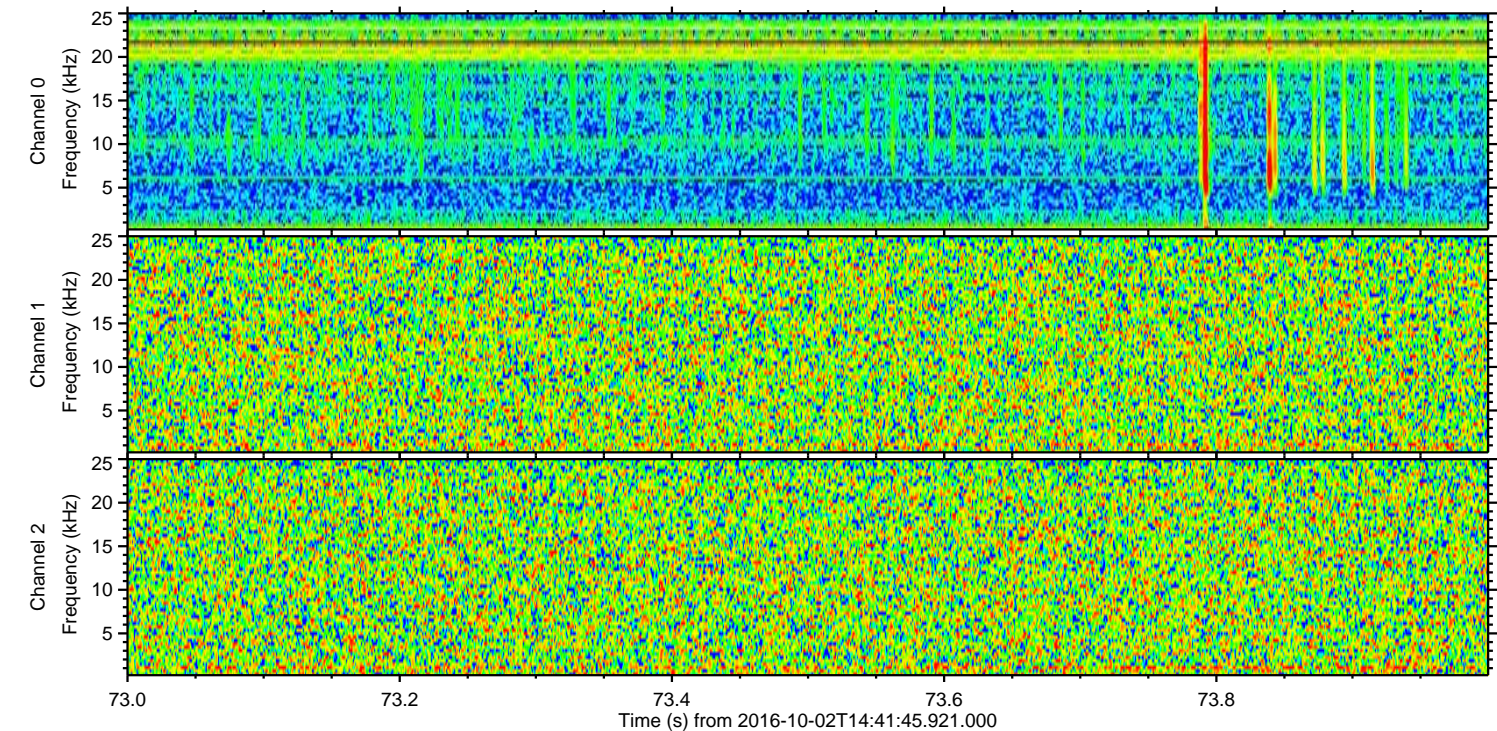
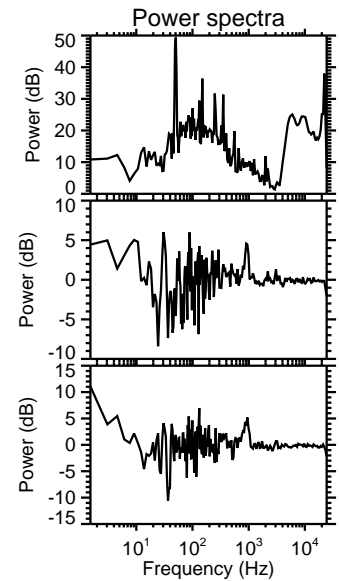
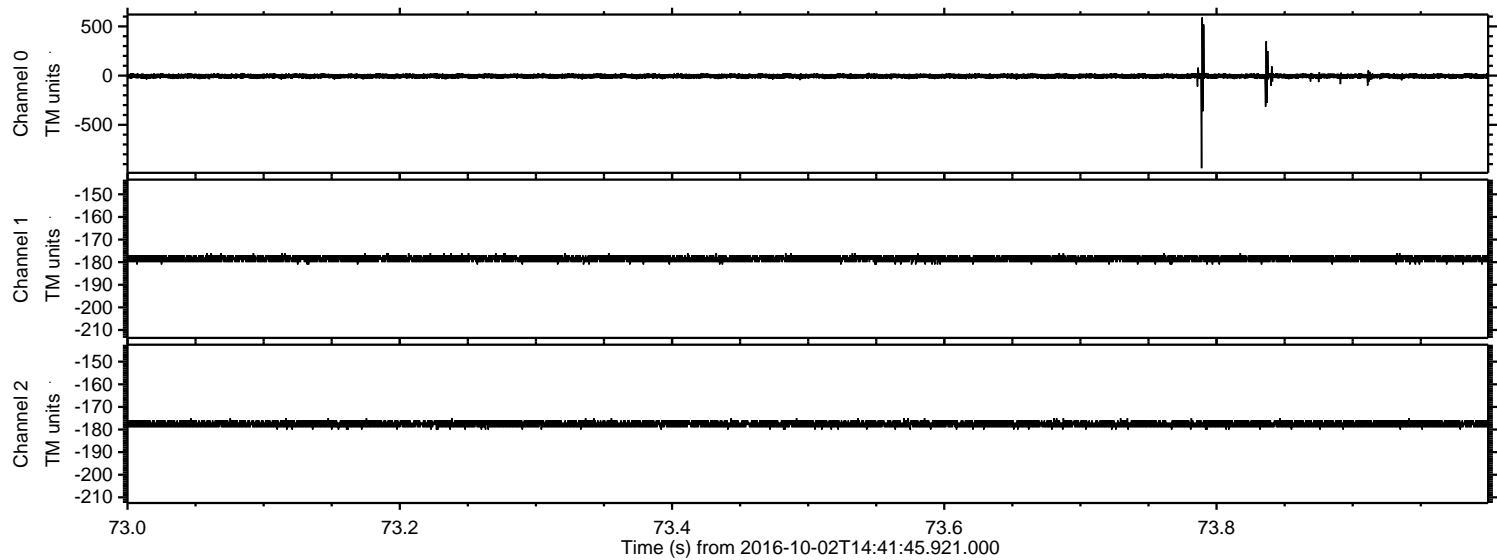


Processed Sun Oct 2 16:49:49 2016 by ELM ver.2012-10-06 from 001\_\_elm20161002\_144144\_\_dat00.bin



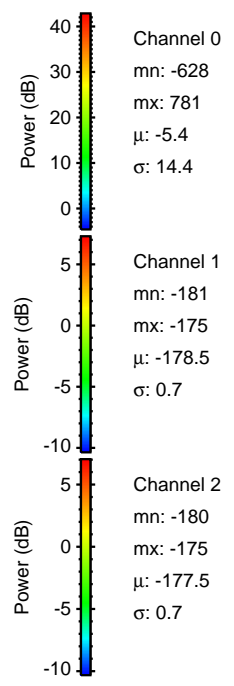
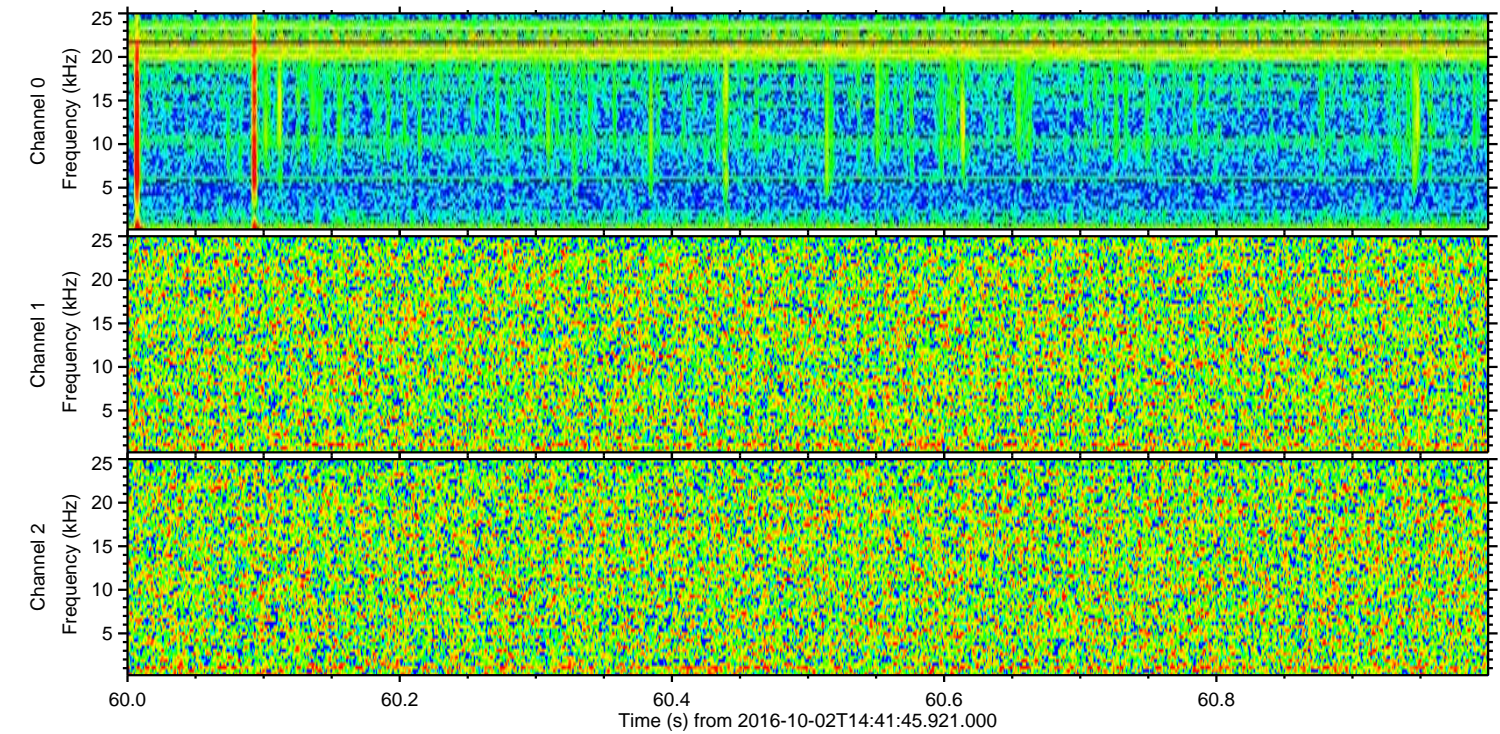
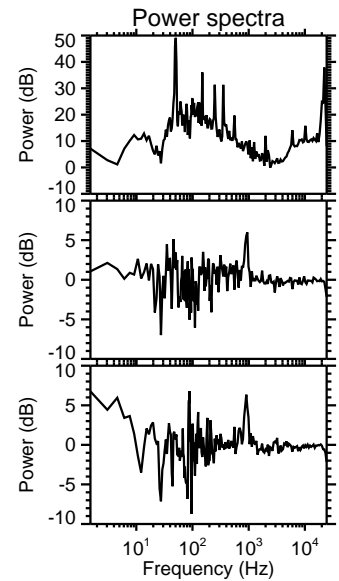
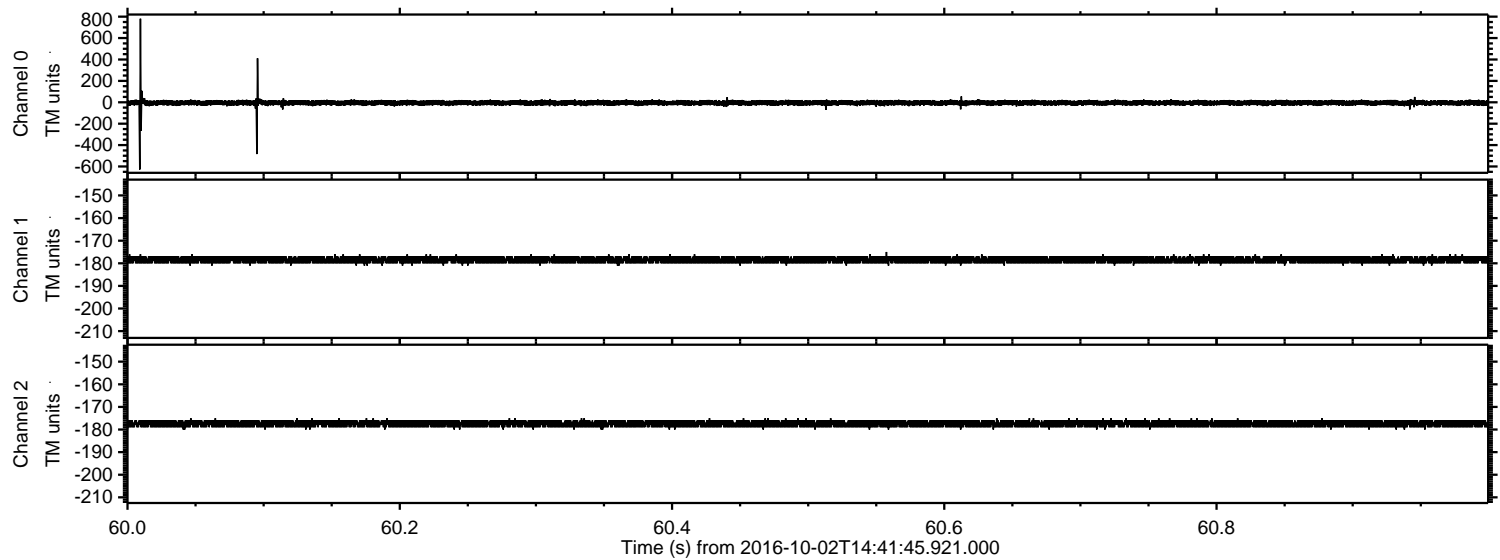


Processed Sun Oct 2 16:49:50 2016 by ELM ver.2012-10-06 from 001\_\_elm20161002\_144144\_\_dat00.bin

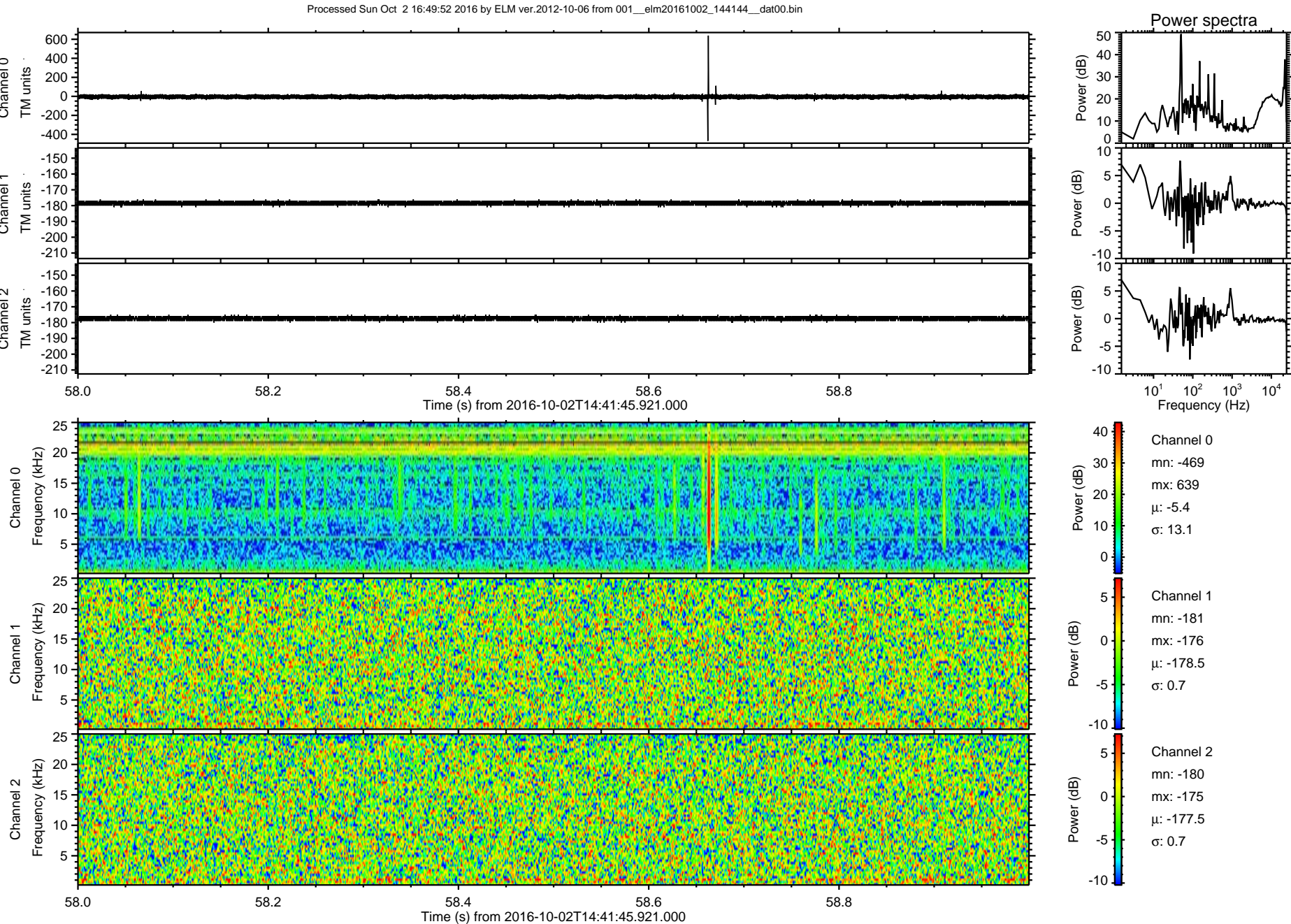




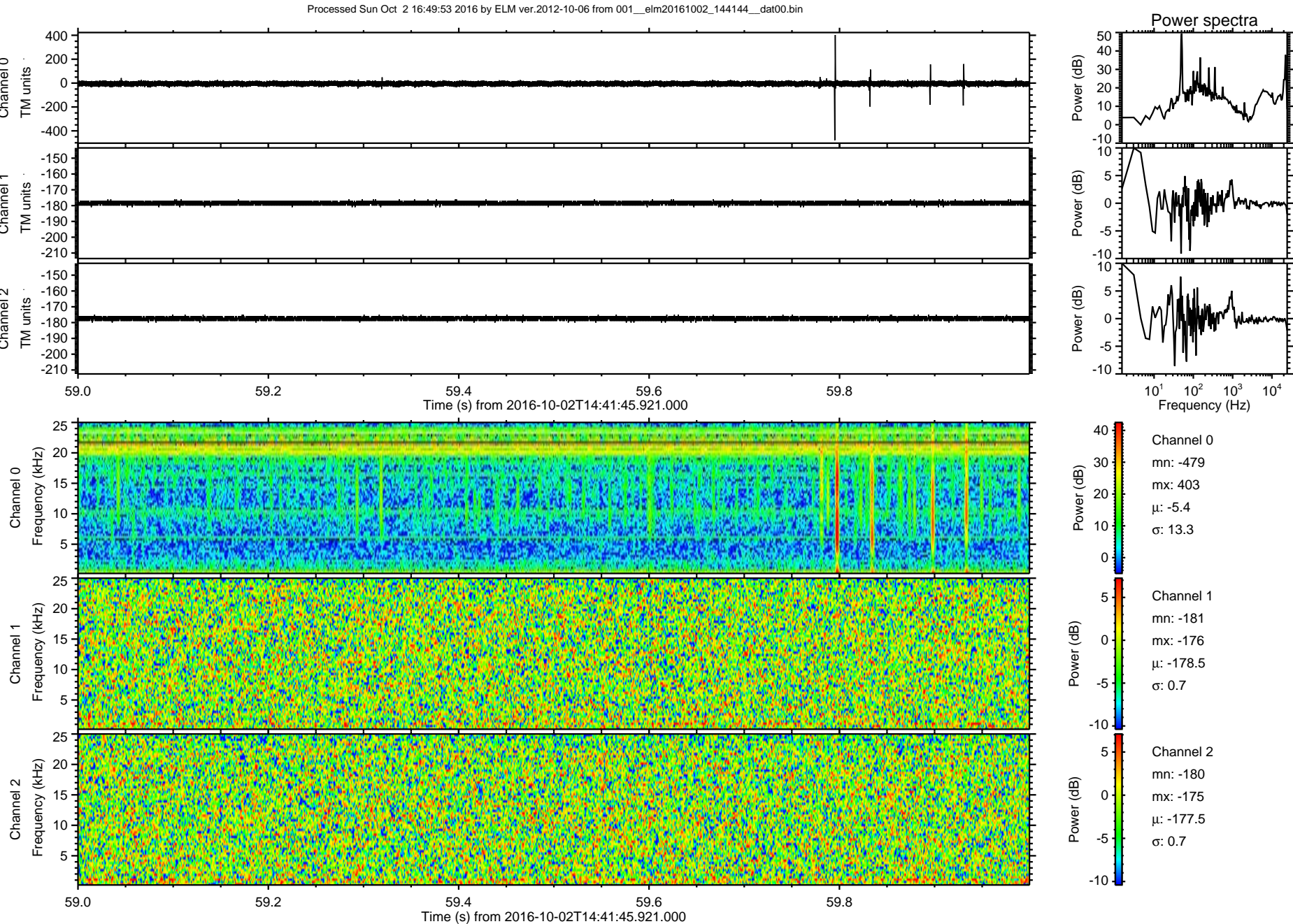
Processed Sun Oct 2 16:49:51 2016 by ELM ver.2012-10-06 from 001\_\_elm20161002\_144144\_\_dat00.bin





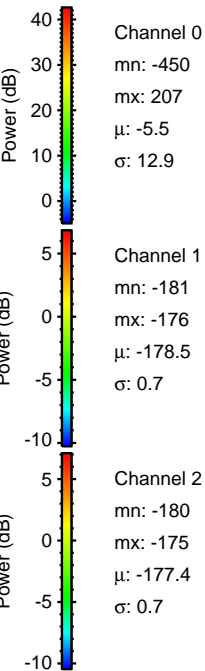
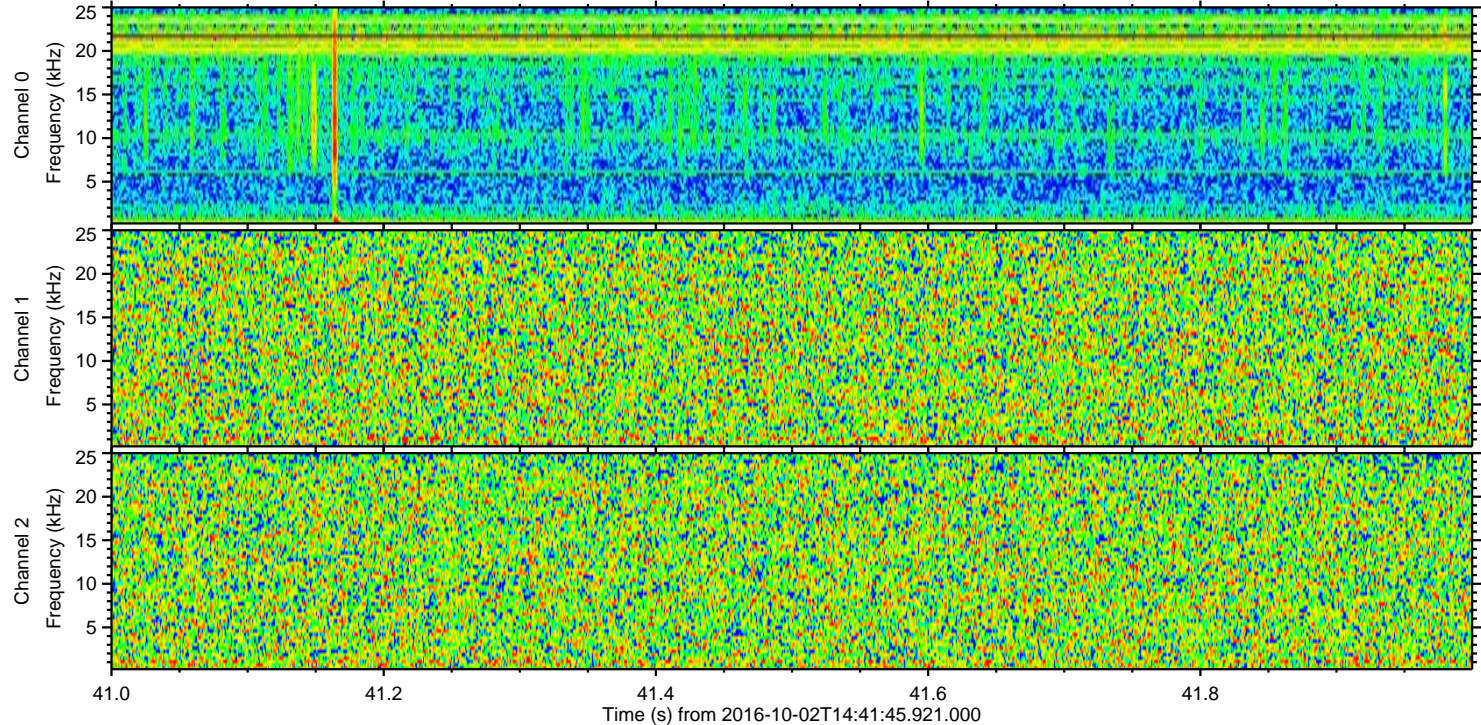
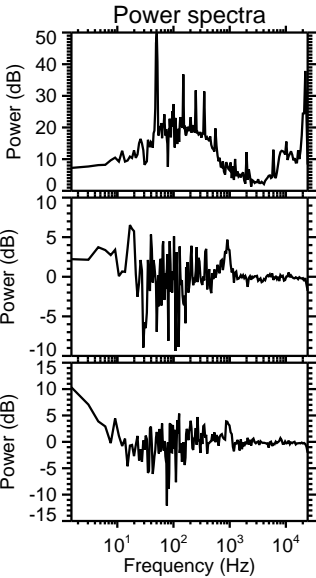
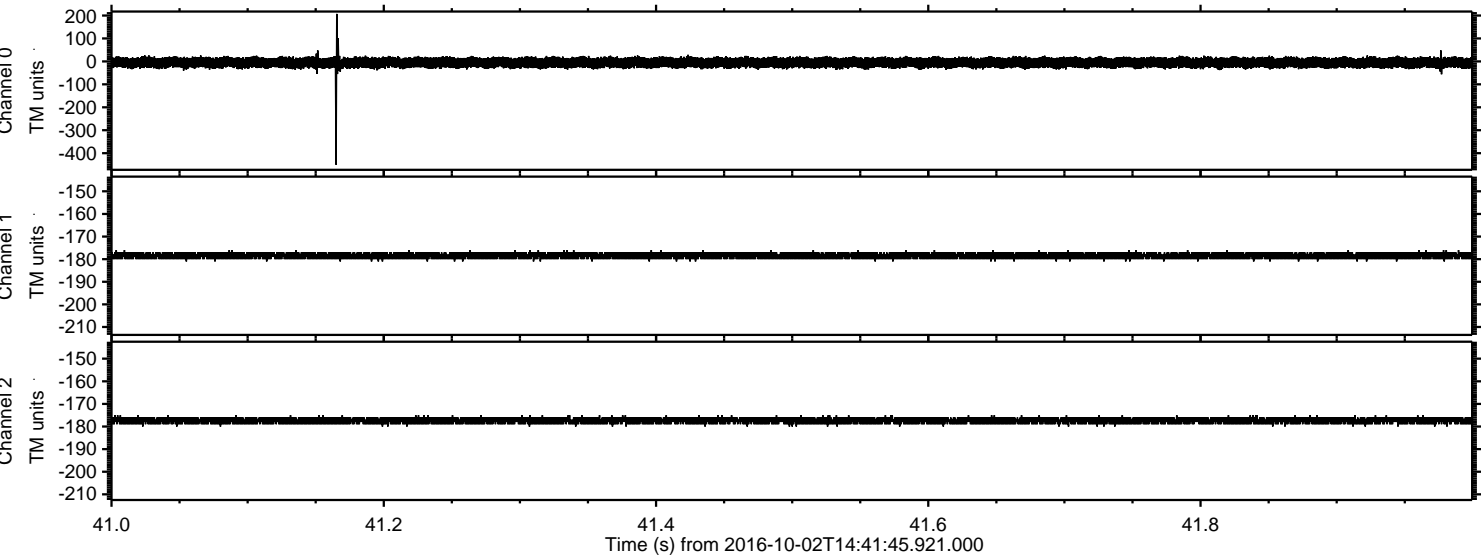








Processed Sun Oct 2 16:49:54 2016 by ELM ver.2012-10-06 from 001\_\_elm20161002\_144144\_\_dat00.bin





Processed Sun Oct 2 16:49:55 2016 by ELM ver.2012-10-06 from 001\_\_elm20161002\_144144\_\_dat00.bin

