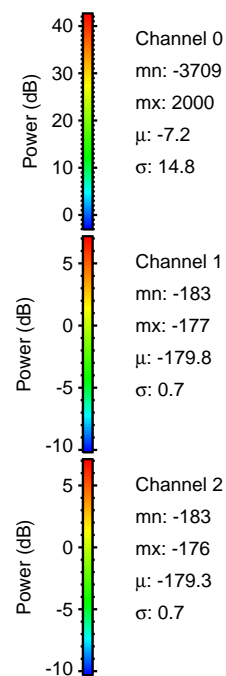
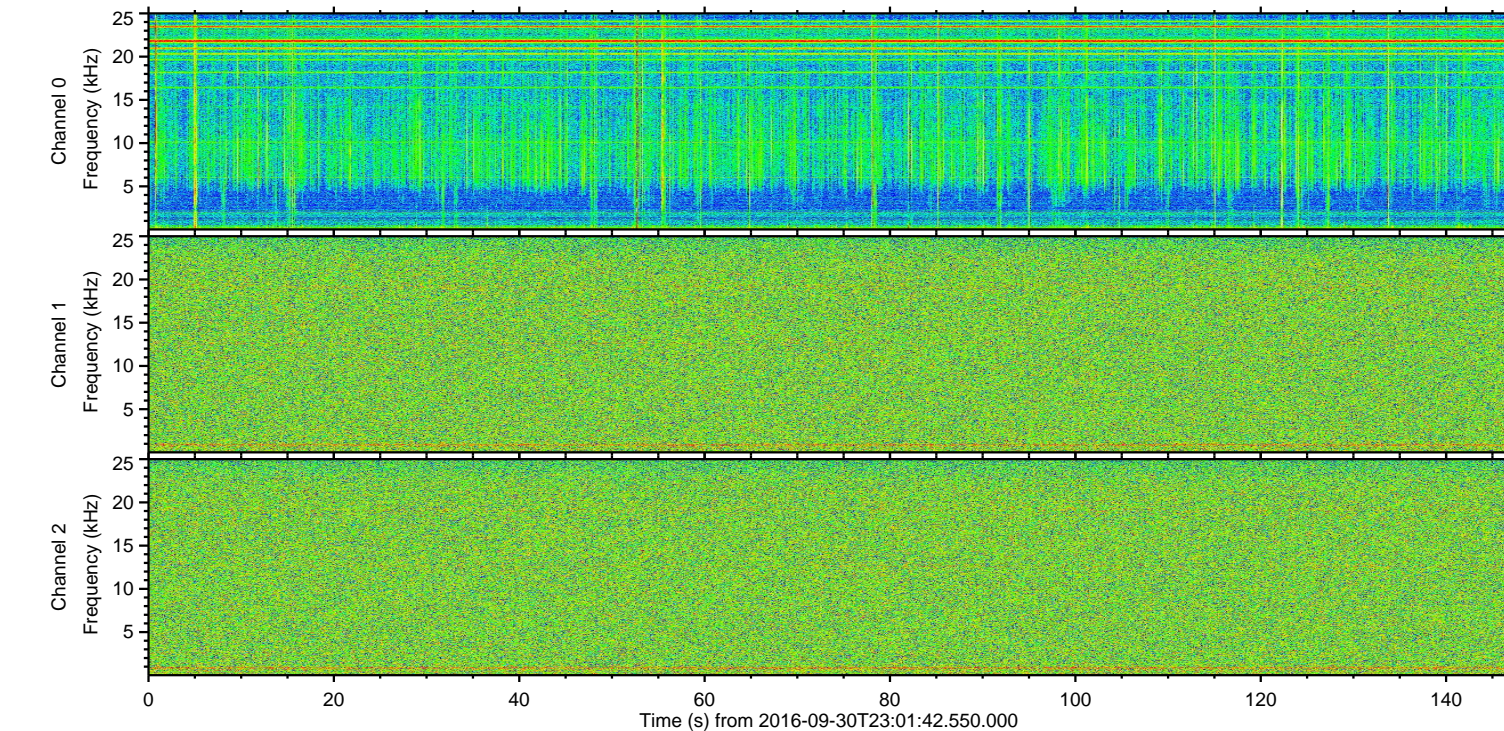
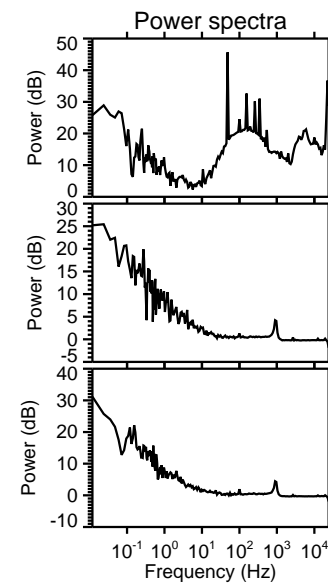
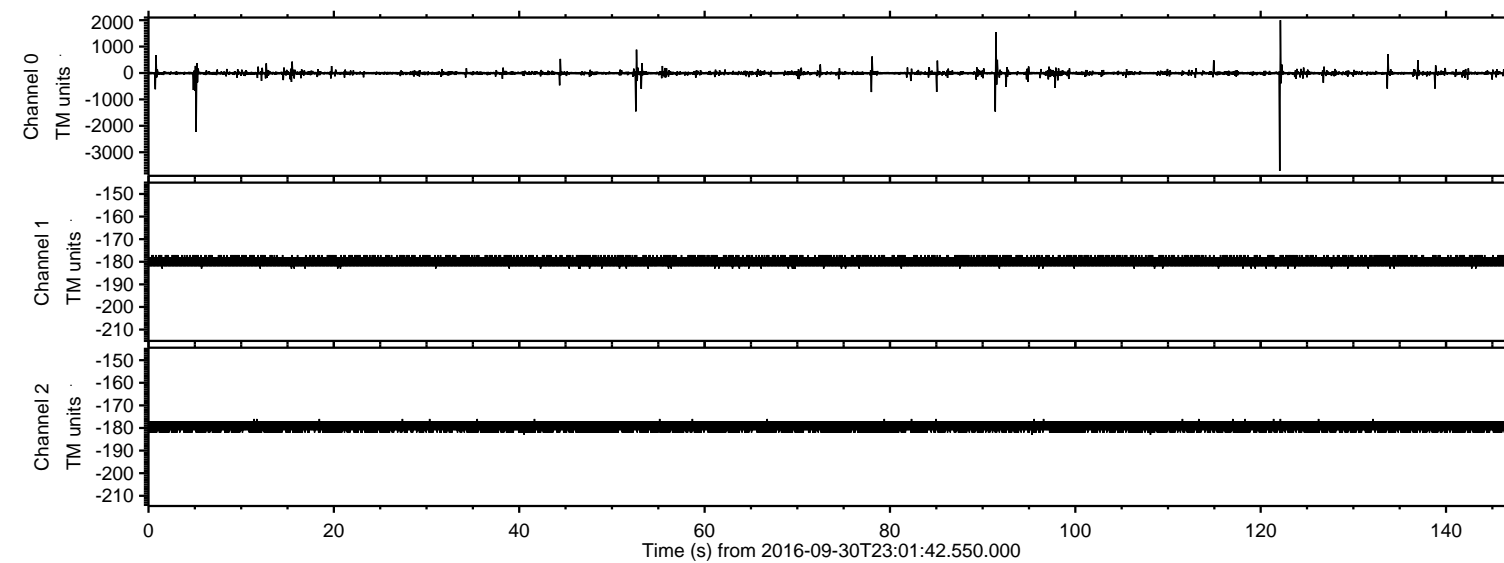


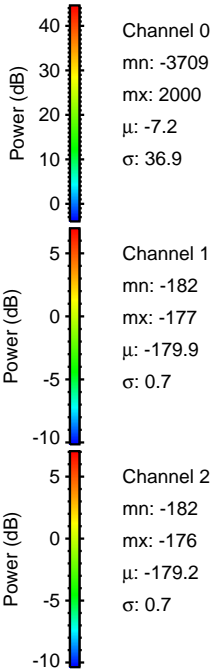
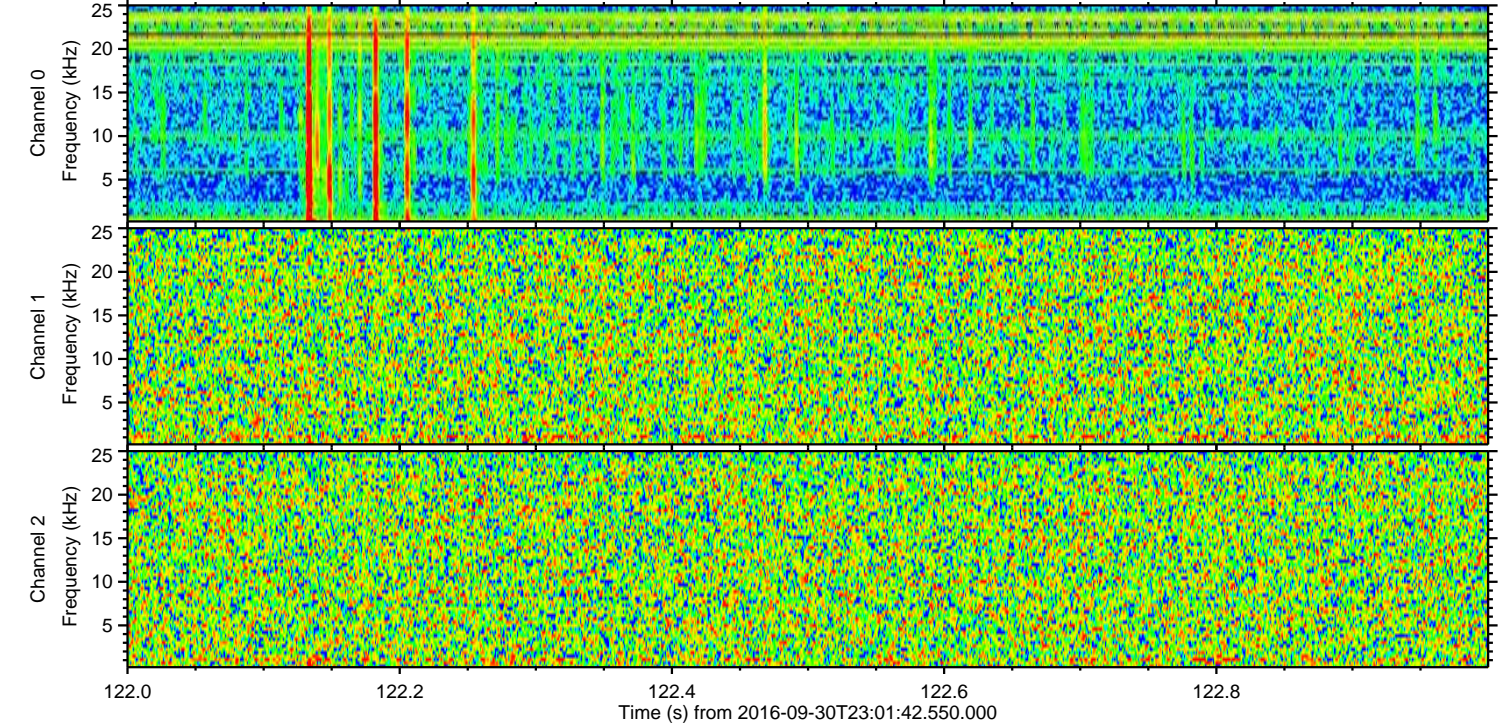
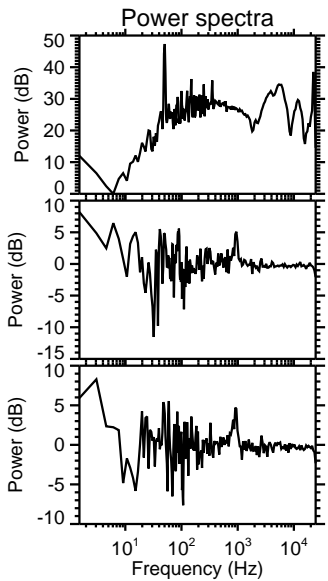
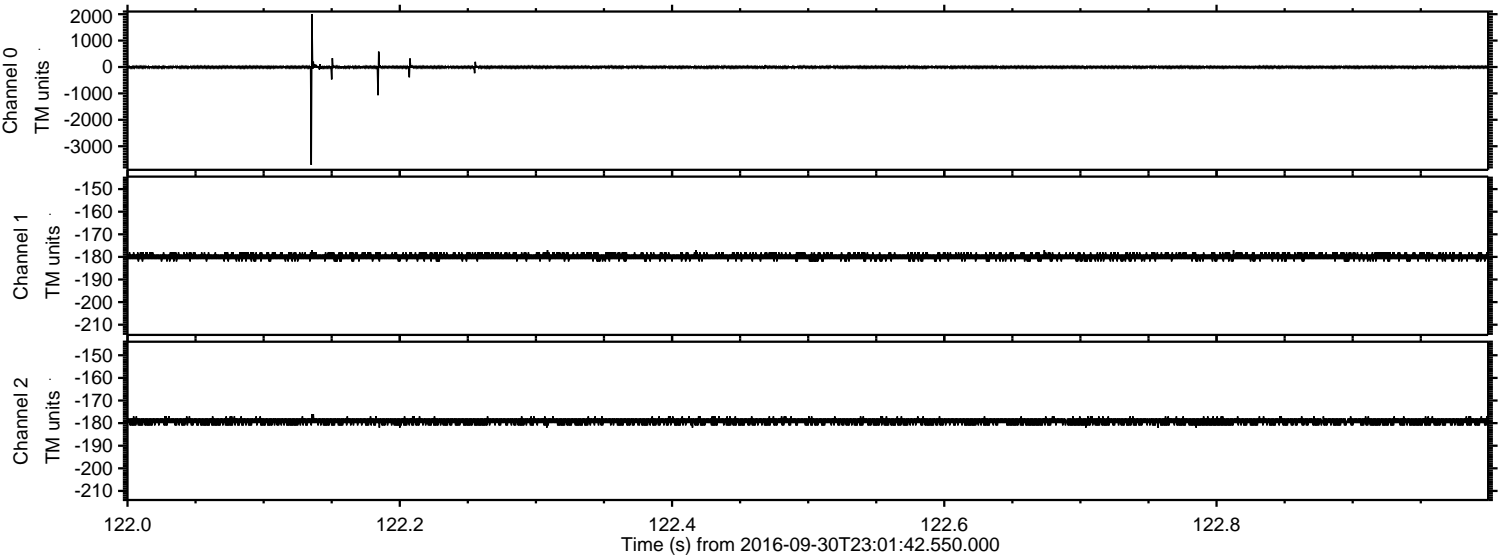
# ELMAVAN 3D WAVEFORMS (Measured data sampled at 50 kHz) 51000 packets of 144 samples from 2016-09-30T23:01:42.550.000.

Processed Sat Oct 1 01:09:55 2016 by ELM ver.2012-10-06 from 001\_\_elm20160930\_230141\_\_dat00.bin

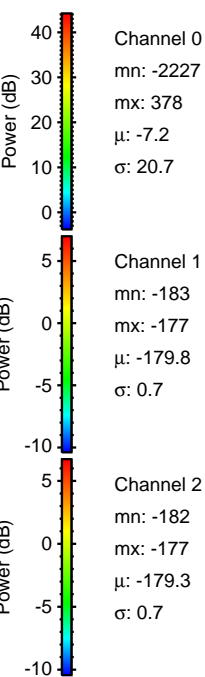
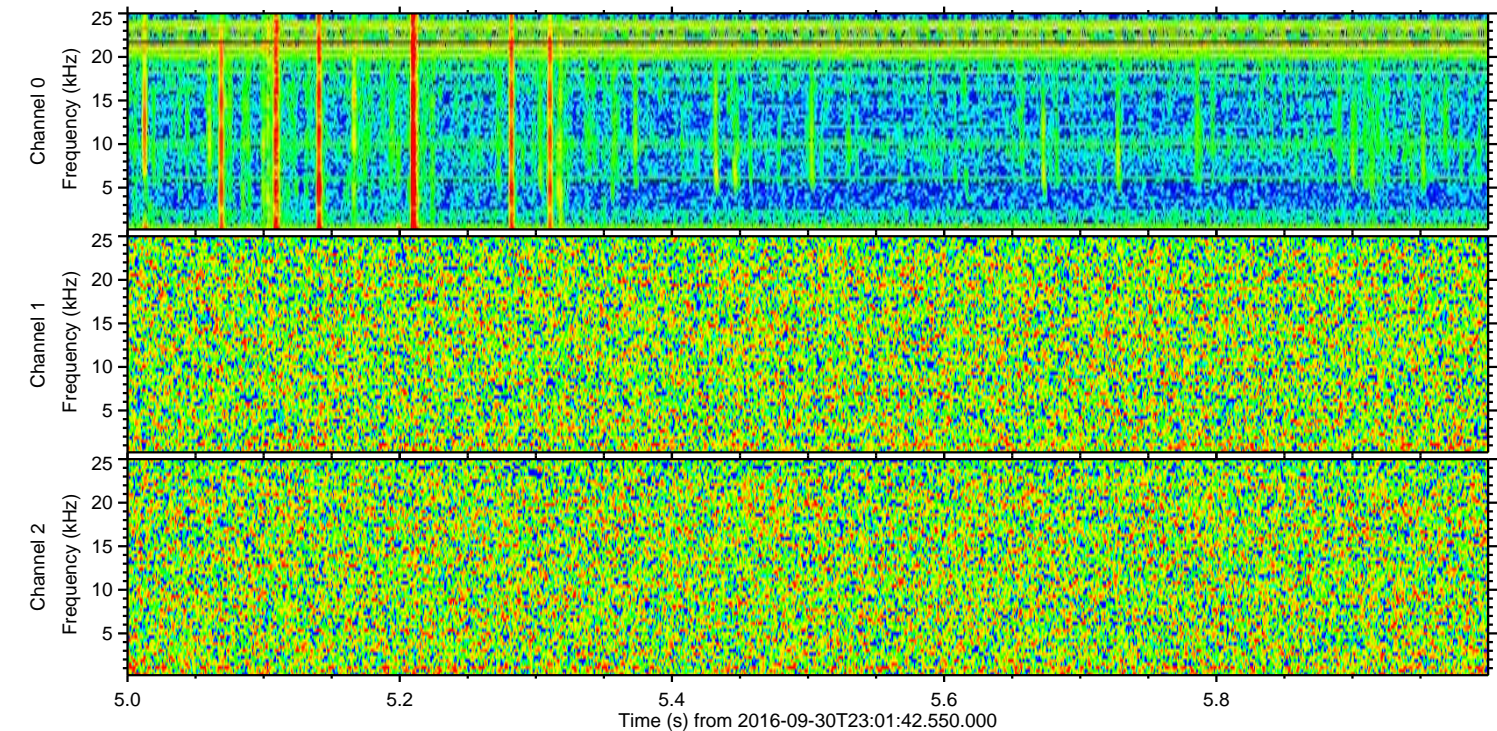
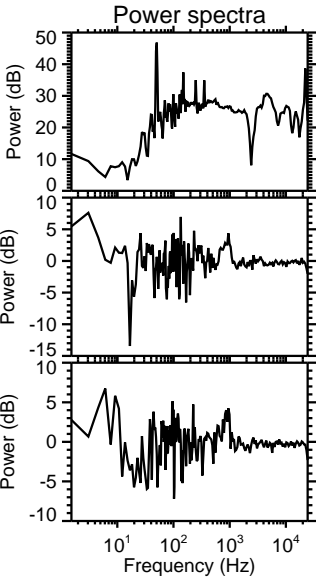
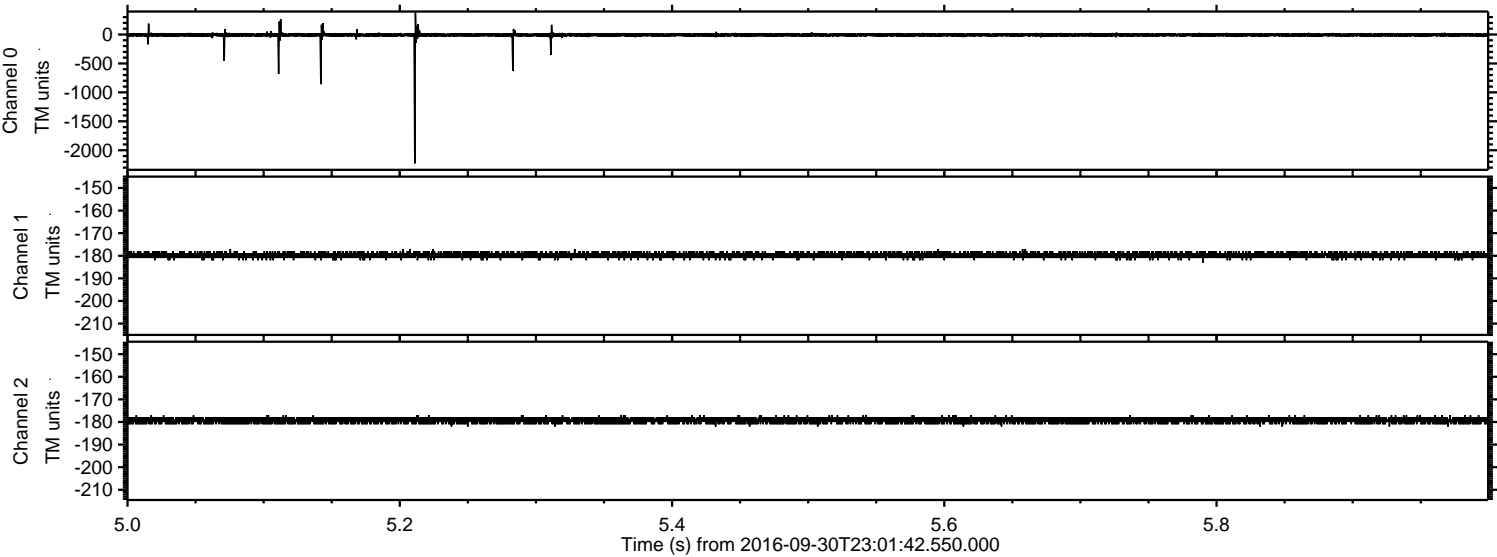


ELMAVAN 3D WAVEFORMS (Measured data sampled at 50 kHz) 51000 packets of 144 samples from 2016-09-30T23:01:42.550.000. Part 123/147

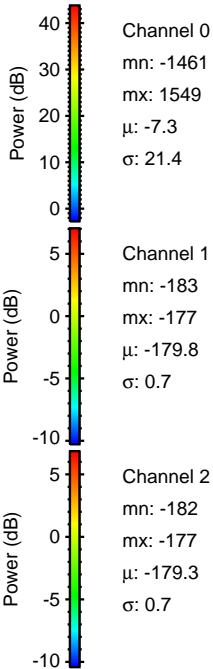
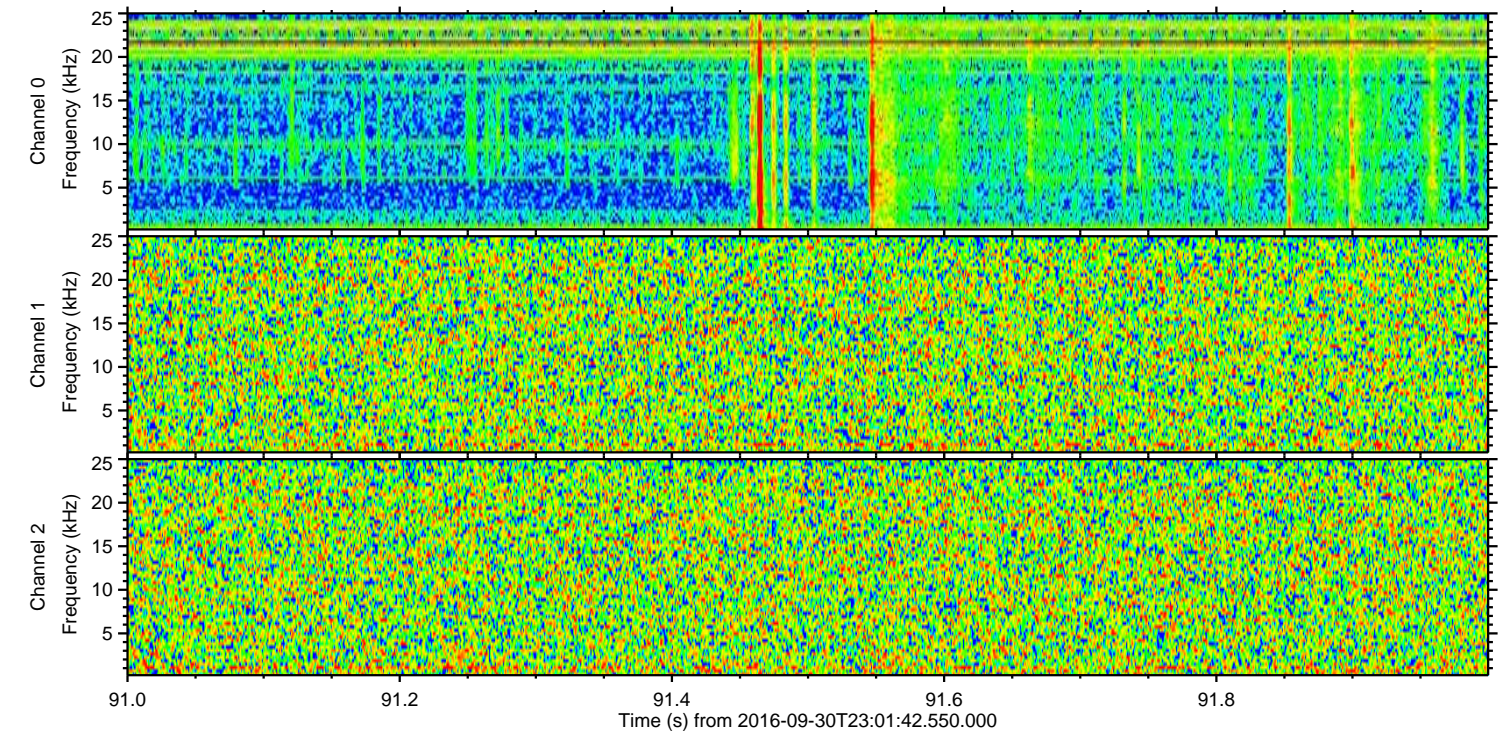
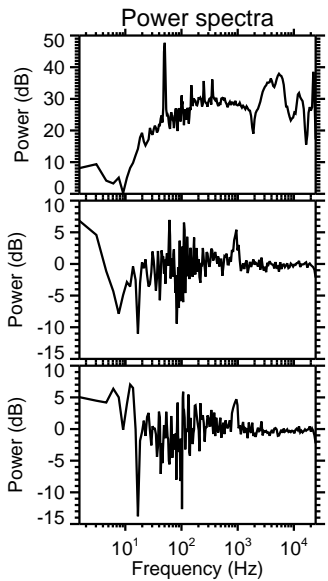
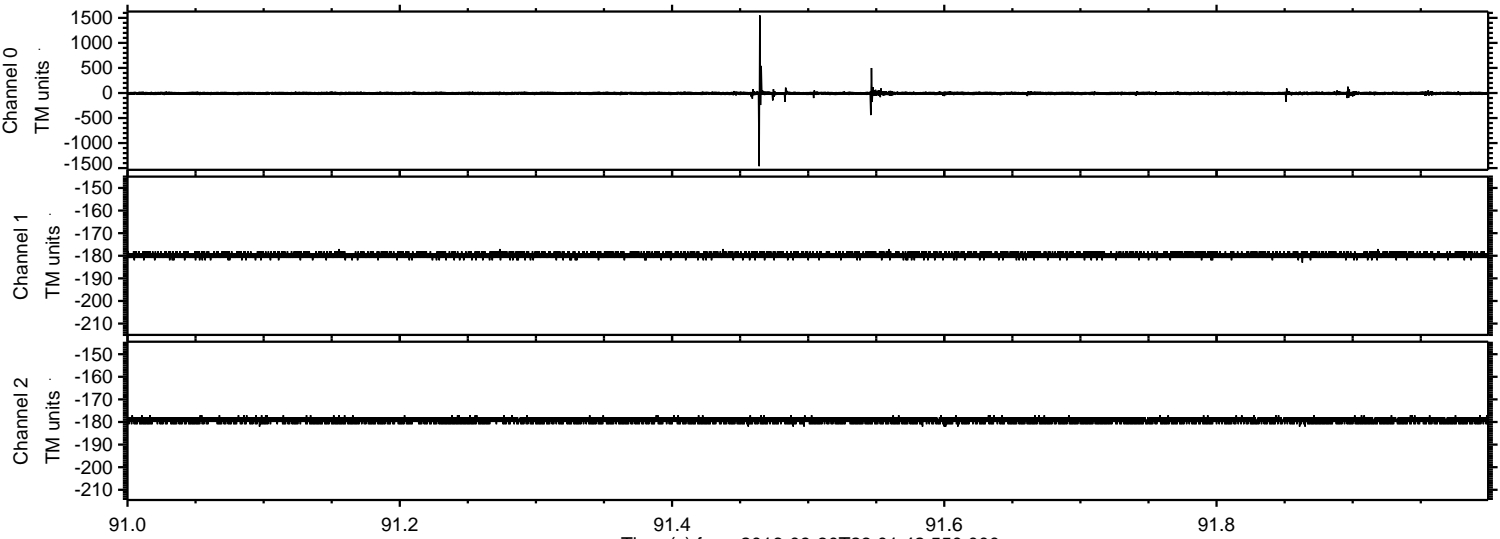
Processed Sat Oct 1 01:10:06 2016 by ELM ver.2012-10-06 from 001\_\_elm20160930\_230141\_\_dat00.bin



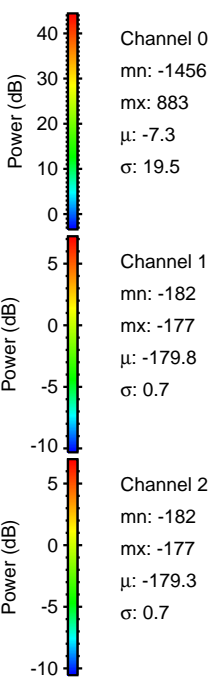
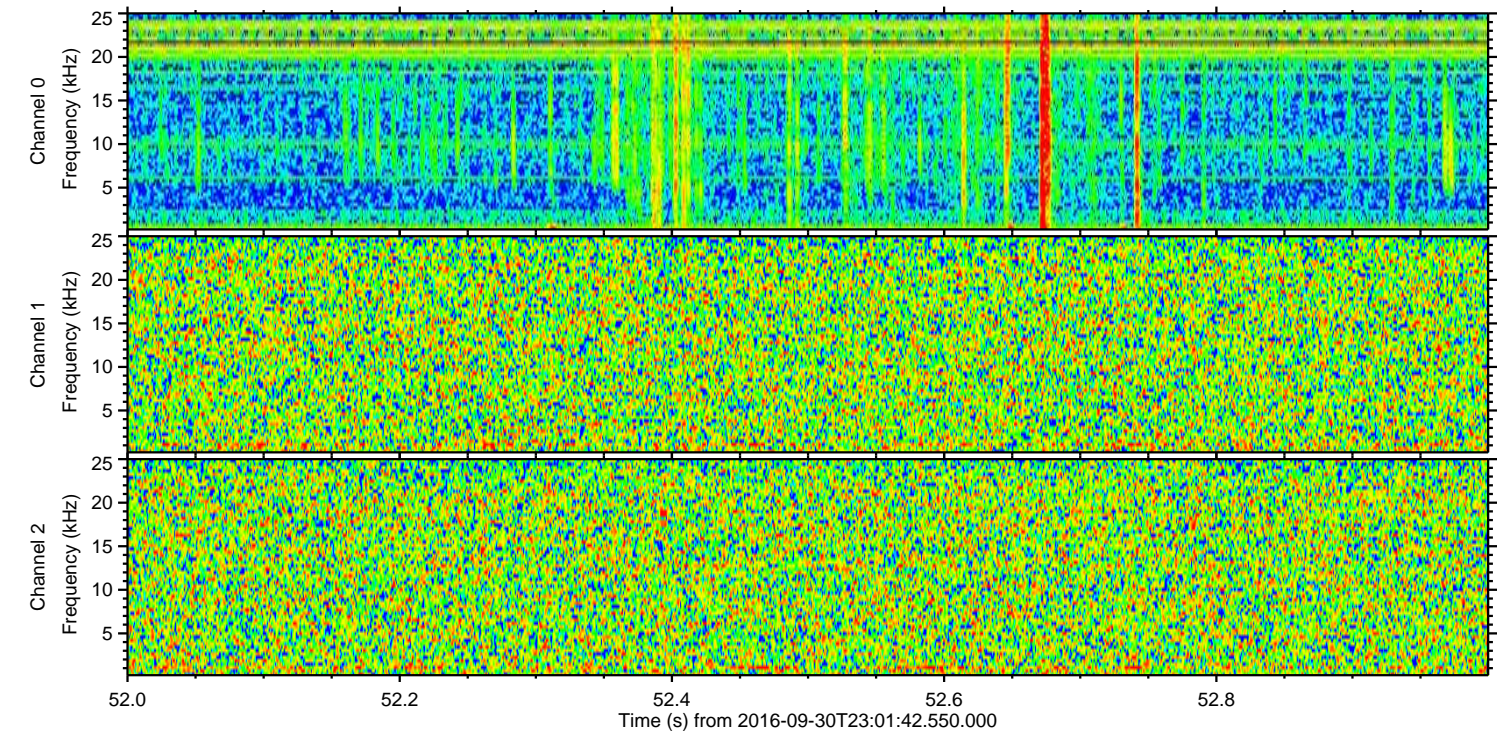
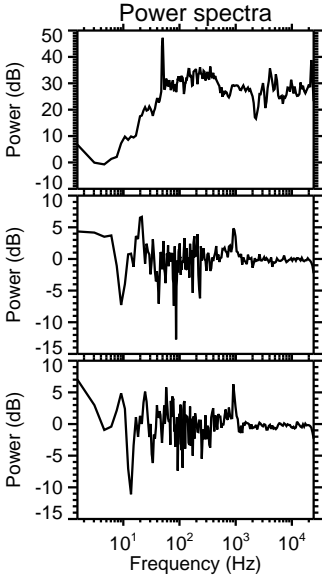
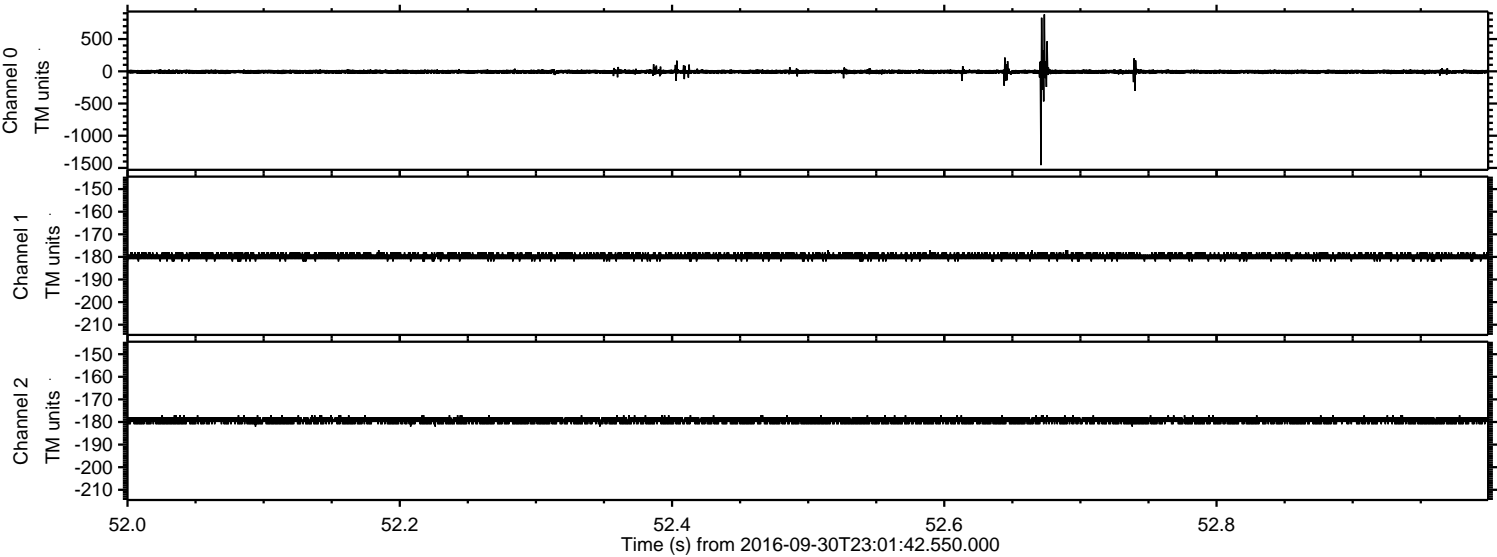
Processed Sat Oct 1 01:10:07 2016 by ELM ver.2012-10-06 from 001\_\_elm20160930\_230141\_\_dat00.bin



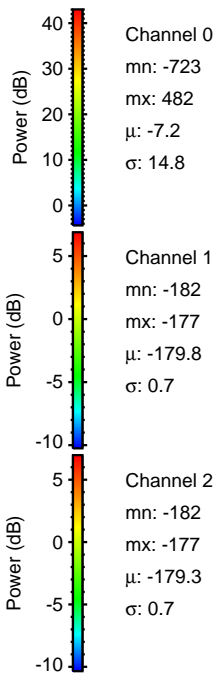
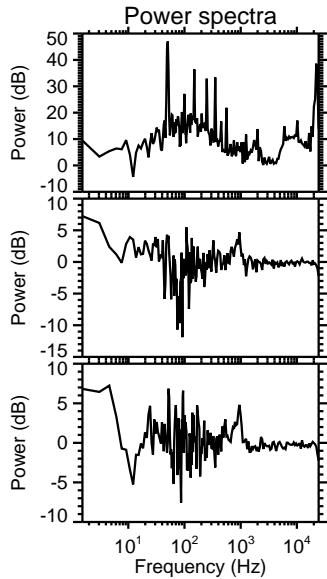
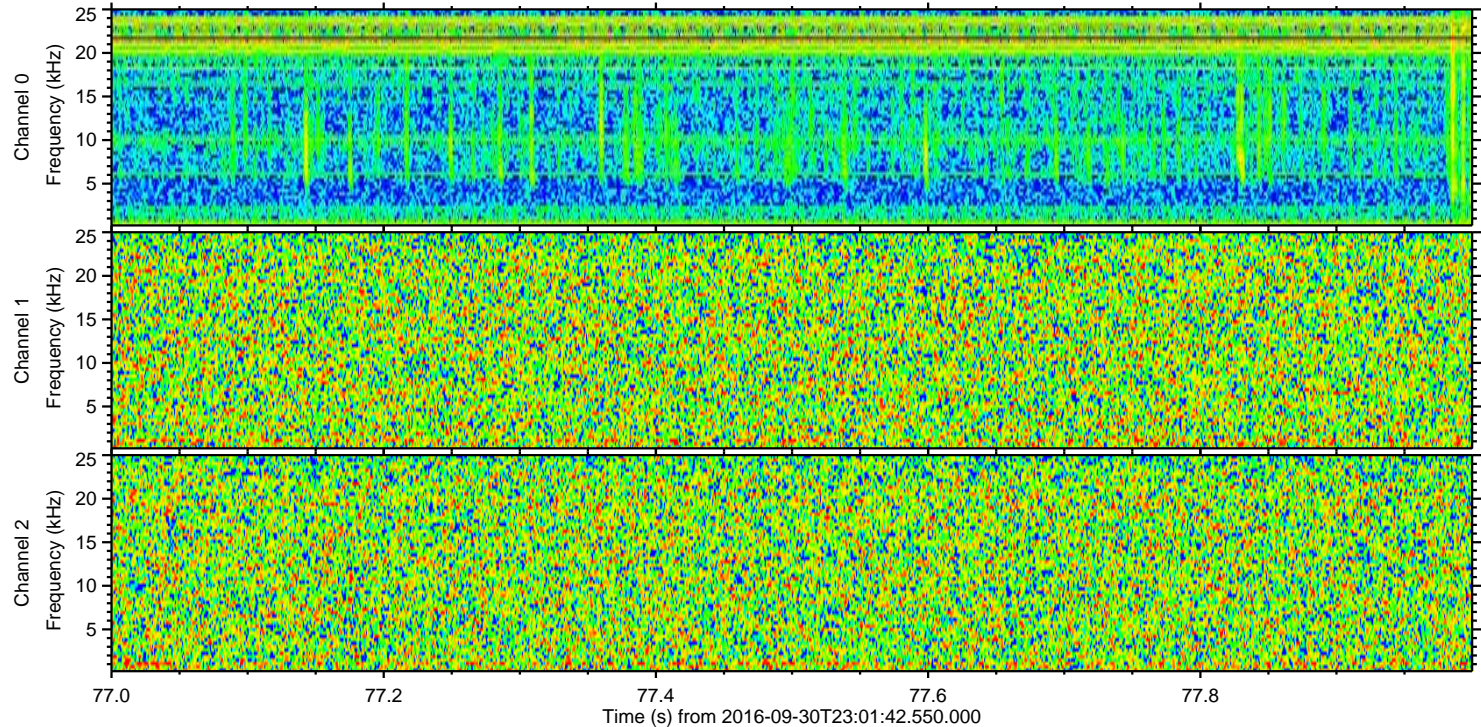
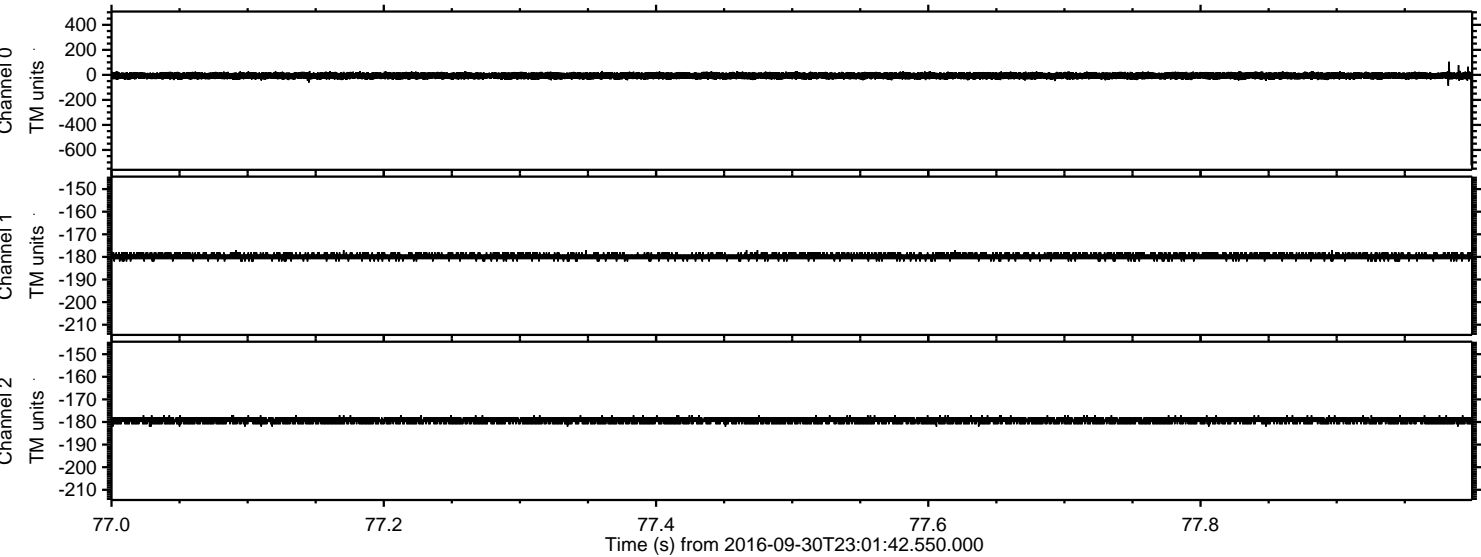
Processed Sat Oct 1 01:10:08 2016 by ELM ver.2012-10-06 from 001\_\_elm20160930\_230141\_\_dat00.bin

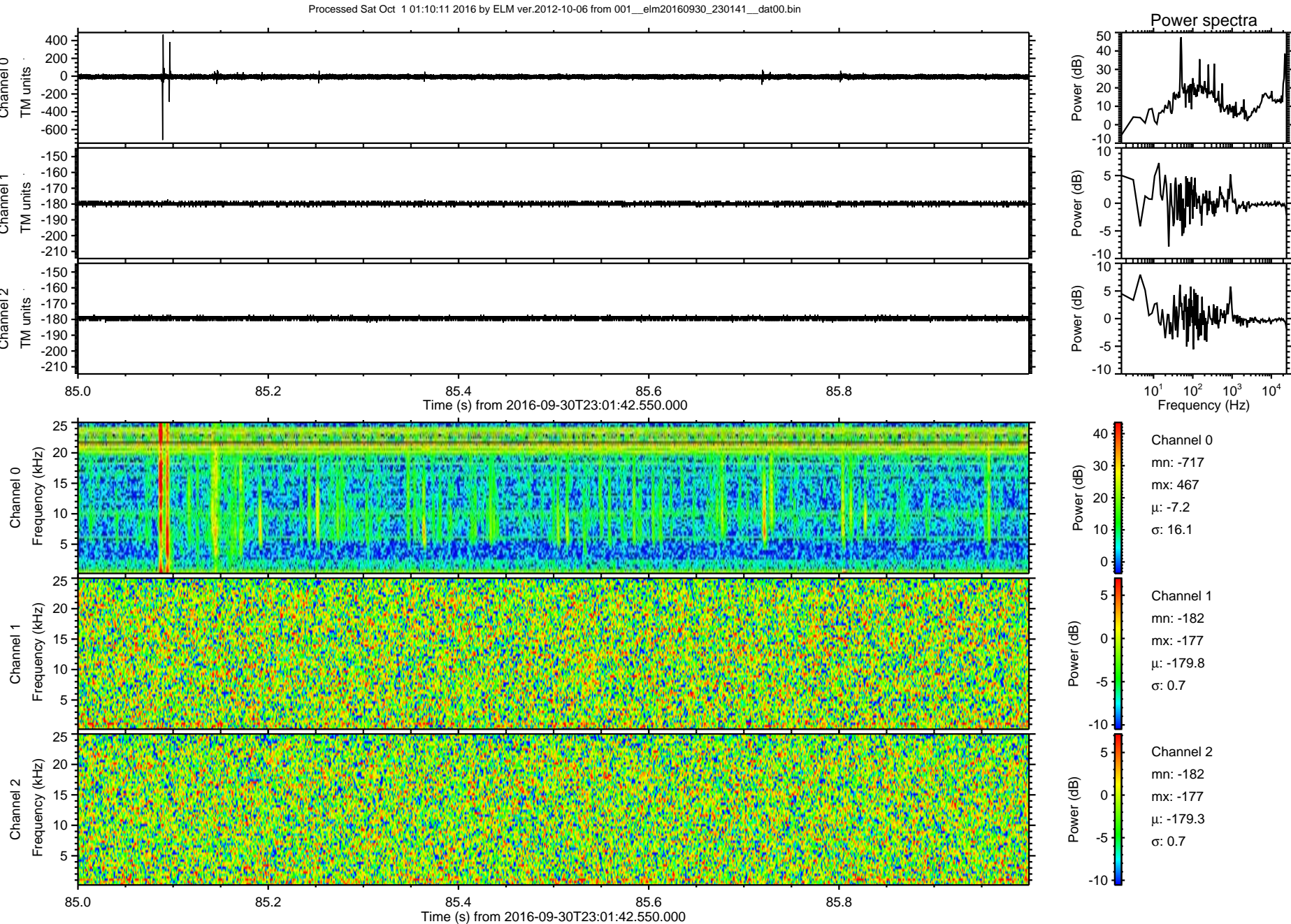


Processed Sat Oct 1 01:10:09 2016 by ELM ver.2012-10-06 from 001\_\_elm20160930\_230141\_\_dat00.bin

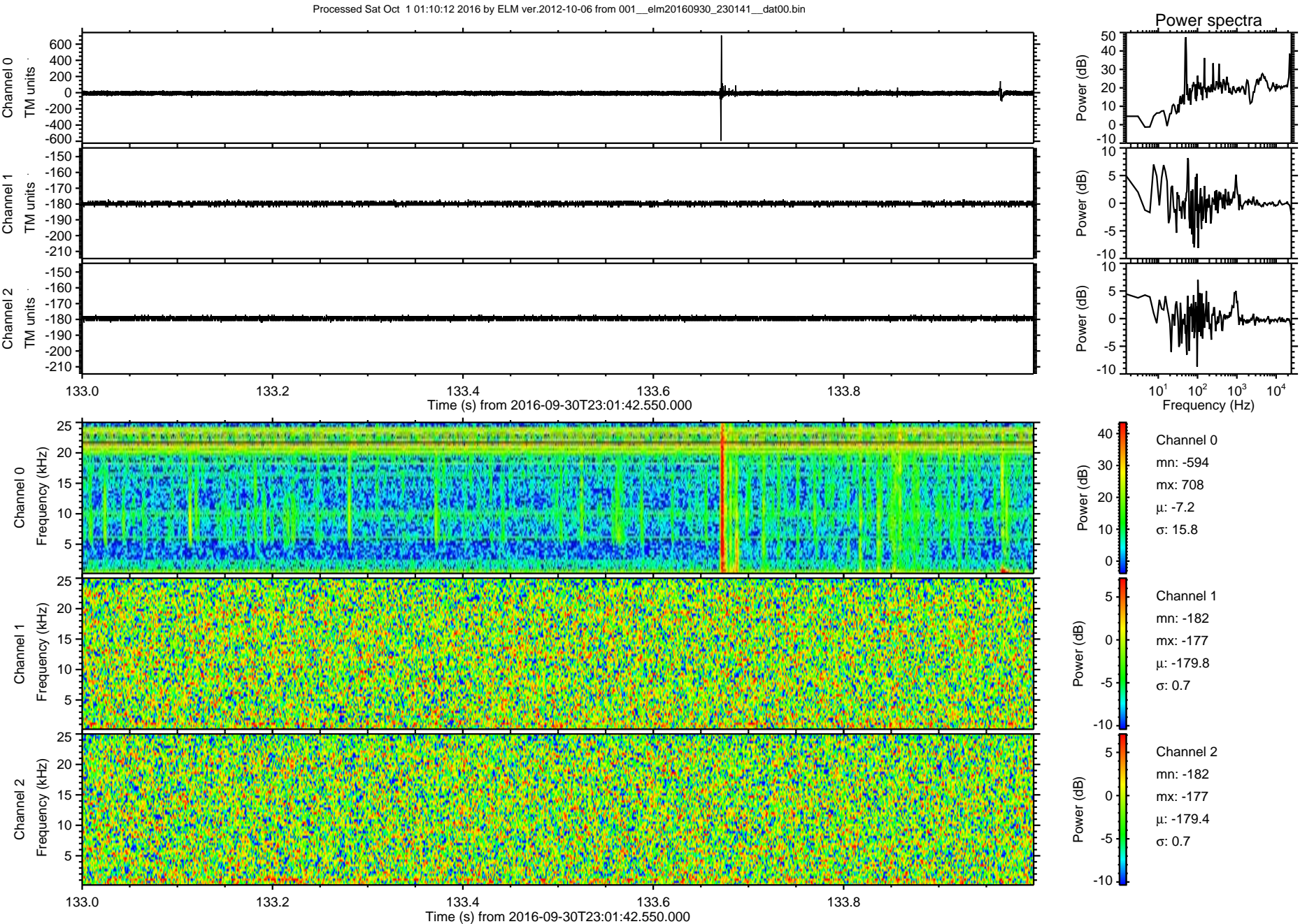


Processed Sat Oct 1 01:10:10 2016 by ELM ver.2012-10-06 from 001\_\_elm20160930\_230141\_\_dat00.bin



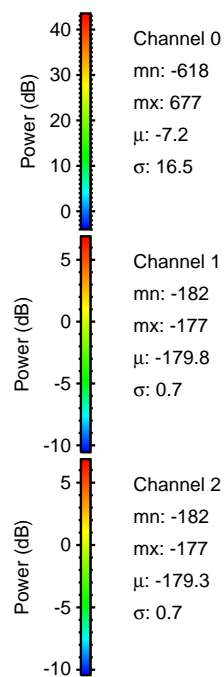
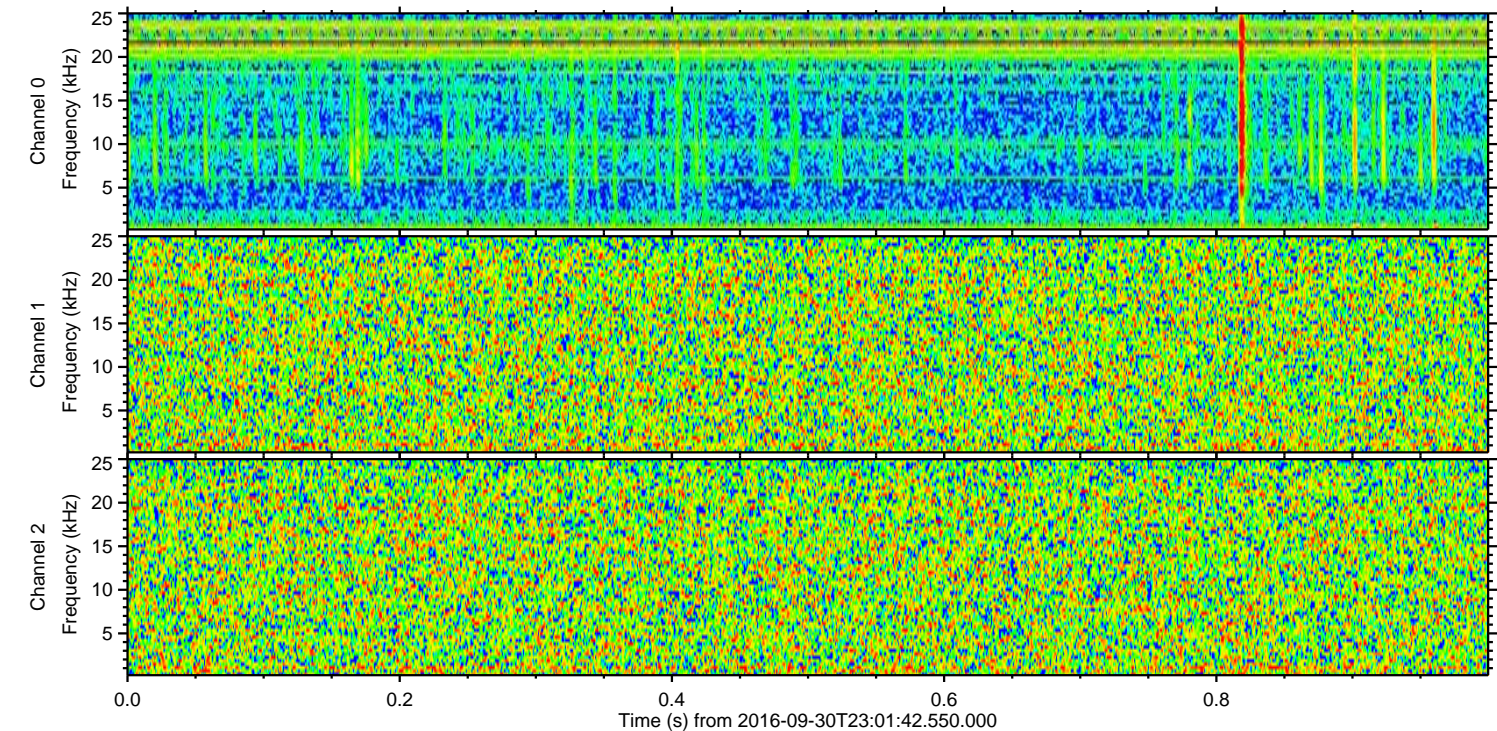
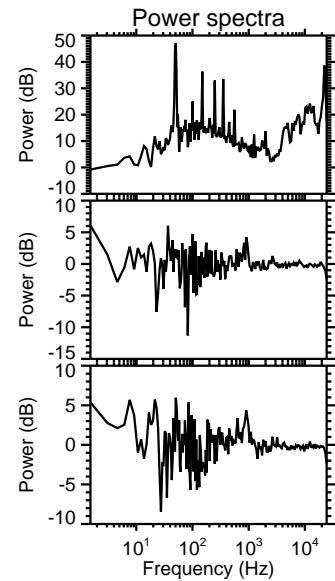
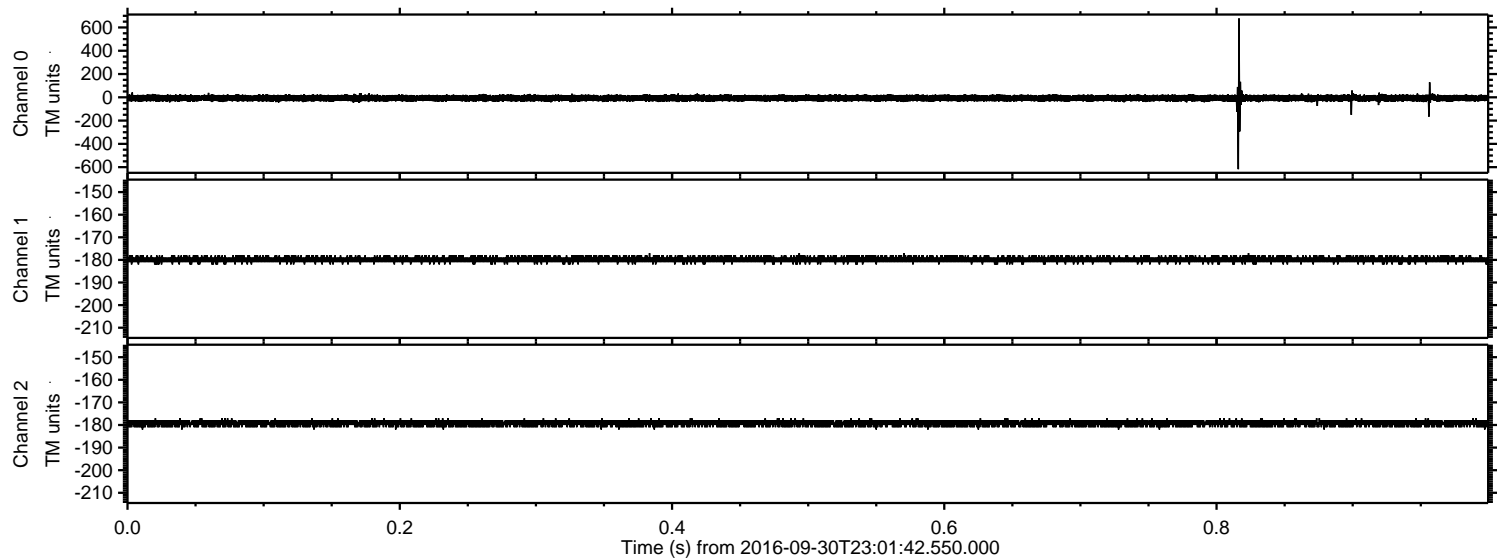


ELMAVAN 3D WAVEFORMS (Measured data sampled at 50 kHz) 51000 packets of 144 samples from 2016-09-30T23:01:42.550.000. Part 134/147

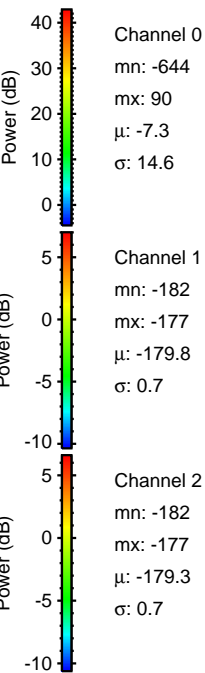
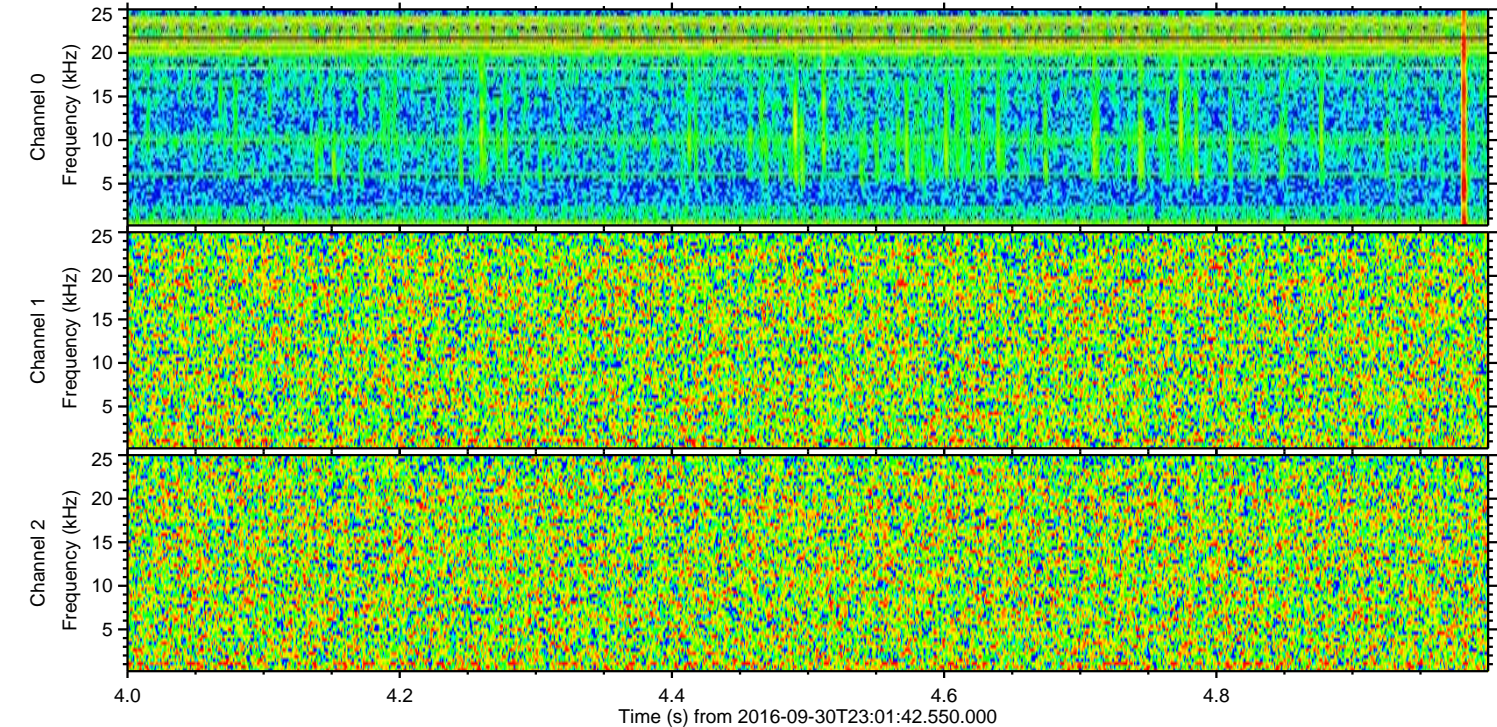
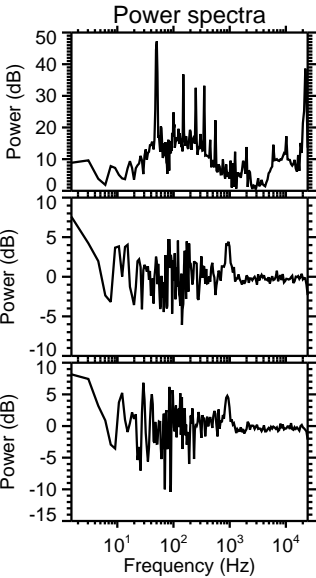
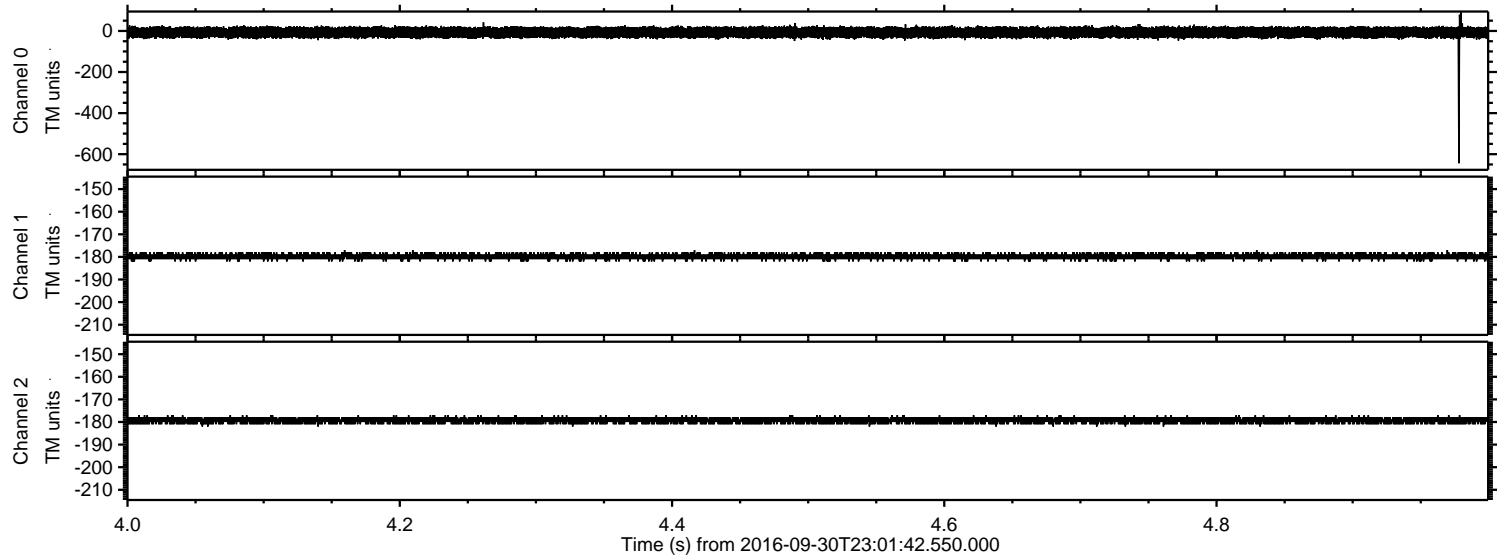


ELMAVAN 3D WAVEFORMS (Measured data sampled at 50 kHz) 51000 packets of 144 samples from 2016-09-30T23:01:42.550.000. Part 1/147

Processed Sat Oct 1 01:10:13 2016 by ELM ver.2012-10-06 from 001\_\_elm20160930\_230141\_\_dat00.bin



Processed Sat Oct 1 01:10:14 2016 by ELM ver.2012-10-06 from 001\_\_elm20160930\_230141\_\_dat00.bin



Processed Sat Oct 1 01:10:15 2016 by ELM ver.2012-10-06 from 001\_\_elm20160930\_230141\_\_dat00.bin

